

1984

Industrial Resources: Gallatin County - Warsaw

Kentucky Library Research Collections
Western Kentucky University, spcol@wku.edu

Follow this and additional works at: https://digitalcommons.wku.edu/gallatin_cty

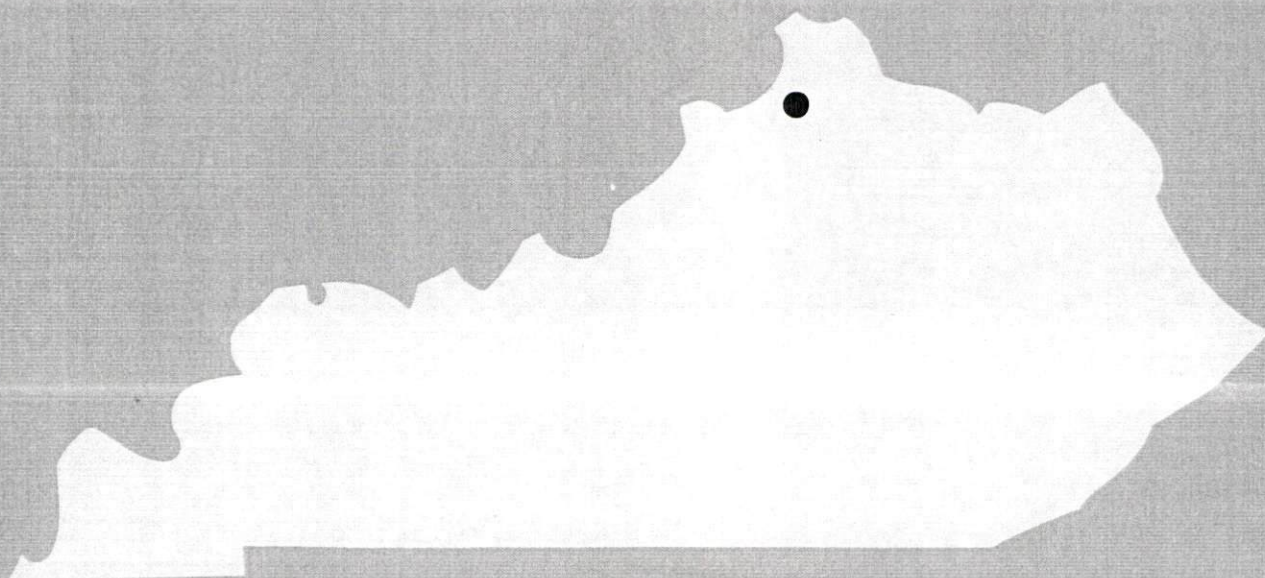
 Part of the [Business Administration, Management, and Operations Commons](#), [Growth and Development Commons](#), and the [Infrastructure Commons](#)

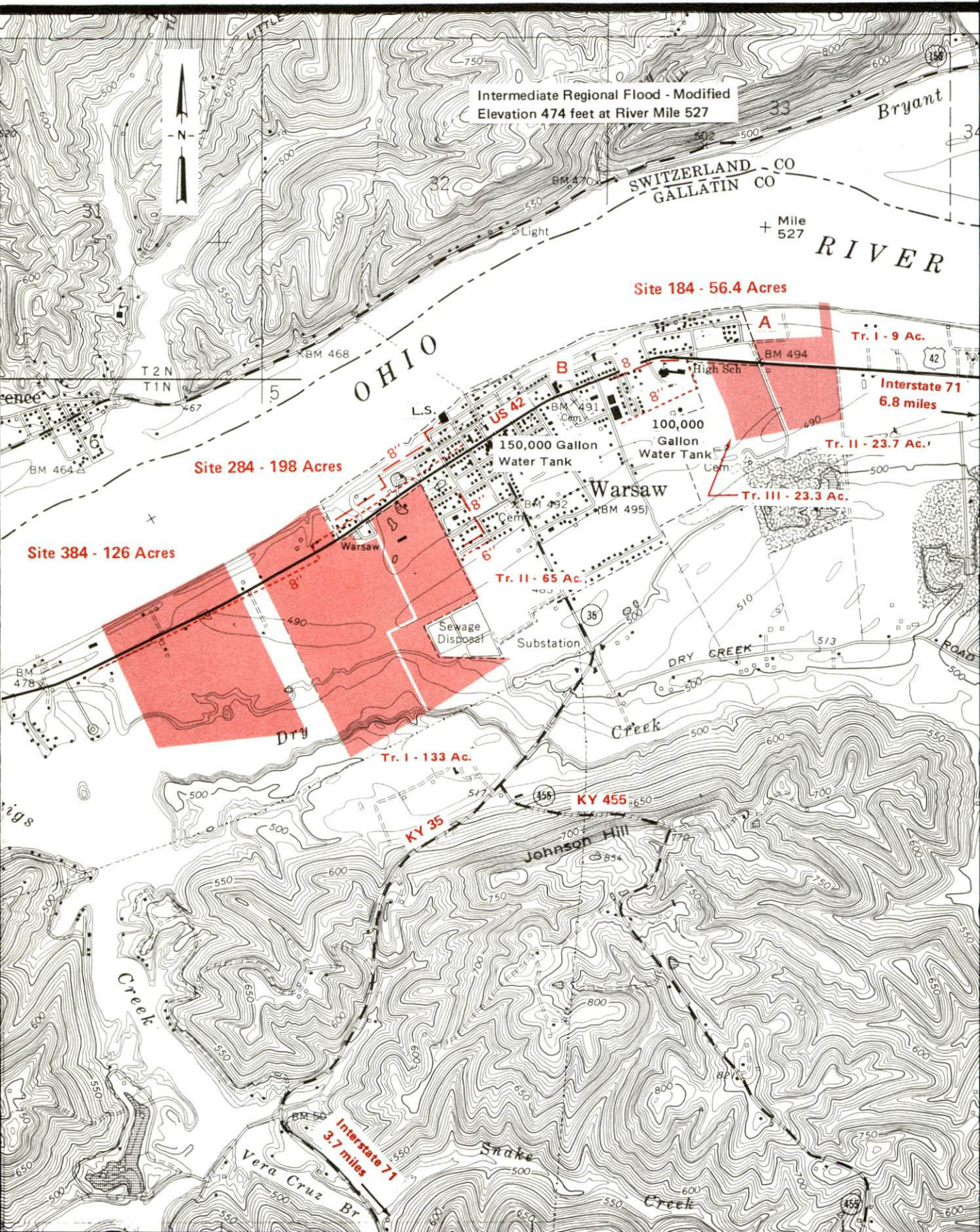
Recommended Citation

Kentucky Library Research Collections, "Industrial Resources: Gallatin County - Warsaw" (1984). *Gallatin County*. Paper 14.
https://digitalcommons.wku.edu/gallatin_cty/14

This Report is brought to you for free and open access by TopSCHOLAR®. It has been accepted for inclusion in Gallatin County by an authorized administrator of TopSCHOLAR®. For more information, please contact topscholar@wku.edu.

1984
**A comprehensive
report on
Warsaw, Ky.**





Site 184 - 56.4 Acres

LOCATION: Within eastern city limits
ZONING: Tract I: I-2, Tract II: I-2, Tract III: I-1
HIGHWAY ACCESS: US 42 serves the site
RAILROAD: Not rail served
WATER: Warsaw Water Works and Sewer System
Size Line: 8-inch line approximately 250 feet west of Tract III
NATURAL GAS: Union Light, Heat and Power
Size Line: 2-inch line approximately 400 feet west of Tract III
ELECTRICITY: Kentucky Utilities Company
SEWERAGE: Warsaw Water Works and Sewer System
Size Line: 8-inch line approximately 200 feet from Tract III
OWNERSHIP: Private

Site 284 - 198 Acres

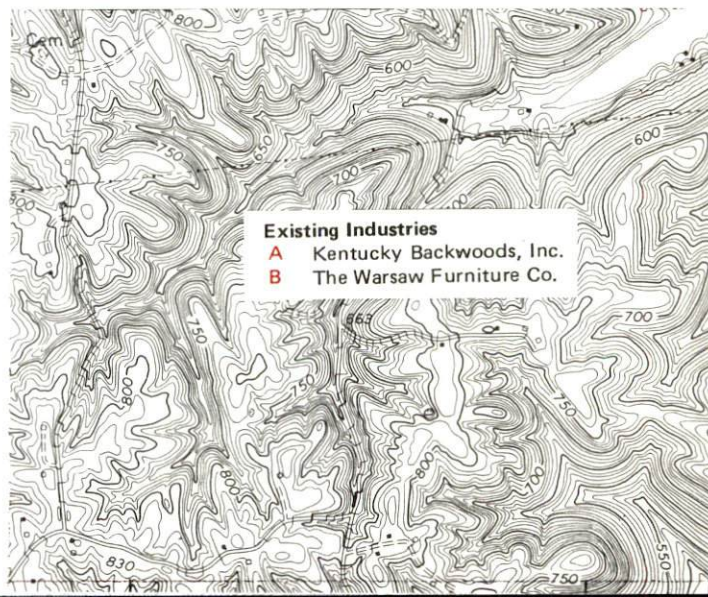
LOCATION: Within western city limits
ZONING: Not zoned
HIGHWAY ACCESS: US 42 serves the site
RAILROAD: Not rail served
WATER: Warsaw Water Works and Sewer System
Size Line: 8-inch line along US 42
NATURAL GAS: Union Light, Heat and Power
Size Line: 2-inch line on site along south side of US 42
ELECTRICITY: Kentucky Utilities Company
SEWERAGE: Warsaw Water Works and Sewer System
Size Line: 8-inch line at eastern boundary of Tract II; 8-inch line within 100 feet of Tract I
OWNERSHIP: Private

Site 384 - 126 Acres

LOCATION: Approximately 1800 feet west of city limits
ZONING: Not zoned
HIGHWAY ACCESS: US 42 passes through the site
RAILROAD: Not rail served
WATER: Warsaw Water Works and Sewer System
Size Line: 8-inch line along south side of US 42
NATURAL GAS: Union Light, Heat and Power
Size Line: 2-inch line adjacent to eastern boundary on south side of US 42
ELECTRICITY: Kentucky Utilities Company or Owen County RECC
SEWERAGE: Warsaw Water Works and Sewer System
Size Line: 8-inch line approximately 1800 feet east
OWNERSHIP: Private

SCALE: 1 inch = 2000 feet
CONTOUR INTERVAL: 10 feet
BASE: USGS 7.5 minute series - 1966
Photorevised - 1981

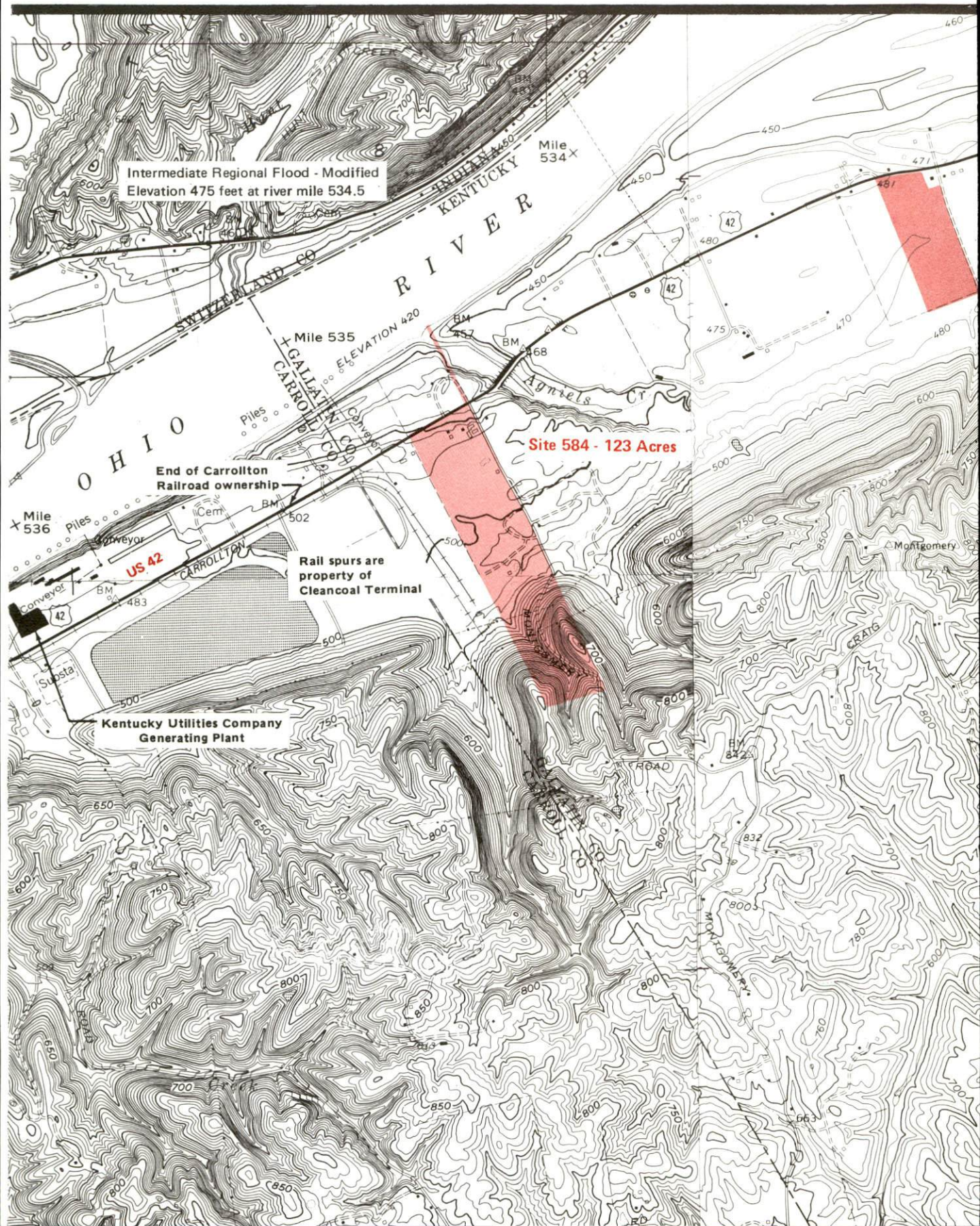
UTILITIES
----- Water Line
——— Sewer Line

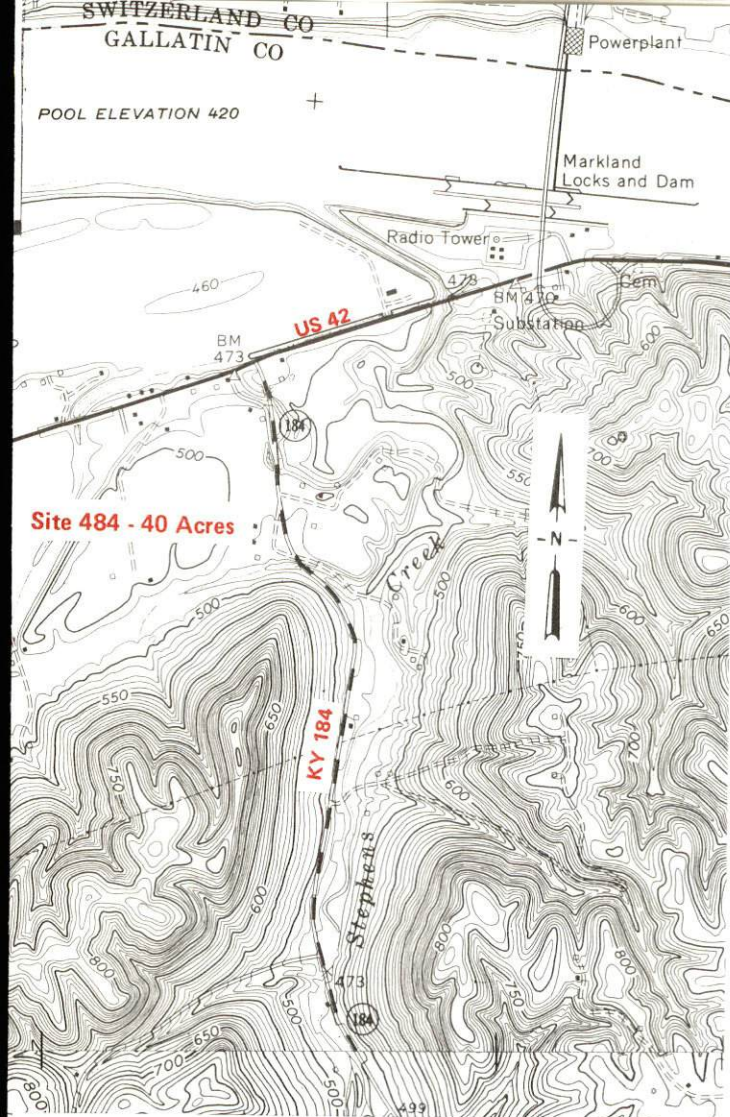


WARSAW, KENTUCKY

Industrial Sites -- 1984

For more information contact the Kentucky Department of Economic Development, Industrial Development & Marketing Division, Capital Plaza Tower, Frankfort, Kentucky 40601 (502-564-7140).





Site 484 - 40 Acres

LOCATION: Approximately 4.3 miles west of city limits
 ZONING: Not zoned
 HIGHWAY ACCESS: US 42 adjacent to northern boundary
 RAILROAD: Not rail served
 WATER: Ground water yield potential up to 500 gallons per minute
 in alluvium soil along the Ohio River
 NATURAL GAS: Nearest gas line is approximately 4 miles east at
 Warsaw
 ELECTRICITY: Owen County RECC
 SEWERAGE: Sewer service not available
 OWNERSHIP: Private

Site 584 - 123 Acres

LOCATION: Approximately 5.5 miles west of Warsaw city limits
 near the Gallatin County/Carroll County boundary line
 ZONING: Not zoned
 HIGHWAY ACCESS: US 42 adjacent to northwest boundary
 RAILROAD: Carrollton Railroad approximately 2200 feet southwest
 WATER: Ground water yield potential up to 500 gallons per minute
 in alluvium soil along the Ohio River
 NATURAL GAS: Nearest gas line approximately 5.2 miles east at
 Warsaw
 ELECTRICITY: Owen County RECC
 SEWERAGE: Sewer service not available
 OWNERSHIP: Private

SCALE: 1 inch = 2000 feet
 CONTOUR INTERVAL: 10 feet
 BASE: USGS 7.5 minute series - 1967-71
 Photorevised - 1980-81

A COMPREHENSIVE REPORT ON
WARSAW, KENTUCKY

Prepared by
The Kentucky Department of Economic Development
Division of Research and Planning
in cooperation with
The City of Warsaw

1984

TABLE OF CONTENTS

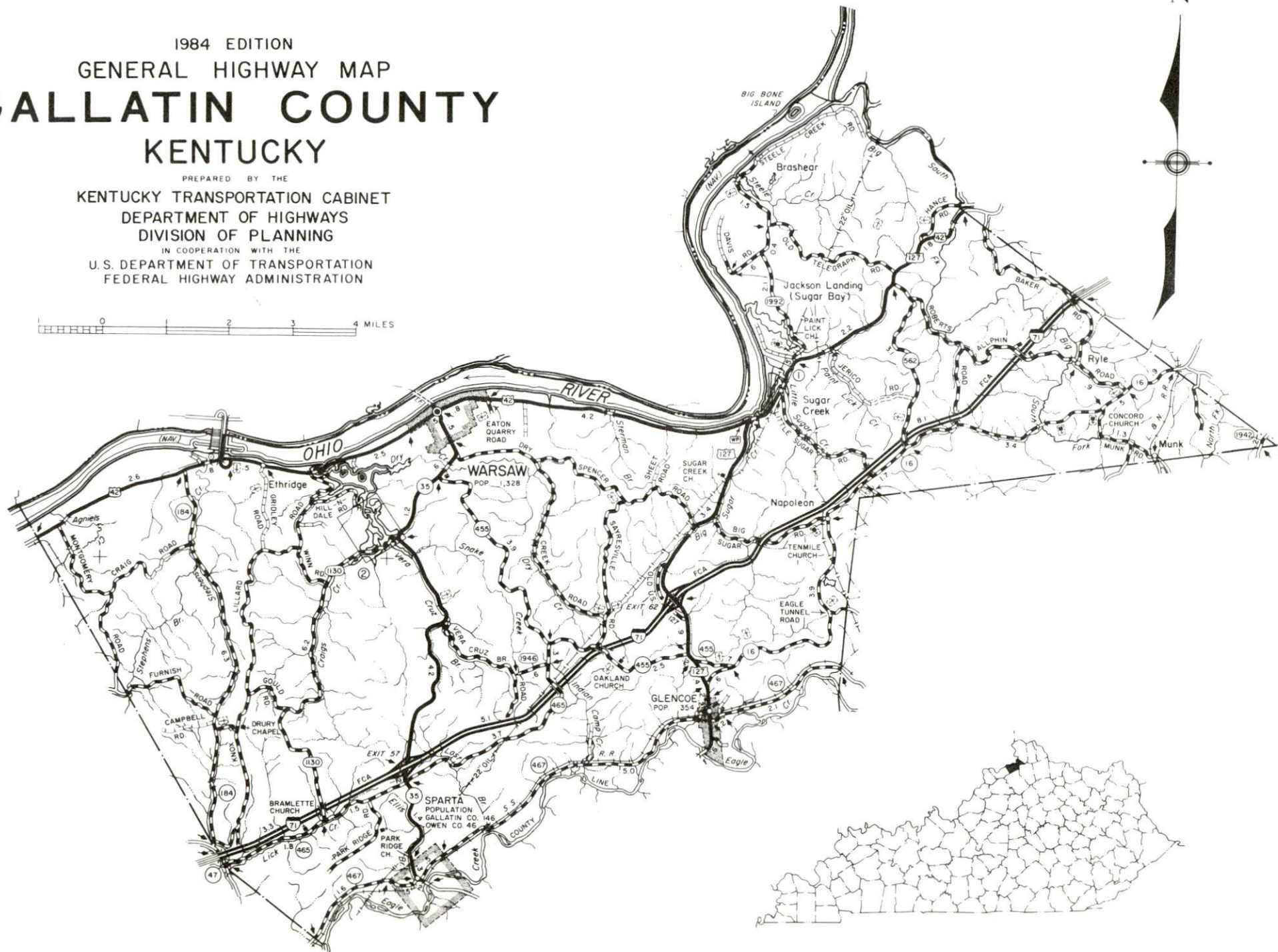
<u>Chapter</u>	<u>Page</u>
INDUSTRIAL SITES	i
WARSAW, KENTUCKY - A RESOURCE PROFILE	1
THE LABOR MARKET AREA	3
Population	3
Labor Force Characteristics of Residents, 1982	3
Selected Components of Nonagricultural Employment, by Place of Work, 1982	4
Warsaw Manufacturing Firms, Their Products and Employment	4
Labor Organizations in Manufacturing Firms	4
Industrial Services	5
Estimated Male Labor Supply	6
Estimated Female Labor Supply	6
Average Weekly Wages By Industry, by Place of Work, 1982	7
Per Capita Personal Income	9
TRANSPORTATION	10
Rail	10
Highways	10
Truck Service	11
Air	12
Bus	12
Rental Services	12
Water	12
POWER AND FUEL	13
Electricity	13
Natural Gas	13
Other Fuels	14
WATER AND SEWERAGE	15
Public Water Supply	15
Raw Water	15
Sewerage	15
CLIMATE	16

<u>Chapter</u>	<u>Page</u>
LOCAL GOVERNMENT	17
City	17
County	17
Assessed Value of Property, 1983	17
Property Taxes	17
Combined State and Local Rates Per \$100 Valuation, 1983	18
Utilities Gross Receipts Tax for Schools	18
Planning and Zoning	18
Safety	19
Police	19
Fire	19
Rescue Service	19
Refuse Collection and Disposal	19
EDUCATION	20
Public Schools	20
Nonpublic Schools	20
Area Colleges and Universities	21
Vocational Schools	22
HEALTH	24
Local Medical Personnel	24
Hospitals	24
Ambulance Service	24
Public Health	25
OTHER LOCAL FACILITIES	26
Communications	26
Library Services	26
Religious Institutions	27
Financial Institutions	27
Hotels and Motels	27
Clubs and Organizations	27
RECREATION	28
COMMUNITY IMPROVEMENTS	30

1984 EDITION
GENERAL HIGHWAY MAP
GALLATIN COUNTY
KENTUCKY

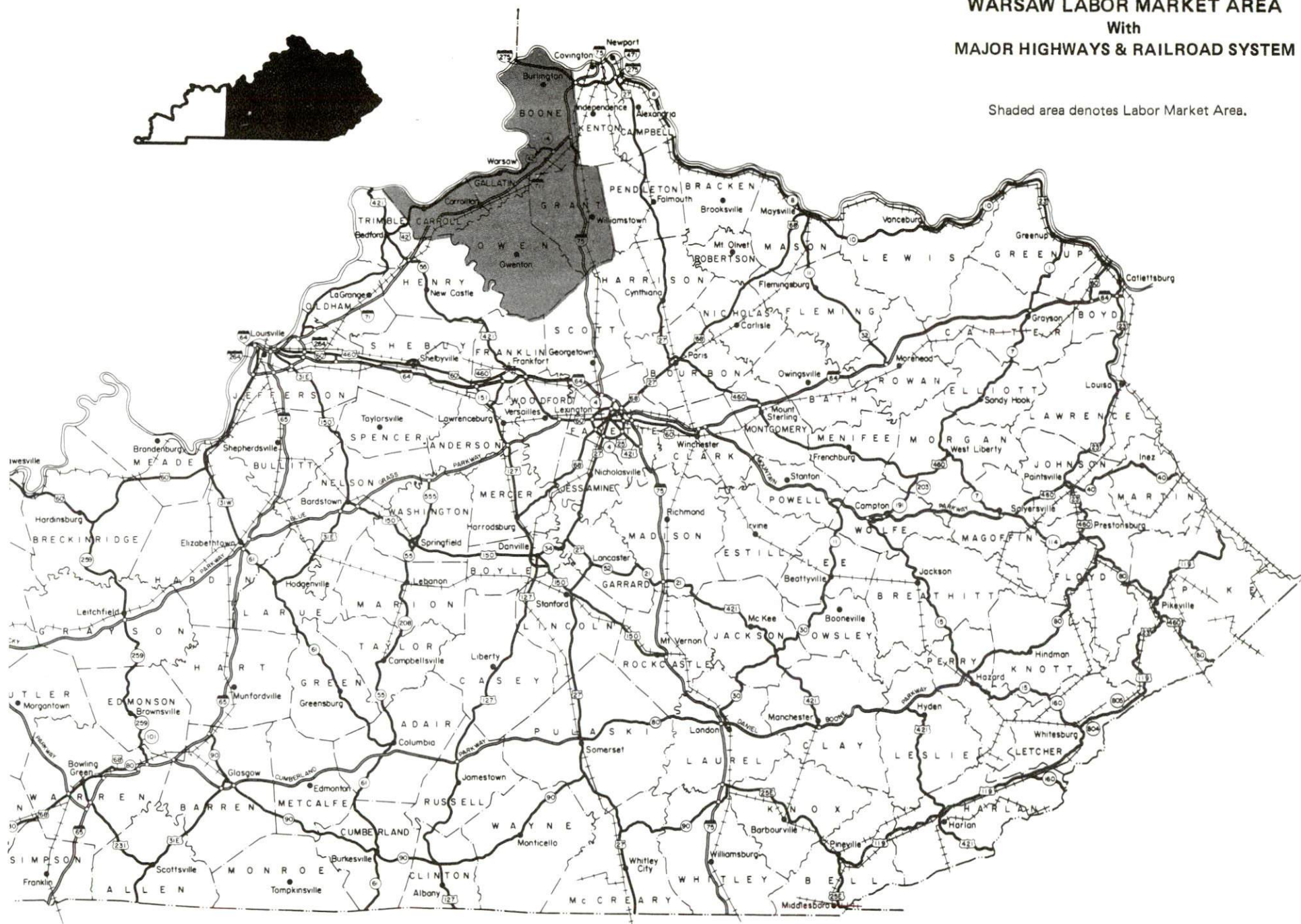
PREPARED BY THE
KENTUCKY TRANSPORTATION CABINET
DEPARTMENT OF HIGHWAYS
DIVISION OF PLANNING
IN COOPERATION WITH THE
U.S. DEPARTMENT OF TRANSPORTATION
FEDERAL HIGHWAY ADMINISTRATION

0 1 2 3 4 MILES



WARSAW LABOR MARKET AREA **With** **MAJOR HIGHWAYS & RAILROAD SYSTEM**

Shaded area denotes Labor Market Area.



WARSAW, KENTUCKY - A RESOURCE PROFILE

Warsaw, the county seat of Gallatin County, is a small community located on the banks of the Ohio River in north-central Kentucky. Warsaw, with a population of 1,328 in 1980, is located 46 miles southwest of Cincinnati, Ohio; 63 miles northeast of Louisville, Kentucky; 86 miles northwest of Lexington, Kentucky; and 236 miles northeast of Nashville, Tennessee.

Gallatin County, with a 1980 population of 4,842, has a land area of 99 square miles.

The Economic Framework

The total number of Gallatin County residents employed in 1982 averaged 1,480, with nonagricultural jobs accounting for 1,295 workers. Manufacturing employers in the county reported 35 workers; wholesale and retail trade 190; state and local government 150; and services 30. Manufacturing employment is in the furniture and fixtures, food and kindred products, stone, clay and glass products, and printing and publishing industries.

Per capita personal income in the county in 1981 was \$6,495. Between 1977 and 1981, per capita income increased by 49 percent.

The Warsaw labor market area includes Gallatin and the adjoining Kentucky counties of Boone, Carroll, Grant and Owen, plus Switzerland County in Indiana. The total number of residents in the Kentucky portion of the labor market area employed in 1982 averaged 35,370, with nonagricultural jobs accounting for 33,140 workers. Manufacturing employers in the area reported 7,160 workers; wholesale and retail trade 7,490; state and local government 3,270; and services 3,235.

Resources for Growth

1. Labor Supply - There is a current labor supply of 3,995 men and 4,480 women available for industrial jobs in the Kentucky portion of the labor market area. In addition, from 1984 through 1988, 3,800 young men and 3,630 young women in this area will become 18 years of age and potentially available for work.

2. Transportation - The Seaboard System Railroad provides main line service to Sparta, 8 miles south of Warsaw. Warsaw is served directly by U.S. 42, a "AAA" rated trucking highway. In addition, Interstate 71 is located 4 miles south, providing easy access to Louisville, Kentucky, and Cincinnati, Ohio. Eight common carriers have the authority to serve Warsaw. The nearest commercial airport, Greater Cincinnati International, is located 42 miles northeast of Warsaw.

3. Power and Fuel - Electric power is provided to Warsaw and parts of Gallatin County by the Kentucky Utilities Company, an electric generation and transmission company. Gallatin County is also served electric power by the Owen County Rural Electric Cooperative Corporation, which is supplied by the East Kentucky Power Cooperative. Warsaw is provided natural gas by the Union Light, Heat and Power Company, which is supplied by the Columbia Gas Transmission Corporation. Three distributors of propane and five distributors of distillate fuel oil serve Warsaw.

4. Education - Primary and secondary education is provided to Warsaw and Gallatin County by the Gallatin County School System.

Six universities, seven senior colleges, two junior colleges, and one community college are located within 70 miles of Warsaw.

The Northern Kentucky State Vocational-Technical School in Covington, 45 miles northeast, and the Northern Campbell County Vocational-Technical School in Highland Heights, 50 miles northeast, offer training in 16 and 7 courses respectively. The Northern Kentucky Health Occupations Center in Edgewood, 43 miles northeast, offers four health-related courses. The Carroll County Area Vocational Education Center in Carrollton, 17 miles southwest, offers training in 12 courses.

THE LABOR MARKET AREA

The Warsaw Labor Market Area includes Gallatin County and the adjoining Kentucky counties of Boone, Carroll, Grant and Owen. The Warsaw Labor Market Area also encompasses Switzerland County, Indiana, located across the Ohio River from Gallatin County.

POPULATION			
Area	1980	1970	Percent Nonwhite
Warsaw	1,328	1,232	6.6
Labor Market Area	82,186	62,938	N/A
Gallatin County	4,842	4,134	2.7
Boone County	45,842	32,812	1.0
Carroll County	9,270	8,523	2.0
Grant County	13,308	9,999	0.4
Owen County	8,924	7,470	2.5

Note: The 1980 counts of population by race are provisional.

Sources: U.S. Department of Commerce, Bureau of the Census, 1980 Census of Population and Housing, March 1981; 1980 Census of Population, Number of Inhabitants. Population Research Unit, Urban Studies Center, University of Louisville, Kentucky Demographics: The 1980 Census of Kentucky, Characteristics of Population, Households, Housing, January 1982.

LABOR FORCE CHARACTERISTICS OF RESIDENTS, 1982		
	Gallatin County	Labor Market Area*
Civilian Labor Force	1,717	39,015
Employment	1,476	35,372
Agricultural	181	2,232
Nonagricultural	1,295	33,140
Unemployment	241	3,643
Rate of Unemployment (%)	14.0	9.3

* Gallatin County and the four adjoining Kentucky counties.

Source: Kentucky Cabinet for Human Resources, Kentucky Labor Force Estimates, Annual Averages, 1982.

SELECTED COMPONENTS OF NONAGRICULTURAL EMPLOYMENT,
BY PLACE OF WORK, 1982

	<u>Gallatin County</u>	<u>Labor Market Area*</u>
All Industries (total)	528	25,531
Manufacturing	35	7,162
Wholesale & Retail Trade	192	7,490
Services	29	3,235
State/Local Government	152	3,272

* Gallatin County and the four adjoining Kentucky counties.

Note: Excludes domestic workers, railway workers, certain nonprofit corporations, majority of federal government workers, and self-employed workers.

Source: Kentucky Cabinet for Human Resources, Average Monthly Workers Covered by Kentucky Unemployment Insurance Law, 1982.

WARSAW MANUFACTURING FIRMS,
THEIR PRODUCTS AND EMPLOYMENT

<u>Firm</u> (Establishment date)	<u>Product</u>	<u>Employment</u>		
		<u>Total</u>	<u>Male</u>	<u>Female</u>
Gallatin County Farm Supply (1951)	Prepared animal feed	9	5	4
Gallatin County News (1880)	Newspaper	6	2	4
Kentucky Backwoods, Inc. (1983)	Pork and beef barbecue	5	3	2
Sugar Creek, Inc. (1976)	Precast concrete	13	12	1
The Warsaw Furniture Company (1902)	Wood household furniture	19	8	11

Sources: Kentucky Department of Economic Development, 1984 Kentucky Directory of Manufacturers; Division of Research and Planning.

LABOR ORGANIZATIONS IN MANUFACTURING FIRMS

There are no labor unions representing manufacturing workers in Warsaw at the present time.

INDUSTRIAL SERVICES

<u>Types of Services</u>	<u>Location</u>	<u>Mileage from Warsaw</u>
Custom Plastics Producers	Florence, Kentucky	33
	Bellevue, Kentucky	48
Electric Motor Repair	Covington, Kentucky	45
	Cincinnati, Ohio	46
Grinding, Precision & Tool	Erlanger, Kentucky	36
	Cincinnati, Ohio	46
Heat Treating Facilities	Cincinnati, Ohio	46
Industrial Equipment & Supplies	Florence, Kentucky	33
	Cincinnati, Ohio	46
Industrial Gases	Cincinnati, Ohio	46
Industrial Waste Removal	Newport, Kentucky	46
	Cincinnati, Ohio	46
Machine Shops, Tool & Die	Erlanger, Kentucky	36
	Covington, Kentucky	45
	Newport, Kentucky	46
	Bellevue, Kentucky	48
	Ludlow, Kentucky	48
	Cincinnati, Ohio	46
Metal Finishers	Covington, Kentucky	45
	Newport, Kentucky	46
	Cincinnati, Ohio	46
Metal Service Centers	Covington, Kentucky	45
	Cincinnati, Ohio	46
Millwrights	Villa Hills, Kentucky	41
	Covington, Kentucky	45
	Cincinnati, Ohio	46

Source: Kentucky Department of Economic Development, Kentucky Directory of Selected Industrial Services, 1983.

ESTIMATED MALE LABOR SUPPLY
WARSAW LABOR MARKET AREA

Area	Current				Future
	Total	Unemployed	Under-employed	Not in Labor Force	Becoming 18 years of age 1984 thru 1988
Labor Market					
Area*	3,995	2,184	1,344	467	3,796
Gallatin	463	173	59	231	212
Boone	1,967	1,240	727	0	2,223
Carroll	324	168	156	0	393
Grant	569	365	204	0	636
Owen	672	238	198	236	332

*Additional workers may be drawn from other nearby counties.

Note: Unemployed - persons unemployed and actively seeking work;
Underemployed - persons employed but working only 14 to 26 weeks per year;
Not in Labor Force - represents the number of persons who would enter the labor force if suitable employment were available (based on the assumption that persons in Kentucky would like to participate in the labor force in the same proportion that they do nationally).

Sources: Kentucky Cabinet for Human Resources, Kentucky Labor Supply Estimates by Area Development District and County, 1982. Kentucky Department of Economic Development, Future Labor Supply Becoming 18 Years of Age, 1984 thru 1988.

ESTIMATED FEMALE LABOR SUPPLY
WARSAW LABOR MARKET AREA

Area	Current				Future
	Total	Unemployed	Under-employed	Not in Labor Force	Becoming 18 years of age 1984 thru 1988
Labor Market					
Area*	4,483	1,459	1,762	1,262	3,633
Gallatin	558	68	133	357	227
Boone	2,010	981	1,029	0	2,093
Carroll	348	110	238	0	363
Grant	1,009	209	228	572	617
Owen	558	91	134	333	333

*Additional workers may be drawn from other nearby counties.

Note: Unemployed - persons unemployed and actively seeking work;
Underemployed - persons employed but working only 14 to 26 weeks per year;
Not in Labor Force - represents the number of persons who would enter the labor force if suitable employment were available (based on the assumption that persons in Kentucky would like to participate in the labor force in the same proportion that they do nationally).

Sources: Kentucky Cabinet for Human Resources, Kentucky Labor Supply Estimates by Area Development District and County, 1982. Kentucky Department of Economic Development, Future Labor Supply Becoming 18 Years of Age, 1984 thru 1988.

AVERAGE WEEKLY WAGES BY INDUSTRY,
BY PLACE OF WORK, 1982

	<u>Gallatin County</u>	<u>Boone County</u>	<u>Carroll County</u>
All Industries	\$ 238.10	\$ 274.28	\$ 328.50
Mining & Quarrying	*	*	.00
Contract Construction	*	320.39	*
Manufacturing	161.51	375.84	351.50
Transportation, Communications & Public Utilities	208.12	433.35	393.69
Wholesale & Retail Trade	196.81	179.64	179.05
Finance, Insurance & Real Estate	248.37	249.94	273.59
Services	503.76	199.41	157.01
State/Local Government	207.57	250.39	215.80
Other	93.85	277.16	*
	<u>Grant County</u>	<u>Owen County</u>	
All Industries	\$ 209.67	\$ 233.72	
Mining & Quarrying	.00	.00	
Contract Construction	218.92	234.34	
Manufacturing	266.92	*	
Transportation, Communications & Public Utilities	328.40	*	
Wholesale & Retail Trade	161.74	181.68	
Finance, Insurance & Real Estate	209.27	210.19	
Services	133.13	149.87	
State/Local Government	236.87	217.20	
Other	101.93	*	

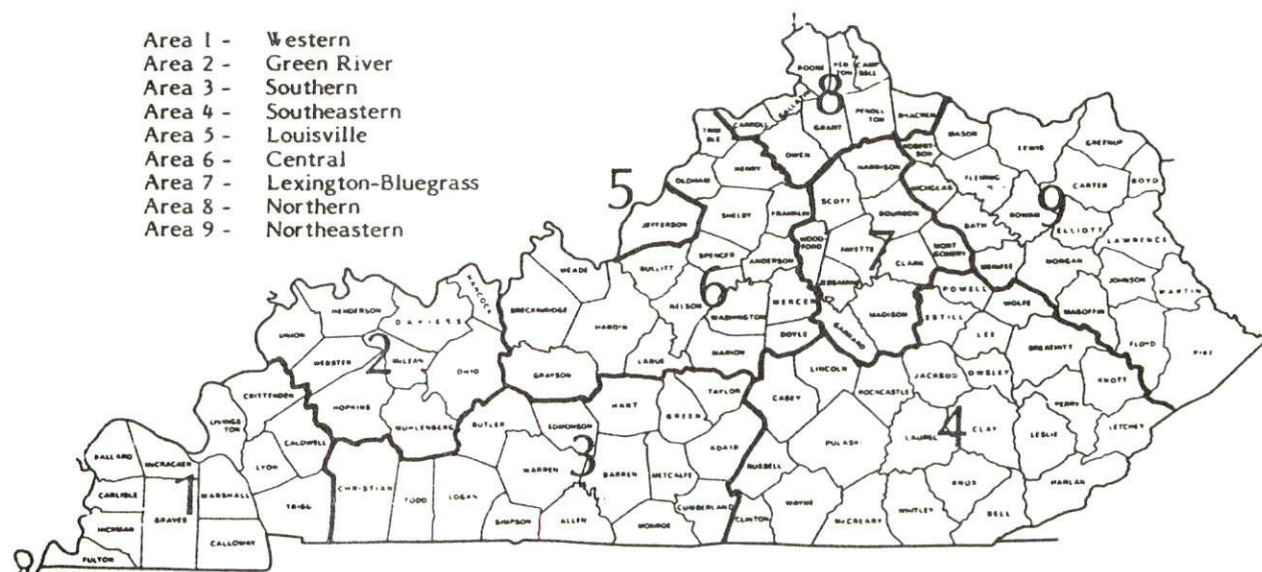
*Not disclosed.

Note: Excludes domestic workers, railway workers, certain nonprofit corporations, majority of federal government workers, and self-employed workers.

Source: Kentucky Cabinet for Human Resources, Average Weekly Wages of Workers Covered by Kentucky Unemployment Insurance Law, 1982.

Occupational wage rates for specific industries are usually not available to most government agencies, and wage data furnished to state employment agencies by individual industrial employers are protected from disclosure by federal law. The most reliable up-to-date wage information can be obtained by direct contact with local employers.

Associated Industries of Kentucky, a voluntary organization of Kentucky businesses, regularly collects occupational wage rates and fringe benefits data from participating member firms. Data are compiled for over 127 clearly defined office, production, and service occupations. Tabulations are published for nine geographical areas of Kentucky, as shown on the map below. It should be noted that the data may be weighted by the preponderance of firms in the larger cities and may be somewhat higher than the rates paid in the smaller communities. Data from these tabulations are available, upon request, from the Kentucky Department of Economic Development, Frankfort, Kentucky 40601.



Associated Industries of Kentucky Area Wage Surveys

PER CAPITA PERSONAL INCOME

<u>Area</u>	<u>1977</u>	<u>1981</u>	<u>Percent Change</u>
Gallatin County	\$ 4,350	\$ 6,495	49.3
Labor Market Area Range*	\$4,350 - 6,497	\$ 6,495 - 8,722	N/A
Kentucky	5,797	8,416	45.2
U. S.	6,984	10,495	50.3

* Gallatin County and the four adjoining Kentucky counties.

Source: U. S. Bureau of Economic Analysis, Kentucky Economic Information System, May 1983.

TRANSPORTATION

Rail

Warsaw is not served directly by rail. The nearest rail service is provided by the Seaboard System Railroad at Sparta, approximately 8 miles south of Warsaw.

Services at Sparta - Main line route with 1 northbound freight making 3 stops per week; 3 northbound and 3 southbound through freights daily; switching services; team track space for 5 cars; siding space for 15 cars. Piggyback facilities are maintained by the Seaboard System Railroad, the Southern Railway System, and the Chessie System at Cincinnati, Ohio, 46 miles northeast of Warsaw

For details on routing, schedules, rates, and services, contact:

Manager of Industrial Development
Seaboard System Railroad
P.O. Box 32290
Louisville, Kentucky 40232
(502) 587-5228

Highways

Warsaw is located 4 miles from an Interstate 71 interchange. Interstate 71 extends northeast from Louisville, through Gallatin County, and connects with north-south Interstate 75 in adjoining Boone County. Interstate 71 also connects with Interstates 64 and 65 at Louisville, 63 miles southwest of Warsaw.

Warsaw is served by U.S. 42 and Kentucky 35, both "AAA"-rated trucking highways. Direct access to Indiana Highway 156 is provided by a bridge recently constructed atop the Markland Dam, about 4 miles west of the city.

Truck Service

<u>Company</u>	<u>Home Office</u>
Jones Transfer Company*	300 Jones Avenue Monroe, Michigan 48161
Leoni Motor Express, Inc.**	Chicago Heights, Illinois 60411
Mason and Dixon Lines, Inc.**	P.O. Box 969 Kingsport, Tennessee 37662
McLean Trucking Company*	P.O. Box 213 Winston-Salem, North Carolina 27154
Overnite Transportation Company**	1000 Semmes Avenue P.O. Box 1216 Richmond, Virginia 23209
R-W Service System, Inc.**	20225 Goddard Road Taylor, Michigan 48180
Roadway Express, Inc.**	1077 Gorge Boulevard Akron, Ohio 44310
United Trucking Service, Inc.**	8505 West Warren Dearborn, Michigan 48126

Source: American Motor Carrier Directory, Spring 1984.

* Interstate service only.

** Interstate and intrastate service.

<u>Other Freight Services</u>	<u>Nearest Office or Shipping Center</u>
Emery	Cincinnati, Ohio, 46 miles northeast
Federal Express	Erlanger, Kentucky, 36 miles northeast
Purolator Courier	Cincinnati, Ohio, 46 miles northeast
United Parcel Service	Cincinnati, Ohio, 46 miles northeast

HIGHWAY MILES AND TRUCK TRANSIT TIME IN DAYS FROM WARSAW, KENTUCKY, TO SELECTED MARKET CENTERS

City	Highway Miles	Delivery Time TL	City	Highway Miles	Delivery Time TL
Atlanta, Ga.	445	1-2	Los Angeles, Ca.	2,171	4
Baltimore, Md.	543	2	Louisville, Ky.	63	1
Birmingham, Ala.	427	2	Nashville, Tenn.	236	1
Chicago, Ill.	333	1	New Orleans, La.	748	2
Cincinnati, Ohio	46	1	New York, N. Y.	693	-
Cleveland, Ohio	290	1	Pittsburgh, Pa.	333	1
Detroit, Mich.	305	1	St. Louis, Mo.	326	1
Knoxville, Tenn.	255	1			

Note: Mileage computations are via the best interstate or primary highways, not necessarily the most direct route of travel.

Sources: Rand McNally Road Atlas, 1979. Official Kentucky Mileage Map, 1980.
Delivery time - Overnite Transportation Company, P.O. Box 1216, Richmond, Virginia 23209.

Air

Nearest Scheduled Commercial Airline Service

Location:	Greater Cincinnati International Airport 8 miles southwest of Covington, Kentucky; 42 miles northeast of Warsaw
Runways:	3 paved
Length:	9,500 feet; 7,800 feet; 5,500 feet
Traffic Control:	Local and ground flight data, clearance delivery, arrival and departure data, arrival and departure radar, satellite control
Lighting:	Beacon, VASI, MALS-RAIL, ALS-SFL, HIRL, Red T-Bar, CL, TDZ
Services:	American, Delta, Piedmont, Republic, TWA, United, USAir, Wright Airways, Aeromech, Britt Airways, Comair, Tennessee Airways; fuel - 100LL, jet-A; hangars, tie-downs; major A & P repairs, major Avionics repairs; APU, charter, flight instruction, oxygen, plane rental, survival equipment, U.S. Customs; weather information; taxi, limousine, car rentals, courtesy car; restaurant, snack bar; hotel
Air Freight Services:	Air freight terminal regularly serviced by freight carrying airlines

Bus - Northern Kentucky Transit

Rental Services - Automobile, truck, and trailer rentals are available at Florence, Kentucky, 33 miles northeast of Warsaw.

Water

The Ohio River forms the northern boundary of Gallatin County. Warsaw is 46 miles southwest of the Cincinnati-Northern Kentucky area where port facilities are available.

The Northern Kentucky Port Authority has been designated as a Foreign Trade Zone and offers complete U.S. Customs services for exports and imports.

Louisville, 63 miles from Warsaw, also offers port facilities and a Foreign Trade Zone.

POWER AND FUEL

Electricity

Company serving **Warsaw and parts of Gallatin County** - Kentucky Utilities Company

Source of power - Kentucky Utilities Company

Total generating capacity - 2,639,100 KW*

For industrial rates contact:

Industrial Development Department
Kentucky Utilities Company
One Quality Street
Lexington, Kentucky 40507
(606) 255-1461

Company serving most of **Gallatin County** - Owen County Rural Electric Cooperative Corporation

Source of power - East Kentucky Power Cooperative

Total generating capacity - 1,304,000 KW**

For industrial rates contact:

Industrial Development Division
East Kentucky Power Cooperative
P.O. Box 707
Winchester, Kentucky 40391
(606) 744-4812

Natural Gas

Company serving **Warsaw** - Union Light, Heat and Power Company

Source of supply - Columbia Gas Transmission Corporation

Size of transmission mains - 24-inch (supplier); 4 and 6 inches (distributor)

Distribution mains - 2 and 4 inches

Distribution pressure - Up to 30 psig

Btu content - 1,025 per cubic foot

Specific gravity - 0.60

For rates and supplies contact:

Union Light, Heat and Power Company
(A subsidiary of the Cincinnati Gas
and Electric Company)
P.O. Box 960
Cincinnati, Ohio 45201
(513) 632-2595

* A new generating unit is under construction in Carroll County. Due to be completed in 1984, the unit will have a generating capacity of 511,000 KW.

** East Kentucky Power Cooperative's total generating capacity will be increased when a new 600,000 KW coal-fired generation plant is completed in southeast Clark County in 1992.

Other Fuels

Propane

Crouch Gas Service
Glenco, Kentucky 41046

G & S Doxol Gas
West Main Street
Warsaw, Kentucky 41095

Williams Energy Company
West Main Street
Warsaw, Kentucky 41095

Fuel oils

Distillate fuel oil -

Ashland Petroleum Company
East Main Street
Warsaw, Kentucky 41095

Baker Petroleum, Inc.
(Union 76)
Main Street
Warsaw, Kentucky 41095

Brinkman Oil Company
Dixie Highway
Walton, Kentucky 41094

Cecil Dorton Oil Company
(Gulf bulk plant)
P.O. Box 180
Carrollton, Kentucky 41008

Bobby Harper Distributors, Inc.
(Chevron bulk plant)
601 Park Avenue
Carrollton, Kentucky 41008

Residual fuel oil - Arrangements must be made with the refinery.

Low sulphur content coal - Available in Kentucky.

WATER AND SEWERAGE

Public Water Supply

Company serving **Warsaw** - Warsaw Water Works and Sewer System
P.O. Box 785
Warsaw, Kentucky 41095
(606) 567-5931

Source - 2 artesian wells
Treatment plant capacity - 300,000 gallons per day
Average daily consumption - 126,347 gallons
Peak daily consumption - 179,500 gallons
Type treatment - Chlorination
Storage capacity - 250,000 gallons
Size lines - 8, 6, 4 and 2 inches
Average pressure - 46 psi
Average temperature - 55 degrees F.

MONTHLY WATER RATES

First	2,000 gallons	\$ 5.00 (Minimum)
Next	8,000 gallons	1.90 per M gallons
Next	10,000 gallons	1.64 per M gallons
All over	20,000 gallons	1.60 per M gallons

Tap-on charge: 3/4-inch - \$500

Larger meter - Actual cost of installation plus 10% of total cost

Raw Water

Surface water sources - Ohio River
Average discharge - Ohio River at Markland Dam, 123,000 cfs (12 years, USGS)
Expected ground water yield - 500 to 1,000 gpm along Ohio River; 5 to 50 gpm along Eagle Creek; 5 gpm or less over remainder of county

Sewerage

Company serving **Warsaw** - Warsaw Water Works and Sewer System
P.O. Box 785
Warsaw, Kentucky 41095
(606) 567-5931

Design capacity - 120,000 gallons per day
Average daily flow - At capacity
Type of treatment - Primary and secondary
Treatment process - Lagoon System
Size of sanitary mains - 6 and 8 inches
Size of storm mains - 8, 10, 12 and 16 inches
Monthly rates - 50 percent of monthly water bill
Tap-on charge: \$400

CLIMATE

Gallatin County

Temperature

Normal (30-year record)	54.00 degrees
Average annual 1982	54.10 degrees
Record highest, August 1962 (21-year record)	102.00 degrees
Record lowest, January 1977 (21-year record)	-25.00 degrees
Normal heating degree days (30-year record)	5,070
(Heating degree day totals are the sums of negative departures of average daily temperatures from 65 degrees F.)	

Precipitation

Normal (30-year record)	39.04 inches
Mean annual snowfall (36-year record)	24.50 inches
Total precipitation 1982	45.14 inches
Mean number days precipitation (.01 inch or more) (35-year record)	129
Mean number days thunderstorms (35-year record)	44

Prevailing Winds (16-year record)

South-Southwest

Relative Humidity (20-year record)

1 a.m.	77 percent
7 a.m.	81 percent
1 p.m.	60 percent
7 p.m.	64 percent

Source: U.S. Department of Commerce, Environmental Science Services Administration, Climatological Data, 1982. Station of record: Cincinnati, Ohio Greater Cincinnati Airport.

LOCAL GOVERNMENT

City

Structure - Mayor - 4-year term; 6 council members - 2-year terms

Budget 1983-84 - General Fund \$ 157,135

Water and Sewer Fund 113,171

Fees and licenses - Occupational license fees range from \$10 to \$200 annually, depending on the type of business; fees for manufacturers with 50 or less employees - \$25, 51 to 100 employees - \$50, over 100 employees - \$100

County

Structure - County Judge/Executive - 4-year term; 4 magistrates - 4-year terms

Budget 1983-84 - General Fund \$384,567; Road Fund \$361,321

Assessed Value of Property, 1983*

<u>Classes of Property</u>	<u>Warsaw</u>	<u>Gallatin County</u>
Real Estate	\$12,984,247	\$ 61,449,366
Tangibles	4,282,021	13,586,922

Property Taxes

All property in Kentucky is assessed at 100 percent of fair cash value.

Land and buildings are taxed by the state and may be taxed by local jurisdictions. The state rate is \$0.221 per \$100 of assessed valuation.

Manufacturing machinery, raw materials inventories, pollution control equipment, and goods in the process of manufacture are not subject to local taxation. The state rate is \$0.15 per \$100.

Other tangible personal property owned by manufacturers (automobiles, trucks, finished goods, office furniture, office equipment) is taxed by the state at \$0.45 per \$100 and may be taxed by local jurisdictions.

Intangible personal property located in Kentucky (money in hand, shares of stock, notes, bonds, accounts receivable, and other credits) is taxed by the state at \$0.25 per \$100, and is not subject to local taxation.

Property stored in public warehouses in a transit status is not subject to local taxation. The state rate is only \$0.015 per \$100.

Private leaseholds in industrial facilities owned by cities or counties and financed by industrial revenue bonds are subject to a state tax of \$0.015 per \$100 of value (essentially the lessee's equity, adjusted for appreciation or depreciation). Local taxation is not permitted.

* Excludes Homestead Exemptions.

Combined State and Local Rates Per \$100 Valuation, 1983*
(100% assessment)

	<u>Site Inside City of Warsaw</u>	<u>Site Inside Unincorporated Gallatin County</u>
1. Land and buildings	\$0.948	\$0.703
2. Mfg. machinery, raw materials, goods in process, pollution control equipment	0.150	0.150
3. Finished goods, office equipment, vehicles, other tangibles	1.222	0.977
4. Intangibles (accounts rec., notes, bonds, etc.)	0.250	0.250
5. Property stored in public warehouses in a transit status	0.015	0.015
6. Leaseholds in industrial revenue bond financed plants	0.015	0.015

Utilities Gross Receipts Tax for Schools

A 3 percent tax is levied on utilities receipts for schools in Gallatin County. Tax is paid by all consumers of utilities as an add-on to the utilities bills. Exempted are receipts from utilities services that are resold and the receipts from the sale of energy or energy producing fuels that exceed 3 percent of the cost of production in manufacturing, processing, mining or refining.

Planning and Zoning

City agency - Warsaw Planning Commission

Zoning enforced - City of Warsaw only

Subdivision regulations enforced - City of Warsaw and 3 miles beyond corporate limits

Local codes enforced - None

Mandatory state codes enforced - Kentucky Plumbing Code, National Electric Code, Kentucky Boiler Regulations and Standards, Kentucky Building Code (modeled after BOCA code)

Safety

Police	Warsaw	Gallatin County
--------	--------	-----------------

Total staff	2 full-time	3
	3 part-time	
Radio-patrol cars	1	1

Fire*

Insurance Services Office,
Public Protection

Classification	5	10
Volunteers	27	--

Rescue Service

Gallatin County Metro Ambulance Service**

Number of volunteers - 26

Equipment - 2 fully-equipped ambulances, jeep, fire truck, and a response truck

Personnel training - 20 of the volunteers are emergency medical technicians

Refuse Collection and Disposal

	Warsaw	Gallatin County
Type service	Municipal	Private
Fee charged:		
residential	\$4 per month	\$5 per month
business	\$5 to \$120 per month	\$8 to \$20 per month
industrial	\$5 to \$120 per month	\$100
Collection frequency:		
residential	Once per week	Once per week
business	As needed	Twice per week
industrial	As needed	Twice per week
Disposal method	Sanitary landfill	Sanitary landfill

* The city of Warsaw and Gallatin County maintain a joint fire station providing fire protection to both city and county residents.

** Provides rescue service and ambulance service.

EDUCATION

Public Schools

Gallatin County

Total Enrollment (Fall, 1983)	1,015
Elementary	530
High School	485
Student-Teacher Ratio	20-1
Elementary	23-1
High School	18-1
Percent High School Graduates to College (1983)	16.4
Expenditures Per Pupil (1982-83)	\$ 1,580.76
Bonded Indebtedness (June 30, 1983)	\$ 740,000

Nonpublic Schools

Numerous private schools are located in the three-county Northern Kentucky area which borders Gallatin County.

Area Colleges and Universities

<u>Name</u>	<u>Location (Miles distant)</u>	<u>Enrollment (Fall, 1983)</u>	<u>Highest Degree Conferred</u>
Hanover College	Hanover, Indiana (38)	999	Baccalaureate
Thomas More College	Fort Mitchell, Kentucky (41)	1,335	Baccalaureate
Athenaeum of Ohio	Cincinnati, Ohio (46)	187	Masters
College of Mt. St. Joseph	Cincinnati, Ohio (46)	1,600	Masters
Hebrew Union College	Cincinnati, Ohio (46)	157	Academic and Professional
Southern Ohio College	Cincinnati, Ohio (46)	1,316	Associate
University of Cincinnati	Cincinnati, Ohio (46)	38,533	Academic and Professional
Xavier University	Cincinnati, Ohio (46)	6,992	Masters
Northern Kentucky University	Highland Heights, Kentucky (50)	9,361	Masters, J.D.
Kentucky State University	Frankfort, Kentucky (51)	2,431	Masters
Midway College	Midway, Kentucky (63)	413	Associate
University of Louisville	Louisville, Kentucky (63)	19,750	Doctorate, M.D., D.M.D., J.D.
Bellarmino College	Louisville, Kentucky (63)	2,809	Masters
Spalding University	Louisville, Kentucky (63)	1,115	Masters, Specialist
Jefferson Community College	Louisville, Kentucky (63)	7,076	Associate
Georgetown College	Georgetown, Kentucky (69)	1,302	Masters

Vocational Schools

Both the state vocational-technical schools and the area vocational education centers are operated by the Kentucky Department of Education. The state vocational-technical schools enroll persons full time who are at least 16 years of age and not in school. These students attend classes for six hours each day. The area vocational education centers are designed to accommodate high school students who are at least 15 years of age. These students attend vocational school for three hours each day. The state vocational-technical schools and the area education centers offer evening courses to enable working adults to upgrade current job skills.

Nearest State School

Location	Northern Kentucky State Vocational- Technical School
Miles Distant	Covington 45
Curriculum	Business and Office Occupations Clerical Data Processing Secretarial Consumer and Home Economics Child Care Services Commercial Foods Health and Personal Services Occupations Cosmetology Industrial Education Air Conditioning and Refrigeration Auto Body Repair and Refinishing Automotive Technology Carpentry Communications Electronics Drafting (with CAD/CAM) Electronics Machine Shop Masonry Welding Learning Resource Center
Location	Northern Kentucky Health Occupations Center
Miles Distant	Edgewood 43
Curriculum	Health and Personal Services Occupations Dental Assisting Licensed Practical Nursing Medical Assisting Medical Secretary

(Cont'd)

Location	Northern Campbell County Vocational- Technical School
Miles Distant	Highland Heights 50
Curriculum	Industrial Education Auto Mechanics (Foreign) Carpentry-Interior Finishing Commercial Arts Diesel Mechanics Graphic Arts Industrial Electronics Plumbing Learning Resource Center

Nearest Area Education Center

Location	Carroll County Area Vocational Education Center
Miles Distant	Carrollton 17
Curriculum	Business and Office Accounting Business Math Clerical Office Machines Secretarial Shorthand Typing Health and Personal Services Occupations Health Careers Industrial Education Auto Mechanics Carpentry Industrial Electricity Welding

Arrangements can be made to provide training in the specific production skills required by an industrial plant. Instruction may be conducted either in the vocational school or in the industrial plant, depending upon the desired arrangement and the availability of special equipment.

HEALTH

Local Medical Personnel

Physicians - 1
Dentists - 1

Hospitals

<u>General Hospital</u>	<u>Location</u>	<u>Beds</u>
Carroll County Memorial Hospital	Carrollton, 17 miles southwest of Warsaw	54
William Booth Memorial Hospital	Florence, 33 miles northeast of Warsaw	155

Carroll County Memorial Hospital

General hospital facilities - Operating room, recovery room, emergency room, X-ray, laboratory, OB section, nursery, blood bank, physical therapy, electrocardiography, cardiac monitors, respiratory therapy, and endoscopic procedures

Medical staff - 8 doctors, 16 registered nurses, 11 graduate licensed practical nurses, 3 medical technologists, 2 X-ray technicians, 1 respiratory therapist, 1 physical therapist, 3 medical records technicians

William Booth Memorial Hospital

General hospital facilities and services - Physical therapy; blood bank; clinical laboratory; EKG and stress testing; EEG; emergency room; intensive and coronary care units; mental health unit; nuclear medicine and ultrasound; pharmacy; pulmonary medicine; radiology; rehabilitation medicine; ambulatory surgical unit; pediatric unit; orthopedic care unit; social services; four medical surgery units for orthopedic, reconstructive, urological, vascular, plastic, eye and general surgery

Medical staff - 174 physicians, 9 consulting dental surgeons; 101 registered nurses (full-time); 54 registered nurses (part-time); 48 licensed practical nurses (full-time); 36 licensed practical nurses (part-time); 2 pathologists; 1 radiologist, plus 2 radiologists on the consulting staff

Ambulance Service

Name - Gallatin County Metro Ambulance Service*

Staff - 26 volunteers (20 emergency medical technicians)

Service - 24-hour, county-wide

Equipment - 2 fully-equipped ambulances, jeep, fire truck, and a response truck

* Provides ambulance service and rescue service.

Public Health

Facility - Three Rivers District Health Department, Gallatin County Health Center

Staff - 1 registered nurse and 1 clerk (full-time); 1 doctor, 1 nutritionist, and 1 environmentalist (part-time)

OTHER LOCAL FACILITIES

Communications

Telephone - Services -	Cincinnati Bell, Inc. Standard
Telegraph - Services -	Western Union Toll-free number, 1-800-325-5100
Postal - Class - Mail received Mail dispatched	U.S. Post Office Second Once daily Once daily
Newspapers - Weekly and circulation - Other papers received from -	Gallatin County News 2,500 Louisville and Lexington, Kentucky; Cincinnati, Ohio; Madison, Indiana
Radio - Major stations received from -	Louisville, Kentucky; Cincinnati, Ohio
Television - Cable service Reception from -	Lexington and Louisville, Kentucky; Cincinnati, Ohio; Atlanta, Georgia; Chicago, Illinois
Kentucky Educational Television -	Owenton transmitter, Channel 52

Library Services

Public library - Gallatin County Free Public Library
Size collection - 16,000 volumes
Circulation - 1,300 (monthly average)
Services - Adult crafts, blind and handicapped programs, bookmobile, cassette tapes, children's weekly movie, copy machine, craft classes, film, Interlibrary Loan, newspapers, projectors, records, record player, senior citizens' programs, special events and story hour

Religious Institutions

Gallatin County

Number of churches - 17
Denominations - Baptist
Catholic
Christian
Church of Christ
Methodist
Pentecostal

Nearest Synagogues - Cincinnati, Ohio, 46 miles northeast of Warsaw
Congregations - 16 Synagogues (orthodox, reform, traditional and conservative)

Financial Institutions

<u>Banks</u>	<u>Assets</u>	<u>Deposits</u>	<u>Statement Date</u>
Farmers State Bank	\$15,995,185.72	\$14,145,992.92	12/31/82

Hotels and Motels

Total number - 3
Total rooms - 15

Clubs and Organizations

American Legion
Beta Club
Boy Scouts
Eastern Star
4-H Club
Future Farmers of America (FFA)
Future Homemakers of America (FHA)
Future Teachers of America (FTA)
Gallatin County Fair Board
Gallatin County Fish and Game Club
Historical Society
Homemakers
Lions
Little League Baseball
Masonic Lodge
Ministerial Association
Northern Kentucky Coon Hunters
Parent Teachers Association (PTA)
Senior Citizens
T-Ball
Van Guard Club
Veterans of Foreign Wars (VFW)
Woman's Club
Women's Auxiliary to the Fire Department
Youth Baseball League

RECREATION

Local

Warsaw's location on the Ohio River provides for excellent recreational activities. The most popular are boating, water skiing, and fishing. There are plans for the construction of a city-county park on the riverfront of the Ohio River. The construction of a new park on the east side of Warsaw is currently under way. The park will include a shelter house with restrooms, a ball park, picnic area, volleyball court, area for horseshoes, and shuffleboard. There are plans to build a basketball court, playground area, jogging trail, bicycle trail and soccer field.

Other recreational facilities close to Warsaw are located in adjoining Boone County. Municipal recreation departments provide supervised recreation programs with playgrounds, swimming pools, tennis courts, baseball diamonds, football fields, basketball courts, and volleyball courts. Private recreational facilities include movie theaters, bowling facilities, country clubs, golf courses and tennis clubs.

Area (Within 65 miles)

General Butler State Resort Park is located 19 miles southwest of Warsaw near Carrollton. The park includes a 30-acre lake, a boat dock, a 9-hole golf course, a miniature golf course, a swimming pool, playgrounds, shuffleboard, tennis courts, planned recreation, fishing, camping, horseback riding, 58 lodge rooms, cottages, and gift shops. General Butler's family home, the Butler Mansion, has been restored and contains a museum of Ohio River lore. Another unique feature is the Ski Butler ski area that has five ski runs, a ski shop, rental equipment, a ski school and chair lifts.

Big Bone Lick State Park in Boone County, 20 miles northeast of Warsaw, provides a unique combination of educational and recreational pleasures. Visitors can walk through the natural outdoor museum with replicas and exhibits that tell the story of Big Bone Lick. Recreational activities and facilities include a modern campground with 62 sites, fishing in a nearby lake, an indoor museum and gift shop, picnic grounds, tennis, shuffleboard, volleyball, basketball, horseshoes, planned recreation, and a swimming pool in the camping area.

Madison, Indiana, 32 miles west of Warsaw, is the home of the world-famous **Madison Regatta**. Highlights of the Gold Cup Week are the world's fastest race boats competing in the Gold Cup and the Indiana Governor's Cup Race. A week of prerace festivities begins with the Miss Madison Regatta beauty pageant and continues with the volunteer fire departments' waterball fight, fireworks, a balloon race, a parade and a 6-mile marathon race. The annual event, held the first week in July, is featured on ABC-TV's "Wide World of Sports."

Madison is also noted for its many stately homes and historical buildings which have been restored to their original condition by the efforts of Historic Madison, Inc.

Clifty Falls State Park near Madison, Indiana, was established in 1920, and contains 1,309 acres of scenic beauty overlooking the Ohio River. The view over the river is comparable to that of the Swiss Alps.

Cincinnati, Ohio, is 46 miles northeast of Warsaw. Cincinnati provides a wide variety of entertainment, cultural facilities and activities, and sports events - all within a few minutes drive. The Cincinnati Zoo offers entertainment the whole family can enjoy. Kings Island is the largest family entertainment center in the entire Midwest. The Cincinnati Riverfront Stadium is the home of the Cincinnati Reds baseball and Bengals pro football teams. The Riverfront Coliseum offers World Hockey League action with the Cincinnati Stingers. Cultural interests include the Cincinnati Symphony Orchestra, various art galleries and museums, libraries, and legitimate theaters presenting Broadway plays.

Frankfort, the capital of Kentucky, is 51 miles south of Warsaw. Points of interest in Frankfort include the Capitol Building, a 34-foot floral clock, the Daniel Boone Monument, several museums, and old homes with their original furnishings. Frankfort is also the home of Kentucky State University which offers many cultural activities and sporting events.

Louisville, 63 miles southwest of Warsaw, provides a wide variety of recreational opportunities. The most noted recreational event in Louisville is the Kentucky Derby at Churchill Downs. The "Run for the Roses" is the oldest continuously held horse race in the United States. Other attractions include: Kentucky Center for the Arts, Macauley Theatre, Actors Theatre of Louisville, Louisville Children's Theatre, the Louisville Bach Society, the Louisville Orchestra, the Louisville Ballet, the Kentucky Opera Association, several museums, the Louisville Zoological Gardens, University of Louisville sporting events, rock concerts, and the "Belle of Louisville" sternwheeler.

COMMUNITY IMPROVEMENTS

Recent

The City of Warsaw recently annexed into the city 160 acres on the east side of the town.

Kentucky Backwoods, Inc., recently completed a \$150,000 expansion of its existing plant. The expansion included the tripling of the plant size and doubling of the employment.

The construction of the new Gallatin County Library was recently completed. Total cost of the library was \$392,350.

The construction of Riverside Square, a 48-unit senior citizens complex, was recently completed. Total cost of the project was \$1,000,000.

The construction of a new city hall and ambulance building was recently completed. Total cost of the project was \$100,000.

A building in downtown Warsaw was recently converted into a meeting facility for civic and business organizations. Total cost of the project was \$50,000.

The construction of a new fairgrounds was recently completed.

The Carroll County Water District recently extended water lines into the western part of Gallatin County.

Under Way

The construction of a new park on the east side of Warsaw is currently under way. The park will include a shelter house with restrooms, a ball park, picnic area, volleyball court, area for horseshoes, and shuffleboard. There are plans to build a basketball court, playground area, jogging trail, bicycle trail and soccer field.

Planned

There are plans for the repaving and reconstruction of U.S. Highway 42 and Kentucky 35 within the city limits of Warsaw. Also, the project will include new sidewalks, new curbs, and a new drainage system. Total cost of the project will be \$625,000.

There are plans for the construction of a city-county park on the riverfront of the Ohio River.

There are plans for the construction of a mini-mall in the downtown area of Warsaw.