

1984

Industrial Resources: Garrard County - Lancaster

Kentucky Library Research Collections
Western Kentucky University, spcol@wku.edu

Follow this and additional works at: https://digitalcommons.wku.edu/garrard_cty

 Part of the [Business Administration, Management, and Operations Commons](#), [Growth and Development Commons](#), and the [Infrastructure Commons](#)

Recommended Citation

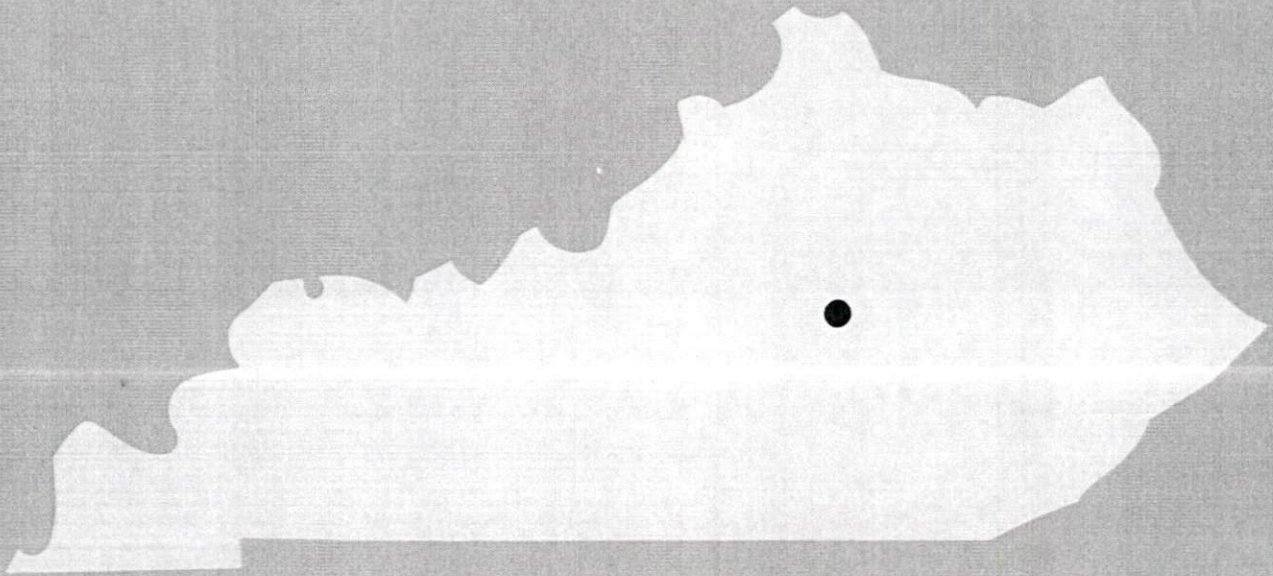
Kentucky Library Research Collections, "Industrial Resources: Garrard County - Lancaster" (1984). *Garrard County*. Paper 15.
https://digitalcommons.wku.edu/garrard_cty/15

This Report is brought to you for free and open access by TopSCHOLAR®. It has been accepted for inclusion in Garrard County by an authorized administrator of TopSCHOLAR®. For more information, please contact topscholar@wku.edu.

IR
300

Garrard County

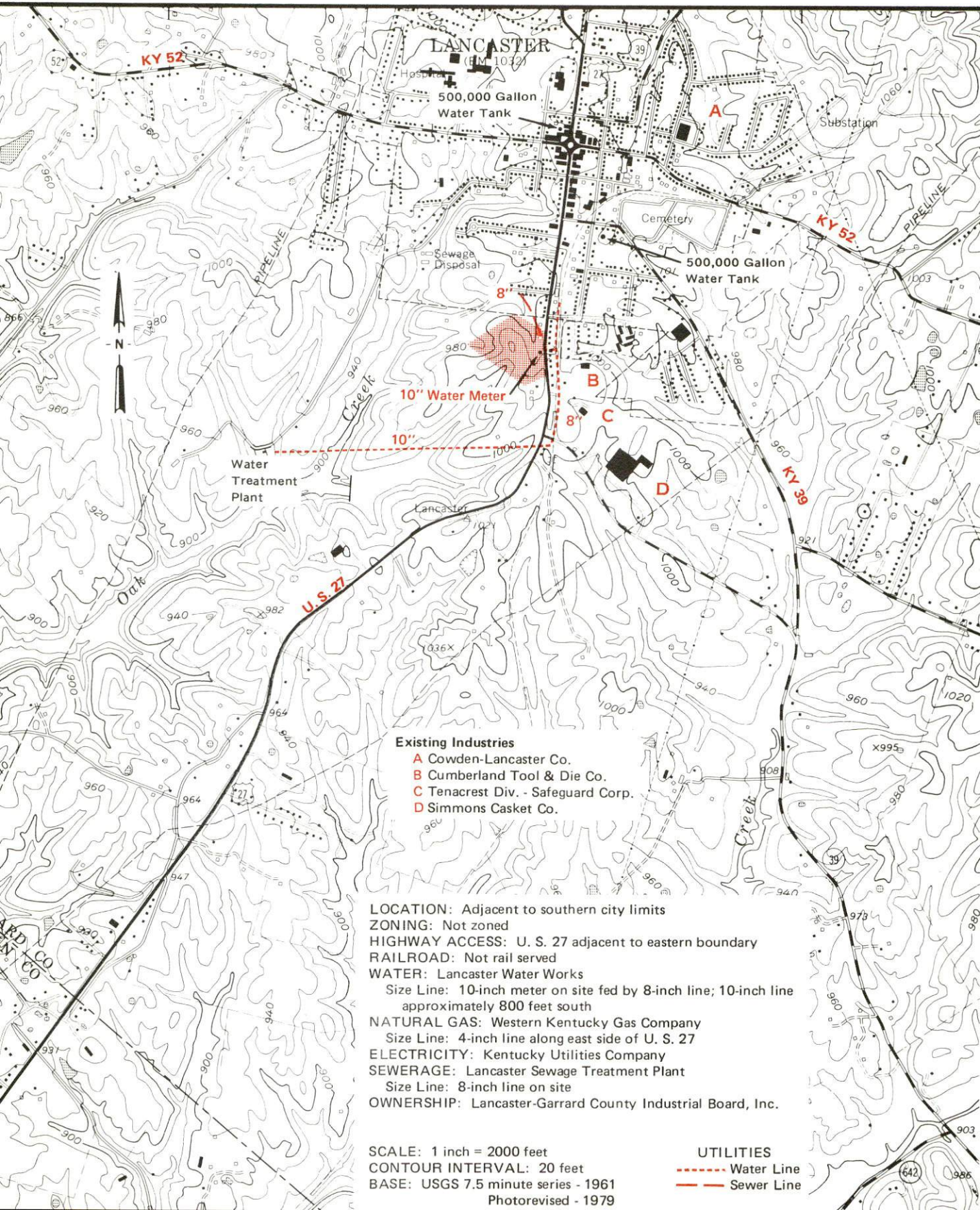
A comprehensive
report on
Lancaster, Ky.



KENTUCKY & CO.
The state that's run like a business.

LANCASTER, KENTUCKY --- Site 182 --- 18 Acres

For more information contact the Department of Economic Development, Office of Business Development, Industrial Development Division, Capital Plaza Tower, Frankfort, Kentucky 40601 (502-564-7140).



A COMPREHENSIVE REPORT ON
LANCASTER, KENTUCKY

Prepared by
The Kentucky Department of Economic Development
Division of Research and Planning
in cooperation with
The Garrard County Chamber of Commerce

1982

Program manager - Brenda Roberts; research - John McMurray; clerical - Shirley Wood; graphics - Frank Ferrante, Tony Cecconi, Robert Owens; cartography - Site Evaluation Section, Industrial Development Division. Cost of printing paid from state funds.

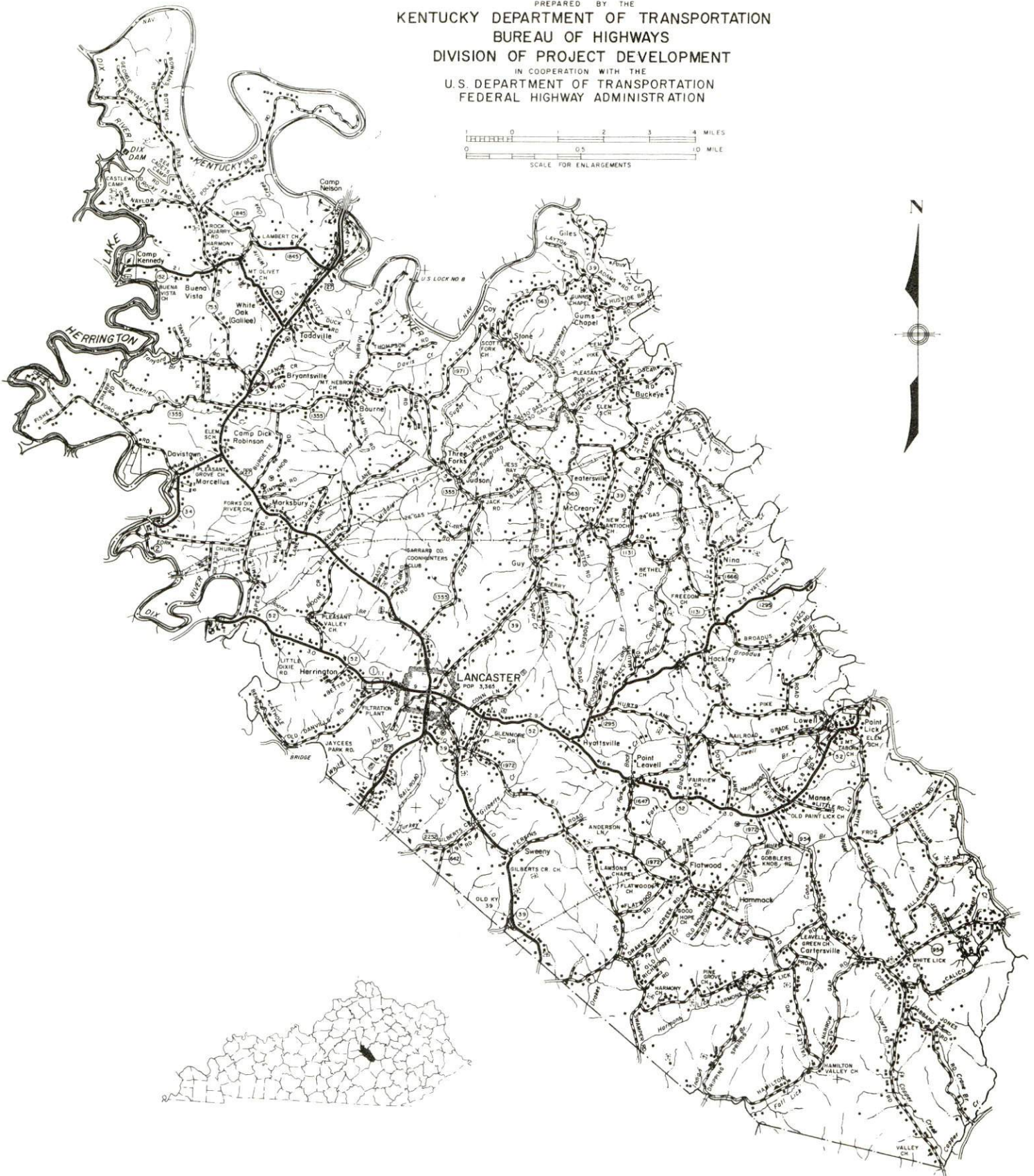
TABLE OF CONTENTS

<u>Chapter</u>	<u>Page</u>
INDUSTRIAL SITES	i
LANCASTER, KENTUCKY - A RESOURCE PROFILE	1
THE LABOR MARKET AREA	3
Population	3
Labor Force Characteristics of Residents, 1980	3
Estimated Male Labor Supply	4
Estimated Female Labor Supply	4
Lancaster Manufacturing Firms, Their Products and Employment	5
Labor Organizations in Manufacturing Firms	5
Industrial Services	6
Average Weekly Wages by Industry, by Place of Work, 1980	7
Per Capita Personal Income	9
TRANSPORTATION	10
Rail	10
Highways	10
Truck Service	11
Air	13
Bus	13
Rental Services	13
Water	13
POWER AND FUEL	14
Electricity	14
Natural Gas	15
Other Fuels	15
WATER AND SEWERAGE	17
Public Water Supply	17
Raw Water	17
Sewerage	18
CLIMATE	19

<u>Chapter</u>	<u>Page</u>
LOCAL GOVERNMENT	20
City	20
County	20
Assessed Value of Property	20
Property Taxes	21
Combined State and Local Rates Per \$100 Valuation, 1981 . . .	21
Planning and Zoning	22
Safety	22
Police	22
Fire	22
Rescue Service	22
Refuse Collection and Disposal	23
EDUCATION	24
Public Schools	24
Area Colleges and Universities	25
Vocational Schools	26
HEALTH	28
Local Medical Personnel	28
Hospitals	28
Ambulance Service	28
Public Health	28
OTHER LOCAL FACILITIES	29
Communications	29
Library Services	29
Religious Institutions	30
Financial Institutions	30
Hotels and Motels	30
Clubs and Organizations	31
RECREATION	32

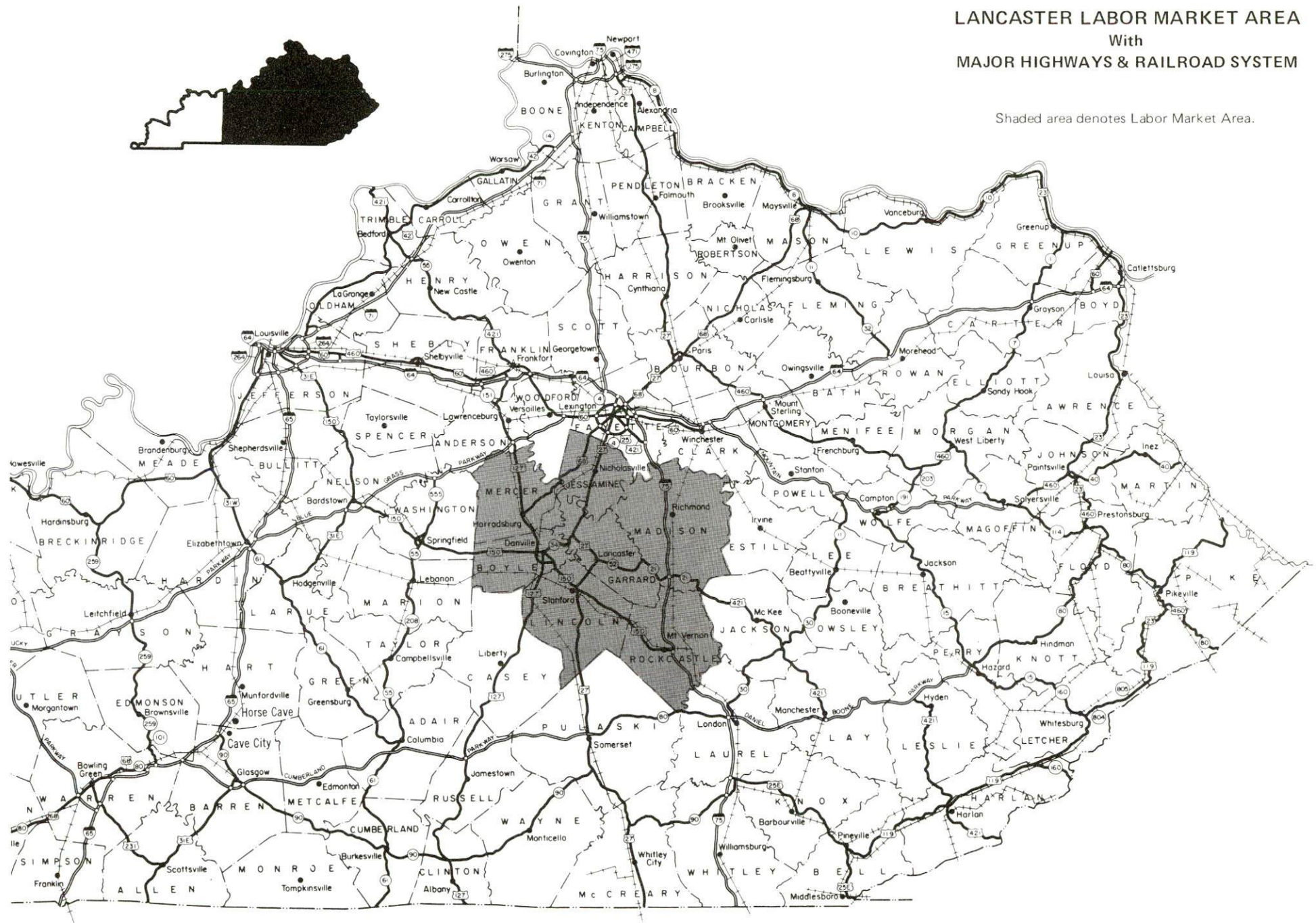
1982 EDITION
GENERAL HIGHWAY MAP
GARRARD COUNTY
KENTUCKY

PREPARED BY THE
KENTUCKY DEPARTMENT OF TRANSPORTATION
BUREAU OF HIGHWAYS
DIVISION OF PROJECT DEVELOPMENT
IN COOPERATION WITH THE
U.S. DEPARTMENT OF TRANSPORTATION
FEDERAL HIGHWAY ADMINISTRATION



LANCASTER LABOR MARKET AREA With MAJOR HIGHWAYS & RAILROAD SYSTEM

Shaded area denotes Labor Market Area.



LANCASTER, KENTUCKY - A RESOURCE PROFILE

Lancaster, serving as the county seat of Garrard County, is located in the south central part of Kentucky's bluegrass region. The small but progressive community was established in 1798. The gently rolling countryside and well-kept farms add to its charm. The population of Lancaster has been rising in the last three decades, reaching 3,365 in 1980. Lancaster is 34 miles from Lexington and 98 miles from Louisville, Kentucky; 149 miles from Knoxville, Tennessee; 112 miles from Cincinnati, Ohio; and 213 miles from Nashville, Tennessee.

Garrard County covers a total land area of 236 square miles. The population of the county in 1980 was 10,853. Between 1970 and 1980, the population increased by 14.8 percent.

The Economic Framework

Total employment in Garrard County in 1980 averaged 3,986 with 3,314 employed in nonagricultural jobs. Manufacturing provided 661 jobs, wholesale and retail trade provided 376 jobs, service occupations provided 151 jobs, and government provided 460 jobs. Manufacturing is greatest in the apparel and related products, lumber and wood products and miscellaneous manufacturing.

Per capita income in the county in 1979 was \$6,740. Between 1975 and 1979, per capita income increased by 43.5 percent.

The Lancaster labor market area includes Garrard County and its six surrounding counties. Area employment in 1980 averaged 74,608 with 68,665 employed in nonagricultural jobs. Manufacturing provided 11,164 jobs, wholesale and retail trade provided 10,445 jobs, service occupations provided 5,902 jobs and government provided 7,670 jobs.

Resources for Growth

1. Labor - There is a current estimated labor supply of 9,886 men and 7,641 women available for industrial jobs in the labor market area. In addition 6,078 young men and 5,890 young women will become 18 years of age before 1986 and potentially available for work.

2. Transportation - The nearest railroads to Lancaster are the Louisville and Nashville Railroad at Stanford, 8 miles distant, and the Southern Railway System at Danville, 12 miles distant. Both railroads provide mailine service. Highways serving the city are U.S. 27 and Kentucky highways 52 and 39. Access to the Interstate Highway System is 22 miles east of Lancaster at Berea, Kentucky. Commercial air carriers provide regularly scheduled service at Lexington's Blue Grass Field, 34 miles distant. Common carrier truck service is provided by 13 trucking companies offering interstate and intrastate service.

3. Energy - An ample amount of electricity is supplied to Lancaster and Garrard County by the Kentucky Utilities Company and the Inter-County Rural Electric Cooperative Corporation, whose source of power is the East Kentucky Power Cooperative. Natural gas is provided by the Western Kentucky Gas Company, whose source of supply is the Tennessee Gas Pipeline Company. Five suppliers of liquefied petroleum gas and four distillate fuel oil jobbers serve the area. Low sulphur content coal is available in eastern Kentucky.

4. Education - One public school system operates in Garrard County. There are six universities and senior colleges, and a technical institute within a 35-mile radius of Lancaster.

The nearest state vocational-technical school is at Lexington, 34 miles distant, and offers 19 courses. The Garrard County Area Vocational Education Center is in Lancaster and offers six courses.

THE LABOR MARKET AREA

The Lancaster Labor Market Area includes Garrard County and the adjoining Kentucky counties of Boyle, Jessamine, Lincoln, Madison, Mercer and Rockcastle.

POPULATION			
Area	1980	1970	Percent Nonwhite
Lancaster	3,365	3,230	13.8
Labor Market Area	167,454	136,406	N/A
Garrard County	10,853	9,457	5.5
Boyle County	25,066	21,861	9.5
Jessamine County	26,065	17,430	4.6
Lincoln County	19,053	16,663	4.2
Madison County	53,352	42,730	6.8
Mercer County	19,011	15,960	4.6
Rockcastle County	13,973	12,305	0.3

Note: The 1980 counts of population by race are provisional.

Source: U.S. Department of Commerce, Bureau of the Census, 1980 Census of Population and Housing, March 1981.

LABOR FORCE CHARACTERISTICS OF RESIDENTS, 1980		
	Garrard County	Labor Market Area
Civilian Labor Force	4,355	80,689
Employment	3,986	74,608
Agricultural	672	5,943
Nonagricultural	3,314	68,665
Unemployment	369	6,081
Rate of Unemployment (%)	8.5	7.5

Source: Kentucky Department for Human Resources, Kentucky Labor Force Estimates, Annual Averages, 1980.

ESTIMATED MALE LABOR SUPPLY
LANCASTER LABOR MARKET AREA

Area	Current			Future	
	Total	Not in Labor Force	Unemployed	Under-employed	Reaching 18 years of age before 1986
Labor Market Area*	9,886	2,057	3,566	4,263	6,078
Garrard	877	499	201	177	409
Boyle	1,046	0	526	520	938
Jessamine	1,020	0	396	624	808
Lincoln	2,382	1,533	486	363	799
Madison	3,145	0	1,128	2,017	1,747
Mercer	740	25	382	333	684
Rockcastle	676	0	447	229	693

*Additional workers may be drawn from other nearby counties.

Note: Unemployed - persons unemployed and actively seeking work; Under-employed - persons employed but working only 14 to 26 weeks per year; Not in Labor Force - represents the number of persons who would enter the labor force if suitable employment were available (based on the assumption that persons in Kentucky would like to participate in the labor force in the same proportion that they do nationally).

Sources: Kentucky Department for Human Resources, Kentucky Labor Supply Estimates by County, 1980. Kentucky Department of Economic Development, Future Labor Supply before 1986.

ESTIMATED FEMALE LABOR SUPPLY
LANCASTER LABOR MARKET AREA

Area	Current			Future	
	Total	Not in Labor Force	Unemployed	Under-employed	Reaching 18 years of age before 1986
Labor Market Area*	7,641	830	2,515	4,296	5,890
Garrard	360	5	168	187	424
Boyle	949	0	438	511	900
Jessamine	1,019	0	242	777	819
Lincoln	1,244	551	405	288	755
Madison	2,715	0	727	1,988	1,636
Mercer	653	0	318	335	736
Rockcastle	701	274	217	210	620

*Additional workers may be drawn from other nearby counties.

Note: Unemployed - persons unemployed and actively seeking work; Under-employed - persons employed but working only 14 to 26 weeks per year; Not in Labor Force - represents the number of persons who would enter the labor force if suitable employment were available (based on the assumption that persons in Kentucky would like to participate in the labor force in the same proportion that they do nationally).

Sources: Kentucky Department for Human Resources, Kentucky Labor Supply Estimates by County, 1980. Kentucky Department of Economic Development, Future Labor Supply before 1986.

LANCASTER MANUFACTURING FIRMS,
THEIR PRODUCTS AND EMPLOYMENT

<u>Firm</u> (Establishment date)	<u>Product</u>	<u>Employment</u>			<u>Labor Unions</u>
		<u>Total</u>	<u>Male</u>	<u>Female</u>	
The Central Record (1889)	Newspaper, job print- ing	9	3	6	
Cowden-Lancaster Company (1946)	Men's and boys' work clothing	289	27	262	Teamsters*
Cumberland Tool and Die Company (1974)	Tools, dies, jigs fix- ture molds	10	9	1	
Feldman Lumber Company Inc. (1938)	Lumber	79	77	2	
Garrard Mills (1921)	Feed	5	4	1	
Mom Blakeman's Candies (1982)	Candy	3	2	1	
Simmons Casket Company, Division of G and W Casket Corporation (1965)	Steel caskets	187	143	44	Upholsterers*
Tenacrest, Division of Safeguard Corporation (1965)	Pillows, cushions	7	5	2	

*See Labor Organizations below.

Source: Kentucky Department of Economic Development, Division of
Research and Planning.

LABOR ORGANIZATIONS IN MANUFACTURING FIRMS

<u>Union</u>	<u>Representing workers at:</u>
International Brotherhood of Teamsters, Chauffeurs Warehousemen and Helpers of America	Cowden-Lancaster Company
Upholsterers' International Union of North America, AFL-CIO	Simmons Casket Company, Division of G and W Casket Corporation

INDUSTRIAL SERVICES

<u>Types of Services</u>	<u>Location</u>	<u>Miles Distant</u>
Tool & Die, Machine & Pattern Shops	Lancaster	-
Metal Service Centers	Lexington	34
Heat Treating	Richmond	24
Metal Finishers	Richmond	24
Electric Motor Repair	Lexington	34

Source: Kentucky Department of Economic Development, Kentucky Directory
of Selected Industrial Services, 1981.

AVERAGE WEEKLY WAGES BY INDUSTRY
BY PLACE OF WORK, 1980

	<u>Garrard County</u>	<u>Boyle County</u>	<u>Jessamine County</u>	<u>Lincoln County</u>
All Industries	\$164.28	\$219.45	\$209.98	\$186.49
Mining & Quarrying	*	*	341.81	*
Contract Construction	170.14	243.29	260.49	201.97
Manufacturing	180.03	264.19	248.62	172.30
Transportation, Communications & Public Utilities	222.71	312.71	243.64	282.53
Wholesale & Retail Trade	113.74	170.46	169.23	136.55
Finance, Insurance & Real Estate	198.28	221.27	191.16	193.93
Services	132.59	171.93	166.88	169.13
State/Local Government	182.13	219.55	241.39	205.68
Other	*	204.75	191.18	*
	<u>Madison County</u>	<u>Mercer County</u>	<u>Rockcastle County</u>	
All Industries	\$206.64	\$214.26	\$156.06	
Mining & Quarrying	*	*	264.51	
Contract Construction	237.59	246.26	121.70	
Manufacturing	260.33	267.22	141.42	
Transportation, Communications & Public Utilities	248.09	314.26	225.06	
Wholesale & Retail Trade	150.59	138.85	128.43	
Finance, Insurance & Real Estate	200.68	232.48	204.26	
Services	170.98	134.89	151.80	
State/Local Government	233.28	210.52	180.00	
Other	94.12	133.04	*	

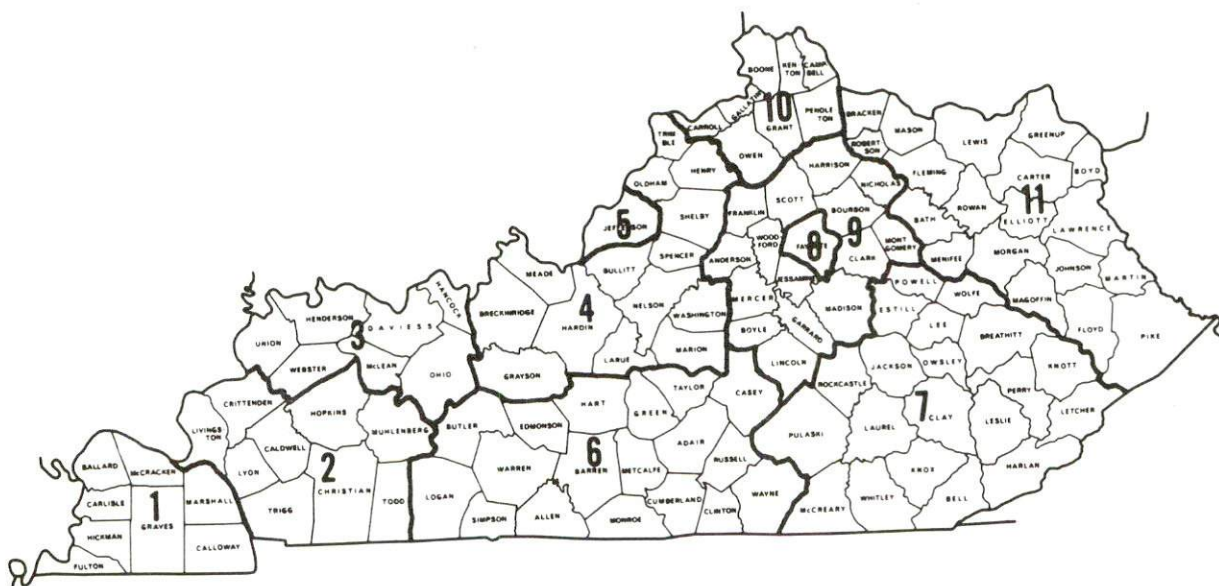
*Not disclosed.

Note: Excludes domestic workers, railway workers, certain nonprofit corporations, majority of federal government workers, and self-employed workers.

Source: Kentucky Department for Human Resources, Average Weekly Wages of Workers Covered by Kentucky Unemployment Insurance Law, 1980.

Occupational wage rates for specific industries are usually not available to most government agencies, and wage data furnished to state employment agencies by individual industrial employers are protected from disclosure by federal law. The most reliable up-to-date wage information can be obtained by direct contact with local employers.

Associated Industries of Kentucky, a voluntary organization of Kentucky businesses, regularly collects occupational wage rates and fringe benefits data from participating member firms. Data are compiled for over 127 clearly defined office, production, and service occupations. Tabulations are published for 11 regions of Kentucky, as shown on the map below. It should be noted that the data may be weighted by the preponderance of firms in the larger cities and may be somewhat higher than the rates in the smaller communities. Data from these tabulations are available, upon request, from the Kentucky Department of Economic Development, Frankfort, Kentucky 40601.



Associated Industries of Kentucky Area Wage Surveys

PER CAPITA PERSONAL INCOME

<u>Area</u>	<u>1979</u>	<u>1975</u>	<u>Percent Change</u>
Garrard County	\$6,740	\$4,696	43.5
Labor Market Area			
Range	\$4,290 - 7,259	\$2,656 - 5,121	N/A
Kentucky	7,052	4,882	44.4
U.S.	8,637	5,861	47.4

Source: U.S. Department of Commerce, Bureau of Economic Analysis,
 April 1981. U.S. Department of Commerce, Bureau of Economic Analysis,
 August 1981.

TRANSPORTATION

Rail

The nearest lines serving Lancaster are the Louisville & Nashville Railroad at Stanford, 8 miles distant, and the Southern Railway System at Danville, 12 miles distant.

Louisville & Nashville Railroad-

Services - Northbound and southbound freight stops two times each week, northbound and southbound through freights daily, switching facilities, team track space for approximately 15 cars. Team track space is also available at Rowland, Kentucky, one mile from Stanford, for 15 to 20 cars.

Southern Railway System -

Services - Main line, freights traveling westbound, northbound and southbound making daily stops, switching facilities, team track space, siding space, and piggyback facilities.

For details on routing, schedules, rates, and services, contact:

Director of Industrial Development
Louisville and Nashville Railroad
P. O. Box 32290
Louisville, Kentucky 40232
(502) 587-5723

and/or

District Sales Manager
Southern Railway System
701 South Broadway
Lexington, Kentucky 40508
(606) 252-2242

Highways

Lancaster is served by U.S. 27, a class "AAA" trucking route, and Kentucky Highway 52 and 39, both "AA" routes. Access to I-75, a north-south transcontinental route, is provided by an interchange 22 miles to the east of Lancaster via Kentucky Highways 52 and 21. Other interchanges to I-75 are located 24 miles northeast via Kentucky Highway 52, and 35 miles southeast via U.S. 27 and 150. U.S. 27 provides direct access to I-64, 38 miles to the north, and to the Cumberland Parkway, 42 miles south of Lancaster. I-64 is an east-west transcontinental route, while the Cumberland Parkway is a major route to the southwestern portion of the state.

Truck Service

Company

Home Office

Eldredge Truck Line*

P.O. Box 659
Somerset, Kentucky 42501

Helms Express, Division of
Ryder Truck Lines Inc.**

P.O. Box 340
Irwin, Pennsylvania 15642

Interstate System **

110 Ionia N.W.
Grand Rapids, Michigan 49503

Lawrenceburg Transfer
Company Inc.*

P.O. Box 220
Lawrenceburg, Kentucky 40342

Mason and Dixon Lines Inc.**

P.O. Box 969
Kingsport, Tennessee 37662

McLean Trucking Company **

P.O. Box 213
Winston-Salem, North Carolina 27154

Middlewest Freightways Inc.**

6810 Prescott Avenue
St. Louis, Missouri 63147

Overnite Transportation
Company*

1000 Semmes Avenue
Richmond, Virginia 23209

Pacific Intermountain
Express**

25 North Via Monte
Walnut Creek, California 94598

Roadway Express Inc.**

1077 Gorge Boulevard
Akron, Ohio 44309

Smith's Transfer
Corporation**

P.O. Box 1000
Staunton, Virginia 24401

Transcon Lines**

101 Centinental Boulevard
El Segundo, California 90245

United Trucking Service Inc.*

8505 West Warren
Dearborn, Michigan 48126

*Interstate and intrastate service.

**Interstate service only.

Other Freight ServicesNearest Shipping Center

Purolator Courier Corporation*
 United Parcel Service**

Lexington, 34 miles distant
 Danville, 12 miles distant

HIGHWAY MILES AND TRUCK TRANSIT TIME IN DAYS FROM
 LANCASTER, KENTUCKY, TO SELECTED MARKET CENTERS

City	Highway Miles	Delivery		City	Highway Miles	Delivery	
		Time TL				Time TL	
Atlanta, Ga.	342	1		Los Angeles, Ca.	2,206	5	
Baltimore, Md.	575	2		Louisville, Ky.	98	1	
Birmingham, Ala.	403	1		Nashville, Tenn.	213	1	
Chicago, Ill.	390	1		New Orleans, La.	730	3	
Cincinnati, Ohio	112	1		New York, N. Y.	737	3	
Cleveland, Ohio	356	2		Pittsburgh, Pa.	377	2	
Detroit, Mich.	371	2		St. Louis, Mo.	361	2	
Knoxville, Tenn.	149	1					

Note: Mileage computations are via the best interstate or primary highways, not necessarily the most direct route of travel.

Sources: Rand McNally Road Atlas, 1979. Official Kentucky Mileage Map, 1979. Delivery time - Lawrenceburg Transfer Company Inc., P. O. Box 220, Lawrenceburg, Kentucky 40342.

- *For regular scheduled pickups or for occasional pickups, arrangements must be made with the Lexington office of Purolator Courier Corporation.
- **For regular scheduled pickups or for occasional pickups, arrangements must be made with the Louisville office of United Parcel Service.

Air

Nearest Small Craft

Goodall Field
Location: 4 miles south of Danville, Kentucky; 16 miles
from Lancaster
Runways: 1 paved
Length: 4,000 feet
Traffic
Control: Wind sock
Lighting: Rotating beacon (sundown to sunrise), REIL
Services: Fuel (100 LL, jet-A), charter service, A & P
repair, hangar, flight instruction, aircraft rental
Air Freight
Service: Charter air freight services must be arranged.

Nearest Scheduled Commercial Airline Service

Blue Grass Field
Location: 4 miles west of Lexington, Kentucky; 34 miles
north of Lancaster
Runways: 2 paved
Length: 6,500 feet; 3,500 feet
Traffic
Control: Tower
Lighting: Approach lighting system, beacon, runways and
obstructions lighted, VASI
Services: USAir, Delta, Piedmont, Frontier, Comair, Tennessee
Airways; fuel - 80, 100LL, jet-A; hangars, tie-downs;
major A & P repairs, major Avionics repairs; APU,
charter, flight instruction, oxygen, plane rentals,
survival equipment; taxi, limousine, car rentals,
courtesy car; weather information; restaurant,
snack bar
Air Freight
Service: Air freight terminal

Bus - Service is available in Danville, 12 miles distant, by Southern
Greyhound Lines Inc. and Trailway Bus Lines.

Rental Services - Auto, truck and trailer rental is available in
Danville, 12 miles distant.

Water

The nearest navigable waterway to Lancaster is the Kentucky River
at Lawrenceburg, 42 miles north. A 6-foot navigation channel is
maintained throughout its course to the Ohio River near Carrollton,
Kentucky.

POWER AND FUEL

Electricity

Company serving Lancaster and portions of Garrard County - Kentucky
Utilities Company

Source of power - Kentucky Utilities Company

Total generating capacity - 2,639,100 KW*

For industrial rates contact:

Industrial Development Department
Kentucky Utilities Company
One Quality Street
Lexington, Kentucky 40507
(606) 255-1461

and/or

Kentucky Utilities Company
208 Lexington Street
Lancaster, Kentucky 40444
(606) 792-2021

Company serving portions of Garrard County - Inter-County Rural
Electric Cooperative Corporation

Source of power - East Kentucky Power Cooperative

Total generating capacity - 1,304,000 KW

For industrial rates contact:

Industrial Development Division
East Kentucky Power Cooperative
P.O. Box 707
Winchester, Kentucky 40391
(606) 744-4812

and/or

Inter-County RECC
P.O. Box 87
Danville, Kentucky 40422
(606) 236-4561

*A new generating unit is under construction in Carroll County. Due to be completed in 1984, the unit will have a generating capacity of 511,000 KW.

Natural Gas

Company serving Lancaster - Western Kentucky Gas Company

Source of supply - Tennessee Gas Pipeline Company

Size of transmission mains - 24 inches (supplier);
6 inches (distributor)

Distribution mains - 6, 4 and 2 inches

Distribution pressure - 35 psi

Btu content - 1,025 per cubic foot

Specific gravity - 0.60

For rates and supplies contact:

Western Kentucky Gas Company

311 West Seventh Street

Owensboro, Kentucky 42301

(502) 685-8000

Other Fuels

Propane (Within 25 miles)

Bright's Bottle Gas Company

100 West Brook

Burgin, Kentucky 40310

Suburban Propane

121 North Fourth Street

Nicholasville, Kentucky 40356

Buckeye Gas Products Company

Moreland, Kentucky 40454

Southern States Boyle

Cooperative Inc.

Lebanon Road

Danville, Kentucky 40422

Jack Campbell Bottled Gas

Route 3

Danville, Kentucky 40422

Fuel oils

Distillate fuel oil - (Within 25 miles)

Ashland Petroleum Company
Danville Pike
Harrodsburg, Kentucky 40330

Jack and Doug Little
Distributors Inc. (Gulf Oil)
719 Dillehay
Danville, Kentucky 40422

Chevron USA Inc.
David Avenue
Danville, Kentucky 40422

Texaco Inc.
Hope Street
Danville, Kentucky 40422

Residual fuel oil - Arrangements must be made with the refinery.

Low sulphur content coal - Available in eastern Kentucky.

WATER AND SEWERAGE

Public Water Supply

Company serving Lancaster - Lancaster Water Works

101 Stanford Street

Lancaster, Kentucky 40444

(606) 792-2241

Source - 2 impoundments and Kentucky River

Treatment plant capacity - 1,400,000 gallons per day

Average daily consumption - 700,000 gallons

Peak daily consumption - 1,100,000 gallons

Type treatment - Flash mix, coagulation, sedimentation, rapid sand filters, chlorination, fluoridation

Storage capacity - 1,000,000 gallons

Size lines - 10, 8, 6 and 4 inches

Average pressure - 70 psi

Average temperature - 60 degrees F.

MONTHLY WATER RATES

First	1,000 gallons	\$3.90 (minimum bill)
Next	3,000 gallons	1.20 per M gallons
Next	10,000 gallons	1.10 per M gallons
Next	10,000 gallons	1.00 per M gallons
All over	24,000 gallons	.90 Per M gallons

Tap-on charge:

	Base fee	Across pavement
3/4-inch meter -	\$150	\$300
1-inch meter -	250	400
1 1/2-inch meter -	350	600
2-inch meter -	500	800
Commercial -	Negotiated	

Raw Water

Surface water sources - Dix River, Herrington Lake, Kentucky River, and Paint Lick Creek

Average discharge - At Dix River near Danville - 466 cfs
(37 years, USGS)

Expected ground water yield - 200 to 500 gpm in small northern portion of county; 50 to 200 gpm in eastern tip of county; 5 to 50 gpm in northwestern fourth of county; and 5 gpm or less over remainder of county

Sewerage

Company serving Lancaster - Lancaster Sewerage Treatment Plant
101 Stanford Street
Lancaster, Kentucky 40444
(606) 792-2241

Design capacity - 400,000 gallons per day

Average daily flow - 248,000 gallons (dry weather)

Treatment - Primary and secondary

Type treatment - Primary clarifier, mixing tank, aeration, secondary clarifier, chlorine contact tank, anaerobic digester, sludge drying beds

Treated effluent discharged into - White Oak Creek

Size of sanitary mains - 10, 8 and 6 inches

Size of storm mains - 24, 18 and 15 inches

Rates - 100 percent of monthly water bill

Tap-on charge: \$500

CLIMATE

Garrard County

Temperature

Normal (30-year record)	55.2 degrees
Average annual 1980	54.3 degrees
Record highest, September, 1954 (36-year record)	103.0 degrees
Record lowest, January, 1963 (36-year record)	-21.0 degrees
Normal heating degree days (30-year record)	4,729
(Heating degree day totals are the sums of negative departures of average daily temperatures from 65 degrees F.)	

Precipitation

Normal (30-year record)	44.49 inches
Mean annual snowfall (36-year record)	17.00 inches
Total precipitation 1980	34.69 inches
Mean number days precipitation (.01 inch or more)	131
Mean number days thunderstorms (36-year record)	47

Prevailing Winds (17-year record)

South

Relative Humidity

1 a.m.	77 percent (16-year record)
7 a.m.	81 percent (17-year record)
1 p.m.	60 percent (17-year record)
7 p.m.	64 percent (17-year record)

Source: U.S. Department of Commerce, Environmental Science
Services Administration, Climatological Data, 1980.
Station of record: Lexington, Kentucky.

LOCAL GOVERNMENT

City

Lancaster

Structure - Mayor - 4-year term; 6 council members - 2-year terms

Budget 1981-82 - General Fund \$198,512.00

Water and Sewer Fund 410,000.00

Fees and licenses - Auto sticker - \$10 per year; business license fees range from \$5 to \$250 per year; business fees for manufacturing or industry with less than 25 employees - \$100 per year, manufacturing or industry with more than 25 employees - \$300 per year (except first five years of operation); trucks or automobiles used for business within the city, per year,

(A) 1/2 ton or less \$ 25

(B) 1 ton 50

(C) 1 1/2 ton 120

(D) 2 ton and over 150

County

Structure - County Judge/Executive - 4-year term; 4 magistrates - 4-year terms

Budget 1981-82 - General Fund \$313,476; Road Fund \$235,743

Assessed Value of Property, 1981*

<u>Classes of Property</u>	<u>Lancaster</u>	<u>Garrard County</u>
Real Estate	\$35,017,400	\$148,488,800
Tangibles	6,013,625	19,979,541

*Excludes Homestead Exemptions.

Property Taxes

All property in Kentucky is assessed at 100 percent of fair cash value.

Land and buildings are taxed by the state and may be taxed by local jurisdictions. The state rate is \$0.229 per \$100 of assessed valuation.

Manufacturing machinery, raw materials inventories, pollution control equipment, and goods in the process of manufacture are not subject to local taxation. The state rate is \$0.15 per \$100.

Other tangible personal property owned by manufacturers (automobiles, trucks, finished goods, office furniture, office equipment) is taxed by the state at \$0.45 per \$100 and may be taxed by local jurisdictions.

Property stored in public warehouses in a transit status is not subject to local taxation. The state rate is only \$0.015 per \$100.

Intangible personal property located in Kentucky (money in hand, shares of stock, notes, bonds, accounts receivable, and other credits) is taxed by the state at \$0.25 per \$100, and is not subject to local taxation.

Private leaseholds in industrial facilities owned by cities or counties and financed by industrial revenue bonds are subject to a state tax of \$0.015 per \$100 of value (essentially the lessee's equity, adjusted for appreciation or depreciation). Local taxation is not permitted.

Combined State and Local Rates Per \$100 Valuation, 1981* (100% assessment)

	<u>Site Inside City of Lancaster</u>	<u>Site In Unincorporated Garrard County</u>
1. Land and buildings	\$0.861	\$0.668
2. Mfg. machinery, raw materials, goods in process, pollution control equipment	0.150	0.150
3. Finished goods, office equipment, vehicles, other tangibles	1.082	0.889
4. Intangibles (accounts rec., notes, bonds, etc.)	0.250	0.250
5. Leaseholds in industrial revenue bond financed plants	0.015	0.015

*Kentucky Department of Economic Development.

Planning and Zoning

City agency - Lancaster Planning and Zoning Commission

Zoning enforced - City only

Subdivision regulations enforced - City and 2 miles beyond corporate limits.

Mandatory state codes enforced - Kentucky Plumbing Code, National Electric Code, Kentucky Boiler Regulations and Standards, National Fire Protection Association Standards of Safety (for buildings with an occupancy of less than 100 persons), Kentucky Building Code (modeled after BOCA code and applying to buildings with an occupancy of 100 or more persons)

Safety

<u>Police</u>	<u>Lancaster</u>	<u>Garrard County</u>
Total staff	7	3
Radio-patrol cars	2	1

Fire

American Insurance Association Fire Rating	6	9*
Volunteers	25	100

Rescue Service

Garrard County DES

Number of volunteers - 125**

Equipment - Siren system for emergency and storm warnings, individual pager system to alert manpower, 1 mobile operation center which includes 1 large trailer equipped with a kitchen and sleeping facilities for several people, 1 heavy-duty rescue truck, boat and underwater recovery equipment, communications section, ambulance and jeep

Personnel training - 30 members are emergency medical technicians

*Applies to all properties within area/district limits that are within five miles accessible road distance of area/district fire station.

**Includes volunteer members of the Lancaster Fire Department and the Camp Dick Robinson Fire Department.

Refuse Collection and Disposal

Lancaster

Type service	Municipal
Fee charged:	
residential	\$5 per month
business	\$10 to \$25 per month
industrial	\$55 to \$165 per month
Collection frequency:	
residential	Weekly
business	Daily
industrial	Daily
Trash pickup	With refuse
Disposal method	City landfill

The city landfill is available for use by county residents on a fee basis. Manufacturers outside the city may purchase permits from the city for landfill use.

EDUCATION

Public Schools

Garrard County*

Total Enrollment (Winter 1982)	1,891**
Elementary (K-8)	1,348
High School (9-12)	538
Student-Teacher Ratio	16-1
Elementary (K-8)	16-1
High School (9-12)	17-1
Percent High School Graduates to College (1980)	28.8
Expenditures Per Pupil (1980-81)	\$1,372.64
Bonded Indebtedness (June 30, 1981)	\$922,000

*A gifted education program was added to the 1981-82 curriculum. The program serves approximately 80 students in grades five through eight.

**Includes five homebound students.

Area Colleges and Universities

<u>Name</u>	<u>Location (Miles distant)</u>	<u>Enrollment (Fall, 1981)</u>	<u>Highest Degree Conferred</u>
Centre College	Danville (12)	685	Baccalaureate
Berea College	Berea (22)	1,587	Baccalaureate
Eastern Kentucky University	Richmond (24)	13,394	Masters, Specialist/ Doctorate*
Asbury College	Wilmore (28)	1,200	Baccalaureate
University of Kentucky	Lexington (34)	23,441	Doctorate, M.D., D.M.D., J.D.
Transylvania University	Lexington (34)	750	Baccalaureate/ Masters**
Lexington Technical Institute	Lexington (34)	2,302	Associate

*Joint doctoral degree programs are offered in cooperation with the University of Kentucky, Lexington, and cooperative doctoral degree programs are offered with Michigan State University and the University of Maryland.

**Courses in the masters degree program are taught on the Transylvania campus by faculty members of Xavier University of Cincinnati. The degree is issued by Xavier University.

Vocational Schools

Both the state vocational-technical schools and the area vocational education centers are operated by the Kentucky Department of Education. The state vocational-technical schools enroll persons full time who are at least 16 years of age and not in school. These students attend classes for six hours each day. The area vocational education centers are designed to accommodate high school students who are at least 15 years of age. These students attend vocational school for three hours each day. The state vocational-technical schools and the area education centers offer evening courses to enable working adults to upgrade current job skills.

Nearest State School

Location	Central Kentucky State Vocational-Technical School
Miles Distant	Lexington 34
Curriculum	Business and Office Clerical Secretarial Consumer and Home Economics Commercial Foods Health and Personal Services Occupations Cosmetology Dental Assistant Nurse's Aide Practical Nursing Surgical Technician Industrial Education Auto Body Repair Auto Mechanics Carpentry Drafting Electronics Graphic Arts Industrial Electricity Machine Shop Masonry Sheet Metal, Heating and Cooling Welding Learning Resource Center

Nearest Area Education Center

Location	Garrard County Area Vocational Education Center
Curriculum	Lancaster Health and Personal Services Occupations Health Careers Industrial Education Auto Mechanics Carpentry Drafting Electricity Welding

Arrangements can be made to provide training in the specific production skills required by an industrial plant. Instruction may be conducted either in the vocational school or in the industrial plant, depending upon the desired arrangement and the availability of special equipment.

Additional technical training is available at the Lexington Technical Institute, a unit of Kentucky's community college system operating on the University of Kentucky campus. Courses parallel university offerings and are transferable to the Lexington U of K campus or to another 4-year institution either public or private. The Institute awards the Associate in Arts degree and the Associate in Applied Science degree.

The Associate in Applied Science Degree is awarded in the following programs: Accounting Technology; Architectural Technology; Civil Engineering Technology; Data Processing Technology (Business Option, Science Option); Dental Hygiene; Dental Laboratory Technology; Electrical Engineering Technology (Electronics Option); Management Technology (Business Option); Mechanical Engineering Technology; Nursing; Radiologic Technology; Real Estate; Respiratory Therapy; Secretarial Administration; Transportation.

HEALTH

Local Medical Personnel

Physicians - 4
Dentists - 3

Hospitals

<u>General Hospital</u>	<u>Location</u>	<u>Beds*</u>
Garrard County Memorial Hospital	Lancaster	50 acute care 34 extended care 46 personal care

General hospital facilities - X-ray, laboratory, physical therapy, emergency room, OB, operating room, psychiatric observation, coronary care unit, respiratory therapy, special care unit

Medical staff - Active staff - 4 doctors, 12 registered nurses (full time), 3 registered nurses (part time), 9 graduate licensed practical nurses; Courtesy staff - 3 surgeons, 1 associate pathologist, 2 radiologist, 3 dentists; Consulting staff - 18 doctors, 1 ophthalmologist, 1 orthopedist

Ambulance Service

Name - Garrard County Ambulance Service
Staff - 5 emergency medical technicians (full time), 1 trainee (full time), and 1 emergency medical technician (part time)
Service - 24 hours daily
Equipment - 2 ambulances

Public Health

Facility - Garrard County Health Department
Staff - Full time - 1 health environmentalist, 1 nurse, 2 clerks;
Part time - 1 nurse, 1 community health worker, 1 clerk, 1 nutritionist in office once weekly and doctor in office 2 half days per month

*Six beds have been converted into an intensive/coronary care unit.

OTHER LOCAL FACILITIES

Communications

Telephone - General Telephone Company
Services - Standard

Telegraph - Western Union
Services - Toll-free telephone number, 1-800-325-5100

Postal - U.S. Post Office
Class - First
Mail received - Twice daily
Mail dispatched - Once daily

Newspapers - The Central Record; The Garrard County News
Weekly and
circulation - 2,650 2,000
Other papers
received from - Louisville, Lexington and Danville, Kentucky

Radio - WIXI-AM
Stations received from - Harrodsburg, Danville, Richmond,
Lexington, and Louisville, Kentucky;
Cincinnati, Ohio

Television -
Cable service
Reception from - Louisville and Lexington, Kentucky;
Cincinnati, Ohio; Atlanta, Georgia
Kentucky Educational
Television - Lexington-Richmond transmitter, Channel 46

Library Services

Public library - Garrard County Public Library*
Size collection - 34,796
Circulation, 1980-81 - 82,832
Services - Films, pictures, records, audiovisual equipment,
magazines, newspapers, bookmobile, programs for children,
meeting room facilities, oral history program, microfilm
and genealogical research section, Interlibrary Loan and
the Kentucky Room

*An annexation has allowed for the development of the Kentucky Room. The new addition provides a collection of Kentucky memorabilia and genealogical research.

Religious Institutions

Number of churches - 13
Denominations - Baptist
Catholic
Christian
Church of Christ
Church of God
Methodist
Nazarene
Pilgrim's Holiness
Presbyterian

Nearest synagogues - Lexington, 34 miles distant
Congregations - Adath Israel (reform)
Ohavey Zion (traditional)

Financial Institutions

<u>Banks</u>	<u>Assets</u>	<u>Deposits</u>	<u>Statement Date</u>
The Garrard Bank and Trust Company*	\$19,205,391.63	\$17,401,663.71	12/31/81
The National Bank of Lancaster	31,487,000.00	25,579,000.00	12/31/81

<u>Savings and Loan Associations</u>	<u>Assets</u>	<u>Savings Accounts</u>	<u>Statement Date</u>
First Lancaster Federal Savings and Loan Association Inc.	\$17,238,996.46	\$15,637,508.07	12/31/81

Hotels and Motels

Total number - 3
Total rooms - 45

*A remodeling of the main office building has been completed. The bank's computer department was relocated on the building's second floor and an elevator was installed. A branch bank was constructed on East Highway 52 and provides full-service banking with easy street access and drive-in conveniences.

Clubs and Organizations

American Legion
American Legion Auxiliary
Boy Scouts
Brownies
Cub Scouts
Daughters of the American Revolution
4-H
Future Farmers of America (FFA)
Garrard County Beef Club
Garrard County Chamber of Commerce
Garrard County Industrial Corporation
Girl Scouts
Homemakers
Hospital Auxiliary
International Order of Odd Fellows
Junior Chamber of Commerce
Kiwanis
Lions
Little League
Masons
Rotary
Veterans of Foreign Wars (VFW)
Woman's Club

RECREATION

Local

Lancaster has a ball park, a playground, tennis courts and a supervised Little League program. A state fox hunt is held in Garrard County each fall and two horse shows are presented annually.

Private recreational facilities nearby include a boat dock; and a country club with an 18-hole golf course, tennis courts, swimming pool and dining facilities.

Lake Lorraine, a 160-acre recreational area, offers picnicking, camping, swimming and fishing.

Herrington Lake, located seven miles from Lancaster, was developed by the Kentucky Utilities Company in 1925. Dix River Dam near Pleasant Hill is located on the 1,860-acre lake. Fishing, boating, and swimming can all be enjoyed on the lake. Camping and fishing facilities are available near Danville and Harrodsburg.

Area (Within 40 miles)

Lancaster is within easy driving distance to a variety of sporting events and cultural activities. Centre College, only 12 miles away at Danville, offers art exhibits, concerts, plays, lectures and collegiate sports. Lexington, 34 miles distant, has some of the finest thoroughbred and harness racing in the world. Many talented professional and amateur groups in Lexington provide the area with quality entertainment, including theatrical and music performances, ballet, art exhibits, and lecture series. The University of Kentucky and Transylvania University in Lexington and Eastern Kentucky University in Richmond provide additional cultural and sporting events for area residents.

Constitution Square State Shrine, 12 miles north of Lancaster in Danville, is a reproduction of Kentucky's first courthouse square, including the original 1792 post office which was the first in the west.

William Whitley House State Shrine, 13 miles southeast of Lancaster near Stanford, is the first brick house west of the Allegheny Mountains, built 1787-94. Whitley laid out Kentucky's first race track here and started U.S. counterclockwise racing. The facility provides picnic and playground areas in a 10-acre park.

Isaac Shelby State Shrine, 20 miles southwest of Lancaster near Danville, is the burial site of Kentucky's first governor and one of the Commonwealth's foremost statesmen.

Old Fort Harrod State Park, 21 miles northwest of Lancaster, is a 28-acre park in Harrodsburg that features a full-scale reproduction of the original Fort Harrod. The park also contains the log cabin where Abraham Lincoln's parents were wed, the Mansion Museum which houses mementos associated with the great periods of Kentucky history, a pioneer cemetery, and a federal monument dedicated to pioneers. The "Legend of Daniel Boone," an outdoor drama which brings to life on stage the men and women who made Kentucky, is performed in the park amphitheatre during the summer months.

The Indian Fort Theatre in Berea presents "Wilderness Road," an outdoor drama renowned for its stirring recreation of Civil War life in Kentucky. Only 22 miles southeast of Lancaster, Berea offers a number of gift shops featuring quilts, wood products and traditional crafts made by Berea College students. Churchill Weavers, the largest hand-weaving business in the United States, is also located in Berea. Self-guided tours of the loomhouse are available.

White Hall State Shrine, located 24 miles northeast of Lancaster near Richmond, is one of the grand estate houses of post-Civil War Kentucky, and the Italianate mansion of Cassius Marcellus Clay, the early abolitionist and politician. Kentucky handicrafts are sold in the White Hall gift shop, only a short walk from the mansion.

Perryville Battlefield State Shrine, 25 miles west of Lancaster near Perryville, is the site of the largest Civil War battle in Kentucky. A museum, a picnic area, and a playground are located on the grounds.

Bybee Pottery, located east of Richmond about 33 miles from Lancaster, is open for tours by appointment. The handmade Kentucky pottery has been created for one and one-third centuries.

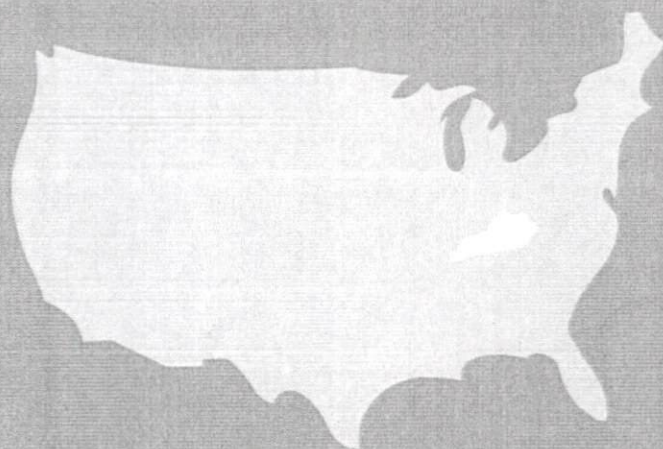
At Pleasant Hill, approximately 35 miles away, is a restored Shaker Village which was once a prosperous religious community. This 19th century village has been carefully restored to display unique Shaker skills in furniture making, crafts, and architecture.

The spirit of Daniel Boone and his pioneers is reborn at Fort Boonesborough State Park in Boonesboro, 37 miles northeast of Lancaster. In the re-created fort 16 pioneer crafts of the eighteenth century are demonstrated by Kentuckians using functioning antiques from the frontier era. Cabins are furnished as they would have been in the days of Boone and documentary films are presented which depict the struggle of the first Kentuckians to make the Kentucky wilderness a home. A gift shop within the fort offers for sale all the handcrafted items made at the fort, along with a wide variety of handicrafts from throughout Kentucky. Other recreational facilities and activities of the park include the finest sand beach on the Kentucky River with a modern bathhouse, sun deck, and snack shop; a modern camping area with 187 sites; a central service building housing showers, restrooms, and laundry facilities for campers;

a pavilion with a gift shop and grocery inside and a playground and basketball, volleyball, and shuffleboard courts on the grounds; and planned daily activities and special events under the guidance of a trained recreation director. Near the park is the dock of the Dixie Belle sternwheel excursion boat which operates one-hour trips daily on the Kentucky River leaving from the Fort Boonesborough boat dock.

Waveland State Shrine, 40 miles north of Lancaster near Lexington, features an 1847 Greek Revival mansion depicting Kentucky lifestyles from the days of early settlers to the antebellum era of gentility and elegance as well as the Civil War and postwar periods. The shrine also includes the Kentucky Life Museum and a plantation village on 10 acres with many shops and displays.

Outdoor recreational opportunities are bountiful in the area. In addition to the opportunities afforded by Herrington Lake and the Kentucky River, Daniel Boone National Forest is only 30 miles away. This vast timberland stretches through much of Kentucky's Eastern Region. Nature trails, picnicking, camping, and water activities are a few of the attractions of the forest's scenic 650,000 acres.



Kentucky Department of Economic Development
Capital Plaza Tower
Frankfort, Kentucky 40601 • Phone (502) 564-4270