

1974

Industrial Resources: Hardin County - West Point

Kentucky Library Research Collections
Western Kentucky University, spcol@wku.edu

Follow this and additional works at: https://digitalcommons.wku.edu/hardin_cty

 Part of the [Business Administration, Management, and Operations Commons](#), [Growth and Development Commons](#), and the [Infrastructure Commons](#)

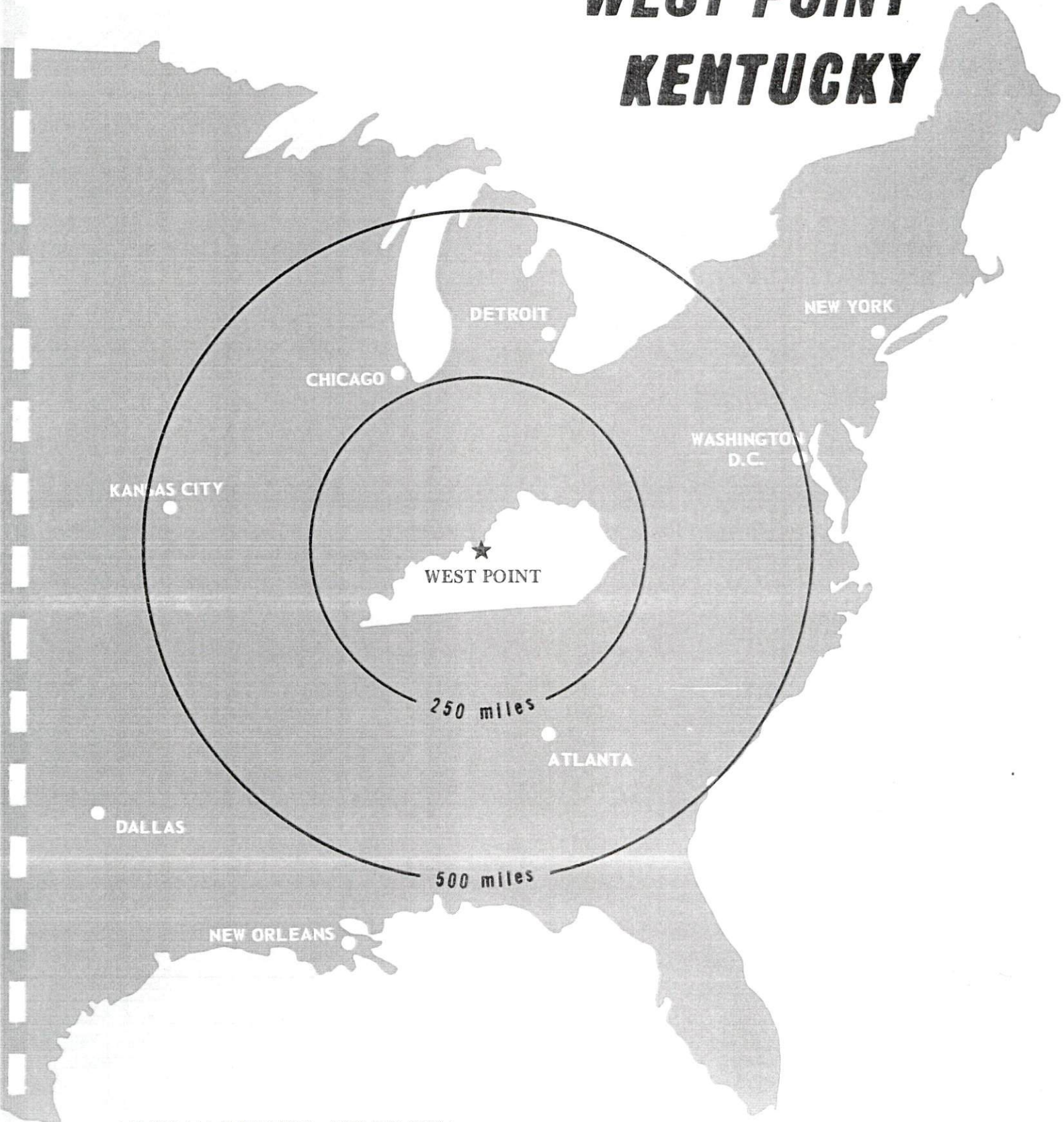
Recommended Citation

Kentucky Library Research Collections, "Industrial Resources: Hardin County - West Point" (1974). *Hardin County*. Paper 16.
https://digitalcommons.wku.edu/hardin_cty/16

This Report is brought to you for free and open access by TopSCHOLAR®. It has been accepted for inclusion in Hardin County by an authorized administrator of TopSCHOLAR®. For more information, please contact topscholar@wku.edu.

INDUSTRIAL RESOURCES

WEST POINT KENTUCKY



HARDIN COUNTY, KENTUCKY

INDUSTRIAL RESOURCES
WEST POINT, KENTUCKY

Prepared by
The Kentucky Department of Commerce
in cooperation with
The West Point Chamber of Commerce

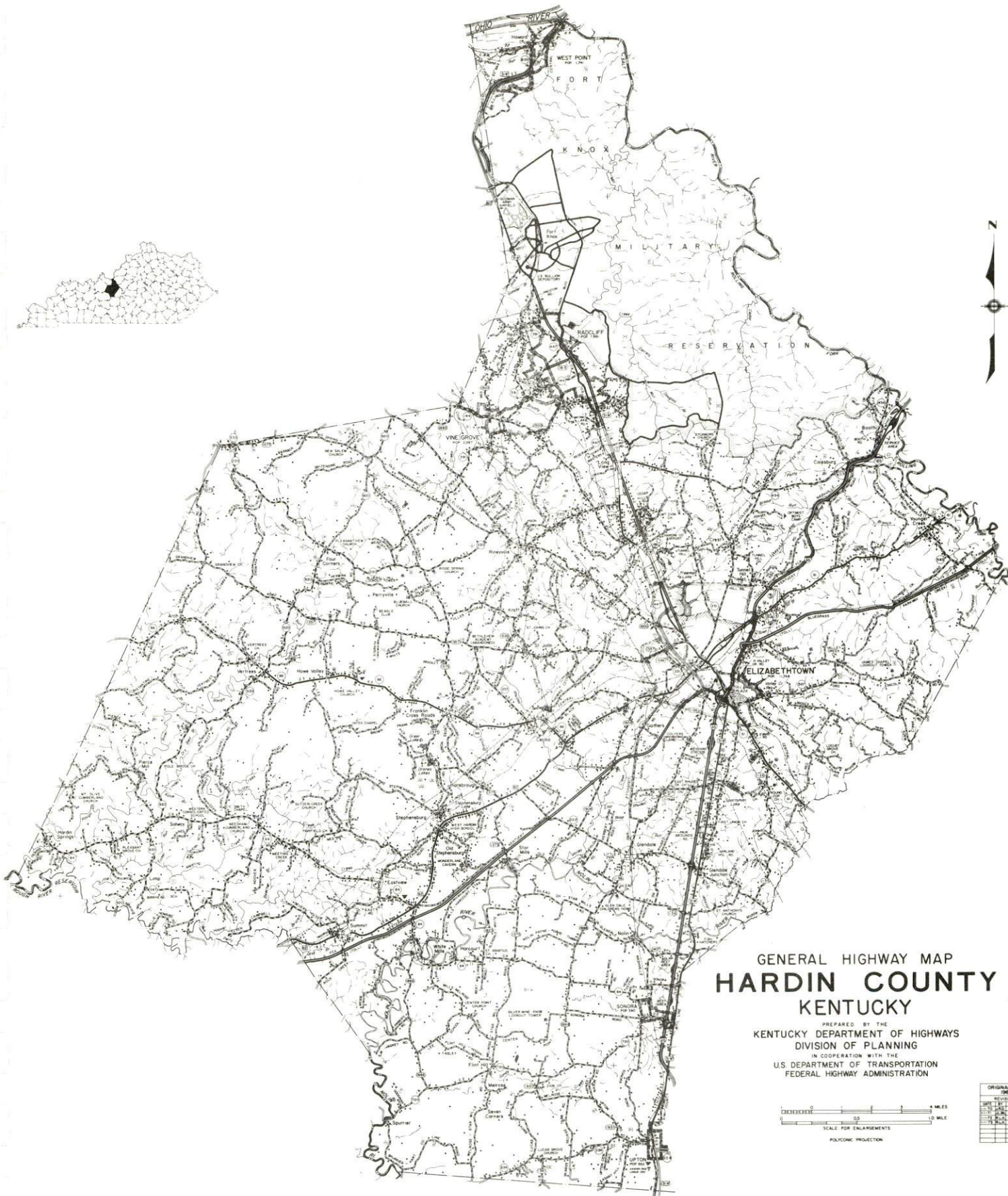
1974

This copy has been prepared by the Kentucky Department of Commerce,
Division of Research and Planning, and the cost of printing paid from
state funds.

TABLE OF CONTENTS

<u>Chapter</u>	<u>Page</u>
INDUSTRIAL SITES	i
WEST POINT, KENTUCKY - A RESOURCE PROFILE.	1
THE LABOR MARKET.	5
Population Trends	5
General Employment Characteristics, 1972	5
Manufacturing Employment Trends by Industry.	6
Manufacturing Firms	6
Wages.	7
Estimated Male Labor Supply	8
Estimated Female Labor Supply	8
Per Capita Personal Income.	9
TRANSPORTATION	10
Rail.	10
Truck Service	10
Air	11
Water.	12
Bus	12
Rental Services.	12
POWER AND FUEL	13
Electricity.	13
Natural Gas	13
Other Fuels	14
WATER AND SEWERAGE	15
Water.	15
Sewerage	16
LOCAL GOVERNMENT	17
City.	17
County	17

<u>Chapter</u>	<u>Page</u>
Assessed Value of Property, 1973	17
Property Taxes	17
Local Property Tax Rate Per \$100 of	
Assessed Valuation, 1973	18
Utilities Gross Receipts Tax for Schools	18
Planning and Zoning	18
Safety.	18
Police	18
Fire	19
Rescue Service	19
Sanitation	19
 EDUCATION	 20
Public Schools	20
Nonpublic Schools	20
Vocational Schools	21
Colleges and Universities	22
 HEALTH.	 23
Hospitals	23
Nursing Homes.	23
Public Health	23
 OTHER LOCAL FACILITIES.	 24
Communications	24
Library Services.	24
Religious Institutions	24
Financial Institutions	25
Hotels and Motels	25
Clubs and Organizations.	25
 RECREATION	 27
Local.	27
Area	27
 AGRICULTURE - NATURAL RESOURCES - CLIMATE	 28
Agriculture	28
Natural Resources	28
Climate.	29
 HISTORY.	 30



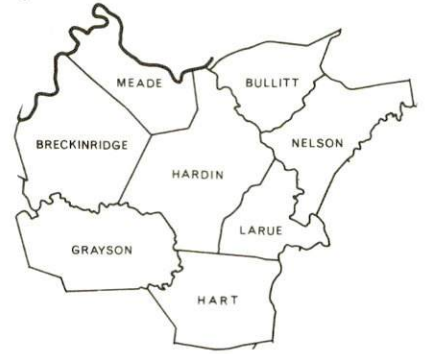
GENERAL HIGHWAY MAP
HARDIN COUNTY
 KENTUCKY

PREPARED BY THE
 KENTUCKY DEPARTMENT OF HIGHWAYS
 DIVISION OF PLANNING
 IN COOPERATION WITH THE
 U.S. DEPARTMENT OF TRANSPORTATION
 FEDERAL HIGHWAY ADMINISTRATION

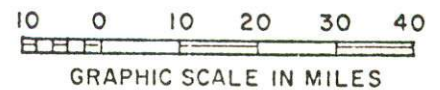
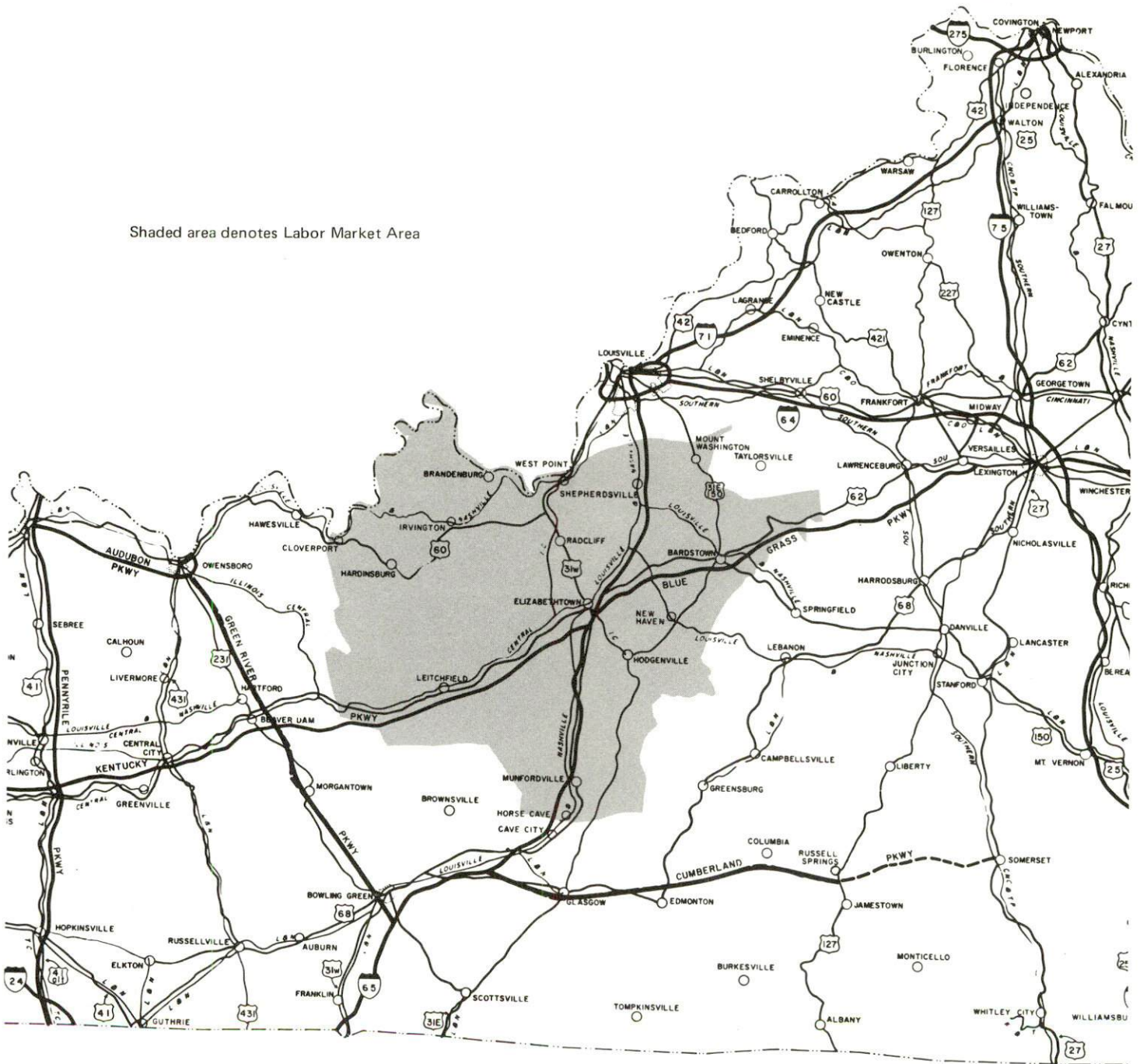


ORIGINAL DATA	
SHEET NO.	
1	2
3	4
5	6
7	8
9	10
11	12
13	14
15	16
17	18
19	20
21	22
23	24
25	26
27	28
29	30
31	32
33	34
35	36
37	38
39	40
41	42
43	44
45	46
47	48
49	50
51	52
53	54
55	56
57	58
59	60
61	62
63	64
65	66
67	68
69	70
71	72
73	74
75	76
77	78
79	80
81	82
83	84
85	86
87	88
89	90
91	92
93	94
95	96
97	98
99	100

WEST POINT LABOR MARKET AREA



Shaded area denotes Labor Market Area



WEST POINT, KENTUCKY - A RESOURCE PROFILE

West Point is located in the northern part of Hardin County in north central Kentucky. Bound on the north by the Ohio River, West Point is 20 miles south of Louisville, Kentucky; 133 miles southwest of Cincinnati, Ohio; and 160 miles northeast of Nashville, Tennessee. In 1970, West Point had a population of 1,741.

Hardin County, covering a land area of 616 square miles, had a 1970 population of 78,421. North Hardin County is the location of Fort Knox, a U. S. Army reservation and depository of the nation's gold reserve. Covering 110,000 acres, the reservation reaches into two adjoining counties.

The Economic Framework

Total employment in Hardin County in 1972 averaged 20,370 with agriculture providing 1,160 jobs, manufacturing 2,510, trade and services 4,830 and government 7,840. Since 1963 manufacturing employment has increased by 322 percent, or 1,993 jobs. Major industrial products in the county are: electric timing devices, motors and program switches, auto v-belts and curved auto hose; silicone sealants; ceramic and alnico magnets, and men's slacks.

Per capita income in the county in 1971 was \$4,402. Between 1961 and 1971, per capita personal income in the county increased approximately 157 percent.

The West Point labor market area is defined for the purpose of this study to include Hardin and the adjacent counties of Breckinridge, Bullitt, Grayson, Hart, Larue, Meade and Nelson Counties. Area employment in 1972 totaled 50,840 jobs with agriculture providing 7,990, manufacturing 7,730, trade and services 10,050, and government 11,760. Manufacturing employment in this area has increased approximately 111 percent since 1963 with sharpest gains in apparel, rubber, machinery, metal products, and paper industries.

This area has a deficit of 10,711 manufacturing jobs when measured against the National industrial employment-population ratio. This indicates an area with a potential for additional manufacturing production.

Resources for Growth

1. Labor supply - There is a current estimated labor supply of 7,580 men and 10,210 women available for industrial jobs in the labor

market area. In addition 10,620 young men and 10,130 young women will become 18 years of age by 1980 and potentially available for work.

2. Transportation - The Illinois Central Gulf Railroad and the Louisville & Nashville Railroad serve West Point. The nearest piggyback facilities are at Louisville, 20 miles away. Trucking service is provided by ten truck lines. West Point is only 20 miles from Louisville, via 31 W-60, where Interstate 71 and 64, east to west, and Interstate 65, north to south, are easily accessible. Commercial air service is available at Standiford Field, 20 miles distant. West Point's location on the Ohio River provides excellent opportunity for low-cost transportation for bulk materials.

3. Power and fuel - West Point is provided electric power and natural gas service by the Louisville Gas and Electric Company. Nolin Rural Electric Cooperative Corporation serves Hardin County. Several distributors of propane, butane and distillate fuel oil are located near West Point.

4. Education - Residents of West Point are served by the West Point Independent School District and the Hardin County School System.

Two universities, two senior colleges, and three community colleges are located within 50 miles of West Point.

The nearest state vocational-technical schools are located at Jeffersontown, 30 miles from West Point, and at Elizabethtown, 25 miles distant.

Community Programs for Improvement

Plans for enlarging and upgrading the sewerage system have been completed and submitted for approval.

An ambulance has been purchased by West Point residents with matching funds provided by Civil Defense.

The city streets have recently been improved.

The city parking lot has just been improved.

The police department is now utilizing new radio equipment.

Recreation, Entertainment and Livability

Within easy driving distance to West Point is Louisville, offering a variety of entertainment such as the Kentucky Derby, the Kentucky State Fair, the Louisville Zoological Gardens, Actors' Theatre, Kentucky Opera Association, Louisville Ballet, Louisville Orchestra, harness racing and professional baseball and basketball.

Also within easy driving distance to West Point are several of the state's outstanding parks.

Green River Lake State Park offers fishing, boating, swimming, a picnic area and a beach at Lone Valley. Facilities also include a marina, parking areas, ramps and rest rooms.

Bernheim Forest is a privately operated 10,000-acre natural forest that is stocked with deer, wild turkey, grouse and quail. Facilities include a picnic area, foot trails, fishing, nature center, and museum.

Nolin Dam and Reservoir provides flood control for the Nolin River Basin. The dam is 166-feet high and 908-feet long. The reservoir is 25 miles long at minimum level and 57 miles long at maximum level. Recreation facilities being developed on 1,023 acres of park area include fishing, hiking, boating, camping, and picnicking.

Rough River Dam State Resort Park is a 9,234-acre resort-type park on Rough River Reservoir with lodge, cottages and camping accommodations. Facilities and recreation include a lodge, pool, beach, bathhouse, boat and motor rentals, paddle boats, fishing, miniature golf, tennis, hiking, shuffleboard, picnic shelter, playground area, supervised recreation and a 2,500-foot paved airstrip inside the park.

My Old Kentucky Home State Park was originally called Federal Hill and was the home of Judge John Rowan. Here in 1852 Judge Rowan's young Pittsburgh cousin Stephen Collins Foster was inspired to compose his immortal melody "My Old Kentucky Home" which later became the official song of Kentucky. Park facilities include: gift shop, amphitheatre, golf course, playground area and camp facilities.

The Patton Museum of Cavalry and Armor in beautifully wooded Keys Park was opened at Fort Knox in 1949. The museum contains cavalry and armor displays from the Revolutionary War to Vietnam. Of special interest are the personal effects of General George C. Patton, for whom the museum was named.

Abraham Lincoln Birthplace National Historic Site grounds include 100 acres of original Thomas Lincoln farm where Abraham Lincoln was born and lived until 2 1/2 years old. The small log cabin is enclosed in a granite memorial shrine. The Visitor Center has exhibits and audiovisual program. Nearby is Lincoln's boyhood home.

Lincoln Homestead State Shrine is a restored settlement of Lincoln's grandparents. It was built in 1782 and was the home of Nancy Hanks, mother of the president. Park facilities include an 18-hole golf course, picnic areas and gift shops.

South of West Point is the world-famous Mammoth Cave region which covers more than 150 miles of charted caverns and vast areas not yet mapped. No other state has as many known caves as Kentucky (about 2,000), and the best known are in this cave region: Mammoth Cave, Mammoth Onyx Cave, Diamond Caverns, Crystal Onyx Cave, Hundred Dome Cave in the Park Mammoth Resort area, and smaller ones. Cave attractions include Snowball Dining Room (267 feet below the surface), Frozen Niagara, Crystal Lake, and Bottomless Pit, plus many others.

Above ground this region offers a 51,000-acre national park, a state park, both with motel and lodging accommodations, and camping facilities. The area also offers two state shrines, two large lakes, many historical sights, festivals, hillside chair lifts, and a wax museum.

THE LABOR MARKET

POPULATION TRENDS

Area	Population				Percent Change	
	1972*	1970	1960	1950	1960-70	1950-60
West Point	--	1,741	2,005	1,669	-13.2	+20.1
Labor Market Area	205,900	202,670	179,654	148,472	+12.8	+21.0
Hardin County	77,700	78,421	67,789	50,312	+15.7	+34.7
Breckinridge County	15,200	14,789	14,734	15,528	+ 0.4	- 5.1
Bullitt County	29,100	26,090	15,726	11,349	+65.9	+38.6
Grayson County	17,400	16,445	15,834	17,063	+ 3.9	- 7.2
Hart County	14,500	13,980	14,119	15,321	- 1.0	- 7.8
Larue County	11,100	10,672	10,346	9,956	+ 3.2	+ 3.9
Meade County	17,400	18,796	18,938	9,422	- 0.7	+101.0
Nelson County	23,500	23,477	22,168	19,521	+ 5.9	+13.6

*Provisional estimates.

Sources: U. S. Department of Commerce, Bureau of the Census, Census of Population, 1970, 1960, 1950. U. S. Bureau of the Census, Current Population Reports, Series P-26, June 1973.

GENERAL EMPLOYMENT CHARACTERISTICS, 1972

Major Employment Group	Employment	
	Hardin County	Labor Market Area
TOTAL	20,370	50,840
Agricultural	1,160	7,990
Nonagricultural	19,210	42,850
Manufacturing	2,510	7,732
Government	7,840	11,760
Trade and Services	4,834	10,051
Other	4,026	13,307

Source: Kentucky Department of Economic Security, Division of Research and Statistics.

MANUFACTURING EMPLOYMENT TRENDS BY INDUSTRY
MARCH 1973 AND 1963

Industry	Hardin County			Labor Market Area		
	1973	1963	% Change	1973	1963	% Change
TOTAL	2,612	619	+322.0	8,128	3,861	+ 110.5
Food & Kindred						
Products	197	74	+166.2	1,547	1,601	- 3.4
Tobacco	0	1	0	12	23	- 47.8
Apparel, Textiles,						
Leather	264	149	+ 77.2	1,689	882	+ 91.5
Lumber, Furniture	10	7	+ 42.9	253	128	+ 97.7
Printing & Publishing,						
Paper	90	47	+ 91.5	861	173	+ 397.7
Chemicals, Petroleum						
& Coal, Rubber	786	16	--	1,459	574	+ 154.2
Stone, Clay & Glass	44	47	- 6.4	290	202	+ 43.6
Primary Metals	0	0	0	130	0	0
Machinery, Metal						
Products, Equip.	809	94	+760.6	1,381	94	+1,369.1
Other	412	184	+123.9	506	184	+ 175.0

Source: Kentucky Department of Economic Security, Number of Workers in Manufacturing Industries Covered by Kentucky Unemployment Insurance Law Classified by Industry and County, March 1973, March 1963.

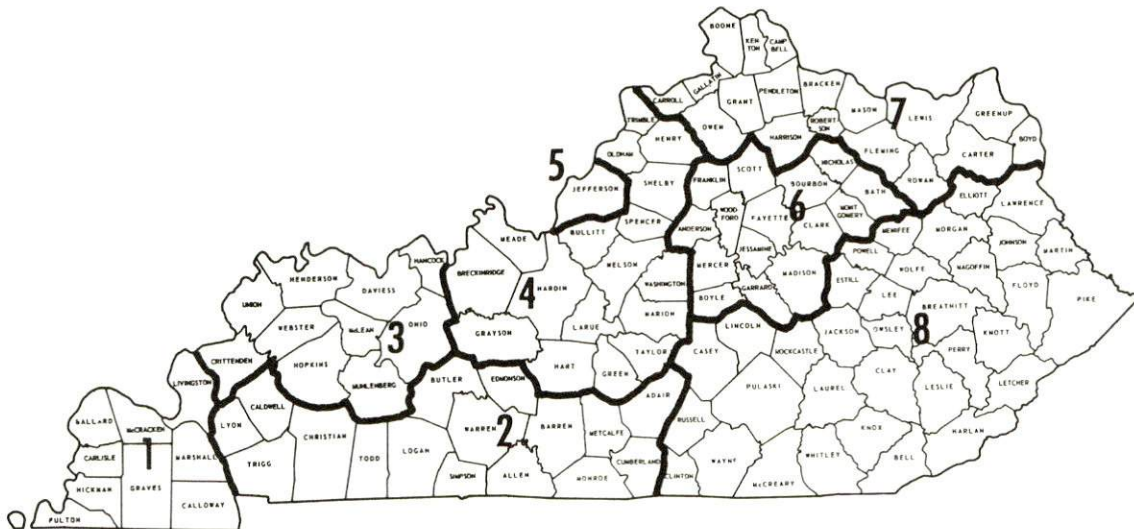
MANUFACTURING FIRMS

At the present time, there are no manufacturing plants located at West Point.

WAGES

Occupational wage rates for specific industries are usually not available to most government agencies, and wage data furnished to state employment agencies by industrial employers is protected from disclosure by federal law. The most reliable up-to-date wage information can be obtained by direct contact with local employers.

Associated Industries of Kentucky, a voluntary organization of Kentucky businesses, regularly collects occupational wage rates and fringe benefits data from participating member firms. Data is compiled for over 130 clearly defined office, production, and service occupations. Tabulations are published for eight regions of Kentucky, as shown on the map below. It should be noted that the data may be weighted by the preponderance of firms in the larger cities and may be somewhat higher than the rates paid in the smaller communities. Data from these tabulations are available, upon request, from the Kentucky Department of Commerce, Frankfort, Kentucky 40601.



Associated Industries of Kentucky Area Wage Surveys

ESTIMATED MALE LABOR SUPPLY
WEST POINT LABOR MARKET AREA

Area	Current			Future	
	Total	Not in Labor Force	Unemployed	Under- employed	Reaching 18 yrs. of age by 1980
Labor Market					
Area	7,580	1,220	1,400	4,960	10,616
Hardin	3,570	140	120	3,310	3,402
Breckinridge	800	400	170	230	775
Bullitt	470	0	140	330	1,610
Grayson	710	190	240	280	874
Hart	400	150	120	130	720
Larue	520	230	100	190	609
Meade	330	110	50	170	1,052
Nelson	780	0	460	320	1,574

Sources: Kentucky Department of Economic Security, Kentucky Labor Supply Estimates by County, 1973. Kentucky Department of Commerce, Future Labor Supply by 1980.

ESTIMATED FEMALE LABOR SUPPLY
WEST POINT LABOR MARKET AREA

Area	Current			Future	
	Total	Not in Labor Force	Unemployed	Under- employed	Reaching 18 yrs. of age by 1980
Labor Market					
Area	10,210	5,160	1,050	4,000	10,133
Hardin	3,220	1,220	410	1,590	3,278
Breckinridge	1,040	690	110	240	764
Bullitt	870	180	100	590	1,526
Grayson	1,110	760	80	270	825
Hart	800	490	100	210	693
Larue	760	490	40	230	588
Meade	1,460	990	40	430	986
Nelson	950	340	170	440	1,473

Sources: Kentucky Department of Economic Security, Kentucky Labor Supply Estimates by County, 1973. Kentucky Department of Commerce, Future Labor Supply by 1980.

PER CAPITA PERSONAL INCOME

<u>Area</u>	<u>1971</u>	<u>1961</u>	<u>% Change</u>
Hardin County	\$4,402	\$2,810	+156.7
Labor Market Area			
Range	\$2,109 - 4,402	\$939 - 2,810	N. A.
Kentucky	3,310	1,677	+ 97.3
U. S.	4,164	2,265	+ 83.8

Sources: University of Kentucky, Office of Development Services and Business Research, Per Capita Income in Kentucky. U. S. Department of Commerce, Bureau of Economic Analysis, Survey of Current Business, August, 1973.

TRANSPORTATION

Rail

Line serving West Point - Illinois Central Gulf Railroad

Services - Freight service - one local six days a week, three north-bound and three southbound fast freights daily, siding space for approximately 15 cars, switching facilities; nearest piggyback facilities at Louisville, 20 miles distant.

Line serving West Point - Louisville & Nashville Railroad Company

Services - Freight, one local daily - north and south, siding space, switching facilities; nearest piggyback facilities at Louisville, 20 miles distant.

For details on routing, schedules, rates, and services, contact:

Director of Industrial Development
Illinois Central Gulf Railroad Company
135 East 11th Place
Chicago, Illinois 60605

and/or

Manager of Industrial Development
Louisville & Nashville Railroad Company
908 West Broadway
Louisville, Kentucky 40203

Truck Service

<u>Company</u>	<u>Home Office</u>
Associated Transport, Inc. (Restricted on S-B to Elizabethtown)	380 Madison Avenue New York, New York 10017
Consolidated Freightways	175 Linfield Drive Menlo Park, California 94025
Cooper-Jarrett, Inc.	23 South Essex Avenue Orange, New Jersey 07050
Crutcher Transfer Line, Inc.	600 Marrett Avenue Louisville, Kentucky 40208
Great Lakes Express Company	Saginaw, Michigan
Majors Transit, Inc. (Restricted on S-B to Clarkson)	P. O. Box 7 Caneyville, Kentucky 42721

(Cont'd.)

Truck Service (Cont'd.)

<u>Company</u>	<u>Home Office</u>
Robbins Truck Line, Inc.	P. O. Box 145 Hardinsburg, Kentucky 40143
Southern Forwarding Company	728 Alston Avenue Memphis, Tennessee 38102
Wilson Freight Company (Restricted S-B)	3636 Follett Avenue Cincinnati, Ohio 45223
<u>Other Freight Services</u>	<u>Nearest Shipping Center</u>
United Parcel Service*	Louisville, Kentucky

*For regular scheduled or occasional pickups, arrangements must be made with the Louisville office of U. P. S.

HIGHWAY MILES AND TRUCK TRANSIT TIME IN DAYS FROM
WEST POINT, KENTUCKY, TO SELECTED MARKET CENTERS

City	Delivery		City	Delivery	
	Highway Miles	Time TL		Highway Miles	Time TL
Atlanta, Ga.	412	1	Los Angeles, Calif.	2,127	4
Birmingham, Ala.	346	1	Louisville, Ky.	20	1
Chicago, Ill.	321	1	Nashville, Tenn.	160	1
Cincinnati, Ohio	133	1	New Orleans, La.	690	2
Cleveland, Ohio	374	1	New York, N. Y.	789	2
Detroit, Mich.	395	1	Pittsburgh, Pa.	414	1
Knoxville, Tenn.	232	1	St. Louis, Mo.	284	1

Source: Delivery time only - Crutcher Transfer Line, Inc., 600 Marrett Avenue, Louisville, Kentucky 40208.

Air

Nearest Commercial

Standiford Field
 Location: Louisville, 20 miles distant
 Runways: 3 paved
 Length: 7,800 feet, 5,000 feet, 7,250 feet
 Traffic Control: Control tower, approach and ground control, guards, radar service, departure control
 Lighting: Runways, obstructions, beacon and approach and touch down lights, center line on runways 1-19

(Cont'd.)

Nearest Commercial (Cont'd.)

Services: Louisville-Jefferson County Air Board, 80, 100, 115
jet fuel, storage, Major A & E repairs; TWA,
American, Eastern, Delta, Piedmont, Ozark and
Allegheny Airlines; Hertz and Avis, National
rent-a-car service, restaurant, taxi, city bus
service, Budget Rent-A-Car Service

Air Freight
Service: Freight carrying airlines regularly service this
terminal

Water

West Point's location on the Ohio River provides excellent oppor-
tunity for low cost transportation for bulk materials.

There are presently no public dock facilities at West Point.

Bus - Greyhound Bus Lines

Rental Services - Nearest truck rentals - Valley Station, 9 miles distant
Nearest car rentals - Louisville, 20 miles distant

POWER AND FUEL

Electricity

Company serving West Point - Louisville Gas & Electric Company

Source of power - Louisville Gas & Electric Company's steam,
jet, gas turbine and hydro generation stations

Total generating capacity - 1,890,000 KW

For industrial rates contact:

Louisville Gas & Electric Company

311 West Chestnut Street

Louisville, Kentucky 40202

Company serving Hardin County - Nolin Rural Electric Cooperative
Corporation

Source of power - East Kentucky Power Cooperative

Total generating capacity - 548,000 KW

For industrial rates contact:

Nolin Rural Electric Cooperative Corporation

P. O. Box 668

Elizabethtown, Kentucky 42701

Natural Gas

Company serving West Point - Louisville Gas & Electric Company

Source of supply - Texas Gas Transmission Corporation

Size of transmission mains - 16 and 20 inches (distributor)

Distribution mains - 2 and 4 inches

Distribution pressure - 30 psig

Btu content - 1,025 per cubic foot; Specific gravity - .6

For rates and supplies contact:

Louisville Gas & Electric Company

Gas Sales Department

311 West Chestnut Street

Louisville, Kentucky 40202

Other Fuels

Propane and butane - Pargas of Canmer, Inc.
Highway 31 East
Canmer, Kentucky
Al's Gas Service, Inc.
Radcliff, Kentucky
J. R. Ashcraft, Distributor
Elizabethtown, Kentucky
Cave Oil Company, Inc.
Elizabethtown, Kentucky
Union Oil Company
Elizabethtown, Kentucky
Distributors in Louisville area

Fuel Oils -

Distillate fuel oil - Sunoco
West Point, Kentucky
Atlantic Richfield Oil Company (ARCO)
337 E. Dixie Avenue
Elizabethtown, Kentucky
Ashland Petroleum Company
736 Hawkins Drive
Elizabethtown, Kentucky
Exxon Company
Hawkins Drive
Elizabethtown, Kentucky
Standard Oil Company
216 E. Poplar
Elizabethtown, Kentucky
Distributors in Louisville area

Residual fuel oil - Arrangements must be made with the refinery

Low sulphur content coal - Available from eastern Kentucky

WATER AND SEWERAGE

Water

Company serving West Point - West Point Water Department

Source - 2 deep wells

Treatment plant capacity - 480,000 gallons per day

Average daily consumption - 135,000 gallons

Peak daily consumption - 146,000 gallons

Type treatment - Softening, filtering, post chlorination

Storage capacity - 50,000 gallons

Size lines - 6, 4 and 2 inches

Average pressure - 40 psi

Average temperature - 58 degrees F.

MONTHLY WATER RATES FOR WHOLESALE AND INDUSTRIAL CONSUMERS

First	3,000 gallons or less	\$3.43
	3,001 to 4,000 gallons	4.30
	4,001 to 5,000 gallons	5.00
	5,001 to 6,000 gallons	5.70
	6,001 to 7,000 gallons	6.40
	7,001 to 8,000 gallons	7.10
	8,001 to 9,000 gallons	7.80
	9,001 to 10,000 gallons	8.50
All over	10,000 gallons	0.70 per M gal- lons or part thereof

Tap-on fee - Cost of materials and labor plus 15 percent

Surface water sources - Ohio, Salt and Rolling Fork Rivers

Average discharge - Ohio - unlimited, Rolling Fork near Boston 1,642 cfs (31-years: USGS); Salt River at Shepherdsville 1,468 cfs (31 years: USGS)

Expected ground water yield - Varies from 5 to 1,000 gpm depending on locale, large springs are common

Sewerage

Company serving West Point - West Point Sewer Department*
Design capacity - 300,000 gallons per day
Average daily flow - 90,000 gallons
Treatment - Primary
Type treatment - Aeration and drying beds, chlorination
Treated effluent discharged into - Ohio River
Size of sanitary mains - 8 and 10 inches
Size of storm mains - 8, 10, 12 and 14 inches
Rates - (Based on water usage) 100 percent of monthly water bill
Tap-on fee - Cost of materials and labor plus 15 percent

*Plans for enlarging and upgrading the sewerage system have been completed and submitted for approval.

LOCAL GOVERNMENT

City

Structure - Mayor - 4-year term; 6 councilmen - 2-year terms
Estimated budget 1974 - General Fund \$103,000
Water and Sewer Fund 48,000
Fees and licenses - Annual business license - \$10.00
Unloading license - \$3.50 to \$10.50

County

Structure - County Judge - 4-year term; 8 magistrates - 4-year terms
Budget 1973-74 - General Fund \$483,433; Road Fund \$302,208

Assessed Value of Property, 1973

<u>Classes of Property</u>	<u>West Point</u>	<u>Hardin County</u>
Real Estate and Tangibles	\$3,664,425	
Real Estate		\$263,885,403
Tangibles		57,596,560
Public Service		33,813,937

Property Taxes

Land and buildings are taxed by the state and may be taxed by local jurisdictions. The state rate is \$0.015 per \$100 of assessed valuation.

Tangible personal property owned by manufacturers (automobiles, trucks, finished goods, office furniture, office equipment) is taxed by the state at \$0.15 per \$100 and may be taxed by local jurisdictions.

Manufacturing machinery, raw materials inventories, and goods in process inventories are not subject to local taxation. The state rate is \$0.15 per \$100.

Property stored in public warehouses is not subject to local taxation. The state rate is only \$0.015 per \$100.

All property is assessed at 100 percent of fair cash value.

Local Property Tax Rate Per \$100 of Assessed Valuation, 1973*

<u>Taxing Jurisdiction</u>	<u>West Point</u>	<u>Hardin County</u>
County	\$.199	\$.199
School	.787	.419
City	.300	

Utilities Gross Receipts Tax for Schools

Hardin County levies a 3 percent tax on utilities receipts for schools. This tax is paid by all consumers of utilities. Exempted are receipts from utilities services that are resold and the receipts from the sale of energy or energy producing fuels that exceed 3 percent of the cost of production in manufacturing, processing, mining or refining.

Planning and Zoning

Joint agency - Hardin County Planning and Zoning Commission

Zoning enforced - In city

Local codes enforced - Building and housing

Mandatory state codes enforced - Plumbing, National Fire Protection Association Code, National Building Code (for major buildings and residential construction containing more than 12 bedrooms per building)

Safety

<u>Police</u>	<u>West Point</u>	<u>Hardin County</u>
Total staff	8	5
Radio patrol cars	3	4

*Kentucky Department of Revenue, Kentucky Property Tax Rates, 1973.

<u>Fire</u>	<u>West Point</u>	<u>Hardin County</u>
American Insurance Association Fire Rating	8	
Full-time staff		8
Volunteers	20	12
Equipment:		
750 gpm pumper	1	
500 gpm pumpers	1	1
250 gpm pumpers		2
Utility truck	1	
Other	Ambulance*	2 jeeps Automobile Helicopter 3 ambulances with daily, 24-hour, county-wide service

*Purchased by West Point residents with matching funds provided by Civil Defense.

Rescue Service

West Point Fire Department and Civil Defense Unit

Number of volunteers - 20

Equipment - One 21-foot inboard and two outboard motor boats, dragging equipment, resuscitator

Sanitation

	<u>West Point</u>
Type service	Private
Fee charged:	
residential	\$1.50 monthly per residential unit
business	\$1.75 monthly
Collection frequency:	
residential	Twice weekly
business	Twice weekly
Trash pickup	Twice weekly
Disposal method	Incinerator

Hardin County provides a free sanitation service to residents of the county. Refuse may be disposed of at collection points which are located throughout the county. The county provides pick-up service at these points.

EDUCATION

Public Schools

	<u>West Point Independent</u>	<u>Hardin County</u>
Total Enrollment (Fall 1973)	225	9,289
Elementary	225	5,852
Junior High		600
High School		2,837
Student-Teacher Ratio	25-1	22-1
Elementary	25-1	23-1
Junior High		21-1
High School		19-1
Percent High School Graduates to College		35.2
Expenditures Per Pupil (1972-73)	\$617.46	\$525.50
Bonded Indebtedness, June 30, 1973	0	\$4,626,000

Nonpublic Schools

Total Enrollment	5,138
Elementary (K-8)	3,209
Middle School	1,069
High School	860
Student-Teacher Ratio	25-1
Elementary (K-8)	27-1
Middle School	23-1
High School	23-1

Vocational Schools

Nearest State Schools

Location	Jefferson County State Vocational-Technical School Jeffersontown, Kentucky	Elizabethtown State Vocational-Technical School Elizabethtown, Kentucky
Miles Distant	30	25
Curriculum	Agriculture: Mechanics Horticulture Business and office: Data Processing Clerical Secretarial Distributive Education: Marketing & Distributive Education Health Occupations: Dental Assistant Practical Nursing Learning Lab Technical: Electronics (Communications) Trade and Industrial: Air Conditioning & Refrigeration Auto Body Repair Auto Mechanics Commercial Foods Drafting Machine Shop Office Machines Repair Printing Radio & TV Repair Welding	Trade and Industrial: Appliance Repair Auto Repair Carpentry Drafting Electricity Welding

Arrangements can be made to provide training in the specific production skills required by an industrial plant. Instruction may be conducted either in the vocational school or in the industrial plant, depending upon the desired arrangement and the availability of special equipment.

Colleges and Universities

<u>Name</u>	<u>Area - Within 50 miles</u>		<u>Highest Degree Conferred</u>
	<u>Location</u>	<u>Enrollment (Fall 1973)</u>	
Elizabethtown Community College	Elizabethtown	837	Associate
Fort Knox Center*	Fort Knox	664	Associate
University of Louisville	Louisville	12,230	Ph. D. , M. D. , D. M. D. , J. D.
Spalding College	Louisville	1,065	Masters
Bellarmino College	Louisville	1,306	Baccalaureate
Jefferson Community College	Louisville	4,183	Associate
Southwest Campus	Louisville	368	Associate
Indiana University Southeast	Jeffersonville	2,745**	A. B. , B. S. , M. S.

*Part of University of Kentucky College of Arts and Sciences, Lexington.

**Fall 1972 enrollment.

HEALTH

Hospitals

West Point is within minutes of the excellent medical facilities in Louisville.

<u>General Hospital</u>	<u>Location</u>	<u>Beds</u>
Hardin Memorial Hospital	Elizabethtown, 25 miles distant	159

General hospital facilities and services - 3 operating rooms, fracture room, cysto room, X-ray room, intensive care, laboratory, pharmacy, emergency room, eye surgery, pediatrics, inhalation therapy, delivery room, nursery, blood bank

Medical staff - 34 doctors, 68 registered nurses, 36 graduate licensed practical nurses, pathologist, radiologist

Nursing Homes

Hardin County

	<u>Number</u>	<u>Beds</u>
Extended care homes	1	56
Personal care homes	3	59
Intermediate care homes	3	151

Public Health

Facility - Hardin County Health Center

Staff - 1 administrative assistant, 5 nurses, 3 sanitarians, 2 clerk typists, 1 custodian, 1 health officer, dental hygienist, family planning - multiphasic clerk

Budget 1973-74 - \$164,225

OTHER LOCAL FACILITIES

Communications

Telephone - South Central Bell Telephone Company
Services - Standard services (Louisville exchange)

Telegraph - Western Union at Fort Knox
Services - Telephone

Postal - U. S. Post Office
Class - Second
Mail recieved - Twice daily
Mail dispatched - Twice daily

Newspapers -
Papers received from - Louisville (daily home delivery)
Elizabethtown (twice weekly)
Radcliff (weekly)

Radio -
Stations received from - Radcliff, Elizabethtown, Lexington, and
Louisville, Kentucky; Cincinnati, Ohio; Nashville, Tennessee

Television -
Reception from - Louisville, Kentucky
Kentucky Educational Television - Louisville transmitter, Channel 68

Library Services

The Hardin County Public Library bookmobile makes scheduled stops at the West Point bookstation every other Thursday. The bookstation contains approximately 400 volumes.

Religious Institutions

Number of churches - 5
Denominations - Baptist, Methodist, Catholic, Christian
Nearest Synagogues - Louisville, 20 miles distant
Congregations - Adath Israel (reform)
Adath Jeshurun (conservative)
Anshei Sfard (orthodox)
Brith Sholum (reform)
Keneseth Israel (orthodox)

Financial Institutions

<u>Banks</u>	<u>Statement as of December 31, 1973</u>	
	<u>Assets</u>	<u>Deposits</u>
West Point Bank	\$2,261,000	\$1,958,000

Hotels and Motels

West Point is located only a few miles from hotels and motels in the Louisville area.

Clubs and Organizations

Business and Civic - Jaycees, Chamber of Commerce

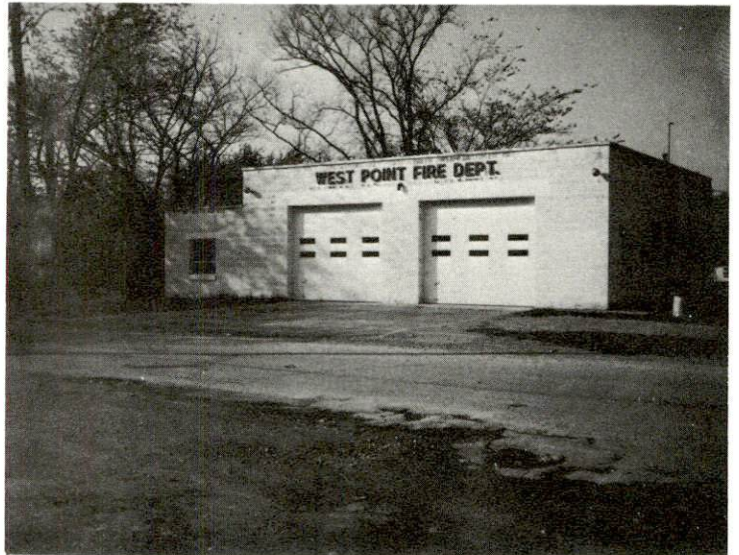
Fraternal - Masons

Women's - Eastern Star, Homemakers, Book Club

Youth - Boy Scouts, Girl Scouts, 4-H, Brownies, Cub Scouts, Church organizations



Post Office



West Point Fire Department



Court House
Water Plant

RECREATION

Local

Public Recreation Facilities

Supervised program - Yes

Park - 1

Playgrounds - 2

Tennis courts - 2

Baseball diamond - 1

Other - Boat Dock

Private Recreation Facilities

Movie theaters - 1 Drive-in

Area (Within 75 miles)

Green River Lake State Park

Bernheim Forest

Nolin Dam and Reservoir

Rough River Dam State Resort Park

My Old Kentucky Home State Park

The Patton Museum of Cavalry and Armor

Abraham Lincoln Birthplace National Historic Site

Lincoln Homestead State Shrine

Mammoth Cave National Park

Louisville, Kentucky, offers numerous cultural, recreational,
and sports events.

AGRICULTURE - NATURAL RESOURCES - CLIMATE

Agriculture*

	<u>Hardin County</u>	<u>Labor Market Area</u>
Total land area (acres)	394,240	2,168,320
Percent of area in farm land	64.4	74.5
Number of farms	2,150	12,502
Average size of farms (acres)	118.1	129.2
1969 value of all farm products	\$12,008,550	\$ 72,277,062
Value per farm	5,585	5,781
Total crop sales	3,694,302	25,587,469
Total livestock & livestock products	8,231,388	46,322,322
1972 agricultural production included:		
Burley tobacco (lbs.) (est.)	3,390,000	27,726,000
Corn for grain (bu.)	1,980,000**	8,411,300**
Cattle and calves (number)	56,900**	352,200**
Hogs and pigs (number)	27,400**	165,200**
Milk production, 1971	43,660,000	282,160,000

Natural Resources

Principal mineral resources	Stone
Other mineral resources	Petroleum, natural gas, rock asphalt, glass sand, gravel and some clay
Acres of commercial forest land	149,300
Most abundant tree species	White oak, red oak, ash, hickory, yellow poplar, beech, hard maple, yellow pine

*U. S. Department of Commerce, Bureau of the Census, Census of Agriculture, 1969. U. S. Department of Agriculture and Kentucky Department of Agriculture, Kentucky Agricultural Statistics, 1972.

**Preliminary figures.

Climate*

Hardin County

Temperature

Annual mean (30-year record)	55.6 degrees
Average annual 1972	54.2 degrees
Record highest, July, 1966** (9-year record)	98.0 degrees
Record lowest, January, 1972 (9-year record)	-11.0 degrees
Normal heating degree days (30-year record) (Heating degree day totals are the sums of negative departures of average daily tem- peratures from 65 degrees F.)	4,683

Precipitation

Mean annual total (30-year record)	44.73 inches
Mean annual snow and sleet (28-year record)	16.30 inches
Total precipitation 1972	57.61 inches
Mean number days precipitation (.01 inch or more) (28-year record)	129
Average number days thunderstorms (28-year record)	47

Prevailing winds (17-year record) South

*U. S. Department of Commerce, Environmental Science Services Administration, Climatological Data, 1972. Station of record: Lexington, Kentucky.

**Also on earlier dates, months or years.

HISTORY

Hardin County lies in the northcentral area of the state, its northern tip extending to the Ohio River. Rolling Fork of Salt River flows along its northeastern boundary, Rough River forms a part of the southwestern border, and Nolin River meanders through the southern portion of the county. The county's 616 square miles of territory is hilly in the north, rolling in the eastern and southern sections, and fairly level in the central area. The soil ranges from thin in the north to fertile in the south.

The first settlers who came to Hardin County included John Severns, after whom the valley in which Elizabethtown is located was first known, and Captain Thomas Helm, Colonel Andrew Hynes, and Samuel Haycraft. They chose the present site of Elizabethtown in 1780 and built three block-houses in a triangle about a mile apart. Also among these early settlers was Christopher Bush, whose daughter Sarah became the stepmother of Abraham Lincoln. The second oldest Baptist church in the state was built here in 1781.

Hardin became Kentucky's fifteenth county in 1792 and was named for Colonel John Hardin of Virginia, a Revolutionary War hero who came to Kentucky and fought in the Indian Wars. The first brick house in the county was built by Ben Helm and the first courthouse constructed in 1804. The first newspaper, The Western Intelligencer, was established in 1826.

Elizabethtown, the county seat, was built on land donated by Colonel Andrew Hynes and was named for his wife, Elizabeth. Now an important trade and industrial center, Elizabethtown had a 1970 population of 11,748. Elizabethtown Community College, a two-year institution in the University of Kentucky system, has an enrollment of over 800.

Radcliff, to the north, had a population of 7,881 in 1970, Vine Grove 2,987, West Point, on the Ohio, had 1,741 and Upton, to the south, had 552. Also in Hardin County is Fort Knox, depository for the nation's gold supply and a major army post.

Hardin County's population was 3,653 in 1800, and it has grown steadily and then rapidly since 1940. In 1950 the total had reached 50,312, by 1960 it was 67,789, and in 1970 it was 78,421.

Agriculture accounted for 1,160 of the county's 20,300 jobs in 1972, with burley tobacco, corn, cattle, hogs, and milk the principal products.

Since 1963 nearly 2,000 manufacturing jobs have been added for a total of 2,600 in 1973. Largest of the county's firms are: Colt Industries, producing ceramic and alnico magnets; Gates Rubber Company, which makes auto V-belts; E-town Sportswear Company, making men's slacks; and Ingraham Industries, which makes electrical devices.

Transportation access to Hardin County is excellent, with Interstate 65, the Blue Grass Parkway, and the Western Kentucky Parkway converging at Elizabethtown.

Among the many noted citizens of Hardin County was Thomas Lincoln, who lived for a while at Elizabethtown. Lincoln and his son, Abraham, later lived at Knob Creek, then a part of Hardin County. President James Buchanan also lived for a time at Elizabethtown. John L. Helm was Governor of Kentucky twice, and John Young Brown was also elected Governor. Duff Green, a member of President Andrew Jackson's "Kitchen Cabinet," lived in Hardin County, as did General George Custer during the time in which he wrote My Life on the Plains.