

1993

Industrial Resources: Hopkins Kentucky - Madisonville and Earlington

Kentucky Library Research Collections
Western Kentucky University, spcol@wku.edu

Follow this and additional works at: https://digitalcommons.wku.edu/hopkins_cty

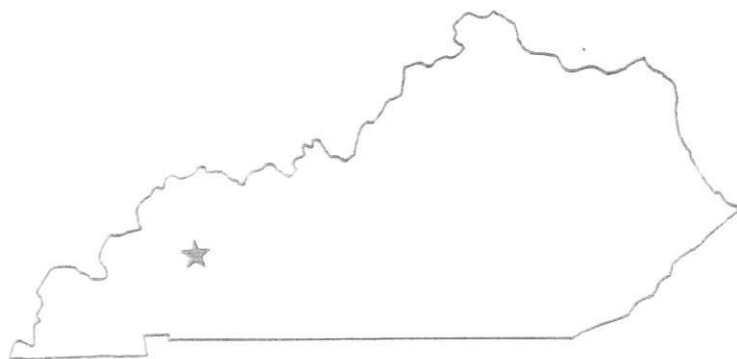
 Part of the [Business Administration, Management, and Operations Commons](#), [Growth and Development Commons](#), and the [Infrastructure Commons](#)

Recommended Citation

Kentucky Library Research Collections, "Industrial Resources: Hopkins Kentucky - Madisonville and Earlington" (1993). *Hopkins County*. Paper 17.
https://digitalcommons.wku.edu/hopkins_cty/17

This Report is brought to you for free and open access by TopSCHOLAR®. It has been accepted for inclusion in Hopkins County by an authorized administrator of TopSCHOLAR®. For more information, please contact topscholar@wku.edu.

Madisonville & Earlinton



KENTUCKY

RESOURCES FOR ECONOMIC DEVELOPMENT
MADISONVILLE & EARLINGTON, KENTUCKY

Prepared by
The Kentucky Cabinet for Economic Development
Division of Research and Planning
in cooperation with
The Economic Development Authority of Greater Madisonville

1993

Division Director - Pamela K. Riley; program manager - Keith Roberts; research - Richard H. Cobb; clerical - Wanda Sharp; graphics - Robert Owens, Pat Coleman; cartography - Edwin Scott, Dave Clark. Cost of printing paid from state funds.

TABLE OF CONTENTS

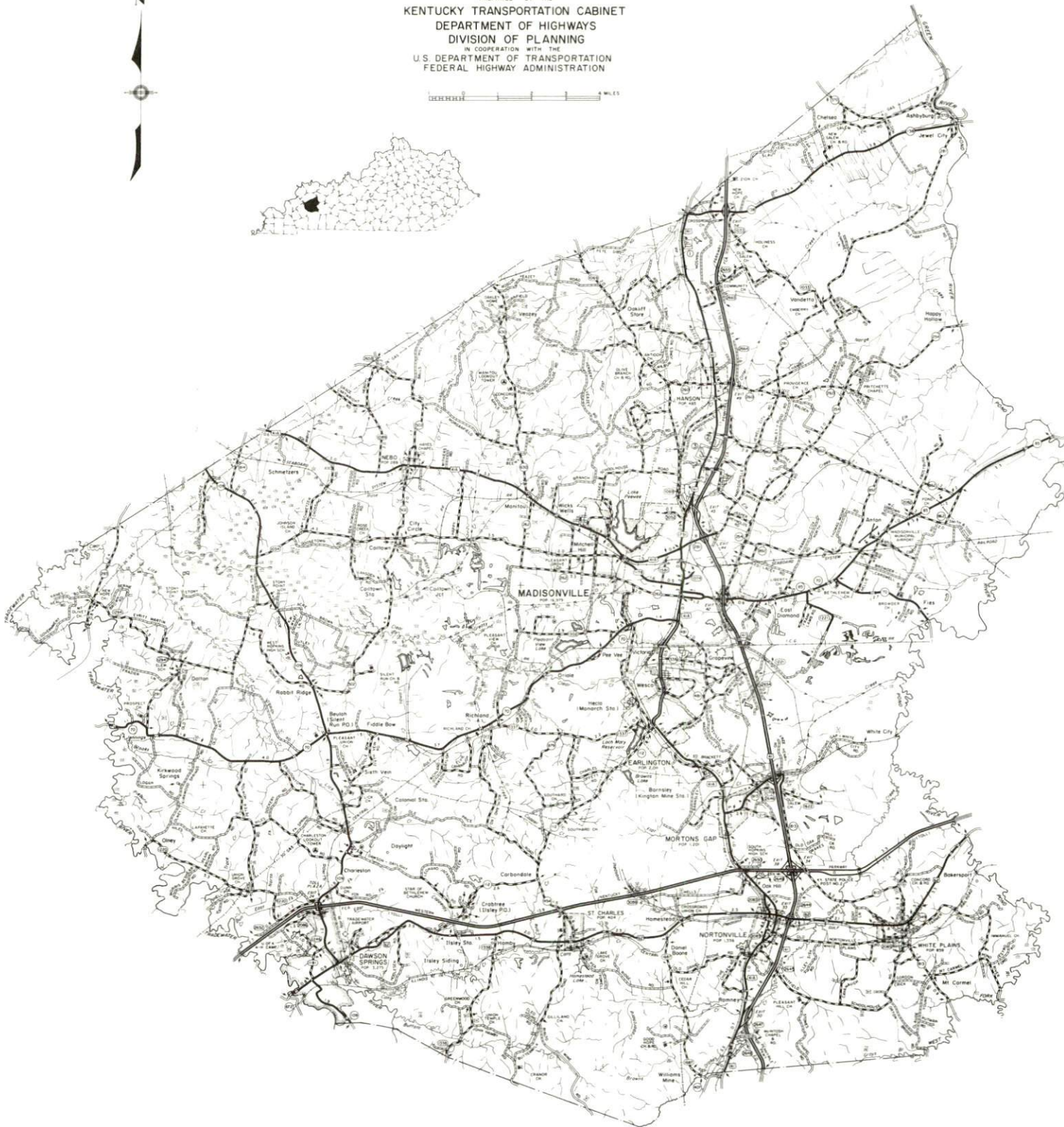
<u>Chapter</u>	<u>Page</u>
MADISONVILLE & EARLINGTON, KENTUCKY - A RESOURCE PROFILE	1
THE LABOR MARKET STATISTICS	2
Labor Market Area Map	2
Population	3
Population Projections	3
Estimated Labor Supply	3
Labor Force Characteristics of Residents, 1991	4
Selected Components of Nonagricultural Employment, by Place of Work, 1991	5
Per Capita Personal Income	6
Average Placement Wages	7
Average Weekly Wages of Workers Covered by Unemployment Insurance 1990 - Bar Chart	8
Average Weekly Wages by Industry, by Place of Work, 1990	9
EXISTING INDUSTRY	10
Madisonville Manufacturing Firms, Their Products and Employment	10
Recent Industrial Developments	11
Labor Organizations in Manufacturing Firms	12
Selected Industrial Services	13
TRANSPORTATION	14
Highways	14
Truck Service	14
Selected Market Location Map	15
Rail	16
Air	16
Water	17
UTILITIES	18
Electricity	18
Natural Gas	18
Public Water Supply	19
Sewerage	19
CLIMATE	20

<u>Chapter</u>	<u>Page</u>
LOCAL GOVERNMENT	21
Structure	21
Planning and Zoning	21
Local Fees and Licenses	21
State and Local Property Taxes	22
EDUCATION	23
Public Schools	23
Nonpublic Schools	23
Area Colleges and Universities	23
Vocational Training	25
OTHER LOCAL FACILITIES	27
Local Medical Personnel	27
Hospitals	27
Other Medical Facilities and Services	27
Banks and Savings & Loan Associations	27
Newspapers	27
Telephone Service	27
RECREATION	28
COMMUNITY IMPROVEMENTS	29

GENERAL HIGHWAY MAP
HOPKINS COUNTY
KENTUCKY

PREPARED BY THE
KENTUCKY TRANSPORTATION CABINET
DEPARTMENT OF HIGHWAYS
DIVISION OF PLANNING
IN COOPERATION WITH THE
U.S. DEPARTMENT OF TRANSPORTATION
FEDERAL HIGHWAY ADMINISTRATION

1:250,000 0 1 2 3 4 5 6 MILES



MADISONVILLE & EARLINGTON, KENTUCKY - A RESOURCE PROFILE

Madisonville, the county seat of Hopkins County, is located in the Western Kentucky Coal Field Region. Madisonville is located 49 miles south of Evansville, Indiana; 104 miles northwest of Nashville, Tennessee; 142 miles southwest of Louisville, Kentucky; and 198 miles southeast of St. Louis, Missouri. In 1990, Madisonville had a population of 16,200.

Earlington, located four miles south of Madisonville, is situated in the south central portion of Hopkins County. In 1990, Earlington had a population of 1,833.

Hopkins County, with a land area of 550 square miles, has a topography that ranges from nearly flat along the broad valleys of the Green, Pond and Tradewater Rivers to hilly in the southern and central parts of the county. In 1990, Hopkins County had a population of 46,126.

The Economic Framework - The total number of Hopkins County residents employed in 1991 averaged 17,678. Manufacturing firms in the county reported 3,345 employees; wholesale and retail trade provided 3,846 jobs; 4,035 people were employed in service occupations; state and local government accounted for 2,364 employees; contract construction firms provided 541 jobs; and 1,394 people were employed by mining and quarrying operations.

Labor Supply - There is a current estimated labor supply of 28,649 persons available for industrial jobs in the labor market area. In addition, from 1992 through 1996, 13,107 young persons in the area will become 18 years of age and potentially available for industrial jobs.

Transportation - Madisonville is served directly by the Pennyriple Parkway, U.S. Highways 41 and 41A, and Kentucky Highways 70 and 85. Thirty-six common carriers serve Madisonville and/or Earlington. One trucking company maintains its corporate headquarters in Madisonville. Rail service is provided to Madisonville and Earlington by CSX Transportation. Madisonville is also served by the Paducah and Louisville Railroad. The nearest scheduled commercial airline service is available at Evansville Regional Airport near Evansville, Indiana, 52 miles north of Madisonville. The Madisonville Municipal Airport, located six miles east of Madisonville, has one paved 5,000-foot runway.

Power and Fuel - Electric power is provided to Madisonville by the Madisonville Municipal Light Department. Earlington and southern Hopkins County are provided electric power by the Kentucky Utilities Company. The remainder of Hopkins County is served by the Green River Electric Corporation and the Henderson-Union Rural Electric Cooperative Corporation. Natural gas service is provided to Madisonville and Earlington by the Western Kentucky Gas Company.

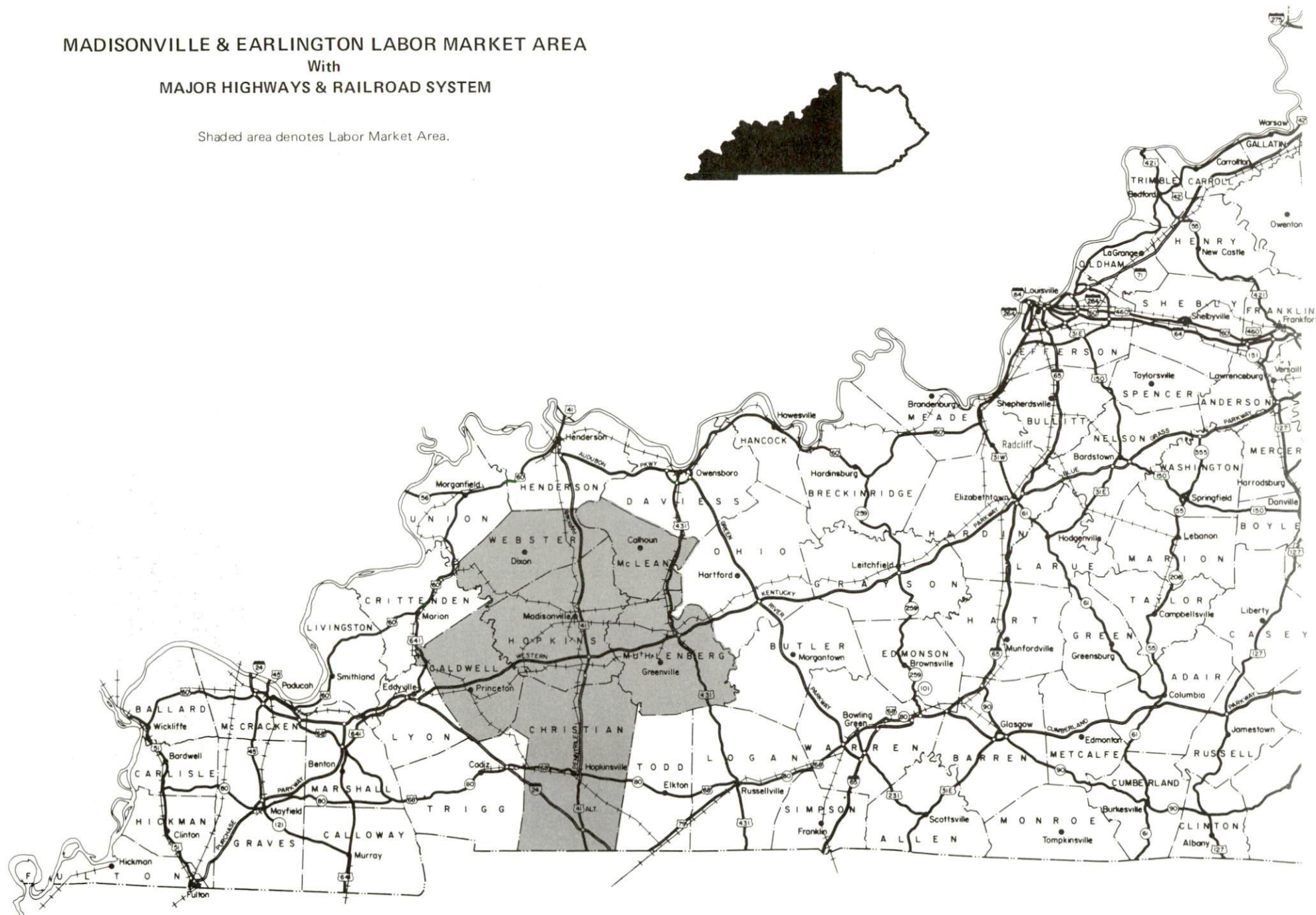
Education - Primary and secondary education is provided to Madisonville, Earlington, and Hopkins County by the Hopkins County School System, which is accredited by the Southern Association of Colleges and Schools. The Madisonville Community College, located in Madisonville, is a member of the University of Kentucky Community College System. Madisonville Community College offers Associate Degrees in Arts, Science, and Applied Sciences. Four universities, two senior colleges and three additional community colleges are located within 90 miles of Madisonville. Vocational education is available locally from the Madisonville State Vocational-Technical School.

MADISONVILLE & EARLINGTON LABOR MARKET AREA

With

MAJOR HIGHWAYS & RAILROAD SYSTEM

Shaded area denotes Labor Market Area.



LABOR MARKET STATISTICS

The Madisonville & Earlington Labor Market Area includes Hopkins County and the adjoining Kentucky counties of Caldwell, Christian, McLean, Muhlenberg and Webster.

POPULATION

	<u>*1992</u>	<u>1990</u>	<u>1980</u>	<u>1970</u>
Labor Market Area		183,200	183,685	157,451
Madisonville	20,500	16,200	16,979	15,332
Earlington		1,833	2,011	2,321
Hopkins County	47,000	46,126	46,174	38,167

Source: U.S. Department of Commerce, Bureau of the Census, January 1991.

*Estimated populations from the Economic Development Authority of Greater Madisonville Office.

POPULATION PROJECTIONS

	<u>1995</u>	<u>2000</u>	<u>2010</u>	<u>2020</u>
Labor Market Area	185,401	186,973	189,376	190,996
Hopkins County	46,311	46,272	45,807	44,857

Note: Projections are from the Moderate Growth Series forecast.

Source: University of Louisville, Urban Studies Center, State Data Center.

ESTIMATED LABOR SUPPLY

	<u>Current</u>				<u>Future</u>
	<u>Total</u>	<u>Unemployed</u>	<u>Employed Part-Time</u>	<u>Not in Labor Force</u>	<u>Becoming 18 years of age 1992 thru 1996</u>
Labor Market Area*	28,649	5,001	7,769	15,879	13,107
Hopkins County	6,481	1,349	2,058	3,074	3,629

* Additional workers may be drawn from other nearby counties.

Note: Unemployed - persons unemployed and actively seeking work; Employed Part-Time - persons employed but working only 14 to 26 weeks per year; Not in Labor Force - represents the number of persons who would enter the labor force if suitable employment were available (based on the assumption that persons in Kentucky would like to participate in the labor force in the same proportion that they do nationally).

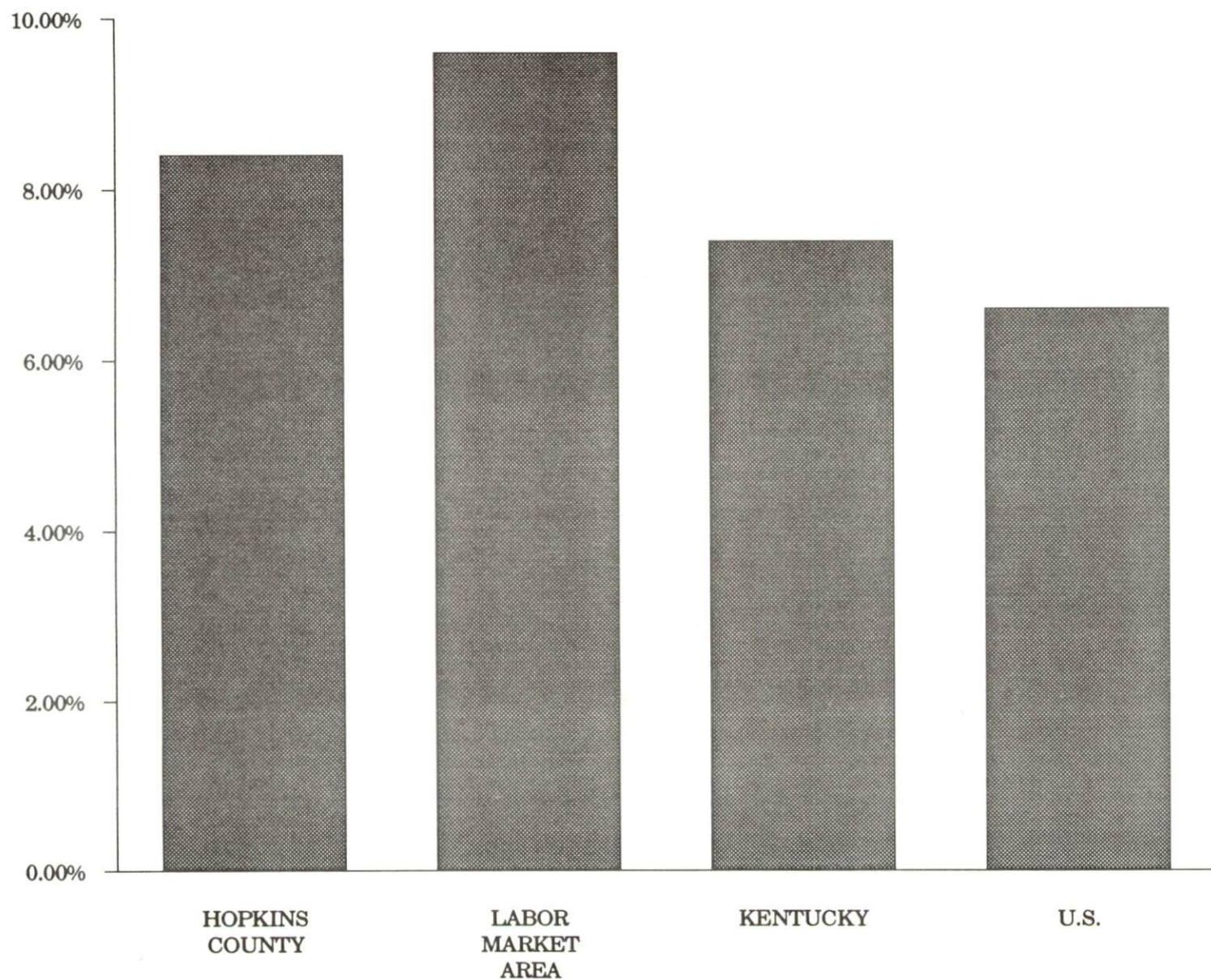
Sources: Kentucky Cabinet for Human Resources, Kentucky Labor Supply Estimates by County, 1989. Kentucky Cabinet for Economic Development, Future Labor Supply Becoming 18 Years of Age, 1992 thru 1996.

LABOR FORCE CHARACTERISTICS OF RESIDENTS, 1991

	Hopkins County	Labor Market Area
Civilian Labor Force	19,298	64,886
Employment	17,678	58,631
Unemployment	1,620	6,255
Rate of Unemployment (%)	8.4	9.6

Source: Kentucky Cabinet for Human Resources, Kentucky Labor Force Estimates, Annual Averages, 1991.

UNEMPLOYMENT RATES 1991

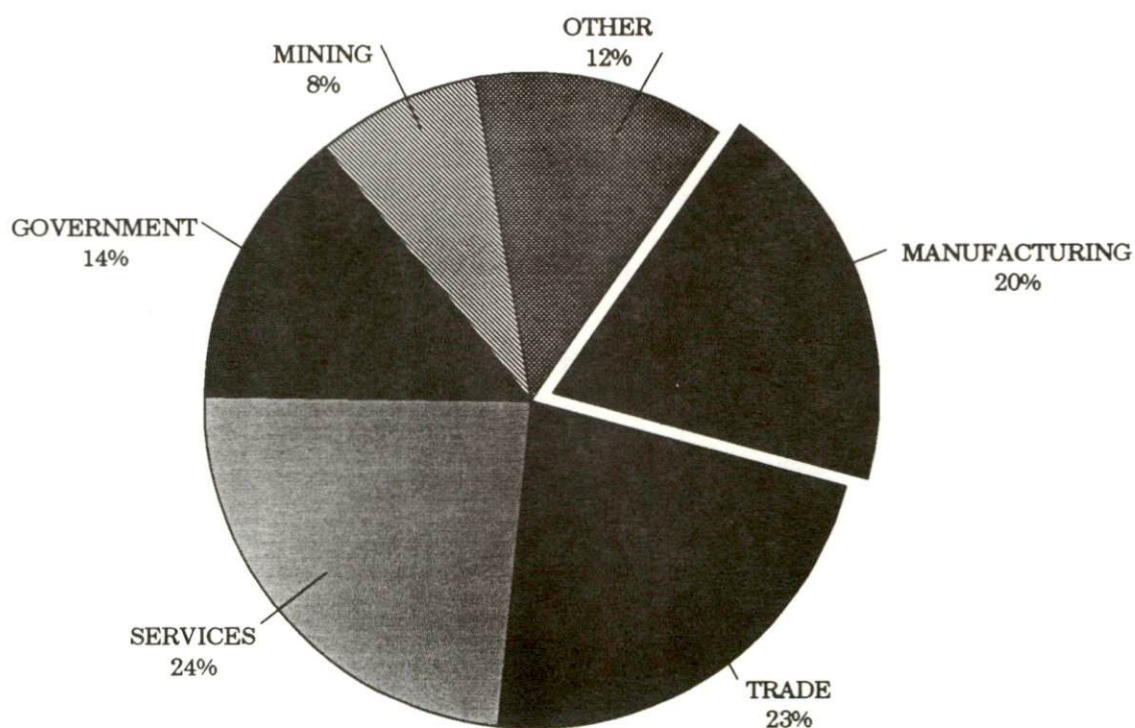


SELECTED COMPONENTS OF NONAGRICULTURAL EMPLOYMENT
BY PLACE OF WORK, 1991

	<u>Hopkins County</u>	<u>Labor Market Area</u>
All Industries (total)	17,041	52,136
Manufacturing	3,345	11,071
Wholesale & Retail Trade	3,846	12,747
Services	4,035	10,604
State/Local Government	2,364	8,042
Contract Construction	541	1,486
Mining & Quarrying	1,394	3,250

Note: Excludes domestic workers, railway workers, certain nonprofit corporations, majority of federal government workers, and self-employed workers.
Source: Kentucky Cabinet for Human Resources, Average Monthly Workers Covered by Kentucky Unemployment Insurance Law, 1991.

HOPKINS COUNTY

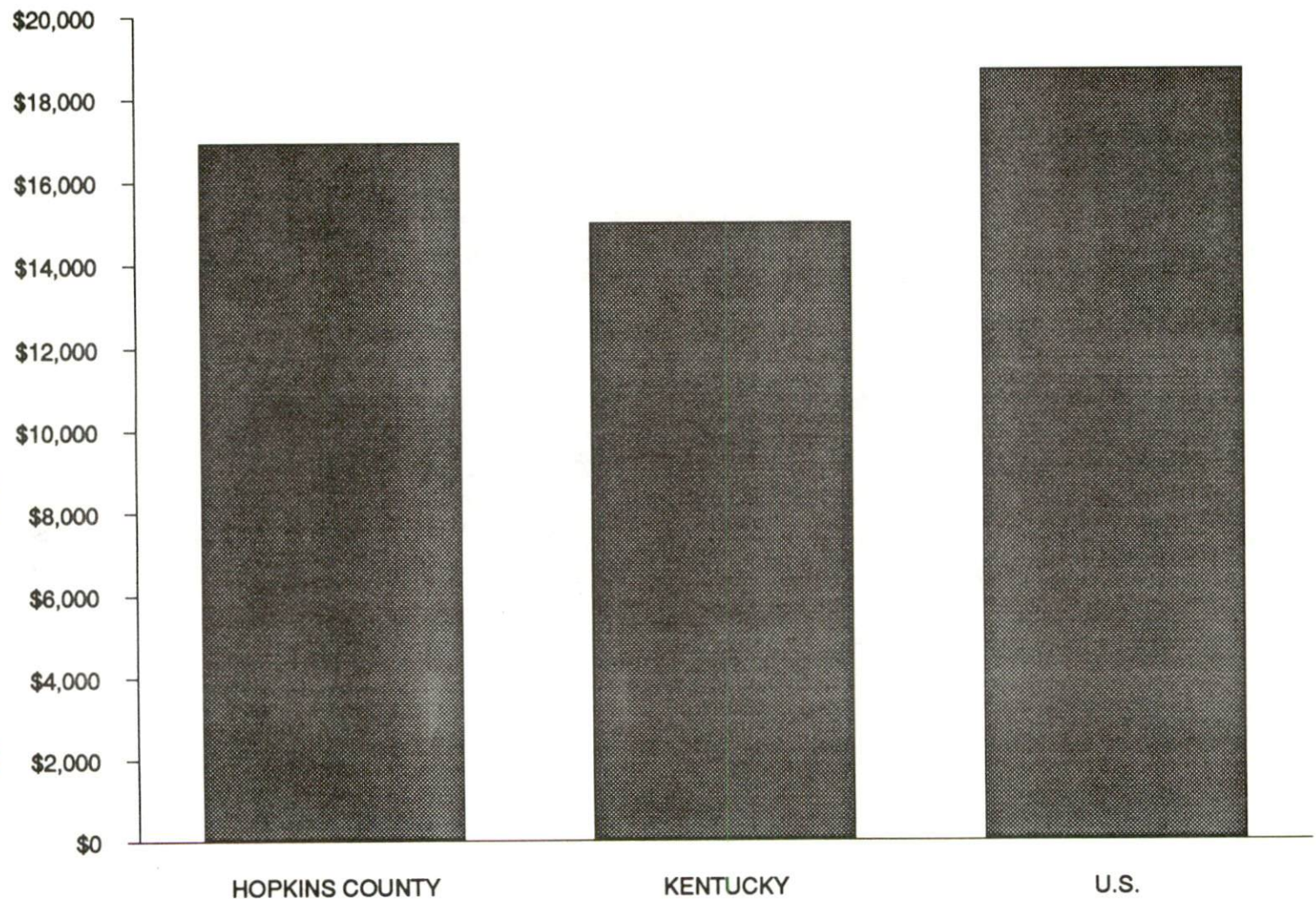


PER CAPITA PERSONAL INCOME

Area	1986	1990	Percent Change
Hopkins County	\$12,927	\$16,934	31.0
Labor Market Area Range	\$9,311 - \$12,927	\$11,399 - \$16,934	-
Kentucky	\$11,273	\$14,992	33.0
U.S.	\$14,654	\$18,696	27.6

Source: U.S. Bureau of Economic Analysis, Kentucky Economic Information System, April 1992.

PER CAPITA PERSONAL INCOME
1990



AVERAGE PLACEMENT WAGES

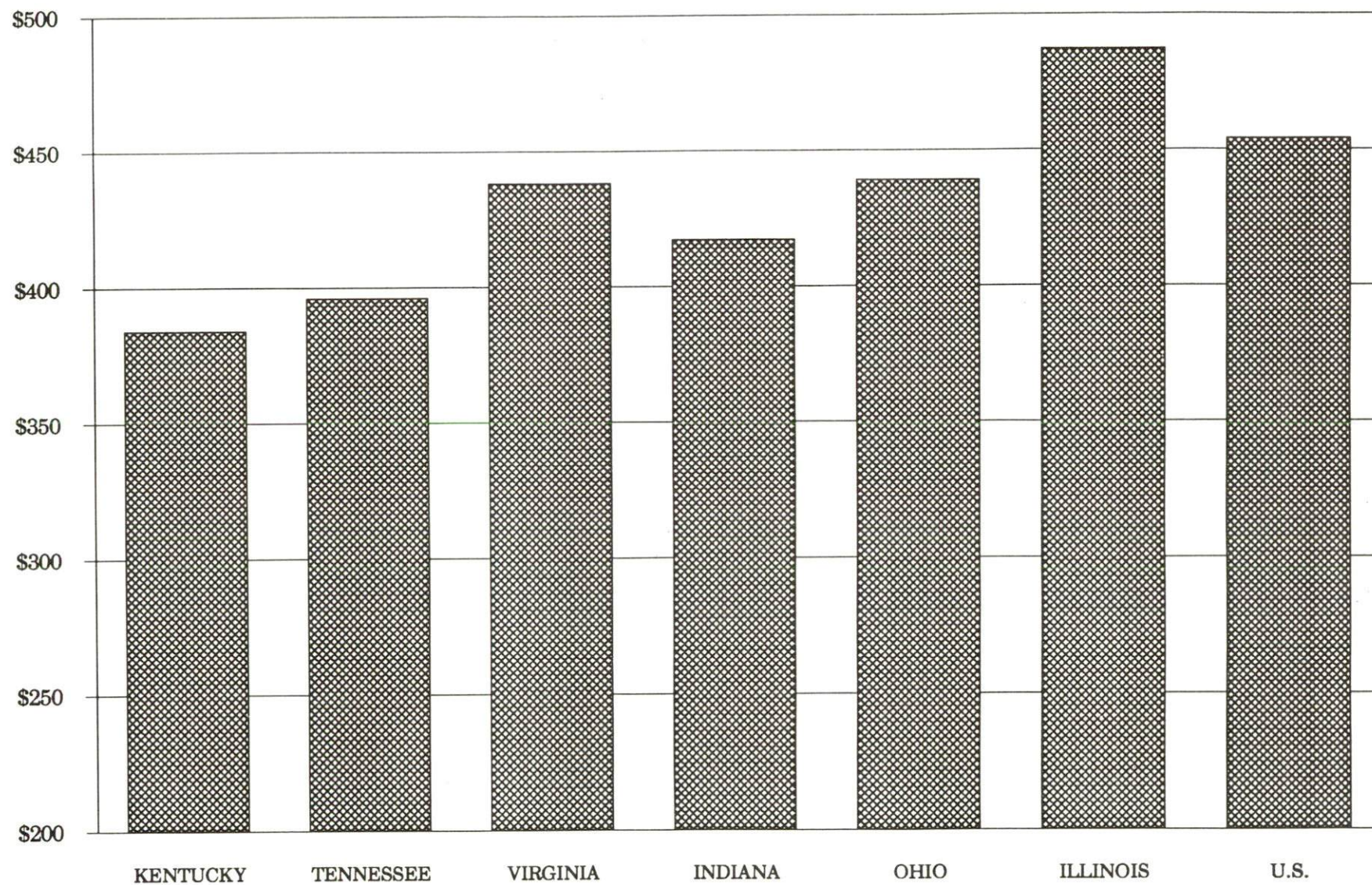
Hopkins County is served by the Madisonville local office of the Kentucky Department for Employment Services. The focus of the following data is on job placements made by the Madisonville local office and may therefore be used as an indicator of the wages which employers in the area pay new employees. During the twelve months which ended on June 30, 1990, the local employment office filled 1,782 job openings in various occupational categories. The average hourly wage for selected occupational categories were:

<u>OCCUPATIONAL CATEGORY</u>	<u>NUMBER OF PLACEMENTS</u>	<u>AVERAGE WAGE(\$)</u>
All Occupations	1,782	5.04
Clerical	565	4.00
Sales	75	4.40
Services (excluding domestic)	244	3.71
Agricultural, Fishery, Forestry, etc.	25	4.48
Processing	79	6.79
Machine Trades	49	8.12
Bench Work	314	4.01
Structural	139	6.42
Motor Freight/ Transportation	82	7.21
Packaging and Materials Handling	98	6.36
Other	58	14.43

The Madisonville local office also serves Crittenden and Muhlenberg County. The above occupational categories are taken from the Dictionary of Occupational Titles published by the U.S. Department of Labor.

Source: Kentucky Cabinet for Human Resources, Department for Employment Services.

AVERAGE WEEKLY WAGES OF WORKERS COVERED BY
UNEMPLOYMENT INSURANCE - 1990



AVERAGE WEEKLY WAGES BY INDUSTRY
BY PLACE OF WORK, 1990*

	Hopkins County	Kentucky (State- Wide)	Tennessee	Virginia
All Industries	\$390.70	\$379.97	\$396.00	\$438.00
Mining & Quarrying	785.41	654.24	535.00	635.00
Contract Construction	326.59	401.70	421.00	444.00
Manufacturing	502.89	496.95	449.00	487.00
Transportation, Communications & Public Utilities	471.79	500.70	523.00	575.00
Wholesale & Retail Trade	243.49	255.93	N/A	N/A
Finance, Insurance & Real Estate	N/A	434.93	469.00	508.00
Services	197.16	329.76	378.00	430.00
State/Local Government	334.62	392.28	N/A	N/A
	<u>Indiana</u>	<u>Ohio</u>	<u>Illinois</u>	<u>U. S.</u>
All Industries	\$417.00	\$439.00	\$487.00	\$454.00
Mining & Quarrying	746.00	619.00	747.00	714.00
Contract Construction	475.00	504.00	624.00	503.00
Manufacturing	561.00	595.00	590.00	555.00
Transportation, Communications & Public Utilities	519.00	553.00	610.00	578.00
Wholesale & Retail Trade	N/A	N/A	N/A	N/A
Finance, Insurance & Real Estate	442.00	478.00	619.00	571.00
Services	349.00	382.00	444.00	423.00
State/Local Government	N/A	N/A	N/A	N/A

* Wages for U.S. and surrounding states rounded to nearest dollar.

N/A Not Available.

Note: The average weekly wage for each category includes the salaries and wages of all persons working for that type business. For example, the manufacturing category includes both production workers and administrative personnel. Excludes domestic workers, railway workers, certain nonprofit corporations, majority of federal government workers, and self-employed workers.

Source: Kentucky Cabinet for Human Resources, Average Weekly Wages of Workers Covered by Kentucky Unemployment Insurance Law, 1990. U.S. Department of Labor, Bureau of Labor Statistics, Employment and Wages, Annual Averages, 1990, November 1991.

EXISTING INDUSTRY

MADISONVILLE MANUFACTURING FIRMS, THEIR PRODUCTS AND EMPLOYMENT

<u>Firm</u> <u>(Establishment date)</u>	<u>Product</u>	<u>1991</u> <u>Average Employment</u>
A & B Sign Company, Inc. (1949)	Signs	5
Ahlstrom Filtration, Inc. (1973)	Air, oil and fuel filter paper	80
American Printing Company (1948)	Offset printing, commercial printing, color brochures	11
Austin Powder Company (1948)	Explosives	20
Bowles Tool & Die Company, Inc. (1966)	Fabricated metal parts, tools, dies, jigs, fixtures, molds	39
Carhartt Midwest, Inc. (1980)	Men's work clothing	350
Dr. Pepper Bottling Company (1938)	Soft drinks	24
Electro Cycle (1989)	Aluminum recycling	30
GTE Products Corporation Kentucky Carbide (1974)	Tungsten carbide mining and carbide road tips	32
General Electric Company Aircraft Engine Group (1970)	Aircraft turbine blades, vanes	895
Goldenrod Dairy Foods UC Milk Company, Inc. (1927)	Plastic milk jugs, fruit juices, fluid milk and cultured buttermilk	147
Hall Printing Company (1964)	Tickets, business forms, job printing	3
Joe Leasure & Sons, Inc. (1936)	Machine shop, mining equipment repair	17
Lebco, Inc. (1972)	Hydraulic cylinders, fluid power cylinders, special machinery	15
Madisonville Concrete Company, Inc. (1966)	Ready-mixed concrete	18
Modern Welding Company, Inc. (1979)	Structural steel shapes, metal fabrication, mining arches and overcasts	27
North American Display and Steel Products (1992)	Metal product display stands	55
Polyweave Bag Company, Inc. (1983)	Wet-hole shot bags, explosives packaging	20
Rain Catchers (1980)	Aluminum gutters and elbos	4

(Continued)

<u>Firm</u> <u>(Establishment date)</u>	<u>Product</u>	<u>1991</u> <u>Average Employment</u>
Rite-Crete Concrete Products; Division of Woodruff Supply (1984)	Concrete dry mixes and mine sealants	8
Royal Brass & Hose (1966)	Hydraulic rebuilding, air hose fittings, hydraulic hose assemblies	22
Ruby Concrete Company (1945)	Precast concrete products, concrete block	16
Speed Queen Company (1968)	Commercial laundry tumblers	255
T.S.P. Newspaper, Inc. The Messenger (1917)	Newspaper, offset printing	50
Trace Industries (1982)	Wood chair stock, wood camp stools and moving dollies	25
Versnick Manufacturing Company (1945)	Cylinder sleeves, taper plugs, taps	10

Sources: Kentucky Cabinet for Economic Development, Division of Research; Economic Development Authority of Greater Madisonville.

RECENT INDUSTRIAL DEVELOPMENT

North American Display and Steel Products initiated operations in Madisonville in 1992. The company manufactures metal product display stands and employs approximately 55 persons.

Major Non-manufacturing Employers

	<u>1991</u> <u>Average Employment</u>
Regional Medical Center/Trover Clinic	2,100
Madisonville Community College	211
Lockheed Support System, Inc.	167
Western Kentucky Hospital Services, Inc.	75
Madisonville Health Technology Center	33

Sources: Economic Development Authority of Greater Madisonville.

LABOR ORGANIZATIONS IN MANUFACTURING FIRMS

Union

International Brotherhood of
Boilermakers, Iron Ship
Builders, Blacksmiths,
Forgers and Helpers

International Union of
Electronic, Electrical,
Technical, Salaried and Machine
Workers, AFL-CIO

United Garment Workers of
America, AFL-CIO

United Steelworkers of
America, AFL-CIO-CLC

Representing workers at:

GTE Products Corporation

General Electric Company,
Aircraft Engine Group

Carhartt Midwest, Inc.

Goldenrod Dairy Foods

SELECTED INDUSTRIAL SERVICES

<u>Types of Services</u>	<u>Location</u>	<u>Mileage from Madisonville</u>
Custom Data Processing	Madisonville, Kentucky	-
Custom Plastics Producers	Dawson Springs, Kentucky	18
	Providence, Kentucky	19
Electric Motor Repair	Madisonville, Kentucky	-
Grinding, Precision & Tool	Madisonville, Kentucky	-
Heat Treating Facilities	Evansville, Indiana	49
Industrial Equipment & Supplies	Madisonville, Kentucky	-
Industrial Gases	Madisonville, Kentucky	-
Industrial Waste Removal	Dawson Springs, Kentucky	18
Machine Shops, Tool & Die	Madisonville, Kentucky	-
Metal Castings	Madisonville, Kentucky	-
Metal Finishers	Livermore, Kentucky	36
	Owensboro, Kentucky	47
Metal Service Centers	Greenville, Kentucky	27
Millwrights	Hopkinsville, Kentucky	34
	Owensboro, Kentucky	47
Public Warehouse Facilities	Hopkinsville, Kentucky	34
	Henderson, Kentucky	39

Sources: Kentucky Cabinet for Economic Development, Division of Research; Economic Development Authority of Greater Madisonville.

TRANSPORTATION

Highways

Madisonville is served directly by the Pennyriple Parkway, U.S. Highway 41 and 41A, and Kentucky Highways 70 and 85. All are "AAA"-rated (80,000-pound gross load limit) trucking highways. The Pennyriple Parkway along with U.S. 41 and 41A, provides easy access to the Western Kentucky Parkway, nine miles south of Madisonville; Interstate 24, 45 miles south of Madisonville; and Interstate 64, 65 miles north of Madisonville.

Earlington is served directly by U.S. Highway 41A and Kentucky Highway 112. The Pennyriple Parkway is located five miles north of Earlington.

HIGHWAY MILES FROM MADISONVILLE, KENTUCKY, TO SELECTED MARKET CENTERS

City	Highway Miles	City	Highway Miles
Atlanta, GA	345	Los Angeles, CA	1,991
Baltimore, MD	723	Louisville, KY	142
Birmingham, AL	291	Nashville, TN	104
Chicago, IL	338	New Orleans, LA	609
Cincinnati, OH	242	New York, NY	901
Cleveland, OH	489	Pittsburgh, PA	529
Detroit, MI	497	St. Louis, MO	198
Knoxville, TN	273		

Note: Mileage computations are via the best interstate or primary highways, not necessarily the most direct route of travel.

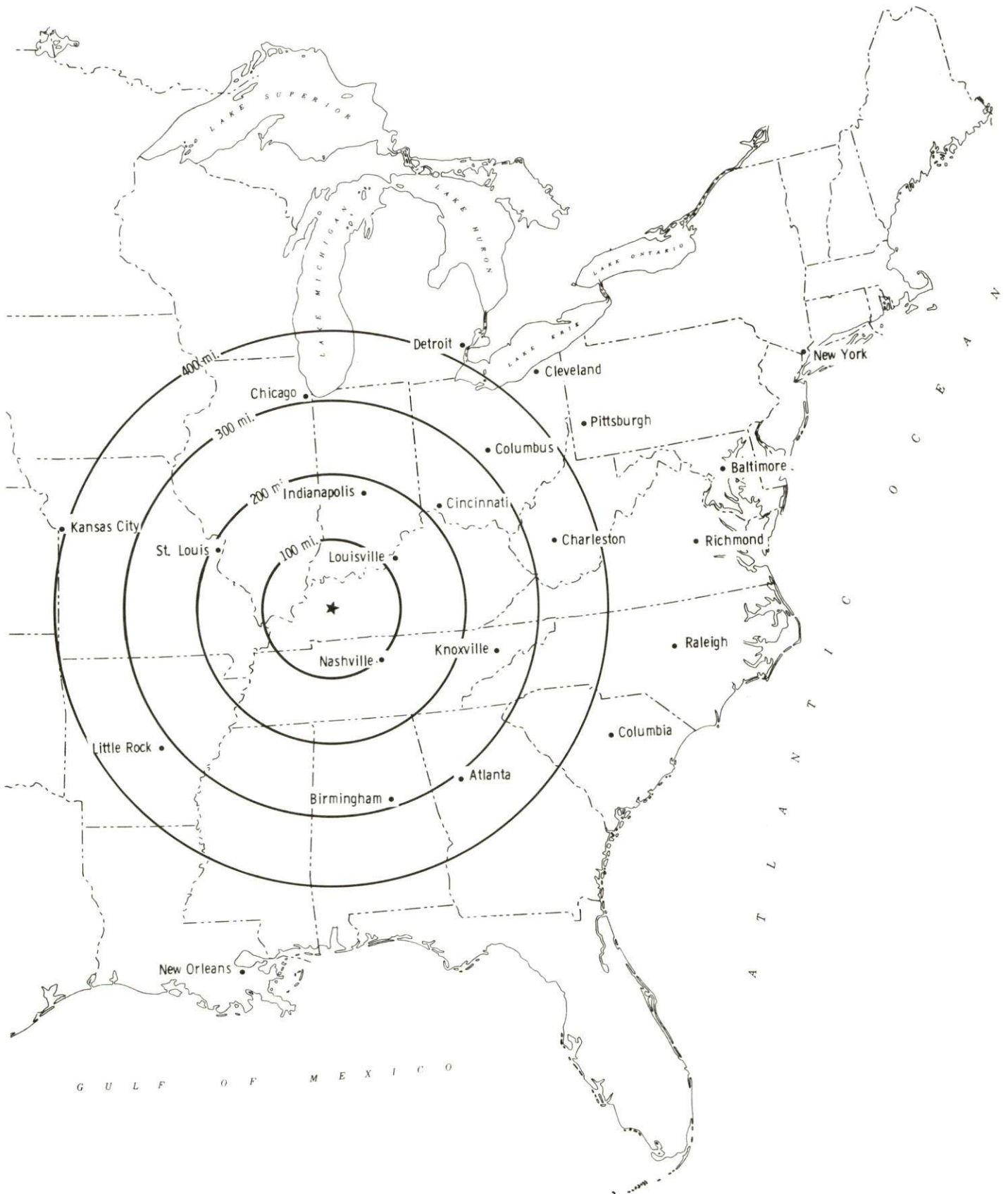
Sources: Rand McNally Standard Highway Mileage Guide, 1990. Official Kentucky Mileage Map, 1985.

Truck Service

Thirty-six firms provide interstate and/or intrastate trucking service to Madisonville. Sixteen trucking companies serve Earlington. Legion Trucking Company maintains its corporate headquarters in Madisonville.

Source: American Motor Carrier Directory, Fall 1992.

Selected Market Centers



Rail

CSX Transportation provides main line rail service to Madisonville and Earlington. Main line rail service is also provided to Madisonville by the Paducah and Louisville Railway. The nearest intermodal facilities are available from CSX Transportation in Evansville, 49 miles north of Madisonville.

For details on routing, schedules, rates, and services contact:

Manager
Industrial Development
CSX Transportation
9420 Bunsen Parkway
Suite 212
Louisville, Kentucky 40220
(502) 499-3025

and/or

Vice President - Marketing & Sales
Paducah and Louisville Railway
1500 Kentucky Avenue
Paducah, Kentucky 42001
(502) 444-4341

Air

Local

Location:	Madisonville Municipal Airport
Runways:	6 miles east of Madisonville
Length:	1 paved
Traffic	5,000 feet
Control:	Wind sock
Lighting:	Runway lighting dusk to dawn, rotating beacon, VASI 4, REIL
Services:	100LL octane, Jet-A; major and minor A & P repairs; tie downs, hangar; flight training

Nearest Scheduled Commercial Airline Service

Location:	Evansville Regional Airport
	3 miles north of Evansville, Indiana;
	52 miles north of Madisonville
Air Service:	ComAir, TransWorld Express, Northwest Air Link, USAir, Atlantic Southeast, American Eagle
Daily Arrivals & Departures:	88

Water

The nearest navigable rivers to Madisonville are the Green and the Ohio Rivers, approximately 25 miles north and 39 miles north, respectively. Both rivers maintain a nine-foot navigation channel.

The Henderson County Riverport Authority operates port facilities on the Ohio River at Henderson, 39 miles north of Madisonville. The Riverport offers full port facilities, coal loading facilities, bulk and cargo handling, warehouse and yard storage, and intermodal transportation.

The Port Authority of Lyon County operates public facilities in the Lick Creek embayment on Barkley Lake, 49 miles southwest of Madisonville. The Port offers grain, crushed limestone, and coal loading facilities, coal storage, public dock with crane service, outside storage area, mooring facilities, harbor service, and truck scales.

The Owensboro Riverport Authority operates a public riverport on the Ohio River at Owensboro, 46 miles northeast of Madisonville. Facilities include more than 100,000-square-feet of general commodity warehousing, two six-hundred thousand gallon liquid storage tanks, 4,200 tons of inside storage, a four-acre asphalt storage pad for outside storage, a coal preparation plant with a loading capacity of 2,000 tons per hour and a 12-acre stock pile area, two 110-ton cranes, eight mooring dolphins and rail service.

The above port authorities are all accessible to the City of Madisonville via the Western Kentucky Parkway and other primary highway and parkway routes.

UTILITIES

Electricity

Company serving **Madisonville** - Madisonville Municipal Light Department
Source of power - Kentucky Utilities Company
For industrial rates contact:

Madisonville Municipal Light Department
P.O. Box 704
Madisonville, Kentucky 42431
(502) 821-0903

Company serving **Earlington and southern Hopkins County** - Kentucky
Utilities Company
Source of power - Kentucky Utilities Company
For industrial rates contact:

Industrial Development Department
Kentucky Utilities Company
One Quality Street
Lexington, Kentucky 40507
(606) 255-2100

Company serving portions of **northern Hopkins County** - Green River
Electric Corporation
Source of power - Big Rivers Electric Corporation
For industrial rates contact:

Green River Electric Corporation
3111 Fairview Drive
P.O. Box 1389
Owensboro, Kentucky 42302
(502) 926-4141 Fax #(502) 685-2279

Company serving portions of **western Hopkins County** - Henderson - Union
Rural Electric Cooperative Corporation
Source of power - Big Rivers Electric Corporation
For industrial rates contact:

Henderson - Union Rural Electric
Cooperative Corporation
6402 Old Corydon Road
P.O. Box 18
Henderson, Kentucky 42420
(502) 826-3991 (800) 264-2191

Natural Gas

Company serving **Madisonville and Earlington** - Western Kentucky Gas
Company
Source of supply - Texas Gas Transmission Corporation
For rates and supplies contact:

Western Kentucky Gas Company
P.O. Box 866
Owensboro, Kentucky 42302
(502) 685-8067

Public Water Supply

Company serving **Madisonville** - Madisonville Municipal Utilities
P.O. Box 704
Madisonville, Kentucky 42431
(502) 824-2135

Source - Four lakes supplemented by 24-inch lines to Green River
Treatment plant capacity - Plant A 8,000,000 gallons per day
Plant B 2,000,000 gallons per day
Average daily consumption - 4,905,000 gallons
Peak daily consumption - 6,335,000 gallons
Storage capacity - 5,100,000 gallons
Water pressure - 68 psi to 78 psi

The Madisonville Water Department has constructed three 1,000,000 gallon elevated storage tanks.

Company serving **Earlington** - City of Earlington
103 West Main Street
Earlington, Kentucky 42410
(502) 383-5364

Source - Loch Mary Lake
Treatment plant capacity - 500,000 gallons per day
Source of treated water - South Hopkins Water District
Maximum amount available - 150,000 gallons per day
Average daily consumption - 150,000 gallons
Peak daily consumption - 250,000 gallons
Storage capacity - 335,000 gallons
Water pressure - 40 psi to 80 psi

Sewerage

Company serving **Madisonville** - Wastewater Treatment Facility
1000 McCoy Avenue
P.O. Box 704
Madisonville, Kentucky 42431
(502) 821-3717

Design capacity - 4,500,000 gallons per day
Average daily flow - 3,500,000 gallons
Type of treatment - Tertiary
Treated effluent discharged into - Flat Creek

Company serving **Earlington** - City of Earlington
103 West Main Street
Earlington, Kentucky 42410
(502) 383-5364

Treated effluent discharged into - Lines connecting to Madisonville
Wastewater Treatment Plant

CLIMATE

Hopkins County

Temperature

Normal (30-year record)	55.70 degrees
Average annual 1991	57.80 degrees
Record highest, July 1954 (51-year record)	105.00 degrees
Record lowest, February 1951 (51-year record)	-23.00 degrees
Normal heating degree days (30-year record)	4,729
(Heating degree day totals are the sums of negative departures of average daily temperatures from 65 degrees F.)	

Precipitation

Normal (30-year record)	41.55 inches
Mean annual snowfall (51-year record)	13.50 inches
Total precipitation 1991	32.68 inches
Mean number days precipitation (.01 inch or more) (51-year record)	115.20
Mean number days thunderstorms (51-year record)	45.10

Prevailing winds (through 1963)

South-Southwest

Relative Humidity (29-year record)

Midnight	79 percent
6 a.m.	82 percent
Noon	59 percent
6 p.m.	63 percent

Source: U.S. Department of Commerce, Environmental Science Services Administration, Climatological Data, 1991. Station of record: Evansville, Indiana.

LOCAL GOVERNMENT

Structure

The Cities of Madisonville and Earlington are served by a mayor/city council form of government. The mayors each serve four-year terms and the council members serve two-year terms. Hopkins County is served by a county judge/executive and seven magistrates.

Planning and Zoning

Joint agency - Hopkins County Joint Planning Commission

Participating cities - Madisonville, Earlington, Dawson Springs,

Hanson, Nortonville, Mortons Gap

Zoning enforced - Madisonville, Earlington, and Hanson

Subdivision regulations enforced - All areas

Local codes enforced - Hopkins County has only codes for multi-family, commercial and industry/Madisonville has codes for all developments

Mandatory state codes enforced - Kentucky Plumbing Code, National

Electric Code, Kentucky Boiler Regulations and Standards, Kentucky

Building Code (modeled after BOCA code)

Local Fees and Licenses

The City of Madisonville levies an occupational license fee of 1.5% on wages, salaries, and commissions of individuals and on net profits of businesses within the city.

The City of Earlington levies annual fees of \$10.75 for business licenses, \$15.75 for unloading licenses, and \$10.00 for auto stickers.

PROPERTY TAXES

The Kentucky Constitution requires the state to tax all classes of taxable property, and state statutes allow local jurisdictions to tax only a few classes. All locally taxed property is subject to county taxes and school district taxes (either a county school district or an independent school district). Property located inside of city limits may also be subject to city property taxes.

Special local taxing jurisdictions (fire protection districts, watershed districts, and sanitation districts) levy taxes within their operating areas (usually a small portion of community or county).

Property assessments in Kentucky are at 100% fair cash value. A 15% reduction is automatically granted for accounts receivable.

STATE PROPERTY TAX RATES PER \$100 VALUATION

<u>Selected Classes of Property</u>	<u>1991 State Rate</u>	<u>Local Taxation Permitted</u>
Real Estate	\$0.187	YES
Manufacturing Machinery	0.150	NO
Pollution Control Equipment	0.150	NO
Inventories		
Raw Materials	0.050	NO
Goods in Process	0.050	NO
Finished Goods	0.050	YES
Motor Vehicles	0.450	YES
Other Tangible Personal Property	0.450	YES
Intangibles (Accounts Receivable, Money on Hand)	0.250	NO

LOCAL PROPERTY TAX RATES PER \$100 VALUATION, 1991

<u>Taxing Jurisdiction</u>	<u>Real Estate</u>	<u>Finished Goods & Tangibles</u>	<u>Motor Vehicles</u>
Hopkins County	\$0.1430	\$0.1430	\$0.1430
School Districts:			
Hopkins County	0.5770	0.5770	0.4520
Cities:			
Madisonville	0.1380	0.1500	0.1500
Earlington	0.2410	0.2350	0.2350

EDUCATION

Public Schools

Hopkins County

Total Enrollment (Fall, 1991)	7,997
Accreditation	Southern Association of Colleges and Schools
Pupil-Teacher Ratio (1990-91)	17.9-1
Percent High School Graduates to College (1990-91)	58.5
Expenditures Per Pupil (1990-91)	\$3,148.93

The Hopkins County School System is in phase one of a multi-year plan to construct three elementary schools and one middle school.

Nonpublic Schools

<u>School</u>	<u>Enrollment</u>	<u>Grades</u>
Christ The King	168	KG-08
Grace Baptist Christ	92	KG-12
Madisonville Christ	71	KG-08

Area Colleges and Universities

<u>Name</u>	<u>Location (Mileage from Madisonville)</u>	<u>Enrollment (Fall, 1991)</u>
Madisonville Community College	Madisonville, Kentucky	2,312
Hopkinsville Community College	Hopkinsville, Kentucky (34)	3,083
Henderson Community College	Henderson, Kentucky (39)	1,444
University of Southern Indiana	Evansville, Indiana (49)	7,021
University of Evansville	Evansville, Indiana (49)	3,046
Brescia College	Owensboro, Kentucky (46)	840
Kentucky Wesleyan College	Owensboro, Kentucky (46)	749
Owensboro Community College	Owensboro, Kentucky (46)	2,587
Western Kentucky University	Bowling Green, Kentucky (80)	15,767
Murray State University	Murray, Kentucky (90)	8,328

Madisonville Community College

Madisonville Community College is a member of the University of Kentucky Community College System. Prescribed curricula lead to the Associate in Arts, the Associate in Science, or the Associate in Applied Science degrees. The following two-year Associate in Applied Science degree programs are offered: Accounting Technology, Biomedical Equipment Technology, Business Technology, Computer Information Systems, Engineering Technology, Laser Optics, Nursing, Office Administration, Respiratory Care, and Radiologic Technology. Most courses offered are university-parallel courses and are readily transferrable to other four-year institutions. In addition to degree programs, the college also offers continuing education programs for business and industry in employee and professional development through its office of Community Development.

VOCATIONAL-TECHNICAL TRAINING

Kentucky Tech schools are operated by the Cabinet for Workforce Development and provide secondary (Sec) and postsecondary (P/S) vocational-technical training.

<u>Kentucky Tech Schools</u>	<u>Number of Program Offerings</u>	<u>Cumulative Enrollment 1991-1992</u>	<u>Approximate Number Completing Programs Annually</u>
Madisonville State Vocational-Technical School	9	<u>Sec</u> <u>P/S</u> 80 283	40
Madisonville Health Technology Center	10	<u>Sec</u> <u>P/S</u> 50 246	160
*School of Industrial Electricity		<u>Sec</u> 46	

An expansion of the Health Technology Center was approved by the General Assembly in 1990 and is expected to be completed in 1993. This new construction will add approximately 44,300 square feet of additional program space.

Customized Training

The Kentucky Tech system, through its Training and Development Coordinators, will provide technical assistance and will identify and develop low cost customized training programs and services for both established and prospective businesses. Businesses wanting to develop a customized training program should contact a Training and Development Coordinator in Hopkins County, located at the Kentucky Tech West Region office in Madisonville.

Assessment Services

Kentucky Tech Career Connections offers to business, education, and government agencies customized assessment in career inventories, interest inventories, pre-hire assessment, psychomotor skills and academic potential.

Tech Prep

Tech Prep is a combined secondary and postsecondary program of studies that leads to an associate degree or diploma in a vocational-technical field. Madisonville-North Hopkins High School in conjunction with Madisonville SVTS and Madisonville Community College has established a Tech Prep program in the field of business.

* Not operated by Cabinet for Workforce Development.

Articulation

Articulation agreements developed between various colleges and universities and the Kentucky Tech system allow students to earn credits to be used when matriculating to degree programs at a college or university. Madisonville SVTS and Madisonville HTC each have articulation agreements with Madisonville Community College. Madisonville HTC also has articulation agreements in most of its health programs with other universities throughout the state.

Adult Basic Education

For adults needing basic skills, business and industry requesting basic skills upgrading for existing employees, or students seeking a GED, adult education services are available through the Hopkins County Literacy Program located in the COPE Center and through the Hopkins County Adult Learning Center.

Bluegrass State Skills Corporation

The Bluegrass State Skills Corporation, an independent public corporation created and funded by the Kentucky General Assembly, provides programs of skills training to meet the needs of business and industry from entry level to advanced training, and from upgrading present employees to retraining experienced workers.

The Bluegrass State Skills Corporation is the primary source for skills training assistance for a new or existing company. The Corporation works in partnership with other employment and job training resources and programs, as well as Kentucky's economic development activities, to package a program customized to meet the specific needs of a company.

OTHER LOCAL FACILITIES

Madisonville and Earlington Medical Personnel

Physicians - 107

Dentists - 21

Hospitals

<u>General Hospitals</u>	<u>Location</u>	<u>Beds</u>
Regional Medical Center of Hopkins County	Madisonville	410

Medical staff - 94 active staff physicians; 15 courtesy staff physicians; 314 registered nurses; and 98 licensed practical nurses

The Regional Medical Center has enacted several improvements to the center. These improvements include: upgrading of its CT-scanner. The scanner incorporates a laser optical disk system, the first of its type in the United States; expanding its MRI service hours and will be increasing the strength of the magnet from a .5 telsa to a 1.0; and has replaced its cardiac catheterization lab with an all-digital unit which offers enhanced computerized imaging.

Regional Medical Facilities

Trover Clinic - A multi-specialty outpatient diagnostic clinic with over 100 physicians and 400 employees, clinic services available in 28 mayor specialties; hemodialysis facilities available, and 242 examination rooms.

In 1992, Trover Clinic Foundation in Madisonville, opened Kentucky's only school for nurse anesthetists-The Kentucky School of Nurse Anesthesia. The school was funded in part by a \$150,000 federal grant. The accomplishment was a collaborative effort among the Foundation, its hospital division Regional Medical Center, Trover Clinic, Murray State University and the Kentucky Cabinet of Workforce Development.

Other Medical Facilities and Services

Hopkins County Public Health Department
Salmon Clinic

Banks and Savings and Loan Associations

Farmers Bank and Trust Company
First Federal Savings Bank of Kentucky
The Kentucky Bank and Trust Company
Madisonville Building and Loan Association
Peoples Bank and Trust Company

Newspapers

The Messenger (Daily)

Telephone Service

South Central Bell

RECREATION

Local

Madisonville, Earlington and the surrounding area offer unlimited recreational opportunities. Madisonville, with 480 acres of park land provides year-round supervised recreational programs for all ages. Facilities at the 185-acre Municipal Park include a nine-hole golf course, a clubhouse containing a golf pro shop and a large clubroom, an olympic-size swimming pool, a ball park, a lighted basketball court and several small courts, playgrounds, shelter house, amphitheater, restrooms, tennis courts, fitness trail and picnic areas. Supervised baseball leagues, football teams, tennis clinics, and golf clinics are also sponsored by the city and local civic groups. Other recreational facilities include four indoor movie theaters, a 20-lane bowling alley, a roller-skating rink, a Youth Athletic Association Sports complex with eight baseball diamonds on a 31-acre tract, and a YMCA.

Two private country clubs are located in Madisonville. The Madisonville Country Club, located on a 170-acre site at the southern edge of the city, has a clubhouse, 18-hole golf course, olympic-size swimming pool and bathhouse, and tennis courts. Lakeshore Country Club is located on 90 acres on the shores of Lake Peewee and present facilities include a clubhouse, 18-hole golf course and driving range, a double olympic-size swimming pool and a bathhouse, tennis courts, and a boat dock.

Madisonville Community College serves as an important source of cultural events. The Pennyriple Performing Arts, presenting the Community Concert Series, the Children's Theater, and the Footlight Players, Inc., offer additional entertainment.

The Loch Mary Lake, a 147-acre lake at Earlington, not only offers boating and fishing, but also has a city park with playground equipment, a picnic area and boat ramp, Earlington also has three tennis courts, outdoor basketball courts, a baseball diamond, and three supervised baseball leagues.

Pennyriple Forest State Resort Park near Dawson Springs is located 31 miles south of Madisonville. The 24-room lodge and cottages nestled within the trees provide excellent accommodations. Other facilities and activities include a dining room, a gift shop, rental rowboats and pedal boats, a nine-hole golf course, hiking trails, horseback riding, picnicking, playgrounds, shuffleboard, swimming at the lodge pool and a sand beach, and two tennis courts. Lake Beshear, only four miles from the lodge, sports good fishing.

Area (Within 65 miles)

John James Audubon State Park
Lake Malone State Park
Jefferson Davis Monument State Historic Site
Kentucky Dam Village State Resort Park
The Land Between the Lakes
Lake Barkley State Resort Park
Ben Hawes State Park
Riverside Downs Race Track
Ellis Park Thoroughbred Race Track

COMMUNITY IMPROVEMENTS

Madisonville re-certified as a "Kentucky Certified City" in 1992, and is distinguished as a gold award winner recognizing nine consecutive years of certification. Re-certification is based on achievement in the following areas: existing industry assistance, small business assistance, educational resources, and community development factors of health care, public safety, arts and culture, recreation, governmental awareness and resources. The Certified Cities Program is sponsored by the Kentucky Chamber of Commerce.

Recent

In the past four years, eighteen community and civic leaders from Madisonville have attended the Kentucky Institute for Economic Development Course in Lexington. Of these eighteen individuals, a group which includes bankers, government officials, realtors, attorneys, judges and other interested parties, four have already completed year two of the economic development certification training in Norman, Oklahoma with additional individuals scheduled to attend in 1993. The Leadership of the community has made a long-range commitment to develop Madisonville and Hopkins County by actively pursuing and encouraging economic growth. The leaders of Madisonville decided that the best approach to make this objective a reality was to improve their knowledge and understanding of how economic development transpires. Their level of commitment has chartered a course of action which will enhance the growth of Madisonville and Hopkins County for years to come.

The City of Madisonville has constructed a 40,000-square-foot spec building, on a ten-acre site, at the industrial park.

Lockheed Support System, Inc. recently initiated operations in Madisonville in 1992. The new telecommunication business will use computers to scan problem mail received in the Postal Service's Indianapolis distribution center and apply bar codes to the envelopes to facilitate delivery of that mail. All work will be handled by computer with telecommunications links to Indianapolis. The company will employ approximately 167 persons.

North American Display and Steel Products initiated operations in Madisonville in 1992. The company manufactures metal product display stands and employs approximately 55 persons.

A new Business and Industry Technical Assistance Center (BITAC) opened in Madisonville in February 1992. Managed by the Madisonville Community College, the center will offer programs and services to guide entrepreneurs through the steps of small business ownership. BITAC will also provide consultants, customized training programs and workshops for both small entrepreneurs and larger business in Hopkins County and surrounding counties.

The Madisonville Water Department has constructed three 1,000,000 gallon elevated storage tanks.

In 1992, Trover Clinic Foundation in Madisonville, opened Kentucky's only school for nurse anesthetists-The Kentucky School of Nurse Anesthesia. The school was funded in part by a \$150,000 federal grant. The accomplishment was a collaborative effort among the Foundation, its hospital division Regional Medical Center, Trover Clinic, Murray State University and the Kentucky Cabinet of Workforce Development.

The Regional Medical Center has enacted several improvements to the center. These improvements include: upgrading of its CT-scanner. The scanner incorporates a laser optical disk system, the first of its type in the United States; expanded its MRI service hours and will be increasing the strength of the magnet from a .5 telsa to a 1.0; and has replaced its cardiac catheterization lab with an all-digital unit which offers enhanced computerized imaging.

As part of an ongoing public improvements project, the City of Madisonville has buried utility lines, laid new brick sidewalks and installed eleven historic style street lights in the four-block area of downtown adjacent to the courthouse. Discover Downtown, Inc. prepared plans for the project and coordinated efforts between the city and utility companies. It will continue to work with the city on completion of an additional eight blocks.

Under Way

The Madisonville Health Technology Center is in process of expanding. The new construction will add approximately 44,300 square feet of additional program space.

Planned

The Hopkins County School System is in phase one of a multi-year plan to construct three elementary schools and one middle school.