

1984

## Industrial Resources: Laurel County - London

Kentucky Library Research Collections  
Western Kentucky University, [spcol@wku.edu](mailto:spcol@wku.edu)

Follow this and additional works at: [https://digitalcommons.wku.edu/laurel\\_cty](https://digitalcommons.wku.edu/laurel_cty)



Part of the [Business Administration, Management, and Operations Commons](#), [Growth and Development Commons](#), and the [Infrastructure Commons](#)

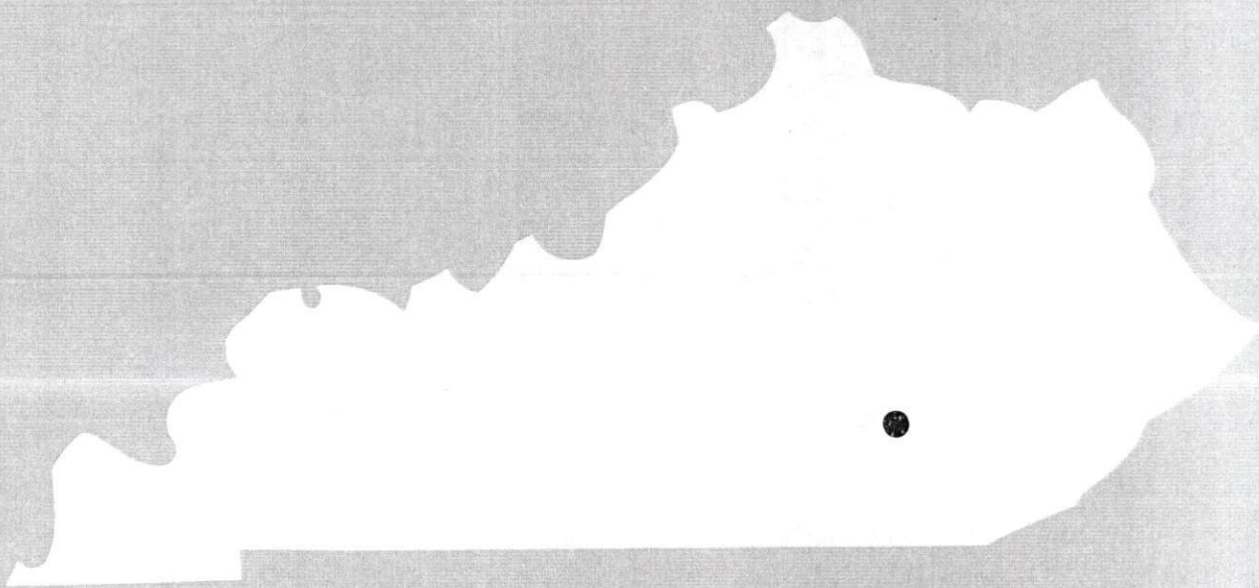
---

### Recommended Citation

Kentucky Library Research Collections, "Industrial Resources: Laurel County - London" (1984). *Laurel County*. Paper 8.  
[https://digitalcommons.wku.edu/laurel\\_cty/8](https://digitalcommons.wku.edu/laurel_cty/8)

This Report is brought to you for free and open access by TopSCHOLAR®. It has been accepted for inclusion in Laurel County by an authorized administrator of TopSCHOLAR®. For more information, please contact [topscholar@wku.edu](mailto:topscholar@wku.edu).

**1984**  
**A comprehensive**  
**report on**  
**London, Ky.**





For more information contact the Kentucky Department of Economic Development, Industrial Development & Marketing Division, Capital Plaza Tower, Frankfort, Kentucky 40601 (502-564-7140).

**LONDON, KENTUCKY -- Site 184 -- 66 Acres**  
**Laurel County Industrial Park**

For more information contact the Kentucky Department of  
 Economic Development, Industrial Development & Marketing  
 Division, Capital Plaza Tower, Frankfort, Kentucky 40601  
 (502-564-7140).







A COMPREHENSIVE REPORT ON  
LONDON, KENTUCKY

Prepared by  
The Kentucky Department of Economic Development  
Division of Research and Planning  
in cooperation with  
The Laurel County Industrial Development Authority  
and  
The London-Laurel County Chamber of Commerce

1984



Program manager - Pamela Riley; research - Andrew Dennis; clerical - Bobbi Graves; graphics - Frank Ferrante, Tony Cecconi, Robert Owens; cartography - Site Evaluation Branch, Division of Industrial Development and Marketing. Cost of printing paid from state funds.



## TABLE OF CONTENTS

<u>Chapter</u>	<u>Page</u>
INDUSTRIAL SITES .....	i
LONDON, KENTUCKY - A RESOURCE PROFILE .....	1
THE LABOR MARKET AREA.....	3
Population .....	3
Labor Force Characteristics of Residents, 1982 .....	3
Selected Components of Nonagricultural Employment, by Place of Work, 1982 .....	4
London Manufacturing Firms, Their Products and Employment.....	5
Labor Organizations in Manufacturing Firms .....	7
Industrial Services .....	8
Estimated Male Labor Supply .....	9
Estimated Female Labor Supply .....	10
Average Weekly Wages By Industry, by Place of Work, 1982 .....	11
Per Capita Personal Income .....	13
TRANSPORTATION .....	14
Rail .....	14
Highways .....	14
Truck Service .....	15
Air .....	16
Bus .....	17
Taxi.....	17
Rental Services .....	17
Water .....	17
POWER AND FUEL .....	18
Electricity .....	18
Natural Gas .....	18
Other Fuels .....	19
WATER AND SEWERAGE .....	20
Public Water Supply .....	20
Raw Water .....	21
Sewerage .....	21
CLIMATE .....	22



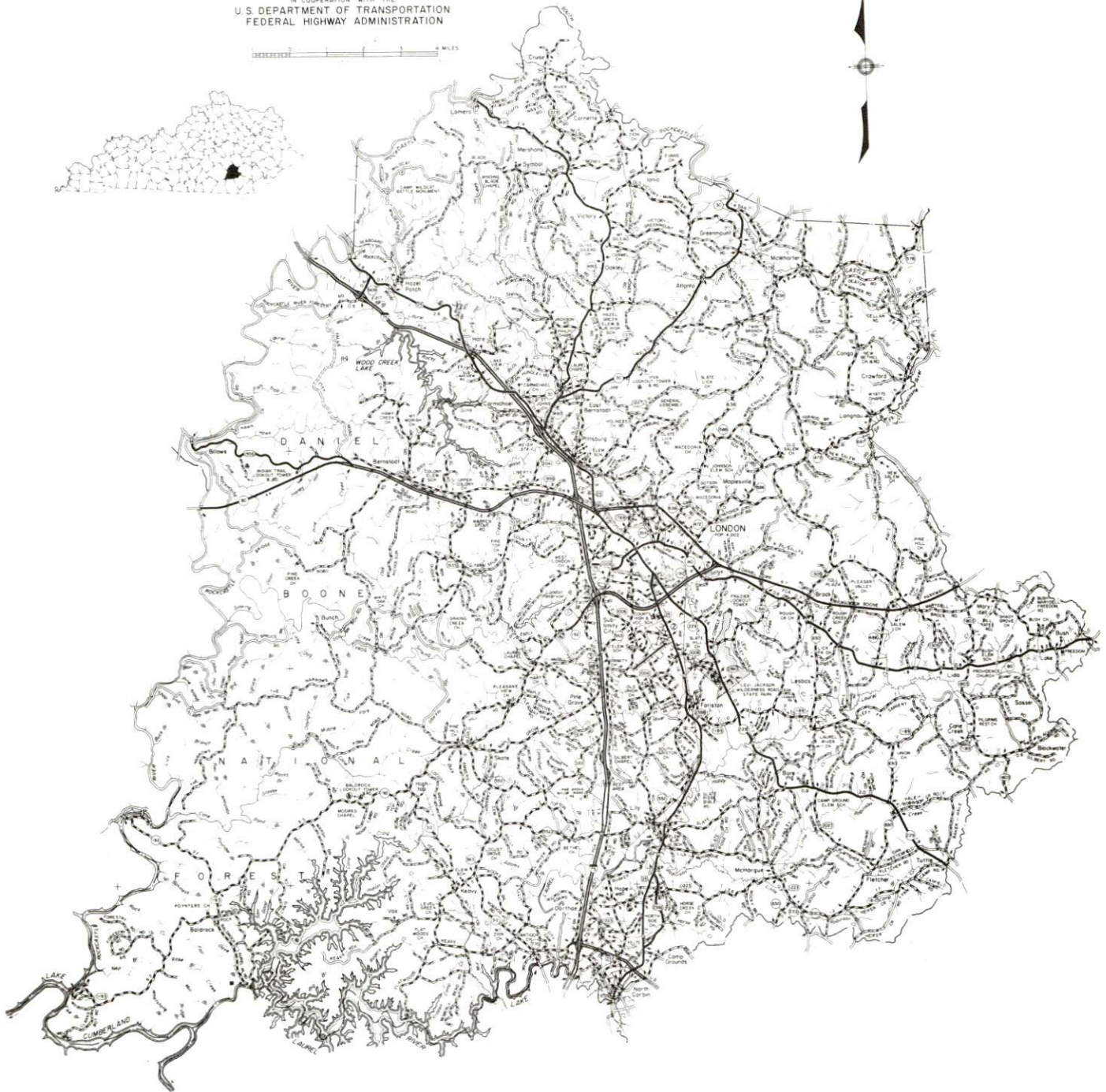
<u>Chapter</u>	<u>Page</u>
LOCAL GOVERNMENT .....	23
City .....	23
County .....	23
Assessed Value of Property, 1983 .....	23
Property Taxes .....	23
Combined State and Local Rates Per \$100 Valuation, 1983 .....	24
Planning and Zoning .....	24
Safety .....	25
Police .....	25
Fire .....	25
Rescue Service .....	25
Refuse Collection and Disposal .....	25
EDUCATION .....	26
Public Schools .....	26
Nonpublic Schools .....	26
Area Colleges and Universities .....	27
Vocational Schools .....	28
HEALTH .....	29
Local Medical Personnel .....	29
Hospitals .....	29
Ambulance Service .....	29
Public Health .....	29
OTHER LOCAL FACILITIES .....	30
Communications .....	30
Library Services .....	30
Religious Institutions .....	31
Financial Institutions .....	31
Hotels and Motels .....	31
Clubs and Organizations .....	32
RECREATION .....	33
COMMUNITY IMPROVEMENTS .....	35



1984 EDITION  
GENERAL HIGHWAY MAP  
**LAUREL COUNTY**  
KENTUCKY

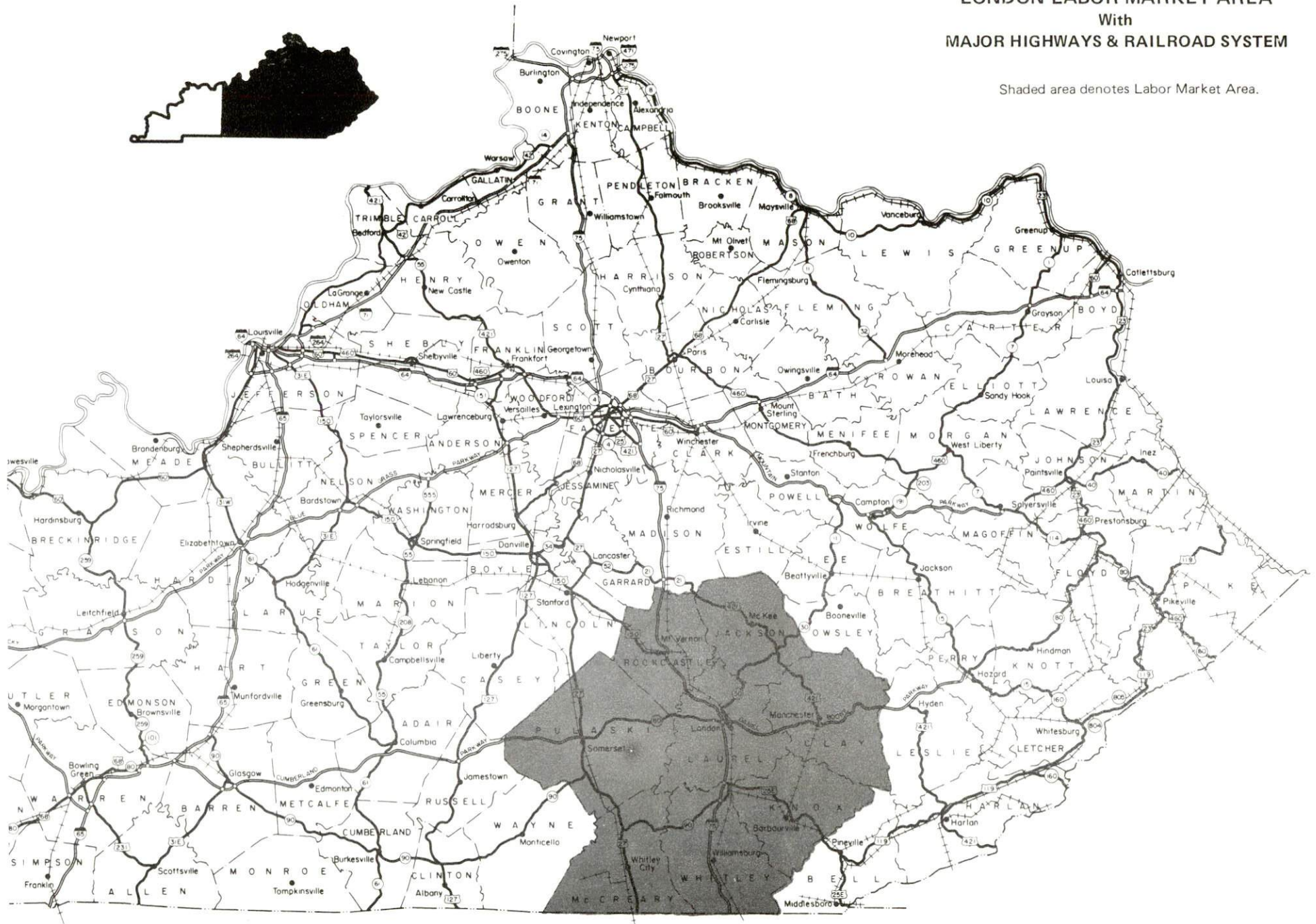
PREPARED BY THE  
KENTUCKY TRANSPORTATION CABINET  
DEPARTMENT OF HIGHWAYS  
DIVISION OF PLANNING  
IN COOPERATION WITH THE  
U.S. DEPARTMENT OF TRANSPORTATION  
FEDERAL HIGHWAY ADMINISTRATION

0 1 2 3 4 5 6 7 8 9 10 MILES



# LONDON LABOR MARKET AREA With MAJOR HIGHWAYS & RAILROAD SYSTEM

Shaded area denotes Labor Market Area.





## **LONDON, KENTUCKY - A RESOURCE PROFILE**

London, the county seat of Laurel County and home of Sue Bennett College, is located in southeastern Kentucky, within the state's eastern coal field region. London's location is 75 miles south of Lexington, Kentucky; 100 miles north of Knoxville Tennessee; and 153 miles south of Cincinnati, Ohio. The 1980 population of London was 4,002.

Laurel County covers 434 square miles. The western half of the county is located within the Daniel Boone National Forest. In 1980, Laurel County had a population of 38,982.

### **The Economic Framework**

The total number of Laurel County residents employed in 1982 averaged 19,220 with 18,590 people employed in nonagricultural jobs. Manufacturing employers in the county reported 3,790 workers; wholesale and retail trade 2,875; state and local government 1,260; and 1,260 persons employed in service occupations. Manufacturing employment is greatest in the food and kindred products, textile mill products and instrument and related products industries.

Per capita personal income in Laurel County in 1981 was \$6,289. Between 1977 and 1981 per capita income increased by 41 percent.

London is the center of a labor market area which includes Laurel County and its seven adjoining counties. The total number of residents of the labor market area employed in 1982 averaged 79,670 with 76,420 employed in nonagricultural jobs. Manufacturing employers reported 10,380 workers; wholesale and retail trade 11,400; state and local government 8,120; and 6,780 employed in service occupations.

### **Resources for Growth**

1. Labor Supply - There is a current estimated labor supply of 15,830 men and 13,970 women available for industrial jobs in the labor market area. In addition, from 1984 through 1988, 10,320 young men and 9,510 young women will become 18 years of age and potentially available for industrial jobs.

2. Transportation - Main line rail service is provided to London by Seaboard System Railroad. Interstate 75, a major north-south highway, directly serves London with an interchange two miles west of the downtown area. London is the terminus of the Daniel Boone Parkway, a multi-lane toll road which stretches across southeastern Kentucky. U.S. Highway 25 and Kentucky 80 also serve London. Fourteen common carriers have authority to serve London with truck service. The London-Corbin Airport has one paved runway, 6,000 feet in length, and offers commuter air service. The nearest scheduled commercial air service is at Lexington, Kentucky's Blue Grass Field, 80 miles north of London.

3. Power and Fuel - Kentucky Utilities Company, an electric generation and transmission company, and Jackson County RECC provide electric power to London and Laurel County. Jackson County RECC is supplied by East Kentucky Power Cooperative. Natural gas service is provided by Delta Natural Gas Company which is supplied by Wiser Oil Company. There are three propane and four distillate fuel oil distributors located in Laurel County.

4. Education - The Laurel County School System provides primary and secondary education in London and Laurel County. The East Bernstadt School System provides education through the eighth grade.

Sue Bennett College is a two-year, coeducational institution located in London. The Fall 1983 enrollment of the college was 330. In addition, there are four universities, four senior colleges, two junior colleges, and three community colleges located within 75 miles of London.

The Laurel County State Vocational-Technical School, located in London, offers occupational training in 14 courses.



## THE LABOR MARKET AREA

The London Labor Market Area includes Laurel County and the adjoining Kentucky counties of Clay, Jackson, Knox, McCreary, Pulaski, Rockcastle, and Whitley.

POPULATION			
<u>Area</u>	<u>1980</u>	<u>1970</u>	<u>Percent Nonwhite</u>
London	4,002	4,337	2.7
Labor Market Area	212,775	163,793	N/A
Laurel County	38,982	27,386	1.0
Clay County	22,752	18,481	1.7
Jackson County	11,996	10,005	0.1
Knox County	30,239	23,689	1.3
McCreary County	15,634	12,548	1.7
Pulaski County	45,803	35,234	1.5
Rockcastle County	13,973	12,305	0.3
Whitley County	33,396	24,145	0.9

Note: The 1980 counts of population by race are provisional.

Sources: U.S. Department of Commerce, Bureau of the Census, 1980 Census of Population and Housing, March 1981; 1980 Census of Population, Number of Inhabitants. Population Research Unit, Urban Studies Center, University of Louisville, Kentucky Demographics: The 1980 Census of Kentucky, Characteristics of Population, Households, Housing, January 1982.

LABOR FORCE CHARACTERISTICS OF RESIDENTS, 1982		
	<u>Laurel County</u>	<u>Labor Market Area</u>
Civilian Labor Force	20,958	89,774
Employment	19,222	79,666
Agricultural	658	3,247
Nonagricultural	18,594	76,419
Unemployment	1,736	10,108
Rate of Unemployment (%)	8.3	11.3

Source: Kentucky Cabinet for Human Resources, Kentucky Labor Force Estimates, Annual Averages, 1982.

SELECTED COMPONENTS OF NONAGRICULTURAL EMPLOYMENT,  
BY PLACE OF WORK, 1982

	<u>Laurel County</u>	<u>Labor Market Area</u>
All Industries (total)	11,327	47,234
Manufacturing	3,793	10,377
Wholesale & Retail Trade	2,875	11,403
Services	1,259	6,784
State/Local Government	1,256	8,119
Contract Construction	691	1,984
Mining & Quarrying	658	4,601

Note: Excludes domestic workers, railway workers, certain nonprofit corporations, majority of federal government workers, and self-employed workers.

Source: Kentucky Cabinet for Human Resources, Average Monthly Workers Covered by Kentucky Unemployment Insurance Law, 1982.



LONDON MANUFACTURING FIRMS,  
THEIR PRODUCTS AND EMPLOYMENT

<u>Firm</u> (Establishment date)	<u>Product</u>	<u>Employment</u>			<u>Labor Unions</u>
		<u>Total</u>	<u>Male</u>	<u>Female</u>	
Binder and Wilson Lumber Company (1974)	Lumber	14	13	1	
Donald Binder Lumber Company (1957)	Lumber	16	15	1	
Burley Belt Chemical Company (1967)	Fertilizer	14	11	3	
Caron Spinning Company (1963)	Synthetic yarns, synthetic tops, worsted yarns	600	240	360	Teamsters*
Chaney Lumber Company, Inc. (1956)	Custom hard-wood, kiln drying, millwork	25	23	2	
Cumberland Forest Products Company, Inc. (1952)	Veneer and plywood	20	N/A	N/A	
Dairymen, Inc. (1976)	Fluid milk	13	8	5	
Flav O Rich, Inc. (1956)	Fluid milk, ice cream milk	132	111	21	Teamsters*
Griffin Pie Company, Inc. (1953)	Bakery products	400	240	160	
Jasper Iron and Metal Company, Inc. (1974)	Aluminum, secondary smelting	54	50	4	
Ken Al Company, Inc. (1961)	Aluminum awnings, marquees, hydraulic telescope cranes	3	2	1	
Kentucky Concrete Pipe Company, Inc. (1965)	Concrete pipe, precast man holes	5	5	0	Teamsters*
Kentucky Stone Company, Inc. (1967)	Bituminous concrete	21	20	1	

(Cont'd)

<u>Firm</u> (Establishment date)	<u>Product</u>	<u>Employment</u>			<u>Labor Unions</u>
		<u>Total</u>	<u>Male</u>	<u>Female</u>	
Kerns Bakery, Inc. (1948)	Bakery products	363	329	34	
Laminated Timbers, Inc. (1960)	Laminated wood structural members, wood roof decking	23	20	3	
O. P. Link Handle Company, Inc. (1960)	Handle blanks, saw dust, hickory wood	14	14	0	
London Bucket Company, Inc. (1931)	Fabricated sheet metal products, fabricated steel bar joists, structural steel	15	12	3	
London Church Furniture, Inc. (1967)	Church furniture	35	34	1	
London-Clay Ready Mix, Inc. (1950)	Ready-mixed concrete, precast concrete specialties	20	18	2	
London Rotary Forms Company (1982)	Business forms, composition-typesetting	45	N/A	N/A	
Micro Devices Production Group, Therm-O-Disc, Inc. (1973)	Thermal cutoffs	280	43	237	
Moore Signs, Inc. (1949)	Neon, plastic and metal signs	3	2	1	
Phoenix Manufacturing Company (1972)	Non-woven fabrics	103	87	16	

(Cont'd)



<u>Firm</u> (Establishment date)	<u>Product</u>	<u>Employment</u>			<u>Labor Unions</u>
		<u>Total</u>	<u>Male</u>	<u>Female</u>	
The Sentinel Echo, Inc. (1873)	Newspaper, commercial printing, shopping circulars	18	12	6	
Tri-County Concrete Products (1946)	Drain and culvert tile, precast concrete products	3	2	1	
Westinghouse Electric Corporation (1979)	Automatic transfer switches	62	36	36	

\* See Labor Organizations below.

Source: Kentucky Department of Economic Development, 1984 Kentucky Directory of Manufacturers; Division of Research and Planning.

#### LABOR ORGANIZATIONS IN MANUFACTURING FIRMS

<u>Union</u>	<u>Representing workers at:</u>
International Brotherhood of Teamsters, Chauffeurs, Warehousemen and Helpers of America	Caron Spinning Company; Flav O Rich, Inc.; Kentucky Concrete Pipe Company, Inc.

## INDUSTRIAL SERVICES

<u>Types of Services</u>	<u>Location</u>	<u>Mileage from London</u>
Custom Plastics Producers	Corbin, Kentucky	14
	Mt. Vernon, Kentucky	22
Electric Motor Repair	London, Kentucky	-
Grinding, Precision & Tool	Richmond, Kentucky	51
Heat Treating Facilities	Richmond, Kentucky	51
Industrial Equipment & Supplies	Lexington, Kentucky	75
Industrial Gases	Somerset, Kentucky	34
Industrial Waste Removal	Somerset, Kentucky	34
Machine Shops, Tool & Die	Corbin, Kentucky	14
	Manchester, Kentucky	20
	Mt. Vernon, Kentucky	22
	Somerset, Kentucky	34
Metal Finishers	Richmond, Kentucky	51
Metal Service Centers	Lexington, Kentucky	75
Millwrights	Lexington, Kentucky	75

Sources: Kentucky Department of Economic Development, Kentucky Directory of Selected Industrial Services, 1983; Division of Research and Planning.



ESTIMATED MALE LABOR SUPPLY  
LONDON LABOR MARKET AREA

<u>Area</u>	<u>Current</u>			<u>Future</u>	
	<u>Total</u>	<u>Unemployed</u>	<u>Under- employed</u>	<u>Not in Labor Force</u>	<u>Becoming 18 years of age 1984 thru 1988</u>
Labor Market					
Area*	15,829	6,824	3,683	5,322	10,319
Laurel	1,749	1,096	653	0	1,894
Clay	1,786	786	433	567	1,254
Jackson	1,203	503	181	519	576
Knox	2,883	865	562	1,456	1,543
McCreary	1,273	555	324	394	854
Pulaski	2,198	1,529	669	0	1,980
Rockcastle	707	471	236	0	759
Whitley	4,030	1,019	625	2,386	1,459

\* Additional workers may be drawn from other nearby counties.

Note: Unemployed - persons unemployed and actively seeking work;  
Underemployed - persons employed but working only 14 to 26 weeks per year;  
Not in Labor Force - represents the number of persons who would enter the labor force if suitable employment were available (based on the assumption that persons in Kentucky would like to participate in the labor force in the same proportion that they do nationally).

Sources: Kentucky Cabinet for Human Resources, Kentucky Labor Supply Estimates by Area Development District and County, 1982. Kentucky Department of Economic Development, Future Labor Supply Becoming 18 Years of Age, 1984 thru 1988.

ESTIMATED FEMALE LABOR SUPPLY  
LONDON LABOR MARKET AREA

Area	Current			Not in Labor Force	Future Becoming 18 years of age 1984 thru 1988
	Total	Unemployed	Under- employed		
Labor Market					
Area*	13,966	3,284	3,074	7,608	9,512
Laurel	1,425	640	581	204	1,684
Clay	1,629	259	193	1,177	1,147
Jackson	1,337	184	187	966	533
Knox	1,450	462	412	576	1,372
McCreary	1,420	268	124	1,028	811
Pulaski	2,461	732	759	970	1,922
Rockcastle	495	270	218	7	585
Whitley	3,749	469	600	2,680	1,458

\* Additional workers may be drawn from other nearby counties.

Note: Unemployed - persons unemployed and actively seeking work;  
Underemployed - persons employed but working only 14 to 26 weeks per year;  
Not in Labor Force - represents the number of persons who would enter the labor force if suitable employment were available (based on the assumption that persons in Kentucky would like to participate in the labor force in the same proportion that they do nationally).

Sources: Kentucky Cabinet for Human Resources, Kentucky Labor Supply Estimates by Area Development District and County, 1982. Kentucky Department of Economic Development, Future Labor Supply Becoming 18 Years of Age, 1984 thru 1988.



AVERAGE WEEKLY WAGES BY INDUSTRY,  
BY PLACE OF WORK, 1982

	<u>Laurel County</u>	<u>Clay County</u>	<u>Jackson County</u>	<u>Knox County</u>
All Industries	\$262.63	\$336.87	\$240.47	\$236.48
Mining & Quarrying	388.00	477.96	326.84	392.71
Contract Construction	361.67	136.43	232.56	284.76
Manufacturing	268.88	*	181.23	268.95
Transportation, Communications & Public Utilities	345.17	312.39	282.27	309.43
Wholesale & Retail Trade	220.36	230.37	166.95	186.65
Finance, Insurance & Real Estate	235.97	234.43	*	228.36
Services	199.90	190.49	207.56	193.72
State/Local Government	262.78	238.70	251.89	221.73
Other	181.64	*	*	*
	<u>McCreary County</u>	<u>Pulaski County</u>	<u>Rockcastle County</u>	<u>Whitley County</u>
All Industries	\$241.87	\$239.42	\$185.06	\$243.83
Mining & Quarrying	503.11	353.85	252.80	403.57
Contract Construction	257.52	195.22	157.07	262.19
Manufacturing	179.57	274.12	181.07	227.04
Transportation, Communications & Public Utilities	274.20	320.27	218.12	282.38
Wholesale & Retail Trade	135.80	175.45	148.32	213.92
Finance, Insurance & Real Estate	280.81	294.40	249.71	238.93
Services	179.09	235.34	175.58	221.90
State/Local Government	224.47	236.24	215.94	236.45
Other	*	164.52	*	206.00

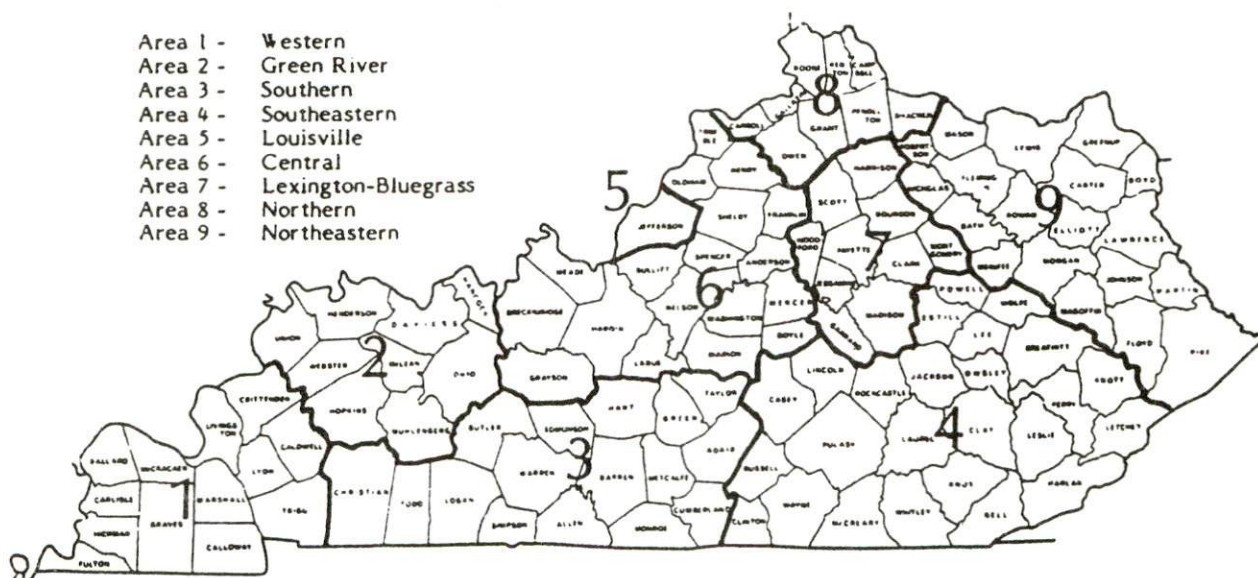
\* Not disclosed.

Note: Excludes domestic workers, railway workers, certain nonprofit corporations, majority of federal government workers, and self-employed workers.

Source: Kentucky Cabinet for Human Resources, Average Weekly Wages of Workers Covered by Kentucky Unemployment Insurance Law, 1982.

Occupational wage rates for specific industries are usually not available to most government agencies, and wage data furnished to state employment agencies by individual industrial employers are protected from disclosure by federal law. The most reliable up-to-date wage information can be obtained by direct contact with local employers.

Associated Industries of Kentucky, a voluntary organization of Kentucky businesses, regularly collects occupational wage rates and fringe benefits data from participating member firms. Data are compiled for over 127 clearly defined office, production, and service occupations. Tabulations are published for nine geographical areas of Kentucky, as shown on the map below. It should be noted that the data may be weighted by the preponderance of firms in the larger cities and may be somewhat higher than the rates paid in the smaller communities. Data from these tabulations are available, upon request, from the Kentucky Department of Economic Development, Frankfort, Kentucky 40601.



Associated Industries of Kentucky Area Wage Surveys



PER CAPITA PERSONAL INCOME

<u>Area</u>	<u>1977</u>	<u>1981</u>	<u>Percent Change</u>
Laurel County	\$ 4,460	\$ 6,289	41.0
Labor Market Area Range	\$2,788 - 4,865	\$ 4,540 - 7,069	N/A
Kentucky	5,797	8,416	45.2
U. S.	6,984	10,495	50.3

Source: U. S. Bureau of Economic Analysis, Kentucky Economic Information System, May 1983.

## TRANSPORTATION

### Rail

Line serving **London** - Seaboard System Railroad

Services - Main line; two northbound and two southbound freights make daily stops; 10 northbound and 10 southbound through freights daily; switch engine; team track space for 20 cars; siding space for 30 cars; nearest Seaboard piggyback facilities are located in Kingsport, Tennessee, 144 miles southeast of London, Louisville, Kentucky, 147 miles northwest, and Cincinnati, Ohio, 153 miles north. The Southern Railway System maintains piggyback facilities at Danville, Kentucky, 58 miles northwest of London.

For details on routing, schedules, rates, and services, contact:

Manager of Industrial Development  
Seaboard System Railroad  
P.O. Box 32290  
Louisville, Kentucky 40232  
(502) 587-5228

### Highways

London is served by an excellent highway system. Interstate 75, a major north-south highway, directly serves London with an interchange two miles west of the downtown area.

London is the terminus of the Daniel Boone Parkway, a multi-lane toll road, which stretches out east of London across southeastern Kentucky. Kentucky Highway 80, a "AAA" rated (80,000-pound gross load limit) trucking highway, connects London with the Cumberland Parkway, 34 miles west of London. The Cumberland Parkway, also a multi-lane toll road, traverses across south central Kentucky.

U.S. Highway 25 is another "AAA" rated trucking highway which directly serves London.



## Truck Service

<u>Company</u>	<u>Home Office</u>
ANR Freight System, Inc.*(T)	One Woodward Avenue Detroit, Michigan 48226
Buske Lines, Inc. (truck load only)**	P.O. Box 349 Litchfield, Illinois 62056
Consolidated Freightways Corporation of Delaware*	175 Linfield Avenue Menlo Park, California 94025
Eldridge Truck Line* Expressway, Inc.*	Somerset, Kentucky 42501 1105 St. Louis Louisville, Kentucky 40210
F.M.S. Transportation (truck load only)*	P.O. Box 22628 St. Louis, Missouri 63147
Lawrenceburg Transfer Company, Inc.*	P.O. Box 220 Lawrenceburg, Kentucky 40342
McLean Trucking Company**	P.O. Box 213 Winston-Salem, North Carolina 27154
Middlewest Freightways, Inc.*	6810 Prescott Avenue St. Louis, Missouri 63147
Overnite Transportation Company* (T)	P.O. Box 1216 Richmond, Virginia 23209
Skyline Transportation, Inc.*	P.O. Box 3569 Knoxville, Tennessee 37917
Smith's Transfer Corporation*	P.O. Box 1000 Staunton, Virginia 24401
Suburban Motor Freight, Inc.*	P.O. Box 1739 Columbus, Ohio 43216
United Trucking Service, Inc.*	8505 West Warren Dearborn, Michigan 48126

(T) Local terminal.

\* Interstate and intrastate service.

\*\* Interstate service only.

Source: American Motor Carrier Directory, Spring 1984.

## Other Freight Services

Emery  
Federal Express  
Purolator Courier  
United Parcel Service

## Nearest Office or Shipping Center

Lexington, Kentucky, 75 miles north  
Lexington, Kentucky, 75 miles north  
Lexington, Kentucky, 75 miles north  
London

HIGHWAY MILES AND TRUCK TRANSIT TIME IN DAYS FROM  
LONDON, KENTUCKY, TO SELECTED MARKET CENTERS

City	Highway Miles	Delivery Time TL	City	Highway Miles	Delivery Time TL
Atlanta, Ga.	293	1	Los Angeles, Ca.	2,230	7
Baltimore, Md.	616	2	Louisville, Ky.	147	1
Birmingham, Ala.	354	1	Nashville, Tenn.	205	1
Chicago, Ill.	427	1	New Orleans, La.	696	2
Cincinnati, Ohio	153	1	New York, N. Y.	778	2
Cleveland, Ohio	392	1	Pittsburgh, Pa.	418	2
Detroit, Mich.	412	1	St. Louis, Mo.	410	1
Knoxville, Tenn.	100	1			

Note: Mileage computations are via the best interstate or primary highways, not necessarily the most direct route of travel.

Sources: Rand McNally Road Atlas, 1981. Official Kentucky Mileage Map, 1980.  
Delivery time - Lawrenceburg Transfer, Inc., P.O. Box 36005, Louisville, KY 40233.

#### Air

##### Local

Location: London-Corbin Airport (Magee Field)\*  
3 miles south of London  
Runways: 1 paved  
Length: 6,000 feet  
Traffic  
Control: Wind sock and FSS advisory service  
Lighting: Beacon, runway and obstruction lights, REIL, VASI  
Services: Tennessee Airways; fuel (100 octane, JP-A-50);  
minor A & P repairs; tie-downs; aircraft rental,  
auto rental, taxi; weather data; flight training;  
charter and ambulance service

Air Freight  
Service: Air carriers accept freight on a space available  
basis

(Cont'd)

\* Two projects completed at the airport in early 1984 are the construction of a 10-unit hangar facility which increases total hangar space to 35 units and the construction of the airport's second commercial hangar facility. A planned project at the airport is the construction of taxiways at a cost of approximately \$400,000.

### Nearest Scheduled Commercial Airline Service

Location: Blue Grass Field  
5 miles west of Lexington, Kentucky;  
80 miles north of London

Runways: 2 paved  
Length: 6,500 feet; 3,500 feet

Traffic Control: Tower

Lighting: Approach lighting system, beacon, runways and  
obstructions lighted, VASI

Services: Delta, Frontier, Piedmont, United, USAir, Allegheny  
Commuter, Comair, Tennessee Airways; fuel - 100LL  
and jet-A; hangars, tie-downs; major A & P repairs;  
major Avionics repairs; APU, charter, flight  
instruction, oxygen, plane rentals, survival  
equipment; taxi, limousine, car rentals, courtesy  
car, weather information; restaurant, snack bar

Air Freight Service: Air freight terminal

**Bus** - Southern Greyhound Bus Lines and Trailway Bus Lines

**Taxi** - One company operates from 7 a.m. to 7 p.m.

**Rental Services** - Automobile, truck and trailer rentals are available locally

### **Water**

The nearest navigable waterways are the Tennessee River at Knoxville, Tennessee, 100 miles south of London, where a nine-foot navigation channel begins; and the Kentucky River at Frankfort, Kentucky, 102 miles northwest of London, where a six-foot navigation channel is maintained.



## POWER AND FUEL

### Electricity

Company serving **London and central Laurel County** - Kentucky Utilities Company

Source of power - Kentucky Utilities Company

Total generating capacity - 2,639,100 KW\*

For industrial rates contact:

Industrial Development Department  
Kentucky Utilities Company  
One Quality Street  
Lexington, Kentucky 40507  
(606) 255-1461

Company serving the major portion of **Laurel County** - Jackson County Rural Electric Cooperative Corporation

Source of power - East Kentucky Power Cooperative

Total generating capacity - 1,304,000 KW\*\*

For industrial rates contact:

Industrial Development Division  
East Kentucky Power Cooperative  
P.O. Box 707  
Winchester, Kentucky 40391  
(606) 744-4812

### Natural Gas

Company serving **London and Laurel County** - Delta Natural Gas Company

Source of supply - Wiser Oil Company

Size of transmission mains - 6 and 8 inches (supplier); 6 and 8 inches (distributor)

Distribution mains - 2 to 6 inches

Distribution pressure - 4 oz. to 60 psi

Btu content - 1,040 per cubic foot

Specific gravity - 0.68

For rates and supplies contact:

Marketing Manager  
Delta Natural Gas Company  
Route 1, Box 30-A  
Winchester, Kentucky 40391  
(606) 744-6171

\* A new generating unit is under construction in Carroll County. Due to be completed in 1984, the unit will have a generating capacity of 511,000 KW.

\*\* East Kentucky Power Cooperative's total generating capacity will be increased when a new 600,000 KW coal-fired generation plant is completed in southeast Clark County in 1992.

## Other Fuels

### Propane

Ralph Casteel Doxol Gas  
East Bernstadt, Kentucky 40729

Lewis LP Gas, Inc.  
Route 11  
London, Kentucky 40741

Rudder's LP Gas  
Route 6  
London, Kentucky 40741

### Fuel oils

#### Distillate fuel oil -

High Speed Oil Company  
Route 6  
London, Kentucky 40741

C. T. Massey Oil Company  
North Main  
London, Kentucky 40741

Ormsby Oil & Industrial Supplies,  
Inc.  
U.S. 25 South  
London, Kentucky 40741

Paul R. Wilson Oil Company, Inc.  
London, Kentucky 40741

Residual fuel oil - Arrangements must be made with the refinery.

Low sulphur content coal - Available in eastern Kentucky.

## WATER AND SEWERAGE

### Public Water Supply

Company serving **London** - City of London Utility Commission  
 123 East Second Street  
 P.O. Box 918  
 London, Kentucky 40741  
 (606) 864-2103

Source - Laurel Lake and City Lake

Treatment plant capacity - 3,000,000 gallons per day\*

Average daily consumption - 1,200,000 gallons

Peak daily consumption - 1,800,000 gallons

Type treatment - Coagulation, flocculation, sedimentation, filtration, chlorination, fluoridation

Storage capacity - 2,300,000 (includes clear well)

Size lines - 2 to 18 inches

Average pressure - 75 psi

Average temperature - 56 degrees F. (estimated)

### MONTHLY WATER RATES

<u>Meter Minimum Rates</u>	<u>Inside City</u>	<u>Outside City</u>
5/8-inch meter or less	\$ 6.25	\$ 9.38
3/4-inch meter	6.25	9.38
1-inch meter	7.70	11.55
1 1/4 or 1 1/2-inch meter	14.00	21.00
2-inch meter	23.10	34.65
3-inch meter	45.50	68.25
4-inch meter	70.00	105.00
6-inch meter	138.60	207.90

<u>Monthly Consumption Rate</u>	<u>Inside City</u>	<u>Outside City</u>
<u>Per 1,000 Gallons</u>		
First 2,000 gallons	Minimum Meter Charge	
Next 4,000 gallons	\$ 1.96 per M gallons	\$ 2.94 per M gallons
Next 14,000 gallons	1.74 per M gallons	2.60 per M gallons
Next 80,000 gallons	1.53 per M gallons	2.30 per M gallons
Next 100,000 gallons	1.30 per M gallons	1.96 per M gallons
Next 800,000 gallons	1.09 per M gallons	1.64 per M gallons
Over 1,000,000 gallons	0.87 per M gallons	1.30 per M gallons

Tap-on charge:                      5/8 or 3/4-inch residential - \$150  
    Larger meters - Actual cost

\* A \$2.5 million project to improve the water treatment system was completed in March 1984. A renovation at the treatment plant increased the treatment capacity to 3 million gallons per day. Laurel Lake is now the primary raw water source for London after the completion of 10 miles of 18-inch line and intake pumps.



## Raw Water

Surface water sources - Rockcastle and Laurel Rivers

Average discharge - Rockcastle River at Billows, Kentucky - 279 cfs (30 years, USGS); Laurel River at Municipal Dam near Corbin, Kentucky - 251 cfs (9 years, USGS)

Expected ground water yield - 5 gpm or less in northern and northwestern portion of Laurel County; 5 to 50 gpm in band running from north central to southwestern portion of county; 50 to 200 gpm in eastern half of county

## Sewerage

Company serving **London** - City of London Utility Commission  
123 East 2nd Street  
P.O. Box 918  
London, Kentucky 40741  
(606) 864-2103

Design capacity - 4,000,000 gallons per day\*

Average daily flow - 1,400,000 gallons

Type treatment - Tertiary

Treatment processes - Static screens, clarifiers, sand filters, chlorination, and sludge digesters (sludge is disposed by land farming)

Treated effluent discharged into - Whitley Branch

Size of sanitary mains - 8 to 20 inches

Size of storm mains - 24 and 30 inches

Monthly rates - 52 percent of monthly water bill plus \$1.50 per 1,000 gallons

Industrial users who discharge wastewater other than domestic wastewater are assessed charges proportionate to the quantity and quality of the wastewater discharged. Separate rates are established by the Utility Commission for costs related to flow volume, BOD, suspended solids, ammonia nitrogen and excess chemical demand and for any other parameter established by the Utility Commission.

Tap-on charge: \$150

---

\* A \$6 million renovation of the sewer treatment system was completed in 1983. The renovation included a completely new treatment process. The renovated plant has a design capacity of 4 million gallons per day, but has a screening capacity of 6 million gallons per day. The treatment system can maintain the 6 million-gallon-per-day flow for short periods of time by diverting excess flow to a lagoon for later treatment.

## CLIMATE

### Laurel County

#### Temperature

Normal (30-year record)	59.70 degrees
Average annual 1982	59.00 degrees
Record highest, September 1954 (30-year record)	103.00 degrees
Record lowest, January 1966 (30-year record)	-9.00 degrees
Normal heating degree days (30-year record)	3,478
(Heating degree day totals are the sums of negative departures of average daily temperatures from 65 degrees F.)	

#### Precipitation

Normal (30-year record)	46.18 inches
Mean annual snowfall (41-year record)	12.50 inches
Total precipitation 1982	54.70 inches
Mean number days precipitation (.01 inch or more) (40-year record)	127
Mean number days thunderstorms (40-year record)	47

#### Prevailing Winds (14-year record)

Northeast

#### Relative Humidity (22-year record)

1 a.m.	80 percent
7 a.m.	85 percent
1 p.m.	59 percent
7 p.m.	63 percent

Source: U.S. Department of Commerce, Environmental Science Services Administration, Climatological Data, 1982. Station of record: Knoxville, Tennessee.

## LOCAL GOVERNMENT

### City

Structure - Mayor - 4-year term; 6 council members - 2-year terms

Budget 1983-84 - General Fund \$1,011,358

Water and Sewer Fund 1,570,210

Fees and licenses - Occupational and business licenses range from \$5 to \$300 per year. Automobile and truck sticker is \$10 annually.

### County

Structure - County Judge/Executive - 4-year term; 6 magistrates - 4-year terms

Budget 1983-84 - General Fund \$773,725; Road Fund \$524,221

### Assessed Value of Property, 1983\*

<u>Classes of Property</u>	<u>London</u>	<u>Laurel County</u>
Real Estate	\$60,016,680	\$354,153,840
Tangibles	24,152,870	120,348,510

### Property Taxes

All property in Kentucky is assessed at 100 percent of fair cash value.

Land and buildings are taxed by the state and may be taxed by local jurisdictions. The state rate is \$0.221 per \$100 of assessed valuation.

Manufacturing machinery, raw materials inventories, pollution control equipment, and goods in the process of manufacture are not subject to local taxation. The state rate is \$0.15 per \$100.

Other tangible personal property owned by manufacturers (automobiles, trucks, finished goods, office furniture, office equipment) is taxed by the state at \$0.45 per \$100 and may be taxed by local jurisdictions.

Intangible personal property located in Kentucky (money in hand, shares of stock, notes, bonds, accounts receivable, and other credits) is taxed by the state at \$0.25 per \$100, and is not subject to local taxation.

Property stored in public warehouses in a transit status is not subject to local taxation. The state rate is only \$0.015 per \$100.

Private leaseholds in industrial facilities owned by cities or counties and financed by industrial revenue bonds are subject to a state tax of \$0.015 per \$100 of value (essentially the lessee's equity, adjusted for appreciation or depreciation). Local taxation is not permitted.

\* Excludes Homestead Exemptions.



**Combined State and Local Rates Per \$100 Valuation, 1983\***  
(100% assessment)

	Site Inside City of <u>London</u>	Site Inside Unincorporated <u>Laurel County</u>
1. Land and buildings	\$0.7168	\$0.5140
2. Mfg. machinery, raw materials, goods in process, pollution control equipment	0.1500	0.1500
3. Finished goods, office equipment, vehicles, other tangibles	0.9691	0.7663
4. Intangibles (accounts rec., notes, bonds, etc.)	0.2500	0.2500
5. Property stored in public warehouses in a transit status	0.0150	0.0150
6. Leaseholds in industrial revenue bond financed plants	0.0150	0.0150

**Planning and Zoning**

Joint agency - London-Laurel County Planning Commission

Zoning enforced - Within London city limits

Subdivision regulations enforced - City and county

Local codes enforced - Building and housing

Mandatory state codes enforced - Kentucky Plumbing Code, National Electric Code, Kentucky Boiler Regulations and Standards, Kentucky Building Code (modeled after BOCA code)

\* Kentucky Department of Economic Development.

## Safety

Police	London	Laurel County
--------	--------	---------------

Total staff	11 full-time	8
	1 part-time	
Radio-patrol cars	6	8

## Fire

Insurance Services Office, Public Protection Classification	6	*
Volunteers	25	

## Rescue Service

London-Laurel County Rescue Squad:

Number of volunteers - 30

Equipment - Ambulance, station wagon, utility truck, highway rescue truck, 4 boats with outboard motors, 20-foot boat with inboard motor, dragging equipment, emergency lighting (generator, floodlights, extension lines), and "Jaws of Life"

Personnel training - 15 volunteers are emergency medical technicians, some volunteers with civil defense and fire training; all volunteers are trained in advanced first aid and some volunteers are trained in rappelling; 12 volunteers are trained in underwater diving

## Refuse Collection and Disposal

	London	Laurel County
Type service	Municipal	Private
Fee charged:		
residential	\$4 per month	\$6 per month
business	Based on volume	**
industrial	Based on volume	**
Collection frequency:		
residential	Once weekly	Once weekly
business	Daily	**
industrial	Daily	**
Disposal method	Landfill	Landfill

\* Nine volunteer fire departments serve Laurel County in addition to the City of London Fire Department. All areas of the county outside of the City of London have an insurance classification of 9 or 10. Approximately 190 volunteers serve the nine fire departments.

\*\* Business and industrial customers outside the City of London are charged based on volume of refuse and desired collection frequency. Municipal refuse collection service may be furnished by the city to business and industry outside London city limits on a contract basis.

## EDUCATION

### Public Schools

	East Bernstadt*	Laurel County**
Total Enrollment (Spring 1984)	344	7,853
Elementary	269	5,072
Junior High	75	1,315
High School	--	1,466
Student-Teacher Ratio	22-1	20-1
Elementary	22-1	19-1
Junior High	19-1	20-1
High School	--	20-1
Percent High School Graduates to College (1983)	--	43.8
Expenditures Per Pupil (1982-83)	\$ 1,329.28	\$ 1,417.67
Bonded Indebtedness (June 30, 1983)	\$ 15,000	\$4,895,000

### Nonpublic Schools

	Faith Assembly of of God Day***	London Christian Academy
Total Enrollment	80	87
Elementary	60	67
Junior High	20	--
High School	--	20
Student-Teacher Ratio	12-1	12-1
Elementary	11-1	13-1
Junior High	10-1	--
High School	--	10-1

\* Kindergarten through eighth grade.

\*\* A new elementary school is under construction within the Laurel County School System. The \$1.2 million facility is designed to serve 480 students and is scheduled to open in the fall of 1984. The Laurel County Junior and Senior High complex will be expanded by an additional 13 acres, which will be used to construct a bus garage and additional sports facilities.

\*\*\* Preschool through ninth grade.



## Area Colleges and Universities

<u>Name</u>	<u>Location (Miles distant)</u>	<u>Enrollment (Fall, 1983)</u>	<u>Highest Degree Conferred</u>
Sue Bennett College	London	330	Associate
Union College	Barbourville, Kentucky (28)	794	Masters/ Specialist
Cumberland College	Williamsburg, Kentucky (31)	1,956	Baccalaureate
Somerset Community College	Somerset, Kentucky (34)	1,079	Associate
Berea College	Berea, Kentucky (38)	1,600	Baccalaureate
Eastern Kentucky University	Richmond, Kentucky (51)	12,660	Masters/ Specialist*
Centre College	Danville, Kentucky (58)	762	Baccalaureate
Hazard Community College	Hazard, Kentucky (59)	650	Associate
Lindsey Wilson College	Columbia, Kentucky (62)	465	Associate
Lincoln Memorial University	Harrogate, Tennessee (67)	1,418	Masters
University of Kentucky	Lexington, Kentucky (75)	22,055	Doctorate, M.D., D.M.D., J.D.
Transylvania University	Lexington, Kentucky (75)	655	Baccalaureate**
Lexington Community College	Lexington, Kentucky (75)	2,532	Associate
Lees Junior College	Jackson, Kentucky (75)	392	Associate

\* Joint doctoral degree programs are offered in cooperation with the University of Kentucky, Lexington. The degrees are issued by the University of Kentucky.

\*\* Courses in a masters degree program are taught on the Transylvania campus by faculty members of Xavier University of Cincinnati. The degree is issued by Xavier University.

## **Sue Bennett College**

Sue Bennett College is a two-year, coeducational institution located in London. The school was established in 1896 for elementary students and became a college in 1922. Sue Bennett College is owned by the United Methodist Church. The college offers an Associate degree in the following areas of study: business administration, medical secretary, legal secretary, elementary education, secondary education, physical education, psychology, social work, English, music, and pre-medical.

During 1984, construction will begin on a new classroom building at Sue Bennett College, plus a renovation project will begin on all major buildings of the campus.

## **Vocational Schools**

Both the state vocational-technical schools and the area vocational education centers are operated by the Kentucky Department of Education. The state vocational-technical schools enroll persons full time who are at least 16 years of age and not in school. These students attend classes for six hours each day. The area vocational education centers are designed to accommodate high school students who are at least 15 years of age. These students attend vocational school for three hours each day. In London, the high school program and the adult program are both taught at the state vocational-technical school. The state vocational-technical schools and the area education centers offer evening courses to enable working adults to upgrade current job skills.

### Nearest State School

Location	Laurel County State Vocational-Technical School London
Curriculum	Consumer and Home Economics Commercial Foods Consumer and Family Life Skills Health and Personal Services Occupations Cosmetology Medical Assistant Industrial Education Air Conditioning and Heating Auto Body Repair Auto Mechanics Carpentry Drafting (with CAD/CAM) Electricity Machine Shop Masonry Plant Maintenance Welding Learning Resource Center

Arrangements can be made to provide training in the specific production skills required by an industrial plant. Instruction may be conducted either in the vocational school or in the industrial plant, depending upon the desired arrangement and the availability of special equipment.

## HEALTH

### Local Medical Personnel

Physicians - 11  
Dentists - 14

### Hospitals

<u>General Hospital</u>	<u>Location</u>	<u>Beds</u>
Marymount Hospital*	London	55

General hospital facilities - 3 operating rooms, nursery, X-ray equipment, laboratory, delivery room, emergency rooms, pharmacy, recovery room, pediatrics section, physical therapy, respiratory therapy, CAT scan, ultrasound, mammography unit, 24-hour physician coverage of emergency room

Medical staff - 8 general practitioners, 2 surgeons, orthopedic surgeon, 4 internists, 2 pediatricians, 2 pathologists, 6 cardiologists, 2 radiologists, urologist, otolaryngologist, obstetrician/gynecologist, 2 neurologists, 45 registered nurses and 15 licensed practical nurses

### Ambulance Service

Name - Ambulance, Inc. of Laurel County  
Staff - 8 emergency medical technicians (full-time); 6 emergency medical technicians (part-time)  
Service - 24 hours, county-wide  
Equipment - 4 ambulances, fully-equipped

### Public Health

Facility - Laurel County Health Department  
Staff - 2 health environmentalists, 5 registered nurses, 2 county health workers, administrator, visiting physician

\* An expansion and renovation project is under way at Marymount Hospital. The \$10 million project includes the construction of a 29,200-square-foot addition to the hospital and will increase bed capacity to 100. The project is scheduled for completion in the fall of 1985.



## OTHER LOCAL FACILITIES

### Communications

Telephone - Services -	Continental Telephone Company of Kentucky Standard
Telegraph - Services -	Western Union Telegraph Company Toll-free number, 1-800-325-5100; local office for counter services
Postal - Class - Mail received - Mail dispatched -	U.S. Post Office First Once daily Once daily
Newspapers - Weekly and circulation - Other papers received from -	Sentinel-Echo 11,000 Lexington and Louisville, Kentucky; Knoxville, Tennessee
Radio - Major stations received from -	WFTG-AM, WLPQ-AM, and WWEL-FM Lexington and Louisville, Kentucky; Knoxville, Tennessee
Television - Cable service Reception from -	Lexington, Kentucky; Knoxville, Johnson City, Kingsport and Bristol, Tennessee; Asheville, North Carolina; Atlanta, Georgia
Kentucky Educational Television -	Somerset transmitter - Channel 29

### Library Services

- Public library - Laurel County Public Library  
Size collection - 46,645 volumes  
Circulation, 1982-83 - 93,944  
Services - Bookmobile, genealogy research, story hour, reading programs,  
puppet shows, plays, film programs, community meeting room, movie night,  
audiovisual equipment, craft club, newspapers, magazines, prints,  
Interlibrary Loan
- College library - Minerva McDaniel Library, Sue Bennett College  
Size collection - 38,000 volumes  
Special collections - Back issues of magazines dating from the 1920's,  
Methodist magazines, Appalachian and Kentucky books

## Religious Institutions

Number of churches - 18  
 Denominations - Assembly of God  
 Baptist  
 Catholic  
 Christian  
 Church of Christ  
 Full Gospel Tabernacle  
 Nazarene  
 Presbyterian  
 Seventh Day Adventist  
 United Methodist

Nearest Synagogues - Lexington, Kentucky 75 miles north of London;  
 Knoxville, Tennessee, 100 miles south of London

Congregations  
 Lexington:  
 Adath Israel (reform)  
 Ohavey Zion (traditional)  
 Knoxville:  
 Heska Amuna Congregation (orthodox)  
 Temple Bethel (reform)

## Financial Institutions

<u>Banks</u>	<u>Assets</u>	<u>Deposits</u>	<u>Statement Date</u>
Cumberland Valley National Bank and Trust Company	\$137,059,000.00	\$124,738,000.00	12/31/83
First National Bank in London	65,123,106.04	55,019,805.36	12/31/83
London Bank and Trust Company	44,558,090.37	38,250,799.69	12/31/83

<u>Savings and Loan Associations</u>	<u>Assets</u>	<u>Savings Accounts</u>	<u>Statement Date</u>
First Federal Savings and Loan Association*	\$ 55,464,509.19	\$ 50,109,771.26	12/31/83
London Federal Savings and Loan Association	27,710,772.18	25,105,994.91	12/31/83

## Hotels and Motels

Total number - 9  
 Total rooms - 460

\* Main office is located in Pineville, Kentucky.

## **Clubs and Organizations**

American Legion  
Boy Scouts  
Business and Professional Women's Club  
Conservation Club  
Cub Scouts  
Daughters of the American Revolution (DAR)  
Fish and Game Club  
4-H Club  
Future Farmers of America (FFA)  
Future Homemakers of America (FHA)  
Garden Club  
Girl Scouts  
Historical Club  
Jaycees  
Kiwanis  
Laurel County Industrial Development Authority  
Lions  
Little League (baseball and football)  
London Development Corporation  
London-Laurel County Tourist Commission  
London-Laurel County Chamber of Commerce  
Masons  
Ministerial Association  
Moose Lodge  
Newcomer's Club  
Optimist Club  
Rotary  
Southeastern Kentucky Saddle Club  
Veterans of Foreign Wars (VFW)  
Woman's Club  
Younger Women's Club



## RECREATION

### Local

**London** offers a wide variety of public recreation facilities including two playgrounds, a swimming pool, three baseball diamonds, four football fields, and a park and fairgrounds area with a horse show ring, one basketball court, two tennis courts, and a picnic shelter house. The city supervises Little League baseball and football programs and men's and women's softball leagues.

Private recreation facilities include a country club, a golf course, two swimming pools, four tennis courts, one indoor movie theatre, two drive-in theatres, and a go-cart track.

London residents enjoy fishing in **Daniel Boone National Forest** at Wood Creek Lake, a large reservoir just northwest of London, and at Laurel River Lake and Dam, 10 miles southwest of London, where camping facilities and a marina are also available.

**Levi Jackson Wilderness Road State Park**, 2 miles south of London, is an 815-acre park located where the Boone Trace and Wilderness Road pioneer trails converge. In addition to a reproduced pioneer settlement, the park offers a pool, a bathhouse, hiking trails, horseback riding, shuffleboard, 200 campsites, a picnic area, a playground, and an amphitheater.

The Sue Bennett Folk Festival is an annual event held at Sue Bennett College in London each spring. The festival includes folk music plus arts and crafts exhibits.

### Area (Within 60 miles)

**Cumberland Falls State Resort Park** is located 34 miles southwest of London near Corbin in the Daniel Boone National Forest. The park is famous for Cumberland Falls which drops 68 feet over a rock precipice and shows one of only two known "moonbows" in the world at full moon. The park offers 53 lodge rooms, woodland suites, 27 cottages, camping, fishing, swimming, hiking, horseback riding, picnicking, tennis, backpacking, shuffleboard, planned recreation, a playground, and an amphitheater.

**Dr. Thomas Walker State Shrine**, 34 miles southeast of London near Barbourville, is the site of the cabin built by Dr. Walker, who led an expedition through Cumberland Gap around 1750. This 12-acre park contains a replica of the cabin, a playground, a picnic shelter, and an amphitheater.

**William Whitley House State Shrine**, 40 miles northwest of London near Stanford, is the first brick house west of the Allegheny Mountains, built 1787-94. Whitley laid out Kentucky's first race track here and started U.S. counterclockwise racing. The facility provides picnic and playground areas in a ten-acre park.

**General Burnside State Park**, 43 miles west of London, is Kentucky's only island state park. Rising out of Lake Cumberland and surrounded by beautiful Kentucky mountains, the park offers excellent fishing, an 18-hole golf course which is open year-round, a picnic area, a 161-site camping area for tents and recreational vehicles, a marina on the mainland near the park, and recreation.

**Pine Mountain State Resort Park** in Pineville, 47 miles southeast from London, provides the finest in mountain scenery and the ultimate in quiet comfort. The 2,500-acre park is located in the Kentucky Ridge State Forest and is the scene of the Mountain Laurel Festival each spring. Also featured is a 35-acre lake, 330 lodge rooms, 20 cottages, a dining room, a gift shop, a meeting room, 36 camping sites, a lodge pool, fishing, a 9-hole golf course, hiking trails, a nature center, picnicking, playgrounds, shuffleboard, and planned recreation.

**Isaac Shelby State Shrine**, 53 miles northwest of London near Danville, is the burial site of Kentucky's first governor and one of the Commonwealth's foremost statesmen.

**The Big South Fork National River and Recreation Area**, 56 miles southwest of London near Whitley City, is being developed as an outdoor recreation area by the U.S. Army Corps of Engineers in cooperation with the National Park Service. The area lies along the Big South Fork of the Cumberland River in Kentucky and Tennessee and encompasses some of the state's most rugged and scenic terrain. Recreational opportunities in the "National Area" include hiking, camping, horseback riding and picnicking, whitewater rafting, canoeing and kayaking trips. The Big South Fork Scenic Railway offers a chance to see part of the rugged Cumberland River area by rail. The train operates on a regular schedule between Stearns and the Big South Fork National River and Recreation Area near the historic Blue Heron Coal Tipple, a distance of about 5 miles each direction.

**Constitution Square State Shrine**, 58 miles northwest of London in Danville, is a reproduction of Kentucky's first courthouse square, including the original 1792 post office which was the first in the west.

**White Hall State Shrine**, 59 miles north of London near Richmond, one of the grand estate houses of post-Civil War Kentucky, is the Italianate mansion of Cassius Marcellus Clay, the early abolitionist and politician. Kentucky handcrafts are sold in the White Hall gift shop, only a short walk from the mansion.

**Cumberland Gap National Historic Park** is located approximately 60 miles southeast of London near Middlesboro. The 20,270-acre park, located in Kentucky, Virginia and Tennessee, is the second largest national historic park in the United States. Features at the park include a frontier museum, Pinnacle Mountain, a restored mountain village, an old iron furnace and caves.



## COMMUNITY IMPROVEMENTS

### Recent

A \$6 million renovation of the sewer treatment system was completed in 1983. The renovation included a completely new treatment process. The renovated plant has a design capacity of 4 million gallons per day but has a screening capacity of 6 million gallons per day. The treatment system can maintain the 6-million-gallon-per-day flow for short periods of time by diverting excess flow to a lagoon for later treatment.

A \$7.5 million project to improve the water treatment system was completed in March 1984. A renovation at the treatment plant increased the treatment capacity to 3 million gallons per day. Laurel Lake is now the primary raw water source for London after the completion of 10 miles of 18-inch line and intake pumps.

Two projects completed at the airport in early 1984 are the construction of a 10-unit hangar facility which increases total hangar space to 35 units and the construction of the airport's second commercial hangar facility. A planned project at the airport is the construction of taxiways at a cost of approximately \$400,000.

### Under Way

A new elementary school is under construction within the Laurel County School System. The \$1.2 million facility is designed to serve 480 students and is scheduled to open in the fall of 1984. The Laurel County Junior and Senior High complex will be expanded by an additional 13 acres which will be used to construct a bus garage and additional sports facilities.

An expansion and renovation project is underway at Marymount Hospital. The \$10 million project includes the construction of a 29,200-square-foot addition to the hospital and will increase bed capacity to 100. The project is scheduled for completion in fall of 1985.

### Planned

A revitalization project for downtown London is in the planning stage. Plans include the planting of trees between the sidewalk and street, installing new street lights, renovating the facades of buildings and a new downtown park in the block between Sixth and Seventh Streets. Timing of the project is coincidental to a rebuilding of Main Street itself scheduled by the Kentucky Transportation Cabinet for 1985.

During 1984, construction will begin on a new classroom building at Sue Bennett College plus a renovation project will begin on all major buildings of the campus.