

1972

Industrial Resources: Madison County - Berea

Kentucky Library Research Collection
Western Kentucky University, spcol@wku.edu

Follow this and additional works at: https://digitalcommons.wku.edu/madison_cty



Part of the [Business Administration, Management, and Operations Commons](#), [Growth and Development Commons](#), and the [Infrastructure Commons](#)

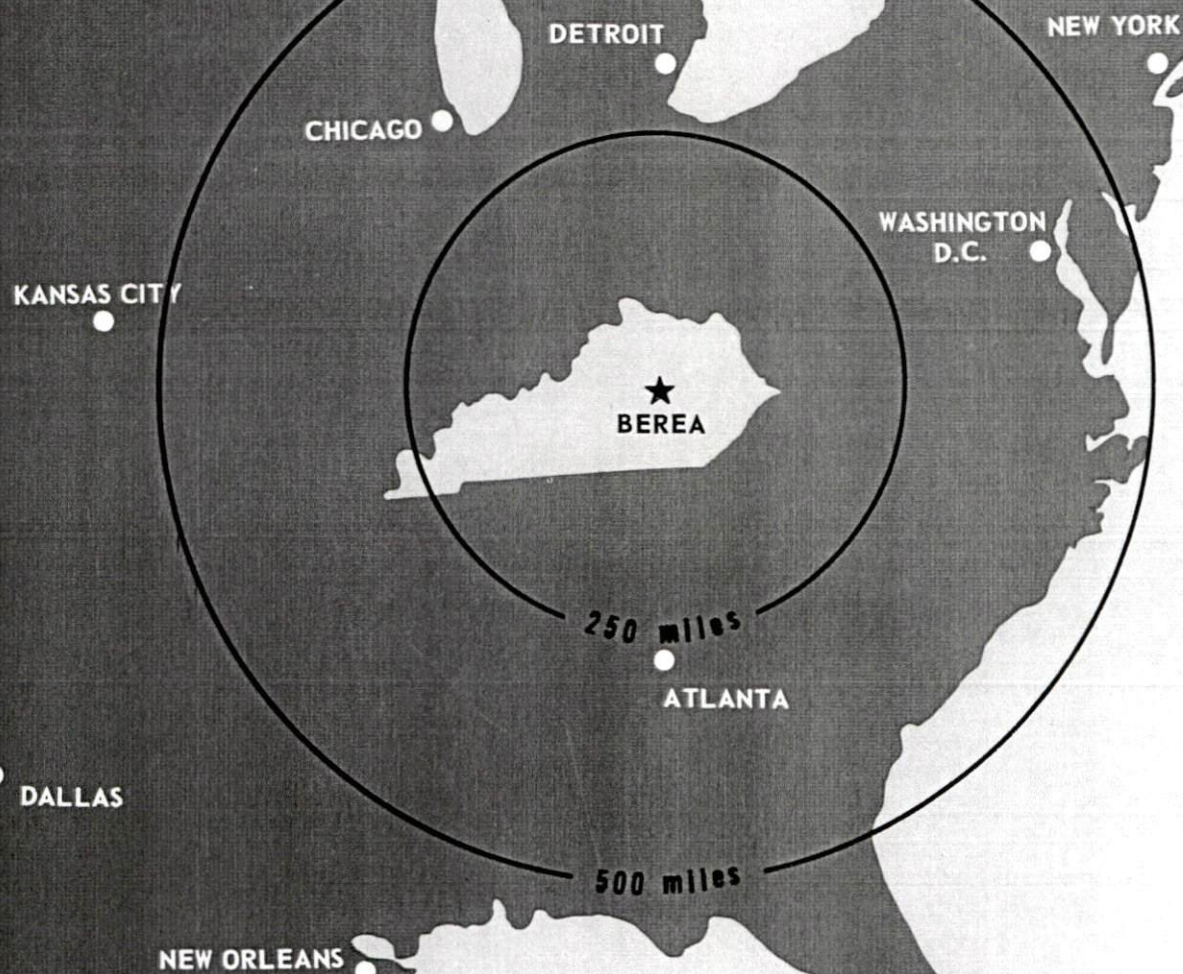
Recommended Citation

Kentucky Library Research Collection, "Industrial Resources: Madison County - Berea" (1972). *Madison County*. Paper 27.
https://digitalcommons.wku.edu/madison_cty/27

This Report is brought to you for free and open access by TopSCHOLAR®. It has been accepted for inclusion in Madison County by an authorized administrator of TopSCHOLAR®. For more information, please contact topscholar@wku.edu.

INDUSTRIAL RESOURCES

BEREA, KENTUCKY



BEREA INDUSTRIAL SITES

1972

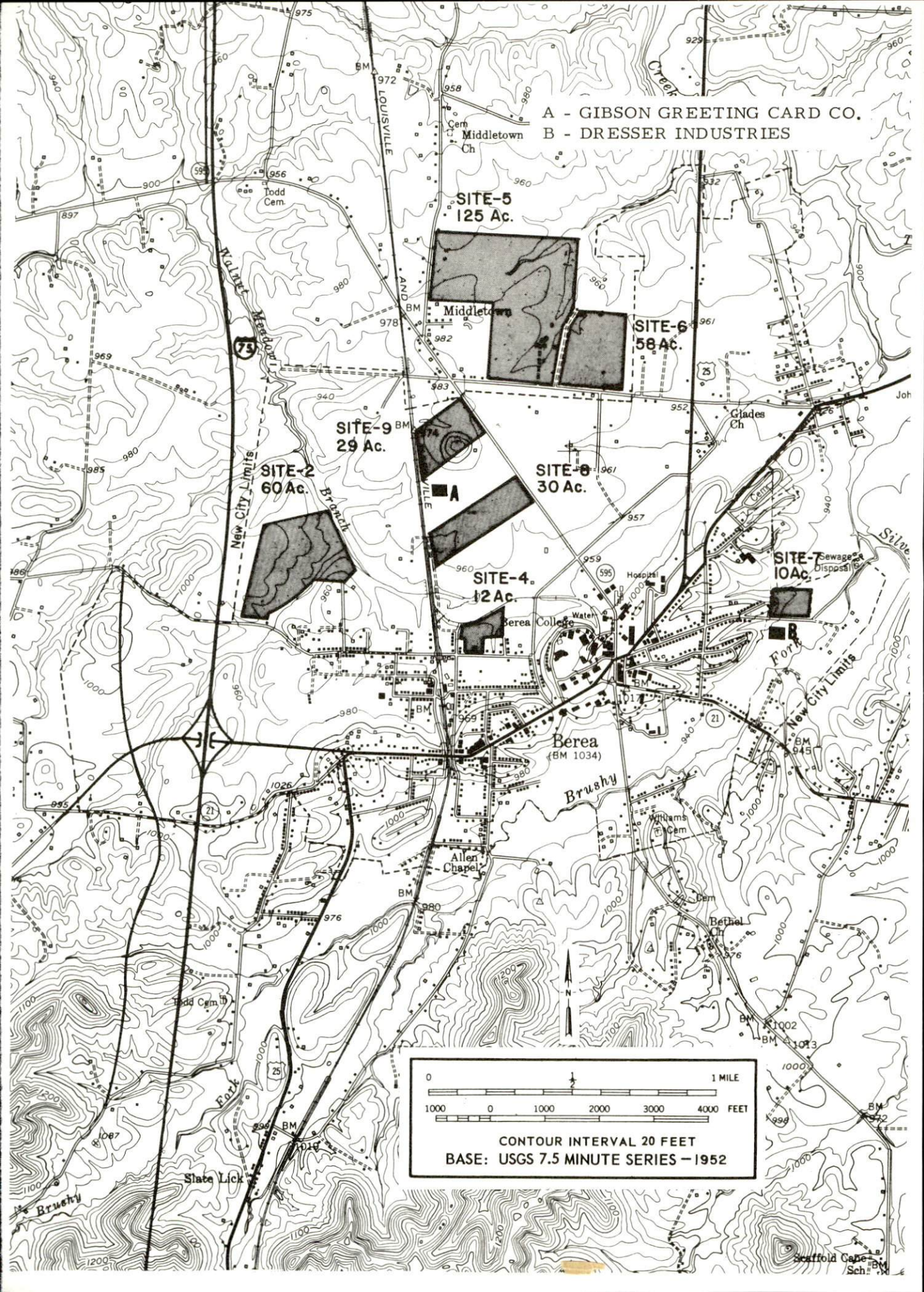
BEREA INDUSTRIAL SITES

1972

For more information about the following sites, contact Mr. William Finnell, Berea Chamber of Commerce, Berea, Kentucky 40403; or the Kentucky Department of Commerce, Frankfort, Kentucky 40601.

- SITE #2: ACREAGE: 60 acres
LOCATION: Northwest city limits
ZONING: Industrial
HIGHWAY ACCESS: Mary Street to eastern boundary; Interstate 75, one-tenth mile west of site
RAILROADS: Louisville & Nashville Railroad 1,500 feet east of site
WATER: Berea College Water Utility
SIZE LINE: 6-inch line 200 feet from site
GAS: Delta Natural Gas Company
SIZE MAIN: 2-inch main 200 feet from site
ELECTRICITY: Berea College Electric Utility
SEWERAGE: Berea Sewer Commission
SIZE LINE: 8-inch line on site
OWNERSHIP: Private
- SITE #4: ACREAGE: 12 acres
LOCATION: Central portion of city limits
ZONING: Industrial
HIGHWAY ACCESS: Fronts on Jefferson Street, Interstate 75, 1.5 miles west
RAILROADS: Louisville & Nashville Railroad bounds site on north.
WATER: Berea College Water Utility
SIZE LINE: 12-inch line adjacent to site
GAS: Delta Natural Gas Company
SIZE MAIN: 4-inch transmission line on site
ELECTRICITY: Berea College Electric Utility
SEWERAGE: Berea Sewer Commission
SIZE LINE: 8-inch line on site
OWNERSHIP: City of Berea
- SITE #5: ACREAGE: 125 acres
LOCATION: Edge of northern city limits
ZONING: None
HIGHWAY ACCESS: Glades Road on southern boundary and White Stations Road on west boundary
RAILROADS: Louisville & Nashville Railroad 500 feet from western boundary
WATER: Southern Madison Water District
SIZE LINE: 6-inch line on west boundary; 8-inch line 500 feet from site
GAS: Delta Natural Gas Company
SIZE MAIN: 2-inch main across road on west
ELECTRICITY: Berea College Electric Utility or Clark RECC
SEWERAGE: Berea Sewer Commission
SIZE LINE: 8-inch line 2,000 feet from site
OWNERSHIP: Private
- SITE #6: ACREAGE: 58 acres
LOCATION: Edge of north city limits
ZONING: None
HIGHWAY ACCESS: Glades Road bounds on south; U. S. 25, 1,000 feet east
RAILROADS: Louisville & Nashville Railroad one-half mile to west
WATER: Berea College Water Utility; Southern Madison Water District
SIZE LINE: 6-inch line 600 feet from site; 8-inch line 1,500 feet from site
GAS: Delta Natural Gas Company
SIZE MAIN: 4-inch main 800 feet from site
ELECTRICITY: Berea College Electric Utility or Clark RECC
SEWERAGE: Berea Sewer Commission
SIZE LINE: 8-inch line 800 feet from site
OWNERSHIP: Private
- SITE #7: ACREAGE: 10 acres
LOCATION: East city limits
ZONING: Industrial
HIGHWAY ACCESS: Center Street on southern boundary of site
RAILROADS: Not rail served
WATER: Berea College Water Utility
SIZE LINE: 6-inch line on site
GAS: Delta Natural Gas Company
SIZE MAIN: 2-inch main on site
ELECTRICITY: Berea College Electric Utility
SEWERAGE: Berea Sewer Commission
SIZE LINE: 8-inch line 100 feet from site
OPTIONED BY: Berea Industrial Development Board
- SITE #8: ACREAGE: 30 acres
LOCATION: North central city limits
ZONING: Industrial
HIGHWAY ACCESS: Kentucky 595 on east boundary
RAILROADS: Louisville & Nashville Railroad bounds on west
WATER: Berea College Water Utility
SIZE LINE: 12-inch line on site
GAS: Delta Natural Gas Company
SIZE MAIN: 4-inch main across road
ELECTRICITY: Berea College Electric Utility
SEWERAGE: Berea Sewer Commission
SIZE LINE: 8-inch line on site
OWNERSHIP: Private
- SITE #9: ACREAGE: 29 acres
LOCATION: North city limits
ZONING: Industrial
HIGHWAY ACCESS: Kentucky 595 along east boundary
RAILROADS: Louisville & Nashville Railroad bounds on west
WATER: Southern Madison Water District
SIZE LINE: 8-inch line on site
GAS: Delta Natural Gas Company
SIZE MAIN: 4-inch main across road
ELECTRICITY: Berea College Electric Utility
SEWERAGE: Berea Sewer Commission
SIZE LINE: 8-inch line 500 feet from site
OWNERSHIP: Private

A - GIBSON GREETING CARD CO.
B - DRESSER INDUSTRIES



INDUSTRIAL RESOURCES

BEREA, KENTUCKY

Prepared by

The Kentucky Department of Commerce

in cooperation with

The Berea Chamber of Commerce

1972

TABLE OF CONTENTS

<u>Chapter</u>	<u>Page</u>
INDUSTRIAL SITES	i
BEREA, KENTUCKY - A RESOURCE PROFILE	1
THE LABOR MARKET	5
Population Trends	5
General Employment Characteristics, 1970	5
Manufacturing Employment Trends by Industry	6
Berea Manufacturing Firms, Their Products and Employment	6
Wage Rates for Selected Occupations	7
Labor Organizations	7
Current and Future Labor Supply	8
Total Personal Income	8
Per Capita Personal Income	8
EDUCATION	9
Public Schools	9
Private School	9
Vocational Schools	11
Colleges and Universities	11
TRANSPORTATION	14
Rail	14
Truck Service	14
Air	15
Bus	15
Taxi	15
Rental Services	15
POWER AND FUEL	16
Electricity	16
Natural Gas	16
WATER AND SEWERAGE	17
Water	17
Sewerage	18

<u>Chapter</u>	<u>Page</u>
LOCAL GOVERNMENT	19
City	19
County	19
Assessed Value of Property, 1971	19
Local General Property Tax Rates Per \$100 of Assessed	
Valuation, 1971	19
Planning and Zoning	19
Safety	20
Police	20
Fire	20
Rescue Service	20
Sanitation	20
HEALTH.	21
Hospitals	21
Nursing Homes	21
Public Health	21
OTHER LOCAL FACILITIES.	23
Communications	23
Library Services	23
Religious Institutions	23
Financial Institutions	24
Hotels and Motels	24
Clubs and Organizations	24
RECREATION	27
Local	27
Area	27
AGRICULTURE - NATURAL RESOURCES - CLIMATE	28
Agriculture	28
Natural Resources	28
Climate	28
HISTORY	29



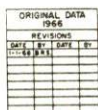
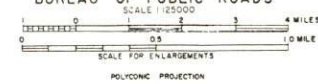
WEST BEREA BUSINESS DISTRICT
CHESTNUT STREET



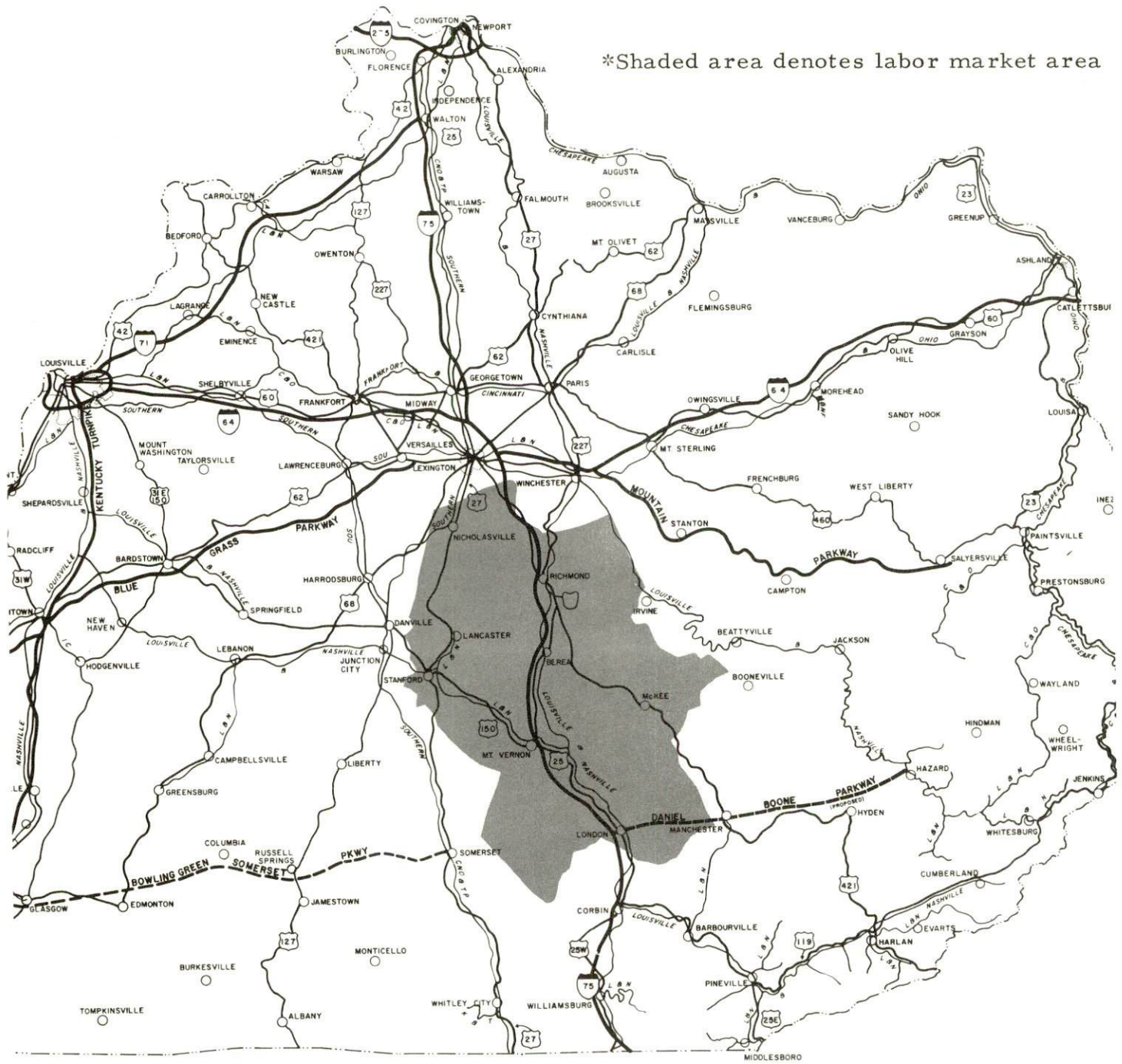
EAST BEREA BUSINESS DISTRICT
MAIN STREET

PREPARED BY THE
KENTUCKY DEPARTMENT OF HIGHWAYS
DIVISION OF PLANNING
IN COOPERATION WITH THE
U.S. DEPARTMENT OF TRANSPORTATION
FEDERAL HIGHWAY ADMINISTRATION
BUREAU OF PUBLIC ROADS

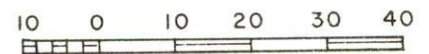
PREPARED BY THE
KENTUCKY DEPARTMENT OF HIGHWAYS
DIVISION OF PLANNING
IN COOPERATION WITH THE
U.S. DEPARTMENT OF TRANSPORTATION
FEDERAL HIGHWAY ADMINISTRATION
BUREAU OF PUBLIC ROADS



BEREA LABOR MARKET AREA



*Shaded area denotes labor market area



GRAPHIC SCALE IN MILES

BEREA, KENTUCKY - A RESOURCE PROFILE

Location

Berea is located in the southern portion of Madison County, which is in the southeastern part of Kentucky's Bluegrass Region. Berea is also at the edge of the Cumberland Mountains and provides the first full view of this mountain range to the east. The city is approximately 40 miles south of Lexington, 120 miles southeast of Louisville, and 120 miles south of Cincinnati, Ohio. The 1970 population of Berea was 6,956 and Madison County, 42,730.

The Economic Framework

Total employment in Madison County in 1970 averaged 15,600 with agriculture providing 1,700 jobs, manufacturing 2,800, trade and services 4,530 and government 5,000. Since 1961, manufacturing employment has increased by approximately 111 percent. Major industrial products are machinery and metal products and rubber products.

Per capita income in the county in 1969 was \$2,480. Between 1959 and 1969, per capita personal income in the county increased by approximately 98 percent.

The Madison County labor market area includes Madison County and the seven surrounding counties. Area employment in 1970 totaled 132,600 jobs with agriculture providing 9,200, manufacturing 24,035, trade and services 38,300 and government 30,200. Industrial employment in this area has increased approximately 76 percent since 1961 with sharpest gains in machinery and metal products and rubber products.

Despite important industrial gains in recent years the area still has a deficit of 5,382 manufacturing jobs when measured against the national industrial employment-population ratio. This indicates an area where the potential for additional manufacturing production is excellent.

Resources for Growth

1. There is a current estimated labor supply of 6,625 men and 5,275 women available for industrial jobs in the labor market area. In addition, 14,110 young men and 13,615 young women in the area will have become 18 years of age by 1978 and potentially available for work.

2. The local transportation capability is very good. The Louisville & Nashville Railroad Company serves Berea with a variety of services. Berea has more than adequate trucking service. An interchange of Interstate 75 is located within the Berea city limits. Interstate 75, a major highway artery to the north and south, provides Berea with easy access to Interstate 64, just 36 miles distant, which is a major highway artery to the midwest and east. Berea is also served by U. S. 25. Lackey Airport provides charter service locally, and commercial air service is available at Blue Grass Field in Lexington, 40 miles north of Berea.

3. Energy - Natural gas is provided by the Delta Natural Gas Company, whose source of supply is the Tennessee Gas Pipeline Company. Kentucky Utilities Company and the Berea College Electric Utility provide electric power to Berea.

4. Industrial sites - Berea has seven sites, totaling 324 acres, available for industrial use.

5. Berea community schools represent a national "first" in educational cooperation. This has been accomplished by sharing the resources of city government, a private college, and the public school system. The entire school system is ungraded and flexibly scheduled so the needs of each child can be met. The Berea Community School System has recently completed the construction of a \$2.4 million city school. The structure is a totally air-conditioned and carpeted ultramodern building which has a theater, gymnasium, laboratory, and library in addition to classrooms and cafeteria.

Three senior colleges, three universities, two junior colleges, and a community college are within a 50-mile radius of Berea. Eastern Kentucky University is only 13 miles away at Richmond. At Berea is Berea College, incorporated in 1855, with an enrollment of 1,448.

The Madison County Vocational Extension Center is located in Richmond, 13 miles distant, and offers training in six different courses. The Central Kentucky Area Vocational School, offering training in 20 different courses, is only 40 miles distant in Lexington.

Community Programs for Improvement

In 1971, Berea was designated an "All Kentucky City." The award was the result of successful community programs. The city is actively continuing its programs for community improvements.

A recent addition to Berea Hospital, Incorporated, includes an extended care facility. It is operated in conjunction with the hospital and is equipped with 37 beds for the care of medicare and medicaid beneficiaries,

as well as others requiring nursing home care. Hospital care has also been improved by the establishment of a clinic program by visiting specialists. The Mountain Maternal Health League, which is associated with Planned Parenthood-World Population, has recently opened a free clinic.

The School of Hope, an educational facility for retarded children has recently been established. A summer program is being planned. STABLE, an adult literary training program, has also recently been developed.

A 500,000-gallon-per-day extended aeration waste disposal plant has been completed and is now in operation. The Berea Sewer Commission plans to extend its sewer lines approximately 12 miles, and construction should begin in 1972.

The Berea College Water Utility is in the process of increasing its water treatment capacity and plans to extend its water mains. Land has been acquired for a new water reservoir; construction should begin in 1972.

Other completed projects: WKXO-AM radio is now in operation; Holiday Motel has been completed and is now open at the interchange of Interstate 75; a branch bank has been opened; Appalachian Village, a shopping center, has been developed and is still expanding; U. S. 21, the access road to I-75, has been lighted with mercury-vapor lights; a new fire district, encompassing the portion of Madison County within a 3-mile radius of Berea, has been established; and 60 units of public housing have been completed.

Planned improvements include: the development of Red Lick Watershed District, a new bank, and two new motels in the I-75 interchange area.

Recreation, Entertainment and Livability

Berea College provides a wide range of entertainment and cultural events. The Kentucky Guild of Artists and Craftsmen's Fair is held annually at Berea, as is the Mountain Folks Festival, which features folk music and folk dancing. Outdoor drama is provided during the summer months by Berea College students at the Indian Fort Theatre. Tourist attractions include the Appalachian Museum and the Wallace Nutting Museum, both maintained by Berea College. Berea College also owns the Boone Tavern Hotel, a landmark staffed by college students and noted for its southern charm and excellent food.

Churchill Weavers, the largest handweaving company in the country, is also located in Berea. Guided or self-guided tours are available through the loomhouse, which is celebrating its 50th anniversary in 1972.

Berea's location at the edges of the Bluegrass region and the Cumberland Mountains places it in an area of numerous recreation and entertainment facilities.

Renfro Valley, located 10 miles south of Berea, provides country music and barn dance shows and holds an annual Old Time Muzzle Loading Turkey Shoot the Saturday before Thanksgiving.

Fort Boonesborough State Park, 25 miles distant, is a 90-acre park on the Kentucky River. Facilities include a 200-seat restaurant, a new bathhouse, boat rental, dock and launching ramp. Swimming, boating and camping lead the recreational activities. There are also supervised recreation, playground and picnic shelters.

Daniel Boone National Forest, approximately 15 miles distant, covers 460,000 acres of timberland in eastern Kentucky. It encompasses much of Kentucky's great beauty and provides a vacation paradise. There are scenic hiking trails, rivers and creeks stocked with rainbow trout, special hunting preserves, and many camping and fishing facilities.

Herrington Lake, approximately 45 miles distant, is an excellent fishing lake with a 325-mile shoreline. There are many accommodations, camping, boating, swimming, skiing and dining facilities along the shores of the lake.

Lexington, 40 miles north, offers the full spectrum of entertainment, cultural and sporting events. Excellent Thoroughbred and harness racing is available at Keeneland Race Course and Red Mile Trotting Track at several meets each year. The University of Kentucky provides nine months of sports excitement each year. The Central Kentucky Concert and Lecture Association presents an annual subscription series which brings to the city world-famous groups and individuals in the arts and sciences. There are also three symphony orchestras, theatre concerts, lectures and art exhibitions at the University of Kentucky and Transylvania University.

Art exhibits, drama productions, concerts, lectures and collegiate sports are also provided by Eastern Kentucky University, only 13 miles away at Richmond.

THE LABOR MARKET

POPULATION TRENDS ^{1/}

Area	Population			Percent Change	
	1970	1960	1950	1960-70	1950-60
Berea	6,956	4,302	3,372	+61.7	+22.5
Labor Market Area	303,092	245,312	216,013	+23.6	+13.6
Madison County	42,730	33,482	31,179	+27.6	+ 7.4
Clark County	24,090	21,075	18,898	+14.3	+11.5
Estill County	12,752	12,466	14,677	+ 2.3	-15.1
Fayette County	174,323	131,906	100,746	+32.2	+30.9
Garrard County	9,457	9,747	11,029	- 3.0	-11.6
Jackson County	10,005	10,677	13,101	- 6.3	-18.5
Jessamine County	17,430	13,625	12,458	+27.9	+ 9.4
Rockcastle County	12,305	12,334	13,925	- 0.2	-11.4

GENERAL EMPLOYMENT CHARACTERISTICS, 1970 ^{2/}

Major Employment Group	Employment	
	Madison County	Labor Market Area
TOTAL	15,600	132,600
Agricultural	1,700	9,200
Nonagricultural	13,900	123,400
Manufacturing	2,800	24,034
Trade and Services	4,529	38,298
Government	5,000	30,200
Other	1,571	30,868

MANUFACTURING EMPLOYMENT TRENDS BY INDUSTRY
SEPTEMBER 1971 AND 1961 ^{3/}

Industry	Madison County			Labor Market Area		
	1971	1961	% Change	1971	1961	% Change
TOTAL	2,832	1,341	+ 111.2	23,408	13,332	+ 75.6
Food & kindred products	167	154	+ 8.4	1,504	1,517	- 0.9
Tobacco	1	4	- 75.0	1,006	1,427	- 29.5
Apparel, textiles, leather	49	58	- 15.5	2,069	1,420	+ 45.7
Lumber & furniture	2	3	- 33.3	727	468	+ 55.3
Printing, publishing, paper	393*	21	+1771.4	1,821*	979	+ 86.0
Chemicals, petroleum, coal, rubber	618	513	+ 20.5	1,533	602	+154.7
Stone, clay & glass	317	39	+ 712.8	828	456	+ 81.6
Primary metals	116	0	--	629	199	+216.1
Machinery & metal products	937	469	+ 99.8	12,214	6,080	+100.9
Other	232	80	+ 190.0	1,077	184	+485.3

*Includes one establishment with approximately 280 employees which should be classified as other.

BEREA MANUFACTURING FIRMS,
THEIR PRODUCTS AND EMPLOYMENT ^{4/}

Firm	Product	Employment		
		Total	Male	Female
Berea College Industries	Furniture, wooden games, fireside brooms	185	88	97
Berea Publishing Co.	Newspaper, job printing	24	14	10
Churchill Weavers, Inc.	Baby blankets, afghans, ties	55	8	47
Concrete Materials Corp.	Ready mixed concrete, septic tanks, highway markers	6	6	0
Dresser Industries, Valve & Instrument Division	Pressure gauges	235	80	155
Dave Eden Lumber	Rough lumber	2	2	0
Gibson Greeting Card Co.	Candles	279	136	143
Parker Seal Co.	Rubber O-rings	592	259	333
Suburban Homes, Inc.	Prefabricated homes	150		
Wyatt Supply Co.	Concrete blocks, ready mixed concrete, cement	7	6	1

WAGE RATES FOR SELECTED OCCUPATIONS
BEREA, KENTUCKY ^{5/}

<u>Classification</u>	<u>Wages Per Hour</u>	
	<u>Starting</u>	<u>Prevailing</u>
<u>Production Employees</u>		
Assembler	\$2.05	\$2.40
Inspector	2.50	2.80
Production Laborer	2.05	2.35
Welder, Arc or Acetylene (Class-A)	2.35	2.60
<u>Service Employees</u>		
Electrician (Class-A)	\$4.00	\$4.75
Laborer	2.00	2.50
Machinist	4.00	4.60
Mechanic, Maintenance	3.85	4.25
Truck Driver, Industrial (Class-A)	2.00	2.50
<u>Office Employees</u>		
Bookkeeper	\$2.75	\$3.15
File Clerk	1.80	2.00
Receptionist	1.85	2.15
Secretary	2.50	2.75
Typist	2.00	2.35

LABOR ORGANIZATIONS

<u>Union</u>	<u>Representing workers at:</u>
International Union of Allied Industrial Workers of America, AFL-CIO	Dresser Industries, Valve & Instrument Division
The International Brotherhood of Firemen and Oilers	Parker Seal Company

CURRENT AND FUTURE LABOR SUPPLY -
BEREA LABOR MARKET AREA

<u>Area</u>	<u>Current Labor Supply, 1971 ^{6/}</u>			<u>Future Labor Supply by 1978 ^{7/}</u> <u>(Becoming 18 Years of Age)</u>		
	<u>Total</u>	<u>Male</u>	<u>Female</u>	<u>Total</u>	<u>Male</u>	<u>Female</u>
Labor Market						
Area	11,896	6,623	5,273	27,729	14,112	13,617
Madison	1,923	1,075	848	3,460	1,778	1,682
Clark	833	396	437	2,297	1,158	1,139
Estill	1,570	869	701	1,259	625	634
Fayette	2,611	1,498	1,113	15,698	7,973	7,725
Garrard	606	464	142	927	483	444
Jackson	1,666	743	923	1,134	573	561
Jessamine	597	284	313	1,589	819	770
Rockcastle	2,090	1,294	796	1,365	703	662

TOTAL PERSONAL INCOME ^{8/}

<u>Area</u>	<u>1969</u>	<u>1959</u>	<u>% Change</u>
Madison County	\$ 93,710,000	\$ 41,032,000	+128.4
Labor Market Area	942,582,000	387,854,000	+143.0
Kentucky	9,202,000,000	4,655,000,000	+ 97.6

PER CAPITA PERSONAL INCOME ^{9/}

<u>Area</u>	<u>1969</u>	<u>1959</u>	<u>% Change</u>
Madison County	\$2,480	\$1,255	+ 97.6
Labor Market Area	\$1,250 to 3,920	\$594 to 1,954	N.A.
Kentucky	2,847	1,552	+ 83.4

EDUCATION

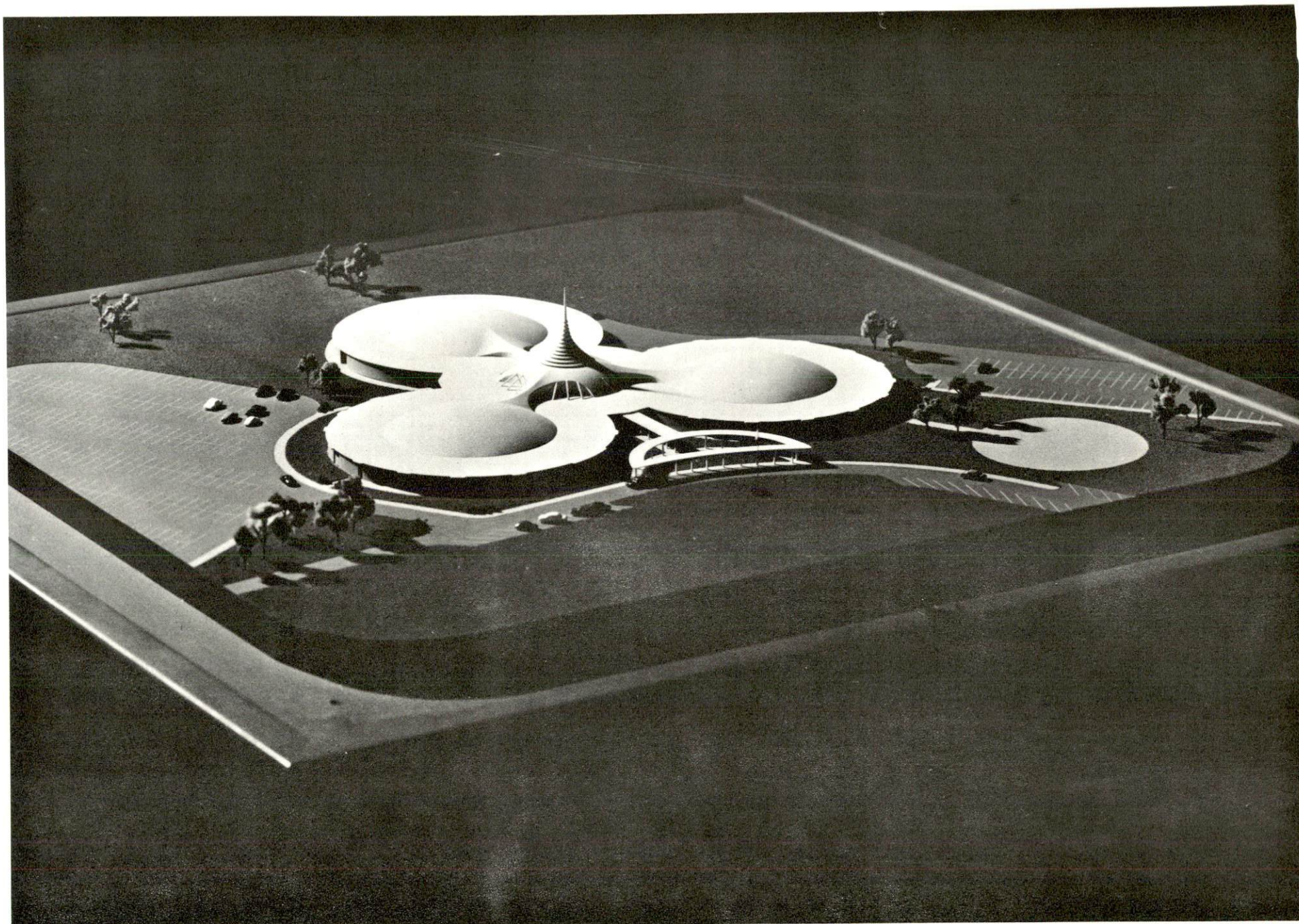
Public Schools

	<u>Berea</u>	<u>Madison County</u>
Total Enrollment	1,115	4,915
Elementary	750	3,615
High School	365	1,300
Student-Teacher Ratio	21-1	22-1
Elementary	23-1	23-1
High School	17-1	20-1
State Rating of High School	Standard	Comprehensive
Percent High School Graduates to College	56.3	34.2
Current Expenditures Per Pupil	\$510.86	\$440.11
Bonded Indebtedness, June 30, 1971	\$2,036,000	\$2,521,000

Private School

	<u>Model Laboratory School*</u>
Total Enrollment	730
Elementary	370
High School	360
Student-Teacher Ratio	20-1
Elementary	26-1
High School	16-1

*Model Laboratory School, laboratory school of Eastern Kentucky State University, has a standard rating by the Kentucky Department of Education and is accredited by the Southern Association of Colleges and Schools.



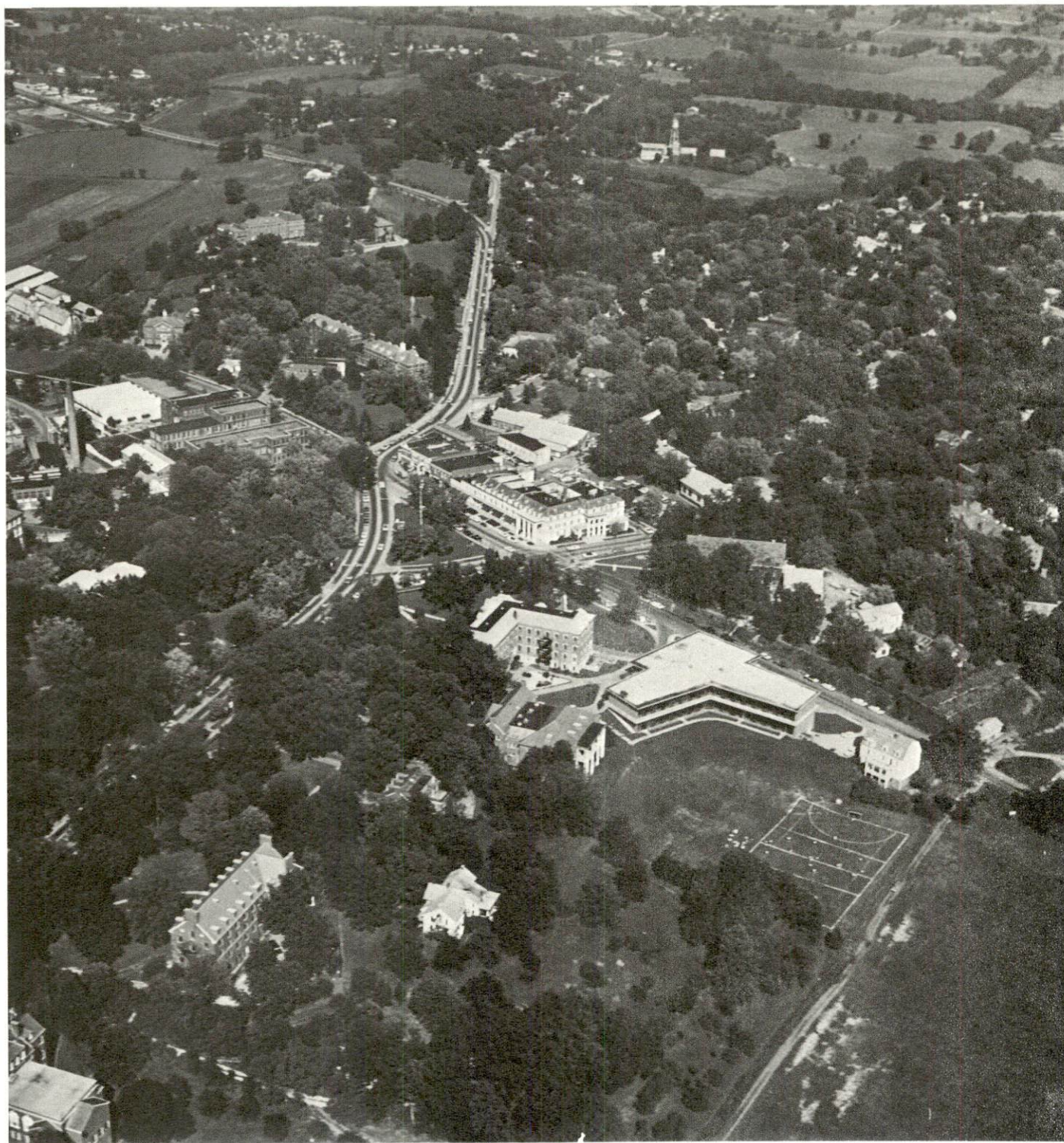
MODEL OF NEW \$2.4 MILLION CITY SCHOOL

Vocational Schools

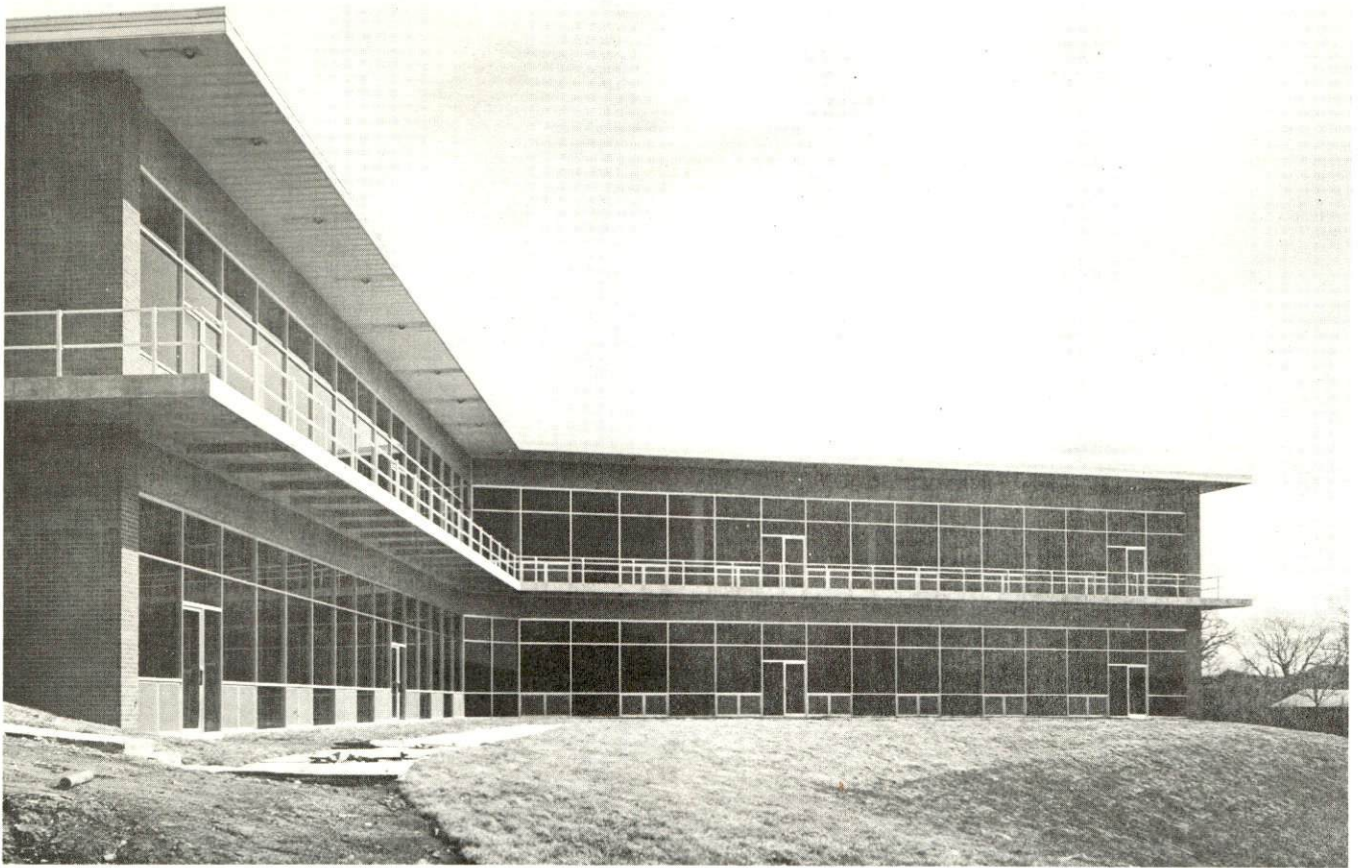
	<u>Nearest Area School</u>	<u>Nearest Extension Center</u>
	Central Kentucky Area Vocational School	Madison County Extension Center
Location	Lexington	Richmond
Miles Distant	40	13
Curriculum	Accounting Jr. Management General Clerical Distributive Education Secretarial-Steno Practical Nursing Electronics (Communications) Technical Drafting Auto Body Repair Auto Mechanics Commercial Foods Cosmetology Drafting Electricity Machine Shop Office Machines Repair Printing Radio and TV Repair Sheet Metal Tool and Die Making Welding	General Clerical Secretarial-Steno Auto Mechanics Drafting Machine Shop Welding

Colleges and Universities

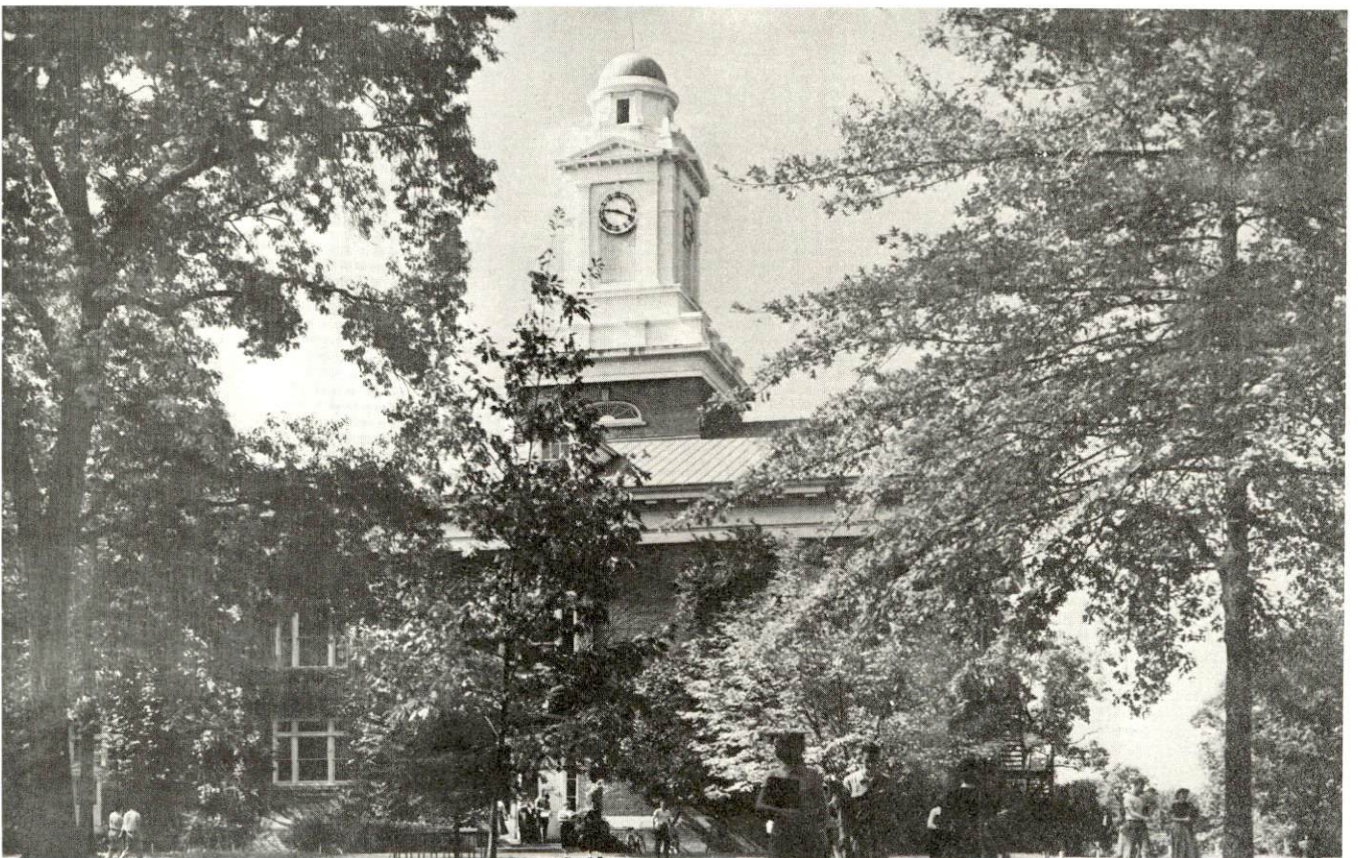
<u>Name</u>	<u>Area - Within 50 Miles</u>		<u>Highest Degree Conferred</u>
	<u>Location</u>	<u>Enrollment</u>	
Berea College	Berea	1,448	Baccalaureate
Asbury College	Wilmore	1,091	Baccalaureate
Centre College	Danville	717	Baccalaureate
Eastern Kentucky University	Richmond	10,170	Masters
Transylvania Univeristy	Lexington	775	Masters
University of Kentucky	Lexington	19,258	Ph. D., M.D., D.M.D., J.D.
Somerset Community College	Somerset	682	Associate
Southeastern Christian Junior College	Winchester	340	Associate
Sue Bennett Junior College	London	181	Associate



AERIAL VIEW OF BEREA COLLEGE CAMPUS
AND EAST BEREA BUSINESS DISTRICT ON U.S. 25



BEREA COLLEGE ALUMNI MEMORIAL BUILDING



BEREA COLLEGE'S PHELPS STOKES CHAPEL

TRANSPORTATION

Rail

Line serving Berea - Louisville & Nashville Railroad

Services - Freight, siding, switching, Piggyback and REA Express service available at Richmond, 13 miles distant.

RAILWAY TRANSIT TIME FROM BEREA, KENTUCKY, TO: 10/

City	No. of Days		City	No. of Days	
	CL			CL	
Atlanta, Ga.	2		Los Angeles, Calif.	6	
Birmingham, Ala.	3		Louisville, Ky.	2	
Chicago, Ill.	4		Nashville, Tenn.	3	
Cincinnati, Ohio	2		New Orleans, La.	5	
Cleveland, Ohio	4		New York, N. Y.	5	
Detroit, Mich.	5		Pittsburgh, Pa.	4	
Knoxville, Tenn.	2		St. Louis, Mo.	3	

Truck Service

Company

Home Office

Bronaugh Motor Express, Inc.	Lexington, Kentucky
Cooper-Jarrett, Inc.	Orange, New Jersey
Consolidated Freightways Corp.	Menlo Park, California
McLean Trucking Company	Winston-Salem, North Carolina
Wilson Freight Company	Cincinnati, Ohio
United Parcel Service	Louisville, Kentucky

HIGHWAY MILES AND TRUCK TRANSIT TIME IN DAYS FROM BEREA, KENTUCKY, TO SELECTED MARKET CENTERS

City	Highway Miles	Delivery Time <u>11/</u>		City	Highway Miles	Delivery Time	
		LTL	TL			LTL	TL
Atlanta, Ga.	346	2-3	1	Los Angeles, Calif.	2,228	7-10	4-6
Birmingham, Ala.	409	2-3	1	Louisville, Ky.	120	1	1
Chicago, Ill.	419	3	1	Nashville, Tenn.	264	2	1
Cincinnati, Ohio	120	1	1	New Orleans, La.	760	3-4	2
Cleveland, Ohio	370	3	1-2	New York, N. Y.	804	4-6	2
Detroit, Mich.	391	3	1	Pittsburgh, Pa.	442	2-3	1-2
Knoxville, Tenn.	152	2	1	St. Louis, Mo.	385	3	1

Air

	<u>Local</u>	<u>Nearest Commercial</u>
	Lackey Airport	Blue Grass Field
Location:	5 miles north of Berea	Lexington, 40 miles distant
Runways:	1 turf	3 paved
Length:	2,450 feet	6,500 feet, 3,500 feet, 3,500 feet
Traffic		
Control:	Wind sock, wind tee	Tower, approach and ground systems, ILS system
Lighting:	None	Approach lighting, beacon, runways and obstructions lighted
Services:	80 octane; tie down	Eastern, Delta, Piedmont, Allegheny, Airlines; 80, 100, 145 octane; jet fuel; major A & E repairs; storage; restaurant; Weather Bureau; flight instruction; charter service; taxi; U-Drive-It rental service

Bus

Greyhound Bus Lines

Taxi

24-hour service

Rental Services

Complete car, truck, and trailer rental services available at Richmond, 13 miles distant

POWER AND FUEL

Electricity

Company serving Berea - Berea College Electric Utility

Source of power - Kentucky Utilities Company

Total generating capacity - 1,215,000 KW

Industrial rates furnished by - Utilities Administrator, Berea College
Electric Utility, Berea College, Berea, Kentucky

Company serving Berea - Kentucky Utilities Company

Source of power - Kentucky Utilities Company

Total generating capacity - 1,215,000 KW

Industrial rates furnished by - Kentucky Utilities Company, Industrial
Development Department, Lexington, Kentucky

Company serving Madison County - Blue Grass RECC, Clark RECC

Source of power - East Kentucky Power Cooperative

Total generating capacity - 548,000 KW

Industrial rates furnished by - Blue Grass RECC, P. O. Box 188,
Nicholasville, Kentucky; Clark RECC, P. O. Box 748, Route 15,
Winchester, Kentucky

Natural Gas

Company serving Berea - Delta Natural Gas Company

Source of supply - Tennessee Gas Pipeline Company

Size of transmission mains - 30 inches (supplier); 4 inches (distributor)

Distribution mains - 4, 3, 2, and 1 inches

Distribution pressure - Average 10 psi

Btu content - 1030

Specific gravity - .60

Rates:

First	1,000 cubic feet	\$2.4147 (Minimum)
Next	1,000 cubic feet	1.3647
Next	3,000 cubic feet	.9347 per M cubic feet
Next	5,000 cubic feet	.8447 per M cubic feet
Next	10,000 cubic feet	.7947 per M cubic feet
All over	20,000 cubic feet	.7647 per M cubic feet

WATER AND SEWERAGE

Water

Company serving Berea - Berea College Water Works

Source - Lake impoundment

Treatment plant capacity - 1,080,000 gpd

Average daily consumption - 848,000 gallons

Peak daily consumption - 980,000 gallons

Type treatment - Upflow clarifier, sand filters

Storage capacity - 1,045,000 gallons

Size mains - 12, 10, 8, 6, 4, 3, 2 inches

Average pressure - 75 psi

Average temperature - 50° F.

MONTHLY WATER RATES FOR WHOLESALE AND INDUSTRIAL CONSUMERS

First	200 cubic feet	\$2.20 (Minimum)
Next	800 cubic feet	.90 per 100 cubic feet
Next	1,000 cubic feet	.70 per 100 cubic feet
Next	1,000 cubic feet	.60 per 100 cubic feet
Next	2,000 cubic feet	.50 per 100 cubic feet
Over	5,000 cubic feet	.40 per 100 cubic feet

Name of water district - Southern Madison Water District

Area served - Southern portion of Madison County

Date when water district began operating - 1969

Source of supply of treated water - Berea College Water Utility

Amount of water which can be purchased in a 24-hour period - 188,100 gallons

Average amount of water used in a 24-hour period - 81,000 gallons (est.)

Size mains - 8, 6, 4, 3, and 2 inches

Rates:

First	2,000 gallons	\$6.65
Next	1,000 gallons	3.25
Next	3,000 gallons	2.90 per 1,000 gallons
Next	4,000 gallons	2.00 per 1,000 gallons
Next	15,000 gallons	1.75 per 1,000 gallons
Next	25,000 gallons	1.50 per 1,000 gallons
Over	50,000 gallons	1.00 per 1,000 gallons

Surface water sources - Kentucky River

Average discharge - Kentucky River at Lock 10 near Winchester - 5,122 cfs
(62-year unadjusted record, USGS)

Expected ground water yield - 50 to 200 gpm along Kentucky River; 5 to 50
gpm in southcentral portion of county; 5 gpm or less over remainder of
county

Sewerage

Company serving Berea - Berea Sewer Commission

Design capacity - 1,500,000 gpd

Average daily flow - 1,200,000 gallons

Treatment - Filtration, extended aeration

Type treatment - Primary and secondary

Treated effluent discharged into - Silver Creek and Walnut Meadow Creek

Size of sanitary mains - 8, 12, and 14 inches

Size of storm mains - 15 to 42 inches

Rates - (Based on Water Usage)

First	300 cubic feet	\$2.00
Next	700 cubic feet	.37 per 100 cubic feet
Next	3,000 cubic feet	.35 per 100 cubic feet
Next	46,000 cubic feet	.31 per 100 cubic feet
Next	50,000 cubic feet	.28 per 100 cubic feet

If over the above amount is used, the rate changes -

First	100,000 cubic feet	\$.46 per 100 cubic feet
Next	400,000 cubic feet	.40 per 100 cubic feet
Next	500,000 cubic feet	.30 per 100 cubic feet
Over 1,000,000	cubic feet	.27 per 100 cubic feet

LOCAL GOVERNMENT

City

Structure - Mayor - 4-year term; 8 councilmen - 2-year terms

Budget 1972 - General Fund \$502,915

Fees and licenses - Annual occupational license - 1 1/2 percent of gross wages and salaries; net profit - business

County

Structure - County Judge - 4-year term; 8 magistrates - 4-year terms

Budget 1971-72 - General Fund \$262,011; Road Fund \$156,500

Assessed Value of Property, 1971

<u>Classes of Property*</u>	<u>Berea</u>	<u>Madison County</u>
Real Estate	\$16,290,600	\$166,829,615
Tangibles	3,274,905	38,248,357
Public Service	1,838,980	39,271,166 (1970)

Local General Property Tax Rates Per \$100 of Assessed Valuation, 1971 ^{12/}

<u>Taxing Unit**</u>	<u>Berea</u>	<u>Madison County</u>
State	\$.015	\$.015
County	.152	.152
School	.814	.394
City	.050	
Total	\$ 1.031	\$.561

Planning and Zoning

Agency - Berea Planning Commission

Plans completed - Base Map, Existing Land Use Map, Existing Land Use Analysis - Population and Economic, Land Use Plan, Transportation Plan, Subdivision Regulations, Zoning Ordinance, Housing Study, Neighborhood Analysis, Existing Land Use Analysis, Commercial Area Study, Housing Condition Survey, Housing Assistance and Information Study.

Codes adopted - Currently in the process of adopting new code system

Other programs - Public Housing

*Property assessed at 100 percent of fair value

**Manufacturing machinery, raw materials inventories and goods in process inventories are not subject to local tax. State rate is only \$.15 per \$100.

Safety

<u>Police</u>	<u>Berea</u>	<u>Madison County</u>
Total staff	9	4
Patrol cars	3 (radio-equipped)	5 (2 are radio-equipped)
Other equipment	Standard	Standard

Fire

American Insurance Association Fire Rating	6
Full-time staff	11
Volunteers	23
Equipment:	
750 gpm pumpers	3
1160 gpm pumper - brush fire truck	1

Rescue Service

Berea Volunteer Fire Rescue Squad
Number of volunteers - 23
Equipment - 2 fully equipped rescue trucks
Personnel training - Auto rescue, metal cutting, first aid

Sanitation

	<u>Berea</u>	<u>Madison County</u>
Type service	municipal	private
Cost		
residential	\$2.50 monthly	contract
business	per volume	contract
Collection frequency:		
residential	weekly	when desired
business	twice weekly	when desired
Trash pickup	as requested	when desired
Disposal method	land fill	land fill

HEALTH

Hospitals

<u>General Hospital</u>	<u>Location</u>	<u>Beds</u>
Berea Hospital, Inc.	Berea	73

General hospital facilities - Operating room, diagnostic X-ray, laboratory, obstetrics ward, delivery room, emergency room, outpatient clinic, physiotherapy, dietary kitchen; extended care facility - 37 beds

Medical staff - 23 doctors, 3 dentists, 1 dietitian, 1 operating room technician, 30 registered nurses, 12 licensed practical nurses, 25 aides, 1 orderly, 1 licensed physical therapist, 2 physical therapy aides, 1 part-time pharmacist

Nursing Homes

	<u>Number</u>	<u>Beds</u>
Extended care homes	2	75

Public Health

Facility - Madison County Health Department

Staff - 4 nurses, 1 nursing supervisor, 1 health officer, 1 clerk,
3 sanitarians

Budget 1971-72 - \$99,783



BEREA HOSPITAL, INC.

OTHER LOCAL FACILITIES

Communications

Telephone - General Telephone Company of Kentucky
Services - Standard

Telegraph - Western Union Telegraph Company
Services - Standard

Postal - U. S. Post Office
Class - First
Mail received - Twice daily
Mail dispatched - Twice daily

Newspapers - The Berea Citizen
Weekly and circulation - 3,800
Other papers received from Richmond, Lexington, and Louisville,
Kentucky; Cincinnati, Ohio

Radio - WKXO-AM
Stations received from - Richmond, Renfro Valley, Lexington, and
Louisville, Kentucky; Cincinnati, Ohio

Television -
Cable service
Reception from - Lexington and Louisville, Kentucky; Cincinnati, Ohio
Kentucky Educational Television - Channel 46, Lexington-Richmond
transmitter

Library Services

Public library - Hutchins Library located on Berea College campus
Size collection - 180,000 volumes
Circulation, 1971 - 43,000
Special collections - Berea archives, rare books, Shedd Memorial
Lincoln collection, Weatherford-Hammond Appalachian collection
Services - Microfilm, magazines, newspapers, records, copy machine

Religious Institutions

Number of churches - 14
Denominations - Baptist, Catholic, Christian, Church of God, Church of
Christ, Nazarene, Penecostal, Union, United Methodist

Financial Institutions

<u>Bank</u>	<u>Statement as of December 31, 1971</u>	
	<u>Assets</u>	<u>Deposits</u>
Berea National Bank	\$10,864,960	\$10,125,031
Peoples Bank & Trust Company	6,832,955	5,932,709

Hotels and Motels

Total number - 8
Units - 422

Clubs and Organizations

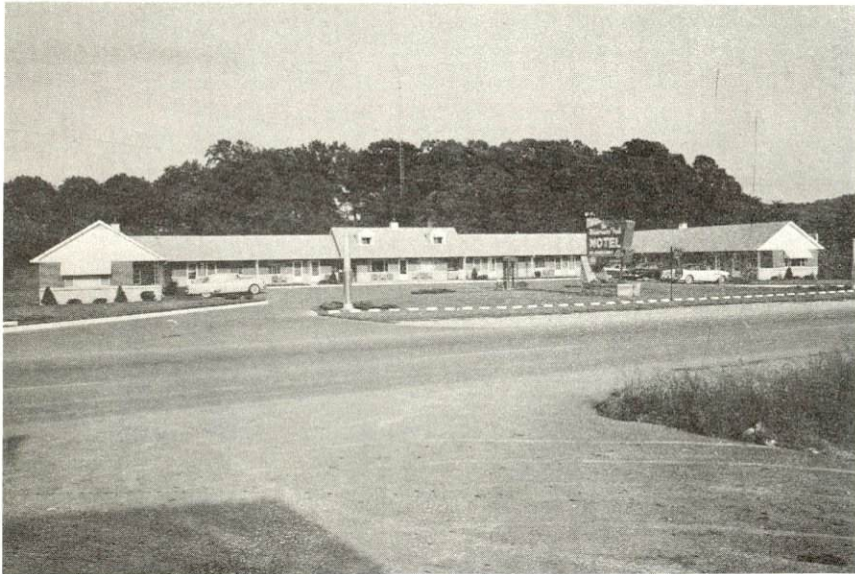
Business and Civic - Chamber of Commerce, Kiwanis, Rotary, Lions, Jaycees, Berea Community Schools Boosters Club, P. T. A., Berea Industrial Development Corporation

Fraternal - American Legion, Masons, VFW

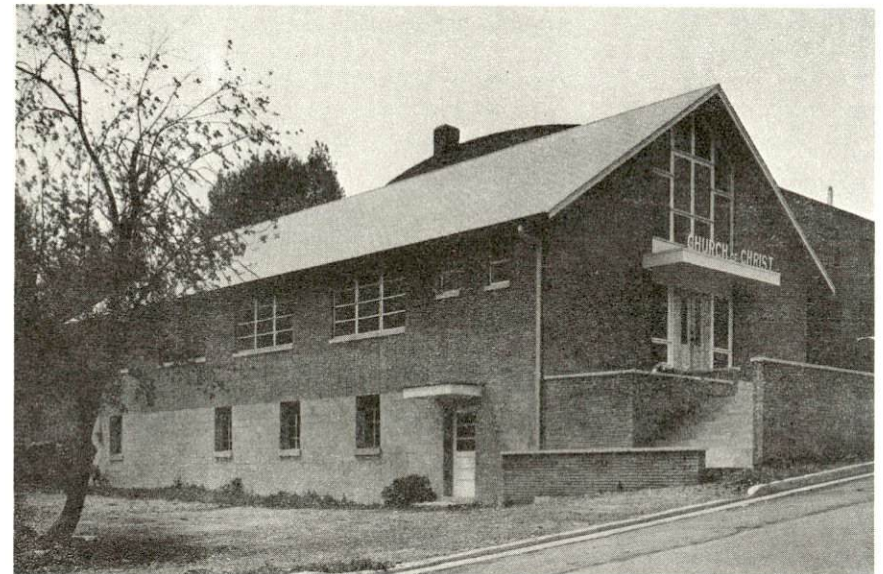
Women's - Woman's Club, Beacon Light, Younger Woman's Club, Eastern Star, Business and Professional Women's Club, Lioness Club, League of Women Voters, Berean Kiwanians, DAR, Progress Club, American Association of University Women

Youth - Boy Scouts, Girl Scouts, FFA, FHA, 4-H Club, Brownies, Cub Scouts, Little League, Teen-Age Club, Pony League

Other - American Association of Retired People



WILDERNESS TRAIL MOTEL



CHURCH OF CHRIST



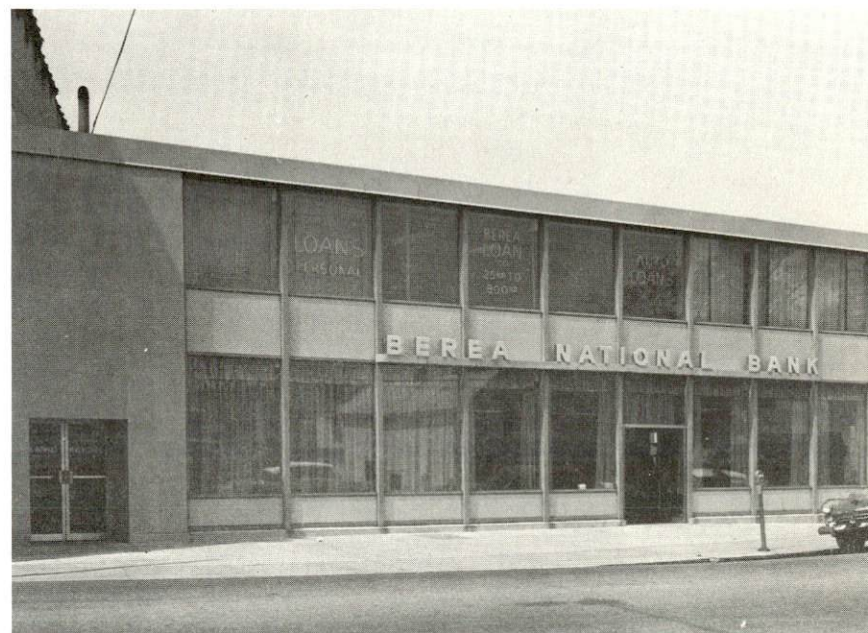
BOONE TAVERN HOTEL AND GIFT SHOP



CATHOLIC CHURCH



BEREA GOLF COURSE



BEREA NATIONAL BANK



BEREA SWIMMING POOL



SILVER CREEK ELEMENTARY SCHOOL

RECREATION

Local

Public Recreation Facilities

Supervised program - Supervised park program, Little League Baseball,
Junior League Football

Park - 1

Playground - 1

Swimming pool - 1

Golf course - 1

Tennis courts - 20

Baseball diamonds - 4

Football field - 1

Softball diamond - 1

Private Recreation Facilities

Swimming pool - 1

Movie theaters - 2 indoor, 1 drive-in

Skating rink - 1

Tourist Attractions

Boone Tavern, Appalachian Museum, Wallace Nutting Museum, Churchill
Weavers, Log House (local handicrafts), Renfro Valley

Cultural Events

Artists' and Craftsmen's Fair, Summer Theatre, Mountain Folk Festival,
Children's Theatre (July)

Area (Within 45 miles)

Fort Boonesborough State Park

William Whitley House State Shrine

Herrington Lake

Daniel Boone National Forest

Richmond - Art exhibits, drama productions, concerts, lectures and sports
at Eastern Kentucky University

AGRICULTURE - NATURAL RESOURCES - CLIMATE

Agriculture 13/

	<u>Madison County</u>	<u>Labor Market Area</u>
Total land area (acres)	285,440	1,475,840
Percent of area in farm land	85.2	76.3
Number of farms	2,006	9,505
Average size of farms (acres)	121.2	118.5
1964 value of all farm products	\$11,058,889	\$60,705,452
Value per farm	5,513	6,387
Total crop sales	5,961,739	29,138,777
Total livestock & livestock products	5,093,003	31,541,957
1969 agricultural production included:		
Burley tobacco (lbs.)	10,734,000	51,664,000
Corn (bu.)	702,000	2,808,000
Cattle and calves (number)	64,300	256,700
Hogs and pigs (number)	12,700	58,700
Milk production, 1968 (lbs.)	12,125,000	90,430,000

Natural Resources

Principal mineral resources	Limestone, fire clay
Other mineral resources	Sand and gravel
Acres of commercial forest land	49,000
Most abundant tree species	Red oak, white oak, yellow pine, hickory, ash, hard maple, yellow poplar

Climate 14/

	<u>Madison County</u>
Temperature	
Annual mean (30-year record)	55.6 degrees
Average annual 1970	54.5 degrees
Record highest, July, 1966* (7-year record)	98.0 degrees
Record lowest, January, 1966* (7-year record)	-10.0 degrees
Seasonal heating degree-days (30-year record)	4,683
Precipitation	
Mean annual total (30-year record)	44.73 inches
Mean annual snow and sleet (26-year record)	16.40 inches
Total precipitation 1970	47.50 inches
Mean number days precipitation, (.01 inch or more) (26-year record)	129
Average number days thunderstorms (26-year record)	47
Prevailing winds (17-year record)	South

*Also on earlier dates, months, or years.

HISTORY

Madison County was the seventh county formed in Kentucky. Dating from 1785, it was taken from Lincoln County and later gave land to help form Garrard, Nicholas, Clay, Estill, Rockcastle, and Jackson Counties. It is the largest of the Bluegrass counties, although a portion of it lies in the Knobs, and it has 446 square miles of territory.

Berea owes its beginning to the reform movements of the last century. Reverend John G. Fee, an ardent opponent of slavery, attracted the attention of Cassius M. Clay, a leader in the Movement for gradual emancipation. Mr. Clay encouraged Reverend Fee to establish a settlement on the edge of the mountains where free speech could be maintained. The settlement was established in 1853 and in 1855 the community built a one-room district school with Reverend Fee as a trustee. Under his direction, two pre-ministerial Oberlin College students taught this school.

In 1858 the Reverend J. A. R. Rogers was added to the preaching mission and because of his great skill as a teacher, his subscription school at once became very popular. Reverend Fee urged the establishment of a higher school. The first articles of incorporation of Berea College were adopted in July 1859, but because of interruptions resulting from the Civil War, they were not recorded at the county seat until April 5, 1866. From these early efforts grew the college and town of Berea. The name "Berea" was taken from the Bible. The formal government of the City of Berea originated in the year 1890 as a result of an act of the General Assembly to incorporate it.

Madison County's early history shows many peaceful, prosperous days. By 1870, the great business of the county had gradually settled into stock raising, while the production of hemp, which was once a leading crop, had almost ceased. In 1870, Madison was the second largest cattle producing county in the state, the fifth in hogs, and the fourth in corn production.

While agriculture remains important, the present-day Madison County is emerging as an industrial area and educational center.

Madison County's population has increased steadily from a total of 15,727 in 1850 to a high of 42,730 in 1970, due to continued industrial growth.

Since 1959 manufacturing employment in Madison County increased by 111 percent to 2,830, and in 1970, 13,900 of the county's 15,600 workers were employed in nonagricultural jobs. The county's major industrial products are machinery and metal products and rubber products. Largest among Berea's industrial plants are: Parker Seal Company, which makes rubber "O" rings; Gibson Greeting Card Company which makes candles; and Dresser Industries, Valve and Instrument Division, which manufactures pressure gauges. Berea College Industries, which employs students of Berea College, produces furniture, wooden games, and fireside brooms.

SOURCES OF INFORMATION

- 1/ U. S. Department of Commerce, Bureau of the Census, Census of Population, 1950, 1960, 1970.
- 2/ Kentucky Department of Economic Security, Division of Research and Statistics.
- 3/ Kentucky Department of Economic Security, Number of Workers in Manufacturing Industries Covered by Kentucky Unemployment Insurance Law Classified by Industry and County, September 1961, September 1971.
- 4/ Kentucky Department of Commerce, 1972 Kentucky Directory of Manufacturers.
- 5/ Kentucky Department of Economic Security, Division of Employment Services, Winchester Office.
- 6/ Kentucky Department of Economic Security, Kentucky Labor Supply Estimates by County, January 1971.
- 7/ Kentucky Department of Commerce, Future Labor Supply by 1978.
- 8/ University of Kentucky, Office of Development Services and Business Research, Total Personal Income for Kentucky.
- 9/ University of Kentucky, Office of Development Services and Business Research, Per Capita Income in Kentucky.
- 10/ Louisville & Nashville Railroad, Louisville, Kentucky.
- 11/ McLean Trucking Company, Winston-Salem, North Carolina.
- 12/ Kentucky Department of Revenue, Kentucky Property Tax Rates, 1971.
- 13/ U. S. Department of Commerce, Bureau of the Census, Census of Agriculture, 1964. U. S. Department of Agriculture and Kentucky Department of Agriculture, Kentucky Agricultural Statistics, 1970.
- 14/ U. S. Department of Commerce, Environmental Science Services Administration, Climatological Data, 1970.

All other information was obtained from governmental offices, local businesses and organizations.