

1987

## Industrial Resources: Marshall County

Kentucky Library Research Collections  
Western Kentucky University, [spcol@wku.edu](mailto:spcol@wku.edu)

Follow this and additional works at: [https://digitalcommons.wku.edu/marshall\\_cty](https://digitalcommons.wku.edu/marshall_cty)



Part of the [Business Administration, Management, and Operations Commons](#), [Growth and Development Commons](#), and the [Infrastructure Commons](#)

---

### Recommended Citation

Kentucky Library Research Collections, "Industrial Resources: Marshall County" (1987). *Marshall County*. Paper 6.  
[https://digitalcommons.wku.edu/marshall\\_cty/6](https://digitalcommons.wku.edu/marshall_cty/6)

This Report is brought to you for free and open access by TopSCHOLAR®. It has been accepted for inclusion in Marshall County by an authorized administrator of TopSCHOLAR®. For more information, please contact [topscholar@wku.edu](mailto:topscholar@wku.edu).



**RESOURCES FOR ECONOMIC DEVELOPMENT**

---

# **Marshall County**



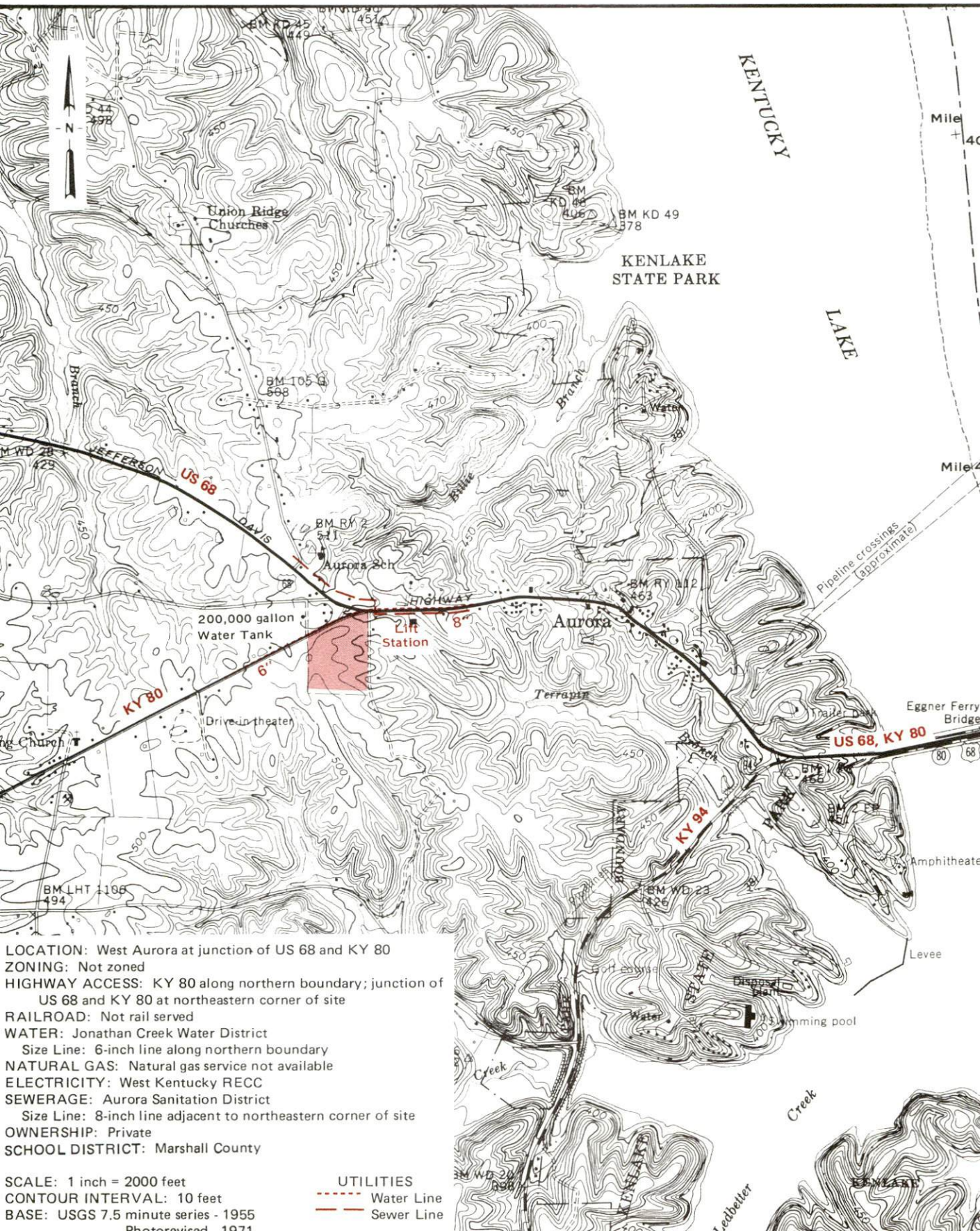
---

**KENTUCKY**  
The business environment is right.



# AURORA, KENTUCKY --- Site 187 --- 20 Acres

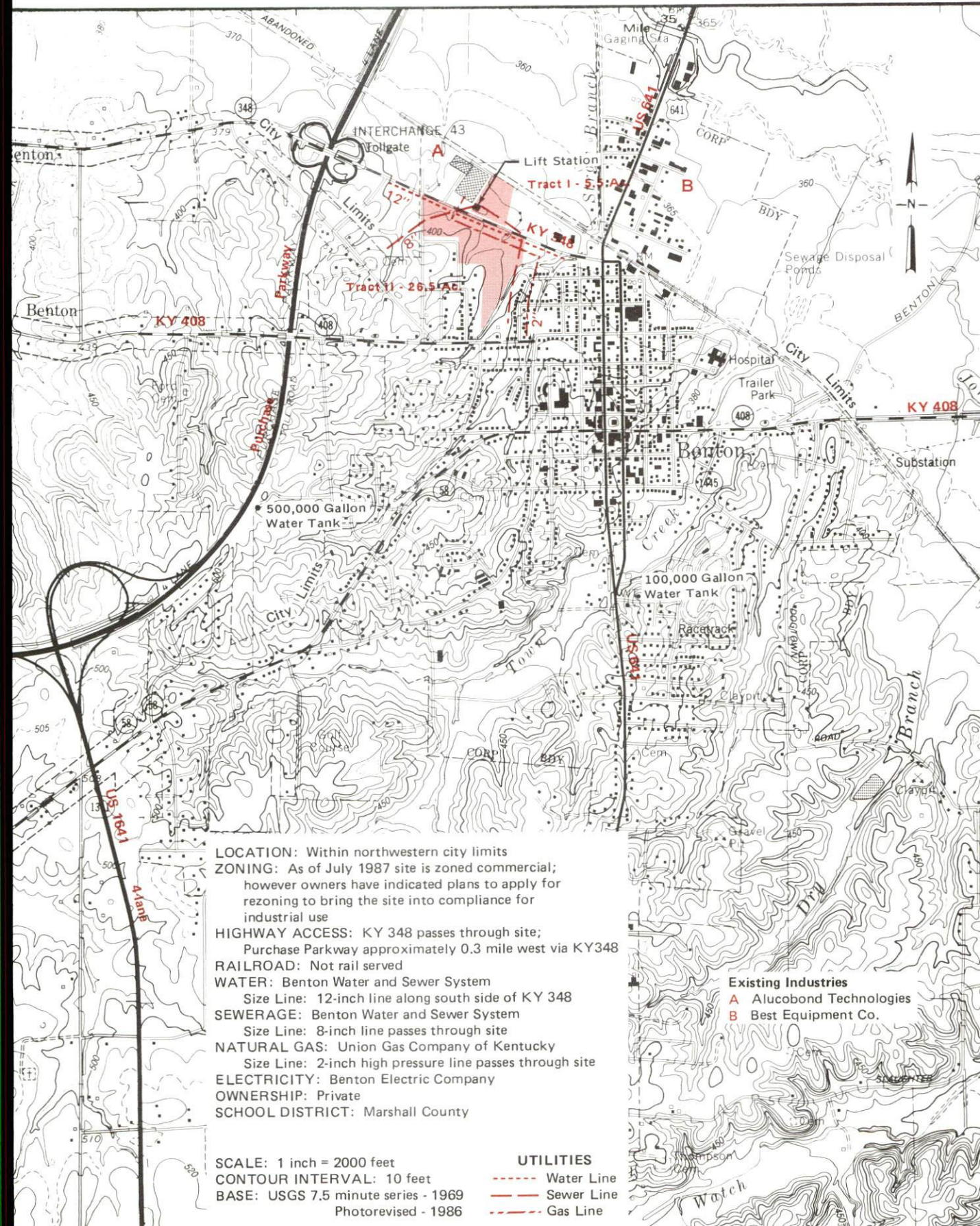
For more information contact the Kentucky Department of Economic Development, Industrial Development & Marketing Division, Capital Plaza Tower, Frankfort, Kentucky 40601 (502-564-7140).





# BENTON, KENTUCKY --- Site 187 --- 32 Acres

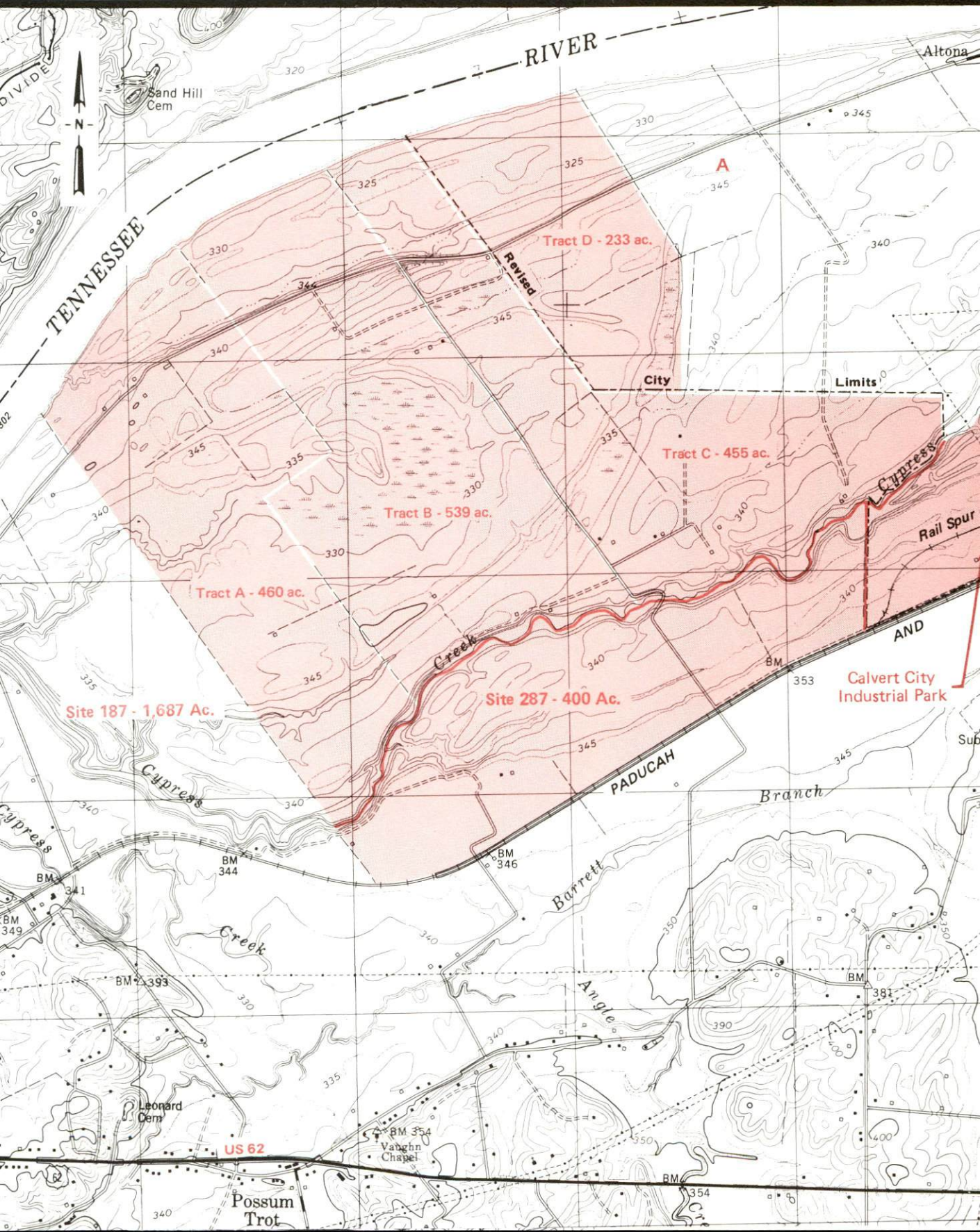
For more information contact the Kentucky Department of Economic Development, Industrial Development & Marketing Division, Capital Plaza Tower, Frankfort, Kentucky 40601 (502-564-7140).





# CALVERT CITY, KENTUCKY --- Industrial Sites --- 1987

For more information contact the Kentucky Department of Economic Development, Industrial Development & Marketing Division, Capital Plaza Tower, Frankfort, Kentucky 40601 (502-564-7140).





**RESOURCES FOR ECONOMIC DEVELOPMENT  
MARSHALL COUNTY, KENTUCKY**

Prepared by  
The Kentucky Department of Economic Development  
Division of Research and Planning  
in cooperation with  
The Marshall County Chamber of Commerce

1987



## TABLE OF CONTENTS

<u>Chapter</u>	<u>Page</u>
INDUSTRIAL SITES . . . . .	i
MARSHALL COUNTY, KENTUCKY - A RESOURCE PROFILE . . . . .	1
THE LABOR MARKET AREA . . . . .	3
Population . . . . .	3
Population Projections . . . . .	3
Labor Force Characteristics of Residents, 1986 . . . . .	4
Selected Components of Nonagricultural Employment, by Place of Work, 1985 . . . . .	4
Per Capita Personal Income . . . . .	5
Estimated Male Labor Supply . . . . .	6
Estimated Female Labor Supply . . . . .	6
Average Weekly Wages by Industry, by Place of Work, 1985 . . . . .	7
EXISTING INDUSTRY . . . . .	9
Marshall County Manufacturing Firms, Their Products and Employment . . . . .	9
Labor Organizations in Manufacturing Firms . . . . .	12
Selected Industrial Services . . . . .	13
TRANSPORTATION . . . . .	14
Rail . . . . .	14
Highways . . . . .	14
Truck Service . . . . .	15
Air . . . . .	16
Air Express Service . . . . .	16
Water . . . . .	17
POWER AND FUEL . . . . .	18
Electricity . . . . .	18
Natural Gas . . . . .	19
Other Fuels . . . . .	20
WATER AND SEWERAGE . . . . .	21
Public Water Supply . . . . .	21
Raw Water . . . . .	26
Sewerage . . . . .	26
CLIMATE . . . . .	20

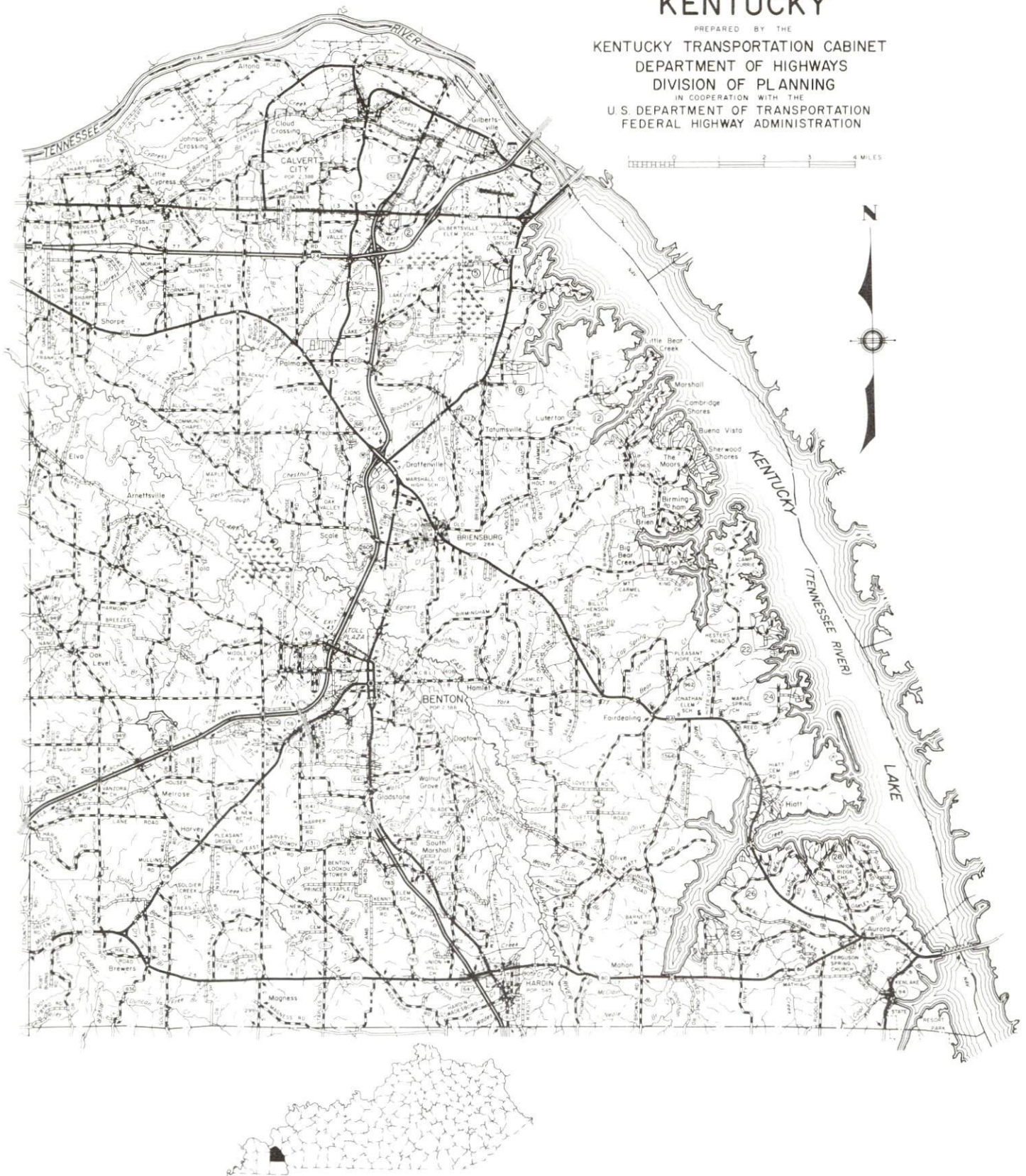


<u>Chapter</u>	<u>Page</u>
LOCAL GOVERNMENT . . . . .	30
Structure . . . . .	30
Planning and Zoning . . . . .	30
Local Fees and Licenses . . . . .	30
State and Local Property Taxes . . . . .	31
Combined State and Local Rates Per \$100 Valuation, 1986 . . . . .	31
Safety . . . . .	33
Police . . . . .	33
Fire . . . . .	33
Rescue Service . . . . .	33
Refuse Collection and Disposal . . . . .	33
EDUCATION . . . . .	34
Public Schools . . . . .	34
Nonpublic Schools . . . . .	34
Area Colleges and Universities . . . . .	35
Vocational Schools . . . . .	36
HEALTH . . . . .	38
Local Medical Personnel . . . . .	38
Hospitals . . . . .	38
Other Medical Facilities . . . . .	38
Ambulance Service . . . . .	38
OTHER LOCAL FACILITIES . . . . .	39
Communications . . . . .	39
Library Services . . . . .	39
Religious Institutions . . . . .	39
Financial Institutions . . . . .	40
Hotels and Motels . . . . .	40
RECREATION . . . . .	41
COMMUNITY IMPROVEMENTS . . . . .	43



1986 EDITION  
GENERAL HIGHWAY MAP  
**MARSHALL COUNTY**  
**KENTUCKY**

PREPARED BY THE  
KENTUCKY TRANSPORTATION CABINET  
DEPARTMENT OF HIGHWAYS  
DIVISION OF PLANNING  
IN COOPERATION WITH THE  
U.S. DEPARTMENT OF TRANSPORTATION  
FEDERAL HIGHWAY ADMINISTRATION

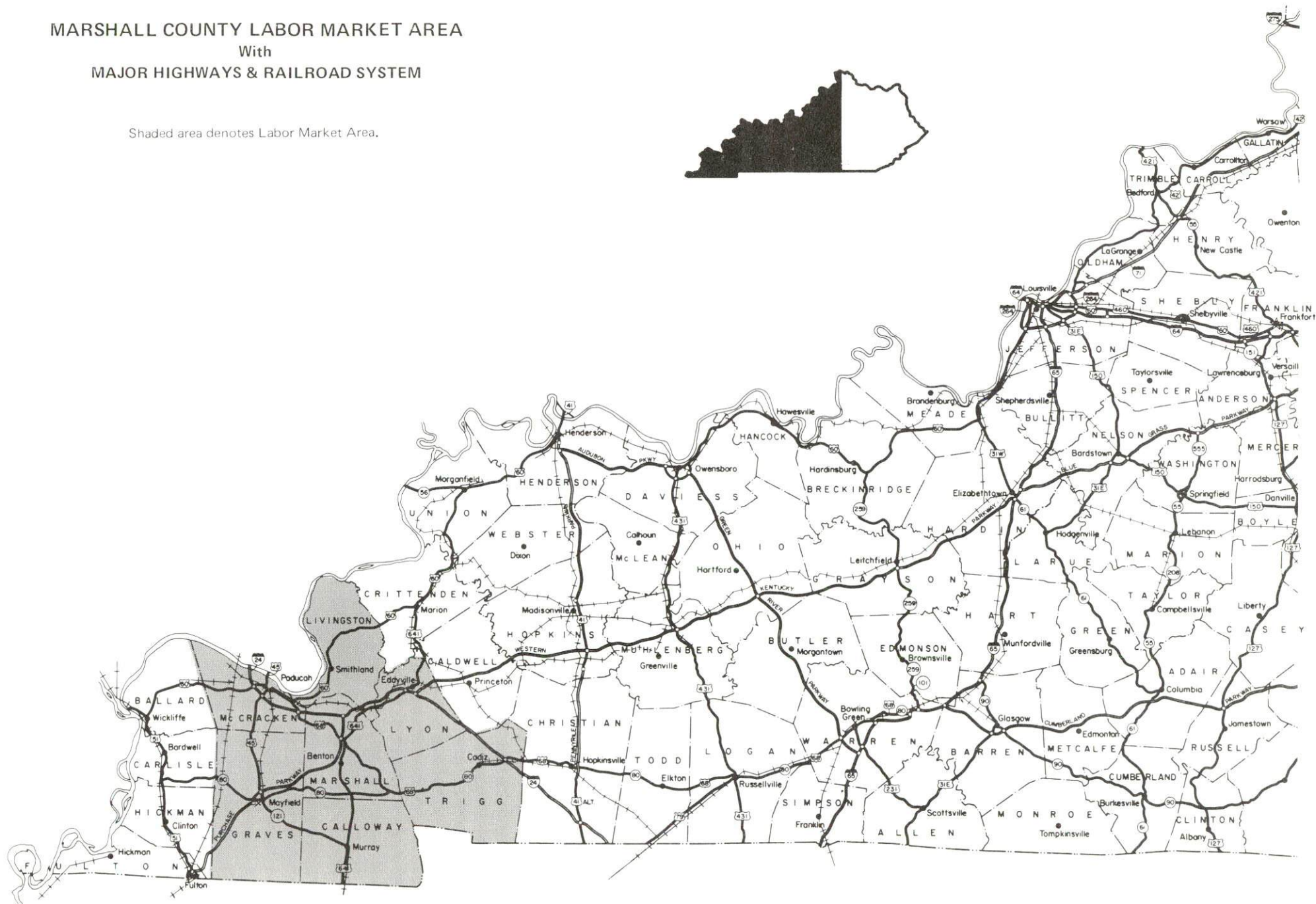




# MARSHALL COUNTY LABOR MARKET AREA

With  
MAJOR HIGHWAYS & RAILROAD SYSTEM

Shaded area denotes Labor Market Area.





## MARSHALL COUNTY, KENTUCKY - A RESOURCE PROFILE

Marshall County is located in the Jackson Purchase Region of western Kentucky. The Tennessee River flows along the northern boundary of the county and Kentucky Lake forms the eastern boundary. The county covers a total land area of 304 square miles and the topography is composed of a gently rolling plain. Benton, the county seat of Marshall County, is located 130 miles northwest of Nashville, Tennessee; 198 miles southeast of St. Louis, Missouri; and 210 miles southwest of Louisville, Kentucky. Calvert City is 12 miles north of Benton and Hardin is 7 miles south of Benton.

Marshall County had a 1985 population of 25,917 with 3,662 persons residing in Benton, 2,383 in Calvert City, and 618 in Hardin.

**The Economic Framework** - The total number of Marshall County residents employed in 1986 averaged 14,178. In 1985, manufacturing firms in the county reported 2,657 employees; wholesale and retail trade provided 1,266 jobs; 918 people were employed in service occupations; state and local government accounted for 1,128 employees; and contract construction firms provided 688 jobs.

**Labor Supply** - There is a current estimated labor supply of 9,717 men and 15,084 women available for industrial jobs in the labor market area. In addition, from 1987 through 1991, 6,326 young men and 6,056 young women in the area will become 18 years of age and potentially available for industrial jobs.

**Transportation** - Railroad service is available in Calvert City and Hardin. The Paducah and Louisville Railway serves Calvert City. Hardin is served by the J and J Railroad, a locally owned company which connects with the Kentucky West Tennessee Railway, 11 miles to the south in Murray, Kentucky. Major highways serving Marshall County are Interstate 24, the multilane Purchase Parkway, plus U.S. Highways 62, 68, and 641. Thirteen trucking companies provide interstate and/or intrastate service to Marshall County. The nearest commercial airline service is available at Barkley Field near Paducah, 34 miles northwest of Benton. The Kentucky Dam Village State Park Airport, 12 miles north of Benton, has a 4,000-foot paved runway to accommodate small aircraft. Two public riverports are located within 26 miles of Benton, the Port of Lyon County and the Paducah-McCracken County Riverport.

**Power and Fuel** - Electric power is distributed in Benton by the Benton Electric System, the distributor in Calvert City is Jackson Purchase ECC and the distributor in Hardin is West Kentucky RECC. Tennessee Valley Authority supplies Benton Electric System and West Kentucky RECC and Big Rivers Electric Corporation supplies Jackson Purchase ECC. Natural gas is distributed in Benton by Union Gas Company of Kentucky, in Calvert City by Western Kentucky Gas Company and in Hardin by Hardin Natural Gas System. All three natural gas distributors are supplied by Texas Gas Transmission Company. Three distributors of propane are within 21 miles of Benton. Three distributors of distillate fuel oil are located in Benton.



**Education** - The Marshall County School System, which is accredited by the Southern Association of Colleges and Schools, serves over 4,400 students in the county.

Seven institutions of higher learning, including three universities, one senior college, and three community colleges, are located within 75 miles of Benton.

Vocational training is available locally at the Marshall County Area Vocational Education Center in Benton and at the West Kentucky State Vocational-Technical School, 28 miles northwest of Benton in Paducah.



## LABOR MARKET STATISTICS

The Marshall County Labor Market Area includes Marshall County and the adjoining Kentucky counties of Calloway, Graves, Livingston, Lyon, McCracken and Trigg.

### POPULATION

Area	1985*	1980	1970	Percent Nonwhite
				1980
Benton	3,662	3,700	3,652	0.2
Calvert City	2,383	2,388	2,104	0.1
Hardin	618	545	522	0.4
Labor Market Area	173,768	176,120	159,071	-
Marshall County	25,859	25,637	20,381	0.2
Calloway County	28,922	30,031	27,692	3.6
Graves County	32,934	34,049	30,939	4.7
Livingston County	9,098	9,219	7,596	0.4
Lyon County	6,437	6,490	5,562	5.4
McCracken County	60,813	61,310	58,281	10.5
Trigg County	9,705	9,384	8,620	12.7

\* Population estimates. City estimates are for 1984.

Note: The 1980 city counts of population by race are provisional.

Sources: U.S. Department of Commerce, Bureau of the Census, 1980 Census of Population and Housing, March 1981; 1980 Census of Population, Number of Inhabitants. University of Louisville, Urban Studies Center, Population Unit, October 1985; University of Louisville, Urban Studies Center, State Data Center, Provisional Estimates of the Population of Counties and Components of Change, July 1, 1985.

### POPULATION PROJECTIONS

Area	1990	1995	2000	2010
Labor Market Area	180,502	183,832	185,571	186,960
Marshall County	26,925	27,630	28,004	28,295
Calloway County	30,423	30,338	30,108	29,367
Graves County	34,184	35,030	35,536	36,217
Livingston County	9,308	9,425	9,472	9,436
Lyon County	6,606	6,729	6,768	6,771
McCracken County	63,541	65,055	66,037	67,334
Trigg County	9,515	9,625	9,646	9,540

Source: University of Louisville, Urban Studies Center, Population Research Unit, How Many Kentuckians: Population Forecasts, 1980-2020, the 1986 Edition, Spring 1986.



LABOR FORCE CHARACTERISTICS OF RESIDENTS, 1986

	<u>Marshall County</u>	<u>Labor Market Area</u>
Civilian Labor Force	11,252	80,466
Employment	14,178	73,003
Unemployment	1,395	7,463
Rate of Unemployment (%)	12.4	9.3

Source: Kentucky Cabinet for Human Resources, Kentucky Labor Force Estimates, Annual Averages, 1986.

SELECTED COMPONENTS OF NONAGRICULTURAL EMPLOYMENT  
BY PLACE OF WORK, 1985

	<u>Marshall County</u>	<u>Labor Market Area</u>
All Industries (total)	7,449	54,011
Manufacturing	2,657	11,811
Wholesale & Retail Trade	1,266	14,854
Services	918	9,776
State/Local Government	1,128	8,822
Contract Construction	688	2,943
Mining & Quarrying	0	86

Note: Excludes domestic workers, railway workers, certain nonprofit corporations, majority of federal government workers, and self-employed workers.  
Source: Kentucky Cabinet for Human Resources, Average Monthly Workers Covered by Kentucky Unemployment Insurance Law, 1985.



PER CAPITA PERSONAL INCOME

<u>Area</u>	<u>1980</u>	<u>1984</u>	<u>Percent Change</u>
Marshall County	\$ 7,444	\$ 9,609	29.1
Labor Market Area Range	\$6,026 - 8,980	\$8,482 - 12,053	-
Kentucky	7,644	10,232	33.9
U.S.	9,494	12,772	34.5

Sources: U.S. Department of Commerce, Bureau of Economic Analysis. Kentucky Economic Information System, June 1986.

ESTIMATED MALE LABOR SUPPLY  
MARSHALL COUNTY LABOR MARKET AREA

Area	Current			Not in Labor Force	Future
	Total Male	Unemployed	Under- employed		Becoming 18 years of age 1987 thru 1991
Labor Market					
Area*	9,717	4,175	4,038	1,504	6,326
Marshall	1,635	757	498	380	929
Calloway	1,572	424	1,148	0	899
Graves	1,856	884	692	280	1,235
Livingston	593	371	222	0	380
Lyon	412	213	199	0	180
McCracken	3,180	1,278	1,113	789	2,366
Trigg	469	248	166	55	337

ESTIMATED FEMALE LABOR SUPPLY  
MARSHALL COUNTY LABOR MARKET AREA

Area	Current			Not in Labor Force	Future
	Total Female	Unemployed	Under- employed		Becoming 18 years of age 1987 thru 1991
Labor Market					
Area*	15,084	3,288	4,822	6,974	6,056
Marshall	3,102	638	683	1,781	889
Calloway	1,434	358	1,076	0	901
Graves	2,852	639	875	1,338	1,139
Livingston	859	168	218	473	336
Lyon	473	57	163	253	179
McCracken	5,596	1,209	1,569	2,818	2,273
Trigg	768	219	238	311	339

\* Additional workers may be drawn from other nearby counties.

Note: Unemployed - persons unemployed and actively seeking work; Underemployed - persons employed but working only 14 to 26 weeks per year; Not in Labor Force - represents the number of persons who would enter the labor force if suitable employment were available (based on the assumption that persons in Kentucky would like to participate in the labor force in the same proportion that they do nationally).

Sources: Kentucky Cabinet for Human Resources, Kentucky Labor Supply Estimates by County, 1986. Kentucky Department of Economic Development, Future Labor Supply Becoming 18 Years of Age, 1987 thru 1991.



AVERAGE WEEKLY WAGES BY INDUSTRY  
BY PLACE OF WORK, 1985

	<u>Marshall County</u>	<u>Calloway County</u>	<u>Graves County</u>	<u>Livingston County</u>
All Industries	\$401.39	\$264.12	\$305.74	\$315.57
Mining & Quarrying	*	*	380.76	*
Contract Construction	483.11	271.20	261.05	548.81
Manufacturing	622.30	326.78	418.21	179.41
Transportation, Communications & Public Utilities	419.49	346.34	433.83	456.48
Wholesale & Retail Trade	180.46	187.01	198.15	141.78
Finance, Insurance & Real Estate	297.74	259.65	285.02	272.11
Services	187.90	225.54	204.24	209.39
State/Local Government	265.17	306.79	306.26	238.99
Other	131.69	222.82	205.59	*

	<u>Lyon County</u>	<u>McCracken County</u>	<u>Trigg County</u>
All Industries	\$262.13	\$300.02	\$256.09
Mining & Quarrying	0	0	*
Contract Construction	394.00	354.55	230.30
Manufacturing	*	407.19	324.70
Transportation, Communications & Public Utilities	194.50	421.91	334.35
Wholesale & Retail Trade	133.42	211.98	158.81
Finance, Insurance & Real Estate	220.22	282.74	283.74
Services	144.15	303.32	157.56
State/Local Government	310.97	318.42	253.46
Other	*	153.35	164.40

\* Not disclosed.

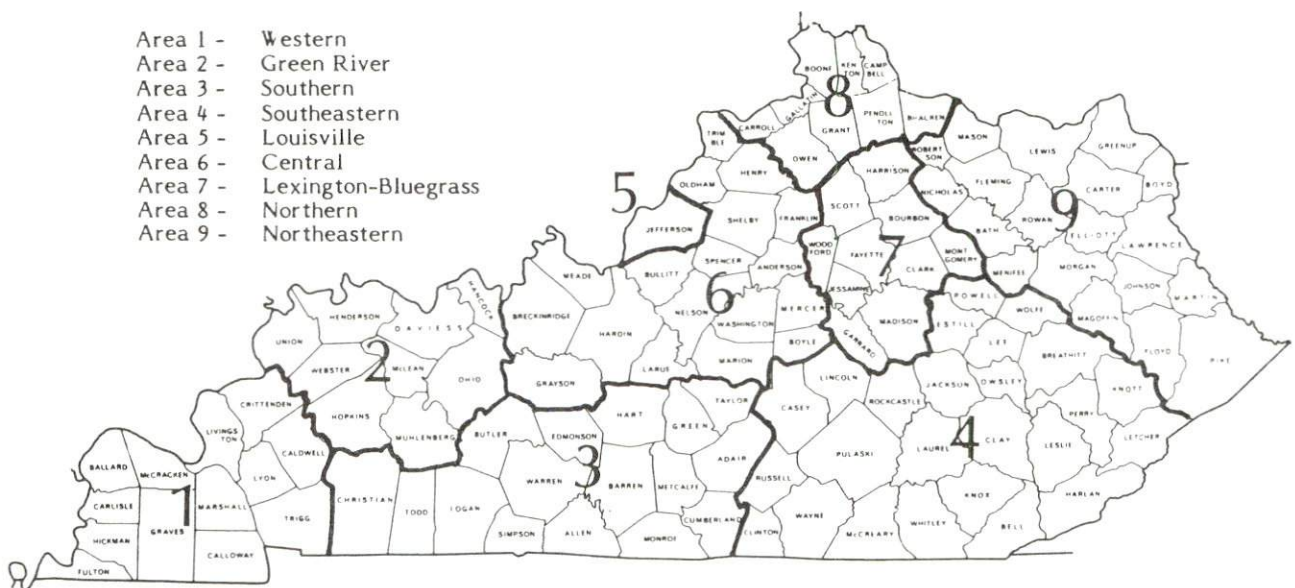
Note: The average weekly wage for each category includes the salaries and wages of all persons working for that type business. For example, the manufacturing category includes both production workers and administrative personnel. Excludes domestic workers, railway workers, certain nonprofit corporations, majority of federal government workers, and self-employed workers.

Source: Kentucky Cabinet for Human Resources, Average Weekly Wages of Workers Covered by Kentucky Unemployment Insurance Law, 1985.

Up to date occupational wage rates of the existing industries are maintained by South Kentucky Industrial Development Association, Post Office Box 726, Hopkinsville, Kentucky 42240.

Occupational wage rates for specific industries are usually not available to most government agencies, and wage data furnished to state employment agencies by individual industrial employers are protected from disclosure by federal law. The most reliable up-to-date wage information can be obtained by direct contact with local employers.

Associated Industries of Kentucky, a voluntary organization of Kentucky businesses, regularly collects occupational wage rates and fringe benefits data from participating member firms. Data are compiled for over 127 clearly defined office, production, and service occupations. Tabulations are published for nine geographical areas of Kentucky, as shown on the map below. It should be noted that the data may be weighted by the preponderance of firms in the larger cities and may be somewhat higher than the rates paid in the smaller communities. Data from these tabulations are available, upon request, from the Kentucky Department of Economic Development, Frankfort, Kentucky 40601.



Associated Industries of Kentucky Area Wage Surveys



# EXISTING INDUSTRY

## MARSHALL COUNTY MANUFACTURING FIRMS, THEIR PRODUCTS AND EMPLOYMENT

Firm (Establishment date)	Product	Average Employment			Labor Unions
		Total	Male	Female	
Benton					
Alucobond Technologies, Inc. (1978)	Aluminum composite panels, foamed pvc sheets	53	36	17	Aluminum, Brick & Glass Workers*
Benton Ready Mix (1962)	Ready mixed concrete	4	4	0	
Best Equipment Company, Inc. (1962)	Car wash equipment	22	18	4	
Birmingham Milling Company (1931)	Feed	1	1	0	
Blue Grass Cooperage, Inc. (1948)	Barrel staves, headings, wood chips	15	14	1	
Edwards Pallet Company (1979)	Specialty skids, dog boxes, plastic material	4	-	-	
Kentucky Waterland Press, Tribune Courier (1888)	Newspaper, job printing	12	4	8	
Long Concrete Company (1946)	Concrete block, ready mixed concrete, precast concrete	10	10	0	

(Continued)

Firm (Establishment date)	Product	Average Employment			Labor Unions
		Total	Male	Female	
Printing & Office Supplies, Inc. (1985)	Job printing	8	-	-	
Pro Equipment Company (1987)	Car wash equipment	20	-	-	
Universal Cleaning Systems, Inc. (1982)	High pressure washers, cleaning- polishing compounds	17	15	2	
West Kentucky Battery Company, Inc. (1970)	Storage batteries	25	24	1	Auto Workers*
Calvert City					
Air Products & Chemicals, Inc., Chemical Group, Calvert City Works (1955)	Polyvinyl acetate alcohol, acetylenics, polyvinyl chloride	477	429	48	Oil, Chemical & Atomic Workers*
Airco Carbide, a Division of the Boc Group, Inc. (1953)	Acetylene, electric calcined anthracite coal, carbon posts, calcium carbide	58	51	7	Oil, Chemical & Atomic Workers*

(Continued)



Firm (Establishment date)	Product	Average Employment			Labor Unions
		Total	Male	Female	
Estron Chemicals, Inc. (1978)	Acrylic emulsions, acrylic resins	12	10	2	
GAF Corporation (1956)	Acetylenics, detergents, methylamines/ formaldehyde	410	369	41	Machinists*
B. F. Goodrich Chemical Company (1952)	Vinyl chloride, caustic soda, acrylic acid polymer	535	-	-	Machinists*
Lake Printers (1975)	Job printing	16	-	-	
North Star Steel Kentucky, Inc. (1983)	Structural steel	217	191	26	Steel- workers*
Pennwalt Corporation (1949)	Plastics, refrigerants, HF acid	418	385	33	Machinists; Teamsters*
SKW Alloys, Inc. (1949)	Ferroalloys	175	170	5	Auto Workers*
<b>Hardin</b>					
Farmer Brown's Country Hams Company (1979)	Country hams, bacon	5	3	2	
Hardin Grain Company (1975)	Fertilizer	8	-	-	
Lees Country Hams (1946)	Country hams, bacon	5	4	1	
Twin Lakes Shore Line Improvement (1964)	Boat lifts, boat docks	6	5	1	

\* See Labor Organizations below.

Sources: Kentucky Department of Economic Development, 1987 Kentucky Directory of Manufacturers; Division of Research and Planning.

## LABOR ORGANIZATIONS IN MANUFACTURING FIRMS

<u>Union</u>	<u>Representing workers at:</u>
Aluminum, Brick and Glass Workers International Union, AFL-CIO	Alucobond Technologies, Inc.
International Union, United Automobile, Aerospace, and Agricultural Implement Workers of America	West Kentucky Battery Company, Inc.; SKW Alloys, Inc.
Oil, Chemical and Atomic Workers International Union, AFL-CIO	Air Products and Chemicals, Inc., Chemical Group, Calvert City Works; Airco Carbide, a Division of the Boc Group, Inc.
International Association of Machinists and Aerospace Workers, AFL-CIO	GAF Corporation; B. F. Goodrich Chemical Company; Pennwalt Corporation
International Brotherhood of Teamsters, Chauffeurs, Warehousemen and Helpers of America	Pennwalt Corporation
United Steelworkers of America, AFL-CIO	North Star Steel Kentucky, Inc.



# SELECTED INDUSTRIAL SERVICES

<u>Types of Service</u>	<u>Location</u>	<u>Mileage from Benton</u>
Custom Plastics Producers	Kuttawa, Kentucky	23
Electric Motor Repair	Mayfield, Kentucky	21
	Paducah, Kentucky	28
Grinding, Precision & Tool	Mayfield, Kentucky	21
Heat Treating Facilities	Evansville, Indiana	125
Industrial Equipment & Supplies	Mayfield, Kentucky	21
	Paducah, Kentucky	28
Industrial Gases	Paducah, Kentucky	28
Industrial Waste Removal	Paducah, Kentucky	28
Machine Shops, Tool & Die	Benton, Kentucky	-
Metal Finishers	Mayfield, Kentucky	21
	Paducah, Kentucky	28
Metal Service Centers	Hopkinsville, Kentucky	53
Millwrights	Paducah, Kentucky	28
Public Warehouse Facilities	Mayfield, Kentucky	21

Sources: Kentucky Department of Economic Development, Kentucky Directory of Selected Industrial Services, 1985; Division of Research and Planning.

## TRANSPORTATION

### Rail

#### Line serving Calvert City - Paducah and Louisville Railway

Services - Main line; one northbound and one southbound through freight daily; at least one local freight daily to Paducah; switching service; team track space for 10 cars; intermediate storage for 100 cars. The nearest piggyback facilities are located at Paducah, 15 miles (via rail) west of Calvert City.

#### Line serving Hardin - J & J Railroad

Services - The J & J Railroad is a locally owned company which began operations in October 1983. J & J Railroad operates one line from Hardin to Murray, Kentucky, 11 miles to the south, where connections may be made with the Kentucky West Tennessee Railway.

For details on routing, schedules, rates, and services contact:

Paducah and Louisville Railway  
1500 Kentucky Avenue  
Paducah, Kentucky 42001  
(502) 443-1246

and/or

J & J Railroad  
Box 131  
Hardin, Kentucky 42048  
(502) 437-4102

### Highways

Major highways which serve Marshall County are Interstate 24, Purchase Parkway, U.S. Highways 62, 68 and 641, plus Kentucky Highway 80.

Interstate 24, a major east-west highway, is routed through northern Marshall County and connects with the Purchase Parkway and U.S. Highways 62, 68 and 641. Interstate 24 also provides access to the Western Kentucky Parkway, 26 miles northeast of Benton.

The Purchase Parkway, a multilane toll road, traverses north and south through Marshall County. Interchanges on the parkway are located at Interstate 24, at U.S. 68 in central Marshall County and at Benton.

U. S. Highways 62, 68 and 641, plus Kentucky Highway 80 are also major routes to Marshall County. All four highways are "AAA"-rated (80,000-pound gross load limit) trucking highways.



## Truck Service

A & H Truck Line, Inc.\*  
 ARA/Smith's\*  
 American Freight System,  
 Inc.\*\*  
 Henry Edwards Trucking  
 Company\*  
 Elfrink Truck Lines, Inc.\*  
 Jones Truck Lines, Inc.\*

Majors Transit, Inc.\*  
 Manning Motor Express, Inc.\*  
 Milan Express Company, Inc.\*  
 Overnite Transportation Company\*  
 (T)  
 Roadway Express, Inc.\*  
 Steve Thompson Trucking, Inc.\*  
 Yellow freight System, Inc.\*

\* Interstate and intrastate service.

\*\* Interstate service only.

(T) Local terminal.

Source: American Motor Carrier Directory, Spring 1987.

## HIGHWAY MILES AND TRUCK TRANSIT TIME IN DAYS FROM BENTON, KENTUCKY, TO SELECTED MARKET CENTERS

City	Highway Miles	Delivery Time TL	City	Highway Miles	Delivery Time TL
Atlanta, GA	372	3	Los Angeles, CA	1,985	5
Baltimore MD	789	4	Louisville, KY	210	2
Birmingham, AL	326	3	Nashville, TN	130	2
Chicago, IL	390	3	New Orleans, LA	556	3
Cincinnati, OH	311	2	New York, NY	951	3
Cleveland, OH	555	3	Pittsburgh, PA	591	3
Detroit, MI	570	3	St. Louis, MO	198	2
Knoxville, TN	307	2			

Note: Mileage computations are via the best interstate or primary highways, not necessarily the most direct route of travel.

Sources: Rand McNally Deluxe Motor Carriers' Road Atlas, 1987. Official Kentucky Mileage Map, 1980. Delivery time - Overnite Transportation Company, Highways 68 and I-24, Reidland, Kentucky 42001.

## Air

### Local

Location: Kentucky Dam Village State Park Airport  
Gilbertsville, 12 miles north of Benton  
Runways: 1 paved  
Length: 4,000 feet  
Traffic  
Control: Wind sock  
Lighting: Runway lights dusk to dawn, REIL, VASI  
Services: 80 and 100 octane fuels, jet-A fuel, tie-down and  
hangar. Transportation to Kentucky Dam Village  
State Park available.

### Nearest Scheduled Commercial Airline Service

Location: Barkley Regional Airport  
6 miles west of Paducah, Kentucky;  
34 miles northwest of Benton  
Runways: 2 paved  
Length: 6,499 feet; 4,000 feet  
Traffic  
Control: Wind sock, wind tee  
Lighting: HIRL, MALSRail, REIL, VASI, MIRL, MITL, rotating  
beacon  
Services: Allegheny Commuter, American Eagle, Northwest Air  
Link, Trans World Express, fuel - 100LL and  
jet-A; hangar, 10 T-hangars, 45 tie-downs;  
major and minor A & P repairs; APU, charter,  
flight instruction, plane rental, aerial  
photography; car rentals, limousine, restaurant,  
weather information; Part 139 Airport Operating  
Certificate, airport security  
  
Air Freight  
Service: Air carriers accept air freight on a space available  
basis

### Air Express Service

Several major companies offer air express services in Kentucky. These companies provide a quick means of shipping small to medium-sized packages expeditiously.



## Water

The Tennessee River forms the northern boundary of Marshall County and Kentucky Lake forms the eastern boundary of the county. Two major riverports are located near Marshall County, the Paducah-McCracken County Riverport and the Port of Lyon County.

The Paducah-McCracken County Riverport is 25 miles northwest of Benton. The Paducah-McCracken County Riverport Authority operates an ice-free, deep water inland waterways port located at Mile 1 on the Tennessee River, at the confluence of the Ohio and Tennessee Rivers, 48 miles east of where the Ohio River flows into the Mississippi River, and at the head of the Tennessee-Tombigbee Waterway.

The Port of Lyon County is located 26 miles northeast of Benton. The Port Authority of Lyon County operates a port facility in the Lick Creek embayment on Barkley Lake at Cumberland River Mile 43.6. Kentucky Lake is only ten miles from the Port as the two lakes are joined by a one and three-quarter mile long canal, 300 feet wide. It is the only public port on either Barkley Lake or the adjoining Kentucky Lake, and there is only one lock between the Port and the Tennessee-Tombigbee.

## POWER AND FUEL

### Electricity

Company serving **Benton** - Benton Electric System  
Source of power - Tennessee Valley Authority  
For industrial rates contact:

South Kentucky Industrial Development  
Association, Inc.  
P. O. Box 726  
Hopkinsville, Kentucky 42240  
(502) 885-5392

Company serving **Calvert City, north and north central Marshall  
County** - Jackson Purchase Electric Cooperative Corporation  
Source of power - Big Rivers Electric Corporation  
For industrial rates contact:

Jackson Purchase ECC  
2900 Irvin Cobb Drive  
P. O. Box 3188  
Paducah, Kentucky 42001  
(502) 442-7321

Company serving **Hardin and southern Marshall County - West Kentucky**  
Rural Electric Cooperative Corporation  
Source of power - Tennessee Valley Authority  
For industrial rates contact:

South Kentucky Industrial Development  
Association, Inc.  
P. O. Box 726  
Hopkinsville, Kentucky 42240  
(502) 885-5392

and/or

West Kentucky RECC  
1218 West Broadway  
P. O. Box 589  
Mayfield, Kentucky 42066  
(502) 247-1321



## Natural Gas

Company serving **Benton** - Union Gas Company of Kentucky

Source of supply - Texas Gas Transmission Corporation

Size of transmission mains - 26 inches (supplier); 4 inches (distributor)

Distribution mains - 4 and 2 inches

Distribution pressure - 35-40 psi

Btu content - 1,022 per cubic foot

Specific gravity - .58

For rates and supplies contact:

Union Gas Company of Kentucky

c/o City Hall

1009 Main Street

Benton, Kentucky 42025

(502) 527-3717 or 527-8677

Company serving **Calvert City** - Western Kentucky Gas Company

Source of supply - Texas Gas Transmission Corporation

Size of transmission mains - 26 inches (supplier); 6 inches (distributor)

Distribution mains - 2 to 6 inches

Distribution pressure - Up to 300 psi

Btu content - 1,000+ per cubic foot

Specific gravity - .60

For rates and supplies contact:

Western Kentucky Gas Company

311 West 7th Street

Owensboro, Kentucky 42301

(502) 685-8067

Company serving **Hardin** - Hardin Natural Gas System

Source of supply - Texas Gas Transmission Corporation

Size of transmission mains - 26 and 30 inches (supplier); 6 inches (distributor)

Distribution mains - 2 inches

Distribution pressure - 50 psi

Btu content - 1,005 per cubic foot

Specific gravity - .585

For rates and supplies contact:

Hardin Natural Gas System

P. O. Box 57

Hardin, Kentucky 42048

(502) 437-4361

## Other Fuels

### Propane

Cal Gas-Mayfield  
U.S. Highway 45 North  
Mayfield, Kentucky 42066

Texgas Corporation  
Railroad Avenue  
Murray, Kentucky 42071

Ohio Valley Gas Company  
832 West Broadway  
Mayfield, Kentucky 42066

### Fuel oils

#### Distillate fuel oil -

Benton Service Oil Company,  
Inc.  
307 North Main  
Benton, Kentucky 42025

Lindsey Stanley Oil Company  
330 Poplar  
Benton, Kentucky 42025

Rudolph Oil Company  
500 Poplar  
Benton, Kentucky 42025

Residual fuel oil - Arrangements must be made with the refinery.

Low sulphur content coal - Available in Kentucky.



## WATER AND SEWERAGE

### Public Water Supply

Company serving Benton - Benton Water and Sewer System  
1009 Main Street  
Benton, Kentucky 42025  
(502) 527-8677

Source - 2 wells

Treatment plant capacity - 1,440,000 gallons per day

Average daily consumption - 580,785 gallons

Peak daily consumption - 750,000 gallons

Treatment processes - Chlorination, fluoridation, and lime

Storage capacity - 710,000 gallons

Size lines - 4, 6, 8, 10 and 12 inches

Water pressure - 70 psi (average)

### MONTHLY WATER RATES

#### BENTON MONTHLY WATER RATES

First	1,500 gallons	\$4.00 (Minimum)
Next	1,000 gallons	1.00 per M gallons
Next	3,000 gallons	1.10 per M gallons
Next	4,500 gallons	1.00 per M gallons
Next	5,000 gallons	.80 per M gallons
Next	5,000 gallons	.70 per M gallons
Next	20,000 gallons	.60 per M gallons
Over	40,000 gallons	.50 per M gallons

Tap-on charge:

\$150 inside city

\$300 outside city

Company serving Calvert City - Calvert City Water Works  
P. O. Box 36  
Calvert City, Kentucky 42029  
(502) 395-4020

Source - Wells

Treatment plant capacity - 2,160,000 gallons per day

Average daily consumption - 965,800 gallons

Peak daily consumption - 1,843,000 gallons

Treatment processes - Aeration, filtration, chlorination, and  
fluoridation

Storage capacity - 840,000 gallons

Size lines - 4, 6 and 8 inches

Water pressure - 70 to 110 psi

(Continued)

### MONTHLY WATER RATES

First	2,000 gallons	\$4.75 (Minimum)
Next	5,000 gallons	1.30 per M gallons
Next	7,500 gallons	1.20 per M gallons
All over	14,500 gallons	.90 per M gallons

The minimum charge for the first 2,000 gallons per month varies depending upon the size of meter in accordance with the following:

### MONTHLY MINIMUM CHARGES

5/8" Service	\$ 4.75
3/4" Service	6.00
1" Service	12.00
1 1/2" Service	18.00
2" Service	30.00
3" Service	60.00
4" Service	120.00

A 25% surcharge shall be levied to the water and sewer charges of all persons, firms, or business establishments connected to the municipal water and sewer system of Calvert City, Kentucky, which are located outside the city limits.

#### Tap-on charge:

\$500 inside city  
\$625 outside city

Company serving Hardin - Hardin Water System  
P. O. Box 57  
Hardin, Kentucky 42048  
(502) 437-4361

Source - Treated water is pumped from Benton Water and Sewer System\*

Average daily consumption - 100,000 gallons

Peak daily consumption - 124,000 gallons

Storage capacity - 50,000 gallons

Size lines - 4 and 6 inches

Water pressure - 56-64 psi

(Continued)

\* Hardin maintains a 150,000-gallon-per-day treatment plant which is currently not utilized.



### MONTHLY WATER RATES

Minimum monthly charges for first 2,000 gallons:

5/8-inch service	\$ 7.25
3/4-inch service	10.00
1-inch service	14.00
1 1/2-inch service	17.00
2-inch service	22.00
3-inch service	42.00
4-inch service	87.00

Rates after minimum charge:

Next	13,000 gallons	\$2.00 per M gallons
All over	15,000 gallons	1.25 per M gallons

Tap-on charge:

\$300.00 up to 10 feet from line  
\$300.00 plus \$1.00 per foot for anything over 10 feet  
from line

Name of water district - West Marshall Water District  
Route 2  
Benton, Kentucky 42025  
(502) 527-8070

Area served - Along Kentucky Highway 348 from Benton city limits to  
Graves County line

Date when water district began operating - 1969

Source of supply of treated water - Benton Water and Sewer System

Average amount of water used in a 24-hour period - 25,000 gallons

Peak amount of water used in a 24-hour period - 30,000 gallons

Storage capacity - 50,000 gallons

Size lines - 4 and 6 inches

Water pressure - 50 to 95 psi

### MONTHLY WATER RATES

First	2,000 gallons	\$7.70 (Minimum)
Next	3,000 gallons	2.75 per M gallons
Next	5,000 gallons	2.20 per M gallons
Next	10,000 gallons	1.93 per M gallons
Over	20,000 gallons	1.65 per M gallons

Tap-on charge: \$399.00

Name of water district - Jonathan Creek Water Association  
P. O. Box 396  
Benton, Kentucky 42025  
(502) 354-8474

Area served - East Marshall County  
Date when water district began operating - 1969  
Source of raw water - Kentucky Lake  
Capacity of treatment plant - 860,000 gallons per day  
Treatment processes - Rapid mix, coagulation, flocculation,  
sedimentation, filtration, chlorination and fluoridation  
Average amount of water used in a 24-hour period - 340,000 gallons  
Peak amount of water used in a 24-hour period - 469,000 gallons  
Storage capacity - 250,000 gallons  
Size lines - 3, 4, 6, and 8 inches  
Water pressure - 30 to 135 psi

### MONTHLY WATER RATES

#### Residential and Commercial (5/8-inch Meter)

First	1,200 gallons	\$7.40 (Minimum)
Next	23,800 gallons	2.55 per M gallons
Next	15,000 gallons	1.35 per M gallons
Over	40,000 gallons	1.15 per M gallons

#### Minimum Bills for Larger Meters\*

3/4-inch meter	First 1,200	\$ 11.00 Minimum
1-inch meter	First 1,200	17.50 Minimum
1 1/2-inch meter	First 1,200	25.75 Minimum
2-inch meter	First 1,200	37.50 Minimum
3-inch meter	First 1,200	73.75 Minimum
4-inch meter	First 1,200	110.00 Minimum

#### Ken Lake (6" Meter)

First	1,200 gallons	\$150.00 (Minimum)
Over	1,200 gallons	1.15 per M gallons

Tap-on charge:

5/8-inch meter - \$400.00  
All larger meters are based on actual cost

\* Usage in excess of 1,200 gallons will be billed at the same rate as for the 5/8-inch meter.

Name of water district - North Marshall Water District  
Route 7, Box 144  
Benton, Kentucky 42025  
(502) 527-3208

Area served - North Marshall County

Date when water district began operating - 1963

Source of raw water - Kentucky Lake and 9 wells

Capacity of treatment plant - 2,304,000 gallons per day

Treatment processes - Aeration, rapid mix, coagulation,  
flocculation, sedimentation, filtration, chlorination, and  
fluoridation

Average amount of water used in a 24-hour period - 1,110,000  
gallons

Peak amount of water used in a 24-hour period - 1,400,000 gallons

Storage capacity - 1,602,000 gallons

Size lines - 2, 3, 4, 6, 8 and 10 inches

Water pressure - 45 to 130 psi

#### BIMONTHLY WATER RATES

First	4,000 gallons	\$9.50	Minimum
Next	6,000 gallons	2.00	per M gallons
Next	10,000 gallons	1.75	per M gallons
Next	10,000 gallons	1.50	per M gallons
Next	10,000 gallons	1.25	per M gallons
Next	10,000 gallons	1.10	per M gallons
Next	50,000 gallons	1.00	per M gallons
All over	100,000 gallons	.50	per M gallons

#### BIMONTHLY MINIMUM CHARGES BASED ON METER SIZE

5/8" Service	\$ 9.50
1" Service	16.00
1 1/2" Service	20.00
2" Service	30.00
3" Service	60.00
4" Service	130.00

#### Tap-on charge:

5/8-inch meter	\$500.00
1-inch meter	\$700.00
1 1/2-inch and larger meter	Actual Cost of Installation



## Raw Water

Surface water sources - Tennessee River, East Fork and West Fork of Clarks River, and Kentucky Lake

Average discharge - Tennessee River near Paducah, Kentucky - 64,840 cfs (17 years, USGS, unadjusted); West Fork of Clarks River near Brewers, Kentucky - 92.7 cfs (14 years, USGS)

Expected ground water yield - 500 to 1,000 gpm in majority of the county; 5-50 gpm along the eastern border of the county near Kentucky Lake

## Sewerage

Company serving Benton - Benton Water and Sewer System  
1009 Main Street  
Benton, Kentucky 42025  
(502) 527-8677

Design capacity - 1,000,000 gallons per day

Average daily flow - 581,000 gallons

Type of treatment - Secondary

Treatment processes - Root zone and wetlands lagoon system

Treated effluent discharged into - Clarks River

Size of sanitary mains - 4, 6 and 8 inches

Size of storm mains - 15 and 18 inches

Monthly rates - Based on water usage:

First	1,500 gallons	\$2.00 (Minimum)
Next	1,000 gallons	1.00 per M gallons
Next	3,000 gallons	1.10 per M gallons
Next	4,500 gallons	1.00 per M gallons
Next	5,000 gallons	.60 per M gallons
Next	5,000 gallons	.50 per M gallons
Next	20,000 gallons	.40 per M gallons
Over	40,000 gallons	.30 per M gallons

Tap-on charge:

\$200 inside city

\$400 outside city

Company serving Calvert City - Calvert City Sewer  
P. O. Box 36  
Calvert City, Kentucky 42029  
(502) 395-4020

Design capacity - 390,000 gallons per day  
Average daily flow - 265,000 gallons  
Type of treatment - Secondary  
Treatment processes - Screening, grit removal, lagoon system,  
chlorination  
Treated effluent discharged into - Cypress Creek  
Size of sanitary mains - 6, 8, and 10 inches  
Monthly rates -

\$1.40 per 1,000 gallons of water used with a minimum bill of  
\$5.00. Residential sewer customers who are not connected  
to the water system shall pay a \$10.00 per month minimum  
sewer charge.

A 25% surcharge shall be levied to the water and sewer charges  
of all persons, firms, or business establishments connected  
to the municipal water and sewer system of Calvert City,  
Kentucky, which are located outside the city limits.

Tap-on charge:

\$500 inside city  
\$625 outside city

Company serving Hardin - Hardin Sewer System  
P. O. Box 57  
Hardin, Kentucky 42048  
(502) 437-4361

Design capacity - 72,000 gallons per day  
Average daily flow - At capacity\*  
Type of treatment - Primary  
Treatment processes - Screening, grit removal, primary  
sedimentation, extended aeration, activated sludge,  
chlorination, anerobic digester, and sludge drying beds  
Treated effluent discharged into - Martins Creek  
Size of sanitary mains - 8 inches  
Size of storm mains - 12 and 18 inches  
Monthly rates - 65 percent of monthly water bill  
Tap-on charge:

\$300 up to 10 feet from line  
\$300 plus \$2.50 per foot for anything over 10 feet from line

---

\* A new sewage treatment system is in the planning stage for the city of Hardin.

Company serving Aurora - Marshall County Sanitation  
District #1  
Route 1  
Hardin, Kentucky 42048  
(502) 474-2778

Design capacity - 210,000 gallons per day

Average daily flow - 80,000 gallons

Type of treatment - Secondary

Treatment processes - Activated sludge, contact stabilization,  
chlorination, aerobic digester, sludge drying beds, tertiary  
filter

Treated effluent discharged into - Kentucky Lake

Size of sanitary mains - 6 and 8 inches

Monthly rates -

Residential - \$10.00

Commercial - \$21.25 plus a surcharge based on type of business

Tap-on charge:

Residential - \$1,000

Commercial - \$1,650



## CLIMATE

### Marshall County

#### Temperature

Normal (30-year record)	59.10 degrees
Average annual 1985	58.20 degrees
Record highest, July 1980 (43-year record)	104.00 degrees
Record lowest, January 1985 (43-year record)	-12.00 degrees
Normal heating degree days (30-year record)	3,913
(Heating degree day totals are the sums of negative departures of average daily temperatures from 65 degrees F.)	

#### Precipitation

Normal (30-year record)	47.65 inches
Mean annual snowfall (30-year record)	10.40 inches
Total precipitation 1985	54.37 inches
Mean number days precipitation (.01 inch or more) (43-year record)	112.60
Mean number days thunderstorms (23-year record)	51.50

#### Prevailing winds (through 1964)

Southwest

#### Relative Humidity (22-year record)

Midnight	N/A
6 a.m.	82 percent
Noon	59 percent
6 p.m.	N/A

Source: U.S. Department of Commerce, Environmental Science Services Administration, Climatological Data, 1985. Station of record: Cairo, Illinois.

## LOCAL GOVERNMENT

### Structure

The cities of Benton, Calvert City and Hardin are each served by a mayor and six council members. The mayor is elected to a four-year term and the council members serve two-year terms. Marshall County is served by a county judge/executive and three magistrates. The judge/executive and magistrates are elected to four-year terms.

### Planning and Zoning

City agency - Benton Planning and Zoning Commission

Zoning enforced - Within city limits

Mandatory state codes enforced - Kentucky Plumbing code, National Electric Code, Kentucky Boiler Regulations and Standards, Kentucky Building Code (modeled after BOCA code)

City agency - Calvert City Planning and Zoning Commission

Zoning enforced - Within city only

Subdivision regulations enforced - Within city only

Local codes enforced - Building and Housing

Mandatory state codes enforced - Kentucky Plumbing code, National Electric Code, Kentucky Boiler Regulations and Standards, Kentucky Building Code (modeled after BOCA code)

### Local Fees and Licenses

The city of Benton levies an occupational license tax of one-half of one percent of the gross salaries, wages and commissions of all persons in the city; annual business licenses are based on the type of businesses, the tax for manufacturing businesses is \$150 for plants with less than 200 employees and \$300 for plants with 200 employees or more.

Calvert City levies annual occupational license fees ranging from \$10 to \$100.

Marshall County levies a one-half of one percent occupational license tax on gross salaries, wages and commissions of individuals and on net profits of business.

Marshall County schools also levy a one-half of one percent occupational license tax on wages, salaries, and commissions of individuals and on net profits of businesses. Exempted are nonresidents and certain businesses including public service companies that pay ad valorem taxes, insurance companies, banks, and trust companies.

## State and Local Property Taxes

All property in Kentucky, except items exempted by the state constitution, is taxed by the state. Property which also may be taxed by local jurisdictions includes land and buildings, finished goods inventories, automobiles, trucks, office furniture and office equipment. Local taxing jurisdictions in Kentucky include counties, cities, and school districts.

All property in Kentucky is assessed at 100 percent of fair cash value.

### COMBINED STATE AND LOCAL RATES PER \$100 VALUATION, 1986

	<u>Inside City of Benton</u>	<u>Inside City of Calvert City</u>
Land and Buildings	\$0.868	\$0.878
Manufacturing		
Machinery	0.150	0.150
Pollution Control		
Equipment	0.150	0.150
Inventories		
Raw materials	0.001	0.001
Goods in Process	0.001	0.001
Finished Goods	0.669	0.684
Automobiles & Trucks	1.084	1.089
Other Tangible		
Personal Property	1.118	1.133
Intangibles (Accounts receivable*, money in hand, stock, notes, bonds)	0.250	0.250
Goods Stored in Public Warehouses in Transit Status	0.001	0.001
Private Leaseholds in Industrial Revenue Bond Financed Facilities	0.015	0.015

(Continued)

\* Accounts receivable are taxed at 85 percent of face value, for an effective rate of \$0.2125 per \$100 valuation.



	<u>Inside City of Hardin</u>	<u>Unincorporated Marshall County</u>
Land and Buildings	\$0.784	\$0.628
Manufacturing		
Machinery	0.150	0.150
Pollution Control		
Equipment	0.150	0.150
Inventories		
Raw materials	0.001	0.001
Goods in Process	0.001	0.001
Finished Goods	0.590	0.434
Automobiles & Trucks	1.005	0.849
Other Tangible		
Personal Property	1.039	0.883
Intangibles (Accounts receivable*, money in hand, stock, notes, bonds)	0.250	0.250
Goods Stored in Public Warehouses in Transit Status	0.001	0.001
Private Leaseholds in Industrial Revenue Bond Financed Facilities	0.015	0.015

\* Accounts receivable are taxed at 85 percent of face value, for an effective rate of \$0.2125 per \$100 valuation.

## Safety

Police	Benton	Calvert City	Marshall County
Total staff	6	3	14
Radio-patrol cars	2	3	9
Fire*			
Insurance Services Office, Public Protection Classification	6	7	**
Volunteers	25	21	

## Hardin

Insurance Services Office, Public Protection Classification	9
Volunteers	24

## Rescue Service

Marshall County is provided rescue service by the Marshall County Rescue Squad.

## Refuse Collection and Disposal

Refuse collection is provided by the city for the residents of Benton and Calvert City. Arrangements for business and industrial refuse collection must be made with private companies. Marshall County operates a system of 150 dumpsters throughout the county. Hardin utilizes the county dumpsters.

\* Includes copyrighted material of ISO Commercial Risk Services, Inc., with its permission.

\*\* Ten volunteer fire departments serve Marshall County. The fire protection districts of Fairdealing Olive, Hardin South Marshall, Harvey Brewers, Pioneer, Possum Trot Sharpe, and Ross Precinct have an insurance rating of class 9. Symsonia has a class 7 rating. East Marshall and Palma Briensburg have a class rating of 6, and Gilbertsville has a class rating of 5. The above class ratings are based on locations within five road miles of the fire station and within 1,000 feet of a hydrant. Class 10 applies to unincorporated areas in Marshall County not contained within a fire district.

## EDUCATION

### Public Schools

	<b>Marshall County</b>
Total Enrollment (Spring 1987)	4,472
Kindergarten	329
Elementary	2,131
Junior High	1,002
High School	1,010
Accreditation	Southern Association of Colleges and Schools
Pupil-Teacher Ratio (1985-86)	19.9-1
Percent High School Graduates to College (1985-86)	50
Expenditures Per Pupil (1985-86)	\$1,966.13

### Nonpublic Schools

<u>School</u>	<u>Enrollment</u>	<u>Grades</u>
Lakeland Christian Academy	54	K-12



## Area Colleges and Universities

<u>Name</u>	<u>Location (Miles distant)</u>	<u>Enrollment (Fall, 1986)</u>	<u>Highest Degree Conferred</u>
Murray State University	Murray, Kentucky (18)	7,073	Masters, Specialist*
Paducah Community College	Paducah, Kentucky (28)	2,005	Associate
Hopkinsville Community College	Hopkinsville, Kentucky (56)	1,068	Associate
University of Tennessee at Martin	Martin, Tennessee (56)	4,928	Masters
Bethel College	McKenzie, Tennessee (58)	495	Bacclauareate
Madisonville Community College	Madisonville, Kentucky (74)	1,356	Associate
Austin Peay State University	Clarksville, Tennessee (75)	4,943	Academic & Professional

\* Joint doctoral degree programs are offered in cooperation with the University of Kentucky, Lexington. The degrees are issued by the University of Kentucky.

## Vocational Training

The Bluegrass State Skills Corporation, an independent public corporation created and funded by the Kentucky General Assembly, provides programs of skills training to meet the needs of business and industry from entry level to advanced training, and from upgrading present employees to retraining experienced workers.

The Bluegrass State Skills Corporation is the primary source for skills training assistance for a new or existing company. The Corporation works in partnership with other employment and job training resources and programs, as well as Kentucky's economic development activities, to package a program customized to meet the specific needs of a company.

Vocational training is available at both the state vocational-technical schools and the area vocational education centers. The state vocational-technical schools are post-secondary institutions. The area vocational education centers are designed to supplement the curriculum of high school students. Both the state vocational-technical schools and the area vocational education centers offer evening courses to enable working adults to upgrade current job skills.

Arrangements can be made to provide training in the specific production skills required by an industrial plant. Instruction may be conducted either in the vocational school or in the industrial plant, depending upon the desired arrangement and the availability of special equipment.

(Continued)

Nearest State School

West Kentucky State Vocational-Technical School  
Paducah, Kentucky, 28 miles from Benton

Business & Office	Auto Mechanics
Accounting/Management	Carpentry
Clerical	Civil & Highway Technology
Secretarial	Diesel Mechanics
Word Processing	Electricity
Health Occupations	Electronics
Dental Assisting	Graphic Arts
Medical Assisting	Masonry
Practical Nursing	Machine Shop
Radiologic Technology	Tailoring
Respiratory Therapy	Welding
Technician	Learning Resource Center
Surgical Technology	Special Vocational Programs
Personal Services Occupations	Vocational Improvement Program
Barbering	Public Service Occupations
Cosmetology	Business/Industry Security
Consumer & Home Economics	Training
Commercial Foods	CPR Training
Consumer & Family Life	Electrical Safety Training
Skills	Emergency Medical Care
Industrial Education	Fire Service Training
Air Conditioning	First Aid & Safety
Drafting	Rescue & Emergency Services
Auto Body Repair	Training

Nearest Area Education Center

Marshall County Area Vocational Education Center  
Benton

Marketing & Distributive	Auto Mechanics
Education	Carpentry
Retailing	Machine Shop
Industrial Education	Welding
Auto Body Repair	



## HEALTH

### Local Medical Personnel

	Benton	Calvert City
Physicians -	10	3
Dentists -	7	4

### Hospitals

<u>General Hospital</u>	<u>Location</u>	<u>Beds</u>
Marshall County Hospital	Benton	46
Lourdes Hospital	Paducah, 28 miles northwest of Benton	385
Western Baptist Hospital	Paducah, 28 miles northwest of Benton	367

#### Marshall County Hospital

Medical staff - 21 physicians, 22 registered nurses, and 18 licensed practical nurses

#### Lourdes Hospital

Medical staff - 125 physicians, 250 registered nurses, and 162 licensed practical nurses

#### Western Baptist Hospital

Medical staff - 155 physicians, 278 registered nurses, and 130 practical nurses

### Other Medical Facilities

Benton Mental Health Center, Benton  
Lee Cox Memorial Hospital Clinic, Calvert City  
Benton Medical Center, Benton  
Calvert City Clinic, Calvert City  
Troylor Clinic, Calvert City

### Ambulance Service

Name - Marshall County Ambulance Service, Benton  
Staff - 15 emergency medical technicians

## OTHER LOCAL FACILITIES

### Communications

Telephone -	South Central Bell Telephone Company
Telegraph -	Western Union
	Toll-Free number, 1-800-325-6000
Newspapers -	
Weekly and	
circulation -	The Tribune-Courier - 7,200;
	The Lake News - 4,500
Radio -	WCBL AM-FM
Television -	
Airwave reception	
from -	Kentucky, Missouri, Illinois,
	Indiana and Tennessee
Cable service -	Benton Cable, Calvert City Cable,
	and C-4 Media Cable Vision
Educational	
Television -	The Kentucky Educational Television
	(K.E.T.) network is available
	statewide

### Library Services

Public library - Marshall County Public Library (main library in  
Benton, branches in Calvert City and Hardin)  
Size collection - 77,659 volumes  
Circulation, 1985-86 - 231,180

### Religious Institutions

Denominations -	Assembly of God	Church of the Nazarene
	Baptist	Episcopal
	Catholic	Jehovah's Witnesses
	Charismatic	Lutheran
	Christian	Presbyterian
	Church of Christ	United Methodist
	Church of God	Apostolic
Nearest Synagogue -	Paducah, 28 miles northwest of Benton	
Congregation -	Temple Israel (reform)	

## Financial Institutions

<u>Banks</u>	<u>Assets</u>	<u>Deposits</u>	<u>Statement Date</u>
The Bank of Benton (Benton)	\$92,129,164.00	\$83,135,050.00	12/31/86
Bank of Marshall County (Benton)	110,477,158.36	99,625,573.90	12/31/86
Calvert Bank (Calvert City)	24,248,795.67	22,403,109.46	12/31/86
First Liberty Bank (Calvert City)	13,784,347.00	12,231,091.00	12/31/86
Republic Savings Bank (Benton)	312,026,140.22	294,744,443.36	12/31/86

<u>Savings and Loan Associations</u>	<u>Assets</u>	<u>Deposits</u>	<u>Statement Date</u>
First Federal Savings & Loan Association of Mayfield*	\$93,060,899.59	\$90,697,026.43	12/31/85

## Hotels and Motels

Total number - 40  
Total rooms - 1,027

\* Branch offices are located in Benton and Calvert City.



## RECREATION

### Local

Benton, Calvert City, and Hardin each have city parks with tennis courts, athletic fields, and playgrounds. Benton's park has a swimming pool and skating facilities, and Calvert City's park has a motorcycle race track. Through a Heritage Conservation Recreation Service grant, Calvert City has acquired a new football/soccer field and a mini-park which includes a covered bridge, a walkway, and a picnic area. The Joe Creason Community Center is located in Benton. Facilities there include meeting rooms, a kitchen, and a multi-purpose basketball court.

Bowling is available at Draffenville, near Benton. Miniature golf is available at Gilbertsville, near Calvert City, and at Aurora, near Hardin.

Country clubs with golf courses and swimming pools are located at Benton and Calvert City.

Tourist attractions in Marshall County include Forgotten Past, offering a museum, miniature train rides, go-carts, miniature golf, and horseback riding; and Wonder Waters Park, featuring a giant waterslide, bumper boats and other water-related activities.

One of the finest outdoor recreational areas in the eastern United States is located in and around Marshall County. Kentucky Dam Village State Resort Park is located at Gilbertsville, near Calvert City, and Kenlake State Resort Park is located at Aurora, near Hardin. Both parks are situated on Kentucky Lake, which forms the eastern boundary of Marshall County.

Kentucky Dam Village State Resort Park, located near Gilbertsville, is one of the largest and most popular vacation resorts in Kentucky. A modern lodge with 46 rooms, 67 cottages, and a 225-site campground make up the accommodations. The park includes a 4,000-foot lighted airstrip. There is also a dining room overlooking Kentucky Lake, a coffee shop, a snack bar, two gift shops, a meeting room, an activities center, and a recreation room. Recreational activities to choose from include boating and fishing at the largest docking facility in the Kentucky parks system, golf at the 18-hole Village Green Course, fishing, hiking, horseback riding, picnicking, swimming at the lodge pool or off the sand beach, and tennis.

Charm and serenity exemplify Kenlake State Resort Park which is located on Kentucky Lake. The park offers hotel and cottage accommodations and an efficient camping site. Other facilities include a 9-hole golf course, pool and lake swimming, horseback riding, hiking trails, fishing, boating, picnicking, planned recreation, and one of the finest tennis complexes in the area.

The Land Between the Lakes, located on a 170,000-acre wooded peninsula, is an outdoor recreational and conservational education center. The Golden Pond Visitors Center offers a multimedia theatre/planetarium and observatory. Camping, swimming, fishing, boating, hiking, a buffalo herd on a 250-acre range, an Environmental Education Center for school study groups, an educational farm and a central station with films and displays are among the attractions. Kentucky Lake and Lake Barkley are among the top fishing and water sport recreation areas in the southeastern United States.

#### Area (Within 60 miles)

The National Museum of the Boy Scouts of America is located on the campus of Murray State University in Murray, 18 miles southeast of Benton. Favorite attractions at the museum are "Murray" the scouting robot, a circular theater featuring a special scouting film, and 54 original Norman Rockwell oil paintings of scouting.

Lake Barkley State Resort Park, 29 miles east of Benton near Cadiz, is located on an embayment of Lake Barkley. The magnificent lodge includes 130 rooms, five suites, 13 cottages, a dining room, a coffee shop, a gift shop, two meeting rooms, and a recreation room. An activities center with a capacity for 1,000, a complete fitness center, and an 80-site campground are located near the lodge. A lodge pool, a beach and a bathhouse, an 18-hole golf course, a pro shop, tennis courts, a riding stable, a trapshooting range, a basketball court, hiking trails, playgrounds, and a picnic area round out the recreational facilities. The marina near the lodge has everything for the "boat lover": covered and open slips, a launching ramp, and rentals for fishing boats, skiing boats, and pleasure ride pontoons. An airport is available also.

Paducah is located 28 miles northwest of Benton. As Kentucky's seventh largest city, Paducah provides many recreational opportunities. Points of interest include the Alben W. Barkley Monument, Barkley Museum, Chief Paduke Statue, and many other attractions.

Reelfoot Lake, approximately 50 miles southwest of Benton, is a 70-square-mile lake in Kentucky and Tennessee known for its fishing.

Pennyrile Forest State Resort Park near Dawson Springs is located 59 miles northeast of Benton. The 24-room lodge and cottages nestled within the trees provide excellent accommodations. Other facilities and activities include a dining room, a gift shop, rental rowboats and pedal boats, a 9-hole golf course, hiking trails, horseback riding, picnicking, playgrounds, shuffleboard, swimming at the lodge pool and off a sand beach, and two tennis courts. Lake Beshear, only four miles from the lodge, sports good fishing.

A Confederate cannon, a network of earthen trenches, and a massive chain and anchor give the feeling of being transported back to the Civil War. All of this and more can be discovered at Columbus-Belmont Battlefield State Park at Columbus, 60 miles west of Benton. Other attractions at the 156-acre park include a 38-site campground, a gift shop, a historical hiking trail, miniature golf, a picnic area, and a playground. A visit to the museum at the park, which is in a building that served as a Civil War infirmary, offers a display of Civil War relics and early Indian artifacts and an audiovisual slide program on the Battle of Belmont.



## COMMUNITY IMPROVEMENTS

### Recent

Air Products & Chemicals, Inc., GAF Corporation, and SKW Alloys, Inc. of Calvert City and Best Equipment Company, Inc., Universal Cleaning Systems and Alucobond Technologies, Inc., of Benton, Kentucky have recently expanded or have announced plans to expand. These expansions represent an investment of over \$76 million and approximately 100 additional jobs.

Specialized Mine Service, Inc. recently announced plans to open a plant in Calvert City. This new firm will manufacture coal bricquetts and represents an investment of approximately \$7 million and 80-120 new jobs.

North Star Steel of Kentucky, Inc., has purchased the Ohio River Steel plant in Calvert City. North Star Steel has increased employment to approximately 270 employees and is making improvements that will nearly double plant capacity.

The city of Benton has just completed construction of a new fire station. Cost of the project was \$140,000.

The U.S. Highway 641 bypass at Benton has been completed at a cost of \$5.7 million. Reconstruction and realignment of U.S. 641 on the north side of Benton has been completed at a cost of \$3.5 million.

Phase I of Benton Town Lift, a downtown renovation project, has been completed at a cost of \$150,000. The projects included street improvements, new sidewalks and landscaping.

The Marshall County Hospital at Benton has completed a \$2 million expansion project. The project included a new coronary care unit, emergency room, and intensive care unit.

The Benton City Hall Annex has been completed at a cost of \$90,000.

Phase I of the Benton Memorial Plaza has been completed at a cost of \$150,000. Phase I consisted of a park setting with a shelter house, fountain, seats and an area for outdoor music. Phase II and III will consist of specialty shops and a visitor information center.

The North Marshall Water District recently installed two 100-horse power high service pumps which increased capacity by 100,000 gallons per day. The water district also installed a 30,000-gallon-per-day booster station to serve Calvert City.

The Marshall County School System recently completed construction of four additional rooms at South Elementary, four additional rooms at Gilbertsville Elementary, and a new roof at Sharpe Elementary. Total cost of these projects was \$400,000. A new fine arts building at Marshall County High School was recently constructed at a cost of \$450,000.



### Under Way

The Benton Artificial Wetlands Lagoon project is nearing completion. This \$250,000 sewerage improvement project will increase capacity from 300,000 to 1,000,000 gallons per day.

### Planned

The National Guard will soon be constructing a \$2 million armory in Benton.