

1988

Industrial Resources: McLean County

Kentucky Library Research Collections
Western Kentucky University, spcol@wku.edu

Follow this and additional works at: https://digitalcommons.wku.edu/mclean_cty

 Part of the [Business Administration, Management, and Operations Commons](#), [Growth and Development Commons](#), and the [Infrastructure Commons](#)

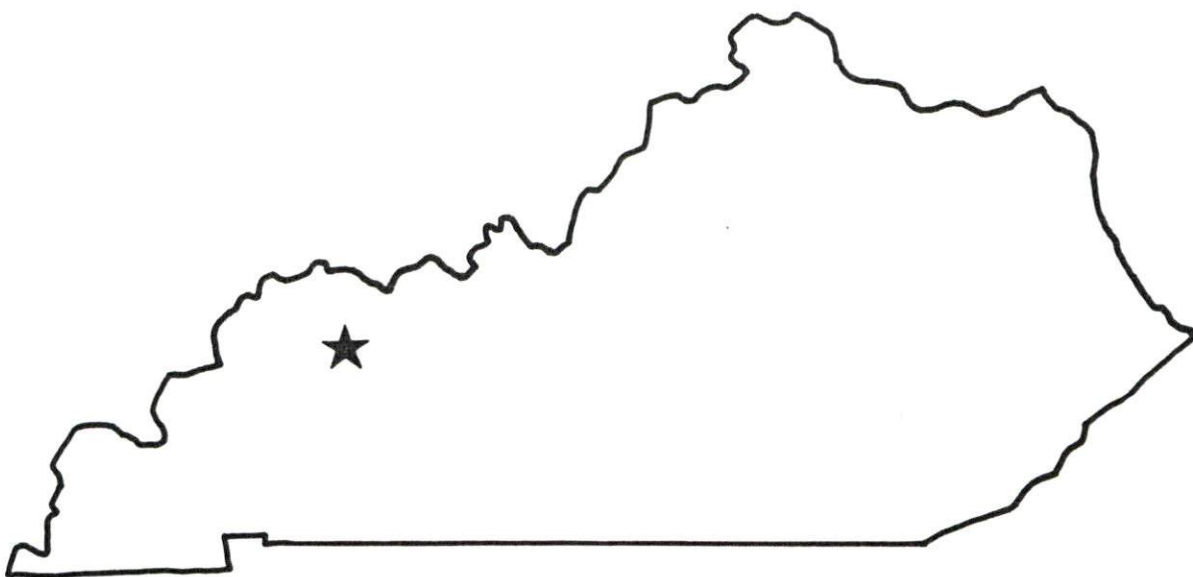
Recommended Citation

Kentucky Library Research Collections, "Industrial Resources: McLean County" (1988). *McLean County*. Paper 5.
https://digitalcommons.wku.edu/mclean_cty/5

This Report is brought to you for free and open access by TopSCHOLAR®. It has been accepted for inclusion in McLean County by an authorized administrator of TopSCHOLAR®. For more information, please contact topscholar@wku.edu.

RESOURCES FOR ECONOMIC DEVELOPMENT

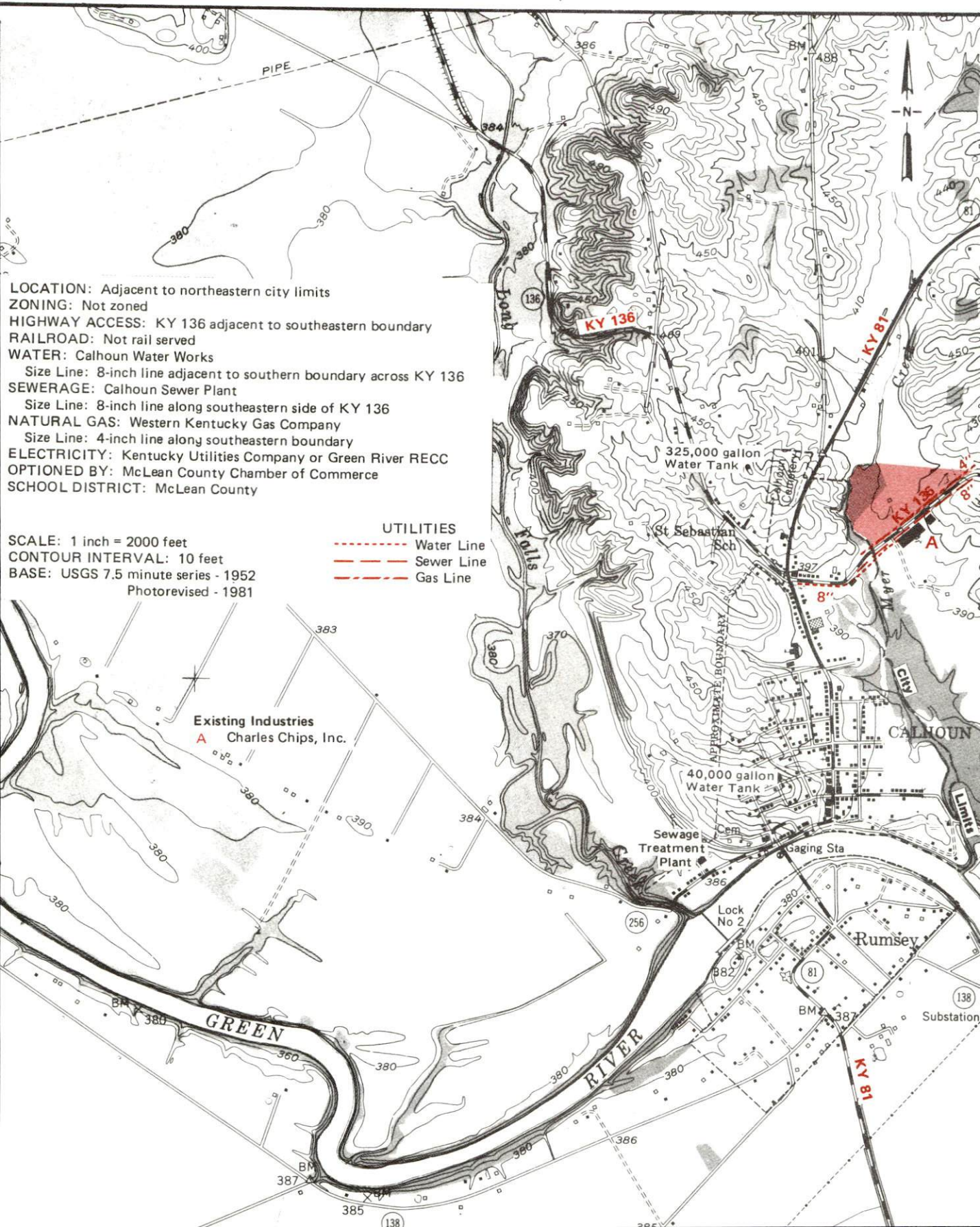
McLean County



KENTUCKY
Open for Business

CALHOUN, KENTUCKY --- Site 188 --- 30 Acres

For more information contact the Cabinet for Economic Development, Department of Business Development, Industrial Development & Marketing Division, Capital Plaza Tower, Frankfort, Kentucky 40601 (502-564-7140)



LOCATION: Adjacent to northeastern city limits
ZONING: Not zoned
HIGHWAY ACCESS: KY 136 adjacent to southeastern boundary
RAILROAD: Not rail served
WATER: Calhoun Water Works
 Size Line: 8-inch line adjacent to southern boundary across KY 136
SEWERAGE: Calhoun Sewer Plant
 Size Line: 8-inch line along southeastern side of KY 136
NATURAL GAS: Western Kentucky Gas Company
 Size Line: 4-inch line along southeastern boundary
ELECTRICITY: Kentucky Utilities Company or Green River RECC
OPTIONED BY: McLean County Chamber of Commerce
SCHOOL DISTRICT: McLean County

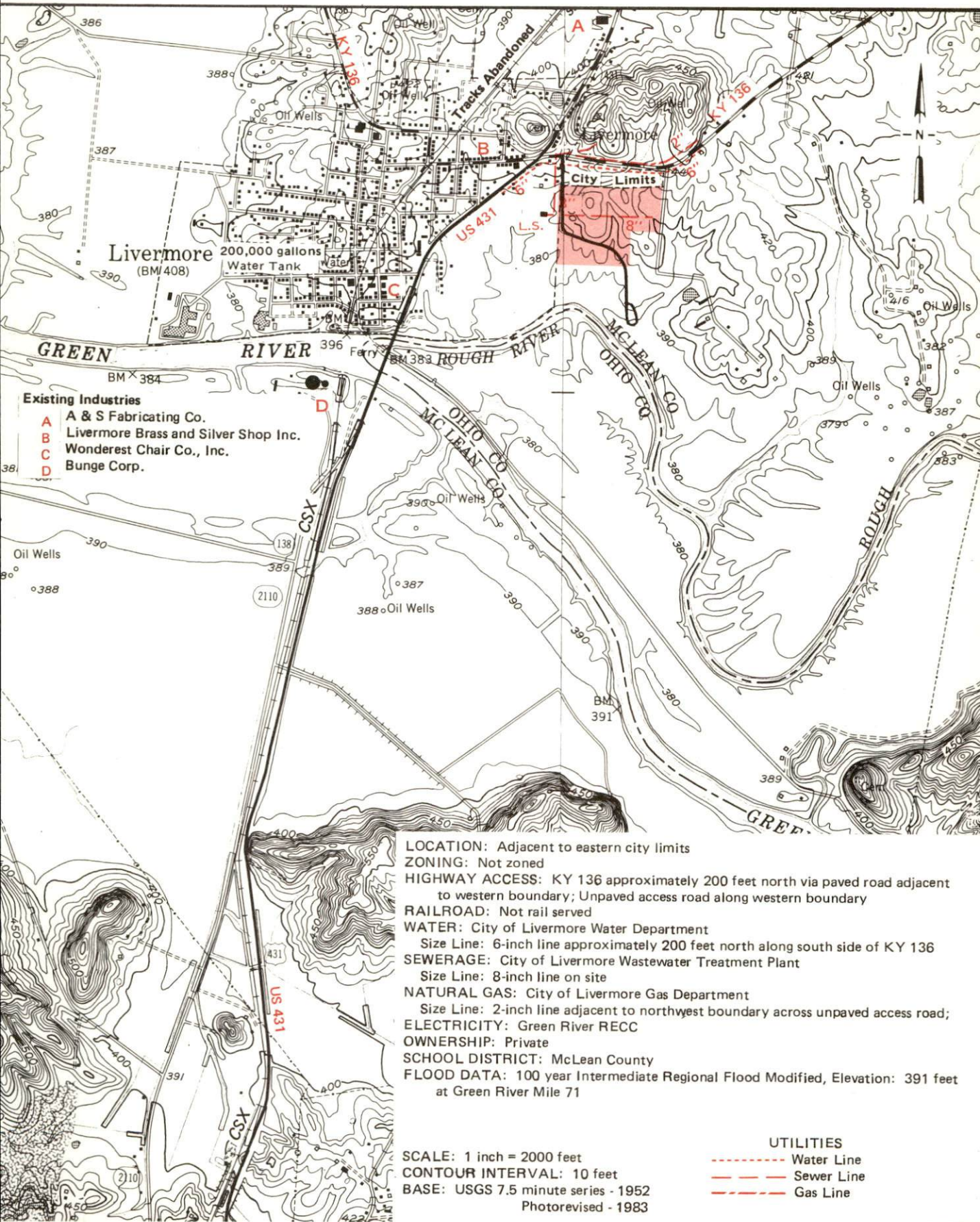
SCALE: 1 inch = 2000 feet
CONTOUR INTERVAL: 10 feet
BASE: USGS 7.5 minute series - 1952
 Photorevised - 1981

UTILITIES
 - - - - - Water Line
 _____ Sewer Line
 - . - . - Gas Line

Existing Industries
A Charles Chips, Inc.

LIVERMORE, KENTUCKY --- Site 188 --- 34 Acres

For more information contact the Cabinet for Economic Development, Department of Business Development,
Industrial Development & Marketing Division, Capital Plaza Tower, Frankfort, Kentucky 40601
(502-564-7140)



RESOURCES FOR ECONOMIC DEVELOPMENT
MCLEAN COUNTY, KENTUCKY

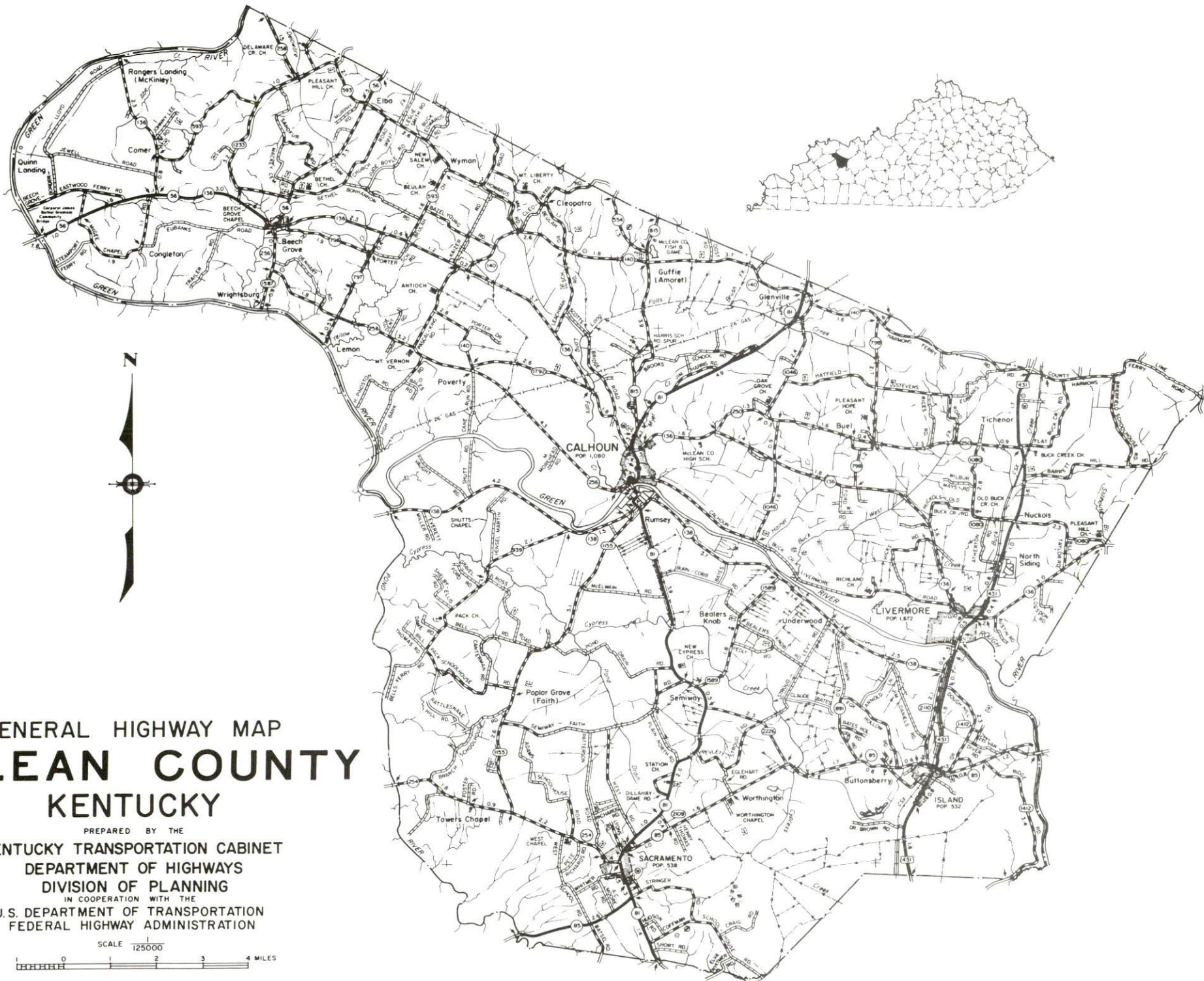
Prepared by
The Kentucky Department of Business Development
Division of Research and Planning
in cooperation with
The Livermore-McLean County Chamber of Commerce
and
The Cities of Calhoun, Island, and Livermore

1988

TABLE OF CONTENTS

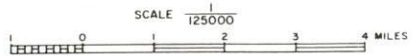
<u>Chapter</u>	<u>Page</u>
INDUSTRIAL SITES	i
MCLEAN COUNTY, KENTUCKY - A RESOURCE PROFILE	1
THE LABOR MARKET STATISTICS	2
Labor Market Area Map	2
Population	3
Population Projections	3
Unemployment Rates, 1980-1987 - Line Chart	4
Labor Force Characteristics of Residents, 1987	5
Selected Components of Nonagricultural Employment, by Place of Work, 1987	5
Estimated Male Labor Supply	6
Estimated Female Labor Supply	6
Average Placement Wages	7
Per Capita Personal Income	7
Average Weekly Wages of Workers Covered by Unemployment Insurance F.Y. 1986-87 - Bar Chart	8
Average Weekly Wages by Industry, by Place of Work, 1987	9
EXISTING INDUSTRY	10
McLean County Manufacturing Firms, Their Products and Employment	10
Labor Organizations in Manufacturing Firms	11
Selected Industrial Services	12
TRANSPORTATION	13
Rail	13
Highways	13
Truck Service	13
Air	14
Air Express Service	15
Water	15
POWER AND FUEL	16
Electricity	16
Natural Gas	16
WATER AND SEWERAGE	18
Public Water Supply	18
Sewerage	20

<u>Chapter</u>	<u>Page</u>
CLIMATE	22
LOCAL GOVERNMENT	23
Structure	23
Planning and Zoning	23
Local Fees and Licenses	23
State and Local Property Taxes	24
Combined State and Local Rates Per \$100 Valuation, 1987	24
Safety	26
Police	26
Fire	26
Rescue Service	26
Refuse Collection and Disposal	26
EDUCATION	27
Public Schools	27
Area Colleges and Universities	28
Vocational Training	29
HEALTH	31
Local Medical Personnel	31
Hospitals	31
Other Medical Facilities	31
Ambulance Service	31
OTHER LOCAL FACILITIES	32
Communications	32
Library Services	32
Religious Institutions	32
Financial Institutions	33
Clubs and Organizations	33
RECREATION	34
COMMUNITY IMPROVEMENTS	36



GENERAL HIGHWAY MAP
MCLEAN COUNTY
 KENTUCKY

PREPARED BY THE
 KENTUCKY TRANSPORTATION CABINET
 DEPARTMENT OF HIGHWAYS
 DIVISION OF PLANNING
 IN COOPERATION WITH THE
 U.S. DEPARTMENT OF TRANSPORTATION
 FEDERAL HIGHWAY ADMINISTRATION



MCLEAN COUNTY, KENTUCKY - A RESOURCE PROFILE

McLean County is located in the western section of Kentucky, in the Western Kentucky Coal Field Region. The county covers a total land area of 256 square miles. Calhoun, the county seat of McLean County, is located 21 miles south of Owensboro, Kentucky; 55 miles southeast of Evansville, Indiana; 131 miles southwest of Louisville, Kentucky; and 132 miles north of Nashville, Tennessee.

McLean County had a 1986 estimated population of 9,920, with 990 persons residing in Calhoun, 660 in Island, 1,650 in Livermore, and 480 in Sacramento.

The Economic Framework - The total number of McLean County residents employed in 1987 averaged 3,640. Manufacturing firms in the county reported 410 employees; wholesale and retail trade provided 370 jobs; 210 people were employed in service occupations; state and local government accounted for 350 employees; and contract construction firms provided 20 jobs.

Labor Supply - There is a current estimated labor supply of 15,800 men and 23,410 women available for industrial jobs in the labor market area. In addition, from 1988 through 1992, 10,460 young men and 9,985 young women in the area will become 18 years of age and potentially available for industrial jobs.

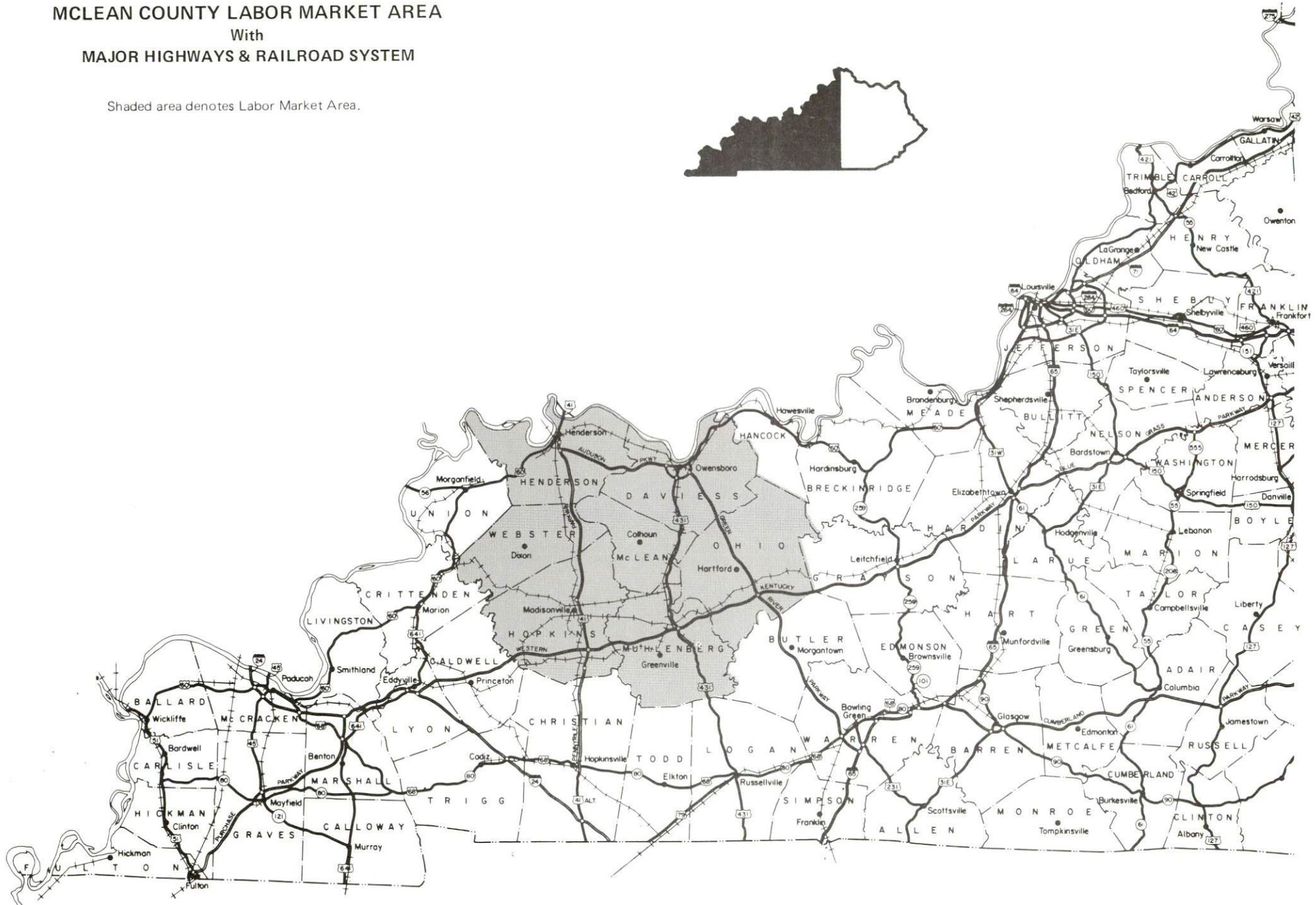
Transportation - CSX Transportation provides rail service to Livermore and Island. Major highways serving McLean County are U.S. Highway 431 and Kentucky Route 81. Access to the Pennyryle Parkway, the Audubon Parkway, the Western Kentucky Parkway, and the Green River Parkway is available within twenty-seven miles of Calhoun. Twelve commercial trucking companies provide interstate and intrastate service to McLean County. The Owensboro-Daviess County Airport, nineteen miles north of Calhoun, maintains a 6,500-foot and a 3,700-foot paved runway. Scheduled commercial airline service is available at the Evansville Dress Regional Airport near Evansville, Indiana, forty-nine miles northwest of Calhoun. Calhoun and Livermore are located on the Green River, which has a nine-foot navigation channel to the Ohio River.

Power and Fuel - Electric power is provided to McLean County by the Kentucky Utilities Company and the Green River Electric Corporation. Natural gas service is provided to Calhoun and Sacramento by the Western Kentucky Gas Company. Livermore is provided natural gas by the City of Livermore Gas Department, which is supplied by the Texas Gas Transmission Corporation.

Education - The McLean County School System provides primary and secondary education to McLean County. Eight institutions of higher learning, including three universities, two senior colleges, and three community colleges, are located within 75 miles of Calhoun. The Daviess County State Vocational-Technical School, in Owensboro, 21 miles north of Calhoun, offers training in 16 courses. The Owensboro Vocational-Technical School, in Owensboro, 21 miles north of Calhoun, offers training in 14 courses.

MCLEAN COUNTY LABOR MARKET AREA With MAJOR HIGHWAYS & RAILROAD SYSTEM

Shaded area denotes Labor Market Area.



LABOR MARKET STATISTICS

The Labor Market Area includes McLean County and the adjoining Kentucky counties of Daviess, Henderson, Hopkins, Muhlenberg, Ohio and Webster.

POPULATION

Area	1986*	1980	1970	Percent Nonwhite
				1980
Calhoun	990	1,080	901	1.4
Island	660	532	410	N/A
Livermore	1,650	1,672	1,594	0.8
Sacramento	480	538	437	N/A
Labor Market Area	254,176	251,897	222,355	-
McLean County	9,920	10,090	9,062	0.8
Daviess County	87,500	85,949	79,486	4.5
Henderson County	42,321	40,849	36,031	7.7
Hopkins County	46,590	46,174	38,167	7.2
Muhlenberg County	31,869	32,238	27,537	5.3
Ohio County	21,360	21,765	18,790	1.4
Webster County	14,616	14,832	13,282	6.1

* Population estimates.

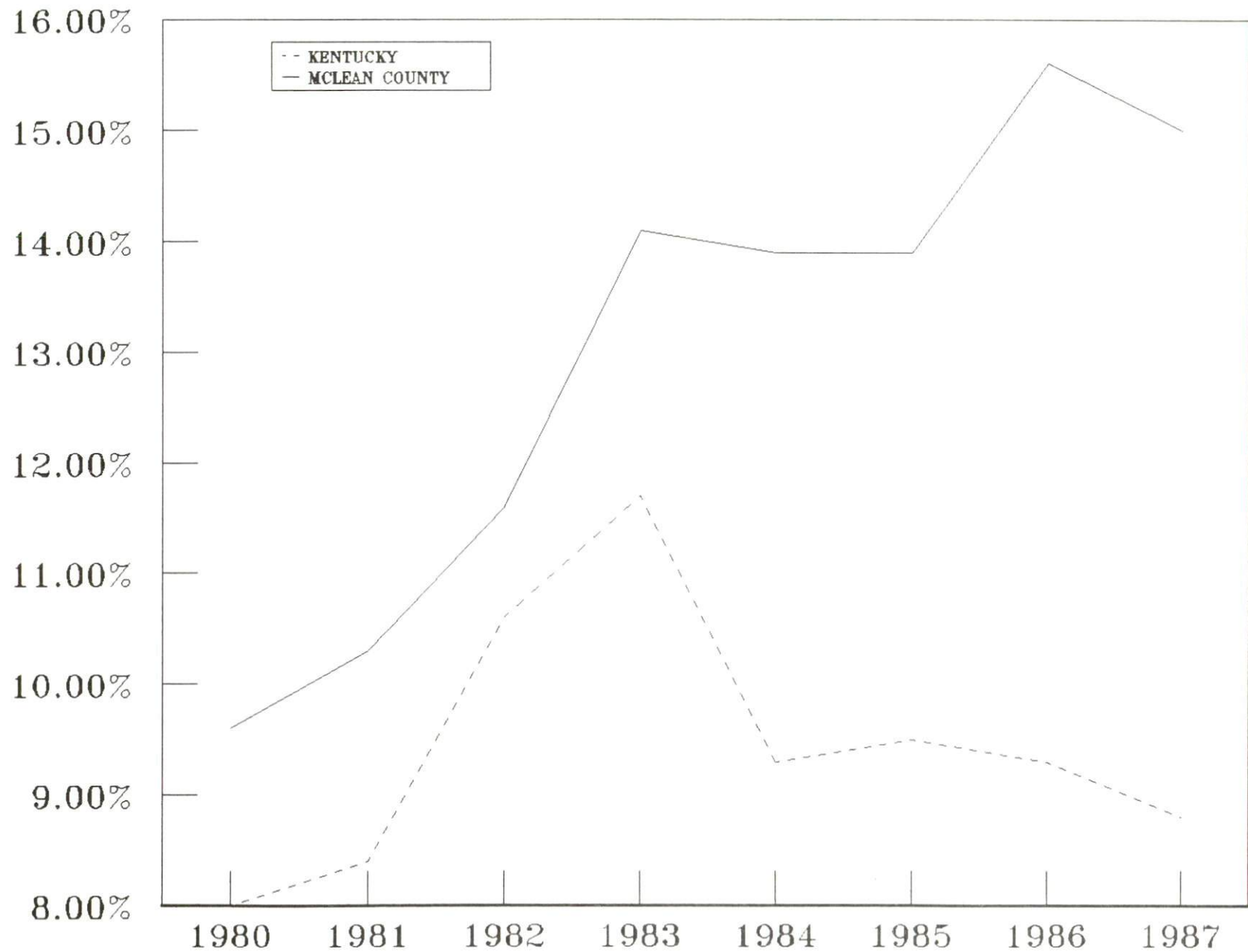
Sources: U.S. Department of Commerce, Bureau of the Census. University of Louisville, Urban Studies Center, Population Unit.

POPULATION PROJECTIONS

Area	1990	1995	2000	2010
Labor Market Area	268,674	278,949	286,959	299,174
McLean County	10,442	10,807	11,070	11,425
Daviess County	92,868	96,214	98,665	102,114
Henderson County	44,905	46,961	48,561	51,103
Hopkins County	48,401	49,995	51,317	53,335
Muhlenberg County	33,035	33,989	34,740	35,865
Ohio County	23,772	25,330	26,608	28,754
Webster County	15,251	15,653	15,998	16,578

Source: University of Louisville, Urban Studies Center, Population Research Unit, How Many Kentuckians: Population Forecasts, 1980-2020, the 1986 Edition, Spring 1986.

UNEMPLOYMENT RATES



LABOR FORCE CHARACTERISTICS OF RESIDENTS, 1987

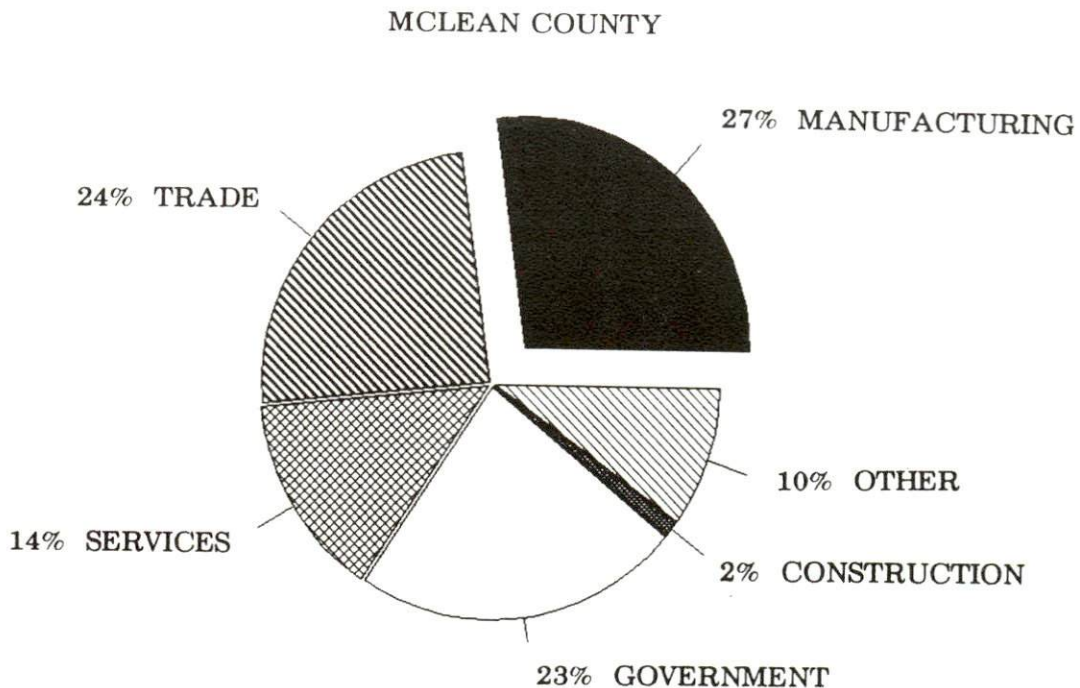
	<u>McLean County</u>	<u>Labor Market Area</u>
Civilian Labor Force	4,279	113,721
Employment	3,637	101,253
Unemployment	642	12,468
Rate of Unemployment (%)	15.0	11.0

Source: Kentucky Cabinet for Human Resources, Kentucky Labor Force Estimates, Annual Averages, 1987.

**SELECTED COMPONENTS OF NONAGRICULTURAL EMPLOYMENT
BY PLACE OF WORK, 1987**

	<u>McLean County</u>	<u>Labor Market Area</u>
All Industries (total)	1,495	79,599
Manufacturing	407	16,240
Wholesale & Retail Trade	366	19,412
Services	212	15,301
State/Local Government	347	11,178
Contract Construction	16	3,329

Note: Excludes domestic workers, railway workers, certain nonprofit corporations, majority of federal government workers, and self-employed workers.
Source: Kentucky Cabinet for Human Resources, Average Monthly Workers Covered by Kentucky Unemployment Insurance Law, 1987.



ESTIMATED MALE LABOR SUPPLY
MCLEAN COUNTY LABOR MARKET AREA

Area	Current				Future
	Total Male	Unemployed	Under-employed	Not in Labor Force	Becoming 18 years of age 1988 thru 1992
Labor Market Area*	15,799	7,366	5,137	3,296	10,463
McLean	621	369	252	0	400
Daviess	4,387	2,586	1,801	0	3,530
Henderson	1,964	1,170	794	0	1,768
Hopkins	2,236	1,100	922	214	1,931
Muhlenberg	2,830	1,123	741	966	1,383
Ohio	2,644	765	416	1,463	906
Webster	1,117	253	211	653	545

ESTIMATED FEMALE LABOR SUPPLY
MCLEAN COUNTY LABOR MARKET AREA

Area	Current				Future
	Total Female	Unemployed	Under-employed	Not in Labor Force	Becoming 18 years of age 1988 thru 1992
Labor Market Area*	23,406	6,605	6,204	10,597	9,985
McLean	1,176	337	223	616	399
Daviess	4,823	2,235	2,166	422	3,457
Henderson	2,734	1,463	1,163	108	1,600
Hopkins	4,849	903	1,183	2,763	1,760
Muhlenberg	4,483	694	736	3,053	1,251
Ohio	3,184	567	431	2,186	906
Webster	2,157	406	302	1,449	612

* Additional workers may be drawn from other nearby counties.

Note: Unemployed - persons unemployed and actively seeking work; Underemployed - persons employed but working only 14 to 26 weeks per year; Not in Labor Force - represents the number of persons who would enter the labor force if suitable employment were available (based on the assumption that persons in Kentucky would like to participate in the labor force in the same proportion that they do nationally).

Sources: Kentucky Cabinet for Human Resources, Kentucky Labor Supply Estimates by County, 1986. Kentucky Department of Economic Development, Future Labor Supply Becoming 18 Years of Age, 1988 thru 1992.

AVERAGE PLACEMENT WAGES

McLean County is served by the Owensboro local office of the Kentucky Department for Employment Services. The focus of the following data is on job placements made by the Owensboro local office and may therefore be used as an indicator of the wages which employers in the area pay new employees. During the twelve months which ended on June 30, 1987, the local employment office filled 2,052 job openings in various occupational categories. The average hourly wage for selected occupational categories were:

<u>OCCUPATIONAL CATEGORY</u>	<u>NUMBER OF PLACEMENTS</u>	<u>AVERAGE WAGE(\$)</u>
All Occupations	2,052	4.34
Clerical	696	3.70
Sales	120	3.78
Services (excluding domestic)	452	3.45
Agricultural, Fishery, Forestry, etc.	47	3.85
Processing	224	5.40
Machine Trades	27	6.27
Bench Work	101	5.89
Structural	97	4.90
Motor Freight/ Transportation	45	6.46
Packaging and Materials Handling	196	5.95
Other	3	4.00

The Owensboro local office also serves Daviess, Hancock, and Ohio Counties. The above occupational categories are taken from the Dictionary of Occupational Titles published by the U.S. Department of Labor.

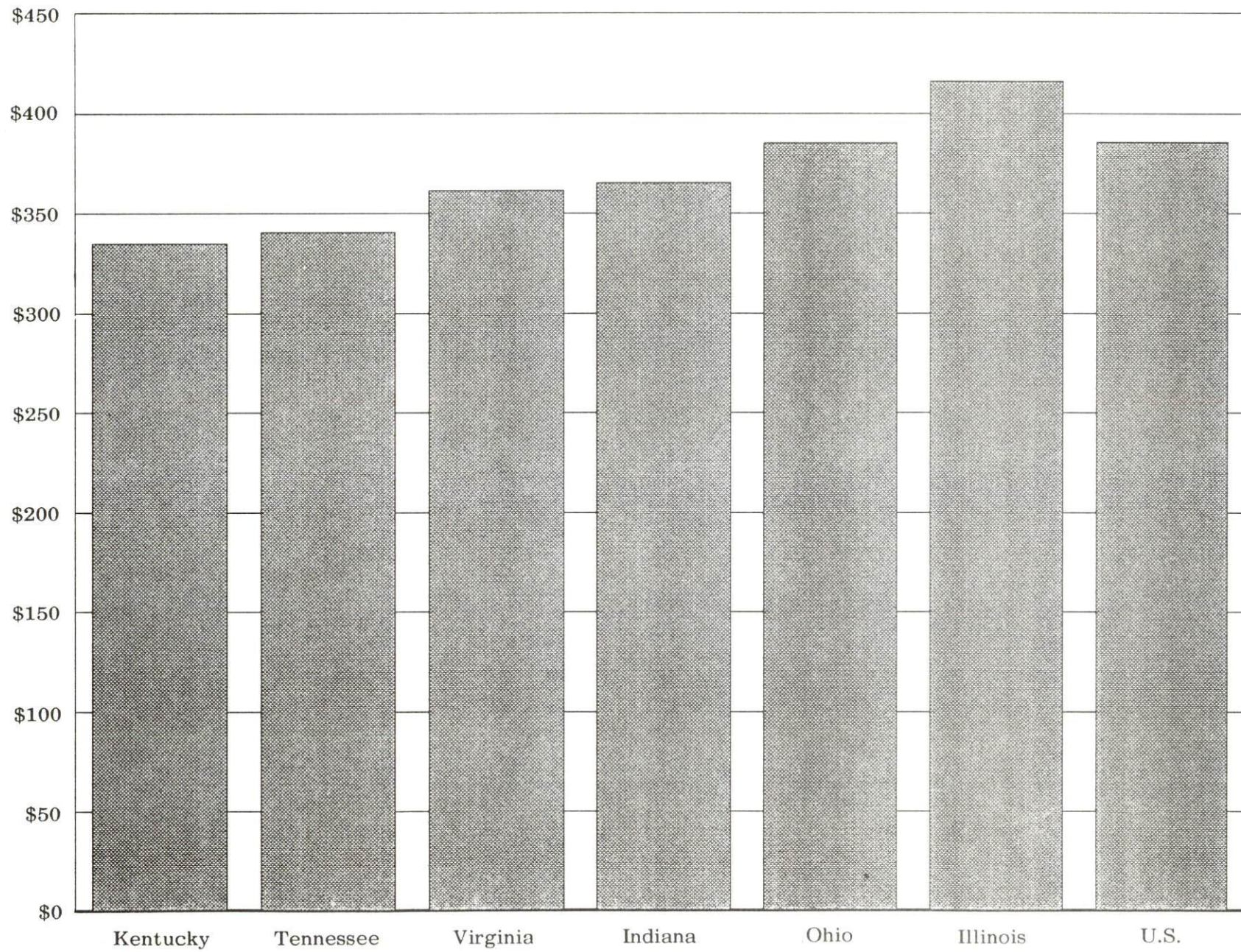
Source: Kentucky Cabinet for Human Resources, Department for Employment Services.

PER CAPITA PERSONAL INCOME

<u>Area</u>	<u>1982</u>	<u>1986</u>	<u>Percent Change</u>
McLean County	\$ 9,269	\$ 10,959	18.2
Labor Market Area Range	\$8,418 - 11,224	\$9,580 - 13,368	-
Kentucky	9,277	11,342	22.3
U.S.	11,480	14,636	27.5

Sources: Kentucky Economic Information System, April 1988.

AVERAGE WEEKLY WAGES OF WORKERS COVERED BY
UNEMPLOYMENT INSURANCE F.Y. 1986-87



AVERAGE WEEKLY WAGES BY INDUSTRY
BY PLACE OF WORK, 1987

	<u>McLean County</u>	<u>Daviess County</u>	<u>Henderson County</u>	<u>Hopkins County</u>
All Industries	\$269.33	\$325.95	\$368.02	\$373.74
Mining & Quarrying	299.33	473.20	697.66	772.33
Contract Construction	169.45	336.51	364.68	309.75
Manufacturing	352.06	430.94	489.65	471.43
Transportation, Communications & Public Utilities	437.70	521.44	496.66	434.15
Wholesale & Retail Trade	205.85	217.74	227.22	232.90
Finance, Insurance & Real Estate	267.46	344.02	311.18	308.77
Services	171.21	279.32	281.07	272.33
State/Local Government	275.83	344.64	330.61	332.96
Other	203.77	248.55	275.27	186.36

	<u>Muhlenberg County</u>	<u>Ohio County</u>	<u>Webster County</u>
All Industries	\$387.84	\$319.75	\$358.02
Mining & Quarrying	*	635.53	865.27
Contract Construction	261.37	256.57	351.32
Manufacturing	251.62	312.21	282.79
Transportation, Communications & Public Utilities	469.74	460.61	525.03
Wholesale & Retail Trade	216.68	190.45	213.05
Finance, Insurance & Real Estate	294.60	288.26	285.96
Services	249.73	213.42	168.54
State/Local Government	321.49	281.40	281.69
Other	287.73	136.04	196.84

* Not disclosed.

Note: The average weekly wage for each category includes the salaries and wages of all persons working for that type business. For example, the manufacturing category includes both production workers and administrative personnel. Excludes domestic workers, railway workers, certain nonprofit corporations, majority of federal government workers, and self-employed workers.

Source: Kentucky Cabinet for Human Resources, Average Weekly Wages of Workers Covered by Kentucky Unemployment Insurance Law, 1987.

EXISTING INDUSTRY

MCLEAN COUNTY MANUFACTURING FIRMS, THEIR PRODUCTS AND EMPLOYMENT

<u>Firm</u> (Establishment date)	<u>Product</u>	<u>1987</u> <u>Average Employment</u>	<u>Labor</u> <u>Unions</u>
Calhoun			
Brackett Vaults, Inc. (1985)	Burial vaults	8	
Charles Chips, Inc. (1962)	Potato chips	135	
McLean County News (1884)	Newspaper	6	
Island			
Trinity Welding (1984)	Steel fabrication	2	
Livermore			
A & S Fabricating Com- pany (1969)	Metal fabrication, structural steel, machine shop	31	
Advanced Drainage Systems, Inc. (1977)	Corrugated plastic pipe & fittings	20	
Barnet Aluminum Cor- poration, Livia Recycling Division (1977)	Aluminum smelter, aluminum coil	193	Molders*
The Livermore Brass and Silver Shop, Inc. (1975)	Industrial plating	20	
James A. Logsdon Lumber Company (1946)	Rough lumber, crossties, wood pallets & skids	6	
Once-A-Tree Waterbeds and Bedroom Furniture, Inc. (1987)	Bedroom furniture, drawer pedestals, waterbeds	11	
Wonderest Chair Company, Inc. (1949)	Hospital, nursing home, motel furniture	12	

(Continued)

<u>Firm</u> <u>(Establishment date)</u>	<u>Product</u>	<u>1987</u> <u>Average Employment</u>	<u>Labor</u> <u>Unions</u>
Sacramento			
E & M Machine Shop (1981)	Machine shop	6	
Sacramento Feed Mill (1963)	Feed grinding	3	

* See labor organizations below.

Sources: Kentucky Department of Economic Development, 1988 Kentucky Directory of Manufacturers; Division of Research and Planning.

LABOR ORGANIZATIONS IN MANUFACTURING FIRMS

Union

Representing workers at:

International Molders and
Allied Workers Union,
AFL-CIO

Barnet Aluminum Corporation,
Livia Recycling Division

SELECTED INDUSTRIAL SERVICES

<u>Types of Service</u>	<u>Location</u>	<u>Mileage from Calhoun</u>
Custom Data Processing	Owensboro, Kentucky	21
Custom Plastics Producers	Livermore, Kentucky	10
Electric Motor Repair	Owensboro, Kentucky	21
	Madisonville, Kentucky	26
Grinding, Precision & Tool	Owensboro, Kentucky	21
Heat Treating Facilities	Evansville, Indiana	55
Industrial Equipment & Supplies	Owensboro, Kentucky	21
	Madisonville, Kentucky	26
Industrial Gases	Owensboro, Kentucky	21
	Madisonville, Kentucky	26
Industrial Waste Removal	Owensboro, Kentucky	21
Machine Shops, Tool & Die	Sacramento, Kentucky	10
	Owensboro, Kentucky	21
Metal Castings	Robards, Kentucky	22
Metal Finishers	Livermore, Kentucky	10
Metal Service Centers	Owensboro, Kentucky	21
	Greenville, Kentucky	32
Millwrights	Owensboro, Kentucky	21
Public Warehouse Facilities	Owensboro, Kentucky	21

Sources: Kentucky Department of Economic Development, Kentucky Directory of Selected Industrial Services, 1987; Division of Research and Planning.

TRANSPORTATION

Rail

CSX Transportation provides branch line rail service to Livermore and Island. Calhoun is not directly served by rail. The nearest piggyback facilities are located at Owensboro, 21 miles north of Livermore.

For details on routing, schedules, rates, and services contact:

Manager
Industrial Development
CSX Transportation
908 West Broadway
P. O. Box 2157
Louisville, Kentucky 40201
(502) 587-7746

Highways

The two major highways serving McLean County are U.S. Highway 431 and Kentucky Route 81. U.S. 431 is a "AAA"-rated (80,000-pound gross load limit) trucking highway. Kentucky Route 81 is a "AAA"-rated trucking highway north of Calhoun and a "AA"-rated (62,000-pound gross load limit) trucking highway south of Calhoun. The Pennyrile Parkway, 14 miles west of Calhoun; the Audubon Parkway, 19 miles north of Calhoun; the Western Kentucky Parkway, 26 miles south of Calhoun; and the Green River Parkway, 27 miles east of Calhoun, provide McLean County with excellent multi-lane highway availability.

Truck Service

Averitt Express, Inc.
Bowman Transportation, Inc.
Consolidated Freightways
Corporation of Delaware
Hohenwald Truck Lines, Inc.
Jones Truck Lines, Inc.
Majors Transit, Inc.

Manning Motor Express, Inc.
Overnite Transportation Company
Quick Freight Systems
Roadway Express, Inc.
Spartan Express, Inc.
Yellow Freight System, Inc.

Source: American Motor Carrier Directory, Spring 1988.

HIGHWAY MILES AND TRUCK TRANSIT TIME IN DAYS FROM
CALHOUN, KENTUCKY, TO SELECTED MARKET CENTERS

City	Highway Miles	Delivery		City	Highway Miles	Delivery Time TL
		Time TL				
Atlanta, GA	373	3		Los Angeles, CA	2,039	5
Baltimore MD	729	3		Louisville, KY	131	2
Birmingham, AL	323	3		Nashville, TN	134	3
Chicago, IL	336	2		New Orleans, LA	648	3
Cincinnati, OH	232	3		New York, NY	889	-
Cleveland, OH	477	3		Pittsburgh, PA	519	3
Detroit, MI	490	3		St. Louis, MO	212	2
Knoxville, TN	310	3				

Note: Mileage computations are via the best interstate or primary highways, not necessarily the most direct route of travel.

Sources: Rand McNally Deluxe Motor Carriers' Road Atlas, 1987. Official Kentucky Mileage Map, 1980. Delivery time - Overnite Transportation Company, 2400 Lynch Road, Evansville, Indiana 47711.

Air

Local

Location: Owensboro-Daviess County Regional Airport
2 miles west of Owensboro;
19 miles north of Calhoun

Runways: 2 paved
Length: 6,500 feet; 3,700 feet

Traffic Control: Control tower, ground control, ILS

Lighting: Beacon, runway, wind sock, obstruction, and taxi lights

Services: Allegheny Commuter, Northwest Air Link; 100LL, Jet-A
fuel; storage; hangar; tie-downs; major A & P
repairs; general flying services; taxi, rental
cars; restaurant; direct line to motel; Avionics;
terminal lounge

Air Freight Service: Air carriers accept air freight on space available
basis

(Continued)

Nearest Scheduled Commercial Airline Service

Location: Evansville Dress Regional Airport
3 miles north of Evansville, Indiana;
49 miles northwest of Calhoun

Runways: 3 paved
Length: 8,021 feet; 5,080 feet; 3,500 feet

Traffic

Control: Control tower

Lighting: Beacon, runway

Services: USAir, Piedmont, Northwest, Trans World Express,
Continental Express, Comair, American Eagle;
fuel - 100LL, jet-A; hangars, tie-downs; major
A & P repairs, major Avionics repairs; flight
instruction, APU, charter, oxygen, plane rental,
survival equipment; taxi, car rentals, courtesy
car; weather information; restaurant, hotel

Air Freight
Service: Air freight terminal

Air Express Service

Several major companies offer air express services in Kentucky. These companies provide a quick means of shipping small to medium-sized packages expeditiously.

Water

Calhoun and Livermore are located on the banks of the Green River, where a 9-foot navigation channel is maintained to the Ohio River. Commercial barge service is available on the Green River.

The Owensboro Riverport Authority operates a public riverport on the Ohio River at Owensboro, 21 miles north of Calhoun. Available services include direct transfer to and from rail, truck, or barge; both open and covered storage; and coal processing and loading. Owensboro is a designated Port of Entry making customs service available on a daily basis.

POWER AND FUEL

Electricity

Company serving Calhoun, Island, Livermore and parts of McLean County -
Kentucky Utilities Company
Source of power - Kentucky Utilities Company
For industrial rates contact:

Industrial Development Department
Kentucky Utilities Company
One Quality Street
Lexington, Kentucky 40507
(606) 255-1461

Company serving a major portion of McLean County - Green River Electric
Corporation
Source of power - Big Rivers Electric Corporation
For industrial rates contact:

Green River Electric Corporation
3111 Fairview Drive
P. O. Box 1389
Owensboro, Kentucky 42302
(502) 926-4141

Natural Gas

Company serving Calhoun - Western Kentucky Gas Company
Source of supply - Texas Gas Transmission Corporation
Size of transmission mains - 30-inch (supplier); 2- and 4-inch
(distributor)
Distribution mains - 2 and 4 inches
Distribution pressure - 25 psi
Btu content - 1,000 per cubic foot
Specific gravity - .60
For rates and supplies contact:

Western Kentucky Gas Company
311 West Seventh Street
Owensboro, Kentucky 42302
(502) 685-8067

Company serving Livermore - City of Livermore Gas Department
Source of supply - Texas Gas Transmission Corporation
Size of transmission mains - 4-inch (supplier); 3-inch (distributor)
Distribution mains - 2 and 3 inches
Distribution pressure - 20 to 40 psi
Btu content - 1,007 per cubic foot
Specific gravity - .59
For rates and supplies contact:

City of Livermore Gas Department
P. O. Box 279
Livermore, Kentucky 42352
(502) 278-2113

Island is currently not served by natural gas service.

WATER AND SEWERAGE

Public Water Supply

Company serving Calhoun - Calhoun Water Works*
P. O. Box 294
Calhoun, Kentucky 42327
(502) 273-3092

Source - Green River

Treatment plant capacity - 485,000 gallons per day

Average daily consumption - 260,000 gallons

Peak daily consumption - 400,000 gallons

Treatment processes - Coagulation, sedimentation, chlorination, rapid mix, flocculation, filtration, fluoridation

Storage capacity - 365,000 gallons

Size lines - 2 to 8 inches

Water pressure - 45 to 60 psi

MONTHLY WATER RATES

First	2,000 gallons	\$5.00 (Minimum)
Next	3,000 gallons	1.85 per M gallons
Next	6,000 gallons	1.40 per M gallons
All over	11,000 gallons	.90 per M gallons

Tap-on charge:

3/4-inch meter	\$ 350
1-inch meter	500
1 1/2-inch meter	750
2-inch meter	1,000

Company serving Island - Island Water Department
P. O. Box 33
Island, Kentucky 42350
(502) 486-9948

Source - 2 wells

Treatment plant capacity - 249,200 gallons per day

Average daily consumption - 90,000 gallons

Peak daily consumption - 134,400 gallons

Treatment processes - Aeration, rapid mix, coagulation, flocculation, sedimentation, filtration, chlorination, fluoridation

Storage capacity - 153,000 gallons

Size lines - 2 to 8 inches

Water pressure - 35 to 45 psi

(Continued)

* Calhoun Water Works has tentative plans to construct a new treatment plant or upgrade the existing plant within the next two years. Approximate cost of a new treatment plant is \$800,000.

MONTHLY WATER RATES

First	2,000 gallons	\$9.30 (Minimum)
Next	4,000 gallons	3.72 per M gallons
Next	4,000 gallons	2.79 per M gallons
Next	10,000 gallons	1.55 per M gallons
All over	20,000 gallons	1.24 per M gallons

Tap-on charge: \$175

Company serving Livermore - City of Livermore Water Department
P. O. Box 279
Livermore, Kentucky 42352
(502) 278-2113

Source - Green River

Treatment plant capacity - 500,000 gallons per day

Average daily consumption - 250,000 gallons

Peak daily consumption - 443,000 gallons

Treatment processes - Aeration, rapid mix, coagulation, flocculation,
sedimentation, filtration, chlorination, fluoridation

Storage capacity - 340,000 gallons

Size lines - 2 to 8 inches

Water pressure - 40 to 65 psi

MONTHLY WATER RATES

Inside City Limits

First	1,000 gallons	\$6.60 (Minimum)
All over	1,000 gallons	2.45 per M gallons

Outside City Limits

First	1,000 gallons	\$9.10 (Minimum)
All over	1,000 gallons	2.65 per M gallons

Tap-on charge:

Inside city - \$100
Outside city - \$300

Name of water district - North McLean County Water District*
Route 1, Box 242
Livermore, Kentucky 42352
(502) 278-2800

Area served - Northern McLean County
Date when water district began operating - 1971
Source of supply of treated water - Calhoun Water Works, City of
Livermore Water Department, West Daviess County Water District
Average amount of water used in a 24-hour period - 170,199 gallons
Peak amount of water used in a 24-hour period - 196,674 gallons
Storage capacity - 350,000 gallons
Size lines - 2 to 6 inches
Water pressure - 45 psi

MONTHLY WATER RATES

First	2,000 gallons	\$8.70 (Minimum)
Next	2,000 gallons	2.80 per M gallons
Next	2,000 gallons	2.30 per M gallons
Next	4,000 gallons	2.00 per M gallons
Next	30,000 gallons	1.70 per M gallons
Next	60,000 gallons	1.50 per M gallons
All over	100,000 gallons	1.30 per M gallons

Tap-on charge:

3/4-inch meter - \$350
Any larger meter - \$500

Sewerage

Company serving Calhoun - Calhoun Sewer Plant**
P. O. Box 294
Calhoun, Kentucky 42327
(502) 273-3092

Design capacity - 200,000 gallons per day
Average daily flow - 135,000 gallons
Type of treatment - Primary and secondary
Treatment processes - Screening, grit removal, primary sedimentation,
contact stabilization, chlorination, sludge drying beds
Treated effluent discharged into - Green River
Size of sanitary mains - 6 to 10 inches
Size of storm mains - 18 to 48 inches
Monthly rates - 75 percent of monthly water bill
Tap-on charge - \$500 except in the Mockingbird Hill area, where \$600
is charged

* The North McLean County Water District plans to construct an addition to an existing water storage facility. This addition, to be completed in 1988, is needed to meet water demand for Barmet Aluminum Corporation.

** Construction of a new 200,000-gallon-per-day wastewater treatment plant and a 100,000-gallon-per-day pre-treatment plant is under way in Calhoun. The pre-treatment plant is being constructed to serve the Charles Chips plant in Calhoun. Upon completion of these plants, the city of Calhoun will have a total wastewater treatment capacity of 400,000 gallons-per-day. This \$360,000 project is scheduled for completion in the fall of 1988.

Company serving Island - Island Waste Water Treatment Plant
P. O. Box 33
Island, Kentucky 42350
(502) 486-9967

Design capacity - 128,000 gallons per day

Average daily flow - 18,000 gallons

Type of treatment - Primary

Treatment processes - Grit removal, oxidation ditch, activated sludge,
chlorination, sludge drying beds, flow equalization, screening,
primary sedimentation, extended aeration, contact stabilization,
rotating biological contactors

Treated effluent discharged into - Green River

Size of sanitary mains - 6 inches

Monthly rates -

First	2,000 gallons	\$11.52 (Minimum)
Next	4,000 gallons	4.16 per M gallons
Next	4,000 gallons	3.52 per M gallons
Next	10,000 gallons	2.88 per M gallons
All over	20,000 gallons	2.24 per M gallons

Tap-on charge: \$300

Company serving Livermore - City of Livermore Sewer Department
P. O. Box 279
Livermore, Kentucky 42352
(502) 278-2410

Design capacity - 315,000 gallons per day

Average daily flow - 197,000 gallons

Type of treatment - Primary and secondary

Treatment processes - Screening, grit removal, oxidation ditch,
chlorination, aerobic digester, sludge drying beds, extended
aeration, secondary sedimentation

Treated effluent discharged into - Green River

Size of sanitary mains - 8 to 12 inches

Size of storm mains - 24 to 36 inches

Monthly rates - Based on monthly water bill

First	1,000 gallons	\$6.50 (Minimum)
All over	1,000 gallons	2.60 per M gallons

Tap-on charge: \$300

CLIMATE

McLean County

Temperature

Normal (30-year record)	55.70 degrees
Average annual 1986	57.00 degrees
Record highest, July 1954 (46-year record)	105.00 degrees
Record lowest, February 1951 (46-year record)	-23.00 degrees
Normal heating degree days (30-year record) (Heating degree day totals are the sums of negative departures of average daily temperatures from 65 degrees F.)	4,729

Precipitation

Normal (30-year record)	41.55 inches
Mean annual snowfall (30-year record)	14.10 inches
Total precipitation 1986	37.68 inches
Mean number days precipitation (.01 inch or more) (46-year record)	115.70
Mean number days thunderstorms (46-year record)	45.10

Prevailing winds (through 1963)

South-Southwest

Relative Humidity (25-year record)

Midnight	78 percent
6 a.m.	81 percent
Noon	59 percent
6 p.m.	62 percent

Source: U.S. Department of Commerce, Environmental Science Services Administration, Climatological Data, 1986. Station of record: Evansville, Indiana.

LOCAL GOVERNMENT

Structure

The cities of Calhoun, Island, and Livermore are all served by a mayor-city council form of government. McLean County is served by a county judge/executive and seven magistrates.

Planning and Zoning

Joint agency - Joint City-County Planning Commission
Zoning enforced - Within city limits of Calhoun and Livermore
Subdivision regulations enforced - All areas
Local codes enforced - Building code in all areas
Mandatory state codes enforced - Kentucky Plumbing code, National Electric Code, Kentucky Boiler Regulations and Standards, Kentucky Building Code (modeled after BOCA code)

Local Fees and Licenses

The city of Calhoun levies business license fees ranging from \$10 to \$125 per year. Business license fees in Island range from \$3.75 to \$25.50; and in Livermore the fees range from \$6 to \$210. Manufacturing plants in Island and Livermore are assessed \$1 per \$1,000 capital stock. The city of Island also levies an unloading license fee of \$22.50 per year.

A 3 percent tax is levied on utilities receipts for schools in McLean County. Tax is paid by all consumers of utilities as an add-on to the utilities bills. Exempted are receipts from utilities services that are resold and the receipts from the sale of energy or energy producing fuels that exceed 3 percent of the cost of production in manufacturing, processing, mining or refining.

State and Local Property Taxes

All property in Kentucky, except items exempted by the state constitution, is taxed by the state. Property which also may be taxed by local jurisdictions includes land and buildings, finished goods inventories, automobiles, trucks, office furniture and office equipment. Local taxing jurisdictions in Kentucky include counties, cities, and school districts.

All property in Kentucky is assessed at 100 percent of fair cash value.

COMBINED STATE AND LOCAL RATES PER \$100 VALUATION, 1987

	Calhoun	Island
Land and Buildings	\$0.690	\$0.668
Manufacturing		
Machinery	0.150	0.150
Pollution Control		
Equipment	0.150	0.150
Inventories		
Raw materials	0.001	0.001
Goods in Process	0.001	0.001
Finished Goods	0.492	0.473
Automobiles & Trucks	0.909	0.890
Other Tangible		
Personal Property	0.941	0.922
Intangibles (Accounts receivable*, money in hand, stock, notes, bonds)	0.250	0.250
Goods Stored in Public Warehouses in Transit Status	0.001	0.001
Private Leaseholds in Industrial Revenue Bond Financed Facilities	0.015	0.015

(Continued)

	Livermore	Unincorporated McLean County
Land and Buildings	\$0.702	\$0.524
Manufacturing		
Machinery	0.150	0.150
Pollution Control		
Equipment	0.150	0.150
Inventories		
Raw materials	0.001	0.001
Goods in Process	0.001	0.001
Finished Goods	0.500	0.322
Automobiles & Trucks	0.916	0.739
Other Tangible		
Personal Property	0.949	0.771
Intangibles (Accounts receivable*, money in hand, stock, notes, bonds)	0.250	0.250
Goods Stored in Public Warehouses in Transit Status	0.001	0.001
Private Leaseholds in Industrial Revenue Bond Financed Facilities	0.015	0.015

* Accounts receivable are taxed at 85 percent of face value, for an effective rate of \$0.2125 per \$100 valuation.

Safety

Police	Calhoun	Island
Total staff	2	-
Radio-patrol cars	-	-
	Livermore	McLean County
Total staff	2	5
Radio-patrol cars	1	2
Fire*	Calhoun	Island
Insurance Services Office, Public Protection Classification	7	9
Volunteers	24	25
	Livermore	McLean County
Insurance Services Office, Public Protection Classification	7	**
Volunteers	13	134

Rescue Service

The McLean County Fire Department provides rescue service to all areas of McLean County.

Refuse Collection and Disposal

Private contractors provide refuse collection and disposal to all areas of McLean County.

* Includes copyrighted material of ISO Commercial Risk Services, Inc., with its permission.

** Five fire protection districts serve McLean County. Fire protection ratings for property located within these districts range from class 6 to class 9. Class 10 applies to unincorporated areas not contained within a fire district.

EDUCATION

Public Schools

	McLean County*
Total Enrollment (May 1988)	1,925
Kindergarten	149
Elementary	750
Middle School	415
High School	611
Pupil-Teacher Ratio (1986-87)	19-1
Percent High School Graduates to College (1986-87)	31.9
Expenditures Per Pupil (1986-87)	\$2,043.00

* The McLean County School System plans to remodel three elementary schools and the high school. The projects will be performed in stages, with the final project scheduled to be completed during the 1992-93 school year. Total estimated cost of these remodeling projects is \$6.2 million.

Area Colleges and Universities

<u>Name</u>	<u>Location (Miles distant from Calhoun)</u>	<u>Enrollment (Fall, 1987)</u>	<u>Highest Degree Conferred</u>
Brescia College	Owensboro, Kentucky (21)	725	Baccalaureate*
Kentucky Wesleyan College	Owensboro, Kentucky (21)	774	Baccalaureate*
Owensboro Community College	Owensboro, Kentucky (21)	1,530	Associate
Madisonville Community College	Madisonville, Kentucky (26)	1,514	Associate
Henderson Community College	Henderson, Kentucky (34)	1,116	Associate
University of Southern Indiana	Evansville, Indiana (46)	4,624	Masters
University of Evansville	Evansville, Indiana (46)	3,550	Masters
Hopkinsville Community College	Hopkinsville, Kentucky (57)	1,341	Associate
Western Kentucky University	Bowling Green, Kentucky (71)	13,520	Masters, Specialist**

* Courses in masters degree programs are taught on campus by faculty members of Western Kentucky University or Murray State University. The degrees are issued by Western Kentucky University or Murray State University.

** Joint doctoral degree programs are offered in cooperation with the University of Kentucky, Lexington, and cooperative doctoral degree programs are offered with the University of Louisville. The degrees are issued by the University of Kentucky or the University of Louisville.

Vocational Training

The Bluegrass State Skills Corporation, an independent public corporation created and funded by the Kentucky General Assembly, provides programs of skills training to meet the needs of business and industry from entry level to advanced training, and from upgrading present employees to retraining experienced workers.

The Bluegrass State Skills Corporation is the primary source for skills training assistance for a new or existing company. The Corporation works in partnership with other employment and job training resources and programs, as well as Kentucky's economic development activities, to package a program customized to meet the specific needs of a company.

Vocational training is available at both the state vocational-technical schools and the area vocational education centers. The state vocational-technical schools are post-secondary institutions. The area vocational education centers are designed to supplement the curriculum of high school students. Both the state vocational-technical schools and the area vocational education centers offer evening courses to enable working adults to upgrade current job skills.

Arrangements can be made to provide training in the specific production skills required by an industrial plant. Instruction may be conducted either in the vocational school or in the industrial plant, depending upon the desired arrangement and the availability of special equipment.

Nearest State Schools

Daviess County State Vocational-Technical School
Owensboro, Kentucky, 21 miles from Calhoun

Business & Office	Drafting (with CAD/CAM)
Clerical	Welding
Secretarial	Learning Resource Center
Consumer & Home Economics	Public Service Occupations
Child Care Services	Business/Industry Security
Commercial Foods	Training
Health & Personal Services	CPR Training
Occupations	Electrical Safety Training
Cosmetology	Emergency Medical Care
Industrial Education	Fire Service Training
Auto Body Repair	First Aid & Safety
Auto Mechanics	Rescue & Emergency Services
Diesel Mechanics	Training

(Continued)

Owensboro Vocational-Technical School
Owensboro, Kentucky, 21 miles from Calhoun

Health & Personal Services

Health Services
Practical Nursing

Industrial Education

Air Conditioning
Carpentry
Electricity
Electronics

Instrumentation

Machine Shop
Masonry
Plumbing
Radio & TV Repair
Sheet Metal
Welding

Learning Resource Center

Nearest Area Education Center

Ohio County Area Vocational Education Center
Hartford, Kentucky, 25 miles from Calhoun

Business & Office

Accounting/Management
Clerical
Secretarial

Health & Personal Services

Occupations

Health Services

Industrial Education

Auto Mechanics
Carpentry
Electricity
Welding

HEALTH

Local Medical Personnel

Physicians - 5

Dentists - 3

Hospitals

<u>General Hospital</u>	<u>Location</u>	<u>Beds</u>
McLean County General Hospital	Calhoun	26

Medical staff - 2 physicians, 2 consulting radiologists, 2 consulting pathologists, 2 dentists, 8 registered nurses, 7 licensed practical nurses

Additional hospitals are located in Owensboro, 21 miles north of Calhoun. The Owensboro-Daviess County Hospital has 458 beds, and Mercy Hospital maintains 125 beds.

Other Medical Facilities

Green River District Health Department
McLean County Health Center

Ambulance Service

Name - McLean County Ambulance Service

Staff - 5 emergency medical technicians, 3 paramedics

OTHER LOCAL FACILITIES

Communications

Telephone - Telegraph -	South Central Bell Telephone Company Western Union Toll-Free number, 1-800-325-6000
Newspapers - Weekly and circulation -	The McLean County News 3,091
Television - Airwave reception from -	Henderson, Louisville, Bowling Green, and Paducah, Kentucky; Nashville, Tennessee; Evansville, Indiana Tel-Media Company of Green River
Cable service - Educational Television -	The Kentucky Educational Television (K.E.T.) network is available statewide

Library Services

The Livermore Community Library operates on a volunteer basis with a collection of 20,000 volumes. The 6,400-square-foot facility also houses an art gallery and facilities for adult education. Public library facilities are also available through the McLean County School System.

Religious Institutions

McLean County

Denominations -	Assembly of God Baptist Catholic Christian Church of Christ Cumberland Presbyterian	General Baptist Pentecostal Pilgrim Holiness Presbyterian Seventh Day Adventist United Methodist
Nearest Synagogues - Congregations -	Owensboro, Kentucky, 21 miles north of Calhoun Adath Israel (reform)	

Financial Institutions

<u>Banks</u>	<u>Assets</u>	<u>Deposits</u>	<u>Statement Date</u>
Citizens Deposit Bank (Calhoun)	\$27,212,861.00	\$24,065,115.00	12/31/87
Farmers & Merchants Bank (Livermore)	9,624,586.00	8,173,193.00	5/31/88
First Security Bank & Trust (Island)	9,603,000.00	8,037,000.00	3/31/88
Sacramento Deposit Bank (Sacramento)	21,551,650.58	17,789,139.99	12/31/87

<u>Savings and Loan Associations</u>	<u>Assets</u>	<u>Deposits</u>	<u>Statement Date</u>
Cardinal Federal Savings Bank	\$247,506,147.00	\$219,741,910.00	9/30/87
First Kentucky Federal Savings & Loan Association	174,780,092.00	167,226,984.00	12/31/87

Clubs and Organizations

McLean County

American Legion	Junior Pro Basketball
Babe Ruth League	Keep America Beautiful Committee
Beta Club	Lions
Boy Scouts	Little League
Brownies	Livermore-McLean County Chamber of Commerce
Cub Scouts	Masonic Lodge
Disaster and Emergency Services	McLean County Airport Board
Eastern Star	Modern Woodmen of the World
Farm Bureau	PTA
Foreign Club	Recreation Committee
4-H Club	Senior Citizens
FBLA	Senior Homemakers Club
FFA	Student Council
FHA	T-Ball
Girl Scouts	Women's Club
HELP, Inc.	Youth Football League
History Club	
Island Community Development Association, Inc.	

RECREATION

Local

A variety of public recreation facilities are available in McLean County. In Calhoun, there are two parks, a playground, two tennis courts, two lighted baseball diamonds, and an indoor movie theater. The Island Recreation Committee maintains a miniature park which has a tennis court, a basketball court, a paved multi-use area, playground equipment and picnic tables. A baseball diamond and a multi-purpose field are also available in Island. A skating rink is located in Sacramento. In addition, four tennis courts, a softball field, a baseball field, and playground equipment are available at the McLean County High School.

The Cleat Johnson Memorial Park, located in Livermore, offers picnic areas and a shelter house, tennis courts, baseball diamonds, and playground equipment. Two mini-parks, also in Livermore, contain picnic areas, playgrounds, and basketball courts.

Beech Grove Community Park has a lighted ball field and playground.

Windy Hollow Recreation, 10 miles north of Calhoun, has thirteen well-stocked lakes, cabins, trailer sites, a restaurant and a country store. The parkland area offers swimming, fishing, picnicking, hiking, playground facilities, miniature golf, and a 250-foot water slide.

Miller Lakes, 12 miles north of Calhoun, offers three fishing lakes, one swimming lake, a campground, cabins, snack bar, fishing, picnicking, hiking, playground equipment, paddle boats, and miniature golf.

Area (Within 55 miles)

Owensboro, 21 miles north of Calhoun, is Kentucky's third largest city. Owensboro is a source of many entertainment and recreational facilities associated with larger communities. Points of interest include museums, an orchestra and two colleges. Several festivals are held annually, including the International Bar-B-Que Festival, the Summer Festival, and the Bluegrass Festival.

Ben Hawes State Park, 29 miles north of Calhoun near Owensboro, is a 300-acre park which is open year-round. It features a playground, a softball field, tennis courts, hiking trails, a picnic area and shelters, including an 18-hole and 9-hole golf course, pro shop, driving range and archery range.

Lake Malone State Park, located in southern Muhlenberg County, 44 miles south of Calhoun, offers camping facilities, swimming, fishing, and boating on an 826-acre lake. Playground facilities and picnic shelters are located in a beautiful scenic cliff area. Located across from the entrance to the park is an inn featuring luxury rooms, a restaurant, a swimming lake, a beach, boating, fishing, tennis, and nature trails.

Just north of Henderson, 47 miles northwest of Calhoun, is the John James Audubon State Park, a 692-acre park where the famed naturalist gathered material for his painting, "The Birds of America." Many paintings by Audubon and his sons, and 126 first-edition prints of his paintings are on display at the Audubon Memorial and Nature Museum which is the focal point of the park. Other park features include the Audubon woods, a bird sanctuary, and a 12-acre nature preserve lake. The park has cottages and camping sites. Recreational facilities include a 28-acre recreational lake, a beach and a bathhouse, rental rowboats and pedal boats, a dock, a 9-hole golf course, a tennis court, hiking trails, picnic shelters, planned recreation, and playgrounds. Organized recreation programs are offered during the summer.

Pennyrile Forest State Resort Park near Dawson Springs is located 55 miles southwest of Calhoun. The 24-room lodge, 13 cottages, and 68 campsites nestled within the trees provide excellent accommodations. Other facilities and activities include a dining room, a gift shop, rental rowboats and pedal boats, a 9-hole golf course, miniature golf, hiking trails, horseback riding, picnicking, playgrounds, shuffleboard, swimming at the lodge pool and off a sand beach, and two tennis courts. Lake Beshear, only four miles from the lodge, sports good fishing.

COMMUNITY IMPROVEMENTS

Recent

Once-A-Tree Waterbeds and Bedroom Furniture, Inc., recently began operations in Livermore. This firm presently employs 11 persons with plans to expand and provide additional jobs in the near future. Charles Chips, Inc., located in Calhoun, recently completed an expansion. This expansion included the addition of new product lines.

A new "Central Dispatch System" was recently installed at the McLean County sheriff's office. This system is a central communication system for all emergency services throughout the county.

The City of Livermore recently completed renovation projects at the fresh water treatment plant and the wastewater treatment plant. This project also included upgrading sewer mains and service lines. Approximate cost of this project was \$1.1 million.

A county-operated ambulance service recently began operations in McLean County. The ambulance service is headquartered at the McLean County Hospital.

A new \$4.6 million bridge was recently completed on Kentucky 85 near Island. A bypass, which will connect with the bridge, is planned for construction in the near future.

The McLean County School System completed construction of a \$250,000 maintenance garage for school buses in June, 1988.

A new 23-unit apartment complex for the elderly and handicapped was recently constructed in Livermore. A renovation project of sub-standard housing within the city was also recently completed.

Under Way

Construction of a new 11.5 acre industrial park is under way in Livermore. A 10-acre recreational park and marina will be located adjacent to the industrial park. A camping area for recreational vehicles will also be available in the recreation area.

The 911 emergency telephone system is being implemented throughout McLean County. The system is scheduled to be in full operation in October, 1988. The county is in the process of numbering houses and naming all roads in conjunction with the system.

Construction of a new 200,000-gallon-per-day wastewater treatment plant and a 100,000-gallon-per-day pre-treatment plant is under way in Calhoun. The pre-treatment plant is being constructed to serve the Charles Chips plant in Calhoun. Upon completion of these plants, the city of Calhoun will have a total wastewater treatment capacity of 400,000 gallons-per-day. This \$360,000 project is scheduled for completion in the fall of 1988.

Planned

A & S Fabricating Company, Barmet Aluminum Corporation, Once-A-Tree Waterbeds, Inc., and Wonderest Chair Company, Inc., have plans for expansions to their Livermore manufacturing facilities.

The McLean County School System plans to remodel three elementary schools and the high school. The projects will be performed in stages, with the final project scheduled to be completed during the 1992-93 school year. Total estimated cost of these remodeling projects is \$6.2 million.

There are plans to renovate the old McLean County jail and convert it into a social service center. This \$25,000 project is scheduled to be complete in October 1988.

Calhoun Water Works has tentative plans to construct a new treatment plant or upgrade the existing plant within the next two years. Approximate cost of a new treatment plant is \$800,000.

The North McLean County Water District plans to construct an addition to an existing water storage facility. This addition, to be completed in 1988, is needed to meet water demand for Barmet Aluminum Corporation.