

1983

Industrial Resources: Monroe County - Tompkinsville and Gamaleil

Kentucky Library Research Collections
Western Kentucky University, spcol@wku.edu

Follow this and additional works at: https://digitalcommons.wku.edu/monroe_cty



Part of the [Business Administration, Management, and Operations Commons](#), [Growth and Development Commons](#), and the [Infrastructure Commons](#)

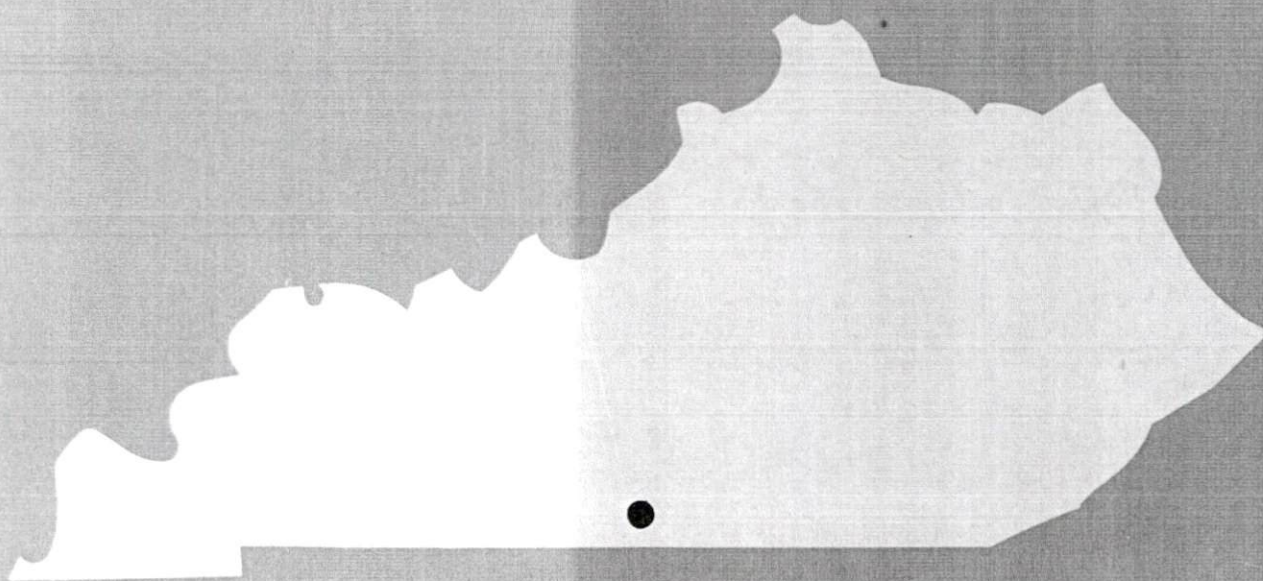
Recommended Citation

Kentucky Library Research Collections, "Industrial Resources: Monroe County - Tompkinsville and Gamaleil" (1983). *Monroe County*. Paper 15.
https://digitalcommons.wku.edu/monroe_cty/15

This Report is brought to you for free and open access by TopSCHOLAR®. It has been accepted for inclusion in Monroe County by an authorized administrator of TopSCHOLAR®. For more information, please contact topscholar@wku.edu.

IR
364 Monroe County

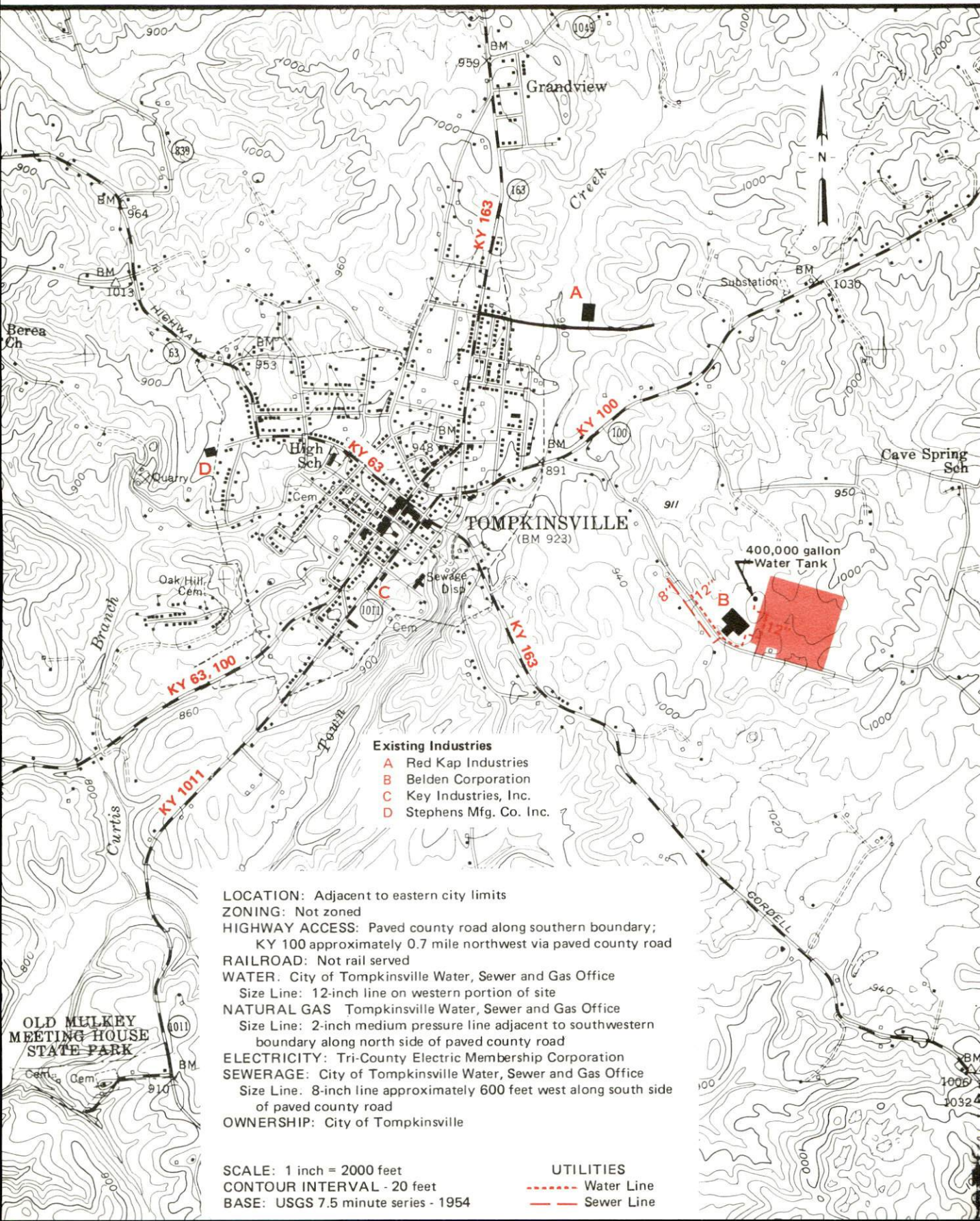
A comprehensive
report on
**Tompkinsville
and Gamaliel, Ky.
1983**



KENTUCKY & CO.
The state that's run like a business.

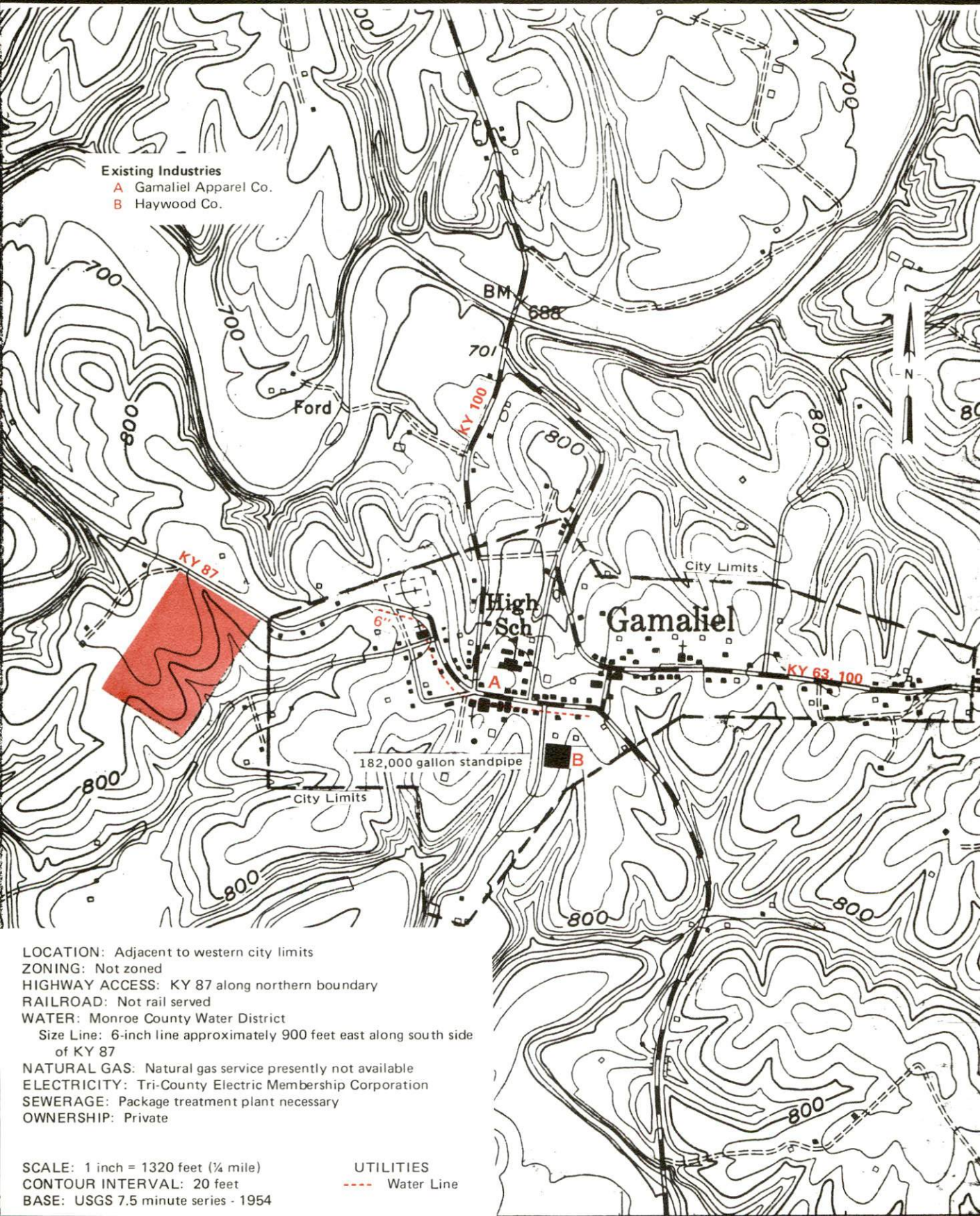
TOMPKINSVILLE, KENTUCKY --- Site 183 --- 29 Acres

For more information contact the Department of Economic Development, Office of Business Development, Industrial Development Division; Capital Plaza Tower, Frankfort, Kentucky 40601 (502-564-7140).



GAMALIEL, KENTUCKY --- Site 183 --- 30 Acres

For more information contact the Department of Economic Development, Office of Business Development, Industrial Development Division, Capital Plaza Tower, Frankfort, Kentucky 40601 (502-564-7140).



LOCATION: Adjacent to western city limits

ZONING: Not zoned

HIGHWAY ACCESS: KY 87 along northern boundary

RAILROAD: Not rail served

WATER: Monroe County Water District

Size Line: 6-inch line approximately 900 feet east along south side of KY 87

NATURAL GAS: Natural gas service presently not available

ELECTRICITY: Tri-County Electric Membership Corporation

SEWERAGE: Package treatment plant necessary

OWNERSHIP: Private

SCALE: 1 inch = 1320 feet ($\frac{1}{4}$ mile)

CONTOUR INTERVAL: 20 feet

BASE: USGS 7.5 minute series - 1954

UTILITIES

--- Water Line

A COMPREHENSIVE REPORT ON
TOMPKINSVILLE AND GAMALIEL, KENTUCKY

Prepared by
The Kentucky Department of Economic Development
Division of Research and Planning
in cooperation with
The Tompkinsville Chamber of Commerce
and
The City of Gamaliel

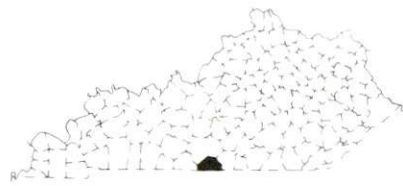
1983

Program manager - Pam Riley; research -James Thompson; clerical - Linda Fint; graphics - Frank Ferrante, Tony Cecconi, Robert Owens; cartography - Site Evaluation Section, Division of New Industries. Cost of printing paid from state funds.

TABLE OF CONTENTS

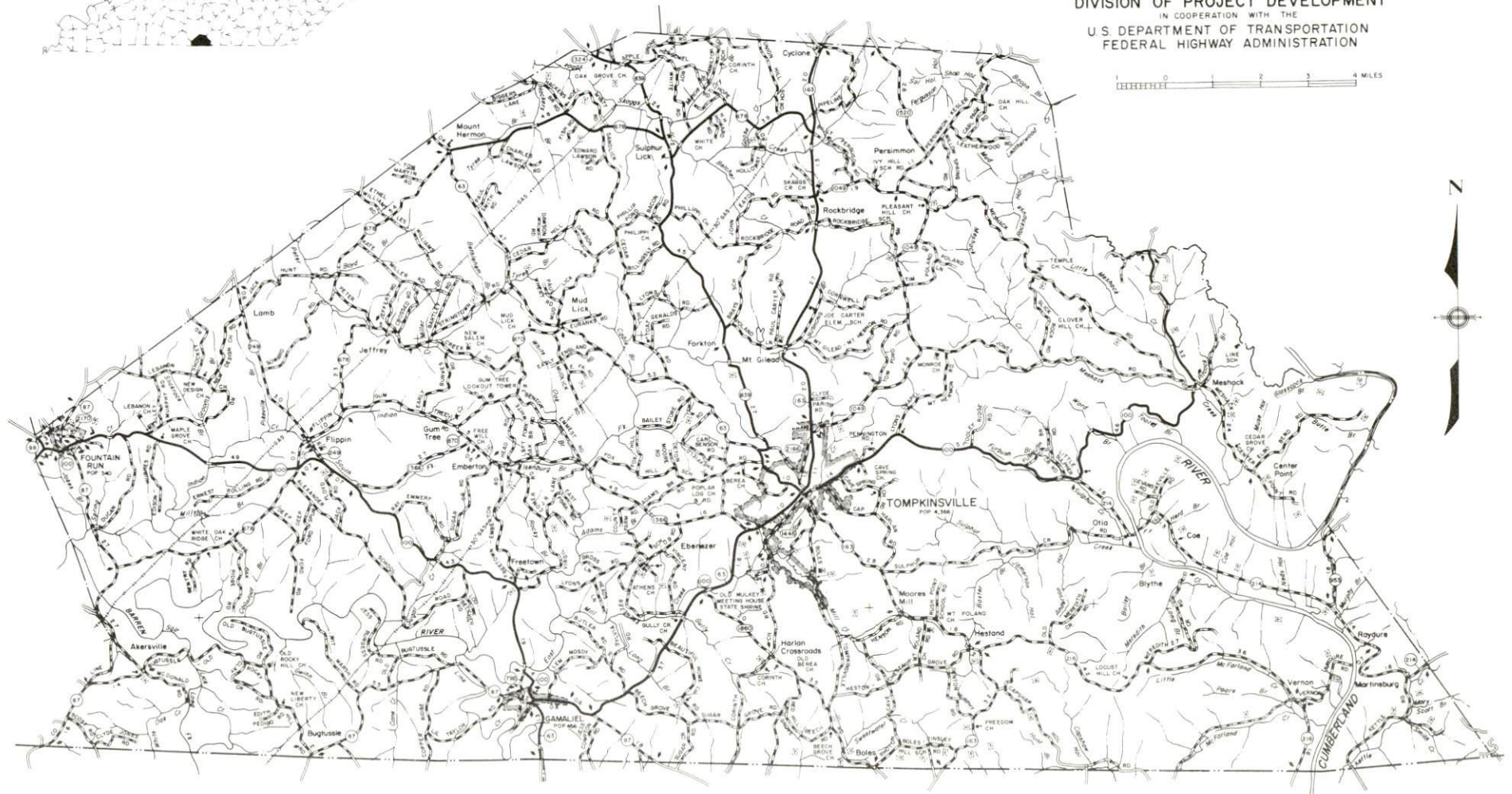
<u>Chapter</u>	<u>Page</u>
INDUSTRIAL SITES	i
TOMPKINSVILLE AND GAMALIEL, KENTUCKY - A RESOURCE PROFILE	1
THE LABOR MARKET AREA	3
Population	3
Labor Force Characteristics of Residents, 1981	3
Monroe County Manufacturing Firms, Their Products and Employment	4
Labor Organizations in Manufacturing Firms	5
Industrial Services	6
Estimated Male Labor Supply	7
Estimated Female Labor Supply	8
Average Weekly Wages by Industry, by Place of Work, 1981	9
Per Capita Personal Income	11
TRANSPORTATION	12
Rail	12
Highways	12
Truck Service	12
Air	14
Taxi	14
Rental Services	14
POWER AND FUEL	15
Electricity	15
Natural Gas	15
Other Fuels	16
WATER AND SEWERAGE	17
Public Water Supply	17
Raw Water	19
Sewerage	19
CLIMATE	20

<u>Chapter</u>	<u>Page</u>
LOCAL GOVERNMENT	21
City	21
County	21
Assessed Value of Property	21
Property Taxes	22
Combined State and Local Rates Per \$100 Valuation, 1982	22
Utilities Gross Receipts Tax for Schools	23
Planning and Zoning	23
Safety	23
Police	23
Fire	23
Rescue Service	23
Refuse Collection and Disposal	24
EDUCATION	25
Public Schools	25
Area Colleges and Universities	26
Vocational Schools	27
HEALTH	29
Local Medical Personnel	29
Hospitals	29
Other Medical Facilities	29
Ambulance Service	29
Public Health	29
OTHER LOCAL FACILITIES	30
Communications	30
Library Services	31
Religious Institutions	31
Financial Institutions	32
Hotels and Motels	32
Clubs and Organizations	32
RECREATION	33
COMMUNITY IMPROVEMENTS	35



1982 EDITION
GENERAL HIGHWAY MAP
MONROE COUNTY
KENTUCKY

PREPARED BY THE
KENTUCKY DEPARTMENT OF TRANSPORTATION
BUREAU OF HIGHWAYS
DIVISION OF PROJECT DEVELOPMENT
IN COOPERATION WITH THE
U.S. DEPARTMENT OF TRANSPORTATION
FEDERAL HIGHWAY ADMINISTRATION



[illegible]

TOMPKINSVILLE AND GAMALIEL, KENTUCKY - A RESOURCE PROFILE

Tompkinsville, the county seat of Monroe County, is located in the south central portion of the county. Tompkinsville, with a 1980 population of 3,077, is 127 miles south of Louisville, Kentucky; 100 miles northeast of Nashville, Tennessee; and 349 miles southeast of St. Louis, Missouri.

Gamaliel, located in the southwestern portion of Monroe County, is located eight miles southwest of Tompkinsville. In 1980, Gamaliel had a population of 456.

Monroe County is located in south central Kentucky in the Mississippian Physiographic region. The county's southern boundary is formed by the Kentucky-Tennessee state line. Monroe County, which covers a land area of 331 square miles, had a 1980 population of 12,353.

The Economic Framework

The total number of Monroe County residents employed in 1981 averaged 4,650, with nonagricultural jobs accounting for 3,730 workers. Manufacturing employers in the county reported 1,330 workers; wholesale and retail trade 420; state and local government 520; and 180 employees in service occupations. Manufacturing employment is greatest in apparel and related products and lumber and wood products.

Per capita personal income in Monroe County in 1980 was \$5,154. Between 1976 and 1980 per capita income increased by 43.1 percent.

The Tompkinsville and Gamaliel labor market area includes Monroe County and the adjoining Kentucky counties of Allen, Barren, Cumberland, and Metcalfe plus Clay and Macon counties in Tennessee. The total number of residents in the Kentucky portion of the labor market area employed in 1981 averaged 36,370, with nonagricultural jobs accounting for 30,870 workers. Manufacturing employers in this area reported 8,250 workers; wholesale and retail trade 4,090; state and local government 2,810; and 2,470 in the service industries.

Resources for Growth

1. Labor Supply - There is a current labor supply of 6,060 men and 3,300 women available for industrial jobs in the labor market area. In addition, from 1983 through 1987, 4,230 young men and 4,210 young women in the area will become 18 years of age and potentially available for industrial jobs.

2. Transportation - The Seaboard System Railroad provides freight service and a variety of other services at Glasgow, 32 miles from Tompkinsville. Tompkinsville is served directly by Kentucky Highway 163, a "AAA" rated trucking highway. The Cumberland Parkway, a multilane toll road, is located 24 miles to the north via Kentucky 163. Interstate 65 is located 43 miles northwest of Tompkinsville. Tompkinsville and Gamaliel are served by three common carriers. The nearest commercial airline service is the Nashville Metropolitan Airport at Nashville, Tennessee, 106 miles southwest of Tompkinsville.

3. Power and Fuel - The Tri-County Electric Membership Corporation, with the Tennessee Valley Authority serving as the source of supply, provides electricity to Tompkinsville, Gamaliel, and Monroe County. The Tompkinsville Natural Gas Company, which is supplied by Texas Eastern Transmission Corporation, provides Tompkinsville with natural gas. Gamaliel does not have natural gas service. There are five propane distributors and six distillate fuel oil distributors serving Tompkinsville and Gamaliel.

4. Education - The Monroe County School System provides primary and secondary education in Tompkinsville and Gamaliel.

Two universities, one senior college, one junior college and two community colleges are located within 90 miles of Tompkinsville.

The Bowling Green State Vocational-Technical School in Bowling Green, 65 miles from Tompkinsville, offers instruction in 25 courses. The Monroe County Vocational Education Center in Tompkinsville offers six courses.

THE LABOR MARKET AREA

The Tompkinsville and Gamaliel Labor Market Area includes Monroe County and the adjoining Kentucky counties of Allen, Barren, Cumberland, and Metcalfe. The southern boundary of Monroe County is formed by the Tennessee state line. The Tompkinsville and Gamaliel Labor Market Area also encompasses two of the adjoining Tennessee counties.

POPULATION			
Area	1980	1970	Percent Nonwhite
Tompkinsville	3,077	2,207	9.2
Gamaliel	456	431	0.0
Labor Market Area	77,263	67,944	N/A
Monroe County	12,353	11,642	3.0
Allen County	14,128	12,598	1.3
Barren County	34,009	28,677	5.1
Cumberland County	7,289	6,850	5.4
Metcalfe County	9,484	8,177	3.0

Note: The 1980 counts of population by race are provisional.

Sources: U.S. Department of Commerce, Bureau of the Census, 1980 Census of Population and Housing, March 1981; 1980 Census of Population, Number of Inhabitants. Population Research Unit, Urban Studies Center, University of Louisville, Kentucky Demographics: The 1980 Census of Kentucky, Characteristics of Population, Households, Housing, January 1982.

LABOR FORCE CHARACTERISTICS OF RESIDENTS, 1981

	Monroe County	Labor Market Area*
Civilian Labor Force	5,169	39,587
Employment	4,647	36,372
Agricultural	918	5,501
Nonagricultural	3,729	30,871
Unemployment	522	3,215
Rate of Unemployment (%)	10.1	8.1

* Monroe County and the four adjoining Kentucky counties.

Source: Kentucky Cabinet for Human Resources, Kentucky Labor Force Estimates, Annual Averages, 1981.

MONROE COUNTY MANUFACTURING FIRMS,
THEIR PRODUCTS AND EMPLOYMENT

Firm (Establishment date)	Product	Employment		
		Total	Male	Female
Tompkinsville				
Anderson Forest Products, Inc. (1976)	Wood pallets, wood boxes, blocking wood reels	63	60	3
Roy Anderson Lumber Company (1956)	Rough lumber	35	35	0
Belden Corporation (1981)	Electronic wire and cable	65	35	30
Custom Hardwood Products, Inc. (1979)	Wood pallet cants	6	5	1
Dairymen, Inc. (1982)	Curd for cheese, whey cream	27	25	2
Ford & Son Paving Contractors, Inc. (1954)	Asphalt	25	22	3
Froedge Machine and Repair Shop (1961)	Machine shop	6	5	1
Graham Pallet Company (1960)	Wood pallets	51	50	1
Haile Guitars (1943)	Hand-craft concert and folk guitars	2	1	1
Kentucky Log Homes, Inc. (1979)	Log homes	10	9	1
Key Industries, Inc. (1952)	Men's and boys' jeans and coveralls	150	22	128
Monroe County Press (1947)	Newspaper, job printing	13	6	7
Monroe Sweet Feed Mill, Inc. (1949)	Feed	5	5	0
Pick's Manufacturing Company, Inc. (1977)	Furniture	12	9	3
Red Kap Industries (1963)	Men's coveralls, work coats, jackets	190	30	160
Stephens Manufacturing Company, Inc. (1956)	Steel bulk cement silos, ready mix plants, pollution control equipment	46	45	1
Tompkinsville Block Company (1961)	Concrete tile, septic tanks, metal fertilizer mixing machine	6	5	1

<u>Firm</u> (Establishment date)	<u>Product</u>	<u>Employment</u>		
		<u>Total</u>	<u>Male</u>	<u>Female</u>
Tompkinsville Printing Company (1962)	Job printing, silk screen printing	2	2	0
Trico Stone, Inc. (1955)	Crushed limestone	24	23	1
USS Agri Chemicals (1966)	Fertilizer	4	3	1

Gamaliel

Haywood Company (1960)	Casual jeans, men's sportswear, women's sportswear	390	80	310
Stitches, Inc. (1976)	Women's sportswear, men's sportswear, children's sportswear	72	8	64

Fountain Run

Brasota Garment, Inc. (1981)	Men's jeans, women's slacks and jeans	46	6	40
Fountain Run Industries (1972)	Ladies' slacks	125	8	117
Spowl Lumber Company, Inc. (1953)	Lumber, wood pallets	27	26	1

Hestand

Graham & Hammer Lumber Company, Inc. (1974)	Lumber	28	28	0
Hestand Lumber Company (1954)	Pulp chips	3	2	1

Monroe County

L. P. H. Manufacturing Company, Inc. (1977)*	Wood bedframes	8	8	0
--	----------------	---	---	---

* L. P. H. Mfg. Company, Inc. is physically located in Monroe County, but has a mailing address of Route 2, Summer Shade, which is in Metcalfe County.

Source: Kentucky Department of Economic Development, Division of Research and Planning.

LABOR ORGANIZATIONS IN MANUFACTURING FIRMS

Presently there are no unions representing manufacturing workers in Monroe County.

INDUSTRIAL SERVICES

<u>Types of Services</u>	<u>Location</u>	<u>Mileage from Tompkinsville</u>
Tool & Die, Machine & Pattern Shops	Tompkinsville, Kentucky	--
Metal Service Centers	Bowling Green, Kentucky	65
Heat Treating	Nashville, Tennessee	100
Metal Finishers	Elizabethtown, Kentucky	85
Electric Motor Repair	Bowling Green, Kentucky	65

Source: Kentucky Department of Economic Development, Kentucky Directory of
Selected Industrial Services, 1981.

ESTIMATED MALE LABOR SUPPLY
TOMPKINSVILLE AND GAMALIEL LABOR MARKET AREA

Area	Current				Future
	Total	Not in Labor Force	Unemployed	Under- employed	Becoming 18 years of age 1983 thru 1987
Labor Market					
Area*	6,060				4,231
Monroe	1,170	614	300	256	539
Allen	578	77	298	203	592
Barren	1,470	0	864	606	1,395
Cumberland	1,465	980	172	313	276
Metcalfe	656	285	224	147	417
Clay (Tenn.)	268	N/A	N/A	N/A	323
Macon (Tenn.)	453	N/A	N/A	N/A	689

*Additional workers may be drawn from other nearby counties.

Note: Not in Labor Force - represents the number of persons who would enter the labor force if suitable employment were available (based on the assumption that persons in Kentucky would like to participate in the labor force in the same proportion that they do nationally; Unemployed - persons unemployed and actively seeking work; Underemployed - persons employed but working only 14 to 26 weeks per year.

Sources: Kentucky Cabinet for Human Resources, Kentucky Labor Supply Estimates by Area Development District and County, 1981. Tennessee Department of Employment Security, Available Labor Estimates, 1981. Kentucky Department of Economic Development, Future Labor Supply Becoming 18 Years of Age, 1983 Thru 1987.

ESTIMATED FEMALE LABOR SUPPLY
TOMPKINSVILLE AND GAMALIEL LABOR MARKET AREA

Area	Current				Future
	Total	Not in Labor Force	Unemployed	Under-employed	Becoming 18 years of age 1983 thru 1987
Labor Market Area*	3,301				4,206
Monroe	568	131	222	215	546
Allen	512	0	248	264	589
Barren	1,210	0	638	572	1,383
Cumberland	209	0	84	125	326
Metcalf	258	0	165	93	402
Clay (Tenn.)	155	N/A	N/A	N/A	319
Macon (Tenn.)	389	N/A	N/A	N/A	641

*Additional workers may be drawn from other nearby counties.

Note: Not in Labor Force - represents the number of persons who would enter the labor force if suitable employment were available (based on the assumption that persons in Kentucky would like to participate in the labor force in the same proportion that they do nationally); Unemployed - persons unemployed and actively seeking work; Underemployed - persons employed but working only 14 to 26 weeks per year.

Sources: Kentucky Cabinet for Human Resources, Kentucky Labor Supply Estimates by Area Development District and County, 1981. Tennessee Department of Employment Security, Available Labor Estimates, 1981. Kentucky Department of Economic Development, Future Labor Supply Becoming 18 Years of Age, 1983 Thru 1987.

AVERAGE WEEKLY WAGES BY INDUSTRY,
BY PLACE OF WORK, 1981

	<u>Monroe County</u>	<u>Allen County</u>	<u>Barren County</u>
All Industries	\$181.77	\$218.24	\$235.25
Mining & Quarrying	*	93.60	281.58
Contract Construction	230.64	147.21	277.36
Manufacturing	180.92	250.83	286.43
Transportation, Communications & Public Utilities	336.61	254.98	272.00
Wholesale & Retail Trade	156.97	192.58	167.83
Finance, Insurance & Real Estate	293.07	218.70	258.67
Services	120.16	139.27	176.68
State/Local Government	197.67	199.30	224.72
Other	105.63	105.45	116.94
	<u>Cumberland County</u>	<u>Metcalf County</u>	
All Industries	\$160.54	\$166.34	
Mining & Quarrying	172.39	157.98	
Contract Construction	144.50	118.24	
Manufacturing	148.11	144.06	
Transportation, Communications & Public Utilities	131.81	290.44	
Wholesale & Retail Trade	151.95	142.03	
Finance, Insurance & Real Estate	199.60	177.46	
Services	144.94	216.54	
State/Local Government	218.28	201.49	
Other	*	*	

*Not disclosed.

Note: Excludes domestic workers, railway workers, certain nonprofit corporations, majority of federal government workers, and self-employed workers.

Source: Kentucky Cabinet for Human Resources, Average Weekly Wages of Workers Covered by Kentucky Unemployment Insurance Law, 1981.

Associated Industries of Kentucky, a voluntary organization of Kentucky businesses, regularly collects occupational wage rates and fringe benefits data from participating member firms. Data are compiled for over 127 clearly defined office, production, and service occupations. Tabulations are published for nine geographical areas of Kentucky, as shown on the map below. It should be noted that the data may be weighted by the preponderance of firms in the larger cities and may be somewhat higher than the rates paid in the smaller communities. Data from these tabulations are available, upon request, from the Kentucky Department of Economic Development, Frankfort, Kentucky 40601.



Up-to-date occupational wage rates of the existing industries are maintained by South Kentucky Industrial Development Association, Post Office Box 726, Hopkinsville, Kentucky 42240.

PER CAPITA PERSONAL INCOME

<u>Area</u>	<u>1976</u>	<u>1980</u>	<u>Percent Change</u>
Monroe County	\$ 3,602	\$ 5,154	43.1
Labor Market Area Range*	\$3,431 - 4,787	\$4,453 - 6,769	N/A
Kentucky	5,263	7,662	45.6
U.S.	6,367	9,511	49.4

*Monroe County and the four adjoining Kentucky counties.

Source: U.S. Bureau of Economic Analysis, Kentucky Economic Information System, June 1982.

TRANSPORTATION

Rail

The nearest rail service is provided by the Seaboard System Railroad at Glasgow, 32 miles northwest of Tompkinsville.

Services - One local turn around to Park City, five days a week; switch engine; switching facilities; team track with space for 10 cars; siding space for 30 cars; piggyback facilities are available at Bowling Green, 65 miles northwest of Tompkinsville

For details on routing, schedules, rates, and services, contact:

• Manager of Industrial Development
Seaboard System Railroad
P. O. Box 32290
Louisville, Kentucky 40232
(502) 587-5228

Highways

Kentucky Highway 163, a "AAA" rated trucking highway, connects Tompkinsville with Kentucky Highway 90, a "AAA" rated trucking highway, 14 miles to the north of Tompkinsville. Kentucky Highway 163 also connects Tompkinsville with the Cumberland Parkway near Edmonton, 24 miles to the north. Access to Interstate 65 is 43 miles northwest of Tompkinsville via Kentucky 163 and Kentucky 90. Kentucky Highway 100/63, a "AAA" rated trucking highway, connects Tompkinsville with Gamaliel, 8 miles to the southwest.

Truck Service

<u>Company</u>	<u>Home Office</u>
Manning Motor Express, Inc.*	Westwood Drive P. O. Box 685 Glasgow, Kentucky 42141
Overnite Transportation Company**	1000 Semmes Avenue P. O. Box 1216 Richmond, Virginia 23209
Smith's Transfer Corporation*	P. O. Box 1000 Staunton, Virginia 24401

* Interstate service only.

** Interstate and intrastate service.

Other Freight Services

Purolator Courier Corporation*
 United Parcel Service**

KATO Express, Inc. (air
 cargo service)***

Nearest Shipping Center or Home Office

Louisville, 127 miles north of Tompkinsville
 Campbellsville, 62 miles north of
 Tompkinsville;
 Bowling Green, 65 miles northwest of
 Tompkinsville

Elizabethtown, 85 miles north of
 Tompkinsville

HIGHWAY MILES AND TRUCK TRANSIT TIME IN DAYS FROM
 TOMPKINSVILLE, KENTUCKY, TO SELECTED MARKET CENTERS

City	Highway Miles	Delivery Time TL	City	Highway Miles	Delivery Time TL
Atlanta, Ga.	342	2	Los Angeles, Ca.	2,125	5
Baltimore, Md.	706	2	Louisville, Ky.	127	1
Birmingham, Ala.	296	2	Nashville, Tenn.	100	1
Chicago, Ill.	419	2	New Orleans, La.	617	2
Cincinnati, Ohio	229	1	New York, N. Y.	868	3
Cleveland, Ohio	472	2	Pittsburgh, Pa.	508	2
Detroit, Mich.	487	2	St. Louis, Mo.	349	2
Knoxville, Tenn.	217	2			

Note: Mileage computations are via the best interstate or primary highways, not necessarily the most direct route of travel.

Sources: Rand McNally Road Atlas, 1981. Official Kentucky Mileage Map, 1980.
 Delivery time - Manning Motor Express, Inc., Westwood Drive, P. O. Box 685,
 Glasgow, Kentucky 42141.

* For regular scheduled pickups or for occasional pickups, arrangements must be made with the Louisville, Kentucky, office of Purolator Courier Corporation.

** For regular scheduled pickups or for occasional pickups, arrangements must be made with the Louisville, Kentucky, office of United Parcel Service.

*** Daily pickup and delivery service is available to and from Standiford Field in Louisville. Arrangements for service should be made through the home office in Elizabethtown.

Air

Local

Location: Moore Field
2 miles northwest of Glasgow;
34 miles north of Tompkinsville
Runways: 1 paved
Length: 4,000 feet (600 feet over-run)
Traffic
Control: Wind sock
Lighting: Runway lights sundown to sunrise, VASI
Services: 100 octane, jet fuel, charter, flight
instruction, taxi, A & E repairs,
rental cars available, hangar rental,
tug, auxiliary power unit
Air Freight
Service: Chartered air freight service must be arranged

Nearest Scheduled Commercial Airline Service

Location: Nashville Metropolitan Airport
6 miles southeast of Nashville, Tennessee;
106 miles southwest of Tompkinsville
Runways: 3 paved
Length: 8,000 feet; 7,700 feet; 4,320 feet
Traffic
Control: Tower
Lighting: Beacon, runway
Services: American, Braniff, Delta, Eastern, Ozark,
Piedmont, Republic, TWA, USAir, Allegheny
Commuter, Skyways, Sunbird, Tennessee
Airways; fuel - 100LL, jet-A; tie-downs,
hangars; major A & P repairs, major
Avionics repairs; APU, charter, flight
instruction, oxygen, plane rental,
survival equipment, U.S. Customs; taxi,
limousine, car rental, public transit;
weather information, restaurant, snack bar
Air Freight
Service: Air freight terminal
Taxi - Tompkinsville has one cab company providing 24-hour service.
Rental Services - Car, truck and trailer rentals are available at Glasgow, 32
miles from Tompkinsville.

POWER AND FUEL

Electricity

Company serving Tompkinsville, Gamaliel, and Monroe County - Tri-County
Electric Membership Corporation
Source of power - Tennessee Valley Authority
Total generating capacity - 31,109,160 KW
For industrial rates contact:

South Kentucky Industrial
Development Association, Inc.
P. O. Box 726
Hopkinsville, Kentucky 42240
(502) 885-5392

and/or

Tri-County Electric
Membership Corporation
450 College Street
P. O. Box 40
Lafayette, Tennessee 37083
(615) 666-2111

Natural Gas

Company serving Tompkinsville - Tompkinsville Natural Gas Company*
Source of supply - Texas Eastern Transmission Corporation
Size of transmission mains - 30 inches (supplier); 3 inches (distributor)
Distribution mains - 2 and 4 inches
Distribution pressure - 15 to 30 psi
Btu content - 1,020 per cubic foot
Specific gravity - 0.590
For rates and supplies contact:

City of Tompkinsville
Third and Magnolia Street
Tompkinsville, Kentucky 42167
(502) 487-6776

Natural gas service is presently not available in Gamaliel.

* The Tompkinsville Natural Gas Company, in the spring of 1980, installed a new PVC gas line that extends to the new hospital and the industrial site. Total cost of the project was \$5,300.

Other Fuels

Propane

Harold Clarkson Gas &
Appliances
921 West Main
Glasgow, Kentucky 42141

Jewell & Gerald's Doxol Service
Old Glasgow Road
Tompkinsville, Kentucky 42167

Pargas of Glasgow
214 Industrial Drive
Glasgow, Kentucky 42141

Petrolane Gas Service
Marrowbone, Kentucky 42759

Petrolane Gas Service
Lafayette Road
Red Boiling Springs,
Tennessee 37150

Fuel oils

Distillate fuel oil -

Paul Bridges Oil Company
Industrial Drive
Glasgow, Kentucky 42141

Jackson's Shell Service
Celina Road
Tompkinsville, Kentucky 42167

Petett Oil Company
310 South Main
Tompkinsville, Kentucky 42167

Travis Oil Company
2000 Glasgow Pike
Tompkinsville, Kentucky 42167

Leroy Williams Oil Company, Inc.
Route 2
P. O. Box 286
Glasgow, Kentucky 42141

Wyatt's Oil Company
1304 South Green Street
Glasgow, Kentucky 42167

Residual fuel oil - Arrangements must be made with the refinery.

Low sulphur content coal - Available in Kentucky.

WATER AND SEWERAGE

Public Water Supply

Company serving Tompkinsville - Tompkinsville Water Works
Third and Magnolia
Tompkinsville, Kentucky 42167
(502) 487-6776

Source - Mill Creek Reservoir
Treatment plant capacity - 1,000,000 gallons per day
Average daily consumption - 334,000 gallons
Peak daily consumption - 520,000 gallons
Type treatment - Filtration, coagulation and chlorination
Storage capacity - 900,000 gallons*
Size lines - 2, 4, 6, 8, and 12 inches
Average pressure - 60 psi
Average temperature - 77 degrees F.

MONTHLY WATER RATES

First	2,000 gallons	\$ 7.10 Minimum
Next	8,000 gallons	1.78 per M gallons
Next	90,000 gallons	1.28 per M gallons
All over	100,000 gallons	.83 per M gallons

Tap-on charge: \$100

* The Tompkinsville Water Works recently put back into operation a 125,000-gallon water tank. Total cost of the project was \$11,000.

Name of water district - Monroe County Water District
 Tompkinsville, Kentucky 42167
 (502) 487-8131

Area served - All of Monroe County except Tompkinsville, Fountain Run and the Fountain Run Water District

Date when water district began operating - November 1979

Source of supply of treated water - City of Tompkinsville

Average amount of water used in a 24-hour period - 99,000 gallons

Storage capacity - 220,000 gallons

Average pressure - 65 psi

Average temperature - 50 degrees F.

Size lines - 4, 6, and 8 inches

MONTHLY WATER RATES

5/8-inch x 3/4-inch Meter

First	2,000 gallons	\$ 8.00 Minimum
Next	3,000 gallons	3.00 per M gallons
Next	5,000 gallons	2.50 per M gallons
Over	10,000 gallons	2.00 per M gallons

1-inch Meter

First	5,000 gallons	\$ 18.20 Minimum
Next	3,000 gallons	3.00 per M gallons
Next	5,000 gallons	2.50 per M gallons
All over	13,000 gallons	2.00 per M gallons

2-inch Meter

First	16,000 gallons	\$ 43.20 Minimum
Next	3,000 gallons	3.00 per M gallons
Next	5,000 gallons	2.50 per M gallons
All over	24,000 gallons	2.00 per M gallons

Tap-on charge:

	5/8 - 3/4-inch meter	\$300
	3/4-inch meter	300
	1-inch meter	500
Larger than	1-inch meter	Actual cost of materials and installation

Raw Water

Surface water sources - East Fork of Barren River and Cumberland River
Average discharge - Barren River near Finney, Kentucky, 1,499 cfs (30 years, unadjusted, USGS)
Expected ground water yield - 5 to 50 gpm in central and western portions of the county; 5 gpm or less over the remainder of the county

Sewerage

Company serving Tompkinsville - Tompkinsville Sewer Company*
Third and Magnolia Street
Tompkinsville, Kentucky 42167
(502) 487-6776

Design capacity - 460,000 gallons per day
Average daily flow - 412,000 gallons
Treatment - Secondary
Type treatment - Aeration, clarifier, drying beds
Treated effluent discharged into - Curtis Branch
Size of sanitary mains - 4, 6, 8, 10, and 12 inches
Size of storm mains - 24 and 36 inches
Rates - 80 percent of monthly water bill (minimum - \$5.68)
Tap-on charge: \$100

Gamaliel** - Gamaliel is utilizing septic tanks for sewage disposal at this time.

* A 201 Facilities Plan study of the Tompkinsville sewerage system has been completed and is under review.

** A study is currently under way to plan sewage treatment facilities for Gamaliel. Tentative plans call for a waste stabilization pond or lagoon system.

CLIMATE

Monroe County

Temperature

Normal (30-year record)	59.40 degrees
Average annual 1980	59.20 degrees
Record highest, July 1952 (41-year record)	107.00 degrees
Record lowest, January 1963 (41-year record)	-15.00 degrees
Normal heating degree days (30-year record)	3,696
(Heating degree day totals are the sums of negative departures of average daily temperatures from 65 degrees F.)	

Precipitation

Normal (30-year record)	46.00 inches
Mean annual snowfall (39-year record)	11.60 inches
Total precipitation 1980	34.92 inches
Mean number days precipitation (.01 inch or more) (39-year record)	119
Mean number days thunderstorms (39-year record)	54

Prevailing Winds (22-year record)

South

Relative Humidity (15-year record)

Midnight	79 percent
6 a.m.	84 percent
Noon	58 percent
6 p.m.	62 percent

Source: U.S. Department of Commerce, Environmental Science Services Administration, Climatological Data, 1980. Station of record: Nashville, Tennessee.

LOCAL GOVERNMENT

City

Tompkinsville

Structure - Mayor - 4-year term; 6 council members - 2-year terms

Budget 1982 - General Fund \$184,980

Water and Sewer Fund 320,039

City Gas Fund 412,341

Fees and licenses - Business licenses range from \$25.50 to \$300 per year

Gamaliel

Structure - Mayor - 4-year term; 4 council members - 2-year terms

Budget 1981 - General Fund \$ 85,000

Fees and licenses - Occupational license fees - 1% on wages and 1% on the net profits of businesses; business licenses - \$25 per year

County

Structure - County Judge/Executive - 4-year term; 5 magistrates - 4-year terms

Budget 1981-82 - General Fund \$214,780; Road Fund \$308,416

Assessed Value of Property*

<u>Classes of Property</u>	<u>Tompkinsville</u> (1982)	<u>Gamaliel</u> (1981)	<u>Monroe County</u> (1982)
Real Estate	\$31,407,477	\$2,483,454	\$86,206,085
Tangibles	1,265,466	807,415	24,310,378

*Excludes Homestead Exemptions.

Property Taxes

All property in Kentucky is assessed at 100 percent of fair cash value.

Land and buildings are taxed by the state and may be taxed by local jurisdictions. The state rate is \$0.224 per \$100 of assessed valuation.

Manufacturing machinery, raw materials inventories, pollution control equipment, and goods in the process of manufacture are not subject to local taxation. The state rate is \$0.15 per \$100.

Other tangible personal property owned by manufacturers (automobiles, trucks, finished goods, office furniture, office equipment) is taxed by the state at \$0.45 per \$100 and may be taxed by local jurisdictions.

Property stored in public warehouses in a transit status is not subject to local taxation. The state rate is only \$0.015 per \$100.

Intangible personal property located in Kentucky (money in hand, shares of stock, notes, bonds, accounts receivable, and other credits) is taxed by the state at \$0.25 per \$100, and is not subject to local taxation.

Private leaseholds in industrial facilities owned by cities or counties and financed by industrial revenue bonds are subject to a state tax of \$0.015 per \$100 of value (essentially the lessee's equity, adjusted for appreciation or depreciation). Local taxation is not permitted.

Combined State and Local Rates Per \$100 Valuation, 1982* (100% assessment)

	<u>Inside City of Tompkinsville</u>	<u>Inside City of Gamaliel</u>	<u>Site Inside Unincorporated Monroe County</u>
1. Land and buildings	\$0.8220	\$0.8100	\$0.6120
2. Mfg. machinery, raw materials, goods in process, pollution control equipment	0.1500	0.1500	0.1500
3. Finished goods, office equipment, vehicles, other tangibles	1.0884	1.0764	0.8784
4. Intangibles (accounts receivable, notes, bonds, etc.)	0.2500	0.2500	0.2500
5. Property stored in public warehouses in a transit status	0.0150	0.0150	0.0150
6. Leaseholds in industrial revenue bond financed plants	0.0150	0.0150	0.0150

*Kentucky Department of Economic Development.

Utilities Gross Receipts Tax for Schools

A 3 percent tax is levied on utilities receipts for schools in Monroe County. Tax is paid by all consumers of utilities as an add-on to the utilities bills. Exempted are receipts from utilities services that are resold and the receipts from the sale of energy or energy-producing fuels that exceed 3 percent of the cost of production in manufacturing, processing, mining or refining.

Planning and Zoning

The joint city/county planning commission of Monroe County and the cities of Tompkinsville, Gamaliel and Fountain Run is not active at the present time.

Mandatory state codes enforced - Kentucky Plumbing Code, National Electric Code, Kentucky Boiler Regulations and Standards, Kentucky Building Code (modeled after BOCA code)

Safety

<u>Police</u>	<u>Tompkinsville</u>	<u>Gamaliel</u>	<u>Monroe County</u>
Total staff	5	2	5
Radio-patrol cars	2	2	2*

Fire

Insurance Services

Office, Public			
Protection Classification	8	7	--
Volunteers	21	20	--

Rescue Service

Monroe County Rescue Squad:

Number of volunteers - 26

Equipment - Utility truck, step van, pontoon and motor, boat and motor, three generators, dragging equipment, four fire extinguishers, first aid supplies, oxygen tank, chain saw and attachments, two air packs and basis rescue gear

Personnel training - Four members are certified emergency medical technicians, and four are registered nurses. Other members receive standard first aid training.

* The Monroe County Sheriff's Department patrol cars are privately owned.

Refuse Collection and Disposal

	<u>Tompkinsville</u>	<u>Gamaliel</u>
Type service	Municipal	Municipal
Fee charged:		
residential	\$1.50 to \$4 per month	\$3 to \$3.50 per month
business	\$8 to \$100 per month	\$12 per month
industrial	\$100 per month	\$55 to \$400 per month
Collection frequency:		
residential	Once weekly	Twice Weekly
business	Twice weekly	Daily
industrial	Daily	Daily
Trash pickup	Upon request	Twice weekly
Disposal method	Sanitary landfill	Sanitary landfill

EDUCATION

Public Schools

Monroe County

Total Enrollment	
(August 1982)	2,360
Elementary	1,249
Junior High	380
High School	731
Student-Teacher Ratio	15-1
Elementary	17-1
Junior High	14-1
High School	15-1
Percent High School	
Graduates to College	
(1981)	40.1
Expenditures Per Pupil	
(1980-81)	\$1,362.76
Bonded Indebtedness	
(June 30, 1981)	\$1,378,000

Area Colleges and Universities

<u>Name</u>	<u>Location (Miles distant)*</u>	<u>Enrollment (Fall, 1981)</u>	<u>Highest Degree Conferred</u>
Lindsey Wilson College	Columbia, Kentucky (45)	418	Associate
Tennessee Technical University	Cookeville, Tennessee (56)	7,927	Academic & Professional
Campbellsville College	Campbellsville, Kentucky (62)	712	Baccalaureate
Western Kentucky University	Bowling Green, Kentucky (65)	13,174	Masters, Specialist/ Doctorate**
Elizabethtown Community College	Elizabethtown, Kentucky (85)	1,967	Associate
Somerset Community College	Somerset, Kentucky (87)	1,065	Associate

* Mileage from Tompkinsville.

** Joint doctoral degree programs are offered in cooperation with the University of Kentucky, Lexington, and cooperative doctoral degree programs are offered with the University of Louisville.

Vocational Schools

Both the state vocational-technical schools and the area vocational education centers are operated by the Kentucky Department of Education. The state vocational-technical schools enroll persons full time who are at least 16 years of age and not in school. These students attend classes for six hours each day. The area vocational education centers are designed to accommodate high school students who are at least 15 years of age. These students attend vocational school for three hours each day. The state vocational-technical schools and the area education centers offer evening courses to enable working adults to upgrade current job skills.

Nearest State School

Location	Bowling Green State Vocational- Technical School
Miles Distant	Bowling Green 65 miles from Tompkinsville
Curriculum	Business and Office Accounting/Jr. Management Clerical Secretarial Consumer and Home Economics Commercial Foods Health and Personal Services Occupations Dental Assistant Health Careers Nurse Assistant Practical Nurse* Respiratory Therapy* Surgical Technician Industrial Education Auto Body Repair Auto Mechanics Carpentry Civil Highway Technology Electricity Electronics Servicing Occupations Electronics Technology Graphic Arts (Printing) Machine Shop Masonry Refrigeration and Air Conditioning Small Engine Repair Technical Drafting Tool and Die Making Welding

*These courses are taught at the T. J. Samson Community Hospital in Glasgow.

Nearest Area Education Center

Location	Monroe County Area Vocational Education Center
Curriculum	Tompkinsville Agribusiness Business and Office Industrial Education Auto Mechanics Building Trades Drafting Electricity Farm Machinery Repair Welding

Arrangements can be made to provide training in the specific production skills required by an industrial plant. Instruction may be conducted either in the vocational school or in the industrial plant, depending upon the desired arrangement and the availability of special equipment.

HEALTH

Local Medical Personnel

Monroe County

Physicians - 6

Dentists - 4

Hospitals

<u>General Hospital</u>	<u>Location</u>	<u>Beds</u>
Monroe County Medical Center*	Tompkinsville	49

General hospital facilities - X-ray equipment, emergency room, operating room, delivery room, laboratory, respiratory therapy, physical therapy, EEG services

Medical staff - Five medical doctors, 11 registered nurses, 12 licensed practical nurses, one pathologist (consulting), one radiologist (consulting), two surgeons

Other Medical Facilities

Monroe County Comprehensive Care Center

Monroe County Health Care Center

Ambulance Service

Name - Monroe County Medical Center Ambulance Service

Staff - Vehicles are staffed by hospital personnel, two emergency medical technicians and one paramedic on duty at all times.

Service - 24-hour, county-wide

Equipment - Two fully equipped ambulances

Public Health

Facility - Barren River District Health Department

Staff - Administrator, two registered nurses, center coordinator, environmentalist, two community health workers.

*A new \$4 million hospital was completed in the fall of 1980.

OTHER LOCAL FACILITIES

Communications

	<u>Tompkinsville</u>	<u>Gamaliel</u>
Telephone -	General Telephone	South Central Rural
Services -	Company Standard	Telephone Cooperative Standard
Telegraph -	Western Union	Western Union
Services -	Toll-free number, 1-800-325-5100	Toll-free number, 1-800-325-5100
Postal - U.S. Post Office		
Class -	First	Second
Mail received -	Once daily	Once daily
Mail dispatched -	Once daily	Once daily
Newspapers -	Tompkinsville News	
Weekly and		
circulation -	3,850	
Other papers		
received from -	Louisville and Glasgow, Kentucky; Nashville, Tennessee	Tompkinsville, Louisville and Glasgow, Kentucky; Nashville, Tennessee
Radio -	WTKY-AM & FM	
Stations		
received from -	Louisville, Glasgow and Bowling Green, Kentucky; Nashville, Tennessee	Tompkinsville, Louisville, Glasgow, and Bowling Green, Kentucky; Nashville, Tennessee
Television -		
Cable service	Yes	No
Reception from -	Louisville and Bowling Green, Kentucky; Nashville, Tennessee; Atlanta, Georgia	Bowling Green, Kentucky; Nashville, Tennessee
Kentucky		
Educational		
Television -	Bowling Green transmitter Channel 53	

Library Services

Public library - William B. Harlan Memorial Library

Size collection - 27,939 volumes

Circulation, 1981-82 - 33,725; bookmobile - 26,520

Services - Magazines, newspapers, pamphlets, records, record player, art, story hour for day care center, four talking book machines for the blind, 8 mm projector and films, movie screens, microfilm, reader-printers, copying machine, cassette players, sports equipment, bookmobile, interlibrary loan, play school, community meeting room, services to shut ins and nursing homes, senior citizens activities and summer reading program

Religious Institutions

	<u>Tompkinsville</u>	<u>Gamaliel</u>
Number of churches -	8	3
Denominations -	Baptist Catholic Church of Christ Church of First Born Church of Today Jehovah's Witnesses Latter Day Saints Methodist	Baptist Church of Christ Methodist
Nearest Synagogues -	Nashville, Tennessee, 100 miles from Tompkinsville	
Congregations -	Sherith Israel (orthodox) Ohabai Shalom (reform) West End Synagogue (conservative)	

Financial Institutions

<u>Banks</u>	<u>Assets</u>	<u>Deposits</u>	<u>Statement Date</u>
<u>Tompkinsville</u>			
Deposit Bank of Monroe County	\$ 31,647,197.62	\$ 28,002,237.28	6/30/82
Peoples Bank of Tompkinsville	16,802,000.00	15,187,000.00	6/30/82
<u>Gamaliel</u>			
Gamaliel Bank	26,638,277.56	24,349,584.56	6/30/82
<u>Savings and Loan Associations</u>	<u>Assets</u>	<u>Savings Accounts</u>	<u>Statement Date</u>
<u>Tompkinsville</u>			
Future Federal Savings and Loan Association	\$419,643,708.00	\$296,497,370.00	12/31/81

Hotels and Motels

Tompkinsville

Total number - 2
Total rooms - 21

Clubs and Organizations

Monroe County

American Legion
Boy Scouts
Chamber of Commerce
Cub Scouts
Eastern Star
Fountain Run Men's Club
4-H Club
Future Farmers of America
Future Homemakers of America
Gamaliel Industrial Foundation
Girl Scouts
Historical Society
Jaycees
Jayceettes
Lions

Little League
Masons
Modern Woodman Junior Service Club
Monroe Arts Council
Monroe County Homemakers Club
Monroe County Horseman's Club
Monroe County Senior Citizens
Sportsman Club
Tompkinsville Industrial Foundation
Tompkinsville Twillers Western Square Dance
Veterans of Foreign Wars

RECREATION

Local

Tompkinsville's city park offers facilities for picnicking, camping, hiking, tennis, and fishing and boating on a 100-acre lake. Other public recreation facilities in the city include two tennis courts near the high school football stadium, and baseball diamonds, softball diamonds, and football fields at the schools. A new little league field has been built at Tompkinsville Elementary.

Gamaliel's city park contains two tennis courts, picnic shelters and grills. Planned improvements are for the construction of basketball courts and shuffleboard courts at the park. In addition, public recreation facilities in the city include a baseball diamond, tennis courts, and a football field on the school grounds, and two fun centers.

A private country club in the county offers a 9-hole golf course, swimming pool, and two tennis courts. A drive-in movie theater is located near Tompkinsville.

The annual Monroe County Fair, held in late July, features agricultural exhibits, fiddling contests, a country music show, rodeo horse show, tractor pulls, and various displays and exhibits. In addition, the Monroe Arts Council hosts the Watermelon Festival which is held annually on Labor Day.

Old Mulkey Meeting House State Shrine, near Tompkinsville, offers picnic areas and playgrounds. The house was built in 1804, and is the oldest log meeting house in the state. Daniel Boone's sister is buried in the graveyard and authentic records written in pokeberry ink are on display.

Area (Within 80 miles)

Barren River Lake State Resort Park, 45 miles northwest of Tompkinsville near Glasgow, is a full-facility resort park offering a resort lodge, a coffee shop, cottages, a lodge pool, a beach, riding stables, nature trails, open and covered boat slips, a 9-hole par-3 golf course, lighted handball and tennis courts, shuffleboard, park camping with a service building, a restaurant, fishing and pleasure boat rentals, picnic areas, and a playground. Barren River Lake, which covers 10,000 acres, is a popular area for skiing, sailing, fishing, and swimming.

Dale Hollow Lake State Park, 46 miles east of Tompkinsville, is located on 3,497 lakeside acres in southeastern Cumberland County. Park facilities include a marina, a picnic area, and 144 sites for tent and trailer camping. A private resort located on the lake provides facilities for swimming, fishing, boating, and playground activities, and offers cabin and houseboat rentals. Another private campground has tent and trailer camping, houseboat rentals, and a picnic area.

Mammoth Cave National Park is located 49 miles northwest of Tompkinsville near Cave City. Beneath 51,000 park acres, Mammoth Cave is among the major tourist attractions of all times. It is one of the largest cave networks ever discovered, with at least 150 miles charted on five levels and vast areas not yet mapped. Some famous sights are Snowball Dining Room (267 feet below surface), Frozen Niagara, Crystal Lake, and Bottomless Pit. The park also features scenic boat trips on the Green River and nature and hiking trails. Park accommodations include a hotel with distinctive gift shops featuring native Kentucky and Southern Highland handicrafts, a motor lodge, hotel cottages, woodland cottages, and a hotel annex with budget accommodations and craft shop featuring live exhibits of broom making and weaving. Other park facilities include the hotel dining room and coffee shop, a service center, group meeting facilities, a campground, a picnic area, and tennis and shuffleboard courts.

Green River Lake State Park near Campbellsville, 62 miles northeast of Tompkinsville, is made up of 1,300 acres surrounding an 8,200-acre lake. The park is open all year-round and offers 96 campsites, a beach, boat docks, fishing, swimming, and a picnic area.

Lake Cumberland State Resort Park at Jamestown, 73 miles northeast of Tompkinsville, is a 3,000-acre park located on the 50,000-acre Lake Cumberland, which sports excellent bass, bluegill, and crappie fishing. The park features a modern resort lodge which is perched on a high bluff above the lake. The lodge has a swimming pool, a dining room, a gift shop, and a multi-purpose convention center. Other park facilities include an additional swimming pool, riding stables, tennis courts, hiking trails, a 9-hole golf course, miniature golf, a picnic area, a playground, a 350-seat amphitheater, and a nature center. A marina offers houseboats, and fishing boats and motors for rent plus year-round launching ramps.

Abraham Lincoln Birthplace National Historic Site, located 76 miles north of Tompkinsville near Hodgenville, features the log cabin, which was the birthplace of Abraham Lincoln, enclosed within a granite memorial shrine. The grounds include 116 acres of the original Thomas Lincoln farm and a visitors' center with audiovisual programs and exhibits on the Lincoln family.

Tompkinsville and Gamaliel are within 80 miles of four Tennessee state parks -- Bledsoe Creek State Park, Cedars of Lebanon State Park, Edgar Evins State Park, and Standing Stone State Park. These parks offer a variety of recreational facilities.

COMMUNITY IMPROVEMENTS

Recent:

The City of Tompkinsville recently relocated its industrial site and extended water and sewer lines to the site. Total cost of the project was \$18,000.

A new \$4 million hospital, the Monroe County Medical Center, was completed in the fall of 1980.

In the spring of 1980, the Tompkinsville Natural Gas Company installed a new PVC gas line that extends to the new hospital and the industrial site. Total cost of the project was \$5,300.

The Tompkinsville Water Works has put a 125,000-gallon water tank back into operation at a cost of \$11,000. In addition, a water tower was renovated at a cost of \$6,000.

A 201 Facilities Plan study of the Tompkinsville sewerage system has been completed and is under review.

With funding from a Community Development Block Grant, the City of Tompkinsville constructed some new, low-income housing units, renovated some existing houses, and blacktopped some streets. The \$900,000 project was completed in the fall of 1981.

The Monroe County Board of Education purchased four new school buses at a total cost of \$89,000; completed a \$60,000 project to reroof the Tompkinsville Elementary School; fenced the baseball stadium at the Tompkinsville High School at a cost of \$4,000; and constructed a new, \$3,000 baseball field house at the Gamaliel High School.

The City of Tompkinsville purchased a new police cruiser, a fire department emergency van, and a building to house the fire department.

The City of Tompkinsville also purchased a \$33,000 trash compactor truck, a \$27,500 backhoe, and a dump truck.

Planned:

The Monroe County Board of Education plans to construct vocational education buildings at the Tompkinsville and the Gamaliel high schools. The building at Gamaliel will also be used for a band room. The \$630,000 project is scheduled to begin in the spring of 1983 and to be completed in the summer of 1983. There are also plans to reroof the Tompkinsville High School in the spring of 1983.

At the beginning of the 1983 school year, the Monroe County School System will begin a pilot project to add computers to all Monroe County schools. The estimated cost of the project will be between \$12,000 and \$15,000.

A study is currently under way to plan sewage treatment facilities for Gamaliel. Tentative plans call for a waste stabilization pond or lagoon system.