

1988

# Industrial Resources: Muhlenberg County

Kentucky Library Research Collections  
Western Kentucky University, [spcol@wku.edu](mailto:spcol@wku.edu)

Follow this and additional works at: [https://digitalcommons.wku.edu/muhlenberg\\_cty](https://digitalcommons.wku.edu/muhlenberg_cty)

 Part of the [Business Administration, Management, and Operations Commons](#), [Growth and Development Commons](#), and the [Infrastructure Commons](#)

---

## Recommended Citation

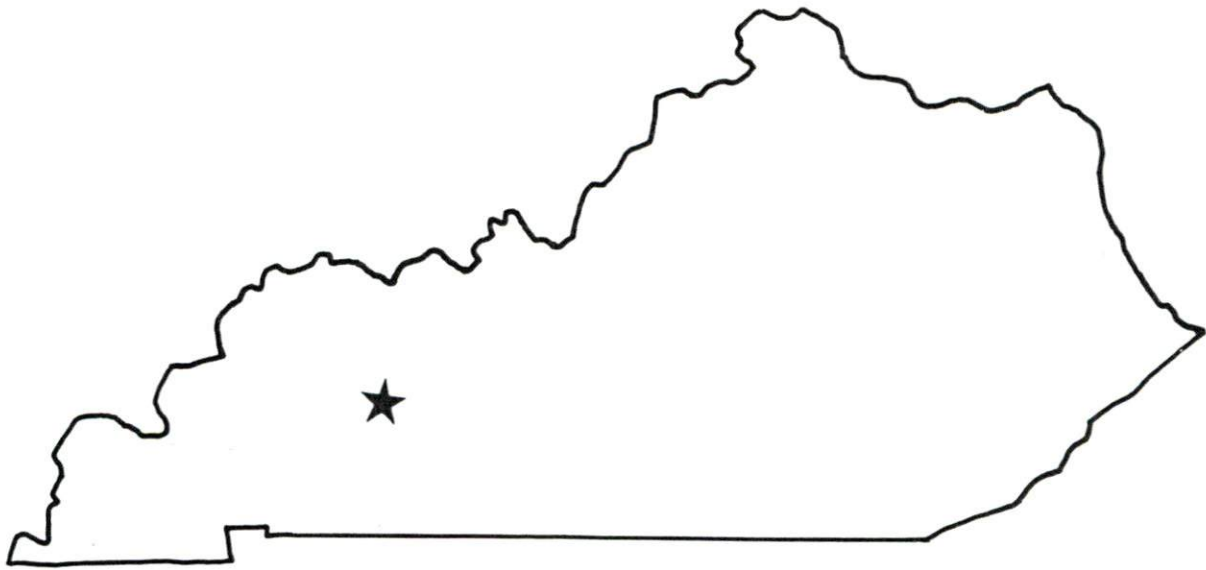
Kentucky Library Research Collections, "Industrial Resources: Muhlenberg County" (1988). *Muhlenberg County*. Paper 6.  
[https://digitalcommons.wku.edu/muhlenberg\\_cty/6](https://digitalcommons.wku.edu/muhlenberg_cty/6)

This Report is brought to you for free and open access by TopSCHOLAR®. It has been accepted for inclusion in Muhlenberg County by an authorized administrator of TopSCHOLAR®. For more information, please contact [topscholar@wku.edu](mailto:topscholar@wku.edu).

**RESOURCES FOR ECONOMIC DEVELOPMENT**

---

# Muhlenberg County



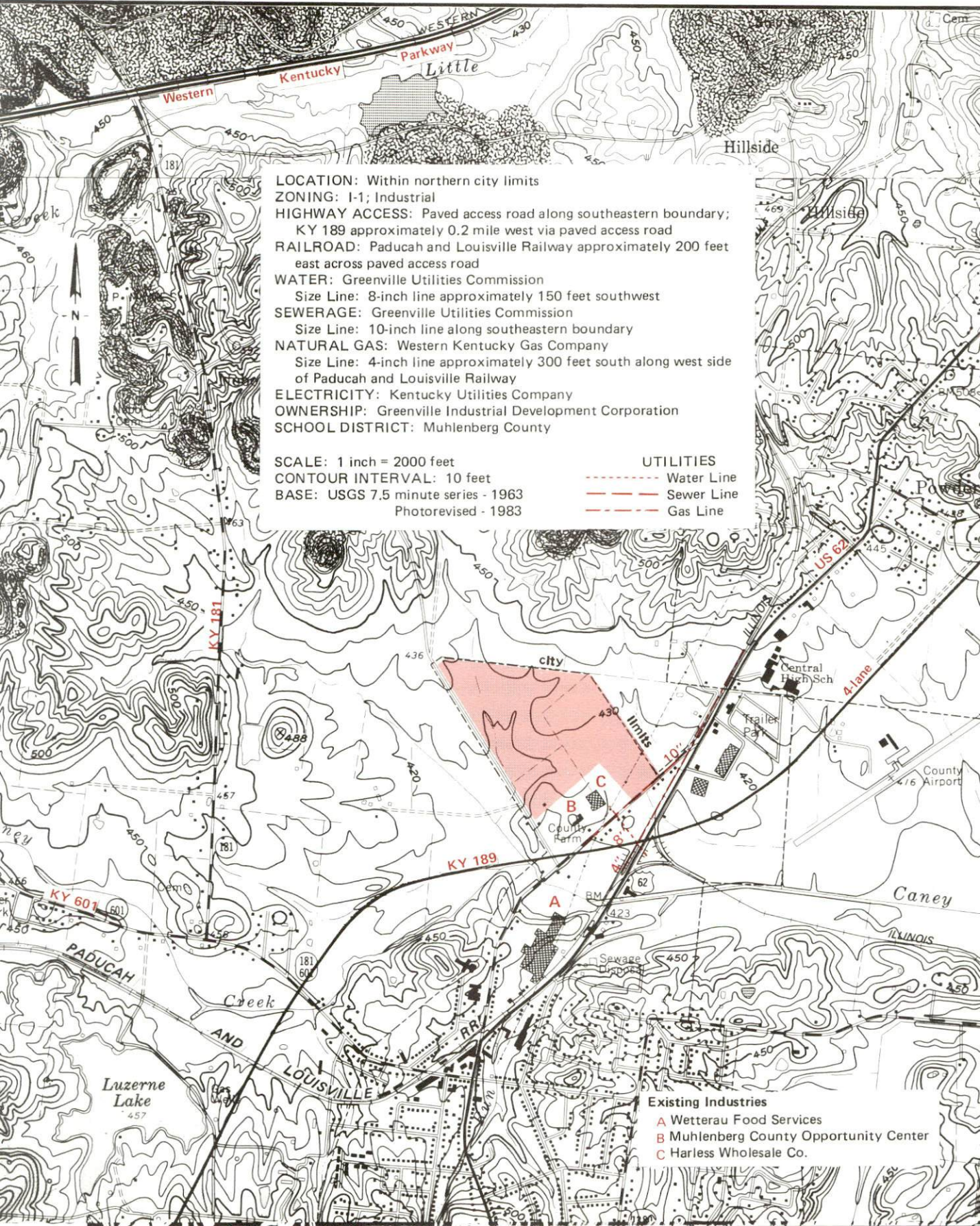
---

**KENTUCKY**  
Open for Business



# GREENVILLE, KENTUCKY --- Site 188 --- 95 Acres

For more information contact the Cabinet for Economic Development, Department of Business Development, Industrial Development & Marketing Division, Capital Plaza Tower, Frankfort, Kentucky 40601 (502-564-7140)



**LOCATION:** Within northern city limits  
**ZONING:** I-1; Industrial  
**HIGHWAY ACCESS:** Paved access road along southeastern boundary;  
KY 189 approximately 0.2 mile west via paved access road  
**RAILROAD:** Paducah and Louisville Railway approximately 200 feet  
east across paved access road  
**WATER:** Greenville Utilities Commission  
Size Line: 8-inch line approximately 150 feet southwest  
**SEWERAGE:** Greenville Utilities Commission  
Size Line: 10-inch line along southeastern boundary  
**NATURAL GAS:** Western Kentucky Gas Company  
Size Line: 4-inch line approximately 300 feet south along west side  
of Paducah and Louisville Railway  
**ELECTRICITY:** Kentucky Utilities Company  
**OWNERSHIP:** Greenville Industrial Development Corporation  
**SCHOOL DISTRICT:** Muhlenberg County

**SCALE:** 1 inch = 2000 feet  
**CONTOUR INTERVAL:** 10 feet  
**BASE:** USGS 7.5 minute series - 1963  
Photorevised - 1983

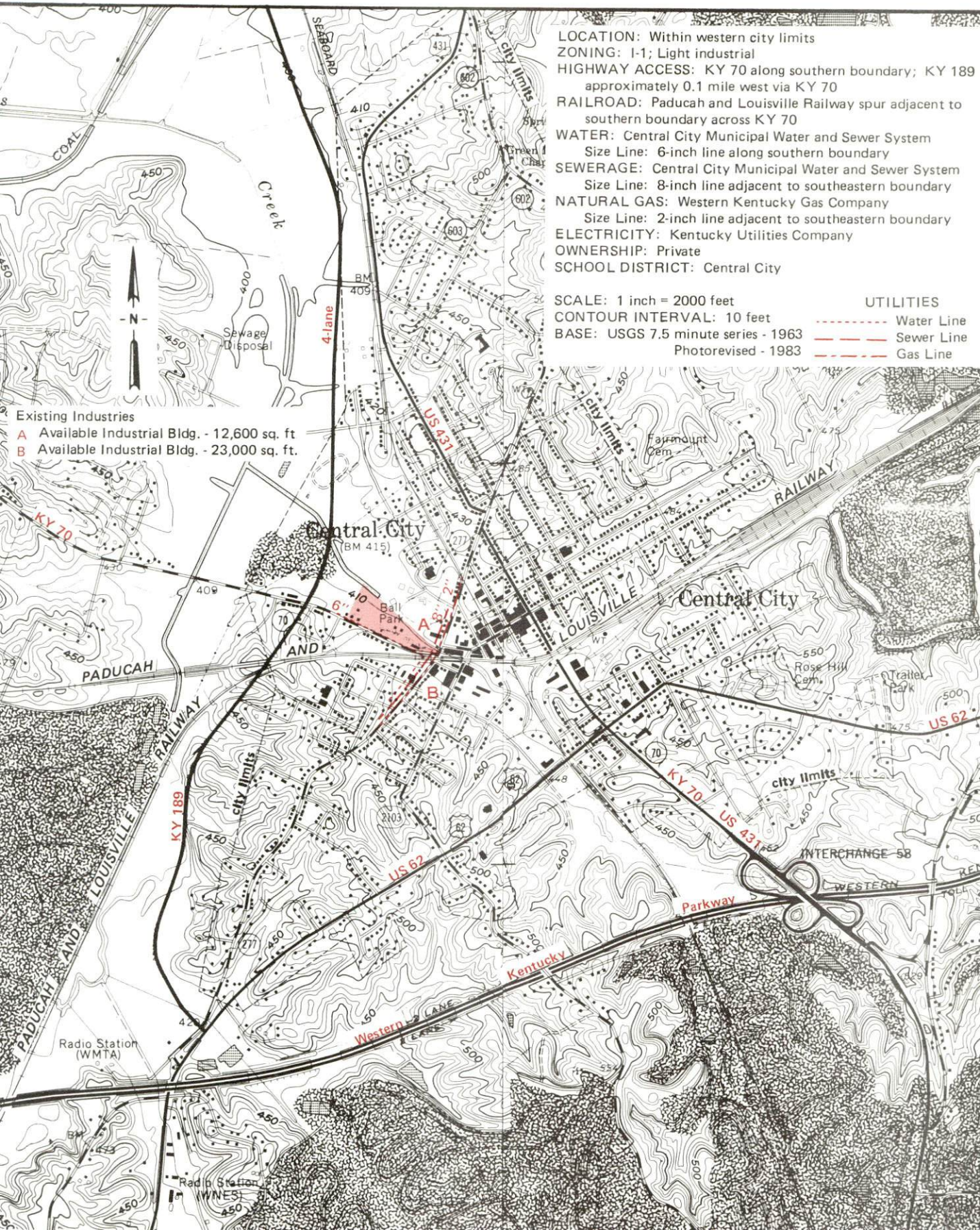
**UTILITIES**  
----- Water Line  
----- Sewer Line  
----- Gas Line

**Existing Industries**  
A Wetterau Food Services  
B Muhlenberg County Opportunity Center  
C Harless Wholesale Co.



# CENTRAL CITY, KENTUCKY --- Site 188 --- 15 Acres

For more information contact the Cabinet for Economic Development, Department of Business Development, Industrial Development & Marketing Division, Capital Plaza Tower, Frankfort, Kentucky 40601 (502-564-7140)

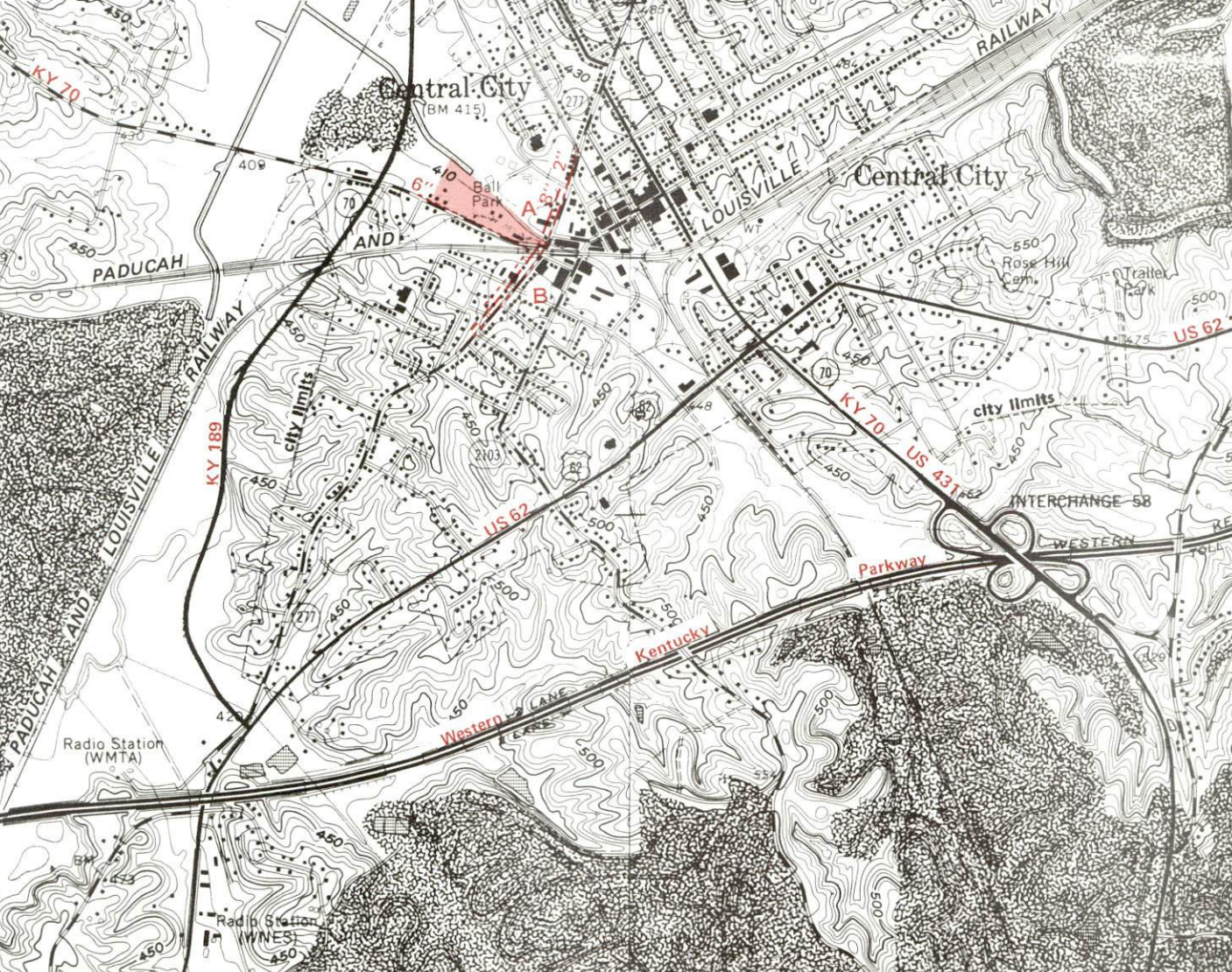


**LOCATION:** Within western city limits  
**ZONING:** I-1; Light industrial  
**HIGHWAY ACCESS:** KY 70 along southern boundary; KY 189 approximately 0.1 mile west via KY 70  
**RAILROAD:** Paducah and Louisville Railway spur adjacent to southern boundary across KY 70  
**WATER:** Central City Municipal Water and Sewer System  
 Size Line: 6-inch line along southern boundary  
**SEWERAGE:** Central City Municipal Water and Sewer System  
 Size Line: 8-inch line adjacent to southeastern boundary  
**NATURAL GAS:** Western Kentucky Gas Company  
 Size Line: 2-inch line adjacent to southeastern boundary  
**ELECTRICITY:** Kentucky Utilities Company  
**OWNERSHIP:** Private  
**SCHOOL DISTRICT:** Central City

**SCALE:** 1 inch = 2000 feet  
**CONTOUR INTERVAL:** 10 feet  
**BASE:** USGS 7.5 minute series - 1963  
 Photorevised - 1983

**UTILITIES**  
 - - - - - Water Line  
 - - - - - Sewer Line  
 - - - - - Gas Line

**Existing Industries**  
**A** Available Industrial Bldg. - 12,600 sq. ft.  
**B** Available Industrial Bldg. - 23,000 sq. ft.





RESOURCES FOR ECONOMIC DEVELOPMENT  
MUHLENBERG COUNTY, KENTUCKY

Prepared by  
The Kentucky Department of Business Development  
Division of Research and Planning  
in cooperation with  
The Muhlenberg County Office of Industrial Development  
and  
The Greenville and Central City Chambers of Commerce

1988



## TABLE OF CONTENTS

<u>Chapter</u>	<u>Page</u>
INDUSTRIAL SITES . . . . .	i
MUHLENBERG COUNTY, KENTUCKY - A RESOURCE PROFILE . . . . .	1
THE LABOR MARKET STATISTICS . . . . .	2
Population . . . . .	2
Population Projections . . . . .	2
Labor Force Characteristics of Residents, 1986 . . . . .	3
Selected Components of Nonagricultural Employment, by Place of Work, 1986 . . . . .	3
Per Capita Personal Income . . . . .	4
Estimated Male Labor Supply . . . . .	5
Estimated Female Labor Supply . . . . .	5
Average Weekly Wages by Industry, by Place of Work, 1986 . . . . .	6
EXISTING INDUSTRY . . . . .	8
Muhlenberg County Manufacturing Firms, Their Products and Employment . . . . .	8
Labor Organizations in Manufacturing Firms . . . . .	10
Major Muhlenberg County Non-Manufacturing Employers . . . . .	11
Recent Industrial Developments . . . . .	11
Selected Industrial Services . . . . .	12
TRANSPORTATION . . . . .	13
Rail . . . . .	13
Highways . . . . .	13
Truck Service . . . . .	14
Air . . . . .	15
Air Express Service . . . . .	15
Water . . . . .	16
POWER AND FUEL . . . . .	17
Electricity . . . . .	17
Natural Gas . . . . .	17
Other Fuels . . . . .	18
WATER AND SEWERAGE . . . . .	19
Public Water Supply . . . . .	19
Sewerage . . . . .	22
CLIMATE . . . . .	24



<u>Chapter</u>	<u>Page</u>
LOCAL GOVERNMENT . . . . .	25
Structure . . . . .	25
Planning and Zoning . . . . .	25
Local Fees and Licenses . . . . .	25
State and Local Property Taxes . . . . .	26
Combined State and Local Rates Per \$100 Valuation, 1987 . . . . .	26
Safety . . . . .	28
Police . . . . .	28
Fire . . . . .	28
Rescue Service . . . . .	28
Refuse Collection and Disposal . . . . .	28
EDUCATION . . . . .	29
Public Schools . . . . .	29
Area Colleges and Universities . . . . .	30
Vocational Training . . . . .	31
HEALTH . . . . .	33
Local Medical Personnel . . . . .	33
Hospitals . . . . .	33
Other Medical Facilities . . . . .	33
Ambulance Service . . . . .	33
OTHER LOCAL FACILITIES . . . . .	34
Communications . . . . .	34
Library Services . . . . .	34
Religious Institutions . . . . .	34
Financial Institutions . . . . .	35
Hotels and Motels . . . . .	35
Clubs and Organizations . . . . .	36
RECREATION . . . . .	37
COMMUNITY IMPROVEMENTS . . . . .	40



GENERAL HIGHWAY MAP  
**MUHLENBERG COUNTY**  
KENTUCKY

PREPARED BY THE  
KENTUCKY TRANSPORTATION CABINET  
DEPARTMENT OF HIGHWAYS  
DIVISION OF PLANNING  
IN COOPERATION WITH THE  
U.S. DEPARTMENT OF TRANSPORTATION  
FEDERAL HIGHWAY ADMINISTRATION

SCALE 1:25,000







## MUHLENBERG COUNTY, KENTUCKY - A RESOURCE PROFILE

Muhlenberg County lies in the Western Coal Field Region of Kentucky, and encompasses a land area of 478 square miles. The estimated population of Muhlenberg County in 1986 was 31,900. Greenville, the county seat, had an estimated population of 4,626 persons in 1984. Greenville is located 134 miles southwest of Louisville, Kentucky; 89 miles north of Nashville, Tennessee; and 245 miles southeast of St. Louis, Missouri.

Central City is located eight miles north of Greenville, and is Muhlenberg County's largest city, with an estimated population of 4,984 persons in 1984. Drakesboro is located eight miles east of Greenville and had a 1984 estimated population of 709 persons.

**The Economic Framework** - The total number of Muhlenberg County residents employed in 1986 averaged 9,700. Manufacturing firms in the county reported 540 employees; wholesale and retail trade provided 1,890 jobs; 1,095 people were employed in service occupations; state and local government accounted for 1,010 employees; contract construction firms provided 202 jobs; and 1,770 people were employed by mining and quarrying operations.

**Labor Supply** - There is a current estimated labor supply of 12,990 men and 22,390 women available for industrial jobs in the labor market area. In addition, from 1987 through 1991, 9,240 young men and 8,680 young women in the area will become 18 years of age and potentially available for industrial jobs.

**Transportation** - The Paducah and Louisville Railway provides main line rail service to Greenville and Central City. CSX Transportation operates a branch line in Central City and Drakesboro. Major highways serving Muhlenberg County include the Western Kentucky Parkway, U.S. Highways 62 and 431, and Kentucky Route 176. All are "AAA"-rated (80,000-pound gross load limit) trucking highways. Twelve trucking companies provide interstate and/or intrastate service to Muhlenberg County. The nearest scheduled commercial airline service is available at the Evansville Dress Regional Airport near Evansville, Indiana, 77 miles north of Greenville. The Muhlenberg County Airport in Greenville maintains a paved 4,200-foot runway. The nearest navigable waterway is the Green River near Rochester, 18 miles east of Greenville.

**Power and Fuel** - Kentucky Utilities Company serves Greenville, Central City, Drakesboro, and northern Muhlenberg County. The remainder of Muhlenberg County receives electric power from Tennessee Valley Authority, through the Pennyrite Rural Electric Cooperative Corporation. Western Kentucky Gas Company provides natural gas service to Greenville and Central City, and Drakesboro Natural Gas provides natural gas service to Drakesboro. There are three propane dealers and five fuel oil dealers operating in Greenville and Central City.

**Education** - Primary and secondary education is provided by the Muhlenberg County Public School System, which had an enrollment of 6,432 students in the fall of 1987. Nine colleges and universities are located within 75 miles of Greenville. The Madisonville State Vocational-Technical School at Madisonville, 27 miles northwest of Greenville, offers training in 18 courses. The Muhlenberg County Area Vocational Education Center in Greenville offers training in eight courses.



## LABOR MARKET STATISTICS

The Muhlenberg County Labor Market Area includes Muhlenberg County and the adjoining Kentucky counties of Butler, Christian, Hopkins, Logan, McLean, Ohio and Todd.

### POPULATION

<u>Area</u>	<u>1986*</u>	<u>1980</u>	<u>1970</u>	<u>Percent Nonwhite</u>
				<u>1980</u>
Greenville	4,626	4,631	3,875	10.2
Central City	4,984	5,214	5,450	6.8
Drakesboro	709	798	907	13.7
Labor Market Area	220,900	224,221	192,119	-
Muhlenberg County	31,900	32,238	27,537	5.3
Butler County	11,100	11,064	9,723	0.6
Christian County	63,300	66,878	56,224	28.9
Hopkins County	46,600	46,174	38,167	7.2
Logan County	25,800	24,138	21,793	9.3
McLean County	9,900	10,090	9,062	0.8
Ohio County	21,400	21,765	18,790	1.4
Todd County	10,900	11,874	10,823	12.4

\* Population estimates. City estimates are for 1984.

Note: The 1980 city counts of population by race are provisional.

Sources: U.S. Department of Commerce, Bureau of the Census, 1980 Census of Population and Housing, March 1981; 1980 Census of Population, Number of Inhabitants. University of Louisville, Urban Studies Center, Population Unit, October 1985; University of Louisville, Urban Studies Center, State Data Center, June 1987 Newsletter, Vol. 5 No. 4.

### POPULATION PROJECTIONS

<u>Area</u>	<u>1990</u>	<u>1995</u>	<u>2000</u>	<u>2010</u>
Labor Market Area	234,775	244,248	252,968	269,179
Muhlenberg County	33,035	33,989	34,740	35,865
Butler County	12,361	12,817	13,174	13,754
Christian County	68,819	72,251	76,142	84,851
Hopkins County	48,401	49,995	51,317	53,335
Logan County	26,752	27,609	28,263	29,227
McLean County	10,442	10,807	11,070	11,425
Ohio County	23,772	25,330	26,608	28,754
Todd County	11,193	11,450	11,654	11,968

Source: University of Louisville, Urban Studies Center, Population Research Unit, How Many Kentuckians: Population Forecasts, 1980-2020, the 1986 Edition, Spring 1986.

LABOR FORCE CHARACTERISTICS OF RESIDENTS, 1986

	<u>Muhlenberg County</u>	<u>Labor Market Area</u>
Civilian Labor Force	11,520	86,623
Employment	9,703	76,398
Unemployment	1,817	10,225
Rate of Unemployment (%)	15.8	11.8

Source: Kentucky Cabinet for Human Resources, Kentucky Labor Force Estimates, Annual Averages, 1986.

SELECTED COMPONENTS OF NONAGRICULTURAL EMPLOYMENT  
BY PLACE OF WORK, 1986

	<u>Muhlenberg County</u>	<u>Labor Market Area</u>
All Industries (total)	7,278	56,704
Manufacturing	543	14,828
Wholesale & Retail Trade	1,887	13,051
Services	1,095	9,284
State/Local Government	1,010	8,508
Contract Construction	202	1,864
Mining & Quarrying	1,768	4,258

Note: Excludes domestic workers, railway workers, certain nonprofit corporations, majority of federal government workers, and self-employed workers.  
Source: Kentucky Cabinet for Human Resources, Average Monthly Workers Covered by Kentucky Unemployment Insurance Law, 1986.



PER CAPITA PERSONAL INCOME

<u>Area</u>	<u>1980</u>	<u>1984</u>	<u>Percent Change</u>
Muhlenberg County	\$ 8,302	\$ 10,417	25.5
Labor Market Area Range	\$5,064 - 9,367	\$6,652 - 12,066	-
Kentucky	7,644	10,232	33.9
U.S.	9,494	12,772	34.5

Sources: U.S. Department of Commerce, Bureau of Economic Analysis. Kentucky Economic Information System, June 1986.

ESTIMATED MALE LABOR SUPPLY  
MUHLENBERG COUNTY LABOR MARKET AREA

Area	Current				Future
	Total Male	Unemployed	Under-employed	Not in Labor Force	Becoming 18 years of age 1987 thru 1991
Labor Market Area*	12,990	5,480	4,835	2,675	9,242
Muhlenberg	2,830	1,123	741	966	1,401
Butler	843	484	327	32	466
Christian	2,095	675	1,420	0	2,674
Hopkins	2,236	1,100	922	214	1,928
Logan	1,205	692	513	0	971
McLean	621	369	252	0	422
Ohio	2,644	765	416	1,463	902
Todd	516	272	244	0	478

ESTIMATED FEMALE LABOR SUPPLY  
MUHLENBERG COUNTY LABOR MARKET AREA

Area	Current				Future
	Total Female	Unemployed	Under-employed	Not in Labor Force	Becoming 18 years of age 1987 thru 1991
Labor Market Area*	22,391	4,745	5,039	12,607	8,683
Muhlenberg	4,483	694	736	3,053	1,252
Butler	1,296	207	192	897	404
Christian	4,744	1,017	1,533	2,194	2,536
Hopkins	4,849	903	1,183	2,763	1,753
Logan	1,678	641	542	495	931
McLean	1,176	337	223	616	409
Ohio	3,184	567	431	2,186	921
Todd	981	379	199	403	477

\* Additional workers may be drawn from other nearby counties.

Note: Unemployed - persons unemployed and actively seeking work; Underemployed - persons employed but working only 14 to 26 weeks per year; Not in Labor Force - represents the number of persons who would enter the labor force if suitable employment were available (based on the assumption that persons in Kentucky would like to participate in the labor force in the same proportion that they do nationally).

Sources: Kentucky Cabinet for Human Resources, Kentucky Labor Supply Estimates by County, 1986. Kentucky Department of Economic Development, Future Labor Supply Becoming 18 Years of Age, 1987 thru 1991.



AVERAGE WEEKLY WAGES BY INDUSTRY  
BY PLACE OF WORK, 1986

	Muhlenberg County	Butler County	Christian County	Hopkins County
All Industries	\$391.69	\$215.97	\$271.33	\$361.80
Mining & Quarrying	788.90	439.63	376.78	712.95
Contract Construction	269.22	211.26	324.72	290.57
Manufacturing	262.39	183.83	341.11	447.26
Transportation, Communications & Public Utilities	477.54	302.43	342.85	418.07
Wholesale & Retail Trade	215.69	202.82	205.44	235.32
Finance, Insurance & Real Estate	286.12	271.89	313.48	298.75
Services	232.71	164.41	210.99	265.19
State/Local Government	300.68	244.54	311.07	318.51
Other	250.56	*	196.61	177.94
	Logan County	McLean County	Ohio County	Todd County
All Industries	\$300.95	\$263.66	\$329.49	\$234.81
Mining & Quarrying	239.46	247.41	690.78	*
Contract Construction	357.77	139.13	306.85	235.27
Manufacturing	348.48	335.65	302.31	259.41
Transportation, Communications & Public Utilities	344.21	456.79	462.89	344.93
Wholesale & Retail Trade	175.01	207.79	190.38	172.81
Finance, Insurance & Real Estate	264.77	261.08	274.69	234.11
Services	258.47	175.34	211.99	126.44
State/Local Government	293.56	260.51	267.45	246.74
Other	220.60	170.63	173.02	255.20

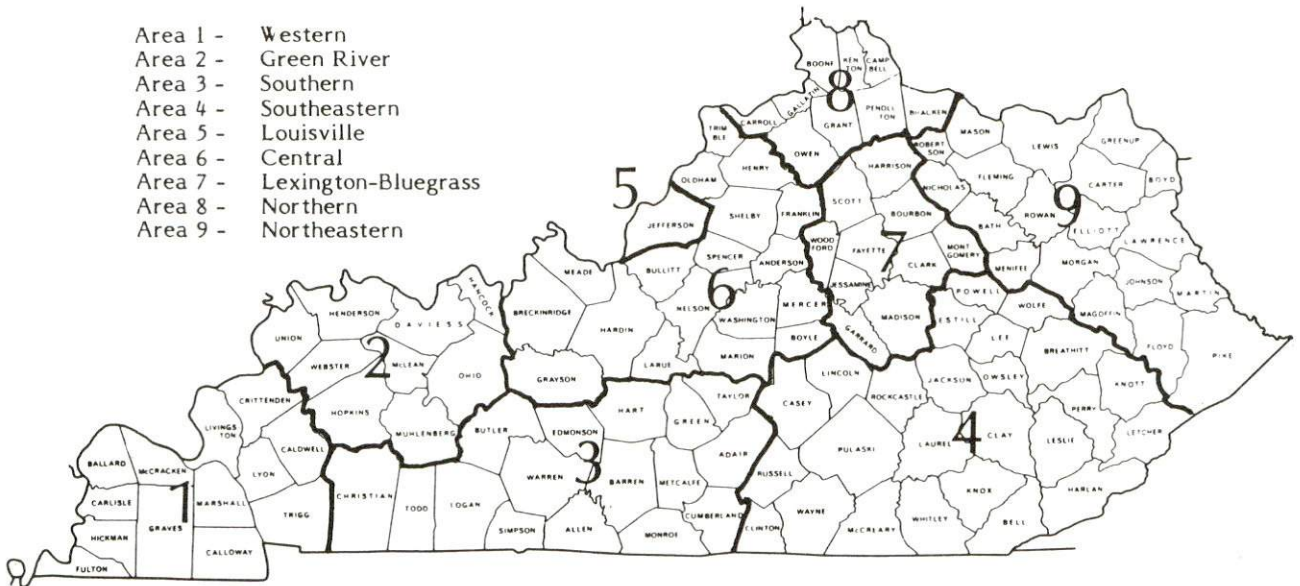
\* Not disclosed.

Note: The average weekly wage for each category includes the salaries and wages of all persons working for that type business. For example, the manufacturing category includes both production workers and administrative personnel. Excludes domestic workers, railway workers, certain nonprofit corporations, majority of federal government workers, and self-employed workers.

Source: Kentucky Cabinet for Human Resources, Average Weekly Wages of Workers Covered by Kentucky Unemployment Insurance Law, 1986.

Occupational wage rates for specific industries are usually not available to most government agencies, and wage data furnished to state employment agencies by individual industrial employers are protected from disclosure by federal law. The most reliable up-to-date wage information can be obtained by direct contact with local employers.

Associated Industries of Kentucky, a voluntary organization of Kentucky businesses, regularly collects occupational wage rates and fringe benefits data from participating member firms. Data are compiled for over 127 clearly defined office, production, and service occupations. Tabulations are published for nine geographical areas of Kentucky, as shown on the map below. It should be noted that the data may be weighted by the preponderance of firms in the larger cities and may be somewhat higher than the rates paid in the smaller communities. Data from these tabulations are available, upon request, from the Kentucky Department of Economic Development, Frankfort, Kentucky 40601.



Associated Industries of Kentucky Area Wage Surveys



EXISTING INDUSTRY

MUHLENBERG COUNTY MANUFACTURING FIRMS,  
THEIR PRODUCTS AND EMPLOYMENT

Firm (Establishment date)	Product	Average Employment			Labor Unions
		Total	Male	Female	
<b>Greenville</b>					
Commercial Printing, Inc. (1959)	Job printing	5	2	3	
D.A.M.E. Manufacturing, Inc., of Greenville (1987)	Men's & ladies' fashion apparell, denim jackets	200	-	-	
Geibel Lumber Company, Inc. (1954)	Pallets, skids, hardwood lumber	22	19	3	
Greenville-Leader- Central City News (1921)	Newspaper	18	9	9	
Greenville Machine Company (1966)	Tools, dies, machine shop	2	2	0	
Greenville Quarries, Inc. (1948)	Crushed limestone, agricultural lime, bituminous concrete	66	62	4	Steel- workers*
Muhlenberg County Opportunity Center (1968)	Pallets & skids, signs	60	25	35	
Muhlenberg Ready Mix Company, Inc. (1971)	Ready-mixed concrete	8	-	-	
Special Mine Service, Inc. (1969)	Electrical cable	5	5	0	Teamsters*
The Tube Works (1974)	Metal fabrication, electrical panel assemblies	2	-	-	
<b>Belton</b>					
Belton Mills (1981)	Animal feed	2	2	0	

(Continued)

Firm (Establishment date)	Product	Average Employment			Labor Unions
		Total	Male	Female	
<b>Bremen</b>					
Associated Pallet, Inc. (1964)	Pallets, grade lumber	80	76	4	
Gatton Farms (1960)	Country ham, bacon, sausage	2	2	0	
Kwick Kut Machine Company (1974)	Sawmill machinery	4	4	0	
<b>Central City</b>					
Big B Equipment Company (1986)	Carpet cutting & rolling machines	5	-	-	
Brewco Sales and Manufacturing, Inc. (1983)	Body & frame straightening machinery	14	12	2	
Brewer Machine & Conveyor Manufacturing Company, Inc. (1969)	Gang rip saw, steel fabrication, drive shafts	25	20	5	
Brewer & Reed Lumber, Inc. (1981)	Pallet stock	10	9	1	
Central City Publishing Corporation (1906)	Newspaper	8	4	4	
Central Pallet Mills, Inc. (1955)	Pallets	6	5	1	
Central Products, Inc. (1971)	Plastic extrusions, fence railing materials, rubber & plastic mud flaps	19	18	1	Teamsters*
El Dorado Chemical Company (1964)	Nitro carbo nitrate	14	13	1	Steel- workers*
Ladshaw Explosives, Inc. (1981)	Blasting agents	7	6	1	
Paragon Press (1960)	Job printing, newspaper publishing	24	12	12	

(Continued)



Firm (Establishment date)	Product	Average Employment			Labor Unions
		Total	Male	Female	
<b>Drakesboro</b>					
Primary Recovery Corporation (1984)	Aluminum recycling	50	47	3	
Reed Minerals Division (1979)	Roofing granules, blast grit	24	23	1	Laborers*
<b>Graham</b>					
The Ensign Bickford Company (1969)	Detonating cord, non-electrical delays, fuses	69	48	21	

\* See Labor Organizations below.

Sources: Kentucky Department of Economic Development, 1987 Kentucky Directory of Manufacturers; Division of Research and Planning.

#### LABOR ORGANIZATIONS IN MANUFACTURING FIRMS

<u>Union</u>	<u>Representing workers at:</u>
International Brotherhood of Teamsters, Chauffeurs, Warehousemen and Helpers of America	Special Mine Service, Inc.; Central Products, Inc.
Laborers International Union of North America, AFL-CIO	Reed Minerals Division
United Steelworkers of America, AFL-CIO	El Dorado Chemical Company; Greenville Quarries, Inc.

## MAJOR MUHLENBERG COUNTY NON-MANUFACTURING EMPLOYERS

<u>Firm</u>	<u>Service</u>	<u>Employment</u>
Peabody Coal Company	Coal mining	1,460
Tennessee Valley Authority	Electric power generation	750
Wetterau, Inc.	Grocery distribution	260
Western Kentucky Poultry	Egg producer	140
Kentucky Utilities	Electric power generation	134
Arch on the Green	Coal mining	87
A & G Egg Farm	Egg distribution	27
Levinson Metal Company	Steel service center	25

## RECENT INDUSTRIAL DEVELOPMENTS

D.A.M.E. Manufacturing, Inc., of Greenville recently began production at its new manufacturing facility. The plant employs approximately 200 persons and manufactures fashion apparel and denim jackets.

Georgia-Pacific and Reed Minerals Division of the Harsco Corporation recently announced plans to construct new manufacturing plants in Muhlenberg County. Georgia-Pacific will manufacture gypsum board and employ approximately 100 persons. Reed Minerals Division will manufacture roofing materials and employ approximately 40 persons.

Brewco Sales & Manufacturing, Inc.; Brewer Machine & Conveyor Company, Inc.; and the Primary Recovery Corporation recently announced plans for expansions to their Muhlenberg County manufacturing facilities. These expansions will create an estimated 80 new jobs.



## SELECTED INDUSTRIAL SERVICES

<u>Types of Service</u>	<u>Location</u>	<u>Mileage from Greenville</u>
Custom Data Processing	Owensboro, Kentucky	44
Custom Plastics Producers	Central City, Kentucky	8
Electric Motor Repair	Madisonville, Kentucky	27
Grinding, Precision & Tool	Hopkinsville, Kentucky	41
	Owensboro, Kentucky	44
Heat Treating Facilities	Evansville, Indiana	74
Industrial Equipment & Supplies	Madisonville, Kentucky	27
Industrial Gases	Madisonville, Kentucky	27
Industrial Waste Removal	Dawson Springs, Kentucky	33
	Russellville, Kentucky	38
Machine Shops, Tool & Die	Greenville, Kentucky	-
Metal Castings	McHenry, Kentucky	23
Metal Finishers	Hartford, Kentucky	30
Metal Service Centers	Greenville, Kentucky	-
Millwrights	Hopkinsville, Kentucky	41
	Owensboro, Kentucky	44
Public Warehouse Facilities	Hopkinsville, Kentucky	41
	Owensboro, Kentucky	44

Sources: Kentucky Department of Economic Development, Kentucky Directory of Selected Industrial Services, 1987; Division of Research and Planning.

## TRANSPORTATION

### Rail

#### Line serving Greenville - Paducah and Louisville Railway

Services - Main line; one northbound and one southbound freights stop daily; one northbound and one southbound through freights daily; switching service; team track space for five cars; siding space for thirty cars; nearest piggyback facilities provided by CSX Transportation at Owensboro, 44 miles north of Greenville

#### Line serving Central City - Paducah and Louisville Railway

Services - Main line; two northbound and two southbound freights stop daily; one northbound and one southbound through freights daily; ample team track space; siding space for 300 cars; nearest piggyback facilities provided by CSX Transportation at Owensboro, 36 miles north of Central City

#### Line serving Central City and Drakesboro - CSX Transportation

Services - Branch line; used for unit coal trains only at the present time

For details on routing, schedules, rates, and services contact:

Paducah and Louisville Railway  
1500 Kentucky Avenue  
Paducah, Kentucky 42001  
(502) 443-1246

and/or

Manager  
Industrial Development  
CSX Transportation  
908 West Broadway  
P. O. Box 2157  
Louisville, Kentucky 40201  
(502) 587-7746

### Highways

Major highways serving Muhlenberg County include the Western Kentucky Parkway, U.S. Highways 62 and 431, and Kentucky Route 176. All are "AAA"-rated (80,000-pound gross load limit) trucking highways. Greenville is served directly by U.S. 62 and Kentucky 176, Central City by the Western Kentucky Parkway and U.S. Highways 62 and 431, and Drakesboro by U.S. 431 and Kentucky 176.

(Continued)



The Western Kentucky Parkway is a multilane highway extending from Interstate 24, 60 miles west of Central City, to Interstate 65 and the Blue Grass Parkway, 80 miles east of Central City. The Western Kentucky Parkway also connects with the Pennyrile Parkway, 21 miles west of Central City, and the Green River Parkway, 20 miles east of Central City. Two interchanges of the Western Kentucky Parkway are located in Muhlenberg County. One at Central City and another six miles north of Greenville via Kentucky 181.

The Greenville-Central City bypass is a multilane highway extending from U.S. 62, west of Greenville, to U.S. 431, north of Central City.

### Truck Service

A & H Truck Line, Inc.*	Jones Truck Lines, Inc.*
American Freight System, Inc.**	Majors Transit, Inc.*
Averitt Express, Inc.*	Manning Motor Express, Inc.*
Birmingham-Nashville Express, Inc.*	Overnite Transportation Company*
Bowman Transportation, Inc.*	Roadway Express, Inc.**
Hohenwald Truck Lines, Inc.*	Thompson, Steve D. Trucking, Inc.*

\* Interstate and intrastate service.

\*\* Interstate service only.

Source: American Motor Carrier Directory, Fall 1987.

### HIGHWAY MILES AND TRUCK TRANSIT TIME IN DAYS FROM GREENVILLE, KENTUCKY, TO SELECTED MARKET CENTERS

City	Highway Miles	Delivery		City	Highway Miles	Delivery	
		Time TL				Time TL	
Atlanta, GA	328	2		Los Angeles, CA	2,072	7	
Baltimore MD	705	3		Louisville, KY	134	1	
Birmingham, AL	278	2		Nashville, TN	89	1	
Chicago, IL	369	2		New Orleans, LA	603	3	
Cincinnati, OH	235	1		New York, NY	892	3	
Cleveland, OH	480	2		Pittsburgh, PA	522	3	
Detroit, MI	493	3		St. Louis, MO	245	2	
Knoxville, TN	265	2					

Note: Mileage computations are via the best interstate or primary highways, not necessarily the most direct route of travel.

Sources: Rand McNally Deluxe Motor Carriers' Road Atlas, 1987. Official Kentucky Mileage Map, 1980. Delivery time - Majors Transit, Inc., P.O. Box 9, Caneyville, Kentucky.

## Air

### Local

Muhlenberg County Airport  
Greenville

Location: Greenville  
Runways: 1 paved  
Length: 4,200 feet  
Traffic  
Control: Wind tee, Unicom frequency 123.0  
Lighting: Sundown to 11 p.m. CT; thereafter, lights are pilot-controlled; VASI and strobe lights are always pilot-controlled  
Services: 100 octane, charter, A & P repairs, hangars on space available basis, tie-downs, flight instruction, aircraft rental, pilot service, paved parking lot, nondirectional beacon radio aid

Air Freight Service: Chartered air freight services must be arranged

### Nearest Scheduled Commercial Airline Service

Evansville Dress Regional Airport  
3 miles north of Evansville, Indiana;  
77 miles north of Greenville

Location: Evansville Dress Regional Airport  
Runways: 3 paved  
Length: 8,021 feet; 5,080 feet; 3,500 feet  
Traffic  
Control: Control tower  
Lighting: Beacon, runway  
Services: Eastern, USAir, Piedmont, Northwest, Trans World Express, Continental Express, Comair, American Eagle; fuel - 100LL, jet-A; hangars, tie-downs; major A & P repairs, major Avionics repairs; flight instruction, APU, charter, oxygen, plane rental, survival equipment; taxi, car rentals, courtesy car; weather information; restaurant, hotel

Air Freight Service: Air freight terminal

### **Air Express Service**

Several major companies offer air express services in Kentucky. These companies provide a quick means of shipping small to medium-sized packages expeditiously.

---

\* Commuter air carrier service is provided by Allegheny Commuter and Northwest Air Link at the Owensboro-Daviess County Airport which is located 3 1/2 miles west-south-west of Owensboro, Kentucky; 45 miles north of Greenville.



## Water

The nearest navigable waterway is the Green River, which forms the northeastern boundary of Muhlenberg County. A 9-foot navigation channel is maintained from Lock Number 3 near Rochester, 18 miles east of Greenville, to the Ohio River.

Public port facilities are located in Owensboro, 44 miles north of Greenville on the Ohio River. The port provides both open and covered storage, liquid storage, transfer facilities, and coal processing and loading.

## POWER AND FUEL

### Electricity

Company serving Greenville, Central City, Drakesboro, and northern  
Muhlenberg County - Kentucky Utilities Company  
Source of power - Kentucky Utilities Company  
For industrial rates contact:

Industrial Development Department  
Kentucky Utilities Company  
One Quality Street  
Lexington, Kentucky 40507  
(606) 255-1461

Company serving southern Muhlenberg County - Pennyriple Rural Electric  
Cooperative Corporation  
Source of power - Tennessee Valley Authority  
For industrial rates contact:

South Kentucky Industrial Development  
Association, Inc.  
P. O. Box 726  
Hopkinsville, Kentucky 42240  
(502) 885-5392

and/or

Pennyriple Rural Electric Cooperative  
Corporation  
2000 Harrison Street  
P. O. Box 551  
Hopkinsville, Kentucky 42240  
(502) 886-2555

### Natural Gas

Company serving Greenville and Central City - Western Kentucky Gas  
Company  
Source of supply - Texas Gas Transmission Corporation  
Size of transmission mains - 6-inch (supplier); 4-inch (distributor)  
Distribution mains - 2 to 4 inches  
Distribution pressure - Up to 35 psi  
Btu content - 1,000 per cubic foot  
Specific gravity - 0.60  
For rates and supplies contact:

Director of Industrial Customer Relations  
Western Kentucky Gas Company  
P. O. Box 866  
Owensboro, Kentucky 42302-0866  
(502) 685-8067

(Continued)



Company serving Drakesboro - Drakesboro Natural Gas  
Source of supply - Texas Gas Transmission Corporation  
Size of transmission mains - 10-inch (supplier); 4-inch (distributor)  
Distribution mains - 1 to 4 inches  
Distribution pressure - 30 psi to 300 psi  
Btu content - 1,024.2 per cubic foot  
Specific gravity - 0.575  
For rates and supplies contact:

Utility Manager  
Drakesboro Natural Gas  
P. O. Box 129  
Drakesboro, Kentucky 42337  
(502) 476-8986

## Other Fuels

### Propane

Conrad and Smith, Inc.\*  
821 North Second Street  
Central City, Kentucky 42330

Texgas Corporation\*  
Highway 60, P. O. Box 46  
Central City, Kentucky 42330

Southern States Cooperative,  
Greenville Service\*  
212 West Depot Street  
Greenville, Kentucky 42345

### Fuel oils

Distillate fuel oil -

Ashland Oil Company\*  
West Depot Street  
P. O. Box 170  
Greenville, Kentucky 42345

F. M. Puryear and Company, Inc.\*  
113 West Depot Street  
Greenville, Kentucky 42345

Darrell B. Baird Distributors,  
Inc.\*  
Gulf Oil Corporation  
310 Walnut Street  
P. O. Box 47  
Central City, Kentucky 42330

Quality Oil Company\*  
West First and Reservoir  
P. O. Box 226  
Central City, Kentucky 42330

Conrad and Smith, Inc.\*  
821 North Second Street  
Central City, Kentucky 42330

Residual fuel oil - Arrangements must be made with the refinery.

Low sulphur content coal - Available in Kentucky.

\* Bulk plant.

## WATER AND SEWERAGE

### Public Water Supply

Company serving Greenville - Greenville Utilities Commission\*  
P. O. Box 283  
Greenville, Kentucky 42345  
(502) 338-2642

Source - Three lakes

Treatment plant capacity - 708,480 gallons per day

Average daily consumption - 576,182 gallons

Peak daily consumption - 691,900 gallons

Treatment processes - Filtration, coagulation, sedimentation, chlorination,  
fluoridation, flocculation, rapid mix

Storage capacity - 670,000 gallons

Size lines - 4 to 8 inches

Water pressure - 80 psi to 105 psi

### MONTHLY WATER RATES

First	1,000 gallons	\$5.25 (Minimum)
Next	1,000 gallons	2.40 per M gallons
Next	3,000 gallons	2.25 per M gallons
Next	5,000 gallons	1.95 per M gallons
Next	40,000 gallons	1.60 per M gallons
All over	50,000 gallons	1.45 per M gallons

### Tap-on charges:

3/4-inch meter -	\$125
1-inch meter -	175
Larger than 1-inch meter -	Cost of labor and materials

\* The Greenville Utilities Commission has plans for several water treatment improvement projects. Included in these projects are: increasing the size of the clear well to 200,000 gallons; upgrading the flocculation and sedimentation basins; installing new flocculation equipment, bafflewall, and tube settlers; and installing high rate filters. These projects are planned to be completed in 1988 at a cost of approximately \$500,000.

Company serving Central City - Municipal Water & Sewer System  
 208 North First Street  
 P. O. Box 430  
 Central City, Kentucky 42330  
 (502) 754-3066

Source - Green River  
 Treatment plant capacity - 4,000,000 gallons per day  
 Average daily consumption - 1,900,000 gallons  
 Peak daily consumption - 2,200,000 gallons  
 Treatment processes - Filtration, coagulation, chlorination, flocculation,  
 rapid mix, fluoridation, sedimentation  
 Storage capacity - 1,985,000 gallons  
 Size lines - 1 to 16 inches  
 Water pressure - 40 psi to 80 psi

MONTHLY WATER RATES FOR CUSTOMERS ON BOTH  
 WATER AND SEWERAGE SYSTEMS

First	1,000 gallons	\$2.25 (Minimum)
Next	4,000 gallons	1.55 per M gallons
Next	5,000 gallons	1.20 per M gallons
Next	10,000 gallons	1.00 per M gallons
Next	80,000 gallons	.80 per M gallons
All over	100,000 gallons	.50 per M gallons

MONTHLY WATER RATES FOR CUSTOMERS ON  
 WATER SYSTEM ONLY

First	1,000 gallons	\$3.00 (Minimum)
Next	4,000 gallons	1.80 per M gallons
Next	5,000 gallons	1.20 per M gallons
Next	10,000 gallons	1.00 per M gallons
Next	80,000 gallons	.80 per M gallons
All over	100,000 gallons	.50 per M gallons

Tap-on charges:

	<u>Inside City</u>	<u>Outside City</u>
3/4-inch -	\$125	\$200
Larger than 3/4-inch -	Cost of labor and materials	

Company serving Drakesboro - Drakesboro Water and Sewer System  
 P. O. Box 129  
 Drakesboro, Kentucky 42337  
 (502) 476-8986

Source of treated water - Muhlenberg County Water District  
 Average daily consumption - 67,000 gallons  
 Peak daily consumption - 73,000 gallons  
 Storage capacity - 150,000 gallons  
 Size lines - 6 inches  
 Water pressure - 60 psi to 80 psi

(Continued)



MONTHLY WATER RATES

First	2,000 gallons	\$11.96 (Minimum)
All over	2,000 gallons	2.73 per M gallons

Tap-on charges: \$250

Name of water district - Muhlenberg County Water District\*  
P. O. Box 348  
Greenville, Kentucky 42345  
(502) 338-1300

Area served - Muhlenberg County and Logan County

Date when water district began operating - 1967

Source of supply of treated water - Central City's Municipal Water  
& Sewer System

Average amount of water used in a 24-hour period - 758,677 gallons

Peak amount of water used in a 24-hour period - 1,300,000 gallons

Storage capacity - 1,585,000 gallons

Size lines - 3 to 12 inches

Water pressure - 30 psi to 155 psi

MONTHLY WATER RATES

5/8 x 3/4-inch meter:

First	2,000 gallons	\$10.10 (Minimum)
Next	8,000 gallons	4.60 per M gallons
Next	10,000 gallons	4.00 per M gallons
Next	30,000 gallons	3.35 per M gallons
Over	50,000 gallons	2.45 per m gallons

1-inch Connection:

First	5,000 gallons	\$23.90 (Minimum)
Next	5,000 gallons	4.60 per M gallons
Next	10,000 gallons	4.00 per M gallons
Next	30,000 gallons	3.35 per M gallons
Over	50,000 gallons	2.45 per M gallons

1 1/2-inch Connection:

First	11,000 gallons	\$50.90 (Minimum)
Next	9,000 gallons	4.00 per M gallons
Next	30,000 gallons	3.35 per M gallons
Over	50,000 gallons	2.45 per M gallons

(Continued)

\* The Muhlenberg County Water District completed projects involving extending water lines and installing new pumps during 1987. Cost of these projects was in excess of \$2 million.

2-inch Connection:

First	16,000 gallons	\$70.90 (Minimum)
Next	4,000 gallons	4.00 per M gallons
Next	30,000 gallons	3.35 per M gallons
Over	50,000 gallons	2.45 per M gallons

Connection Fees:

3/4-inch	\$350
1-inch	468
1 1/2-inch	851
2-inch	930
Over 2-inch	Cost of labor and materials

**Sewerage**

Company serving Greenville - Greenville Utilities Commission\*  
P. O. Box 283  
Greenville, Kentucky 42345  
(502) 338-2642

Design capacity - 773,000 gallons per day  
Average daily flow - 350,000 gallons  
Type of treatment - Biolac treatment system  
Treatment processes - Screening, primary sedimentation, lagoon system,  
extended aeration, activated sludge  
Treated effluent discharged into - Caney Creek  
Size of sanitary mains - 6 to 18 inches  
Size of storm mains - 12 to 24 inches  
Monthly rates - Based on water usage

First	2,000 gallons	\$6.35 (Minimum)
Next	1,000 gallons	6.85 per M gallons
Next	1,000 gallons	7.35 per M gallons
Over	4,000 gallons	100% of water bill

Tap-on charge: \$100

\* The Greenville Utilities Commission recently completed construction of a new wastewater treatment plant. The new system is an innovative system that uses a combination of low-loaded, extended aeration/activated sludge technology; floating aeration chains with high efficiency, fine bubble diffused aeration; and earthen basin construction. Design capacity can be expanded up to 3 million gallons per day. Cost of the treatment plant was \$977,000.

Company serving Central City - Municipal Water & Sewer System  
P. O. Box 430  
Central City, Kentucky 42330  
(502) 754-3066

Design capacity - 600,000 gallons per day  
Average daily flow - 390,000 gallons  
Type of treatment - Primary and secondary  
Treatment processes - Grit removal, primary sedimentation, trickling filter, secondary sedimentation, anaerobic digester, sludge drying beds  
Treated effluent discharged into - Cypress Creek  
Size of sanitary mains - 8 to 15 inches  
Size of storm mains - 18 to 36 inches  
Monthly rates - Based on water rates

First	1,000 gallons	\$2.25 (Minimum)
Next	4,000 gallons	1.15 per M gallons
Next	5,000 gallons	.60 per M gallons
Next	10,000 gallons	.50 per M gallons
Next	80,000 gallons	.40 per M gallons
All over	100,000 gallons	.25 per M gallons

Tap-on charge: Cost of labor and materials

Company serving Drakesboro - Drakesboro Water and Sewer System\*  
P. O. Box 129  
Drakesboro, Kentucky 42337  
(502) 476-8986

Design capacity - 400,000 gallons per day  
Average daily flow - 70,000 gallons  
Type of treatment - Tertiary  
Treatment processes - Screening, grit removal, lagoon, oxidation ditch, activated sludge, sludge drying beds, tertiary filter, flow meter bar, final clarifier  
Treated effluent discharged into - Plum Creek  
Size of sanitary mains - 6 inches  
Monthly rates - Based on water usage

First	2,000 gallons	\$11.00 (Minimum)
All over	2,000 gallons	2.75 per M gallons

Tap-on charge: \$125

\* The city of Drakesboro recently installed a new flow meter and chlorinators at the wastewater treatment plant. These improvements increased the design capacity of the plant to 400,000 gallons per day.



## CLIMATE

### Muhlenberg County

#### Temperature

Normal (30-year record)	55.70 degrees
Average annual 1986	57.00 degrees
Record highest, July 1954 (46-year record)	105.00 degrees
Record lowest, February 1951 (46-year record)	-23.00 degrees
Normal heating degree days (30-year record)	4,729
(Heating degree day totals are the sums of negative departures of average daily temperatures from 65 degrees F.)	

#### Precipitation

Normal (30-year record)	41.55 inches
Mean annual snowfall (30-year record)	14.10 inches
Total precipitation 1986	37.68 inches
Mean number days precipitation (.01 inch or more) (46-year record)	115.70
Mean number days thunderstorms (46-year record)	45.10

#### Prevailing winds (through 1963)

South-Southwest

#### Relative Humidity (25-year record)

Midnight	78 percent
6 a.m.	81 percent
Noon	59 percent
6 p.m.	62 percent

Source: U.S. Department of Commerce, Environmental Science Services Administration, Climatological Data, 1986. Station of record: Evansville, Indiana.

## LOCAL GOVERNMENT

### Structure

The cities of Greenville, Central City, and Drakesboro are served by a mayor-city council form of government. Greenville and Central City also employ city administrators. Muhlenberg County is served by a county judge/executive and five magistrates.

### Planning and Zoning

Joint agency - Muhlenberg Joint City-County Planning Commission  
Participating cities - Greenville, Central City, Drakesboro, Powderly  
Zoning enforced - Within the corporate limits of Greenville and Central City  
Subdivision regulations enforced - Within a five-mile radius of the cities of Greenville and Central City  
Local codes enforced - Building and housing codes are enforced in all areas of Muhlenberg County  
Mandatory state codes enforced - Kentucky Plumbing code, National Electric Code, Kentucky Boiler Regulations and Standards, Kentucky Building Code (modeled after BOCA code)

### Local Fees and Licenses

The city of Greenville levies a business license fee on businesses within the city. The rates range from \$5 to \$500 per year. The fee for manufacturers with 25 employees or less is \$50 annually. Firms with more than 25 employees are charged \$75 annually. An unloading license is required in Greenville. The fee is \$7.50 and up, depending on vehicle capacity.

Business license fees in Central City range from \$7 to \$350 per year. Auto stickers are \$10 annually. An unloading license fee is also required in Central City. The fees are \$10 and \$25, depending on vehicle capacity. A five percent insurance premium tax is also levied in Central City.

## State and Local Property Taxes

All property in Kentucky, except items exempted by the state constitution, is taxed by the state. Property which also may be taxed by local jurisdictions includes land and buildings, finished goods inventories, automobiles, trucks, office furniture and office equipment. Local taxing jurisdictions in Kentucky include counties, cities, and school districts.

All property in Kentucky is assessed at 100 percent of fair cash value.

### COMBINED STATE AND LOCAL RATES PER \$100 VALUATION, 1987

	Greenville	Central City
Land and Buildings	\$0.848	\$0.850
Manufacturing		
Machinery	0.150	0.150
Pollution Control		
Equipment	0.150	0.150
Inventories		
Raw materials	0.001	0.001
Goods in Process	0.001	0.001
Finished Goods	0.621	0.632
Automobiles & Trucks	0.984	0.995
Other Tangible		
Personal Property	1.070	1.081
Intangibles (Accounts receivable*, money in hand, stock, notes, bonds)	0.250	0.250
Goods Stored in Public Warehouses in Transit Status	0.001	0.001
Private Leaseholds in Industrial Revenue Bond Financed Facilities	0.015	0.015

(Continued)



	Drakesboro	Unincorporated Muhlenberg County
Land and Buildings	\$0.943	\$0.636
Manufacturing		
Machinery	0.150	0.150
Pollution Control		
Equipment	0.150	0.150
Inventories		
Raw materials	0.001	0.001
Goods in Process	0.001	0.001
Finished Goods	0.734	0.427
Automobiles & Trucks	1.097	0.790
Other Tangible		
Personal Property	1.183	0.876
Intangibles (Accounts receivable*, money in hand, stock, notes, bonds)	0.250	0.250
Goods Stored in Public Warehouses in Transit Status	0.001	0.001
Private Leaseholds in Industrial Revenue Bond Financed Facilities	0.015	0.015

Five watershed districts in Muhlenberg County levy a special tax on property located within their district. The rates range from \$0.01 to \$0.09 per \$100 valuation. One of the districts assesses the tax at \$0.015 per acre.

\* Accounts receivable are taxed at 85 percent of face value, for an effective rate of \$0.2125 per \$100 valuation.

## Safety

Police	Greenville	Central City	Muhlenberg County
Total staff	7	7	4 full-time 1 part-time
Radio-patrol cars	3	4	5
Fire*	Greenville	Central City	Drakesboro
Insurance Services Office, Public Protection Classification	7	4	9
Full-time staff	5	5	-
Volunteers	25	25	14
	Muhlenberg County		
Insurance Services Office, Public Protection Classification	**		
Full-time staff	-		
Volunteers	180		

### Rescue Service

Rescue service is provided by the Greenville and Central City fire departments and all volunteer fire departments in Muhlenberg County.

### Refuse Collection and Disposal

The city of Central City provides refuse collection and disposal to residents and businesses within the city. Greenville and Drakesboro are served by private contractors.

A county-wide refuse collection service has been instituted in Muhlenberg County. The county has set up five convenient sites where residents may bring their refuse and have it compacted and transferred to the county landfill at no charge.

\* Includes copyrighted material of ISO Commercial Risk Services, Inc., with its permission.

\*\* Eight fire districts provide fire protection in Muhlenberg County. Property located within these districts has a classification rating of 9. Property in unincorporated Muhlenberg County, not within a fire district, is class 10.

## EDUCATION

### Public Schools

	Muhlenberg County*
Total Enrollment (August, 1987)	6,432
Kindergarten	450
Elementary	3,043
Junior High	920
High School	1,890
Special Education	129
Pupil-Teacher Ratio (1985-86)	21-1
Percent High School Graduates to College (1985-86)	47.8
Expenditures Per Pupil (1985-86)	\$2,263.81

\* The Muhlenberg County School System plans to construct two new high schools. The existing high schools will be converted into elementary and junior high schools. Construction of the new schools is tentatively scheduled to be completed in the fall of 1989 at an estimated cost of \$15 million.



Area Colleges and Universities

<u>Name</u>	<u>Location (Miles distant)</u>	<u>Enrollment (Fall, 1986)</u>	<u>Highest Degree Conferred</u>
Madisonville Community College	Madisonville, Kentucky (27)	1,356	Associate
Hopkinsville Community College	Hopkinsville, Kentucky (41)	1,068	Associate
Brescia College	Owensboro, Kentucky (44)	709	Baccalaureate*
Kentucky Wesleyan College	Owensboro, Kentucky (44)	791	Baccalaureate*
Henderson Community College	Henderson, Kentucky (64)	1,045	Associate
Western Kentucky University	Bowling Green, Kentucky (65)	12,257	Masters, Specialist**
Austin Peay State University	Clarksville, Tennessee (66)	4,943	Academic & Professional
University of Southern Indiana	Evansville, Indiana (74)	4,333	Baccalaureate
University of Evansville	Evansville, Indiana (74)	5,844	Masters

\* Courses in masters degree programs are taught on campus by faculty members of Western Kentucky University or Murray State University. The degrees are issued by Western Kentucky University or Murray State University.

\*\* Joint doctoral degree programs are offered in cooperation with the University of Kentucky, Lexington, and cooperative doctoral degree programs are offered with the University of Louisville. The degrees are issued by the University of Kentucky or the University of Louisville.

## Vocational Training

The Bluegrass State Skills Corporation, an independent public corporation created and funded by the Kentucky General Assembly, provides programs of skills training to meet the needs of business and industry from entry level to advanced training, and from upgrading present employees to retraining experienced workers.

The Bluegrass State Skills Corporation is the primary source for skills training assistance for a new or existing company. The Corporation works in partnership with other employment and job training resources and programs, as well as Kentucky's economic development activities, to package a program customized to meet the specific needs of a company.

Vocational training is available at both the state vocational-technical schools and the area vocational education centers. The state vocational-technical schools are post-secondary institutions. The area vocational education centers are designed to supplement the curriculum of high school students. Both the state vocational-technical schools and the area vocational education centers offer evening courses to enable working adults to upgrade current job skills.

Arrangements can be made to provide training in the specific production skills required by an industrial plant. Instruction may be conducted either in the vocational school or in the industrial plant, depending upon the desired arrangement and the availability of special equipment.

### Nearest State School

Madisonville State Vocational-Technical School  
Madisonville, 27 miles distant

Consumer & Home Economics  
  Consumer & Family Life  
  Skills  
Industrial Education  
  Auto Body Repair  
  Auto Mechanics  
  Carpentry  
  Diesel Mechanics  
  Drafting (with CAD/CAM)  
  Electricity  
  Electronics  
  Machine Shop  
  Mine Maintenance Technology

  Tool & Die Making  
  Welding  
Learning Resource Center  
Public Service Occupations  
  Business/Industry Security  
  Training  
  CPR Training  
  Electrical Safety Training  
  Emergency Medical Care  
  Fire Service Training  
  First Aid & Safety  
  Rescue & Emergency Services  
  Training

Nearest Area Education Center

Muhlenberg County Area Vocational Education Center  
Greenville

Business & Office

Accounting/Management

Clerical

Secretarial

Health & Personal Services

Occupations

Health Services

Industrial Education

Auto Mechanics

Carpentry

Electricity

Welding



## HEALTH

### Local Medical Personnel

Physicians - 24

Dentists - 8

Optometrists - 4

Psychologist - 1

Pediatricist - 1

Chiropractor - 1

### Hospitals

<u>General Hospital</u>	<u>Location</u>	<u>Beds</u>
Muhlenberg Community Hospital	Greenville	135

Medical staff - 25 doctors, 63 registered nurses, and 50 licensed practical nurses

### Other Medical Facilities

Coal Miners Respiratory Clinic

Muhlenberg County Health Center, East Pennyrile District Health Department

Pennyroyal Center - Muhlenberg County Area Clinic

The Greenville Doctors Clinic

The Central City Medical Building

Upjohn Home Health Care Services

Muhlenberg Community Home Health Care

### Ambulance Service

Name - Muhlenberg Community Hospital Emergency Medical Service

Staff - 9 emergency medical technicians

## OTHER LOCAL FACILITIES

### Communications

Telephone - Telegraph -	South Central Bell Telephone Company Western Union Toll-Free number, 1-800-325-6000
Newspapers - Weekly and circulation -	Leader-News - 9,000; Times-Argus - 3,000
Radio -	WGKY-FM, WKYA-FM, WMTA-AM, WNES-AM
Television - Airwave reception from -	Bowling Green and Paducah, Kentucky; Evansville, Indiana; Nashville, Tennessee
Cable service - Educational Television -	Telescripts and C-4 Media  The Kentucky Educational Television (K.E.T.) network is available statewide

### Library Services

Public library - Muhlenberg County Library District; branches at  
Greenville, Central City, Drakesboro, and Muhlenberg Community  
Hospital  
Size collection - 86,212 volumes (district total)  
Circulation, 1986-87 - 161,003 (district total)

### Religious Institutions

Denominations -	AME Zion Apostolic Assembly of God Baptist Catholic Christian Church of Christ Church of God	Church of the Nazarene The Church of Jesus Christ of Latter Day Saints Pentecostal Presbyterian United Methodist
Nearest Synagogues - Congregations -	Owensboro, Kentucky, 44 miles north of Greenville Adath Israel (reform)	

## Financial Institutions

<u>Banks</u>	<u>Assets</u>	<u>Deposits</u>	<u>Statement Date</u>
Citizens Union Bank (Central City)	\$20,996,148.00	\$18,857,248.00	12/31/86
First National Bank (Central City)	45,619,992.57	41,222,192.73	6/30/87
First State Bank (Greenville)	117,743,400.43	107,370,957.29	6/30/87
<u>Savings and Loan Associations</u>	<u>Assets</u>	<u>Deposits</u>	<u>Statement Date</u>
First Kentucky Federal Savings and Loan Association	\$176,277,846.00	\$167,997,190.00	12/31/86

## Hotels and Motels

Total number - 5  
Total rooms - 183



## Clubs and Organizations

Aeolian Music Club  
American Legion  
American Legion Auxiliary  
American Legion League  
Archery Club  
Art Guild  
Athletic Boosters  
Babe Ruth League  
Band Boosters  
Beta Club  
Big M Bass Club  
Boys' Club of America  
Boy Scouts of America  
Brownies  
Business and Professional  
Women's Club  
Chamber of Commerce  
Citizens' Band Radio Club  
Coal Dusters Square Dance  
Club  
Conservation Club  
Cub Scouts  
Daughters of the American  
Revolution  
Ducks Unlimited  
Eastern Star  
Fire Department Auxiliary  
4-H Club  
Fraternal Order of Eagles  
Fraternal Order of Eagles  
Auxiliary  
Fresh Start Center  
Future Business Leaders of  
America (FBLA)  
Future Farmers of America (FFA)  
Future Homemakers of America  
(FHA)  
Future Teachers of America (FTA)  
Genealogical Society  
Girl Scouts  
Greenville Heritage Society, Inc.  
Historical Society  
Homemakers of America  
Independent Order of Odd Fellows  
Junior Achievement  
Junior Homemakers  
Kiwanis  
Lions  
Lioness  
Little League Baseball  
Little League Football  
Masons  
Medical Auxiliary  
Muhlenberg Community Theater  
Muhlenberg County React  
Parent-Teacher Association  
Rebekah Lodge  
Red Cross  
Retail Merchants Association  
Retired Teachers Association  
Rotary  
Rotarians  
Saddle Club  
Show Horse Club  
Shriners  
Sky Diving  
Sportsman's Club  
Veterans of Foreign Wars  
Veterans of Foreign Wars  
Ladies Auxiliary  
Woman's Club  
Young at Heart Club

## RECREATION

### Local

Muhlenberg County offers a wide variety of recreational opportunities. The J. P. Morgan Park on Greenville's east side is a 15-acre recreation complex containing two tennis courts, basketball courts, a junior Olympic swimming pool, a large children's pool, bathhouse facilities with a food service area, a playground area with redwood play structures, assorted swings and slides, and exercise facilities including a vita course. A new amphitheater, two pavilions, new playground, and new walkways and lighting were recently installed at Morgan Park. Morgan Tennis Park, located on East Main Cross Street, contains two tennis courts and shuffleboard courts. The West End Baseball Park, a 13-acre site located on the west side of Greenville, provides facilities for the high school, Babe Ruth, and American Legion baseball programs. A second ball park located on Greenville's south end provides facilities for the Little League and T-ball programs. An additional T-ball field is under construction.

Greenville's Senior Citizens' Center features a meeting room, an activities room, a kitchen, a beauty shop and laundry facilities.

The Greenville Country Club has a 9-hole golf course with exchange privileges with Central City, an Olympic-size swimming pool and tennis courts.

Recreational facilities at Central City include Central Park, with a swimming pool, tennis courts, a playground, and picnic facilities. Other facilities in Central City include Gish Park, with basketball courts, a playground, and picnic facilities; Keown Memorial Park, with a baseball/softball field; and Pattontown Mini-Park, which features a picnic area. Private recreational facilities in Central City include two cinemas, a bowling facility, and the Central City Country Club, which offers a golf course, a swimming pool, and two tennis courts.

Recreational activities and events held annually in Muhlenberg County include the Muhlenberg County Fair, the Coal Festival, Annual Community Pride Banquet, several golf tournaments, a tennis tournament, the Greenville Annual Arts and Crafts Fair, Farm-City Week, an antique car show, the State Washer Pitching Championship, the Lioness Home Tour, and several flea markets.

Numerous recreational facilities are available in communities throughout Muhlenberg County. These facilities include community parks, community centers, ball fields, tennis courts, basketball courts, and playgrounds.

### Area (Within 80 miles)

Lake Malone State Park, located in southern Muhlenberg County, 11 miles south of Greenville, offers camping facilities, swimming, fishing, and boating on a 788-acre lake. Playground facilities and picnic shelters are located in a beautiful scenic cliff area. Located across from the entrance to the park is an inn featuring luxury rooms, a restaurant, a swimming lake, a beach, boating, fishing, tennis, and nature trails.



**Pennyrile Forest State Resort Park** near Dawson Springs is located 39 miles west of Greenville. The 24-room lodge and cottages nestled within the trees provide excellent accommodations. Other facilities and activities include a dining room, a gift shop, rental rowboats and pedal boats, a 9-hole golf course, hiking trails, horseback riding, picnicking, playgrounds, shuffleboard, swimming at the lodge pool and off a sand beach, and two tennis courts. Lake Beshear, only four miles from the lodge, sports good fishing.

Owensboro, 44 miles north of Greenville, is Kentucky's third largest city. Owensboro is a source of many entertainment and recreational facilities associated with larger communities. Points of interest include museums, an orchestra and two colleges.

**Jefferson Davis Monument State Shrine** is located 50 miles south of Greenville at Fairview. The shrine is at the site of the birthplace of Jefferson Davis, a former U.S. Senator, Secretary of War, and the only president of the Confederate States of America. The park contains a 351-foot obelisk with an elevator to the top for viewing, a museum, a gift shop, and a playground with picnic tables.

**Ben Hawes State Park**, 51 miles north of Greenville near Owensboro, is a 300-acre park which is open year-round. It contains a playground, tennis courts, hiking trails, a picnic area and shelters, including an 18-hole and 9-hole golf course, pro shop, driving range and archery range.

**Lake Barkley State Resort Park**, 61 miles southwest of Greenville near Cadiz, is located on an embayment of Lake Barkley. The magnificent lodge includes 130 rooms, five suites, 13 cottages, a dining room, a coffee shop, a gift shop, two meeting rooms, and a recreation room. An activities center with a capacity for 1,000, a complete fitness center, and an 80-site campground are located near the lodge. A lodge pool, a beach and a bathhouse, an 18-hole golf course, a pro shop, tennis courts, a riding stable, a trapshooting range, a basketball court, hiking trails, playgrounds, and a picnic area round out the recreational facilities. The marina near the lodge has everything for the "boat lover": covered and open slips, a launching ramp, and rentals for fishing boats, skiing boats, and pleasure ride pontoons. An airport is available also.

Noteworthy for its spaciousness, **Rough River Dam State Resort Park** at Falls of Rough is 62 miles northeast of Greenville. The 637-acre park on Rough River Lake has a 40-room lodge with a dining room, a coffee shop, a gift shop, a meeting room, and a 2,500-foot lighted airstrip. Cottages and camping sites are also available. Recreational facilities include a launching ramp, a dock with open and covered slips, fishing and pleasure boat rentals, a 9-hole, 3-par golf course, a swimming pool, a sand beach with a bathhouse complex, tennis courts, an archery range, hiking and fitness trails, picnic and playground areas, and planned recreation. Cruise boat excursions on Rough River Lake are available on the "Lady of the Lake" in season.

**Bowling Green** is located 65 miles southeast of Greenville. Bowling Green serves the area as a recreational and educational center. Kentucky Museum and Library offers extensive collections relating to the history and heritage of the Commonwealth. Western Kentucky University provides the city with many exciting sporting events. Beech Bend Amusement Park has many rides, games and other forms of entertainment.



The Land Between the Lakes, located on a 170,000-acre wooded peninsula, is an outdoor recreational and conservational education center. The Golden Pond Visitors Center offers a multimedia theatre/planetarium and observatory. Camping, swimming, fishing, boating, hiking, a buffalo herd on a 250-acre range, an Environmental Education Center for school study groups, an educational farm and a central station with films and displays are among the attractions. Kentucky Lake and Lake Barkley are among the top fishing and water sport recreation areas in the southeastern United States. The Land Between the Lakes area is 65 miles southwest of Greenville.

Just north of Henderson, 66 miles north of Greenville, is the **John James Audubon State Park**, a 692-acre park where the famed naturalist gathered material for his painting, "The Birds of America." Many paintings by Audubon and his sons, and 126 first-edition prints of his paintings are on display at the Audubon Memorial and Nature Museum which is the focal point of the park. Other park features include the Audubon woods, a bird sanctuary, and a 12-acre nature preserve lake. The park has cottages and camping sites. Recreational facilities include a 28-acre recreational lake, a beach and a bathhouse, rental rowboats and pedal boats, a dock, a 9-hole golf course, hiking trails picnic shelters, and playgrounds. Organized recreation programs are offered during the summer.

Charm and serenity exemplify **Kenlake State Resort Park** which is located on Kentucky Lake, 79 miles southwest of Greenville. The park offers hotel and cottage accommodations and an efficient camping site. Other facilities include a 9-hole golf course, pool and lake swimming, horseback riding, hiking trails, fishing, boating, picnicking, planned recreation, and one of the finest tennis complexes in the area.

**Kentucky Dam Village State Resort Park**, located 79 miles west of Greenville near Gilbertsville, is one of the largest and most popular vacation resorts in Kentucky. A modern lodge with 46 rooms, 67 cottages, and a 225-site campground make up the accommodations. The park includes a 4,000-foot lighted airstrip. There is also a dining room overlooking Kentucky Lake, a coffee shop, a snack bar, two gift shops, a meeting room, an activities center, and a recreation room. Recreational activities to choose from include boating and fishing at the largest docking facility in the Kentucky parks system, golf at the 18-hole Village Green Course, fishing, hiking, horseback riding, picnicking, swimming at the lodge pool or off the sand beach, and tennis.

**Mammoth Cave National Park** is located 80 miles east of Greenville near Cave City. Beneath 52,000 park acres, Mammoth Cave is among the major tourist attractions of all times. It is the largest cave network ever discovered, with over 300 miles of caverns. Some famous sights are Snowball Dining Room (267 feet below surface), Frozen Niagara, Crystal Lake, and Bottomless Pit. The park also features scenic boat trips on the Green River and nature and hiking trails. Park accommodations include a hotel with distinctive gift shops featuring native Kentucky and Southern Highland handicrafts, a motor lodge, hotel cottages, and woodland cottages. Other park facilities include the hotel dining room and coffee shop, a service center, group meeting facilities, a campground, a picnic area, and tennis and shuffleboard courts. The park is open for tours every day of the year (except Christmas Day).

## COMMUNITY IMPROVEMENTS

### Recent

D.A.M.E. Manufacturing, Inc., of Greenville recently began production at its new manufacturing facility. The plant employs approximately 200 persons and manufactures fashion apparel and denim jackets.

Georgia-Pacific and Reed Minerals Division of the Harsco Corporation recently announced plans to construct new manufacturing plants in Muhlenberg County. Georgia-Pacific will manufacture gypsum board and employ approximately 100 persons. Reed Minerals Division will manufacture roofing materials and employ approximately 40 persons.

Brewco Sales & Manufacturing, Inc.; Brewer Machine & Conveyor Company, Inc.; and the Primary Recovery Corporation recently announced plans for expansions to their Muhlenberg County manufacturing facilities. These expansions will create an estimated 80 new jobs.

The city of Greenville received the Gold Award in 1987 for being chosen as a "Kentucky Certified City" for five consecutive years. Central City received the Silver Award for being chosen for three consecutive years. The award is based on achievement in the following categories: economic development, transportation, public affairs, utilities, health, commercial development, housing, education, and recreation. The Certified Cities Program is sponsored by the Kentucky Chamber of Commerce.

Several new additions were recently completed at the J. P. Morgan Park in Greenville. These additions include a new amphitheater, two new pavilions, a playground, and new walkways and lighting. Total cost of these projects was approximately \$80,000.

Central City was accepted into the "Main Street Program" in March of 1987 and is designated a demonstration city. The program was established by the Kentucky Heritage Council with the major goal being the preservation and development of downtown areas.

A memorial, consisting of twelve bronze plaques containing the names of Muhlenberg County veterans serving World Wars I and II, the Korean War, and the Vietnam War, was erected on the courthouse lawn in the fall of 1987. This memorial was funded by \$70,000 in donations.

The Greenville Utilities Commission recently completed construction of a new wastewater treatment plant. The new system is an innovative system that uses a combination of low-loaded, extended aeration/activated sludge technology; floating aeration chains with high efficiency, fine bubble diffused aeration; and earthen basin construction. Design capacity can be expanded up to 3 million gallons per day. Cost of the treatment plant was \$977,000.



The city of Drakesboro recently installed a new flow meter and chlorinators at the wastewater treatment plant. These improvements increased the design capacity of the plant to 400,000 gallons per day.

The Muhlenberg County Water District completed projects involving extending water lines and installing new pumps during 1987. Cost of these projects was in excess of \$2 million.

#### **Under Way**

A historic house in downtown Greenville, the Duncan House, is presently being converted into a cultural center and art museum. The facility will also be available for civic activities.

An improvement project to the sewerage system is presently under way in Central City. The effluent lines will be extended to the Green River and discharge into Cypress Creek will be discontinued. The wastewater treatment plant will be upgraded and an oxidation ditch will be added. This \$4 million project is scheduled to be completed in the spring of 1989.

#### **Planned**

The Muhlenberg County School System plans to construct two new high schools. The existing high schools will be converted into elementary and junior high schools. Construction of the new schools is tentatively scheduled to be completed in the fall of 1989 at an estimated cost of \$15 million.

The Greenville Utilities Commission has plans for several water treatment improvement projects. Included in these projects are: increasing the size of the clear well to 200,000 gallons; upgrading the flocculation and sedimentation basins; installing new flocculation equipment, bafflewall, and tube settlers; and installing high rate filters. These projects are planned to be completed in 1988 at a cost of approximately \$500,000.