

1995

Industrial Resources: Pendleton County - Falmouth and Butler

Kentucky Library Research Collections
Western Kentucky University, spcol@wku.edu

Follow this and additional works at: https://digitalcommons.wku.edu/pendleton_cty

 Part of the [Business Administration, Management, and Operations Commons](#), [Growth and Development Commons](#), and the [Infrastructure Commons](#)

Recommended Citation

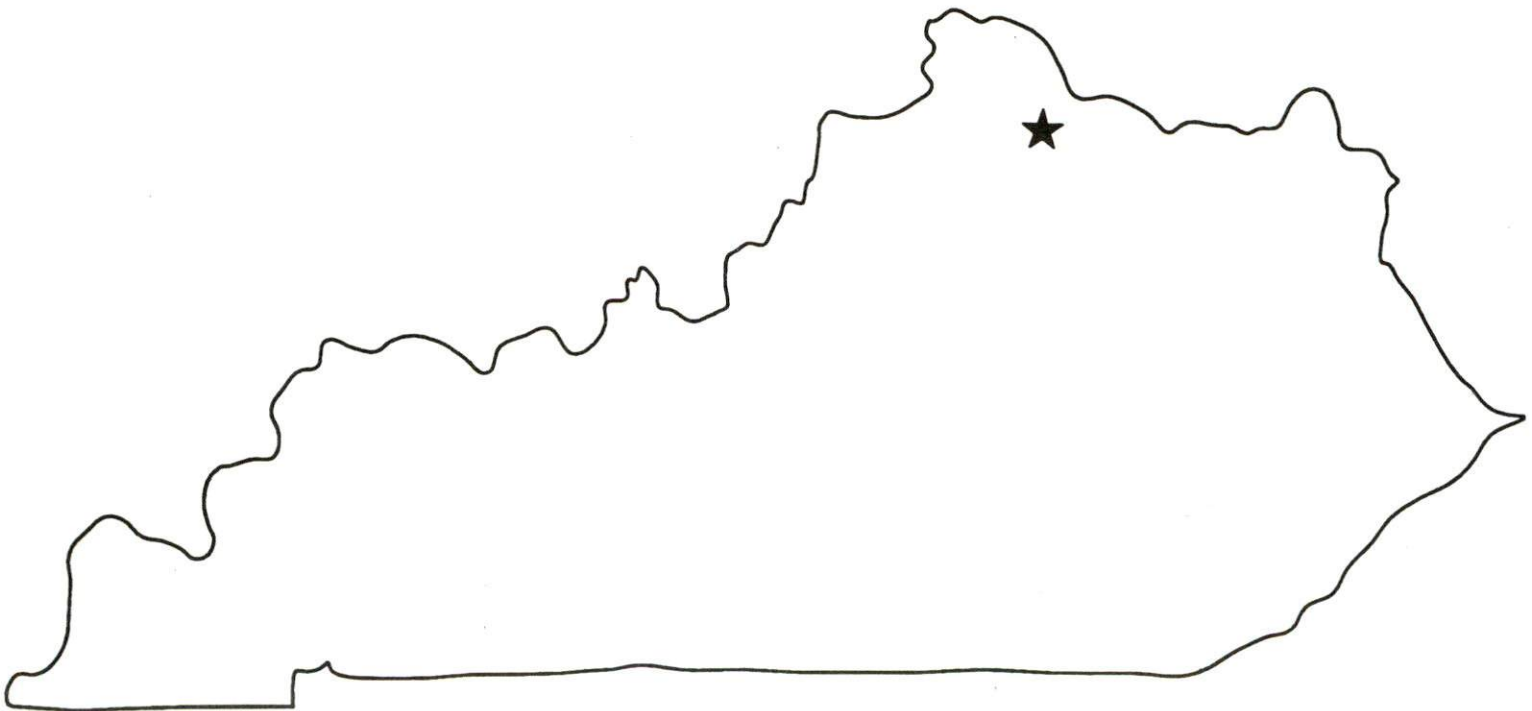
Kentucky Library Research Collections, "Industrial Resources: Pendleton County - Falmouth and Butler" (1995). *Pendleton County*. Paper 2.
https://digitalcommons.wku.edu/pendleton_cty/2

This Report is brought to you for free and open access by TopSCHOLAR®. It has been accepted for inclusion in Pendleton County by an authorized administrator of TopSCHOLAR®. For more information, please contact topscholar@wku.edu.

Kentucky

**Resources For
Economic Development**

Falmouth & Butler



Prepared by
The Kentucky Cabinet for Economic Development
Division of Research
in cooperation with
Pendleton County Economic Development Office

1995

Division Director - Ronald W. Morgan; program manager - Keith Roberts;
research - Keith Roberts; clerical - Wanda Sharp; graphics - Robert Owens. Cost
of printing paid from state funds.

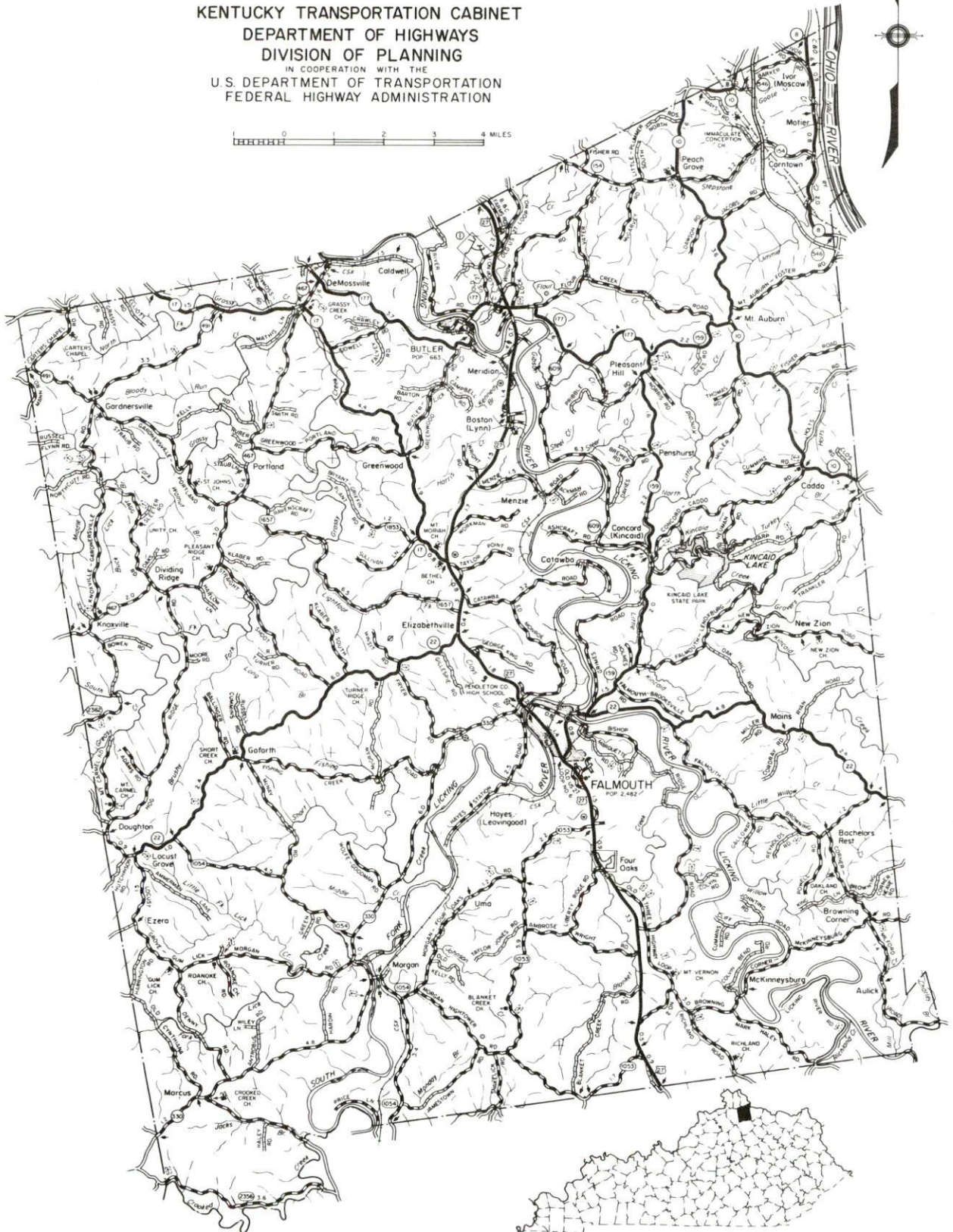
TABLE OF CONTENTS

<u>Chapter</u>	<u>Page</u>
FALMOUTH & BUTLER, KENTUCKY - A RESOURCE PROFILE.....	1
THE LABOR MARKET STATISTICS	2
Labor Market Area Map	2
Population	3
Population Projections	3
Estimated Labor Supply.....	3
Labor Force Characteristics of Residents, 1994.....	4
Selected Components of Nonagricultural Employment, by Place of Work, 1993	5
Per Capita Personal Income	6
Average Placement Wages	7
Average Weekly Wages of Workers Covered by Unemployment Insurance 1993 - Bar Chart	8
Average Weekly Wages by Industry, by Place of Work, 1993	9
EXISTING INDUSTRY	10
Pendleton County Manufacturing Firms, Their Products and Employment	10
Recent Industrial Developments	11
Labor Organizations in Manufacturing Firms	11
Selected Industrial Services	11
TRANSPORTATION.....	12
Highways.....	12
Truck Service	12
Selected Market Location Map	13
Rail.....	14
Air	14
UTILITIES	15
Electricity.....	15
Natural Gas.....	16
Public Water Supply.....	16
Sewerage.....	17
CLIMATE	18

<u>Chapter</u>	<u>Page</u>
LOCAL GOVERNMENT	19
Structure	19
Planning and Zoning	19
Local Fees and Licenses.....	19
State and Local Property Taxes	20
EDUCATION	21
Public Schools	21
Area Colleges and Universities.....	21
Vocational Training.....	22
OTHER LOCAL FACILITIES	24
Local Medical Personnel.....	24
Hospitals.....	24
Other Medical Facilities and Services	24
Banks and Savings & Loan Associations	24
Newspapers.....	24
Telephone Service	24
RECREATION	25

GENERAL HIGHWAY MAP PENDLETON COUNTY KENTUCKY

PREPARED BY THE
KENTUCKY TRANSPORTATION CABINET
DEPARTMENT OF HIGHWAYS
DIVISION OF PLANNING
IN COOPERATION WITH THE
U.S. DEPARTMENT OF TRANSPORTATION
FEDERAL HIGHWAY ADMINISTRATION



FALMOUTH AND BUTLER, KENTUCKY - A RESOURCE PROFILE

Falmouth, the county seat of Pendleton County, is located in the Licking River Valley in northern Kentucky. Falmouth is located 37 miles south of Cincinnati, Ohio; 109 miles northeast of Louisville, Kentucky; and 56 miles north of Lexington, Kentucky. Falmouth had an estimated 1992 population of 2,496.

Butler is located in the Licking River Valley, 10 miles north of Falmouth, and had an estimated 1992 population of 672.

Pendleton County has a land area of 280 square miles. The northeast portion of the county is bounded by the Ohio River, and the Licking River flows northward through the central area of the county. Pendleton County had an estimated 1992 population of 12,703.

The Economic Framework - The total number of Pendleton County residents employed in 1994 averaged 5,662. In 1993, manufacturing firms in the county reported 413 employees; wholesale and retail trade provided 456 jobs; 225 people were employed in service occupations; state and local government accounted for 584 employees; and contract construction firms provided 67 jobs.

Labor Supply - There is a current estimated labor supply of 9,153 persons available for industrial jobs in the labor market area. In addition, from 1996 through 2000, 21,961 young persons in the area will become 18 years of age and potentially available for industrial jobs.

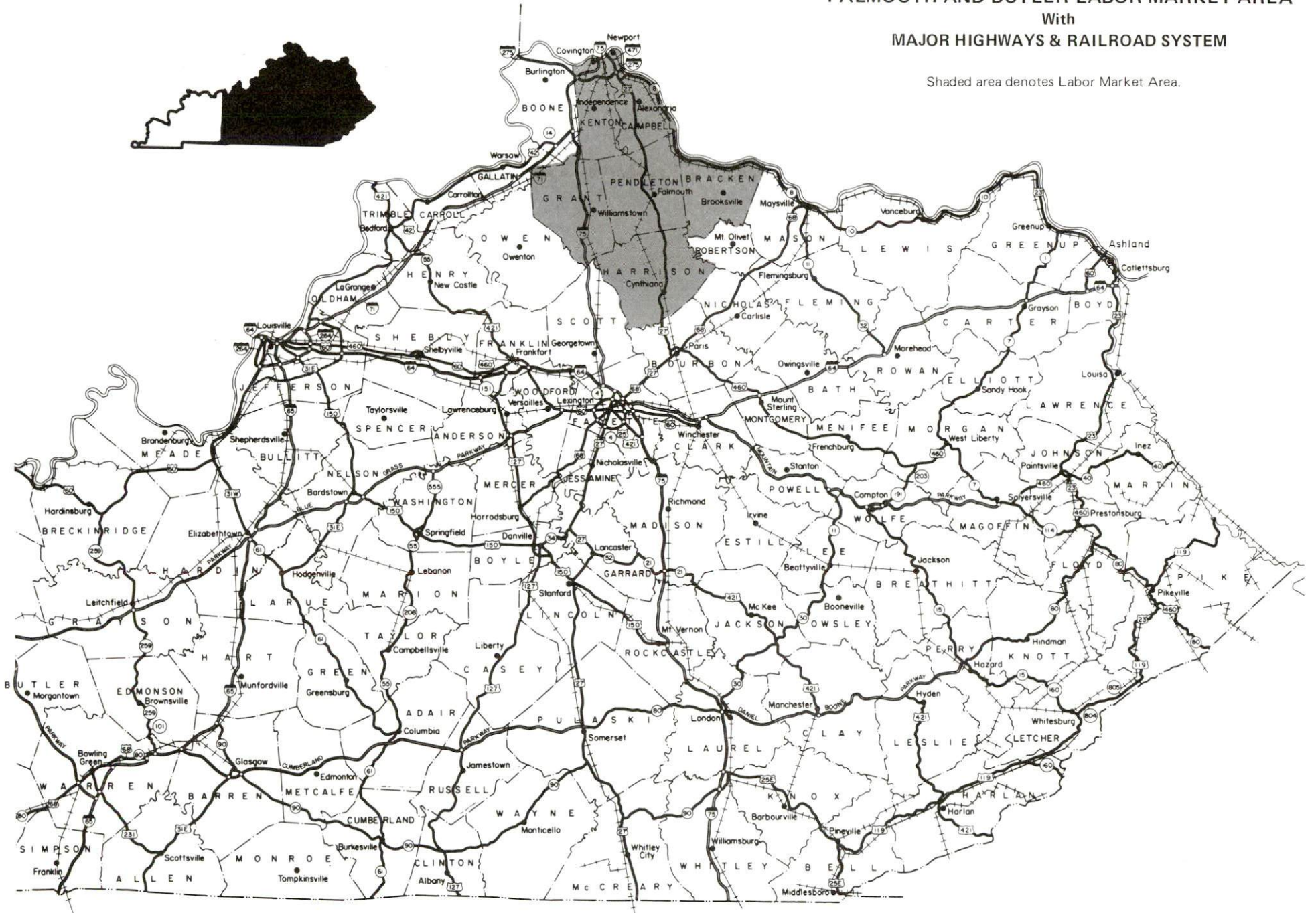
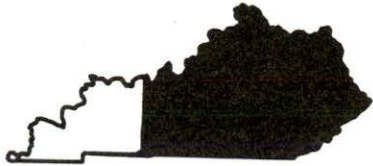
Transportation - Highways serving Falmouth and Butler include U.S. Highway 27 and Kentucky Route 22, both "AAA"-rated trucking highways; and Kentucky Route 177, a "AA"-rated trucking highway. Seventeen common carrier trucking companies provide service to Falmouth and Butler. CSX Transportation provides main line rail service to Falmouth and Butler. The nearest scheduled commercial airline service is available at the Cincinnati/Northern Kentucky International Airport, 37 miles northwest of Falmouth. The Falmouth-Pendleton County Airport maintains a 4,000-foot paved runway.

Power and Fuel - The City of Falmouth, whose source of power is Kentucky Utilities Company, provides electricity to Falmouth. Kentucky Utilities Company also provides electricity to Butler and parts of Pendleton County. The remainder of Pendleton County is served by Harrison Rural Electric Cooperative Corporation and Owen Electric Cooperative. The Union Light, Heat and Power Company provides natural gas service to Falmouth and Butler.

Education - Primary and secondary public education is provided by the Pendleton County School System. Fourteen institutions of higher learning are located within 60 miles of Falmouth. Vocational training facilities are available in Campbell County and Harrison County, both within 25 miles of Falmouth.

FALMOUTH AND BUTLER LABOR MARKET AREA With MAJOR HIGHWAYS & RAILROAD SYSTEM

Shaded area denotes Labor Market Area.



LABOR MARKET STATISTICS

The Falmouth & Butler Labor Market Area includes Pendleton County and the adjoining Kentucky counties of Bracken, Campbell, Grant, Harrison, and Kenton.

POPULATION

	<u>1992*</u>	<u>1990</u>	<u>1980</u>	<u>1970</u>
Labor Market Area	282,797	277,684	267,576	259,477
Falmouth	2,496	2,378	2,482	2,593
Butler	672	625	663	558
Pendleton County	12,703	12,036	10,989	9,949

* Population estimates.

Source: U.S. Department of Commerce, Bureau of the Census.

POPULATION PROJECTIONS

	<u>1995</u>	<u>2000</u>	<u>2010</u>	<u>2020</u>
Labor Market Area	286,791	293,848	305,901	314,941
Pendleton County	13,106	14,172	16,108	18,000

Note: Population projections are from Moderate Growth Series forecast.

Source: University of Louisville, Urban Studies Center, State Data Center.

ESTIMATED LABOR SUPPLY

	<u>Current</u>		<u>Not in Labor Force</u>	<u>Future</u>
	<u>Total</u>	<u>Unemployed</u>		<u>Becoming 18 years of age 1996 thru 2000</u>
Labor Market Area*	9,153	7,112	2,041	21,961
Pendleton County	778	305	473	997

* Additional workers may be drawn from other nearby counties.

Note: Unemployed - persons unemployed and actively seeking work; Not in Labor Force - represents the number of persons who would enter the labor force if suitable employment were available (based on the assumption that persons in Kentucky would like to participate in the labor force in the same proportion that they do nationally). Underemployed persons (employed only 14 to 26 weeks during the year) are no longer included in labor surplus estimates.

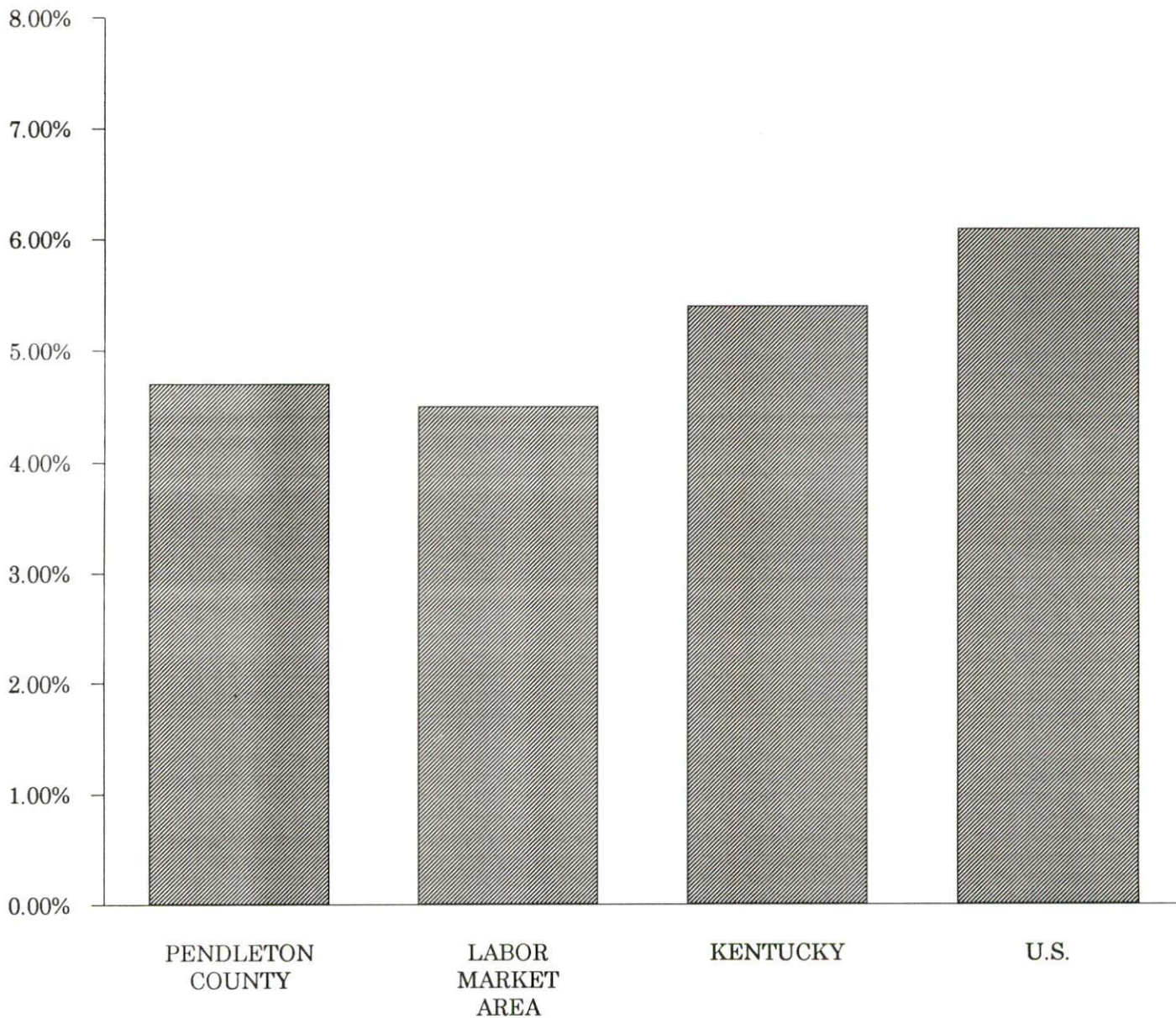
Sources: Kentucky Cabinet for Human Resources, Kentucky Labor Surplus Estimates by County, 1993. Kentucky Cabinet for Economic Development, Future Labor Supply Becoming 18 Years of Age, 1996 thru 2000.

LABOR FORCE CHARACTERISTICS OF RESIDENTS, 1994

	<u>Pendleton County</u>	<u>Labor Market Area</u>
Civilian Labor Force	5,944	144,882
Employment	5,662	138,399
Unemployment	282	6,483
Rate of Unemployment (%)	4.7	4.5

Source: Kentucky Cabinet for Human Resources, Kentucky Labor Force Estimates, Annual Averages, 1994.

**UNEMPLOYMENT RATES
1994**

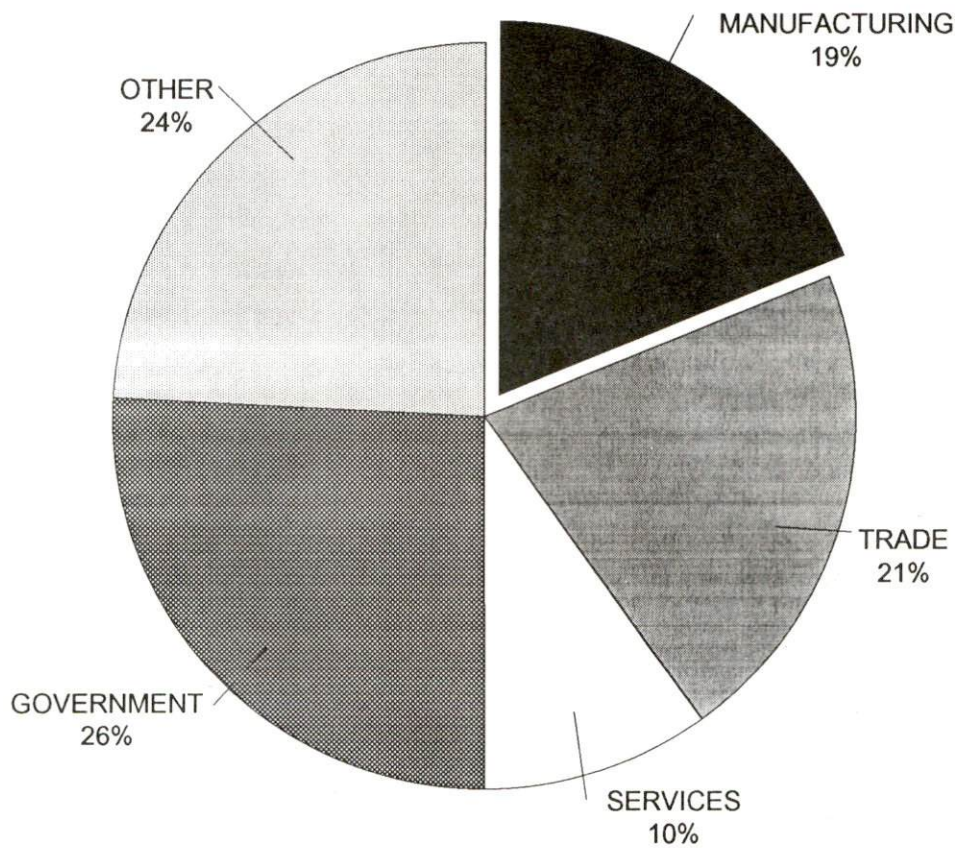


SELECTED COMPONENTS OF NONAGRICULTURAL EMPLOYMENT
BY PLACE OF WORK, 1993

	Pendleton County	Labor Market Area
All Industries (total)	2,219	76,698
Manufacturing	413	10,294
Wholesale & Retail Trade	456	22,772
Services	225	20,842
State/Local Government	584	11,725
Contract Construction	67	4,783

Note: Excludes domestic workers, railway workers, certain nonprofit corporations, majority of federal government workers, and self-employed workers.
Source: Kentucky Cabinet for Human Resources, Average Monthly Workers Covered by Kentucky Unemployment Insurance Law, 1993.

PENDLETON COUNTY

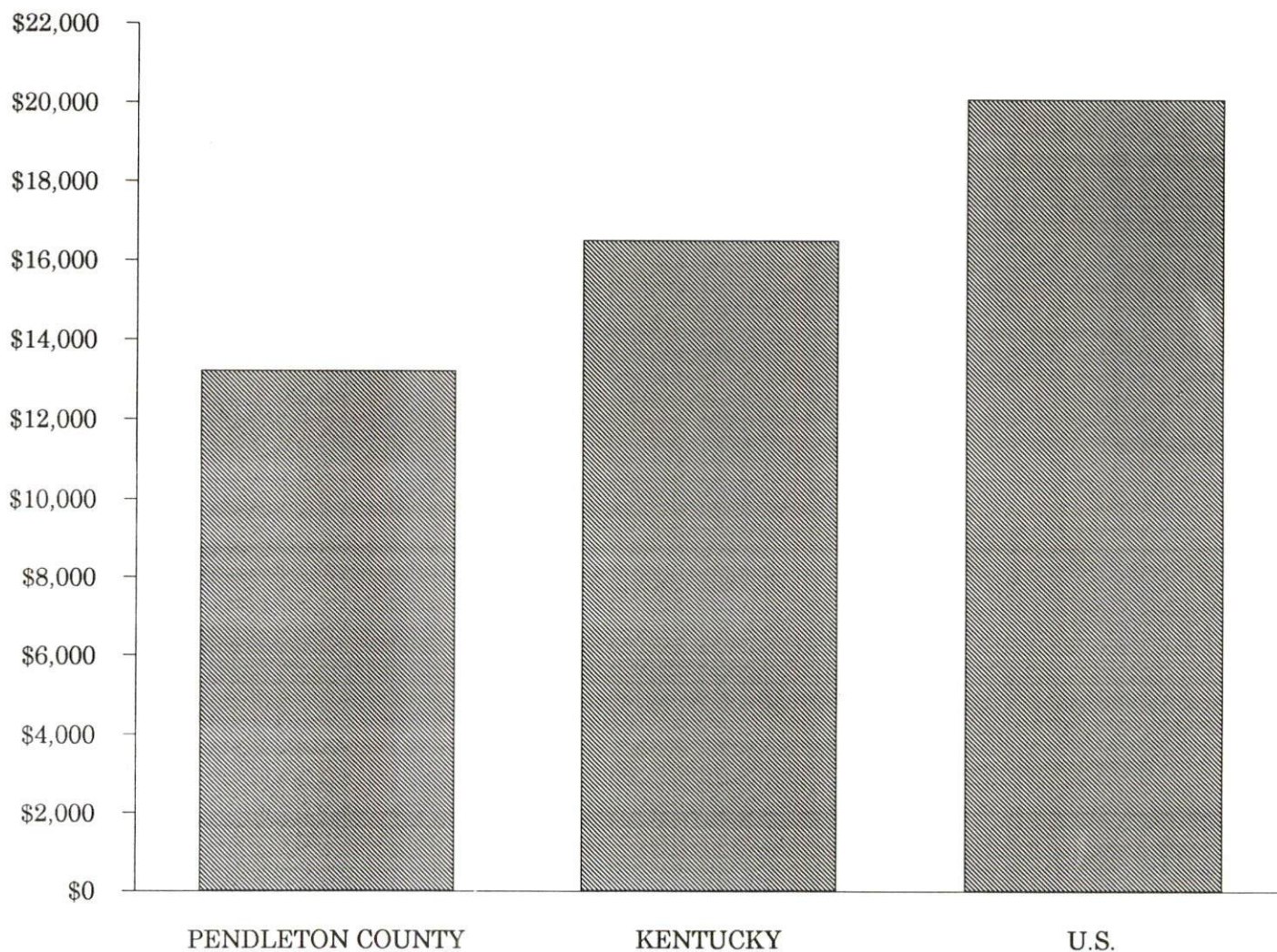


PER CAPITA PERSONAL INCOME

<u>Area</u>	<u>1988</u>	<u>1992</u>	<u>Percent Change</u>
Pendleton County	\$10,020	\$13,222	32.0
Labor Market Area Range	\$10,020 - \$14,787	\$13,043 - \$18,992	-
Kentucky	\$12,751	\$16,528	29.6
U.S.	\$16,610	\$20,105	21.0

Source: U.S. Department of Commerce, Bureau of Economic Analysis, Regional Economic Information System.

PER CAPITA PERSONAL INCOME
1992



AVERAGE PLACEMENT WAGES

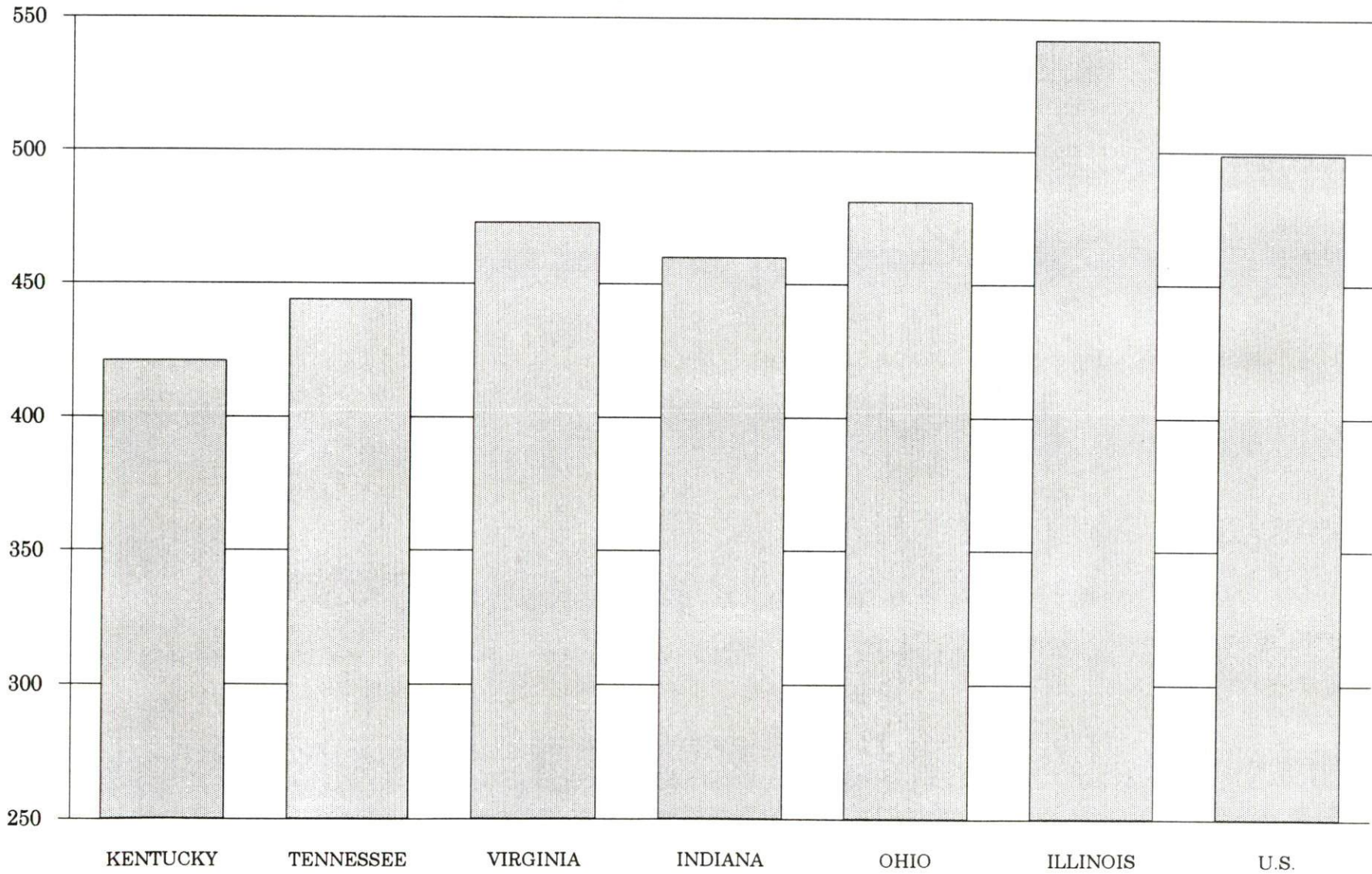
Pendleton County is served by the Covington local office of the Kentucky Department for Employment Services. The focus of the following data is on job placements made by the Covington local office and may therefore be used as an indicator of the wages which employers in the area pay new employees. During the twelve months which ended on June 30, 1994, the local employment office filled 6,234 job openings in various occupational categories. The average hourly wage for selected occupational categories were:

<u>OCCUPATIONAL CATEGORY</u>	<u>NUMBER OF PLACEMENTS</u>	<u>AVERAGE WAGE(\$)</u>
All Occupations	6,234	6.23
Clerical	907	6.02
Sales	103	5.91
Services (excluding domestic)	700	4.97
Agricultural, Fishery, Forestry, etc.	54	5.74
Processing	164	6.83
Machine Trades	323	7.86
Bench Work	406	5.90
Structural	533	7.17
Motor Freight/ Transportation	414	6.08
Packaging and Materials Handling	2,224	5.54
Other	6	4.25

The Covington local office also serves Boone, Campbell, Carroll, Gallatin, Grant, Kenton, and Owen Counties. The above occupational categories are taken from the Dictionary of Occupational Titles published by the U.S. Department of Labor.

Source: Kentucky Cabinet for Human Resources, Department for Employment Services.

**AVERAGE WEEKLY WAGES OF WORKERS COVERED BY
UNEMPLOYMENT INSURANCE - 1993**



AVERAGE WEEKLY WAGES BY INDUSTRY
BY PLACE OF WORK, 1993*

	Pendleton County	Kentucky (State- Wide)	Tennessee	Virginia
All Industries	\$357.21	\$421.30	\$444.00	\$473.00
Mining & Quarrying	N/A	691.01	605.00	684.00
Contract Construction	348.71	440.47	467.00	464.00
Manufacturing	493.18	541.18	522.00	543.00
Transportation, Communications & Public Utilities	412.29	567.94	572.00	648.00
Wholesale & Retail Trade	205.97	287.24	N/A	N/A
Finance, Insurance & Real Estate	268.37	529.88	574.00	612.00
Services	256.11	377.50	424.00	492.00
State/Local Government	323.34	431.93	N/A	N/A
	<u>Indiana</u>	<u>Ohio</u>	<u>Illinois</u>	<u>U. S.</u>
All Industries	\$460.00	\$481.00	\$542.00	\$499.00
Mining & Quarrying	757.00	645.00	738.00	816.00
Contract Construction	509.00	534.00	658.00	530.00
Manufacturing	629.00	670.00	667.00	623.00
Transportation, Communications & Public Utilities	561.00	600.00	682.00	643.00
Wholesale & Retail Trade	N/A	N/A	N/A	N/A
Finance, Insurance & Real Estate	527.00	568.00	748.00	693.00
Services	391.00	422.00	494.00	475.00
State/Local Government	N/A	N/A	N/A	N/A

* Wages for U.S. and surrounding states rounded to nearest dollar.

N/A Not Available.

Note: The average weekly wage for each category includes the salaries and wages of all persons working for that type business. For example, the manufacturing category includes both production workers and administrative personnel. Excludes domestic workers, railway workers, certain nonprofit corporations, majority of federal government workers, and self-employed workers.

Source: Kentucky Cabinet for Human Resources, Average Weekly Wages of Workers Covered by Kentucky Unemployment Insurance Law, 1993. U.S. Department of Labor, Bureau of Labor Statistics, Employment and Wages, Annual Averages, 1993, October 1994.

EXISTING INDUSTRY

PENDLETON COUNTY MANUFACTURING FIRMS, THEIR PRODUCTS AND EMPLOYMENT

<u>Firm</u> (Establishment date)	<u>Product</u>	<u>1994</u> <u>Average Employment</u>
Butler		
Butler Products, Inc. (1957)	Trailer landing gear, stabilizing legs, wheel chocks	40
Dravo Lime Company, Black River Division (1962)	Chemical and metallurgical quicklime products, metallurgical limestone, hydrated calcium oxide	190
Griffin Industries, Inc. (1942)	Hides, meat meal, rendering, tallow, grease	57
Jay Gee, Inc. (1971)	Grease tank fabrication, machine shop, metal fabrication	35
Jesse Vater Manufacturing Company (1963)	Screw machine products	2
L & W Lumber Supply Company (1979)	Wood boxes, skids, rough lumber	7
Mago Construction Company, Inc. (1969)	Bituminous concrete surface mixes	3
Medusa Aggregates Company (1977)	Agricultural lime, crushed stone	35
Pittsfield of Kentucky Inc., Division of Pittsfield Products Company, Inc. (1981)	Industrial filters	60
Williams Cabinet Company (1980)	Formica laminated cabinets and counters	10
Falmouth		
Classic Cabinets (1991)	Custom cabinets	6
Fuller/Stolle Manufacturing Company (1939)	Remanufactured auto engines and parts	120
Hammer Strength (1989)	Exercise weights	63
Moore's Glass and Metal Fabricating, Inc. (1989)	Machine work, welding, glass	1
Outlook Publications, Inc. (1907)	Newspaper, shopper's pamphlet	10
Paynter's Generator Service, Inc. (1978)	Rebuilt generators, alternators, and starters	18
S.T.I. Manufacturing, Inc. (1990)	Teleconference equipment, telephone apparatus, mechanical assemblies	18

Sources: Kentucky Cabinet for Economic Development, Division of Research; Pendleton County Economic Development Office.

RECENT INDUSTRIAL DEVELOPMENTS

The Pendleton County Industrial Development Authority and Pendleton County Chamber of Commerce recently established the Pendleton County Economic Development Office. A full-time director has been employed to manage operations of the new agency.

The Industrial Development Authority recently obtained an option on a new 34-acre industrial site. Funding approval has been granted for development improvements.

LABOR ORGANIZATIONS IN MANUFACTURING FIRMS

<u>Union</u>	<u>Representing workers at:</u>
United Steelworkers of America, AFL-CIO-CLC	Butler Products, Inc. Dravo Lime Company, Black River Division
International Union of Operating Engineers, AFL-CIO	Medusa Aggregates Company

SELECTED INDUSTRIAL SERVICES

<u>Types of Services</u>	<u>Location</u>	<u>Mileage from Falmouth</u>
Custom Plastics Producers	Williamstown, Kentucky	18
Electric Motor Repair	Alexandria, Kentucky	22
Heat Treating Facilities	Cincinnati, Ohio	37
Industrial Waste Removal	Butler, Kentucky	10
Machine Shops, Tool & Die	Berry, Kentucky	15
	Cynthiana, Kentucky	22
Metal Castings	Cynthiana, Kentucky	22
Metal Finishers	Newport, Kentucky	35
	Covington, Kentucky	36
	Cincinnati, Ohio	37
Metal Service Centers	Dry Ridge, Kentucky	22
	Alexandria, Kentucky	22
Millwrights & Riggers	Erlanger, Kentucky	38

Sources: Kentucky Cabinet for Economic Development, Division of Research.

TRANSPORTATION

Highways

Falmouth is served by U.S. Highway 27, a "AAA"-rated (80,000-pound gross load limit) trucking highway, and by Kentucky Route 22, which is "AAA"-rated west of Falmouth and "AA"-rated (62,000-pound gross load limit) east of Falmouth.

Butler is located 10 miles north of Falmouth via U.S. Highway 27 and Kentucky Route 177, a "AA"-rated trucking highway.

Access to Interstate 75 is 19 miles west of Falmouth via Kentucky Route 22 and 14 miles west of Butler via Kentucky Routes 177, 17 and 14, all "AA"-rated highways. Interstate 275 is 30 miles north of Falmouth via Highway 27. Falmouth is 41 miles southeast of Interstate 71; 48 miles north of Interstate 64; 53 miles north of the Mountain Parkway; and 62 miles northeast of the Blue Grass Parkway. Kentucky Route 546 (AA Highway) is accessible 25 miles north of Falmouth via U.S. 27.

HIGHWAY MILES FROM FALMOUTH, KENTUCKY, TO SELECTED MARKET CENTERS

City	Highway Miles	City	Highway Miles
Atlanta, GA	419	Los Angeles, CA	2,204
Baltimore, MD	536	Louisville, KY	109
Birmingham, AL	450	Nashville, TN	266
Chicago, IL	322	New Orleans, LA	788
Cincinnati, OH	37	New York, NY	696
Cleveland, OH	284	Pittsburgh, PA	324
Detroit, MI	297	St. Louis, MO	380
Knoxville, TN	225		

Note: Mileage computations are via the best interstate or primary highways, not necessarily the most direct route of travel.

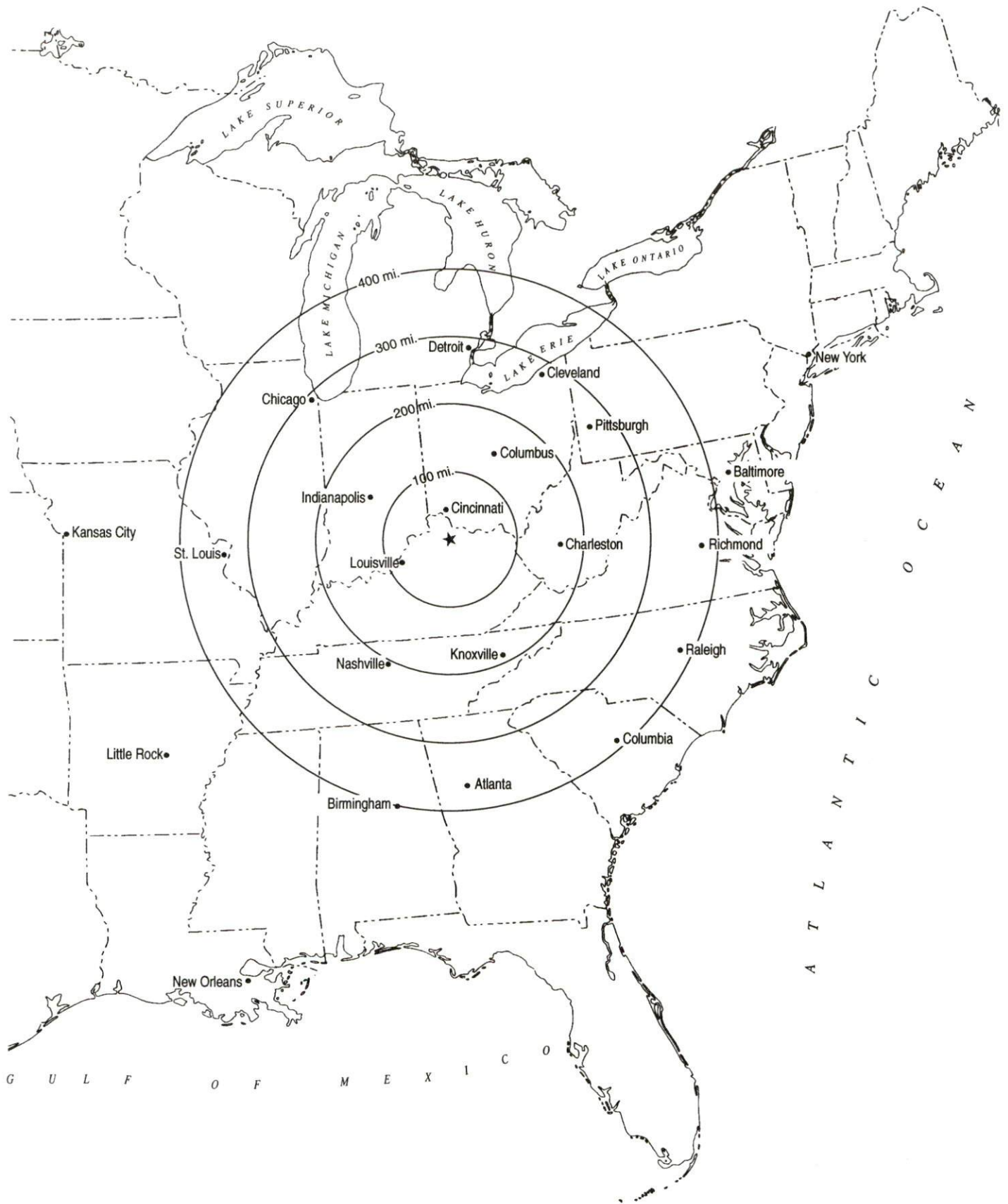
Sources: Rand McNally Standard Highway Mileage Guide, 1990. Official Kentucky Mileage Map, 1988.

Truck Service

There are currently seventeen common carrier trucking companies that provide interstate and/or intrastate service to Falmouth and/or Butler.

Source: American Motor Carrier Directory, Spring 1995.

Selected Market Centers



Rail

CSX Transportation provides main line rail service to Falmouth and Butler. The nearest intermodal facilities are available at Cincinnati, Ohio, 37 miles north of Falmouth, by CSX Transportation and Norfolk Southern Corporation.

For details on routing, schedules, rates, and services contact:

Manager
Industrial Development
CSX Transportation
9420 Bunsen Parkway
Suite 212
Louisville, Kentucky 40220
(502) 499-3025

Air

Local

Location: Falmouth-Pendleton County Airport (Gene Snyder)
Runways: 4 miles northwest of Falmouth
Length: 1 paved
4,000 feet
Traffic
Control: Unicom
Lighting: Beacon dusk to dawn
Services: 80 and 100LL fuel, major A & P repairs, hangar
and tie downs

Nearest Scheduled Commercial Airline Service

Cincinnati/Northern Kentucky
International Airport
Location: 8 miles southwest of Covington, Kentucky;
37 miles northwest of Falmouth
Air Service: American, American Eagle, ComAir, Continental,
Continental Express, Delta, Northwest,
Northwest Airlink, TWA, United, United
Express, USAir, USAir Express
Daily Arrivals
& Departures: 846

UTILITIES

Electricity

Company serving **Falmouth** - City of Falmouth
Source of power - Kentucky Utilities Company
For industrial rates contact:

City of Falmouth
212 Main Street
Falmouth, Kentucky 41040
(606) 654-8780

Company serving **Butler and parts of Pendleton County** - Kentucky
Utilities Company
Source of power - Kentucky Utilities Company
For industrial rates contact:

Economic Development Department
Kentucky Utilities Company
One Quality Street
Lexington, Kentucky 40507
(606) 255-2100

Company serving **the remainder of Pendleton County** - Harrison Rural
Electric Cooperative Corporation and Owen Electric Cooperative
Source of power - East Kentucky Power
For industrial rates contact:

Industrial Development Department
East Kentucky Power
P.O. Box 707
Winchester, Kentucky 40392-0707
(606) 744-4812

and/or

Harrison Rural Electric Cooperative
Corporation
P.O. Box 130
Cynthiana, Kentucky 41031
(606) 234-3131 Fax #(606) 234-4710

and/or

Owen Electric Cooperative
510 South Main Street
Owenton, Kentucky 40359
(502) 484-3471 Fax #(502) 484-2661

Natural Gas

Company serving **Falmouth and Butler** - Union Light, Heat and Power Company

Source of supply - Columbia Gas Transmission Corporation

For rates and supplies contact:

Regional Development Department
Union Light, Heat and Power
Company
A subsidiary of The Cincinnati Gas &
Electric Company
P.O. Box 960
Cincinnati, Ohio 45201-0960
(513) 287-2595

Public Water Supply

Company serving **Falmouth** - City of Falmouth Water Department
212 Main Street
Falmouth, Kentucky 41040
(606) 654-6937 Fax #(606) 654-4460

Source - Licking River
Treatment plant capacity - 2,000,000 gallons per day
Average daily consumption - 1,000,000 gallons
Peak daily consumption - 1,500,000 gallons
Storage capacity - 1,000,000 gallons
Water pressure - 40 psi to 110 psi

Company serving **Butler** - City of Butler Water and Sewer
P.O. Box 229
Butler, Kentucky 41006
(606) 472-5031

Source - Licking River
Treatment plant capacity - 200,000 gallons per day
Average daily consumption - 70,000 gallons
Peak daily consumption - 120,000 gallons
Storage capacity - 200,000 gallons
Water pressure - 30 psi to 160 psi

Company serving **Western and Northern Pendleton County** -

Pendleton County Water District
400 Main Street
Falmouth, Kentucky 41040
(606) 654-6964

Source of supply of treated water - City of Falmouth
Maximum amount available - 140,000 gallons per day
Source of supply of treated water - Campbell County Water
Maximum amount available - no set limit
Average daily consumption - 228,000 gallons
Peak daily consumption - 400,000 gallons
Storage capacity - 436,000 gallons
Water pressure - 35 psi to 250 psi

Company serving **East Pendleton County** -

East Pendleton County Water District
Route 1, Box 68
Foster, Kentucky 41043
(606) 472-2462

Source of supply of treated water - City of Falmouth
Maximum amount available - 200,000 gallons per day
Average daily consumption - At limit
Peak daily consumption - At limit
Storage capacity - 450,000 gallons
Water pressure - 40 psi to 90 psi

Sewerage

Company serving **Falmouth** - City of Falmouth Sewer Department
212 Main Street
Falmouth, Kentucky 41040
(606) 654-6937 Fax #(606) 654-4460

Design capacity - 390,000 gallons per day
Average daily flow - 325,000 gallons
Type of treatment - Secondary
Treated effluent discharged into - Licking River

Company serving **Butler** - City of Butler Water and Sewer
P.O. Box 229
Butler, Kentucky 41006
(606) 472-5031

Design capacity - 60,000 gallons per day
Average daily flow - 35,000 gallons
Type of treatment - Secondary
Treated effluent discharged into - Licking River

CLIMATE

Pendleton County

Temperature

Normal (30-year record)	53.20 degrees
Average annual 1993	53.20 degrees
Record highest, July 1988 (32-year record)	103.00 degrees
Record lowest, January 1977 (32-year record)	-25.00 degrees
Normal heating degree days (30-year record) (Heating degree day totals are the sums of negative departures of average daily temperatures from 65 degrees F.)	5,248

Precipitation

Normal (30-year record)	41.33 inches
Mean annual snowfall (46-year record)	23.20 inches
Total precipitation 1993	38.71 inches
Mean number days precipitation (.01 inch or more) (46-year record)	130.20
Mean number days thunderstorms (46-year record)	42.60

Prevailing winds (through 1963)

South-Southwest

Relative Humidity (31-year record)

1 a.m.	78 percent
7 a.m.	82 percent
1 p.m.	60 percent
7 p.m.	64 percent

Source: U.S. Department of Commerce, Environmental Science Services Administration, Climatological Data, 1993. Station of record: Cincinnati, Ohio.

LOCAL GOVERNMENT

Structure

The cities of Falmouth and Butler are both served by a mayor and six council members. The mayor serves a four-year term and the council members each serve a two-year term. Pendleton County is served by a county judge/executive serving a four-year term and eight magistrates each serving four-year terms.

Planning and Zoning

Presently there are no active planning and zoning commissions operating in Falmouth, Butler or Pendleton County.

Mandatory state codes enforced - Kentucky Plumbing Code, National Electric Code, Kentucky Boiler Regulations and Standards, Kentucky Building Code (modeled after BOCA code)

Local Fees and Licenses

The City of Falmouth requires businesses to pay a business license fee ranging from \$10 to \$150 per year.

The City of Butler requires businesses to pay a business license fee ranging from \$5 to \$100 per year. An annual \$6 vehicle sticker is also required.

PROPERTY TAXES

The Kentucky Constitution requires the state to tax all classes of taxable property, and state statutes allow local jurisdictions to tax only a few classes. All locally taxed property is subject to county taxes and school district taxes (either a county school district or an independent school district). Property located inside of city limits may also be subject to city property taxes.

Special local taxing jurisdictions (fire protection districts, watershed districts, and sanitation districts) levy taxes within their operating areas (usually a small portion of community or county).

Property assessments in Kentucky are at 100% fair cash value. Accounts receivable are taxed at 85% of face value.

STATE PROPERTY TAX RATES PER \$100 VALUATION

<u>Selected Classes of Property</u>	<u>1994 State Rate</u>	<u>Local Taxation Permitted</u>
Real Estate	\$0.172	YES
Manufacturing Machinery	0.150	NO
Pollution Control Equipment	0.150	NO
Inventories		
Raw Materials	0.050	NO
Goods in Process	0.050	NO
Finished Goods	0.050	YES
Motor Vehicles	0.450	YES
Other Tangible Personal Property	0.450	YES
Intangibles (Accounts Receivable, Money on Hand)	0.250	NO

LOCAL PROPERTY TAX RATES PER \$100 VALUATION, 1994

<u>Taxing Jurisdiction</u>	<u>Real Estate</u>	<u>Finished Goods & Tangibles</u>	<u>Motor Vehicles</u>
Pendleton County	\$0.2510	\$0.2697	\$0.2675
School Districts:			
Pendleton County	0.3890	0.3890	0.5500
Cities:			
Butler	0.1210	0.1210	0.1340
Falmouth	0.1726	0.1924	0.2040

EDUCATION

Public Schools

	Pendleton County
Total Enrollment (Fall, 1994)	2,659
Pupil-Teacher Ratio (1993-94)	18.3-1
Percent High School Graduates to College (1993-94)	50.4
Expenditures Per Pupil (1993-94)	\$3,761.31

The Pendleton County School System plans to construct a new middle school. Construction of the \$5 million facility is scheduled to begin in Spring 1995 and completed in Fall 1996.

Area Colleges and Universities

<u>Name</u>	<u>Location (Miles from Falmouth)</u>	<u>Enrollment (Fall, 1993)</u>
Northern Kentucky University	Highland Heights, Kentucky (29)	12,024
Athenaeum of Ohio	Cincinnati, Ohio (37)	236
Cincinnati Bible Seminary	Cincinnati, Ohio (37)	938
Hebrew Union College	Cincinnati, Ohio (37)	129
College of Mt. St. Joseph	Cincinnati, Ohio (37)	2,594
Southern Ohio College	Cincinnati, Ohio (37)	356
University of Cincinnati	Cincinnati, Ohio (37)	28,301
Xavier University	Cincinnati, Ohio (37)	6,279
Maysville Community College	Maysville, Kentucky (39)	1,535
Thomas More College	Ft. Mitchell, Kentucky (42)	1,258
Georgetown College	Georgetown, Kentucky (43)	1,383
Lexington Community College	Lexington, Kentucky (56)	5,046
Transylvania University	Lexington, Kentucky (56)	917
University of Kentucky	Lexington, Kentucky (56)	24,288

VOCATIONAL-TECHNICAL TRAINING

Kentucky Tech schools are operated by the Cabinet for Workforce Development and provide secondary (Sec) and postsecondary (P/S) vocational-technical training.

<u>Kentucky Tech Schools</u>	<u>Location (Mileage from Falmouth)</u>	<u>Number of Program Offerings</u>	<u>Cumulative Enrollment 1993-1994</u>		<u>Approximate Number Completing Long Term Programs Annually</u>
Kentucky Tech - Northern Kentucky	Covington (36)	13	<u>Sec</u> 32	<u>P/S</u> 5,510	56
Kentucky Tech - Northern Campbell	Highland Heights (29)	5	<u>Sec</u> 29	<u>P/S</u> 130	30
Northern Kentucky Health Occupation Center	Edgewood (36)	4	<u>Sec</u> N/A	<u>P/S</u> 345	99
Harrison County Area Vocational Education Center	Cynthiana (22)	5	<u>Sec</u> 401	<u>P/S</u> N/A	N/A
Campbell County Area Vocational Education Center	Alexandria (22)	7	<u>Sec</u> 205	<u>P/S</u> 4	N/A

Customized Training

The Kentucky Tech system, through its Training and Development Coordinators, will provide technical assistance and will identify and develop low-cost customized training programs and services for both established and prospective businesses. Businesses needing customized training should contact a Training and Development Coordinator located at Kentucky Tech-Northern Kentucky, Covington, Kentucky (606-431-2700).

Assessment Services

Kentucky Tech Career Connections offers to business, education, and government agencies customized assessment in career inventories, interest inventories, pre-hire assessment, psychomotor skills and academic potential. A Career Connections Assessment Center is located at Kentucky Tech-Northern Kentucky, Covington Kentucky (606-431-2700).

Tech Prep

Tech Prep is a combined secondary and postsecondary program of studies that leads to an associate degree or diploma in a vocational-technical field. Harrison County Area Vocational Education Center offers programs in Tech Prep in the areas of automotive technology, carpentry, electrical technology, machine tool technology and welding.

Adult Education Services

Adult education programs are available to adults who want to develop new skills, or earn a high school equivalency degree. In Pendleton County, adult literacy and adult basic education are provided by the Pendleton County Adult Learning Center, 205 East Shelby Street, Falmouth, Kentucky 41040; and the Pendleton County Adult Reading Program, 228 Main Street, Falmouth, Kentucky 41040.

Bluegrass State Skills Corporation

The Bluegrass State Skills Corporation, an independent public corporation created and funded by the Kentucky General Assembly, provides programs of skills training to meet the needs of business and industry from entry level to advanced training, and from upgrading present employees to retraining experienced workers.

The Bluegrass State Skills Corporation is a major source for skills training assistance for a new or existing company. The Corporation works in partnership with other employment and job training resources and programs, as well as Kentucky's economic development activities, to package a program customized to meet the specific needs of a company.

OTHER LOCAL FACILITIES

Local Medical Personnel

Physicians - 5
Dentists - 2

Hospitals

<u>General Hospitals</u>	<u>Location (Mileage from Falmouth)</u>	<u>Beds</u>
Harrison Memorial Hospital	Cynthiana (22)	99
St. Luke Hospital East	Ft. Thomas (34)	362

Harrison Memorial Hospital

Medical staff - 12 physicians, 28 consulting physicians,
45 registered nurses, 18 licensed practical nurses

St. Luke Hospital East

Medical staff - 312 physicians, 317 registered nurses, 61 licensed
practical nurses

Other Medical Facilities and Services

Comprehensive Care Center of Northern Kentucky
Butler Rest Home
Falmouth Rest Home
Grants Lake I.C. Home
Sharp's Personal Care Home
Three Rivers District Health Department
Pendleton County Health Center
Pendleton County Ambulance Service

Banks and Savings & Loan Associations

Fifth Third Bank of Northern Kentucky
Kentucky Enterprise Bank
Pendleton Federal Savings Bank
Star Bank N/A Kentucky
The Farmers Bank
United Kentucky Bank of Pendleton County

Newspapers

The Falmouth Outlook (weekly)

Telephone Service

The Cincinnati Bell Telephone Company

RECREATION

Local

Kincaid Lake State Park, near Falmouth, offers many opportunities for the outdoors lover. The park offers a 183-acre lake, a sand beach, a 209-site campground, a gift shop/grocery store, a bathhouse, swimming, olympic-size pool, boating, hiking, picnicking, an amphitheatre, shuffleboard, miniature golf, tennis, and organized recreational programs in the summer months.

The Pendleton County Country Club, a private facility located in the northern part of the county, offers an 18-hole golf course, pro shop, a clubhouse, a swimming pool, and two tennis courts.

Falmouth has one park with a playground, tennis court, basketball court, and horseshoe pit. The city also has three lighted softball fields available for public use.

Annual events in the Falmouth area include the 4-H Youth Fair, with shows and contests; and the Kentucky Wool Festival, featuring demonstrations, musical entertainment, and arts and crafts. Thaxton's South Fork Canoe Trails hosts a sanctioned canoe race in Pendelton County. The Kincaid Theatre attracts professional theatrical performances to Falmouth.

The City of Falmouth has been awarded a \$350,000 grant for the purchase and renovation of the historic Kennett Tavern in the downtown district. Plans include relocating city hall to the newly renovated building and a museum and multi-purpose community meeting area will also be available to the public.

In 1993, Griffin Industries constructed a 1,200-seat amphitheater and donated it to the community.

An annual flea market and homecoming is a popular event in Butler.

Area (Within 65 miles)

Big Bone Lick State Park
The Kentucky Horse Park
Blue Licks Battlefield State Park
Waveland State Historic Site
Fort Boonesborough State Park
Keeneland Race Course
Major Metropolitan Areas:
Northern Kentucky
Cincinnati, Ohio
Lexington, Kentucky