

1997

Industrial Resources: Pike County

Kentucky Library Research Collections
Western Kentucky University, spcol@wku.edu

Follow this and additional works at: https://digitalcommons.wku.edu/pike_cty

 Part of the [Business Administration, Management, and Operations Commons](#), [Growth and Development Commons](#), and the [Infrastructure Commons](#)

Recommended Citation

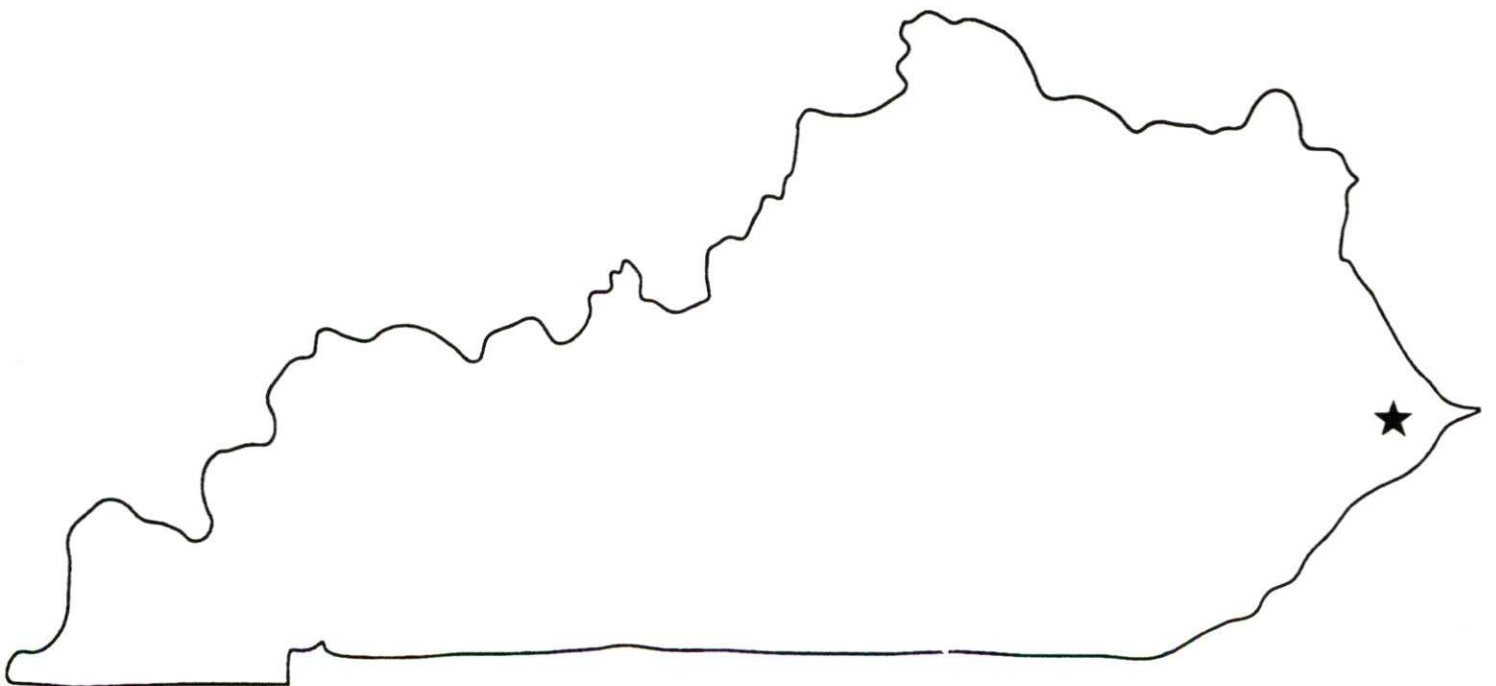
Kentucky Library Research Collections, "Industrial Resources: Pike County" (1997). *Pike County*. Paper 2.
https://digitalcommons.wku.edu/pike_cty/2

This Report is brought to you for free and open access by TopSCHOLAR®. It has been accepted for inclusion in Pike County by an authorized administrator of TopSCHOLAR®. For more information, please contact topscholar@wku.edu.

Kentucky

Resources For Economic Development

Pike County



Prepared by
The Kentucky Cabinet for Economic Development
Division of Research
in cooperation with
Pikeville-Pike County Industrial Development
and Economic Authority (IDEA)

1997

Division Director - Rene' True; program manager - Keith Roberts; research - Mary Rawlings; clerical - Wanda Sharp; graphics - Robert Owens. Cost of printing paid from state funds.

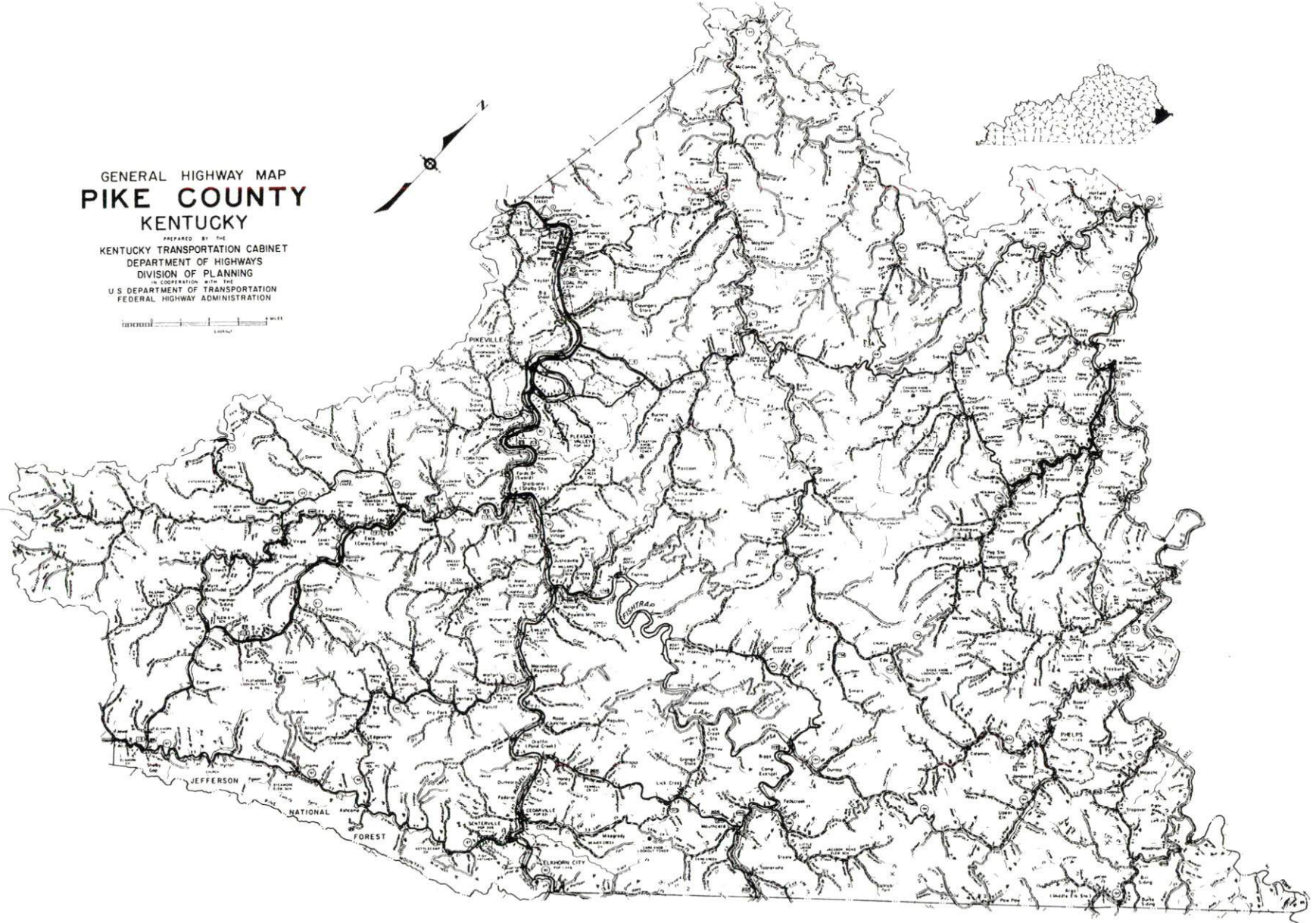
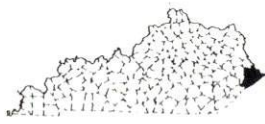
TABLE OF CONTENTS

<u>Chapter</u>	<u>Page</u>
PIKE COUNTY, KENTUCKY-A RESOURCE PROFILE.....	1
THE LABOR MARKET STATISTICS.....	2
Labor Market Area Map.....	2
Population.....	3
Population Projections.....	3
Estimated Labor Supply.....	3
Labor Force Characteristics of Residents, 1995.....	4
Selected Components of Nonagricultural Employment, by Place of Work, 1995.....	5
Per Capita Personal Income.....	6
Average Placement Wages.....	7
Average Weekly Wages of Workers Covered by Unemployment Insurance 1994 - Bar Chart.....	8
Average Weekly Wages by Industry, by Place of Work, 1994.....	9
EXISTING INDUSTRY.....	10
Pike County Manufacturing Firms, Their Products and Employment.....	10
Recent Industrial Developments.....	11
Labor Organizations in Manufacturing Firms.....	11
Selected Industrial Services.....	12
TRANSPORTATION.....	13
Highways.....	13
Truck Service.....	13
Selected Market Location Map.....	14
Rail.....	15
Air.....	15
UTILITIES.....	16
Electricity.....	16
Natural Gas.....	16
Public Water Supply.....	17
Sewerage.....	18
CLIMATE.....	19

<u>Chapter</u>	<u>Page</u>
LOCAL GOVERNMENT.....	20
Structure.....	20
Planning and Zoning.....	20
Local Fees and Licenses.....	20
State and Local Property Taxes.....	21
EDUCATION.....	22
Public Schools.....	22
Nonpublic Schools.....	22
Area Colleges and Universities.....	23
Vocational Training.....	24
OTHER LOCAL FACILITIES.....	26
Local Medical Personnel.....	26
Hospitals.....	26
Other Medical Facilities and Services.....	26
Banks and Savings & Loan Associations.....	26
Newspapers.....	27
Telephone Service.....	27
Telecommunications.....	27
RECREATION.....	28

GENERAL HIGHWAY MAP
PIKE COUNTY
KENTUCKY

PREPARED BY THE
KENTUCKY TRANSPORTATION CABINET
DEPARTMENT OF HIGHWAYS
DIVISION OF PLANNING
IN COOPERATION WITH THE
U.S. DEPARTMENT OF TRANSPORTATION
FEDERAL HIGHWAY ADMINISTRATION



PIKE COUNTY, KENTUCKY - A RESOURCE PROFILE

Pike County, located at the easternmost tip of Kentucky in the Eastern Kentucky Coal Field Region, covers 787 square miles of land area. Pike County is both Kentucky's largest county and the nation's largest underground bituminous coal-producing county. The estimated 1994 population of Pike County was 73,413.

Pikeville, the county seat and a "Hall of Fame" Kentucky Certified City, is located along the Levisa Fork of the Big Sandy River. The city had a 1994 estimated population of 6,769. Pikeville is located 144 miles southeast of Lexington, Kentucky; 193 miles southeast of Cincinnati, Ohio; and 181 miles northeast of Knoxville, Tennessee.

Elkhorn City, 23 miles southeast of Pikeville on the Kentucky-Virginia border, had a 1994 estimated population of 800 persons.

The Economic Framework - The total number of Pike County residents employed in 1995 averaged 25,164. Manufacturing firms in the county reported 838 employees; wholesale and retail trade provided 6,477 jobs; 5,053 people were employed in service occupations; state and local government accounted for 3,199 employees; contract construction firms provided 622 jobs; and 4,955 people were employed by mining and quarrying operations.

Labor Supply - There is a current estimated labor supply of 38,751 persons available for industrial jobs in the labor market area. In addition, from 1998 through 2002, 14,670 young persons in the area will become 18 years of age and potentially available for industrial jobs.

Transportation - U.S. Highways 23, 119, and 460, and Kentucky 80 are AAA-rated trucking highways serving Pikeville. The Mountain Parkway, a multi-lane highway, is accessible 49 miles northwest of Pikeville. Thirteen trucking companies provide interstate and/or intrastate service to Pike County. CSX Transportation provides main line rail service to Pike County. The nearest commercial airport is located at Huntington, West Virginia, 114 miles distant. The Pike County Regional Airport maintains both 3,600-foot and 5,000-foot paved runways.

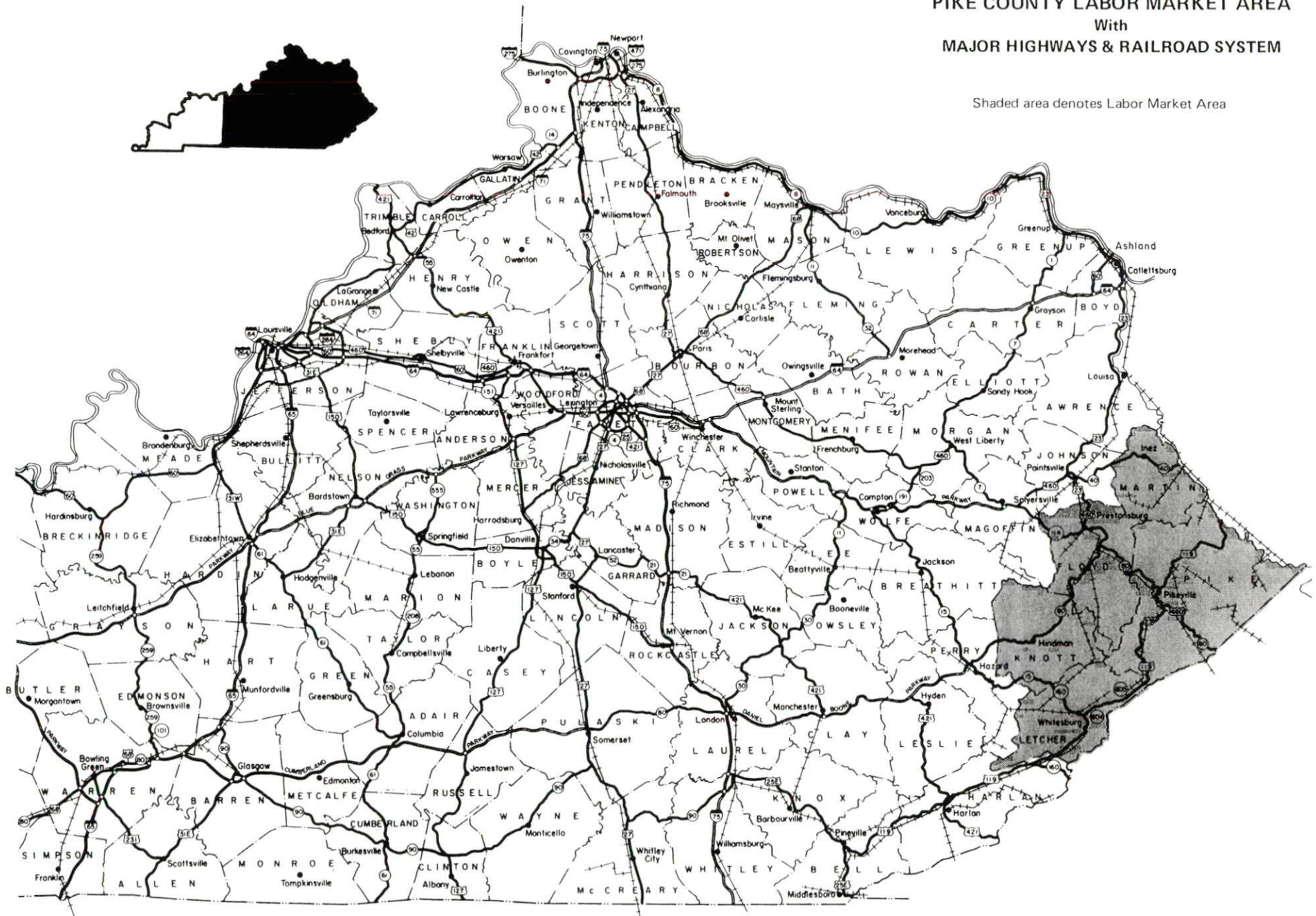
Power and Fuel - American Electric Power provides electric power throughout Pike County. Natural gas service is provided to Pikeville by the City of Pikeville. In addition, seven privately owned gas companies provide natural gas service at wholesale rates to Pike County.

Wood Resources - Pike County's abundance of raw timber resources make it a natural location for manufacturers of wood products; however, most of Kentucky's timber production is sold out-of-state. By targeting the secondary wood industry, Pike County and Kentucky can reap the benefits of greater employment in the manufacture of high value-added wood products such as furniture and hardwood flooring.

Education - The Pikeville Independent School System and the Pike County School System provide primary and secondary education in Pike County. One private elementary school also operates in Pike County. Pikeville College is a local four-year, independent college affiliated with the Presbyterian Church. Prestonsburg Community College operates a branch campus in Pikeville. Five other institutions of higher learning are located within 70 miles of Pikeville. Area technology centers in Pike County provide training for all ages. Specialized on-site industrial training is available to new and existing industries.

PIKE COUNTY LABOR MARKET AREA With MAJOR HIGHWAYS & RAILROAD SYSTEM

Shaded area denotes Labor Market Area



LABOR MARKET STATISTICS

The Pike County Labor Market Area includes Pike County and the adjoining Kentucky counties of Floyd, Knott, Letcher, and Martin.

POPULATION

	<u>1994*</u>	<u>1990</u>	<u>1980</u>	<u>1970</u>
Labor Market Area	175,873	173,601	192,439	144,188
Elkhorn City	800	813	1,446	1,081
Pikeville	6,769	6,324	4,756	5,205
Pike County	73,413	72,583	81,123	61,059

*Population estimates.

Source: U.S. Department of Commerce, Bureau of the Census.

POPULATION PROJECTIONS

	<u>2000</u>	<u>2010</u>	<u>2020</u>
Labor Market Area	182,767	188,578	188,631
Pike County	74,783	74,262	71,125

Note: Population projections are from High Growth Series forecast.

Source: University of Louisville, Urban Studies Center, State Data Center.

ESTIMATED LABOR SUPPLY

	<u>Current</u>			<u>Future</u>
	<u>Total</u>	<u>Unemployed</u>	<u>Not in Labor Force</u>	<u>Becoming 18 years of age 1998 thru 2002</u>
Labor Market Area*	38,751	6,144	32,607	14,670
Pike County	14,023	2,602	11,421	6,021

* Additional workers may be drawn from other nearby counties.

Note: Unemployed - persons unemployed and actively seeking work; Not in Labor Force - represents the number of persons who would enter the labor force if suitable employment were available (based on the assumption that persons in Kentucky would like to participate in the labor force in the same proportion that they do nationally). Underemployed persons (employed only 14 to 26 weeks during the year) are no longer included in labor surplus estimates.

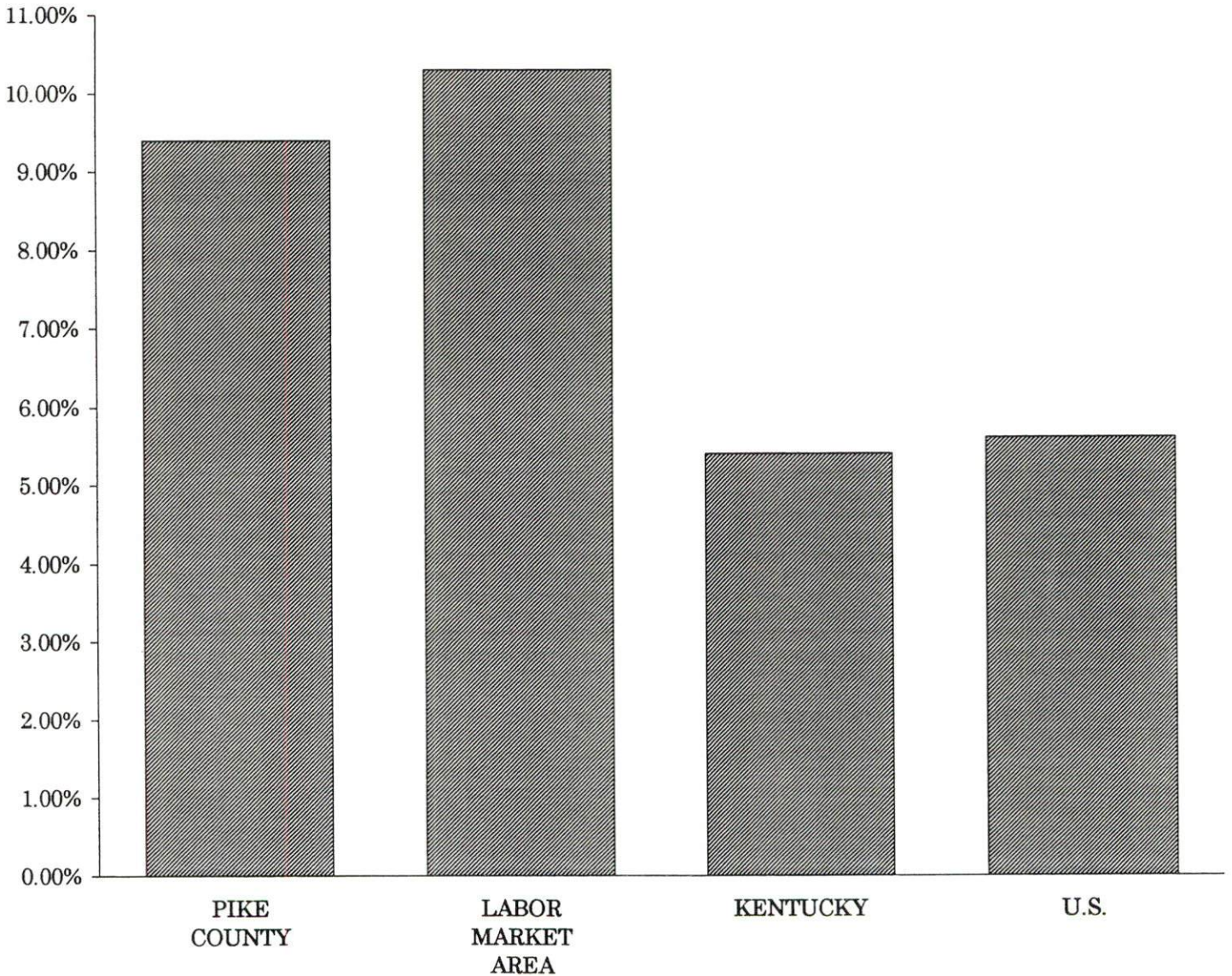
Sources: Kentucky Workforce Development Cabinet, Kentucky Labor Surplus Estimates by County, 1995. Kentucky Cabinet for Economic Development, Future Labor Supply Becoming 18 Years of Age, 1998 thru 2002.

LABOR FORCE CHARACTERISTICS OF RESIDENTS, 1995

	<u>Pike County</u>	<u>Labor Market Area</u>
Civilian Labor Force	27,766	59,872
Employment	25,164	53,728
Unemployment	2,602	6,144
Rate of Unemployment (%)	9.4	10.3

Source: Kentucky Workforce Development Cabinet, Kentucky Labor Force Estimates, Annual Averages 1995.

UNEMPLOYMENT RATES
1995



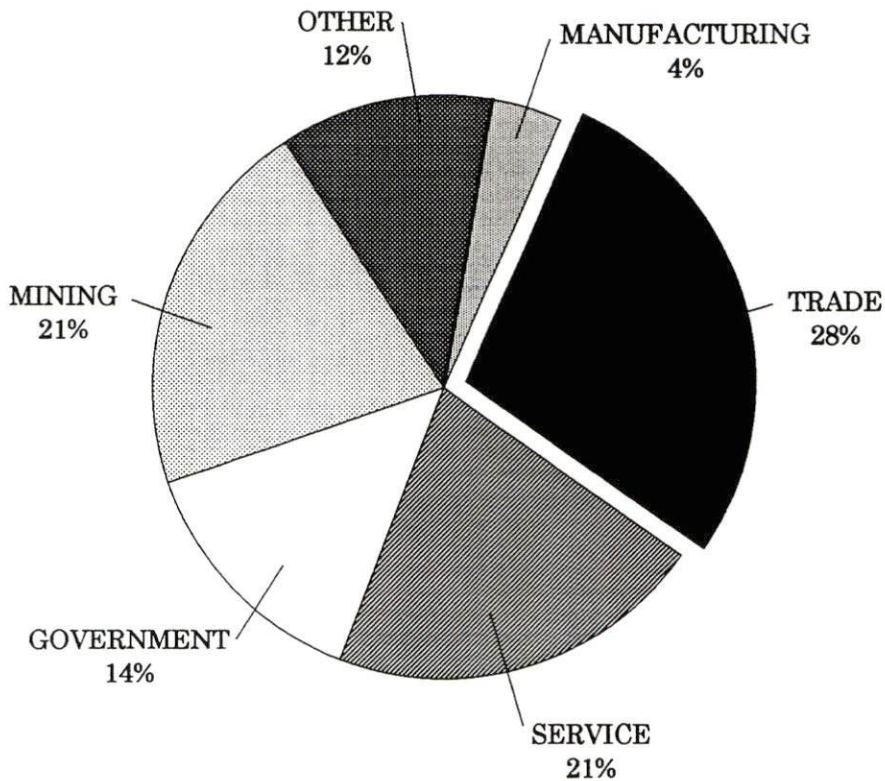
SELECTED COMPONENTS OF NONAGRICULTURAL EMPLOYMENT
BY PLACE OF WORK, 1995

	<u>Pike County</u>	<u>Labor Market Area</u>
All Industries (total)	23,527	47,342
Manufacturing	838	1,434
Wholesale & Retail Trade	6,477	11,609
Services	5,053	10,121
State/Local Government	3,199	8,445
Contract Construction	622	1,397
Mining & Quarrying	4,955	9,712

Note: Excludes domestic workers, railway workers, certain nonprofit corporations, majority of federal government workers, and self-employed workers.

Source: Kentucky Workforce Development Cabinet, Average Monthly Workers Covered by Kentucky Unemployment Insurance Law, 1995.

PIKE COUNTY

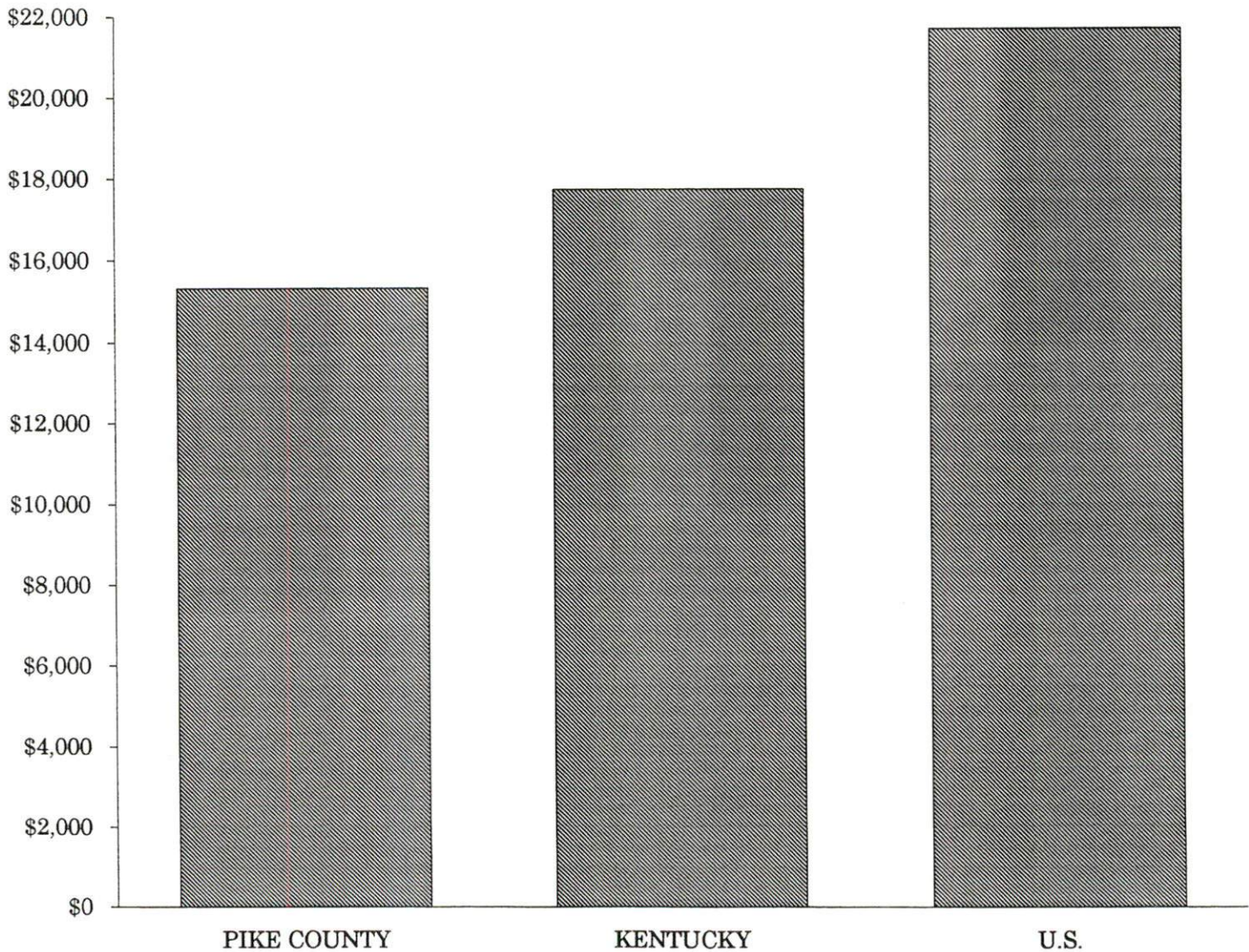


PER CAPITA PERSONAL INCOME

Area	1990	1994	Percent Change
Pike County	\$12,742	\$15,305	20.1
Labor Market Area Range	\$9,908 - \$12,742	\$11,673 - \$15,305	-
Kentucky	\$14,747	\$17,721	20.2
U.S.	\$18,666	\$21,696	16.2

Source: U.S. Department of Commerce, Bureau of Economic Analysis, Regional Economic Information System.

PER CAPITA PERSONAL INCOME
1994



AVERAGE PLACEMENT WAGES

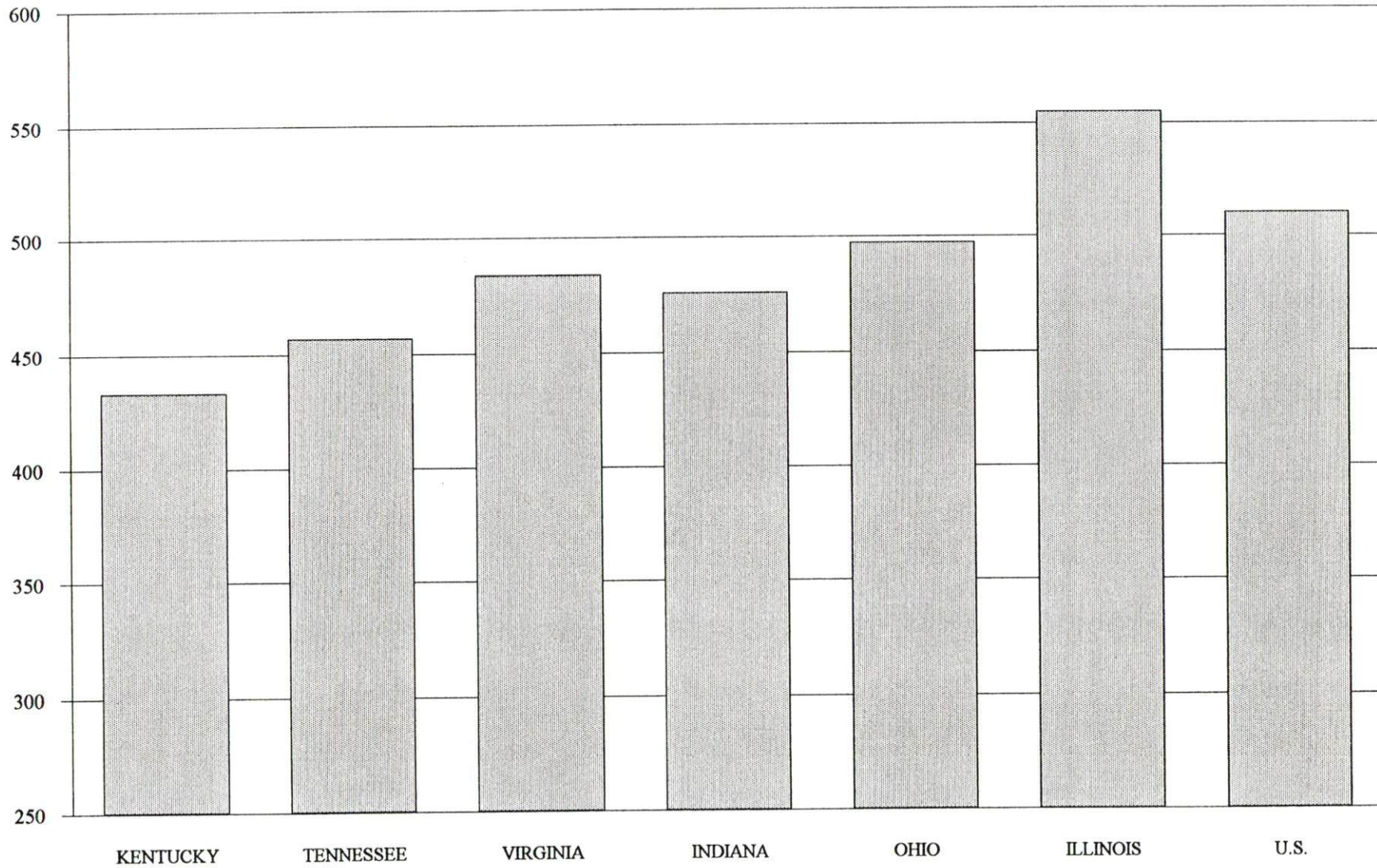
Pike County is served by the Pikeville local office of the Kentucky Department for Employment Services. The focus of the following data is on job placements made by the Pikeville local office and may therefore be used as an indicator of the wages which employers in the area pay new employees. During the twelve months which ended on June 30, 1996 the local employment office filled 1,212 job openings in various occupational categories. The average hourly wage for selected occupational categories were:

<u>OCCUPATIONAL CATEGORY</u>	<u>NUMBER OF PLACEMENTS</u>	<u>AVERAGE WAGE(\$)</u>
All Occupations	1,212	5.25
Clerical	357	4.95
Sales	42	4.60
Services (excluding domestic)	361	4.39
Agricultural, Fishery, Forestry, etc.	5	6.40
Processing	11	5.58
Machine Trades	15	5.63
Bench Work	1	4.65
Structural	94	7.19
Motor Freight/ Transportation	64	6.11
Packaging and Materials Handling	164	4.70
Other	45	10.00

The Pikeville local office serves Pike County only. The above occupational categories are taken from the Dictionary of Occupational Titles published by the U.S. Department of Labor.

Source: Kentucky Workforce Development Cabinet, Department for Employment Services.

**AVERAGE WEEKLY WAGES OF WORKERS COVERED BY
UNEMPLOYMENT INSURANCE - 1994**



AVERAGE WEEKLY WAGES BY INDUSTRY
BY PLACE OF WORK, 1994*

	<u>Pike County</u>	<u>Kentucky (Statewide)</u>	<u>Tennessee</u>	<u>Virginia</u>
All Industries	\$443.43	\$432.45	\$457.00	\$484.00
Mining & Quarrying	704.73	724.79	638.00	721.00
Contract Construction	374.03	457.02	485.00	476.00
Manufacturing	328.03	560.04	540.00	565.00
Transportation, Communications & Public Utilities	502.63	573.31	588.00	673.00
Wholesale & Retail Trade	274.12	297.57	N/A	N/A
Finance, Insurance & Real Estate	459.41	521.15	585.00	609.00
Services	410.32	385.62	434.00	501.00
State/Local Government	424.24	441.53	N/A	N/A
	<u>Indiana</u>	<u>Ohio</u>	<u>Illinois</u>	<u>U. S.</u>
All Industries	\$476.00	\$497.00	\$555.00	\$510.00
Mining & Quarrying	771.00	682.00	815.00	839.00
Contract Construction	538.00	549.00	681.00	544.00
Manufacturing	653.00	701.00	692.00	645.00
Transportation, Communications & Public Utilities	581.00	619.00	694.00	658.00
Wholesale & Retail Trade	N/A	N/A	N/A	N/A
Finance, Insurance & Real Estate	557.00	572.00	764.00	693.00
Services	400.00	433.00	501.00	483.00
State/Local Government	N/A	N/A	N/A	N/A

* Wages for U.S. and surrounding states rounded to nearest dollar.

N/A Not Available.

Note: The average weekly wage for each category includes the salaries and wages of all persons working for that type business. For example, the manufacturing category includes both production workers and administrative personnel. Excludes domestic workers, railway workers, certain nonprofit corporations, majority of federal government workers, and self-employed workers.

Sources: Kentucky Workforce Development Cabinet, Average Weekly Wages of Workers Covered by Kentucky Unemployment Insurance Law, 1994. U.S. Department of Labor, Bureau of Labor Statistics, Employment and Wages, Annual Averages, 1994, November 1995.

EXISTING INDUSTRY

PIKE COUNTY MANUFACTURING FIRMS, THEIR PRODUCTS AND EMPLOYMENT

<u>Firm</u> <u>(Establishment date)</u>	<u>Product</u>	1996 <u>Average Employment</u>
Meta		
Mountaintop Baking (1990)	Convenience foods	400
Pikeville		
Adams Construction Corporation (1955)	Ready-mixed concrete, bituminous concrete	12
Appalachian News-Express (1920)	Newspaper	30
Executive Printing & Office Supply (1977)	Job printing	4
Hydroplate of Kentucky, Inc. (1983)	Hydraulic cylinders, pumps, hydraulic valves, motors	5
Industrial Rubber Products Company (1976)	Rubber knee pads, garden hose, hydraulic hose	15
Johnson Industries, Inc. (1981)	Engineering laser, mine personnel carriers, coal sampling systems	9
Kris Electrical Manufacturing Company (1985)	Electrical mining equipment, battery chargers, dry type transformers	6
Mountain Enterprises, Inc. (1974)	Asphalt, crushed limestone	18
Pikeville Ready Mix (1969)	Ready-mixed concrete	23
Printing By George (1985)	Job printing	8
Webco Conveyor Manufacturing, Inc. (1985)	Conveyor structure	3

(Continued)

<u>Firm</u> <u>(Establishment date)</u>	<u>Product</u>	1996 <u>Average Employment</u>
Robinson Creek		
Colley Block Company, Inc. (1958)	Concrete blocks	18
Virgie		
Coolidge Johnson Lumber Company (1957)	Lumber	9

Sources: Kentucky Cabinet for Economic Development, Division of Research; Office of Pike County Judge/Executive.

RECENT INDUSTRIAL DEVELOPMENTS

The Everett Hannah Lumber firm announced plans in 1996 to establish a \$1.3 million lumber operation in Pikeville creating 35 jobs. Printing By George announced a \$75,000 expansion, also in 1996. Kelloggs recently purchased Mountaintop Baking in Pike County. The company plans to expand the Pike County operation in the near future.

LABOR ORGANIZATIONS IN MANUFACTURING FIRMS

<u>Union</u>	<u>Representing workers at:</u>
United Steelworkers of America, AFL-CIO-CLC	Adams Construction Corporation; Mountain Enterprises, Inc.; Mountaintop Baking

SELECTED INDUSTRIAL SERVICES

<u>Types of Services</u>	<u>Location</u>	<u>Mileage from Pikeville</u>
Custom Plastics Producers	Wurtland, Kentucky	114
Electric Motor Repair	Pikeville, Kentucky	-
Heat Treating Facilities	Richmond, Kentucky	143
	Lexington, Kentucky	144
Industrial Waste Removal	Prestonsburg, Kentucky	27
Machine Shops, Tool & Die	West Van Lear, Kentucky	36
Metal Castings	Middlesboro, Kentucky	138
Metal Finishers	Ashland, Kentucky	104
Metal Service Centers	Pikeville, Kentucky	-
Millwrights & Riggers	Lexington, Kentucky	144

Source: Kentucky Cabinet for Economic Development, Division of Research.

TRANSPORTATION

Highways

Pike County and Pikeville are served by an excellent transportation network including AAA-rated (80,000-pound gross load limit) U.S. Highways 23 and 119. U.S. 460 and Kentucky Route 80 are AAA-rated west of Pikeville and AA-rated (62,000-pound gross load limit) east of the city. Portions of U.S. 23 and 119, and Kentucky 80 are four-lane highways. The Mountain Parkway, a multi-lane limited access highway, is accessible 49 miles northwest of Pikeville, and provides easy access to Interstate 64, 125 miles northwest of Pikeville. Elkhorn City is located 23 miles southeast of Pikeville via Kentucky Route 80.

Major reconstruction projects are currently underway to improve U.S. 23 from southern Pike County to the Virginia state line, and U.S. 119 from Pikeville to Belfry near the West Virginia border.

Funding has been allocated to convert U.S. 460 to four-lanes from U.S. 23 near Pikeville to the Virginia state line near Grundy.

HIGHWAY MILES FROM PIKEVILLE, KENTUCKY, TO SELECTED MARKET CENTERS

City	Highway Miles	City	Highway Miles
Atlanta, GA	375	Los Angeles, CA	2,314
Baltimore, MD	453	Louisville, KY	218
Birmingham, AL	453	Nashville, TN	317
Chicago, IL	478	New Orleans, LA	788
Cincinnati, OH	193	New York, NY	653
Cleveland, OH	346	Pittsburgh, PA	337
Detroit, MI	411	St. Louis, MO	476
Knoxville, TN	181		

Note: Mileage computations are via the best interstate or primary highways, not necessarily the most direct route of travel.

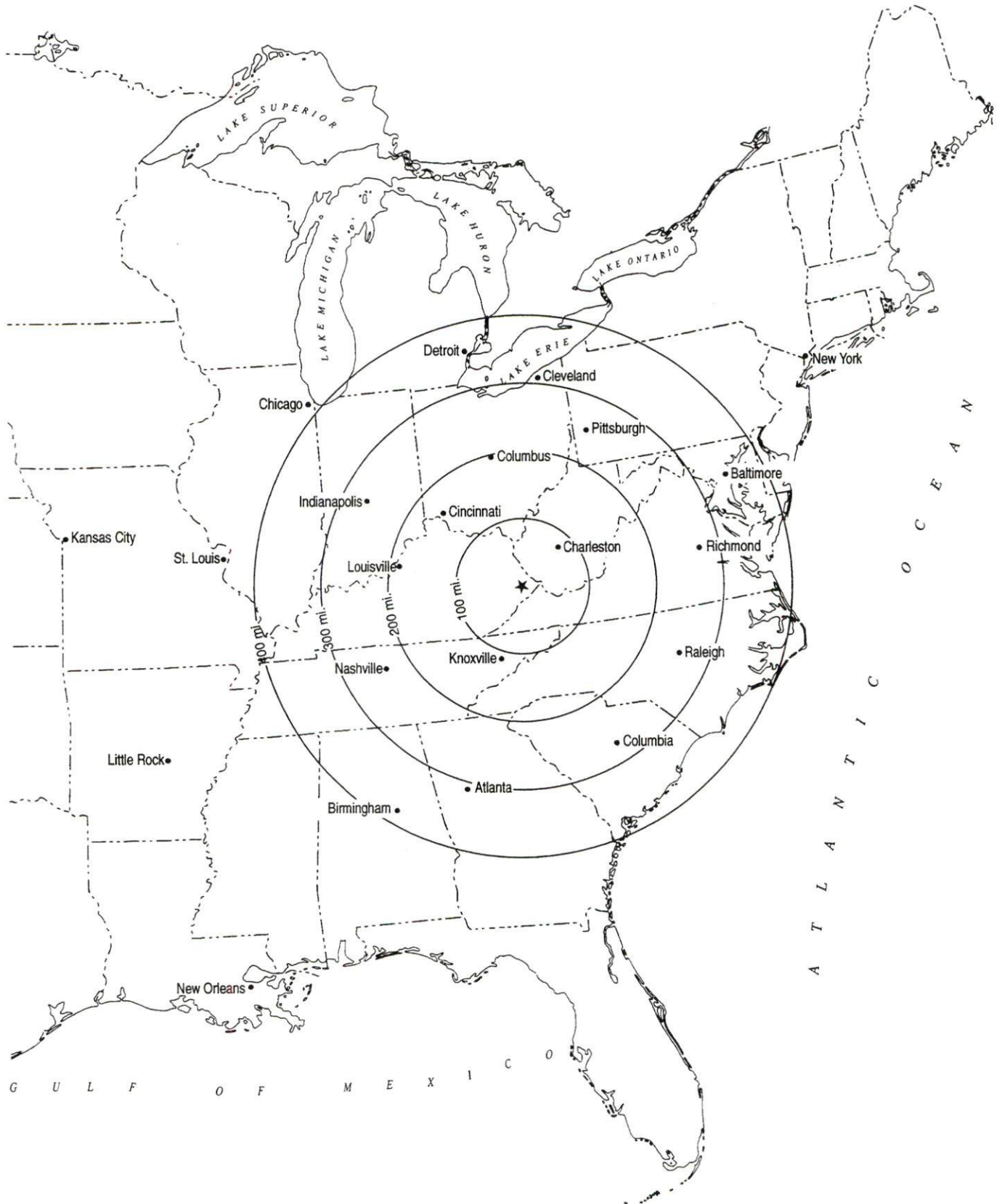
Sources: Rand McNally Standard Highway Mileage Guide, 1990. Official Kentucky Mileage Map, 1988.

Truck Service

Thirteen common carrier trucking companies provide interstate and/or intrastate service to Pike County.

Source: American Motor Carrier Directory, Fall 1996.

Selected Market Centers



Rail

CSX Transportation provides main line rail service to Pikeville and to Elkhorn City, 23 miles southeast of Pikeville. CSX Transportation and Norfolk Southern Corporation provide the nearest intermodal facilities in Kingsport, Tennessee, 101 miles south of Pikeville. The Norfolk Southern Corporation provides rail service to numerous coal mining operations in Pike County.

For details on routing, schedules, rates, and services contact:

Manager
Industrial Development
CSX Transportation
9420 Bunsen Parkway
Suite 212
Louisville, Kentucky 40220
(502) 499-3025

Air

Local

Location:	Pike County Regional Airport 6 miles north of Pikeville
Runways:	2 paved
Length:	5,000 and 3,600 feet
Traffic	
Control:	Wind sock, 122.8 unicom
Lighting:	Runway lights, VASI, sundown to sunrise
Services:	100LL and jet-A fuel; hangars and tie-downs; flight instruction; plane rentals; FBO, which services general aviation aircraft
Air Freight	
Service:	Charter air freight services must be arranged

Pike County recently completed approximately \$6.35 million worth of major improvements at the airport, including a new 5,000-foot runway, hangar and terminal buildings, landing system and above-ground fuel tanks. An access road to the airport is being designed which will make it easier to reach from U.S. 23 near the Pike-Floyd County line.

Nearest Scheduled Commercial Airline Service

Location:	Tri-State Airport (Milton J. Ferguson Field) 3 miles southwest of Huntington, West Virginia; 114 miles north of Pikeville
Air Service:	C.C. Air, Comair, USAir Express
Daily Arrivals & Departures:	48

Location:	Tri-City Regional Airport 14 miles southwest of Bristol, Tennessee; 133 miles south of Pikeville
Air Service:	Atlantic Southeast, Comair, Corporate Express, Delta
Daily Arrivals & Departures:	68

UTILITIES

Electricity

Company serving **Pike County** - American Electric Power
Source of power - American Electric Power
For industrial rates contact:

Economic Development Manager
American Electric Power
1701 Central Avenue
P.O. Box 1428
Ashland, Kentucky 41105-1428
(606) 327-1244 Fax (606) 327-1246

and/or

American Electric Power
749 North Mayo Trail
Pikeville, Kentucky 41501-8220
(606) 437-3777

Natural Gas

Company serving **Pikeville** - City of Pikeville
Source of supply - Columbia Gas Transmission Corporation and local wells
For rates and supplies contact:

City of Pikeville
P.O. Box 1228
Pikeville, Kentucky 41502
(606) 437-5100

In addition, several other privately-owned local gas companies provide natural gas service at wholesale rates to Pike County including:

Alert Oil and Gas Company
Ashland Exploration
Case Enterprises, Inc.
CD&G Development
Interstate Natural Gas Company
Kentucky - West Virginia Gas
Kinzer Drilling Company

Public Water Supply

Company serving **Pikeville** - Professional Services Group, Inc.
787 Island Creek Road
Pikeville, Kentucky 41501
(606) 437-5114

Source - Levisa Fork of the Big Sandy River
Treatment plant capacity- 6,000,000 gallons per day
Average daily consumption - 3,500,000 gallons
Peak daily consumption - 4,100,000 gallons
Storage capacity - 3,630,000 gallons
Water pressure - 50 psi to 260 psi

Company serving **Elkhorn City** - Elkhorn City Water and Sewer
Department
P.O. Box 681
Elkhorn City, Kentucky 41522
(606) 754-5080

Source - Russell Fork of the Big Sandy River
Treatment plant capacity- 400,000 gallons per day
Average daily consumption - 170,000 gallons
Peak daily consumption - 188,000 gallons
Storage capacity - 200,000 gallons
Water pressure - 120 psi to 140 psi

Name of water district - Mountain Water District
P.O. Box 3157
Pikeville, Kentucky 41502-3157
(606) 631-9167 Fax (606) 432-6254

Area served - Pike County (except Pikeville, Elkhorn City & Sandy Valley)
Source of raw water - Russell Fork River
Source of supply of treated water - (Maximum amount available)
City of Pikeville - 1,500,000 gallons per day
City of Williamson, West Virginia - 1,500,000 gallons per day
Capacity of treatment plant - 612,000 gallons per day
Average daily consumption - 2,180,000 gallons
Peak daily consumption - 3,223,000 gallons
Storage capacity - 6,607,000 gallons
Water pressure - 30 psi to 240 psi

The Mountain Water District has neared completion of the Elkhorn Creek line extension.

Name of water district -	Sandy Valley Water District P.O. Box 127 Betsy Layne, Kentucky 41605 (606) 478-5500
Area served -	Western Pike County including Coal Run
Source of supply of treated water -	(Maximum amount available)
City of Pikeville -	530,000 gallons per day
City of Prestonsburg -	210,000 gallons per day
Average daily consumption -	666,000 gallons
Peak daily consumption -	740,000 gallons
Storage capacity -	300,000 gallons
Water pressure -	30 psi to 110 psi

Sewerage

Company serving Pikeville -	Professional Services Group, Inc. 787 Island Creek Road Pikeville, Kentucky 41501 (606) 437-5114
Design capacity -	2,000,000 gallons per day
Average daily flow -	604,000 gallons
Type of treatment -	Secondary
Treated effluent discharged into -	Levisa Fork of the Big Sandy River
Company serving Elkhorn City -	Elkhorn City Water and Sewer Department P.O. Box 681 Elkhorn City, Kentucky 41522 (606) 754-5080
Design capacity -	150,000 gallons per day
Average daily flow -	126,000 gallons
Type of treatment -	Primary
Treated effluent discharged into -	Russell Fork of the Big Sandy River

Complete renovation of the wastewater treatment plant is scheduled in the summer of 1997.

CLIMATE

Pike County

Temperature

Normal (29-year record)	55.50 degrees
Average annual 1995	56.10 degrees
Record highest, July 1952 (57-year record)	102.00 degrees
Record lowest, January 1985 (57-year record)	-21.00 degrees
Normal heating degree days (29-year record) (Heating degree day totals are the sums of negative departures of average daily temperatures from 65 degrees F.)	4,406

Precipitation

Normal (29-year record)	40.72 inches
Mean annual snowfall (57-year record)	15.50 inches
Total precipitation 1995	40.22 inches
Mean number days precipitation (.01 inch or more) (57-year record)	133.40
Mean number days thunderstorms (57-year record)	42.90

Prevailing Winds (through 1963) Northeast

Relative Humidity (34-year record)

1 a.m.	81 percent
7 a.m.	86 percent
1 p.m.	57 percent
7 p.m.	63 percent

Source: U.S. Department of Commerce, Environmental Science Services Administration, Climatological Data, 1995. Station of record: Bristol, Johnson City, Kingsport, Tennessee.

LOCAL GOVERNMENT

Structure

Pikeville is governed by a mayor, four commissioners, and a full-time city manager. The mayor is elected to a four-year term, while the commissioners each serve two-year terms. Elkhorn City is governed by a mayor and six council members. The mayor is elected to a four-year term, while the council members each serve two-year terms. Pike County is governed by a county judge/executive and six magistrates. Each county official serves a four-year term.

Planning and Zoning

Joint agency - Pikeville-Pike County-Elkhorn City Joint Planning Commission
Participating cities - Pikeville and Elkhorn City
Zoning enforced - Pikeville corporate limits, and Elkhorn City
Subdivision regulations enforced - All areas of Pike County
Local codes enforced - Building within Pikeville corporate limits
Mandatory state codes enforced - Kentucky Plumbing Code, National
Electric Code, Kentucky Boiler Regulations and Standards, Kentucky
Building Code (modeled after BOCA code)

Local Fees and Licenses

The City of Pikeville levies a two percent occupational license tax on wages, salaries, and commissions of individuals and on net profits of businesses. The City of Pikeville also levies an annual business license fee on most businesses.

Elkhorn City levies a one percent occupational license tax on wages, salaries, and commissions of individuals. The city also levies a business license fee on businesses, occupations, and professions in the city. These fees range from \$25 to \$150 annually for most businesses. Elkhorn City also levies a \$50 per year loading and unloading fee.

PROPERTY TAXES

The Kentucky Constitution requires the state to tax all classes of taxable property, and state statutes allow local jurisdictions to tax only a few classes. All locally taxed property is subject to county taxes and school district taxes (either a county school district or an independent school district). Property located inside of city limits may also be subject to city property taxes.

Special local taxing jurisdictions (fire protection districts, watershed districts, and sanitation districts) levy taxes within their operating areas (usually a small portion of community or county).

Property assessments in Kentucky are at 100% fair cash value. Accounts receivable are taxed at 85% of face value.

STATE PROPERTY TAX RATES PER \$100 VALUATION

<u>Selected Classes of Property</u>	<u>1995 State Rate</u>	<u>Local Taxation Permitted</u>
Real Estate	\$0.167	YES
Manufacturing Machinery	0.150	NO
Pollution Control Equipment	0.150	NO
Inventories		
Raw Materials	0.050	NO
Goods in Process	0.050	NO
Finished Goods	0.050	YES
Motor Vehicles	0.450	YES
Other Tangible Personal Property	0.450	YES
Intangibles (Accounts Receivable, Money on Hand)	0.250	NO

LOCAL PROPERTY TAX RATES PER \$100 VALUATION, 1995

<u>Taxing Jurisdiction</u>	<u>Real Estate</u>	<u>Finished Goods & Tangibles</u>	<u>Motor Vehicles</u>
Pike County	\$0.1940	\$0.2327	\$0.2234
School Districts:			
Pikeville Independent	N/A	N/A	0.7930
Pike County	0.5200	0.5200	0.5530
Cities:			
Elkhorn City	0.2000	0.2000	0.2000
Pikeville	0.1750	0.1750	0.1810

N/A: Not Available.

EDUCATION

Public Schools

	Pikeville Independent	Pike County
Total Enrollment (Fall, 1995)	1,373	12,029
Accreditation	Southern Association of Colleges and Schools	Southern Association of Colleges and Schools
Pupil-Teacher Ratio (1993-94)	15.8-1	15.5-1
Percent High School Graduates to College (1993-94)	82.8	50.0
Expenditures Per Pupil (1993-94)	\$4,311.15	\$4,164.69

Nonpublic Schools

<u>School</u>	<u>Enrollment</u>	<u>Grades</u>
St. Francis of Assisi Elementary	75	P-6

Pikeville Independent School District

The Pikeville Independent School District is highly regarded throughout the state in both academics and athletics. Academically, the district has exceeded its performance goals for the first and second bienniums of statewide accountability. In 1986, the Pikeville High School Academic Team won the first statewide Governor's Cup Competition and has continued to place near the top each year since. While maintaining a high level of academic performance, the high school athletic teams are also competitive and have recently won regional championships in track and field, girls' softball, baseball, football, and cheerleading. There has always been strong community involvement in all aspects of Pikeville Independent Schools.

In 1996, the Pikeville Independent School Board opened a newly constructed 1,000 seat auditorium adjacent to Pikeville High School. A new library and seven additional classrooms were also a part of the construction project. The district boasts the highest teacher salary scale in Kentucky.

Pike County School District

The Pike County School District is the third largest school system in Kentucky. Thirty-two schools located throughout the school district provide a community-based educational program and promote parental involvement in all programs.

The Pike County School System provides a wide variety of educational programs for its students. Vocational programs are available in all eight high schools and three vocational centers. Special education students are served by sixty-one different programs. Headstart programs are available for all qualifying four-year olds. The kindergarten program serves all five-year olds on a "full day-everyday basis".

Area Colleges and Universities

<u>Name</u>	<u>Location (Miles distant)</u>	<u>Enrollment (Fall, 1995)</u>
Pikeville College	Pikeville, Kentucky	841
Prestonsburg Community College-Pikeville Campus	Pikeville, Kentucky	860
Prestonsburg Community College	Prestonsburg, Kentucky (27)	2,798
Southern West Virginia Community College	Williamson, West Virginia (32)	3,097
Clinch Valley College of the University of Virginia	Wise, Virginia (48)	1,267
Alice Lloyd College	Pippa Passes, Kentucky (58)	525
Hazard Community College	Hazard, Kentucky (69)	1,690

Pikeville College

Pikeville College is a four-year, independent, liberal arts college affiliated with the Presbyterian Church. The College, founded in 1889, offers courses leading to the degrees of Bachelor of Arts, Bachelor of Science, and Bachelor of Business Administration, as well as associate degrees in Nursing and Business. Beginning in the fall of 1997, the Pikeville College School of Osteopathy Medicine (PCSOM) will enroll its first students. PCSOM is a four-year osteopathic medical school accredited by the American Osteopathic Association (AOA).

Prestonsburg Community College-Pikeville Campus

Prestonsburg Community College-Pikeville Campus, is a branch of the University of Kentucky. This two-year college offers associate degrees in Nursing, Accounting, Secretarial Science, and Early Childhood Education and also offers prerequisites for those students who plan to attend a four-year college to pursue a bachelor's degree.

VOCATIONAL-TECHNICAL TRAINING

Kentucky Tech schools are operated by the Cabinet for Workforce Development and provide secondary (Sec) and postsecondary (P/S) vocational-technical training.

<u>Kentucky Tech Schools</u>	<u>Location (Mileage from Pikeville)</u>	<u>Number of Program Offerings</u>	<u>Cumulative Enrollment 1995-1996</u>		<u>Approximate Number Completing Long-Term Programs Annually</u>
Mayo Regional Technology Center	Prestonsburg (40)	19	<u>Sec</u> 129	<u>P/S</u> 696	274
Millard Area Technology Center	Millard (13)	6	<u>Sec</u> 128	<u>P/S</u> 54	61
Belfry Area Technology Center	Belfry (28)	5	<u>Sec</u> 361	<u>P/S</u> 0	100
Phelps Area Technology Center	Phelps (35)	5	<u>Sec</u> 161	<u>P/S</u> 0	60

Construction will soon begin on a \$12.4 million state-of-the-art Pike County Regional Technology Center. It will be the largest training facility of its type in the state with the latest technology and flexibility to retrain workers to meet the needs of employers.

Customized Training

The Kentucky Tech system, through its Training and Development Coordinators, will provide technical assistance and will identify and develop low-cost customized training programs and services for both established and prospective businesses. Businesses wanting to establish a customized training program should contact a Training and Development Coordinator located at the Mayo Regional Technology Center in Prestonsburg.

Assessment Services

Kentucky Tech Career Connections offers to business, education, and government agencies testing packages for evaluating job applicants, selecting employees for promotional consideration and developing training programs within the organization. A Career Connections Assessment Center is located on the campus of the Mayo Regional Technology Center in Prestonsburg.

Adult Education Services

Adult education programs are available to adults who want to develop new skills, improve basic skills, or earn a high school equivalency diploma. In Pike County, adult literacy and adult basic education are provided by the Pike County Board of Education.

Bluegrass State Skills Corporation

The Bluegrass State Skills Corporation, an independent public corporation created and funded by the Kentucky General Assembly, provides programs of skills training to meet the needs of business and industry from entry level to advanced training, and from upgrading present employees to retraining experienced workers.

The Bluegrass State Skills Corporation is a major source for skills training assistance for a new or existing company. The Corporation works in partnership with other employment and job training resources and programs, as well as Kentucky's economic development activities, to package a program customized to meet the specific needs of a company.

OTHER LOCAL FACILITIES

Local Medical Personnel

Physicians - 104
Dentists - 35

Hospital

<u>General Hospitals</u>	<u>Location</u>	<u>Beds</u>
Pikeville Methodist Hospital	Pikeville	221
South Williamson Appalachian Regional Hospital	South Williamson, 31 miles northeast of Pikeville	173

Pikeville Methodist Hospital

Medical staff - 119 physicians, 145 registered nurses, and 112 licensed practical nurses

Pikeville Methodist Hospital is the top private sector employer in Pike County with more than 1,000 employees. Methodist Hospital provides state-of-the-art medical care to patients, including a Breast Care Center and Level II Neonatal Intensive Care Unit.

Williamson Appalachian Regional Hospital

Medical staff - 58 physicians, 80 registered nurses, and 45 licensed practical nurses

Other Medical Facilities and Services

Mountain Comprehensive Care Center
Pike County Health Department
Marrowbone Health Clinic
Phelps Clinic
Pikeville Pediatric Clinic
Accu-Med Ambulance Service (Pikeville)
Elkhorn City Area Ambulance Service
Med-Tech Ambulance (Pikeville)
Shelby Valley Ambulance Service, Inc.
Pike County "911" Enhanced Service

Banks and Savings & Loan Associations

Family Bank
Pikeville National Corporation and its
subsidiaries (Pikeville National Bank
and Trust Company and the First Security
Bank and Trust Company)
Matewan National Bank
Trans Financial Bank

Newspaper

Appalachian News-Express (three times weekly)

Telephone

BellSouth

Telecommunications

Pike County is the home of Big Sandy Telecommuting Services, Inc., a non-profit corporation which is bringing access to modern technology and technology-based training to local business, education, government and the medical community. The rural televillage project is one of the first of its kind in the nation and has attracted attention from across the world. Big Sandy Telecommuting has received funding and will soon begin construction of a telecommunications center and regional library complex in cooperation with the City of Pikeville, the Pike County Library District and the Kentucky Department for Libraries and Archives. The information center will be a model for libraries of the 21st century to emulate. Total cost of the project will be \$2.5 to \$3 million.

RECREATION

Pike County is in the center of Kentucky's mountain vacationland and is surrounded by some of the most majestic scenery in the eastern United States.

There are over 20 public parks in the county, providing several baseball, softball and football fields, tennis courts, three swimming pools, walking/running tracks and playgrounds.

Pike County recently expanded its public golf course to 18-holes. There are also two private country clubs with golf courses and swimming pools. There are two bowling alleys and a 10-screen movie theater.

The Pikeville Area Family YMCA's outstanding new 32,000 square-foot facility offers a wide array of recreational activities, as well as YMCA programs such as softball and soccer. The YMCA plans to develop a children's play area and an indoor swimming pool at the facility in the future.

Planning is underway to develop a skate park for in-line skating, skateboards and bikes, near the YMCA and the Bob Amos Park.

The Augusta Dils York "Creekmore" Mansion, located on a hill overlooking downtown Pikeville, was home to Augusta Dils York, a prominent woman of Pikeville. This circa 1912 mansion features period furniture, antiques, china, and many other historic artifacts. Tours are offered by appointment.

Annual events in Pike County include Hillbilly Days, an outdoor festival to benefit Shriners Hospital for Children, held in Pikeville. Summerfest is Pikeville's July 4th celebration. Coal Digger Days is hosted by Hardy, Kentucky. Elkhorn City holds the Apple Blossom Festival in May, a 4th of July celebration, and Oktoberfest.

Pike County is home of the infamous Hatfield-McCoy Feud. The county has developed some sites for the Hatfield-McCoy Feud Tour, and is working to develop more sites in the county.

U.S. 23 through Pike County is the "Country Music Highway." The Pike County section is named for Pike County native Patsy Loveless, Country Music's 1996 "Female Vocalist of the Year."

Fishtrap Lake, seven miles southeast of Pikeville, contains 1,131 acres of excellent boating and fishing. The lake extends about 18 1/2 miles up the Levisa Fork of the Big Sandy River. A planning study is underway to develop a hiking-biking-equestrian trail around Fishtrap Lake.

Breaks Interstate Park, near Elkhorn City on the Kentucky-Virginia border, is a unique park sponsored by Kentucky and Virginia which is situated on the rim of the largest river canyon east of the Mississippi. The canyon is a five-mile cut with 1,600-foot palisades on either side. Sometimes called the "Grand Canyon of the South" this park offers 4,600 acres of breathtaking scenery. The "Breaks" is a full-facility resort park with a 36-room lodge, cottages, a restaurant, a swimming pool, camping facilities, fishing, whitewater rafting, and a visitors center. Numerous special events are held at the park throughout the year.

Jenny Wiley State Resort Park, 29 miles northwest of Pikeville near Prestonsburg, takes full advantage of its picturesque highland setting. The 1,700-acre park offers facilities and activities such as a 49-room lodge, a dining room, a gift shop, 17 cottages, a lodge pool, sky lift, recreation rooms, campsites, picnic areas, planned recreation, playground, golf, hiking, horseback riding, miniature golf, shuffleboard, fishing, and fishing boat and pedal boat rentals. Also located at the park is Jenny Wiley Summer Music Theatre, which features four outdoor productions including Broadway musicals and the "Jenny Wiley Story".