

1984

# Industrial Resources: Wayne County - Monticello

Kentucky Library Research Collections  
Western Kentucky University, [spcol@wku.edu](mailto:spcol@wku.edu)

Follow this and additional works at: [https://digitalcommons.wku.edu/wayne\\_cty](https://digitalcommons.wku.edu/wayne_cty)

 Part of the [Business Administration, Management, and Operations Commons](#), [Growth and Development Commons](#), and the [Infrastructure Commons](#)

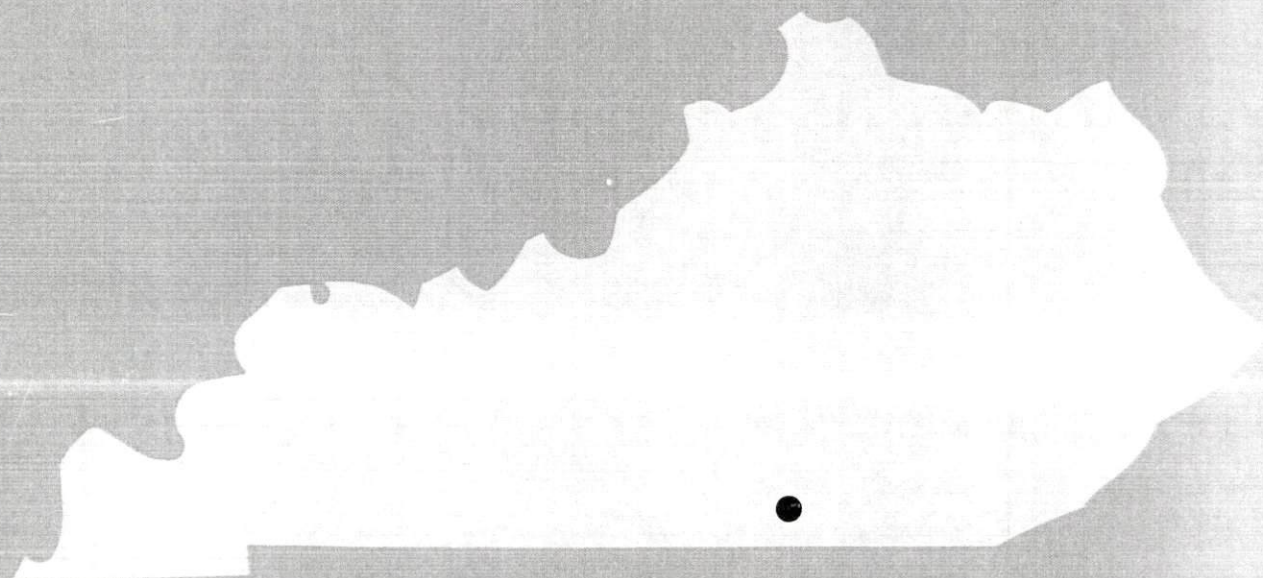
---

## Recommended Citation

Kentucky Library Research Collections, "Industrial Resources: Wayne County - Monticello" (1984). *Wayne County*. Paper 3.  
[https://digitalcommons.wku.edu/wayne\\_cty/3](https://digitalcommons.wku.edu/wayne_cty/3)

This Report is brought to you for free and open access by TopSCHOLAR®. It has been accepted for inclusion in Wayne County by an authorized administrator of TopSCHOLAR®. For more information, please contact [topscholar@wku.edu](mailto:topscholar@wku.edu).

**1984**  
**A comprehensive**  
**report on**  
**Monticello, Ky.**



### Site 184 - 70 Ac.

LOCATION: Partially within northern city limits  
ZONING: Not zoned  
HIGHWAY ACCESS: Paved county road (Old KY 90) adjacent to western boundary  
RAILROAD: Not rail served  
WATER: Monticello Utility Commission  
Size Line: 10-inch line along east side of Old KY 90  
NATURAL GAS: Natural gas service not available  
ELECTRICITY: Monticello Electric Plant Board  
SEWERAGE: Monticello Utility Commission  
Size Line: 8-inch line adjacent to southeast corner; 8-inch line to be constructed along east side of Old KY 90 by June 1985  
OPTIONED BY: Wayne County Industrial Foundation

### Site 284 - 13 Ac.

LOCATION: Partially within eastern city limits  
ZONING: Industrial  
HIGHWAY ACCESS: KY 90 approximately 1300 feet west via paved access road  
RAILROAD: Not rail served  
WATER: Monticello Utility Commission  
Size Line: 10-inch line adjacent to southwest corner of site  
NATURAL GAS: Natural gas service not available  
ELECTRICITY: Monticello Electric Plant Board  
SEWERAGE: Monticello Utility Commission  
Size Line: 8-inch line approximately 400 feet west of site  
OWNERSHIP: Wayne County Industrial Foundation

### Site 384 - 5 Ac.

LOCATION: Within eastern city limits  
ZONING: Industrial  
HIGHWAY ACCESS: KY 90 approximately 350 feet west via paved access road  
RAILROAD: Not rail served  
WATER: Monticello Utility Commission  
Size Line: 10-inch line along northern boundary of site  
NATURAL GAS: Natural gas service not available  
ELECTRICITY: Monticello Electric Plant Board  
SEWERAGE: Monticello Utility Commission  
Size Line: 8-inch line along northern boundary of site  
OWNERSHIP: Wayne County Industrial Foundation

### Site 484 - 4 Ac.

LOCATION: Within eastern city limits  
ZONING: Industrial  
HIGHWAY ACCESS: KY 90 approximately 1500 feet west via paved access road  
RAILROAD: Not rail served  
WATER: Monticello Utility Commission  
Size Line: 10-inch line approximately 400 feet north of site  
NATURAL GAS: Natural gas service not available  
ELECTRICITY: Monticello Electric Plant Board  
SEWERAGE: Monticello Utility Commission  
Size Line: 8-inch line approximately 50 feet west across access road  
OWNERSHIP: Private

### Site 584 - 6 Ac.

LOCATION: Within eastern city limits  
ZONING: Industrial  
HIGHWAY ACCESS: KY 90 approximately 500 feet west via paved access road  
RAILROAD: Not rail served  
WATER: Monticello Utility Commission  
Size Line: 10-inch line approximately 800 feet north  
NATURAL GAS: Natural gas service not available  
ELECTRICITY: Monticello Electric Plant Board  
SEWERAGE: Monticello Utility Commission  
Size Line: 8-inch line along eastern boundary  
OWNERSHIP: Private

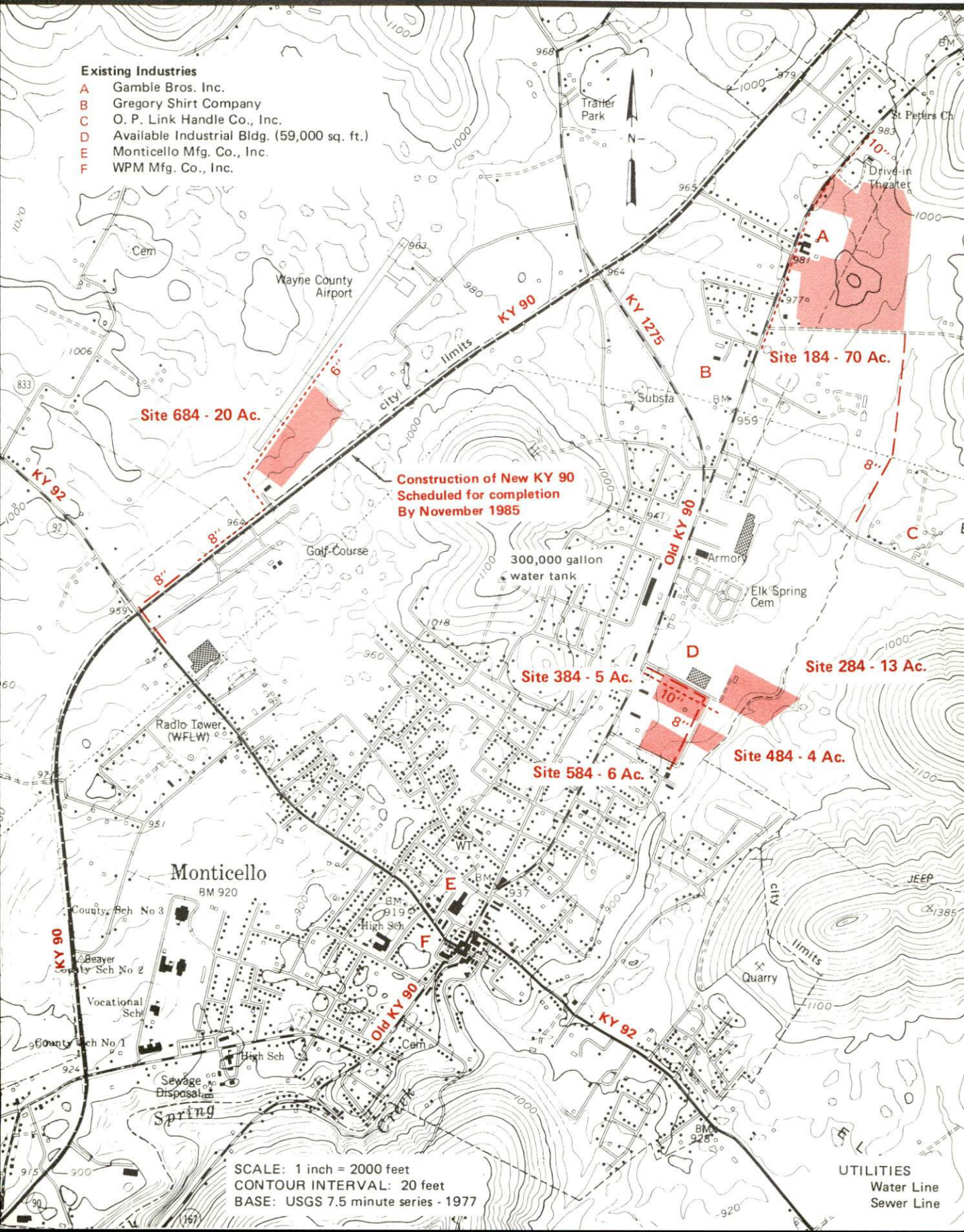
### Site 684 - 20 Ac.

LOCATION: Adjacent to northwest city limits  
ZONING: Not zoned  
HIGHWAY ACCESS: KY 90 approximately 150 feet from southern boundary (construction to be completed by December 1985)  
RAILROAD: Not rail served  
WATER: Monticello Utility Commission  
Size Line: 6-inch line adjacent to northwest boundary; 8-inch line approximately 200 feet southwest  
NATURAL GAS: Natural gas service not available  
ELECTRICITY: Monticello Electric Plant Board  
SEWERAGE: Monticello Utility Commission  
Size Line: 8-inch line approximately 2000 feet southwest  
OWNERSHIP: Wayne County Airport Board

# MONTICELLO, KENTUCKY

## Industrial Sites — 1984

For more information contact the Kentucky Department of Economic Development, Industrial Development & Marketing Division, Capital Plaza Tower, Frankfort, Kentucky 40601 (502-564-7140).



A COMPREHENSIVE REPORT ON  
MONTICELLO, KENTUCKY

Prepared by  
The Kentucky Department of Economic Development  
Division of Research and Planning  
in cooperation with  
The Monticello-Wayne County Chamber of Commerce,  
The Wayne County Industrial Foundation,  
and  
The City of Monticello

1984

Program manager - Pamela Riley; research - James Thompson; clerical - Shirley Wood; graphics - Frank Ferrante, Tony Cecconi, Robert Owens; cartography - Site Evaluation Branch, Division of Industrial Development. Cost of printing paid from state funds.

## TABLE OF CONTENTS

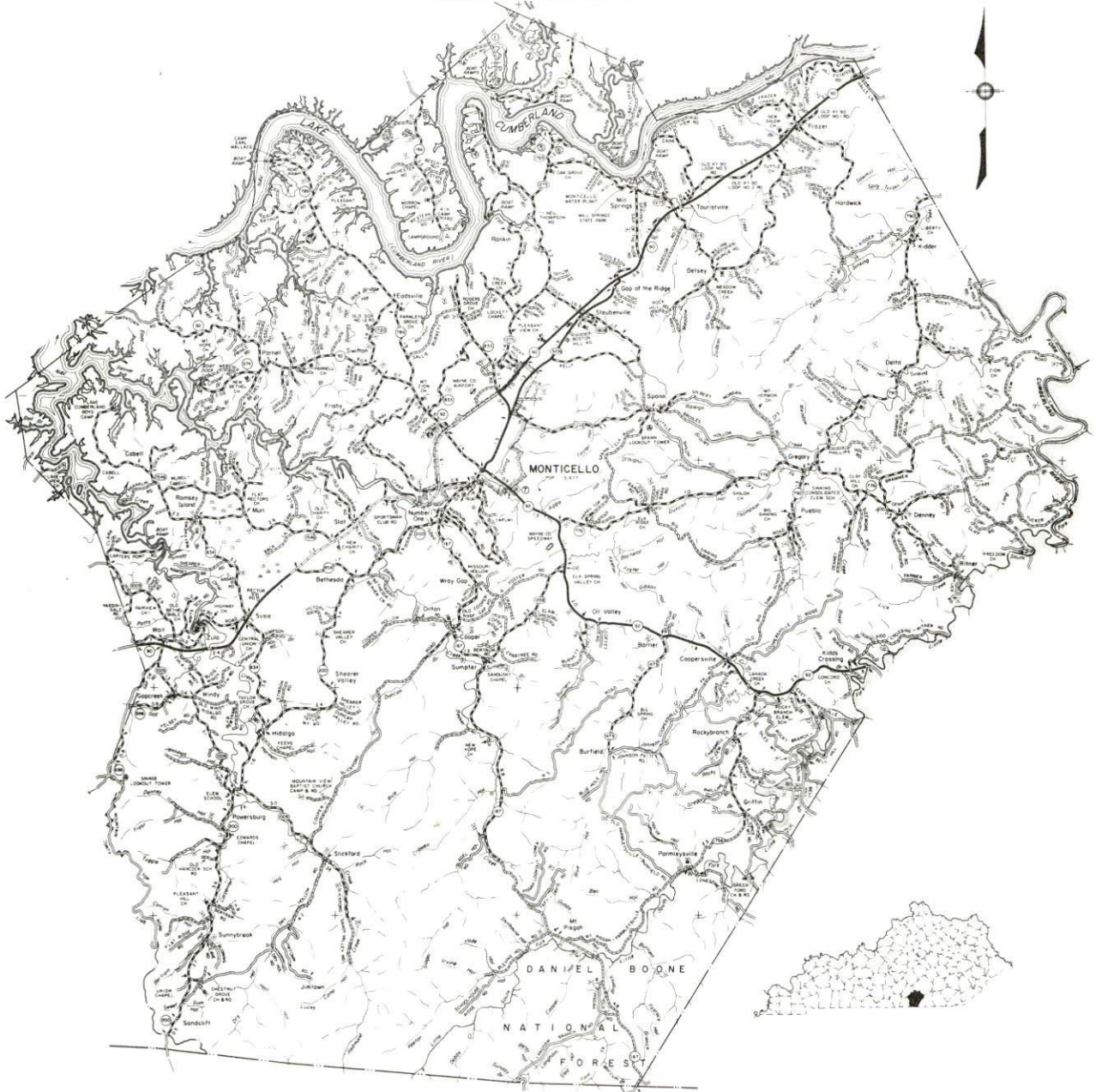
<u>Chapter</u>	<u>Page</u>
INDUSTRIAL SITES . . . . .	i
MONTICELLO, KENTUCKY - A RESOURCE PROFILE . . . . .	1
THE LABOR MARKET AREA . . . . .	3
Population . . . . .	3
Labor Force Characteristics of Residents, 1982 . . . . .	3
Selected Components of Nonagricultural Employment, by Place of Work, 1982 . . . . .	4
Monticello Manufacturing Firms, Their Products and Employment . . . . .	5
Labor Organizations in Manufacturing Firms . . . . .	6
Industrial Services . . . . .	7
Estimated Male Labor Supply . . . . .	8
Estimated Female Labor Supply . . . . .	9
Average Weekly Wages by Industry, by Place of Work, 1982 . . . . .	10
Per Capita Personal Income . . . . .	12
TRANSPORTATION . . . . .	13
Rail . . . . .	13
Highways . . . . .	13
Truck Service . . . . .	14
Air . . . . .	16
Bus . . . . .	17
Taxi . . . . .	17
Rental Services . . . . .	17
Water . . . . .	17
POWER AND FUEL . . . . .	18
Electricity . . . . .	18
Natural Gas . . . . .	19
Other Fuels . . . . .	19
WATER AND SEWERAGE . . . . .	20
Public Water Supply . . . . .	20
Raw Water . . . . .	21
Sewerage . . . . .	21
CLIMATE . . . . .	22

<u>Chapter</u>	<u>Page</u>
LOCAL GOVERNMENT . . . . .	23
City . . . . .	23
County . . . . .	23
Assessed Value of Property, 1983 . . . . .	23
Property Taxes . . . . .	24
Combined State and Local Rates Per \$100 Valuation, 1983 . . . . .	25
Planning and Zoning . . . . .	25
Safety . . . . .	26
Police . . . . .	26
Fire . . . . .	26
Rescue Service . . . . .	26
Refuse Collection and Disposal . . . . .	26
EDUCATION . . . . .	27
Public Schools . . . . .	27
Area Colleges and Universities . . . . .	28
Vocational Schools . . . . .	28
HEALTH . . . . .	30
Local Medical Personnel . . . . .	30
Hospitals . . . . .	30
Ambulance Service . . . . .	30
Public Health . . . . .	30
OTHER LOCAL FACILITIES . . . . .	31
Communications . . . . .	31
Library Services . . . . .	31
Religious Institutions . . . . .	32
Financial Institutions . . . . .	32
Hotels and Motels . . . . .	32
Clubs and Organizations . . . . .	33
RECREATION . . . . .	34
COMMUNITY IMPROVEMENTS . . . . .	37



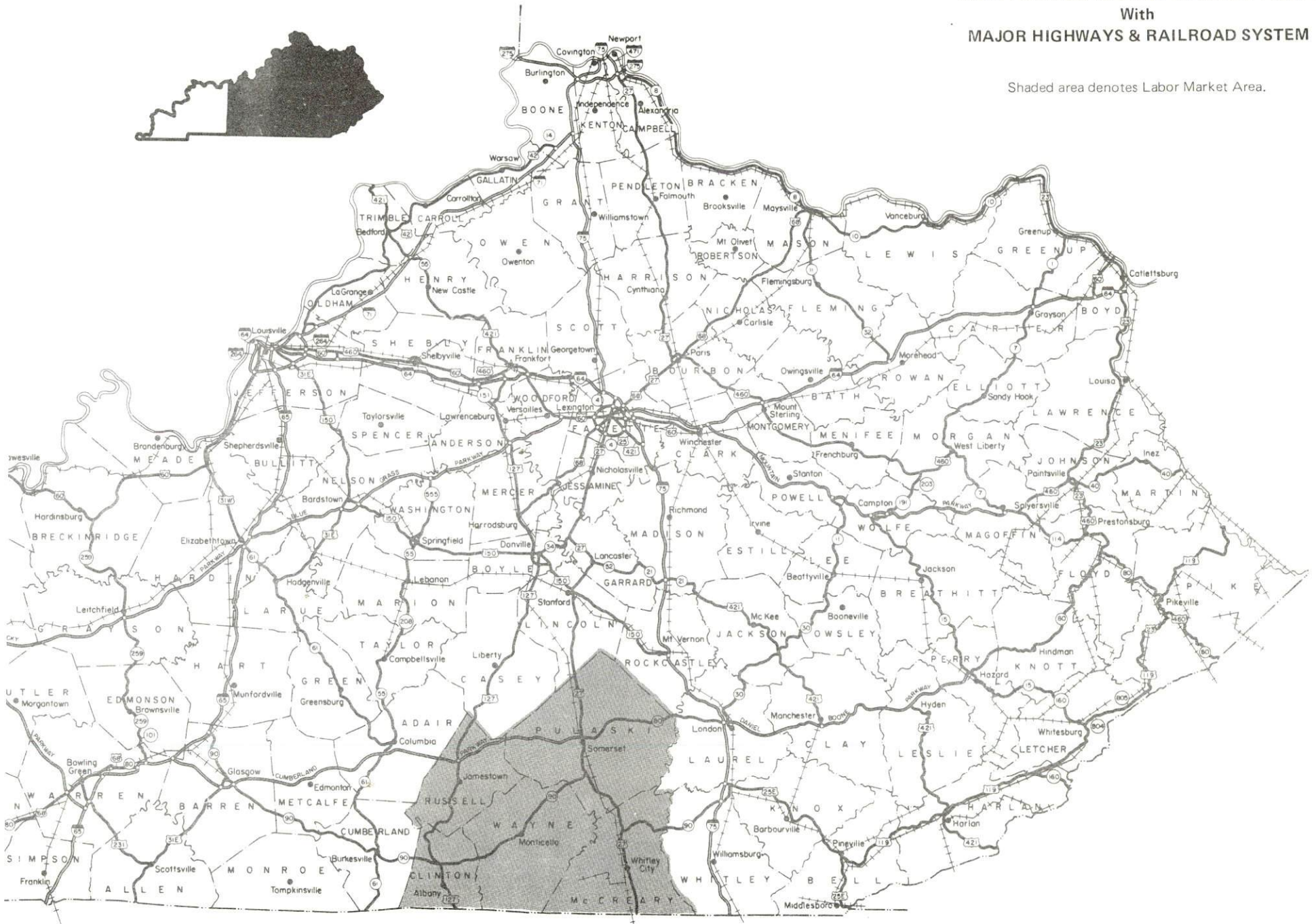
1983 EDITION  
GENERAL HIGHWAY MAP  
**WAYNE COUNTY**  
KENTUCKY

PREPARED BY THE  
KENTUCKY TRANSPORTATION CABINET  
DEPARTMENT OF HIGHWAYS  
DIVISION OF PROJECT DEVELOPMENT  
IN COOPERATION WITH THE  
U.S. DEPARTMENT OF TRANSPORTATION  
FEDERAL HIGHWAY ADMINISTRATION



# MONTICELLO LABOR MARKET AREA With MAJOR HIGHWAYS & RAILROAD SYSTEM

Shaded area denotes Labor Market Area.



## MONTICELLO, KENTUCKY - A RESOURCE PROFILE

Monticello, the county seat of Wayne County, is located in south central Kentucky. Monticello, with a population of 5,677 in 1980, is located 105 miles southwest of Lexington, Kentucky; 121 miles northwest of Knoxville, Tennessee; 159 miles southeast of Louisville, Kentucky; 156 miles northeast of Nashville, Tennessee; and 188 miles south of Cincinnati, Ohio.

Wayne County, with a total land area of 446 square miles, covers portions of both the Mississippian Plateaus and the Eastern Kentucky Coal Fields Regions of the state. Lake Cumberland runs along or near the northern boundary of Wayne County and the Tennessee state line forms the southern boundary. Wayne County had a 1980 population of 17,022.

### The Economic Framework

The total number of Wayne County residents employed in 1982 averaged 6,905, with nonagricultural jobs accounting for 5,960 workers. Manufacturing employers in the county reported 1,430 workers; state and local government 565; wholesale and retail trade 540; and services 310. Manufacturing employment is greatest in apparel and related products, lumber and wood products, and primary metal industries.

Per capita personal income in Wayne County in 1981 was \$5,131. Between 1977 and 1981 per capita income increased by 54 percent.

The Monticello labor market area includes Wayne County, the four adjoining Kentucky counties and one adjoining Tennessee County. The total number of residents in the Kentucky portion of the labor market area employed in 1982 averaged 38,120, with nonagricultural jobs accounting for 35,200 workers. Manufacturing employers in the area reported 7,570 workers; wholesale and retail trade 5,010; state and local government 4,530; and services 2,780.

### Resources for Growth

1. Labor Supply - There is a current labor supply of 7,460 men and 5,920 women available for industrial jobs in the labor market area. In addition, from 1984 thru 1988, 4,760 young men and 4,610 young women in the area will become 18 years of age and potentially available for work.

2. Transportation - Monticello is not served directly by rail. However, the Southern Railway System provides main line service at Burnside, 21 miles northeast of Monticello. Monticello is served directly by Kentucky Highway 90, a "AAA" rated trucking highway, and by Kentucky Highway 92, a "AA" rated trucking highway. In addition, the Cumberland Parkway is just 30 miles north of Monticello. Six common carriers have the authority to serve Monticello. The nearest scheduled commercial airline service is available at Blue Grass Field in Lexington, 110 miles northeast of Monticello. The Monticello-Wayne County Airport, just north of Monticello, has a 4,000-foot paved runway and charter service.

3. Power and Fuel - Electric power is provided to Monticello by the City of Monticello Electric Plant Board, which is supplied by the Tennessee Valley Authority. Wayne County is served by the South Kentucky Rural Electric Cooperative Corporation, which is supplied by the East Kentucky Power Cooperative. Natural gas service is not available in Monticello. There are three distributors of propane and four distributors of distillate fuel oil that serve Monticello.

4. Education - Primary and secondary education is provided to Monticello by the Monticello Independent School System and to Wayne County by the Wayne County School System.

One university, five senior colleges, two junior colleges, and one community college are within 85 miles of Monticello.

The Somerset State Vocational-Technical School in Somerset, 29 miles northeast, offers training in 16 different courses. The Wayne County Vocational Education Center in Monticello offers training in seven different courses.

## THE LABOR MARKET AREA

The Monticello Labor Market Area includes Wayne County and the adjoining Kentucky counties of Clinton, McCreary, Pulaski, and Russell. The southern boundary of Wayne County is formed by the Tennessee state line. The Monticello Labor Market Area also encompasses the adjoining Tennessee county of Pickett.

### POPULATION

Area	1980	1970	Percent Nonwhite
Monticello	5,677	3,618	3.9
Labor Market Area	101,488	80,766	N/A
Wayne County	17,022	14,268	2.4
Clinton County	9,321	8,174	0.2
McCreary County	15,634	12,548	1.7
Pulaski County	45,803	35,234	1.5
Russell County	13,708	10,542	0.9

Note: The 1980 counts of population by race are provisional.

Sources: U. S. Department of Commerce, Bureau of the Census, 1980 Census of Population and Housing, March 1981; 1980 Census of Population, Number of Inhabitants. Population Research Unit, Urban Studies Center, University of Louisville, Kentucky Demographics: The 1980 Census of Kentucky, Characteristics of Population, Households, Housing, January 1982.

### LABOR FORCE CHARACTERISTICS OF RESIDENTS, 1982

	Wayne County	Labor Market Area*
Civilian Labor Force	8,034	43,720
Employment	6,905	38,120
Agricultural	941	2,923
Nonagricultural	5,964	35,197
Unemployment	1,129	5,600
Rate of Unemployment (%)	14.1	12.8

\*Wayne County and the four adjoining Kentucky counties.

Source: Kentucky Cabinet for Human Resources, Kentucky Labor Force Estimates, Annual Averages, 1982.

SELECTED COMPONENTS OF NONAGRICULTURAL EMPLOYMENT,  
BY PLACE OF WORK, 1982

	<u>Wayne County</u>	<u>Labor Market Area*</u>
All Industries (total)	3,126	23,486
Manufacturing	1,430	7,570
Wholesale & Retail Trade	536	5,014
Services	308	2,779
State/Local Government	565	4,528

\*Wayne County and the four adjoining Kentucky counties.

Note: Excludes domestic workers, railway workers, certain nonprofit corporations, majority of federal government workers, and self-employed workers.

Source: Kentucky Cabinet for Human Resources, Average Monthly Workers Covered by Kentucky Unemployment Insurance Law, 1982.

MONTICELLO MANUFACTURING FIRMS,  
THEIR PRODUCTS AND EMPLOYMENT

Firm (Establishment date)	Product	Employment			Labor Unions
		Total	Male	Female	
American Lumber Company (1978)	Lumber	10	10	0	
Bassett Products Company, Inc. (1928)	Agricultural lime, crush- ed limestone, ready mixed concrete	30	29	1	
Belden Corporation, Electronic Division, Monticello Plant (1973)	Electronic wire & cable	345	215	130	
Frank Bell Lumber (1941)	Lumber	7	6	1	
Farmers Supply & Produce Company (1957)	Feed	11	10	1	
Gamble Brothers, Inc. (1969)	Wood cabinet doors	211	194	17	Laborer's; Carpenters*
Gregory Shirt Company (1973)	Men's shirts, women's blouses	132	13	119	
Lakeview Printing, Inc., (1974)	Commercial printing, rubber stamps	6	5	1	
O. P. Link Handle Company, Inc. (1950)	Hickory handle blanks, hickory barbecue wood and sawdust	14	14	0	
M & P Lumber Company, Inc. (1981)	Lumber	12	11	1	
Mago Construction Company, Inc. (1961)	Bituminous concrete mixes	18	15	3	

<u>Firm (Establishment date)</u>	<u>Product</u>	<u>Employment</u>			<u>Labor Unions</u>
		<u>Total</u>	<u>Male</u>	<u>Female</u>	
McCutchen & Pyles Lumber Company, Inc. (1960)	Hardwoods, pallet, cedar lumber	32	30	2	
Mikel Block Company (1983)	Concrete block	9	7	2	
Monticello Flooring & Lumber Company (1971)	Wood flooring, dimension stock, wood paneling molding	57	55	2	
Monticello Machine Shop, Inc. (1948)	Machine shop, conveyors, sawmill	22	20	2	
Monticello Manufacturing Company, Inc. (1955)	Men's shirts, ladies' blouses and shirts	260	40	220	
Plum Creek, Inc. (1974)	Treated lumber, mine material, ties	39	38	1	
Tenco Industries (1981)	Wood products	25	-	-	
WPM Manufacturing Company, Inc. (1977)	Ladies' jeans, men's jeans, ladies' skirts	120	15	105	
Wayne County Outlook, Inc. (1904)	Newspaper, job printing	9	5	4	
Wayne Lumber Company (1966)	Rough lumber	47	45	2	

\*See Labor Organizations below.

Sources: Kentucky Department of Economic Development, 1984 Kentucky Directory of Manufacturers; Division of Research and Planning.

#### LABOR ORGANIZATIONS IN MANUFACTURING FIRMS

<u>Union</u>	<u>Representing workers at:</u>
Laborer's International Union of North America, AFL-CIO	Gamble Brothers, Inc.
Falls Cities Carpenters	Gamble Brothers, Inc.



INDUSTRIAL SERVICES

<u>Types of Services</u>	<u>Location</u>	<u>Mileage from Monticello</u>
Custom Plastics Producers	Mt. Vernon	55
Electric Motor Repair	Somerset	29
Grinding, Precision & Tool	Richmond	85
Heat Treating Facilities	Richmond	85
Industrial Equipment & Supplies	Bowling Green Lexington	105 105
Industrial Gases	Somerset	29
Industrial Waste Removal	Somerset	29
Machine Shops, Tool & Die	Monticello	-
Metal Finishers	Richmond	85
Metal Service Centers	Bowling Green Lexington	105 105
Millwrights	Nicholasville	93

Source: Kentucky Department of Economic Development, Kentucky Directory of Selected Industrial Services, 1983.

ESTIMATED MALE LABOR SUPPLY  
MONTICELLO LABOR MARKET AREA

Area	Current			Not in Labor Force	Future Becoming 18 years of age 1984 thru 1988
	Total	Unemployed	Under- employed		
Labor Market Area*	7,462				4,758
Wayne	1,037	769	268	0	805
Clinton	1,083	374	309	400	378
McCreary	1,273	555	324	394	854
Pulaski	2,198	1,529	669	0	1,980
Russell	1,542	511	269	762	570
Pickett (Tenn.)	329	N/A	N/A	N/A	171

\*Additional workers may be drawn from other nearby counties.

Note: Unemployed - persons unemployed and actively seeking work; Underemployed - persons employed but working only 14 to 26 weeks per year. Not in Labor Force - represents the number of persons who would enter the labor force if suitable employment were available (based on the assumption that persons in Kentucky would like to participate in the labor force in the same proportion that they do nationally).

Sources: Kentucky Cabinet for Human Resources, Kentucky Labor Supply Estimates by Area Development District and County, 1982. Tennessee Department of Economic and Community Development, Tennessee Available Labor, 1982. Kentucky Department of Economic Development, Future Labor Supply Becoming 18 Years of Age, 1984 thru 1988.

ESTIMATED FEMALE LABOR SUPPLY  
MONTICELLO LABOR MARKET AREA

Area	Current			Not in Labor Force	Future
	Total	Unemployed	Under-employed		Becoming 18 years of age 1984 thru 1988
Labor Market Area*	5,920				4,607
Wayne	714	360	155	199	753
Clinton	760	244	228	288	376
McCreary	1,420	268	124	1,028	811
Pulaski	2,461	732	759	970	1,922
Russell	510	258	252	0	572
Pickett (Tenn.)	55	N/A	N/A	N/A	173

\*Additional workers may be drawn from other nearby counties.

Note: Unemployed - persons unemployed and actively seeking work; Underemployed - persons employed but working only 14 to 26 weeks per year. Not in Labor Force - represents the number of persons who would enter the labor force if suitable employment were available (based on the assumption that persons in Kentucky would like to participate in the labor force in the same proportion that they do nationally).

Sources: Kentucky Cabinet for Human Resources, Kentucky Labor Supply Estimates by Area Development District and County, 1982. Tennessee Department of Economic and Community Development, Tennessee Available Labor, 1982. Kentucky Department of Economic Development, Future Labor Supply Becoming 18 Years of Age, 1984 thru 1988.

AVERAGE WEEKLY WAGES BY INDUSTRY,  
BY PLACE OF WORK, 1982

	<u>Wayne County</u>	<u>Clinton County</u>	<u>McCreary County</u>
All Industries	\$191.04	\$171.43	\$241.87
Mining & Quarrying	236.07	308.10	503.11
Contract Construction	232.05	165.30	257.52
Manufacturing	183.65	151.18	179.57
Transportation, Communications & Public Utilities	204.54	170.88	274.20
Wholesale & Retail Trade	142.94	140.63	135.80
Finance, Insurance & Real Estate	237.26	194.09	280.81
Services	177.67	169.00	179.09
State/Local Government	244.07	184.53	224.47
Other	*	*	*
	<u>Pulaski County</u>	<u>Russell County</u>	
All Industries	\$239.42	\$179.58	
Mining & Quarrying	353.85	*	
Contract Construction	195.22	246.70	
Manufacturing	274.12	167.05	
Transportation, Communications & Public Utilities	320.27	*	
Wholesale & Retail Trade	175.45	142.49	
Finance, Insurance & Real Estate	294.40	188.89	
Services	235.34	156.53	
State/Local Government	236.24	221.22	
Other	164.52	138.45	

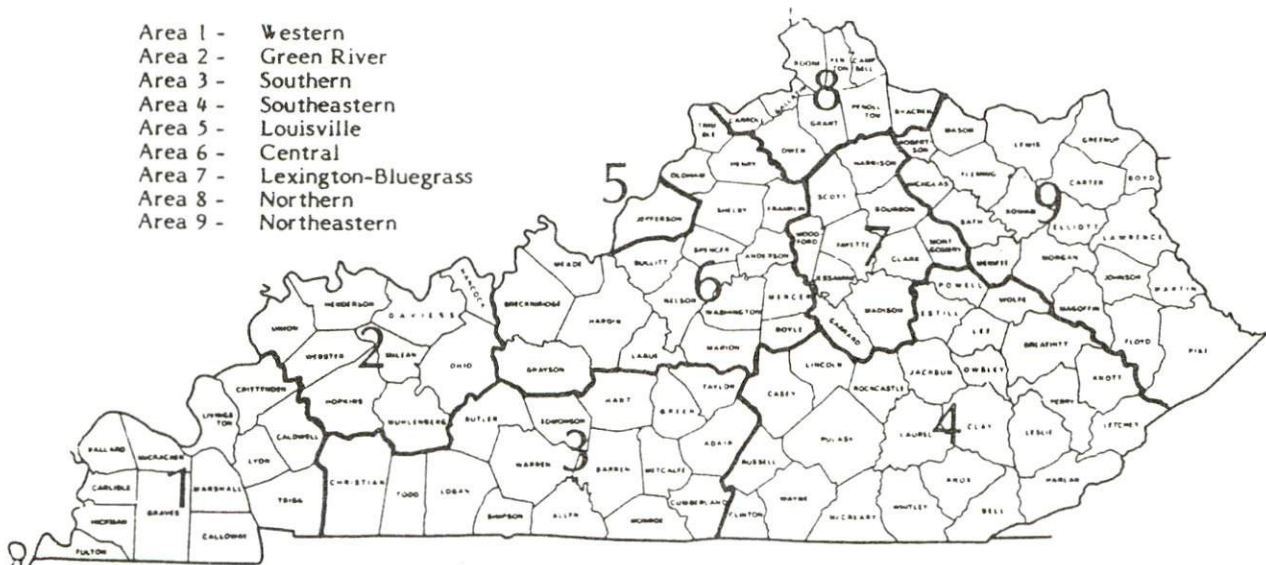
\*Not disclosed.

Note: Excludes domestic workers, railway workers, certain nonprofit corporations, majority of federal government workers, and self-employed workers.

Source: Kentucky Cabinet for Human Resources, Average Weekly Wages of Workers Covered by Kentucky Unemployment Insurance Law, 1982.

Occupational wage rates for specific industries are usually not available to most government agencies, and wage data furnished to state employment agencies by individual industrial employers are protected from disclosure by federal law. The most reliable up-to-date wage information can be obtained by direct contact with local employers.

Associated Industries of Kentucky, a voluntary organization of Kentucky businesses, regularly collects occupational wage rates and fringe benefits data from participating member firms. Data are compiled for over 127 clearly defined office, production, and service occupations. Tabulations are published for nine geographical areas of Kentucky, as shown on the map below. It should be noted that the data may be weighted by the preponderance of firms in the larger cities and may be somewhat higher than the rates paid in the smaller communities. Data from these tabulations are available, upon request, from the Kentucky Department of Economic Development, Frankfort, Kentucky 40601.



Associated Industries of Kentucky Area Wage Surveys

Up-to-date occupational wage rates of the existing industries are maintained by South Kentucky Industrial Development Association, Post Office Box 726, Hopkinsville, Kentucky 42240.

PER CAPITA PERSONAL INCOME

<u>Area</u>	<u>1977</u>	<u>1981</u>	<u>Percent Change</u>
Wayne County	\$3,340	\$5,131	53.6
Labor Market Area			
Range*	\$2,788 - 4,756	\$4,448 - 7,069	N/A
Kentucky	5,797	8,416	45.2
U. S.	6,984	10,495	50.3

\*Wayne County and the four adjoining Kentucky counties.

Source: U. S. Bureau of Economic Analysis, Kentucky Economic Information System, May 1983.

## TRANSPORTATION

### Rail

Monticello is not served directly by rail. The nearest rail service is provided by the Southern Railway System at Burnside, 21 miles northeast of Monticello.

Services at Burnside - One northbound and one southbound freight stop daily; one local freight transfers daily from Somerset to Burnside and return; 30 through freights daily; switching facilities; team track space for 10 cars; siding space for approximately 50 cars; nearest piggyback facilities at Danville, 74 miles north of Monticello.

For details on routing, schedules, rates, and services, contact:

District Sales Manager  
Norfolk Southern Corporation  
701 South Broadway  
Lexington, Kentucky 40508  
(606) 259-1352

### Highways

Monticello is served by Kentucky Highway 90, a "AAA" rated trucking highway, which connects with U. S. 27 just 21 miles north-east of Monticello; and Kentucky Highway 92, a "AA" rated trucking highway, which connects with U. S. 27, 32 miles southeast. U. S. 127 is 23 miles southwest of Monticello via Kentucky 90. The Cumberland Parkway, a multilane toll road, is just 30 miles north of Monticello via Kentucky 90 and U. S. 27. Interstate 75, a major north-south highway, is 53 miles east of Monticello via Kentucky 92.

An \$8,875,000 project to upgrade Kentucky 90 is currently under way. The project includes construction of a new 3.8-mile section of Kentucky 90 which will bypass Monticello, reconstruction of a 4.2-mile section of the existing highway southwest of Monticello, and construction of a new bridge over Beaver Creek. The project is scheduled for completion in the fall of 1984.

## Truck Service

### Company

Eldridge Truck Line\*  
Manning Motor Express, Inc.\*  
Monticello-Albany Freight  
Lines, Inc.(T)\*  
Overnite Transportation  
Company\*  
Smith's Transfer Corporation\*  
Suburban Motor Freight, Inc.\*

### Home Office

North Highway 27  
P. O. Box 659  
Somerset, Kentucky 42501  
Westwood Avenue  
Glasgow, Kentucky 42141  
P. O. Box 25  
Monticello, Kentucky 42633  
1000 Semmes Avenue  
P. O. Box 1216  
Richmond, Virginia 23209  
P. O. Box 1000  
Staunton, Virginia 24401  
1100 King Avenue  
P. O. Box 1739  
Columbus, Ohio 43216

(T)Local terminal

\*Interstate and intrastate service.

Source: American Motor Carrier Directory, Spring 1984.

### Other Freight Services

Emery  
Federal Express  
KATO Express, Inc. (air  
cargo service)  
Purolator Courier  
United Parcel Service

### Nearest Office or Shipping Center

Lexington, 105 miles northeast  
Lexington, 105 miles northeast  
Elizabethtown, 124 miles northwest  
Lexington, 105 miles northeast  
Somerset, 29 miles northeast



HIGHWAY MILES AND TRUCK TRANSIT TIME IN DAYS FROM  
MONTICELLO, KENTUCKY, TO SELECTED MARKET CENTERS

City	Highway Miles	Delivery		City	Highway Miles	Delivery	
		Time TL				Time TL	
Atlanta, Ga.	314	2		Los Angeles, Ca.	2,181	6	
Baltimore, Md.	646	4		Louisville, Ky.	159	1	
Birmingham, Ala.	352	2		Nashville, Tenn.	156	2	
Chicago, Ill.	451	2		New Orleans, La.	673	4	
Cincinnati, Ohio	188	1		New York, N. Y.	808	4	
Cleveland, Ohio	422	1		Pittsburgh, Pa.	448	4	
Detroit, Mich.	442	2		St. Louis, Mo.	422	3	
Knoxville, Tenn.	121	2					

Note: Mileage computations are via the best interstate or primary highway, not necessarily the most direct route of travel.

Sources: Rand McNally Road Atlas, 1979. Official Kentucky Mileage Map, 1980. Delivery time - Eldridge Truck Lines, P. O. Box 659, Somerset, Kentucky 42501.

Air

Local

Monticello-Wayne County Airport\*  
Location: 1.5 miles north of Monticello  
Runways: 1 paved  
Length: 4,000 feet  
Traffic  
Control: Wind sock, UNICOM, and ADF approach  
Lighting: Wind sock and runway lights, VASI, REIL  
Services: 80 and 100 LL fuel, tie down and hangar, major  
A & E repairs, charter service, flight instructions,  
and transportation to motels and restaurants  
Air Freight  
Service: Chartered air freight service must be arranged

Nearest Scheduled Commercial Airline Service

Blue Grass Field  
Location: 5 miles west of Lexington, Kentucky;  
110 miles northeast of Monticello  
Runways: 2 paved  
Length: 6,500 feet; 3,500 feet  
Traffic  
Control: Tower  
Lighting: Approach lighting system, beacon, runways and  
obstructions lighted, VASI  
Services: Delta, Frontier, Piedmont, USAir, Comair, Tennessee  
Airways; fuel - 100LL and jet-A; hangars, tie-  
downs; major A & P repairs, major Avionics repairs;  
APU, charter, flight instruction, oxygen, plane  
rentals, survival equipment; taxi, limousine,  
car rentals, courtesy car; weather information;  
restaurant, snack bar  
Air Freight  
Service: Air freight terminal

\*There are plans to build an access road from the airport to the junction of Kentucky 1275 and Kentucky 90.

Bus - Greyhound Bus Lines and Somerset Suburban Carriers, Inc., serve Somerset, 29 miles northeast of Monticello.

Taxi - One company provides 24-hour service.

Rental Services - Nearest car, truck, and trailer rentals are available in Somerset, 29 miles northeast of Monticello.

Water

Lake Cumberland, 10 miles northwest of Monticello, is navigable for approximately 100 miles. Presently, barge service on the lake is being used for transport of coal to the John Sherman Cooper Power Station at Burnside, Kentucky.

POWER AND FUEL

Electricity

Company serving Monticello - City of Monticello Electric Plant Board  
Source of power -Tennessee Valley Authority  
Total generating capacity - 31,109,160 KW  
For industrial rates contact:

South Kentucky Industrial Development  
Association, Inc.  
P. O. Box 726  
Hopkinsville, Kentucky 42240  
(502) 885-5392

and/or

City of Monticello Electric Plant Board  
615 Columbia Avenue  
P. O. Box 657  
Monticello, Kentucky 42633  
(606) 348-8102

Company serving Wayne County - South Kentucky Rural Electric  
Cooperative Corporation  
Source of power - East Kentucky Power Cooperative  
Total generating capacity - 1,304,000 KW\*  
For industrial rates contact:

Industrial Development Division  
East Kentucky Power Cooperative  
P. O. Box 707  
Winchester, Kentucky 40391  
(606) 744-4812

\*East Kentucky Power Cooperative's total generating capacity will be increased when a new 600,000 KW coal-fired generation plant is completed in southeast Clark County in 1992.

Natural Gas

Natural gas service is not available in Monticello at the present time.

Other Fuels

Propane (Within 30 miles)

Ashland Oil Company  
(bulk plant)  
South Main Street  
Monticello, Kentucky 42633

Williams Energy Company  
104 South Vine Street  
Somerset, Kentucky 42501

Kengas  
Route 5  
Monticello, Kentucky 42633

Fuel oils

Distillate fuel oil - (Within 30 miles)

Ashland Oil Company  
(bulk plant)  
South Main Street  
Monticello, Kentucky 42633

Hornsby Petroleum Company, Inc.  
608 North Main Street  
Monticello, Kentucky 42633

Lewis J. Heber Oil  
Company, Inc.  
Walnut Street  
Burnside, Kentucky 42519

Somerset Oil  
(bulk plant)  
119 South Main Street  
Monticello, Kentucky 42633

Residual fuel oil - Arrangements must be made with the refinery.

Low sulphur content coal - Available in Kentucky.

WATER AND SEWERAGE

Public Water Supply

Company serving Monticello - Monticello Utility Commission  
P. O. Box 518  
Monticello, Kentucky 42633  
(606) 348-8473

Source - Lake Cumberland  
Treatment plant capacity - 1,000,000 gallons per day\*  
Average daily consumption - 750,000 gallons  
Peak daily consumption - 950,000 gallons  
Type treatment - Filtration, coagulation, chlorination  
Storage capacity - 800,000 gallons including clear wells  
Size lines - 16, 12, 10, 8, 6, 4 and 2 inches  
Average pressure - 100 psi  
Average temperature - 55 degrees F.

MONTHLY WATER RATES

Residential  
Inside Corporate Limits

First	2,500 gallons	\$9.75 (Minimum)
Next	2,000 gallons	1.40 per M gallons
Next	2,000 gallons	1.30 per M gallons
Over	6,500 gallons	1.20 per M gallons

Commercial  
Inside Corporate Limits

First	2,500 gallons	\$10.50 (Minimum)
Next	7,500 gallons	1.50 per M gallons
Next	20,000 gallons	1.40 per M gallons
Next	30,000 gallons	1.30 per M gallons
Next	40,000 gallons	1.20 per M gallons
Over	100,000 gallons	1.10 per M gallons

(contd.)

\*The Monticello Utility Commission plans to expand the capacity of the water treatment plant from 1 million gallons per day to 2 million gallons per day. The \$1 million project is expected to be completed by mid-1985.

All Customers  
Outside Corporate Limits

First	2,500 gallons	\$11.75 (Minimum)
Next	2,000 gallons	1.80 per M gallons
Next	2,000 gallons	1.60 per M gallons
Over	6,500 gallons	1.40 per M gallons

Tap-on charge: Residential - \$100 inside corporate limits  
150 outside corporate limits  
Commercial and industrial - Negotiated

Raw Water

Surface water sources - Lake Cumberland

Extremes - Lake Cumberland near Jamestown, Kentucky - maximum contents 2,025,100 cfs-days, minimum 1,150,800 cfs-days (1982)

Expected ground water yield - 5 to 50 gpm in the northwestern portion of the county; 5 gpm or less in the remainder of the county

Sewerage

Company serving Monticello - Monticello Utility Commission  
P. O. Box 518  
Monticello, Kentucky 42633  
(606) 348-8473

Design capacity - 360,000 gallons per day

Average daily flow - 300,000 gallons

Type of treatment - Primary and secondary

Treatment processes - Aeration, clarifier, drying beds

Treated effluent discharged into - Elk Creek

Size of sanitary mains - 10, 8 and 6 inches

Monthly rates - Residential - Minimum bill \$4.88, or 50 percent of water bill with a maximum bill of \$10

Commercial - Minimum bill \$4.88, or 50 percent of water bill with no maximum

Sprinkler charge - \$0.10 per sprinkler head per month

Tap-on charge: \$100

## CLIMATE

### Wayne County

#### Temperature

Normal (30-year record)	59.70 degrees
Average annual 1982	59.00 degrees
Record highest, September 1954 (30-year record)	103.00 degrees
Record lowest, January 1966 (30-year record)	-9.00 degrees
Normal heating degree days (30-year record) (Heating degree day totals are the sums of negative departures of average daily temperatures from 65 degrees F.)	3,478

#### Precipitation

Normal (30-year record)	46.18 inches
Mean annual snowfall (41-year record)	12.50 inches
Total precipitation 1982	54.70 inches
Mean number days precipitation (.01 inch or more) (40-year record)	127
Mean number days thunderstorms (40-year record)	47

#### Prevailing Winds (14-year record)

Northeast

#### Relative Humidity (22-year record)

1 a.m.	80 percent
7 a.m.	85 percent
1 p.m.	59 percent
7 p.m.	63 percent

Source: U. S. Department of Commerce, Environmental Science  
Services Administration, Climatological Data, 1982.  
Station of record: Knoxville, Tennessee.



## LOCAL GOVERNMENT

### City

Structure - Mayor - 4-year term; 6 council members - 2-year terms

Budget 1983 - General Fund \$ 400,000

Water and Sewer Fund 600,000

City Electric Fund 3,000,000

Fees and licenses - Business licenses range from \$10 to \$450 per year, depending on the type of business. For manufacturers, the following fees apply:

Less than 50 employees	\$225 per year
More than 50, but less than 100 employees	375 per year
More than 100 employees	450 per year

### County

Structure - County Judge/Executive - 4-year term;

4 magistrates - 4-year terms

Budget 1983-84 - General Fund \$220,322; Road Fund \$340,000

### Assessed Value of Property, 1983\*

<u>Classes of Property</u>	<u>Monticello</u>	<u>Wayne County</u>
Real Estate	\$34,890,404	\$103,334,333
Tangibles	17,604,805	24,482,429

\*Excludes Homestead Exemptions.

## Property Taxes

All property in Kentucky is assessed at 100 percent of fair cash value.

Land and buildings are taxed by the state and may be taxed by local jurisdictions. The state rate is \$0.221 per \$100 of assessed valuation.

Manufacturing machinery, raw materials inventories, pollution control equipment, and goods in process of manufacture are not subject to local taxation. The state rate is \$0.15 per \$100.

Other tangible personal property owned by manufacturers (automobiles, trucks, finished goods, office furniture, office equipment) is taxed by the state at \$0.45 per \$100 and may be taxed by local jurisdictions.

Intangible personal property located in Kentucky (money in hand, shares of stock, notes, bonds, accounts receivable, and other credits) is taxed by the state at \$0.25 per \$100, and is not subject to local taxation.

Property stored in public warehouses in a transit status is not subject to local taxation. The state rate is only \$0.015 per \$100.

Private leaseholds in industrial facilities owned by cities or counties and financed by industrial revenue bonds are subject to a state tax of \$0.015 per \$100 of value (essentially the lessee's equity, adjusted for appreciation or depreciation). Local taxation is not permitted.

Combined State and Local Rates Per \$100 Valuation, 1983\*  
 (100% assessment)

Kentucky school districts levy property taxes on property located within individual school district boundaries. Two types of school districts are operated in Kentucky: 1) independent school districts which usually operate within a single city and often do not cover the entire city; and 2) common school districts which operate in portions of counties not covered by independent districts and cover the entire county when there is no independent district. School district boundaries are mutually exclusive and do not cross.

	<u>Site Inside Monticello and the Monticello School District</u>	<u>Site Inside Monticello and the Wayne County School District</u>	<u>Site Inside Unincorporated Wayne County</u>
1. Land and buildings	\$0.9962	\$0.7872	\$0.5622
2. Mfg. machinery, raw materials, goods in process, pollution control equipment	0.1500	0.1500	0.1500
3. Finished goods, office equipment, vehicles, other tangibles	1.2944	1.0314	0.8064
4. Intangibles (accounts rec., notes, bonds, etc.)	0.2500	0.2500	0.2500
5. Property stored in public warehouses in a transit status	0.0150	0.0150	0.0150
6. Leaseholds in industrial revenue bond financed plants	0.0150	0.0150	0.0150

Planning and Zoning

City agency - Monticello Planning Commission (inactive)

Zoning enforced - None

Subdivision regulations enforced - None

Local codes enforced - None

Mandatory state codes enforced - Kentucky Plumbing Code, National Electric Code, Kentucky Boiler Regulations and Standards, Kentucky Building Code (modeled after BOCA code)

\*Kentucky Department of Economic Development.

Safety

<u>Police</u>	<u>Monticello</u>	<u>Wayne County</u>
Total staff	15	6
Radio-patrol cars	5	3

Fire

Insurance Services Office, Public Protection Classification	6	10
Full-time staff	1	-
Volunteers	19	*

Rescue Service

Wayne County Rescue Squad:

Number of volunteers - 25

Equipment - 1 ambulance; 2 pickup trucks; 3 Thundercraft boats, 800-pound capacity; 3 aluminum boats; 3 outboard motors; dragging equipment; 2 jeeps; portable generator (5 KW)

Personnel training - 1 emergency medical technician, 12 trained in cardiopulmonary resuscitation procedures and basic first aid.

Additional training has been provided in cooperation with the Civil Defense and Red Cross organizations. The rescue squad has also had training in radiological monitoring.

Refuse Collection and Disposal

	<u>Monticello</u>
Type service	Municipal
Fee charged:	
residential	\$4.00
business	\$6.00 to \$250.00
industrial	Negotiated
Collection frequency:	
residential	Weekly
business	Twice weekly
industrial	Daily
Trash pickup	Weekly
Disposal method	Sanitary landfill

Wayne County residents are served by private collectors who use the Monticello sanitary landfill.

\*Fire protection is provided to Wayne County residents by the Monticello Fire Department.

EDUCATION

Public Schools

	<u>Monticello Independent*</u>	<u>Wayne County</u>
Total Enrollment (Spring 1983)	720	2,938
Kindergarten	-	225
Elementary	506	1,357
Middle School	-	508
High School	214	848
Student-Teacher Ratio	17-1	19-1
Kindergarten	-	19-1
Elementary	16-1	15-1
Middle School	-	25-1
High School	18-1	24-1
Percent High School Graduates to College (1982)	44.7	31.6
Expenditures Per Pupil (1982-83)	\$1,604.36	\$1,448.19
Bonded Indebtedness (June 30, 1983)	\$1,257,000**	\$1,470,000***

\*The construction of a new building by the Monticello School System was recently completed. The \$1.1 million building houses the new Industrial Education Department, a Home Economics Department, the Music Department, and a new Elementary Physical Education Department.

\*\*Includes School Building Authority bonds outstanding \$1,100,000 - local school district obligation \$553,208.

\*\*\*Includes refunding issue of \$1,075,000.

### Area Colleges and Universities

<u>Name</u>	<u>Location (Miles distant)</u>	<u>Enrollment (Fall, 1982)</u>	<u>Highest Degree Conferred</u>
Somerset Community College	Somerset (29)	1,128	Associate
Cumberland College Lindsey Wilson College	Williamsburg (54)	1,718	Baccalaureate
Sue Bennett College	Columbia (62)	428	Associate
Berea College	London (63)	288	Associate
Centre College	Berea (72)	1,599	Baccalaureate
Campbellsville College	Danville (74)	718	Baccalaureate
Union College	Campbellsville (81)	702	Baccalaureate
Eastern Kentucky University	Barbourville (82)	542	Masters, Specialist
	Richmond (85)	13,041	Masters, Specialist*

### Vocational Schools

Both the state vocational-technical schools and the area vocational education centers are operated by the Kentucky Department of Education. The state vocational-technical schools enroll persons full time who are at least 16 years of age and not in school. These students attend classes for six hours each day. The area vocational education centers are designed to accommodate high school students who are at least 15 years of age. These students attend vocational school for three hours each day. The state vocational-technical schools and the area education centers offer evening courses to enable working adults to upgrade current job skills.

(Contd.)

\*Joint doctoral degree programs are offered in cooperation with the University of Kentucky, Lexington. The degrees are issued by the University of Kentucky.

Nearest State School

Location	Somerset State Vocational-Technical School
Miles Distant	Somerset
Curriculum	29
	Business and Office
	Accounting/Jr. Management
	Clerical
	Data Processing
	Secretarial
	Health and Personal Services Occupations
	Health Careers
	Licensed Practical Nursing
	Industrial Education
	Appliance Repair
	Auto Body Repair
	Auto Mechanics
	Aviation Maintenance Technician
	Diesel Mechanics
	Drafting
	Graphic Arts (Printing)
	Machine Shop
	Industrial Electronics
	Welding
	Learning Resource Center

Nearest Area Education Center

Location	Wayne County Vocational Education Center
Curriculum	Monticello
	Adult Farmers Class
	Business and Office
	General Clerical
	Secretarial
	Health and Personal Services Occupations
	Health Services
	Industrial Education
	Auto Mechanics
	Machine Shop
	Welding

Arrangements can be made to provide training in the specific production skills required by an industrial plant. Instruction may be conducted either in the vocational school or in the industrial plant, depending upon the desired arrangement and the availability of special equipment.

## HEALTH

### Local Medical Personnel

Physicians - 10  
Dentists - 4

### Hospitals

<u>General Hospital</u>	<u>Location</u>	<u>Beds</u>
Wayne County Hospital	Monticello	40

General hospital facilities - Emergency room, OB section, X-ray, laboratory, physical therapy

Medical staff - 10 general practitioners, 12 registered nurses, 7 licensed practical nurses, 6 nurses' aides, 6 lab technicians, 2 pathologists, radiologist, 3 ward clerks, dietician on consulting basis

### Ambulance Service

Name - Marvin S. Hicks Ambulance Service  
Staff - 6 emergency medical technicians  
Service - 24-hour, county-wide service  
Equipment - 4 fully-equipped ambulances

### Public Health

Facility - Wayne County Health Center  
Staff - 2 registered nurses, 1 sanitarian, 1 health service aide, 1 office manager, 3 clerks (2 full-time, 1 part-time), 1 clinician (part-time)



## OTHER LOCAL FACILITIES

### Communications

Telephone - General Telephone Company  
Services - Standard

Telegraph - Western Union Telegraph Company  
Services - Toll-free number, 1-800-325-5100

Postal - U. S. Post Office  
Class - First  
Mail received - Once daily  
Mail dispatched - Once daily

Newspapers -  
Weekly and circulation - The Reporter - 2,300  
Wayne County Outlook - 6,000  
Other papers  
received from - Lexington, Louisville, and Somerset, Kentucky

Radio - WFLW-AM; WKYM-FM  
Stations received from - Lexington, Louisville, and Bowling Green  
Kentucky; Knoxville, Nashville, and  
Oak Ridge, Tennessee

Television -  
Cable service  
Reception from - Lexington and Louisville, Kentucky; Nashville and  
Knoxville, Tennessee  
Kentucky Educational  
Television - Channel 29, Somerset transmitter

### Library Services

Public library - Wayne County Public Library  
Size collection - 36,677 volumes  
Circulation, 1982-83 - 156,913 (library and bookmobile)  
Services - Bookmobile, magazines, filmstrips, microfilm, films,  
phonograph records, framed paintings, audiovisual equipment,  
story hour for preschool children, summer reading program,  
Great Books discussion for adults, Wayne County-Monticello  
Library Media Club, oral history program (tapes), and a  
meeting room with all facilities needed to handle any type  
of meeting

Religious Institutions

Number of churches - 15  
Denominations - Baptist  
Catholic  
Christian  
Church of Christ  
Church of God  
Jehovah's Witnesses  
Methodist  
Nazarene  
Pentecostal

Nearest Synagogues - Lexington, Kentucky, 105 miles northeast  
Congregations - Adath Israel (reform)  
Ohavey Zion (traditional)

Financial Institutions

<u>Banks</u>	<u>Assets</u>	<u>Deposits</u>	<u>Statement Date</u>
First State Bank of Wayne County	\$25,211,000.00	\$22,234,000.00	6/30/83
Monticello Banking Company	61,906,722.36	54,301,686.99	6/30/83
<u>Savings and Loan Associations</u>	<u>Assets</u>	<u>Savings Accounts</u>	<u>Statement Date</u>
Mutual Federal Savings and Loan Association	\$118,339,593.00	\$105,761,290.00	12/31/82

Hotels and Motels

Total number - 2  
Total rooms - 85

## Clubs and Organizations

American Legion  
Bass Club  
Boy Scouts  
Brownies  
Business and Professional Women's Club  
CB Club  
Cub Scouts  
Demolay  
Disabled American Veterans (DAV)  
Eastern Star  
4-H  
Future Business Leaders of American (FBLA)  
Future Farmers of America (FFA)  
Future Homemakers of America (FHA)  
Future Teachers of America (FTA)  
Girl Scouts  
Great Books Club  
Junior Conservation  
Key Club  
Kiwanis Club  
Lions Club  
Little League  
Masonic Lodge  
Monticello-Wayne County Chamber of Commerce  
Monticello-Wayne County Development Board  
Monticello-Wayne County Revitalization Committee  
Parent Teachers Association (PTA)  
Veterans of Foreign Wars (VFW)  
Wayne County Arts Council  
Wayne County Band Boosters  
Wayne County Historical Society  
Wayne County Jaycees  
Wayne County-Monticello Library Media Club  
Wayne County Sportsman Club  
Woman's Club  
Y-Teens

## RECREATION

### Local

Monticello has a supervised recreation program. The Monticello-Wayne County Memorial Park is an 86-acre facility which offers five shelters with one shelter used for roller skating, two playgrounds, three basketball courts, two lighted tennis courts, volleyball, badminton, horseshoe pitching, croquet, two softball fields, one baseball field, and horseback riding trails.

An indoor swimming pool is located at the Monticello High School and is available to the community for recreation and instruction.

Private recreational facilities include a country club, a 9-hole golf course, two swimming pools, a movie theatre, and two tennis courts.

The Wayne County Sportsman's Club offers a clubhouse which is available for community activities. The clubhouse is located on 50 acres and provides kitchen and dining facilities.

The Wayne County Fair and Horse Show is an annual event which is held the first week in July.

The Labor Day Arts and Crafts Festival is held annually on the Saturday prior to Labor Day. Events include arts and crafts displays, a 10K run, a fun run, the Labor Day Tennis Tournament, and the Labor Day Slalom Ski Tournament. The following day a CB Jamboree is held.

Immanuel Baptist Church Camp, 17 miles south of Monticello, offers 6 cabins accommodating 250 campers; dining facilities; a staff house with a capacity of 16; a swimming pool; softball fields; volleyball courts; basketball courts; archery field; horseshoes; ping pong; and miniature golf.

### Area (Within 65 miles)

The Daniel Boone National Forest, approximately 15 miles east of Monticello, covers 640,000 acres of timberland in eastern Kentucky. It encompasses much of Kentucky's great beauty and provides a vacation paradise. There are scenic hiking trails, rivers and streams stocked with a variety of fish, hunting preserves, camping sites, and numerous other natural and historical attractions.

General Burnside State Park, 22 miles northeast of Monticello, is Kentucky's only island state park. Rising out of Lake Cumberland and surrounded by beautiful Kentucky mountains, the park offers excellent fishing, an 18-hole golf course which is open year-round, a picnic area, a 161-site camping area for tents and recreational vehicles, a marina on the mainland near the park, and recreation.

The Big South Fork National River and Recreation Area, 32 miles east of Monticello near Whitley City, is being developed as an outdoor recreation area by the U. S. Army Corps of Engineers in cooperation with the National Park Service. The area lies along the Big South Fork of the Cumberland River in Kentucky and Tennessee and encompasses some of the state's most rugged and scenic terrain. Recreational opportunities in the "National Area" include hiking, camping, horseback riding and picnicking, whitewater rafting, canoeing and kayaking trips. The Big South Fork Scenic Railway offers a chance to see part of the rugged Cumberland River area by rail. The train operates on a regular schedule between Stearns and the Big South Fork National River and Recreation Area near the historic Blue Heron Coal Tipple, a distance of about 5 miles each direction.

Lake Cumberland State Resort Park near Jamestown, 40 miles northwest of Monticello, is a 3,000-acre park located on the 50,000-acre Lake Cumberland, which sports excellent bass, bluegill, and crappie fishing. The park features a modern 48-room resort lodge which is perched on a high bluff above the lake. The lodge has a swimming pool, a dining room, a gift shop, and a multi-purpose activities center. Other park facilities include an additional swimming pool, riding stables, tennis courts, hiking trails, a 9-hole golf course, miniature golf, a picnic area, and a playground. A marina offers houseboats, and fishing boats and motors for rent plus year-round launching ramps.

Dale Hollow Lake State Park, 42 miles southwest of Monticello, is located alongside 48 square miles of surface water in southeastern Cumberland County. Park facilities include a marina, a picnic area, and 144 sites for tent and trailer camping. Dale Hollow Lake straddles the Kentucky-Tennessee state line. Several private recreation facilities are located near the lake.

Cumberland Falls State Resort Park is located 46 miles east of Monticello near Corbin in the Daniel Boone National Forest. The park is famous for Cumberland Falls which drops 68 feet over a rock precipice and shows one of only two known "moonbows" in the world at full moon. The park offers 53 lodge rooms, woodland suites, 27 cottages, camping, fishing, swimming, hiking, horseback riding, picnicking, tennis, back-packing, shuffleboard, planned recreation, a playground, and an amphitheater.

William Whitley House State Shrine, 57 miles northeast of Monticello near Stanford, is the first brick house west of the Allegheny Mountains, built 1787-94. Whitley laid out Kentucky's first race track here and started U. S. counterclockwise racing. The facility provides picnic and playground areas in a ten-acre park.

Levi Jackson Wilderness Road State Park, 65 miles northeast of Monticello at London, is an 815-acre park located where the Boone Trace and Wilderness Road pioneer trails converge. In addition to a reproduced pioneer settlement, the park offers a pool, a bathhouse, hiking trails, horseback riding, shuffleboard, 200 campsites, a picnic area, a playground, and an amphitheater.

Old Mulkey Meeting House State Shrine, 65 miles southwest of Monticello near Tompkinsville, offers picnic areas and playgrounds. The house was built in 1804, and is the oldest log meeting house in the state. Daniel Boone's sister is buried in the graveyard and authentic records written in pokeberry ink are on display.

## COMMUNITY IMPROVEMENTS

### Recent

A \$500,000 Missouri Hollow Housing Rehabilitation Project, which included the rehabilitation of 56 houses, was completed in the fall of 1982.

The construction of a new building by the Monticello School System was recently completed. The \$1.1 million building houses the new Industrial Education Department, a Home Economics Department, the Music Department, and a new Elementary Physical Education Department.

The construction of a \$100,000 senior citizens center was completed in the fall of 1981.

Recent improvements at the city park included: the construction of a little league field, renovation of the existing softball field, and paving of streets within the park.

In the fall of 1983, a micro-computer program was put into operation at the Wayne County High School.

### Under Way

An \$8,875,000 project to upgrade Kentucky 90 is currently under way. The project includes construction of a new 3.8-mile section of Kentucky 90 which will bypass Monticello, reconstruction of a 4.2-mile section of the existing highway southwest of Monticello, and construction of a new bridge over Beaver Creek. The project is scheduled for completion in the fall of 1984.

The construction of a 46-unit low-income housing project is currently under way. The \$2 million project is scheduled for completion in 1984.

A \$620,000 housing rehabilitation project of 39 houses in the Number One - Wray Hill Community is currently under way and is scheduled for completion in January of 1985.

The City of Monticello is currently a participant in a downtown revitalization program. A \$10,000 matching grant has been received.

The Monticello Utility Commission is currently extending water services into Wayne County.

### Planned

The Monticello Utility Commission has plans to construct a new \$3 million sewage treatment plant. Construction of the sewage treatment plant, which will have an average design capacity of 700,000 gallon per day, is scheduled for 1984.

The Monticello Utility Commission has plans to expand the capacity of the water treatment plant from 1 million gallons per day to 2 million gallons per day. The \$1 million project is scheduled for completion by mid-1985.

The Monticello Utility Commission has plans to extend sewer service to areas recently annexed into the city. Total cost of the project will be \$3 million.

There are plans to build an access road from the Monticello-Wayne County Airport to the junction of Kentucky 1275 and Kentucky 90.