

1991

## Industrial Resources: Webster County

Kentucky Library Research Collections  
Western Kentucky University, [spcol@wku.edu](mailto:spcol@wku.edu)

Follow this and additional works at: [https://digitalcommons.wku.edu/webster\\_cty](https://digitalcommons.wku.edu/webster_cty)



Part of the [Business Administration, Management, and Operations Commons](#), [Growth and Development Commons](#), and the [Infrastructure Commons](#)

---

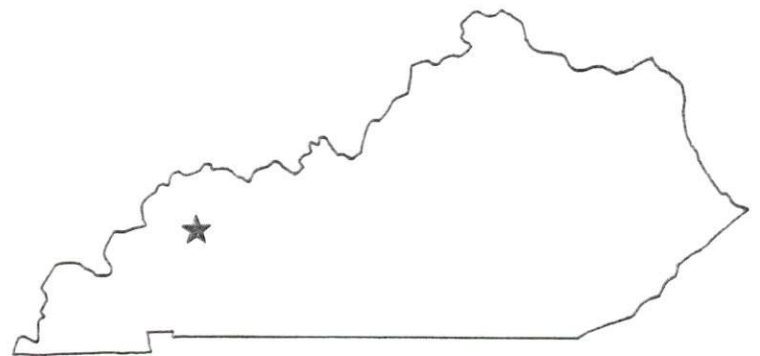
### Recommended Citation

Kentucky Library Research Collections, "Industrial Resources: Webster County" (1991). *Webster County*. Paper 4.  
[https://digitalcommons.wku.edu/webster\\_cty/4](https://digitalcommons.wku.edu/webster_cty/4)

This Report is brought to you for free and open access by TopSCHOLAR®. It has been accepted for inclusion in Webster County by an authorized administrator of TopSCHOLAR®. For more information, please contact [topscholar@wku.edu](mailto:topscholar@wku.edu).

# *Resources for Economic Development*

## Webster County



**KENTUCKY**  
*Open for Business*

---

RESOURCES FOR ECONOMIC DEVELOPMENT  
WEBSTER COUNTY, KENTUCKY

Prepared by  
The Kentucky Cabinet for Economic Development  
Division of Research and Planning  
in cooperation with  
The Webster County Economic Development Corporation  
and  
The Cities of Clay, Providence, and Sebree

1991

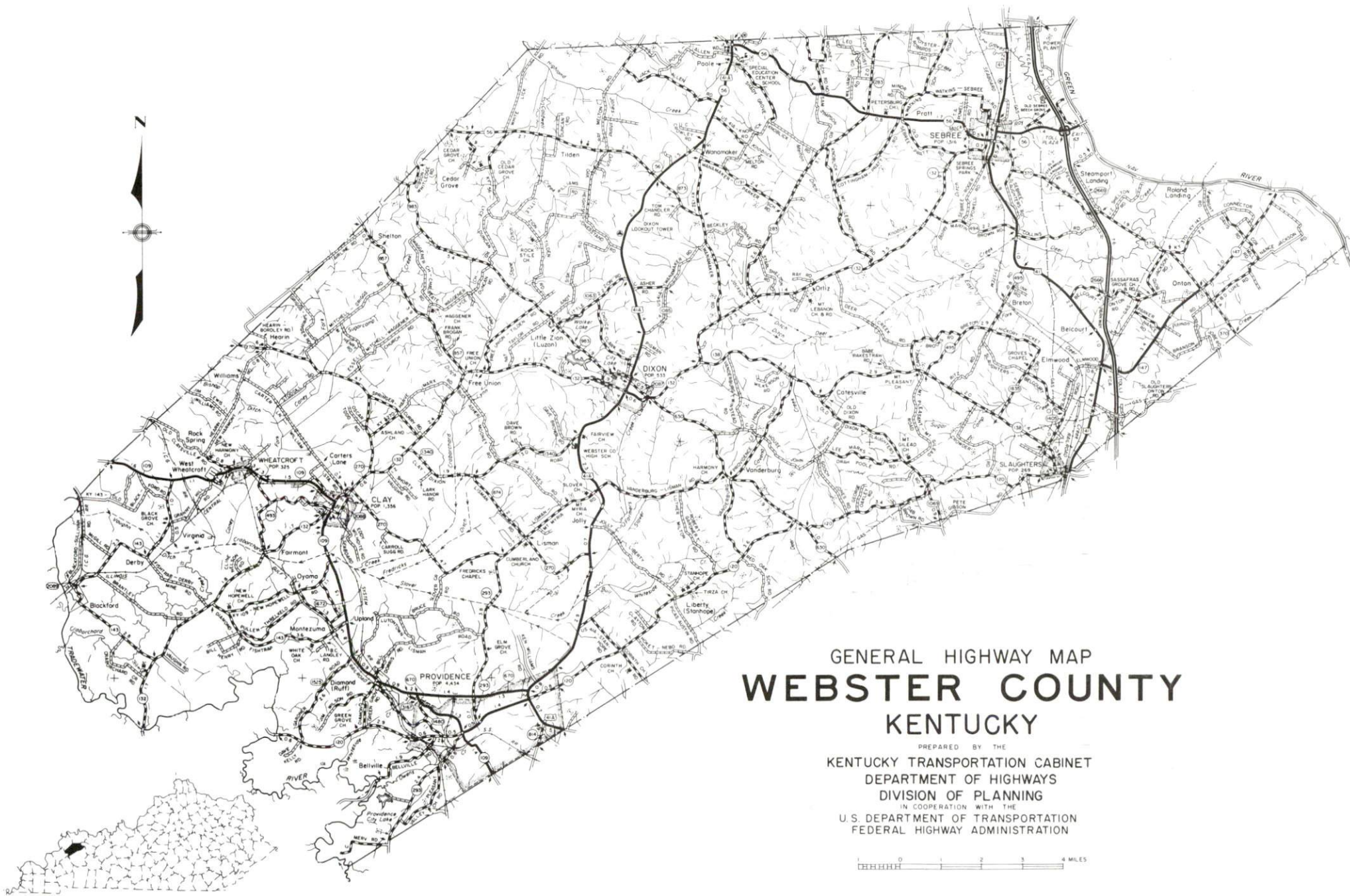
Division Director - Pamela K. Riley; program manager - Keith Roberts; research - Barry K. Holder, Jr.; clerical - Wanda Sharp; graphics - Robert Owens, Pat Coleman; cartography - Edwin Scott, Dave Clark. Cost of printing paid from state funds.

## TABLE OF CONTENTS

<u>Chapter</u>	<u>Page</u>
WEBSTER COUNTY, KENTUCKY - A RESOURCE PROFILE .....	1
THE LABOR MARKET STATISTICS .....	2
Labor Market Area Map .....	2
Population .....	3
Population Projections .....	3
Estimated Labor Supply .....	3
Labor Force Characteristics of Residents, 1989 .....	4
Selected Components of Nonagricultural Employment, by Place of Work, 1989 .....	5
Per Capita Personal Income .....	6
Average Placement Wages .....	7
Average Weekly Wages of Workers Covered by Unemployment Insurance 1988 - Bar Chart .....	8
Average Weekly Wages by Industry, by Place of Work, 1988 .....	9
EXISTING INDUSTRY .....	10
Webster County Manufacturing Firms, Their Products and Employment .....	10
Recent Industrial Developments .....	11
Labor Organizations in Manufacturing Firms .....	11
Selected Industrial Services .....	12
TRANSPORTATION .....	13
Highways .....	13
Truck Service .....	13
Selected Market Location Map .....	14
Rail .....	15
Air .....	15
Water .....	15
UTILITIES .....	16
Electricity .....	16
Natural Gas .....	16
Public Water Supply .....	17
Sewerage .....	19
CLIMATE .....	20

<u>Chapter</u>	<u>Page</u>
LOCAL GOVERNMENT .....	21
Structure .....	21
Planning and Zoning .....	21
Local Fees and Licenses .....	21
State and Local Property Taxes .....	22
Combined State and Local Rates Per \$100 Valuation, 1989 .....	22
EDUCATION .....	24
Public Schools .....	24
Area Colleges and Universities .....	24
Vocational Training .....	25
OTHER LOCAL FACILITIES .....	26
Local Medical Personnel .....	26
Hospitals .....	26
Other Medical Facilities and Services .....	26
Banks and Savings & Loan Associations .....	26
Newspapers .....	26
Telephone Service .....	26
RECREATION .....	27
COMMUNITY IMPROVEMENTS .....	28





GENERAL HIGHWAY MAP  
**WEBSTER COUNTY**  
KENTUCKY

PREPARED BY THE  
KENTUCKY TRANSPORTATION CABINET  
DEPARTMENT OF HIGHWAYS  
DIVISION OF PLANNING  
IN COOPERATION WITH THE  
U.S. DEPARTMENT OF TRANSPORTATION  
FEDERAL HIGHWAY ADMINISTRATION





## WEBSTER COUNTY, KENTUCKY - A RESOURCE PROFILE

Webster County, with a land area of 336 square miles, is located within the Western Kentucky Coal Field region. The Green River forms the northeastern boundary of the county, while the Tradewater River forms the county's southwestern boundary. In 1988, Webster County had an estimated population of 13,900.

Dixon, the county seat of Webster County, had a 1988 estimated population of 530. Dixon is located 132 miles northwest of Nashville, Tennessee; 147 miles southwest of Louisville, Kentucky; and 203 miles southeast of St. Louis, Missouri. Clay, with a 1988 estimated population of 1,250, is located in the western portion of Webster County. Providence, the largest city in the county, is located in the southwestern area of the county. Providence had a 1988 estimated population of 3,830. Sebree, located in the northeastern portion of Webster County, is situated near the Green River. In 1988, Sebree had an estimated population of 1,300.

**The Economic Framework** - The total number of Webster County residents employed in 1989 averaged 5,617. Manufacturing firms in the county reported 855 employees; wholesale and retail trade provided 576 jobs; 334 people were employed in service occupations; state and local government accounted for 614 employees; and 959 people were employed by mining and quarrying operations.

**Labor Supply** - There is a current estimated labor supply of 19,651 persons available for industrial jobs in the labor market area. In addition, from 1990 through 1994, 11,318 young persons in the area will become 18 years of age and potentially available for industrial jobs.

**Transportation** - Major highways serving Webster County include the Pennyrile Parkway, U.S. 41, U.S. 41 Alternate, and Kentucky 109. Twenty-seven trucking companies have the authority to serve Webster County. CSX Transportation provides rail service to Providence and Sebree while Tradewater Railway provides service to Clay and Providence. The Evansville Regional Airport, 39 miles north of Dixon, provides the nearest scheduled commercial airline service. The Providence-Webster County Airport maintains a 3,800-foot paved runway designed to accommodate small aircraft.

**Power and Fuel** - Providence Municipal Light and Water Company provides electric service to Providence. Kentucky Utilities Company provides electric power to Clay, Dixon, Sebree, and parts of Webster County. Webster County is also served by the Green River Electric Corporation and the Henderson-Union Rural Electric Cooperative Corporation. Natural gas service is provided to Providence by the Providence Municipal Gas Company, to Sebree by the Western Kentucky Gas Company, and to Clay by the Clay Gas System.

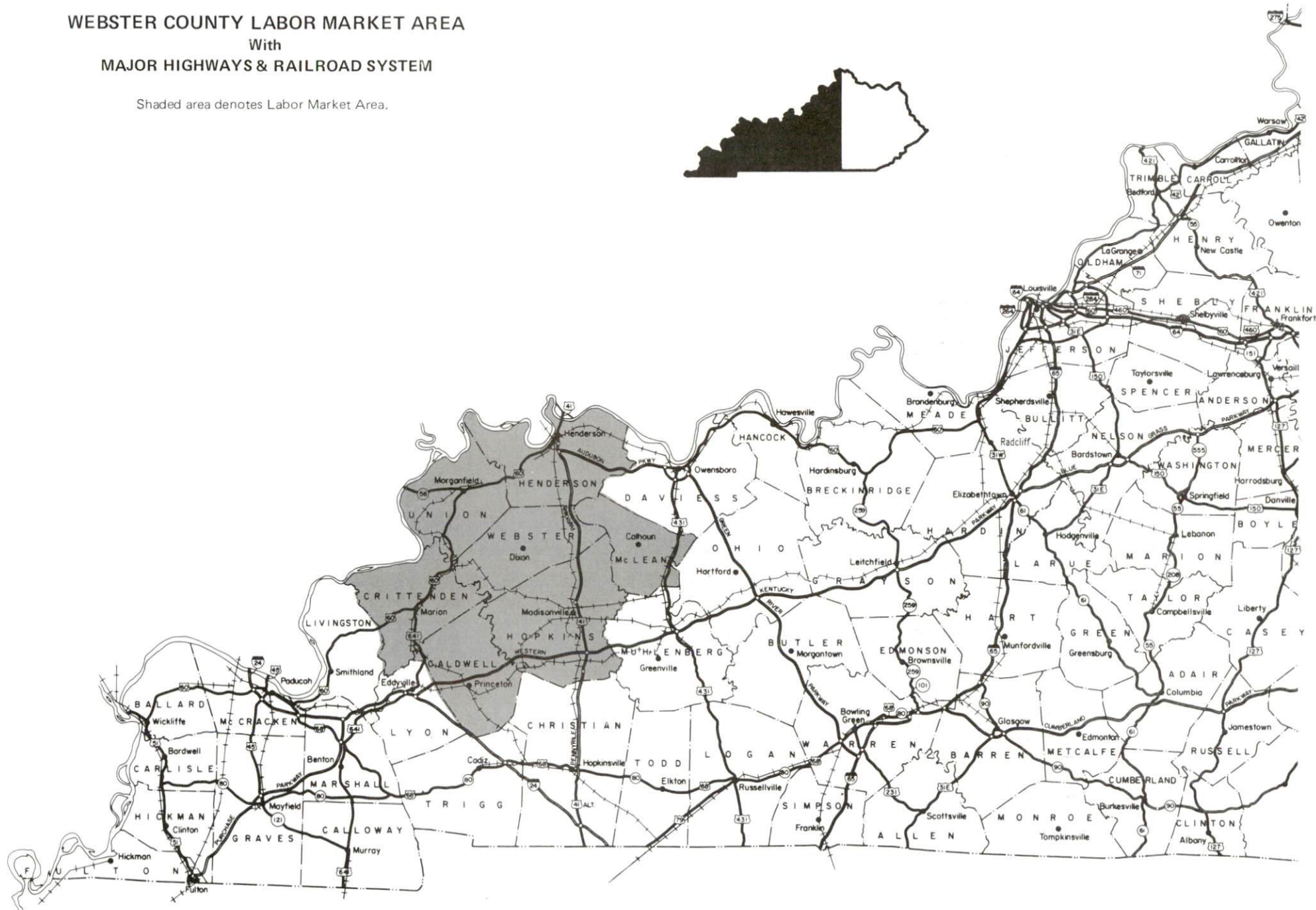
**Education** - The Providence Independent School System provides primary and secondary education to Providence. Clay, Dixon, Sebree, and unincorporated Webster County are served by the Webster County School System. Eight institutions of higher learning are located within 60 miles of Dixon. The Madisonville State Vocational-Technical School in Madisonville, 24 miles southeast of Dixon, and the Webster County Area Vocational Education Center, in Dixon, provide vocational training facilities for the area.



# WEBSTER COUNTY LABOR MARKET AREA

With  
MAJOR HIGHWAYS & RAILROAD SYSTEM

Shaded area denotes Labor Market Area.



## LABOR MARKET STATISTICS

The Webster County Labor Market Area includes Webster County and the adjoining Kentucky counties of Caldwell, Crittenden, Henderson, Hopkins, McLean, and Union.

POPULATION			
	<u>1988*</u>	<u>1980</u>	<u>1970</u>
Labor Market Area	150,800	152,446	134,096
Clay	1,250	1,356	1,426
Dixon	530	533	572
Providence	3,830	4,434	4,270
Sebree	1,300	1,516	1,092
Webster County	13,900	14,832	13,282

\* Population estimates.

Sources: U.S. Department of Commerce, Bureau of the Census, August 1989; November 1989.

POPULATION PROJECTIONS				
	<u>2000</u>	<u>2010</u>	<u>2020</u>	<u>2030</u>
Labor Market Area	154,210	156,190	156,030	153,210
Webster County	13,910	14,050	14,020	13,740

Source: University of Louisville, Urban Studies Center, State Data Center.

ESTIMATED LABOR SUPPLY					
	Current				Future
	<u>Total</u>	<u>Unemployed</u>	<u>Employed Part-Time</u>	<u>Not in Labor Force</u>	<u>Becoming 18 years of age 1990 thru 1994</u>
Labor Market Area*	19,651	4,684	7,069	7,898	11,318
Webster County	1,780	404	476	900	1,098

\* Additional workers may be drawn from other nearby counties.

Note: Unemployed - persons unemployed and actively seeking work; Employed Part-Time - persons employed but working only 14 to 26 weeks per year; Not in Labor Force - represents the number of persons who would enter the labor force if suitable employment were available (based on the assumption that persons in Kentucky would like to participate in the labor force in the same proportion that they do nationally).

Sources: Kentucky Cabinet for Human Resources, Kentucky Labor Supply Estimates by County, 1989. Kentucky Cabinet for Economic Development, Future Labor Supply Becoming 18 Years of Age, 1990 thru 1994.

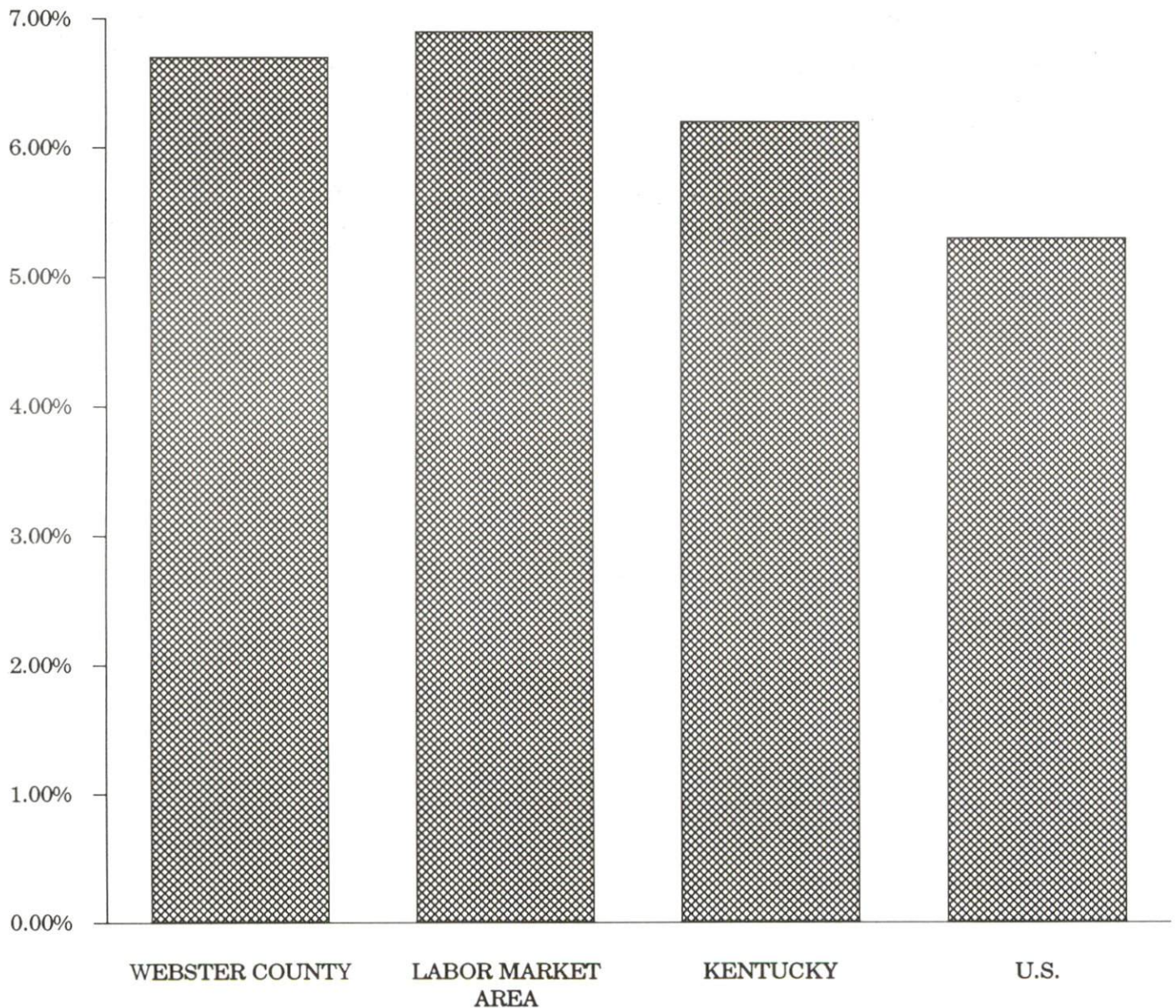


# LABOR FORCE CHARACTERISTICS OF RESIDENTS, 1989

	Webster County	Labor Market Area
Civilian Labor Force	6,021	67,761
Employment	5,617	63,077
Unemployment	404	4,684
Rate of Unemployment (%)	6.7	6.9

Source: Kentucky Cabinet for Human Resources, Kentucky Labor Force Estimates, Annual Averages, 1989.

## UNEMPLOYMENT RATES 1989

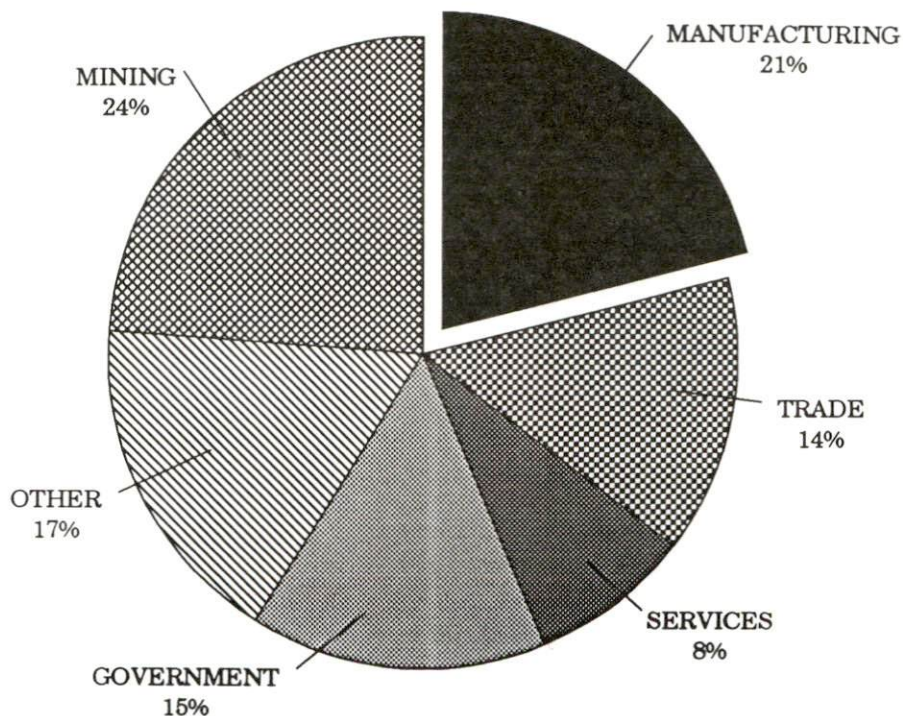


SELECTED COMPONENTS OF NONAGRICULTURAL EMPLOYMENT  
BY PLACE OF WORK, 1989

	<u>Webster County</u>	<u>Labor Market Area</u>
All Industries (total)	4,028	51,843
Manufacturing	855	12,851
Wholesale & Retail Trade	576	11,270
Services	334	10,505
State/Local Government	614	6,420
Mining & Quarrying	959	4,961

**Note:** Excludes domestic workers, railway workers, certain nonprofit corporations, majority of federal government workers, and self-employed workers.  
**Source:** Kentucky Cabinet for Human Resources, Average Monthly Workers Covered by Kentucky Unemployment Insurance Law, 1989.

WEBSTER COUNTY



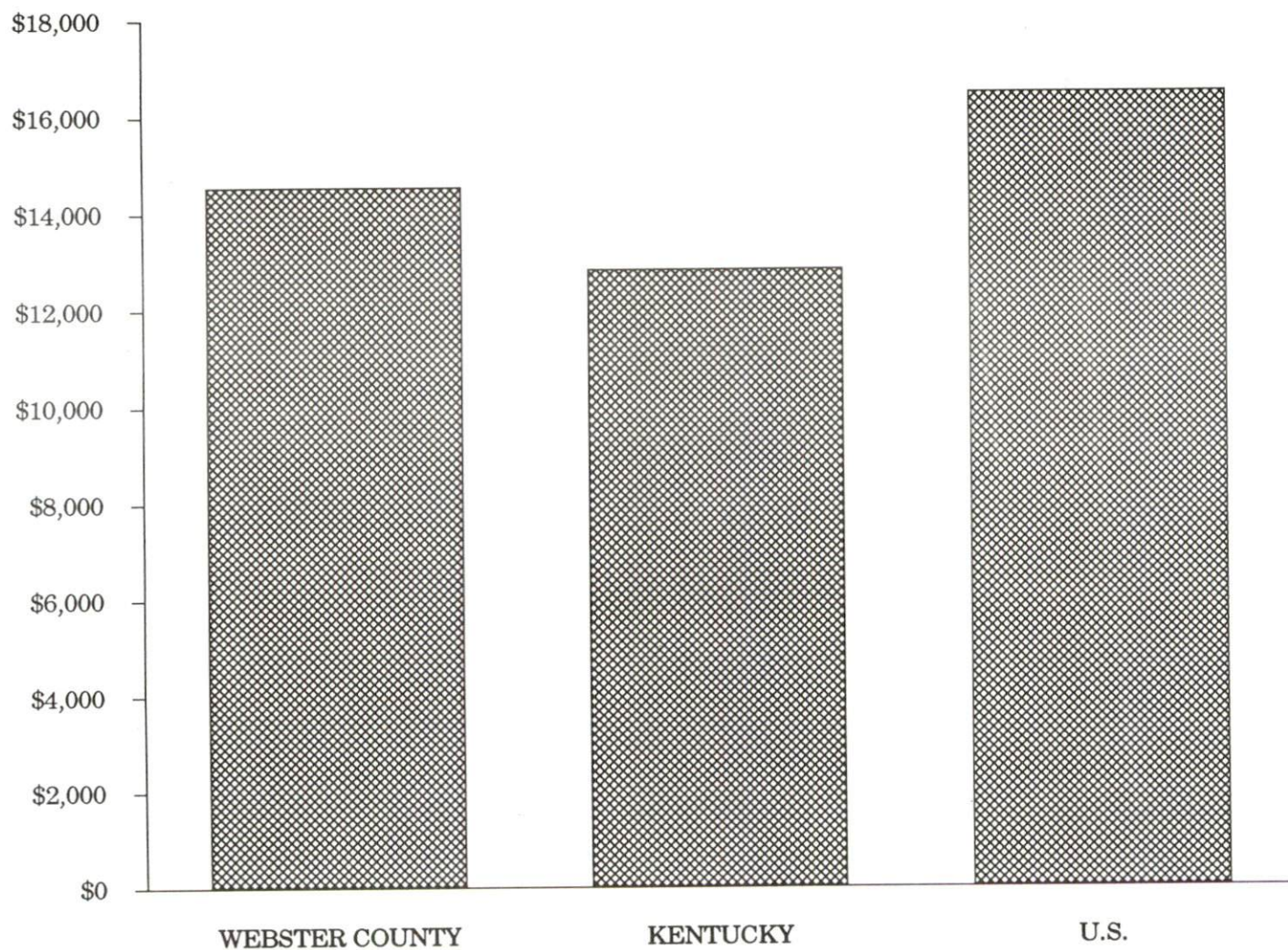


PER CAPITA PERSONAL INCOME

Area	1984	1988	Percent Change
Webster County	\$11,090	\$14,536	31.1
Labor Market Area Range	\$8,791 - \$12,436	\$10,345 - \$14,752	-
Kentucky	\$10,411	\$12,830	23.2
U.S.	\$13,116	\$16,490	25.7

Sources: U.S. Bureau of Economic Analysis, Kentucky Economic Information System, April 1990.

PER CAPITA PERSONAL INCOME  
1988



## AVERAGE PLACEMENT WAGES

---

Webster County is served by the Henderson local office of the Kentucky Department for Employment Services. The focus of the following data is on job placements made by the Henderson local office and may therefore be used as an indicator of the wages which employers in the area pay new employees. During the twelve months which ended on June 30, 1990, the local employment office filled 2,797 job openings in various occupational categories. The average hourly wage for selected occupational categories were:

<u>OCCUPATIONAL CATEGORY</u>	<u>NUMBER OF PLACEMENTS</u>	<u>AVERAGE WAGE(\$)</u>
All Occupations	2,797	4.50
Clerical	652	4.01
Sales	49	4.62
Services (excluding domestic)	917	3.78
Agricultural, Fishery, Forestry, etc.	172	4.04
Processing	476	4.97
Machine Trades	86	5.95
Bench Work	81	5.51
Structural	128	6.51
Motor Freight/ Transportation	35	6.86
Packaging and Materials Handling	125	4.35
Other	19	14.91

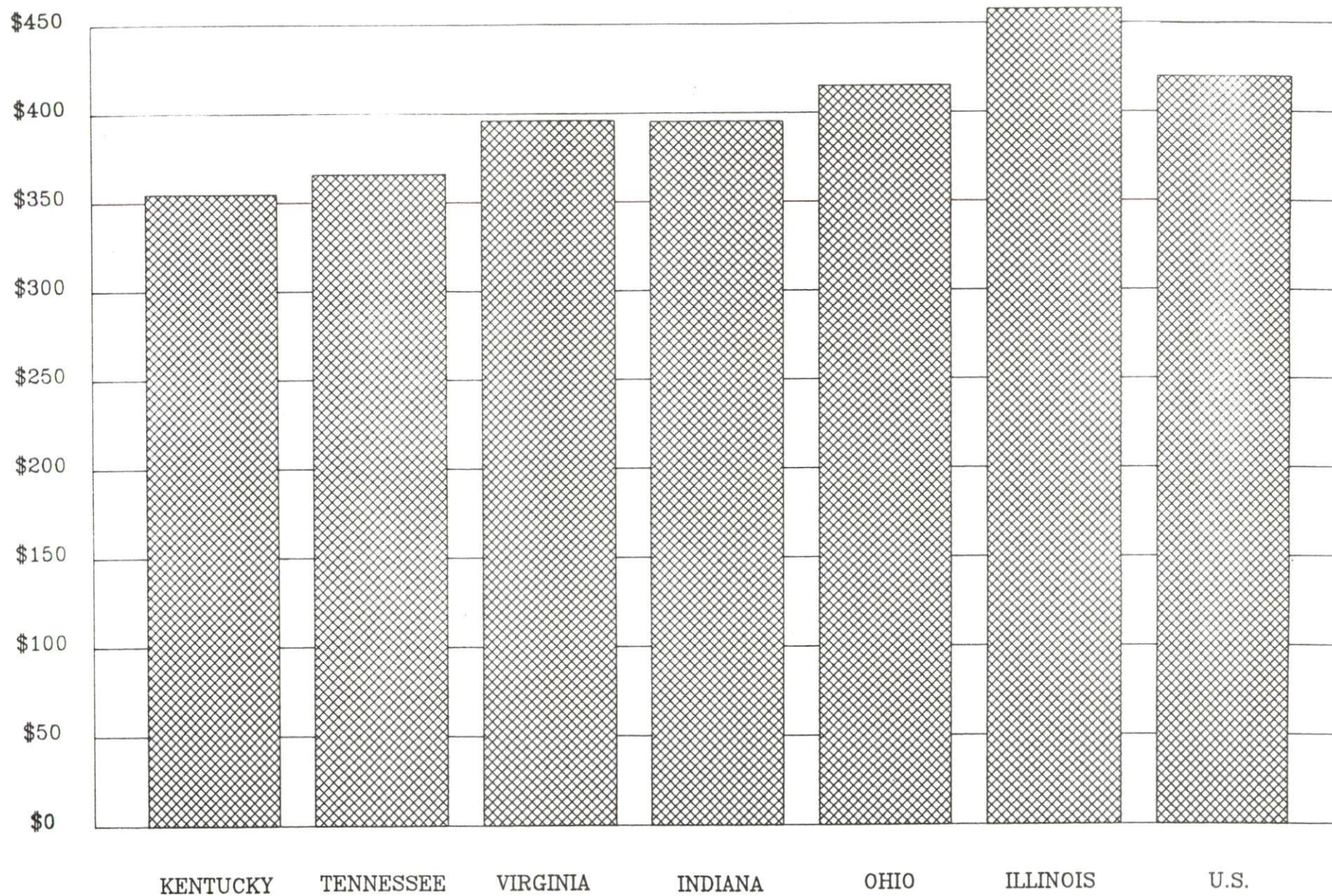
The Henderson local office also serves Henderson and Union Counties. The above occupational categories are taken from the Dictionary of Occupational Titles published by the U.S. Department of Labor.

---

Source: Kentucky Cabinet for Human Resources, Department for Employment Services.



AVERAGE WEEKLY WAGES OF WORKERS COVERED BY  
UNEMPLOYMENT INSURANCE — 1988





AVERAGE WEEKLY WAGES BY INDUSTRY  
BY PLACE OF WORK, 1988

	Webster County	Kentucky (State- Wide)	Tennessee	Virginia
All Industries	\$435.92	\$352.31	\$363.12	\$392.56
Mining & Quarrying	839.22	603.27	495.85	596.88
Contract Construction	230.40	380.71	394.27	422.27
Manufacturing	283.44	464.92	416.73	452.60
Transportation, Communications & Public Utilities	538.89	468.17	485.13	554.17
Wholesale & Retail Trade	221.15	238.88	N/A	N/A
Finance, Insurance & Real Estate	281.05	401.17	269.27	466.23
Services	185.35	298.98	343.48	391.67
State/Local Government	296.36	377.81	403.21	457.00
	<u>Indiana</u>	<u>Ohio</u>	<u>Illinois</u>	<u>U. S.</u>
All Industries	\$392.63	\$411.08	\$454.10	\$416.33
Mining & Quarrying	635.77	579.73	674.62	660.40
Contract Construction	449.87	465.46	584.10	469.85
Manufacturing	532.06	569.98	555.83	517.62
Transportation, Communications & Public Utilities	502.69	519.17	584.83	542.33
Wholesale & Retail Trade	N/A	N/A	N/A	N/A
Finance, Insurance & Real Estate	406.58	444.33	579.88	532.52
Services	317.98	348.48	402.38	384.31
State/Local Government	395.31	428.10	453.12	442.71

\* Not disclosed.

N/A Not Available.

Note: The average weekly wage for each category includes the salaries and wages of all persons working for that type business. For example, the manufacturing category includes both production workers and administrative personnel. Excludes domestic workers, railway workers, certain nonprofit corporations, majority of federal government workers, and self-employed workers.

Source: Kentucky Cabinet for Human Resources, Average Weekly Wages of Workers Covered by Kentucky Unemployment Insurance Law, 1988. U.S. Department of Labor, Bureau of Labor Statistics, Average Annual Pay by State and Industry, August 29, 1989.



## EXISTING INDUSTRY

### WEBSTER COUNTY MANUFACTURING FIRMS, THEIR PRODUCTS AND EMPLOYMENT

<u>Firm</u> <u>(Establishment date)</u>	<u>Product</u>	<u>1990</u> <u>Average Employment</u>
<b>Clay</b>		
Clay Machine Works, Inc. (1967)	Welding, machine shop, cylinder parts, mining and farm machine parts	16
Crop Production Services (1964)	Fertilizer blending	4
<b>Dixon</b>		
Pioneer Plastics (1981)	Molding, custom injection	70
<b>Providence</b>		
Carhartt, Inc. (1981)	Work clothing, men's outerwear	209
Dapco, Inc. (1989)	Personnel carriers for underground coal mines	3
Hawk Industries (1988)	Mine and machine fabrication	26
Hoov-R-Line (1974)	Plastic plumbing parts	120
The Journal-Enterprise, Inc. (1902)	Newspaper	8
Northern Printing and Office Supplies (1973)	Job printing	4
Providence Machine, Inc. (1956)	Machine shop, metal fabrication, mining machinery parts	25
Quality Fabrication, Inc. (1982)	Metal fabrication, machine	26
Tri-Valley Plastics (1990)	Plastics injection molding	81
West Kentucky Steel Construction (1958)	Steel fabrication	20

(Continued)

<u>Firm</u> <u>(Establishment date)</u>	<u>Product</u>	<u>1990</u> <u>Average Employment</u>
<b>Sebree</b>		
Carhartt Midwest, Inc. Sebree Division (1973)	Men's work clothing	180
Scott Manufacturing Company (1963)	Auto and appliance fiberglas insulation	23
The Sebree Banner (1892)	Newspaper, commercial printing	4
Winiger White Corn Company (1990)	Processing blue, white, and yellow corn	12
<b>Wheatcroft</b>		
Da-Co Machine and Steel Fabrication, Inc. (1977)	Steel fabrication, mine equipment repair	14

Sources: Kentucky Cabinet for Economic Development, Division of Research and Planning; Webster County Economic Development Corporation.

### RECENT INDUSTRIAL DEVELOPMENTS

Recent manufacturing firm locations in Webster County include: Tri-Valley Plastics, Hawk Industries, Winiger White Corn Company, and Dapco, Inc. These four businesses created more than 120 new jobs.

### LABOR ORGANIZATIONS IN MANUFACTURING FIRMS

<u>Union</u>	<u>Representing workers at:</u>
United Garment Workers of America, AFL-CIO	Carhartt, Inc. (Providence plant); Carhartt Midwest, Inc., Sebree Division
United Steelworkers of America, AFL-CIO-CLC	Hoov-R-Line

## SELECTED INDUSTRIAL SERVICES

<u>Types of Services</u>	<u>Location</u>	<u>Mileage from Dixon</u>
Custom Data Processing	Henderson, Kentucky	26
Custom Plastics Producers	Dixon, Kentucky	-
	Providence, Kentucky	11
Electric Motor Repair	Madisonville, Kentucky	24
	Henderson, Kentucky	26
Grinding, Precision & Tool	Corydon, Kentucky	22
Heat Treating Facilities	Evansville, Indiana	36
Industrial Equipment & Supplies	Madisonville, Kentucky	24
Industrial Gases	Madisonville, Kentucky	24
	Henderson, Kentucky	26
Industrial Waste Removal	Henderson, Kentucky	26
Machine Shops, Tool & Die	Clay, Kentucky	9
Metal Castings	Robards, Kentucky	21
Metal Finishers	Livermore, Kentucky	38
Metal Service Centers	Greenville, Kentucky	51
Millwrights	Evansville, Indiana	36
Public Warehouse Facilities	Henderson, Kentucky	26

Sources: Kentucky Cabinet for Economic Development, Kentucky Directory of Selected Industrial Services, 1987; Division of Research and Planning.

## TRANSPORTATION

### Highways

Major highways serving Webster County include the Pennyriple Parkway, U.S. 41, U.S. 41 Alternate, Kentucky 56, and Kentucky 109. An interchange with the Pennyriple Parkway, a multi-lane toll road, is located two miles east of Sebree. The Pennyriple Parkway provides access to the Audubon Parkway to the north and the Western Kentucky Parkway to the south. Interchanges with the Western Kentucky Parkway are located 16 miles south of Providence via Kentucky 109.

#### HIGHWAY MILES FROM DIXON, KENTUCKY, TO SELECTED MARKET CENTERS

City	Highway Miles	City	Highway Miles
Atlanta, GA	373	Los Angeles, CA	2,031
Baltimore, MD	746	Louisville, KY	147
Birmingham, AL	319	Nashville, TN	132
Chicago, IL	326	New Orleans, LA	625
Cincinnati, OH	248	New York, NY	907
Cleveland, OH	495	Pittsburgh, PA	535
Detroit, MI	483	St. Louis, MO	203
Knoxville, TN	310		

Note: Mileage computations are via the best interstate or primary highways, not necessarily the most direct route of travel.

Sources: Rand McNally Deluxe Motor Carriers' Road Atlas, 1989. Official Kentucky Mileage Map, 1980.

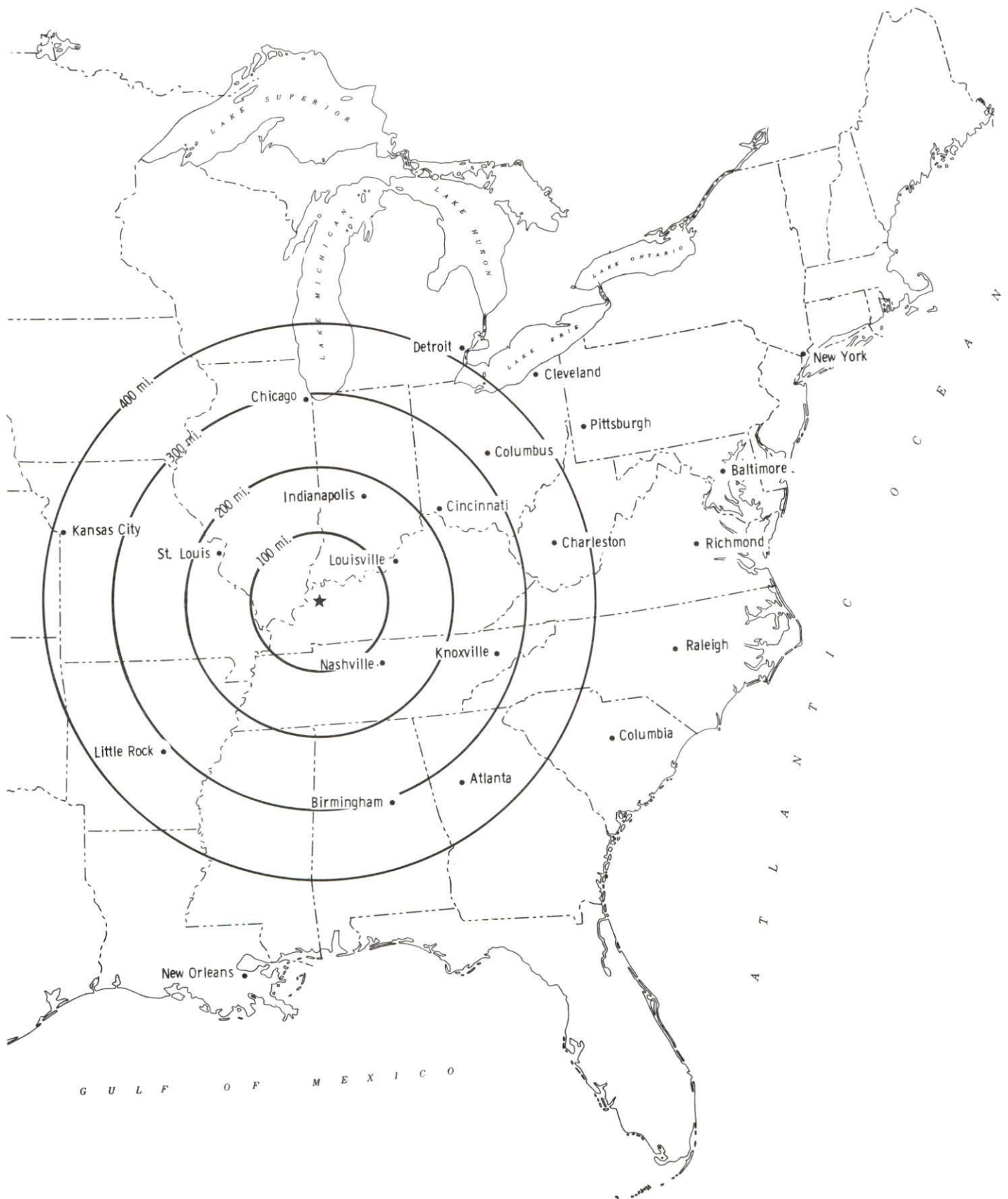
### Truck Service

Twenty-seven common carrier trucking companies provide interstate and/or intrastate service to Webster County.

Source: American Motor Carrier Directory, Fall 1990.



# Selected Market Centers



## Rail

Webster County is served by an excellent network of rail companies. CSX Transportation provides main line rail service to Sebree and branch line service to Providence. Tradewater Railway provides main line service to Providence and branch line service to Clay. CSX Transportation provides the nearest piggyback facilities at Evansville, Indiana, 36 miles north of Dixon.

For details on routing, schedules, rates, and services contact:

Manager  
Industrial Development  
CSX Transportation  
9420 Bunsen Parkway  
Suite 212  
Louisville, Kentucky 40220  
(502) 499-3025

and/or

Tradewater Railway  
P.O. Box 66  
Sturgis, Kentucky 42459  
(502) 333-4151

## Air

### Local

Location:	Providence-Webster County Airport
Runways:	2 miles northeast of Providence
Length:	1 paved
Traffic	3,800 feet
Control:	Lighted wind sock, unicom 122.8
Lighting:	Radio activated lighting system, rotating beacon
Services:	100 octane LL fuel, car rental, tie down, hangar, office and lounge

### Nearest Scheduled Commercial Airline Service

Location:	Evansville Regional Airport
	3 miles north of Evansville, Indiana;
	39 miles north of Dixon
Air Service:	American Eagle, ComAir, TransWorld Express, Northwest Link, USAir, United Express
Daily Arrivals & Departures:	88

## Water

The nearest navigable river is the Green River at Sebree, where a 9-foot navigation channel is maintained to the Ohio River. A private rail-served terminal at Sebree will contract with any manufacturer for use of loading and unloading facilities on the Green River.

## UTILITIES

### Electricity

Company serving Clay, Dixon, Sebree, and parts of Webster County -  
Kentucky Utilities Company  
Source of power - Kentucky Utilities Company  
For industrial rates contact:

Industrial Development Department  
Kentucky Utilities Company  
One Quality Street  
Lexington, Kentucky 40507  
(606) 255-1461

Company serving Providence - Providence Municipal Light and Water  
Company  
Source of power - Kentucky Utilities Company  
For industrial rates contact:

Providence Municipal Light and Water  
Company  
P.O. Box 128  
Providence, Kentucky 42450  
(502) 667-2511

The Providence Municipal Light and Water Company recently renovated its electric transformers, transmission lines, disconnections, and installed new street lights.

Companies serving Webster County - Green River Electric Corporation  
and Henderson-Union Rural Electric Cooperative Corporation  
Source of power - Big Rivers Electric Corporation  
For industrial rates contact:

Green River Electric Corporation  
P.O. Box 1389  
Owensboro, Kentucky 42302  
(502) 926-4141

and/or

Henderson-Union Rural Electric  
Cooperative Corporation  
P.O. Drawer 18  
Henderson, Kentucky 42420  
(502) 826-3991 or (800) 242-7069

### Natural Gas

Company serving Clay - Clay Gas System  
Source of supply - Texas Gas Transmission Corporation  
For rates and supplies contact:

Clay Gas System  
North Main Street  
P.O. Box 425  
Clay, Kentucky 42404  
(502) 664-2444

Company serving **Providence** - Providence Municipal Gas Company  
Source of supply - Texas Gas Transmission Corporation  
For rates and supplies contact:

Providence Municipal Gas Company  
P.O. Box 128  
Providence, Kentucky 42450  
(502) 667-2511

Company serving **Sebree** - Western Kentucky Gas Company  
Source of supply - Texas Gas Transmission Corporation  
For rates and supplies contact:

Western Kentucky Gas Company  
311 West Seventh Street  
P.O. Box 866  
Owensboro, Kentucky 42302  
(502) 685-8067

### Public Water Supply

Company serving **Clay** - Clay Water System  
P.O. Box 425  
Clay, Kentucky 42404  
(502) 664-2444

Source -	Webster County Water District
Average daily consumption -	100,000 gallons
Peak daily consumption -	170,000 gallons
Storage capacity -	555,000 gallons
Water pressure -	30 psi to 60 psi

Company serving **Providence** - Providence Municipal Light and Water Company  
P.O. Box 128  
Providence, Kentucky 42450  
(502) 667-2170

Source -	Two lakes, Tradewater River
Treatment plant capacity -	1,500,000 gallons per day
Average daily consumption -	700,000 gallons
Peak daily consumption -	1,000,000 gallons
Storage capacity -	700,000 gallons (including clear well)
Water pressure -	72 psi to 80 psi



Company serving Sebree - City of Sebree Water System  
P.O. Box 245  
305 Spring Street  
Sebree, Kentucky 42455  
(502) 835-7501

Source - Green River (Alcan Aluminum Company)  
Average daily consumption - 125,000 gallons  
Peak daily consumption - 150,000 gallons  
Storage capacity - 315,000 gallons  
Water pressure - 75 psi to 100 psi

The City of Sebree purchases treated water from the Alcan Aluminum Company. Under the current contractual agreement, the City of Sebree is permitted to purchase an unlimited amount of water per day.

Name of water district - Webster County Water District  
Route 2, Box 111A, Davis Road  
Sebree, Kentucky 42455  
(502) 884-3395 or (502) 884-3879

Area served - Southeastern, northern, central and western parts of Webster County

Source of raw water - Two wells  
Capacity of treatment plant - 864,000 gallons per day  
Average daily consumption - 525,000 gallons  
Peak daily consumption - 864,000 gallons  
Storage capacity - 731,000 gallons  
Water pressure - 35 psi to 150 psi

Webster County Water District plans a project which will double the capacity of its treatment plant.

## Sewerage

Company serving Clay - Clay Sewerage System  
P.O. Box 425  
Clay, Kentucky 42404  
(502) 664-2444

Design capacity - 200,000 gallons per day  
Average daily flow - 100,000 gallons  
Type of treatment - Primary  
Treated effluent discharged into - Crab Orchard Creek

Company serving Providence - Providence Municipal Light and Water  
Company  
P.O. Box 128  
Providence, Kentucky 42450  
(502) 667-2170

Design capacity - 450,000 gallons per day  
Average daily flow - 350,000 gallons  
Type of treatment - Primary and secondary  
Treated effluent discharged into - Owens Creek to Tradewater River

The Providence Municipal Light and Water Company plans to construct a 1.15 million-gallon-per-day wastewater treatment facility in Providence. The \$3 million project is scheduled for completion by December 1992.

Company serving Sebree - Sebree Wastewater Treatment Plant  
305 Spring Street  
P.O. Box 245  
Sebree, Kentucky 42455  
(502) 835-7501

Design capacity - 130,000 gallons per day  
Average daily flow - 110,000 gallons  
Type of treatment - Primary  
Treated effluent discharged into - Mock Roy Creek

The City of Sebree is in the process of extending sewer service to several businesses on U.S. Highway 41 north of Sebree. Total cost of the project will approximate \$65,000.

## CLIMATE

### Webster County

#### Temperature

Normal (30-year record)	55.70 degrees
Average annual 1988	55.60 degrees
Record highest, July 1954 (48-year record)	105.00 degrees
Record lowest, February 1951 (48-year record)	-23.00 degrees
Normal heating degree days (30-year record)	4,729
(Heating degree day totals are the sums of negative departures of average daily temperatures from 65 degrees F.)	

#### Precipitation

Normal (30-year record)	41.55 inches
Mean annual snowfall (48-year record)	13.90 inches
Total precipitation 1988	38.43 inches
Mean number days precipitation (.01 inch or more) (48-year record)	115.20
Mean number days thunderstorms (48-year record)	44.90

#### Prevailing winds (through 1963)

South-Southwest

#### Relative Humidity (27-year record)

Midnight	78 percent
6 a.m.	81 percent
Noon	59 percent
6 p.m.	62 percent

Source: U.S. Department of Commerce, Environmental Science Services Administration, Climatological Data, 1988. Station of record: Evansville, Indiana.



## LOCAL GOVERNMENT

### Structure

Clay, Providence and Sebree are each governed by a mayor and six council members. The City of Dixon is governed by a mayor and four commissioners. The mayor for each city is elected to a four-year term while the council members or commissioners each serve two-year terms.

Webster County is served by a county judge/executive and three magistrates. Each county official serves a four-year term.

### Planning and Zoning

City agency - Providence Planning Commission

Zoning enforced - Within city and 2.5 miles beyond the corporate limits

Subdivision regulations enforced - Within city limits and 2.5 miles beyond the corporate limits

Mandatory state codes enforced - Kentucky Plumbing Code, National Electric Code, Kentucky Boiler Regulations and Standards, Kentucky Building Code (modeled after BOCA code)

### Local Fees and Licenses

The City of Clay levies an unloading fee ranging from \$10.50 to \$15.50 and also levies an eight percent insurance premium tax on policies written within the city. The City of Providence levies a \$7.50 annual automobile license fee. The City of Sebree levies business license fees ranging from \$31.25 to \$70.00. Automobile license fees are \$10.00 annually. An optional fire card is available for \$25.00, which provides fire protection to residents and businesses outside of Sebree, within a ten-mile radius.

## State and Local Property Taxes

All property in Kentucky, except items exempted by the state constitution, is taxed by the state. Property which also may be taxed by local jurisdictions includes land and buildings, finished goods inventories, automobiles, trucks, office furniture and office equipment. Local taxing jurisdictions in Kentucky include counties, cities, and school districts.

All property in Kentucky is assessed at 100 percent of fair cash value.

### COMBINED STATE AND LOCAL RATES PER \$100 VALUATION, 1989

	Clay	Dixon	Sebree
Land and Buildings	\$0.8650	\$0.7920	\$0.9250
Manufacturing			
Machinery	0.1500	0.1500	0.1500
Pollution Control			
Equipment	0.1500	0.1500	0.1500
Inventories			
Raw Materials	0.0010	0.0010	0.0010
Goods in Process	0.0010	0.0010	0.0010
Finished Goods	0.6838	0.6168	0.7438
Automobiles & Trucks	1.1428	1.0758	1.2028
Other Tangible			
Personal Property	1.1328	1.0658	1.1928
Intangibles (Accounts			
receivable*, money			
in hand, stock,			
notes, bonds)	0.2500	0.2500	0.2500
Goods Stored in Public			
Warehouses in Transit			
Status	0.0010	0.0010	0.0010
Private Leaseholds in			
Industrial Revenue			
Bond Financed			
Facilities	0.0150	0.0150	0.0150

COMBINED STATE AND LOCAL RATES PER \$100 VALUATION, 1989

	Providence and Within the Providence School District	Providence and Within the Webster County School District	Unincorporated Webster County
Land and Buildings	\$1.1850	\$1.0950	\$0.5950
Manufacturing			
Machinery	0.1500	0.1500	0.1500
Pollution Control			
Equipment	0.1500	0.1500	0.1500
Inventories			
Raw Materials	0.0010	0.0010	0.0010
Goods in Process	0.0010	0.0010	0.0010
Finished Goods	1.0038	0.9138	0.4138
Automobiles & Trucks	1.4578	1.3728	0.8728
Other Tangible			
Personal Property	1.4528	1.3628	0.8628
Intangibles (Accounts			
receivable*, money			
in hand, stock,			
notes, bonds)	0.2500	0.2500	0.2500
Goods Stored in Public			
Warehouses in Transit			
Status	0.0010	0.0010	0.0010
Private Leaseholds in			
Industrial Revenue			
Bond Financed			
Facilities	0.0150	0.0150	0.0150

\* Accounts receivable are taxed at 85 percent of face value, for an effective rate of \$0.2125 per \$100 valuation.



## EDUCATION

### Public Schools

	Providence Independent	Webster County
Total Enrollment (Fall, 1989)	592	2,204
Pupil-Teacher Ratio (1988-89)	17.9-1	19.2-1
Percent High School Graduates to College (1988-89)	27.8	49.7
Expenditures Per Pupil (1988-89)	\$2,444.40	\$2,405.29

### Area Colleges and Universities

<u>Name</u>	<u>Location (Miles distant)</u>	<u>Enrollment (Fall, 1989)</u>
Madisonville Community College	Madisonville, Kentucky (24)	1,960
Henderson Community College	Henderson, Kentucky (26)	1,246
University of Evansville	Evansville, Indiana (36)	3,290
University of Southern Indiana	Evansville, Indiana (36)	5,713
Brescia College	Owensboro, Kentucky (55)	689
Kentucky Wesleyan College	Owensboro, Kentucky (55)	716
Owensboro Community College	Owensboro, Kentucky (55)	2,125
Hopkinsville Community College	Hopkinsville, Kentucky (58)	1,877

## Vocational Training

Vocational training is available at both the state vocational-technical schools and the area vocational education centers. The state vocational-technical schools are post-secondary institutions. The area vocational education centers are designed to supplement the curriculum of high school students. Both the state vocational-technical schools and the area vocational education centers offer evening courses to enable working adults to upgrade current job skills.

Arrangements can be made to provide training in the specific production skills required by an industrial plant. Instruction may be conducted either in the vocational school or in the industrial plant, depending upon the desired arrangement and the availability of special equipment.

### Bluegrass State Skills Corporation

The Bluegrass State Skills Corporation, an independent public corporation created and funded by the Kentucky General Assembly, provides programs of skills training to meet the needs of business and industry from entry level to advanced training, and from upgrading present employees to retraining experienced workers.

The Bluegrass State Skills Corporation is the primary source for skills training assistance for a new or existing company. The Corporation works in partnership with other employment and job training resources and programs, as well as Kentucky's economic development activities, to package a program customized to meet the specific needs of a company.

<u>Vocational School</u>	<u>Location (Miles distant)</u>	<u>Cumulative Enrollment 1988-1989</u>
Madisonville State Vocational- Technical School	Madisonville, Kentucky (24)	463
Webster County Area Vocational Education Center	Dixon, Kentucky	270

## OTHER LOCAL FACILITIES

### Local Medical Personnel

Physicians - 5  
Dentists - 3

### Hospitals

<u>General Hospital</u>	<u>Location</u>	<u>Beds</u>
Regional Medical Center of Hopkins County	Madisonville, 24 miles southeast of Dixon	410
Community Methodist Hospital	Henderson, 26 miles north of Dixon	213

#### Regional Medical Center of Hopkins County

Medical staff - 85 active staff physicians, 26 courtesy staff physicians,  
336 registered nurses; 115 licensed practical nurses

#### Community Methodist Hospital

Medical staff - 64 active staff physicians, 25 courtesy staff physicians,  
143 registered nurses; 60 licensed practical nurses

### Other Medical Facilities and Services

Community Methodist Ambulatory Center (Dixon)  
Sebree Medical Center  
Trover Clinic (Providence)  
Webster County Health Department (Dixon)  
Providence Fire Department (provides ambulance service)  
City of Sebree Emergency Medical Service  
Webster County Ambulance Service (units in Clay and Dixon)

### Banks and Savings and Loan Associations

Dixon Bank  
Farmers Bank (Clay)  
Poole Deposit Bank  
Providence State Bank  
Sebree Deposit Bank

### Newspapers

Journal Enterprise - Providence (weekly)  
The Sebree Banner - Sebree (weekly)

### Telephone Service

South Central Bell Telephone Company



## RECREATION

### Local

Baker Park in Dixon includes a fishing lake and a little league field. Dixon Park features basketball and tennis courts, a baseball field, a picnic shelter, and concessions.

Westerfield Memorial Park in Providence contains picnic shelters and grills, a concession stand, restrooms, three baseball diamonds, two tennis courts, a basketball court, track and a playground. The Legion park contains a baseball diamond, Christian Youth Center, horse show ring and is the location of the annual Coal Festival.

The 30-acre Sebree Springs Park in Sebree features a swimming pool, two tennis courts, volleyball courts, a baseball diamond, a pee-wee baseball diamond, a basketball court, a pavilion, a picnic area, three shelter houses, a horse show ring and playground equipment. Sebree Elementary School offers a football field.

The Clay Community park in Clay is a 10-acre public park containing two lighted baseball fields with bleachers, playground equipment, two tennis courts, concession stands, barbecue pit, and community building.

### Area (Within 35 miles)

Just north of Henderson, 28 miles north of Dixon, is the John James Audubon State Park, a 692-acre park where the famed naturalist gathered material for his painting, "The Birds of America." Many paintings by Audubon and his sons, and 126 first-edition prints of his paintings are on display at the Audubon Memorial and Nature Museum which is the focal point of the park. Other park features include the Audubon woods, a bird sanctuary, and a 12-acre nature preserve lake. The park has cottages and camping sites. Recreational facilities include a 28-acre recreational lake, a beach and a bathhouse, rental rowboats and pedal boats, a dock, a 9-hole golf course, a tennis court, hiking trails, picnic shelters, planned recreation, and playgrounds. Organized recreation programs are offered during the summer.

Pennyrile Forest State Resort Park near Dawson Springs is located 33 miles south of Dixon. The 24-room lodge, 13 cottages, and 68 campsites nestled within the trees provide excellent accommodations. Other facilities and activities include a dining room, a gift shop, rental rowboats and pedal boats, a 9-hole golf course, miniature golf, hiking trails, horseback riding, picnicking, playgrounds, shuffleboard, swimming at the lodge pool and at the sand beach, and two tennis courts. Lake Beshear, only four miles from the lodge, sports good fishing.

## COMMUNITY IMPROVEMENTS

Recent manufacturing firm locations in Webster County include: Tri-Valley Plastics, Hawk Industries, Winiger White Corn Company, and Dapco, Inc. These four businesses created more than 120 new jobs.

The Providence Municipal Light and Water Company recently renovated its electric transformers, transmission lines, disconnections, and installed new street lights.

The City of Providence recently constructed a 3,200-square-foot community center. The \$95,000 public facility provides space for meetings, banquets, senior citizen and youth activities.

The City of Sebree is in the process of extending sewer service to several businesses on U.S. Highway 41 north of Sebree. Total cost of the project will approximate \$65,000.

The Providence Municipal Light and Water Company plans to construct a 1.15 million-gallon-per-day wastewater treatment facility in Providence. The \$3 million project is scheduled for completion by December 1992.

Webster County Water District plans a project which will double the capacity of its treatment plant.