

1981

Industrial Resources: Allen County - Scottsville

Kentucky Library Research Collections
Western Kentucky University, spcol@wku.edu

Follow this and additional works at: https://digitalcommons.wku.edu/allen_cty

 Part of the [Business Administration, Management, and Operations Commons](#), [Growth and Development Commons](#), and the [Infrastructure Commons](#)

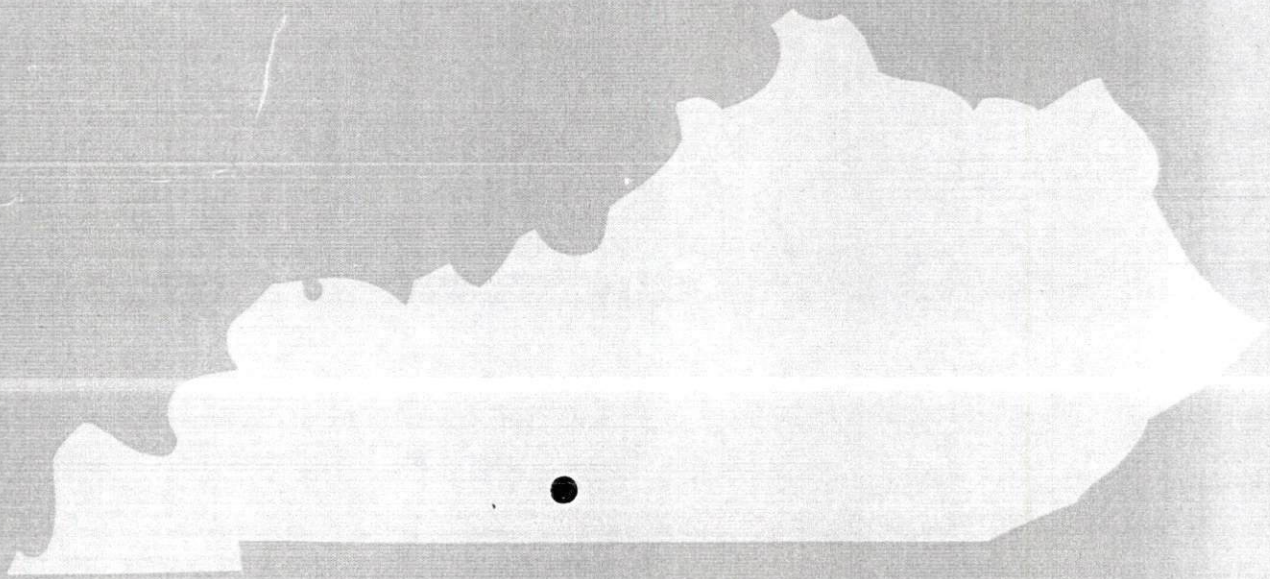
Recommended Citation

Kentucky Library Research Collections, "Industrial Resources: Allen County - Scottsville" (1981). *Allen County*. Paper 15.
https://digitalcommons.wku.edu/allen_cty/15

This Report is brought to you for free and open access by TopSCHOLAR®. It has been accepted for inclusion in Allen County by an authorized administrator of TopSCHOLAR®. For more information, please contact topscholar@wku.edu.

Allen County

A comprehensive
report on
Scottsville, Ky.

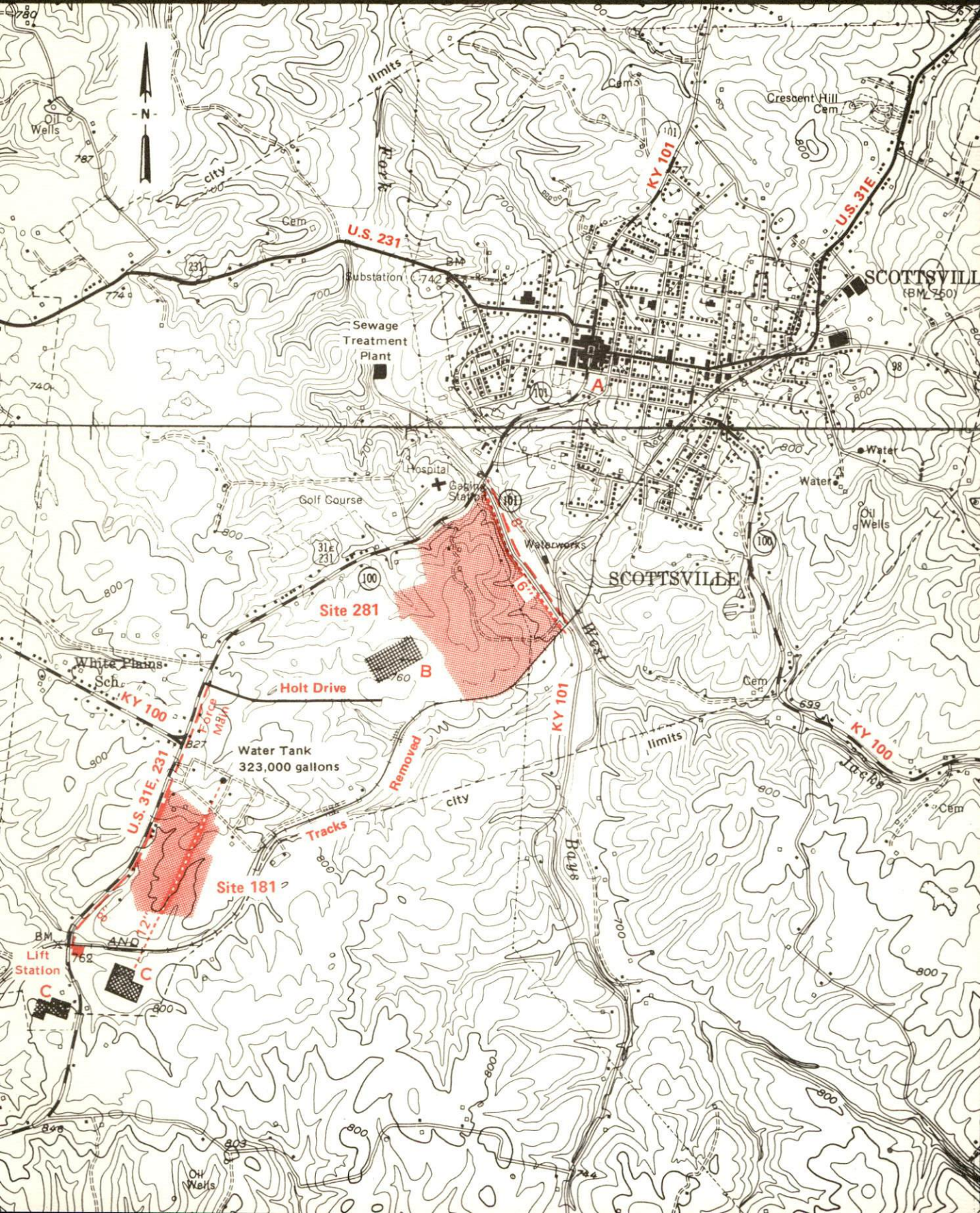


KENTUCKY & CO.
The state that's run like a business.

For more information contact The Department of Economic Development, Industrial Development Division, Capital Plaza Tower, Frankfort, Kentucky 40601 (502-564-7140).

SCOTTSVILLE, KENTUCKY

Industrial Sites --- 1981



Site 181 - 38.3 Acres

LOCATION: Within southwest city limits
ZONING: Not zoned
HIGHWAY ACCESS: U.S. 31E, 231 adjacent to western boundary
RAILROAD: Not rail served
WATER: Scottsville Water Department
 Size Line: 12-inch line passes through site
NATURAL GAS: Scottsville Gas Department
 Size Line: 6-inch line along western boundary
ELECTRICITY: Tri-County Electric Membership Corporation
SEWERAGE: Scottsville Sewer Plant
 Size Line: Lift station approximately 1100 feet southwest
OWNERSHIP: Private

Site 281 - 90.7 Acres

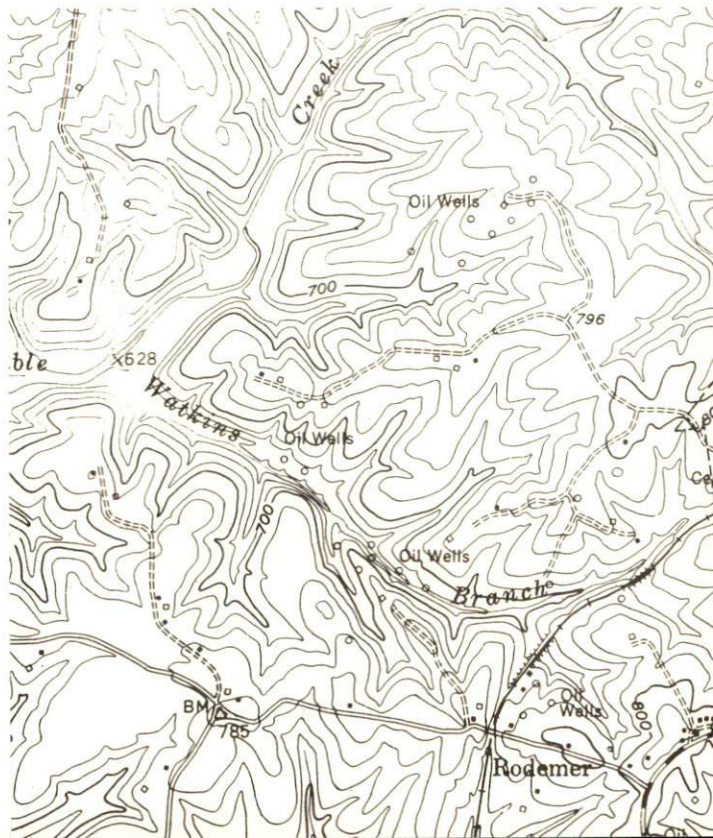
LOCATION: Within central city limits
ZONING: Not zoned
HIGHWAY ACCESS: U.S. 31E, 231, KY 100 adjacent to northern boundary; KY 101 adjacent to eastern boundary
RAILROAD: Not rail served
WATER: Scottsville Water Department
 Size Line: 6-inch line along eastern boundary
NATURAL GAS: Scottsville Gas Department
 Size Line: 6-inch line along northern boundary
ELECTRICITY: Tri-County Electric Membership Corporation
SEWERAGE: Scottsville Sewer Plant
 Size Line: 8-inch line along east side of KY 101
OWNERSHIP: Private

SCALE: 1 inch = 2000 feet
CONTOUR INTERVAL: 20 feet
BASE: USGS 7.5 minute series - 1954

UTILITIES
- - - - - Water Line
- - - - - Sewer Line

Existing Industries

- A** Washington Overall Mfg. Co.
- B** General Electric Co.
- C** Scotscraft Inc.



A COMPREHENSIVE REPORT ON
SCOTTSVILLE, KENTUCKY

Prepared by
The Kentucky Department of Commerce
Division of Research and Planning
in cooperation with
The Scottsville/Allen County Chamber of Commerce

1981

Program manager - Brenda Roberts; research - John McMurray; clerical - Linda Fint; graphics - Frank Ferrante, Tony Cecconi, Jimmy Thompson; cartography - Site Evaluation Section, Division of New Industries. Cost of printing paid from state funds.

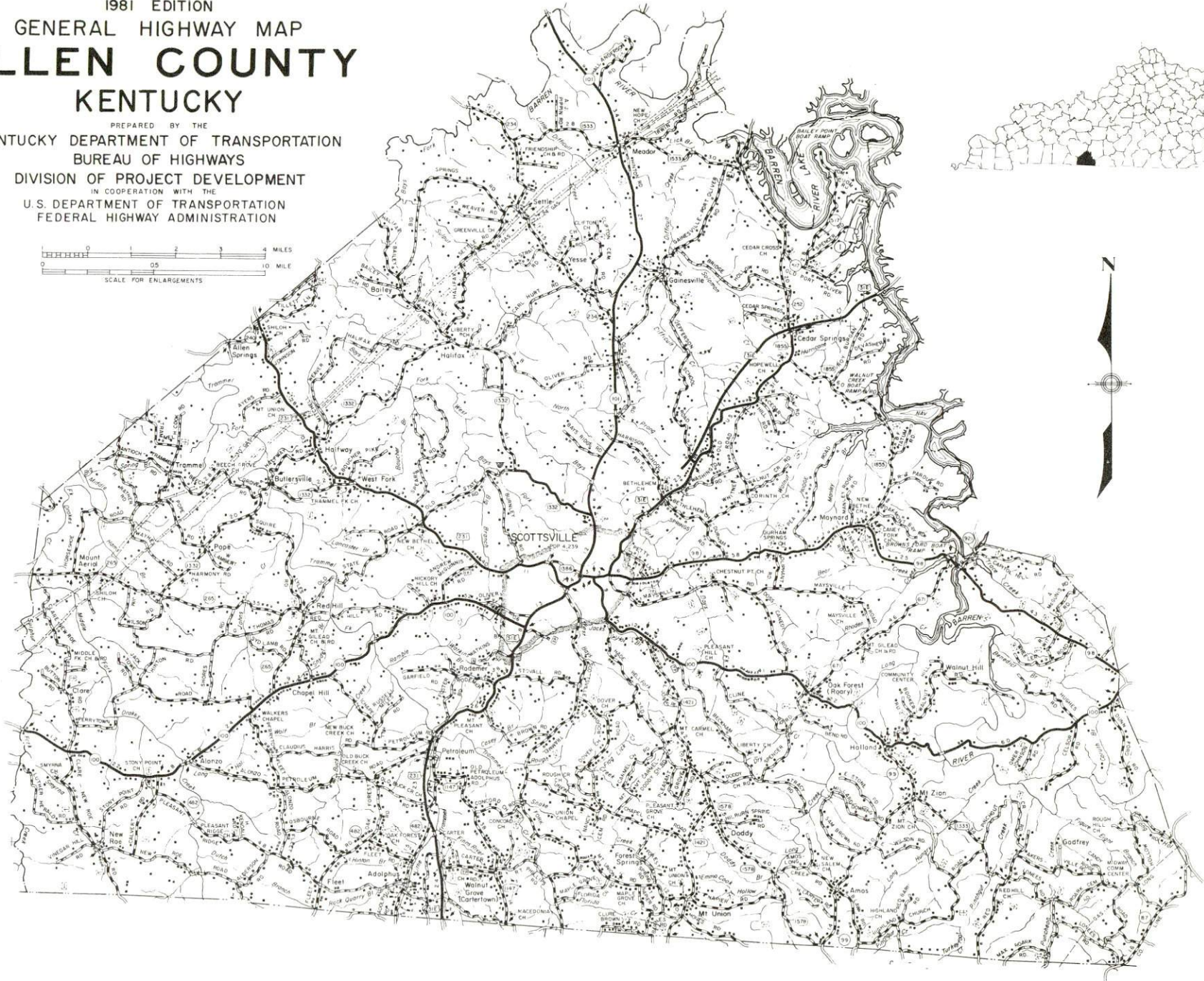
TABLE OF CONTENTS

<u>Chapter</u>	<u>Page</u>
INDUSTRIAL SITES	i
SCOTTSVILLE, KENTUCKY - A RESOURCE PROFILE	1
THE LABOR MARKET AREA	3
Population	3
Labor Force Characteristics of Residents, 1980	3
Estimated Male Labor Supply	4
Estimated Female Labor Supply	4
Allen County Manufacturing Firms, Their Products and Employment	5
Labor Organizations in Manufacturing Firms	6
Industrial Services	6
Average Weekly Wages by Industry, by Place of Work, 1980	7
Per Capita Personal Income	9
TRANSPORTATION	10
Rail	10
Highways	10
Truck Service	11
Air	12
Bus	13
Rental Services	13
Water	13
POWER AND FUEL	14
Electricity	14
Natural Gas	14
Other Fuels	15
WATER AND SEWERAGE	16
Public Water Supply	16
Raw Water	17
Sewerage	17
CLIMATE	18

<u>Chapter</u>	<u>Page</u>
LOCAL GOVERNMENT	19
City	19
County	19
Assessed Value of Property	19
Property Taxes	19
Combined State and Local Rates Per \$100 Valuation, 1980 . .	20
Planning and Zoning	20
Safety	21
Police	21
Fire	21
Rescue Service	21
Refuse Collection and Disposal	21
EDUCATION	22
Public Schools	22
Area Colleges and Universities	23
Vocational Schools	24
HEALTH	26
Local Medical Personnel	26
Hospitals	26
Other Medical Facilities	26
Ambulance Service	26
Public Health	26
OTHER LOCAL FACILITIES	27
Communications	27
Library Services	27
Religious Institutions	28
Financial Institutions	28
Hotels and Motels	28
Clubs and Organizations	29
RECREATION	30

1981 EDITION
GENERAL HIGHWAY MAP
ALLEN COUNTY
KENTUCKY

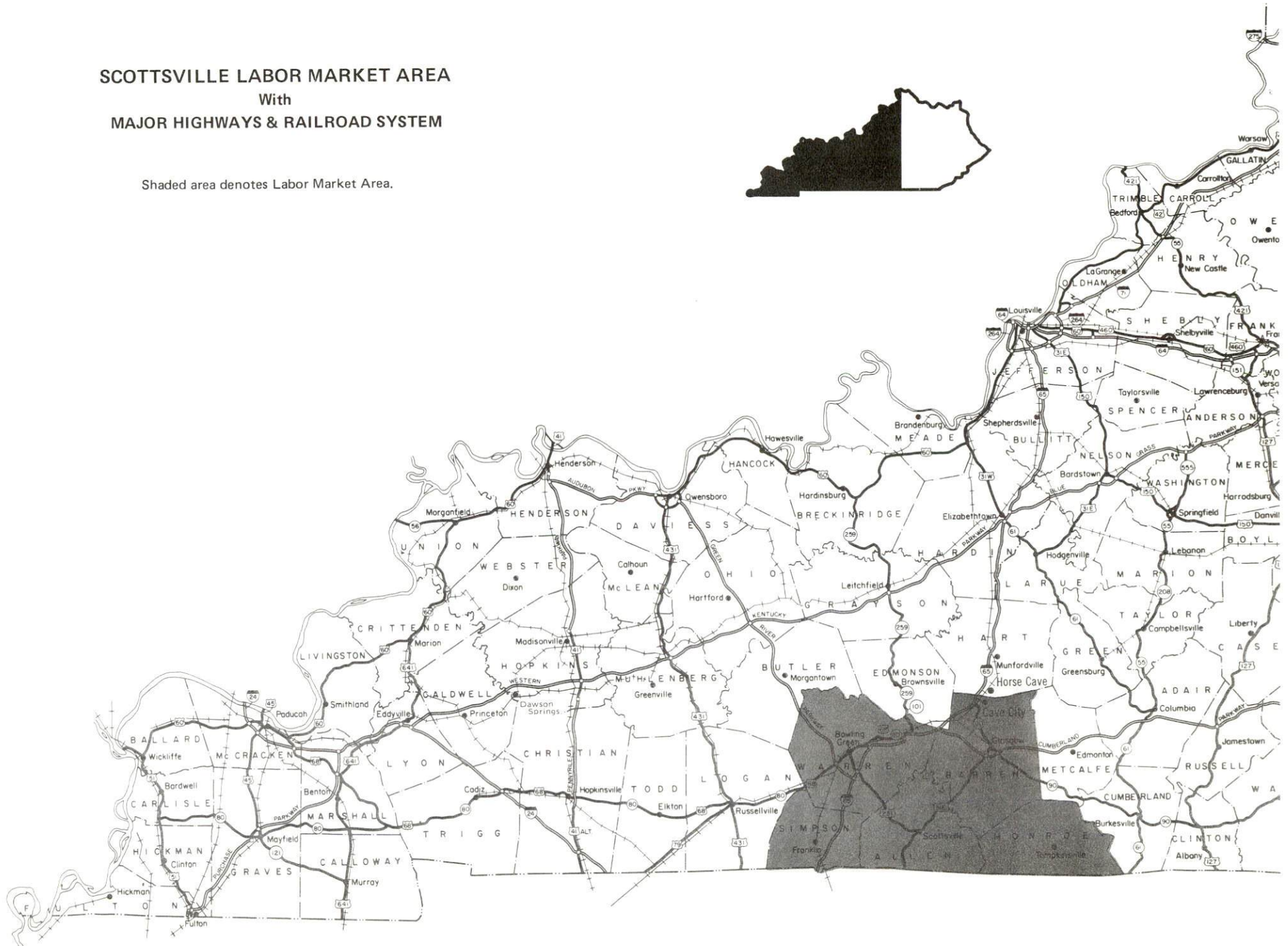
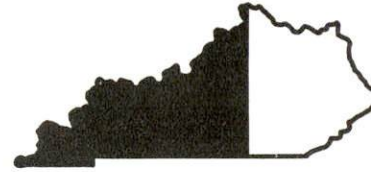
PREPARED BY THE
KENTUCKY DEPARTMENT OF TRANSPORTATION
BUREAU OF HIGHWAYS
DIVISION OF PROJECT DEVELOPMENT
IN COOPERATION WITH THE
U.S. DEPARTMENT OF TRANSPORTATION
FEDERAL HIGHWAY ADMINISTRATION



SCOTTSVILLE LABOR MARKET AREA

With
MAJOR HIGHWAYS & RAILROAD SYSTEM

Shaded area denotes Labor Market Area.



SCOTTSVILLE, KENTUCKY - A RESOURCE PROFILE

Scottsville, the county seat of Allen County, is situated in south central Kentucky and lies only 10 miles from the Kentucky-Tennessee border. Scottsville is 120 miles from Louisville, Kentucky; 65 miles from Nashville, Tennessee; and 221 miles from Cincinnati, Ohio. In 1980, Scottsville had an estimated population of 4,278.

Allen County, with a land area of 351 square miles, is bound on the south by the Kentucky-Tennessee state line, on the west by Simpson County, on the north by Warren and Barren counties, and on the east by Monroe County. In 1980, Allen County had an estimated population of 14,128.

The Economic Framework

The total number of Allen County residents employed in 1980 averaged 6,422, including 821 in agriculture and 5,601 in nonagricultural jobs. Manufacturing employers in the county reported 1,386 workers; trade and services firms employed 943. Manufacturing employment is greatest in the electrical machinery, apparel products, and furniture and fixtures industries. Dollar General Stores, with headquarters in Scottsville, provides approximately 225 jobs in Allen County.

Per capita personal income in the county in 1979 was \$5,990, an increase of 61.6 percent since 1975.

The Scottsville labor market area includes Allen County, the four adjoining Kentucky counties, and Sumner and Macon counties in Tennessee. The total number of residents in the Kentucky portion of the labor market area employed in 1980 averaged 68,214, including 6,246 in agriculture and 61,968 in nonagricultural jobs. Manufacturing employers in the Kentucky portion of the labor market area reported 17,567 workers; trade and service firms employed 18,968.

Resources for Growth

1. Labor Supply - There is a current labor supply of 9,720 men and 8,400 women available for industrial jobs in the Kentucky portion of the labor market area. In addition, 8,899 young men and 8,447 young women in the area will become 18 years of age by 1986 and potentially available for work. The current labor supply would be supplemented by the number of men and women in the adjoining Tennessee counties who are available for industrial jobs.

2. Transportation - Highway access to the city is by U.S. 231, U.S. 31E and Kentucky highways 98, 100 and 101. Interstate 65 is 21 miles from Scottsville via U.S. 231. A Cumberland Parkway interchange is located 23 miles north of Scottsville. The city is served by five truck lines. The nearest commercial airport is located at Nashville, Tennessee, 65 miles away.

3. Utilities and Fuel - Scottsville is provided electric power by the Tri-County Electric Membership Corporation, whose source of supply is the Tennessee Valley Authority. Natural Gas service is provided to Scottsville by the Scottsville Gas Department, whose source of supply is Texas Gas Transmission Corporation. There are five propane distributors and ten distillate fuel oil distributors serving the area.

4. Education - One public school system, the Allen County School System, serves the residents of Allen County. The Allen County Area Vocational Education Center is located in Scottsville and offers training in five vocational areas. The nearest state vocational-technical school, located at Bowling Green, 25 miles away, offers training in 26 vocational areas. Ten institutions of higher learning are located within 65 miles of Scottsville, including Western Kentucky University at Bowling Green.

THE LABOR MARKET AREA

The Scottsville Labor Market Area includes Allen County and the adjoining Kentucky counties of Barren, Monroe, Simpson and Warren.

POPULATION			
Area	1980	1970	Percent Nonwhite
Scottsville	4,278	3,584	3.5
Labor Market Area	146,991	123,855	N/A
Allen County	14,128	12,598	1.3
Barren County	34,009	28,677	5.1
Monroe County	12,353	11,642	3.0
Simpson County	14,673	13,054	12.4
Warren County	71,828	57,884	9.0

Note: The 1980 counts of population by race are provisional.

Source: U.S. Department of Commerce, Bureau of the Census, March 1981, as published in Special Report No. 8, State Data Center, Urban Studies Center, University of Louisville, March 1981.

LABOR FORCE CHARACTERISTICS OF RESIDENTS, 1980

	Allen County	Labor Market Area
Civilian Labor Force	7,084	74,415
Employment	6,422	68,214
Agricultural	821	6,246
Nonagricultural	5,601	61,968
Unemployment	662	6,201
Rate of Unemployment (%)	9.3	8.3

Source: Kentucky Department for Human Resources, Kentucky Labor Force Estimates, Annual Averages, 1980.

ESTIMATED MALE LABOR SUPPLY
SCOTTSVILLE LABOR MARKET AREA

Area	Current				Future
	Total	Not in Labor Force	Unemployed	Under-employed	Reaching 18 years of age before 1986
Labor Market Area*	9,720				8,899
Allen	555	0	361	194	531
Barren	1,474	0	905	569	1,314
Monroe	1,200	666	278	256	526
Simpson	999	455	337	207	679
Warren	3,688	0	1,560	2,128	2,357
Macon (Tenn.)	459	N/A	N/A	N/A	507
Sumner (Tenn.)	1,345	N/A	N/A	N/A	2,985

*Additional workers may be drawn from other nearby counties.

Note: Unemployed - persons unemployed and actively seeking work;

Underemployed - persons employed but working only 14 to 26 weeks per year;

Not in Labor Force - represents the number of persons who would enter the labor force if suitable employment were available (based on the assumption that persons in Kentucky would like to participate in the labor force in the same proportion that they do nationally).

Sources: Kentucky Department for Human Resources, Kentucky Labor Supply Estimates by County, 1980. Tennessee Department of Economic & Community Development, Available Labor, February 1979. Kentucky Department of Commerce, Future Labor Supply before 1986.

ESTIMATED FEMALE LABOR SUPPLY
SCOTTSVILLE LABOR MARKET AREA

Area	Current				Future
	Total	Not in Labor Force	Unemployed	Under-employed	Reaching 18 years of age before 1986
Labor Market Area*	8,400				8,447
Allen	563	0	301	262	516
Barren	1,199	0	669	530	1,190
Monroe	565	142	206	217	502
Simpson	560	14	281	265	591
Warren	3,401	0	1,303	2,098	2,281
Macon (Tenn.)	385	N/A	N/A	N/A	477
Sumner (Tenn.)	1,727	N/A	N/A	N/A	2,890

*Additional workers may be drawn from other nearby counties.

Note: Unemployed - Persons unemployed and actively seeking work;

Underemployed - persons employed but working only 14 to 26 weeks per year;

Not in Labor Force - represents the number of persons who would enter the labor force if suitable employment were available (based on the assumption that persons in Kentucky would like to participate in the labor force in the same proportion that they do nationally).

Sources: Kentucky Department for Human Resources, Kentucky Labor Supply Estimates by County, 1980. Tennessee Department of Economic & Community Development, Available Labor, February 1979. Kentucky Department of Commerce, Future Labor Supply before 1986.

ALLEN COUNTY MANUFACTURING FIRMS,
THEIR PRODUCTS AND EMPLOYMENT

<u>Firm</u> (Establishment date)	<u>Product</u>	<u>Employment</u>			<u>Labor Unions</u>
		<u>Total</u>	<u>Male</u>	<u>Female</u>	
<u>Adolphus</u>					
Petroleum Industries, Inc. (1972)	Ladies' and girls' blouses	75	2	73	
<u>Holland</u>					
Holland Industries (1971)	Knit shirts and blouses	104	8	96	
<u>Scottsville</u>					
The Allen County News (1935)	Newspapers	5	1	4	
Bryant Lumber Company (1933)	Lumber	47	45	2	
The Citizen Times (1890)	Newspaper, job printing	6	2	4	
Farmers Feed and Fertilizer Company (1976)	Fertilizer, feed	12	11	1	
General Electric Company (1973)	Hermetic motor parts	500	-	-	
Gerald Printing Service (1935)	Job printing	24	17	7	
Keen Tool and Die Company, Inc. (1974)	Precision tools and dies, molds, gauges, special machinery	14	13	1	
Olde Kentucky Foods, Inc. (1972)	Country hams, bacon	12	8	4	
Scotscraft, Inc. (1961)	Drapery hard- ware and accessories	320	100	220	Machinists*
Washington Overall Manufacturing Company (1928)	Men's, boys' trousers	263	26	237	

<u>Firm (Establishment date)</u>	<u>Product</u>	<u>Employment</u>			<u>Labor Unions</u>
		<u>Total</u>	<u>Male</u>	<u>Female</u>	
Marvin Wood Lumber Company (1950)	Lumber, pallet stock, furniture dimension	50	50	0	
Woodstock Mills, Inc. (1978)	Lumber, crossties, cants	20	18	2	

*See Labor Organizations below.

Source: Kentucky Department of Commerce, Division of Research and Planning.

LABOR ORGANIZATIONS IN MANUFACTURING FIRMS

<u>Union</u>	<u>Representing workers at:</u>
International Association of Machinists and Aerospace Workers, AFL-CIO	Scotscraft, Inc.

INDUSTRIAL SERVICES

<u>Types of Services</u>	<u>Location</u>	<u>Mileage from Scottsville</u>
Tool & Die, Machine & Pattern Shops	Bowling Green, Kentucky	25
Metal Service Centers	Bowling Green, Kentucky	25
Heat Treating	Nashville, Tennessee	65
Metal Finishers	Nashville, Tennessee	65
Electric Motor Repair	Bowling Green, Kentucky	25

Source: Kentucky Directory of Selected Industrial Services, 1981.

AVERAGE WEEKLY WAGES BY INDUSTRY,
BY PLACE OF WORK, 1980

	<u>Allen County</u>	<u>Barren County</u>	<u>Monroe County</u>
All Industries	\$203.85	\$214.01	\$170.11
Mining & Quarrying	118.94	245.74	*
Contract Construction	137.90	259.76	176.89
Manufacturing	237.99	254.02	171.02
Transportation, Communications & Public Utilities	248.01	262.66	285.07
Wholesale & Retail Trade	176.93	152.30	144.67
Finance, Insurance & Real Estate	204.52	250.01	255.03
Services	128.65	167.07	121.60
State/Local Government	188.84	203.65	182.72
Other	*	108.72	111.03
	<u>Simpson County</u>	<u>Warren County</u>	
All Industries	\$222.82	\$223.88	
Mining & Quarrying	*	269.07	
Contract Construction	159.54	238.72	
Manufacturing	260.00	264.92	
Transportation, Communications & Public Utilities	323.14	309.37	
Wholesale & Retail Trade	155.90	170.37	
Finance, Insurance & Real Estate	243.39	237.86	
Services	151.40	181.27	
State/Local Government	205.52	256.87	
Other	*	121.63	

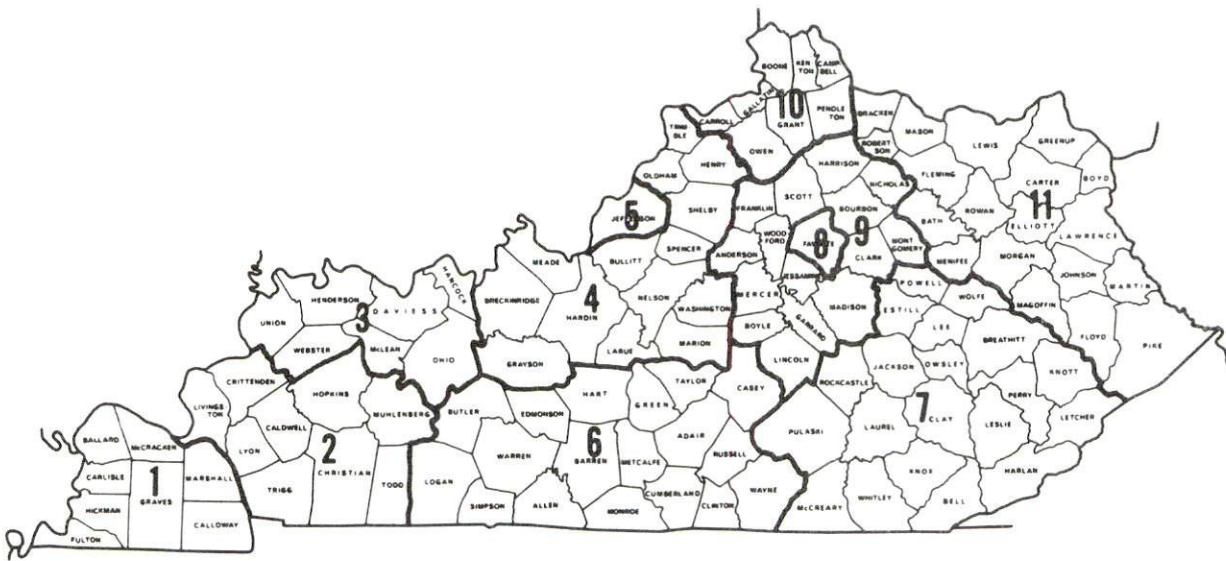
*Not disclosed.

Note: Excludes domestic workers, railway workers, certain nonprofit corporations, majority of federal government workers, and self-employed workers.

Source: Kentucky Department for Human Resources, Average Weekly Wages of Workers Covered by Kentucky Unemployment Insurance Law, 1980.

Occupational wage rates for specific industries are usually not available to most government agencies, and wage data furnished to state employment agencies by individual industrial employers is protected from disclosure by federal law. The most reliable up-to-date wage information can be obtained by direct contact with local employers.

Associated Industries of Kentucky, a voluntary organization of Kentucky businesses, regularly collects occupational wage rates and fringe benefits data from participating member firms. Data is compiled for over 127 clearly defined office, production, and service occupations. Tabulations are published for eleven regions of Kentucky, as shown on the map below. It should be noted that the data may be weighted by the preponderance of firms in the larger cities and may be somewhat higher than the rates paid in the smaller communities. Data from these tabulations are available, upon request, from the Kentucky Department of Commerce, Frankfort, Kentucky 40601.



Associated Industries of Kentucky Area Wage Surveys

Up-to-date occupational wage rates of the existing industries are maintained by South Kentucky Industrial Development Association, Inc., Post Office Box 726, Hopkinsville, Kentucky 42240.

PER CAPITA PERSONAL INCOME

<u>Area</u>	<u>1979</u>	<u>1975</u>	<u>Percent Change</u>
Allen County	\$ 5,990	\$ 3,707	61.6
Labor Market Area Range	\$4,863 - 7,617	\$3,084 - 4,776	N/A
Kentucky	7,052	4,882	44.4
U.S.	8,637	5,861	47.4

Sources: U.S. Department of Commerce, Bureau of Economic Analysis, April 1981. U.S. Department of Commerce, Bureau of Economic Analysis, August 1981.

TRANSPORTATION

Rail

Louisville and Nashville Railroad Company provides service at Bowling Green, 25 miles northwest of Scottsville.

Services - Main line; one turnaround originating at Louisville to Bowling Green Monday through Friday; one turnaround originating at Radner, Tennessee, to Bowling Green Sunday through Friday; one northbound and one southbound freight makes daily stops in Bowling Green as needed, three northbound and three southbound through freights daily; switching facilities; team track space for four cars, ample storage space; piggyback facilities

For details on routing, schedules, rates, and services, contact:

Director of Industrial Development
Louisville and Nashville Railroad
P. O. Box 32290
Louisville, Kentucky 40232
(502) 587-5723

Highways

Scottsville is served by U.S. 31E and U.S. 231. Both are excellent highways with passing lanes and are rated "AAA" (80,000 pounds gross vehicle load). Additional highways into Scottsville are Kentucky highways 98, 100 and 101.

Access to the interstate highway system is via U.S. 231, 21 miles northwest of Scottsville, where it connects with I-65, a major north/south artery. U.S. 31E joins the Cumberland Parkway, an east/west interstate type toll-road, 23 miles northeast of Scottsville.

Truck Service

<u>Company</u>	<u>Home Office</u>
Interstate Motor Freight System*	110 Ionia N.W. Grand Rapids, Michigan 49501
Manning Motor Express, Inc.**	P. O. Box 685 Glasgow, Kentucky 42141
McLean Trucking Company*	P. O. Box 213 Winston-Salem, North Carolina 27102
Renner's Express, Inc.**	1350 South West Street Indianapolis, Indiana 46206
Smith's Transfer Corporation*	P. O. Box 1000 Staunton, Virginia 24401
<u>Other Freight Services</u>	<u>Nearest Shipping Center or Home Office</u>
Purolator Courier Corporation***	Louisville, 120 miles distant
United Parcel Service****	Bowling Green, 25 miles distant
KATO Express, Inc. (air cargo service)*****	Elizabethtown, 78 miles distant
Red Arrow Delivery Service (air cargo service)*****	Bowling Green, 25 miles distant
Federal Express*****	Clarksville, Tennessee, 80 miles distant

* Interstate service only.

** Interstate and intrastate service.

*** For regular scheduled pickups or for occasional pickups, arrangements must be made with the Louisville office of Purolator Courier Corporation.

**** For regular scheduled pickups or for occasional pickups, arrangements must be made with the Louisville office of United Parcel Service.

***** Daily pickup and delivery service is available to and from Standiford Field in Louisville. Arrangements for service should be made through the home office in Elizabethtown.

***** Daily pickup and delivery service is available to and from Standiford Field in Louisville, Kentucky, and Nashville Metropolitan Airport in Nashville, Tennessee. Arrangements for service should be made through the shipping center in Bowling Green.

***** For information on scheduling, rates and services, contact the Federal Express station at Clarksville, Tennessee, or call the home office in Memphis, Tennessee, toll-free at 800-238-5355. Shipments originating in Scottsville receive regular service. Shipments destined for Scottsville are scheduled for delivery by the end of the next business day after tender to Federal Express.

HIGHWAY MILES AND TRUCK TRANSIT TIME IN DAYS FROM
SCOTTSVILLE, KENTUCKY, TO SELECTED MARKET CENTERS

City	Highway Miles	Delivery	City	Highway Miles	Delivery
		Time TL			Time TL
Atlanta, Ga.	307	2	Los Angeles, Ca.	2,090	5
Baltimore, Md.	699	2	Louisville, Ky.	120	1
Birmingham, Ala.	261	2	Nashville, Tenn.	65	1
Chicago, Ill.	412	2	New Orleans, La.	603	2
Cincinnati, Ohio	221	1	New York, N. Y.	868	3
Cleveland, Ohio	468	2	Pittsburgh, Pa.	508	2
Detroit, Mich.	480	2	St. Louis, Mo.	295	2
Knoxville, Tenn.	242	1			

Note: Mileage computations are via the best interstate or primary highways, not necessarily the most direct route of travel.

Sources: Rand McNally Road Atlas, 1979. Official Kentucky Mileage Map, 1979.
Delivery time - Manning Motor Express, Inc., 1203 South Green Street,
Glasgow, Kentucky 42141.

Air

Nearest Local

Location: Bowling Green-Warren County Airport
25 miles northwest of Scottsville at
Bowling Green

Runways: 2 paved

Length: 4,000 feet; 6,500 feet

Traffic Control: Wind tee

Lighting: Runways, obstructions, taxiways, beacon,
wind tee, strobes approach to 3, VASI

Services: 100 octane, jet A-50, storage, major and
minor A & E repairs, oxygen, FAA
Flight Service Station, taxi and rental
car service, snack bar

Air Freight Service: Air freight service must be arranged.

(Contd.)

Nearest Scheduled Commercial Airline Service

Nashville Metropolitan Airport
Location: 6 miles southeast of Nashville, Tennessee;
70 miles southwest of Scottsville
Runways: 3 paved
Length: 8,000 feet; 7,700 feet; 4,320 feet
Traffic
Control: Tower
Lighting: Beacon, runway
Services: American, Braniff, Delta, Eastern, Ozark,
Piedmont, Republic, TWA, and USAir
airlines; Scheduled Skyways, Allegheny Commuter
Sunbird, and Tennessee Airways
commuter air carriers; 100 LL, 100, and
jet fuel; major repairs, major Avionics
repairs; tie-downs and hangars; charter
service; flight instructions; plane rental;
U.S. Customs; car rental; limousine;
taxi; weather information; hotel; restaurant

Air Freight
Service: Air freight terminal

Bus - Southern Greyhound Bus Lines; Continental Trailway

Rental Services - Auto, truck and trailer rental is available at Bowling Green,
25 miles northwest of Scottsville.

Water

Water transportation is available at a point on the Green River,
approximately 50 miles northeast of Scottsville, where a 9-foot navigation
channel is maintained.

POWER AND FUEL

Electricity

Company serving Scottsville and Allen County - Tri-County Electric Membership Corporation

Source of power - Tennessee Valley Authority

Total generating capacity - 31,109,160 KW

For industrial rates contact:

South Kentucky Industrial
Development Association, Inc.
P. O. Box 726
Hopkinsville, Kentucky 42240
(502) 885-5392

and/or

Tri-County Electric
Membership Corporation
405 College Street
Lafayette, Tennessee 37083
(615) 666-2111

Natural Gas

Company serving Scottsville - Scottsville Gas Department

Source of supply - Texas Gas Transmission Corporation

Size of transmission mains - 26-inch (supplier)

Distribution mains - 6, 4 and 2 inches

Distribution pressure - 25 to 33 psi

Btu content - 1,003 per cubic foot

Specific gravity - 0.586 (average)

For rates and supplies contact:

Texas Gas Transmission Corporation
3800 Frederica Street
P. O. Box 1160
Owensboro, Kentucky 42301
(502) 926-8686

Other Fuels

Propane (Within 25 miles)

Pargas of Scottsville
Gallatin Road
Scottsville, Kentucky 42164

Buckeye Gas Products Company
West Main Street
Glasgow, Kentucky 42141

Millers Bottled Gas, Inc.
110 Campbell Lane
Bowling Green, Kentucky 42101

Pargas of Glasgow, Inc.
214 Industrial Drive
Glasgow, Kentucky 42141

Southern States Bowling Green
Petroleum Cooperative
Emmett Drive
Bowling Green, Kentucky 42101

Fuel oils

Distillate fuel oil - (Within 25 miles)

Paul Bridges Oil Company
(Exxon)
Industrial Drive
Glasgow, Kentucky 42141

Browning Oil Company
Louisville Road
Bowling Green, Kentucky 42101

Chevron Oil Company
316 Portage Railroad
Bowling Green, Kentucky 42101

Chevron USA, Inc.
Parkview Drive
Glasgow, Kentucky 42141

Exxon Company
3170 Fitzgerald
Bowling Green, Kentucky 42101

Gulf Oil Products
800 Power
Bowling Green, Kentucky 42101

R. C. McKinney
(Texaco)
110 Plain Avenue
Bowling Green, Kentucky 42101

Ramsey Oil Company
(Phillips)
633 U.S. 31W Bypass
Bowling Green, Kentucky 42101

Tri-County Oil Company, Inc.
(Shell)
715 West Main Street
Glasgow, Kentucky 42141

Wyatt's Oil Company
(Gulf)
700 West Main Street
Glasgow, Kentucky 42141

Residual fuel oil - Arrangements must be made with the refinery.

Low sulphur content coal - Available in eastern Kentucky.

WATER AND SEWERAGE

Public Water Supply

Company serving Scottsville - Scottsville Water Department
c/o City/County Building
Scottsville, Kentucky 42164
(502) 237-4402

Source - Calvert Springs*
Pumping capacity - 720,000 gallons per day
Type treatment - Chlorination, fluoridation
Storage capacity - 760,000 gallons
Size lines - 12, 8 and 6 inch mains

MONTHLY WATER RATES

First	2,000 gallons	\$7.25 (Minimum)
Next	2,000 gallons	2.42 per M gallons
Next	4,000 gallons	1.93 per M gallons
Next	12,000 gallons	1.70 per M gallons
All over	20,000 gallons	1.09 per M gallons

MINIMUM MONTHLY WATER SERVICE CHARGE

5/8- or 3/4-inch meter	\$ 7.25
1-inch meter	10.35
1 1/4-inch meter	15.50
1 1/2-inch meter	20.70
2-inch meter	34.50

Tap-on charge:

5/8- or 3/4-inch meter	\$125
1-inch meter and larger	Actual cost of installation

*The Glasgow Water Works serves as a backup to the Scottsville water system.

Raw Water

Surface water sources - Barren River

Average discharge - Barren River near Finney, Kentucky - 1,504 cfs
(28-year record, USGS) unadjusted

Expected ground water yield - 50 to 200 gpm along the extreme northern and western borders of the county; 5 to 50 gpm in a band extending from the northern to the central portion; and 5 gpm or less over the remainder of the county.

Sewerage

Company serving Scottsville - Scottsville Sewer Plant*
c/o City/County Building
Scottsville, Kentucky 42164
(502) 237-3396

Design capacity - 400,000 gallons per day

Average daily flow - At capacity

Treatment - Primary and secondary

Type treatment - Trickling filter, sludge digester, sludge drying beds

Treated effluent discharged into - West Bays Fork Creek

Size of sanitary mains - Up to 8 inches

Rates - 80 percent of monthly water bill

Tap-on charge: \$100

*Renovation of the Scottsville sewage treatment plant is proceeding as scheduled. The treatment plant capacity will be increased to 860,000 gallons per day by adding a carousel-type treatment process. The awarding of a construction contract for the \$2.5 million project is scheduled for January 1982 and the completion date is scheduled for February 1983.

CLIMATE

Allen County

Temperature

Normal (30-year record)	59.4 degrees
Average annual 1980	59.2 degrees
Record highest, July 1952 (41-year record)	107.0 degrees
Record lowest, January 1963 (41-year record)	-15.0 degrees
Normal heating degree days (30-year record) (Heating degree day totals are the sums of negative departures of average daily temperatures from 65 degrees F.)	3,696

Precipitation

Normal (30-year record)	46.00 inches
Mean annual snowfall (39-year record)	11.60 inches
Total precipitation 1980	34.92 inches
Mean number days precipitation (.01 inch or more) (39-year record)	119
Mean number days thunderstorms (39-year record)	54

Prevailing Winds (22-year record)

South

Relative Humidity (15-year record)

1 a.m.	79 percent
7 a.m.	84 percent
1 p.m.	58 percent
7 p.m.	62 percent

Source: U.S. Department of Commerce, Environmental Science Services
Administration, Climatological Data, 1980. Station of record: Nashville,
Tennessee.

LOCAL GOVERNMENT

City

Structure - Mayor - 4-year term; 6 council members - 2-year terms

Budget 1982 - General Fund \$780,931

Water and Sewer Fund 579,207

City Gas System 869,904

Fees and licenses - 1 1/2 percent occupational fee on wages and net profits

County

Structure - County Judge/Executive - 4-year term;

5 magistrates - 4-year terms

Budget 1980-81 - General Fund \$291,370; Road Fund \$346,566

Assessed Value of Property

<u>Classes of Property</u>	<u>Scottsville (1981)</u>	<u>Allen County (1981)</u>
Real Estate	\$28,569,042	\$111,540,434
Tangibles	20,610,962	35,266,401

Property Taxes

All property in Kentucky is assessed at 100 percent of fair cash value.

Land and buildings are taxed by the state and may be taxed by local jurisdictions. The state rate is \$0.241 per \$100 of assessed valuation.

Manufacturing machinery, raw materials inventories, pollution control equipment, and goods in the process of manufacture are not subject to local taxation. The state rate is \$0.15 per \$100.

Other tangible personal property owned by manufacturers (automobiles, trucks, finished goods, office furniture, office equipment) is taxed by the state at \$0.45 per \$100 and may be taxed by local jurisdictions.

Property stored in public warehouses in a transit status is not subject to local taxation. The state rate is only \$0.015 per \$100.

Intangible personal property located in Kentucky (money in hand, shares of stock, notes, bonds, accounts receivable, and other credits) is taxed by the state at \$0.25 per \$100, and is not subject to local taxation.

Private leaseholds in industrial facilities owned by cities or counties and financed by industrial revenue bonds are subject to a state tax of \$0.015 per \$100 of value (essentially the lessee's equity, adjusted for appreciation or depreciation). Local taxation is not permitted.

Combined State and Local Rates Per \$100 Valuation, 1980*
(100% assessment)

	<u>Inside City of Scottsville</u>	<u>Outside City</u>
1. Land and buildings	\$1.084	\$0.824
2. Mfg. machinery, raw materials, goods in process, pollution control equipment	0.150	0.150
3. Finished goods, office equipment, vehicles, other tangibles	1.293	1.033
4. Intangibles (accounts receivable, notes, bonds, etc.)	0.250	0.250
5. Leaseholds in industrial revenue bond financed plants	0.015	0.015

Planning and Zoning

Joint agency - Scottsville/Allen County Planning Commission
Mandatory state codes enforced - Kentucky Plumbing Code, National Electric Code, Kentucky Boiler Regulations and Standards, Kentucky Building Code (modeled after BOCA code and applying to buildings with an occupancy of 100 or more persons)

*Kentucky Department of Commerce.

Safety

<u>Police</u>	<u>Scottsville</u>	<u>Allen County</u>
Total staff	9	3
Radio-patrol cars	3	2

Fire

American Insurance Association Fire Rating	7	
Volunteers	20	Some of the volunteers from the city fire department also answer calls from the county. County-owned equipment is used.

Rescue Service

Scottsville-Allen County DES Rescue Squad:
Number of volunteers - 45
Equipment - One 1,200-gallon tank truck (available for fire fighting), 24 vehicles (assorted special types), 4 boats and motors, 10 trailers, emergency lighting (11 generators, flood lights, extension lines), wide variety of communication equipment, dragging equipment
Personnel training - First aid, Civil Defense School training, fire school, emergency medical technician

Refuse Collection and Disposal

	<u>Scottsville</u>
Type service	Municipal
Fee charged:	
residential	\$3 per month
business	By volume
industrial	By volume
Collection frequency:	
residential	Twice weekly
business	Negotiated
industrial	Negotiated
Trash pickup	By request
Disposal method	Sanitary landfill

Residents and businesses that are not provided with refuse collection, may use the city/county sanitary landfill. A disposal fee of \$0.75 per cubic yard is charged for Allen County residents and businesses. A disposal fee of \$1.50 per cubic yard is charged for non-residents and businesses.

EDUCATION

Public Schools

Allen County

Total Enrollment (July 1981)	2,465
Elementary	1,084
Middle School	636
High School	745
Student-Teacher Ratio	20-1
Elementary	18-1
Middle School	19-1
High School	22-1
Percent High School Graduates to College (1980)	30.0
Expenditures Per Pupil (1979-80)	\$1,237.43
Bonded Indebtedness (June 30, 1980)	\$1,896,000

Area Colleges and Universities

<u>Name</u>	<u>Location (Miles distant)</u>	<u>Enrollment (Fall, 1980)</u>	<u>Highest Degree Conferred</u>
Western Kentucky University	Bowling Green, Kentucky (25)	13,358	Masters, Specialists*
Belmont College	Nashville, Tennessee (65)	1,587	Baccalaureate
David Lipscomb	Nashville, Tennessee (65)	2,316	Baccalaureate
Fisk University	Nashville, Tennessee (65)	1,009	Masters
Free Will Baptist Bible College	Nashville, Tennessee (65)	513	Baccalaureate
Meharry Medical College	Nashville, Tennessee (65)	1,017	M.S., M.D., D.D.S
Scarritt College	Nashville, Tennessee (65)	94	Masters
Trevecca Nazarene	Nashville, Tennessee (65)	920	Baccalaureate
Tennessee State University	Nashville, Tennessee (65)	8,317	Masters
Vanderbilt University	Nashville, Tennessee (65)	8,874	Academic and Professional
Lindsey Wilson Junior College	Columbia, Kentucky (66)	408	Associate

*Joint doctoral degree programs are offered in cooperation with the University of Kentucky, Lexington, and cooperative doctoral degree programs are offered with the University of Louisville.

Vocational Schools

Both the state vocational-technical schools and the area vocational education centers are operated by the Kentucky Department of Education. The state vocational-technical schools enroll persons full time who are at least 16 years of age and not in school. These students attend classes for six hours each day. The area vocational education centers are designed to accommodate high school students who are at least 15 years of age. These students attend vocational school for three hours each day. The state vocational-technical schools and the area education centers offer evening courses to enable working adults to upgrade current job skills.

	<u>Nearest State School</u>
Location	Bowling Green State Vocational-Technical School
Miles Distant	Bowling Green 25 miles northwest of Scottsville
Curriculum	Business and Office Accounting/Jr. Management Clerical Secretarial Consumer and Home Economics Commercial Foods Distributive Education Fashion Merchandising Health and Personal Services Occupations Dental Assistant Health Careers Nurse Assistant Practical Nurse* Respiratory Therapy* Surgical Technician Industrial Education Auto Body Repair Auto Mechanics Carpentry Civil Highway Technology Electronics Servicing Occupations Electronics Technology Graphic Arts (Printing) Industrial Electricity Machine Shop Masonry Refrigeration and Air Conditioning Small Engine Repair Technical Drafting Tool and Die Making Welding

*These courses are taught at the T. J. Samson Community Hospital in Glasgow.

Nearest Area Education Center

Location	Allen County Area Vocational Education Center
Curriculum	Scottsville Business and Office Industrial Education Auto Mechanics Building Trades Drafting Electricity

Arrangements can be made to provide training in the specific production skills required by an industrial plant. Instruction may be conducted either in the vocational school or in the industrial plant, depending upon the desired arrangement and the availability of special equipment.

HEALTH

Local Medical Personnel

Physicians - 5

Dentists - 5

Hospitals

<u>General Hospital</u>	<u>Location</u>	<u>Beds</u>
Allen County War Memorial Hospital	Scottsville	53

General hospital facilities - Operating rooms, delivery room, recovery room, emergency room, critical care unit, chapel, X-ray, laboratory

Medical staff - 24 physicians (6 active staff, 18 consulting staff), 11 registered nurses, 22 licensed practical nurses, 41 nurses' aides, 7 laboratory and 5 X-ray technicians, 5 respiratory technicians and orderlies

Other Medical Facilities

Allen County Medical Clinic

Ambulance Service

Name - Allen County Ambulance Service

Staff - 1 director, 5 paramedics

Service - County-wide, 24-hour service

Equipment - 2 ambulances, fully equipped

Public Health

Facility - Allen County Health Department

Staff - 1 administrator, 4 nurses, 3 home health aids, 1 environmentalist,

3 clerks, 1 clinician, 1 speech therapist, 1 physical therapist, 1 orderly,

2 janitors

OTHER LOCAL FACILITIES

Communications

Telephone - General Telephone Company provides service to the city of Scottsville. North Central Telephone Cooperative, Inc., provides service to Allen County.

Services - Standard

Telegraph - Western Union Telegraph
Services - Toll-free number, 1-800-325-5100. Counter service available at Bowling Green, 25 miles northwest and at Glasgow, 25 miles northeast.

Postal - U.S. Post Office

Class - First

Mail received - Once daily

Mail dispatched - Once daily

Newspapers -	Citizens Times	Allen County News
Weekly and		
circulation	4,000	2,800

Other papers

received from - Louisville, Bowling Green and Glasgow, Kentucky;
Nashville, Tennessee

Radio - WLCK-AM/FM

Major stations

received from - Louisville, Kentucky; Nashville, Tennessee

Television -

Cable service

Reception from - Louisville, Bowling Green, Kentucky; Nashville, Tennessee

Kentucky Educational

Television - Bowling Green, WKGB Channel 53

Library Services

Public library - Allen County Library

Size collection - 21,562 volumes

Circulation, 1980-81 - 40,883

Services - Magazines, records, story hour, pictures, projectors, book stations, bookmobile, newspapers, community meeting room, Interlibrary Loan, summer reading program

Religious Institutions

Number of churches - 31 (Allen County)

Denominations - Baptist
Catholic
Church of Christ
Church of God
Methodist
Nazarene

Nearest Synagogues - Nashville, Tennessee, 65 miles distant

Congregations - Sherith Israel (orthodox)
Ohabai Shalom (reform)
West End Synagogue (conservative)

Financial Institutions

<u>Banks</u>	<u>Assets</u>	<u>Deposits</u>	<u>Statement Date</u>
The Farmers National Bank	\$34,645,273.49	\$29,866,828.81	6/30/81
Kentucky State Bank	29,932,814.01	25,928,265.20	6/30/81
<u>Savings and Loan Associations</u>	<u>Assets</u>	<u>Savings Accounts</u>	<u>Statement Date</u>
Fidelity Federal Savings and Loan Association*	\$43,725,802.20	\$38,249,655.53	12/31/80

Hotels and Motels

Total number - 5
Total rooms - 62

*These figures are totals for the Scottsville and Bowling Green offices of Fidelity Federal Savings and Loan Association.

Clubs and Organizations

Allen County-Scottsville Recreation Board
American Legion
Boy Scouts
Business and Professional Women
Chamber of Commerce
Cub Scouts
Daughters of the American Revolution (DAR)
Eastern Star
4-H
Future Farmers of America (FFA)
Future Homemakers of America (FHA)
Garden Club
Girl Scouts
Historical Society
Homemakers
Jaycees
Jaycettes
Lioness
Lions
Little League
Masons
Mother's Club
Port Oliver Yacht Club
Rainbow Girls
Rotary
Scottsville-Allen County Recreation Association (Country Club)
Veterans of Foreign Wars (VFW)
Youth, Inc.

RECREATION

Local

Public recreation facilities available to the residents of Scottsville include two neighborhood parks and playground areas, one baseball field, one football field, two tennis courts, picnic grounds, and Youth Center. Private recreation facilities include a country club, a golf course, and a swimming pool. The Fred Hale Park, a large community park, located approximately 2.5 miles from the central business district, provides facilities for Little League baseball and adult softball. The U.S. Corps of Engineers camping sites at Barren River Lake offer primitive camping sites, swimming and fishing.

Area (Within 55 miles)

Scottsville is within easy driving distance of several excellent park and recreation facilities.

Barren River Lake State Resort Park, 12 miles north of Scottsville near Glasgow, is a full-facility resort park offering a resort lodge, a coffee shop, cottages, a lodge pool, a beach, riding stables, nature trails, open and covered boat slips, a 9-hole par-3 golf course, lighted handball and tennis courts, shuffleboard, park camping with a service building, a restaurant, fishing and pleasure boat rentals, picnic areas, and a playground. Barren River Lake, which covers 10,000 acres, is a popular area for skiing, sailing, fishing, and swimming.

Western Kentucky University at Bowling Green, 25 miles from Scottsville, offers an array of cultural and athletic activities, including a fine arts series, a university lecture series, various musical performances, and productions by the Western players. The Hardin Planetarium and the Kentucky Building, housing a collection of art and artifacts devoted to local and state history, are open to the public.

Mammoth Cave National Park is located 55 miles north of Scottsville near Cave City. Beneath 51,000 park acres, Mammoth Cave is among the major tourist attractions of all times. It is one of the largest cave networks ever discovered, with at least 150 miles charted on five levels and vast areas not yet mapped. Some famous sights are Snowball Dining Room (267 feet below surface), Frozen Niagara, Crystal Lake, and Bottomless Pit. The park also features scenic boat trips on the Green River and nature and hiking trails. Park accommodations include a hotel with distinctive gift shops featuring native Kentucky and Southern Highland handicrafts, a motor lodge, hotel cottages, woodland cottages, and a hotel annex with budget accommodations and craft shop featuring live exhibits of broom making and weaving. Other park facilities include the hotel dining room and coffee shop, a service center, group meeting facilities, a campground, a picnic area, and tennis and shuffleboard courts.

The Old Mulkey Meeting House State Shrine, 38 miles east of Scottsville near Tompkinsville, offers picnic areas and playgrounds. The house was built in 1804, and is the oldest log meeting house in the state. Daniel Boone's sister is buried in the graveyard and authentic records written in pokeberry ink are on display.



AMERICAN
OVERSEAS