

1982

Industrial Resources: Bullitt County

Kentucky Library Research Collections
Western Kentucky University, spcol@wku.edu

Follow this and additional works at: https://digitalcommons.wku.edu/bullitt_cty

 Part of the [Business Administration, Management, and Operations Commons](#), [Growth and Development Commons](#), and the [Infrastructure Commons](#)

Recommended Citation

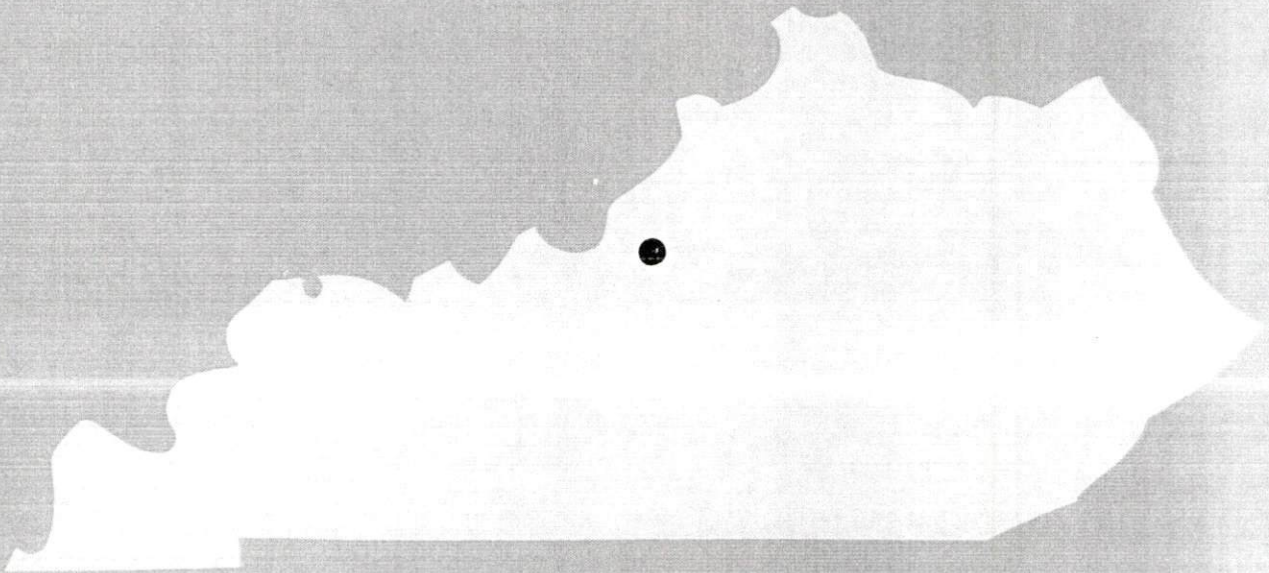
Kentucky Library Research Collections, "Industrial Resources: Bullitt County" (1982). *Bullitt County*. Paper 16.
https://digitalcommons.wku.edu/bullitt_cty/16

This Report is brought to you for free and open access by TopSCHOLAR®. It has been accepted for inclusion in Bullitt County by an authorized administrator of TopSCHOLAR®. For more information, please contact topscholar@wku.edu.

15 Bullitt County

1/30/01

A comprehensive
report on
Bullitt County, Ky.

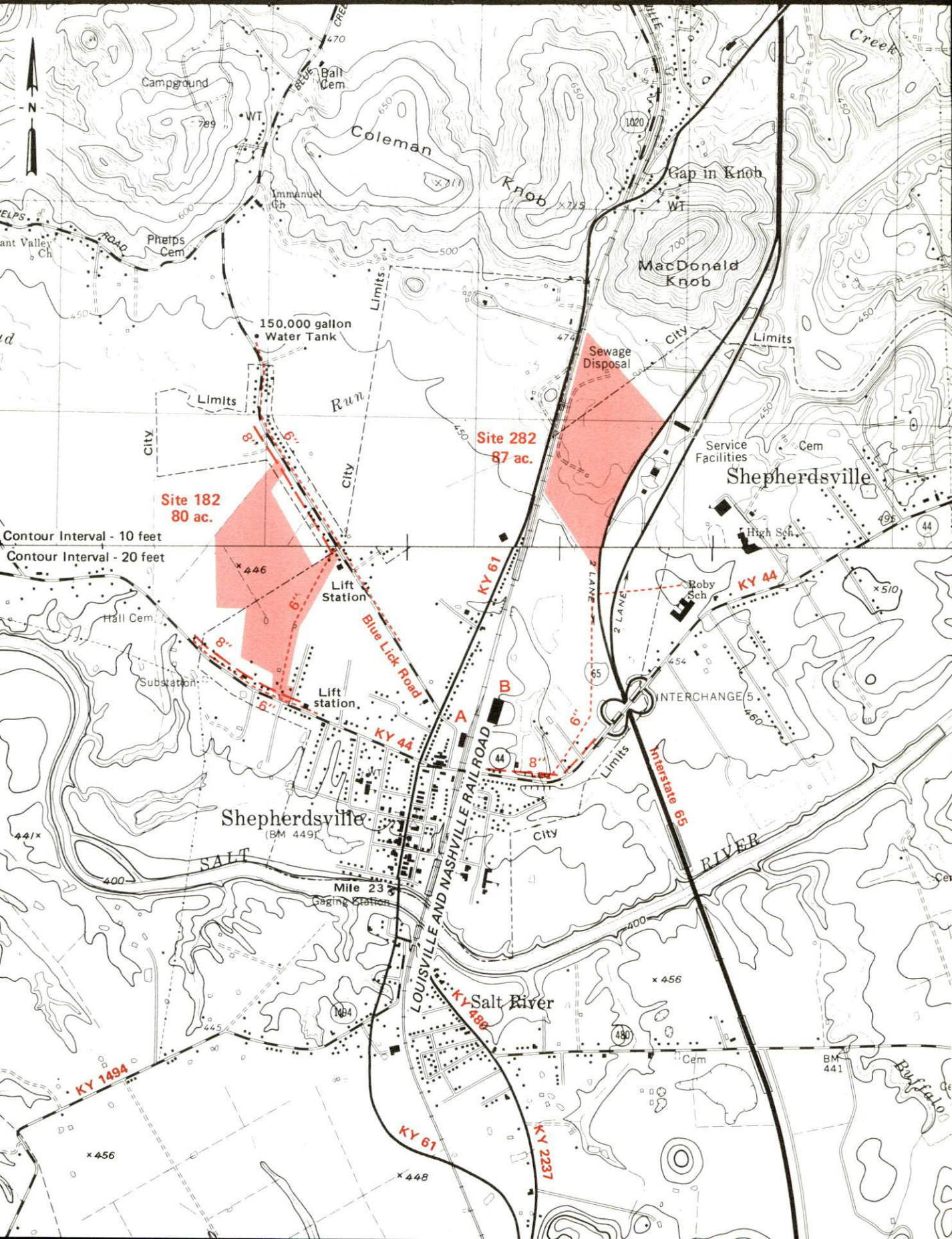


KENTUCKY & CO.
The state that's run like a business.

SHEPHERDSVILLE, KENTUCKY

Industrial Sites --- 1982

For more information contact the Department of Economic Development Division, Capital Plaza Tower, Frankfort, Kentucky



Site 182 - 87 Acres

LOCATION: Partially within northeast city limits
ZONING: Industrial
HIGHWAY ACCESS: KY 44 adjacent to southeast corner of site;
Interstate 65 interchange approximately 1.1 miles east via KY 44
RAILROAD: Not rail served
WATER: Shepherdsville Water Works
Size Line: 6-inch line along eastern boundary, along west side of
Blue Lick Road, and along north side of KY 44
NATURAL GAS: Louisville Gas and Electric Company
Size Line: 4-inch line along north side of KY 44 and west side
of Blue Lick Road
ELECTRICITY: Louisville Gas and Electric Company
SEWERAGE: Shepherdsville Sewer Works
Size Line: 8-inch line along north side of KY 44 and west side
of Blue Lick Road
OWNERSHIP: Private
FLOOD DATA: Salt River Mile 23 - Intermediate Regional Flood -
Modified, Elevation 448 feet

Site 282 - 80 Acres

LOCATION: Partially within northern city limits
ZONING: Industrial
HIGHWAY ACCESS: KY 61 along western boundary across Louisville
and Nashville Railroad; KY 44 and Interstate 65 interchange
approximately 2500 feet south
RAILROAD: Louisville and Nashville Railroad along western
boundary
WATER: Shepherdsville Water Works
Size Line: 6-inch line approximately 450 feet south
NATURAL GAS: Louisville Gas and Electric Company
Size Line: 8-inch line passes through southern portion of site
ELECTRICITY: Louisville Gas and Electric Company
SEWERAGE: Shepherdsville Sewer Works
Size Line: 8-inch line approximately 2800 feet south along north
side of KY 44
OWNERSHIP: Bullitt Development Corporation
FLOOD DATA: Salt River Mile 23 - Intermediate Regional Flood -
Modified, Elevation 448 feet

Existing Industries

- A Publishers Printing Co.
- B A. J. Bayer Co.

UTILITIES

- Water Line
- Sewer Line

SCALE: 1 inch = 2000 feet
CONTOUR INTERVAL: 10-20 feet
BASE: USGS 7.5 minute series - 1962 & 1981

A COMPREHENSIVE REPORT ON
BULLITT COUNTY, KENTUCKY

Prepared by
The Kentucky Department of Economic Development
Division of Research and Planning
in cooperation with
The Bullitt County Chamber of Commerce

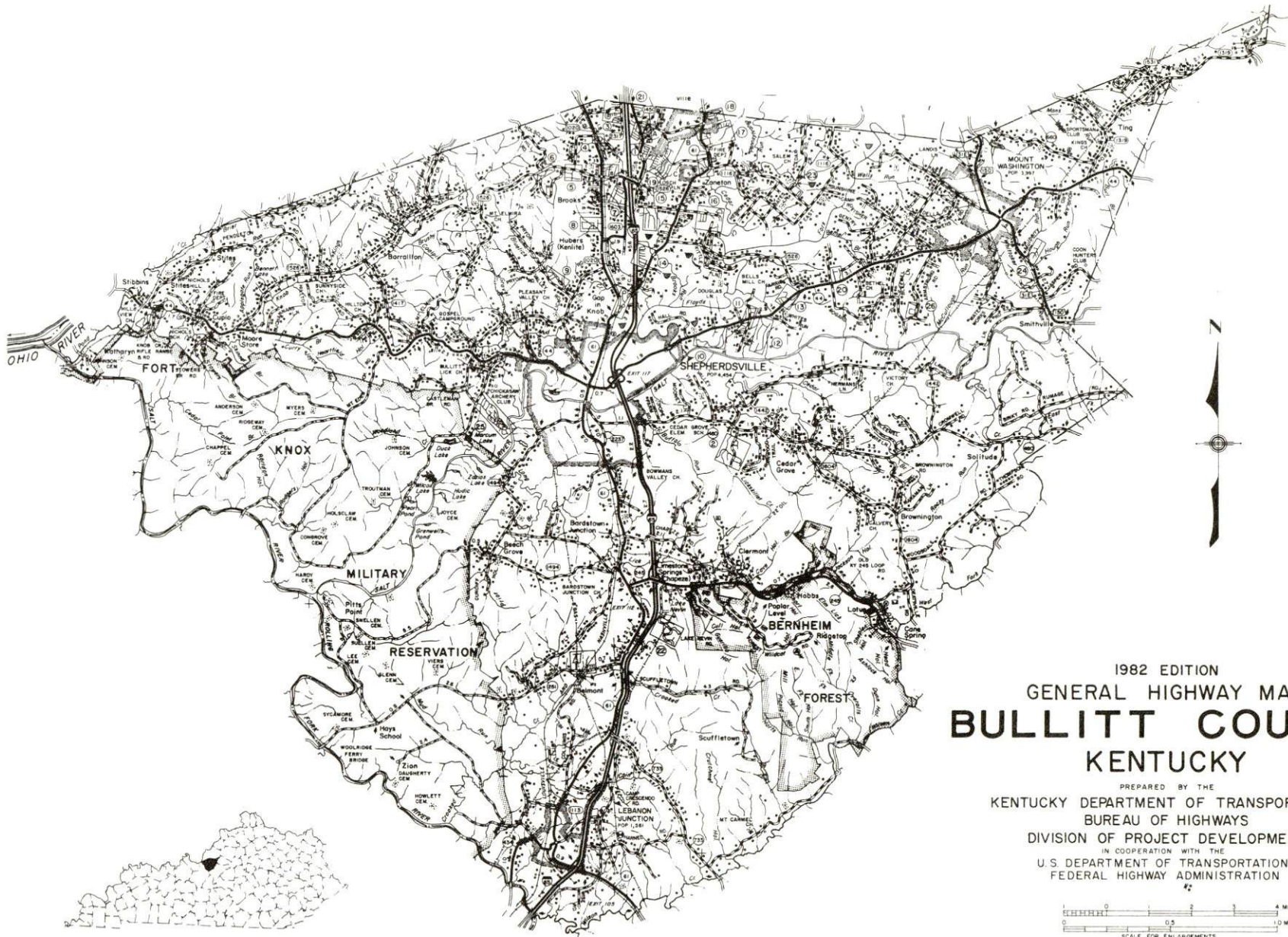
1982

Program manager - Brenda Roberts; research - John McMurray; clerical - Linda Fint; graphics - Frank Ferrante, Tony Cecconi, Jimmy Thompson; cartography - Site Evaluation Section, Division of New Industries. Cost of printing paid from state funds.

TABLE OF CONTENTS

<u>Chapter</u>	<u>Page</u>
INDUSTRIAL SITES	i
BULLITT COUNTY, KENTUCKY - A RESOURCE PROFILE	1
THE LABOR MARKET AREA	3
Population	3
Labor Force Characteristics of Residents, 1980	3
Estimated Male Labor Supply	4
Estimated Female Labor Supply	4
Bullitt County Manufacturing Firms, Their Products and Employment	5
Labor Organizations in Manufacturing Firms	7
Industrial Services	7
Average Weekly Wages by Industry, by Place of Work, 1980	8
Per Capita Personal Income	10
TRANSPORTATION	11
Rail	11
Highways	12
Truck Service	13
Air	15
Rental Services	15
Water	15
POWER AND FUEL	16
Electricity	16
Natural Gas	17
Other Fuels	18
WATER AND SEWERAGE	19
Public Water Supply	19
Raw Water	23
Sewerage	24
CLIMATE	27

<u>Chapter</u>	<u>Page</u>
LOCAL GOVERNMENT	28
City	28
County	28
Assessed Value of Property, 1981	29
Property Taxes	29
Combined State and Local Rates Per \$100 Valuation, 1981	30
Utilities Gross Receipts Tax for Schools	31
Planning and Zoning	31
Safety	31
Police	31
Fire	31
Rescue Service	32
Refuse Collection and Disposal	32
EDUCATION	33
Public Schools	33
Nonpublic Schools	33
Area Colleges and Universities	34
Vocational Schools	35
HEALTH	37
Local Medical Personnel	37
Hospitals	37
Ambulance Service	37
Public Health	37
OTHER LOCAL FACILITIES	38
Communications	38
Library Services	39
Religious Institutions	39
Financial Institutions	40
Hotels and Motels	40
Clubs and Organizations	40
RECREATION	41



1982 EDITION
 GENERAL HIGHWAY MAP
BULLITT COUNTY
 KENTUCKY

PREPARED BY THE
 KENTUCKY DEPARTMENT OF TRANSPORTATION
 BUREAU OF HIGHWAYS
 DIVISION OF PROJECT DEVELOPMENT
 IN COOPERATION WITH THE
 U.S. DEPARTMENT OF TRANSPORTATION
 FEDERAL HIGHWAY ADMINISTRATION

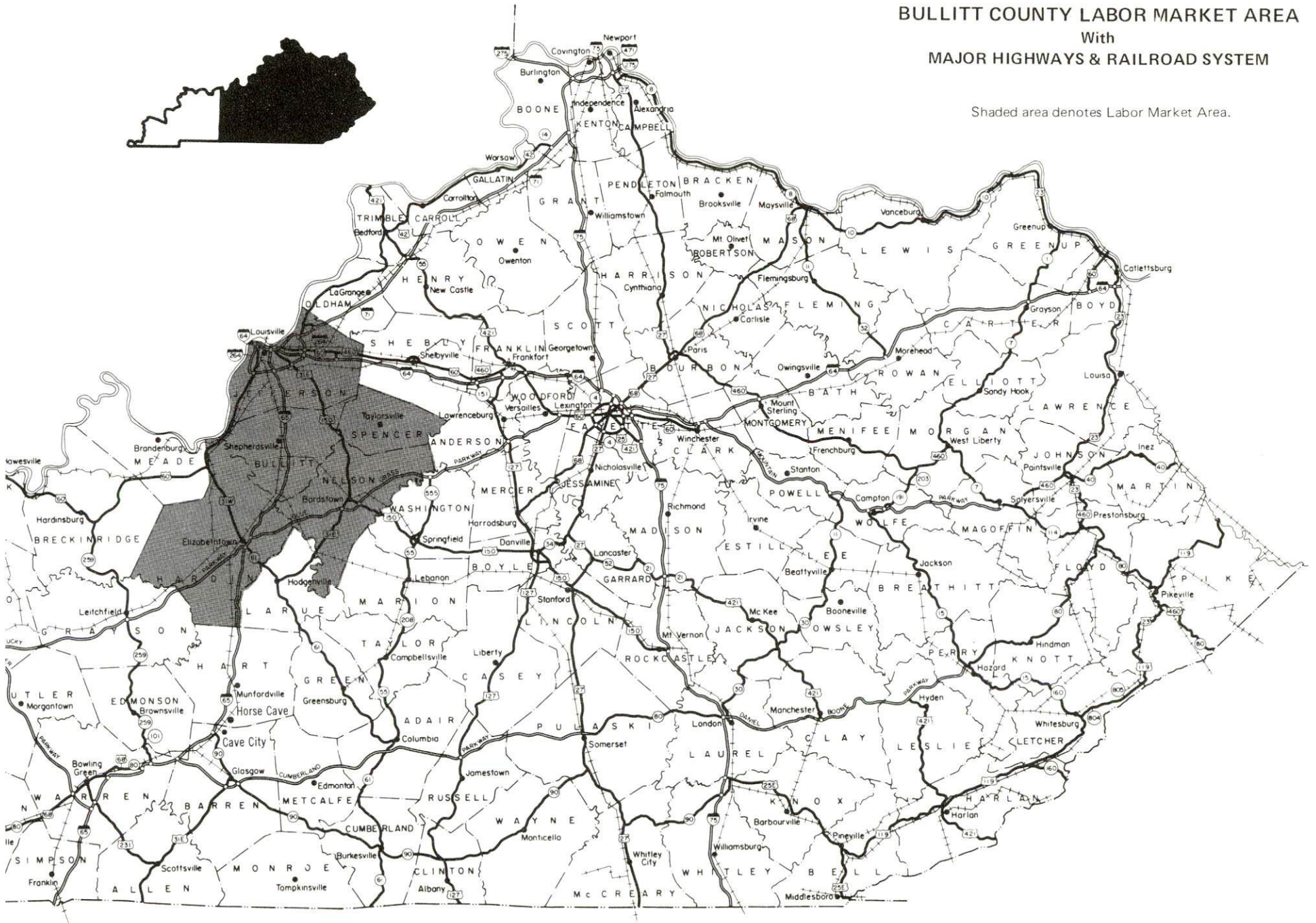
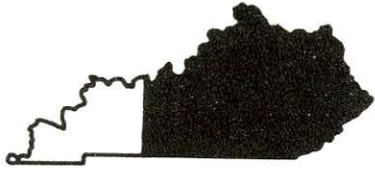


POLYCONIC PROJECTION



BULLITT COUNTY LABOR MARKET AREA With MAJOR HIGHWAYS & RAILROAD SYSTEM

Shaded area denotes Labor Market Area.



BULLITT COUNTY, KENTUCKY - A RESOURCE PROFILE

There are four incorporated cities within Bullitt County. Shepherdsville, which was established in 1793 and serves as the county seat, and the cities of Mt. Washington, Lebanon Junction and Hillview. Shepherdsville lies along the Salt River in the central section of the county and is 20 miles south of Louisville via I-65. Mt. Washington is located in the northeast portion of the county, Lebanon Junction is located in the southern tip of the county and Hillview is located in the northern portion of the county. The 1980 population of Shepherdsville was 3,358; Mt. Washington - 3,997; Lebanon Junction - 1,581; and Hillview - 5,196.

Bullitt County covers a land area of 300 square miles and is located in the eastern section of the Blue Grass region of central Kentucky. The 1980 population of Bullitt County was 43,346. Between 1970 and 1980, the population increased by 66.1 percent.

The Economic Framework

Total employment in Bullitt County in 1980 averaged 17,478 with 17,257 employed in nonagricultural jobs. Manufacturing provided 1,255 jobs, wholesale and retail trade provided 1,028 jobs, service occupations provided 505 jobs and government provided 1,181 jobs. The major industrial products in the county are liquors, offset lithographic printing and conveyors.

Per capita personal income in the county in 1979 was \$6,147. Between 1975 and 1979, per capita income increased by 47.2 percent.

The Bullitt County labor market area includes Bullitt County and its four surrounding counties. Area employment in 1980 averaged 356,246 with 352,123 employed in nonagricultural jobs. Manufacturing provided 93,448 jobs, wholesale and retail trade provided 83,281 jobs, service occupations provided 62,553 jobs and government provided 40,817 jobs.

Resources for Growth

1. Labor Supply - There is a current estimated labor supply of 36,471 men and 28,477 women available for industrial jobs in the labor market area. In addition 39,820 young men and 38,194 young women will become 18 years of age before 1986 and potentially available for work.

2. Transportation - Transportation capability is excellent. Shepherdsville and Lebanon Junction are served by the Louisville and Nashville Railroad providing mainline service. Direct access to the interstate highway system is via I-65 at Shepherdsville and Lebanon Junction. Mt. Washington is served by U.S. Highway 31E/150, a class "AAA" highway and Hillview is served by Kentucky Highway 61. Regularly scheduled air service is available at Louisville's Standiford Field, approximately 16 miles north of Shepherdsville. Truck service to Bullitt County is provided by 15 common carrier freight companies offering interstate and intrastate service.

3. Energy - The Louisville Gas and Electric Company and the Salt River RECC provide electric power to Shepherdsville, Mt. Washington and Hillview. The Kentucky Utilities Company serves Lebanon Junction. Bullitt County is served by the Kentucky Utilities Company and the Salt River RECC. Natural gas is furnished to Shepherdsville, Mt. Washington and Hillview by the Louisville Gas and Electric Company, whose source of supply is Texas Gas Transmission Corporation. Natural gas service is not available in Lebanon Junction. There are five distillate fuel oil distributors and two propane and butane distributors in the Shepherdsville-Mt. Washington-Lebanon Junction area. In addition, propane suppliers are located in Louisville and Jefferson County, Kentucky, 20 miles from Shepherdsville.

4. Education - One public school system and three private schools operate within Bullitt County. The Bullitt County Area Vocational Education Center is located in Shepherdsville and offers training in seven courses. The Jefferson State Vocational Technical School is located in Louisville, 20 miles north of Shepherdsville, and offers training in 25 courses. The Elizabethtown State Vocational Technical School is located in Elizabethtown, 26 miles south of Shepherdsville, and offers training in 13 courses. There are three universities, one college, two junior colleges and three community colleges located within 50 miles of Shepherdsville.

THE LABOR MARKET AREA

The Bullitt County Labor Market Area includes Bullitt County and the adjoining Kentucky counties of Hardin, Jefferson, Nelson and Spencer.

POPULATION			
Area	1980	1970	Percent Nonwhite
Shepherdsville	4,454	2,769	2.2
Mt. Washington	3,997	2,020	0.0
Lebanon Junction	1,581	1,571	1.5
Hillview	5,196	*	0.8
Labor Market Area	850,341	828,531	N/A
Bullitt County	43,346	26,090	0.8
Hardin County	88,917	78,421	14.7
Jefferson County	684,565	695,055	16.9
Nelson County	27,584	23,477	6.6
Spencer County	5,929	5,488	2.7

*The city of Hillview was established after the 1970 census report.

Note: The 1980 counts of population by race are provisional.

Source: U.S. Department of Commerce, Bureau of the Census, 1980 Census of Population and Housing, March 1981.

LABOR FORCE CHARACTERISTICS OF RESIDENTS, 1980

	Bullitt County	Labor Market Area
Civilian Labor Force	18,844	387,495
Employment	17,478	356,246
Agricultural	221	4,123
Nonagricultural	17,257	352,123
Unemployment	1,366	31,249
Rate of Unemployment (%)	7.2	8.1

Source: Kentucky Department for Human Resources, Kentucky Labor Force Estimates, Annual Averages, 1980.

ESTIMATED MALE LABOR SUPPLY
BULLITT COUNTY LABOR MARKET AREA

Area	Current			Under- employed	Future
	Total	Not in Labor Force	Unemployed		Reaching 18 years of age before 1986
Labor Market					
Area*	36,471	933	21,641	13,897	39,820
Bullitt	1,476	0	944	532	1,749
Hardin	4,057	0	1,467	2,590	3,033
Jefferson	28,402	0	18,148	10,254	33,408
Nelson	1,937	552	947	438	1,327
Spencer	599	381	135	83	303

*Additional workers may be drawn from other nearby counties.

Note: Unemployed - Persons unemployed and actively seeking work;

Underemployed - persons employed but working only 14 to 26 weeks per year;

Not in Labor Force - represents the number of persons who would enter the labor force if suitable employment were available (based on the assumption that persons in Kentucky would like to participate in the labor force in the same proportion that they do nationally).

Sources: Kentucky Department for Human Resources, Kentucky Labor Supply Estimates by County, 1980. Kentucky Department of Economic Development, Future Labor Supply before 1986.

ESTIMATED FEMALE LABOR SUPPLY
BULLITT COUNTY LABOR MARKET AREA

Area	Current			Under- employed	Future
	Total	Not in Labor Force	Unemployed		Reaching 18 years of age before 1986
Labor Market					
Area*	28,477	1,114	9,608	17,755	38,194
Bullitt	1,305	0	422	883	1,606
Hardin	2,618	846	614	1,158	2,946
Jefferson	23,219	0	8,115	15,104	32,046
Nelson	957	0	396	561	1,343
Spencer	378	268	61	49	253

*Additional workers may be drawn from other nearby counties.

Note: Unemployed - persons unemployed and actively seeking work;

Underemployed - persons employed but working only 14 to 26 weeks per year;

Not in Labor Force - represents the number of persons who would enter the labor force if suitable employment were available (based on the assumption that persons in Kentucky would like to participate in the labor force in the same proportion that they do nationally).

Sources: Kentucky Department for Human Resources, Kentucky Labor Supply Estimates by County, 1980. Kentucky Department of Economic Development, Future Labor Supply before 1986.

BULLITT COUNTY MANUFACTURING FIRMS,
THEIR PRODUCTS AND EMPLOYMENT

Firm (Establishment date)	Product	Employment			Labor Unions
		Total	Male	Female	
<u>Shepherdsville</u>					
A. J. Bayer Company (1973)	Conveyors	228	199	29	Carpenters*
Bullitt County Stone Company (1967)	Agricultural lime, crushed stone	30	28	2	Engineers*
Bullitt Publishing Corporation (1980)	Newspaper publishing, printing letter press	25	-	-	
Mago Construction Company, Inc. (1967)	Bituminous concrete mixes	15	15	-	
Modern Designs, Inc. (1967)	Fiberglass septic tanks, corrosion resistant equipment, fabricated fiberglass	10	10	-	
Monarch Hardware Manufacturing Company (1965)	Panic exit hardware	30	28	2	
The Pioneer Press (1882)	Newspaper, job printing	15	10	5	
Publishers Printing Company (1866)	Offset lithographic printing	250	182	68	
Quality Crushed Stone Company, Inc. (1966)	Agricultural lime, crushed limestone	18	15	3	
Quality Ready Mix, Inc. (1960)	Ready mixed concrete	5	4	1	
Charles H. Reichmuth, Inc. (1962)	Rough lumber, ties	11	11	-	

<u>Firm (Establishment date)</u>	<u>Product</u>	<u>Employment</u>			<u>Labor Unions</u>
		<u>Total</u>	<u>Male</u>	<u>Female</u>	
<u>Mt. Washington</u>					
B & B Screw Machine Specialists, Ltd. (1965)	Screw machine products, shafts and collars, screws	18	17	1	
Mt. Washington Star, Inc. (1964)	Newspaper	2	-	2	
Walker Machine Tool Company, Inc. (1959)	Plastic molding, molds and dies, machine shop	31	22	9	
<u>Lebanon Junction</u>					
Mac Manufacturing Company (1957)	Barrel lifts, automatic barrel filling device, automatic barrel stenciler	14	13	1	
<u>Hillview</u>					
Taylor Battery Company (1952)	Battery rebuilding	21	18	3	
Ziniz Company (1969)	Conveyors, steel fabrication, special machine	52	50	2	Carpenters*
<u>Clermont</u>					
James B. Beam Distilling Company (1934)	Whiskey, cordials, cocktails, vodka, distillers dried grains	514	225	289	Distillery Workers*

*See Labor Organizations.

Source: Kentucky Department of Economic Development, Division of Research and Planning.

LABOR ORGANIZATIONS IN MANUFACTURING FIRMS

<u>Union</u>	<u>Representing workers at:</u>
Distillery, Wine and Allied Workers' International Union, AFL-CIO-CLC	James B. Beam Distilling Company
United Brotherhood of Carpenters and Joiners of America, AFL-CIO	A. J. Bayer Company; Ziniz Company
International Union of Operating Engineers, AFL-CIO	Bullitt County Stone Company

INDUSTRIAL SERVICES

<u>Types of Services</u>	<u>Location</u>	<u>Mileage from Shepherdsville</u>
Tool & Die, Machine & Pattern Shops	Louisville	20
Metal Service Centers	Louisville	20
Heat Treating	Louisville	20
Metal Finishers	Louisville	20
Electric Motor Repair	Louisville	20

Source: Kentucky Directory of Selected Industrial Services, 1981.

AVERAGE WEEKLY WAGES BY INDUSTRY,
BY PLACE OF WORK, 1980

	<u>Bullitt County</u>	<u>Hardin County</u>	<u>Jefferson County</u>
All Industries	\$205.60	\$211.03	\$277.06
Mining & Quarrying	*	*	339.44
Contract Construction	210.79	275.96	339.93
Manufacturing	285.48	274.97	372.92
Transportation, Communications & Public Utilities	267.12	243.66	365.59
Wholesale & Retail Trade	140.28	160.49	208.70
Finance, Insurance & Real Estate	193.56	212.67	271.36
Services	128.59	188.57	208.20
State/Local Government	206.65	206.55	241.39
Other	190.18	113.94	173.05
	<u>Nelson County</u>	<u>Spencer County</u>	
All Industries	\$225.65	\$178.27	
Mining & Quarrying	364.59	*	
Contract Construction	261.84	*	
Manufacturing	301.31	*	
Transportation, Communications & Public Utilities	326.19	175.40	
Wholesale & Retail Trade	155.11	135.59	
Finance, Insurance & Real Estate	187.12	*	
Services	130.77	193.07	
State/Local Government	200.57	178.82	
Other	148.61	*	

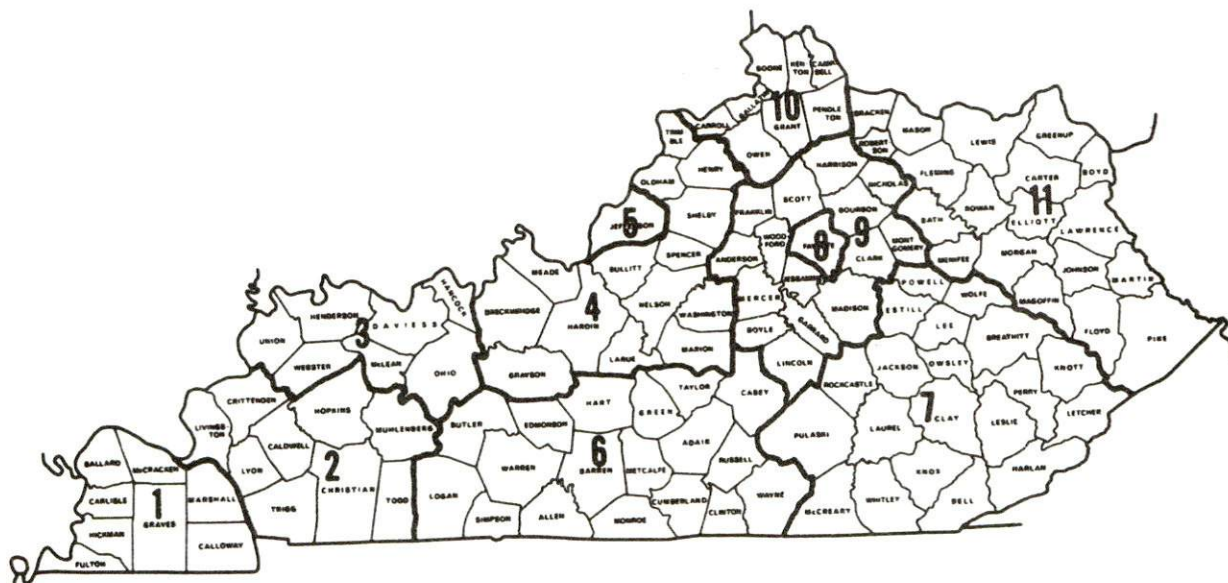
*Not disclosed.

Note: Excludes domestic workers, railway workers, certain nonprofit corporations, majority of federal government workers, and self-employed workers.

Source: Kentucky Department for Human Resources, Average Weekly Wages of Workers Covered by Kentucky Unemployment Insurance Law, 1980.

Occupational wage rates for specific industries are usually not available to most government agencies, and wage data furnished to state employment agencies by individual industrial employers are protected from disclosure by federal law. The most reliable up-to-date wage information can be obtained by direct contact with local employers.

Associated Industries of Kentucky, a voluntary organization of Kentucky businesses, regularly collects occupational wage rates and fringe benefits data from participating member firms. Data are compiled for over 127 clearly defined office, production, and service occupations. Tabulations are published for 11 regions of Kentucky, as shown on the map below. It should be noted that the data may be weighted by the preponderance of firms in the larger cities and may be somewhat higher than the rates paid in the smaller communities. Data from these tabulations are available, upon request, from the Kentucky Department of Economic Development, Frankfort, Kentucky 40601.



Associated Industries of Kentucky Area Wage Surveys

PER CAPITA PERSONAL INCOME

<u>Area</u>	<u>1979</u>	<u>1975</u>	<u>Percent Change</u>
Bullitt County	\$ 6,147	\$ 4,175	47.2
Labor Market Area Range	\$6,147 - 9,266	\$4,175 - 6,131	N/A
Kentucky	7,052	4,882	44.4
U.S.	8,637	5,861	47.4

Sources: U.S. Department of Commerce, Bureau of Economic Analysis, April 1981.
 U.S. Department of Commerce, Bureau of Economic Analysis, August 1981.

TRANSPORTATION

Rail

Line serving Shepherdsville and Lebanon Junction - Louisville and Nashville Railroad

Services - Main line; one freight stops daily Sunday through Friday; eight to ten through freights daily; team track space for two cars; switching facilities. Piggyback facilities are located in Louisville, 20 miles north of Shepherdsville*.

For details on routing, schedules, rates, and services, contact:

Director of Industrial Development
Louisville & Nashville Railroad
P. O. Box 32290
Louisville, Kentucky 40232
(502) 587-5723

Mt. Washington and Hillview are not served directly by a rail line.

*The nearest piggyback service is available at Clermont, 5 miles south of Shepherdsville and 8 miles north of Lebanon Junction. L & N provides piggyback service from Clermont through the Louisville ramp with highway service substituted for rail between the two cities. Rates are charged from Clermont.

Highways*

Interstate 65, a major north-south highway, is routed through the center of Bullitt County with an interchange located at Shepherdsville. Direct access to I-65 north is available at Lebanon Junction. I-65 interconnects with I-64 and with I-71 at Louisville, 20 miles north of Shepherdsville, and with the Blue Grass Parkway and the Western Kentucky Parkway at Elizabethtown, 25 miles south of Shepherdsville.

Mt. Washington is located 10 miles east of I-65 via Kentucky Highway 44. In addition, Mt. Washington is served by U.S. Highway 31E/150. This class "AAA" rated trucking highway connects with the Blue Grass Parkway, an east-west toll road, 21 miles south of Mt. Washington. Hillview is served by Kentucky Highway 61 which provides access to the interstate highway system at Shepherdsville.

*Easy interstate highway access from the southern portion of Bullitt County will be possible by a new interchange that is planned at I-65 and Kentucky Highway 480, just south of Shepherdsville. Construction of the interchange could possibly begin in early 1984. No completion date for the \$2 million project has been announced.

Kentucky Highway 44, an east/west highway through Shepherdsville, is scheduled for widening from Kentucky Highway 61 to a point east of I-65. This widening project will increase the flow of traffic from the present I-65 interchange into Shepherdsville and Bullitt County.

Truck Service

Company

Shepherdsville

Bowman Transportation, Inc.*
Distillery Transfer Service,
Inc.**
IML Freight, Inc.*
Interstate System*
Leoni Motor Express, Inc.*
Mason and Dixon Lines, Inc.*
Overnite Transportation
Company**
Robbins Truck Line, Inc.**
Smith's Transfer Corporation*
T.I.M.E.-DC, Inc.*
Thurston Motor Lines, Inc.*

Home Office

1010 Stroud Avenue
Gadsden, Alabama 35093

P. O. Box "H"
Bardstown, Kentucky 40004
2175 South 3270 West
Salt Lake City, Utah 84111
110 Ionia, N.W.
Grand Rapids, Michigan 49503
501 Ashland Avenue
Chicago Heights, Illinois 60411
P. O. Box 969
Kingsport, Tennessee 37662

1000 Semmes Avenue
Richmond, Virginia 23209
Route 1
Hardinsburg, Kentucky 40143
P. O. Box 1000
Staunton, Virginia 24401
P. O. Box 2550
Lubbock, Texas 79408
600 Johnston Road
Charlotte, North Carolina 28206

Mt. Washington

Associated Truck Lines, Inc.*
Distillery Transfer Service,
Inc.**
IML Freight, Inc.*
Interstate System*
Maislin Transport, Ltd.*
Mason and Dixon Lines, Inc.*
Mercury Motor Express, Inc.*
Overnite Transportation
Company**
Smith's Transfer Corporation*
T.I.M.E.-DC., Inc.*

200 Monroe Avenue, N.W.
Grand Rapids, Michigan 49503

P. O. Box "H"
Bardstown, Kentucky 40004
2175 South 3270 West
Salt Lake City, Utah 84111
110 Ionia, N. W.
Grand Rapids, Michigan 49503
7401 Newman Boulevard
Montreal, Quebec Canada H8N1X4
P. O. Box 969
Kingsport, Tennessee 37662
2511 North Grady Avenue
Tampa, Florida 33607

1000 Semmes Avenue
Richmond, Virginia 23209
P. O. Box 1000
Staunton, Virginia 24401
P. O. Box 2550
Lubbock, Texas 79408

CompanyHome Office

Thurston Motor Lines, Inc.*

600 Johnston Road
Charlotte, North Carolina 28206Lebanon Junction

Distillery Transfer Service, Inc.**

P. O. Box "H"
Bardstown, Kentucky 40004

Maislin Transport, Ltd.*

7401 Newman Boulevard
Montreal, Quebec Canada H8N 1X4

McLean Trucking Company*

P. O. Box 213
Winston Salem, North Carolina 27154Overnite Transportation
Company**1000 Semmes Avenue
Richmond, Virginia 23209

Smith's Transfer Corporation*

P. O. Box 1000
Staunton, Virginia 24401

Thurston Motor Lines, Inc.*

600 Johnston Road
Charlotte, North Carolina 28206Hillview

Bowman Transportation, Inc.*

1010 Stroud Avenue
Gadsden, Alabama 35093

Distillery Transfer Service, Inc.**

P. O. Box "H"
Bardstown, Kentucky 40004

Interstate System*

110 Ionia, N.W.
Grand Rapids, Michigan 49503

Mason and Dixon Lines, Inc.*

P. O. Box 969
Kingsport, Tennessee 37662Overnite Transportation
Company**1000 Semmes Avenue
Richmond, Virginia 23209

Robbins Truck Line, Inc.**

Route 1
Hardinsburg, Kentucky 40143

Smith's Transfer Corporation*

P. O. Box 1000
Staunton, Virginia 24401

T.I.M.E.-DC., Inc.*

P. O. Box 2550
Lubbock, Texas 79408

Thurston Motor Lines, Inc.*

600 Johnston Road
Charlotte, North Carolina 28206Other Freight ServicesNearest Shipping Center

Purolator Courier Corporation***

Louisville, 20 miles north of Shepherdsville

United Parcel Service***

Louisville, 20 miles north of Shepherdsville

Federal Express****

Louisville, 20 miles north of Shepherdsville

* Interstate service only.

** Interstate and intrastate service.

*** For regular scheduled pickups or for occasional pickups, arrangements must be made with the Louisville office of Purolator Courier Corporation or United Parcel Service.

**** For information on scheduling, rates, and services, contact the Federal Express shipping station at Louisville, or call the home office in Memphis, Tennessee, toll-free at 800-238-5355 (in Tennessee, call 800-542-5171).

HIGHWAY MILES AND TRUCK TRANSIT TIME IN DAYS FROM
SHEPHERDSVILLE, KENTUCKY, TO SELECTED MARKET CENTERS

City	Highway Miles	Delivery Time TL	City	Highway Miles	Delivery Time TL
Atlanta, Ga.	398	1	Los Angeles, Ca.	2,128	5
Baltimore, Md.	618	2	Louisville, Ky.	20	1
Birmingham, Ala.	352	1	Nashville, Tenn.	156	1
Chicago, Ill.	312	1	New Orleans, La.	673	2
Cincinnati, Ohio	121	1	New York, N.Y.	768	3
Cleveland, Ohio	365	1	Pittsburgh, Pa.	408	1
Detroit, Mich.	380	1	St. Louis, Mo.	283	1
Knoxville, Tenn.	259	1			

Note: Mileage computations are via the best interstate or primary highways, not necessarily the most direct route of travel.

Sources: Rand McNally Road Atlas, 1979. Official Kentucky Mileage Map, 1979.
Delivery time - Distillery Transfer Service, Inc., P. O. Box "H", Bardstown,
Kentucky 40004.

Air

Nearest Scheduled Commercial Airline Service

Standiford Field
Location: 4 miles southeast of center of Louisville, Kentucky;
16 miles north of Shepherdsville
Runways: 3 paved
Length: 7,800 feet; 7,250 feet; 5,000 feet
Traffic
Control: Control tower
Lighting: Runways, obstructions, beacon and approach and
touchdown lights, center line on one runway
Services: Continental, Delta, Eastern, Ozark, Piedmont,
TWA, USAir, Wright, Allegheny Commuter;
fuel - 100 and jet; storage; minor A & P repairs;
APU, charter, oxygen, survival equipment; taxi,
car rentals, limousine, courtesy car, public
transit; weather information; restaurant, snack bar

Rental Services - Complete car, truck, and trailer rentals are available in
Louisville, 20 miles north of Shepherdsville.

Water

Shepherdsville is only 20 miles from Louisville, via Interstate 65, where
port facilities are available on the Ohio River. The Louisville and
Jefferson County Riverport Authority has been designated as a Foreign
Trade Zone and offers complete U.S. customs services for exports and
imports.

POWER AND FUEL

Electricity

Companies serving Bullitt County* - (1) Louisville Gas and Electric Company;
(2) Salt River Rural Electric Cooperative Corporation; (3) Kentucky
Utilities Company**

Source of power - (1) Louisville Gas and Electric Company; (2) East Kentucky
Power Cooperative; (3) Kentucky Utilities Company

Total generating capacity - (1) 4,207,300 KW; (2) 1,304,000 KW;
(3) 2,639,100 KW

For industrial rates contact:

(1) Louisville Gas and Electric Company
311 West Chestnut Street
Louisville, Kentucky 40202
(502) 566-4250

and/or

(2) Industrial Development Division
East Kentucky Power Cooperative
P. O. Box 707
Winchester, Kentucky 40391
(606) 744-4812

and/or

(2) Salt River RECC
111 West Brashear Avenue
Bardstown, Kentucky 40004
(502) 348-3931

and/or

(3) Industrial Development Department
Kentucky Utilities Company
One Quality Street
Lexington, Kentucky 40507
(606) 255-1461

* The Louisville Gas and Electric Company supplies electricity to the cities of
Shepherdsville, Mt. Washington and Hillview and to parts of Bullitt County.
Kentucky Utilities Company provides electricity to the city of Lebanon
Junction. Salt River RECC serves the major portion of Bullitt County.

** A new generating unit is under construction in Carroll County. Due to be
completed in 1984, the unit will have a generating capacity of 511,000 KW.

Natural Gas

Company serving Shepherdsville, Mt. Washington and Hillview - Louisville Gas and Electric Company

Source of supply - Texas Gas Transmission Corporation

Size of transmission mains - 30 and 26 inches (supplier);
20, 16 and 12 inches (distributor)

Distribution mains - 8, 6, 4 and 2 inches

Distribution pressure - 4 ounces to 5 pounds

Btu content - 1,004 per cubic foot

Specific gravity - 0.59

For rates and supplies contact:

Manager, Gas Market Services
Louisville Gas and Electric Company
P. O. Box 32010
Louisville, Kentucky 40232
(502) 566-4253

- Natural gas service is not available in Lebanon Junction.

Other Fuels

Propane (Bullitt County)

Big "3" Gas Company of
Lebanon Junction
Preston Highway
Lebanon Junction, Kentucky 40150

Buckey Gas Products Company
Highway 61 South
Shepherdsville, Kentucky 40165

In addition, propane suppliers are located in Louisville and Jefferson County, Kentucky, 20 miles from Shepherdsville.

Fuel oils

Distillate fuel oil - (Bullitt County)

Ace Oil Distributors, Inc.
Old Highway 61
Shepherdsville, Kentucky 40165

Harris Gulf Service
North Main Street
Mt. Washington, Kentucky 40047

Agenbright Oil Company
Preston Highway
Lebanon Junction, Kentucky 40150

Lee Distributors, Inc.
(Chevron)
P. O. Box 86
Shepherdsville, Kentucky 40165

Dawson and Reesor Service Station
and Fuel Oil
Second and Buckman Streets
Shepherdsville, Kentucky 40165

Residual fuel oil - Arrangements must be made with the refinery.

Low sulphur content coal - Available in eastern Kentucky.

WATER AND SEWERAGE

Public Water Supply

Company serving Shepherdsville - Shepherdsville Water and Sewer Department*
P. O. Box 398
Shepherdsville, Kentucky 40165
(502) 543-2923 or 543-6016

Source - Salt River

Treatment plant capacity - 400,000 gallons per day**

Average daily consumption - 357,000 gallons

Peak daily consumption - At capacity

Type treatment - Gravity filters with lime, alum and chlorine chemical feed

Storage capacity - 510,000 gallons

Size lines - 8, 6 and 4 inches

Average pressure - 55 psi

Average temperature - 50 degrees F.

MONTHLY WATER RATES

First	2,000 gallons	\$7.80 (Minimum)
Next	3,000 gallons	2.50 per M gallons
Next	5,000 gallons	2.00 per M gallons
Next	15,000 gallons	1.90 per M gallons
Next	25,000 gallons	1.50 per M gallons
Next	50,000 gallons	1.30 per M gallons
Next	100,000 gallons	1.20 per M gallons
All over	200,000 gallons	1.10 per M gallons

Tap-on charge:

3/4-inch meter	\$150
1-inch meter	300
2-inch meter	500

* The department has completed improvements to its storage and distribution system. Reinforcing mains were installed within problem areas in the system and two above ground storage tanks, holding 350,000 gallons of treated water, were erected.

** Based on 16 hours pumping.

Company serving Mt. Washington - Mt. Washington Water Company
 208 Snapp Street
 Mt. Washington, Kentucky 40047
 (502) 538-4216

Source of supply of treated water - Louisville Water Company
 Average daily consumption - 600,000 gallons
 Peak daily consumption - At capacity
 Storage capacity - 300,000 gallons
 Size lines - 12, 8, 6 and 4 inches
 Average pressure - 55 psi
 Average temperature - 45 degrees F.

MONTHLY WATER FEES

0 -	2,490 gallons	\$ 6.05
2,500 -	3,490 gallons	7.16
3,500 -	4,490 gallons	8.36
4,500 -	5,490 gallons	9.56
5,500 -	6,490 gallons	10.56
6,500 -	7,490 gallons	11.56
7,500 -	8,490 gallons	12.56
8,500 -	9,490 gallons	13.56
9,500 -	10,490 gallons	14.56
10,500 -	11,490 gallons	15.56
11,500 -	12,490 gallons	16.56
12,500 -	13,490 gallons	17.56
13,500 -	14,490 gallons	18.56
14,500 -	15,490 gallons	19.56
All	over 15,500 gallons	0.76 per M gallons plus tax
Tap-on charge:	3/4-inch meter	\$250
	1-inch meter	435
	2-inch meter	735

Company serving Lebanon Junction - Lebanon Junction Water Works*
City Hall
Lebanon Junction, Kentucky 40150
(502) 833-4311

Source of supply of treated water - Bardstown Municipal Light and Water
Company

Average daily consumption - 130,000 gallons

Peak daily consumption - 175,000 gallons

Storage capacity - 321,000 gallons

Size lines - 8, 6 and 4 inches

Average pressure - 50 psi

Average temperature - 62 degrees F.

MONTHLY WATER RATES

First	2,000 gallons	\$ 8.60 (Minimum charge)
Next	4,000 gallons	3.60 per M gallons
Next	4,000 gallons	3.00 per M gallons
Next	5,000 gallons	2.40 per M gallons
Next	10,000 gallons	2.00 per M gallons
All over	25,000 gallons	1.80 per M gallons

Tap-on charge:	3/4-inch meter	\$250
	Larger size meter	250 plus cost

*A 211,000-gallon above ground storage tank for treated water has been constructed and new water lines, ranging in size from 2 inches through 6 inches, have been installed. The 5,000 feet of new water line extensions will provide first-time water service to homes in some areas.

Company serving Hillview - Louisville Water Company
435 South Third Street
Louisville, Kentucky 40202
(502) 582-2431

The city of Hillview does not maintain a water treatment system. City residents purchase water from the Louisville Water Company. Water lines in the city are 6, 8, 10 and 12 inches.

BI-MONTHLY WATER RATES

0 - 2,000 gallons	\$5.46 (Minimum)
Over 2,000 gallons	0.74 per M gallons

Tap-on charge:	3/4-inch meter	\$350
	1-inch meter	500

Name of water district - Salt River Water District*
P. O. Box 426
Shepherdsville, Kentucky 40165
(502) 543-3253

Area served - Approximately two miles south of Salt River and two miles northeast of Salt River

Date when water district began operating - 1963

Source of raw water - Salt River and Wade Lake

Capacity of treatment plant - 500,000 gallons per day

Type of treatment - Coagulation, chlorination

Average amount of water used in a 24-hour period - 300,000 gallons

Peak amount of water used in a 24-hour period - 420,000 gallons

Storage capacity - 200,000 gallons

Average pressure - 60 psi

Average temperature - 50 degrees F.

Size lines - 8, 6, 4, 3 and 2 inches

MONTHLY RATES

Residential

First	3,000 gallons	\$7.90 (Minimum charge)
Next	5,000 gallons	1.40 per M gallons
Next	7,000 gallons	1.15 per M gallons
Next	10,000 gallons	.90 per M gallons
All over	25,000 gallons	.80 per M gallons

Commercial

First	3,000 gallons	\$8.50 (Minimum charge)
Next	5,000 gallons	1.55 per M gallons
All over	8,000 gallons	1.25 per M gallons

Tap-on charge: \$350

Raw Water

Surface water sources - Salt River and Rolling Fork

Average discharge - Salt River at Shepherdsville - 1,601 cfs (41 years, USGS);

Rolling Fork near Boston - 1,820 cfs (41 years, USGS)

Expected ground water yield - 500 to 1,000 gpm in northwestern tip of county along Ohio River; 50 to 200 gpm in western edge of county; 5 to 50 gpm in areas adjacent to Salt River; 5 gpm or less over remainder of county

*The Water District, serving a portion of southwestern Bullitt County, has installed new raw water intake pumps at Wade Lake. The older raw water intake pumps, located on the Salt River, are being overhauled and will be maintained as a backup unit.

Sewerage

Company serving Shepherdsville - Shepherdsville Water and Sewer Department*
P. O. Box 398
Shepherdsville, Kentucky 40165
(502) 543-2923 or 543-7339

Design capacity - 300,000 gallons per day
Average daily flow - At capacity
Treatment - Primary and secondary
Type treatment - Aeration, chlorination and activated sludge
Treated effluent discharged into - Salt River
Size of sanitary mains - 10 and 8 inches
Size of storm mains - 24 and 18 inches

Rates

Sewer rates are based on metered water usage in addition to a minimum charge.

	Number of gallons of water usage <u>per month</u>	
First	2,000 gallons	\$6.56 (Minimum)
Next	3,000 gallons	2.44 per M gallons
Next	5,000 gallons	2.14 per M gallons
Next	15,000 gallons	2.08 per M gallons
Next	25,000 gallons	1.84 per M gallons
Next	50,000 gallons	1.72 per M gallons
Next	100,000 gallons	1.66 per M gallons
All over	200,000 gallons	1.10 per M gallons

Tap-on charge:

Residential - \$500
Commercial - 1,000

*The sewer department has started a major expansion of its sewerage system. The project will provide for the renovation of the existing treatment plant and increase its capacity to 1 million gallons per day. Service is to be extended to the south side of Shepherdsville with three miles of sanitary mains, which will provide service to 250 new customers. The \$4.3 million project is scheduled for completion in May 1983.

Company serving Mt. Washington - Mt. Washington Waste Water Treatment Plant*
P. O. Box 237
Mt. Washington, Kentucky 40047
(502) 538-4781

Design capacity - 400,000 gallons per day
Average daily flow - 150,000 gallons**
Treatment - Primary and secondary
Type treatment - Grit chamber, extended aeration, primary clarifier, sludge settling tank, chlorine contact tank, sludge drying beds
Treated effluent discharged into - McCullough Run to Salt River
Size of sanitary mains - 15, 12, 10, 8, 6 and 4 inches
Monthly fees - Based on water usage

0 -	2,490 gallons	\$ 7.99
2,500 -	3,490 gallons	9.45
3,500 -	4,490 gallons	11.04
4,500 -	5,490 gallons	12.62
5,500 -	6,490 gallons	13.94
6,500 -	7,490 gallons	15.26
7,500 -	8,490 gallons	16.58
8,500 -	9,490 gallons	17.90
9,500 -	10,490 gallons	19.22
10,500 -	11,490 gallons	20.54
11,500 -	12,490 gallons	21.86
12,500 -	13,490 gallons	23.18
13,500 -	14,490 gallons	24.50
14,500 -	15,490 gallons	25.82
All over	15,500 gallons	0.80 per M gallons

Users who are not connected to city water - \$12.75 per month

Tap-on charge: \$500

* Step I of a 201 Facilities Plan has been completed for the sewerage system. At present, an inflow/infiltration study is under way to determine problems within the system. When completed, a sewer system evaluation study will begin.

** Dry weather average.

Company serving Lebanon Junction - Lebanon Junction Sewerage Department
City Hall
Lebanon Junction, Kentucky 40150
(502) 833-4311

Design capacity - 280,000 gallons per day
Average daily flow - 120,000 gallons
Treatment - Primary
Type treatment - Aeration, clarification and chlorination
Treated effluent discharged into - Rolling Fork River
Size of sanitary mains - 8 and 10 inches
Rates - 80 percent of monthly water bill
Tap-on charge: \$250

Company serving Hillview - Maryville Sewerage System, Inc.
4898 Brownsboro Center
Louisville, Kentucky 40207
(502) 895-4273

Sewer service is provided by a private company which maintains four treatment plants.
Treated effluent discharged into - Tanyard Branch and Brooks Run
Size of sanitary mains - 12, 10, 8 and 6 inches
Rates - Residential - \$9.50 per month
Commercial - 19.00 per month
Tap-on charge: Separate evaluation is afforded each tap-on.

CLIMATE

Bullitt County

Temperature

Normal (30-year record)	55.60 degrees
Average annual 1980	56.30 degrees
Record highest, July 1954 (33-year record)	105.00 degrees
Record lowest, January 1963 (33-year record)	-20.00 degrees
Normal heating degree days (30-year record)	4,640
(Heating degree day totals are the sums of negative departures of average daily temperatures from 65 degrees F.)	

Precipitation

Normal (30-year record)	43.11 inches
Mean annual snowfall (33-year record)	18.30 inches
Total precipitation 1980	37.89 inches
Mean number days precipitation (.01 inch or more) (33-year record)	125
Mean number days thunderstorms (33-year record)	45

Prevailing Winds (15-year record)

South

Relative Humidity (20-year record)

1 a.m.	76 percent
7 a.m.	81 percent
1 p.m.	59 percent
7 p.m.	61 percent

Source: U.S. Department of Commerce, Environmental Science Services Administration, Climatological Data, 1980. Station of record: Louisville, Kentucky.

LOCAL GOVERNMENT

City

Shepherdsville

Structure - Mayor - 4-year term; 6 council members - 2-year terms

Budget 1982 - General Fund \$329,116
Water and Sewer Fund 418,840

Fees and licenses - Business licenses vary from \$6.50 to \$400 per year; unloading license - \$25 per year

Mt. Washington

Structure - Mayor - 4-year term; 6 council members - 2-year terms

Budget 1982 - General Fund \$182,922
Water and Sewer Fund 333,302

Fees and licenses - Business licenses vary from \$25 to \$600 per year; unloading license - \$25 per year; vehicle tax - \$5 per year

Lebanon Junction

Structure - Mayor - 4-year term; 6 council members - 2-year terms

Budget 1982 - General Fund \$ 67,031
Water and Sewer Fund 90,000 (estimated)

Fees and licenses - Business licenses vary from \$10 to \$400 per year; unloading license - \$25 per year

Hillview

Structure - Mayor - 4-year term; 6 council members - 2-year terms

Budget 1982 - General Fund \$113,336

Fees and licenses - Business licenses range from \$25 to \$600 per year; unloading license - \$25 per year

County

Structure - County Judge/Executive - 4-year term; 4 magistrates - 4-year terms

Budget 1981-82 - General Fund \$770,541; Road Fund \$513,500

Assessed Value of Property, 1981

<u>Classes of Property</u>	<u>Shepherdsville</u>	<u>Mt. Washington</u>	<u>Lebanon Junction</u>
Real Estate	\$52,882,778	\$ 47,224,676	\$ 7,661,843
Tangibles	8,319,762	9,765,729	-----
<u>Classes of Property</u>	<u>Hillview</u>	<u>Bullitt County</u>	
Real Estate	\$35,680,260	\$423,584,526	
Tangibles	-----	65,247,680	

Property Taxes

All property in Kentucky is assessed at 100 percent of fair cash value.

Land and buildings are taxed by the state and may be taxed by local jurisdictions. The state rate is \$0.229 per \$100 of assessed valuation.

Manufacturing machinery, raw materials inventories, pollution control equipment, and goods in the process of manufacture are not subject to local taxation. The state rate is \$0.15 per \$100.

Other tangible personal property owned by manufacturers (automobiles, trucks, finished goods, office furniture, office equipment) is taxed by the state at \$0.45 per \$100 and may be taxed by local jurisdictions.

Property stored in public warehouses in a transit status is not subject to local taxation. The state rate is only \$0.015 per \$100.

Intangible personal property located in Kentucky (money in hand, shares of stock, notes, bonds, accounts receivable, and other credits) is taxed by the state at \$0.25 per \$100, and is not subject to local taxation.

Private leaseholds in industrial facilities owned by cities or counties and financed by industrial revenue bonds are subject to a state tax of \$0.015 per \$100 of value (essentially the lessee's equity, adjusted for appreciation or depreciation). Local taxation is not permitted.

Combined State and Local Rates Per \$100 Valuation, 1981*
(100% assessment)

	<u>Inside City of Shepherdsville</u>	<u>Inside City of Mt. Washington</u>	<u>Inside City of Lebanon Junction</u>
1. Land and buildings	\$0.7811	\$0.8001	\$0.9011
2. Mfg. machinery, raw materials, goods in process, pollution control equipment	0.1500	0.1500	0.1500
3. Finished goods, office equipment, vehicles, other tangibles	1.0021	1.0211	1.1221
4. Intangibles (accounts rec., notes, bonds, etc.)	0.2500	0.2500	0.2500
5. Leaseholds in industrial revenue bond financed plants	0.0150	0.0150	0.0150

	<u>Inside City of Hillview</u>	<u>Site Inside Unincorporated Bullitt County</u>
1. Land and buildings	\$0.7911	\$0.5611
2. Mfg. machinery, raw materials, goods in process, pollution control equipment	0.1500	0.1500
3. Finished goods, office equipment, vehicles, other tangibles	1.0121	0.7821
4. Intangibles (accounts rec., notes, bonds, etc.)	0.2500	0.2500
5. Leaseholds in industrial revenue bond financed plants	0.0150	0.0150

*Kentucky Department of Economic Development.

Utilities Gross Receipts Tax for Schools

A 3 percent tax is levied on utilities receipts for schools in Bullitt County. Tax is paid by all consumers of utilities as an add-on to the utilities bills. Exempted are receipts from utilities services that are resold and the receipts from the sale of energy or energy producing fuels that exceed 3 percent of the cost of production in manufacturing, processing, mining or refining.

Planning and Zoning

Joint agency - Bullitt County Joint Planning Commission*
 Zoning enforced - All areas
 Subdivision regulations enforced - Within corporate limits of Hillview, Mt. Washington and Shepherdsville
 Mandatory state codes enforced - Kentucky Plumbing Code, National Electric Code, Kentucky Boiler Regulations and Standards, Kentucky Building Code (modeled after BOCA code and applying to buildings with an occupancy of 100 or more persons)

Safety

<u>Police</u>	<u>Full-time staff</u>	<u>Part-time staff</u>	<u>Radio-patrol cars</u>
Shepherdsville	4	6	6
Mt. Washington	4	-	2
Lebanon Junction	2	-	2
Hillview	1	8	4
Bullitt County			
Police	13**	-	5
Sheriff	11	-	11

Fire

	<u>American Insurance Association Fire Rating</u>	<u>Volunteers</u>
Shepherdsville	9	30
Mt. Washington	7	30
Lebanon Junction	8	26
Hillview	***	--

* Includes the cities of Hillview, Lebanon Junction, Mt. Washington and Shepherdsville.
 ** Includes 5 dispatchers who also serve the Bullitt County Sheriff's Department.
 *** Fire protection for the city of Hillview is provided by the Zoneton Fire Protection District volunteer fire department. The Zoneton F.P.D. has an American Insurance Association fire rating of Class 6 & 9.

Rescue Service

Rescue service is provided by the Shepherdsville fire department. Members are emergency medical technicians.

Refuse Collection and Disposal

	<u>Bullitt County*</u>
Type service	Private**
Fee charged:	
residential	Fee varies
business	Fee varies
industrial	Fee varies
Collection frequency:	
residential	Frequency varies
business	Frequency varies
industrial	Frequency varies
Trash pickup	Included with garbage
Disposal method	Sanitary landfill

* Includes service to the cities of Shepherdsville, Mt. Washington, Lebanon Junction and Hillview.

** Service is provided by several private haulers. Fee charged and collection frequency will vary.

EDUCATION

Public Schools

Bullitt County*

Total Enrollment (Winter, 1981)	11,209
Elementary	4,961
Middle School	2,777
High School	3,471
Student-Teacher Ratio	24-1
Elementary	25-1
Middle School	22-1
High School	23-1
Percent High School Graduates to College (1981)	31.9
Expenditures Per Pupil (1980-81)	\$1,161.55
Bonded Indebtedness (June 30, 1981)	\$17,031,000

Nonpublic Schools

	<u>Rolling Hills Christian Elementary</u>	<u>St. Aloysius</u>	<u>St. Benedict</u>
Total Enrollment	60	229	108
Elementary	60	229	108
Student-Teacher Ratio	12-1	25-1	18-1
Elementary	12-1	25-1	18-1

*Construction of the \$4.5 million Bullitt East High School has been completed for the Bullitt County School System.

Area Colleges and Universities

<u>Name</u>	<u>Location (Miles distant)</u>	<u>Enrollment (Fall, 1981)</u>	<u>Highest Degree Conferred</u>
Fort Knox Extension Campus, University of Kentucky	Fort Knox, Kentucky (15)	*	Baccalaureate**
University of Louisville	Louisville, Kentucky (20)	20,302	Doctorate, M.D., D.M.D., J.D.
Bellarmino College	Louisville, Kentucky (20)	2,585	Masters
Spalding College	Louisville, Kentucky (20)	1,005	Masters
Jefferson Community College	Louisville, Kentucky (20)	5,116	Associate
Jefferson Community College - Southwest	Louisville, Kentucky (20)	1,221	Associate
Indiana University Southeast	New Albany, Indiana (21)	4,564	Masters***
Elizabethtown Community College	Elizabethtown, Kentucky (25)	1,967	Associate
St. Catharine College	St. Catharine, Kentucky (43)	246	Associate

* Enrollment is included in the total enrollment of the University of Kentucky, which was 23,441 in the fall of 1981.

** A masters degree program is offered at the Fort Knox Military Base through the University of Southern California, Western Kentucky University, and Embry-Riddle Aeronautical University.

*** Masters in education only.

Vocational Schools

Both the state vocational-technical schools and the area vocational education centers are operated by the Kentucky Department of Education. The state vocational-technical schools enroll persons full time who are at least 16 years of age and not in school. These students attend classes for six hours each day. The area vocational education centers are designed to accommodate high school students who are at least 15 years of age. These students attend vocational school for three hours each day. The state vocational-technical schools and the area education centers offer evening courses to enable working adults to upgrade current job skills.

Nearest State Schools

Location	Jefferson State Vocational- Technical School
Miles Distant	Louisville
Curriculum	20 miles from Shepherdsville Agriculture Horticulture Business and Office Accounting/Jr. Management Clerical Data Processing Secretarial Consumer and Home Economics Culinary Arts Health and Personal Services Occupations Cosmetology Child Care Aide Dental Assistant Licensed Practical Nursing Medical Assistant Nurse's Aide Surgical Technician Industrial Education Air Conditioning and Refrigeration Auto Body Repair Auto Mechanics Carpentry-Building Trades Diesel Mechanics Electricity Electronics Graphic Arts (Printing) Machine Shop Masonry Plumbing Welding Learning Resource Center

Location Miles Distant Curriculum	Elizabethtown State Vocational- Technical School Elizabethtown 25 miles from Shepherdsville Business and Office Clerical Secretarial Consumer and Home Economics Commercial Foods Industrial Education Appliance Repair Auto Mechanics Carpentry-Building Trades Commercial Heating and Air Conditioning Drafting Industrial Electricity Industrial Maintenance Machine Shop Radio and Television Repair Welding
---	---

Nearest Area Education Center

Location Curriculum	Bullitt County Area Vocational Education Center Shepherdsville Consumer and Home Economics Commercial Foods Health and Personal Services Occupations Health Careers Industrial Education Air Conditioning/Heating/Refrigeration Auto Mechanics Graphic Arts (Printing) Radio and Television Repair Welding
------------------------	--

Arrangements can be made to provide training in the specific production skills required by an industrial plant. Instruction may be conducted either in the vocational school or in the industrial plant, depending upon the desired arrangement and the availability of special equipment.

HEALTH

Local Medical Personnel

Physicians - 7
Dentists - 6

Hospitals

Major hospital facilities are located in Louisville, 20 miles from Shepherdsville. Also, hospitals are located in nearby Elizabethtown and Bardstown.

Ambulance Service

Name - Bullitt County EMS
Staff - Two full-time emergency medical technicians, with an emergency vehicle, are stationed in Shepherdsville. Backup support is provided by trained volunteers. An emergency vehicle is stationed in Mt. Washington, Hillview and Lebanon Junction and is manned by volunteers.
Service - 24-hour service
Equipment - 4 fully-equipped ambulances

Public Health

Facility - Bullitt County Health Center
Staff - Four clerks (one part-time), two registered nurses, one licensed practical nurse (part-time), one health environmentalist, one plumbing inspector (part-time)
Programs - Communicable disease; family planning; Kentucky Medical Assistance Program; school program including kidney screening and TB skin tests; and women, infants and children food supplement program

Facility - Seven Counties Service Mental Health center
Staff - One director, one registered nurse, three social workers (one part-time), one drug and alcohol counselor, one psychologist (part-time)

OTHER LOCAL FACILITIES

Communications

Telephone - Echo Telephone Company serves Hillview, Mt. Washington, and Shepherdsville
 South Central Bell Telephone Company serves Lebanon Junction

Telegraph - Western Union Telegraph Company
 Services - Toll-free number, 1-800-325-5100; counter service available at Shepherdsville

Postal - U.S. Post Office

	<u>Shepherdsville</u>	<u>Mt. Washington</u>	<u>Lebanon Junction</u>
Class -	First	Second	Second
Mail received -	Twice daily	Twice daily	Once daily
Mail dispatched -	Once daily	Once daily	Once daily

Newspapers -

	<u>Shepherdsville</u>	<u>Mt. Washington</u>
	Pioneer News	Mt. Washington Star
Weekly and circulation -	6,000	2,300
Other papers received from -	Louisville, Bardstown and Elizabethtown, Kentucky	

Radio -

Stations received from - Louisville, Kentucky; Cincinnati, Ohio; Nashville, Tennessee

Television -

Cable service
 Reception from - Louisville, Kentucky; Atlanta, Georgia; Chicago, Illinois

Kentucky Educational

Television - Elizabethtown transmitter, channel 23
 Louisville transmitter, channel 68

Library Services

Public library - Ridgeway Memorial Library, Shepherdsville

Size collection - 61,084 volumes

Circulation, 1980-81 - 130,852

Services - Magazines, records and record player, framed paintings, information file, art, story hour, filmstrips, copying machine, microfilm reader-printer, meeting room, children's summer program, tapes on oral history, Interlibrary Loan and newspapers. Branch libraries are located in Mt. Washington, Hillview and Lebanon Junction.

Religious Institutions

Bullitt County

Number of churches - 36

Denominations - Assembly of God
Baptist
Calvary Christian
Catholic
Christian
Church of Christ
Church of God
Fellowship Baptist
First Church of the Nazarene
Jehovah's Witnesses
Methodist
Presbyterian

Nearest synagogues - Louisville, 20 miles north of Shepherdsville

Congregations - Adath Israel (reform)
Adath Jeshurun (conservative)
Anshei Sfard (orthodox)
Brith Shalom (reform)
Keneseth Israel (orthodox)

Financial Institutions

<u>Banks</u>	<u>Assets</u>	<u>Deposits</u>	<u>Statement Date</u>
Bullitt County Bank	\$14,882,589.87	\$11,676,351.21	12/31/81
The Peoples Bank (Shepherdsville)	32,406,920.00	27,440,109.00	12/31/81
The Peoples Bank of Mt. Washington*	27,886,890.00	24,019,575.00	12/31/81
<u>Savings and Loan Associations</u>	<u>Assets</u>	<u>Savings Accounts</u>	<u>Statement Date</u>
Bullitt Federal Savings and Loan Association	\$24,813,437.00	\$23,094,922.00	12/31/81

Hotels and Motels

Total number - 3
Total rooms - 245

Clubs and Organizations

American Red Cross	Friendship Center
Boy Scouts	Girl Scouts
Bullitt County Chamber of Commerce	Homemakers
Bullitt County Jaycees	Knights of Columbus
Bullitt County Saddle Club	Lions Club
Bullitt County Women's Club	Masons
Cub Scouts	Ministerial Association
Eastern Star	Optimist Club
4-H	Parents-Teachers Association (PTA)
Future Farmers of America (FFA)	Peaceful Valley Saddle Club
Future Teachers of America (FTA)	Shrine Club
	Young Democrats

*A branch bank is located in Hillview.

RECREATION

Local

Public recreational facilities include three parks, three playgrounds, four swimming pools, three golf courses, four tennis courts, four baseball diamonds, four football fields, and one basketball court. In addition, a supervised recreational program is available in Bullitt County.

Private recreational facilities include a country club, one golf course, three skating rinks, two bowling facilities, and a camp ground with a swimming pool.

Bullitt County was established in 1773 by Thomas Bullitt. Located east of Shepherdsville, which was designated the seat of Bullitt County in 1796, is the site where salt production was provided by Thomas Bullitt. Prehistoric animals licked the natural salt formations found in the area, thus the name Bullitt's Lick.

Located in southeastern Bullitt County is Bernheim Forest, a renowned 10,000-acre wildlife sanctuary with natural forest, lakes, an arboretum, a nature center and hiking trails.

Camp Crescendo, located at Lebanon Junction, provides facilities for instruction and training in marching, proper use and display of flags, rifle drill team, drum major and drum majorette to marching bands in Kentucky, Indiana, Ohio, West Virginia, and Tennessee.

The Bullitt County Fair is an annual event held in mid-June. A rural atmosphere is prevalent with displays, judging of events and awarding of ribbons.

Area (Within 80 miles)

Louisville, 20 miles north of Shepherdsville, offers a wide variety of recreational, sporting, and cultural events. Most notable is the running of the Kentucky Derby. The most prestigious thoroughbred horse race in America is held at historic Churchill Downs the first Saturday in May. The Kentucky Derby was modeled after the Epsom Derby (Darby) held at Epsom Downs in Surrey County, England.

Other famous Louisville attractions are the renowned sternwheeler, the Belle of Louisville, (the Belle vies for honors in the Great Steamboat Race held annually during the Derby festival); the Kentucky Derby Museum; the Louisville Zoological Gardens; the Museum of Natural History and Science; and the J. B. Speed Art Museum. Seasonal performances of the arts are presented by Actors Theatre, the Louisville Ballet Company, the Kentucky Opera Association, the Louisville Bach Society, the Louisville Orchestra, and Shakespeare-in-the-Park.

West of Shepherdsville and extending into Bullitt County is the Fort Knox Military Reservation. Named in honor of revolutionary war general and first secretary of war, Henry T. Knox, the vast 110,300-acre military reservation was activated in 1918.

The Patton Museum of Cavalry and Armor is located near Fort Knox. Opened in 1949, the museum has cavalry and armor displays dating from the revolutionary war to the war in Vietnam. Also displayed are personal effects of famed World War II General George S. Patton, Jr. Much enemy armor, captured by General Patton and his troops, are displayed on the grounds of the museum.

The United States Gold Depository at Fort Knox is a two-story granite, steel, and concrete bullion depository containing a greater part of the United States' gold reserve. The stored gold is in standard mint bars of almost pure gold or melted coin gold.

My Old Kentucky Home State Park, 23 miles southeast of Shepherdsville in Bardstown, portrays an image of the South's gentle and leisurely home life before the Civil War. The restored Georgian Colonial mansion is where composer Stephen Foster visited and where he was inspired to write "My Old Kentucky Home." One of the nation's most successful outdoor dramas, "The Stephen Foster Story," is presented in the park's amphitheatre mid-June until Labor Day. The park also offers a 40-site campground, a gift shop, a 9-hole golf course and pro shop, a picnic area, and planned recreation.

Abraham Lincoln Birthplace National Historic Site, located 37 miles south of Shepherdsville near Hodgenville, features the log cabin, which was the birthplace of Abraham Lincoln, enclosed within a granite memorial shrine. The grounds include 116 acres of the original Thomas Lincoln farm and a visitors' center with audiovisual programs and exhibits on the Lincoln family.

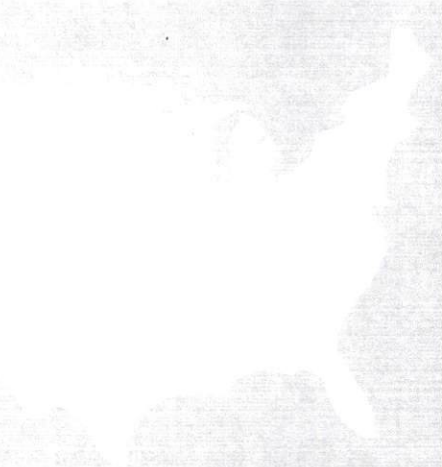
Lincoln Homestead State Park, 40 miles southeast of Shepherdsville near Springfield, is a 153-acre park on the original land settled by Abraham Lincoln's family. The actual building in which Nancy Hanks, mother of President Lincoln, lived during her courtship with Thomas Lincoln is preserved here as well as a replica of the 1782 cabin where Lincoln lived as a boy. The park also has a museum, a gift shop, a picnic area, and an 18-hole golf course.

Mammoth Cave National Park is located 70 miles south of Shepherdsville near Cave City. Beneath 51,000 park acres, Mammoth Cave is among the major tourist attractions of all times. It is one of the largest cave networks ever discovered, with at least 150 miles charted on five levels and vast areas not yet mapped. Some famous sights are Snowball Dining Room (267 feet below surface), Frozen Niagara, Crystal Lake, and Bottomless Pit. The park also features scenic boat trips on the Green River and nature and hiking trails. Park accommodations include a hotel with distinctive gift shops featuring native Kentucky and Southern Highland handicrafts, a motor lodge, hotel cottages, woodland cottages, and a hotel annex with budget accommodations and craft shop featuring live exhibits of broom making and weaving. Other park facilities include the hotel dining room and coffee shop, a service center, group meeting facilities, a campground, a picnic area, and tennis and shuffleboard courts.

Green River Lake State Park near Campbellsville, 73 miles southeast of Shepherdsville, is made up of 1,300 acres surrounding an 8,200-acre lake. The park is open all year-round and offers 96 campsites, a beach, boat docks, fishing, swimming, and a picnic area.

Nolin River Lake, 77 miles south-southwest of Shepherdsville, is just north of Mammoth Cave National Park. The lake has a surface area of 5,800 acres and offers facilities for camping, boating, and fishing.

Noteworthy for its spaciousness and perfect grooming, Rough River Dam State Resort Park at Falls of Rough, is 80 miles southwest of Shepherdsville. The 377-acre park on Rough River Lake has a 40-room lodge with a dining room, a coffee shop, a gift shop, and a meeting room. Cottages and camping sites are also available. Recreational facilities include a launching ramp, a dock with open and covered slips, fishing and pleasure boat rentals, a 9-hole golf course, a swimming pool, a sand beach with a bathhouse complex, three tennis courts, an archery range, hiking trails, picnic and playground areas, and planned recreation. Cruise boat excursions on Rough River Lake are available on the "Lady of the Lake."



Copyright © 1997 by [illegible]
All rights reserved.