

1992

Industrial Resources: Christian County - Hopkinsville

Kentucky Library Research Collections
Western Kentucky University, spcol@wku.edu

Follow this and additional works at: https://digitalcommons.wku.edu/christian_cty

 Part of the [Business Administration, Management, and Operations Commons](#), [Growth and Development Commons](#), and the [Infrastructure Commons](#)

Recommended Citation

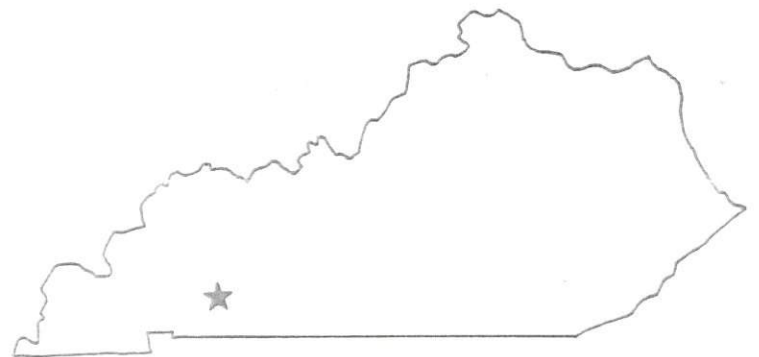
Kentucky Library Research Collections, "Industrial Resources: Christian County - Hopkinsville" (1992). *Christian County*. Paper 3. https://digitalcommons.wku.edu/christian_cty/3

This Report is brought to you for free and open access by TopSCHOLAR®. It has been accepted for inclusion in Christian County by an authorized administrator of TopSCHOLAR®. For more information, please contact topscholar@wku.edu.

1997 Christian

Resources for Economic Development

Hopkinsville- Christian County



KENTUCKY

RESOURCES FOR ECONOMIC DEVELOPMENT
HOPKINSVILLE-CHRISTIAN COUNTY, KENTUCKY

Prepared by
The Kentucky Cabinet for Economic Development
Division of Research
in cooperation with
The Hopkinsville-Christian County
Economic Development Council

1993

Division Director - Pamela K. Riley; program manager - Keith Roberts; research - Barry K. Holder, Jr.; clerical - Wanda Sharp; graphics - Robert Owens, Pat Coleman; cartography - Edwin Scott, Dave Clark. Cost of printing paid from state funds.

TABLE OF CONTENTS

<u>Chapter</u>	<u>Page</u>
HOPKINSVILLE-CHRISTIAN COUNTY, KENTUCKY - A RESOURCE PROFILE ..	1
THE LABOR MARKET STATISTICS	2
Labor Market Area Map	2
Population	3
Population Projections	3
Estimated Labor Supply.....	3
Labor Force Characteristics of Residents, 1991	4
Selected Components of Nonagricultural Employment, by Place of Work, 1991	5
Per Capita Personal Income	6
Average Placement Wages	7
Average Weekly Wages of Workers Covered by Unemployment Insurance 1991 - Bar Chart.....	8
Average Weekly Wages by Industry, by Place of Work, 1991	9
EXISTING INDUSTRY	10
Major Christian County Manufacturing Firms, Their Products and Employment	10
Labor Organizations in Manufacturing Firms	12
Selected Industrial Services	13
TRANSPORTATION.....	14
Highways	14
Truck Service	14
Selected Market Location Map.....	15
Rail	16
Air	16
Water	16
UTILITIES	17
Electricity	17
Natural Gas	17
Public Water Supply	18
Sewerage	18
CLIMATE	20

<u>Chapter</u>	<u>Page</u>
LOCAL GOVERNMENT	21
Structure	21
Planning and Zoning	21
Local Fees and Licenses	21
State and Local Property Taxes	22
EDUCATION	23
Public Schools	23
Nonpublic Schools	23
Area Colleges and Universities	24
Vocational Training	25
OTHER LOCAL FACILITIES	27
Local Medical Personnel	27
Hospitals	27
Other Medical Facilities and Services	27
Newspapers	27
Telephone Service	27
Television	27
Banks and Savings & Loan Associations	28
RECREATION	29
COMMUNITY IMPROVEMENTS	30

GENERAL HIGHWAY MAP
CHRISTIAN COUNTY
KENTUCKY

PREPARED BY THE
KENTUCKY TRANSPORTATION CABINET
DEPARTMENT OF HIGHWAYS
DIVISION OF PLANNING
IN COOPERATION WITH THE
U.S. DEPARTMENT OF TRANSPORTATION
FEDERAL HIGHWAY ADMINISTRATION



HOPKINSVILLE-CHRISTIAN COUNTY, KENTUCKY - A RESOURCE PROFILE

Hopkinsville, the county seat of Christian County, is situated in southwestern Kentucky, 70 miles northwest of Nashville, Tennessee; 162 miles southwest of Louisville, Kentucky; and 226 miles southeast of St. Louis, Missouri. Hopkinsville had a 1990 population of 29,809 persons. Crofton, a small community in northern Christian County, had a 1990 population of 699.

Christian County, covering a land area of 721 square miles, is Kentucky's second largest county. The county is situated in the Mississippian Plateaus area of southwestern Kentucky, and borders Tennessee on the south and the Western Coal Field Region on the north. Christian County had a 1990 population of 68,941.

The Economic Framework - The total number of Christian County residents employed in 1991 averaged 18,024. Manufacturing firms in the county reported 4,995 employees; wholesale and retail trade provided 4,689 jobs; 4,093 people were employed in service occupations; state and local government accounted for 2,890 employees; and contract construction firms provided 533 jobs.

Labor Supply - There is a current estimated labor supply of 27,432 persons available for industrial jobs in the labor market area. In addition, from 1993 through 1997, 12,853 young persons in the area will become 18 years of age and potentially available for industrial jobs.

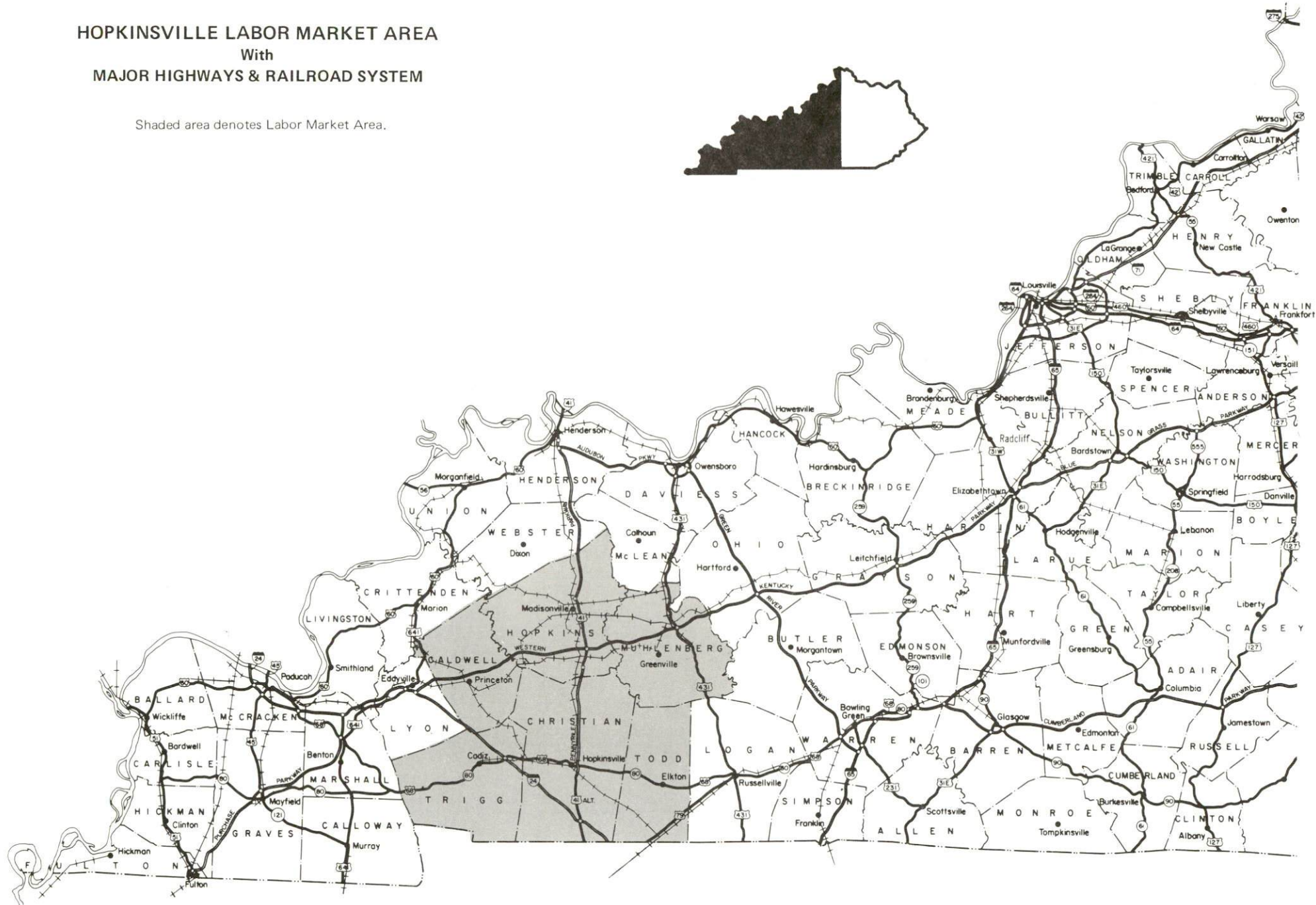
Transportation - Hopkinsville is the southern terminus of the Pennyriple Parkway, a multi-lane highway. Other "AAA"-rated trucking highways serving Hopkinsville include U.S. Highways 41, 41A, and 68. Interstate Highway 24 traverses southern Christian County, and is accessible 13 miles from Hopkinsville. Crofton is served directly by U.S. Highway 41 and Kentucky Highways 800 and 1348. The Pennyriple Parkway is located one mile east of Crofton. CSX Transportation provides main line rail service to Hopkinsville and Crofton. Thirty-two common carrier trucking companies provide interstate and/or intrastate service to Christian County. The nearest scheduled commercial airline service is available at Nashville International Airport, 76 miles southeast of Hopkinsville, near Nashville, Tennessee. Hopkinsville-Christian County Airport maintains a 5,000-foot paved runway designed to accommodate small aircraft.

Power and Fuel - Hopkinsville Electric System provides electricity to Hopkinsville. Electric power is provided to Christian County by Pennyriple Rural Electric Cooperative Corporation and Kentucky Utilities Company. Natural gas service is provided by Western Kentucky Gas Company.

Education - The Christian County School System provides primary and secondary education to the county. Four non-public schools operate in Christian County. The Hopkinsville Community College provides higher education to the community. In addition, 13 other institutions of higher learning are located within 75 miles of Hopkinsville. Vocational training is available at the Christian County Area Vocational Education Center in Hopkinsville, at the Madisonville State Vocational-Technical School and at the Madisonville Health Technology Center, both in Madisonville, 34 miles north.

HOPKINSVILLE LABOR MARKET AREA With MAJOR HIGHWAYS & RAILROAD SYSTEM

Shaded area denotes Labor Market Area.



LABOR MARKET STATISTICS

The Hopkinsville-Christian County Labor Market Area includes Christian County and the adjoining Kentucky counties of Caldwell, Hopkins, Muhlenberg, Todd, and Trigg. In addition, the Labor Market Area is supplemented by Montgomery and Stewart Counties, Tennessee.

POPULATION			
	1990	1980	1970
Labor Market Area	180,918	180,021	154,550
Clarksville-Hopkinsville TN-KY Metropolitan Statistical Area	169,439	150,220	118,945
Hopkinsville	29,809	27,318	21,395
Crofton	699	823	631
Christian County	68,941	66,878	56,224

Source: U.S. Department of Commerce, Bureau of the Census, January 1991.

POPULATION PROJECTIONS				
	1995	2000	2010	2020
Labor Market Area	184,166	186,682	190,273	192,728
Christian County	71,289	73,425	77,534	81,742

Note: Population projections are from Moderate Growth Series forecast.
Source: University of Louisville, Urban Studies Center, State Data Center.

ESTIMATED LABOR SUPPLY					
	Current				Future
	Total	Unemployed	Employed Part-Time	Not in Labor Force	Becoming 18 years of age 1993 thru 1997
Labor Market Area*	27,432	4,761	7,659	15,012	12,853
Christian County	8,512	1,162	2,749	4,601	4,361

* Additional workers may be drawn from other nearby counties.

Note: Unemployed - persons unemployed and actively seeking work; Employed Part-Time - persons employed but working only 14 to 26 weeks per year; Not in Labor Force - represents the number of persons who would enter the labor force if suitable employment were available (based on the assumption that persons in Kentucky would like to participate in the labor force in the same proportion that they do nationally).

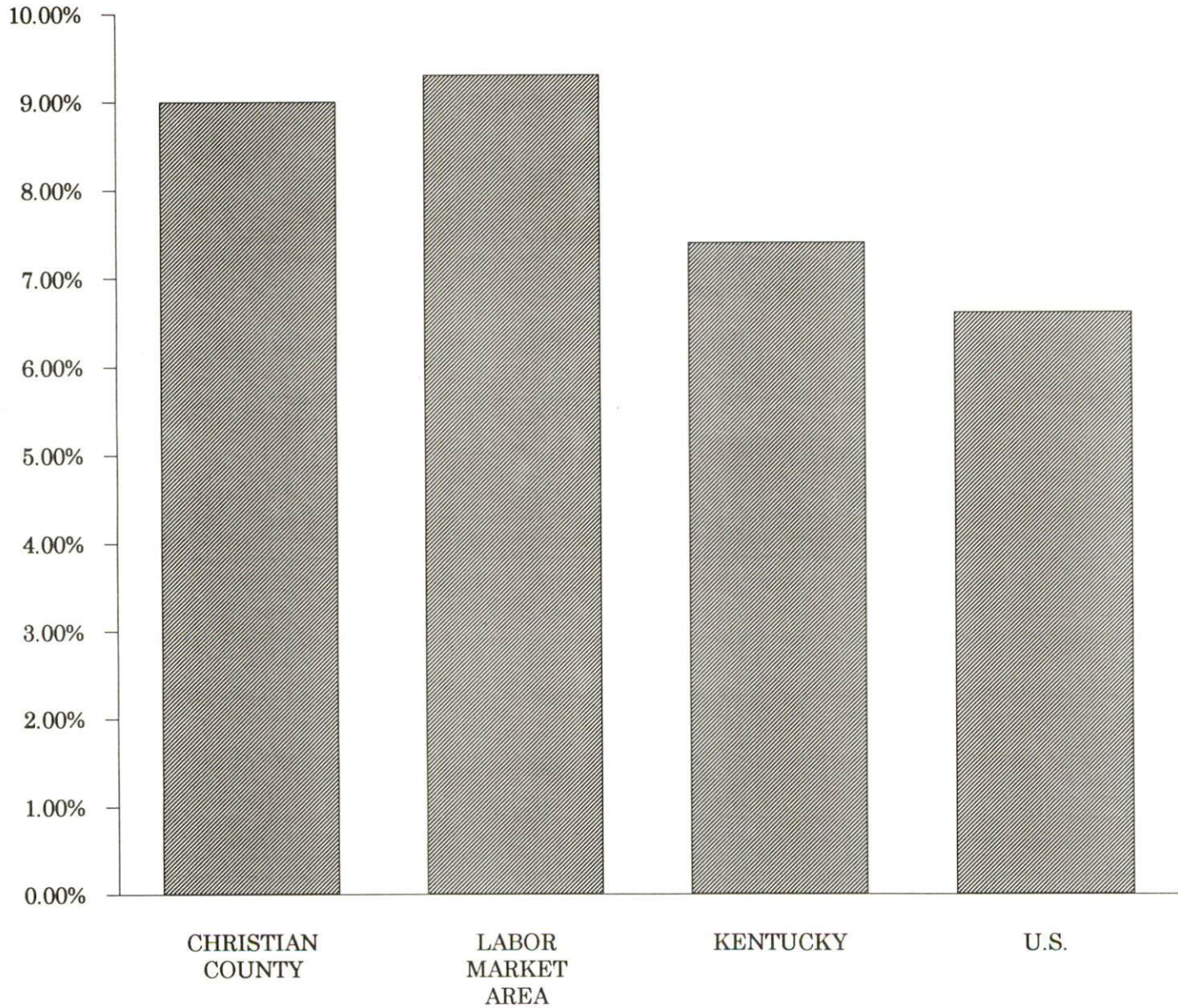
Sources: Kentucky Cabinet for Human Resources, Kentucky Labor Supply Estimates by County, 1989. Kentucky Cabinet for Economic Development, Future Labor Supply Becoming 18 Years of Age, 1993 thru 1997.

LABOR FORCE CHARACTERISTICS OF RESIDENTS, 1991

	<u>Christian County</u>	<u>Labor Market Area</u>
Civilian Labor Force	19,804	64,519
Employment	18,024	58,527
Unemployment	1,780	5,992
Rate of Unemployment (%)	9.0	9.3

Source: Kentucky Cabinet for Human Resources, Kentucky Labor Force Estimates, Annual Averages, 1991.

**UNEMPLOYMENT RATES
1991**

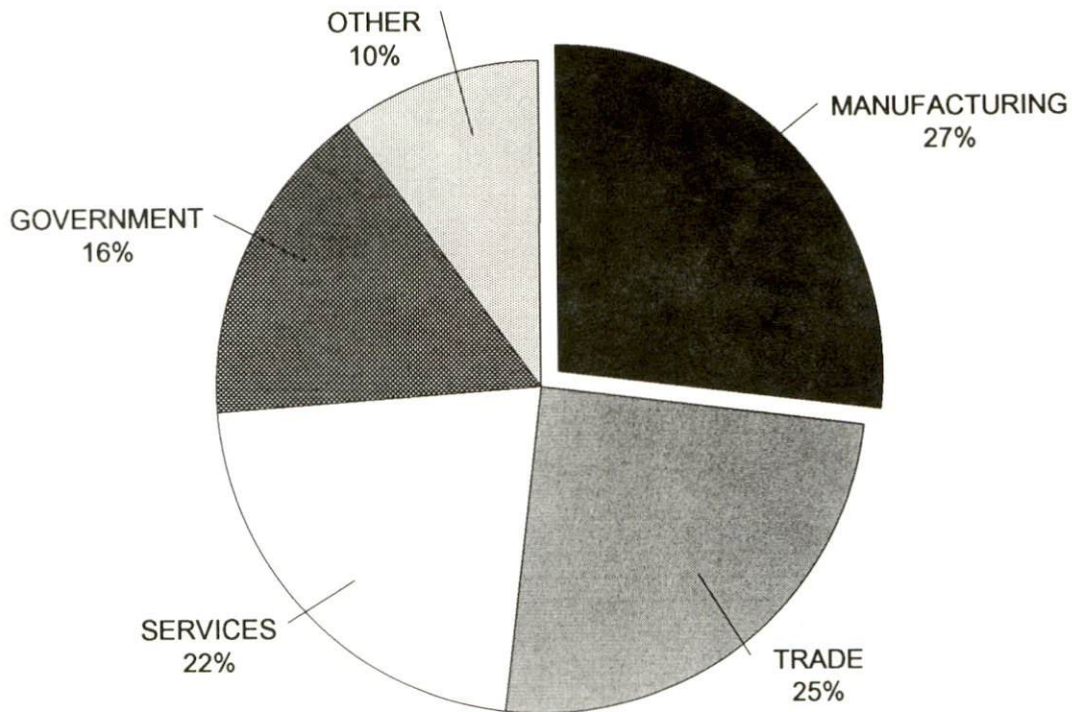


SELECTED COMPONENTS OF NONAGRICULTURAL EMPLOYMENT
BY PLACE OF WORK, 1991

	Christian County	Labor Market Area
All Industries (total)	18,803	51,551
Manufacturing	4,995	12,115
Wholesale & Retail Trade	4,689	12,665
Services	4,093	10,429
State/Local Government	2,890	8,042
Contract Construction	533	1,508

Note: Excludes domestic workers, railway workers, certain nonprofit corporations, majority of federal government workers, and self-employed workers.
 Source: Kentucky Cabinet for Human Resources, Average Monthly Workers Covered by Kentucky Unemployment Insurance Law, 1991.

CHRISTIAN COUNTY

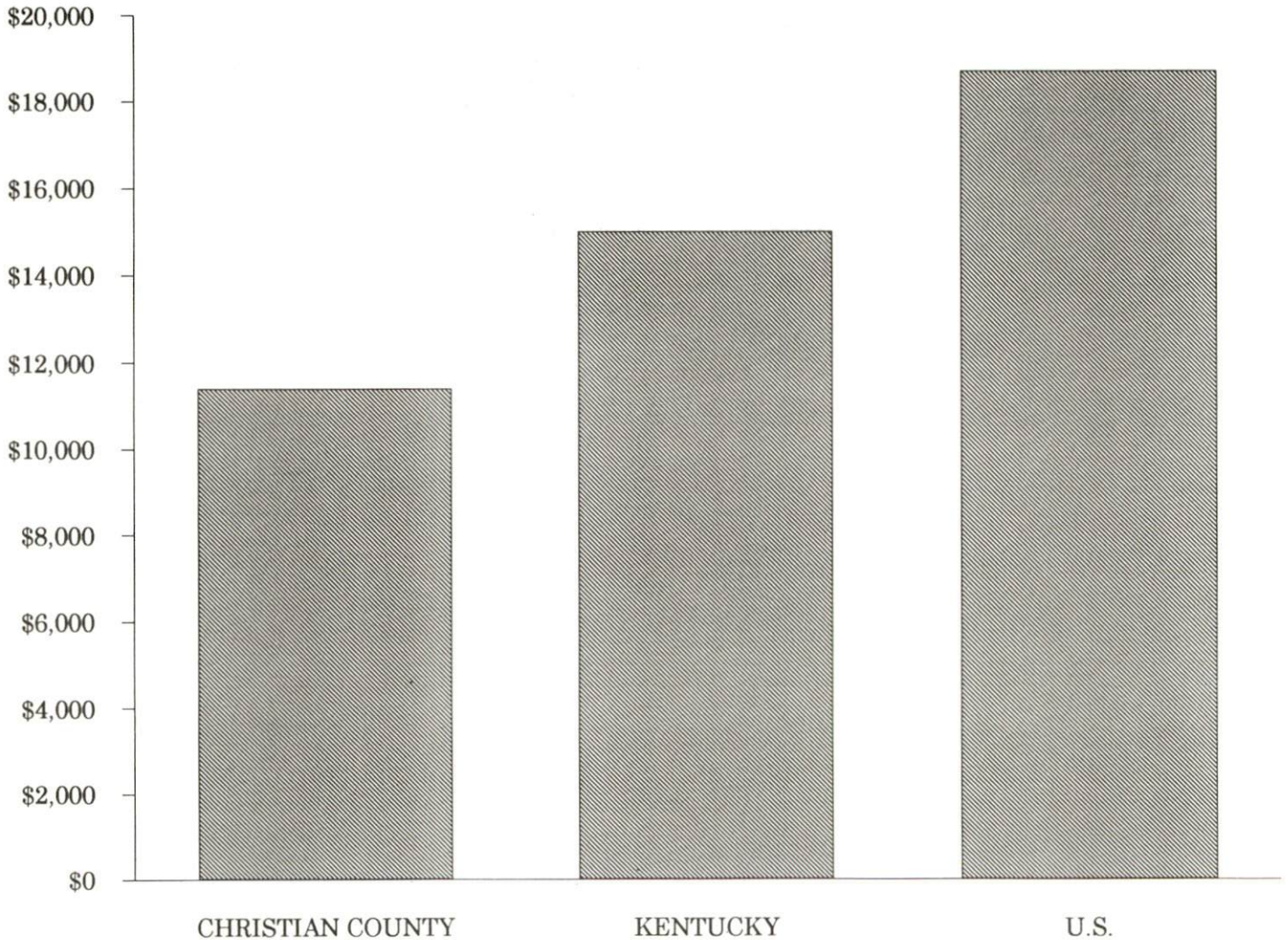


PER CAPITA PERSONAL INCOME

Area	1986	1990	Percent Change
Christian County	\$9,311	\$11,399	22.4
Labor Market Area Range	\$8,701 - \$12,927	\$11,399 - \$16,934	-
Kentucky	\$11,273	\$14,992	33.0
U.S.	\$14,654	\$18,696	27.6

Source: U.S. Bureau of Economic Analysis, Kentucky Economic Information System, April 1992.

PER CAPITA PERSONAL INCOME
1990



AVERAGE PLACEMENT WAGES

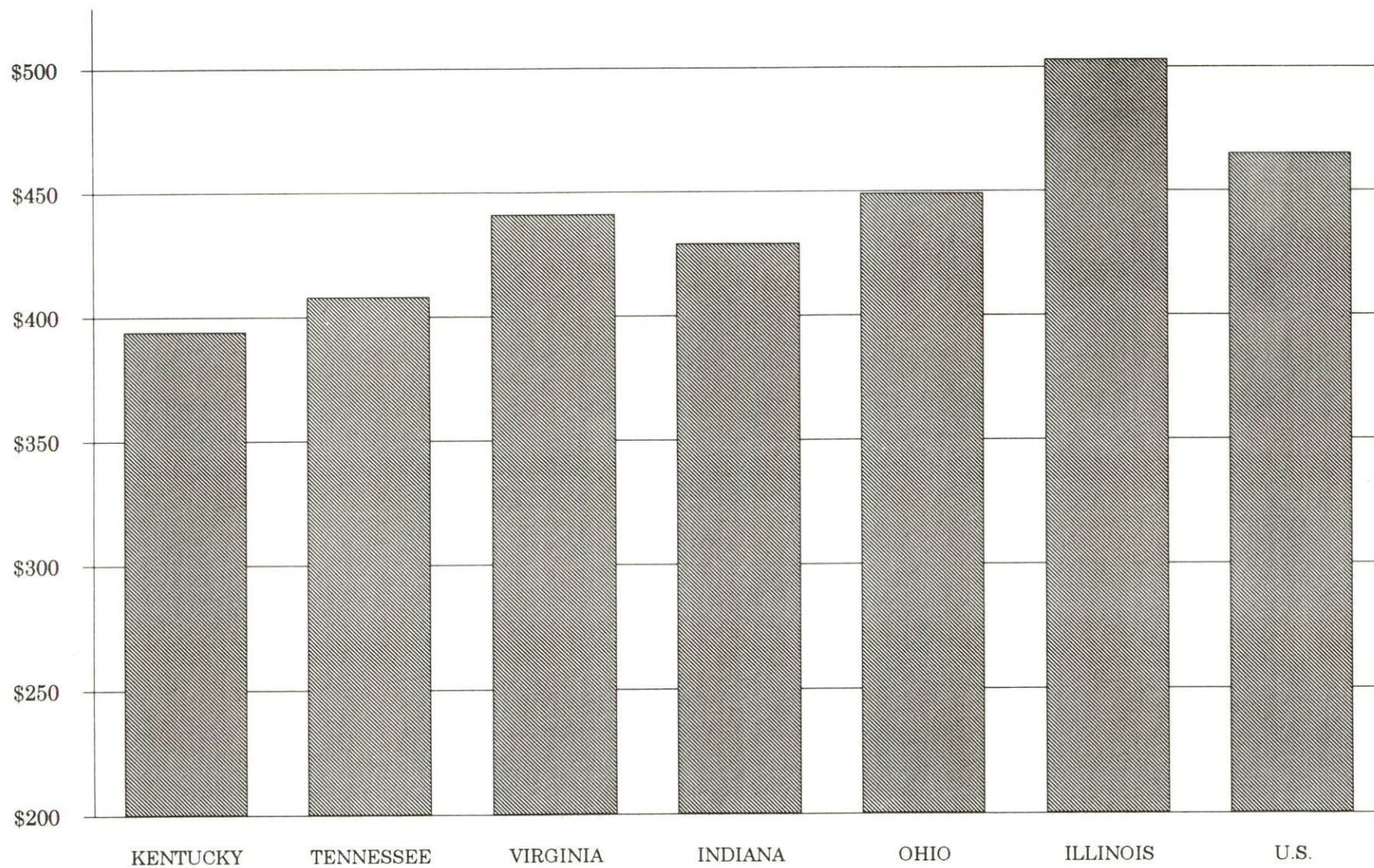
Christian County is served by the Hopkinsville local office of the Kentucky Department for Employment Services. The focus of the following data is on job placements made by the Hopkinsville local office and may therefore be used as an indicator of the wages which employers in the area pay new employees. During the twelve months which ended on June 30, 1990, the local employment office filled 1,598 job openings in various occupational categories. The average hourly wage for selected occupational categories were:

<u>OCCUPATIONAL CATEGORY</u>	<u>NUMBER OF PLACEMENTS</u>	<u>AVERAGE WAGE(\$)</u>
All Occupations	1,598	5.21
Clerical	538	3.76
Sales	56	4.20
Services (excluding domestic)	205	5.59
Agricultural, Fishery, Forestry, etc.	15	4.77
Processing	126	5.88
Machine Trades	246	7.33
Bench Work	69	4.19
Structural	172	6.67
Motor Freight/ Transportation	25	5.22
Packaging and Materials Handling	96	4.79
Other	5	4.17

The Hopkinsville local office also serves Caldwell, Lyon, Todd, and Trigg Counties. The above occupational categories are taken from the Dictionary of Occupational Titles published by the U.S. Department of Labor.

Source: Kentucky Cabinet for Human Resources, Department for Employment Services.

AVERAGE WEEKLY WAGES OF WORKERS COVERED BY
UNEMPLOYMENT INSURANCE - 1991



AVERAGE WEEKLY WAGES BY INDUSTRY
BY PLACE OF WORK, 1991*

	Christian County	Kentucky (State- Wide)	Tennessee	Virginia
All Industries	\$339.80	\$394.46	\$408.00	\$441.00
Mining & Quarrying	554.65	661.68	528.00	655.00
Contract Construction	379.66	410.33	436.00	452.00
Manufacturing	427.48	505.56	477.00	509.00
Transportation, Communications & Public Utilities	402.96	528.78	541.00	605.00
Wholesale & Retail Trade	246.99	268.42	N/A	N/A
Finance, Insurance & Real Estate	365.69	449.89	495.00	523.00
Services	277.35	350.41	394.00	455.00
State/Local Government	393.90	413.84	N/A	N/A
	<u>Indiana</u>	<u>Ohio</u>	<u>Illinois</u>	<u>U. S.</u>
All Industries	\$429.00	\$449.00	\$503.00	\$465.00
Mining & Quarrying	708.00	609.00	758.00	747.00
Contract Construction	499.00	510.00	635.00	514.00
Manufacturing	583.00	613.00	609.00	579.00
Transportation, Communications & Public Utilities	531.00	567.00	632.00	599.00
Wholesale & Retail Trade	N/A	N/A	N/A	N/A
Finance, Insurance & Real Estate	458.00	498.00	650.00	596.00
Services	368.00	398.00	462.00	443.00
State/Local Government	N/A	N/A	N/A	N/A

* Wages for U.S. and surrounding states rounded to nearest dollar.

N/A Not Available.

Note: The average weekly wage for each category includes the salaries and wages of all persons working for that type business. For example, the manufacturing category includes both production workers and administrative personnel. Excludes domestic workers, railway workers, certain nonprofit corporations, majority of federal government workers, and self-employed workers.

Source: Kentucky Cabinet for Human Resources, Average Weekly Wages of Workers Covered by Kentucky Unemployment Insurance Law, 1991. U.S. Department of Labor, Bureau of Labor Statistics, Employment and Wages, Annual Averages, 1991, January 1993.

EXISTING INDUSTRY

MAJOR CHRISTIAN COUNTY MANUFACTURING FIRMS,
THEIR PRODUCTS AND EMPLOYMENT*

<u>Firm</u> <u>(Establishment date)</u>	<u>Product</u>	<u>1992</u> <u>Average Employment</u>
Adventure World, Inc. (1982)	Satellite antennas for T.V., steel shelters	20
Agri-Chem, Inc. (1976)	Agricultural products and chemicals	42
Autostyle Plastics (1982)	Automotive stampings, injection molded plastics	360
Brazeway, Inc. (1988)	Evaporators for frost-free refridgerators	103
Copar, Inc. (1988)	Radiators for industrial equipment	90
Dana Corporation (1990)	Motor vehicle frames	435
Dixie Pavers, Inc. (1959)	Bituminous concrete and asphalt paving, ready-mixed concrete, crushed limestone	100
Dunlap Sales, Inc. (1968)	Sewing machines and parts	75
EMS-TOGO Corporation (1987)	Automotive caulking and waxes, automotive plastisol sealant	30
Ebonite International, Inc. (1967)	Bowling balls, bags, gloves	270
Flynn Enterprises, Inc. (1976)	Men's & boys' jeans, women's and girls' jeans	1,200
Freudenberg Nonwovens, Limited Partnership (1973)	Nonwoven textiles, industrial filtration products	203
Hampton Meat Processing (1975)	Meat processing (sausage)	25
Hopkinsville Aggregate Company (1930)	Bituminous concrete, ready-mixed concrete, crushed limestone	40
Hopkinsville Milling Company (1874)	Wheat flour, corn meal, grits	65
International Paper Company, Folding Carton & Label Division (1982)	Folding cartons (fast food boxes)	119
Kentech Plastics, Inc. (1967)	Injection molded plastics	160
Kentucky New Era, Inc. (1869)	Newspaper	85
Lee Masonry Products (1951)	Precast concrete products, concrete block	27

(Continued)

<u>Firm</u> <u>(Establishment date)</u>	<u>Product</u>	<u>1992</u> <u>Average Employment</u>
MHI Machine Tools U.S.A., Inc. (1990)	Vertical machining, CNC turning, and horizontal machining center	42
Mid Continent Spring Company (1957)	Precision springs, compression torsion springs	200
Model Pure Milk Company, Inc. (1948)	Dairy products	25
O.E.M. Exhaust (1988)	Tailpipes for automobiles	20
Perdue Woodworks, Inc. (1981)	Laminated furniture	80
Phelps Dodge Magnet Wire Company, Hopkinsville Plant (1965)	Cooper magnet wire	460
Plymouth Tube Company, Hopkinsville Extrusion Plant (1978)	Extruded stainless steel shapes, extruded nonferrous shapes	62
Pop Fastener Division, A Black and Decker Company (1965)	Fasteners	139
Rockwell International Suspension Systems, Inc. (1991)	Automotive torsion bar springs	38
Superior Graphite Company, Desulco Division (1976)	Desulfurized petroleum coke, granular synthetic graphite	76
Thomas Industries, Inc., Residential Lighting Division (1955)	Lighting fixtures	416
Trace Industries (1980)	Wooden stools, tables & chairs	65
U.S. Tobacco Company (1978)	Snuff flour, tobacco processing	53
White Hydraulics, Inc. (1983)	Hydraulic motors	182

*Manufacturing firms with 20 or more employees.

Sources: Kentucky Cabinet for Economic Development, Division of Research;
Hopkinsville-Christian County Chamber of Commerce.

LABOR ORGANIZATIONS IN MANUFACTURING FIRMS

Union

International Association of
Machinists and Aerospace
Workers, AFL-CIO

International Brotherhood of
Electrical Workers, AFL-CIO

International Brotherhood of
Teamsters, Chauffeurs,
Warehousemen and Helpers
of America

International Leather Goods,
Plastic and Novelty Workers

International Union of Operating
Engineers, AFL-CIO

International Union, United
Automobile, Aerospace and
Agricultural Implement
Workers of America

Laborers International Union of
North America, AFL-CIO

Retail, Wholesale and
Department Store Union,
AFL-CIO

Representing workers at:

Pop Fastener Division,
A Black and Decker Company

Thomas Industries, Inc.,
Residential Lighting Division

Kentech Plastics, Inc.;
Thomas Industries, Inc.,
Residential Lighting Division

Ebonite International, Inc.

Dixie Pavers, Inc.

Phelps Dodge Magnet Wire
Company, Hopkinsville Plant

Dixie Pavers, Inc.

Hopkinsville Milling Company

SELECTED INDUSTRIAL SERVICES

<u>Types of Services</u>	<u>Location</u>	<u>Mileage from Hopkinsville</u>
Custom Plastics Producers	Hopkinsville	-
Electric Motor Repair	Hopkinsville Crofton	- 13
Heat Treating Facilities	Hopkinsville	-
Industrial Equipment & Supplies	Hopkinsville	-
Industrial Waste Removal	Hopkinsville	-
Machine Shops, Tool & Die	Hopkinsville	-
Metal Castings	Elkton	20
Metal Finishers	Madisonville	34
Metal Service Centers	Hopkinsville	-
Millwrights & Riggers	Hopkinsville	-

Sources: Kentucky Cabinet for Economic Development, Division of Research;
Hopkinsville-Christian County Chamber of Commerce.

TRANSPORTATION

Highways

Hopkinsville

Interstate 24, a major east-west route, serves Christian County. Interstate 24 is accessible 13 miles south of Hopkinsville via U.S. 41A or 16 miles west of Hopkinsville via U.S. 68. Other major highways serving Hopkinsville include U.S. Highways 41, 41A and 68, all "AAA"-rated (80,000-pound gross load limit) trucking highways. Hopkinsville is the southern terminus of the Pennyriple Parkway, a multi-lane highway. The Pennyriple Parkway serves Hopkinsville with four interchanges and extends north to connect with the Western Kentucky Parkway, 25 miles from Hopkinsville.

The rebuilding of U.S. 68-Kentucky 80 from Bowling Green to Cadiz, Kentucky is currently under construction. This will effectively connect Interstate 65 with Interstate 24.

Construction of a southwest bypass around the city of Hopkinsville is currently under way. The \$9 million project will be completed in segments with phase one scheduled for completion in 1993.

Crofton

Crofton is served directly by U.S. Highway 41, a "AAA"-rated (80,000-pound gross load limit) trucking highway, and Kentucky Highways 800 and 1348. The Pennyriple Parkway, a multi-lane highway is accessible one mile east of Crofton. The Pennyriple Parkway connects with the Western Kentucky Parkway, another multi-lane highway, 12 miles north of Crofton. Interstate 24, a major east-west route, is located 26 miles south of Crofton via U.S. 41 and U.S. 41A.

HIGHWAY MILES FROM HOPKINSVILLE, KENTUCKY, TO SELECTED MARKET CENTERS

City	Highway Miles	City	Highway Miles
Atlanta, GA	308	Los Angeles, CA	1,988
Baltimore, MD	736	Louisville, KY	162
Birmingham, AL	259	Nashville, TN	70
Chicago, IL	371	New Orleans, LA	574
Cincinnati, OH	262	New York, NY	914
Cleveland, OH	507	Pittsburgh, PA	544
Detroit, MI	520	St. Louis, MO	226
Knoxville, TN	243		

Note: Mileage computations are via the best interstate or primary highways, not necessarily the most direct route of travel.

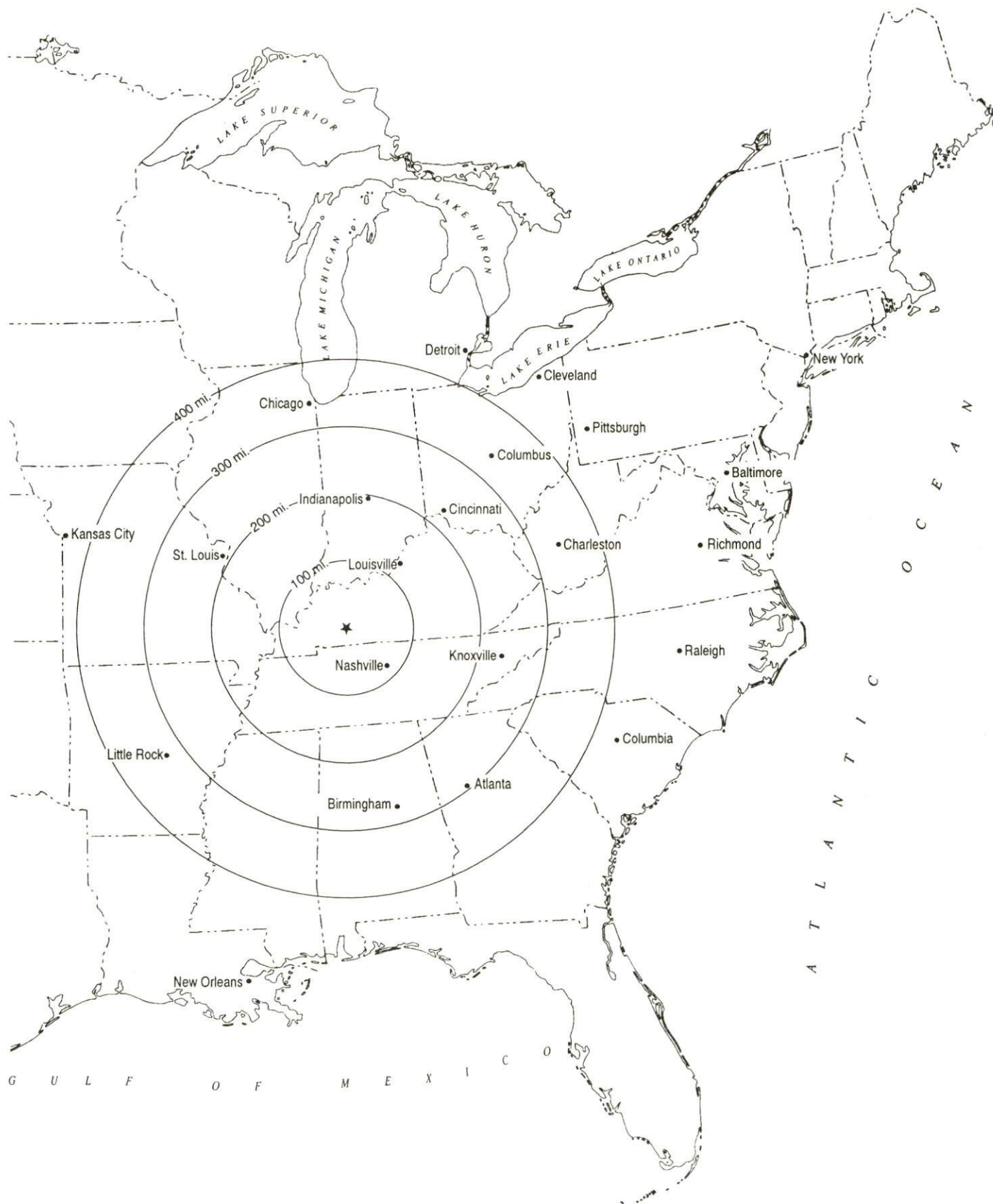
Sources: Rand McNally Standard Highway Mileage Guide, 1990. Official Kentucky Mileage Map, 1985.

Truck Service

Thirty-two common carrier trucking companies provide interstate and/or intrastate service to Hopkinsville and Christian County. One terminal operates in Hopkinsville.

Source: American Motor Carrier Directory, Spring 1993.

Selected Market Centers



Rail

CSX Transportation provides main line rail service to Hopkinsville and Crofton. The nearest intermodal facilities are located at Nashville, Tennessee, 70 miles southeast of Hopkinsville and at Evansville, Indiana, 80 miles north.

For details on routing, schedules, rates, and services contact:

Manager
Industrial Development
CSX Transportation
9420 Bunsen Parkway
Suite 212
Louisville, Kentucky 40220
(502) 499-3025

Air

Local

Hopkinsville-Christian County Airport
1 mile east of Hopkinsville

Location: 1 mile east of Hopkinsville
Runways: 1 paved
Length: 5,000 feet
Width: 75 feet
Traffic Control: Wind socks on northwest and northeast corners, unicom
Lighting: Sundown to sunrise, REILS
Services: 100LL octane and jet-A fuel; minor A & P repairs; tie-downs, taxi and 30 T-hangars; heated storage hangar; car rental
Navigation: Localizer, radar, NDB
Air Freight Service: Chartered air freight services must be arranged.

Nearest Scheduled Commercial Airline Service

Nashville International Airport
6 miles southeast of Nashville, Tennessee;
76 miles southeast of Hopkinsville

Location: 6 miles southeast of Nashville, Tennessee;
76 miles southeast of Hopkinsville
Air Service: American, Delta, Northwest, TWA, Southwest, United, USAir, ComAir, USAir, Express, American Eagle, Atlantic Southeast
Daily Arrivals & Departures: 682

Water

The nearest navigable waterway is the Cumberland River at Clarksville, Tennessee, 26 miles south of Hopkinsville, where several public and private full service river terminal facilities are available. The Cumberland River connects with the Ohio River via Lake Barkley and is part of the Tennessee-Tombigbee Waterway Corridor.

UTILITIES

Electricity

Company serving the majority of Hopkinsville - Hopkinsville Electric System

Source of power - Tennessee Valley Authority

For industrial rates contact:

Hopkinsville Electric System
P.O. Box 544
Hopkinsville, Kentucky 42241-0544
(502) 887-4210

Company serving a small portion of Hopkinsville and the majority of Christian County - Pennyrile Rural Electric Cooperative Corporation

Source of power - Tennessee Valley Authority

For industrial rates contact:

South Kentucky Industrial Development Association, Inc.
P.O. Box 726
Hopkinsville, Kentucky 42241-0726
(502) 885-5392

and/or

Pennyrile Rural Electric Cooperative Corporation
2000 Harrison Street
P.O. Box 551
Hopkinsville, Kentucky 42241
(502) 886-2555

Company serving Crofton and a portion of northern Christian County - Kentucky Utilities Company

Source of power - Kentucky Utilities Company

For industrial rates contact:

Industrial Development Department
Kentucky Utilities Company
One Quality Street
Lexington, Kentucky 40507
(606) 255-2100

Natural Gas

Company serving Hopkinsville and Crofton - Western Kentucky Gas Company

Source of supply - Texas Gas Transmission Corporation

For rates and supplies contact:

Western Kentucky Gas Company
P.O. Box 866
Owensboro, Kentucky 42302
(502) 685-8067

Public Water Supply

Company serving Hopkinsville - Hopkinsville Sewerage & Water
Works Commission
P.O. Box 628
Hopkinsville, Kentucky 42241-0628
(502) 887-4241

Source - North Fork of Little River and old Hopkinsville Stone Quarry
Treatment plant capacity - 7,000,000 gallons per day
Average daily consumption - 4,700,000 gallons
Peak daily consumption - 6,300,000 gallons
Storage capacity - 5,300,000 gallons
Water pressure - 60 psi to 100 psi

Hopkinsville Sewerage and Water Works Commission plans to construct a new ten million-gallon-per-day water treatment facility at a cost of \$10 million. The project is scheduled for completion by April 1996.

Company serving Crofton - Crofton Water Department
P.O. Box 109
Crofton, Kentucky 42217
(502) 424-5111 or 424-8111

Source - Crofton Lake
Treatment plant capacity - 300,000 gallons per day
Average daily consumption - 160,000 gallons
Peak daily consumption - 230,000 gallons
Storage capacity - 100,000 gallons
Water pressure - 30 psi to 67 psi

Sewerage

Company serving Hopkinsville - Hopkinsville Sewerage and Water
Works Commission
P.O. Box 628
Hopkinsville, Kentucky 42241-0628
(502) 887-4241

Design capacity - Plant #1 3,000,000 gallons per day
Plant #2 3,000,000 gallons per day
Total 6,000,000 gallons per day
Total average daily flow - 4,130,000 gallons
Type of treatment - Tertiary
Treated effluent discharged into - North Fork of Little River

The Hopkinsville Sewerage & Water Works Commission plans to renovate and expand the existing wastewater treatment plant. Four new pumping stations will be constructed in the renovation. The expansion will double the existing capacity. Total cost is estimated at \$10,900,000. The project is scheduled for completion in Spring 1996.

Company serving Crofton -

Crofton Sewer Department
P.O. Box 243
Crofton, Kentucky 42217
(502) 424-5111

Design capacity -

350,000 gallons per day

Average daily flow -

155,000 gallons

Type of treatment -

Primary

Treated effluent discharged into - McFarland Creek

CLIMATE

Christian County

Temperature

Normal (30-year record)	59.20 degrees
Average annual 1991	61.40 degrees
Record highest, July 1952 (52-year record)	107.00 degrees
Record lowest, January 1985 (52-year record)	-17.00 degrees
Normal heating degree days (30-year record) (Heating degree day totals are the sums of negative departures of average daily temperatures from 65 degrees F.)	3,756

Precipitation

Normal (30-year record)	48.49 inches
Mean annual snowfall (50-year record)	10.50 inches
Total precipitation 1991	46.94 inches
Mean number days precipitation (.01 inch or more) (50-year record)	118.50
Mean number days thunderstorms (50-year record)	53.20

Prevailing winds (through 1963)

South

Relative Humidity (26-year record)

Midnight	79 percent
6 a.m.	84 percent
Noon	57 percent
6 p.m.	61 percent

Source: U.S. Department of Commerce, Environmental Science Services Administration, Climatological Data, 1991. Station of record: Nashville, Tennessee.

LOCAL GOVERNMENT

Structure

The City of Hopkinsville is governed by a mayor, twelve council members, and a full-time city administrator. The mayor is elected to a four-year term while the council members each serve two-year terms. The City of Crofton is governed by a mayor and six council members. The mayor is elected to a four-year term while the council members each serve two-year terms.

Christian County is governed by a county judge/executive and eight magistrates. Each county official serves a four-year term.

Planning and Zoning

Joint agency - Hopkinsville-Christian County Planning Commission
Participating cities - Hopkinsville, Crofton, La Fayette, Oak Grove,
Pembroke

Zoning enforced - Within city limits of Hopkinsville and Oak Grove

Subdivision regulations enforced - Within city of Hopkinsville and
unincorporated Christian County

Mandatory state codes enforced - Kentucky Plumbing Code, National
Electric Code, Kentucky Boiler Regulations and Standards, Kentucky
Building Code (modeled after BOCA code)

Local Fees and Licenses

The City of Hopkinsville levies an occupational license (payroll) tax of 1 1/2% of gross wages, and a business license tax of .115% of gross receipts. Manufacturers with less than 50 employees are levied a business license fee of \$100, firms with 50-99 employees are charged \$150 and firms with 100 employees or greater pay \$200 per year.

The City of Crofton levies a full-time business license fee of \$65 annually, a part-time business license fee of \$25 per year, and a \$50 loading and unloading license fee annually.

Tax Incentives

The City of Hopkinsville received enterprise zone status from the Kentucky Enterprise Zone Authority in December 1987. The Hopkinsville Enterprise Zone offers tax rebates and regulatory relief to qualifying businesses which locate or expand activities within the zone's boundaries. The zone comprises 6.5 square miles which includes commercial and industrial land.

PROPERTY TAXES

The Kentucky Constitution requires the state to tax all classes of taxable property, and state statutes allow local jurisdictions to tax only a few classes. All locally taxed property is subject to county taxes and school district taxes (either a county school district or an independent school district). Property located inside of city limits may also be subject to city property taxes.

Special local taxing jurisdictions (fire protection districts, watershed districts, and sanitation districts) levy taxes within their operating areas (usually a small portion of community or county).

Property assessments in Kentucky are at 100% fair cash value. A 15% reduction is automatically granted for accounts receivable.

STATE PROPERTY TAX RATES PER \$100 VALUATION

<u>Selected Classes of Property</u>	<u>1992 State Rate</u>	<u>Local Taxation Permitted</u>
Real Estate	\$0.184	YES
Manufacturing Machinery	0.150	NO
Pollution Control Equipment	0.150	NO
Inventories		
Raw Materials	0.050	NO
Goods in Process	0.050	NO
Finished Goods	0.050	YES
Motor Vehicles	0.450	YES
Other Tangible Personal Property	0.450	YES
Intangibles (Accounts Receivable, Money on Hand)	0.250	NO

LOCAL PROPERTY TAX RATES PER \$100 VALUATION, 1992

<u>Taxing Jurisdiction</u>	<u>Real Estate</u>	<u>Finished Goods & Tangibles</u>	<u>Motor Vehicles</u>
Christian County	\$0.1374	\$0.1774	\$0.1523
School Districts:			
Christian County	0.2350	0.2350	0.5660
Cities:			
Hopkinsville	0.2450	0.2510	0.2510
Crofton	0.2410	0.3550	0.3000
Other:			
Watershed Districts			
West Fork, Pond River	0.1000	None	None
East Fork, Pond River	0.0900	None	None
Tradewater River	0.1000	None	None

EDUCATION

Public Schools

	Christian County
Total Enrollment (Fall, 1992)	9,200
Accreditation	Southern Association of Colleges and Schools
Pupil-Teacher Ratio (1991-92)	18.7-1
Percent High School Graduates to College (1991-92)	55.3
Expenditures Per Pupil (1991-92)	\$3,405.29

The Christian County School System recently completed several renovation/expansion projects at five elementary schools totaling \$4.2 million.

Nonpublic Schools

<u>School</u>	<u>Enrollment</u>	<u>Grades</u>
Fort Campbell	3,865	K-12
Life Tabernacle Christian School	49	K-12
Saints Peter and Paul Elementary	145	PS-6
University Heights Academy	215	PS-12

Area Colleges and Universities

<u>Name</u>	<u>Location (Miles distant)</u>	<u>Enrollment (Fall, 1992)</u>
Hopkinsville Community College	Hopkinsville, Kentucky	3,020
Austin Peay State University	Clarksville, Tennessee (26)	7,816
Madisonville Community College	Madisonville, Kentucky (34)	2,403
Murray State University	Murray, Kentucky (57)	8,190
Western Kentucky University	Bowling Green, Kentucky (65)	15,750
Belmont University	Nashville, Tennessee (70)	2,866
Crichton College	Nashville, Tennessee (70)	321
David Lipscomb University	Nashville, Tennessee (70)	2,227
Fisk University	Nashville, Tennessee (70)	867
Meharry Medical College	Nashville, Tennessee (70)	867
Nashville State Technical Institute	Nashville, Tennessee (70)	6,082
Trevecca Nazarene College	Nashville, Tennessee (70)	1,386
Tennessee State University	Nashville, Tennessee (70)	7,590
Vanderbilt University	Nashville, Tennessee (70)	9,724

Hopkinsville Community College

The University of Kentucky's Hopkinsville Community College offers two years transfer or university parallel courses; and an associate degree in Business Technology with options in banking, management, and management information systems; Human Services Technology; Law Enforcement; Nursing; Dental Hygiene; Industrial Electrical Technology (IET); and Secretarial and Office Administration. The Community College also offers a variety of credit and non-credit courses in proactive response to industrial and business needs which includes pre-employment testing, pre-employment training, middle-management training, Statistical Process Control (SPC), and Learning to Learn programs geared to industrial applications.

The Industrial Electrical Technology (IET) program at Hopkinsville Community College is an associate degree that helps to prepare an individual for an entry-level position in a technically related field. These positions could include; automated production, machine installation, maintenance, trouble-shooting or equipment testing. Upon completion of the program, students have a basic knowledge in the areas of electronics, hydraulics, mathematics, manufacturing and mechanics. The student is also exposed to computer logic and digital circuit analysis. With this background, graduates are capable of understanding and resolving problems that can occur in everyday operation of today's advanced technology manufacturing facilities.

The Community College conducts examinations for the Certification of Professional Secretaries (CPS), General Education Development tests (GEDs), and the State Merit Examinations (for employment with state government) on a routine basis, HCC is fully accredited by the Southern Association of Colleges and Schools and has active 2 + 2 baccalaureate programs with nearby institutions of higher education such as Western Kentucky University, Murray State University, University of Kentucky, and Austin Peay State University.

VOCATIONAL-TECHNICAL TRAINING

Kentucky Tech schools are operated by the Cabinet for Workforce Development and provide secondary (Sec) and postsecondary (P/S) vocational-technical training.

<u>Kentucky Tech Schools</u>	<u>Location (Mileage from Hopkinsville)</u>	<u>Number of Program Offerings</u>	<u>Cumulative Enrollment 1991-1992</u>	<u>Approximate Number Completing Programs Annually</u>
Christian County Area Vocational Education Center	Hopkinsville	8	<u>Sec</u> <u>P/S</u> 163 45	26
Madisonville State Vocational-Technical School	Madisonville (34)	9	<u>Sec</u> <u>P/S</u> 80 283	40
Madisonville Health Technology Center	Madisonville (34)	10	<u>Sec</u> <u>P/S</u> 50 246	160

An expansion of the Health Technology Center was approved by the General Assembly in 1990 and is expected to be completed in 1993. This new construction will add approximately 44,300 square feet of additional program space.

Customized Training

The Kentucky Tech system, through its Training and Development Coordinators will provide technical assistance and will identify and develop low cost customized training programs and services for both established and prospective businesses. Businesses needing customized training should contact a Training and Development Coordinator in Hopkins County, located at the Kentucky Tech West Region office in Madisonville.

Assessment Services

Kentucky Tech Career Connections offers to business, education, and government agencies customized assessment in career inventories, interest inventories, pre-hire assessment, psychomotor skills and academic potential. The School also has a Career Connections mobile unit that is available to potential Kentucky Tech students, business and industry, and other agencies within Christian County.

Adult Basic Education

Adult education is available to adults who want to develop new skills, improve basic skills, or earn a high school equivalency degree. In Christian County, adult literacy and adult basic education are available through the Christian County Board of Education.

Bluegrass State Skills Corporation

The Bluegrass State Skills Corporation, an independent public corporation created and funded by the Kentucky General Assembly, provides programs of skills training to meet the needs of business and industry from entry level to advanced training, and from upgrading present employees to retraining experienced workers.

The Bluegrass State Skills Corporation is a major source for skills training assistance for a new or existing company. The Corporation works in partnership with other employment and job training resources and programs, as well as Kentucky's economic development activities, to package a program customized to meet the specific needs of a company.

OTHER LOCAL FACILITIES

Local Medical Personnel

Physicians - 88
Dentists - 29

Hospitals

<u>General Hospital</u>	<u>Location</u>	<u>Beds</u>
Jennie Stuart Medical Center	Hopkinsville, Kentucky	194
Trover Clinic (Hopkinsville)	Hopkinsville, Kentucky	(Outpatient Care)
Regional Medical Center Madisonville	Madisonville, Kentucky 37 miles north	410

Jennie Stuart Medical Center

Medical staff - 59 physicians, 20 surgeons, 159 registered nurses, and
60 licensed practical nurses

Trover Clinic (Hopkinsville)

Medical staff - 25 physicians, one registered nurse, five licensed
practical nurses

Regional Medical Center Madisonville

Medical staff - 92 active staff physicians, 15 courtesy staff physicians,
394 registered nurses, 107 licensed practical nurses

Other Medical Facilities and Services

Christian County Health Department
Cumberland Hall (psychiatric)
Hopkinsville-Christian County Emergency
Ambulance Service
Pennyroyal Regional Mental Health-
Mental Retardation Center
Western State Hospital (psychiatric)

Newspapers

The Kentucky New Era (daily except Sunday)

Telephone Service

South Central Bell

Television

W43AG TV-43

Banks and Savings and Loan Associations

First City Bank and Trust Company
First Federal Savings Bank of Hopkinsville
Fort Campbell Federal Credit Union
Hopkinsville Federal Savings Bank
NationsBank of Kentucky
Pennyrile Citizens Bank and Trust Company
United Southern Bank

RECREATION

Local

Hopkinsville offers a variety of public recreation opportunities. Public facilities include ten parks, eight playgrounds, a swimming pool, fifteen tennis courts, eight baseball diamonds, three softball fields, a football field, two soccer fields, an 18-hole golf course and a nine-hole golf course (par-3), two fishing lakes, a football field and stadium, a senior citizens' walking course, an 18-hole miniature golf course, and a nature fitness trail.

Trail of Tears Commemorative Park, which recently opened in Hopkinsville, is located on the banks of the Little River and highlights the Cherokee movement through Kentucky. An annual Indian Pow Wow held in September features authentic Indian dancing and foods, Cherokee storytelling, and arts and crafts. Facilities include a two-room log cabin museum/visitor's center, canoe landing and nature trails.

The Hopkinsville-Christian County Recreation Department employs a full-time director and staff. Supervised recreational programs include classes in tennis, arts and crafts, soccer, aerobics, and special programs for the handicapped. Sports leagues include men's and women's softball, basketball and volleyball; co-ed softball, and boys' and girls' softball; Little League and Babe Ruth League baseball; junior league basketball; pee wee football; and soccer. Special events coordinated by the department are: "Life. Be in it. Superday", Christmas Parade, Haunted House, Little River Days Festival, Little River Road Races, Halloween Costume Parade and Pumpkin Painting Contest.

The Western Kentucky State Fair, held at the Christian County Fairgrounds each summer, features a horse show, horse races, tractor pulls, and performances by famous entertainers. The Pennyroyal Area Museum, in Hopkinsville, houses exhibits of Civil War and Jefferson Davis memorabilia, Indian relics, and early pioneer displays. Private recreational facilities include a country club, swimming pools, riding stables, trap shooting facilities, and a racquetball and health club.

Several organizations in Hopkinsville hold periodic performances, programs or exhibits throughout the year. These groups include the Community Players, the Hopkinsville Art Guild, the Hopkinsville Madrigal Singers, the Oratorio Society, the Pennyryle Players, the Pennyroyal Crafts Group, the Pennyroyal Youth Choral, Hopkinsville Community Concerts, and the Southern Kentucky Independent Theatre (S.K.I.T.).

Several events held in Crofton each year include a 4th of July Homecoming, PTO Fall Festival and Freedom Day. The City of Crofton plans to develop a community park by the summer of 1993. Facilities will include a playground, a basketball court, and picnic areas.

Area (Within 45 miles)

Jefferson Davis Monument State Historic Site
Kenlake State Resort Park
Lake Barkley State Resort Park
Lake Malone State Park
The Land Between the Lakes
National Recreation Area
Pennyryle Forest State Resort Park

COMMUNITY IMPROVEMENTS

Hopkinsville re-certified as a "Kentucky Certified City" in 1992, and is distinguished as a gold award winner recognizing nine consecutive years of certification. Re-certification is based on achievement in the following areas: existing industry assistance, small business assistance, educational resources, and community development factors of health care, public safety, arts and culture, recreation, governmental awareness and resources. In addition to receiving the 1992 Gold Award, Hopkinsville was recognized as a Hall of Fame community. This category not only demonstrates that a community is adequately prepared for immediate growth, but also that the community has analyzed emerging economic trends, and has set about planning for the future. The Certified Cities Program is sponsored by the Kentucky Chamber of Commerce.

Hopkinsville-Christian County has experienced considerable growth over the past two years including ten new industries and more than two dozen plant expansions which represented an investment of over \$98 million and created over 1,000 new jobs.

Construction of a southwest bypass around the city of Hopkinsville is currently under way. The \$9 million project will be completed in segments with phase one scheduled for completion in 1993.

The rebuilding of U.S. 68-Kentucky 80 from Bowling Green to Cadiz, Kentucky is currently under construction. This will effectively connect Interstate 65 with Interstate 24.

Hopkinsville Sewerage and Water Works Commission plans to construct a new ten million-gallon-per-day water treatment facility at a cost of \$10 million. In addition, the Commission plans to renovate and expand the existing wastewater treatment plant. Four new pumping stations will be constructed in the renovation. The expansion will double the existing capacity. Total cost is estimated at \$10,900,000. The two projects are scheduled for completion in Spring 1996.

Hopkinsville recently launched "Heart of Hopkinsville", which through joint public-private ventures, provides funding for capital improvements for downtown development. The community plans several projects to enhance growth opportunities for the central business district.

The Christian County School System recently completed several renovation/expansion projects at five elementary schools totaling \$4.2 million.

The City of Crofton plans to develop a community park by the summer of 1993. Facilities will include a playground, a basketball court, and picnic areas. Tennis courts and a baseball field are planned for the future.

Trail of Tears Commemorative Park recently opened in Hopkinsville. The park is located on the banks of the Little River and highlights the trail of the Cherokee movement through Kentucky. Facilities include a two-room log cabin museum/visitor's center, canoe landing and nature trails. Additional development is planned for the future.



KENTUCKY