

1981

# Industrial Resources: Floyd County - Prestonsburg

Kentucky Library Research Collections  
Western Kentucky University, [spcol@wku.edu](mailto:spcol@wku.edu)

Follow this and additional works at: [https://digitalcommons.wku.edu/floyd\\_cty](https://digitalcommons.wku.edu/floyd_cty)

 Part of the [Business Administration, Management, and Operations Commons](#), [Growth and Development Commons](#), and the [Infrastructure Commons](#)

---

## Recommended Citation

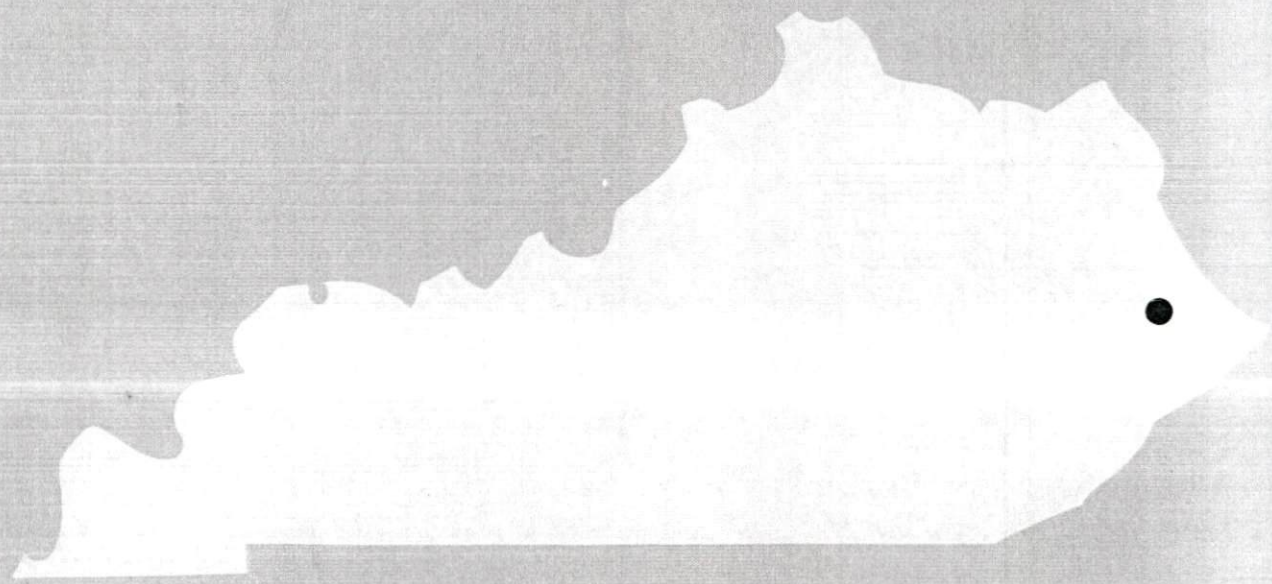
Kentucky Library Research Collections, "Industrial Resources: Floyd County - Prestonsburg" (1981). *Floyd County*. Paper 17.  
[https://digitalcommons.wku.edu/floyd\\_cty/17](https://digitalcommons.wku.edu/floyd_cty/17)

This Report is brought to you for free and open access by TopSCHOLAR®. It has been accepted for inclusion in Floyd County by an authorized administrator of TopSCHOLAR®. For more information, please contact [topscholar@wku.edu](mailto:topscholar@wku.edu).

116  
215

Floyd County

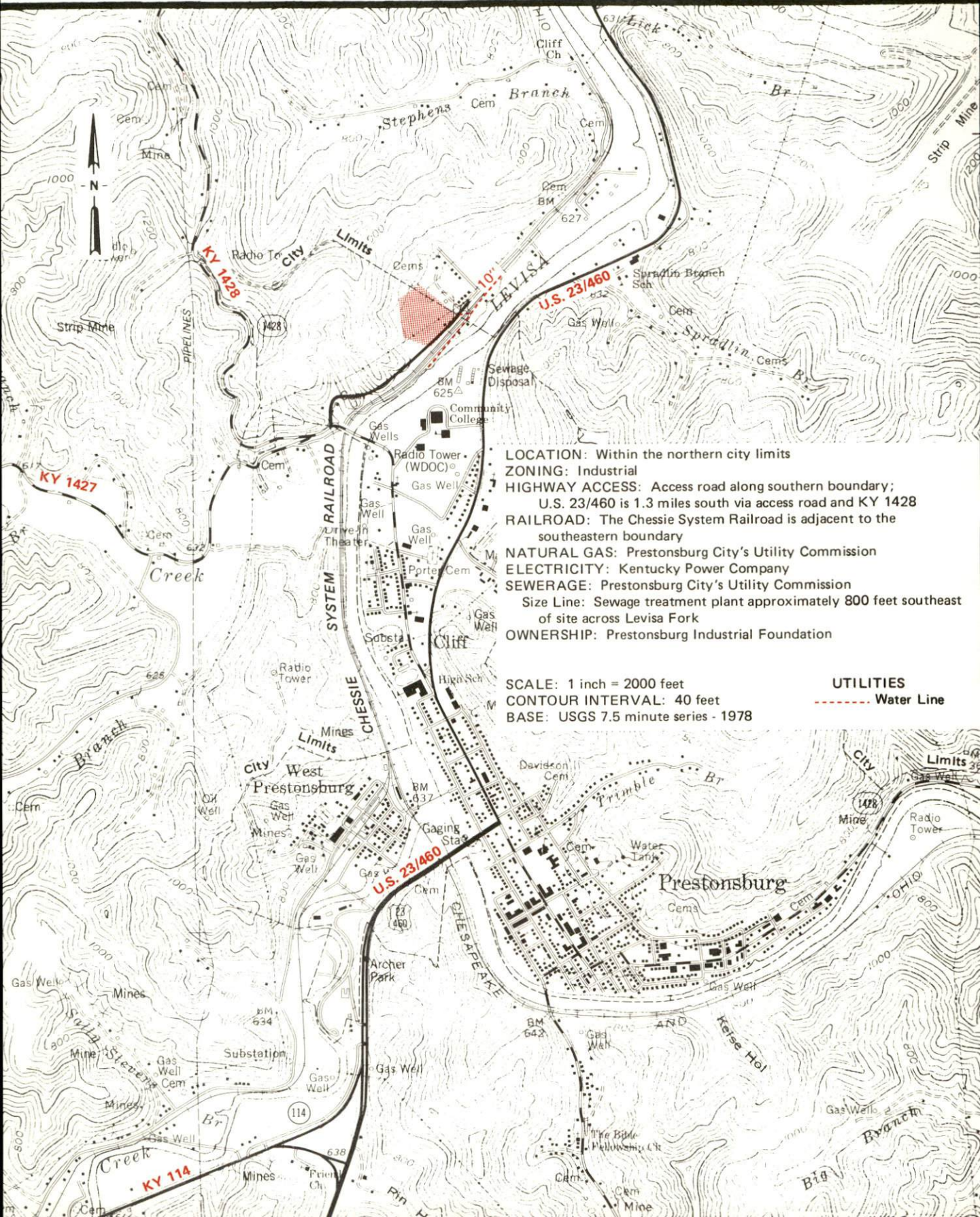
A comprehensive  
report on  
**Prestonsburg, Ky.**



**KENTUCKY & CO.**  
The state that's run like a business.

# PRESTONSBURG, KENTUCKY --- Site 181 -- 8.3 Acres

For more information contact Mr. Chalmer Frazier, Executive Director, Prestonsburg-Floyd County Chamber of Commerce, North Lake Drive, Prestonsburg, Kentucky 41653 or the Kentucky Commerce Cabinet, New Industries Division, Capital Plaza Tower, Frankfort, Kentucky 40601.



- LOCATION: Within the northern city limits
- ZONING: Industrial
- HIGHWAY ACCESS: Access road along southern boundary; U.S. 23/460 is 1.3 miles south via access road and KY 1428
- RAILROAD: The Chessee System Railroad is adjacent to the southeastern boundary
- NATURAL GAS: Prestonsburg City's Utility Commission
- ELECTRICITY: Kentucky Power Company
- SEWERAGE: Prestonsburg City's Utility Commission
  - Size Line: Sewage treatment plant approximately 800 feet southeast of site across Levisa Fork
- OWNERSHIP: Prestonsburg Industrial Foundation

SCALE: 1 inch = 2000 feet  
CONTOUR INTERVAL: 40 feet  
BASE: USGS 7.5 minute series - 1978

**UTILITIES**  
----- Water Line

A COMPREHENSIVE REPORT ON  
PRESTONSBURG, KENTUCKY

Prepared by  
The Kentucky Department of Commerce  
Division of Research and Planning  
in cooperation with  
The Prestonsburg/Floyd County Chamber of Commerce

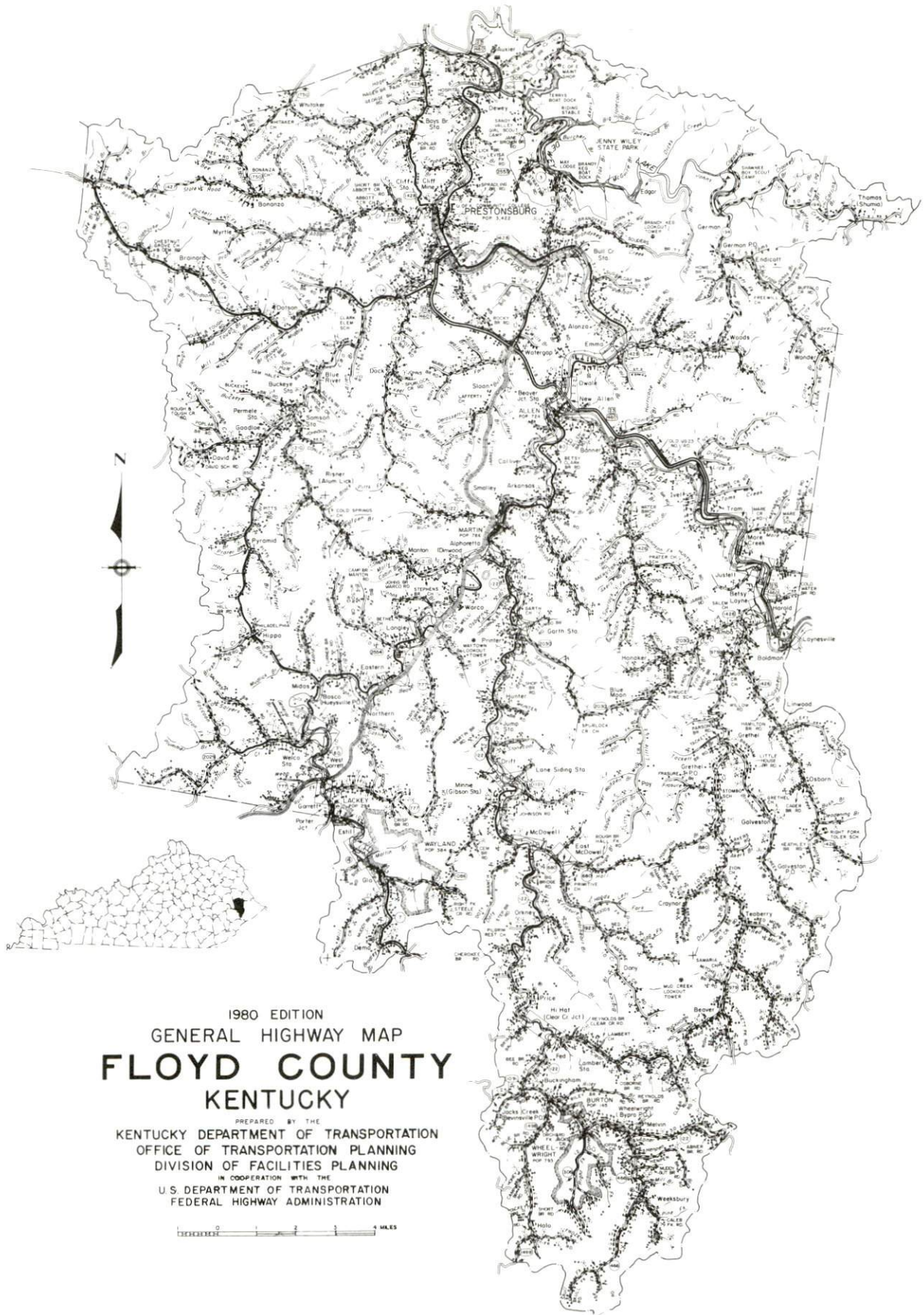
1981

Program manager - Brenda Roberts; research - Michael Haynes; clerical - Annette Mitchell; graphics - Frank Ferrante, Tony Cecconi, Jimmy Thompson; cartography - Site Evaluation Section, Division of New Industries. Cost of printing paid from state funds.

## TABLE OF CONTENTS

<u>Chapter</u>	<u>Page</u>
INDUSTRIAL SITES . . . . .	i.
THE LABOR MARKET AREA . . . . .	1
Population . . . . .	1
Labor Force Characteristics of Residents, 1979 . . . . .	1
Estimated Male Labor Supply . . . . .	2
Estimated Female Labor Supply . . . . .	2
Prestonsburg Manufacturing Firms, Their Products and Employment . . . . .	3
Labor Organizations in Manufacturing Firms . . . . .	3
Industrial Services . . . . .	3
Average Weekly Wages by Industry, by Place of Work, 1979 . . . . .	4
Per Capita Personal Income . . . . .	6
TRANSPORTATION . . . . .	7
Rail . . . . .	7
Highways . . . . .	7
Truck Service . . . . .	7
Air . . . . .	9
Bus . . . . .	9
Taxi . . . . .	9
Rental Services . . . . .	9
Water . . . . .	9
POWER AND FUEL . . . . .	10
Electricity . . . . .	10
Natural Gas . . . . .	11
Other Fuels . . . . .	11
WATER AND SEWERAGE . . . . .	12
Water . . . . .	12
Sewerage . . . . .	13
CLIMATE . . . . .	14

<u>Chapter</u>	<u>Page</u>
LOCAL GOVERNMENT . . . . .	15
City . . . . .	15
County . . . . .	15
Assessed Value of Property . . . . .	15
Property Taxes . . . . .	16
Combined State and Local Rates Per \$100	
Valuation, 1980 . . . . .	16
Planning and Zoning . . . . .	17
Safety . . . . .	17
Police . . . . .	17
Fire . . . . .	17
Rescue Service . . . . .	17
Refuse Collection and Disposal . . . . .	18
EDUCATION . . . . .	19
Public Schools . . . . .	19
Nonpublic Schools . . . . .	19
Area Colleges and Universities . . . . .	20
Vocational Schools . . . . .	21
HEALTH . . . . .	23
Local Medical Personnel . . . . .	23
Hospitals . . . . .	23
Other Medical Facilities . . . . .	23
Ambulance Service . . . . .	24
Public Health . . . . .	24
OTHER LOCAL FACILITIES . . . . .	25
Communications . . . . .	25
Library Services . . . . .	25
Religious Institutions . . . . .	26
Financial Institutions . . . . .	26
Hotels and Motels . . . . .	26
Clubs and Organizations . . . . .	27
RECREATION . . . . .	28



1980 EDITION  
 GENERAL HIGHWAY MAP  
**FLOYD COUNTY**  
 KENTUCKY

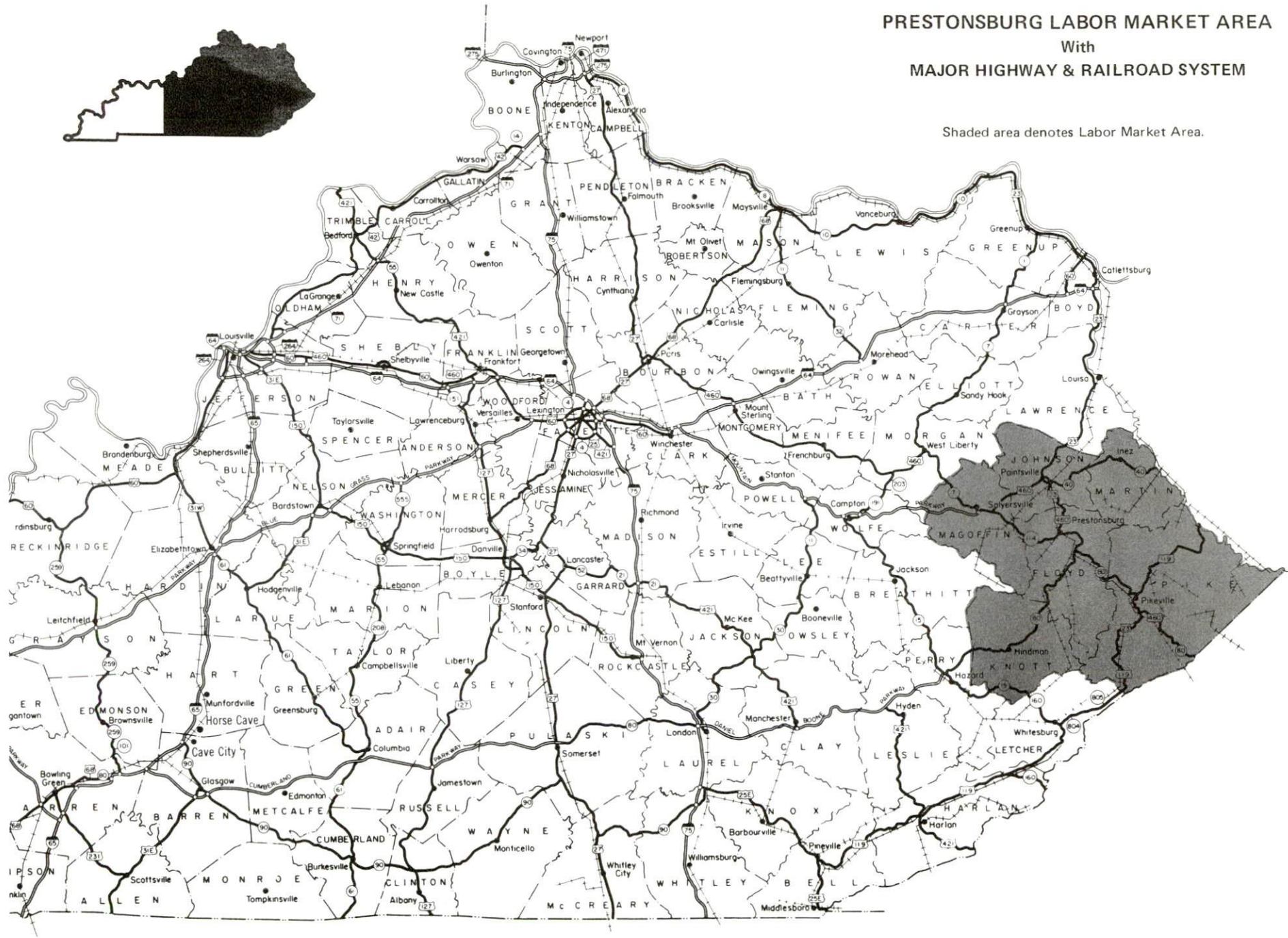
PREPARED BY THE  
 KENTUCKY DEPARTMENT OF TRANSPORTATION  
 OFFICE OF TRANSPORTATION PLANNING  
 DIVISION OF FACILITIES PLANNING  
 IN COOPERATION WITH THE  
 U.S. DEPARTMENT OF TRANSPORTATION  
 FEDERAL HIGHWAY ADMINISTRATION





# PRESTONSBURG LABOR MARKET AREA With MAJOR HIGHWAY & RAILROAD SYSTEM

Shaded area denotes Labor Market Area.



## THE LABOR MARKET AREA

The Labor Market Area includes Floyd County and the adjoining Kentucky counties of Johnson, Knott, Magoffin, Martin, and Pike.

POPULATION			
Area	1980	1970	Percent Nonwhite
Prestonsburg	4,011	3,422	0.5
Labor Market Area	199,699	149,005	N/A
Floyd County	48,764	35,889	0.6
Johnson County	24,432	17,539	0.3
Knott County	17,940	14,698	0.8
Magoffin County	13,515	10,443	0.2
Martin County	13,925	9,377	0.2
Pike County	81,123	61,059	0.6

Note: The 1980 counts of population by race are provisional.

Source: U.S. Department of Commerce, Bureau of the Census, March 1981, as published in Special Report No. 8, State Data Center, Urban Studies Center, University of Louisville, March 1981.

### LABOR FORCE CHARACTERISTICS OF RESIDENTS, 1980

	Floyd County	Labor Market Area
Civilian Labor Force	14,274	69,859
Employment	12,818	64,133
Agricultural	44	288
Nonagricultural	12,774	63,845
Unemployment	1,456	5,726
Rate of Unemployment	10.2	8.2

Source: Kentucky Department for Human Resources, Kentucky Labor Force Estimates, Annual Averages, 1980.

ESTIMATED MALE LABOR SUPPLY  
PRESTONSBURG LABOR MARKET AREA

Area	Current			Under- employed	Future
	Total	Not in Labor Force	Unemployed		Reaching 18 years of age before 1986
Labor Market Area*	6,098	1,256	2,522	2,320	7,681
Floyd	1,537	302	585	650	1,823
Johnson	769	161	288	320	761
Knott	590	123	237	230	850
Magoffin	481	83	268	130	601
Martin	409	82	157	170	553
Pike	2,312	505	987	820	3,093

\*Additional workers may be drawn from other nearby counties.

Sources: Kentucky Department for Human Resources, Kentucky Labor Supply Estimates by County, 1979. Kentucky Department of Commerce, Future Labor Supply before 1986.

ESTIMATED FEMALE LABOR SUPPLY  
PRESTONSBURG LABOR MARKET AREA

Area	Current			Under- employed	Future
	Total	Not in Labor Force	Unemployed		Reaching 18 years of age before 1986
Labor Market Area*	4,921	518	2,333	2,070	7,070
Floyd	1,262	128	544	590	1,567
Johnson	626	65	261	300	713
Knott	416	50	216	150	730
Magoffin	388	33	245	110	607
Martin	351	32	149	170	514
Pike	1,878	210	918	750	2,939

\*Additional workers may be drawn from other nearby counties.

Sources: Kentucky Department for Human Resources, Kentucky Labor Supply Estimates by County, 1979. Kentucky Department of Commerce, Future Labor Supply before 1986.

Note: "Not in Labor Force" represents those persons who are not now in the labor force, but would enter the labor force if suitable employment were available. Unemployed persons are those persons who are unemployed and actively seeking work. Underemployed persons are those persons who are employed, but are working only 14 to 26 weeks per year.

PRESTONSBURG MANUFACTURING FIRMS,  
THEIR PRODUCTS AND EMPLOYMENT

Firm (Establishment date)	Product	Employment		
		Total	Male	Female
Big Sandy Ready Mix Concrete, Inc. (N/A)	Ready-mixed concrete	7	7	0
Coal Bit Company, Inc. (1950)	Rebuilt mine car wheels	11	10	1
Highlands Publishing Company, Inc. (1970)	Printing	3	3	0
May Sign Company, Inc. (1952)	Plastic and road signs, displays	7	6	1
Prestonsburg Publishing Company, Inc. (1937)	Newspapers	9	6	3

Source: Kentucky Department of Commerce, Division of Research and Planning.

LABOR ORGANIZATIONS IN MANUFACTURING FIRMS

At present, there are no labor organizations representing manufacturing workers in Prestonsburg.

INDUSTRIAL SERVICES

	Location	Mileage from Prestonsburg
Tool & Die, Machine & Pattern Shops	Paintsville, Kentucky	13
Metal Service Centers	Pikeville, Kentucky	23
Heat Treating	Huntington, West Virginia	78
Metal Finishers	Huntington, West Virginia	78
Electric Motor Repair	Allen, Kentucky	8

Sources: Kentucky Directory of Selected Industrial Services, 1979; Kentucky Department of Commerce, Division of Research and Planning.

AVERAGE WEEKLY WAGES BY INDUSTRY,  
BY PLACE OF WORK, 1979

	Floyd County	Johnson County	Knott County
All Industries	\$264.65	\$221.23	\$245.03
Mining & Quarrying	367.34	360.89	322.75
Contract Construction	300.63	204.16	285.78
Manufacturing	217.54	*	*
Transportation, Communications & Public Utilities	294.29	260.48	238.00
Wholesale & Retail Trade	189.71	168.80	130.31
Finance, Insurance & Real Estate	218.35	219.79	343.28
Services	200.78	195.51	188.54
Other	65.53	93.46	*

	Magoffin County	Martin County	Pike County
All Industries	\$253.09	\$433.67	\$289.80
Mining & Quarrying	390.07	522.57	393.02
Contract Construction	186.60	208.54	288.60
Manufacturing	219.14	217.53	277.34
Transportation, Communications & Public Utilities	223.31	250.14	275.00
Wholesale & Retail Trade	142.55	160.05	182.86
Finance, Insurance & Real Estate	273.99	179.97	278.65
Services	173.69	206.21	183.18
Other	0	0	*

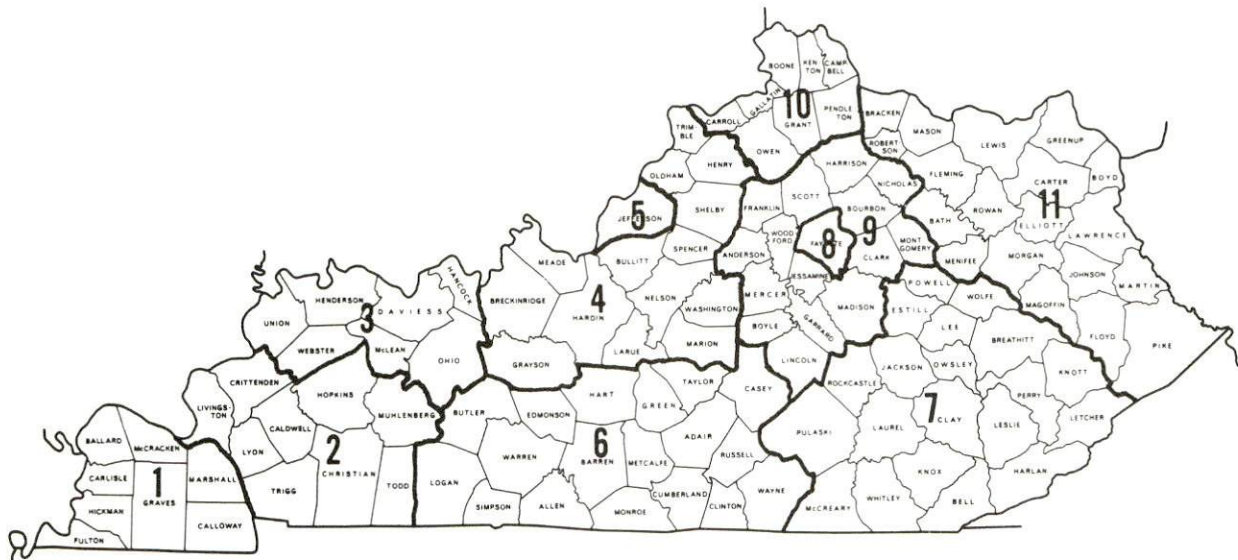
\*Not disclosed.

Note: Excludes domestic workers, railway workers; certain nonprofit corporations; majority of federal government workers; and self-employed workers. Effective January 1, 1979, the Kentucky Unemployment Insurance Law extended coverage to include all state and local government agencies (shown in the Services category).

Source: Kentucky Department for Human Resources, Average Weekly Wages of Workers Covered by Kentucky Unemployment Insurance Law, 1979.

Occupational wage rates for specific industries are usually not available to most government agencies, and wage data furnished to state employment agencies by individual industrial employers is protected from disclosure by federal law. The most reliable up-to-date wage information can be obtained by direct contact with local employers.

Associated Industries of Kentucky, a voluntary organization of Kentucky businesses, regularly collects occupational wage rates and fringe benefits data from participating member firms. Data is compiled for over 127 clearly defined office, production, and service occupations. Tabulations are published for eleven regions of Kentucky, as shown on the map below. It should be noted that the data may be weighted by the preponderance of firms in the larger cities and may be somewhat higher than the rates paid in the smaller communities. Data from these tabulations are available, upon request, from the Kentucky Department of Commerce, Frankfort, Kentucky 40601.



Associated Industries of Kentucky Area Wage Surveys

PER CAPITA PERSONAL INCOME

<u>Area</u>	<u>1979</u>	<u>1975</u>	<u>Percent Change</u>
Floyd County	\$6,106	\$4,430	37.8
Labor Market Area Range	\$4,680 - 8,085	\$3,051 - 5,259	N/A
Kentucky	7,377	4,882	51.1
U.S.	8,757	5,861	49.4

Source: U.S. Department of Commerce, Bureau of Economic Analysis,  
April 1981.

## TRANSPORTATION

### Rail

Line serving Prestonsburg - The Chessie System

Services - Eastbound and westbound freights stop on request; 11 eastbound and 11 westbound through freights daily; switching facilities; team track space for 20 cars; siding space available for 160 cars; nearest piggyback facilities at Huntington, West Virginia, 77 miles northeast of Prestonsburg.

For details on routing, schedules, rates, and services, contact:

The Chessie System  
Real Estate and Industrial  
Development Department  
808 Dixie Terminal Building  
Cincinnati, Ohio 45202  
(513) 369-5258

### Highways

Prestonsburg is easily accessible via the Mountain Parkway (a limited access toll road) from the west, U.S. 23/460 from the south-east, and U.S. 23 from the north. The Mountain Parkway provides access to Interstate 64 approximately 98 miles northwest of Prestonsburg near Lexington. By the end of 1981, Kentucky Highway 80 will have been widened to four lanes facilitating access to the Daniel Boone Parkway (a limited-access toll road), 46 miles to the southwest at Hazard. Kentucky Highways 3, 114, and 1428, all "AAA" rated trucking highways, also serve Prestonsburg.

### Truck Service

<u>Company</u>	<u>Home Office</u>
Hogan Storage and Transfer*	721 East Fourth Avenue Williamson, West Virginia 25661
Overnite Transportation Company (T)**	1000 Semmes Avenue P. O. Box 1216 Richmond, Virginia 23209
Smith Transfer Corporation*	P. O. Box 1000 Staunton, Virginia 24401

(T)Local terminal.

\*Interstate service only.

\*\*Interstate and intrastate service.



Other Freight ServicesNearest Shipping Center of Home Office

Purolator Courier Corporation\*

London, 103 miles distant  
Lexington, 120 miles distant

United Parcel Service\*

Prestonsburg

HIGHWAY MILES AND TRUCK TRANSIT TIME IN DAYS FROM  
PRESTONSBURG, KENTUCKY, TO SELECTED MARKET CENTERS

City	Highway Miles	Delivery		City	Highway Miles	Delivery	
		Time TL				Time TL	
Atlanta, Ga.	411	2		Los Angeles, Ca.	2,300	7	
Baltimore, Md.	515	2		Louisville, Ky.	196	1	
Birmingham, Ala.	472	1-2		Nashville, Tenn.	395	1	
Chicago, Ill.	472	1-2		New Orleans, La.	814	2	
Cincinnati, Ohio	198	1-2		New York, N. Y.	711	3	
Cleveland, Ohio	371	1-2		Pittsburgh, Pa.	341	1-2	
Detroit, Mich.	457	3		St. Louis, Mo.	455	1-2	
Knoxville, Tenn.	218	1					

Note: Mileage computations are via the best interstate or primary highways, not necessarily the most direct route of travel.

Sources: Rand McNally Road Atlas, 1979. Official Kentucky Mileage Map, 1979. Delivery time - Overnite Transportation Company, 1100 Commerce Road, Richmond, Virginia 23209.

\*For regular scheduled pickups or for occasional pickups, arrangements must be made with the Louisville office of Purolator Courier Corporation or United Parcel Service.

## Air

### Local

Combs Airport  
Location: Eight miles north of Prestonsburg  
Runways: One paved  
Length: 3,200 feet  
Traffic  
Control: Wind sock  
Lighting: None  
Services: 100 LL octane, jet fuel; attendant on field  
Monday through Friday

### Nearest Scheduled Airline Service

Tri-State Airport (Walker-Long Field)  
Location: Nine miles southwest of Huntington, West Virginia;  
68 miles northeast of Prestonsburg  
Runways: Two paved  
Length: 6,509 feet and 3,007 feet  
Traffic  
Control: Tower  
Lighting: Beacon, runway  
Services: Piedmont and USAir airlines; 100 LL and jet fuel;  
major repairs, major Avionics repairs; hangars and  
tiedowns; charter service; flight instructions;  
plane rental; U.S. Customs; taxi, limousine, car  
rentals; weather information; restaurant  
Air Freight  
Service: Air carriers accept air freight on a space  
available basis

Bus - Greyhound Bus Lines

Taxi - Two companies, 24-hour service

Rental Services - Cars, trucks, and trailers

### Water

The Big Sandy River is the nearest navigable waterway to Prestonsburg. Prestonsburg is approximately 50 miles from a point on the Big Sandy River where a 6-foot navigation channel is maintained for about six miles. At that point, a 9-foot navigation channel is maintained to the Ohio River.

POWER AND FUEL

Electricity

Company serving Prestonsburg and most of Floyd County - Kentucky  
Power Company

Source of power - Kentucky Power Company

Total generating capacity - 1,060,000 KW

For industrial rates contact:

Kentucky Power Company  
1701 Central Avenue  
P. O. Box 1428  
Ashland, Kentucky 41101  
(606) 329-2220

Company serving the remainder of Floyd County - Big Sandy Rural  
Electric Cooperative Corporation

Source of power - East Kentucky Power Cooperative

Total generating capacity - 1,318,010 KW

For industrial rates contact:

Industrial Development Division  
East Kentucky Power Cooperative  
P. O. Box 707  
Winchester, Kentucky 40391  
(606) 744-4812

and/or

Big Sandy RECC  
P. O. Box 671  
Paintsville, Kentucky 41240  
(606) 789-4095

## Natural Gas

Company serving Prestonsburg - Prestonsburg City's Utilities Commission\*

Source of supply - Kentucky-West Virginia Gas Company

Size of transmission mains - 10 inches (supplier);  
4 inches (distributor)

Distribution mains - 4, 3, and 2 inches

Distribution pressure - 18 psi to 60 psi

Btu content - 1,000 per cubic foot or more

Specific gravity - .675

For rates and supplies contact:

Prestonsburg City's Utilities Commission  
1048 South Lake Drive  
P. O. Box 468  
Prestonsburg, Kentucky 41653  
(606) 886-6872

## Other Fuels

### Propane (Within 15 miles)

Comstock's Bottle Gas  
Martin, Kentucky 41649

Williams Energy Company  
Bull Creek Road  
Allen, Kentucky 41601

Hardware Charlie Gas Company  
Route 23  
Paintsville, Kentucky 41240

Williams Energy Company  
Bypass  
Paintsville, Kentucky 41240

### Fuel oils

#### Distillate fuel oil - (Within 15 miles)

Ashland Petroleum Company  
Bypass  
Paintsville, Kentucky 41240

Moore Brothers Oil Company  
Allen, Kentucky 41601

Chevron USA  
U.S. 23 South  
Paintsville, Kentucky 41240

Marvin Music, Distributor  
West Prestonsburg, Kentucky 41668

Kentucky Oil and Refining Company  
P. O. Box 63  
Betsy Layne, Kentucky 41605

Residual fuel oil - Arrangements must be made with the refinery.

Low sulphur content coal - Available locally

\*Prestonsburg's City's Utilities Commission continues work on the complete replacement of the city's gas delivery system. Approximately 95% of the old mains have been replaced by plastic mains. The \$300,000 renovation is expected to be completed in 1982.

## WATER AND SEWERAGE

### Water

Company serving Prestonsburg - Prestonsburg City's Utilities Commission  
1048 South Lake Drive  
P. O. Box 468  
Prestonsburg, Kentucky 41653  
(606) 886-6872

Source - Levisa Fork, Big Sandy River  
Treatment plant capacity - 1.5 million gallons per day\*  
Average daily consumption - 1 million gallons  
Peak daily consumption - 1.2 million gallons  
Type treatment - Mixed filter media, chemical mixing, flocculation,  
settling, filtration, and chlorination  
Storage capacity - 850,000 gallons  
Size lines - 14, 12, 10, 8, and 6 inches  
Average pressure - 70 psi  
Average temperature - 65 degrees F.

### MONTHLY WATER RATES

#### Inside Prestonsburg

First	2,000 gallons	\$4.25 (minimum)
Next	98,000 gallons	1.60 per thousand
All over	100,000 gallons	1.10 per thousand

#### Outside City Limits

First	2,000 gallons	\$6.25 (minimum)
Next	98,000 gallons	2.25 per thousand
All over	100,000 gallons	1.35 per thousand

Tap-on charge: No charge inside corporate city limits;  
\$150 outside corporate limits; \$100  
additional charge if road crossing  
is required.

\*The capacity of the treatment plant will be expanded from 1.5 million gallons per day to 3 million gallons per day with the completion of a \$4.2 million expansion program that includes 1,060,000 gallons of additional storage and approximately 10 miles of new 12-, 10-, and 8-inch distribution mains that will serve the industrial site and three housing tracts near the site. Completion is expected in mid-1982.

Surface water sources - Levisa Fork of Big Sandy River at  
Prestonsburg  
Average discharge - 2,186 cfs (16 years, USGS, unadjusted)  
Expected ground water yield - 5 to 50 gpm in the northern 2/3 of  
Floyd County, 50 to 200 gpm in the southern 1/3 of Floyd County

#### Sewerage

Company serving Prestonsburg - Prestonsburg City's Utilities Commission  
1048 South Lake Drive  
P. O. Box 468  
Prestonsburg, Kentucky 41653  
(606) 886-6872

Design capacity - 999,000 gallons per day  
Average daily flow - 618,000 gallons per day\*  
Treatment - Primary and secondary  
Type treatment - Biological, grit chamber, comminutors, primary  
clarifiers, secondary clarifiers, activated sludge, chlorinators,  
anaerobic digestion, aerobic digestion, sludge digestion, and  
drying beds  
Treated effluent discharged into - Levisa Fork, Big Sandy River  
Size of sanitary mains - 8, 10, 15 inches\*  
Size of storm mains - 18, 24, 36, 48 and 96 inches  
Rates - 70% of water bill  
Tap-on charge: \$250

\*Kentucky Department for Natural Resources and Environmental Protection.

## CLIMATE

### Floyd County

#### Temperature

Normal (30-year record)	56.1 degrees
Average annual 1979	54.2 degrees
Record highest, July, 1952 (34-year record)	102.0 degrees
Record lowest, January, 1966 (34-year record)	-15.0 degrees
Normal heating degree days (30-year record) (Heating degree day totals are the sums of negative departures of average daily temperatures from 65 degrees F.)	4,306

#### Precipitation

Normal (30-year record)	41.47 inches
Mean annual snowfall (42-year record)	16.20 inches
Total precipitation 1979	43.71 inches
Mean number days precipitation (.01 inch or more) (34-year record)	134
Mean number days thunderstorms (36-year record)	45

#### Prevailing Winds (9-year record)

West, southwest

#### Relative Humidity (18-year record)

1 a.m.	81 percent
7 a.m.	85 percent
1 p.m.	57 percent
7 p.m.	64 percent

Source: U.S. Department of Commerce, Environmental Science  
Services Administration, Climatological Data, 1979.  
Station of record: Bristol, Johnson City, Kingsport, Tennessee.

LOCAL GOVERNMENT

City

Structure - Mayor - 4-year term; 8 council members - 2-year terms;  
city administrator

Budget 1980-81 - General Fund \$720,835.00

Receipts 1979 Water, Sewer  
and Gas Fund 854,131.51

Fees and licenses - Occupational license fees - 1 percent of gross  
salaries and 1 percent of net profits of businesses; business  
licenses range from \$10 to \$300 annually

County

Structure - County Judge/Executive - 4-year term;  
4 magistrates - 4-year terms

Budget 1980-81 - General Fund \$651,382; Road Fund \$469,141

Assessed Value of Property

<u>Classes of Property</u>	<u>Prestonsburg (1980)</u>	<u>Floyd County (1980-81)</u>
Real Estate and Tangibles	\$43,496,480	
Real Estate Tangibles		\$169,866,166 119,845,283



## Property Taxes

All property in Kentucky is assessed at 100 percent of fair cash value.

Land and buildings are taxed by the state and may be taxed by local jurisdictions. The state rate is \$0.241 per \$100 of assessed valuation.

Manufacturing machinery, raw materials inventories, pollution control equipment, and goods in the process of manufacture are not subject to local taxation. The state rate is \$0.15 per \$100.

Other tangible personal property owned by manufacturers (automobiles, trucks, finished goods, office furniture, office equipment) is taxed by the state at \$0.45 per \$100 and may be taxed by local jurisdictions.

Property stored in public warehouses in a transit status is not subject to local taxation. The state rate is only \$0.015 per \$100.

Intangible personal property located in Kentucky (money in hand, shares of stock, notes, bonds, accounts receivable, and other credits) is taxed by the state at \$0.25 per \$100, and is not subject to local taxation.

Private leaseholds in industrial facilities owned by cities or counties and financed by industrial revenue bonds are subject to a state tax of \$0.015 per \$100 of value (essentially the lessee's equity, adjusted for appreciation or depreciation). Local taxation is not permitted.

### Combined State and Local Rates Per \$100 Valuation, 1980\* (100% assessment)

	<u>Inside City of Prestonsburg</u>	<u>Outside City</u>
1. Land and buildings	\$0.935	\$0.635
2. Mfg. machinery, raw materials, goods in process, pollution control equipment	0.150	0.150
3. Finished goods, office equipment, vehicles, other tangibles	1.144	0.844
4. Intangibles (accounts rec., notes, bonds, etc.)	0.250	0.250
5. Leaseholds in I. R. bond financed plants	0.015	0.015

\*Kentucky Department of Commerce.

## Planning and Zoning

Joint agency - Prestonsburg-Floyd County Planning Commission\*  
Zoning enforced - Prestonsburg only  
Local codes enforced - Building and housing codes enforced in Prestonsburg only; flood plain administration enforced county-wide  
Mandatory state codes enforced - Kentucky Plumbing Code, National Electric Code, Kentucky Boiler Regulations and Standards, National Fire Protection Association Standards of Safety (for buildings with an occupancy of less than 100 persons), Kentucky Building Code (modeled after BOCA code and applying to buildings with an occupancy of 100 or more persons)

## Safety

<u>Police</u>	<u>Prestonsburg</u>	<u>Floyd County</u>
Total staff	10 full-time 8 auxiliary	6 -
Radio-patrol cars	4	1

## Fire

American Insurance Association Fire Rating	6	**
Full-time staff	10	--
Volunteers	32	--

## Rescue Service

Prestonsburg Rescue Squad:  
Number of paid staff - 10  
Number of volunteers - 10  
Equipment - One 4-wheel drive mini-pumper, porta-power equipment, a trauma kit, an aspirator, a portable generator, a backboard, a stretcher, a scoop stretcher, and a power saw  
Personnel training - Civil defense and cardiopulmonary resuscitation (CPR) certification

(Contd.)

\*Includes the cities of Prestonsburg, Allen, Wheelwright, Martin, and Wayland.

\*\*Several communities in Floyd County house fire equipment and serve surrounding areas of the county. The communities and their A.I.A. fire ratings are as follows: Allen - 9; Betsy Layne - 8 & 9; Martin - 8 & 9; Wayland - 10; and Wheelwright - 8.

Floyd County Emergency and Rescue Squad:

Number of volunteers - 50

Equipment - Seven trucks, three jeeps, five power plants, one water pump, three trailers, six boats with motors, one carry-all 4-wheel drive van, scuba equipment for seven divers, one full-time kitchen, one Jaws-of-Life, and a portable power saw

Personnel training - Full training program with corresponding civil defense program, first aid team with eight emergency medical technicians, 14 persons trained in cardiopulmonary resuscitation, and 25 persons trained in advanced first-aid

Refuse Collection and Disposal

	<u>Prestonsburg</u>	<u>Floyd County</u>
Type service	Municipal	County-wide
Fee charged:		
residential	\$1.75 per month	\$6.50 per month
business	Based on volume	Based on volume
industrial	Based on volume	Based on volume
Collection frequency:		
residential	Twice weekly	Weekly
business	Daily	Based on volume
industrial	Daily	Based on volume
Trash pickup	Based on volume	As required
Disposal method	Landfill	Landfill

## EDUCATION

### Public Schools

#### Floyd County

Total Enrollment (Fall 1980)	9,629
Elementary	6,898 (K-8)
High School	2,731
Student-Teacher Ratio	21-1
Elementary	24-1 (K-8)
High School	18-1
Percent High School Graduates to College	37.6
Expenditures Per Pupil (1979-80)	\$1,022.06
Bonded Indebtedness, June 30, 1980	\$3,445,000

### Nonpublic Schools

#### The David School David, Kentucky

Total Enrollment	35
High School	35
Student-Teacher Ratio	5-1
High School	5-1

Area Colleges and Universities

<u>Name</u>	<u>Location (Miles distant)</u>	<u>Enrollment (Fall, 1980)</u>	<u>Highest Degree Conferred</u>
Prestonsburg Community College	Prestonsburg, Kentucky	751	Associate
Pikeville College	Pikeville, Kentucky (27)	616	Masters*
Alice Lloyd Junior College	Pippa Passes, Kentucky (41)	395	Associate
Hazard Community College	Hazard, Kentucky (59)	326	Associate
Lees Junior College	Jackson, Kentucky (63)	337	Associate
Ashland Community College	Ashland, Kentucky (77)	1,472	Associate
Marshall University	Huntington, West Virginia (78)	11,856	Academic & Professional
Morehead State University	Morehead, Kentucky (80)	7,163	Masters, Specialist**

\*Courses in the masters degree programs are taught on the Pikeville campus by faculty members of Pikeville College and Morehead State University. The degrees are issued by Morehead State University.

\*\*Joint doctoral degree programs are offered in cooperation with the University of Kentucky, Lexington.

## Vocational Schools

Both the state vocational-technical schools and the area vocational education centers are operated by the Kentucky Department of Education. The state vocational-technical schools enroll persons full time who are at least 16 years of age and not in school. These students attend classes for six hours each day. The area vocational education centers are designed to accommodate high school students who are at least 15 years of age. These students attend vocational school for three hours each day. The state vocational-technical schools and the area education centers offer evening courses to enable working adults to upgrade current job skills.

### Nearest State School

Location	Mayo State Vocational-Technical School Paintsville
Miles Distant	13 miles north of Prestonsburg
Curriculum	Business and Office Accounting/Junior Management Clerical Court and Conference Reporter Data Processing Secretarial (Legal & Medical) Consumer and Home Economics Consumer and Family Life Skills Health and Personal Services Occupations Cosmetology Nursing Aide Practical Nursing Industrial Education Auto Body Repair Auto Mechanics Carpentry-Building Trades Diesel and Heavy Equipment Maintenance and Repair Drafting (Mechanical) Drafting (Technical) Electronic Communications Graphic Arts (Printing) Highway Technology Industrial Electricity Industrial Electronics Machine Shop Mining Maintenance Mechanics Radio and Television Repair Tool and Die Making Welding Learning Resource Center

Nearest Area Education Center

Location	Floyd County Area Vocational Education Center
Miles Distant	Martin
Curriculum	13 miles south of Prestonsburg
	Business and Office
	Accounting/Junior Management
	Clerical
	Model Office
	Secretarial
	Health Careers
	Industrial Education
	Auto Mechanics
	Carpentry
	Industrial Electricity
	Machine Shop
	Mining Occupations
	Welding

Arrangements can be made to provide training in the specific production skills required by an industrial plant. Instruction may be conducted either in the vocational school or in the industrial plant, depending upon the desired arrangement and the availability of special equipment.

## HEALTH

### Local Medical Personnel

Physicians - 18  
Dentists - 5

### Hospitals

<u>General Hospital</u>	<u>Location</u>	<u>Beds</u>
Highland Regional Medical Center	Prestonsburg	137

General hospital facilities - Five operating rooms, a four-room emergency suite, diagnostic X-ray, nuclear medicine, a clinical laboratory, a pulmonary function laboratory, a six-bed recovery room, a seven-bed coronary/intensive care unit, physical therapy, EKG, two delivery rooms, ophthalmology, a premature infant nursery, OB/GYN, general surgery, orthopedics, cardiac rehabilitation, speech pathology, anesthesiology and pharmacy

Medical staff - 14 general practitioners, six family practitioners, four internists, one cardiologist, one pulmonologist, one nephrologist, two urologists, one pediatrician, four obstetricians, one radiologist, one podiatrist, one dermatologist, two ophthalmologists, one orthopedist, 69 registered nurses, 39 licensed practical nurses, and a 24-hour emergency room staffed by four physicians

### Other Medical Facilities

Mountain Comprehensive Care Center - Region 11 Mental Health-Mental Retardation Board, Inc., in Prestonsburg  
Services - Alcohol and drug abuse programs; marriage, group, and individual counseling; mental health-mental retardation programs, and sheltered workshop  
Staff - Four psychiatrists, five psychologists, seven registered nurses, seven social workers, 53 mental health workers, 36 support staff

### Archer Memorial Clinic

Staff - 12 doctors (full time) - Doctors are specialists in orthopedics, family practice, radiology, cardiopulmonary/cardiac, pediatrics, pharmacy, general surgery, nephrology and urology. Four doctors (part time) - These doctors are specialists in thoracic, plastic and neurosurgery, and dermatology. There is also one vocational counselor.



Ambulance Service

Name - P & B Ambulance Service

Staff - 12 full-time emergency medical technicians

Service - 24 hours, seven days per week

Equipment - Five ambulances

Public Health

Facility - Floyd County Health Department

Staff - One administrator, four registered nurses, three health environmentalists, one health educator, six clerks, one licensed practical nurse, two community health aides

## OTHER LOCAL FACILITIES

### Communications

Telephone - South Central Bell Telephone Company  
Services - Standard

Telegraph - Western Union  
Services - Standard

Postal - U.S. Post Office  
Class - First  
Mail received - Once daily  
Mail dispatched - Once daily

Newspapers - Floyd County Times  
Weekly and circulation - 10,300  
Other papers  
received from - Louisville, Lexington and Ashland, Kentucky;  
Huntington, West Virginia; and Cincinnati, Ohio

Radio - WPRT-AM & -FM; WDOC-AM & -FM  
Major stations  
received from - Louisville, Lexington and Ashland, Kentucky;  
Huntington, West Virginia; and Cincinnati, Ohio

Television -  
Cable service  
Reception from - Lexington and Hazard, Kentucky; Huntington,  
West Virginia; Kingsport, Tennessee; and  
Atlanta, Georgia  
Kentucky Educational  
Television - Pikeville transmitter, Channel 22

### Library Services

Public library - Floyd County Public Library  
Size collection - 58,913 volumes  
Circulation, 1979-1980 - 125,325  
Services - Bookmobile, newspapers, records, tapes, films, filmstrips,  
audio-visual equipment, magazines, microfilm, microfilm readers,  
story hour, exhibits, art and music room, and community room

College library - Prestonsburg Community College  
Size collection - 32,440 volumes  
Special collections - Local and state history (includes some  
genealogical information)  
Services - Magazines, newspapers, records, tapes, films, filmstrips,  
transparencies, microfilm, microfiche, microfilm reader-printer,  
microfiche reader, audio-visual equipment, copy machine, art  
reproductions, community service classes, and special community  
art displays

Religious Institutions

Number of churches - 13  
Denominations - Assembly of God  
Baptist  
Catholic  
Christian  
Church of Christ  
Church of God  
Episcopal  
Freewill Baptist  
Methodist  
Presbyterian  
Pentacostal

Nearest Synagogues - Ashland, Kentucky, 77 miles north of Prestonsburg  
Congregations - Agudath Achim (reform)

Financial Institutions

<u>Banks</u>	<u>Assets</u>	<u>Deposits</u>	<u>Statement Date</u>
First Commonwealth Bank	\$98,475,536.86	\$88,720,915.07	6/30/80
The Bank Josephine	82,193,831.00	70,572,798.00	6/30/80
<u>Savings and Loan Associations</u>	<u>Assets</u>	<u>Savings Accounts</u>	<u>Statement Date</u>
United Federal Savings and Loan Association	\$31,860,523.75	\$29,672,604.35	6/30/80

Hotels and Motels

Total number - 6\*  
Total rooms - 201

\*Additional accommodations are available at Jenny Wiley State Resort Park, three miles north of Prestonsburg.

## Clubs and Organizations

American Legion  
American Legion Auxiliary  
Band Parents Association  
Beta Club  
Boy Scouts of America  
Brownie Scouts  
Business and Professional Women's Club  
Chamber of Commerce  
Circle K  
Cub Scouts  
Daughters of the American Revolution (DAR)  
Downtown Merchants Association  
Eagles  
Eastern Star  
Floyd County Fair Board  
4-H Club  
Future Farmers of America (FFA)  
Future Homemakers of America (FHA)  
Girl Scouts  
Highland Striders Jogging Club  
Homemakers Club  
Humane Society  
Independent Order of Odd Fellows (IOOF)  
Jenny Wiley Drama Association  
Junior Women's Club  
K-Club  
Kiwanis  
Masonic Order  
Medical Society  
Ministerial Association  
Parent-Teachers Association (PTA)  
Rebekah  
Red Cross  
Veterans of Foreign Wars (VFW)  
Veterans of Foreign Wars Ladies Auxiliary  
Women's Club  
Woodmen of the World

## RECREATION

### Local

Recreation in the Prestonsburg area is centered around its 32-acre Archer Park. Facilities include seven all-weather tennis courts, a skating rink, a basketball gymnasium with a stage for theatrical productions, a senior citizens' center, three lighted baseball fields, an Olympic-sized swimming pool, two fenced playgrounds, several camping spaces, a horse show ring, and four shelter buildings. Classes in gymnastics and square dancing are offered. The park has received a \$30,000 grant, to be matched by local funds, for use in the construction of raquetball facilities. A county fair and horse show are held at the park annually.

A county park at Allen, Kentucky, four miles south of Prestonsburg has recently been completed. Facilities include a 9-hole golf course, tennis courts, baseball diamonds, and meeting rooms for arts and crafts. A swimming pool will be complete and open in the spring of 1981.

Jenny Wiley State Resort Park, three miles north of Prestonsburg, takes full advantage of its picturesque highland setting. The 1,700-acre park offers facilities and activities such as a lodge, a dining room, a gift shop, cottages, a lodge pool, recreation rooms, primitive campsites, picnic areas, planned recreation, a playground, golf, hiking, horseback riding, a shuffleboard court, fishing, and pedal and fishing boat rentals. A mountain skylift is operated from Memorial Day until Labor Day.

### Area (Within 75 miles)

Breaks Interstate Park is 50 miles southeast of Prestonsburg via Kentucky 80 and U.S. 460 at the Kentucky-Virginia border. It is located on the rim of the largest river canyon east of the Mississippi River and encompasses 2,500 acres. Facilities and recreational activities include a lodge, campsites, swimming, fishing, boating, a playground, a visitor center, and the 12-acre Laurel Lake.

Natural Bridge State Resort Park at Slade, 64 miles west of Prestonsburg, is a 1,899-acre park located in the Daniel Boone National Forest where cliffs and stone arches fill the landscape. The rugged awesomeness of the great Natural Bridge, the largest of 12 natural sandstone arches in the park, is the main attraction. The park has a 35-room resort lodge with a dining room and a gift shop, efficiency and one-bedroom cottages, and 95 camping sites. Other facilities include a 54-acre lake, a swimming pool, picnic shelters and playgrounds, hiking trails, and a riding stable. A skylift to Natural Bridge is operated from April 15 to October 31.

Red River Gorge, most of which is located in Wolfe County adjacent to Natural Bridge State Resort Park, has three waterfalls, 59 natural sandstone arches, and the Red River Gorge Loop Drive, a 30-mile scenic route on Kentucky 715 and 77 which passes along the Red River. The Daniel Boone National Forest Visitor Information Center on Kentucky 715 is located on the loop drive.

Grayson Lake State Park is located 70 miles north of Prestonsburg near Grayson. Facilities available include 71 campsites, a beach, and a picnic area. Good fishing and organized recreational programs can be enjoyed during the summer. The park is located in the 7,350-acre Grayson Lake Wildlife Area. Hunting information is available from the Kentucky Department of Fish and Wildlife Resources. The Rosedale Recreation Area, located near a dam on Grayson Lake, includes Kitchen House, a log house circa 1838 which was the scene of a Civil War skirmish. The nearby Camp Webb Conservation Center has a wildlife museum.

