

1976

Industrial Resources: Hardin County - Radcliff & Vine Grove

Kentucky Library Research Collections
Western Kentucky University, spcol@wku.edu

Follow this and additional works at: https://digitalcommons.wku.edu/hardin_cty



Part of the [Business Administration, Management, and Operations Commons](#), [Growth and Development Commons](#), and the [Infrastructure Commons](#)

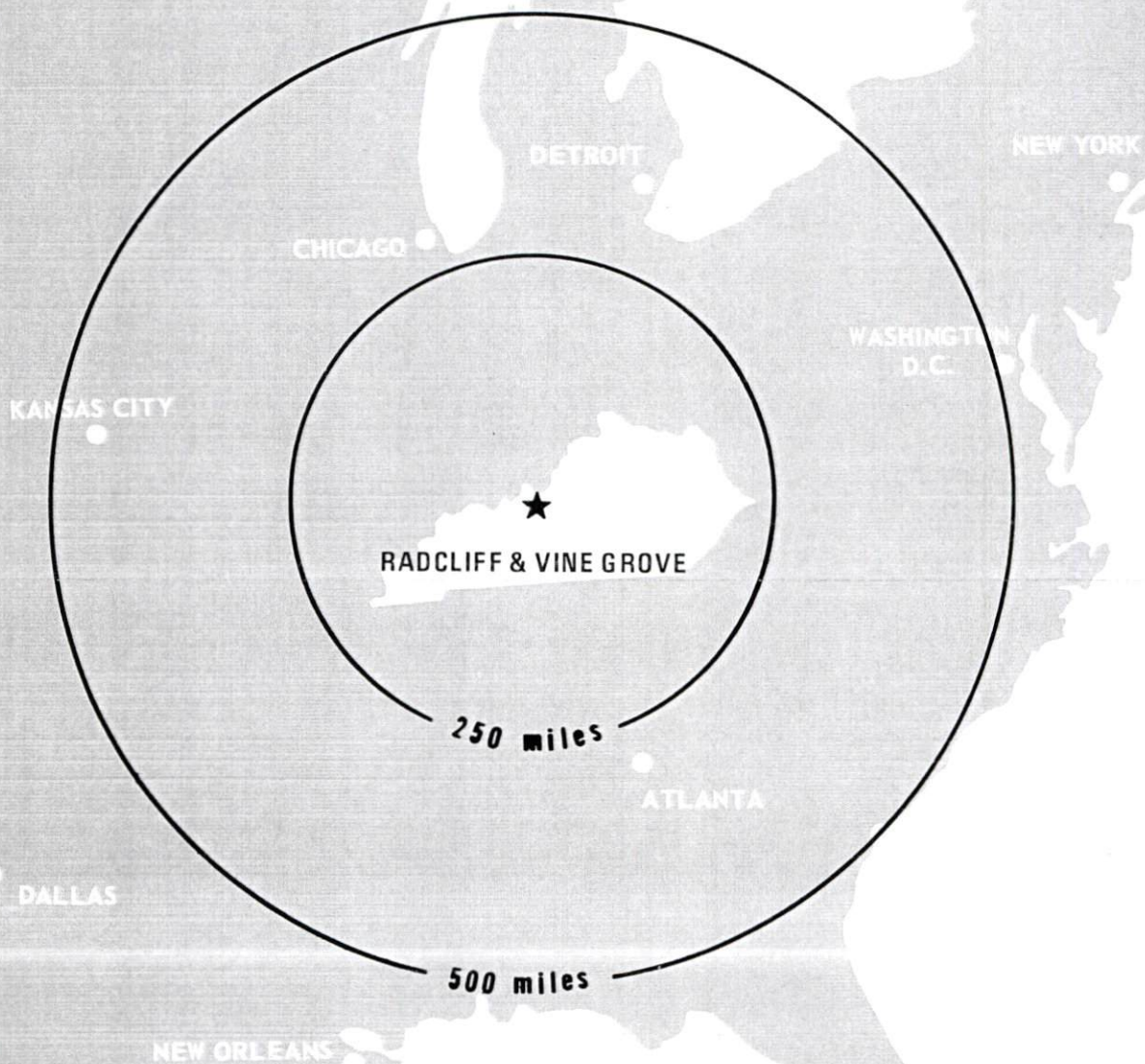
Recommended Citation

Kentucky Library Research Collections, "Industrial Resources: Hardin County - Radcliff & Vine Grove" (1976). *Hardin County*. Paper 15.
https://digitalcommons.wku.edu/hardin_cty/15

This Report is brought to you for free and open access by TopSCHOLAR®. It has been accepted for inclusion in Hardin County by an authorized administrator of TopSCHOLAR®. For more information, please contact topscholar@wku.edu.

INDUSTRIAL RESOURCES

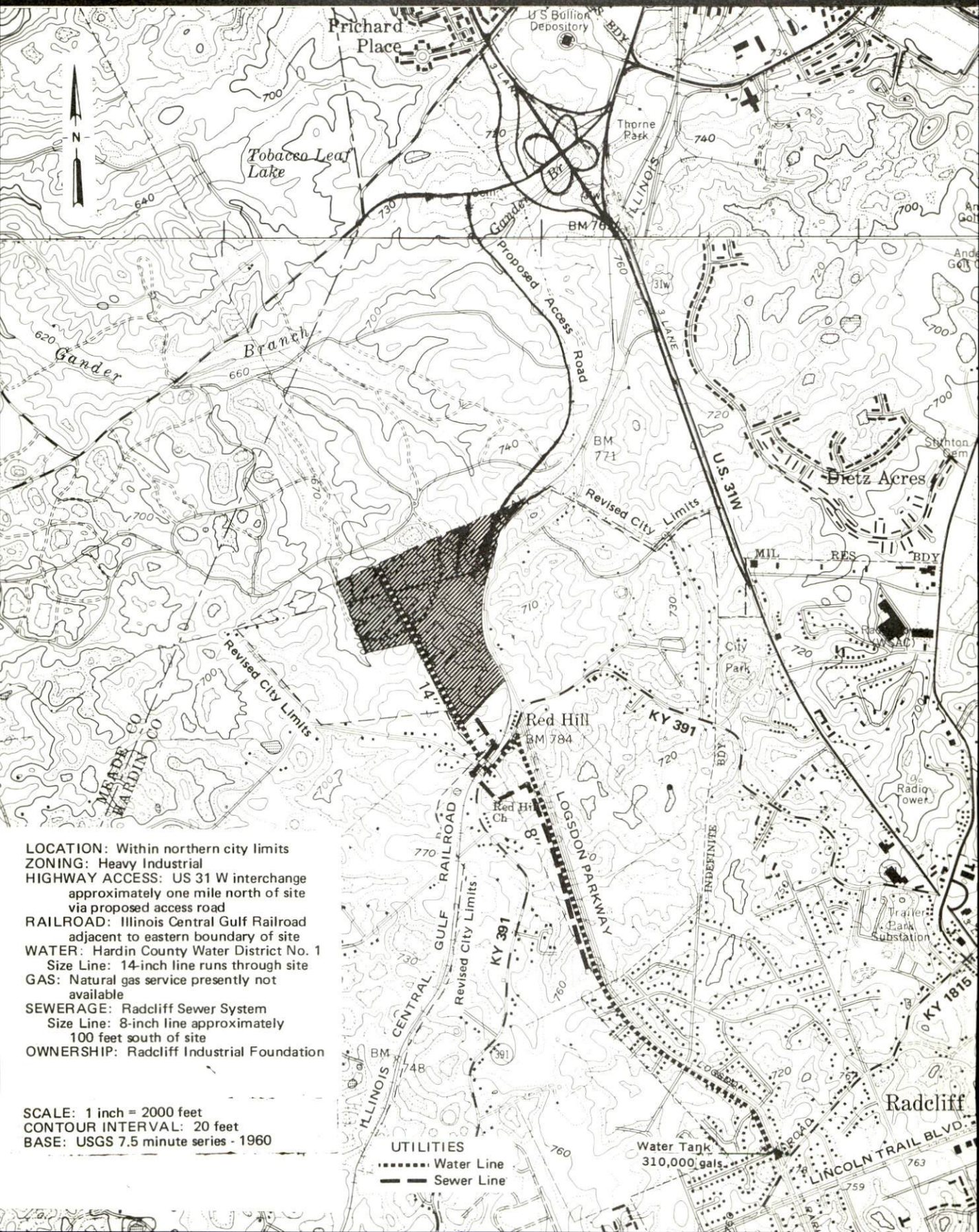
RADCLIFF & VINE GROVE KENTUCKY



HARDIN COUNTY, KENTUCKY

RADCLIFF, KENTUCKY --- Site No. 176 -- 93 Acres

For more information contact Mrs. Temple Stidham, Executive Director, Radcliff Chamber of Commerce, Post Office Box 399, Radcliff, Kentucky 40160, or the Industrial Development Division, Kentucky Department of Commerce, Capital Plaza Tower, Frankfort, Kentucky 40601.



LOCATION: Within northern city limits
ZONING: Heavy Industrial
HIGHWAY ACCESS: US 31 W interchange approximately one mile north of site via proposed access road
RAILROAD: Illinois Central Gulf Railroad adjacent to eastern boundary of site
WATER: Hardin County Water District No. 1
 Size Line: 14-inch line runs through site
GAS: Natural gas service presently not available
SEWERAGE: Radcliff Sewer System
 Size Line: 8-inch line approximately 100 feet south of site
OWNERSHIP: Radcliff Industrial Foundation

SCALE: 1 inch = 2000 feet
CONTOUR INTERVAL: 20 feet
BASE: USGS 7.5 minute series - 1960

UTILITIES
 - - - - - Water Line
 — — — — — Sewer Line

INDUSTRIAL RESOURCES
RADCLIFF AND VINE GROVE

Prepared by
The Kentucky Department of Commerce
in cooperation with
The Radcliff Chamber of Commerce
and
The City of Vine Grove
1976

TABLE OF CONTENTS

<u>Chapter</u>	<u>Page</u>
INDUSTRIAL SITES	i
RADCLIFF AND VINE GROVE, KENTUCKY – A RESOURCE PROFILE	1
THE LABOR MARKET	3
Population	3
General Employment Characteristics, 1974	3
Manufacturing Employment by Industry	5
Radcliff Manufacturing Firms, Their Products and Employment	5
Labor Organizations	5
Estimated Male Labor Supply	6
Estimated Female Labor Supply	6
Wages	7
Per Capita Personal Income	8
TRANSPORTATION	9
Rail	9
Highways	9
Truck Service	9
Air	11
Bus	11
Taxi	11
Rental Services	11
POWER AND FUEL	12
Electricity	12
Natural Gas	12
Other Fuels	13
WATER AND SEWERAGE	14
Water	14
Sewerage	17
CLIMATE	19
Temperature	19
Precipitation	19
Prevailing Winds	19
Relative Humidity	19

<u>Chapter</u>	<u>Page</u>
LOCAL GOVERNMENT	20
City	20
County	20
Assessed Value of Property, 1975	20
Property Taxes	20
Local Property Tax Rate Per \$100 of Assessed Valuation, 1975	21
Utilities Gross Receipts Tax for Schools	21
Planning and Zoning	21
Safety	21
Police	21
Fire	22
Rescue Service	22
Solid Waste	22
EDUCATION	23
Public Schools	23
Nonpublic Schools	23
Area Colleges and Universities	24
Vocational Schools	24
HEALTH	25
Local Medical Personnel	25
Hospitals	25
Other Medical Facilities	25
Ambulance Service	25
Nursing Homes	25
Public Health	25
OTHER LOCAL FACILITIES	26
Communications	26
Library Services	26
Religious Institutions	31
Financial Institutions	31
Hotels and Motels	32
Clubs and Organizations	32
RECREATION	33
Local	33
Area	33
COMMUNITY IMPROVEMENTS	34
Radcliff	34
Vine Grove	34
Hardin County	35
HISTORY	36

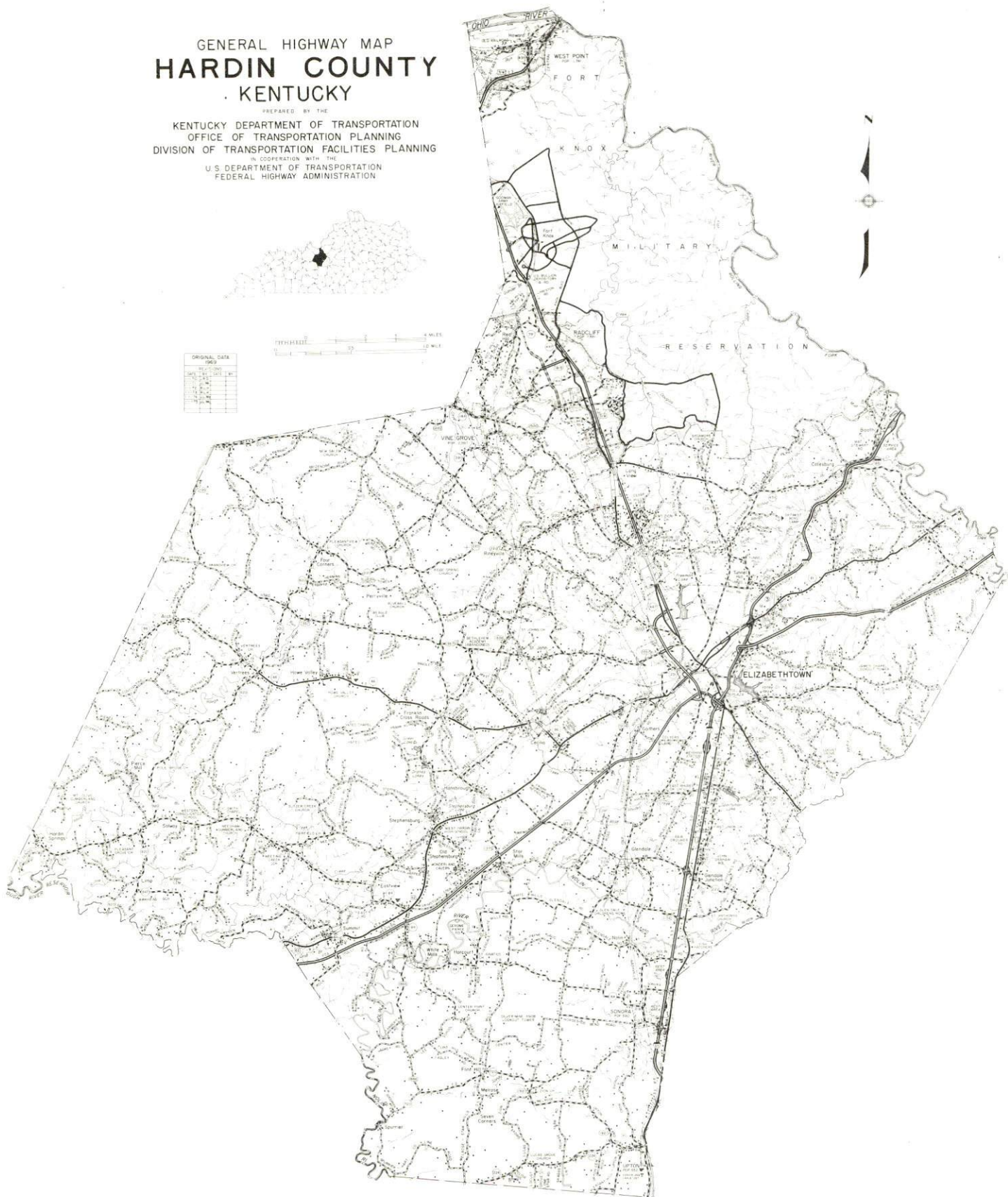
GENERAL HIGHWAY MAP HARDIN COUNTY KENTUCKY

PREPARED BY THE
KENTUCKY DEPARTMENT OF TRANSPORTATION
OFFICE OF TRANSPORTATION PLANNING
DIVISION OF TRANSPORTATION FACILITIES PLANNING
IN COOPERATION WITH THE
U.S. DEPARTMENT OF TRANSPORTATION
FEDERAL HIGHWAY ADMINISTRATION



ORIGINAL DATA
1959

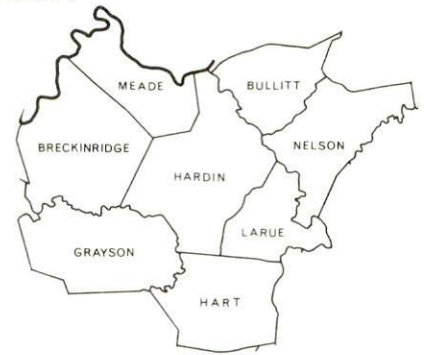
TYPE	NO.	DATE	BY
1	1	1959	...
2	2	1959	...
3	3	1959	...
4	4	1959	...
5	5	1959	...
6	6	1959	...
7	7	1959	...
8	8	1959	...
9	9	1959	...
10	10	1959	...



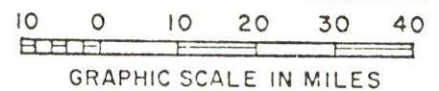
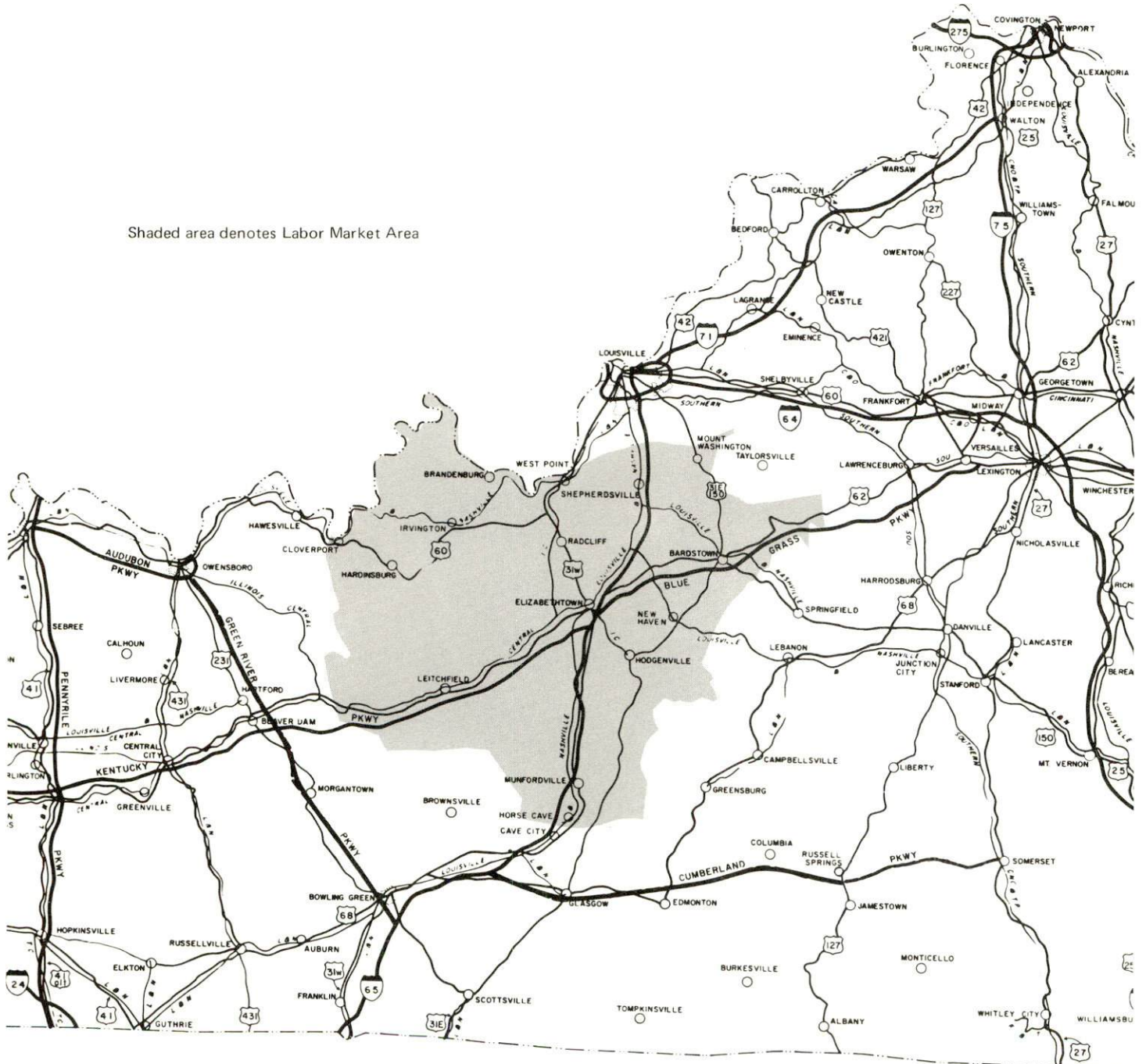


Aerial View of Radcliff, Kentucky

RADCLIFF AND VINE GROVE LABOR MARKET AREA



Shaded area denotes Labor Market Area



RADCLIFF AND VINE GROVE, KENTUCKY – A RESOURCE PROFILE

Radcliff, with a 1973 estimated population of 11,268, is a rapidly growing community located in Hardin County in north central Kentucky. Radcliff is only 33 miles south of Louisville, Kentucky; 137 miles southwest of Cincinnati, Ohio; 139 miles north-east of Nashville, Tennessee; and 296 miles southeast of St. Louis, Missouri.

Vine Grove, located 4 miles west of Radcliff, had a 1973 population of 3,050.

Hardin County, covering a land area of 616 square miles, is bound on the north by the Ohio River; on the east by Bullitt, Nelson and Larue Counties; on the south by Hart County; on the west by Grayson, Breckinridge and Meade Counties, and on the northeasternmost part by Jefferson County. North Hardin County is the location of Fort Knox, a U. S. Army reservation and depository of the nation's gold reserve. Covering 110,000 acres, the reservation reaches into two adjoining counties. In 1974 Hardin County had an estimated population of 73,600.

The Economic Framework

The total number of Hardin County residents employed in 1974 averaged 20,680, including 1,110 in agriculture and 5,210 in government. Manufacturing employers in the county reported 3,020 workers; trade and services firms employed 5,740. Major industrial products are: auto v-belts and curved auto hose; ceramic and alnico magnets; men's slacks; electric fuses and holders; silicone sealants; and business forms.

Total unemployment in Hardin County averaged 4.6 percent of the labor force in 1974.

Per capita personal income in the county in 1973 was \$5,026, an increase of 22.9 percent since 1969.

The Radcliff and Vine Grove labor market area includes Hardin, Breckinridge, Bullitt, Grayson, Hart, Larue, Meade and Nelson Counties. The total number of residents of the labor market area employed in 1974 averaged 68,110, including 7,660 in agriculture and 11,690 in government. Manufacturing employers in the labor market area reported 8,670 workers; trade and services firms employed 11,820.

Resources for Growth

1. Labor Supply – There is a current labor supply of 7,120 men and 10,510 women available for industrial jobs in the labor market area. In addition, 10,710 young men and 10,190 young women in the area will become 18 years of age before 1981 and potentially available for work.

2. Transportation – The Illinois Central Gulf Railroad serves Radcliff and Vine Grove. Twelve truck lines serve Radcliff, while four serve Vine Grove. Four-lane U.S. Highway 31 W provides quick access to Interstate 65, the Blue Grass Parkway, Western Kentucky Parkway and U.S. Highway 60. Ben Floyd Field, 7 miles south of Radcliff, has a 2,800-foot paved runway capable of accommodating light aircraft. Commercial air service is available at Standiford Field, Louisville, only 33 miles north of Radcliff.

3. Power and Fuel — Kentucky Utilities Company provides electric power to Radcliff and Vine Grove. Nolin RECC serves Hardin County, Radcliff and Vine Grove. Natural gas service is provided to Radcliff and Vine Grove by the Louisville Gas and Electric Company, whose source of supply is the Texas Gas Transmission Corporation. Two distributors of propane and butane, and four distributors of distillate fuel oil are located near Radcliff and Vine Grove.

4. Education — Education is an important growth asset for Hardin County. Three public school systems operate in the county. Radcliff and Vine Grove are located in an area served by the Hardin County School System. One university, three senior colleges, and two community colleges are located within 35 miles of Radcliff, including the Elizabethtown Community College and Fort Knox Center which are located in the county.

The nearest state vocational-technical school is located in Elizabethtown, 11 miles from Radcliff, and offers training in 12 different course areas. The Pleasure Ridge Park Area Vocational Education Center is located in Pleasure Ridge Park, 31 miles from Radcliff, and offers training in 12 different courses.

THE LABOR MARKET AREA

POPULATION

<u>Area</u>	<u>1974*</u>	<u>1970</u>	<u>Percent Nonwhite</u>
			<u>1970</u>
Radcliff	11,268**	7,881	5.4
Vine Grove	3,050**	2,987	4.9
Labor Market Area	206,000	202,670	
Hardin County	73,600	78,421	9.0
Breckinridge County	15,400	14,789	4.6
Bullitt County	31,600	26,090	0.9
Grayson County	17,600	16,445	0.8
Hart County	14,900	13,980	9.9
Larue County	11,300	10,672	4.7
Meade County	17,600	18,796	6.4
Nelson County	24,000	23,477	7.7

* Provisional Estimates.

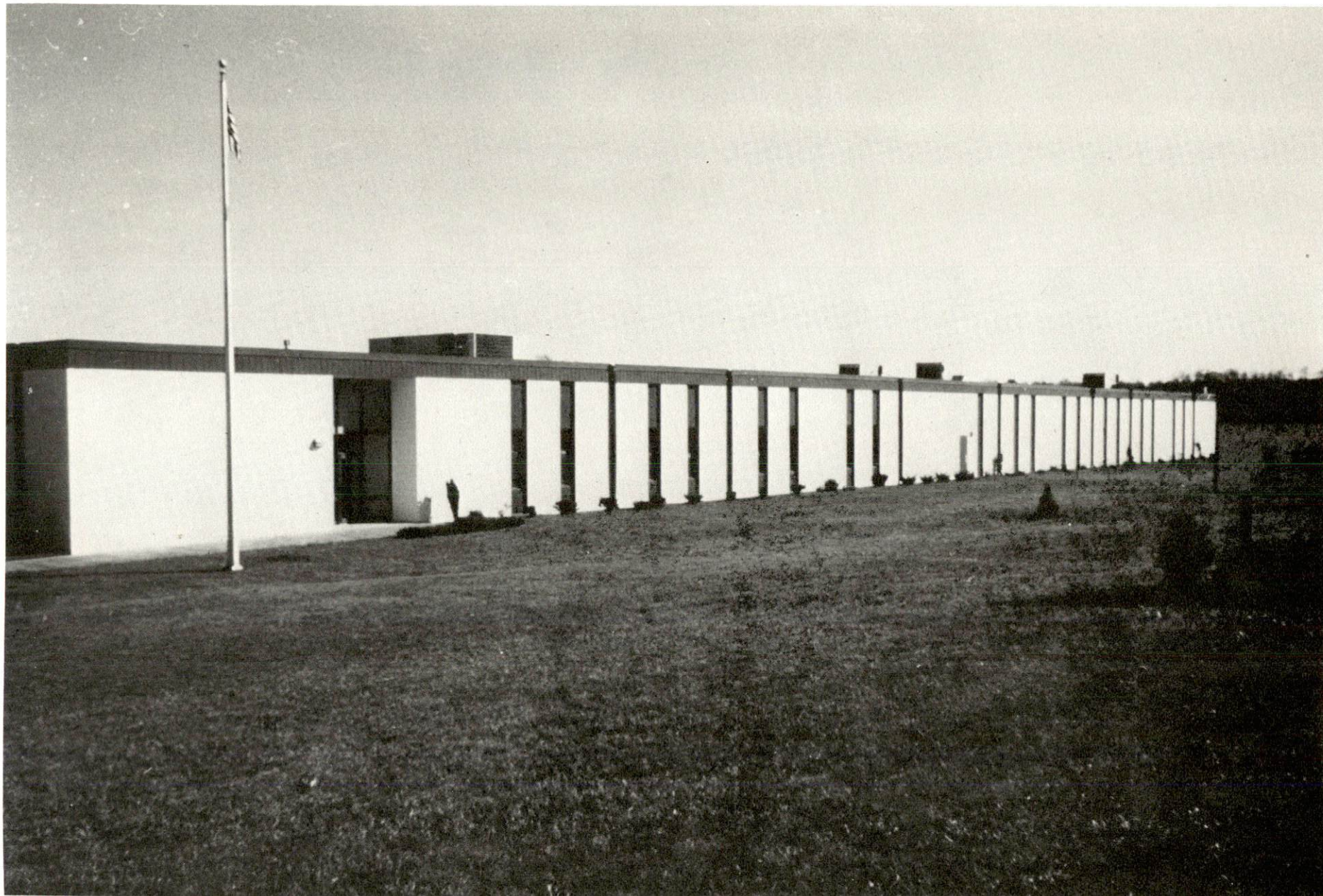
** 1973 Population Estimates.

Sources: U. S. Department of Commerce, Bureau of the Census, Census of Population 1970. U. S. Bureau of the Census, Current Population Reports, Series P-25, No. 562, June 1975; Series P-26, No. 120, June 1975.

GENERAL EMPLOYMENT CHARACTERISTICS, 1974

<u>Major Employment Group</u>	<u>Employment by Place of Residence of Workers</u>	
	<u>Hardin County</u>	<u>Labor Market Area</u>
Total Employment	20,682	68,114
Agriculture	1,113	7,658
Government	5,206	11,690
	<u>Employment by Location of Jobs</u>	
	<u>Hardin County</u>	<u>Labor Market Area</u>
Manufacturing	3,019	8,667
Trade and Services	5,741	11,821

Source: Kentucky Department for Human Resources, Bureau for Administration and Operations.



UARCO, Inc.

MANUFACTURING EMPLOYMENT BY INDUSTRY
MARCH 1975

<u>Industry</u>	<u>Hardin County</u>	<u>Labor Market Area</u>
TOTAL	2,676	8,000
Food & Kindred Products	220	1,519
Tobacco	0	10
Apparel, Textiles, Leather	346	1,770
Lumber, Furniture	2	263
Printing & Publishing, Paper	321	1,219
Chemicals, Petroleum & Coal, Rubber	727	1,444
Stone, Clay & Glass	40	186
Primary Metals	0	40
Machinery, Metals Products, Equipment	677	1,118
Other	343	431

Source: Kentucky Department for Human Resources, Number of Workers in Manufacturing Industries Covered by Kentucky Unemployment Insurance Law Classified by Industry and County, March, 1975.

**RADCLIFF MANUFACTURING FIRMS,
THEIR PRODUCTS AND EMPLOYMENT**

<u>Firm (Establishment date)</u>	<u>Product</u>	<u>Employment</u>		
		<u>Total</u>	<u>Male</u>	<u>Female</u>
Knox Engravers, Inc. (1962)	Plastic signs, rubber stamps, name tags	3	1	2
Radcliff Concrete, Inc. (1957)	Ready-mixed concrete	30	28	2
Royalty Printing Company and the Sentinel (1957)	Newspaper, job printing	6	4	2
UARCO, Inc. (1972)	Business forms	240	120	120

Source: Kentucky Department of Commerce, 1976 Kentucky Directory of Manufacturers.

LABOR ORGANIZATIONS

There are presently no unions representing manufacturing workers in Radcliff.

**ESTIMATED MALE LABOR SUPPLY
RADCLIFF AND VINE GROVE LABOR MARKET AREA**

<u>Area</u>	<u>Current</u>			<u>Future</u>	
	<u>Total</u>	<u>Not in Labor Force</u>	<u>Unemployed</u>	<u>Under- employed</u>	<u>Reaching 18 yrs. of age before 1981</u>
Labor Market Area	7,120	0	2,670	4,450	10,709
Hardin County	3,390	0	770	2,620	3,454
Breckinridge County	470	0	230	240	761
Bullitt County	630	0	250	380	1,638
Grayson County	680	0	360	320	880
Hart County	360	0	160	200	722
Larue County	330	0	150	180	597
Meade County	300	0	150	150	1,096
Nelson County	960	0	600	360	1,561

Sources: Kentucky Department for Human Resources, Kentucky Labor Supply Estimates by County, 1975. Kentucky Department of Commerce, Future Labor Supply before 1981.

**ESTIMATED FEMALE LABOR SUPPLY
RADCLIFF AND VINE GROVE LABOR MARKET AREA**

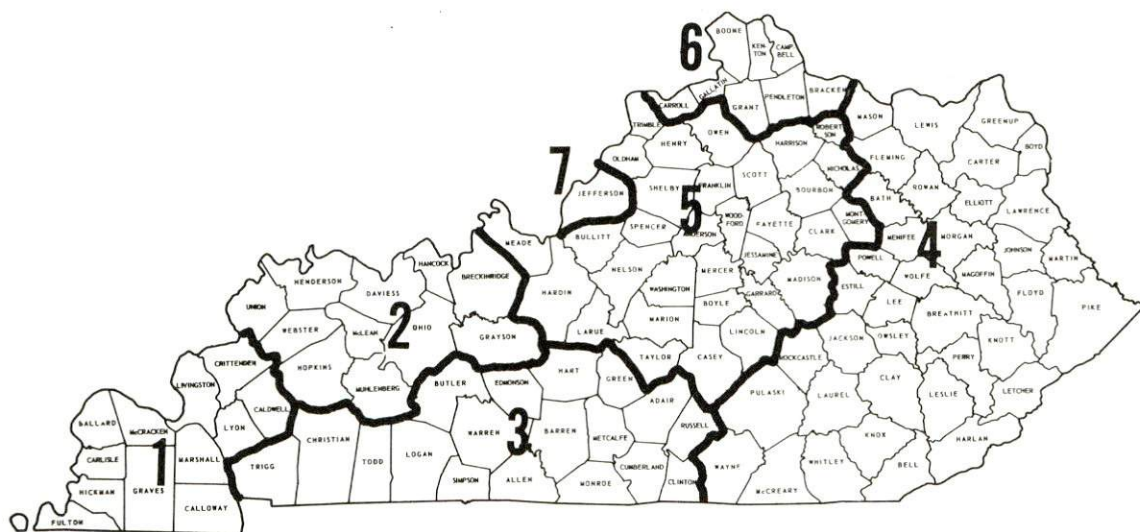
<u>Area</u>	<u>Current</u>			<u>Future</u>	
	<u>Total</u>	<u>Not in Labor Force</u>	<u>Unemployed</u>	<u>Under- employed</u>	<u>Reaching 18 yrs. of age before 1981</u>
Labor Market Area	10,510	6,050	890	3,570	10,188
Hardin County	6,460	5,080	230	1,150	3,276
Breckinridge County	290	0	70	220	766
Bullitt County	720	0	100	620	1,538
Grayson County	470	90	110	270	798
Hart County	660	260	110	290	689
Larue County	260	0	50	210	586
Meade County	1,020	620	40	360	1,025
Nelson County	630	0	180	450	1,510

Sources: Kentucky Department for Human Resources, Kentucky Labor Supply Estimates by County, 1975. Kentucky Department of Commerce, Future Labor Supply before 1981.

WAGES

Occupational wage rates for specific industries are usually not available to most government agencies, and wage data furnished to state employment agencies by individual industrial employers is protected from disclosure by federal law. The most reliable up-to-date wage information can be obtained by direct contact with local employers.

Associated Industries of Kentucky, a voluntary organization of Kentucky businesses, regularly collects occupational wage rates and fringe benefits data from participating member firms. Data is compiled for over 127 clearly defined office, production, and service occupations. Tabulations are published for seven regions of Kentucky, as shown on the map below. It should be noted that the data may be weighted by the preponderance of firms in the larger cities and may be somewhat higher than the rates paid in the smaller communities. Data from these tabulations are available, upon request, from the Kentucky Department of Commerce, Frankfort, Kentucky 40601.



Associated Industries of Kentucky Area Wage Surveys

PER CAPITA PERSONAL INCOME

<u>Area</u>	<u>1973</u>	<u>1969</u>	<u>% Change</u>
Hardin County	\$5,026	\$4,090	22.9
Labor Market Area Range	\$2,713 — 5,026	\$1,954 — 4,090	N.A.
Kentucky	4,050	2,894	39.9
U. S.	5,041	3,733	35.1

Sources: U. S. Department of Commerce, Office of Business Economics, Survey of Current Business, August, 1974. U. S. Department of Commerce, Bureau of Economic Analysis, April, 1975.

TRANSPORTATION

Rail

Line serving Radcliff and Vine Grove — Illinois Central Gulf Railroad Company
Services — One northbound and one southbound through freight Monday through Friday; one northbound and one southbound local freight Monday through Friday; siding space at Vine Grove for approximately five cars; switching facilities at Vine Grove; nearest piggyback facilities at Louisville, 37 miles from Vine Grove.

For details on routing, schedules, rates, and services, contact:

Manager of Industrial Development
Illinois Central Gulf Railroad Company
112 North 4th Street
St. Louis, Missouri 63102
(314) 241-9400

Highways

Radcliff is served by four-lane U.S. Highway 31 W which is only 11 miles from access onto the Blue Grass Parkway, Western Kentucky Parkway and Interstate 65, a north-south transcontinental route. U.S. Highway 60 is only four miles north of Radcliff. Access to Interstate 64, an east-west route, is 36 miles to the north.

Vine Grove is located on Kentucky Highway 144, four miles east of U.S. 31W.

Truck Service

Radcliff

Company

Associated Transport, Inc.

Bowling Green Express, Inc.
(N-B only)
Brown's Supply Company

Cooper-Jarrett, Inc.

Crutcher Transfer Line, Inc.

Great Lakes Express Company

Majors Transit, Inc.
(Restricted on S-B to Clarkson)
McLean Trucking Company

Home Office

380 Madison Avenue
New York, New York 10017
Post Office Box 1111
Bowling Green, Kentucky 42101
217 West Main
Vine Grove, Kentucky 40175
23 South Essex Avenue
Orange, New Jersey 07050
600 Marrett Avenue
Louisville, Kentucky 40208
172 Davenport Street
Saginaw, Michigan 48602
Post Office Box 7
Caneyville, Kentucky 42721
Post Office Box 213
Winston-Salem, North Carolina 27107

(Cont.)

CompanyHome Office

Robbins Truck Line, Inc.

Post Office Box 145

Hardinsburg, Kentucky 40143

Southern Forwarding Company

728 Alston Avenue

Memphis, Tennessee 38102

T.I.M.E.—DC, Inc.

Post Office Box 2550

Lubbock, Texas 79408

Wilson Freight Company
(Restricted S-B)

3636 Follett Avenue

Cincinnati, Ohio 45223

Vine GroveCompanyHome Office

Brown's Supply Company*

217 West Main

Vine Grove, Kentucky 40175

McLean Trucking Company

Post Office Box 213

Winston-Salem, North Carolina 27107

Robbins Truck Line, Inc.

Post Office Box 145

Hardinsburg, Kentucky 40143

Wilson Freight Company
(Off-route restricted S-B)

3636 Follett Avenue

Cincinnati, Ohio 45223

Other Freight ServicesNearest Shipping Center

United Parcel Service**

Louisville, Kentucky

**HIGHWAY MILES AND TRUCK TRANSIT TIME IN DAYS FROM
RADCLIFF, KENTUCKY, TO SELECTED MARKET CENTERS**

City	Highway Miles	Delivery Time TL	City	Highway Miles	Delivery Time TL
Atlanta, Georgia	381	2	Los Angeles, California	2,159	5
Birmingham, Alabama	335	2	Louisville, Kentucky	33	1
Chicago, Illinois	321	2	Nashville, Tennessee	139	1
Cincinnati, Ohio	137	2	New Orleans, Louisiana	656	3
Cleveland, Ohio	381	2	New York, New York	781	3
Detroit, Michigan	397	2	Pittsburgh, Pennsylvania	420	2
Knoxville, Tennessee	270	2	St. Louis, Missouri	296	2

Source: Delivery Time Only — Crutcher Transfer Line, Inc., 600 Marrett Avenue, Louisville, Kentucky 40208.

* Local terminal.

** For regular scheduled or occasional pickups, arrangements must be made with the Louisville office of U.P.S.

Air

	<u>Local</u>	<u>Nearest Commercial</u>
Location:	Ben Floyd Field 7 miles south of Radcliff	Standiford Field, Louisville 33 miles north of Radcliff
Runways:	One paved	Three paved
Length:	2,800 feet	7,800 feet, 5,000 feet, 7,250 feet
Traffic		
Control:	Wind tee and wind sock	Control tower, approach control, ground control, guards, radar service, departure control, clearance delivery
Lighting:	Sundown to sunrise	Runways, obstructions, beacon and approach and touchdown lights, center line on runways 1-19
Services:	80-100-130 octane, flight instructions, transportation available, restaurant across highway from field, charter, lodging by reservation	TWA, American, Eastern, Delta, Piedmont, Ozark and Allegheny Airlines; Louisville-Jefferson County Air Board; 80, 100, 115, jet fuel; storage; major A&E repairs; Hertz, Avis, and National rent-a-car service; restaurant; taxi and city bus service; Budget Rent-A-Car Service; Weather Bureau
Air Freight Service:	Chartered air freight services must be arranged	Freight carrying airlines regularly service this terminal

	<u>Radcliff</u>	<u>Vine Grove</u>
Bus —	Southern Greyhound Bus Line	Nearest bus service at Radcliff, 4 miles away
Taxi —	One company, 24-hour service	One company, 24-hour service
Rental Services — Car, truck and trailer rentals		Nearest car, truck and trailer rentals at Radcliff, 4 miles away

POWER AND FUEL

Electricity

Company serving Radcliff and Vine Grove — Kentucky Utilities Company

Source of power — Kentucky Utilities Company

Total generating capacity — 1,615,500 KW

For industrial rates contact:

Kentucky Utilities Company
120 South Limestone Street
Lexington, Kentucky 40507
(606) 255-1461

Company serving Hardin County, Radcliff and Vine Grove — Nolin RECC

Source of power — East Kentucky Power Cooperative

Total generating capacity — 496,000 KW

For industrial rates contact:

Industrial Development Division
East Kentucky Power Cooperative
Post Office Box 707
Winchester, Kentucky 40391
(606) 744-4812

and/or

Nolin RECC
Post Office Box 668
Elizabethtown, Kentucky 42701
(502) 765-6153

Natural Gas

Company serving Radcliff — Louisville Gas & Electric Company

Source of supply — Texas Gas Transmission Corporation

Size of transmission mains — 16-inch (distributor)

Distribution mains — 2, 4, 6 and 8 inches

Distribution pressure — 30 psig

Btu content — 1,025 per cubic foot; Specific gravity — 0.6

For rates and supplies contact:

Louisville Gas & Electric Company
Gas Sales Department
311 West Chestnut Street
Louisville, Kentucky 40202
(502) 582-3511

Company serving Vine Grove — Louisville Gas & Electric Company
Source of supply — Texas Gas Transmission Corporation
Distribution mains — 2, 4 and 8 inches
Distribution pressure — 30 psig
Btu content — 1,025 per cubic foot; Specific gravity — 0.6
For rates and supplies contact:

Louisville Gas & Electric Company
Gas Sales Department
311 West Chestnut Street
Louisville, Kentucky 40202
(502) 582-3511

Other Fuels

Propane and butane

Pargas of Canmer, Inc.
Highway 31 East
Canmer, Kentucky

Al's Gas Service, Inc.
Woodland Mobile Park
Radcliff, Kentucky

Fuel oils

Distillate fuel oil —

Atlantic Richfield Oil Company (ARCO)
337 East Dixie Avenue
Elizabethtown, Kentucky

Ashland Petroleum Company
736 Hawkins Drive
Elizabethtown, Kentucky

Exxon Company
Hawkins Drive
Elizabethtown, Kentucky

Standard Oil Company
216 East Poplar
Elizabethtown, Kentucky

Residual fuel oil —

Arrangements must be made with the refinery.

Low sulphur content coal

Available in Kentucky.

WATER AND SEWERAGE

Water

Company serving Radcliff — Hardin County Water District No. 1
409 West Lincoln Trail Boulevard
Radcliff, Kentucky 40160
(502) 351-3222

Source — Wells along the Ohio River and spring-fed impoundments

Treatment plant capacity — Saunders Spring Plant — 1,200,000 gpd
Muldraugh Plant — 2,000,000 gpd*

Average daily consumption — 2,000,000 gallons

Peak daily consumption — 2,200,000 gallons

Type treatment — Complete — consisting of aeration, prechlorination, coagulation, sedimentation, filtration, taste and odor, fluoride adjustment, disinfection

Storage capacity — 877,000 gallons

Size lines — 2, 3, 4, 6, 8, 10, 12 and 14 inches

Average pressure — 45 psi

Average temperature — 64 degrees F.

Rates —

¾-inch commercial meter (\$10.00 minimum bill)

First	10,000 gallons	\$1.00 per M gallons
Next	10,000 gallons	.80 per M gallons
Next	20,000 gallons	.60 per M gallons
Next	60,000 gallons	.50 per M gallons
All over	100,000 gallons	.40 per M gallons

1-inch commercial meter (\$30.00 minimum bill)

First	50,000 gallons	\$.60 per M gallons
Next	50,000 gallons	.50 per M gallons
All over	100,000 gallons	.40 per M gallons

1½-inch commercial meter (\$45.00 minimum bill)

First	75,000 gallons	\$.60 per M gallons
Next	25,000 gallons	.50 per M gallons
All over	100,000 gallons	.40 per M gallons

2-inch commercial meter (\$60.00 minimum bill)

First	120,000 gallons	\$.50 per M gallons
All over	120,000 gallons	.40 per M gallons

* Hardin County Water District No. 1 is in the first stage of a three-phase plan to double the treatment capacity of the Muldraugh treatment plant to 4,000,000 gpd. Capacity of the Saunders Spring plant was increased from 700,000 to 1,200,000 gpd during 1975.

Commercial Tap-on Charges —

¾-inch meter	\$200
1-inch meter	300
1½-inch meter	350
2-inch meter	400

Company serving Vine Grove — Vine Grove Water and Sewer*
201 West Main Street
Vine Grove, Kentucky 40175
(502) 877-2422

Source — Brushy Fork Creek, Otto Creek, Peck Springs
Treatment plant capacity — 360,000 gpd
Average daily consumption — 225,000 gallons
Peak daily consumption — 300,000 gallons
Type treatment — Chlorination, fluoridation, lime, alum
Storage capacity — 476,000 gallons
Size lines — 2, 4, 6 and 10 inches
Average pressure — 32 psi
Average temperature — 50 degrees F.

**MONTHLY WATER RATES FOR WHOLESALE
AND INDUSTRIAL CONSUMERS**

First	2,000 gallons	\$3.50 minimum bill
Next	3,000 gallons	1.15 per M gallons
Next	5,000 gallons	1.10 per M gallons
Next	5,000 gallons	1.05 per M gallons
Next	5,000 gallons	.95 per M gallons
Next	5,000 gallons	.85 per M gallons
Next	25,000 gallons	.75 per M gallons
Next	50,000 gallons	.55 per M gallons
Next	100,000 gallons	.45 per M gallons

Tap-on charge: \$80 to \$250

* Application has been filed for a water system improvement project which includes a new 750,000 gpd water treatment plant and a new 200,000 gallon elevated storage tank.

Name of water district — Hardin County Water District No. 2

Area served — East central Hardin County

Date when water district began operating — 1969

Source of supply of treated water — Hardin County Water District No. 1, Radcliff,
Kentucky

Average amount of water used in a 24-hour period — 700,000 gallons

Peak amount of water used in a 24-hour period — 996,800 gallons

Storage capacity — 1,000,000 gallons

Average pressure — 100 to 130 psi

Average temperature — 50 degrees F.

Size lines — 2, 4, 6 and 8 inches

Rates —

5/8 and 3/4-inch meter

First	2,000 gallons	\$5.60 minimum bill
Next	2,000 gallons	1.70 per M gallons
Next	6,000 gallons	1.30 per M gallons
Next	30,000 gallons	1.05 per M gallons
Next	60,000 gallons	.90 per M gallons
All over	100,000 gallons	.80 per M gallons

1-inch meter

First	5,000 gallons	\$14.00 minimum bill
Next	5,000 gallons	1.30 per M gallons
Next	30,000 gallons	1.05 per M gallons
Next	60,000 gallons	.90 per M gallons
All over	100,000 gallons	.80 per M gallons

1½-inch meter

First	10,000 gallons	\$28.00 minimum bill
Next	30,000 gallons	1.05 per M gallons
Next	60,000 gallons	.90 per M gallons
All over	100,000 gallons	.80 per M gallons

2-inch meter

First	20,000 gallons	\$55.00 minimum bill
Next	20,000 gallons	1.05 per M gallons
Next	60,000 gallons	.90 per M gallons
All over	100,000 gallons	.80 per M gallons

(Cont.)

3-inch meter

First	30,000 gallons	\$84.00 minimum bill
Next	10,000 gallons	1.05 per M gallons
Next	60,000 gallons	.90 per M gallons
All over	100,000 gallons	.80 per M gallons

4-inch meter

First	50,000 gallons	\$140.00 minimum bill
Next	50,000 gallons	.90 per M gallons
All over	100,000 gallons	.80 per M gallons

6-inch meter

First	100,000 gallons	\$280.00 minimum bill
All over	100,000 gallons	.80 per M gallons

Tap-On Charges:

5/8-inch meter	\$250
1-inch meter	350
1½-inch meter	500
2-inch meter	800

Surface water sources for North Hardin County -- Ohio, Salt and Rolling Fork Rivers
Average discharge -- Ohio -- unlimited; Rolling Fork near Boston -- 1,726 cfs (36-year
record, USGS); Salt River at Shepherdsville -- 1,526 cfs (36-year record, USGS)
Expected ground water yield -- 500 - 1,000 gpm in northern tip; 5 - 200 gpm in north
central part of county

Sewerage

Company serving Radcliff -- City of Radcliff Sewerage System*
409 West Lincoln Trail Boulevard
Radcliff, Kentucky 40160
(502) 351-6270

Design capacity -- Plant No. 1 -- 500,000 gpd; Plant No. 2 -- 1,000,000 gpd

Average daily flow -- 950,000 gallons

Treatment -- Secondary and tertiary

Type treatment -- Aeration, contact stabilization, clarification; two lagoons, one for
further aeration and the second for final clarification and scrubbing; chlorination

Treated effluent discharged into -- Mill Creek

Size of sanitary mains -- 8, 10 and 12 inches

* A preliminary study of the Radcliff Sewerage System is now in progress to determine
future needs.

Rates —

¾-inch commercial meter (\$9.25 minimum bill)

First	10,000 gallons	\$.925 per M gallons
Next	5,000 gallons	.60 per M gallons
Next	85,000 gallons	.4999 per M gallons
All over	100,000 gallons	.40 per M gallons

1-inch commercial meter (\$29.25 minimum bill)

First	50,000 gallons	\$.585 per M gallons
Next	50,000 gallons	.5098 per M gallons
All over	100,000 gallons	.40 per M gallons

1½-inch commercial meter (\$54.75 minimum bill)

First	100,000 gallons	\$.5474 per M gallons
All over	100,000 gallons	.40 per M gallons

2-inch commercial meter (\$74.74 minimum bill)

First	150,000 gallons	\$.4983 per M gallons
All over	150,000 gallons	.40 per M gallons

Commercial Tap-On Charges —

5/8 or ¾-inch meter	\$175
1-inch meter	225
1½-inch meter	275
2-inch meter	425

For property where it is necessary to install a uniject to get into the sewer line, the tap-on charge is computed at actual cost.

Company serving Vine Grove — Vine Grove Water and Sewer*
201 West Main Street
Vine Grove, Kentucky 40175
(502) 877-2422

Design capacity — 110,000 gpd
Average daily flow — At capacity
Treatment — Primary
Type treatment — Primary digester, trickling filter, chlorine, drying beds
Treated effluent discharged into — Brushy Fork Creek
Size of sanitary mains — 6 and 8 inches

Rates — 60 percent of monthly water bill

Tap-on charge — \$100 to \$250

* A preliminary study of the Vine Grove sewerage system is now in progress to determine future needs.

CLIMATE

Hardin County

Temperature

Annual mean (30-year record) —	55.2 degrees
Average annual 1974 —	55.1 degrees
Record highest, July, 1966 (11-year record) —	98.0 degrees
Record lowest, January, 1972 (11-year record) —	- 11.0 degrees
Normal heating degree days (30-year record) —	4729
(Heating degree day totals are the sums of negative departures of average daily temperatures from 65 degrees F.)	

Precipitation

Mean annual total (30-year record) —	44.49 inches
Mean annual snowfall (30-year record) —	15.70 inches
Total precipitation 1974 —	60.09 inches
Mean number days precipitation (.01 inch or more) (30-year record) —	130
Average number days thunderstorms (30-year record) —	47

Prevailing Winds (17-year record) —

South

Relative Humidity (11-year record)

1 AM	76%
7 AM	81%
1 PM	59%
7 PM	64%

Source: U. S. Department of Commerce, Environmental Science Services Administration, Climatological Data, 1974. Station of record: Lexington, Kentucky.

LOCAL GOVERNMENT

City

Radcliff

Structure -- Mayor -- 4-year term; 6 councilmen -- 2-year terms

Budget 1975-1976 -- General Fund \$493,020

Sewer Fund 282,622*

Fees and licenses -- Business license fee based on gross receipts with a set minimum fee

Vine Grove

Structure -- Mayor -- 4-year term; 6 councilmen -- 2-year terms

Budget 1975-1976 -- General Fund \$108,000

Water and Sewer Fund 130,000

Fees and licenses -- Occupational license fees range from \$15 to \$50 annually, depending on the type of business; unloading license - \$10.50 annually.

County

Structure -- County Judge -- 4-year term; 8 magistrates -- 4-year terms

Budget 1974-1975 -- General Fund \$507,708

Road Fund 398,374

Assessed Value of Property, 1975

<u>Classes of Property</u>	<u>Radcliff</u>	<u>Vine Grove</u>	<u>Hardin County</u>
Real Estate and Tangibles		\$16,714,874	
Real Estate	\$65,340,688		\$363,280,231
Tangibles	19,183,585		77,058,759

Property Taxes

Land and buildings are taxed by the state and may be taxed by local jurisdictions. The state rate is \$0.015 per \$100 or assessed valuation.

Tangible personal property owned by manufacturers (automobiles, trucks, finished goods, office furniture, office equipment) is taxed by the state at \$0.15 per \$100 and may be taxed by local jurisdictions.

Manufacturing machinery, raw materials inventories, pollution control equipment and goods in process inventories are not subject to local taxation. The state rate is \$0.15 per \$100.

* Receipts for 1975.

Property stored in public warehouses is not subject to local taxation. The state rate is only \$0.015 per \$100.

All property is assessed at 100 percent of fair cash value.

Local Property Tax Rate Per \$100 of Assessed Valuation, 1975*

<u>Taxing Jurisdiction</u>	<u>Radcliff</u>	<u>Vine Grove</u>	<u>Hardin County</u>
County	\$.161	\$.161	\$.161
School	.428	.428	.428
City	.220	.235	
Special (not county wide): Fire Protection — \$.020			
Watershed — \$.020			

Utilities Gross Receipts Tax for Schools

Hardin County levies a 3 percent tax on utilities for schools. This tax is paid by all consumers of utilities as an add-on to the utilities bills. Exempted are receipts from utilities services that are resold and the receipts from the sale of energy or energy producing fuels that exceed 3 percent of the cost of production in manufacturing, processing, mining or refining.

Planning and Zoning

Joint agency — Joint City-County Planning Commission of Hardin County, Kentucky
Zoning enforced — In city of Radcliff and in city of Vine Grove

Subdivision regulations enforced — In city of Radcliff and in city of Vine Grove

Local codes enforced — Building and housing in both Radcliff and Vine Grove

Mandatory state codes enforced — Plumbing, National Fire Protection Association Code, National Building Code (for major buildings and residential construction containing more than 12 bedrooms per building)

Safety

	<u>Radcliff</u>	<u>Vine Grove</u>	<u>Hardin County</u>
<u>Police</u>			
Total staff	15 (full time)	5 (full time)	8
	10 (auxiliary)	3 (part time)	
Radio-patrol cars	7	3	6

A county-wide mobile crime lab, based in Radcliff, is staffed by one full-time person.

* Kentucky Department of Revenue, Kentucky Property Tax Rates, 1975.

	<u>Radcliff</u>	<u>Vine Grove</u>
<u>Fire</u>		
American Insurance		
Association Fire Rating	7	7
Full-time staff	1	
Volunteers	30	38

Rescue Service

Hardin County Disaster and Emergency Services:

Offices for the Hardin County Disaster and Emergency Services are located in Elizabethtown, Upton, Radcliff, Vine Grove, West Point and Sonora. Equipment includes boats and motors, communications equipment and dragging equipment. A county-wide rescue squad, which is part of the Disaster and Emergency Services, is based in Elizabethtown. Equipment for the rescue squad includes a rescue van and a jeep, communications equipment and an emergency generator. A mutual assistance program has been agreed upon between Hardin and Larue Counties.

Solid Waste

	<u>Radcliff</u>	<u>Vine Grove</u>
Type service	Private	Private
Fee charged:		
residential	\$2.50 monthly	\$3.00 monthly
business	Contract	Contract
Collection frequency:		
residential	Twice weekly	Twice weekly
business	Twice weekly	As needed
Trash pickup		Twice weekly
Disposal method	County landfill	County landfill

Kentucky Industrial Services, Inc., based in Elizabethtown, 11 miles south of Radcliff, provides service to industrial customers. Services and rates are negotiated.

Hardin County provides sanitation service to residents of the county. Refuse may be disposed of at collection points which are located throughout the county. Free pickup service is provided at these points. Door-to-door pickup service is provided by the county in selected areas at a cost of \$3.00 per month.

EDUCATION

Public Schools

Hardin County

Total Enrollment (Fall, 1975)	9,500
Elementary	5,860
Junior High	650
High School	2,990
Student-Teacher Ratio	22 to 1
Elementary	21 to 1
Junior High	22 to 1
High School	23 to 1
Percent High School Graduates to College	52.1
Expenditures Per Pupil (1974-75)	\$ 666.41
Bonded Indebtedness, June 30, 1975	\$4,236,000.00

Nonpublic Schools

Total Enrollment	4,596
Elementary	2,894
Junior High	961
High School	741
Student-Teacher Ratio	19 to 1
Elementary	20 to 1
Junior High	18 to 1
High School	16 to 1

Area Colleges and Universities

<u>Name</u>	<u>Location</u>	<u>Distance (miles)</u>	<u>Enrollment (Fall 1975)</u>	<u>Highest Degree Conferred</u>
Bellarmino College	Louisville	33	1,561	Baccalaureate
Elizabethtown Community College	Elizabethtown	11	1,345	Associate
Fort Knox Extension Campus, University of Kentucky	Fort Knox	16	*	Baccalaureate
Jefferson Community College	Louisville	33	6,107	Associate
Spalding College	Louisville	33	1,141	Masters
University of Louisville	Louisville	33	15,781	Ph.D., M.D., D.M.D., J.D.

Vocational Schools

	<u>Nearest State School</u>	<u>Nearest Area Education Center</u>
	Elizabethtown State Vocational- Technical School	Pleasure Ridge Park Area Vocational Education Center
Location	Elizabethtown	Pleasure Ridge Park
Miles Distant	11 miles from Radcliff	31 miles from Radcliff
Curriculum	Health Occupations	Agriculture
	Health Careers	Horticulture
	Trade and Industrial	Distributive Education
	Appliance Repair	Marketing and Distributive Education
	Auto Mechanics	Health Occupations
	Carpentry	Health Careers
	Commercial Foods	Trade and Industrial
	Commercial Heating and Refrigeration	Air Conditioning and Refrigeration
	Drafting	Auto Body Repair
	Electricity	Auto Mechanics
	Industrial Machine Repair	Commercial Foods
	Machine Shop	Drafting
	Radio and TV Service	Graphic Arts
	Welding	Machine Shop
		Radio and TV Service
		Welding

Arrangements can be made to provide training in the specific production skills required by an industrial plant. Instruction may be conducted either in the vocational school or in the industrial plant, depending upon the desired arrangement and the availability of special equipment.

* Enrollment is included in total enrollment of the University of Kentucky which in 1975 was 22,526.

HEALTH

Local Medical Personnel

Physicians -- 1
Dentists -- 4

Hospitals

<u>General Hospital</u>	<u>Location</u>	<u>Beds</u>
Hardin Memorial Hospital	Elizabethtown, 33 miles from Radcliff	159

General hospital facilities and services -- 3 operating rooms, fracture room, cysto room, X-ray department, intensive care, laboratory, pharmacy, emergency room, eye surgery, pediatrics, respiratory therapy, delivery room, nursery, blood bank, physical therapy, renal dialysis, psychiatric services, EKG, EEG, accredited by the Joint Commission on Accreditation of Hospitals

Medical staff -- 40 doctors, 104 registered nurses, 36 graduate licensed practical nurses, pathologist, radiologist, urologist, anesthesiologist

Other Medical Facilities

North Hardin County Comprehensive Care Center, based in Radcliff

Ambulance Service

Name -- Hardin County Ambulance Service, based in Elizabethtown
Staff -- 6 full time, 11 part time
Service -- 24-hour, county-wide service
Equipment -- 3 ambulances

Nursing Homes

<u>Hardin County</u>	
<u>Number of Homes</u>	<u>Beds</u>
3 Extended Care	151
2 Intermediate Care	84
2 Personal Care	44

Public Health

Facility -- Hardin County Health Center, based in Elizabethtown
Staff -- 1 administrative assistant, 5 nurses, 3 sanitarians, 2 clerk typists, 1 custodian, 1 health officer, 1 dental hygienist, 1 family planning-multiphasic clerk

OTHER LOCAL FACILITIES

Communications

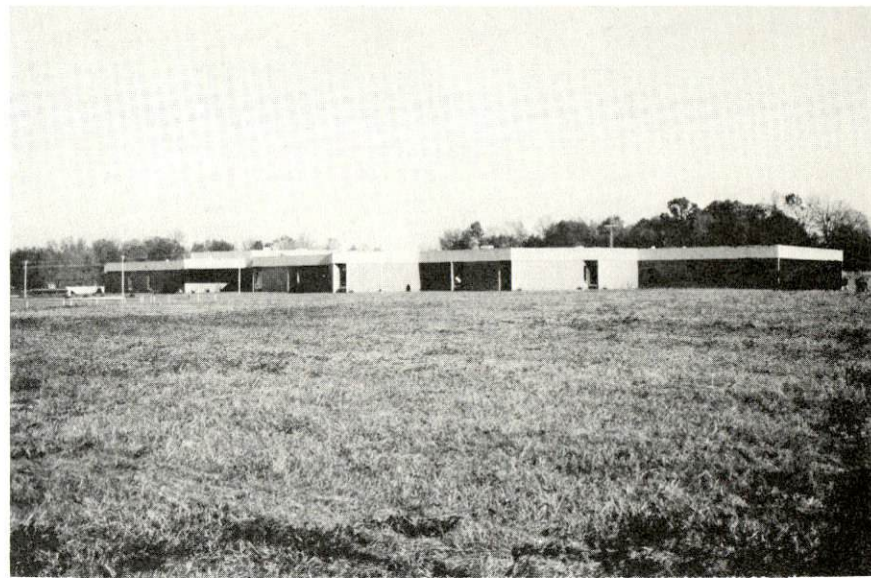
	<u>Radcliff</u>	<u>Vine Grove</u>
Telephone —	Brandenburg Telephone Co.	Brandenburg Telephone Co.
Services —	Standard	Standard
Telegraph —	Western Union from	Western Union from
	Fort Knox	Fort Knox
Services —	Telephone	Telephone
Postal — U.S. Post Office		
Revenue units —	1,926	676
Mail received —	3 times daily	3 times daily
Mail dispatched —	3 times daily	3 times daily
Newspapers —		
Daily and circulation —	News - Enterprise 10,102 (3,000 in North Hardin County)	
Weekly and circulation —	The Sentinel 4,200	
Other papers		
received from —	Elizabethtown and Louisville, Kentucky; Nashville, Tennessee	Radcliff, Elizabethtown, and Louisville, Kentucky
Radio —	WSAC AM-FM	
Stations received from —	Elizabethtown, Lexington, Louisville, Brandenburg, Hodgenville and Louisville, Kentucky; Cincinnati, Ohio	Radcliff, Elizabethtown, Brandenburg, Lexington, and Louisville, Kentucky; Cincinnati, Ohio
Television —		
Reception from —	Bowling Green and Louisville, Kentucky	Bowling Green and Louisville, Kentucky
Kentucky Educational		
Television —	Elizabethtown transmitter — Channel 23; Louisville transmitter — Channel 68	Elizabethtown transmitter — Channel 23; Louisville transmitter — Channel 68

Library Services

The Hardin County Free Public Library bookmobile makes scheduled stops at Vine Grove and Radcliff. Vine Grove also has a bookstation containing 400 to 600 volumes. A North Hardin Branch Library is now under construction. Services will include 8,000 volumes, records, pictures and tapes.



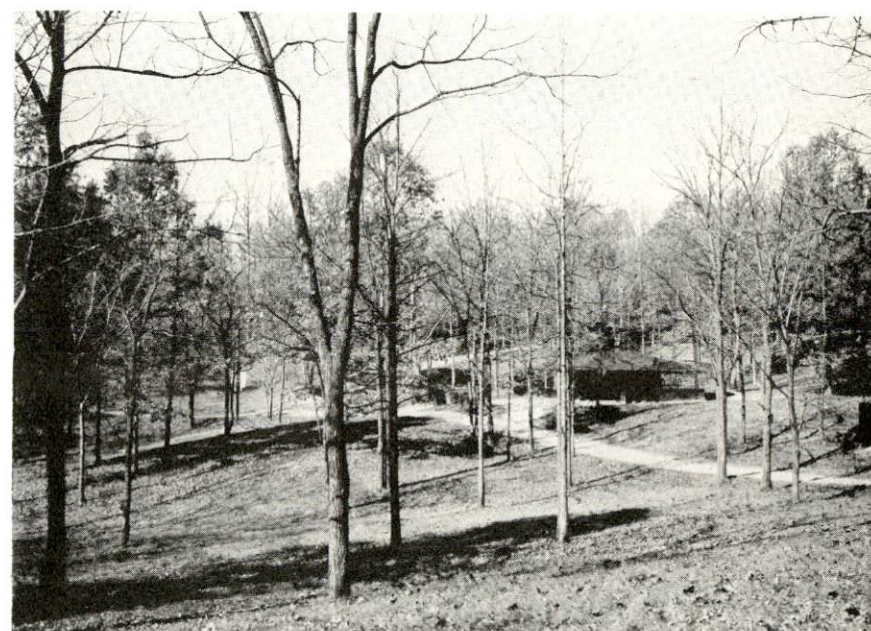
North Hardin High School
Radcliff



Parkway Elementary School
Radcliff



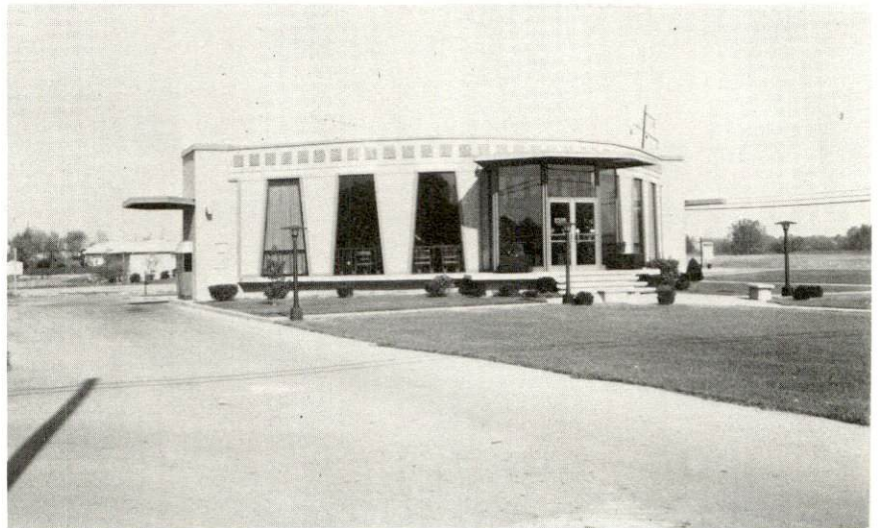
Apartment House



City Park



Dixie Boulevard South



Ft. Knox Bank,
Radcliff Branch

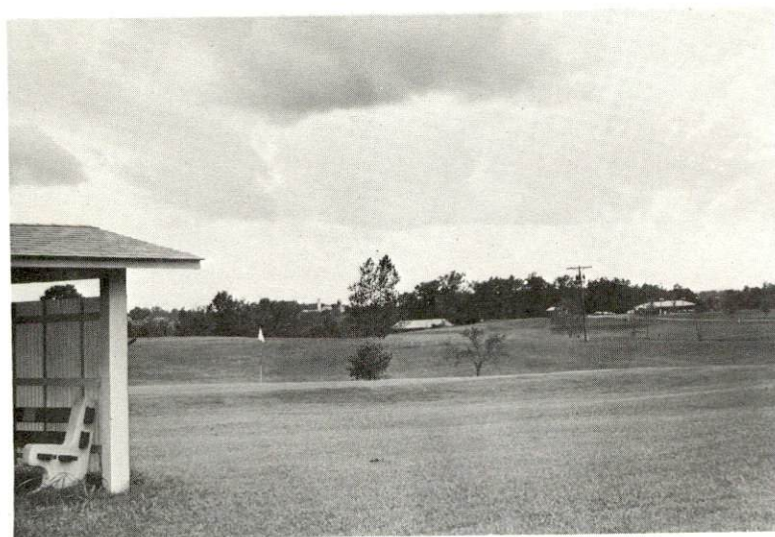
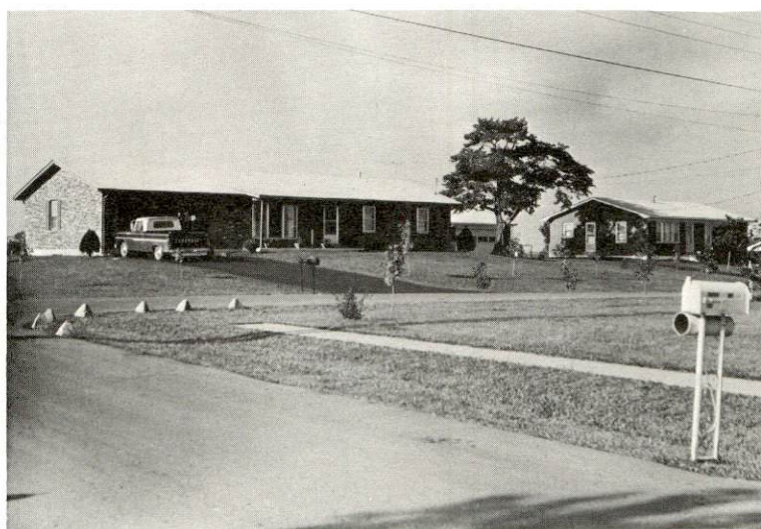


Commercial Building
Central Parkway



Vine Grove
Elementary School

New Subdivision



Golf Course



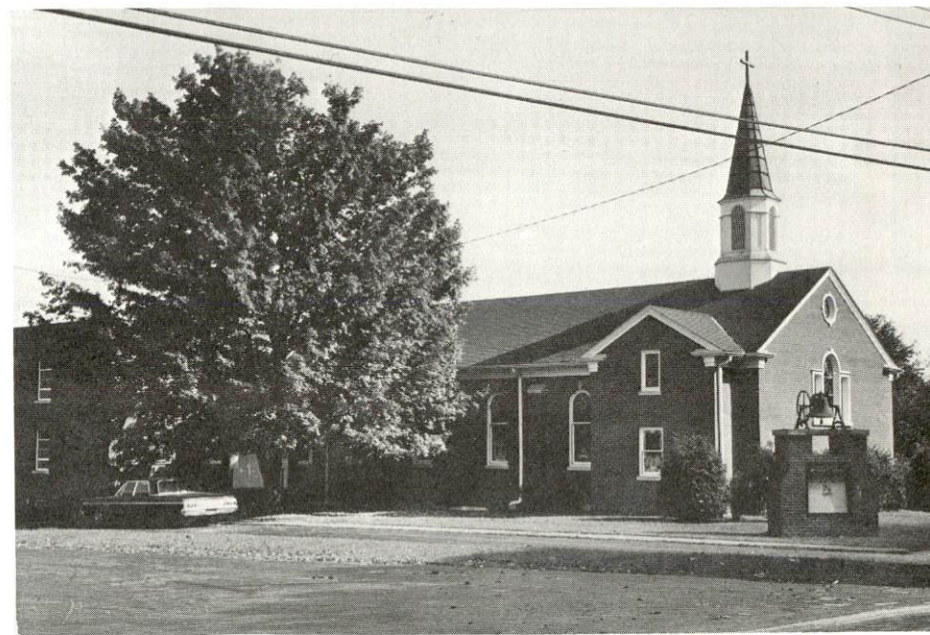
Christian Church



Vine Grove Baptist Church



St. Brigid's Catholic Church



Vine Grove Methodist Church

Religious Institutions

	<u>Radcliff</u>	<u>Vine Grove</u>
Number of churches —	15	6
Denominations —	Assembly of God	Baptist
	Baptist	Christian
	Christian	Jehovah's Witnesses
	Church of Christ	Methodist
	Church of God	Roman Catholic
	Church of the Nazarene	
	Jehovah's Witnesses	
	Methodist	
	Roman Catholic	
Nearest Synagogues —	Louisville, 33 miles away	Louisville, 37 miles away
Congregations —	Adath Israel (reform)	Adath Israel (reform)
	Adath Jeshurun	Adath Jeshurun
	(conservative)	(conservative)
	Anshei Sford (orthodox)	Anshei Sford (orthodox)
	Brith Sholom (reform)	Brith Sholom (reform)
	Keneseth Israel (orthodox)	Keneseth Israel (orthodox)

Financial Institutions

<u>Banks</u>	<u>Assets</u>	<u>Deposits</u>	<u>Statement Date</u>
The Bank of North Hardin	*		
Citizens Bank, Radcliff Branch	\$35,148,475	\$30,426,190	6/30/75
Farmers Bank, Vine Grove	5,020,637	4,379,812	6/30/75
First Hardin National Bank, Radcliff Branch	76,700,614	68,169,390	6/30/75
Fort Knox National Bank, Radcliff Branch	25,588,758	22,747,906	12/31/75
<u>Savings and Loan Associations</u>	<u>Assets</u>	<u>Shared Accounts</u>	<u>Statement Date</u>
First Federal Savings and Loan Association, Radcliff Branch	\$60,690,287	\$53,219,636	6/30/75

* The Bank of North Hardin opened in Radcliff in December 1975; capitalization of the bank amounted to \$1 million.

Hotels and Motels

Radcliff

Total number — 2

Total units — 55

Clubs and Organizations

Radcliff

Business and Civic — Jaycees, Chamber of Commerce, Optimist, City Council, Hair-dressers Guild, AFGE, Civil Defense Unit, Radcliff Ministerial Association, Radcliff P.T.A., Lions, Rotary, V.F.W., Business and Professional Women's Club

Fraternal — Masonic Lodge

Women's — Radcliff Homemakers, Bob-O-Link Homemakers, Longview Homemakers, Eastern Star, Woman's Club, Jaycettes, Ladies Auxiliary

Youth — Boy Scouts, Girl Scouts, 4-H

Vine Grove

Business and Civic — Optimist, Service Club, P.T.A.

Fraternal — Masonic Lodge, Knights of Columbus, American Legion

Women's — Woman's Club, Homemakers, Eastern Star, Amaranth, Rainbow

Youth — Teenage Club, Boy Scouts, Girl Scouts

Other — Sportsman's Club

RECREATION

Local

Public recreational facilities available in Radcliff and in Vine Grove include tennis courts, playgrounds, parks, baseball diamonds, softball fields and football fields. In addition, Radcliff has a drive-in theater, bowling facilities, a skating rink, and the Hardin County Playhouse. Vine Grove has a village green with a bandstand, a private golf course, and a private swimming pool.

Area (Within 50 miles)

Green River Lake State Park, Nolin River Lake, Rough River Dam State Resort Park, and Mammoth Cave National Park provide an opportunity for fishing, boating, picnicking, and camping. In addition, Rough River Dam State Resort Park has a lodge, cottages, a pool, and a paved airstrip. Mammoth Cave National Park features one of the largest cave networks ever discovered. Cave tours and river cruises are available, as well as cottages, a lodge, tennis, and summer theater.

Bernheim Forest is a privately operated 10,000 acre sanctuary with a natural forest, nature center, and museum.

Places of historic interest in the area include My Old Kentucky Home, the Lincoln Homestead State Shrine, the Abraham Lincoln Birthplace National Historic Site, the Patton Museum of Cavalry and Armor, and the U. S. Gold Depository at Fort Knox.

Proximity to Louisville provides the area with entertainment such as the Kentucky Derby, the Kentucky State Fair, the Louisville Zoological Gardens, the J. B. Speed Art Museum, Actors' Theatre, Kentucky Opera Association, Louisville Ballet, Louisville Orchestra, harness racing, and professional basketball.

COMMUNITY IMPROVEMENTS

Radcliff

1. A \$412,000 city hall, recently completed, houses the city offices, the police department, a courtroom and a community room. The old city hall building has been renovated for the Radcliff Chamber of Commerce.
2. A new fire station has been constructed at a cost of \$164,000.
3. Two tracks of land were recently purchased to be used for recreational purposes. Plans are being made to develop ball fields, tennis courts, picnicking facilities, and a swimming pool on the land.
4. Six new retail and service businesses opened in Radcliff in 1975.
5. Improvements in banking facilities include the opening of the Bank of North Hardin in December 1975, new offices for the First Federal Savings and Loan Association, and the remodeling of the Radcliff Branch of the First Hardin National Bank.
6. UARCO, Inc., which manufactures business forms, has completed a 40,000 square foot addition and has increased employment to 240 persons.
7. A sewerage study is being conducted.
8. Other improvements in Radcliff include the facelifting of a shopping center, the opening of a newspaper sub-office, and the construction of a \$20,000 tornado shelter at a day care center.

Vine Grove

1. Land has been purchased for a recreation project which will include shuffleboard, tennis courts, ball fields, picnic areas, and a playground.
2. A bandstand has been constructed on a village green which is being leased by the city.
3. Land for a mini-park has been purchased.
4. A sewerage study is being conducted.
5. Application has been filed for a water system improvement project which includes a new 750,000 gpd water treatment plant and a new 200,000-gallon elevated storage tank.
6. Work is now underway by the Nolin RECC to increase a 5,000 KVA substation to 10,000 KVA.

Hardin County

1. A North Hardin Branch Library, now under construction, will house 8,000 books.
2. The Hardin County School System is currently constructing a \$2.2 million junior high school in southern Hardin County.
3. Hardin County Water District No. 1 is in the first stage of a three-phase plan to double capacity of the Muldraugh treatment plant to 4,000,000 gpd. The Water District has recently added a new well and has increased the treatment capacity of the Saunders Spring Plant from 700,000 gpd to 1,200,000 gpd.

HISTORY

Hardin County lies in the northcentral area of the state, its northern tip extending to the Ohio River. Rolling Fork of Salt River flows along its northeastern boundary. Rough River forms a part of the southwestern border, and Nolin River meanders through the southern portion of the county. The county's 616 square miles of territory is hilly in the north, rolling in the eastern and southern sections, and fairly level in the central area. The soil ranges from thin in the north to fertile in the south.

The first settlers who came to Hardin County included John Severns, after whom the valley in which Elizabethtown is located was first known, and Captain Thomas Helm, Colonel Andrew Hynes, and Samuel Haycraft. They chose the present site of Elizabethtown in 1780 and built three blockhouses in a triangle about a mile apart. Also among these early settlers was Christopher Bush, whose daughter Sarah became the stepmother of Abraham Lincoln. The second oldest Baptist church in the state was built here in 1781.

Hardin became Kentucky's fifteenth county in 1792 and was named for Colonel John Hardin of Virginia, a Revolutionary War hero who came to Kentucky and fought in the Indian Wars. The first brick house in the county was built by Ben Helm and the first courthouse constructed in 1804. The first newspaper, The Western Intelligencer, was established in 1826.

Elizabethtown, the county seat, was built on land donated by Colonel Andrew Hynes and was named for his wife, Elizabeth. Now an important trade and industrial center, Elizabethtown had a 1973 estimated population of 14,354. Elizabethtown Community College, a two-year institution in the University of Kentucky system, has an enrollment of over 1,300.

Radcliff, to the north, had an estimated 1973 population of 11,268; Vine Grove 3,050; West Point, on the Ohio, had 1,921; and Upton, to the south, had 598. Also in Hardin County is Fort Knox, depository for the nation's gold supply and a major army post.

Hardin County's population was 3,653 in 1800, and it has grown steadily and then rapidly since 1940. In 1950 the total had reached 50,312, by 1960 it was 67,789, and in 1974 it was estimated to be 73,600.

Residents employed in agriculture accounted for 1,110 of Hardin County's 20,680 residents employed in 1974; government accounted for 5,210 employed residents. Trade and services firms in the county employed 5,740 while manufacturers employed 3,020. Largest of the county's firms are: Gates Rubber Company, which makes auto v-belts; Colt Industries, producing ceramic and alnico magnets; E-Town Sportswear Company, making men's slacks; Bussmann Manufacturing, which makes electronic fuses and holders; Dow Corning Corporation, a silicone sealant manufacturer; and UARCO, Inc., producer of business forms.

Among the many noted citizens of Hardin County was Thomas Lincoln, who lived for a while at Elizabethtown. Lincoln and his son, Abraham, later lived at Knob Creek, then a part of Hardin County. President James Buchanan also lived for a time at Elizabethtown. John L. Helm was Governor of Kentucky twice, and John Young Brown was also elected Governor. Duff Green, a member of President Andrew Jackson's "Kitchen Cabinet," lived in Hardin County, as did General George Custer during the time in which he wrote My Life on the Plains.

This copy has been prepared by the Kentucky Department of Commerce, Division of Research and Planning, and the cost of printing paid from state funds.

Production Supervisor

Patsy Wallace

Research

Betty Clary

Clerical

Julie Worth

Graphics

N. C. Montague

Frank Ferrante

Tony Cecconi

Cartography

Site Development Section

**Kentucky Department of Commerce
Capital Plaza Tower
Frankfort, Kentucky 40601**

**Industrial Development Division
(502) 564-7140**

**Community Services Division
(502) 564-4300**

**Business Development Division
(502) 564-4300**

**Research and Planning Division
(502) 564-4886**

**Office of Minority Business Enterprises
(502) 564-4270**

**Map Sales Office
133 Holmes Street
(502) 564-4715**

**Industrial Development Finance Authority
(502) 564-4554**