

1983

Industrial Resources: Henry County - New Castle and Campbellsburg

Kentucky Library Research Collection
Western Kentucky University, spcol@wku.edu

Follow this and additional works at: https://digitalcommons.wku.edu/henry_cty

 Part of the [Business Administration, Management, and Operations Commons](#), [Growth and Development Commons](#), and the [Infrastructure Commons](#)

Recommended Citation

Kentucky Library Research Collection, "Industrial Resources: Henry County - New Castle and Campbellsburg" (1983). *Henry County*. Paper 7.
https://digitalcommons.wku.edu/henry_cty/7

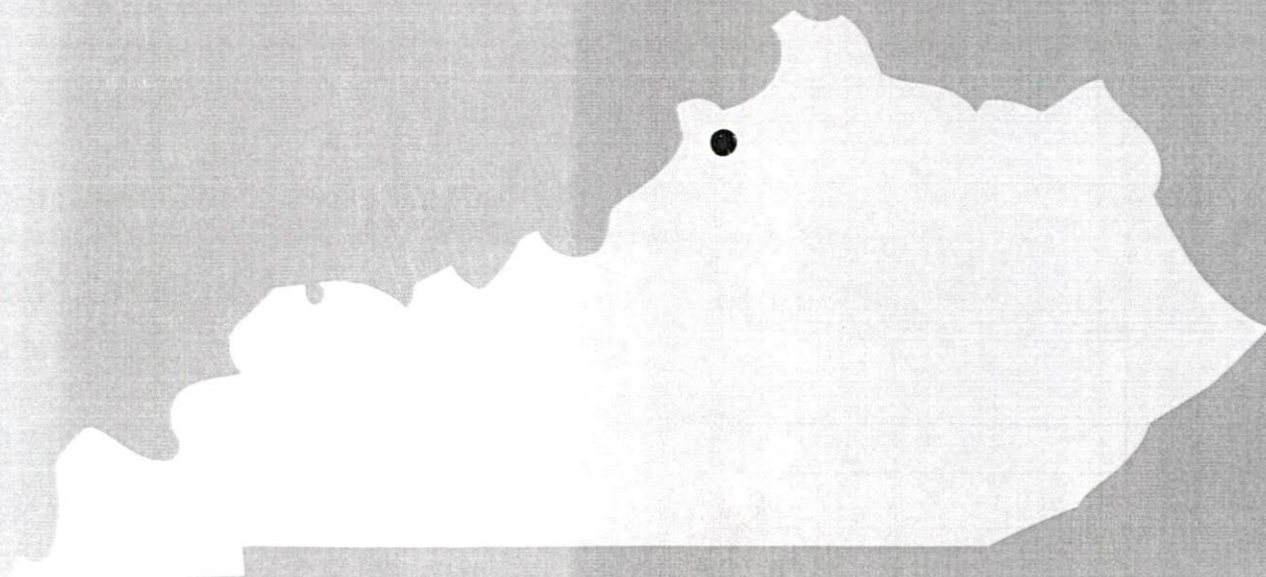
This Report is brought to you for free and open access by TopSCHOLAR®. It has been accepted for inclusion in Henry County by an authorized administrator of TopSCHOLAR®. For more information, please contact topscholar@wku.edu.

DR Henry
362

1983

A comprehensive
report on

**New Castle and
Campbellsburg, Ky.**

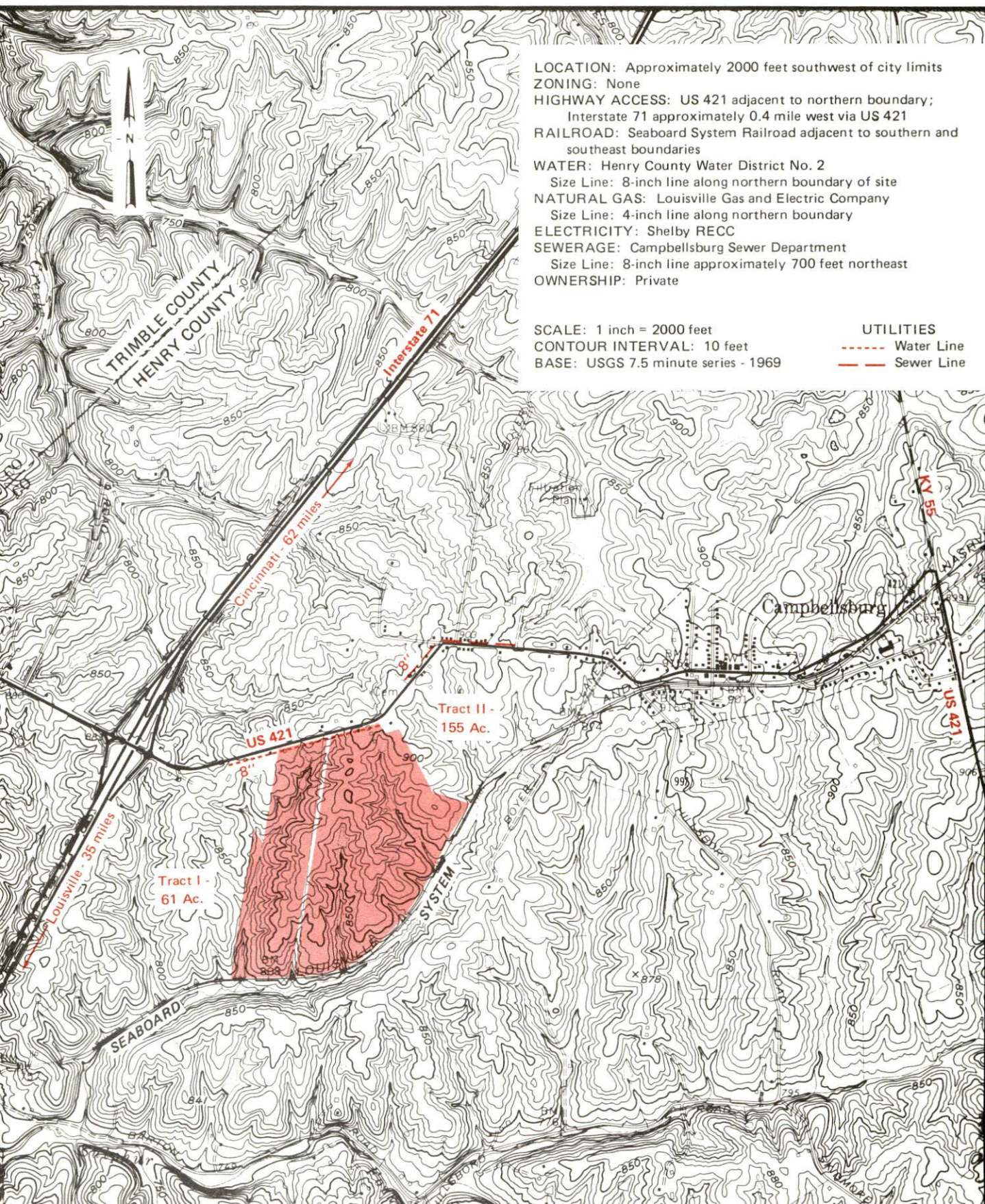


KENTUCKY & CO.

The state that's run like a business.

CAMPBELLSBURG, KENTUCKY --- Site 183 --- 216 Acres

For more information contact the Department of Economic Development, Office of Business Development, Industrial Development Division, Capital Plaza Tower, Frankfort, Kentucky 40601 (502-564-7140).



A COMPREHENSIVE REPORT ON
NEW CASTLE AND CAMPBELLSBURG, KENTUCKY

Prepared
The Kentucky Department of Economic Development
Division of Research and Planning
in cooperation with
The Cities of New Castle and Campbellsburg

1983

Program manager - Pamela Riley; research James Thompson; clerical - Shirley Wood; graphics - Frank Ferrante, Tony Cecconi, Robert Owens; cartography - Site Evaluation Branch, Division of Industrial Development. Cost of printing paid from state funds.

TABLE OF CONTENTS

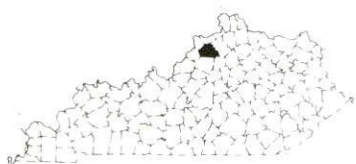
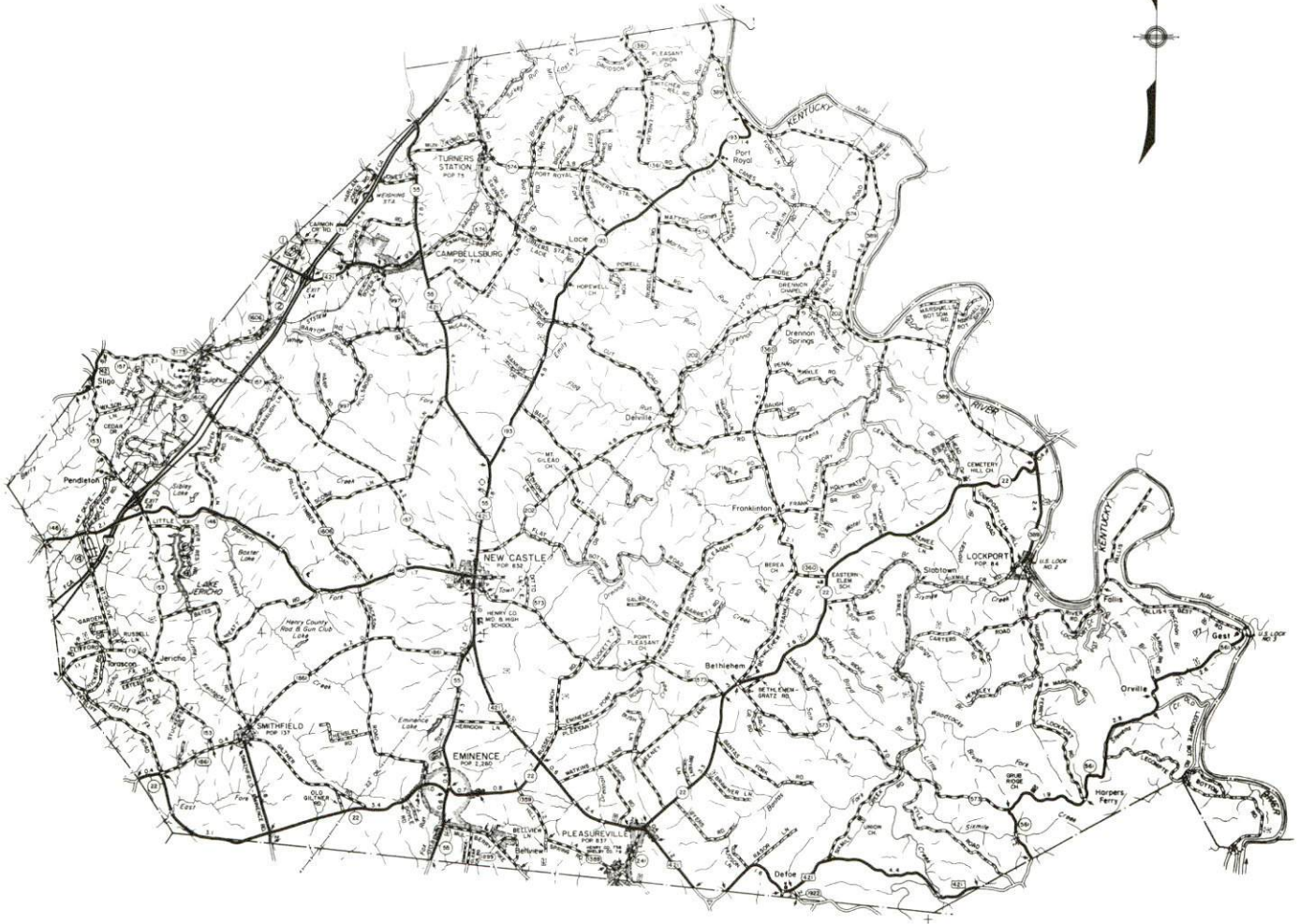
<u>Chapter</u>	<u>Page</u>
INDUSTRIAL SITES	i
NEW CASTLE AND CAMPBELLSBURG, KENTUCKY - A RESOURCE PROFILE . . .	1
THE LABOR MARKET AREA	3
Population	3
Labor Force Characteristics of Residents, 1981	3
Selected Components of Nonagricultural Employment, by Place of Work, 1981	4
New Castle Manufacturing Firms, Their Products and Employment	4
Labor Organizations in Manufacturing Firms	4
Industrial Services	5
Estimated Male Labor Supply	6
Estimated Female Labor Supply	6
Average Weekly Wages by Industry, by Place of Work, 1981	7
Per Capita Personal Income	9
TRANSPORTATION	10
Rail	10
Highways	10
Truck Service	10
Air	12
Bus	12
Rental Services	12
Water	12
POWER AND FUEL	13
Electricity	13
Natural Gas	14
Other Fuels	14
WATER AND SEWERAGE	15
Public Water Supply	15
Raw Water	17
Sewerage	17
CLIMATE	18

<u>Chapter</u>	<u>Page</u>
LOCAL GOVERNMENT	19
City	19
County	19
Assessed Value of Property, 1982	19
Property Taxes	20
Combined State and Local Rates Per \$100 Valuation, 1982	21
Utilities Gross Receipts Tax for Schools	21
Planning and Zoning	22
Safety	22
Police	22
Fire	22
Rescue Service	22
Refuse Collection and Disposal	22
EDUCATION	23
Public Schools	23
Area Colleges and Universities	24
Vocational Schools	25
HEALTH	27
Local Medical Personnel	27
Hospitals	27
Other Medical Facilities	27
Ambulance Service	28
Public Health	28
OTHER LOCAL FACILITIES	29
Communications	29
Library Services	30
Religious Institutions	30
Financial Institutions	30
Hotels and Motels	30
Clubs and Organizations	31
RECREATION	32
COMMUNITY IMPROVEMENTS	34

1983 EDITION
GENERAL HIGHWAY MAP
HENRY COUNTY
KENTUCKY

PREPARED BY THE
KENTUCKY TRANSPORTATION CABINET
DEPARTMENT OF HIGHWAYS
DIVISION OF PROJECT DEVELOPMENT
IN COOPERATION WITH THE
U.S. DEPARTMENT OF TRANSPORTATION
FEDERAL HIGHWAY ADMINISTRATION

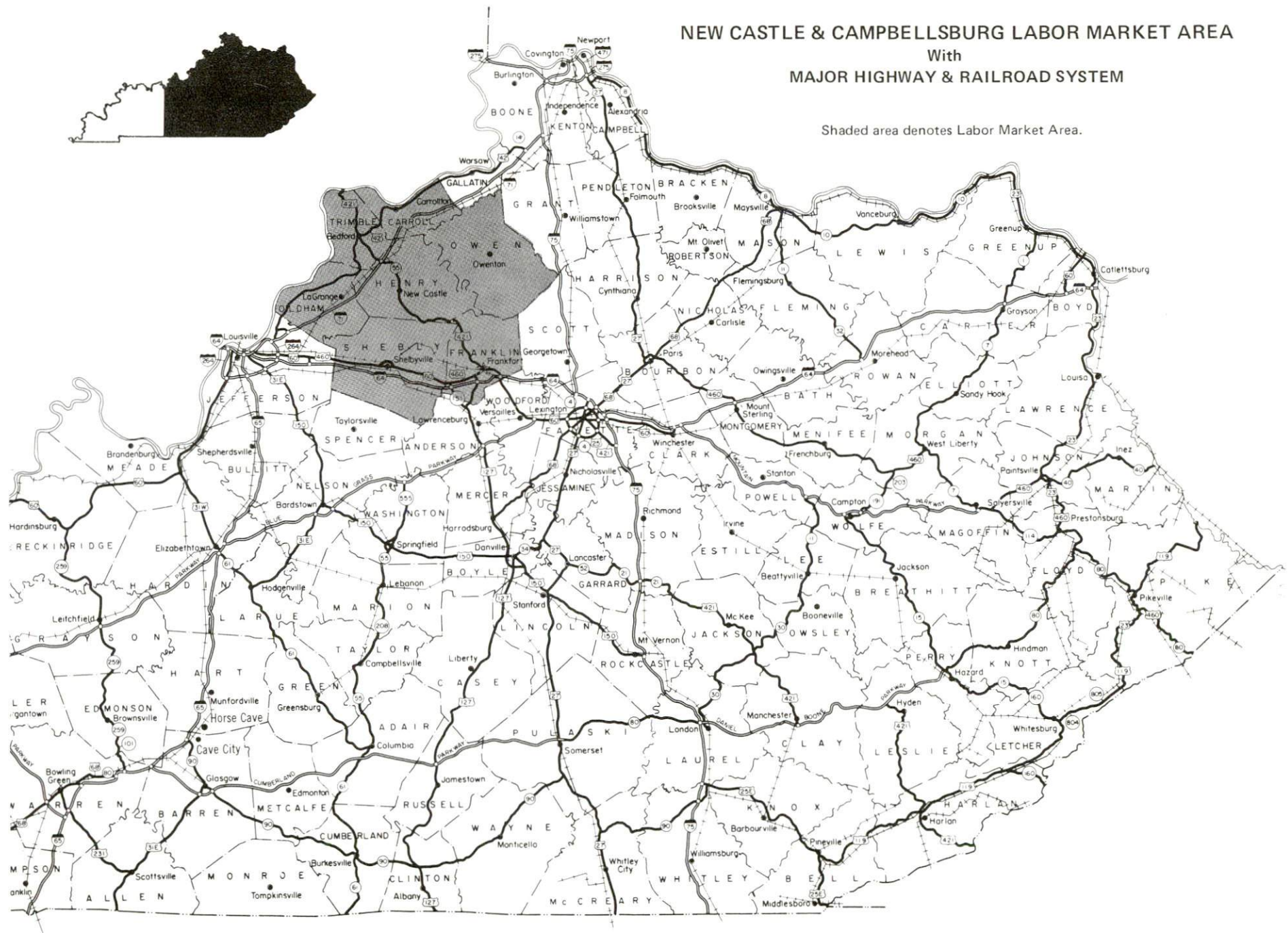
0 1 2 3 4 MILES



NEW CASTLE & CAMPBELLSBURG LABOR MARKET AREA

With MAJOR HIGHWAY & RAILROAD SYSTEM

Shaded area denotes Labor Market Area.



NEW CASTLE AND CAMPBELLSBURG, KENTUCKY - A RESOURCE PROFILE

New Castle, the county seat of Henry County, is located in the central portion of Henry County. New Castle, with a population of 832 in 1980, is located 38 miles northeast of Louisville, Kentucky; 74 miles southwest of Cincinnati, Ohio; and 206 miles northeast of Nashville, Tennessee.

Campbellsburg, with a population of 714 in 1980, is located only 8 miles north of New Castle.

Henry County, with a land area of 291 square miles, is located in north central Kentucky in the Outer Blue Grass physiographic region. In 1980, the population of Henry County was 12,740.

The Economic Framework

The total number of Henry County residents employed in 1981 averaged 5,120, with nonagricultural jobs accounting for 4,160 workers. Manufacturing employers in the county reported 450 workers; wholesale and retail trade 490; state and local government 390; and 130 in services industries.

Manufacturing employment in the county is greatest in the miscellaneous manufacturing category.

Per capita personal income in Henry County in 1980 was \$7,180. Between 1976 and 1980, per capita income increased by 43.5 percent.

The New Castle and Campbellsburg labor market includes Henry and the six adjoining counties. The total number of residents of the labor market area employed in 1981 averaged 57,070, with nonagricultural jobs accounting for 52,085 workers. Manufacturing employers in the area reported 7,900 workers; state and local government 16,950; wholesale and retail trade 6,650; and 4,280 in the services industries.

Resources for Growth

1. Labor Supply - There is a current labor supply of 6,300 men and 4,520 women available for industrial jobs in the labor market area. In addition, from 1983 through 1987, 5,700 young men and 5,390 young women in the area will become 18 years of age and potentially available for work.

2. Transportation - The Seaboard System Railroad provides main line rail service to Campbellsburg. New Castle and Campbellsburg are served directly by U. S. 421 and Ky. 55. Interstate 71 is located one mile west of Campbellsburg and 10 miles northwest of New Castle. Five common carriers have authority to serve New Castle and Campbellsburg. The nearest commercial airport, Standiford Field, is located 41 miles southwest of New Castle.

3. Power and Fuel - Electric power is provided to New Castle and Campbellsburg by the Kentucky Utilities Company. Henry County is served electric power by the Shelby Rural Electric Cooperative Corporation, which is supplied by the East Kentucky Power Cooperative. Natural gas service is provided to New Castle and Campbellsburg by the Louisville Gas and Electric Company, which is supplied by Texas Gas Transmission Corporation. Three distributors of propane and six distributors of distillate fuel oil serve New Castle and Campbellsburg.

4. Education - Primary and secondary education is provided to New Castle and Campbellsburg by the Henry County School System, which serves approximately 1,950 students in the county.

There are five universities, four senior colleges, a junior college, a community college, and a technical institute located within 60 miles of New Castle.

The Jefferson State Vocational-Technical School in Louisville, 38 miles from New Castle, offers vocational training in 27 areas. The Oldham County Area Vocational Education Center in Buckner, 15 miles from New Castle, offers training in seven areas and the Shelby County Area Vocational Education Center in Shelbyville, 16 miles from New Castle, provides training in twelve areas.

THE LABOR MARKET AREA

The New Castle and Campbellsburg Labor Market Area includes Henry County and the adjoining Kentucky counties of Carroll, Franklin, Oldham, Owen, Shelby and Trimble.

POPULATION

<u>Area</u>	<u>1980</u>	<u>1970</u>	<u>Percent Nonwhite</u>
New Castle	832	755	7.6
Campbellsburg	714	479	7.8
Labor Market Area	130,140	100,419	N/A
Henry County	12,740	10,910	5.5
Carroll County	9,270	8,523	2.0
Franklin County	41,830	34,481	8.7
Oldham County	27,795	14,687	5.5
Owen County	8,924	7,470	2.5
Shelby County	23,328	18,999	11.4
Trimble County	6,253	5,349	0.1

Note: The 1980 counts of population by race are provisional.

Sources: U. S. Department of Commerce, Bureau of the Census, 1980 Census of Population and Housing, March 1981; 1980 Census of Population, Number of Inhabitants. Population Research Unit, Urban Studies Center, University of Louisville, Kentucky Demographics: The 1980 Census of Kentucky, Characteristics of Population, Households, Housing, January 1982.

LABOR FORCE CHARACTERISTICS OF RESIDENTS, 1981

	<u>Henry County</u>	<u>Labor Market Area</u>
Civilian Labor Force	5,643	61,033
Employment	5,116	57,066
Agricultural	959	4,981
Nonagricultural	4,157	52,085
Unemployment	527	3,967
Rate of Unemployment (%)	9.3	6.5

Source: Kentucky Cabinet for Human Resources, Kentucky Labor Force Estimates, Annual Averages, 1981.

SELECTED COMPONENTS OF NONAGRICULTURAL EMPLOYMENT,
BY PLACE OF WORK, 1981

	<u>Henry County</u>	<u>Labor Market Area</u>
All Industries (total)	1,643	40,674
Manufacturing	453	7,902
Wholesale & Retail Trade	486	6,647
Services	129	4,281
State/Local Government	387	16,948

Source: Kentucky Cabinet for Human Resources, Average Monthly Workers Covered by Kentucky Unemployment Insurance Law, 1981.

NEW CASTLE MANUFACTURING FIRMS,
THEIR PRODUCTS AND EMPLOYMENT

<u>Firm (Establishment date)</u>	<u>Product</u>	<u>Employment</u>			<u>Labor Unions</u>
		<u>Total</u>	<u>Male</u>	<u>Female</u>	
The Henry County Local Company, Inc. (1876)	Newspaper, job printing	7	1	6	
McKeeson Envirosystems Company (1970)	Solvent recycling, thinners and lacquers, diluents, polyester and urethane clean up solvents	26	25	1	Independent Employees*
Meyers & Son Manufacturing Company, Inc. (1960)	Men's work clothing	34	2	32	

*See Labor Organization below.

Source: Kentucky Department of Economic Development, 1983 Kentucky Directory of Manufacturers.

LABOR ORGANIZATIONS IN MANUFACTURING FIRMS

<u>Union</u>	<u>Representing workers at:</u>
Independent Employees Union	McKeeson Envirosystems Company

INDUSTRIAL SERVICES

<u>Types of Services</u>	<u>Location</u>	<u>Mileage from New Castle</u>
Tool & Die, Machine & Pattern Shops	Simpsonville	23
	Frankfort	30
Metal Service Centers	Louisville	38
Heat Treating	Frankfort	30
	Louisville	38
Metal Finishers	Louisville	38
Electric Motor Repair	Louisville	38
Sources: Kentucky Department of Economic Development, <u>Kentucky Directory</u> of Selected Industrial Services, 1981. Kentucky Department of Economic Development, Division of Research and Planning.		

ESTIMATED MALE LABOR SUPPLY
NEW CASTLE AND CAMPBELLSBURG LABOR MARKET AREA

Area	Total	Unemployed	Current	Not in Labor Force	Future
			Under- employed		Becoming 18 years of age 1983 thru 1987
Labor Market					
Area*	6,297	2,680	2,536	1,081	5,699
Henry	799	364	197	238	533
Carroll	327	171	156	0	415
Franklin	1,908	933	771	204	1,703
Oldham	1,147	428	719	0	1,361
Owen	736	209	198	329	368
Shelby	852	467	385	0	1,027
Trimble	528	108	110	310	292

*Additional workers may be drawn from other nearby counties.

Note: Unemployed - persons unemployed and actively seeking work; Under-employed - persons employed but working only 14 to 26 weeks per year. Not in Labor Force - represents the number of persons who would enter the labor force if suitable employment were available (based on the assumption that persons in Kentucky would like to participate in the labor force in the same proportion that they do nationally).

Sources: Kentucky Cabinet for Human Resources, Kentucky Labor Supply Estimates by Area Development District and County, 1981. Kentucky Department of Economic Development, Future Labor Supply Becoming 18 Years of Age, 1983 thru 1987.

ESTIMATED FEMALE LABOR SUPPLY
NEW CASTLE AND CAMPBELLSBURG LABOR MARKET AREA

Area	Total	Unemployed	Current	Not in Labor Force	Future
			Under- employed		Becoming 18 years of age 1983 thru 1987
Labor Market					
Area*	4,517	1,287	2,662	568	5,393
Henry	587	163	224	200	572
Carroll	324	86	238	0	380
Franklin	1,436	484	952	0	1,555
Oldham	730	192	538	0	1,337
Owen	391	104	134	153	344
Shelby	690	209	481	0	935
Trimble	359	49	95	215	270

*Additional workers may be drawn from other nearby counties.

Note: Unemployed - persons unemployed and actively seeking work; Under-employed - persons employed but working only 14 to 26 weeks per year. Not in Labor Force - represents the number of persons who would enter the labor force if suitable employment were available (based on the assumption that persons in Kentucky would like to participate in the labor force in the same proportion that they do nationally).

Sources: Kentucky Cabinet for Human Resources, Kentucky Labor Supply Estimates by Area Development District and County, 1981. Kentucky Department of Economic Development, Future Labor Supply Becoming 18 Years of Age, 1983 thru 1987.

AVERAGE WEEKLY WAGES BY INDUSTRY
BY PLACE OF WORK, 1981

	<u>Henry County</u>	<u>Carroll County</u>	<u>Franklin County</u>	<u>Oldham County</u>
All Industries	\$202.58	\$272.13	\$263.59	\$233.50
Mining & Quarrying	0	0	252.04	*
Contract Construction	157.89	447.87	353.76	263.39
Manufacturing	269.43	310.81	284.73	309.75
Transportation, Communications & Public Utilities	307.58	378.33	364.06	227.56
Wholesale & Retail Trade	136.30	170.96	165.43	181.13
Finance, Insurance & Real Estate	215.88	240.38	279.83	229.63
Services	152.67	155.96	200.51	158.55
State/Local Government	218.78	207.70	279.53	254.98
Other	108.92	*	193.82	189.38
	<u>Owen County</u>	<u>Shelby County</u>	<u>Trimble County</u>	
All Industries	\$216.08	\$210.56	\$222.26	
Mining & Quarrying	0	0	0	
Contract Construction	*	181.73	*	
Manufacturing	*	260.00	*	
Transportation, Communications & Public Utilities	*	328.51	*	
Wholesale & Retail Trade	167.78	164.86	122.21	
Finance, Insurance & Real Estate	207.15	240.86	215.87	
Services	145.24	175.79	140.90	
State/Local Government	195.07	209.52	196.45	
Other	0	192.83	*	

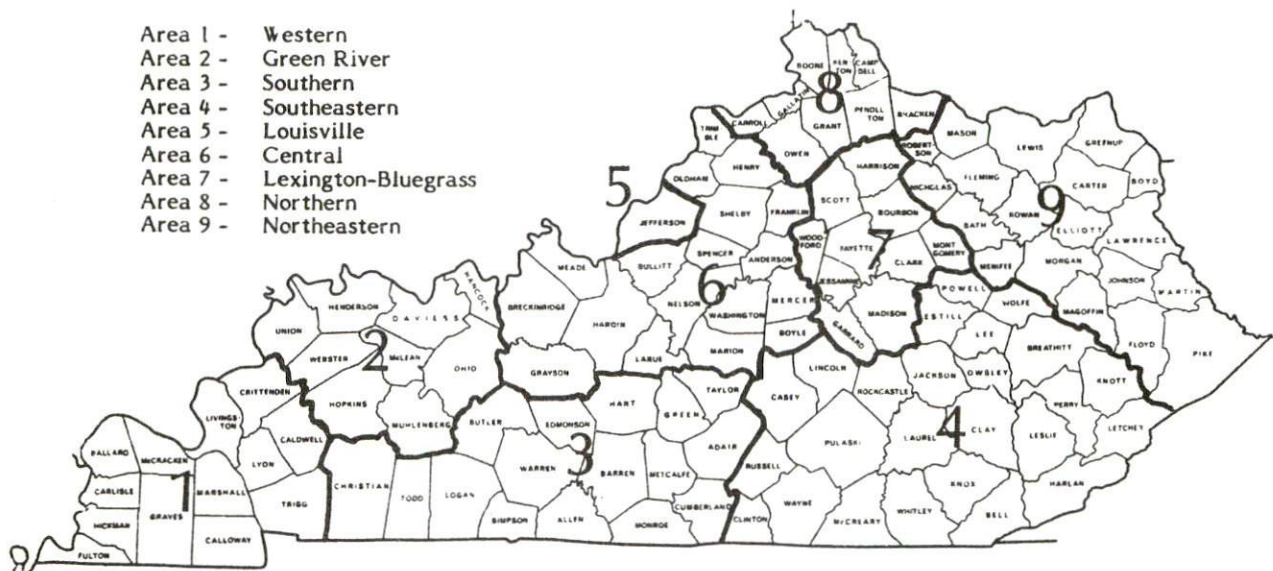
*Not disclosed.

Note: Excludes domestic workers, railway workers, certain nonprofit corporations, majority of federal government workers, and self-employed workers.

Source: Kentucky Cabinet for Human Resources, Average Weekly Wages of Workers Covered by Kentucky Unemployment Insurance Law, 1981.

Occupational wage rates for specific industries are usually not available to most government agencies, and wage data furnished to state employment agencies by individual industrial employers are protected from disclosure by federal law. The most reliable up-to-date wage information can be obtained by direct contact with local employers.

Associated Industries of Kentucky, a voluntary organization of Kentucky businesses, regularly collects occupational wage rates and fringe benefits data from participating member firms. Data are compiled for over 127 clearly defined office, production, and service occupations. Tabulations are published for nine geographical areas of Kentucky, as shown on the map below. It should be noted that the data may be weighted by the preponderance of firms in the larger cities and may be somewhat higher than the rates paid in the smaller communities. Data from these tabulations are available, upon request, from the Kentucky Department of Economic Development, Frankfort, Kentucky 40601.



Associated Industries of Kentucky Area Wage Surveys

PER CAPITA PERSONAL INCOME

<u>Area</u>	<u>1976</u>	<u>1980</u>	<u>Percent Change</u>
Henry County	\$5,005	\$7,180	43.5
Labor Market Area Range	\$4,035 - 6,463	\$5,426 - 9,523	N/A
Kentucky	5,263	7,662	45.6
U. S.	6,367	9,511	49.4

Source: U. S. Bureau of Economic Analysis, Kentucky Economic Information System, June 1982.

TRANSPORTATION

Rail

Line serving Campbellsburg - Seaboard System Railroad

Services - Main line; 3 northbound and 3 southbound through freights daily; switching facilities; team track space for 8 cars; piggyback facilities are located at Louisville, Kentucky, 39 miles southwest of Campbellsburg.

For details on routing, schedules, rates, and services, contact:

Manager of Industrial Development
Seaboard System Railroad
P. O. Box 32290
Louisville, Kentucky 40232
(502) 587-5228

New Castle is not served directly by a rail line.

Highways

Interstate 71, the major highway between Louisville and Cincinnati, passes through Henry County with an interchange located one mile from Campbellsburg and ten miles from New Castle. U. S. Highway 421, a "AAA" rated trucking highway, connects both cities with Interstate 71. In addition, New Castle is served by Kentucky Highways 146, 157, 202 and 573.

Truck Service

New Castle and Campbellsburg

Company

Home Office

E. & G. Motor Express, Inc.*

U. S. 42 West
Carrollton, Kentucky 41008

Lee Way Motor Freight, Inc.**

3401 NW 63rd Street
P. O. Box 12750
Oklahoma City, Oklahoma 73157

Overnite Transportation
Company**

1000 Semmes Avenue
P. O. Box 1216
Richmond, Virginia 23209

Owenton Express, Inc.*

P. O. Box 328
Carrollton, Kentucky 41008

*Interstate and intrastate service.

**Interstate service only.

Other Freight ServicesNearest Shipping Center

Purolator Courier Corporation*

Louisville, Kentucky, 38 miles from
New Castle

United Parcel Service**

Louisville, Kentucky, 38 miles from
New Castle

HIGHWAY MILES AND TRUCK TRANSIT TIME IN DAYS FROM
NEW CASTLE, KENTUCKY, TO SELECTED MARKET CENTERS

City	Highway Miles	Delivery		City	Highway Miles	Delivery	
		Time	TL			Time	TL
Atlanta, Ga.	420	3		Los Angeles, Ca.	2,146	4	
Baltimore, Md.	571	2		Louisville, Ky.	38	1	
Birmingham, Ala.	402	3		Nashville, Tenn.	206	2	
Chicago, Ill.	330	2		New Orleans, La.	723	3	
Cincinnati, Ohio	74	1		New York, N. Y.	721	3	
Cleveland, Ohio	318	2		Pittsburgh, Pa.	361	3	
Detroit, Mich.	334	3		St. Louis, Mo.	301	2	
Knoxville, Tenn.	228	2					

Note: Mileage computation are via the best interstate or primary
highways, not necessarily the most direct route of travel:

Sources: Rand McNally Interstate Road Atlas, 1981. Official Kentucky
Mileage Map, 1980. Delivery time - E & G Motor Express, Inc., U. S.
42, Carrollton, Kentucky 41008.

*For regular scheduled pickups or for occasional pickups, arrangements
must be made with the Louisville, Kentucky office of Purolator Courier
Corporation.

**For regular scheduled pickups or for occasional pickups, arrangements
must be made with the Louisville office of United Parcel Service.

Air

Nearest Scheduled Commercial Airline Service

Standiford Field
Location: 5 miles southeast of center of Louisville, Kentucky;
41 miles southwest of New Castle
Runways: 3 paved
Length: 7,800 feet; 7,250; 5,000 feet
Traffic
Control: Control tower
Lighting: Runways, obstructions, beacon and approach and touch-down lights, center line on one runway
Services: Continental, Delta, Eastern, Ozark, Piedmont, TWA, United, USAir, Wright Airways, Allegheny Commuter, Comair; fuel - 100 and jet-A; tie downs; major A & P repairs; major Avionics repairs; APU, charter, oxygen, U. S. Customs; taxi, car rentals, limousine, courtesy car, public transit; weather information; restaurant, snack bar
Air Freight Service: Air freight terminal

Bus -

New Castle - Greyhound Bus service is available at Shelbyville, 16 miles south of New Castle.

Campbellsburg - Greyhound Bus service is available at Carrollton, 14 miles north of Campbellsburg.

Rental Services - Trailer rental services are available in Campbellsburg. Automobile and truck rental services are available in La Grange, 14 miles from New Castle, and Carrollton, 20 miles from New Castle.

Water

The nearest navigable waterway is the Ohio River at Carrollton, 14 miles north of Campbellsburg and 20 miles north of New Castle. Port facilities are located on the Ohio River at Louisville, 38 miles southwest of New Castle. Louisville has also been classified as a Foreign Trade Zone and offers complete U. S. Customs services for exports and imports.

POWER AND FUEL

Electricity

Company serving New Castle, Campbellsburg and part of Henry County-
Kentucky Utilities Company
Source of power - Kentucky Utilities Company
Total generating capacity - 2,639,100 KW*
For industrial rates contact:

Industrial Development Department
Kentucky Utilities Company
One Quality Street
Lexington, Kentucky 40507
(606) 255-1461

Company serving the major portion of Henry County - Shelby Rural
Electric Cooperative Corporation
Source of power - East Kentucky Power Cooperative
Total generating capacity - 1,304,000 KW
For industrial rates contact:

Industrial Development Division
East Kentucky Power Cooperative
P. O. Box 707
Winchester, Kentucky 40391
(606) 744-4812

and/or

Shelby RECC
P. O. Box 309
Shelbyville, Kentucky 40065
(502) 633-4420

*A new generating unit is under construction in Carroll County. Due to be completed in 1984, the unit will have a generating capacity of 511,000 KW.

Natural Gas

Company serving New Castle and Campbellsburg - Louisville Gas and Electric Company

Source of supply - Texas Gas Transmission Corporation

Size of transmission mains - 26-inch (supplier);
4-inch (distributor)

Distribution mains - 2 and 4 inches

Distribution pressure - 35 psi

Btu content - 1,020 per cubic foot

Specific gravity - 0.6

For rates and supplies contact:

General Manager, Market Services
Louisville Gas and Electric Company
P. O. Box 32010
Louisville, Kentucky 40232
(502) 566-4255

Other Fuels

Propane

Big 3 Gas Company of Shelby
County
Route 8
P. O. Box 78
Shelbyville, Kentucky 40065

Southern States Henry Cooperative
Elm Street
Eminence, Kentucky 40019

Silgas, Inc.
Old Finchville Road
Shelbyville, Kentucky 40065

Fuel oils

Distillate fuel oil -

Barnett Oil Company, Inc.
(Sunoco)
Campbellsburg, Kentucky 40011

Gullion & Son Oil Company
Port Royal, Kentucky 40058

L. D. Chapman Distributing,
Inc. (Campbellsburg only)
(Chevron)
614 Park Avenue
Carrollton, Kentucky 41008

Marathon Oil Company
107 Owen Street
Eminence, Kentucky 40019

Crume-Hundley Oil Company
(Ashland)
801 South Third Street
Shelbyville, Kentucky 40065

J. T. Moore Oil Company
(Texaco)
Pendleton, Kentucky 40055

Residual fuel oil - Arrangements must be made with the refinery.

Low sulphur content coal - Available in Kentucky.

WATER AND SEWERAGE

Public Water Supply

Company serving New Castle - New Castle Water Company*

Cross Main Street

New Castle, Kentucky 40050

(502) 845-2900

Source of supply of treated water - Henry County Water District #2

Average daily consumption - 100,000 gallons

Peak daily consumption - 120,000 gallons

Storage capacity - 40,000 gallons

Size lines - 2, 4 and 6 inches

Average pressure - 45 psi

Average temperature - 48 degrees F.

MONTHLY WATER RATES

First	2,000 gallons	\$6.00 (Minimum)
Next	2,000 gallons	2.05 per M gallons
Next	2,000 gallons	1.75 per M gallons
Next	4,000 gallons	1.60 per M gallons
All over	10,000 gallons	1.50 per M gallons

Tap-on charge: \$2.00

*The New Castle Water Company plans to install a new 8-inch water main to be used as an alternate to the existing main. It will also help increase the water pressure in New Castle.

Company serving Campbellsburg - Campbellsburg Water Works
P. O. Box 67
Campbellsburg, Kentucky 40011
(502) 532-6019

Source of supply of treated water - Henry County Water District #2
Average daily consumption - 38,293 gallons
Peak daily consumption - 45,282 gallons
Storage capacity - 75,000 gallons
Size lines - 2, 4 and 6 inches
Average pressure - 60 psi
Average temperature - 40 degrees F.

MONTHLY WATER RATES

First	2,000 gallons	\$9.00 (Minimum)
Next	2,000 gallons	2.00 per M gallons
Next	2,000 gallons	1.90 per M gallons
Next	2,000 gallons	1.80 per M gallons
Next	2,000 gallons	1.70 per M gallons
All over	10,000 gallons	1.60 per M gallons

Tap-on charge: 3/4-inch - \$300
larger than 3/4-inch - \$300 plus cost

Name of water district - Henry County Water District #2
P. O. Box 219
Campbellsburg, Kentucky 40011
(502) 532-6280

Area served - Henry, Trimble, Oldham, and Carroll Counties
Date when water district began operating - December 1969
Source of raw water - 4 wells
Capacity of treatment plant - 1,728,000 gallons per day
Type of treatment - Chlorination and fluoridation
Average amount of water used in a 24-hour period - 950,000 gallons
Peak amount of water used in a 24-hour period - 1,200,000 gallons
Storage capacity - 575,000 gallons*
Average pressure - 100 psi
Average temperature - 60 degrees F.
Size lines - 2, 3, 4, 6, 8, 10 and 12 inches

MONTHLY WATER RATES

First	2,500 gallons	\$7.50 (Minimum)
Next	2,500 gallons	2.45 per M gallons
Next	5,000 gallons	1.65 per M gallons
Next	10,000 gallons	1.10 per M gallons
All over	20,000 gallons	0.75 per M gallons

Tap-on charge: \$200

*In April of 1982, the Henry County Water District #2 completed the construction of a 300,000-gallon storage tank. Total cost of the project was \$325,000.

Raw Water

Surface water sources - Kentucky River

Average discharge - Kentucky River at Lockport, 8,353 cfs
(56-year record, USGS)

Expected ground water yield - 50 to 200 gpm along southern portion of the Kentucky River Valley; 5 to 50 gpm along northern portion of the Kentucky River Valley; 5 gpm or less in the remaining portion of the county.

Sewerage

Company serving New Castle - New Castle Sewerage System*
Cross Main Street
New Castle, Kentucky 40050
(502) 845-2900

Design capacity - At capacity
Average daily flow - 80,000 gallons
Treatment - Primary
Type treatment - Drying beds
Treated effluent discharged into - Town Creek
Size of sanitary mains - 8 inches
Size of storm mains - 20 inches
Rates - 20% of monthly water bill
Tap-on charge: \$200

Company serving Campbellsburg - Campbellsburg Water Works
P. O. Box 67
Campbellsburg, Kentucky 40011
(502) 532-6019

Design capacity - 100,000 gallons**
Average daily flow - 38,293 gallons
Treatment - Tertiary
Type treatment - Aeration
Treated effluent discharged into - Carmine Creek
Size of sanitary mains - 8 inches
Size of storm mains - 20 inches
Rates - 50% of water bill
Tap-on charge: \$300

*Construction is scheduled to begin in 1984 on a new \$600,000 aerated facultative lagoon system sewage treatment plant. The average design flow of the new plant will be 100,000 gallons per day. In addition, a \$400,000 project to renovate and rehabilitate existing sewer lines is planned.

**The design capacity of the sewage treatment plant can be easily increased from 100,000 to 150,000 gallons per day.

CLIMATE

Henry County

Temperature

Normal (30-year record)	55.2 degrees
Average annual 1981	54.2 degrees
Record highest, September 1954 (37-year record)	103.0 degrees
Record lowest, January 1963 (37-year record)	-21.0 degrees
Normal heating degree days (30-year record)	4,729
(Heating degree day totals are the sums of negative departures of average daily temperatures from 65 degrees F.)	

Precipitation

Normal (30-year record)	44.49 inches
Mean annual snowfall (37-year record)	16.70 inches
Total precipitation 1981	36.65 inches
Mean number days precipitation (.01 inch or more) (37-year record)	130
Mean number days thunderstorms (37-year record)	46

Prevailing Winds (17-year record)

South

Relative Humidity

1 a.m.	77 percent (17-year record)
7 a.m.	81 percent (18-year record)
1 p.m.	60 percent (18-year record)
7 p.m.	64 percent (18-year record)

Source: U. S. Department of Commerce, Environmental Science
Services Administration, Climatological Data, 1981.
Station of record: Lexington, Kentucky.

LOCAL GOVERNMENT

City

New Castle

Structure - Board of Trustees - 5 members - 2-year terms
(Chairman selected)

Budget 1982 - General Fund \$69,792

Water and Sewer Fund 65,829

Fees and licenses - Business licenses range from \$5 to \$100 per year; unloading license - \$15 per year

Campbellsburg

Structure - Mayor - 4-year term; 5 council members - 2-year terms

Budget 1982 - General Fund \$65,494

Water and Sewer Fund 88,315

Fees and licenses - Business licenses range from \$15 to \$50 per year; unloading license - \$40 per year

County

Structure - County Judge/Executive - 4-year term;

6 magistrates - 4-year terms

Budget 1982-83 - General Fund \$374,477; Road Fund \$368,832

Assessed Value of Property, 1982*

<u>Classes of Property</u>	<u>New Castle</u>	<u>Campbellsburg</u>	<u>Henry County</u>
Real Estate	\$8,184,100	\$6,849,355	\$165,503,942
Tangibles	1,720,130	793,100	31,321,709

*Excludes Homestead Exemptions.

Property Taxes

All property in Kentucky is assessed at 100 percent of fair cash value.

Land and buildings are taxed by the state and may be taxed by local jurisdictions. The state rate is \$0.224 per \$100 of assessed valuation.

Manufacturing machinery, raw materials inventories, pollution control equipment, and goods in the process of manufacture are not subject to local taxation. The state rate is \$0.15 per \$100.

Other tangible personal property owned by manufacturers (automobiles, trucks, finished goods, office furniture, office equipment) is taxed by the state at \$0.45 per \$100 and may be taxed by local jurisdictions.

Intangible personal property located in Kentucky (money in hand, shares of stock, notes, bonds, accounts receivable, and other credits) is taxed by the state at \$0.25 per \$100, and is not subject to local taxation.

Property stored in public warehouses in a transit status is not subject to local taxation. The state rate is only \$0.015 per \$100.

Private leaseholds in industrial facilities owned by cities or counties and financed by industrial revenue bonds are subject to a state tax of \$0.015 per \$100 of value (essentially the lessee's equity, adjusted for appreciation or depreciation). Local taxation is not permitted.

Combined State and Local Rates Per \$100 Valuation, 1982*
(100% assessment)

	<u>Site Inside City of New Castle</u>	<u>Site Inside City of Campbellsburg</u>	<u>Site Inside Unincorporated Henry County</u>
1. Land and buildings	\$0.889	\$0.928	\$0.684
2. Mfg. machinery, raw materials, goods in process, pollution control equipment	0.150	0.150	0.150
3. Finished goods, office equipment, vehicles, other tangibles	1.159	1.198	0.954
4. Intangibles (accounts rec., notes, bonds, etc.)	0.250	0.250	0.250
5. Property stored in public warehouses in a transit status	0.015	0.015	0.015
6. Leaseholds in industrial revenue bond financed plants	0.015	0.015	0.015

Utilities Gross Receipts Tax for Schools

A 3 percent tax is levied on utilities receipts for schools in Henry County. Tax is paid by all consumers of utilities as an add-on to the utilities bills. Exempted are receipts from utilities services that are resold and the receipts from the sale of energy or energy producing fuels that exceed 3 percent of the cost of production in manufacturing, processing, mining or refining.

*Kentucky Department of Economic Development.

Planning and Zoning

There is no planning and zoning agency operating in Henry County at the present time.

Mandatory state codes enforced - Kentucky Plumbing Code, National Electric Code, Kentucky Boiler Regulations and Standards, Kentucky Building Code (modeled after BOCA code)

Safety

<u>Police</u>	<u>New Castle</u>	<u>Campbellsburg</u>	<u>Henry County</u>
Total staff	3	4	5
Radio-patrol cars	2	1	3

Fire

Insurance Services

Office, Public

Protection

Classification

Volunteers

7

23

7

42

10

155

Rescue Service

Henry County Disaster and Emergency Service

Number of volunteers - 155

Equipment - 4 fully equipped ambulances; 2 "Jaws of Life" rescue apparatus; 4-wheel drive trucks; flood lights, generators; rescue vans

Personnel training - Basic first aid, advanced first aid, emergency medical technician training, and cardiopulmonary resuscitation

Refuse Collection and Disposal

	<u>New Castle</u>	<u>Campbellsburg</u>	<u>Henry County</u>
Type service	Private	Municipal	Private
Fee charged:			
residential	\$5.00 monthly	\$4.00 monthly	\$7.50 monthly
business	Negotiable	Negotiable	Negotiable
industrial	Negotiable	Negotiable	Negotiable
Collection frequency:			
residential	Weekly	Weekly	Weekly
business	Negotiable	Negotiable	Negotiable
industrial	Negotiable	Negotiable	Negotiable
Trash pickup	Annual cleanup	Annual cleanup	Annual cleanup
Disposal method	Sanitary Landfill	Sanitary Landfill	Sanitary Landfill

EDUCATION

Public Schools

Henry County

Total Enrollment	
(Fall 1982)	1,954
Elementary	1,045
Middle School	474
High School	435
Student-Teacher Ratio	19-1
Elementary	21-1
Middle School	17-1
High School	18-1
Percent High School	
Graduates to College	
(1982)	24.8
Expenditures Per Pupil	
(1981-82)	\$1,623.63
Bonded Indebtedness	
(June 30, 1981)	\$883,000

Area Colleges and Universities

<u>Name</u>	<u>Location (Miles distant)*</u>	<u>Enrollment (Fall, 1982)</u>	<u>Highest Degree Conferred</u>
Kentucky State University	Frankfort, Kentucky (30)	2,322	Masters
Bellarmino College	Louisville, Kentucky (38)	2,350	Masters
Jefferson Community College	Louisville, Kentucky (38)	6,595	Associate
Spalding College	Louisville, Kentucky (38)	763	Masters
University of Louisville	Louisville, Kentucky (38)	19,744	Doctorate, M.D., D.M.D., J.D.
Hanover College	Hanover, Indiana (40)	997	Baccalaureate
Midway Junior College	Midway, Kentucky (43)	349	Associate
Indiana University Southeast	New Albany, Indiana (45)	4,640	Masters (Education only)
Georgetown College	Georgetown, Kentucky (48)	1,029	Masters
Lexington Technical Institute	Lexington, Kentucky (59)	2,462	Associate
Transylvania University	Lexington, Kentucky (59)	701	Baccalaureate**
University of Kentucky	Lexington, Kentucky (59)	22,829	Doctorate, M.D., D.M.D., J.D.

*Mileage from New Castle.

**Courses in a masters degree program are taught on the Transylvania campus by faculty members of Xavier University of Cincinnati. The degree is issued by Xavier University.

Vocational Schools

Both the state vocational-technical schools and the area vocational education centers are operated by the Kentucky Department of Education. The state vocational-technical schools enroll persons full time who are at least 16 years of age and not in school. These students attend classes for six hours each day. The area vocational education centers are designed to accommodate high school students who are at least 15 years of age. These students attend vocational school for three hours each day. The state vocational-technical schools and the area education centers offer evening courses to enable working adults to upgrade current job skills.

Nearest State School

Location	Jefferson State Vocational-Technical School Louisville
Miles Distant	38 from New Castle
Curriculum	Agriculture Horticulture Business and Office Accounting/Jr. Management Clerical Data Processing Secretarial Word Processing Consumer and Home Economics Culinary Arts Health and Personal Services Occupations Cosmetology Child Care Aide Dental Assistant Licensed Practical Nursing Medical Assistant Nurses's Aide Surgical Technician Ward Clerk Industrial Education Air Conditioning and Refrigeration Auto Body Repair Auto Mechanics Carpentry-Building Trades Diesel Mechanics Electricity Electronics Graphic Arts (Printing) Machine Shop Masonry Plumbing Welding Learning Resource Center

Nearest Area Education Centers

Location	Oldham County Area Vocational Education Center Buckner
Miles Distant	15 from New Castle
Curriculum	Health and Personal Services Occupations Health Services Industrial Education Auto Mechanics Carpentry Commercial Arts Electricity Heating and Air Conditioning Machine Shop

Location	Shelby County Area Vocational Education Center Shelbyville
Miles Distant	16 from New Castle
Curriculum	Business and Office Accounting Business Law Model Office Office Machines Shorthand Typing Word Processing Industrial Education Auto Mechanics Carpentry Electricity Machine Shop Welding

Arrangement can be made to provide training in the specific production skills required by an industrial plant. Instruction may be conducted either in the vocational school or in the industrial plant, depending upon the desired arrangement and the availability of special equipment.

HEALTH

Local Medical Personnel

Physicians - 2 in New Castle
 1 in Campbellsburg
Dentist - 2 in Campbellsburg

Hospitals

<u>General Hospital</u>	<u>Location</u>	<u>Beds</u>
Carroll County Memorial Hospital	Carrollton, 20 miles from New Castle	54
The King's Daughters Hospital	Shelbyville, 16 miles from New Castle	76

Carroll County Memorial Hospital

General hospital facilities - Operating room, recovery room, emergency room, X-ray, laboratory, OB section, nursery, blood bank, physical therapy, electrocardiography, cardiac monitors, respiratory therapy, endoscopic procedures, and E.N.T.

Medical staff - 8 doctors, 16 registered nurses, 11 graduate licensed practical nurses, 3 medical technologists, 2 X-ray technicians, 1 respiratory therapist, 1 physical therapist, 3 medical records technicians

The King's Daughters Hospital

General hospital facilities - 4-bed intensive care and coronary care unit, laboratory, X-ray, operating room, recovery room, cystoscopic room, fracture room, obstetric room, delivery room, emergency room, respiratory therapy, physical therapy, pharmacy

Medical staff - 26 active physicians, 19 courtesy physicians, 42 registered nurses, 14 licensed practical nurses, 2 pharmacists

Other Medical Facilities

Norvell Clinic, located in New Castle, has a staff of one doctor, two nurses, and one receptionist. Facilities include X-ray equipment and a recently upgraded routine clinical laboratory.

Campbellsburg Medical Plaza is a family practice facility with 1 medical doctor and 1 dentist.

Ambulance Service

Name - Henry County Emergency Squad

Staff - 75 volunteers, fully trained in emergency medical technician and cardiopulmonary resuscitation procedures

Service - 24-hour service is provided by four squads located in Henry County

Equipment - Four ambulances equipped to meet state licensing regulations

Public Health

Facility - Northern Central District Health Department (Henry County Center)

Staff - One administrator, two public health nurses, one nurse coordinator, one social worker, one health environmentalist, one plumbing inspector, one home health nurse, three community health workers, and three clerks

OTHER LOCAL FACILITIES

Communications

Telephone -

Services -

Telegraph -

Services -

Postal - U. S. Post Office

Class -

Mail received -

Mail dispatched -

Newspapers -

Weekly and circulation -

Other papers
received from -

Radio -

Stations received from -

Television -

Cable service

Reception from -

Kentucky Educational

Television -

New Castle

South Central Bell

Telephone

Standard

Western Union

Toll-free number,

1-800-325-5100

Second

Once daily

Once daily

Henry County Local

5,300

Louisville and

Campbellsburg,

Kentucky

Louisville,

Lexington,

Eminence, and

Shelbyville,

Kentucky;

Cincinnati, Ohio

Yes

Louisville and

Lexington,

Kentucky;

Cincinnati, Ohio

Owenton transmitter

Channel 52

Louisville transmitter

Channel 68

Campbellsburg

South Central Bell

Telephone

Standard

Western Union

Toll-free number,

1-800-325-5100

Second

Once daily

Once daily

Patroit - Statesman

2,000

Louisville, New

Castle, Bedford,

and Carrollton,

Kentucky; Madison,

Indiana

Louisville, Eminence,

Carrollton, and

Shelbyville,

Kentucky; Madison,

Indiana

No

Louisville and

Lexington,

Kentucky;

Cincinnati, Ohio;

Indianapolis,

Indiana

Owenton transmitter

Channel 52

Louisville transmitter

Channel 68

Library Services

Public library - Henry County Public Library - Eminence, 4 miles from New Castle

Size of collection - 40,050 volumes

Circulation, 1981-82 - 209,529

Services - Bookmobile to New Castle, Campbellsburg and 14 other communities in Henry County plus stops at 3 schools, 16 book deposit stations, and 31 houses for shut-ins; films and projectors; records; periodicals lending; children's story hour; summer reading and film program; photo copy machine; local authors and Kentucky history collections; library headquarters for Kentuckiana Regional Library (7-county region), Interlibrary loan, and community meeting room

Religious Institutions

	<u>New Castle</u>	<u>Campbellsburg</u>
Number of churches -	8	6
Denominations -	Apostolic Pentecostal Baptist Christian Church of Christ Faith Temple Assembly of God Methodist	Apostolic Pentecostal Christian Methodist National Baptist Primitive Baptist Southern Baptist
Nearest Synagogues -	Louisville, 38 miles from New Castle	
Congregations -	Adath Israel (reform) Adath Jeshurum (conservative) Anshei Sfard (orthodox) Brith Sholom (reform) Keneseth Israel (orthodox)	

Financial Institutions

<u>Banks</u>	<u>Assets</u>	<u>Deposits</u>	<u>Statement Date</u>
United Citizens Bank and Trust Company	\$40,702,791.85	\$35,318,479.92	6/30/82

Hotels and Motels

	<u>Henry County</u>
Total number -	1
Total rooms -	6

Clubs and Organizations (Henry County)

Art Club
Beta Club
Boy Scouts
Chamber of Commerce
Daughters of the American Revolution
Democratic Women's Club
Explorer Scouts
4-H
Future Business Leaders of America (FBLA)
Future Farmers of America (FFA)
Future Homemakers of America (FHA)
Future Teachers of America (FTA)
Girl Scouts
Henry County Rod and Gun Club
Homemakers
Independent Order of Odd Fellows
Jaycees
Jaycettes
Lions
Little Kentucky River Sportsman Club
Little League
Masons
Optimist Club
Parent-Teachers Association (PTA)
Pony League
Rotary
Science Project Committee Club
Speech Club
Teen Democratic Club
Women's Club

RECREATION

Local

The construction of the new county-owned, Harry Hill Recreational Park, located one mile south of New Castle, was completed in the fall of 1982. The park includes two softball fields, playground area, basketball court, shelter house and restrooms, horseshoe court and a volleyball court. A public park, located in New Castle, contains a tennis court and a baseball diamond. Located 2 miles south of New Castle is the Henry County Fairgrounds, where the annual County Fair (usually held in July) features agricultural exhibits, rides and special events. Facilities at a private county club located a few miles north of the city includes a swimming pool and an 18-hole golf course.

Recreational facilities in Campbellsburg include a tennis court, basketball courts, and a baseball diamond located at the local elementary school. This area is now being developed into a public park.

Lake Jerico and Lake Jerico Recreation Area are located approximately 8 miles from both New Castle and Campbellsburg. Fishing and boating are favorite activities at this 136-acre lake. Private facilities are available for picnicking and tent and trailer camping.

Area (Within 40 miles)

The 809-acre General Butler State Resort Park is located 20 miles north of New Castle at Carrollton. The park includes a 30-acre lake, a boat dock, a 9-hole golf course, a miniature golf course, a swimming pool, playgrounds, shuffleboard, bicycle rentals, tennis courts, planned recreation, fishing, camping, horseback riding, lodge rooms or cottages, and gift shops. General Butler's family home, the Butler Mansion, has been restored and contains a museum of Ohio River lore.

The General Butler Ski Area, located at General Butler State Resort Park in Carrollton, opened during December of 1981. The 100-acre area, privately managed, provides complete facilities for the beginning and advanced skier, including nine slopes, five ski lifts and full snow-making capability. The ski center offers skiing instructions for adults and children, with a cafeteria, a rental shop, a repair shop, a retail ski shop and locker rooms all located in the new ski center building. The ski area has year-round activities including grass skiing during the spring, summer and fall, and the annual Kentucky Ski Derby for amateur ski club teams.

In Shelbyville, 16 miles south of New Castle, the Wakefield-Scearce Galleries features a fine collection of English antiques and rare and unusual silver. The well-known Science Hill Inn is located under the same roof. Additionally, the 325-acre Guist Creek Lake, which offers facilities for fishing, boating, picnicking and camping, is only 4 miles east of Shelbyville.

Louisville, 38 miles southeast of New Castle, offers a wide variety of recreational, sporting, and cultural events. Most notable is the running of the Kentucky Derby. The most prestigious thoroughbred horse race in America is held at historic Churchill Downs on the first Saturday in May. The Kentucky Derby was modeled after the Epsom Derby (Darby) held at Epsom Downs in Surrey County, England.

Other famous Louisville attractions are the renowned sternwheeler, the Belle of Louisville, (the Belle vies for honors in the Great Steamboat Race held annually during the Derby Festival); the Kentucky Derby Museum; the Louisville Zoological Gardens; the Museum of Natural History and Science; and the J. B. Speed Art Museum.

Seasonal performances of the arts are provided by Actors Theatre, the Louisville Ballet Company, the Kentucky Opera Association, the Louisville Bach Society, the Louisville Orchestra and Shakespeare-in-the-Park.

E. P. "Tom" Sawyer State Park, 38 miles southwest of New Castle, is a 400-acre park located in Louisville. Recreational facilities include an outdoor Olympic-size pool, a bathhouse, 12 lighted tennis courts, a picnic area, an archery range, and soccer fields. Planned recreation and a playground are offered year-round.

COMMUNITY IMPROVEMENTS

Recent

In April of 1982, the Henry County Water District #2 completed the construction of a 300,000-gallon storage tank. Total cost of the project was \$325,000.

The construction of the new county-owned, Harry Hill Recreational Park was completed in the fall of 1982. The \$103,000 park includes two softball fields, playground area, basketball court, shelter house and restrooms, horseshoe court and a volleyball court.

During 1982 several renovation and maintenance projects totaling \$210,000 were completed within the Henry County School System. The changes included moving the ninth grade from the high school to the middle school, modifying the interior of the middle school, remodeling the high school and the elementary school for energy saving purposes, and increasing the fuel storage capacity. In addition, the curriculum in mathematics, science and social studies was upgraded, a computer science center was started, and two new school buses were purchased.

The Lakeview Subdivision and Apartment Complex, located in Campbellsburg, was completed in May of 1980. The subdivision contains 32 units and the \$790,000 apartment complex contains 24 units.

A 54-unit apartment complex, located in New Castle, was recently completed. The project was financed by the U. S. Department of Housing and Urban Development to provide housing for the handicapped, elderly and low-income persons.

The Castle Creek Subdivision, which is located on the east side of New Castle, was recently annexed into the city.

The City of New Castle upgraded all the sidewalks in the business district in the summer of 1982.

The interior and exterior of the New Castle Fire Department building have been renovated at a cost of \$45,000.

The Lions Club and the City of Campbellsburg recently purchased and installed a new \$10,000 lighting system at the ballpark located at the elementary school.

The City of Campbellsburg purchased a new \$8,000 police cruiser in August of 1982.

Planned

Construction is scheduled to begin in 1984 on a new \$600,000 aerated facultative lagoon system sewage treatment plant in New Castle. The average daily design flow will be 100,000 gallons per day. In addition, a \$400,000 project to renovate and rehabilitate existing sewer lines is planned.

The New Castle Water Company plans to install a new 8-inch water main to be used as an alternate to the existing main. It will also help increase the water pressure in New Castle.

A 50-unit apartment complex for senior citizens is proposed for Campbellsburg. The \$2.4 million project is to be financed by the U. S. Department of Housing and Urban Development.

Construction of a 20-unit apartment complex, located in Campbellsburg, is scheduled to begin in the spring of 1983.

The City of Campbellsburg is planning to establish an agency that will provide transportation to senior citizens for a small fee.

The Lions Club and the City of Campbellsburg plan to develop a recreational park which will consist of picnic grills and tables, a community building, and a playground area.