

1995

Industrial Resources: Hopkins County - Madisonville and Earlington

Kentucky Library Research Collections
Western Kentucky University, spcol@wku.edu

Follow this and additional works at: https://digitalcommons.wku.edu/hopkins_cty

 Part of the [Business Administration, Management, and Operations Commons](#), [Growth and Development Commons](#), and the [Infrastructure Commons](#)

Recommended Citation

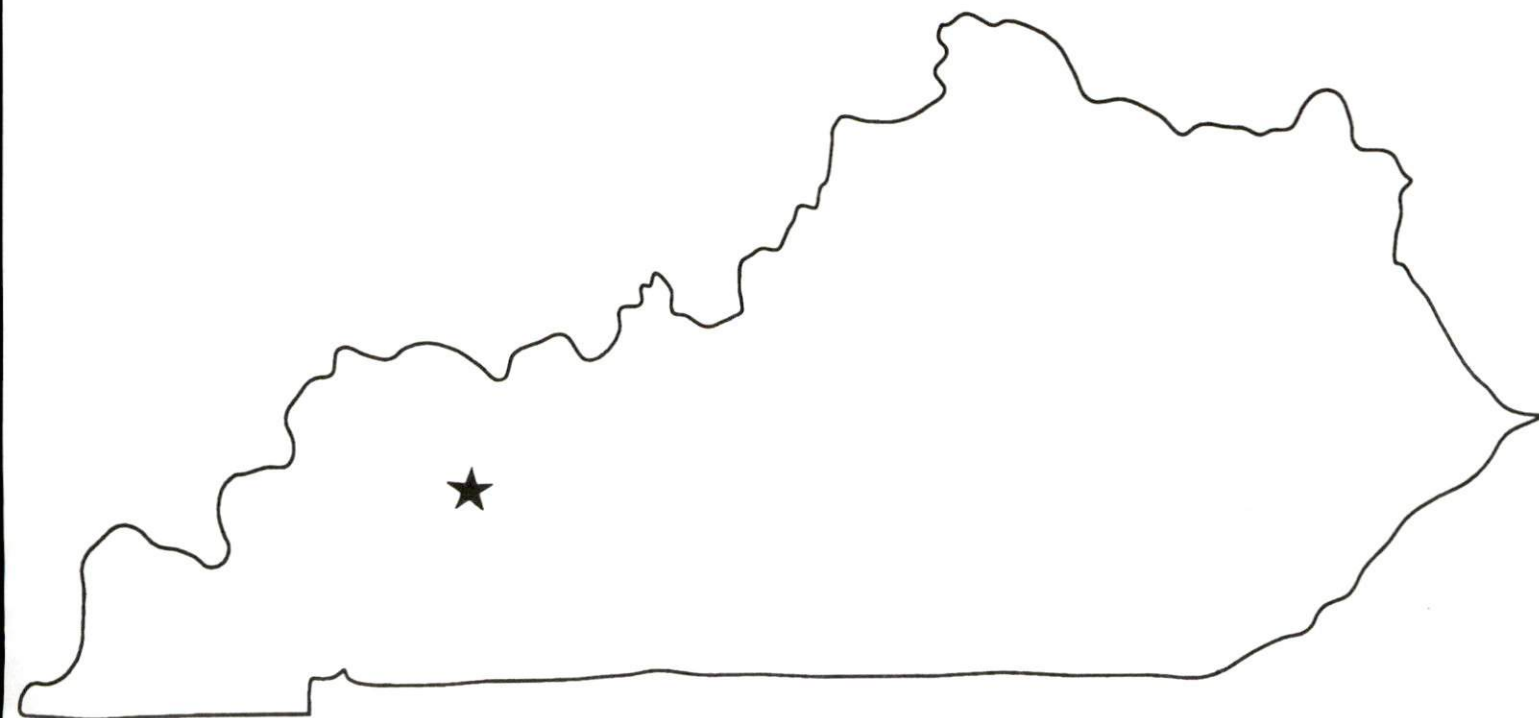
Kentucky Library Research Collections, "Industrial Resources: Hopkins County - Madisonville and Earlington" (1995). *Hopkins County*. Paper 16.
https://digitalcommons.wku.edu/hopkins_cty/16

This Report is brought to you for free and open access by TopSCHOLAR®. It has been accepted for inclusion in Hopkins County by an authorized administrator of TopSCHOLAR®. For more information, please contact topscholar@wku.edu.

Kentucky

**Resources For
Economic Development**

Madisonville & Earlington



Prepared by
The Kentucky Cabinet for Economic Development
Division of Research
in cooperation with
Madisonville-Hopkins County Economic Development Corporation

1995

Division Director - Ron Morgan; program manager - Keith Roberts; research - Keith Roberts; clerical - Wanda Sharp; graphics - Robert Owens. Cost of printing paid from state funds.

TABLE OF CONTENTS

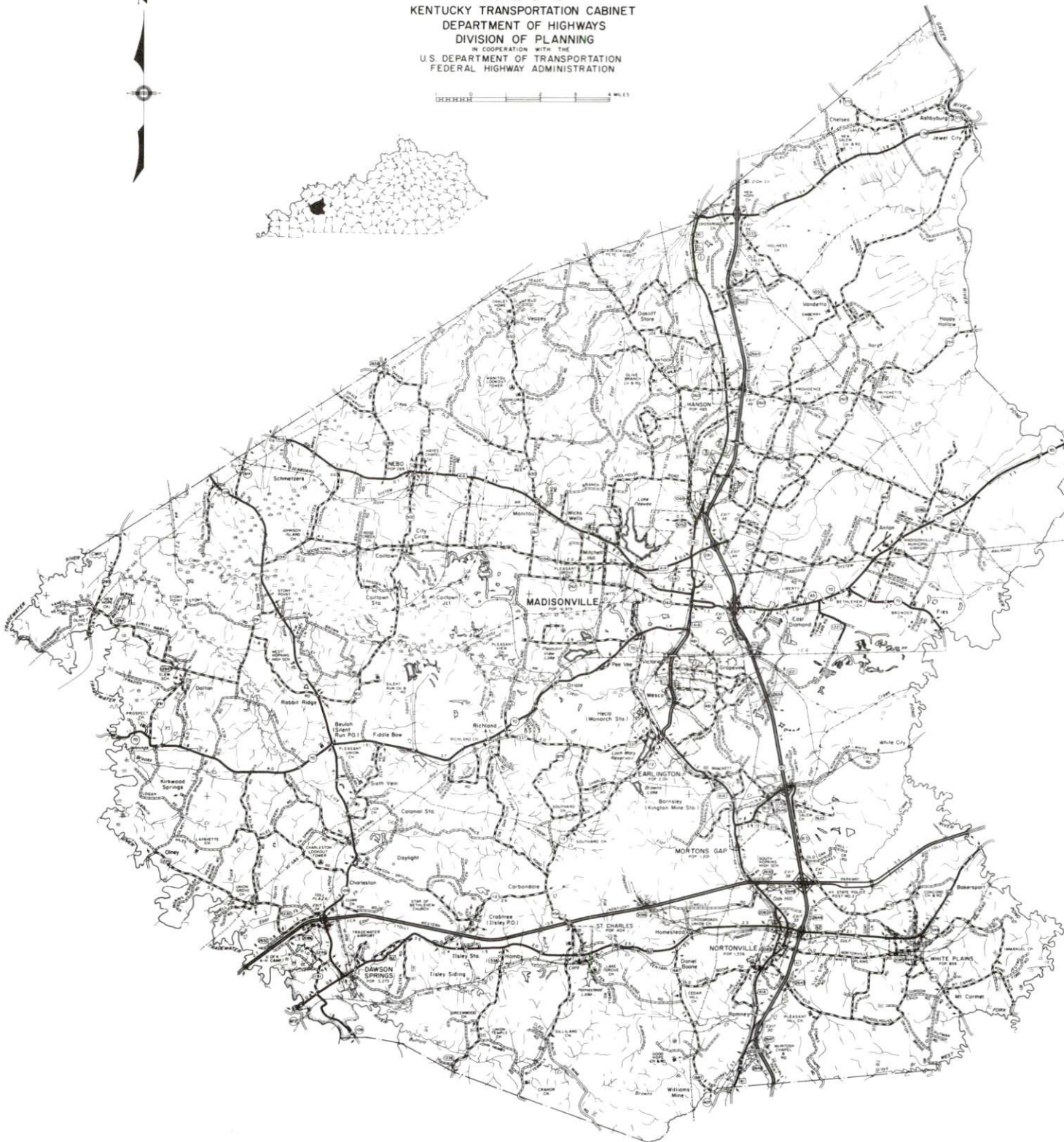
<u>Chapter</u>	<u>Page</u>
MADISONVILLE, KENTUCKY-A RESOURCE PROFILE	1
THE LABOR MARKET STATISTICS	2
Labor Market Area Map	2
Population	3
Population Projections	3
Estimated Labor Supply	3
Labor Force Characteristics of Residents, 1994	4
Selected Components of Nonagricultural Employment, by Place of Work, 1994	5
Per Capita Personal Income	6
Average Placement Wages	7
Average Weekly Wages of Workers Covered by Unemployment Insurance 1993 - Bar Chart	8
Average Weekly Wages by Industry, by Place of Work, 1993	9
EXISTING INDUSTRY	10
Madisonville Manufacturing Firms, Their Products and Employment	10
Selected Non-Manufacturing Employers	11
Recent Industrial Developments	12
Labor Organizations in Manufacturing Firms	12
Selected Industrial Services	13
TRANSPORTATION	14
Highways	14
Truck Service	14
Selected Market Location Map	15
Rail	16
Air	16
Water	17
UTILITIES	18
Electricity	18
Natural Gas.....	19
Public Water Supply.....	19
Sewerage	20
CLIMATE.....	21

<u>Chapter</u>	<u>Page</u>
LOCAL GOVERNMENT.....	22
Structure.....	22
Planning and Zoning.....	22
Local Fees and Licenses.....	22
State and Local Property Taxes.....	23
EDUCATION.....	24
Public Schools.....	24
Nonpublic Schools.....	24
Area Colleges and Universities.....	24
Vocational Training.....	26
OTHER LOCAL FACILITIES.....	28
Local Medical Personnel.....	28
Hospitals.....	28
Other Medical Facilities and Services.....	28
Banks and Savings & Loan Associations.....	28
Newspapers.....	28
Telephone Service.....	28
RECREATION.....	29

GENERAL HIGHWAY MAP
HOPKINS COUNTY
KENTUCKY

PREPARED BY THE
KENTUCKY TRANSPORTATION CABINET
DEPARTMENT OF HIGHWAYS
DIVISION OF PLANNING
IN COOPERATION WITH THE
U.S. DEPARTMENT OF TRANSPORTATION
FEDERAL HIGHWAY ADMINISTRATION

0 1 2 3 4 MILES



MADISONVILLE & EARLINGTON, KENTUCKY - A RESOURCE PROFILE

Madisonville, the county seat of Hopkins County, is located in the Western Kentucky Coal Field Region. Madisonville is located 49 miles south of Evansville, Indiana; 104 miles northwest of Nashville, Tennessee; 142 miles southwest of Louisville, Kentucky; and 198 miles southeast of St. Louis, Missouri. Madisonville had an estimated 1992 population of 16,489.

Earlington, located four miles south of Madisonville, is situated in the south central portion of Hopkins County. In 1992, Earlington had an estimated population of 1,800.

Hopkins County, with a land area of 550 square miles, has a topography that ranges from nearly flat along the broad valleys of the Green Pond, and Tradewater Rivers to hilly in the southern and central parts of the county. Hopkins County had an estimated 1992 population of 46,356.

The Economic Framework - The total number of Hopkins County residents employed in 1994 averaged 19,341. Manufacturing firms in the county reported 2,704 employees; wholesale and retail trade provided 4,087 jobs; 4,628 people were employed in service occupations; state and local government accounted for 2,499 employees; contract construction firms provided 694 jobs; and 1,023 people were employed by mining and quarrying operations.

Labor Supply - There is a current estimated labor supply of 17,325 persons available for industrial jobs in the labor market area. In addition, from 1996 through 2000, 13,224 young persons in the area will become 18 years of age and potentially available for industrial jobs.

Transportation - Madisonville is served directly by the Pennyriple Parkway, U.S. Highways 41 and 41A, and Kentucky Highways 70 and 85. Twenty-nine common carriers serve Madisonville and/or Earlington. One trucking company maintains its corporate headquarters in Madisonville. Rail service is provided to Madisonville and Earlington by CSX Transportation. Madisonville is also served by the Paducah and Louisville Railway. The nearest scheduled commercial airline service is available at Evansville Regional Airport near Evansville, Indiana, 52 miles north of Madisonville. The Madisonville Municipal Airport, located six miles east of Madisonville, has one paved 5,000-foot runway.

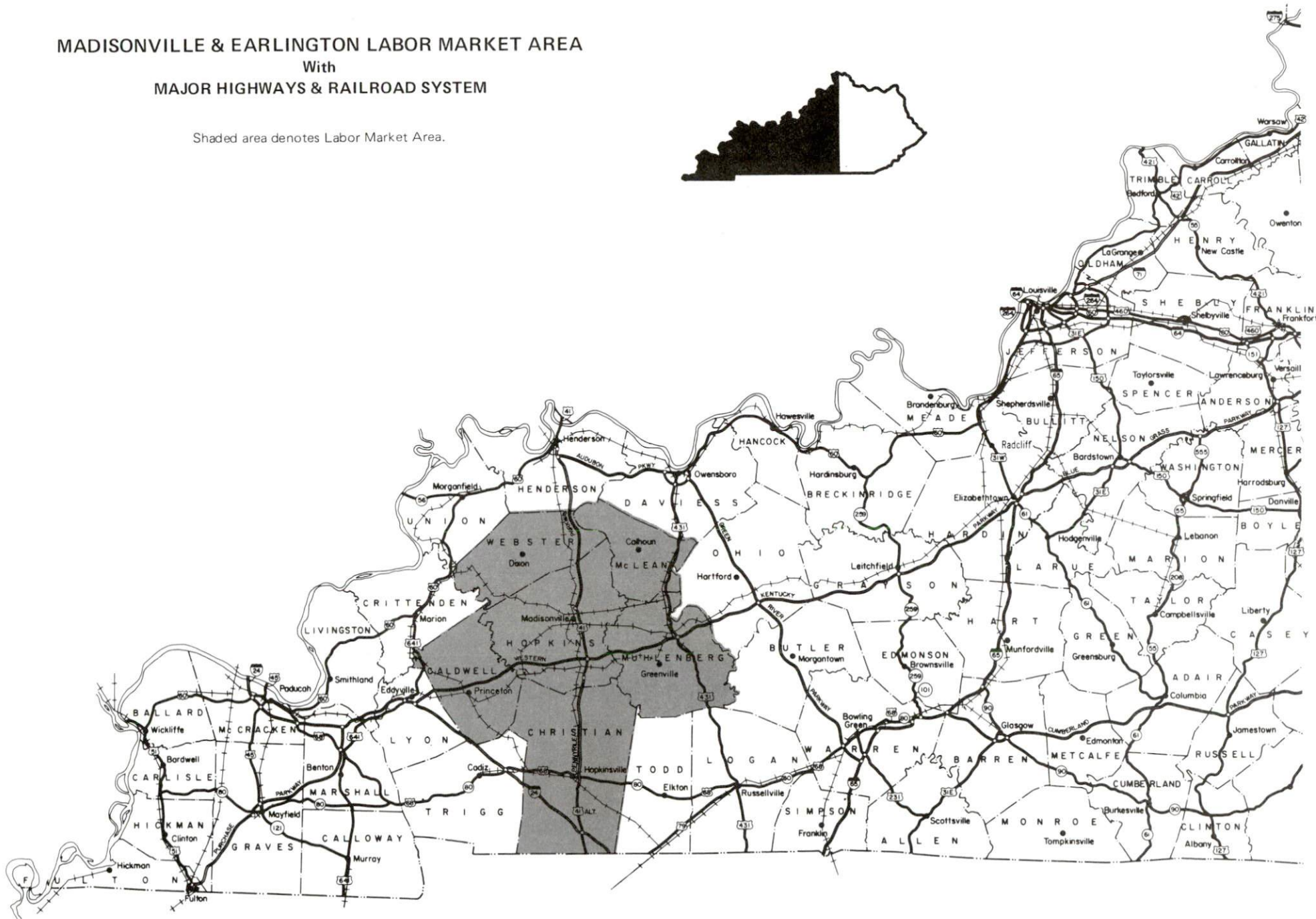
Power and Fuel - Electric power is provided to Madisonville by the Madisonville Municipal Light Department. Earlington and southern Hopkins County are provided electric power by the Kentucky Utilities Company. The remainder of Hopkins County is served by the Green River Electric Corporation and the Henderson-Union Electric Cooperative. Natural gas service is provided to Madisonville and Earlington by the Western Kentucky Gas Company.

Education - Primary and secondary education is provided to Madisonville, Earlington, and Hopkins County by the Hopkins County School System, which is accredited by the Southern Association of Colleges and Schools. The Madisonville Community College, located in Madisonville, is a member of the University of Kentucky Community College System. Madisonville Community College offers Associate Degrees in Arts, Science, and Applied Sciences. Four universities, two senior colleges and three other community colleges are located within 90 miles of Madisonville. Vocational education is available locally from the Madisonville Regional Technology Center.

MADISONVILLE & EARLINGTON LABOR MARKET AREA

With
MAJOR HIGHWAYS & RAILROAD SYSTEM

Shaded area denotes Labor Market Area.



LABOR MARKET STATISTICS

The Madisonville & Earlington Labor Market Area includes Hopkins County and the adjoining Kentucky counties of Caldwell, Christian, McLean, Muhlenberg, and Webster.

POPULATION

	<u>1992*</u>	<u>1990</u>	<u>1980</u>	<u>1970</u>
Labor Market Area	182,483	183,200	183,685	157,451
Madisonville	16,489	16,203	16,979	15,332
Earlington	1,800	1,833	2,011	2,321
Hopkins County	46,356	46,126	46,174	38,167

*Population estimates.

Source: U.S. Department of Commerce, Bureau of the Census.

POPULATION PROJECTIONS

	<u>1995</u>	<u>2000</u>	<u>2010</u>	<u>2020</u>
Labor Market Area	181,788	187,555	196,405	203,657
Hopkins County	46,542	47,600	49,109	50,252

Note: Population projections are from High Growth Series forecast.

Source: University of Louisville, Urban Studies Center, State Data Center.

ESTIMATED LABOR SUPPLY

	<u>Current</u>			<u>Future</u>
	<u>Total</u>	<u>Unemployed</u>	<u>Not in Labor Force</u>	<u>Becoming 18 years of age 1996 thru 2000</u>
Labor Market Area*	17,325	5,379	11,946	13,224
Hopkins County	4,090	1,545	2,545	3,384

* Additional workers may be drawn from other nearby counties.

Note: Unemployed - persons unemployed and actively seeking work; Not in Labor Force - represents the number of persons who would enter the labor force if suitable employment were available (based on the assumption that persons in Kentucky would like to participate in the labor force in the same proportion that they do nationally). Underemployed persons (employed only 14 to 26 weeks during the year) are no longer included in labor surplus estimates.

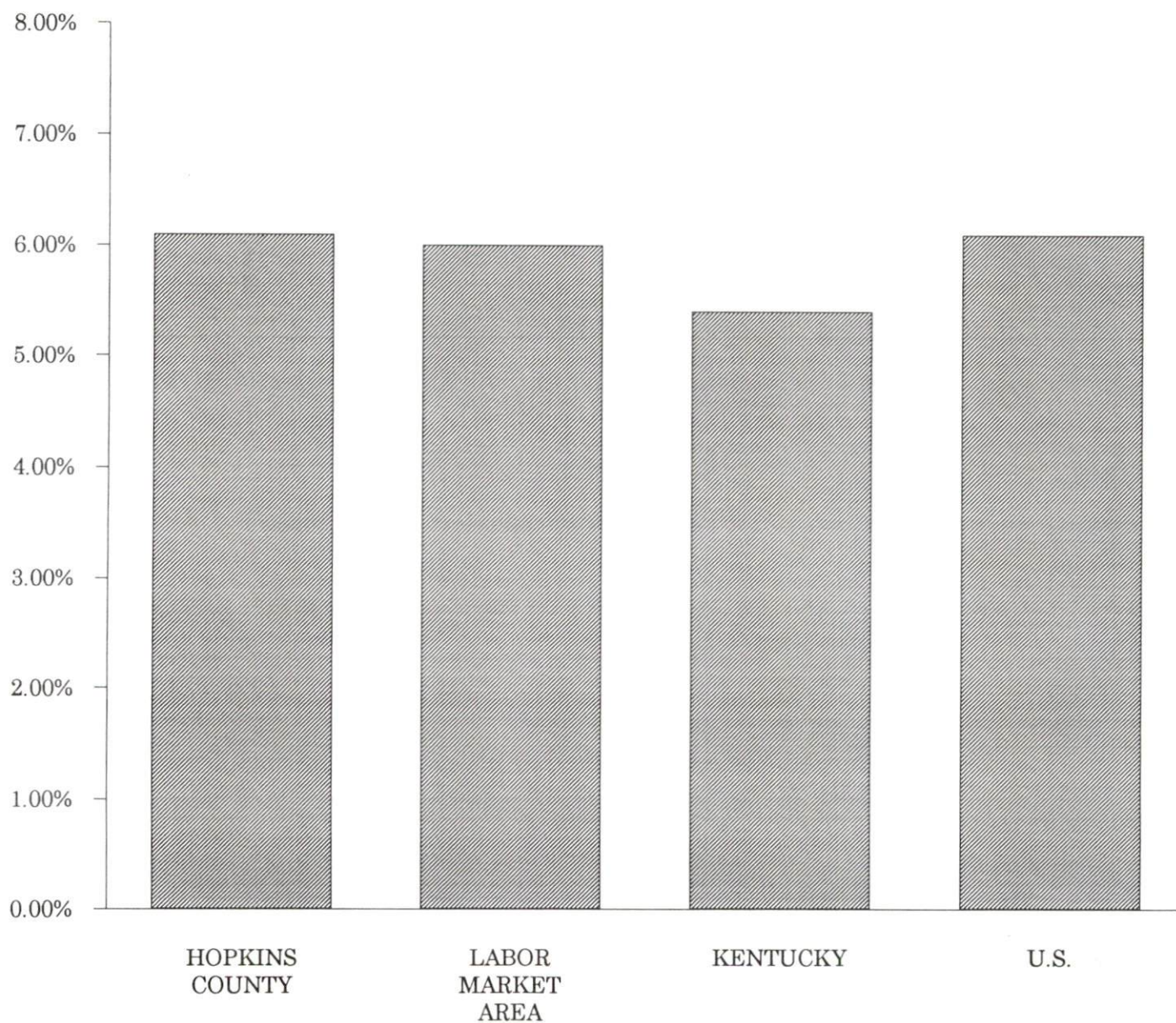
Sources: Kentucky Cabinet for Human Resources, Kentucky Labor Surplus Estimates by County, 1993. Kentucky Cabinet for Economic Development, Future Labor Supply Becoming 18 Years of Age, 1996 thru 2000.

LABOR FORCE CHARACTERISTICS OF RESIDENTS, 1994

	<u>Hopkins County</u>	<u>Labor Market Area</u>
Civilian Labor Force	20,589	73,735
Employment	19,341	69,289
Unemployment	1,248	4,446
Rate of Unemployment (%)	6.1	6.0

Source: Kentucky Cabinet for Human Resources, Kentucky Labor Force Estimates, Annual Averages 1994.

UNEMPLOYMENT RATES 1994

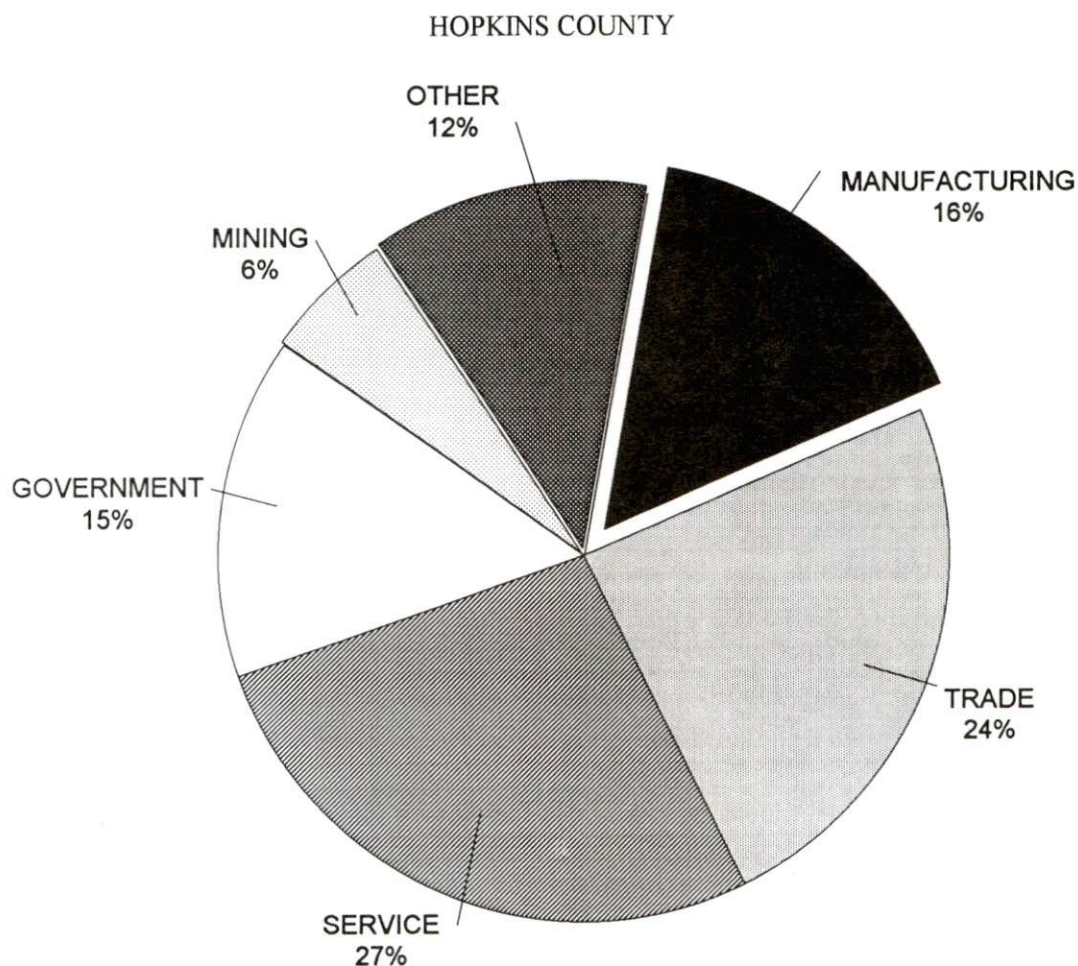


SELECTED COMPONENTS OF NONAGRICULTURAL EMPLOYMENT
BY PLACE OF WORK, 1994

	<u>Hopkins County</u>	<u>Labor Market Area</u>
All Industries (total)	17,195	56,090
Manufacturing	2,704	12,242
Wholesale & Retail Trade	4,087	13,615
Services	4,628	11,801
State/Local Government	2,499	8,601
Contract Construction	694	1,817
Mining & Quarrying	1,023	2,970

Note: Excludes domestic workers, railway workers, certain nonprofit corporations, majority of federal government workers, and self-employed workers.

Source: Kentucky Cabinet for Human Resources, Average Monthly Workers Covered by Kentucky Unemployment Insurance Law, 1994.

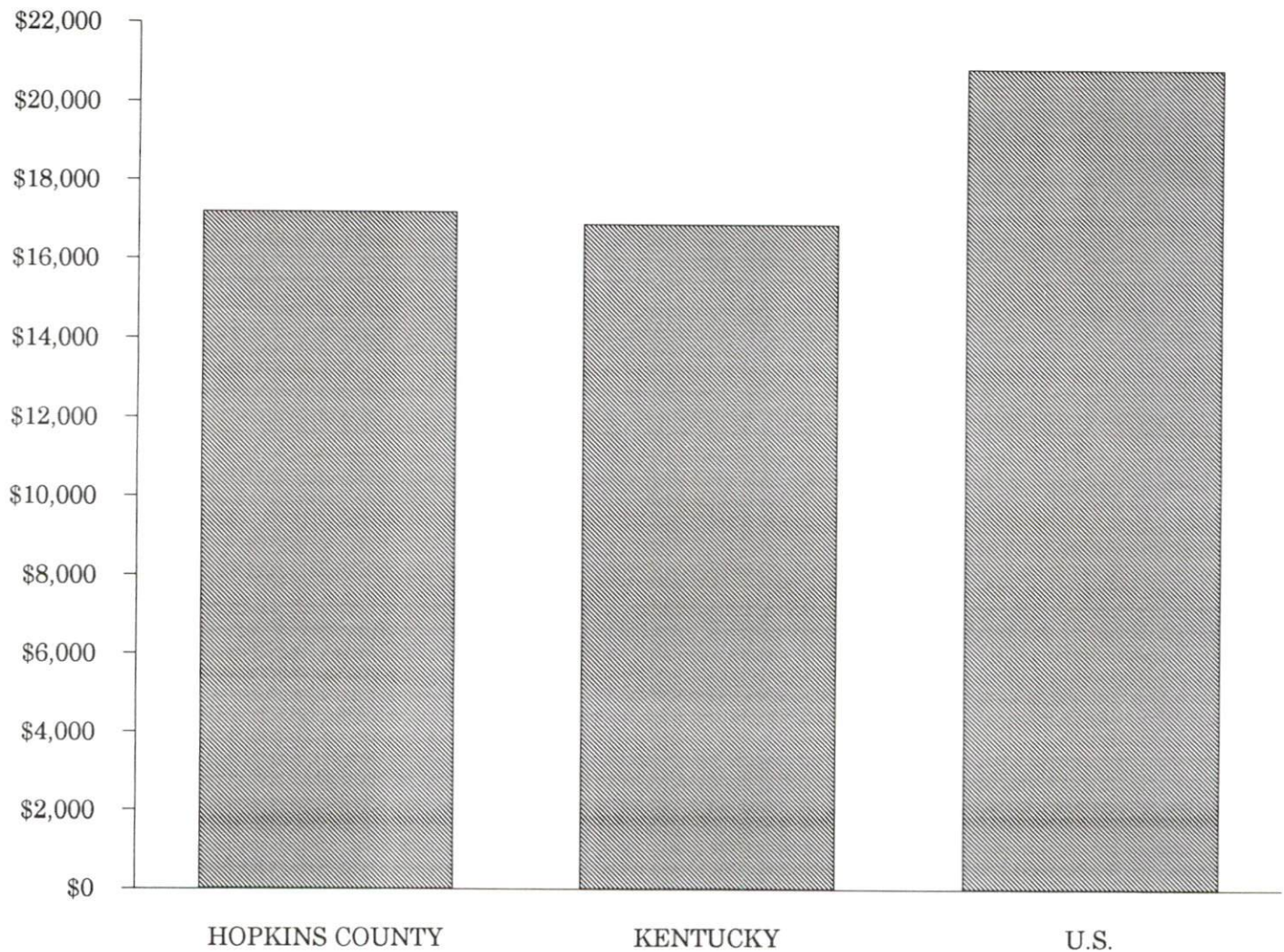


PER CAPITA PERSONAL INCOME

<u>Area</u>	<u>1989</u>	<u>1993</u>	<u>Percent Change</u>
Hopkins County	\$15,011	\$17,207	14.6
Labor Market Area Range	\$10,835 - \$15,011	\$13,462 - \$17,207	-
Kentucky	\$13,756	\$16,889	22.8
U.S.	\$17,690	\$20,800	17.6

Source: U.S. Department of Commerce, Bureau of Economic Analysis, Regional Economic Information System.

PER CAPITA PERSONAL INCOME 1993



AVERAGE PLACEMENT WAGES

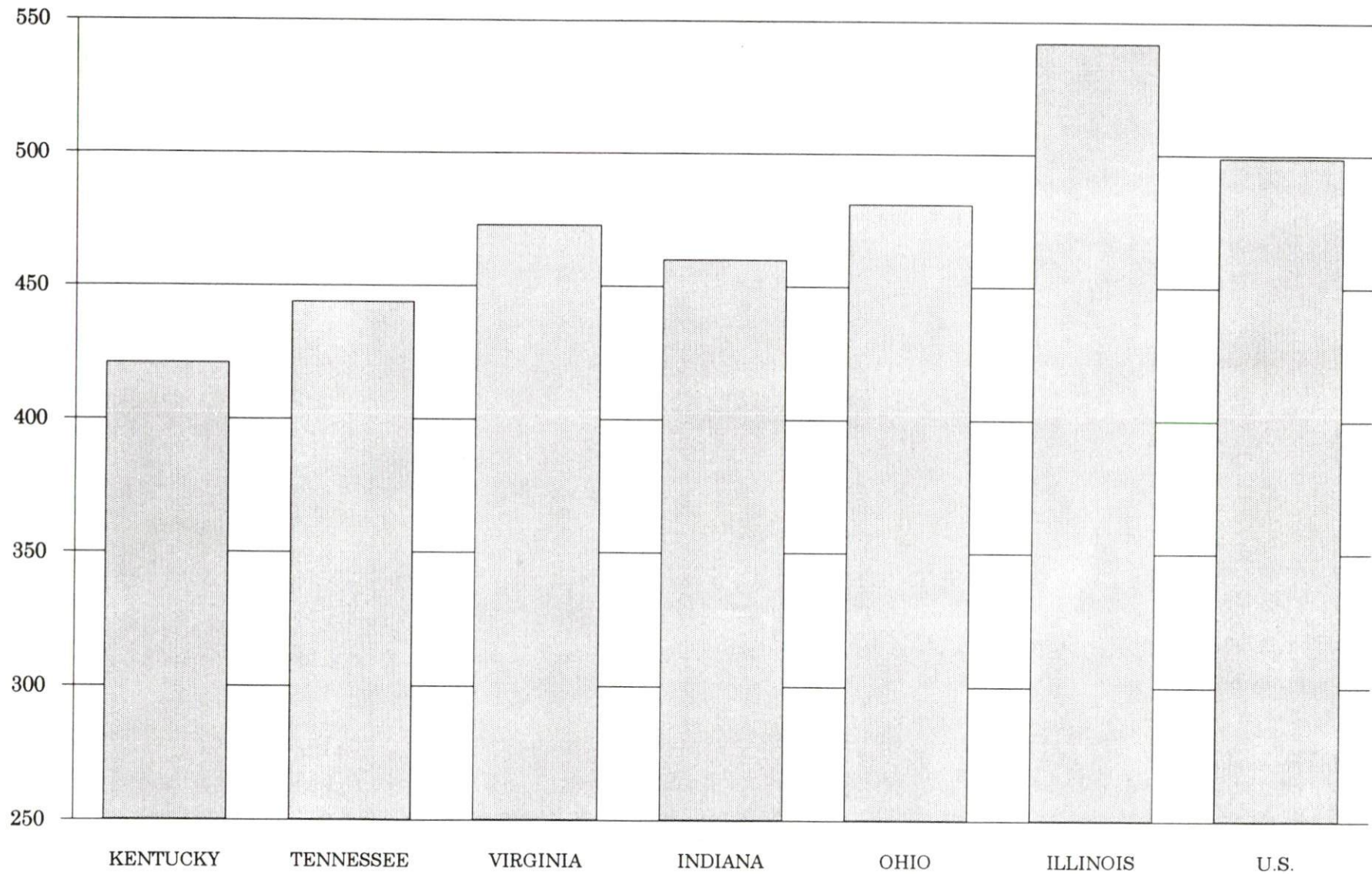
Hopkins County is served by the Madisonville local office of the Kentucky Department for Employment Services. The focus of the following data is on job placements made by the Madisonville local office and may therefore be used as an indicator of the wages which employers in the area pay new employees. During the twelve months which ended on June 30, 1995, the local employment office filled 1,375 job openings in various occupational categories. The average hourly wage for selected occupational categories were:

<u>OCCUPATIONAL CATEGORY</u>	<u>NUMBER OF PLACEMENTS</u>	<u>AVERAGE WAGE(\$)</u>
All Occupations	1,375	5.30
Clerical	249	5.30
Sales	62	4.82
Services (excluding domestic)	249	4.39
Agricultural, Fishery, Forestry, etc.	49	5.38
Processing	184	7.75
Machine Trades	22	5.05
Bench Work	300	4.26
Structural	76	6.22
Motor Freight/ Transportation	58	6.07
Packaging and Materials Handling	86	5.24
Other	1	4.25

The Madisonville local office also serves Crittenden, and Muhlenberg Counties. The above occupational categories are taken from the Dictionary of Occupational Titles published by the U.S. Department of Labor.

Source: Kentucky Cabinet for Human Resources, Department for Employment Services.

**AVERAGE WEEKLY WAGES OF WORKERS COVERED BY
UNEMPLOYMENT INSURANCE - 1993**



AVERAGE WEEKLY WAGES BY INDUSTRY
BY PLACE OF WORK, 1993*

	<u>Hopkins County</u>	<u>Kentucky (Statewide)</u>	<u>Tennessee</u>	<u>Virginia</u>
All Industries	\$404.48	\$421.30	\$444.00	\$473.00
Mining & Quarrying	843.93	691.01	605.00	684.00
Contract Construction	366.02	440.47	467.00	464.00
Manufacturing	500.65	541.18	522.00	543.00
Transportation, Communications & Public Utilities	505.80	567.94	572.00	648.00
Wholesale & Retail Trade	273.54	287.24	N/A	N/A
Finance, Insurance & Real Estate	402.15	449.89	495.00	523.00
Services	337.09	350.41	394.00	455.00
State/Local Government	419.60	413.84	N/A	N/A
	<u>Indiana</u>	<u>Ohio</u>	<u>Illinois</u>	<u>U. S.</u>
All Industries	\$460.00	\$481.00	\$542.00	\$499.00
Mining & Quarrying	757.00	645.00	738.00	816.00
Contract Construction	509.00	534.00	658.00	530.00
Manufacturing	629.00	670.00	667.00	623.00
Transportation, Communications & Public Utilities	561.00	600.00	682.00	643.00
Wholesale & Retail Trade	N/A	N/A	N/A	N/A
Finance, Insurance & Real Estate	527.00	568.00	748.00	693.00
Services	391.00	422.00	494.00	475.00
State/Local Government	N/A	N/A	N/A	N/A

* Wages for U.S. and surrounding states rounded to nearest dollar.

N/A Not Available.

Note: The average weekly wage for each category includes the salaries and wages of all persons working for that type business. For example, the manufacturing category includes both production workers and administrative personnel. Excludes domestic workers, railway workers, certain nonprofit corporations, majority of federal government workers, and self-employed workers.

Source: Kentucky Cabinet for Human Resources, Average Weekly Wages of Workers Covered by Kentucky Unemployment Insurance Law, 1993. U.S. Department of Labor, Bureau of Labor Statistics, Employment and Wages, Annual Averages, 1993, October, 1994.

EXISTING INDUSTRY

MADISONVILLE MANUFACTURING FIRMS, THEIR PRODUCTS AND EMPLOYMENT

<u>Firm</u> <u>(Establishment date)</u>	<u>Product</u>	<u>1994</u> <u>Average Employment</u>
A & B Sign Company, Inc. (1949)	Signs	5
Ahlstrom Filtration, Inc. (1973)	Air, oil and fuel filter paper	83
American Printing Company (1948)	Offset printing, commercial printing, color brochures	13
Austin Powder Company (1948)	Explosives	18
Automotive Industries, Inc. (1994)	Automotive parts	150
Bowles Tool & Die Company, Inc. (1966)	Fabricated metal parts, tools, dies, jigs, fixtures, molds	20
Carhartt Midwest, Inc. (1980)	Men's work clothing	350
Clayton-Hall Printing Company (1964)	Job printing, tickets, business forms	5
Dr. Pepper Bottling Company (1938)	Soft drinks	35
Electro Cycle (1989)	Aluminum recycling	30
General Electric Company Aircraft Engine Group (1970)	Aircraft turbine blades, vanes	800
Goldenrod Dairy Foods UC Milk Company, Inc. (1927)	Plastic milk jugs, fruit juices, fluid milk and cultured buttermilk	166
Hanner Machine Company, Inc. (1976)	Hydraulic cylinders	18
Hibbs Electric (1991)	Coils for electric motors	30
Ice Products, Inc. (1983)	Block ice, fragmented ice	5
Joe Leasure & Sons, Inc. (1936)	Machine shop, mining equipment repair, CNC machining	17
Lebco, Inc. (1972)	Hydraulic cylinders, fluid power cylinders, special machinery	15
Madisonville Concrete (1966)	Ready-mixed concrete	36
Madisonville Log & Lumber Company, Inc. (1984)	Veneer lumber, mine timber, pallet stock, ties	28
Modern Welding Company, Inc. (1979)	Structural steel shapes, metal fabrication, mining arches and overcasts	27
Osram Sylvania, Inc., Kentucky Carbide (1974)	Tungsten carbide mining tips, carbide road tips	33

(Continued)

<u>Firm</u> <u>(Establishment date)</u>	<u>Product</u>	1994 <u>Average Employment</u>
Polyweave Packaging, Inc. (1983)	Wet-hole shot bags, explosives packaging	29
Precision Piping & Mechanical Inc. (1994)	Steel pipe assemblies & supports, structural steel	25
Rain Catchers (1980)	Aluminum gutters	4
Rite-Crete Concrete Products; Division of Woodruff Supply (1984)	Concrete dry mixes and mine sealants	9
Royal Brass & Hose (1966)	Hydraulic rebuilding, air hose fittings, hydraulic hose assemblies	32
Ruby Concrete Company (1945)	Precast concrete products, concrete block	17
Speed Queen Company (1968)	Commercial laundry tumblers	251
Sprint Print, Inc. (1978)	Commercial printing	12
T.S.P. Newspapers, Inc. The Messenger (1917)	Newspaper, offset printing	50
Trace Industries (1982)	Wood chair stock, wood camp stools and moving dollies, wood	25
Versnick Manufacturing Company (1945)	Cylinder sleeves, taper plugs, taps	30
Wolniak Machine, Inc. (1994)	Tool & die	30

Sources: Kentucky Cabinet for Economic Development, Division of Research; Madisonville-Hopkins County Economic Development Corporation.

SELECTED NON-MANUFACTURING EMPLOYERS

	1994 <u>Average Employment</u>
Regional Medical Center/Trover Clinic	2,100
Madisonville Community College	211
Lockheed Support System, Inc.	167
Western Kentucky Hospital Services, Inc.	75
Madisonville Health Technology Center	33

Source: Madisonville-Hopkins County Economic Development Corporation.

RECENT INDUSTRIAL DEVELOPMENTS

Automotive Industries Inc., Precision Piping & Mechanical Inc., and Wolniak Machine Inc. began operations in Madisonville during 1994. In addition, Speed Queen, General Electric, and Hibbs Electric completed major expansions. In total, these new locations and expansions created approximately 535 new jobs.

The Pennyryle Industrial Park, an 80-acre industrial site, was acquired by the Madisonville-Hopkins County Economic Development Corporation in 1995. Utilities, infrastructure, and rail spur are all available. The Madisonville Industrial Park has also experienced major growth in recent months.

The new Telecommunications/Economic Development Center is under construction in Madisonville. The 20,000 square-foot facility will provide a variety of services to area industry and business. In addition to providing state-of-the-art telecommunications, the Center will provide short-term space to new companies and provide training facilities. The Center will also house the offices of the Economic Development Corporation.

LABOR ORGANIZATIONS IN MANUFACTURING FIRMS

Union

International Brotherhood of
Boilermakers, Iron Ship
Builders, Blacksmiths,
Forgers and Helpers

International Union of Electronic,
Electrical, Technical, Salaried,
Machine and Furniture Workers,
AFL-CIO

United Garment Workers of
America, AFL-CIO

United Steelworkers of America,
AFL-CIO-CLC

United Association of Journeymen
and Apprentices of the Plumbing
and Pipe Fitting Industry of the
United States and Canada, AFL-CIO

Representing workers at:

Osram Sylvania, Inc.,
Kentucky Carbide

General Electric Company,
Aircraft Engine Group

Carhart Midwest, Inc.

Goldenrod Dairy Foods,
UC Milk Company, Inc.

Precision Piping & Mechanical, Inc.

SELECTED INDUSTRIAL SERVICES

<u>Types of Services</u>	<u>Location</u>	<u>Mileage from Madisonville</u>
Custom Plastics Producers	Dawson Springs, Kentucky	18
Electric Motor Repair	Crofton, Kentucky	15
Heat Treating Facilities	Hopkinsville, Kentucky	34
	Evansville, Indiana	49
Industrial Waste Removal	Madisonville, Kentucky	-
Machine Shops, Tool & Die	Madisonville, Kentucky	-
Metal Castings	Robards, Kentucky	33
	McHenry, Kentucky	36
Metal Finishers	Madisonville, Kentucky	-
Metal Service Centers	Madisonville, Kentucky	-
Millwrights & Riggers	Owensboro, Kentucky	46
	Evansville, Indiana	49

Sources: Kentucky Cabinet for Economic Development, Division of Research.

TRANSPORTATION

Highways

Madisonville is served directly by the Pennyrile Parkway, U.S. Highways 41 and 41A, and Kentucky Highways 70 and 85. All are "AAA"-rated (80,000-pound gross load limit) trucking highways. The Pennyrile Parkway, along with U.S. 41 and 41A, provides easy access to the Western Kentucky Parkway, nine miles south of Madisonville; Interstate 24, 45 miles south of Madisonville; and Interstate 64, 65 miles north of Madisonville.

Earlington is served directly by U.S. Highway 41A and Kentucky Highway 112. The Pennyrile Parkway is located five miles north of Earlington.

HIGHWAY MILES FROM MADISONVILLE, KENTUCKY, TO SELECTED MARKET CENTERS

City	Highway Miles	City	Highway Miles
Atlanta, GA	345	Los Angeles, CA	1,991
Baltimore, MD	723	Louisville, KY	142
Birmingham, AL	291	Nashville, TN	104
Chicago, IL	338	New Orleans, LA	609
Cincinnati, OH	242	New York, NY	901
Cleveland, OH	489	Pittsburgh, PA	529
Detroit, MI	497	St. Louis, MO	198
Knoxville, TN	273		

Note: Mileage computations are via the best interstate or primary highways, not necessarily the most direct route of travel.

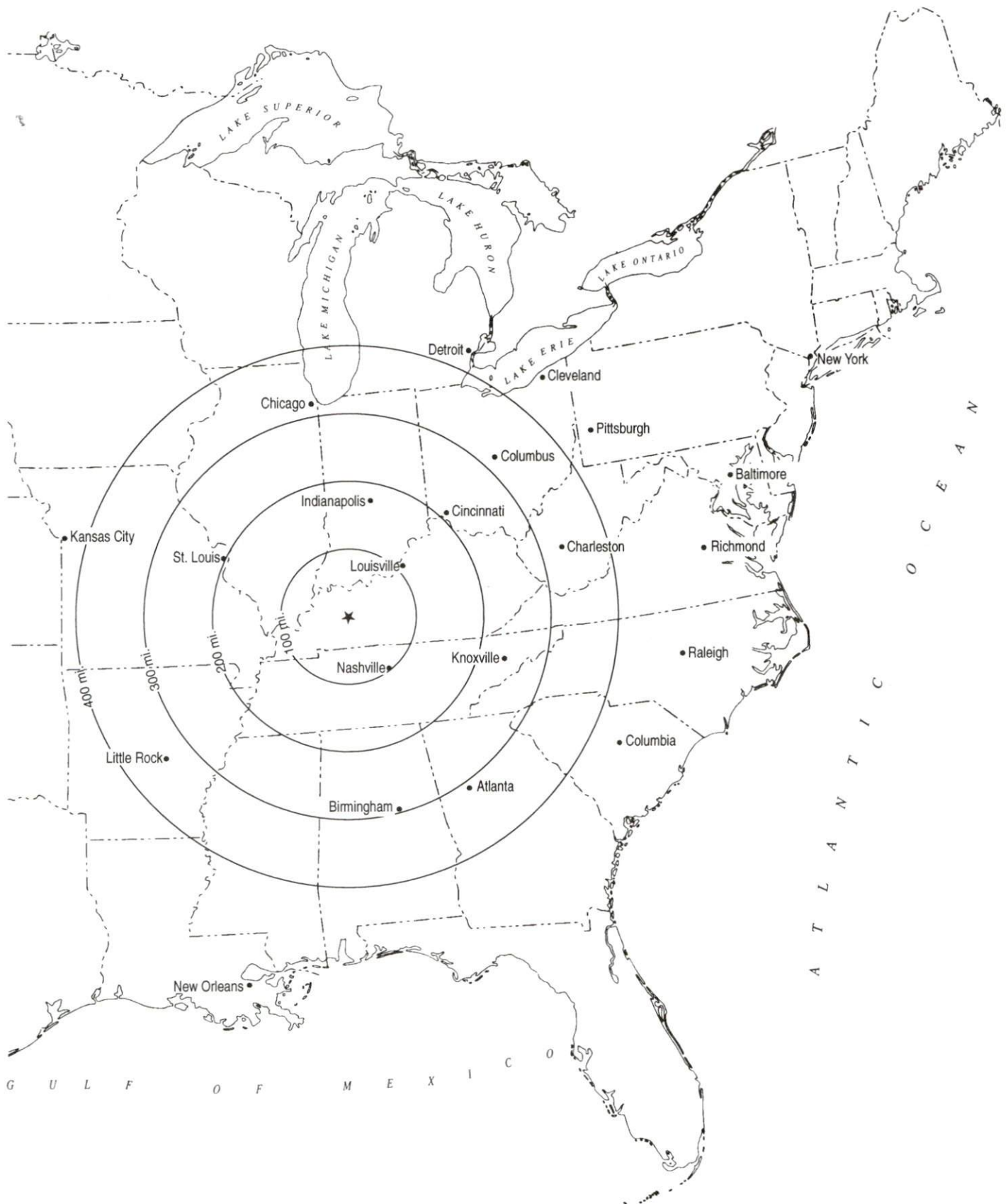
Sources: Rand McNally Standard Highway Mileage Guide, 1990. Official Kentucky Mileage Map, 1988.

Truck Service

Twenty-nine trucking companies provide interstate and/or intrastate service to Madisonville and Earlington. Landstar Legion Trucking Company maintains its corporate headquarters in Madisonville and maintains a fleet of 1,600 trucks.

Source: American Motor Carrier Directory, Fall 1995.

Selected Market Centers



Rail

CSX Transportation provides main line rail service to Madisonville and Earlington. Main line rail service is also provided to Madisonville by the Paducah and Louisville Railway. The nearest intermodal facilities are available from CSX Transportation in Evansville, 49 miles north of Madisonville.

For details on routing, schedules, rates, and services contact:

Manager
Industrial Development
CSX Transportation
9420 Bunsen Parkway
Suite 212
Louisville, Kentucky 40220
(502) 499-3025

and/or

Vice President - Marketing and Sales
Paducah and Louisville Railway
1500 Kentucky Avenue
Paducah, Kentucky 42001
(502) 444-4341

Air

Local

Location:	Madisonville Municipal Airport 6 miles east of Madisonville
Runways:	1 paved
Length:	5,000 feet
Traffic	
Control:	Wind sock
Lighting:	Runway lighting dusk to dawn, rotating beacon, VASI 4, REIL
Services:	100LL octane, Jet-A; major and minor A & P repairs; tie downs, hangar; flight training

Nearest Scheduled Commercial Airline Service

Location:	Evansville Regional Airport 3 miles north of Evansville, Indiana; 52 miles north of Madisonville
Air Service:	Atlantic Southeast, ComAir, American Eagle, Northwest Airlink, TW Express, USAir US Air Express
Daily Arrivals & Departures:	98

Commuter air carrier service is provided by American Eagle and Northwest AirLink at the Owensboro-Daviess County Airport which is located three miles west of Owensboro, 46 miles north of Madisonville.

Water

The nearest navigable rivers to Madisonville are the Green and the Ohio Rivers, approximately 25 miles north and 39 miles north, respectively. Both rivers maintain a nine-foot navigation channel.

The Henderson County Riverport Authority operates port facilities on the Ohio River at Henderson, 39 miles north of Madisonville. The Riverport offers full port facilities, coal loading facilities, bulk and cargo handling, warehouse and yard storage, and intermodal transportation.

The Port Authority of Lyon County operates public facilities in the Lick Creek embayment on Barkley Lake, 49 miles southwest of Madisonville. The Port offers grain, crushed limestone, and coal loading facilities, coal storage, public dock with crane service, outside storage area, mooring facilities, harbor service, and truck scales.

The Owensboro Riverport Authority operates a public riverport on the Ohio River at Owensboro, 46 miles northeast of Madisonville. Facilities include more than 100,000-square-feet of general commodity warehousing, two six-hundred thousand gallon liquid storage tanks, inside storage, a four-acre asphalt storage pad for outside storage, a coal preparation plant with a loading capacity of 2,000 tons per hour and a 12-acre stock pile area, two 110-ton cranes, eight mooring dolphins and rail service.

UTILITIES

Electricity

Company serving **Madisonville** - Madisonville Municipal Light Department
Source of power - Kentucky Utilities Company
For industrial rates contact:

Madisonville Municipal Light Department
P.O. Box 704
Madisonville, Kentucky 42431
(502) 821-0903

Company serving **Earlington and southern Hopkins County** - Kentucky Utilities Company
Source of power - Kentucky Utilities Company
For industrial rates contact:

Economic Development Department
Kentucky Utilities Company
One Quality Street
Lexington, Kentucky 40507
(606) 255-2100

Company serving **portions of northern Hopkins County** - Green River Electric Corporation
Source of power - Big Rivers Electric Corporation
For industrial rates contact:

Green River Electric Corporation
311 Fairview Drive
P.O. Box 1389
Owensboro, Kentucky 42302
(502) 926-4141 Fax (502) 685-2279

Company serving **portions of western Hopkins County** - Henderson - Union Electric Cooperative
Source of power - Big Rivers Electric Corporation
For industrial rates contact:

Henderson - Union Electric Cooperative
6402 Old Corydon Road
P.O. Box 18
Henderson, Kentucky 42420
(502) 826-3991 or (800) 844-4832

Natural Gas

Company serving **Madisonville and Earlington** - Western Kentucky Gas Company
Source of supply - Texas Gas Transmission Corporation
For rates and supplies contact:

Western Kentucky Gas Company
P.O. Box 866
Owensboro, Kentucky 42302-0866
(502) 685-8069

Public Water Supply

Company serving **Madisonville** - Madisonville Municipal Utilities
P.O. Box 704
Madisonville, Kentucky 42431
(502) 824-2145

Source - Four lakes supplemented by 24-inch lines to Green River
Treatment plant capacity- Plant A 8,000,000 gallons per day
Plant B 2,000,000 gallons per day
Average daily consumption - 4,100,000 gallons
Peak daily consumption - 4,800,000 gallons
Storage capacity - 6,100,000 gallons
Water pressure - 30 psi to 80 psi

Company serving **Earlington** - City of Earlington Water Department
103 West Main Street
Earlington, Kentucky 42410
(502) 383-5121

Source - Loch Mary Lake
Treatment plant capacity- 500,000 gallons per day
Source of treated water - South Hopkins Water District
Maximum amount available - 100,000 gallons per day (emergency use)
Average daily consumption - 110,000 gallons
Peak daily consumption - 200,000 gallons
Storage capacity - 278,000 gallons
Water pressure - 40 psi to 100 psi

Sewerage

Company serving Madisonville - Madisonville Municipal Utilities
1000 McCoy Avenue
Madisonville, Kentucky 42431
(502) 821-3717

Design capacity - 4,500,000 gallons per day
Average daily flow - 4,000,000 gallons
Type of treatment - Secondary
Treated effluent discharged into - Flat Creek

Madisonville Municipal Utilities is constructing a new 6.0 million gallon-per-day wastewater treatment plant. The new treatment plant will replace the existing facility and is scheduled to be complete in the Fall 1996. Cost of the plant will be approximately \$11 million.

Company serving Earlington - City of Earlington Sewer Department
103 West Main Street
Earlington, Kentucky 42410
(502) 383-5121

Treated effluent discharged into - Lines connecting to Madisonville Wastewater Treatment Plant

CLIMATE

Hopkins County

Temperature

Normal (30-year record)	55.70 degrees
Average annual 1993	56.30 degrees
Record highest, July 1954 (53-year record)	105.00 degrees
Record lowest, February 1951 (53-year record)	-23.00 degrees
Normal heating degree days (30-year record)	4,729
(Heating degree day totals are the sums of negative departures of average daily temperatures from 65 degrees F.)	

Precipitation

Normal (30-year record)	41.55 inches
Mean annual snowfall (53-year record)	13.30 inches
Total precipitation 1993	35.81 inches
Mean number days precipitation (.01 inch or more) (53-year record)	115.40
Mean number days thunderstorms (53-year record)	45.30

Prevailing Winds (through 1963)

South-Southwest

Relative Humidity (32-year record)

1 a.m.	79 percent
7 a.m.	82 percent
1 p.m.	59 percent
7 p.m.	63 percent

Source: U.S. Department of Commerce, Environmental Science Services Administration, Climatological Data, 1993. Station of record: Evansville, Indiana.

LOCAL GOVERNMENT

Structure

The cities of Madisonville and Earlington are served by a mayor/city council form of government. The mayors each serve four-year terms and the council members serve two-year terms. Hopkins County is served by a county judge/executive and seven magistrates.

Planning and Zoning

Joint agency - Hopkins County Joint Planning Commission

Participating cities - Madisonville, Earlington, Dawson Springs, Hanson, Nortonville, Mortons Gap

Zoning enforced - Madisonville, Earlington, Hanson, and Dawson Springs

Subdivision regulations enforced - All areas

Local codes enforced - Hopkins County has only codes for multi-family, commercial and industry/Madisonville has codes for all developments

Mandatory state codes enforced - Kentucky Plumbing Code, National Electric Code, Kentucky Boiler Regulations and Standards, Kentucky Building Code (modeled after BOCA code)

Local Fees and Licenses

The City of Madisonville levies an occupational license fee of 1.5% on wages, salaries, and commissions of individuals and on net profits of businesses within the city.

The City of Earlington levies annual fees of \$10.75 for business licenses, \$15.75 for unloading licenses, and \$10.00 for auto stickers.

PROPERTY TAXES

The Kentucky Constitution requires the state to tax all classes of taxable property, and state statutes allow local jurisdictions to tax only a few classes. All locally taxed property is subject to county taxes and school district taxes (either a county school district or an independent school district). Property located inside of city limits may also be subject to city property taxes.

Special local taxing jurisdictions (fire protection districts, watershed districts, and sanitation districts) levy taxes within their operating areas (usually a small portion of community or county).

Property assessments in Kentucky are at 100% fair cash value. Accounts receivable are taxed at 85% of face value.

STATE PROPERTY TAX RATES PER \$100 VALUATION

<u>Selected Classes of Property</u>	<u>1994 State Rate</u>	<u>Local Taxation Permitted</u>
Real Estate	\$0.172	YES
Manufacturing Machinery	0.150	NO
Pollution Control Equipment	0.150	NO
Inventories		
Raw Materials	0.050	NO
Goods in Process	0.050	NO
Finished Goods	0.050	YES
Motor Vehicles	0.450	YES
Other Tangible Personal Property	0.450	YES
Intangibles (Accounts Receivable, Money on Hand)	0.250	NO

LOCAL PROPERTY TAX RATES PER \$100 VALUATION, 1994

<u>Taxing Jurisdiction</u>	<u>Real Estate</u>	<u>Finished Goods & Tangibles</u>	<u>Motor Vehicles</u>
Hopkins County	\$0.1480	\$0.1460	\$0.1475
School Districts:			
Hopkins County	0.5770	0.5770	0.5470
Cities:			
Madisonville	0.0146	0.0195	0.1500
Earlington	0.2450	0.2880	0.3090

EDUCATION

Public Schools

Hopkins County

Total Enrollment (Fall, 1994)	7,547
Accreditation	Southern Association of Colleges and Schools
Pupil-Teacher Ratio (1991-92)	18.0-1
Percent High School Graduates to College (1991-92)	48.7
Expenditures Per Pupil (1991-92)	\$3,332.55

The Hopkins County School System is presently constructing a new high school. Hopkins County Central High School is scheduled to be complete in the fall of 1996.

Nonpublic Schools

<u>School</u>	<u>Enrollment</u>	<u>Grades</u>
Christ The King	190	KG-08
Life Christian Academy	70	KG-12
Madisonville Christian School	16	KG-12

Area Colleges and Universities

<u>Name</u>	<u>Location (Miles distant)</u>	<u>Enrollment (Fall, 1993)</u>
Madisonville Community College	Madisonville, Kentucky	2,513
Hopkinsville Community College	Hopkinsville, Kentucky (34)	3,115
Henderson Community College	Henderson, Kentucky (39)	1,343
University of Southern Indiana	Evansville, Indiana (49)	7,551
University of Evansville	Evansville, Indiana (49)	3,164
Brescia College	Owensboro, Kentucky (46)	704
Kentucky Wesleyan College	Owensboro, Kentucky (46)	784
Owensboro Community College	Owensboro, Kentucky (46)	2,648
Western Kentucky University	Bowling Green, Kentucky (80)	15,335
Murray State University	Murray, Kentucky (90)	8,120

Madisonville Community College

Madisonville Community College is a member of the University of Kentucky Community College System. Prescribed curricula lead to the Associate in Arts, the Associate in Science, or the Associate in Applied Science degrees. The following two-year Associate in Applied Science degree programs are offered: Accounting Technology, Biomedical Equipment Technology, Business Technology, Computer Information Systems, Engineering Technology, Laser Optics, Nursing, Office Administration, Respiratory Care, and Radiologic Technology. Most courses offered are university-parallel courses and are readily transferrable to other four-year institutions. In addition to degree programs, the college also offers continuing education programs for business and industry in employee and professional development through its office of Community Development.

The Fine Arts Center at Madisonville Community College offers the community a rich diversity of artistic talent and quality entertainment. In addition to concerts, plays, and exhibits the center is available for meetings, receptions, seminars, and more. The Fine Arts Center contains a 1,061-seat auditorium and a 7,300 square-foot lobby for visual arts presentations.

VOCATIONAL-TECHNICAL TRAINING

Kentucky Tech schools are operated by the Cabinet for Workforce Development and provide secondary (Sec) and postsecondary (P/S) vocational-technical training.

	Location (Mileage from Madisonville)	Number of Program Offerings	Cumulative Enrollment 1994-1995		Approximate Number Completing Long-Term Programs Annually
<u>Kentucky Tech Schools</u>					
Madisonville Regional Technology Center	Madisonville	11	<u>Sec</u> 97	<u>P/S</u> 6,190	42
Madisonville Health Technology Center	Madisonville	11	<u>Sec</u> 105	<u>P/S</u> 284	139
*School of Industrial Electricity			<u>Sec</u> 46		

Customized Training

The Kentucky Tech system, through its Training and Development Coordinators, will provide technical assistance and will identify and develop low-cost customized training programs and services for both established and prospective businesses. Businesses needing customized training programs should contact a Training and Development Coordinator located at the Kentucky Tech-West Region, 750 North Laffoon Street, Madisonville, Kentucky 42431, (502) 824-7552.

Assessment Services

Kentucky Tech Career Connections offers to business, education, and government agencies customized assessment in career inventories, interest inventories, pre-hire assessment, psychomotor skills and academic potential. Career Connections is located on the Madisonville Regional Technology Center campus, (502) 825-5059.

Tech Prep

Tech Prep is a combined secondary and postsecondary program of studies that leads to an associate degree or diploma in a vocational-technical field. Madisonville-North Hopkins High School in conjunction with Madisonville Regional Technology Center and Madisonville Community College has established Tech Prep programs in business, auto, construction, and welding technology.

Adult Education Services

For adults needing basic skills, business and industry requesting basic skills upgrading for existing employees, or students seeking a GED, adult education services are available through the Hopkins County Learning Center located in the Madisonville Library, Hall Street Family Education Center, Madisonville Community College and Madisonville Regional Technology Center.

* Not operated by Cabinet for Workforce Development.

Articulation

Articulation agreements developed between various colleges and universities and the Kentucky Tech system allow students to earn credits to be used when matriculating to degree programs at a college or university. Madisonville Regional Technology Center and Madisonville HTC each have articulation agreements with Madisonville Community College. Madisonville HTC also has articulation agreements in most of its health programs with other universities throughout the state.

Bluegrass State Skills Corporation

The Bluegrass State Skills Corporation, an independent public corporation created and funded by the Kentucky General Assembly, provides programs of skills training to meet the needs of business and industry from entry level to advanced training, and from upgrading present employees to retraining experienced workers.

The Bluegrass State Skills Corporation is a major source for skills training assistance for a new or existing company. The Corporation works in partnership with other employment and job training resources and programs, as well as Kentucky's economic development activities, to package a program customized to meet the specific needs of a company.

OTHER LOCAL FACILITIES

Madisonville and Earlington Medical Personnel

Physicians - 106
Dentists - 22

Hospitals

<u>General Hospitals</u>	<u>Location</u>	<u>Beds</u>
Regional Medical Center of Hopkins County	Madisonville	410

Medical staff - 86 active staff physicians; 16 courtesy staff physicians; 295 registered nurses; and 74 licensed practical nurses

The Merle M. Mahr Cancer Center is located directly adjacent to the Regional Medical Center of Hopkins County and is a complete cancer center. Comprehensive chemotherapy and radiation therapy can be provided at a location close to other major health care facilities.

Regional Medical Facilities

Trover Clinic - A multi-specialty outpatient diagnostic clinic with over 100 physicians and 400 employees, clinic services available in 28 major specialties; hemodialysis facilities available, and 242 examination rooms.

Trover Clinic Foundation in Madisonville operates Kentucky's only school for nurse anesthetists-The Kentucky School of Nurse Anesthesia. The school was funded in part by a \$150,000 federal grant. The accomplishment was a collaborative effort among the Foundation, its hospital division Regional Medical Center, Trover Clinic, Murray State University, and the Kentucky Cabinet of Workforce Development.

Other Medical Facilities and Services

Hopkins County Public Health Department
Salmon Clinic

Banks and Savings & Loan Associations

Citizens Bank & Trust Company
Farmers Bank and Trust Company
First Federal Savings Bank of Kentucky
First United Bank of Hopkins County, Inc.
Liberty Bank
Madisonville Building and Loan Association

Newspapers

The Messenger (Daily)

Telephone Service

South Central Bell

RECREATION

Local

Madisonville, Earlington, and the surrounding area offer unlimited recreational opportunities. Madisonville, with 480 acres of park land provides year-round supervised recreational programs for all ages. Facilities at the 185-acre Municipal Park include a nine-hole golf course, a clubhouse containing a golf pro shop and a large clubroom, an olympic-size swimming pool, a ball park, a lighted basketball court and several small courts, playgrounds, shelter house, amphitheater, restrooms, tennis courts, fitness trail and picnic areas. Supervised baseball leagues, football teams, tennis clinics, and golf clinics are also sponsored by the city and local civic groups. Other recreational facilities include four indoor movie theaters, a 20-lane bowling alley, a roller-skating rink, a Youth Athletic Association sports complex with eight baseball diamonds on a 31-acre tract, and a YMCA.

Two private country clubs are located in Madisonville. The Madisonville Country Club, located on a 170-acre site at the southern edge of the city, has a clubhouse, 18-hole golf course, olympic-size swimming pool and bathhouse, and tennis courts. Lakeshore Country Club is located on 90 acres on the shores of Lake Peewee and present facilities include a clubhouse, 18-hole golf course and driving range, a double olympic-size swimming pool, bathhouse, tennis courts, and a boat dock.

Madisonville Community College serves as an important source of cultural events. The Pennyrile Performing Arts (presenting the Community Concert Series), the Children's Theater, and the Footlight Players, Inc., offer additional entertainment. The 1,061-seat Fine Arts Center is located on the campus of Madisonville Community College.

The Loch Mary Lake, a 147-acre lake at Earlington, not only offers boating and fishing, but also has a city park with playground equipment, a picnic area and boat ramp, Earlington also has three tennis courts, outdoor basketball courts, a baseball diamond, and three supervised baseball leagues.

Pennyrile Forest Resort Park near Dawson Springs is located 31 miles south of Madisonville. The 24-room lodge and cottages nestled within the trees provide excellent accommodations. Other facilities and activities include a dining room, a gift shop, rental rowboats and pedal boats, a nine-hole golf course, hiking trails, horseback riding, picnicking, playgrounds, shuffleboard, swimming at the lodge pool and a sand beach, and two tennis courts. Lake Beshear, only four miles from the lodge, sports good fishing.

Area (Within 65 miles)

John James Audubon State Park
Lake Malone State Park
Jefferson Davis Monument State Historic Site
Kentucky Dam Village State Resort Park
The Land Between the Lakes
Lake Barkley State Resort Park
Ben Hawes State Park
Riverside Downs Race Track
Ellis Park Thoroughbred Race Track