

1988

# Industrial Resources: Lincoln County - Stanford

Kentucky Library Research Collections  
Western Kentucky University, [spcol@wku.edu](mailto:spcol@wku.edu)

Follow this and additional works at: [https://digitalcommons.wku.edu/lincoln\\_cty](https://digitalcommons.wku.edu/lincoln_cty)



Part of the [Business Administration, Management, and Operations Commons](#), [Growth and Development Commons](#), and the [Infrastructure Commons](#)

---

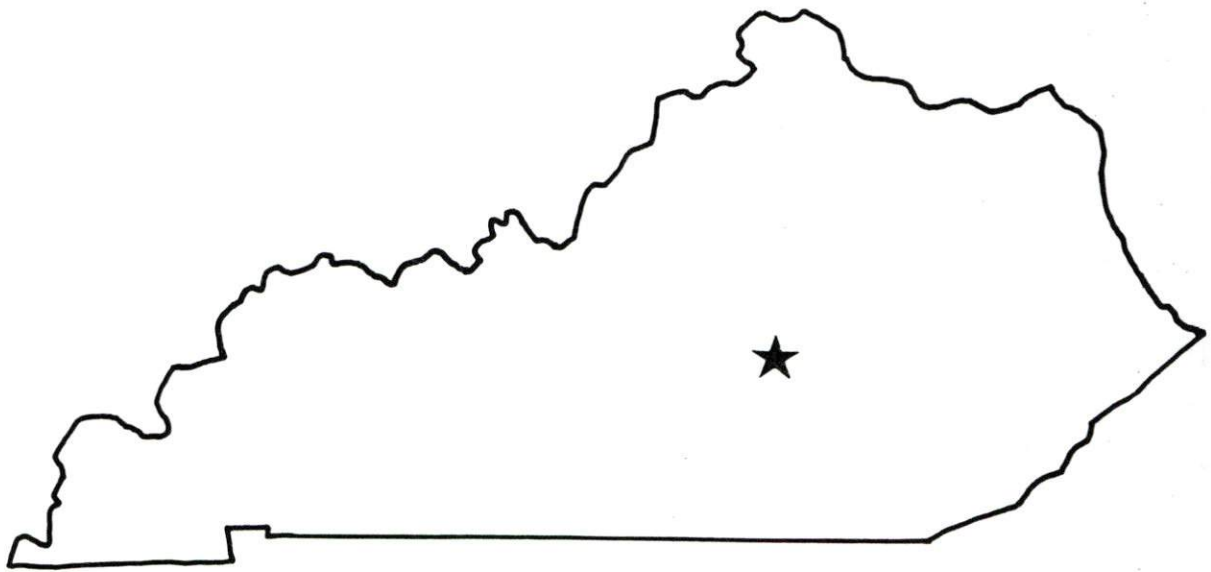
## Recommended Citation

Kentucky Library Research Collections, "Industrial Resources: Lincoln County - Stanford" (1988). *Lincoln County*. Paper 3.  
[https://digitalcommons.wku.edu/lincoln\\_cty/3](https://digitalcommons.wku.edu/lincoln_cty/3)

This Report is brought to you for free and open access by TopSCHOLAR®. It has been accepted for inclusion in Lincoln County by an authorized administrator of TopSCHOLAR®. For more information, please contact [topscholar@wku.edu](mailto:topscholar@wku.edu).

## RESOURCES FOR ECONOMIC DEVELOPMENT

# Stanford



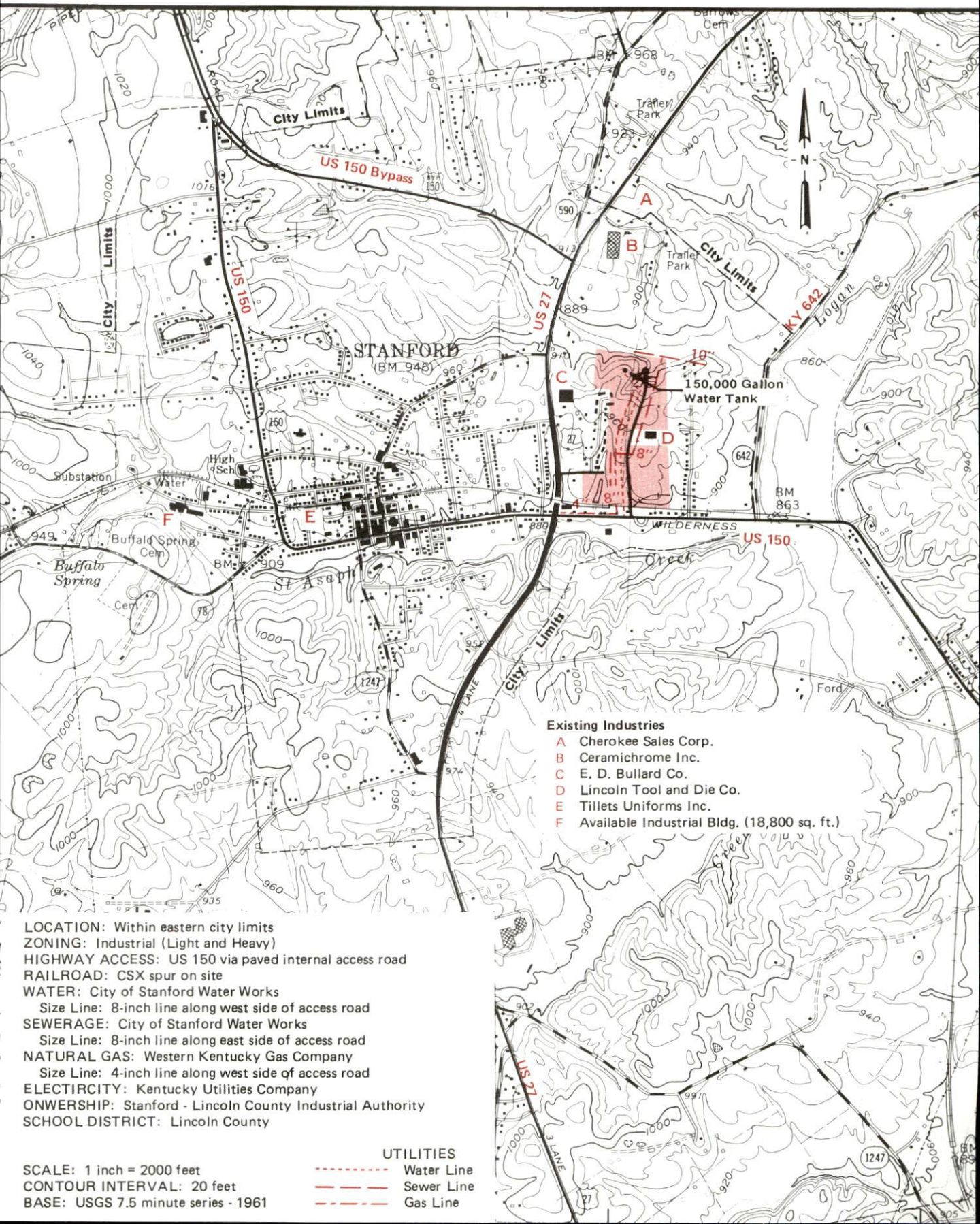
---

**KENTUCKY**  
Open for Business



# STANFORD, KENTUCKY --- Site 188 --- 46.5 Acres

For more information contact the Cabinet for Economic Development, Department of Business Development,  
Industrial Development & Marketing Division, Capital Plaza Tower, Frankfort, Kentucky 40601  
(502-564-7140)



RESOURCES FOR ECONOMIC DEVELOPMENT

STANFORD, KENTUCKY

Prepared by  
The Kentucky Department of Business Development  
Division of Research and Planning  
in cooperation with  
The Stanford/Lincoln County Chamber of Commerce

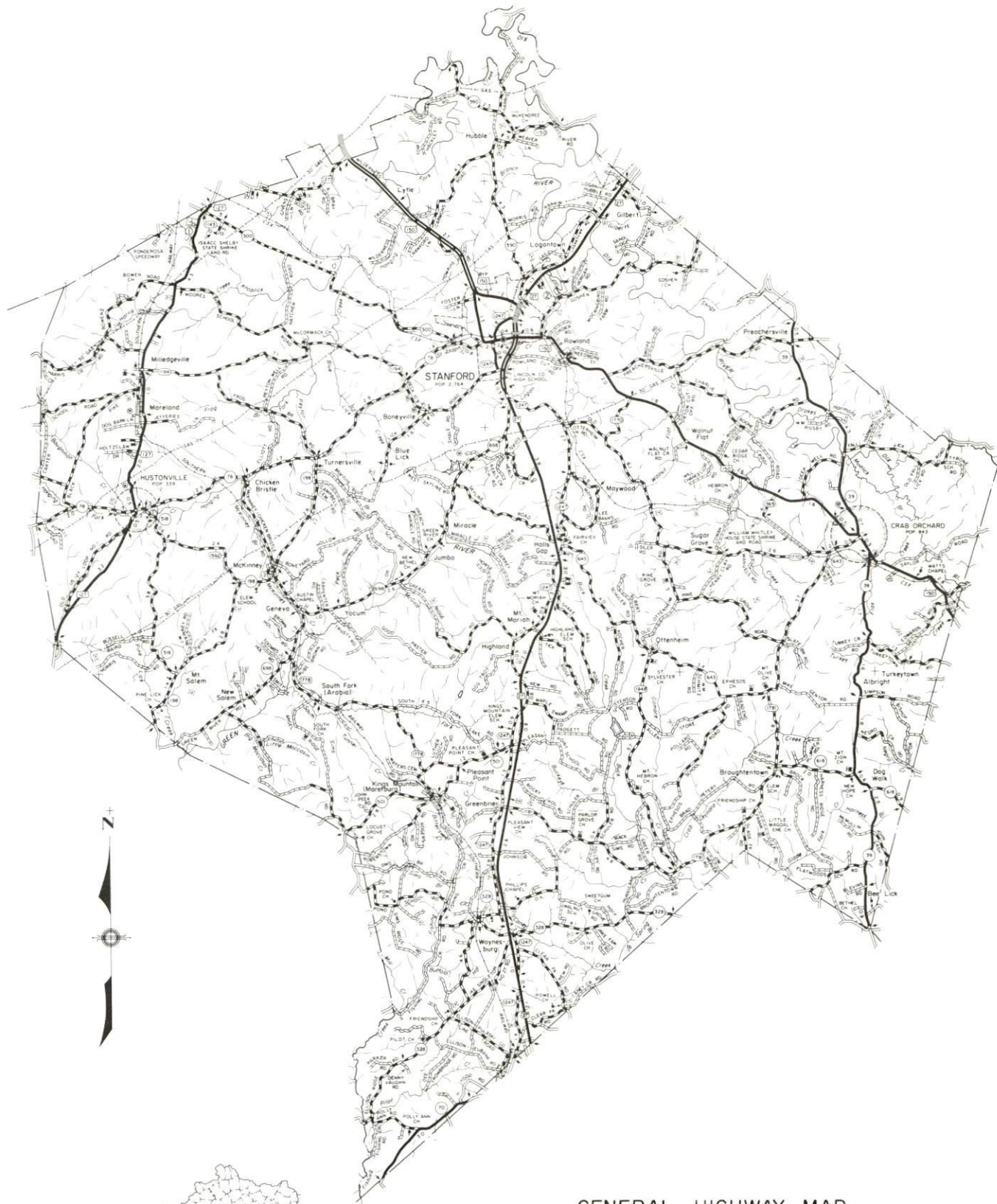
1988



## TABLE OF CONTENTS

<u>Chapter</u>	<u>Page</u>
INDUSTRIAL SITES . . . . .	i
STANFORD, KENTUCKY - A RESOURCE PROFILE . . . . .	1
THE LABOR MARKET STATISTICS . . . . .	2
Population . . . . .	2
Population Projections . . . . .	2
Labor Force Characteristics of Residents, 1987 . . . . .	3
Selected Components of Nonagricultural Employment, by Place of Work, 1986 . . . . .	3
Per Capita Personal Income . . . . .	4
Estimated Male Labor Supply . . . . .	5
Estimated Female Labor Supply . . . . .	5
Average Weekly Wages by Industry, by Place of Work, 1986 . . . . .	6
EXISTING INDUSTRY . . . . .	8
Stanford Manufacturing Firms, Their Products and Employment . . . . .	8
Labor Organizations in Manufacturing Firms . . . . .	9
Selected Industrial Services . . . . .	9
TRANSPORTATION . . . . .	10
Rail . . . . .	10
Highways . . . . .	10
Truck Service . . . . .	10
Air . . . . .	11
Air Express Service . . . . .	12
Water . . . . .	12
POWER AND FUEL . . . . .	13
Electricity . . . . .	13
Natural Gas . . . . .	14
Other Fuels . . . . .	14
WATER AND SEWERAGE . . . . .	15
Public Water Supply . . . . .	15
Sewerage . . . . .	16
CLIMATE . . . . .	17

<u>Chapter</u>	<u>Page</u>
LOCAL GOVERNMENT . . . . .	18
Structure . . . . .	18
Planning and Zoning . . . . .	18
Local Fees and Licenses . . . . .	18
State and Local Property Taxes . . . . .	19
Combined State and Local Rates Per \$100 Valuation, 1987 . . . . .	19
Safety . . . . .	20
Police . . . . .	20
Fire . . . . .	20
Rescue Service . . . . .	20
Refuse Collection and Disposal . . . . .	20
EDUCATION . . . . .	21
Public Schools . . . . .	21
Area Colleges and Universities . . . . .	22
Vocational Training . . . . .	23
HEALTH . . . . .	25
Local Medical Personnel . . . . .	25
Hospitals . . . . .	25
Other Medical Facilities . . . . .	25
Ambulance Service . . . . .	25
OTHER LOCAL FACILITIES . . . . .	26
Communications . . . . .	26
Library Services . . . . .	26
Religious Institutions . . . . .	26
Financial Institutions . . . . .	27
Hotels and Motels . . . . .	27
RECREATION . . . . .	28
COMMUNITY IMPROVEMENTS . . . . .	30



GENERAL HIGHWAY MAP  
**LINCOLN COUNTY**  
**KENTUCKY**

PREPARED BY THE  
KENTUCKY TRANSPORTATION CABINET  
DEPARTMENT OF HIGHWAYS  
DIVISION OF PLANNING  
IN COOPERATION WITH THE  
U.S. DEPARTMENT OF TRANSPORTATION  
FEDERAL HIGHWAY ADMINISTRATION

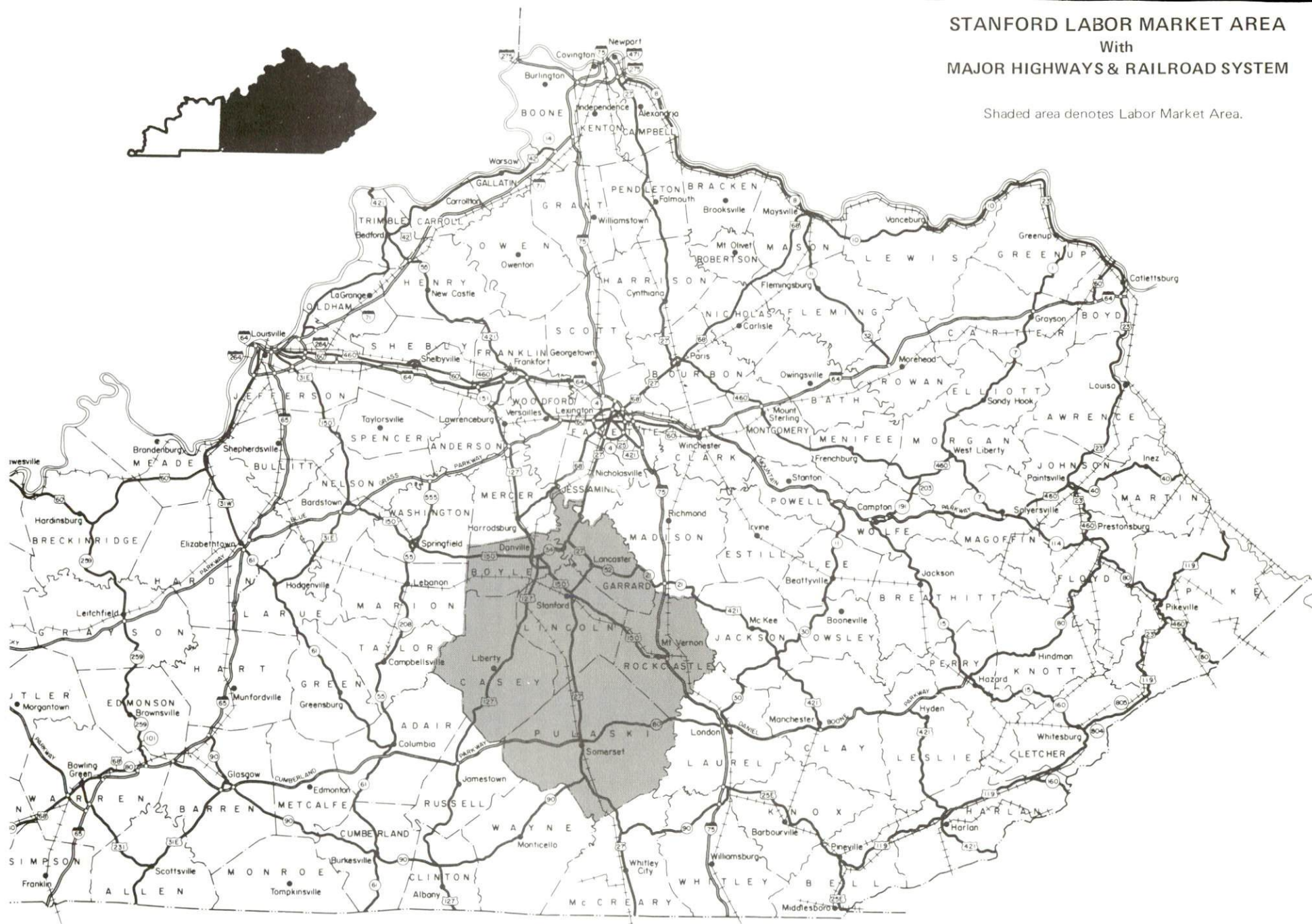
SCALE 1:25000  
0 1 2 3 4 MILES



# STANFORD LABOR MARKET AREA

## With MAJOR HIGHWAYS & RAILROAD SYSTEM

Shaded area denotes Labor Market Area.





## STANFORD, KENTUCKY - A RESOURCE PROFILE

Stanford, the county seat of Lincoln County, is located in south central Kentucky. Stanford is located 42 miles south of Lexington, Kentucky; 96 miles southeast of Louisville, Kentucky; 120 miles south of Cincinnati, Ohio; and 143 miles northwest of Knoxville, Tennessee. In 1986, Stanford had an estimated population of 2,700.

Lincoln County, with a land area of 337 square miles, is located in portions of both the Outer Blue Grass and Mississippian Plateaus Regions. In 1986, Lincoln County had an estimated population of 19,327.

**The Economic Framework** - The total number of Lincoln County residents employed in 1987 averaged 7,051. In 1986, manufacturing firms in the county reported 404 employees; wholesale and retail trade provided 490 jobs; 351 people were employed in service occupations; state and local government accounted for 562 employees; and contract construction firms provided 90 jobs.

**Labor Supply** - There is a current estimated labor supply of 10,128 men and 12,006 women available for industrial jobs in the labor market area. In addition, from 1988 through 1992, 5,508 young men and 5,130 young women in the area will become 18 years of age and potentially available for industrial jobs.

**Transportation** - CSX Transportation provides rail service to Stanford. U.S. Highways 27 and 150, both "AAA"-rated trucking highways, serve Stanford. Interstate 75, a major north-south multi-lane highway, is located 27 miles southeast of Stanford via U.S. 150. The Cumberland Parkway, a east-west multi-lane toll road located in south central Kentucky, is 34 miles south of Stanford via U.S. 127. The Bluegrass Parkway, a east-west multi-lane toll road located in central Kentucky, is 36 miles north of Stanford via U.S. 127. Sixteen trucking companies provide interstate and/or intrastate service to Stanford. The nearest scheduled commercial airline service is available at Blue Grass Airport near Lexington, 47 miles north of Stanford. Goodall Field, 8 miles northwest of Stanford, offers 2 paved runways, 4,600 and 2,500 feet long.

**Power and Fuel** - Electric power is provided to Stanford and Lincoln County by the Kentucky Utilities Company. Lincoln County is also provided electric power by the South Kentucky Rural Electric Cooperative Corporation and the Inter-County Rural Electric Cooperative Corporation, which are supplied by the East Kentucky Power Cooperative. Natural gas service is provided to Stanford by the Western Kentucky Gas Company, which is supplied by the Tennessee Gas Transmission Company. Five distributors of propane and four distributors of distillate fuel oil serve Stanford.

**Education** - Primary and secondary education is provided to Stanford and Lincoln County by the Lincoln County School System. Three universities, three senior colleges, one junior college and two community colleges are located within 45 miles of Stanford. Vocational education is available at the Somerset State Vocational-Technical School in Somerset, 34 miles south of Stanford, and at the Garrard County Area Vocational Education Center in Lancaster, 8 miles north of Stanford.

## LABOR MARKET STATISTICS

The Stanford Labor Market Area includes Lincoln County and the adjoining Kentucky counties of Boyle, Casey, Garrard, Pulaski and Rockcastle.

### POPULATION

Area	1986*	1980	1970	Percent Nonwhite
				1980
Stanford	2,700	2,764	2,474	11.6
Labor Market Area	135,228	129,566	108,450	-
Lincoln County	19,327	19,053	16,663	4.2
Boyle County	25,537	25,066	21,861	9.5
Casey County	14,962	14,818	12,930	0.3
Garrard County	11,751	10,853	9,457	5.5
Pulaski County	48,897	45,803	35,234	1.5
Rockcastle County	14,754	13,973	12,305	0.3

\* Population estimates.

Note: The 1980 city counts of population by race are provisional.

Sources: U.S. Department of Commerce, Bureau of the Census, 1980 Census of Population and Housing, March 1981; 1980 Census of Population, Number of Inhabitants. University of Louisville, Urban Studies Center, Population Unit, October 1985; University of Louisville, Urban Studies Center, State Data Center, June 1987 Newsletter, Vol. 5 No. 4.

### POPULATION PROJECTIONS

Area	1990	1995	2000	2010
Labor Market Area	141,456	147,553	152,125	158,350
Lincoln County	19,831	20,392	20,810	21,324
Boyle County	26,345	27,301	27,973	28,632
Casey County	15,776	16,244	16,615	17,133
Garrard County	11,849	12,252	12,543	12,899
Pulaski County	52,557	55,803	58,286	62,103
Rockcastle County	15,098	15,561	15,898	16,259

Source: University of Louisville, Urban Studies Center, Population Research Unit, How Many Kentuckians: Population Forecasts, 1980-2020, the 1986 Edition, Spring 1986.

LABOR FORCE CHARACTERISTICS OF RESIDENTS, 1987

	<u>Lincoln County</u>	<u>Labor Market Area</u>
Civilian Labor Force	8,315	58,315
Employment	7,051	51,991
Unemployment	1,264	6,324
Rate of Unemployment (%)	15.2	10.8

Source: Kentucky Cabinet for Human Resources, Kentucky Labor Force Estimates, Annual Averages, 1987.

SELECTED COMPONENTS OF NONAGRICULTURAL EMPLOYMENT  
BY PLACE OF WORK, 1986

	<u>Lincoln County</u>	<u>Labor Market Area</u>
All Industries (total)	2,029	34,127
Manufacturing	404	9,851
Wholesale & Retail Trade	490	8,903
Services	351	5,234
State/Local Government	562	5,877
Contract Construction	90	1,287
Mining & Quarrying	0	159

Note: Excludes domestic workers, railway workers, certain nonprofit corporations, majority of federal government workers, and self-employed workers.  
Source: Kentucky Cabinet for Human Resources, Average Monthly Workers Covered by Kentucky Unemployment Insurance Law, 1986.



PER CAPITA PERSONAL INCOME

<u>Area</u>	<u>1980</u>	<u>1984</u>	<u>Percent Change</u>
Lincoln County	\$ 5,077	\$ 7,129	40.4
Labor Market Area Range	\$4,232 - 7,643	\$5,871 - 10,428	-
Kentucky	7,644	10,232	33.9
U.S.	9,494	12,772	34.5

Sources: U.S. Department of Commerce, Bureau of Economic Analysis. Kentucky Economic Information System, June 1986.

ESTIMATED MALE LABOR SUPPLY  
STANFORD LABOR MARKET AREA

Area	Current				Future
	Total Male	Unemployed	Under-employed	Not in Labor Force	Becoming 18 years of age 1988 thru 1992
Labor Market Area*	10,128	4,035	3,134	2,959	5,508
Lincoln	1,391	772	379	240	821
Boyle	1,122	558	564	0	1,083
Casey	1,997	391	460	1,146	632
Garrard	840	353	287	200	434
Pulaski	3,933	1,518	1,042	1,373	921
Rockcastle	845	443	402	0	617

ESTIMATED FEMALE LABOR SUPPLY  
STANFORD LABOR MARKET AREA

Area	Current				Future
	Total Female	Unemployed	Under-employed	Not in Labor Force	Becoming 18 years of age 1988 thru 1992
Labor Market Area*	12,006	2,841	2,729	6,436	5,130
Lincoln	1,919	474	370	1,075	781
Boyle	1,208	542	613	53	992
Casey	2,036	257	292	1,487	599
Garrard	1,083	290	199	594	362
Pulaski	4,596	947	1,063	2,586	1,785
Rockcastle	1,164	331	192	641	611

\* Additional workers may be drawn from other nearby counties.

Note: Unemployed - persons unemployed and actively seeking work; Underemployed - persons employed but working only 14 to 26 weeks per year; Not in Labor Force - represents the number of persons who would enter the labor force if suitable employment were available (based on the assumption that persons in Kentucky would like to participate in the labor force in the same proportion that they do nationally).

Sources: Kentucky Cabinet for Human Resources, Kentucky Labor Supply Estimates by County, 1986. Kentucky Department of Economic Development, Future Labor Supply Becoming 18 Years of Age, 1988 thru 1992.

AVERAGE WEEKLY WAGES BY INDUSTRY  
BY PLACE OF WORK, 1986

	<u>Lincoln County</u>	<u>Boyle County</u>	<u>Casey County</u>
All Industries	\$222.70	\$318.77	\$224.89
Mining & Quarrying	0	616.59	*
Contract Construction	188.17	269.71	243.01
Manufacturing	234.70	427.20	187.53
Transportation, Communications & Public Utilities	276.70	427.69	473.06
Wholesale & Retail Trade	154.14	219.73	167.44
Finance, Insurance & Real Estate	257.75	330.56	286.51
Services	218.82	262.68	155.29
State/Local Government	275.59	306.42	285.04
Other	87.18	244.00	*
	<u>Garrard County</u>	<u>Pulaski County</u>	<u>Rockcastle County</u>
All Industries	\$220.50	\$277.47	\$203.84
Mining & Quarrying	*	363.78	286.76
Contract Construction	270.97	225.40	187.62
Manufacturing	203.58	338.75	206.11
Transportation, Communications & Public Utilities	360.45	411.52	235.79
Wholesale & Retail Trade	144.79	191.83	149.85
Finance, Insurance & Real Estate	278.58	311.71	249.90
Services	234.34	253.37	189.92
State/Local Government	242.97	291.98	251.78
Other	173.08	197.81	*

\* Not disclosed.

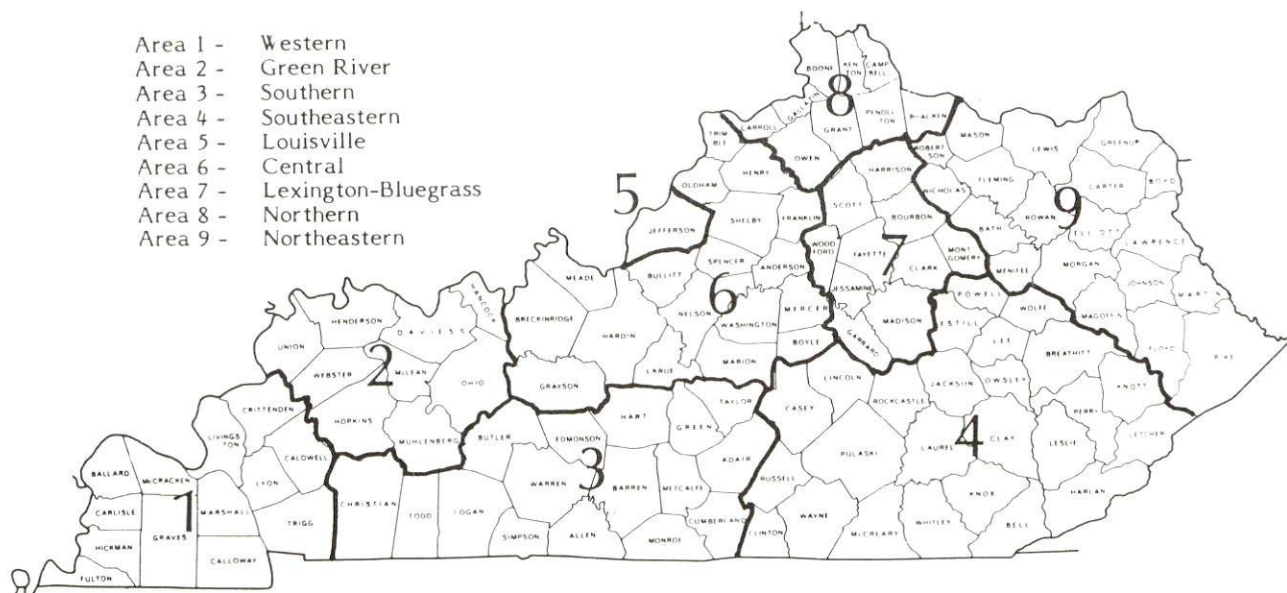
Note: The average weekly wage for each category includes the salaries and wages of all persons working for that type business. For example, the manufacturing category includes both production workers and administrative personnel. Excludes domestic workers, railway workers, certain nonprofit corporations, majority of federal government workers, and self-employed workers.

Source: Kentucky Cabinet for Human Resources, Average Weekly Wages of Workers Covered by Kentucky Unemployment Insurance Law, 1986.



Occupational wage rates for specific industries are usually not available to most government agencies, and wage data furnished to state employment agencies by individual industrial employers are protected from disclosure by federal law. The most reliable up-to-date wage information can be obtained by direct contact with local employers.

Associated Industries of Kentucky, a voluntary organization of Kentucky businesses, regularly collects occupational wage rates and fringe benefits data from participating member firms. Data are compiled for over 127 clearly defined office, production, and service occupations. Tabulations are published for nine geographical areas of Kentucky, as shown on the map below. It should be noted that the data may be weighted by the preponderance of firms in the larger cities and may be somewhat higher than the rates paid in the smaller communities. Data from these tabulations are available, upon request, from the Kentucky Department of Economic Development, Frankfort, Kentucky 40601.



Associated Industries of Kentucky Area Wage Surveys

# EXISTING INDUSTRY

## STANFORD MANUFACTURING FIRMS, THEIR PRODUCTS AND EMPLOYMENT

Firm (Establishment date)	Product	Average Employment		
		Total	Male	Female
E.D. Bullard Company (1988)	Safety equipment, hard hats	50	-	-
Ceramichrome, Inc. (1977)	Ceramic colors, plaster molds, ceramic bodies	61	40	21
Cherokee Sales Corpor- ation (1956)	Truck beds, lime spreaders, post hole diggers	12	10	2
The Interior Journal (1860)	Newspaper, job printing	6	2	4
Lincoln County Pallet Company (1972)	Wood pallets	55	53	2
Lincoln County Ready Mix, Inc. (1978)	Ready mixed concrete, concrete septic tanks	11	10	1
Lincoln Tool & Die Company (1978)	Tools & dies, machine shop	20	19	1
Southern States, Stanford Services (1977)	Food products	6	5	1
Stanford Ready Mix and Auto Sales, Inc. (1957)	Ready mixed concrete	10	10	0
Stanford Wood Products Company, Inc. (1947)	Wood store fixtures, bank fixtures, contract furniture, plastic laminated furniture	21	18	3
Tillett's Uniforms, Inc. (1983)	Band uniforms, flags, choir robes	21	1	20

Sources: Kentucky Department of Economic Development, 1987 Kentucky Directory of Manufacturers; Division of Research and Planning.

## LABOR ORGANIZATIONS IN MANUFACTURING FIRMS

There are no unions representing manufacturing workers in Stanford at the present time.

### SELECTED INDUSTRIAL SERVICES

<u>Types of Service</u>	<u>Location</u>	<u>Mileage from Stanford</u>
Custom Data Processing	Danville	11
Custom Plastics Producers	Danville	11
	Mt. Vernon	25
Electric Motor Repair	Lebanon	42
	Lexington	42
Grinding, Precision & Tool	Richmond	32
Heat Treating Facilities	Richmond	32
	Lexington	42
Industrial Equipment & Supplies	Danville	11
	Richmond	32
Industrial Gases	Somerset	34
Industrial Waste Removal	Richmond	32
	Somerset	34
Machine Shops, Tool & Die	Stanford	-
	Lancaster	8
	Danville	11
Metal Finishers	Richmond	32
	Lexington	42
Metal Service Centers	Richmond	32
	Lexington	42
Millwrights	Nicholasville	30
	Lexington	42
Public Warehouse Facilities	Danville	11

Sources: Kentucky Department of Economic Development, Kentucky Directory of Selected Industrial Services, 1987; Division of Research and Planning.



## TRANSPORTATION

### Rail

Line serving Stanford - CSX Transportation

Services - Branch line - local freight service available twice weekly from London; switching services; team track space for 35 cars; nearest piggyback facilities are located in Georgetown, Kentucky, 57 miles north

For details on routing, schedules, rates, and services contact:

Manager  
Industrial Development  
CSX Transportation  
908 West Broadway  
P. O. Box 2157  
Louisville, Kentucky 40201  
(502) 587-7746

### Highways

Stanford is served directly by U.S. Highways 27 and 150, both "AAA"-rated (80,000-pound gross load limit) trucking highways. Interstate 75, a major north-south multi-lane highway, is located 27 miles southeast of Stanford via U.S. 150. The Cumberland Parkway, a east-west multi-lane toll road located in south central Kentucky, is 34 miles south of Stanford via U.S. 127. The Bluegrass Parkway, a east-west multi-lane toll road located in central Kentucky, is 36 miles north of Stanford via U.S. 127.

### Truck Service

ANR Freight System, Inc.\*  
Averitt Express, Inc.\*  
Bailey's Express, Inc.\*  
Central Transport, Inc.\*\*  
Consolidated Freightways  
Corporation of Delaware\*  
Lawrenceburg Transfer Company,  
Inc.\*  
Manning Motor Express, Inc.\*

Middlewest Freightways, Inc.\*  
The O.K. Trucking Company\*  
Overnite Transportation Company\*  
P-I-E Nationwide, Inc.\*  
Quick Freight Systems\*  
Roadway Express, Inc.\*  
Smith's Transfer Corporation\*  
Transcon Lines\*

\* Interstate and intrastate service.

\*\* Interstate service only.

Source: American Motor Carrier Directory, Fall 1987.

# HIGHWAY MILES AND TRUCK TRANSIT TIME IN DAYS FROM STANFORD, KENTUCKY, TO SELECTED MARKET CENTERS

City	Highway Miles	Delivery		City	Highway Miles	Delivery Time TL
		Time TL				
Atlanta, GA	356	2		Los Angeles, CA	2,204	4
Baltimore MD	583	2		Louisville, KY	96	1
Birmingham, AL	381	2		Nashville, TN	185	1
Chicago, IL	388	2		New Orleans, LA	702	3
Cincinnati, OH	120	1		New York, NY	745	3
Cleveland, OH	359	2		Pittsburgh, PA	385	2
Detroit, MI	379	2		St. Louis, MO	359	2
Knoxville, TN	143	1				

Note: Mileage computations are via the best interstate or primary highways, not necessarily the most direct route of travel.

Sources: Rand McNally Deluxe Motor Carriers' Road Atlas, 1987. Official Kentucky Mileage Map, 1980. Delivery time - Overnite Transportation Company, 213 Blue Sky Parkway, Lexington, Kentucky 40509.

## Air

### Local

	Goodall Field
Location:	8 miles northwest of Stanford
Runways:	2 paved
Length:	4,600 feet; 2,500 feet
Traffic	
Control:	Wind sock, unicom, non-directional beacon
Lighting:	Rotating beacon (sundown to sunrise), VASI
Services:	100LL and Jet-A fuel; minor A & P repairs; hangar; flight instruction; aircraft rental; car rental
Air Freight	
Service:	Charter air freight services must be arranged

### Nearest Scheduled Commercial Airline Service

Location:	Bluegrass Airport 4 miles west of Lexington, Kentucky; 47 miles north of Stanford
Runways:	2 paved
Length:	7,000 feet; 3,500 feet
Traffic	
Control:	Control tower
Lighting:	Approach lighting system, beacon, runways and obstructions lighted, VASI
Services:	Delta, Piedmont, USAir, Allegheny Commuter, TWA, Jetstream United Express, Eastern Metro, Comair, American Eagle; fuel - 100LL and jet-A; hangars, tie-downs; major A & P repairs; major Avionics repairs; APU, charter, flight instruction, oxygen, plane rentals, survival equipment; taxi, limousine, car rentals, courtesy car, weather information; restaurant, snack bar
Air Freight	
Service:	Air freight terminal

### Air Express Service

Several major companies offer air express services in Kentucky. These companies provide a quick means of shipping small to medium-sized packages expeditiously.

### Water

The nearest navigable waterway is the Kentucky River at Frankfort, 55 miles northwest. A 6-foot navigation channel is maintained from Frankfort throughout its course to the Ohio River near Carrollton, Kentucky.



## POWER AND FUEL

### Electricity

Company serving Stanford and parts of Lincoln County - Kentucky Utilities Company

Source of power - Kentucky Utilities Company

For industrial rates contact:

Industrial Development Department  
Kentucky Utilities Company  
One Quality Street  
Lexington, Kentucky 40507  
(606) 255-1461

Company serving parts of Lincoln County - Inter-County RECC and South Kentucky RECC

Source of power - East Kentucky Power Cooperative

For industrial rates contact:

Industrial Development Division  
East Kentucky Power Cooperative  
P. O. Box 707  
Winchester, Kentucky 40391  
(606) 744-4812

and/or

Inter-County RECC  
P. O. Box 87  
Danville, Kentucky 40422  
(606) 236-4561

and/or

South Kentucky RECC  
P. O. Box 910  
Somerset, Kentucky 42501  
(606) 678-4121

## Natural Gas

Company serving Stanford - Western Kentucky Gas Company  
Source of supply - Tennessee Gas Transmission Company  
Size of transmission mains - 30-inch (supplier); 4-inch (distributor)  
Distribution mains - 2 and 4 inches  
Distribution pressure - 25 psi  
Btu content - 1,000+ per cubic foot  
Specific gravity - 0.60  
For rates and supplies contact:

Western Kentucky Gas Company  
311 West 7th Street  
Owensboro, Kentucky 42302  
(502) 685-8067; or  
(502) 685-8026

## Other Fuels

### Propane

Brights Bottle Gas Company  
100 West Brook  
Burgin, Kentucky 40310

Smith and Sons Gas Company  
U.S. Highway 27  
Waynesburg, Kentucky 40489

Jack Campbell Bottle Gas  
Route 3  
Danville, Kentucky 40422

Southern States Cooperative  
Lebanon Road  
Danville, Kentucky 40422

Parsons Gas and Appliance  
Service  
Route 3  
Mt. Vernon, Kentucky 40456

### Fuel oils

Distillate fuel oil -

Action Oil Company  
U.S. Highway 27  
Stanford, Kentucky 40484

Scheuer Oil Company  
Stanford Road  
Danville, Kentucky 40422

Pinkeston Oil Company  
Parksville, Kentucky 40464

Johnson Oil Company  
1211 Lebanon Road  
Danville, Kentucky 40422

Residual fuel oil - Arrangements must be made with the refinery.

Low sulphur content coal - Available in Kentucky.

## WATER AND SEWERAGE

### Public Water Supply

Company serving Stanford - City of Stanford Water Works\*  
P. O. Box 45  
Stanford, Kentucky 40484  
(606) 365-2788

Source - City-owned lake

Treatment plant capacity - 700,000 gallons per day

Average daily consumption - 470,000 gallons

Peak daily consumption - 590,000 gallons

Treatment processes - Rapid mix, coagulation, flocculation, sedimentation, filtration, chlorination, and fluoridation

Storage capacity - 786,000 gallons (including clear well)

Size lines - 2 to 12 inches

Water pressure - 30 to 110 psi

### MONTHLY WATER RATES

First	2,000 gallons	\$6.25 (Minimum)
Next	8,000 gallons	2.04 per M gallons
Next	20,000 gallons	1.88 per M gallons
Next	20,000 gallons	1.73 per M gallons
Next	25,000 gallons	1.56 per M gallons
Next	25,000 gallons	1.41 per M gallons
All over	100,000 gallons	1.18 per M gallons

#### Tap-on charge:

Inside city limits - \$200 (minimum) or actual cost of labor and materials

Outside city limits - \$250 (minimum) or actual cost of labor and materials

\* The Stanford Water Works plans to build a new reservoir to be used as a second source of supply. Also, renovation work is planned on the existing water supply reservoir. Construction on the \$2 million project is scheduled to begin June 1988 with completion in 1989.



## Sewerage

Company serving Stanford - City of Stanford Water Works\*  
P. O. Box 45  
Stanford, Kentucky 40484  
(606) 365-2788

Design capacity - 800,000 gallons per day

Average daily flow - 423,000 gallons

Type of treatment - Secondary

Treatment processes - Grit removal, primary sedimentation, oxidation ditch, extended aeration, activated sludge, chlorination, aerobic digester, sludge drying beds

Treated effluent discharged into - Logan Creek

Size of sanitary mains - 4 to 12 inches

Size of storm mains - 16 to 40 inches

Monthly rates -

### Inside city:

First	2,000 gallons	\$6.10 (Minimum)
All over	2,000 gallons	2.30 per M gallons

### Outside city:

Same as above, plus 15 percent

Tap-on charge: \$500 (minimum) or actual cost of labor and materials

\* The city of Stanford has completed construction of a new \$2.1 million sewerage treatment plant. The new plant has a treatment capacity of 800,000 gallons per day.

## CLIMATE

### Lincoln County

#### Temperature

Normal (30-year record)	54.90 degrees
Average annual 1986	54.40 degrees
Record highest, August 1983 (42-year record)	103.00 degrees
Record lowest, January 1963 (42-year record)	-21.00 degrees
Normal heating degree days (30-year record)	4,814
(Heating degree day totals are the sums of negative departures of average daily temperatures from 65 degrees F.)	

#### Precipitation

Normal (30-year record)	45.68 inches
Mean annual snowfall (30-year record)	16.40 inches
Total precipitation 1986	34.86 inches
Mean number days precipitation (.01 inch or more) (42-year record)	130.30
Mean number days thunderstorms (42-year record)	45.60

#### Prevailing winds (through 1963)

South

#### Relative Humidity

1 a.m.	77 percent (22-year record)
7 a.m.	82 percent (23-year record)
1 p.m.	60 percent (23-year record)
7 p.m.	64 percent (23-year record)

Source: U.S. Department of Commerce, Environmental Science Services Administration, Climatological Data, 1986. Station of record: Lexington, Kentucky.

## LOCAL GOVERNMENT

### Structure

The city of Stanford is served by a mayor and six council members. The mayor is elected to a four-year term and the council members serve two-year terms. Lincoln County is served by a county judge/executive and four magistrates. The county judge/executive and magistrates serve four-year terms.

### Planning and Zoning

City agency - Stanford Planning and Zoning Commission

Zoning enforced - Within city limits

Subdivision regulations enforced - With city limits and five miles beyond

Local codes enforced - Building and housing

Mandatory state codes enforced - Kentucky Plumbing code, National

Electric Code, Kentucky Boiler Regulations and Standards, Kentucky

Building Code (modeled after BOCA code)

### Local Fees and Licenses

The city of Stanford levies an occupational license tax which ranges from \$5 to \$500 annually. Manufacturing firms are not charged a fee during the first five years of operation. After the fifth year, manufacturing firms with less than 25 employees are levied \$100 per year and firms with more than 25 employees are levied a tax of \$300 per year.



## State and Local Property Taxes

All property in Kentucky, except items exempted by the state constitution, is taxed by the state. Property which also may be taxed by local jurisdictions includes land and buildings, finished goods inventories, automobiles, trucks, office furniture and office equipment. Local taxing jurisdictions in Kentucky include counties, cities, and school districts.

All property in Kentucky is assessed at 100 percent of fair cash value.

### COMBINED STATE AND LOCAL RATES PER \$100 VALUATION, 1987

	Site Inside City of Stanford	Site Inside Unincorporated Lincoln County
Land and Buildings	\$0.8641	\$0.7241
Manufacturing		
Machinery	0.150	0.150
Pollution Control		
Equipment	0.150	0.150
Inventories		
Raw materials	0.001	0.001
Goods in Process	0.001	0.001
Finished Goods	0.672	0.532
Automobiles & Trucks	1.132	0.992
Other Tangible		
Personal Property	1.121	0.981
Intangibles (Accounts receivable*, money in hand, stock, notes, bonds)	0.250	0.250
Goods Stored in Public Warehouses in Transit Status	0.001	0.001
Private Leaseholds in Industrial Revenue Bond Financed Facilities	0.015	0.015

\* Accounts receivable are taxed at 85 percent of face value, for an effective rate of \$0.2125 per \$100 valuation.

## Safety

Police	Stanford	Lincoln County
Total staff	6	5
Radio-patrol cars	2	4
Fire*		
Insurance Services Office, Public Protection Classification	7	**
Full-time staff	1	1
Volunteers	17	150 (approximately)
Rescue Service		

Rescue service is provided to residents of Lincoln County by the Mid-County Rescue Squad.

## Refuse Collection and Disposal

Refuse collection and disposal is provided to residents of Stanford by the city of Stanford. Residents of Lincoln County are provided this service by private contractors.

---

\* Includes copyrighted material of ISO Commercial Risk Services, Inc., with its permission.

\*\* Six volunteer fire departments serve Lincoln County with insurance classifications ranging from class 7 to class 9.

## EDUCATION

### Public Schools

	Lincoln County*
Total Enrollment (January 1988)	3,861
Kindergarten	257
Elementary	2,448
High School	1,156
Pupil-Teacher Ratio (1985-86)	19-6
Percent High School Graduates to College (1985-86)	28.2
Expenditures Per Pupil (1985-86)	\$1,732.75

\* A new central office building was recently acquired by the Lincoln County School System. Cost of the building was \$95,000. A new \$480,000 gymnasium is under construction at the Crab Orchard Elementary School. Completion is scheduled for Spring of 1988.



## Area Colleges and Universities

<u>Name</u>	<u>Location (Miles distant)</u>	<u>Enrollment (Fall, 1986)</u>	<u>Highest Degree Conferred</u>
Centre College	Danville (11)	814	Baccalaureate
Berea College	Berea (30)	1,587	Baccalaureate
Eastern Kentucky University	Richmond (32)	12,737	Masters, Specialist*
Somerset Community College	Somerset (34)	1,302	Associate
Saint Catharine College	Springfield (38)	280	Associate
Asbury College	Wilmore (39)	939	Baccalaureate
Lexington Community College	Lexington (42)	2,587	Associate
Transylvania University	Lexington (42)	970	Baccalaureate**
University of Kentucky	Lexington (42)	20,788	Doctorate, M.D., D.M.D., J.D.

\* Joint doctoral degree programs are offered in cooperation with the University of Kentucky, Lexington. The degrees are issued by the University of Kentucky.

\*\* Courses in a masters degree program are taught on the Transylvania campus by faculty members of Xavier University of Cincinnati. The degree is issued by Xavier University.

## Vocational Training

The Bluegrass State Skills Corporation, an independent public corporation created and funded by the Kentucky General Assembly, provides programs of skills training to meet the needs of business and industry from entry level to advanced training, and from upgrading present employees to retraining experienced workers.

The Bluegrass State Skills Corporation is the primary source for skills training assistance for a new or existing company. The Corporation works in partnership with other employment and job training resources and programs, as well as Kentucky's economic development activities, to package a program customized to meet the specific needs of a company.

Vocational training is available at both the state vocational-technical schools and the area vocational education centers. The state vocational-technical schools are post-secondary institutions. The area vocational education centers are designed to supplement the curriculum of high school students. Both the state vocational-technical schools and the area vocational education centers offer evening courses to enable working adults to upgrade current job skills.

Arrangements can be made to provide training in the specific production skills required by an industrial plant. Instruction may be conducted either in the vocational school or in the industrial plant, depending upon the desired arrangement and the availability of special equipment.

### Nearest State School

Somerset State Vocational-Technical School  
Somerset, 34 miles distant

Business & Office	Electronics
Accounting/Management	Graphic Arts
Clerical	Machine Shop
Data Processing	Welding
Secretarial	Learning Resource Center
Consumer & Home Economics	Vocational Improvement
Consumer & Family Life	Programs
Skills	Public Service Occupations
Health & Personal Services	Business/Industry Security
Occupations	Training
Health Services	CPR Training
Practical Nursing	Electrical Safety Training
Industrial Education	Emergency Medical Care
Auto Body Repair	Fire Service Training
Auto Mechanics	First Aid & Safety
Diesel Mechanics	Rescue & Emergency Services
Drafting (with CAD/CAM)	Training

Nearest Area Education Center

Garrard County Area Vocational Education Center  
Lancaster, 8 miles distant

Health & Personal Services  
Occupations  
    Health Services  
Industrial Education  
    Auto Mechanics  
    Carpentry

Drafting  
Electricity  
Welding  
Special Vocation  
    Learning Resource Center



## HEALTH

### Local Medical Personnel

Physicians - 9  
Dentists - 5

### Hospitals

<u>General Hospital</u>	<u>Location</u>	<u>Beds</u>
Fort Logan Hospital	Stanford	43 acute care 30 skilled nursing
Ephraim McDowell Memorial Hospital	Danville, 11 miles distant	177

#### Fort Logan Hospital

Medical staff - 9 physicians, 22 registered nurses, and 10 licensed  
practical nurses

#### Ephraim McDowell Memorial Hospital

Medical staff - 50 physicians, 112 registered nurses, and 99 licensed  
practical nurses

### Other Medical Facilities

Lincoln County Health Department  
Southern Bluegrass Division of Blue Grass Mental Health-Mental Retardation  
Board, Inc.  
Stanford House Nursing Home

### Ambulance Service

Name - Mid-County Rescue Service  
Staff - 15 emergency medical technicians

## OTHER LOCAL FACILITIES

### Communications

Telephone -	South Central Bell Telephone Company
Telegraph -	Western Union
	Toll-Free number, 1-800-325-6000
Newspapers -	
Weekly and	
circulation -	Interior Journal - 4,800;
	Lincoln Ledger* - 8,000
Radio -	WRSL, AM-FM
Television -	
Airwave reception	
from -	Lexington and Louisville, Kentucky
Cable service -	R. B. Cablevision
Educational	
Television -	The Kentucky Educational Television
	(K.E.T.) network is available
	statewide

### Library Services

Public library - Harvey Helm Memorial Library  
Size collection - 33,635 volumes  
Circulation, 1986-87 - 130,000

### Religious Institutions

#### Lincoln County

Denominations -	Baptist	Full Gospel Christian
	Catholic	Methodist
	Christian	Pentecostal
	Church of God	Presbyterian
	Episcopal	
Nearest Synagogues -	Lexington, 42 miles north	
Congregations -	Adath Israel (reform)	
	Ohavey Zion (traditional)	

\* The Lincoln Ledger is provided to the residents of Lincoln County at no charge.

## Financial Institutions

<u>Banks</u>	<u>Assets</u>	<u>Deposits</u>	<u>Statement Date</u>
Lincoln County National Bank	\$35,809,000	\$32,009,000	12/31/87
The Peoples Bank of Hustonville	23,750,000	21,512,000	12/30/87
National Bank of Hustonville	18,816,000	17,095,000	12/31/87

<u>Savings and Loan Associations</u>	<u>Assets</u>	<u>Deposits</u>	<u>Statement Date</u>
Lincoln County Federal Savings and Loan Association	\$38,322,095	\$35,964,654	11/30/87

## Hotels and Motels

### Lincoln County

Total number -	5
Total rooms -	60

## RECREATION

### Local

The Stanford-Lincoln County Recreational Park, located adjacent to the Lincoln County High School, contains four tennis courts, lighted playground, water fountain, and a softball field.

The Farm Bureau Youth Center is the location of various activities for the youth and adults of Stanford. The Lincoln County Fair and Horse Show and little league baseball games are among events held there.

The Lyons Club Recreational Park, a 15-acre facility, features two softball fields and a football field.

The Dix River Country Club provides an 18-hole golf course, two tennis courts, and a swimming pool for its members. Other private recreational facilities include a drive-in theatre and two tennis courts.

The Harvey Helm Museum provides historical records, genealogical records, and a collection of historical articles.

### Area (Within 45 miles)

William Whitley House State Shrine, 8 miles southeast of Stanford, is the first brick house west of the Allegheny Mountains, built 1787-94. Whitley laid out Kentucky's first race track here and started U.S. counterclockwise racing. The facility provides picnic and playground areas in a ten-acre park.

Constitution Square State Shrine, 11 miles northwest of Stanford in Danville, is a reproduction of Kentucky's first courthouse square, including the original 1792 post office which was the first in the west.

Isaac Shelby State Shrine, 16 miles northwest of Stanford near Danville, is the burial site of Kentucky's first governor and one of the Commonwealth's foremost statesmen.

Old Fort Harrod State Park, 20 miles northwest of Stanford, is a 28-acre park in Harrodsburg that features a full-scale reproduction of the original Fort Harrod. The park also contains the log cabin where Abraham Lincoln's parents were wed, the Mansion Museum which houses mementos associated with the great periods of Kentucky history, a pioneer cemetery, and a federal monument dedicated to pioneers. The "Legend of Daniel Boone" and "Lincoln" are two excellent outdoor dramas which are performed at the Old Fort Amphitheater during the summer months.

Perryville Battlefield State Shrine, 24 miles northwest of Stanford near Perryville, is the site of the largest Civil War battle in Kentucky. A museum, a gift shop, a picnic area, and a playground are located on the grounds.



Herrington Lake, 27 miles north of Stanford near Danville and Harrodsburg, was developed by the Kentucky Utilities Company in 1925. Dix River Dam near Pleasant Hill is located on the 3,600-acre lake. Fishing, boating, and swimming can all be enjoyed on the lake. Camping and fishing facilities are available near Danville and Harrodsburg.

Pleasant Hill, a restored Shaker Village located 27 miles north of Stanford, is a National Historic Landmark. Over 20 buildings and grounds have been restored to display unique Shaker skills in furniture making, crafts, and architecture. Dining rooms, lodging, craft shops, and seasonal festivals and plays are offered.

Waveland State Shrine, 38 miles north of Stanford near Lexington, features an 1847 Greek Revival mansion depicting Kentucky lifestyles from the days of early settlers to the antebellum era of gentility and elegance as well as the Civil War and postwar periods. The shrine also includes the Kentucky Life Museum and a plantation village on ten acres with many shops and displays.

White Hall State Shrine, 40 miles northeast of Stanford near Richmond, one of the grand estate houses of post-Civil War Kentucky, is the Italianate mansion of Cassius Marcellus Clay, the early abolitionist and politician. Kentucky handcrafts are sold in the White Hall gift shop, only a short walk from the mansion.

Lexington, 42 miles north of Stanford, offers a variety of cultural, sporting, and recreational activities. Thoroughbred and harness racing is presented at Keeneland Race Course and the Red Mile Harness Track during several meets each year. The University of Kentucky and Transylvania University offer a number of sporting events. The University of Kentucky basketball games are held at Rupp Arena, the world's largest basketball arena. Other attractions include Lexington Philharmonic concerts, Lexington Children's Theatre, and plays performed by Broadway touring companies, all held in the recently renovated Opera House. In addition, located in the heart of downtown Lexington, the historical Victorian Square and Festival Market Place offer a taste of nostalgia with their many quaint shops and restaurants.

Lincoln Homestead State Park, 43 miles northwest of Stanford near Springfield, is a 153-acre park on land settled by Abraham Lincoln's family. The actual building in which Nancy Hanks, mother of President Lincoln, lived during her courtship with Thomas Lincoln is preserved here as well as a replica of the 1782 cabin where Thomas Lincoln lived as a boy. The park also has a museum, a gift shop, a picnic area, and an 18-hole golf course.

General Burnside State Park, 43 miles south of Stanford, is Kentucky's only island state park. Rising out of Lake Cumberland and surrounded by beautiful Kentucky mountains, the park offers excellent fishing, an 18-hole golf course which is open year-round, a picnic area, a 110-site camping area for tents and recreational vehicles, a marina on the mainland near the park, a community pool, and recreation.

## COMMUNITY IMPROVEMENTS

### Recent

Ceramichrome, Inc., recently announced plans to expand their operations in Stanford. This \$100,000 expansion will create 3-10 new jobs.

The E. D. Bullard Company, which manufactures safety equipment, has recently located in Stanford. This \$1.5 million facility will employ approximately 100 workers. Production is scheduled to begin April 1, 1988.

The city of Stanford has completed construction of a new \$2.1 million sewerage treatment plant. The new plant has a treatment capacity of 800,000 gallons per day.

Renovation and expansion of the Lincoln County Regional Jail has been completed at a cost of \$550,000.

A new central office building was recently acquired by the Lincoln County School System. Cost of the building was \$95,000.

A \$100,000 renovation of the old Western Auto building has been completed. The building is now used as an office building for the Stanford/Lincoln County Chamber of Commerce, Stanford/Lincoln County Industrial Foundation, and county offices.

Construction of a car wash, mini storage complex, and a small office complex was recently completed.

The Lincoln County Federal Savings and Loan Association recently constructed a new drive-in branch bank.

Construction of the Lyon's Club Recreational Park has been completed. The 15-acre park features two softball fields and a football field. Total cost of the project was \$400,000.

Construction of the Lincoln Plaza Shopping Mall has been completed. The mall features a Wal-Mart, Food Fair, McDonalds, and eight specialty shops. Plans are currently under way to expand the entire facility.

### Under Way

A new \$480,000 gymnasium is under construction at the Crab Orchard Elementary School.

A revitalization and beautification project of the Stanford downtown area is currently under way.

## Planned

The Lincoln County Fairboard is planning construction of a new fairground. This 50-acre project will feature a new community building and exhibit areas.

The Stanford Waterworks plans to build a new reservoir to be used as a second source of water supply. Also, renovation work is planned on the existing water supply reservoir. Construction on the \$2 million project is scheduled to begin June 1988 with completion in 1989.

The International Harvester Tractor Company plans to relocate in new facilities near the U.S. 150 Bypass.