

1993

# Industrial Resources: Marion County - Lebanon

Kentucky Library Research Collection  
Western Kentucky University, [spcol@wku.edu](mailto:spcol@wku.edu)

Follow this and additional works at: [https://digitalcommons.wku.edu/marion\\_cty](https://digitalcommons.wku.edu/marion_cty)

 Part of the [Business Administration, Management, and Operations Commons](#), [Growth and Development Commons](#), and the [Infrastructure Commons](#)

---

## Recommended Citation

Kentucky Library Research Collection, "Industrial Resources: Marion County - Lebanon" (1993). *Marion County*. Paper 2.  
[https://digitalcommons.wku.edu/marion\\_cty/2](https://digitalcommons.wku.edu/marion_cty/2)

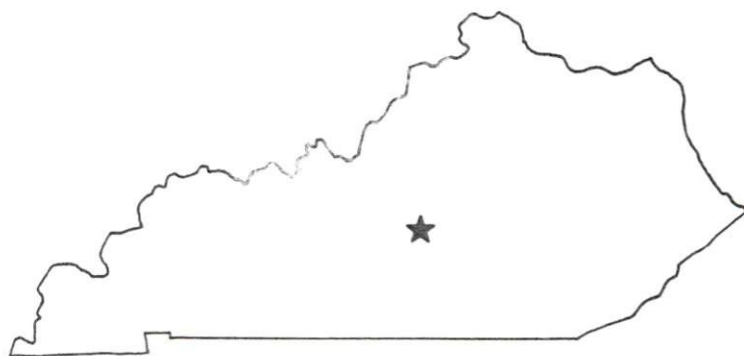
This Report is brought to you for free and open access by TopSCHOLAR®. It has been accepted for inclusion in Marion County by an authorized administrator of TopSCHOLAR®. For more information, please contact [topscholar@wku.edu](mailto:topscholar@wku.edu).

LR  
04

Marion

# *Resources for Economic Development*

## Lebanon



## **KENTUCKY**

---

RESOURCES FOR ECONOMIC DEVELOPMENT  
LEBANON, KENTUCKY

Prepared by  
The Kentucky Cabinet for Economic Development  
Division of Research  
in cooperation with  
Lebanon/Marion County Chamber of Commerce  
and  
The Economic Development Office

1993

Division Director - Pamela K. Riley; program manager - Keith Roberts; research - Richard H. Cobb; clerical - Wanda Sharp; graphics - Robert Owens, Pat Coleman; cartography - Edwin Scott, Dave Clark. Cost of printing paid from state funds.

## TABLE OF CONTENTS

<u>Chapter</u>	<u>Page</u>
LEBANON, KENTUCKY - A RESOURCE PROFILE .....	1
THE LABOR MARKET STATISTICS .....	2
Labor Market Area Map .....	2
Population .....	3
Population Projections .....	3
Estimated Labor Supply .....	3
Labor Force Characteristics of Residents, 1992 .....	4
Selected Components of Nonagricultural Employment, by Place of Work, 1992 .....	5
Per Capita Personal Income .....	6
Average Placement Wages .....	7
Average Weekly Wages of Workers Covered by Unemployment Insurance 1991 - Bar Chart .....	8
Average Weekly Wages by Industry, by Place of Work, 1991 .....	9
EXISTING INDUSTRY .....	10
Marion County Manufacturing Firms, Their Products and Employment .....	10
Recent Industrial Developments .....	11
Labor Organizations in Manufacturing Firms .....	11
Selected Industrial Services .....	12
TRANSPORTATION .....	13
Highways .....	13
Truck Service .....	13
Selected Market Location Map .....	14
Rail .....	15
Air .....	15
UTILITIES .....	16
Electricity .....	16
Natural Gas .....	16
Public Water Supply .....	17
Sewerage .....	17
CLIMATE .....	18

<u>Chapter</u>	<u>Page</u>
LOCAL GOVERNMENT .....	19
Structure .....	19
Planning and Zoning .....	19
Local Fees and Licenses .....	19
State and Local Property Taxes .....	20
EDUCATION .....	21
Public Schools .....	21
Nonpublic Schools .....	21
Area Colleges and Universities .....	21
Vocational Training .....	22
OTHER LOCAL FACILITIES .....	24
Local Medical Personnel .....	24
Hospitals .....	24
Other Medical Facilities and Services .....	24
Banks and Savings & Loan Associations .....	24
Newspapers .....	24
Telephone Service .....	24
RECREATION .....	25
COMMUNITY IMPROVEMENTS .....	26

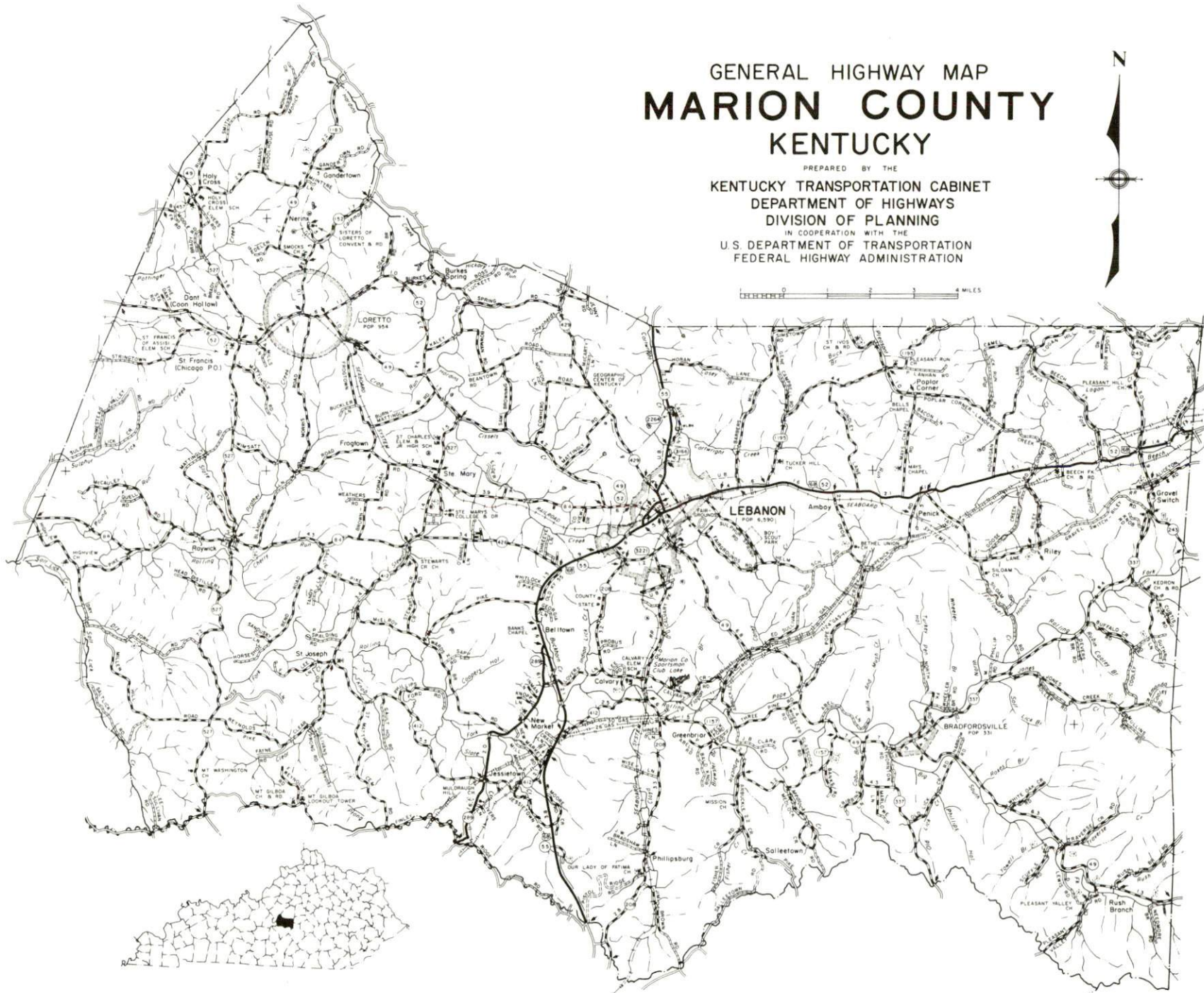


# GENERAL HIGHWAY MAP MARION COUNTY KENTUCKY

PREPARED BY THE  
KENTUCKY TRANSPORTATION CABINET  
DEPARTMENT OF HIGHWAYS  
DIVISION OF PLANNING  
IN COOPERATION WITH THE  
U.S. DEPARTMENT OF TRANSPORTATION  
FEDERAL HIGHWAY ADMINISTRATION



0 1 2 3 4 MILES





## LEBANON, KENTUCKY - A RESOURCE PROFILE

Lebanon, the county seat of Marion County, is located three miles southeast of the geographical center of the state of Kentucky. Lebanon, with a 1990 population of 5,695, is located 62 miles southwest of Lexington, Kentucky; 66 miles southeast of Louisville, Kentucky; 138 miles southwest of Cincinnati, Ohio; 151 miles northeast of Nashville, Tennessee; and 179 miles northwest of Knoxville, Tennessee.

Marion County, located in both the Outer Blue Grass and Mississippian Plateaus Regions, has a land area of 346 square miles. In 1990 Marion County had a population of 16,499.

**The Economic Framework** - The total number of Marion County residents employed in 1992 averaged 7,957. Manufacturing firms in the county reported 1,315 employees; wholesale and retail trade provided 970 jobs; 756 people were employed in service occupations; state and local government accounted for 630 employees; and contract construction firms provided 142 jobs.

**Labor Supply** - There is a current estimated labor supply of 7,238 persons available for industrial jobs in the labor market area. In addition, from 1993 through 1997, 9,863 young persons in the area will become 18 years of age and potentially available for industrial jobs.

**Transportation** - Lebanon is served directly by U.S. 68 and Kentucky 55, both "AAA"-rated (80,000-pound gross limit) trucking highways. The Blue Grass Parkway is located 23 miles north via Kentucky 55 and Kentucky 555. Interstate 65 is located 44 miles northwest of Lebanon via Blue Grass Parkway. Fifteen trucking companies provide interstate and/or intrastate trucking service to Lebanon. R.J. Corman Railroad provides the nearest branch line rail service at Bardstown, Kentucky, 25 miles northwest of Lebanon. The Lebanon-Springfield Airport, four miles north, maintains one paved 4,000-foot runway. The nearest scheduled commercial airline service is provided by Blue Grass Airport near Lexington, Kentucky, 58 miles northeast of Lebanon; and Standiford Field near Louisville, Kentucky, 62 miles northwest of Lebanon.

**Power and Fuel** - Electric power is provided to Lebanon and parts of Marion County by the Kentucky Utilities Company. Most of Marion County is provided electric power by Inter-County Rural Electric Cooperative Corporation. Natural gas is provided to Lebanon by the Western Kentucky Gas Company.

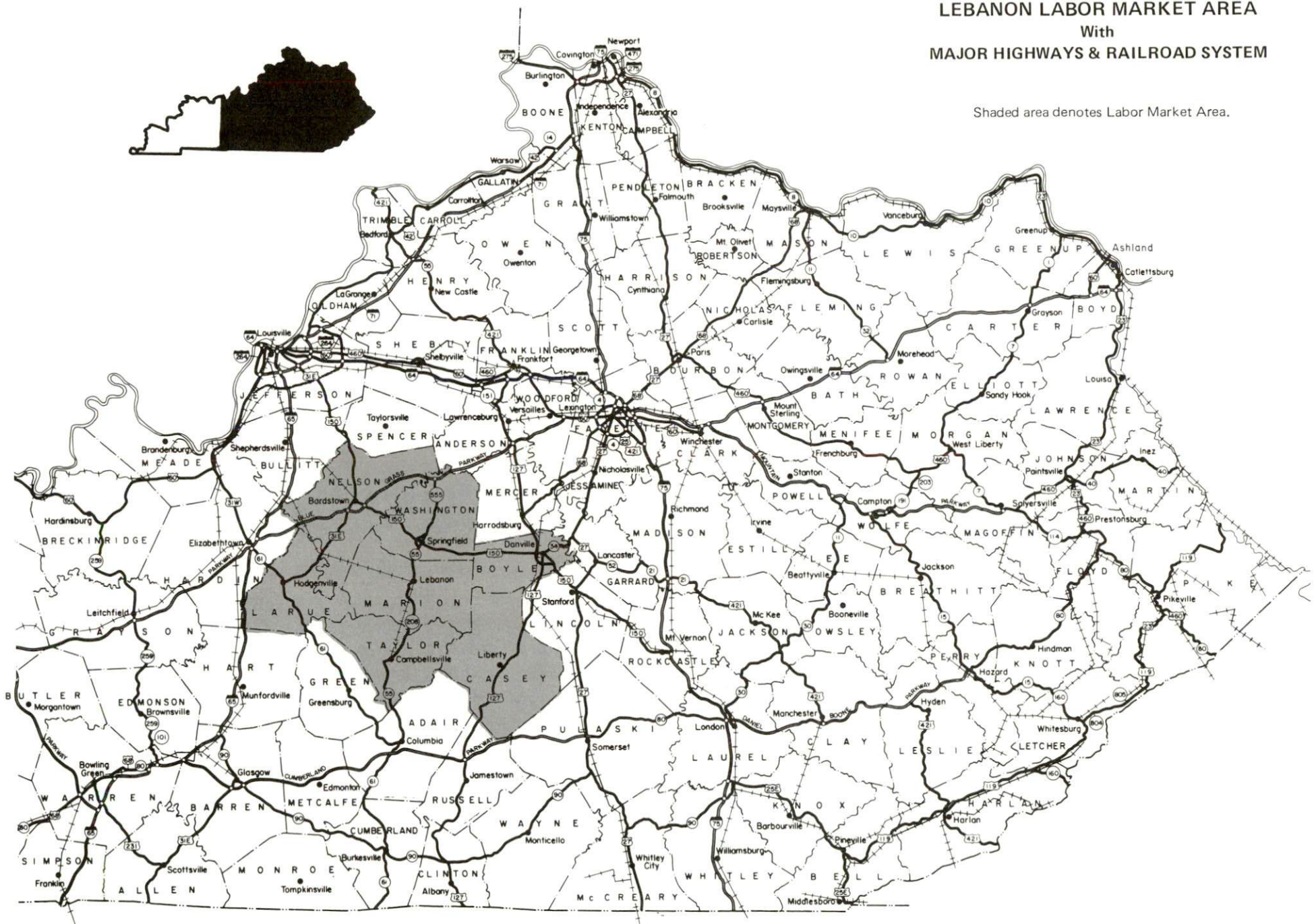
**Education** - Primary and secondary education is provided to Lebanon and Marion County by the Marion County School System. One nonpublic school serves Marion County. Six universities, eight senior colleges, and four community colleges are located within 70 miles of Lebanon. Vocational training is provided by the Marion County Area Vocational Education Center in Lebanon and the Elizabethtown State Vocational-Technical School in Elizabethtown, 51 miles northwest.



LEBANON LABOR MARKET AREA  
With  
MAJOR HIGHWAYS & RAILROAD SYSTEM

Shaded area denotes Labor Market Area.

The map displays the Lebanon Labor Market Area, which is shaded in gray. The area is bounded by major highways and includes the following counties: Boone, Grant, Pendleton, Bracken, Owen, Harrison, Scott, Franklin, Jefferson, Woodford, Mercer, Jessamine, Madison, Estill, Lee, Breathitt, Jackson, Owsley, Perry, Knott, Letcher, Harlan, Bell, Whitley, Knox, Wayne, Russell, Pulaski, Adair, Marion, Taylor, Larue, Green, Monroe, Allen, Warren, Barren, Metcalfe, Cumberland, Simpson, and Monroe. Major cities and towns shown include Lexington, Louisville, Glasgow, Middlesboro, and Whitesburg. The map also shows the Kentucky River and the Ohio River. An inset map in the top left corner shows the location of the labor market area within the state of Kentucky.



## LABOR MARKET STATISTICS

The Lebanon Labor Market Area includes Marion County and the adjoining Kentucky counties of Boyle, Casey, Larue, Nelson, Taylor and Washington.

### POPULATION

	<u>1990</u>	<u>1980</u>	<u>1970</u>
Labor Market Area	129,327	129,242	113,520
Lebanon	5,695	6,590	5,528
Marion County	16,499	17,910	16,714

Source: U.S. Department of Commerce, Bureau of the Census, January 1991.

### POPULATION PROJECTIONS

	<u>1995</u>	<u>2000</u>	<u>2010</u>	<u>2020</u>
Labor Market Area	130,813	131,708	132,831	132,551
Marion County	16,286	16,045	15,700	15,318

Note: Population projections are from Moderate Growth Series forecast.

Source: University of Louisville, Urban Studies Center, State Data Center.

### ESTIMATED LABOR SUPPLY

	<u>Current</u>		<u>Future</u>	
	<u>Total</u>	<u>Unemployed</u>	<u>Not in Labor Force</u>	<u>Becoming 18 years of age 1993 thru 1997</u>
Labor Market Area*	7,238	4,621	2,617	9,863
Marion County	757	757	0	1,330

\* Additional workers may be drawn from other nearby counties.

Note: Unemployed - persons unemployed and actively seeking work; Not in Labor Force - represents the number of persons who would enter the labor force if suitable employment were available (based on the assumption that persons in Kentucky would like to participate in the labor force in the same proportion that they do nationally). Underemployed persons (employed only 14 to 26 weeks during the year) are no longer included in labor surplus estimates.

Sources: Kentucky Cabinet for Human Resources, Kentucky Labor Surplus Estimates by County, 1992. Kentucky Cabinet for Economic Development, Future Labor Supply Becoming 18 Years of Age, 1993 thru 1997.

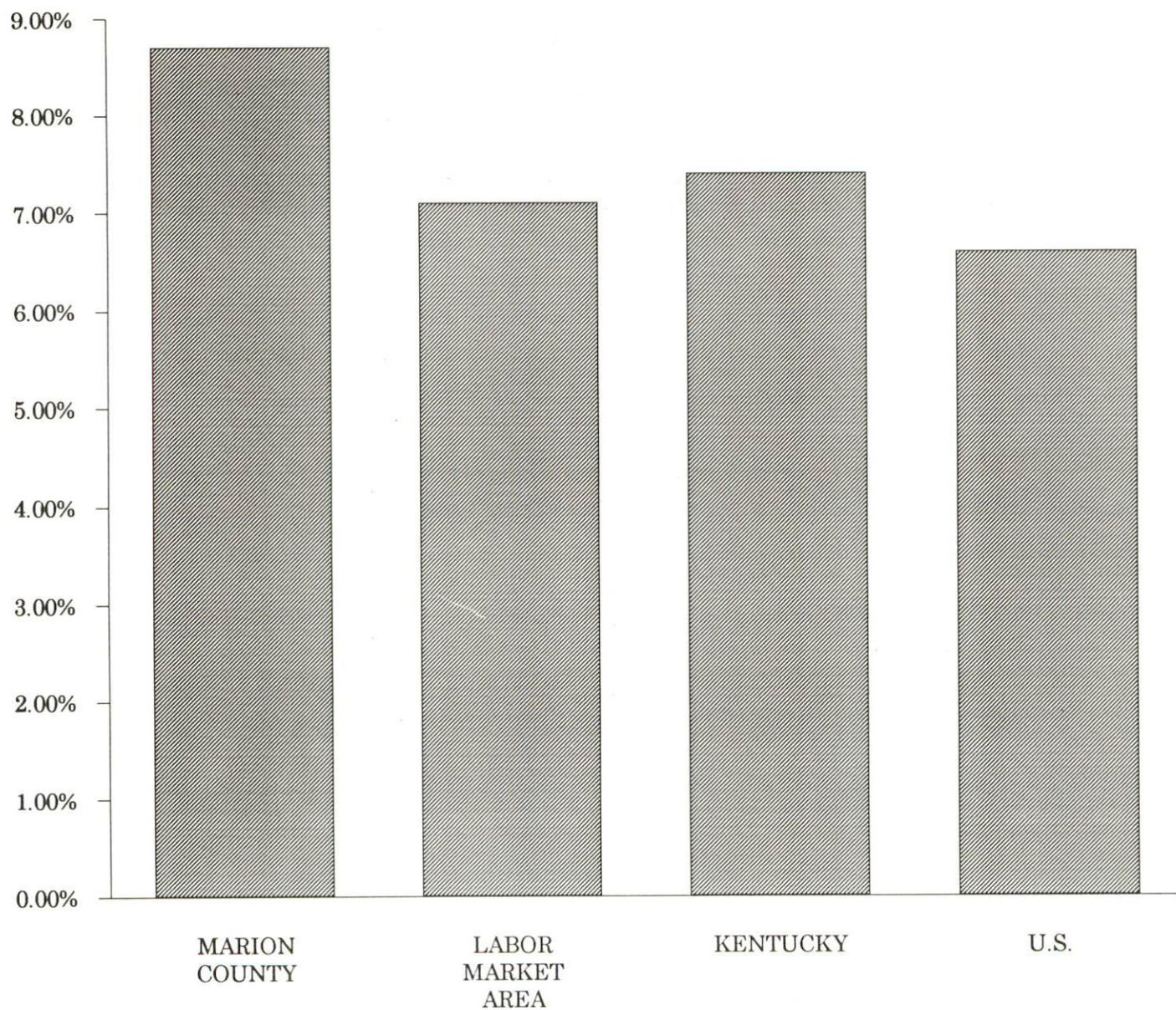


# LABOR FORCE CHARACTERISTICS OF RESIDENTS, 1992

	<u>Marion County</u>	<u>Labor Market Area</u>
Civilian Labor Force	8,714	64,856
Employment	7,957	60,235
Unemployment	757	4,621
Rate of Unemployment (%)	8.7	7.1

Source: Kentucky Cabinet for Human Resources, Kentucky Labor Force Estimates, Annual Averages, 1992.

## UNEMPLOYMENT RATES 1992

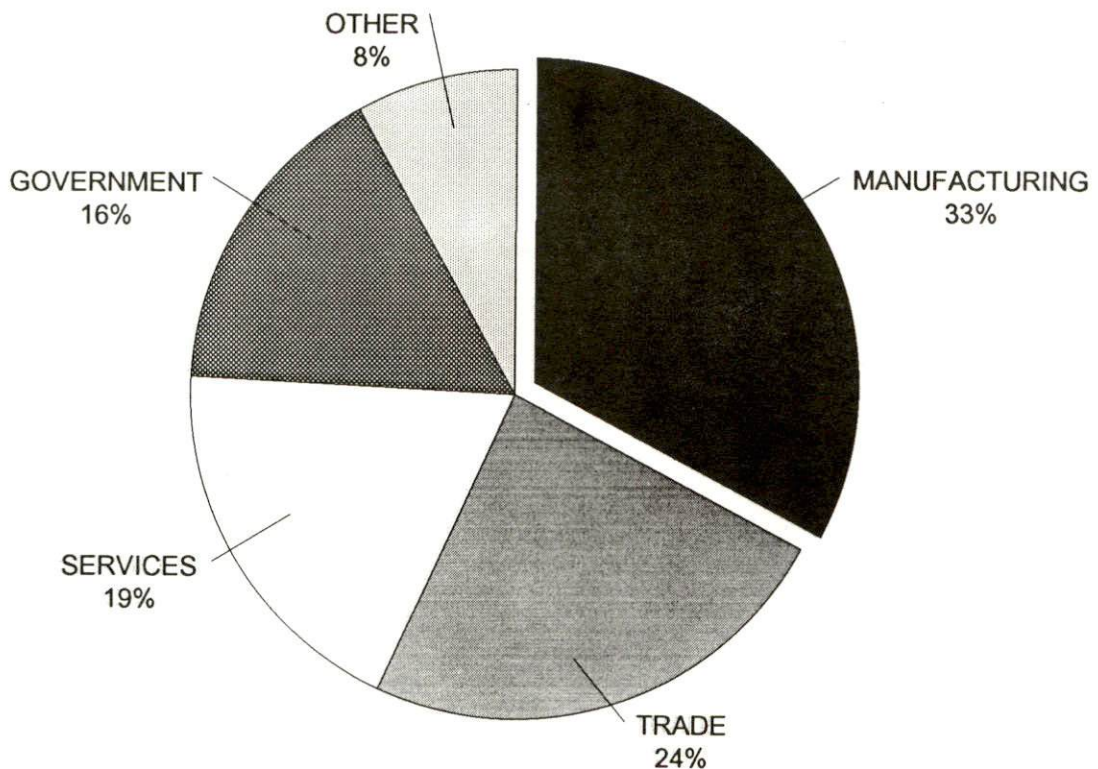


SELECTED COMPONENTS OF NONAGRICULTURAL EMPLOYMENT  
BY PLACE OF WORK, 1992

	<u>Marion County</u>	<u>Labor Market Area</u>
All Industries (total)	4,025	43,744
Manufacturing	1,315	15,466
Wholesale & Retail Trade	970	10,156
Services	756	6,772
State/Local Government	630	5,936
Contract Construction	142	1,909

Note: Excludes domestic workers, railway workers, certain nonprofit corporations, majority of federal government workers, and self-employed workers.  
Source: Kentucky Cabinet for Human Resources, Average Monthly Workers Covered by Kentucky Unemployment Insurance Law, 1992.

MARION COUNTY



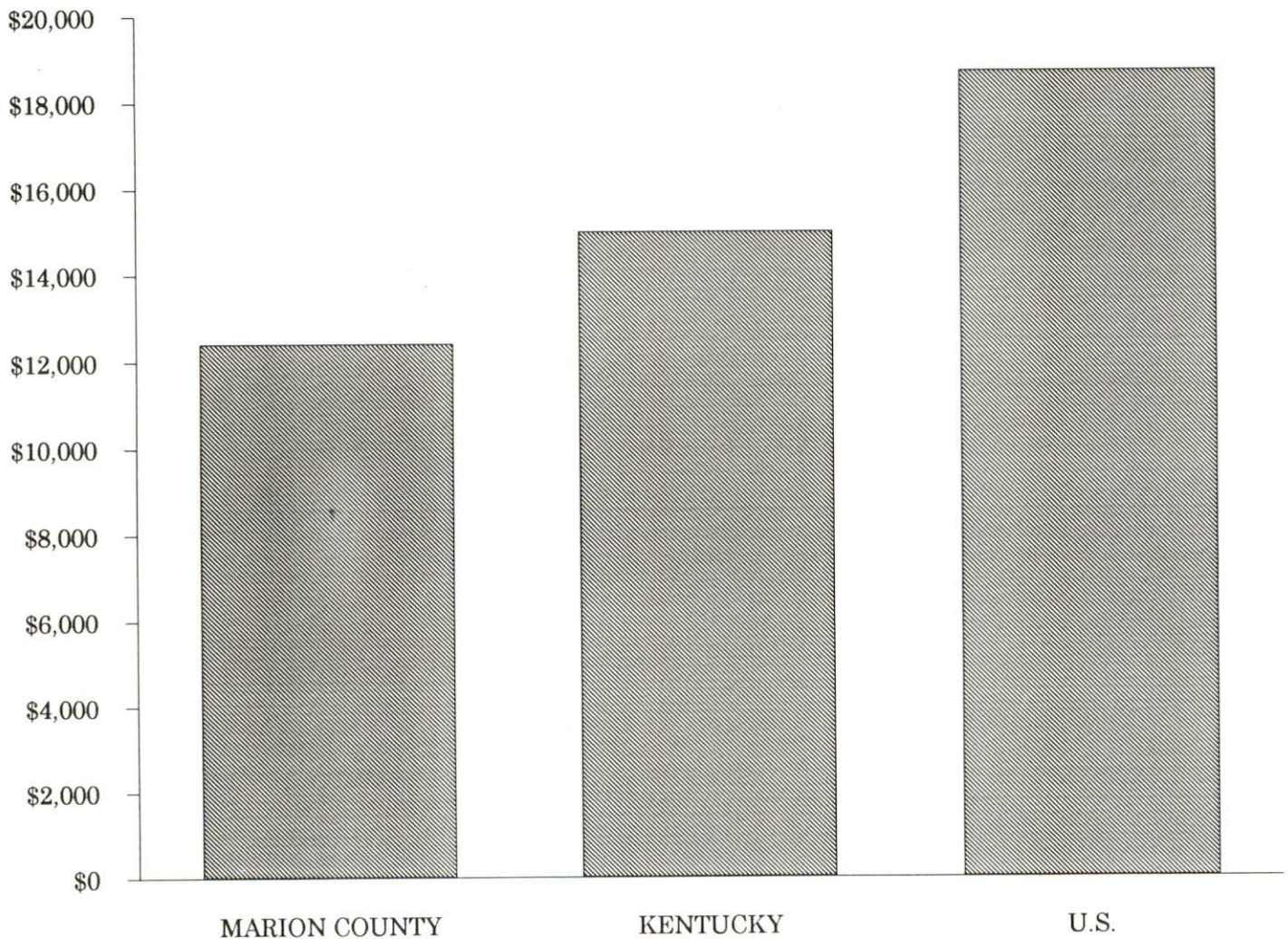


PER CAPITA PERSONAL INCOME

Area	1986	1990	Percent Change
Marion County	\$8,977	\$12,407	38.2
Labor Market Area Range	\$7,314 - \$11,468	\$10,241 - \$14,580	-
Kentucky	\$11,273	\$14,992	33.0
U.S.	\$14,654	\$18,696	27.6

Source: U.S. Bureau of Economic Analysis, Kentucky Economic Information System, April 1992.

PER CAPITA PERSONAL INCOME  
1990



## AVERAGE PLACEMENT WAGES

Marion County is served by the Bardstown local office of the Kentucky Department for Employment Services. The focus of the following data is on job placements made by the Bardstown local office and may therefore be used as an indicator of the wages which employers in the area pay new employees. During the twelve months which ended on June 30, 1993, the local employment office filled 1,486 job openings in various occupational categories. The average hourly wage for selected occupational categories were:

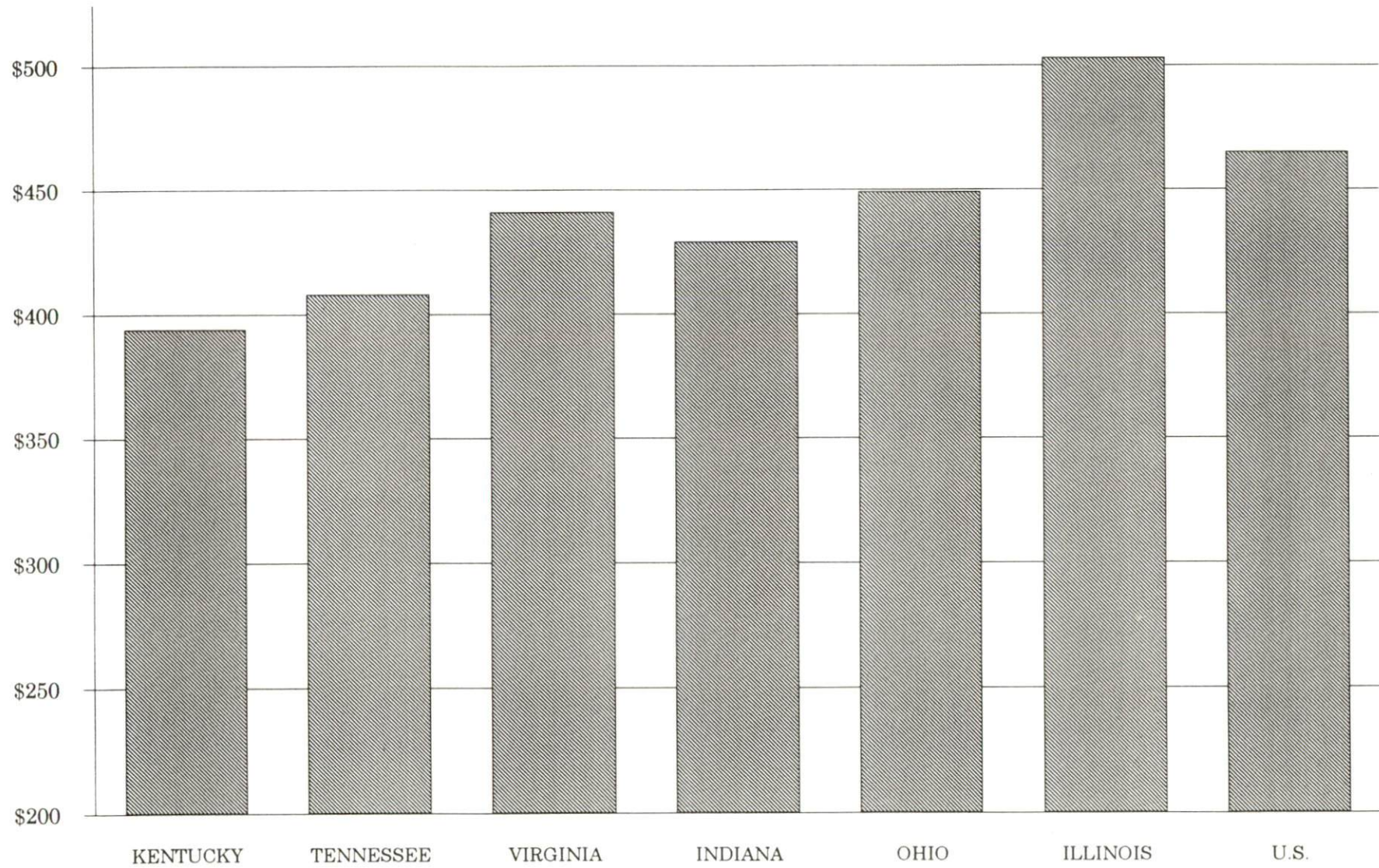
<u>OCCUPATIONAL CATEGORY</u>	<u>NUMBER OF PLACEMENTS</u>	<u>AVERAGE WAGE(\$)</u>
All Occupations	1,486	4.94
Clerical	174	4.54
Sales	26	4.78
Services (excluding domestic)	224	4.29
Agricultural, Fishery, Forestry, etc.	76	4.35
Processing	91	5.89
Machine Trades	238	5.19
Bench Work	360	4.92
Structural	73	5.84
Motor Freight/ Transportation	40	4.43
Packaging and Materials Handling	139	5.49
Other	7	4.67

The Bardstown local office also serves Nelson and Washington Counties. The above occupational categories are taken from the Dictionary of Occupational Titles published by the U.S. Department of Labor.

Source: Kentucky Cabinet for Human Resources, Department for Employment Services.



AVERAGE WEEKLY WAGES OF WORKERS COVERED BY  
UNEMPLOYMENT INSURANCE - 1991



AVERAGE WEEKLY WAGES BY INDUSTRY  
BY PLACE OF WORK, 1991\*

	Marion County	Kentucky (State- Wide)	Tennessee	Virginia
All Industries	\$298.53	\$394.46	\$408.00	\$441.00
Mining & Quarrying	.00	661.68	528.00	655.00
Contract Construction	263.63	410.33	436.00	452.00
Manufacturing	322.51	505.56	477.00	509.00
Transportation, Communications & Public Utilities	302.57	528.78	541.00	605.00
Wholesale & Retail Trade	180.78	268.42	N/A	N/A
Finance, Insurance & Real Estate	344.41	449.89	495.00	523.00
Services	354.20	350.41	394.00	455.00
State/Local Government	365.78	413.84	N/A	N/A
	<u>Indiana</u>	<u>Ohio</u>	<u>Illinois</u>	<u>U. S.</u>
All Industries	\$429.00	\$449.00	\$503.00	\$465.00
Mining & Quarrying	708.00	609.00	758.00	747.00
Contract Construction	499.00	510.00	635.00	514.00
Manufacturing	583.00	613.00	609.00	579.00
Transportation, Communications & Public Utilities	531.00	567.00	632.00	599.00
Wholesale & Retail Trade	N/A	N/A	N/A	N/A
Finance, Insurance & Real Estate	458.00	498.00	650.00	596.00
Services	368.00	398.00	462.00	443.00
State/Local Government	N/A	N/A	N/A	N/A

\* Wages for U.S. and surrounding states rounded to nearest dollar.

N/A Not Available.

Note: The average weekly wage for each category includes the salaries and wages of all persons working for that type business. For example, the manufacturing category includes both production workers and administrative personnel. Excludes domestic workers, railway workers, certain nonprofit corporations, majority of federal government workers, and self-employed workers.

Source: Kentucky Cabinet for Human Resources, Average Weekly Wages of Workers Covered by Kentucky Unemployment Insurance Law, 1991. U.S. Department of Labor, Bureau of Labor Statistics, Employment and Wages, Annual Averages, 1991, January 1993.



# EXISTING INDUSTRY

## MARION COUNTY MANUFACTURING FIRMS, THEIR PRODUCTS AND EMPLOYMENT

<u>Firm</u> <u>(Establishment date)</u>	<u>Product</u>	<u>1992</u> <u>Average Employment</u>
<b>Lebanon</b>		
American Wood Products (1990)	Animal bedding (red cedar and pine)	42
Angell Manufacturing Company (1965)	Name plates, plaques, aluminum & plastic trim	120
Bluegrass Knitting Mills (1989)	T-shirts	175
Cargill, Inc. (1964)	Fertilizer mixing; chemicals, herbicides	4
Central Kentucky Tool & Engineering Company (1970)	Precision machine parts, stampings, tools, dies, fabrication, jigs fixtures, machine shop, precision machining	32
Curtis Maruyasu American, Inc. (1988)	Steel tubing for the auto industry	75
Deeps Farm Supply (1953)	Animal feed	7
Jane & Linda Sportswear Company (1958)	Ladies' sportswear	176
Kemp Lumber Company (1950)	Rough lumber, dimension stock, cedar posts	1
Ken Mar Tool, Inc. (1976)	Sheet metal fabrication, service industry machines, machine shop	76
Kentucky Furniture & Woodworking, Inc. (1983)	Furniture dimension stock	52
The Lebanon Enterprise, Inc. (1966)	Newspaper, printing	10
Lebanon Machine Shop, Inc. (1955)	Machine shop	6
Lebanon Oak Flooring Company (1897)	Flooring, furniture dimension, millwork products	77
Lebanon Power & Apparatus Company, Inc. (1963)	Rebuilt motors, industrial electronic repair, industrial electronic design	19
Marion County Cooperage Company (1983)	Whiskey barrels	160
Plastic Products Company, Inc. (1986)	Plastic injection molding	160

(Continued)

<u>Firm</u> <u>(Establishment date)</u>	<u>Product</u>	<u>1992</u> <u>Average Employment</u>
Professional Molded Products (1953)	Foot shaped molded shoes	3
T & H Feed Service, Inc. (1956)	Feed	9
Teledyne Portland Forge (1990)	Steel forgings	58
<b>Loretto</b>		
Makers Mark Distillery, Inc. (1953)	Whiskey, Feed	50

Sources: Kentucky Cabinet for Economic Development, Division of Research; Lebanon/Marion County Chamber of Commerce Office of Economic Development.

### RECENT INDUSTRIAL IMPROVEMENTS

Curtis Maruyasu American, Inc. recently expanded its facility, doubling the size of production space. The company manufactures steel tubing for the auto industry.

### LABOR ORGANIZATIONS IN MANUFACTURING FIRMS

<u>Union</u>	<u>Representing workers at:</u>
International Union of Electronic, Electrical, Technical, Salaried, Machine and Furniture Workers, AFL-CIO	Angell Manufacturing Company
Coopers International Union of North America, AFL-CIO	Marion County Cooperage Company
International Ladies' Garment Workers Union, AFL-CIO	Jane & Linda Sportswear Company
International Woodworkers of America, UF	Lebanon Oak Flooring Company

# SELECTED INDUSTRIAL SERVICES

<u>Types of Services</u>	<u>Location</u>	<u>Mileage from Lebanon</u>
Custom Plastics Producers	Lebanon	-
Electric Motor Repair	Lebanon	-
Heat Treating Facilities	Frankfort	58
Industrial Waste Removal	Campbellsville	20
Machine Shops, Tool & Die	Lebanon	-
Metal Castings	Louisville	66
Metal Finishers	Elizabethtown	51
Metal Service Centers	Campbellsville	20
Millwrights & Riggers	Nicholasville	54

Sources: Kentucky Cabinet for Economic Development, Division of Research.

## TRANSPORTATION

### Highways

Lebanon is served by U.S. Highway 68 and Kentucky Highway 55, both "AAA"-rated (80,000-pound gross load limit) trucking highways. The Blue Grass Parkway, which provides easy access to Interstate 64, 65, and 75, is located 23 miles north via Kentucky 55 and 555. Interstate 65 is located 44 miles northwest of Lebanon, while Interstate 64 and 75 are located 65 miles northeast of Lebanon. The Cumberland Parkway is accessible 40 miles south via Kentucky 55.

Portions of U.S. Highway 68, from Lebanon to Danville, were straightened to provide a safer access between the cities.

#### HIGHWAY MILES FROM LEBANON, KENTUCKY, TO SELECTED MARKET CENTERS

City	Highway Miles	City	Highway Miles
Atlanta, GA	335	Los Angeles, CA	2,130
Baltimore, MD	597	Louisville, KY	66
Birmingham, AL	338	Nashville, TN	151
Chicago, IL	353	New Orleans, LA	673
Cincinnati, OH	138	New York, NY	775
Cleveland, OH	380	Pittsburgh, PA	403
Detroit, MI	398	St. Louis, MO	324
Knoxville, TN	179		

Note: Mileage computations are via the best interstate or primary highways, not necessarily the most direct route of travel.

Sources: Rand McNally Standard Highway Mileage Guide, 1990. Official Kentucky Mileage Map, 1985.

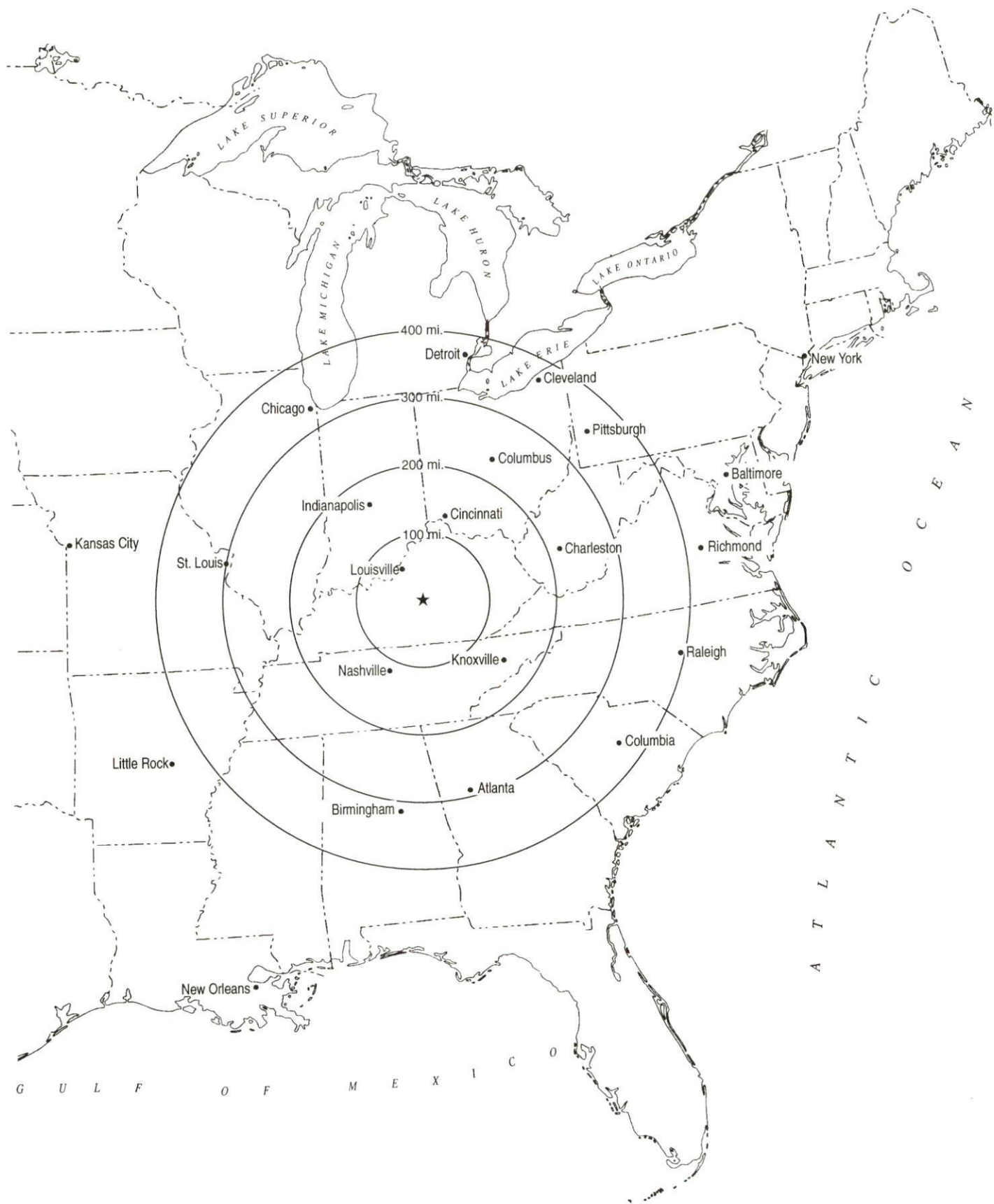
### Truck Service

Fifteen common carrier trucking companies provide interstate and/or intrastate service to Lebanon.

Source: American Motor Carrier Directory, Spring 1993.



# Selected Market Centers



## Rail

R.J. Corman Railroad provides the nearest branch line rail service at Bardstown, Kentucky, 25 miles northwest of Lebanon. Norfolk Southern and Burlington Northern, located at Louisville, Kentucky, 66 miles northwest, provides the nearest intermodal facilities.

For details on routing, schedules, rates, and services contact:

Vice President-Operations  
R.J. Corman Railroad Corporation  
P.O. Box 279  
Bardstown, Kentucky 40004  
(502) 348-7444

## Air

### Local

Location:	Lebanon-Springfield Airport
Runways:	4 miles north of Lebanon
Length:	1 paved
Traffic	4,000 feet
Control:	Wind sock, VOR/DME, unicom
Lighting:	Rotating beacon, sunset to sunrise
Services:	80 and 100LL fuel, major and minor A & P repairs, flight instruction, tie-down, hangar, courtesy car

The Lebanon-Springfield Airport plans to expand its runway from 4,000 feet to 5,000 feet.

### Nearest Scheduled Commercial Airline Service

Location:	Bluegrass Airport
	4 miles west of Lexington, Kentucky;
	58 miles northeast of Lebanon
Air Service:	Delta, USAir, United Express, American Eagle, ComAir, TW Express, Atlantic Southeast Airlines, Northwest Airlink

Daily Arrivals & Departures:	120
---------------------------------	-----

Location:	Standiford Field
	4 miles southeast of center of Louisville, Kentucky; 62 miles northwest of Lebanon
Air Service:	Air Toronto, Delta, Northwest, American, Continental, TWA, United, USAir, ComAir, Midway, Midwest Express, Southwest
Daily Arrivals & Departures:	136

## UTILITIES

### Electricity

Company serving **Lebanon and parts of Marion County** - Kentucky Utilities Company

Source of power - Kentucky Utilities Company  
For industrial rates contact:

Economic Development Department  
Kentucky Utilities Company  
One Quality Street  
Lexington, Kentucky 40507  
(606) 255-2100

Company serving **most of Marion County** - Inter-County Rural Electric Cooperative Corporation

Source of power - East Kentucky Power  
For industrial rates contact:

Industrial Development Department  
East Kentucky Power  
P.O. Box 707  
Winchester, Kentucky 40392-0707  
(606) 744-4812

and/or

Inter-County Rural Electric Cooperative Corporation  
1009 Hustonville Road  
P.O. Box 87  
Danville, Kentucky 40423-0087  
(606) 236-4561 Fax (606) 236-3627

### Natural Gas

Company serving **Lebanon** - Western Kentucky Gas Company

Source of supply - Tennessee Gas Pipeline Company  
For rates and supplies contact:

Western Kentucky Gas Company  
P.O. Box 866  
Owensboro, Kentucky 42302  
(502) 685-8067



## Public Water Supply

Company serving Lebanon - Lebanon Water Company  
120 South Proctor Knott  
Lebanon, Kentucky 40033  
(502) 692-2491

Source - Rolling Fork River  
Treatment plant capacity - 3,000,000 gallons per day  
Average daily consumption - 1,500,000 gallons  
Peak daily consumption - 2,100,000 gallons  
Storage capacity - 2,250,000 gallons  
Water pressure - 40 psi to 180 psi

The Lebanon Water Company completed construction on a new 940-million-gallon reservoir on the Fagan Branch and a raw water pump station near the Rolling Fork at the Calvary Dam. These improvements will assure customers adequate water supply for future needs.

## Sewerage

Company serving Lebanon - Lebanon Sewer Department  
118 South Proctor Knott  
Lebanon, Kentucky 40033  
(502) 692-6272 Fax (502) 692-4638

Design capacity - 2,500,000 gallons per day  
Average daily flow - 1,000,000 gallons  
Type of treatment - Secondary  
Treated effluent discharged into - Hardins Creek

## CLIMATE

### Marion County

#### Temperature

Normal (30-year record)	54.90 degrees
Average annual 1991	57.30 degrees
Record highest, July 1988 (47-year record)	103.00 degrees
Record lowest, January 1963 (47-year record)	-21.00 degrees
Normal heating degree days (30-year record)	4,814
(Heating degree day totals are the sums of negative departures of average daily temperatures from 65 degrees F.)	

#### Precipitation

Normal (30-year record)	45.68 inches
Mean annual snowfall (47-year record)	15.70 inches
Total precipitation 1991	41.80 inches
Mean number days precipitation (.01 inch or more) (47-year record)	129.40
Mean number days thunderstorms (47-year record)	44.90

#### Prevailing winds (through 1963)

South

#### Relative Humidity (28-year record, except 1 a.m. - 27-year record)

1 a.m.	77 percent
7 a.m.	82 percent
1 p.m.	60 percent
7 p.m.	64 percent

Source: U.S. Department of Commerce, Environmental Science Services Administration, Climatological Data, 1991. Station of record: Lexington, Kentucky.

## LOCAL GOVERNMENT

### Structure

Lebanon is governed by a mayor and six council members. The mayor serves a four-year term and the six council members are elected for two-year terms. Marion County is governed by a county judge/executive and five magistrates. Each county official is elected to a four-year term.

### Planning and Zoning

City agency - Lebanon Planning Commission

Zoning enforced - Within city only

Subdivision regulations enforced - Within city and three miles beyond the corporate limits

Local codes enforced - Building and housing

Mandatory state codes enforced - Kentucky Plumbing Code, National Electric Code, Kentucky Boiler Regulations and Standards, Kentucky Building Code (modeled after BOCA code)

### Local Fees and Licenses

The City of Lebanon levies an occupational license tax of one-half of one percent on salaries, wages, commissions and other compensations earned by individuals, and one-half of one percent on net profits of sales made within the city for businesses and professions, with a minimum fee of \$25.00.

Marion County levies an occupational license tax of one-half of one percent on salaries, wages, commissions and other compensations earned by individuals, and one-half of one percent on net profits of businesses and professions.



## PROPERTY TAXES

The Kentucky Constitution requires the state to tax all classes of taxable property, and state statutes allow local jurisdictions to tax only a few classes. All locally taxed property is subject to county taxes and school district taxes (either a county school district or an independent school district). Property located inside of city limits may also be subject to city property taxes.

Special local taxing jurisdictions (fire protection districts, watershed districts, and sanitation districts) levy taxes within their operating areas (usually a small portion of community or county).

Property assessments in Kentucky are at 100% fair cash value. Accounts receivable are taxed at 85% of face value.

### STATE PROPERTY TAX RATES PER \$100 VALUATION

<u>Selected Classes of Property</u>	<u>1992 State Rate</u>	<u>Local Taxation Permitted</u>
Real Estate	\$0.184	YES
Manufacturing Machinery	0.150	NO
Pollution Control Equipment	0.150	NO
Inventories		
Raw Materials	0.050	NO
Goods in Process	0.050	NO
Finished Goods	0.050	YES
Motor Vehicles	0.450	YES
Other Tangible Personal Property	0.450	YES
Intangibles (Accounts Receivable, Money on Hand)	0.250	NO

### LOCAL PROPERTY TAX RATES PER \$100 VALUATION, 1992

<u>Taxing Jurisdiction</u>	<u>Real Estate</u>	<u>Finished Goods &amp; Tangibles</u>	<u>Motor Vehicles</u>
Marion County	\$0.1614	\$0.1965	\$0.1929
School Districts:			
Marion County	0.4180	0.4360	0.5000
Cities:			
Lebanon	0.1970	0.1970	0.2433

## EDUCATION

### Public Schools

	Marion County
Total Enrollment (Fall, 1992)	2,977
Pupil-Teacher Ratio (1991-92)	16.6-1
Percent High School Graduates to College (1991-92)	57.3
Expenditures Per Pupil (1991-92)	\$3,493.36

The Marion County School System plans to construct a new middle school. Property has been purchased for the new school with construction to begin by early 1994.

### Nonpublic Schools

<u>School</u>	<u>Enrollment</u>	<u>Grades</u>
St. Augustine Elementary	397	K-8

### Area Colleges and Universities

<u>Name</u>	<u>Location (Mileage from Lebanon)</u>	<u>Enrollment (Fall, 1992)</u>
Saint Catharine College	Springfield (8)	353
Campbellsville College	Campbellsville (20)	1,042
Centre College	Danville (31)	906
Lindsey Wilson College	Columbia (39)	1,091
Ashbury College	Wilmore (48)	1,138
Elizabethtown Community College	Elizabethtown (51)	4,297
Kentucky State University	Frankfort (58)	2,544
Lexington Community College	Lexington (62)	4,862
Transylvania University	Lexington (62)	974
University of Kentucky	Lexington (62)	24,197
Midway College	Midway (63)	798
Berea College	Berea (65)	1,579
Bellarmino College	Louisville (66)	2,977
Jefferson Community College	Louisville (66)	11,861
Spalding University	Louisville (66)	1,141
University of Louisville	Louisville (66)	22,634
Eastern Kentucky University	Richmond (65)	16,866
Somerset Community College	Somerset (69)	2,485

## VOCATIONAL-TECHNICAL TRAINING

Kentucky Tech schools are operated by the Cabinet for Workforce Development and provide secondary (Sec) and postsecondary (P/S) vocational-technical training.

<u>Kentucky Tech Schools</u>	<u>Location (Mileage from Lebanon)</u>	<u>Number of Program Offerings</u>	<u>Cumulative Enrollment 1991-1992</u>	<u>Approximate Number Completing Programs Annually</u>
Marion County Area Vocational Education Center	Lebanon	7	<u>Sec</u> <u>P/S</u> 170 7	58
Elizabethtown State Vocational-Technical School	Elizabethtown (51)	16	<u>Sec</u> <u>P/S</u> 42 562	190

### Customized Training

The Elizabethtown Industrial Foundation Training Consortium is a partnership of local companies, government, civic and education representatives who are dedicated to achieve training excellence by planning, conducting and evaluating training for people from local business and industry to ensure continuous improvement. The partnership cooperatively ties together Elizabethtown Community College and Elizabethtown SVTS.

The Kentucky Tech system, through its Training and Development Coordinators, will provide technical assistance and will identify and develop low cost customized training programs and services for both established and prospective businesses. Businesses wanting to establish a customized training program should simply contact a Training and Development Coordinator located at the Kentucky Tech Northwest Region office in Elizabethtown.

### Assessment Services

Kentucky Tech Career Connections offers to business, education, and government agencies customized assessment in career inventories, interest inventories, psychomotor skills and academic potential, as well as pre-hire assessment. A Career Connections Assessment Center is located on the campus of Elizabethtown SVTS.

### Articulation

Articulation agreements developed between various colleges and universities and the Kentucky Tech system allow students to earn credits to be used when matriculating to degree programs at a college or university. Marion County AVEC and Saint Catherine College have an articulation agreement in Auto Body Repair, Automotive Technology, Carpentry, Machine Tool Technology and Office Technology. Elizabethtown SVTS has articulation agreements with Elizabethtown Community College.



### Adult Basic Education

Adult education programs are available to adults who want to develop new skills, improve basic skills or earn a high school equivalency diploma. In Lebanon, adult literacy and adult basic education are provided through the Marion County Board of Education.

### Area Vocational Education Center

The Marion County Area Vocational Education Center is expanding its program to reach more residents of Marion County. The school has recently added programs in the following fields: computer courses, machine technology, welding, blueprint reading, keyboarding, accounting and first aid training.

### Bluegrass State Skills Corporation

The Bluegrass State Skills Corporation, an independent public corporation created and funded by the Kentucky General Assembly, provides programs of skills training to meet the needs of business and industry from entry level to advanced training, and from upgrading present employees to retraining experienced workers.

The Bluegrass State Skills Corporation is a major source for skills training assistance for a new or existing company. The Corporation works in partnership with other employment and job training resources and programs, as well as Kentucky's economic development activities, to package a program customized to meet the specific needs of a company.

## OTHER LOCAL FACILITIES

### Local Medical Personnel

Physicians - 11  
Dentists - 3

### Hospitals

<u>General Hospital</u>	<u>Location</u>	<u>Beds</u>
Spring View Hospital	Lebanon	75

Medical staff - 52 physicians, 48 registered nurses, and 17 licensed practical nurses

Spring View Hospital, serving Lebanon and the surrounding area, is completing construction on a new ultra modern facility at a cost of approximately \$15 million.

### Other Medical Facilities

Communicare Clinic  
Hospice of Central Kentucky  
Marion County Home Health Agency  
Cedars of Lebanon Nursing Home - 94 beds  
Spring View Nursing Home - 38 beds  
Marion County Ambulance Emergency Service  
Lincoln Trail District Home Health  
Agency/Marion County Branch  
Marion County Health Department

### Banks and Savings & Loan Associations

Citizens National Bank  
Farmers National Bank  
Great Financial Federal  
Peoples Bank  
Star Bank NA, Kentucky

### Newspapers

The Lebanon Enterprise (weekly)

### Telephone Service

GTE South, Inc.

## RECREATION

### Local

Public recreational facilities in or near Lebanon include eight tennis courts, one park, four playgrounds, one swimming pool, three baseball diamonds, two football fields and a 3,400-foot jogging track.

The Lebanon Community Theater provides the community with several productions of the musical, drama, and comedy variety each year.

Sportsman's Lake, near the Lebanon city limits, is a public recreational area owned by the Commonwealth of Kentucky and operated by Marion County. The lake and surrounding area offers a clubhouse, a playground, and facilities for fishing, picnicking, and archery.

The Lebanon Country Club, a privately-owned facility, offers a nine-hole golf course, a swimming pool, and tennis courts.

Makers Mark Distillery, located between Lebanon and Loretto, is Kentucky's oldest operating mill and distillery on its original site. Tours are offered Monday through Friday. Facilities include a visitor/reception house which features artifacts of old time distilling and quarehouse, the equivalent of the modern package store. The Makers Mark Distillery has been listed on the National Register of Historic Places and has been named a Kentucky Landmark.

Lebanon is the home of the annual **Marion County Ham Days**, held the last weekend in September, and the Marion County Fair, held each year in July.

A fitness center is located at the Marion County High School and is fully equipped with the latest exercise equipment. The facility is open to the public during the evenings and used by the high school students daily.

### Area (Within 50 miles)

Abraham Lincoln Birthplace National  
Historic Site  
Bernheim Forest Arboretum and  
Nature Center  
Constitution Square State Historic Site  
Green River Lake State Park  
Herrington Lake  
Isaac Shelby Cemetery State Historic Site  
Lincoln Homestead State Park  
My Old Kentucky Home State Park  
Old Fort Harrod State Park  
Taylorsville Lake State Park  
William Whitley House State Historic Site



## COMMUNITY IMPROVEMENTS

Lebanon re-certified as a "Kentucky Certified City" in 1992, and is distinguished as a gold award winner recognized eight consecutive years of certification. Re-certification is based on achievement in the following area: existing industry assistance, small business assistance, educational resources, and community development factors of health care, public safety, arts and culture, recreation, governmental awareness and resources. The Certified Cities Program is sponsored by the Kentucky Chamber of Commerce.

Curtis Maruyasu American, Inc. recently expanded its facility, doubling the size of production space. The company manufactures steel tubing for the auto industry.

The Lebanon Water Company completed construction on a new 940-million-gallon reservoir on the Fagan Branch and a raw water pump station near the Rolling Fork at the Calvary Dam. These improvements will assure customers adequate water supply for future needs.

The Lebanon-Springfield Airport plans to expand its runway from 4,000 feet to 5,000 feet.

Spring View Hospital, serving Lebanon and the surrounding area, is completing construction on a new ultra modern facility at a cost of approximately \$15 million.

Portions of U.S. Highway 68, from Lebanon to Danville, were straightened to provide a safer access between the cities.

The Marion County School System plans to construct a new middle school. Property has been purchased for the new school with construction to begin by early 1994.

The Marion County Area Vocational Education Center is expanding its program to reach more residents of Marion County. The school has recently added programs in the following fields: computer courses, machine technology, welding, blueprint reading, keyboarding, accounting and first aid training.

The City of Lebanon, through a local company, has photo mapping capability. The city can provide a detail aerial photos of any location in Marion County.

The City of Lebanon, in 1992, was accepted into the Kentucky Main Street Program. The Kentucky Heritage Council initiated the main street program which is based on a four-point approach to downtown revitalization. The program offers grant funding and a variety of types of technical assistance to local communities. Lebanon has several projects that are currently underway including construction of new sidewalks and street lights for the downtown area.