

1984

# Industrial Resources: Mercer County - Harrodsburg

Kentucky Library Research Collections  
Western Kentucky University, [spcol@wku.edu](mailto:spcol@wku.edu)

Follow this and additional works at: [https://digitalcommons.wku.edu/mercer\\_cty](https://digitalcommons.wku.edu/mercer_cty)

 Part of the [Business Administration, Management, and Operations Commons](#), [Growth and Development Commons](#), and the [Infrastructure Commons](#)

---

## Recommended Citation

Kentucky Library Research Collections, "Industrial Resources: Mercer County - Harrodsburg" (1984). *Mercer County*. Paper 8.  
[https://digitalcommons.wku.edu/mercer\\_cty/8](https://digitalcommons.wku.edu/mercer_cty/8)

This Report is brought to you for free and open access by TopSCHOLAR®. It has been accepted for inclusion in Mercer County by an authorized administrator of TopSCHOLAR®. For more information, please contact [topscholar@wku.edu](mailto:topscholar@wku.edu).

IR  
416  
MERCER COUNTY

RESOURCES  
FOR  
ECONOMIC  
DEVELOPMENT

**HARRODSBURG**



**KENTUCKY**  
The Business Environment is Right



# HARRODSBURG, KENTUCKY

## Industrial Sites - 1984

For more information contact the Kentucky Department of Economic Development, Industrial Development & Marketing Division, Capital Plaza Tower, Frankfort, Kentucky 40601 (502-564-7140).





RESOURCES FOR ECONOMIC DEVELOPMENT

HARRODSBURG, KENTUCKY

Prepared by  
The Kentucky Department of Economic Development  
Division of Research and Planning  
in cooperation with  
The Mercer Chamber of Commerce

1984

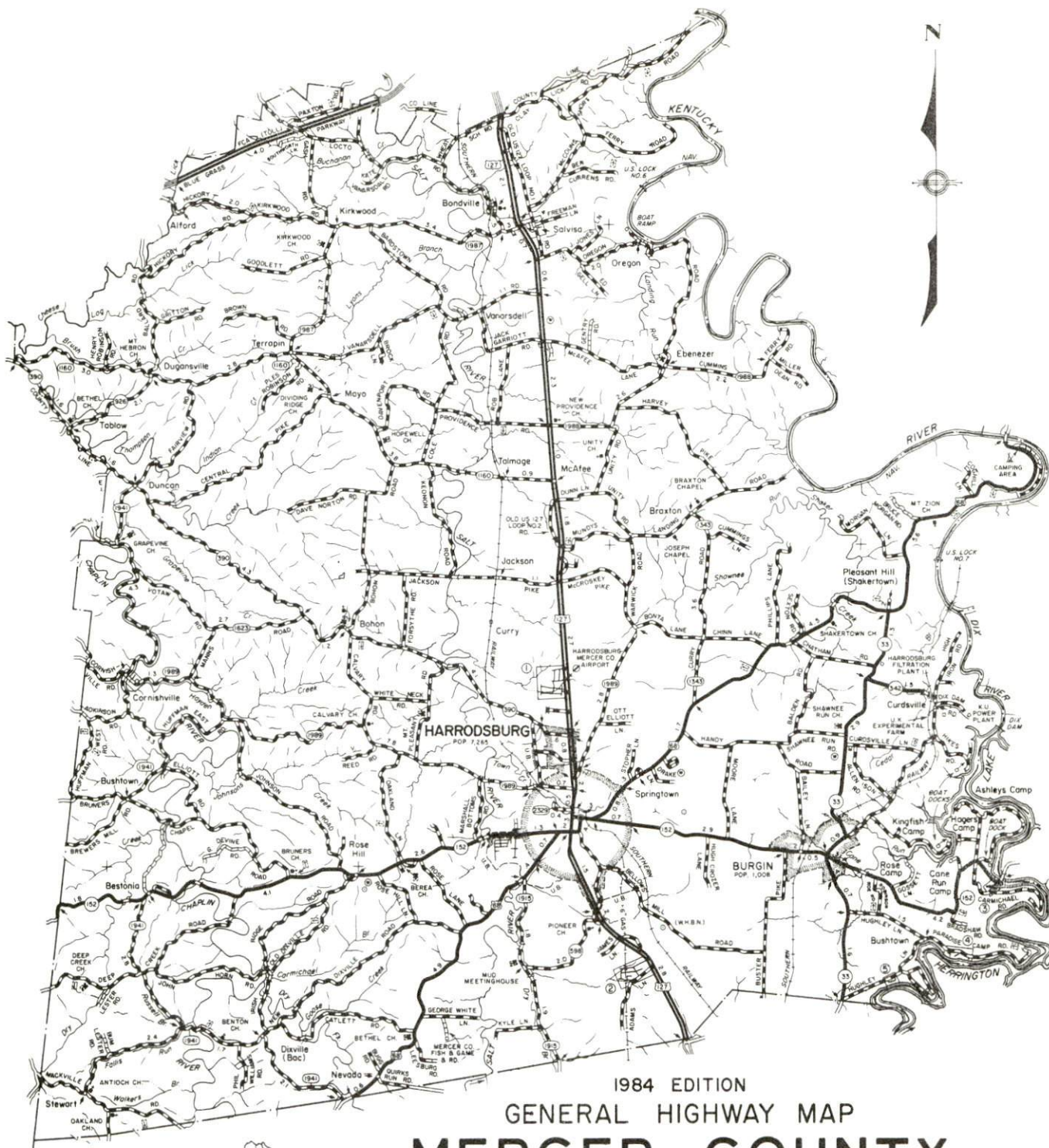


## TABLE OF CONTENTS

<u>Chapter</u>	<u>Page</u>
INDUSTRIAL SITES .....	i
HARRODSBURG, KENTUCKY - A RESOURCE PROFILE .....	1
THE LABOR MARKET AREA .....	3
Population .....	3
Labor Force Characteristics of Residents, 1983 .....	3
Selected Components of Nonagricultural Employment, by Place of Work, 1983 .....	4
Mercer County Manufacturing Firms, Their Products and Employment .....	5
Labor Organizations in Manufacturing Firms .....	6
Industrial Services .....	7
Estimated Male Labor Supply .....	8
Estimated Female Labor Supply .....	8
Average Weekly Wages By Industry, by Place of Work, 1983 .....	9
Per Capita Personal Income .....	11
TRANSPORTATION .....	12
Rail .....	12
Highways .....	12
Truck Service .....	12
Air .....	14
Bus .....	15
Taxi .....	15
Rental Services .....	15
Water .....	15
POWER AND FUEL .....	16
Electricity .....	16
Natural Gas .....	16
Other Fuels .....	17
WATER AND SEWERAGE .....	18
Public Water Supply .....	18
Raw Water .....	18
Sewerage .....	19
CLIMATE .....	20

<u>Chapter</u>	<u>Page</u>
LOCAL GOVERNMENT .....	21
City .....	21
County .....	21
Assessed Value of Property, 1984 .....	21
Property Taxes .....	22
Combined State and Local Rates Per \$100 Valuation, 1983 .....	23
Planning and Zoning .....	24
Safety .....	25
Police .....	25
Fire .....	25
Rescue Service .....	25
Refuse Collection and Disposal .....	25
EDUCATION .....	26
Public Schools .....	26
Nonpublic Schools .....	26
Area Colleges and Universities .....	27
Vocational Schools .....	28
HEALTH.....	30
Local Medical Personnel .....	30
Hospitals .....	30
Other Medical Facilities .....	30
Ambulance Service .....	30
Public Health .....	30
OTHER LOCAL FACILITIES.....	31
Communications .....	31
Library Services .....	31
Religious Institutions .....	32
Financial Institutions .....	32
Hotels and Motels .....	32
Clubs and Organizations .....	33
RECREATION .....	34
COMMUNITY IMPROVEMENTS .....	38





1984 EDITION  
 GENERAL HIGHWAY MAP  
**MERCER COUNTY**  
**KENTUCKY**

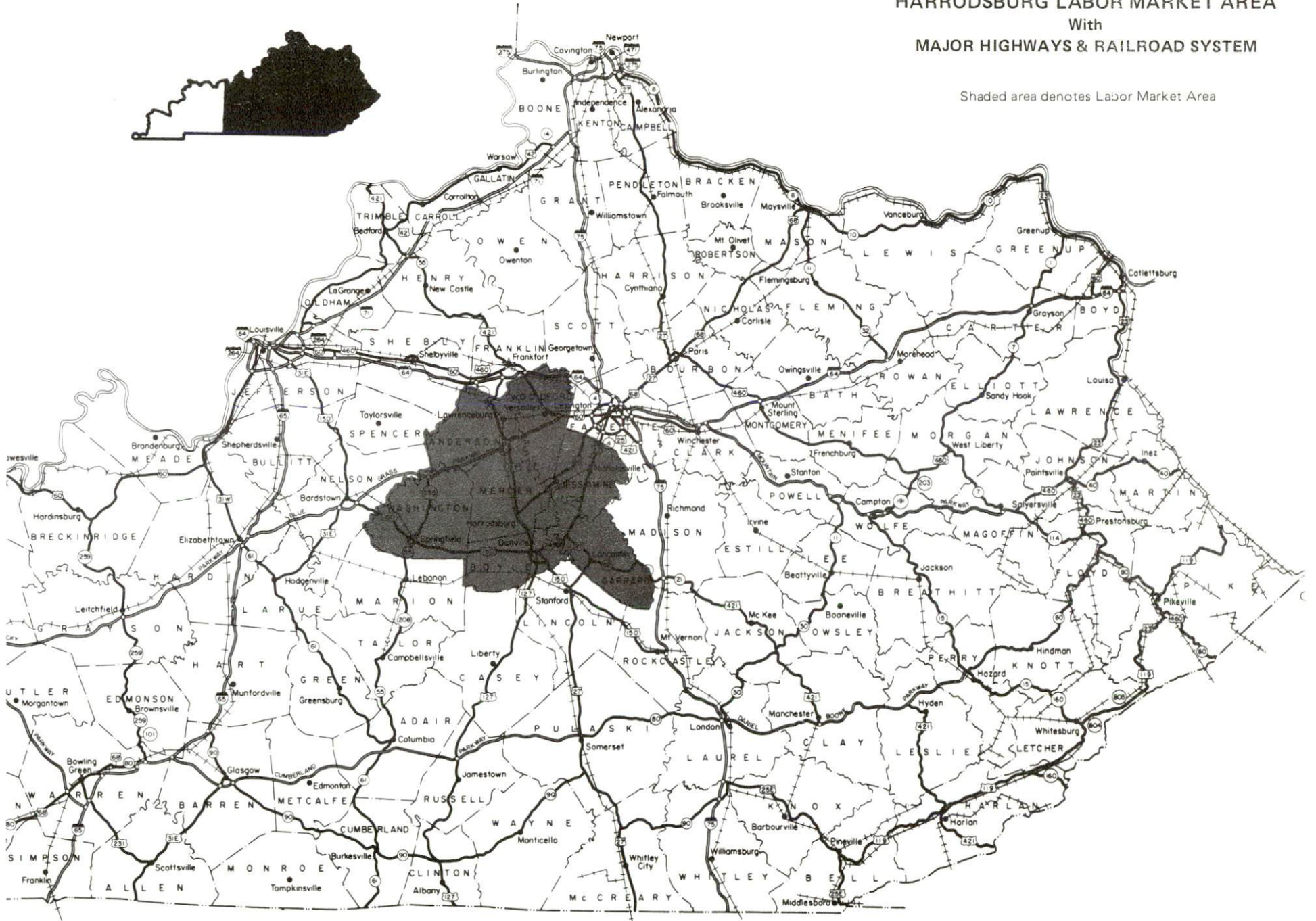
PREPARED BY THE  
 KENTUCKY TRANSPORTATION CABINET  
 DEPARTMENT OF HIGHWAYS  
 DIVISION OF PLANNING  
 IN COOPERATION WITH THE  
 U.S. DEPARTMENT OF TRANSPORTATION  
 FEDERAL HIGHWAY ADMINISTRATION





# HARRODSBURG LABOR MARKET AREA With MAJOR HIGHWAYS & RAILROAD SYSTEM

Shaded area denotes Labor Market Area





## HARRODSBURG, KENTUCKY - A RESOURCE PROFILE

Harrodsburg, Kentucky's oldest city, is located in central Kentucky's Blue Grass Region. Harrodsburg was founded in 1774 by James Harrod and a party of explorers from Pennsylvania. The following year a permanent settlement was begun, and in 1785 Mercer County was formed. Harrodsburg was designated as the county seat.

Today, Harrodsburg is a thriving city whose heritage is still deeply ingrained in its identity. In 1980, Harrodsburg had a population of 7,265 persons. The city is located 38 miles southwest of Lexington Kentucky; 76 miles southeast of Louisville, Kentucky; and 122 miles south of Cincinnati, Ohio.

Mercer County, with a land area of 250 square miles, had a 1982 estimated population of 19,100.

### The Economic Framework

The total number of Mercer County residents employed in 1983 averaged 8,240, with nonagricultural jobs accounting for 7,385 workers. Manufacturing employers in the county reported 1,380 workers; wholesale and retail trade 900; state and local government 540; and 740 employees in the service industries. Manufacturing employment is greatest in stone, clay, and glass products; apparel and related products; and nonelectrical machinery.

Per capita personal income in Mercer County in 1982 was \$8,371. Between 1978 and 1982, per capita income increased by 38 percent.

The Harrodsburg labor market area includes Mercer County and the adjoining counties of Anderson, Boyle, Garrard, Jessamine, Washington, and Woodford. The total number of residents of the labor market area employed in 1983 averaged 57,990, with nonagricultural jobs accounting for 52,855 workers. Manufacturing employers in this area reported 10,450 workers; wholesale and retail trade 7,490; state and local government 3,950; and 4,320 in the service industries.

### Resources for Growth

1. Labor Supply - There is a current labor supply of 7,570 men and 6,610 women available for industrial jobs in the labor market area. In addition, from 1984 through 1988, 5,250 young men and 5,100 young women in the area will become 18 years of age and potentially available for industrial jobs.

2. Transportation - The Southern Railway System provides main line service to Harrodsburg. The city is served by U.S. Highways 68 and 127, both "AAA"-rated, 80,000-pound gross load limit highways, and by Kentucky Route 152, a "AA"-rated, 62,000-pound gross load limit highway. The Blue Grass Parkway is accessible 16 miles north of Harrodsburg via U.S. 127. Access to Interstate Highways 64 and 75 is available within 50 miles of Harrodsburg via "AAA"-rated roads. Of the 23 common carrier trucking companies serving Harrodsburg, 15 provide both interstate and intrastate service. The nearest scheduled commercial airline service is available at Lexington's Blue Grass Field, 33 miles northeast. The Harrodsburg-Mercer County Airport has a 3,000-foot turf runway.

3. Power and Fuel - Kentucky Utilities Company provides electric power to Harrodsburg and parts of Mercer County. The remainder of Mercer County is served by East Kentucky Power Cooperative, through the Fox Creek Rural Electric Cooperative Corporation and the Inter-County Rural Electric Cooperative Corporation. Western Kentucky Gas Company, whose source of supply is Tennessee Gas Pipeline Company, provides natural gas service to Harrodsburg. There are five propane dealers and eight fuel oil dealers within 25 miles of Harrodsburg.

4. Education - The Harrodsburg Independent schools, the Burgin Independent schools, and the Mercer County schools provide primary and secondary education in Mercer County. The Harrodsburg Independent School System is accredited by the Southern Association of Colleges and Schools. A nonpublic school also operates in the county.

There are 13 institutions of higher learning within 55 miles of Harrodsburg, including 9 senior colleges and universities.

The Central Kentucky State Vocational-Technical School at Lexington, 38 miles northeast of Harrodsburg, offers training in 20 course areas. The Harrodsburg Area Vocational Education Center offers training in 7 course areas.



## THE LABOR MARKET AREA

The Harrodsburg Labor Market Area includes Mercer County and the adjoining Kentucky counties of Anderson, Boyle, Garrard, Jessamine, Washington and Woodford.

POPULATION				
<u>Area</u>	<u>1982*</u>	<u>1980</u>	<u>1970</u>	<u>Percent Nonwhite</u>
				<u>1980</u>
Harrodsburg	N/A	7,265	6,741	9.6
Burgin	N/A	1,008	1,002	5.7
Labor Market Area	123,500	122,104	99,228	N/A
Mercer County	19,100	19,011	15,960	4.6
Anderson County	12,900	12,567	9,358	3.9
Boyle County	24,800	25,066	21,861	9.5
Garrard County	11,200	10,853	9,457	5.5
Jessamine County	27,000	26,065	17,430	4.6
Washington County	10,500	10,764	10,728	10.3
Woodford County	18,000	17,778	14,434	8.0

\* Population estimates.

Note: The 1980 city counts of population by race are provisional.

Sources: U.S. Department of Commerce, Bureau of the Census, 1980 Census of Population and Housing, March 1981; 1980 Census of Population, Number of Inhabitants; Local Population Estimates, Series P-26, No. 82-17-C, June 1984.

### LABOR FORCE CHARACTERISTICS OF RESIDENTS, 1983

	<u>Mercer County</u>	<u>Labor Market Area</u>
Civilian Labor Force	9,210	63,439
Employment	8,236	57,986
Agricultural	851	5,131
Nonagricultural	7,385	52,855
Unemployment	974	5,453
Rate of Unemployment (%)	10.6	8.6

Source: Kentucky Cabinet for Human Resources, Kentucky Labor Force Estimates, Annual Averages, 1983.

SELECTED COMPONENTS OF NONAGRICULTURAL EMPLOYMENT,  
BY PLACE OF WORK, 1983

	<u>Mercer County</u>	<u>Labor Market Area</u>
All Industries (total)	4,135	30,642
Manufacturing	1,376	10,449
Wholesale & Retail Trade	897	7,494
Services	743	4,320
State/Local Government	536	3,948
Contract Construction	131	1,237

Note: Excludes domestic workers, railway workers, certain nonprofit corporations, majority of federal government workers, and self-employed workers.

Source: Kentucky Cabinet for Human Resources, Average Monthly Workers Covered by Kentucky Unemployment Insurance Law, 1983.

MERCER COUNTY MANUFACTURING FIRMS,  
THEIR PRODUCTS AND EMPLOYMENT

<u>Firm (Establishment date)</u>	<u>Product</u>	<u>Employment</u>			<u>Labor Unions</u>
		<u>Total</u>	<u>Male</u>	<u>Female</u>	
<b>Harrodsburg</b>					
Corning Glass Works (1952)	Optical and ophthalmic glass, optical sunglass and medical glass	350	210	140	Flint Glass Workers*
Cricketeer Manufacturing (1957)	Men's sport coats and suits	405	15	390	Clothing & Textile Workers*
Dairymen, Inc., Manufacturing Producer Division (1942)	Cheese, dried whey	60	52	8	Food & Commercial Workers*
Hall Mack, Nutone Division Scovill, Inc. (1967)	Bathroom accessories, push buttons for door chimes, paddle light fans	174	122	52	Steelworkers*
Harrodsburg Herald (1884)	Newspaper, offset printing, letterpress printing	21	12	9	
Harrodsburg Ready Mix & Supply Company (1955)	Ready-mixed concrete	5	5	--	
Kentucky Souvenirs, Inc. (1947)	Textile screening, ceramics, wood souvenirs	11	8	3	

(Cont'd)



<u>Firm (Establishment date)</u>	<u>Product</u>	<u>Employment</u>			<u>Labor Unions</u>
		<u>Total</u>	<u>Male</u>	<u>Female</u>	
Mago Construction Company, Inc. (1966)	Bituminous concrete mixes	18	15	3	
National By-Products, Inc. (1956)	Dog food processing	27	25	2	
Sandusky Farm Service (1920)	Feed	10	9	1	
Signet Systems, Inc. (1969)	Auto and truck air condi- tioners, electric shift components, speedometer adapters	280	100	180	
<b>Burgin</b>					
DeTer Company, Inc. (1984)	Microfoam dust arresting equipment, microbond surfactants	10	6	4	
Keystone Brush & Contact, Inc. (1984)	Brushes for electric motors	60	--	--	

\* See Labor Organizations below.

Sources: Kentucky Department of Economic Development, 1984 Kentucky Directory of Manufacturers; Division of Research and Planning.

#### LABOR ORGANIZATIONS IN MANUFACTURING FIRMS

<u>Union</u>	<u>Representing workers at:</u>
Amalgamated Clothing and Textile Workers Union, AFL-CIO	Cricketeer Manufacturing
American Flint Glass Workers Union, AFL-CIO	Corning Glass Works
United Food and Commercial Workers International Union, AFL-CIO	Dairymen, Inc., Manufacturing Producer Division
United Steelworkers of America, AFL-CIO	Hall Mack, Nutone Division Scovill, Inc.

## INDUSTRIAL SERVICES

<u>Types of Services</u>	<u>Location</u>	<u>Mileage from Harrodsburg</u>
Custom Plastics Producers	Nicholasville	25
	Springfield	27
Electric Motor Repair	Lebanon	31
	Lexington	38
Grinding, Precision & Tool	Georgetown	54
	Winchester	62
	Richmond	63
Heat Treating Facilities	Frankfort	35
	Lexington	38
Industrial Equipment & Supplies	Frankfort	35
	Lexington	38
Industrial Gases	Lexington	38
Industrial Waste Removal	Frankfort	35
	Lexington	38
Machine Shops, Tool & Die	Danville	9
	Lawrenceburg	21
	Lancaster	21
	Springfield	27
Metal Finishers	Lexington	38
Metal Service Centers	Lexington	38
Millwrights	Nicholasville	25
	Lexington	38

Sources: Kentucky Department of Economic Development, Kentucky Directory of Selected Industrial Services, 1983; Division of Research and Planning.



ESTIMATED MALE LABOR SUPPLY  
HARRODSBURG LABOR MARKET AREA

Area	Current			Future	
	Total	Unemployed	Under-employed	Not in Labor Force	Becoming 18 years of age 1984 thru 1988
Labor Market					
Area*	7,570	3,173	2,388	2,009	5,252
Mercer	977	617	360	0	774
Anderson	1,016	299	143	574	553
Boyle	1,402	829	573	0	1,130
Garrard	1,731	306	208	1,217	424
Jessamine	1,261	555	706	0	992
Washington	666	319	129	218	524
Woodford	517	248	269	0	855

\* Additional workers may be drawn from other nearby counties.

Note: Unemployed - persons unemployed and actively seeking work;  
Underemployed - persons employed but working only 14 to 26 weeks per year;  
Not in Labor Force - represents the number of persons who would enter the labor force if suitable employment were available (based on the assumption that persons in Kentucky would like to participate in the labor force in the same proportion that they do nationally).

Sources: Kentucky Cabinet for Human Resources, Kentucky Labor Supply Estimates by County, 1983. Kentucky Department of Economic Development, Future Labor Supply Becoming 18 Years of Age, 1984 thru 1988.

ESTIMATED FEMALE LABOR SUPPLY  
HARRODSBURG LABOR MARKET AREA

Area	Current			Future	
	Total	Unemployed	Under-employed	Not in Labor Force	Becoming 18 years of age 1984 thru 1988
Labor Market					
Area*	6,610	2,280	2,844	1,486	5,097
Mercer	1,349	357	356	636	803
Anderson	588	263	228	97	500
Boyle	1,175	619	556	0	1,083
Garrard	942	194	208	540	405
Jessamine	1,267	333	934	0	1,065
Washington	638	276	149	213	451
Woodford	651	238	413	0	790

\* Additional workers may be drawn from other nearby counties.

Note: Unemployed - persons unemployed and actively seeking work;  
Underemployed - persons employed but working only 14 to 26 weeks per year;  
Not in Labor Force - represents the number of persons who would enter the labor force if suitable employment were available (based on the assumption that persons in Kentucky would like to participate in the labor force in the same proportion that they do nationally).

Sources: Kentucky Cabinet for Human Resources, Kentucky Labor Supply Estimates by County, 1983. Kentucky Department of Economic Development, Future Labor Supply Becoming 18 Years of Age, 1984 thru 1988.

AVERAGE WEEKLY WAGES BY INDUSTRY,  
BY PLACE OF WORK, 1983

	<u>Mercer County</u>	<u>Anderson County</u>	<u>Boyle County</u>	<u>Garrard County</u>
All Industries	\$252.62	\$279.50	\$272.11	\$205.91
Mining & Quarrying	0	*	420.68	*
Contract Construction	293.88	231.63	268.90	206.30
Manufacturing	329.56	341.91	336.96	226.21
Transportation, Communications & Public Utilities	384.08	385.85	380.88	304.25
Wholesale & Retail Trade	161.35	209.75	203.25	139.15
Finance, Insurance & Real Estate	274.60	262.63	286.67	267.61
Services	171.54	166.04	228.81	193.12
State/Local Government	258.70	276.49	292.40	216.85
Other	162.15	152.47	221.40	*
	<u>Jessamine County</u>	<u>Washington County</u>	<u>Woodford County</u>	
All Industries	\$246.60	\$220.45	\$298.42	
Mining & Quarrying	*	*	*	
Contract Construction	270.46	390.01	236.39	
Manufacturing	302.47	239.03	381.35	
Transportation, Communications & Public Utilities	296.73	176.24	386.63	
Wholesale & Retail Trade	212.81	165.41	168.46	
Finance, Insurance & Real Estate	241.84	295.60	244.47	
Services	203.70	146.90	214.79	
State/Local Government	226.66	224.49	273.11	
Other	248.86	135.72	278.71	

\* Not disclosed.

Note: Excludes domestic workers, railway workers, certain nonprofit corporations, majority of federal government workers, and self-employed workers.

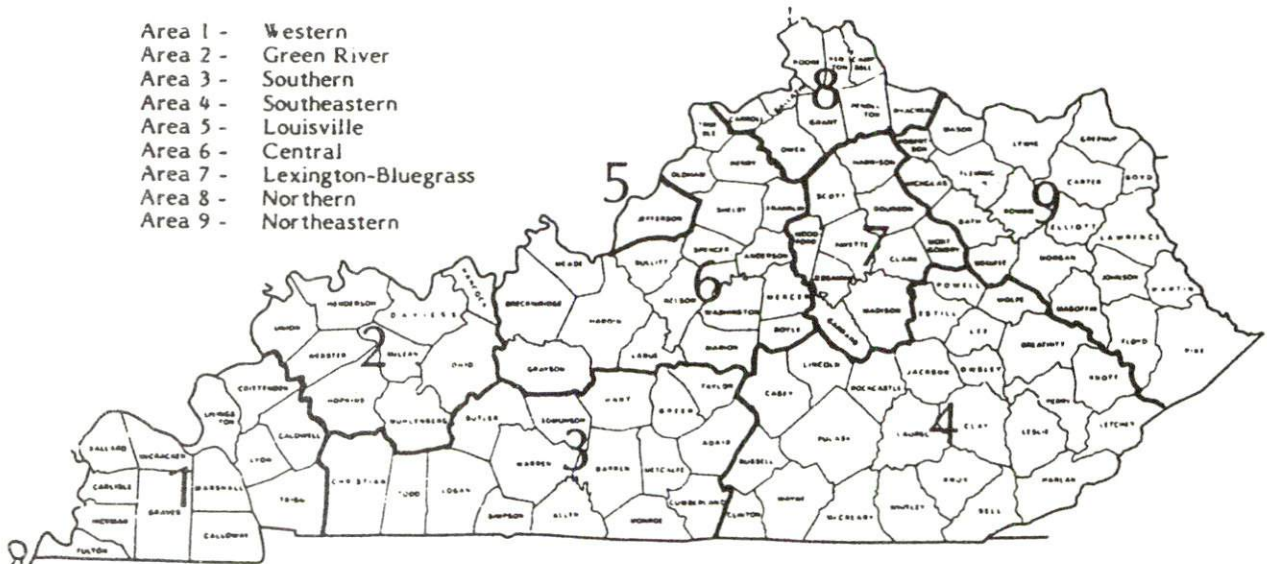
Source: Kentucky Cabinet for Human Resources, Average Weekly Wages of Workers Covered by Kentucky Unemployment Insurance Law, 1983.



Occupational wage rates for specific industries are usually not available to most government agencies, and wage data furnished to state employment agencies by individual industrial employers are protected from disclosure by federal law. The most reliable up-to-date wage information can be obtained by direct contact with local employers.

Associated Industries of Kentucky, a voluntary organization of Kentucky businesses, regularly collects occupational wage rates and fringe benefits data from participating member firms. Data are compiled for over 127 clearly defined office, production, and service occupations. Tabulations are published for nine geographical areas of Kentucky, as shown on the map below. It should be noted that the data may be weighted by the preponderance of firms in the larger cities and may be somewhat higher than the rates paid in the smaller communities. Data from these tabulations are available, upon request, from the Kentucky Department of Economic Development, Frankfort, Kentucky 40601.

- Area 1 - Western
- Area 2 - Green River
- Area 3 - Southern
- Area 4 - Southeastern
- Area 5 - Louisville
- Area 6 - Central
- Area 7 - Lexington-Bluegrass
- Area 8 - Northern
- Area 9 - Northeastern



Associated Industries of Kentucky Area Wage Surveys

PER CAPITA PERSONAL INCOME

<u>Area</u>	<u>1978</u>	<u>1982</u>	<u>Percent Change</u>
Mercer County	\$ 6,055	\$ 8,371	38.3
Labor Market Area Range	\$5,011 - 8,502	\$6,852 - 12,213	N/A
Kentucky	6,389	8,893	39.2
U. S.	7,776	11,100	42.7

Sources: U.S. Department of Commerce, Bureau of Economic Analysis, Survey of Current Business, April 1983; Commerce News, April 29, 1984. Kentucky Economic Information System, July 1984.



## TRANSPORTATION

### Rail

Line serving **Harrodsburg** - Southern Railway System

Services - Main line; one stop daily by local switcher; eight northbound and eight southbound through freights daily; switching services; team track space for 10 cars; nearest piggyback facilities located at Danville, nine miles southeast

For details on routing, schedules, rates, and services, contact:

District Sales Manager  
Norfolk Southern Corporation  
1402 South 15th Street  
Louisville, Kentucky 40210  
(502) 636-6023

### Highways

U.S. Highways 68 and 127 are "AAA"-rated (80,000-pound gross load limit) highways serving Harrodsburg. U.S. 127 has an excellent multilane segment extending from the Blue Grass Parkway, 16 miles north of Harrodsburg, to Danville, 9 miles southeast of Harrodsburg.

Access to Interstate Highway 64 is available 32 miles north of Harrodsburg via U.S. 127, and 42 miles northeast near Lexington. Interstate 75 is also accessible near Lexington, as well as 47 miles southeast of Harrodsburg via U.S. 127 and U.S. 150, also a "AAA"-rated highway.

Kentucky Route 152, a "AA"-rated (62,000-pound gross load limit) highway, also serves Harrodsburg.

### Truck Service

<u>Company</u>	<u>Home Office</u>
ANR Freight System, Inc.*	12136 West Bayaud Avenue Lakewood, Colorado 80228
American Freight System, Inc.*	9393 West 110th Street Overland Park, Kansas 66210
Bailey's Express Company, Inc.**	Middletown, Connecticut 06457
Bestway Express, Inc.*	Nashville, Tennessee 37210
Branch Motor Express Company**	114 Fifth Avenue New York, New York 10011
Briggs Transportation Company**	St. Paul, Minnesota 55113
Carolina Freight Carriers Corporation**	P.O. Box 697 Cherryville, North Carolina 28021

(Cont'd)

<u>Company</u>	<u>Home Office</u>
Central Transport, Inc.*	34200 Mound Road Sterling Heights, Michigan 48077
C L Motor Freight, Inc.**	2605 Commercial Lane Columbus, Ohio 43232
Expressway, Inc.**	Louisville, Kentucky 40210
Interstate System**	Grand Rapids, Michigan 49503
Lawrenceburg Transfer Company, Inc.**	Highway 127 P.O. Box 220 Lawrenceburg, Kentucky 40342
The Mason and Dixon Lines, Inc.**	P.O. Box 969 Kingsport, Tennessee 37662
McLean Trucking Company*	P.O. Box 213 Winston-Salem, North Carolina 27154
Middlewest Freightways, Inc.**	6810 Prescott Avenue St. Louis, Missouri 63147
The O.K. Trucking Company**	3000 East Crescentville Road Cincinnati, Ohio 45241
Overnite Transportation Company**	1000 Semmes Avenue P.O. Box 1216 Richmond, Virginia 23209
Renner's Express, Inc.*	1350 South West Street P.O. Box 882 Indianapolis, Indiana 46206
Roadway Express, Inc.**	1077 Gorge Boulevard Akron, Ohio 44310
Ryder/P-I-E Nationwide, Inc.*	2050 Kings Road P.O. Box 2408 Jacksonville, Florida 32203
Smith's Transfer Corporation*	P.O. Box 1000 Staunton, Virginia 24401
Suburban Motor Freight, Inc.**	1100 King Avenue P.O. Box 1739 Columbus, Ohio 43216
United Trucking Service, Inc.**	8505 West Warren Dearborn, Michigan 48126

\* Interstate service only.

\*\* Interstate and intrastate service.

Source: American Motor Carrier Directory, Fall 1984.

Other Freight Services

Emery  
Federal Express  
Purolator Courier  
United Parcel Service

Nearest Office or Shipping Center

Lexington, 38 miles northeast  
Lexington, 38 miles northeast  
Lexington, 38 miles northeast  
Danville, 9 miles southeast

HIGHWAY MILES AND TRUCK TRANSIT TIME IN DAYS FROM  
HARRODSBURG, KENTUCKY, TO SELECTED MARKET CENTERS

City	Highway Miles	Delivery		City	Highway Miles	Delivery	
		Time TL				Time TL	
Atlanta, Ga.	356	1		Los Angeles, Ca.	2,184	4	
Baltimore, Md.	579	2		Louisville, Ky.	76	2	
Birmingham, Ala.	402	2		Nashville, Tenn.	206	2	
Chicago, Ill.	368	2		New Orleans, La.	723	2	
Cincinnati, Ohio	122	2		New York, N. Y.	741	-	
Cleveland, Ohio	355	2		Pittsburgh, Pa.	381	2	
Detroit, Mich.	375	3		St. Louis, Mo.	339	2	
Knoxville, Tenn.	163	2					

Note: Mileage computations are via the best interstate or primary highways, not necessarily the most direct route of travel.

Sources: Rand McNally Road Atlas, 1979. Official Kentucky Mileage Map, 1980.  
Delivery time - Overnite Transportation Company; P.O. Box 1216; Richmond, Virginia 23209.

**Air**

Local

Location: Harrodsburg-Mercer County Airport  
2 miles north of Harrodsburg  
Runway: 1 turf  
Length: 3,000 feet  
Traffic  
Control: Wind sock  
Lighting: Runway lights, sunset to midnight  
Services: None

Nearest Scheduled Commercial Airline Service

Location: Blue Grass Field  
5 miles west of Lexington, Kentucky;  
33 miles northeast of Harrodsburg  
Runways: 2 paved  
Length: 6,500 feet; 3,500 feet  
Traffic  
Control: Tower  
Lighting: Approach lighting system, beacon, runways and  
obstructions lighted, VASI  
Services: Delta, Piedmont, United, USAir, Allegheny Commuter,  
Comair, Tennessee Airways; fuel - 100LL and  
jet-A; hangars, tie-downs; major A & P repairs;  
major Avionics repairs; APU, charter, flight  
instruction, oxygen, plane rentals, survival  
equipment; taxi, limousine, car rentals, courtesy  
car, weather information; restaurant, snack bar

Air Freight  
Service: Air freight terminal



**Bus** - Greyhound Bus Lines; Trailways Bus System

**Taxi** - 1 company, radio dispatched (6 a.m. to 10 p.m., except Sunday)

**Rental Services** - Auto, truck and trailer rentals are available locally.

**Water**

The nearest navigable waterway is the Kentucky River near Frankfort, 35 miles north of Harrodsburg, where a 6-foot navigation channel is maintained.

## POWER AND FUEL

### Electricity

Company serving **Harrodsburg and parts of Mercer County** - Kentucky Utilities Company  
Source of power - Kentucky Utilities Company  
Total generating capacity - 3,164,000 KW\*  
For industrial rates contact:

Industrial Development Department  
Kentucky Utilities Company  
One Quality Street  
Lexington, Kentucky 40507  
(606) 255-1461

Companies serving parts of **Mercer County** - Fox Creek Rural Electric Cooperative Corporation; Inter-County Rural Electric Cooperative Corporation  
Source of power - East Kentucky Power Cooperative  
Total generating capacity - 1,309,000 KW\*\*  
For industrial rates contact:

Industrial Development Division  
East Kentucky Power Cooperative  
P.O. Box 707  
Winchester, Kentucky 40391  
(606) 744-4812

### Natural Gas

Company serving **Harrodsburg** - Western Kentucky Gas Company  
Source of supply - Tennessee Gas Pipeline Company  
Size of transmission mains - 16 to 30 inches (supplier); 6 inches (distributor)  
Distribution mains - 2 to 6 inches  
Distribution pressure - 25 to 55 psi  
Btu content - 1,004 per cubic foot  
Specific gravity - 0.60  
For rates and supplies contact:

Director of Industrial Marketing  
Western Kentucky Gas Company  
311 West Seventh Street, P.O. Box 866  
Owensboro, Kentucky 42302  
(502) 685-8000

\* Kentucky Utilities Company's total generating capacity will be increased when a new 650,000 KW generation plant is completed in Hancock County in 1993.

\*\* East Kentucky Power Cooperative's total generating capacity will be increased when a new 650,000 KW coal-fired generation plant is completed in southeast Clark County in 1992.

**Other Fuels (Within 25 miles)**

Propane

Bright's Bottle Gas Company\*  
100 West Brook Street  
Burgin, Kentucky 40310

Buckeye Gas Products Company\*  
P.O. Box 280  
Hustonsville, Kentucky 40437

Buckeye Gas Products\*  
P.O. Box 28  
Lawrenceburg, Kentucky 40342

Southern States Boyle Cooperative\*  
Route 4, Lebanon Road  
Danville, Kentucky 40422

Suburban Propane Gas Company\*  
121 North Fourth Street  
Nicholasville, Kentucky 40356

Fuel oils

Distillate fuel oil -

Burton Oil Company\*  
419 West Factory Street  
Harrodsburg, Kentucky 40330

Clarke & Keller Oil Company\*  
1060 Beaumont Avenue  
Harrodsburg, Kentucky 40330

Ensslin Enterprises, Inc.\*  
David Road, P.O. Box 142  
Danville, Kentucky 40422

E. N. Johnson Oil Company, Inc.  
Texaco Distributor\*  
Hope Street  
Danville, Kentucky 40422

Little Oil Company, Inc.\*  
Highway 150 By-Pass  
Danville, Kentucky 40422

Scheuer Oil Company\*  
Stanford Road, P.O. Box 687  
Danville, Kentucky 40422

Southern States Boyle Cooperative\*  
Route 4, Lebanon Road  
Danville, Kentucky 40422

Watts & Durr Oil Company, Inc.\*  
201 North College Street  
Harrodsburg, Kentucky 40330

Residual fuel oil - Arrangements must be made with the refinery.

Low sulphur content coal - Available in Kentucky.

\* Bulk plant.



## WATER AND SEWERAGE

### Public Water Supply

Company serving **Harrodsburg** - Harrodsburg Municipal Water Department  
110 West Poplar Street  
Harrodsburg, Kentucky 40330  
(606) 734-2383

Source - Kentucky River

Treatment plant capacity - 4,000,000 gallons per day

Average daily consumption - 1,525,000 gallons

Peak daily consumption - 2,050,000 gallons

Type treatment - Coagulation, sedimentation, filtration, chlorination, fluoridation

Storage capacity - 1,090,000 gallons

Size lines - 4 through 8 inches, 10 and 20 inches

Average pressure - 60 psi

Average temperature - 60 degrees F.

### MONTHLY WATER RATES

First	250 cu. ft.	\$5.00 (Minimum)
Next	750 cu. ft.	1.90 per 100 cu. ft.
Next	3,000 cu. ft.	1.65 per 100 cu. ft.
Next	6,000 cu. ft.	1.40 per 100 cu. ft.
Next	25,000 cu. ft.	1.20 per 100 cu. ft.
Next	25,000 cu. ft.	1.00 per 100 cu. ft.
Over	60,000 cu. ft.	.80 per 100 cu. ft.

Tap-on charge:

3/4-inch	\$ 300
1-inch	400
1 1/2-inch	500
2-inch	750
3-inch	1,000

Tap larger than 3 inches is negotiated.

An additional \$100 per tap is charged outside the city limits.

### Raw Water

Surface water sources - Herrington Lake, Kentucky River, Salt River

Average discharge - Nearest gaging station - Kentucky River at Lock 6 near Salvisa, Kentucky - 6,732 cfs (58 years, unadjusted, USGS)

Expected ground water yield - 50 to 200 gpm along the Salt River north of Harrodsburg; 5 to 50 gpm along the eastern boundary of Mercer County; 5 gpm or less in remainder of county

## Sewerage

Company serving **Harrodsburg** - Harrodsburg Municipal Sewer Department\*  
110 West Poplar Street  
Harrodsburg, Kentucky 40330  
(606) 734-2383

Design capacity - 2,680,000 gallons per day

Average daily flow - 1,000,000 gallons

Type of treatment - Primary and secondary with tertiary lagoons

Treatment processes - Flow equalization, mechanical screen, grit removal, primary clarifiers, secondary clarifiers, chlorine disinfection, post aeration, sludge thickener, anaerobic digesters, sludge drying beds

Treated effluent discharged into - Salt River

Size of sanitary mains - 18-inch main outfall; 6-, 8-, and 10-inch branch lines

Size of storm mains - 12 inches to 36 inches. Storm drainage is not combined with sanitary sewers.

Monthly rates -

First	250 cu. ft.	\$6.25 (Minimum)
Next	750 cu. ft.	2.30 per 100 cu. ft.
Next	3,000 cu. ft.	2.10 per 100 cu. ft.
Next	6,000 cu. ft.	1.90 per 100 cu. ft.
Next	25,000 cu. ft.	1.75 per 100 cu. ft.
Next	25,000 cu. ft.	1.65 per 100 cu. ft.
Over	60,000 cu. ft.	1.40 per 100 cu. ft.

Quality treatment surcharges for industrial wastes exceeding specific limits are as follows:

- 1.) BOD in concentrations greater than 250 mg/l - \$0.129 per pound
- 2.) SS in concentrations greater than 250 mg/l - \$0.155 per pound
- 3.) Ammonia nitrogen in concentrations greater than 25 mg/l - \$0.130 per pound

Tap-on charge:

4-inch	\$ 300
6-inch	500
8-inch	1,000
Larger than 8-inch:	negotiated based on cost of labor and materials

\* Construction of a new sewage treatment plant was completed in 1982.

## CLIMATE

### Mercer County

#### Temperature

Normal (30-year record)	54.90 degrees
Average annual 1983	55.50 degrees
Record highest, August 1983 (39-year record)	103.00 degrees
Record lowest, January 1963 (39-year record)	-21.00 degrees
Normal heating degree days (30-year record) (Heating degree day totals are the sums of negative departures of average daily temperatures from 65 degrees F.)	4,814

#### Precipitation

Normal (30-year record)	45.68 inches
Mean annual snowfall (39-year record)	16.20 inches
Total precipitation 1983	40.76 inches
Mean number days precipitation (.01 inch or more) (39-year record)	131
Mean number days thunderstorms (39-year record)	46

#### Prevailing Winds (17-year record)

South

#### Relative Humidity

1 a.m.	77 percent (19-year record)
7 a.m.	81 percent (20-year record)
1 p.m.	60 percent (20-year record)
7 p.m.	64 percent (20-year record)

Source: U.S. Department of Commerce, Environmental Science Services Administration, Climatological Data, 1983. Station of record: Lexington, Kentucky.



## LOCAL GOVERNMENT

### City

Structure - Mayor - 4-year term; 4 council members - 2-year terms

Budget 1983-84 - General Fund \$1,675,300

Water and Sewer Fund 1,279,000

Fees and licenses - Occupational license fees: 1 percent of gross salaries and wages, and 1 percent of net profits of businesses; new business license fee: \$25; unloading license: \$25 to \$75 per year, depending on vehicle weight\*

### County

Structure - County Judge/Executive - 4-year term; 6 magistrates - 4-year terms

Budget 1983-84 - General Fund \$397,998; Road Fund \$514,060

### Assessed Value of Property, 1984\*\*

<u>Classes of Property</u>	Harrodsburg	Mercer County
Real Estate and Tangibles	\$101,330,572	--
Real Estate	--	\$254,486,458
Tangibles	--	66,341,932

\* Excluded from unloading licenses: trucks owned by manufacturers delivering their own products to a licensed business less than twelve times per year.

\*\* Excludes Homestead Exemptions.

## Property Taxes

All property in Kentucky is assessed at 100 percent of fair cash value.

Land and buildings are taxed by the state and may be taxed by local jurisdictions. The state rate is \$0.221 per \$100 of assessed valuation.

Manufacturing machinery, raw materials inventories, pollution control equipment, and goods in the process of manufacture are not subject to local taxation. The state rate is \$0.15 per \$100.

Other tangible personal property owned by manufacturers (automobiles, trucks, finished goods, office furniture, office equipment) is taxed by the state at \$0.45 per \$100 and may be taxed by local jurisdictions.

Intangible personal property located in Kentucky (money in hand, shares of stock, notes, bonds, accounts receivable, and other credits) is taxed by the state at \$0.25 per \$100, and is not subject to local taxation.

Property stored in public warehouses in a transit status is not subject to local taxation. The state rate is only \$0.015 per \$100.

Private leaseholds in industrial facilities owned by cities or counties and financed by industrial revenue bonds are subject to a state tax of \$0.015 per \$100 of value (essentially the lessee's equity, adjusted for appreciation or depreciation). Local taxation is not permitted.

**Combined State and Local Rates Per \$100 Valuation, 1983\***  
 (100% assessment)

Kentucky school districts levy property taxes on property located within individual school district boundaries. Two types of school districts are operated in Kentucky: 1) independent school districts which usually operate within a single city and often do not cover the entire city; and 2) common school districts which operate in portions of counties not covered by independent districts and cover the entire county when there is no independent district. School district boundaries are mutually exclusive and do not cross.

	<u>Site Inside City of Harrodsburg and within the Harrodsburg School District</u>	<u>Site Inside City of Harrodsburg and within the Mercer County School District</u>	<u>Site Inside City of Burgin and within the Burgin School District</u>
1. Land and buildings	\$1.1607	\$ 0.9417	\$ 0.8627
2. Mfg. machinery, raw materials, goods in process, pollution control equipment	0.1500	0.1500	0.1500
3. Finished goods, office equipment, vehicles, other tangibles	1.4477	1.2037	1.1317
4. Intangibles (accounts receivable, notes, bonds, etc.)	0.2500	0.2500	0.2500
5. Property stored in public warehouses in a transit status	0.0150	0.0150	0.0150
6. Leaseholds in industrial revenue bond financed plants	0.0150	0.0150	0.0150

(Cont'd)

\* Kentucky Department of Economic Development.



	Site Inside City of <b>Burgin</b> and within the <b>Mercer County</b> <u>School District</u>	Site Inside Unincorporated <b>Mercer County</b>
1. Land and buildings	\$ 0.9057	\$ 0.7057
2. Mfg. machinery, raw materials, goods in process, pollution control equipment	0.1500	0.1500
3. Finished goods, office equipment, vehicles, other tangibles	1.1677	0.9677
4. Intangibles (accounts receivable, notes, bonds, etc.)	0.2500	0.2500
5. Property stored in public warehouses in a transit status	0.0150	0.0150
6. Leaseholds in industrial revenue bond financed plants	0.0150	0.0150

### **Planning and Zoning**

Joint agency - Greater Mercer County Planning and Zoning Commission\*

Zoning enforced - All areas of Mercer County, except Burgin

Subdivision regulations enforced - Within corporate limits of Harrodsburg and 5 miles beyond

Local codes enforced - None

Mandatory state codes enforced - Kentucky Plumbing Code, National Electric Code, Kentucky Boiler Regulations and Standards, Kentucky Building Code (modeled after BOCA code)

---

\* Includes the participating city of Harrodsburg.

## Safety

Police	Harrodsburg	Mercer County
Total staff	19	4
Radio-patrol cars	3	3

## Fire

Insurance Services Office, Public Protection Classification	Harrodsburg	Mercer County
	6	9/10*
Full-time staff	14	-
Volunteers	20	30

## Rescue Service

Harrodsburg Fire Department provides rescue service when needed

Number of volunteers - Regular fire department staff

Equipment - Rescue truck equipped with oxygen, MSA resuscitator, Stephenson resuscitator, 4 portable generators, 3 fully equipped first aid kits, 1 complete set of air splints, complete dragging operation equipment (boat, motor, trailer, life jackets, grappling hooks, oars, etc.), chain saws, canvas stretchers, power tools, air tools, all purpose saws

Personnel training - 2 emergency medical technicians, 5 trained in cardiopulmonary resuscitation, Mercer County Civil Defense director on fire department staff

## Refuse Collection and Disposal

	Harrodsburg	Mercer County
Type service	Private	Private
Fee charged:		
residential	\$4.20 per month	\$7.00 per month
business	\$7.35 per month	By contract
industrial	By contract	By contract
Collection frequency:		
residential	Weekly	Weekly
business	Weekly	By contract
industrial	By contract	By contract
Trash pickup	Semi-annually	--
Disposal method	Landfill	Landfill

Refuse collection is provided to Harrodsburg by a private company. Fees for this service are paid to the city of Harrodsburg.

\* The Mercer County Fire Protection Association maintains substations at Harrodsburg, Burgin, Cornishville and Salvisa. The public protection classification is 9 for these areas, which are within 5 road miles of a responding fire station, and 10 for areas more than 5 road miles from a responding fire station. A classification of 7 applies within the city of Burgin.

## EDUCATION

### Public Schools

	<u>Harrodsburg Independent*</u>	<u>Burgin Independent**</u>	<u>Mercer County***</u>
Total Enrollment (Spring 1984)	1,056	437	2,079
Elementary	742	226	1,098
Junior High	--	80	369
High School	314	131	612
Student-Teacher Ratio	22-1	17-1	20-1
Elementary	21-1	17-1	22-1
Junior High	--	****	18-1
High School	22-1	****	19-1
Accreditation	Southern Association of Colleges and Schools	--	--
Percent High School Graduates to College (1983)	50.7	51.1	34.3
Expenditures Per Pupil (1982-83)	\$1,644.14	\$1,653.18	\$ 1,410.78
Bonded Indebtedness (June 30, 1984)	\$ 895,000	\$ 570,000	\$1,230,000

### Nonpublic Schools

	<u>Central Kentucky Christian School</u>
Total Enrollment	45
Elementary	30
High School	15
Student-Teacher Ratio	11-1
Elementary	15-1
High School	8-1

- \* The Harrodsburg Independent School System installed computer labs at the junior high and high schools during the 1983-84 school year. Construction of a 12,000-square-foot elementary school addition is scheduled for completion by the end of 1984.
- \*\* The Burgin Independent School System recently began using microcomputers in several of the schools' programs.
- \*\*\* Plans are being made to add an elementary classroom and physical education facility at the Mercer County Elementary School.
- \*\*\*\* Some junior high and high school classes are taught by high school teachers with dual teaching assignments.



## Area Colleges and Universities

<u>Name</u>	<u>Location (Miles distant)</u>	<u>Enrollment (Fall, 1983)</u>	<u>Highest Degree Conferred</u>
Centre College	Danville (9)	762	Baccalaureate
Asbury College	Wilmore (19)	1,062	Baccalaureate
St. Catharine College	Springfield (27)	201	Associate
Kentucky State University	Frankfort (35)	2,431	Masters
Lexington Community College	Lexington (38)	2,532	Associate
Transylvania University	Lexington (38)	655	Baccalaureate*
University of Kentucky	Lexington (38)	22,055	Doctorate, M.D., D.M.D., J.D.
Midway College	Midway (39)	413	Associate
Berea College	Berea (43)	1,600	Baccalaureate
Eastern Kentucky University	Richmond (45)	12,660	Masters, Specialist**
Georgetown College	Georgetown (48)	1,302	Masters
Campbellsville College	Campbellsville (51)	701	Baccalaureate
Somerset Community College	Somerset (54)	1,079	Associate

\* Courses in a masters degree program are taught on the Transylvania campus by faculty members of Xavier University of Cincinnati. The degree is issued by Xavier University.

\*\* Joint doctoral degree programs are offered in cooperation with the University of Kentucky, Lexington. The degrees are issued by the University of Kentucky.

## Vocational Schools

Both the state vocational-technical schools and the area vocational education centers are operated by the Kentucky Department of Education. The state vocational-technical schools enroll persons full time who are at least 16 years of age and not in school. These students attend classes for six hours each day. The area vocational education centers are designed to accommodate high school students who are at least 15 years of age. These students attend vocational school for three hours each day. The state vocational-technical schools and the area education centers offer evening courses to enable working adults to upgrade current job skills.

### Nearest State School

Location	Central Kentucky State Vocational-Technical School
Miles Distant	Lexington 38
Curriculum	Business and Office Accounting Clerical Secretarial Consumer and Home Economics Commercial Foods Health and Personal Services Occupations Cosmetology Dental Assistant Nurse's Aide Practical Nursing Surgical Technician Industrial Education Air Conditioning Auto Body Repair Auto Mechanics Carpentry Drafting (with CAD/CAM) Electronics Graphic Arts Industrial Electricity Machine Shop Masonry Welding Learning Resource Center

(Cont'd)

Nearest Area Education Center

Location	Harrodsburg Area Vocational Education Center
Curriculum	Harrodsburg Business and Office Clerical Secretarial Health and Personal Services Occupations Health Careers Industrial Education Auto Mechanics Carpentry Electricity Welding

Arrangements can be made to provide training in the specific production skills required by an industrial plant. Instruction may be conducted either in the vocational school or in the industrial plant, depending upon the desired arrangement and the availability of special equipment.



## HEALTH

### Local Medical Personnel

Physicians - 10

Dentists - 7

### Hospitals

<u>General Hospital</u>	<u>Location</u>	<u>Beds</u>
James B. Haggin Memorial Hospital	Harrodsburg	80

General hospital facilities - 2 operating rooms, emergency room, urology, X-ray department, laboratory, OB section, EKG, EEG, intensive care unit, coronary care unit, pharmacy, pathology, respiratory therapy, physical therapy, ultrasound, nuclear medicine, stress testing, nursery, dietary department, cafeteria and family practice

Medical staff - 15 physicians, specialists in urology and internal medicine, consulting specialist in oral surgery, 31 registered nurses, 44 licensed practical nurses, 2 registered pharmacists, 35 nurse's aides

### Other Medical Facilities

Southern Blue Grass Comprehensive Care Center

### Ambulance Service

Name - Mercer County Ambulance Service, Inc.

Staff - 6 emergency medical technicians (part-time emergency medical technicians are available as needed)

Service - 24-hour, county-wide service

Equipment - 1983 high-top van, 1981 high-top van, 1976 module-type ambulance

### Public Health

Facility - West Bluegrass District Health Department, Mercer County Center

Staff - Full time: 3 registered nurses, 3 clerks, environmentalist technician;  
part time: registered nurse, nutritionist

## OTHER LOCAL FACILITIES

### Communications

Telephone - Services -	South Central Bell Telephone Company Standard
Telegraph - Services -	Western Union Telegraph Company Toll-free number, 1-800-325-5100
Postal - Class - Mail received - Mail dispatched	U.S. Post Office First Three times daily Twice daily
Newspapers - Weekly and circulation - Other papers received from -	The Harrodsburg Herald, 6,300 Danville, Lexington, and Louisville, Kentucky
Radio - Stations received from -	WHBN - AM and FM Danville, Lexington, and Louisville, Kentucky
Television - Cable service Reception from -	Louisville and Lexington, Kentucky; Cincinnati, Ohio
Kentucky Educational Television -	Lexington-Richmond transmitter, Channel 46

### Library Services

Public library - Mercer County Public Library  
Size collection - 32,436 volumes  
Circulation, 1982-83 - 115,410  
Services - Story hour, films, filmstrips, 2 film projectors, carousel slide projector, 8mm projector, 2 filmstrip projectors, microfilm, microfilm reader-printer, converta set, cassette tape recorder, 3 16mm projectors, paintings, magazines, newspapers, records, bookmobile, talking books, meeting room, children's section, a Kentucky and genealogy section, Interlibrary Loan, microfilm copies of the Harrodsburg Herald dating from 1902, summer reading program

## Religious Institutions

Denominations -	AME Baptist Catholic Christian Church of Christ Church of God Episcopal Guiding Light Tabernacle Interdenominational Jehovah's Witnesses Methodist Presbyterian Unity Business Mission
Nearest Synagogues -	Lexington, 38 miles northeast
Congregations -	Adath Israel (reform) Ohavey Zion (traditional)

## Financial Institutions

<u>Banks</u>	<u>Assets</u>	<u>Deposits</u>	<u>Statement Date</u>
Citizens Bank & Trust Company (Burgin)	\$ 5,301,000.00	\$ 3,655,000.00	6/30/84
Mercer County National Bank	37,540,000.00	31,481,000.00	6/30/84
State Bank & Trust Company	30,986,000.00	27,682,000.00	6/30/84
<u>Savings and Loan Associations</u>	<u>Assets</u>	<u>Savings Accounts</u>	<u>Statement Date</u>
The Cumberland*	\$923,817,709.00	\$746,341,537.00	12/31/83
First Federal Savings and Loan Association	68,691,650.00	64,751,967.00	6/30/84

## Hotels and Motels

Total number - 9  
Total rooms - 286

\* Includes total assets and deposits for Louisville main office and branch offices in Bowling Green, Frankfort, Harrodsburg, Lexington, Louisville, Maysville, Scottsville, and Shelbyville.



## Clubs and Organizations

Agricultural Stabilization  
and Conservation Service  
American Legion  
Art Club  
Band Club  
Beta Club  
Bluegrass Steam and Gas  
Association  
Burgin Lions Club  
Coed "Y" Club  
Disabled American Veterans  
Eastern Star  
Fort Harrod Business and  
Professional Women's Club  
French Club  
Future Farmers of America  
(FFA)  
Future Homemakers of America  
(FHA)  
Go-Getters  
Harrodsburg Guild of Creative  
Arts  
Harrodsburg Historical Society  
Harrodsburg Lions Club  
Homemakers  
Homemakers Garden Club  
Jaycees  
Junior Student Council

Kiwanis  
Library Club  
Masons  
McAfee Puritan Club  
Mercer Chamber of Commerce  
Mercer County Farm Bureau  
Mercer County Fish and Game  
Club  
Mercer County Homemakers  
Advisory Council  
Mercer County Humane Society  
Mercer County Ministerial  
Association  
Mercer County Senior Citizens  
National Honor Society  
Old Harrodsburg CB Club  
Optimist Club of Harrodsburg  
Parent-Teachers Association  
Pep Club  
Pioneer Saddle Club  
Rotary Club  
Senior Student Council  
Spanish Club  
Veterans of Foreign Wars  
(VFW)  
Women's Club  
Young Moderns

## RECREATION

### Local

The citizens of Harrodsburg and Mercer County have access to a wide variety of recreational opportunities. The local YMCA manages the four city parks and the city swimming pool, in addition to its own facility, which houses a gymnasium, a coed weight room, and offices.

Facilities at Lions Park include the Harrodsburg Community Center, with conference and meeting room areas designed to accommodate over 300 people, and three lighted tennis courts.

Young's Park features a picnic area with tables and grills, a large shelter house that can be rented for group activities, and a playground.

Sportleigh Field offers baseball and football fields for use by Little League and Babe Ruth teams, and West Lane Park has a soccer field, a lighted softball field, and community meeting rooms. Other public recreational facilities in Harrodsburg include a municipal swimming pool, several tot lots, and two tennis courts and three baseball diamonds located at the public schools. Private recreational offerings include several swimming pools, a drive-in movie theater and a golf course.

The Beaumont Inn is one of Harrodsburg's most famous attractions. The antebellum structure serves as an historic country inn with antique furnishings, modern recreational facilities, a dining room specializing in southern delicacies, and a gift shop.

The Bright Leaf Resort, also a noted local attraction, features a modern 27-hole golf course and a health spa on the premises.

Old Fort Harrod State Park is a 28-acre park in Harrodsburg that features a full-scale reproduction of the original Fort Harrod. The park also contains the log cabin where Abraham Lincoln's parents were wed, the Mansion Museum which houses mementos associated with the great periods of Kentucky history, a pioneer cemetery, and a federal monument dedicated to pioneers. The "Legend of Daniel Boone" and "Lincoln" are two excellent outdoor dramas which are performed at the Old Fort Amphitheater during the summer months.

Herrington Lake, near Harrodsburg, was developed by the Kentucky Utilities Company in 1925. Dix River Dam near Pleasant Hill is located on the 3,600-acre lake. Fishing, boating, and swimming can all be enjoyed on the lake. Camping and fishing facilities are available near Harrodsburg.

Pleasant Hill, a restored Shaker Village located 7 miles northeast of Harrodsburg, is a National Historic Landmark. Over 20 buildings and grounds have been restored to display unique Shaker skills in furniture making, crafts, and architecture. Dining rooms, lodging, craft shops, and seasonal festivals and plays are offered.



Recreational events and activities in the Harrodsburg area offer something for all ages. Pioneer Days, Harrodsburg's tribute to the early settlers, is an event for young and old. Held annually, the 3-day celebration includes a parade, a horse and truck pull, open-air church services, a mini-marathon, an antique and classic car show, an arts and crafts flea market, Bluegrass and folk music, a gospel sing and a "through the years" fashion show.

The Mercer County Fair and Horse Show is one of the largest and oldest continually held county fairs in Kentucky. Featured activities include a horse show, equitation classes, exhibits, livestock judging, a parade, and beauty contests.

The Mercer Family YMCA coordinates a variety of athletic activities and programs. These include basketball leagues, volleyball leagues, soccer leagues, and Little League football and baseball. The YMCA also programs tennis instruction, swimming instruction, gymnastics instruction, aerobics and fitness classes, tennis tournaments, an annual golf tournament, and road races during the Pioneer Days festival.

#### **Area (Within 80 miles)**

Centre College at Danville, 9 miles southeast of Harrodsburg, is host to many concerts, plays, lectures, art exhibits and sporting events each year.

**Constitution Square State Shrine**, 9 miles southeast of Harrodsburg in Danville, is a reproduction of Kentucky's first courthouse square, including the original 1792 post office which was the first in the west.

**Perryville Battlefield State Shrine**, 13 miles southwest of Harrodsburg near Perryville, is the site of the largest Civil War battle in Kentucky. A museum, a picnic area, and a playground are located on the grounds.

**Isaac Shelby State Shrine**, 14 miles south of Harrodsburg near Danville, is the burial site of Kentucky's first governor and one of the Commonwealth's foremost statesmen.

**William Whitley House State Shrine**, 28 miles southeast of Harrodsburg near Stanford, is the first brick house west of the Allegheny Mountains, built 1787-94. Whitley laid out Kentucky's first race track here and started U.S. counterclockwise racing. The facility provides picnic and playground areas in a ten-acre park.

**Lincoln Homestead State Park**, 32 miles west of Harrodsburg near Springfield, is a 153-acre park on land settled by Abraham Lincoln's family. The actual building in which Nancy Hanks, mother of President Lincoln, lived during her courtship with Thomas Lincoln is preserved here as well as a replica of the 1782 cabin where Thomas Lincoln lived as a boy. The park also has a museum, a gift shop, a picnic area, and an 18-hole golf course.

**Waveland State Shrine**, 32 miles northeast of Harrodsburg near Lexington, features an 1847 Greek Revival mansion depicting Kentucky lifestyles from the days of early settlers to the antebellum era of gentility and elegance as well as the Civil War and postwar periods. The shrine also includes the Kentucky Life Museum and a plantation village on ten acres with many shops and displays.



**Frankfort**, the capital of Kentucky, is 35 miles north of Harrodsburg. Points of interest in Frankfort include the Capitol Building, a 34-foot floral clock, the Daniel Boone Monument, several museums, and old homes with their original furnishings. Frankfort is also the home of Kentucky State University which offers many cultural activities and sporting events.

**Lexington**, 38 miles northeast of Harrodsburg, offers a variety of cultural, sporting, and recreational activities. Thoroughbred and harness racing is presented at Keeneland Race Course and the Red Mile Harness Track during several meets each year. The University of Kentucky and Transylvania University offer a number of sporting events. The University of Kentucky basketball games are held at Rupp Arena, the world's largest basketball arena. Other attractions include Lexington Philharmonic concerts, Lexington Children's Theatre, and plays performed by Broadway touring companies, all held in the recently renovated Opera House.

**The Kentucky Horse Park**, a park dedicated to horses and to man's love for horses, is located 40 miles northeast of Harrodsburg near Lexington. The park, which contains more than 1,000 acres of Kentucky Bluegrass, features the International Museum of the Horse; the Man O'War Memorial; an antique carriage display; horseback and pony rides; walking farm tours; horse-drawn tours; a restaurant; a gift shop; and a campground area, which offers swimming, tennis, and planned activities. Numerous special events are held year-round and include various horse shows, steeplechasing, dressage, polo games, and rodeos.

**My Old Kentucky Home State Park**, 44 miles west of Harrodsburg in Bardstown, portrays an image of the South's gentle and leisurely home life before the Civil War. The restored Georgian Colonial mansion is where composer Stephen Foster visited and where he was inspired to write "My Old Kentucky Home." One of the nation's most successful outdoor dramas, "The Stephen Foster Story", is presented in the park's amphitheatre during the summer months. The park also offers a 40-site campground, a gift shop, a 9-hole golf course and pro shop, a picnic area, and planned recreation.

**White Hall State Shrine**, 49 miles east of Harrodsburg near Richmond, one of the grand estate houses of post-Civil War Kentucky, is the Italianate mansion of Cassius Marcellus Clay, the early abolitionist and politician. Kentucky handcrafts are sold in the White Hall gift shop, only a short walk from the mansion.

**Green River Lake State Park** near Campbellsville, 54 miles southwest of Harrodsburg, is made up of 1,300 acres surrounding an 8,200-acre lake. The park is open all year-round and offers 96 campsites, a beach, boat docks, fishing, and a picnic area.

The spirit of Daniel Boone and his pioneers is reborn at **Fort Boonesborough State Park** in Boonesboro, 58 miles northeast of Harrodsburg. In the re-created fort, pioneer crafts of the eighteenth century are demonstrated by using functioning antiques from the frontier era. Cabins are furnished as they would have been in the days of Boone and documentary films are presented which depict the struggle of the first Kentuckians to make the Kentucky wilderness a home. A gift shop within the fort offers for sale all the handcrafted items made at the fort. Other recreational facilities and activities of the park include the finest sand beach on the Kentucky River with a modern bathhouse and a modern camping area with 187 sites.



**Bernheim Forest Arboretum and Nature Center**, located 59 miles northwest of Harrodsburg, is a privately endowed 10,000-acre forest and wildlife refuge. The area contains over 1,400 labeled varieties of plants, trees and shrubs; ornamental gardens; a museum; nature trails and waterfowl ponds.

**Taylorsville Lake**, 59 miles northwest of Harrodsburg near Taylorsville, was developed by the U.S. Army Corps of Engineers. The 3,050-acre lake and 10,700-acre recreation area offer facilities for fishing, boating, swimming, and wildlife recreation.

**General Burnside State Park**, 63 miles southeast of Harrodsburg, is Kentucky's only island state park. Rising out of Lake Cumberland and surrounded by beautiful Kentucky mountains, the park offers excellent fishing, an 18-hole golf course which is open year-round, a picnic area, a 161-site camping area for tents and recreational vehicles, a marina on the mainland near the park, and recreation.

**E. P. "Tom" Sawyer State Park**, 67 miles northwest of Harrodsburg, is located near Louisville. Recreational facilities include an outdoor Olympic-size pool, a bathhouse, 12 lighted tennis courts, a picnic area, an archery range, and soccer fields. Planned recreation and a playground are offered year-round. Indoor facilities are available for basketball, volleyball, exercise classes, dance classes and various other events.

**Abraham Lincoln Birthplace National Historic Site**, located 72 miles southwest of Harrodsburg near Hodgenville, features the log cabin which was the birthplace of Abraham Lincoln, enclosed within a granite memorial shrine. The grounds include 116 acres of the original Thomas Lincoln farm and a visitors' center with audiovisual programs and exhibits on the Lincoln family.

**Louisville**, 76 miles northwest of Harrodsburg, provides a wide variety of recreational opportunities. The most noted recreational event in Louisville is the Kentucky Derby at Churchill Downs. The "Run for the Roses" is the oldest continuously held horse race in the United States. Other attractions include: Kentucky Center for the Arts, Macauley Theatre, Actors Theatre of Louisville, Louisville Children's Theatre, the Louisville Bach Society, the Louisville Orchestra, the Louisville Ballet, the Kentucky Opera Association, several museums, the Louisville Zoological Gardens, University of Louisville sporting events, rock concerts, and the "Belle of Louisville" sternwheeler.

**Lake Cumberland State Resort Park** near Jamestown, 78 miles southwest of Harrodsburg, is a 3,000-acre park located on the 50,000-acre Lake Cumberland, which sports excellent bass, bluegill, and crappie fishing. The park features a modern 48-room resort lodge which is perched on a high bluff above the lake. The lodge has a swimming pool, a dining room, a gift shop, and a multi-purpose activities center. Other park facilities include an additional swimming pool, riding stables, tennis courts, hiking trails, a 9-hole golf course, miniature golf, a picnic area, and a playground. A marina offers houseboats, and fishing boats and motors for rent plus year-round launching ramps.

## COMMUNITY IMPROVEMENTS

### Recent

DeTer Company, Inc., began operations at its Burgin facility during 1984. The company manufactures dust suppression foam equipment and foaming agent.

Keystone Brush and Contact began operations in Burgin in 1984. The company manufactures electric motor components.

Construction of a new 2,680,000-gallon-per-day wastewater treatment facility for Harrodsburg was completed in 1982.

Access facilities for the handicapped were added at the Mercer County Courthouse in 1983. The \$70,000 project included installation of elevator, ramp, restroom, and parking facilities oriented to use by handicapped persons.

The Harrodsburg Independent School System installed computer labs at the junior high and high schools during the 1983-84 school year. Construction of a 12,000-square-foot elementary school addition is scheduled for completion by the end of 1984.

The Burgin Independent School System recently began using microcomputers in several of the schools' programs.

The State Bank & Trust Company expanded its main office in Harrodsburg in 1983, and began installation of automated banking machines.

### Planned

The City of Harrodsburg is planning a downtown revitalization project.

Plans are being made to add an elementary classroom and physical education facility at the Mercer County Elementary School.

The State Bank & Trust Company is planning to construct a limited-service branch in Harrodsburg.

The Mercer County Ambulance Service, Inc., plans to purchase a new ambulance in 1984.