

1995

Industrial Resources: Oldham County

Kentucky Library Research Collections
Western Kentucky University, spcol@wku.edu

Follow this and additional works at: https://digitalcommons.wku.edu/oldham_cty



Part of the [Business Administration, Management, and Operations Commons](#), [Growth and Development Commons](#), and the [Infrastructure Commons](#)

Recommended Citation

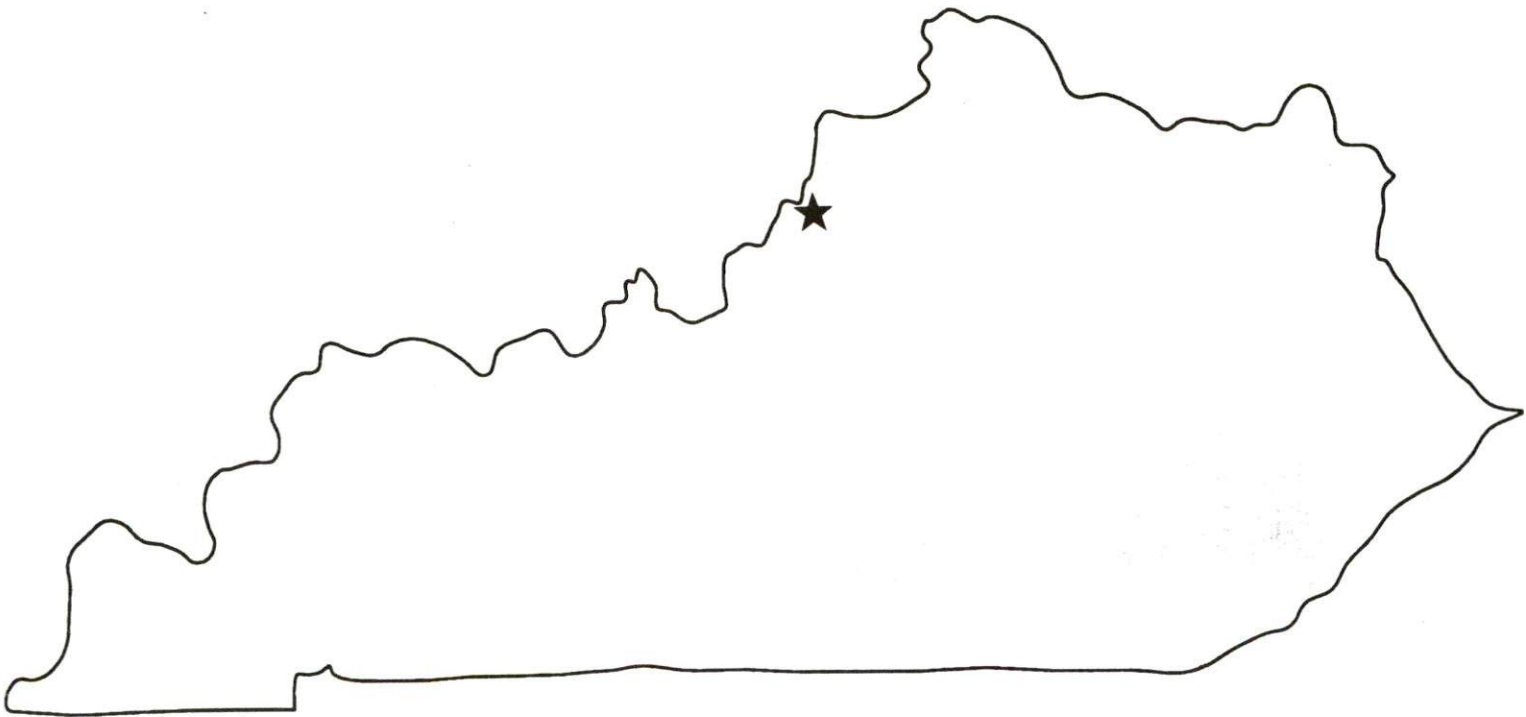
Kentucky Library Research Collections, "Industrial Resources: Oldham County" (1995). *Oldham County*. Paper 2.
https://digitalcommons.wku.edu/oldham_cty/2

This Report is brought to you for free and open access by TopSCHOLAR®. It has been accepted for inclusion in Oldham County by an authorized administrator of TopSCHOLAR®. For more information, please contact topscholar@wku.edu.

Kentucky

Resources For Economic Development

Oldham County



Prepared by
The Kentucky Cabinet for Economic Development
Division of Research
in cooperation with
The Oldham County Chamber of Commerce

1995

Division Director - Ronald W. Morgan; program manager - Keith Roberts;
research - Keith Roberts; clerical - Wanda Sharp; graphics - Robert Owens. Cost
of printing paid from state funds.

TABLE OF CONTENTS

<u>Chapter</u>	<u>Page</u>
OLDHAM COUNTY, KENTUCKY - A RESOURCE PROFILE	1
THE LABOR MARKET STATISTICS	2
Labor Market Area Map	2
Population	3
Population Projections	3
Estimated Labor Supply	3
Labor Force Characteristics of Residents, 1993	4
Selected Components of Nonagricultural Employment, by Place of Work, 1992	5
Per Capita Personal Income	6
Average Placement Wages	7
Average Weekly Wages of Workers Covered by Unemployment Insurance 1992 - Bar Chart	8
Average Weekly Wages by Industry, by Place of Work, 1992	9
EXISTING INDUSTRY	10
Oldham County Manufacturing Firms, Their Products and Employment	10
Recent Industrial Developments	11
Labor Organizations in Manufacturing Firms	12
Selected Industrial Services	12
TRANSPORTATION	13
Highways	13
Truck Service	13
Selected Market Location Map	14
Rail	15
Air	15
Water	15
UTILITIES	16
Electricity	16
Natural Gas	16
Public Water Supply	17
Raw Water	17
Sewerage	17
CLIMATE	18

<u>Chapter</u>	<u>Page</u>
LOCAL GOVERNMENT	19
Structure	19
Planning and Zoning	19
Local Fees and Licenses	19
State and Local Property Taxes	20
EDUCATION	21
Public Schools	21
Nonpublic Schools	21
Area Colleges and Universities	22
Vocational Training	23
OTHER LOCAL FACILITIES	25
Local Medical Personnel	25
Hospitals	25
Other Medical Facilities and Services	25
Banks and Savings & Loan Associations	25
Newspapers	25
Telephone Service	25
RECREATION	26

GENERAL HIGHWAY MAP OLDHAM COUNTY KENTUCKY

PREPARED BY THE
KENTUCKY TRANSPORTATION CABINET
DEPARTMENT OF HIGHWAYS
DIVISION OF PLANNING
IN COOPERATION WITH THE
U.S. DEPARTMENT OF TRANSPORTATION
FEDERAL HIGHWAY ADMINISTRATION



0 1 2 3 4 MILES



OLDHAM COUNTY, KENTUCKY - A RESOURCE PROFILE

Oldham County lies in the Outer Blue Grass Region in north-central Kentucky. The county covers a total land area of 189 square miles. The Ohio River forms the northwest boundary of the county. Oldham County had an estimated 1992 population of 36,461.

LaGrange, the county seat of Oldham County, is located adjacent to Interstate 71. LaGrange is 25 miles northeast of Louisville, Kentucky; 74 miles southwest of Cincinnati, Ohio; and 198 miles northeast of Nashville, Tennessee. LaGrange had an estimated 1992 population of 4,274.

The Economic Framework - The total number of Oldham County residents employed in 1993 averaged 18,184. In 1992, manufacturing firms in the county reported 826 employees; wholesale and retail trade provided 1,958 jobs; 1,885 people were employed in service occupations; state and local government accounted for 2,327 employees; and contract construction firms provided 818 jobs.

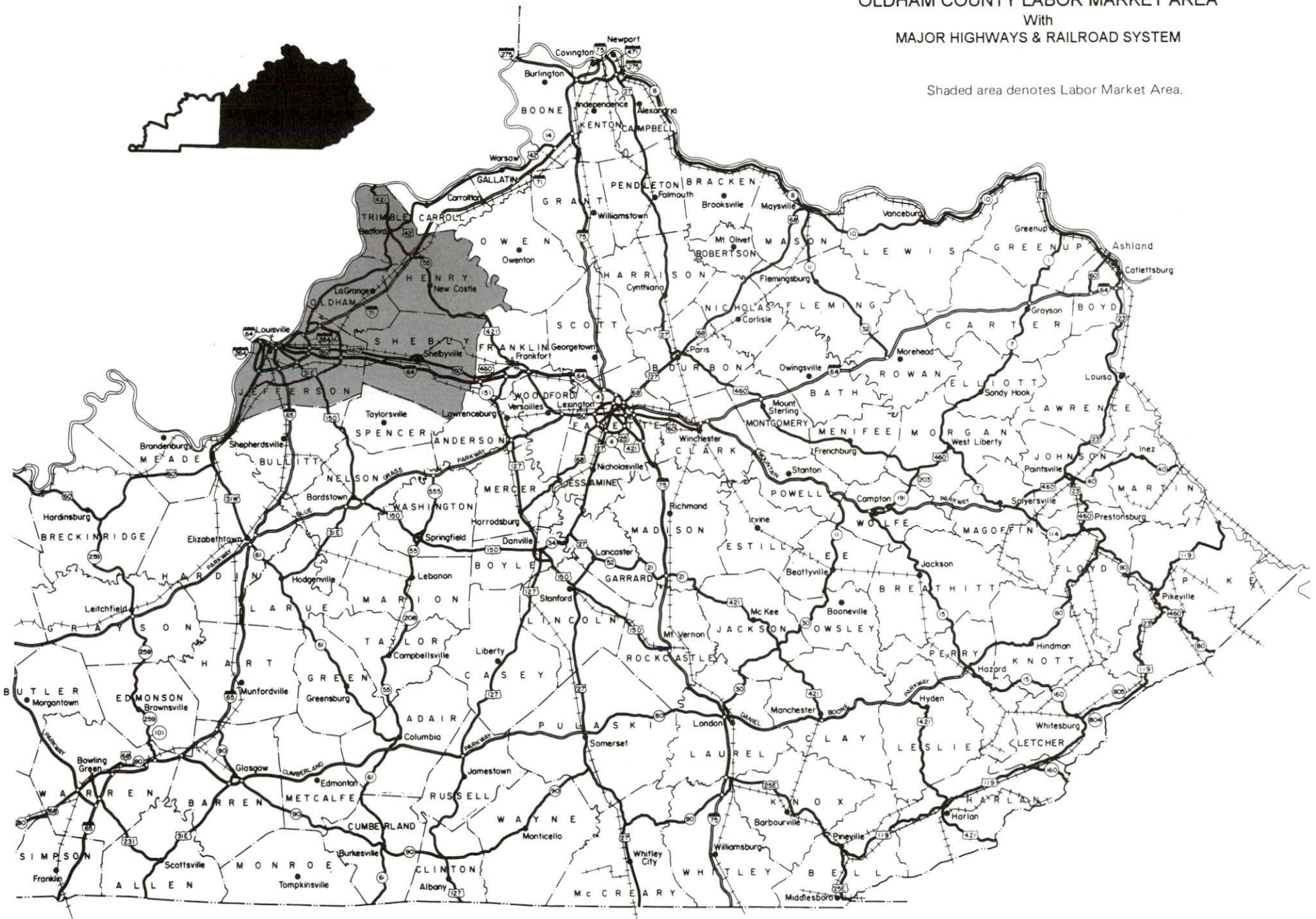
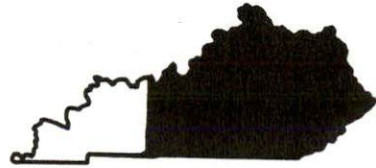
Labor Supply - There is a current estimated labor supply of 22,572 persons available for industrial jobs in the labor market area. In addition, from 1995 through 1999, 52,469 young persons in the area will become 18 years of age and potentially available for industrial jobs.

Transportation - Major highways directly serving LaGrange include Interstate 71, a major north-south route, and Kentucky Highways 146 and 53. Twenty-six trucking companies provide interstate and/or intrastate service to the area. Main line rail service is provided to LaGrange by CSX Transportation. The nearest scheduled commercial airline service is located at Standiford Field, 29 miles southwest of LaGrange, near Louisville. Riverport facilities are available on the Ohio River at Louisville, 25 miles southwest of LaGrange.

Power and Fuel - Electric power is provided to LaGrange and part of Oldham County by the Kentucky Utilities Company. A major portion of Oldham County is served electric power by the Louisville Gas and Electric Company. LaGrange and parts of Oldham County are provided natural gas service by the Louisville Gas and Electric Company.

Education - Primary and secondary education is provided to LaGrange and Oldham County by the Oldham County School System, which is accredited by the Southern Association of Colleges and Schools. Seven colleges and universities are located within 45 miles of LaGrange. Vocational training is available at the Oldham County Area Vocational Education Center, located in Buckner, four miles southwest of LaGrange; and at the Jefferson State Vocational-Technical School in Louisville, 25 miles southwest of LaGrange.

Shaded area denotes Labor Market Area.



LABOR MARKET STATISTICS

The Oldham County Labor Market Area includes Oldham County and the adjoining Kentucky counties of Henry, Jefferson, Shelby, and Trimble.

POPULATION				
	<u>1992*</u>	<u>1990</u>	<u>1980</u>	<u>1970</u>
Labor Market Area	752,886	742,123	754,754	745,000
LaGrange	4,274	3,853	2,971	1,713
Crestwood	1,585	1,435	531	N/A
PeeWee Valley	1,444	1,283	982	950
Oldham County	36,461	33,263	27,795	14,687

* Population estimates.

Source: U.S. Department of Commerce, Bureau of the Census.

POPULATION PROJECTIONS				
	<u>1995</u>	<u>2000</u>	<u>2010</u>	<u>2020</u>
Labor Market Area	749,573	751,409	750,101	743,577
Oldham County	38,627	43,996	53,232	60,569

Note: Population projections are from Moderate Growth Series forecast.

Source: University of Louisville, Urban Studies Center, State Data Center.

ESTIMATED LABOR SUPPLY				
	Current		Not in Labor Force	Future Becoming 18 years of age 1995 thru 1999
	<u>Total</u>	<u>Unemployed</u>		
Labor Market Area*	22,572	22,572	0	52,469
Oldham County	569	569	0	3,041

* Additional workers may be drawn from other nearby counties.

Note: Unemployed - persons unemployed and actively seeking work; Not in Labor Force - represents the number of persons who would enter the labor force if suitable employment were available (based on the assumption that persons in Kentucky would like to participate in the labor force in the same proportion that they do nationally). Underemployed persons (employed only 14 to 26 weeks during the year) are no longer included in labor surplus estimates.

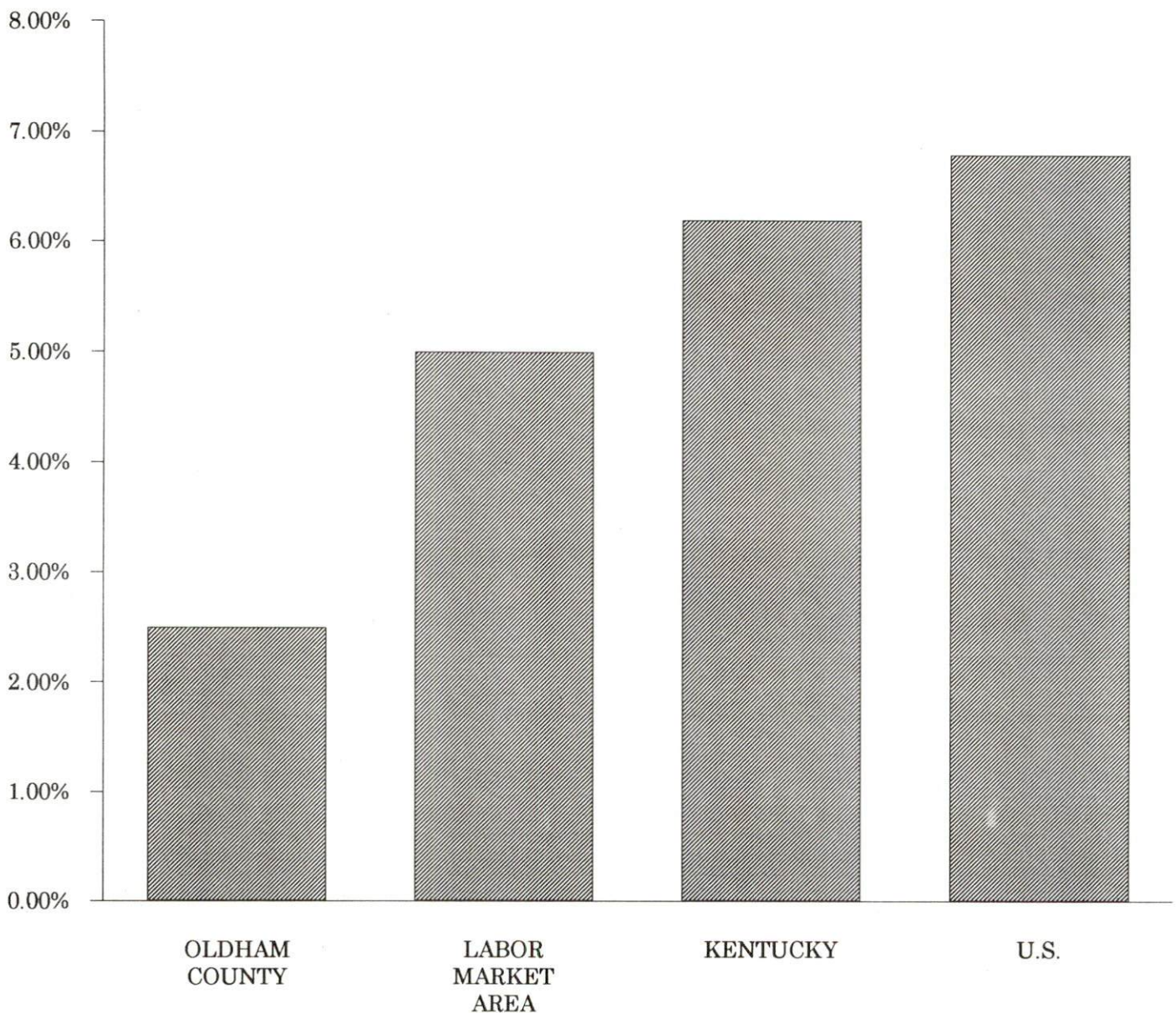
Sources: Kentucky Cabinet for Human Resources, Kentucky Labor Surplus Estimates by County, 1992. Kentucky Cabinet for Economic Development, Future Labor Supply Becoming 18 Years of Age, 1995 thru 1999.

LABOR FORCE CHARACTERISTICS OF RESIDENTS, 1993

	<u>Oldham County</u>	<u>Labor Market Area</u>
Civilian Labor Force	18,644	396,592
Employment	18,184	376,762
Unemployment	460	19,830
Rate of Unemployment (%)	2.5	5.0

Source: Kentucky Cabinet for Human Resources, Kentucky Labor Force Estimates, Annual Averages, 1993.

UNEMPLOYMENT RATES 1993

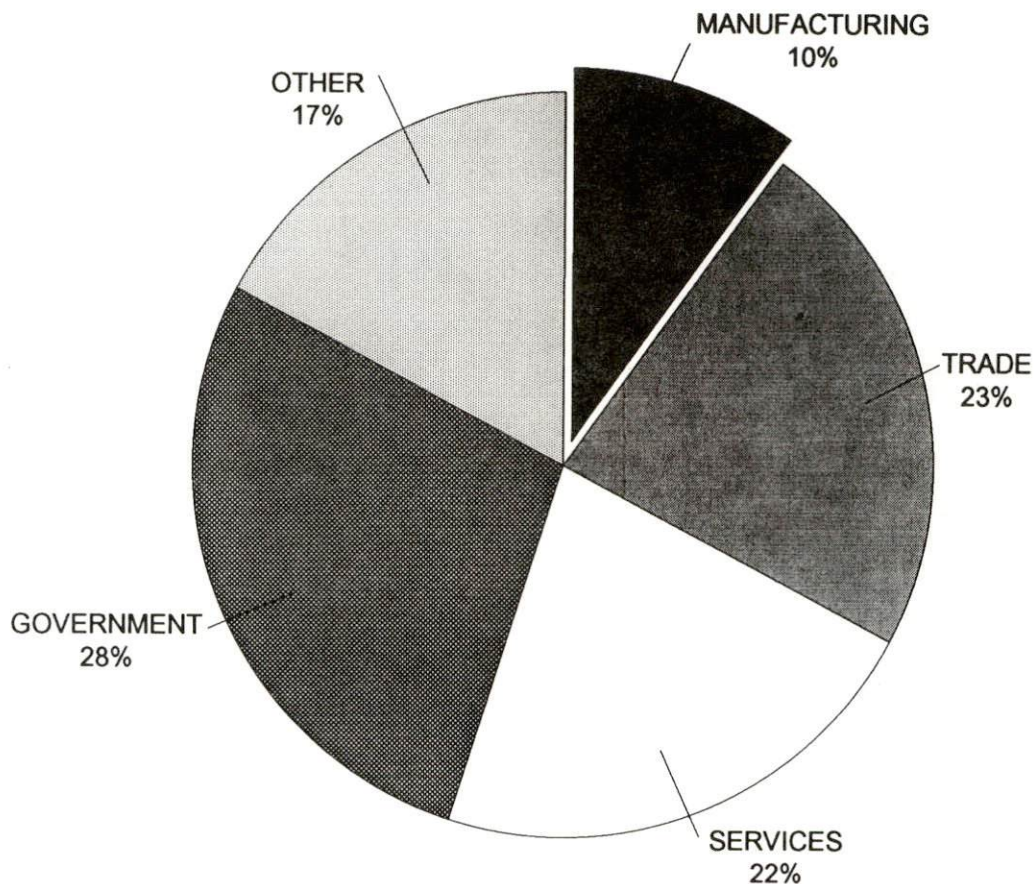


**SELECTED COMPONENTS OF NONAGRICULTURAL EMPLOYMENT
BY PLACE OF WORK, 1992**

	<u>Oldham County</u>	<u>Labor Market Area</u>
All Industries (total)	8,443	385,743
Manufacturing	826	72,041
Wholesale & Retail Trade	1,958	98,825
Services	1,885	107,891
State/Local Government	2,327	36,577
Contract Construction	818	17,548

Note: Excludes domestic workers, railway workers, certain nonprofit corporations, majority of federal government workers, and self-employed workers.
Source: Kentucky Cabinet for Human Resources, Average Monthly Workers Covered by Kentucky Unemployment Insurance Law, 1992.

OLDHAM COUNTY

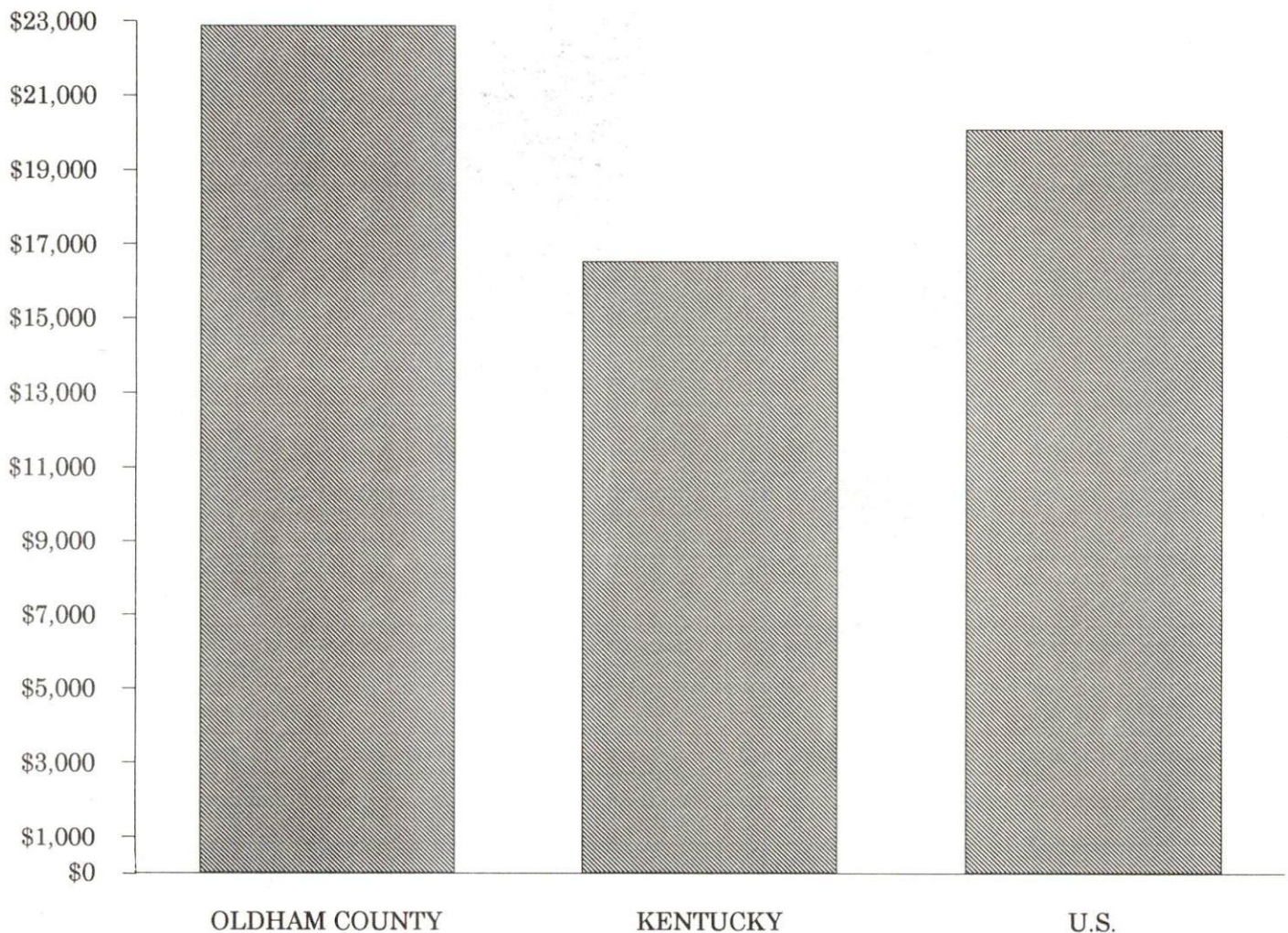


PER CAPITA PERSONAL INCOME

<u>Area</u>	<u>1988</u>	<u>1992</u>	<u>Percent Change</u>
Oldham County	\$20,047	\$22,891	14.2
Labor Market Area Range	\$9,505 - \$20,047	\$13,608 - \$22,891	-
Kentucky	\$12,751	\$16,528	29.6
U.S.	\$16,610	\$20,105	21.0

Source: U.S. Bureau of Economic Analysis, Regional Economic Information System, April 1994.

PER CAPITA PERSONAL INCOME
1992



AVERAGE PLACEMENT WAGES

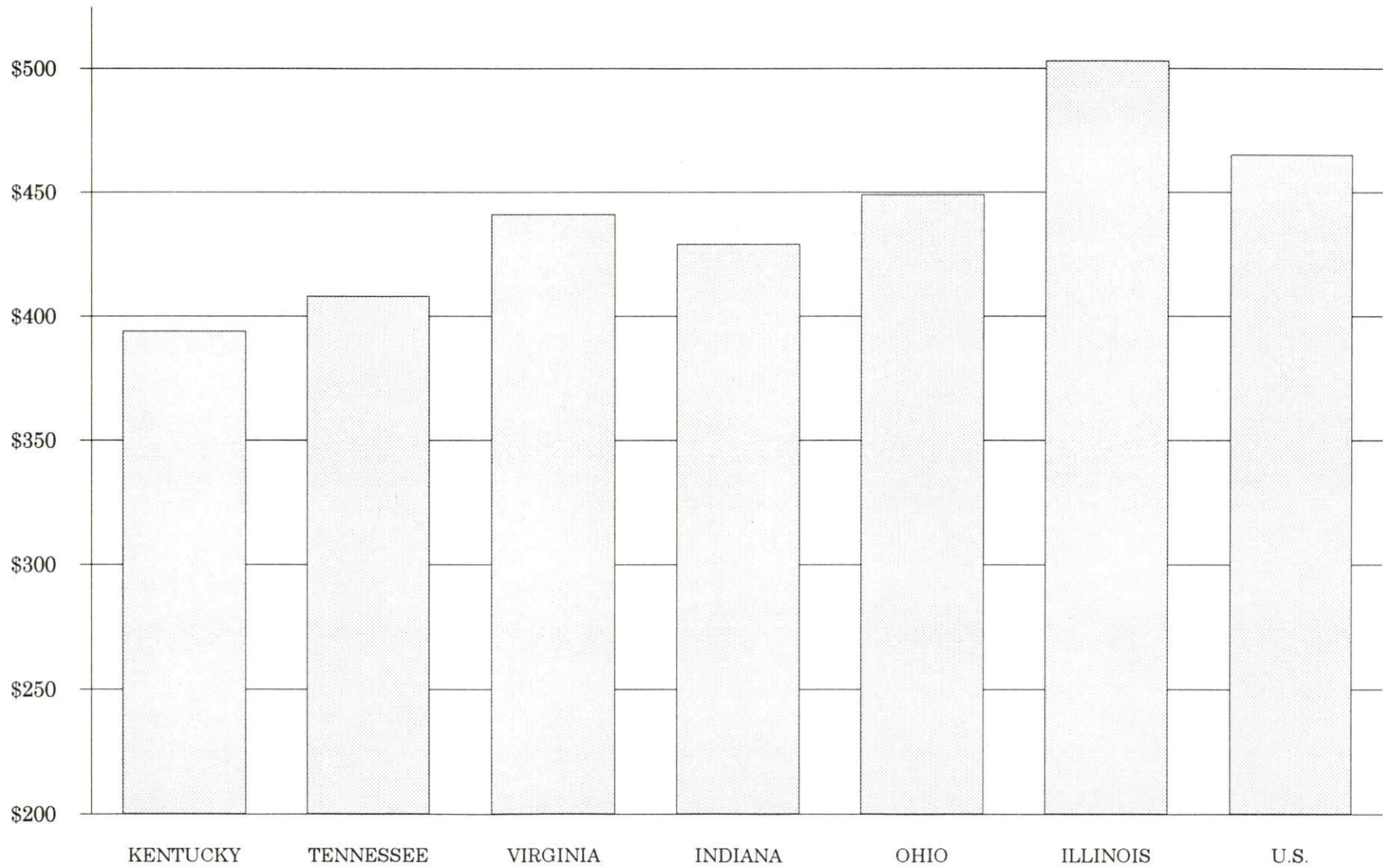
Oldham County is served by the Louisville local office of the Kentucky Department for Employment Services. The focus of the following data is on job placements made by the Louisville local office and may therefore be used as an indicator of the wages which employers in the area pay new employees. During the twelve months which ended on June 30, 1994, the local employment office filled 17,560 job openings in various occupational categories. The average hourly wage for selected occupational categories were:

<u>OCCUPATIONAL CATEGORY</u>	<u>NUMBER OF PLACEMENTS</u>	<u>AVERAGE WAGE(\$)</u>
All Occupations	17,560	6.42
Clerical	948	5.39
Sales	297	5.19
Services (excluding domestic)	1,852	4.77
Agricultural, Fishery, Forestry, etc.	82	5.33
Processing	1,631	5.91
Machine Trades	587	7.17
Bench Work	1,826	4.63
Structural	2,072	9.07
Motor Freight/ Transportation	373	5.93
Packaging and Materials Handling	7,534	6.78
Other	41	6.54

The Louisville local office also serves Bullitt, Henry, Jefferson, Shelby, Spencer, and Trimble Counties. The above occupational categories are taken from the Dictionary of Occupational Titles published by the U.S. Department of Labor.

Source: Kentucky Cabinet for Human Resources, Department for Employment Services.

AVERAGE WEEKLY WAGES OF WORKERS COVERED BY
UNEMPLOYMENT INSURANCE - 1991



AVERAGE WEEKLY WAGES BY INDUSTRY
BY PLACE OF WORK, 1992*

	Oldham County	Kentucky (State- Wide)	Tennessee	Virginia
All Industries	\$353.16	\$415.94	\$435.00	\$465.00
Mining & Quarrying	379.03	685.48	564.00	690.00
Contract Construction	366.06	431.97	456.00	456.00
Manufacturing	515.90	535.73	510.00	535.00
Transportation, Communications & Public Utilities	343.44	560.84	561.00	637.00
Wholesale & Retail Trade	248.89	282.29	N/A	N/A
Finance, Insurance & Real Estate	333.48	493.68	548.00	576.00
Services	324.54	371.91	419.00	483.00
State/Local Government	411.26	434.01	N/A	N/A
	<u>Indiana</u>	<u>Ohio</u>	<u>Illinois</u>	<u>U. S.</u>
All Industries	\$450.00	\$473.00	\$535.00	\$491.00
Mining & Quarrying	731.00	639.00	787.00	799.00
Contract Construction	504.00	525.00	658.00	527.00
Manufacturing	609.00	653.00	652.00	612.00
Transportation, Communications & Public Utilities	548.00	590.00	674.00	632.00
Wholesale & Retail Trade	N/A	N/A	N/A	N/A
Finance, Insurance & Real Estate	511.00	545.00	728.00	670.00
Services	386.00	419.00	488.00	468.00
State/Local Government	N/A	N/A	N/A	N/A

* Wages for U.S. and surrounding states rounded to nearest dollar.

N/A Not Available.

Note: The average weekly wage for each category includes the salaries and wages of all persons working for that type business. For example, the manufacturing category includes both production workers and administrative personnel. Excludes domestic workers, railway workers, certain nonprofit corporations, majority of federal government workers, and self-employed workers.

Source: Kentucky Cabinet for Human Resources, Average Weekly Wages of Workers Covered by Kentucky Unemployment Insurance Law, 1992. U.S. Department of Labor, Bureau of Labor Statistics, Employment and Wages, Annual Averages, 1992, October 1993.

EXISTING INDUSTRY

OLDHAM COUNTY MANUFACTURING FIRMS, THEIR PRODUCTS AND EMPLOYMENT

<u>Firm</u> <u>(Establishment date)</u>	<u>Product</u>	<u>1994</u> <u>Average Employment</u>
LaGrange		
Blue Grass Electronics, Inc. (1972)	Temperature controls, electronic security systems, alarms	55
C W Magnet Wire Company (1989)	Aluminum & copper magnet wire, bare copper products	75
GVS, Inc. DBA Warming-glo Candle Company (1990)	Candles	15
Jenner Company, Inc. (1981)	Foil stamping and embossing, engraved stationary	105
Joe Clark Quarry (1956)	Gravel, limestone, agricultural lime	20
L & M Gribbins Company, Inc. (1977)	Concrete and fiberglass septic tanks	12
Lesco Design & Manufacturing Company, Inc. (1972)	Steel fabrication, cranes, conveyors	100
Northland Corporation (1964)	Hardwood dimension, lumber, veneer, plywood	150
The Oldham Era, Inc. (1876)	Newspaper	13
Southern States LaGrange Cooperative (1946)	Fertilizer	9
Buckner		
Aggressive Tool & Die, Inc. (1989)	Tools, dies, plastic injection molds	22
Clayton & Lambert Manufacturing Company (1956)	Grain bins & silos, steel swimming pool panels	23
Fastline Printing and Publications (1981)	Typesetting, commercial printing	85
Hartlage Mold & Tool, Inc. (1978)	Plastic injection molds	15
Pearce Brothers Ready Mix Concrete & Supply Company, Inc. (1986)	Ready-mixed concrete	27
Rigo Company (1974)	Rodenticides, insecticides, pesticides	30
The Torbitt & Castleman Company (1869)	Chocolate syrup, barbecue sauces, syrups	210
U.S. Housing Components, Inc. (1980)	Wooden wall panels, prefabricated buildings, wood roof and floor trusses	80

(Continued)

<u>Firm</u> <u>(Establishment date)</u>	<u>Product</u>	<u>1994</u> <u>Average Employment</u>
Crestwood		
Atlas Concrete, Inc. (1963)	Ready-mixed concrete	60
Creative Engineering & Manufacturing, Inc. (1976)	Bedspreads, draperies, textile machinery	13
Creative Packaging Company (1988)	Expanded polystyrene foam and corrugated laminated parts, specialty packaging products	8
Hettinger & Shuck (1993)	Metal fabrication and ductwork	60
Kintec Wood Truss Manufacturing, Inc. (1976)	Wood trusses and panels	45
Microdry, Inc. (1988)	Microwave ovens, dryers, and power supply generators	16
Nemeth Engineering Associates, Inc. (1984)	Textile drying equipment, bindery/gluing equipment, packaging machinery	38
Oldham County Stone Company (1968)	Crushed stone, agricultural lime	22
Specialty Conveyor Concepts, Inc. (1988)	Specialty equipment and accessories, conveyor products, mobile racks & dollies	10
Wilding Industries, Inc. (1974)	Engraving signs	4
Pewee Valley		
Custom Powder Coating (1989)	Metal finishing, powder coating, sand blasting	3
Quality Sand Blasting & Finishing (1989)	Sand blasting, metal finishing	3

Sources: Kentucky Cabinet for Economic Development, Division of Research;
Oldham County Chamber of Commerce.

LABOR ORGANIZATION IN MANUFACTURING FIRMS

<u>Union</u>	<u>Representing workers at:</u>
Aluminum, Brick, and Glass Workers International Union, AFL-CIO	C W Magnet Wire Company
International Association of Machinists and Aerospace Workers, AFL-CIO	Clayton & Lambert Manufacturing Company
International Brotherhood of Teamsters, Chauffeurs, Warehousemen and Helpers of America	Atlas Concrete, Inc.
United Steelworkers of America, AFL-CIO-CLC	Clayton & Lambert Manufacturing Company
International Union of Operating Engineers, AFL-CIO	Oldham County Stone Company

SELECTED INDUSTRIAL SERVICES

<u>Types of Services</u>	<u>Location</u>	<u>Mileage from LaGrange</u>
Custom Plastics Producers	LaGrange, Kentucky	-
Electric Motor Repair	Shelbyville, Kentucky	20
	Louisville, Kentucky	25
Heat Treating Facilities	Anchorage, Kentucky	13
	Louisville, Kentucky	25
Industrial Waste Removal	LaGrange, Kentucky	-
	Buckner, Kentucky	4
Machine Shops, Tool & Die	Buckner, Kentucky	4
	Crestwood, Kentucky	6
Metal Castings	Louisville, Kentucky	25
Metal Finishers	Louisville, Kentucky	25
Metal Service Centers	Louisville, Kentucky	25
Millwrights & Riggers	Louisville, Kentucky	25

Sources: Kentucky Cabinet for Economic Development, Division of Research.

TRANSPORTATION

Highways

Major highways serving Oldham County include Interstate 71, U.S. Highway 42, and Kentucky Highways 146, 53, 393, 524, 329 and 22. All are "AAA"-rated (80,000-pound gross load limit) trucking highways.

Interstate 71, with interchanges located at LaGrange and Buckner, is a major north-south route connecting Louisville, Kentucky; and Cincinnati, Ohio. Interstate 71 intersects with Interstate 64 and 65 in Louisville, 25 miles southwest of LaGrange and with Interstate 75 in Boone County, 56 miles northeast of LaGrange. U.S. 42 lies four miles north of LaGrange via Kentucky 53. Kentucky 146 is a "AAA"-rated trucking highway directly serving LaGrange.

Construction of a full cloverleaf exit on Interstate 71 at Kentucky Highway 393 near Buckner is scheduled to begin in 1995. The exit will provide access to Buckner from northbound and southbound I-71 traffic.

HIGHWAY MILES FROM LAGRANGE, KENTUCKY, TO SELECTED MARKET CENTERS

City	Highway Miles	City	Highway Miles
Atlanta, GA	404	Los Angeles, CA	2,111
Baltimore, MD	572	Louisville, KY	25
Birmingham, AL	385	Nashville, TN	198
Chicago, IL	312	New Orleans, LA	718
Cincinnati, OH	74	New York, NY	733
Cleveland, OH	321	Pittsburgh, PA	361
Detroit, MI	332	St. Louis, MO	283
Knoxville, TN	247		

Note: Mileage computations are via the best interstate or primary highways, not necessarily the most direct route of travel.

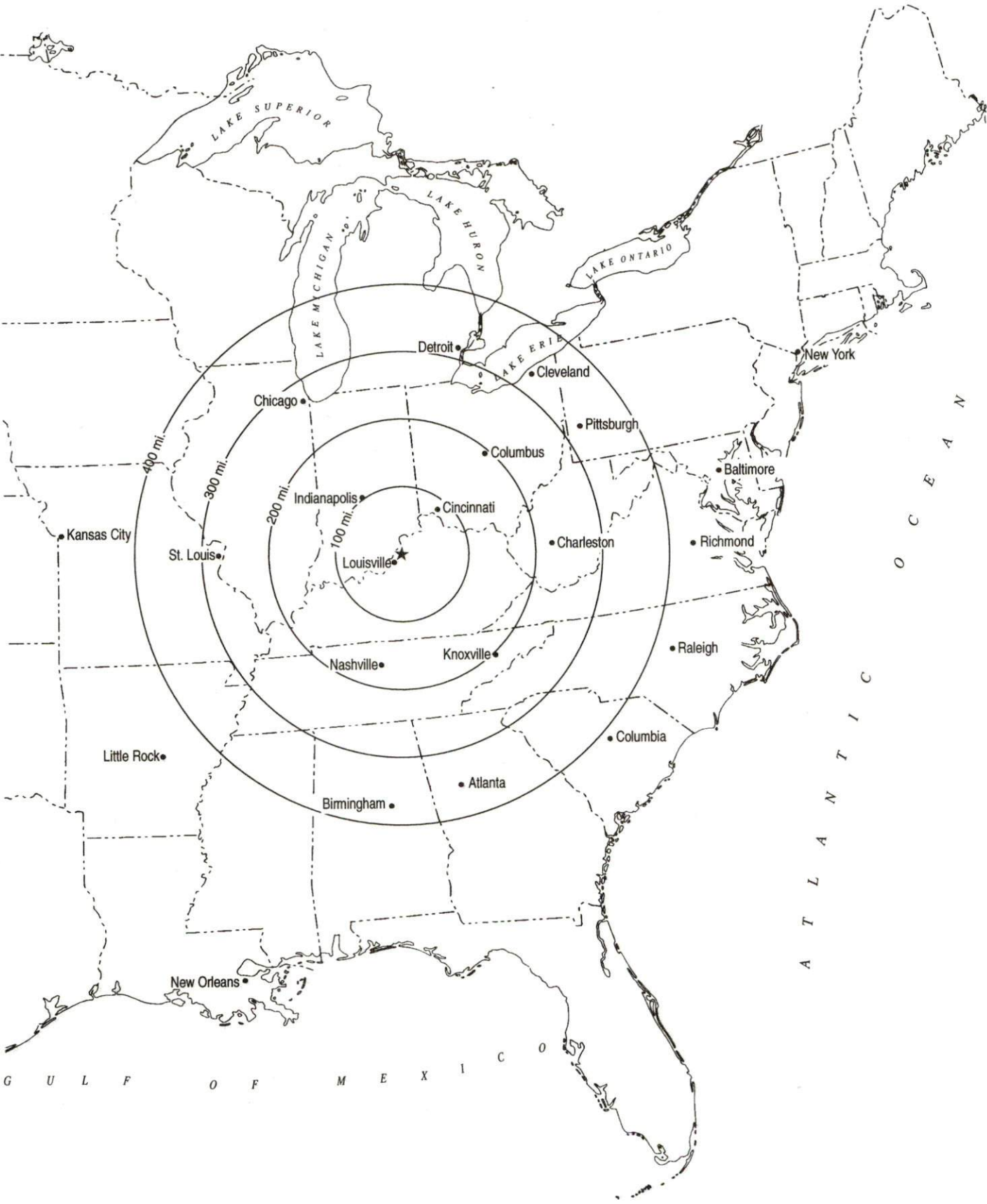
Sources: Rand McNally Standard Highway Mileage Guide, 1990. Official Kentucky Mileage Map, 1985.

Truck Service

Twenty-six common carrier trucking companies provide interstate and/or intrastate service to Oldham County.

Source: American Motor Carrier Directory, Fall 1994.

Selected Market Centers



Rail

CSX Transportation provides main line rail service to Oldham County. Burlington Northern Railroad, Norfolk Southern Corporation, and Paducah and Louisville Railway provides intermodal facilities at Louisville, 25 miles southwest of LaGrange.

For details on routing, schedules, rates, and services contact:

Manager
Industrial Development
CSX Transportation
9420 Bunsen Parkway
Suite 212
Louisville, Kentucky 40220
(502) 499-3025

Air

Nearest Scheduled Commercial Airline Service

Standiford Field
Location: 4 miles southeast of center of Louisville, Kentucky;
29 miles southwest of LaGrange
Air Service: American, American West Express, American Eagle,
ComAir, Continental, Continental Express, Midway,
Midwest Express, Northwest, Northwest Airlink,
Southwest, TWA, TW Express, United, USAir,
USAir Express, Valujet
Daily Arrivals
& Departures: 146

Nearest International Airport

Cincinnati/Northern Kentucky
International Airport
Location: 8 miles southwest of Covington, Kentucky;
71 miles northeast of LaGrange
Air Service: American, American Eagle, ComAir, Continental,
Continental Express, Delta, Northwest,
Northwest Airlink, TWA, United, United Express,
USAir, USAir Express
Daily Arrivals
& Departures: 846

Water

The Ohio River forms the northwestern boundary of Oldham County. A nine-foot navigation channel is maintained for the entire length of the Ohio River.

Port facilities are available on the Ohio River at Louisville, 25 miles southwest of LaGrange. The Jefferson Riverport Complex has been designated as a Foreign Trade Zone and offers complete U.S. Customs services for exports and imports. The Port of Louisville terminal, although privately-owned, is also available for public use.

UTILITIES

Electricity

Company serving LaGrange and parts of Oldham County - Kentucky
Utilities Company

Source of power - Kentucky Utilities Company

For industrial rates contact:

Economic Development Department
Kentucky Utilities Company
One Quality Street
Lexington, Kentucky 40507
(606) 255-2100

Company serving a major portion of Oldham County - Louisville
Gas and Electric Company

Source of power - Louisville Gas and Electric Company

For industrial rates contact:

Economic Development Department
Louisville Gas and Electric Company
P.O. Box 32010
Louisville, Kentucky 40232
In Kentucky: (502) 627-3714
Out-of-State: (800) 252-0226

Natural Gas

Company serving LaGrange and parts of Oldham County - Louisville
Gas and Electric Company

Source of supply - Texas Gas Transmission Corporation

For rates and supplies contact:

Economic Development Department
Louisville Gas and Electric Company
P.O. Box 32010
Louisville, Kentucky 40232
In Kentucky: (502) 627-3714
Out-of-State: (800) 252-0226

Public Water Supply

Company serving LaGrange -	LaGrange Utilities Commission 412 West Jefferson Street LaGrange, Kentucky 40031 (502) 222-9325
Source of treated water -	Oldham County Water District
Amount of water that can be purchased -	1,000,000 gallons per day
Average daily consumption -	600,000 gallons
Peak daily consumption -	840,000 gallons
Storage capacity -	1,000,000 gallons
Water pressure -	38 psi to 91 psi
Name of water district -	Oldham County Water District 3707 West Highway 146 P.O. Box 51 Buckner, Kentucky 40010 (502) 222-1690
Area served -	Oldham County
Source of raw water -	Wells (pumping capacity - 6,300 gallons per minute)
Capacity of treatment plant -	5,000,000 gallons per day
Average daily consumption -	3,400,000 gallons
Peak daily consumption -	4,400,000 gallons
Storage capacity -	4,135,000 gallons
Water pressure -	39 psi to 110 psi

Raw Water

Surface water sources - The Ohio River, Harrods Creek, and Floyd's Fork of the Salt River

Average discharge - Ohio River at Markland Dam, 114,500 cfs (24-year record, USGS); Harrods Creek near LaGrange, 37.1 cfs (26-year record, USGS); Floyd's Fork near Peewee Valley, 92.4 cfs (3-year record, USGS)

Expected ground water yield - 500-1,000 gpm along the Ohio River; 5-50 gpm along Floyd's Fork; 5 gpm or less in the remainder of the county

Sewerage

Company serving LaGrange -	LaGrange Utilities Commission 412 West Jefferson Street LaGrange, Kentucky 40031 (502) 222-9325
Design capacity -	775,000 gallons per day
Average daily flow -	430,000 gallons
Type of treatment -	Secondary
Treated effluent discharged into -	Curry's Fork tributary

CLIMATE

Oldham County

Temperature

Normal (30-year record)	56.20 degrees
Average annual 1993	56.70 degrees
Record highest, July 1954 (46-year record)	105.00 degrees
Record lowest, January 1963 (46-year record)	-20.00 degrees
Normal heating degree days (30-year record)	4,525
(Heating degree day totals are the sums of negative departures of average daily temperatures from 65 degrees F.)	

Precipitation

Normal (30-year record)	43.56 inches
Mean annual snowfall (46-year record)	16.20 inches
Total precipitation 1993	47.39 inches
Mean number days precipitation (.01 inch or more) (46-year record)	124.70
Mean number days thunderstorms (46-year record)	45.60

Prevailing winds (through 1963)

South

Relative Humidity (33-year record)

1 a.m.	76 percent
7 a.m.	81 percent
1 p.m.	58 percent
7 p.m.	61 percent

Source: U.S. Department of Commerce, Environmental Science Services Administration, Climatological Data, 1993. Station of record: Louisville, Kentucky.

LOCAL GOVERNMENT

Structure

LaGrange is governed by a mayor and eight council members. The mayor is elected to a four-year term, while the council members each serve two-year terms. Oldham County is governed by a county judge/executive and eight magistrates. Each county official serves a four-year term.

Planning and Zoning

Joint agency - Oldham County Joint Planning and Zoning Commission

Participating cities - LaGrange, Crestwood, Pewee Valley

Zoning enforced - All areas

Subdivision regulations enforced - All areas

Local codes enforced - Building, Housing (LaGrange only)

Mandatory state codes enforced - Kentucky Plumbing Code, National Electric Code, Kentucky Boiler Regulations and Standards, Kentucky Building Code (modeled after BOCA code)

Local Fees and Licenses

Businesses within the city of LaGrange are required to pay an annual license tax. Contractors, professional, and delivery type businesses in LaGrange pay a flat annual license tax. The amount of the license ranges from \$25 to \$200 per year, depending upon the type of business. Manufacturing, retail and wholesale trade businesses must pay a license tax based upon gross receipts. The minimum tax is \$51.

PROPERTY TAXES

The Kentucky Constitution requires the state to tax all classes of taxable property, and state statutes allow local jurisdictions to tax only a few classes. All locally taxed property is subject to county taxes and school district taxes (either a county school district or an independent school district). Property located inside of city limits may also be subject to city property taxes.

Special local taxing jurisdictions (fire protection districts, watershed districts, and sanitation districts) levy taxes within their operating areas (usually a small portion of community or county).

Property assessments in Kentucky are at 100% fair cash value. Accounts receivable are taxed at 85% of face value.

STATE PROPERTY TAX RATES PER \$100 VALUATION

<u>Selected Classes of Property</u>	<u>1993 State Rate</u>	<u>Local Taxation Permitted</u>
Real Estate	\$0.180	YES
Manufacturing Machinery	0.150	NO
Pollution Control Equipment	0.150	NO
Inventories		
Raw Materials	0.050	NO
Goods in Process	0.050	NO
Finished Goods	0.050	YES
Motor Vehicles	0.450	YES
Other Tangible Personal Property	0.450	YES
Intangibles (Accounts Receivable, Money on Hand)	0.250	NO

LOCAL PROPERTY TAX RATES PER \$100 VALUATION, 1993

<u>Taxing Jurisdiction</u>	<u>Real Estate</u>	<u>Finished Goods & Tangibles</u>	<u>Motor Vehicles</u>
Oldham County	\$0.1608	\$0.1896	\$0.168
School Districts:			
Oldham County	0.4810	0.4810	0.643
Cities:			
LaGrange	0.264	0.265	0.265

Sixteen fire protection districts levy a special property tax within their boundaries. The rates range from \$0.050 to \$0.100 per \$100 valuation.

EDUCATION

Public Schools

Oldham County

Total Enrollment (Fall, 1993)	7,433
Accreditation	Southern Association of Colleges and Schools
Pupil-Teacher Ratio (1991-92)	18.8-1
Percent High School Graduates to College (1991-92)	69.4
Expenditures Per Pupil (1991-92)	\$3,250.74

Nonpublic Schools

<u>School</u>	<u>Enrollment</u>	<u>Grades</u>
Immaculate Conception Elementary	118	K-8
St. Aloysius Elementary	240	K-8
St. Francis Elementary	245	K-8

Area Colleges and Universities

<u>Name</u>	<u>Location (Miles distant)</u>	<u>Enrollment (Fall, 1993)</u>
Bellarmino College	Louisville, Kentucky (25)	2,943
Jefferson Community College	Louisville, Kentucky (25)	11,184
Spalding University	Louisville, Kentucky (25)	1,221
University of Louisville	Louisville, Kentucky (25)	21,826
Indiana University Southeast	New Albany, Indiana (30)	5,770
Hanover College	Hanover, Indiana (38)	1,044
Kentucky State University	Frankfort, Kentucky (45)	2,487

VOCATIONAL-TECHNICAL TRAINING

Kentucky Tech schools are operated by the Cabinet for Workforce Development and provide secondary (Sec) and postsecondary (P/S) vocational-technical training.

<u>Kentucky Tech Schools</u>	<u>Location (Mileage from LaGrange)</u>	<u>Number of Program Offerings</u>	<u>Cumulative Enrollment 1992-1993</u>		<u>Approximate Number Completing Programs Annually</u>
			<u>Sec</u>	<u>P/S</u>	
Oldham County Area Vocational Education Center	LaGrange	5	186	8	69
Jefferson State Vocational-Technical School	Louisville (25)	20		977	293

Customized Training

The Kentucky Tech system, through its Training and Development Coordinators, will provide technical assistance and will identify and develop low-cost customized training programs and services for both established and prospective businesses. Businesses needing customized training should contact a Training and Development Coordinator located at Jefferson SVTS.

Assessment Services

Kentucky Tech Career Connections offers to business, education, and government agencies customized assessment in career inventories, interest inventories, pre-hire assessment, psychomotor skills and academic potential. A Career Connections assessment center is located at the Jefferson SVTS.

Tech Prep

Tech Prep is a combined secondary and postsecondary program of studies that leads to an associate degree or diploma in a vocational-technical field. The Oldham County Board of Education is currently in the second-year implementation of its tech prep program in the area of automotive technology, business technology, construction and manufacturing technology, and health occupations services.

Adult Education Services

Adult education programs are available to adults who want to develop new skills, or earn a high school equivalency degree. In Oldham County, adult literacy is provided by the Lifelong Learning Center and adult basic education is provided by the Oldham County Board of Education.

Bluegrass State Skills Corporation

The Bluegrass State Skills Corporation, an independent public corporation created and funded by the Kentucky General Assembly, provides programs of skills training to meet the needs of business and industry from entry level to advanced training, and from upgrading present employees to retraining experienced workers.

The Bluegrass State Skills Corporation is a major source for skills training assistance for a new or existing company. The Corporation works in partnership with other employment and job training resources and programs, as well as Kentucky's economic development activities, to package a program customized to meet the specific needs of a company.

OTHER LOCAL FACILITIES

Local Medical Personnel

Physicians - 36

Dentists - 13

Hospitals

<u>General Hospital</u>	<u>Location</u>	<u>Beds</u>
Tri-County Baptist Hospital	LaGrange	120
Medical staff - 187 physicians, 137 registered nurses, 27 licensed practical nurses		

Other Medical Facilities and Services

Oldham County EMS

Oldham County Health Department

The LaGrange Fire and Rescue Department

Banks and Savings & Loan Associations

Bank of Oldham County

Fifth Third Bank

Mid America Bank

National City Bank

PNC Bank

Newspapers

The Oldham Era (weekly)

Telephone Service

South Central Bell

RECREATION

Local

A year-round, supervised recreation program is open to all county residents. The program is operated through the Oldham County Board of Education and the various activities are conducted through the schools, using school recreational facilities.

The Wendell Moore Park is located one mile north of Buckner. The park contains a 56-acre fishing lake, volleyball courts, basketball courts, horseshoe pits, grills, picnic shelters, public restrooms, and parking facilities. There are plans for the construction of additional facilities at the Oldham County Recreational Park. They include a miniature golf course and additional soccer and football fields.

LaGrange sponsors Pony and Babe Ruth Baseball Leagues. In addition, there are a number of county-wide softball leagues, some operated by the Recreation Department and others privately organized. Additional public recreational facilities in LaGrange and Buckner include two tennis courts, five baseball diamonds, and two football fields.

A city park has recently been developed in LaGrange. The ten-acre park contains picnic areas, shelters, ball fields, and restrooms.

A small park located on the Ohio River near Westport, Kentucky, provides facilities for launching small boats and a boat dock.

Several new soccer fields recently opened in Buckner. A new driving range is located between Buckner and Crestwood.

There are two private country clubs in the LaGrange area. Each club maintains an 18-hole golf course and a swimming pool.

Area (Within 65 miles)

Bernheim Forest Arboretum and Nature Center
Big Bone Lick State Park
E.P. "Tom" Sawyer State Park
General Butler State Resort Park
Louisville (Kentucky's largest city)
My Old Kentucky Home State Park
Taylorsville Lake State Park
The Kentucky Horse Park