

1-1999

Industrial Resources: Pendleton County - Falmouth and Butler

Kentucky Library Research Collections
Western Kentucky University, spcol@wku.edu

Follow this and additional works at: https://digitalcommons.wku.edu/pendleton_cty



Part of the [Business Administration, Management, and Operations Commons](#), [Growth and Development Commons](#), and the [Infrastructure Commons](#)

Recommended Citation

Kentucky Library Research Collections, "Industrial Resources: Pendleton County - Falmouth and Butler" (1999). *Pendleton County*. Paper 1.
https://digitalcommons.wku.edu/pendleton_cty/1

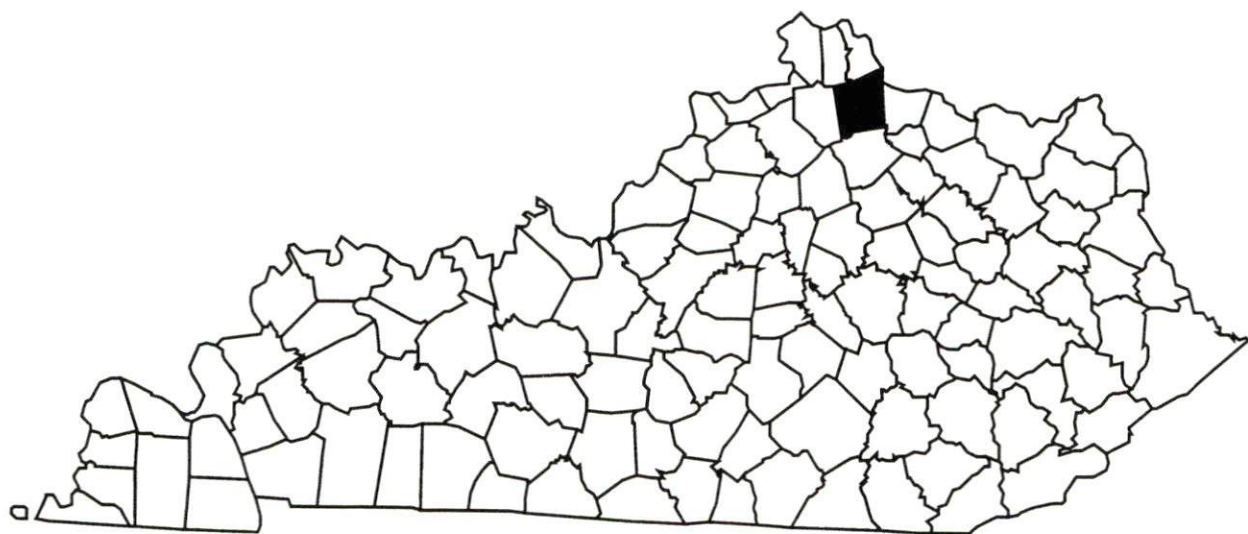
This Report is brought to you for free and open access by TopSCHOLAR®. It has been accepted for inclusion in Pendleton County by an authorized administrator of TopSCHOLAR®. For more information, please contact topscholar@wku.edu.

Kentucky

Resources For Economic Development

Falmouth & Butler (Pendleton County)

January, 1999



Prepared by
Kentucky Cabinet for Economic Development
Division of Research
in cooperation with
Pendleton County Economic Development Office
P.O. Box 123
Falmouth, KY 41040
606-654-4332

Kentucky Cabinet for Economic Development
Division of Research
500 Mero Street
2300 Capital Plaza Tower
Frankfort, KY 40601
Telephone: (502) 564-4886
Fax: (502) 564-3256
Email: econdev@mail.state.ky.us

Cost of printing paid from state funds.

TABLE OF CONTENTS

	Page
FALMOUTH & BUTLER, KENTUCKY – A RESOURCE PROFILE	1
LABOR MARKET STATISTICS	3
Population.....	3
Population Projections.....	3
Estimated Labor Supply	3
Labor Force Characteristics of Residents, 1997	4
Work Force Commuting Patterns (1990)	4
Selected Components of Nonagricultural Employment by Place of Work, 1997.....	4
Per Capita Personal Income.....	6
Average Placement Wages	6
Average Weekly Wages by Industry by Place of Work, 1997	7
EXISTING INDUSTRY	8
Falmouth & Butler Manufacturing Firms, Their Products and Employment	8
Recent Industrial Developments.....	8
Labor Organizations in Pendleton County	8
Selected Industrial Services – Within 50 Miles of Falmouth	9
TRANSPORTATION	10
Highways.....	10
Truck Service	10
Rail	12
Air.....	12
UTILITIES	13
Electricity	13
Natural Gas.....	14
Public Water Supply	14
Sewerage	15
CLIMATE	16
LOCAL GOVERNMENT	17
Structure	17
Planning and Zoning.....	17
Local Fees and Licenses	17
Sales and Use Tax	17
State and Local Property Taxes	17
EDUCATION	19
Primary and Secondary Schools	19
Colleges and Technical Schools	19
OTHER LOCAL FACILITIES.....	22
RECREATION	23
APPENDIX - DEFINITIONS	24

FALMOUTH & BUTLER, KENTUCKY – A RESOURCE PROFILE

Falmouth, the county seat of Pendleton County, is located in the Licking River Valley in northern Kentucky. Falmouth is located 38 miles south of Cincinnati, Ohio; 108 miles northeast of Louisville, Kentucky; and 56 miles north of Lexington, Kentucky. Falmouth had an estimated population of 2,642 in 1996.

Butler is located in the Licking River Valley, 10 miles north of Falmouth, and had an estimated population of 731 in 1996.

Pendleton County covers a land area of 280 square miles and had an estimated 1997 population of 13,859 persons. The northeast portion of the county is bounded by the Ohio River, and the Licking River flows northward through the central area of the county.

The Economic Framework – Pendleton County firms employed 2,233 people in 1997. Contract construction firms provided 102 jobs; manufacturing firms in the county reported 416 employees; wholesale and retail trade provided 402 jobs; 235 were employed in the service industry; and state and local government accounted for 551 jobs.

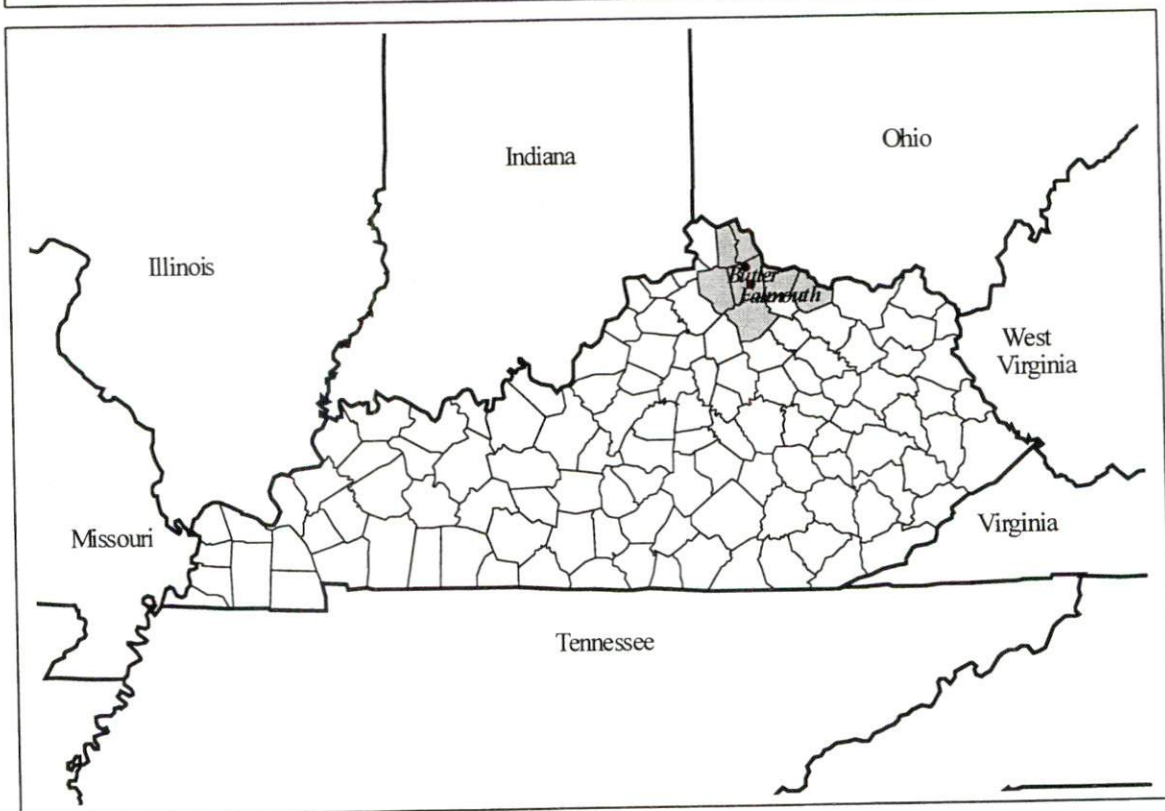
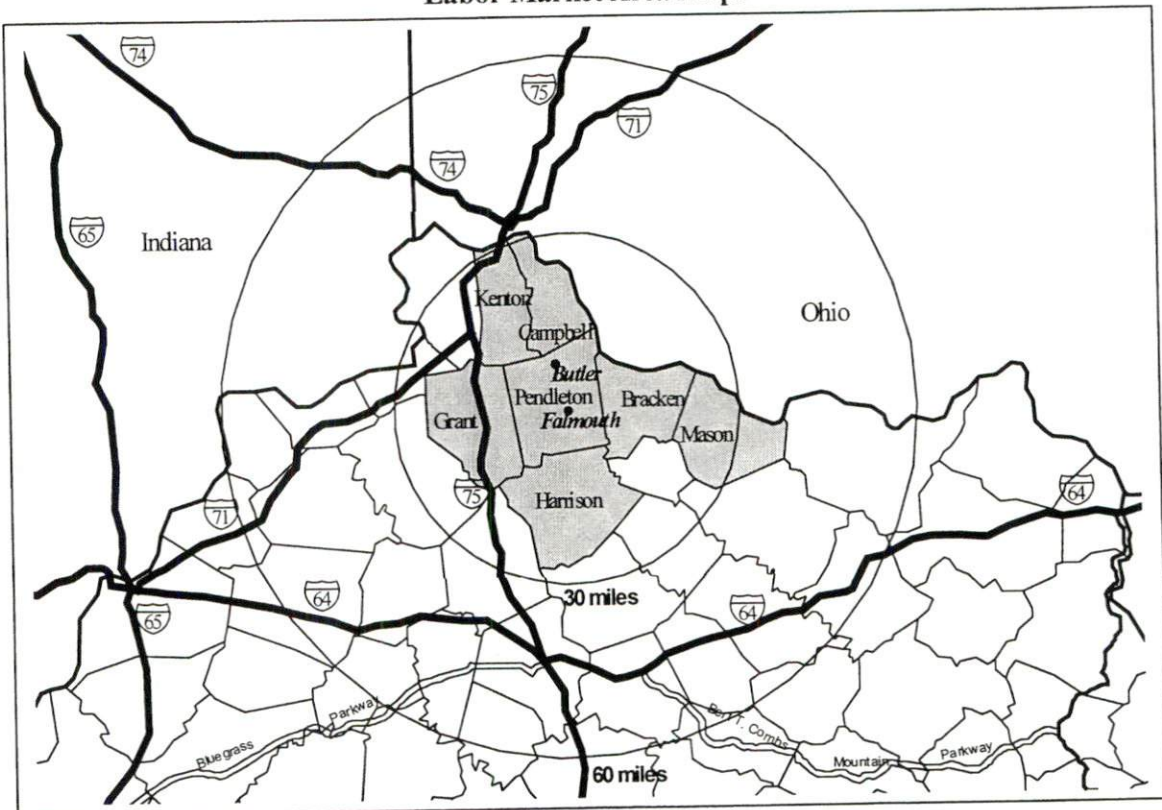
Labor Supply – There is a current estimated labor supply of 53,533 persons available for industrial jobs in the labor market area. In addition, from 1999 to 2003, approximately 22,105 young persons in the labor market area will become 18 years of age and potentially available for industrial jobs.

Transportation – Highways serving Falmouth and Butler include U.S. Highway 27 and Kentucky Route 22, both "AAA"-rated trucking highways; and Kentucky Route 177, a "AA"-rated trucking highway. Fourteen common carrier trucking companies provide service to Falmouth and eleven companies provide service to Butler. CSX Transportation provides main line rail service to Falmouth and Butler. The nearest scheduled commercial airline service is available at the Cincinnati/Northern Kentucky International Airport, 38 miles northwest of Falmouth. The Gene Snyder Airport in Falmouth maintains a 4,000-foot paved runway.

Power and Fuel – The City of Falmouth, whose source of power is Kentucky Utilities Company, provides electricity to Falmouth. Kentucky Utilities Company also provides electricity to Butler and parts of Pendleton County. The remainder of Pendleton County is served by Harrison Rural Electric Cooperative Corporation and Owen Electric Cooperative. Union Light, Heat and Power provides natural gas service to Falmouth and Butler.

Education – Primary and secondary public education is provided by the Pendleton County School Systems. Twenty colleges and universities are located within 60 miles of Falmouth. The nearest state technical college is Northern Kentucky Technical College with campuses in Highland Heights, Edgewood and Covington. The nearest area technology centers (ATC) are C. E. McCormick ATC in Alexandria and Harrison County ATC in Cynthia.

Labor Market Area Maps



Note: To obtain detailed topographical and general highway maps contact Maps and Publications at 502-564-4715, or for industrial site maps contact the Site Evaluation Division at 502-564-7140.

LABOR MARKET STATISTICS

The Falmouth & Butler labor market area includes Pendleton County and the following additional counties: Bracken, Campbell, Grant, Harrison, Kenton, and Mason.

Population

	<u>1980</u>	<u>1990</u>	<u>1996*</u>	<u>1997*</u>
Labor Market Area	285,336	294,350	307,647	309,879
Falmouth	2,482	2,378	2,642	N/A
Butler	663	625	731	N/A
Pendleton County	10,989	12,036	13,706	13,859

Notes: * - Population estimates. N/A – Not available.

Source: U.S. Department of Commerce, Bureau of the Census.

Population Projections

	<u>2000</u>	<u>2010</u>	<u>2020</u>
Labor Market Area	322,633	346,449	367,782
Pendleton County	15,422	18,405	21,482

Note: Population projections are from High Growth Series forecast.

Source: University of Louisville, Urban Studies Center, State Data Center.

Estimated Labor Supply

	<u>Available Labor, 1997</u>			<u>Under-employed</u>	<u>Future Labor Becoming 18 years of age 1999 through 2003</u>
	<u>Total</u>	<u>Unemployed</u>	<u>Potential Labor Supply</u>		
Labor Market Area	53,533	6,916	5,165	41,452	22,105
Pendleton County	1,362	474	254	635	1,084

Note: Unemployed – people not working but actively seeking work. Potential Labor Supply – represents the number of persons not in the labor force, but would like a job (based on national estimates). Underemployed – people employed in wholesale/retail trade and non-professional services. See Appendix for further explanation.

Sources: U.S. Department of Labor, Bureau of Labor Statistics. U.S. Department of Commerce, Bureau of the Census. Kentucky Cabinet for Economic Development, Future Labor Supply Becoming 18 Years of Age, 1999 through 2003.

Labor Force Characteristics of Residents, 1997

	<u>Pendleton County</u>	<u>Labor Market Area</u>
Civilian Labor Force	6,852	162,320
Employed	6,379	155,404
Unemployed	474	6,916
Unemployment Rate (%)	6.9	4.3

Source: U.S. Department of Labor, Bureau of Labor Statistics.

Work Force Commuting Patterns (1990)

Workers commuting out of Pendleton County	3,064
Workers commuting into Pendleton County	593
Working and residing in Pendleton County	2,038

Source: University of Louisville, State Data Center.

Selected Components of Nonagricultural Employment by Place of Work, 1997

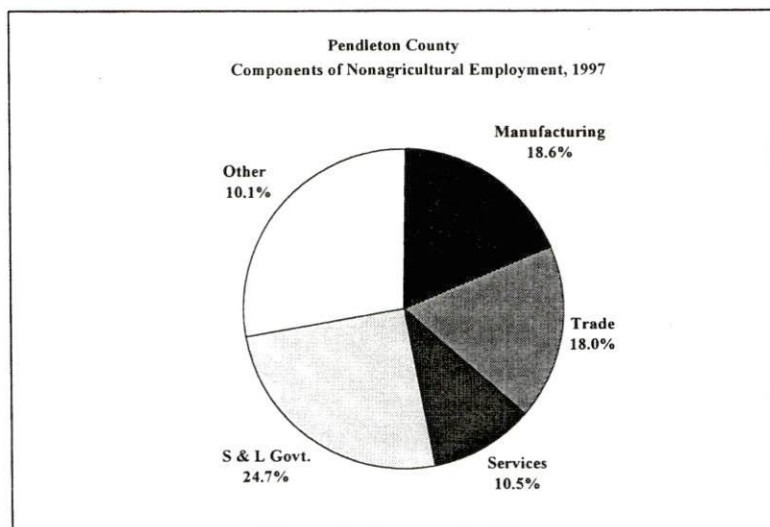
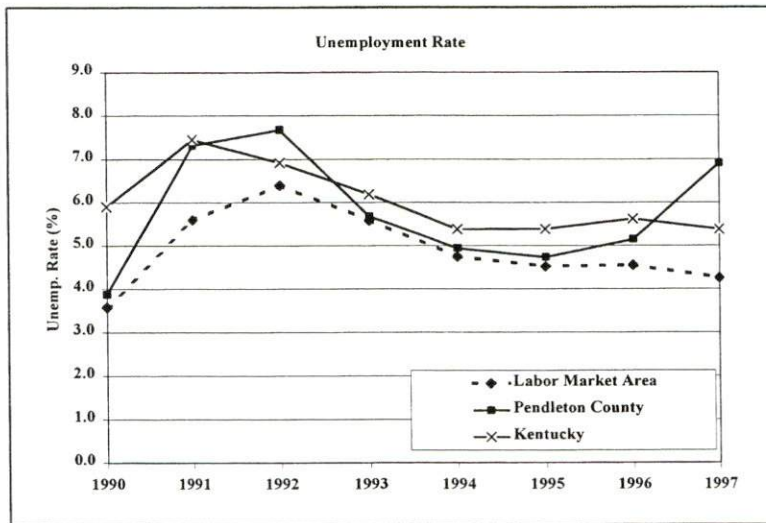
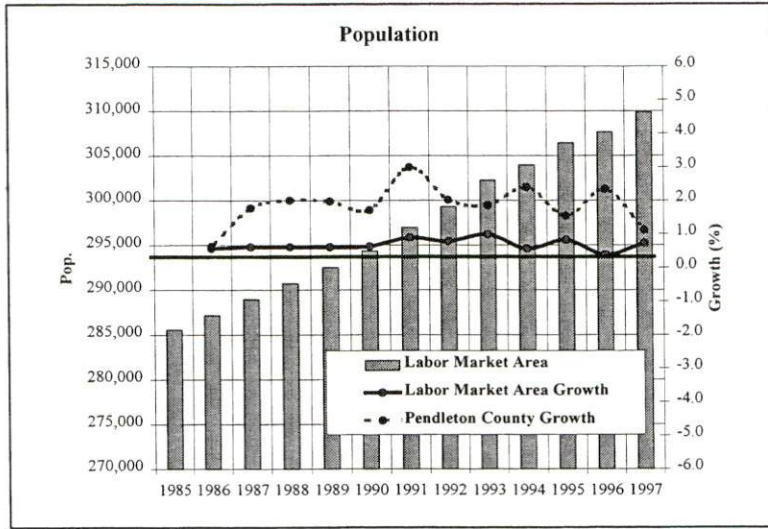
	<u>Pendleton County</u>	<u>Labor Market Area</u>
All Industries	2,233	96,169
Mining & Quarrying	N/A	0
Contract Construction	102	5,970
Manufacturing	416	13,687
Transportation & Public Utilities	76	3,022
Wholesale & Retail Trade	402	27,697
Finance, Insurance, & Real Estate	101	4,439
Services	235	26,437
State & Local Government	551	13,813
Other	18	513

Note: Excludes domestic workers, railway workers, certain nonprofit corporations, majority of federal government workers, and self-employed workers.

N/A: Not available.

Source: Kentucky Workforce Development Cabinet, Average Monthly Workers Covered by Kentucky Unemployment Insurance Law, 1997.

Selected Charts



Per Capita Personal Income

	<u>1992</u>	<u>1996</u>	<u>Percent Change (1992-1996)</u>
Pendleton County	\$13,354	\$15,496	16.0
Labor Market Area Range	\$12,604 - \$19,162	\$14,984 - \$23,163	-
Kentucky	\$16,761	\$19,773	18.0
U. S.	\$20,631	\$24,436	18.4

Source: U.S. Department of Commerce, Bureau of Economic Analysis. 1998.

Average Placement Wages

The Kentucky Department for Employment Services local office in Covington serves Pendleton County. The focus of the following data is on job placements made by the Covington local office and may therefore be used as an indicator of the wages which employers in the area pay new employees. During the twelve months which ended on June 30, 1998, the local employment office filled Pendleton County job openings in various occupational categories. The average hourly wage for selected occupational categories were:

	<u>Number of Placements</u>	<u>Average Wage (\$)</u>
All Occupations	4,463	7.61
Professional, Technical & Managerial	103	7.22
Clerical	645	6.43
Sales	81	7.62
Domestic	8	5.63
Services (excluding domestic)	352	6.08
Agricultural, Fishery, Forestry, etc.	60	6.72
Processing	289	10.14
Machine Trades	286	8.59
Bench Work	311	7.95
Structural	224	8.67
Motor Freight/Transportation	461	8.56
Packaging and Materials Handling	1,643	7.38

Note: Occupational categories are taken from the Dictionary of Occupational Titles published by the U.S. Department of Labor. The Covington local office serves Boone, Campbell, Carroll, Gallatin, Grant, Kenton, Owen, and Pendleton Counties.

Source: Kentucky Workforce Development Cabinet, Department for Employment Services.

Average Weekly Wages by Industry by Place of Work, 1997

	<u>Pendleton County</u>	<u>Kentucky (Statewide)</u>	<u>Tennessee</u>	<u>Virginia</u>
All Industries	\$434.05	\$488.00	\$521.00	\$555.00
Mining & Quarrying	0.00	790.00	839.00	772.00
Contract Construction	633.81	516.00	561.00	544.00
Manufacturing	427.21	644.00	621.00	644.00
Transportation & Public Utilities	414.21	648.00	653.00	761.00
Wholesale & Retail Trade	227.38	337.00	391.00	392.00
Finance, Insurance, & Real Estate	345.70	613.00	696.00	748.00
Services	295.66	440.00	495.00	580.00
State & Local Government	457.71	484.00	494.00	530.00
	<u>Indiana</u>	<u>Ohio</u>	<u>Illinois</u>	<u>U.S.</u>
All Industries	\$530.00	\$553.00	\$634.00	\$578.00
Mining & Quarrying	849.00	773.00	881.00	961.00
Contract Construction	604.00	619.00	765.00	610.00
Manufacturing	732.00	776.00	792.00	737.00
Transportation & Public Utilities	633.00	669.00	764.00	724.00
Wholesale & Retail Trade	351.00	384.00	452.00	411.00
Finance, Insurance, & Real Estate	624.00	682.00	938.00	863.00
Services	452.00	486.00	575.00	547.00
State & Local Government	510.00	567.00	615.00	576.00

Note: The average weekly wage for each category includes salaries and wages of all persons working for that type of business. For example, the manufacturing category includes both production workers and administrative personnel. Domestic workers, railway workers, certain nonprofit corporations, majority of federal government workers, and self-employed workers are excluded. Wages for U.S. and surrounding states rounded to nearest dollar. N/A – Data not available.

Sources: Kentucky Workforce Development Cabinet, Average Weekly Wages of Workers Covered by Kentucky Unemployment Insurance Law, 1997. U.S. Department of Labor, Bureau of Labor Statistics, Employment and Wages, Annual Averages, 1997, December 1998.

EXISTING INDUSTRY

Falmouth & Butler Manufacturing Firms, Their Products and Employment

<u>Firm</u>	<u>Product</u>	<u>1998 Emp.</u>	<u>Date Established</u>
<u>Butler</u>			
Butler Products Co.	Trailer prop legs, supports & stabilizing stands	36	1957
Jay Gee, Inc.	Machine shop: drilling & boring, arc, gas, MIG & TIG welding; sheet, plate & structural metal fabricating	30	1971
L & W Lumber Supply Co.	Sawmill: rough lumber, timber, wooden boxes & skids	8	1979
Mago Construction Co., Inc.	Asphalt paving materials	5	1950
Mago Construction Co., Inc.	Bituminous concrete	18	1958
Pittsfield Of KY, Inc.	Industrial filters	65	1981
Vater, Jesse Manufacturing Co.	Screw machine products	1	1963
Williams Manufacturing Co., Inc.	Plastic laminated products & cabinets	12	1980
<u>Falmouth</u>			
Armor Shield, Inc.	Petroleum tank resin	7	N/A
Classic Cabinets	Custom laminated cabinets	4	1991
Falmouth Outlook Publications	Newspaper publishing	8	1907
Hammer Strength Corp	Fitness equipment & plate loading exercise equipment	90	1988
Moore Glass/Metal Fabricating	Machine shop: arc & MIG welding, metal fabricating	2	1962
Reis Concrete Products, Inc.	Ready-mixed concrete	3	1954
Vege Manufacturing	Automobile engine & part remfg	95	1952

Sources: Kentucky Directory of Manufacturers published by Harris InfoSource in cooperation with the Kentucky Cabinet for Economic Development, Division of Research.

Recent Industrial Developments

The Pendleton County Industrial Development Authority has acquired ownership of a new 75-acre industrial park, the Paul Patton Commerce Center, located on U.S. Highway 27, one mile south of Falmouth. The park has been surveyed, master planned, has protective covenants, an access road, with water, electric, sewer and natural gas services on site. Funding approval has been granted for construction of a 50,000 square foot speculative manufacturing facility at the park.

Labor Organizations in Pendleton County

United Steelworkers of America, AFL-CIO-CLC

Source: Kentucky Cabinet for Economic Development, Division of Research; Pendleton County Economic Development Office.

Selected Industrial Services – Within 50 Miles of Falmouth

Miles	City	Custom Plastics Producers	Electric Motor Repair	Heat Treating Facilities	Industrial Waste Removal	Machine Shops, Tool & Die	Metal Castings	Metal Finishers	Metal Service Centers	Mill- wrights & Riggers
14	Williamstown	X								
17	Cynthiana					X	X			
21	Walton				X					
25	Florence	X							X	
26	Covington					X				
26	Elsmere	X								
26	Newport				X			X		
27	Bellevue					X				
27	Park Hills		X							
28	Erlanger	X				X				X
28	Paris					X				
29	Georgetown	X		X		X				
31	Burlington					X			X	
32	Stamping Ground					X				
33	Hebron					X		X		
34	Maysville		X			X				
39	Lexington	X	X		X	X		X		X
41	Winchester		X			X			X	
43	Frankfort	X			X					
44	Mount Sterling					X		X		
44	Versailles					X				
48	Nicholasville	X			X	X				
50	Carrollton					X				

Note: Miles are calculated as the straight-line distance from city center to city center; not road miles.

Source: Kentucky Cabinet for Economic Development, Division of Research.

TRANSPORTATION

Highways

Falmouth is served by U.S. Highway 27, a "AAA"-rated (80,000-pound gross load limit) trucking highway, and by Kentucky Route 22, which is "AAA"-rated west of Falmouth and "AA"-rated (62,000-pound gross load limit) east of Falmouth.

Butler is located 10 miles north of Falmouth via U.S. Highway 27 and Kentucky Route 177, a "AA"-rated trucking highway.

Access to Interstate 75 is 19 miles west of Falmouth via Kentucky Route 22 and 14 miles west of Butler via Kentucky Routes 177, 17 and 14, all "AA"-rated highways. Interstate 275 is 30 miles north of Falmouth via Highway 27. Falmouth is 41 miles southeast of Interstate 71; 48 miles north of Interstate 64; 53 miles north of the Mountain Parkway; and 62 miles northeast of the Blue Grass Parkway. Kentucky Route 546 (AA Highway) is accessible 25 miles north of Falmouth via U.S. 27.

Highway Miles from Falmouth, Kentucky to Selected Market Centers

<u>City</u>	<u>Highway Miles</u>	<u>City</u>	<u>Highway Miles</u>
Atlanta, GA	430	Kansas City, MO	616
Baltimore, MD	551	Knoxville, TN	220
Birmingham, AL	453	Los Angeles, CA	2,190
Charleston, WV	174	Louisville, KY	108
Chicago, IL	331	Minneapolis, MN	742
Cincinnati, OH	38	Nashville, TN	262
Cleveland, OH	287	New Orleans, LA	794
Columbia, SC	481	New York, NY	674
Columbus, OH	143	Pittsburgh, PA	325
Dallas, TX	924	Raleigh, NC	492
Des Moines, IA	626	Richmond, VA	493
Detroit, MI	301	St. Louis, MO	367
Indianapolis, IN	149	Tallahassee, FL	701

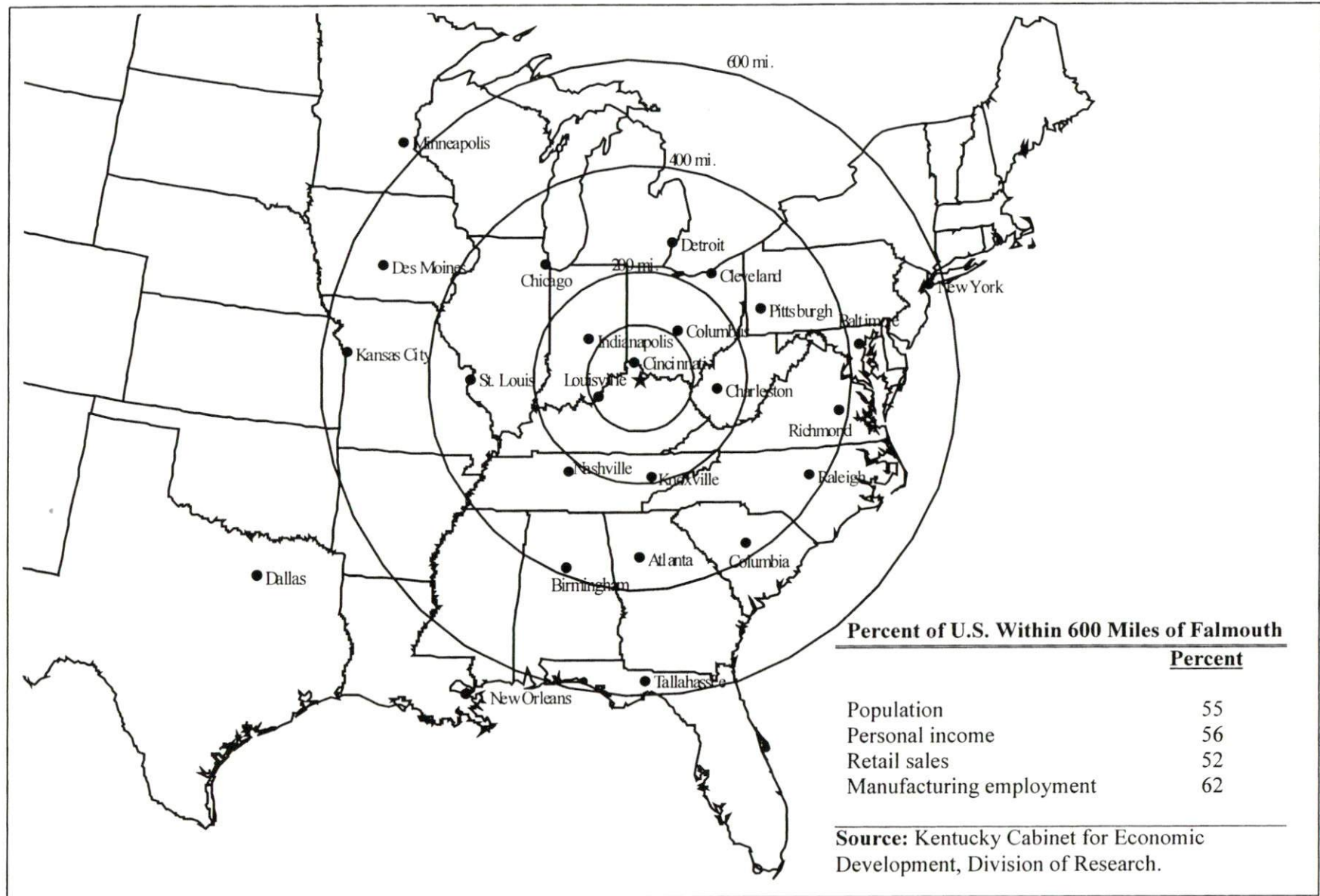
Note: Mileage computations are via the best interstate or primary highways, not necessarily the most direct route of travel.

Source: AAA Map 'n' Go, DeLORME, 1998.

Truck Service

There are currently fourteen common carrier trucking companies that provide interstate and/or intrastate service to Falmouth and there are currently eleven common carrier trucking companies that provide interstate and/or intrastate service to Butler. **Source:** American Motor Carrier Directory, Spring, 1999.

Selected Market Centers Map



Rail

CSX Transportation provides main line rail service to Falmouth and Butler. The nearest intermodal facilities are available at Cincinnati, Ohio, 38 miles north of Falmouth, by CSX Transportation and Norfolk Southern Corporation.

For details on routing, schedules, rates, and services contact:

Manager of Industrial Development
CSX Transportation
9420 Bunsen Parkway
Suite 212
Louisville, KY 40220
(502) 499-3025

and/or

Industrial Development Manager
Norfolk Southern Corporation
The Tower Suite 2904
611 Commerce Street
Nashville, TN 37203
(615) 254-3398

Air

Local

Location:	Gene Snyder Airport
Runway length:	Falmouth, KY
Phone:	4,000 feet (asphalt)
	(606) 654-3241

Commercial/International

Location:	Cincinnati/Northern Kentucky International Airport
	Covington, Kentucky
	38 miles Falmouth of Falmouth
Air service:	Air Trans, American, American Eagle, Comair, Continental, Continental Express, Delta, Northwest, Northwest Airlink, Skyway, Sunworld, SwissAir, TWA, United, US Airways, US Airways Express
Daily arrivals & departures:	1,060

UTILITIES

Electricity

Service area:
Company:
Source of power:
For industrial rates contact:

Falmouth
City of Falmouth
Kentucky Utilities Company

City of Falmouth
212 main Street
Falmouth, KY 41040
(606) 654-8780

Service area:
Company:
Source of power:
For industrial rates contact:

Butler and parts of Pendleton County
Kentucky Utilities Company
Kentucky Utilities Company

Economic Development Department
Kentucky Utilities Company
One Quality Street
Lexington, KY 40507
(606) 255-2100

Service area:
Company:

Source of power:
For industrial rates contact:

remainder of Pendleton County
Harrison Rural Electric Cooperative Corporation and Owen Electric
Cooperative
East Kentucky Power Cooperative

Industrial Development Department
East Kentucky Power Cooperative
4775 Lexington Road
P.O. Box 707
Winchester, KY 40391
(606) 744-4812

and/or

Harrison Rural Electric Cooperative Corporation
Oddville Avenue
P.O. Box 130
Cynthiana, KY 41031
(606) 234-3131

and/or

Owen Electric Cooperative
510 South Main Street
Owenton, KY 40359
(502) 484-3471

Natural Gas

Service area:
Company:
Source of supply:
For rates and supplies contact:

Falmouth and Butler
Union Light, Heat & Power
Columbia Gas Transmission Company

Regional Development Department
Union Light, Heat & Power
P.O. Box 960
Cincinnati, OH 45201-0960
(513) 287-2595

Public Water Supply

Service area:
Company:

Falmouth
City of Falmouth Water Department
508 East Shelby Street
Falmouth, KY 41040
(606) 654-6008

Treatment facilities information
Source of raw water:
Treatment plant capacity:
Average daily consumption:
Peak daily consumption:
Storage capacity:
Water pressure:

Licking River
2,000,000 gallons per day
800,000 gallons
1,300,000 gallons
1,000,000 gallons
40 psi to 110 psi

Service Area:
Company:

Butler
City of Butler Water and Sewer
Mill Street
P.O. Box 229
Butler, KY 41006
(606) 472-5031

Treatment facilities information
Source of raw water:
Treatment plant capacity:
Average daily consumption:
Peak daily consumption:
Storage capacity:
Water pressure:

Licking River
150,000 gallons per day (10 hour day)
75,000 gallons
85,000 gallons
210,000 gallons
57 psi to 60 psi

Service area:
Company:

east Pendleton County
East Pendleton County Water District
600 Woodson Road
P.O. Box 29
Falmouth, KY 41040
(606) 654-2100

Treatment facilities information
Source of treated water:
Average daily consumption:

City of Falmouth
200,000 gallons

Peak daily consumption: 240,000 gallons
Storage capacity: 450,000 gallons
Water pressure: 150 psi to 40 psi

Service area: **western and northern Pendleton County**
Company: Pendleton County Water District
Route 5, Box 14, Highway 330
Falmouth, KY 41040
(606) 654-6964

Source of treated water: City of Falmouth and Northern Kentucky Water
Average daily consumption: 220,000 gallons
Peak daily consumption: 350,000 gallons
Storage capacity: 376,000 gallons
Water pressure: 150 psi to 40 psi

Improvements: Improvements will be made to 8.2 miles of 12" main with an estimated cost of \$2.3 million to be completed by the end of 1999.

Sewerage

Service area: **Falmouth**
Company: City of Falmouth Sewer Department
508 E. Shelby Street
Falmouth, KY 41040
(606) 654-6008

Design capacity: 400,000 gallons per day
Average daily flow: 350,000 gallons per day
Type of treatment: Secondary
Treated effluent discharged into: Licking River

Improvements: Treatment plant upgrade and system improvements are currently underway at an estimated cost of \$465,000 and scheduled to be completed in the Spring, 1999. North Trunk Sewer improvements are planned at an estimated cost of \$680,000 and scheduled to be completed in the Spring, 1999.

Service area: **Butler**
Company: City of Butler Water and Sewer
Cindy Drive
P.O. Box 229
Butler, KY 41006
(606) 472-5015

Design capacity: 60,000 gallons per day (#1) 80,000 gallons per day (#2)
Average daily flow: 35,000 gallons per day
Type of treatment: Secondary
Treated effluent discharged into: Licking River

CLIMATE

Pendleton County

Temperature

Average (50-year record)	53.60 degrees
Average annual 1997	51.90 degrees
Record highest, July 1988 (36-year record)	103.00 degrees
Record lowest, January 1977 (36-year record)	-25.00 degrees
Normal heating degree days (30-year record)	5,248
Normal cooling degree days (30-year record)	996

Precipitation

Normal total (30-year record)	41.33 inches
Normal annual snowfall (30-year record)	23.60 inches
Total precipitation 1997	40.12 inches
Mean number days precipitation (.01 inch or more) (30-year record)	128.50
Mean number days thunderstorms (51-year record)	42.70

Prevailing Winds (27-year record)

Southwest

Relative Humidity (30-year record)

1 a.m.	77 percent
7 a.m.	81 percent
1 p.m.	59 percent
7 p.m.	63 percent

Note: Heating degree day totals are the sums of negative departures of average daily temperatures from 65 degrees F. Cooling degree day totals are the sums of positive departures of average daily temperatures from 65 degrees F.

Source: U.S. Department of Commerce, National Climatic Data Center, Local Climatological Data, 1997.
Station of record: Cincinnati, Ohio.

LOCAL GOVERNMENT

Structure

The cities of Falmouth and Butler are both served by a mayor and six council members. The mayor serves a four-year term and the council members each serve a two-year term. Pendleton County is served by a county judge/executive serving a four-year term and eight magistrates each serving four-year terms.

Planning and Zoning

Joint agency – Pendleton County Planning Commission
Participating cities – Falmouth, Butler, Pendleton County
Mandatory state codes enforced - Kentucky Plumbing Code, National Electric Code, Kentucky Boiler Regulations and Standards, Kentucky Building Code (modeled after BOCA code)

Local Fees and Licenses

The City of Falmouth requires businesses to pay a business license fee ranging from \$10 to \$150 per year.

The City of Butler requires businesses to pay a business license fee ranging from \$5 to \$100 per year. An annual \$6 vehicle sticker is also required.

Sales and Use Tax

A state sales and use tax is levied at the rate of 6.0% on the purchase or lease price of taxable goods and on utility services. Local sales taxes are not levied in Kentucky.

State and Local Property Taxes

The Kentucky Constitution requires the state to tax all classes of taxable property, and state statutes allow local jurisdictions to tax only a few classes. All locally taxed property is subject to county taxes and school district taxes (either a county school district or an independent school district). Property located inside the city limits may also be subject to city property taxes. Property assessments in Kentucky are at 100% fair cash value. Accounts receivable are taxed at 85% of face value. Special local taxing jurisdictions (fire protection districts, watershed districts, and sanitation districts) levy taxes within their operating areas (usually a small portion of community or county).

State Property Tax Rates Per \$100 Valuation

<u>Selected Classes of Property</u>	<u>State Rate, 1998</u>	<u>Local Taxation Permitted</u>
Real Estate	\$0.153	Yes
Manufacturing Machinery	0.150	No
Pollution Control Equipment	0.150	No
Inventories:		
Raw Materials	0.050	No
Goods in Process	0.050	No
Finished Goods	0.050	Yes
Motor Vehicles	0.450	Yes
Other Tangible Personal Property	0.450	Yes
Intangibles (Accounts Receivable, Money on Hand)	0.250	No

Source: Property Tax Rates 1998, Kentucky Revenue Cabinet, Department of Property Valuation.

Local Property Tax Rates Per \$100 Valuation, 1998

<u>Taxing Jurisdiction</u>	<u>Real Estate</u>	<u>Finished Goods & Tangibles</u>	<u>Motor Vehicles</u>
Pendleton County	0.2501	0.2800	0.2685
<u>Cities</u>			
Butler	0.1040	0.1040	0.1070
Falmouth	0.1726	0.2200	0.2040
<u>School Districts</u>			
Pendleton County School District	0.4030	0.4220	0.5500

Source: Property Tax Rates 1998, Kentucky Revenue Cabinet, Department of Property Valuation.

EDUCATION

Primary and Secondary Schools

Public School District Enrollments and Expenditures, 1996-1997

	<u>Total Enrollment</u>	<u>Expenditures Per Pupil</u>	<u>Pupil to Teacher Ratio</u>
Pendleton County	2,812	\$5,448	18.1 to 1

Source: Kentucky Department of Education, Office of Curriculum, Assessment, and Accountability.

Transition to Adult Life of High School Graduates, 1996-1997

<u>County-wide</u>	<u>Number of Graduates</u>	<u>Percent of Total Graduates (%)</u>
Total High School Graduates	162	100.0
To College	64	39.5
To Vocational/Technical School	4	2.5
To Workforce	63	38.9
To Work & School	16	9.9
To Military	4	2.5
Other	11	6.8

Source: Kentucky Department of Education, Office of Curriculum, Assessment, and Accountability.

Colleges and Technical Schools

Area Colleges and Universities Within 60 Miles of Falmouth

<u>Miles</u>	<u>Institution</u>	<u>Location</u>	<u>Enrollment (Fall 1997)</u>
23	Northern Kentucky University	Highland Heights, KY	11,785
25	Thomas More College	Crestview Hills, KY	1,322
29	Georgetown College	Georgetown, KY	1,626
30	Athenaeum of Ohio	Cincinnati, OH	104
30	College of Mt. St. Joseph	Cincinnati, OH	2,205
30	Hebrew Union College, Cincinnati Campus	Cincinnati, OH	147
30	Southern Ohio College, Cincinnati Campus	Cincinnati, OH	500
30	University of Cincinnati	Cincinnati, OH	35,000
30	Xavier University	Cincinnati, OH	6,423
34	Maysville Community College	Maysville, KY	1,294

<u>Miles</u>	<u>Institution</u>	<u>Location</u>	<u>Enrollment (Fall 1997)</u>
38	Midway College	Midway, KY	968
39	Lexington Community College	Lexington, KY	5,558
39	Transylvania University	Lexington, KY	1,021
39	University of Kentucky	Lexington, KY	24,171
43	Kentucky State University	Frankfort, KY	2,288
53	Asbury College	Wilmore, KY	1,258
56	Eastern Kentucky University	Richmond, KY	15,425
56	Miami University	Oxford, OH	16,103
56	Wilmington College	Wilmington, OH	1,092
60	Morehead State University	Morehead, KY	8,208

Note: Miles are calculated as the straight-line distance from Falmouth, not road miles.

Source: Kentucky Council on Higher Education.

Technical Schools

<u>Miles</u>	<u>Institution</u>	<u>Location</u>	<u>Enrollment (1997-1998)</u>		
			<u>Sec</u>	<u>P/S</u>	<u>Total</u>
16	C. E. McCormick ATC	Alexandria, KY	241	1	242
17	Harrison County ATC	Cynthiana, KY	720	5	725
23	Northern Kentucky Technical College Highland Heights Campus	Highland Heights, KY	30	212	242
25	Northern Kentucky Technical College Edgewood Campus	Edgewood, KY	0	248	248
26	Northern Kentucky Technical College Covington Campus	Covington, KY	7	473	480
26	J. D. Patton ATC	Fort Mitchell, KY	185	0	185
33	Boone County ATC	Hebron, KY	175	3	178
34	Mason County ATC	Maysville, KY	185	33	218
39	Central Kentucky Technical College Lexington Campus	Lexington, KY	0	1,154	1,154

Notes: Kentucky Tech secondary schools (Sec), called area technology centers (ATC), are operated by the Cabinet for Workforce Development and the post-secondary schools (P/S), called technical colleges, are governed by the Kentucky Community and Technical College System (KCTCS). Adult courses may be offered at some secondary technical schools. Miles are calculated as the straight-line distance from Falmouth, not road miles.

Source: Kentucky Workforce Development Cabinet, KCTCS.

Customized Training

The Kentucky Tech system, through its training and development coordinators, will provide technical assistance and will identify and develop low-cost customized training programs and services for both established and prospective businesses. Businesses wanting to establish a customized training program should contact a Training and Development Coordinator at the Northern Kentucky Technical College Covington Campus, Covington, Kentucky (606) 431-2700.

Assessment Services

Kentucky Tech Career Connections offers business, education, and government agencies testing packages for evaluating job applicants, selecting employees for promotional consideration and developing training programs within the organization. The Career Connections Assessment Center serving the Falmouth & Butler area is located at the, Northern Kentucky Technical College Covington Campus, Covington, Kentucky (606) 431-2700.

Adult Education Services

Adult education programs are available to adults who want to develop new academic skills, improve basic skills, or earn a high school equivalency diploma. In Pendleton County, adult literacy and adult basic education is provided by the Pendleton County Adult Learning Center and the Pendleton County Adult Reading Program.

Tech Prep is combined secondary and postsecondary program of studies that leads to an associate degree or diploma in a vocational-technical field. Harrison County Area Vocational Education Center offers programs in Tech Prep in the areas of automotive technology, carpentry, electrical technology, machine tool technology and welding.

Bluegrass State Skills Corporation

The Bluegrass State Skills Corporation (BSSC) was established in 1984 by the General Assembly of the Commonwealth of Kentucky as an independent, de jure corporation to stimulate economic development through customized business and industry specific skills training programs. The BSSC works with business and industry and Kentucky's educational institutions to establish programs of skills training. The BSSC is attached to the Cabinet for Economic Development for administrative purposes, in recognition of the relationship between economic development and skills training efforts.

The BSSC is comprised of two economic development tools, matching grants and the newly authorized Skills Training Investment Credit Act. The BSSC grant program is available to new, expanding and existing business and industry. Eligible training activities include pre-employment skills training and assessment; entry level, skills upgrade and occupational upgrade training; train-the-trainer travel; and capacity-building. The Skills Training Investment Credit Act provides tax credits to existing businesses for skills upgrade training.

OTHER LOCAL FACILITIES

Local Medical Personnel

Physicians - 5

Dentists - 2

Hospitals

General Hospital	Location (Mileage form Falmouth)	Beds
Harrison Memorial Hospital	Cynthiana (22)	99
St. Luke Hospital East	Ft. Thomas (34)	362

Harrison Memorial Hospital

Medical staff - 12 physicians, 317 registered nurses, 61 licensed practical nurses

St. Luke Hospital East

Medical staff - 312 physicians, 317 registered nurses, 61 licensed practical nurses

Other Medical Facilities and Services

Butler Rest Home

Comprehensive Care Center of Northern Kentucky

Falmouth Rest Home

Grants Lake I.C. Home

Pendleton County Health Center

Pendleton County Ambulance Service

River Valley Nursing Home

St. Luke Care Unit (Drug & Alcohol Rehab.)

Sharp's Personal Care Home

Three Riers District Health Department

Banks and Savings & Loan Associations

Farmers National Bank

Fifth Third Bank of Northern Kentucky

Pendleton Federal Savings Bank

Star Bank N/A Kentucky

United Kentucky Bank of Pendleton County

Newspapers

The Falmouth Outlook (weekly)

Telephone Service

The Cincinnati Bell Telephone Company

RECREATION

Kincaid Lake State Park, near Falmouth, offers many opportunities for the outdoors lover. The park offers a 183-acre lake, a sand beach, a 209-site Campground, a gift shop/grocery store, a bathhouse, swimming, olympic-size pool, boating, hiking, picnicking, an amphitheatre, shuffleboard, miniature golf, tennis, and organized recreational programs in the summer months. A 9-hole golf course has been approved for construction by the state legislature at a cost of \$3 million.

The Pendleton County Country Club, a private facility located in the northern part of the county, offers an 18-hole golf course, pro shop, a clubhouse, and a swimming pool.

Falmouth has one park with a playground, tennis court, basketball court, and horseshoe pit. The city also has three lighted softball fields available for public use. A Department of Fish and Wildlife boat ramp has been constructed on the Licking River allowing for improved recreational access.

Annual events in the Falmouth area include the 4-H Youth Fair, with shows and contests; and the Kentucky Wool Festival, featuring demonstrations, musical entertainment, and arts and crafts. Thaxton's South Fork Canoe Trails hosts a sanctioned canoe race in Pendleton County. The Kincaid Theatre attracts professional theatrical performances to Falmouth.

The City of Falmouth has been awarded a \$350,000 grant for the purchase and renovation of the historic Kennett Tavern in the downtown district. Plans include relocating city hall to the newly renovated building and a museum and multi-purpose community meeting area will also be available to the public.

In 1993, Griffin Industries constructed a 1,200-seat amphitheater and donated it to the community.

An annual flea market and homecoming is a popular event in Butler.

Area (Within 65 miles)

Big Bone Lick State Park
Blue Licks Battlefield State Park
Fort Boonesborough State Park
Keeneland Race Course
The Kentucky Horse Park
Waveland State Historic Site

Major Metropolitan Areas:

Northern Kentucky
Cincinnati, Ohio
Lexington, Kentucky

APPENDIX - DEFINITIONS

Geographic definition of the labor market area

A county's labor market area is defined as the base county, adjacent counties, and any other major commuting counties. Adjacency is used to define the labor market area primarily because of the small size of Kentucky's counties. The major commuting counties are defined from the point of view of the base county. Major commuting counties are those counties that comprise 90% of the base county's total commuters. The source of the commuting patterns is the 1990 journey-to-work data available from the U.S. Department of Commerce, Bureau of Economic Analysis.

Example – Logan County

To determine the labor market area for Logan County the following steps are taken. First, the counties with workers commuting into Logan county are listed in ascending order (see the table below). The cumulative percent is calculated. Next, all counties that comprise up to 90% of the commuters are included in the labor market area (actually the cut-off will be the county that breaks the 90% threshold – Montgomery County, TN at 92.6% in this case). Although Robertson is not a major commuter county, it is included since it is adjacent. The Logan County labor market is then comprised of the seven bold-faced counties in the table below.

Labor Market Area Example – Logan County				
<u>Adjacent to Logan</u>	<u>Commuter County</u>	<u>Commuters into Logan</u>	<u>Percent of Total Commuters</u>	<u>Cumulative Percent</u>
Y	Todd	385	24.4%	24.4%
Y	Warren	377	23.9	48.4
Y	Muhlenberg	365	23.2	71.5
Y	Simpson	162	10.3	81.8
Y	Butler	116	7.4	89.1
	Montgomery, TN	55	3.5	92.6
	Christian	36	2.3	94.9
	Sumner, TN	35	2.2	97.1
Y	Robertson, TN	25	1.6	98.7
	Davidson, TN	20	1.3	100.0
	<i>Total Commuters into Logan County</i>	<i>1,576</i>	<i>100.0</i>	

Source: U.S. Department of Commerce, Bureau of Economic Analysis. Regional Economic Information System, CD-ROM. August 1997.

Potential Labor Supply

The potential labor supply is an estimate of those persons not classified as in the labor force (not employed and not unemployed), but who want a job. The assumption is that people not in the labor force at the local level would like a job at the same rate as the nation. The U.S. Department of Labor, Bureau of Labor Statistics provides national, yearly estimates of the percent of the people not in the labor force who want a job. This percent is applied to the county-level number of people not in the labor force.

Underemployed

Wholesale/retail trade and non-professional services have historically paid low wages. The assumption is that workers in these industries would take higher paying jobs if they were available. Non-professional services excludes Miscellaneous Repair Services (SIC 7600), Health Services (SIC 8000), Legal Services (SIC 8100), and Engineering and Management Services (SIC 8700).

Total Available Labor

Total available labor is the sum of the number of unemployed, potential labor supply, and underemployed. Please note that the number of unemployed is the only generally accepted measure of labor availability. The other concepts are weaker measures and should be used with caution.