

1983

Industrial Resources: Pulaski County - Somerset and Burnside

Kentucky Library Research Collections
Western Kentucky University, spcol@wku.edu

Follow this and additional works at: https://digitalcommons.wku.edu/pulaski_cty

 Part of the [Business Administration, Management, and Operations Commons](#), [Growth and Development Commons](#), and the [Infrastructure Commons](#)

Recommended Citation

Kentucky Library Research Collections, "Industrial Resources: Pulaski County - Somerset and Burnside" (1983). *Pulaski County*. Paper 19.
https://digitalcommons.wku.edu/pulaski_cty/19

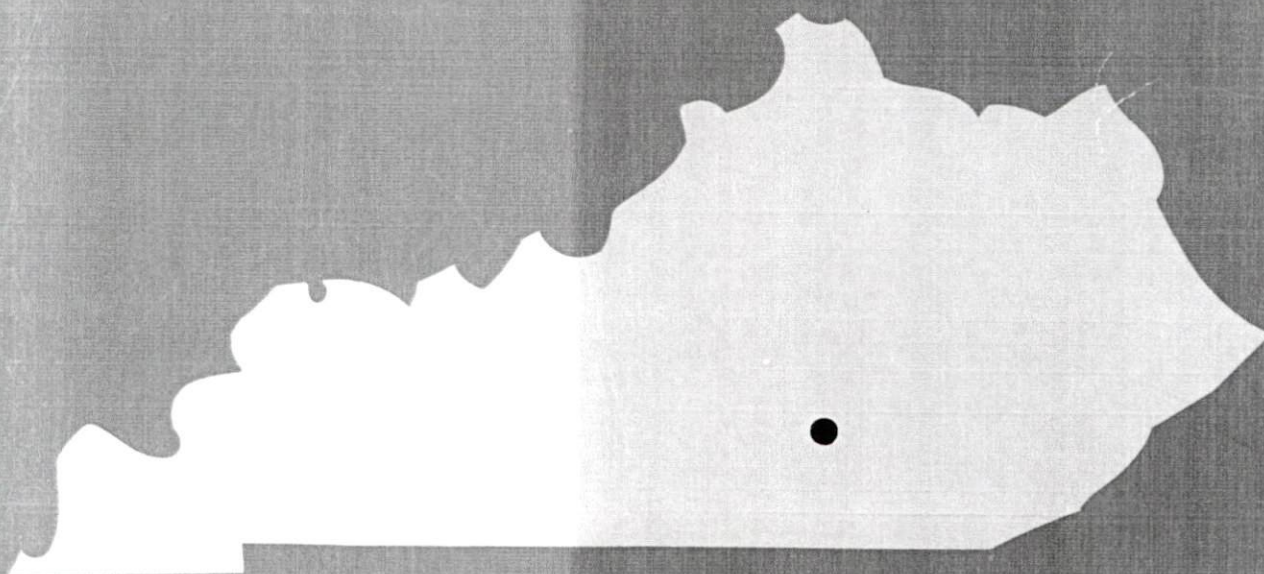
This Report is brought to you for free and open access by TopSCHOLAR®. It has been accepted for inclusion in Pulaski County by an authorized administrator of TopSCHOLAR®. For more information, please contact topscholar@wku.edu.

IR Pulaski
260

1983

**A comprehensive
report on**

**Somerset and
Burnside, Ky.**



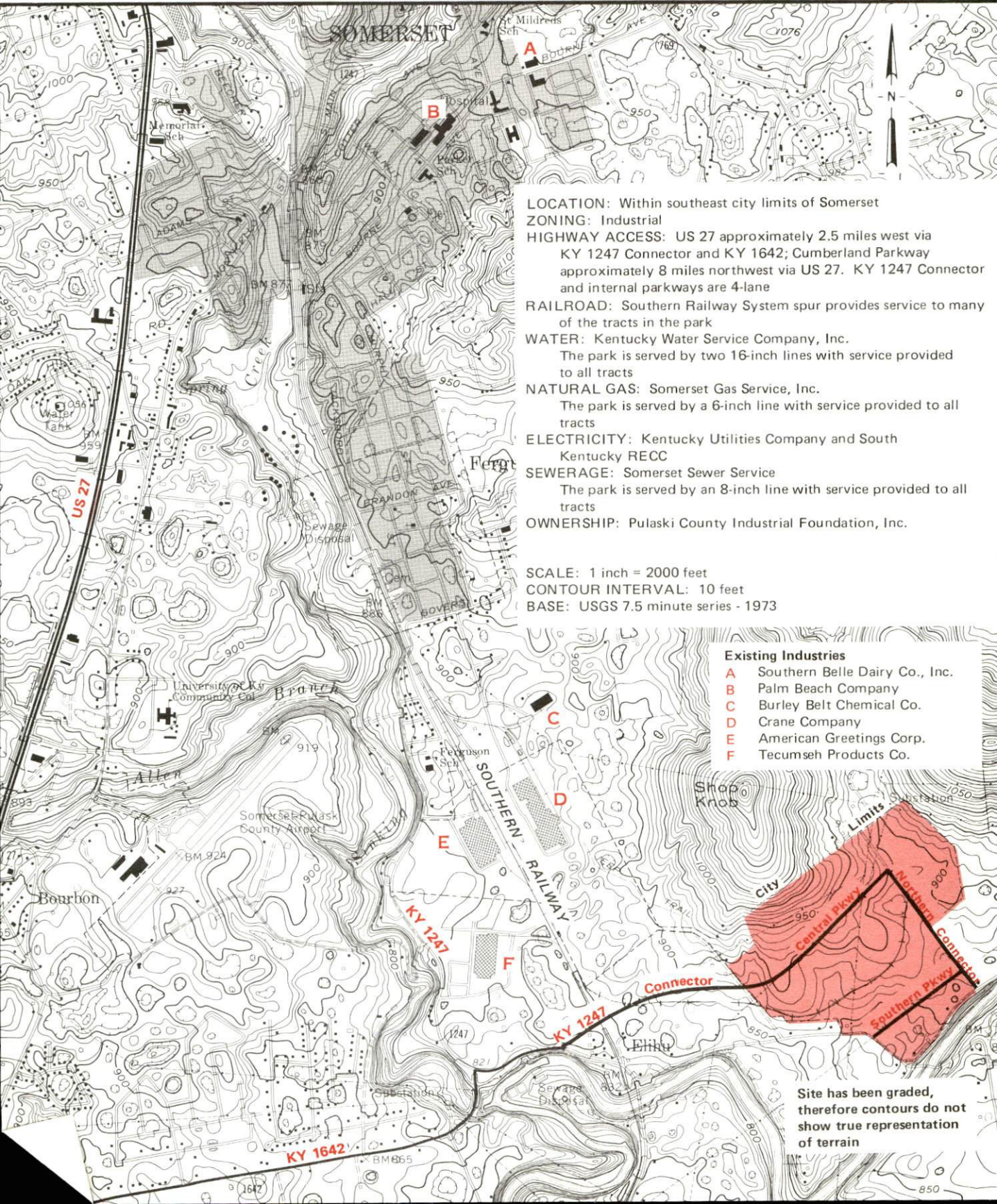
KENTUCKY & CO.

The state that's run like a business.

SOMERSET, KENTUCKY --- Site 183 --- 170 Acres

Lake Cumberland Regional Industrial Park

For more information contact the Department of Economic Development, Office of Business Development, Industrial Development Division, Capital Plaza Tower, Frankfort, Kentucky 40601 (502-564-7140).



LOCATION: Within southeast city limits of Somerset

ZONING: Industrial

HIGHWAY ACCESS: US 27 approximately 2.5 miles west via KY 1247 Connector and KY 1642; Cumberland Parkway approximately 8 miles northwest via US 27. KY 1247 Connector and internal parkways are 4-lane

RAILROAD: Southern Railway System spur provides service to many of the tracts in the park

WATER: Kentucky Water Service Company, Inc.

The park is served by two 16-inch lines with service provided to all tracts

NATURAL GAS: Somerset Gas Service, Inc.

The park is served by a 6-inch line with service provided to all tracts

ELECTRICITY: Kentucky Utilities Company and South Kentucky RECC

SEWERAGE: Somerset Sewer Service

The park is served by an 8-inch line with service provided to all tracts

OWNERSHIP: Pulaski County Industrial Foundation, Inc.

SCALE: 1 inch = 2000 feet

CONTOUR INTERVAL: 10 feet

BASE: USGS 7.5 minute series - 1973

A COMPREHENSIVE REPORT ON
SOMERSET AND BURNSIDE, KENTUCKY

Prepared by
The Kentucky Department of Economic Development
Division of Research and Planning
in cooperation with
The Somerset-Pulaski County Chamber of Commerce
and
The City of Burnside

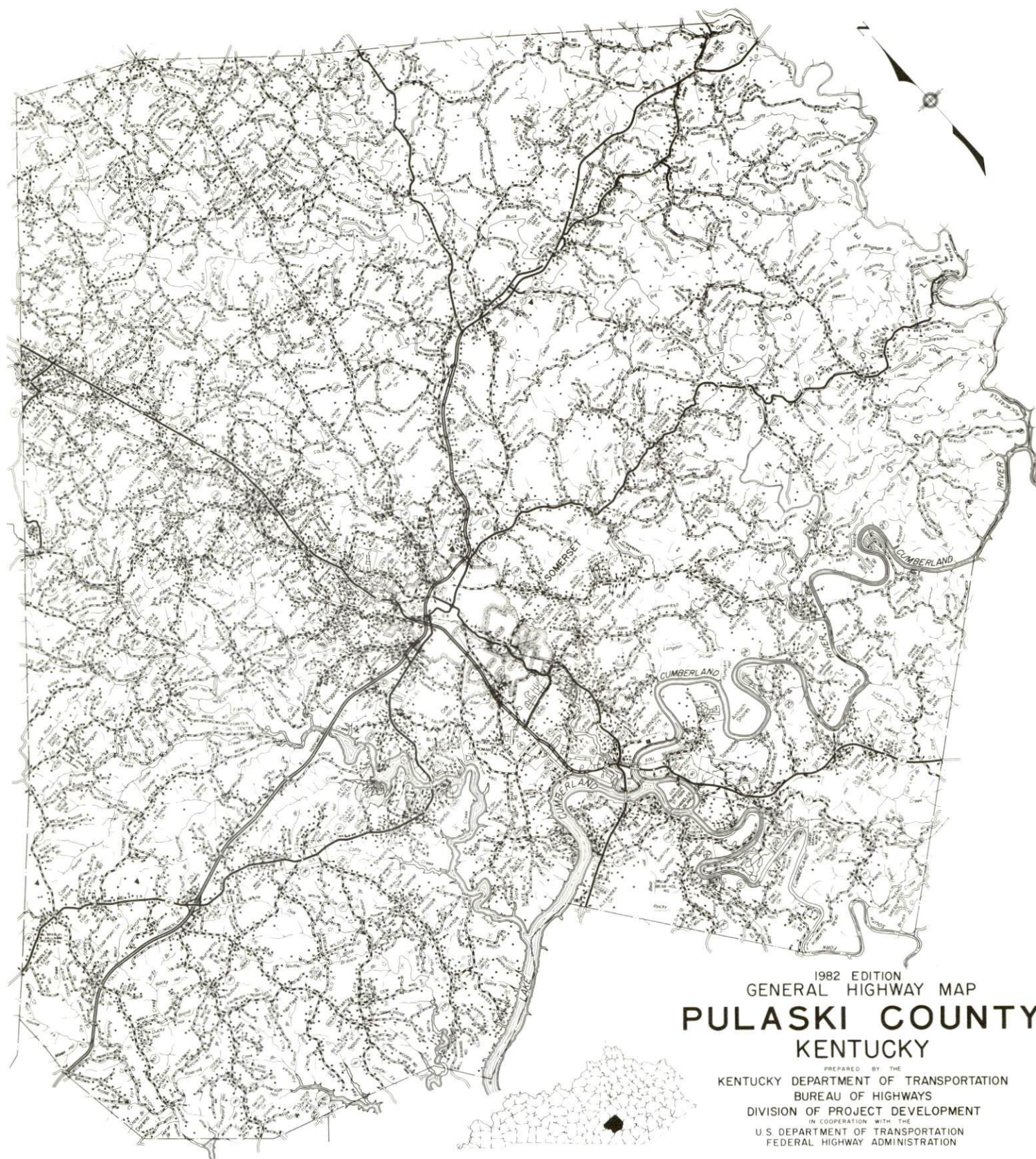
1983

Program manager - Pamela Riley; research - Bill Morris; clerical - Linda Fint; graphics - Frank Ferrante, Tony Cecconi, Robert Owens; cartography - Site Evaluation Branch, Division of Industrial Development. Cost of printing paid from state funds.

TABLE OF CONTENTS

<u>Chapter</u>	<u>Page</u>
INDUSTRIAL SITES	i
SOMERSET AND BURNSIDE -A RESOURCE PROFILE	1
THE LABOR MARKET AREA	3
Population	3
Labor Force Characteristics of Residents, 1981	3
Selected Components of Nonagricultural Employment, by Place of Work, 1981	4
Major Pulaski County Manufacturing Firms, Their Products and Employment	5
Labor Organizations in Manufacturing Firms	8
Industrial Services	9
Estimated Male Labor Supply	10
Estimated Female Labor Supply	11
Average Weekly Wages by Industry, by Place of Work, 1981	12
Per Capita Personal Income	14
TRANSPORTATION	15
Rail	15
Highways	15
Truck Service	16
Air	17
Bus	18
Taxi	18
Rental Services	18
Water	18
POWER AND FUEL	19
Electricity	19
Natural Gas	20
Other Fuels	20
WATER AND SEWERAGE	21
Public Water Supply	21
Raw Water	22
Sewerage	23
CLIMATE	24

<u>Chapter</u>	<u>Page</u>
LOCAL GOVERNMENT	25
City	25
County	25
Assessed Value of Property, 1982	25
Property Taxes	26
Combined State and Local Rates Per \$100 Valuation, 1982	27
Utilities Gross Receipts Tax for Schools	28
Planning and Zoning	28
Safety	28
Police	28
Fire	28
Rescue Service	28
Refuse Collection and Disposal	29
EDUCATION	30
Public Schools	30
Nonpublic Schools	30
Area Colleges and Universities	31
Vocational Schools	32
HEALTH	33
Local Medical Personnel	33
Hospitals	33
Other Medical Facilities	33
Ambulance Service	34
Public Health	34
OTHER LOCAL FACILITIES	35
Communications	35
Library Services	36
Religious Institutions	36
Financial Institutions	37
Hotels and Motels	37
Clubs and Organizations	38
RECREATION	39
COMMUNITY IMPROVEMENTS	41

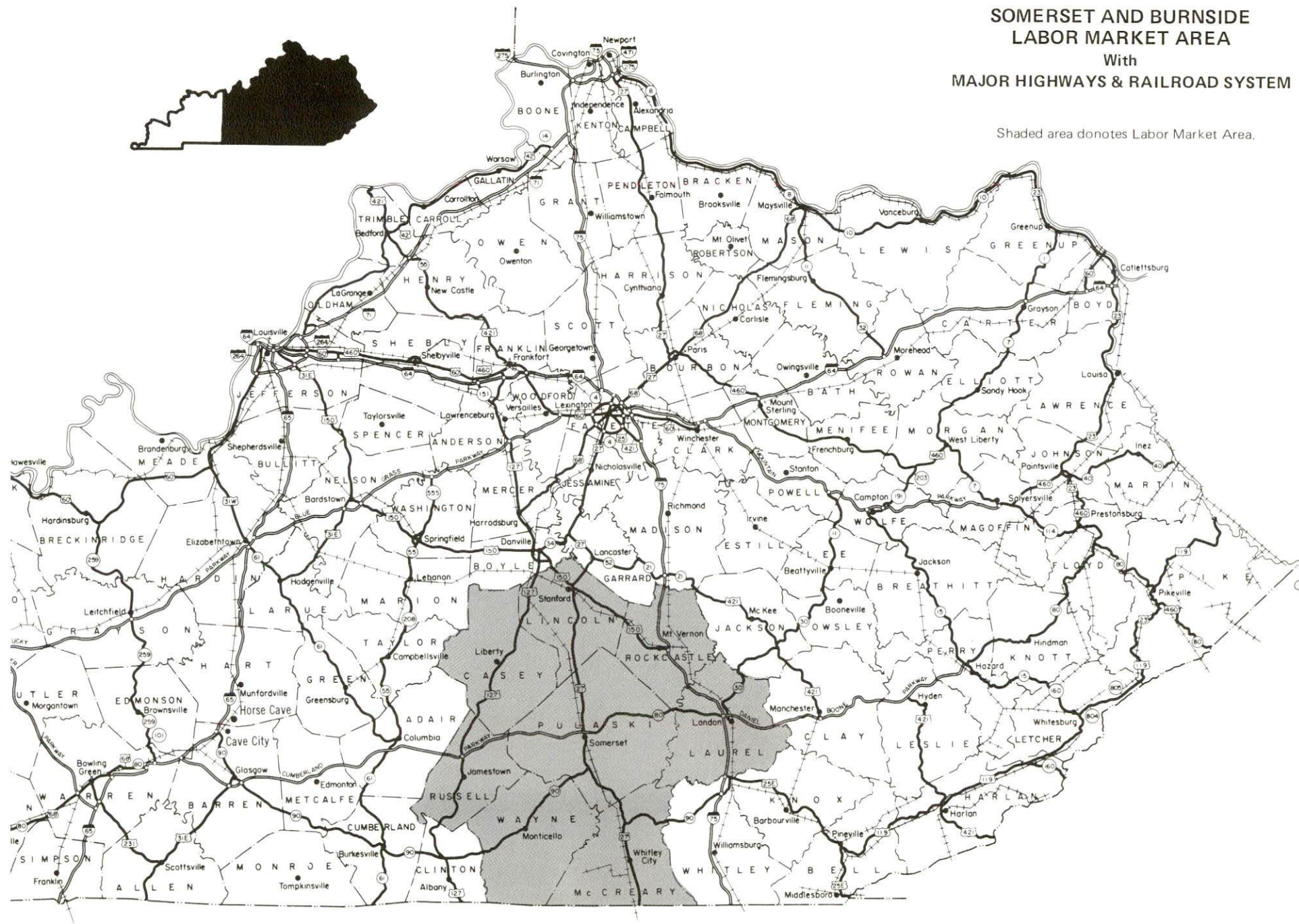


1982 EDITION
GENERAL HIGHWAY MAP
PULASKI COUNTY
KENTUCKY

PREPARED BY THE
KENTUCKY DEPARTMENT OF TRANSPORTATION
BUREAU OF HIGHWAYS
DIVISION OF PROJECT DEVELOPMENT
IN COOPERATION WITH THE
U.S. DEPARTMENT OF TRANSPORTATION
FEDERAL HIGHWAY ADMINISTRATION

0 1 2 3 4 MILES

Shaded area donotes Labor Market Area.



SOMERSET AND BURNSIDE - A RESOURCE PROFILE

Somerset is located in the Lake Cumberland region of south central Kentucky, at the western edge of the state's eastern coal field area. The city is 76 miles south of Lexington, Kentucky; 130 miles southeast of Louisville, Kentucky; and 130 miles northwest of Knoxville, Tennessee. Somerset had a 1980 population of 10,649.

Burnside, located 8 miles south of Somerset on Lake Cumberland, had a 1980 population of 775.

Somerset is the county seat of Pulaski County, which covers a land area of 660 square miles. The county had a 1980 population of 45,803.

The Economic Framework

The total number of Monroe County residents employed in 1981 averaged 18,590, with 17,390 employed in nonagricultural jobs. Manufacturing employers in the county reported 3,900 workers; wholesale and retail trade 3,170; state and local government 2,560; and 1,870 employees in service occupations. Manufacturing employment in Pulaski County is greatest in the apparel and related products; the nonelectrical machinery; and the stone, clay and glass products industries.

Per capita income in the county in 1980 was \$6,209. Between 1976 and 1980, per capita income increased by 46 percent.

Pulaski County is the hub of a labor market area which includes its seven surrounding counties. The total number of labor market area residents employed in 1981 averaged 71,450, with 65,770 employed in nonagricultural jobs. Manufacturing employers in this area reported 12,700 workers; wholesale and retail trade 8,340; state and local government 6,970; and 4,550 in the service industries.

Resources for Growth

1. Labor Supply - There is a current labor supply of 12,090 men and 8,400 women available for industrial jobs in the labor market area. In addition, from 1983 through 1987, 8,570 young men and 7,980 young women in the area will become 18 years of age and potentially available for industrial jobs.

2. Transportation - Local transportation capability is excellent. Both Somerset and Burnside are served by the Southern Railway System. Major highways serving Somerset are U.S. Highway 27, the Cumberland Parkway, and Kentucky Routes 80, 192, and 461. Interstate Highway 75 is accessible 32 miles east of Somerset via Kentucky Route 80. Burnside is served by U.S. Highway 27 and Kentucky Route 90. Twelve motor freight carriers serve Somerset and Burnside, and four of the carriers maintain terminals in the Somerset area. The nearest scheduled commercial airline service is available at Lexington, Kentucky, 77 miles north of Somerset via U.S. Highway 27. Local airports include the Somerset-Pulaski County Airport, 2 miles south of Somerset, and Boss Field, 2 miles west of Burnside.

3. Power and Fuel - Electric power is provided to Somerset, Burnside and portions of Pulaski County by Kentucky Utilities Company. The remainder of the county is served by South Kentucky Rural Electric Cooperative Corporation and its source of power is East Kentucky Power Cooperative. Natural gas service in Somerset is provided by Somerset Gas Service, Inc., which is supplied by Texas Eastern Transmission Corporation and a municipally-owned gas field. There are three propane dealers and six fuel oil dealers located within 20 miles of Somerset.

4. Education - Education is an important growth asset for Somerset. The Somerset Independent School District had a total 1982 enrollment of 2,020 and is accredited by the Southern Association of Colleges and Schools. The Pulaski County School System had a total 1982 enrollment of 6,744. Two nonpublic schools also operate in Somerset.

Somerset Community College is a unit of the University of Kentucky Community College System and offers associate degrees and curricula for the first two years of a baccalaureate program. The Fall 1982 enrollment of Somerset Community College was 1,128. In addition, one university, five senior colleges and one junior college are located within 65 miles of Somerset.

The Somerset State Vocational-Technical School offers training in 16 course areas.

THE LABOR MARKET AREA

The Somerset and Burnside Labor Market Area includes Pulaski County and the adjoining Kentucky counties of Casey, Laurel, Lincoln, McCreary, Rockcastle, Russell and Wayne.

POPULATION			
Area	1980	1970	Percent Nonwhite
Somerset	10,649	10,436	5.2
Burnside	775	586	0.8
Labor Market Area	178,993	141,876	N/A
Pulaski County	45,803	35,234	1.5
Casey County	14,818	12,930	0.3
Laurel County	38,982	27,386	1.0
Lincoln County	19,053	16,663	4.2
McCreary County	15,634	12,548	1.7
Rockcastle County	13,973	12,305	0.3
Russell County	13,708	10,542	0.9
Wayne County	17,022	14,268	2.4

Note: The 1980 counts of population by race are provisional.

Sources: U.S. Department of Commerce, Bureau of the Census, 1980 Census of Population and Housing, March 1981; 1980 Census of Population, Number of Inhabitants. Population Research Unit, Urban Studies Center, University of Louisville, Kentucky Demographics: The 1980 Census of Kentucky, Characteristics of Population, Households, Housing, January 1982.

LABOR FORCE CHARACTERISTICS OF RESIDENTS, 1981

	Pulaski County	Labor Market Area
Civilian Labor Force	20,385	78,845
Employment	18,587	71,446
Agricultural	1,196	5,679
Nonagricultural	17,391	65,767
Unemployment	1,798	7,399
Rate of Unemployment (%)	8.8	9.4

Source: Kentucky Cabinet for Human Resources, Kentucky Labor Force Estimates, Annual Averages, 1981.

SELECTED COMPONENTS OF NONAGRICULTURAL EMPLOYMENT,
BY PLACE OF WORK, 1981

	<u>Pulaski County</u>	<u>Labor Market Area</u>
All Industries (total)	13,737	38,828
Manufacturing	3,896	12,697
Wholesale & Retail Trade	3,166	8,344
Services	1,871	4,550
State/Local Government	2,556	6,970
Contract Construction	527	1,796
Mining & Quarrying	229	1,278

Source: Kentucky Cabinet for Human Resources, Average Monthly Workers Covered by Kentucky Unemployment Insurance Law, 1981.

MAJOR PULASKI COUNTY MANUFACTURING FIRMS,
THEIR PRODUCTS AND EMPLOYMENT*

Firm (Establishment date)	Product	Employment			Labor Unions
		Total	Male	Female	
Somerset					
BHB Tire, Inc. (1982)	Tire retreading material	20	19	1	
The Commonwealth-Journal, Inc. (1895)	Newspaper, job printing	51	31	20	
Cornett Machine Shop, Inc. (1948)	Rebuilt engines, machine work, hard chrome plating	26	24	2	
Cumberland Wood & Chair Corporation (1958)	Bunk beds, beds and headboards, chairs	300	280	20	Teamsters**
General Electric Company, Somerset Glass Plant (1958)	Pressed glassware	230	135	95	Electrical Workers, IUE**
Haney Hams, Inc. (1964)	Country hams	10	4	6	
Modern Log Home Builders (1981)	Log homes	25	25	0	
Palm Beach Company (1945)	Men's coats	1,153	56	1,097	Clothing and Textile Workers**
The Pulaski Block & Tile Company, Inc. (1962)	Concrete block and building supplies	15	15	0	
Ready Mix Concrete Company of Somerset, Inc. (1949)	Ready-mixed concrete, concrete blocks	35	33	2	
Robinson Milling Company, Inc. (1934)	Flour, corn meal, feed	14	14	0	

Firm (Establishment date)	Product	Employment			Labor Unions
		Total	Male	Female	
Somerset (Contd.)					
Somerset Boat Company, Inc. (1971)	Aluminum houseboats and utility boats, fiberglass houseboats	72	64	8	
Somerset Machine Shop (1924)	Custom machining, metal fabrication, automated equipment conveyors, jigs and fixtures	10	9	1	
The Somerset Refinery, Inc. (1932)	Gasoline, kerosene, diesel fuel	72	60	12	
Somerset Tool & Die Corporation (1980)	Tools, dies, jigs, fixtures, machine shop, machined parts	16	15	1	
Southern Belle Dairy Company, Inc. (1951)	Fluid milk, ice cream mix	248	220	28	Food and Commercial Workers; Teamsters**
Strunk Construction Company (1958)	Crushed stone, agricultural lime	16	16	0	
Tecumseh Products Company(1970)	Compressors for air conditioners	800	--	--	Electrical Workers, IBEW**
Unlimited Fiberglass, Inc. (1979)	Satellite antenna dishes	12	12	--	

<u>Firm</u> (Establishment date)	<u>Product</u>	<u>Employment</u>			<u>Labor Unions</u>
		<u>Total</u>	<u>Male</u>	<u>Female</u>	
Somerset (Contd.)					
Warner Fertilizer Company, Inc. (1965)	Commercial fertilizer	17	14	3	
Burnside					
Kingsford Company (1963)	Charcoal briquets	189	174	15	Laborers**
Plum Creek, Inc. (1958)	Laminated truck flooring, furniture, lumber, rail car flooring wood	105	98	7	Furniture Workers**
Tenco Industries (1981)	Wood products	50	--	--	
Eubank					
Perdue Lumber Company, Inc. (1955)	Lumber, wood chips	18	18	--	
Ferguson					
Burley Belt Chemical Company (1970)	Fertilizer	20	17	3	
Crane Company (1963)	Vitreous china, sanitary ware	275	263	12	Potters**
Mid-State Generator Company (1962)	Rebuilt engines, brake shoes, rebuilt generators, alternators, starters	61	57	4	
Science Hill					
Hardwick Block & Tile Company (1946)	Concrete block and brick	10	9	1	
Kentucky Frame Company (1955)	Chair backs	39	39	--	Teamsters**

<u>Firm</u> (Establishment date)	<u>Product</u>	<u>Employment</u>			<u>Labor Unions</u>
		<u>Total</u>	<u>Male</u>	<u>Female</u>	
Science Hill (Contd.)					
Vaught Brothers Manufacturing Company, Inc. (1960)	Box springs, frames, hardwood dimension, pallets	68	65	3	

* Firms with 10 or more employees.

** See Labor Organizations below.

Source: Kentucky Department of Economic Development, Division of Research and Planning.

LABOR ORGANIZATIONS IN MANUFACTURING FIRMS

<u>Union</u>	<u>Representing workers at:</u>
Amalgamated Clothing and Textile Workers Union, AFL-CIO	Palm Beach Company
International Brotherhood of Electrical Workers, AFL-CIO	Tecumseh Products Company
International Union of Electrical, Radio and Machine Workers, AFL-CIO	General Electric Company, Somerset Glass Plant
United Food and Commercial Workers International Union, AFL-CIO	Southern Belle Dairy Company, Inc.
United Furniture Workers of America, AFL-CIO	Plum Creek, Inc.
Laborer's International Union of North America, AFL-CIO	Kingsford Company
International Brotherhood of Pottery and Allied Workers, AFL-CIO	Crane Company
International Brotherhood of Teamsters, Chauffeurs, Warehousemen and Helpers of America	Cumberland Wood & Chair Corporation; Kentucky Frame Company; Southern Belle Dairy Company, Inc.

INDUSTRIAL SERVICES

<u>Types of Services</u>	<u>Location</u>	<u>Mileage from Somerset</u>
Tool & Die, Machine & Pattern Shops	Somerset	--
Metal Service Centers	Lexington	76
Heat Treating	Richmond	56
Metal Finishers	Lexington	76
Electric Motor Repair	Somerset	--

Sources: Kentucky Department of Economic Development, Kentucky Directory of Selected Industrial Services, 1981; Kentucky Department of Economic Development, Division of Research and Planning.

ESTIMATED MALE LABOR SUPPLY
SOMERSET AND BURNSIDE LABOR MARKET AREA

Area	Current			Future	
	Total	Unemployed	Under- employed	Not in Labor Force	Becoming 18 years of age 1983 thru 1987
Labor Market					
Area*	12,093	4,448	3,112	4,533	8,574
Pulaski	2,649	1,210	669	770	2,003
Casey	989	353	325	311	702
Laurel	1,249	596	653	0	1,903
Lincoln	2,225	561	368	1,296	926
McCreary	1,695	384	324	987	871
Rockcastle	670	434	236	0	771
Russell	1,856	418	269	1,169	572
Wayne	760	492	268	0	826

*Additional workers may be drawn from other nearby counties.

Note: Unemployed - persons unemployed and actively seeking work;
Underemployed - persons employed but working only 14 to 26 weeks per year;
Not in Labor Force - represents the number of persons who would enter the labor force if suitable employment were available (based on the assumption that persons in Kentucky would like to participate in the labor force in the same proportion that they do nationally).

Sources: Kentucky Cabinet for Human Resources, Kentucky Labor Supply Estimates by Area Development District and County, 1981. Kentucky Department of Economic Development, Future Labor Supply Becoming 18 Years of Age, 1983 thru 1987.

ESTIMATED FEMALE LABOR SUPPLY
SOMERSET AND BURNSIDE LABOR MARKET AREA

Area	Current			Future	
	Total	Unemployed	Under-employed	Not in Labor Force	Becoming 18 years of age 1983 thru 1987
Labor Market					
Area*	8,401	2,951	2,635	2,815	7,980
Pulaski	2,054	588	759	707	1,941
Casey	526	171	256	99	682
Laurel	1,466	885	581	0	1,781
Lincoln	1,016	467	290	259	807
McCreary	1,048	187	124	737	793
Rockcastle	565	211	218	136	614
Russell	1,333	204	252	877	614
Wayne	393	238	155	0	748

*Additional workers may be drawn from other nearby counties.

Note: Unemployed - persons unemployed and actively seeking work;
Underemployed - persons employed but working only 14 to 26 weeks per year;
Not in Labor Force - represents the number of persons who would enter the labor force if suitable employment were available (based on the assumption that persons in Kentucky would like to participate in the labor force in the same proportion that they do nationally).

Sources: Kentucky Cabinet for Human Resources, Kentucky Labor Supply Estimates by Area Development District and County, 1981. Kentucky Department of Economic Development, Future Labor Supply Becoming 18 Years of Age, 1983 thru 1987.

AVERAGE WEEKLY WAGES BY INDUSTRY,
BY PLACE OF WORK, 1981

	<u>Pulaski County</u>	<u>Casey County</u>	<u>Laurel County</u>	<u>Lincoln County</u>
All Industries	\$227.01	\$167.97	\$252.30	\$209.83
Mining & Quarrying	361.47	*	369.10	*
Contract Construction	196.08	177.44	391.24	197.71
Manufacturing	258.75	142.47	252.22	201.88
Transportation, Communications & Public Utilities	314.91	348.75	320.11	346.88
Wholesale & Retail Trade	170.90	142.70	212.29	145.62
Finance, Insurance & Real Estate	266.56	245.66	225.15	214.70
Services	219.12	128.78	185.12	170.95
State/Local Government	211.00	218.75	246.79	211.21
Other	160.42	*	172.04	111.39

	<u>McCreary County</u>	<u>Rockcastle County</u>	<u>Russell County</u>	<u>Wayne County</u>
All Industries	\$229.67	\$179.07	\$168.89	\$175.29
Mining & Quarrying	474.45	284.84	*	258.82
Contract Construction	*	138.44	205.69	220.22
Manufacturing	174.72	174.18	161.10	162.89
Transportation, Communications & Public Utilities	284.20	231.50	*	213.92
Wholesale & Retail Trade	139.50	148.24	135.71	147.24
Finance, Insurance & Real Estate	284.66	228.40	168.15	214.04
Services	176.14	167.09	137.34	159.48
State/Local Government	187.41	200.80	204.84	212.22
Other	*	*	*	43.78

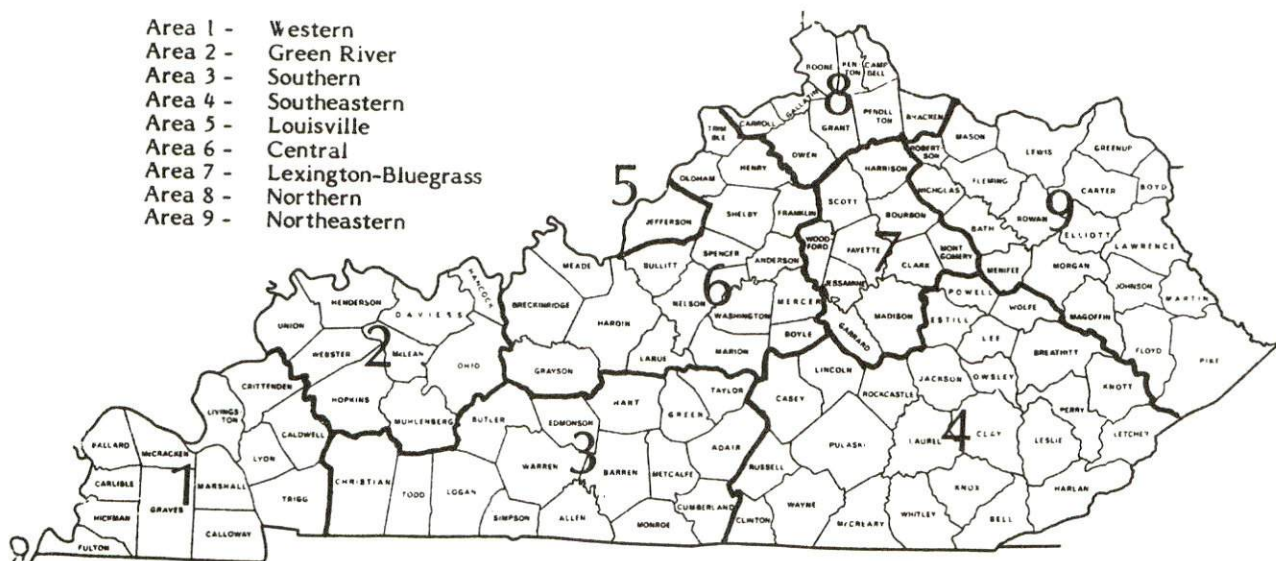
*Not disclosed.

Note: Excludes domestic workers, railway workers, certain nonprofit corporations, majority of federal government workers, and self-employed workers.

Source: Kentucky Cabinet for Human Resources, Average Weekly Wages of Workers Covered by Kentucky Unemployment Insurance Law, 1981.

Occupational wage rates for specific industries are usually not available to most government agencies, and wage data furnished to state employment agencies by individual industrial employers are protected from disclosure by federal law. The most reliable up-to-date wage information can be obtained by direct contact with local employers.

Associated Industries of Kentucky, a voluntary organization of Kentucky businesses, regularly collects occupational wage rates and fringe benefits data from participating member firms. Data are compiled for over 127 clearly defined office, production, and service occupations. Tabulations are published for nine geographical areas of Kentucky, as shown on the map below. It should be noted that the data may be weighted by the preponderance of firms in the larger cities and may be somewhat higher than the rates paid in the smaller communities. Data from these tabulations are available, upon request, from the Kentucky Department of Economic Development, Frankfort, Kentucky 40601.



Associated Industries of Kentucky Area Wage Surveys

PER CAPITA PERSONAL INCOME

<u>Area</u>	<u>1976</u>	<u>1980</u>	<u>Percent Change</u>
Pulaski County	\$ 4,249	\$ 6,209	46.1
Labor Market Area Range	\$2,575 - 4,249	\$4,038 - 6,209	N/A
Kentucky	5,263	7,662	45.6
U.S.	6,367	9,511	49.4

Source: U.S. Bureau of Economic Analysis, Kentucky Economic Information System, June 1982.

TRANSPORTATION

Rail

Line serving **Somerset** - Southern Railway System

Services - Two northbound and two southbound freights stop daily; one local freight transfers daily from Somerset to Burnside and return; 30 through freights daily; switching facilities; team track space for 14 cars; siding space for 200 cars; nearest piggyback facilities at Danville, 45 miles north of Somerset

Line serving **Burnside** - Southern Railway System

Services - One northbound and one southbound freight stop daily; one local freight transfers daily from Somerset to Burnside and return; 30 through freights daily; switching facilities; team track space for 10 cars; siding space for approximately 50 cars; nearest piggyback facilities at Danville, 53 miles north of Burnside

For details on routing, schedules, rates, and services, contact:

District Sales Manager
Norfolk Southern Corporation
701 South Broadway
Lexington, Kentucky 40508
(606) 259-1352

Highways

The Cumberland Parkway, U.S. Highway 27 and Kentucky Routes 80 and 192 are all 80,000-pound gross load limit highways serving Somerset. The Cumberland Parkway provides access to Interstate 65, 90 miles west of Somerset. Kentucky Route 80, improved in 1982 with four-lane sections and two-lane sections with passing lanes, provides access to Interstate 75, 32 miles east of Somerset, and to the Daniel Boone Parkway 34 miles east. Interstate 75 is also accessible 28 miles northeast of Somerset via Kentucky Route 461, a 62,000-pound gross load limit highway scheduled for reconstruction during 1983. U.S. Highway 27 provides access to Lexington, Kentucky, 76 miles north of Somerset, and to Interstate 40, 63 miles to the south in eastern Tennessee.

Burnside is served by U.S. Highway 27 and Kentucky Route 90, also an 80,000-pound gross load limit highway.

Truck Service

Company

Home Office

Buske Lines, Inc.*	123 West Tyler Street P. O. Box 349 Litchfield, Illinois 62056
Eldridge Truck Line, Inc.*(T)	Highway 27 P. O. Box 659 Somerset, Kentucky 42501
Epes Transport System, Inc.**	830 South Main P. O. Box 550 Blackstone, Virginia 23824
Express Service, Inc.*(T)	P. O. Box 1107 Somerset, Kentucky 42501
F.M.S. Transportation, Inc.**	2564 Harley Drive St. Louis, Missouri 63043
Interstate Motor Freight Systems, DBA**	110 Ionia Avenue N.W. P. O. Box 175 Grand Rapids, Michigan 49501
Latham Trucking Company, Inc.*(TT)	West Highway 90 P. O. Box 596 Burnside, Kentucky 42519
McLean Trucking Company**	P. O. Box 213 Winston-Salem, North Carolina 27102
Monticello-Albany Freight Line, Inc.***	P. O. Box 25 Monticello, Kentucky 42633
Overnite Transportation Company*	1000 Semmes Avenue P. O. Box 1216 Richmond, Virginia 23209
Smith's Transfer Corporation**	P. O. Box 1000 Staunton, Virginia 24401
Super Service, Inc.**(TTT)	West Highway 90 P. O. Box 538 Burnside, Kentucky 42519

* Interstate and intrastate service.

** Interstate service only.

*** Intrastate service only.

(T) Somerset terminal.

(TT) Bronston terminal.

(TTT) Burnside terminal.

Other Freight ServicesNearest Shipping Center (From Somerset)

Purolator Courier Corporation*
 United Parcel Service**

Lexington, Kentucky, 76 miles north
 London, Kentucky, 34 miles east

**HIGHWAY MILES AND TRUCK TRANSIT TIME IN DAYS FROM
 SOMERSET, KENTUCKY, TO SELECTED MARKET CENTERS**

City	Highway Miles	Delivery Time TL	City	Highway Miles	Delivery Time TL
Atlanta, Ga.	323	1	Los Angeles, Ca.	2,196	2
Baltimore, Md.	617	1	Louisville, Ky.	130	Same day
Birmingham, Ala.	367	1	Nashville, Tenn.	171	Same day
Chicago, Ill.	422	1	New Orleans, La.	688	1
Cincinnati, Ohio	160	Same day	New York, N.Y.	779	2
Cleveland, Ohio	393	1	Pittsburgh, Pa.	419	1
Detroit, Mich.	413	1	St. Louis, Mo.	393	1
Knoxville, Tenn.	130	Same day			

Note: Mileage computations are via the best interstate or primary highways, not necessarily the most direct route of travel.

Sources: Rand McNally Road Atlas, 1979. Official Kentucky Mileage Map, 1980.
 Delivery time - Express Service, Inc., P. O. Box 1107, Somerset, Kentucky 42501.

AirLocal

Location: Somerset-Pulaski County Airport
 Runways: 2 miles south of the center of Somerset
 Length: 1 paved
 Traffic: 5,000 feet
 Control: Wind sock and intercom
 Lighting: Beacon, runway lights, VASI and REILS
 Services: Fuel - 100LL, jet-A; major A & P repairs;
 tie downs, hangars; flight school;
 charter; air taxi; taxi, car rental;
 restaurant; Cessna dealer
 Air Freight Service: Chartered air freight services must be arranged.

(Contd.)

* For regular scheduled pickups or for occasional pickups, arrangements must be made with the Lexington, Kentucky, office of Purolator Courier Corporation.

** For regular scheduled pickups or for occasional pickups, arrangements must be made with the Louisville, Kentucky, office of United Parcel Service.

Location: Boss Field
 2 miles west of Burnside;
 10 miles south of Somerset
 Runways: 1 turf
 Length: 2,500 feet
 Traffic
 Control: Wind sock
 Lighting: Runway lights
 Services: Fuel - 100LL; major A & P repairs; tie downs

Nearest Scheduled Commercial Airline Service*

Location: Blue Grass Field
 5 miles west of Lexington, Kentucky;
 77 miles north of Somerset
 Runways: 2 paved
 Length: 6,500 feet; 3,500 feet
 Traffic
 Control: Tower
 Lighting: Approach lighting system, beacon, runways
 and obstructions lighted, VASI
 Services: Delta, Frontier, Piedmont, USAir, Comair,
 Tennessee Airways; fuel - 100LL and
 jet-A; hangars, tie downs; major A & P
 repairs, major Avionics repairs; APU,
 charter, flight instruction, oxygen,
 plane rentals, survival equipment; taxi,
 limousine, car rentals, courtesy car;
 weather information; restaurant, snack bar

Air Freight
 Service: Air freight terminal

Bus - Somerset and Burnside are served by Southern
 Greyhound Bus Lines. A Greyhound bus terminal
 is located in Somerset.

Taxi - Two Somerset taxicab companies provide 24-hour,
 radio-dispatched service to all of Pulaski County.

Rental Services - Car, truck and trailer rentals are available in Somerset.

Water

The nearest navigable waterway is the Kentucky River at Frankfort, 89
 miles north of Somerset, where a 6-foot navigation channel begins.

* Commuter air carrier service is provided by Allegheny Commuter at the
 London-Corbin Airport which is located 3 miles south of London, Kentucky; 37
 miles east of Somerset.

POWER AND FUEL

Electricity

Company serving **Somerset, Burnside and part of Pulaski County** - Kentucky
Utilities Company

Source of power - Kentucky Utilities Company

Total generating capacity - 2,639,100 KW*

For industrial rates contact:

Industrial Development Department
Kentucky Utilities Company
One Quality Street
Lexington, Kentucky 40507
(606) 255-1461

Company serving **remainder of Pulaski County** - South Kentucky Rural Electric
Cooperative Corporation

Source of power - East Kentucky Power Cooperative

Total generating capacity - 1,304,000 KW

For industrial rates contact:

Industrial Development Division
East Kentucky Power Cooperative
P. O. Box 707
Winchester, Kentucky 40391
(606) 744-4812

and/or

South Kentucky RECC
925-929 North Main Street
P. O. Box 910
Somerset, Kentucky 42501
(606) 678-4121

* A new generating unit is under construction in Carroll County. Due to be completed in 1984, the unit will have a generating capacity of 511,000 KW.

Natural Gas

Company serving **Somerset** - Somerset Gas Service, Inc.

Source of supply - Texas Eastern Transmission Corporation and municipally-owned, 84,000-acre gas field

Size of transmission mains - 30- and 36-inch (supplier);
8-inch (distributor)

Distribution mains - 1 through 6 inches

Distribution pressure - 4 ounces to 30 psig

Btu content - 1,020 to 1,160 per cubic foot

Specific gravity - 0.65 to 0.70

For rates and supplies contact:

Somerset Gas Service, Inc.
City Hall
Somerset, Kentucky 42501
(606) 679-7568

Natural gas service is not available in **Burnside**.

Other Fuels (Within 20 miles of Somerset)

Propane

Buckeye Gas, Inc.*
Murphy Avenue
P. O. Box 307
Ferguson, Kentucky 42583

Hall's Daxol Gas
2620 South Highway 27
Somerset, Kentucky 42501

Pyrofax Gas Corporation
A Texas Eastern Company
(bulk plant at Burnside)
114 South Main Street
Somerset, Kentucky 42501

Fuel oils

Distillate fuel oil -

Appalachian Oil Corporation*
2201 South Highway 27
Somerset, Kentucky 42501

Ashland Oil, Inc.*
509 Monticello Street
Somerset, Kentucky 42501

Cumberland Lake Shell, Inc.*
Railroad Drive
Somerset, Kentucky 42501

Oscar Hornsby, Inc.*
P. O. Box 639
Somerset, Kentucky 42501

Phelps Oil Company*
Oak Hill and Arthur Streets
P. O. Box 684
Somerset, Kentucky 42501

The Somerset Refinery, Inc.
520 Monticello Street
Somerset, Kentucky 42501

Residual fuel oil - Arrangements must be made with the refinery.

Low sulphur content coal - Available locally.

*Bulk plant.

WATER AND SEWERAGE

Public Water Supply

Company serving **Somerset** - Kentucky Water Service Company, Inc.
201 North Main Street
Somerset, Kentucky 42501
(606) 679-1712

Source - Lake Cumberland

Treatment plant capacity - 4,500,000 gallons per day

Average daily consumption - 2,868,500 gallons

Peak daily consumption - 3,632,100 gallons

Type treatment - Flocculation, coagulation, sedimentation, filtration and chlorination

Storage capacity - 3,450,000 gallons including clearwells

Size lines - 1 to 16 inches

Average pressure - 70 to 160 psi

Average temperature - 58 degrees F.

MONTHLY WATER RATES

First	1,000 gallons	\$5.15 (Minimum)
Next	9,000 gallons	2.20 per M gallons
Next	15,000 gallons	1.90 per M gallons
Next	25,000 gallons	1.80 per M gallons
Next	50,000 gallons	1.65 per M gallons
All over	100,000 gallons	1.29 per M gallons

Minimum Monthly Charges

5/8 or	3/4-inch meter	\$ 5.15
1 or	1 1/4-inch meter	14.75
	1 1/2-inch meter	28.15
	2-inch meter	42.25
	3-inch meter	113.80
	4-inch meter	196.35
	6-inch meter	402.50

Tap-on charge: None

Company serving **Burnside** - Burnside Municipal Waterworks*
Box 304
Burnside, Kentucky 42519
(606) 561-4216

Source - Lake Cumberland

Treatment plant capacity - 250,000 gallons per day

Average daily consumption - 180,000 gallons

Peak daily consumption - 220,000 gallons

Type treatment - Chlorination, coagulation, sedimentation, filtration and fluoridation

Storage capacity - 140,000 gallons including clearwell

Size lines - 4 and 6 inches

Average pressure - 72 psi

Average temperature - 60 degrees F.

MONTHLY WATER RATES

First	1,000 gallons	\$4.60 (Minimum)
Next	1,000 gallons	3.45 per M gallons
Next	3,000 gallons	2.24 per M gallons
Next	10,000 gallons	2.13 per M gallons
Next	15,000 gallons	2.07 per M gallons
Next	20,000 gallons	2.01 per M gallons
Next	50,000 gallons	1.73 per M gallons
All over	100,000 gallons	1.58 per M gallons

Tap-on charge:

3/4-inch meter	\$125
1-inch meter	250
2-inch meter	450

Raw Water

Surface water sources - Lake Cumberland and Cumberland River

Average discharge - Cumberland River near Rowena, Kentucky - 9,129 cfs (42 years, USGS, adjusted for storage)

Expected ground water yield - 5 to 50 gpm in north central Pulaski County and along southeastern border of county; 5 gpm or less over remainder of county

* New filters were recently installed at the treatment plant. In addition, construction of a 50,000-gallon water storage tank is planned for 1983.

Sewerage

Company serving **Somerset** - Somerset Sewer Department*
400 East Mt. Vernon Street
P. O. Box 989
Somerset, Kentucky 42501
(606) 679-2802

Design capacity - Plant #1 - 1,600,000 gallons per day**
Plant #2 - 2,000,000 gallons per day**
Total - 3,600,000 gallons per day

Average daily flow - 1,500,000 gallons per day (total)

Treatment - Plant #1 - Secondary; Plant #2 - Tertiary

Type treatment - Plant #1 - Aeration, clarifiers, drying beds, anaerobic digestors, chlorination; Plant #2 - Aeration, clarifiers, drying beds, anaerobic digestors, extended aeration on lagoons

Treated effluent discharged into - Plant #1 - Sinking Creek; Plant #2 - Pitman Creek

Size of sanitary mains - 8 to 24 inches

Monthly rates (based on water consumption) -

First	1,000 gallons	#3.50 (Minimum)
All over	1,000 gallons	1.00 per M gallons

Tap-on charge:

Industrial Buildings

Less than 25,000 square feet	\$ 600
25,000 to 50,000 square feet	750
More than 50,000 square feet	1,000

Commercial Buildings

2,000 square feet or less	\$ 300
2,000 to 5,000 square feet	500
5,000 to 25,000 square feet	600
More than 25,000 square feet	750

Residences

Varies from \$200 to \$350

Burnside - Septic tanks are utilized for sewage disposal in Burnside.

* The Somerset Sewer Department maintains two treatment plants connected by sewer mains for greater efficiency.

** Kentucky Natural Resources and Environmental Protection Cabinet.

CLIMATE

Pulaski County

Temperature

Normal (30-year record)	59.70 degrees
Average annual 1981	58.60 degrees
Record highest, September 1954 (40-year record)	103.00 degrees
Record lowest, January 1966 (40-year record)	-9.00 degrees
Normal heating degree days (30-year record)	3,478
(Heating degree day totals are the sums of negative departures of average daily temperatures from 65 degrees F.)	

Precipitation

Normal (30-year record)	46.18 inches
Mean annual snowfall (39-year record)	12.60 inches
Total precipitation 1981	43.79 inches
Mean number days precipitation (.01 inch or more) (39-year record)	127
Mean number days thunderstorms (39-year record)	46

Prevailing Winds (14-year record)

Northeast

Relative Humidity (21-year record)

1 a.m.	79 percent
7 a.m.	85 percent
1 p.m.	59 percent
7 p.m.	62 percent

Source: U.S. Department of Commerce, Environmental Science Services Administration, Climatological Data, 1981. Station of record: Knoxville, Tennessee.

LOCAL GOVERNMENT

City

Somerset

Structure - Mayor - 4-year term; 12 council members - 2-year terms; city administrator

Budget 1982-83 -	General Fund	\$2,043,579
	Sewer Fund	558,661
	City Gas System	5,500,000

Fees and licenses - Occupational licenses range from \$10 to \$500 per year, including the following for manufacturers: 25 employees or less - \$100; 26 to 50 employees - \$200; 51 to 100 employees - \$300; 101 to 200 employees - \$400; more than 200 employees - \$500

Burnside

Structure - Mayor - 4-year term; 6 council members - 2-year terms

Budget 1982 -	General Fund	\$ 119,500
	Water Fund	90,000

Fees and licenses - Occupational licenses range from \$5 to \$100 per year

County

Structure - County Judge/Executive - 4-year term; 5 magistrates - 4-year terms

Budget 1982-83 - General Fund \$1,114,894; Road Fund \$694,000

Assessed Value of Property, 1982*

<u>Classes of Property</u>	<u>Somerset</u>	<u>Burnside</u>	<u>Pulaski County</u>
Real Estate	\$124,795,373	\$10,989,690	\$511,511,226
Tangibles	40,930,502	1,148,953	157,512,540

*Excludes Homestead Exemptions.

Property Taxes

All property in Kentucky is assessed at 100 percent of fair cash value.

Land and buildings are taxed by the state and may be taxed by local jurisdictions. The state rate is \$0.224 per \$100 of assessed valuation.

Manufacturing machinery, raw materials inventories, pollution control equipment, and goods in the process of manufacture are not subject to local taxation. The state rate is \$0.15 per \$100.

Other tangible personal property owned by manufacturers (automobiles, trucks, finished goods, office furniture, office equipment) is taxed by the state at \$0.45 per \$100 and may be taxed by local jurisdictions.

Intangible personal property located in Kentucky (money in hand, shares of stock, notes, bonds, accounts receivable, and other credits) is taxed by the state at \$0.25 per \$100, and is not subject to local taxation.

Property stored in public warehouses in a transit status is not subject to local taxation. The state rate is only \$0.015 per \$100.

Private leaseholds in industrial facilities owned by cities or counties and financed by industrial revenue bonds are subject to a state tax of \$0.015 per \$100 of value (essentially the lessee's equity, adjusted for appreciation or depreciation). Local taxation is not permitted.

Combined State and Local Rates Per \$100 Valuation, 1982*
(100% assessment)

Kentucky school districts levy property taxes on property located within individual school district boundaries. Two types of school districts are operated in Kentucky: 1) independent school districts which usually operate within a single city and often do not cover the entire city; and 2) common school districts which operate in portions of counties not covered by independent districts and cover the entire county when there is no independent district. School district boundaries are mutually exclusive and do not cross.

	Site Inside City of Somerset and within the Somerset <u>School District</u>	Site Inside City of Somerset and within the Pulaski County <u>School District</u>
1. Land and buildings	\$1.024	\$0.644
2. Mfg. machinery, raw materials, goods in process, pollution control equipment	0.150	0.150
3. Finished goods, office equipment, vehicles, other tangibles	1.331	0.873
4. Intangibles (accounts rec., notes, bonds, etc.)	0.250	0.250
5. Property stored in public warehouses in a transit status	0.015	0.015
6. Leaseholds in industrial revenue bond financed plants	0.015	0.015
	Site Inside City of Burnside and within the Pulaski County <u>School District</u>	Site Inside Unincorporated Pulaski County
1. Land and buildings	\$0.521	\$0.351
2. Mfg. machinery, raw materials, goods in process, pollution control equipment	0.150	0.150
3. Finished goods, office equipment, vehicles, other tangibles	0.750	0.580
4. Intangibles (accounts rec., notes, bonds, etc.)	0.250	0.250
5. Property stored in public warehouses in a transit status	0.015	0.015
6. Leaseholds in industrial revenue bond financed plants	0.015	0.015

*Kentucky Department of Economic Development.

Utilities Gross Receipts Tax for Schools

A 3 percent tax is levied on utilities receipts for schools in Pulaski County. Tax is paid by all consumers of utilities as an add-on to the utilities bills. Exempted are receipts from utilities services that are resold and the receipts from the sale of energy or energy producing fuels that exceed 3 percent of the cost of production in manufacturing, processing, mining or refining.

Planning and Zoning

City agency - Somerset Planning and Zoning Commission

Zoning enforced - Within the corporate limits of Somerset only

Subdivision regulations enforced - Within the corporate limits of Somerset and one mile beyond

Local codes enforced - Building and housing

Mandatory state codes enforced - Kentucky Plumbing Code, National Electric Code, Kentucky Boiler Regulations and Standards, Kentucky Building Code (modeled after BOCA code)

Safety

Police	Somerset	Burnside	Pulaski County
Total staff	31	2	19
Radio-patrol cars	9	1	10

Fire

Insurance Services Office,
Public Protection

Classification	6	7	9
Full-time staff	20	--	--
Volunteers	20	15	*

Rescue Service

Somerset-Pulaski County Rescue Squad:

Number of volunteers - 21

Equipment - 2 ambulances, van equipped for use as ambulance, 4-wheel drive truck, panel truck, kitchen truck, and utility truck, all equipped with 2-way radios; 5 boats; 4 outboard motors; 3 boat trailers; 2 generators; lake dragging and scuba diving equipment; emergency crash truck; Jaws of Life; emergency bedding for 100 persons; county-wide dispatch system

Personnel training - Emergency medical technician training, first aid training, scuba diving and rescue training

* All areas of the county, except the city of Somerset, are served by volunteer fire departments. Approximately 320 volunteer firemen serve with the 12 volunteer fire departments located in Pulaski County.

Refuse Collection and Disposal

	Somerset	Burnside
Type service	Municipal*	Private
Fee charged:		
residential	\$4.50 per month	\$5 per month
business	By volume**	\$2 per cubic yard
industrial	None	\$2 per cubic yard
Collection frequency:		
residential	Weekly	Weekly
business	As needed	Weekly
industrial	None	Upon request
Trash pickup	Upon request	Annually
Disposal method	Landfill	Landfill

Pulaski County

Type service	Private
Fee charged:	
residential	\$5 per month
business	By volume
industrial	By volume
Collection frequency:	
residential	Weekly
business	By contract
industrial	By contract
Trash pickup	None
Disposal method	Landfill

* Private collection is also available.

** Minimum monthly charge is \$6.

EDUCATION

Public Schools

	Somerset Independent	Pulaski County
Total Enrollment (Fall 1982)	2,020	6,744
Elementary	1,084	3,707
Junior High	--	1,347
Middle School	345	--
High School	591	1,690
Student-Teacher Ratio	14-1	21-1
Elementary	13-1	19-1
Junior High	--	29-1
Middle School	18-1	--
High School	16-1	22-1
Accreditation	Southern Association of Colleges and Schools	
Percent High School Graduates to College (1982)	65.8	44.2
Expenditures Per Pupil (1981-82)	\$1,860.15	\$1,369.84
Bonded Indebtedness (June 30, 1981)	\$2,960,000	\$6,202,000

Nonpublic Schools

	<u>Saline Christian Academy</u>	<u>Oakwood School</u> (facility for the mentally retarded)
Total Enrollment	35	412
Elementary	20	--
High School	15	--
Student-Teacher Ratio	10-1	6-1

Area Colleges and Universities

<u>Name</u>	<u>Location (Miles distant from Somerset)</u>	<u>Enrollment (Fall, 1982)</u>	<u>Highest Degree Conferred</u>
Somerset Community College	Somerset	1,128	Associate
Sue Bennett College	London (34)	288	Associate
Lindsey Wilson College	Columbia (42)	428	Associate
Berea College	Berea (43)	1,599	Baccalaureate
Centre College	Danville (45)	718	Baccalaureate
Eastern Kentucky University	Richmond (56)	13,041	Masters, Specialist*
Campbellsville College	Campbellsville (61)	702	Baccalaureate
Cumberland College	Williamsburg (61)	1,718	Baccalaureate
Union College	Barbourville (61)	542	Masters, Specialist

The Somerset Community College is part of the Community College System of the University of Kentucky and it is charged with three specific functions: (1) to offer career-oriented programs designed to prepare students for immediate technical or semi-professional employment; (2) to offer curricula for the first two years of a baccalaureate program, which courses parallel University offerings and are transferable to the Lexington campus of the University of Kentucky or to another four-year institution either public or private; and (3) to provide general educational opportunities for citizens in their immediate areas.

* Joint doctoral degree programs are offered in cooperation with the University of Kentucky, Lexington. The degrees are issued by the University of Kentucky.

Vocational Schools

Both the state vocational-technical schools and the area vocational education centers are operated by the Kentucky Department of Education. The state vocational-technical schools enroll persons full time who are at least 16 years of age and not in school. These students attend classes for six hours each day. The area vocational education centers are designed to accommodate high school students who are at least 15 years of age. These students attend vocational school for three hours each day. In Somerset, the high school program and the adult program are both taught at the state vocational-technical school. The state vocational-technical schools and the area education centers offer evening course to enable working adults to upgrade current job skills.

Nearest State School

Location	Somerset State Vocational-Technical School Somerset
Curriculum	Business and Office Accounting/Jr. Management Clerical Data Processing Secretarial Health and Personal Services Occupations Health Careers Licensed Practical Nursing Industrial Education Appliance Repair Auto Body Repair Auto Mechanics Aviation Maintenance Technician Diesel Mechanics Drafting Graphic Arts (Printing) Machine Shop Industrial Electronics Welding Learning Resource Center

Arrangements can be made to provide training in the specific production skills required by an industrial plant. Instruction may be conducted either in the vocational school or in the industrial plant, depending upon the desired arrangement and the availability of special equipment.

HEALTH

Local Medical Personnel

Physicians - 47 (one physician practices in Burnside)
Dentists - 24
Chiropractors - 4
Optometrists - 5

Hospitals

<u>General Hospital</u>	<u>Location</u>	<u>Beds</u>
Lake Cumberland Medical Center	Somerset	175

General hospital facilities - 5 operating rooms; emergency room with observation room; intensive/coronary care unit; neo-natal intensive care (Level II); recovery room; E.N.T.; outpatient surgery; oral surgery; radiology therapy including nuclear medicine, ultrasound and CAT scanning; pathology (laboratory); dermatology; physical therapy; respiratory therapy; outpatient services; blood bank; pharmacy; medical records; maintenance; social services; training facilities for students in health careers, nursing, medical laboratory technology, radiology, pharmacy and physical therapy

Medical staff - 47 physicians (active), 22 physicians (courtesy), 5 dentists, 93 registered nurses, 39 licensed practical nurses, 3 honorary members of medical staff, emergency room physicians (3 full time, 8 part time), 349 full-time employees, 90 part-time employees

Other Medical Facilities

Region 14 Community Mental Health Services Center (outpatient services)

Services - Advocacy, assessments and evaluations, behavior shaping, community education, day care placements, disabled children's program, early intervention, family and individual counseling, support groups, child abuse counseling, drug and alcohol treatment, group therapy, speakers bureau, marital counseling, partial hospitalization, literature and materials, medical attention, residential services, pre-school, physical therapy, recreation programs, referral services, respite services, speech, sheltered workshops, volunteer support system, psychiatric services, rape relief services

Ambulance Service

Name - Pulaski County Ambulance Division of Lake Cumberland Emergency Medical Service System, Inc.

Staff - 18 emergency medical technicians

Service - 24-hour, county-wide service

Equipment - 4 van-type ambulances

Public Health

Facility - Pulaski County Health Center and Lake Cumberland District Health Department

Staff - District director, 2 administrative secretaries, administrative specialist, health officer/medical director, 10 registered nurses, lab technician, 3 environmentalists, clinician, director of administrative services, 4 program coordinators, nutritionist, health educator, 16 clerks, health planner, 2 social workers, 4 community health workers, director of nursing, director of environmental health, health services dental hygienist

OTHER LOCAL FACILITIES

Communications

	Somerset	Burnside
Telephone -	General Telephone Company of Kentucky	General Telephone Company of Kentucky
Services -	Standard	Standard
Telegraph -	Western Union	Western Union
Services -	Toll-free number, 1-800-325-5100 Counter service available	Toll-free number, 1-800-325-5100
Postal - U.S. Post Office		
Class -	First	Second
Mail received -	Once daily	Once daily
Mail dispatched -	Once daily	Once daily
Newspapers -	The Commonwealth Journal	
Daily and		
Sunday and		
circulation -	12,000 daily, 18,000 Sunday	
Weekly and		
circulation -	The Observer - 3,000	
Other papers		
received from -	Lexington and Louisville, Kentucky	Somerset, Lexington and Louisville, Kentucky
Radio -	WSFC-AM, WSEK-FM, WTLO-AM	
Stations		
received from -	Lexington and Louisville, Kentucky; Knoxville, Tennessee	Somerset, Lexington and Louisville, Kentucky; Knoxville, Tennessee
Television -		
Cable service	Yes	Yes
Reception from -	Lexington, Louisville and Bowling Green, Kentucky; Knoxville, Tennessee	Lexington, Kentucky; Knoxville, Tennessee
Kentucky		
Educational		
Television -	Somerset transmitter, Channel 29	Somerset transmitter, Channel 29

Library Services

Public library - **Pulaski County Public Library, Somerset**

Size collection - 49,835 volumes

Circulation, 1981-82 - 269,954

Services - Books, magazines, records, tapes, filmstrips, paintings, cassettes, newspapers, copy and mimeograph services, microfilm reader-printer, movie projector, slide projector, story hour programs, two bookmobile branches (Nancy and Science Hill), Interlibrary Loan, community room, aid to the blind and handicapped in securing talking books, and a ramp and elevator for the handicapped

Public library - **Burnside Public Library** (Branch of the Pulaski County Public Library)

Size collection - 6,000 volumes

Services - Books, magazines, newspapers, records, copy service, Interlibrary Loan, story hour, community room

College library - **Somerst Community College Library**

Size collection - 32,000 volumes

Services - Magazines, numerous business periodicals, newspapers, records, record players, slides, slide projectors, cassettes, cassette recorder-player, filmstrips, movies, movie projector, microfilm, tape recorder-player, Interlibrary Loan, copy service, collection of transparencies for overhead projectors; Courier-Journal, New York Times, and Commonwealth Journal on microfilm

Religious Institutions

Pulaski County

Denominations - Apostolic
Assembly of God
Baptist
Catholic
Christian
Church of the Bible Covenant
Church of Christ
Church of God
Church of God of Prophecy
Episcopal
Interdenominational
Lutheran
Methodist
Mormon
Nazarene
Pentecostal
Presbyterian
Seventh Day Adventist

Nearest Synagogues - Lexington, 76 miles north of Somerset
Congregations - Adath Israel (reform)
Ohavey Zion (traditional)

Financial Institutions

<u>Banks</u>	<u>Assets</u>	<u>Deposits</u>	<u>Statement Date</u>
Bank of Somerset	\$ 18,898,108.00	\$ 16,252,608.00	6/30/82
Citizens National Bank	75,383,000.00	63,418,000.00	6/30/82
United American Bank of Kentucky	144,678,964.00	117,934,035.00	6/30/82
<u>Savings and Loan Associations</u>	<u>Assets</u>	<u>Savings Accounts</u>	<u>Statement Date</u>
First Federal Savings and Loan Association	\$128,428,476.00	\$107,811,984.00	6/30/82
Mutual Federal Savings and Loan Association	116,896,630.00	102,841,313.00	12/31/81

Hotels and Motels

Somerset-Burnside Area

Total number -	23
Total rooms -	550

Clubs and Organizations

Alpha Delta Kappa-Tau Chapter
Beta Sigma Phi Sorority
Big Brothers/Big Sisters
Burnside Civic Club
Burnside Lions Club
Chautagua Club
Daughters of the American Revolution
Downtown Merchants Association
Eagles Nest Country Club
Eastern Star Organization
Eubank Ruritan Club
Homebuilders Association of
 Somerset and Pulaski County
Ladies of the Lake Bowling
 Association
Lake Cumberland Arts and Crafts
 League
Lake Cumberland Chapter of American
 Red Cross
Lake Cumberland Garden Club
Lake Cumberland Performing Arts
Licensed Practical Nurses,
 District 2
Literary Club
March of Dimes
National Hairdressers and
 Cosmetologists Association
Oleika Shrine Temples Lake
 Cumberland Shrine Club
Open Doors Club
Pulaski County Bar Association
Pulaski County Democrat Women
Pulaski County Historical Society
Pulaski County Industrial Foundation
Pulaski County Legal Auxiliary
Pulaski County Medical Auxiliary
Pulaski County Outdoorsmen Club
Pulaski County Republican Women
Pulaski County YMCA
Somerset Business and Professional
 Women's Club
Somerset China Painters'
 Association
Somerset Christian Women's Club
Somerset Country Club
Somerset Garden Club
Somerset Junior Women's Club
Somerset Kiwanis Club
Somerset Lions Club
Somerset Mall Merchants
Somerset Plaza Merchants
 Association
Somerset Rotary Club
Somerset Senior Citizens Club
Somerset Square Dancing Club
Somerset Women's Club
Somerset-Pulaski County Chamber
 of Commerce
Somerset-Pulaski County
 Interagency Council
Somerset-Pulaski County Jaycees
Somerset-Pulaski County Jaycettes
Somerset-Pulaski Ministerial
 Association
Somerset-Pulaski Tourist
 Commission
Southern Railway Ladies Auxiliary
Tradewinds Merchants Association
United Way of South Central
 Kentucky
Women's Civic Club

RECREATION

Local

Lake Cumberland, with 1,255 miles of shoreline, is the centerpiece of scenic beauty and outdoor recreational activity in south central Kentucky. The Somerset-Burnside area also offers a variety of recreational facilities including supervised programs during the summer months.

Construction continues on the \$4.5 million, 465-acre **Pulaski County Park**. The park presently contains 86 campsites, five shelter houses, two tennis courts, 300 picnic sites, hiking trails, playgrounds, a frisbee golf course, a horse arena, a rodeo arena with bleachers for 400 people, two boat docks, two boat launching ramps and a beach.

General Burnside State Park, 9 miles south of Somerset at Burnside, is Kentucky's only island state park. Rising out of Lake Cumberland and accessible by a causeway, the island park offers an 18-hole golf course (open year-round), a 161-site camping area with electrical and water hookups, an Olympic-size swimming pool, a launching ramp, and facilities for boating, fishing, water sports and picnicking. Organized recreational programs are available throughout the summer. A nearby marina offers rental fishing boats and slips.

A \$245,000 city park is being constructed in Somerset. The park presently contains an amphitheater, bleachers, playgrounds, exercise stations, hard-surface basketball courts, a pavilion, a picnic area and hiking trails.

Cole Park, a community park in Burnside, offers a 1,000-seat amphitheater for concerts and weekend productions, two tennis courts, a lighted Little League baseball park, a shelterhouse, a concession stand and a picnic area.

The Daniel Boone National Forest lies partially within the boundaries of Pulaski County. The vast timberland encompasses hundreds of natural and historical attractions and provides ample opportunities for camping, boating, fishing and hiking.

Woodson Bend Resort is a private resort located on Lake Cumberland near Burnside. This development features a golf course, tennis courts, a swimming pool, horseback riding, boating, skiing, fishing and condominiums for sale or lease.

The "Eagles Nest," a private recreational facility located 3 miles north of Somerset on Highway 39, features an 18-hole golf course, fishing lakes, four tennis courts, an Olympic-size swimming pool, and a two-story clubhouse.

Other private recreational facilities include the YMCA and a country club with a golf course and a swimming pool.

Area (Within 50 miles)

William Whitley House State Shrine, 28 miles north of Somerset near Stanford, is the first brick house west of the Allegheny Mountains, built 1787-94. Whitley laid out Kentucky's first race track here and started U.S. counterclockwise racing. The facility provides picnic and playground areas in a ten-acre park.

Cumberland Falls State Resort Park is located 34 miles southeast of Somerset in the Daniel Boone National Forest. The park is famous for Cumberland Falls which drops 68 feet over a rock precipice and shows one of only two known "moonbows" in the world at full moon. Little Eagle Falls, a mountain creek which tumbles 125 feet into the Cumberland River, is also part of the 1,794-acre park. The park offers lodge rooms, woodland suites, cottages, camping, fishing, swimming, hiking, horseback riding, picnicking, tennis, backpacking, horse shows, shuffleboard, planned recreation, a playground, a dance pavilion, and an amphitheater.

Levi Jackson Wilderness Road State Park, 36 miles east of Somerset near London, is an 815-acre park located where the Boone Trace and Wilderness Road pioneer trails converge. In addition to a reproduced pioneer settlement, the park offers a pool, a bathhouse, hiking trails, horseback riding, shuffleboard, camp sites, a picnic area, a playground, and an amphitheater. The Wilderness Road is thought to be the first state built road in the United States (1796-1875) and a section of the original road is preserved in the park.

Lake Cumberland State Resort Park near Jamestown, 40 miles southwest of Somerset, is a 3,000-acre park located on the 50,000-acre Lake Cumberland, which sports excellent bass, bluegill, and crappie fishing. The park features a modern resort lodge which is perched on a high bluff above the lake. The lodge has a swimming pool, a dining room, a gift shop, and a multi-purpose convention center. Other park facilities include an additional swimming pool, riding stables, tennis courts, hiking trails, a 9-hole golf course, miniature golf, a picnic area, a playground, a 350-seat amphitheater, and a nature center. A marina offers houseboats, and fishing boats and motors for rent plus year-round launching ramps.

Wood Creek Lake, located 42 miles northeast of Somerset near London, is a popular fishing lake in the Daniel Boone National Forest.

Constitution Square State Shrine, 45 miles north of Somerset in Danville, is a reproduction of Kentucky's first courthouse square, including the original 1792 post office which was the first in the west.

Isaac Shelby State Shrine, 45 miles north of Somerset near Danville, is the burial site of Kentucky's first governor and one of the Commonwealth's foremost statesmen.

Laurel River Lake, 48 miles southeast of Somerset near Corbin, is a 4,200-acre lake located in the Daniel Boone National Forest. A variety of recreational facilities are under development here.

COMMUNITY IMPROVEMENTS

Recent

The 31-mile segment of Kentucky Highway 80 linking Somerset and London, Kentucky, was replaced in 1982 with a new highway combining sections of four lanes, two lanes, and two lanes with passing lanes on the upgrades.

The \$9 million Somerset Mall shopping complex was completed in 1981.

The runway at the Somerset-Pulaski County Airport was extended to 5,000 feet in 1981. Other features which were added recently include a middle marker, localizer, pilot-control lighting, NDB and ARTAIS.

New filters and pumps were installed at the Burnside Municipal Waterworks in 1982 and early 1983.

The Pulaski County Fiscal Court has established a 13-station, county-wide fire protection system with a central dispatching unit for all emergency and law enforcement operations. The establishment of the fire protection system has allowed all areas of the county to achieve a public protection classification of nine or less.

A new agriculture shop and five new classrooms were recently added to the facilities of the Pulaski County High School. The \$4 million Southern Elementary School in Pulaski County was completed in 1981. Computer programming was recently added to the curricula of the Somerset Independent School System.

Kentucky Utilities Company installed a new 10,000 KVA substation in Somerset in 1982.

Facilities which have been completed at the new \$4.5 million Pulaski County Park include 86 campsites, five shelter houses, playgrounds, a frisbee golf course, a rodeo arena, 300 picnic sites, two tennis courts, two boat launching ramps, and hiking trails.

The "Eagles Nest," a private recreational facility, has been completed. Features include an 18-hole golf course, fishing lakes, four tennis courts, an Olympic-size swimming pool and a clubhouse.

Under Way

Construction is nearing completion on the rail spur into the new Lake Cumberland Regional Industrial Park. The \$3.8 million park presently encompasses 200 acres and has 22 sites completely served by utilities.

The City of Burnside has applied for a grant from the Farmer's Home Administration for funding to improve the water treatment plant.

Somerset is participating in the Governor's Economic Achievement Recognition (GEAR) program. GEAR, utilizing a team of economic and community development professionals, helps communities identify and solve specific economic development problems or needs.

Planned

Plans are being made to improve Kentucky Highway 461 from Somerset to Interstate Highway 75, 28 miles northeast at Mt. Vernon.

The Burnside Municipal Waterworks is planning to construct a new 50,000-gallon water storage tank in 1983.

The Lake Cumberland Medical Center is planning to enlarge an operating room in 1983 to accommodate outpatient surgery facilities. Cost of the project is estimated to be \$600,000 to \$700,000.