

1987

Industrial Resources: Shelby County - Shelbyville

Kentucky Library Research Collections
Western Kentucky University, spcol@wku.edu

Follow this and additional works at: https://digitalcommons.wku.edu/shelby_cty

 Part of the [Business Administration, Management, and Operations Commons](#), [Growth and Development Commons](#), and the [Infrastructure Commons](#)

Recommended Citation

Kentucky Library Research Collections, "Industrial Resources: Shelby County - Shelbyville" (1987). *Shelby County*. Paper 6.
https://digitalcommons.wku.edu/shelby_cty/6

This Report is brought to you for free and open access by TopSCHOLAR®. It has been accepted for inclusion in Shelby County by an authorized administrator of TopSCHOLAR®. For more information, please contact topscholar@wku.edu.

528 Shelby County, Ky

RESOURCES FOR ECONOMIC DEVELOPMENT

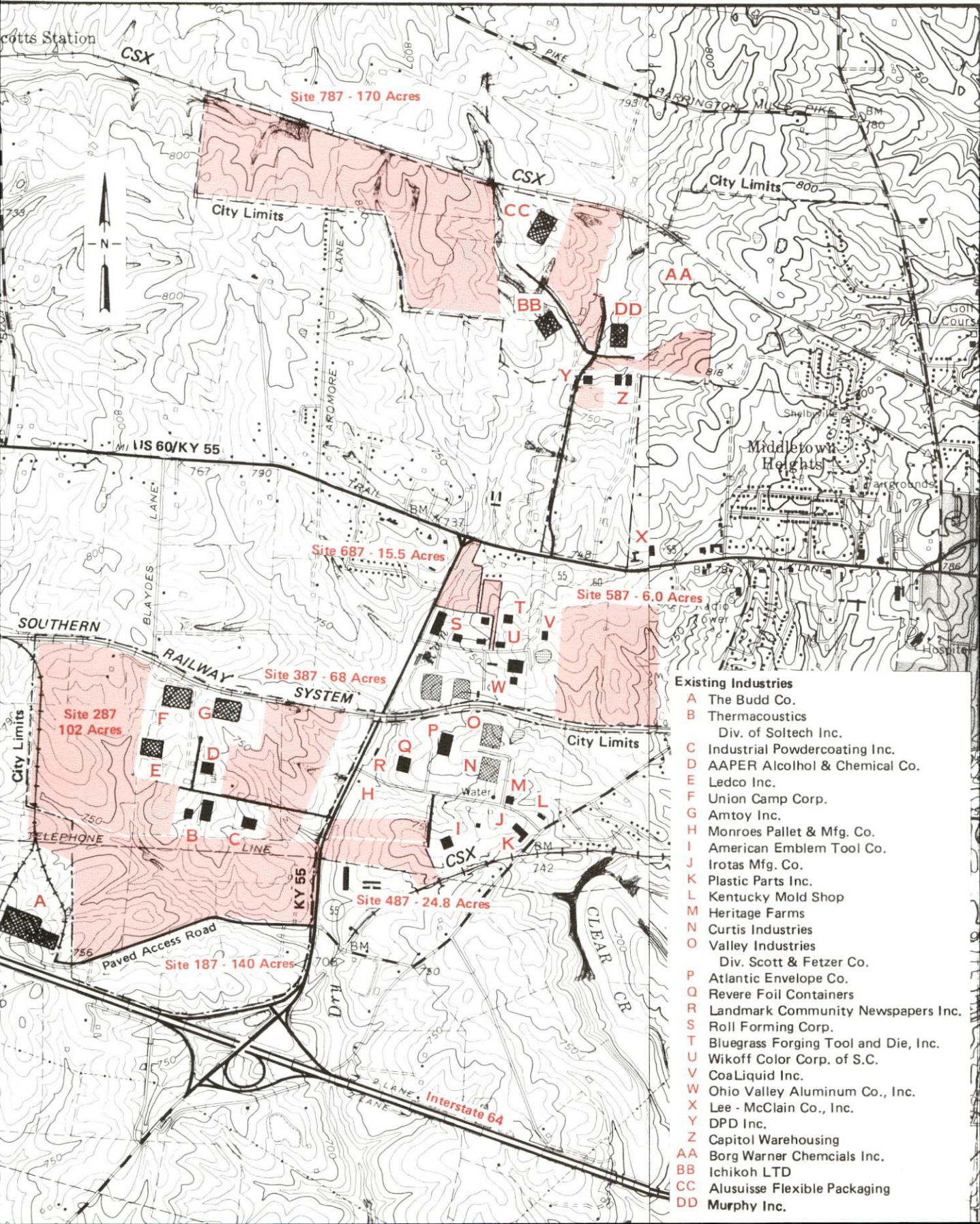
Shelbyville



KENTUCKY
The business environment is right.

SHELBYVILLE, KENTUCKY --- Index to Industrial Sites --- 1987

For detailed data on individual sites contact the Kentucky Department of Economic Development, Industrial Development & Marketing Division, Capital Plaza Tower, Frankfort, Kentucky 40601 (502-564-7140).



RESOURCES FOR ECONOMIC DEVELOPMENT

SHELBYVILLE, KENTUCKY

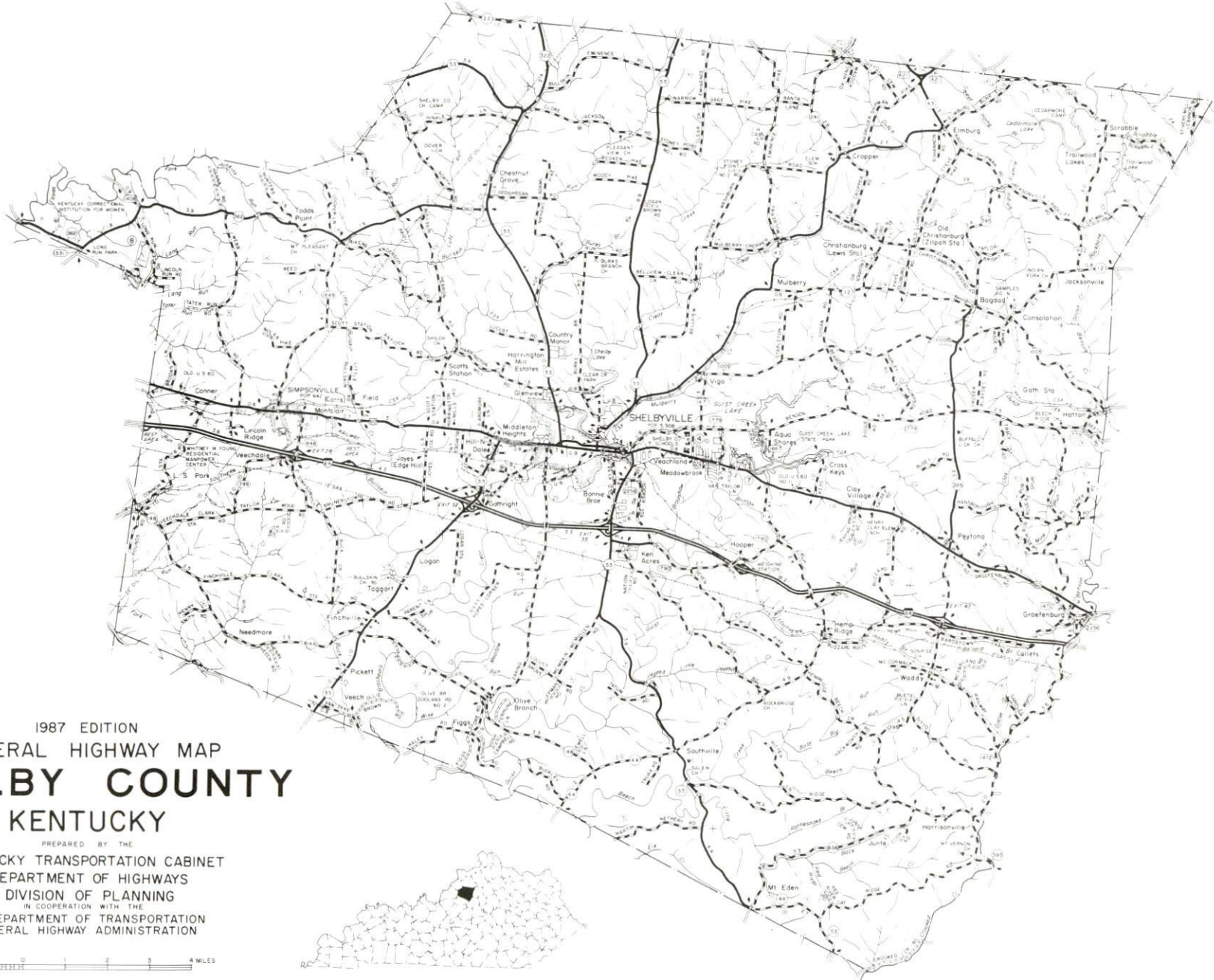
Prepared by
The Kentucky Department of Economic Development
Division of Research and Planning
in cooperation with
Shelby County Chamber of Commerce
and
Shelby County Industrial and Development Corporation

1987

TABLE OF CONTENTS

<u>Chapter</u>	<u>Page</u>
INDUSTRIAL SITES	i
SHELBYVILLE, KENTUCKY - A RESOURCE PROFILE	1
THE LABOR MARKET AREA	2
Population	2
Population Projections	2
Labor Force Characteristics of Residents, 1986	3
Selected Components of Nonagricultural Employment, by Place of Work, 1986	3
Per Capita Personal Income	4
Estimated Male Labor Supply	5
Estimated Female Labor Supply	5
Average Weekly Wages by Industry, by Place of Work, 1986	6
EXISTING INDUSTRY	8
Shelby County Manufacturing Firms, Their Products and Employment	8
Recent Industrial Developments	11
Labor Organizations in Manufacturing Firms	11
Selected Industrial Services	12
TRANSPORTATION	13
Rail	13
Highways	13
Truck Service	14
Air	15
Air Express Service	16
Water	16
POWER AND FUEL	17
Electricity	17
Natural Gas	17
Other Fuels	18
WATER AND SEWERAGE	19
Public Water Supply	19
Sewerage	21
CLIMATE	23

<u>Chapter</u>	<u>Page</u>
LOCAL GOVERNMENT	24
Structure	24
Planning and Zoning	24
Local Fees and Licenses	24
State and Local Property Taxes	25
Combined State and Local Rates Per \$100 Valuation, 1986	25
Safety	26
Police	26
Fire	26
Rescue Service	26
Refuse Collection and Disposal	26
EDUCATION	27
Public Schools	27
Nonpublic Schools	27
Area Colleges and Universities	28
Vocational Training	29
HEALTH	31
Local Medical Personnel	31
Hospitals	31
Other Medical Facilities	31
Ambulance Service	31
OTHER LOCAL FACILITIES	32
Communications	32
Library Services	32
Religious Institutions	32
Financial Institutions	33
Hotels and Motels	33
Clubs and Organizations	33
RECREATION	34
COMMUNITY IMPROVEMENTS	37



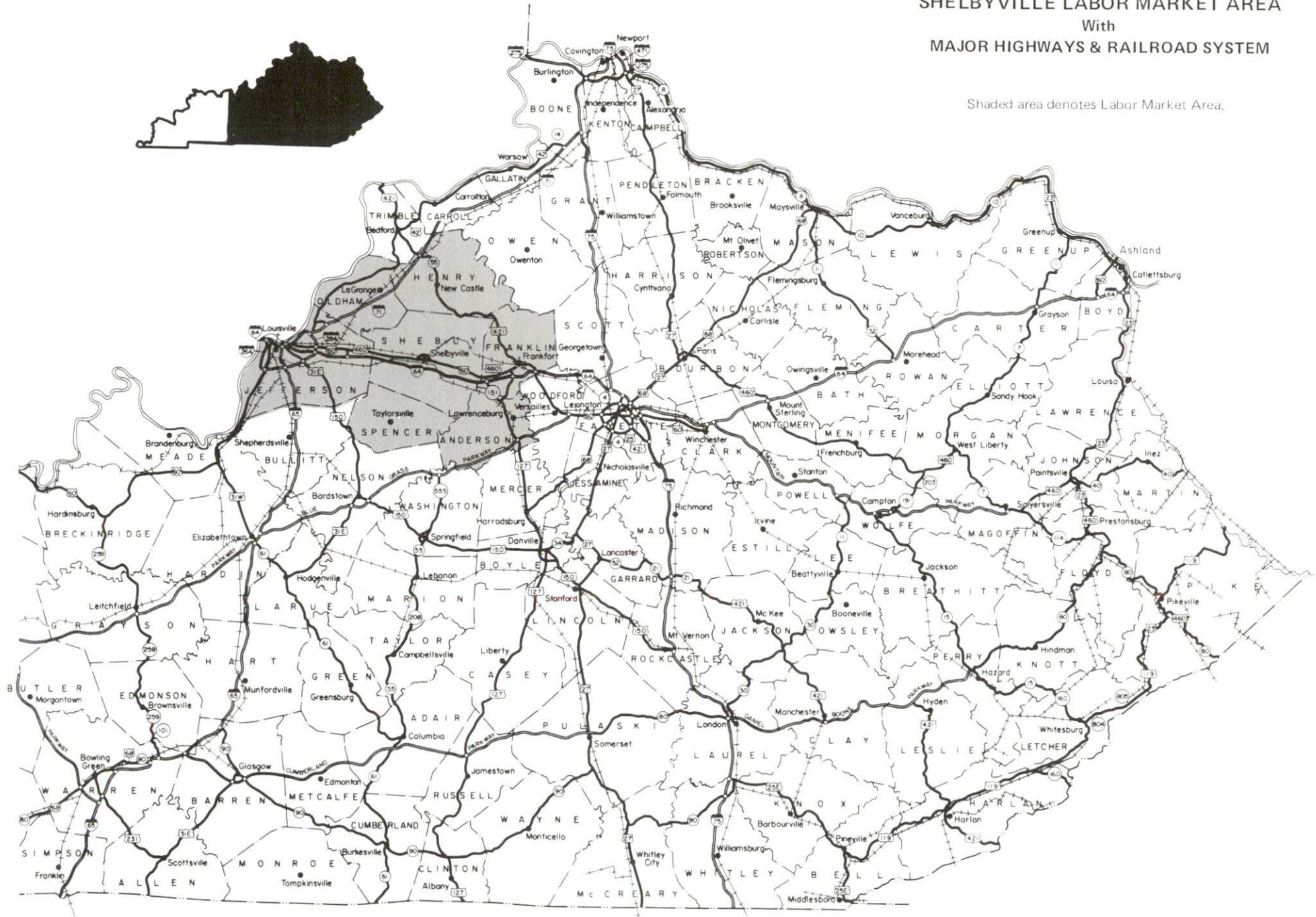
1987 EDITION
 GENERAL HIGHWAY MAP
SHELBY COUNTY
 KENTUCKY

PREPARED BY THE
 KENTUCKY TRANSPORTATION CABINET
 DEPARTMENT OF HIGHWAYS
 DIVISION OF PLANNING
 IN COOPERATION WITH THE
 U.S. DEPARTMENT OF TRANSPORTATION
 FEDERAL HIGHWAY ADMINISTRATION



SHELBYVILLE LABOR MARKET AREA
 With
 MAJOR HIGHWAYS & RAILROAD SYSTEM

Shaded area denotes Labor Market Area.



SHELBYVILLE, KENTUCKY - A RESOURCE PROFILE

Shelbyville, the county seat of Shelby County, is located in the Outer Blue Grass Region of north central Kentucky. Shelbyville, with a 1984 estimated population of 5,565, is located 31 miles east of Louisville, Kentucky; 50 miles west of Lexington, Kentucky; 95 miles southwest of Cincinnati, Ohio; and 202 miles northeast of Nashville, Tennessee.

Shelby County, with a rolling to hilly terrain, covers a total land area of 385 square miles. In 1986, Shelby County had an estimated population of 24,000.

The Economic Framework - The total number of Shelby County residents employed in 1986 averaged 11,180. Manufacturing firms in the county reported 2,160 employees; wholesale and retail trade provided 1,660 jobs; 1,030 people were employed in service occupations; state and local government accounted for 820 employees; and contract construction firms provided 190 jobs.

Labor Supply - There is a current estimated labor supply of 31,170 men and 35,810 women available for industrial jobs in the labor market area. In addition, from 1987 through 1991, 32,260 young men and 30,950 young women in the area will become 18 years of age and potentially available for industrial jobs.

Transportation - Main line rail service is provided to Shelbyville by CSX Transportation and the Southern Railway System. Major highways serving Shelbyville are Interstate 64, U.S. Highways 60 and 460, and Kentucky Routes 53 and 55. All are "AAA"-rated (80,000-pound gross load limit) trucking highways. Twenty trucking companies provide interstate and/or intrastate service to the area. The Capital City Airport in Frankfort, 20 miles east of Shelbyville, and Bowman Field in Louisville, 26 miles west, provide facilities for small aircraft operation. The nearest scheduled commercial airline service is available at Standiford Field near Louisville, 35 miles west of Shelbyville.

Power and Fuel - Electric power is provided to Shelbyville and portions of Shelby County by Kentucky Utilities Company. The major portion of Shelby County is served by the Shelby Rural Electric Cooperative Corporation. Natural gas service is provided by Western Kentucky Gas Company. There are three propane distributors and six fuel oil distributors in Shelbyville.

Education - Primary and secondary education is provided by the Shelby County School System, which is accredited by the Southern Association of Colleges and Schools. Twelve colleges and universities are located within 50 miles of Shelbyville. Vocational training is available locally at the Shelby County Area Vocational Education Center. The Jefferson State Vocational-Technical School in Louisville, 31 miles west of Shelbyville, provides training in 31 areas.

LABOR MARKET STATISTICS

The Shelbyville Labor Market Area includes Shelby County and the adjoining Kentucky counties of Anderson, Franklin, Henry, Jefferson, Oldham and Spencer.

POPULATION

Area	1986*	1980	1970	Percent Nonwhite
				1980
Shelbyville	5,565	5,329	4,182	25.7
Labor Market Area	812,800	808,827	788,978	-
Shelby County	24,000	23,328	18,999	11.4
Anderson County	13,800	12,567	9,358	3.9
Franklin County	44,000	41,830	34,481	8.7
Henry County	13,300	12,740	10,910	5.5
Jefferson County	680,700	684,638	695,055	16.9
Oldham County	30,700	27,795	14,687	5.5
Spencer County	6,300	5,929	5,488	2.7

* Population estimates. City estimates are for 1984.

Note: The 1980 city counts of population by race are provisional.

Sources: U.S. Department of Commerce, Bureau of the Census, 1980 Census of Population and Housing, March 1981; 1980 Census of Population, Number of Inhabitants. University of Louisville, Urban Studies Center, Population Unit, October 1985; University of Louisville, Urban Studies Center, State Data Center, June 1987 Newsletter, Vol. 5 No. 4.

POPULATION PROJECTIONS

Area	1990	1995	2000	2010
Labor Market Area	827,378	837,876	846,023	854,295
Shelby County	25,724	27,068	28,101	29,615
Anderson County	14,495	15,438	16,166	17,250
Franklin County	47,818	50,700	52,868	55,934
Henry County	14,159	14,815	15,319	16,030
Jefferson County	685,347	686,874	687,921	685,944
Oldham County	33,587	36,628	39,212	43,090
Spencer County	6,248	6,353	6,436	6,432

Source: University of Louisville, Urban Studies Center, Population Research Unit, How Many Kentuckians: Population Forecasts, 1980-2020, the 1986 Edition, Spring 1986.

LABOR FORCE CHARACTERISTICS OF RESIDENTS, 1986

	<u>Shelby County</u>	<u>Labor Market Area</u>
Civilian Labor Force	11,756	419,356
Employment	11,183	389,664
Unemployment	573	29,692
Rate of Unemployment (%)	4.9	7.1

Source: Kentucky Cabinet for Human Resources, Kentucky Labor Force Estimates, Annual Averages, 1986.

SELECTED COMPONENTS OF NONAGRICULTURAL EMPLOYMENT
BY PLACE OF WORK, 1986

	<u>Shelby County</u>	<u>Labor Market Area</u>
All Industries (total)	6,426	362,041
Manufacturing	2,160	76,547
Wholesale & Retail Trade	1,657	91,120
Services	1,029	80,118
State/Local Government	819	47,600
Contract Construction	187	18,082

Note: Excludes domestic workers, railway workers, certain nonprofit corporations, majority of federal government workers, and self-employed workers.
Source: Kentucky Cabinet for Human Resources, Average Monthly Workers Covered by Kentucky Unemployment Insurance Law, 1986.

PER CAPITA PERSONAL INCOME

<u>Area</u>	<u>1980</u>	<u>1984</u>	<u>Percent Change</u>
Shelby County	\$ 8,216	\$ 10,616	29.2
Labor Market Area Range	\$6,459 - 9,694	\$8,683 - 12,901	-
Kentucky	7,644	10,232	33.9
U.S.	9,494	12,772	34.5

Sources: U.S. Department of Commerce, Bureau of Economic Analysis. Kentucky Economic Information System, June 1986.

**ESTIMATED MALE LABOR SUPPLY
SHELBYVILLE LABOR MARKET AREA**

Area	Current			Not in Labor Force	Future
	Total Male	Unemployed	Under- employed		Becoming 18 years of age 1987 thru 1991
Labor Market					
Area*	31,168	15,445	15,689	34	32,256
Shelby	646	297	349	0	928
Anderson	454	239	215	0	564
Franklin	1,538	669	869	0	1,735
Henry	517	238	279	0	548
Jefferson	26,646	13,617	13,029	0	26,795
Oldham	1,110	276	834	0	1,421
Spencer	257	109	114	34	265

**ESTIMATED FEMALE LABOR SUPPLY
SHELBYVILLE LABOR MARKET AREA**

Area	Current			Not in Labor Force	Future
	Total Female	Unemployed	Under- employed		Becoming 18 years of age 1987 thru 1991
Labor Market					
Area*	35,806	14,247	19,516	2,043	30,946
Shelby	1,162	276	465	421	926
Anderson	680	274	355	51	543
Franklin	1,557	534	1,023	0	1,652
Henry	1,108	214	374	520	489
Jefferson	28,963	12,486	16,477	0	25,670
Oldham	1,757	356	704	697	1,440
Spencer	579	107	118	354	226

* Additional workers may be drawn from other nearby counties.

Note: Unemployed - persons unemployed and actively seeking work; Underemployed - persons employed but working only 14 to 26 weeks per year; Not in Labor Force - represents the number of persons who would enter the labor force if suitable employment were available (based on the assumption that persons in Kentucky would like to participate in the labor force in the same proportion that they do nationally).

Sources: Kentucky Cabinet for Human Resources, Kentucky Labor Supply Estimates by County, 1986. Kentucky Department of Economic Development, Future Labor Supply Becoming 18 Years of Age, 1987 thru 1991.

AVERAGE WEEKLY WAGES BY INDUSTRY
BY PLACE OF WORK, 1986

	<u>Shelby County</u>	<u>Anderson County</u>	<u>Franklin County</u>	<u>Henry County</u>
All Industries	\$266.61	\$301.71	\$337.85	\$272.68
Mining & Quarrying	0	*	0	0
Contract Construction	224.50	247.85	372.67	244.63
Manufacturing	324.46	407.09	367.02	383.91
Transportation, Communications & Public Utilities	399.32	433.23	479.48	341.81
Wholesale & Retail Trade	193.37	217.99	187.06	196.87
Finance, Insurance & Real Estate	274.40	315.05	352.47	302.64
Services	224.49	175.45	250.30	215.37
State/Local Government	300.86	264.84	382.93	295.30
Other	218.20	225.97	213.56	183.77
	<u>Jefferson County</u>	<u>Oldham County</u>	<u>Spencer County</u>	
All Industries	\$368.42	\$278.34	\$223.36	
Mining & Quarrying	467.19	*	0	
Contract Construction	375.82	311.23	*	
Manufacturing	529.33	380.44	189.46	
Transportation, Communications & Public Utilities	457.08	262.90	221.21	
Wholesale & Retail Trade	262.12	192.83	160.62	
Finance, Insurance & Real Estate	422.86	299.39	*	
Services	295.10	200.53	222.12	
State/Local Government	377.86	333.89	263.71	
Other	220.69	225.82	*	

* Not disclosed.

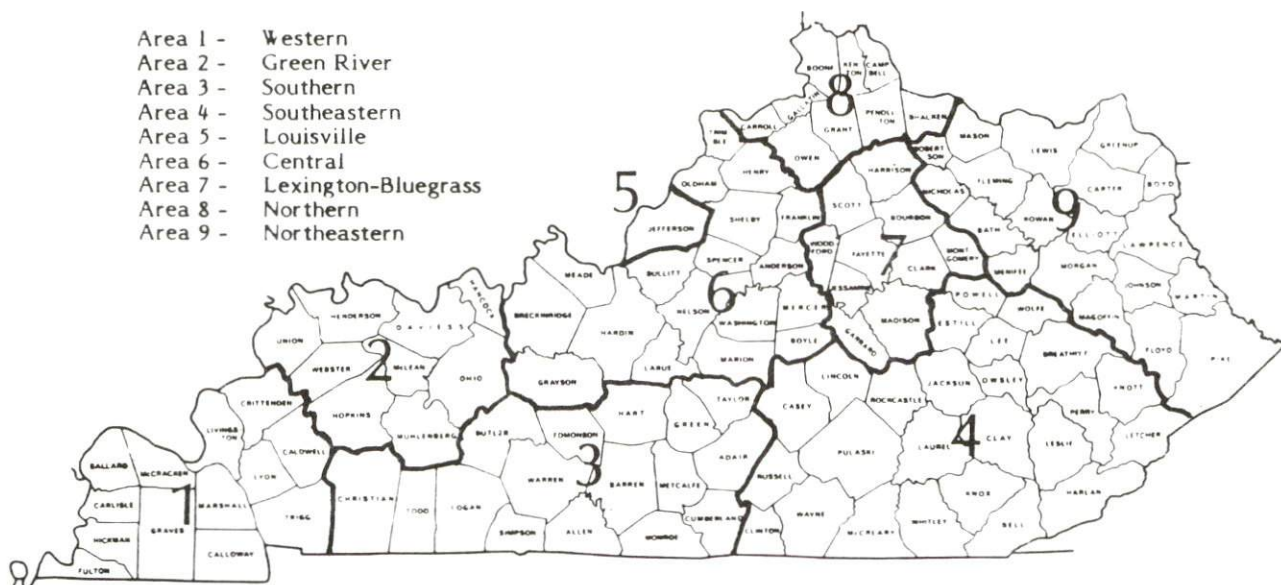
Note: The average weekly wage for each category includes the salaries and wages of all persons working for that type business. For example, the manufacturing category includes both production workers and administrative personnel. Excludes domestic workers, railway workers, certain nonprofit corporations, majority of federal government workers, and self-employed workers.

Source: Kentucky Cabinet for Human Resources, Average Weekly Wages of Workers Covered by Kentucky Unemployment Insurance Law, 1986.

Occupational wage rates for specific industries are usually not available to most government agencies, and wage data furnished to state employment agencies by individual industrial employers are protected from disclosure by federal law. The most reliable up-to-date wage information can be obtained by direct contact with local employers.

Associated Industries of Kentucky, a voluntary organization of Kentucky businesses, regularly collects occupational wage rates and fringe benefits data from participating member firms. Data are compiled for over 127 clearly defined office, production, and service occupations. Tabulations are published for nine geographical areas of Kentucky, as shown on the map below. It should be noted that the data may be weighted by the preponderance of firms in the larger cities and may be somewhat higher than the rates paid in the smaller communities. Data from these tabulations are available, upon request, from the Kentucky Department of Economic Development, Frankfort, Kentucky 40601.

- Area 1 - Western
- Area 2 - Green River
- Area 3 - Southern
- Area 4 - Southeastern
- Area 5 - Louisville
- Area 6 - Central
- Area 7 - Lexington-Bluegrass
- Area 8 - Northern
- Area 9 - Northeastern



Associated Industries of Kentucky Area Wage Surveys

EXISTING INDUSTRY

SHELBY COUNTY MANUFACTURING FIRMS,
THEIR PRODUCTS AND EMPLOYMENT

Firm (Establishment date)	Product	Average Employment			Labor Unions
		Total	Male	Female	
Shelbyville					
AAPER Alcohol & Chemical Company (1980)	Chafing dish fuel	60	-	-	
Alusuisse Flexible Packaging, Inc. (1987)	Paper and film packaging products	250	-	-	
American Emblem Tool Company (1977)	Steel saw blades, carbide, saber	140	-	-	
Atlantic Envelope Company (1972)	Envelopes	88	34	54	
Bluegrass Forging Tool & Die, Inc. (1967)	Tools & dies, forging	18	16	2	
Cargill, Inc. (1960)	Fertilizer	11	10	1	
Coca-Cola Bottling Company (1920)	Soft drinks	41	35	6	
Dotson Concrete, Inc. (1965)	Ready mixed concrete	19	17	2	
Flexible Packaging Products, Inc. (1982)	Printing on plastic articles, plastic packaging materials	35	17	18	
Industrial Powder Coatings, Inc. (1987)	Powder coating	122	-	-	

(Continued)

Firm (Establishment date)	Product	Average Employment			Labor Unions
		Total	Male	Female	
Irotas Manufacturing Company (1977)	Rotogravure & flexographic cylinders, conveyor rolls, corrugated boxes	53	50	3	
Kentucky Mold Company, Inc. (1970)	Plaster molds for ceramics	5	4	1	
Landmark Webb Press, Inc. (1968)	Newspapers, commercial printing	75	29	46	
Ledco, Inc. (1979)	Wood doors, metal doors	104	79	25	
Lee-McClain Company, Inc. (1933)	Men's suits, sport coats, men's slacks	100	25	75	
Long Block & Supply Company (1938)	Concrete block, concrete septic tanks, & precast products	21	20	1	
Millstone Farm Sausage, Inc. (1984)	Sausage	5	-	-	
Monroe Pallet & Manu- facturing Company (1979)	Pallet parts	3	-	-	
Murphy Industries, Inc. (1985)	Wiring harness	170	50	120	
Ohio Valley Aluminum Company, Inc. (1960)	Aluminum extrusion billets fabrication, aluminum reclaimed scrap ingot, aluminum extrusions	63	60	3	
Plastic Parts, Inc. (1969)	Plastic fabricators structure foam, plastic molds	47	23	24	

(Continued)

Firm (Establishment date)	Product	Average Employment			Labor Unions
		Total	Male	Female	
Revere Ware Containers, Inc. (1967)	Aluminum foil containers	68	-	-	Aluminum Workers*
Roll Forming Corpor- ation (1947)	Custom roll formed products, miscellaneous metal work products	154	118	36	
The Sentinel News (1886)	Newspaper	19	3	16	
Shelby Industries, Inc., Byrd Industries - Division of Shelby Industries, Inc. (1982)	Winches, couplers, trolling motors	60	42	18	
Soltech, Inc. (1985)	Insulation, fiberglas	155	75	80	
Southwestern Tobacco Company, Inc. (1925)	Hogsheads repairing	57	54	3	
Union Camp Corpora- tion (1980)	Hope merchan- dise bags	195	123	72	
Wickoff Color Cor- poration (1976)	Printing ink	9	8	1	
Bagdad					
Bagdad Roller Mills, Inc. (1914)	Feed	21	19	2	
Finchville					
Robertson Country Meats (1948)	Country hams, bacon, jowl	6	4	2	

(Continued)

<u>Firm</u> <u>(Establishment date)</u>	<u>Product</u>	<u>Average Employment</u>			<u>Labor</u> <u>Unions</u>
		<u>Total</u>	<u>Male</u>	<u>Female</u>	
Simpsonville					
Leggett & Platt, Inc. (1959)	Swivel chair and sofa bed mechanisms, recliner chair mechanisms	450	-	-	Machinists*
F. B. Purnell Sausage Company, Inc. (1955)	Sausage products	190	-	-	

* See Labor Organizations below.

Sources: Kentucky Department of Economic Development, 1987 Kentucky Directory of Manufacturers; Division of Research and Planning.

RECENT INDUSTRIAL DEVELOPMENTS

The Budd Company, one of the nation's largest automotive suppliers, is constructing a new \$100 million manufacturing complex in Shelbyville. Construction of this 400,000-square-foot facility is scheduled to be completed in early 1988. The plant will employ approximately 400 persons and manufacture automotive stampings and assemblies.

Ichikoh Manufacturing, Inc., is also constructing a manufacturing plant in Shelbyville. The \$10 million facility will be located on a 28-acre tract in the Midland Industrial Park. Ichikoh will employ approximately 90 persons and manufacture automotive mirrors. Production is scheduled to begin in late 1988.

LABOR ORGANIZATIONS IN MANUFACTURING FIRMS

<u>Union</u>	<u>Representing workers at:</u>
Aluminum, Brick and Glass Workers International Union, AFL-CIO	Revere Ware Containers, Inc.
International Association of Machinists and Aerospace Workers, AFL-CIO	Leggett & Platt, Inc.

SELECTED INDUSTRIAL SERVICES

<u>Types of Service</u>	<u>Location</u>	<u>Mileage from Shelbyville</u>
Custom Data Processing	Frankfort	21
Custom Plastics Producers	Shelbyville	-
Electric Motor Repair	Louisville	31
Grinding, Precision & Tool	Louisville	31
Heat Treating Facilities	Frankfort	21
	Louisville	31
Industrial Equipment & Supplies	Frankfort	21
	Louisville	31
Industrial Gases	Louisville	31
Industrial Waste Removal	Frankfort	21
	Buckner	24
	Louisville	31
Machine Shops, Tool & Die	Shelbyville	-
Metal Castings	Louisville	31
Metal Finishers	Jeffersontown	19
	Louisville	31
Metal Service Centers	Louisville	31
Millwrights	Louisville	31
Public Warehouse Facilities	Shelbyville	-

Sources: Kentucky Department of Economic Development, Kentucky Directory of Selected Industrial Services, 1987; Division of Research and Planning.

TRANSPORTATION

Rail

Line serving **Shelbyville** - CSX Transportation

Services - Main line; local freight available on as needed basis; two northbound and two southbound through freights daily; switching services; team track space for 15 cars; siding space for 20 cars; nearest piggyback facilities are in Louisville, Kentucky, 31 miles west of Shelbyville

Line serving **Shelbyville** - Southern Railway System

Services - Main line; four eastbound and four westbound through freights daily; three eastbound and three westbound freights stop daily; switching services; team track space for 4 cars; piggyback facilities available in Louisville, Kentucky, 31 miles west of Shelbyville

For details on routing, schedules, rates, and services contact:

Manager, Industrial Development
CSX Transportation
908 West Broadway - P. O. Box 2157
Louisville, Kentucky 40201
(502) 587-7746

and/or

District Sales Manager
Norfolk Southern Corporation
1402 South 15th Street
Louisville, Kentucky 40210
(502) 636-6023

Highways

Major highways serving **Shelbyville** are Interstate 64, U.S. Highways 60 and 460, and Kentucky Routes 53 and 55. All are "AAA"-rated (80,000-pound gross load limit) trucking highways.

Interstate 64, a major east-west route, serves **Shelbyville** with two interchanges. An interchange of Interstate 64 is located three miles southeast of downtown **Shelbyville** via Kentucky Highway 53. Another interchange is located four miles southwest of the downtown area via Kentucky Highway 55.

Interstate 64 provides direct access to Louisville, 31 miles west, where it connects with Interstate 65 and 71. Interstate 64 also provides direct access to Lexington, 50 miles east of **Shelbyville**, where it connects with Interstate 75.

An expansion of U.S. 60 to four lanes, from the intersection of U.S. 60 and Kentucky 55, west of **Shelbyville**, to Old Finchville Road, in **Shelbyville**, was recently completed.

Truck Service

A & H Truck Line, Inc.*	Louisville-Shelbyville Express, Inc.*
ANR Freight System, Inc.*	Manning Motor Express, Inc.*
ARA/Smith's**	Middlewest Freightways, Inc.*
Bailey's Express, Inc.*	O.K. Trucking Company*
Bowman Transportation, Inc.*	Overnite Transportation Company*
Claxon Truck Line, Inc.*	Owenton Express, Inc.*
Consolidated Freightways Corporation of Delaware*	P-I-E Nationwide, Inc.*
Harris Motor Express, Inc.*	R-W Service System, Inc.*
Holland Motor Express, Inc.*	Spartan Express, Inc.*
Jones Truck Lines, Inc.*	Suburban Motor Freight, Inc.*

* Interstate and intrastate service.

** Interstate service only.

Source: American Motor Carrier Directory, Spring 1987.

HIGHWAY MILES AND TRUCK TRANSIT TIME IN DAYS FROM SHELBYVILLE, KENTUCKY, TO SELECTED MARKET CENTERS

City	Highway Miles	Delivery		City	Highway Miles	Delivery	
		Time TL				Time TL	
Atlanta, GA	420	1		Los Angeles, CA	2,117	5	
Baltimore MD	583	2		Louisville, KY	31	1	
Birmingham, AL	391	1		Nashville, TN	202	1	
Chicago, IL	317	1		New Orleans, LA	716	2	
Cincinnati, OH	95	1		New York, NY	752	3	
Cleveland, OH	340	1		Pittsburgh, PA	382	1	
Detroit, MI	353	1		St. Louis, MO	290	1	
Knoxville, TN	221	1					

Note: Mileage computations are via the best interstate or primary highways, not necessarily the most direct route of travel.

Sources: Rand McNally Deluxe Motor Carriers' Road Atlas, 1987. Official Kentucky Mileage Map, 1980. Delivery time - Overnite Transportation Company, P. O. Box 99308, Louisville, Kentucky 40299.

Air

Local

Location: Capital City Airport
1 mile west of Frankfort;
20 miles east of Shelbyville
Runways: One paved
Length: 5,000 feet
Traffic
Control: Wind tee
Lighting: Beacon, runway lights sundown to sunrise, REILS and
VASI
Services: 100 octane, jet fuel; hangar; storage; taxi

Location: Bowman Field
5 miles east of downtown Louisville
26 miles west of Shelbyville
Runways: 3 paved
Length: 4,350 feet; 3,677 feet; 3,539 feet
Traffic
Control: Control tower
Lighting: Runways, obstructions, beacon, and wind tee lighted;
VASI
Services: 100 octane and jet fuel, major A & P repairs,
storage, radio service, FAA Flight Standards
District Office, FAA Flight Service Station,
charter service, taxi, city bus, restaurant

Nearest Scheduled Commercial Airline Service

Location: Standiford Field
4 miles southeast of center of Louisville, Kentucky;
35 miles west of Shelbyville
Runways: 2 paved
Length: 10,000 feet; 7,250 feet
Traffic
Control: Control Tower
Lighting: Runways, obstructions, beacon and approach; touch-
down lights and center line on one runway
Services: American Airlines, Delta, Eastern, Ozark, Piedmont,
Northeast, TWA, United, USAir, Jetstream,
Allegheny Commuter, Comair, Florida Express;
fuel - 100 and jet-A; major A & P repairs, major
Avionics repairs, APU, charter, oxygen, U.S.
Customs; taxi, car rentals, limousine,
courtesy car, public transit; Weather Bureau,
restaurant, snack bar

Air Freight
Service: Air freight terminal

Air Express Service

Several major companies offer air express services in Kentucky. These companies provide a quick means of shipping small to medium-sized packages expeditiously.

Water

Shelbyville is located 31 miles east of Louisville, where port facilities are available on the Ohio River. The Louisville and Jefferson County Riverport Authority has been designated as a Foreign Trade Zone and offers complete U.S. Customs services for exports and imports. The Port of Louisville is also available for public use.

POWER AND FUEL

Electricity

Company serving Shelbyville and parts of Shelby County - Kentucky
Utilities Company
Source of power - Kentucky Utilities Company
For industrial rates contact:

Industrial Development Department
Kentucky Utilities Company
One Quality Street
Lexington, Kentucky 40507
(606) 255-1461

Company serving a major portion of Shelby County - Shelby Rural
Electric Cooperative Corporation
Source of power - East Kentucky Power Cooperative
For industrial rates contact:

Industrial Development Division
East Kentucky Power Cooperative
P. O. Box 707
Winchester, Kentucky 40391
(606) 744-4812

and/or

Shelby RECC
Old Finchville Road
Shelbyville, Kentucky 40065
(502) 633-4420

Natural Gas

Company serving Shelbyville - Western Kentucky Gas Company
Source of supply - Texas Gas Transmission Corporation
Size of transmission mains - 26-inch (supplier); 6- and 8- inch
(distributor)
Distribution mains - 2 to 6 inches
Distribution pressure - Up to 30 psi
Btu content - 1,000 per cubic foot
Specific gravity - 0.60
For rates and supplies contact:

Western Kentucky Gas Company
311 West 7th Street
Owensboro, Kentucky 42301
(502) 685-8067

Other Fuels

Propane

Big 3 Gas Company of
Shelby County
U.S. 60 West
Shelbyville, Kentucky 40065

Silgas, Inc.
Old Finchville Road
Shelbyville, Kentucky 40065

H & S Gas Company, Inc.
U.S. Highway 60 East
Waddy, Kentucky 40076

Fuel oils

Distillate fuel oil -

Chevron U.S.A.
Tom Wathen Distributor, Inc.
North Seventh Street
P. O. Box 386
Shelbyville, Kentucky 40065

Marathon Oil Company
415 Second Street
Shelbyville, Kentucky 40065

Crume-Hundley Oil Company,
Inc.
801 South Third
Shelbyville, Kentucky 40065

Southern States Shelbyville
Cooperative, Inc.
Seventh and Bradshaw
Shelbyville, Kentucky 40065

Gray Oil Company
P. O. Box 81
U.S. 60 East
Shelbyville, Kentucky 40065

W.P.B. Oil Company, Inc.
First and Goodman Avenue
P. O. Box 157
Shelbyville, Kentucky 40065

Residual fuel oil - Arrangements must be made with the refinery.

Low sulphur content coal - Available in Kentucky.

WATER AND SEWERAGE

Public Water Supply

Company serving Shelbyville - Shelbyville Municipal Water & Sewer
 Commission*
 1040 West Main Street
 P. O. Box 608
 Shelbyville, Kentucky 40065
 (502) 633-2840

Source - Guist Creek Lake

Treatment plant capacity - 4,600,000 gallons per day

Average daily consumption - 2,150,000 gallons

Peak daily consumption - 3,008,000 gallons

Treatment processes - Aeration, coagulation, sedimentation, chlorination,
 rapid mix, flocculation, filtration, fluoridation

Storage capacity - 2,540,000 gallons (including clear wells)

Size lines - 6 to 16 inches

Water pressure - 30 psi to 135 psi

MONTHLY WATER RATES

First	1,000 gallons	\$3.50 (Minimum)
Next	9,000 gallons	1.40 per M gallons
Next	15,000 gallons	1.20 per M gallons
Next	25,000 gallons	1.10 per M gallons
Next	50,000 gallons	1.05 per M gallons
All over	100,000 gallons	1.00 per M gallons

Minimum Monthly Charge (for 1,000 gallons or less)

5/8- or	3/4-inch meter	\$ 3.50
	1-inch meter	4.50
1 1/4- or	1 1/2-inch meter	5.25
	2-inch meter	7.25
	3-inch meter	13.00
	4-inch meter	20.00
	6-inch meter	35.00

(Continued)

* The Shelbyville Municipal Water and Sewer Commission recently completed the construction of a one-million-gallon water storage tank at the Midland Industrial Park. A \$2.5 million expansion of the water treatment plant was also recently completed. This expansion increased the treatment capacity from 3-million gallons per day to 4.6-million gallons per day.

An area outside the corporate limits of Shelbyville which extends south and east of the city is subject to the following special rates:

First	1,000 gallons	\$5.38 (Minimum)
Next	9,000 gallons	2.15 per M gallons
Next	15,000 gallons	1.72 per M gallons
Next	25,000 gallons	1.51 per M gallons
Next	50,000 gallons	1.40 per M gallons
All over	100,000 gallons	1.25 per M gallons

Minimum Monthly Charge (for 1,000 gallons or less)

5/8- or 3/4-inch meter	\$5.38
1-inch meter	6.31
1 1/4- or 1 1/2-inch meter	7.84
2-inch meter	10.77

Tap-on charge:

- 5/8-inch meter - \$250
- 1-inch meter - \$350
- Larger meter - Based on cost of materials, labor and installation

Name of water district - West Shelby Water District*
P. O. Box 26
Simpsonville, Kentucky 40067
(502) 722-8944

Area served - Simpsonville and western Shelby County
Date when water district began operating - 1967
Source of supply of treated water - Shelbyville Municipal Water & Sewer Commission and the Louisville Water Company
Average amount of water used in a 24-hour period - 333,000 gallons
Peak amount of water used in a 24-hour period - 400,000 gallons
Storage capacity - 200,000 gallons
Size lines - 3 to 8 inches
Water pressure - 60 to 70 psi

MONTHLY WATER RATES

First	2,500 gallons	\$9.25 (Minimum)
Next	7,500 gallons	3.20 per M gallons
Next	20,000 gallons	2.70 per M gallons
Next	200,000 gallons	2.30 per M gallons
Over	230,000 gallons	2.00 per M gallons

(Continued)

* The West Shelby Water District plans to construct a 500,000 gallon water storage tank and install a 12-inch water line from the Louisville Water Company in 1988.

Minimum Monthly Charge

5/8-inch x 3/4-inch meter	First	2,500 gallons	\$ 9.25
3/4-inch meter	First	3,500 gallons	12.45
1-inch meter	First	5,000 gallons	17.25
1 1/2-inch meter	First	10,000 gallons	33.25
2-inch meter	First	16,000 gallons	49.45
3-inch meter	First	30,000 gallons	87.25
4-inch meter	First	50,000 gallons	133.25
6-inch meter	First	100,000 gallons	248.25

Tap-on charges:

5/8 x 3/4-inch meter	\$ 300
3/4-inch meter	320
1-inch meter	390
1 1/2-inch meter	510
2-inch meter	620
3-inch meter	1,000
4-inch meter or larger	Actual cost

Sewerage

Company serving Shelbyville - Shelbyville Municipal Water & Sewer
 Commission
 1040 West Main Street
 P. O. Box 608
 Shelbyville, Kentucky 40065
 (502) 633-2840

Design capacity - 1,070,000 gallons per day

Average daily flow - 620,000 gallons

Type of treatment - Advanced secondary

Treatment processes - Grit removal, primary sedimentation, roughing
 trickling filter, rotating biological contactors, secondary
 sedimentation, chlorination, anaerobic digester, sludge drying
 beds, post aeration

Treated effluent discharged into - Clear Creek

Size of sanitary mains - 8 to 18 inches

Monthly rates (based on water usage) -

First	1,000 gallons	\$4.50 (Minimum)
Next	9,000 gallons	1.80 per M gallons
Next	15,000 gallons	1.65 per M gallons
Next	25,000 gallons	1.55 per M gallons
Next	50,000 gallons	1.45 per M gallons
Over	100,000 gallons	1.35 per M gallons

(Continued)

Surcharge for excessive strength sewage:

BOD in excess of 250 milligrams per liter	\$0.121 per pound
Suspended solids in excess of 250 milligrams per liter	0.121 per pound
Ammonia nitrogen in excess of 25 milligrams per liter	0.483 per pound

Tap-on charge: \$50

Construction of the Shelby County Sanitation District #1 will begin in the spring of 1988. The district will serve approximately 1,100 customers in areas surrounding Shelbyville. The sewage will be treated by the Shelbyville Municipal Water and Sewer Commission.

CLIMATE

Shelby County

Temperature

Normal (30-year record)	54.90 degrees
Average annual 1986	54.40 degrees
Record highest, August 1983 (42-year record)	103.00 degrees
Record lowest, January 1963 (42-year record)	-21.00 degrees
Normal heating degree days (30-year record) (Heating degree day totals are the sums of negative departures of average daily temperatures from 65 degrees F.)	4,814

Precipitation

Normal (30-year record)	45.68 inches
Mean annual snowfall (30-year record)	16.40 inches
Total precipitation 1986	34.86 inches
Mean number days precipitation (.01 inch or more) (42-year record)	130.30
Mean number days thunderstorms (42-year record)	45.60

Prevailing winds (through 1963)

South

Relative Humidity

1 a.m.	77 percent (22-year record)
7 a.m.	82 percent (23-year record)
1 p.m.	60 percent (23-year record)
7 p.m.	64 percent (23-year record)

Source: U.S. Department of Commerce, Environmental Science Services Administration, Climatological Data, 1986. Station of record: Lexington, Kentucky.

LOCAL GOVERNMENT

Structure

The city of Shelbyville is served by a mayor and six council members. The mayor serves a four-year term and the council members serve two-year terms. Shelby County is served by a county judge/executive and seven magistrates. The judge/executive and magistrates are elected to serve four-year terms.

Planning and Zoning

Joint agency - Triple S Planning Commission
Participating areas - Shelbyville, Simpsonville, and Shelby County
Zoning enforced - County-wide
Subdivision regulations enforced - County-wide
Local codes enforced - Building and housing (county-wide)
Mandatory state codes enforced - Kentucky Plumbing code, National Electric Code, Kentucky Boiler Regulations and Standards, Kentucky Building Code (modeled after BOCA code)

Local Fees and Licenses

The city of Shelbyville levies an occupational tax of one percent on gross wages, salaries, and commissions of individuals and on net profits of businesses within the city. The maximum amount collected on net profits of businesses is \$3,000 per year. The city also levies an insurance premium tax of five percent.

State and Local Property Taxes

All property in Kentucky, except items exempted by the state constitution, is taxed by the state. Property which also may be taxed by local jurisdictions includes land and buildings, finished goods inventories, automobiles, trucks, office furniture and office equipment. Local taxing jurisdictions in Kentucky include counties, cities, and school districts.

All property in Kentucky is assessed at 100 percent of fair cash value.

COMBINED STATE AND LOCAL RATES PER \$100 VALUATION, 1986

	Inside City of Shelbyville	Unincorporated Shelby County
Land and Buildings	\$1.0589	\$0.714
Manufacturing		
Machinery	0.150	0.150
Pollution Control		
Equipment	0.150	0.150
Inventories		
Raw materials	0.001	0.001
Goods in Process	0.001	0.001
Finished Goods	0.912	0.480
Automobiles & Trucks	1.377	0.939
Other Tangible		
Personal Property	1.361	0.929
Intangibles (Accounts receivable*, money in hand, stock, notes, bonds)	0.250	0.250
Goods Stored in Public		
Warehouses in Transit Status	0.001	0.001
Private Leaseholds in		
Industrial Revenue Bond Financed Facilities	0.015	0.015

Five fire protection districts in Shelby County levy special property taxes on property located within their boundaries. The rates range from \$0.06 to \$0.10 per \$100 valuation.

* Accounts receivable are taxed at 85 percent of face value, for an effective rate of \$0.2125 per \$100 valuation.

Safety

Police	Shelbyville	Shelby County
Total staff	14	7
Radio-patrol cars	7	6
Fire*		
Insurance Services Office, Public Protection Classification	6	**
Full-time staff	11	-
Volunteers	15	131
Rescue Service		

Rescue service is provided county-wide by the Shelbyville-Shelby County Rescue Squad.

Refuse Collection and Disposal

Private contractors provide refuse collection and disposal to Shelbyville and Shelby County.

* Includes copyrighted material of ISO Commercial Risk Services, Inc., with its permission.

** Seven fire protection districts serve Shelby County. Property located in these districts have a fire classification rating ranging from 6 to 9. Property located in unincorporated Shelby County, not within a fire district, is class 10.

EDUCATION

Public Schools

	Shelby County*
Total Enrollment (September 1987)	4,421
Kindergarten	335
Elementary	1,666
Middle School	934
High School	1,346
Special Education	134
Homebound	6
Accreditation	Southern Association of Colleges and Schools
Pupil-Teacher Ratio (1985-86)	21-1
Percent High School Graduates to College (1985-86)	52.6
Expenditures Per Pupil (1985-86)	\$1,886.19

Nonpublic Schools

<u>School</u>	<u>Enrollment</u>	<u>Grades</u>
Living Waters Christian Elementary	34	1-6
Living Waters Christian High School	36	7-11

* The Shelby County School System recently completed construction of a gymnasium and three additional classrooms at the Southside Elementary School, window replacement and reroofing projects at the middle schools, and installation of handicapped access facilities at the high school. A new fieldhouse, containing locker rooms, weight training rooms, and restrooms, was also recently constructed at the high school. The school system is constructing a new \$2.5 million elementary school in Simpsonville. The new facility will serve approximately 500 students and is scheduled to be completed in the fall of 1988.

Area Colleges and Universities

<u>Name</u>	<u>Location (Miles distant)</u>	<u>Enrollment (Fall, 1986)</u>	<u>Highest Degree Conferred</u>
Kentucky State University	Frankfort, Kentucky (21)	2,205	Masters
Bellarmino College	Louisville, Kentucky (31)	2,644	Masters
Jefferson Community College	Louisville, Kentucky (31)	6,996	Associate
Spalding University	Louisville, Kentucky (31)	1,154	Doctorate
University of Louisville	Louisville, Kentucky (31)	20,217	Doctorate, M.D., D.M.D., J.D.
Midway College	Midway, Kentucky (34)	340	Associate
Indiana University, Southeast Campus	New Albany, Indiana (37)	4,657	Masters (Education only)
Georgetown College	Georgetown, Kentucky (39)	1,362	Masters
Saint Catharine College	Springfield, Kentucky (49)	280	Associate
Lexington Community College	Lexington, Kentucky (50)	2,587	Associate
Transylvania University	Lexington, Kentucky (50)	970	Baccalaureate*
University of Kentucky	Lexington, Kentucky (50)	20,788	Doctorate, M.D., D.M.D., J.D.

* Courses in a masters degree program are taught on the Transylvania campus by faculty members of Xavier University of Cincinnati. The degree is issued by Xavier University.

Vocational Training

The Bluegrass State Skills Corporation, an independent public corporation created and funded by the Kentucky General Assembly, provides programs of skills training to meet the needs of business and industry from entry level to advanced training, and from upgrading present employees to retraining experienced workers.

The Bluegrass State Skills Corporation is the primary source for skills training assistance for a new or existing company. The Corporation works in partnership with other employment and job training resources and programs, as well as Kentucky's economic development activities, to package a program customized to meet the specific needs of a company.

Vocational training is available at both the state vocational-technical schools and the area vocational education centers. The state vocational-technical schools are post-secondary institutions. The area vocational education centers are designed to supplement the curriculum of high school students. Both the state vocational-technical schools and the area vocational education centers offer evening courses to enable working adults to upgrade current job skills.

Arrangements can be made to provide training in the specific production skills required by an industrial plant. Instruction may be conducted either in the vocational school or in the industrial plant, depending upon the desired arrangement and the availability of special equipment.

Nearest State School

Jefferson State Vocational-Technical School
Louisville, 31 miles distant

Agriculture	Carpentry
Horticulture	Diesel Mechanics
Business & Office	Electricity
Accounting/Management	Electronics
Clerical	Graphic Arts
Data Processing	Machine Shop
Secretarial	Masonry
Consumer & Home Economics	Plumbing
Child Care	Welding
Commercial Foods	Learning Resource Center
Health & Personal Services	Public Service Occupations
Occupations	Business/Industry Security
Cosmetology	Training
Dental Assisting	CPR Training
Medical Assisting	Electrical Safety Training
Practical Nursing	Emergency Medical Care
Surgical Technology	Fire Service Training
Industrial Education	First Aid & Safety
Air Conditioning	Rescue & Emergency Services
Auto Body Repair	Training
Auto Mechanics	

Nearest Area Education Center

Shelby County Area Vocational Education Center
Shelbyville

Business & Office
Accounting/Management
Clerical
Word Processing
Industrial Education
Auto Mechanics

Carpentry
Electricity
Machine Shop
Welding

HEALTH

Local Medical Personnel

Physicians - 19

Dentists - 12

Hospitals

<u>General Hospital</u>	<u>Location</u>	<u>Beds</u>
United Medical Center*	Shelbyville	76

Medical staff - 26 active physicians, 29 courtesy physicians, 50 registered nurses, and 12 licensed practical nurses

Other Medical Facilities

North Central District Health Department
Tri-County Medical Center

Ambulance Service

Name - Shelby County Emergency Medical Services

Staff - Six full-time; eight part-time emergency medical technicians

* A \$2 million renovation and expansion project is under way at the United Medical Center. New and expanded facilities will include surgical units, critical care units, an obstetrics ward, and radiology department.

OTHER LOCAL FACILITIES

Communications

Telephone - Telegraph -	South Central Bell Telephone Company Western Union Toll-Free number, 1-800-325-6000
Newspapers - Twice weekly and circulation -	The Sentinel-News 7,200
Radio -	WCND-AM
Television - Airwave reception from - Cable service - Educational Television -	Louisville and Lexington, Kentucky Cencom Cable Television The Kentucky Educational Television (K.E.T.) network is available statewide

Library Services

Public library - Shelby County Library District
Size collection - 43,565 volumes
Circulation, 1985-86 - 142,912 (library and bookmobile)

Religious Institutions

Denominations -	AME Apostolic Baptist Catholic Christ Ambassador Christian Church of Christ Church of the Nazarene	Disciples of Christ Episcopal Interdenominational Pentecostal Presbyterian United Methodist Wesleyan
Nearest Synagogues - Congregations -	Louisville, 31 miles west Adath Israel Brith Sholom (reform) Adath Jeshurum (conservative) Anshei Sfard (orthodox) Keneseth Israel (orthodox) Sholom (reform)	

Financial Institutions

<u>Banks</u>	<u>Assets</u>	<u>Deposits</u>	<u>Statement Date</u>
Bank of Shelbyville	\$45,503,536.97	\$41,447,936.71	6/30/87
Citizens Union Bank	87,966,308.67	76,548,361.27	6/30/87
Republic Bank	38,383,674.00	34,942,119.76	6/30/87
Shelby County Trust Bank	66,377,595.00	54,849,872.00	6/30/87

<u>Savings and Loan Associations</u>	<u>Assets</u>	<u>Deposits</u>	<u>Statement Date</u>
The Cumberland*	\$977,635,000.00	\$693,055,000.00	6/30/87
Great Financial Federal*	1,031,693,484.00	879,688,059.00	12/31/86

Hotels and Motels

Total number - 3
Total rooms - 124

Clubs and Organizations

American Legion	King's Auxiliary
Beta Sigma Phi	King's Daughters' Circle
Big Brothers-Big Sisters	Kiwanis
Boy Scouts	Lions
Business and Professional Women	Masons
Children's Art League	Moose
Christian Women's Club	Odd Fellows
Daughters of the American Revolution	Optimist Club
Democratic Woman's Club	Parent-Teacher Association
Downtown Business Association	Rebekahs
Eastern Star	Rotary
4-H	Ruritan Club
Future Farmers of America	Senior Citizens
Garden Club	Shelby County Boosters
Girl Scouts	Shelby County Chamber of Commerce
Golf and Fishing Club	Shelby County Industrial and Development Foundation
Guist Creek Bass Club	Shelby County Tobacco Board of Trade
Guist Creek Ski Club	Shelby County Women's Club
Helping Hand	Speed Art Museum Guild
Historical Society	Triple L Club
Homemakers	
Jaycees	

* These institutions are headquartered in Louisville and operate branch offices in Shelbyville and other Kentucky cities.

RECREATION

Local

Recreational facilities in Shelbyville include nine ball diamonds, one central park, three mini-parks, one swimming pool, nine tennis courts and a bowling alley. The country club offers an 18-hole golf course, a swimming pool, a clubhouse and tennis courts.

The 132-acre Clear Creek Park is located adjacent to Lake Shelby, a 100-acre fishing lake. The park contains three softball fields, four baseball fields, six tennis courts, three soccer fields, boat rentals, a boat ramp and dock, three shelters, a playground, four horseshoe pits, an activities center, a driving range and a miniature golf course.

Guist Creek Lake, located four miles east of the city, is a 325-acre skiing and fishing lake with both primitive and recreational vehicle camping available.

A fine collection of English antiques, Georgian silver, limited edition porcelain and paintings are featured at Shelbyville's Wakefield-Scearce Galleries. Historic Science Hill Inn is located beside the Galleries.

The Shelby County Community Theatre, located at 8th and Main Streets, offers live performances for the Shelbyville area.

Construction of a nine-hole executive golf course is planned at Clear Creek Park. The golf course is scheduled to be completed in the fall of 1988. The city of Shelbyville also plans to install a pool enclosure (bubble) over the public swimming pool to enable the facility to be used year-round.

Construction of Persimmon Ridge, a 700-acre recreational and residential development, is planned to begin in the fall of 1987. The development will include an 18-hole golf course, swimming pool, and tennis courts. The residential section will contain single family homes, condominiums, and townhouses.

Area (Within 50 miles)

Taylorsville Lake State Park, 16 miles south of Shelbyville near Taylorsville, was developed by the U.S. Army Corps of Engineers. The 3,050-acre lake and 10,700-acre recreation area features full-service marina facilities, fishing, boating, swimming, and wildlife recreation.

E. P. "Tom" Sawyer State Park, 20 miles west of Shelbyville, is located near Louisville. Recreational facilities include an outdoor Olympic-size pool, a bathhouse, 12 lighted tennis courts, a one-mile fitness trail, a picnic area, an archery range, and soccer fields. Planned recreation and playground are offered year-round. Indoor facilities are available for basketball, volleyball, exercise classes, dance classes and various other events.

Frankfort, the capital of Kentucky, is 21 miles east of Shelbyville. Points of interest in Frankfort include the Capitol Building, a 34-foot floral clock, the Daniel Boone Monument, several museums, and old homes with their original furnishings. Frankfort is also the home of Kentucky State University which offers many cultural activities and sporting events.

Louisville, 31 miles west of Shelbyville, provides a wide variety of recreational opportunities. The most noted recreational event in Louisville is the Kentucky Derby at Churchill Downs. The "Run for the Roses" is the oldest continuously held horse race in the United States. Other attractions include: Kentucky Center for the Arts, Macauley Theatre, Actors Theatre of Louisville, Louisville Children's Theatre, the Louisville Bach Society, the Louisville Orchestra, the Louisville Ballet, the Kentucky Opera Association, several museums, the Louisville Zoological Gardens, University of Louisville sporting events, rock concerts, and the "Belle of Louisville" sternwheeler.

Lincoln Homestead State Park, 43 miles south of Shelbyville near Springfield, is a 153-acre park on land settled by Abraham Lincoln's family. The actual building in which Nancy Hanks, mother of President Lincoln, lived during her courtship with Thomas Lincoln is preserved here as well as a replica of the 1782 cabin where Thomas Lincoln lived as a boy. The park also has a museum, a gift shop, a picnic area, and an 18-hole golf course.

My Old Kentucky Home State Park, 43 miles southwest of Shelbyville in Bardstown, portrays an image of the South's gentle and leisurely home life before the Civil War. The restored Georgian Colonial mansion is where composer Stephen Foster visited and where he was inspired to write "My Old Kentucky Home." One of the nation's most successful outdoor dramas, "The Stephen Foster Story", is presented in the park's amphitheatre during the summer months. The park also offers a 40-site campground, a gift shop, a 9-hole golf course and pro shop, a picnic area, and planned recreation.

The Kentucky Horse Park, a park dedicated to horses and to man's love for horses, is located 45 miles east of Shelbyville at Lexington. The park, which contains more than 1,000 acres of Kentucky Bluegrass, features the International Museum of the Horse; the Man O'War Memorial; the wide screen film "Thou Shalt Fly Without Wings"; an antique carriage display; horseback and pony rides; walking farm tours; horse-drawn tours; a restaurant; a gift shop; and a campground area, which offers swimming, tennis, and planned activities. Numerous special events are held year-round and include various horse shows, steeplechasing, dressage, polo games, and rodeos.

Old Fort Harrod State Park, 47 miles southeast of Shelbyville, is a 28-acre park in Harrodsburg that features a full-scale reproduction of the original Fort Harrod. The park also contains the log cabin where Abraham Lincoln's parents were wed, the Mansion Museum which houses mementos associated with the great periods of Kentucky history, a pioneer cemetery, and a federal monument dedicated to pioneers. The "Legend of Daniel Boone" and "Lincoln" are two excellent outdoor dramas which are performed at the Old Fort Amphitheater during the summer months.

Bernheim Forest Arboretum and Nature Center, located 47 miles southwest of Shelbyville, is a privately endowed 10,000-acre forest and wildlife refuge. The area contains over 1,400 labeled varieties of plants, trees and shrubs; ornamental gardens; a museum; nature trails and waterfowl ponds.

Lexington, 50 miles east of Shelbyville, offers a variety of cultural, sporting, and recreational activities. Thoroughbred and harness racing is presented at Keeneland Race Course and the Red Mile Harness Track during several meets each year. The University of Kentucky and Transylvania University offer a number of sporting events. The University of Kentucky basketball games are held at Rupp Arena, the world's largest basketball arena. Other attractions include Lexington Philharmonic concerts, Lexington Children's Theatre, and plays performed by Broadway touring companies, all held in the recently renovated Opera House. In addition, located in the heart of downtown Lexington, the historical Victorian Square and Festival Market Place offer a taste of nostalgia with their many quaint shops and restaurants.

COMMUNITY IMPROVEMENTS

Recent

Shelbyville was chosen as a "Kentucky Certified City" in 1981 through 1986. The award is based on achievement in the following categories: economic development, transportation, public affairs, utilities, health, commercial development, housing, education and recreation. The Certified Cities Program is sponsored by the Kentucky Chamber of Commerce.

Alusuisse Flexible Packaging, Inc., and Industrial Power Coatings, Inc., recently began production at their new Shelbyville manufacturing facilities. Alusuisse Flexible Packaging manufactures paper and film packaging products and employs approximately 250 persons. Industrial Power Coatings manufactures and applies powder coating and employs 122 persons.

In 1986 and 1987, twelve companies announced plans for expansion to their Shelbyville manufacturing facilities.

Amtoy recently completed a 103,000-square-foot expansion and employed an additional 60 persons. Amtoy presently packages and distributes toys and plans to begin manufacturing toys in the near future. Ledco, Inc., and Soltech, Inc., also recently completed expansions to their plants. These expansions created an additional 160 jobs.

Several renovation projects have recently been completed in the downtown area of Shelbyville. The Bradshaw Street Project consisted of a \$750,000 renovation of housing, streets, and sidewalks. The Sixth Street Project consisted of the construction of new brick sidewalks, the installation of old-fashioned street lamps, and landscaping. Two historic buildings on Main Street were recently renovated and converted into a downtown mini-mall.

The Shelby County School System recently completed construction of a gymnasium and three additional classrooms at the Southside Elementary School, window replacement and reroofing projects at the middle schools, and installation of handicapped access facilities at the high school. A new fieldhouse, containing locker rooms, weight training rooms, and restrooms, was also recently constructed at the high school.

The Shelbyville Municipal Water and Sewer Commission recently completed the construction of a one-million-gallon water storage tank at the Midland Industrial Park. A \$2.5 million expansion of the water treatment plant was also recently completed. This expansion increased the treatment capacity from 3-million gallons per day to 4.6-million gallons per day.

A segment of U.S. Highway 60, extending from the Kentucky 55 intersection (west of Shelbyville) to the Old Finchville Road, was recently widened to four lanes.

The city of Shelbyville recently purchased a new fire truck, street sweeper, and two police cruisers.

Under Way

The Budd Company, one of the nation's largest automotive suppliers, is constructing a new \$100 million manufacturing complex in Shelbyville. Construction of this 400,000-square-foot facility is scheduled to be completed in early 1988. The plant will employ approximately 400 persons and manufacture automotive stampings and assemblies.

Ichikoh Manufacturing, Inc., is also constructing a manufacturing plant in Shelbyville. The \$10 million facility will be located on a 28-acre tract in the Midland Industrial Park. Ichikoh will employ approximately 90 persons and manufacture automotive mirrors. Production is scheduled to begin in late 1988.

A \$2 million renovation and expansion project is under way at the United Medical Center. New and expanded facilities will include surgical units, critical care units, an obstetrics ward, and radiology department.

Shelby Industries, Inc., is constructing a 70,000-square-foot facility in which to package trailer hitches and winches manufactured by the company. The facility is scheduled to begin operations in the summer 1988.

The Shelby County School System is constructing a new \$2.5 million elementary school in Simpsonville. The new facility will serve approximately 500 students and is scheduled to be completed in the fall of 1988.

Construction of a senior citizens building is under way in Shelbyville. This \$200,000 multi-purpose facility will contain 4,000 square feet and provide meeting rooms, recreational facilities, and kitchen.

Planned

American Emblem Tool Company and AAPER Alcohol & Chemical Company have plans for expansions to their Shelbyville plants. American Emblem's \$2 million expansion will consist of a 32,000-square-foot addition which is scheduled for completion in the spring of 1988. AAPER Alcohol plans to add 15,000 square feet to its plant. These expansions are expected to create an additional 100 jobs.

Landmark Community Newspapers, Inc., plans to construct a \$1.5 million corporate headquarters building in Shelbyville. Construction is scheduled for the summer of 1988.

Construction of the Shelby County Sanitation District #1 is scheduled to begin in the spring of 1988. The district will serve approximately 1,100 customers in areas surrounding Shelbyville. Construction cost of the sanitation district will be approximately \$4 million.

Construction of a nine-hole executive golf course is planned at Clear Creek Park. The golf course is scheduled to be completed in the fall of 1988. The city of Shelbyville also plans to install a pool enclosure (bubble) over the public swimming pool to enable the facility to be used year-round.

Construction of Persimmon Ridge, a 700-acre recreational and residential development, is planned to begin in the fall of 1987. The development will include an 18-hole golf course, swimming pool, and tennis courts. The residential section will contain single family homes, condominiums, and townhouses.