

1988

Industrial Resources: Webster County

Kentucky Library Research Collections

Follow this and additional works at: https://digitalcommons.wku.edu/webster_cty



Part of the [Business Administration, Management, and Operations Commons](#), [Growth and Development Commons](#), and the [Infrastructure Commons](#)

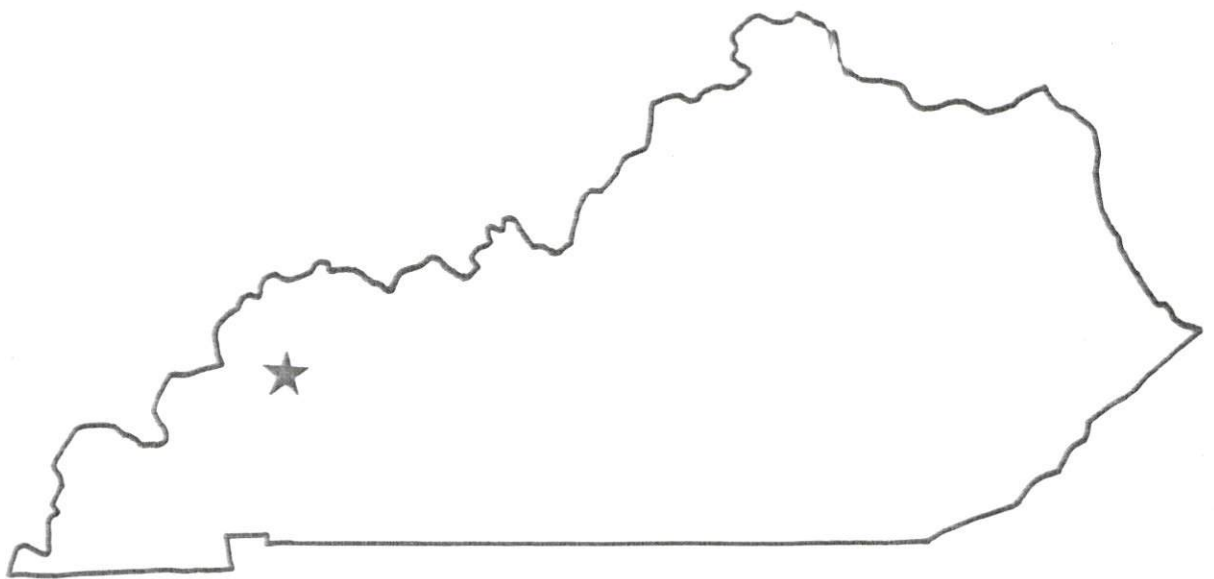
Recommended Citation

Kentucky Library Research Collections, "Industrial Resources: Webster County" (1988). *Webster County*. Paper 3.
https://digitalcommons.wku.edu/webster_cty/3

This Report is brought to you for free and open access by TopSCHOLAR®. It has been accepted for inclusion in Webster County by an authorized administrator of TopSCHOLAR®. For more information, please contact topscholar@wku.edu.

RESOURCES FOR ECONOMIC DEVELOPMENT

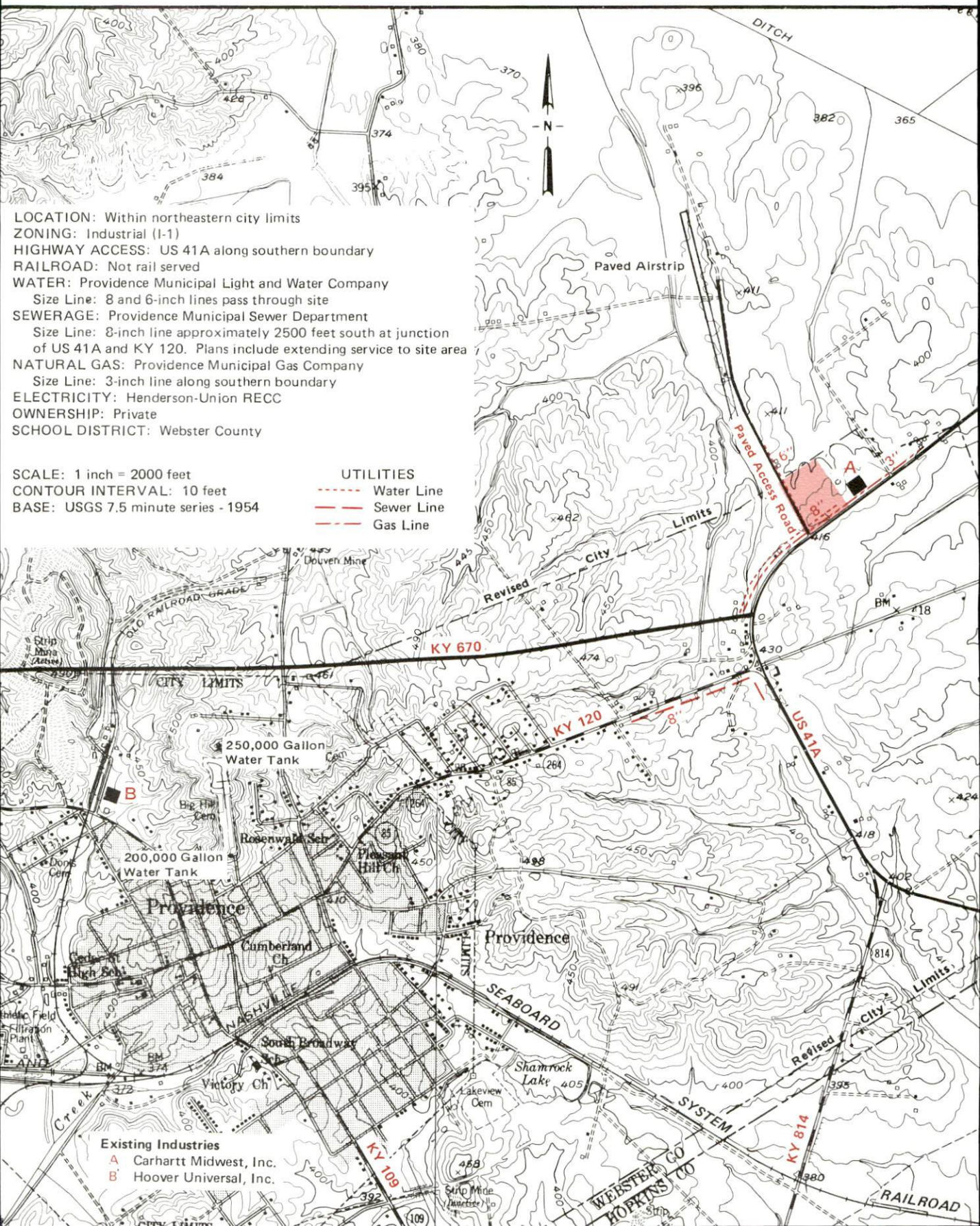
Webster County



KENTUCKY
Open for Business

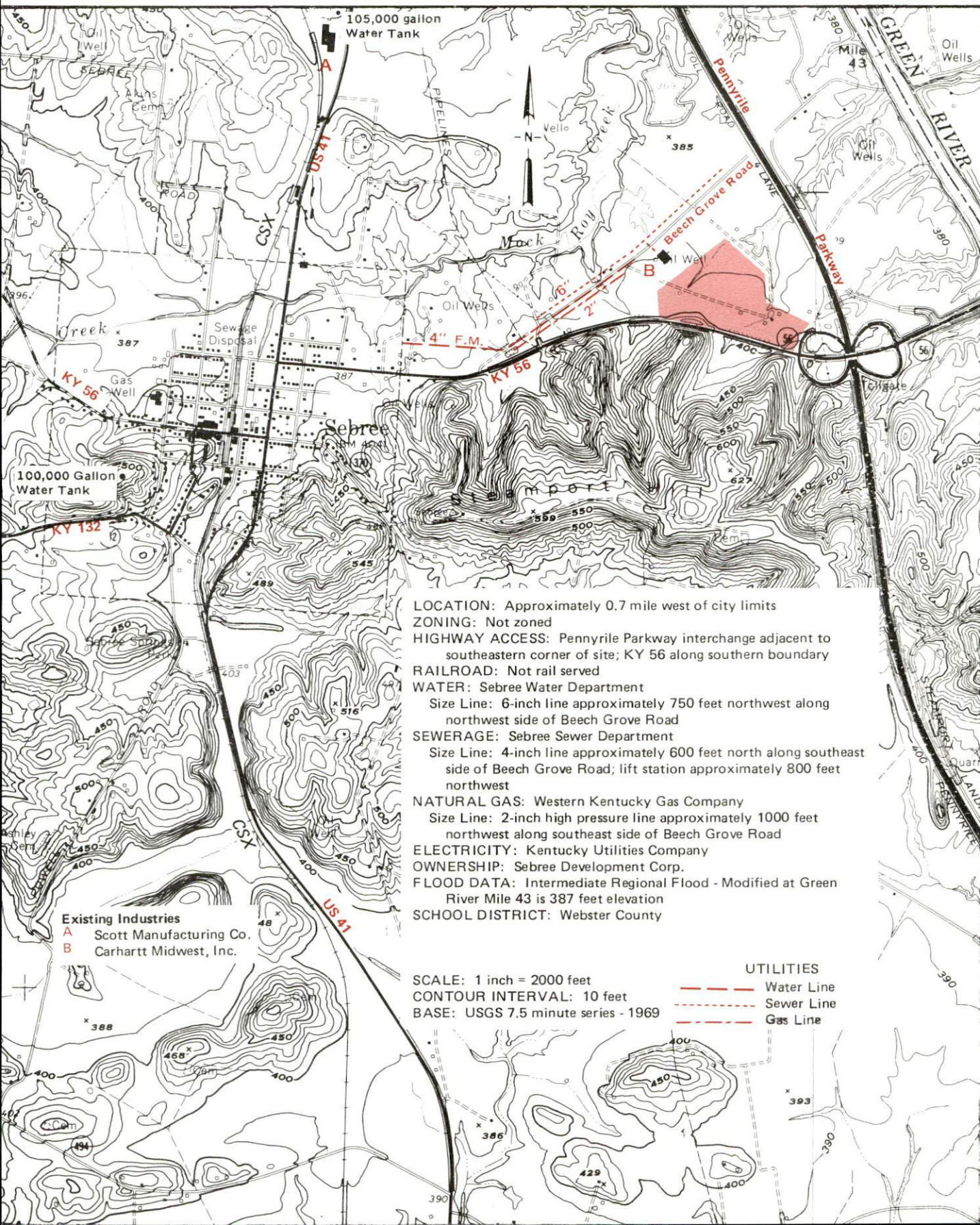
PROVIDENCE, KENTUCKY --- Site 188 --- 15 Acres

For more information contact the Cabinet for Economic Development, Department of Business Development,
Industrial Development & Marketing Division, Capital Plaza Tower, Frankfort, Kentucky 40601
(502-564-7140)



SEBREE, KENTUCKY --- Site 188 --- 48 Acres

For more information contact the Cabinet for Economic Development, Department of Business Development,
Industrial Development & Marketing Division, Capital Plaza Tower, Frankfort, Kentucky 40601
(502-564-7140)



LOCATION: Approximately 0.7 mile west of city limits
ZONING: Not zoned
HIGHWAY ACCESS: Pennyrile Parkway interchange adjacent to southeastern corner of site; KY 56 along southern boundary
RAILROAD: Not rail served
WATER: Sebree Water Department
Size Line: 6-inch line approximately 750 feet northwest along northwest side of Beech Grove Road
SEWERAGE: Sebree Sewer Department
Size Line: 4-inch line approximately 600 feet north along southeast side of Beech Grove Road; lift station approximately 800 feet northwest
NATURAL GAS: Western Kentucky Gas Company
Size Line: 2-inch high pressure line approximately 1000 feet northwest along southeast side of Beech Grove Road
ELECTRICITY: Kentucky Utilities Company
OWNERSHIP: Sebree Development Corp.
FLOOD DATA: Intermediate Regional Flood - Modified at Green River Mile 43 is 387 feet elevation
SCHOOL DISTRICT: Webster County

SCALE: 1 inch = 2000 feet
CONTOUR INTERVAL: 10 feet
BASE: USGS 7.5 minute series - 1969

UTILITIES
--- Water Line
--- Sewer Line
--- Gas Line

Existing Industries
A Scott Manufacturing Co.
B Carhartt Midwest, Inc.

RESOURCES FOR ECONOMIC DEVELOPMENT
WEBSTER COUNTY, KENTUCKY

Prepared by
The Kentucky Department of Business Development
Division of Research and Planning
in cooperation with
The Webster County Economic Development Corporation
and
The Cities of Clay, Providence, and Sebree

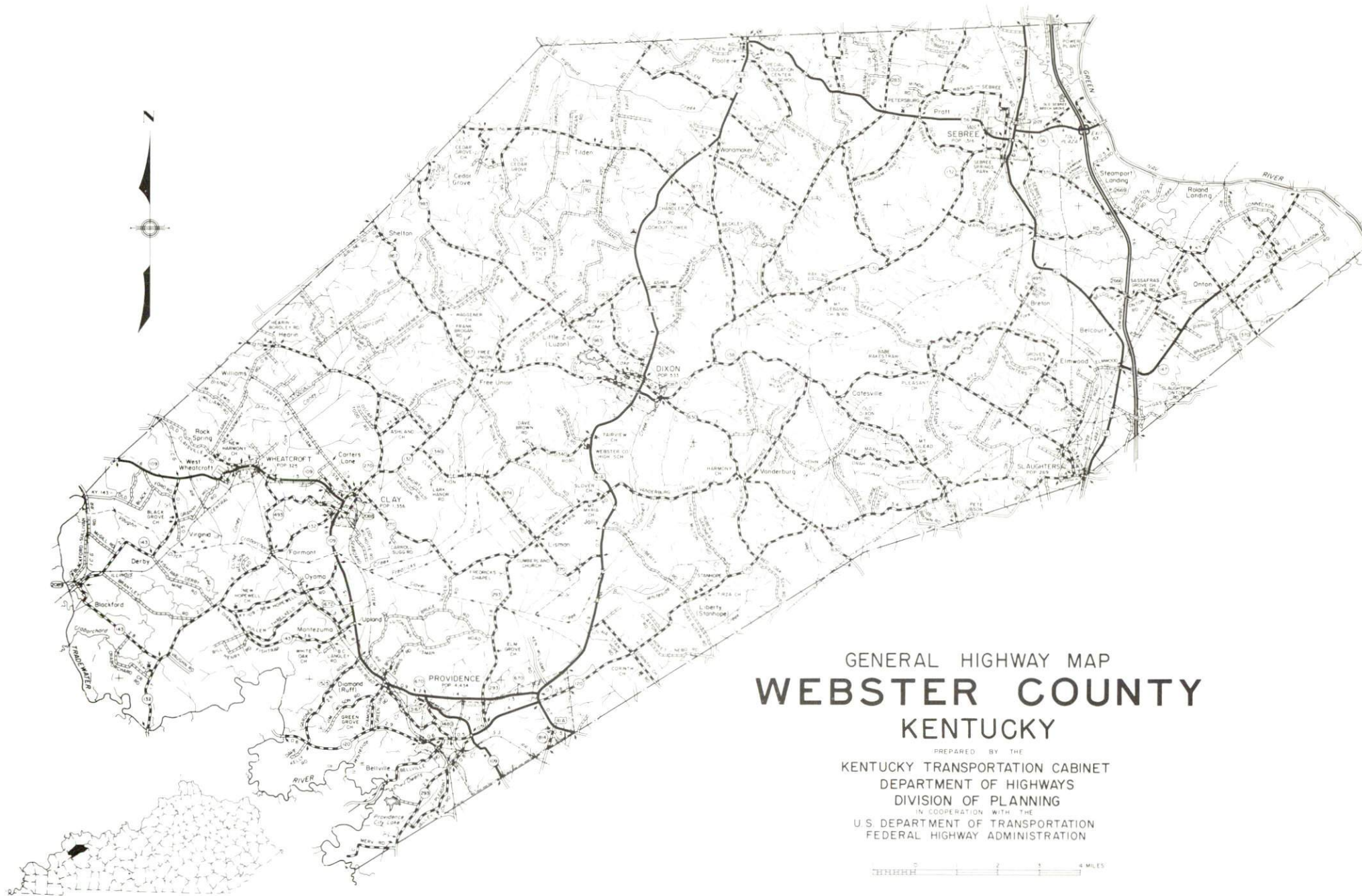
1988

Program manager - Andrew Dennis; research - Barry K. Holder, Jr.; clerical - Bobbi Graves; graphics - Tony Cecconi, Robert Owens, Pat Coleman; cartography - Site Evaluation Branch, Division of Industrial Development and Marketing. Cost of printing paid from state funds.

TABLE OF CONTENTS

<u>Chapter</u>	<u>Page</u>
INDUSTRIAL SITES	i
WEBSTER COUNTY, KENTUCKY - A RESOURCE PROFILE	1
THE LABOR MARKET STATISTICS	2
Labor Market Area Map	2
Population	3
Population Projections	3
Unemployment Rates, 1980-1987 - Line Chart	4
Labor Force Characteristics of Residents, 1987	5
Selected Components of Nonagricultural Employment, by Place of Work, 1986	5
Estimated Male Labor Supply	6
Estimated Female Labor Supply	6
Average Placement Wages	7
Per Capita Personal Income	7
Average Weekly Wages of Workers Covered by Unemployment Insurance F.Y. 1986-87 - Bar Chart	8
Average Weekly Wages by Industry, by Place of Work, 1986	9
EXISTING INDUSTRY	10
Webster County Manufacturing Firms, Their Products and Employment	10
Labor Organizations in Manufacturing Firms	11
Selected Industrial Services	12
TRANSPORTATION	13
Rail	13
Highways	13
Truck Service	14
Air	15
Air Express Service	15
Water	15
POWER AND FUEL	16
Electricity	16
Natural Gas	17
Other Fuels	18
WATER AND SEWERAGE	19
Public Water Supply	19
Sewerage	23

<u>Chapter</u>	<u>Page</u>
CLIMATE	24
LOCAL GOVERNMENT	25
Structure	25
Planning and Zoning	25
Local Fees and Licenses	25
State and Local Property Taxes	26
Combined State and Local Rates Per \$100 Valuation, 1987	26
Safety	28
Police	28
Fire	28
Rescue Service	28
Refuse Collection and Disposal	28
EDUCATION.	29
Public Schools	29
Area Colleges and Universities	30
Vocational Training	31
HEALTH	33
Local Medical Personnel	33
Hospitals	33
Other Medical Facilities	33
Ambulance Service	33
OTHER LOCAL FACILITIES	34
Communications	34
Library Services	34
Religious Institutions	34
Financial Institutions	35
Hotels and Motels	35
RECREATION	36
COMMUNITY IMPROVEMENTS	38



GENERAL HIGHWAY MAP
WEBSTER COUNTY
KENTUCKY

PREPARED BY THE
KENTUCKY TRANSPORTATION CABINET
DEPARTMENT OF HIGHWAYS
DIVISION OF PLANNING
IN COOPERATION WITH THE
U.S. DEPARTMENT OF TRANSPORTATION
FEDERAL HIGHWAY ADMINISTRATION

0 1 2 3 4 MILES

WEBSTER COUNTY, KENTUCKY - A RESOURCE PROFILE

Webster County, with a land area of 336 square miles, is located within the Western Kentucky Coal Field region. The Green River forms the northeastern boundary of the county, while the Tradewater River forms the southwestern boundary of the county. In 1986, Webster County had an estimated population of 14,616.

Dixon, the county seat of Webster County, had a 1986 estimated population of 530. Dixon is located 132 miles north of Nashville, Tennessee; 151 miles southwest of Louisville, Kentucky; and 204 miles southeast of St. Louis, Missouri. Clay, with a 1986 estimated population of 1,330, is located in the western portion of Webster County. Providence, the largest city in the county, is located in the southwestern area of the county. In 1986, Providence had an estimated population of 4,130. Sebree, located in the northeastern portion of Webster County, is situated near the Green River. In 1986, Sebree had an estimated population of 1,390.

The Economic Framework - The total number of Webster County residents employed in 1987 averaged 4,550. In 1986, manufacturing firms in the county reported 580 employees; wholesale and retail trade provided 520 jobs; 300 people were employed in service occupations; state and local government accounted for 560 employees; contract construction firms provided 90 jobs; and 350 people were employed by mining and quarrying operations.

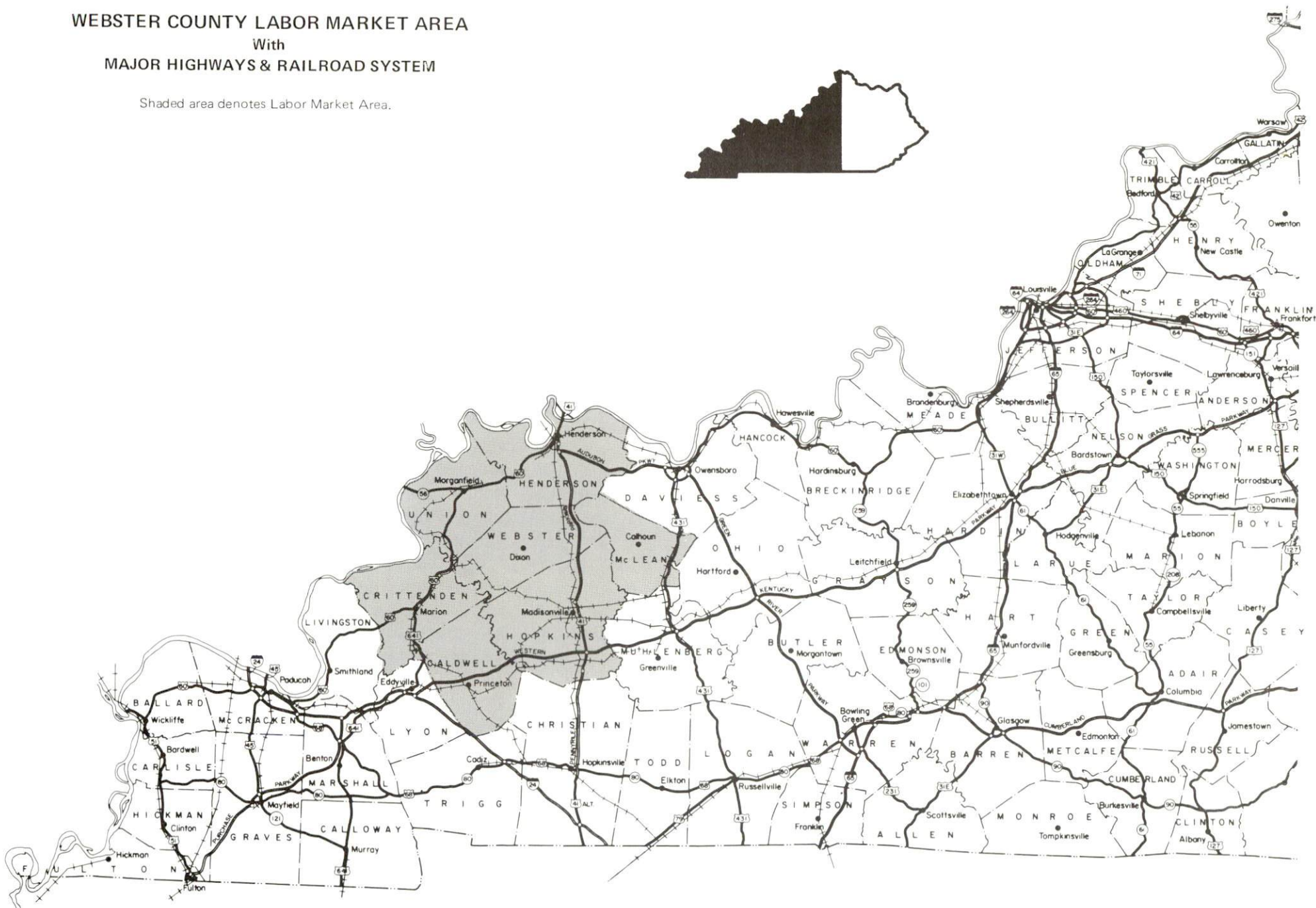
Labor Supply - There is a current estimated labor supply of 8,815 men and 15,040 women available for industrial jobs in the labor market area. In addition, from 1988 through 1992, 6,230 young men and 5,810 young women in the area will become 18 years of age and potentially available for industrial jobs.

Transportation - Rail service is provided to Providence and Sebree by CSX Transportation. Providence is also served by the Tradewater Railway. Major highways serving Webster County include the Pennyryle Parkway, U.S. 41, U.S. 41A, and Kentucky 109. Thirteen trucking companies have the authority to serve Webster County. The Evansville Dress Regional Airport, 39 miles north of Dixon, provides the nearest scheduled commercial airline service. The Providence-Webster County Airport maintains one paved runway, 3,800 feet long, to accommodate small aircraft.

Power and Fuel - Electric power is provided to Providence by Providence Municipal Light and Water Company. Sebree, Clay, and parts of Webster County are served by Kentucky Utilities Company. Webster County is also served by the Green River Electric Corporation and the Henderson-Union Rural Electric Cooperative Corporation. Natural gas service is provided to Providence by the Providence Municipal Gas Company, to Sebree by the Western Kentucky Gas Company, and to Clay by the Clay Gas System.

Education - Primary and secondary education is provided to Providence by the Providence Independent School System. Dixon, Clay, Sebree, and unincorporated Webster County are served by the Webster County School System. Nine institutions of higher learning are located within 60 miles of Dixon. The Madisonville State Vocational-Technical School in Madisonville, 24 miles southeast of Dixon, and the Webster County Area Vocational Education Center, in Dixon, provide courses in vocational training.

Shaded area denotes Labor Market Area.



LABOR MARKET STATISTICS

The Webster County Labor Market Area includes Webster County and the adjoining Kentucky counties of Caldwell, Crittenden, Henderson, Hopkins, McLean and Union.

POPULATION

Area	1986*	1980	1970	Percent Nonwhite
				1980
Dixon	530	533	572	3.2
Clay	1,330	1,356	1,426	0.9
Providence	4,130	4,434	4,270	17.8
Sebree	1,390	1,516	1,092	1.0
Slaughters	260	269	276	0.0
Wheatcroft	320	325	229	13.5
Labor Market Area	153,152	152,446	134,096	-
Webster County	14,616	14,832	13,282	6.1
Caldwell County	13,295	13,473	13,179	6.4
Crittenden County	8,820	9,207	8,493	1.0
Henderson County	42,321	40,849	36,031	7.7
Hopkins County	46,590	46,174	38,167	7.2
McLean County	9,920	10,090	9,062	0.8
Union County	17,590	17,821	15,882	18.9

* Population estimates.

Note: The 1980 city counts of population by race are provisional.

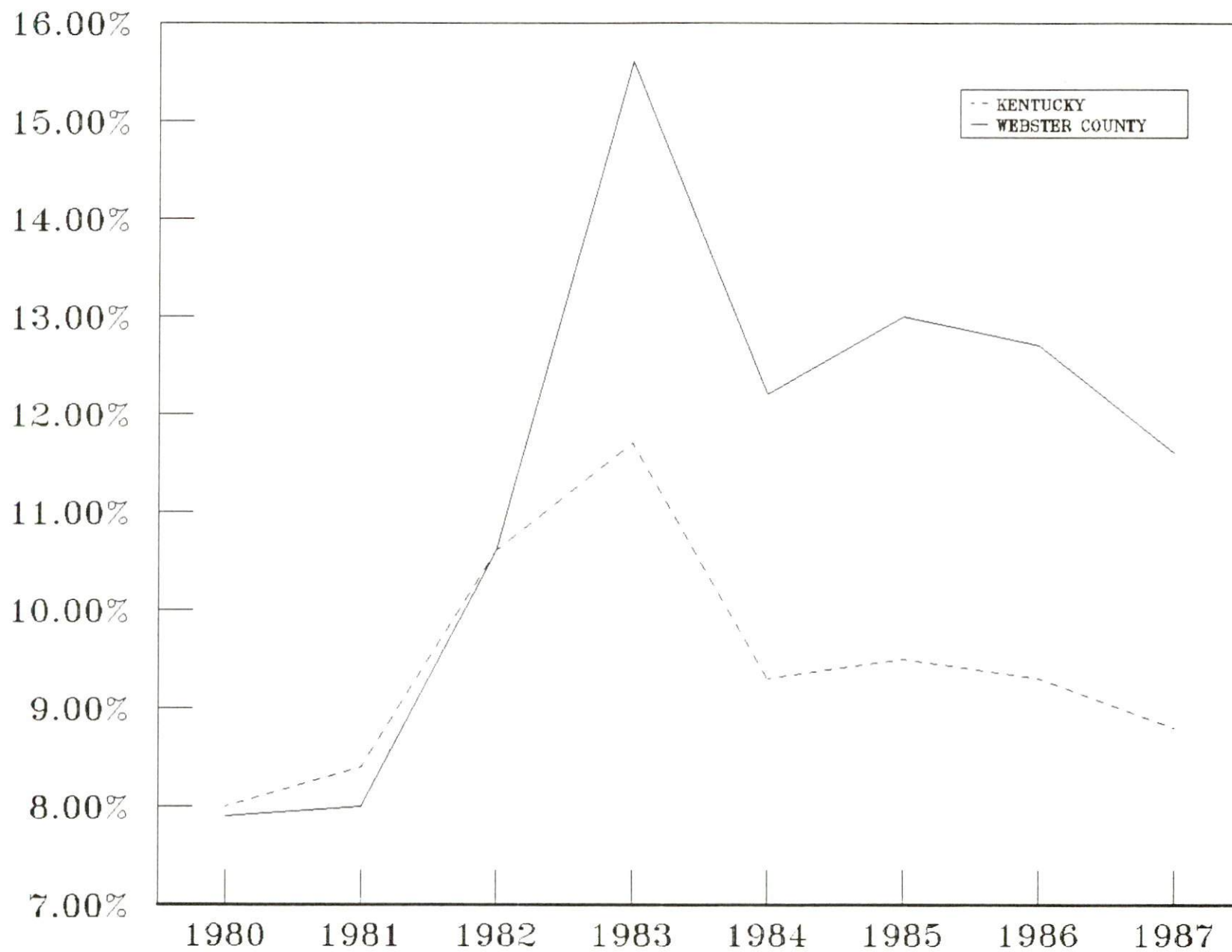
Sources: U.S. Department of Commerce, Bureau of the Census, 1980 Census of Population and Housing, March 1981; 1980 Census of Population, Number of Inhabitants. University of Louisville, Urban Studies Center, Population Unit.

POPULATION PROJECTIONS

Area	1990	1995	2000	2010
Labor Market Area	160,449	165,923	170,259	177,091
Webster County	15,251	15,653	15,998	16,578
Caldwell County	13,325	13,328	13,255	13,100
Crittenden County	9,351	9,622	9,797	10,082
Henderson County	44,905	46,961	48,561	51,103
Hopkins County	48,401	49,995	51,317	53,335
McLean County	10,442	10,807	11,070	11,425
Union County	18,774	19,557	20,261	21,468

Source: University of Louisville, Urban Studies Center, Population Research Unit, How Many Kentuckians: Population Forecasts, 1980-2020, the 1986 Edition, Spring 1986.

UNEMPLOYMENT RATES



LABOR FORCE CHARACTERISTICS OF RESIDENTS, 1987

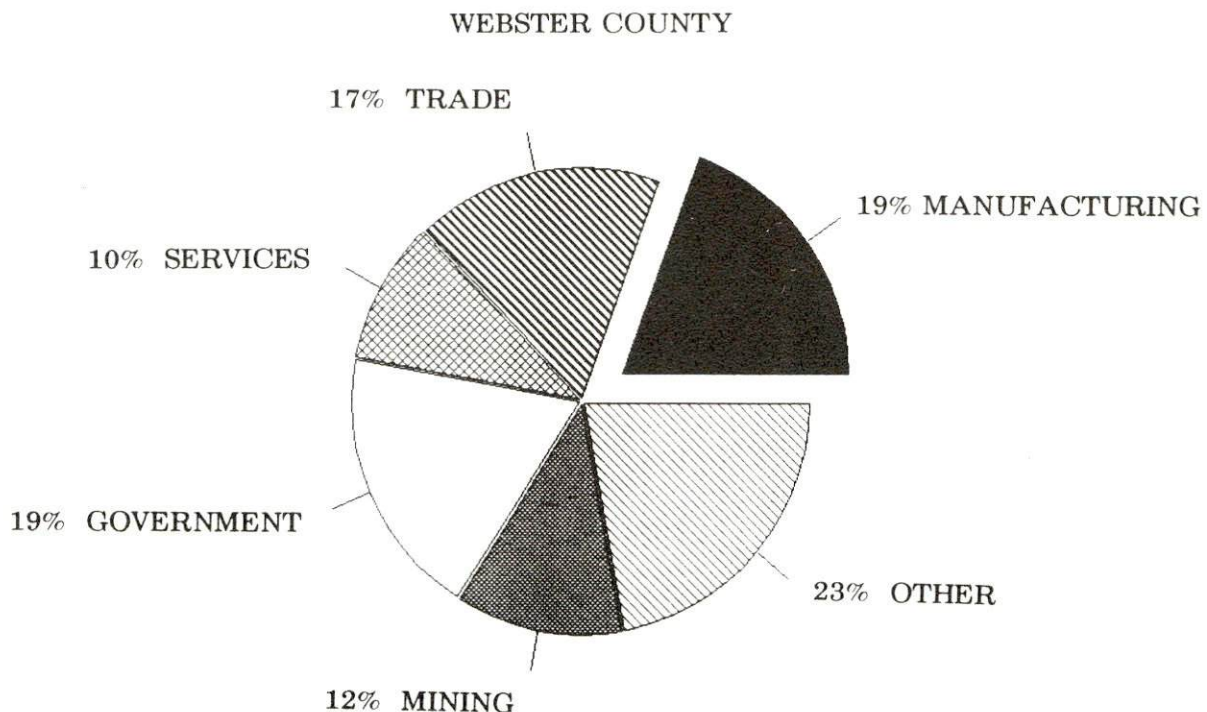
	Webster County	Labor Market Area
Civilian Labor Force	5,147	66,472
Employment	4,548	59,711
Unemployment	599	6,761
Rate of Unemployment (%)	11.6	10.2

Source: Kentucky Cabinet for Human Resources, Kentucky Labor Force Estimates, Annual Averages, 1987.

SELECTED COMPONENTS OF NONAGRICULTURAL EMPLOYMENT BY PLACE OF WORK, 1986

	Webster County	Labor Market Area
All Industries (total)	2,968	46,241
Manufacturing	578	11,098
Wholesale & Retail Trade	523	9,717
Services	296	8,915
State/Local Government	561	6,091
Contract Construction	92	1,213
Mining & Quarrying	354	5,130

Note: Excludes domestic workers, railway workers, certain nonprofit corporations, majority of federal government workers, and self-employed workers.
Source: Kentucky Cabinet for Human Resources, Average Monthly Workers Covered by Kentucky Unemployment Insurance Law, 1986.



**ESTIMATED MALE LABOR SUPPLY
WEBSTER COUNTY LABOR MARKET AREA**

Area	Current				Future
	Total Male	Unemployed	Under-employed	Not in Labor Force	Becoming 18 years of age 1988 thru 1992
Labor Market					
Area*	8,815	3,904	3,262	1,649	6,227
Webster	1,117	253	211	653	545
Caldwell	1,011	376	290	345	532
Crittenden	936	291	208	437	355
Henderson	1,964	1,170	794	0	1,768
Hopkins	2,236	1,100	922	214	1,931
McLean	621	369	252	0	400
Union	930	345	585	0	696

**ESTIMATED FEMALE LABOR SUPPLY
WEBSTER COUNTY LABOR MARKET AREA**

Area	Current				Future
	Total Female	Unemployed	Under-employed	Not in Labor Force	Becoming 18 years of age 1988 thru 1992
Labor Market					
Area*	15,042	3,979	3,719	7,344	5,810
Webster	2,157	406	302	1,449	612
Caldwell	1,488	337	351	800	464
Crittenden	1,064	221	165	678	324
Henderson	2,734	1,463	1,163	108	1,600
Hopkins	4,849	903	1,183	2,763	1,760
McLean	1,176	337	223	616	399
Union	1,574	312	332	930	651

* Additional workers may be drawn from other nearby counties.

Note: Unemployed - persons unemployed and actively seeking work; Underemployed - persons employed but working only 14 to 26 weeks per year; Not in Labor Force - represents the number of persons who would enter the labor force if suitable employment were available (based on the assumption that persons in Kentucky would like to participate in the labor force in the same proportion that they do nationally).

Sources: Kentucky Cabinet for Human Resources, Kentucky Labor Supply Estimates by County, 1986. Kentucky Department of Economic Development, Future Labor Supply Becoming 18 Years of Age, 1988 thru 1992.

AVERAGE PLACEMENT WAGES

Webster County is served by the Henderson local office of the Kentucky Department for Employment Services. The focus of the following data is on job placements made by the Henderson local office and may therefore be used as an indicator of the wages which employers in the area pay new employees. During the twelve months which ended on June 30, 1987, the local employment office filled 2,102 job openings in various occupational categories. The average hourly wage for selected occupational categories were:

<u>OCCUPATIONAL CATEGORY</u>	<u>NUMBER OF PLACEMENTS</u>	<u>AVERAGE WAGE(\$)</u>
All Occupations	2,102	4.18
Clerical	383	3.60
Sales	135	3.94
Services (excluding domestic)	390	3.55
Agricultural, Fishery, Forestry, etc.	222	3.40
Processing	219	4.33
Machine Trades	147	4.99
Bench Work	139	4.50
Structural	128	5.80
Motor Freight/ Transportation	42	5.90
Packaging and Materials Handling	191	3.85
Other	20	13.42

The Henderson local office also serves Henderson and Union Counties. The above occupational categories are taken from the Dictionary of Occupational Titles published by the U.S. Department of Labor.

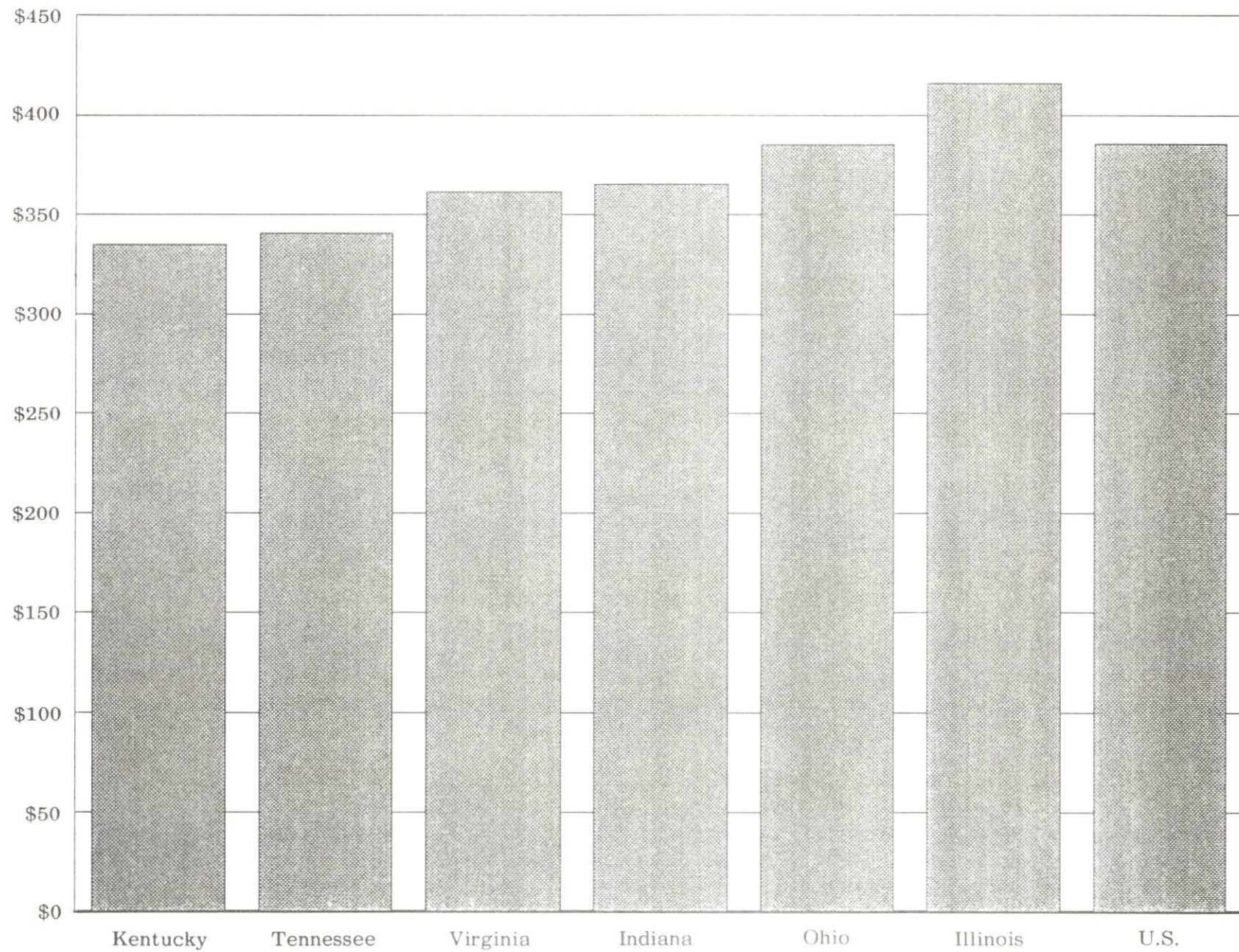
Source: Kentucky Cabinet for Human Resources, Department for Employment Services.

PER CAPITA PERSONAL INCOME

<u>Area</u>	<u>1980</u>	<u>1984</u>	<u>Percent Change</u>
Webster County	\$ 8,232	\$ 11,093	34.8
Labor Market Area Range	\$6,922 - 9,367	\$9,464 - 12,066	-
Kentucky	7,644	10,232	33.9
U.S.	9,494	12,772	34.5

Sources: U.S. Department of Commerce, Bureau of Economic Analysis. Kentucky Economic Information System, June 1986.

AVERAGE WEEKLY WAGES OF WORKERS COVERED BY
UNEMPLOYMENT INSURANCE F.Y. 1986-87



AVERAGE WEEKLY WAGES BY INDUSTRY
BY PLACE OF WORK, 1986

	<u>Webster County</u>	<u>Caldwell County</u>	<u>Crittenden County</u>	<u>Henderson County</u>
All Industries	\$346.02	\$262.87	\$249.57	\$351.70
Mining & Quarrying	772.19	353.75	313.66	713.85
Contract Construction	270.77	219.65	272.55	314.31
Manufacturing	292.40	327.59	*	448.55
Transportation, Communications & Public Utilities	517.11	404.49	305.73	474.98
Wholesale & Retail Trade	210.52	191.45	160.27	222.77
Finance, Insurance & Real Estate	280.26	310.94	267.34	363.20
Services	143.96	226.97	187.24	270.48
State/Local Government	271.53	276.73	246.72	313.42
Other	180.50	173.53	162.14	265.06
	<u>Hopkins County</u>	<u>McLean County</u>	<u>Union County</u>	
All Industries	\$361.80	\$263.66	\$433.11	
Mining & Quarrying	712.95	247.41	720.38	
Contract Construction	290.57	139.13	353.17	
Manufacturing	447.26	335.65	309.17	
Transportation, Communications & Public Utilities	418.07	456.79	468.41	
Wholesale & Retail Trade	235.32	207.79	194.97	
Finance, Insurance & Real Estate	298.75	261.08	303.30	
Services	265.19	175.34	249.38	
State/Local Government	318.51	260.51	294.62	
Other	177.94	170.63	235.10	

* Not disclosed.

Note: The average weekly wage for each category includes the salaries and wages of all persons working for that type business. For example, the manufacturing category includes both production workers and administrative personnel. Excludes domestic workers, railway workers, certain nonprofit corporations, majority of federal government workers, and self-employed workers.

Source: Kentucky Cabinet for Human Resources, Average Weekly Wages of Workers Covered by Kentucky Unemployment Insurance Law, 1986.

EXISTING INDUSTRY

WEBSTER COUNTY MANUFACTURING FIRMS, THEIR PRODUCTS AND EMPLOYMENT

Firm (Establishment date)	Product	Average Employment			Labor Unions
		Total	Male	Female	
Dixon					
Pioneer Plastics (1981)	Molding, custom injection	52	19	33	
Clay					
Clay Machine Works, Inc. (1967)	Welding, machine shop, cylinder parts, mining & farm machine parts	15	12	3	
Crop Production Services, Inc. (1964)	Fertilizer blending	4	3	1	
Providence					
Carhartt Midwest, Inc. (1981)	Work clothing, men's outer- wear	102	12	90	Garment Workers*
Hoov-R-Line, Division of Twentieth Century Company (1974)	Plastic plumbing parts	120	36	84	Steel- workers*
The Journal-Enterprise, Inc. (1902)	Newspaper	10	4	6	
Northern Printing and Office Supplies (1973)	Job printing	4	2	2	
Providence Machine, Inc. (1956)	Machine shop, metal fabrica- tion, mining machinery parts	34	32	2	

(Continued)

Firm (Establishment date)	Product	Average Employment			Labor Unions
		Total	Male	Female	
West Kentucky Steel Construction (1958)	Steel fabrica- tion	10	8	2	
Sebree					
Carhartt Midwest, Inc. (1973)	Men's work clothing	110	10	100	Garment Workers*
Scott Manufacturing Company (1973)	Fabricated fiber- glas, metal bulding insulation, styrofoam	23	13	10	
The Sebree Banner (1892)	Newspaper, commercial printing	4	1	3	
Wheatcroft					
Da-Co Machine and Steel Fabriction, Inc. (1977)	Steel fabri- cation, mine equipment repair	9	8	1	

* See Labor Organizations below.

Sources: Kentucky Department of Economic Development, 1988 Kentucky Directory of Manufacturers; Division of Research and Planning.

LABOR ORGANIZATIONS IN MANUFACTURING FIRMS

<u>Union</u>	<u>Representing workers at:</u>
United Garment Workers of America, AFL-CIO	Carhartt Midwest, Inc. (Providence plant); Carhartt Midwest, Inc. (Sebree plant)
United Steelworkers of America, AFL-CIO	Hoov-R-Line, Division of Twentieth Century Company

SELECTED INDUSTRIAL SERVICES

<u>Types of Service</u>	<u>Location</u>	<u>Mileage from Dixon</u>
Custom Data Processing	Henderson, Kentucky	26
Custom Plastics Producers	Dixon, Kentucky	-
Electric Motor Repair	Madisonville, Kentucky	24
	Henderson, Kentucky	26
Grinding, Precision & Tool	Corydon, Kentucky	22
Heat Treating Facilities	Evansville, Indiana	36
Industrial Equipment & Supplies	Madisonville, Kentucky	24
Industrial Gases	Madisonville, Kentucky	24
	Henderson, Kentucky	26
Industrial Waste Removal	Henderson, Kentucky	26
Machine Shops, Tool & Die	Clay, Kentucky	9
Metal Castings	Robards, Kentucky	21
Metal Finishers	Livermore, Kentucky	38
Metal Service Centers	Owensboro, Kentucky	52
Millwrights	Evansville, Indiana	36
Public Warehouse Facilities	Henderson, Kentucky	26

Sources: Kentucky Department of Economic Development, Kentucky Directory of Selected Industrial Services, 1987; Division of Research and Planning.

TRANSPORTATION

Rail

Line serving Providence - CSX Transportation

Services - Branch line; service is provided as needed to Providence; switching services; team track space for three cars; nearest piggyback facilities at Evansville, Indiana, 47 miles north of Providence

Line serving Providence - Tradewater Railway

Services - Main line; four northbound and four southbound freights stop weekly; switching services; siding space for 90 cars; nearest piggyback facilities are provided by CSX Transportation at Evansville, Indiana, 47 miles north of Providence

Line serving Sebree - CSX Transportation

Services - Main line; ten northbound and ten southbound through freights daily; local stops as needed; switching services; nearest piggyback facilities at Evansville, Indiana, 30 miles north of Sebree

For details on routing, schedules, rates, and services contact:

Manager
Industrial Development
CSX Transportation
908 West Broadway
P. O. Box 2157
Louisville, Kentucky 40201
(502) 587-7746

and/or

Tradewater Railway
P. O. Box 66
Sturgis, Kentucky 42459
(502) 333-4151

Highways

Major highways serving Webster County include the Pennyrile Parkway, U.S. 41, U.S. 41 Alternate, Kentucky 56, and Kentucky 109. Interchanges with the Pennyrile Parkway, a multi-lane toll road, are located 2 miles east of Sebree. The Pennyrile Parkway provides access to the Audubon Parkway to the north and the Western Kentucky Parkway to the south. Interchanges with the Western Kentucky Parkway are located 16 miles south of Providence via Kentucky 109.

Truck Service (Dixon)

Advance Transportation Company*
 American Freight System, Inc.**
 Averitt Express, Inc.*
 Bowman Transportation, Inc.*
 Carolina Freight Carriers
 Corporation*
 Consolidated Freightways
 Corporation of Delaware*

Hohenwald Truck Lines, Inc.*
 K-Double-I Express*
 Manning Motor Express*
 Midwest Freightways, Inc.*
 Overnite Transportation Company*
 Spartan Express, Inc.*
 Yellow Freight System, Inc.*

* Provides both interstate and intrastate service.

** Provides interstate service only.

Source: American Motor Carrier Directory, Spring 1988.

HIGHWAY MILES AND TRUCK TRANSIT TIME IN DAYS FROM DIXON, KENTUCKY, TO SELECTED MARKET CENTERS

City	Highway Miles	Delivery		City	Highway Miles	Delivery	
		Time TL				Time TL	
Atlanta, GA	374	2		Los Angeles, CA	2,049	8	
Baltimore MD	758	5		Louisville, KY	151	1	
Birmingham, AL	328	2		Nashville, TN	132	1	
Chicago, IL	328	2		New Orleans, LA	649	4	
Cincinnati, OH	252	1		New York, NY	899	5	
Cleveland, OH	496	3		Pittsburgh, PA	539	4	
Detroit, MI	511	3		St. Louis, MO	204	2	
Knoxville, TN	309	1					

Note: Mileage computations are via the best interstate or primary highways, not necessarily the most direct route of travel.

Sources: Rand McNally Deluxe Motor Carriers' Road Atlas, 1987. Official Kentucky Mileage Map, 1980. Delivery time - Majors Transit, Inc., P. O. Box 9, Caneyville, Kentucky 42721 (delivery time from Providence).

Air

Local

Providence-Webster County Airport*
Location: 2 miles northeast of Providence
Runways: 1 paved
Length: 3,800 feet
Traffic
Control: Lighted wind sock, unicom 122.8
Lighting: Radio activated lighting system, rotating beacon
Services: 100 octane LL fuel, car rental, tie down, hangar,
office and lounge

Nearest Scheduled Commercial Airline Service

Evansville Dress Regional Airport
Location: 3 miles north of Evansville, Indiana;
39 miles north of Dixon, Kentucky
Runways: 3 paved
Length: 8,021 feet; 5,080 feet; 3,500 feet
Traffic
Control: Control tower
Lighting: Beacon, runway
Services: Eastern, USAir, Piedmont, Northwest, Trans World
Express, Continental Express, Comair, American
Eagle; fuel - 100LL, jet-A; hangars, tie-downs;
major A & P repairs, major Avionics repairs;
flight instruction, APU, charter, oxygen, plane
rental, survival equipment; taxi, car rentals,
courtesy car; weather information; restaurant,
hotel

Air Freight
Service: Air freight terminal

Air Express Service

Several major companies offer air express services in Kentucky. These companies provide a quick means of shipping small to medium-sized packages expeditiously.

Water

The nearest navigable river is the Green River at Sebree, where a 9-foot navigational channel is maintained to the Ohio River. The Henderson County Riverport Authority offers port facilities at Henderson, 26 miles north of Dixon.

* The Providence-Webster County Airport recently resurfaced its runway and runway ramp. Total cost of the project was approximately \$80,000.

POWER AND FUEL

Electricity

Company serving Dixon, Sebree, Clay and parts of Webster County -
Kentucky Utilities Company
Source of power - Kentucky Utilities Company
For industrial rates contact:

Industrial Development Department
Kentucky Utilities Company
One Quality Street
Lexington, Kentucky 40507
(606) 255-1461

Company serving Providence - Providence Municipal Light and Water
Company*
Source of power - Kentucky Utilities Company
For industrial rates contact:

Providence Municipal Light and Water
Company
North Willow Street
Providence, Kentucky 42450
(502) 667-2511

Companies serving Webster County - Green River Electric Corporation
and Henderson-Union Rural Electric Cooperative Corporation
Source of power - Big Rivers Electric Corporation
For industrial rates contact:

Green River Electric Corporation
P. O. Box 1389
Owensboro, Kentucky 42302
(502) 926-4141

and/or

Henderson-Union RECC
P. O. Drawer 18
Henderson, Kentucky 42420
(502) 826-3991 or (800) 242-7069

* The Providence Municipal Light and Water Company is in the process of renovating its electric transformers, transmission lines, disconnections and installing new street lights. Completion date for the project is scheduled for 1991.

Natural Gas

Company serving Clay - Clay Gas System

Source of supply - Texas Gas Transmission Corporation
Size of transmission mains - 26-inch (supplier); 6-inch (distributor)
Distribution mains - 1 to 4 inches
Distribution pressure - 10 to 25 psi
Btu content - 1,020 per cubic foot
Specific gravity - .585
For rates and supplies contact:

Clay Gas System
North Main Street
P. O. Box 425
Clay, Kentucky 42404
(502) 664-2444

Company serving Providence - Providence Municipal Gas Company*

Source of supply - Texas Gas Transmission Corporation
Size of transmission mains - 26-inch (supplier); 4-inch (distributor)
Distribution mains - 1 to 4 inches
Distribution pressure - Up to 28 psi
Btu content - 1,008 to 1,016 per cubic foot
Specific gravity - .585
For rates and supplies contact:

Providence Municipal Gas Company
P. O. Box 128
Providence, Kentucky 42450
(502) 667-2511

Company serving Sebree - Western Kentucky Gas Company

Source of supply - Texas Gas Transmission Corporation
Size of transmission mains - 12-inch (supplier); 2-inch (distributor)
Distribution mains - 2 to 4 inches
Distribution pressure - 25 psi
Btu content - 1,000 per cubic foot
Specific gravity - 0.600
For rates and supplies contact:

Western Kentucky Gas Company
311 West 7th Street
Owensboro, Kentucky 42301
(502) 685-8067 or (502) 685-8026

* The City of Providence Municipal Gas Company recently spent \$12,000 for the construction of a five-mile gas distribution line to serve the entire west side of Providence.

Other Fuels

Propane

Lin-Gas, Inc.
Highway 41 South
Slaughters, Kentucky 42456

Southern States Coop Clay Service
205 East Railroad Street
Clay, Kentucky 42404

Fuel oils

Distillate fuel oil -

Ashland Oil Company*
North Broadway
Providence, Kentucky 42450

Marathon Oil Company*
U.S. 41
Sebree, Kentucky 42455

Hart Gas and Oil Company, Inc.*
North Broadway
Providence, Kentucky 42450

Residual fuel oil - Arrangements must be made with the refinery.

Low sulphur content coal - Available in Kentucky.

* Bulk plant.

WATER AND SEWERAGE

Public Water Supply

Company serving Clay - Clay Water System*
Main Street
P. O. Box 425
Clay, Kentucky 42404
(502) 664-2444

Source - Webster County Water District
Average daily consumption - 100,000 gallons
Peak daily consumption - 170,000 gallons
Storage capacity - 555,000 gallons
Size lines - 1 to 8 inches
Water pressure - 30 to 60 psi

MONTHLY WATER RATES

First	2,000 gallons	\$11.00 (Minimum)
All over	2,000 gallons	4.30 per M gallons

Tap-on charge: \$200

Company serving Providence - Providence Municipal Light and Water
Company
Cedar Street
Providence, Kentucky 42450
(502) 667-7332

Source - Two lakes, Tradewater River
Treatment plant capacity - 1,500,000 gallons per day
Average daily consumption - 629,000 gallons
Peak daily consumption - 941,000 gallons
Treatment processes - Coagulation, sedimentation, chlorination,
rapid mix, flocculation, filtration, fluoridation
Storage capacity - 700,000 gallons (including clear well)
Size lines - 1 through 12 inches
Water pressure - 72 to 80 psi

MONTHLY WATER RATES

Inside city limits

First	3,000 gallons	\$7.50 (Minimum)
Next	2,000 gallons	2.00 per M gallons
Next	10,000 gallons	1.80 per M gallons
Next	15,000 gallons	1.35 per M gallons
Next	30,000 gallons	1.13 per M gallons
All over	60,000 gallons	.83 per M gallons

(Continued)

* The City of Clay Water System recently spent \$12,000 for the renovation of a 55,000-gallon elevated water storage tank.

Outside city limits

First	3,000 gallons	\$10.00 (Minimum)
Next	2,000 gallons	2.25 per M gallons
Next	5,000 gallons	1.88 per M gallons
Next	5,000 gallons	1.50 per M gallons
Next	5,000 gallons	1.35 per M gallons
Next	10,000 gallons	1.20 per M gallons
Next	15,000 gallons	1.05 per M gallons
All over	45,000 gallons	.75 per M gallons

Tap-on charge: \$175

Company serving Sebree - City of Sebree
P. O. Box 245
305 Spring Street
Sebree, Kentucky 42455
(502) 835-7501

Source - Alcan Aluminum Company*

Average daily consumption - 125,000 gallons

Peak daily consumption - 150,000 gallons

Treatment processes - Aeration, rapid mix, coagulation, flocculation,
chlorination, filtration, fluoridation

Storage capacity - 315,000 gallons

Size lines - 2 to 8 inches

Water pressure - 75 to 100 psi

The City of Sebree recently completed two major water projects, including the construction of a water distribution system which enables Sebree to purchase water from a company, then distribute it to the customers. In addition, a 210,000-gallon elevated water storage tank was erected. The combined costs of the two projects totaled \$1,000,000.

MONTHLY WATER RATES

Inside city

5/8, 3/4, and 1-inch meter

First	2,000 gallons	\$10.00 (Minimum)
All over	2,000 gallons	2.00 per M gallons

1 1/2 and 2-inch meter

First	2,000 gallons	\$11.00 (Minimum)
All over	2,000 gallons	2.00 per M gallons

(Continued)

* The City of Sebree purchases treated water from the Alcan Aluminum Company. Under the current contractual agreement, the city of Sebree is permitted to purchase a maximum of 250,000 gallons of water per day.

All larger meters

First	2,000 gallons	\$12.00 (Minimum)
All over	2,000 gallons	2.00 per M gallons

Outside city

5/8, 3/4, and 1-inch meter

First	2,000 gallons	\$12.00 (Minimum)
All over	2,000 gallons	2.00 per M gallons

1 1/2 and 2-inch meter

First	2,000 gallons	\$13.00 (Minimum)
All over	2,000 gallons	2.00 per M gallons

All larger meters

First	2,000 gallons	\$14.00 (Minimum)
All over	2,000 gallons	2.00 per M gallons

Tap-on charges: \$225

Name of water district - Webster County Water District*
Route 2, Box 111A, Davis Road
Sebree, Kentucky 42455
(502) 884-3395 or (502) 884-3879

Area served - Southeastern, central, and western parts of Webster County

Date when water district began operating - October 1980

Source of raw water - 2 wells

Capacity of treatment plant - 846,000 gallons per day

Treatment processes - Aeration, coagulation, flocculation, sedimentation, chlorination, rapid mix, filtration, fluoridation

Average amount of water used in a 24-hour period - 464,081 gallons

Peak amount of water used in a 24-hour period - 600,000 gallons

Storage capacity - 731,000 gallons

Size lines - 3 to 12 inches

Water pressure - 35 to 150 psi

(Continued)

* Recent projects by the Webster County Water District include the renovation of several pumps and wells, which increased pumping capacity from 425 gpm to 1,200 gpm; and the construction of an equipment storage building. Total combined cost of the two projects was approximately \$63,000.

MONTHLY WATER RATES

5/8-inch x 3/4-inch meter

First	2,000 gallons	\$11.50 (Minimum)
Next	4,000 gallons	5.20 per M gallons
Next	4,000 gallons	4.25 per M gallons
Next	20,000 gallons	3.45 per M gallons
Next	20,000 gallons	2.90 per M gallons
Next	50,000 gallons	2.50 per M gallons
All over	100,000 gallons	1.70 per M gallons

1-inch meter

First	10,000 gallons	\$49.30 (Minimum)
Next	20,000 gallons	3.45 per M gallons
Next	20,000 gallons	2.90 per M gallons
Next	50,000 gallons	2.50 per M gallons
All over	100,000 gallons	1.70 per M gallons

1 1/2-inch meter

First	15,000 gallons	\$66.55 (Minimum)
Next	15,000 gallons	3.45 per M gallons
Next	20,000 gallons	2.90 per M gallons
Next	50,000 gallons	2.50 per M gallons
All over	100,000 gallons	1.70 per M gallons

2-inch meter

First	20,000 gallons	\$83.80 (Minimum)
Next	10,000 gallons	3.45 per M gallons
Next	20,000 gallons	2.90 per M gallons
Next	50,000 gallons	2.50 per M gallons
All over	100,000 gallons	1.70 per M gallons

3-inch meter

First	30,000 gallons	\$118.30 (Minimum)
Next	20,000 gallons	2.90 per M gallons
Next	50,000 gallons	2.50 per M gallons
All over	100,000 gallons	1.70 per M gallons

Tap-on charge:

5/8-inch meter - \$300

All larger meters - Actual cost of labor and materials

Sewerage

Company serving Clay - Clay Sewerage System
Main Street
P. O. Box 425
Clay, Kentucky 42404
(502) 664-2444

Design capacity - 200,000 gallons per day
Average daily flow - 100,000 gallons
Type of treatment - Primary
Treatment processes - Lagoon system, chlorination, post aeration,
polishing lagoon
Treated effluent discharged into - Crab Orchard Creek
Size of sanitary mains - 8 inches
Size of storm mains - 12 and 15 inches
Monthly rates - 60 percent of monthly water bill
Tap-on charge: \$600

Company serving Providence - Providence Municipal Light and Water
Company*
Cedar Street
Providence, Kentucky 42450
(502) 667-7332

Design capacity - 450,000 gallons per day
Average daily flow - 288,000 gallons
Type of treatment - Primary and secondary
Treatment processes - Grit removal, primary sedimentation, trickling
filter, chlorination, sludge drying beds
Treated effluent discharged into - Owens Creek to Tradewater River
Size of sanitary mains - 8 through 15 inches
Size of storm mains - 12 through 48 inches
Tap-on charge: \$200

MONTHLY SEWER RATES

First	3,000 gallons	\$7.50 (Minimum)
All over	3,000 gallons	7.50 plus 75 percent of monthly water bill

Company serving Sebree - Sebree Wastewater Treatment Plant**
P. O. Box 245
Sebree, Kentucky 42455
(502) 835-7501

Design capacity - 160,000 gallons per day
Average daily flow - 110,000 gallons
Type of treatment - Primary
Treatment processes - Flow equalization, screening, grit removal,
extended aeration, chlorination, aerobic digester
Treated effluent discharged into - Mock Roy Creek
Size of sanitary mains - 6 and 8 inches
Size of storm mains - 36 inches
Monthly rates - 50 percent of monthly water bill
Tap-on charge: \$200

* The Providence Municipal Light and Water Company is in the process of expanding and upgrading its existing sewerage system.

** The City of Sebree is planning to renovate its existing wastewater treatment system.

CLIMATE

Webster County

Temperature

Normal (30-year record)	55.70 degrees
Average annual 1986	57.00 degrees
Record highest, July 1954 (46-year record)	105.00 degrees
Record lowest, February 1951 (46-year record)	-23.00 degrees
Normal heating degree days (30-year record)	4,729
(Heating degree day totals are the sums of negative departures of average daily temperatures from 65 degrees F.)	

Precipitation

Normal (30-year record)	41.55 inches
Mean annual snowfall (30-year record)	14.10 inches
Total precipitation 1986	37.68 inches
Mean number days precipitation (.01 inch or more) (46-year record)	115.70
Mean number days thunderstorms (46-year record)	45.10

Prevailing winds (through 1963)

South-Southwest

Relative Humidity (25-year record)

Midnight	78 percent
6 a.m.	81 percent
Noon	59 percent
6 p.m.	62 percent

Source: U.S. Department of Commerce, Environmental Science Services Administration, Climatological Data, 1986. Station of record: Evansville, Indiana.

LOCAL GOVERNMENT

Structure

Clay, Providence and Sebree are each served by a mayor and six council members. The mayor is elected to a four-year term while the council members each serve two-year terms.

Webster County is served by a county judge/executive and three magistrates. Each official serves a four-year term.

Planning and Zoning

City agency - Providence Planning and Zoning Commission

Zoning enforced - Within city only

Mandatory state codes enforced - Kentucky Plumbing code, National

Electric Code, Kentucky Boiler Regulations and Standards, Kentucky

Building Code (modeled after BOCA code)

Local Fees and Licenses

The City of Clay levies an unloading fee ranging from \$10.50 to \$15.50 and also levies a 17 percent insurance premium tax on policies written within the city. The City of Providence levies a \$7.50 annual automobile license fee, and a \$10.50 annual loading fee for trucks under one ton and \$15.00 for trucks over one ton. The City of Sebree levies fees on businesses ranging from \$31.25 to \$70.00. An optional fire card is available for \$25.00, which provides fire protection to residents and businesses outside of Sebree, within a ten-mile radius.

A 3 percent tax is levied on utilities receipts for schools in Webster County. Tax is paid by all consumers of utilities as an add-on to the utilities bills. Exempted are receipts from utilities services that are resold and the receipts from the sale of energy or energy producing fuels that exceed 3 percent of the cost of production in manufacturing, processing, mining or refining.

State and Local Property Taxes

All property in Kentucky, except items exempted by the state constitution, is taxed by the state. Property which also may be taxed by local jurisdictions includes land and buildings, finished goods inventories, automobiles, trucks, office furniture and office equipment. Local taxing jurisdictions in Kentucky include counties, cities, and school districts.

All property in Kentucky is assessed at 100 percent of fair cash value.

COMBINED STATE AND LOCAL RATES PER \$100 VALUATION, 1987

	City of Clay	City of Seebree
Land and Buildings	\$0.874	\$0.934
Manufacturing		
Machinery	0.150	0.150
Pollution Control		
Equipment	0.150	0.150
Inventories		
Raw materials	0.001	0.001
Goods in Process	0.001	0.001
Finished Goods	0.6808	0.7408
Automobiles & Trucks	1.1628	1.2028
Other Tangible		
Personal Property	1.1298	1.1898
Intangibles (Accounts		
receivable*, money		
in hand, stock,		
notes, bonds)	0.250	0.250
Goods Stored in Public		
Warehouses in Transit		
Status	0.001	0.001
Private Leaseholds in		
Industrial Revenue		
Bond Financed		
Facilities	0.015	0.015

(Continued)

	City of Providence and Within the Providence School District	City of Providence and Within the Webster County School District	Unincorporated Webster County
Land and Buildings	\$1.197	\$1.104	\$0.604
Manufacturing			
Machinery	0.150	0.150	0.150
Pollution Control			
Equipment	0.150	0.150	0.150
Inventories			
Raw materials	0.001	0.001	0.001
Goods in Process	0.001	0.001	0.001
Finished Goods	1.0038	0.9108	0.4238
Automobiles & Trucks	1.4578	1.3728	0.8728
Other Tangible			
Personal Property	1.4528	1.3598	0.8598
Intangibles (Accounts receivable*, money in hand, stock, notes, bonds)	0.250	0.250	0.250
Goods Stored in Public Warehouses in Transit Status	0.001	0.001	0.001
Private Leaseholds in Industrial Revenue Bond Financed Facilities	0.015	0.015	0.015

* Accounts receivable are taxed at 85 percent of face value, for an effective rate of \$0.2125 per \$100 valuation.

Safety

Police	Clay	Providence	Sebree	Webster County
Total staff	2	9	2	9
Radio-patrol cars	1	4	1	4
Fire*	Clay	Providence	Sebree	Webster County
Insurance Services Office, Public Protection Classification	8	4	7	**
Full-time staff	0	10	5	15
Volunteers	12	12	10	132

Rescue Service

Rescue service is provided to Providence by the Providence Fire Department and Rescue Squad and to Sebree by the Sebree Fire and Rescue Squad. Webster County Rescue Squad provides this service to all other areas in the county.

Refuse Collection and Disposal

Municipal refuse collection and disposal service is provided to the businesses and residents of Providence and Sebree. Private service is available in all other areas in the county.

* Includes copyrighted material of ISO Commercial Risk Services, Inc., with its permission.

** Property located within the Onton Fire District and within 1,000 feet of a fire hydrant has a class 8 rating; property located within the Slaughters Fire District and within 1,000 feet of a fire hydrant is rated as class 7; all other areas within these two fire districts, plus the Wheatcroft Fire District, has a class 9 rating; all other areas within unincorporated Webster County is rated as class 10.

EDUCATION

Public Schools

	Providence Independent*	Webster County**
Total Enrollment (March 1988)	610	2,280
Kindergarten	57	181
Elementary	401	1,410
High School	152	689
Pupil-Teacher Ratio (1985-86)	18-1	20-1
Percent High School Graduates to College (1985-86)	34.2	25.9
Expenditures Per Pupil (1985-86)	\$2,107.33	\$1,930.19

* The Providence Independent School System recently instituted a career development program for in-school youth. In addition, Principles of Technology was added to the college prep curriculum.

** Recent projects by the Webster County School System include construction of the 149,000-square-foot Sebree Elementary School, totaling \$3.2 million; an \$800,000 renovation of Slaughters Elementary School; and the renovation of the central office building which totaled \$120,000.

Area Colleges and Universities

<u>Name</u>	<u>Location (Miles distant from Dixon)</u>	<u>Enrollment (Fall, 1987)</u>	<u>Highest Degree Conferred</u>
Madisonville Community College	Madisonville, Kentucky (24)	1,514	Associate
Henderson Community College	Henderson, Kentucky (26)	1,116	Associate
University of Evansville	Evansville, Indiana (36)	3,550	Masters
University of Southern Indiana	Evansville, Indiana (36)	4,624	Masters
Brescia College	Owensboro, Kentucky (52)	725	Baccalaureate*
Kentucky Wesleyan College	Owensboro, Kentucky (52)	774	Baccalaureate*
Owensboro Community College	Owensboro, Kentucky (52)	1,530	Associate
Hopkinsville Community College	Hopkinsville, Kentucky (58)	1,341	Associate

* Courses in masters degree programs are taught on campus by faculty members of Western Kentucky University or Murray State University. The degrees are issued by Western Kentucky University or Murray State University.

Vocational Training

The Bluegrass State Skills Corporation, an independent public corporation created and funded by the Kentucky General Assembly, provides programs of skills training to meet the needs of business and industry from entry level to advanced training, and from upgrading present employees to retraining experienced workers.

The Bluegrass State Skills Corporation is the primary source for skills training assistance for a new or existing company. The Corporation works in partnership with other employment and job training resources and programs, as well as Kentucky's economic development activities, to package a program customized to meet the specific needs of a company.

Vocational training is available at both the state vocational-technical schools and the area vocational education centers. The state vocational-technical schools are post-secondary institutions. The area vocational education centers are designed to supplement the curriculum of high school students. Both the state vocational-technical schools and the area vocational education centers offer evening courses to enable working adults to upgrade current job skills.

Arrangements can be made to provide training in the specific production skills required by an industrial plant. Instruction may be conducted either in the vocational school or in the industrial plant, depending upon the desired arrangement and the availability of special equipment.

Nearest State Schools

Madisonville State Vocational-Technical School
Madisonville, 24 miles distant

Consumer & Home Economics
Consumer & Family Life
Skills
Industrial Education
Auto Body Repair
Auto Mechanics
Carpentry
Diesel Mechanics
Drafting (with CAD/CAM)
Electricity
Electronics
Machine Shop
Mine Maintenance Technology

Tool & Die Making
Welding
Learning Resource Center
Public Service Occupations
Business/Industry Security
Training
CPR Training
Electrical Safety Training
Emergency Medical Care
Fire Service Training
First Aid & Safety
Rescue & Emergency Services
Training

(Continued)

Madisonville Health Occupations Center
Madisonville, 24 miles distant

Home Economics	Medical Laboratory Technician
Consumer & Family Life Skills	Medical Secretary
Health & Personal Services	Practical Nursing
Occupations	Radiologic Technology
Biomedical Equipment Technology	Respiratory Therapy Technician
Dental Assisting	Surgical Technology

Nearest Area Education Center

Webster County Area Vocational Education Center
Dixon

Health & Personal Services	Electricity
Occupations	Machine Shop
Health Services	Welding
Industrial Education	
Auto Mechanics	

HEALTH

Local Medical Personnel

Physicians - 8
Dentists - 6

Hospitals

<u>General Hospital</u>	<u>Location</u>	<u>Beds</u>
Regional Medical Center of Hopkins County	Madisonville, 24 miles southeast of Dixon	401
Community Methodist Hospital	Henderson, 26 miles north of Dixon	213

Regional Medical Center of Hopkins County

Medical staff - 95 physicians on active staff; 250 registered nurses;
122 licensed practical nurses

Community Methodist Hospital

Medical staff - 85 physicians, 144 registered nurses; 57 licensed
practical nurses

Other Medical Facilities

Sebree Medical Center
Total Care
Trover Clinic
Webster county Health Department

Ambulance Service

Name - Providence Fire Department

Staff - Nine full-time emergency medical technicians; five volunteer
emergency medical technicians

Name - City of Sebree Emergency Medical Service

Staff - Eight emergency medical technicians

Name - Webster County Ambulance Service

Staff - Dixon unit: Twelve emergency medical technicians; Clay unit:
Eight emergency medical technicians

OTHER LOCAL FACILITIES

Communications

Telephone - South Central Bell Telephone Company
Telegraph - Western Union
Toll-Free number, 1-800-325-6000

Newspapers -
Weekly and circulation - Journal Enterprise - 4,500 (Providence);
The Sebree Banner - 4,000 (Sebree)

Radio - WHRZ-FM (Providence)

Television -
Airwave reception from - Paducah, Kentucky; Evansville, Indiana;
Harrisburg, Illinois; Nashville,
Indiana

Cable service - Horizon TCI

Educational Television - The Kentucky Educational Television
(K.E.T.) network is available
statewide

Library Services

Public library - Webster County Public Library*
Size collection - 42,000 volumes
Circulation, 1986-87 - 104,904

Religious Institutions

Denominations -	Assembly of God	Jehovah's Witnesses
	Baptist	Methodist
	Catholic	Pentecostal
	Christian	Presbyterian
	Church of Christ	Seventh Day Adventist

Nearest Synagogues - Evansville, Indiana, 36 miles north of Dixon
Congregations - Adath Israel (reform)

* The main library is located in Dixon. Branches are located in Providence and Sebree.

Financial Institutions

<u>Banks</u>	<u>Assets</u>	<u>Deposits</u>	<u>Statement Date</u>
Dixon Bank	\$24,808,000.00	\$22,270,000.00	12/31/87
Farmers Bank (Clay)	75,854,000.00	62,117,000.00	3/31/88
Poole Deposit Bank	30,717,000.00	25,721,000.00	12/31/87
Providence State Bank	29,485,000.00	25,382,000.00	12/31/87
Sebree Deposit Bank	16,075,296.58	13,652,605.80	12/31/87
<u>Savings and Loan Associations</u>	<u>Assets</u>	<u>Deposits</u>	<u>Statement Date</u>
First Federal Savings and Loan Association (Providence)	\$64,083,617.35	\$61,691,882.22	12/31/87

Hotels and Motels

Webster County

Total number -	2
Total rooms -	20

RECREATION

Local

Baker Park in Dixon includes a fishing lake and the park board is developing a little league field. Dixon Park features basketball and tennis courts, a baseball field, a picnic shelter, and concessions.

Westerfield Memorial Park in Providence contains picnic shelters and grills, a concession stand, restrooms, three baseball diamonds, two tennis courts, a basketball court, track and a playground. The legion park contains a baseball diamond, Christian Youth Center, horse show rink and is the location of the annual Coal Festival.

The 30-acre Sebree Springs Park in Sebree features a swimming pool, two tennis courts, volleyball courts, baseball diamond, basketball court, pavilion, picnic area, three shelter houses, horse show rink and playground equipment. Recreational facilities at the Sebree Elementary School include a football field and a baseball diamond.

The Clay Community Park in Clay is a 10-acre public park containing two lighted baseball fields with bleachers, playground equipment, two tennis courts, concession stands, barbecue pit, and community building.

Area (Within 60 miles)

Just north of Henderson, 28 miles north of Dixon, is the **John James Audubon State Park**, a 692-acre park where the famed naturalist gathered material for his painting, "The Birds of America." Many paintings by Audubon and his sons, and 126 first-edition prints of his paintings are on display at the Audubon Memorial and Nature Museum which is the focal point of the park. Other park features include the Audubon woods, a bird sanctuary, and a 12-acre nature preserve lake. The park has cottages and camping sites. Recreational facilities include a 28-acre recreational lake, a beach and a bathhouse, rental rowboats and pedal boats, a dock, a 9-hole golf course, a tennis court, hiking trails, picnic shelters, planned recreation, and playgrounds. Organized recreation programs are offered during the summer.

Pennyrile Forest State Resort Park near Dawson Springs is located 33 miles south of Dixon. The 24-room lodge, 13 cottages, and 68 campsites nestled within the trees provide excellent accommodations. Other facilities and activities include a dining room, a gift shop, rental rowboats and pedal boats, a 9-hole golf course, miniature golf, hiking trails, horseback riding, picnicking, playgrounds, shuffleboard, swimming at the lodge pool and off a sand beach, and two tennis courts. Lake Beshear, only four miles from the lodge, sports good fishing.

Owensboro, 55 miles northeast of Dixon, is Kentucky's third largest city. Owensboro is a source of many entertainment and recreational facilities associated with larger communities. Points of interest include museums, an orchestra and two colleges. Several festivals are held annually, including the International Bar-B-Que Festival, the Summer Festival, and the Bluegrass Festival.

Ben Hawes State Park, 55 miles northeast of Dixon near Owensboro, is a 300-acre park which is open year-round. It features a playground, a softball field, tennis courts, hiking trails, a picnic area and shelters, including an 18-hole and 9-hole golf course, pro shop, driving range and archery range.

The Land Between the Lakes, located on a 170,000-acre wooded peninsula, is an outdoor recreational and conservational education center. The Golden Pond Visitors Center offers a multimedia theatre/planetarium and observatory. Camping, swimming, fishing, boating, hiking, a buffalo herd on a 250-acre range, an Environmental Education Center for school study groups, an educational farm and a central station with films and displays are among the attractions. Kentucky Lake and Lake Barkley are among the top fishing and water sport recreation areas in the southeastern United States. The Land Between the Lakes area is 56 miles southwest of Dixon.

Kentucky Dam Village State Resort Park, located 57 miles southwest of Dixon near Gilbertsville, is one of the largest and most popular vacation resorts in Kentucky. A modern lodge with 72 rooms, a small lodge with 14 rooms, 67 cottages, and a 221-site campground make up the accommodations. The park includes a 4,000-foot lighted airstrip. There is also a dining room overlooking Kentucky Lake, a coffee shop, a snack bar, two gift shops, a meeting room, an activities center, and a recreation room. Recreational activities to choose from include boating and fishing at the largest docking facility in the Kentucky parks system, golf at the 18-hole Village Green Course, fishing, hiking, horseback riding, picnicking, swimming at the lodge pool or off the sand beach, and tennis.

Lake Barkley State Resort Park, 60 miles southwest of Dixon near Cadiz, is located on an embayment of Lake Barkley. The magnificent lodge includes 130 rooms, five suites, 13 cottages, a dining room, a coffee shop, a gift shop, two meeting rooms, and a recreation room. An activities center with a capacity for 1,000, a complete fitness center, and an 80-site campground are located near the lodge. A lodge pool, a beach and a bathhouse, an 18-hole golf course, a pro shop, tennis courts, a riding stable, a trapshooting range, a basketball court, hiking trails, playgrounds, and a picnic area round out the recreational facilities. The marina near the lodge has everything for the "boat lover": covered and open slips, a launching ramp, and rentals for fishing boats, skiing boats, and pleasure ride pontoons. An airport, including a 4,800-foot lighted airstrip, is available.

COMMUNITY IMPROVEMENTS

Recent

The City of Sebree recently completed two major water projects, including the construction of a water distribution system which enables Sebree to purchase water from a company, then distribute it to the customers. In addition, a 210,000-gallon elevated water storage tank was erected. The combined costs of the two projects totaled \$1,000,000.

Recent projects by the Webster County Water District include the renovation of several pumps and wells, which increased pumping capacity from 425 gpm to 1,200 gpm; and the construction of an equipment storage building. Total combined cost of the two projects was approximately \$63,000.

The Providence-Webster County Airport recently resurfaced its runway and runway ramp. Total cost of the project was approximately \$80,000.

The City of Clay Water System recently spent \$12,000 for the renovation of a 55,000-gallon elevated water storage tank.

The City of Providence Municipal Gas Company recently spent \$12,000 for the construction of a five-mile gas distribution line to serve the entire west side of Providence.

Recent projects by the Webster County School System include construction of the 149,000-square-foot Sebree Elementary School, totaling \$3.2 million; an \$800,000 renovation of Slaughters Elementary School; and the renovation of the central office building which totaled \$120,000.

The Providence Independent School System recently instituted a career development program for in-school youth. In addition, Principles of Technology was added to the college prep curriculum.

The City of Clay recently constructed a municipal building which includes administrative offices and meeting rooms. The 2,500-square-foot building totaled \$100,000 for completion of the project.

A 12-unit apartment housing complex for the elderly was recently developed. Total cost of the project was approximately \$300,000.

Under Way

The Providence Municipal Light and Water Company is in the process of renovating its electric transformers, transmission lines, disconnections and installing new street lights. Completion date for the project is scheduled for 1991. In addition, the company is in the process of expanding and upgrading its existing sewerage system.

A \$750,000 housing rehabilitation project is under way in Providence. Sixty houses are under renovation while 14 houses are being replaced. The federally-funded project is scheduled for completion in Summer 1988.

Planned

The City of Sebree is planning to upgrade its existing wastewater treatment system.

Providence Greens, Ltd., a 20-unit apartment complex, is planned for construction in Providence.