

1969

Industrial Resources: Whitley County - Corbin

Kentucky Library Research Collections
Western Kentucky University, spcol@wku.edu

Follow this and additional works at: https://digitalcommons.wku.edu/whitley_cty



Part of the [Business Administration, Management, and Operations Commons](#), [Growth and Development Commons](#), and the [Infrastructure Commons](#)

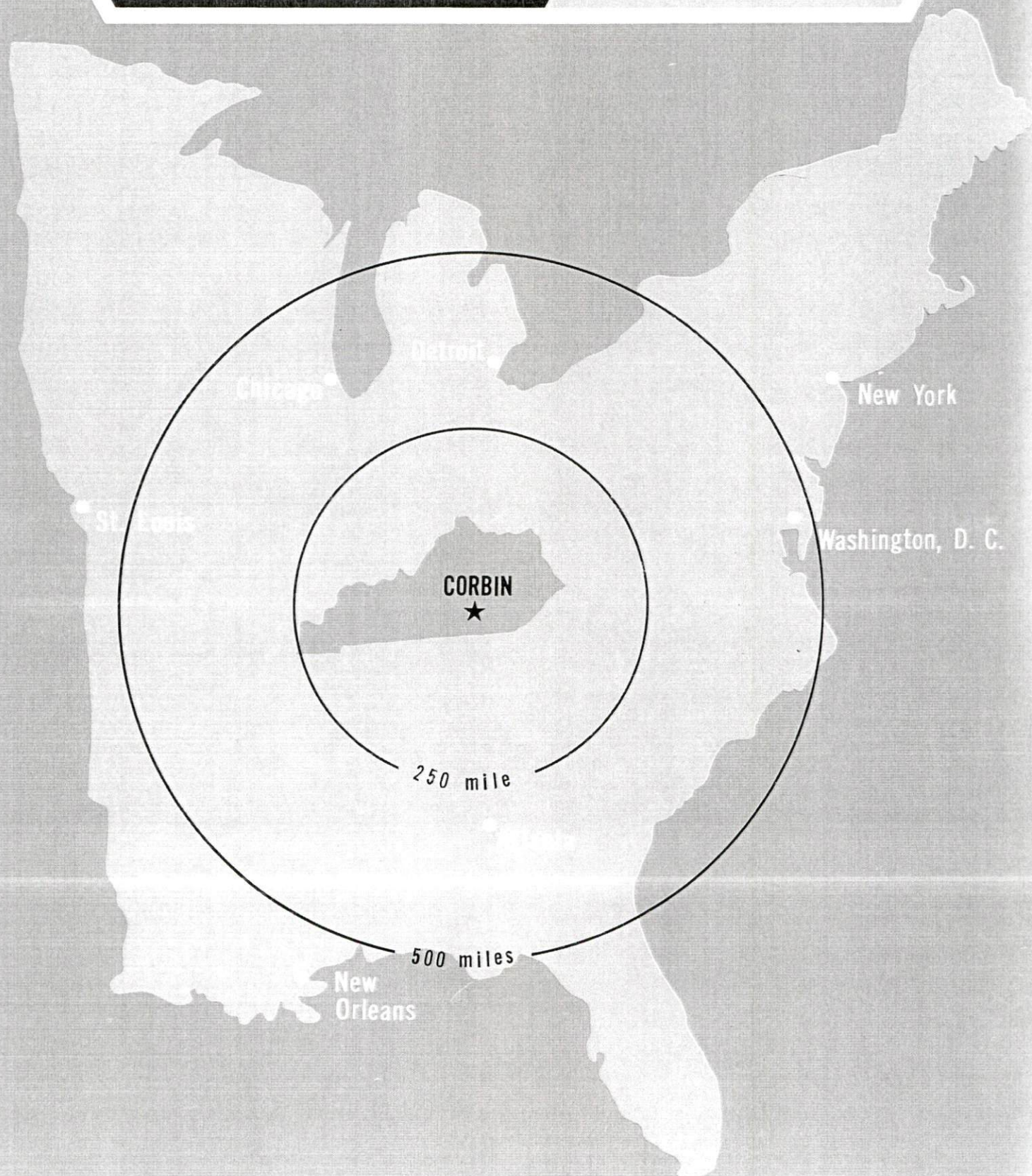
Recommended Citation

Kentucky Library Research Collections, "Industrial Resources: Whitley County - Corbin" (1969). *Whitley County*. Paper 13.
https://digitalcommons.wku.edu/whitley_cty/13

This Report is brought to you for free and open access by TopSCHOLAR®. It has been accepted for inclusion in Whitley County by an authorized administrator of TopSCHOLAR®. For more information, please contact topscholar@wku.edu.

INDUSTRIAL RESOURCES

**CORBIN
KENTUCKY**



CURRENT INDUSTRIAL RESOURCES

CURRENT INDUSTRIAL RESOURCES, CORBIN, KENTUCKY

This is a 1970 supplement to "Industrial Resources, Corbin, Kentucky" which was published in 1969.

Population

	<u>1970</u>	<u>1960</u>
Corbin	7,217	7,119
Whitley County	23,501	25,815
Labor Market Area	117,830	123,773
(Includes Whitley, Bell, Knox, Laurel, and McCreary Counties)		

General Employment Characteristics

	<u>Employment 1969</u>	
<u>Industry</u>	<u>Whitley County</u>	<u>Labor Market Area</u>
TOTAL	7,800	26,400
Agriculture	600	2,500
Nonagricultural	7,200	23,900
Manufacturing	900	4,647
Trade & Services	2,261	7,393
Government	1,000	5,000

Manufacturing Employment

<u>Type Industry</u>	<u>Whitley County</u>			<u>Labor Market Area</u>		
	<u>1969</u>	<u>1959</u>	<u>% Change</u>	<u>1969</u>	<u>1959</u>	<u>% Change</u>
TOTAL	724	240	+ 201.7	4,710	1,943	+ 142.4
Food & kindred products	133	104	+ 27.9	649	507	+ 28.0
Apparel, textiles, leather	352	0	--	1,838	264	+ 596.2
Printing, publishing, paper	56	45	+ 24.4	404	92	+ 339.1
Lumber & furniture	92	40	+ 130.0	953	886	+ 7.6
Chemicals, petroleum, coal, rubber	0	0	--	98	39	+ 151.3
Machinery & metal products	50	3	+1566.6	687	61	+1026.2
Other	41	48	- 14.6	81	94	- 13.8

There are presently 30 manufacturing firms in Whitley County. Major firms, employment, and year started operations:

<u>Firms</u>	<u>Employment</u>	<u>Year Started Operations</u>
<u>Corbin</u>		
American Greetings Corp.	400	1967
Elicon-Corbin, Inc.	300	1961
National-Standard Co.	279	1962
<u>Williamsburg</u>		
Lion Uniform, Inc.	400	1959
Roper Corp.	200	1969

Labor Supply

	<u>Whitley County</u>			<u>Labor Market Area</u>		
	<u>Total</u>	<u>Male</u>	<u>Female</u>	<u>Total</u>	<u>Male</u>	<u>Female</u>
Current	2,287	991	1,296	12,932	5,309	7,623
Potential additions next five years	2,640	1,346	1,294	13,854	7,051	6,803

Personal Income

Whitley County, 1968: Total - \$45,527,000; Per capita - \$1,737
 1959: Total - \$22,587,000; Per capita - \$ 859

Property Tax Rates

Property tax rates per \$100 of assessed valuation, 1969:

	<u>Corbin</u>	<u>Whitley County</u>
State	\$.015	\$.015
County	.185	.185
School	.554	.336
City	.308	
Total	\$1.062	\$.536

Labor Organizations

United Steel Workers - National-Standard Co.
 International Brotherhood of Electrical Workers and International Association
 of Machinists - Elicon-Corbin, Inc.
 United Mine Workers - U. S. Steel Corporation

CORBIN INDUSTRIAL SITES

1970

CORBIN INDUSTRIAL SITES

For additional information concerning the industrial sites, contact Roy G. Houser, Jr., Executive Director, Corbin Chamber of Commerce and Corbin Industrial Commission, Corbin, Kentucky 40701, or the Kentucky Department of Commerce, Frankfort, Kentucky 40601.

SITE # 1:

LOCATION: Northwest corner of North Corbin Interchange of I-75
 ACREAGE: 100 acres
 TOPOGRAPHY: Hilly
 UTILITIES: Water - Corbin City Utilities Commission
 Sewer (soon to be constructed)
 Corbin City Utilities Commission
 Electricity - Kentucky Utilities Company
 Gas - Peoples Gas Company
 OWNERSHIP: Optioned by Corbin Industrial Commission

SITE # 3:

LOCATION: 3/4 mile from U.S. 25-E bypass route
 ACREAGE: 22 acres and on rail
 TOPOGRAPHY: Level
 UTILITIES: Water - Corbin City Utilities Commission
 Sewer (soon to be constructed)
 Corbin City Utilities Commission
 Electricity - Kentucky Utilities Company
 Gas - Peoples Gas Company
 OWNERSHIP: Optioned by Corbin Industrial Commission

SITE # 5:

LOCATION: North of Corbin, Kentucky - borders American Greetings Corporation factory site to the north
 ACREAGE: Forty (40) acres
 TOPOGRAPHY: Level to hilly - twenty-five (25) acres can be developed at reasonable cost
 UTILITIES: Twelve (12) inch water line and 250,000-gallon storage tank. Sanitary sewers soon to be constructed - Corbin City Utilities Commission. Four (4) inch natural gas line - Peoples Gas Company of Kentucky. Electricity - Kentucky Utilities Company
 OWNERSHIP: Optioned by Corbin Industrial Commission, Corbin, Kentucky

SITE # 7:

LOCATION: North of Corbin, Kentucky - county road immediately east of industrial access road to American Greetings plant
 ACREAGE: Thirty (30) acres
 TOPOGRAPHY: Level to hillside
 UTILITIES: Twelve (12) inch water line and 250,000-gallon storage tank. Sanitary sewers soon to be constructed - Corbin City Utilities Commission. Four (4) inch natural gas line - Peoples Gas Company of Kentucky. Electricity - Kentucky Utilities Company
 OWNERSHIP: Optioned by Corbin Industrial Commission, Corbin, Kentucky

SITE # 9:

LOCATION: One-half (1/2) mile south of Corbin city limits on Kentucky 26
 ACREAGE: Thirty-five (35) acres
 TOPOGRAPHY: Level land
 UTILITIES: Water - City Utilities Commission, Corbin, Kentucky
 Electricity - Kentucky Utilities Company
 Gas - Peoples Gas Company of Kentucky
 OWNERSHIP: Optioned by Corbin Industrial Commission, Corbin, Kentucky

SITE # 2:

LOCATION: Northeast corner of North Corbin Interchange of I-75
 ACREAGE: 50 acres
 TOPOGRAPHY: Rolling to hilly
 UTILITIES: Water - Corbin City Utilities Commission
 Sewer (soon to be constructed)
 Corbin City Utilities Commission
 Electricity - Kentucky Utilities Company
 Gas - Peoples Gas Company
 OWNERSHIP: Optioned by Corbin Industrial Commission

SITE # 4:

LOCATION: North of Corbin, Kentucky - immediately south of American Greetings plant site
 ACREAGE: Twelve (12) acres
 TOPOGRAPHY: Gently rolling
 UTILITIES: Twelve (12) inch water line and 250,000-gallon storage tank. Sanitary sewers soon to be constructed - Corbin City Utilities Commission. Four (4) inch natural gas line - Peoples Gas Company of Kentucky. Electricity - Kentucky Utilities Company
 OWNERSHIP: Optioned by Corbin Industrial Commission, Corbin, Kentucky

SITE # 6:

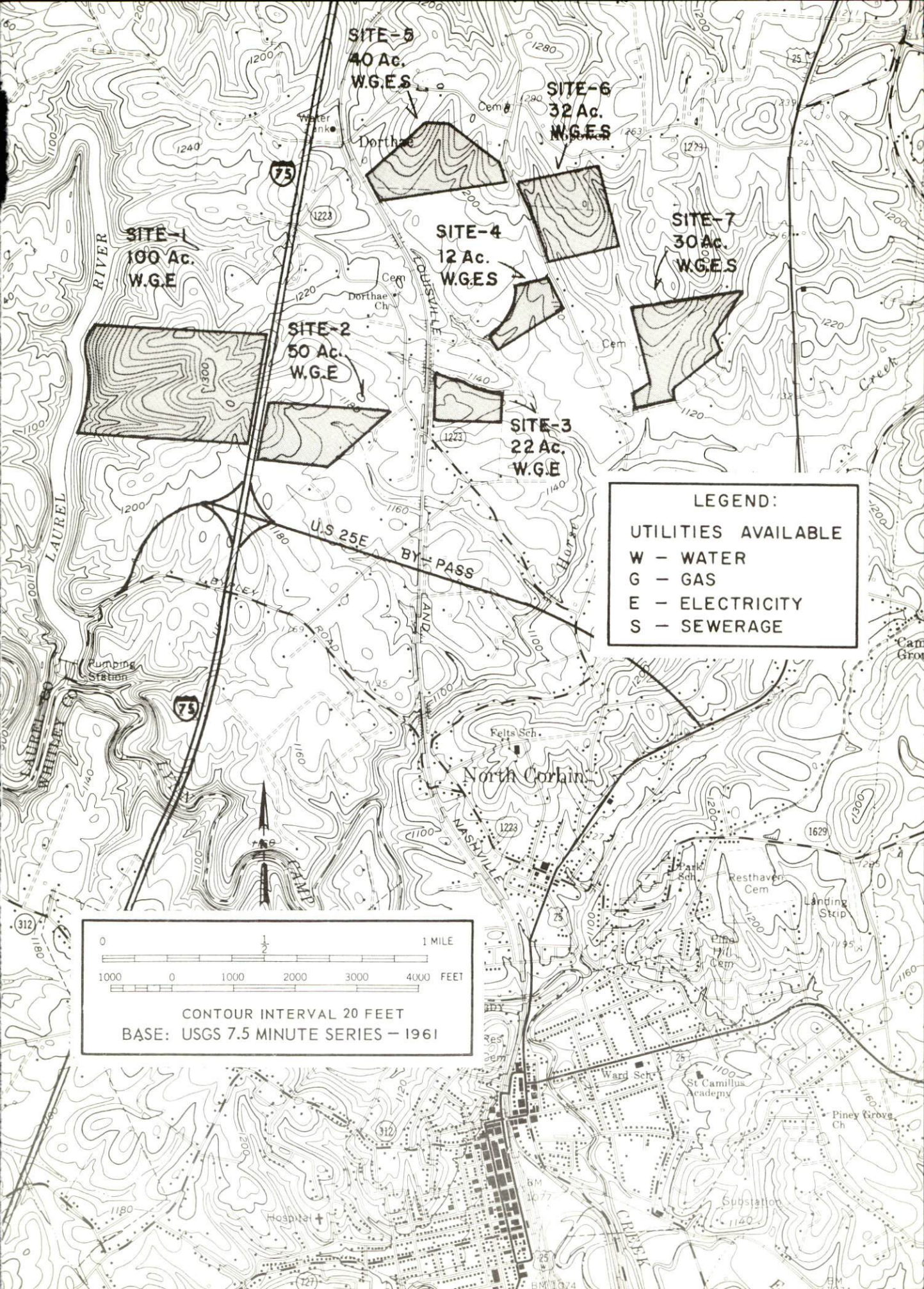
LOCATION: North of Corbin, Kentucky - directly east of the American Greetings Corporation plant site
 ACREAGE: Thirty-two (32) acres
 TOPOGRAPHY: Rolling but can be developed at reasonable expense
 UTILITIES: Twelve (12) inch water line and 250,000-gallon storage tank - sanitary sewers soon to be constructed - Corbin City Utilities Commission. Four (4) inch natural gas line - Peoples Gas Company of Kentucky. Electricity - Kentucky Utilities Company
 OWNERSHIP: Optioned by Corbin Industrial Commission, Corbin, Kentucky

SITE # 8:

LOCATION: South Corbin, Kentucky - three blocks west of Kentucky 26, in the city limits
 ACREAGE: Thirty (30) acres
 TOPOGRAPHY: Eighteen (18) acres level land and twelve (12) acres hillside
 UTILITIES: Corbin City Utilities - sewers, water and electric. Natural gas - Peoples Gas Company of Kentucky
 OWNERSHIP: Corbin Board of Education

SITE # 10:

LOCATION: One-half mile south of U.S. 25-E
 ACREAGE: 23 acres and on rail
 TOPOGRAPHY: Level
 UTILITIES: Water - Corbin City Utilities Commission
 Electricity - Kentucky Utilities Company
 Gas - Peoples Gas Company
 OWNERSHIP: Optioned by Corbin Industrial Commission



LEGEND:

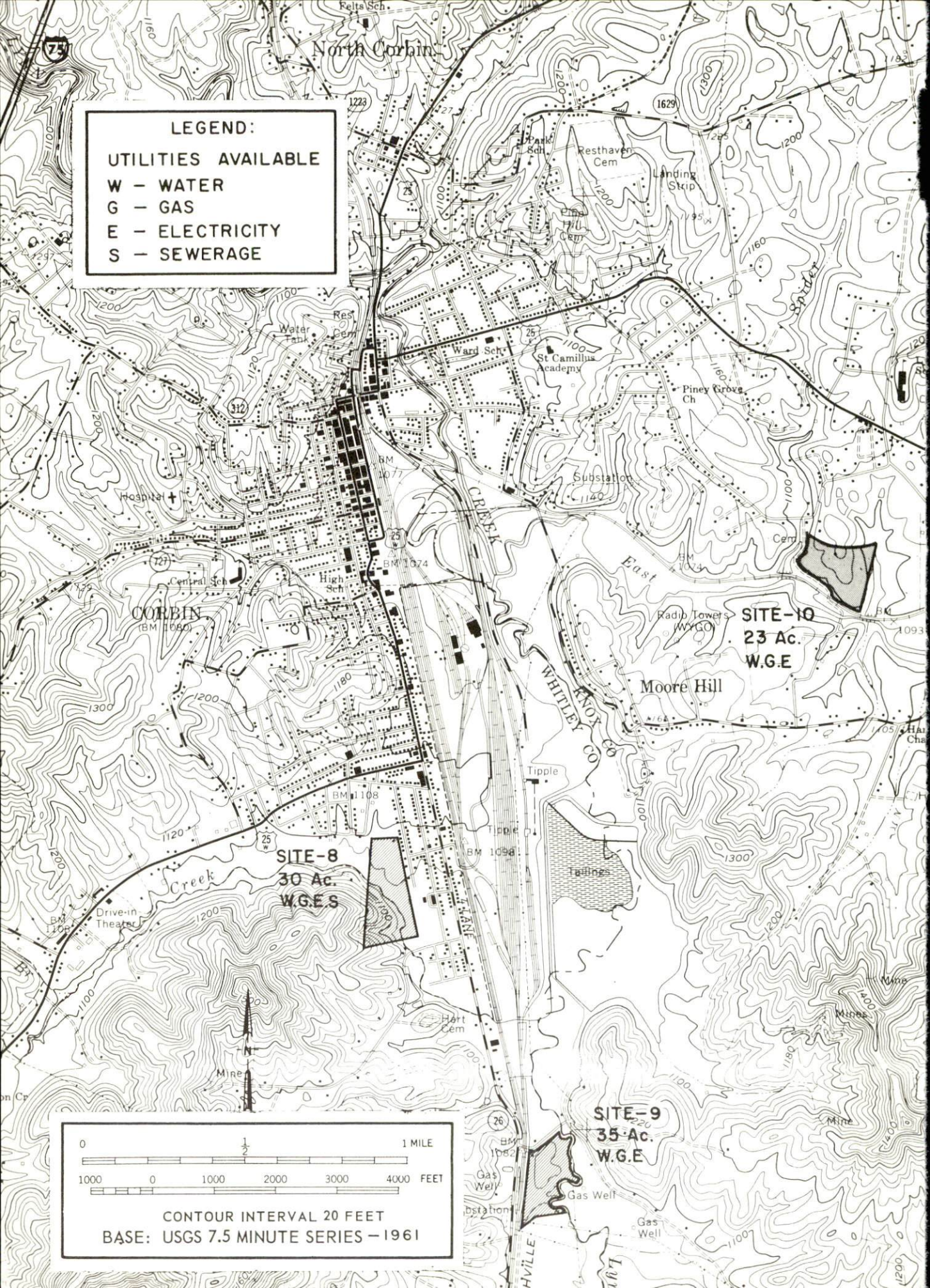
UTILITIES AVAILABLE

W - WATER

G - GAS

E - ELECTRICITY

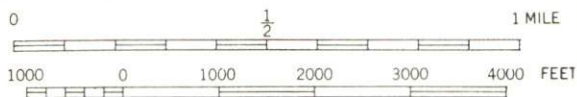
S - SEWERAGE



SITE-8
30 Ac.
W.G.E.

SITE-10
23 Ac.
W.G.E.

SITE-9
35 Ac.
W.G.E.



CONTOUR INTERVAL 20 FEET
BASE: USGS 7.5 MINUTE SERIES - 1961

Education

The Whitley County School System includes one high school with standard rating, and eighteen elementary schools.

The Corbin Independent School District includes one high school with standard rating, and three elementary schools.

Vocational School: Corbin Extension Center

Courses offered: Appliance Repair, Auto Mechanics, Drafting, Electricity, Welding

Transportation

Trucking Service: Dance Freight Lines, Inc. (Consolidated), Dixie Ohio Express, Inc., Mason & Dixon Lines, Inc., McDuffee Motor Freight, Inc. (Ellis Trucking), McLean Trucking Company, OK Trucking Co., Inc., Roadway Express, Inc., Smith's Transfer Corporation of Virginia.

Bus Service: Southern Greyhound Bus Lines, Black Brothers Bus Lines, Trailways Bus Lines.

Rail Service: Louisville & Nashville Railroad. Piggyback service is available at Richmond, Kentucky, 69 miles distant.

Air Service: London-Corbin War Memorial Airport (commercial).

Power and Fuel

Electric Distributors

City Utilities Commission
Cumberland Valley RECC

Natural Gas Distributor

Peoples Gas Company

Specific Gravity

.660

Btu Per Cu. Ft.

1,150

Water and Sewerage

Water: Daily treatment capacity - 2,000,000 gallons; average daily use - 1,000,000 gallons; maximum daily use - 1,340,000 gallons; storage capacity - 750,000 gallons; size distribution lines - 3/4 to 16 inches.

Sewerage: Type treatment - primary and secondary; design capacity - 1,500,000 gallons per day; size of sewer mains - 4 to 24 inches.

Local Government

Police Protection: Number of law enforcement officers - 9 (city); 5 (county).

Fire Protection: Number of full-time firemen - 11; number of volunteer firemen - 10; American Insurance Association fire rating, City of Corbin - Class 7.

Health

Nearest general hospital - Southeastern Kentucky Baptist Hospital; capacity - 80 beds; staff - 14 doctors and 19 registered nurses; special personnel - four medical technologists, three X-ray technicians, two surgical technicians, one radiologist, two anaesthetists, one consulting pathologist.

Other Local Facilities

Telephone: South Central Bell Telephone Company.

Postal: Class of post office - first-class; mail received - 17 times daily; mail dispatched - 17 times daily.

Public Library: Corbin Public Library; number of volumes - 15,500; annual circulation - 92,000 volumes.

Financial Institutions

<u>Banks</u>	<u>Statement of Condition as of December 31, 1969</u>	
	<u>Assets</u>	<u>Deposits</u>
Corbin Deposit Bank	\$13,267,003.32	\$12,194,815.31
First National Bank	19,071,186.40	17,686,896.98

Recreation

Local: Swimming pool, youth center, basketball, football, baseball, track, square dancing, men's softball league, Country Club with golf course, movie theater, drive-in theater, bowling alley, skating rink, Nibroc Festival, and the Laurel River Dam impoundment.

Area: Dr. Thomas Walker State Shrine, Levi Jackson Wilderness Road State Park, Kentucky Ridge State Forest, Daniel Boone National Forest.

Industrial Sites

Corbin now has ten sites available for industrial use.

CORBIN INDUSTRIAL SITES

1969

CORBIN INDUSTRIAL SITES

For additional information concerning the industrial sites, contact Roy G. Houser, Jr., Executive Director, Corbin Chamber of Commerce and Corbin Industrial Commission, Corbin, Kentucky 40701, or the Kentucky Department of Commerce, Frankfort, Kentucky 40601.

SITE # 1:

LOCATION: North of Corbin, Kentucky - borders American Greetings Corporation factory site to the north

ACREAGE: Forty (40) acres

TOPOGRAPHY: Level to hilly - twenty-five (25) acres can be developed at reasonable cost

UTILITIES: Twelve (12) inch water line and 250,000 gallon storage tank. Sanitary sewers soon to be constructed - Corbin City Utilities Commission. Four (4)-inch natural gas line - Peoples Gas Company of Kentucky. Electricity - Kentucky Utilities Company

OWNERSHIP: Optioned by Corbin Industrial Commission, Corbin, Kentucky

SITE # 3:

LOCATION: North of Corbin, Kentucky - county road immediately east of industrial access road to American Greetings plant

ACREAGE: Thirty (30) acres

TOPOGRAPHY: Level to hillside

UTILITIES: Twelve (12) inch water line and 250,000-gallon storage tank. Sanitary sewers soon to be constructed - Corbin City Utilities Commission. Four (4)-inch natural gas line - Peoples Gas Company of Kentucky. Electricity - Kentucky Utilities Company

OWNERSHIP: Optioned by Corbin Industrial Commission, Corbin, Kentucky

SITE # 5:

LOCATION: South Corbin, Kentucky - three blocks west of Kentucky 26, in the city limits

ACREAGE: Thirty (30) acres

TOPOGRAPHY: Eighteen (18) acres level land and twelve (12) acres hillside

UTILITIES: Corbin City Utilities - sewers, water and electric. Natural gas - Peoples Gas Company of Kentucky

OWNERSHIP: Corbin Board of Education

SITE # 2:

LOCATION: North of Corbin, Kentucky - directly east of the American Greetings Corporation plant site

ACREAGE: Thirty-two (32) acres

TOPOGRAPHY: Rolling but can be developed at reasonable expense

UTILITIES: Twelve (12) inch water line and 250,000-gallon storage tank - sanitary sewers soon to be constructed - Corbin City Utilities Commission. Four (4)-inch natural gas line - Peoples Gas Company of Kentucky. Electricity - Kentucky Utilities Company

OWNERSHIP: Optioned by Corbin Industrial Commission, Corbin, Kentucky

SITE # 4:

LOCATION: North of Corbin, Kentucky - immediately south of American Greetings plant site

ACREAGE: Twelve (12) acres

TOPOGRAPHY: Gently rolling

UTILITIES: Twelve (12) inch water line and 250,000-gallon storage tank. Sanitary sewers soon to be constructed - Corbin City Utilities Commission. Four (4)-inch natural gas line - Peoples Gas Company of Kentucky. Electricity - Kentucky Utilities Company

OWNERSHIP: Optioned by Corbin Industrial Commission, Corbin, Kentucky

SITE # 6:

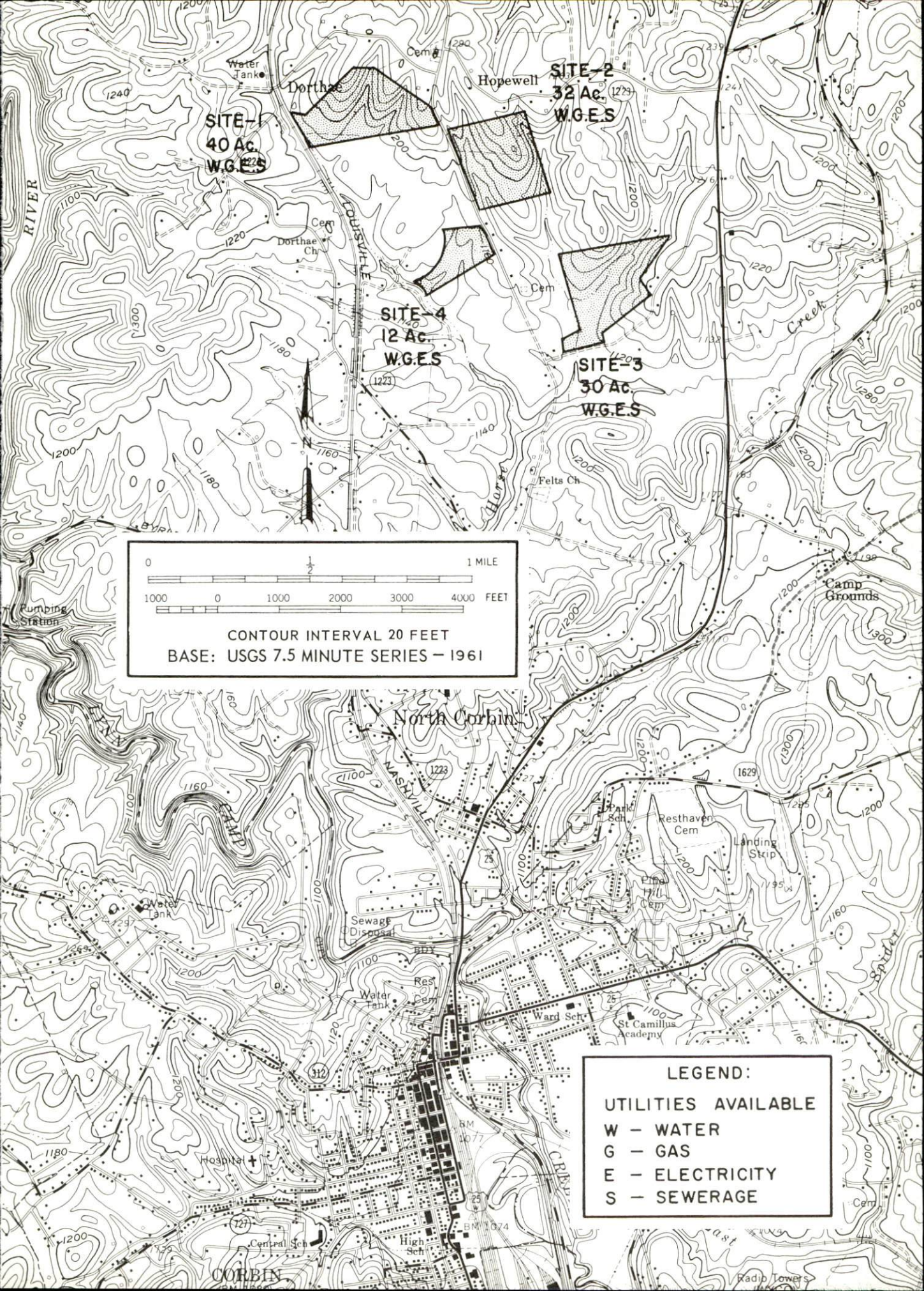
LOCATION: One-half (1/2) mile south of Corbin city limits on Kentucky 26

ACREAGE: Thirty-five (35) acres

TOPOGRAPHY: Level land

UTILITIES: Water - City Utilities Commission, Corbin, Kentucky
Electricity - Kentucky Utilities Company
Gas - Peoples Gas Company of Kentucky

OWNERSHIP: Optioned by Corbin Industrial Commission, Corbin, Kentucky

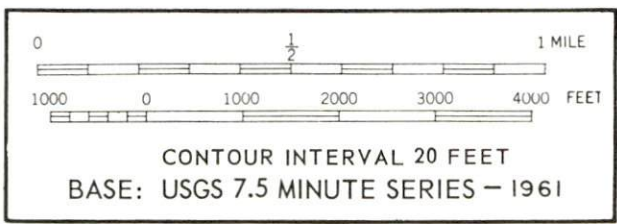


SITE-1
40 Ac.
W.G.E.S.

SITE-2
32 Ac.
W.G.E.S.

SITE-4
12 Ac.
W.G.E.S.

SITE-3
30 Ac.
W.G.E.S.



LEGEND:

UTILITIES AVAILABLE

W - WATER
G - GAS
E - ELECTRICITY
S - SEWERAGE

LEGEND:

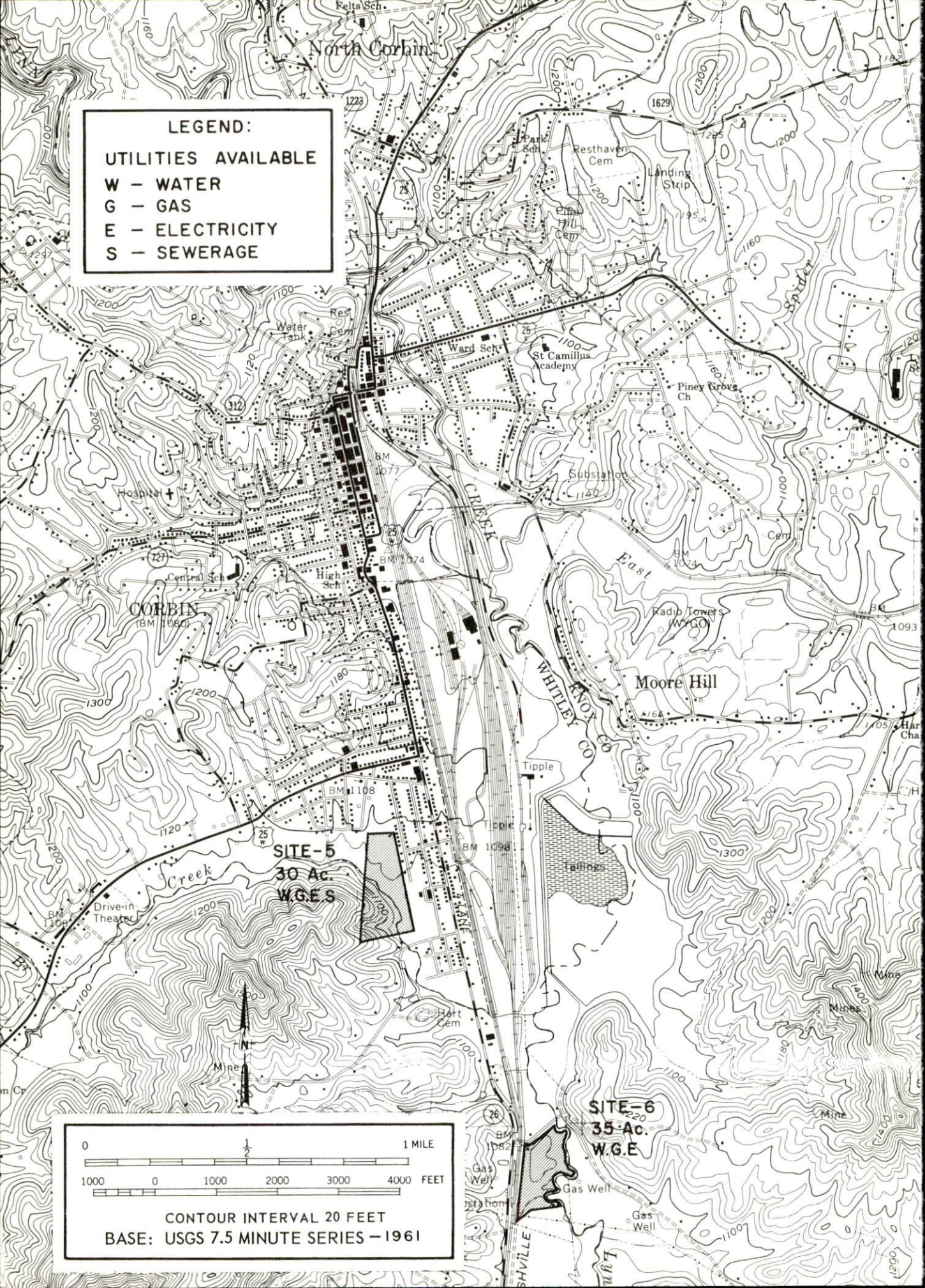
UTILITIES AVAILABLE

W - WATER

G - GAS

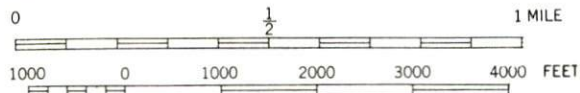
E - ELECTRICITY

S - SEWERAGE



SITE-5
30 Ac.
W.G.E.S.

SITE-6
35 Ac.
W.G.E.



CONTOUR INTERVAL 20 FEET
BASE: USGS 7.5 MINUTE SERIES - 1961

INDUSTRIAL RESOURCES

CORBIN, KENTUCKY

Prepared by

The Kentucky Department of Commerce

in cooperation with

Corbin Chamber of Commerce, Inc.

1969

This copy has been prepared by the Kentucky Department of Commerce,
Division of Research and Planning, and the cost of printing paid from
state funds.

TABLE OF CONTENTS

<u>Chapter</u>	<u>Page</u>
INDUSTRIAL SITES	i
CORBIN, KENTUCKY, A PROFILE	1
THE LABOR MARKET	4
Population	4
General Employment Characteristics	4
Manufacturing Characteristics	6
Labor Organizations	7
Wage Levels	8
Labor Supply	9
Income	9
EDUCATION	10
Elementary and High Schools	10
Vocational Schools	11
Colleges	11
TRANSPORTATION	12
Rail	12
Highways	12
Truck Service	12
Air	13
Other Transportation Service	13
POWER AND FUEL	14
Electricity	14
Natural Gas	15
Coal	16
Fuel Oil	16
WATER AND SEWERAGE	17
Water	17
Sewerage	17

<u>Chapter</u>	<u>Page</u>
AGRICULTURE - NATURAL RESOURCES - CLIMATE	18
Agriculture	18
Mineral Resources	18
Water Resources	18
Forests	19
Climate	19
LOCAL GOVERNMENT	21
Structure	21
Finance	21
Taxes	21
Planning and Zoning	22
Safety	22
Fire	22
Police	22
Sanitation	23
HEALTH	25
Hospitals	25
Public Health	25
OTHER LOCAL FACILITIES	26
Housing	26
Communication	26
Telephone	26
Telegraph	26
Postal	26
Newspapers	26
Radio	26
Television	26
Libraries	27
Financial Institutions	27
Churches	27
Hotels and Motels	27
Clubs and Organizations	28
Recreation	28
Recent Community Improvements	30
HISTORY	31

CORBIN, KENTUCKY, A PROFILE

Location

Corbin is located in southeastern Kentucky, 100 miles south of Lexington, Kentucky, and 85 miles north of Knoxville, Tennessee. Corbin is located in the gateway to the Eastern Kentucky Coal Fields and long has been a rail center for coal shipped from the Eastern Kentucky Coal Fields.

The Economy

During 1968, trade and services (1,820), manufacturing (1,035), government (940) and agriculture (635) were the leading segments of employment in Whitley County. The majority of Corbin's industrial and commercial sections are in Whitley County. Manufacturing employment has been growing spectacularly in the 1960's by increasing 287 percent and in September, 1968, employing 1,035. Community attitudes and programs are directed toward greater future industrial growth. Personal income for Whitley County residents was \$41,541,000 in 1968 for a gain of 81.8 percent during the sixties. Per capita income in 1968 was \$1,662.

Corbin is the geographic center of a five-county area with an employment of 25,785. Corbin is the largest urban area in this area and is the prime economic center. In September, 1968, there were 4,400 manufacturing jobs in the five-county area, and since 1960 industrial employment has increased by 127 percent. Other important activities are trade and services (6,750), government (5,030) and agriculture (2,800). Growth in this area has been excellent during the past few years and available resources indicate additional progress in the years to come.

Labor Supply

There are 5,200 men and 7,590 women available for industrial jobs within reasonable commuting distance of Corbin. During the next five years 7,070 boys and 6,939 girls in the area will become 18 years of age, augmenting this labor supply.

Industrial Sites and Services

Six industrial sites ranging from 12 to 40 acres are now available in the Corbin area.

Corbin's transportation facilities were greatly improved when Interstate 75 was completed in 1969. The Corbin area will also

soon be served by a new east-west state parkway system which will intersect with I-75, fifteen miles north of Corbin.

Trucking service is provided by eight common carriers. Interstate and intrastate services are available.

Rail service is provided by the Louisville & Nashville Railroad Company. Freight and "piggyback" services are available.

Commercial air service is available at the London-Corbin War Memorial Airport, 9 miles north of Corbin.

Ample supplies of power and fuels are available. Electric power is supplied by the City Utilities Commission or Kentucky Utilities Company. Natural gas is supplied by Peoples Gas Company.

Higher Education

Cumberland College is located 17 miles south of Corbin in Williamsburg, Kentucky. The small liberal arts college has an enrollment of approximately 1,800 and the degrees of Bachelor of Arts and Bachelor of Science are conferred with majors in various arts and sciences and the pre-professional field. In addition, there are nine institutions of higher learning located within 100 miles of Corbin.

Recreation

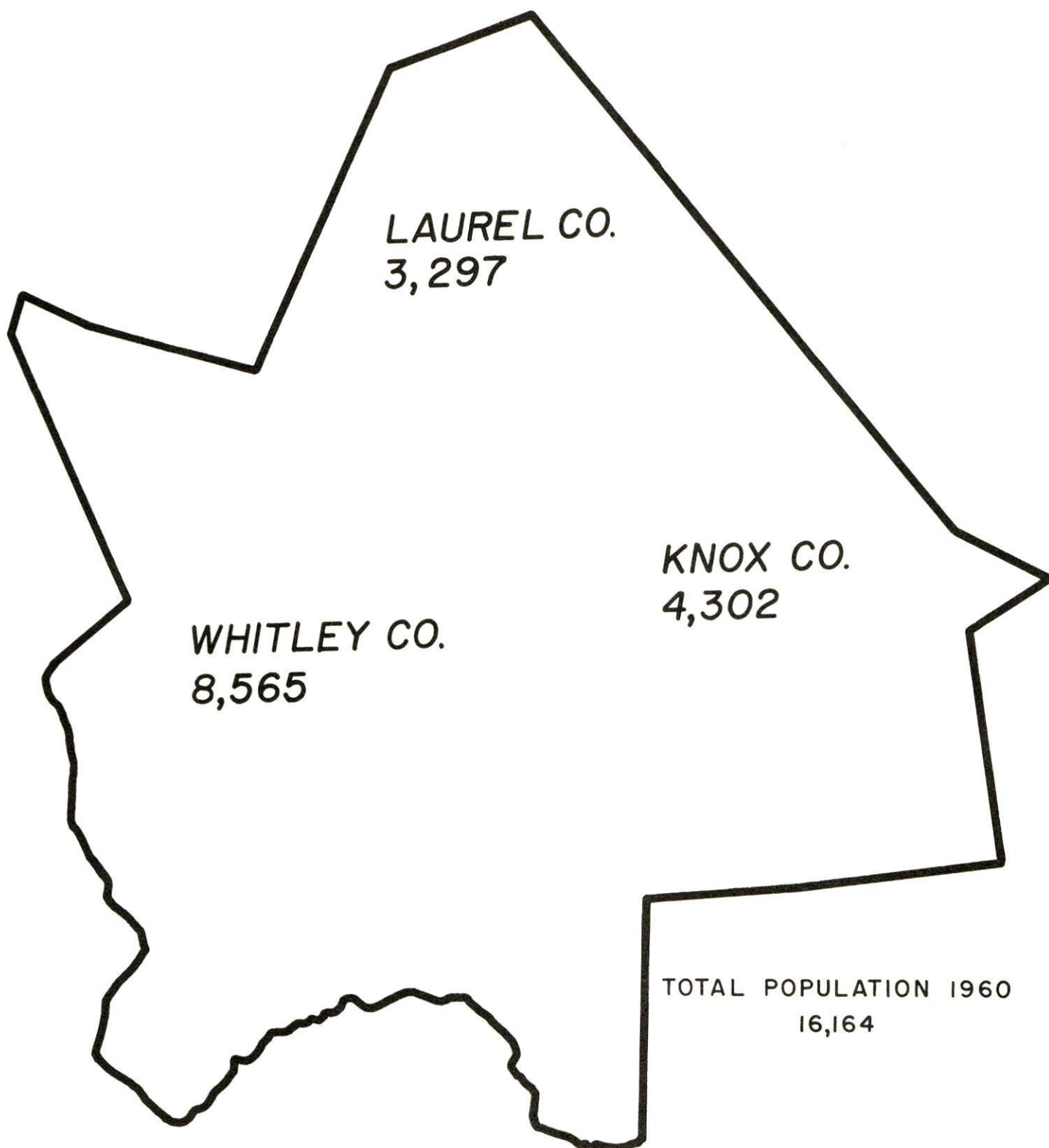
Recreational activities in the Corbin area are varied and plentiful. Corbin is situated in an area unsurpassed in scenic beauty, rich in history and within an hour's drive of three state parks, a national park and a national forest.

Cultural events of note include the summer production of the world famous "Book of Job" choral drama and the annual Mountain Laurel Festival at Pine Mountain State Park.

Lexington, two hours drive north, offers the full program of cultural and sporting events as well as a wide variety of entertainment facilities.

Intercollegiate athletics are found at the University of Kentucky, Lexington, Kentucky; Eastern Kentucky University, Richmond, Kentucky; and the University of Tennessee, Knoxville, Tennessee.

URBAN POPULATION MAP CORBIN, KENTUCKY



THE LABOR MARKET

Population

The 1960 U. S. Census lists Corbin as having a population of 7,119; however, due to the city's unusual location, this figure does not reflect the true urban population. The map on the preceding page shows the Corbin area and its total urban population of 16,164, which includes the adjacent areas surrounding the Corbin city limits in Whitley, Laurel and Knox Counties.

TABLE 1

POPULATION TREND-CORBIN AND WHITLEY COUNTY, KENTUCKY ^{1/}

Year	Corbin		Whitley County	
	Population	% Change	Population	% Change
1910	2,589		31,982	
1950	7,744	199.1	31,940	- 0.2
1960	7,119	8.1	25,815	- 19.2
1969 (Est.) ^{2/}			24,900	- 3.4

General Employment Characteristics

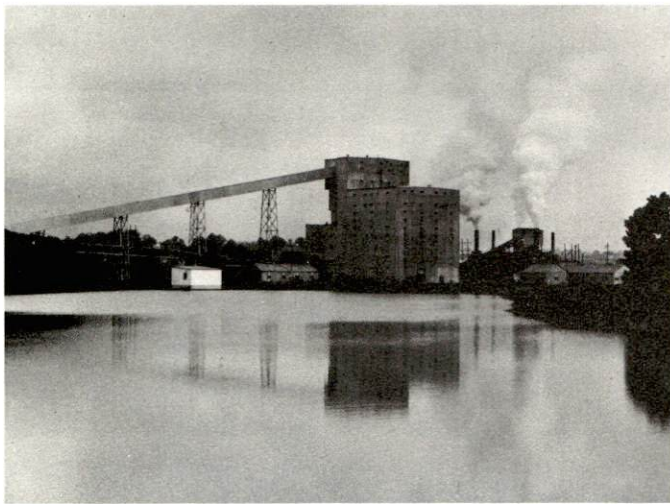
Due to Corbin's unusual location, being incorporated in Whitley and Knox Counties, it should be noted that although the majority of the industrial and commercial section lies within the boundaries of Whitley County, there will be some distortion in available economic statistics enumerated on a purely county basis.

During 1968, total employment in Whitley County averaged 7,676. Major segments of employment are trade and services (1,820), manufacturing (1,035), government (940) and agriculture (635). In addition, two of Corbin's major manufacturing firms are located in the fringe of adjacent counties, with an additional manufacturing employment of 430.

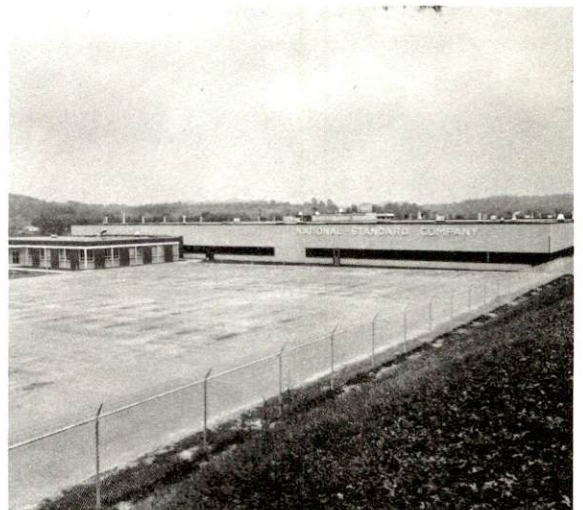
In the Corbin labor market area, defined as Whitley and adjacent counties, total employment in 1968 averaged 25,785. Major segments of its employment were trade and services (6,750), government (5,030), manufacturing (4,400) and agriculture (2,800).



Corbin Textiles



U. S. Steel Coal Washing Plant



National-Standard Company

Manufacturing Characteristics

Manufacturing activity in Corbin has experienced spectacular growth during the 1960's. Manufacturing employment in Whitley County totaled 1,035 in September, 1968, a 287.6 % gain during the past nine years. In the Corbin area, which includes the incorporated area of Knox County and the unincorporated area of Laurel County, manufacturing employment totaled approximately 950. Approximately 33 percent of industrial employment is female.

Nineteen firms in Corbin are engaged in manufacturing activity and produce 22 different products.

Three manufacturing firms employ 100 or more workers.

Six of Corbin's manufacturing firms began production during the sixties. The following three firms are the largest manufacturers located in Corbin: American Greetings Corporation, National-Standard Company and Elicon-Corbin, Inc. American Greetings Corporation is the latest addition to the Corbin area, locating in 1967, and will have a full production employment of 750 in their \$6,500,000 facility.

TABLE 2
CORBIN MANUFACTURING FIRMS, THEIR PRODUCTS,
AND EMPLOYMENT ^{3/}

Firm	Product	Employment		
		Total	Male	Female
American Greetings Corp.	Greeting cards, gift wrapping paper, ribbon	150	50	100
Chandler Printing Co., Inc.	Job printing	8	7	1
Clover Top Bakery	Bakery products	2	1	1
Corbin Buick Co.	Drain tile	33	32	1
Corbin Concrete Block Co.	Concrete block	5	4	1
Corbin Manufacturing & Sales Co.	Corrective auto seat cushions			
Corbin Textiles	Ladies' blouses	45	44	1
Corbin Times-Tribune, Inc.	Job printing	35	30	5
Elicon-Corbin, Inc.	Sockets, terminals, switches	120	40	80
Garland Aluminum Corp.	Storm doors, awnings, windows	1	0	1
Knox Monument Co.	Monuments	4	3	1
National-Standard Co.	Industrial wire cloth	279	271	8

Firm	Product	Employment		
		Total	Male	Female
Pennington Block Co.	Concrete blocks	10	10	0
William H. Pennington	Ready-mix concrete	60	60	0
Pepsi-Cola Bottling Co.	Soft drinks	65	61	4
Seven-up Bottling Co., Inc.	Soft drinks	18	17	1
Tri-County Concrete Products	Concrete block, drain tile	4		
C. B. Ward Sawmill	Rough lumber	11	10	1
Wood Products, Inc.	Wood pallets	52	50	2

The five-county Corbin labor market area includes: Whitley, Bell, Knox, Laurel and McCreary Counties. In September, 1968, there were 4,397 employed in manufacturing. Major groupings are shown in Table 3. The largest manufacturing employment is located in Bell, Whitley and Knox Counties. Manufacturing in the area has shown rapid growth during the past nine years by increasing 127 percent and providing 2,460 new jobs.

TABLE 3

MANUFACTURING EMPLOYMENT, CORBIN LABOR MARKET AREA,
SEPTEMBER, 1968 ^{4/}

Industry	Employment
TOTAL	4,397
Food and beverages	647
Apparel	1,760
Metal products and machinery	794
Lumber and furniture	881
Other	315

Labor Organizations

The following unions are represented in Corbin:

<u>Name of Union</u>	<u>Name of Company</u>
United Steel Workers	National-Standard Co.
International Brotherhood of Electrical Workers and International Association of Machinists	Elicon-Corbin, Inc.
United Mine Workers	U. S. Steel Corporation

Wage Levels

The average weekly wage during 1968 in industries covered by unemployment insurance in Whitley County was \$85.08. The average weekly wage in manufacturing was \$82.82. Comparable figures for Kentucky were: \$112.16 in all industries; \$123.97 in manufacturing. All the counties in the labor market area were below the state average, leading to the tentative conclusion that production workers could be recruited at near the minimum wage level.

The following wage rates are presented as a rough guideline to the Corbin wage situation. 5/

<u>Production Employees</u>	<u>Wages Per Hour</u>		
	<u>Starting</u>	<u>Maximum</u>	<u>Prevailing</u>
Assembler	\$1.60	\$2.10	\$1.80
Inspector	1.60	2.10	1.80
Machinist, Set Up	2.10	2.80	2.45
Production Laborer	1.60	2.10	1.87
Packager, Hand	1.65	1.85	1.65
<u>Service Employees</u>			
Carpenter	\$2.50	\$4.25	\$3.50
Electrician	2.60	4.25	3.50
Janitor	1.60	2.00	1.65
Machinist	2.10	3.60	2.75
Shipping Clerk	1.65	2.20	1.85
Truck Driver	1.60	3.72	2.00
Welder, Acetylene, Carbon, and Arc	1.75	3.00	2.50
<u>Office Employees</u>			
Bookkeeper or Accounting Clerk	\$1.60	\$2.50	\$2.00
Draftsman	1.75	2.75	2.25
File Clerk	1.60	1.90	1.70
Receptionist	1.60	2.00	1.75
Secretary	1.60	2.50	1.85
Stenographer	1.60	2.25	1.85
Tabulating Machine Operator	1.60	2.00	1.75
Telephone Operator	1.65	1.85	1.75
Typist	1.60	1.95	1.70

Labor Supply

There is a current labor supply of 5,200 men and 7,590 women available for industrial jobs in the Corbin labor market area. This includes the unemployed, underemployed, and those people who would enter the labor force if jobs became available. By 1975, the labor supply will be augmented by the 14,010 young men and women who will become 18 years of age.

TABLE 4

CURRENT AND FUTURE LABOR SUPPLY - CORBIN LABOR MARKET AREA

County	Current Labor Supply <u>6/</u> 1969			Future Labor Supply by 1975 <u>7/</u> (Becoming 18 Years of Age)		
	Total	Male	Female	Total	Male	Female
Labor Market Area	12,801	5,208	7,593	14,010	7,071	6,939
Whitley	2,161	890	1,271	2,660	1,343	1,317
Bell	3,690	1,488	2,202	4,089	2,085	2,004
Knox	2,668	1,166	1,502	2,863	1,408	1,455
Laurel	2,663	1,012	1,651	2,829	1,434	1,395
McCreary	1,619	652	967	1,569	801	768

Income

The total personal income in Whitley County in 1968 was estimated at \$14,541,000. Per capita income was \$1,662 for a gain of \$756 during the previous nine years. 8/

EDUCATION

The educational system in the Corbin labor market area has the facilities to produce an effective labor force for future industrial growth.

Elementary and High Schools

The Corbin Independent School District serves the City of Corbin and has one high school and three elementary schools. The high school is an accredited member of the Southern Association of Colleges and Secondary Schools and also holds a "standard" rating from the Kentucky Department of Education. The elementary schools of the system also have "standard" ratings from the Kentucky Department of Education and are also associated with the Southern Association of Colleges and Secondary Schools. The Corbin Independent School District had a budget for the year ending June 30, 1969, of \$663,109. As of June 30, 1969, the District had an outstanding bonded indebtedness of \$549,795.

The Whitley County School System serves the residents of Whitley County and is comprised of one high school and eighteen elementary schools. The county high school holds a "standard" rating from the Kentucky Department of Education. The County School System's budget for the year ending June 30, 1969, was \$1,343,569, and the system had an outstanding bonded indebtedness of \$763,000.

TABLE 5

SCHOOLS, ENROLLMENT, NUMBER OF TEACHERS, STUDENT -
TEACHER RATIO IN CORBIN AND WHITLEY COUNTY 1968-69^{9/}

School	Grades	Enrollment	No. of Teachers	Student-Teacher Ratio
Corbin High School (Ind.)	9-12	566	29	20-1
Corbin Elementaries (Ind.)	1- 8	1,020	41	25-1
Whitley County High School	9-12	994	45	22-1
Whitley County Elementaries	1- 8	2,922	123	24-1
St. Camillus Acad. Elementary (Par.)	2- 8	78	6	13-1
St. Camillus Acad. High School (Par.)	9-12	44	6	7-1

Vocational Schools

The new Corbin Extension Center began classes in September, 1968. Courses offered include appliance repair, auto mechanics, building trades, drafting, and welding. The school is an extension of the Harlan Area Vocational-Technical School, Harlan, Kentucky, 68 miles from Corbin. Trade and industrial educational courses offered at the Harlan Vocational School include auto body repair, auto mechanics, carpentry, drafting, electricity, electronics technician, health occupations, home economics occupations, machine shop, mine machinery mechanics, practical nursing, refrigeration and air conditioning, and welding.

The Extension Center in Barbourville, 23 miles from Corbin, offers carpentry, drafting, electricity, welding, auto mechanics, home appliance repair, and business and office education.

Colleges

Cumberland College, located in Williamsburg, 17 miles from Corbin, was established in 1889 by the Mt. Zion Association of Baptists. In 1957, the General Association of Baptists in Kentucky voted to allow Cumberland to assume full four-year status.

Cumberland rests on a campus of 25 acres and has 13 major buildings. Included among these buildings are dormitories, a science building, a gymnasium, an auditorium, cafeteria, and a library.

The college has a present enrollment of 1,800 which is an increase of 63 percent over the past four years. The degrees of Bachelor of Arts and Bachelor of Science are conferred with majors in various arts and sciences and the pre-professional fields including medicine, pharmacy, law, engineering, dentistry, and the ministry.

Other institutions of higher learning in the Corbin area include:

Berea College, Berea, Kentucky, 62 miles
Eastern Kentucky University, Richmond, Kentucky, 76 miles
Centre College, Danville, Kentucky, 77 miles
Lindsey Wilson College, Columbia, Kentucky, 96 miles
Lees Junior College, Jackson, Kentucky, 97 miles
Asbury College, Wilmore, Kentucky, 99 miles
University of Kentucky, Lexington, Kentucky, 100 miles
Transylvania University, Lexington, Kentucky, 100 miles

TRANSPORTATION

Rail

Corbin is served by a main north-south line of the Louisville & Nashville Railroad and is the headquarters of the Cumberland Valley Division. It is the largest coal shipping center in the Eastern Kentucky Coal Fields. There are fifty north and southbound through freights daily. There is no passenger service available. Terminal switching service is available seven days per week and there are sidings available for 3,500 cars. Package car service and "piggyback" service is available.

TABLE 6

RAILWAY TRANSIT TIME FROM CORBIN, KENTUCKY, TO: 10/

City	No. of Days		City	No. of Days	
	CL			CL	
Atlanta, Ga.	1		Los Angeles, Calif.	5	
Birmingham, Ala.	2		Louisville, Ky.	1	
Chicago, Ill.	3		Nashville, Tenn.	2	
Cincinnati, Ohio	1		New Orleans, La.	3	
Cleveland, Ohio	3		New York, N. Y.	4	
Detroit, Mich.	4		Pittsburgh, Pa.	4	
Knoxville, Tenn.	1		St. Louis, Mo.	2	

Highways

Corbin is served by Interstate 75; U. S. Routes 25, 25-E and 25-W; and Kentucky Routes 6, 26 and 312.

Truck Service: The following trucking firms serve Corbin:

<u>Company</u>	<u>Home Office</u>
Consolidated Freightways, Inc.	Lexington, Kentucky
Dixie Ohio Express, Inc.	Cincinnati, Ohio
Mason & Dixon Lines, Inc.	Kingsport, Tennessee
Ellis Trucking Co.	Indianapolis, Indiana
McLean Trucking Co.	Winston-Salem, North Carolina
O. K. Trucking Co.	Louisville, Kentucky
Roadway Express, Inc.	Louisville, Kentucky
Smith's Transfer Corporation of Virginia	Staunton, Virginia

TABLE 7

HIGHWAY MILES AND TRUCK TRANSIT TIME FROM CORBIN,
KENTUCKY, TO SELECTED MARKET CENTERS

City	Highway Miles	Delivery Time (Days)		City	Highway Miles	Delivery Time <u>11</u> / LTL TL	
		LTL	TL			LTL	TL
Atlanta, Ga.	298	2	1	Los Angeles, Calif.	2,362	7	5
Birmingham, Ala.	343	2	1	Louisville, Ky.	144	1	1
Chicago, Ill.	506	3	2	Nashville, Tenn.	165	2	1
Cincinnati, Ohio	187	1	1	New Orleans, La.	873	3	2
Cleveland, Ohio	450	3	2	New York, N. Y.	838	4	3
Detroit, Mich	449	3	2	Pittsburgh, Pa.	468	3	2
Knoxville, Tenn.	85	1	1	St. Louis, Mo.	470	3	2

Air

The London-Corbin War Memorial Airport, 9 miles north of Corbin, serves the southeastern area of Kentucky with commercial flights. There is one 6,000 by 150 foot paved and lighted runway that is capable of accommodating the smaller commercial jets. Services available include: 80 and 100 octane, JP-A-50, taxi, U-Drive It, weather, flight training, charter and ambulance service. Piedmont Airlines serve the airport with four flights daily.

Other Transportation Service

Corbin is provided daily bus service by the Southern Greyhound Lines, Black Brothers Bus Lines and Southeastern Trailway.

Twenty-four hour taxi service is offered in Corbin by three companies.

Car rentals are available through Hertz at the London-Corbin Airport.

POWER AND FUEL

Electricity

The City Utilities Commission operates the distribution system serving electric power to the City of Corbin. Their source of supply is the Kentucky Utilities Company, which provides service to 78 Kentucky counties. Daily demands within the city average about 4,800 KW. The commission serves some 3,400 customers in the Corbin area.

Kentucky Utilities Company has a generating capacity of approximately 740,000 KW in the six generating stations which are located in southeastern, central, and western Kentucky. Additional generating capacity of 427,000 KW is under construction with completion scheduled for May 1971. The Company also has major interconnections with its neighboring utilities. These interconnections provide a means of interchanging substantial blocks of electricity when desired. Rates for industry will be furnished by the company's Industrial Development Department in Lexington, Kentucky.

Rates of the City Utilities Commission are as follows:

Commercial Rates:

	<u>Rate Per KWH</u>	<u>Inside City</u>	<u>Outside City</u>
First	50	\$.06	\$.07
Next	250	.05	.05
Next	700	.035	.035
Next	2,000	.02	.02
Over	3,000	.015	.015

Minimum Per Month \$1.50

Industrial Rates:

\$1.80 per KWH Demand per month

<u>Rate per Kilowatt Hour</u>			<u>No Demand</u>		
First	250 KWH	.03¢	First	250 KWH	.04¢
Next	750 KWH	.02 1/2¢	Next	750 KWH	.03 1/2¢
Next	2,000 KWH	.02¢	Next	1,000 KWH	.02 1/2¢
Over	3,000 KWH	.01 1/2¢	Next	3,000 KWH	.02¢
			Over	5,000 KWH	.01 1/2¢

Natural Gas

Natural gas is distributed in Corbin by the Peoples Gas Company, which is a wholly owned subsidiary of Petroleum Exploration Company, Sistersville, West Virginia. The sources of supply are the Knox, Clay, and Laurel County gas fields, Kentucky Gas Transmission Corporation, and Petroleum Exploration Company, which has interconnections with the Tennessee Gas Transmission Company.

Pressures range from 150 to 250 psi on the transmission system, 40 psi on the intermediate system, and 8 ounces on the low pressure system. BTU content is 1,150 with a specific gravity of .660. Distribution lines are 4 to 8 inches in size. There are 3,781 meters in the City of Corbin.

Commercial Rates:

First	2,000 Cu. Ft.	\$2.60 (Minimum)
Next	4,000 Cu. Ft.	1.04 Per M Cu. Ft.
Next	44,000 Cu. Ft.	.93 Per M Cu. Ft.
Next	350,000 Cu. Ft.	.86 Per M Cu. Ft.
Over and above		.78 Per M Cu. Ft.

Industrial Rates:

Industrial Rate for Natural Gas-Interruptible Service*
Monthly Rates: Summer Rate (six months, May thru October)
First 1,000 MCF or fraction thereof for - \$550.00 (minimum);
Next 1,000 MCF @ 54¢ per MCF; All over 2,000 MCF @ 52¢ per MCF;
Winter Rate (six months, November thru April) First MCF or fraction thereof for - \$700.00 (minimum); Next 1,000 MCF @ 65¢ per MCF; All over 2,000 MCF @ 64¢ per MCF;
Minimums must be guaranteed for twelve consecutive months
Carry-over and summation not permissible in computing number of minimums, i. e., each industrial customer constitutes a minimum each month.

The minimums for service first begun after the beginning of a month may be prorated for such month.

*The Utility shall have the right to curtail deliveries of gas hereunder whenever, and to the extent necessary, in its sole judgement, the protection of service to its other customers may require.

Note: Available only to those industrial customers who agree to be liable for the specified minimums for at least twelve consecutive months, and who agree to take their entire natural gas requirements from Peoples Gas Company of Kentucky. This agreement shall be in writing.

Other terms and conditions the same as for general customers.

Coal

Industrial and domestic grade coals of the Eastern Kentucky group have a freight cost of \$2.34 per net ton to Corbin. 12/

Fuel Oil

Kentucky has three fuel oil refineries located in Catlettsburg, Louisville, and Somerset. Kentucky's fuel supply is supplemented by border state operations.

Delivered prices of the various grades may be obtained from the Kentucky Department of Commerce, Frankfort, Kentucky.

WATER AND SEWERAGE

Water

Corbin is served by the City Utilities Commission, whose source of supply is the Laurel River. The treatment of the raw water includes flocculation, sedimentation, and filtration. The treatment plant has a daily capacity of 2,000,000 gallons with an average daily use of 1,000,000 gallons. The peak daily use has been 1,340,000 gallons. Storage facilities include a 2,000,000-gallon clear well and four elevated tanks with a total capacity of 750,000 gallons. The distribution lines range in size from 3/4 to 16 inches. Pressure is maintained at 70 psi. Average pumping time to meet daily requirements is 8 hours. The City Utilities Commission serves 3,300 metered customers.

Rates:

	<u>Gallons</u>	<u>Per M Gallons</u>
First	1,000	\$2.50 (Minimum)
Next	1,000	.80
Next	1,000	.60
Next	2,000	.50
Next	90,000	.40
All over	100,000	.30

Special industrial rate for users over 3,000,000 gallons per month.

First	1,000	\$2.50
Per each additional	1,000	.18

Sewerage

The City Utilities Commission operates the sewerage system in Corbin. The present sewerage treatment plant, completed in 1962, has a design flow of 1,500,000 gallons and a design population of 2,200. Maximum daily use has been 800,000 gallons and the plant serves 1,807 customers. The plant provides primary and secondary treatment before the effluent is discharged into Lynn Camp Creek. Sanitary mains range in size from 4 to 24 inches.

There are plans to increase the capacity of the treatment plant to 2,500,000 gallons per day.

The sewerage rates are 100 percent of the monthly water bill.

AGRICULTURE-NATURAL RESOURCES-CLIMATE

Agriculture

The approximate total land area of Whitley County is 293,760 acres, with 25 percent of the area devoted to farm land. In 1964, there were 870 farms in the county, with an average size of 86 acres.

Farm income in the county is largely from the production of cattle, hogs, and poultry, supplemented by burley tobacco. The 1964 value of sales of all farm products totaled \$890,284, averaging \$1,023 per farm. Crop sales totaled \$367,205; livestock and livestock products amounted to \$517,524.

In 1967, agricultural production in Whitley County included 382,000 pounds of burley tobacco, 85,000 bushels of corn, and 8,800 tons of clover-timothy hay. Livestock on farms on January 1, 1968, included 6,500 cattle and calves, and 2,200 hogs and pigs. Milk cows on farms during 1966 averaged 1,300 head, with milk production for the year totaling 6.3 million pounds.

Mineral Resources

The principal mineral resources of Whitley County, produced in order of value in 1967, consist of coal and petroleum. Other important minerals include natural gas, which has played an important role to the economy of this area, clay, and sands and gravels. Limestone, suitable for general construction purposes and possibly agricultural lime, occurs along the Pine Mountain thrust fault in the southeastern portion of the county.

All of the coals of this area are classified as high volatile bituminous. They run low in ash and sulphur content and have a high BTU value. During 1967 coal was taken from 35 underground mines, 1 strip mine, and 2 auger mines totaling 372,000 short tons valued at \$1,121,000. Through 1967 an accumulative total of 42,189,562 short tons had been produced.

More recently, several good oil wells have reportedly been drilled. Through 1968 an accumulative total of 212,615 barrels of crude oil had been produced in the county. In 1968, 19,719 barrels of oil were produced.

Water Resources

Large quantities of surface water are available from both the Cumberland and Laurel Rivers. Other sources may be made available from impounded small streams. The average discharge (USGS) of the Cumberland

River at Williamsburg and the Laurel River near Corbin are 2,591 cfs (16-year record) and 327 cfs (26-year record), respectively.

The expected yield of the western quarter and extreme eastern tip of the county is 5 to 50 gpm. The remaining portion has an expected yield of 50 to 200 gpm. All yields are a potential for industrial water supplies. Exceptions may be found in restricted areas.

Forests

There are 228,200 acres of commercial forest land in Whitley County, covering 77.9 percent of the total land area. The most abundant species are white oaks, red oaks, yellow pines, hickories, yellow poplar, beech, and soft maple.

In Kentucky, within a 50-mile radius of Corbin, there are more than 2,700,000 acres of commercial forest land. In 1962, 117 million board feet of timber were harvested from this area. Forestry authorities agree that the desirable annual cut should be much larger. The adjacent parts of Tennessee and Virginia are also well forested. While some of the timber harvest is used locally, much of it is shipped out of the area for further processing.

Forests of the entire area receive organized protection from fire from the State Department of Natural Resources.

Climate

Corbin has a pleasant year-round climate. Great extremes of heat or cold rarely occur. Yet, weather changes are sufficiently frequent to gain variety.

Winter is short, with snowfall heaviest during the months of December, January, and February.

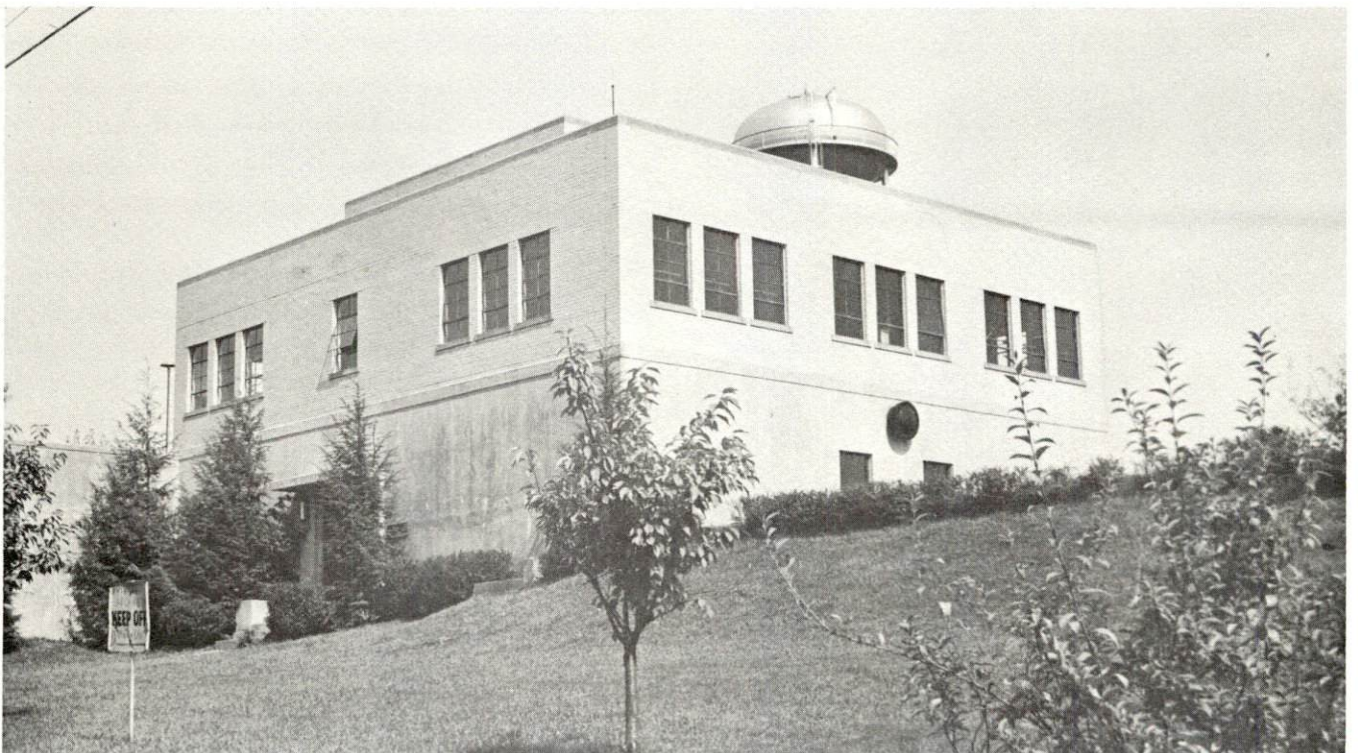
Total precipitation averages 47 inches annually, occurring mainly in the winter and spring.

During an average year, 157 days are cloudy, 110 days partly cloudy, and 98 days clear. Normal monthly temperatures range from 31° to 68°F., maximum range is from 48° to 88°F., average annual temperatures range from 39° to 78°F.

Prevailing wind is from the southwest.



City Hall and Fire Station



Modern Water Plant

LOCAL GOVERNMENT

Structure

Corbin, a third-class city, is governed under the city manager form of government. The mayor is elected for a four-year term and the four city commissioners are elected every two years.

Whitley County's governing body is a fiscal court consisting of a county judge as chief executive and three magistrates. All are elected for four-year terms.

Finance

The City of Corbin had an income of \$354,659 for the year ending May 31, 1969, while expenditures totaled \$375,124. As of May 31, 1969, bonded indebtedness outstanding of the city was \$244,000. The 1969-70 Corbin City budget is \$381,585.

Whitley County's budget for the year ending June 30, 1969, was \$126,400. As of June 30, 1969, the county had no bonded indebtedness.

Taxes

Property taxes are the major source of income for Corbin and Whitley County. Property must be assessed at 100 percent of value under provisions of the Kentucky Constitution. Net assessed value of property in Corbin as of January 1969 was:

<u>Classes of Property</u>	<u>Corbin</u>
Real Estate	\$22,878,342
Tangibles	6,799,516
Public Service	1,908,151

Property tax rates for Corbin are shown on the following page.

TABLE 8

PROPERTY TAX RATES PER \$100 OF ASSESSED VALUE FOR
CORBIN AND WHITLEY COUNTY, 1968 ^{13/}

Taxing Unit	Corbin	Whitley County
State	\$.015	\$.015
County	.187	.187
School	.564	.341
City	.308	
Total	\$ 1.074	\$.543

The City of Corbin requires a business license to be purchased annually. The costs for these licenses range from \$5 to \$750.

Corbin is empowered by state law to allow a five-year exemption from municipal taxation for new industry.

Planning and Zoning

The Corbin Planning Commission has completed a comprehensive plan, zoning ordinance, subdivision regulations and several detailed studies.

The City's Workable Program for Community Improvements has been recertified to February 1971. The city has completed an urban renewal project and 150 units of low-cost housing. There are plans for additional units of housing.

Corbin has adopted and enforces all major codes and ordinances.

Safety

Fire: Corbin has a Class-7 American Insurance Association rating. The Corbin Fire Department is staffed by eleven full-time firemen and ten volunteers. Equipment consists of two 750-gpm pumpers and two 500-gpm pumpers. Other equipment includes a 1,000-gpm pumper, ladders, portable generator, MSA masks, resuscitator and other needed first aid supplies.

The fire department protects all property within the city limits and will also answer calls to protect plants outside the city limits. The department also works in conjunction with neighboring towns in case of large fires.

Police: Corbin's city police force is made up of nine police officers and two meter maids. Mobile equipment includes three radio-equipped patrol cars and one traffic motorcycle.

The Whitley County Sheriff's office is staffed by a sheriff, two full-time deputies, two clerks, and twenty part-time deputies. Motorized equipment consists of two radio-equipped cars.

There are three Kentucky State Police officers assigned to Whitley County. A state police post is located in London, 14 miles from Corbin.

Sanitation

The city collects garbage daily in the business district and once a week in the residential areas. There is a charge of \$15 per month for daily pickup service and \$2 per month for weekly pickup service.



South Ward Elementary School



Southeastern Kentucky Baptist Hospital

HEALTH

Hospitals

Corbin is served by the Southeastern Kentucky Baptist Hospital, a modern 80-bed, 15-bassinet hospital. Facilities of the hospital include: two operating, two delivery rooms, X-ray and emergency treatment facilities, complete laboratory, blood bank, OBGYN, surgical suite, EKG equipment, recovery room, nursery, pediatrics ward, medical records and food service. The staff associated with the hospital includes: eleven medical doctors, three surgeons, nineteen registered nurses, four medical technologists, three X-ray technicians, two surgical technicians, one radiologist, two anaesthetists, and one consulting pathologist. Planned improvements include an expansion of the hospital to obtain more bed space, and also to acquire more modern and better facilities.

Public Health

The Whitley County Health Department, with its main office located in Williamsburg and a branch office in Corbin, serves the residents of Whitley County. The staff consists of one doctor, three registered nurses, three clerks, two sanitarians and one dentist part-time. The department has a complete public health program, consisting of communicable disease control, programs for crippled children, infant and preschool services and general sanitation. The 1969-70 budget for the department is \$75,722.

OTHER LOCAL FACILITIES

Housing

There is a limited amount of adequate apartments or houses for rent in the Corbin area. The construction costs for two- and three-bedroom houses range from \$12,000 to \$20,000. There are several new subdivisions located in Corbin with lots available.

Communication

Telephone: South Central Bell Telephone Company serves approximately 6,500 subscribers in the Corbin area. The company provides toll free service to Williamsburg, Kentucky.

Telegraph: Western Union Telegraph Company serves Corbin with telegraph, cablegram and radiogram service.

Postal: Corbin has a first-class post office with 40 employees. The Corbin Post Office acts as a sectional center for some 180 other offices. Mail is received and dispatched at frequent intervals throughout the day.

Newspapers: Both the Corbin Daily Tribune, delivered daily except Saturday, and the Corbin Times, Sunday only, have a circulation of approximately 6,000.

Other papers are received daily from Knoxville, Tennessee; and Lexington and Louisville, Kentucky.

Radio:

<u>Station</u>	<u>Town</u>	<u>Watts</u>	<u>Kilocycles</u>	<u>Hours</u>
WCTT-AM-FM	Corbin	1,000	680	5:30 a. m. - 11:00 p. m.
WYGO-AM-FM	Corbin	5,000	1,330	Sunup to Sundown

Television: Television reception is excellent from stations located in Knoxville, Tennessee; Asheville, North Carolina; and Lexington, Kentucky, with all major networks represented. Reception is described as excellent by both cable service and outside antenna.

Libraries

The Corbin Public Library is now occupying its new \$165,000 facility. The new facility contains 6,000 square feet and will have a capacity of 50,000 volumes. The library now contains approximately 15,500 volumes and has a daily circulation of approximately 250. The library is staffed by two full-time and one part-time employees. Facilities include: meeting room, office, record player, records, pictures, paintings, movie projector, periodicals, copying machine and microfilm machine. The library is a member of the American Library Association, Friends of Kentucky Libraries and Trustees Library Association. The library is open on Tuesday, Wednesday and Friday from 1 to 6 p. m., and Monday and Thursday from 1 to 8 p. m. and on Saturday from 10 a. m. to 4 p. m. A bookmobile serves the rural areas of Whitley County. The budget for 1969-70 is \$9,300.

Financial Institutions

<u>Bank</u>	<u>Statement as of December 31, 1968</u>	
	<u>Assets</u>	<u>Deposits</u>
First National Bank & Trust Company	\$17,308,119.69	\$16,195,547.88
Corbin Deposit Bank & Trust Company	12,700,136.81	11,724,024.64

Churches

There are at the present time 16 churches in Corbin representing the following denominations: Baptist, Catholic, Church of Christ, Christian, Church of God, Episcopal, Methodist, Nazarene, Presbyterian and Church of Latter Day Saints.

Hotels and Motels

Holiday Inn	100 units
Wilbur Hotel	52 rooms
Holiday Motel	19 units
Town House Motel	20 units
Preston's Court	15 units
Ward's Court	7 units
Dixie Motel	19 units
Campbell Motel	7 units
Yeary's Court	34 units
Wilbur Motel	7 units
Stewart's Motel	50 units
Veach Motel	6 units
Helton's Court	7 units

Meredith's Court	16 units
Suburban Motel	14 units
Sander's Court	28 units
Taylor's Motel	6 units
Howard Johnson	70 units

Clubs and Organizations

Civic: Chamber of Commerce, Corbin Industrial Development Commission, Rotary Club, Kiwanis Club, Lions Club, Junior Chamber of Commerce, Optimist

Fraternal: Masons, Shriners, American Legion, VFW, FOP, Knights of Pythias Nos. 148 and 279

Women's: Garden Club, Women's Club, Younger Women's Club, Junior Women's Club, Eastern Star, Tri County Business and Professional Women's Club, Lady Golfers, Daughters of American Council No. 124, Daughters of American Council No. 77, Pythian System Temple 46, American Legion Auxiliary, Book Club, Rainbow Girls, Ossoli Club, Forsythia Garden Club, Cumberland Falls Garden Club, Corbin Business and Professional Women

Youth: 4-H Clubs, FFA, Boy Scouts, Girl Scouts, Little League, Cub Scouts

Recreation

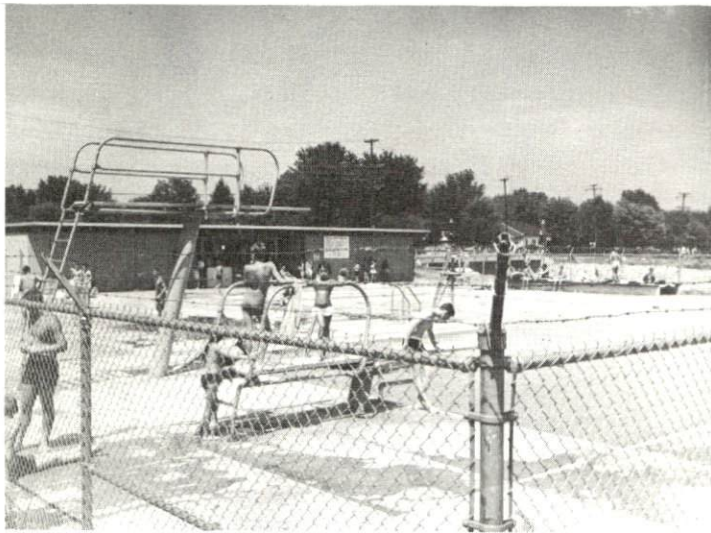
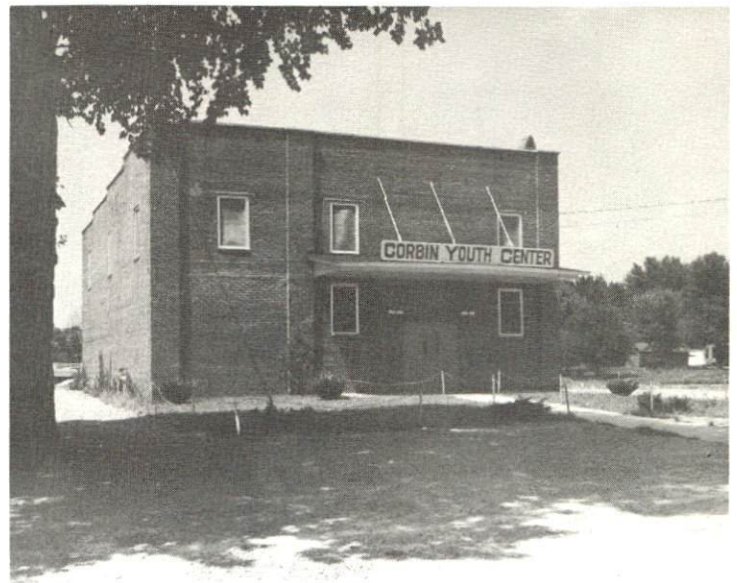
Local: The Corbin Recreation Commission maintains a new swimming pool and youth center as well as sponsoring a year-round recreation program which includes basketball, football, baseball, track and square dancing. The city also has a men's softball league. Privately-owned recreation facilities include the Corbin Country Club which has a nine-hole golf course, a movie theater, a drive-in theater, a bowling alley and a skating rink. The high school stadium and gymnasium are also utilized for special sports events as well as the regular athletic schedule.

The Corbin Chamber of Commerce each year sponsors the Nibroc Festival in August which runs for six days and features such events as square dancing, folk music and beauty contest.

The Laurel River Dam impoundment, a few minutes drive from Corbin, will provide limitless recreational opportunities when completed in 1974.

Area: Corbin is situated in an area unsurpassed in scenic beauty, rich in history and within an hour's drive of three state parks, a national park and a national forest.

Corbin Youth Center



Corbin
Municipal Swimming Pool

DuPont Lodge
Cumberland Falls
State Park



Cumberland Falls State Park, in the heart of the Daniel Boone National Forest, has complete recreational, camping and lodging facilities. Cumberland Falls is one of two places in the world that has a moonbow - the other is at Victoria Falls on the Zambesi River in Africa.

Levi Jackson Wilderness Road State Park and Pine Mountain State Park have full recreational and camping facilities. Levi Jackson Park is the home of the Mountain Life Museum and memorializes the pioneer westward movement from Cumberland Gap along the Wilderness Road, made famous by Daniel Boone. Cumberland Gap National Park is the site of Dr. Thomas Walker's discovery in 1750 of the gap in the mountains through which Daniel Boone later led the pioneers westward.

Cultural events of note include the summer production of the world famous "Book of Job" choral drama and the annual Mountain Laurel Festival at Pine Mountain State Park.

Lexington, 2 hours drive north, offers the full gamut of cultural and sporting events as well as a wide variety of entertainment facilities. Racing - both harness and thoroughbred - is the best in the world. Year-round sports events, lectures and concerts are available at the University of Kentucky as well as art exhibits, and both local and national theatrical productions.

Recent Community Improvements

Public: A new public library; an area vocational school; a new regional post office under construction; city water lines extended approximately 2 miles north of city limits to American Greetings Corporation.

Business and Industrial: American Greetings Corporation - new plant; Ellis Trucking Company - new terminal; Whayne Supply Company - expanded; Elicon-Corbin - expanded; new "Doctors Park" building; new "Executive Towers" building; Y & S Supply Company, Inc.; Building Components, Inc.; Y & S Construction Company, Inc.

Other Community Improvements: New clubhouse and swimming pool at Corbin Golf Course; new subdivisions - Tanglewood, Hideaway Heights, Woodland Acres, Reasor Subdivision; London-Corbin War Memorial Airport extended the runway 2,000 feet to 6,000 feet to accommodate larger jet powered commercial aircraft; two new apartment buildings.

HISTORY

Whitley County, the 59th county created in the state, dates from 1818. It has an area of over 450 square miles and is the tenth largest in Kentucky. Its border runs along the Tennessee state line for 34 miles and the Cumberland River system drains the area. Although the topography is mountainous and broken, there is much fertile soil in the valleys and the hills are rich in high grade bituminous coal. The county was named for Colonel William Whitley, a renowned Indian fighter and soldier who was killed in the Battle of the Thames in Ontario, Canada in 1813.

Corbin, organized in 1902 by an Act of the Legislature, has grown steadily, extending its boundaries into adjoining Knox County. Corbin's history is linked with the growth of the Louisville & Nashville Railroad and the coal mining economy of the area. In 1919, 70,000 cars a month were handled by the Corbin yards which employed 1,500 men in the Corbin area. After World War II, the decline of the coal business and railroad jobs forced the city to look to the tourist business and new industry to take up the economic slack. Corbin has continued to grow in these economic sectors as well as that of an area trade center for the more than 78,000 persons that live within a 25-mile radius. The completion of I-75 within a year will have a prime beneficial effect upon the economic growth of the Corbin area.

Famous residents of Whitley County include:

Julia Marcum who aided the underground railroad prior to the Civil War and later fought for the Union, losing an eye from a bayonet wound. She was the only woman to be granted a soldiers pension by the United States Government.

John Crittenden Bird - inaugurated the pardon system in Kentucky to reduce the chance of miscarriage of justice in court trials.

SOURCES OF INFORMATION

- 1/ U. S. Bureau of the Census, U. S. Census of Population, Kentucky.
- 2/ Department of Sociology, University of Kentucky, Kentucky County Provisional Population Estimates, 1969, Lexington, Kentucky.
- 3/ Kentucky Department of Commerce, 1969 Kentucky Directory of Manufacturers.
- 4/ Kentucky Department of Economic Security, Division of Research and Statistics.
- 5/ Kentucky Department of Economic Security, Employment Service Office.
- 6/ Kentucky Department of Economic Security, Division of Research and Statistics.
- 7/ Kentucky Department of Commerce, Kentucky's Labor Supply Estimates, 1969.
- 8/ Office of Development Services and Business Research, University of Kentucky, Lexington, Kentucky.
- 9/ Kentucky Department of Education, Kentucky School Directory, 1968-69.
- 10/ Louisville & Nashville Railroad, Louisville, Kentucky.
- 11/ Consolidated Freightways, Inc., Lexington, Kentucky.
- 12/ Louisville & Nashville Railroad, Louisville, Kentucky.
- 13/ Kentucky Department of Revenue, Kentucky Property Tax Rates, 1968.