

1983

Industrial Resources: Woodford County - Versailles

Kentucky Library Research Collections
Western Kentucky University, spcol@wku.edu

Follow this and additional works at: https://digitalcommons.wku.edu/woodford_cty



Part of the [Business Administration, Management, and Operations Commons](#), [Growth and Development Commons](#), and the [Infrastructure Commons](#)

Recommended Citation

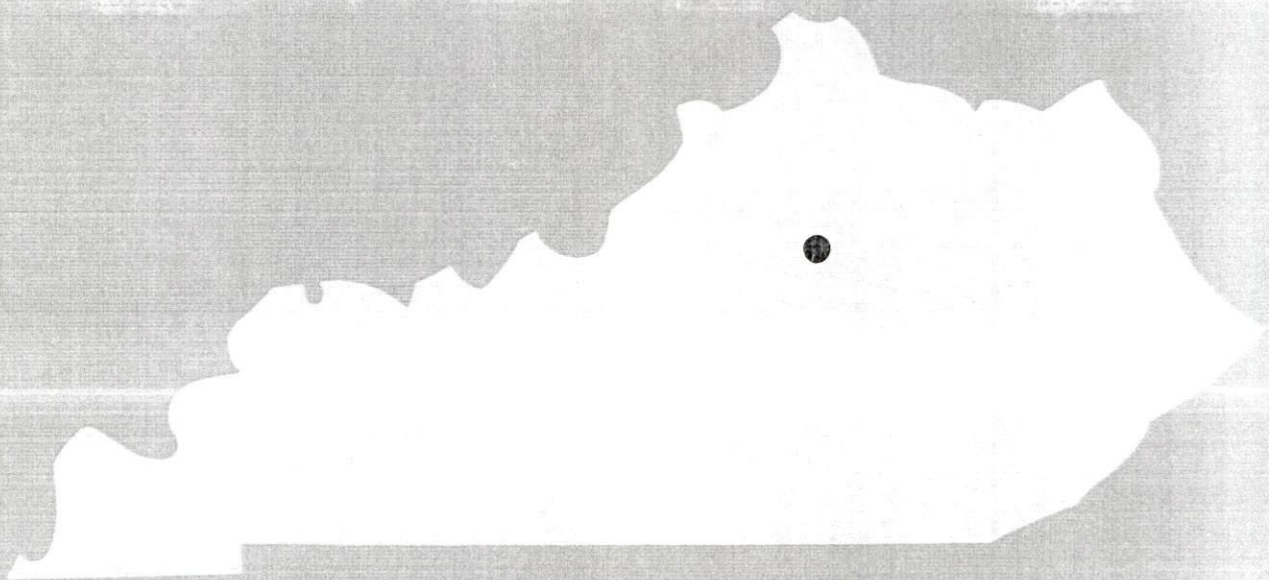
Kentucky Library Research Collections, "Industrial Resources: Woodford County - Versailles" (1983). *Woodford County*. Paper 1.
https://digitalcommons.wku.edu/woodford_cty/1

This Report is brought to you for free and open access by TopSCHOLAR®. It has been accepted for inclusion in Woodford County by an authorized administrator of TopSCHOLAR®. For more information, please contact topscholar@wku.edu.

IR Woodford Co.

340

A comprehensive
report on
Versailles, Ky.
1983



KENTUCKY & CO.
The state that's run like a business.

Site 183 - 15 Acres

LOCATION: Approximately 300 feet north of city limits
ZONING: Light industrial
HIGHWAY ACCESS: US 60 Bypass approximately 1200 feet south via paved access road
RAILROAD: Not rail served
WATER: Versailles Municipal Water and Sewer Works
Size Line: 10-inch line approximately 1200 feet south along north side of US 60 Bypass
NATURAL GAS: Columbia Gas of Kentucky
Size Line: 4-inch line approximately 1300 feet south along southwest side of US 60 Bypass
ELECTRICITY: Kentucky Utilities Company
SEWERAGE: Versailles Municipal Water and Sewer Works
Size Line: 8-inch line approximately 1200 feet south along north side of US 60 Bypass
OWNERSHIP: Private

Site 283 - 11 Acres

LOCATION: Partially within eastern city limits
ZONING: Light industrial
HIGHWAY ACCESS: US 60 Bypass approximately 0.4 mile southwest via Crossfield Drive
RAILROAD: Southern Railway System adjacent to northern boundary of Tract I
WATER: Versailles Municipal Water and Sewer Works
Size Line: 8-inch line along eastern and northern boundary of Tract II
NATURAL GAS: Columbia Gas of Kentucky
Size Line: 4-inch line along southwest side of US 60 Bypass approximately 1500 feet away
ELECTRICITY: Kentucky Utilities Company
SEWERAGE: Versailles Municipal Water and Sewer Service
Size Line: 8-inch line along eastern and northern boundary of Tract II
OWNERSHIP: Private

Site 383 - 63 Acres

LOCATION: Tract II is approximately 200 feet from southwest city limit boundary
ZONING: Light industrial
HIGHWAY ACCESS: US 62 adjacent to southern boundary of Tract I
RAILROAD: Southern Railway System adjacent to northern boundary of Tract I and adjacent to southern boundary of Tract II
WATER: Versailles Municipal Water and Sewer Works
Size Line: 16-inch line along south side of US 62
NATURAL GAS: Columbia Gas of Kentucky
Size Line: 6-inch line approximately 2500 feet east along north side of US 62
ELECTRICITY: Kentucky Utilities Company
SEWERAGE: Versailles Municipal Water and Sewer Works
Size Line: Lift station approximately 500 feet east of Tract I
OWNERSHIP: Private

For more information contact
Development Division, Capital P

SCALE: 1 inch = 2000 feet
CONTOUR INTERVAL: 10 feet
BASE: USGS 7.5 minute series - 1967
Photorevised - 1978

UTILITIES
----- Water Line
----- Sewer Line

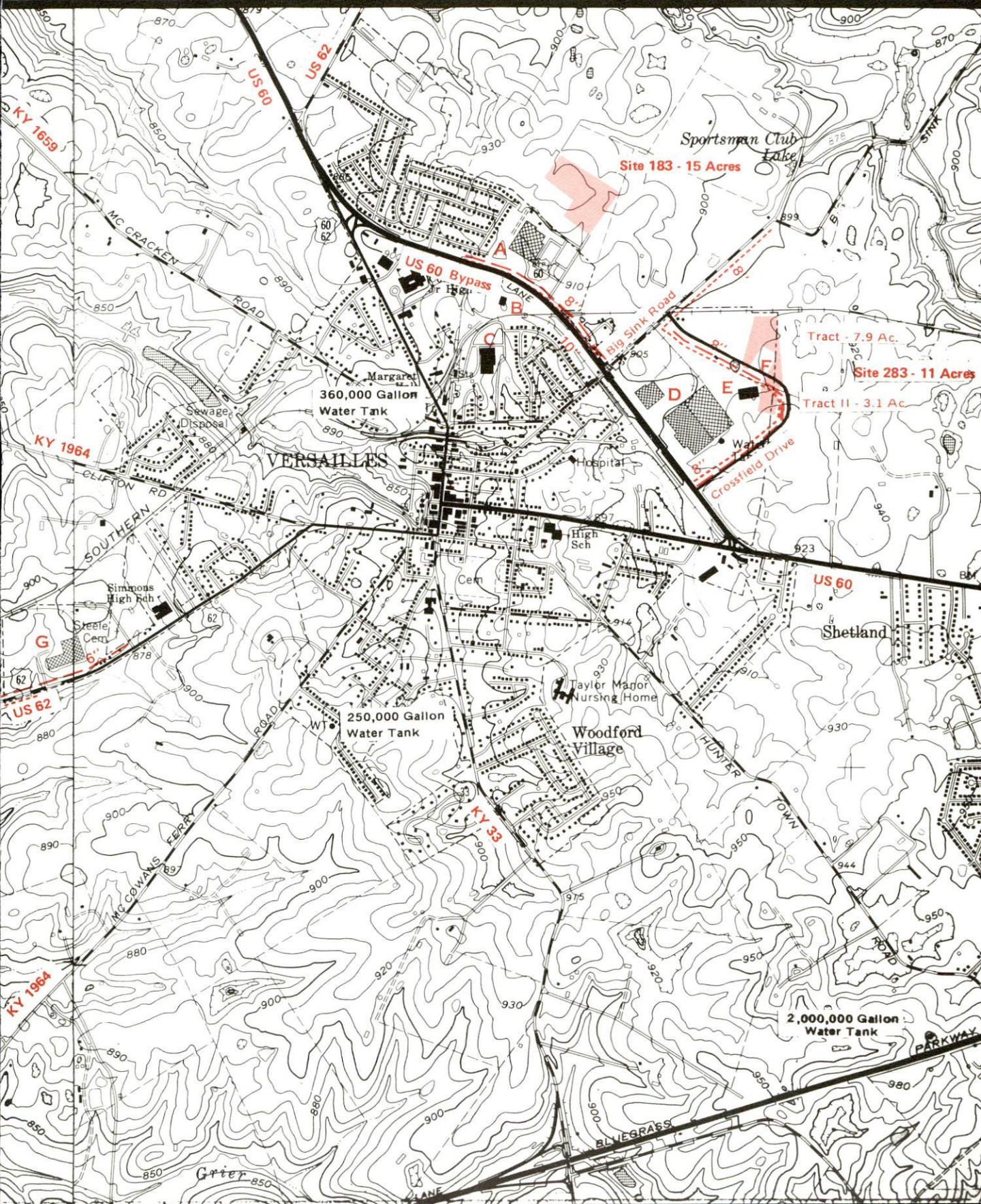
- Existing Industries**
- A Kuhlman Electric Co.
 - B Advanced Drainage Systems
 - C Texas Instruments Inc.
 - D Rand McNally & Co.
 - E M-B Food Corp.
 - F Keebler Co.
 - G GTE Products Corp.



the Department of Economic Development, Office of Business Development, Industrial
Tazewell Tower, Frankfort, Kentucky 40601 (502-564-7140).

VERSAILLES, KENTUCKY

Industrial Sites -- 1983



A COMPREHENSIVE REPORT ON
VERSAILLES, KENTUCKY

Prepared by
The Kentucky Department of Economic Development
Division of Research and Planning
in cooperation with
The Woodford County Chamber of Commerce

1983

Program manager - Pam Riley; research - Andrew Dennis; clerical - Shirley Wood; graphics - Frank Ferrante, Tony Cecconi, Robert Owens; cartography - Site Evaluation Section, Division of New Industries. Cost of printing paid from state funds.

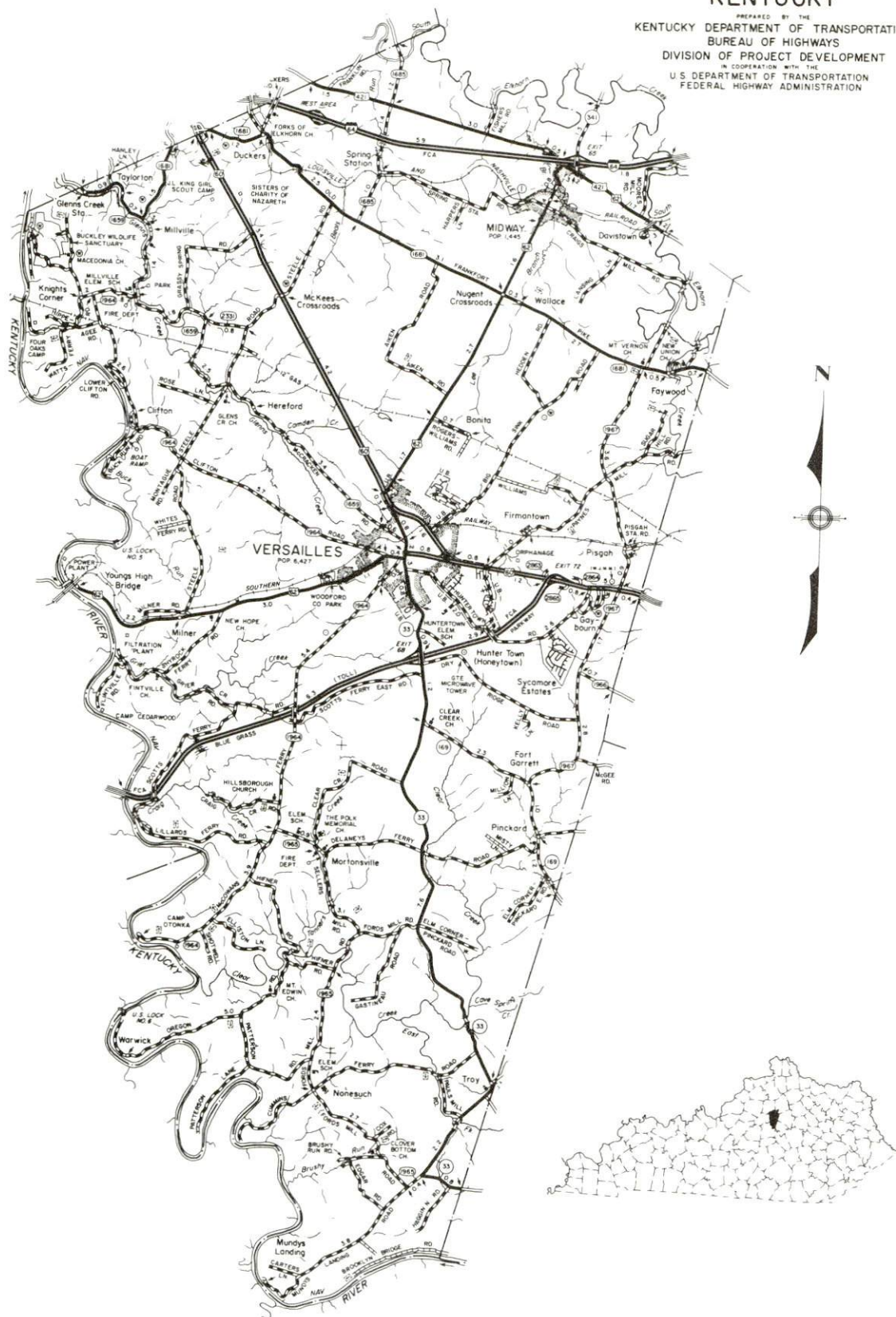
TABLE OF CONTENTS

<u>Chapter</u>	<u>Page</u>
INDUSTRIAL SITES	i
VERSAILLES, KENTUCKY - A RESOURCE PROFILE	1
THE LABOR MARKET AREA	3
Population	3
Labor Force Characteristics of Residents, 1981	3
Versailles Manufacturing Firms, Their Products and Employment	4
Labor Organizations in Manufacturing Firms	5
Industrial Services	5
Estimated Male Labor Supply	6
Estimated Female Labor Supply	6
Average Weekly Wages by Industry, by Place of Work, 1981	7
Per Capita Personal Income	9
TRANSPORTATION	10
Rail	10
Highways	10
Truck Service	11
Air	14
Bus	14
Taxi	14
Rental Services	14
Water	14
POWER AND FUEL	15
Electricity	15
Natural Gas	16
Other Fuels	16
WATER AND SEWERAGE	18
Public Water Supply	18
Raw Water	19
Sewerage	19
CLIMATE	20

<u>Chapter</u>	<u>Page</u>
LOCAL GOVERNMENT	21
City	21
County	21
Assessed Value of Property, 1982	21
Property Taxes	22
Combined State and Local Rates Per \$100 Valuation, 1982	23
Utilities Gross Receipts Tax for Schools	23
Planning and Zoning	24
Safety	24
Police	24
Fire	24
Rescue Service	24
Refuse Collection and Disposal	24
EDUCATION	25
Public Schools	25
Nonpublic Schools	25
Area Colleges and Universities	26
Vocational Schools	27
HEALTH	30
Local Medical Personnel	30
Hospitals	30
Other Medical Facilities	30
Ambulance Service	31
Public Health	31
OTHER LOCAL FACILITIES	32
Communications	32
Library Services	32
Religious Institutions	33
Financial Institutions	33
Hotels and Motels	33
Clubs and Organizations	34
RECREATION	35
COMMUNITY IMPROVEMENTS	38

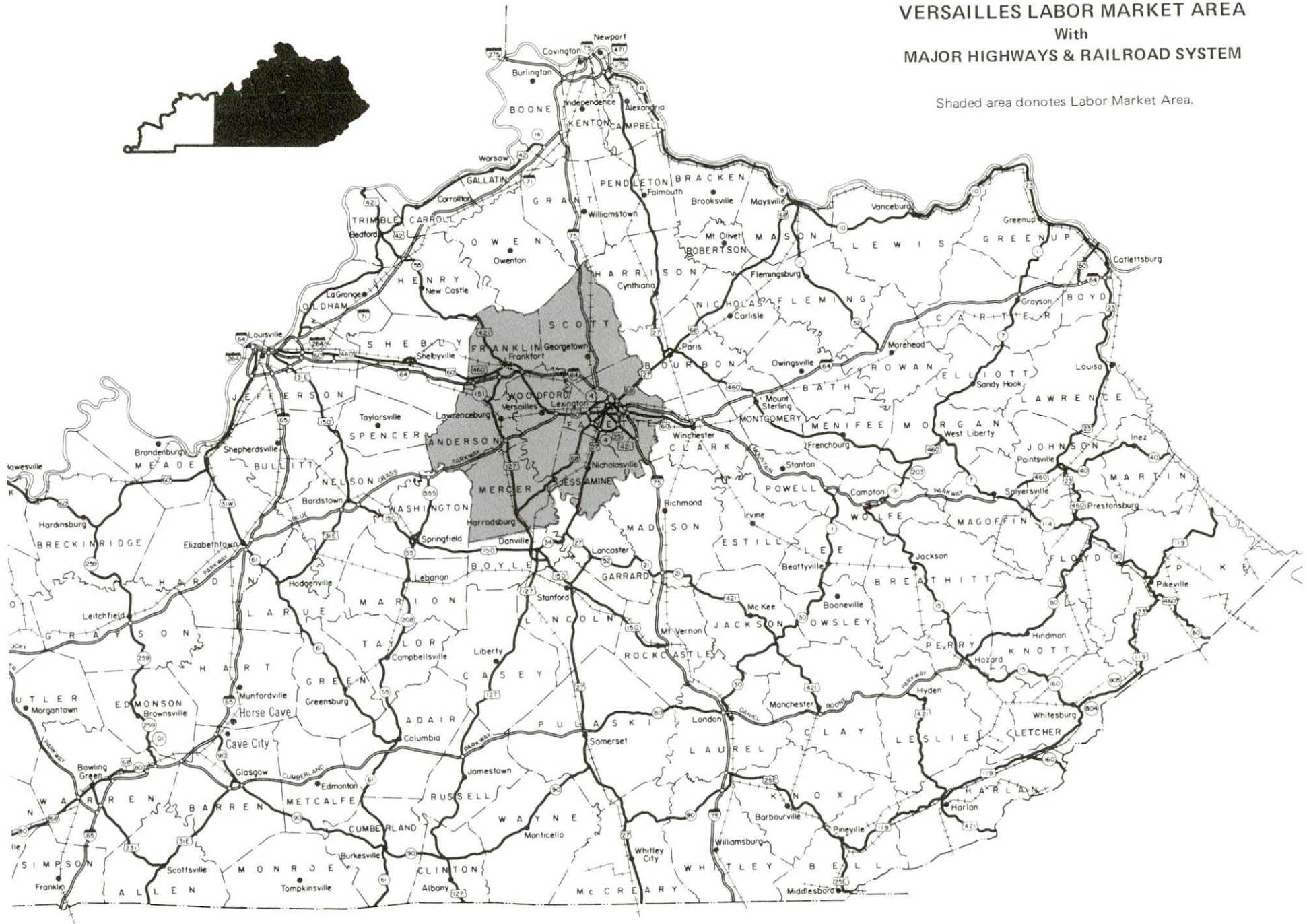
1982 EDITION
GENERAL HIGHWAY MAP
WOODFORD COUNTY
KENTUCKY

PREPARED BY THE
KENTUCKY DEPARTMENT OF TRANSPORTATION
BUREAU OF HIGHWAYS
DIVISION OF PROJECT DEVELOPMENT
IN COOPERATION WITH THE
U.S. DEPARTMENT OF TRANSPORTATION
FEDERAL HIGHWAY ADMINISTRATION



VERSAILLES LABOR MARKET AREA With MAJOR HIGHWAYS & RAILROAD SYSTEM

Shaded area donotes Labor Market Area.



VERSAILLES, KENTUCKY - A RESOURCE PROFILE

Versailles, the county seat of Woodford County, is situated in central Kentucky's famous Bluegrass Region. Versailles is only 13 miles west of Lexington, Kentucky; 65 miles east of Louisville, Kentucky; 96 miles south of Cincinnati, Ohio; and 194 miles north of Knoxville, Tennessee. In 1980 Versailles had a population of 6,427.

Woodford County covers a land area of 192 square miles and had a 1980 population of 17,778.

The Economic Framework

The total number of Woodford County residents employed in 1981 averaged 9,500, with nonagricultural jobs accounting for 8,600 workers. Manufacturing employers in the county reported 2,780 workers; wholesale and retail trade 730; state and local government 560; and 680 employees in service occupations. Manufacturing employment is greatest in the printing and publishing and electrical machinery industries.

Per capita personal income in Woodford County in 1980 was \$10,128 or \$2,466 above the state average. Between 1976 and 1980, per capita income increased by 70.5 percent.

The Versailles labor market area includes Woodford and the six adjoining counties. The total number of residents of the labor market area employed in 1981 averaged 177,930, with nonagricultural jobs accounting for 171,250 workers. Manufacturing employers in the area reported 30,310 workers; wholesale and retail trade 32,630; state and local government 33,940; and 25,700 in the service industries.

Resources for Growth

1. Labor Supply - There is a current labor supply of 14,460 men and 12,830 women available for industrial jobs in the labor market area. In addition, from 1983 through 1987, 13,100 young men and 12,720 young women in the area will become 18 years of age and potentially available for work.

2. Transportation - The Southern Railway System provides daily service to Versailles. Primary trucking highways serving the city are "AAA" rated U. S. 60 & 62. The Blue Grass Parkway, a multi-lane toll road, is three miles east of town. Interstate 64 is eight miles distant via U. S. 62 or ten miles distant via U. S. 60. Interstate 75 is 18 miles distant via U. S. 62 and I-64. Twenty-five of the 28 common carriers with authority to serve Versailles operate terminals within 15 miles of the city. Blue Grass Field, a major airport with scheduled airline service, is only 8 miles east of Versailles.

3. Power and Fuel - Kentucky Utilities Company provides electric power to Versailles and a major portion of Woodford County. Fox Creek RECC and the Frankfort Electric and Water Plant Board also serve Woodford County. Natural gas service is provided to Versailles by Columbia Gas of Kentucky, Inc. There are seven distributors of propane and ten distributors of distillate fuel oil located within 16 miles of the city.

4. Education - The Woodford County School System serves over 3,500 students and is accredited by the Southern Association of College of Schools.

There are eleven institutions of higher learning within 55 miles of Versailles including the Lexington Technical Institute, 13 miles distant, which offers technical training.

The Central Kentucky State Vocational-Technical School located in Lexington, 13 miles east, offers training in 19 different courses. Also in Lexington, the Northside and Southside Area Vocational Education Centers offer training in a total of 19 courses.

THE LABOR MARKET AREA

The Versailles Labor Market Area includes Woodford County and the adjoining Kentucky counties of Anderson, Fayette, Franklin, Jessamine, Mercer and Scott.

Area	POPULATION		Percent Nonwhite
	1980	1970	
Versailles	6,427	5,679	12.1
Labor Market Area	343,229	283,934	N/A
Woodford County	17,778	14,434	8.0
Anderson County	12,567	9,358	3.9
Fayette County	204,165	174,323	14.5
Franklin County	41,830	34,481	8.7
Jessamine County	26,065	17,430	4.6
Mercer County	19,011	15,960	4.6
Scott County	21,813	17,948	7.3

Note: The 1980 counts of population by race are provisional.

Sources: U. S. Department of Commerce, Bureau of the Census, 1980 Census of Population and Housing, March 1981; 1980 Census of Population, Number of Inhabitants. Population Research Unit, Urban Studies Center, University of Louisville, Kentucky Demographics: The 1980 Census of Kentucky, Characteristics of Population, Households, Housing, January 1982.

LABOR FORCE CHARACTERISTICS OF RESIDENTS, 1981		
	Woodford County	Labor Market Area
Civilian Labor Force	9,867	187,471
Employment	9,496	177,931
Agricultural	895	6,682
Nonagricultural	8,601	171,249
Unemployment	371	9,540
Rate of Unemployment (%)	3.8	5.1

Source: Kentucky Cabinet for Human Resources, Kentucky Labor Force Estimates, Annual Averages, 1981.

VERSAILLES MANUFACTURING FIRMS,
THEIR PRODUCTS AND EMPLOYMENT

Firm (Establishment date)	Product	Employment			Labor Unions
		Total	Male	Female	
Advanced Drainage Systems (1972)	Corrugated plastic pipe	15	13	2	
GTE Products Corporation (1964)	Fluorescent lamps	302	198	104	
GTE Products Corporation, Glass Plant (1972)	Glass tubing	182	140	42	
Garrett Orchards and Farm Market (1951)	Cider	8	-	-	
Jomco (1972)	Special production machinery, custom machinery, machine parts and components	4	4	0	
Kuhlman Electric Company (1967)	Transformers	450	360	90	Auto Workers*
McCauley Brothers Seed Company (1938)	Horse feed	10	9	1	
Rand McNally and Company (1962)	Books, printing and binding, map publishing	820	511	309	
S & S Controls, Inc. (1979)	Electrical control panels, electrical controls	5	4	1	
Texas Instruments, Inc. Control Products Division (1954)	Thermostats, pressure switch, relays	N/A			
Woodford Feed Company (1940)	Feed, fertilizer	23	20	3	

(Cont'd.)

<u>Firm</u> (<u>Establishment date</u>)	<u>Product</u>	<u>Employment</u>			<u>Labor Unions</u>
		<u>Total</u>	<u>Male</u>	<u>Female</u>	
The Woodford Sun Company (1869)	Newspaper, offset printing	11	4	7	

*See Labor Organizations below.

Source: Kentucky Department of Economic Development, 1982 Kentucky Directory of Manufacturers. Kentucky Department of Economic Development, Division of Research and Planning.

LABOR ORGANIZATIONS IN MANUFACTURING FIRMS

<u>Union</u>	<u>Representing workers at:</u>
International Union, United Automobile, Aerospace and Agricultural Implement Workers of America	Kuhlman Electric Company

INDUSTRIAL SERVICES

<u>Types of Services</u>	<u>Location</u>	<u>Mileage from Versailles</u>
Tool & Die, Machine & Pattern Shops	Versailles	-
Metal Service Centers	Lexington	13
Heat Treating	Georgetown	18
Metal Finishers	Lexington	13
Electric Motor Repair	Lexington	13

Source: Kentucky Department of Economic Development, Kentucky Directory of Selected Industrial Services, 1981.

ESTIMATED MALE LABOR SUPPLY
VERSAILLES LABOR MARKET AREA

Area	Current				Future
	Total	Unemployed	Under-employed	Not in Labor Force	Becoming 18 years of age 1983 thru 1987
Labor Market Area*	14,463	5,967	7,675	821	13,096
Woodford	505	245	260	0	850
Anderson	670	294	139	237	564
Fayette	8,215	3,253	4,962	0	7,267
Franklin	1,908	933	771	204	1,703
Jessamine	1,100	418	682	0	983
Mercer	1,154	421	353	380	801
Scott	911	403	508	0	928

*Additional workers may be drawn from other nearby counties.

Note: Unemployed - persons unemployed and actively seeking work; Under-employed - persons employed but working only 14 to 26 weeks per year. Not in Labor Force - represents the number of persons who would enter the labor force if suitable employment were available (based on the assumption that persons in Kentucky would like to participate in the labor force in the same proportion that they do nationally).

Sources: Kentucky Cabinet for Human Resources, Kentucky Labor Supply Estimates by Area Development District and County, 1981. Kentucky Department of Economic Development, Future Labor Supply Becoming 18 Years of Age, 1983 Thru 1987.

ESTIMATED FEMALE LABOR SUPPLY
VERSAILLES LABOR MARKET AREA

Area	Current				Future
	Total	Unemployed	Under-employed	Not in Labor Force	Becoming 18 years of age 1983 thru 1987
Labor Market Area*	12,826	3,573	9,253	0	12,720
Woodford	529	126	403	0	390
Anderson	373	152	221	0	524
Fayette	7,840	1,995	5,845	0	7,057
Franklin	1,436	484	952	0	1,555
Jessamine	1,120	255	865	0	1,075
Mercer	700	351	349	0	840
Scott	828	210	618	0	860

*Additional Workers may be drawn from other nearby counties.

Note: Unemployed - persons unemployed and actively seeking work; Under-employed - persons employed but working only 14 to 26 weeks per year. Not in Labor Force - represents the number of persons who would enter the labor force if suitable employment were available (based on the assumption that persons in Kentucky would like to participate in the labor force in the same proportion that they do nationally).

Sources: Kentucky Cabinet for Human Resources, Kentucky Labor Supply Estimates by Area Development District and County, 1981. Kentucky Department of Economic Development, Future Labor Supply Becoming 18 Years of Age, 1983 Thru 1987.

AVERAGE WEEKLY WAGES BY INDUSTRY,
BY PLACE OF WORK, 1981

	<u>Woodford County</u>	<u>Anderson County</u>	<u>Fayette County</u>	<u>Franklin County</u>
All Industries	\$258.17	\$231.79	\$282.74	\$263.59
Mining & Quarrying	0	*	529.79	252.04
Contract Construction	270.42	177.49	340.51	353.76
Manufacturing	311.93	289.32	401.73	284.73
Transportation, Communications & Public Utilities	336.35	373.34	351.28	364.06
Wholesale & Retail Trade	157.92	186.99	199.44	165.43
Finance, Insurance & Real Estate	199.49	214.14	273.23	279.83
Services	185.25	120.46	242.34	200.51
State/Local Government	234.39	203.74	290.61	279.53
Other	241.93	122.69	244.71	193.82
	<u>Jessamine County</u>	<u>Mercer County</u>	<u>Scott County</u>	
All Industries	\$221.79	\$234.82	\$232.72	
Mining & Quarrying	*	*	*	
Contract Construction	254.20	272.84	242.11	
Manufacturing	263.59	299.53	291.32	
Transportation, Communications & Public Utilities	277.62	354.57	402.15	
Wholesale & Retail Trade	189.74	150.52	155.03	
Finance, Insurance & Real Estate	209.55	237.74	227.40	
Services	189.57	151.63	168.78	
State/Local Government	218.01	222.28	194.21	
Other	210.47	145.39	240.29	

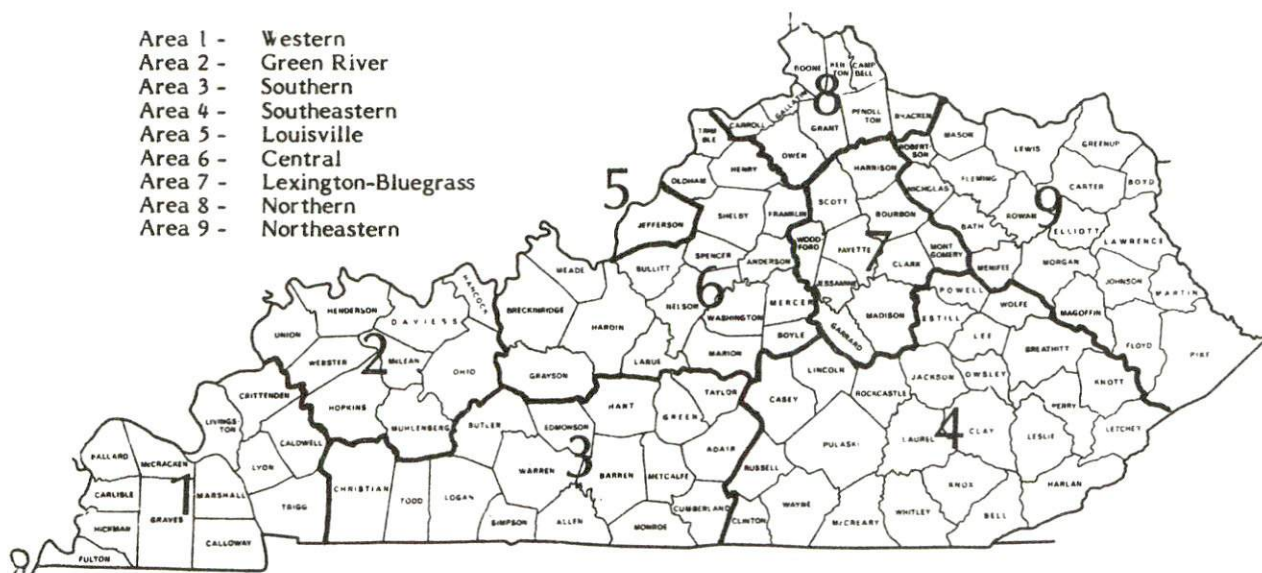
*Not disclosed.

Note: Excludes domestic workers, railway workers, certain nonprofit corporations, majority of federal government workers, and self-employed workers.

Source: Kentucky Cabinet for Human Resources, Average Weekly Wages of Workers Covered by Kentucky Unemployment Insurance Law, 1981.

Occupational wage rates for specific industries are usually not available to most government agencies, and wage data furnished to state employment agencies by individual industrial employers are protected from disclosure by federal law. The most reliable up-to-date wage information can be obtained by direct contact with local employers.

Associated Industries of Kentucky, a voluntary organization of Kentucky businesses, regularly collects occupational wage rates and fringe benefits data from participating member firms. Data are compiled for over 127 clearly defined office, production, and service occupations. Tabulations are published for nine geographical areas of Kentucky, as shown on the map below. It should be noted that the data may be weighted by the preponderance of firms in the larger cities and may be somewhat higher than the rates paid in the smaller communities. Data from these tabulations are available, upon request, from the Kentucky Department of Economic Development, Frankfort, Kentucky 40601.



Associated Industries of Kentucky Area Wage Surveys

PER CAPITA PERSONAL INCOME

<u>Area</u>	<u>1976</u>	<u>1980</u>	<u>Percent Change</u>
Woodford County	\$5,940	\$10,128	70.5
Labor Market Area			
Range	\$4,419 - 6,463	\$6,794 - 10,128	N/A
Kentucky	5,263	7,662	45.6
U. S.	6,367	9,511	49.4

Source: U. S. Bureau of Economic Analysis, Kentucky Economic Information System, June 1982.

TRANSPORTATION

Rail

Line serving Versailles - Southern Railway System

Services - One eastbound and one westbound local freight stops daily on route from Lawrenceburg to Lexington and return; team track space for 16 cars plus siding space for 25 cars; nearest Southern Railway piggyback facilities are located in Danville, 40 miles south of Versailles; nearest piggyback facilities are provided by the L & N Railroad in Frankfort, 15 miles northwest of Versailles.

For details on routing, schedules, rates, and services, contact:

District Sales Manager
Southern Railway System
1402 South 15th Street
Louisville, Kentucky 40210
(502) 637-7643

Highways

Versailles is served by U. S. Highways 60 and 62, both class "AAA" trucking highways. The Blue Grass Parkway, a multi-lane toll road, is located three miles east of the city.

Access onto Interstate 64, a major east-west route, is 8 miles to the northeast via U. S. 62 or 10 miles northwest via U. S. 60. Access onto Interstate 75, a major north-south highway, is located 17 miles east of Versailles at Lexington. Interstates 64 and 75 intersect approximately four miles north of Lexington.

Truck Service

<u>Company</u>	<u>Home Office</u>
American Freight System, Inc.*	9393 West 110th Street Overland Park, Kansas 66210
Associated Truck Lines, Inc.*	200 Monroe Avenue, N. W. Grand Rapids, Michigan 49503
Bestway Express, Inc.*	520 Lexter Avenue Nashville, Tennessee 37210
Bishop Motor Express**	Grand Rapids, Michigan 49502
Branch Motor Company**	114 Fifth Avenue New York, New York 10011
CCC Highway, Inc.**	1375 Euclid Avenue Cleveland, Ohio 44115
C W Transport, Inc.**	610 High Street Wisconsin Rapids, Wisconsin 54494
Claxon Truck Line, Inc.**	453 Versailles Road P. O. Box 678 Frankfort, Kentucky 40602
Commercial Lovelace Motor Freight, Inc.**	3400 Refugee Road Columbus, Ohio 43227
Consolidated Freightways Corporation of Delaware**	175 Linfield Drive Menlo Park, California 94025
Duff Truck Line, Inc.**	P. O. Box 359 Lima, Ohio 45802
General Highway Express, Inc.*	P. O. Box 727 Sidney, Ohio 45365
Helms Express**	Irwin, Pennsylvania 15642
Lawrenceburg Transfer Company, Inc.**	P. O. Box 220 Lawrenceburg, Kentucky 40342
Leoni Motor Express, Inc.**	Chicago Heights, Illinois 60411
Maislin Transport, Ltd. ***	7401 Newman Boulevard Montreal, Canada H8N 1X4
The Mason and Dixon Lines, Inc.**	P. O. Box 969 Kingsport, Tennessee 37662
McLean Trucking Company*	P. O. Box 213 Winston-Salem, North Carolina 27154
Mercury Motor Express, Inc.**	2511 N. Grady Avenue Tampa, Florida 33607
Middlewest Freightways, Inc.**	6810 Prescott Avenue St. Louis, Missouri 63147
O. K. Trucking Company**	3000 East Crescentville Road Cincinnati, Ohio 45241

Truck Service

Company

Home Office

Overnite Transportation
Company**

P. O. Box 1216
Richmond, Virginia 23209

P-I-E**

25 North Via Monte
Walnut Creek, California 94598

Quick Transportation, Inc.**

P. O. Box 12248
Lexington, Kentucky 40582

Roadway Express, Inc.**

1077 Gorge Boulevard
Akron, Ohio 44309

Ryder Truck Lines, Inc.**

P. O. Box 2408
Jacksonville, Florida 32203

Smith's Transfer Corporation*

P. O. Box 1000
Staunton, Virginia 24401

*Interstate service only.

**Interstate and intrastate service.

***Interstate service, truck load only.

Other Freight ServicesNearest Shipping Center

Purolator Courier Corporation*
 United Parcel Service**
 Federal Express***

Lexington, 13 miles distant
 Lexington, 13 miles distant
 Lexington, 13 miles distant

HIGHWAY MILES AND TRUCK TRANSIT TIME IN DAYS FROM
 VERSAILLES, KENTUCKY, TO SELECTED MARKET CENTERS

City	Highway Miles	Delivery		City	Highway Miles	Delivery	
		Time TL				Time TL	
Atlanta, Ga.	375	2		Los Angeles, Ca.	2,173	10	
Baltimore, Md.	554	3		Louisville, Ky.	65	1	
Birmingham, Ala.	401	2		Nashville, Tenn.	205	1	
Chicago, Ill.	357	2		New Orleans, La.	722	3	
Cincinnati, Ohio	96	1		New York, N. Y.	716	3	
Cleveland, Ohio	330	2		Pittsburgh, Pa.	356	3	
Detroit, Mich.	350	2-3		St. Louis, Mo.	328	2	
Knoxville, Tenn.	194	1					

Note: Mileage computations are via the best interstate or primary highways, not necessarily the most direct route of travel.

Sources: Rand McNally Interstate Road Atlas, 1981. Official Kentucky Mileage Map, 1980. Delivery time - Quick Transportation, Inc., P. O. Box 12248, Lexington, Kentucky 40582.

*For regular scheduled pickups or for occasional pickups, arrangements must be made with the Lexington, Kentucky office of Purolator Courier Corporation.

**For regular scheduled pickups or for occasional pickups, arrangements must be made with the Louisville office of United Parcel Service.

***For information on scheduling, rates, and services, contact the Federal Express shipping station at Lexington, Kentucky or call the home office in Memphis, Tennessee, Toll-Free at 800-238-5355 (in Tennessee, call 800-542-5171).

Air

Nearest Scheduled Airline Service

Location: Blue Grass Field
4 miles west of Lexington, Kentucky; 8 miles east of Versailles
Runways: 2 paved
Length: 6,500 feet; 3,500 feet
Traffic
Control: Tower
Lighting: Approach lighting system, beacon, runways and obstructions lighted, VASI
Services: USAir, Delta, Piedmont, Frontier, Comair, Tennessee Airways; fuel - 80, 100LL, jet-A; hangars, tie-downs; major A & P repairs, major Avionics repairs; APU, charter, flight instruction, oxygen, plane rentals, survival equipment; taxi, limousine, car rentals, courtesy car; weather information; restaurant, snack bar
Air Freight Service: Air freight terminal

Bus - Southern Greyhound Bus Lines

Taxi - 24-hour service is provided.

Rental Services - U-Haul truck and trailer rentals are available locally.
Auto rentals are available at Blue Grass Field, 8 miles away.

Water

The Kentucky River, which flows along the western boundary of Woodford County, is located approximately 5 miles west of Versailles. A 6-foot navigation channel is maintained to the Ohio River.

POWER AND FUEL

Electricity

Company serving Versailles and parts of Woodford County - Kentucky
Utilities Company
Source of power - Kentucky Utilities Company
Total generating capacity - 2,639,100 KW*
For industrial rates contact:

Industrial Development Department
Kentucky Utilities Company
One Quality Street
Lexington, Kentucky 40507
(606) 255-1461

Company serving parts of Woodford County - Fox Creek Rural Electric
Cooperative Corporation
Source of power - East Kentucky Power Cooperative
Total generating capacity - 1,304,000 KW
For industrial rates contact:

Industrial Development Division
East Kentucky Power Cooperative
P. O. Box 707
Winchester, Kentucky 40391
(606) 744-4812

and/or

Fox Creek RECC
P. O. Box 211
Lawrenceburg, Kentucky 40342
(502) 839-3442

Company serving a small portion of northwest Woodford County - Frankfort
Electric and Water Plant Board
Source of power - Kentucky Utilities Company
Total generating capacity - 2,639,100 KW*
For industrial rates contact:

Frankfort Electric and Water Plant Board
315 West Second Street
Frankfort, Kentucky 40601
(502) 233-3401

*A new generating unit is under construction in Carroll County. Due to be completed in 1984, the unit will have a generating capacity of 511,000 KW.

Natural Gas

Company serving Versailles - Columbia Gas of Kentucky, Inc.
Source of supply - Columbia Gas Transmission Corporation
Size of transmission mains - 10 and 12 inches (supplier);
6 and 12 inches (distributor)
Distribution mains - 2, 4 and 6 inches
Distribution pressure - 4 ounces to 25 psi
Btu content - 1,025 per cubic foot
Specific gravity - 0.57
For rates and supplies contact:

Marketing Manager
Columbia Gas of Kentucky, Inc.
P. O. Box 241
Lexington, Kentucky 40584
(606) 255-3612

Other Fuels (Within 16 miles)

Propane

Olson's L. P. Gas Company
Lexington Pike
Versailles, Kentucky 40383

Buckeye Gas Products Company
(bulk plant)
Spurr Road
Lexington, Kentucky 40511

Crawford Gas and Appliances,
Inc.
1104 Winchester Road
Lexington, Kentucky 40505

Buckeye Gas Products Company
(Doxol Propane, bulk plant)
U. S. 127 Bypass
Lawrenceburg, Kentucky 40342

Burley Oil Company
Versailles Road
Frankfort, Kentucky 40601

Southern States Cooperative, Inc.
Jett Petroleum Service
Versailles Road
Frankfort, Kentucky 40601

Suburban Propane
121 North 4th Street
Nicholasville, Kentucky 40356

(Cont'd.)

Fuel oils

Distillate fuel oil -

Rainbow Coal and Oil Company
Lexington Pike
Versailles, Kentucky 40383

Ashland Petroleum Company
Old Frankfort Pike
Lexington, Kentucky 40504

Chevron U.S.A., Inc.
1750 Old Frankfort Pike
Lexington, Kentucky 40504

Exxon Company, U.S.A.
1506 Old Frankfort Pike
Lexington, Kentucky 40504

Doc Ferrell Gulf Distributor,
Inc.
1102 West Manchester
Lexington, Kentucky 40508

H & R Oil Company, Inc.
Georgetown Road
Lexington, Kentucky 40502

Moore Oil Company
Old Frankfort Pike
Lexington, Kentucky 40504

Burley Oil Company
Versailles Road
Frankfort, Kentucky 40601

Phillips 66
Louisville Road
Frankfort, Kentucky 40601

Robinson's Oil Company
Versailles Road
Frankfort, Kentucky 40601

Residual fuel oil - Arrangements must be made with the refinery.

Low sulphur content coal - Available in Kentucky.

WATER AND SEWERAGE

Public Water Supply

Company serving Versailles - Versailles Municipal Water and Sewer Works*
196 South Main Street
Versailles, Kentucky 40383
(606) 873-5437

Source - Kentucky River and Big Sandy Well

Treatment plant capacity - 3,000,000 gallons per day (combined capacity of two plants)

Average daily consumption - 2,000,000 gallons

Peak daily consumption - 2,250,000 gallons

Type treatment - Filtration and chlorination

Storage capacity - 2,700,000 gallons - including clearwell

Size lines - 16, 12, 10, 8, 6 and 4 inches

Average pressure - 44 psi

Average temperature - 56 degrees F.

MONTHLY WATER RATES

Inside City

First	1,000 gallons	\$3.00 (Minimum)
Next	4,000 gallons	1.29 per M gallons
Next	5,000 gallons	1.29 per M gallons
Next	15,000 gallons	1.22 per M gallons
Over	25,000 gallons	1.15 per M gallons

Outside City

First	1,000 gallons	\$4.75 (Minimum)
Next	4,000 gallons	1.94 per M gallons
Next	5,000 gallons	1.94 per M gallons
Next	15,000 gallons	1.83 per M gallons
Over	25,000 gallons	1.74 per M gallons

Tap-on charge: Inside city limits: \$750 (combination rate for water and sewer)

Outside city limits: \$850 (combination rate for water and sewer)

*The Versailles Municipal Water and Sewer Works completed improvement to the water treatment plant in the spring of 1982. The \$20,000 project increased total treatment capacity from 2.6 million gallons to 3 million gallons per day.

Raw Water

Surface water sources - Kentucky River and South Elkhorn Creek
Average discharge - Kentucky River at Lock 6, near Salvisa, Kentucky,
6,770 cfs (56-year record, USGS, unadjusted); South Elkhorn Creek
at Fort Spring, Kentucky, 32.9 cfs (31-year record, USGS)
Expected ground water yield - Northeast border of county - 50 to 200
gpm; remainder of county - 5 to 50 gpm

Sewerage

Company serving Versailles - Versailles Municipal Water and Sewer Works
196 South Main Street
Versailles, Kentucky 40383
(606) 873-5437

Design capacity - 1,320,000 gallons per day*

Average daily flow - 1,000,000 gallons*

Treatment - Primary, secondary and tertiary

Type treatment - Aeration, clarifier, drying beds

Treated effluent discharged into - Glen's Creek

Size of sanitary mains - 8, 12, 16 and 21 inches

Size of storm mains - 6, 15 and 18 inches

Rates - Inside City: 70 percent of total amount of monthly water bill.

Outside City: 100 percent of total amount of monthly water bill.

Tap-on charge: Inside city limits: \$750 (combination rate for
water and sewer)

Outside city limits: \$850 (combination rate for
water and sewer:

Hookups for industry must be arranged

*Kentucky Cabinet for Natural Resources and Environmental Protection.

CLIMATE

Woodford County

Temperature

Normal (30-year record)	55.2 degrees
Average annual 1981	54.2 degrees
Record highest, September 1954 (37-year record)	103.0 degrees
Record lowest, January 1963 (37-year record)	-21.0 degrees
Normal heating degree days (30-year record)	4,729
(Heating degree day totals are the sums of negative departures of average daily temperatures from 65 degrees F.)	

Precipitation

Normal (30-year record)	44.49 inches
Mean annual snowfall (37-year record)	16.70 inches
Total precipitation 1981	36.65 inches
Mean number days precipitation (.01 inch or more) (37-year record)	130
Mean number days thunderstorms (37-year record)	46

Prevailing Winds (17-year record) South

Relative Humidity

1 a.m.	77 percent (17-year record)
7 a.m.	81 percent (18-year record)
1 p.m.	60 percent (18-year record)
7 p.m.	64 percent (18-year record)

Source: U. S. Department of Commerce, Environmental Science
Services Administration, Climatological Data, 1981.
Station of record: Lexington, Kentucky.

LOCAL GOVERNMENT

City

Versailles

Structure - Mayor - 4-year term; 6 council members - 2-year terms
Budget 1982-83 - General Fund \$1,478,370
1981-82 - Water and Sewer Fund 608,952
Fees and licenses - Business licenses range from \$5 to \$500 annually,
manufacturing factory - \$50; occupational license taxes - 1 percent
of the gross salaries of individuals and 1 percent of the net profits
of businesses

County

Structure - County Judge/Executive - 4-year term;
8 magistrates - 4-year terms
Budget 1982-83 - General Fund \$1,205,445*; Road Fund \$923,212
Fees and licenses - Occupational licenses taxes 1 percent of the
gross salaries of individuals and 1 percent of the net profit of
businesses

Assessed Value of Property, 1982**

<u>Classes of Property</u>	<u>Versailles</u>	<u>Woodford County</u>
Real Estate	\$129,579,650	\$398,993,050
Tangibles	N/A***	53,433,132

*Includes \$950,000 occupational license tax.

**Excludes Homestead Exemptions.

***Tangible personal property is not taxed by the city of Versailles.

Property Taxes

All property in Kentucky is assessed at 100 percent of fair cash value.

Land and buildings are taxed by the state and may be taxed by local jurisdictions. The state rate is \$0.224 per \$100 of assessed valuation.

Manufacturing machinery, raw materials inventories, pollution control equipment, and goods in the process of manufacture are not subject to local taxation. The state rate is \$0.15 per \$100.

Other tangible personal property owned by manufacturers (automobiles, trucks, finished goods, office furniture, office equipment) is taxed by the state at \$0.45 per \$100 and may be taxed by local jurisdictions.

Intangible personal property located in Kentucky (money in hand, shares of stock, notes, bonds, accounts receivable, and other credits) is taxed by the state at \$0.25 per \$100, and is not subject to local taxation.

Property stored in public warehouses in a transit status is not subject to local taxation. The state rate is only \$0.015 per \$100.

Private leaseholds in industrial facilities owned by cities or counties and financed by industrial revenue bonds are subject to a state tax of \$0.015 per \$100 of value (essentially the lessee's equity, adjusted for appreciation or depreciation). Local taxation is not permitted.

Combined State and Local Rates per \$100 Valuation, 1982*
(100% assessment)

	<u>Site Inside City of Versailles</u>	<u>Site Inside Unincorporated Woodford County</u>
1. Land and buildings	\$0.568	\$0.488
2. Mfg. machinery, raw materials, goods in process, pollution control equipment	0.150	0.150
3. Finished goods, office equipment, vehicles, other tangibles	0.734**	0.734
4. Intangibles (accounts rec., notes, bonds, etc.)	0.250	0.250
5. Property stored in public warehouses in a transit status	0.015	0.015
6. Leaseholds in industrial revenue bond financed plants	0.015	0.015

Utilities Gross Receipts Tax for Schools

A 3 percent tax is levied on utilities receipts for schools in Woodford County. Tax is paid by all consumers of utilities as an add-on to the utilities bills. Exempted are receipts from utilities services that are resold and the receipts from the sale of energy or energy-producing fuels that exceed 3 percent of the cost of production in manufacturing, processing, mining or refining.

*Kentucky Department of Economic Development.

**Does not include the city tax of \$0.08 since the City of Versailles currently does not tax tangible personal property.

Planning and Zoning

Joint agency - Woodford County Planning and Zoning Commission*
Zoning enforced - All areas of the county
Subdivision regulations enforced - All areas of the county
Local codes enforced - Building and housing
Mandatory state codes enforced - Kentucky Plumbing Code, National
Electric Code, Kentucky Boiler Regulations and Standards, Kentucky
Building Code (modeled after BOCA code)

Safety

<u>Police</u>	<u>Versailles</u>	<u>Woodford County Police Department</u>	<u>Woodford County Sheriff's Office</u>
Total staff	13 full-time 1 part-time	14 -	5 -
Radio-patrol cars	6	14	4

Fire

Insurance Services			
Office, Public			
Protection			
Classification	7	-	9
Full-time staff	0	-	1
Volunteers	23	-	54

Rescue Service

Woodford County Rescue Squad:
Number of volunteers - 25
Equipment - Rescue van, jeep, diving equipment (2 sets of tanks,
regulators & wet suits) dragging gear, portable generator
Personnel training - First aid, emergency medical technicians

Refuse Collection and Disposal

	<u>Versailles</u>	<u>Woodford County</u>
Type service	Municipal	Private
Fee charged:		
residential	\$2 per month	\$8 per month
business	\$6 to \$12 per month	Based on volume
industrial	**	Based on volume
Collection frequency:		
residential	Twice weekly	Twice weekly
business	Twice weekly	Twice weekly
industrial	**	Based on volume
Trash pickup	Twice weekly	Twice weekly
Disposal method	Landfill	Landfill

*Participating cities - Versailles and Midway.

**Industrial customers must contract with private companies.

EDUCATION

Public Schools

Woodford County*

Total Enrollment (Fall 1982)	3,583
Elementary	1,837
Middle School	634
High School	1,112
Student-Teacher Ratio	18-1
Elementary	17-1
Middle School	19-1
High School	18-1
Accreditation	Southern Association of Colleges and Schools
Percent High School Graduates to College (1981)	53.6
Expenditures Per Pupil (1981-82)	\$1,522.51
Bonded Indebtedness (June 30, 1981)	\$5,600,000**

Nonpublic Schools

St. Leo

Total Enrollment	150
Elementary (1-8)	150
Student-Teacher Ratio	21-1
Elementary	21-1

*A new elementary school was completed in 1981. The \$3 million facility is designed for 800 students. An agriculture complex, physical education room and 20 class rooms make up the \$2.5 million expansion recently completed at the high school. In addition, \$1.5 million remodeling and expansion program has been completed at the middle school.

**Includes School Building Authority bonds outstanding \$2,870,000 -- Local School District obligation \$2,124,000.

Area Colleges and Universities

<u>Name</u>	<u>Location (Miles distant)</u>	<u>Enrollment (Fall, 1981)</u>	<u>Highest Degree Conferred</u>
Midway College	Midway (8)	338	Associate
University of Kentucky	Lexington (13)	23,441	Doctorate, M.D., D.M.D., J.D.
Transylvania University	Lexington (13)	750	Baccalaureate/ Masters*
Lexington Technical Institute	Lexington (13)	2,302	Associate
Kentucky State University	Frankfort (15)	2,385	Masters
Asbury College	Wilmore (16)	1,200	Baccalaureate
Georgetown College	Georgetown (18)	1,263	Masters
Centre College	Danville (40)	685	Baccalaureate
Eastern Kentucky University	Richmond (40)	13,394	Masters, Specialist/ Doctorate**
St. Catharine College	Springfield (50)	246	Associate
Berea College	Berea (54)	1,587	Baccalaureate

*Courses in the masters degree program are taught on the Transylvania campus by faculty members of Xavier University of Cincinnati. The degree is issued by Xavier University.

**Joint doctoral degree programs are offered in cooperation with the University of Kentucky, Lexington. The degree is issued by the University of Kentucky.

Vocational Schools

Both the state vocational-technical schools and the area vocational education centers are operated by the Kentucky Department of Education. The state vocational-technical schools enroll persons full time who are at least 16 years of age and not in school. These students attend classes for six hours each day. The area vocational education centers are designed to accommodate high school students who are at least 15 years of age. These students attend vocational school for three hours each day. The state vocational-technical schools and the area education centers offer evening courses to enable working adults to upgrade current job skills.

Nearest State School

Central Kentucky State Vocational-
Technical School

Location	Lexington
Miles Distant	13
Curriculum	Business and Office Clerical Secretarial Consumer and Home Economics Commercial Foods Health and Personal Services Occupations Cosmetology Dental Assistant Nurse's Aide Practical Nursing Surgical Technician Industrial Education Auto Body Repair Auto Mechanics Carpentry Drafting Electronics Graphic Arts Industrial Electricity Machine Shop Masonry Sheet Metal, Heating and Cooling Welding Learning Resource Center

(Cont'd.)

The Lexington Technical Institute is a unit of Kentucky's community college system operating on the University of Kentucky campus. Courses parallel university offerings and are transferable to the Lexington U of K campus or to another 4-year institution either public or private. The Institute awards the Associate in Arts degree and the Associate in Applied Science degree.

The Associate in Applied Science Degree is awarded in the following programs: accounting technology; architectural technology; civil engineering technology; data processing technology (business option, science option); dental hygiene; dental laboratory technology; electrical engineering technology (electronics option); management technology (business option); mechanical engineering technology; nursing; radiologic technology; real estate; respiratory therapy; secretarial administration; transportation.

Nearest Area Education Center

	Northside Area Vocational Education Center
Location	Lexington
Miles Distant	13
Curriculum	Agriculture Horticulture Health and Personal Services Occupations Health Careers Industrial Education Auto Mechanics Auto Parts Construction Electricity Diesel Mechanics Graphic Arts Industrial Equipment Mechanics Machine Shop Welding

	Southside Area Vocational Education Center
Location	Lexington
Miles Distant	13
Curriculum	Health and Personal Services Occupations Health Careers Industrial Education Air Conditioning and Refrigeration Auto Body Repair Auto Mechanics Carpentry Electricity Electronic Service Masonry Plumbing

(Cont'd.)

Arrangements can be made to provide training in the specific production skills required by an industrial plant. Instruction may be conducted either in the vocational school or in the industrial plant, depending upon the desired arrangement and the availability of special equipment.

HEALTH

Local Medical Personnel

Physicians - 13
Dentists - 9

Hospitals

<u>General Hospital</u>	<u>Location</u>	<u>Beds</u>
Woodford Memorial Hospital*	Versailles	71

General hospital facilities: 2 operating rooms (1 equipped for orthopedic surgery), 6 emergency rooms, 2 delivery rooms, obstetrics, 10 bassinets, recovery room, 3 bed intensive-coronary care unit, respiratory therapy, physical therapy, laboratory, X-ray department, pharmacy

Medical staff: 27 physicians, 45 registered nurses (15 part-time), 10 nurses on a special call in program who are oriented and work when called in to relieve regular staff when sick or on vacation, 12 licensed practical nurses, 4 operating room personnel, 7 laboratory personnel (4 medical technologists, 3 medical technicians), 15 intensive-coronary care unit personnel, 2 registered pharmacists, 1 pharmacy technician, 5 X-ray personnel, 1 dietician, 2 registered respiratory therapists, 1 certified respiratory therapist, 2 respiratory therapy technicians, 1 physical therapist, 1 physical therapy technician

Other Medical Facilities

Comprehensive Care Center - Blue Grass West

Woodford Family Health Care Center

*The Woodford Memorial Hospital completed a major expansion and renovation project in the spring of 1982. The \$4.1 million project included: a new emergency room, a new radiology department, a new laboratory, a remodeled cafeteria, new physical therapy department, new respiratory therapy department, a new pharmacy, new administrative offices and offices for physicians.

Ambulance Service

Name - Woodford County Ambulance Service

Staff - 8 registered emergency medical technicians (full time)

Service - 24-hour emergency service, radio-dispatched

Equipment - 1980 van, 1976 van with coronary care equipment,
and a 1979 4-wheel drive critical care van

Public Health

Facility - Woodford County Health Department*

Staff - Full-time: 1 registered nurse, 1 public health
environmentalist, 2 clerks

Part-time: Health officer, nutritionist, family
planning doctor, and a consulting M.D.

*The Woodford County Health Department is now affiliated with the West Bluegrass District Health Department. This also includes Boyle, Mercer, Garrard and Franklin Counties.

OTHER LOCAL FACILITIES

Communications

Telephone - General Telephone of Kentucky
Services - Standard

Telegraph - Western Union
Services - Toll-free telephone number, 1-800-325-5100

Postal - U. S. Post Office
Class - First
Mail received - Once daily
Mail dispatched - Once daily

Newspaper - Woodford Sun
Weekly and circulation - 4,950
Other papers
received - Louisville, Lexington and Frankfort, Kentucky

Radio - WJMM-FM
Stations received from - Lexington, Louisville, Georgetown and
Frankfort, Kentucky; Cincinnati, Ohio

Television -
Cable service
Reception from - Lexington and Louisville, Kentucky;
Cincinnati, Ohio
Kentucky Educational
Television - Lexington-Richmond transmitter, Channel 46

Library Services

Public library - Logan-Helm Woodford County Library
Size collection - 34,606 volumes
Circulation, 1981-82 - 92,800
Services - Books, records, microfilm reader-printer, 16 mm film projectors, photocopier, newspapers, magazines, interlibrary loan through Kentucky Department of Libraries and Archives, story hours, films, bookmobile, reference, community meeting rooms, art exhibits, materials for visually handicapped, special programs sponsored by Friends of the Library.

Religious Institutions

Woodford County

Number of churches - 46

Denominations - A.M.E.
Assembly of God
Baptist
Catholic
Christian
Church of Christ
Church of God
Church of Jesus Christ
Episcopal
Nazarene
Presbyterian
Seventh Day Adventist
United Methodist

Nearest synagogues - Lexington, 13 miles distant

Congregations - Adath Israel (reform)
Ohavey Zion (traditional)

Financial Institutions

<u>Banks</u>	<u>Assets</u>	<u>Deposits</u>	<u>Statement Date</u>
First National Bank of Versailles	\$ 6,060,323.59	\$ 5,264,709.75	6/30/82
The Woodford Bank and Trust Company	55,555,554.08	48,803,704.88	6/30/82
United Bank and Trust Company	51,319,207.70	43,260,031.01	6/30/82

<u>Savings and Loan Associations</u>	<u>Assets</u>	<u>Savings Accounts</u>	<u>Statement Date</u>
Future Federal Savings and Loan Association	\$479,450,426.00	\$344,512,694.00	6/30/82

Hotels and Motels

Accommodations are available in Lexington, 13 miles away.

Clubs and Organizations

American Legion
American Legion Auxiliary
Buckley Hills Audubon Society
Craig's Creek Muzzle Loaders, Inc.
Daughters of the American Revolution
Eastern Star
Friends of the Library
Kiwanis Club
Knights of Pythias
Lions Club
Little Garden Club
Masons
Midway Women's Club
Millville Sportsman Club
Oddfellows
Optimist Club
Protect Each Other Sisterhood
Rotary Club
Taylor Manor Gray Ladies
Woodford County Antique Dealers Association
Woodford County Chamber of Commerce
Woodford County Bar Association
Woodford County Board of Realtors
Woodford County Business and Professional Women's Club
Woodford County Democratic Committee
Woodford County Education Association
Woodford County Fair Association
Woodford County Farm Bureau
Woodford County Heritage Commission
Woodford County Historical Society
Woodford County Humane Society
Woodford County Jaycees
Woodford County Ministerial Association
Woodford Gardeners
Woodford Improvement League
Woodford Memorial Hospital Association
Woodford County Republican Committee
Woodford County Woman's Club

RECREATION

Local

Versailles offers a year-round recreational program with a full-time director and superintendent. The Versailles-Woodford County Recreational Department operates and maintains a variety of recreational facilities which are available for public use. There are five parks, seven playgrounds (five maintained by the county parks department), one swimming pool, and twelve tennis courts. Six baseball diamonds located at various schools and parks are maintained by the recreation department; the department handles scheduling. Two football fields and seven basketball courts are also located on school and park property.

Big Spring Recreation Center offers gymnastics, karate, tennis, physical fitness, dance, swim lessons, square dancing, clogging and various workshops.

There is one 18-hole public golf course in Versailles.

Private recreational facilities include Woodford Hills Country Club with an 18-hole private golf course, a swimming pool, and two tennis courts. An additional private pool is also operated in Versailles.

A June Celebration, the Woodford County Fair and a Jaycees Fall Festival are annual events.

Tourist attractions around Versailles include the Woodburn Farm, the first horse breeding farm in the United States; and Crittenden Cabin (built in 1784), which was the birthplace of John Crittenden, Kentucky governor between 1848-50. Versailles Historical Park on South Main Street honors eight Civil War generals; and Pisgah Presbyterian Church, 3 miles east of Versailles, is an 1812 Gothic structure. Clyde E. Bucklye Wildlife Sanctuary, north of Versailles, was established by a private citizen as a memorial and was developed by the Audubon Society. The area provides trail walks and group tours can be arranged.

Area (Within 40 miles)

Lexington, 13 miles east of Versailles, offers a variety of cultural, sporting, and recreational activities. Thoroughbred and harness racing is presented at Keeneland Race Course and the Red Mile Harness Track during several meets each year. The University of Kentucky and Transylvania University offer a number of sporting events. The University of Kentucky basketball games are held at Rupp Arena, the world's largest basketball arena. Other attractions include Lexington Philharmonic concerts, Lexington Children's Theatre, and plays performed by Broadway touring companies, all held in the recently renovated Opera House.

Waveland State Shrine, 15 miles east of Versailles near Lexington, features an 1847 Greek Revival mansion depicting Kentucky lifestyles from the days of early settlers to the antebellum era of gentility and elegance as well as the Civil War and postwar periods. The shrine also includes the Kentucky Life Museum and a plantation village on ten acres with many shops and displays.

The Kentucky Horse Park, a park dedicated to horses and to man's love for horses, is located 17 miles east of Versailles in Lexington. The park, which contains more than 1,000 acres of Kentucky Bluegrass, features the International Museum of the Horse; the Man O'War Memorial; an antique carriage display; horseback and pony rides; walking farm tours; horse-drawn tours; planned recreation; a restaurant; a gift shop; and a campground area, which offers swimming, tennis, and planned activities. Numerous special events are held year-round and include various horse shows, steeplechasing, dressage, polo games, and three-day eventing.

Frankfort, the capital of Kentucky located 15 miles northwest of Versailles, offers numerous tourist attractions. The Capitol Building, the 34-foot Floral Clock, the Governor's Mansion, the Old State House, and the Corner of Celebrities are only a few of the many tourist attractions in Frankfort.

Old Fort Harrod State Park, 30 miles southwest of Versailles, is a 28-acre park in Harrodsburg that features a full-scale reproduction of the original Fort Harrod. The park also contains the log cabin where Abraham Lincoln's parents were wed, the Mansion Museum which houses mementos associated with the great periods of Kentucky history, a pioneer cemetery, and a federal monument dedicated to pioneers. The "Legend of Daniel Boone", an outdoor drama which brings to life on stage the men and women who made Kentucky, is performed in the park amphitheatre during the summer months.

The spirit of Daniel Boone and his pioneers is reborn at Fort Boonesborough State Park in Boonesborough, approximately 40 miles southeast of Versailles. In the re-created fort 16 pioneer crafts of the eighteenth century are demonstrated by Kentuckians using functioning antiques from the frontier era. Cabins are furnished as they would have been in the days of Boone and documentary films are presented which depict the struggle of the first Kentuckians to make the Kentucky wilderness a home. A gift shop within the fort offers for sale all the handcrafted items made at the fort, along with a wide variety of handcrafts from throughout Kentucky. Other recreational facilities and activities of the park include the finest sand beach on the Kentucky River with a modern bathhouse, sun deck, and snack shop; a modern camping area with 187 sites; a central service building housing showers, restrooms, and laundry facilities for campers; a pavilion with a gift shop and grocery inside and a playground and basketball, volleyball, and shuffleboard courts on the grounds; and planned daily activities and special events under the guidance of a trained recreation director. Near the park is the dock of the Dixie Belle sternwheel excursion boat which operates one-hour trips daily on the Kentucky River leaving from the Fort Boonesborough boat dock.

Perryville Battlefield State Shrine, 40 miles southwest of Versailles near Perryville, is the site of the largest Civil War battle in Kentucky. A museum, a picnic area, and a playground are located on the grounds.

White Hall State Shrine, 35 miles southeast of Versailles near Richmond, one of the grand estate houses of post-Civil War Kentucky, is the Italianate mansion of Cassius Marcellus Clay, the early abolitionist and politician. Kentucky handcrafts are sold in the White Hall gift shop, only a short walk from the mansion.

Constitution Square State Shrine, 40 miles south of Versailles in Danville, is a reproduction of Kentucky's first courthouse square, including the original 1792 post office which was the first in the west.

COMMUNITY IMPROVEMENTS

Recent

The Versailles Municipal Water and Sewer Works completed an improvement to the water treatment plant in the spring of 1982. The \$20,000 project increased total treatment capacity from 2.6 million gallons to 3 million gallons per day.

The Woodford Memorial Hospital completed a major expansion and renovation project in the spring of 1982. The \$4.1 million project included: a new emergency room, a new radiology department, a new laboratory, a remodeled cafeteria, a new physical therapy department, new respiratory therapy department, a new pharmacy, new administrative offices and offices for physicians.

The beautification of North Main Street has been completed. The project included new sidewalks, with curb cuts for handicapped persons, and the removal of overhead utility lines.

The Woodford County Ambulance Service recently purchased a new modular ambulance.

A new elementary school was completed in 1981. The \$3 million facility is designed for 800 students.

An agriculture complex, physical education room and 20 class rooms make up the \$2.5 million expansion recently completed at the high school. In addition, \$1.5 million remodeling and expansion program has been completed at the middle school.

The First National Bank of Versailles, with total assets of over \$6 million, opened in late 1980.

The Woodford County Chamber of Commerce recently opened its new office in a renovated church building in the downtown area.

The new Versailles Center shopping complex opened in 1981. A variety of stores have located there including a drug store, a grocery store, a shoe store, a department store, a clothing store and an arcade.

The Woodford County Health Department is now affiliated with the West Bluegrass District Health Department. This also includes Boyle, Mercer, Garrard and Franklin Counties.

Approximately 60 units of new low-cost housing became available for occupancy during 1981 and 1982. The total project was completed at an approximate cost of \$1.2 million.

Under Way

Rand McNally and Company is currently expanding its facilities in Versailles. The 160,000 square-foot expansion is scheduled for completion in early 1983.

Planned

Two new recreation parks for Versailles are in the early planning stage.