

1984

# Industrial Resources: Allen County - Scottsville

Kentucky Library Research Collections  
Western Kentucky University, [spcol@wku.edu](mailto:spcol@wku.edu)

Follow this and additional works at: [https://digitalcommons.wku.edu/allen\\_cty](https://digitalcommons.wku.edu/allen_cty)

 Part of the [Business Administration, Management, and Operations Commons](#), [Growth and Development Commons](#), and the [Infrastructure Commons](#)

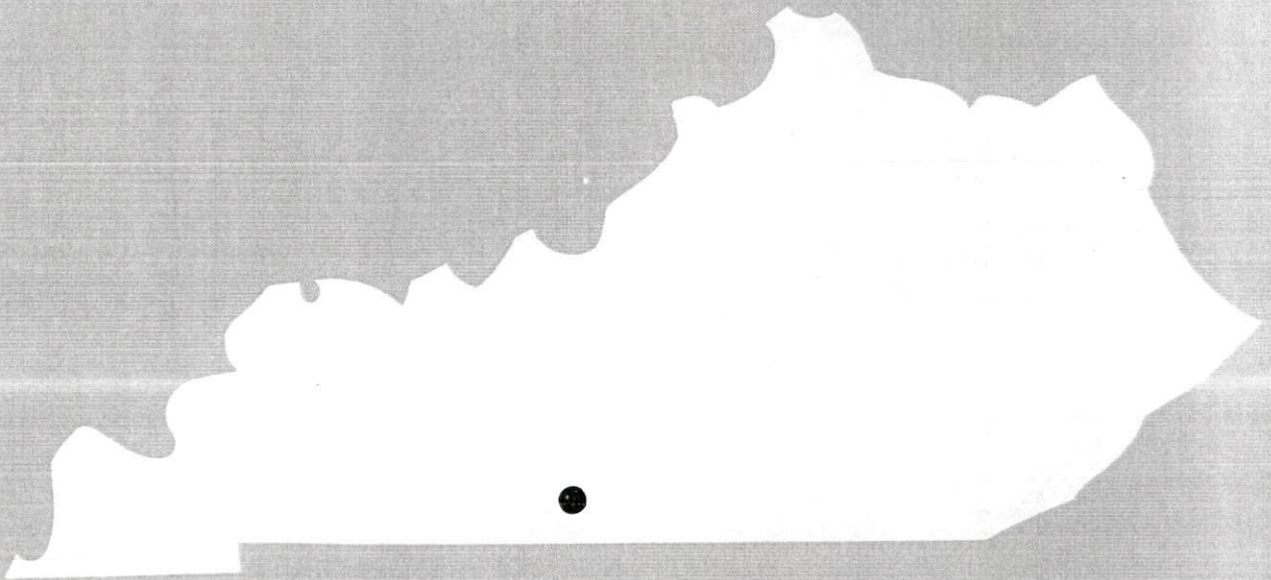
---

## Recommended Citation

Kentucky Library Research Collections, "Industrial Resources: Allen County - Scottsville" (1984). *Allen County*. Paper 14.  
[https://digitalcommons.wku.edu/allen\\_cty/14](https://digitalcommons.wku.edu/allen_cty/14)

This Report is brought to you for free and open access by TopSCHOLAR®. It has been accepted for inclusion in Allen County by an authorized administrator of TopSCHOLAR®. For more information, please contact [topscholar@wku.edu](mailto:topscholar@wku.edu).

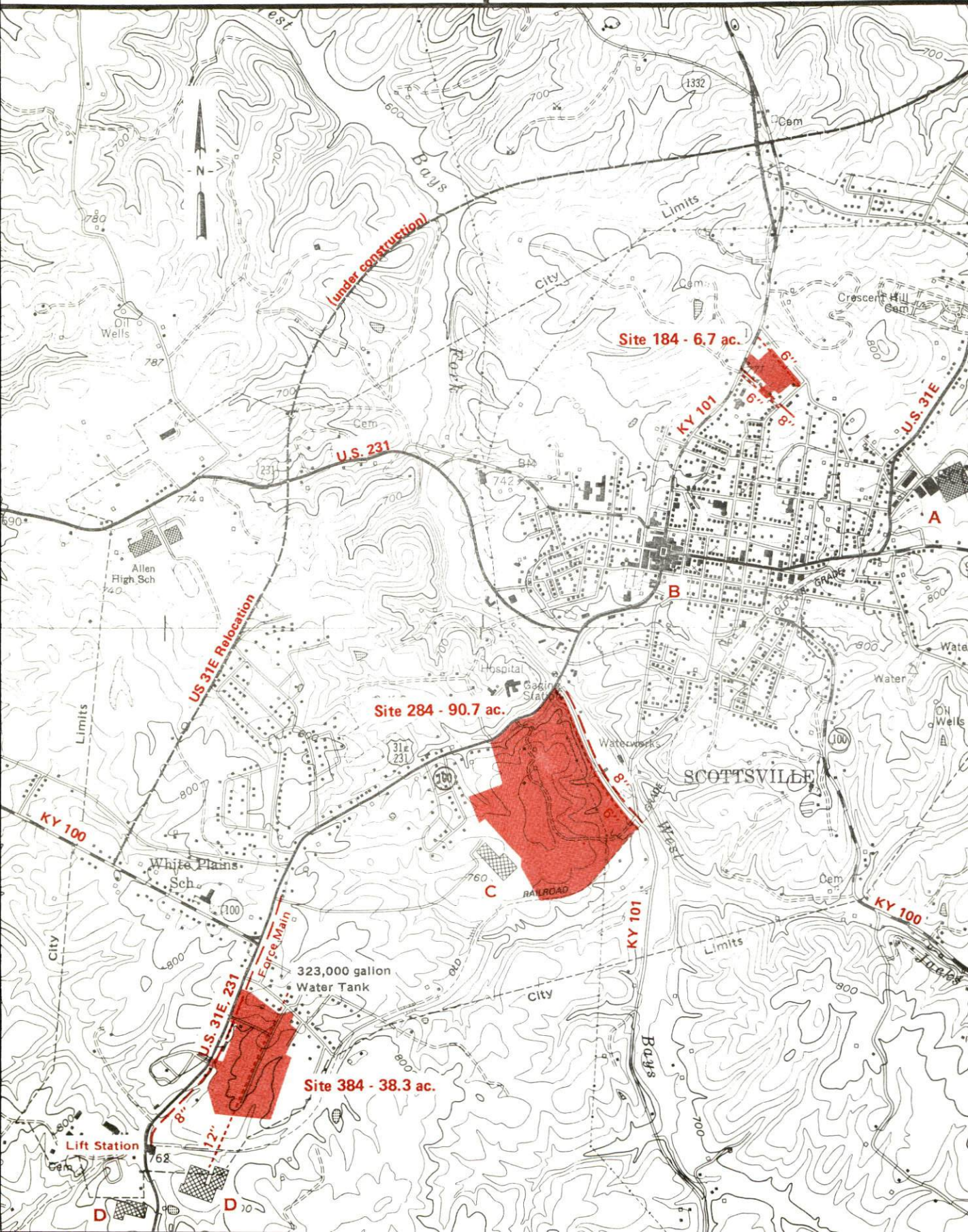
**1984**  
A comprehensive  
report on  
**Scottsville, Ky.**



For more information contact the Kentucky Department of Economic Development, Industrial Development & Marketing Division, Capital Plaza Tower, Frankfort, Kentucky 40601 (502-564-7140).

# SCOTTSVILLE, KENTUCKY

## Industrial Sites -- 1984



### Site 184 - 6.7 Acres

LOCATION: Within northern city limits  
ZONING: None  
HIGHWAY ACCESS: KY 101 along northwestern boundary; US 31E relocation approximately 0.6 mile north via KY 101 (construction of US 31E scheduled to be completed in July 1985)  
RAILROAD: Not rail served  
WATER: Scottsville Water Department  
Size Line: 6-inch line adjacent to southwestern boundary and along northeastern boundary  
NATURAL GAS: Scottsville Gas Department  
Size Line: 4-inch medium pressure line adjacent to southwestern boundary; 2-inch medium pressure line along northeastern boundary  
ELECTRICITY: Tri-County Electric Membership Corporation  
SEWERAGE: Scottsville Sewer Plant  
Size Line: 8-inch line adjacent to southwestern boundary  
OWNERSHIP: Scottsville-Allen County Industrial Foundation

### Site 284 - 90.7 Acres

LOCATION: Within central city limits  
ZONING: Not zoned  
HIGHWAY ACCESS: US 31E, 231, KY 100 along northern boundary; KY 101 along eastern boundary  
RAILROAD: Not rail served  
WATER: Scottsville Water Department  
Size Line: 6-inch line along eastern boundary  
NATURAL GAS: Scottsville Gas Department  
Size Line: 6-inch line along northern boundary  
ELECTRICITY: Tri-County Electric Membership Corporation  
SEWERAGE: Scottsville Sewer Plant  
Size Line: 8-inch line along east side of KY 101  
OWNERSHIP: Private

### Site 384 - 38.3 Acres

LOCATION: Within southwest city limits  
ZONING: Not zoned  
HIGHWAY ACCESS: US 31E, 231 adjacent to western boundary  
RAILROAD: Not rail served  
WATER: Scottsville Water Department  
Size Line: 12-inch line passes through site  
NATURAL GAS: Scottsville Gas Department  
Size Line: 6-inch line along western boundary  
SEWERAGE: Scottsville Sewer Plant  
Lift station approximately 1100 feet southwest  
OWNERSHIP: Private

SCALE: 1 inch = 2000 feet  
CONTOUR INTERVAL: 20 feet  
BASE: USGS 7.5 minute series - 1982

UTILITIES  
----- Water Line  
----- Sewer Line

#### Existing Industries

- A Dollar General, Inc.
- B Washington Overall Mfg. Co.
- C General Electric Co.
- D Scotscraft

A COMPREHENSIVE REPORT ON  
SCOTTSVILLE, KENTUCKY

Prepared by  
The Kentucky Department of Economic Development  
Division of Research and Planning  
in cooperation with  
The Scottsville-Allen County Chamber of Commerce

1984

Program manager - Pamela Riley; research - Andrew Dennis; clerical - Bobbi Medley; graphics - Frank Ferrante, Tony Cecconi, Robert Owens; cartography - Site Evaluation Branch, Division of Industrial Development. Cost of printing paid from state funds.

## TABLE OF CONTENTS

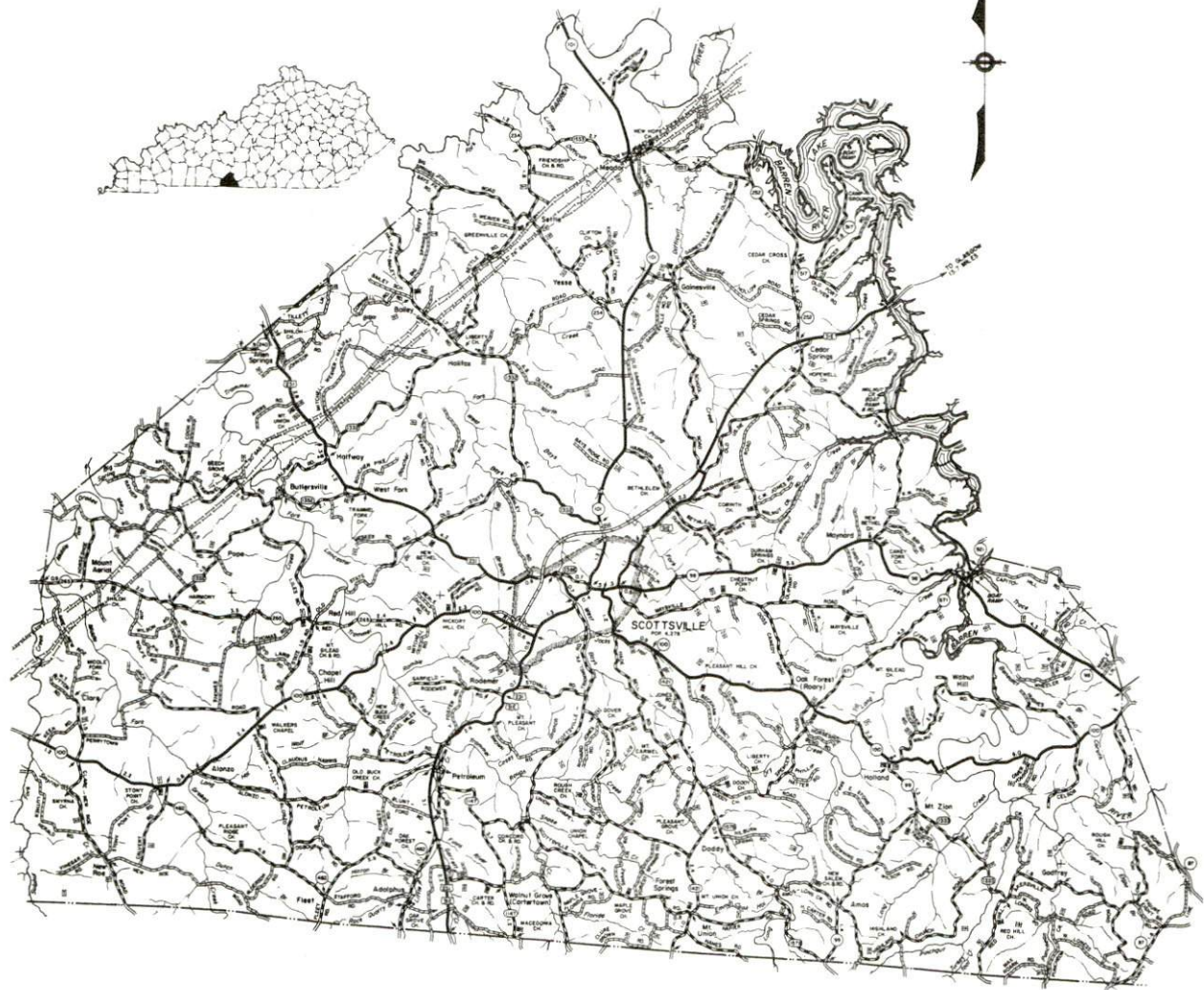
<u>Chapter</u>	<u>Page</u>
INDUSTRIAL SITES .....	i
SCOTTSVILLE, KENTUCKY - A RESOURCE PROFILE .....	1
THE LABOR MARKET AREA .....	3
Population .....	3
Labor Force Characteristics of Residents, 1982 .....	3
Selected Components of Nonagricultural Employment, by Place of Work, 1982 .....	4
Allen County Manufacturing Firms, Their Products and Employment .....	5
Labor Organizations in Manufacturing Firms .....	6
Industrial Services .....	7
Estimated Male Labor Supply .....	8
Estimated Female Labor Supply .....	9
Average Weekly Wages By Industry, by Place of Work, 1982 .....	10
Per Capita Personal Income .....	12
TRANSPORTATION .....	13
Rail .....	13
Highways .....	13
Truck Service .....	14
Air .....	15
Rental Services .....	16
Water .....	16
POWER AND FUEL .....	17
Electricity .....	17
Natural Gas .....	17
Other Fuels .....	18
WATER AND SEWERAGE .....	19
Public Water Supply .....	19
Raw Water .....	19
Sewerage .....	20
CLIMATE .....	21

<u>Chapter</u>	<u>Page</u>
LOCAL GOVERNMENT .....	22
City .....	22
County .....	22
Assessed Value of Property, 1983 .....	22
Property Taxes .....	22
Combined State and Local Rates Per \$100 Valuation, 1983 .....	23
Planning and Zoning .....	23
Safety .....	24
Police .....	24
Fire .....	24
Rescue Service .....	24
Refuse Collection and Disposal .....	24
EDUCATION .....	25
Public Schools .....	25
Area Colleges and Universities .....	26
Vocational Schools .....	27
HEALTH .....	29
Local Medical Personnel .....	29
Hospitals .....	29
Other Medical Facilities .....	29
Ambulance Service .....	29
Public Health .....	29
OTHER LOCAL FACILITIES .....	30
Communications .....	30
Library Services .....	30
Religious Institutions .....	31
Financial Institutions .....	31
Hotels and Motels .....	31
Clubs and Organizations .....	32
RECREATION .....	33
COMMUNITY IMPROVEMENTS .....	35



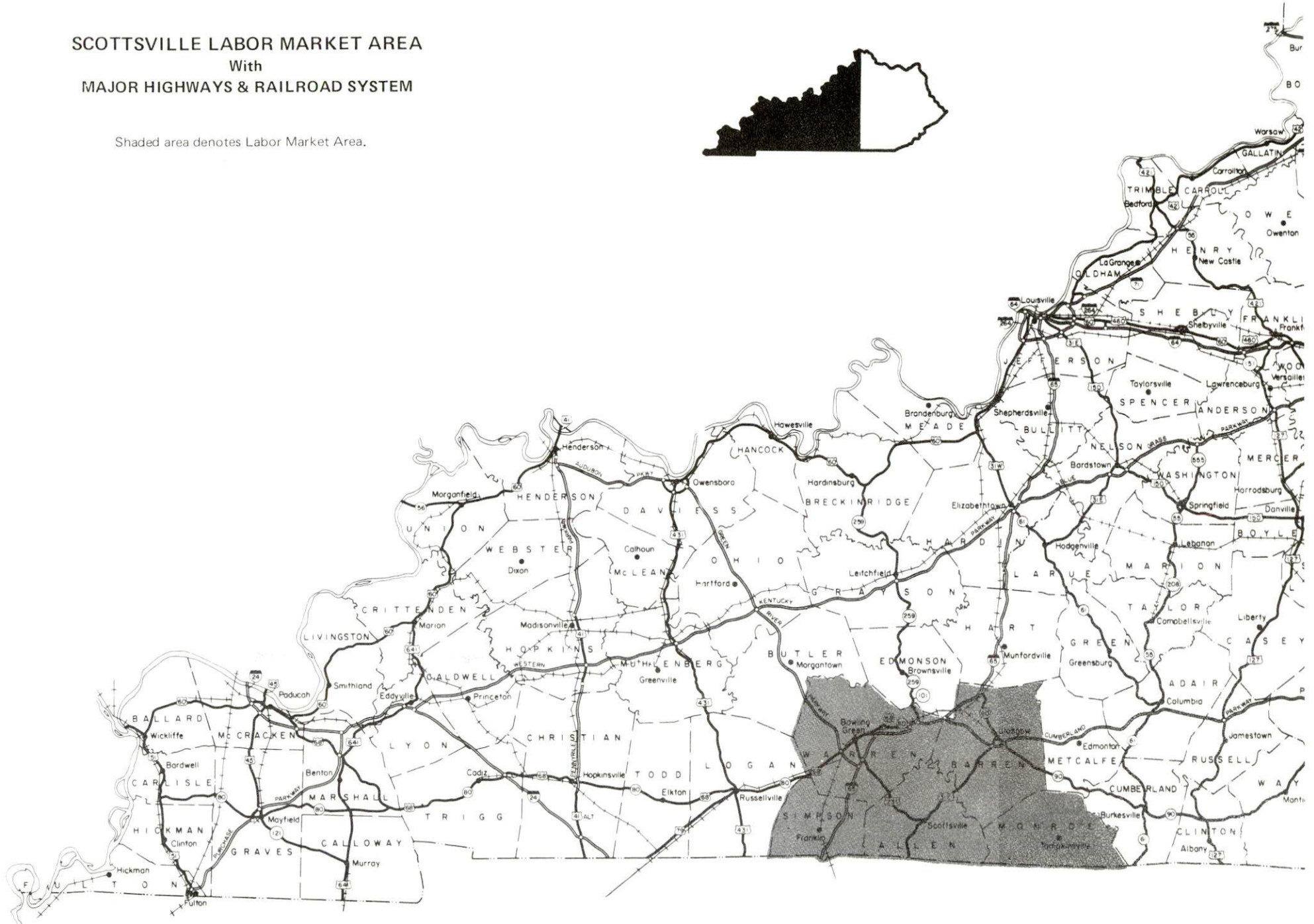
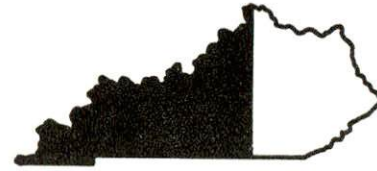
1984 EDITION  
GENERAL HIGHWAY MAP  
**ALLEN COUNTY**  
**KENTUCKY**

PREPARED BY THE  
KENTUCKY TRANSPORTATION CABINET  
DEPARTMENT OF HIGHWAYS  
DIVISION OF PLANNING  
IN COOPERATION WITH THE  
U.S. DEPARTMENT OF TRANSPORTATION  
FEDERAL HIGHWAY ADMINISTRATION



# SCOTTSVILLE LABOR MARKET AREA With MAJOR HIGHWAYS & RAILROAD SYSTEM

Shaded area denotes Labor Market Area.



## SCOTTSDALE, KENTUCKY - A RESOURCE PROFILE

Scottsville, the county seat of Allen County, is located in south central Kentucky. The city had a 1980 population of 4,278. Scottsville is 65 miles northeast of Nashville, Tennessee; 120 miles southwest of Louisville, Kentucky; and 221 miles southwest of Cincinnati, Ohio.

Allen County covers a land area of 338 square miles in Kentucky's Pennyroyal Region. The Pennyroyal Region is noted for its gently rolling plain and agricultural production. The southern boundary of the county is formed by the Kentucky-Tennessee state line. The 1980 population of Allen County was 14,128.

### The Economic Framework

The total number of Allen County residents employed in 1982 averaged 6,230 with nonagricultural jobs accounting for 5,440 workers. Manufacturing employers reported 1,245 workers; wholesale and retail trade 800; state and local government 540; and 180 persons in service occupations. Manufacturing employment is greatest in the electrical machinery, apparel and related products and furniture and fixtures industry. Dollar General, Inc., which operates approximately 1,200 retail stores in 23 states, is headquartered in Scottsville.

The per capita personal income in Allen County in 1981 was \$7,187. Between 1977 and 1981 per capita income increased by 51 percent.

The Scottsville labor market area includes Allen County and the adjoining Kentucky counties of Barren, Monroe, Simpson and Warren, plus Macon and Sumner counties in Tennessee. The total number of residents employed in the Kentucky portion of the labor market area in 1982 averaged 66,900, with nonagricultural jobs accounting for 60,940 workers. Manufacturing employers in this area reported 16,870 workers; wholesale and retail trade 11,740; state and local government 6,825; and 7,400 employed in service occupations.

### Resources for Growth

1. Labor Supply - There is a current labor supply of 12,340 men and 12,370 women available for industrial jobs in the labor market area. In addition, from 1983 through 1987, 10,190 young men and 9,925 young women in the area will become 18 years of age and potentially available for industrial jobs.

2. Transportation - Scottsville is not served directly by rail, however, the Seaboard System Railroad provides main line rail service at Bowling Green, 25 miles northwest of Scottsville. Major highways which serve Scottsville are U.S. Highways 31E and 231. Both are "AAA" rated (80,000-pound gross load limit) trucking highways. Interstate 65 is 21 miles northwest of Scottsville via U.S. 231, and the Cumberland Parkway, a multilane toll road, is 23 miles northeast of the city via U.S. 31E. The nearest scheduled commercial airline service is available at Nashville Metropolitan Airport in Nashville, Tennessee, 71 miles southwest of Scottsville. Charter service is available at the Bowling Green-Warren County Airport, 23 miles northwest of Scottsville.

3. Power and Fuel - The Tri-County Electric Membership Corporation, supplied by the Tennessee Valley Authority, provides electricity to Scottsville and Allen County. The Scottsville Water and Gas Department, supplied by Texas Gas Resources Corporation, provides the city with natural gas. One propane and one distillate fuel oil dealer are located in Scottsville. Additional distributors are located within 25 miles.

4. Education - The Allen County School System provides primary and secondary education to 2,570 students. Eleven colleges and universities are located within 65 miles of Scottsville. The Bowling Green State Vocational-Technical School, 25 miles northwest of Scottsville, offers 29 courses. The Allen County Area Vocational Education Center offers eight courses.

## THE LABOR MARKET AREA

The Scottsville Labor Market Area includes Allen County and the adjoining Kentucky counties of Barren, Monroe, Simpson and Warren. The southern boundary of Allen County is formed by the Tennessee state line. The Scottsville Labor Market Area also encompasses the two adjoining Tennessee counties.

POPULATION			
<u>Area</u>	<u>1980</u>	<u>1970</u>	<u>Percent Nonwhite</u>
Scottsville	4,278	3,584	3.5
Labor Market Area	146,991	123,855	N/A
Allen County	14,128	12,598	1.3
Barren County	34,009	28,677	5.1
Monroe County	12,353	11,642	3.0
Simpson County	14,673	13,054	12.4
Warren County	71,828	57,884	9.0

Note: The 1980 counts of population by race are provisional.

Sources: U.S. Department of Commerce, Bureau of the Census, 1980 Census of Population and Housing, March 1981; 1980 Census of Population, Number of Inhabitants. Population Research Unit, Urban Studies Center, University of Louisville, Kentucky Demographics: The 1980 Census of Kentucky, Characteristics of Population, Households, Housing, January 1982.

LABOR FORCE CHARACTERISTICS OF RESIDENTS, 1982		
	<u>Allen County</u>	<u>Labor Market Area*</u>
Civilian Labor Force	7,237	75,410
Employment	6,228	66,900
Agricultural	784	5,964
Nonagricultural	5,444	60,936
Unemployment	1,009	8,510
Rate of Unemployment (%)	13.9	11.3

\* Allen County and the four adjoining Kentucky counties.

Source: Kentucky Cabinet for Human Resources, Kentucky Labor Force Estimates, Annual Averages, 1982.

SELECTED COMPONENTS OF NONAGRICULTURAL EMPLOYMENT,  
BY PLACE OF WORK, 1982

	<u>Allen County</u>	<u>Labor Market Area*</u>
All Industries (total)	3,055	48,719
Manufacturing	1,245	16,866
Wholesale & Retail Trade	803	11,741
Services	181	7,400
State/Local Government	536	6,825
Contract Construction	54	1,952

\* Allen County and the four adjoining Kentucky counties.

Note: Excludes domestic workers, railway workers, certain nonprofit corporations, majority of federal government workers, and self-employed workers.

Source: Kentucky Cabinet for Human Resources, Average Monthly Workers Covered by Kentucky Unemployment Insurance Law, 1982.

ALLEN COUNTY MANUFACTURING FIRMS,  
THEIR PRODUCTS AND EMPLOYMENT

Firm (Establishment date)	Product	Employment			Labor Unions
		Total	Male	Female	
<b>Adolphus</b>					
Petroleum Industries, Inc. (1972)	Ladies' and girls' blouses	75	2	73	
<b>Holland</b>					
Holland Industries (1971)	Knit shirts and blouses	104	8	96	
<b>Scottsville</b>					
The Allen County News, Scottsville Publishing Corporation (1935)	Newspapers	5	1	4	
Bryant Lumber Company (1933)	Lumber	47	45	2	
The Citizen Times (1890)	Newspaper, job printing	5	2	3	
Farmers Feed and Fertilizer Company (1976)	Fertilizer, feed	11	10	1	
General Electric Company (1973)	Hermetic motor parts	450	205	245	
Gerald Printing Service (1935)	Job printing	29	19	10	
Independent Stave Company, Inc. (1984)	Barrel staves	13	-	-	
Keen Tool and Die Company, Inc. (1974)	Precision tools and dies, molds, gauges, special machinery	15	14	1	
Olde Kentucky Foods, Inc. (1972)	Country hams, bacon	12	8	4	
Scotscraft (1961)	Drapery hard- ware and accessories	305	102	203	Machinists*
Marvin Wood Lumber Company (1950)	Lumber, pallet stock, furniture dimension	40	40	0	

(Contd.)

<u>Firm (Establishment date)</u>	<u>Product</u>	<u>Employment</u>			<u>Labor Unions</u>
		<u>Total</u>	<u>Male</u>	<u>Female</u>	
Washington Overall Manufacturing Company (1928)	Men's, boys' trousers, children's overalls	241	26	215	
Woodstock Mills, Inc. (1978)	Lumber, crossties, cants	20	19	1	

\* See Labor Organizations below.

Sources: Kentucky Department of Economic Development, 1984 Kentucky Directory of Manufacturers; Division of Research and Planning.

#### LABOR ORGANIZATIONS IN MANUFACTURING FIRMS

<u>Union</u>	<u>Representing workers at:</u>
International Association of Machinists and Aerospace Workers, AFL-CIO	Scotscraft



## INDUSTRIAL SERVICES

<u>Types of Services</u>	<u>Location</u>	<u>Mileage from Scottsville</u>
Custom Plastics Producers	Franklin, Kentucky	24
	Bowling Green, Kentucky	25
Electric Motor Repair	Bowling Green, Kentucky	25
	Glasgow, Kentucky	25
Grinding, Precision & Tool	Nashville, Tennessee	65
Heat Treating Facilities	Nashville, Tennessee	65
Industrial Equipment & Supplies	Bowling Green, Kentucky	25
Industrial Gases	Bowling Green, Kentucky	25
Industrial Waste Removal	Russellville, Kentucky	46
Machine Shops, Tool & Die	Scottsville	-
Metal Finishers	Nashville, Tennessee	65
Metal Service Centers	Bowling Green, Kentucky	25
Millwrights	Franklin, Kentucky	24
	Bowling Green, Kentucky	25

Sources: Kentucky Department of Economic Development, Kentucky Directory of Selected Industrial Services, 1983; Division of Research and Planning.

ESTIMATED MALE LABOR SUPPLY  
SCOTTSVILLE LABOR MARKET AREA

Area	Current			Not in Labor Force	Future
	Total	Unemployed	Under- employed		Becoming 18 years of age 1984 thru 1988
Labor Market					
Area*	12,336				10,186
Allen	730	527	203	0	553
Barren	1,813	1,207	606	0	1,338
Monroe	1,101	428	256	417	518
Simpson	841	367	203	271	617
Warren	4,345	1,976	2,369	0	2,502
Macon (Tenn.)	897	N/A	N/A	N/A	668
Sumner (Tenn.)	2,609	N/A	N/A	N/A	3,990

\*Additional workers may be drawn from other nearby counties.

Note: Unemployed - persons unemployed and actively seeking work;  
Underemployed - persons employed but working only 14 to 26 weeks per year;  
Not in Labor Force - represents the number of persons who would enter the labor force if suitable employment were available (based on the assumption that persons in Kentucky would like to participate in the labor force in the same proportion that they do nationally).

Sources: Kentucky Cabinet for Human Resources, Kentucky Labor Supply Estimates by Area Development District and County, 1982. Tennessee Department of Economic and Community Development, Tennessee Available Labor, 1982. Kentucky Department of Economic Development, Future Labor Supply Becoming 18 Years of Age, 1984 thru 1988.

ESTIMATED FEMALE LABOR SUPPLY  
SCOTTSVILLE LABOR MARKET AREA

Area	Current				Future
	Total	Unemployed	Under- employed	Not in Labor Force	Becoming 18 years of age 1984 thru 1988
Labor Market					
Area*	12,374				9,925
Allen	746	482	264	0	550
Barren	1,428	856	572	0	1,362
Monroe	865	303	215	347	516
Simpson	950	524	264	162	615
Warren	4,281	1,840	2,441	0	2,371
Macon (Tenn.)	760	N/A	N/A	N/A	638
Sumner (Tenn.)	3,344	N/A	N/A	N/A	3,873

\*Additional workers may be drawn from other nearby counties.

Note: Unemployed - persons unemployed and actively seeking work;  
Underemployed - persons employed but working only 14 to 26 weeks per year;  
Not in Labor Force - represents the number of persons who would enter the  
labor force if suitable employment were available (based on the assumption that  
persons in Kentucky would like to participate in the labor force in the same  
proportion that they do nationally).

Sources: Kentucky Cabinet for Human Resources, Kentucky Labor Supply  
Estimates by Area Development District and County, 1982. Tennessee  
Department of Economic and Community Development, Tennessee Available  
Labor, 1982. Kentucky Department of Economic Development, Future Labor  
Supply Becoming 18 Years of Age, 1984 thru 1988.

AVERAGE WEEKLY WAGES BY INDUSTRY,  
BY PLACE OF WORK, 1982

	<u>Allen County</u>	<u>Barren County</u>	<u>Monroe County</u>
All Industries	\$ 229.52	\$ 251.43	\$ 185.32
Mining & Quarrying	132.68	301.27	*
Contract Construction	176.68	283.43	134.46
Manufacturing	257.09	308.75	176.78
Transportation, Communications & Public Utilities	318.42	297.87	366.00
Wholesale & Retail Trade	203.80	174.73	166.37
Finance, Insurance & Real Estate	246.94	260.54	282.43
Services	166.03	208.66	130.27
State/Local Government	213.18	241.41	215.59
Other	192.72	133.77	134.77
	<u>Simpson County</u>	<u>Warren County</u>	
All Industries	\$ 272.97	\$ 275.27	
Mining & Quarrying	*	281.66	
Contract Construction	349.63	273.68	
Manufacturing	320.92	354.06	
Transportation, Communications & Public Utilities	375.33	340.57	
Wholesale & Retail Trade	179.83	188.60	
Finance, Insurance & Real Estate	263.19	269.24	
Services	184.04	229.23	
State/Local Government	225.01	317.59	
Other	*	159.84	

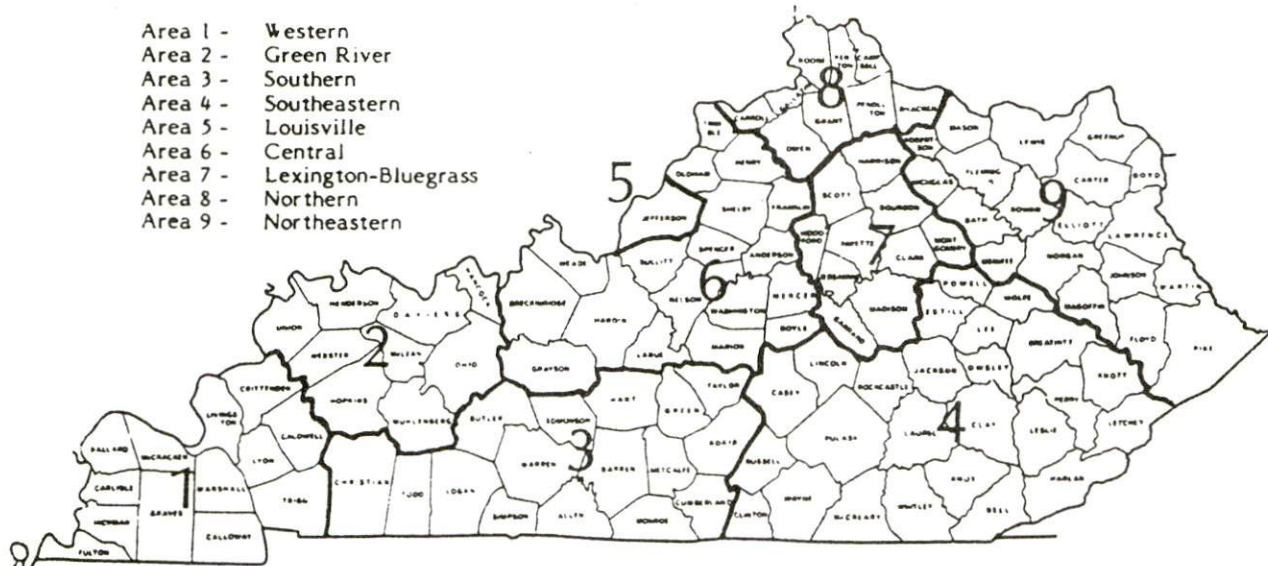
\* Not disclosed.

Note: Excludes domestic workers, railway workers, certain nonprofit corporations, majority of federal government workers, and self-employed workers.

Source: Kentucky Cabinet for Human Resources, Average Weekly Wages of Workers Covered by Kentucky Unemployment Insurance Law, 1982.

Occupational wage rates for specific industries are usually not available to most government agencies, and wage data furnished to state employment agencies by individual industrial employers are protected from disclosure by federal law. The most reliable up-to-date wage information can be obtained by direct contact with local employers.

Associated Industries of Kentucky, a voluntary organization of Kentucky businesses, regularly collects occupational wage rates and fringe benefits data from participating member firms. Data are compiled for over 127 clearly defined office, production, and service occupations. Tabulations are published for nine geographical areas of Kentucky, as shown on the map below. It should be noted that the data may be weighted by the preponderance of firms in the larger cities and may be somewhat higher than the rates paid in the smaller communities. Data from these tabulations are available, upon request, from the Kentucky Department of Economic Development, Frankfort, Kentucky 40601.



Associated Industries of Kentucky Area Wage Surveys

Up to date occupational wage rates of the existing industries are maintained by South Kentucky Industrial Development Association, Post Office Box 726, Hopkinsville, Kentucky 42240.

PER CAPITA PERSONAL INCOME

<u>Area</u>	<u>1977</u>	<u>1981</u>	<u>Percent Change</u>
Allen County	\$ 4,769	\$ 7,187	50.7
Labor Market Area Range*	\$3,764 - 5,856	\$ 5,746 - 9,213	N/A
Kentucky	5,797	8,416	45.2
U. S.	6,984	10,495	50.3

\* Allen County and the four adjoining Kentucky counties.

Source: U. S. Bureau of Economic Analysis, Kentucky Economic Information System, May 1983.

## TRANSPORTATION

### Rail

**Scottsville** is not served directly by rail. However, the Seaboard System Railroad provides main line service at Bowling Green, Kentucky, 25 miles northwest of Scottsville.

Services at Bowling Green - Main line; two northbound and two southbound freights make daily stops; four northbound and four southbound through freights daily; switch engine; team track space for 10 cars; nearest piggyback facilities are located in Nashville, Tennessee, 65 miles southwest of Scottsville.

For details on routing, schedules, rates, and services, contact:

Manager of Industrial Development  
Seaboard System Railroad  
P.O. Box 32290  
Louisville, Kentucky 40232  
(502) 587-5228

### Highways\*

Major highways which directly serve Scottsville are U.S. Highways 31E and 231. Each is a "AAA" rated (80,000-pound gross load limit) trucking highway. Other highways which serve Scottsville are Kentucky Highways 98, 100 and 101.

Interstate 65, a major north-south highway, is easily accessible from Scottsville by two routes. Interstate 65 is 21 miles northwest of the city via U.S. 231, and 21 miles west of Scottsville via Kentucky 100. Kentucky 100 is "AAA" rated between Scottsville and I-65.

The Cumberland Parkway, a multilane toll road which traverses across south central Kentucky, is 23 miles northeast of Scottsville via U.S. 31E.

---

\* Construction is under way on a new highway which will connect U.S. 231 west of Scottsville and U.S. 31E north of the city. The 5.5 miles of new highway is tentatively scheduled for completion in the summer of 1985 at an estimated cost of \$5 million.

## Truck Service

<u>Company</u>	<u>Home Office</u>
A & H Truck Line, Inc.*	Evansville, Indiana 47711
American Freight System, Inc.**	9393 West 110th Street Overland Park, Kansas 66210
Bowling Green Freight, Inc.*	Route 14, Box 65B Bowling Green, Kentucky 42101
Expressway, Inc.*	1105 St. Louis Louisville, Kentucky 40210
General Highway Express, Inc.*	Sidney, Ohio 45365
Interstate System**	110 Ionia NW Grand Rapids, Michigan 49503
Majors Transit, Inc.*	P.O. Box 9 Caneyville, Kentucky 42721
Manning Motor Express, Inc.*	Glasgow, Kentucky 42141
The Mason and Dixon Lines, Inc.*	P.O. Box 969 Kingsport, Tennessee 37662
McLean Trucking Company**	P.O. Box 213 Winston-Salem, North Carolina 27154
Overnite Transportation Company*	P.O. Box 1216 Richmond, Virginia 23209
Renner's Express, Inc.*	P.O. Box 882 Indianapolis, Indiana 46206
Roadway Express, Inc.*	1077 Gorge Boulevard Akron, Ohio 44310
Smith's Transfer Corporation**	P. O. Box 1000 Staunton, Virginia 24401
Thurston Motor Lines, Inc.*	600 Johnston Road Charlotte, North Carolina 28206
Yellow Freight System, Inc.*	P.O. Box 7270 Overland Park, Kansas 66207

\* Interstate and intrastate service.

\*\* Interstate service only.

Sources: American Motor Carrier Directory, Spring 1984. Kentucky Department of Economic Development, Division of Research and Planning.

### Other Freight Services

### Nearest Office or Shipping Center

Emery	Nashville, Tennessee, 65 miles southwest
Federal Express	Nashville, Tennessee, 65 miles southwest
KATO Express, Inc. (air cargo service)	Elizabethtown, Kentucky, 78 miles northeast
Purolator Courier	Nashville, Tennessee, 65 miles southwest
United Parcel Service	Bowling Green, Kentucky, 25 miles northwest



HIGHWAY MILES AND TRUCK TRANSIT TIME IN DAYS FROM  
SCOTTSVILLE, KENTUCKY, TO SELECTED MARKET CENTERS

City	Highway Miles	Delivery		City	Highway Miles	Delivery	
		Time TL				Time TL	
Atlanta, Ga.	307	1		Los Angeles, Ca.	2,090	4	
Baltimore, Md.	699	2		Louisville, Ky.	120	1	
Birmingham, Ala.	261	1		Nashville, Tenn.	65	1	
Chicago, Ill.	412	1		New Orleans, La.	582	2	
Cincinnati, Ohio	221	1		New York, N. Y.	861	-	
Cleveland, Ohio	465	1		Pittsburgh, Pa.	501	1	
Detroit, Mich.	480	1		St. Louis, Mo.	303	1	
Knoxville, Tenn.	242	1					

Note: Mileage computations are via the best interstate or primary highways, not necessarily the most direct route of travel.

Sources: Rand McNally Road Atlas, 1979. Official Kentucky Mileage Map, 1980.  
Delivery time - Overnite Transportation Company, P.O. Box 1216, Richmond, Virginia 23209.

**Air**

Local

Location: Bowling Green-Warren County Airport  
2 miles southeast of Bowling Green;  
23 miles northwest of Scottsville

Runways: 2 paved  
Length: 4,000 feet; 6,500 feet

Traffic Control: Wind tee, airport advisory service

Lighting: Runways, obstructions, taxiways, beacon,  
wind tee, strobes approach to 3, VASI

Services: 100LL, jet-A fuel, charter, plane rental,  
storage, major and minor A & P repairs,  
oxygen, FAA flight service station, taxi  
and rental car service

Air Freight Service: Chartered air freight service must be arranged.

(Contd.)

Nearest Scheduled Commercial Airline Service

Location: Nashville Metropolitan Airport  
6 miles southeast of Nashville, Tennessee;  
71 miles southwest of Scottsville

Runways: 3 paved  
Length: 8,000 feet; 7,700 feet; 4,320 feet

Traffic Control: Tower

Lighting: Beacon, runway

Services: American, Delta, Eastern, Ozark, Pan Am, Piedmont, Republic, TWA, United, USAir, Allegheny Commuter, Comair, Florida Express, Scheduled Skyways, Sunbird, Tennessee Airways; fuel - 100LL, jet-A; hangars; major A & P repairs, major Avionics repairs; APU, charter, flight instruction, oxygen, plane rental, survival equipment, U.S. Customs; taxi, limousine, car rental, courtesy car, public transit; weather information; restaurant, snack bar

Air Freight Service: Air freight terminal

**Rental Services** - Auto, truck and trailer rental is available at Bowling Green, 25 miles northwest of Scottsville.

**Water**

The nearest navigable river is the Green River. Scottsville is located approximately 60 miles southeast of a point on the Green River where a nine-foot navigation channel is maintained.

## POWER AND FUEL

### Electricity

Company serving **Scottsville and Allen County** - Tri-County Electric Membership Corporation

Source of power - Tennessee Valley Authority

Total generating capacity - 31,109,160 KW

For industrial rates contact:

South Kentucky Industrial  
Development Association, Inc.  
P. O. Box 726  
Hopkinsville, Kentucky 42240  
(502) 885-5392

and/or

Tri-County Electric  
Membership Corporation  
405 College Street  
P.O. Box 40  
Lafayette, Tennessee 37083  
(615) 666-2111

### Natural Gas

Company serving **Scottsville** - Scottsville Water and Gas Department

Source of supply - Texas Gas Resources Corporation

Size of transmission mains - 4-inch (supplier)\*

Distribution mains - 6, 4 and 2 inches

Distribution pressure - 28 to 35 psi

Btu content - 1,017 per cubic foot

Specific gravity - 0.589

For rates and supplies contact:

Texas Gas Resources Corporation  
3800 Frederica Street  
Owensboro, Kentucky 42302  
(502) 926-8686

\* Texas Gas Resources Corporation serves the Scottsville Water and Gas Department with a 4-inch line which takes delivery from 24- and 26-inch lines approximately 6.7 miles from Scottsville.

## Other Fuels

### Propane (Within 25 miles)

Buckeye Gas Products Company  
West Main Street  
Glasgow, Kentucky 42141

Millers Bottled Gas, Inc.  
110 Campbell Lane  
Bowling Green, Kentucky 42101

Pargas of Franklin  
700 North Main  
Franklin, Kentucky 42134

Pargas of Glasgow, Inc.  
214 Industrial Drive  
Glasgow, Kentucky 42141

Pargas of Scottsville  
Gallatin Road  
Scottsville, Kentucky 42164

Southern States Bowling Green  
Petroleum Cooperative  
Emmett Drive  
Bowling Green, Kentucky 42101

Southern States Franklin  
Petroleum Cooperative  
Gold City Road  
Franklin, Kentucky 42134

### Fuel oils

#### Distillate fuel oil - (Within 25 miles)

Ashland Oil Company  
921 West Main  
Glasgow, Kentucky 42141

Benedict & Benedict, Inc.  
101 North Street  
Scottsville, Kentucky 42164

Benedict & Benedict, Inc.  
(Chevron)  
103 East College  
Glasgow, Kentucky 42141

Browning Oil Company  
Louisville Road  
Bowling Green, Kentucky 42101

Hildreth Oil Company  
(Chevron)  
316 Portage Railroad  
Bowling Green, Kentucky 42101

McKinney  
(Texaco)  
110 Plain Avenue  
Bowling Green, Kentucky 42101

Ramsey Oil Company  
(Phillips)  
633 U.S. 31W Bypass  
Bowling Green, Kentucky 42101

Roe Oil Company  
(Gulf)  
800 Power Street  
Bowling Green, Kentucky 42101

Tom's Oil Company  
3170 Fitzgerald  
Bowling Green, Kentucky 42101

Tri-County Oil Company, Inc.  
(Shell)  
715 West Main Street  
Glasgow, Kentucky 42141

Leroy Williams Oil Company, Inc.  
U.S. 31E South  
Glasgow, Kentucky 42141

Wyatt's Oil Company  
(Gulf)  
700 West Main Street  
Glasgow, Kentucky 42141

Residual fuel oil - Arrangements must be made with the refinery.

Low sulphur content coal - Available in Kentucky.

## WATER AND SEWERAGE

### Public Water Supply

Company serving **Scottsville** - Scottsville Water and Gas Department  
City/County Building  
Scottsville, Kentucky 42164  
(502) 237-4402

Source - Calvert Springs\*  
Treatment plant capacity - 720,000 gallons per day  
Average daily consumption - 373,084 gallons  
Peak daily consumption - 452,763 gallons  
Type treatment - Chlorination, fluoridation  
Storage capacity - 761,000 gallons  
Size lines - 2, 4, 6, 8, 10 and 12 inches  
Average pressure - Above 40 psi  
Average temperature - N/A

### MONTHLY WATER RATES

First	2,000 gallons	\$ 7.25 (Minimum)
Next	2,000 gallons	2.42 per M gallons
Next	4,000 gallons	1.93 per M gallons
Next	12,000 gallons	1.70 per M gallons
All over	20,000 gallons	1.09 per M gallons

#### Tap-on charge:

5/8- or 3/4-inch meter	\$125
1-inch meter and larger	Actual cost of installation, \$125 minimum

### Raw Water

Surface water sources - Barren River and Trammel Fork of Drakes Creek  
Average discharge - Barren River near Finney, Kentucky - 1,511 cfs (31-year record, USGS) unadjusted  
Expected ground water yield - 50 to 200 gpm along the extreme northern and western borders of the county; 5 to 50 gpm in a band extending from the northern to the central portion; and 5 gpm or less over the remainder of the county.

\* The Glasgow Water Works serves as a backup to the Scottsville water system.

## Sewerage

Company serving **Scottsville** - Scottsville Water and Gas Department\*  
City/County Building  
Scottsville, Kentucky 42164  
(502) 237-4402

Design capacity - Plant #1 - 1,200,000 gallons per day  
Plant #2 - 400,000 gallons per day

Average daily flow - 500,000 gallons

Type of treatment - Tertiary

Treatment process - Plant #1 - Carrousel, clarifier, chlorine contact tank, sludge thickener, drying bed  
Plant #2 - Trickling filter, sludge digester, sludge drying beds

Treated effluent discharged into - West Bays Fork Creek

Size of sanitary mains - 8 and 10 inches

Size of storm mains - None

Monthly rates - 80 percent of monthly water bill

Tap-on charge - \$100

---

\* Treatment Plant #1 is presently still under construction. Operation of the plant began in March 1984 although some aspects of the new facility were not completed. The final completion date for the new plant is scheduled for the fall of 1984. Upon completion of the \$3 million facility, operations of Plant #2 will be discontinued.

## CLIMATE

### Allen County

#### Temperature

Normal (30-year record)	59.4 degrees
Average annual 1982	59.3 degrees
Record highest, July 1952 (43-year record)	107.0 degrees
Record lowest, January 1963 (43-year record)	-15.0 degrees
Normal heating degree days (30-year record) (Heating degree day totals are the sums of negative departures of average daily temperatures from 65 degrees F.)	3,696

#### Precipitation

Normal (30-year record)	46.00 inches
Mean annual snowfall (42-year record)	11.60 inches
Total precipitation 1982	49.43 inches
Mean number days precipitation (.01 inch or more) (41-year record)	119
Mean number days thunderstorms (41-year record)	54

#### Prevailing Winds (22-year record)

South

#### Relative Humidity (17-year record)

Midnight	79 percent
6 a.m.	84 percent
Noon	58 percent
6 p.m.	61 percent

Source: U.S. Department of Commerce, Environmental Science Services Administration, Climatological Data, 1982. Station of record: Nashville, Tennessee.

## LOCAL GOVERNMENT

### City

Structure - Mayor - 4-year term; 6 council members - 2-year terms

Budget 1983-84 - General Fund \$ 864,197

Water and Sewer Fund 555,602

City Gas System 1,029,619

Fees and licenses - 1 1/2 percent occupational license fee on wages of individuals and on the net profits of businesses. Minimum business license fee is \$30.

### County

Structure - County Judge/Executive - 4-year term; 5 magistrates - 4-year terms

Budget 1983-84 - General Fund \$300,740; Road Fund \$310,500

### Assessed Value of Property, 1983\*

<u>Classes of Property</u>	<u>Scottsville</u>	<u>Allen County</u>
Real Estate	\$30,115,327	\$116,473,436
Tangibles	26,296,168	49,022,052

### Property Taxes

All property in Kentucky is assessed at 100 percent of fair cash value.

Land and buildings are taxed by the state and may be taxed by local jurisdictions. The state rate is \$0.221 per \$100 of assessed valuation.

Manufacturing machinery, raw materials inventories, pollution control equipment, and goods in the process of manufacture are not subject to local taxation. The state rate is \$0.15 per \$100.

Other tangible personal property owned by manufacturers (automobiles, trucks, finished goods, office furniture, office equipment) is taxed by the state at \$0.45 per \$100 and may be taxed by local jurisdictions.

Property stored in public warehouses in a transit status is not subject to local taxation. The state rate is only \$0.015 per \$100.

Intangible personal property located in Kentucky (money in hand, shares of stock, notes, bonds, accounts receivable, and other credits) is taxed by the state at \$0.25 per \$100, and is not subject to local taxation.

Private leaseholds in industrial facilities owned by cities or counties and financed by industrial revenue bonds are subject to a state tax of \$0.015 per \$100 of value (essentially the lessee's equity, adjusted for appreciation or depreciation). Local taxation is not permitted.

\* Excludes Homestead Exemptions.



**Combined State and Local Rates Per \$100 Valuation, 1983\***  
(100% assessment)

	<u>Inside City of Scottsville</u>	<u>Unincorporated Allen County</u>
1. Land and buildings	\$1.0921	\$0.8321
2. Mfg. machinery, raw materials, goods in process, pollution control equipment	0.1500	0.1500
3. Finished goods, office equipment, vehicles, other tangibles	1.3252	1.0652
4. Intangibles (accounts receivable, notes, bonds, etc.)	0.2500	0.2500
5. Property stored in public warehouses in a transit status	0.0150	0.0150
6. Leaseholds in industrial revenue bond financed plants	0.0150	0.0150

**Planning and Zoning**

Joint agency - Scottsville/Allen County Planning Commission

Zoning enforced - None

Subdivision regulations enforced - None\*\*

Local codes enforced - None

Mandatory state codes enforced - Kentucky Plumbing Code, National Electric Code, Kentucky Boiler Regulations and Standards, Kentucky Building Code (modeled after BOCA code)

\* Kentucky Department of Economic Development.

\*\* The Scottsville/Allen County Planning Commission is in the process of establishing subdivision regulations.

## Safety

### Police

	Scottsville	Allen County
Total staff	14	4
Radio-patrol cars	3	3

### Fire

Insurance Services Office,  
Public Protection  
Classification  
Volunteers

6  
22

10

Some of the volunteers from the city fire department also answer calls from the county. County-owned equipment is used.

### Rescue Service

Scottsville-Allen County DES Rescue Squad:

Number of volunteers - 45

Equipment - One 1,200-gallon tank truck (available for fire fighting), 24 vehicles (assorted special types), 4 boats and motors, 10 trailers, emergency lighting (11 generators, flood lights, extension lines), wide variety of communication equipment, dragging equipment, "Jaws of Life"

Personnel training - First aid, Civil Defense School training, fire school, emergency medical technician

### Refuse Collection and Disposal

	Scottsville
Type service	Municipal
Fee charged:	
residential	\$3 per month
business	\$10 to \$15 per month
industrial	By volume
Collection frequency:	
residential	Twice weekly
business	Daily
industrial	Daily
Trash pickup	By request
Disposal method	Sanitary landfill

Residents and businesses that are not provided with refuse collection may use the city/county sanitary landfill. A disposal fee of \$1.50 per cubic yard is charged for in-county businesses and haulers and a fee of \$3.00 per cubic yard is charged for out-of-county haulers.

## EDUCATION

### Public Schools

#### Allen County

Total Enrollment (Spring 1984)	2,569	
Elementary	1,174	(Includes kindergarten)
Middle School	590	
High School	805	
Student-Teacher Ratio	20-1	
Elementary	20-1	
Middle School	20-1	
High School	19-1	
Percent High School Graduates to College (1983)	38.9	
Expenditures Per Pupil (1982-83)	\$ 1,609.11	
Bonded Indebtedness (June 30, 1983)	\$1,575,000*	

\* Includes refunding issue of \$340,000.

## Area Colleges and Universities

<u>Name</u>	<u>Location (Miles distant)</u>	<u>Enrollment (Fall, 1983)</u>	<u>Highest Degree Conferred</u>
Western Kentucky University	Bowling Green, Kentucky (25)	12,666	Masters, Specialists*
Lindsey Wilson College	Columbia, Kentucky (62)	465	Associate
Belmont College	Nashville, Tennessee (65)	2,041	Baccalaureate
David Lipscomb College	Nashville, Tennessee (65)	2,321	Baccalaureate, Masters in Biblical Studies
Fisk University	Nashville, Tennessee (65)	694	Masters
Free Will Baptist Bible College	Nashville, Tennessee (65)	414	Masters in Pastoral Studies
Meharry Medical College	Nashville, Tennessee (65)	732	Academic and Professional
Scarritt College	Nashville, Tennessee (65)	95	Masters**
Trevecca Nazarene College	Nashville, Tennessee (65)	926	Baccalaureate
Tennessee State University	Nashville, Tennessee (65)	8,136	Academic and Professional
Vanderbilt University	Nashville, Tennessee (65)	9,035	Academic and Professional

\* Joint doctoral degree programs are offered in cooperation with the University of Kentucky, Lexington, and cooperative doctoral degree programs are offered with the University of Louisville. The degrees are issued by the University of Kentucky or the University of Louisville.

\*\* Graduation level only.

## Vocational Schools

Both the state vocational-technical schools and the area vocational education centers are operated by the Kentucky Department of Education. The state vocational-technical schools enroll persons full time who are at least 16 years of age and not in school. These students attend classes for six hours each day. The area vocational education centers are designed to accommodate high school students who are at least 15 years of age. These students attend vocational school for three hours each day. The state vocational-technical schools and the area education centers offer evening courses to enable working adults to upgrade current job skills.

### Nearest State School

Location	Bowling Green State Vocational-Technical School
Miles Distant	Bowling Green 25
Curriculum	Business and Office Accounting/Jr. Management Clerical Secretarial Consumer and Home Economics Commercial Foods Health and Personal Services Occupations Dental Assistant Health Careers Nurse Assistant Practical Nurse* Radiological Technology Respiratory Therapy Surgical Technician Industrial Education Auto Body Repair Auto Mechanics Carpentry Civil Highway Technology Diesel Mechanics Electricity Electronics Servicing Occupations Electronics Technology Graphic Arts (Printing) Industrial Maintenance Machine Shop Masonry Plumbing Refrigeration and Air Conditioning Small Engine Repair Technical Drafting Tool and Die Making Welding

(Cont'd)

\* This course is taught at the T. J. Samson Community Hospital in Glasgow.

Nearest Area Education Center

Location	Allen County Area Vocational Education Center
Curriculum	Scottsville Business and Office Accounting/Jr. Management Clerical Secretarial Word Processing Industrial Education Auto Mechanics Building Trades Drafting Electricity

Arrangements can be made to provide training in the specific production skills required by an industrial plant. Instruction may be conducted either in the vocational school or in the industrial plant, depending upon the desired arrangement and the availability of special equipment.

## HEALTH

### Local Medical Personnel

Physicians - 5  
Dentists - 5

### Hospitals\*

<u>General Hospital</u>	<u>Location</u>	<u>Beds</u>
Allen County War Memorial Hospital	Scottsville	53

General hospital facilities - Laboratory, respiratory therapy, physical therapy, X-ray, ultrasound, pharmaceutical services, labor/delivery/nursery, surgical suites, emergency room, critical care unit, chapel and other ancillary departments

Medical staff - 25 physicians (8 active staff, 16 consulting and 1 courtesy), 12 registered nurses, 21 licensed practical nurses, 18 nurses' aides, 1 orderly, 5 laboratory technicians, 4 X-ray technicians, 3 respiratory technicians and 1 physical therapist

### Other Medical Facilities

Allen County Medical Clinic

### Ambulance Service

Name - Allen County Ambulance Service\*\*  
Staff - 1 director, 4 paramedics, 4 emergency medical technicians  
Service - County-wide, 24-hour service  
Equipment - 2 ambulances, fully equipped; 1 back-up ambulance

### Public Health

Facility - Allen County Health Department  
Staff - 1 administrator, 4 registered nurses, 3 home health aids, 1 environmentalist, 3 clerks, 1 clinician, 1 speech therapist, 2 physical therapists, 1 orderly

\* The Allen County War Memorial Hospital will expand its services during 1984 and 1985. During 1984 new services will include nuclear medicine and echo cardiography. Plans for 1985 will create an outpatient processing center.

\*\* The Allen County Ambulance Service recently moved to a newly constructed headquarters adjacent to the hospital.

## OTHER LOCAL FACILITIES

### Communications

Telephone -	General Telephone Company provides service to the city of Scottsville. North Central Telephone Cooperative, Inc., provides service to Allen County.	
Services -	Standard	
Telegraph -	Western Union Telegraph	
Services -	Toll-free number, 1-800-325-5100. Counter service available locally	
Postal -	U.S. Post Office	
Class -	First	
Mail received -	Once daily	
Mail dispatched -	Once daily	
Express mail -	1:30 p.m. daily	
Newspapers -	Citizens Times	Allen County News
Weekly and circulation -	4,200	3,200
Other papers received from -	Louisville, Bowling Green and Glasgow, Kentucky; Nashville, Tennessee	
Radio -	WLCK-AM/FM	
Major stations received from -	Louisville, Bowling Green, Glasgow, and Franklin, Kentucky; Nashville and Gallatin, Tennessee	
Television -		
Cable service		
Reception from -	Louisville and Bowling Green, Kentucky; Nashville, Tennessee	
Kentucky Educational Television -	Bowling Green, WKGB Channel 53	

### Library Services

Public library - Allen County Public Library  
Size collection - 24,627 volumes  
Circulation, 1982-83 - 43,792  
Services - Magazines, records, story hour, pictures, projectors, book stations, bookmobile, newspapers, community meeting room, Interlibrary Loan, summer reading program, children's films



**Religious Institutions**

Number of churches - 31 (Allen County)  
 Denominations - Baptist  
                   Catholic  
                   Church of Christ  
                   Church of God  
                   Methodist  
                   Nazarene

Nearest Synagogues - Nashville, Tennessee, 65 miles southwest  
 Congregations - Sherith Israel (orthodox)  
                   Ohabai Shalom (reform)  
                   West End Synagogue (conservative)

**Financial Institutions**

<u>Banks</u>	<u>Assets</u>	<u>Deposits</u>	<u>Statement Date</u>
The Farmers National Bank	\$ 51,280,728.56	\$ 45,003,643.95	12/31/83
Kentucky State Bank	37,804,395.59	32,813,376.80	12/31/83
<u>Savings and Loan Associations</u>	<u>Assets</u>	<u>Savings Accounts</u>	<u>Statement Date</u>
The Cumberland*	\$ 923,817,709.00	\$ 746,341,537.00	12/31/83

**Hotels and Motels**

Total number - 3  
 Total rooms - 48

\* The Cumberland is headquartered in Louisville, Kentucky, and operates branch offices in six Kentucky cities. The figures shown above are taken from the combined statement of condition of all locations.

## Clubs and Organizations

Allen County-Scottsville Arts Council  
Allen County-Scottsville Recreation Board  
American Legion  
Boy Scouts  
Business and Professional Women  
Chamber of Commerce  
Cub Scouts  
Daughters of the American Revolution (DAR)  
Eastern Star  
4-H  
Future Business Leaders of America (FBLA)  
Future Farmers of America (FFA)  
Future Homemakers of America (FHA)  
Garden Club  
Girl Scouts  
Historical Society  
Homemakers  
Jaycees  
Jaycettes  
Lioness  
Lions  
Little League  
Masons  
Mother's Club  
Port Oliver Yacht Club  
Rainbow Girls  
Rotary  
Scottsville-Allen County Recreation Association (**Country Club**)  
Veterans of Foreign Wars (VFW)  
Youth, Inc.

## RECREATION

### Local

Public recreation facilities available to the residents of Scottsville include two neighborhood parks and playground areas, one baseball field, one football field, eight tennis courts, picnic grounds, and Youth Center. Private recreation facilities include a country club, a golf course, and a swimming pool. The Fred Hale Park, a large community park, located approximately 2.5 miles from the central business district, provides four lighted ball fields for Little League baseball, adult softball, and girls' softball. The U.S. Army Corps of Engineers camping sites at Barren River Lake offer primitive camping sites, swimming and fishing.

### Area (Within 66 miles)

**Barren River Lake State Resort Park**, 11 miles northeast of Scottsville, is a full-facility resort park offering a 51-room resort lodge, a coffee shop, 12 cottages, a lodge pool, a beach, riding stables, nature trails, open and covered boat slips, a 9-hole golf course, lighted handball and tennis courts, shuffleboard, park camping with a service building, a restaurant, fishing and pleasure boat rentals, picnic areas, and a playground. Barren River Lake, which covers 10,000 acres, is a popular area for skiing, sailing, fishing, and swimming.

**Bowling Green** is located 25 miles northwest of Scottsville. Bowling Green serves the area as a recreational and educational center. Western Kentucky University provides the city with many exciting sporting events. Beech Bend Amusement Park has many rides, games and other forms of entertainment.

**Mammoth Cave National Park** is located 40 miles northeast of Scottsville near Cave City. Beneath 52,000 park acres, Mammoth Cave is among the major tourist attractions of all times. It is the largest cave network ever discovered, with at least 230 miles of caverns. Some famous sights are Snowball Dining Room (267 feet below surface), Frozen Niagara, Crystal Lake, and Bottomless Pit. The park also features scenic boat trips on the Green River and nature and hiking trails. Park accommodations include a hotel with distinctive gift shops featuring native Kentucky and Southern Highland handicrafts, a motor lodge, hotel cottages, woodland cottages, and a hotel annex with budget accommodations and craft shop featuring live exhibits of broom making and weaving. Other park facilities include the hotel dining room and coffee shop, a service center, group meeting facilities, a campground, a picnic area, and tennis and shuffleboard courts.

**Nolin River Lake** is just north of Mammoth Cave National Park. The lake has a surface area of 5,800 acres and offers facilities for camping, boating, and fishing.

**Old Mulkey Meeting House State Shrine**, 41 miles east of Scottsville near Tompkinsville, offers picnic areas and playgrounds. The house was built in 1804, and is the oldest log meeting house in the state. Daniel Boone's sister is buried in the graveyard and authentic records written in pokeberry ink are on display.

**Nashville, Tennessee,** is 65 miles southwest of Scottsville. Nashville ("Music City, USA") is the Tennessee state capital, home of the Grand Ole Opry, Opryland amusement park, plus a variety of other entertainment and cultural activities.

**Abraham Lincoln Birthplace National Historic Site,** located 66 miles northeast of Scottsville near Hodgenville, features the log cabin which was the birthplace of Abraham Lincoln, enclosed within a granite memorial shrine. The grounds include 116 acres of the original Thomas Lincoln farm and a visitors' center with audiovisual programs and exhibits on the Lincoln family.

## COMMUNITY IMPROVEMENTS

### Recent

Independent Stave Company, Inc., began operations in Scottsville in 1984. The company produces barrel staves and employs 13 persons.

### Under Way

General Electric Company is in the process of expanding its Scottsville plant. The expansion includes the transfer of production operations from another General Electric facility. The expansion is expected to add about 275 jobs and will be completed by mid-1985.

Washington Overall Manufacturing Company, which manufactures men's and boys' trousers and children's overalls, is expanding in Scottsville. The expansion will increase employment by 20 jobs.

The Scottsville Water and Gas Department will begin operation of a new waste water treatment plant in March 1984. The plant will have a design capacity of 1.2 million gallons per day. Some aspects of the new facility will not be completed until October 1984. Upon final completion of the facility, operation of the old treatment plant will be discontinued.

Dollar General, Inc., is currently expanding its Scottsville operation. The addition of a second shift in January 1984 has doubled employment. Also included in the expansion are plans to build a new 100,000-square-foot warehouse. The new warehouse is scheduled for completion in the summer of 1984. Dollar General, Inc., which employs approximately 450 in Scottsville, is the headquarters for approximately 1,200 retail stores which operate in 23 states.

Construction is under way on a new highway which will connect U.S. 231 west of Scottsville and U.S. 31E north of the city. The 5.5 miles of new highway is tentatively scheduled for completion in the summer of 1985 at an estimated cost of \$5 million.