

1971

Industrial Resources: Barren County - Glasgow

Kentucky Library Research Collections
Western Kentucky University, spcol@wku.edu

Follow this and additional works at: https://digitalcommons.wku.edu/barren_cty

 Part of the [Business Administration, Management, and Operations Commons](#), [Growth and Development Commons](#), and the [Infrastructure Commons](#)

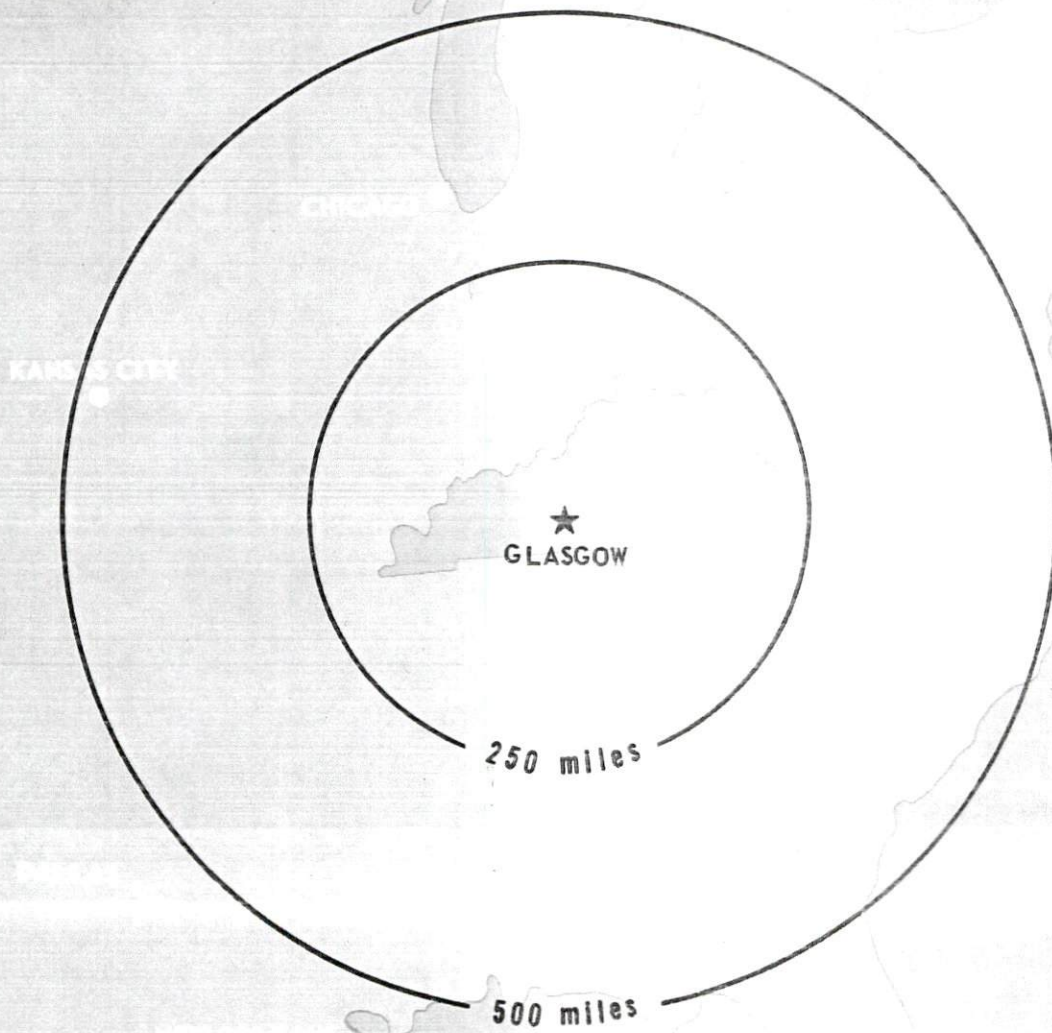
Recommended Citation

Kentucky Library Research Collections, "Industrial Resources: Barren County - Glasgow" (1971). *Barren County*. Paper 19.
https://digitalcommons.wku.edu/barren_cty/19

This Report is brought to you for free and open access by TopSCHOLAR®. It has been accepted for inclusion in Barren County by an authorized administrator of TopSCHOLAR®. For more information, please contact topscholar@wku.edu.

INDUSTRIAL RESOURCES

GLASGOW KENTUCKY



CURRENT INDUSTRIAL RESOURCES

CURRENT INDUSTRIAL RESOURCES, GLASGOW, KENTUCKY

This is a 1972 supplement to "Industrial Resources, Glasgow, Kentucky" which was published in 1971.

Population

	<u>1970</u>	<u>1960</u>
Glasgow	11,301	10,069
Barren County	28,677	28,303
Labor Market Area	141,257	128,433
(Includes Barren, Allen, Edmonson, Hart, Metcalfe, Monroe, and Warren Counties.)		

General Employment Characteristics

<u>Industry</u>	<u>Employment 1970</u>	
	<u>Barren County</u>	<u>Labor Market Area</u>
TOTAL	11,800	55,300
Agricultural	2,600	10,400
Nonagricultural	9,200	44,900
Manufacturing	3,000	12,135
Trade and Services	2,710	12,342
Government	1,200	7,700
Other	2,290	12,723

Manufacturing Employment

<u>Type Industry</u>	<u>Barren County</u>			<u>Labor Market Area</u>		
	<u>1971</u>	<u>1961</u>	<u>%Change</u>	<u>1971</u>	<u>1961</u>	<u>%Change</u>
TOTAL	3,077	1,446	+112.8	12,254	5,957	+105.7
Food & kindred products	245	227	+ 7.9	914	897	+ 1.9
Tobacco	1	1	0	124	129	- 3.9
Apparel, textiles, leather	806	878	- 8.2	4,547	2,586	+ 75.8
Lumber & furniture	116	80	+ 45.0	1,161	772	+ 50.4
Printing, publishing, paper	322	40	+705.0	512	115	+345.2
Chemicals, petroleum, coal, rubber	39	9	+333.3	58	16	+262.5
Stone, clay & glass	0	22	-	45	38	+ 18.4
Primary metals	0	0	0	75	0	-
Machinery & metal products	1,548	189	+719.0	4,802	1,404	+242.0
Other	0	0	0	16	0	-

There are presently 34 manufacturing firms in Barren County.
Major firms, employment, and year started operations:

<u>Firms</u>	<u>Employment</u>	<u>Year Started Operations</u>
Eaton Corporation	300	
Glasgow Industries, Inc.	284	1962
Glasgow Mfg. Co., Inc.	233	1946
Glasgow Mfg. Div.	275	1968
Kentucky Pants Co., Inc.	455	1937
Mallory Capacitor Co.	570	1964
Mammoth Cave Garment Co.	172	1945
Tyson Bearing Corp. Div.	390	1965

Labor Supply

	<u>Barren County</u>			<u>Labor Market Area</u>		
	<u>Total</u>	<u>Male</u>	<u>Female</u>	<u>Total</u>	<u>Male</u>	<u>Female</u>
Current	1,541	883	658	8,449	5,618	2,831
Potential additions next five years	2,835	1,443	1,392	13,485	6,975	6,510

Personal Income

Barren County, 1970: Total - \$77,456,000; Per Capita - \$2,696
1960: Total - \$34,066,000; Per Capita - \$1,204

Education

The Barren County School System includes 4 high schools with Basic ratings, and 6 elementary schools.

The Caverna Independent School District includes 1 high school with standard rating, and 2 elementary schools.

The Glasgow Independent School District includes 1 high School with comprehensive rating, 1 junior high school, and 4 elementary schools.

Nearest Vocational School: Bowling Green Area Vocational School

Courses offered: Distributive Education, Dental Assistant, Dental Technician, Health Careers, Nurse Aide, Practical Nursing, Surgical Technician, Ward Clerk, Electronics (Technology), Highway Technology, Technical Drafting, Air Conditioning & Refrigeration, Auto Body Repair, Auto Mechanics, Carpentry, Commercial Foods, Drafting, Electricity, Machine Shop, Office Machines Repair, Printing, Radio & TV Repair, Small Engine Repair, Tool & Die Making, Welding

GLASGOW INDUSTRIAL SITES

1972

GLASGOW INDUSTRIAL SITES

1972

For additional information concerning the industrial sites, contact Leslie Moran, Glasgow-Barren County Chamber of Commerce, Inc., Glasgow, Kentucky; or the Kentucky Department of Commerce, Capital Plaza Office Tower, Frankfort, Kentucky

SITE #1: ACREAGE: 25 acres
 LOCATION: In southwest city limits of Glasgow
 HIGHWAY ACCESS: Light duty road from site to Kentucky 1297
 RAILROADS: Not rail served
 WATER: Glasgow Water Company
 SIZE LINE: 12-inch line 400 feet away;
 8-inch line 900 feet away
 GAS: Western Kentucky Gas Company
 SIZE MAIN: 6-inch main 375 feet away
 ELECTRICITY: Glasgow Electric Plant Board
 SEWERAGE: Glasgow Water Company
 OWNERSHIP: Private

SITE #2: ACREAGE: 59 acres
 LOCATION: Adjacent to southwest city limits
 HIGHWAY ACCESS: Unimproved road from property to Kentucky 1297
 RAILROADS: Not rail served
 WATER: Glasgow Water Company
 SIZE LINE: 8-inch line 200 feet away
 GAS: Western Kentucky Gas Company
 SIZE MAIN: 4-inch main on site
 ELECTRICITY: Glasgow Electric Plant Board
 SEWERAGE: Glasgow Water Company
 OWNERSHIP: Private

SITE #3: ACREAGE: 93 acres
 LOCATION: Part of site lies in southwest city limits of Glasgow.
 HIGHWAY ACCESS: Kentucky 1297 bounds property on north.
 RAILROADS: Not rail served
 WATER: Glasgow Water Company
 SIZE LINE: 8-inch line 2,100 feet away
 GAS: Western Kentucky Gas Company
 SIZE MAIN: 4-inch main 1,800 feet away
 ELECTRICITY: Glasgow Electric Plant Board
 SEWERAGE: Glasgow Water Company
 OWNERSHIP: Private

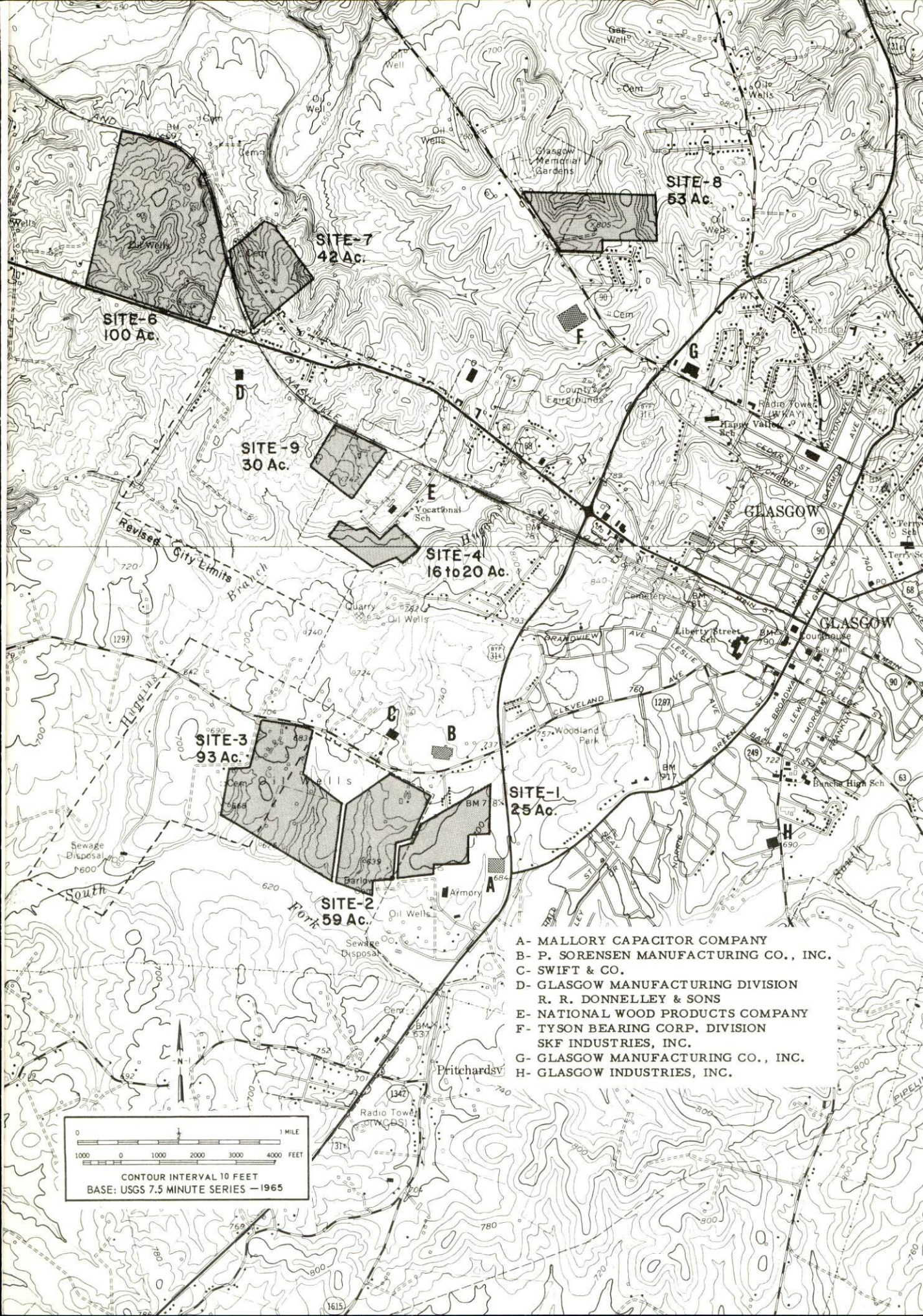
SITE #4: ACREAGE: 16 to 20 acres
 LOCATION: In west city limits of Glasgow
 HIGHWAY ACCESS: Light duty road from property to U. S. 68
 RAILROADS: Louisville & Nashville Railroad spur 175 feet to the north
 WATER: Glasgow Water Company
 SIZE LINE: 8-inch line on site
 GAS: Western Kentucky Gas Company
 SIZE MAIN: 2-inch main on site
 ELECTRICITY: Glasgow Electric Plant Board
 SEWERAGE: Glasgow Water Company
 OWNERSHIP: Glasgow Development Corporation

SITE #6: ACREAGE: 100 acres
 LOCATION: Northwest of city limits
 HIGHWAY ACCESS: Site fronts on U. S. 68
 RAILROADS: Louisville & Nashville Railroad adjacent to eastern and northern boundaries
 WATER: Glasgow Water Company
 SIZE LINE: 12-inch line 750 feet away
 GAS: Western Kentucky Gas Company
 SIZE MAIN: 6-inch main 1,000 feet away
 ELECTRICITY: Farmers RECC
 SEWERAGE: Glasgow Water Company
 OWNERSHIP: Private

SITE #7: ACREAGE: 42 acres
 LOCATION: Northwest of city limits
 HIGHWAY ACCESS: Unimproved road through property to U. S. 68
 RAILROADS: Louisville & Nashville Railroad adjacent to west-southwest boundary
 WATER: Glasgow Water Company
 SIZE LINE: 12-inch line 500 feet away
 GAS: Western Kentucky Gas Company
 SIZE MAIN: 6-inch main on site
 ELECTRICITY: Glasgow Electric Plant Board or Farmers RECC
 SEWERAGE: Glasgow Water Company
 OWNERSHIP: Private

SITE #8: ACREAGE: 53 acres
 LOCATION: In northwest city limits
 HIGHWAY ACCESS: Fronts on Kentucky 90
 RAILROADS: Not rail served
 WATER: Glasgow Water Company
 SIZE LINE: 8-inch line 600 feet away
 GAS: Western Kentucky Gas Company
 SIZE MAIN: 4-inch main on site
 ELECTRICITY: Glasgow Electric Plant Board or Farmers RECC
 SEWERAGE: Glasgow Water Company
 OWNERSHIP: Private

SITE #9: ACREAGE: 30 acres
 LOCATION: In west city limits of Glasgow
 HIGHWAY ACCESS: Paved road approximately 440 feet southeast of site
 RAILROADS: Louisville & Nashville Railroad on north boundary of site
 WATER: Glasgow Water Company
 SIZE LINE: 12-inch line on site
 GAS: Western Kentucky Gas Company
 SIZE MAIN: 4-inch main on property
 ELECTRICITY: Glasgow Electric Plant Board
 SEWERAGE: Glasgow Water Company
 SIZE LINE: 12-inch line
 OPTIONED BY: City of Glasgow



Police Protection: Number of law enforcement officers - 23 (city);
4 (county)

Fire Protection: Number of full-time firemen - 22; American Insurance
Association fire rating, City of Glasgow, Classes 6 and 9

Industrial Sites

Glasgow has eight sites available for industrial use.

GLASGOW INDUSTRIAL SITES

1971

GLASGOW INDUSTRIAL SITES

1971

For additional information concerning the industrial sites, contact Leslie Moran, Glasgow-Barren County Chamber of Commerce, Inc., Glasgow, Kentucky; or the Kentucky Department of Commerce, Frankfort, Kentucky.

- SITE # 1: ACREAGE: 25 acres
 LOCATION: In southwest city limits of Glasgow
 HIGHWAY ACCESS: Light duty road from site to Kentucky 1297
 RAILROADS: Not rail served
 WATER: Glasgow Water Company
 SIZE LINE: 12-inch line 400 feet away;
 8-inch line 900 feet away
 GAS: Western Kentucky Gas Company
 SIZE MAIN: 6-inch main 375 feet away
 ELECTRICITY: Glasgow Electric Plant Board
 SEWERAGE: Glasgow Water Company
 OWNERSHIP: Private
- SITE # 2: ACREAGE: 59 acres
 LOCATION: Adjacent to southwest city limits
 HIGHWAY ACCESS: Unimproved road from property to Kentucky 1297
 RAILROADS: Not rail served
 WATER: Glasgow Water Company
 SIZE LINE: 8-inch line 200 feet away
 GAS: Western Kentucky Gas Company
 SIZE MAIN: 4-inch main on site
 ELECTRICITY: Glasgow Electric Plant Board
 SEWERAGE: Glasgow Water Company
 OWNERSHIP: Private
- SITE # 3: ACREAGE: 93 acres
 LOCATION: Part of site lies in southwest city limits of Glasgow.
 HIGHWAY ACCESS: Kentucky 1297 bounds property on north.
 RAILROADS: Not rail served
 WATER: Glasgow Water Company
 SIZE LINE: 8-inch line 2,100 feet away
 GAS: Western Kentucky Gas Company
 SIZE MAIN: 4-inch main 1,800 feet away
 ELECTRICITY: Glasgow Electric Plant Board
 SEWERAGE: Glasgow Water Company
 OWNERSHIP: Private
- SITE # 4: ACREAGE: 16 acres
 LOCATION: In west city limits of Glasgow
 HIGHWAY ACCESS: Light duty road from property to U.S. 68
 RAILROADS: Louisville & Nashville Railroad spur 175 feet to the north
 WATER: Glasgow Water Company
 SIZE LINE: 8-inch line on site
 GAS: Western Kentucky Gas Company
 SIZE MAIN: 8-inch main 400 feet away
 ELECTRICITY: Glasgow Electric Plant Board
 SEWERAGE: Glasgow Water Company
 OWNERSHIP: Glasgow Development Corporation
- SITE # 5: ACREAGE: 66 acres
 LOCATION: In west city limits of Glasgow
 HIGHWAY ACCESS: Site fronts on U.S. 68
 RAILROADS: Louisville & Nashville Railroad divides property.
 WATER: Glasgow Water Company
 SIZE LINE: 15-inch line 1,300 feet away
 GAS: Western Kentucky Gas Company
 SIZE MAIN: 8-inch main on site
 ELECTRICITY: Glasgow Electric Plant Board
 SEWERAGE: Glasgow Water Company
 OWNERSHIP: Private
- SITE # 6: ACREAGE: 100 acres
 LOCATION: Northwest of city limits
 HIGHWAY ACCESS: Site fronts on U.S. 68
 RAILROADS: Louisville & Nashville Railroad adjacent to eastern and northern boundaries
 WATER: Glasgow Water Company
 SIZE LINE: 12-inch line 750 feet away
 GAS: Western Kentucky Gas Company
 SIZE MAIN: 6-inch main 1,000 feet away
 ELECTRICITY: Farmers RECC
 SEWERAGE: Glasgow Water Company
 OWNERSHIP: Private
- SITE # 7: ACREAGE: 42 acres
 LOCATION: Northwest of city limits
 HIGHWAY ACCESS: Unimproved road through property to U.S. 68.
 RAILROADS: Louisville & Nashville Railroad adjacent to west-southwest boundary
 WATER: Glasgow Water Company
 SIZE LINE: 12-inch line 500 feet away
 GAS: Western Kentucky Gas Company
 SIZE MAIN: 6-inch main on site
 ELECTRICITY: Glasgow Electric Plant Board or Farmers RECC
 SEWERAGE: Glasgow Water Company
 OWNERSHIP: Private
- SITE # 8: ACREAGE: 53 acres
 LOCATION: In northwest city limits
 HIGHWAY ACCESS: Fronts on Kentucky 90
 RAILROADS: Not rail served
 WATER: Glasgow Water Company
 SIZE LINE: 8-inch line 600 feet away
 GAS: Western Kentucky Gas Company
 SIZE MAIN: 4-inch main on site
 ELECTRICITY: Glasgow Electric Plant Board or Farmers RECC
 SEWERAGE: Glasgow Water Company
 OWNERSHIP: Private



SITE-6
100 Ac.

SITE-7
42 Ac.

SITE-8
53 Ac.

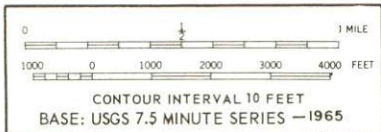
SITE-5
66 Ac.

SITE-4
16 Ac.

SITE-3
93 Ac.

SITE-1
25 Ac.

SITE-2
59 Ac.



- A- MALLORY CAPACITOR COMPANY
- B- P. SORENSEN MANUFACTURING CO., INC.
- C- SWIFT & CO.
- D- GLASGOW MANUFACTURING DIVISION
R. R. DONNELLEY & SONS
- E- NATIONAL WOOD PRODUCTS COMPANY
- F- TYSON BEARING CORP. DIVISION
SKF INDUSTRIES, INC.
- G- GLASGOW MANUFACTURING CO., INC.
- H- GLASGOW INDUSTRIES, INC.

INDUSTRIAL RESOURCES

GLASGOW, KENTUCKY

Prepared by

The Kentucky Department of Commerce

in cooperation with

The Glasgow-Barren County Chamber of Commerce

1971

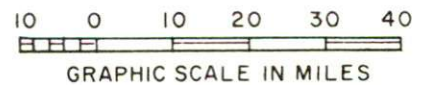
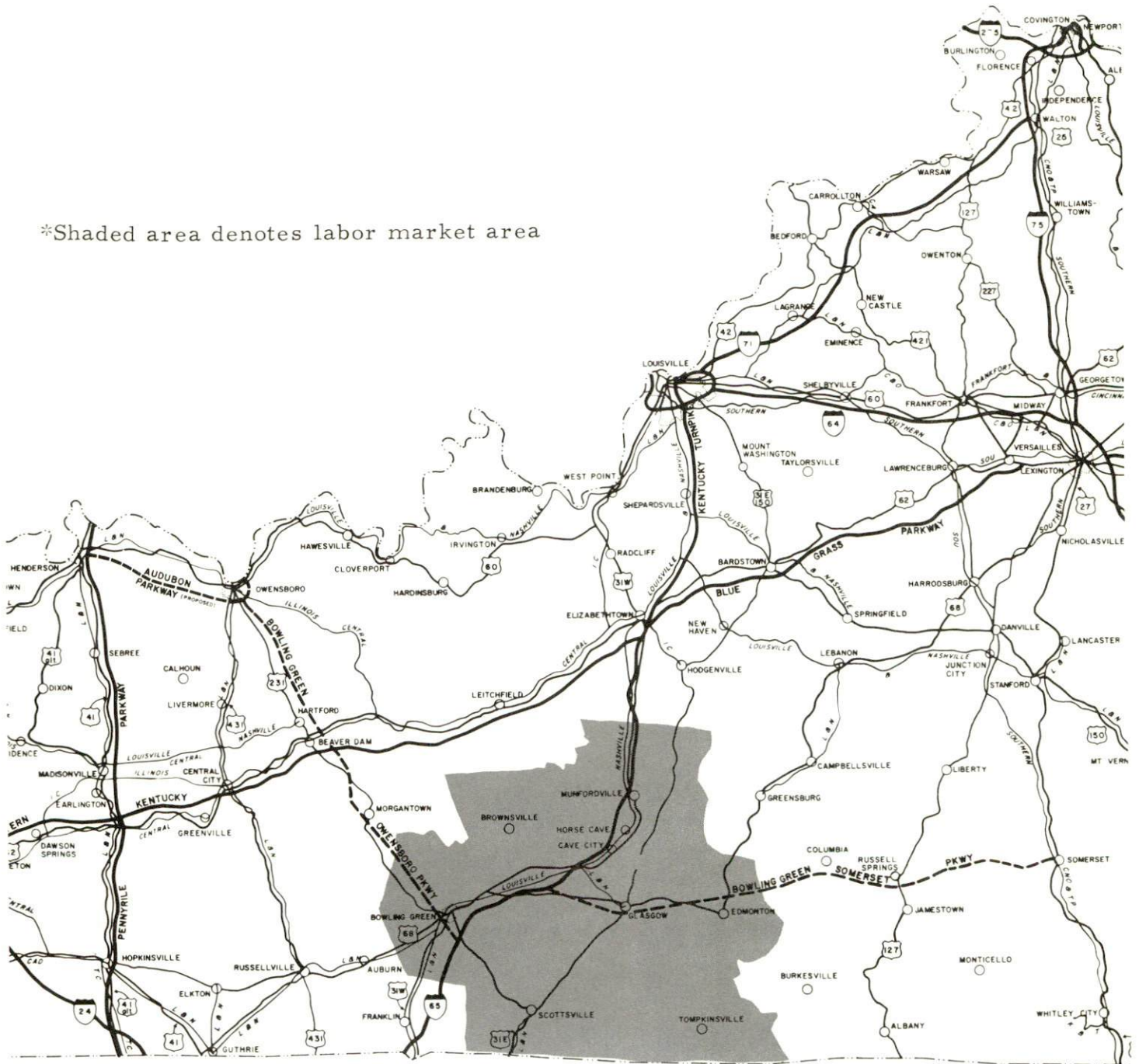
TABLE OF CONTENTS

<u>Chapter</u>	<u>Page</u>
INDUSTRIAL SITES	i
GLASGOW, KENTUCKY - A RESOURCE PROFILE	1
THE LABOR MARKET	4
Population Trends	4
General Employment Characteristics, 1969	4
Manufacturing Employment Trends by Industry	4
Major Glasgow Manufacturing Firms, Their Products and Employment	5
Wage Rates for Selected Occupations	9
Labor Organizations	9
Current and Future Labor Supply	10
Total Personal Income	10
Per Capita Personal Income	10
EDUCATION	11
Public Schools	11
Vocational Schools	11
Colleges and Universities	12
TRANSPORTATION	13
Rail	13
Truck Service	13
Air	14
Bus	14
Taxi	14
Rental Services	14
POWER AND FUEL	16
Electricity	16
Natural Gas	16
WATER AND SEWERAGE	17
Water	17
Sewerage	18

<u>Chapter</u>	<u>Page</u>
LOCAL GOVERNMENT	19
City	19
County	19
Assessed Value of Property, 1970.	19
Local General Property Tax Rates Per \$100 of Assessed Valuation, 1970.	19
Planning and Zoning	20
Safety	20
Police	20
Fire	20
Rescue Service	20
Sanitation	20
HEALTH	21
Hospitals	21
Nursing Homes	21
Public Health	21
OTHER LOCAL FACILITIES	23
Communications	23
Library Services	23
Religious Institutions	24
Financial Institutions	24
Hotels and Motels	24
Clubs and Organizations	24
RECREATION	25
Local	25
Area	25
AGRICULTURE - NATURAL RESOURCES - CLIMATE	26
Agriculture	26
Natural Resources	26
Climate	26
HISTORY	27

GLASGOW LABOR MARKET AREA

*Shaded area denotes labor market area



GLASGOW, KENTUCKY - A RESOURCE PROFILE

Location

Glasgow is located in the scenic rolling hills and cave area of southcentral Kentucky. Glasgow, only about 10 miles from Interstate 65, is located midway between Louisville and Nashville. Glasgow is only 30 miles to the east of Bowling Green, a western Kentucky transportation center. Glasgow's proximity to Bowling Green and the cave area provides the city with many recreational and cultural advantages.

Glasgow had a 1970 population of 11,301 and Barren County had a population of 28,677.

The Economic Framework

Total employment in Barren County averaged 12,500 in 1969 with manufacturing providing 2,800 of these jobs. During the decade of the 1960's, manufacturing employment increased by over 1,900 jobs or more than 160 percent. Major industrial products are: men's work clothing, ladies' wearing apparel, automotive parts, roller bearings, commercial printing, and electrolytic capacitors.

Per capita personal income in the county in 1969 was \$2,530, an increase of 120 percent in the past decade.

Glasgow is the hub of a labor market area that includes Barren and the six adjoining counties. Area employment totaled 53,300 jobs in 1969, including 10,900 in agriculture and 11,820 in manufacturing. Area industrial employment has increased by over 120 percent since 1960 with the sharpest gains in the machinery and metal products and apparel industries.

Despite important industrial gains in recent years the area still has a deficit of 1,430 jobs in manufacturing when measured against the national industrial employment-population ratio. This indicates an area where the potential for additional manufacturing production is good.

Resources for Growth

1. There is a current labor supply of 5,600 men and 2,825 women available for industrial jobs in the labor market area. In addition, 8,250 young men and 7,750 young women in the area will become 18 years of age by 1977 and potentially available for work.

2. The local transportation capability is good. The Louisville & Nashville Railroad serves Glasgow with a variety of services. There is easy access to Interstate 65, which provides Glasgow with access to the Western Kentucky Parkway, the Kentucky Turnpike, and the Blue Grass Parkway. These are major highway arteries which lead to the north, south, east, and west. The Glasgow Municipal Airport provides service for light aircraft, and commercial air service is available in Bowling Green, 30 miles west of Glasgow.

3. Energy - natural gas is provided by the Western Kentucky Gas Company, and electricity by the Glasgow Electric Plant Board, which receives its power from the Tennessee Valley Authority. The local raw water supply from Barren River Lake and Beaver Creek is more than adequate for continued growth.

4. Industrial sites - Glasgow has eight available industrial sites totaling 454 acres.

5. Education - the City of Glasgow has an independent school system. The Glasgow High School has a comprehensive state rating.

Western Kentucky University is located only 30 miles to the west in Bowling Green. The nearest area vocational school is in Bowling Green with an extension center located in Glasgow.

Community Programs for Improvement

Recent community improvements include: a new Glasgow-Barren County Chamber of Commerce building; a new recreation center for all ages, which includes game room, ceramics, shuffleboard court, and physical fitness facilities; new mini park adjacent to recreation building; addition of department for mental patients and extendicare units to T. J. Samson Community Hospital; 52-room Glasgow Personal Care Home completed; new two-acre park and playground completed and named L. J. Tyman Park in honor of Mayor Tyman; new library, cafeteria, and kitchen added to Liberty Street Elementary; new library and office suite added to E. B. Terry Elementary; new library, four classrooms, and storage rooms added to Happy Valley Elementary; completion of new Central Center Shopping Center on Kentucky 90; and Wesley Heights Apartment Complex with 72 units completed. The Glasgow Country Club has built a new clubhouse, swimming pool, and added nine holes to the golf course.

Completion of lodge and executive cottages on Barren River Lake is expected by July, 1971. A new three-story building for Farmers National Bank is under construction, and is expected to be completed by November, 1971. Ninety units of low-rent housing for the elderly is presently under construction.

Planned improvements include: new aeration plant for Cardinal Court Subdivision and related area; completion of twelve-inch water main around the city, and two one-million-gallon ground tanks to be constructed; extension of water lines beyond the city limits during 1971 and 1972; a \$45,000 project to expand rest room and lounge facilities at the Hiseville School; a \$140,000 addition to Mary Wood Weldon Memorial Library; a new consolidated Barren County High School; and a new vocational school.

Recreation, Entertainment, and Livability

Recreation in Glasgow is centered around Mammoth Cave National Park, only 20 miles to the west, and the Barren River Reservoir, a few miles from town.

The world-famous Mammoth Cave covers more than 150 miles of charted caverns. Cave attractions include Crystal Lake and Bottomless Pit, Frozen Niagara, and the Snowball Dining Room. Other park attractions include a scenic boat trip on the Green River, nature trails, and amphitheater.

Park Mammoth Resort, Mammoth Onyx Cave, and Crystal Onyx Cave are located only a few miles to the west and northwest of Glasgow.

The Barren River Reservoir provides fishing, swimming, and boating. The Barren River Reservoir State Park has camping accommodations and complete boating and fishing facilities available. A new 51-room lodge will be completed and ready for use by the 1971 season.

Intercollegiate athletic competition is found at Western Kentucky University in Bowling Green. Western competes in seven varsity sports - basketball, football, baseball, tennis, track, golf, and cross-country.

The City of Glasgow has a Municipal Recreation and Playground Board. The Board has a staff of 6 full-time and 11 part-time employees and maintains a full-time recreation program.

THE LABOR MARKET

POPULATION TRENDS ^{1/}

Area	Population			Percent Change	
	1970	1960	1950	1960-70	1950-60
Glasgow	11,301	10,069	7,025	+12.2	+43.3
Labor Market Area	141,257	128,433	133,324	+ 9.9	- 3.7
Barren County	28,677	28,303	28,461	+ 1.3	- 0.6
Allen County	12,598	12,269	13,787	+ 2.7	-11.0
Edmonson County	8,751	8,085	9,376	+ 8.2	-13.8
Hart County	13,980	14,119	15,321	- 1.0	- 7.8
Metcalf County	8,177	8,367	9,851	- 2.3	-15.1
Monroe County	11,642	11,799	13,770	- 1.3	-14.3
Warren County	57,432	45,491	42,758	+26.2	+ 6.4

GENERAL EMPLOYMENT CHARACTERISTICS, 1969 ^{2/}

Major Employment Group	Employment	
	Barren County	Labor Market Area
TOTAL	12,500	53,300
Agricultural	2,700	10,900
Nonagricultural	9,800	42,400
Manufacturing	2,800	11,820
Trade and Services	2,768	11,887
Government	1,000	7,300
Other	3,232	11,393

MANUFACTURING EMPLOYMENT TRENDS BY INDUSTRY JUNE 1970 AND 1960 ^{3/}

Industry	Barren County			Labor Market Area		
	1970	1960	%Change	1970	1960	%Change
TOTAL	3,088	1,170	+163.9	12,553	5,672	+121.3
Food & Kindred Products	289	225	+ 28.4	1,027	869	+ 18.2
Tobacco	5	1	+400.0	141	180	- 21.7
Apparel, Textiles, Leather	825	794	+ 3.9	4,652	2,531	+ 83.8
Lumber & Furniture	102	80	+ 27.5	1,116	629	+ 77.4
Printing, Publishing, Paper	209	37	+464.9	390	124	+214.5
Chemicals, Petroleum, Coal, Rubber	44	20	+120.0	75	26	+188.5
Stone, Clay & Glass	0	13		43	25	+ 72.0
Machinery & Metal Products	1,614	0		5,041	1,288	+291.4
Other	0	0		68	0	

MAJOR GLASGOW MANUFACTURING FIRMS,
THEIR PRODUCTS AND EMPLOYMENT ^{4/}

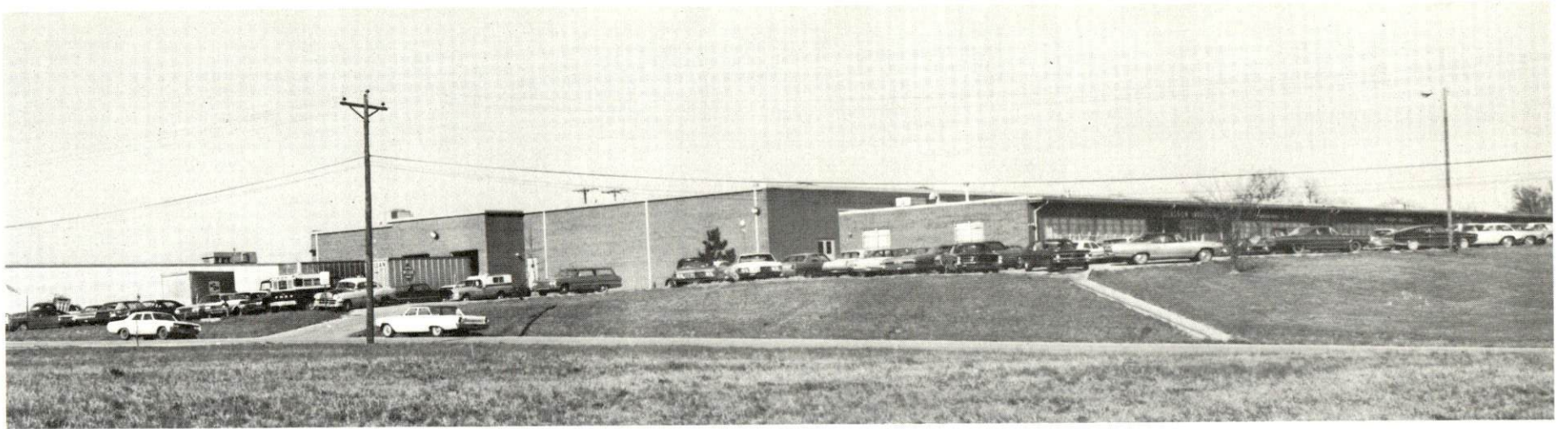
<u>Firm</u>	<u>Product</u>	<u>Employment</u>		
		<u>Total</u>	<u>Male</u>	<u>Female</u>
Glasgow Coca-Cola Bottling Works	Carbonated beverages	26	22	4
Glasgow Foods, Inc.	Poultry processing	160	57	103
Glasgow Industries, Inc.	Automotive parts, electrical connectors	284	84	200
Glasgow Manufacturing Co., Inc.	Ladies' dresses	353	53	300
Glasgow Manufacturing Division, R. R. Donnelley & Sons, Inc.	Printing	NA		
Kentucky Pants Co., Inc.	Men's dress and work pants	455	70	385
Mallory Capacitor Co.	Electrolytic capacitors	570	110	460
National Wood Products Co.	Brush blocks, wood handles, wood parts	56	54	2
P. Sorensen Manufacturing Co., Inc.	Automotive parts	122	42	80
Swift and Company	Cheese	34	30	4
Tyson Bearing Corporation, Division of SKF Industries, Inc.	Roller bearings, tapered	390	340	50



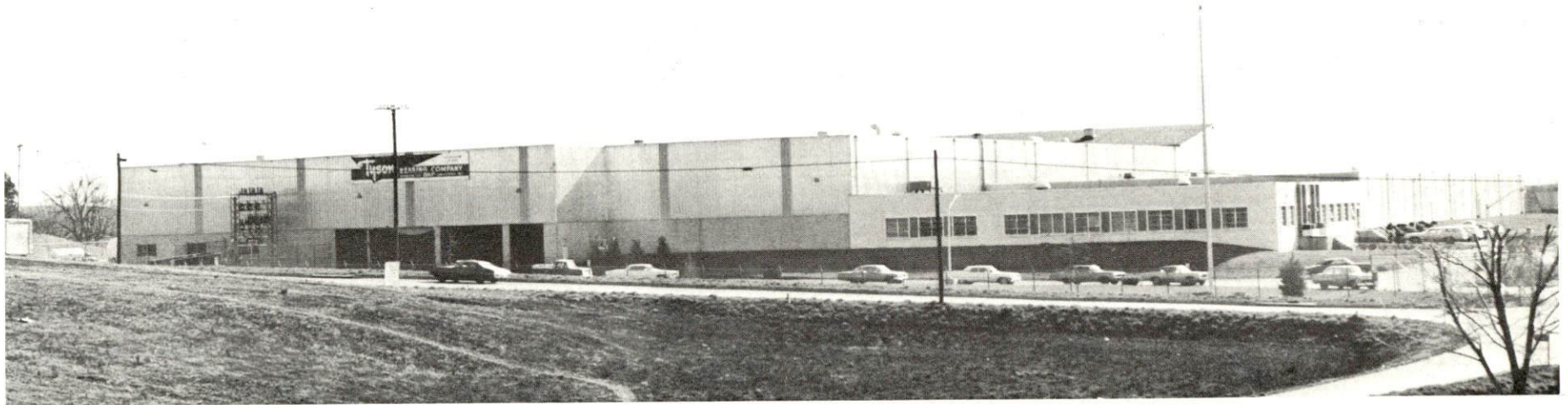
MALLORY CAPACITOR COMPANY



SWIFT AND COMPANY



GULF + WESTERN INDUSTRIES, INC.
P. Sorensen Mfg. Co.
Glasgow Industries
MB Manufacturing Co.



TYSON BEARING CORP.



R. R. DONNELLEY & SON

WAGE RATES FOR SELECTED OCCUPATIONS
GLASGOW, KENTUCKY ^{5/}

<u>Classification</u>	<u>Wages Per Hour</u>	
	<u>Starting</u>	<u>Maximum</u>
<u>Production Employees</u>		
Assembler	\$1.65	\$2.15
Inspector	1.65	2.50
Production Laborer	1.60	2.20
Welder, Arc or Acetylene (Class-A)	2.00	3.10
<u>Service Employees</u>		
Electrician (Class-A)	\$1.75	\$4.20
Laborer	2.20	3.30
Machinist	2.40	2.90
Mechanic, Maintenance	1.95	3.25
Truck Driver, Industrial (Class-A)	3.10	3.60
<u>Office Employees</u>		
Bookkeeper	\$1.60	\$3.00
File Clerk	1.60	1.90
Receptionist	1.60	2.00
Secretary	1.60	3.00
Typist	1.60	2.00

LABOR ORGANIZATIONS

<u>Union</u>	<u>Representing workers at:</u>
International Ladies' Garment Workers (AFL-CIO)	Glasgow Manufacturing Company
Teamsters	J. F. Pace Concrete Products, Inc.
United Steel Workers	Tyson Bearing Corporation, Division of SKF Industries, Inc.
Amalgamated Meat Cutters & Butcher Workmen of North America	Swift & Company

CURRENT AND FUTURE LABOR SUPPLY -
GLASGOW LABOR MARKET AREA

Area	Current Labor Supply, 1971 ^{6/}			Future Labor Supply by 1977 (Becoming 18 Years of Age) ^{7/}		
	Total	Male	Female	Total	Male	Female
Labor Market Area	8,449	5,618	2,831	16,016	8,255	7,761
Barren County	1,541	883	658	3,386	1,718	1,668
Allen County	1,012	687	325	1,380	713	667
Edmonson County	1,105	877	228	1,132	604	528
Hart County	1,202	671	531	1,676	870	806
Metcalfe County	1,104	617	487	943	491	452
Monroe County	960	694	266	1,417	752	665
Warren County	1,525	1,189	336	6,082	3,107	2,975

TOTAL PERSONAL INCOME^{8/}

Area	1969	1959	% Change
Barren County	\$ 74,869,000	\$ 32,094,000	+133.3
Labor Market Area	318,892,000	144,707,000	+120.4
Kentucky	9,202,000,000	4,655,000,000	+ 97.7

PER CAPITA PERSONAL INCOME^{9/}

Area	1969	1959	% Change
Barren County	\$ 2,530	\$ 1,149	+120.2
Labor Market Area	\$1,760 to 2,730	\$672 to 1,451	NA
Kentucky	2,847	1,552	+ 83.4

EDUCATION

Public Schools

	<u>Glasgow</u>	<u>Barren County</u>
Total Enrollment	2,838	3,411
Elementary	2,088	2,426
High School	750	985
Student-Teacher Ratio	26-1	24-1
Elementary	26-1	25-1
High School	26-1	22-1
State Rating of High School	Comprehensive	Basic
Other Accreditations	Southern Association of Colleges & Schools	
Percent High School Graduates to College	60.5	41.1
Current Expenditures Per Pupil	\$403.76	\$303.47
Bonded Indebtedness, June 30, 1970	\$1,788,000	\$539,000

Vocational Schools

	<u>Nearest Area School</u>	<u>Nearest Extension Center</u>
Location	Bowling Green Area Vocational School	Glasgow Extension Center
Miles Distant	Bowling Green 30	Glasgow
Curriculum	General Clerical Dental Assistant Nurse Aide O. B. Technician Practical Nursing Surgical Technician Ward Clerk Electronics Highway Technology Air Conditioning & Refrigeration	Auto Mechanics Carpentry Drafting

(Cont'd.)

Nearest Area
School (Cont'd.)

Auto Body Repair
Auto Mechanics
Carpentry
Drafting
Electricity
Printing
Radio & TV Repair
Tool & Die Making
Welding

Colleges and Universities

<u>Name</u>	<u>Area - Within 50 Miles</u>		<u>Highest Degree Conferred</u>
	<u>Location</u>	<u>Enrollment</u>	
Western Kentucky University	Bowling Green	10,737	Masters
Campbellsville College	Campbellsville	914	Baccalaureate
Lindsey Wilson Junior College	Columbia	413	Associate

TRANSPORTATION

Rail

Line serving Glasgow - Louisville & Nashville Railroad

Services - Daily freight service, piggyback service, private sidings, team tracks, switching, REA Express

RAILWAY TRANSIT TIME FROM GLASGOW, KENTUCKY, TO: 10/

City	No. of Days		City	No. of Days	
	CL			CL	
Atlanta, Ga.	3		Los Angeles, Calif.	5	
Birmingham, Ala.	3		Louisville, Ky.	1	
Chicago, Ill.	3		Nashville, Tenn.	2	
Cincinnati, Ohio	2		New Orleans, La.	4	
Cleveland, Ohio	3		New York, N. Y.	4	
Detroit, Mich.	4		Pittsburgh, Pa.	3	
Knoxville, Tenn.	2		St. Louis, Mo.	3	

Truck Service

Company

Home Office

Dixie Ohio Express, Inc.	Akron, Ohio
Manning Motor Express, Inc.	Glasgow, Kentucky
McLean Trucking Company	Winston-Salem, North Carolina
Skaggs Transfer, Inc.	Louisville, Kentucky
Southern Forwarding Company	Memphis, Tennessee
Terminal Transport Company, Inc.	Atlanta, Georgia
Theatres Service Company	Atlanta, Georgia
Tompkinsville Transfer Company	Tompkinsville, Kentucky

HIGHWAY MILES AND TRUCK TRANSIT TIME IN DAYS FROM
GLASGOW, KENTUCKY, TO SELECTED MARKET CENTERS

City	Highway Miles	Delivery Time <u>11</u> / LTL TL		City	Highway Miles	Delivery Time LTL TL	
		Atlanta, Ga.	342			3	2
Birmingham, Ala.	276	3	2	Louisville, Ky.	90	1	1
Chicago, Ill.	391	2-3	2	Nashville, Tenn.	90	1-2	1
Cincinnati, Ohio	203	2-3	1	New Orleans, La.	620	3	2
Cleveland, Ohio	444	2-3	1	New York, N. Y.	859	5	4
Detroit, Mich.	465	2-3	2	Pittsburgh, Pa.	484	4	3
Knoxville, Tenn.	163	2	1	St. Louis, Mo.	354	2-3	2

Air

	<u>Local</u>	<u>Nearest Commercial</u>
Location:	Glasgow Municipal Airport	Bowling Green-Warren County Municipal
Runways:	Highway 90	Bowling Green, 30 miles
Length:	1 paved	2 paved
Traffic	4,000 feet	4,000 feet; 6,500 feet
Control:	Unicom, radio, wind sock	Wind tee
Lighting:	Runway, beacon	Runways, obstructions, beacons, and wind tee until midnight
Services:	80 and 100 octane; jet fuel; small engine repairs; car rentals; taxi; flying ambulance	80 and 100 octane; jet A-50; storage; minor A&E repairs; FAA Flight Service Station, taxi and rental car service; restaurant on field, Wright Airlines

Bus

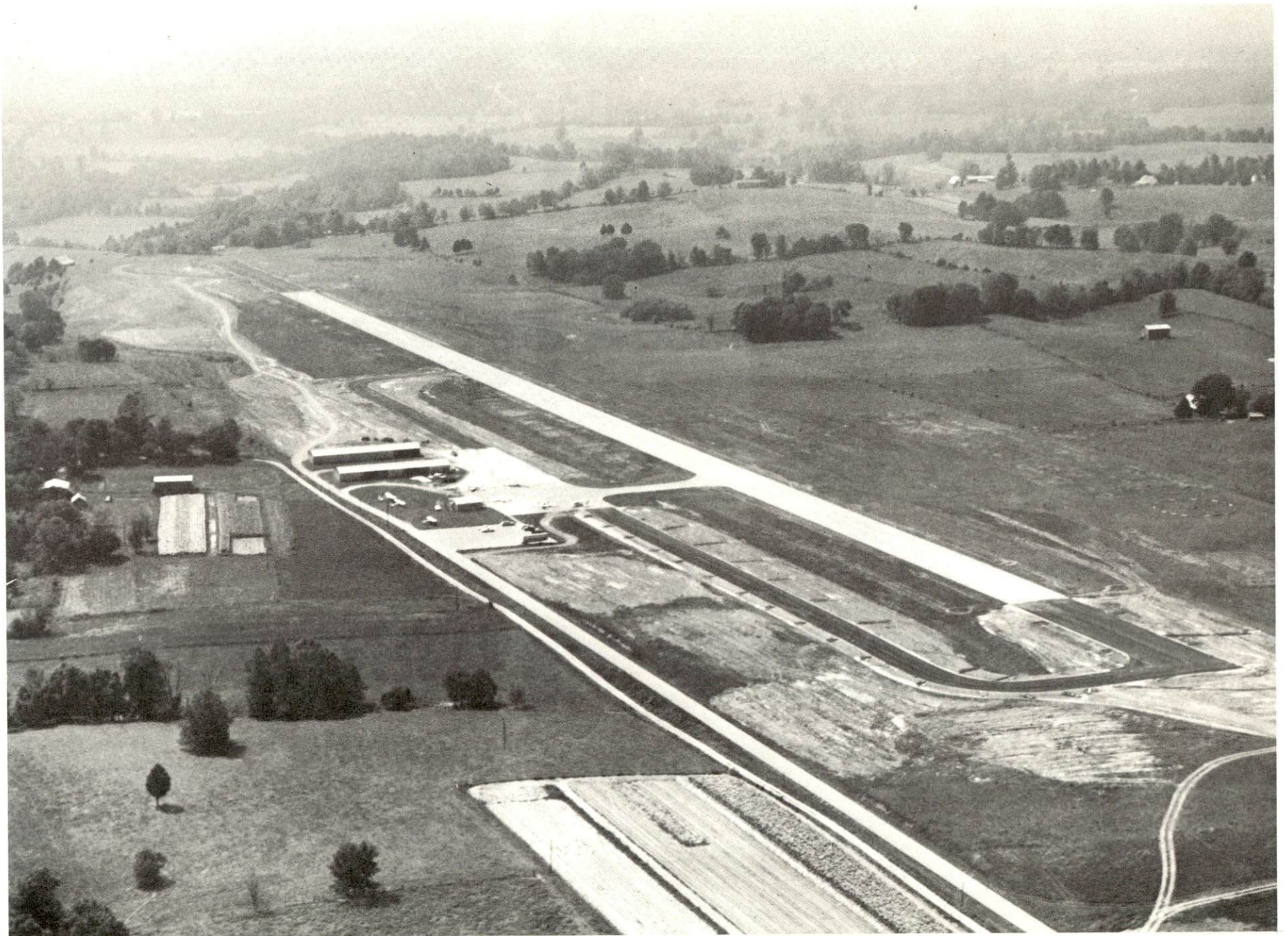
Southern Greyhound Bus Lines

Taxi

Scottie Cab

Rental Services

Rental services available through local automobile dealerships.



GLASGOW MUNICIPAL AIRPORT

POWER AND FUEL

Electricity

Company serving Glasgow - Glasgow Electric Plant Board
Source of power - Tennessee Valley Authority
Total generating capacity - 19,400,000 KW
Industrial rates furnished by - Glasgow Electric Plant Board,
Glasgow, Kentucky

Company serving Barren County - Farmers RECC
Source of power - East Kentucky Power Cooperative
Total generating capacity - 515,000 KW
Industrial rates furnished by - Farmers RECC, 504 South Broadway,
Glasgow, Kentucky 42141

Company serving Barren County - Warren RECC
Source of power - Tennessee Valley Authority
Total generating capacity - 19,400,000 KW
Industrial rates furnished by - Warren RECC, P.O. Box 118,
Bowling Green, Kentucky 42101

Natural Gas

Company serving Glasgow - Western Kentucky Gas Company
Source of supply - Texas Gas Transmission Corporation
Size of transmission lines - 6-inch
Distribution lines - 6, 4, 3 and 2 inches
Btu content - 1,000
Specific gravity - .60
Distribution pressure - 40 psi
Rates - Provided by Western Kentucky Gas Company, Glasgow,
Kentucky.

WATER AND SEWERAGE

Water

Company serving Glasgow - Glasgow Water Company
Source - Barren River Lake and Beaver Creek
Treatment plant capacity - 8,500,000 gpd
Average daily consumption - 2,000,000 gallons
Peak daily consumption - 2,200,000 gallons
Type treatment - Primary, settling, rapid sand filter
Storage capacity - 2,050,000 gallons
Average pressure - 70 psi
Average temperature - 68-70° F.
Size mains - 20, 12, 8, 6 and 4 inches

MONTHLY WATER RATES FOR WHOLESALE AND INDUSTRIAL CONSUMERS

Domestic and Commercial Customers

First	2,000 gallons	\$3.60 (Minimum)
Next	8,000 gallons	1.00 per M gallons
Next	40,000 gallons	.60 per M gallons
Next	50,000 gallons	.50 per M gallons
Over	100,000 gallons	.40 per M gallons

Industrial Customers

(2,000,000 gallons or more per month to qualify)

First	400,000 gallons	\$120.00 (Minimum)
Over	400,000 gallons	.30 per M gallons

Surface water sources - Barren River and reservoirs

Average discharge - Barren River near Finney 1,383 cfs (18-year record USGS)

Expected ground water yield - 50 to 200 gpm in large belt running east-west in central section; 5 to 50 gpm in northern section; and 5 gpm or less in southern part of county.

Sewerage

Company serving Glasgow - Glasgow Water Company

Design capacity - 2,000,000 gpd

Average daily flow - 1,200,000 gallons

Treatment - Primary and secondary

Type treatment - Clarifier, drying beds

Treated effluent discharged into - Beaver Creek

Size of sanitary mains - 24, 18, 15, 12 and 8 inches

Size of storm mains - 36, 24, 15, and 12 inches

Monthly rates - Sewer rates are equal to 50 percent of the gross amount of water bill.

LOCAL GOVERNMENT

City

Structure - Mayor - 4-year term; 12 councilmen - 2-year terms

Budget 1971 - General Fund \$775,382

Fees and licenses - Minimum license fee \$25.00; net profits license tax - 1 percent net profit for year; payroll tax - 1 percent gross wages paid

County

Structure - County Judge - 4-year term; 7 magistrates - 4-year terms

Budget 1970-71 - General Fund \$207,464; Road Fund \$180,650

Assessed Value of Property, 1970

<u>Classes of Property*</u>	<u>Glasgow</u>	<u>Barren County</u>
Real Estate	\$52,247,372	\$139,912,953
Tangibles	9,357,787	41,497,021
Public Service		26,211,490 (1969)

Local General Property Tax Rates Per \$100 of Assessed Valuation, 1970 ^{12/}

<u>Taxing Unit**</u>	<u>Glasgow</u>	<u>Barren County</u>
State	\$.015	\$.015
County	.128	.128
School	.750	.400
City	.280	
Total	\$ 1.173	\$.543

*Property assessed at 100 percent of fair value.

**Manufacturing machinery, raw materials inventories and goods in process inventories are not subject to local tax. State rate is only \$0.15 per \$100.

Planning and Zoning

Agency - Glasgow Planning Commission

Plans completed - Comprehensive Plan, Subdivision Regulations,
Zoning Ordinance, Commercial Area Study

Codes adopted - All major codes have been adopted and are up to date

Safety

<u>Police</u>	<u>Glasgow</u>	<u>Barren County</u>
Total staff	23	4
Radio-patrol cars	5	3
Other equipment	Radar equipment	

Fire

American Insurance Association Fire Rating	6 & 9
Full-time staff	22
Equipment:	
750-gpm pumpers	2
500-gpm pumper	1
600-gpm pumper	1
65-foot Aerial Platform truck - 1,000 gpm pumper	1
pickup service truck	1
station wagon	1

Rescue Service

Glasgow Rescue Squad:

Staff - 22 (manned by fire department)

Equipment - 14-foot flat bottom boat, used for dragging, 7 1/2 horse-power boat motor

Personnel training - First Aide

Sanitation

	<u>Glasgow</u>
Type service	municipal
Cost	
residential	no charge
business	no charge
Collection frequency	
residential	weekly
business	weekly
Trash pickup	weekly
Disposal method	land fill dump

HEALTH

Hospitals

<u>General Hospital</u>	<u>Location</u>	<u>Beds</u>
T. J. Samson Community Hospital	Glasgow	200

General hospital facilities - 3 operating rooms, X-ray room, laboratory, emergency room, licensed practical nurse school, pathology laboratory, delivery room, nursery, mental health wing, extended care wing, coronary care, intensive care, and recovery room

Medical staff - 26 doctors, 30 registered nurses, 50 licensed practical nurses, radiologist, pathologist, psychologist, optomologist, internist, pediatrician, neurologist

District 6 State Tuberculosis Hospital

General hospital facilities - X-ray room, laboratory

Medical staff - 3 doctors, 35 nurses, 1 dentist

Nursing Homes

	<u>Number</u>	<u>Beds</u>
Extended care homes	2	130

Public Health

Facility - Barren County Health Department

Staff - 2 registered nurses, 1 clerk, 1 sanitarian, 1 clerk and 1 plumbing inspector (part-time)

Budget 1970-71 - \$19,887



T. J. SAMSON COMMUNITY HOSPITAL

Religious Institutions

Number of churches - 27

Denominations - Baptist, Catholic, Christian, Church of Christ,
Church of God, Episcopal, Jehovah's Witnesses, Presbyterian,
Methodist

Financial Institutions

<u>Banks</u>	<u>Statement as of December 31, 1970</u>	
	<u>Assets</u>	<u>Deposits</u>
Citizens Bank & Trust Company	\$20,762,889.35	\$18,519,334.68
New Farmers National Bank	22,838,350.21	20,450,102.20
<u>Savings and Loan Associations</u>	<u>Assets</u>	<u>Shared Accounts</u>
First Federal Savings & Loan Association	\$17,503,905.82	\$15,805,253.61

Hotels and Motels

<u>Number</u>	<u>Units</u>
5	250

Clubs and Organizations

Business and Civic - Junior Chamber of Commerce, Rotary, Lions,
Kiwanis, Younger Business & Professional Women's Club, Barren
County Farm Bureau, Glasgow Business & Professional Women's
Club, Glasgow-Barren County Chamber of Commerce

Fraternal - American Legion, Veterans of Foreign Wars, Ministerial
Association, Masons, Shriners, Travelers Protective Association

Women's - Ladies Matinee Musicale, Barren County War Mothers,
Edmund Rogers Chapter DAR, Glasgow Garden Club, Heritage
Garden Club, Homemakers

Youth - Little League, Boy Scouts, Girl Scouts, FFA, FHA, 4-H

Other - Barren County Wildlife Conservation Club, Historical Club,
National Farmers Organization, Barren River Rod and Gun Club,
Glasgow 5 Watt Club, Barren County Association for Retarded Children,
Barren County Teachers Association, Glasgow Band Boosters, Glasgow
Education Association, PTA

RECREATION

Local

Public Recreation Facilities

Supervised program - Full-time recreation program

Parks - 4

Playgrounds - 2

Swimming pool - 1

Tennis courts - 2

Baseball diamonds - 3

Football field - 1

Picnic areas - 3

Private Recreation Facilities

Country club - 1

Swimming pool - 1

Movie theaters - 1 indoor, 1 drive-in

Bowling lanes - 1

Area (Within 25 miles)

Barren River Reservoir State Park

Mammoth Cave National Park

Crystal Onyx Cave

Mammoth Onyx Cave

Park Mammoth Resort

AGRICULTURE - NATURAL RESOURCES - CLIMATE

Agriculture 13/

	<u>Barren County</u>	<u>Labor Market Area</u>
Total land area (acres)	311,040	1,763,200
Percent of area in farm land	87.2	79.3
Number of farms	3,327	13,886
Average size of farms (acres)	84.6	100.7
1964 value of all farm products	\$15,292,885	\$55,390,532
Value per farm	4,591	3,989
Total crop sales	8,570,228	29,404,728
Total livestock & livestock products	6,711,972	26,695,788
1968 agricultural production included:		
Burley tobacco (lbs.)	32,300	123,700
Corn (bu.)	1,342,000	5,711,000
Cattle and calves (number)	62,400	279,200
Hogs and pigs (number)	24,500	118,500
Milk production (1967) (lbs.)	124,200,000	383,680,000

Natural Resources

Principal mineral resources	Limestone and petroleum
Other mineral resources	Natural gas, sand, gravel, residual clays
Acres of commercial forest land	81,400 (26 percent of land area)
Most abundant tree species	Red oaks, white oaks, hickories, ash, yellow poplar, hard maple, sweet gum

Climate 14/

	<u>Barren County</u>
Temperature	
Annual mean (30-year record)	60.0 degrees
Average annual 1969	58.8 degrees
Record highest July, 1966 (5-year record)	103.0 degrees
Record lowest January, 1966 (5-year record)	- 6.0 degrees
Seasonal heating degree-days (30-year record)	3,578
Precipitation	
Mean annual total (30-year record)	45.14 inches
Mean annual snow and sleet (29-year record)	11.6 inches
Total precipitation 1969	46.93 inches
Mean number days precipitation (29-year record) (.01 inch or more)	118
Average No. days thunderstorms (29-year record)	55
Prevailing winds (22-year record)	South

HISTORY

Barren County, the thirty-seventh county in Kentucky, was established in 1798. Its territory was taken from Green and Warren Counties. Portions of land were then given by Barren to form Allen, Monroe, and Metcalfe Counties.

The county got its name from the dominance of young and under-sized trees in the area which resulted from the Indian practice of clearing the land to facilitate hunting buffalo and other game. Barren County is in the heart of the fabled hunting grounds of the Indians. It was also a favorite locale of prehistoric people as shown by numerous mounds and graves that dotted the countryside.

Glasgow was established in 1799, and incorporated in 1809. It was named for the town of Glasgow in Virginia from which came many of the early settlers in the county.

Alexander Spottswood acquired a large Revolutionary War grant and received the help of George Washington in drawing up the plans for his house. This dwelling known as the Spottswood House was Glasgow's first brick structure. The first courthouse in Glasgow was erected in 1806.

One of the first railroads authorized by the Kentucky Legislature passed through Glasgow between Lexington and Nashville.

Names worthy of remembrance are:

Louie B. Nunn - Governor of Kentucky (1967-1971)

Preston H. Leslie - Former lieutenant governor and governor of Kentucky.

Major John Gorin - The first settler to settle within the present city limits of Glasgow, and donated fifty acres of land for the townsite.

Dr. Isaac Baldwin - The first doctor in the region

Alexander Spottswood - The first lawyer in the region

General John McFerran - One of the earliest pioneers in the county and later became justice of the peace, sheriff, and constable

William Iredell - Published the first newspaper in the county, the Glasgow Patriot, as early as 1815.

SOURCES OF INFORMATION

- 1/ U. S. Department of Commerce, Bureau of the Census, Census of Population, 1950, 1960, 1970.
- 2/ Kentucky Department of Economic Security, Division of Research and Statistics.
- 3/ Kentucky Department of Economic Security, Number of Workers in Manufacturing Industries Covered by Kentucky Unemployment Insurance Law Classified by Industry and County, June 1970 and June 1960.
- 4/ Kentucky Department of Commerce, 1971 Kentucky Directory of Manufacturers.
- 5/ Kentucky Department of Economic Security, Division of Employment Services, Glasgow Office.
- 6/ Kentucky Department of Economic Security, Kentucky Labor Supply Estimates by County, January 1971.
- 7/ Kentucky Department of Commerce, Future Labor Supply by 1977.
- 8/ University of Kentucky, Office of Development Services and Business Research, Total Personal Income for Kentucky.
- 9/ University of Kentucky, Office of Development Services and Business Research, Per Capita Income in Kentucky.
- 10/ Louisville & Nashville Railroad, Louisville, Kentucky.
- 11/ Skaggs Transfer, Inc., Louisville, Kentucky.
- 12/ 1970 Kentucky Property Tax Rates, Kentucky Department of Revenue.
- 13/ U. S. Department of Commerce, Bureau of the Census, Census of Agriculture, 1964. U. S. Department of Agriculture and Kentucky Department of Agriculture, Kentucky Agricultural Statistics, 1969.
- 14/ U. S. Department of Commerce, Environmental Science Services Administration, Climatological Data, 1970.

All other information was obtained from governmental offices, local businesses and organizations.