

1982

Industrial Resources: Carroll County - Carrollton

Kentucky Library Research Collections
Western Kentucky University, spcol@wku.edu

Follow this and additional works at: https://digitalcommons.wku.edu/carroll_cty

 Part of the [Business Administration, Management, and Operations Commons](#), [Growth and Development Commons](#), and the [Infrastructure Commons](#)

Recommended Citation

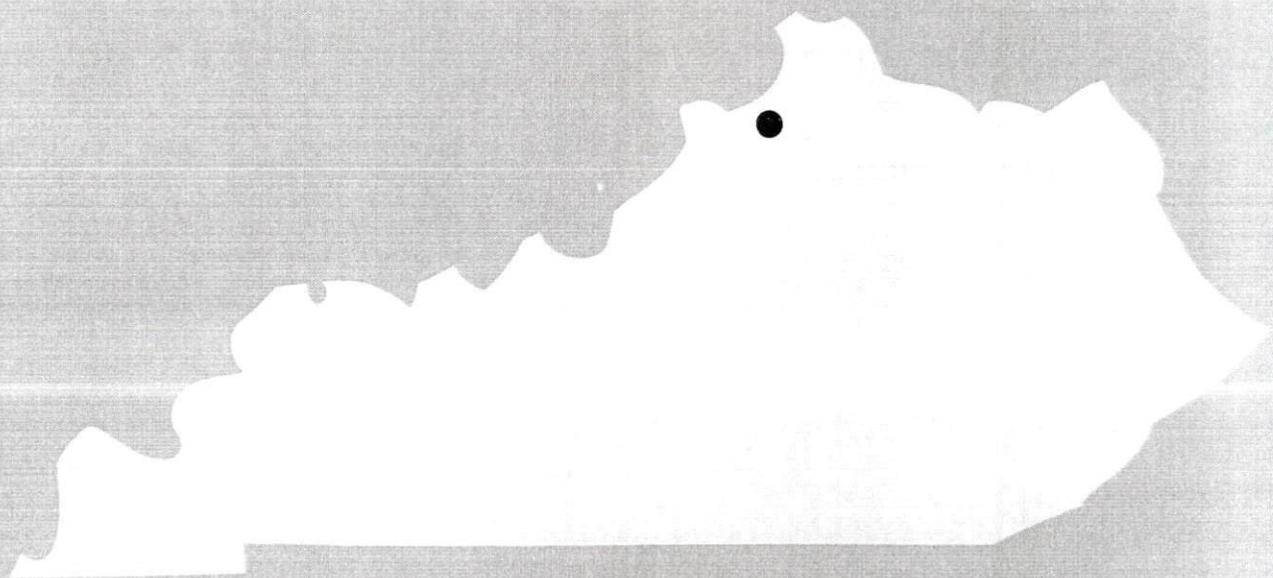
Kentucky Library Research Collections, "Industrial Resources: Carroll County - Carrollton" (1982). *Carroll County*. Paper 17.
https://digitalcommons.wku.edu/carroll_cty/17

This Report is brought to you for free and open access by TopSCHOLAR®. It has been accepted for inclusion in Carroll County by an authorized administrator of TopSCHOLAR®. For more information, please contact topscholar@wku.edu.

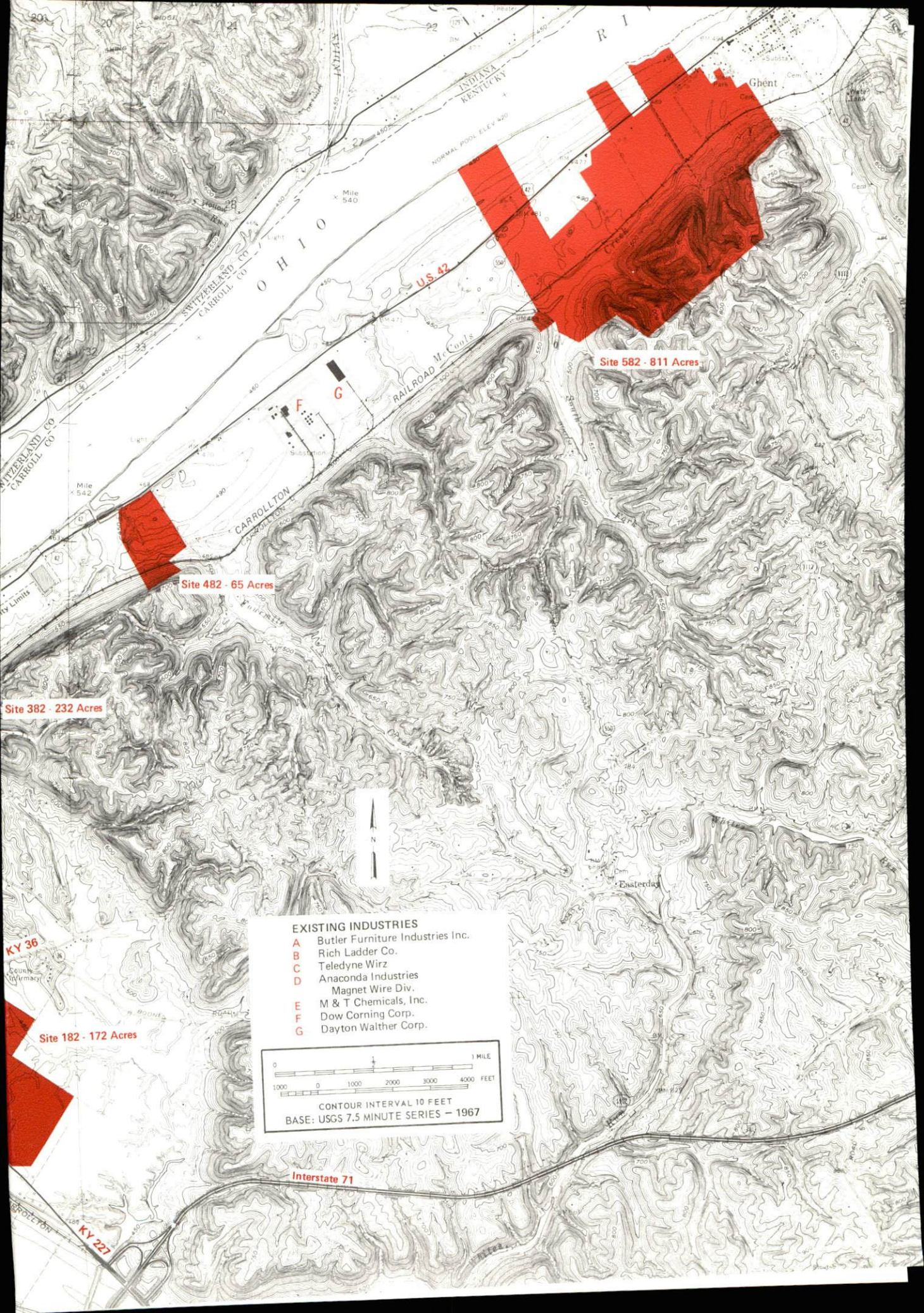
I.R. Carroll County

329

A comprehensive
report on
Carrollton, Ky.



KENTUCKY & CO.
The state that's run like a business.



Site 482 - 65 Acres

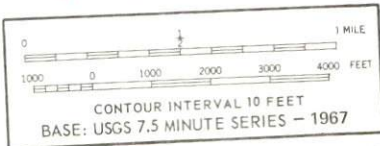
Site 582 - 811 Acres

Site 382 - 232 Acres

Site 182 - 172 Acres

EXISTING INDUSTRIES

- A** Butler Furniture Industries Inc.
- B** Rich Ladder Co.
- C** Teledyne Wirz
- D** Anaconda Industries
Magnet Wire Div.
- E** M & T Chemicals, Inc.
- F** Dow Corning Corp.
- G** Dayton Walther Corp.



Interstate 71

CARROLLTON, KENTUCKY --- Index to Industrial Sites --- 1982

For detailed data on individual sites, contact the Department of Economic Development, Office of Business Development, Industrial Development Division, Capital Plaza Tower, Frankfort, Kentucky 40601 (502-564-7140).



A COMPREHENSIVE REPORT ON
CARROLLTON, KENTUCKY

Prepared by
The Kentucky Department of Economic Development
Division of Research and Planning
in cooperation with
The Carroll County Chamber of Commerce

1982

Program manager - Brenda Roberts; research - Bill Morris; clerical - Shirley Wood; graphics - Frank Ferrante, Tony Cecconi, Jimmy Thompson; cartography - Site Evaluation Section, Industrial Development Division. Cost of printing paid from state funds.

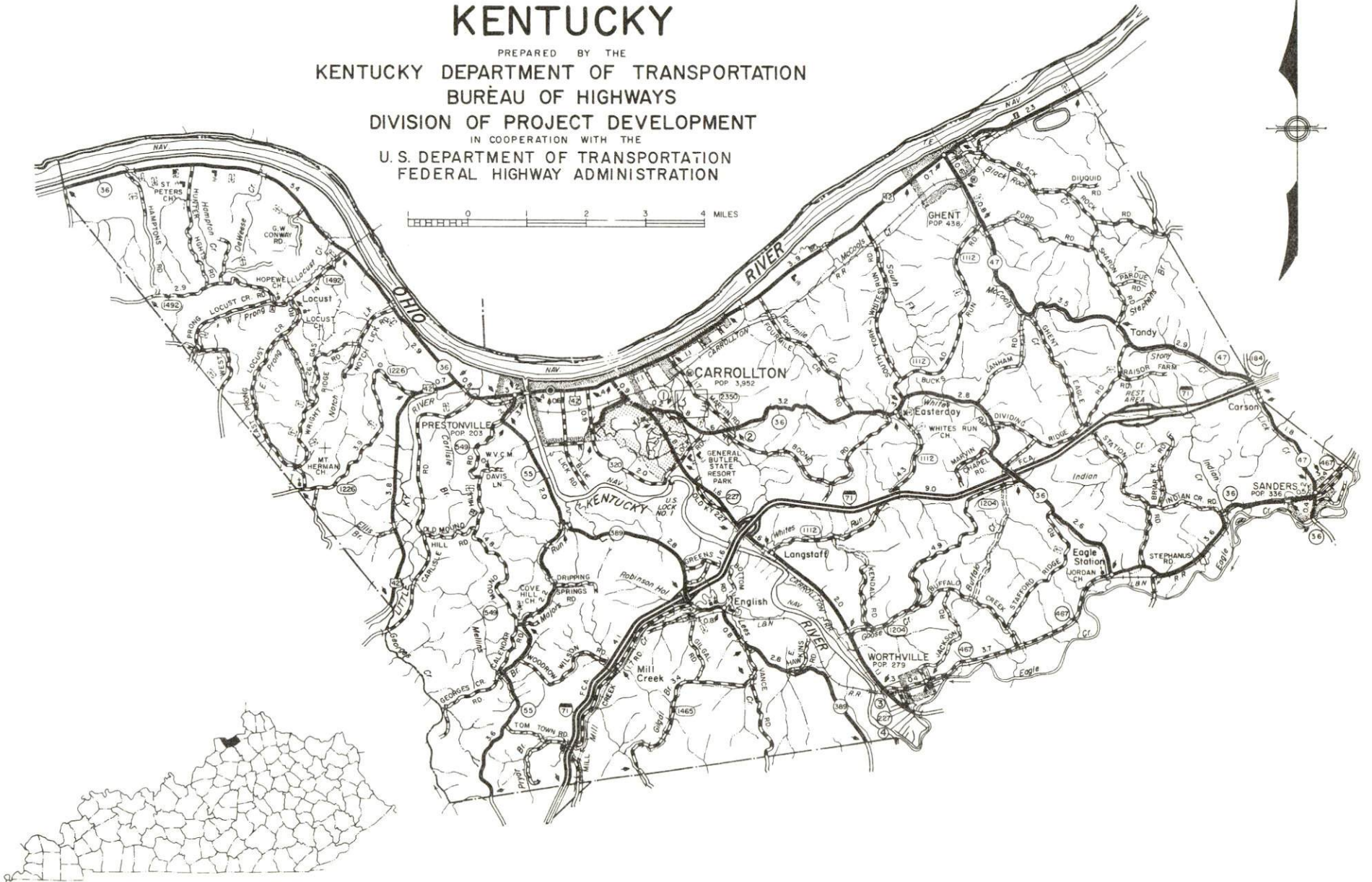
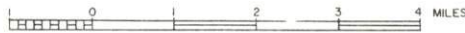
TABLE OF CONTENTS

<u>Chapter</u>	<u>Page</u>
INDUSTRIAL SITES	i
CARROLLTON, KENTUCKY - A RESOURCE PROFILE	1
THE LABOR MARKET AREA	3
Population	3
Labor Force Characteristics of Residents, 1980	3
Estimated Male Labor Supply	4
Estimated Female Labor Supply	4
Carrollton Manufacturing Firms, Their Products and Employment	5
Labor Organizations in Manufacturing Firms	6
Industrial Services	6
Average Weekly Wages by Industry, by Place of Work, 1980	7
Per Capita Personal Income	9
TRANSPORTATION	10
Rail	10
Highways	10
Truck Service	11
Air	13
Bus	14
Taxi	14
Rental Services	14
Water	14
POWER AND FUEL	15
Electricity	15
Natural Gas	17
Other Fuels	17
WATER AND SEWERAGE	18
Public Water Supply	18
Raw Water	20
Sewerage	21
CLIMATE	22

<u>Chapter</u>	<u>Page</u>
LOCAL GOVERNMENT	23
City	23
County	23
Assessed Value of Property	23
Property Taxes	24
Combined State and Local Rates Per \$100 Valuation, 1981	24
Utilities Gross Receipts Tax for Schools	25
Planning and Zoning	25
Safety	25
Police	25
Fire	25
Rescue Service	25
Refuse Collection and Disposal	26
EDUCATION	27
Public Schools	27
Area Colleges and Universities	28
Vocational Schools	29
HEALTH	32
Local Medical Personnel	32
Hospitals	32
Other Medical Facilities	32
Ambulance Service	32
Public Health	32
OTHER LOCAL FACILITIES	33
Communications	33
Library Services	33
Religious Institutions	34
Financial Institutions	34
Hotels and Motels	34
Clubs and Organizations	35
RECREATION	36

1981 EDITION
GENERAL HIGHWAY MAP
CARROLL COUNTY
KENTUCKY

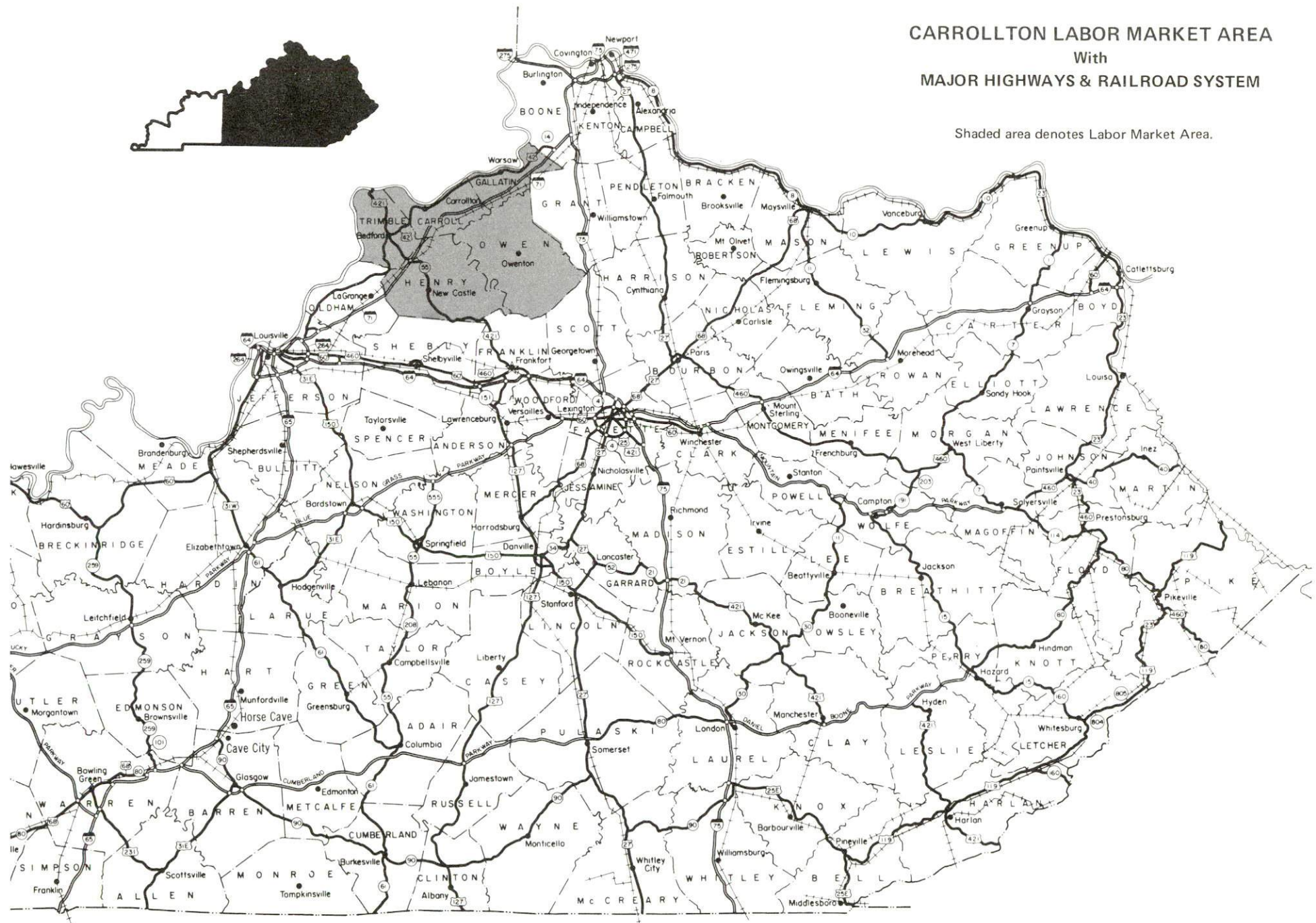
PREPARED BY THE
KENTUCKY DEPARTMENT OF TRANSPORTATION
BUREAU OF HIGHWAYS
DIVISION OF PROJECT DEVELOPMENT
IN COOPERATION WITH THE
U. S. DEPARTMENT OF TRANSPORTATION
FEDERAL HIGHWAY ADMINISTRATION



CARROLLTON LABOR MARKET AREA

With
MAJOR HIGHWAYS & RAILROAD SYSTEM

Shaded area denotes Labor Market Area.



CARROLLTON, KENTUCKY - A RESOURCE PROFILE

Carrollton, the county seat of Carroll County, is located at the confluence of the Kentucky and Ohio rivers, midway between Louisville, Kentucky, 51 miles southwest, and Cincinnati, Ohio, 58 miles northeast. Carrollton is the third-largest tobacco market area in the world and has eight local tobacco warehouses. The city had a 1980 population of 3,967, and is home to General Butler Ski Area, Kentucky's first major alpine ski area, which opened in December of 1981.

The Economic Framework

Total resident employment in Carroll County in 1980 averaged 4,349, with 4,027 employed in nonagricultural jobs. Manufacturing in Carroll County provided 1,422 jobs; state and local government provided 545 jobs; and wholesale and retail trade provided 525 jobs. Manufacturing employment is greatest in the chemicals and allied products, furniture and fixtures, fabricated metal products, and transportation equipment fields.

Per capita income in Carroll County in 1979 was \$7,212, or \$160 more than the state average. Between 1975 and 1979, per capita income in the county increased by 58 percent.

Carrollton is the hub of a labor market area which includes Carroll and its four surrounding Kentucky counties. Area employment in 1980 averaged 16,028 with 13,221 employed in nonagricultural jobs. Manufacturing in the labor market area provided 2,198 jobs, state and local government provided 1,677 jobs, and wholesale and retail trade provided 1,429 jobs.

Resources for Growth

1. There is a current estimated labor supply of 2,953 men and 2,137 women available for industrial jobs in the labor market area. In addition, 1,703 young men and 1,540 young women will become 18 years of age, and potentially available for work, before 1986.

2. Carroll County is served by Interstate 71, from Louisville, Kentucky, to Cincinnati, Ohio. The Carrollton Railroad, a subsidiary of the Louisville and Nashville Railroad, runs from Carrollton to a main line of the L & N rail system. A total of 14 trucking companies provide motor freight service to Carrollton, and its location on the Ohio River makes for excellent water transportation capabilities.

3. Electric power is provided by Kentucky Utilities Company, and by East Kentucky Power Cooperative through the Owen County and Shelby rural electric cooperative corporations. Texas Gas Transmission Corporation supplies Carrollton with natural gas. There are three distributors of propane and two distributors of fuel oil serving the Carrollton area.

4. Education is an important growth asset for Carroll County. Carroll County schools are accredited by the Southern Association of Colleges and Schools. Sixteen colleges and universities are located within 65 miles of Carrollton. The Carroll County Area Vocational Education Center, located in Carrollton, offers vocational training in 13 course areas. One vocational-technical school and two state vocational-technical schools also are located within 65 miles.

THE LABOR MARKET AREA

The Carrollton Labor Market Area includes Carroll County and the adjoining Kentucky counties of Gallatin, Henry, Owen and Trimble.

Area	POPULATION		Percent Nonwhite
	1980	1970	
Carrollton	3,967	3,884	3.0
Labor Market Area	42,029	36,386	N/A
Carroll County	9,270	8,523	2.0
Gallatin County	4,842	4,134	2.7
Henry County	12,740	10,910	5.5
Owen County	8,924	7,470	2.5
Trimble County	6,253	5,349	0.1

Note: The 1980 counts of population by race are provisional.

Sources: U.S. Department of Commerce, Bureau of the Census, 1980 Census of Population and Housing, March 1981. Population Research Unit, Urban Studies Center, University of Louisville, Kentucky Demographics: The 1980 Census of Kentucky, Characteristics of Population, Households, January 1982.

LABOR FORCE CHARACTERISTICS OF RESIDENTS, 1980

	Carroll County	Labor Market Area
Civilian Labor Force	4,594	17,251
Employment	4,349	16,028
Agricultural	322	2,807
Nonagricultural	4,027	13,221
Unemployment	245	1,223
Rate of Unemployment (%)	5.3	7.1

Source: Kentucky Department for Human Resources, Kentucky Labor Force Estimates, Annual Averages, 1980.

ESTIMATED MALE LABOR SUPPLY
CARROLLTON LABOR MARKET AREA

Area	Current			Future
	Total	Not in Labor Force	Unemployed	Under-employed Reaching 18 years of age before 1986
Labor Market Area*	2,953	1,448	830	675
Carroll	310	0	163	147
Gallatin	457	307	97	53
Henry	835	359	287	189
Owen	792	461	143	188
Trimble	559	321	140	98

*The labor supply will be supplemented by the number of men who are available for industrial jobs in the adjoining Indiana counties of Jefferson and Switzerland. Additional workers may be drawn for other nearby counties.

Note: Unemployed - persons unemployed and actively seeking work; Underemployed - persons employed but working only 14 to 26 weeks per year; Not in Labor Force - represents the number of persons who would enter the labor force if suitable employment were available (based on the assumption that persons in Kentucky would like to participate in the labor force in the same proportion that they do nationally).

Sources: Kentucky Department for Human Resources, Kentucky Labor Supply Estimates by County, 1980. Kentucky Department of Economic Development, Future Labor Supply before 1986.

ESTIMATED FEMALE LABOR SUPPLY
CARROLLTON LABOR MARKET AREA

Area	Current			Future
	Total	Not in Labor Force	Unemployed	Under-employed Reaching 18 years of age before 1986
Labor Market Area*	2,137	952	393	792
Carroll	307	0	82	225
Gallatin	410	234	48	128
Henry	587	237	129	221
Owen	420	217	71	132
Trimble	413	264	63	86

*The labor supply will be supplemented by the number of women who are available for industrial jobs in the adjoining Indiana counties of Jefferson and Switzerland. Additional workers may be drawn from other nearby counties.

Note: Unemployed - persons unemployed and actively seeking work; Underemployed - persons employed but working only 14 to 26 weeks per year; Not in Labor Force - represents the number of persons who would enter the labor force if suitable employment were available (based on the assumption that persons in Kentucky would like to participate in the labor force in the same proportion that they do nationally).

Sources: Kentucky Department for Human Resources, Kentucky Labor Supply Estimates by County, 1980. Kentucky Department of Economic Development, Future Labor Supply before 1986.

CARROLLTON MANUFACTURING FIRMS,
THEIR PRODUCTS AND EMPLOYMENT

Firm (Establishment date)	Product	Employment			Labor Unions
		Total	Male	Female	
Anaconda Industries, Magnet Wire Division (1981)	Copper magnet wire	N/A	-	-	
Butler Furniture Industries (1971)	Wood dinette sets, chairs	225	75	150	
Carrollton Cabinet Company, Inc. (1960)	Electronic and clock cabinets	35	5	30	
Carrollton Redrying Company (1946)	Tobacco redrying	32	28	4	
Coo Par (1949)	Ready-mixed concrete	21	20	1	Teamsters*
Dayton-Walther Corporation, Carrollton Division (1972)	Disc brakes, drums, steering mechanisms, auto hubs	160	120	40	Auto Workers*
Dow Corning Corporation (1967)	Silicones	214	191	23	
Hills Dairy (1898)	Milk	5	5	-	
Kawneer Company (1965)	Aluminum appliance trim, auto parts	200	110	90	Auto Workers*
M & T Chemicals, Inc. (1958)	Organotin chemicals, inorganic tin chem- icals	400	350	50	
News-Democrat (1867)	Newspaper, job print- ing	6	2	4	
Ohio Valley Paving Company (1953)	Asphaltic concrete	3	3	-	Operating Engineers*
Rich Ladder Company (1945)	Wood ladders	85	40	45	
Teledyne Wirz (1954)	Metal col- lapsible tubes	101	34	67	Steelworkers*

*See Labor Organizations below.

Source: Kentucky Department of Economic Development, 1982 Kentucky Directory of Manufacturers; Carroll County Chamber of Commerce.

LABOR ORGANIZATIONS IN MANUFACTURING FIRMS

<u>Union</u>	<u>Representing workers at:</u>
International Brotherhood of Teamsters, Chauffeurs, Warehousemen and Helpers of America	Coo Par
International Union of Operating Engineers, AFL-CIO	Ohio Valley Paving Company
International Union, United Automobile, Aerospace and Agricultural Implement Workers of America, AFL-CIO	Dayton Walther; Kawneer Company
United Steelworkers of America, AFL-CIO	Teledyne Wirz

INDUSTRIAL SERVICES

<u>Types of Services</u>	<u>Location</u>	<u>Mileage from Carrollton</u>
Tool & Die, Machine & Pattern Shops	Simpsonville Louisville	43 51
Metal Service Centers	Louisville	51
Heat Treating	Louisville	51
Metal Finishers	Louisville	51
Electric Motor Repair	Louisville	51

Source: Kentucky Directory of Selected Industrial Services, 1981.

AVERAGE WEEKLY WAGES BY INDUSTRY,
BY PLACE OF WORK, 1980

	<u>Carroll County</u>	<u>Gallatin County</u>	<u>Henry County</u>
All Industries	\$246.29	\$239.88	\$191.35
Mining & Quarrying	*	*	*
Contract Construction	269.89	*	148.42
Manufacturing	302.41	175.69	240.82
Transportation, Communications & Public Utilities	328.22	234.96	262.67
Wholesale & Retail Trade	159.74	145.81	132.11
Finance, Insurance & Real Estate	211.86	189.19	233.51
Services	138.75	100.44	129.81
State/Local Government	189.71	175.35	207.93
Other	*	108.86	87.94

	<u>Owen County</u>	<u>Trimble County</u>
All Industries	\$195.41	\$172.44
Mining & Quarrying	0	0
Contract Construction	*	143.42
Manufacturing	234.32	155.08
Transportation, Communication & Public Utilities	*	*
Wholesale & Retail Trade	160.54	108.91
Finance, Insurance & Real Estate	191.13	195.98
Services	132.73	130.98
State/Local Government	180.36	175.78
Other	*	*

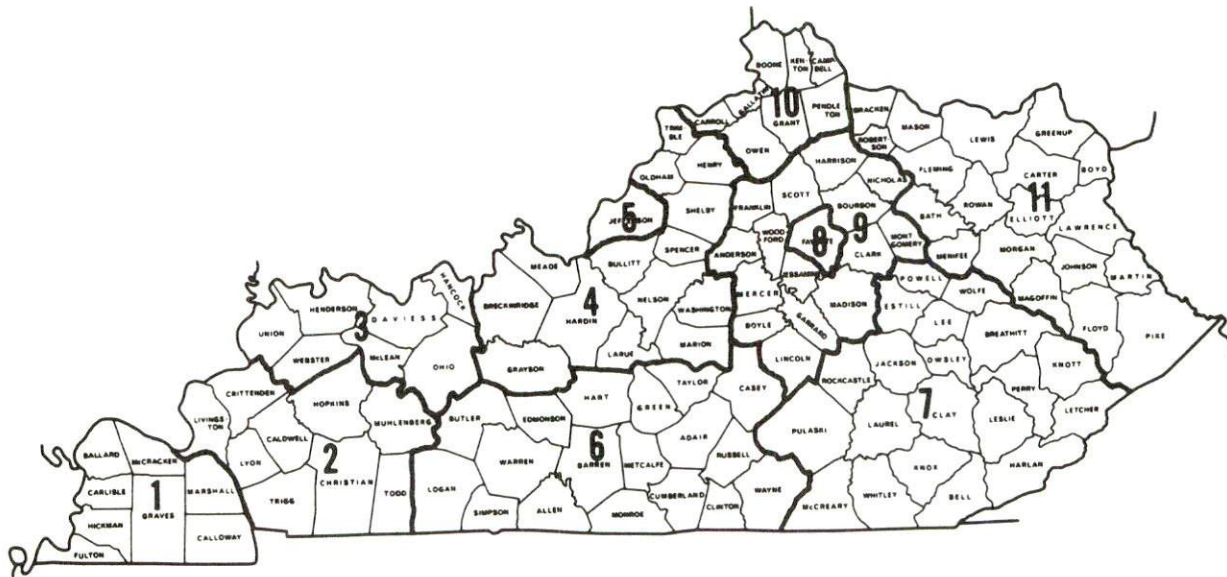
*Not disclosed.

Note: Excludes domestic workers, railway workers, certain nonprofit corporations, majority of federal government workers, and self-employed workers.

Source: Kentucky Department for Human Resources, Average Weekly Wages of Workers Covered by Kentucky Unemployment Insurance Law, 1980.

Occupational wage rates for specific industries are usually not available to most government agencies, and wage data furnished to state employment agencies by individual industrial employers is protected from disclosure by federal law. The most reliable up-to-date wage information can be obtained by direct contact with local employers.

Associated Industries of Kentucky, a voluntary organization of Kentucky businesses, regularly collects occupational wage rates and fringe benefits data from participating member firms. Data is compiled for over 127 clearly defined office, production, and service occupations. Tabulations are published for eleven regions of Kentucky, as shown on the map below. It should be noted that the data may be weighted by the preponderance of firms in the larger cities and may be somewhat higher than the rates paid in the smaller communities. Data from these tabulations are available, upon request, from the Kentucky Department of Economic Development, Frankfort, Kentucky 40601.



Associated Industries of Kentucky Area Wage Surveys

PER CAPITA PERSONAL INCOME

<u>Area</u>	<u>1979</u>	<u>1975</u>	<u>Percent Change</u>
Carroll County	\$7,212	\$4,552	58.4
Labor Market Area			
Range	\$5,377 - 7,212	\$3,813 - 4,737	N/A
Kentucky	7,052	4,882	44.4
U.S.	8,637	5,861	47.4

Source: U.S. Department of Commerce, Bureau of Economic Analysis,
 April 1981. U.S. Department of Commerce, Bureau of Economic
 Analysis, August 1981.

TRANSPORTATION

Rail

Line serving Carrollton - The Carrollton Railroad
(a subsidiary of the Louisville & Nashville Railroad)

Services - Main line; one southbound local and one northbound local stop on alternating days, Monday through Saturday, to set off and pick up at Worthville, Kentucky; through freights stop approximately once per week at Worthville, Kentucky; four northbound and four southbound through freights daily; switching facilities, team track space for 12 cars; siding space for 10 cars; nearest piggyback facilities located at Louisville, Kentucky, 51 miles southwest of Carrollton, and at Cincinnati, Ohio, 58 miles northeast.

For details on routing, schedules, rates, and services, contact:

The Carrollton Railroad
P.O. Box 116
Carrollton, Kentucky 41008
(502) 732-6179

and/or

Director of Industrial Development
Louisville and Nashville Railroad
P.O. Box 32290
Louisville, Kentucky 40232
(502) 587-5723

Highways

Carrollton is served by U.S. 42 and Kentucky Highway 227. An interchange of Interstate 71 is located 4 miles southeast of Carrollton by way of Kentucky 227.

Truck Service

<u>Company</u>	<u>Home Office</u>
Budig Western*	1100 Gest Street Cincinnati, Ohio 45203
Cooper-Jarrett, Inc.*	Hanover Plaza Morristown, New Jersey 07960
E & G Motor Express, Inc.**(T)	R.R.1 U.S. 42 West Carrollton, Kentucky 41008
Gordons Transports, Inc.*	P.O. Box 59 185 West McLemore Memphis, Tennessee 38101
Interstate System**	P.O. Box 175 Grand Rapids, Michigan 49501
Lee Way Motor Freight, Inc.*	3401 N.W. 63rd Street P.O. Box 12750 Oklahoma City, Oklahoma 73157
Leoni Motor Express, Inc.*	501 Ashland Avenue Chicago, Heights, Illinois 60411
O.K. Trucking Company, Inc.**	3000 East Crescentville Road Cincinnati, Ohio 45241
Overnite Transportation Company **(T)	1000 Semmes Avenue Richmond, Virginia 23209
Owenton Express, Inc.**(T)	P.O. Box 328 Highway 42 South Carrollton, Kentucky 41008
Robbins Truck Line, Inc.*	Route 1 Hardinsburg, Kentucky 40143
Smith's Transfer Corporation*	P.O. Box 1000 Staunton, Virginia 24401
Transcon Lines*	P.O. Box 92220 Los Angeles, California 90009
United Trucking Service, Inc.**(T)	8505 West Warren Avenue Dearborn, Michigan 48126

(T) Terminal

*Interstate service only.

**Interstate and intrastate service.

Other Freight ServicesNearest Shipping Center

Purolator Courier Corporation*
 United Parcel Service*

Louisville, Kentucky, 51 miles southwest
 Louisville, Kentucky, 51 miles southwest

HIGHWAY MILES AND TRUCK TRANSIT TIME IN DAYS FROM
 CARROLLTON, KENTUCKY, TO SELECTED MARKET CENTERS

City	Highway Miles	Delivery		City	Highway Miles	Delivery	
		Time TL				Time TL	
Atlanta, Ga.	433	1		Los Angeles, Ca.	2,159	6-8	
Baltimore, Md.	555	2		Louisville, Ky.	51	1	
Birmingham, Ala.	415	1		Nashville, Tenn	219	1	
Chicago, Ill.	290	1		New Orleans, La.	736	2	
Cincinnati, Ohio	58	1		New York, N.Y.	705	2-3	
Cleveland, Ohio	302	1		Pittsburg, Pa.	345	1	
Detroit, Mich.	317	2		St. Louis, Mo.	314	1	
Knoxville, Tenn.	269	1					

Note: Mileage computations are via the best interstate or primary highways, not necessarily the most direct route of travel. Transit time does not include the day of pickup.

Sources: Rand McNally Road Atlas, 1979. Official Kentucky Mileage Map, 1979. Delivery time - Overnite Transportation Company; 1100 Commerce Road; Richmond, Virginia 23209.

*For regular scheduled pickups or for occasional pickups, arrangements must be made with the Louisville, Kentucky, office of Purolator Courier Corporation or United Parcel Service.

Air

Local

Madison Municipal Airport
Location: 5 miles west of Madison, Indiana; approximately
19 miles west of Carrollton, Kentucky
Runways: 1 paved
Length: 3,200 feet
Traffic
Control: Unicom frequency, Standiford Field approach control
Lighting: Beacon, runway, REIL
Services: 100 octane; A & E repair; tie-down and hangars;
charter service; flight instruction; plane rental;
car rental; taxi
Air Freight
Service: Chartered air freight services must be arranged.

Nearest Scheduled Commercial Airline Services

Greater Cincinnati International Airport
Location: 8 miles southwest of Covington, Kentucky; 49 miles
northeast of Carrollton
Runways: 3 paved
Length: 9,500 feet; 7,800 feet; 5,500 feet
Traffic
Control: Local and ground flight data, clearance delivery,
arrival and departure data, arrival and departure
radar, satellite control
Lighting: Beacon, VASI, MALS-RAIL, ALS-SFL, HIRL, Red T-Bar,
CL, TDZ
Services: American, Comair, Delta, Piedmont, Republic, TWA, United,
USAir, and Wright; fuel - 100, Jet A, 650 turbine;
storage; major A & P repairs; airport limousine, taxi;
hotel; restaurant
Air Freight
Services: Air freight terminal

(Contd.)

Nearest Scheduled Commercial Airline Service

Standiford Field
Location: 4 miles southeast of center of Louisville, Kentucky;
55 miles southwest of Carrollton
Runways: 3 paved
Length: 7,800 feet; 7,250 feet; 5,000 feet
Traffic
Control: Control tower
Lighting: Runways, obstructions, beacon and approach and touch-down lights, center line on one runway
Services: American, Continental, Delta, Eastern, New York Air, Ozark, Piedmont, TWA, USAir, Wright, and Allegheny Commuter; fuel - 100 and jet; storage; minor A & P repairs; APU, charter, oxygen, survival equipment; taxi, car rentals, limousine, courtesy car, public transit; weather information; restaurant, snack bar
Air Freight Service: Air freight terminal

Bus - Southern Greyhound Bus Lines

Taxi - One company provides 24-hour service.

Rental Services - Cars and trucks may be leased in Carrollton. Complete car, truck and trailer rental services are available in Louisville, Kentucky, 51 miles southwest, and in the Northern Kentucky/Metro area, 57 miles northeast.

Water

Carrollton is located at the confluence of the Kentucky and Ohio rivers. A 9-foot navigation channel is maintained along the Ohio River.

Port facilities are available in Louisville, Kentucky, 51 miles southwest, and in the Northern Kentucky - Cincinnati area, 57 miles northeast. The Louisville - Jefferson County Riverport Authority and the Northern Kentucky Port Authority have been designated as Foreign Trade Zones and offer complete U.S. Customs Services for exports and imports. The Port of Louisville Terminal, while privately owned, is available for public use.

POWER AND FUEL

Electricity

Company serving Carrollton and portions of Carroll County - Kentucky
Utilities Company

Source of power - Kentucky Utilities Company

Total generating capacity - 2,639,100 KW

For industrial rates contact:

Industrial Development Department
Kentucky Utilities Company
One Quality Street
Lexington, Kentucky 40507
(606) 255-1461

Company serving part of eastern Carroll County - Owen County Rural
Electric Cooperative Corporation

Source of power - East Kentucky Power Cooperative

Total generating capacity - 1,304,000 KW

For industrial rates contact:

Industrial Development Division
East Kentucky Power Cooperative
P.O. Box 707
Winchester, Kentucky 40391
(606) 744-4812

and/or

Owen County Rural Electric Cooperative Corporation
510 Georgetown Road
Owenton, Kentucky 40359
(502) 484-3471

Company serving part of western Carroll County - Shelby Rural Electric
Cooperative Corporation
Source of power - East Kentucky Power Cooperative
Total generating capacity - 1,304,000 KW
For industrial rates contact:

Industrial Development Division
East Kentucky Power Cooperative
P.O. Box 707
Winchester, Kentucky 40391
(606) 744-4812

and/or

Shelby Rural Electric Cooperative Corporation
U.S. 60 W and Old Finchville Road
P.O. Box 309
Shelbyville, Kentucky 40065
(502) 633-4420

Natural Gas

Company serving Carrollton - Carrollton Utilities
Source of supply - Texas Gas Transmission Corporation
Size of transmission mains - 26-inch (supplier);
6-inch (distributor)
Distribution mains - 6, 4, 3 and 2 inches
Distribution pressure - 160 psi to 15 psi
Btu content - 1,006 per cubic foot
Specific gravity - .6
For rates and supplies contact:

Manager
Carrollton Utilities
P.O. Box 277
Carrollton, Kentucky 41008
(502) 732-4221

Other Fuels

Propane

Blue Flame of Madison*
301 West Main
Madison, Indiana 47250

Buckeye Gas*
Box B
Sparta, Kentucky 41086

Silgas, Inc.*
P.O. Box 67
Glencoe, Kentucky 41046

Fuel Oils

Distillate fuel oil -

L.D. Chapman Distributor,
Inc.*
Box 6
606 Park Avenue
Carrollton, Kentucky 41008

Cecil Dorten Oil Company*
P.O. Box 180
Carrollton, Kentucky 41008

Residual fuel oil - Arrangements must be made with the refinery.

Low sulphur content coal - Available in Kentucky.

*Bulk plant

WATER AND SEWERAGE

Public Water Supply

Company serving Carrollton - Carrollton Utilities
 P.O. Box 277
 Carrollton, Kentucky 41008
 (502) 732-4221

Source - Wells
 Treatment plant capacity - 1,440,000 gallons per day
 Average daily consumption - 600,000 gallons
 Peak daily consumption - 900,000 gallons
 Type treatment - Softening, lime, alum, chlorination, fluoridation
 Storage capacity - 1,000,000 gallons
 Size lines - 12, 10, 8, 6 and 4 inches
 Average pressure - 125 psi
 Average temperature - 15 degrees C.

MONTHLY WATER RATES

Inside City Limits

First	1,000 gallons	\$3.00 (Minimum)
Next	4,000 gallons	1.38 per M gallons
Next	15,000 gallons	1.02 per M gallons
Next	20,000 gallons	.90 per M gallons
Next	60,000 gallons	.66 per M gallons
Over	100,000 gallons	.54 per M gallons

Outside City Limits

First	1,000 gallons	\$3.75 (Minimum)
Next	4,000 gallons	1.58 per M gallons
Next	15,000 gallons	1.22 per M gallons
Next	20,000 gallons	1.00 per M gallons
Next	60,000 gallons	.76 per M gallons
Next	100,000 gallons	.64 per M gallons

Minimum Monthly Charges

<u>Meter Sizes</u>	<u>Inside City Limits</u>	<u>Outside City Limits</u>
5/8 or 3/4-inch	\$3.00	\$3.75
1-inch	3.50	4.50
1 1/4 or 1 1/2-inch	4.00	5.00
2-inch	5.50	6.50
3-inch	8.00	9.00
4-inch	11.50	12.75
6-inch	20.50	22.00

Name of water district - Carroll County Water District #1*

P.O. Box 311
Ghent, Kentucky 41045
(502) 732-4034

Area served - Carroll County area east of the Kentucky River

Date when water district began operating - 1965

Source of raw water - Wells

Capacity of treatment plant - 500,000 gallons per day

Type of treatment - Chlorination and fluoridation

Average amount of water used in a 24-hour period - 300,000 gallons

Peak amount of water used in a 24-hour period - 380,000 gallons

Storage capacity - 222,000 gallons

Average pressure - 67 psi

Average temperature - 52 degrees F.

Size lines - 6 and 4 inches

MONTHLY WATER RATES

First	1,000 gallons	\$7.00 (Minimum)
Next	9,000 gallons	1.50 per M gallons
Next	10,000 gallons	1.25 per M gallons
Next	10,000 gallons	1.00 per M gallons
Next	10,000 gallons	.85 per M gallons
Next	10,000 gallons	.80 per M gallons
Next	10,000 gallons	.75 per M gallons
Next	10,000 gallons	.70 per M gallons
Next	10,000 gallons	.65 per M gallons
Next	10,000 gallons	.60 per M gallons
Next	10,000 gallons	.50 per M gallons
All over	100,000 gallons	.50 per M gallons

Tap-on charge:

3/4-inch meter	\$200
1-inch and larger meter	300

*A new chlorinator was installed in July of 1981.

Name of water district - West Carroll Water District
P.O. Box 45
Carrollton, Kentucky 41008
(502) 732-4034

Area served - Carroll County west of the Kentucky River; some parts of
Trimble County

Date when water district began operating - 1976

Source of supply of treated water - Carrollton Utilities, Henry County
Water District, and Trimble County Water District

Storage capacity - 230,000 gallons

Average pressure - 67 psi

Average temperature - 52 degrees F.

Size lines - 6, 5, 4, 3 and 2 inches

MONTHLY WATER RATES

First	2,000 gallons	\$8.00 (Minimum)
Next	3,000 gallons	3.00 per M gallons
Next	5,000 gallons	2.00 per M gallons
Next	90,000 gallons	1.00 per M gallons
Over	100,000 gallons	.65 per M gallons

Tap-on charge:

5/8 x 3/4-inch meter \$235

Raw Water

Surface water sources - Ohio and Kentucky Rivers

Average discharge - Ohio River at Markland Dam, 127,100 cfs
(10-year record, USGS); Kentucky River at Lock 2 at Lockport,
8,405 cfs(55-year record, USGS, unadjusted)

Expected ground water yield - 500 to 1,000 gpm on counties northern
border along Ohio River; 50 to 50 gpm along Kentucky River and
southeastern border of county, 5 gpm or less over remainder of
county.

Sewerage

Company serving Carrollton - Carrollton Utilities
P.O. Box 277
Carrollton, Kentucky 41008
(502) 732-4221

Design capacity - 500,000 gallons per day
Average daily flow - At capacity*
Treatment - Primary
Type treatment - Settling, clarifier, drying beds, digester
Treated effluent discharged into - Kentucky River
Size of sanitary mains - 12, 10, 8 and 6 inches
Size of storm mains - 36 to 6 inches
Rates - Based on water usage

WATER USAGE

SEWER RATES

	<u>Inside City limits</u>	<u>Outside City limits</u>
First 1,000 gallons	\$2.50 (Minimum)	\$3.25 (Minimum)
Next 4,000 gallons	1.15 per M gallons	1.35 per M gallons
Next 15,000 gallons	.85 per M gallons	1.05 per M gallons
Next 20,000 gallons	.75 per M gallons	.85 per M gallons
Next 60,000 gallons	.55 per M gallons	.65 per M gallons
Over 100,000 gallons	.45 per M gallons	.55 per M gallons

Tap-on charge: \$600

*Kentucky Department for Natural Resources and Environmental Protection.

CLIMATE

Carroll County

Temperature

Normal (30-year record)	55.6 degrees
Average Annual 1980	56.3 degrees
Record highest, July, 1954 (33-year record)	105.0 degrees
Record lowest, January, 1963 (33-year record)	-20.0 degrees
Normal heating degree days (30-year record)	4,640
(Heating degree days totals are the sums of negative departures of average daily temperatures from 65 degrees F.)	

Precipitation

Normal (30-year record)	43.11 inches
Mean annual snowfall (33-year record)	18.30 inches
Total precipitation 1980	37.89 inches
Mean number days percipitation (.01 inch or more) (33-year record)	125
Mean number days thunderstorms (33-year record)	45

Prevailing Winds (15-year record) South

Relative Humidity (20-year record)

1 a.m.	76 percent
7 a.m.	81 percent
1 p.m.	59 percent
7 p.m.	61 percent

Source: U.S. Department of Commerce, Environmental Science Services Administration, Climatological Data, 1980.
Station of record: Louisville, Kentucky.

LOCAL GOVERNMENT

City

Carrollton

Structure - Mayor - 4-year term; Council members - 2-year terms

Budget 1981 - General Fund \$ 438,734.00 (Estimate)

Water and Sewer Fund 355,580.00

City Gas System 4,629,998.93

Fees and licenses - Business licenses range from \$5 to \$500 annually; license to manufacture any products by processing, assembling or converting (except alcoholic beverages) - \$200; unloading license - \$30 - \$90, depending on vehicle weight; annual vehicle sticker (automobile) - \$10; annual vehicle sticker (truck and trailer) - \$10 - \$20, depending on vehicle weight

County

Structure - County Judge/Executive - 4-year term; 3 magistrates - 4-year terms

Budget 1981-82 - General Fund \$282,860; Road Fund \$191,828

Assessed Value of Property, 1981

<u>Classes of Property</u>	<u>Carrollton</u>	<u>Carroll County</u>
Real Estate	\$38,988,640	\$101,025,040
Tangibles	12,975,268	25,374,354

Property Taxes

All property in Kentucky is assessed at 100 percent of fair cash value.

Land and buildings are taxed by the state and may be taxed by local jurisdictions. The state rate is \$0.229 per \$100 of assessed valuation.

Manufacturing machinery, raw materials inventories, pollution control equipment, and goods in the process of manufacture are not subject to local taxation. The state rate is \$0.15 per \$100.

Other tangible personal property owned by manufacturers (automobiles, trucks, finished goods, office furniture, office equipment) is taxed by the state at \$0.45 per \$100 and may be taxed by local jurisdictions.

Property stored in public warehouses in a transit status is not subject to local taxation. The state rate is only \$0.015 per \$100.

Intangible personal property located in Kentucky (money in hand, shares of stocks, notes, bonds, accounts receivable, and other credits) is taxed by the state at \$0.25 per \$100, and is not subject to local taxation.

Private leaseholds in industrial facilities owned by cities or counties and financed by industrial revenue bonds are subject to a state tax of \$0.015 per \$100 of value (essentially the lessee's equity, adjusted for appreciation or depreciation). Local taxation is not permitted.

Combined State and Local Rates Per \$100 Valuation, 1981* (100% assessment)

	<u>Inside City of Carrollton</u>	<u>Outside City</u>
1. Land and buildings	\$0.989	\$0.749
2. Mfg. machinery, raw materials, goods in process, pollution control equipment	0.150	0.150
3. Finished goods, office equipment, vehicles, other tangibles	1.210	0.970
4. Intangibles (accounts rec., notes, bonds, etc.)	0.250	0.250
5. Leaseholds in industrial revenue bond financed plants	0.015	0.015

*Kentucky Department of Economic Development.

Utilities Gross Receipts Tax for Schools

A 3 percent tax is levied on utilities receipts for schools in Carroll County. Tax is paid by all consumers of utilities as an add-on to the utilities bills. Exempted are receipts from utilities services that are resold and the receipts from the sale of energy or energy producing fuels that exceed 3 percent of the cost of production in manufacturing, processing, mining or refining.

Planning and Zoning

City agency - Carrollton Planning and Zoning Commission

Zoning enforced - City only

Subdivision regulations enforced - City only

Local code enforced - Building

Mandatory state codes enforced - Kentucky Plumbing Code, National Electric Code, Kentucky Boiler Regulations and Standards, Kentucky Building Code (modeled after BOCA code and applying to buildings with an occupancy of 100 or more persons)

Safety

<u>Police</u>	<u>Carrollton</u>	<u>Carroll County</u>
Total staff	13	3
Radio-patrol cars	3	2
<u>Fire</u>		
American Insurance Association Fire Rating	6	10
Full-time staff	4	*
Volunteers	20	-

Rescue Service

Carrollton - Carroll County Rescue Squad:

Number of volunteers - 25

Equipment - Fully equipped auto rescue carry-all, 1972 Dodge truck, porta-power, hooligan wrecking bar, 4,000-watt portable generator, 8-ton jack, boat

Personnel training - 4 emergency medical technicians, first aid, CPR, auto rescue, water rescue, fire extinguishing

*Carroll County is served by volunteer fire departments in the communities of Ghent, Sanders, Worthville and Prestonville (Westside).

Refuse Collection and Disposal

	<u>Carrollton</u>	<u>Carroll County</u>
Type service	Private	Private
Fee charged:		
residential	\$6.00 per month	\$7.50 per month
business and		
industrial	By contract	By contract
Collection frequency:		
residential	Weekly	Weekly
business and		
industrial	By contract	By contract
Trash pickup	As needed (additional fee)	As needed (additional fee)
Disposal method	Landfill	Landfill

EDUCATION

Public Schools

Carroll County

Total Enrollment*	
(Fall, 1981)	1,836
Elementary	856
Middle School	466
High School	506
Student-Teacher Ratio	17-1
Elementary	18-1
Middle School	16-1
High School	16-1
Accreditation	Southern Association of Colleges and Schools
Percent High School Graduates to College (1980)	33.6
Expenditures Per Pupil (1979-80)	\$1,308.31
Bonded Indebtedness (June 30, 1980)	\$3,796,000

*Includes 8 homebound students.

Area Colleges and Universities

<u>Name</u>	<u>Location (Miles distant)</u>	<u>Enrollment (Fall, 1980)</u>	<u>Highest Degree Conferred</u>
Hanover College	Hanover, Indiana (20)	1,021	Baccalaureate
Kentucky State University	Frankfort, Kentucky (50)	2,342	Masters
Bellarmino College	Louisville, Kentucky (51)	2,284	Masters
Jefferson Community College	Louisville, Kentucky (51)	4,822	Associate
Jefferson Community College, Southwest Campus	Louisville, Kentucky (51)	1,167	Associate
Spaulding College	Louisville, Kentucky (51)	1,048	Masters
University of Louisville	Louisville, Kentucky (51)	20,585	Doctorate, M.D., D.M.D., J.D.
Thomas More College	Ft. Mitchell, Kentucky (55)	1,316	Baccalaureate
College of Mt. St. Joseph on the Ohio (Women)	Cincinnati, Ohio (58)	1,684	Baccalaureate, M.A in Education
Hebrew Union College	Cincinnati, Ohio (58)	150	M.A., Ph.D., D.H.L.
University of Cincinnati	Cincinnati, Ohio (58)	39,772	Academic & Professional
Xavier University	Cincinnati, Ohio (58)	7,197	Masters
Indiana University Southeast	New Albany, Indiana (61)	4,361	Masters*
Midway College	Midway, Kentucky (62)	316	Associate
Northern Kentucky University	Highland Heights Kentucky (63)	8,358	Masters, J.D.
Georgetown College	Georgetown, Kentucky (65)	1,270	Masters

*Masters in education only.

Vocational Schools

Both the state vocational-technical schools and the area vocational education centers are operated by the Kentucky Department of Education. The state vocational-technical schools enroll persons full time who are at least 16 years of age and not in school. These students attend classes for six hours each day. The area vocational education centers are designed to accomodate high school students who are at least 15 years of age. These students attend vocational school for three hours each day. The state vocational-technical schools and the area education centers offer evening courses to enable working adults to upgrade current job skills.

Nearest State Schools

Location	Jefferson State Vocational-Technical School Louisville
Miles Distant	51
Curriculum	Agriculture Horticulture Business and Office Accounting/Jr. Management Clerical Data Processing Secretarial Consumer and Home Economics Culinary Arts Health and Personal Services Occupations Cosmetology Child Care Aide Dental Assistant Licensed Practical Nursing Medical Assistant Nurse's Aide Surgical Technician Industrial Education Air Conditioning and Refrigeration Auto Body Repair Auto Mechanics Carpentry-Building Trades Diesel Mechanics Electricity Graphic Arts (Printing) Machine Shop Masonry Plumbing Welding Learning Resource Center

(Contd.)

Location	Northern Kentucky State Vocational-Technical School
Miles Distant	Covington
Curriculum	57
	Business and Office
	Clerical
	Data Processing
	Secretarial
	Consumer and Home Economics
	Child Care Services
	Commercial Foods
	Health and Personal Services Occupations
	Cosmetology
	Practical Nursing
	Industrial Education
	Air Conditioning and Refrigeration
	Auto Body Repair and Refinishing
	Automotive Technology
	Carpentry
	Communications
	Drafting
	Electronics
	Machine Shop
	Masonry
	Welding
	Learning Resource Center

Nearest Vocational-Technical School

Location	Northern Campbell County Vocational-Technical School
Miles Distant	Highland Heights
Curriculum	63
	Health and Personal Services Occupations
	Dental Assistant
	Medical Assistant
	Medical Transcription
	Industrial Education
	Auto Mechanics (Foreign)
	Carpentry-Interior Finishing
	Commerical Art
	Diesel Mechanics
	Graphic Arts
	Industrial Electronics
	Plumbing
	Learning Resource Center

Nearest Area Education Center

Location	Carroll County Area Vocational Education Center
Curriculum	Carrollton Business and Office Accounting Business Math Clerical Office Machines Secretarial Shorthand Typing Health and Personal Services Occupations Health Careers Industrial Education Air Conditioning and Heating Auto Mechanics Carpentry Industrial Electricity Welding

Arrangements can be made to provide training in the specific production skills required by an industrial plant. Instruction may be conducted either in the vocational school or in the industrial plant, depending upon the desired arrangement and the availability of special equipment.

HEALTH

Local Medical Personnel

Physicians - 10
Dentists - 4 full-time, 1 part-time

Hospitals

<u>General Hospital</u>	<u>Location</u>	<u>Beds</u>
Carroll County Memorial Hospital	Carrollton	54

General hospital facilities - Operating room, recovery room, emergency room, X-ray, laboratory, OB section, nursery, blood bank, physical therapy, electrocardiography, cardiac monitors, respiratory therapy, endoscopic procedures and ultrasound.

Medical staff

Active - 8 physicians, 12 registered nurses, 10 graduate licensed practical nurses, 5 medical technologists, 1 X-ray technologist, 1 X-ray technician, 2 respiratory therapists, 1 physical therapist, 2 medical records technicians, 3 dentists
Consulting - 6 physicians, 3 psychologists
Courtesy - 1 physician

Other Medical Facilities

Comprehensive Care Center

Ambulance Service

Name - Carroll County Ambulance Service
Staff - 2 full-time emergency medical technicians;
27 volunteer emergency medical technicians
Service - 24-hour service, 7 days a week to all of Carroll County
Equipment - 1 van and 2 fully-equipped modular ambulances with back-boards, stretchers, scoop stretcher, air and bar splints, resuscitator, wrecking bars, built-a-boards and a stairchair

Public Health

Facility - Three Rivers District - Carroll County Health Center
Staff - Health officer, 2 nurses, 1 outreach worker, 1 clerk, 1 health environmentalist (part-time)

OTHER LOCAL FACILITIES

Communications - Carrollton

Telephone - South Central Bell Telephone Company
Services - Standard

Telegraph - Western Union Telegraph Company
Services - Toll-free number, 1-800-325-5100, counter service
available

Postal - U.S. Post Office
Class - First
Mail received - Once daily
Mail dispatched - Once daily

Newspapers - News-Democrat
Weekly and circulation - 3,239
Other papers
received from - Louisville and Lexington, Kentucky; Indianapolis
and Madison, Indiana; Cincinnati, Ohio

Radio - WIKI-FM
Stations received from - Louisville and Lexington, Kentucky; Vevey
and Madison, Indiana; Cincinnati, Ohio

Television -
Cable service
Reception from - Louisville and Lexington, Kentucky; Indianapolis
and Bloomington, Indiana; Cincinnati, Ohio

Kentucky Educational
Television - Channel 52, Owenton transmitter
Channel 68, Louisville transmitter

Library services

Public library - Carroll County Public Library*
Size of collection - 16,493 volumes
Circulation, 1980 - 31,048
Services - Bookmobile, magazines, story hour, records, films,
microfilm reader-printer, newspapers, Interlibrary Loan,
meeting room

*A new 6,000-square-foot library was completed during 1980.

Religious Institutions

Denominations - Apostolic
Baptist
Calvary Temple
Catholic
Christian
Church of Christ
Disciples of Christ
Latter Day Saints
Lutheran
Pentecostal
United Methodist
United Pentecostal
Wesleyan

Nearest Synagogues - Louisville, Kentucky (51 miles southwest)
Cincinnati, Ohio (58 miles northeast)

Congregations - Louisville - 5 (conservative, orthodox, reform)
Cincinnati - 16 (conservative, orthodox, reform,
traditional)

Financial Institutions

<u>Banks</u>	<u>Assets</u>	<u>Deposits</u>	<u>Statement Date</u>
Farmers Bank of Milton (Milton, Kentucky; 12 miles west of Carrollton)	\$18,558,832.35	\$16,076,223.15	6/30/81
The First National Bank of Carrollton	13,982,356.84	12,237,198.59	12/31/80
Kentucky State Bank	15,318,696.22	13,772,213.34	6/30/81

<u>Savings and Loan Association</u>	<u>Assets</u>	<u>Savings Accounts</u>	<u>Statement Date</u>
Carrollton Federal Savings and Loan Association	\$10,074,064.00	\$ 8,844,696.00	12/31/80

Hotels and Motels*

Total number - 5
Total rooms - 150

*Facilities at General Butler State Resort Park are not included.

Clubs and Organizations

American Legion
Art Club
Athletic Boosters
Benevolent and Protective Order of Elks
Beta Club
Boy Scouts
Brownies
Business and Professional Women's Club
Carroll County Chamber of Commerce
Carroll County Community Development Corporation
Carroll County Garden Club
Carroll County Homemaker's Club
Carroll County Memorial Hospital Auxiliary
Carroll County Safety Council
Carroll County Youth Council
Carrollton Women's Club
Carrollton Younger Women's Club
Conservation Club
Cub Scouts
Daughters of the American Revolution
Disabled American Veterans
Eastern Star
Future Farmers of America (FFA)
Future Homemakers of America (FHA)
Garden Club
Ghent Women's Club
Girl Scouts
Homemakers
Independent Order of Odd Fellows
Independent Order of Odd Fellows Auxiliary
Jaycees
Key Club
Kiwanis
Little League
Loyal Order of Moose
Masonic
Optimist Club
Port William Historical Society
Rotary International
Science Club
Veterans of Foreign Wars

RECREATION

Local

There are various recreational opportunities available in the Carrollton area due to its location on the Kentucky and Ohio rivers and its proximity to Louisville, Kentucky, and Cincinnati, Ohio.

General Butler State Resort Park, located at Carrollton near the confluence of the Ohio and Kentucky rivers, provides year-round facilities. Easy access to the park is provided by Interstate Highway 71. Park accommodations include a 58-unit lodge and 18 cottages. Recreation at the 809-acre park includes a 30-acre lake, a boat dock, fishing, a 9-hole golf course, a miniature golf course, a swimming pool, camping, playgrounds, shuffleboard, tennis courts and gift shops.

The Butler Mansion Museum, former home of General William Orlando Butler, was built on land settled by the Butler family in 1796. The house, now a part of General Butler State Resort Park, is open to the public. It is of the Federal style and is furnished with period pieces of Kentucky workmanship.

The General Butler Ski Area, located at General Butler State Resort Park in Carrollton opened during December of 1981. The 100-acre area, privately managed, provides complete facilities for the beginning and advanced skier, including nine slopes, five ski lifts and full snow-making capability. The ski center offers skiing instructions for adults and children, with a cafeteria, a rental shop, a repair shop, a retail ski shop and locker rooms all located in the new ski center building. The ski area has year-round activities including grass skiing during the spring, summer and fall, and the annual Kentucky Ski Derby for amateur ski club teams.

The Carrollton Recreation Department along with the local churches provide supervised recreational programs. Six playgrounds are located throughout the city as well as tennis courts, a baseball diamond, a football field, boating facilities and private boat docks.

A lighted county recreational park is located on a 35-acre site and includes six tennis courts, two softball fields, a tot lot, a playground, basketball goals, picnic tables, and grills. Plans for a horse show arena, horse barns, and an exhibit hall with meeting rooms, locker rooms, showers, restrooms, a youth center and a recreational center for senior citizens have been proposed.

A 6-acre site has been developed as the Point Park project. Located at the confluence of the Ohio and Kentucky rivers, the park has a playground, a softball field, a soccer field, a frisbee golf course and camping and picnic areas.

Organized little league football, baseball, basketball and soccer teams are available for boys and girls in the Carrollton area.

Area (Within 60 miles)

Madison, Indiana, located 12 miles from Carrollton, is home of the world-famous Madison Regatta. Highlight of the Gold Cup Week is the world's fastest race boats competing in the Gold Cup and the Indiana Governor's Cup Race. Madison is also noted for its many stately homes and historical buildings.

Other recreational facilities afforded Madison area residents are indoor and outdoor movie theatres, boating, municipal and private golf courses, racquet ball, tennis, swimming, camping and nature trails.

Clifty Falls State Park near Madison, Indiana, was established in 1920, and contains 1,309 acres of scenic beauty overlooking the Ohio River.

Big Bone Lick State Park in Boone County, Kentucky, 44 miles from Carrollton, provides a unique combination of educational and recreational pleasures. Visitors can walk through the original "jellyland," now a natural outdoor museum with replicas and exhibits that tell the story of Big Bone Lick. Recreational activities and facilities include a boat launch and picnic area on the Ohio River, a modern campground, fishing in the nearby lake, an indoor museum and gift shop, picnic grounds, tennis, shuffleboard, volleyball, basketball, horse shoes, planned recreation, and a swimming pool in the camping area open Memorial Day through Labor Day.

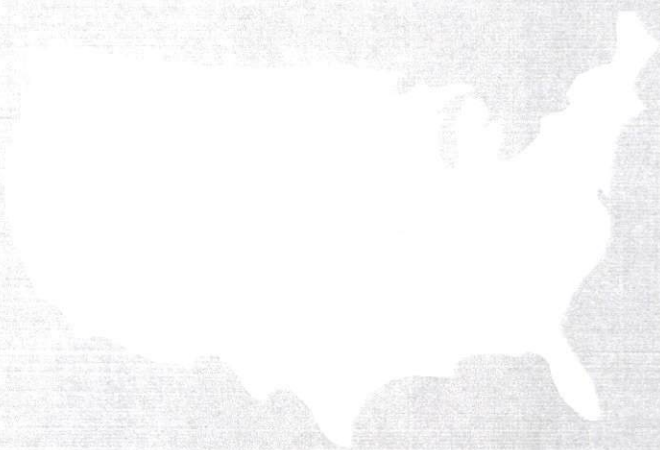
Frankfort, Kentucky's capital, is located 50 miles southeast of Carrollton and offers numerous museums, tours and historical landmarks.

Louisville, 51 miles southwest of Carrollton, offers a wide variety of recreational, sporting, and cultural events. Most notable is the running of the Kentucky Derby, the most prestigious thoroughbred horse race in America which is held at historic Churchill Downs the first Saturday in May. The Kentucky Derby was modeled after the Epsom Derby (Darby) held at Epsom Downs in Surrey County, England.

Other famous Louisville attractions are the renowned sternwheeler, Belle of Louisville (the Belle vies for honors in the Great Steamboat Race held annually during the Derby Festival); the Kentucky Derby Museum; Louisville Zoological Gardens; the Museum of Natural History and Science; and the J.B. Speed Art Museum. Seasonal performances of the arts include Actors Theatre, Louisville Ballet Company, Kentucky Opera Association, Louisville Bach Society, Louisville Orchestra and Shakespeare-in-the-Park. The E.P. "Tom" Sawyer Park in Louisville consists of 319 acres and provides a swimming pool, tennis, a picnic area and playground.

The Northern Kentucky/Metro area is located within 60 miles of Carrollton. With downtown Cincinnati directly across the Ohio River, the cities of Covington, Newport, Fort Thomas, Erlanger, and Florence blend rich Germanic heritage with progressive development, thus creating an unusual urban-rural character. The area offers convention centers, historic villages and cathedrals, museums, and cultural activities centers.

Cincinnati, 58 miles northeast of Carrollton, provides a wide variety of entertainment, cultural facilities and activities, and sports events. The Cincinnati Zoo offers entertainment the whole family can enjoy. Kings Island is the largest family entertainment center in the entire midwest. The Cincinnati Riverfront Stadium is the home of the Cincinnati Reds baseball and Bengals pro football teams. The Riverfront Coliseum offers World Hockey League action with the Cincinnati Stingers. Cultural interests include the Cincinnati Symphony Orchestra, various art galleries and museums, libraries, and theaters presenting Broadway plays.



Missouri Department of Economic Development
Capital Plaza Tower
Jefferson City, Missouri 64501 • Phone (502) 564-4270