

1983

Industrial Resources: Carter County - Olive Hill and Grayson

Kentucky Library Research Collections
Western Kentucky University, spcol@wku.edu

Follow this and additional works at: https://digitalcommons.wku.edu/carter_cty

 Part of the [Business Administration, Management, and Operations Commons](#), [Growth and Development Commons](#), and the [Infrastructure Commons](#)

Recommended Citation

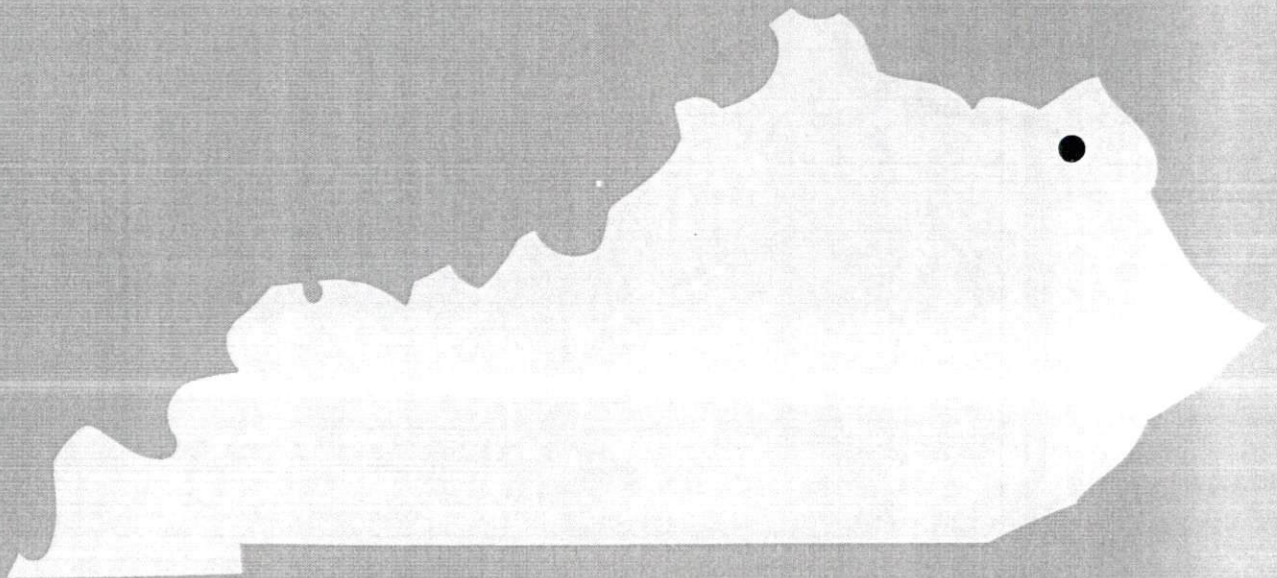
Kentucky Library Research Collections, "Industrial Resources: Carter County - Olive Hill and Grayson" (1983). *Carter County*. Paper 17.
https://digitalcommons.wku.edu/carter_cty/17

This Report is brought to you for free and open access by TopSCHOLAR®. It has been accepted for inclusion in Carter County by an authorized administrator of TopSCHOLAR®. For more information, please contact topscholar@wku.edu.

1983

A comprehensive
report on

**Olive Hill and
Grayson, Ky.**



KENTUCKY & CO.
The state that's run like a business.

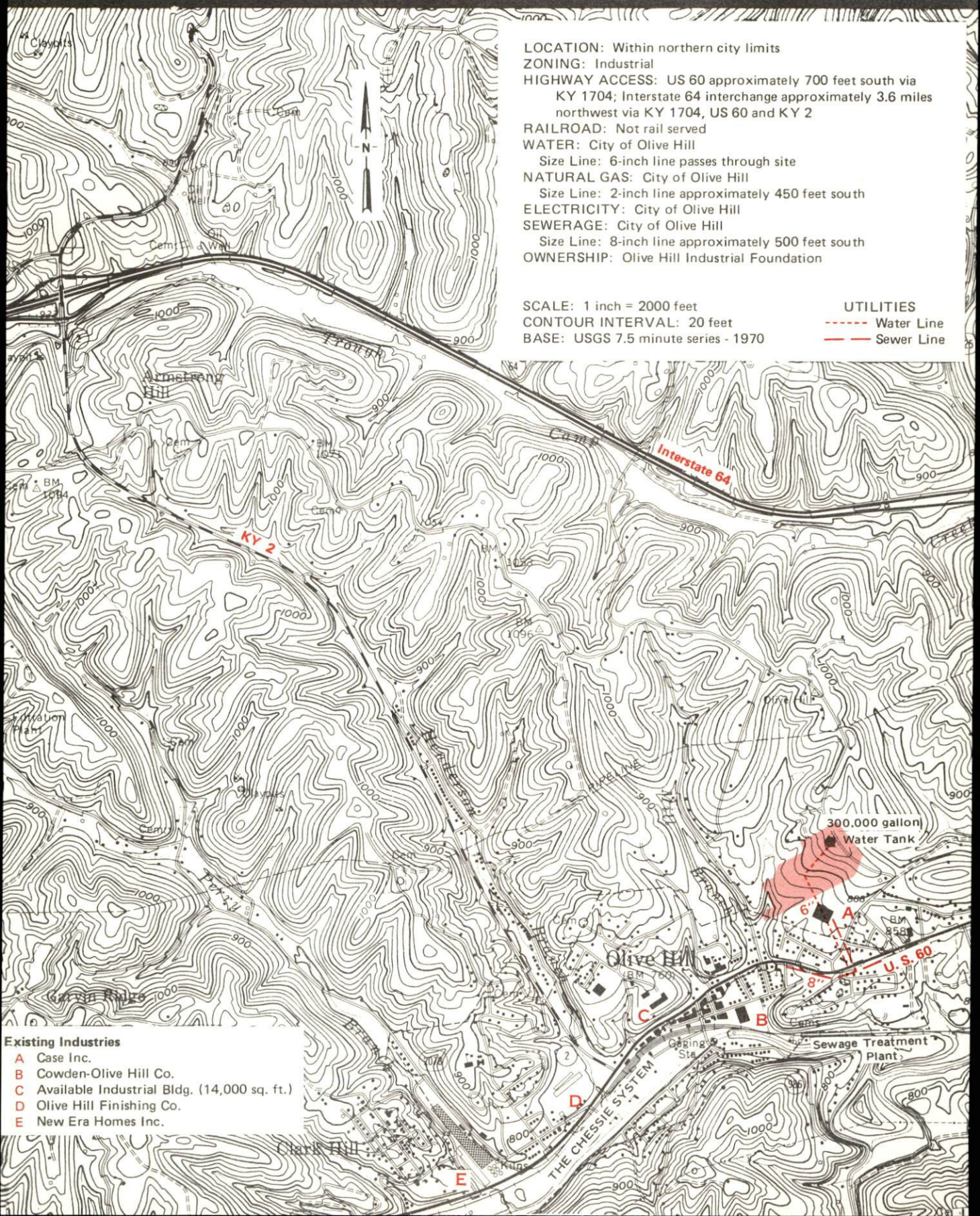
OLIVE HILL, KENTUCKY --- Site 183 --- 22 Acres

For more information contact the Department of Economic Development, Office of Business Development, Industrial Development Division, Capital Plaza Tower, Frankfort, Kentucky 40601 (502-564-7140).

LOCATION: Within northern city limits
ZONING: Industrial
HIGHWAY ACCESS: US 60 approximately 700 feet south via KY 1704; Interstate 64 interchange approximately 3.6 miles northwest via KY 1704, US 60 and KY 2
RAILROAD: Not rail served
WATER: City of Olive Hill
Size Line: 6-inch line passes through site
NATURAL GAS: City of Olive Hill
Size Line: 2-inch line approximately 450 feet south
ELECTRICITY: City of Olive Hill
SEWERAGE: City of Olive Hill
Size Line: 8-inch line approximately 500 feet south
OWNERSHIP: Olive Hill Industrial Foundation

SCALE: 1 inch = 2000 feet
CONTOUR INTERVAL: 20 feet
BASE: USGS 7.5 minute series - 1970

UTILITIES
--- Water Line
--- Sewer Line

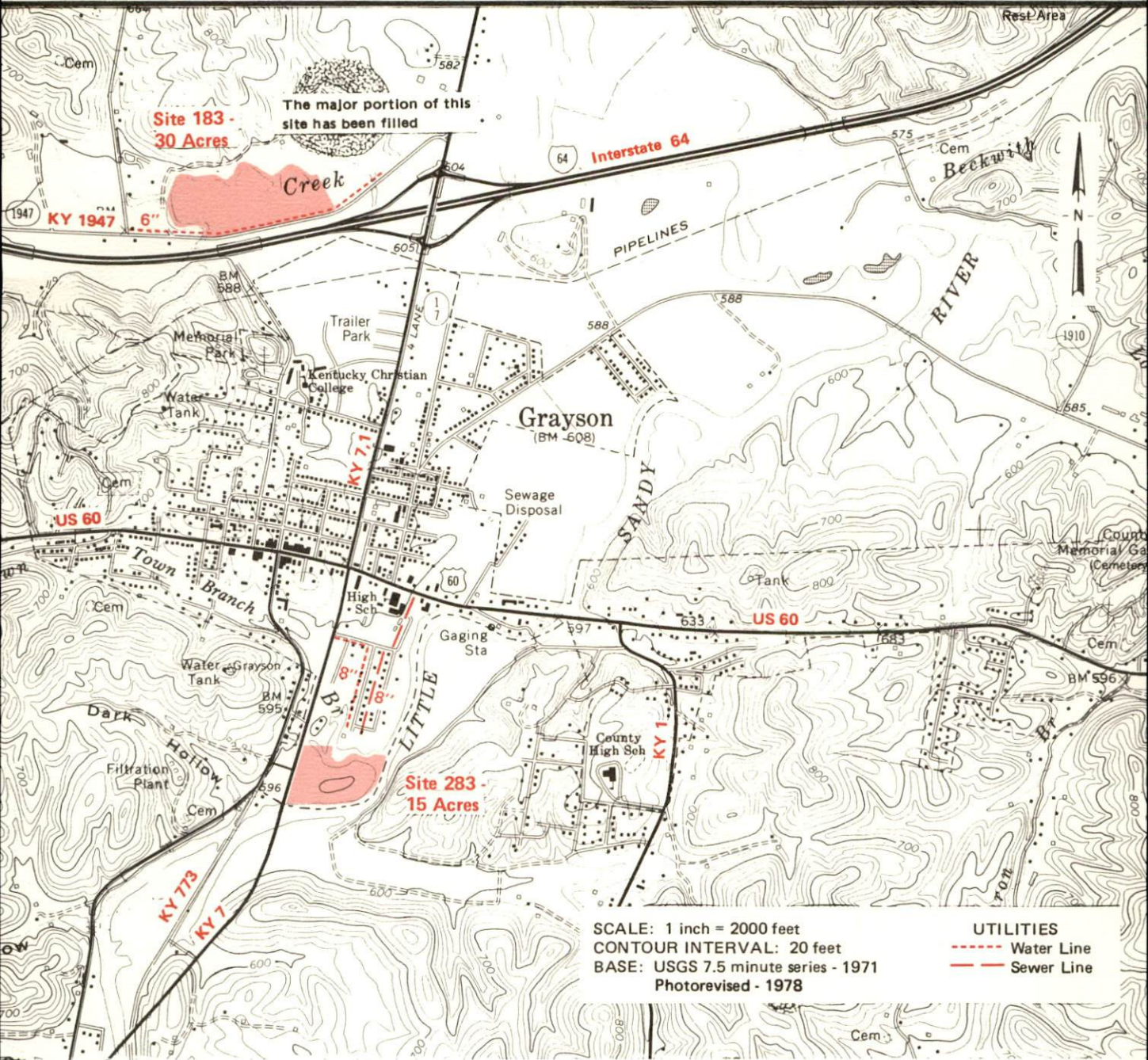


- Existing Industries**
- A Case Inc.
 - B Cowden-Olive Hill Co.
 - C Available Industrial Bldg. (14,000 sq. ft.)
 - D Olive Hill Finishing Co.
 - E New Era Homes Inc.

GRAYSON, KENTUCKY

Industrial Sites — 1983

For more information contact the Department of Economic Development, Office of Business Development, Industrial Development Division, Capital Plaza Tower, Frankfort, Kentucky 40601 (502-564-7140).



Site 183 - 30 Acres

LOCATION: Approximately 350 feet north of city limits
ZONING: None
HIGHWAY ACCESS: KY 1947 adjacent to southern boundary; Interstate 64 interchange approximately 0.37 mile away via KY 1947 and KY 7
RAILROAD: Not rail served
WATER: City of Grayson Utilities
 Size Line: 6-inch line along southern boundary of site
NATURAL GAS: City of Grayson Utilities
 Size Line: 4-inch line approximately 1800 feet south along US 60
ELECTRICITY: Kentucky Power Company
SEWERAGE: City of Grayson Utilities
 Size Line: 8-inch line approximately 1800 feet south along US 60
OWNERSHIP: Private

Site 283 - 15 Acres

LOCATION: Within southern city limits
ZONING: None
HIGHWAY ACCESS: KY 7 adjacent to western boundary; Interstate 64 interchange approximately 1.3 miles north via KY 7
RAILROAD: Not rail served
WATER: City of Grayson Utilities
 Size Line: 8-inch line approximately 500 feet north
NATURAL GAS: City of Grayson Utilities
 Size Line: 4-inch line approximately 500 feet north
ELECTRICITY: Kentucky Power Company
SEWERAGE: City of Grayson Utilities
 Size Line: 8-inch line approximately 500 feet north
FLOOD DATA: Intermediate Regional Flood Elevation (average occurrence once in 100 years) - 589 feet at Town Branch and Little Sandy River
OWNERSHIP: Private

A COMPREHENSIVE REPORT ON
OLIVE HILL AND GRAYSON, KENTUCKY

Prepared by
The Kentucky Department of Economic Development
Division of Research and Planning
in cooperation with
The Grayson Area Chamber of Commerce
and
The City of Olive Hill

1983

Program manager - Pamela Riley; research - Bill Morris; clerical - Shirley Wood; graphics - Frank Ferrante, Tony Cecconi, Robert Owens; cartography - Site Evaluation Section, Division of New Industries. Cost of printing paid from state funds.

TABLE OF CONTENTS

<u>Chapter</u>	<u>Page</u>
INDUSTRIAL SITES	i
OLIVE HILL AND GRAYSON, KENTUCKY - A RESOURCE PROFILE	1
THE LABOR MARKET AREA	3
Population	3
Labor Force Characteristics of Residents, 1981	3
Carter County Manufacturing Firms, Their Products and Employment	4
Labor Organizations in Manufacturing Firms	5
Industrial Services	6
Estimated Male Labor Supply	7
Estimated Female Labor Supply	8
Average Weekly Wages by Industry, by Place of Work, 1981	9
Per Capita Personal Income	11
TRANSPORTATION	12
Rail	12
Highways	12
Truck Service	13
Air	15
Bus	15
Taxi	15
Rental Services	15
Water	15
POWER AND FUEL	16
Electricity	16
Natural Gas	17
Other Fuels	18
WATER AND SEWERAGE	19
Public Water Supply	19
Raw Water	21
Sewerage	21
CLIMATE	23

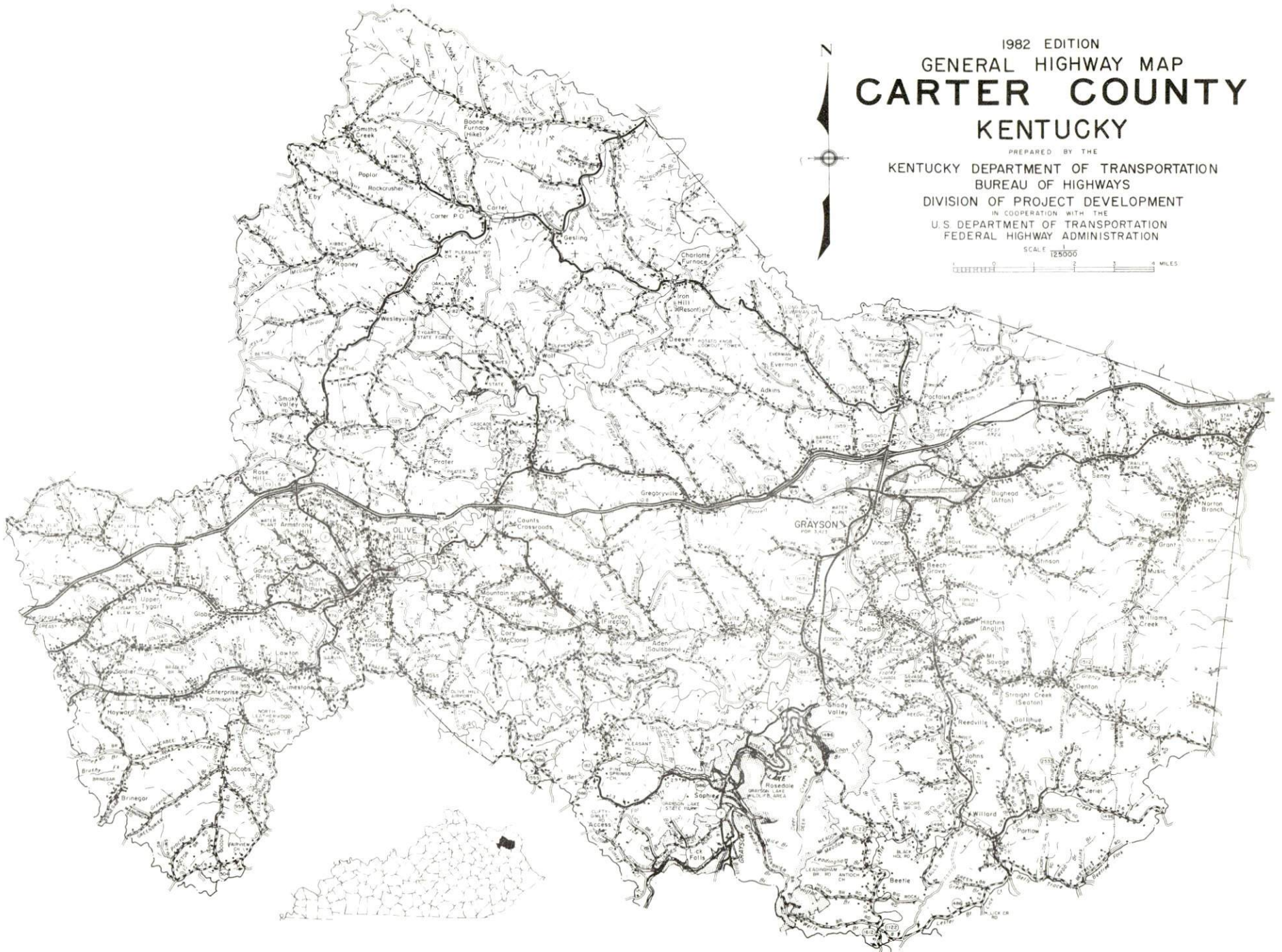
<u>Chapter</u>	<u>Page</u>
LOCAL GOVERNMENT	24
City	24
County	24
Assessed Value of Property, 1982	24
Property Taxes	25
Combined State and Local Rates Per \$100 Valuation, 1982	26
Planning and Zoning	27
Safety	27
Police	27
Fire	27
Rescue Service	27
Refuse Collection and Disposal	28
EDUCATION	29
Public Schools	29
Area Colleges and Universities	30
Vocational Schools	31
HEALTH	33
Local Medical Personnel	33
Hospitals	33
Other Medical Facilities	34
Ambulance Service	34
Public Health	34
OTHER LOCAL FACILITIES	35
Communications	35
Library Services	36
Religious Institutions	36
Financial Institutions	37
Hotels and Motels	37
Clubs and Organizations	37
RECREATION	39
COMMUNITY IMPROVEMENTS	41

1982 EDITION
GENERAL HIGHWAY MAP
CARTER COUNTY
KENTUCKY

PREPARED BY THE
KENTUCKY DEPARTMENT OF TRANSPORTATION
BUREAU OF HIGHWAYS
DIVISION OF PROJECT DEVELOPMENT
IN COOPERATION WITH THE
U.S. DEPARTMENT OF TRANSPORTATION
FEDERAL HIGHWAY ADMINISTRATION

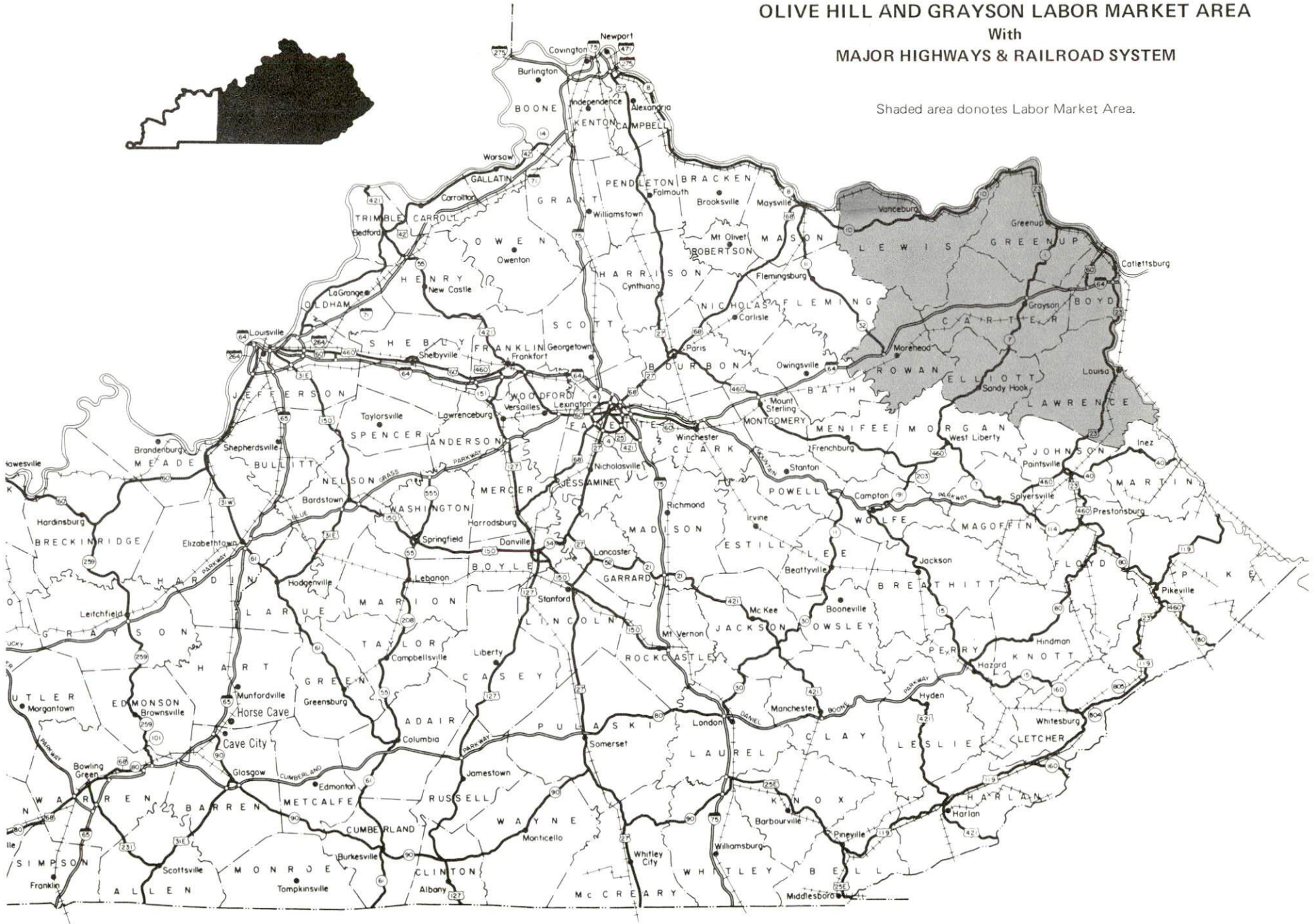
SCALE 1:25000

0 1 2 3 4 MILES



OLIVE HILL AND GRAYSON LABOR MARKET AREA
With
MAJOR HIGHWAYS & RAILROAD SYSTEM

Shaded area donotes Labor Market Area.



OLIVE HILL AND GRAYSON, KENTUCKY - A RESOURCE PROFILE

Olive Hill and Grayson are the two largest cities in Carter County, which covers 407 square miles of northeastern Kentucky. Grayson, the county seat and home of Kentucky Christian College, had a 1980 population of 3,423 persons. Olive Hill, with the majority of the county's manufacturing firms, had a 1980 population of 2,539. Olive Hill is located 162 miles southeast of Cincinnati, Ohio; 155 miles east of Louisville, Kentucky; 247 miles northeast of Knoxville, Tennessee; and 305 miles southwest of Pittsburgh, Pennsylvania.

The Economic Framework

The total number of Carter County residents employed in 1981 averaged 7,660, with nonagricultural jobs accounting for 7,270 workers. Manufacturing employers in the county reported 780 workers; wholesale and retail trade 980; state and local government 870; and 350 in the services industry. Manufacturing employment is greatest in the apparel and related products, and the stone, clay and glass products industries.

Per capita income in Carter County in 1980 was \$4,729. Between 1976 and 1980, per capita income increased by 39 percent.

The labor market area includes Carter County and the six adjoining counties. The total number of residents of the labor market area employed in 1981 averaged 61,560, with nonagricultural jobs accounting for 59,575 workers. Manufacturing in the labor market area provided 13,570 jobs; wholesale and retail trade 9,260; state and local government 7,150; and 6,190 jobs in the service occupations.

Resources for Growth

1. Labor Supply - There is a current estimated labor supply of 12,880 men and 14,200 women available for industrial jobs in the labor market area. In addition, from 1983 through 1987, 8,035 young men and 7,520 young women will become 18 years of age and potentially available for work.

2. Transportation - Local transportation capability is excellent. The City of Olive Hill has rail service provided by a main line of the Chessie System. Both Olive Hill and Grayson are served by Interstate Highway 64 and by U. S. Highway 60 - a class "AAA" highway (80,000-pound gross load limit). There are two trucking companies which provide interstate and intrastate motor freight service and two which provide interstate service only. The nearest scheduled commercial airline service is at Tri-State Airport (Walker-Long Field), 9 miles southwest of Huntington, West Virginia, and 51 miles east of Olive Hill. A local airport with a 2,500-foot paved runway is located 4 miles southeast of Olive Hill.

3. Power and Fuel - Electric power is provided to Olive Hill by the Olive Hill Municipal Electric Company which is supplied by the Kentucky Power Company. Grayson and sections of Carter County are served by the Kentucky Power Company. The remainder of Carter County is served by the Grayson Rural Electric Cooperative Corporation which is supplied by East Kentucky Power Cooperative. Natural gas service to Olive Hill and Grayson is provided by each city's own municipal gas system. The source of supply for both municipal companies is Tennessee Gas Pipeline Company. Three propane dealers and three fuel oil dealers are located in Carter County.

4. Education - Education is an important growth asset for Carter County. There were 5,510 students enrolled in the Carter County school system during the fall term of 1982.

Kentucky Christian College at Grayson is a four-year institution offering Bachelor of Arts, Bachelor of Science, and Bachelor of Technology degrees. In addition, there are five universities, three community colleges, and one technical institute located within 85 miles of Olive Hill

The nearest state vocational-technical school is located at Ashland, 36 miles east of Olive Hill, and offers training in 19 course areas. The Carter County Area Vocational Education Center at Olive Hill offers training in six course areas.

THE LABOR MARKET AREA

The Olive Hill and Grayson Labor Market Area includes Carter County and the adjoining Kentucky counties of Boyd, Elliott, Greenup, Lawrence, Lewis and Rowan.

POPULATION

<u>Area</u>	<u>1980</u>	<u>1970</u>	<u>Percent Nonwhite</u>
Olive Hill	2,539	1,197	0.1
Grayson	3,423	2,184	0.5
Labor Market Area	174,328	151,442	N/A
Carter County	25,060	19,850	0.2
Boyd County	55,513	52,376	2.3
Elliott County	6,908	5,933	0.01
Greenup County	39,132	33,192	0.6
Lawrence County	14,121	10,726	0.4
Lewis County	14,545	12,355	0.3
Rowan County	19,049	17,010	2.1

Note: The 1980 counts of population by race are provisional.

Sources: U. S. Department of Commerce, Bureau of the Census, 1980 Census of Population and Housing, March 1981; 1980 Census of Population, Number of Inhabitants. Population Research Unit, Urban Studies Center, University of Louisville, Kentucky Demographics: The 1980 Census of Kentucky, Characteristics of Population, Households, Housing, January 1982.

LABOR FORCE CHARACTERISTICS OF RESIDENTS, 1981

	<u>Carter County</u>	<u>Labor Market Area</u>
Civilian Labor Force	9,277	68,969
Employment	7,660	61,563
Agricultural	389	1,988
Nonagricultural	7,271	59,575
Unemployment	1,617	7,406
Rate of Unemployment (%)	17.4	10.7

Source: Kentucky Cabinet for Human Resources, Kentucky Labor Force Estimates, Annual Averages, 1981.

CARTER COUNTY MANUFACTURING FIRMS,
THEIR PRODUCTS AND EMPLOYMENT

<u>Firm</u> (Establishment date)	<u>Product</u>	<u>Employment</u>			<u>Labor Unions</u>
		<u>Total</u>	<u>Male</u>	<u>Female</u>	
<u>Carter City</u>					
Standard Slag Stone Company (1954)	Crushed limestone	10	9	1	Aluminum, Brick and Clay Workers*
<u>Denton</u>					
Mullins & Sexton Lumber Company (1963)	Wood pallets	16	15	1	
<u>Grahn</u>					
Louisville Fire Brick Works (1913)	Fire brick	38	37	1	Aluminum, Brick and Clay Workers*
<u>Grayson</u>					
Big Sandy Ready Mix Concrete, Inc. (1959)	Ready-mixed concrete	11	-	-	
The Grayson Journal-Enquirer (1922)	Newspaper	5	1	4	
<u>Hitchens</u>					
General Refractories Company (1912)	Fireclay refractory brick	154	150	4	Aluminum, Brick and Clay Workers*
Hamilton Hardwood Company (1968)	Rough lumber	41	40	1	
<u>Olive Hill</u>					
Acme Stone Company (1949)	Crushed stone	13	13	-	Aluminum, Brick and Clay Workers*

<u>Firm</u> (Establishment date)	<u>Product</u>	<u>Employment</u>			<u>Labor Unions</u>
		<u>Total</u>	<u>Male</u>	<u>Female</u>	
Ashland Sales & Service, Inc. (1968)	Military jackets, coats	75	5	70	
Case, Inc. (1970)	Men's sportswear, uniform coat liners, insulated underwear	235	19	216	
Cowden-Olive Hill Company (1963)	Men's and boys' work and play clothes	225	25	200	Aluminum, Brick and Clay Workers*
East Kentucky Paving Corporation (1957)	Bituminous concrete	6	-	-	Steelworkers*
Johnson Bass Hawk Company, Inc. (1976)	Fiberglass boats	13	11	2	
Ken-Mor Stone Company, Inc. (1968)	Crushed limestone	22	20	2	
B & J Logan Lumber Company, Inc. (1977)	Lumber crossties	12	-	-	
New Era Homes, Inc. (1978)	Prefabricated homes	22	20	2	
Olive Hill Finishing Company (1975)	Greeting cards	102	12	90	

*See Labor Organizations below.

Source: Kentucky Department of Economic Development, Division of Research and Planning.

LABOR ORGANIZATIONS IN MANUFACTURING FIRMS

Union

Representing workers at:

Aluminum, Brick and Clay Workers International Union, AFL-CIO

Acme Stone Company; Cowden-Olive Hill Company; General Refractories Company; Louisville Fire Brick Works; Standard Slag Stone Company

United Steelworkers of America, AFL-CIO

East Kentucky Paving Corporation

INDUSTRIAL SERVICES

<u>Types of Services</u>	<u>Location</u>	<u>Mileage from Olive Hill</u>
Tool & Die, Machine & Pattern Shops	Ashland, Kentucky	36
Metal Service Centers	Huntington, West Virginia	42
Heat Treating	Georgetown, Kentucky	94
Metal Finishers	Huntington, West Virginia	42
Electric Motor Repair	Huntington, West Virginia	42

Source: Kentucky Department of Economic Development, Kentucky Directory of Selected Industrial Services, 1981. Kentucky Department of Economic Development, Division of Research and Planning.

ESTIMATED MALE LABOR SUPPLY
OLIVE HILL AND GRAYSON LABOR MARKET AREA

Area	Current			Future	
	Total	Unemployed	Under- employed	Not in Labor Force	Becoming 18 years of age 1983 thru 1987
Labor Market					
Area*	12,878	5,516	3,643	3,719	8,035
Carter	2,428	1,253	367	808	1,220
Boyd	2,834	1,568	802	464	2,354
Elliott	456	296	160	0	347
Greenup	2,067	996	562	509	1,908
Lawrence	1,918	385	253	1,280	676
Lewis	1,387	431	298	658	788
Rowan	1,788	587	1,201	0	742

*Additional workers may be drawn from other nearby counties.

Note: Unemployed - persons unemployed and actively seeking work; Under-employed - persons employed but working only 14 to 26 weeks per year. Not in Labor Force - represents the number of persons who would enter the labor force if suitable employment were available (based on the assumption that persons in Kentucky would like to participate in the labor force in the same proportion that they do nationally).

Sources: Kentucky Cabinet for Human Resources, Kentucky Labor Supply Estimates by Area Development District and County, 1981. Kentucky Department of Economic Development, Future Labor Supply Becoming 18 Years of Age, 1983 Thru 1987.

ESTIMATED FEMALE LABOR SUPPLY
OLIVE HILL AND GRAYSON LABOR MARKET AREA

Area	Total	Unemployed	Current		Future
			Under- employed	Not in Labor Force	Becoming 18 years of age 1983 thru 1987
Labor Market					
Area*	14,198	1,890	3,194	9,114	7,520
Carter	2,219	364	283	1,572	1,179
Boyd	4,936	455	922	3,559	2,110
Elliott	359	86	81	192	317
Greenup	2,946	289	628	2,029	1,832
Lawrence	1,570	112	111	1,347	676
Lewis	978	344	219	415	671
Rowan	1,190	240	950	0	735

*Additional workers may be drawn from other nearby counties.

Note: Unemployed - persons unemployed and actively seeking work; Under-employed - persons employed but working only 14 to 26 weeks per year. Not in Labor Force - represents the number of persons who would enter the labor force if suitable employment were available (based on the assumption that persons in Kentucky would like to participate in the labor force in the same proportion that they do nationally).

Sources: Kentucky Cabinet for Human Resources, Kentucky Labor Supply Estimates by Area Development District and County, 1981. Kentucky Department of Economic Development, Future Labor Supply Becoming 18 Years of Age, 1983 Thru 1987.

AVERAGE WEEKLY WAGES BY INDUSTRY
BY PLACE OF WORK, 1981

	<u>Carter County</u>	<u>Boyd County</u>	<u>Elliott County</u>	<u>Greenup County</u>
All Industries	\$221.37	\$332.20	\$240.41	\$404.94
Mining & Quarrying	377.13	388.27	419.31	*
Contract Construction	334.91	437.60	*	315.89
Manufacturing	221.24	464.65	206.94	572.98
Transportation, Communications & Public Utilities	318.11	374.68	275.56	420.63
Wholesale & Retail Trade	172.07	205.51	163.98	176.74
Finance, Insurance & Real Estate	230.16	252.86	*	241.66
Services	180.71	261.96	120.27	200.71
State/Local Government	211.11	259.09	192.87	206.57
Other	*	190.00	0	90.17

	<u>Lawrence County</u>	<u>Lewis County</u>	<u>Rowan County</u>
All Industries	\$224.27	\$180.90	\$225.52
Mining & Quarrying	271.61	0	369.14
Contract Construction	195.67	138.22	301.17
Manufacturing	182.94	168.93	222.37
Transportation, Communications & Public Utilities	*	199.01	332.21
Wholesale & Retail Trade	173.91	140.05	153.72
Finance, Insurance & Real Estate	239.27	231.15	283.30
Services	199.52	126.47	229.13
State/Local Government	190.59	227.61	249.46
Other	0	0	*

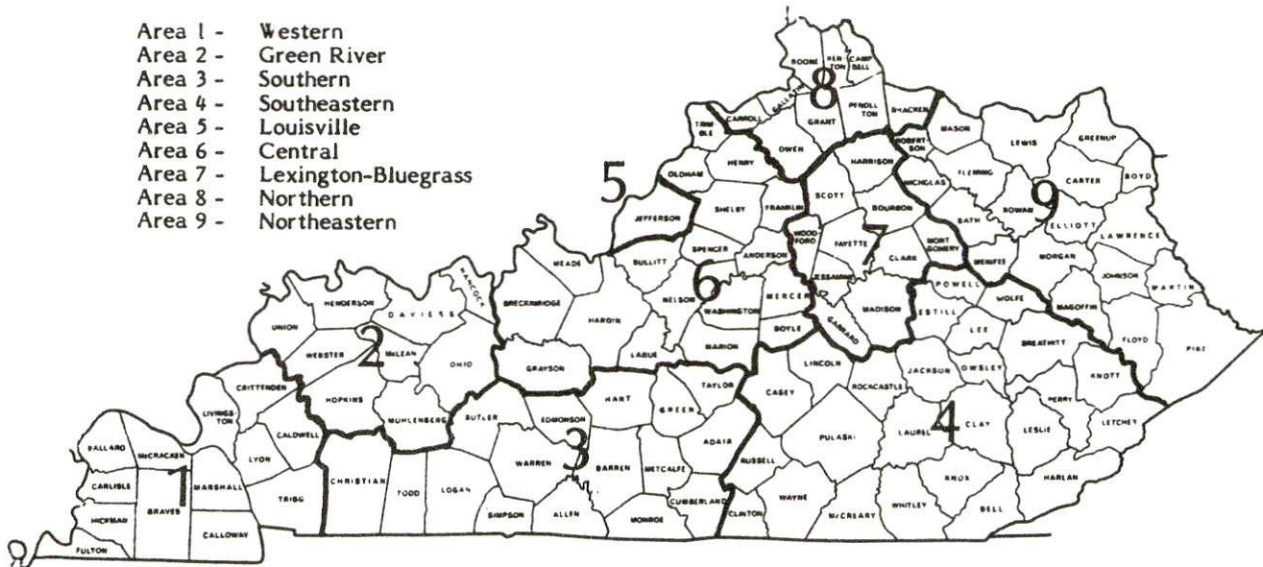
*Not disclosed.

Note: Excludes domestic workers, railway workers, certain nonprofit corporations, majority of federal government workers, and self-employed workers.

Source: Kentucky Cabinet for Human Resources, Average Weekly Wages of Workers Covered by Kentucky Unemployment Insurance Law, 1981.

Occupational wage rates for specific industries are usually not available to most government agencies, and wage data furnished to state employment agencies by individual industrial employers are protected from disclosure by federal law. The most reliable up-to-date wage information can be obtained by direct contact with local employers.

Associated Industries of Kentucky, a voluntary organization of Kentucky businesses, regularly collects occupational wage rates and fringe benefits data from participating member firms. Data are compiled for over 127 clearly defined office, production, and service occupations. Tabulations are published for nine geographical areas of Kentucky, as shown on the map below. It should be noted that the data may be weighted by the preponderance of firms in the larger cities and may be somewhat higher than the rates paid in the smaller communities. Data from these tabulations are available, upon request, from the Kentucky Department of Economic Development, Frankfort, Kentucky 40601.



Associated Industries of Kentucky Area Wage Surveys

PER CAPITA PERSONAL INCOME

<u>Area</u>	<u>1976</u>	<u>1980</u>	<u>Percent Change</u>
Carter County	\$3,409	\$4,729	38.7
Labor Market Area			
Range	\$3,341 - 6,419	\$4,590 - 9,474	N/A
Kentucky	5,263	7,662	45.6
U. S.	6,367	9,511	49.4

Source: U. S. Bureau of Economic Analysis, Kentucky Economic Information System, June 1982.

TRANSPORTATION

Rail

Line Serving Olive Hill - The Chessie System

Services - Main line; one eastbound and one westbound freight make daily stops; one eastbound and one westbound through freight daily; switching facilities; team track with space for seven cars; siding space available for 50 cars; nearest piggyback facilities are available at Louisville, Kentucky, 155 miles west of Olive Hill, and at Cincinnati, Ohio, 162 miles northwest of Olive Hill.

Grayson is not directly served by a rail line.

For details on routing, schedules, rates, and services, contact:

The Chessie System Railroads
Real Estate and Industrial Development Department
202 Dixie Terminal Building
Cincinnati, Ohio 45202
(513) 369-5258

Highways

Carter County is bisected by Interstate 64 and by U. S. Highway 60- a two-lane, class "AAA" (80,000-pound gross load limit) highway. Interstate 64 has interchanges at its intersection with Kentucky Route 2, 3 miles northwest of Olive Hill; and at its intersection with U. S. Highway 60, 4 miles northeast of Olive Hill; and at its intersection with Kentucky Route 1, 1 mile north of Grayson.

Truck Service

Company

Budig Western Trucking
Company (serves Olive Hill
only)*

Overnite Transportation
Company*

Reinhardt Transfer
Company**

Smith's Transfer Corporation,
Division of ARA Services**

Other Freight Services

Purolator Courier Corporation
(Olive Hill)***

United Parcel Service****

Home Office

1100 Gest Street
Cincinnati, Ohio 45203

1000 Semmes Avenue
P. O. Box 1216
Richmond, Virginia 23209

1412 10th Street
P. O. Box 7
Portsmouth, Ohio 45662

P. O. Box 1000
Staunton, Virginia 24401

Nearest Shipping Center

Huntington, West Virginia, 42 miles
east of Olive Hill

Ashland, Kentucky, 36 miles northeast
of Olive Hill

*Interstate and intrastate service.

**Interstate service only.

***For regular scheduled pickups or for occasional pickups, arrangements must be made with the Lexington, Kentucky office of Purolator Courier Corporation.

****For regular scheduled pickups or for occasional pickups, arrangements must be made with the Louisville office of United Parcel Service.

HIGHWAY MILES AND TRUCK TRANSIT TIME IN DAYS FROM
OLIVE HILL, KENTUCKY, TO SELECTED MARKET CENTERS

City	Highway Miles	Delivery		City	Highway Miles	Delivery	
		Time TL				Time TL	
Atlanta, Ga.	446	1		Los Angeles, Ca.	2,263	6	
Baltimore, Md.	473	2		Louisville, Ky.	155	1	
Birmingham, Ala.	482	1		Nashville, Tenn.	294	1	
Chicago, Ill.	436	1		New Orleans, La.	811	2	
Cincinnati, Ohio	162	1		New York, N. Y.	645	4-5	
Cleveland, Ohio	308	1		Pittsburgh, Pa.	305	1	
Detroit, Mich.	362	4		St. Louis, Mo.	418	1	
Knoxville, Tenn.	247	1					

Note: Mileage computations are via the best interstate or primary highways, not necessarily the most direct route of travel.

Sources: Rand McNally Interstate Road Atlas, 1981. Official Kentucky Mileage Map, 1980. Delivery time - Overnite Transportation Company, 1000 Semmes Avenue, P. O. Box 1216, Richmond, Virginia 23209.

Air

Local

Sellers Field
Location: 4 nautical miles south-southeast of Olive Hill
Runways: 1 paved
Length: 2,500 feet
Traffic
Control: Tetrahedron
Lighting: None
Services: Tie-down and hangar

Nearest Scheduled Commercial Airline Service

Tri-State Airport (Walker-Long Field)
Location: 9 miles southwest of Huntington, West Virginia;
38 miles east of Grayson and 51 miles east of
Olive Hill
Runways: 2 paved
Length: 6,509 feet and 3,007 feet
Traffic
Control: Tower
Lighting: Beacon, runway
Services: USAir, Piedmont, Aeromech, Comair; fuel - 100LL, jet;
tie-downs, hangars; major A & P repairs, major
Avionics repairs; APU, charter, flight instruction,
oxygen, plane rental, survival equipment, U. S.
Customs; taxi, limousine, car rental; restaurant
Air Freight
Service: Air freight terminal

Bus - Southern Greyhound Bus Lines serves Olive Hill and Grayson.

Taxi - One company provides service to Olive Hill and Grayson.

Rental Services - Auto, truck and trailer rentals are available in
Ashland, 23 miles northeast of Grayson and 36 miles
northeast of Olive Hill.

Water

Located 23 miles northeast of Grayson and 36 miles northeast of Olive Hill is the Ohio River at Ashland, where a 9-foot navigation channel is maintained. The Eastern Kentucky Riverport Authority is in the process of developing a public riverport at mile 321 of the Ohio River at Ashland. The riverport eventually will include docking facilities, warehouses, bulk storage areas and coal handling equipment.

POWER AND FUEL

Electricity

Company serving Olive Hill - Olive Hill Municipal Electric Company

Source of power - Kentucky Power Company

Total generating capacity - 1,065,000 KW

For industrial rates contact:

City of Olive Hill Utilities
P. O. Box 460
Olive Hill, Kentucky 41164
(606) 286-2192

and/or

Kentucky Power Company
1701 Central Avenue
P. O. Box 1428
Ashland, Kentucky 41101
(606) 329-2220

Company serving Grayson and sections of eastern and western

Carter County - Kentucky Power Company

Source of power - Kentucky Power Company

Total generating capacity - 1,065,000 KW

For industrial rates contact:

Kentucky Power Company
1701 Central Avenue
P. O. Box 1428
Ashland, Kentucky 41101
(606) 329-2220

Company serving central and northwestern Carter County - Grayson
Rural Electric Cooperative Corporation
Source of power - East Kentucky Power Cooperative
Total generating capacity - 1,304,000 KW
For industrial rates contact:

Industrial Development Division
East Kentucky Power Cooperative
P. O. Box 707
Winchester, Kentucky 40391
(606) 744-4812

and/or

Grayson Rural Electric Cooperative Corporation
109 Bagby Park
Grayson, Kentucky 41143
(606) 474-5136

Natural Gas

Company serving Olive Hill - City of Olive Hill Municipal Gas Company
Source of supply - Tennessee Gas Pipeline Company
Size of transmission mains - 26 inches (supplier);
3 and 2 inches (distributor)
Distribution mains - 8, 6 and 3 inches
Distribution pressure - 25 psi
Btu content - 1,005 per cubic foot
Specific gravity - 0.576
For rates and supplies contact:

City of Olive Hill Municipal Gas Company
P. O. Box 460
Olive Hill, Kentucky 41164
(606) 286-2191

Company serving Grayson - City of Grayson Utilities
Source of supply - Tennessee Gas Pipeline Company
Size of transmission mains - 24 inches (supplier);
4 inches (distributor)
Distribution mains - 1 to 4 inches
Distribution pressure - 120 to 10 psi
Btu content - 1,022 per cubic foot
Specific gravity - 0.6
For rates and supplies contact:

City of Grayson Utilities
302 East Main Street
Grayson, Kentucky 41143
(606) 474-6651

Other Fuels

Propane

Buckeye Gas Products Company
(bulk plant)
State Route 1947 West
P. O. Box 276
Grayson, Kentucky 41143

Prince & Ross Bottle Gas
Company (bulk plant)
U. S. 60 East
P. O. Box 328
Grayson, Kentucky 41143

Helton's Doxol Propane and
Appliances
U. S. 60 East
Grayson, Kentucky 41143

Fuel oils

Distillate fuel oil -

Ashland Oil Bulk Plant
Davis & Davis Distributors
(bulk plant)
McClave Street
P. O. Box 575
Grayson, Kentucky 41143

Waggoner Oil Company, Inc.
(bulk plant)
U. S. 60 East
P. O. Box 545
Olive Hill, Kentucky 41164

Qualls Oil Company, Inc.
(bulk plant)
U. S. 60 West
P. O. Box Q
Olive Hill, Kentucky 41164

Residual fuel oil - Arrangements must be made with the refinery.

Low sulphur content coal - Available in Kentucky.

WATER AND SEWERAGE

Public Water Supply

Company serving Olive Hill - City of Olive Hill Municipal Water Company*
P. O. Box 460
Olive Hill, Kentucky 41164
(606) 286-2192

Source - Olive Hill City Reservoir
Treatment plant capacity - 1,300,000 gallons per day
Average daily consumption - 400,000 gallons
Peak daily consumption - 460,000 gallons
Type treatment - Chlorination, coagulation, filtration, fluoridation
and sedimentation
Storage capacity - 950,000 gallons including clearwell
Size lines - 10, 8 and 6 inches
Average pressure - 40 psi
Average temperature - 40 degrees F.

MONTHLY WATER RATES

Inside City

First	2,000 gallons	\$6.00 (Minimum)
Next	3,000 gallons	2.50 per M gallons
Next	5,000 gallons	2.25 per M gallons
Next	5,000 gallons	2.00 per M gallons
Next	5,000 gallons	1.75 per M gallons
Next	5,000 gallons	1.50 per M gallons
Next	25,000 gallons	1.25 per M gallons
All over	50,000 gallons	1.00 per M gallons

Minimum Monthly Charges

Meter size:	5/8-inch - \$ 6.00
	3/4-inch - 6.00
	1-inch - 10.00
	1 1/2-inch - 14.00
	2-inch - 21.00
	3-inch - 42.00
	4-inch - 91.00

Tap-on charge: \$100

(Cont'd.)

*A new 200,000-gallon elevated tank was recently put into use in the Olive Hill water system.

Outside City

First	2,000 gallons	\$9.15 (Minimum)
Next	3,000 gallons	3.50 per M gallons
Next	5,000 gallons	3.25 per M gallons
Next	5,000 gallons	3.00 per M gallons
Next	5,000 gallons	2.75 per M gallons
Next	5,000 gallons	2.25 per M gallons
Next	25,000 gallons	1.75 per M gallons
All over	50,000 gallons	1.25 per M gallons

Minimum Monthly Charges

Meter size:	5/8-inch - \$ 9.15
	3/4-inch - 10.50
	1-inch - 13.00
	1 1/2-inch - 18.50
	2-inch - 27.00
	3-inch - 54.00
	4-inch - 117.00

Tap-on charge: \$150

Company serving Grayson - City of Grayson Utilities*
302 East Main Street
Grayson, Kentucky 41143
(606) 474-6651

Source- Little Sandy River

Treatment plant capacity - 1,500,000 gallons per day

Average daily consumption - 800,000 gallons

Peak daily consumption - 1,000,000 gallons

Type treatment - Chlorination, coagulation, filtration and
fluoridation

Storage capacity - 860,000 gallons

Size lines - 12, 10, 8, 6, 4, 3 and 2 inches

Average pressure - 80 psi

Average temperature - 60 degrees F.

(Cont'd.)

*The City of Grayson upgraded its treatment plant in 1982. The \$600,000 project included the addition of new pumps and effectively doubled the plant's treatment capacity.

MONTHLY WATER RATES

First	2,000 gallons	\$7.00 (Minimum)
Next	8,000 gallons	1.65 per M gallons
All over	10,000 gallons	1.25 per M gallons

Minimum Monthly Charges

<u>Meter size</u>	<u>Minimum water usage</u>	<u>Minimum bill</u>
Smaller than 1-inch	2,000 gallons	\$ 7.00
1-inch	10,000 gallons	20.20
1 1/2-inch	25,000 gallons	38.95
2-inch or larger	50,000 gallons	70.20

A \$2.00 monthly surcharge is billed to customers outside the city limits.

Tap-on charge: Inside city - \$200 for 5/8-inch meter
Outside city - \$300 for 5/8-inch meter
For larger meters, the installation charge includes the standard tap-on fee plus the cost of the meter.

Raw Water

Surface water sources - Grayson Lake, Little Sandy River and Tygarts Creek
Average discharge - Little Sandy River at Grayson, 478 cfs
(43 years, USGS, unadjusted); Tygarts Creek at Olive Hill,
87.7 cfs (24 years, USGS)
Expected ground water yield - 5 gpm or less in extreme western
Carter County; 50 to 200 gpm in southeastern corner of county,
5 to 50 gpm over remainder of county

Sewerage

Company serving Olive Hill - City of Olive Hill Municipal Sewerage
Treatment Plant
P. O. Box 460
Olive Hill, Kentucky 41164
(606) 286-2930
Design capacity - 250,000 gallons per day
Average daily flow - 125,000 gallons
Treatment - Primary
Type treatment - Cold floating top digester, drying beds
Treated effluent discharged into - Tygarts Creek
Size of sanitary mains - 8, 6 and 4 inches
Size of storm mains - 24, 12 and 8 inches
Rates - 50 percent of monthly water bill
Tap-on charge: \$100 (Inside city)
\$150 (Outside city)

Company serving Grayson - City of Grayson Utilities
302 East Main Street
Grayson, Kentucky 41143
(606) 474-6651

Design capacity - 235,000 gallons per day

Average daily flow - At capacity*

Treatment - Primary and secondary

Type treatment - Clarifier, drying beds, trickling filter

Treated effluent discharged into - Little Sandy River

Size of sanitary mains - 12, 10, 8 and 6 inches

Size of storm mains - 12 inches

Rates - Based upon water usage

First	2,000 gallons	\$5.45 (Minimum)
All over	2,000 gallons	.75 per M gallons

Tap-on charge: Residential - \$100
Commercial 125

*Kentucky Natural Resources and Environmental Protection Cabinet.

CLIMATE

Carter County

Temperature

Normal (30-year record)	54.6 degrees
Average annual 1981	53.1 degrees
Record highest, August 1918 (93-year record)	106.0 degrees
Record lowest, February 1899 (93-year record)	-27.0 degrees
Normal heating degree days (30-year record)	4,817
(Heating degree day totals are the sums of negative departures of average daily temperatures from 65 degrees F.)	

Precipitation

Normal (30-year record)	38.44 inches
Mean annual snowfall (94-year record)	24.40 inches
Total precipitation 1981	26.68 inches
Mean number days precipitation (.01 inch or more) (93-year record)	141
Mean number days thunderstorms (76-year record)	44

Relative Humidity

1 a.m.	N/A
7 a.m.	80 percent (60-year record)
1 a.m.	56 percent (31-year record)
7 p.m.	68 percent (60-year record)

Source: U. S. Department of Commerce, Environmental Science
Services Administration, Climatological Data, 1981.
Station of record: Parkersburg, West Virginia.

LOCAL GOVERNMENT

City

Olive Hill

Structure - Mayor - 4-year term; 6 council members - 2-year terms
 Budget 1983 - General Fund \$304,700
 Water and Sewer Fund 348,000
 City Gas System 540,600
 Fees and licenses - Unloading license - \$25.00 per year

Grayson

Structure - Mayor - 4-year term; 6 council members - 2-year terms
 Budget 1982-83 - General Fund \$ 390,150
 City Gas, Water
 and Sewer Fund 1,119,900
 Fees and licenses - Unloading license - \$30.00 per year

County

Structure - County Judge/Executive - 4-year term;
 5 magistrates - 4-year terms
 Budget 1982-83 - General Fund \$396,979; Road Fund \$368,995

Assessed Value of Property, 1982*

<u>Classes of Property</u>	<u>Olive Hill (1981)</u>	<u>Grayson</u>	<u>Carter County</u>
Real Estate	\$14,955,990	\$26,651,318	\$169,978,431
Tangibles	7,230,076	8,465,905	50,925,056

*Excludes Homestead Exemptions.

Property Taxes

All property in Kentucky is assessed at 100 percent of fair cash value.

Land and buildings are taxed by the state and may be taxed by local jurisdictions. The state rate is \$0.224 per \$100 of assessed valuation.

Manufacturing machinery, raw materials inventories, pollution control equipment, and goods in the process of manufacture are not subject to local taxation. The state rate is \$0.15 per \$100.

Other tangible personal property owned by manufacturers (automobiles, trucks, finished goods, office furniture, office equipment) is taxed by the state at \$0.45 per \$100 and may be taxed by local jurisdictions.

Intangible personal property located in Kentucky (money in hand, shares of stock, notes, bonds, accounts receivable, and other credits) is taxed by the state at \$0.25 per \$100, and is not subject to local taxation.

Property stored in public warehouses in a transit status is not subject to local taxation. The state rate is only \$0.015 per \$100.

Private leaseholds in industrial facilities owned by cities or counties and financed by industrial revenue bonds are subject to a state tax of \$0.015 per \$100 of value (essentially the lessee's equity, adjusted for appreciation or depreciation). Local taxation is not permitted.

Combined State and Local Rates Per \$100 Valuation, 1982*
(100% assessment)

	<u>Site Inside City of Olive Hill and within the Carter County School District</u>	<u>Site Inside City of Grayson and within the Carter County School District</u>
1. Land and buildings	\$0.7015	\$0.653
2. Mfg. machinery, raw materials, goods in process, pollution control equipment	0.1500	0.150
3. Finished goods, office equipment, vehicles, other tangibles	0.9625	0.914
4. Intangibles (accounts rec., notes, bonds, etc.)	0.2500	0.250
5. Property stored in public warehouses in a transit status	0.0150	0.015
6. Leaseholds in industrial revenue bond financed plants	0.0150	0.015
	<u>Site Inside Unincorporated Carter County</u>	
1. Land and buildings	\$0.483	
2. Mfg. machinery, raw materials, goods in process, pollution control equipment	0.015	
3. Finished goods, office equipment, vehicles, other tangibles	0.744	
4. Intangibles (accounts rec., notes, bonds, etc.)	0.250	
5. Property stored in public warehouses in a transit status	0.015	
6. Leaseholds in industrial revenue bond financed plants	0.015	

*Kentucky Department of Economic Development.

Planning and Zoning

At the present time there is no active planning and zoning commission in Olive Hill or Grayson.

Mandatory state codes enforced - Kentucky Plumbing Code, National Electric Code, Kentucky Boiler Regulations and Standards, Kentucky Building Code (modeled after BOCA code)

Safety

<u>Police</u>	<u>Olive Hill</u>	<u>Grayson</u>	<u>Carter County</u>
Total staff	8	7 full-time 2 part-time	5
Radio-patrol cars	3	5	3
<u>Fire</u>			
Insurance Services Office, Public Protection Classification	7	7	Olive Hill and Grayson fire departments provide fire protection for Carter County
Volunteers	25	27	

Rescue Service

Olive Hill Rescue Squad:

Number of volunteers - 20

Equipment - Rescue van, jeep, first aid equipment, flood lights, generator, saws, and "Jaws of Life" rescue apparatus

Personnel training - Emergency medical technician training, cardiopulmonary resuscitation training, fire fighting

Grayson Fire Department Rescue Squad:

Number of volunteers - 20

Equipment - Rescue unit equipped with "Jaws of Life," oxygen, metal saw, pneumatic chisel, and first aid equipment

Personnel training - Fire fighting, first aid, cardiopulmonary resuscitation, four volunteers with emergency medical technician training

Refuse Collection and Disposal

	<u>Olive Hill</u>	<u>Grayson</u>
Type service	Municipal	Private
Fee charged:		
residential	\$5 per month	\$3 to \$5 per month
business	By contract	By contract
industrial	By contract	By contract
Collection frequency:		
residential	Weekly	Weekly
business	3 to 5 times weekly	By contract
industrial	By contract	By contract
Disposal method	Landfill	Landfill

The Carter County landfill is available for public use; the fees are: \$3.00 per truck load, \$6.00 dump truck load, and \$1.25 per cubic yard for larger truck loads.

EDUCATION

Public Schools

Carter County*

Total Enrollment (Fall, 1982)	5,510
Elementary	3,794
High School	1,716
Student-Teacher Ratio	18-1
Elementary	16-1
High School	21-1
Percent High School Graduates to College (1982)	39.3
Expenditures Per Pupil (1981-82)	\$1,398.67
Bonded Indebtedness (June 30, 1981)	\$4,070,000 **

*Improvements and renovation projects worth approximately \$600,000 have been completed by the Carter County school system since 1981. Approximately \$350,000 worth of additional projects are currently under way, including the construction of two new baseball fields.

**Includes refunding issue of \$1,210,000.

Area Colleges and Universities

<u>Name</u>	<u>Location (Miles distant from Olive Hill)</u>	<u>Enrollment (Fall, 1981)</u>	<u>Highest Degree Conferred</u>
Kentucky Christian College	Grayson, Kentucky (15)	457	Baccalaureate
Morehead State University	Morehead, Kentucky (19)	6,739	Masters, Specialist/ Doctorate*
Ashland Community College	Ashland, Kentucky (36)	1,572	Associate
Ohio University (Ironton Campus)	Ironton, Ohio (42)	1,242	Academic and Professional
Marshall University	Huntington, West Virginia (42)	11,846	Academic and Professional
Shawnee State Community College	Portsmouth, Ohio (46)	2,130	Associate
Maysville Community College	Maysville, Kentucky (63)	547	Associate
Lexington Technical Institute	Lexington, Kentucky (84)	2,302	Associate
Transylvania University	Lexington, Kentucky (84)	750	Baccalaureate/ Masters**
University of Kentucky	Lexington, Kentucky (84)	23,441	Doctorate, M.D., D.M.D., J.D.

Kentucky Christian College is a Bible College which was established in Grayson in 1919. The college is a non-profit educational institution designed especially for the preparation of men and women who plan to enter specialized, church-related vocations. Bachelor of Arts, Bachelor of Science, and Bachelor of Theology degrees are conferred by the college. A teacher education program was added in 1982.

*Joint doctoral degree programs are offered in cooperation with the University of Kentucky, Lexington.

**Courses in the masters degree program are taught on the Transylvania campus by faculty members of Xavier University of Cincinnati. The degree is issued by Xavier University.

Vocational Schools

Both the state vocational-technical schools and the area vocational education centers are operated by the Kentucky Department of Education. The state vocational-technical schools enroll persons full time who are at least 16 years of age and not in school. These students attend classes for six hours each day. The area vocational education centers are designed to accommodate high school students who are at least 15 years of age. These students attend vocational school for three hours each day. The state vocational-technical schools and the area education centers offer evening courses to enable working adults to upgrade current job skills.

Nearest State School

Location	Ashland State Vocational-Technical School Ashland
Miles Distant	36 from Olive Hill
Curriculum	Business and Office General Clerical Secretarial-Stenographic Consumer and Home Economics Child Care Commercial Foods Health and Personal Services Occupations Cosmetology Nurse Assistant Practical Nursing Industrial Education Auto Body Repair Auto Mechanics Carpentry-Building Trades Drafting Heavy Equipment Maintenance Industrial Electricity Industrial Electronics Instrumentation Machine Shop Radio and Television Repair Tool and Die Making Welding

Nearest Area Education Center

Carter County Area Vocational Education Center

Location	Olive Hill
Curriculum	Industrial Education Auto Body Repair Auto Mechanics Carpentry/Building Trades Drafting Electricity Welding

Arrangements can be made to provide training in the specific production skills required by an industrial plant. Instruction may be conducted either in the vocational school or in the industrial plant, depending upon the desired arrangement and the availability of special equipment.

HEALTH

Local Medical Personnel

	<u>Olive Hill</u>	<u>Grayson</u>
Physicians -	3	2
Dentists -	2	4

Hospitals

<u>General Hospital</u>	<u>Location</u>	<u>Beds</u>
St. Clair Medical Center	Morehead, 19 miles southwest of Olive Hill	170
King's Daughters' Hospital*	Ashland, 36 miles northeast of Olive Hill	340

St. Clair Medical Center

General hospital facilities and services - 14-station emergency room, 4 operating rooms, 3 delivery rooms, 10-bed intensive/coronary care unit, physical therapy department, diagnostic radiology (ultrasound, nuclear medicine, C.T. scan, special procedures), EKG laboratory, blood bank, pharmacy, respiratory therapy, clinical and histology laboratory, medical library, speech pathology, mental health, home health and homemaker services, in-home hospice, inpatient and out-patient services, sponsors 2 primary care centers

Medical staff - 4 general surgeons, anesthesiologist, 2 urologists, 2 orthopedists, 2 pediatricians, 2 obstetricians, 2 radiologists, 5 family medicine physicians, 5 internal medicine specialists, pathologist, 2 oral surgeons, 2 EENT surgeons, psychiatrist, 53 registered nurses, 25 licensed practical nurses, 12 laboratory technicians, 11 X-ray technicians, 3 pharmacists, 3 physical therapists, 4 respiratory therapists

*A major expansion project is currently under way at King's Daughters' Hospital. The \$12.9 million project includes the addition of two floors onto the existing building and new 4-story (plus basement) building which will connect to the present facility. Construction on the project began in April 1982 with an estimated two years until completion.

King's Daughters' Hospital

General hospital facilities - Emergency room, seven operating rooms, recovery room, X-ray, laboratory, OB section, pediatrics, pediatrics special care unit, intensive care unit, cardiac care unit, 17-bed psychiatric unit, occupational therapy, physical therapy, respiratory therapy, nuclear medicine, home health services, cardiac rehabilitation program, prenatal clinic, EKG, EEG, blood bank, CAT Scanner, 20-bed unit for alcoholism

Medical staff - 74-physicians on active staff, 18 physicians on courtesy staff, 9 dentists, 2 pathologists, 194 registered nurses (full-time), 61 registered nurses (part-time), 97 licensed practical nurses, 9 emergency medical technicians, 21 X-ray technicians

Other Medical Facilities

Carter County Clinic in Grayson

Ambulance Service

Name - Carter County Emergency Service

Staff - 14 full-time staff, 3 full-time dispatchers, 3 part-time dispatchers

Service - 24-hour emergency service to Carter County and surrounding areas

Equipment - 4 ambulances

Public Health

Facility - Little Sandy District Health Department at Grayson

Staff - 1 registered nurse, 1 health environmentalist, 1 nutritionist, 3 clerks

Facility - West Carter County Health Center at Olive Hill

Staff - 2 registered nurses, 1 clinician, 3 clerks

Facility - Carter County Health Center at Grayson

Staff - 3 registered nurses, 1 health environmentalist, 4 clerks

OTHER LOCAL FACILITIES

Communications

	<u>Olive Hill</u>	<u>Grayson</u>
Telephone -	General Telephone Company of Kentucky	General Telephone Company of Kentucky
Services -	Standard	Standard
Telegraph -	Western Union	Western Union
Services -	Counter at Olive Hill; Toll-free number, 1-800-325-5100	Toll-free number, 1-800-325-5100
Postal - U. S. Post Office		
Class -	Second	First
Mail received -	Once daily	Once daily
Mail dispatched -	Once daily	Once daily
Newspaper -	-	Journal-Times (combination newspaper)
Weekly and circulation -	-	7,000
Other papers received from -	Ashland, Louisville and Lexington, Kentucky; Cincinnati, Ohio; Huntington, West Virginia	Ashland and Louisville, Kentucky; Huntington, West Virginia
Radio -	-	WGOH-AM, WUGO-FM, WKCC-FM
Stations received from -	Grayson, Morehead, Ashland, Prestonsburg, Lexington and Louisville, Kentucky; Huntington, West Virginia; Nashville, Tennessee	Ashland, Greenup, Louisville and Paintsville, Kentucky; Cincinnati, and Portsmouth, Ohio; Huntington, West Virginia
Television -		
Cable service		
Reception from -	Lexington, Kentucky; Cincinnati, Ohio; Huntington and Charleston, West Virginia	Lexington, Kentucky; Cincinnati, Ohio; Huntington and Charleston, West Virginia

	<u>Olive Hill</u>	<u>Grayson</u>
Kentucky Educational Television	Morehead transmitter - Channel 38	Morehead transmitter - Channel 38

Library Services

College library - Lusby Memorial Library, Kentucky Christian College at Grayson*
 Size collection - 80,000 volumes
 Circulation, 1981-82 - 7,000
 Services - Films, records, magazines, newspapers, periodicals, Interlibrary Loan, copier, audio-visual equipment
 Special collections - Restoration movement

Religious Institutions

	<u>Olive Hill</u>	<u>Grayson</u>
Denominations -	Baptist Christian Church of Christ Church of Holiness Methodist Mormon Nazarene Wesleyan	Baptist Christian Church of Christ Church of God Church of God of Prophecy Freewill Baptist Methodist Nazarene Pentecostal Presbyterian Roman Catholic Seventh Day Adventist
Nearest Synagogues - Congregations	Ashland, 36 miles northeast of Olive Hill and 23 miles northeast of Grayson Agudath Achim (reform)	

*The Lusby Memorial Library was moved to a new 15,000-square-foot building during the latter half of 1981. The \$700,000 structure contains seating capacity for 300 persons, an instructional resource center, seminar rooms and archives.

Financial Institutions

<u>Banks</u>	<u>Assets</u>	<u>Deposits</u>	<u>Statement Date</u>
The Commercial Bank of Grayson	\$46,956,054.42	\$41,421,616.56	6/30/82
First National Bank of Grayson	53,777,126.21	43,489,731.90	3/31/82
Peoples Bank of Olive Hill	52,291,350.00	41,363,216.00	6/30/82
<u>Savings and Loan Associations</u>	<u>Assets</u>	<u>Savings Accounts</u>	<u>Statement Date</u>
Catlettsburg Federal Savings and Loan Association	\$31,491,567.79	\$27,230,669.08	12/31/81

Hotels and Motels

	<u>Olive Hill</u>	<u>Grayson</u>
Total number -	1	2
Total rooms -	28	90

Additional lodging facilities are available at Carter Caves State Resort Park.

Clubs and Organizations

Olive Hill

American Legion
American Legion Auxiliary
Boy Scouts
Bud and Bloom Club
Carter County Shrine Club
Eastern Star
Fish and Game Club
4-H
Garden Club
Girl Scouts
Jaycees
Little League Baseball
Masons
Ministerial Association
Olive Hill Chamber of Commerce
Parents-Teachers Association
Rotary
Skyline Trap Shoot Club

(Cont'd.)

Grayson

American Legion
Art Club
Boys Scouts
Boosters Club
Carter County Fair Board
Cub Scouts
Eagles
Eastern Star
Food Cooperative
4-H
Future Farmers of America
Future Homemakers of America
Garden Club
Girl Scouts
Grayson Area Chamber of Commerce
Graysonian Homemakers
Hospice
Jaycees
Junior Women's Club
Lioness Club
Lions Club
Little League Baseball
Little Sandy Fish and Game Club
Masons
Ministerial Association
Parents-Teachers Association
REA Ladies Club
Rotary Club
Shriners
Veterans of Foreign Wars
Younger Women's Club
Women's Club

RECREATION

Local

Recreational facilities in Olive Hill's city park include a swimming pool, a playground, and a picnic area with a shelter house. The Carter County Shrine Club Park, also at Olive Hill, contains a ballfield and a horse park with stables. A second ballfield is located at the Olive Hill high school.

The Eastern Kentucky Homecoming, an event held annually in Olive Hill, features the famed Olive Hill entertainer and songwriter Tom T. Hall and the Tom T. Hall golf tournament. Other attractions of the event are a parade, a horse show, a beauty pageant, music, and local arts and crafts.

Recreational facilities in Grayson include a new swimming pool and bathhouse, tennis courts, ballfields, playgrounds and picnic areas. Two new tennis courts are scheduled to be added in 1983.

The annual Grayson Memory Days festival features a parade, street dancing, and Jaycee horse show.

Carter Caves State Resort Park, 6 miles north of Olive Hill, provides a restful atmosphere with its mountain wildflowers, a rippling stream, the underground wonders of three caves, a lodge, a restaurant, and gift shop. Recreational facilities available include something for the whole family with playgrounds, two swimming pools (one Olympic-size), horseback riding, picnicking, and cave tours.

A trip down Tygarts' Creek near Olive Hill offers an opportunity for canoeing, spelunking, hiking, and picnicking. Scheduled canoe trips are available.

Grayson Lake State Park is located 7 miles south of Grayson. Facilities available include 71 campsites and a picnic area. Good fishing and organized recreational programs can be found during the summer. The park is located in the 7,350-acre Grayson Lake Wildlife Area. Hunting information is available from the Kentucky Department of Fish and Wildlife Resources. The Rosendale Recreation Area, located near a dam on Grayson Lake, includes Kitchen House, a log house circa 1838 which was the scene of a Civil War skirmish. The nearby Camp Webb Conservation Center has a wildlife museum.

Area (Within 36 miles)

Lying 14 miles west of Olive Hill is the Daniel Boone National Forest, a strip of timberland which encompasses 670,000 acres of eastern Kentucky. Recreational opportunities of all types abound in this rugged area.

Greenbo Lake State Resort Park, which is located 16 miles north of Grayson, has a magnificent fieldstone lodge and every article in each room of the lodge has been made in Kentucky. The lodge offers 36 lodge rooms, a dining room, a gift shop, a meeting room, a lodge pool, and a recreation room. Other facilities and activities at the park include a well-equipped campground, a marina, miniature golf, tennis courts, playgrounds, shuffleboard, planned recreation, fishing, hiking, horse-back riding, and picnicking.

Morehead State University at Morehead, Kentucky, 19 miles southwest of Olive Hill, offers a variety of cultural and athletic activities which may be enjoyed by the public year-round.

The 8,270-acre Cave Run Lake, located 26 miles southwest of Olive Hill, offers boating, fishing and camping within the Daniel Boone National Forest.

Numerous recreational opportunities are also available at Ashland, 36 miles northeast of Olive Hill, including athletics, cultural events, private and public entertainment facilities, fairs and festivals.

COMMUNITY IMPROVEMENTS

Recent

The Bank of Olive Hill recently completed an expansion project which increased the size of its Downtown office and added three new drive-through windows. A new full-service branch of the bank was also recently constructed at Pleasant Valley.

The City of Grayson completed a project to upgrade its water treatment plant in 1982. The \$600,000 project included the installation of new pumps and effectively doubled the plant's treatment capacity.

Kentucky Christian College's Lusby Memorial Library moved to a new \$700,000 building in 1981. The new facility has 15,000 square feet of floor space, seating for 300 persons, an instructional resource center, seminar rooms and archives.

The Grayson city park was opened recently and contains a new swimming pool and bathhouse.

The sidewalks along Grayson's Main Street were replaced in a \$20,000 project completed in September of 1982.

The Commercial Bank of Grayson installed a new branch facility at the Kentucky Highway 1 interchange with Interstate 64.

Highways in Carter County underwent extensive resurfacing in 1982. These included Interstate Highway 64 and U. S. Highway 60. A new bridge at Carter City on Kentucky Highway 2 was also completed in 1982.

Extensive renovations have been completed in the buildings of the Carter County school system since January 1981. The projects cost approximately \$600,000 and included new classrooms at the high schools, new heating and air conditioning systems in the buildings, and two new baseball fields.

A new Olympic-size swimming pool has been completed at Carter Caves State Resort Park.

Under Way

Construction is nearing completion on 45 new homes for low and middle-income families in Olive Hill.

Renovation of the Dixie Park area of Grayson is continuing with approximately \$3,000,000 having been spent thus far to install new sewers, streets, sidewalks and eight new houses.

Planned

Plans are being made to install a \$130,000 raw-water line from Tygarts Creek to the Olive Hill reservoir.

The City of Grayson is studying the feasibility of adding a "911" emergency number system to its telephone exchange.

Carter County government has applied for an Appalachian Regional Commission grant to extend water service to areas of the county south and east of Grayson. Approximately 10 percent of the total water treatment capacity of the City of Grayson Utilities will be made available to this area.



Kentucky Department of Economic Development
Capital Plaza Tower
Frankfort, Kentucky 40601 • Phone (502) 564-4270