

1981

Industrial Resources: Clark County - Winchester

Kentucky Library Research Collections
Western Kentucky University, spcol@wku.edu

Follow this and additional works at: https://digitalcommons.wku.edu/clark_cty

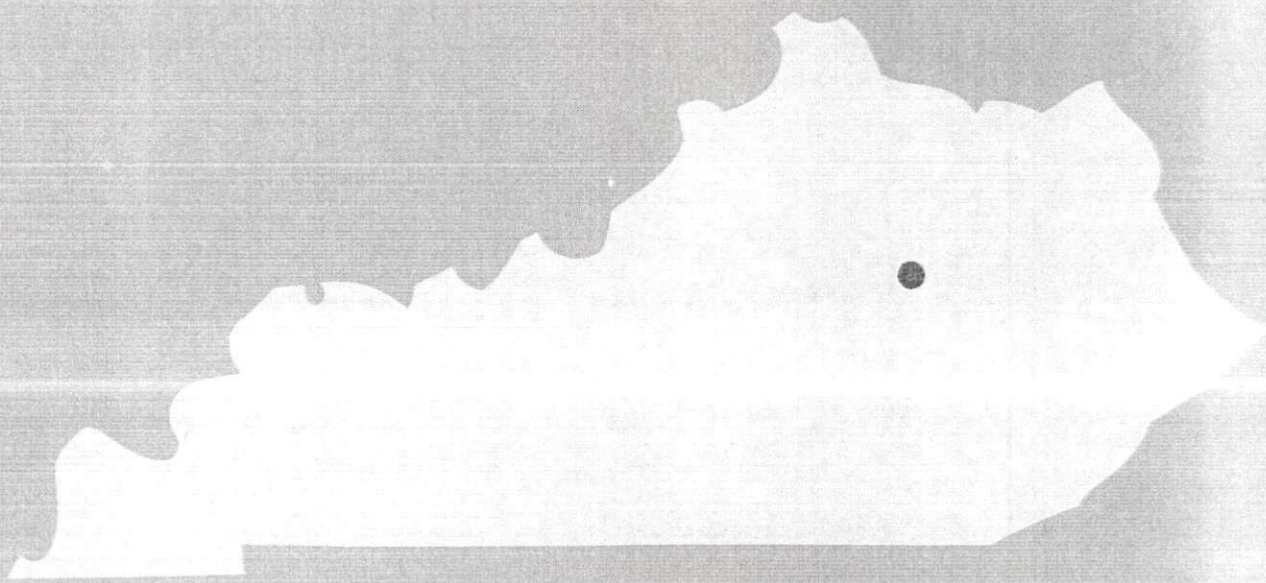
 Part of the [Business Administration, Management, and Operations Commons](#), [Growth and Development Commons](#), and the [Infrastructure Commons](#)

Recommended Citation

Kentucky Library Research Collections, "Industrial Resources: Clark County - Winchester" (1981). *Clark County*. Paper 18.
https://digitalcommons.wku.edu/clark_cty/18

This Report is brought to you for free and open access by TopSCHOLAR®. It has been accepted for inclusion in Clark County by an authorized administrator of TopSCHOLAR®. For more information, please contact topscholar@wku.edu.

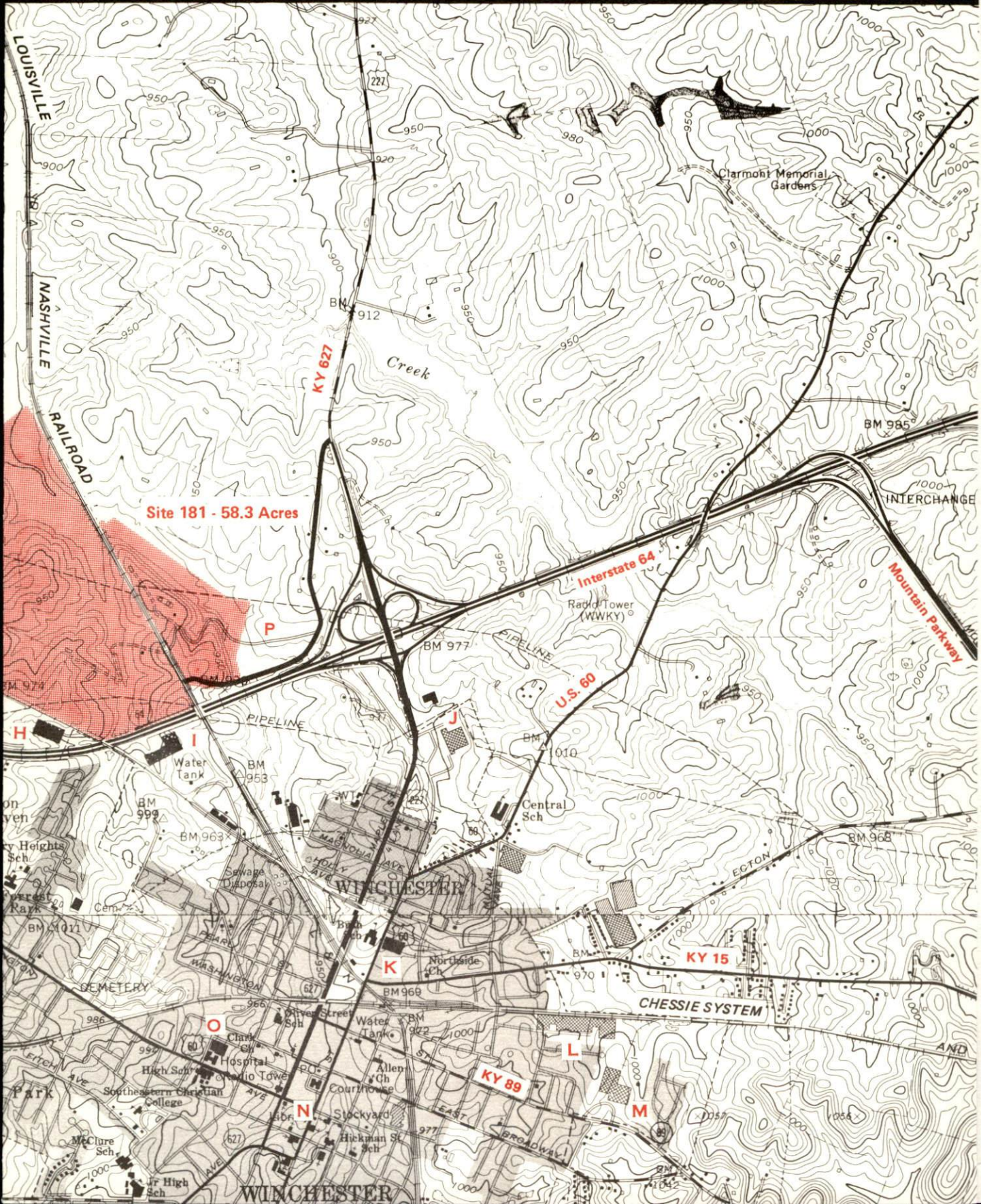
A comprehensive
report on
Winchester, Ky.

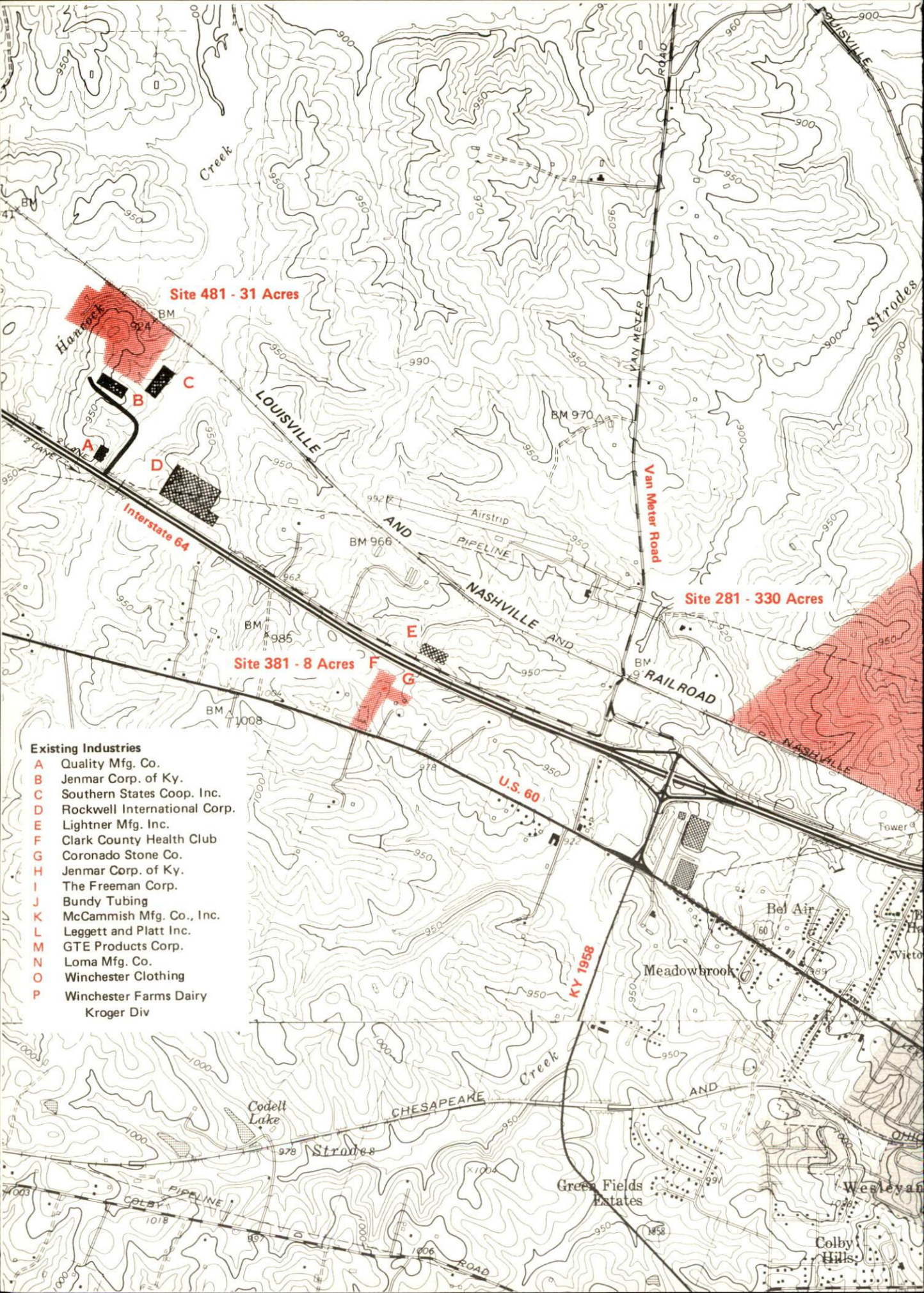


KENTUCKY & CO.
The state that's run like a business.

WINCHESTER, KENTUCKY --- Index to Industrial Sites --- 1981

For detailed data on industrial sites contact Mr. James J. Coleman, East Kentucky Power Cooperative, P. O. Box 707, Winchester Kentucky 40391 (606-744-4812), or the Kentucky Commerce Cabinet, Office of Industrial Development, New Industry Division, Capital Plaza Tower, Frankfort, Kentucky 40601 (502-564-7140).





Site 481 - 31 Acres

Site 281 - 330 Acres

Site 381 - 8 Acres

Existing Industries

- A** Quality Mfg. Co.
- B** Jenmar Corp. of Ky.
- C** Southern States Coop. Inc.
- D** Rockwell International Corp.
- E** Lightner Mfg. Inc.
- F** Clark County Health Club
- G** Coronado Stone Co.
- H** Jenmar Corp. of Ky.
- I** The Freeman Corp.
- J** Bundy Tubing
- K** McCammish Mfg. Co., Inc.
- L** Leggett and Platt Inc.
- M** GTE Products Corp.
- N** Loma Mfg. Co.
- O** Winchester Clothing
- P** Winchester Farms Dairy
Kroger Div

A COMPREHENSIVE REPORT ON
WINCHESTER, KENTUCKY

Prepared by
The Kentucky Department of Commerce
Division of Research and Planning
in cooperation with
The Winchester-Clark County Chamber of Commerce

1981

Program manager - Brenda Roberts; research - Andrew Dennis; clerical - Shirley Wood; graphics - Frank Ferrante, Tony Cecconi, Jimmy Thompson; cartography - Economic Development Division. Cost of printing paid from state funds.

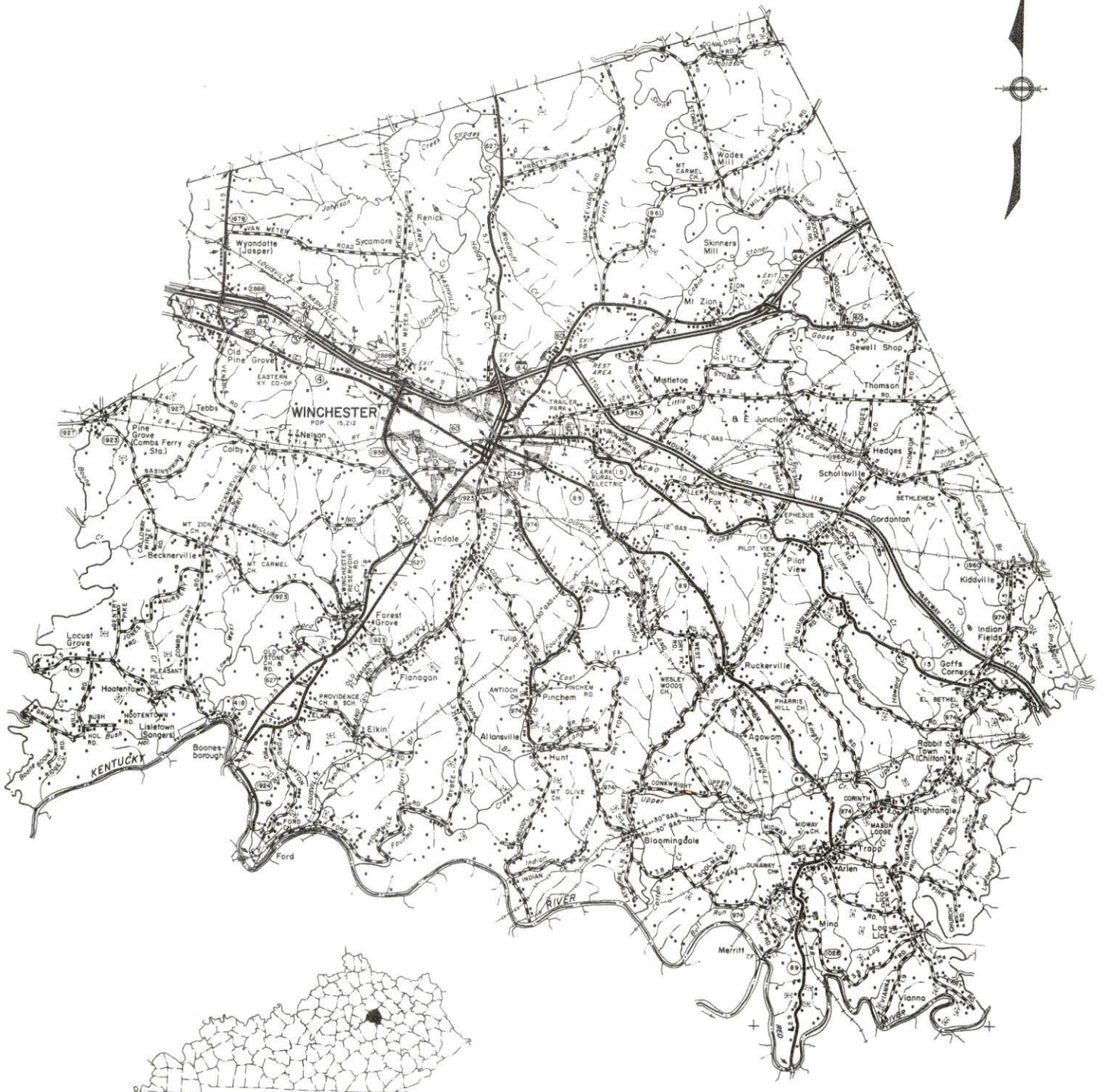
TABLE OF CONTENTS

<u>Chapter</u>	<u>Page</u>
INDUSTRIAL SITES	i
WINCHESTER, KENTUCKY - A RESOURCE PROFILE	1
THE LABOR MARKET AREA	3
Population	3
Labor Force Characteristics of Residents, 1980	3
Estimated Male Labor Supply	4
Estimated Female Labor Supply	4
Winchester Manufacturing Firms, Their Products and Employment	5
Labor Organizations in Manufacturing Firms	8
Industrial Services	8
Average Weekly Wages by Industry, by Place of Work, 1980	9
Per Capita Personal Income	11
TRANSPORTATION	12
Rail	12
Highways	12
Truck Service	13
Air	15
Bus	15
Taxi	15
Rental Services	15
Water	16
POWER AND FUEL	17
Electricity	17
Natural Gas	18
Other Fuels	18
WATER AND SEWERAGE	19
Water	19
Sewerage	21
CLIMATE	22

<u>Chapter</u>	<u>Page</u>
LOCAL GOVERNMENT	23
City	23
County	23
Assessed Value of Property	23
Property Taxes	24
Combined State and Local Rates Per \$100 Valuation, 1980	24
Planning and Zoning	25
Safety	25
Police	25
Fire	25
Rescue Service	25
Refuse Collection and Disposal	25
EDUCATION	26
Public Schools	26
Nonpublic Schools	26
Area Colleges and Universities	27
Vocational Schools	28
HEALTH	30
Local Medical Personnel	30
Hospitals	30
Other Medical Facilities	30
Ambulance Service	30
Public Health	30
OTHER LOCAL FACILITIES	31
Communications	31
Library Services	31
Religious Institutions	32
Financial Institutions	32
Hotels and Motels	32
Clubs and Organizations	33
RECREATION	34

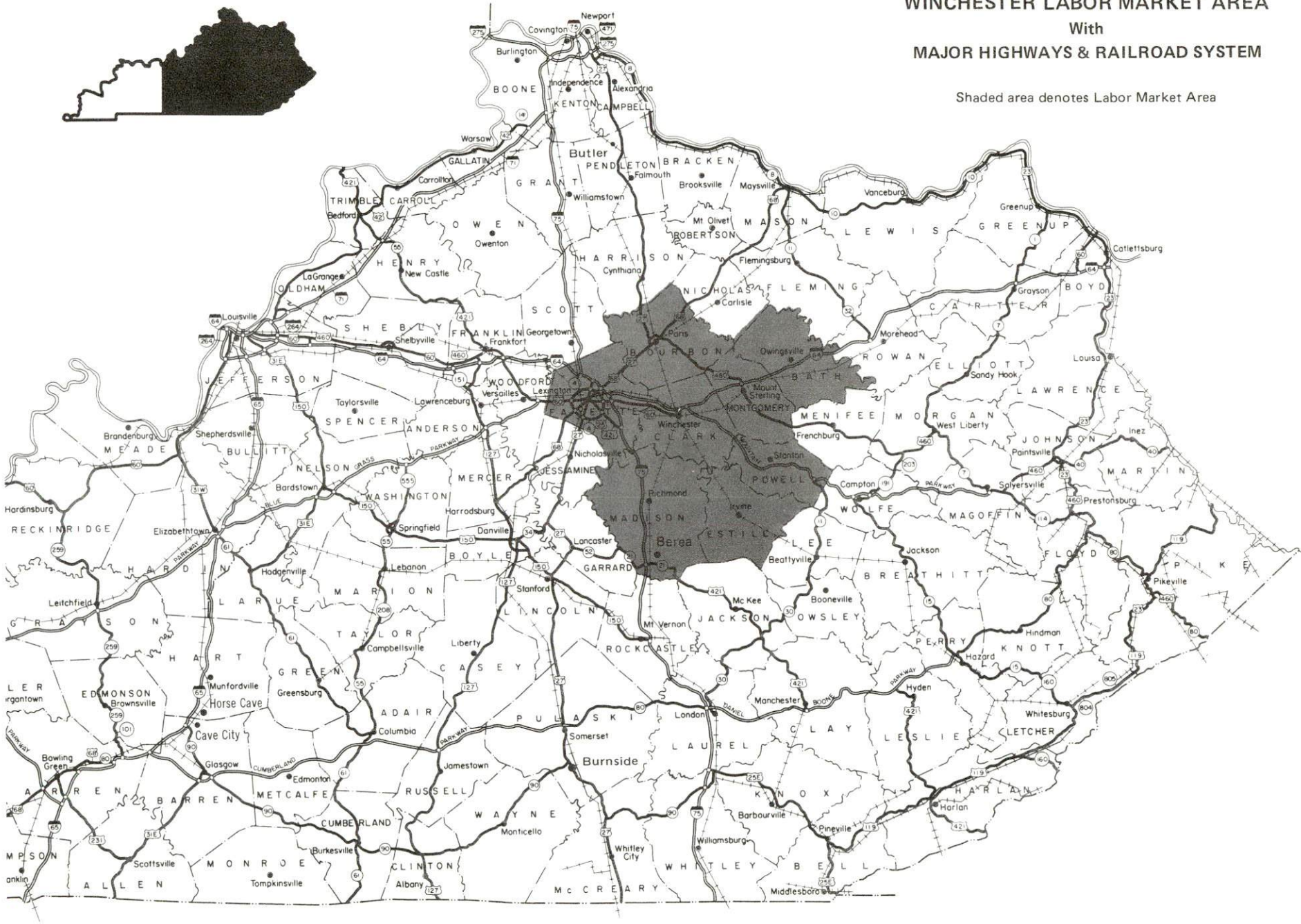
1981 EDITION
GENERAL HIGHWAY MAP
CLARK COUNTY
KENTUCKY

PREPARED BY THE
KENTUCKY DEPARTMENT OF TRANSPORTATION
BUREAU OF HIGHWAYS
DIVISION OF PROJECT DEVELOPMENT
IN COOPERATION WITH THE
U.S. DEPARTMENT OF TRANSPORTATION
FEDERAL HIGHWAY ADMINISTRATION



WINCHESTER LABOR MARKET AREA
With
MAJOR HIGHWAYS & RAILROAD SYSTEM

Shaded area denotes Labor Market Area



WINCHESTER, KENTUCKY - A RESOURCE PROFILE

Winchester, the county seat of Clark County, has been named three times as an All-Kentucky City. Clark County is situated in central Kentucky on the eastern edge of Kentucky's famous Bluegrass Region. Winchester is located 23 miles east of Lexington, Kentucky; 95 miles east of Louisville, Kentucky; 101 miles south of Cincinnati, Ohio and 186 miles north of Knoxville, Tennessee. Clark County had a 1980 population of 28,322 with 15,216 people residing in Winchester.

The Economic Framework

Total employment in Clark County in 1980 averaged 14,797 with 13,848 employed in nonagricultural jobs. Manufacturing provided 3,781 jobs, wholesale and retail trade firms employed 2,318 persons, and 1,010 persons were working in service occupations. Manufacturing employment is greatest in the transportation equipment, electrical machinery furniture and fixtures, and apparel and related products industries.

Per capita income in the county in 1979 was \$8,169 or \$1,117 above the state average. Between 1975 and 1979, per capita income increased by 55 percent.

Winchester is the hub of a labor market area which includes Clark and its seven adjoining counties. Area employment in 1980 averaged 175,387 with 167,942 employed in nonagricultural jobs. Manufacturing provided 30,795 jobs, wholesale and retail trade provided 35,555 jobs and 23,851 people were employed in service occupations.

Resources for Growth

1. There is a current estimated labor supply of 13,612 men and 13,188 women available for industrial jobs in the labor market area. In addition, 14,281 young men and 13,274 young women will become 18 years of age before 1986 and potentially available for work.

2. Local transportation capability is excellent. The Louisville and Nashville Railroad and the Chessie System provide main line service. Interstate 64 is routed through Clark County with an interchange off U.S. 60, 0.30 of a mile west of Winchester, and another interchange just north of the city. Interstate 64 connects with the Mountain Parkway one mile east of Winchester and also connects with Interstate 75 15 miles to the west. The city is served by 10 truck lines.

3. Electric power is provided by the Kentucky Utilities Company and the Clark Rural Electric Cooperative Corporation. Natural gas service is provided by Columbia Gas of Kentucky, Inc. There are two distributors of propane located in Winchester and four distributors of distillate fuel oil located within 20 miles.

(Contd.)

4. Education is an important growth asset for Winchester. The Clark County school system serves over 5,500 students and is accredited by the Southern Association of Colleges and Schools. In addition, one elementary parochial school is located in Winchester.

THE LABOR MARKET AREA

The Labor Market Area includes Clark County and the adjoining Kentucky counties of Bath, Bourbon, Estill, Fayette, Madison, Montgomery, and Powell.

Area	POPULATION		Percent Nonwhite
	1980	1970	
Winchester	15,216	13,402	11.6
Labor Market Area	360,911	304,674	N/A
Clark County	28,322	24,090	6.5
Bath County	10,025	9,235	3.3
Bourbon County	19,405	18,476	10.2
Estill County	14,495	12,752	0.2
Fayette County	204,165	174,323	14.5
Madison County	53,352	42,730	6.8
Montgomery County	20,046	15,364	5.4
Powell County	11,101	7,704	1.2

Note: The 1980 counts of population by race are provisional.

Source: U.S. Department of Commerce, Bureau of the Census, 1980 Census of Population and Housing, March 1981.

LABOR FORCE CHARACTERISTICS OF RESIDENTS, 1980

	Clark County	Labor Market Area
Civilian Labor Force	16,180	186,713
Employment	14,797	175,387
Agricultural	949	7,445
Nonagricultural	13,848	167,942
Unemployment	1,383	11,326
Rate of Unemployment (%)	8.5	6.1

Source: Kentucky Department for Human Resources, Kentucky Labor Force Estimates, Annual Averages, 1980.

ESTIMATED MALE LABOR SUPPLY
WINCHESTER LABOR MARKET AREA

Area	Current			Under- employed	Future
	Total	Not in Labor Force	Unemployed		Reaching 18 years of age before 1986
Labor Market Area*	13,612	2,140	3,782	7,690	14,281
Clark	935	177	368	390	1,219
Bath	428	66	182	180	428
Bourbon	610	132	208	270	893
Estill	582	91	231	260	659
Fayette	7,159	1,217	1,762	4,180	8,091
Madison	2,769	276	593	1,900	1,747
Montgomery	795	121	284	390	791
Powell	334	60	154	120	453

*Additional workers may be drawn from other nearby counties.

Note: Not in Labor Force - persons who would enter the labor force if suitable employment were available; Unemployed - persons unemployed and actively seeking work; Underemployed - persons employed but working only 14 to 26 weeks per year.

Sources: Kentucky Department for Human Resources, Kentucky Labor Supply Estimates by County, 1979. Kentucky Department of Commerce, Future Labor Supply before 1986.

ESTIMATED FEMALE LABOR SUPPLY
WINCHESTER LABOR MARKET AREA

Area	Current			Under- employed	Future
	Total	Not in Labor Force	Unemployed		Reaching 18 years of age before 1986
Labor Market Area*	13,188	965	3,543	8,680	13,274
Clark	1,094	83	351	660	1,144
Bath	366	28	168	170	405
Bourbon	643	60	193	390	840
Estill	496	41	215	240	639
Fayette	7,135	554	1,671	4,910	7,563
Madison	2,503	119	544	1,840	1,636
Montgomery	626	55	261	310	661
Powell	325	25	140	160	386

*Additional workers may be drawn from other nearby counties.

Note: Not in Labor Force - persons who would enter the labor force if suitable employment were available; Unemployed - persons unemployed and actively seeking work; Underemployed - persons employed but working only 14 to 26 weeks per year.

Sources: Kentucky Department for Human Resources, Kentucky Labor Supply Estimates by County, 1979. Kentucky Department of Commerce, Future Labor Supply before 1986.

WINCHESTER MANUFACTURING FIRMS,
THEIR PRODUCTS AND EMPLOYMENT

Firm (Establishment date)	Product	Employment			Labor Unions
		Total	Male	Female	
Ale 8 One Bottling, Inc. (1962)	Soft drinks	36	34	2	
Boonesboro Quarry (1959)	Plant mix asphalt, agricultural lime, crushed stone	33	32	1	
Bundy Tubing (1957)	Copper-coated steel tubing, steel tubing	484	444	40	Auto workers*
Clark County Lumber, Inc. (N/A)	Millwork, boxes, crates, surveyor stakes	21	17	4	
Concrete Materials Corporation (1960)	Ready-mixed concrete, concrete products, building materials	8	7	1	
Drew Foam Company (1978)	Expandable polystyrene foam products, super sheath sheathing, foam packing	15	14	1	
The Freeman Corporation (1912)	Walnut veneer, Kiln dried walnut lumber, furniture hardwood	120	100	20	

(Contd.)

WINCHESTER MANUFACTURING FIRMS,
THEIR PRODUCTS AND EMPLOYMENT

Firm (Establishment data)	Product	Employment			Labor Unions
		Total	Male	Female	
GTE Products Corporation (1953)	Special lighting application	755	238	517	Auto workers*
Jenmar of Kentucky, Inc. (1979)	Steel fabrication	20	-	-	
Kentucky Wood Preserving, Inc. (1963)	Wood preserving	10	9	1	
Leggett and Platt, Inc. (1910)	Mattress units, box springs, bed frames, bedding components	400	340	60	Machinists*
Loma Manufacturing Company (1956)	Ladies' blouses, men's shirts, ladies' dresses	85	5	80	
McCammish Manufacturing Company, Inc. (1959)	Plastic laminated desk table tops, plastic laminated dinnette tops, plastic laminated hospital furniture parts	56	42	14	
Pepsi-Cola Bottling Company of Winchester (1965)	Soft drinks	65	59	6	Teamsters*
Quality Manufacturing Company (1965)	Production machining, special machining straightening machinery	115	83	32	

(Contd.)

WINCHESTER MANUFACTURING FIRMS,
THEIR PRODUCTS AND EMPLOYMENT

Firm (Establishment date)	Product	Employment			Labor Unions
		Total	Male	Female	
Rees Printing Company (1946)	Letterpress printing, litho- graphic printing	17	13	4	
Rockwell International Corporation (1966)	Truck axles	1,089	1,058	31	Auto workers*
Southern States Cooperative, Inc. (1948)	Fertilizer	20	20	-	
Tand M Printing Company, Inc. (1962)	Job printing	6	3	3	
Winchester Clothing, Division of Hart, Schaffner and Marx (1981)	Men's sport- coats, suits	350	34	316	
Winchester Sun Company, Inc. (1878)	Newspaper	36	19	17	

*See Labor Organizations below.

Source: Kentucky Department of Commerce, Division of Research and Planning.

Construction of a Kroger Company dairy plant began in July 1981. The new plant is scheduled to open in fall 1982 and will employ approximately 150 people.

The Winchester-Clark County Industrial Authority has purchased 86 1/2 acres for the development of an industrial park. The park will be on the northwest corner of the Paris Road - Interstate 64 interchange. The park is accessible by a four-lane road and L & N Railroad is on the property. Water and sewer lines have been laid on the property. Lot sizes range from 3 to 24 acres.

LABOR ORGANIZATIONS IN MANUFACTURING FIRMS

<u>Union</u>	<u>Representing workers at:</u>
International Union, United Automobile, Aerospace and Agricultural Implement Workers of America	Bundy Tubing; GTE Products Corporation; Rockwell Inter- national Corporation
International Association of Machinists and Aerospace Workers, AFL-CIO	Leggett and Platt, Inc.
International Brotherhood of Teamsters, Chauffeurs, Warehousemen and Helpers of America	Pepsi-Cola Bottling Company of Winchester

INDUSTRIAL SERVICES

<u>Type of Services</u>	<u>Location</u>	<u>Miles Distant</u>
Tool & Die, Machine & Pattern Shops	Mt. Sterling, Kentucky	17
	Paris, Kentucky	17
	Richmond, Kentucky	21
	Lexington, Kentucky	23
Metal Service Centers	Lexington, Kentucky	23
Heat Treating	Richmond, Kentucky	21
Metal Finishers	Richmond, Kentucky	21
	Lexington, Kentucky	23
Electric Motor Repair	Lexington, Kentucky	23

Source: Kentucky Directory of Selected Industrial Services, 1979.

AVERAGE WEEKLY WAGES BY INDUSTRY
BY PLACE OF WORK, 1980

	<u>Clark County</u>	<u>Bath County</u>	<u>Bourbon County</u>	<u>Estill County</u>
All Industries	\$242.63	\$182.85	\$205.02	\$202.85
Mining & Quarrying	*	0	*	*
Contract				
Construction	260.96	249.16	272.28	151.19
Manufacturing	296.88	*	228.97	*
Transportation, Communications & Public				
Utilities	362.48	357.86	278.95	209.35
Wholesale & Retail Trade	154.22	125.71	175.30	147.44
Finance, Insurance & Real Estate	208.51	167.29	242.29	210.70
Services	154.41	112.37	135.07	135.44
State/Local Government	201.68	200.39	206.34	207.49
Other	142.97	*	199.97	0
	<u>Fayette County</u>	<u>Madison County</u>	<u>Montgomery County</u>	<u>Powell County</u>
All Industries	\$255.40	\$206.64	\$187.02	\$193.56
Mining & Quarrying	493.78	*	0	218.19
Contract				
Construction	306.91	237.59	225.50	275.21
Manufacturing	358.97	260.33	206.66	185.80
Transportation, Communications & Public				
Utilities	315.04	248.09	248.24	309.74
Wholesale & Retail Trade	180.07	150.59	148.43	125.90
Finance, Insurance & Real Estate	245.30	200.68	205.03	*
Services	221.00	170.98	152.86	183.65
State/Local Government	260.81	233.28	215.22	215.54
Other	217.99	94.12	*	0

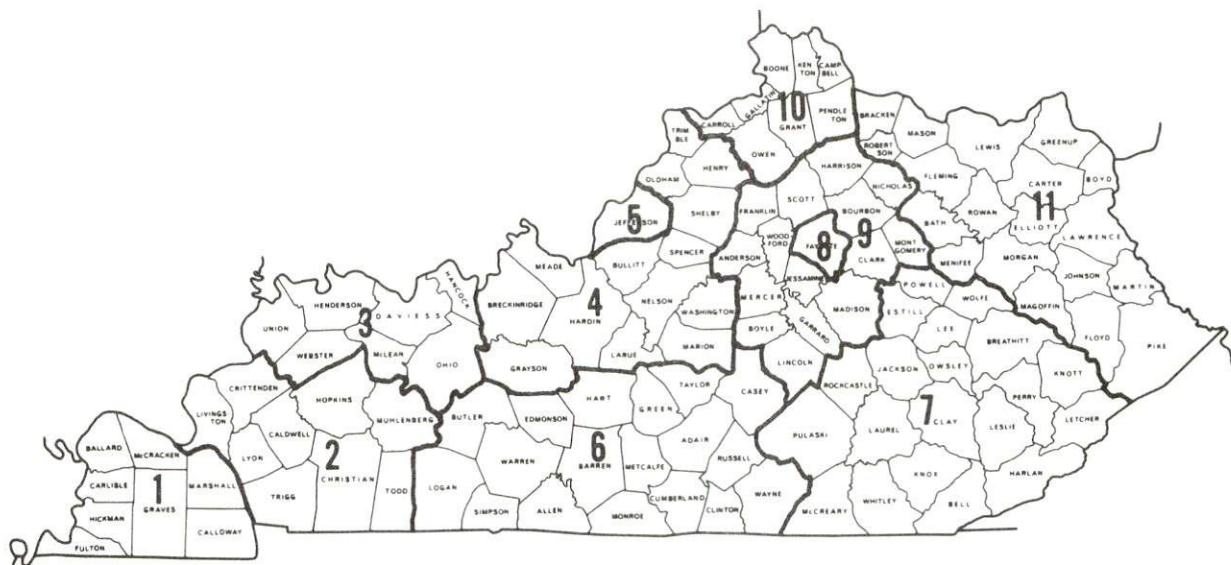
*Not disclosed.

Note: Excludes domestic workers, railway workers, certain nonprofit corporations, majority of federal government workers, self-employed workers.

Source: Kentucky Department for Human Resources, Average Weekly Wages of Workers Covered by Kentucky Unemployment Insurance Law, 1980.

Occupational wage rates for specific industries are usually not available to most government agencies, and wage data furnished to state employment agencies by individual industrial employers is protected from disclosure by federal law. The most reliable up-to-date wage information can be obtained by direct contact with local employers.

Associated Industries of Kentucky, a voluntary organization of Kentucky businesses, regularly collects occupational wage rates and fringe benefits data from participating member firms. Data is compiled for over 127 clearly defined office, production, and service occupations. Tabulations are published for eleven regions of Kentucky, as shown on the map below. It should be noted that the data may be weighted by the preponderance of firms in the larger cities and may be somewhat higher than the rates paid in the smaller communities. Data from these tabulations are available, upon request, from the Kentucky Department of Commerce, Frankfort, Kentucky 40601.



Associated Industries of Kentucky Area Wage Surveys

PER CAPITA PERSONAL INCOME

<u>Area</u>	<u>1979</u>	<u>1975</u>	<u>Percent Change</u>
Clark County	\$8,169	\$5,271	55.0
Labor Market Area			
Range	\$5,261 - 8,856	\$3,330 - 5,854	N/A
Kentucky	7,052	4,882	44.4
U.S.	8,637	5,861	47.4

Source: U.S. Department of Commerce, Bureau of Economic Analysis, April 1981. U.S. Department of Commerce, Bureau of Economic Analysis, August 1981.

TRANSPORTATION

Rail

Lines serving Winchester - Louisville and Nashville Railroad and The Chessie System*

Services - Main line; north, south, east and westbound freights make daily stops as needed; 10 northbound and 10 southbound through freights daily; switching facilities; team track space for 10 cars; siding space for 50 cars. The nearest piggyback facilities are located in Frankfort, 46 miles west of Winchester. L & N provides piggyback service to Frankfort through the Louisville ramp with highway service substituted for rail between the two cities.

For details on routing, schedules, rates, and services, contact:

Director of Industrial Development
Louisville and Nashville Railroad
P. O. Box 32290
Louisville, Kentucky 40232
(502) 587-5723

and/or

The Chessie System
Real Estate and Industrial Development Department
808 Dixie Terminal Building
Cincinnati, Ohio 45202
(513) 369-5258

Highways

Major highways serving Winchester are Interstate 64, U.S. 60 and Kentucky 627. Interstate 64, a major east-west highway, is routed through Clark County with an interchange located at Winchester. Interstate 64 connects with Interstate 75, 15 miles west at Lexington. Also, Interstate 75 southbound is easily accessible 14 miles southwest of Winchester via Kentucky 627, a "AAA" rated trucking highway. The Mountain Parkway, a toll road, begins one mile east of Winchester and runs southeast to Salyersville.

*The Louisville and Nashville Railroad and The Chessie System maintain joint operating facilities in Winchester.

Truck Service

Company

Bronaugh Motor Express,
Inc. *

Cooper-Jarrett, Inc.**

Interstate Motor Freight
System**

McKenzie Trucking Service*(T)
(Irregular route common
carrier)

McLean Trucking Company**

Oliver Trucking Company,
Inc.*(T)

Overnight Transportation
Company*

Roadway Express, Inc.**

Smith's Transfer
Corporation**

United Trucking Service,
Inc.*

Home Office

1025 Nandino Boulevard
Lexington, Kentucky 40511

Hanover Plaza
Morristown, New Jersey 07960

110 Ionia Northwest
Grand Rapids, Michigan 49501

Irvine Road
Winchester, Kentucky 40391

P.O. Box 213
Winston-Salem, North Carolina 27102

Rockwell Road
Winchester, Kentucky 40391

1000 Semmes Avenue
P.O.Box 1216
Richmond, Virginia 23209

1077 George Boulevard
Akron, Ohio 44309

P.O. Box 1000
Staunton, Virginia 24401

8505 West Warren
Dearborn, Michigan 48126

(T) Local terminal

*Interstate and intrastate service.

**Interstate service only.

Other Freight Services

Nearest Shipping Center

Purolator Courier Corporation*
United Parcel Service**
Federal Express***

Lexington, Kentucky, 23 miles west
Lexington, Kentucky, 23 miles west
Lexington, Kentucky, 23 miles west

HIGHWAY MILES AND TRUCK TRANSIT TIME IN DAYS FROM WINCHESTER, KENTUCKY, TO SELECTED MARKET CENTERS

City	Highway Miles	Delivery		City	Highway Miles	Delivery	
		Time TL				Time TL	
Atlanta, Ga.	385	1		Los Angeles, Ca.	2,203	5-7	
Baltimore, Md.	536	1-2		Louisville, Ky.	95	1	
Birmingham, Ala.	421	1-2		Nashville, Tenn.	233	1	
Chicago, Ill.	375	1		New Orleans, La.	750	2-3	
Cincinnati, Ohio	101	1		New York, N.Y.	708	3	
Cleveland, Ohio	340	1		Pittsburgh, Pa.	368	1	
Detroit, Mich.	360	2-3		St. Louis, Mo.	358	1	
Knoxville, Tenn.	186	1					

Note: Mileage computations are via the best interstate or primary highways, not necessarily the most direct route of travel. Delivery time does not include the day of pickup.

Sources: Rand McNally Road Atlas, 1979. Official Kentucky Mileage Map, 1979. Delivery time - Overnite Transportation Company, 1100 Commerce Road, Richmond, Virginia 23209.

*For regular scheduled pickups or for occasional pickups, arrangements must be made with the Lexington office of Purolator Courier Corporation.

**For regular scheduled pickups or for occasional pickups, arrangements must be made with the Louisville office of United Parcel Service.

***For information on scheduling, rates, and services, contact the Federal Express shipping station at Lexington, Kentucky, or call the home office in Memphis, Tennessee, toll-free at 1-800-238-5355 (in Tennessee, call 1-800-542-5171).

Air

Local*

Location: Mt. Sterling-Montgomery County Airport
2 miles west of Mt. Sterling; 14 miles east of
Winchester
Runways: 1 paved
Length: 2,800 feet
Traffic
Control: Wind sock and tetrahedron
Lighting: Sunset to sunrise, rotating beacon, VASI and REIL
Services: 100 octane gasoline, charter, flight instruction,
tie-down hanger, major and minor A and E repairs
Air Freight
Service: Chartered air freight services must be arranged.

Nearest Scheduled Commercial Airline Service

Location: Blue Grass Field
4 miles west of Lexington, Kentucky; 27 miles
west of Winchester
Runways: 2 paved
Length: 6,500 feet; 3,500 feet
Traffic
Control: Tower
Lighting: Approached lighting system, beacon, runways and
obstructions lighted, VASI
Services: Delta, Frontier, Piedmont, and USAir airlines;
Tennessee Airways commuter air carrier; fuel -
24-hour service, 100, and jet fuel; repair
service - major A & E repairs, Certified Avionics
repair station; National Weather Service; flight
instructions; charter service; storage; taxi,
limousine and car rentals; restaurant
Air Freight
Service: Air freight terminal

Bus - Greyhound Bus Lines

Taxi - One company radio-dispatched, service available Sunday through
Thursday - 5 a.m. to 11 p.m., Friday and Saturday - 5 a.m. to
1 a.m.

Rental Services - Truck and trailer rentals available.

*A 65-foot square lighted heliport is adjacent to the Winchester Holiday
Inn. The heliport is available for occasional use by the public.
Arrangements must be made in advance with hotel desk.

Water

Winchester is 65 miles from a point on the Ohio River at Maysville where a 9-foot navigation channel is maintained. A public riverport is currently being developed at Maysville. The nearest navigable waterway is the Kentucky River at Frankfort, 45 miles west, where a 6-foot navigation channel begins.

POWER AND FUEL

Electricity

Company serving Winchester and parts of Clark County - Kentucky
Utilities Company
Source of power - Kentucky Utilities Company
Total generating capacity - 2,383,767 KW
For industrial rates contact:

Industrial Development Department
Kentucky Utilities Company
One Quality Street
Lexington, Kentucky 40507
(606) 255-1461

Company serving major portion of Clark County - Clark Rural Electric
Cooperative Corporation
Source of power - East Kentucky Power Cooperative*
Total generating capacity - 1,318,010 KW

For industrial rates contact:

Industrial Development Division
East Kentucky Power Cooperative
P.O. Box 707
Winchester, Kentucky 40391
(606) 744-4812

and/or

Clark RECC
Route 15
P.O. Box 748
Winchester, Kentucky 40391
(606) 744-4251

*East Kentucky Power Cooperative has begun a major expansion. Two new coal fire burning plants are under construction in southeast Clark County. The first plant is set for completion in 1985 and the second in 1987. Each plant will have a capacity of 650,000 KW.

Natural Gas

Company serving Winchester - Columbia Gas of Kentucky, Inc.
Source of supply - Columbia Gas Transmission Corporation
Size of transmission mains - 12 inches (supplier);
12 and 10 inches (distributor)
Distribution mains - 2 to 12 inches
Distribution pressure - 4 ounces to 135 psi
Btu content - 1,020 per cubic foot;
Specific gravity - 0.60
For rates and supplies contact:

District Manager
166 Walnut Street
P.O. Box 241
Lexington, Kentucky 40584
(606) 255-3612

Other Fuels

Propane

Buckeye Gas Products Company
(Doxol)
Victory Avenue
Winchester, Kentucky 40391

Southern States Cooperative, Inc.
Pendleton Road
Winchester, Kentucky 40391

Fuels Oils (Within 20 miles)

Ashland Petroleum Company
221 North Main
Winchester, Kentucky 40391

Gateway Gas and Oil
125 South Queen
Mt. Sterling, Kentucky 40353

Bonfield Brothers, Inc.
(TEXACO)
Calk Avenue
Mt. Sterling, Kentucky 40353

Given Oil Service
207 East Main
Mt. Sterling, Kentucky 40353

Residual fuel oil - Arrangements must be made with the refinery.

Low sulphur content coal - Available in Kentucky.

WATER AND SEWERAGE

Water

Company serving Winchester - Winchester Municipal Utilities*
P. O. Box 98
Winchester, Kentucky 40391
(606) 744-5434

Source - Reservoir and the Kentucky River
Treatment plant capacity - 5,500,000 gallons per day
Average daily consumption - 2,200,000 gallons
Peak daily consumption - 3,000,000 gallons
Type treatment - Rapid sand filtration
Storage capacity - 3,600,000 gallons
Size lines - 2 to 18 inches
Average pressure - 30 to 100 psi
Average temperature - 50 degrees F.

MONTHLY WATER RATES

The monthly charge for water supplied
by meter within the city shall be:

<u>Cubic feet consumed</u>	<u>Rate per 100 cubic feet</u>
First 100	\$1.80 (Minimum Bill)
Next 400	1.30
Next 1,500	1.20
Next 15,000	1.10
All over 17,000	.80

The monthly charge for water supplied
by meter outside the city limits shall be:

<u>Cubic feet consumed</u>	<u>Rate per 100 cubic feet</u>
First 100	\$2.35 (Minimum Bill)
Next 400	1.70
Next 1,500	1.55
Next 15,000	1.45
All over 17,000	1.05

Tap-on charges:

Residential and commercial within city limits -
\$200 - same side of road
\$300 - opposite side of road
Residential and commercial outside city limits -
\$300 - same side of road
\$400 - opposite side of road
Industry - Cost of labor and materials

*The next major program will be the development of a reservoir capable of yielding 6,000,000 gallons per day. The river raw water pump station will be serving as a backup.

Name of water district - Boonesboro Water Association, Inc.
P. O. Box 340
Winchester, Kentucky 40391
(606) 744-8941

Area served - Southwestern portion of Clark County
Date when water district began operating - 1969
Source of supply of treated water - Winchester Municipal Utilities
Average amount of water used in a 24-hour period - 195,600 gallons
Peak amount of water used in a 24-hour period - 245,750 gallons
Storage capacity - 224,740 gallons
Average pressure - 40 psi
Size lines - 8, 6, 4, 3 and 2 inches
Rates -

Regular Service: 5/8-inch meter

First	1,000 gallons	\$ 8.75 (Minimum)
Next	2,000 gallons	1.95 per M gallons
Next	12,000 gallons	1.65 per M gallons
All over	15,000 gallons	1.40 per M gallons

Special 1-inch meter

First	10,000 gallons	\$23.25 (Minimum)
Next	5,000 gallons	1.65 per M gallons
All over	15,000 gallons	1.40 per M gallons

Special 1 1/2-inch meter

First	30,000 gallons	\$51.25 (Minimum)
Next	10,000 gallons	1.40 per M gallons
Next	10,000 gallons	1.20 per M gallons
All over	50,000 gallons	1.05 per M gallons

Special 2-inch meter

First	50,000 gallons	\$75.50 (Minimum)
All over	50,000 gallons	1.05 per M gallons

Connection fees:	5/8-inch meter	\$ 200
	1-inch meter	400
	1 1/2-inch meter	2,000
	2-inch meter	2,250

Fire hydrant connection fee - \$200 plus \$50 a year rental fee

Surface water sources - Kentucky River

Average discharge - On Kentucky River at Lock 10 near Winchester, Kentucky - 5,313 cfs (72 years, unadjusted, USGS)

Expected ground water yield - 50 to 200 gpm in extreme southwest portion of Clark County; 5 to 50 gpm along the western border and a small portion in the north central portion of the county; 5 gpm or less in remainder of the county

Sewerage

Company serving Winchester - Winchester Municipal Utilities

P. O. Box 98

Winchester, Kentucky 40391

(606) 744-5434

Design capacity - 3,000,000 gallons per day

Average daily flow - 1,000,000 gallons

Treatment - Primary, secondary, and tertiary

Type treatment - Coarse screening pretreatment, hydrosieve primary, rotating biological contactors, clarification, rapid sand filtration, chlorination, sand drying beds

Treated effluent discharged into - Strodes Creek

Size of sanitary mains - 6 to 42 inches

Rates -

The rates and charges for sewer service are computed and based upon the quantity of water used as determined by water meter readings. Rates within city limits are \$1.25 per 100 cubic feet of water metered. Rates outside city limits are \$1.65 per 100 cubic feet of water metered.

Special arrangements can be made with an industry when a substantial quantity of the water used does not flow into the sewer system.

Tap-on charges:

Within city limits:

Residential - \$300

Commercial - \$500 (Minimum)

Outside city limits:

Residential - \$500

Commercial - \$1,500 (Minimum)

CLIMATE

Clark County

Temperature

Normal (30-year record)	55.2 degrees
Average annual 1980	54.3 degrees
Record highest, September, 1954 (36-year record)	103.0 degrees
Record lowest, January, 1963 (36-year record)	-21.0 degrees
Normal heating degree days (30-year record)	4,729
(Heating degree day totals are the sums of negative departures of average daily temperatures from 65 degrees F.)	

Precipitation

Normal (30-year record)	44.49 inches
Mean annual snowfall (36-year record)	17.0 inches
Total precipitation 1980	34.69 inches
Mean number days precipitation (.01 inch or more) (36-year record)	131
Mean number days thunderstorms (36-year record)	47
Prevailing Winds (17-year record)	South

Prevailing Winds (17-year record)

Relative Humidity

1 a.m.	77 percent (16-year record)
7 a.m.	81 percent (17-year record)
1 p.m.	60 percent (17-year record)
7 p.m.	64 percent (17-year record)

Source: U.S. Department of Commerce, Environmental Science Services Administration, Climatological Data, 1980.
Station of record: Lexington, Kentucky.

LOCAL GOVERNMENT

City

Structure - Mayor - 4-year term; 4 council members - 2-year terms
Budget - General Fund \$ 2,595,384
Water, Sewer and Garbage
Fund (1980-81) 2,200,000

Fees and licenses - Occupational license taxes: 1/2 percent of the gross salaries, wages, commissions, and other compensation earned by employees for work done or services performed in the city; annual business license fees vary according to the type of business; manufacturers - employing less than 10 people - \$240; employing 10 to 25 people - \$420; employing 26 to 50 people - \$600; employing 51 to 100 people - \$840; employing 101 to 200 people - \$1,200; employing 201 to 300 people - \$1,500; employing 301 to 400 people - \$1,300; employing 401 to 500 people - \$2,100; employing 501 to 600 people - \$2,400; employing 601 to 700 people - \$2,700; employing 701 to 1000 people - \$3,420; employing more than 1000 people - \$3,900

County

Structure - County Judge/Executive - 4-year term
7 magistrates - 4-year terms
Budget 1980-81 - General Fund \$692,334; Road Fund \$583,516

Assessed Value of Property

<u>Classes of Property</u>	<u>Winchester</u>	<u>Clark County</u>
Real Estate	\$142,443,993	\$389,107,250
Tangibles	33,589,833	70,866,304

Property Taxes

All property in Kentucky is assessed at 100 percent of fair cash value.

Land and buildings are taxed by the state and may be taxed by local jurisdictions. The state rate is \$0.241 per \$100 of assessed valuation.

Manufacturing machinery, raw materials inventories, pollution control equipment, and goods in the process of manufacture are not subject to local taxation. The state rate is \$0.15 per \$100.

Other tangible personal property owned by manufacturers (automobiles, trucks, finished goods, office furniture, office equipment) is taxed by the state at \$0.45 per \$100 and may be taxed by local jurisdictions.

Property stored in public warehouses in a transit status is not subject to local taxation. The state rate is only \$0.015 per \$100.

Intangible personal property located in Kentucky (money in hand, shares of stock, notes, bonds, accounts receivable, and other credits) is taxed by the state at \$0.25 per \$100, and is not subject to local taxation.

Private leaseholds in industrial facilities owned by cities or counties and financed by industrial revenue bonds are subject to a state tax of \$0.015 per \$100 of value (essentially the lessee's equity, adjusted for appreciation or depreciation). Local taxation is not permitted.

Combined State and Local Rates Per \$100 Valuation, 1980* (100% assessment)

	<u>Inside City of Winchester</u>	<u>Outside City</u>
1. Land and buildings	\$0.7775	\$0.5807
2. Mfg. machinery, raw materials, goods in process, pollution control equipment	0.1500	0.1500
3. Finished goods, office equipment, vehicles, other tangibles	0.9865	0.7897
4. Intangibles (accounts rec., notes, bonds, etc.)	0.2500	0.2500
5. Leaseholds in industrial revenue bond financed plants	0.1500	0.1500

Utilities Gross Receipts Tax for Schools

A 3 percent tax is levied on utilities receipts for schools in Clark County. Tax is paid by all consumers of utilities as an add-on to the utilities bills. Exempted are receipts from utilities services that are resold and the receipts from the sale of energy or energy producing fuels that exceed 3 percent of the cost of production in manufacturing, processing, mining or refining.

*Kentucky Department of Commerce.

Planning and Zoning

Joint agency - Winchester - Clark County Planning and Zoning Commission
Zoning enforced - All areas
Subdivision regulations enforced - All areas
Local codes enforced - Building and housing
Mandatory state codes enforced - Kentucky Plumbing Code, National Electric Code, Kentucky Boiler Regulations and Standards, National Fire Protection Association Standards of Safety (for buildings with an occupancy of less than 100 persons), Kentucky Building Code (modeled after BOCA code and applying to buildings with an occupancy of 100 or more persons)

Safety

<u>Police</u>	<u>Winchester</u>	<u>Clark County</u>
Total staff	32	7 full time, 2 part time
Radio -partol cars	8, 1 motorcycle, and 1 mobile crime lab	3

Fire

American Insurance Association Fire Rating	5	10
Full-time staff	41	10
Volunteers	11	14

Rescue Service

Winchester-Clark County Rescue Squad:
Number of volunteers - 19
Equipment - Rescue truck, access to a fully-equipped ambulance, and all standard rescue equipment
Personnel training - 9 emergency medical technicians; standard multimedia first aid training, and training in cardiopulmonary resuscitation

Refuse Collection and Disposal

	<u>Winchester</u>	<u>Clark County</u>
Type service	Municipal	Private
Fee charged:		
residential	\$5 per month	\$6.75 to \$8.75 per month
business	Based on volume	Contract
industrial	Based on volume	Contract
Collection frequency:		
residential	2 times a week	2 times a week
business	Based on volume	As needed
industrial	Based on volume	As needed
Trash pickup	Weekly	As needed
Disposal method	Sanitary landfill	Sanitary landfill

EDUCATION

Public Schools*

Clark County

Total Enrollment (Spring 1981)	5,617
Elementary	3,069
Middle School	908
High School	1,640
Student-Teacher Ratio	17-1
Elementary	17-1
Middle School	17-1
High School	19-1
Accreditation	Southern Association of Colleges and Schools
Percent High School Graduates to College	41.7
Expenditure Per Pupil (1979-80)	\$ 1,236.88
Bonded Indebtedness, June 30, 1980	\$2,165,000

Nonpublic Schools

St. Agatha Academy

Total Enrollment	117
Elementary (Grades 1-6)	117
Student-Teacher Ratio	18-1
Elementary	18-1

*A six-room expansion is planned for the Providence Elementary School. Work should begin during spring 1982.

Area Colleges and Universities

<u>Name</u>	<u>Location (Miles distant)</u>	<u>Enrollment (Fall, 1980)</u>	<u>Highest Degree Conferred</u>
Eastern Kentucky University	Richmond (21)	14,185	Masters, Specialist*
Lexington Technical Institute	Lexington (23)	2,111	Associate
University of Kentucky	Lexington (23)	23,468	Doctorate, M.D., D.M.D., J.D.
Transylvania University	Lexington (23)	810	Masters**
Georgetown College	Georgetown (33)	1,270	Masters
Berea College	Berea (35)	1,514	Baccalaureate
Midway College	Midway (35)	316	Associate
Asbury College	Wilmore (42)	1,222	Baccalaureate
Morehead State University	Morehead (46)	7,163	Masters, Specialist***
Kentucky State University	Frankfort (46)	2,342	Masters
Centre College	Danville (58)	749	Baccalaureate

*Joint doctoral degree programs are offered in cooperation with the University of Kentucky, Lexington, and cooperative doctoral degree programs are offered with Michigan State University and the University of Maryland.

**Courses in the masters degree program are taught on the Transylvania campus by faculty members of Xavier University of Cincinnati. The degree is issued by Xavier University.

***Joint doctoral degree programs are offered in cooperation with the University of Kentucky, Lexington.

Vocational Schools

Both the state vocational-technical schools and the area vocational education centers are operated by the Kentucky Department of Education. The state vocational-technical schools enroll persons full time who are at least 16 years of age and not in school. These students attend classes for six hours each day. The area vocational education centers are designed to accommodate high school students who are at least 15 years of age. These students attend vocational school for three hours each day. The state vocational-technical schools and the area education centers offer evening courses to enable working adults to upgrade job skills.

Nearest State School

Location	Central Kentucky State Vocational - Technical School
Miles Distant	Lexington 23
Curriculum	Business and Office Clerical Secretarial Consumer and Home Economics Commercial Foods Health and Personal Services Occupations Cosmetology Dental Assistant Nurse's Aide Practical Nursing Surgical Technician Industrial Education Auto Body Repair Auto Mechanics Carpentry Drafting Electronics Graphic Arts Industrial Electricity Machine Shop Masonry Office Machine Repair Sheet Metal, Heating and Cooling Welding Learning Resource Center

Nearest Area Education Center

Clark County Area Vocational Education Center

Location
Curriculum

Winchester
Health and Personal Service Occupations
Health Careers
Industrial Education
Auto Mechanics
Carpentry
Machine Shop
Welding

Arrangements can be made to provide training in the specific production skills required by an industrial plant. Instruction may be conducted either in the vocational school or in the industrial plant, depending upon the desired arrangement and the availability of special equipment.

HEALTH

Local Medical Personnel

Physicians - 21
Dentists - 15

Hospitals

<u>General Hospital</u>	<u>Location</u>	<u>Beds</u>
Clark County Hospital	Winchester	81

General hospital facilities - 3 major and 1 minor operating rooms, 2 delivery rooms, 10 bassinets, 2 X-ray rooms, laboratory, emergency room (24-hour physician coverage), coronary-intensive care unit.

Medical staff - 21 physicians, 8 dentists, 45 registered nurses, 25 licensed practical nurses, 1 radiologist, 2 cardiologists, 1 anesthesiologist, 9 laboratory technicians, 55 aides, 3 orderlies

Other Medical Facilities

Comprehensive Care Center - Bluegrass East Home Health

Ambulance Service

Name - Winchester-Clark County Ambulance Service
Staff - (Full time) 3 emergency medical technicians and 4 paramedics;
(part-time) 8 emergency medical technicians and 1 paramedic
Service - 24 hours, 7 days a week
Equipment - 3 fully-equipped ambulances and 1 backup ambulance

Public Health

Facility - Clark County Health Center
Staff - (full-time) 5 registered nurses, 1 licensed practical nurse, 2 health environmentalists, 2 outreach workers, 1 x-ray technician, and 1 ob-gyn nurse practitioner; (part-time) 1 physician, 1 nutritionist, 1 physical therapist, 1 plumbing inspector, and 1 health educator

OTHER LOCAL FACILITIES

Communications

Telephone - South Central Bell Telephone Company
Services - Standard

Telegraph - Western Union
Services - Counter service available; toll-free number 1-800-325-5100

Postal - U.S. Post Office
Class - First
Mail received - Twice daily
Mail dispatched - Once daily

Newspapers -
Daily except Sunday and circulation - Winchester Sun - 6,800
Weekly and circulation - Clark County Weekly - 1,000
Other papers received from - Lexington and Louisville, Kentucky;
Cincinnati, Ohio

Radio - WWKY-AM and WKDJ-FM
Stations received from - Lexington and Louisville, Kentucky;
Cincinnati, Ohio

Television -
Cable service
Reception from - Lexington and Louisville, Kentucky;
Cincinnati, Ohio

Kentucky Educational
Television - Lexington - Richmond transmitter, Channel 46

Library Services

Public library - Winchester-Clark County Public Library
Size collection - 30,000 volumes
Circulation, 1979-80 - 92,000 (library and bookmobile)
Services - Newspapers, magazines, framed paintings, records, films,
film projector, filmstrips and projector, carousel slide projector,
screen, copy service, microfilm reader-printer, bookmobile, special
genealogical collection, weekly story hour, large print books for
the vision impaired, talking books, library column in newspaper,
meeting room, summer reading club, monthly book discussion groups
for adults; open 53 hours per week June-August, 55 1/2 hours per
week September - May.

Religious Institutions

Number of churches - Approximately 60 in Clark County

- Denominations - Assembly of God
 Baptist
 Catholic
 Christian
 Church of Christ
 Church of God
 Latter Day Saints
 Nazarene
 Pentecostal
 Presbyterian
 Seventh Day Adventist
 United Methodist

Nearest Synagogues - Lexington, 23 miles
 Congregations - Adath Israel (reform)
 Ohavey Zion (traditional)

Financial Institutions

<u>Banks</u>	<u>Assets</u>	<u>Deposits</u>	<u>Statement Date</u>
The Winchester Bank	\$73,956,000.00	\$64,330,000.00	12/31/80
Clark County Bank	58,312,000.00	52,211,000.00	12/31/80
Peoples Commercial Bank	46,977,329.21	41,063,278.53	12/31/80
<u>Savings and Loan Associations</u>	<u>Assets</u>	<u>Savings Accounts</u>	<u>Statement Date</u>
Pioneer Federal Savings and Loan Association	\$32,725,170.77	\$30,223,842.84	12/31/80
Winchester Federal Savings and Loan Association	14,580,231.37	13,196,560.21	12/31/80

Hotels and Motels

Total number - 5
 Total rooms - 239

Clubs and Organizations

American Cancer Society
American War Mothers
Association of Legal Secretaries
Beta Club
Business and Professional Womens Club
Chamber of Commerce
Civil Defense
Civinettes
Civitans
Clark County Education Association
Clark County Historical Society
Clark County Homemakers
Clark County Hospital Auxiliary
Clark County Women's Club
Community Greeters
Daniel Boone American Legion
Daniel Boone Music Club
Easter Seals Campaign
Eastern Star
Farm Bureau
Fortnightly Club
Future Farmers of America (FFA)
Future Homemakers of America
Future Teachers of America (FTA)
Heart Fund
Hospital Board
Jaycees
Jayceettes
Junior Achievement
Kiwanis
League of Women Voters
Lioness Club
Lions Club
Little Garden Club
Masonic Lodge
Mental Retardation Fund
Ministerial Association
National Forensic League
National Honor Society
Newcomers Club
Optimist Club
Retired Teachers
Republican Women's Club
Rotary Club
Spanish Club
Speech Club
United Community Fund
Winchester Art Guild
Winchester Music Club
Women's Democratic Club
Young Democrats

RECREATION

Local

The Winchester-Clark County Parks and Recreation Department offers year-round supervised recreational programs for all ages. Public recreational facilities include eight parks, eight tennis courts and two swimming pools.*

An 18-hole public golf course is located on U.S. 60. A private country club with an 18-hole golf course, swimming pool and tennis courts is available. Other privately-owned facilities include one drive-in movie theater and one indoor movie theater.

A horse show and county fair are held annually.

Historical points of interest in Clark County include the Clark Mansion, home of Governor James Clark (1836-40); Old Stone Meeting House, the first established church west of the Allegheny Mountains; Indian Old Fields, the last Indian town in Kentucky; and the Clark County Courthouse where Henry Clay made his first and last speeches. A collection of historical paintings is displayed in the courthouse.

Area (Within 55 miles)

The spirit of Daniel Boone and his pioneers is reborn at Fort Boonesborough State Park in Boonesboro, 8 miles south of Winchester. In the re-created fort, 16 pioneer crafts of the eighteenth century are demonstrated by Kentuckians using functioning antiques from the frontier era. Cabins are furnished as they would have been in the days of Boone and documentary films are presented which depict the struggle of the first Kentuckians to make the Kentucky wilderness a home. A gift shop within the fort offers for sale all the handcrafted items made at the fort, along with a wide variety of handcrafts from throughout Kentucky. Other recreational facilities and activities of the park include the finest sand beach on the Kentucky River with a modern bathhouse, sun deck, and snack shop; a modern camping area with 187 sites; a central service building housing showers, restrooms, and laundry facilities for campers; a pavilion with a gift shop and grocery inside and a playground and basketball, volleyball, and shuffleboard courts on the grounds; and planned daily activities and special events under the guidance of a trained recreation director. Near the park is the dock of the Dixie Belle sternwheel excursion boat which operates one-hour trips daily on the Kentucky River leaving from the Fort Boonesborough boat dock.

*The city and county governments have worked together to purchase the former campus of Southeastern Christian Junior College for use as a recreational park. Plans include retaining the library which was built during the 1920's from funds furnished by Andrew Carnegie, and the athletic facilities which include a gymnasium and indoor swimming pool. The park will consist of 7.4 acres.

The Kentucky Horse Park, a park dedicated to horses and to man's love for horses, is located 30 miles west of Winchester in Lexington. The park, which contains more than 1,000 acres of Kentucky Bluegrass, features the International Museum of the Horse; the Man O'War Memorial; an antique carriage display; horseback and pony rides; walking farm tours; horse-drawn tours; planned recreation; a restaurant; a gift shop; and a campground area, which offers swimming, tennis, and planned activities. Numerous special events are held year-round and include various horse shows, steeplechasing, dressage, polo games, and three-day eventing.

Natural Bridge State Resort Park at Slade, 39 miles southeast of Winchester, is a 1,899-acre park located in the Daniel Boone National Forest where cliffs and stone arches fill the landscape. The rugged awesomeness of the great Natural Bridge, the largest of 12 natural sandstone arches in the park, is the main attraction. The park has a 35-room lodge with a dining room and gift shop, efficiency and one-bedroom cottages, and 95 camping sites. Other facilities include a 54-acre lake, a swimming pool, picnic shelters and playgrounds, hiking trails, and a stable. A skylift going up to Natural Bridge is operated during the tourist season.

Old Fort Harrod State Park, 52 miles southwest of Winchester, is a 28-acre park in Harrodsburg that features a full-scale reproduction of the original Fort Harrod. The park also contains the log cabin where Abraham Lincoln's parents were wed, the Mansion Museum which houses mementos associated with the great periods of Kentucky history, a pioneer cemetery, and a federal monument dedicated to pioneers. The "Legend of Daniel Boone," an outdoor drama which brings to life on stage the men and women who made Kentucky, is performed in the park amphitheatre during the summer months.

Red River Gorge, approximately 30-40 miles southeast of Winchester, is within the Daniel Boone National Forest. The river canyon, Kentucky's largest, is a spectacular boulder-strewn area of rugged woodlands, streams, limestone cliffs, overlooks, and arches with rare plant and animal life.

Cave Run Lake is approximately 40 miles east of Winchester. The lake is an Army Corps of Engineers project consisting of 8,270 acres with camping, picnicking, fishing and boating facilities.

Nearby cities offering tourist attractions include: Berea, Frankfort and Lexington.

Special events that are held in Berea, 35 miles south of Winchester, include the Kentucky Guild of Artists and Craftsmen's Fairs and the annual Mountain Folk Festival featuring folk music and dancing. The outdoor drama "Wilderness Road" is presented each summer in the Indian Fort Theatre. The Berea Community Players, a local theater group, also presents several productions each year.

In Frankfort, 46 miles west of Winchester, attractions are numerous. The State Capitol, Old State House, Governor's Mansion, Daniel Boone's

Grave, the Foral Clock, Kentucky Historical Museum, and several distilleries are seen by thousands of tourists each year. Kentucky State University offers various cultural events, tours of the campus including historic Jackson Hall, and exhibits and sporting attractions held in the Sports Center. Capital Expo, an annual festival spotlighting Kentucky heritage, also offers international foods, folk music, and arts and crafts.

Winchester is located just 23 miles from Lexington, Kentucky's second largest city. Broadway national tours, ballets, and symphony and rock concerts are available in Lexington. Tours of horse farms and historic homes, thoroughbred and standardbred racing, horse shows and numerous sporting events are also available in Lexington.

State shrines near Winchester are numerous. The Issac Shelby State Shrine near Danville (54 miles), is the burial place of Kentucky's first governor.

Constitution State Shrine, also in Danville, is a reproduction of Kentucky's first courthouse square.

White Hall State Shrine, near Richmond (approximately 14 miles), is the Italianate mansion of Cassius Marcellus Clay, and early anti-slave leader and politician.

Waveland State Shrine, near Lexington (28 miles), is a complete plantation village on ten acres with a blacksmith shop, general store and other shops. An 1847 Greek Revival mansion built by a grandson of Mary Boone is located in the village.

