

1983

Industrial Resources: Floyd County - Prestonsburg

Kentucky Library Research Collections
Western Kentucky University, spcol@wku.edu

Follow this and additional works at: https://digitalcommons.wku.edu/floyd_cty

 Part of the [Business Administration, Management, and Operations Commons](#), [Growth and Development Commons](#), and the [Infrastructure Commons](#)

Recommended Citation

Kentucky Library Research Collections, "Industrial Resources: Floyd County - Prestonsburg" (1983). *Floyd County*. Paper 16.
https://digitalcommons.wku.edu/floyd_cty/16

This Report is brought to you for free and open access by TopSCHOLAR®. It has been accepted for inclusion in Floyd County by an authorized administrator of TopSCHOLAR®. For more information, please contact topscholar@wku.edu.

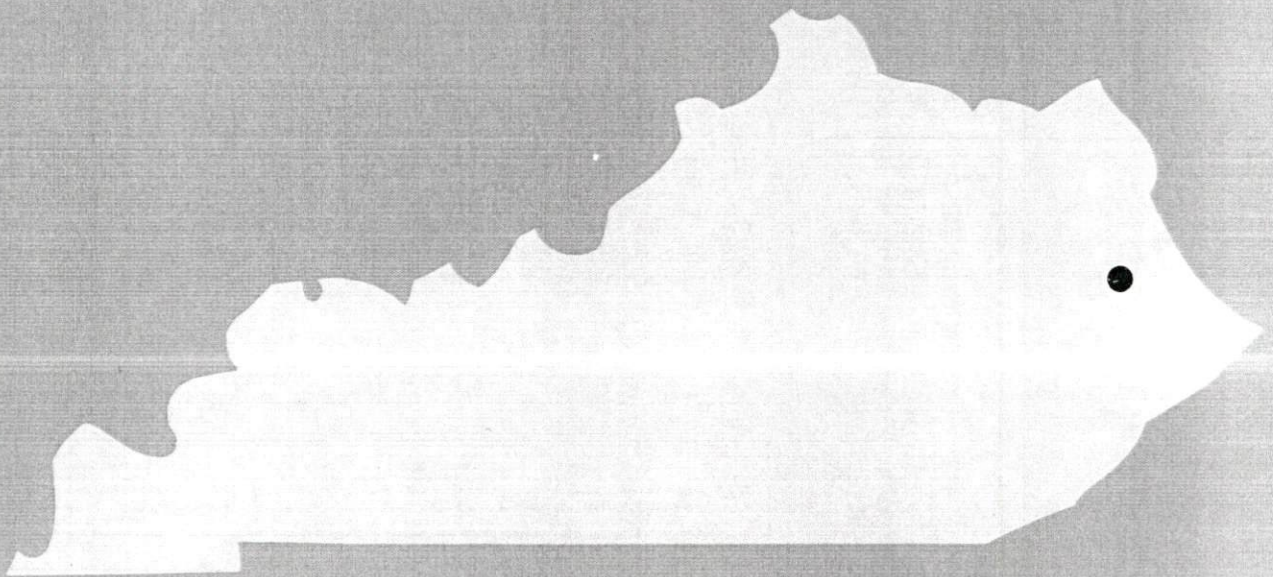
IR

Floyd County

377

1983

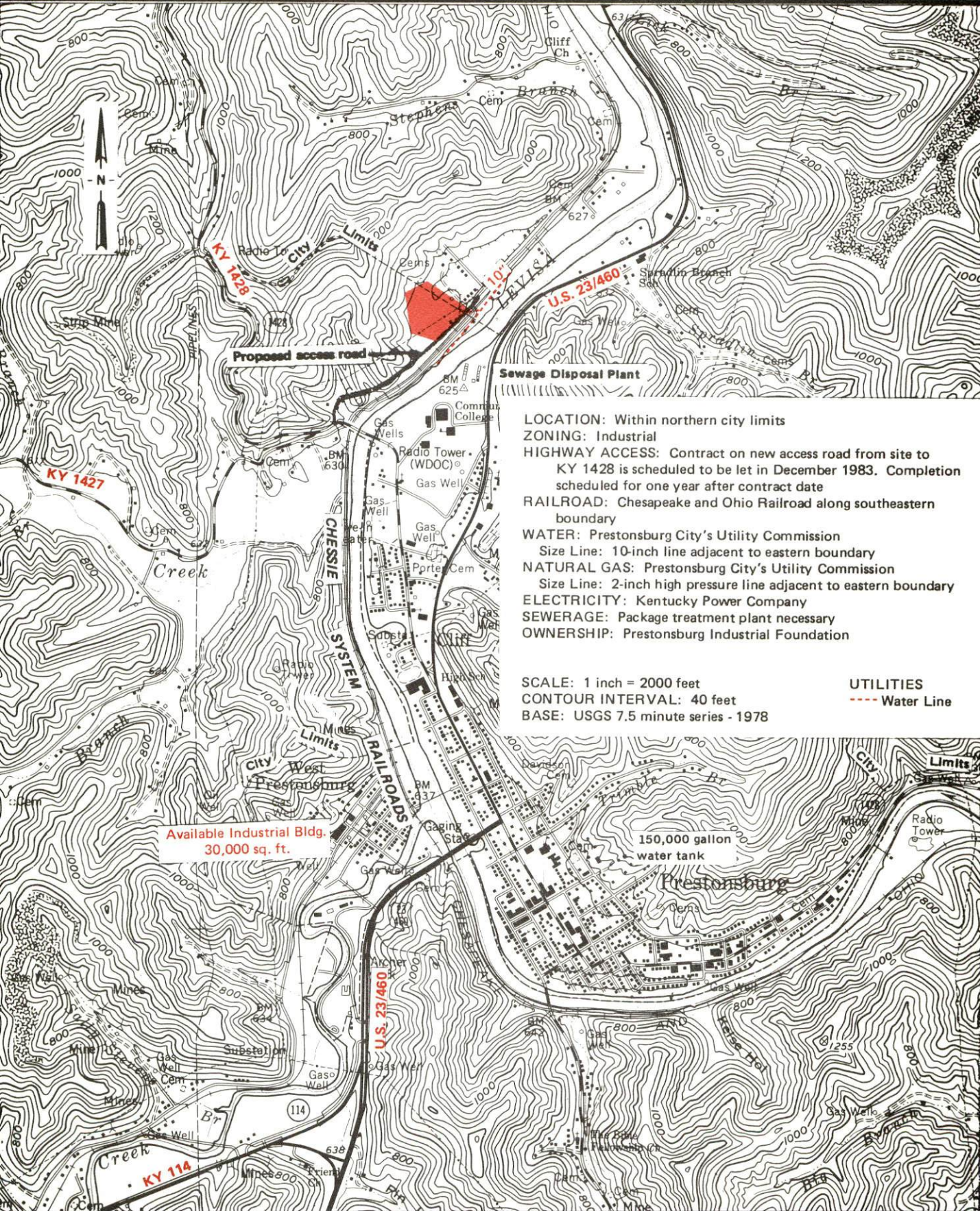
A comprehensive
report on
Prestonsburg, Ky.



KENTUCKY & CO.
The state that's run like a business.

PRESTONSBURG, KENTUCKY --- Site 183 --- 8.3 Acres

For more information contact the Department of Economic Development, Office of Business Development, Industrial Development Division, Capital Plaza Tower, Frankfort, Kentucky 40601 (502-564-7140).



LOCATION: Within northern city limits
ZONING: Industrial
HIGHWAY ACCESS: Contract on new access road from site to KY 1428 is scheduled to be let in December 1983. Completion scheduled for one year after contract date
RAILROAD: Chesapeake and Ohio Railroad along southeastern boundary
WATER: Prestonsburg City's Utility Commission
 Size Line: 10-inch line adjacent to eastern boundary
NATURAL GAS: Prestonsburg City's Utility Commission
 Size Line: 2-inch high pressure line adjacent to eastern boundary
ELECTRICITY: Kentucky Power Company
SEWERAGE: Package treatment plant necessary
OWNERSHIP: Prestonsburg Industrial Foundation

SCALE: 1 inch = 2000 feet
CONTOUR INTERVAL: 40 feet
BASE: USGS 7.5 minute series - 1978

UTILITIES
 --- Water Line

Available Industrial Bldg.
 30,000 sq. ft.

150,000 gallon
 water tank

A COMPREHENSIVE REPORT ON
PRESTONSBURG, KENTUCKY

Prepared by
The Kentucky Department of Economic Development
Division of Research and Planning
in cooperation with
The Prestonsburg-Floyd County Chamber of Commerce

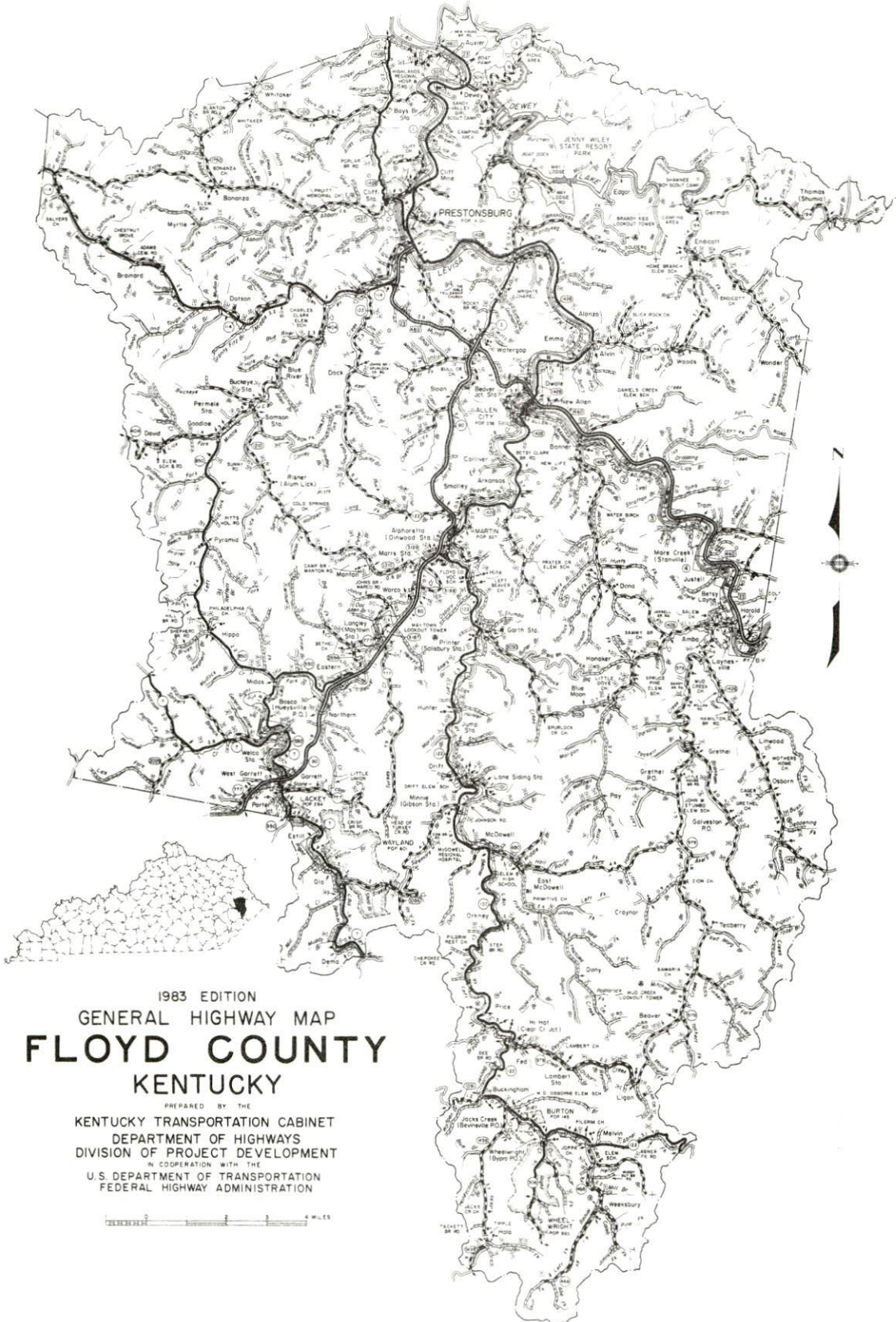
1983

Program manager - Pamela Riley; research - James Thompson; clerical - Shirley Wood; graphics - Frank Ferrante, Tony Cecconi, Robert Owens; cartography - Site Evaluation Branch, Division of Industrial Development. Cost of printing paid from state funds.

TABLE OF CONTENTS

<u>Chapter</u>	<u>Page</u>
INDUSTRIAL SITES	i
PRESTONSBURG, KENTUCKY - A RESOURCE PROFILE	1
THE LABOR MARKET AREA	3
Population	3
Labor Force Characteristics of Residents, 1982	3
Selected Components of Nonagricultural Employment, by Place of Work, 1982	4
Prestonsburg Manufacturing Firms, Their Products and Employment	5
Labor Organizations in Manufacturing Firms	5
Industrial Services	6
Estimated Male Labor Supply	7
Estimated Female Labor Supply	7
Average Weekly Wages by Industry, by Place of Work, 1982	8
Per Capita Personal Income	10
TRANSPORTATION	11
Rail	11
Highways	11
Truck Service	12
Air	13
Bus	13
Taxi	13
Rental Services	13
Water	13
POWER AND FUEL	14
Electricity	14
Natural Gas	15
Other Fuels	15
WATER AND SEWERAGE	17
Public Water Supply	17
Raw Water	18
Sewerage	18
CLIMATE	19

<u>Chapter</u>	<u>Page</u>
LOCAL GOVERNMENT	20
City	20
County	20
Assessed Value of Property, 1982	20
Property Taxes	21
Combined State and Local Rates Per \$100 Valuation, 1982	21
Planning and Zoning	22
Safety	22
Police	22
Fire	22
Rescue Service	22
Refuse Collection and Disposal	23
EDUCATION	24
Public Schools	24
Nonpublic Schools	24
Area Colleges and Universities	25
Vocational Schools	26
HEALTH	28
Local Medical Personnel	28
Hospitals	28
Other Medical Facilities	29
Ambulance Service	29
Public Health	29
OTHER LOCAL FACILITIES	30
Communications	30
Library Services	30
Religious Institutions	31
Financial Institutions	31
Hotels and Motels	31
Clubs and Organizations	32
RECREATION	33
COMMUNITY IMPROVEMENTS	36



1983 EDITION
 GENERAL HIGHWAY MAP
FLOYD COUNTY
 KENTUCKY

PREPARED BY THE
 KENTUCKY TRANSPORTATION CABINET
 DEPARTMENT OF HIGHWAYS
 DIVISION OF PROJECT DEVELOPMENT
 IN COOPERATION WITH THE
 U.S. DEPARTMENT OF TRANSPORTATION
 FEDERAL HIGHWAY ADMINISTRATION



PRESTONSBURG, KENTUCKY - A RESOURCE PROFILE

Prestonsburg, the county seat of Floyd County, is located in the Eastern Coal Field Region of Kentucky. Prestonsburg is located 120 miles southeast of Lexington, Kentucky; 193 miles southeast of Louisville, Kentucky; 198 miles southeast of Cincinnati, Ohio; and 203 miles northeast of Knoxville, Tennessee. The city had a 1980 population of 4,011.

Floyd County covers a total land area of 393 square miles and had a population of 48,764 in 1980.

The Economic Framework

The total number of Floyd County residents employed in 1982 averaged 14,270, with nonagricultural jobs accounting for 14,230 workers. Manufacturing employers in the county reported 310 workers; mining and quarrying 3,250; wholesale and retail trade 2,310; services 1,570; and state and local government 1,555. Manufacturing in Prestonsburg consist of printing and publishing; stone, clay and glass products; primary metals; and miscellaneous manufacturing.

Per capita personal income in the county in 1981 was \$6,603. Between 1977 and 1981 per capita income increased by 47 percent.

The Prestonsburg labor market area includes Floyd and five adjoining counties. The total number of residents of the labor market area employed in 1982 averaged 70,760, with nonagricultural jobs accounting for 70,475 workers. Manufacturing employers in the area reported 1,140 workers; mining and quarrying 18,490; wholesale and retail trade 9,070; services 5,560; and state and local government 6,540.

Resources for Growth

1. Labor Supply - There is a current labor supply of 13,420 men and 20,160 women available for industrial jobs in the labor market area. In addition, from 1983 through 1987, 9,800 young men and 9,280 young women in the area will become 18 years of age and potentially available for work.

2. Transportation - The Chessie System Railroads provides rail service to Prestonsburg. Prestonsburg is served directly by U. S. 23/460 and Kentucky 114, both "AAA" rated trucking highways. In addition, the Mountain Parkway is just 22 miles northwest of Prestonsburg. Five common carriers have the authority to serve Prestonsburg. The nearest scheduled airline service is available at Tri-State Airport, 73 miles northeast of Prestonsburg. Combs Airport, 8 miles north of Prestonsburg, has a 3,200-foot, paved runway to serve small aircraft.

3. Power and Fuel - Electric power is provided to Prestonsburg and part of Floyd County by the Kentucky Power Company. Floyd County is also served electric power by the Big Sandy Rural Electric Cooperative Corporation, which is supplied by the East Kentucky Power Cooperative. Natural gas service is provided by the Prestonsburg City's Utilities Commission, which is supplied by the Kentucky-West Virginia Gas Company. Three distributors of propane and seven distributors of distillate fuel oil serve Prestonsburg.

4. Education - Primary and secondary education is provided to Prestonsburg and Floyd County by the Floyd County School System which serves approximately 9,900 students.

The Prestonsburg Community College, a unit of the University of Kentucky Community College System; offers associate degree programs and curricula for the first two years of a baccalaureate program. The Fall 1982 enrollment at Prestonsburg Community College was 906.

There are two universities, one senior college, two junior colleges, and three other community colleges located within 80 miles of Prestonsburg.

The Mayo State Vocational-Technical School in Paintsville, 13 miles north, offers training in 27 courses. The Floyd County Area Vocational Education Center in Martin, 11 miles south, offers training in 11 courses.

THE LABOR MARKET AREA

The Prestonsburg Labor Market Area includes Floyd County and the adjoining Kentucky counties of Johnson, Knott, Magoffin, Martin and Pike.

POPULATION

Area	1980	1970	Percent Nonwhite
Prestonsburg	4,011	3,422	0.5
Labor Market Area	199,699	149,005	N/A
Floyd County	48,764	35,889	0.6
Johnson County	24,432	17,539	0.3
Knott County	17,940	14,698	0.8
Magoffin County	13,515	10,443	0.2
Martin County	13,925	9,377	0.2
Pike County	81,123	61,059	0.6

Note: The 1980 counts of population by race are provisional.

Sources: U. S. Department of Commerce, Bureau of the Census, 1980 Census of Population and Housing, March 1981; 1980 Census of Population, Number of Inhabitants. Population Research Unit, Urban Studies Center, University of Louisville, Kentucky Demographics: The 1980 Census of Kentucky, Characteristics of Population, Households, Housing, January 1982.

LABOR FORCE CHARACTERISTICS OF RESIDENTS, 1982

	Floyd County	Labor Market Area
Civilian Labor Force	16,558	80,555
Employment	14,270	70,759
Agricultural	42	284
Nonagricultural	14,228	70,475
Unemployment	2,288	9,796
Rate of Unemployment (%)	13.8	12.2

Source: Kentucky Cabinet for Human Resources, Kentucky Labor Force Estimates, Annual Averages, 1982.

SELECTED COMPONENTS OF NONAGRICULTURAL EMPLOYMENT,
BY PLACE OF WORK, 1982

	<u>Floyd County</u>	<u>Labor Market Area</u>
All Industries (total)	10,188	45,447
Manufacturing	311	1,141
Wholesale & Retail Trade	2,307	9,070
Services	1,567	5,559
State/Local Government	1,555	6,540
Contract Construction	382	1,399
Mining & Quarrying	3,253	18,491

Note: Excludes domestic workers, railway workers, certain nonprofit corporations, majority of federal government workers, and self-employed workers.

Source: Kentucky Cabinet for Human Resources, Average Monthly Workers Covered by Kentucky Unemployment Insurance Law, 1982.

PRESTONSBURG MANUFACTURING FIRMS,
THEIR PRODUCTS AND EMPLOYMENT

Firm (Establishment date)	Product	Employment		
		Total	Male	Female
Coal Bit Company, Inc. (1950)	Rebuild mine car wheels	5	3	2
Highlands Publishing Company, Inc. (1970)	Printing	2	2	0
May Sign Company, Inc. (1952)	Plastic and road signs, displays	10	8	2
Prestonsburg Publishing Company, Inc. (1937)	Newspaper	14	7	7
Wells Ready Mix Concrete, Inc. (1958)	Ready mixed concrete	5	5	0

Source: Kentucky Department of Economic Development, Division of Research and Planning.

LABOR ORGANIZATIONS IN MANUFACTURING FIRMS

There are no labor organizations representing manufacturing workers in Prestonsburg.

INDUSTRIAL SERVICES

<u>Types of Services</u>	<u>Location</u>	<u>Mileage from Prestonsburg</u>
Custom Plastics Producers	Ashland, Kentucky	77
Electric Motor Repair	Whitesburg, Kentucky	56
Grinding, Precision & Tool	Huntington, West Virginia	78
Heat Treating Facilities	Lexington, Kentucky	120
	Richmond, Kentucky	122
Industrial Equipment & Supplies	Lexington, Kentucky	120
Industrial Gases	Huntington, West Virginia	78
Industrial Waste Removal	Ashland, Kentucky	77
	Huntington, West Virginia	78
Machine Shops, Tool & Die	Paintsville, Kentucky	13
	Pikeville, Kentucky	27
Metal Finishers	Lexington, Kentucky	120
	Richmond, Kentucky	122
Metal Service Centers	Pikeville, Kentucky	27
Millwrights	Lexington, Kentucky	120

Sources: Kentucky Department of Economic Development, Kentucky Directory of Selected Industrial Services, 1983. Kentucky Department of Economic Development, Division of Research and Planning.

ESTIMATED MALE LABOR SUPPLY
PRESTONSBURG LABOR MARKET AREA

Area	Current			Future	
	Total	Unemployed	Under- employed	Not in Labor Force	Becoming 18 years of age 1983 thru 1987
Labor Market					
Area*	13,423	6,971	2,928	3,524	9,796
Floyd	4,359	1,472	831	2,056	2,368
Johnson	1,696	698	388	610	1,163
Knott	2,016	881	277	858	985
Magoffin	784	618	166	0	730
Martin	585	341	244	0	684
Pike	3,983	2,961	1,022	0	3,866

*Additional workers may be drawn from other nearby counties.

Note: Unemployed - persons unemployed and actively seeking work; Underemployed - persons employed but working only 14 to 26 weeks per year. Not in Labor Force - represents the number of persons who would enter the labor force if suitable employment were available (based on the assumption that persons in Kentucky would like to participate in the labor force in the same proportion that they do nationally).

Sources: Kentucky Cabinet for Human Resources, Kentucky Labor Supply Estimates by Area Development District and County, 1982. Kentucky Department of Economic Development, Future Labor Supply Becoming 18 Years of Age, 1983 thru 1987.

ESTIMATED FEMALE LABOR SUPPLY
PRESTONSBURG LABOR MARKET AREA

Area	Current			Future	
	Total	Unemployed	Under- employed	Not in Labor Force	Becoming 18 years of age 1983 thru 1987
Labor Market					
Area*	20,159	2,825	2,597	14,737	9,284
Floyd	5,726	816	755	4,155	2,129
Johnson	2,407	421	355	1,631	1,055
Knott	2,115	256	180	1,679	892
Magoffin	1,069	178	139	752	710
Martin	712	96	233	383	744
Pike	8,130	1,058	935	6,137	3,754

*Additional workers may be drawn from other nearby counties.

Note: Unemployed - persons unemployed and actively seeking work; Underemployed - persons employed but working only 14 to 26 weeks per year. Not in Labor Force - represents the number of persons who would enter the labor force if suitable employment were available (based on the assumption that persons in Kentucky would like to participate in the labor force in the same proportion that they do nationally).

Sources: Kentucky Cabinet for Human Resources, Kentucky Labor Supply Estimates by Area Development District and County, 1982. Kentucky Department of Economic Development, Future Labor Supply Becoming 18 Years of Age, 1983 thru 1987.

AVERAGE WEEKLY WAGES BY INDUSTRY,
BY PLACE OF WORK, 1982

	<u>Floyd County</u>	<u>Johnson County</u>	<u>Knott County</u>
All Industries	\$317.81	\$302.27	\$326.84
Mining & Quarrying	453.03	464.81	423.32
Contract Construction	328.08	298.02	342.97
Manufacturing	337.86	*	206.97
Transportation, Communications & Public Utilities	348.12	332.58	271.22
Wholesale & Retail Trade	231.69	221.66	181.22
Finance, Insurance & Real Estate	278.54	260.23	425.43
Services	247.60	249.01	205.57
State/Local Government	227.68	261.09	244.93
Other	111.04	*	*
	<u>Magoffin County</u>	<u>Martin County</u>	<u>Pike County</u>
All Industries	\$336.59	\$569.90	\$361.36
Mining & Quarrying	529.13	691.76	504.78
Contract Construction	172.22	*	379.85
Manufacturing	*	*	399.90
Transportation, Communications & Public Utilities	299.69	309.72	369.48
Wholesale & Retail Trade	158.50	194.30	218.59
Finance, Insurance & Real Estate	302.52	315.00	335.41
Services	180.36	394.56	230.45
State/Local Government	235.66	207.76	242.46
Other	0	0	205.99

*Not disclosed.

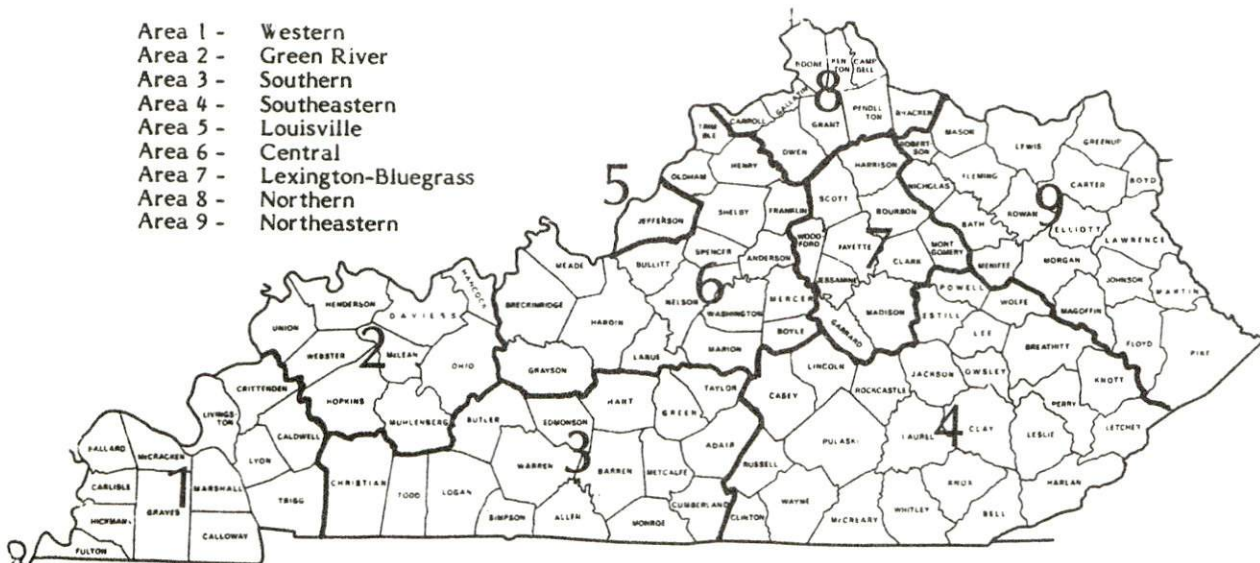
Note: Excludes domestic workers, railway workers, certain nonprofit corporations, majority of federal government workers, and self-employed workers.

Source: Kentucky Cabinet for Human Resources, Average Weekly Wages of Workers Covered by Kentucky Unemployment Insurance Law, 1982.

Occupational wage rates for specific industries are usually not available to most government agencies, and wage data furnished to state employment agencies by individual industrial employers are protected from disclosure by federal law. The most reliable up-to-date wage information can be obtained by direct contact with local employers.

Associated Industries of Kentucky, a voluntary organization of Kentucky businesses, regularly collects occupational wage rates and fringe benefits data from participating member firms. Data are compiled for over 127 clearly defined office, production, and service occupations. Tabulations are published for nine geographical areas of Kentucky, as shown on the map below. It should be noted that the data may be weighted by the preponderance of firms in the larger cities and may be somewhat higher than the rates paid in the smaller communities. Data from these tabulations are available, upon request, from the Kentucky Department of Economic Development, Frankfort, Kentucky 40601.

- Area 1 - Western
- Area 2 - Green River
- Area 3 - Southern
- Area 4 - Southeastern
- Area 5 - Louisville
- Area 6 - Central
- Area 7 - Lexington-Bluegrass
- Area 8 - Northern
- Area 9 - Northeastern



Associated Industries of Kentucky Area Wage Surveys

PER CAPITA PERSONAL INCOME

<u>Area</u>	<u>1977</u>	<u>1981</u>	<u>Percent Change</u>
Floyd County	\$4,495	\$6,603	46.9
Labor Market Area Range	\$3,428 - 5,223	\$5,670 - 7,699	N/A
Kentucky	5,797	8,416	45.2
U. S.	6,984	10,495	50.3

Source: U. S. Bureau of Economic Analysis, Kentucky Economic Information System, May 1983.

TRANSPORTATION

Rail

Line serving Prestonsburg - The Chessie System Railroads

Services - Eastbound and westbound freights stop on request; 11 eastbound and 11 westbound through freights daily; switching facilities; team track space for 20 cars; siding space available for 160 cars; nearest Chessie System piggyback facilities at Louisville, Kentucky, 193 miles northwest of Prestonsburg

For details on routing, schedules, rates, and services, contact:

The Chessie System Railroads
Real Estate and Industrial Development Department
202 Dixie Terminal Building
Cincinnati, Ohio 45202
(513) 369-5258

Highways

Major highways serving Prestonsburg are U. S. 23/460 and Kentucky 114, both "AAA" rated trucking highways. Access to the Mountain Parkway, a multilane toll road, is 22 miles northwest of Prestonsburg via Kentucky 114. The Mountain Parkway intersects with Interstate 64, approximately 98 miles northwest of Prestonsburg. Kentucky 80, just 4 miles south of Prestonsburg, is a multilane highway which provides access to the Daniel Boone Parkway, 46 miles southwest of Prestonsburg near Hazard. The Daniel Boone Parkway then provides access to Interstate 75, 105 miles from Prestonsburg.

Truck Service

<u>Company</u>	<u>Home Office</u>
Consolidated Motor Express, Inc.*	Bluefield, West Virginia 24740
Hazard Express, Inc.*	P. O. Box 746 Hazard, Kentucky 41701
Overnite Transportation Company(T)*	1000 Semmes Avenue P. O. Box 1216 Richmond, Virginia 23209
Russell Transfer, Inc.*	5258 Aviation Drive, NW Roanoke, Virginia 24012
Smith Transfer Corporation**	P. O. Box 1000 Staunton, Virginia 24401

(T)Local Terminal.

*Interstate and intrastate service.

**Interstate service only.

Source: American Motor Carrier Directory, Spring 1983.

<u>Other Freight Services</u>	<u>Nearest Office or Shipping Center</u>
Emery	Lexington, 120 miles northwest
Federal Express	Lexington, 120 miles northwest
Purolator Courier	Ashland, 77 miles north
United Parcel Service	Prestonsburg

HIGHWAY MILES AND TRUCK TRANSIT TIME IN DAYS FROM PRESTONSBURG, KENTUCKY, TO SELECTED MARKET CENTERS

City	Highway Miles	Delivery		City	Highway Miles	Delivery	
		Time*	TL			Time*	TL
Atlanta, Ga.	396	2		Los Angeles, Ca.	2,300	4-5	
Baltimore, Md.	509	2		Louisville, Ky.	193	1	
Birmingham, Ala.	457	2		Nashville, Tenn.	334	1	
Chicago, Ill.	472	2		New Orleans, La.	799	2	
Cincinnati, Ohio	198	1		New York, N. Y.	681	3	
Cleveland, Ohio	371	1		Pittsburgh, Pa.	341	1	
Detroit, Mich.	457	1-2		St. Louis, Mo.	455	2	
Knoxville, Tenn.	203	1					

*Transit time does not include the day of pickup.

Note: Mileage computations are via the best interstate or primary highways, not necessarily the most direct route of travel.

Sources: Rand McNally Road Atlas, 1979. Official Kentucky Mileage Map, 1980. Delivery time - Overnite Transportation Company, 1000 Semmes Avenue, Richmond, Virginia 23209.

Air

Local*

Location: Combs Airport
8 miles north of Prestonsburg
Runways: One paved
Length: 3,200 feet
Traffic
Control: Wind sock
Lighting: None
Services: 100 LL octane, and jet-A fuel, flight instruction

Nearest Scheduled Airline Service

Location: Tri-State Airport (Walker-Long Field)
9 miles southwest of Huntington, West Virginia;
73 miles northeast of Prestonsburg
Runways: 2 paved
Length: 6,509 and 3,007 feet
Traffic
Control: Tower
Lighting: Beacon, runway
Services: USAir, Piedmont, Aeromech, Comair; fuel - 100LL, jet-A;
tie-downs, hangars; major A & P repairs, major Avionics
repairs; APU, charter, flight instruction, oxygen, plane
rental, survival equipment, U. S. Customs; taxi, limousine,
car rental; weather information; restaurant

Air Freight
Service: Air freight terminal

Bus - Greyhound Bus Lines

Taxi - Two companies, 24-hour service

Rental Services - Car, truck, and trailer rentals available

Water

The Big Sandy River is the nearest navigable waterway. Prestonsburg is approximately 50 miles from a point on the Big Sandy River where a 6-foot navigation channel is maintained for about six miles. At that point, a 9-foot navigation channel is maintained to the Ohio River.

*Site preparation for the Big Sandy Regional Airport is scheduled to begin in the fall of 1983 or the spring of 1984. Facilities planned for the airport include a 5,000-foot paved runway, a parallel taxiway, an airplane parking apron, runway and taxiway lights, and VASI. The airport will be located approximately 14 miles northeast of Prestonsburg.

POWER AND FUEL

Electricity

Company serving Prestonsburg and most of Floyd County - Kentucky Power Company

Source of power - Kentucky Power Company

Total generating capacity - 1,065,000 KW

For industrial rates contact:

Kentucky Power Company
1701 Central Avenue
P. O. Box 1428
Ashland, Kentucky 41101
(606) 329-2220

Company serving the remainder of Floyd County - Big Sandy Rural Electric Cooperative Corporation

Source of power - East Kentucky Power Cooperative

Total generating capacity - 1,304,000 KW*

For industrial rates contact:

Industrial Development Division
East Kentucky Power Cooperative
P. O. Box 707
Winchester, Kentucky 40391
(606) 744-4812

*East Kentucky Power Cooperative's total generating capacity will be increased when a new 600,000 KW coal-fired generation plant is completed in southeast Clark County in 1992.

Natural Gas

Company serving Prestonsburg - Prestonsburg City's Utilities Commission*

Source of supply - Kentucky-West Virginia Gas Company

Size of transmission mains - 10 inches (supplier);

4 inches (distributor)

Distribution mains - 2, 3 and 4 inches

Distribution pressure - 18 psi to 100 psi

Btu content - 1,100 per cubic foot

Specific gravity - .675

For rates and supplies contact:

Prestonsburg City's Utilities Commission
1048 South Lake Drive
Prestonsburg, Kentucky 41653
(606) 886-6871

Other Fuels

Propane

Buckeye Gas Products Company
Route 3
P. O. Box 1050
Prestonsburg, Kentucky 41653

Hardware Charlie Gas Company
Route 23
Paintsville, Kentucky 41240

Comstock's Bottle Gas
Martin, Kentucky 41649

(Contd.)

*The Prestonsburg City's Utilities Commission recently completed the replacement of the city's gas delivery system. The \$500,000 project replaced the old steel mains with new plastic mains.

Fuel oils

Distillate fuel oil -

Action Petroleum Company, Inc.
West Prestonsburg, Kentucky
41668

Moore Brothers Oil Company
Allen, Kentucky 41601

Ashland Petroleum Company
Hagerhill, Kentucky 41222

Pelphrey Supply Company, Inc.
P. O. Box 112
Paintsville, Kentucky 41240

Coleman Oil Company, Inc.
Shelbiana, Kentucky 41562

Pikeville Oil & Tire and Mountain
Petroleum Companies, Inc.
Banner, Kentucky 41603

Kentucky Oil and Refining Company
P. O. Box 63
Betsy Layne, Kentucky 41605

Residual fuel oil - Arrangements must be made with the refinery.

Low sulphur content coal - Available locally.

WATER AND SEWERAGE

Public Water Supply

Company serving Prestonsburg - Prestonsburg City's Utilities Commission
1048 South Lake Drive
Prestonsburg, Kentucky 41653
(606) 886-6871

Source - Levisa Fork of Big Sandy River
Treatment plant capacity - 4,000,000 gallons per day*
Average daily consumption - 1,200,000 gallons
Peak daily consumption - 1,400,000 gallons
Type treatment - Post or pre-chlorination, coagulation, sedimentation,
fluoridation and filtration
Storage capacity - 2,260,000 gallons
Size lines - 2, 3, 4, 6, 8, 10, 12 and 14 inches
Average pressure - 72 psi
Average temperature - 60 degrees F.

MONTHLY WATER RATES

Inside Prestonsburg

First	2,000 gallons	\$4.25 (minimum)
Next	98,000 gallons	1.60 per M gallons
All over	100,000 gallons	1.10 per M gallons

Outside City Limits

First	2,000 gallons	\$6.25 (minimum)
Next	98,000 gallons	2.25 per M gallons
All over	100,000 gallons	1.35 per M gallons

Tap-on charge: No charge inside corporate city limits;
\$250 outside corporate limits; \$100
additional charge if road crossing
is required

*The Prestonsburg City's Utilities Commission recently completed a \$4.2 million expansion of the water treatment plant. The treatment capacity was increased from 1.5 million gallons per day to 4 million gallons per day.

Raw Water

Surface water sources - Levisa Fork of Big Sandy River at Prestonsburg
Average discharge - 2,127 cfs (18 years, USGS, unadjusted)
Expected ground water yield - 5 to 50 gpm in the northern 2/3 of
Floyd County and along the southwestern boundary of the county;
50 to 200 gpm in the southern 1/3 of Floyd County

Sewerage

Company serving Prestonsburg - Prestonsburg City's Utilities Commission
1048 South Lake Drive
Prestonsburg, Kentucky 41653
(606) 886-6871

Design capacity - 990,000 gallons per day

Average daily flow - 432,000 gallons

Treatment - Secondary

Type treatment - Biological, grit chamber, comminutor, primary clarifiers, activated sludge, secondary clarifiers, chlorination, anaerobic and aerobic sludge digestion, and drying beds

Treated effluent discharged into - Levisa Fork of Big Sandy River

Size of sanitary mains - 6, 8, 12, 15, 18 and 24 inches

Size of storm mains - 15, 18, 24, 36, 48, 60 and 96 inches

Monthly rates - 70 percent of water bill

Tap-on charge: \$250 for residential; actual cost of installation for commercial or industrial

CLIMATE

Floyd County

Temperature

Normal (30-year record)	56.10 degrees
Average annual 1982	56.30 degrees
Record highest, July 1952 (37-year record)	102.00 degrees
Record lowest, January 1966 (37-year record)	-15.00 degrees
Normal heating degree days (30-year record)	4,306
(Heating degree day totals are the sums of negative departures of average daily temperatures from 65 degrees F.)	

Precipitation

Normal (30-year record)	41.47 inches
Mean annual snowfall (45-year record)	16.20 inches
Total precipitation 1982	51.78 inches
Mean number days precipitation (.01 inch or more) (37-year record)	134
Mean number days thunderstorms (39-year record)	45

Prevailing Winds (9-year record)

West-southwest

Relative Humidity (21-year record)

1 a.m.	81 percent
7 a.m.	85 percent
1 p.m.	57 percent
7 p.m.	64 percent

Source: U. S. Department of Commerce, Environmental Science Services Administration, Climatological Data, 1982.
Station of record: Bristol, Johnson City, Kingsport, Tennessee.

LOCAL GOVERNMENT

City

Structure - Mayor - 4-year term; 8 council members - 2-year terms;
city administrator

Budget 1983-84 - General Fund \$1,041,000

Fees and licenses - Occupational license fees - 1 1/2 percent of
gross salaries of individuals and 1 1/2 percent of net profits
of businesses; business licenses range from \$10 to \$200 annually

County

Structure - County Judge/Executive - 4-year term;

4 magistrates - 4-year terms

Budget 1982-83 - General Fund \$608,600; Road Fund \$448,266

Assessed Value of Property, 1982*

<u>Classes of Property</u>	<u>Prestonsburg</u>	<u>Floyd County</u>
Real Estate	\$31,812,712	\$208,416,295
Tangibles	17,544,417	130,794,419

*Excludes Homestead Exemptions.

Property Taxes

All property in Kentucky is assessed at 100 percent of fair cash value.

Land and buildings are taxed by the state and may be taxed by local jurisdictions. The state rate is \$0.224 per \$100 of assessed valuation.

Manufacturing machinery, raw materials inventories, pollution control equipment, and goods in the process of manufacture are not subject to local taxation. The state rate is \$0.15 per \$100.

Other tangible personal property owned by manufacturers (automobiles, trucks, finished goods, office furniture, office equipment) is taxed by the state at \$0.45 per \$100 and may be taxed by local jurisdictions.

Intangible personal property located in Kentucky (money in hand, shares of stock, notes, bonds, accounts receivable, and other credits) is taxed by the state at \$0.25 per \$100, and is not subject to local taxation.

Property stored in public warehouses in a transit status is not subject to local taxation. The state rate is only \$0.015 per \$100.

Private leaseholds in industrial facilities owned by cities or counties and financed by industrial revenue bonds are subject to a state tax of \$0.015 per \$100 of value (essentially the lessee's equity, adjusted for appreciation or depreciation). Local taxation is not permitted.

Combined State and Local Rates Per \$100 Valuation, 1982* (100% assessment)

	<u>Site Inside City of Prestonsburg</u>	<u>Site Inside Unincorporated Floyd County</u>
1. Land and Buildings	\$0.881	\$0.591
2. Mfg. machinery, raw materials, goods in process, pollution control equipment	0.150	0.150
3. Finished goods, office equipment, vehicles, other tangibles	1.223	0.933
4. Intangibles (accounts rec., notes, bonds, etc.)	0.250	0.250
5. Property stored in public warehouses in a transit status	0.015	0.015
6. Leaseholds in industrial revenue bond financed plants	0.015	0.015

*Kentucky Department of Economic Development.

Planning and Zoning

City agency - Prestonsburg Planning Commission
Zoning enforced - Within city limits
Subdivision regulations enforced - Within city limits
Local codes enforced - Building and housing
Mandatory state codes enforced - Kentucky Plumbing Code, National Electric Code, Kentucky Boiler Regulations and Standards, Kentucky Building Code (modeled after BOCA code)

Safety

<u>Police</u>	<u>Prestonsburg</u>	<u>Floyd County</u>
Total staff	11 full-time 10 auxiliary	5
Radio-patrol cars	4	4

Fire

Insurance Services Office, Public Protection Classification	6	*
Full-time staff	10	-
Volunteers	32	-

Rescue Service

Prestonsburg Rescue Squad:

Number of paid staff - 10
Number of volunteers - 20
Equipment - One 4-wheel drive mini-pumper, porta-power equipment, two trauma kits, an aspirator, a portable generator, a backboard, a stretcher, a scoop stretcher, two power saws, and one boat
Personnel training - Civil defense and cardiopulmonary resuscitation (CPR) certification, emergency medical technician and first aid training, and a trained diving team

Floyd County Emergency and Rescue Squad:

Number of volunteers - 35
Equipment - Seven trucks, two jeeps, four power plants, one water pump, three trailers, six boats with motors, one carry-all 4-wheel drive van, scuba equipment for seven divers, one full-time kitchen, one Jaws-of-Life, and a portable power saw
Personnel training - Full training program with corresponding civil defense program, first aid team with eight emergency medical technicians, 14 persons trained in cardiopulmonary resuscitation, and 25 persons trained in advanced first aid.

*In addition to the Prestonsburg Fire Department, twelve fire departments serve communities and/or unincorporated areas of Floyd County. Public protection classifications for these areas range from 8 to 10.

Refuse Collection and Disposal

	<u>Prestonsburg</u>	<u>Floyd County</u>
Type service	Municipal	Municipal
Fee charged:		
residential	\$6.00 per month	\$6.00 per month
business	Based on volume	Based on volume
industrial	Based on volume	Based on volume
Collection frequency:		
residential	Twice weekly	Weekly
business	Daily	Based on volume
industrial	Daily	Based on volume
Trash pickup	As needed	As needed
Disposal method	Landfill	Landfill

EDUCATION

Public Schools

Floyd County

Total Enrollment (Spring 1983)	9,892
Elementary	7,226 (K-8)
High School	2,666
Student-Teacher Ratio	21-1
Elementary	22-1 (K-8)
High School	19-1
Percent High School Graduates to College (1982)	40.0
Expenditures Per Pupil (1981-82)	\$1,252.39
Bonded Indebtedness (June 30, 1983)	\$6,696,000

Nonpublic Schools

The David School David, Kentucky

Total Enrollment	30
High School	30
Student-Teacher Ratio	6-1
High School	6-1

Area Colleges and Universities

<u>Name</u>	<u>Location (Miles distant)</u>	<u>Enrollment (Fall, 1982)</u>	<u>Highest Degree Conferred</u>
Prestonsburg Community College	Prestonsburg, Kentucky	906	Associate
Pikeville College	Pikeville, Kentucky (27)	560	Baccalaureate*
Alice Lloyd Junior Colleges	Pippa Passes, Kentucky (40)	483	Baccalaureate
Hazard Community College	Hazard, Kentucky (50)	514	Associate
Lees Junior College	Jackson, Kentucky (63)	360	Associate
Ashland Community College	Ashland, Kentucky (77)	1,775	Associate
Marshall University	Huntington, West Virginia (78)	11,756	Academic & Professional
Morehead State University	Morehead, Kentucky (80)	6,370	Masters, Specialist**
Southeast Community College	Cumberland, Kentucky (80)	624	Associate

Prestonsburg Community College, a unit of the University of Kentucky Community College System, offers courses leading to the Associate in Applied Science degree, the Associate in Arts degree and the Associate in Science degree. The Community College is charged with three specific functions: 1) to offer career-oriented programs designed to prepare students for immediate technical or semi-professional employment; 2) to offer curricula for the first two years of a baccalaureate program, which courses parallel University offerings and are transferable to the Lexington campus of the University of Kentucky or to another four-year institution either public or private; and 3) to provide general educational opportunities for citizens in its area.

*Courses in masters degree programs are taught on the Pikeville campus by faculty members of Pikeville College and Morehead State University. The degrees are issued by Morehead State University.

**Joint doctoral degree programs are offered in cooperation with the University of Kentucky, Lexington. The degrees are issued by the University of Kentucky.

Vocational Schools

Both the state vocational-technical schools and the area vocational education centers are operated by the Kentucky Department of Education. The state vocational-technical schools enroll persons full time who are at least 16 years of age and not in school. These students attend classes for six hours each day. The area vocational education centers are designed to accommodate high school students who are at least 15 years of age. These students attend vocational school for three hours each day. The state vocational-technical schools and the area education centers offer evening courses to enable working adults to upgrade current job skills.

Nearest State School

Location	Mayo State Vocational-Technical School Paintsville
Miles Distant	13
Curriculum	Business and Office Accounting/Jr. Management Business Education Clerical Court and Conference Reporter Data Processing Secretarial (Legal and Medical) Consumer and Home Economics Consumer and Family Life Skills Health and Personal Services Occupations Cosmetology Nursing Aide Practical Nursing Industrial Education Auto Body Repair Auto Mechanics Carpentry-Building Trades Diesel and Heavy Equipment Maintenance and Repair Drafting (Mechanical) Drafting (Technical) Electronic Communications Graphic Arts (Printing) Highway Technology Industrial Electricity Industrial Electronics Machine Shop Mine Machine Operation Mine Machine Repair Radio and Television Repair Refrigeration, Air Conditioning and Heating Welding Learning Resource Center

Nearest Area Education Center

Location	Floyd County Area Vocational Education Center
Miles Distant	Martin 11
Curriculum	Business and Office Accounting/Junior Management Clerical Model Office Secretarial Health Careers Industrial Education Auto Mechanics Carpentry Industrial Electricity Machine Shop Mine Maintenance Technology Welding

Arrangements can be made to provide training in the specific production skills required by an industrial plant. Instruction may be conducted either in the vocational school or in the industrial plant, depending upon the desired arrangement and the availability of special equipment.

HEALTH

Local Medical Personnel

Physicians - 78
Dentists - 4

Hospitals

<u>General Hospital</u>	<u>Location</u>	<u>Beds</u>
Highlands Regional Medical Center*	Prestonsburg	137

General hospital facilities - Five operating rooms, six-bed emergency room, diagnostic X-ray, nuclear medicine, ultrasound, clinical laboratory, eight-bed recovery room, seven-bed coronary/intensive care unit, physical therapy, EKG, two delivery rooms, ophthalmology, premature infant nursery, OB/GYN, general surgery, outpatient surgery, orthopedics, cardiac rehabilitation, respiratory care services, anesthesiology, pharmacy, cardio-diagnostic services, and EEG/ECHO testing

Medical staff - Physician staff of seventy seven including: sixteen family practitioners; three general practitioners; eight internists including one cardiologist, two pulmonologists, three nephrologists and two gastroenterologists; five urologists; one neonatologist; five obstetricians; four dentists; four anesthesiologists; two psychiatrists; one radiologist; one podiatrist; two ophthalmologists; two orthopedists; six surgeons; five pathologists; four pediatricians; a 24-hour emergency room staffed by eight physicians; fifty-four registered nurses; and sixty-four licensed practical nurses

*A \$10 million expansion project under way at Highlands Regional Medical Center will add 55,000 square feet to the current 100,000-square-foot facility. The addition will include: 47 new beds, a new emergency room, twelve-bed intensive/coronary care unit, laboratory, physical therapy department, staff education facilities, and patient and visitor comfort areas. Surgical facilities and the radiology and medical records departments will be expanded. The completion date is scheduled for late 1984.

Other Medical Facilities

Mountain Comprehensive Care Center - Region 11 Mental Health-Mental Retardation Board, Inc., in Prestonsburg
Services - Alcohol and drug abuse programs; marriage, group, and individual counseling; mental health-mental retardation programs, and sheltered workshop
Staff - Three psychiatrists, four psychologists, six registered nurses, three social workers, forty-five mental health workers, thirty-eight support staff

Archer Memorial Clinic

Staff - Four general and family practitioners, three general surgeons, one orthopedic surgeon, two obstetricians/gynecologists, one radiologist and one cardiologist/internist. Specialists serving on a part-time basis include: one neuro surgeon, one dermatologist and one cardiovascular surgeon

Ambulance Service

Name - P & B Ambulance Service
Staff - Six emergency medical technicians (full time)
Service - 24 hours, seven days a week
Equipment - Six ambulances

Public Health

Facility - Floyd County Health Department
Staff - One administrator, four registered nurses, two health environmentalists, one health educator, six clerks, one licensed practical nurse, three community health aides, one administrative specialist, one nutritionist

OTHER LOCAL FACILITIES

Communications

Telephone - South Central Bell Telephone Company
Services - Standard

Telegraph - Western Union
Services - Toll-free number, 1-800-325-5100

Postal - U. S. Post Office
Class - First
Mail received - Once daily
Mail dispatched - Once daily

Newspapers - Floyd County Times
Weekly and circulation - 11,700
Other papers
received from - Louisville, Lexington, and Ashland, Kentucky;
Huntington, West Virginia; and Cincinnati, Ohio

Radio - WPRT-AM & FM; WDOC-AM & FM
Stations received from - Louisville, Lexington and Ashland, Kentucky;
Huntington, West Virginia; and Cincinnati, Ohio

Television -
Cable service
Reception from - Lexington and Hazard, Kentucky; Huntington, West
Virginia; Kingsport, Tennessee; Atlanta, Georgia;
and Chicago, Illinois
Kentucky Educational
Television - Pikeville transmitter, Channel 22

Library Services

Public library - Floyd County Public Library
Size collection - 62,252 volumes
Circulation, 1981-82 - 83,433
Services - Bookmobile, newspapers, records, tapes, films, filmstrips,
audiovisual equipment, magazines, microfilm, microfilm readers,
story hour, exhibits, art and music room, and community room

College library - University of Kentucky/Prestonsburg Community College
Size collection - 34,201 volumes
Special collections - Local and state history (includes some genealogical
information)
Services - Magazines, newspapers, records, tapes, films, filmstrips,
transparencies, microfilm, microfiche, microfilm reader-printer,
microfiche reader, audiovisual equipment, copy machine, art
reproductions, community service classes, and special community
art displays

Religious Institutions

Number of churches - 24 (Floyd County)
Denominations - Assembly of God
Baptist
Catholic
Christian
Church of Christ
Church of God
Episcopal
Freewill Baptist
Methodist
Presbyterian
Pentecostal

Nearest Synagogues - Ashland, Kentucky, 77 miles north of Prestonsburg;
Huntington, West Virginia, 78 miles northeast of
Prestonsburg
Congregations - Agudath Achim (reform)
B'nai Shalom (conservative & reform)

Financial Institutions

<u>Banks</u>	<u>Assets</u>	<u>Deposits</u>	<u>Statement Date</u>
First Commonwealth Bank	\$128,187,563.21	\$115,404,170.01	6/30/83
The Bank Josephine	105,337,806.00	82,988,603.00	12/31/82
<u>Savings and Loan Associations</u>	<u>Assets</u>	<u>Savings Accounts</u>	<u>Statement Date</u>
United Federal Savings and Loan Association	\$ 40,203,389.24	\$ 37,714,055.23	6/30/82

Hotels and Motels

Total number - 6*
Total rooms - 201

*Additional accommodations are available at Jenny Wiley State Resort Park near Prestonsburg.

Clubs and Organizations

American Legion
American Legion Auxiliary
Band Parents Association
Beta Club
Boy Scouts of America
Brownie Scouts
Business and Professional Women's Club
Chamber of Commerce
Circle K
Cub Scouts
Daughters of the American Revolution (DAR)
Downtown Merchants Association
Eagles
Eastern Kentucky Concert Series, Inc.
Eastern Star
Floyd County Fair Board
4-H Club
Future Farmers of America (FFA)
Future Homemakers of America (FHA)
Girl Scouts
Highland Striders Jogging Club
Homemakers Club
Humane Society
Independent Order of Odd Fellows (IOOF)
Jenny Wiley Drama Association
Jenny Wiley Festival, Inc.
Jenny Wiley Summer Music Theater, Inc.
Junior Women's Club
K-Club
Kentucky Highlands Folk Festival, Inc.
Kiwanis
Masonic Order
Medical Society
Ministerial Association
Parent-Teachers Association (PTA)
Rebekah
Red Cross
Veterans of Foreign Wars (VFW)
Veterans of Foreign Wars Ladies Auxiliary
Women's Club
Woodmen of the World

RECREATION

Local

Recreation in the Prestonsburg area is centered around its 32-acre Archer Park. Facilities include seven all-weather tennis courts, a skating rink, a basketball gymnasium with a stage for theatrical productions, a senior citizens center, three lighted baseball fields, an Olympic-sized swimming pool, two fenced playgrounds, several camping spaces, a horse ring, and four shelter buildings. Also, racquetball facilities have been constructed and there are plans to build a miniature golf course and an additional playground. Classes in gymnastics and square dancing are offered. A county fair and horse show are held at the park annually.

A county park at Allen, Kentucky, 4 miles south of Prestonsburg, includes a 9-hole golf course, tennis courts, baseball diamonds, a swimming pool, and meeting rooms.

A new park at Auxier, Kentucky, 6 miles north of Prestonsburg, is currently under construction and is scheduled to be completed in the fall of 1983. Facilities will include a racquetball court, baseball field, basketball court, playground, shelter and restroom facilities.

Annual events held in Prestonsburg include the Kentucky Highlands Folk Festival which is held the Friday, Saturday and Sunday after Labor Day; the Jenny Wiley Festival which is held the second week in October; and the Old Christmas Party which is held the Sunday following the 6th of January.

Jenny Wiley State Resort Park, 3 miles north of Prestonsburg, takes full advantage of its picturesque highland setting. The 1,700-acre park offers facilities and activities such as a lodge, a dining room, a gift shop, cottages, a lodge pool, recreation rooms, primitive campsites, picnic areas, planned recreation, playground, golf, hiking, horseback riding, shuffleboard, fishing, and fishing boat and pedal boat rentals.

The Jenny Wiley Summer Music Theater, located at the Jenny Wiley Amphitheater, provides Prestonsburg with Broadway music attractions. Productions begin the last week in June and run through the third week in August.

Area (Within 95 miles)

Breaks Interstate Park is 50 miles southeast of Prestonsburg at the Kentucky-Virginia border. It is located on the rim of the largest river canyon east of the Mississippi River and encompasses 2,500 acres. Facilities and recreational activities include a lodge, campsites, swimming, fishing, boating, a playground, a visitor center, and the 12-acre Laurel Lake.

Natural Bridge State Resort Park at Slade, 65 miles west of Prestonsburg, is a 1,899-acre park located in the Daniel Boone National Forest where cliffs and stone arches fill the landscape. The rugged awesomeness of the great Natural Bridge, the largest of 12 natural sandstone arches in the park, is the main attraction. The park has a 35-room resort lodge with a dining room and gift shop, efficiency and one-bedroom cottages, and 95 camping sites. Other facilities include a 54-acre lake, a swimming pool, picnic shelters and playgrounds, hiking trails, and a riding stable. A skylift going up to Natural Bridge is operated from April 15 to October 31 each year.

Red River Gorge, most of which is located in Wolfe County adjacent to Natural Bridge State Resort Park, has three waterfalls, 59 natural sandstone arches, and the Red River Gorge Loop Drive, a 30-mile scenic route on Kentucky 715 and 77 which passes along the Red River. The Daniel Boone National Forest Visitor Information Center on Kentucky 715 is located on the loop drive.

Buckhorn Lake State Resort Park, 68 miles southwest of Prestonsburg at Buckhorn, is a full-facility resort park with a 36-room lodge. The lodge itself offers a dining room with a lake view, a gift shop, a pool, meeting rooms, and a recreation room. Other park facilities and activities include a beach, a bathhouse, a picnic shelter, 72 campsites, a playground, mini-golf, tennis, a dock with open and covered slips, boat rentals, a 40-foot levee plus a fishing pier, bicycle rentals, and planned recreation.

Grayson Lake State Park is located 70 miles northwest of Prestonsburg near Grayson. Facilities available include 71 campsites, a beach, and a picnic area. Good fishing and organized recreational programs can be found during the summer. The park is located in the 7,350-acre Grayson Lake Wildlife Area. Hunting information is available from the Kentucky Department of Fish and Wildlife Resources. The Rosedale Recreation Area, located near a dam on Grayson Lake, includes Kitchen House, a log house circa 1838 which was the scene of a Civil War skirmish. The nearby Camp Webb Conservation Center has a wildlife museum.

Kingdom Come State Park, located 80 miles southwest of Prestonsburg near Cumberland, Kentucky, contains 1,000 beautiful mountain acres. It is named for John Fox, Jr.'s, "The Little Shepherd of Kingdom Come," which was written in 1903 and was the first U. S. novel to sell one million copies. Features include a three-acre fishing lake, a picnic area, a hiking trail, a playground, and Raven Rock, a fascinating stone formation with a large cave opening at the top. The park is located on the mid-way point of the Little Shepherd Trail, a hiking and driving trail which follows Pine Mountain from Harlan to Whitesburg.

Greenbo Lake State Resort Park, which is located 92 miles north of Prestonsburg near Ashland, has a magnificent fieldstone lodge and every article in each room of the lodge has been made in Kentucky. The lodge offers 36 lodge rooms, a dining room, a gift shop, a meeting room, a lodge pool, and a recreation room. Other facilities and activities at the park include a well-equipped campground, a marina, miniature golf, tennis courts, playgrounds, shuffleboard, planned recreation, fishing, hiking, horseback riding, and picnicking.

Carter Caves State Resort Park, 95 miles northwest of Prestonsburg, provides a restful atmosphere with its mountain wildflowers, a rippling stream, the underground wonders of three caves, a lodge, a restaurant, and a gift shop. Recreational facilities available include something for the whole family with playgrounds, two swimming pools (one Olympic-size), tennis courts, shuffleboard, a 9-hole golf course, boating, fishing, horseback riding, picnicking, and cave tours.

COMMUNITY IMPROVEMENTS

Recent

The Prestonsburg City's Utilities Commission recently completed a \$4.2 million expansion of the water treatment plant. The treatment capacity was increased from 1.5 million gallons per day to 4 million gallons per day.

The Prestonsburg City's Utilities Commission recently completed the replacement of the city's gas delivery system. The \$500,000 project replaced the old steel mains with new plastic mains.

The Prestonsburg City's Utilities recently completed the construction of a new \$250,000 utilities and maintenance building. Also, during 1982 a \$150,000 gas well, which produces 50,000 cubic feet per day, was drilled.

A \$4 million, 100-unit housing project at Cliffside was completed in 1982.

A building on 1st Avenue, which recently underwent a \$750,000 renovation, is available for use for a commercial establishment.

Improvements recently completed by the Floyd County School System included a new \$3.9 million Betsy Layne High School and a \$375,000 five-classroom addition to the McDowell High School. In addition, the school system has implemented the following programs: gifted and talented program at five schools, industrial arts at Betsy Layne High School, learning and behavior disorder and special education at the high school level, a multi-handicapped unit, and two units for the hearing-impaired.

Under Way

A \$10 million expansion project under way at Highlands Regional Medical Center will add 55,000 square feet to the current 100,000-square-foot facility. The addition will include: 47 new beds, a new emergency room, twelve-bed intensive/coronary care unit, laboratory, physical therapy department, staff education facilities, and patient and visitor comfort areas. Surgical facilities and the radiology and medical records departments will be expanded. The completion date is scheduled for late 1984.

A new recreational park at Auxier, six miles north of Prestonsburg, is under construction. The park, which will contain a raquetball court, baseball field, basketball court, playground, and shelter and restroom facilities, is scheduled to be completed in the fall of 1983.

The size of the camping area at Jenny Wiley State Resort Park has been increased, along with the addition of water and sewer hookups. At the entrance of the park the construction of Jenny Wiley Village is under way. The village will contain several novelty shops.

Planned

A \$1 million state highway entrance to the Cliffside industrial site is planned for the spring of 1984.

Site preparation for the Big Sandy Regional Airport is scheduled to begin in the fall of 1983 or the spring of 1984. Facilities planned for the airport include a 5,000-foot paved runway, a parallel taxiway, an airplane parking apron, runway and taxiway lights, and VASI. The airport will be located approximately 14 miles northeast of Prestonsburg.

There are plans for the construction of a new middle school in Prestonsburg.

The city of Prestonsburg has plans to extend the city limits five miles north and one mile west of the present city boundaries.

The First Commonwealth Bank plans to build a new \$6 million bank in Prestonsburg.

Construction of a 120-unit, holidome-type motel is planned. The motel will be located two miles south of Prestonsburg.



Kentucky Department of Economic Development
Capital Plaza Tower
Frankfort, Kentucky 40601 • Phone (502) 564-4270