

1979

Industrial Resources - Fulton County - Hickman

Kentucky Library Research Collections
Western Kentucky University, spcol@wku.edu

Follow this and additional works at: https://digitalcommons.wku.edu/fulton_cty

 Part of the [Business Administration, Management, and Operations Commons](#), [Growth and Development Commons](#), and the [Infrastructure Commons](#)

Recommended Citation

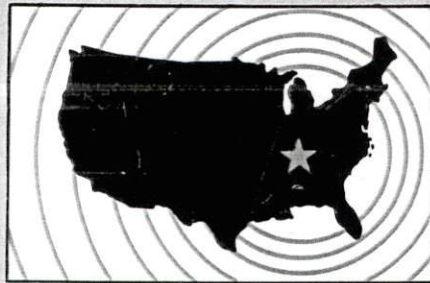
Kentucky Library Research Collections, "Industrial Resources - Fulton County - Hickman" (1979). *Fulton County*. Paper 10.
https://digitalcommons.wku.edu/fulton_cty/10

This Report is brought to you for free and open access by TopSCHOLAR®. It has been accepted for inclusion in Fulton County by an authorized administrator of TopSCHOLAR®. For more information, please contact topscholar@wku.edu.

INDUSTRIAL RESOURCES

HICKMAN

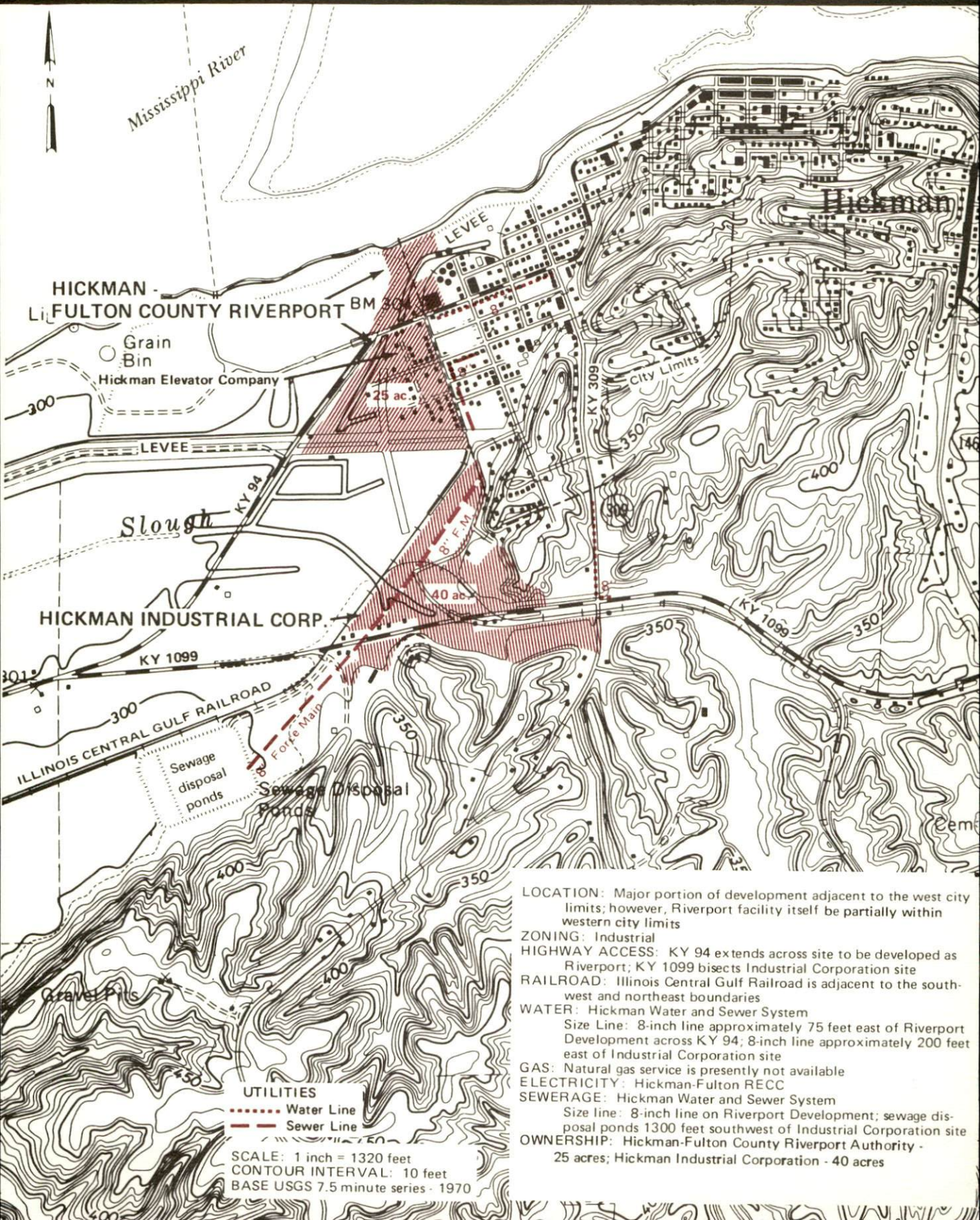
**Kentucky
first**



DEPARTMENT OF COMMERCE

HICKMAN, KENTUCKY --- Site No. 179 -- 65 Acres

For more information contact Mr. James M. Everett, Box 199, Fulton County - Hickman Chamber of Commerce, Hickman, Kentucky 42050, (502) 236-2517, or the Industrial Development Division, Kentucky Department of Commerce, Capital Plaza Tower, Frankfort, Kentucky 40601.



LOCATION: Major portion of development adjacent to the west city limits; however, Riverport facility itself be partially within western city limits

ZONING: Industrial

HIGHWAY ACCESS: KY 94 extends across site to be developed as Riverport; KY 1099 bisects Industrial Corporation site

RAILROAD: Illinois Central Gulf Railroad is adjacent to the southwest and northeast boundaries

WATER: Hickman Water and Sewer System
 Size Line: 8-inch line approximately 75 feet east of Riverport Development across KY 94; 8-inch line approximately 200 feet east of Industrial Corporation site

GAS: Natural gas service is presently not available

ELECTRICITY: Hickman-Fulton RECC

SEWERAGE: Hickman Water and Sewer System
 Size line: 8-inch line on Riverport Development; sewage disposal ponds 1300 feet southwest of Industrial Corporation site

OWNERSHIP: Hickman-Fulton County Riverport Authority - 25 acres; Hickman Industrial Corporation - 40 acres

UTILITIES
 - - - - - Water Line
 - - - - - Sewer Line

SCALE: 1 inch = 1320 feet
 CONTOUR INTERVAL: 10 feet
 BASE USGS 7.5 minute series - 1970

INDUSTRIAL RESOURCES

HICKMAN, KENTUCKY

Prepared by
The Kentucky Department of Commerce
Division of Research and Planning
in cooperation with
The Fulton County-Hickman Chamber of Commerce

1979

TABLE OF CONTENTS

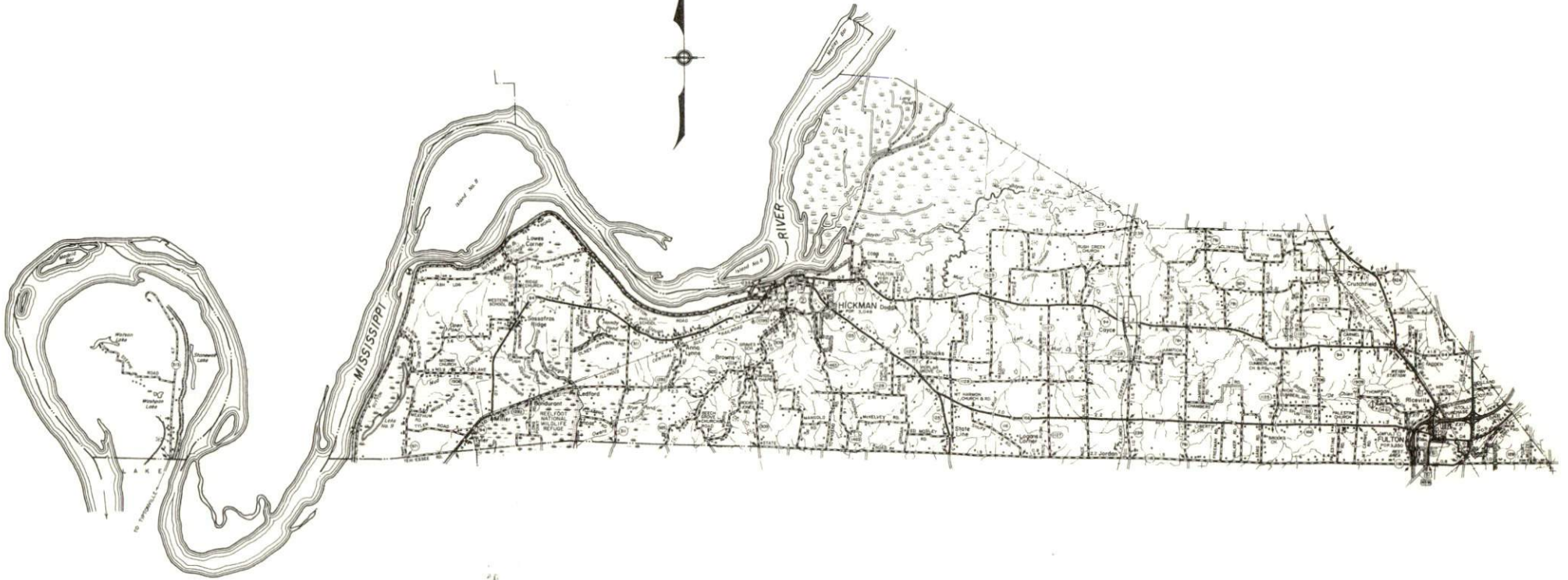
<u>Chapter</u>	<u>Page</u>
INDUSTRIAL SITES	i
SUMMARY OF INDUSTRIAL RESOURCES - HICKMAN, KENTUCKY	1
THE LABOR MARKET AREA	6
Population	6
Labor Force Characteristics of Residents, 1978	6
Hickman Manufacturing Firms, Their Products and Employment	7
Labor Organizations	7
Industrial Services	7
Estimated Male Labor Supply	9
Estimated Female Labor Supply	9
Average Weekly Wages by Industry, by Place of Work, 1978	10
Per Capita Personal Income	12
TRANSPORTATION	13
Rail	13
Highways	13
Truck Service	13
Air	15
Taxi	19
Rental Services	19
Water	19
POWER AND FUEL	21
Electricity	21
Natural Gas	22
Other Fuels	22
WATER AND SEWERAGE	23
Water	23
Sewerage	26
CLIMATE	27

<u>Chapter</u>	<u>Page</u>
LOCAL GOVERNMENT	28
City	28
County	28
Assessed Value of Property	28
Property Taxes	29
Combined State and Local Rates Per \$100	
Valuation, 1979	29
Utilities Gross Receipts Tax for Schools	30
Planning and Zoning	30
Safety	30
Police	30
Fire	30
Rescue Service	30
Refuse Collection and Disposal	31
EDUCATION	32
Public Schools	32
Nonpublic Schools	32
Area Colleges and Universities	33
Vocational Schools	34
HEALTH	36
Local Medical Personnel	36
Hospitals	36
Other Medical Services	36
Ambulance Service.	36
Public Health	36
OTHER LOCAL FACILITIES	37
Communications	37
Library Services	37
Religious Institutions	38
Financial Institutions	38
Hotels and Motels	38
Clubs and Organizations	39
RECREATION	40
COMMUNITY IMPROVEMENTS	42

1979 EDITION
GENERAL HIGHWAY MAP
FULTON COUNTY
KENTUCKY

PREPARED BY THE
KENTUCKY DEPARTMENT OF TRANSPORTATION
OFFICE OF TRANSPORTATION PLANNING
DIVISION OF FACILITIES PLANNING
IN COOPERATION WITH THE
U.S. DEPARTMENT OF TRANSPORTATION
FEDERAL HIGHWAY ADMINISTRATION

0 1 2 3 4 MILES

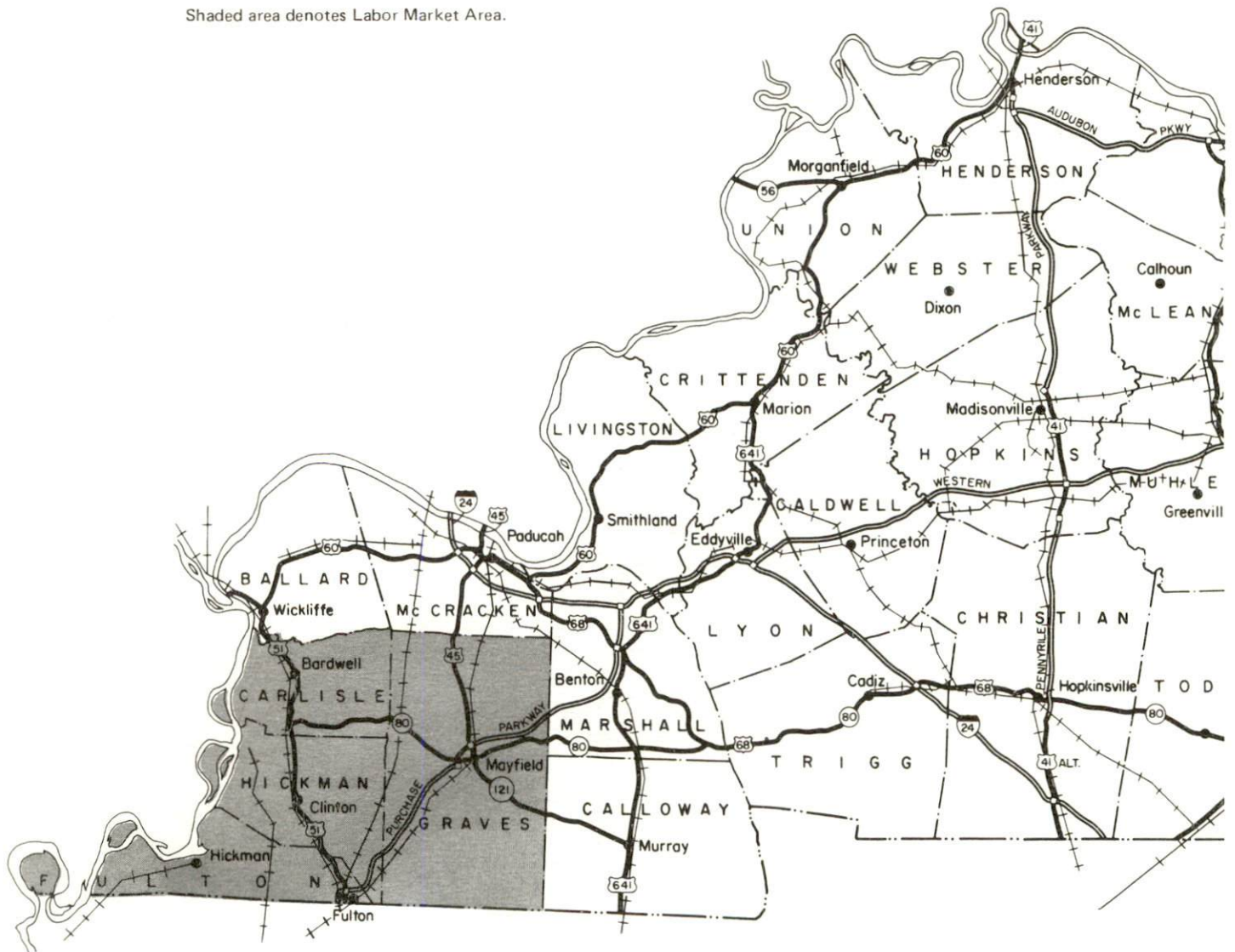




AERIAL VIEW OF HICKMAN, KENTUCKY

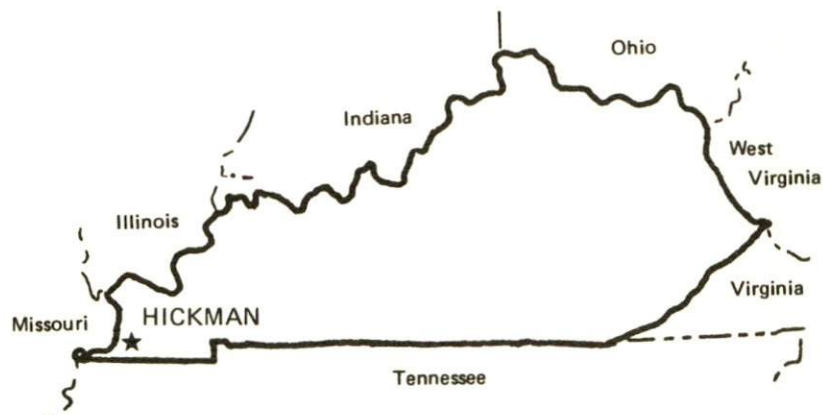
HICKMAN LABOR MARKET AREA
With
MAJOR HIGHWAY & RAILROAD SYSTEM

Shaded area denotes Labor Market Area.



SUMMARY OF INDUSTRIAL RESOURCES
HICKMAN, KENTUCKY

LOCATION



Road Distance in Miles:

Atlanta	<u>415</u>	Baltimore	<u>868</u>
Chicago	<u>415</u>	Detroit	<u>630</u>
New York	<u>1,018</u>	St. Louis	<u>194</u>

POPULATION

City of Hickman, 1976	<u>2,569</u>
Fulton County, 1978	<u>9,100</u>
Labor Market Area, 1978	<u>54,700</u>
%Nonwhite, Fulton County, 1977	<u>19.5</u>

LABOR ANALYSIS

Labor Market Area - Fulton, Carlisle, Graves and Hickman Counties

Estimated available workers from labor market area, 1978:

Male	<u>3,486*</u>	Female	<u>4,267*</u>
Unemployment rate, 1978		Labor Market Area	<u>6.8%</u>
Fulton County	<u>5.8%</u>	Graves County	<u>7.3%</u>
Carlisle County	<u>6.5%</u>	Hickman County	<u>5.8%</u>

*The labor supply includes the number of men and women in the adjoining Tennessee counties of Lake, Obion and Weakley who are available for industrial jobs.

Total employment, Fulton County, 1978 - 4,086
 Manufacturing employment in labor market area, 1978 - 5,169
 Major local manufacturing plants:

<u>Name</u>	<u>Employment</u>
<u>Graphite Products Division, The</u> <u>Carborundum Company</u>	<u>187</u>
<u>Hickman Garment Company,</u> <u>Rolane Industries</u>	<u>75</u>
<u>Roper Pecan Company</u>	<u>46</u>

Labor unions in local manufacturing plants:

Oil, Chemical and Atomic Workers

INDUSTRIAL SERVICES

	<u>Location</u>	<u>Miles Distant</u>
Tool & Die, Machine & Pattern Shops	<u>Paducah, Kentucky</u>	<u>67</u>
Metal Service Centers	<u>Nashville, Tennessee</u>	<u>173</u>
Heat Treating	<u>Nashville, Tennessee</u>	<u>173</u>
Metal Finishers	<u>Morganfield, Kentucky</u>	<u>134</u>
Electric Motor Repair	<u>Paducah, Kentucky</u>	<u>67</u>

TRANSPORTATION

Rail:

Railroad - Illinois Central Gulf Railroad
 Distance to nearest piggyback - 47 miles

Highways:

Interstate - I-57, 52 miles north; I-24, 69 miles northeast
 Parkway - Purchase Parkway, 19 miles east of Hickman

Truck:

Number of interstate motor carriers - 5; Local terminals - 0

Air:

Nearest scheduled airline service - Barkley Field, 8 miles west of Paducah

Distance - 75 miles; Airlines serving - Ozark, Air Kentucky (commuter), and Air Illinois (commuter)

Nearest local airport - Fulton Municipal Airport, 2 miles northwest of Fulton

Distance - 18 miles; Runway length - 2,600 feet

Water:

Nearest navigable river - Mississippi River
Nearest public riverport - Hickman

UTILITIES AND SERVICES

Electricity:

Local distributor - Hickman Electric System
Source of power - Tennessee Valley Authority

Natural Gas:

Local distributor - Hickman Natural Gas System
Source of supply - Trunkline Gas Company
Available for new industry - A petition has been filed with the Federal Energy Regulatory Commission to allow Hickman to take on additional customers.

Other Fuels:

Number of area propane distributors - 4
Number of area distillate fuel oil distributors - 4

Water, treated:

Local supplier - Municipal
Excess municipal system capacity - 1,100,000 gpd
Storage capacity - 800,000 gallons
Expansions planned - Yes

Water, raw:

Source for industrial use - Mississippi River

Sewer:

Excess treatment capacity - 11,000 gpd
Planned expansions - Yes

CLIMATE

Temperature, Normal - 59.4 degrees F
Precipitation, Normal - 47.12 inches
Snowfall, Mean Annual - 10.1 inches
Prevailing winds - Southwest
Relative humidity (%) - 6 a.m. 82; Noon 59

GOVERNMENT

Type - Mayor-City Commission-City Manager

Police personnel - full-time - 7

Fire department personnel - full-time - 4, volunteer - 17

Fire insurance rating (A.I.A.), class - Inside city - 7
Outside city - 10

TAXES

Property taxes:

Combined state and local rates per \$100 valuation, 1979
(100% assessment)

	<u>Inside City of Hickman</u>	<u>Outside City</u>
1. Land and buildings	\$0.939	\$0.667
2. Mfg. machinery, raw materials, goods in process, pollution control equipment	0.150	0.150
3. Finished goods, office equipment, vehicles, other tangibles	1.110	0.881
4. Intangibles (accounts receivable, notes, bonds, etc.)	0.250	0.250
5. Leaseholds in I.R. bond financed plants	0.015	0.015

Special local taxes:

Utilities tax - 3% of electric, gas, water, sewer, telephone services in the Fulton County School District

EDUCATION

Nearest state vocational-technical school - West Kentucky State Vocational-Technical School at Paducah, 67 miles distant

Area vocational education center - Fulton County Area Vocational Education Center, Hickman

Nearest colleges and universities - Five colleges and universities are located within 85 miles of Hickman

Public Schools:

High school enrollment - 360; Student/teacher ratio - 21-1

Middle school enrollment - 413; Student/teacher ratio - 26-1

Elementary school enrollment - 504; Student/teacher ratio - 16-1

Nonpublic Schools:

Enrollment - 45; Student/teacher ratio - 11-1

MEDICAL

Number of physicians locally - 5, each serving 1 day a week; Number of dentists locally - 1
Nearest hospital - Obion County General Hospital, Union City, Tennessee;
Number of beds - 173

COMMUNICATIONS

Local newspapers - Hickman Courier - Weekly
Local radio station - WALR-FM
Television reception from - Kentucky, Missouri, Illinois and Tennessee stations

RELIGIOUS FACILITIES

Churches - 15; Nearest synagogues - Union City, Tennessee, 15 miles distant, and Paducah, Kentucky, 67 miles distant

FINANCIAL INSTITUTIONS

Banks - 1; Total assets - \$13,922,120.23
Savings & loan associations - 1*; Total assets - \$6,090,999.81

PUBLIC LODGING

Total number hotels and motels - 9 within a 20-mile radius;
Total rooms - 405

RECREATION FACILITIES

Parks; Tennis courts; Basketball courts; Playgrounds; Picnic areas; Baseball diamonds and football field at high school; Country club with 9-hole golf course, swimming pool and tennis court

Nearest state resort park - Kentucky Dam Village State Resort Park
Camping; Swimming; Fishing; Water skiing; Golfing; Boating; Lodgings
Dining facility; Airstrip; Open year round

*A branch office of the Home Federal Savings and Loan Association of Paducah is tentatively scheduled to open in the spring of 1980.

THE LABOR MARKET AREA

POPULATION			
Area	1978*	1970	Percent Nonwhite**
Hickman	2,569**	3,048	19.7
Labor Market Area	54,700	52,740	N/A
Fulton County	9,100	10,183	19.5
Carlisle County	6,300	5,354	1.2
Graves County	33,100	30,939	4.9
Hickman County	6,200	6,264	13.4

*Provisional Estimates.

**1976 Population Estimates; 1970 Percent Nonwhite for city; 1977 Percent Nonwhite for counties.

Sources: U.S. Department of Commerce, Bureau of the Census, Census of Population, 1970. U.S. Department of Commerce, Bureau of the Census, Current Population Reports, Series P-25, No. 756, January 1979; Series P-26, No. 78-17, August 1979. University of Louisville, Urban Studies Center, Population Research Unit, Kentucky's Population Disaggregations of 1977 Estimates, December 1978.

LABOR FORCE CHARACTERISTICS OF RESIDENTS, 1978

	Fulton County	Labor Market Area
Civilian Labor Force	4,338	25,235
Employment	4,086	23,524
Agricultural	494	1,945
Nonagricultural	3,592	21,579
Unemployment	252	1,711
Rate of Unemployment (%)	5.8	6.8

Source: Kentucky Department for Human Resources, Kentucky Labor Force Estimates, Annual Averages, 1978.

HICKMAN MANUFACTURING FIRMS,
THEIR PRODUCTS AND EMPLOYMENT

Firm (Establishment date)	Product	Employment			Organized
		Total	Male	Female	
Graphite Products Division, The Carborundum Company (1967)	Graphite products	187	184	3	*
The Hickman Courier (1859)	Newspaper, offset printing	4	1	3	
Hickman Garment Company, Rolane Industries (1955)	Men's outerwear	75	4	71	
Lattus Ready Mix (1963)	Ready mixed con- crete, concrete products	5	4	1	
Roper Pecan Company (1940)	Shelled pecans	46	18	28	

*See Labor Organizations below.

Source: Kentucky Department of Commerce, Division of Research and Planning.

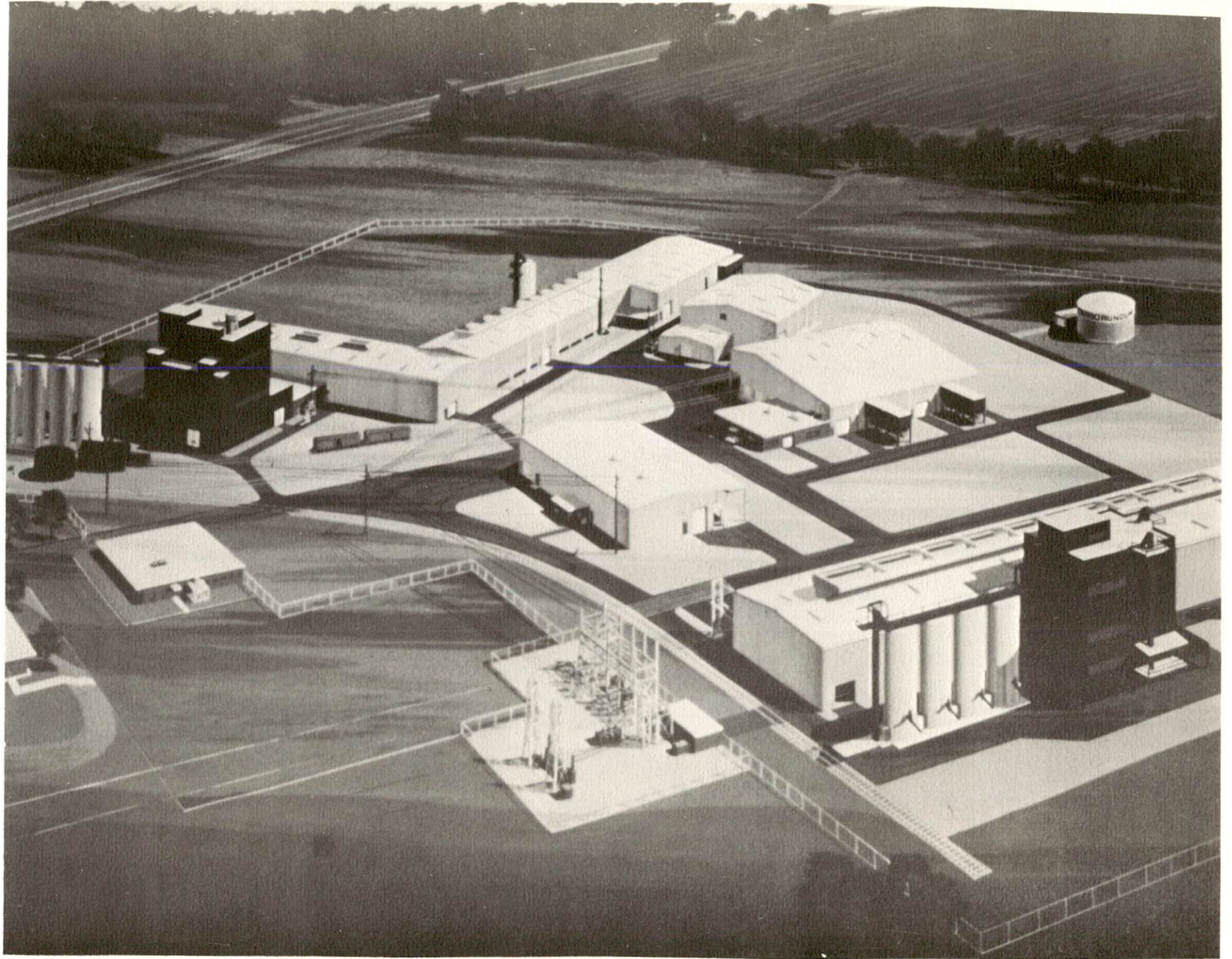
LABOR ORGANIZATIONS

<u>Union</u>	<u>Representing manufacturing workers at:</u>
Oil, Chemical and Atomic Workers International Union, AFL-CIO	Graphite Products Division, The Carborundum Company

INDUSTRIAL SERVICES

	<u>Location</u>	<u>Miles Distant</u>
Tool & Die, Machine & Pattern Shops	Paducah, Kentucky	67
Metal Service Centers	Nashville, Tennessee	173
Heat Treating	Nashville, Tennessee	173
Metal Finishers	Morganfield, Kentucky	134
Electric Motor Repair	Paducah, Kentucky	67

Source: Kentucky Directory of Selected Industrial Services, 1979.



GRAPHITE PRODUCTS DIVISION, THE CARBORUNDUM COMPANY

ESTIMATED MALE LABOR SUPPLY
HICKMAN LABOR MARKET AREA

Area	Current			Under- employed	Future
	Total	Not in Labor Force	Unemployed		Reaching 18 years of age before 1985
Labor Market Area	3,486				5,090
Fulton	333	62	111	160	450
Carlisle	254	43	71	140	228
Graves	1,268	232	536	500	1,347
Hickman	221	46	75	100	289
Lake (Tenn.)	350	N/A	N/A	N/A	393
Obion (Tenn.)	600	N/A	N/A	N/A	1,275
Weakley (Tenn.)	460	N/A	N/A	N/A	1,108

Sources: Kentucky Department for Human Resources, Kentucky Labor Supply Estimates by County, 1978. Tennessee Department of Economic & Community Development, Available Labor, February 1979. Kentucky Department of Commerce, Future Labor Supply before 1985.

ESTIMATED FEMALE LABOR SUPPLY
HICKMAN LABOR MARKET AREA

Area	Current			Under- employed	Future
	Total	Not in Labor Force	Unemployed		Reaching 18 years of age before 1985
Labor Market Area	4,267				4,706
Fulton	397	36	141	220	451
Carlisle	223	21	82	120	176
Graves	1,352	111	611	630	1,247
Hickman	215	21	84	110	261
Lake (Tenn.)	210	N/A	N/A	N/A	389
Obion (Tenn.)	910	N/A	N/A	N/A	1,239
Weakley (Tenn.)	960	N/A	N/A	N/A	943

Sources: Kentucky Department for Human Resources, Kentucky Labor Supply Estimates by County, 1978. Tennessee Department of Economic & Community Development, Available Labor, February 1979. Kentucky Department of Commerce, Future Labor Supply before 1985.

AVERAGE WEEKLY WAGES BY INDUSTRY,
BY PLACE OF WORK, 1978

	<u>Fulton County</u>	<u>Carlisle County</u>	<u>Graves County</u>	<u>Hickman County</u>
All Industries	\$154.72	\$129.87	\$208.29	\$146.55
Mining & Quarrying	*	0	*	0
Contract Construction	250.50	121.34	194.52	175.09
Manufacturing	187.08	*	264.44	131.66
Transportation, Communications & Public Utilities	259.95	*	260.97	210.60
Wholesale & Retail Trade	131.21	119.72	145.94	166.59
Finance, Insurance & Real Estate	164.71	176.20	195.90	156.79
Services	116.43	112.45	132.07	121.78
Other	*	*	*	0

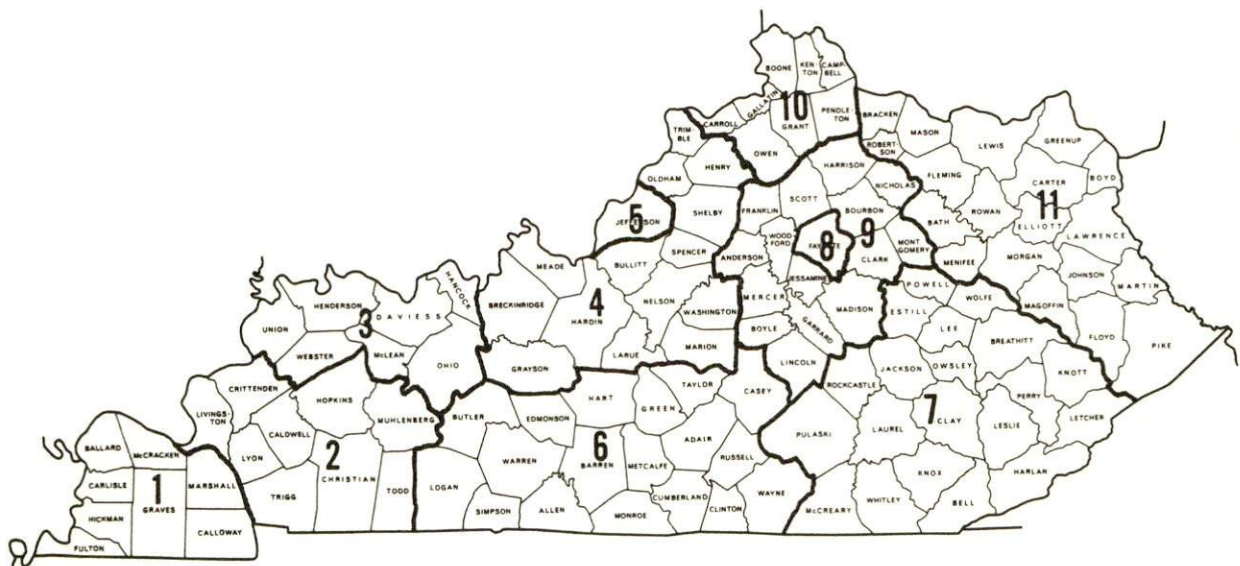
*Not disclosed.

Note: Excludes domestic workers, railway workers; certain nonprofit corporations; majority of federal, state, and local government workers; and self-employed workers.

Source: Kentucky Department for Human Resources, Average Weekly Wages of Workers Covered by Kentucky Unemployment Insurance Law, 1978.

Occupational wage rates for specific industries are usually not available to most government agencies, and wage data furnished to state employment agencies by individual industrial employers is protected from disclosure by federal law. The most reliable up-to-date wage information can be obtained by direct contact with local employers.

Associated Industries of Kentucky, a voluntary organization of Kentucky businesses, regularly collects occupational wage rates and fringe benefits data from participating member firms. Data is compiled for over 127 clearly defined office, production, and service occupations. Tabulations are published for eleven regions of Kentucky, as shown on the map below. It should be noted that the data may be weighted by the preponderance of firms in the larger cities and may be somewhat higher than the rates paid in the smaller communities. Data from these tabulations are available, upon request, from the Kentucky Department of Commerce, Frankfort, Kentucky 40601.



Associated Industries of Kentucky Area Wage Surveys

Up-to-date occupational wage rates of the existing industries are maintained by South Kentucky Industrial Development Association, Post Office Box 726, Hopkinsville, Kentucky 42240.

PER CAPITA PERSONAL INCOME

<u>Area</u>	<u>1977</u>	<u>1973</u>	<u>Percent Change</u>
Fulton County	\$5,473	\$3,767	45.3
Labor Market Area			
Range	\$4,732 - 6,015	\$3,307 - 3,907	N/A
Kentucky	5,989	4,021	48.9
U.S.	7,026	4,980	41.1

Source: U.S. Department of Commerce, Bureau of Economic Analysis, April 1979.

TRANSPORTATION

Rail

Line serving Hickman - Illinois Central Gulf Railroad

Services - Branch line; one local freight from Dyersburg, Tennessee, to Hickman twice weekly; piggyback facilities available at Dyersburg, Tennessee, 47 miles south of Hickman, and at Paducah, Kentucky, 67 miles northeast of Hickman

For details on routing, schedules, rates, and services, contact:

Manager of Industrial Development
Illinois Central Gulf Railroad
112 North 4th Street
240 Pierce Building
St. Louis, Missouri 63102
(314) 241-9400

Highways

Kentucky Routes 125 and 166 connect Hickman with the Purchase parkway at Fulton, 19 miles to the east. Kentucky Route 94 also connects Hickman with Fulton. Both 125 and 166 are rated "AAA" trucking highways with 80,000 pound gross load limits. The Purchase Parkway connects with Interstate 24, 69 miles northeast of Hickman. Access to Interstate 57 in Illinois is 52 miles north of Hickman.

Truck Service

Company

Home Office

Henry Edwards Trucking Company*

P.O. Box 97
Clinton, Kentucky 42031

Harper Truck Service, Inc.**

1230 North 8th Street
Paducah, Kentucky 42001

McLean Trucking Company*

P.O. Box 213
Winston-Salem, North Carolina 27102

Smith's Transfer Corporation*

P.O. Box 1000
Staunton, Virginia 24401

T.I.M.E. - DC, Inc.*

P.O. Box 2550
Lubbock, Texas 79408

*Interstate only.

**Intrastate only.

The following companies serve the Hickman-Fulton County Riverport:

Ace-Doran Hauling & Rigging Company	1601 Blue Rock Street Cincinnati, Ohio 45223
Commercial Transport, Inc.	South 20th Belleville, Illinois 62008
Henry Edwards Trucking Company	Fulton Highway, P.O. Box 97 Clinton, Kentucky 42031
Ligon Specialized Hauler, Inc.	Highway 85 Madisonville, Kentucky 42431
Liquid Transporters, Inc.	1292 Fern Valley Road Louisville, Kentucky 40219
Paschall Truck Lines, Inc.	Rt. 4 Murray, Kentucky 42071
Sartain Truck Lines	P.O. Box 1298 Dyersburg, Tennessee 38024
Fred Stokes Transport, Inc.	P.O. Box 227 Hickman, Kentucky 42050
Tajon, Inc.	Rd. #5 Mercer, Pennsylvania 16137
Usher Transport, Inc.	3295 Old Benton Road Paducah, Kentucky 42001

Other Freight Services

Purolator Courier Corporation*
United Parcel Service*

Nearest Shipping Center

Paducah, 67 miles distant
Paducah, 67 miles distant

*For regular scheduled pickups or for occasional pickups, arrangements must be made with the Louisville office of Purolator Courier Corporation or United Parcel Service.

HIGHWAY MILES AND TRUCK TRANSIT TIME IN DAYS FROM
HICKMAN, KENTUCKY, TO SELECTED MARKET CENTERS

City	Highway Miles	Delivery		City	Highway Miles	Delivery	
		Time TL	City			Time TL	
Atlanta, Ga.	415	2-3	Los Angeles, Ca.	1,048	5		
Baltimore, Md.	868	3-4	Louisville, Ky.	270	2		
Birmingham, Ala.	369	2-3	Nashville, Tenn.	173	2		
Chicago, Ill.	415	2	New Orleans, La.	521	2-3		
Cincinnati, Ohio	371	2	New York, N.Y.	1,018	3-4		
Cleveland, Ohio	615	2	Pittsburgh, Pa.	658	3-4		
Detroit, Mich.	630	2	St. Louis, Mo.	194	1		
Knoxville, Tenn.	350	2					

Source: Delivery Time Only - Henry Edwards Trucking Company, P.O. Box 97,
Clinton, Kentucky 42031

Air

Local

Location: Fulton Municipal Airport*
2 miles northwest of Fulton,
18 miles east of Hickman

Runways: 1 paved

Length: 2,600 feet

Traffic Control: Wind sock

Lighting: Runway lights sunset to sunrise

(Contd.)

*An expansion of the Fulton Municipal Airport is planned. The Master Plan includes three phases of development. Phase I is presently under way and improvements which have been completed included the resurfacing of the runway and the installation of new lights, a new wind sock, and a rotating beacon.

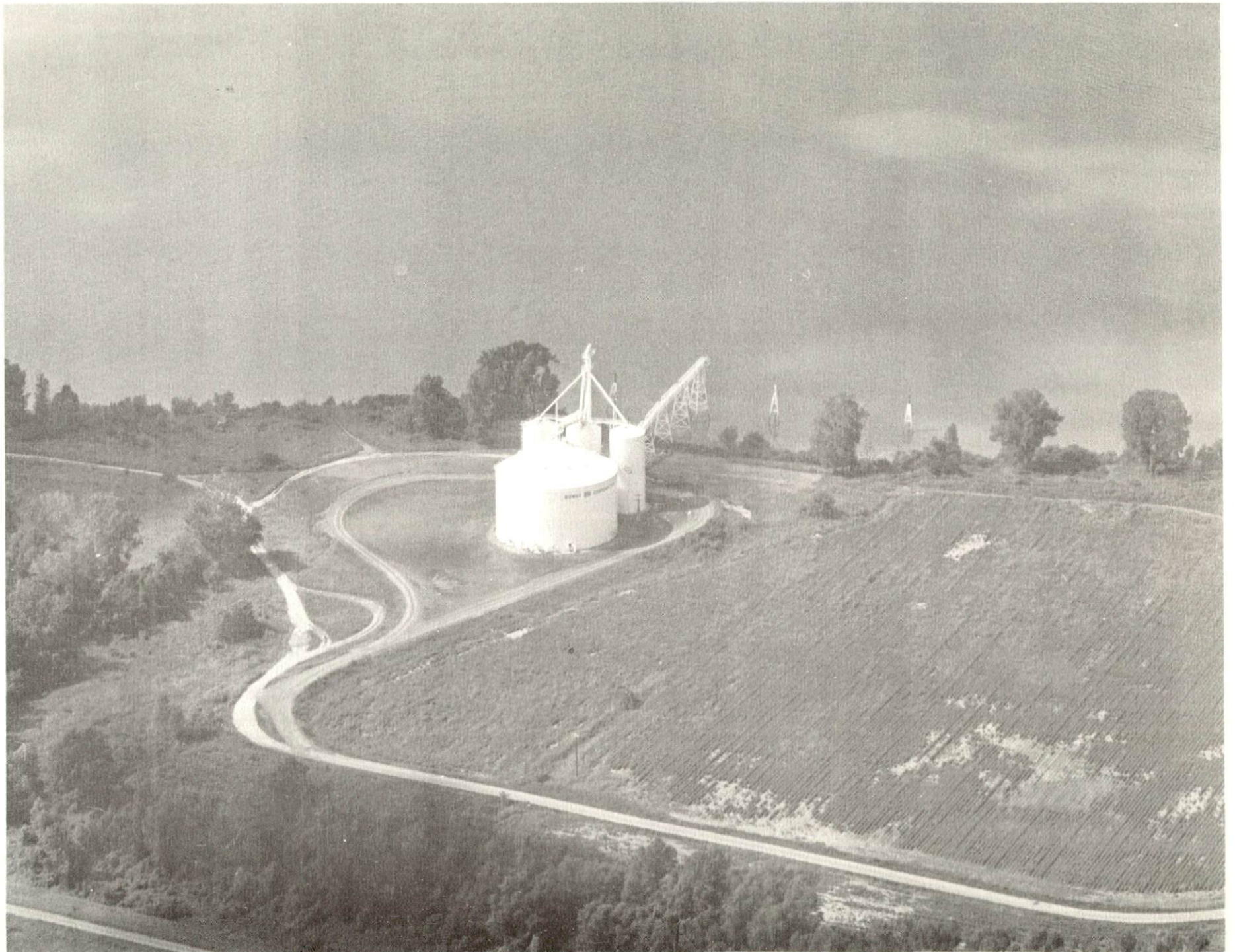
Phase I will also involve expanding the existing runway to 4,000 feet, acquiring the land necessary to expand the runway to 5,000 feet, and adding a radio non-directional beacon.

Phase II calls for the future widening and expansion of the runway and construction of an additional building to provide better facilities.

Phase III will consist of expanding the runway to 5,000 feet. This project is a joint venture among the City of Fulton, Fulton County, and South Fulton, Tennessee. They have cooperated to form a tri-governmental agency known as the Ken-Tenn Airport Board which is in the process of acquiring land for the completion of Phase I.



FULTON COUNTY GRAIN COMPANY



BUNGE CORPORATION GRAIN TERMINAL



AERIAL VIEW OF HICKMAN-FULTON COUNTY RIVERPORT

Nearest Scheduled Airline Service

Location: Barkley Field
8 miles west of Paducah,
75 miles northeast of Hickman

Runways: 2 paved

Length: 4,000 feet and 6,500 feet

Traffic Control: Tower, ground control, approach control

Lighting: Beacon, boundary, obstruction, runway
lights and runway end identification
lights, medium intensity approach
lighting system, MALS, RAIL

Services: Ozark, Air Kentucky (commuter) and Air
Illinois (commuter) Airlines; 100 octane,
JA-1 fuel; major A & E repairs; storage;
taxi, limousine, U-Drive-It; restaurant

Air Freight Service: Accepted on a space available basis

Taxi - One company, 24-hour service

Rental Services - Car and pick-up truck rentals available.

Water

The Mississippi River bounds Hickman on the west and has port facilities available for barges. Hickman Harbor, a still water port on the Mississippi River, has private unloading facilities, 24-hour service, 24-hour food and provision service, fresh water, and refueling service for the large freight boats and barges that serve the area. Hickman Harbor Service, Inc. and Flowers Transportation, Inc. provide fleet service for the harbor. Hickman is a headquarters for the U.S. Coast Guard, serving an area of 190 miles up and down the river, and the home base for the Coast Guard Cutter Chippewa.

The Hickman-Fulton County Riverport Authority has completed a \$2.2 million general cargo facility within the harbor. The heart of the port is the docking facility, consisting of two 16-foot diameter mooring cells, one 20-foot diameter mooring and conveyor cell, one mooring "dolphin" structure, and a 30-foot diameter crane cell which will have a pedestal-mounted crane rated at 125-ton lifting capacity. This crane, which has a 120-foot long boom, will be able to lift 50 tons out of a barge and place a 20-ton load on a truck.

Linking the docking facility with the flood protected material handling and processing segment of the port on the other side of the levee is an 86-foot long bridge with paved roadway over the levee. At the land end of the bridge is an 18,400-square-foot heated warehouse and a paved staging area with truck height loading dock which will have a rail spur at one end for rail transshipment. There will also be 10,000 square feet of outside storage space.

(Contd.)

The second main element of the port is a 125-foot long radial stacker which will have the capability of stockpiling ten or more bargeloads of material. In the barge unloading operation it will be fed by a hopper on the 20-foot diameter river cell which will be loaded by a clamshell attached to the crane. The stacker is connected to the docking facility by a 1,205-foot-long conveyor system which has a 30-inch-wide belt with the capacity to transport material at a rate of 350 tons per hour outbound and 400 tons per hour inbound.

The entire facility is constructed on approximately 25 acres of land adjoining the harbor. A two tract industrial site is being developed with one tract located adjacent to the port and the other tract located 1/4 mile from the port. The port was built primarily to handle and transport bulk commodities, mainly corn, grain and coal. As demand for other commodities grows, this port will have the capability to adapt to handle virtually any cargo moved on the inland waterways system.

Hickman Elevator Company is constructing a grain facility at the riverport which is scheduled to be in operation by the spring of 1980. Other private facilities within the harbor area include a river dredge and a sand and gravel company operated by the Lattus Ready-Mix Company; a million-bushel grain terminal operated by the Bunge Corporation; a grain terminal operated by the Fulton County Grain Company; and a 215-million-gallon capacity oil terminal operated by the Stokes Oil Company.

POWER AND FUEL

Electricity

Company serving Hickman and part of Fulton County - Hickman Electric System

Source of power - Tennessee Valley Authority

Total generating capacity - 27,071,480 KW*

For industrial rates contact:

South Kentucky Industrial
Development Association, Inc.
P.O. Box 726
Hopkinsville, Kentucky 42240
(502) 885-5392

and/or

Hickman Electric System
P.O. Box 228
Hickman, Kentucky 42050
(502) 236-2535

Company serving part of Fulton County - Hickman-Fulton Counties Electric Cooperative Corporation

Source of power - Tennessee Valley Authority

Total generating capacity - 27,071,480 KW*

For industrial rates contact:

South Kentucky Industrial
Development Association, Inc.
P.O. Box 726
Hopkinsville, Kentucky 42240
(502) 885-5392

and/or

Hickman-Fulton Counties ECC
P.O. Box 190
Hickman, Kentucky 42050
(502) 236-2521

*1976 capacity in service - kilowatts.

Natural Gas

Company serving Hickman - Hickman Natural Gas System
Source of supply - Trunkline Gas Company
Size of transmission mains - 30 inches (supplier);
4 inches (distributor)
Distribution mains - 3/4, 1, 2 and 4 inches
Distribution pressure - 30 psi
Btu content - 1,020 per cubic foot;
Specific gravity - 0.60
For rates and supplies contact:

Hickman Natural Gas System
202 Jackson Street
City Hall
Hickman, Kentucky 42050
(502) 236-2535

Other Fuels

Propane (Within 20 miles)

Amerigas
603 West Highland Drive
Fulton, Kentucky 42041

Busby LP Gas
Hickman, Kentucky 42050

Texgas
Union City, Tennessee 38261

Tri-State Gas and Appliance Company
Jefferson Street
Clinton, Kentucky 42031

Fuel oils

Distillate fuel oil - (Within 20 miles)

Chevron U.S.A., Inc.
Terry Road
Fulton, Kentucky 42041

Reynolds Brothers Oil Company, Inc.
400 East Church Street
Union City, Tennessee 38261

Ralph Puckett Oil Company
Box 187
Fulton, Kentucky 42041

Stokes Oil Company, Inc.
Highway 94-W
Hickman, Kentucky 42050

Residual fuel oil - Arrangements must be made with the refinery.

Low sulphur content coal - Available in eastern Kentucky.

WATER AND SEWERAGE

Water

Company serving Hickman - Hickman Water and Sewer System*
202 Jackson Street
City Hall
Hickman, Kentucky 42050
(502) 236-2535

Source - Two deep wells
Treatment plant capacity - 2,800,000 gallons per day
Average daily consumption - 1,200,000 gallons
Peak daily consumption - 1,700,000 gallons
Type treatment - Filtration, chlorination
Storage capacity - 800,000 gallons
Size lines - 2, 2 1/2, 3, 4, 6 and 8 inches
Average pressure - 90 psi
Average temperature - 67 degrees F.

(Contd.)

*One well has recently been upgraded increasing the capacity of the well from 400 to 600 gpm. Three new water mains have been laid in the city to replace old lines and a replacement schedule has been set up to replace all older lines in the city. A contract has been awarded for the development of a 20-year improvement plan for the city's water system. This will entail a comprehensive analysis of the water distribution system, the treatment and storage capacity, and the rate structure. Plans are under way for the drilling of an additional well and expansion of the water treatment plant. There are also tentative plans to construct additional elevated storage and to upgrade fire plug connections so that all fire plugs will be connected to 6-inch water mains. This will require the installation of approximately 18,000 feet of 6-inch main.

MONTHLY WATER RATES FOR WHOLESALE
AND INDUSTRIAL CONSUMERS

Inside City Limits

First	2,000 gallons	\$4.00 (Minimum)
Next	8,000 gallons	1.09 per M gallons
Next	15,000 gallons	.862 per M gallons
Next	25,000 gallons	.747 per M gallons
Next	50,000 gallons	.621 per M gallons
Next	100,000 gallons	.460 per M gallons
All over	200,000 gallons	.400 per M gallons

A \$.50 surcharge is added to all bills.

Areas outside the city limits and not part of the Hickman Rural Water Extension pay 150% of inside city limits rate plus \$.50 surcharge.

Tap-on charge:

Inside city limits	\$ 60
Hickman Rural Water Extension and areas outside city limits	\$175

Name of water district - Hickman Rural Water Extension*
202 Jackson Street
City Hall
Hickman, Kentucky 42050
(502)236-2535

Area served - Highway 125 south of Hickman; Highway 309 southwest of Hickman

Date when water district began operating - 1972

Source of supply of treated water - Directly connected to City of Hickman water supply

Average amount of water used in a 24-hour period - 40,000 gallons

Peak amount of water used in a 24-hour period - 48,000 gallons

Storage capacity - 50,000 gallons

Average pressure - 50 psi

Average temperature - 67 degrees F.

Size lines - 2, 2½, 3, 4, 6 and 8 inches

Rates -

First	2,000 gallons	\$8.00 (Minimum)
Next	8,000 gallons	1.635 per M gallons
Next	15,000 gallons	1.245 per M gallons
Next	25,000 gallons	1.120 per M gallons
Next	50,000 gallons	.931 per M gallons
Next	100,000 gallons	.690 per M gallons
All over	200,000 gallons	.600 per M gallons

Tap-on charge: \$175

*Plans are being made to eliminate deadend water lines and make the system a complete loop of continuous water flow.

Name of water district - Southwestern Kentucky Water District
c/o Hickman - Fulton Counties ECC
P.O. Box 190
Hickman, Kentucky 42050
(502)236-2521

Area served - Portions of Fulton and Hickman Counties
Date when water district began operating - August 1971
Source of supply of treated water - Fulton Utility System
Average amount of water used in a 24-hour period - 32,622 gallons
Storage capacity - 200,000 gallons
Average pressure - 55 to 70 psi
Size lines - 6, 4, 3 and 2 inches
Rates* -

First	2,000 gallons	\$7.50	(Minimum)
Next	5,000 gallons	1.875	per M gallons
Next	5,000 gallons	1.35	per M gallons
Next	8,000 gallons	1.05	per M gallons
Next	10,000 gallons	.90	per M gallons
Next	20,000 gallons	.75	per M gallons
All over	50,000 gallons	.60	per M gallons

Tap-on charge: \$150

Surface water sources - Mississippi River, Obion Creek and Bayou De Chien
Average discharge - Bayou De Chien near Clinton - 107 cfs
(39-year record, USGS)
Expected ground water yield - 500 to 1,000 gpm over the entire county

*Commercial minimum rate for first 5,000 gallons: \$13.13.

Sewerage

Company serving Hickman - Hickman Water and Sewer System*
202 Jackson Street
City Hall
Hickman, Kentucky 42050
(502)236-2535

Design capacity - East Lagoon - 160,000 gallons per day, West Lagoon -
160,000 gallons per day

Average daily flow - East Lagoon - 151,000 gallons**, West Lagoon -
158,000 gallons**

Treatment - Lagoon system

Type treatment - Aeration

Treated effluent discharged into - Mud Creek

Size of sanitary mains - 6, 8, 10 and 12 inches

Size of storm mains - 10, 12, 18 and 36 inches

Rates - 50 percent of monthly water bill

Tap-on charge: \$175

*A Sewer System Evaluation Study of the Municipal Sewerage System is under way and scheduled to be completed in December of 1979. The design phase of a 201 Facilities Plan to expand and upgrade the system is expected to begin in the spring of 1980.

**Kentucky Department for Natural Resources and Environmental Protection.

CLIMATE

Fulton County

Temperature

Normal (30-year record)	59.4 degrees
Average annual 1978	57.7 degrees
Record highest, July, 1954 (36-year record)	104.0 degrees
Record lowest, January, 1963 (36-year record)	-5.0 degrees
Normal heating degree days (30-year record)	3,833
(Heating degree day totals are the sums of negative departures of average daily temperatures from 65 degrees F.)	

Precipitation

Normal (30-year record)	47.12 inches
Mean annual snowfall (36-year record)	10.10 inches
Total precipitation 1978	58.18 inches
Mean number days precipitation (.01 inch or more) (36-year record)	114 inches
Mean number days thunderstorms (22-year record)	53

Prevailing Winds (22-year record)

Southwest

Relative Humidity (22-year record)

6 a.m.	82 percent
Noon	59 percent

Source: U.S. Department of Commerce, Environmental Science Services
Administration, Climatological Data, 1978. Station of record:
Cairo, Illinois.

LOCAL GOVERNMENT

City

Structure - Mayor - 4-year term; 4 commissioners - 2-year terms;
city manager

Budget 1979 - General Fund	\$398,842.00
Water and Sewer Fund	327,000.00
City Gas System	869,341.00

Fees and licenses - Occupational license fees for businesses range from \$7.50 to \$410 per year; occupational license tax of one percent of gross wages of individuals; automobile stickers - \$10 per automobile per year

County

Structure - County Judge/Executive - 4-year term; 4 magistrates - 4-year terms

Budget 1978-79 - General Fund \$174,691; Road Fund \$104,700

Assessed Value of Property

<u>Classes of Property</u>	<u>Hickman (1979)</u>	<u>Fulton County (1979-1980)</u>
Real Estate	\$13,578,889	\$72,087,489
Tangibles	9,424,617	21,627,373

Property Taxes

All property in Kentucky is assessed at 100 percent of fair cash value.

Land and buildings are taxed by the state and may be taxed by local jurisdictions. The state rate is \$0.279 per \$100 of assessed valuation.

Manufacturing machinery, raw materials inventories, pollution control equipment, and goods in the process of manufacture are not subject to local taxation. The state rate is \$0.15 per \$100.

Other tangible personal property owned by manufacturers (automobiles, trucks, finished goods, office furniture, office equipment) is taxed by the state at \$0.45 per \$100 and may be taxed by local jurisdictions.

Property stored in public warehouses in a transit status is not subject to local taxation. The state rate is only \$0.015 per \$100.

Intangible personal property located in Kentucky (money in hand, shares of stock, notes, bonds, accounts receivable, and other credits) is taxed by the state at \$0.25 per \$100, and is not subject to local taxation.

Private leaseholds in industrial facilities owned by cities or counties and financed by industrial revenue bonds are subject to a state tax of \$0.015 per \$100 of value (essentially the lessee's equity, adjusted for appreciation or depreciation). Local taxation is not permitted.

Combined State and Local Rates Per \$100 Valuation, 1979* (100% assessment)

	<u>Inside City of Hickman</u>	<u>Outside City</u>
1. Land and buildings	\$0.939	\$0.667
2. Mfg. machinery, raw materials, goods in process, pollution control equipment	0.150	0.150
3. Finished goods, office equipment, vehicles, other tangibles	1.110	0.881
4. Intangibles (accounts rec., notes, bonds, etc.)	0.250	0.250
5. Leaseholds in I. R. bond financed plants	0.015	0.015

*Kentucky Department of Commerce.

Utilities Gross Receipts Tax for Schools

A 3 percent tax is levied on utilities receipts for schools in the Fulton County School District. Tax is paid by all consumers of utilities as an add-on to the utilities bills. Exempted are receipts from utilities services that are resold and the receipts from the sale of energy or energy producing fuels that exceed 3 percent of the cost of production in manufacturing, processing, mining or refining.

Planning and Zoning

City agency - City of Hickman Planning and Zoning Commission
Zoning enforced - In the city only
Subdivision regulations enforced - In the city only
Local codes enforced - Building and housing
Mandatory state codes enforced - Plumbing, National Fire Protection Association Code, National Building Code (for major buildings and residential construction containing more than 12 bedrooms per building)

Safety

<u>Police</u>	<u>Hickman</u>	<u>Fulton County</u>
Total staff	7 full-time 3 part-time	3 full-time 4 part-time
Radio-patrol cars	2	5

Fire

American Insurance Association Fire rating	7	10
Full-time staff	4	
Volunteers	17	

Rescue Service

Hickman Rescue Squad:

Number of volunteers - 25

Equipment - Boat and motor, dragging equipment, oxygen, two generators, 3/4-ton van/truck, lights, radios, basic rescue equipment, army trailer with lights

Personnel training - Advanced and standard first aid. Most members are also volunteer firemen and have received fire fighting training.

Refuse Collection and Disposal

	<u>Hickman</u>	<u>Fulton County</u>
Type service	Private	Private
Fee charged:		
residential	\$3.50 per month*	\$3.50 per month*
business	By contract (\$5 to \$50 per month)	By contract
industrial	By contract	By contract
Collection frequency:		
residential	Once per week	Once per week
business	Twice per week	As required
industrial	As required	As required
Trash pickup	As required	As required
Disposal method	Sanitary landfill	Sanitary landfill

*Fee for residents on a fixed income is \$1.75 per month.

EDUCATION

Public Schools

	<u>Fulton County</u>
Total Enrollment (March 1979)	1,277
Elementary	504
Middle School	413
High School	360
Student-Teacher Ratio	20-1
Elementary	16-1
Middle School	26-1
High School	21-1
Percent High School Graduates to College	21.6
Expenditures Per Pupil (1977-78)	\$919.93
Bonded Indebtedness, June 30, 1978	\$960,000

Nonpublic Schools

	<u>Church of Jesus Christ</u>
Total Enrollment	45
Elementary	32
High School	13
Student-Teacher Ratio	11-1
Elementary	16-1
High School	16-1

Area Colleges and Universities

<u>Name</u>	<u>Location (Miles distant)</u>	<u>Enrollment (Fall, 1978)</u>	<u>Highest Degree Conferred</u>
University of Tennessee	Martin, Tennessee (32)	5,125	Masters
Murray State University	Murray (55)	7,394	Masters, Specialist*
Bethel College	McKenzie, Tennessee (56)	360	Baccalaureate
Paducah Community College	Paducah (67)	1,464	Associate
Southeast Missouri State University	Cape Girardeau, Missouri (82)	8,804	Masters

*Joint doctoral degree programs are offered in cooperation with the University of Kentucky, Lexington.

Vocational Schools

Location
Miles Distant
Curriculum

Nearest State School

West Kentucky State
Vocational-Technical School
Paducah
67
Health Programs
Dental Assistant
Practical Nursing
Nurse Aide/Orderly
Ward Secretary
Respiratory Therapy
Operating Room Technology
Emergency Medical Technology
Service Trades
Barbering
Cosmetology
Commercial Foods
Auto Body
Auto Mechanics
Diesel Mechanics
Tailoring
Business & Communications
Business & Office Occupations
Printing
Commercial Art
Distributive Education
Consumer Education
Cooperative Education
Construction Trades
Carpentry
Masonry
Electricity
Welding
Air Conditioning & Refrigeration
Architectural Drafting
Mechanical Drafting
Technical Education
Chemical Lab Technology
Instrumentation
Electronics
Machine Shop
Industrial Plant Maintenance
Civil & Highway Technology

Nearest Area Education Center

Location	Fulton County Area
Curriculum	Vocational Education Center
	Hickman
	Business and Office
	Accounting Jr. Management
	Clerical
	Secretarial
	Industrial Education
	Auto Mechanics
	Carpentry
	Electricity
	Welding
	Special Vocational Programs
	Co-op Training
	Emergency Medical Technician
	Fireman Training
	First Aid and Safety

Arrangements can be made to provide training in the specific production skills required by an industrial plant. Instruction may be conducted either in the vocational school or in the industrial plant, depending upon the desired arrangement and the availability of special equipment.

HEALTH

Local Medical Personnel

Physicians - *
Dentists - 1

Hospitals

<u>General Hospital</u>	<u>Location</u>	<u>Beds</u>
Obion County General Hospital**	Union City, Tennessee, 15 miles distant	173

General hospital facilities and services - Emergency room, operating room, coronary care unit, intensive care unit, obstetrics, pharmacy, laboratory, radiology, nuclear medicine, EKG, physical therapy, respiratory therapy, recovery therapy

Medical staff - 27 medical doctors on active staff, 12 medical doctors on consulting staff, 75 registered nurses, 63 licensed practical nurses

There are two general hospitals located in Fulton, Kentucky, 20 miles east of Hickman, with a combined capacity of 75 acute beds.

Other Medical Services

Project Independence - A pilot program for the state, this program is designed to provide health services for senior citizens in a home setting rather than having them placed in an institutional health facility.

Ambulance Service

Name - Hickman-Fulton County Ambulance Service
Staff - 8 emergency medical technicians
Service - 24-hour, county-wide
Equipment - One fully equipped ambulance; one standby ambulance

Public Health

Facility - Fulton County Health Center
Staff - Nurse, sanitarian, clerk. In addition, a registered nurse, a licensed practical nurse, a clerk and an aide work in home health services.

*Five physicians from a clinic in Union City, Tennessee, each practice one day a week at Hickman.

**The hospital completed a building addition in early 1979 which includes a new surgical suite, an intensive care unit, a coronary care unit, a physical therapy unit, emergency room, laboratory and pharmacy. In addition, the physical therapy facilities, the obstetrics unit, the nursery, central supply, and one patient care unit were renovated.

OTHER LOCAL FACILITIES

Communications

Telephone - South Central Bell Telephone Company
Services - Standard

Telegraph - Western Union
Services - Toll-free telephone number

Postal - U.S. Post Office
Class - Second
Mail received - Once daily
Mail dispatched - Once daily

Newspapers - Hickman Courier
Weekly and circulation - 2,900
Other papers
received from - Fulton, Louisville and Paducah, Kentucky;
Memphis and Union City, Tennessee

Radio - WALR-FM
Stations received from - Fulton, Paducah and Mayfield, Kentucky;
McKenzie and Union City, Tennessee;
Cairo, Illinois

Television -
Reception from - Paducah, Kentucky; Cape Girardeau and St. Louis,
Missouri; Carbondale, Illinois; Memphis,
Tennessee

Kentucky Educational
Television - Murray-Mayfield transmitter, Channel 21

Library Services

Public library - Hickman Public Library (a branch of the Fulton
County Library Board)
Size collection - 36,543 volumes*
Circulation, 1977-78 - 68,755 (libraries), 29,149 (bookmobile),
97,904 (Total)
Services - Bookmobile, magazines, movie projector, films, records,
pictures, microfilm recorder-printer, reading program, story hour,
book displays, meeting room, reference services, inter-library
loans, special programs for organizations upon request, services
to shut-ins, copying services.

*Includes both the Fulton and the Hickman libraries.

Religious Institutions

Number of churches - 15
Denominations - Catholic
Christian
Church of Christ
Church of God
Church of Jesus Christ
Episcopal
Freewill Baptist
Holiness
Missionary Baptist
Southern Baptist
United Methodist

Nearest Synagogues -
Congregations - Temple Israel (reform) at Paducah,
67 miles northeast
Jewish Center (reform) at Union City,
Tennessee, 15 miles southeast
(September through May)

Financial Institutions

<u>Banks</u>	<u>Assets</u>	<u>Deposits</u>	<u>Statement Date</u>
The Citizens Bank	\$13,922,120.23	\$12,149,475.14	12/30/78
<u>Savings and Loan Associations*</u>	<u>Assets</u>	<u>Savings Accounts</u>	<u>Statement Date</u>
Hickman Federal Savings & Loan Association	\$6,090,999.81	\$4,862,784.36	12/31/78

Hotels and Motels

There are three motels with a total of 227 units in Union City, Tennessee, 15 miles south of Hickman, and six motels and hotels with a total of 178 units in Fulton, 20 miles east of Hickman.

*The Home Federal Savings and Loan Association of Paducah plans to establish a branch office in Hickman. Construction of the branch facility is to begin in the fall of 1979 with completion scheduled for the spring of 1980.

Clubs and Organizations

American Legion
American Legion Auxiliary
Chamber of Commerce
Debutants
Eastern Star
4-H
Future Business Leaders of America
Future Farmers of America
Future Homemakers of America
Future Teachers of America
Hickman Area Ministerial Alliance
Hickman Area Retail Merchants Association
Hickman Country Club
Hickman Development Corporation
Hickman Historical Society
Homemakers
Jaycees
Ky-Mo-Tenn CB Club
Masons
Mothers Club
Riding Club
Riverport Authority
Senior Citizens Club
VICA (vocational school)

RECREATION

Local

Three public parks are located in Hickman. A recently completed park in east Hickman offers three tennis courts, two basketball courts, two playgrounds, picnic area, public shelters and restrooms. Another park in west Hickman contains a playground. Sanger Field at Fulton County High School contains two baseball diamonds and a football field. A riverfront park and a neighborhood park have been proposed for development.

The Hickman Country Club offers private recreational facilities including a 9-hole golf course, swimming pool, and tennis court.

Hickman, situated at the start of the Mississippi River delta, is located in a prime hunting and fishing area. The city contains a historic courthouse, numerous antebellum homes and buildings, and a unique footbridge. Other interesting features are factory tours and numerous Indian mounds and sites.

Annual events at Hickman include the Fourth of July "Spirit of America Celebration," featuring water festivities; the Summer Salute to Agriculture (sponsored jointly by the Hickman-Fulton County Chamber of Commerce and the Fulton-South Fulton Chamber of Commerce); and a Christmas festival, featuring a parade, Santa's arrival by boat, unique Christmas card lane, and other events. The International Banana Festival is held annually in Fulton, 20 miles east of Hickman.

Area (Within 75 miles)

Reelfoot Lake and the Kentucky Bend are approximately 24 miles from Hickman. Reelfoot Lake is a 70-square mile lake in Kentucky and Tennessee known for its fishing. Kentucky maintains a 2,000-acre wildlife area near the lake for hunting. The Kentucky Bend is land totally separated from the state by the Mississippi River. Both lake and bend were created in 1811 and 1812 by the largest earthquakes ever recorded in North America.

Columbus-Belmont Battlefield State Park, 27 miles away, contains 156 acres on a bluff overlooking the Mississippi River. The park offers camping, miniature golf, hiking trails, picnic shelter, playground, tables and grills, and snack bar, and features Civil War artillery, an anchor and chain used to stop Union boats, and a museum with battle diorama.

Kentucky Dam Village State Resort Park, 72 miles distant on the shore of Kentucky Lake, offers full resort accommodations, cottages, and camping. Among the parks' attractions are the following: swimming pool, beach, regulation 18-hole golf course, miniature golf, picnic area, playgrounds, horseback riding, fishing, boating, tennis, and boat and car rentals.

Kenlake State Resort Park, 74 miles distant on Kentucky Lake, also offers full resort accommodations, cottages, and camping. Recreational activities include the following: swimming pool, sand beach with bathhouse, playgrounds, picnic area, hiking trails, regulation 9-hole golf course, tennis, horseback riding, boating, fishing, and summer entertainment at Kenlake Amphitheatre.

The Land Between the Lakes, located on a 170,000-acre wooded peninsula approximately 74 miles from Hickman, is an outdoor recreational and conservational education center. Camping, swimming, fishing, boating, hiking, a buffalo herd on a 250-acre range, an Environmental Education Center for school study groups, an educational farm and a central station with films and displays are among the attractions.

Horseshoe Lake Recreational Area is located 65 miles from Hickman in southern Illinois. Fort Massac State Park, also in Illinois, is 72 miles away.

COMMUNITY IMPROVEMENTS

Industrial and Commercial:

Roper Pecan Company, a manufacturer of shelled pecans, completed a \$13,000 project in 1977 to improve its facilities.

The Hickman Courier, now in its 121st year of operation, completed a \$140,000 expansion of its newspaper and offset printing facilities in August of 1978. The project included a new photographic dark room, new job printing presses, and improvements to the typesetting, office supply, advertising and executive offices.

The Hickman-Fulton County Riverport Authority has completed a \$2.2 million general cargo facility located within the Hickman Harbor. The main elements of the riverport are a docking facility with a 125-ton crane, a material handling and processing area with an 18,400-square-foot heated warehouse, and a 125-foot-long conveyor. An industrial site is located adjacent to the park and another tract of available industrial property is located 1/4-mile from the port.

Hickman Elevator Company is constructing a grain facility at the Hickman-Fulton County Riverport which is scheduled to be in operation by the spring of 1980.

The Home Federal Savings and Loan Association of Paducah plans to establish a branch office in Hickman. Construction of the branch facility is to begin in the fall of 1979 with completion scheduled for the spring of 1980.

"Operation Townlift" is the planned remodeling of several Hickman businesses along a river town theme. A steering committee composed of representatives of business, government, and the Chamber of Commerce has been formed, a color scheme adopted, and plans drafted for the remodeling of a core group of three downtown businesses. One of these businesses has already been remodeled and work on the other two will begin shortly. Also, as part of "Operation Townlift," the Tennessee Valley Authority is developing plans to improve downtown parking, restroom facilities, and streets and sidewalks.

A Chamber of Commerce committee has begun work on developing a landing strip to serve Hickman's agricultural industries. Land for the strip has been donated and plans are now being drafted.

Water and Sewerage:

The Hickman Water and Sewer System has upgraded one well increasing the capacity of the well from 400 gpm to 600 gpm. Three new water mains have been laid in the city to replace old lines and a replacement schedule has been set up to replace all older lines in the city.

The city of Hickman has awarded a contract for the development of a 20-year improvement plan for the city's water system. This will entail a comprehensive analysis of the water distribution system, the treatment and storage capacity, and the rate structure. Plans are under way for the drilling of an additional well and expansion of the water treatment plant. There are also tentative plans to construct additional elevated storage and to upgrade fire plug connections so that all fire plugs will be connected to 6-inch water mains. This will require the installation of approximately 18,000 feet of 6-inch main.

Plans are being made by the Hickman Rural Water Extension to eliminate deadend water lines and make the system a complete loop for continuous water flow.

A Sewer System Evaluation Study of the municipal sewerage system is under way and scheduled to be completed in December of 1979. The design phase of a 201 Facilities Plan to upgrade and expand the system is expected to begin in the spring of 1980.

Health:

A new dental clinic was built in 1978 by the Hickman Development Corporation and the old physicians clinic was purchased by the city of Hickman.

The city of Hickman is the locus of a pilot program for the Commonwealth of Kentucky. The program, "Project Independence," is designed to provide health services to senior citizens in a home setting rather than having them placed in an institutional health facility.

Construction is under way on an addition to the Fulton County Health Department building.

Education:

A new 15-classroom elementary school for the Fulton County School System was completed for the 1977-78 school year. Four additional classrooms were added to the building in the 1978-79 term. New programs offered by the school system include environmental education, career education, and consumer education.

Recreation:

A public park was developed in east Hickman in 1977 and improvements were made at the park in 1978 and 1979. Facilities at the park include three tennis courts, two basketball courts, two playgrounds, a picnic area, public shelters, and restrooms. A building has recently been constructed to provide live-in quarters for the park caretaker. The park is also being completely enclosed with fencing.

Work has begun on the development of a riverfront park and a neighborhood park.

The city of Hickman is in the process of selecting a route through both Hickman and Fulton County as part of the "Great River Road" National Historic project, which is tracing a route that runs from inside Canada to the Gulf of Mexico along the Mississippi River. Funds totaling \$3.7 million have been set aside for the Kentucky portion and will be used for the renovation of historic sights, establishment of scenic overlooks, riverfront improvements, new construction and rehabilitation of existing roads.

Other:

The new Fulton County Office Building, which was completed in November of 1978, houses offices for the University of Kentucky extension services, the Kentucky Department for Human Resources, the Bureau for Manpower Services, and the Fulton County Judge/Executive.

A new \$160,000 library building was constructed and the Hickman Public Library added a new bookmobile in late 1977.

The Fulton County Sheriff's Office purchased a four-wheel drive vehicle in 1979.

A new zoning ordinance has been drafted and will be presented to the Hickman City Commission for approval. The ordinance distinguishes business, industrial, and residential zones within the city.

The city has purchased an existing building which will be used by the Hickman Senior Citizens. This building will also serve as a community center when not being used by the senior citizens.

A Rural Development Planning Grant has been received from the Farmers Home Administration to evaluate the local housing stock and the local public facilities, to update the present comprehensive plan, to help coordinate available funding sources, and to ensure coordinated growth. Implementation funds are expected from the F.H.A. to supplement other funding sources.

The city of Hickman presently has an application before the Department of Housing and Urban Development for 75 additional units of low and moderate income housing.

The city of Hickman has been invited to submit an Urban Development Action Grant application.

Kentucky Department of Commerce
Capital Plaza Tower
Frankfort, Kentucky 40601

Office of the Commissioner
(502) 564-4270

Industrial Development Division
(502) 564-7140

Existing Industries Division
(502) 564-4300

Office of Minority Business Enterprise
(502) 564-2064

Agribusiness Division
(502) 564-6784

International Trade and Investment
Promotion Division
(502) 564-2170

Research and Planning Division
(502) 564-4886
Map Sales Office
133 Holmes Street
(502) 564-4715

Kentucky Development Finance Authority (KDFA)
(502) 564-4554

Kentucky Film Commission
(502) 564-2240