

1981

Industrial Resources: Grayson County - Leitchfield

Kentucky Library Research Collections
Western Kentucky University, spcol@wku.edu

Follow this and additional works at: https://digitalcommons.wku.edu/grayson_cty

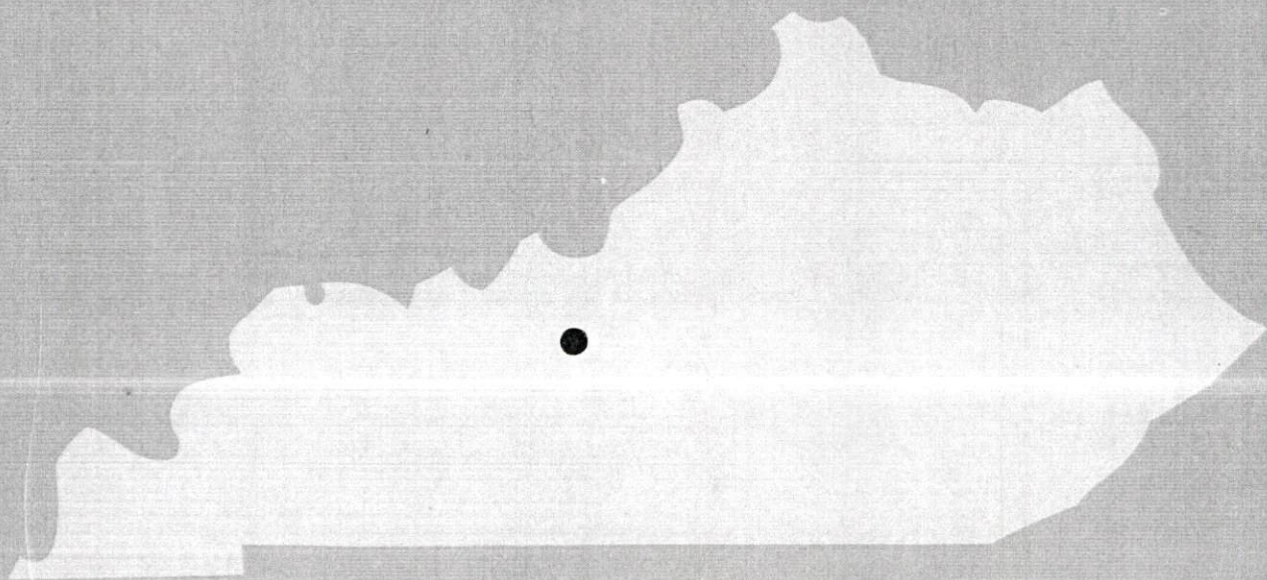
 Part of the [Business Administration, Management, and Operations Commons](#), [Growth and Development Commons](#), and the [Infrastructure Commons](#)

Recommended Citation

Kentucky Library Research Collections, "Industrial Resources: Grayson County - Leitchfield" (1981). *Grayson County*. Paper 18.
https://digitalcommons.wku.edu/grayson_cty/18

This Report is brought to you for free and open access by TopSCHOLAR®. It has been accepted for inclusion in Grayson County by an authorized administrator of TopSCHOLAR®. For more information, please contact topsolar@wku.edu.

A comprehensive
report on
Leitchfield, Ky.

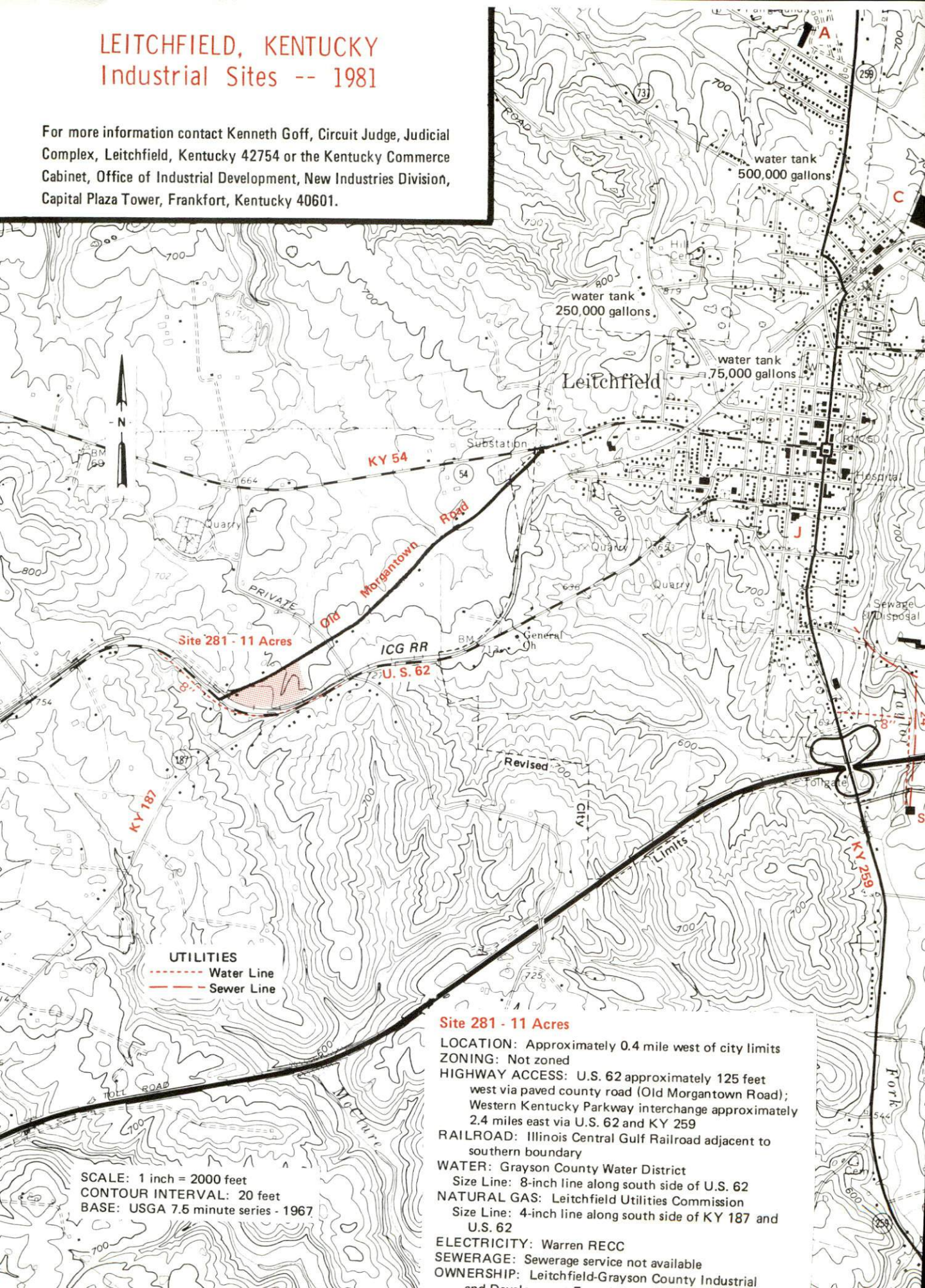


KENTUCKY & CO.
The state that's run like a business.

LEITCHFIELD, KENTUCKY

Industrial Sites -- 1981

For more information contact Kenneth Goff, Circuit Judge, Judicial Complex, Leitchfield, Kentucky 42754 or the Kentucky Commerce Cabinet, Office of Industrial Development, New Industries Division, Capital Plaza Tower, Frankfort, Kentucky 40601.

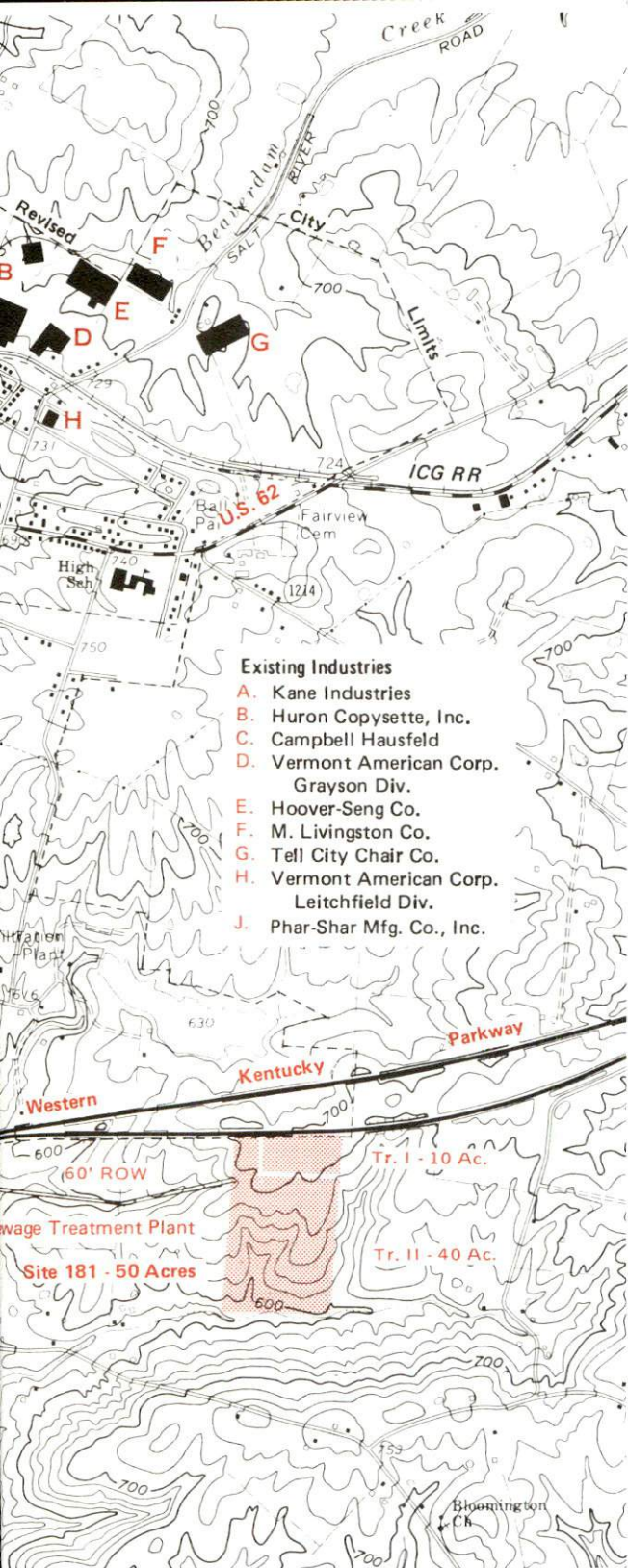


UTILITIES
 - - - - Water Line
 - - - - Sewer Line

Site 281 - 11 Acres

- LOCATION:** Approximately 0.4 mile west of city limits
- ZONING:** Not zoned
- HIGHWAY ACCESS:** U.S. 62 approximately 125 feet west via paved county road (Old Morgantown Road); Western Kentucky Parkway interchange approximately 2.4 miles east via U.S. 62 and KY 259
- RAILROAD:** Illinois Central Gulf Railroad adjacent to southern boundary
- WATER:** Grayson County Water District
 Size Line: 8-inch line along south side of U.S. 62
- NATURAL GAS:** Leitchfield Utilities Commission
 Size Line: 4-inch line along south side of KY 187 and U.S. 62
- ELECTRICITY:** Warren RECC
- SEWERAGE:** Sewerage service not available
- OWNERSHIP:** Leitchfield-Grayson County Industrial and Development

SCALE: 1 inch = 2000 feet
 CONTOUR INTERVAL: 20 feet
 BASE: USGA 7.5 minute series - 1967



Existing Industries

- A. Kane Industries
- B. Huron Copysette, Inc.
- C. Campbell Hausfeld
- D. Vermont American Corp.
Grayson Div.
- E. Hoover-Seng Co.
- F. M. Livingston Co.
- G. Tell City Chair Co.
- H. Vermont American Corp.
Leitchfield Div.
- J. Phar-Shar Mfg. Co., Inc.

Site 181 - 50 Acres

- LOCATION:** Adjacent to southeast city limits
- ZONING:** Not zoned
- HIGHWAY ACCESS:** Western Kentucky Parkway interchange approximately 0.7 mile west via 60 foot right of way and KY 259
- RAILROAD:** Not rail served
- UTILITIES:** The Leitchfield Utilities Commission has stated their intention of providing the following services upon firm commitment of an industry to locate on the site
 - WATER: 8-inch line
 - SEWER: 8-inch line
 - NATURAL GAS: 4-inch line
- OWNERSHIP:** Tract I - Leitchfield-Grayson County Industrial and Development Foundation, Inc.

A COMPREHENSIVE REPORT ON
LEITCHFIELD, KENTUCKY

Prepared by
The Kentucky Department of Commerce
Division of Research and Planning
in cooperation with
The Leitchfield-Grayson County Chamber of Commerce

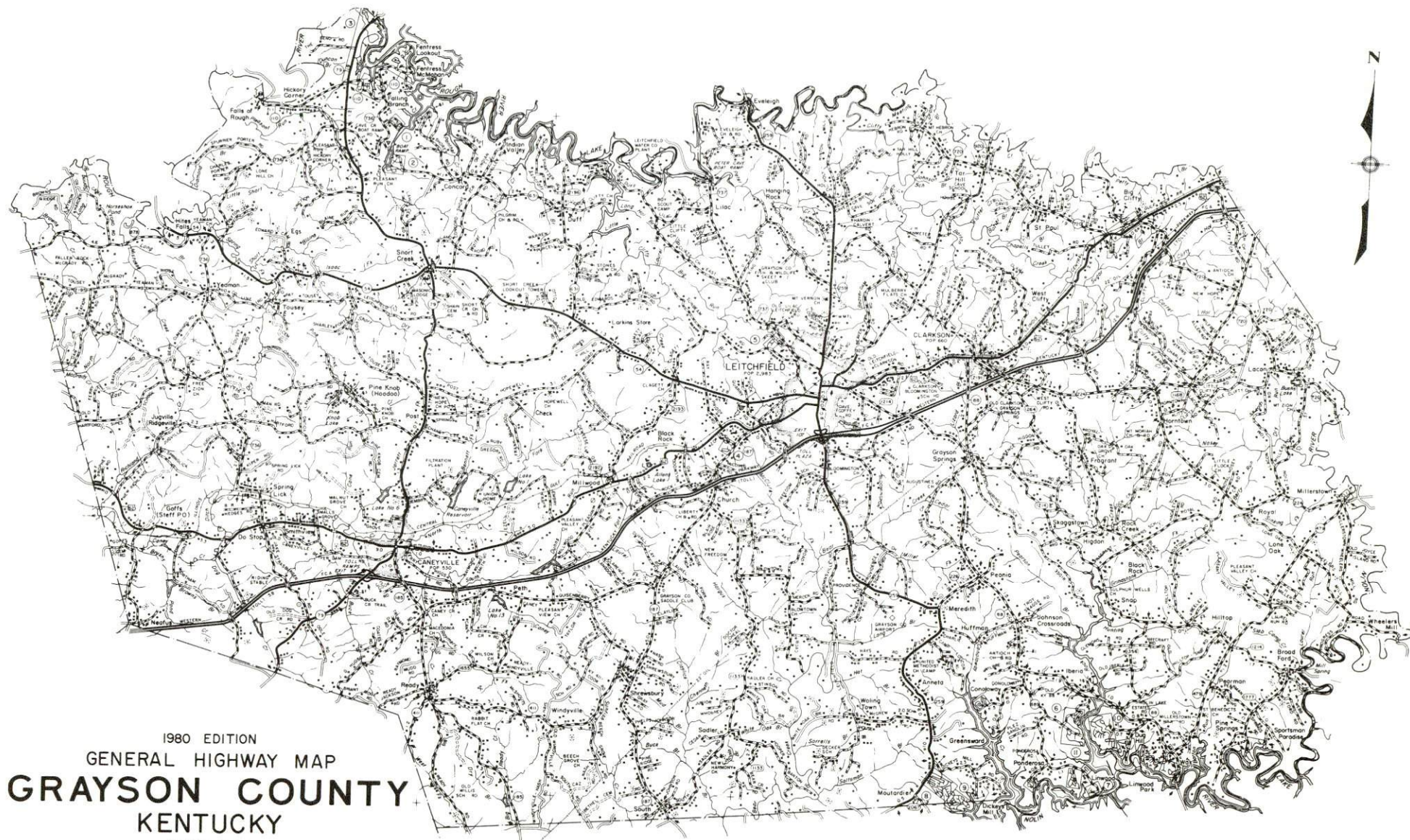
1981

Program supervisor - Brenda Roberts; research - Chris Karibo; clerical - Annette Mitchell; graphics - Frank Ferrante, Tony Cecconi, Jimmy Thompson; cartography - Site Evaluation Section, Division of New Industries. Cost of printing paid from state funds.

TABLE OF CONTENTS

<u>Chapter</u>	<u>Page</u>
INDUSTRIAL SITES	i
THE LABOR MARKET AREA	1
Population	1
Labor Force Characteristics of Residents, 1980	1
Estimated Male Labor Supply	2
Estimated Female Labor Supply	2
Grayson County Manufacturing Firms, Their Products and Employment	3
New Manufacturing Development	5
Labor Organizations in Manufacturing Firms	5
Industrial Services	5
Average Weekly Wages by Industry, by Place of Work, 1979	8
Per Capita Personal Income	10
TRANSPORTATION	11
Rail	11
Highways	11
Truck Service	12
Air	13
Bus	14
Taxi	14
Rental Services	14
Water	14
POWER AND FUEL	15
Electricity	15
Natural Gas	16
Other Fuels	16
WATER AND SEWERAGE	17
Water	17
Raw Water	18
Sewerage	19
CLIMATE	20

<u>Chapter</u>	<u>Page</u>
LOCAL GOVERNMENT	21
City	21
County	21
Assessed Value of Property, 1980	21
Property Taxes	21
Combined State and Local Rates Per \$100 Valuation, 1980	22
Utilities Gross Receipts Tax for Schools	22
Planning and Zoning	22
Safety	23
Police	23
Fire	23
Rescue Service	23
Refuse Collection and Disposal	23
EDUCATION	24
Public Schools	24
Nonpublic Schools	24
Area Colleges and Universities	25
Vocational Schools	26
HEALTH	28
Local Medical Personnel	28
Hospitals	28
Other Medical Facilities	28
Ambulance Service	28
Public Health	28
OTHER LOCAL FACILITIES	29
Communications	29
Library Services	29
Religious Institutions	30
Financial Institutions	30
Hotels and Motels	30
Clubs and Organizations	31
RECREATION	32



1980 EDITION
 GENERAL HIGHWAY MAP
GRAYSON COUNTY
 KENTUCKY

PREPARED BY THE
 KENTUCKY DEPARTMENT OF TRANSPORTATION
 OFFICE OF TRANSPORTATION PLANNING
 DIVISION OF FACILITIES PLANNING
 IN COOPERATION WITH THE
 U.S. DEPARTMENT OF TRANSPORTATION
 FEDERAL HIGHWAY ADMINISTRATION



THE LABOR MARKET AREA

The Labor Market Area includes Grayson County and the adjoining Kentucky counties of Breckinridge, Butler, Edmonson, Hardin, Hart, and Ohio.

Area	POPULATION		Percent Nonwhite
	1980	1970	
Leitchfield	4,533	2,983	1.9
Labor Market Area	184,825	160,899	N/A
Grayson County	20,854	16,445	0.6
Breckinridge County	16,861	14,789	3.8
Butler County	11,064	9,723	0.6
Edmonson County	9,962	8,751	1.9
Hardin County	88,917	78,421	14.7
Hart County	15,402	13,980	8.1
Ohio County	21,765	18,790	1.4

Note: The 1980 counts of population by race are provisional.

Source: U.S. Department of Commerce, Bureau of the Census, March 1981, as published in Special Report No. 8, State Data Center, Urban Studies Center, University of Louisville, March 1981.

LABOR FORCE CHARACTERISTICS OF RESIDENTS, 1980

	Grayson County	Labor Market Area
Civilian Labor Force	9,195	66,730
Employment	8,275	60,305
Agricultural	807	5,166
Nonagricultural	7,468	55,139
Unemployment	920	6,425
Rate of Unemployment (%)	10.0	9.6

Source: Kentucky Department for Human Resources, Kentucky Labor Force Estimates, Annual Averages, 1980.

ESTIMATED MALE LABOR SUPPLY
LEITCHFIELD LABOR MARKET AREA

Area	Current			Future	
	Total	Not in Labor Force	Unemployed	Under-employed	Reaching 18 years of age before 1986
Labor Market Area*	7,396	1,115	2,341	3,940	6,777
Grayson	821	140	351	330	730
Breckinridge	580	116	234	230	705
Butler	456	79	167	210	421
Edmonson	393	70	203	120	375
Hardin	3,870	446	864	2,560	3,033
Hart	543	109	244	190	692
Ohio	733	155	278	300	821

*Additional workers may be drawn from other nearby counties.

Note: Not in Labor Force - persons who would enter the labor force if suitable employment were available; Unemployed - persons unemployed and actively seeking work; Underemployed - persons employed but working only 14 to 26 weeks per year.

Sources: Kentucky Department for Human Resources, Kentucky Labor Supply Estimates by County, 1979. Kentucky Department of Commerce, Future Labor Supply before 1986.

ESTIMATED FEMALE LABOR SUPPLY
LEITCHFIELD LABOR MARKET AREA

Area	Current			Future	
	Total	Not in Labor Force	Unemployed	Under-employed	Reaching 18 years of age before 1986
Labor Market Area*	5,210	456	2,154	2,600	6,608
Grayson	658	56	322	280	738
Breckinridge	483	47	216	220	695
Butler	384	32	152	200	419
Edmonson	357	29	188	140	372
Hardin	2,104	180	794	1,130	2,946
Hart	552	48	224	280	642
Ohio	672	64	258	350	796

*Additional workers may be drawn from other nearby counties.

Note: Not in Labor Force - persons who would enter the labor force if suitable employment were available; Unemployed - persons unemployed and actively seeking work; Underemployed - persons employed but working only 14 to 26 weeks per year.

Sources: Kentucky Department for Human Resources, Kentucky Labor Supply Estimates by County, 1979. Kentucky Department of Commerce, Future Labor Supply before 1986.

GRAYSON COUNTY MANUFACTURING FIRMS,
THEIR PRODUCTS AND EMPLOYMENT

Firm (Establishment date)	Product	Employment			Labor Unions
		Total	Male	Female	
<u>Leitchfield</u>					
Bel Cheese, Inc. (1958)	Cheese	94	49	45	
Campbell-Hausfeld (1979)	Air compressors	185	--	--	
Grayson County News (1940)	Newspaper	13	2	11	
Grayson County Ready Mix, Inc. (1966)	Ready-mixed concrete	5	4	1	
Hoover Universal Inc. Leitchfield Plant (1969)	Metal furniture parts	255	225	30	Electrical Workers, IUE*
Huron Copysette, Inc. (1972)	Manifold carbon paper sets, adding machine rolls, paper pads, tablets	181	80	101	
Kane Industries, Division of Chromalloy American Corporation (1925)	Men's sportswear, women's sportswear, children's sportswear	495	40	455	Ladies' Garment Workers*
Lowe's Concrete, Inc. (1946)	Concrete blocks, ready-mixed concrete, precast concrete products	25	22	3	
Middle Ground, Inc. (1975)	Golf clubs	14	12	2	
Mid-Part Metal Products, Inc. (1978)	Metal stampings, machine shop, tool and die	12	12	--	
Phar-shar Manufacturing Company, Inc. (1979)	Men's outerwear, ladies' outerwear	90	7	83	

(Contd.)

<u>Firm (Establishment date)</u>	<u>Product</u>	<u>Employment</u>			<u>Labor Unions</u>
		<u>Total</u>	<u>Male</u>	<u>Female</u>	
Ragland Quarry (N/A)	Agricultural lime, crushed stone	28	25	3	
Tell City Chair Company (1974)	Furniture components	90	68	22	
Henry G. Thompson Company, Grayson Division, A subsidiary of the Vermont American Corporation (1977)	Pruning tools, power bench saws, routers, accessories	36	18	18	Aluminum Workers*
Vermont American Corporation, Leitchfield Division (1977)	Miscellaneous hand tools	179	103	76	Aluminum Workers*
<u>Caneyville</u>					
Caneyville Roller Mill (1953)	Feed	3	2	1	
<u>Clarkson</u>					
Agrico Chemical Company (1966)	Bulk fertilizer blending	8	7	1	
Walter T. Kelley Company (1953)	Bee hives, bee comb foundation, honey extracting equipment	70	50	20	
<u>Millwood</u>					
Escue Wood Preserving Company (1980)	Wood preserving	30	--	--	
Koppers Company, Inc. (1969)	Wood products	32	31	1	

*See Labor Organizations.

Source: Kentucky Department of Commerce, Division of Research and Planning.

New Manufacturing Development

Baillie Lumber, dealers and exporters of natural hardwood, will begin operating in February 1981. The firm has a potential employment of 40 people.

LABOR ORGANIZATIONS IN MANUFACTURING FIRMS

<u>Union</u>	<u>Representing workers at:</u>
Aluminum Workers International Union, AFL-CIO	Henry G. Thompson Company, Grayson Division, A subsidiary of the Vermont American Corporation Vermont American Corporation, Leitchfield Division
International Ladies' Garment Workers Union, AFL-CIO	Kane Industries, Division of Chromalloy American Corporation
International Union of Electrical, Radio and Machine Workers, AFL-CIO	Hoover Universal Inc. Leitchfield Plant

INDUSTRIAL SERVICES

<u>Types of Services</u>	<u>Location</u>	<u>Mileage from Leitchfield</u>
Tool & Die, Machine & Pattern Shops	Elizabethtown, Kentucky	32
Metal Service Centers	Owensboro, Kentucky	66
	Bowling Green, Kentucky	69
Heat Treating	Evansville, Indiana	105
Metal Finishers	Elizabethtown, Kentucky	32
	Hartford, Kentucky	41
Electric Motor Repair	Owensboro, Kentucky	66
	Bowling Green, Kentucky	69

Source: Kentucky Directory of Selected Industrial Services, 1979.

LEITCHFIELD DIVISION



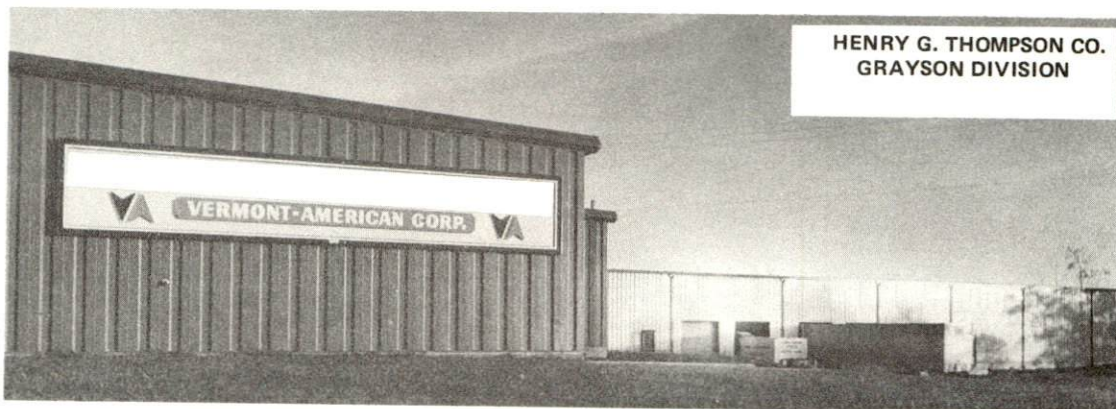
HOOVER UNIVERSAL INC.



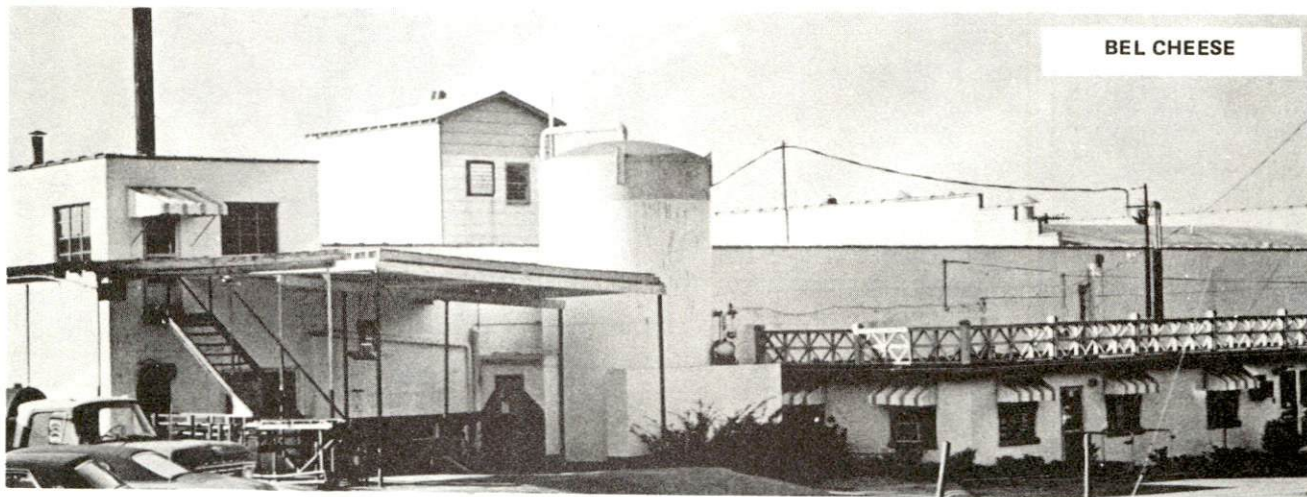
MANUFACTURING
COMPANIES



HENRY G. THOMPSON CO.
GRAYSON DIVISION



BEL CHEESE



WALTER T. KELLEY CO.
BEE HIVE FACTORY
CLARKSON, KY.



AVERAGE WEEKLY WAGES BY INDUSTRY,
BY PLACE OF WORK, 1979

	<u>Grayson County</u>	<u>Breckinridge County</u>	<u>Butler County</u>	<u>Edmonson County</u>
All Industries	\$171.31	\$173.90	\$180.20	\$157.02
Mining & Quarrying	247.35	181.29	322.94	*
Contract Construction	210.46	171.55	109.36	185.68
Manufacturing	182.15	187.87	140.91	*
Transportation, Communications & Public Utilities	223.75	319.16	252.42	146.89
Wholesale & Retail Trade	147.80	134.44	152.34	123.24
Finance, Insurance & Real Estate	195.30	206.19	167.63	148.53
Services	157.36	166.62	163.13	176.12
Other	119.68	*	0	*

	<u>Hardin County</u>	<u>Hart County</u>	<u>Ohio County</u>
All Industries	\$196.82	\$157.15	\$296.80
Mining & Quarrying	*	182.38	*
Contract Construction	249.41	143.68	235.81
Manufacturing	252.19	169.03	188.74
Transportation, Communications & Public Utilities	232.27	180.60	230.45
Wholesale & Retail Trade	151.68	130.65	143.05
Finance, Insurance & Real Estate	196.48	178.50	191.52
Services	184.94	167.18	166.47
Other	78.47	*	157.02

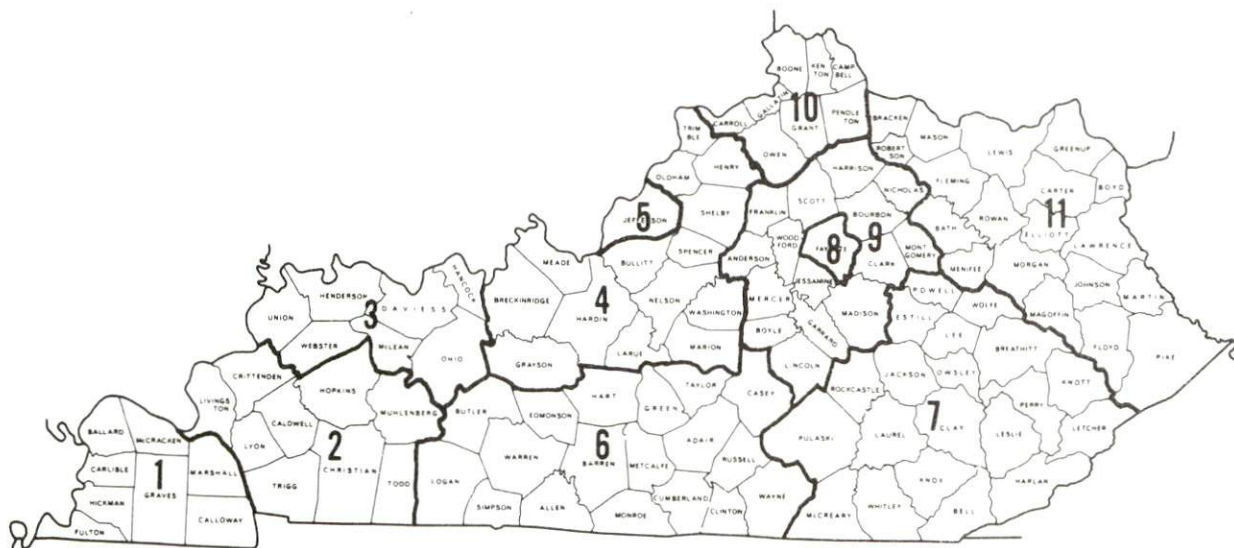
*Not disclosed.

Note: Excludes domestic workers, railway workers, certain nonprofit corporations, majority of federal government workers, and self-employed workers. Effective January 1, 1979, the Kentucky Unemployment Insurance Law extended coverage to include all state and local government agencies (shown in the Services category).

Source: Kentucky Department for Human Resources, Average Weekly Wages of Workers Covered by Kentucky Unemployment Insurance Law, 1979.

Occupational wage rates for specific industries are usually not available to most government agencies, and wage data furnished to state employment agencies by individual industrial employers is protected from disclosure by federal law. The most reliable up-to-date wage information can be obtained by direct contact with local employers.

Associated Industries of Kentucky, a voluntary organization of Kentucky businesses, regularly collects occupational wage rates and fringe benefits data from participating member firms. Data is compiled for over 127 clearly defined office, production, and service occupations. Tabulations are published for eleven regions of Kentucky, as shown on the map below. It should be noted that the data may be weighted by the preponderance of firms in the larger cities and may be somewhat higher than the rates paid in the smaller communities. Data from these tabulations are available, upon request, from the Kentucky Department of Commerce, Frankfort, Kentucky 40601.



Associated Industries of Kentucky Area Wage Surveys

Up-to-date occupational wage rates of the existing industries are maintained by South Kentucky Industrial Development Association, Post Office Box 726, Hopkinsville, Kentucky 42240.

PER CAPITA PERSONAL INCOME			
<u>Area</u>	<u>1979</u>	<u>1975</u>	<u>Percent Change</u>
Grayson County	\$5,625	\$3,606	60.0
Labor Market Area Range	\$4,315 - 7,120	\$2,836 - 5,128	N/A
Kentucky	7,377	4,882	51.1
U.S.	8,757	5,861	49.4

Source: U.S. Department of Commerce, Bureau of Economic Analysis, April 1981.

TRANSPORTATION

Rail

Line serving Leitchfield - Illinois Central Gulf Railroad

Services - Local freight Monday, Wednesday, and Friday supplemented by night freights as needed by customers; 2 scheduled northbound and 2 scheduled southbound through freights daily; average of 2 unscheduled northbound or southbound through coal freights per day; switching facilities; siding space for 78 cars at Leitchfield, 105 cars at Caneyville, and 95 cars at Big Clifty. Illinois Central Gulf Railroad piggyback service is available in Louisville, 76 miles northeast of Leitchfield. The nearest piggyback service is provided by L & N Railroad at Bowling Green, 55 miles south of Leitchfield.

For details on routing, schedules, rates, and services, contact:

Manager of Industrial Development
Illinois Central Gulf Railroad Company
Pet Plaza, 400 South Fourth Street
St. Louis, Missouri 63102
(314) 241-9400

Highways

Highway access to Leitchfield is provided by the Western Kentucky Parkway; U.S. Highway 62, a "AAA" rated trucking highway; and Kentucky Highway 259, a "AA" rated trucking highway. Leitchfield is located approximately one mile north of an interchange to the Western Kentucky Parkway which connects with Interstate 65 and the Blue Grass Parkway at Elizabethtown, 33 miles northeast. The Western Kentucky Parkway also provides easy access to the Green River Parkway, 32 miles west of Leitchfield, and the Pennyryle Parkway, approximately 75 miles west of Leitchfield.

Truck Service

<u>Company</u>	<u>Home Office</u>
Leitchfield Transfer Company* (T)	P. O. Box 366 Leitchfield, Kentucky 42754
Majors Transit, Inc.**	P. O. Box 7 Caneyville, Kentucky 42721
McLean Trucking Company**	P. O. Box 213 Winston-Salem, North Carolina 27102
Overnite Transportation Company**	P. O. Box 1216 Richmond, Virginia 23209
Smith's Transfer Corporation**	P. O. Box 1000 Staunton, Virginia 24401
<u>Other Freight Services</u>	<u>Nearest Shipping Center or Home Office</u>
Purolator Courier Corporation***	Louisville, 76 miles north
United Parcel Service***	Bowling Green, 54 miles south
KATO Express, Inc. (air cargo service)****	Elizabethtown, 32 miles northeast

HIGHWAY MILES AND TRUCK TRANSIT TIME IN DAYS FROM LEITCHFIELD, KENTUCKY, TO SELECTED MARKET CENTERS

City	Highway Miles	Delivery		City	Highway Miles	Delivery	
		Time TL				Time TL	
Atlanta, Ga.	374	2		Los Angeles, Ca.	2,110	5	
Baltimore, Md.	655	3		Louisville, Ky.	76	1	
Birmingham, Ala.	328	2		Nashville, Tenn.	132	2	
Chicago, Ill.	368	2		New Orleans, La.	649	2	
Cincinnati, Ohio	177	2		New York, N. Y.	817	4	
Cleveland, Ohio	421	2		Pittsburgh, Pa.	457	2	
Detroit, Mich.	436	2		St. Louis, Mo.	265	2	
Knoxville, Tenn.	265	2					

Note: Mileage computations are via the best interstate or primary highways, not necessarily the most direct route of travel.

Sources: Rand McNally Road Atlas, 1979. Official Kentucky Mileage Map, 1979. Delivery time - Leitchfield Transfer Company, 619 Mill Street, P. O. Box 366, Leitchfield, Kentucky 42754.

(T) Terminal

*Interstate and intrastate service.

**Interstate service only.

***For regular scheduled pickups or for occasional pickups, arrangements must be made with the Louisville office of Purolator Courier Corporation or United Parcel Service.

****Daily pickup and delivery service is available to and from Standiford Field in Louisville. Arrangements for service should be made through the home office in Elizabethtown.

Air

Local Airports

Grayson County Airport*
Location: 5 nautical miles southeast of Leitchfield
Runways: 1 paved
Length: 2,200 feet
Traffic
Control: Wind sock
Lighting: None
Services: A & E repairs, tie-down
Air Freight
Service: Chartered air freight services must be arranged.

Rough River State Park Airport
Location: 17 miles northwest of Leitchfield
Runways: 1 paved
Length: 2,500 feet
Traffic
Control: Wind sock
Lighting: Runway lights, VASI, RTG beacon, lighted
wind sock
Services: 100 octane fuel, tie-down
Air Freight
Service: Chartered air freight services must be arranged.

*Improvements to the Grayson County Airport are planned that include expansion of the runway from 2,200 feet to 3,000 feet in length and from 20 feet to 75 feet in width. The estimated cost of the improvement is \$650,000.

Nearest Scheduled Commercial Airline Service

Location: Standiford Field
4 miles southeast of center of Louisville,
Kentucky; 76 miles northeast of Leitchfield

Runways: 3 paved
Length: 7,800 feet; 7,250 feet; 5,000 feet

Traffic Control: Control tower

Lighting: Runways, obstructions, beacon and approach and
touchdown lights, center line on one runway

Services: American, Delta, Eastern, New York Air, Ozark,
Piedmont, TWA, USAir, and Wright airlines;
Allegheny Commuter air carrier; 100 octane
and jet fuel; major A & E repairs; storage;
Louisville-Jefferson County Air Board; Hertz,
Avis, National and Budget rental car services;
taxi, city bus service; restaurant

Air Freight Service: Air freight terminal

Bus - Tri-State Bus Lines; Trailways

Taxi - 1 company, 24-hour, radio-dispatched service

Rental Services - Nearest car, truck, and trailer rentals available
at Elizabethtown, 32 miles northeast

Water

Leitchfield is located approximately 50 miles south of the Ohio River at Hawesville where a 9-foot navigation channel is maintained. In addition, Leitchfield is located approximately 50 miles northeast of a point on the Green River where a 9-foot navigation channel is maintained from Paradise, Kentucky, north to the confluence of the Green and Ohio Rivers.

Port facilities are available on the Ohio River at Owensboro, 66 miles northwest of Leitchfield.

POWER AND FUEL

Electricity

Company serving most of Leitchfield and part of Grayson County -
Kentucky Utilities Company

Source of power - Kentucky Utilities Company

Total generating capacity - 2,383,767 KW

For industrial rates contact:

Industrial Development Department
Kentucky Utilities Company
One Quality Street
Lexington, Kentucky 40507
(606) 255-1461

Company serving most of Grayson County and portions of Leitchfield -
Warren Rural Electric Cooperative Corporation

Source of power - Tennessee Valley Authority

Total generating capacity - 28,539,945 KW

For industrial rates contact:

South Kentucky Industrial Development
Association, Inc.
P. O. Box 726
Hopkinsville, Kentucky 42240
(502) 885-5392

and/or

Warren RECC
951 Fairview Avenue
P. O. Box 1118
Bowling Green, Kentucky 42101
(502) 842-6541

Natural Gas

Company serving Leitchfield - Leitchfield Utilities
Source of supply - Texas Gas Transmission and private gas well*
Size of transmission mains - 24-inch (supplier);
6-inch (distributor)
Distribution mains - 2 to 6 inches
Distribution pressure - Ranges from 4 ounces to 10 psi
Btu content - 1,000 per cubic feet
Specific gravity - .585
For rates and supplies contact:

Leitchfield Utilities
314 West White Oak Street
Leitchfield, Kentucky 42754
(502) 259-4034

Other Fuels

Propane

John E. Foster and Son, Inc.
(CITGO)
207 North Main Street
Leitchfield, Kentucky 42754

Foster's Gas, Inc. (Gulfgas)
126 West Market
Leitchfield, Kentucky 42754

Fuel oils

Distillate fuel oil -

Ashland Oil and Refining
Company
200 West White Oak Street
Leitchfield, Kentucky 42754

Gulf Oil Products
313 Floyd Street
Leitchfield, Kentucky 42754

B. W. Lyons Oil Company
308 South Main Street
Leitchfield, Kentucky 42754

Independent Oil Company
206 Marion Street
Leitchfield, Kentucky 42754

Residual fuel oil - Arrangements must be made with the refinery.

Low sulphur content coal - Available in Kentucky

*The city has a contract with the owner of a private gas well in Shrewsbury, Kentucky, to purchase a minimum of 6 million cubic feet of natural gas per month.

WATER AND SEWERAGE

Water

Company serving Leitchfield - Leitchfield Utilities
314 West White Oak Street
Leitchfield, Kentucky 42754
(502) 259-4034

Source - Rough River Reservoir
Treatment plant capacity - 1,000,000 gallons per day
Average daily consumption - 700,000 gallons
Peak daily consumption - 925,000 gallons
Type treatment - Flocculation, sedimentation, rapid sand filtration,
chlorination
Storage capacity - 775,000 gallons
Size lines - 2 to 12 inches
Average pressure - 75 psi
Average temperature - 55 degrees F.

MONTHLY WATER RATES

First	2,000 gallons	\$4.90 (Minimum)
Next	3,000 gallons	2.35 per M gallons
Next	5,000 gallons	1.79 per M gallons
Next	10,000 gallons	1.42 per M gallons
Next	10,000 gallons	1.32 per M gallons
Next	20,000 gallons	0.98 per M gallons
Over	50,000 gallons	0.82 per M gallons

Tap-on charge: 3/4-inch - \$125
1 inch and over - Cost of materials and labor
plus 10 percent

Name of water district - Grayson County Water District
Warren RECC Building
P. O. Box 345
Leitchfield, Kentucky 42754
(502) 259-3161

Area served - From Leitchfield east along U.S. 62 to within 1 mile of the Grayson County line. West of Leitchfield approximately 11 miles along U.S. 62; along Kentucky 187 South approximately 10 miles
Date when water district began operating - November 1974
Source of supply of treated water - Leitchfield Utilities
Amount of water which can be purchased in one month - 8,000,000 gallons
Peak amount of water used in a 24-hour period - 90,000 gallons
Size lines - 8, 6, 4, and 3 inches
Monthly rates -

First	1,500 gallons	\$6.50 (Minimum bill)
Next	3,500 gallons	3.50 per M gallons
Next	5,000 gallons	3.00 per M gallons
Next	15,000 gallons	2.00 per M gallons
All over	25,000 gallons	1.00 per M gallons

Contribution in aid of construction -

5/8-inch meter (Res.)	\$ 250
3/4-inch meter	300
1-inch meter	350
1 1/2-inch meter	500
2-inch meter	675
3-inch meter	950
4-inch meter	1,350
6-inch meter or larger	Actual cost

Raw water

Surface water sources - Rough River and Rough River Reservoir, Nolin River and Nolin River Reservoir
Average discharge - Rough River at Falls of Rough, Kentucky - 766 cfs (31 years, unadjusted, USGS); Nolin River at Kyrock, Kentucky - 926 cfs (31 years, unadjusted, USGS)
Expected ground water yield - 50 to 200 gpm along the western and southwestern border of the county and small portions throughout the county; 5 to 50 gpm in northeastern and northwestern tips of county; 5 gpm or less over remainder of county.

Sewerage

Company serving Leitchfield - Leitchfield Utilities
314 West White Oak Street
Leitchfield, Kentucky 42754
(502) 259-4034

Design capacity - 1,300,000 gallons per day

Average daily flow - 450,000 gallons

Treatment - Primary, secondary (2 types), and tertiary

Type treatment - Bio-filter, clarifier, bio-filter, clarifier,
rapid sand filter, chlorine, and sludge applicator

Treated effluent discharged into - Taylor Fork of Bear Creek

Size of sanitary mains - 6, 8, 10, 12, 15, and 24 inches

Size of storm mains - 24 and 36 inches

Rates - 100 percent of monthly water bill plus \$0.35 per M gallons

Tap-on charge: \$300

CLIMATE

Grayson County

Temperature

Normal (30-year record)	55.2 degrees
Average annual 1979	53.4 degrees
Record highest, September 1954 (35-year record)	103.0 degrees
Record lowest, January 1963 (35-year record)	-21.0 degrees
Normal heating degree days (30-year record) (Heating degree day totals are the sums of negative departures of average daily temperatures from 65 degrees F.)	4,729

Precipitation

Normal (30-year record)	44.49 inches
Mean annual snowfall (35-year record)	16.80 inches
Total precipitation 1979	54.00 inches
Mean number days precipitation (.01 inch or more) (35-year record)	131
Mean number days thunderstorms (35-year record)	47

Prevailing Winds (17-year record) South

Relative Humidity

1 a.m.	77 percent (15-year record)
7 a.m.	81 percent (16-year record)
1 p.m.	60 percent (16-year record)
7 p.m.	64 percent (16-year record)

Source: U.S. Department of Commerce, Environmental Science
Services Administration, Climatological Data, 1979.
Station of record: Lexington, Kentucky.

LOCAL GOVERNMENT

City

Structure - Mayor - 4-year term; 6 council members - 2-year terms
Budget 1980 - General Fund \$ 741,565
 Water and Sewer Fund 1,496,500
Fees and licenses - Occupational license taxes - one percent on wages
and one percent on net profits of business; unloading licenses of
\$10 to \$35 annually.

County

Structure - County Judge/Executive - 4-year term;
6 magistrates - 4-year terms
Budget 1980-81 - General Fund \$469,360; Road Fund \$440,947

Assessed Value of Property, 1980

<u>Classes of Property</u>	<u>Leitchfield</u>	<u>Grayson County</u>
Real Estate	\$38,063,894	\$184,483,817
Tangibles	10,965,839	36,363,508

Property Taxes

All property in Kentucky is assessed at 100 percent of fair cash value.

Land and buildings are taxed by the state and may be taxed by local jurisdictions. The state rate is \$0.241 per \$100 of assessed valuation.

Manufacturing machinery, raw materials inventories, pollution control equipment, and goods in the process of manufacture are not subject to local taxation. The state rate is \$0.15 per \$100.

Other tangible personal property owned by manufacturers (automobiles, trucks, finished goods, office furniture, office equipment) is taxed by the state at \$0.45 per \$100 and may be taxed by local jurisdictions.

Property stored in public warehouses in a transit status is not subject to local taxation. The state rate is only \$0.015 per \$100.

Intangible personal property located in Kentucky (money in hand, shares of stock, notes, bonds, accounts receivable, and other credits) is taxed by the state at \$0.25 per \$100, and is not subject to local taxation.

Private leaseholds in industrial facilities owned by cities or counties and financed by industrial revenue bonds are subject to a state tax of \$0.015 per \$100 of value (essentially the lessee's equity, adjusted for appreciation or depreciation). Local taxation is not permitted.

Combined State and Local Rates Per \$100 Valuation, 1980*
(100% assessment)

	<u>Inside City of Leitchfield</u>	<u>Outside City</u>
1. Land and buildings	\$0.646	\$0.517
2. Mfg. machinery, raw materials, goods in process, pollution control equipment	0.150	0.150
3. Finished goods, office equipment, vehicles, other tangibles	0.855	0.726
4. Intangibles (accounts rec., notes, bonds, etc.)	0.250	0.250
5. Leaseholds in I. R. bond financed plants	0.015	0.015

Utilities Gross Receipts Tax for Schools

A 3 percent tax is levied on utilities receipts for schools in Grayson County. Tax is paid by all consumers of utilities as an add-on to the utilities bills. Exempted are receipts from utilities services that are resold and the receipts from the sale of energy or energy producing fuels that exceed 3 percent of the cost of production in manufacturing, processing, mining or refining.

Planning and Zoning

Presently there is no planning and zoning agency in Leitchfield or Grayson County.

Mandatory state codes enforced - Kentucky Plumbing Code, National Electric Code, Kentucky Boiler Regulations and Standards, National Fire Protection Association Standards of Safety (for buildings with an occupancy of less than 100 persons), Kentucky Building Code (modeled after BOCA code and applying to buildings with an occupancy of 100 or more persons)

*Kentucky Department of Commerce.

Safety

<u>Police</u>	<u>Leitchfield</u>	<u>Grayson County</u>
Total staff	12 full-time 4 part-time	6
Radio-patrol cars	6	5

Fire

American Insurance Association Fire Rating	7	*
Volunteers	35	--

Rescue Service

Leitchfield Rescue Squad: (Operated by the Leitchfield Fire Department)
Number of volunteers - 35
Equipment - 7 complete sets of scuba diving equipment, 2 boats (14-foot each), 2 resuscitators, porta-power, "Jaws of Life", and miscellaneous rescue equipment
Personnel training - 6 licensed rescue instructors, first aid, emergency medical technician training, 8 licensed scuba divers, annual refresher training conducted for volunteer firemen

Refuse Collection and Disposal

	<u>Leitchfield</u>
Type service	Municipal
Fee charged:	
residential	\$2 minimum
business	\$5 minimum
industrial	Variable up to \$100
Collection frequency:	
residential	Weekly
business	As needed
industrial	As needed
Trash pickup	Weekly
Disposal method	Sanitary landfill

*There are four volunteer fire departments that serve portions of Grayson County - the Caneyville Fire Department with a Class 8 rating, the Clarkson Fire Department and the Falls of Rough Fire Department both with Class 10 ratings, and a newly organized department at Wax.

EDUCATION

Public Schools

Grayson County*

Total Enrollment (September 1980)	4,088
Elementary	2,148**
Middle School	597
High School	1,317***
Student-Teacher Ratio	18-1
Elementary	17-1
Middle School	17-1
High School	21-1
Accreditation	Southern Association of Colleges and Schools
Percent High School Graduates to College	29.8
Expenditures Per Pupil (1979-80)	\$1,167.31
Bonded Indebtedness (June 30, 1980)	\$3,525,000

Nonpublic Schools

St. Paul (Clarkson, Ky.)

Total Enrollment	126
Elementary	126
Student-Teacher Ratio	21-1
Elementary	21-1

*An addition to Grayson County Middle School is planned to be completed Fall 1981 and will cost approximately \$500,000. Also, the Grayson County Board of Education has applied for a program for gifted and talented students.

**Includes kindergarten enrollment.

***Includes 26 students at the Grayson County Occupational Training Center for handicapped students, 16 years old and older.

Area Colleges and Universities

<u>Name</u>	<u>Location (Miles distant)</u>	<u>Enrollment (Fall 1980)</u>	<u>Highest Degree Conferred</u>
Elizabethtown Community College	Elizabethtown (32)	1,930	Associate
Fort Knox Extension Campus, University of Kentucky	Fort Knox (49)	*	Baccalaureate
Western Kentucky University	Bowling Green (53)	13,417	Masters, Specialist**
Brescia College	Owensboro (66)	860	Baccalaureate
Kentucky Wesleyan College	Owensboro (66)	918	Baccalaureate

*Enrollment is included in the total enrollment of the University of Kentucky, which in fall 1980 was 23,468.

**Joint doctoral degree programs are offered in cooperation with the University of Kentucky, Lexington, and cooperative doctoral degree programs are offered with the University of Louisville.

Vocational Schools

Both the state vocational-technical schools and the area vocational education centers are operated by the Kentucky Department of Education. The state vocational-technical schools enroll persons full time who are at least 16 years of age and not in school. These students attend classes for six hours each day. The area vocational education centers are designed to accommodate high school students who are at least 15 years of age. These students attend vocational school for three hours each day. The state vocational-technical schools and the area education centers offer evening courses to enable working adults to upgrade current job skills.

Nearest State School

Location	Elizabethtown State Vocational-Technical School
Miles Distant	Elizabethtown 32
Curriculum	Business and Office Clerical Consumer and Home Economics Commercial Foods Health and Personal Services Occupations Health Careers Industrial Education Appliance Repair Auto Mechanics Carpentry-Building Trades Commercial Heating and Air Conditioning Drafting Industrial Electricity Industrial Maintenance Machine Shop Radio and Television Repair Welding

Nearest Area Education Center

Location	Grayson County Area Vocational Education Center
Curriculum	Leitchfield Health and Personal Services Occupations Health Careers Industrial Education Auto Mechanics Carpentry Industrial Electricity Basic Electronics Radio and Television Repair Welding Related Instruction Math Reading

Arrangments can be made to provide training in the specific production skills required by an industrial plant. Instruction may be conducted either in the vocational school or in the industrial plant, depending upon the desired arrangement and the availability of special equipment.

HEALTH

Local Medical Personnel

Physicians - 10
Dentists - 5

Hospitals

<u>General Hospital</u>	<u>Location</u>	<u>Beds</u>
Grayson County War Memorial Hospital	Leitchfield	75

General hospital facilities - 2 operating rooms, X-ray department, laboratory, recovery room, maternity ward, emergency room, outpatient clinic, respiratory therapy, physical therapy, stress test, EKG, EEG

Medical staff - 9 physicians, 44 registered nurses, 5 licensed practical nurses; 24-hour physician coverage through Emergency Medical Service

Other Medical Facilities

Comprehensive Care Center - North Central

Ambulance Service

Name - Grayson County-City Ambulance Service, Inc.
Staff - 12 employees including 9 certified emergency medical technicians
Service - 24-hour, county-wide
Equipment - 1 conforming and 2 nonconforming ambulances

Public Health

Facility - Grayson County Health Department
Staff - 1 health environmentalist, 6 registered nurses including 1 family planning nurse, 2 home health nurses, and 4 clerks

OTHER LOCAL FACILITIES

Communications

Telephone - General Telephone Company of Kentucky
Services - Standard

Telegraph - Western Union
Services - Toll-free number (1-800-325-5100)

Postal - U.S. Post Office
Class - First
Mail received - Once daily
Mail dispatched - Once daily

Newspaper - Grayson County News-Gazette
Twice weekly and circulation - 6,200
Other major papers
received from - Bowling Green and Louisville, Kentucky

Radio - WMTL - AM/FM
Stations received from - Elizabethtown, Bowling Green, Louisville,
and Owensboro, Kentucky; Evansville,
Indiana

Television -
Cable service
Reception from - Bowling Green and Louisville, Kentucky;
Evansville, Indiana; Nashville, Tennessee

Educational Television - Bowling Green, Madisonville, and
Elizabethtown, Kentucky; Evansville,
Indiana

Library Services

Public library - Grayson County Public Library
Size collection - 17,000 volumes
Circulation, 1979-80 - 43,578 volumes
Services - Bookmobile, meeting room, study tables, periodicals,
records, story hour, copy machine, Interlibrary Loan service,
microfilm collection of Grayson County genealogy, night deposit,
telephone reference service

Religious Institutions

Number of churches - 12
Denominations - Baptist
Catholic
Christian
Church of Christ
Church of God
Methodist
Nazarene
Pilgrim Holiness
Presbyterian
Seventh Day Adventist

Nearest Synagogues - Owensboro, 66 miles northwest
Congregations - Adath Israel (reform)

Financial Institutions

<u>Banks</u>	<u>Assets</u>	<u>Deposits</u>	<u>Statement Date</u>
<u>Leitchfield</u>			
The Citizens Bank and Trust Company of Grayson County	\$31,377,930.76	\$28,195,387.79	6/30/80
Leitchfield Deposit Bank and Trust Company	27,165,501.30	24,510,052.49	6/30/80
<u>Clarkson</u>			
Bank of Clarkson	30,119,639.78	27,346,855.21	6/30/80
<u>Caneyville</u>			
Bank of Caneyville	10,384,824.15	9,400,235.54	6/30/80
<u>Savings and Loan Associations</u>	<u>Assets</u>	<u>Savings Accounts</u>	<u>Statement Date</u>
First Federal Savings and Loan Association of Leitchfield	\$28,166,005.90	\$26,578,210.12	6/30/80

Hotels and Motels

Total number - 4
Total rooms - 62

Clubs and Organizations

Alumni Association
American Legion
Bass Club
Business and Professional Women's Club
Chamber of Commerce
Cub Scouts
Democratic Women's Club
Eastern Star
4-H Club
Four-Wheel Drive Club
Future Farmers of America
Girl Scouts
Grayson County Republicans
Historical Society
Homemakers' Club
Hospital Auxiliary
Jaycees
Jayceettes
Leitchfield-Grayson County Industrial
Development Foundation
Lions
Little League
Masons
Ministerial Society
Regional Artists Group
Retail Merchants Association
Rotary
Scottish Rite
Senior Citizens
Shriners
Sportsman Club
Veterans of Foreign Wars
Woman's Club
Youth String Orchestra
Zeta Chi

RECREATION

Local

Leitchfield provides a supervised summer recreation program which includes tennis, and arts and crafts classes. As part of the program, the Grayson County Middle School gymnasium is opened to adults in the community for organized sports such as volleyball, badminton, floor tennis, and table tennis. Three parks, two playgrounds, two baseball diamonds, a municipal swimming pool, and two tennis courts are provided for recreational activities.

Private recreational facilities include a movie theater, a drive-in theater, a lake and a pay fishing area, and a 9-hole golf course available to residents on a membership basis. A \$75,000 clubhouse is being built at the golf course, which will include a pro shop, snack bar, locker room, and party room. A spring 1981 completion date is hoped for. There are also plans to develop another nine holes on the golf course and to build tennis courts near the clubhouse.

Area (Within 45 miles)

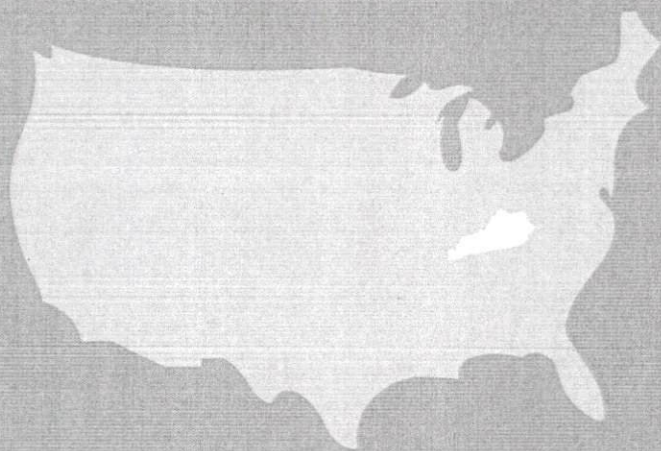
Noteworthy for its spaciousness and perfect grooming, Rough River Dam State Resort Park at Falls of Rough, is approximately 17 miles northwest of Leitchfield. The 377-acre park on Rough River Lake has a 40-room lodge with a dining room, a coffee shop, a gift shop, and a meeting room. A 2,500-foot paved airstrip is located near the lodge. Cottages and camping sites are also available. Recreational facilities include a launching ramp, a dock with open and covered slips, fishing and pleasure boat rentals, a 9-hole golf course, a swimming pool, a sand beach with bathhouse complex, three tennis courts, an archery range, hiking trails, picnic and playground areas, and planned recreation. Cruise boat excursions on Rough River Lake are available on the "Lady of the Lake."

Nolin River Lake, approximately 25 miles southeast of Leitchfield, is just north of Mammoth Cave National Park. The river lake has a surface area of 5,800 acres and offers facilities for camping, boating, and fishing.

Mammoth Cave National Park is located approximately 40 miles south of Leitchfield near Cave City. Beneath 51,000 park acres, Mammoth Cave is among the major tourist attractions of all times. It is one of the largest cave networks ever discovered, with at least 150 miles charted on five levels and vast areas not yet mapped. Some famous sights are Snowball Dining Room (267 feet below surface), Frozen Niagara, Crystal Lake and the Bottomless Pit. The park also features scenic boat trips on the Green River and nature and hiking trails. Park accommodations include a hotel with distinctive gift shops featuring native Kentucky and Southern Highland handicrafts, a motor lodge, hotel cottages, woodland cottages, and a hotel annex with budget accommodations and a

craft shop featuring live exhibits of broom making and weaving. Other park facilities include the hotel dining room and coffee shop, a service center, group meeting facilities, a campground, a picnic area, and tennis and shuffleboard courts.

Abraham Lincoln Birthplace National Historic Site, located 44 miles east of Leitchfield near Hodgenville, features the log cabin where Lincoln was born. The cabin is enclosed within a granite memorial shrine. The grounds include 116 acres of the original Thomas Lincoln farm and a visitors' center with audio-visual programs and exhibits on the Lincoln family.



Kentucky Department of Commerce
Capital Plaza Tower
Frankfort, Kentucky 40601 • Phone (502) 564-4270