

1976

Industrial Resources: Hardin County - Elizabethtown and Upton

Kentucky Library Research Collections
Western Kentucky University, spcol@wku.edu

Follow this and additional works at: https://digitalcommons.wku.edu/hardin_cty



Part of the [Business Administration, Management, and Operations Commons](#), [Growth and Development Commons](#), and the [Infrastructure Commons](#)

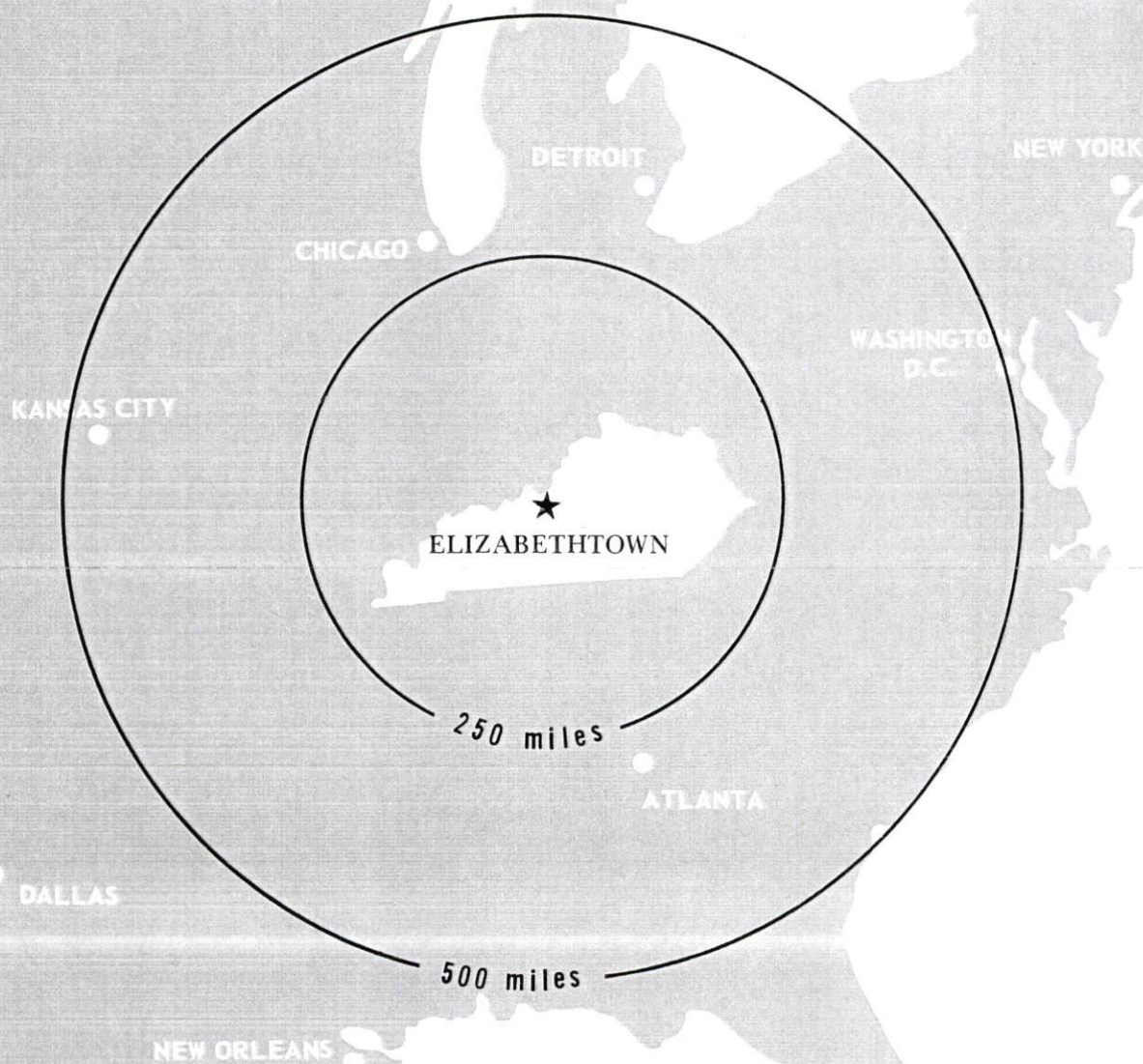
Recommended Citation

Kentucky Library Research Collections, "Industrial Resources: Hardin County - Elizabethtown and Upton" (1976). *Hardin County*. Paper 44.
https://digitalcommons.wku.edu/hardin_cty/44

This Report is brought to you for free and open access by TopSCHOLAR®. It has been accepted for inclusion in Hardin County by an authorized administrator of TopSCHOLAR®. For more information, please contact topscholar@wku.edu.

INDUSTRIAL RESOURCES

ELIZABETHTOWN & UPTON KENTUCKY



HARDIN COUNTY, KENTUCKY

ELIZABETHTOWN, KENTUCKY --- Index to Industrial Sites --- 1976

For detailed data on individual sites, contact Mr. Lawrence Hughes, First Hardin National Bank, Elizabethtown, Kentucky 42701, or the Industrial Development Division, Kentucky Department of Commerce, Capital Plaza Tower, Frankfort, Kentucky 40601.



LEGEND --

Available Sites

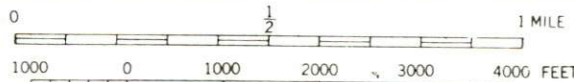
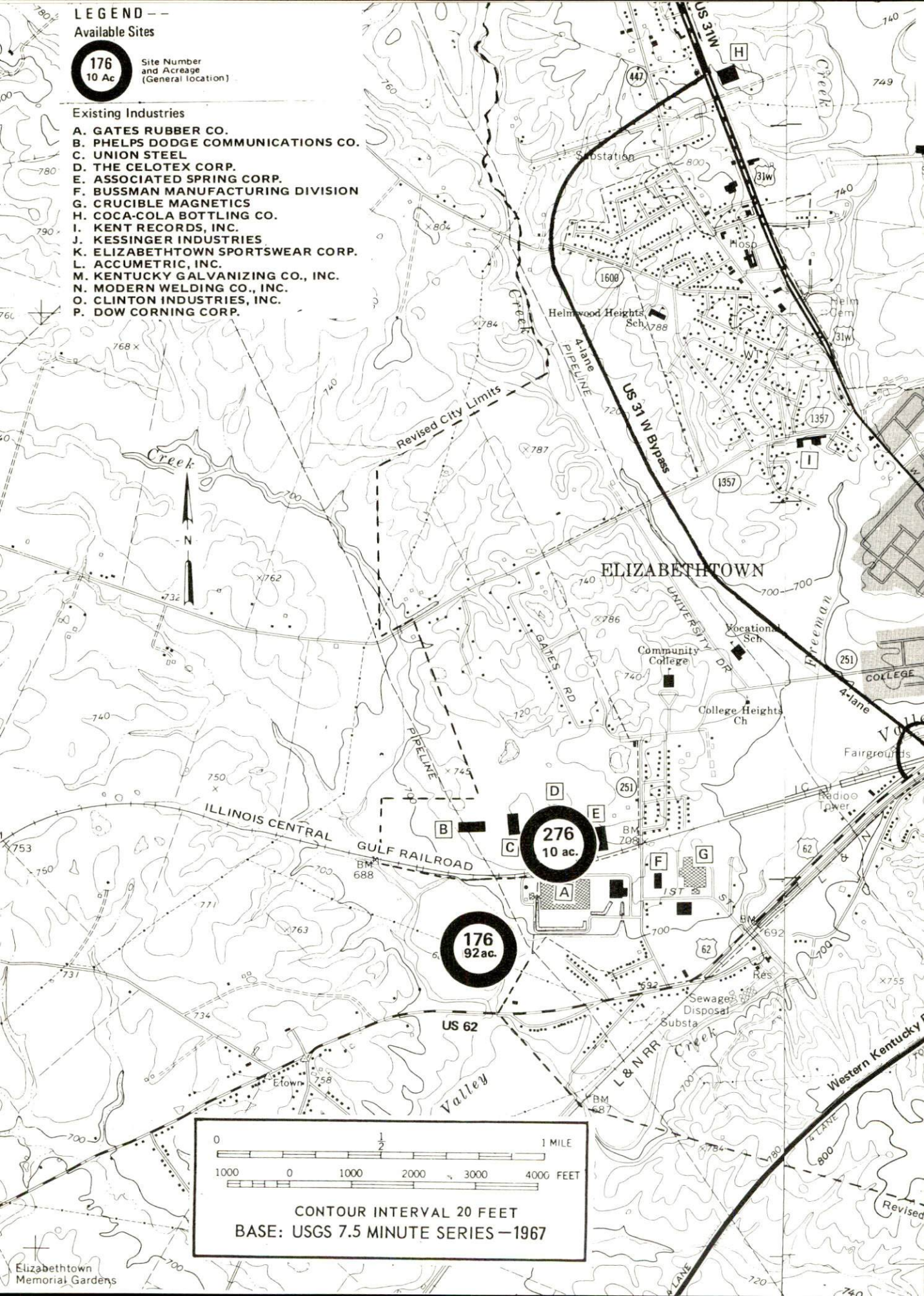
176

10 Ac

Site Number
and Acreage
(General location)

Existing Industries

- A. GATES RUBBER CO.
- B. PHELPS DODGE COMMUNICATIONS CO.
- C. UNION STEEL
- D. THE CELOTEX CORP.
- E. ASSOCIATED SPRING CORP.
- F. BUSSMAN MANUFACTURING DIVISION
- G. CRUCIBLE MAGNETICS
- H. COCA-COLA BOTTLING CO.
- I. KENT RECORDS, INC.
- J. KESSINGER INDUSTRIES
- K. ELIZABETHTOWN SPORTSWEAR CORP.
- L. ACCUMETRIC, INC.
- M. KENTUCKY GALVANIZING CO., INC.
- N. MODERN WELDING CO., INC.
- O. CLINTON INDUSTRIES, INC.
- P. DOW CORNING CORP.



CONTOUR INTERVAL 20 FEET
BASE: USGS 7.5 MINUTE SERIES - 1967

INDUSTRIAL RESOURCES
ELIZABETHTOWN AND UPTON, KENTUCKY

Prepared by
The Kentucky Department of Commerce
in cooperation with
The Elizabethtown-Hardin County Chamber of Commerce
and
The City of Upton
1976

Production Supervisor

Patsy Wallace

Research

Betty Clary

Clerical

Julie Worth

Graphics

N. C. Montague

Frank Ferrante

Tony Cecconi

Cartography

Site Development Section

TABLE OF CONTENTS

<u>Chapter</u>	<u>Page</u>
INDUSTRIAL SITES	i
ELIZABETHTOWN AND UPTON, KENTUCKY – A RESOURCE PROFILE.....	1
THE LABOR MARKET	3
Population	3
General Employment Characteristics, 1974	3
Manufacturing Employment by Industry	4
Major Elizabethtown Manufacturing Firms, Their Products & Employment	4
Labor Organizations	5
Estimated Male Labor Supply	10
Estimated Female Labor Supply	10
Wages	11
Per Capita Personal Income.....	12
TRANSPORTATION	13
Rail	13
Highways	13
Truck Service	14
Air	15
Bus	16
Taxi	16
Rental Services	16
POWER AND FUEL.....	17
Electricity	17
Natural Gas.....	17
Other Fuels.....	18
WATER AND SEWERAGE	19
Water.....	19
Sewerage.....	24
CLIMATE.....	25
Temperature	25
Precipitation	25
Prevailing Winds	25
Relative Humidity.....	25

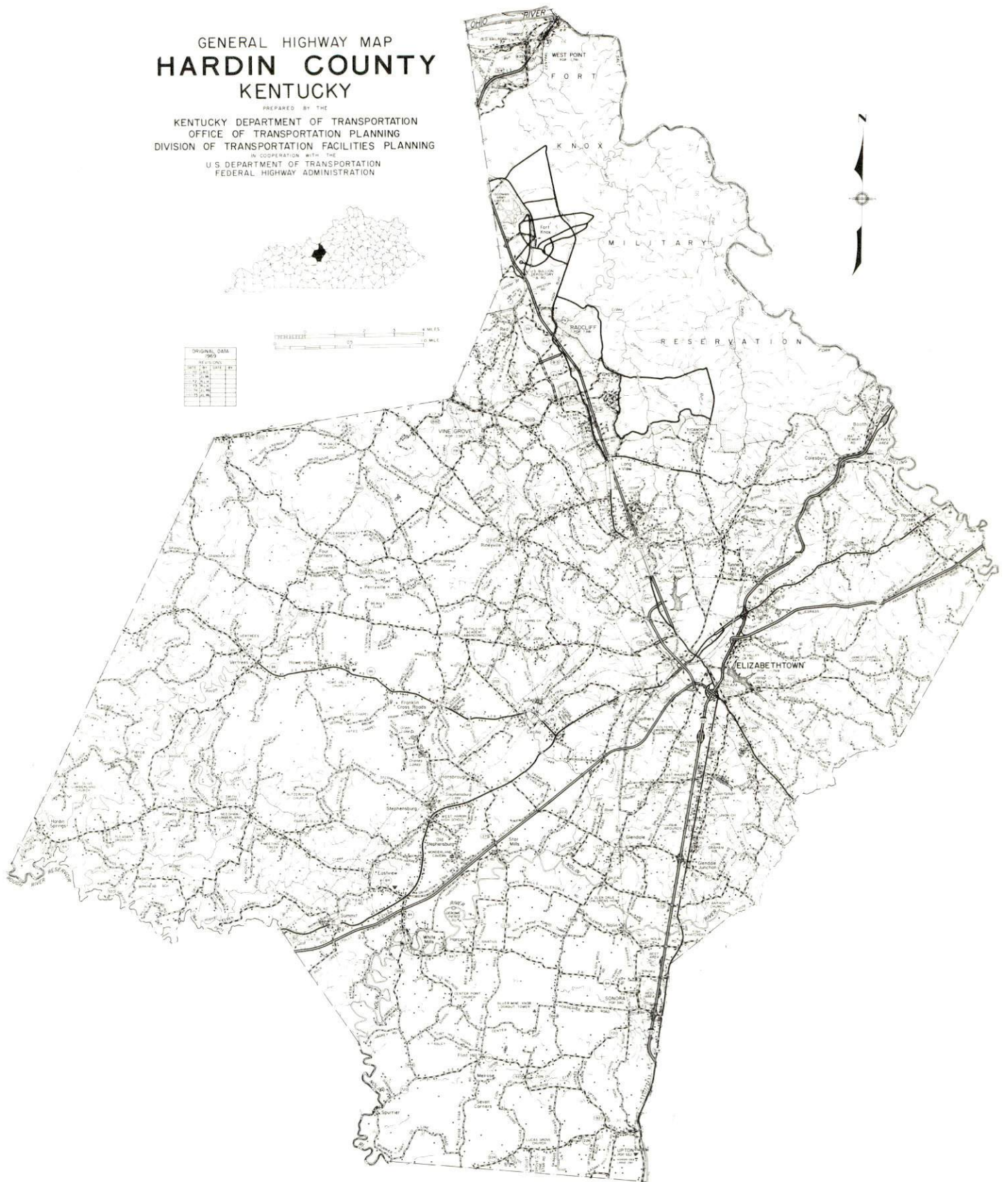
<u>Chapter</u>	<u>Page</u>
LOCAL GOVERNMENT	26
City.....	26
County	26
Assessed Value of Property, 1975	26
Property Taxes	26
Local Property Tax Rate Per \$100 of Assessed Valuation, 1975.....	27
Utilities Gross Receipts Tax for Schools	27
Planning and Zoning	27
Safety	27
Police	27
Fire	27
Rescue Service	28
Solid Waste	28
EDUCATION	29
Public Schools.....	29
Nonpublic Schools	29
Area Colleges and Universities.....	31
Vocational Schools	31
HEALTH	33
Local Medical Personnel	33
Hospitals	33
Other Medical Facilities	33
Ambulance Service	33
Nursing Homes	33
Public Health	33
OTHER LOCAL FACILITIES	35
Communications.....	35
Library Services	35
Religious Institutions	37
Financial Institutions	38
Hotels and Motels	38
Clubs and Organizations	38
RECREATION	39
Local	39
Area	39
COMMUNITY IMPROVEMENTS	41
HISTORY	43

GENERAL HIGHWAY MAP HARDIN COUNTY KENTUCKY

PREPARED BY THE
KENTUCKY DEPARTMENT OF TRANSPORTATION
OFFICE OF TRANSPORTATION PLANNING
DIVISION OF TRANSPORTATION FACILITIES PLANNING
IN COOPERATION WITH THE
U.S. DEPARTMENT OF TRANSPORTATION
FEDERAL HIGHWAY ADMINISTRATION

ORIGINAL DATA
1969

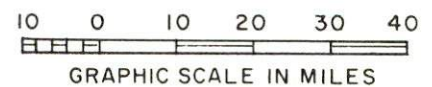
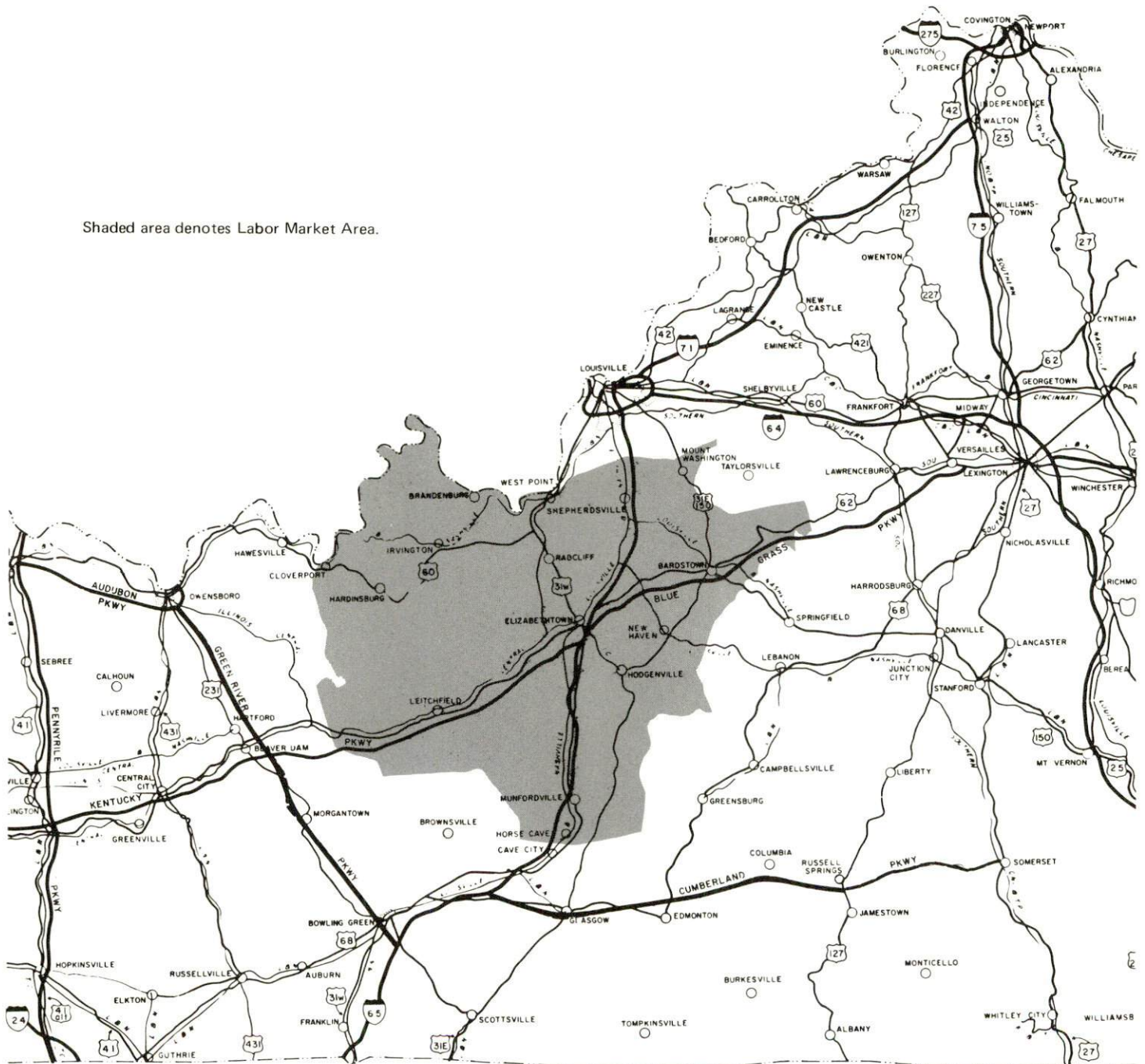
DATE	FILE	DATE	FILE
1/1/69	1	1/1/69	1
2/1/69	2	2/1/69	2
3/1/69	3	3/1/69	3
4/1/69	4	4/1/69	4
5/1/69	5	5/1/69	5
6/1/69	6	6/1/69	6
7/1/69	7	7/1/69	7
8/1/69	8	8/1/69	8
9/1/69	9	9/1/69	9
10/1/69	10	10/1/69	10
11/1/69	11	11/1/69	11
12/1/69	12	12/1/69	12



ELIZABETHTOWN & UPTON LABOR MARKET AREA



Shaded area denotes Labor Market Area.



ELIZABETHTOWN AND UPTON, KENTUCKY — A RESOURCE PROFILE

Elizabethtown, county seat and largest city in Hardin County, is located in north-central Kentucky, 40 miles south of Louisville, 72 miles northeast of Bowling Green, and 145 miles southwest of Cincinnati, Ohio. In 1973, Elizabethtown had an estimated population of 14,354.

The community of Upton, 17 miles south of Elizabethtown, is centrally located within 25 miles of four county seats. Upton had a 1973 estimated population of 598.

Hardin County, covering a land area of 616 square miles, is bound on the north by the Ohio River; on the east by Bullitt, Nelson and Larue Counties; on the south by Hart County; on the west by Grayson, Breckinridge and Meade Counties; and on the northeasternmost part by Jefferson County. Hardin County had a 1974 estimated population of 73,600.

The Economic Framework

The total number of Hardin County residents employed in 1974 averaged 20,680, including 1,110 in agriculture and 5,210 in government. Manufacturing employers in the county reported 3,020 workers; trade and services firms employed 5,740. Major industrial products are: auto v-belts and curved auto hose; ceramic and alnico magnets; men's slacks; electric fuses and holders; silicone sealants, and business forms.

Total unemployment in Hardin County averaged 4.6 percent of the labor force in 1974.

Per capita personal income in the county in 1973 was \$5,026, an increase of 23 percent since 1969.

The Elizabethtown and Upton labor market area includes Hardin, Breckinridge, Bullitt, Grayson, Hart, Larue, Meade and Nelson Counties. The total number of residents of the labor market area employed in 1974 averaged 68,110, including 7,660 in agriculture and 11,690 in government. Manufacturing employers in the labor market area reported 8,670 workers; trade and services firms employed 11,820.

Resources for Growth

1. Labor Supply — There is a current labor supply of 7,120 men and 10,510 women available for industrial jobs in the labor market area. In addition, 10,710 young men and 10,190 young women in the area will become 18 years of age before 1981 and potentially available for work.

2. Transportation — The local transportation capability is good. The Louisville and Nashville Railroad and the Illinois Central Gulf Railroad provide a variety of rail services. Thirteen truck lines serve Elizabethtown. I-65, a north-south route, the Blue Grass Parkway, and the Western Kentucky Parkway converge at Elizabethtown. Ben Floyd Field, 4 miles north-northwest of Elizabethtown, has a 2,800-foot paved runway capable of accommodating light aircraft. Commercial air service is available at Standiford Field, Louisville, only 40 miles north of Elizabethtown.

3. Power and Fuel — Kentucky Utilities Company provides electric power to Elizabethtown and Upton. Nolin RECC serves Upton and Hardin County. Natural gas is furnished in Elizabethtown by the Elizabethtown Gas Department whose source of supply is the Texas Gas Transmission Corporation. Natural gas service is not available at Upton; however, several distributors of propane, butane, and distillate fuel oil are located in the Elizabethtown - Upton area.

4. Education — Education is an important growth asset for Hardin County. Three public school systems operate within the county. One university, three senior colleges, three community colleges, and one junior college are located within 40 miles of the county. The Elizabethtown Community College and Fort Knox Center are located in the county.

The Elizabethtown State Vocational Technical School is located in Elizabethtown, and offers training in twelve different courses. The Nelson County Area Vocational Education Center is located at Bardstown, only 23 miles from Elizabethtown, and offers seven different courses.

THE LABOR MARKET AREA

POPULATION			
<u>Area</u>	<u>1974*</u>	<u>1970</u>	<u>Percent Nonwhite</u> <u>1970</u>
Elizabethtown	14,354**	13,036	7.6
Upton	598**	552	N.A.
Labor Market Area	206,000	202,670	
Hardin County	73,600	78,421	9.0
Breckinridge County	15,400	14,789	4.6
Bullitt County	31,600	26,090	0.9
Grayson County	17,600	16,445	0.8
Hart County	14,900	13,980	9.9
Larue County	11,300	10,672	4.7
Meade County	17,600	18,796	6.4
Nelson County	24,000	23,477	7.7

*Provisional Estimates.

**1973 Population Estimates.

Sources: U. S. Department of Commerce, Bureau of the Census, Census of Population, 1970. U. S. Bureau of the Census, Current Population Reports, Series P-25, No. 562, June 1975; Series P-26, No. 120, June 1975.

GENERAL EMPLOYMENT CHARACTERISTICS, 1974

<u>Major Employment Group</u>	<u>Employment by Place of Residence of Workers</u>	
	<u>Hardin County</u>	<u>Labor Market Area</u>
Total Employment	20,682	68,114
Agriculture	1,113	7,658
Government	5,206	11,690
	<u>Employment by Location of Jobs</u>	
	<u>Hardin County</u>	<u>Labor Market Area</u>
Manufacturing	3,019	8,667
Trade and Services	5,741	11,821

Source: Kentucky Department for Human Resources, Bureau for Administration and Operations.

**MANUFACTURING EMPLOYMENT BY INDUSTRY
MARCH 1975**

<u>Industry</u>	<u>Hardin County</u>	<u>Labor Market Area</u>
TOTAL	2,676	8,000
Food & Kindred Products	220	1,519
Tobacco	0	10
Apparel, Textiles, Leather	346	1,770
Lumber, Furniture	2	263
Printing & Publishing, Paper	321	1,219
Chemicals, Petroleum & Coal, Rubber	727	1,444
Stone, Clay & Glass	40	186
Primary Metals	0	40
Machinery, Metals Products, Equipment	677	1,118
Other	343	431

Source: Kentucky Department for Human Resources, Number of Workers in Manufacturing Industries Covered by Kentucky Unemployment Insurance Law Classified by Industry and County, March, 1975.

**MAJOR ELIZABETHTOWN MANUFACTURING FIRMS,
THEIR PRODUCTS AND EMPLOYMENT**

<u>Firm (Establishment date)</u>	<u>Product</u>	<u>Employment</u>			
		<u>Total</u>	<u>Male</u>	<u>Female</u>	<u>Organized</u>
Bussmann Mfg. Div. (1955)	Electrical and electronic fuses, holders	333.	58	275	*
The Celotex Corp. (1971)	Urethane roof insulation	42	39	3	
Coca-Cola Bottling Co. (1920)	Soft drinks	148	130	18	
Colt Industries, Crucible Magnetics Div. (1965)	Ceramic and alnico magnets	421	339	82	*
Dow Corning Corp. (1963)	Silicone sealants	250			*
E-town Sportswear Corp. (1960)	Men's slacks	350	38	312	*
Elizabethtown Ice Cream Co. (1908)	Ice cream	40	28	12	
Gates Rubber Co. (1964)	Auto v-belts, curved auto hose	557	460	97	*
The Jenkins-Essex Co., Inc. (1903)	Wood windows, doors, cabinets, wood cabinets	57	50	7	
Kent Records, Inc. (1958)	Phonograph records	100	20	80	

(Cont.)

<u>Firm (Establishment date)</u>	<u>Product</u>	<u>Employment</u>			
		<u>Total</u>	<u>Male</u>	<u>Female</u>	<u>Organized</u>
Kentucky Galvanizing Co., Inc. (1968)	Guardrails and posts, steel fabrication, hot dip galvanizing	47	44	3	
Kessinger Industries (1972)	Electrical mechanical devices, printed circuit boards, wiring harnesses	74	55	19	
Phelps Dodge Communications Co. (1975)	Telephone cable	150	125	25	*
Union Steel Div., Eagle-Picher Industries (1971)	Refrigerator shelves, freezer baskets	68	39	29	*

* See Labor Organizations below.

Sources: Elizabethtown - Hardin County Chamber of Commerce; Kentucky Department of Commerce, 1976 Kentucky Directory of Manufacturers.

LABOR ORGANIZATIONS

<u>Union</u>	<u>Representing manufacturing workers at:</u>
Teamsters	Armour & Company
International Union of Electrical, Radio and Machine Workers	Bussmann Manufacturing Division
International Union of Electrical, Radio and Machine Workers	Colt Industries, Crucible Magnetics Division
International Chemical Workers	Dow Corning Corporation
Amalgamated Clothing Workers	E-town Sportswear Corporation
International Union of Electrical, Radio and Machine Workers	Gates Rubber Company
United Rubber, Cork, Linoleum and Plastic Workers of America	Gates Rubber Company
International Union of Electrical, Radio and Machine Workers	Phelps Dodge Communications Company
United Steel Workers of America	Union Steel Division, Eagle - Picher Industries



BUSSMAN MFG. DIV.



DOW CORNING CORP.



PHELPS DODGE COMMUNICATIONS CO.



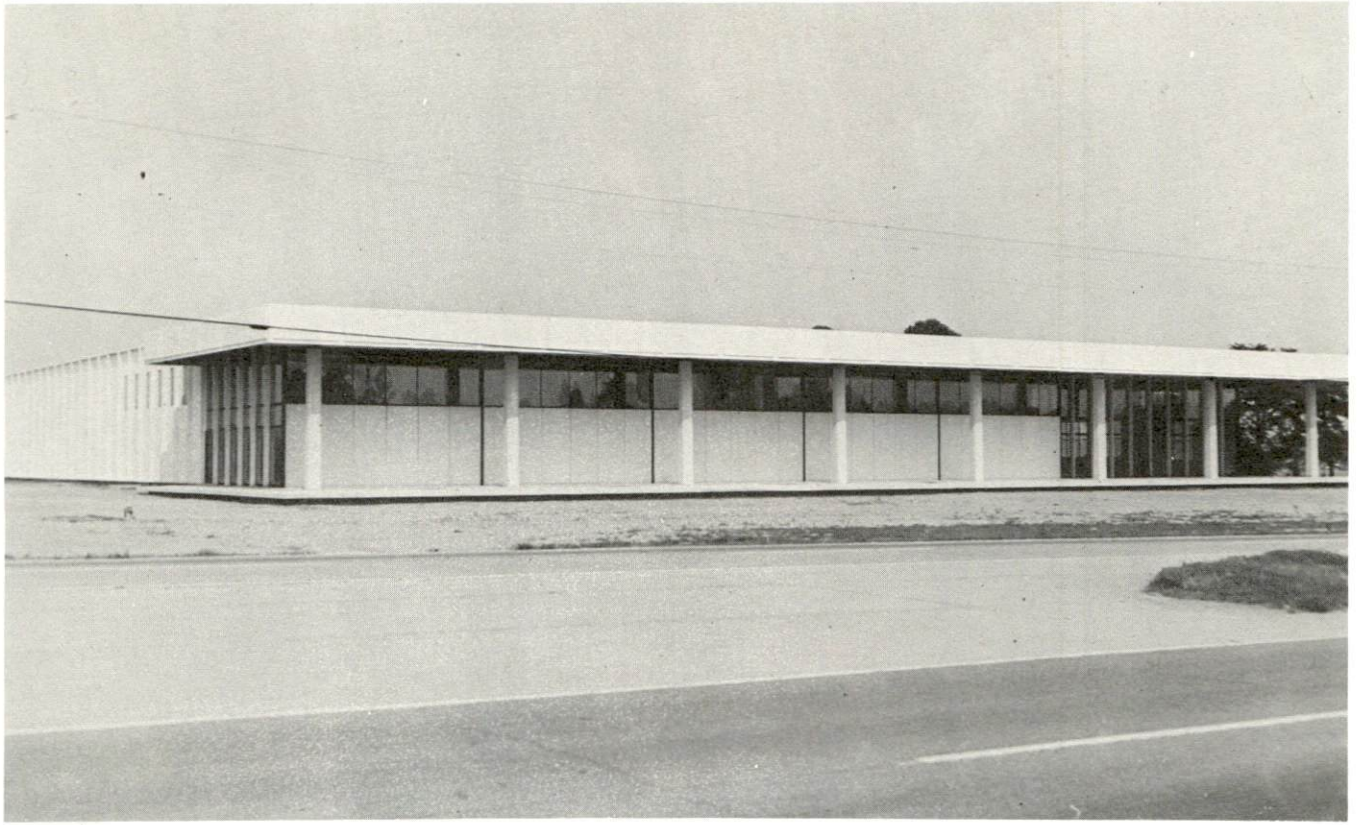
THE CELOTEX CORP.



GATES RUBBER CO.



COLT INDUSTRIES, CRUCIBLE MAGNETICS DIV.



COCA-COLA BOTTLING CO.



E-TOWN SPORTSWEAR CORP.

**ESTIMATED MALE LABOR SUPPLY
ELIZABETHTOWN AND UPTON LABOR MARKET AREA**

<u>Area</u>	<u>Current</u>			<u>Future</u>	
	<u>Total</u>	<u>Not in Labor Force</u>	<u>Unemployed</u>	<u>Under- employed</u>	<u>Reaching 18 yrs. of age before 1981</u>
Labor Market Area	7,120	0	2,670	4,450	10,709
Hardin County	3,390	0	770	2,620	3,454
Breckinridge County	470	0	230	240	761
Bullitt County	630	0	250	380	1,638
Grayson County	680	0	360	320	880
Hart County	360	0	160	200	722
Larue County	330	0	150	180	597
Meade County	300	0	150	150	1,096
Nelson County	960	0	600	360	1,561

Sources: Kentucky Department for Human Resources, Kentucky Labor Supply Estimates by County, 1975. Kentucky Department of Commerce, Future Labor Supply before 1981.

**ESTIMATED FEMALE LABOR SUPPLY
ELIZABETHTOWN AND UPTON LABOR MARKET AREA**

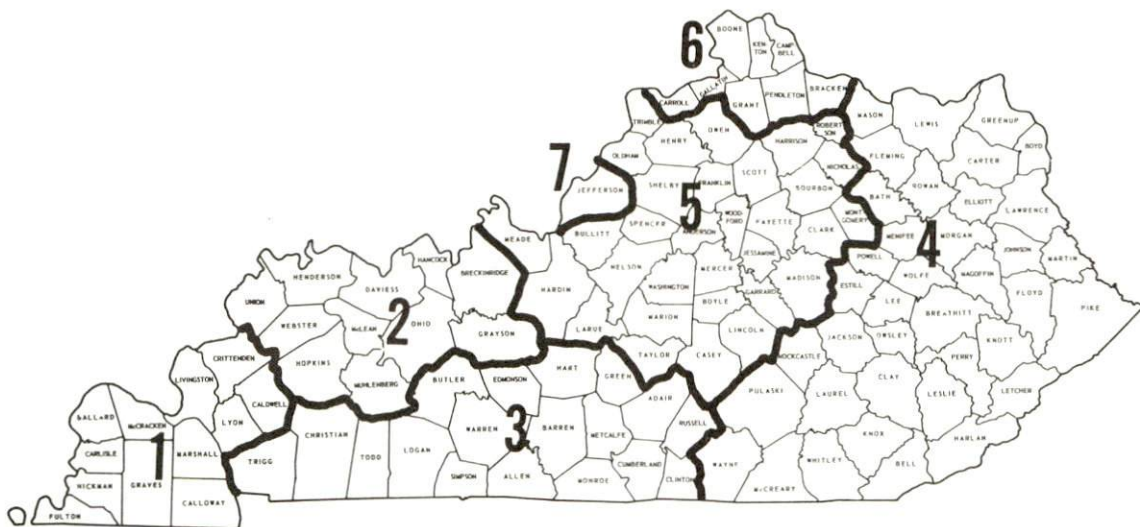
<u>Area</u>	<u>Current</u>			<u>Future</u>	
	<u>Total</u>	<u>Not in Labor Force</u>	<u>Unemployed</u>	<u>Under- employed</u>	<u>Reaching 18 yrs. of age before 1981</u>
Labor Market Area	10,510	6,050	890	3,570	10,188
Hardin County	6,460	5,080	230	1,150	3,276
Breckinridge County	290	0	70	220	766
Bullitt County	720	0	100	620	1,538
Grayson County	470	90	110	270	798
Hart County	660	260	110	290	689
Larue County	260	0	50	210	586
Meade County	1,020	620	40	360	1,025
Nelson County	630	0	180	450	1,510

Sources: Kentucky Department for Human Resources, Kentucky Labor Supply Estimates by County, 1975. Kentucky Department of Commerce, Future Labor Supply before 1981.

WAGES

Occupational wage rates for specific industries are usually not available to most government agencies, and wage data furnished to state employment agencies by individual industrial employers is protected from disclosure by federal law. The most reliable up-to-date wage information can be obtained by direct contact with local employers.

Associated Industries of Kentucky, a voluntary organization of Kentucky businesses, regularly collects occupational wage rates and fringe benefits data from participating member firms. Data is compiled for over 127 clearly defined office, production, and service occupations. Tabulations are published for seven regions of Kentucky, as shown on the map below. It should be noted that the data may be weighted by the preponderance of firms in the larger cities and may be somewhat higher than the rates paid in the smaller communities. Data from these tabulations are available, upon request, from the Kentucky Department of Commerce, Frankfort, Kentucky 40601.



Associated Industries of Kentucky Area Wage Surveys

PER CAPITA PERSONAL INCOME

<u>Area</u>	<u>1973</u>	<u>1969</u>	<u>% Change</u>
Hardin County	\$5,026	\$4,090	22.9
Labor Market Area Range	\$2,713 – 5,026	\$1,954 – 4,090	N.A.
Kentucky	4,050	2,894	39.9
U. S.	5,041	3,733	35.1

Sources: U.S. Department of Commerce, Office of Business Economics, Survey of Current Business, August, 1974. U.S. Department of Commerce, Bureau of Economic Analysis, April, 1975.

TRANSPORTATION

Rail

Line serving Elizabethtown — Louisville & Nashville Railroad

Services — One southbound local freight Monday, Wednesday and Friday; one northbound local freight Tuesday, Thursday and Saturday; six southbound and six northbound through freights daily; team track space for ten cars; piggyback facilities at Louisville, 40 miles away.

Line serving Elizabethtown — Illinois Central Gulf Railroad

Services — One northbound and one southbound freight daily; switching facilities; team track; siding space for 30 to 40 cars; piggyback facilities at Louisville, 40 miles away.

Line serving Upton — Louisville & Nashville Railroad

Services — One southbound local freight Monday, Wednesday and Friday; one northbound local freight Tuesday, Thursday and Saturday; six southbound and six northbound through freights daily; team track space for three cars; siding space for ten cars; piggyback facilities at Louisville, 57 miles away.

For details on routing, schedules, rates and services, contact:

Manager of Industrial Development
Louisville & Nashville Railroad Company
908 West Broadway
Louisville, Kentucky 40203
(502) 587-5000

and/or

Manager of Industrial Development
Illinois Central Gulf Railroad Company
112 North 4th Street
St. Louis, Missouri 63102
(314) 241-9400

Highways

Three major highways — Interstate 65, Blue Grass Parkway and Western Kentucky Parkway — converge at Elizabethtown, linking the area with important Eastern, Southern and Midwestern commercial centers. Elizabethtown is also served by U. S. Highways 31 W and 62 and by Kentucky Highway 61.

Upton is served by Interstate 65 and U. S. 31 W.

Truck Service

Company

Associated Transport, Inc.
Best Way Express, Inc.*
Bowling Green Express, Inc.
Central Motor Express, Inc.
Crutcher Transfer Line, Inc.*
Great Lakes Express Company
Leitchfield Transfer Company
McLean Trucking Company
Southern Forwarding Company
Terminal Transport Company, Inc.
Turner Expediting Service
Wilson Freight Company

Home Office

380 Madison Avenue
New York, New York 10017
710 Poplar Avenue
Nashville, Tennessee 37210
Post Office Box 1111
Bowling Green, Kentucky 42101
Post Office Drawer C
Campbellsville, Kentucky 40011
600 Marrett Avenue
Louisville, Kentucky 40208
1105 North Niagra Street
Saginaw, Michigan 48602
619 Mill Street
Leitchfield, Kentucky 42754
617 Waughtown Street
Winston-Salem, North Carolina 27107
728 Alston Avenue
Memphis, Tennessee 38102
5101 South Lawndale Avenue
Summit, Illinois 60501
Box 21333, Standiford Field
Louisville, Kentucky 40221
3636 Follett Avenue
Cincinnati, Ohio 45223

Other Freight Services

United Parcel Service**

Nearest Shipping Center

Louisville, Kentucky — 40 miles from
Elizabethtown

* Local terminal.

** For regular scheduled pickups or for occasional pickups, arrangements must be made with the Louisville office of U.P.S.

**HIGHWAY MILES AND TRUCK TRANSIT TIME IN DAYS FROM
ELIZABETHTOWN, KENTUCKY, TO SELECTED MARKET CENTERS**

<u>City</u>	<u>Highway Miles</u>	<u>Delivery Time TL</u>	<u>City</u>	<u>Highway Miles</u>	<u>Delivery Time TL</u>
Atlanta, Georgia	370	2	Los Angeles, California	2,148	5
Birmingham, Alabama	324	2	Louisville, Kentucky	40	1
Chicago, Illinois	332	2	Nashville, Tennessee	128	1
Cincinnati, Ohio	145	2	New Orleans, Louisiana	645	3
Cleveland, Ohio	388	2	New York, New York	788	3
Detroit, Michigan	400	2	Pittsburgh, Pennsylvania	431	2
Knoxville, Tennessee	257	2	St. Louis, Missouri	303	2

Source: Delivery Time Only — Crutcher Transfer Line, Inc., 600 Marrett Avenue,
Louisville, Kentucky 40208.

Air

	<u>Local</u>	<u>Nearest Commercial</u>
Location:	Ben Floyd Field, 4 miles north-northwest of Elizabethtown	Standiford Field, Louisville, 40 miles north of Elizabethtown
Runways:	One paved	Three paved
Length:	2,800 feet	7,800 feet, 5,000 feet, 7,250 feet
Traffic		
Control:	Wind tee and wind sock	Control tower, approach control, ground control, guards, radar service, depart- ure control, clearance delivery
Lighting:	Sundown to sunrise	Runways, obstructions, beacon and approach and touchdown lights, center line on runways 1-19
Services.	80-100-130 octane, flight instructions, transporta- tion available, restaurant across highway from field, charter, lodging by reservation	TWA, American, Eastern, Delta, Piedmont, Ozark and Allegheny; Louisville-Jefferson County Air Board; 80, 100, 115, jet fuel; storage; major A&E repairs; Hertz, Avis, and National rent-a-car service; restaurant; taxi and city bus service; Budget Rent-A-Car Service; Weather Bureau Phone
Air Freight		
Service:	Chartered air freight services must be arranged	Freight carrying airlines regularly service this terminal

	<u>Elizabethtown</u>	<u>Upton</u>
Bus —	Greyhound Bus Lines Kentucky Bus Lines Trailways	Greyhound Bus Lines
Taxi —	One company, radio equipped, 24-hour service	
Rental Services —	Car, truck and trailer rentals	

POWER AND FUEL

Electricity

Company serving Elizabethtown and Upton — Kentucky Utilities Company

Source of power — Kentucky Utilities Company

Total generating capacity — 1,615,500 KW

For industrial rates contact:

Kentucky Utilities Company
242 West Dixie
Elizabethtown, Kentucky
(502) 765-4101

Company serving Upton and Hardin County — Nolin RECC

Source of power — East Kentucky Power Cooperative

Total generating capacity — 496,000 KW

For industrial rates contact:

Industrial Development Division
East Kentucky Power Cooperative
Post Office Box 707
Winchester, Kentucky 40391
(606) 744-4812

and/or

Nolin RECC
Post Office Box 668
Elizabethtown, Kentucky 42701
(502) 765-6153

Natural Gas

Company serving Elizabethtown — Elizabethtown Gas Department

Source of supply — Texas Gas Transmission Corporation

Size of transmission mains — 16 and 24 inches (supplier); 6 and 8 inches (distributor)

Distribution mains — 2, 3, 4, 6 and 8 inches

Distribution pressure — 30 psi

Btu content — 1,000 per cubic foot; Specific gravity — 0.6

For rates and supplies contact:

Elizabethtown Gas Department
Post Office Box 550
Elizabethtown, Kentucky 42701
(502) 765-6121

Upton — Natural gas service is not available at Upton.

Other Fuels

Propane and butane Pargas of Canmer, Inc.
Highway 31 East
Canmer, Kentucky

Fuel oils

Distillate fuel oil — Atlantic Richfield Oil Company (ARCO)
337 East Dixie Avenue
Elizabethtown, Kentucky

Ashland Petroleum Company
736 Hawkins Drive
Elizabethtown, Kentucky

Exxon Company
Hawkins Drive
Elizabethtown, Kentucky

Standard Oil Company
216 East Poplar
Elizabethtown, Kentucky

Residual fuel oil — Arrangements must be made with the refinery.

Low sulphur content coal Available in Kentucky

WATER AND SEWERAGE

Water

Company serving Elizabethtown — City of Elizabethtown Water and Sewer Utilities*
111 West Dixie Avenue
Elizabethtown, Kentucky 42701
(502) 765-6121

Source — Two wells, two springs, Freeman Lake
Treatment plant capacity — Plant No. 1 -- 2,500,000 gpd; Plant No. 2 -- 3,000,000 gpd
Average daily consumption — 2,500,000 gallons
Peak daily consumption — 3,500,000 gallons
Type treatment — Settling, flocculation, filtration, chlorination and fluoridation
Storage capacity — 2,366,000 gallons
Size lines - 4, 6, 8, 10, 12 and 14 inches
Average pressure — 65 psi
Average temperature — Plant No. 1 -- 55 degrees F.; Plant No. 2 -- 60 degrees F.

MONTHLY WATER RATES FOR WHOLESALE AND INDUSTRIAL CONSUMERS

First	2,000 gallons	\$3.50 minimum bill
Next	3,000 gallons	1.20 per M gallons
Next	5,000 gallons	1.10 per M gallons
Next	5,000 gallons	1.00 per M gallons
Next	10,000 gallons	.80 per M gallons
Next	15,000 gallons	.65 per M gallons
All over	40,000 gallons	.45 per M gallons

Outside city rates are 50 percent higher than in city rates.

TAP ON CHARGES

<u>Meter Size</u>	<u>In City</u>	<u>Outside City</u>
¾-inch	\$ 100.00	\$ 150.00
1 -inch	145.00	193.33
1½-inch	265.00	353.33
2 -inch	400.00	533.33
3 -inch	800.00	1,066.66
4 -inch	1,200.00	1,600.00

* The Elizabethtown Water Department has installed 8-inch lines on East Dixie Avenue; a loop of 12-inch lines is planned for an area northeast of Elizabethtown.

Company serving Upton — Upton Water Company*
Upton, Kentucky 42784

Source — Two deep wells

Treatment plant capacity — 216,000 gpd**

Average daily consumption — 35,000 gallons

Peak daily consumption — 50,000 gallons

Type treatment — chlorination and softeners

Storage capacity — 76,000 gallons

Size lines — 2, 4, 6 and 8 inches

Average pressure — 62 psi

Average temperature — 45 degrees F.

**MONTHLY WATER RATES FOR WHOLESALE
AND INDUSTRIAL CONSUMERS**

First	3,500 gallons	\$5.60 minimum bill
Next	1,500 gallons	1.75 per M gallons
Next	2,000 gallons	.90 per M gallons
Next	8,000 gallons	.80 per M gallons
Next	35,000 gallons	.70 per M gallons
Next	50,000 gallons	.60 per M gallons
All over	100,000 gallons	.50 per M gallons

Tap-on charge: \$250

* The Upton Water Company has installed new water softeners and chlorination equipment.

** Kentucky Department for Natural Resources and Environmental Protection.

Name of water district — Hardin County Water District No. 1*
409 West Lincoln Trail Boulevard
Radcliff, Kentucky 40160
(502) 351-3222

Area served — Radcliff and surrounding area

Date when water district began operating — 1954

Source of raw water — wells along the Ohio River and spring fed impoundments

Capacity of treatment plant — Saunders Spring Plant -- 1,200,000 gpd;

Muldraugh Plant -- 2,000,000 gpd

Type of treatment — Complete - consisting of aeration, prechlorination, coagulation, sedimentation, filtration, taste and odor, fluoride adjustment, disinfection

Average amount of water used in a 24-hour period — 2,000,000 gallons

Peak amount of water used in a 24-hour period — 2,200,000 gallons

Storage capacity — 877,000 gallons

Average pressure — 45 psi

Average temperature — 64 degrees F.

Size lines — 2, 3, 4, 6, 8, 10, 12 and 14 inches

Rates —

¾-inch commercial meter (\$10.00 minimum bill)

First	10,000 gallons	\$1.00 per M gallons
Next	10,000 gallons	.80 per M gallons
Next	20,000 gallons	.60 per M gallons
Next	60,000 gallons	.50 per M gallons
All over	100,000 gallons	.40 per M gallons

1-inch commercial meter (\$30.00 minimum bill)

First	50,000 gallons	\$.60 per M gallons
Next	50,000 gallons	.50 per M gallons
All over	100,000 gallons	.40 per M gallons

1½-inch commercial meter (\$45.00 minimum bill)

First	75,000 gallons	\$.60 per M gallons
Next	25,000 gallons	.50 per M gallons
All over	100,000 gallons	.40 per M gallons

2-inch commercial meter (\$60.00 minimum bill)

First	120,000 gallons	\$.50 per M gallons
All over	120,000 gallons	.40 per M gallons

(Cont.)

* Hardin County Water District No. 1 is in the first stage of a three-phase plan to double the treatment capacity of the Muldraugh treatment plant to 4,000,000 gpd. Capacity of the Saunders Spring Plant was increased from 700,000 to 1,200,000 during 1975.

Commercial Tap-On Charges —

¾-inch meter	\$200
1-inch meter	300
1½-inch meter	350
2-inch meter	400

Name of water district — Hardin County Water District No. 2

Area served — East central Hardin County

Date when water district began operating — 1969

Source of supply of treated water — Hardin County Water District No. 1

Average amount of water used in a 24-hour period — 700,000 gallons

Peak amount of water used in a 24-hour period — 996,800 gallons

Storage capacity — 1,000,000 gallons

Average pressure — 100 to 130 psi

Average temperature — 50 degrees F.

Size lines — 2, 4, 6 and 8 inches

Rates —

5/8 and ¾-inch meter

First	2,000 gallons	\$5.60 minimum bill
Next	2,000 gallons	1.70 per M gallons
Next	6,000 gallons	1.30 per M gallons
Next	30,000 gallons	1.05 per M gallons
Next	60,000 gallons	.90 per M gallons
All over	100,000 gallons	.80 per M gallons

1-inch meter

First	5,000 gallons	\$14.00 minimum bill
Next	5,000 gallons	1.30 per M gallons
Next	30,000 gallons	1.05 per M gallons
Next	60,000 gallons	.90 per M gallons
All over	100,000 gallons	.80 per M gallons

1½-inch meter

First	10,000 gallons	\$28.00 minimum bill
Next	30,000 gallons	1.05 per M gallons
Next	60,000 gallons	.90 per M gallons
All over	100,000 gallons	.80 per M gallons

2-inch meter

First	20,000 gallons	\$55.00 minimum bill
Next	20,000 gallons	1.05 per M gallons
Next	60,000 gallons	.90 per M gallons
All over	100,000 gallons	.80 per M gallons

(Cont.)

3-inch meter

First	30,000 gallons	\$84.00 minimum bill
Next	10,000 gallons	1.05 per M gallons
Next	60,000 gallons	.90 per M gallons
All over	100,000 gallons	.80 per M gallons

4-inch meter

First	50,000 gallons	\$140.00 minimum bill
Next	50,000 gallons	.90 per M gallons
All over	100,000 gallons	.80 per M gallons

6-inch meter

First	100,000 gallons	\$280.00 minimum bill
All over	100,000 gallons	.80 per M gallons

Tap-On Charges —

5/8-inch meter	\$250
1-inch meter	350
1½-inch meter	500
2-inch meter	800

Surface water sources — Ohio River, Salt River, Rolling Fork River, Nolin River,
Rough Creek

Average discharge — Rolling Fork near Boston — 1,726 cfs (36 years, USGS);

Nolin River at White Mills — 462 cfs (15 years, USGS)

Expected ground water yield — 500 - 1,000 gpm at northern tip; 5 - 50 gpm at southern
tip, north central region and western tip; 5 gpm or less at eastern and western borders;
50 - 200 gpm in remainder of county.

Sewerage

Company serving Elizabethtown — City of Elizabethtown Water and Sewer Utilities*
111 West Dixie Avenue
Elizabethtown, Kentucky 42701
(502) 765-6121

Design capacity — Plant No. 1 -- 1,100,000 gpd; Plant No. 2 -- 1,000,000 gpd

Average daily flow — 1,900,000 gallons

Treatment — Primary and secondary

Type treatment — Plant No. 1 -- trickling filters, digester and drying beds;

Plant No. 2 -- extended aeration, aerobic digestion and drying beds; lagoon

Treated effluent discharged into — Valley Creek

Size of sanitary mains — 6, 8, 12 and 16 inches

Size of storm mains — None

Rates —

First	2,000 gallons	\$1.50 minimum bill
All over	2,000 gallons	.60 per M gallons

Outside city rates are 50 percent higher than in city rates.

Tap-on Charge: \$200 in city; \$300 outside city

Upton — Septic tanks are used for sewage disposal in Upton.

* Plans are being prepared by the Elizabethtown Sewer Department to extend outfall lines and to increase treatment facilities.

CLIMATE

Hardin County

Temperature

Annual mean (30-year record)	55.2 degrees
Average annual 1974 —	55.1 degrees
Record highest, July, 1966 (11-year record) --	98.0 degrees
Record Lowest, January, 1972 (11-year record) —	- 11.0 degrees
Normal heating degree days (30-year record) —	4729
(Heating degree day totals are the sums of negative departures of average daily temperatures from 65 degrees F.)	

Precipitation

Mean annual total (30-year record) —	44.49 inches
Mean annual snowfall (30-year record) --	15.70 inches
Total precipitation 1974 —	60.09 inches
Mean number days precipitation (.01 inch or more) (30-year record) —	130
Average number days thunderstorms (30-year record) —	47

Prevailing Winds (17-year record) —

South

Relative Humidity (11-year record)

1 AM	76%
7 AM	81%
1 PM	59%
7 PM	64%

Source: U. S. Department of Commerce, Environmental Science Services Administration,
Climatological Data, 1974. Station of record: Lexington, Kentucky.

LOCAL GOVERNMENT

City

Elizabethtown

Structure — Mayor - 4-year term; 6 councilmen - 2-year terms

Budget 1975 — General Fund \$1,853,170

Water and Sewer Fund 916,436

City Gas Fund 1,532,282

Fees and licenses — 0.8 of 1 percent of net profits (\$25 minimum); 0.8 of 1 percent of gross wages

Upton

Structure — 6 member Board of Trustees - 2-year terms

Budget 1974 — Water Fund \$ 14,988

County

Structure — County Judge - 4-year term; 8 magistrates - 4-year terms

Budget 1974-75 — General Fund \$ 507,708

Road Fund 398,374

Assessed Value of Property, 1975

<u>Classes of Property</u>	<u>Elizabethtown</u>	<u>Upton</u>	<u>Hardin County</u>
Real Estate	\$102,963,603	\$2,379,165	\$363,280,231
Tangibles	25,492,820	409,129	77,058,759

Property Taxes

Land and buildings are taxed by the state and may be taxed by local jurisdictions. The state rate is \$0.015 per \$100 of assessed valuation.

Tangible personal property owned by manufacturers (automobiles, trucks, finished goods, office furniture, office equipment) is taxed by the state at \$0.15 per \$100 and may be taxed by local jurisdictions.

Manufacturing machinery, raw materials inventories, pollution control equipment and goods in process inventories are not subject to local taxation. The state rate is \$0.15 per \$100.

Property stored in public warehouses is not subject to local taxation. The state rate is only \$0.015 per \$100.

All property is assessed at 100 percent of fair cash value.

Local Property Tax Rate Per \$100 of Assessed Valuation, 1975*

<u>Taxing Jurisdiction</u>	<u>Elizabethtown</u>	<u>Upton</u>	<u>Hardin County</u>
County	\$.161	\$.161	\$.161
School	.687	.428	.428
City	.220	.250	
Special (not county wide): Fire Protection — \$.020			
Watershed — \$.020			

Utilities Gross Receipts Tax for Schools

Hardin County levies a 3 percent tax on utilities for schools. This tax is paid by all consumers of utilities as an add-on to the utilities bills. Exempted are receipts from utilities services that are resold and the receipts from the sale of energy or energy producing fuels that exceed 3 percent of the cost of production in manufacturing, processing, mining or refining.

Planning and Zoning

Joint agency — Joint City-County Planning Commission of Hardin County, Kentucky
Zoning enforced — Presently enforced in Elizabethtown and a 2-mile area outside of the city limits

Subdivision regulations enforced — Presently enforced in Elizabethtown and 5 miles outside of the city limits

Local codes enforced — Building and housing codes are enforced in Elizabethtown.

Mandatory state codes enforced — Plumbing, National Fire Protection Association Code, National Building Code (for major buildings and residential construction containing more than 12 bedrooms per building)

Safety

<u>Police</u>	<u>Elizabethtown</u>	<u>Upton</u>	<u>Hardin County</u>
Total staff	22	**	8
Radio-patrol cars	16		6
<u>Fire</u>			
American Insurance Association Fire Rating	5		
Full-time staff	16		
Volunteers	15	25	
Number of stations	2	1	

* Kentucky Department of Revenue, Kentucky Property Tax Rates, 1975.

** One state policeman resides in Upton.

Rescue Service

Hardin County Disaster and Emergency Services:

Offices for the Hardin County Disaster and Emergency Services are located in Elizabethtown, Upton, Radcliff, Vine Grove, West Point and Sonora. Equipment includes boats and motors, communications equipment and dragging equipment. A county-wide rescue squad, which is part of the Disaster and Emergency Services, is based in Elizabethtown. Equipment for the rescue squad includes a rescue van and a jeep, communications equipment and an emergency generator. A mutual assistance program has been agreed upon between Hardin and Larue Counties.

Solid Waste

	<u>Elizabethtown</u>	<u>Upton</u>
Type service	Private companies	County dumpsters
Fee charged.		
residential	Approximately \$2.50 monthly (varies by company and collection frequency)	
business	By contract	
Collection frequency:		
residential	Once or twice weekly, as needed	
business	As needed	
Disposal method	County landfill	

Kentucky Industrial Services, Inc., provides service to industrial customers. Services and rates are negotiated.

The City of Elizabethtown provides trash pickup once a year and leaf collection in season at no charge to the city's residents.

Hardin County provides sanitation service to residents of the county. Refuse may be disposed of at collection points which are located throughout the county. Free pick-up service is provided at these points. Door-to-door pick-up service is provided by the county in selected areas at a cost to the residents of \$3.00 per month.

EDUCATION

Public Schools

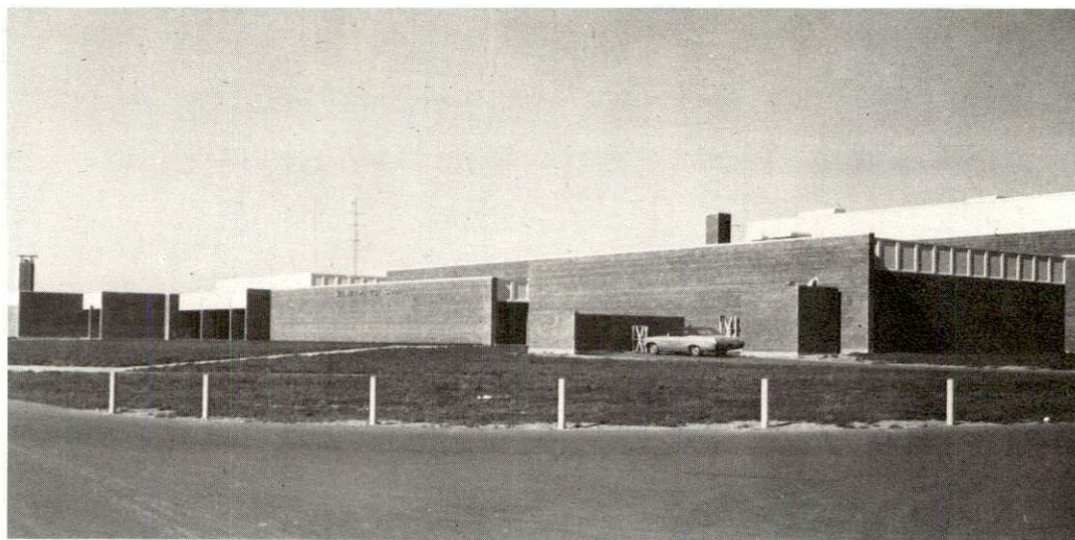
	<u>Elizabethtown</u>	<u>Hardin County</u>
Total Enrollment (Fall, 1975)	2,472	9,500
Elementary	1,034	5,860
Junior High	701	650
High School	737	2,990
Student-Teacher Ratio	19 to 1	22 to 1
Elementary	18 to 1	21 to 1
Junior High	20 to 1	22 to 1
High School	19 to 1	23 to 1
Accreditation	Southern Association of Colleges and Schools	
Percent High School Graduates to College	64.9	52.1
Expenditures Per Pupil (1974-75)	\$ 802.83	\$ 666.41
Bonded Indebtedness, June 30, 1975	\$5,087,000.00*	\$4,236,000.00

Nonpublic Schools

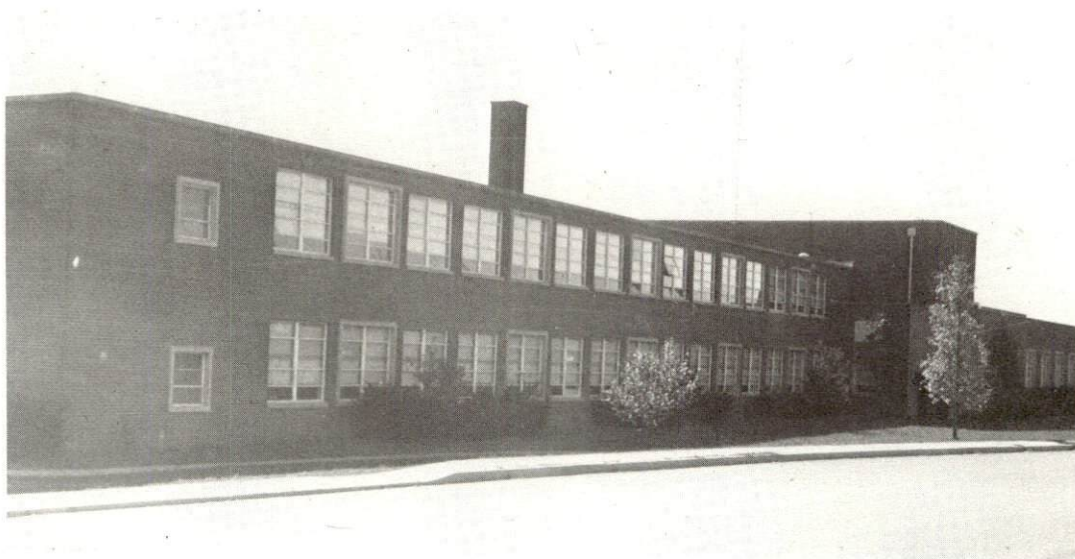
Total enrollment	207	4,596
Elementary	157	2,894
Junior High	---	961
High School	---	741
Special Education	50	---
Student-Teacher Ratio	14 to 1	19 to 1
Elementary	22 to 1	20 to 1
Junior High	---	18 to 1
High School	---	16 to 1
Special Education	8 to 1	---

* Includes Advance Refunding issues — \$2,325,000.

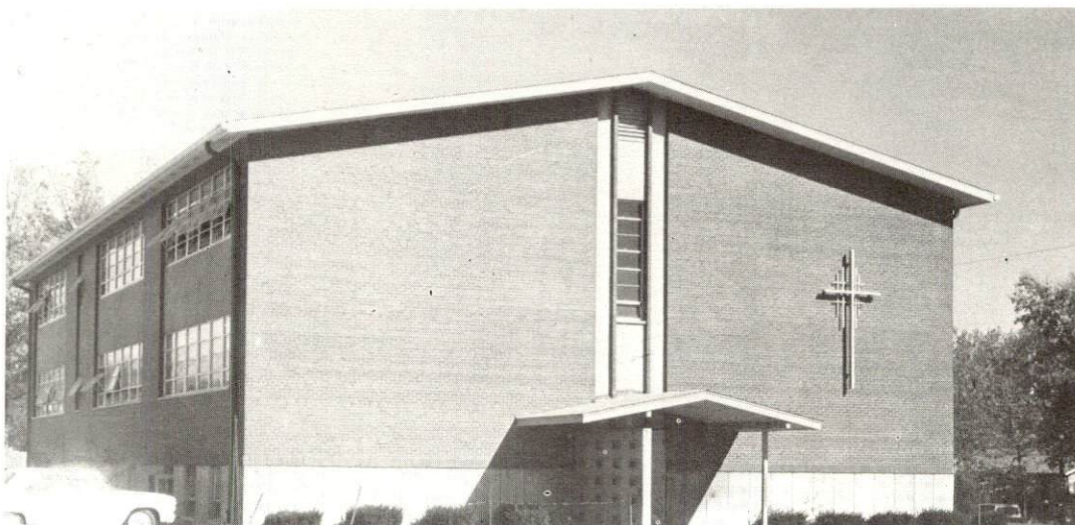
ELIZABETHTOWN
HIGH SCHOOL



T.K. STONE
JUNIOR HIGH SCHOOL



ST. JAMES
ELEMENTARY
SCHOOL



Area Colleges and Universities

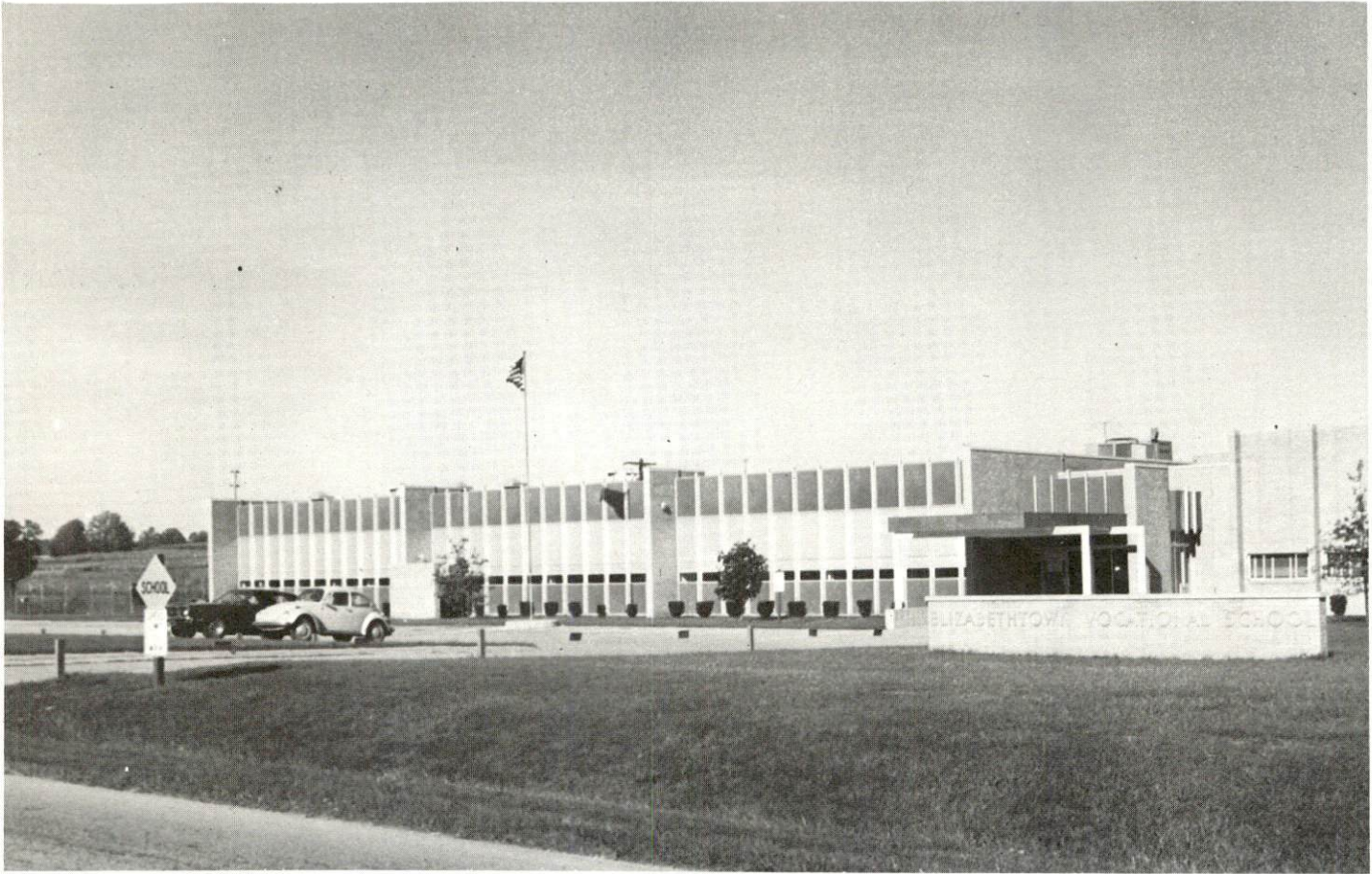
<u>Name</u>	<u>Location</u>	<u>Distance (miles)</u>	<u>Enrollment (Fall 1975)</u>	<u>Highest Degree Conferred</u>
Elizabethtown Community College	Elizabethtown	---	1,345	Associate
Fort Knox Extension Campus, University of Kentucky	Fort Knox	17	*	Baccalaureate
Bellarmino College	Louisville	40	1,561	Baccalaureate
Campbellsville College	Campbellsville	40	711	Baccalaureate
Jefferson Community College	Louisville	40	6,107	Associate
St. Catharine Junior College	St. Catharine	40	91	Associate
Spalding College	Louisville	40	1,141	Masters
University of Louisville	Louisville	40	15,781	Ph.D., M.D. D.M.D., J.D.

Vocational Schools

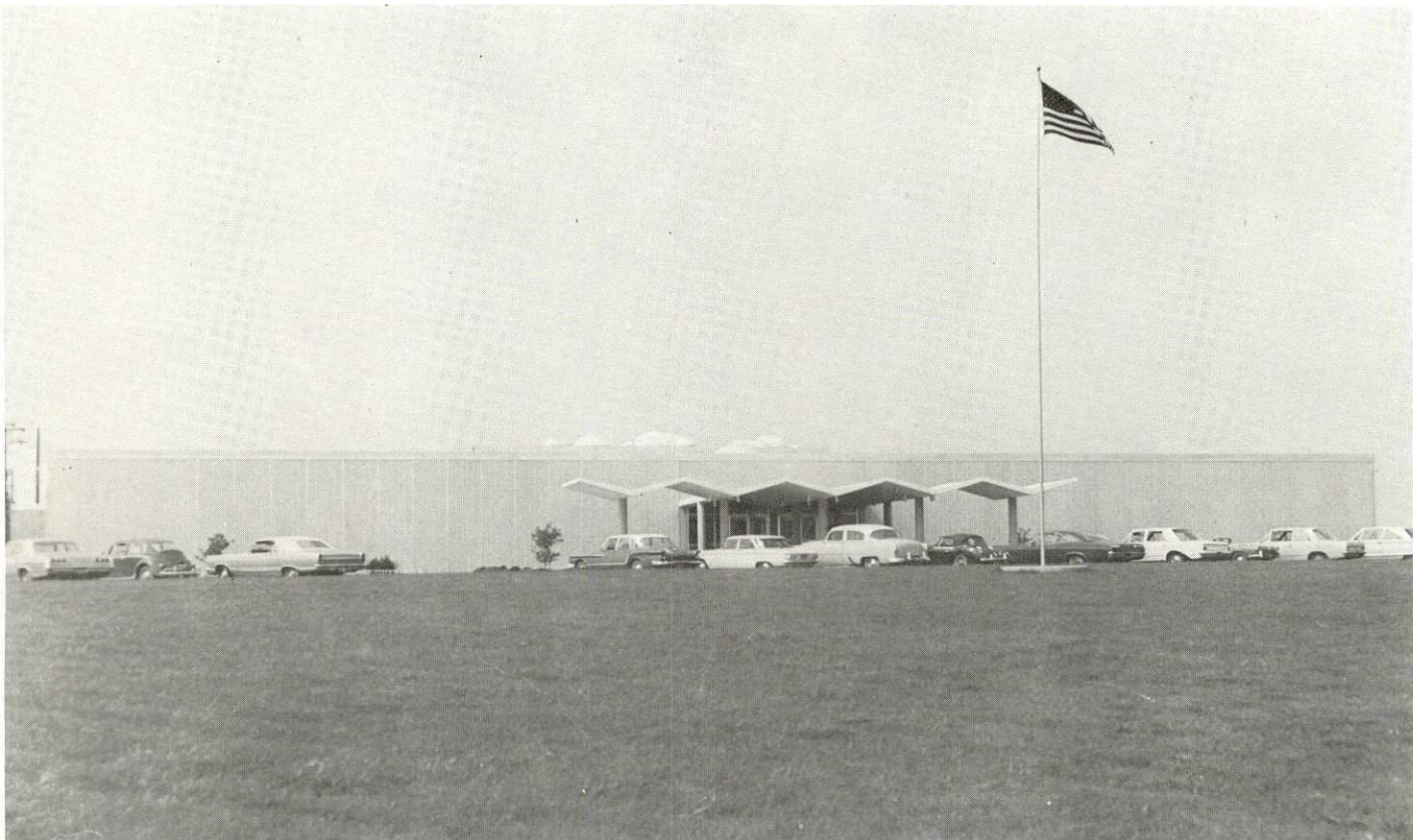
	<u>Nearest State School</u>	<u>Nearest Area Education Center</u>
Location	Elizabethtown State Vocational- Technical School Elizabethtown	Nelson County Area Vocational Education Center Bardstown
Miles Distant	---	23
Curriculum	Health Occupations Health Careers Trade and Industrial Appliance Repair Auto Mechanics Carpentry Commercial Foods Commercial Heating and Refrigeration Drafting Electricity Industrial Machine Repair Machine Shop Radio and TV Service Welding	Health Occupations Health Careers Trade and Industrial Auto Mechanics Carpentry Drafting Electricity Heating, Air Conditioning and Refrigeration Welding

Arrangements can be made to provide training in the specific production skills required by an industrial plant. Instruction may be conducted either in the vocational school or in the industrial plant, depending upon the desired arrangement and the availability of special equipment.

* Enrollment is included in total enrollment of the University of Kentucky which in 1975 was 22,526.



ELIZABETHTOWN VOCATIONAL SCHOOL



ELIZABETHTOWN COMMUNITY COLLEGE

HEALTH

Local Medical Personnel

Physicians — 28
Dentists — 14

Hospitals

<u>General Hospital</u>	<u>Location</u>	<u>Beds</u>
Hardin Memorial Hospital	Elizabethtown	159

General hospital facilities and services — 3 operating rooms, fracture room, cysto room, X-ray department, intensive care, laboratory, pharmacy, emergency room, eye surgery, pediatrics, respiratory therapy, delivery room, nursery, blood bank, physical therapy, renal dialysis, psychiatric services, EKG, EEG, accredited by the Joint Commission on Accreditation of Hospitals

Medical staff — 40 doctors, 104 registered nurses, 36 graduate licensed practical nurses, pathologist, radiologist, urologist, anesthesiologist

Other Medical Facilities

Comprehensive Care Center (North Central)

Ambulance Service

Name — Hardin County Ambulance Service
Staff — 6 full time, 11 part time
Service — 24-hour, county-wide service
Equipment — 3 ambulances

Nursing Homes

<u>Number of Homes</u>	<u>Number and Types of Beds</u>
3	151 Extended Care
2	84 Intermediate Care
2	44 Personal Care

Public Health

Facility — Hardin County Health Center
Staff — 1 administrative assistant, 5 nurses, 3 sanitarians, 2 clerk typists, 1 custodian, 1 health officer, 1 dental hygienist, 1 family planning-multiphasic clerk



HARDIN
MEMORIAL
HOSPITAL



HARDIN
COUNTY
HEALTH
DEPT.



HELMWOOD
MEDICAL
CENTER

OTHER LOCAL FACILITIES

Communications

	<u>Elizabethtown</u>	<u>Upton</u>
Telephone —	General Telephone Co.	General Telephone Co.
Services —	Standard	Standard
Telegraph —	Western Union Telegraph	Western Union Telegraph
Services —	Telephone and messenger	Telephone
Postal — U. S. Post Office		
Revenue units —	4975	144
Mail received —	8 times daily	5 times daily
Mail dispatched —	8 times daily	2 times daily
Newspapers —		
Daily and circulation —	The News - Enterprise 10,102	
Weekly and circulation —	Elizabethtown Examiner 8,700	
Other papers		
received from —	Louisville, Radcliff and Fort Knox, Kentucky	Elizabethtown and Louisville, Kentucky
Radio —	WIEL-AM, WQXE-FM	
Stations received from —	Louisville, Radcliff, Hodgenville and Leitchfield, Kentucky	Elizabethtown, Louisville, Munfordville and Hodgenville, Kentucky
Television —		
Cable service —	Yes	No
Reception from —	Louisville, Bowling Green, and Lexington, Kentucky; Nashville, Tennessee; and Evansville, Indiana	Louisville and Bowling Green, Kentucky; Nashville, Tennessee; and Evansville, Indiana
Kentucky Educational Television —	Elizabethtown transmitter — Channel 23	Elizabethtown transmitter — Channel 23

Library Services

Public library — Hardin County Free Public Library (Lincoln Trail System), Elizabethtown
 Size collection — 48,951 volumes
 Circulation, 1974-75 — 121,821
 Services — Bookmobile, children's story hour, records, pictures, tapes, microfilm, reader-printer, copying machine; library building is available for community programs.



E-TOWN PLAZA



HARDIN PLAZA



BIG K



HELMWOOD PLAZA

Public library — Elizabethtown Community College Media Center

Size collection — 22,175 volumes

Circulation, 1974-75 — 11,884

Services — Magazines, films, art, records, record players, projector, pamphlets, newspapers, microfilm, video tape, Kentucky collection; Career Center — equipped with film strips; all facilities available to the community

Private library — Brown Pusey (Elizabethtown)

Special collection — Historical

Religious Institutions

	<u>Elizabethtown</u>	<u>Upton</u>
Number of churches —	36	3
Denominations —	African Methodist Episcopal Apostolic Assembly of God Baptist Christian Church of Christ Church of God Episcopal Holiness Lutheran Methodist Nazarene Presbyterian Roman Catholic Seventh Day Adventist Wesleyan	Baptist Methodist
Nearest Synagogues —	Louisville, 40 miles away	
Congregations —	Adath Israel (reform) Adath Jeshurun (conservative) Anshei Sford (orthodox) Brith Sholom (reform) Keneseth Israel (orthodox)	

Financial Institutions

<u>Banks</u>	<u>Assets</u>	<u>Deposits</u>	<u>Statement Date</u>
Citizens Bank of Elizabethtown	\$35,148,475	\$30,426,190	6/30/75
First Hardin National Bank	76,700,614	68,169,390	6/30/75
The Cecilian Bank	12,837,686	11,158,550	6/30/75
<u>Savings and Loan Associations</u>	<u>Assets</u>	<u>Shared Accounts</u>	<u>Statement Date</u>
First Federal Savings and Loan Association	\$60,690,287	\$53,219,636	6/30/75

Hotels and Motels

Total number — 18
Total units — 1,018

Clubs and Organizations

Elizabethtown and Upton

Business and Civic — American Business Women, American Red Cross, Business and Professional Women's Club, Chamber of Commerce, Elizabethtown Industrial Foundation, Jaycees, Optimist, Rotary, Upton Industrial Land Development, Upton Ruritan Club

Fraternal — American Legion, Knights of Columbus, Lions Club, Masonic Lodge, Shrine Club, Travelers Protective Association

Women's — American Legion Ladies Auxiliary, D.A.R., Democratic Women's Club, Elizabethtown Women's Club, Garden Club, Hardin County Republican Women's Club, Hospital Auxiliary, Jaycee-ettes, Junior Women's Club, League of Women Voters, Order of Eastern Star, Retired Live Wives

Youth — Boy Scouts of America, Girl Scouts of America, 4-H, FFA, FHA, Junior Achievement, Youth Theater of Hardin County, Inc.

Other — American Field Service, Audubon Society, Bicentennial, Elizabethtown Rod and Gun Club, Farm Bureau, Hardin County Arts Council, Hardin County Historical Society, Hardin County Singers, Hub-town Twirlers, Lively Arts, Ministerial Association, National Farmer's Organization, Saddle Club.

RECREATION

Local

Four public parks provide Elizabethtown with a variety of outdoor activities. Freeman Lake Park has 80 acres of picnic areas, playgrounds and shelter houses, with boating and fishing featured at the lake. University Park has facilities for tennis, volleyball, baseball, handball, softball and picnicking. The 32-acre American Legion Park features two swimming pools and a golf course. Memorial Recreation Park has tennis and picnicking. The Elizabethtown Parks and Recreation Department offers supervised programs during the summer months.

Local schools have facilities for track, football, and indoor swimming. Other recreational facilities include a private country club with a swimming pool and an 18-hole golf course; a public 9-hole golf course; a semi-private golf club with a swimming pool, tennis courts, and hiking trails; bowling facilities, and indoor and drive-in movie theaters.

Facilities in Upton include a playground, a baseball diamond, billiards, and a riding club.

Historical attractions in Elizabethtown include the Brown-Pusey Community House, General Custer's Headquarters, the Lincoln Heritage House and Severn Valley Baptist Church.

Year-round cultural events are sponsored by three local organizations. Additional programs are offered by the Elizabethtown Community College.

Area (Within 50 miles)

Green River Lake State Park, Nolin River Lake, Rough River Dam State Resort Park, and Mammoth Cave National Park provide an opportunity for fishing, boating, picnicking, and camping. In addition, Rough River Dam State Resort Park has a lodge, cottages, a pool, and a paved airstrip. Mammoth Cave National Park features one of the largest cave networks ever discovered. Cave tours and river cruises are available, as well as cottages, a lodge, tennis, and summer theater.

Bernheim Forest, located 20 miles from Elizabethtown, is a privately operated 10,000-acre sanctuary with a national forest, nature center, and museum.

Places of historic interest in the area include My Old Kentucky Home, the Lincoln Homestead State Shrine, the Abraham Lincoln Birthplace National Historic Site, the Patton Museum of Cavalry and Armor, and the U. S. Gold Depository at Fort Knox.

Proximity to Louisville provides the area with entertainment such as the Kentucky Derby, the Kentucky State Fair, the Louisville Zoological Gardens, the J. B. Speed Art Museum, Actors' Theatre, Kentucky Opera Association, Louisville Ballet, Louisville Orchestra, harness racing, and professional basketball.



ELIZABETHTOWN COUNTRY CLUB



SHELTERED WORKSHOP

COMMUNITY IMPROVEMENTS

Elizabethtown's designation as a 1975 All-Kentucky City is evidence of the successful programs and continued industrial expansion that have taken place in the community.

The Hardin County Memorial Hospital has recently purchased \$99,000 worth of new equipment. Plans have been made for expansion of the hospital. The first phase of the program involves a \$5.4 million expansion and renovation of the first floor; the second phase will expand present departments and increase the size of the emergency room, at a cost of \$1.4 million.

Numerous recreation projects have been completed. Freeman Lake Park has recently developed 40 additional acres for recreational purposes, adding more equipment and another shelter. The University Drive Park has made \$52,400 worth of improvements, while a mini-park has added new playground equipment.

The Hardin County School System is currently constructing a \$2.2 million junior high school in southern Hardin County. The Elizabethtown Independent School System has completed a football and track field and an indoor swimming pool. A career-oriented guidance program for high school students and an individually guided education program for elementary students have been introduced into the Elizabethtown schools. In addition, community education is available to all age groups outside of regular school hours.

The Elizabethtown State Vocational-Technical School has completed a 48,000 square foot addition at a cost of \$1.3 million. A \$76,000 improvement project at Elizabethtown Community College is now complete.

Industrial advances in Elizabethtown include the completion of an \$11 million plant by Phelps-Dodge Communications Company; a 42,000 square foot expansion, now underway, at the Coca-Cola Bottling Company; construction of a new plant by Magna Products, to be completed in mid-1976. The Elizabethtown Industrial Foundation has purchased 92 acres of land for a fourth industrial park.

Commercial growth includes the completion of two shopping centers; the location of more than twenty new businesses during 1975; and the renovation and expansion of the Cecilian Bank.

The General Telephone Company has recently completed an electronic switching center in Elizabethtown and is now working to provide similar service to other areas in the county.

The Elizabethtown Water Department has increased the size of existing water lines on East Dixie Avenue and plans are underway to install a loop of 12-inch lines northeast of the city. Plans are being prepared by the Elizabethtown Sewer Department to extend outfall lines and to increase treatment facilities.

Hardin County Water District No. 1 has upgraded the Saunders Spring Plant to increase treatment capacity from 700,000 gpd to 1,200,000 gpd. The first phase of a three-stage plan to double the capacity of the Muldraugh Plant to 4,000,000 gpd is now in progress. Hardin County Water District No. 2 is continuing to expand and upgrade service.

In Upton, new water softeners and a chlorinator have been installed at the water plant; a new supermarket has opened; and a three-acre park is planned for the community.

HISTORY

Hardin County lies in the northcentral area of the state, its northern tip extending to the Ohio River. Rolling Fork of Salt River flows along its northeastern boundary. Rough River forms a part of the southwestern border, and Nolin River meanders through the southern portion of the county. The county's 616 square miles of territory is hilly in the north, rolling in the eastern and southern sections, and fairly level in the central area. The soil ranges from thin in the north to fertile in the south.

The first settlers who came to Hardin County included John Severns, after whom the valley in which Elizabethtown is located was first known, and Captain Thomas Helm, Colonel Andrew Hynes, and Samuel Haycraft. They chose the present site of Elizabethtown in 1780 and built three blockhouses in a triangle about a mile apart. Also among these early settlers was Christopher Bush, whose daughter Sarah became the stepmother of Abraham Lincoln. The second oldest Baptist church in the state was built here in 1781.

Hardin became Kentucky's fifteenth county in 1792 and was named for Colonel John Hardin of Virginia, a Revolutionary War hero who came to Kentucky and fought in the Indian Wars. The first brick house in the county was built by Ben Helm and the first courthouse constructed in 1804. The first newspaper, The Western Intelligencer, was established in 1826.

Elizabethtown, the county seat, was built on land donated by Colonel Andrew Hynes and was named for his wife, Elizabeth. Now an important trade and industrial center, Elizabethtown had a 1973 estimated population of 14,354. Elizabethtown Community College, a two-year institution in the University of Kentucky system, has an enrollment of over 1,300.

Radcliff, to the north, had an estimated 1973 population of 11,268, Vine Grove had 3,050, West Point, on the Ohio, had 1,921, and Upton, to the south, had 598. Also in Hardin County is Fort Knox, depository for the nation's gold supply and a major army post.

Hardin County's population was 3,653 in 1800, and it has grown steadily and then rapidly since 1940. In 1950 the total had reached 50,312, by 1960 it was 67,789, and in 1974 it was estimated to be 73,600.

Residents employed in agriculture accounted for 1,110 of Hardin County's 20,680 residents employed in 1974; government accounted for 5,210 employed residents. Trade and services firms in the county employed 5,740, while manufacturers employed 3,020. Largest of the county's manufacturing firms are: Gates Rubber Company, which makes auto v-belts; Colt Industries, producing ceramic and alnico magnets; E-Town Sportswear Company, making men's slacks; and Bussmann Manufacturing, which makes electrical devices.

Transportation access to Hardin County is excellent, with Interstate 65, the Blue Grass Parkway, and the Western Kentucky Parkway converging at Elizabethtown.

Among the many noted citizens of Hardin County was Thomas Lincoln, who lived for a while at Elizabethtown. Lincoln and his son, Abraham, later lived at Knob Creek, then a part of Hardin County. President James Buchanan also lived for a time at Elizabethtown. John L. Helm was Governor of Kentucky twice, and John Young Brown was also elected Governor. Duff Green, a member of President Andrew Jackson's "Kitchen Cabinet," lived in Hardin County, as did General George Custer during the time in which he wrote My Life On the Plains.

This copy has been prepared by the Kentucky Department of Commerce, Division of Research and Planning, and the cost of printing paid from state funds.

**Kentucky Department of Commerce
Capital Plaza Tower
Frankfort, Kentucky 40601**

**Industrial Development Division
(502) 564-7140**

**Community Services Division
(502) 564-4300**

**Business Development Division
(502) 564-4300**

**Research and Planning Division
(502) 564-4886**

**Office of Minority Business Enterprises
(502) 564-4270**

**Map Sales Office
133 Holmes Street
(502) 564-4715**

**Industrial Development Finance Authority
(502) 564-4554**