

1987

Industrial Resources: Henry County

Kentucky Library Research Collection
Western Kentucky University, spcol@wku.edu

Follow this and additional works at: https://digitalcommons.wku.edu/henry_cty

 Part of the [Business Administration, Management, and Operations Commons](#), [Growth and Development Commons](#), and the [Infrastructure Commons](#)

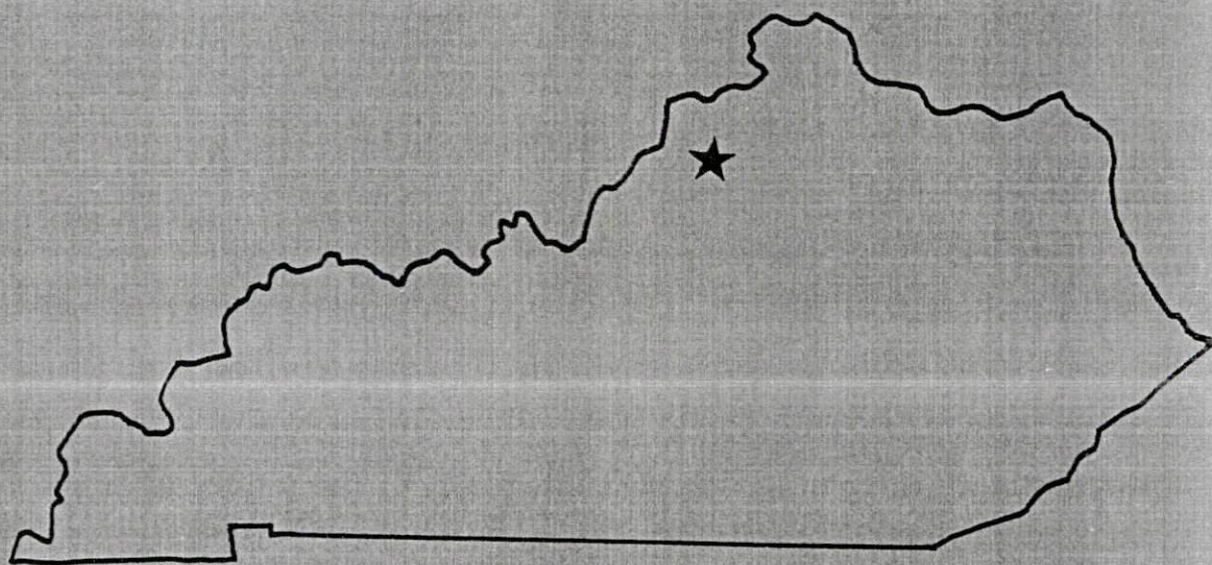
Recommended Citation

Kentucky Library Research Collection, "Industrial Resources: Henry County" (1987). *Henry County*. Paper 6.
https://digitalcommons.wku.edu/henry_cty/6

This Report is brought to you for free and open access by TopSCHOLAR®. It has been accepted for inclusion in Henry County by an authorized administrator of TopSCHOLAR®. For more information, please contact topscholar@wku.edu.

RESOURCES FOR ECONOMIC DEVELOPMENT

Henry County



KENTUCKY
The business environment is right.

Site 187 - 151 Acres

LOCATION: In Henry County adjacent to eastern city limits of Eminence
ZONING: Not zoned
HIGHWAY ACCESS: KY 22 adjacent to northern boundary of Tract I;
paved county road (Mulberry Pike) approximately 600 feet south of
Tract II
RAILROAD: Not rail served
WATER: Eminence Water Works
Size Line: 6-inch line approximately 100 feet east of Tract II across
paved access road; 6-inch line approximately 1600 feet west of Tract I
along north side of KY 22
SEWERAGE: Eminence Water Works
Size Line: 8-inch line approximately 400 feet east of Tract II; Lift
station approximately 600 feet east of Tract I
NATURAL GAS: Louisville Gas and Electric Company
Size Line: 4-inch line approximately 600 feet east of Tract I along
north side of KY 22; 4 -inch line approximately 600 feet south of
Tract II along south side of Mulberry Pike
ELECTRICITY: Kentucky Utilities Company
OWNERSHIP: Private
SCHOOL DISTRICT: Henry County

Site 287 - 50 Acres

LOCATION: Adjacent to eastern city limits
ZONING: Not zoned
HIGHWAY ACCESS: Paved access road approximately 1200 feet west
(Right of way has been obtained)
RAILROAD: Not rail served
WATER: Eminence Water Works
Size Line: 6-inch line approximately 1150 feet west
SEWERAGE: Eminence Water Works
Size Line: 8-inch line approximately 700 feet west of site
NATURAL GAS: Louisville Gas and Electric Company
Size Line: 4-inch line approximately 1500 feet south along
south side of Mulberry Pike
ELECTRICITY: Kentucky Utilities Company
OWNERSHIP: Private
SCHOOL DISTRICT: Henry County

Site 387 - 7.5 Acres

LOCATION: Adjacent to eastern city limits
ZONING: Not zoned
HIGHWAY ACCESS: Mulberry Pike adjacent to southern boundary
RAILROAD: Not rail served
WATER: Eminence Water Works
Size Line: 6-inch line along western boundary
SEWERAGE: Eminence Water Works
Size Line: 8-inch line adjacent to eastern boundary
NATURAL GAS: Louisville Gas and Electric Company
Size Line: 4-inch line along south side of Mulberry Pike
ELECTRICITY: Kentucky Utilities Company
OWNERSHIP: Private
SCHOOL DISTRICT: Henry County

SCALE: 1 inch = 2000 feet
CONTOUR INTERVAL: 10 feet
BASE: USGS 7.5 minute series - 1954
Photorevised - 1978

UTILITIES

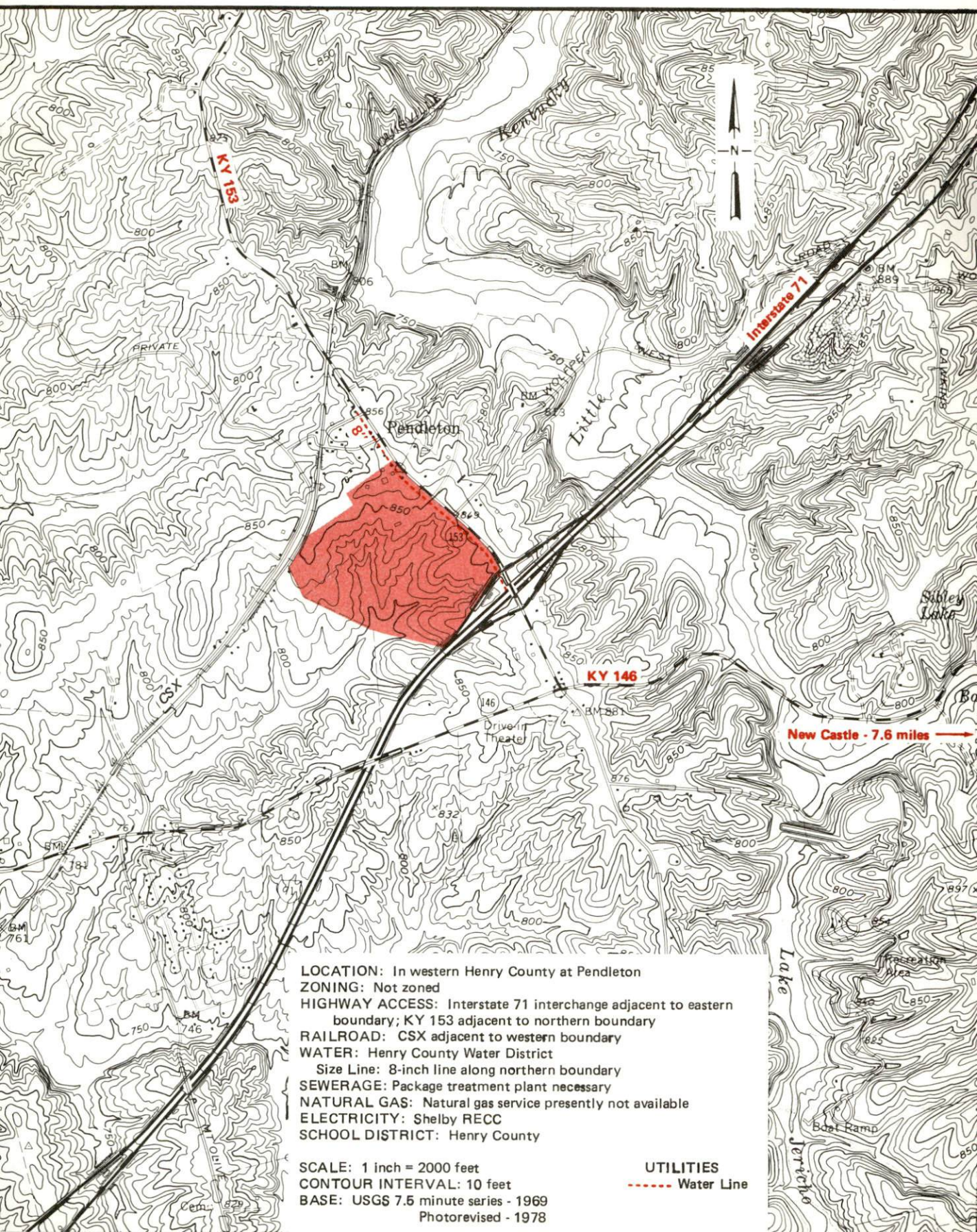
----- Water Line
----- Sewer Line
----- Gas Line

Existing Industries

- A Southern Strip Steel Inc.
- B Eminence Speaker Corp.
- C Hussey Copper Ltd.
- D Brunswick Corp.

HENRY COUNTY, KENTUCKY --- Site 187 --- 120 Acres

For more information contact the Kentucky Department of Economic Development, Industrial Development & Marketing Division, Capital Plaza Tower, Frankfort, Kentucky 40601 (502-564-7140).



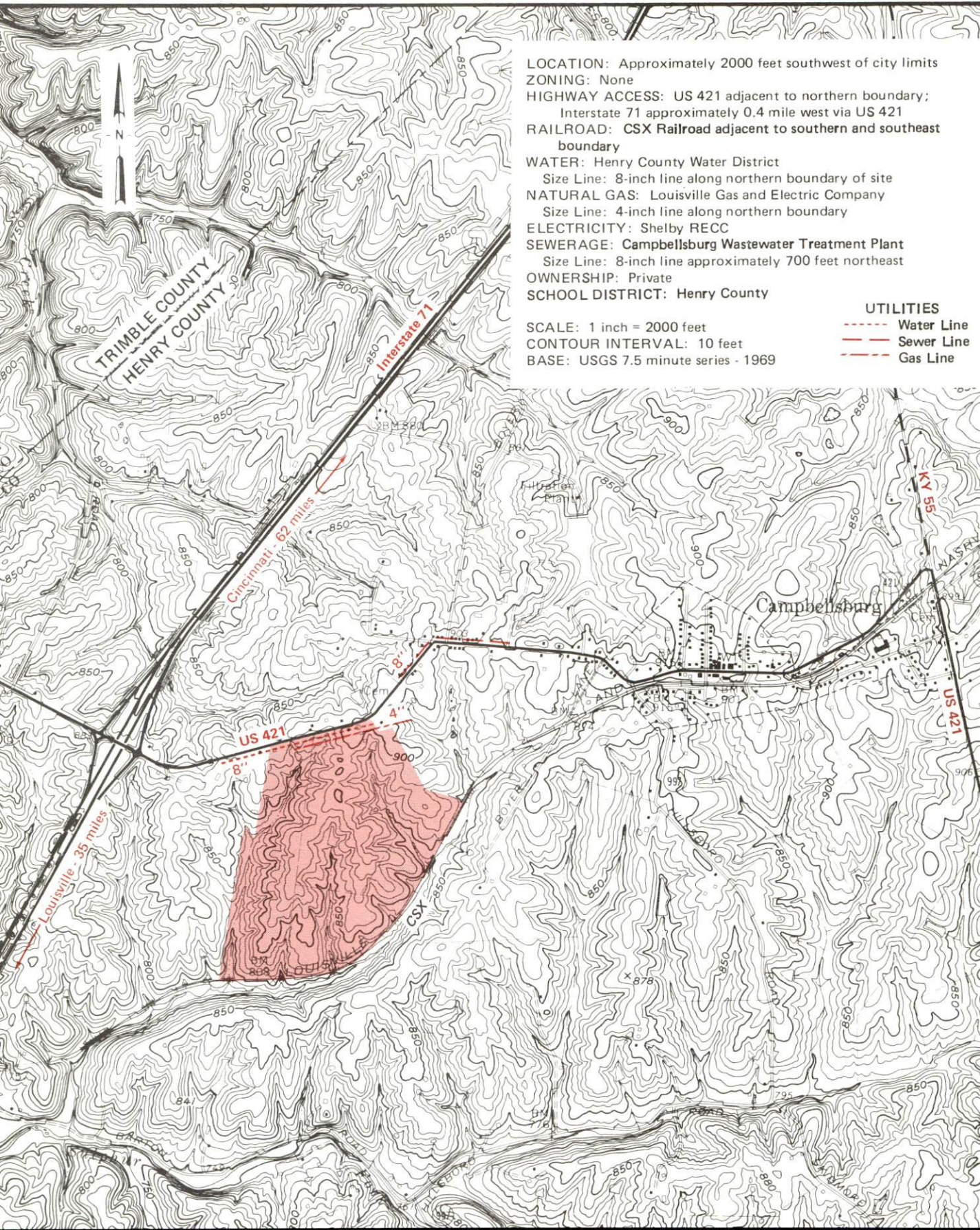
LOCATION: In western Henry County at Pendleton
ZONING: Not zoned
HIGHWAY ACCESS: Interstate 71 interchange adjacent to eastern boundary; KY 153 adjacent to northern boundary
RAILROAD: CSX adjacent to western boundary
WATER: Henry County Water District
Size Line: 8-inch line along northern boundary
SEWERAGE: Package treatment plant necessary
NATURAL GAS: Natural gas service presently not available
ELECTRICITY: Shelby RECC
SCHOOL DISTRICT: Henry County

SCALE: 1 inch = 2000 feet
CONTOUR INTERVAL: 10 feet
BASE: USGS 7.5 minute series - 1969
Photorevised - 1978

UTILITIES
----- Water Line

CAMPBELLSBURG, KENTUCKY --- Site 187 --- 216 Acres

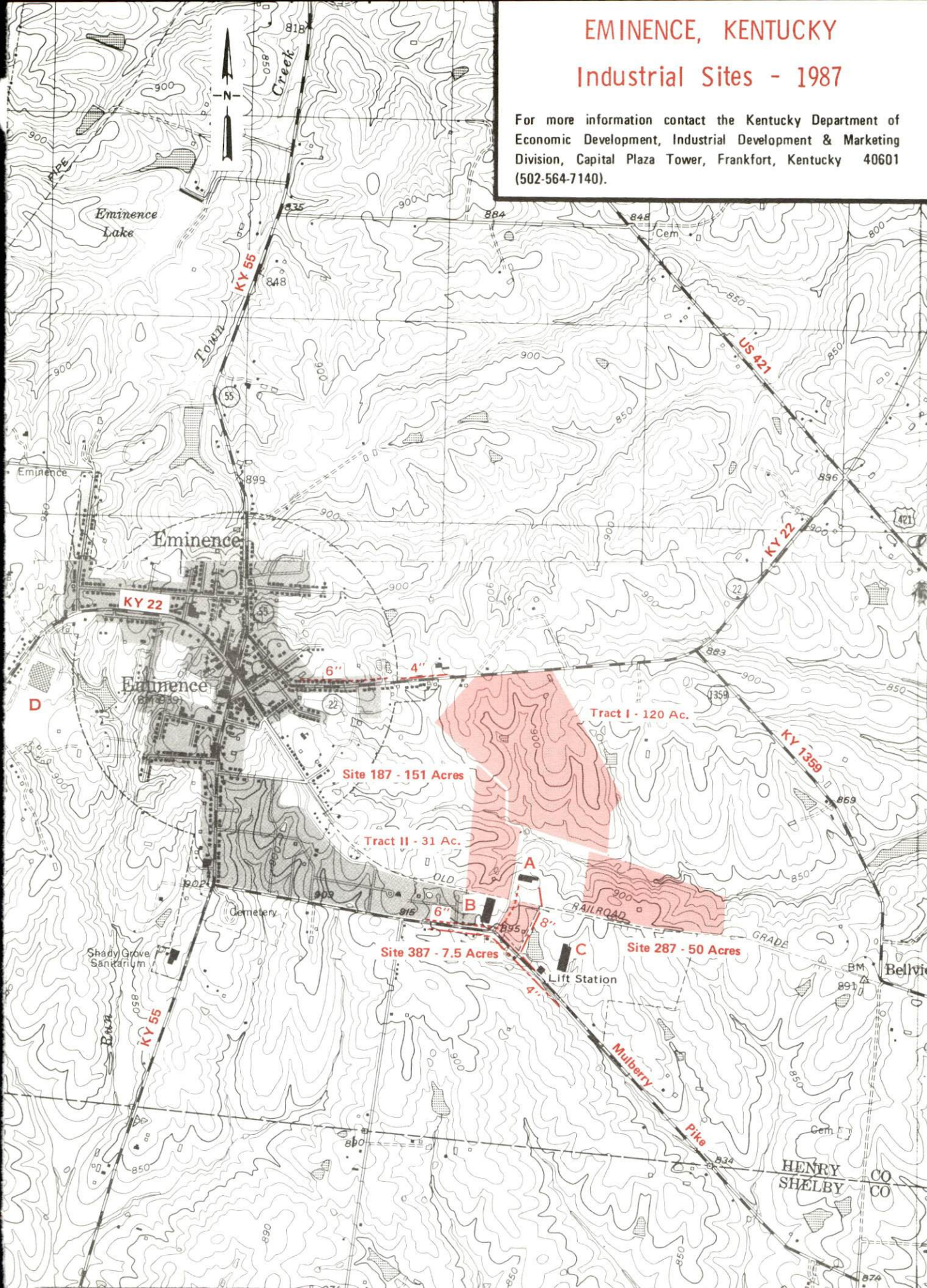
For more information contact the Kentucky Department of Economic Development, Industrial Development & Marketing Division, Capital Plaza Tower, Frankfort, Kentucky 40601 (502-564-7140).



EMINENCE, KENTUCKY

Industrial Sites - 1987

For more information contact the Kentucky Department of Economic Development, Industrial Development & Marketing Division, Capital Plaza Tower, Frankfort, Kentucky 40601 (502-564-7140).



RESOURCES FOR ECONOMIC DEVELOPMENT
HENRY COUNTY, KENTUCKY

Prepared by
The Kentucky Department of Economic Development
Division of Research and Planning
in cooperation with
The Cities of New Castle and Campbellsburg
and
The Eminence Chamber of Commerce

1987

Program manager - Andrew Dennis; research - Keith Roberts; clerical - Bobbi Graves; graphics - Tony Cecconi, Robert Owens; cartography - Site Evaluation Branch, Division of Industrial Development and Marketing. Cost of printing paid from state funds.

TABLE OF CONTENTS

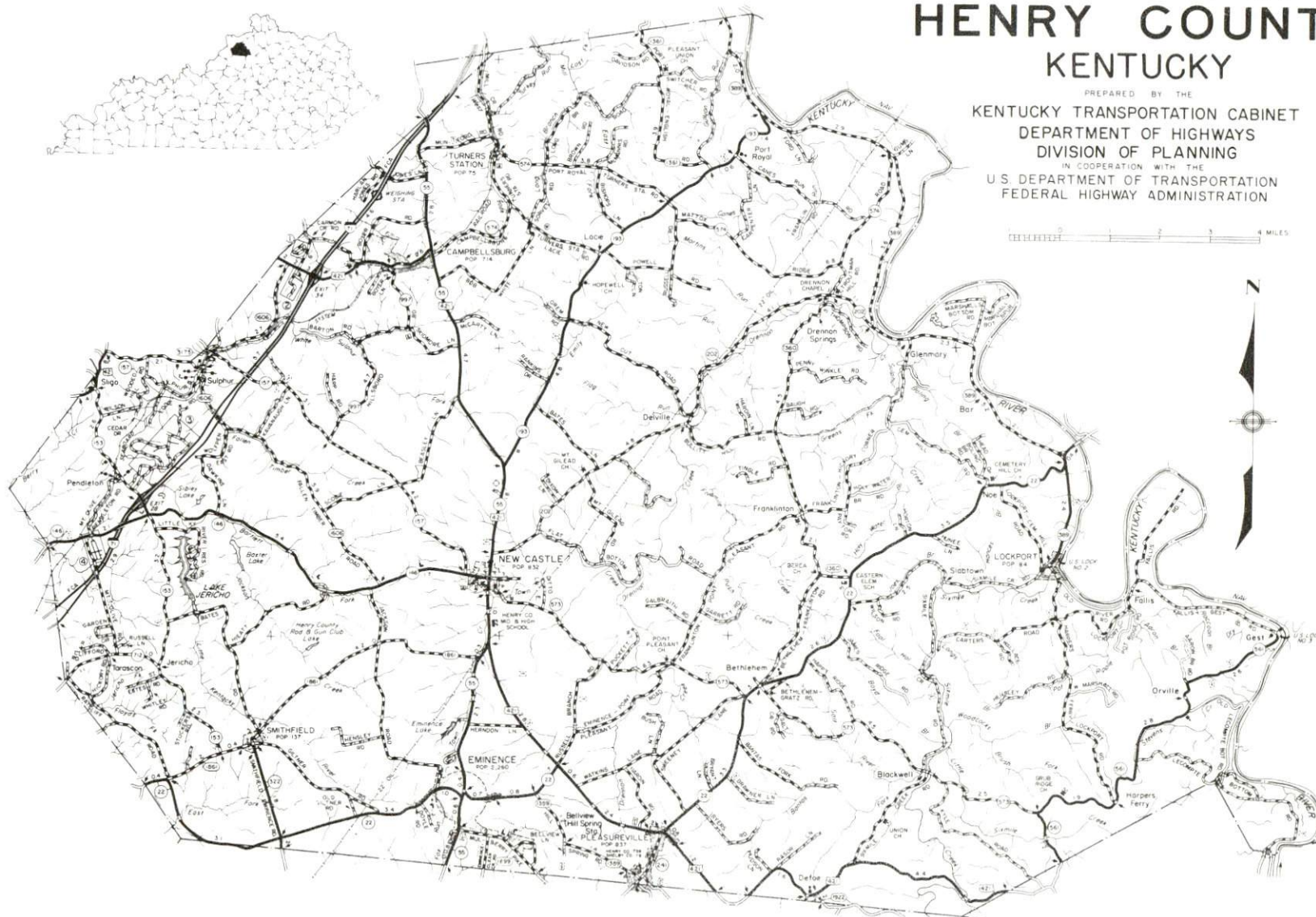
<u>Chapter</u>	<u>Page</u>
INDUSTRIAL SITES	i
HENRY COUNTY, KENTUCKY - A RESOURCE PROFILE	1
THE LABOR MARKET AREA	2
Population	2
Population Projections	2
Labor Force Characteristics of Residents, 1985	3
Selected Components of Nonagricultural Employment, by Place of Work, 1985	3
Per Capita Personal Income	4
Estimated Male Labor Supply	5
Estimated Female Labor Supply	5
Average Weekly Wages by Industry, by Place of Work, 1985	6
EXISTING INDUSTRY	8
Henry County Manufacturing Firms, Their Products and Employment	8
Labor Organizations in Manufacturing Firms	9
Industrial Services	10
TRANSPORTATION	11
Rail	11
Highways	11
Truck Service	12
Air	13
Air Express Service	13
Water	13
POWER AND FUEL	14
Electricity	14
Natural Gas	15
Other Fuels	15
WATER AND SEWERAGE	16
Public Water Supply	16
Sewerage	19
CLIMATE	21

<u>Chapter</u>	<u>Page</u>
LOCAL GOVERNMENT	22
Structure	22
Planning and Zoning	22
Local Fees and Licenses	22
State and Local Property Taxes	23
Combined State and Local Rates Per \$100 Valuation, 1986	23
Safety	25
Police	25
Fire	25
Rescue Service	25
Refuse Collection and Disposal	25
EDUCATION	26
Public Schools	26
Area Colleges and Universities	27
Vocational Schools	28
HEALTH	31
Local Medical Personnel	31
Hospitals	31
Other Medical Facilities	31
Ambulance Service	31
OTHER LOCAL FACILITIES	32
Communications	32
Library Services	32
Religious Institutions	32
Financial Institutions	33
RECREATION	34
COMMUNITY IMPROVEMENTS	36

1986 EDITION
GENERAL HIGHWAY MAP
HENRY COUNTY
KENTUCKY

PREPARED BY THE
KENTUCKY TRANSPORTATION CABINET
DEPARTMENT OF HIGHWAYS
DIVISION OF PLANNING
IN COOPERATION WITH THE
U.S. DEPARTMENT OF TRANSPORTATION
FEDERAL HIGHWAY ADMINISTRATION

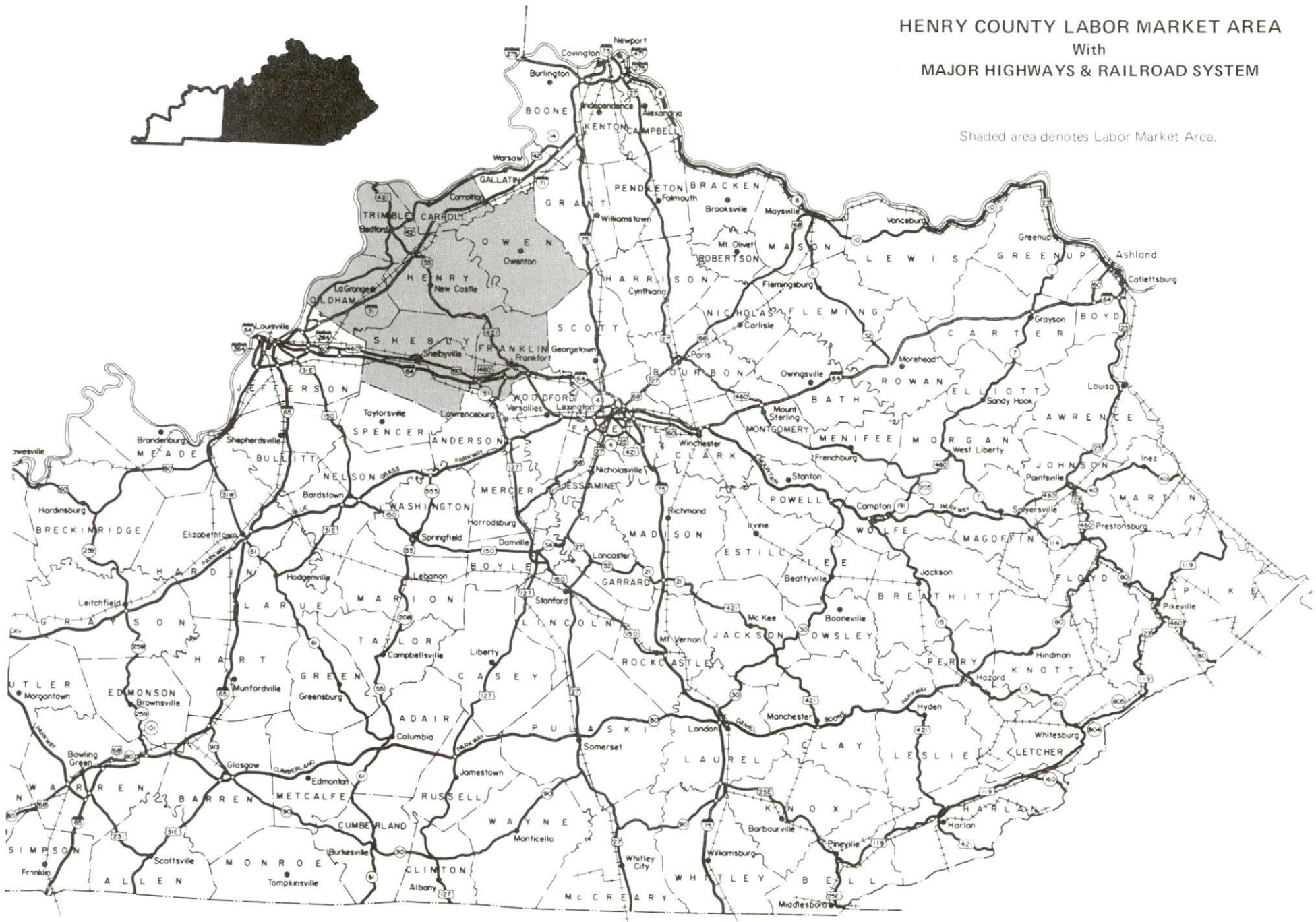
0 1 2 3 4 MILES



HENRY COUNTY LABOR MARKET AREA

With
MAJOR HIGHWAYS & RAILROAD SYSTEM

Shaded area denotes Labor Market Area.



HENRY COUNTY, KENTUCKY - A RESOURCE PROFILE

Henry County, located in north-central Kentucky, is situated in the Outer Blue Grass Region and has a land area of 291 square miles. The Kentucky River forms the eastern boundary of the county. In 1984, Henry County had an estimated population of 13,328 persons.

New Castle, the county seat, is located 38 miles northeast of Louisville, Kentucky; 75 miles southwest of Cincinnati, Ohio; and 206 miles northeast of Nashville, Tennessee. New Castle had an estimated population of 904 in 1984. Campbellsburg, located eight miles north of New Castle, had a 1984 estimated population of 815. Eminence, the largest city in Henry County, is four miles south of New Castle and had a 1984 estimated population of 2,246.

The Economic Framework - The total number of Henry County residents employed in 1985 averaged 5,690, with nonagricultural jobs accounting for 4,800 workers. Manufacturing firms in the county reported 430 employees; wholesale and retail trade provided 570 jobs; 160 people were employed in service occupations; state and local government accounted for 430 employees; and contract construction firms provided 50 jobs.

Labor Supply - There is a current estimated labor supply of 5,890 men and 6,715 women available for industrial jobs in the labor market area. In addition, from 1987 through 1991, 5,650 young men and 5,480 young women in the area will become 18 years of age and potentially available for industrial jobs.

Transportation - CSX Transportation provides main line rail service to Campbellsburg. Major AAA-rated trucking highways serving Henry County are Interstate 71, U.S. Highway 421, and Kentucky Route 55. Kentucky Routes 22, 146, and 322 are also AAA-rated highways serving the county. Fourteen trucking companies provide interstate and/or intrastate service to Henry County. The Capital City Airport in Frankfort, 29 miles southeast of New Castle, has a 5,000-foot paved runway. The nearest scheduled commercial airline service is located at Standiford Field in Louisville, 41 miles southwest of New Castle. The Ohio River at Carrollton, 20 miles north of New Castle, is the nearest navigable waterway.

Power and Fuel - Electric power is provided to Henry County by the Kentucky Utilities Company and by the Shelby Rural Electric Cooperative Corporation. Louisville Gas and Electric supplies natural gas service to the county. Four propane dealers and six fuel oil dealers are located within 25 miles of New Castle.

Education - Primary and secondary education is provided to by the Eminence Independent School System and the Henry County School System. Twelve colleges and universities are located within 55 miles of New Castle. Vocational training is available at the Jefferson State Vocational-Technical School in Louisville, 38 miles southwest of New Castle; the Oldham County Area Vocational Education Center in Buckner, 15 miles west of New Castle; and the Shelby County Vocational Education Center in Shelbyville, 16 miles south of New Castle.

LABOR MARKET STATISTICS

The Henry County Labor Market Area includes Henry County and the adjoining Kentucky counties of Carroll, Franklin, Oldham, Owen, Shelby and Trimble.

POPULATION

Area	1984*	1980	1970	Percent Nonwhite
				1980
Campbellsburg	815	714	479	7.8
Eminence	2,246	2,260	2,225	17.2
Lockport	79	84	-	0.0
New Castle	904	832	755	7.6
Pleasureville	807	837	747	2.4
Smithfield	168	137	185	7.3
Labor Market Area	136,318	130,140	100,419	-
Henry County	13,328	12,740	10,910	5.5
Carroll County	9,738	9,270	8,523	2.0
Franklin County	43,728	41,830	34,481	8.7
Oldham County	29,984	27,795	14,687	5.5
Owen County	9,163	8,924	7,470	2.5
Shelby County	24,067	23,328	18,999	11.4
Trimble County	6,310	6,253	5,349	0.1

* Population estimates.

Note: The 1980 city counts of population by race are provisional.

Sources: U.S. Department of Commerce, Bureau of the Census, 1980 Census of Population, Number of Inhabitants. University of Louisville, Urban Studies Center, Population Unit, October 1985; Kentucky Population Research Notes, Issue Number One, May 1985.

POPULATION PROJECTIONS

Area	1990	1995	2000	2010
Labor Market Area	147,701	156,617	163,676	173,985
Henry County	14,159	14,815	15,319	16,030
Carroll County	10,305	10,742	11,042	11,511
Franklin County	47,818	50,700	52,868	55,934
Oldham County	33,587	36,628	39,212	43,090
Owen County	9,577	9,932	10,240	10,725
Shelby County	25,724	27,068	28,101	29,615
Trimble County	6,531	6,732	6,894	7,080

Source: University of Louisville, Urban Studies Center, Population Research Unit, How Many Kentuckians: Population Forecasts, 1980-2020, the 1986 Edition, Spring 1986.

LABOR FORCE CHARACTERISTICS OF RESIDENTS, 1985

	<u>Henry County</u>	<u>Labor Market Area</u>
Civilian Labor Force	6,386	68,828
Employment	5,692	64,218
Agricultural	894	4,705
Nonagricultural	4,798	59,513
Unemployment	694	4,610
Rate of Unemployment (%)	10.9	6.7

Source: Kentucky Cabinet for Human Resources, Kentucky Labor Force Estimates, Annual Averages, 1985.

SELECTED COMPONENTS OF NONAGRICULTURAL EMPLOYMENT
BY PLACE OF WORK, 1985

	<u>Henry County</u>	<u>Labor Market Area</u>
All Industries (total)	1,846	42,664
Manufacturing	432	8,212
Wholesale & Retail Trade	566	7,735
Services	160	5,167
State/Local Government	429	16,153
Contract Construction	54	1,812

Note: Excludes domestic workers, railway workers, certain nonprofit corporations, majority of federal government workers, and self-employed workers.

Source: Kentucky Cabinet for Human Resources, Average Monthly Workers Covered by Kentucky Unemployment Insurance Law, 1985.

PER CAPITA PERSONAL INCOME

<u>Area</u>	<u>1980</u>	<u>1984</u>	<u>Percent Change</u>
Henry County	\$ 7,227	\$ 9,312	28.9
Labor Market Area Range	\$5,711 - 9,694	\$7,926 - 12,810	-
Kentucky	7,644	10,232	33.9
U.S.	9,494	12,772	34.5

Sources: U.S. Department of Commerce, Bureau of Economic Analysis.
Kentucky Economic Information System, June 1986.

ESTIMATED MALE LABOR SUPPLY
HENRY COUNTY LABOR MARKET AREA

Area	Current				Future
	Total Male	Unemployed	Under-employed	Not in Labor Force	Becoming 18 years of age 1987 thru 1991
Labor Market					
Area*	5,890	2,764	2,953	173	5,646
Henry	681	411	270	0	548
Carroll	470	168	302	0	366
Franklin	1,984	1,154	830	0	1,735
Oldham	1,129	340	789	0	1,421
Owen	584	218	193	173	366
Shelby	718	374	344	0	928
Trimble	324	99	225	0	282

ESTIMATED FEMALE LABOR SUPPLY
HENRY COUNTY LABOR MARKET AREA

Area	Current				Future
	Total Female	Unemployed	Under-employed	Not in Labor Force	Becoming 18 years of age 1987 thru 1991
Labor Market					
Area*	6,715	1,846	3,007	1,862	5,480
Henry	1,072	283	357	432	489
Carroll	685	111	186	388	349
Franklin	1,706	712	994	0	1,652
Oldham	1,422	336	670	416	1,440
Owen	610	81	161	368	354
Shelby	984	268	458	258	926
Trimble	236	55	181	0	270

* Additional workers may be drawn from other nearby counties.

Note: Unemployed - persons unemployed and actively seeking work; Underemployed - persons employed but working only 14 to 26 weeks per year; Not in Labor Force - represents the number of persons who would enter the labor force if suitable employment were available (based on the assumption that persons in Kentucky would like to participate in the labor force in the same proportion that they do nationally).

Sources: Kentucky Cabinet for Human Resources, Kentucky Labor Supply Estimates by County, 1985. Kentucky Department of Economic Development, Future Labor Supply Becoming 18 Years of Age, 1987 thru 1991.

AVERAGE WEEKLY WAGES BY INDUSTRY
BY PLACE OF WORK, 1985

	Henry County	Carroll County	Franklin County	Oldham County
All Industries	\$247.58	\$327.57	\$328.10	\$273.75
Mining & Quarrying	0	0	0	*
Contract Construction	212.26	258.25	336.99	306.47
Manufacturing	358.56	409.54	352.93	375.79
Transportation, Communications & Public Utilities	330.79	*	445.32	249.66
Wholesale & Retail Trade	155.54	200.83	182.96	207.57
Finance, Insurance & Real Estate	276.23	272.83	335.45	280.12
Services	182.40	147.93	232.11	195.05
State/Local Government	275.14	252.01	379.72	320.32
Other	206.50	*	188.49	219.12
	Owen County	Shelby County	Trimble County	
All Industries	\$248.37	\$252.54	\$356.14	
Mining & Quarrying	0	0	0	
Contract Construction	255.29	199.71	295.74	
Manufacturing	282.40	307.46	*	
Transportation, Communications & Public Utilities	*	394.25	*	
Wholesale & Retail Trade	182.70	179.76	108.78	
Finance, Insurance & Real Estate	238.21	266.21	280.66	
Services	142.01	221.07	142.31	
State/Local Government	245.71	290.49	257.78	
Other	*	191.90	96.74	

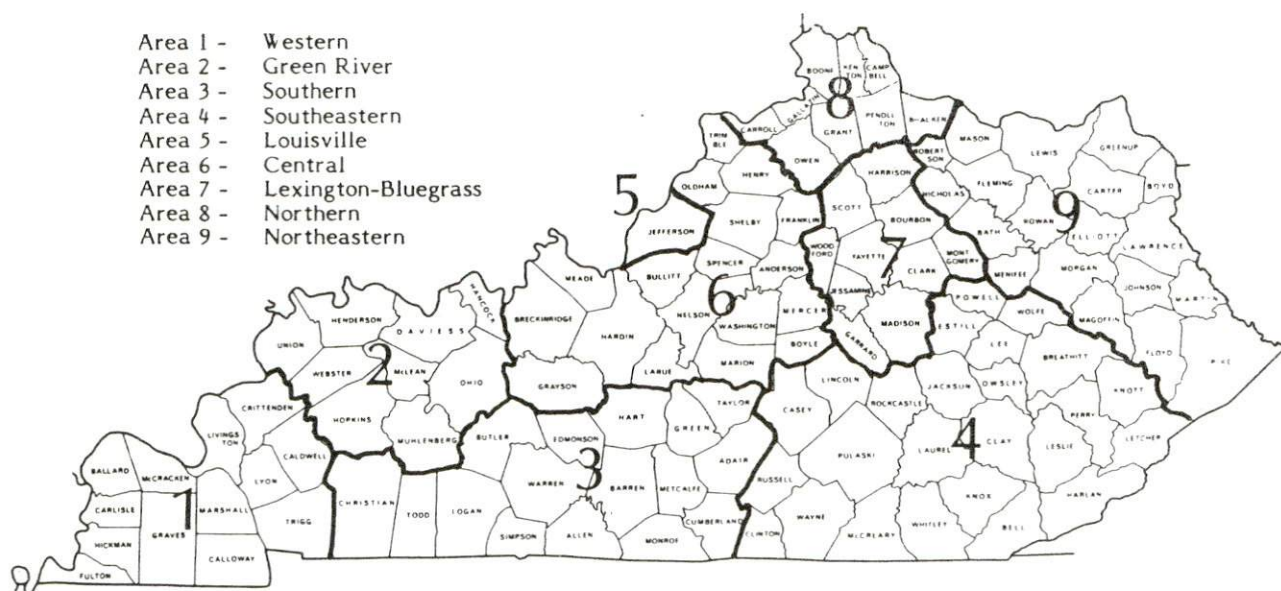
* Not disclosed.

Note: The average weekly wage for each category includes the salaries and wages of all persons working for that type business. For example, the manufacturing category includes both production workers and administrative personnel. Excludes domestic workers, railway workers, certain nonprofit corporations, majority of federal government workers, and self-employed workers.

Source: Kentucky Cabinet for Human Resources, Average Weekly Wages of Workers Covered by Kentucky Unemployment Insurance Law, 1985.

Occupational wage rates for specific industries are usually not available to most government agencies, and wage data furnished to state employment agencies by individual industrial employers are protected from disclosure by federal law. The most reliable up-to-date wage information can be obtained by direct contact with local employers.

Associated Industries of Kentucky, a voluntary organization of Kentucky businesses, regularly collects occupational wage rates and fringe benefits data from participating member firms. Data are compiled for over 127 clearly defined office, production, and service occupations. Tabulations are published for nine geographical areas of Kentucky, as shown on the map below. It should be noted that the data may be weighted by the preponderance of firms in the larger cities and may be somewhat higher than the rates paid in the smaller communities. Data from these tabulations are available, upon request, from the Kentucky Department of Economic Development, Frankfort, Kentucky 40601.



Associated Industries of Kentucky Area Wage Surveys

EXISTING INDUSTRY

HENRY COUNTY MANUFACTURING FIRMS, THEIR PRODUCTS AND EMPLOYMENT

Firm (Establishment date)	Product	Employment			Labor Unions
		Total	Male	Female	
<u>Eminence</u>					
Brunswick Corporation, Eminence Plant (1961)	Golf & bowling bags; carryalls	160	40	120	Clothing and Textile Workers*
Eminence Speaker Corporation (1966)	Electronic speakers	70	34	36	
Hussey Copper, Ltd. (1966)	Copper products	52	49	3	
Steel Technologies, Inc. (1971)	Cold rolled strip & sheet steel; steel slitting	73	57	16	
<u>Lake Jericho</u>					
Lake Jericho Veneer, Inc. (1983)	Fine hardwood veneers	110	70	40	
<u>Lockport</u>					
Mago Construction Company, Inc. (1966)	Bituminous concrete mixes	3	3	0	

(Continued)

Firm (Establishment date)	Product	Employment			Labor Unions
		Total	Male	Female	
<u>New Castle</u>					
The Henry County Local Company, Inc. (1876)	Newspaper	7	2	5	
McKesson Enviro- systems Company (1970)	Solvent recycling; thinners & lacquers diluent;s polyester & urethane clean-up solvents	32	29	3	Indepen- dent Employees*
<u>Pendleton</u>					
Atlas Tri-County Concrete, Inc. (1972)	Ready-mixed concrete	6	5	1	Teamsters*
<u>Smithfield</u>					
Smithfield Milling Company (1890)	Flour; corn meal	5	4	1	

* See Labor Organizations below.

Sources: Kentucky Department of Economic Development, 1986 Kentucky Directory of Manufacturers; Division of Research and Planning.

LABOR ORGANIZATIONS IN MANUFACTURING FIRMS

<u>Union</u>	<u>Representing workers at:</u>
Amalgamated Clothing and Textile Workers Union, AFL-CIO	Brunswick Corporation, Eminence Plant
Independent Employees Union	McKesson EnviroSystems Company
International Brotherhood of Teamsters, Chauffeurs, Warehousemen and Helpers of America	Atlas Tri-County Concrete, Inc.

SELECTED INDUSTRIAL SERVICES

<u>Types of Service</u>	<u>Location</u>	<u>Mileage from New Castle</u>
Custom Plastics Producers	LaGrange	14
	Shelbyville	16
Electric Motor Repair	Louisville	38
Grinding, Precision & Tool	Louisville	38
Heat Treating Facilities	Frankfort	30
	Louisville	38
Industrial Equipment & Supplies	Frankfort	30
	Louisville	38
Industrial Gases	Louisville	38
Industrial Waste Removal	Buckner	18
Machine Shops, Tool & Die	Shelbyville	16
Metal Finishers	Louisville	38
Metal Service Centers	Louisville	38
Millwrights	Louisville	38
Public Warehouse Facilities	Louisville	38

Sources: Kentucky Department of Economic Development, Kentucky Directory of Selected Industrial Services, 1985; Division of Research and Planning.

TRANSPORTATION

Rail

Line serving Campbellsburg - CSX Transportation

Services - Main line; three northbound and three southbound through freights daily, stops made as needed; switching services; team track space for 12 cars; piggyback facilities are located at Louisville, 39 miles southwest of Campbellsburg

New Castle and Eminence are not served directly by a rail line.

For details on routing, schedules, rates, and services, contact:

Manager of Industrial Development
CSX Transportation
P. O. Box 2157
Louisville, Kentucky 40201
(502) 587-5228

Highways

Interstate 71 and U.S. Highway 421/Kentucky Route 55 are major AAA-rated (80,000-pound gross load limit) trucking highways serving Henry County. Kentucky Route 55 is AA-rated (64,000-pound gross load limit) north of Campbellsburg. New Castle and Campbellsburg are located along U.S. 421 and Eminence is located along Kentucky 55. Other AAA-rated highways serving the county are Kentucky Routes 22, 146, and 322.

Interstate 71, a major highway connecting Louisville and Cincinnati, passes through west Henry County. Interchanges are located one mile west of Campbellsburg, via U.S. 421; and eight miles west of New Castle, via Kentucky 146. Access to Interstate 64, which connects Louisville and Lexington, is available 15 miles south of Eminence via Kentucky 55.

Kentucky Routes 193 and 389, AA-rated trucking highways, also serve Henry County.

Truck Service

ANR Freight System, Inc.*	Old Dominion Freight Line, Inc.**
ARA/Smith's*	Overnite Transportation Company*
Bestway Express, Inc.*	Owenton Express, Inc.*
Carolina Freight Carriers Corporation*	Preston Trucking Company, Inc.*
Holland Motor Express, Inc.*	Spartan Express, Inc.*
Jones Truck Lines, Inc.*	Transcon Lines*
Manning Motor Express, Inc.*	
O.K. Trucking Company*	

* Interstate and intrastate service.

** Interstate service only.

Source: American Motor Carrier Directory, Fall 1986.

HIGHWAY MILES AND TRUCK TRANSIT TIME IN DAYS FROM NEW CASTLE, KENTUCKY, TO SELECTED MARKET CENTERS

City	Highway Miles	Delivery Time TL	City	Highway Miles	Delivery Time TL
Atlanta, GA	420	2	Los Angeles, CA	2,146	5
Baltimore, MD	572	2	Louisville, KY	38	1
Birmingham, AL	402	2	Nashville, TN	206	1
Chicago, IL	330	2	New Orleans, LA	723	3
Cincinnati, OH	75	1	New York, NY	722	-
Cleveland, OH	319	2	Pittsburgh, PA	362	2
Detroit, MI	334	2	St. Louis, MO	301	1
Knoxville, TN	279	2			

Note: Mileage computations are via the best interstate or primary highways, not necessarily the most direct route of travel.

Sources: Rand McNally Road Atlas, 1979. Official Kentucky Mileage Map, 1985. Delivery time - Overnite Transportation Company, P. O. Box 99308, Louisville, Kentucky.

Air

Nearest Small Craft Airport

Location: Capital City Airport
One mile west of Frankfort;
29 miles southeast of New Castle
Runways: One paved
Length: 5,000 feet
Traffic
Control: Wind tee
Lighting: Rotating beacon, runway lights sundown to
sunrise, REILS and VASI
Services: 100 octane, jet fuel; hangars; storage; taxi
service

Nearest Scheduled Commercial Airline Service

Location: Standiford Field
5 miles southeast of center of Louisville;
41 miles southwest of New Castle
Runways: 2 paved
Length: 10,000 feet; 7,250 feet
Traffic
Control: Control tower
Lighting: Runways, obstructions, beacon and approach;
touch-down lights and center line on one
runway
Services: American Airlines, Delta, Eastern, Ozark,
Piedmont, Britt Airways, Midstate,
Republic, TWA, United, USAir, Allegheny
Commuter, Comair, Florida Express;
fuel - 100 and jet-A; major A & P repairs;
major Avionics repairs; APU, charter,
oxygen, U.S. Customs; taxi, car rentals,
limousine, courtesy car, public transit;
Weather Bureau; restaurant, snack bar
Air Freight
Service: Air freight terminal

Air Express Service

Several major companies offer air express services in Kentucky. These companies provide a quick means of shipping small to medium-sized packages expeditiously.

Water

The nearest navigable waterway is the Ohio River at Carrollton, 20 miles north of New Castle. Port facilities are located on the Ohio River at Louisville, 38 miles southwest of New Castle. Louisville has also been classified as a Foreign Trade Zone and offers complete U.S. Customs services for exports and imports.

POWER AND FUEL

Electricity

Company serving Campbellsburg, Eminence, New Castle, and parts of Henry County - Kentucky Utilities Company

Sources of power - Kentucky Utilities Company

For industrial rates contact:

Industrial Development Department
Kentucky Utilities Company
One Quality Street
Lexington, Kentucky 40507
(606) 255-1461

Company serving major portion of Henry County - Shelby Rural Electric Cooperative Corporation

Source of power - East Kentucky Power Cooperative

For industrial rates contact:

Industrial Development Division
East Kentucky Power Cooperative
P. O. Box 707
Winchester, Kentucky 40391
(606) 744-4812

and/or

Shelby Rural Electric Cooperative
Corporation
P. O. Box 309
Shelbyville, Kentucky 40065
(502) 633-4420

Natural Gas

Company serving Campbellsburg, Eminence, and New Castle - Louisville Gas and Electric Company

Source of supply - Texas Gas Transmission Corporation

Size of transmission mains - 26 inches (supplier); 4 inches (distributor)

Distribution mains - 2 to 4 inches

Distribution pressure - 35 to 350 psi

Btu content - 1,025 per cubic foot

Specific gravity - 0.60

For rates and supplies contact:

Economic Development and Market Research
Louisville Gas and Electric Company
P. O. Box 32010
Louisville, Kentucky 40232
(502) 566-4488

Other Fuels

Propane

Big 3 Gas Company of Shelby
County
Route 8
P. O. Box 78
Shelbyville, Kentucky 40065

H & S Gas Company, Inc.
U.S. 60 E
Waddy, Kentucky 40076

Silgas, Inc.
Old Finchville Road
Shelbyville, Kentucky 40065

Southern States Henry
Cooperative
Elm Street
Eminence, Kentucky 40019

Fuel oils

Distillate fuel oil -

Barnett Oil Company, Inc.
(Sunoco)
Campbellsburg, Kentucky 40011

Chevron U.S.A.
Tom Wathen Distributor, Inc.
North Seventh Street
P. O. Box 386
Shelbyville, Kentucky 40065

Crume-Hundley Oil Company
(Ashland)
801 South Third Street
Shelbyville, Kentucky 40065

Gullion & Son Oil Company
Port Royal
Kentucky 40058

Bobby L. Harper
Distributing, Inc.
(Chevron)
601 Park Avenue
Carrollton, Kentucky 41008

McAlister's Oil Company
107 Owen Street
Eminence, Kentucky 40019

Residual fuel oil - Arrangements must be made with the refinery.

Low sulphur content coal - Available in Kentucky.

WATER AND SEWERAGE

Public Water Supply

Company serving Campbellsburg - Campbellsburg Water Works
P. O. Box 67
Campbellsburg, Kentucky 40011
(502) 532-6019

Source - Henry County Water District #2
Average daily consumption - 41,000 gallons
Peak daily consumption - 47,450 gallons
Storage capacity - 60,000 gallons
Size lines - 2 to 6 inches
Water pressure - 15 psi to 60 psi

MONTHLY WATER RATES

First	2,000 gallons	\$9.50 (Minimum)
Next	2,000 gallons	2.20 per M gallons
Next	2,000 gallons	2.10 per M gallons
Next	2,000 gallons	2.00 per M gallons
Next	2,000 gallons	1.90 per M gallons
All over	10,000 gallons	1.80 per M gallons

Tap-on charge:

3/4-inch - \$300

Larger than 3/4-inch - \$300 plus cost

Company serving Eminence - Eminence Water Works
P. O. Box 163
Eminence, Kentucky 40019
(502) 845-4159

Source - Henry County Water District #2 and city lakes*
Treatment plant capacity - 250,000 gallons per day
Average daily consumption - 200,000 gallons
Peak daily consumption - 300,000 gallons
Treatment processes - Coagulation, flocculation, sedimentation, filtration, chlorination, fluoridation
Storage capacity - 375,000 gallons
Size lines - 2 to 12 inches
Water pressure - 45 psi to 65 psi

(Continued)

* The majority of treated water supplied to the city of Eminence is purchased from the Henry County Water District #2.

MONTHLY WATER RATES

First	2,000 gallons	\$6.50 (Minimum)
Next	5,000 gallons	2.60 per M gallons
Next	5,000 gallons	2.20 per M gallons
Next	8,000 gallons	1.90 per M gallons
Next	30,000 gallons	1.50 per M gallons
All over	150,000 gallons	1.30 per M gallons

Tap-on charge:

3/4-inch - \$200

Larger than 3/4-inch - \$200 plus cost

Company serving New Castle - New Castle Water Company*
P. O. Box 171
New Castle, Kentucky 40050
(502) 845-2900

Source - Henry County Water District #2

Average daily consumption - 80,000 gallons

Peak daily consumption - 90,000 gallons

Size lines - 2 to 8 inches

Water pressure - 58 psi to 60 psi

MONTHLY WATER RATES

First	2,000 gallons	\$9.15 (Minimum)
Next	2,000 gallons	2.70 per M gallons
Next	2,000 gallons	2.45 per M gallons
Next	4,000 gallons	2.20 per M gallons
All over	10,000 gallons	1.95 per M gallons

Tap-on charge: \$200

* The New Castle Water Company recently completed renovation of the water distribution system. The \$230,000 project included installation of new lines and replacing existing lines.

Name of water district - Henry County Water District #2*
P. O. Box 219
Campbellsburg, Kentucky 40011
(502) 532-6280

Area served - Henry, Trimble, Carroll, Oldham, and Shelby Counties
Date when water district began operating - 1969
Source of raw water - Four wells
Capacity of treatment plant - 1,728,000 gallons per day**
Treatment processes - Chlorination, fluoridation
Average amount of water used in a 24-hour period - 1,200,000 gallons
Peak amount of water used in a 24-hour period - 1,500,000 gallons
Storage capacity - 575,000 gallons
Size lines - 2 to 12 inches
Water pressure - 45 psi to 230 psi

MONTHLY WATER RATES

First	2,500 gallons	\$7.50 (Minimum)
Next	2,500 gallons	2.45 per M gallons
Next	5,000 gallons	1.65 per M gallons
Next	10,000 gallons	1.10 per M gallons
All over	20,000 gallons	0.75 per M gallons

Tap-on charge: \$350

* The Henry County Water District #2 is currently under Phase I expansion. A new 3,000-gallon elevated storage tank is being constructed and two booster pumps are being installed. The \$500,000 project is scheduled for completion in the spring of 1987. Phase II expansion will include installing 12 miles of additional 12-inch water mains, constructing a 100,000-gallon elevated storage tank and a 500,000-gallon silo tank, installing two 1,000-gallon-per-minute booster pumps at the treatment plant, and two new wells. Completion is scheduled for the spring of 1988 at an estimated cost of \$2 million.

** The treatment plant capacity will be increased to 4.6 million gallons per day after completion of Phase II construction.

Sewerage

Company serving Campbellsburg - Campbellsburg Wastewater
Treatment Plant
P. O. Box 67
Campbellsburg, Kentucky 40011
(502) 532-6019

Design capacity - 75,000 gallons per day
Average daily flow - 48,000 gallons
Type of treatment - Tertiary
Treatment processes - Extended aeration, chlorination, aerobic digester,
sludge drying beds, tertiary filter
Treated effluent discharged into - Carmine Creek
Size of sanitary mains - 8 inches
Size of storm mains - 20 inches
Monthly rates - 50% of monthly water bill
Tap-on charge: \$300

Company serving Eminence - Eminence Water Works*
P. O. Box 163
Eminence, Kentucky 40019
(502) 845-4159

Design capacity - 210,000 gallons per day
Average daily flow - 192,000 gallons
Type of treatment - Secondary
Treatment processes - Screening, extended aeration, secondary
sedimentation, chlorination, anaerobic digester
Treated effluent discharged into - Fox Run Creek
Size of sanitary mains - 8 inches
Size of storm mains - 12 inches
Monthly rates - 50% of monthly water bill
Tap-on charge: \$200

* Eminence Water Works is in the process of obtaining funding to increase the design capacity of the wastewater treatment plant.

Company serving New Castle - New Castle Wastewater
Treatment Plant*
P. O. Box 171
New Castle, Kentucky 40050
(502) 845-2900

Design capacity - 1,000,000 gallons per day

Average daily flow - 90,000 gallons

Type of treatment - Primary

Treatment processes - Lagoon system, chlorination

Treated effluent discharged into - Town Creek

Size of sanitary mains - 6 to 10 inches

Size of storm mains - 20 inches

Monthly rates - Monthly charge of \$5.75, plus \$1.55 per M gallons of
metered water consumed

Tap-on charge: \$200

* The city of New Castle completed construction of a new wastewater treatment plant and renovation of the wastewater collection system in the fall of 1985. The approximate cost of the project was \$1 million.

CLIMATE

Henry County

Temperature

Normal (30-year record)	54.90 degrees
Average annual 1985	54.60 degrees
Record highest, August 1983 (41-year record)	103.00 degrees
Record lowest, January 1963 (41-year record)	-21.00 degrees
Normal heating degree days (30-year record)	4,814
(Heating degree day totals are the sums of negative departures of average daily temperatures from 65 degrees F.)	

Precipitation

Normal (30-year record)	45.68 inches
Mean annual snowfall (30-year record)	16.50 inches
Total precipitation 1985	37.75 inches
Mean number days precipitation (.01 inch or more) (41-year record)	130.70
Mean number days thunderstorms (41-year record)	45.80

Prevailing Winds (through 1963) South

Relative Humidity

1 a.m.	77 percent (21-year record)
7 a.m.	82 percent (22-year record)
1 p.m.	60 percent (22-year record)
7 p.m.	64 percent (22-year record)

Source: U.S. Department of Commerce, Environmental Science Services Administration, Climatological Data, 1985. Station of record: Lexington, Kentucky.

LOCAL GOVERNMENT

Structure

Campbellsburg, Eminence, and New Castle are all served by a mayor-city council form of government. Henry County is served by a county judge/executive and six magistrates.

Planning and Zoning

County-wide planning and zoning is to be implemented in Henry County during the summer of 1987. At that time, a planning and zoning board will be established and regulations for the county and participating cities will be established. There is presently no planning and zoning agency in Henry County.

Mandatory state codes enforced - Kentucky Plumbing Code, National Electric Code, Kentucky Boiler Regulations and Standards, Kentucky Building Code (modeled after BOCA code)

Local Fees and Licenses

The city of Campbellsburg levies a business license fee ranging from \$15 to \$50. The business license fees in the city of Eminence range from \$7.50 to \$86.25. Eminence also levies a 5% insurance premium tax on policies written within the city. The New Castle city commission is presently in the process of revising the city's business license ordinance. The new business license fee schedule will be available in the spring of 1987.

A 3 percent tax is levied on utilities receipts for schools in Henry County. Tax is paid by all consumers of utilities as a add-on to the utilities bills. Exempted are receipts from utilities services that are resold and the receipts from the sale of energy or energy producing fuels that exceed 3 percent of the cost of production in manufacturing, processing, mining or refining.

State and Local Property Taxes

All property in Kentucky, except items exempted by the state constitution, is taxed by the state. Property which also may be taxed by local jurisdictions includes land and buildings, finished goods inventories, automobiles, trucks, office furniture and office equipment. Local taxing jurisdictions in Kentucky include counties, cities, and school districts.

All property in Kentucky is assessed at 100 percent of fair cash value.

COMBINED STATE AND LOCAL RATES PER \$100 VALUATION, 1986

	<u>Campbellsburg</u>	<u>New Castle</u>
Land and Buildings	\$0.9669	\$0.9310
Manufacturing Machinery	0.1500	0.1500
Pollution Control		
Equipment	0.1500	0.1500
Inventories		
Raw materials	0.0010	0.0010
Goods in Process	0.0010	0.0010
Finished Goods	0.7509	0.7060
Automobiles & Trucks	1.2330	1.1910
Other Tangible Personal		
Property	1.1999	1.1550
Intangibles (Accounts		
receivable*, money in		
hand, stock, notes,		
bonds)	0.2500	0.2500
Goods Stored in Public		
Warehouses in Transit		
Status	0.0010	0.0010
Private Leaseholds in		
Industrial Revenue		
Bond Financed		
Facilities	0.0150	0.0150

(Continued)

* Accounts receivable are taxed at 85 percent of face value, for an effective rate of \$0.2125 per \$100 valuation.

	<u>Eminence & Eminence Independent School District</u>	<u>Eminence & Henry County School District</u>	<u>Unincorporated Henry County</u>
Land and Buildings	\$1.1650	\$0.9780	\$0.7140
Manufacturing Machinery	0.1500	0.1500	0.1500
Pollution Control Equipment	0.1500	0.1500	0.1500
Inventories			
Raw materials	0.0010	0.0010	1.0010
Goods in Process	0.0010	0.0010	0.0010
Finished Goods	1.0120	0.7640	0.4980
Automobiles & Trucks	1.5540	1.2490	0.9830
Other Tangible Personal Property	1.4610	1.2130	0.9470
Intangibles (Accounts receivable*, money in hand, stock, notes, bonds)	0.2500	0.2500	0.2500
Goods Stored in Public Warehouses in Transit Status	0.0010	0.0010	0.0010
Private Leaseholds in Industrial Revenue Bond Financed Facilities	0.0150	0.0150	0.0150

One watershed district in Henry County levies a special tax on property within it's boundaries, not county-wide. The rate is \$0.025 per \$100 valuation.

* Accounts receivable are taxed at 85 percent of face value, for an effective rate of \$0.2125 per \$100 valuation.

Safety

Police	Campbellsburg	Eminence
Total staff	2	6
Radio-patrol cars	2	3
	New Castle	Henry County
Total staff	2	5
Radio-patrol cars	1	3

Fire*	Campbellsburg	Eminence
Insurance Services Office, Public Protection Classification	7	7
Volunteers	35	15
	New Castle	Henry County

Insurance Services Office, Public Protection Classification	7	**
Volunteers	23	79

Rescue Service

Rescue service is provided to all areas of Henry County by the Henry County Disaster and Emergency Services.

Refuse Collection and Disposal

Private contractors provide refuse collection and disposal service to Campbellsburg, Eminence, New Castle, and Henry County.

* Includes copyrighted material of ISO Commercial Risk Services, Inc., with its permission.

** Property located within the Pleasureville fire district also has a rating of class 7. All other property in unincorporated Henry County is class 10.

EDUCATION

Public Schools

	Eminence* Independent	Henry** County
Total Enrollment		
(December 1986)	528	1,984
Kindergarten	33	134
Elementary	251	918
Middle School	-	489
High School	244	443
Pupil-Teacher Ratio		
(1985-86)	16-1	19-1
Percent High School		
Graduates to College		
(1985-86)	59.4	46.2
Expenditures Per Pupil		
(1985-86)	\$2,398.75	\$2,064.73

* The Eminence Independent School System recently replaced windows at the high school with double pane thermal guard windows. Cost of the project was approximately \$95,000. A handicap lift was also installed during the summer, 1986 to enable wheelchair students access to the second floor. Cost was approximately \$20,000.

** The Henry County School System has tentative plans for several additions to their facilities. These include constructing a library and four new classrooms at the elementary schools, construct a bus maintenance facility, renovate the central office, and increase the seating capacity in the gymnasium at the middle school. Construction is tentatively set to begin in 1988.

Area Colleges and Universities

<u>Name</u>	<u>Location (Miles Distant)*</u>	<u>Enrollment (Fall, 1986)</u>	<u>Highest Degree Conferred</u>
Kentucky State University	Frankfort, Kentucky (30)	2,205	Masters
Bellarmino College	Louisville, Kentucky (38)	2,644	Masters
Jefferson Community College	Louisville, Kentucky (38)	6,996	Associate
Spalding College	Louisville, Kentucky (38)	1,154	Doctorate
University of Louisville	Louisville, Kentucky (38)	20,217	Doctorate, M.D., D.M.D., J.D.
Hanover College	Hanover, Indiana (40)	1,075	Baccalaureate
Midway Junior College	Midway, Kentucky (43)	340	Associate
Indiana University Southeast	New Albany, Indiana (45)	4,657	Masters (education only)
Georgetown College	Georgetown, Kentucky (48)	1,362	Masters
Lexington Community College	Lexington, Kentucky (53)	2,587	Associate
Transylvania University	Lexington, Kentucky (53)	970	Baccalaureate**
University of Kentucky	Lexington, Kentucky (53)	20,788	Doctorate, M.D., D.M.D., J.D.

* Mileage from New Castle.

** Courses in a masters degree program are taught on the Transylvania campus by faculty members of Xavier University of Cincinnati. The degree is issued by Xavier University.

Vocational Training

The Bluegrass State Skills Corporation, an independent public corporation created and funded by the Kentucky General Assembly, provides programs of skills training to meet the needs of business and industry from entry level to advanced training, and from upgrading present employees to retraining experienced workers.

The Bluegrass State Skills Corporation is the primary source for skills training assistance for a new or existing company. The Corporation works in partnership with other employment and job training resources and programs, as well as Kentucky's economic development activities, to package a program customized to meet the specific needs of a company.

Vocational training is available at both the state vocational-technical schools and the area vocational education centers. The state vocational-technical schools are post-secondary institutions. The area vocational education centers are designed to supplement the curriculum of high school students. Both the state vocational-technical schools and the area vocational education centers offer evening courses to enable working adults to upgrade current job skills.

Arrangements can be made to provide training in the specific production skills required by an industrial plant. Instruction may be conducted either in the vocational school or in the industrial plant, depending upon the desired arrangement and the availability of special equipment.

(Continued)

Nearest State School

Jefferson State Vocational-Technical School
Louisville, Kentucky
38 miles from New Castle

Agriculture	Surgical Technician
Ornamental Horticulture	Ward Clerk
Business & Office	Industrial Education
Accounting	Air Conditioning &
Clerical	Refrigeration
Data Processing	Auto Body Repair
Secretarial	Auto Mechanics
Word Processing	Carpentry-Building Trades
Consumer & Home Economics	Diesel Mechanics
Culinary Arts (Commercial	Electricity
Foods)	Electronics
Retail Training	Graphic Arts (Printing)
Health & Personal Services	Machine Shop
Occupations	Masonry
Cosmetology	Plumbing
Dental Assistant	Welding
Licensed Practical Nursing	Learning Resource Center
Medical Assistant	
Nurse's Aide	

Nearest Area Education Center

Oldham County Area Vocational Education Center
Buckner, Kentucky
15 miles from New Castle

Health and Personal Services Occupations
Health Services
Industrial Education
Auto Mechanics
Carpentry
Commercial Art
Heating and Air Conditioning

Nearest Area Education Center

Shelby County Area Vocational Education Center
Shelbyville, Kentucky
16 miles from New Castle

Business and Office

Accounting
Accounting II
Business English
Business Law
Model Office
Shorthand
Typing
Typing II
Word Processing

Industrial Education

Auto Mechanics
Carpentry
Electricity
Machine Shop
Welding

HEALTH

Local Medical Personnel (Henry County)

Physicians - 11
Dentists - 7

Hospitals

<u>General Hospital</u>	<u>Location</u>	<u>Beds</u>
Tri-County Community Hospital	LaGrange, 14 miles from New Castle	120
United Medical Center	Shelbyville, 16 miles from New Castle	76
Carroll County Memorial Hospital	Carrollton, 20 miles from New Castle	54

Tri-County Community Hospital

Medical staff - 42 active physicians, and 44 registered nurses

United Medical Center

Medical staff - 26 active and 29 courtesy physicians, 50 registered nurses, and 12 licensed practical nurses

Carroll County Memorial Hospital

Medical staff - 8 physicians, 18 registered nurses, and 6 licensed practical nurses

Other Medical Facilities

Henry County Medical Center
Henry County Primary Care Center
Seven Counties Services (Mental Health Services)

Ambulance Service

Name - Henry County Emergency Squad
Staff - 98 volunteers, fully trained emergency medical technicians

OTHER LOCAL FACILITIES

Communications

Telephone -	South Central Bell Telephone Company
Telegraph -	Western Union Toll-Free number, 1-800-325-6000;
Newspapers - Weekly and circulation -	Henry County Local 4,800
Radio -	WKX-AM (Eminence)
Television - Airwave reception from -	Louisville and Lexington, Kentucky; Cincinnati, Ohio
Cable service -	Cencom Cable TV
Educational Television -	The Kentucky Educational Television (K.E.T.) network is available statewide

Library Services

Public library - Henry County Public Library
Size collection - 39,548 volumes
Circulation, 1985-86 - 244,222 (includes bookmobile)

The Kentuckiana Regional Library is housed in the same building.

Religious Institutions

Henry County

Denominations -	Apostolic Assembly of God Baptist Christian Disciples of Christ Methodist Pentecostal Presbyterian
-----------------	---

Nearest Synagogues - Louisville, 38 miles from New Castle

Congregations - Adath Israel (reform)
 Adath Jeshurum (conservative)
 Anshei Sfard (orthodox)
 Brith Sholom (reform)
 Keneseth Israel (orthodox)

Financial Institutions

<u>Banks</u>	<u>Assets</u>	<u>Deposits</u>	<u>Statement Date</u>
United Citizens Bank and Trust Company*	\$50,587,995.33	\$44,249,665.72	6/30/86
<u>Eminence</u>			
Farmers Deposit Bank	47,304,494.04	42,701,002.87	6/30/86
<u>Pleasureville</u>			
The Central Bank	29,456,032.96	25,974,690.92	6/30/86
Republic Savings Bank**	208,368,274.17	192,190,410.26	12/31/85

* Office in Campbellsburg, New Castle, Port Royal, Pendleton, and Turners Station.

** Republic Savings Bank has offices in several Kentucky cities in addition to the Pleasureville location.

RECREATION

Local

Harry Hill Recreational Park, located one mile south of New Castle, includes two softball fields, playground area, basketball court, shelter house and restrooms, horseshoe court and a volleyball court. A public park, located in New Castle, contains a tennis court and a baseball diamond. Located 2 miles south of New Castle is the Henry County Fairgrounds, where the annual County Fair features agricultural exhibits, rides and special events. Facilities at a private county club located a few miles north of the city includes a swimming pool, an 18-hole golf course and two tennis courts.

Lake Jericho and Lake Jericho Recreation Area are located approximately 8 miles from New Castle and Campbellsburg. Fishing and boating are favorite activities at this 136-acre lake. Private facilities are available for picnicking and tent and trailer camping.

Recreational facilities in Eminence include a public swimming pool and playground, two public tennis courts, and a little league ballfield. Facilities at the Eminence schools are also open to the public.

Recreational facilities in Campbellsburg include a tennis court, basketball courts, and a baseball diamond located at the local elementary school. This area has been developed into a public park.

Area (Within 40 miles)

General Butler State Resort Park is located 22 miles north of New Castle near Carrollton. The park includes a 30-acre lake, a boat dock, a 9-hole golf course, a miniature golf course, a swimming pool, playgrounds, shuffleboard, tennis courts, planned recreation, fishing, camping, horseback riding, 58 lodge rooms, cottages, and gift shops. General Butler's family home, the Butler Mansion, has been restored and contains a museum of Ohio River lore. Another unique feature is the Ski Butler ski area that has five ski runs, a ski shop, rental equipment, a ski school and chair lifts.

Frankfort, the capital of Kentucky, is 30 miles southeast of New Castle. Points of interest in Frankfort include the Capitol Building, a 34-foot floral clock, the Daniel Boone Monument, several museums, and old homes with their original furnishings. Frankfort is also the home of Kentucky State University which offers many cultural activities and sporting events.

Louisville, 38 miles southwest of New Castle, provides a wide variety of recreational opportunities. The most noted recreational event in Louisville is the Kentucky Derby at Churchill Downs. The "Run for the Roses" is the oldest continuously held horse race in the United States. Other attractions include: Kentucky Center for the Arts, Maccauley Theatre, Actors Theatre of Louisville, Louisville Children's Theatre, the Louisville Bach Society, the Louisville Orchestra, the Louisville Ballet, the Kentucky Opera Association, several museums, the Louisville Zoological Gardens, University of Louisville sporting events, rock concerts, and the "Belle of Louisville" sternwheeler.

E. P. "Tom" Sawyer State Park, 38 miles southwest of New Castle, is located near Louisville. Recreational facilities include an outdoor Olympic-size pool, a bathhouse, 12 lighted tennis courts, a picnic area, an archery range, and soccer fields. Planned recreation and a playground are offered year-round. Indoor facilities are available for basketball, volleyball, exercise classes, dance classes and various other events.

Taylorsville Lake, 40 miles south of New Castle near Taylorsville, was developed by the U. S. Army Corps of Engineers. The 3,050-acre lake and 10,700-acre recreation area offer facilities for fishing, boating, swimming, and wildlife recreation.

COMMUNITY IMPROVEMENTS

Recent

The Eminence Independent School System recently replaced windows at the high school with double pane thermal guard windows. Cost of the project was approximately \$95,000. A handicap lift was also installed during the summer, 1986 to enable wheelchair students access to the second floor. Cost was approximately \$20,000.

New Castle Water and Sewer completed construction of a new wastewater treatment plant and renovation of the wastewater collection system in the fall of 1985. The water department completed installation of new water lines and replacement of old lines in the fall of 1984.

The City of New Castle recently completed a renovation and remodeling project at city hall.

Steel Technologies, Inc., recently expanded it's Eminence plant facilities and employed additional workers.

Under Way

A \$670,000 redevelopment project is currently under way in the King-McElroy Street section of Eminence. The project includes constructing new housing, rehabilitating existing housing, water and sewer line expansion, and street and sidewalk construction. The project is scheduled to be completed in mid-1987.

The Henry County Water District #2 is currently under Phase I expansion. A new 300,000 gallon elevated storage tank is being constructed and two booster pumps are being installed. The \$500,000 project is scheduled for completion in the spring of 1987.

Planned

The Henry County School System has tentative plans for several additions to their facilities. These include constructing a library and four new classrooms at the elementary schools, construct a bus maintenance facility, renovate the central office, and increase the seating capacity in the gymnasium at the middle school. Construction is tentatively set to begin in 1988.

The Henry County Water District #2 has plans for Phase II expansion which will include installing 12 miles of additional 12 inch water mains, constructing a 100,000 gallon elevation storage tank and a 500,000 gallon silo tank, installing two 1,000 gallon per minute booster pumps at the treatment plant, and two new wells. Completion is scheduled for the spring of 1988 at an estimated cost of \$2 million.

The City of New Castle plans to resurface city streets and replace sidewalks in the spring, 1987.