

1990

Industrial Resources: Laurel County - London

Kentucky Library Research Collections
Western Kentucky University, spcol@wku.edu

Follow this and additional works at: https://digitalcommons.wku.edu/laurel_cty



Part of the [Business Administration, Management, and Operations Commons](#), [Growth and Development Commons](#), and the [Infrastructure Commons](#)

Recommended Citation

Kentucky Library Research Collections, "Industrial Resources: Laurel County - London" (1990). *Laurel County*. Paper 6.
https://digitalcommons.wku.edu/laurel_cty/6

This Report is brought to you for free and open access by TopSCHOLAR®. It has been accepted for inclusion in Laurel County by an authorized administrator of TopSCHOLAR®. For more information, please contact topscholar@wku.edu.

Resources for Economic Development

London



KENTUCKY
Open for Business

RESOURCES FOR ECONOMIC DEVELOPMENT
LONDON, KENTUCKY

Prepared by
The Kentucky Cabinet for Economic Development
Division of Research and Planning
in cooperation with
Laurel Chamber of Commerce
and the
Laurel County Industrial Development Authority

1990

Division Director - Pamela K. Riley; program coordinator - Keith Roberts; research - Jane Sullivan; clerical - Bobbi Graves; graphics - Robert Owens, Pat Coleman; cartography - Edwin Scott, Dave Clark. Cost of printing paid from state funds.

TABLE OF CONTENTS

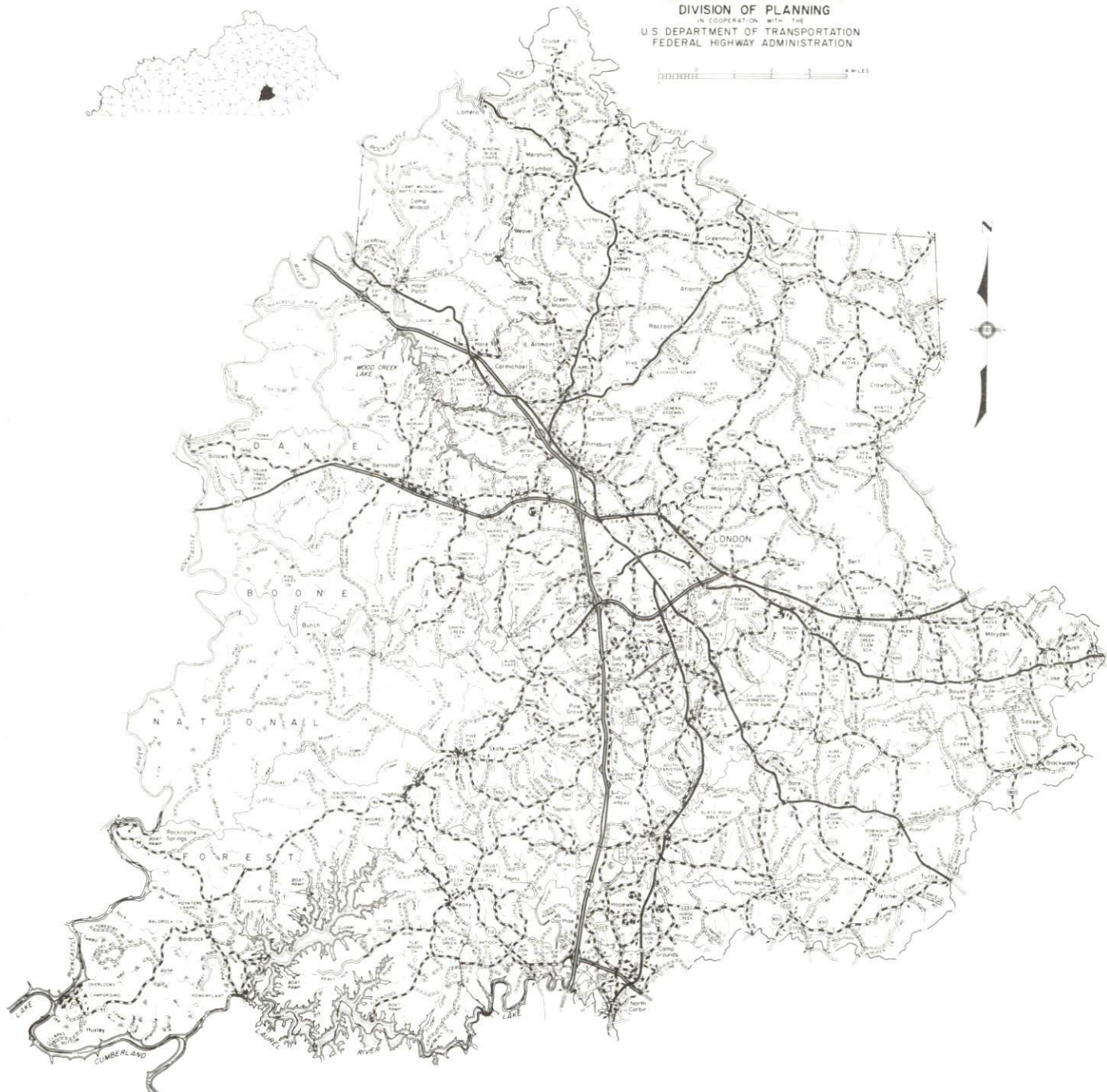
<u>Chapter</u>	<u>Page</u>
LONDON, KENTUCKY - A RESOURCE PROFILE.	1
THE LABOR MARKET STATISTICS.	2
Labor Market Area Map	2
Population	3
Population Projections.	3
Estimated Labor Supply	3
Labor Force Characteristics of Residents, 1988.	4
Selected Components of Nonagricultural Employment, by Place of Work, 1988	5
Per Capita Personal Income	6
Average Placement Wages	7
Average Weekly Wages of Workers Covered by Unemployment Insurance F.Y. 1987-88 - Bar Chart	8
Average Weekly Wages by Industry, by Place of Work, 1988.	9
EXISTING INDUSTRY	10
London Manufacturing Firms, Their Products and Employment.	10
Labor Organizations in Manufacturing Firms	11
Selected Industrial Services.	12
TRANSPORTATION	13
Highways.	13
Truck Service.	13
Selected Market Location Map	14
Rail	15
Air	15
UTILITIES	16
Electricity	16
Natural Gas.	16
Public Water Supply	17
Sewerage.	17
CLIMATE.	18

<u>Chapter</u>	<u>Page</u>
LOCAL GOVERNMENT	19
Structure	19
Planning and Zoning.	19
Local Fees and Licenses.	19
State and Local Property Taxes.	20
Combined State and Local Rates Per \$100 Valuation, 1988	20
EDUCATION.	21
Public Schools	21
Nonpublic Schools.	21
Area Colleges and Universities	22
Vocational Training	23
OTHER LOCAL FACILITIES	24
Local Medical Personnel.	24
Hospitals	24
Other Medical Facilities and Services	24
Banks and Savings & Loan Associations.	24
Newspapers	24
Telephone Service.	24
RECREATION.	25
COMMUNITY IMPROVEMENTS.	26

GENERAL HIGHWAY MAP
LAUREL COUNTY
KENTUCKY

PREPARED BY THE
KENTUCKY TRANSPORTATION CABINET
DEPARTMENT OF HIGHWAYS
DIVISION OF PLANNING
IN COOPERATION WITH THE
U.S. DEPARTMENT OF TRANSPORTATION
FEDERAL HIGHWAY ADMINISTRATION

0 1 2 3 4 5 6 7 8 9 10 MILES



LONDON, KENTUCKY - A RESOURCE PROFILE

London, the county seat of Laurel County is located in southeastern Kentucky. The city of London is located 75 miles south of Lexington, Kentucky, 100 miles north of Knoxville, Tennessee; and 153 miles south of Cincinnati, Ohio. In 1988, London had an estimated population of 4,550.

Laurel County has a land area of 434 square miles. Approximately half of the county is located in the eastern coal field region and the western portion of the county is located within the Daniel Boone National Forest. In 1988, Laurel County had an estimated population of 43,700.

The Economic Framework - The total number of Laurel County residents employed in 1988 averaged 15,372. Manufacturing firms in the county reported 3,593 employees; wholesale and retail trade provided 4,165 jobs; 2,600 people were employed in service occupations; state and local government accounted for 1,530 employees; contract construction firms provided 1,375 jobs; and 335 people were employed by mining and quarrying operations.

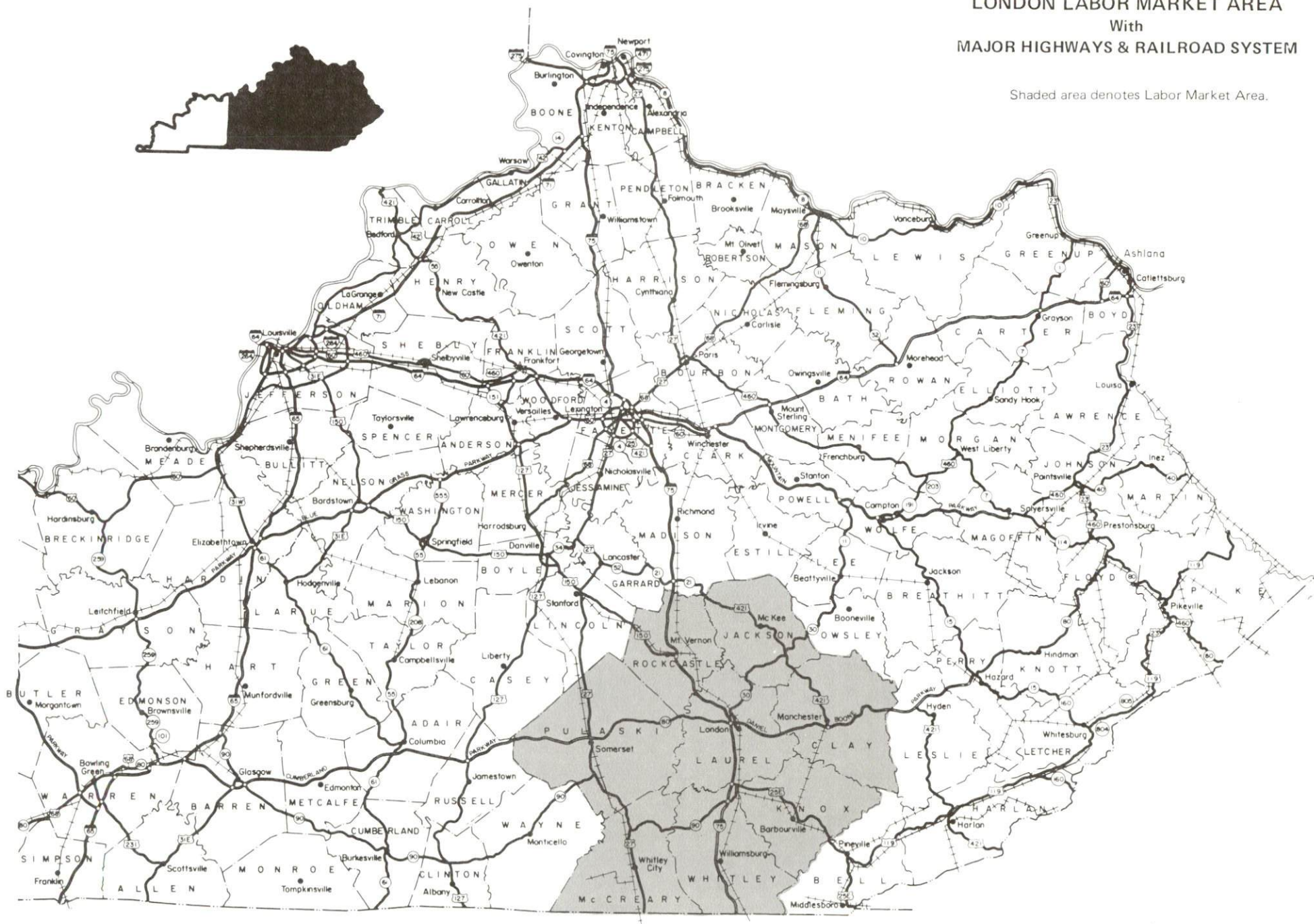
Labor Supply - There is a current estimated labor supply of 46,448 persons available for industrial jobs in the labor market area. In addition, from 1989 through 1993, 18,544 young persons in the area will become 18 years of age and potentially available for industrial jobs.

Transportation - CSX Transportation provides main line rail service to London. Interstate 75, a major north-south highway corridor, directly serves London with an interchange two miles west of the downtown area. London is located on the Daniel Boone Parkway, a multi-lane toll road, which extends from London to the east. U.S. Highway 25 and Kentucky 80, both AAA-rated trucking highways, also serve London. Nineteen trucking companies provide interstate and/or intrastate service to London. The London-Corbin Airport, a local airport located 3 miles south of London, has a 6,000-foot paved runway. Scheduled commercial airline service is available at Blue Grass Airport near Lexington Kentucky, 80 miles north of London.

Power and Fuel - Electric power is provided to London and Laurel County by the Kentucky Utilities Company and by the Jackson County Rural Electric Cooperative Corporation. Natural gas service is provided by the Delta Natural Gas Company.

Education - The Laurel County School System provides primary and secondary education in London and Laurel County, and the East Bernstadt Independent School System provides education through the eighth grade. In addition, there are three non-public schools in London. London is the home of Sue Bennett College, a two year college, with a 1988 fall enrollment of 557. In addition, there are 13 colleges and universities within 75 miles of London. Vocational training is available locally at the Laurel County State Vocational Technical School.

Shaded area denotes Labor Market Area.



LABOR MARKET STATISTICS

The London Labor Market Area includes Laurel County and the adjoining Kentucky counties of Clay, Jackson, Knox, McCreary, Pulaski, Rockcastle and Whitley.

POPULATION			
	<u>1988*</u>	<u>1980</u>	<u>1970</u>
Labor Market Area	223,000	212,775	163,793
London	4,550	4,002	4,337
Laurel County	43,700	38,982	27,286

* Population estimates.

Sources: U.S. Department of Commerce, Bureau of the Census, August 1989 and November 1989.

POPULATION PROJECTIONS				
	<u>1990</u>	<u>1995</u>	<u>2000</u>	<u>2010</u>
Labor Market Area	237,911	252,581	264,732	284,146
Laurel County	45,870	49,749	53,023	58,680

Source: University of Louisville, Urban Studies Center, State Data Center.

ESTIMATED LABOR SUPPLY					
	Current			Future	
	<u>Total</u>	<u>Unemployed</u>	<u>Employed Part-Time</u>	<u>Not in Labor Force</u>	<u>Becoming 18 years of age 1989 thru 1993</u>
Labor Market Area*	46,448	9,489	9,592	27,367	18,544
Laurel Co.	6,743	1,893	1,851	2,999	3,367

* Additional workers may be drawn from other nearby counties.

Note: Unemployed - persons unemployed and actively seeking work; Employed Part-Time - persons employed but working only 14 to 26 weeks per year; Not in Labor Force - represents the number of persons who would enter the labor force if suitable employment were available (based on the assumption that persons in Kentucky would like to participate in the labor force in the same proportion that they do nationally).

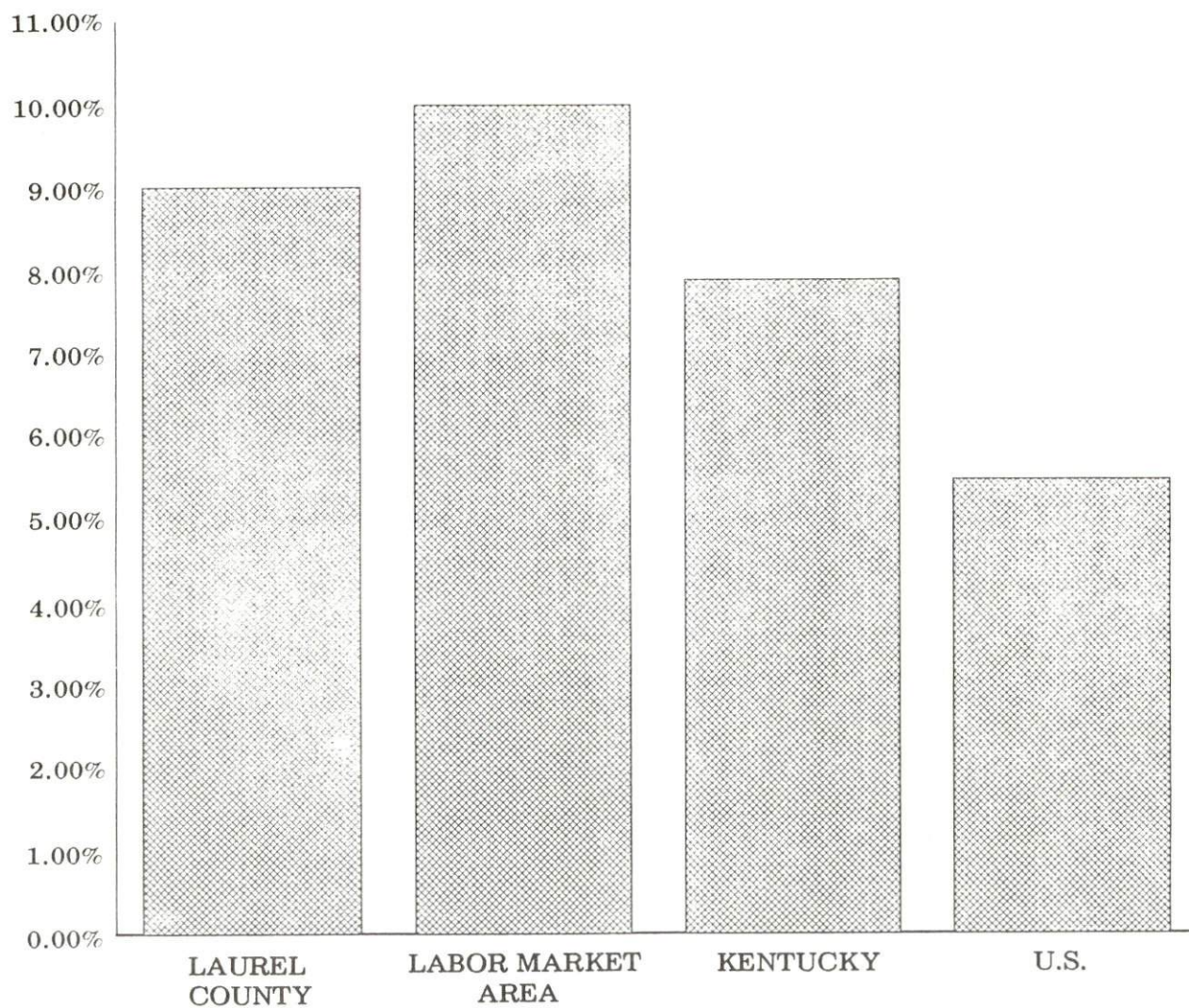
Sources: Kentucky Cabinet for Human Resources, Kentucky Labor Supply Estimates by County, 1987. Kentucky Cabinet for Economic Development, Future Labor Supply Becoming 18 Years of Age, 1989 thru 1993.

LABOR FORCE CHARACTERISTICS OF RESIDENTS, 1988

	<u>Laurel County</u>	<u>Labor Market Area</u>
Civilian Labor Force	16,888	81,187
Employment	15,372	73,056
Unemployment	1,516	8,131
Rate of Unemployment (%)	9.0	10.0

Source: Kentucky Cabinet for Human Resources, Kentucky Labor Force Estimates, Annual Averages, 1988.

UNEMPLOYMENT RATES 1988

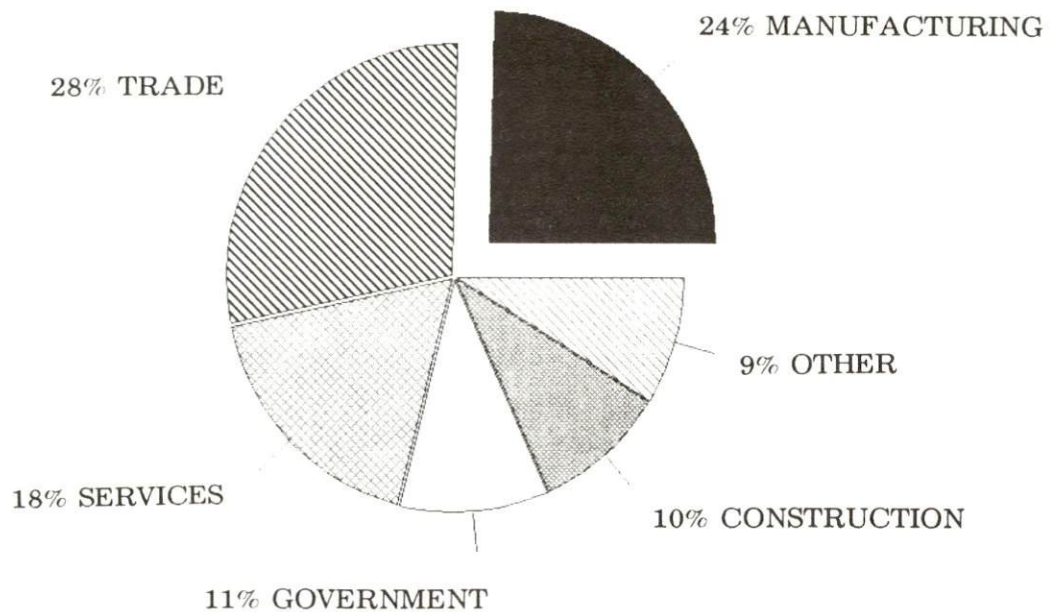


SELECTED COMPONENTS OF NONAGRICULTURAL EMPLOYMENT
BY PLACE OF WORK, 1988

	Laurel County	Labor Market Area
All Industries (total)	14,561	55,904
Manufacturing	3,593	12,212
Wholesale & Retail Trade	4,165	15,010
Services	2,600	9,663
State/Local Government	1,530	9,187
Contract Construction	1,375	2,794
Mining & Quarrying	335	2,741

Note: Excludes domestic workers, railway workers, certain nonprofit corporations, majority of federal government workers, and self-employed workers.
Source: Kentucky Cabinet for Human Resources, Average Monthly Workers Covered by Kentucky Unemployment Insurance Law, 1988.

LAUREL COUNTY

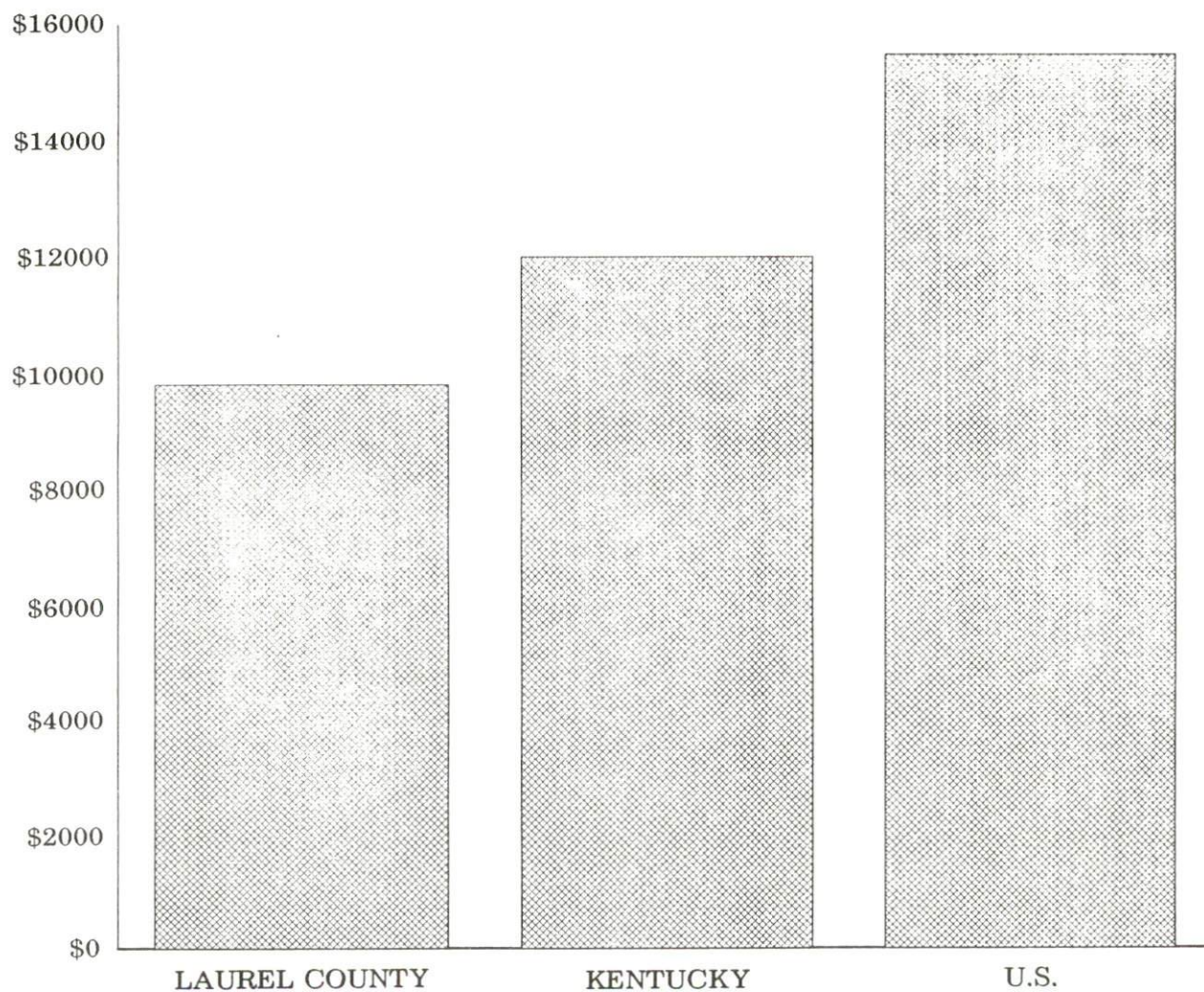


PER CAPITA PERSONAL INCOME

<u>Area</u>	<u>1983</u>	<u>1987</u>	<u>Percent Change</u>
Laurel County	\$7,929	\$9,787	23.4
Labor Market Area Range	\$4,859 - 8,021	\$5,570 - 10,502	-
Kentucky	\$9,513	\$11,997	26.1
U.S.	\$12,098	\$15,484	28.0

Sources: U.S. Bureau of Economic Analysis, Kentucky Economic Information System, August 1988 and April 1989.

PER CAPITA PERSONAL INCOME 1987



AVERAGE PLACEMENT WAGES

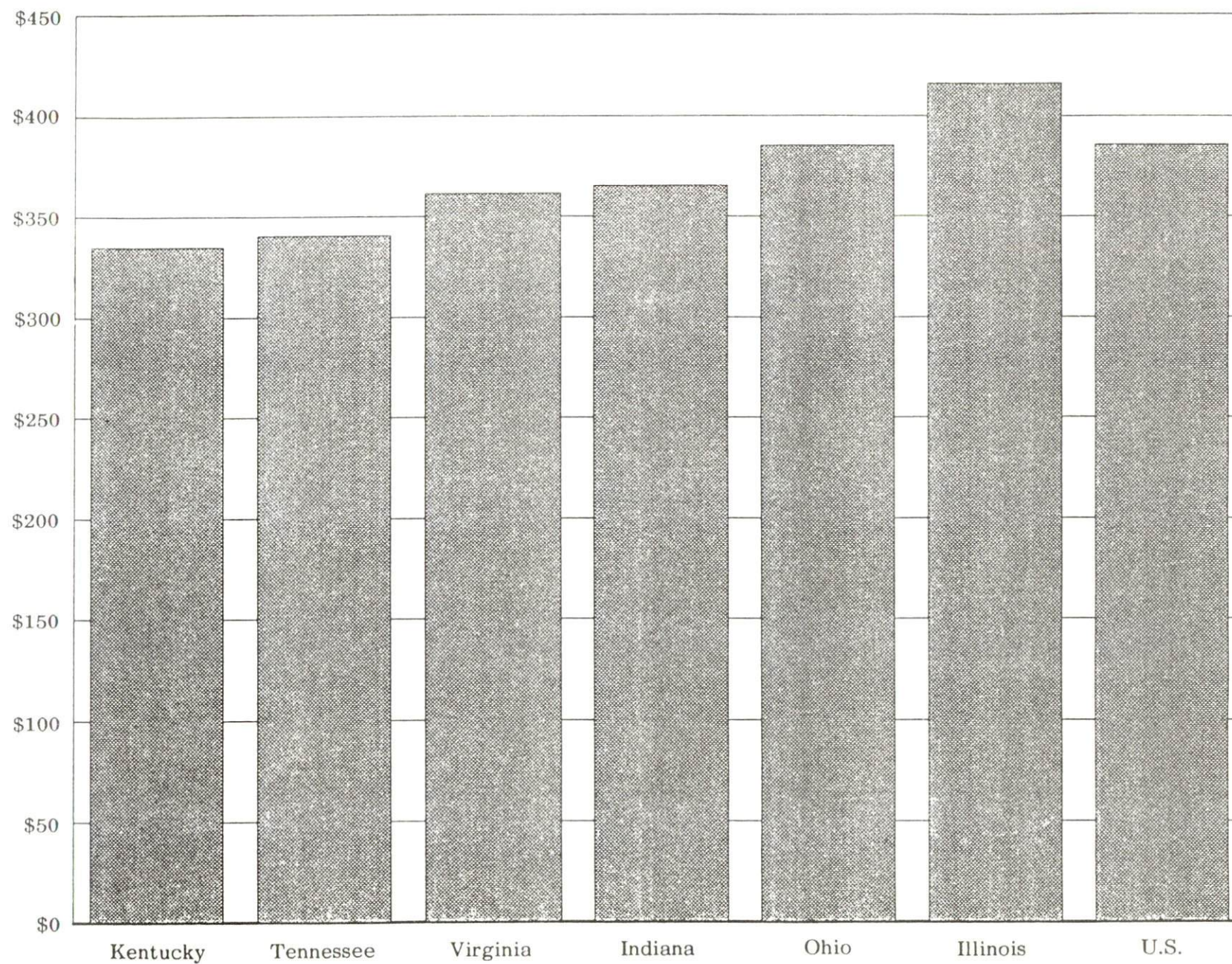
Laurel County is served by the Corbin local office of the Kentucky Department for Employment Services. The focus of the following data is on job placements made by the Corbin local office and may therefore be used as an indicator of the wages which employers in the area pay new employees. During the twelve months which ended on June 30, 1988, the local employment office filled 2,710 job openings in various occupational categories. The average hourly wage for selected occupational categories were:

<u>OCCUPATIONAL CATEGORY</u>	<u>NUMBER OF PLACEMENTS</u>	<u>AVERAGE WAGE(\$)</u>
All Occupations	2,710	3.75
Clerical	823	3.47
Sales	123	3.91
Services (excluding domestic)	749	3.38
Agricultural, Fishery, Forestry, etc.	12	4.10
Processing	28	3.38
Machine Trades	98	5.98
Bench Work	448	3.58
Structural	130	4.52
Motor Freight/ Transportation	61	4.67
Packaging and Materials Handling	159	4.96
Other	5	5.18

The Corbin local office also serves Clay, Jackson, Knox, Rockcastle, and Whitley Counties. The above occupational categories are taken from the Dictionary of Occupational Titles published by the U.S. Department of Labor.

Source: Kentucky Cabinet for Human Resources, Department for Employment Services.

AVERAGE WEEKLY WAGES OF WORKERS COVERED BY
UNEMPLOYMENT INSURANCE F.Y. 1986-87



AVERAGE WEEKLY WAGES BY INDUSTRY
BY PLACE OF WORK, 1988

	Laurel County	Kentucky (State- Wide)	Tennessee	Virginia
All Industries	\$316.93	\$352.31	\$363.12	\$392.56
Mining & Quarrying	487.93	603.27	495.85	596.88
Contract Construction	438.52	380.71	394.27	422.27
Manufacturing	349.23	464.92	416.73	452.60
Transportation, Communications & Public Utilities	412.08	468.17	485.13	554.17
Wholesale & Retail Trade	233.47	238.88	N/A	N/A
Finance, Insurance & Real Estate	300.45	401.17	269.27	466.23
Services	283.37	298.98	343.48	391.67
State/Local Government	358.48	377.81	403.21	457.00
	<u>Indiana</u>	<u>Ohio</u>	<u>Illinois</u>	<u>U. S.</u>
All Industries	\$392.63	\$411.08	\$454.10	\$416.33
Mining & Quarrying	635.77	579.73	674.62	660.40
Contract Construction	449.87	465.46	584.10	469.85
Manufacturing	532.06	569.98	555.83	517.62
Transportation, Communications & Public Utilities	502.69	519.17	584.83	542.33
Wholesale & Retail Trade	N/A	N/A	N/A	N/A
Finance, Insurance & Real Estate	406.58	444.33	579.88	532.52
Services	317.98	348.48	402.38	384.31
State/Local Government	395.31	428.10	453.12	442.71

N/A Not Available.

Note: The average weekly wage for each category includes the salaries and wages of all persons working for that type business. For example, the manufacturing category includes both production workers and administrative personnel. Excludes domestic workers, railway workers, certain nonprofit corporations, majority of federal government workers, and self-employed workers.

Source: Kentucky Cabinet for Human Resources, Average Weekly Wages of Workers Covered by Kentucky Unemployment Insurance Law, 1988. U.S. Department of Labor, Bureau of Labor Statistics, Average Annual Pay by State and Industry, August 29, 1989.

EXISTING INDUSTRY

LONDON MANUFACTURING FIRMS, THEIR PRODUCTS AND EMPLOYMENT

<u>Firm</u> <u>(Establishment date)</u>	<u>Product</u>	<u>1988</u> <u>Average Employment</u>
Binder & Wilson Lumber Company (1974)	Lumber	12
Caron Spinning Company (1963)	Synthetic tops, worsted yarns, synthetic yarns	380
Chaney Lumber Company, Inc. (1956)	Millwork, kiln drying, custom hardware	37
Cumberland Forest Products (1952)	Veneer & plywood	20
Flav-O-Rich, Inc. (1976)	Ice cream mix, fluid milk	132
Griffen Pie Company, Inc. (1953)	Bakery products	400
Jasper Iron and Metal Company, Inc. (1974)	Aluminum, secondary smelting	30
Ken Al Company, Inc. (1961)	Hydraulic telescopic cranes, aluminum awnings, marquees	3
Kentucky Concrete Pipe Company, Inc. (1956)	Concrete pipe, precast manholes	12
Kerns Bakery, Inc. (1948)	Bakery products	367
Laminated Timbers, Inc. (1960)	Wood roof deckings, laminated wood structural members	48
London Bucket Company, Inc. (1931)	Fabricated steel bar joists, fabricated sheet metal products	15
London Church Furniture, Inc. (1967)	Church furniture	30
London Rotary Forms (1982)	Typesetting, snap-out business forms - computer	65
London-Clay Ready Mix, Inc. (1950)	Precast concrete specialties, ready-mix concrete	20
Micro Devices Product Group (1973)	Thermal cutoffs, thermostats	280
Moore Signs, Inc. (1949)	Neon, plastic & metal signs	9
O. P. Link Handle Company, Inc. (1960)	Sawdust, hickory wood, handle blanks	3
Phoenix Manufacturing Company (1972)	Non-woven fabrics	88

(Continued)

<u>Firm</u> <u>(Establishment date)</u>	<u>Product</u>	<u>1988</u> <u>Average Employment</u>
The Kentucky Stone Company (1967)	Bituminous concrete, agricultural lime	21
The Sentinel Echo, Inc. (1873)	Shopping circulars, commercial printers, newspaper	18
Tri-County Concrete Products (1946)	Precast concrete products drain & culvert tile	5
Westinghouse Electric Corporation (1979)	Control switches, automatic transfer switches, insulated case circuit breakers	105

Sources: Kentucky Cabinet for Economic Development, 1989 Kentucky Directory of Manufacturers; Division of Research and Planning.

MAJOR NON-MANUFACTURING EMPLOYERS:

One of the largest non-manufacturing employers in London is the Appalachian Computer Services which employs 1,450.

LABOR ORGANIZATIONS IN MANUFACTURING FIRMS

<u>Union</u>	<u>Representing workers at:</u>
International Brotherhood of Teamsters, Chauffeurs, Warehousemen and Helpers of America	Kentucky Concrete Pipe Company, Inc. Caron Spinning Company; Flav-O-Rich, Inc.

SELECTED INDUSTRIAL SERVICES

<u>Types of Services</u>	<u>Location</u>	<u>Mileage from London</u>
Custom Data Processing	London, Kentucky	-
Custom Plastics Producers	Mt. Vernon, Kentucky	22
Electric Motor Repair	Corbin, Kentucky	14
Grinding, Precision & Tool	Richmond, Kentucky	51
Heat Treating Facilities	Richmond, Kentucky	51
Industrial Equipment & Supplies	Richmond, Kentucky	51
Industrial Gases	London, Kentucky	-
Industrial Waste Removal	Corbin, Kentucky	14
Machine Shops, Tool & Die	Corbin, Kentucky	14
	Manchester, Kentucky	20
Metal Castings	Middlesboro, Kentucky	59
Metal Finishers	Richmond, Kentucky	51
Metal Service Centers	Richmond, Kentucky	51
Millwrights	Lexington, Kentucky	75
	Knoxville, Tennessee	104
Public Warehouse Facilities	Danville, Kentucky	58
	Lexington, Kentucky	75

Sources: Kentucky Cabinet for Economic Development, Kentucky Directory of Selected Industrial Services, 1987; Division of Research and Planning.

TRANSPORTATION

HIGHWAYS

London is located two miles east of Interstate 75, a major north-south interstate highway. The Daniel Boone Parkway originates in London and extends to the east. Kentucky Highway 80, a "AAA"-rated highway with an 80,000 pound gross load limit, serves London to the east and west and U.S. 25, another "AAA"-rated highway, serves London to the north and south. Kentucky Highway 229, a "AA"-highway with a 62,000 pound gross load limit, extends from London to the south.

HIGHWAY MILES FROM LONDON, KENTUCKY,
TO SELECTED MARKET CENTERS

City	Highway Miles	City	Highway Miles
Atlanta, GA	297	Los Angeles, CA	2,228
Baltimore, MD	516	Louisville, KY	165
Birmingham, AL	352	Nashville, TN	196
Chicago, IL	412	New Orleans, LA	692
Cincinnati, OH	147	New York, NY	782
Cleveland, OH	387	Pittsburgh, PA	410
Detroit, MI	406	St. Louis, MO	408
Knoxville, TN	102		

Note: Mileage computations are via the best interstate or primary highways, not necessarily the most direct route of travel.

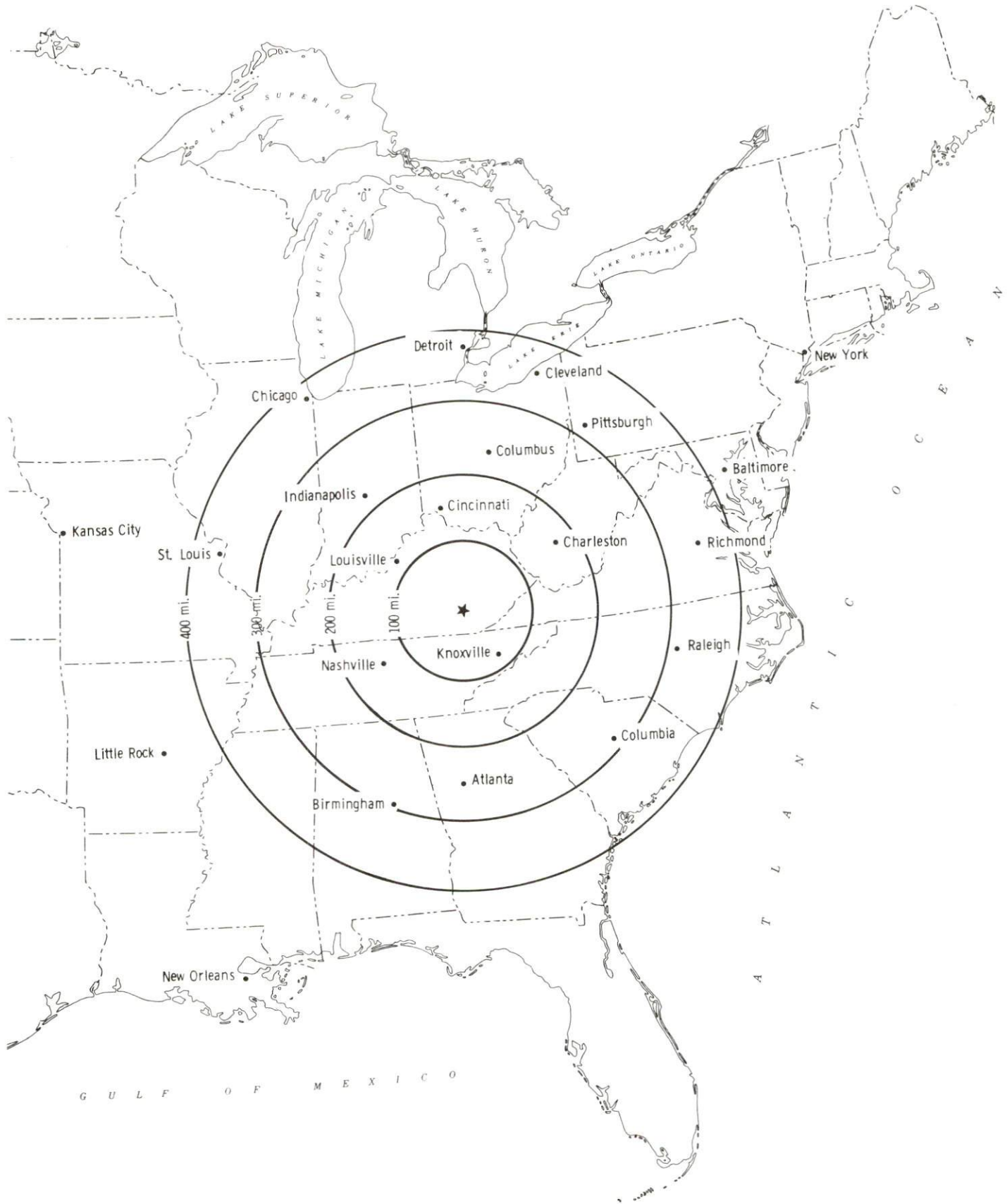
Sources: Rand McNally Deluxe Motor Carriers' Road Atlas, 1989. Official Kentucky Mileage Map, 1980.

Truck Service

Nineteen trucking companies currently provide interstate and/or intrastate service to the London area.

Source: American Motor Carrier Directory, Fall 1989.

Selected Market Centers



Rail

Main line rail service is provided to London by CSX Transportation. The nearest piggyback facilities are available in Knoxville, 102 miles south of London, and are provided by Southern Railroad System.

For details on routing, schedules, rates, and services contact:

Manager
Industrial Development
CSX Transportation
908 West Broadway
P. O. Box 2157
Louisville, Kentucky 40201
(502) 499-3025

Air

Local

Location:	London-Corbin Airport (Magee Field)
Runways:	3 miles south of London
Lenght:	1 paved
Traffic	6,000 feet
Control:	Wind sock and FSS advisory service
Lighting:	Beacon, runway and obstruction lights, REIL, VASI
Services	Fuel (100 octane, JP-A-50); minor A&P repairs; tie-downs; aircraft rental, auto rental, taxi; weather data, flight training; charter flights and ambulance service.

The London-Corbin Airport constructed a parallel taxiway in the fall of 1988 and perimeter fencing was installed in the spring of 1989. The total cost for these projects was approximately \$300,000.

Nearest Scheduled Commercial Airline Service

Location:	Bluegrass Airport
	4 miles west of Lexington, Kentucky;
	80 miles north of London
Air Service:	Delta, USAir, TWA, United Express, JetStream, Air Kentucky, American Eagle, ComAir
Daily Arrivals & Departures:	116

UTILITIES

Electricity

Company serving London and Central Laurel County - Kentucky Utilities Company
Source of power - Kentucky Utilities Company

For industrial rates contact:

Industrial Development Department
Kentucky Utilities Company
One Quality Street
Lexington, KY 40507
(606) 255-1461

Company serving a majority of Laurel County - Jackson County Rural Electric Cooperation
Source of power - East Kentucky Power Cooperative

For industrial rates contact:

Industrial Development Division
East Kentucky Power Cooperative
P.O. Box 707
Winchester, KY 40391
(606) 744-4812

and/or

Jackson County Rural Electric
Cooperative Corporation, Inc.
P.O. Box 307
McKee, KY 40447
(606) 287-7161

Natural Gas

Company serving London and Laurel County - Delta Natural Gas Company, Inc.
Source of supply - Wiser Oil Company
For rates and supplies contact:

Marketing Manager
Delta Natural Gas Company, Inc.
3617 Lexington Road
Winchester, KY 40391
(606) 744-6171

Low sulphur content coal is produced in the London area.

Public Water Supply

Company serving London - London Utility Commission
801 North Main Street
P.O. Box 918
London, KY 40741
(606) 864-2103

Source - Laurel Lake

Treatment plant capacity -	3,000,000 gallons per day
Average daily consumption -	1,364,000 gallons
Peak daily consumption -	1,763,000 gallons
Storage capacity -	2,300,000 gallons
Water pressure -	28 psi to 110 psi

Sewerage

Company serving London -	London Utility Commission
	801 N. Main Street
	P.O. Box 918
	London, KY 40741
	(606) 864-2103

Design capacity -	4,000,000 gallons per day
Average daily flow -	1,700,000 gallons
Type of treatment -	Tertiary
Treated effluent discharged into -	Whitley Branch

CLIMATE

Laurel County

Temperature

Normal (30-year record)	58.90 degrees
Average annual 1987	58.70 degrees
Record highest, September 1954 (46-year record)	103.00 degrees
Record lowest, January 1985 (46-year record)	-24.00 degrees
Normal heating degree days (30-year record)	3,658
(Heating degree day totals are the sums of negative departures of average daily temperatures from 65 degrees F.)	

Precipitation

Normal (30-year record)	47.29 inches
Mean annual snowfall (45-year record)	12.60 inches
Total precipitation 1987	34.66 inches
Mean number days precipitation (.01 inch or more) (45-year record)	126.40
Mean number days thunderstorms (45-year record)	47.00

Prevailing winds (through 1963)

Northeast

Relative Humidity (27-year record)

1 a.m.	80 percent
7 a.m.	85 percent
1 p.m.	59 percent
7 p.m.	63 percent

Source: U.S. Department of Commerce, Environmental Science Services Administration, Climatological Data, 1987. Station of record: Knoxville, Tennessee.

LOCAL GOVERNMENT

Structure

The city of London is served by a mayor and six council members. The mayor is elected to a four-year term and the council members serve two-year terms. Laurel County is served by a county judge/executive and six magistrates. The judge/executive and magistrates are elected to four-year terms.

Planning and Zoning

Joint agency - London-Laurel County Joint Planning Commission

Participating cities - London

Zoning enforced - Within the city limits of London

Subdivision regulations enforced - All areas

Local codes enforced - Building and housing codes are enforced throughout the city and in county subdivisions.

Mandatory state codes enforced - Kentucky Plumbing code, National Electric Code, Kentucky Boiler Regulations and Standards, Kentucky Building Code (modeled after BOCA code)

Local Fees and Licenses

The city of London levies business license fees which range from \$5 to \$300 annually. An annual fee of \$10 is charged by the city for automobiles and trucks.

State and Local Property Taxes

All property in Kentucky, except items exempted by the state constitution, is taxed by the state. Property which also may be taxed by local jurisdictions includes land and buildings, finished goods inventories, automobiles, trucks, office furniture and office equipment. Local taxing jurisdictions in Kentucky include counties, cities, and school districts.

All property in Kentucky is assessed at 100 percent of fair cash value.

COMBINED STATE AND LOCAL RATES PER \$100 VALUATION, 1988

	<u>London</u>	<u>Unincorporated Laurel County</u>
Land and Buildings	\$0.8333	\$0.6713
Manufacturing		
Machinery	0.1500	0.1500
Pollution Control		
Equipment	0.1500	0.1500
Inventories		
Raw Materials	0.0010	0.0010
Goods in Process	0.0010	0.0010
Finished Goods	0.6743	0.4933
Automobiles & Trucks	0.9663	0.7853
Other Tangible		
Personal Property	1.1233	0.9423
Intangibles (Accounts receivable*, money in hand, stock, notes, bonds)	0.2500	0.2500
Goods Stored in Public Warehouses in Transit		
Status	0.0010	0.0010
Private Leaseholds in Industrial Revenue Bond Financed Facilities	0.0150	0.0150

* Accounts receivable are taxed at 85 percent of face value, for an effective rate of \$0.2125 per \$100 valuation.

EDUCATION

Public Schools

	East Bernstadt Independent	Laurel County
Total Enrollment (Fall, 1988)	361	8,305
Pupil-Teacher Ratio (1987-88)	19.9-1	20.7-1
Percent High School Graduates to College (1987-88)	NA	48.6
Expenditures Per Pupil (1987-88)	\$2,107	\$2,079.40

Nonpublic Schools

<u>School</u>	<u>Enrollment</u>	<u>Grades</u>
London Christian Academy	72	1-12
Faith Assembly	92	Pre-6
Garden Life Christian	64	K-6

The Laurel County School System has invested approximately \$9 million recently on the renovation and upgrading of existing educational facilities and construction of additional classrooms. Currently, every classroom in the district is air conditioned. The construction of the North Laurel Junior High was recently completed and new physical education facilities have been added to two elementary schools. In addition, twelve new classrooms have been added throughout the district. Construction of a new high school is planned.

Area Colleges and Universities

<u>Name</u>	<u>Location (Miles distant)</u>	<u>Enrollment (Fall, 1988)</u>
Sue Bennett College	London	551
Union College	Barbourville (28)	1,048
Cumberland College	Williamsburg (31)	1,904
Somerset Community College	Somerset (33)	1,585
Berea College	Berea (33)	1,527
Eastern Kentucky University	Richmond (51)	13,664
Hazard Community College	Hazard (57)	1,042
Centre College	Danville (57)	859
Lindsey Wilson College	Columbia (59)	1,060
Lincoln Memorial University	Harrogate, Tennessee (66)	1,582
University of Kentucky	Lexington (75)	22,824
Transylvania University	Lexington (75)	1,041
Lexington Community College	Lexington (75)	3,401
Lees College	Jackson (75)	432

Sue Bennett College

Sue Bennett College is a two-year, coeducational institution located in London. The school was established in 1896 for elementary students and became a college in 1922. Sue Bennett College is owned by the United Methodist Church. The college offers an Associate degree in the following areas of study: education, secondary education, physical education, psychology, social work, English, music, pre-medical, pre-pharmacy, pre-law, paralegal, communications, business administration, accounting, computer information systems, office administrator, medical and legal secretary.

Vocational Training

Vocational training is available at both the state vocational-technical schools and the area vocational education centers. The state vocational-technical schools are post-secondary institutions. The area vocational education centers are designed to supplement the curriculum of high school students. Both the state vocational-technical schools and the area vocational education centers offer evening courses to enable working adults to upgrade current job skills.

Arrangements can be made to provide training in the specific production skills required by an industrial plant. Instruction may be conducted either in the vocational school or in the industrial plant, depending upon the desired arrangement and the availability of special equipment.

Bluegrass State Skills Corporation

The Bluegrass State Skills Corporation, an independent public corporation created and funded by the Kentucky General Assembly, provides programs of skills training to meet the needs of business and industry from entry level to advanced training, and from upgrading present employees to retraining experienced workers.

The Bluegrass State Skills Corporation is the primary source for skills training assistance for a new or existing company. The Corporation works in partnership with other employment and job training resources and programs, as well as Kentucky's economic development activities, to package a program customized to meet the specific needs of a company.

<u>Vocational School</u>	<u>Location (Miles distant)</u>	<u>Enrollment Fall, 1987</u>
Laurel County State Vocational- Technical School	London	504
Corbin Area Vocational- Educational Center	Corbin (14)	338

OTHER LOCAL FACILITIES

Local Medical Personnel

Physicians - 19

Dentists - 16

Hospitals

<u>General Hospital</u>	<u>Location</u>	<u>Beds</u>
Marymount Hospital	London	100

Medical Staff - 26 staff physicians, 45 registered nurses, 15 licensed practical nurses.

Other Medical Facilities and Services

Cumberland River Comprehensive Care Center
Ambulance, Incorporated of Laurel County
Laurel County Health Department

Banks and Savings & Loans

Cumberland Valley National Bank & Trust Company
First Federal Savings Bank
First National Bank & Trust
London Bank & Trust

Newspapers

Sentinel-Echo (daily)
The Laurel County Weekly (weekly)
News-Leader (weekly)

Telephone Service

Continental Telephone Company of Kentucky

RECREATION

Local

A wide variety of public recreation facilities are available in London including two playgrounds, a swimming pool, three baseball diamonds, and four football fields. A park and fairground area with a horseshow ring, one basketball court, six tennis courts, and a picnic shelter house are also available. The city supervises Little League baseball, football programs and men's and women's softball leagues.

Private recreation facilities include a country club, a golf course, two swimming pools, four tennis courts, one indoor movie theatre, a go-cart track, bumper boats, and a water slide.

London residents enjoy fishing at Wood Creek Lake, a large reservoir just northwest of London, and at Laurel River Lake, 10 miles southwest of London, where camping facilities and a marina are also available.

Levi Jackson Wilderness Road State Park is located two miles south of London. The Boone Trace and Wilderness Road pioneer trails converge within the 815-acre park. Attractions include a reproduced pioneer settlement, the McHargue Mill, hiking trails, campsites, swimming, and horseback riding.

London is located in the Daniel Boone National Forest, which covers 640,000 acres of timberland in eastern Kentucky. It encompasses much of Kentucky's great beauty and provides a vacation paradise. There are scenic hiking trails, rivers and streams stocked with a variety of fish, hunting preserves, camping sites, and numerous other natural and historical attractions.

Area (Within 56 miles)

Dr. Thomas Walker State Shrine
Cumberland Falls State Resort Park
General Burnside State Park
William Whitley House State Shrine
Pine Mountain State Resort Park
Issac Shelby State Shrine
The Big South Fork National River and Recreation Area

COMMUNITY IMPROVEMENTS

Recent

London was chosen as a "Kentucky Certified City" for the fifth consecutive year in 1989. The award is based on achievement in the following categories: economic development, transportation, public affairs, utilities, health, commercial development, housing, education and recreation. The Certified Cities Program is sponsored by the Kentucky Chamber of Commerce.

Richland Foods has announced that they will locate in London. Richland should be in operation by fall of 1990 with a projected employment of 200 to 450 employees.

New physical education facilities have been constructed at the Laurel Junior High School and two elementary schools. A total of twelve additional classrooms have been added throughout the district and several buildings have been renovated. The school system plans to construct a new high school within the next three years.

The London Sewage Treatment Plant won an award in 1988 from the Kentucky-Tennessee Water Pollution Control Association.

Under Way

A fifth lane is being added to a section of North Main (U.S. 25) and improvements have been made to portions of South Main.

A regional postal sorting facility is currently under construction and is scheduled to open in the spring of 1990.

A new attraction is currently being developed at the Levi Jackson State Park. The McHargue Mill, which includes one of the largest mill stone collections in the world, is being restored and will be the primary feature of the new attraction which is scheduled to open in the spring of 1990.

Planned

The Tourism Commission and other community groups are planning to construct a community building to house a theatre, dining area, and mini convention facility. The groups hope to complete this project by the end of 1990.

London will host the World Chicken Festival in September of 1990, the 100th anniversary of Colonel Sanders' birthday. London hopes to make this an annual event.