

1982

Industrial Resources: Lewis County - Vanceburg and Tollesboro

Kentucky Library Research Collections
Western Kentucky University, spcol@wku.edu

Follow this and additional works at: https://digitalcommons.wku.edu/lewis_cty

 Part of the [Business Administration, Management, and Operations Commons](#), [Growth and Development Commons](#), and the [Infrastructure Commons](#)

Recommended Citation

Kentucky Library Research Collections, "Industrial Resources: Lewis County - Vanceburg and Tollesboro" (1982). *Lewis County*. Paper 1.
https://digitalcommons.wku.edu/lewis_cty/1

This Report is brought to you for free and open access by TopSCHOLAR®. It has been accepted for inclusion in Lewis County by an authorized administrator of TopSCHOLAR®. For more information, please contact topscholar@wku.edu.

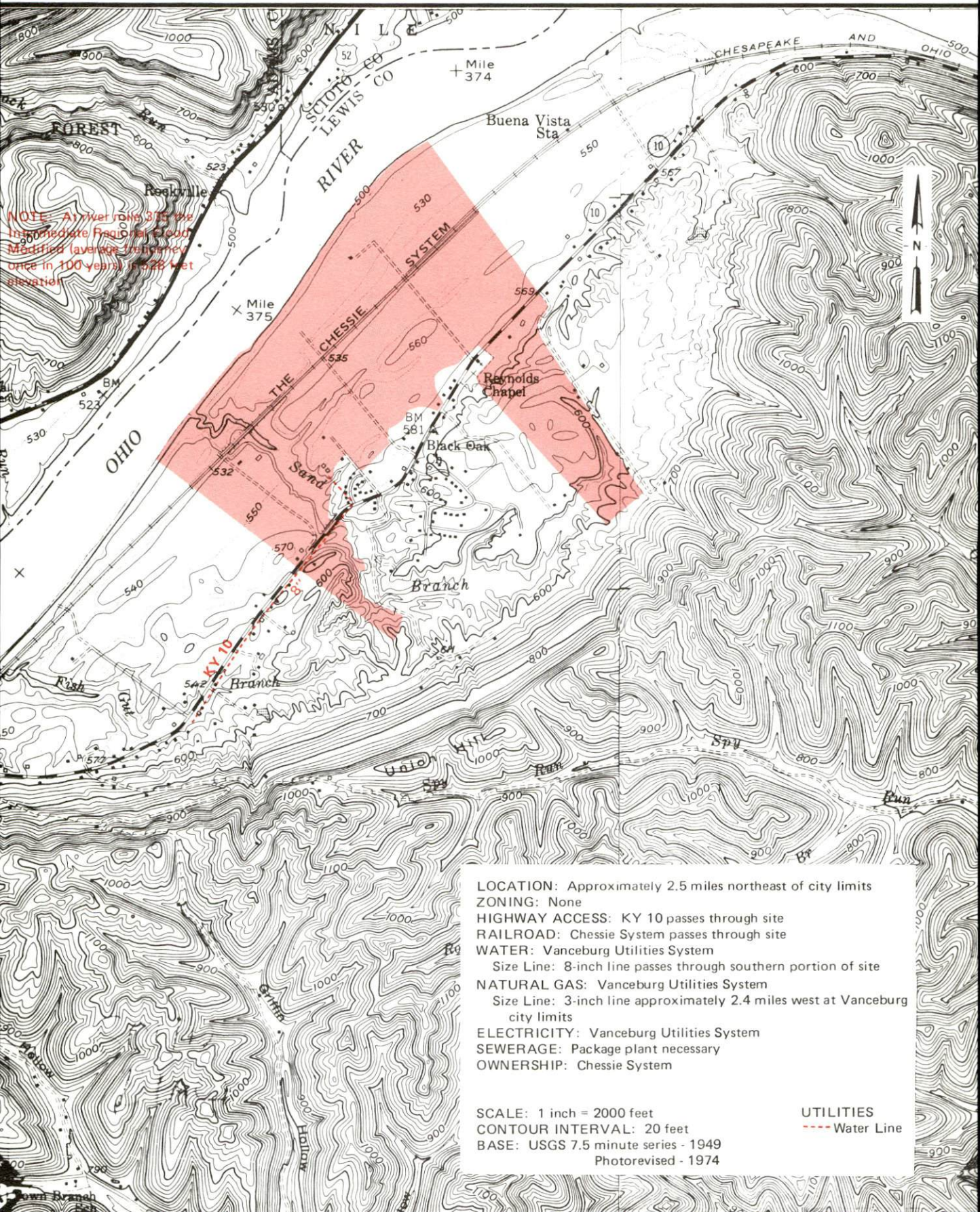
A comprehensive
report on
**Vanceburg
and Tollesboro, Ky.**



KENTUCKY & CO.
The state that's run like a business.

VANCEBURG, KENTUCKY --- Site 182 --- 530 Acres

For more information contact the Department of Economic Development, Office of Business Development, Industrial Development Division, Capital Plaza Tower, Frankfort, Kentucky 40601 (502-564-7140).

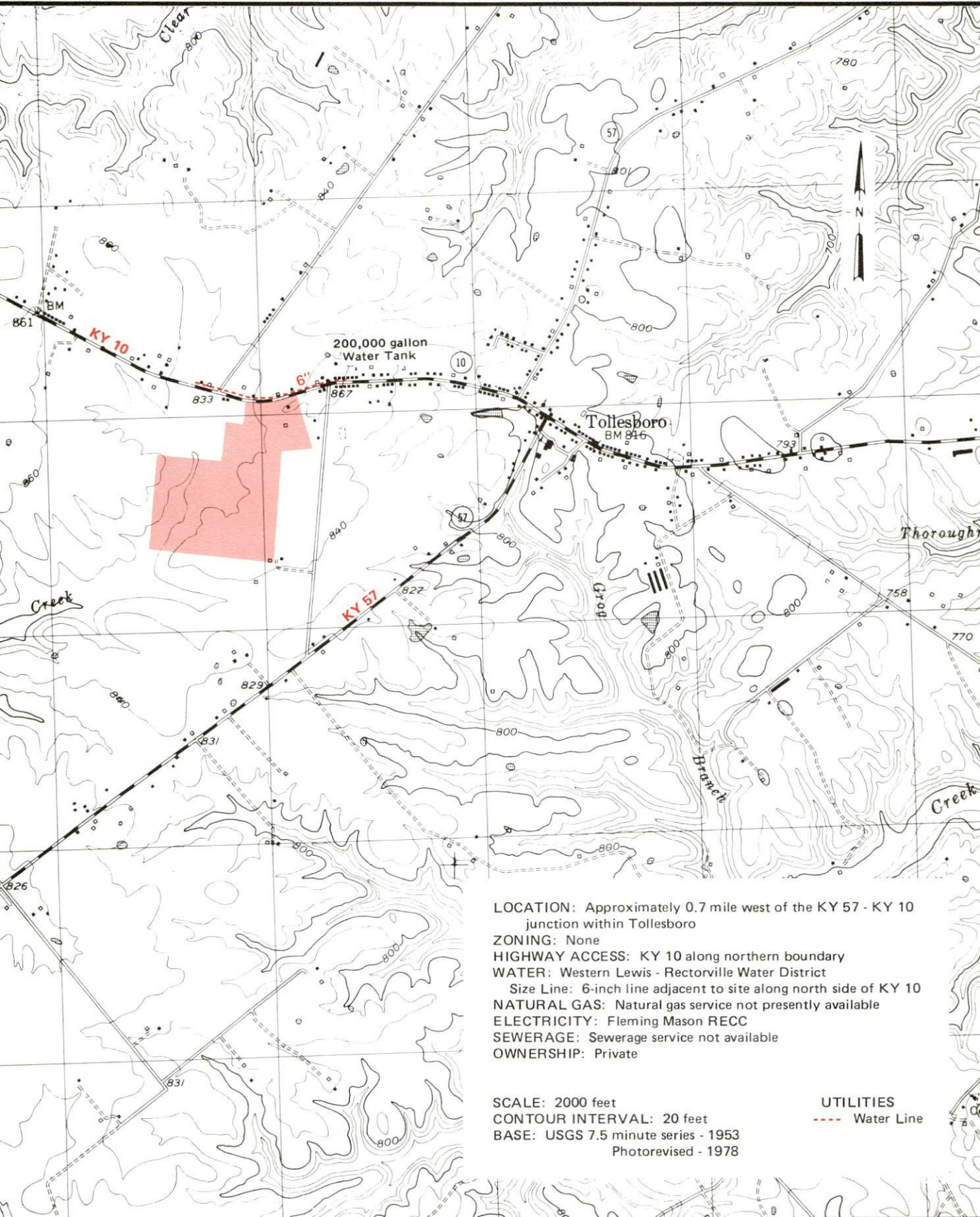


LOCATION: Approximately 2.5 miles northeast of city limits
ZONING: None
HIGHWAY ACCESS: KY 10 passes through site
RAILROAD: Chessie System passes through site
WATER: Vanceburg Utilities System
Size Line: 8-inch line passes through southern portion of site
NATURAL GAS: Vanceburg Utilities System
Size Line: 3-inch line approximately 2.4 miles west at Vanceburg city limits
ELECTRICITY: Vanceburg Utilities System
SEWERAGE: Package plant necessary
OWNERSHIP: Chessie System

SCALE: 1 inch = 2000 feet
CONTOUR INTERVAL: 20 feet
BASE: USGS 7.5 minute series - 1949
Photorevised - 1974

TOLLESBORO, KENTUCKY --- Site 182 --- 83 Acres

For more information contact the Department of Economic Development, Office of Business Development, Industrial Development Division, Capital Plaza Tower, Frankfort, Kentucky 40601 (502-564-7140).



LOCATION: Approximately 0.7 mile west of the KY 57 - KY 10 junction within Tollesboro

ZONING: None

HIGHWAY ACCESS: KY 10 along northern boundary

WATER: Western Lewis - Rectorville Water District

Size Line: 6-inch line adjacent to site along north side of KY 10

NATURAL GAS: Natural gas service not presently available

ELECTRICITY: Fleming Mason RECC

SEWERAGE: Sewerage service not available

OWNERSHIP: Private

SCALE: 2000 feet

CONTOUR INTERVAL: 20 feet

BASE: USGS 7.5 minute series - 1953

Photorevised - 1978

UTILITIES

--- Water Line

A COMPREHENSIVE REPORT ON
VANCEBURG AND TOLLESBORO, KENTUCKY

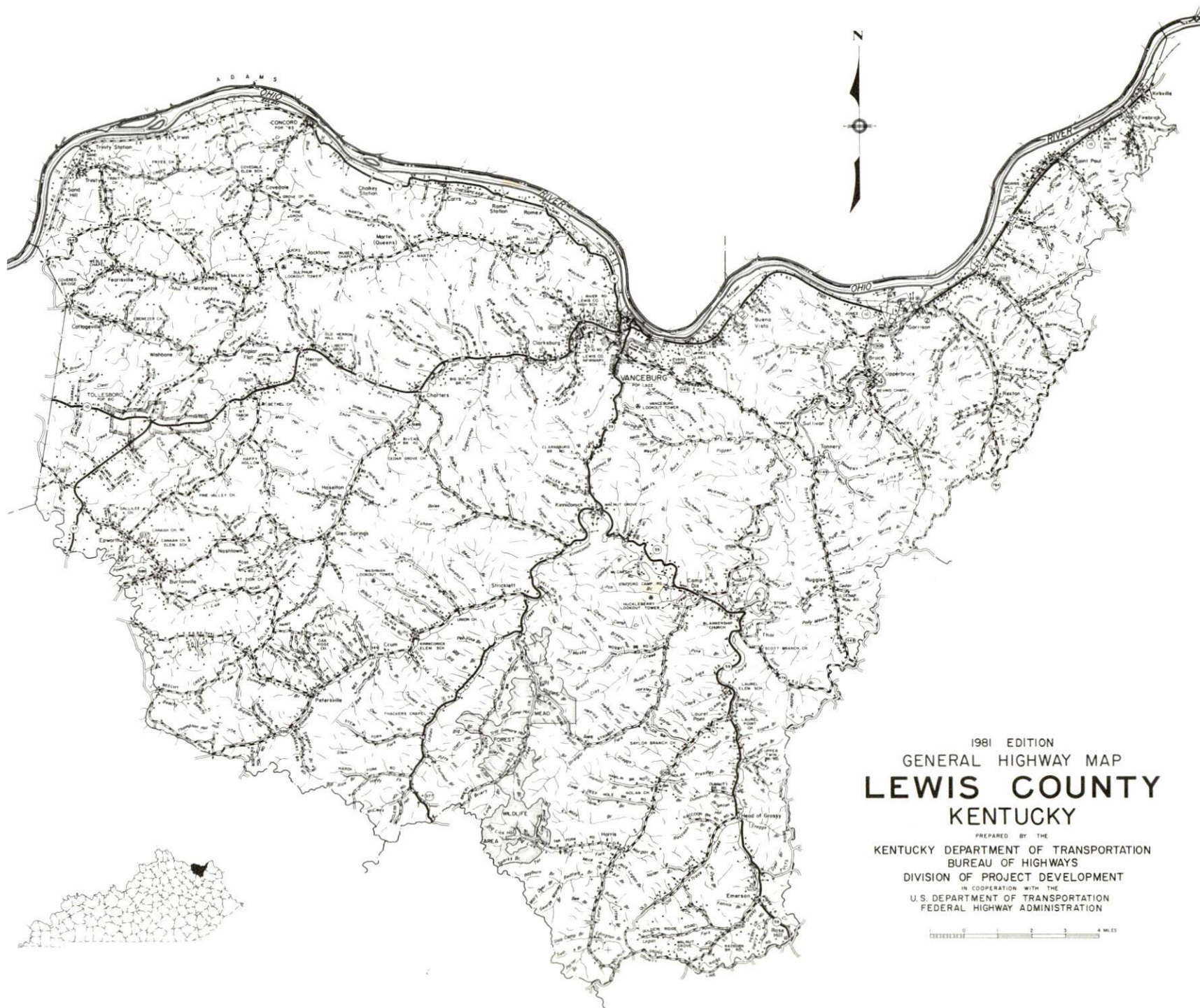
Prepared by
The Kentucky Department of Economic Development
Division of Research and Planning
in cooperation with
The Lewis County Chamber of Commerce

1982

TABLE OF CONTENTS

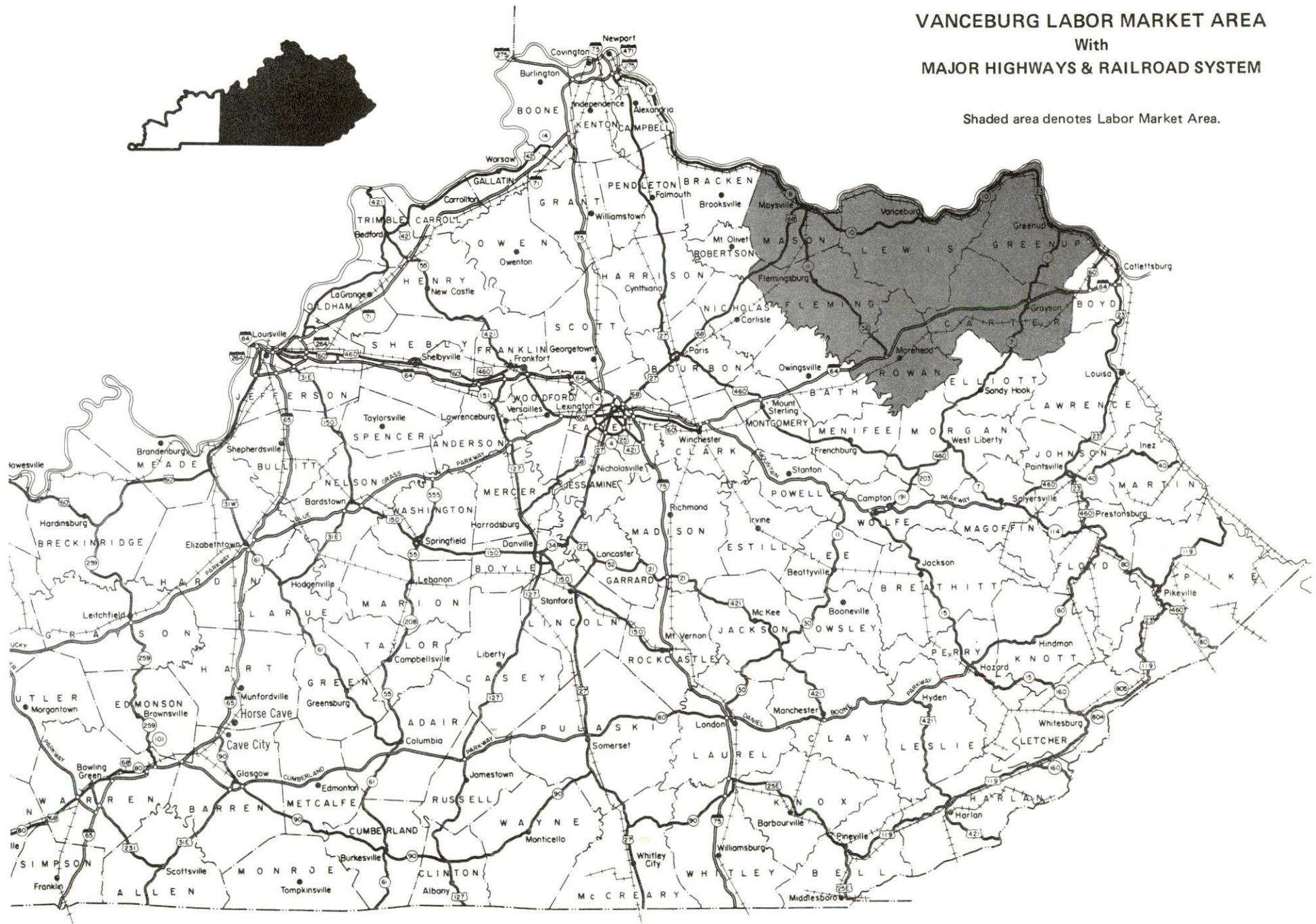
<u>Chapter</u>	<u>Page</u>
INDUSTRIAL SITES	i
VANCEBURG AND TOLLESBORO, KENTUCKY - A RESOURCE PROFILE .	1
THE LABOR MARKET AREA	3
Population	3
Labor Force Characteristics of Residents, 1981	3
Estimated Male Labor Supply	4
Estimated Female Labor Supply	5
Vanceburg and Tollesboro Manufacturing Firms, Their Products and Employment	6
Labor Organizations in Manufacturing Firms	6
Industrial Services	7
Average Weekly Wages by Industry, by Place of Work, 1981	8
Per Capita Personal Income	10
TRANSPORTATION	11
Rail	11
Highways	12
Truck Service	12
Air	13
Bus	14
Taxi	14
Rental Services	14
Water	14
POWER AND FUEL	15
Electricity	15
Natural Gas	16
Other Fuels	17
WATER AND SEWERAGE	18
Public Water Supply	18
Raw Water	21
Sewerage	22
CLIMATE	23

<u>Chapter</u>	<u>Page</u>
LOCAL GOVERNMENT	24
City	24
County	24
Assessed Value of Property, 1981	24
Property Taxes	25
Combined State and Local Rates Per \$100 Valuation, 1981	25
Planning and Zoning	26
Safety	26
Police	26
Fire	26
Refuse Collection and Disposal	26
EDUCATION	27
Public Schools	27
Area Colleges and Universities	28
Vocational Schools	29
HEALTH	31
Local Medical Personnel	31
Hospitals	31
Other Medical Facilities	32
Ambulance Service	32
Public Health	32
OTHER LOCAL FACILITIES	33
Communications	33
Library Services	34
Religious Institutions	34
Financial Institutions	34
Hotels and Motels	34
Clubs and Organizations	35
RECREATION	36



VANCEBURG LABOR MARKET AREA With MAJOR HIGHWAYS & RAILROAD SYSTEM

Shaded area denotes Labor Market Area.



VANCEBURG AND TOLLESBORO, KENTUCKY - A RESOURCE PROFILE

Vanceburg, serving as the county seat of Lewis County, is located in the north central portion of the county. Vanceburg is 161 miles east of Louisville, Kentucky; 89 miles northeast of Lexington, Kentucky; 264 miles north of Knoxville, Tennessee; 94 miles east of Cincinnati, Ohio; and 114 miles northwest of Huntington, West Virginia. In 1980, Vanceburg had a population of 1,939.

Tollesboro is located in the west central portion of Lewis County, 18 miles west of Vanceburg. In 1980, Tollesboro had a population of 808.

Lewis County, with a land area of 486 square miles, is located in the northeastern area of Kentucky. The Ohio River forms the northern boundary of the county, while the Licking River forms the southern boundary. Lewis County had a 1980 population of 14,545. Between 1970 and 1980, the population of Lewis County increased by 17.7 percent.

The Economic Framework

Total employment in Lewis County averaged 4,781 in 1981, with 4,211 employed in nonagricultural jobs. Manufacturing provided 855 jobs, wholesale and retail trade provided 200 jobs, service occupations provided 106 jobs and government provided 418 jobs. Manufacturing employment is greatest in the leather and leather products, rubber and plastics, and lumber and wood products.

Per capita income in the county in 1980 was \$4,696. Between 1976 and 1980 per capita income increased by 40.6 percent.

The Vanceburg/Tollesboro labor market area includes Lewis County and its five surrounding counties. Area employment in 1981 averaged 48,207 with 44,778 employed in nonagricultural jobs. Manufacturing provided 10,038 jobs, wholesale and retail trade provided 5,845 jobs, service occupations provided 3,288 jobs and government provided 5,754 jobs.

Resources for Growth

1. Labor - There is a current estimated labor supply of 7,694 men and 7,956 women available for industrial jobs in the labor market area. In addition, 5,364 young men and 5,123 young women will become 18 years of age before 1986 and potentially available for work.

2. Transportation - Vanceburg is served by the Chessie System, which provides a mainline route. There are eight Kentucky highway routes serving Lewis County and an entrance to Interstate 64 is located about 40 miles south of Vanceburg and Tollesboro. Regularly scheduled airline service is available at Huntington, West Virginia, 72 miles southeast of Vanceburg. Four trucking companies provide Lewis County with interstate and intrastate common carrier service. The Ohio River, which forms the northern boundary of Lewis County, offers economical bulk transportation capabilities.

3. Energy - Vanceburg is supplied electric power by the Vanceburg Utilities System, whose source of supply is the Kentucky Power Company. Tollesboro and Lewis County are supplied electric power by the Fleming-Mason RECC, whose source of power is the East Kentucky Power Cooperative.

Vanceburg is provided natural gas service by the Vanceburg Utilities System. The Western-Lewis Rectorville Gas and Water District provides natural gas service to Tollesboro. The Columbia Gas Transmission Company serves as the source of supply for these distributors. Liquefied petroleum gas and distillate fuel oil is available locally. Additional suppliers are located within a 30-mile radius of Vanceburg. Low sulphur content coal is available in Kentucky.

4. Education - A consolidated school system operates in Lewis County with an enrollment of almost 3,000. There are five universities, three community colleges, one technical school, and one junior college located within 90 miles of Vanceburg.

The nearest area vocational education center, located 23 miles from Vanceburg, offers eight courses. The nearest state vocational-technical school, 55 miles away, offers 17 different areas of study.

THE LABOR MARKET AREA

The Vanceburg/Tollesboro Labor Market Area includes Lewis County and the adjoining Kentucky counties of Carter, Fleming, Greenup, Mason and Rowan.

POPULATION			
<u>Area</u>	<u>1980</u>	<u>1970</u>	<u>Percent Nonwhite</u>
Vanceburg	1,939	1,773	.03
Tollesboro	808	N/A	0.0
Labor Market Area	127,874	111,046	N/A
Lewis County	14,545	12,355	0.3
Carter County	25,060	19,850	0.2
Fleming County	12,323	11,366	1.9
Greenup County	39,132	33,192	0.6
Mason County	17,765	17,273	7.8
Rowan County	19,049	17,010	2.1

Note: The 1980 counts of population by race are provisional.

Sources: U.S. Department of Commerce, Bureau of the Census, 1980 Census of Population and Housing, March 1981. Population Research Unit, Urban Studies Center, University of Louisville, Kentucky Demographics: The 1980 Census of Kentucky, Characteristics of Population, Households, Housing, January 1982.

LABOR FORCE CHARACTERISTICS OF RESIDENTS, 1981		
	<u>Lewis County</u>	<u>Labor Market Area</u>
Civilian Labor Force	5,556	54,199
Employment	4,781	48,207
Agricultural	570	3,429
Nonagricultural	4,211	44,778
Unemployment	775	5,992
Rate of Unemployment (%)	13.9	11.1

Source: Kentucky Cabinet for Human Resources, Kentucky Labor Force Estimates, Annual Averages, 1981.

ESTIMATED MALE LABOR SUPPLY
VANCEBURG AND TOLLESBORO LABOR MARKET AREA

Area	Current			Future	
	Total	Not in Labor Force	Unemployed	Under-employed	Reaching 18 years of age before 1986
Labor Market Area*	7,694	1,784	3,295	2,615	5,364
Lewis	1,036	412	350	274	710
Carter	2,116	840	940	336	948
Fleming	700	267	237	196	531
Greenup	1,775	265	977	533	1,737
Mason	631	0	307	324	788
Rowan	1,436	0	484	952	650

* The labor supply will be supplemented by the number of male workers who are available for industrial jobs in the adjoining Ohio counties of Adams and Scioto. Additional workers may be drawn from other nearby counties.

Note: Unemployed - Persons unemployed and actively seeking work;

Underemployed - persons employed but working only 14 to 26 weeks per year;

Not in Labor Force - represents the number of persons who would enter the labor force if suitable employment were available (based on the assumption that persons in Kentucky would like to participate in the labor force in the same proportion that they do nationally).

Sources: Kentucky Cabinet for Human Resources, Kentucky Labor Supply Estimates by County, 1980. Kentucky Department of Economic Development, Future Labor Supply before 1986.

ESTIMATED FEMALE LABOR SUPPLY
VANCEBURG AND TOLLESBORO LABOR MARKET AREA

Area	Current				Future
	Total	Not in Labor Force	Unemployed	Under-employed	Reaching 18 years of age before 1986
Labor Market Area*	7,956	4,214	1,469	2,273	5,123
Lewis	907	420	279	208	675
Carter	2,070	1,535	273	262	937
Fleming	682	315	190	177	528
Greenup	2,832	1,944	283	605	1,608
Mason	587	0	246	341	742
Rowan	878	0	198	680	633

* The labor supply will be supplemented by the number of female workers who are available for industrial jobs in the adjoining Ohio counties of Adams and Scioto. Additional workers may be drawn from other nearby counties.

Note: Unemployed - persons unemployed and actively seeking work;

Underemployed - persons employed but working only 14 to 26 weeks per year;

Not in Labor Force - represents the number of persons who would enter the labor force if suitable employment were available (based on the assumption that persons in Kentucky would like to participate in the labor force in the same proportion that they do nationally).

Sources: Kentucky Cabinet for Human Resources, Kentucky Labor Supply Estimates by County, 1980. Kentucky Department of Economic Development, Future Labor Supply before 1986.

VANCEBURG AND TOLLESBORO MANUFACTURING FIRMS,
THEIR PRODUCTS AND EMPLOYMENT

<u>Firm</u> (Establishment date)	<u>Product</u>	<u>Employment</u>		
		<u>Total</u>	<u>Male</u>	<u>Female</u>
<u>Vanceburg</u>				
Goodwin Lumber Company (1960)	Lumber, wood chips	13	12	1
Lewis County Herald Publishing Company (1924)	Newspaper	3	--	3
Moore and White Lumber Company, Inc. (1958)	Rough lumber, crossties, veneer logs	25	22	3
C. J. Thomas and Son, Inc. (1945)	Wood pallets	21	20	1
U.S. Shoe Corporation (1957)	Ladies' shoes	439	109	330
U.S. Shoe Corporation, Component Plant (1967)	Shoe ornaments, binding and lining, processing insoles	425	90	335
<u>Tollesboro</u>				
R. S. Salvage Company, Inc. (1964)	Pallets, lumber	5	4	1

*See Labor Organizations below.

Source: Kentucky Department of Economic Development, Division of Research and Planning.

LABOR ORGANIZATIONS IN MANUFACTURING FIRMS

There are no unions representing manufacturing workers in Lewis County at the present time.

INDUSTRIAL SERVICES

<u>Types of Services</u>	<u>Location</u>	<u>Mileage from Vanceburg</u>
Tool & Die, Machine & Pattern Shops	Ashland, Kentucky	55
Metal Service Centers	Huntington, West Virginia	74
Heat Treating	Georgetown, Kentucky Cincinnati, Ohio	86 94
Metal Finishers	Huntington, West Virginia	74
Electric Motor Repair	Huntington, West Virginia	74

Source: Kentucky Department of Economic Development, Kentucky Directory of Selected Industrial Services, 1981; Kentucky Department of Economic Development, Division of Research and Planning.

AVERAGE WEEKLY WAGES BY INDUSTRY,
BY PLACE OF WORK, 1981

	<u>Lewis County</u>	<u>Carter County</u>	<u>Fleming County</u>
All Industries	\$180.90	\$221.37	\$193.21
Mining & Quarrying	0	377.13	*
Contract Construction	138.22	334.91	256.09
Manufacturing	168.93	221.24	178.05
Transportation, Communications & Public Utilities	199.01	318.11	317.16
Wholesale & Retail Trade	140.05	172.07	165.06
Finance, Insurance & Real Estate	231.15	230.16	211.27
Services	126.47	180.71	133.58
State/Local Government	227.61	211.11	214.72
Other	0	*	62.21
	<u>Greenup County</u>	<u>Mason County</u>	<u>Rowan County</u>
All Industries	\$404.94	\$242.94	\$225.52
Mining & Quarrying	*	*	369.14
Contract Construction	315.89	379.08	301.17
Manufacturing	572.98	279.30	222.37
Transportation, Communications & Public Utilities	420.63	429.69	332.21
Wholesale & Retail Trade	176.74	169.81	153.72
Finance, Insurance & Real Estate	241.66	229.30	283.30
Services	200.71	190.59	229.13
State/Local Government	206.57	217.98	249.46
Other	90.17	232.12	*

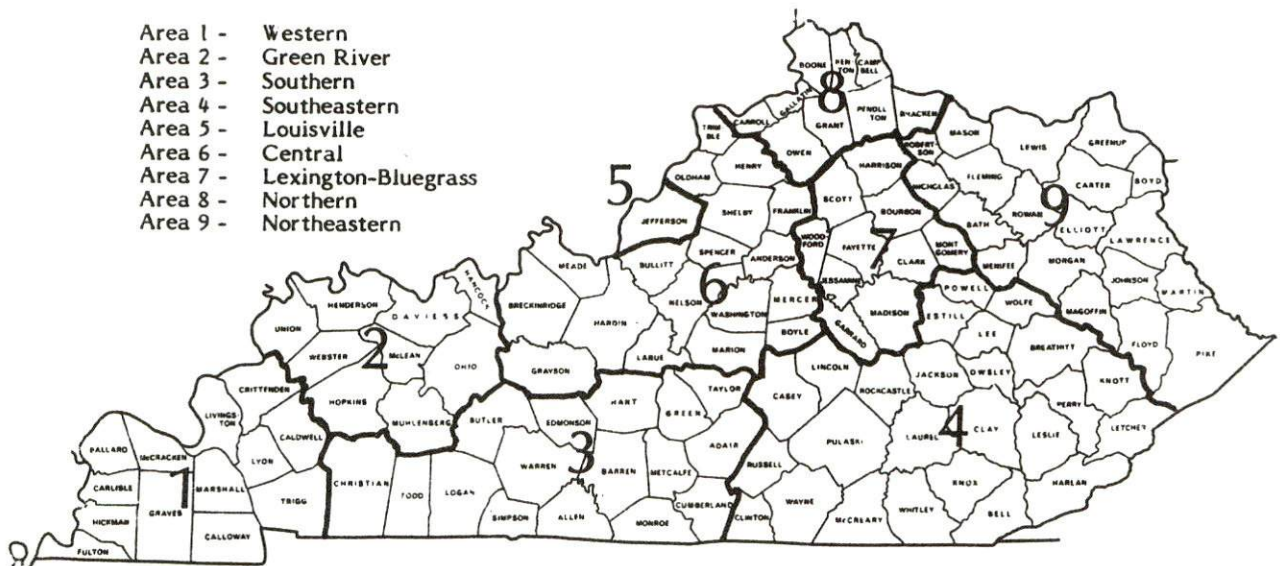
*Not disclosed.

Note: Excludes domestic workers, railway workers, certain nonprofit corporations, majority of federal government workers, and self-employed workers.

Source: Kentucky Cabinet for Human Resources, Average Weekly Wages of Workers Covered by Kentucky Unemployment Insurance Law, 1981.

Occupational wage rates for specific industries are usually not available to most government agencies, and wage data furnished to state employment agencies by individual industrial employers are protected from disclosure by federal law. The most reliable up-to-date wage information can be obtained by direct contact with local employers.

Associated Industries of Kentucky, a voluntary organization of Kentucky businesses, regularly collects occupational wage rates and fringe benefits data from participating member firms. Data are compiled for over 127 clearly defined office, production, and service occupations. Tabulations are published for nine geographical areas of Kentucky, as shown on the map below. It should be noted that the data may be weighted by the preponderance of firms in the larger cities and may be somewhat higher than the rates paid in the smaller communities. Data from these tabulations are available, upon request, from the Kentucky Department of Economic Development, Frankfort, Kentucky 40601.



Associated Industries of Kentucky Area Wage Surveys

PER CAPITA PERSONAL INCOME

<u>Area</u>	<u>1976</u>	<u>1980</u>	<u>Percent Change</u>
Lewis County	\$ 3,341	\$ 4,696	40.6
Labor Market Area Range	\$3,341 - 5,416	\$4,696 - 7,436	N/A
Kentucky	5,263	7,662	45.6
U.S.	6,367	9,511	49.4

Source: U.S. Bureau of Economic Analysis, Kentucky Economic Information System, June 1982.

TRANSPORTATION

Rail

Line serving Vanceburg - The Chessie System

Services - Local freight service provided six days a week by a turn around from Russell, Kentucky; four eastbound and four westbound through freights daily; switching facilities; team track space for 10 cars; piggyback facilities available at Huntington, West Virginia, 72 miles southeast of Vanceburg

Nearest lines serving Tollesboro - The Chessie System and TTI Railroad provide rail service at Maysville, 13 miles northwest of Tollesboro

The Chessie System

Services - Main line; one eastbound and one westbound freight stops daily, eastbound and westbound through freights, consisting of manifest freight and unit trains, will vary daily; switching facilities; team track space for 50 to 60 cars and siding space for 150 cars. The nearest Chessie System piggyback facilities are located at Cincinnati, Ohio, 77 miles northeast of Tollesboro

TTI (Trans-Kentucky Transportation Railroad)

Services - The TTI operates a connecting rail line between Maysville and Paris. Connections are with the Chessie System at Maysville and the Louisville and Nashville Railroad at Paris.

For details on routing, schedules, rates, and services, contact:

The Chessie System
Real Estate and Industrial
Development Department
808 Dixie Terminal Building
Cincinnati, Ohio 45202
(513) 369-5258

and/or

Manager, Marketing and Development
TTI Railroad
Kincaid Tower
Lexington, Kentucky 40507
(606) 253-9200

Highways

Vanceburg and Tollesboro are served by Kentucky Highway 10, a "AAA" rated, 80,000 pound gross load limit highway. Vanceburg is also served by Kentucky highways 344 and 59, both "AA" rated, 62,000 pound gross load limit highways. Tollesboro is also served by Kentucky Highway 57, a "AAA" rated highway. Access to I-64 is available approximately 40 miles south of Vanceburg and Tollesboro.

Truck Service

<u>Company</u>	<u>Home Office</u>
<u>Vanceburg and Tollesboro</u>	
Budig Western*	1100 Gest Street Cincinnati, Ohio 45203
General Highway Express, Inc.**	P. O. Box 727 Sidney, Ohio 45365
Overnite Transportation Company*	1000 Semmes Avenue Richmond, Virginia 23209
Reinhardt Transfer Company* (truck load only)	P. O. Box 7 Portsmouth, Ohio 45662
<u>Other Freight Services</u>	<u>Nearest Shipping Center or Home Office</u>
Purolator Courier Corporation***	Cincinnati, Ohio, 94 miles distant
United Parcel Service****	Maysville, Kentucky, 31 miles distant

* Interstate and intrastate service.

** Interstate service only.

*** For regular scheduled pickups or for occasional pickups, arrangements must be made with the Cincinnati, Ohio, office of Purolator Courier Corporation.

**** For regular scheduled pickups or for occasional pickups, arrangements must be made with the Louisville, Kentucky, office of United Parcel Service.

HIGHWAY MILES AND TRUCK TRANSIT TIME IN DAYS FROM
VANCEBURG, KENTUCKY, TO SELECTED MARKET CENTERS

City	Highway Miles	Delivery Time* TL	City	Highway Miles	Delivery Time* TL
Atlanta, Ga.	457	1-2	Los Angeles, Ca.	2,269	6-8
Baltimore, Md.	495	1	Louisville, Ky.	161	1
Birmingham, Ala.	495	1-2	Nashville, Tenn.	299	1
Chicago, Ill.	381	1-2	New Orleans, La.	816	2
Cincinnati, Ohio	94	1	New York, N. Y.	648	2-3
Cleveland, Ohio	245	1	Pittsburgh, Pa.	288	1
Detroit, Mich.	298	2-3	St. Louis, Mo.	424	1-2
Knoxville, Tenn.	264	1			

* Delivery time does not include day of pickup.

Note: Mileage computations are via the best interstate or primary highways, not necessarily the most direct route of travel.

Sources: Rand McNally Road Atlas, 1979. Official Kentucky Mileage Map, 1979.
Delivery time - Overnite Transportation Company, 1100 Commerce Road,
Richmond, Virginia 23209.

Air

Nearest Local Airport

Location: Fleming-Mason Airport
22 miles west of Tollesboro;
40 miles southwest of Vanceburg

Runways: 1 paved

Length: 3,900 feet

Traffic

Control: Segmented circle and wind cone

Lighting: MIRL, REIL, beacon - sundown to sunrise

Services: Fuel (100LL and Jet A); A & P repair; auto
and aircraft rental; hangar and tie-down;
flight instructions

(Contd.)

Nearest Scheduled Airline Service

Location:	Tri-State Airport (Walker-Long Field) 9 miles southwest of Huntington, West Virginia; 72 miles southeast of Vanceburg
Runways:	2 paved
Length:	6,509 feet and 3,007 feet
Traffic	
Control:	Tower
Lighting:	Beacon, runway
Services:	USAir, Piedmont, Aeromech, Comair; fuel - 100LL, jet; tie-downs, hangars; major A & P repairs, major Avionics repairs; APU, charter, flight instruction, oxygen, plane rental, survival equipment, U.S. Customs; taxi, limousine, car rental; restaurant
Air Freight Service:	Air freight terminal
<u>Bus</u> -	The Greyhound Bus Line provides service at Portsmouth, Ohio, 25 miles northeast of Vanceburg.
<u>Taxi</u> -	24-hour service available in Vanceburg.
<u>Rental Services</u> -	Auto, truck and trailer rental is available at Portsmouth, Ohio, 25 miles northeast of Vanceburg.

Water

The Ohio River, which forms the northern boundary of Lewis County, provides the area with water transportation capabilities. The Maysville-Mason County Port Authority is planning to develop a public port on the Ohio River at Maysville, 13 miles west of Tollesboro and 31 miles west of Vanceburg. The planned port will serve as a general cargo facility. Public port facilities are presently available in the Northern Kentucky-Cincinnati Area, 95 miles northwest of Vanceburg. The Northern Kentucky Port Authority has been designated as a Foreign Trade Zone and offers complete U.S. Customs services for exports and imports.

POWER AND FUEL

Electricity

Company serving Vanceburg and a small portion of Lewis County - Vanceburg Utilities System*

Source of power - Kentucky Power Company

Total generating capacity - 1,065,000 KW

For industrial rates contact:

Vanceburg Utilities System
P. O. Box 117
Vanceburg, Kentucky 41179
(606) 796-2641

and/or

Kentucky Power Company
1701 Central Avenue
P. O. Box 1428
Ashland, Kentucky 41101
(606) 329-2220

* A 70,000 kilowatt hydroelectric power plant, owned and operated by the city of Vanceburg, began generating power in the fall of 1982. The plant will begin serving Vanceburg in the summer of 1983. In addition, Vanceburg Utilities System will begin construction on two more 70,000 kilowatt plants during 1983.

Company serving Tollesboro and most of Lewis County - Fleming-Mason Rural
Electric Cooperative Corporation
Source of power - East Kentucky Power Cooperative
Total generating capacity - 1,304,000 KW
For industrial rates contact:

Industrial Development Division
East Kentucky Power Cooperative
P. O. Box 707
Winchester, Kentucky 40391
(606) 744-4812

and/or

Fleming-Mason RECC
P. O. Drawer 328
Flemingsburg, Kentucky 41041
(606) 845-2661

Natural Gas

Company serving Vanceburg - Vanceburg Utilities System
Source of supply - Columbia Gas System
Size of transmission mains - 4 and 6 inches (supplier);
4 inches (distributor)
Distribution mains - 1 to 6 inches
Distribution pressure - 12-15 psi
Btu content - 1,000 per cubic foot
Specific gravity - 0.60
For rates and supplies contact:

Vanceburg Utilities System
P. O. Box 117
Vanceburg, Kentucky 41179
(606) 796-2641

Company serving Tollesboro - Western Lewis-Rectorville Gas and Water District
Source of supply - Columbia Gas Transmission Corporation
Size of transmission mains - 12-inch (supplier); 3-inch (distributor)
Distribution mains - 2 and 3 inches
Distribution pressure - 30 psi
Btu content - 1,025 per cubic foot
Specific gravity - 0.62
For rates and supplies contact:

Western Lewis-Rectorville
Gas and Water District
P. O. Box 633
Maysville, Kentucky 41056
(606) 564-6086

Other Fuels

Propane

Stan Harvey Gas Company
Route 10
Tollesboro, Kentucky 41189

Additional suppliers of propane are located at Portsmouth, Ohio, 25 miles east of Vanceburg; Maysville, Kentucky, 31 miles west of Vanceburg; and Flemingsburg, Kentucky, 32 miles south of Vanceburg.

Fuel oils

Distillate fuel oil -

Ashland Oil Refining Company
(Bulk plant)
RFD #1
Vanceburg, Kentucky 41179

Additional suppliers of distillate fuel oil are located at Portsmouth, Ohio, 25 miles east of Vanceburg, Kentucky; Maysville, Kentucky, 31 miles west of Vanceburg; and Flemingsburg, Kentucky, 32 miles south of Vanceburg.

Residual fuel oil - Arrangements must be made with the refinery.

Low sulphur content coal - Available in Kentucky.

WATER AND SEWERAGE

Public Water Supply

Company serving Vanceburg - Vanceburg Utilities System
P. O. Box 117
Vanceburg, Kentucky 41179
(606) 796-2641

Source - Two wells

Treatment plant capacity - 720,000 gallons per day

Average daily consumption - 240,000 gallons

Peak daily consumption - 270,000 gallons

Type treatment - Chlorination and fluoridation

Storage capacity - 350,000 gallons

Size lines - 4 to 10 inches

Average pressure - 50 psi

Average temperature - 40 degrees F.

MONTHLY WATER RATES

First	1,500 gallons	\$4.00 (Minimum)
Next	3,500 gallons	2.50 per M gallons
Next	5,000 gallons	2.00 per M gallons
Next	10,000 gallons	1.50 per M gallons
Next	30,000 gallons	1.25 per M gallons
All over	50,000 gallons	1.00 per M gallons

Tap-on charge: Cost of labor and materials (\$200 average)

Company serving Tollesboro - Western Lewis-Rectorville Gas and
Water District
P. O. Box 633
Maysville, Kentucky 41056
(606) 564-6086

Source - Three wells

Treatment plant capacity - 216,000 gallons per day*

Average daily consumption - 158,000 gallons*

Peak daily consumption - 163,000 gallons*

Type treatment - Chlorination

Storage capacity - 200,000 gallons

Size lines - 8, 6, 4, and 2 inches

Average pressure - 45 psi

Average temperature - 45 degrees F.

MONTHLY WATER RATES

First	1,000 gallons	\$3.75 (Minimum)
Next	2,000 gallons	1.50 per M gallons
Next	2,000 gallons	1.00 per M gallons
Next	5,000 gallons	.85 per M gallons
Next	5,000 gallons	.75 per M gallons
All over	15,000 gallons	.65 per M gallons

Tap-on charge: 3/4-inch - \$225

* Natural Resources and Environmental Protection Cabinet.

Name of water district - Salt Lick Water Association, Inc.
Route #7
Vanceburg, Kentucky 41179
(606) 796-2552

Area served - East of Vanceburg along Kentucky Route 10 to Charters,
Kentucky

Date when water district began operating - 1969

Source of supply of treated water - Vanceburg Utilities System

Average amount of water used in a 24-hour period - 10,000 gallons

Peak amount of water used in a 24-hour period - 16,250 gallons

Average pressure - 50 psi

Average temperature - 40 degrees F.

Size lines - 3, 4 and 6 inches

Monthly rates -

First	1,500 gallons	\$5.90 (Minimum)
Next	3,500 gallons	1.25 per M gallons
Next	5,000 gallons	1.00 per M gallons
Next	10,000 gallons	.90 per M gallons
All over	20,000 gallons	.80 per M gallons

Tap-on charge: \$300

Name of water district - Black Oak Water Association, Inc.
Route #2
Vanceburg, Kentucky 41179
(606) 796-3224

Area served - Black Oak area (east of Vanceburg along Kentucky Route 10)

Date when water district began operating - 1971

Source of supply of treated water - Vanceburg Utilities System

Average amount of water used in a 24-hour period - 10,000 gallons

Peak amount of water used in a 24-hour period - 15,000 gallons

Average pressure - 30 psi

Average temperature - 40 degrees F.

Size lines - 3 and 4 inches

Monthly fees including sales tax -

First	2,000 gallons	\$ 7.35 (Minimum)
	5,000 gallons	15.23
	10,000 gallons	21.79
	15,000 gallons	27.04
	20,000 gallons	32.29
All over	20,000 gallons	.84 per M gallons

Tap-on charge: \$200 plus, (if cost of actual installation exceeds \$200, customer must pay full cost)

Raw Water

Surface water sources - Vanceburg - Ohio River; Tollesboro - Cabin Creek

Average discharge - Ohio River at Greenup Dam, Kentucky - 94,420 cfs (11-year record, USGS); Cabin Creek near Tollesboro - 35.3 cfs (7-year record, USGS)

Expected ground water yield - 500 to 1,000 gpm along the Ohio River; 5 to 50 gpm in isolated bands throughout the county; 5 gpm or less over the remainder of the county

Sewerage

Company serving Vanceburg - Vanceburg Utilities System*
P. O. Box 117
Vanceburg, Kentucky 41179
(606) 796-2641

Design capacity - 250,000 gallons per day

Average daily flow - 200,000 gallons

Treatment - Primary

Type treatment - Aeration, clarifier, digester

Treated effluent discharged into - Ohio River

Size of sanitary mains - 6, 8, 10 and 12 inches

Size of storm mains - 10, 12, 14, 16 and 24 inches

Rates - 125% of monthly water bill

Tap-on charge: \$90

Tollesboro - Septic tanks are being used for sewage disposal at the present time.
An application has been made for funds to conduct the study phase of a 201
Facilities Plan.

* A 201 facilities study is currently under way for the Vanceburg sewerage system.
Tentative plans include expanding the treatment capacity and extending
collector lines into areas which currently do not have sewer service.

CLIMATE

Lewis County

Temperature

Normal (30-year record)	54.00 degrees
Average annual 1981	52.50 degrees
Record highest, August 1962 (20-year record)	102.00 degrees
Record lowest, January 1977 (20-year record)	-25.00 degrees
Normal heating degree days (30-year record)	5,070
(Heating degree day totals are the sums of negative departures of average daily temperatures from 65 degrees F.)	

Precipitation

Normal (30-year record)	39.04 inches
Mean annual snowfall (34-year record)	24.90 inches
Total precipitation 1981	34.55 inches
Mean number days precipitation (.01 inch or more) (34-year record)	129
Mean number days thunderstorms (34-year record)	44

Prevailing Winds (16-year record)

South-southwest

Relative Humidity (19-year record)

1 a.m.	77 percent
7 a.m.	81 percent
1 p.m.	60 percent
7 p.m.	64 percent

Source: U.S. Department of Commerce, Environmental Science Services Administration, Climatological Data, 1981. Station of record: Cincinnati, Ohio Greater Cincinnati Airport.

LOCAL GOVERNMENT

City

Vanceburg

Structure - Mayor - 4-year term; 6 council members - 2-year terms

Budget 1982 -	General Fund	\$ 177,434.01
	Water Fund	152,000.00
	Sewer Fund	110,000.00
	City Electric System	1,178,535.92

Fees and licenses - Occupational license fee - \$25.50 per year; occupational license tax of 1% on wages and net profits; auto stickers - \$5.25

Tollesboro

Structure - Mayor - 4-year term; 4 council members - 2-year terms

Budget 1982 - General Fund \$18,000

Fees and licenses - None at present

County

Structure - County Judge/Executive - 4-year term; 3 magistrates - 4-year terms

Budget 1981-82 - General Fund \$275,500; Road Fund \$416,000

Assessed Value of Property, 1981*

<u>Classes of Property</u>	<u>Vanceburg</u>	<u>Tollesboro</u>	<u>Lewis County</u>
Real Estate	\$11,387,074	\$5,123,715	\$83,621,407
Tangibles	3,631,399	1,179,821	18,730,815

*Excludes Homestead Exemptions.

Property Taxes

All property in Kentucky is assessed at 100 percent of fair cash value.

Land and buildings are taxed by the state and may be taxed by local jurisdictions. The state rate is \$0.229 per \$100 of assessed valuation.

Manufacturing machinery, raw materials inventories, pollution control equipment, and goods in the process of manufacture are not subject to local taxation. The state rate is \$0.15 per \$100.

Other tangible personal property owned by manufacturers (automobiles, trucks, finished goods, office furniture, office equipment) is taxed by the state at \$0.45 per \$100 and may be taxed by local jurisdictions.

Property stored in public warehouses in a transit status is not subject to local taxation. The state rate is only \$0.015 per \$100.

Intangible personal property located in Kentucky (money in hand, shares of stock, notes, bonds, accounts receivable, and other credits) is taxed by the state at \$0.25 per \$100, and is not subject to local taxation.

Private leaseholds in industrial facilities owned by cities or counties and financed by industrial revenue bonds are subject to a state tax of \$0.015 per \$100 of value (essentially the lessee's equity, adjusted for appreciation or depreciation). Local taxation is not permitted.

Combined State and Local Rates Per \$100 Valuation, 1981* (100% assessment)

	<u>Inside City of Vanceburg</u>	<u>Inside City of Tollesboro</u>	<u>Site Inside Unincorporated Lewis County</u>
1. Land and buildings	\$0.818	\$0.980	\$0.680
2. Mfg. machinery, raw materials, goods in process, pollution control equipment	0.150	0.150	0.150
3. Finished goods, office equipment, vehicles, other tangibles	1.039	1.201	0.901
4. Intangibles (accounts receivable, notes, bonds, etc.)	0.250	0.250	0.250
5. Leaseholds in industrial revenue bond financed plants	0.015	0.015	0.015

*Kentucky Department of Economic Development.

Planning and Zoning

Presently there is no planning and zoning commission in Lewis County.

Mandatory state codes enforced - Kentucky Plumbing Code, National Electric Code, Kentucky Boiler Regulations and Standards, Kentucky Building Code (modeled after BOCA code)

Safety

<u>Police</u>	<u>Vanceburg</u>	<u>Tollesboro</u>	<u>Lewis County</u>
Total staff	3 full-time	1	6
	2 part-time		
Radio-patrol cars	2	1	5

Fire

Insurance Services

Office, Public Protection			
Classifications	7	9	--
Volunteers	17	35	--

Refuse Collection and Disposal

	<u>Vanceburg</u>	<u>Tollesboro</u>	<u>Lewis County</u>
Type service	Municipal	Private	Private
Fee charged:			
residential	\$3.50 monthly	\$4 monthly	\$4 monthly
business	\$5-\$25 monthly	Based on volume	Based on volume
industrial	\$150 monthly	Based on volume	Based on volume
Collection frequency:			
residential	Once weekly	Once weekly	Once weekly
business	Twice weekly	Once weekly	Based on volume
industrial	Daily	Based on volume	Based on volume
Trash pickup	Weekly	Weekly	Weekly
Disposal method	Landfill	Landfill	Landfill

EDUCATION

Public Schools

Lewis County

Total Enrollment (February 1982)	2,941
Elementary	1,996
High School	945
Student-Teacher Ratio	20-1
Elementary	21-1
High School	18-1
Percent High School Graduates to College (1981)	32.0
Expenditures Per Pupil (1980-81)	\$1,291.98
Bonded Indebtedness (June 30, 1981)	\$2,936,000

Area Colleges and Universities

<u>Name</u>	<u>Location (Miles distant)</u>	<u>Enrollment (Fall, 1981)</u>	<u>Highest Degree Conferred</u>
Shawnee State Community College	Portsmouth, Ohio (25)	2,130	Associate
Maysville Community College	Maysville, Kentucky (31)	547	Associate
Morehead State University	Morehead, Kentucky (39)	6,739	Masters, Specialist/ Doctorate*
Ohio University (Ironton campus)	Ironton, Ohio (49)	1,242	Academic and Professional
Ashland Community College	Ashland, Kentucky (55)	1,572	Associate
Marshall University	Huntington, West Virginia (74)	11,846	Academic and Professional
Georgetown College	Georgetown, Kentucky (88)	1,263	Masters
University of Kentucky	Lexington, Kentucky (89)	23,441	Doctorate, M.D., D.M.D., J.D.
Transylvania University	Lexington, Kentucky (89)	750	Baccalaureate/ Masters**
Lexington Technical Institute	Lexington, Kentucky (89)	2,302	Associate

* Joint doctoral degree programs are offered in cooperation with the University of Kentucky, Lexington.

** Courses in the masters degree program are taught on the Transylvania campus by faculty members of Xavier University of Cincinnati. The degree is issued by Xavier University.

Vocational Schools

Both the state vocational-technical schools and the area vocational education centers are operated by the Kentucky Department of Education. The state vocational-technical schools enroll persons full time who are at least 16 years of age and not in school. These students attend classes for six hours each day. The area vocational education centers are designed to accommodate high school students who are at least 15 years of age. These students attend vocational school for three hours each day. The state vocational-technical schools and the area education centers offer evening courses to enable working adults to upgrade current job skills.

Nearest State School

Location	Ashland State Vocational- Technical School
Miles Distant	Ashland
Curriculum	55 from Vanceburg Business and Office Clerical Secretarial-Stenographic Consumer and Home Economics Child Care Commercial Foods Health and Personal Services Occupations Cosmetology Nurse Assistant Practical Nursing Industrial Education Auto Body Repair Auto Mechanics Carpentry-Building Trades Drafting Industrial Electricity Industrial Electronics Machine Shop Radio and Television Repair Tool and Die Making Welding

Nearest Area Education Center

Location	Foster "Sid" Meade Area Vocational Education Center
Curriculum	Vanceburg Business and Office Clerical Model Office Secretarial Industrial Education Auto Body Repair Auto Mechanics Carpentry Welding

Arrangements can be made to provide training in the specific production skills required by an industrial plant. Instruction may be conducted either in the vocational school or in the industrial plant, depending upon the desired arrangement and the availability of special equipment.

HEALTH

Local Medical Personnel

Physicians - 3
Dentists - 2

Hospitals

<u>General Hospital</u>	<u>Location</u>	<u>Beds</u>
Scioto Memorial Hospital	Portsmouth, Ohio, 23 miles from Vanceburg	225
Mercy Hospital	Portsmouth, Ohio, 23 miles from Vanceburg	212
Hayswood Hospital	Maysville, Kentucky, 31 miles from Vanceburg	113 Acute; 16 Skilled nursing
Fleming County Hospital	Flemingsburg, Kentucky, 32 miles from Vanceburg	52 Acute; 28 Skilled nursing

Scioto Memorial Hospital

General hospital facilities - Anesthesia, blood bank, cardiac lab, chapel, cobalt therapy, dietary, EEG, EKG, ENG, emergency department, home health care, intensive/coronary care, intensive care nursery, laboratory, maternity, newborn nursery, outpatient clinics, outpatient services, patient education, pediatrics, pharmacy, physical therapy, radiology (X-ray) nuclear medicine, ultrasonography, CAT scanner and digital vascular imaging, recovery rooms, respiratory therapy, same-day surgery, social services, ambulatory care, speech and hearing services, and surgery

Medical staff - 88 physicians, 14 dentists, 105 registered nurses, 30 licensed practical nurses

Mercy Hospital

General hospital facilities - Pathology, radiology, fluoroscopy, xerography ultrasound, nuclear medicine, radiography, DVI, respiratory therapy, physical therapy, cardiac testing, EKG, EEG, pharmacy, dietetics, renal dialysis, peripheral vascular laboratory, emergency room, operating room

Medical staff - 107 physicians and dentists, 96 registered nurses, 67 licensed practical nurses, 75 nursing aides

Hayswood Hospital

General hospital facilities - Three operating rooms, recovery room, intensive care, three X-ray units, obstetrical unit, nursery, laboratory, pharmacy, physical therapy, respiratory therapy, nuclear medicine, cardiac care monitor, medical staff library

Medical staff - 19 physicians (eight family practitioners, three general practitioners, one anesthesiologist, one orthopedic surgeon, one ophthalmologist, one obstetrician/gynecologist, one internist, two general surgeons, one radiologist), 66 registered nurses, 30 licensed practical nurses, two physical therapists, one certified respiratory therapy technician

Fleming County Hospital

General hospital facilities - Operating room, laboratory, X-ray, obstetrical section, emergency room, physical therapy, respiratory therapy, pharmacy and extended care facility

Medical staff - Six active physicians, four visiting consultant physicians, one full-time surgeon, one nurse anesthetist, one physical therapist, one respiratory therapist and one pharmacist, 18 registered nurses and seven practical nurses

Other Medical Facilities

Vanceburg Health Care Center, Inc.

Ambulance Service

Name - Lewis County Ambulance Service

Staff - Six emergency medical technicians full-time, four part-time

Service - 24-hour county wide service; transferring service to area hospitals

Equipment - Two fully-equipped ambulances and two back-ups

Public Health

Facility - Lewis County Health Department

Staff - Administrator, three registered nurses, three clerks, environmentalist, one part-time doctor

OTHER LOCAL FACILITIES

Communications

	<u>Vanceburg</u>	<u>Tollesboro</u>
Telephone - Services -	General Telephone Company Standard	General Telephone Company Standard
Telegraph - Services -	Western Union Toll-free number 1-800-325-5100	Western Union Toll-free number 1-800-325-5100
Postal - Class - Mail received - Mail dispatched -	U.S. Post Office Second Once daily Once daily	U.S. Post Office Third Twice daily Twice daily
Newspapers - Weekly and circulation - Other papers received from -	Lewis County Herald 4,300 Maysville and Lexington, Kentucky; Portsmouth and Cincinnati, Ohio; Huntington, West Virginia	Vanceburg, Maysville, Lexington and Louisville, Kentucky; Portsmouth and Cincinnati, Ohio; Huntington, West Virginia
Radio - Stations received from -	WKKS-AM* Maysville and Lexington, Kentucky; Portsmouth and Cincinnati, Ohio; Huntington, West Virginia	Vanceburg, Maysville, Lexington and Louisville, Kentucky; Portsmouth and Cincinnati, Ohio; Huntington, West Virginia
Television - Cable service - Reception from -	Yes Lexington, Kentucky; Cincinnati, Ohio; Huntington and Charleston, West Virginia	No Cincinnati, Ohio; Lexington, Kentucky
Kentucky Educational Television -	Morehead transmitter, Channel 38	Morehead transmitter, Channel 38

*WKKS is planning the addition of a FM station.

Library Services

Public library - Lewis County Public Library

Size collection - 28,037 volumes

Circulation - 1979-80 - 58,009

Services - Records, films, sports equipment, story hour, newspapers, magazines, paintings, conference room, audiovisual equipment, microfilm reader-printer, radio programs, bookmobile service to Tollesboro and Lewis County, talking books for the blind, Interlibrary Loan, summer reading program, services to shut-ins, guidance in development of special programs for organizations and individuals, tours upon request

Religious Institutions

	<u>Vanceburg</u>	<u>Tollesboro</u>
Number of churches -	7	5
Denominations -	Baptist Catholic Christian Baptist Church of God Church of the First Born Methodist	Christian Kentucky Christian Methodist Methodist Pilgrim Holiness
Nearest Synagogues -	Portsmouth, Ohio, 24 miles from Vanceburg	Portsmouth, Ohio, 42 miles from Tollesboro
Congregations -	Bene Abraham (reform)	Bene Abraham (reform)

Financial Institutions

<u>Banks</u>	<u>Assets</u>	<u>Deposits</u>	<u>Statement Date</u>
Citizens Deposit Bank and Trust	\$64,050,571.35	\$56,730,847.15	12/31/81
First National Bank of Lewis County	12,717,000.00	11,187,000.00	12/31/81

Hotels and Motels

	<u>Vanceburg</u>
Total number -	2
Total rooms -	14

Clubs and Organizations

American Legion
Babe Ruth Baseball
Boy Scouts
Civic Club
Cub Scouts
Eastern Star
4-H
Future Farmers of America
Future Homemakers of America
Garden Club
Girl Scouts
Homemakers
Jaycees
Jaycettes
Lewis County Chamber of Commerce
Lewis County Woman's Club
Lions Club
Little League
Masons
Ministerial Association
Senior Citizens Center
Sportsman's Club
Vanceburg Hot Rod Association
Vanceburg-Lewis County Improvement Association
Vanceburg-Merchants Association

RECREATION

Local

Public recreational facilities in Vanceburg are located at a public park and the Lewis County High School. The public park, located on a stream off the Ohio River, contains two lighted tennis courts, a basketball court, a shelterhouse, and a boat dock. Plans have been made to develop this park by resurfacing the tennis courts, and adding a volleyball court, fencing, picnic tables and grills, a playground, and a concession booth. Facilities at the high school include a football field and two baseball diamonds. Little League and Babe Ruth activities are available at these diamonds during the summer.

Recreational facilities in Tollesboro are located at the Lions Club Park, which contains a baseball diamond, tennis court, and playground. The city has purchased three acres of land from the Lions Club for development of a ball field and recreation area.

An indoor movie theater in Vanceburg provides private recreational facilities in Lewis County. The Ohio River borders Lewis County on the north and provides ideal boating, fishing, and other water sports opportunities.

Area (Within 65 miles)

Portsmouth, Ohio, 23 miles east of Vanceburg, provides the area with numerous attractions including: concerts, lecture series, theatre, art shows, a museum, and Shawnee State Park.

Carter Caves State Resort Park, 37 miles southeast of Vanceburg, provides a restful atmosphere with its mountain wildflowers, a rippling stream, the underground wonders of three caves, a lodge, a restaurant, and a gift shop. Recreational facilities available include something for the whole family with playgrounds, a swimming pool, tennis courts, shuffleboard, a 9-hole golf course, boating, fishing, horseback riding, picnicking, and cave tours.

Grayson Lake State Park is located 40 miles southeast of Vanceburg near Grayson. Facilities available include 71 campsites, a beach, and a picnic area. Good fishing and organized recreational programs can be found during the summer. The park is located in the 7,350-acre Grayson Lake Wildlife Area. Hunting information is available from the Kentucky Department of Fish and Wildlife Resources. The Rosedale Recreation Area, located near a dam on Grayson Lake, includes Kitchen House, a log house circa 1838 which was the scene of a Civil War skirmish. The nearby Camp Webb Conservation Center has a wildlife museum.

Cave Run Lake, constructed by the U.S. Army Corps of Engineers, is located 45 miles south of Vanceburg within the 640,000-acre Daniel Boone National Forest. The lake area offers everything for the camper, the boatsman, the hunter, the fisherman, and "the lover of leisure."

Greenbo Lake State Resort Park, which is located 49 miles east of Vanceburg near Ashland, has a magnificent fieldstone lodge and every article in each room of the lodge has been made in Kentucky. The lodge offers 36 lodge rooms, a dining room, a gift shop, a meeting room, a lodge pool, and a recreation room. Other facilities and activities at the park include a well-equipped campground, a marina, miniature golf, tennis courts, playgrounds, shuffleboard, planned recreation, fishing, hiking, horseback riding, and picnicking.

Blue Licks Battlefield State Park is located near Mt. Olivet, 56 miles west of Vanceburg. The 100-acre park is on the site of what is known as "The Last Battle of the Revolution" and the last major confrontation between the Indians and the pioneers. A museum features Indian and pioneer artifacts, an audiovisual program, and prehistoric bones from animals trapped at Blue Licks. Facilities include ten primitive campsites, a gift shop, picnic shelters and grills, a playground, a snack bar, and an Olympic-size swimming pool. Fishing is available at the Licking River which runs through the park.

Kincaid Lake State Park, 61 miles west of Vancesburg near Falmouth, offers many opportunities for the outdoors lover. The park offers a 250-acre lake, a sand beach, an 80-site campground, a gift shop/grocery store, a bathhouse, swimming, boating, hiking, picnicking, an amphitheatre, badminton, shuffleboard, miniature golf, tennis, and organized recreational programs in the summer months.