

1989

Industrial Resources: Mason County - Maysville

Kentucky Library Research Collections
Western Kentucky University, spcol@wku.edu

Follow this and additional works at: https://digitalcommons.wku.edu/mason_cty



Part of the [Business Administration, Management, and Operations Commons](#), [Growth and Development Commons](#), and the [Infrastructure Commons](#)

Recommended Citation

Kentucky Library Research Collections, "Industrial Resources: Mason County - Maysville" (1989). *Mason County*. Paper 5.
https://digitalcommons.wku.edu/mason_cty/5

This Report is brought to you for free and open access by TopSCHOLAR®. It has been accepted for inclusion in Mason County by an authorized administrator of TopSCHOLAR®. For more information, please contact topscholar@wku.edu.

R
H Mason County

RESOURCES FOR ECONOMIC DEVELOPMENT

Maysville



KENTUCKY
Open for Business

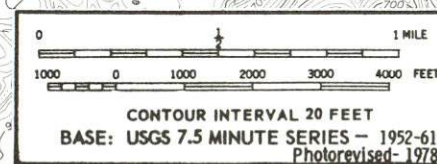
MAYSVILLE, KENTUCKY

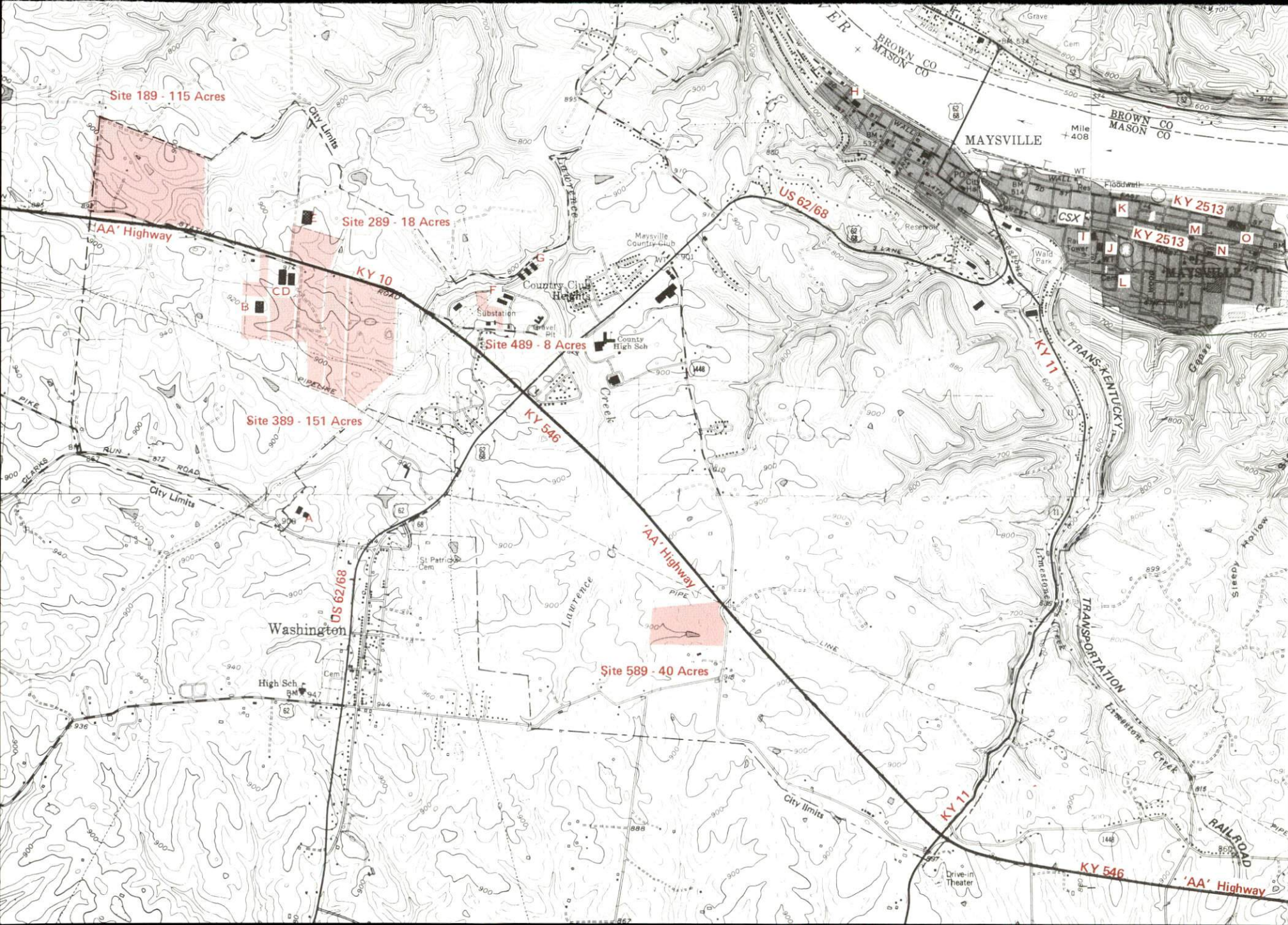
Index to Industrial Sites - 1989

For more information contact the Cabinet for Economic Development, Department of Existing Business and Industry, Division of Research and Planning, Capital Plaza Tower, Frankfort, Kentucky 40601 (502-564-7140)

Existing Industries

- | | |
|----------|--|
| A | Jockey International Inc. |
| B | Technotrim |
| C | Crystal Tissue |
| D | TRW |
| E | TRW (Parts Pkg) |
| F | Available Industrial Buildings
(Two Buildings - 22,000 sq. ft. each) |
| G | Available Industrial Buildings
(Three Buildings - 22,000sq. ft. each) |
| H | January & Wood Co. |
| I | Standard Tobacco Co. |
| J | Parker Tobacco Co. Inc. |
| K | Southwestern Tobacco Co. |
| L | Wald Mfg. Co. Inc. |
| M | Browning Mfg. Division
Emerson Electric Co. |
| N | Carnation Co. |
| O | Carnation Co.
Tin Can Division |





RESOURCES FOR ECONOMIC DEVELOPMENT

MAYSVILLE, KENTUCKY

Prepared by
The Kentucky Cabinet for Economic Development
Division of Research and Planning
in cooperation with
The Maysville-Mason County Chamber of Commerce

1989

TABLE OF CONTENTS

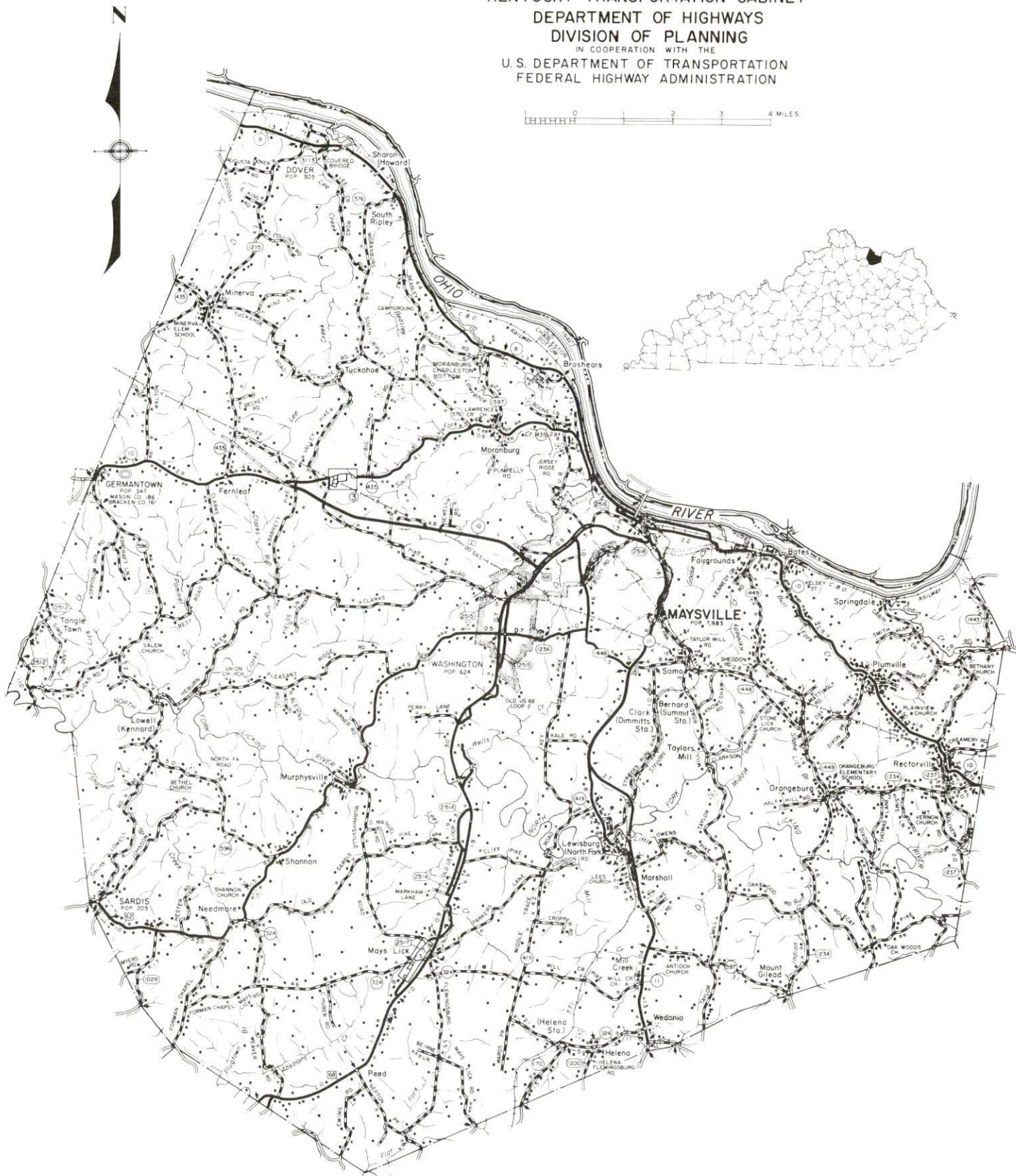
<u>Chapter</u>	<u>Page</u>
INDUSTRIAL SITES	i
MAYSVILLE, KENTUCKY - A RESOURCE PROFILE	1
THE LABOR MARKET STATISTICS	2
Labor Market Area Map	2
Population	3
Population Projections	3
Unemployment Rates, 1980-1988 - Line Chart	4
Labor Force Characteristics of Residents, 1988	5
Selected Components of Nonagricultural Employment, by Place of Work, 1987	5
Estimated Male Labor Supply	6
Estimated Female Labor Supply	6
Average Placement Wages	7
Per Capita Personal Income	7
Average Weekly Wages of Workers Covered by Unemployment Insurance F.Y. 1986-87 - Bar Chart	8
Average Weekly Wages by Industry, by Place of Work, 1987	9
EXISTING INDUSTRY	10
Major Maysville Manufacturing Firms, Their Products and Employment	10
Labor Organizations in Manufacturing Firms	11
Recent Industrial Developments	11
Selected Industrial Services	12
TRANSPORTATION	13
Rail	13
Highways	14
Truck Service	14
Air	15
Air Express Service	16
Water	17
POWER AND FUEL	18
Electricity	18
Natural Gas	18
WATER AND SEWERAGE	19
Public Water Supply	19
Raw Water	20
Sewerage	20

<u>Chapter</u>	<u>Page</u>
CLIMATE	21
LOCAL GOVERNMENT	22
Structure	22
Planning and Zoning	22
Local Fees and Licenses	22
State and Local Property Taxes	23
Combined State and Local Rates Per \$100 Valuation, 1988	23
Safety	24
Police	24
Fire	24
Rescue Service	24
Refuse Collection and Disposal	24
EDUCATION	25
Public Schools	25
Nonpublic Schools	25
Area Colleges and Universities	26
Vocational Training	28
HEALTH	30
Local Medical Personnel	30
Hospitals	30
Other Medical Facilities	30
Ambulance Service	30
OTHER LOCAL FACILITIES	31
Communications	31
Library Services	31
Religious Institutions	32
Financial Institutions	32
Hotels and Motels	32
RECREATION	33
COMMUNITY IMPROVEMENTS	36

GENERAL HIGHWAY MAP MASON COUNTY KENTUCKY

PREPARED BY THE
KENTUCKY TRANSPORTATION CABINET
DEPARTMENT OF HIGHWAYS
DIVISION OF PLANNING
IN COOPERATION WITH THE
U.S. DEPARTMENT OF TRANSPORTATION
FEDERAL HIGHWAY ADMINISTRATION

1 0 1 2 3 4 MILES



MAYSVILLE, KENTUCKY - A RESOURCE PROFILE

Maysville, the county seat of Mason County, is situated on the south bank of the Ohio River in the northeastern portion of Kentucky. Maysville is 64 miles southeast of Cincinnati, Ohio; 140 miles northeast of Louisville, Kentucky; and 154 miles west of Charleston, West Virginia. The city had a 1986 estimated population of 7,410.

Mason County, covering a land area of 241 square miles, is in the Outer Blue Grass Region. The terrain of the county is rolling to hilly. Mason County had a 1987 estimated population of 17,300.

The Economic Framework - The total number of Mason County residents employed in 1988 averaged 6,800. In 1987, manufacturing firms in the county reported 2,270 employees; wholesale and retail trade provided 1,845 jobs; 890 people were employed in service occupations; state and local government accounted for 720 employees; and contract construction firms provided 110 jobs.

Labor Supply - There is a current estimated labor supply of 3,830 men and 4,790 women available for industrial jobs in the labor market area. In addition, from 1989 through 1993, 2,360 young men and 2,150 young women in the area will become 18 years of age and potentially available for industrial jobs.

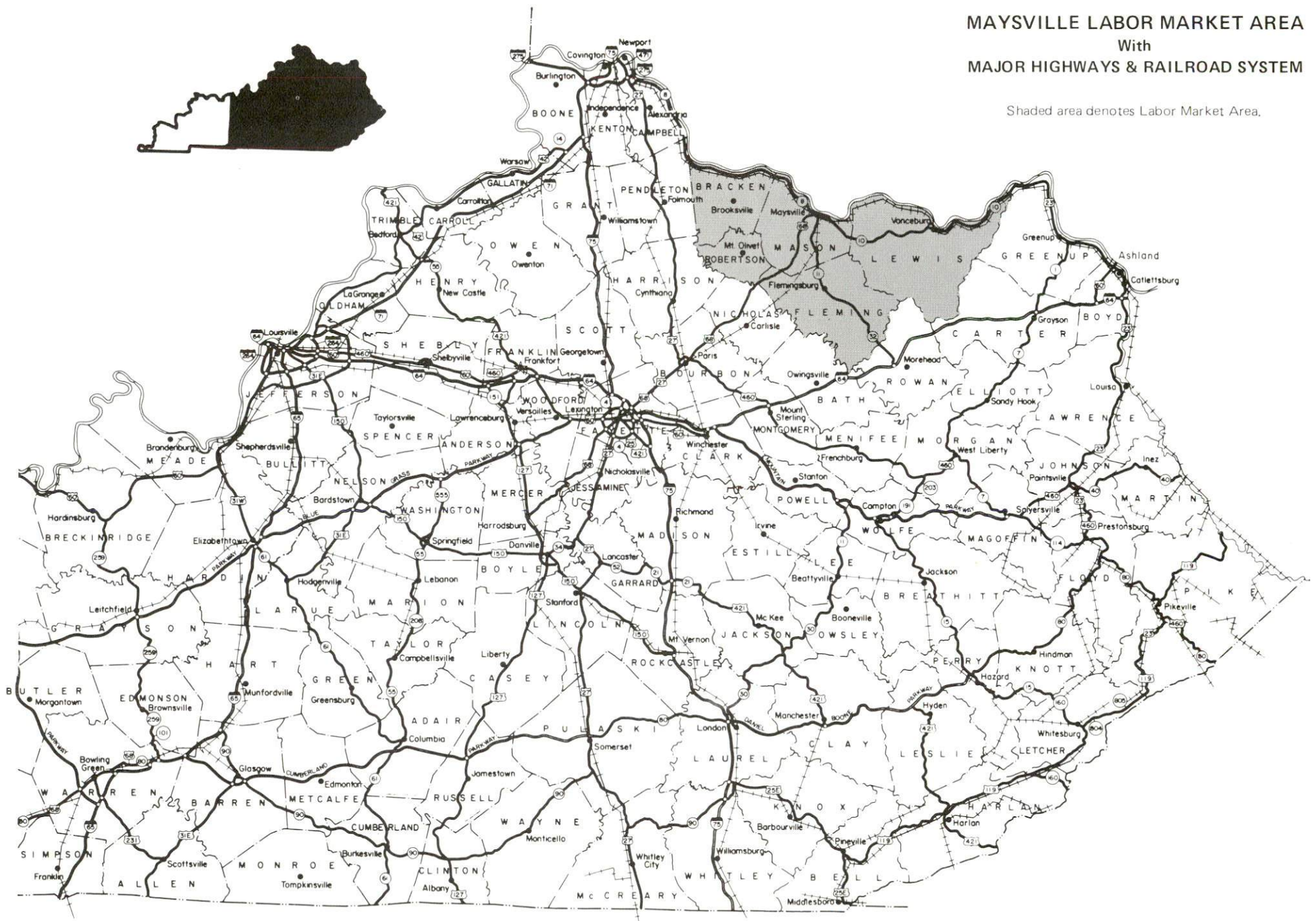
Transportation - CSX Transportation, the Trans-Kentucky Transportation Railroad (T.T.I.), and Amtrack provide rail service to Maysville. Highways serving Maysville include U.S. Highway 62/68 and Kentucky Routes 8, 10 and 11, all "AAA"-rated trucking highways. A new east-west highway, which will serve the area, is presently being constructed. Seventeen trucking companies provide interstate and/or intrastate service to Maysville. The Fleming-Mason Airport, a local airport located 6 miles south of the city, maintains a 5,000-foot paved runway. Scheduled commercial airline service is available at the Bluegrass Airport, 71 miles southeast, near Lexington, and at the Greater Cincinnati International Airport in Boone County, Kentucky, 72 miles northwest of Maysville. Maysville is located on the Ohio River, where a nine-foot navigation channel is maintained. Private port facilities are located in Maysville.

Power and Fuel - Electric power is provided to Maysville and portions of Mason County by the Kentucky Utilities Company. The remainder of Mason County is served by the Fleming-Mason Rural Electric Cooperative Corporation. Natural gas service is provided by Columbia Gas of Kentucky, Inc.

Education - The Maysville Independent School System and the Mason County Public School System provide primary and secondary education to Maysville and Mason County. The Maysville Independent School System is accredited by the Southern Association of Colleges and Schools. One nonpublic school is located in Maysville. Sixteen colleges and universities are located within 70 miles of Maysville. The Maysville Community College, a unit of the University of Kentucky, had a Fall 1988 enrollment of 873. Vocational training is available locally at the Maysville Area Vocational Education Center and at the Rowan State Vocational-Technical School in Morehead, 44 miles southeast of Maysville.

MAYSVILLE LABOR MARKET AREA With MAJOR HIGHWAYS & RAILROAD SYSTEM

Shaded area denotes Labor Market Area.



LABOR MARKET STATISTICS

The Maysville Labor Market Area includes Mason County and the adjoining Kentucky counties of Bracken, Fleming, Lewis and Robertson. The Labor Market Area also encompasses the Ohio counties of Adams and Brown.

POPULATION

<u>Area</u>	<u>1987*</u>	<u>1980</u>	<u>1970</u>	<u>Percent Nonwhite</u>
				<u>1980</u>
Maysville, KY	7,410	7,983	7,411	12.7
Labor Market Area	113,500	113,364	95,976	-
Mason County, KY	17,300	17,760	17,273	7.8
Bracken County, KY	7,600	7,738	7,227	0.8
Fleming County, KY	12,200	12,323	11,366	1.9
Lewis County, KY	13,900	14,545	12,355	0.3
Robertson County, KY	2,200	2,270	2,163	0.4
Adams County, OH	25,300	24,328	18,957	0.4
Brown County, OH	35,000	34,400	26,635	1.6

* Population estimates. City estimates are for 1986.

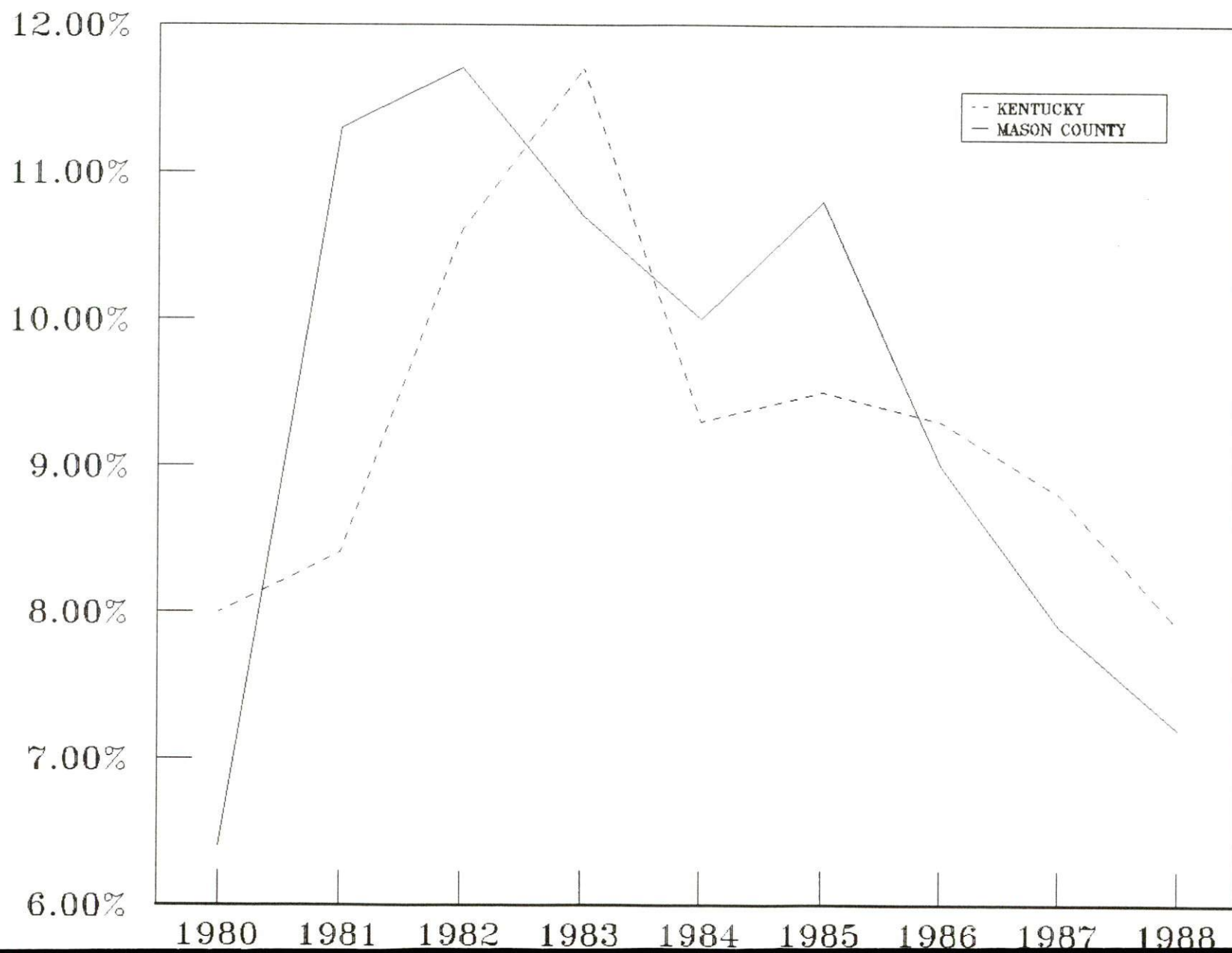
Sources: U.S. Department of Commerce, Bureau of the Census, October 1988; University of Louisville, Urban Studies Center, Population Unit; Ohio data - U.S. Department of Commerce, Bureau of the Census, Current Population Reports, Local Population Estimates, County Population Estimates: July 1, 1987 and 1986, Series P-26, No. 87-A.

POPULATION PROJECTIONS

<u>Area</u>	<u>1990</u>	<u>1995</u>	<u>2000</u>	<u>2010</u>
Labor Market Area	114,880	117,756	120,066	122,610
Mason County, KY	16,943	16,749	16,599	16,122
Bracken County, KY	7,721	7,940	8,109	8,320
Fleming County, KY	12,904	13,458	13,882	14,471
Lewis County, KY	14,594	14,980	15,338	15,790
Robertson County, KY	2,179	2,164	2,128	2,040
Adams County, OH	25,078	25,257	25,255	24,619
Brown County, OH	35,461	37,208	38,755	41,248

Source: University of Louisville, Urban Studies Center, State Data Center; Ohio Department of Development, Data Users Center.

UNEMPLOYMENT RATES



LABOR FORCE CHARACTERISTICS OF RESIDENTS, 1988

	<u>Mason County</u>	<u>Labor Market Area*</u>
Civilian Labor Force	7,325	23,230
Employment	6,798	21,062
Unemployment	527	2,168
Rate of Unemployment (%)	7.2	9.3

* Includes the five Kentucky counties only.

Source: Kentucky Cabinet for Human Resources, Kentucky Labor Force Estimates, Annual Averages, 1988.

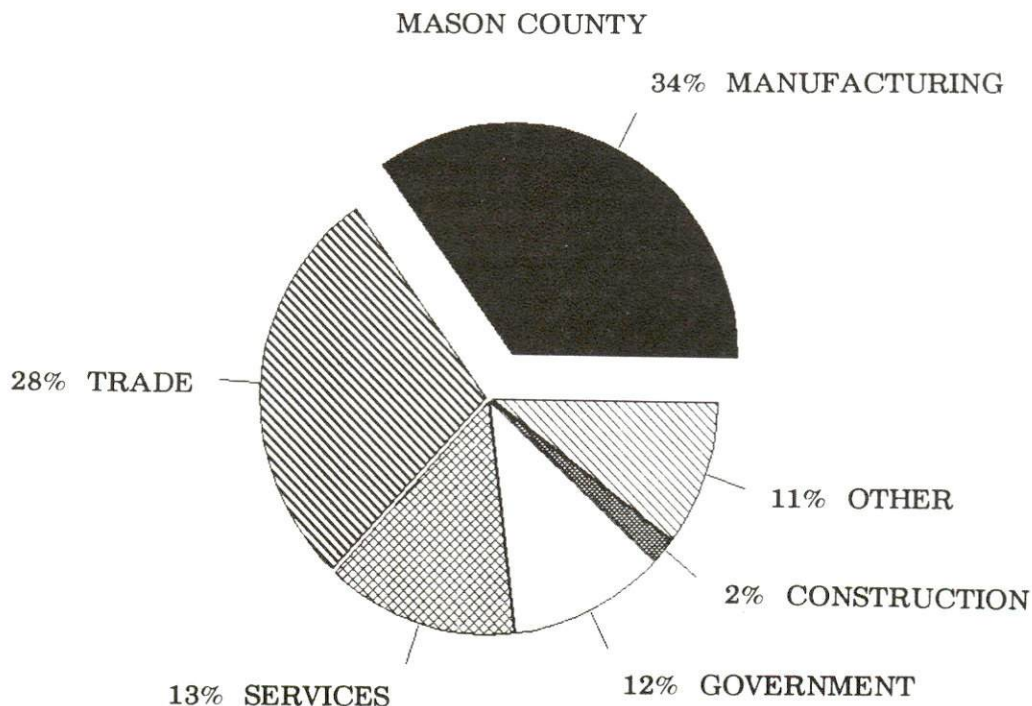
SELECTED COMPONENTS OF NONAGRICULTURAL EMPLOYMENT BY PLACE OF WORK, 1987

	<u>Mason County</u>	<u>Labor Market Area*</u>
All Industries (total)	6,499	12,409
Manufacturing	2,274	4,103
Wholesale & Retail Trade	1,845	3,056
Services	889	1,381
State/Local Government	724	2,306
Contract Construction	109	225

* Includes the five Kentucky counties only.

Note: Excludes domestic workers, railway workers, certain nonprofit corporations, majority of federal government workers, and self-employed workers.

Source: Kentucky Cabinet for Human Resources, Average Monthly Workers Covered by Kentucky Unemployment Insurance Law, 1987.



ESTIMATED MALE LABOR SUPPLY
MAYSVILLE LABOR MARKET AREA

Area	Current			Not in Labor Force	Future Becoming 18 years of age 1989 thru 1993
	Total Male	Unemployed	Under- employed		
Labor Market					
Area*	3,834	1,341	1,137	1,316	2,356
Mason	1,144	252	293	559	688
Bracken	400	238	162	0	300
Fleming	639	293	254	92	544
Lewis	1,476	463	371	642	738
Robertson	174	95	57	23	86

ESTIMATED FEMALE LABOR SUPPLY
MAYSVILLE LABOR MARKET AREA

Area	Current			Not in Labor Force	Future Becoming 18 years of age 1989 thru 1993
	Total Female	Unemployed	Under- employed		
Labor Market					
Area*	4,794	936	1,307	2,551	2,147
Mason	1,450	305	405	740	658
Bracken	728	125	144	459	323
Fleming	1,021	214	333	474	454
Lewis	1,373	263	370	740	650
Robertson	222	29	55	138	62

* Additional workers may be drawn from other nearby counties.

Note: Unemployed - persons unemployed and actively seeking work; Underemployed - persons employed but working only 14 to 26 weeks per year; Not in Labor Force - represents the number of persons who would enter the labor force if suitable employment were available (based on the assumption that persons in Kentucky would like to participate in the labor force in the same proportion that they do nationally).

Sources: Kentucky Cabinet for Human Resources, Kentucky Labor Supply Estimates by County, 1987. Kentucky Cabinet for Economic Development, Future Labor Supply Becoming 18 Years of Age, 1989 thru 1993.

AVERAGE PLACEMENT WAGES

Mason County is served by the Maysville local office of the Kentucky Department for Employment Services. The focus of the following data is on job placements made by the Maysville local office and may therefore be used as an indicator of the wages which employers in the area pay new employees. During the twelve months which ended on June 30, 1988, the local employment office filled 1,849 job openings in various occupational categories. The average hourly wage for selected occupational categories were:

<u>OCCUPATIONAL CATEGORY</u>	<u>NUMBER OF PLACEMENTS</u>	<u>AVERAGE WAGE(\$)</u>
All Occupations	1,849	3.89
Clerical	488	3.64
Sales	41	3.76
Services (excluding domestic)	176	3.41
Agricultural, Fishery, Forestry, etc.	28	4.19
Processing	15	4.06
Machine Trades	123	4.34
Bench Work	705	3.43
Structural	103	8.36
Motor Freight/ Transportation	21	6.45
Packaging and Materials Handling	125	3.53
Other	2	10.50

The Maysville local office also serves Bracken, Fleming, Lewis, and Robertson Counties. The above occupational categories are taken from the Dictionary of Occupational Titles published by the U.S. Department of Labor.

Source: Kentucky Cabinet for Human Resources, Department for Employment Services.

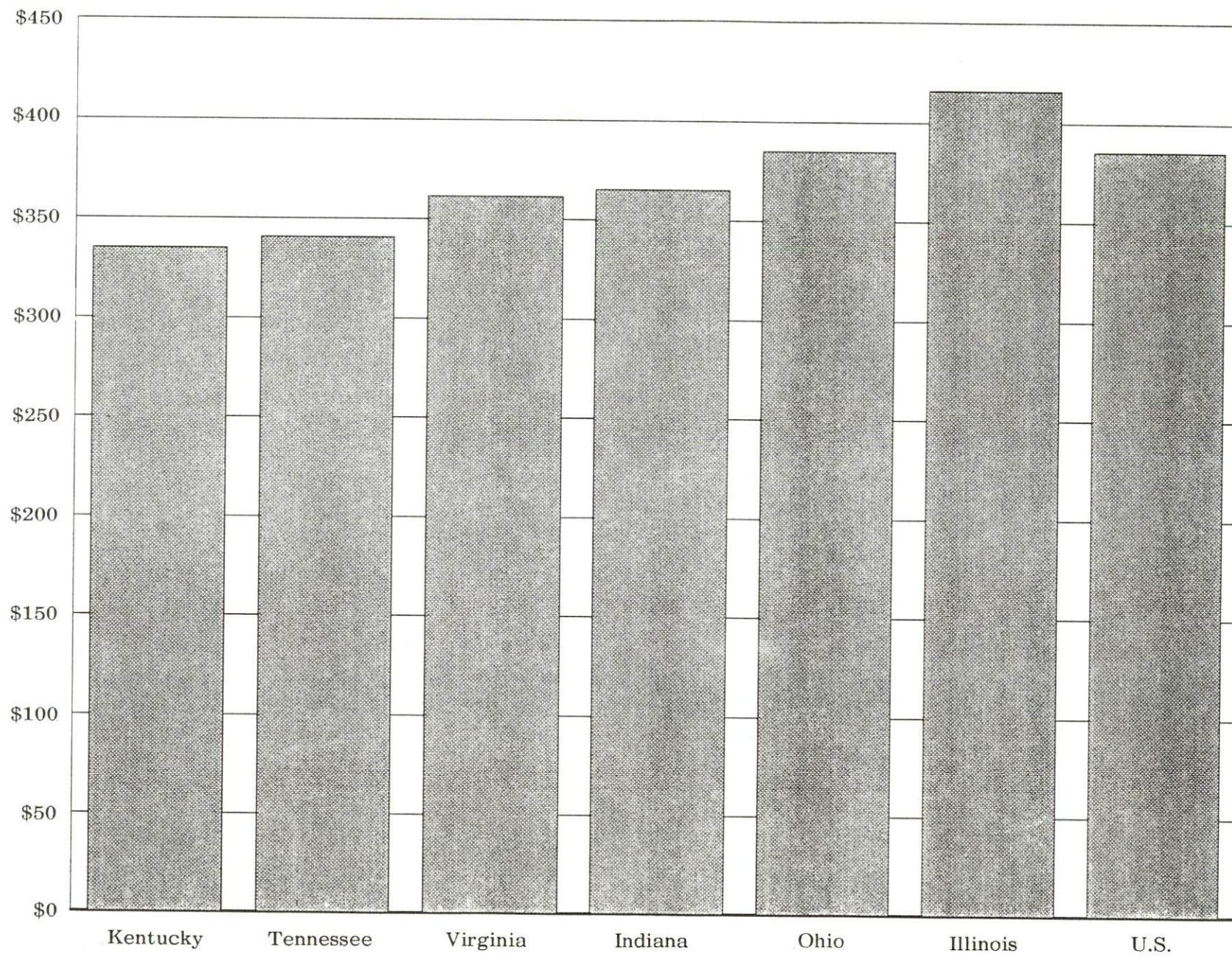
PER CAPITA PERSONAL INCOME

<u>Area</u>	<u>1982</u>	<u>1986</u>	<u>Percent Change</u>
Mason County	\$9,054	\$10,263	13.4
Labor Market Area Range*	\$6,324 - 9,054	\$7,342 - 10,263	-
Kentucky	\$9,277	\$11,268	21.5
U.S.	\$11,480	\$14,606	27.2

* Includes the five Kentucky counties only.

Sources: Kentucky Economic Information System, April 1988 and August 1988.

AVERAGE WEEKLY WAGES OF WORKERS COVERED BY
UNEMPLOYMENT INSURANCE F.Y. 1986-87



AVERAGE WEEKLY WAGES BY INDUSTRY
BY PLACE OF WORK, 1987

	<u>Mason County</u>	<u>Bracken County</u>	<u>Fleming County</u>
All Industries	\$313.08	\$319.22	\$267.81
Mining & Quarrying	0	0	*
Contract Construction	295.59	*	677.64
Manufacturing	399.95	*	257.67
Transportation, Communications & Public Utilities	519.13	376.07	429.07
Wholesale & Retail Trade	192.20	143.98	192.24
Finance, Insurance & Real Estate	290.90	265.10	281.76
Services	248.06	123.80	199.22
State/Local Government	319.97	247.27	306.16
Other	259.21	*	174.63
	<u>Lewis County</u>	<u>Robertson County</u>	
All Industries	\$224.77	\$255.78	
Mining & Quarrying	0	0	
Contract Construction	192.31	0	
Manufacturing	216.20	0	
Transportation, Communications & Public Utilities	221.71	*	
Wholesale & Retail Trade	147.85	116.25	
Finance, Insurance & Real Estate	255.19	217.58	
Services	167.83	106.25	
State/Local Government	304.90	262.45	
Other	0	0	

* Not disclosed.

Note: The average weekly wage for each category includes the salaries and wages of all persons working for that type business. For example, the manufacturing category includes both production workers and administrative personnel. Excludes domestic workers, railway workers, certain nonprofit corporations, majority of federal government workers, and self-employed workers.

Source: Kentucky Cabinet for Human Resources, Average Weekly Wages of Workers Covered by Kentucky Unemployment Insurance Law, 1987.

EXISTING INDUSTRY

MAJOR MAYSVILLE MANUFACTURING FIRMS, THEIR PRODUCTS AND EMPLOYMENT*

<u>Firm</u> <u>(Establishment date)</u>	<u>Product</u>	<u>1988</u> <u>Average Employment</u>
Browning Manufacturing Division, Emerson Electric Company (1886)	Pulleys, V-belt drives, sprockets, ball & roller bearing units, gear reducers	1,000
Carnation Company (1928)	Evaporated milk	50
Carnation Company - Tin Can Division (1928)	Metal cans	27
Dravo Lime Company (1974)	Lime & calcinating plant fines	215
January & Wood Company (1824)	Cotton twine; cotton, rayon yarns	135
Jockey International, Inc. (1984)	Men's & women's knit underwear	400
Maysville Electric Company (1984)	Electric motor sub- assembly, compressor assembly	46
Maysville Newspapers, Inc., The Ledger- Independent News- paper (1968)	Newspaper publishing, commercial printing	55
Maysville Ready Mix Concrete Company (1950)	Ready-mixed concrete	17
Parker Tobacco Com- pany, Inc. (1932)	Tobacco processing	150
Standard Supply Com- pany (1953)	Concrete block, precast concrete products	16
Standard Tobacco Com- pany (1932)	Concrete blocks & bricks, burial vaults, parking curbs, precast concrete	43

(Continued)

<u>Firm</u> <u>(Establishment date)</u>	<u>Product</u>	<u>1988</u> <u>Average Employment</u>
TechnoTrim (1988)	Automotive trim covers	450
Wald Manufacturing, Inc. (1925)	Bicycle parts	200

* Manufacturing firms with 10 or more employees.

Sources: Kentucky Department of Business Development, 1988 Kentucky Directory of Manufacturers; Division of Research and Planning.

LABOR ORGANIZATIONS IN MANUFACTURING FIRMS

<u>Union</u>	<u>Representing workers at:</u>
International Brotherhood of Teamsters, Chauffeurs, Warehousemen and Helpers of America	Carnation Company; Carnation Company - Tin Can Division
United Textile Workers of America, AFL-CIO	January & Wood Company

RECENT INDUSTRIAL DEVELOPMENTS

TechnoTrim, a subsidiary of Johnson Controls, recently began operations in Maysville. The 450-employee facility produces automotive trim covers and represents an investment of \$6 million.

TRW, Automotive Aftermarket Division, recently began operations in Maysville. The 185-employee facility functions as a parts packaging, distribution and return goods center, and represents an investment of \$8 million.

Crystal Tissue recently announced plans to locate its operations in Maysville. The 100-employee facility will produce tissue giftwrap and printed giftwrap, and will represent an investment of \$2.5 million.

SELECTED INDUSTRIAL SERVICES

<u>Types of Service</u>	<u>Location</u>	<u>Mileage from Maysville</u>
Custom Data Processing	Alexandria, Kentucky	48
Custom Plastics Producers	Georgetown, Kentucky	66
	Lexington, Kentucky	67
Electric Motor Repair	Maysville, Kentucky	-
Grinding, Precision & Tool	Cincinnati, Ohio	64
	Erlanger, Kentucky	65
	Winchester, Kentucky	65
Heat Treating Facilities	Cincinnati, Ohio	64
	Georgetown, Kentucky	66
	Lexington, Kentucky	67
Industrial Equipment & Supplies	Mt. Sterling, Kentucky	49
Industrial Gases	Cincinnati, Ohio	64
Industrial Waste Removal	Butler, Kentucky	51
Machine Shops, Tool & Die	Maysville, Kentucky	-
Metal Castings	Cynthiana, Kentucky	47
Metal Finishers	Newport, Kentucky	63
	Cincinnati, Ohio	64
Metal Service Centers	Morehead, Kentucky	44
Millwrights	Cincinnati, Ohio	64
	Erlanger, Kentucky	65
Public Warehouse Facilities	Maysville, Kentucky	-

Sources: Kentucky Department of Business Development, Kentucky Directory of Selected Industrial Services, 1987; Division of Research and Planning.

TRANSPORTATION

Rail

Maysville is served by three separate rail lines. CSX Transportation provides main line rail service; T.T.I. (Trans-Kentucky Transportation Railroad, Inc.) provides a connecting rail line between the CSX system at Maysville and the CSX system at Paris, Kentucky. Passenger rail line service is available through Amtrack in Maysville. The nearest piggyback facilities are located at Cincinnati, Ohio, 64 miles northwest of Maysville.

For details on routing, schedules, rates, and services contact:

Manager
Industrial Development
CSX Transportation
908 West Broadway
P. O. Box 2157
Louisville, Kentucky 40201
(502) 587-7746

and/or

President
T.T.I. Systems, Inc.
199 East Main Street
Lexington, Kentucky 40507
(606) 253-9200

and/or

Amtrack Distribution Center
1-800-872-7245

Highways

Major highways serving Maysville include U.S. Highway 62/68 and Kentucky Routes 8, 10, and 11. All are "AAA"-rated trucking highways (80,000-pound gross load limit). The Simon Kenton Memorial Bridge connects Maysville with U.S. Highway 52, located across the Ohio River in Aberdeen, Ohio. U.S. 52 provides access to Cincinnati, Ohio, 64 miles northwest of Maysville.

Access to several interstate highways is available via "AAA"-rated routes. Interchanges of Interstate 64 are located 41 miles southeast of Maysville near Morehead, Kentucky, and 47 miles south near Mount Sterling, Kentucky. These interchanges are accessible via Kentucky Routes 11 and 32. An interchange of Interstate 64 and 75 is located near Lexington, Kentucky via U.S. 68, 64 miles southwest of Maysville. Access to Interstate 71, 74, and 75 is available at Cincinnati, Ohio, 64 miles northwest of Maysville.

The A-A Highway is presently under construction. The new highway will connect Maysville to the Interstate 275/Kentucky 9 interchange in Campbell County, west of Maysville; and also extend to Vanceburg, east of Maysville. At that point, the highway will split. One spur will proceed to Greenup Dam Bridge in Greenup County and the other spur will proceed to an Interstate 64 interchange at Grayson. The A-A Highway will be 136 miles in length.

Construction of a bridge crossing the Ohio River near Maysville to U.S. Highway 52 in Ohio is planned. Total cost of the project is expected to exceed \$34 million.

Truck Service

Aberdeen Express, Inc.*
Brown Transport Corporation*
Buske Lines, Inc.**
Central Transport, Inc.*
Century Motor Freight, Inc.*
Craig's Express, Inc.*
Eck Miller Transportation
Corporation*
Jones Truck Lines, Inc.**
Manning Motor Express, Inc.*

McDaniel Motor Express, Inc.***
Overnite Transportation Company*
Owenton Express, Inc.*
Putnam Transfer and Storage
Company*
Quick Freight Systems*
R & L Transfer, Inc.*
Roadway Express, Inc.*
Yellow Freight System, Inc.*

* Provides both interstate and intrastate service.

** Provides interstate service only.

*** Provides intrastate service only.

Source: American Motor Carrier Directory, Spring 1989; Maysville-Mason County Chamber of Commerce.

HIGHWAY MILES AND TRUCK TRANSIT TIME IN DAYS FROM
MAYSVILLE, KENTUCKY, TO SELECTED MARKET CENTERS

City	Highway Miles	Delivery		City	Highway Miles	Delivery	
		Time TL				Time TL	
Atlanta, GA	430	1		Los Angeles, CA	2,226	4	
Baltimore MD	513	2		Louisville, KY	140	1	
Birmingham, AL	460	1		Nashville, TN	275	1	
Chicago, IL	349	1		New Orleans, LA	789	3	
Cincinnati, OH	64	1		New York, NY	696	-	
Cleveland, OH	309	1		Pittsburgh, PA	343	2	
Detroit, MI	322	1		St. Louis, MO	399	1	
Knoxville, TN	238	1					

Note: Mileage computations are via the best interstate or primary highways, not necessarily the most direct route of travel.

Sources: Rand McNally Deluxe Motor Carriers' Road Atlas, 1987. Official Kentucky Mileage Map, 1980. Delivery time - Overnite Transportation Company, 213 Blue Sky Parkway, Lexington, Kentucky 40509.

Air

Local

Location: Fleming-Mason Airport*
 Runways: 6 miles south of Maysville
 Length: 1 paved
 Traffic: 5,000 feet
 Control: Segmented circle, wind cone, VOR approach from
 Falmouth VOR, NDB, certified altimeters
 Lighting: MIRL, VASI (24-hour service daily), beacon, runway
 lights (sundown to sunrise)
 Services: 100LL and Jet A fuel, minor A & P repairs, hangar,
 tie-downs, flight instruction, taxi service, auto
 fuel, attended 24 hours daily

* Construction of a parallel taxiway and REIL lighting is under way at the Fleming-Mason Airport and scheduled for completion by summer of 1989.

Nearest Scheduled Commercial Airline Service

Bluegrass Airport
Location: 4 miles west of Lexington, Kentucky;
71 miles southwest of Maysville
Runways: 2 paved
Length: 7,000 feet; 3,500 feet
Traffic
Control: Control tower
Lighting: Approach lighting system, beacon, runways and
obstructions lighted, VASI
Services: Delta, USAir, TWA, Air Kentucky, Jetstream, United
Express, Eastern Metro, Comair, Air Wisconsin,
American Eagle; fuel - 100LL and jet-A; hangars,
tie-downs; major A & P repairs; major Avionics
repairs; APU, charter, flight instruction, oxygen,
plane rentals, survival equipment; taxi,
limousine, car rentals, courtesy car, weather
information; restaurant, snack bar
Air Freight
Service: Air freight terminal

Greater Cincinnati International Airport
Location: 8 miles southwest of Covington, Kentucky;
72 miles northwest of Maysville
Runways: 3 paved
Length: 9,500 feet; 7,800 feet; 5,500 feet
Traffic
Control: Control tower
Lighting: Beacon, VASI, MALS-RAIL, ALS-SFL, HIRL, CL, TDZ
Services: American, Delta, Pan Am, Enterprise, Midstate,
Northwest, American Eagle, Comair, Braniff,
TWA, United, USAir; fuel - 100LL, jet-A; hangars,
tie-downs; major A & P repairs, major Avionics
repairs; APU, charter, flight instruction, oxygen,
plane rental, U.S. Customs; weather information;
taxi, limousine, car rentals, courtesy car;
restaurant, snack bar; hotel; business service
centers
Air Freight
Services: Air freight terminal

Air Express Service

Several major companies offer air express services in Kentucky. These companies provide a quick means of shipping small to medium-sized packages expeditiously.

Water

Maysville is located on the Ohio River, one of the most heavily traveled inland waterways in the United States. A 9-foot navigation channel is maintained along the entire length of the Ohio River. The Transcontinental Terminals Incorporated maintains a 1,500-ton-per-hour coal-loading facility at Maysville, and future plans call for the development of a 400-acre site west of Maysville as a major coal-loading facility capable of handling eight unit-trains per day. Crounse Corporation operates a commercial barge line with load service offices in Maysville. Four river terminals for private use only are operated within 5 miles of Maysville. The Maysville-Mason County Port Authority has an option on property in the Charleston Bottom area for potential development of an intermodal riverport facility.

POWER AND FUEL

Electricity

Company serving Maysville and parts of Mason County - Kentucky Utilities Company

Source of power - Kentucky Utilities Company

For industrial rates contact:

Industrial Development Department
Kentucky Utilities Company
One Quality Street
Lexington, Kentucky 40507
(606) 255-1461

Company serving parts of Mason County - Fleming-Mason Rural Electric Cooperative Corporation

Source of power - East Kentucky Power Cooperative

For industrial rates contact:

Industrial Development Division
East Kentucky Power Cooperative
P. O. Box 707
Winchester, Kentucky 40391
(606) 744-4812

and/or

Fleming-Mason Rural Electric
Cooperative Corporation
P. O. Drawer 328
Flemingsburg, Kentucky 41041
(606) 845-2661

Natural Gas

Company serving Maysville - Columbia Gas of Kentucky, Inc.*

Source of supply - Columbia Gas Transmission Corporation

Size of transmission mains - 10 inches (supplier); 8 and 6 inches (distributor)

Distribution mains - 2 to 10 inches

Distribution pressure - 0.5 to 40 psi

Btu content - 1,025 per cubic foot

Specific gravity - 0.625

For rates and supplies contact:

Columbia Gas of Kentucky, Inc.
P. O. Box 506
325 Moody Drive
Maysville, Kentucky 41056
(606) 564-5895

* Columbia Gas recently extended a four-inch gas distribution line to the industrial park located just off the A-A Highway.

WATER AND SEWERAGE

Public Water Supply

Company serving Maysville - Maysville Utility Commission*
P. O. Box 1
Maysville, Kentucky 41056
(606) 564-3531

Source - Ohio River

Treatment plant capacity - 2,400,000 gallons per day

Average daily consumption - 1,200,000 gallons

Peak daily consumption - 1,600,000 gallons

Treatment processes - Coagulation, flocculation, sedimentation,
filtration, chlorination, and fluoridation

Storage capacity - 3,550,000 gallons

Size lines - 4 to 16 inches

Water pressure - 30 to 150 psi

MONTHLY WATER RATES

First	1,000 gallons	\$3.89 per M gallons
Next	3,000 gallons	1.95 per M gallons
Next	6,000 gallons	1.66 per M gallons
Next	40,000 gallons	1.27 per M gallons
Over	50,000 gallons	.77 per M gallons

A surcharge of 25 percent of the water bill is assessed to customers outside the city limits purchasing treated water from the Maysville Utility Commission.

MINIMUM CHARGES

3/4-inch meter	\$ 3.89 per month
1-inch meter	9.71 per month
1 1/4-inch meter	19.43 per month
1 1/2-inch meter	29.14 per month
1 3/4-inch meter	38.86 per month
2-inch meter	48.57 per month
2 1/2-inch meter	58.28 per month
3-inch meter	77.71 per month
4-inch meter	97.14 per month
6-inch meter	194.29 per month

Tap-on charge: \$300 for meter sizes up to 1-inch; actual cost of labor and materials, plus 20 percent for larger meters

(Continued)

* The Maysville Utilities Commission recently completed construction of a 16-inch water main extending from a downtown pumping station to the south Maysville area. Total cost of the project approximated \$800,000. In addition, the commission has plans to extend water service to the Charleston Bottom Industrial Site. The project should be completed by 1991.

YEARLY PRIVATE FIRE PROTECTION RATES

4-inch connection for fire use	\$188.00	plus taxes
6-inch connection for fire use	279.00	plus taxes
8-inch connection for fire use	467.00	plus taxes
10-inch connection for fire use	700.00	plus taxes

PUBLIC FIRE PROTECTION RATES

\$5.50 per plug per month for all public fire hydrants in excess of 97.

Raw Water

Surface water sources - Ohio River and North Fork Licking River

Average discharge - Ohio River at Greenup Dam - 90,790 cfs (19 years, USGS); North Fork Licking River near Lewisburg - 149 cfs (38 years, USGS)

Expected ground water yield - 500 to 1,000 gpm along Ohio River, 5 to 50 gpm in a small portion of north central part of county, 5 gpm or less over remainder of county.

Sewerage

Company serving Maysville - Maysville Utility Commission*
P. O. Box 1
Maysville, Kentucky 41056
(606) 564-3531

Design capacity - 1,424,000 gallons per day

Average daily flow - 900,000 gallons

Type of treatment - Secondary

Treatment processes - Activated sludge, chlorination, sludge drying beds, screening, grit removal, primary sedimentation, secondary sedimentation, anaerobic digester, aerobic digester

Treated effluent discharged into - Ohio River

Size of sanitary mains - 6 to 24 inches

Size of storm mains - 8 to 54 inches

Monthly rates - 90 percent of monthly water bill

The industrial recovery cost of not less than \$0.05 per 1,000 gallons will be added to the standard rate schedule, based upon the calculated extra cost for treatment of industrial sewage.

Tap-on charge: \$400

* The Maysville Utility Commission has plans to extend sewer service to the Charleston Bottom Industrial Site. The project should be completed by 1991.

CLIMATE

Mason County

Temperature

Normal (30-year record)	53.40 degrees
Average annual 1987	55.20 degrees
Record highest, August 1962 (26-year record)	102.00 degrees
Record lowest, January 1977 (26-year record)	-25.00 degrees
Normal heating degree days (30-year record)	5,247
(Heating degree day totals are the sums of negative departures of average daily temperatures from 65 degrees F.)	

Precipitation

Normal (40-year record)	40.14 inches
Mean annual snowfall (40-year record)	23.70 inches
Total precipitation 1987	32.60 inches
Mean number days precipitation (.01 inch or more) (40-year record)	128.80
Mean number days thunderstorms (40-year record)	42.80

Prevailing winds (through 1963)

South-Southwest

Relative Humidity (25-year record)

1 a.m.	77 percent
7 a.m.	81 percent
1 p.m.	60 percent
7 p.m.	64 percent

Source: U.S. Department of Commerce, Environmental Science Services Administration, Climatological Data, 1987. Station of record: Cincinnati, Ohio, Greater Cincinnati Airport.

LOCAL GOVERNMENT

Structure

The City of Maysville is governed by a mayor, four city commissioners, and a city manager. The mayor is elected to a four-year term while the commissioners each serve two-year terms. The city manager serves as a full-time employee. Mason County is governed by a county judge/executive and three commissioners. Each county official is elected to a four-year term.

Planning and Zoning

Joint agency - Mason County Joint Planning Commission
Participating cities - Maysville and Washington
Zoning enforced - Within the city limits of Maysville
Subdivision regulations enforced - All areas
Local codes enforced - Building and housing within the city limits of Maysville
Mandatory state codes enforced - Kentucky Plumbing code, National Electric Code, Kentucky Boiler Regulations and Standards, Kentucky Building Code (modeled after BOCA code)

Local Fees and Licenses

The City of Maysville levies a one and one-half percent occupational license tax on wages, salaries, and commissions earned within the city. Annual occupational license fees for manufacturers are: \$150 for firms employing 50 or fewer persons, \$225 for firms employing 51 to 100 persons, and \$50 for each additional 100 employees or fraction thereof. Business license fees range from \$5.00 to \$1,025 annually.

A 3 percent tax is levied on utilities receipts for schools in Mason County. Tax is paid by all consumers of utilities as an add-on to the utilities bills. Exempted are receipts from utilities services that are resold and the receipts from the sale of energy or energy producing fuels that exceed 3 percent of the cost of production in manufacturing, processing, mining or refining.

State and Local Property Taxes

All property in Kentucky, except items exempted by the state constitution, is taxed by the state. Property which also may be taxed by local jurisdictions includes land and buildings, finished goods inventories, automobiles, trucks, office furniture and office equipment. Local taxing jurisdictions in Kentucky include counties, cities, and school districts.

All property in Kentucky is assessed at 100 percent of fair cash value.

COMBINED STATE AND LOCAL RATES PER \$100 VALUATION, 1988

	Maysville and Maysville Independent School District	Maysville and Mason County School District	Unincorporated Mason County
Land and Buildings	\$0.9861	\$0.9051	\$0.663
Manufacturing			
Machinery	0.150	0.150	0.150
Pollution Control			
Equipment	0.150	0.150	0.150
Inventories			
Raw materials	0.001	0.001	0.001
Goods in Process	0.001	0.001	0.001
Finished Goods	0.7782	0.6972	0.4551
Automobiles & Trucks	1.2111	1.1741	0.9281
Other Tangible			
Personal Property	1.2272	1.1462	0.9041
Intangibles (Accounts receivable*, money in hand, stock, notes, bonds)	0.250	0.250	0.250
Goods Stored in Public Warehouses in Transit Status	0.001	0.001	0.001
Private Leaseholds in Industrial Revenue Bond Financed Facilities	0.015	0.015	0.015

* Accounts receivable are taxed at 85 percent of face value, for an effective rate of \$0.2125 per \$100 valuation.

Safety

Police	Maysville	Mason County
Total staff	21	10
Radio-patrol cars	7	7
Fire*		
Insurance Services Office, Public Protection Classification	6	**
Full-time staff	19	-
Volunteers	15	88
Rescue Service		

Maysville and Mason County are provided rescue service by the Maysville-Mason County Ambulance Service.

Refuse Collection and Disposal

Refuse collection is provided by the city and county for residents of Maysville and Mason County. Private contractors provide service to industries in both the city and county. In addition, the county has forty-four dumpsters placed throughout the county and a city-county landfill is available.

* Includes copyrighted material of ISO Commercial Risk Services, Inc., with its permission.

** Property located in the Mayslick Fire District is rated class 8 if within five road miles of a fire station and within 1,000 feet of a fire hydrant, and is rated class 9 if within five road miles of a fire station and beyond 1,000 feet of a fire hydrant. Lewisburg, Sardis, and Washington Fire Districts are rated class 9. All other property in unincorporated Mason County is rated class 10.

EDUCATION

Public Schools

	Maysville Independent	Mason County
Total Enrollment (January, 1989)	628	2,222
Kindergarten	74	162
Elementary	314	818
Junior High	68	-
Middle School	-	525
High School	172	717
Accreditation	Southern Association of Colleges and Schools	
Pupil-Teacher Ratio (1987-88)	14-1	20-1
Percent High School Graduates to College (1987-88)	59.3	46.8
Expenditures Per Pupil (1987-88)	\$2,935.62	\$2,298.31

Recent improvements by the Mason County School System include the construction of an elementary gymnasium, and a four-classroom addition at an elementary school. Total combined cost of the two projects was approximately \$1,200,000. In addition, curricula improvements include the institution of an alternative classroom for troubled students, a computer skills management program, and a language development program which aids the low achieving children prior to admission to the school system. Planned improvements for the school system include renovation and addition to the existing high school, construction of a central office, and a central storage building. Total combined cost of these projects should approximate \$2.2 million.

Nonpublic Schools

<u>School</u>	<u>Enrollment</u>	<u>Grades</u>
St. Patrick Elementary	180	1-8
St. Patrick High School	70	9-12

Area Colleges and Universities

<u>Name</u>	<u>Location (Miles distant)</u>	<u>Enrollment (Fall, 1988)</u>	<u>Highest Degree Conferred</u>
Maysville Community College	Maysville, Kentucky	873	Associate
Morehead State University	Morehead, Kentucky (44)	7,379	Masters, Specialist*
Shawnee State University	Portsmouth, Ohio (55)	2,905	Associate
Northern Kentucky University	Highland Heights, Kentucky (57)	9,497	Masters, J.D.
Athenaeum of Ohio	Cincinnati, Ohio (64)	294	Masters
Cincinnati Bible Seminary	Cincinnati, Ohio (64)	560	Master of Divinity
College of Mount St. Joseph	Cincinnati, Ohio (64)	2,504	Masters in Education
Hebrew Union College (1 campus in Cincinnati)	Cincinnati, Ohio (64)	118	Academic & Professional
Southern Ohio College	Cincinnati, Ohio (64)	699	Associate
University of Cincinnati	Cincinnati, Ohio (64)	30,505	Academic & Professional
Xavier University	Cincinnati, Ohio (64)	6,412	Masters
Thomas More College	Ft. Mitchell, Kentucky (65)	1,097	Baccalaureate

(Continued)

* Joint doctoral degree programs are offered in cooperation with the University of Kentucky, Lexington. The degrees are issued by the University of Kentucky.

<u>Name</u>	<u>Location (Miles distant)</u>	<u>Enrollment (Fall, 1988)</u>	<u>Highest Degree Conferred</u>
Georgetown College	Georgetown, Kentucky (66)	1,471	Masters
Lexington Community College	Lexington, Kentucky (67)	3,401	Associate
Transylvania University	Lexington, Kentucky (67)	1,041	Baccalaureate*
University of Kentucky	Lexington, Kentucky (67)	22,824	Doctorate, M.D., D.M.D., J.D.

Maysville Community College

Maysville Community College, a state-supported community college, and accredited by the Southern Association of Colleges and Schools, is one of fourteen institutions in the University of Kentucky Community College System. The college has a service area in northeastern Kentucky which includes Mason County and its surrounding counties.

Campus facilities, housed in two adjoining buildings, include a well equipped library; an auditorium which seats 150 spectators; multipurpose and special-purpose classrooms; a college bookstore; a learning assistance center; laboratories for biology, chemistry, computer operations, nursing, electrical technology, dental hygiene, and retail merchandising; various office administration specialties; and a television studio. Students enrolled in the college's Associate in Arts and Associate in Science prebaccalaureate programs as well as those pursuing occupational courses in one of MCC's Associate in Applied Science degree programs are provided with opportunity for hands-on experience in a variety of disciplines.

Prebaccalaureate degree programs prepare graduates to transfer to the UK Lexington campus and to other accredited senior institutions in and outside of Kentucky. Career-oriented programs prepare graduates to enter job markets at good beginning salaries typically after two years of full-time study. A broad range of service courses and programs help improve the quality of life for registered students and other members of the college's service community.

Construction of a student center and fine arts building is planned at the Maysville Community College. The \$2.5 million complex includes classroom space, a performing auditorium, and a number of facilities for student services. Scheduled completion date for the project is Fall 1990.

* Courses in a masters degree program are taught on the Transylvania campus by faculty members of Xavier University of Cincinnati. The degree is issued by Xavier University.

Vocational Training

The Bluegrass State Skills Corporation, an independent public corporation created and funded by the Kentucky General Assembly, provides programs of skills training to meet the needs of business and industry from entry level to advanced training, and from upgrading present employees to retraining experienced workers.

The Bluegrass State Skills Corporation is the primary source for skills training assistance for a new or existing company. The Corporation works in partnership with other employment and job training resources and programs, as well as Kentucky's economic development activities, to package a program customized to meet the specific needs of a company.

Vocational training is available at both the state vocational-technical schools and the area vocational education centers. The state vocational-technical schools are post-secondary institutions. The area vocational education centers are designed to supplement the curriculum of high school students. Both the state vocational-technical schools and the area vocational education centers offer evening courses to enable working adults to upgrade current job skills.

Arrangements can be made to provide training in the specific production skills required by an industrial plant. Instruction may be conducted either in the vocational school or in the industrial plant, depending upon the desired arrangement and the availability of special equipment.

Nearest State School

Rowan State Vocational-Technical School
Morehead, Kentucky, 44 miles distant

Business & Office	Diesel Mechanics
Clerical	Drafting
Exploratory Business &	Electricity
Office	Machine Shop
Secretarial	Welding
Consumer & Home Economics	Learning Resource Center
Consumer & Family Life	Public Service Occupations
Skills	Business/Industry Security
Health & Personal Services	Training
Occupations	CPR Training
Health Services	Electrical Safety Training
Practical Nursing	Emergency Medical Care
Industrial Education	Fire Service Training
Air Conditioning	First Aid & Safety
Auto Mechanics	Rescue & Emergency Services
Carpentry	Training

Nearest Area Education Center

Maysville Area Vocational Education Center
Maysville

Business & Office

Clerical

Secretarial

Health & Personal Services

Occupations

Practical Nursing

Industrial Education

Auto Body Repair

Auto Mechanics

Carpentry

Electricity

Welding

HEALTH

Local Medical Personnel

Physicians - 23
Dentists - 14

Hospitals

<u>General Hospital</u>	<u>Location</u>	<u>Beds</u>
Meadowview Regional Hospital	Maysville	111

Medical staff - 21 physicians, 68 registered nurses, and 14 licensed practical nurses

Other Medical Facilities

Comprehend, Inc., Mental Health-Mental Retardation Board
Mason County Health Center (a public health facility)

Ambulance Service

Name - Maysville-Mason County Ambulance Service
Staff - 19 emergency medical technicians

OTHER LOCAL FACILITIES

Communications

Telephone -	South Central Bell Telephone Company
Telegraph -	Western Union
	Toll-Free number, 1-800-325-6000
Newspapers -	
Daily and	
circulation -	The Ledger-Independent - 8,000
Weekly and	
circulation -	The Advertiser - 16,300;
	The Times - 4,300*
Radio** -	WFTM (AM & FM)
Television -	
Airwave reception	
from -	Lexington, Kentucky; Cincinnati and
	Dayton, Ohio; Huntington, West
	Virginia
Cable service -	Cable Vision, Inc.
Educational	
Television -	The Kentucky Educational Television
	(K.E.T.) network is available
	statewide

Library Services

Public library - Mason County Public Library
Size collection - 32,000 volumes
Circulation, 1987-88 - 121,309
College library - Maysville Community College Library (open to public)
Size collection - 25,810 volumes
Genealogical library - Mason County Museum Genealogical Library
Size collection - 16,100 volumes

* Free weekly publications of the Leger-Independent.

** WVXU-FM, a national public radio and fine arts station sponsored by Xavier University in Cincinnati, Ohio, is constructing a repeater station in Maysville.

Religious Institutions

Denominations -	Baptist	Episcopal
	Catholic	Holiness
	Christian	Jehovah's Witnesses
	Church of Christ	Lutheran
	Church of God	Methodist
	Church of Jesus	Nazarene
	Christ of Latter	Pentecostal
	Day Saints	Presbyterian

Nearest Synagogues -	Portsmouth, Ohio (55 miles east)
	Cincinnati, Ohio (64 miles northwest)
Congregations -	Portsmouth - Bene Abraham (reform)
	Cincinnati - 16 synagogues (orthodox, reform, traditional, and conservative)

Financial Institutions

<u>Banks</u>	<u>Assets</u>	<u>Deposits</u>	<u>Statement Date</u>
Bank of Maysville	\$56,023,000.00	\$49,196,000.00	6/30/88
The Security Bank and Trust Company	32,531,635.85	27,205,196.37	12/31/88
The State National Bank (a subsidiary of Kentucky Community Bancorp)	83,556,764.00	74,177,219.00	12/31/88

<u>Savings and Loan Associations</u>	<u>Assets</u>	<u>Deposits</u>	<u>Statement Date</u>
The Cumberland	\$1,128,403,000.00	\$748,525,000.00	9/30/88

Hotels and Motels

Total number - 7
Total rooms - 400

RECREATION

Local

Seven public parks are open to Maysville and Mason County residents. Facilities at these parks include a swimming pool, a children's pool, 10 tennis courts, five basketball goals, a lodge, a 10-acre picnic area, a fishing lake, two softball diamonds, mini-golf, shelters, concession stands, a boat launch, 33 camping pads, a floating dock with a gas pump, a shelter house, a 1/2-mile river walkway, and a playground. Organized Little League baseball and youth soccer is available. A 9-hole public golf course is located six miles south of Maysville. Development of a 9-hole, par-three golf course is under way at the Maysville-Mason County Recreation Park. The \$200,000 project will be completed by July, 1989.

The Maysville Boys' Club sponsors organized basketball, soccer, and baseball.

A new YMCA facility was recently constructed in Maysville. The \$3 million complex consists of an indoor swimming pool, two racquetball courts, a gymnasium, an indoor walking track, several saunas, and a whirlpool.

Private recreational facilities in Maysville include a country club with a swimming pool, a 9-hole golf course and three tennis courts; a cinema with four theaters; a drive-in theater; and a roller rink. A bowling facility is located across the Ohio River in Aberdeen, Ohio. The Maysville Country Club plans to develop an additional nine holes on the existing nine-hole golf course.

Maysville has one of the most attractive and beautifully preserved downtown areas in Kentucky. Fifteen French-style houses built in Maysville in the mid-1800's are known as "Little New Orleans", and walking tour maps are available at the Maysville-Mason County Chamber of Commerce office.

The Mason County Museum houses a substantial genealogical library, and also features an art gallery and a variety of history exhibits. The City-County Arts Commission is active in attracting both performing and visual arts to Maysville.

Annual events in Maysville include Mason County Court Day, held each October, which features an old-fashioned dress contest and other special events. Mainstreet festivals, parades, fireworks, hydroplane races and a two-mile River Run are also featured throughout the year. Concerts and lectures held at Maysville Community College are open to the public. The Maysville Little Theatre presents programs year-round at the Maysville Opera Theatre building.

Historic Old Washington is located three miles southwest of Maysville in Mason County. Old Washington's historic district has been named to the National Register of Historic Places, and guided tours are available on weekends, and at other times by special arrangement. Activities such as Geranium Day and Frontier Christmas take place April through December.

The Germantown Fair and Horse Show is held annually at Germantown, 11 miles west of Maysville in Mason County.

Area (Within 70 miles)

Blue Licks Battlefield State Park is located near Mt. Olivet, 25 miles southwest of Maysville. The 100-acre park is on the site of the last Revolutionary War battle in Kentucky. A museum features Indian and pioneer artifacts, an audiovisual program, and prehistoric bones from animals trapped at Blue Licks. Facilities include 51 campsites, a state nature preserve, a gift shop, picnic shelters and grills, miniature golf, a snack bar, and an Olympic-size swimming pool. Fishing is available at the Licking River which runs through the park.

Kincaid Lake State Park, 43 miles west of Maysville near Falmouth, offers many opportunities for the outdoors lover. The park offers a 175-acre lake, a sand beach, a 209-site campground, a gift shop/grocery store, a bathhouse, swimming, boating, hiking, picnicking, an amphitheatre, shuffleboard, miniature golf, tennis, and organized recreational programs in the summer months.

The **Daniel Boone National Forest**, approximately 44 miles southeast of Maysville, covers 640,000 acres of timberland in eastern Kentucky. It encompasses much of Kentucky's great beauty and provides a vacation paradise. There are scenic hiking trails, rivers and streams stocked with a variety of fish, hunting preserves, camping sites, and numerous other natural and historical attractions.

Cave Run Lake, constructed by the U.S. Army Corps of Engineers, is located 54 miles southeast of Maysville within the 640,000-acre Daniel Boone National Forest. The lake area offers everything for the camper, the boatsman, the hunter, the fisherman, and "the lover of leisure."

Cincinnati, Ohio, is 64 miles northwest of Maysville. Cincinnati provides a wide variety of entertainment, cultural facilities and activities, and sports events - all within a few minutes drive. The Cincinnati Zoo offers entertainment the whole family can enjoy. Kings Island is the largest family entertainment center in the entire Midwest. The Cincinnati Riverfront Stadium is the home of the Cincinnati Reds baseball and Bengals pro football teams. The Riverfront Coliseum offers NCAA basketball action with the University of Cincinnati Bearcats. Cultural interests include the Cincinnati Symphony Orchestra, various art galleries and museums, libraries, and legitimate theaters presenting Broadway plays.

Lexington, 67 miles southwest of Maysville, offers a variety of cultural, sporting, and recreational activities. Thoroughbred and harness racing is presented at Keeneland Race Course and the Red Mile Harness Track during several meets each year. The University of Kentucky and Transylvania University offer a number of sporting events. The University of Kentucky basketball games are held at Rupp Arena, the second largest basketball arena in the world. Other attractions include Lexington Philharmonic concerts, Lexington Children's Theatre, and plays performed by Broadway touring companies, all held in the recently renovated Opera House. In addition, located in the heart of downtown Lexington, the historical Victorian Square and Festival Market Place offer a taste of nostalgia with their many quaint shops and restaurants.

Carter Caves State Resort Park, 69 miles southeast of Maysville, provides a restful atmosphere with its mountain wildflowers, a rippling stream, the underground wonders of more than 20 caverns, a 28-room lodge, a restaurant, and a gift shop. Recreational facilities offer something for the whole family, including planned recreation, playgrounds, two swimming pools (one Olympic-size), tennis courts, shuffleboard, a 9-hole golf course, miniature golf, boating, fishing, hiking, horseback riding, picnicking, and cave tours.

The Kentucky Horse Park, a park dedicated to horses and to man's love for horses, is located 70 miles southwest of Maysville at Lexington. The park, which contains more than 1,000 acres of Kentucky Bluegrass, features the International Museum of the Horse; the American Saddle Horse Museum; the Man O'War Memorial; the wide screen film "Thou Shalt Fly Without Wings"; an antique carriage display; horseback and pony rides; walking farm tours; horse-drawn tours; a restaurant; a gift shop; and a campground area, which offers swimming, tennis, and planned activities. Numerous special events are held year-round and include various horse shows, steeplechasing, dressage, polo games, and rodeos.

COMMUNITY IMPROVEMENTS

Recent

Maysville was chosen as a "Kentucky Certified City" in 1988 for the fifth consecutive year. The award is based on achievement in the following categories: economic development, transportation, public affairs, utilities, health, commercial development, housing, education and recreation. The Certified Cities Program is sponsored by the Kentucky Chamber of Commerce.

TechnoTrim, a subsidiary of Johnson Controls, recently began operations in Maysville. The 450-employee facility produces automotive trim covers and represents an investment of \$6 million.

TRW, Automotive Aftermarket Division, recently began operations in Maysville. The 185-employee facility functions as a parts packaging, distribution and return goods center, and represents an investment of \$8 million.

Crystal Tissue recently announced plans to locate its operations in Maysville. The 100-employee facility will produce tissue giftwrap and printed giftwrap, and will represent an investment of \$2.5 million.

The Maysville Utilities Commission recently completed construction of a 16-inch water main extending from a downtown pumping station to the south Maysville area. Total cost of the project approximated \$800,000.

Columbia Gas recently extended a four-inch gas distribution line to the industrial park located just off the A-A Highway.

Recent improvements by the Mason County School System include the construction of an elementary gymnasium, and a four-classroom addition at an elementary school. Total combined cost of the two projects was approximately \$1,200,000. In addition, curricula improvements include the institution of an alternative classroom for troubled students, a computer skills management program, and a language development program which aids the low achieving children prior to admission to the school system.

A new YMCA facility was recently constructed in Maysville. The \$3 million complex consists of an indoor swimming pool, two raquetball courts, a gymnasium, an indoor walking track, several saunas, and a whirlpool.

The City of Maysville recently constructed a new fire sub-station and ambulance center. Total cost of the 4,800-square-foot facility was approximately \$550,000.

The Sleepy Hollow Marina at the Maysville River Park was recently completed. Cost of the project was approximately \$500,000.

Under Way

The A-A Highway is presently under construction. The new highway will connect Maysville to the Interstate 275/Kentucky 9 interchange in Campbell County, west of Maysville; and also extend to Vanceburg, east of Maysville. At that point, the highway will split. One spur will proceed to Greenup Dam Bridge in Greenup County and the other spur will proceed to an Interstate 64 interchange at Grayson. The A-A Highway will be 136 miles in length.

Construction of a parallel taxiway and REIL lighting is under way at the Fleming-Mason Airport and scheduled for completion by summer of 1989.

Development of a 9-hole, par-three golf course is under way at the Maysville-Mason County Recreation Park. The \$200,000 project will be completed by July, 1989.

WVXU-FM, a national public radio and fine arts station sponsored by Xavier University in Cincinnati, Ohio, is constructing a repeater station in Maysville.

Planned

The Maysville Utility Commission has plans to extend water and sewer service to the Charleston Bottom Industrial Site. The project should be completed by 1991.

Construction of a student center and fine arts building is planned at the Maysville Community College. The \$2.5 million complex includes classroom space, a performing auditorium, and a number of facilities for student services. Scheduled completion date for the project is Fall 1990.

Planned improvements for the Mason County School System include renovation and addition to the existing high school, construction of a central office, and a central storage building. Total combined cost of these projects should approximate \$2.2 million.

Construction of a bridge crossing the Ohio River near Maysville to U.S. Highway 52 in Ohio is planned. Total cost of the project is expected to exceed \$34 million.

The Maysville Country Club plans to develop an additional nine holes on the existing nine-hole golf course.

A riverfront development project for Maysville is planned. The project includes construction of an amphitheatre, the addition of a floating restaurant, and development of access to the area.