

1987

Industrial Resources: Mercer County - Harrodsburg

Kentucky Library Research Collections
Western Kentucky University, spcol@wku.edu

Follow this and additional works at: <https://digitalcommons.wku.edu/mercercnty>



Part of the [Business Administration, Management, and Operations Commons](#), [Growth and Development Commons](#), and the [Infrastructure Commons](#)

Recommended Citation

Kentucky Library Research Collections, "Industrial Resources: Mercer County - Harrodsburg" (1987). *Mercer County*. Paper 7.
<https://digitalcommons.wku.edu/mercercnty/7>

This Report is brought to you for free and open access by TopSCHOLAR®. It has been accepted for inclusion in Mercer County by an authorized administrator of TopSCHOLAR®. For more information, please contact topscholar@wku.edu.

IR
493 Mercer County

RESOURCES FOR ECONOMIC DEVELOPMENT

Harrodsburg



KENTUCKY
The business environment is right.

Industrial Sites - 1987

HARRODSBURG, KENTUCKY

Industrial Sites - 1987

For more information contact the Kentucky Department of Economic Development, Industrial Development & Marketing Division, Capital Plaza Tower, Frankfort, Kentucky 40601 (502-564-7140).

RESOURCES FOR ECONOMIC DEVELOPMENT

HARRODSBURG, KENTUCKY

Prepared by
The Kentucky Department of Economic Development
Division of Research and Planning
in cooperation with
The Mercer Chamber of Commerce

1987

TABLE OF CONTENTS

<u>Chapter</u>	<u>Page</u>
INDUSTRIAL SITES	i
HARRODSBURG, KENTUCKY - A RESOURCE PROFILE	1
LABOR MARKET STATISTICS	2
Population	2
Population Projections	2
Labor Force Characteristics of Residents, 1985	3
Selected Components of Nonagricultural Employment, by Place of Work, 1985	3
Per Capita Personal Income	3
Estimated Male Labor Supply	4
Estimated Female Labor Supply	4
Average Weekly Wages By Industry, by Place of Work, 1985	5
EXISTING INDUSTRY	7
Mercer County Manufacturing Firms, Their Products and Employment	7
Labor Organizations in Manufacturing Firms	9
Selected Industrial Services	9
TRANSPORTATION	10
Rail	10
Highways	10
Truck Service	10
Air	11
Air Express Service	12
Water	12
POWER AND FUEL	13
Electricity	13
Natural Gas	14
Other Fuels	14
WATER AND SEWERAGE	16
Public Water Supply	16
Sewerage	17

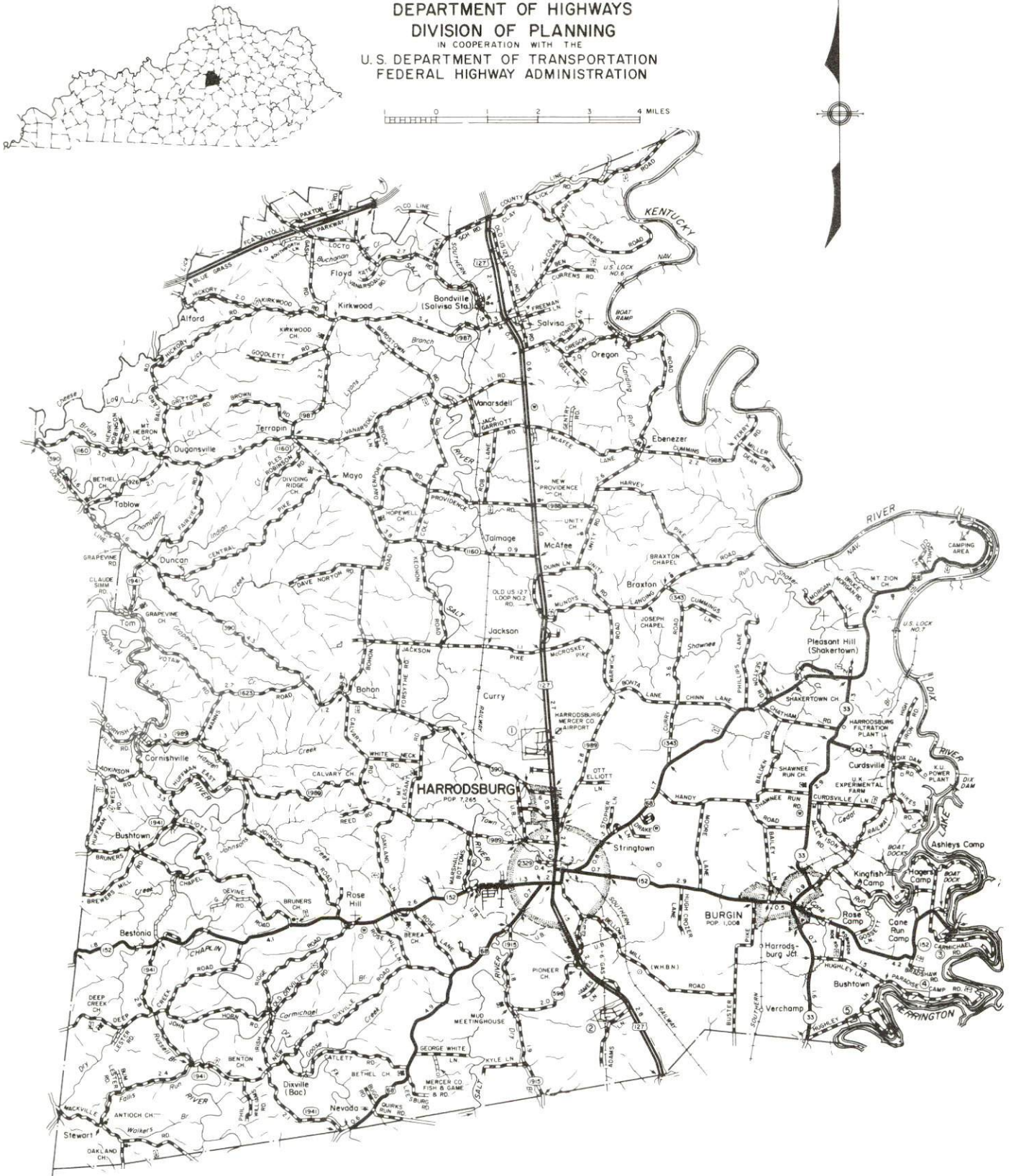
<u>Chapter</u>	<u>Page</u>
CLIMATE	18
LOCAL GOVERNMENT	19
Structure	19
Planning and Zoning	19
Local Fees and Licenses	19
State and Local Property Taxes	20
Safety	21
Police	21
Fire	21
Rescue Service	21
Refuse Collection and Disposal	22
EDUCATION	23
Public Schools	23
Area Colleges and Universities	24
Vocational Training	25
HEALTH	27
Local Medical Personnel	27
Hospitals	27
Other Medical Facilities	27
Ambulance Service	27
OTHER LOCAL FACILITIES	28
Communications	28
Library Services	28
Religious Institutions	28
Financial Institutions	29
Hotels and Motels	29
Clubs and Organizations	30
RECREATION	31
COMMUNITY IMPROVEMENTS	34

1986 EDITION
GENERAL HIGHWAY MAP
MERCER COUNTY
KENTUCKY

PREPARED BY THE
KENTUCKY TRANSPORTATION CABINET
DEPARTMENT OF HIGHWAYS
DIVISION OF PLANNING
IN COOPERATION WITH THE
U.S. DEPARTMENT OF TRANSPORTATION
FEDERAL HIGHWAY ADMINISTRATION

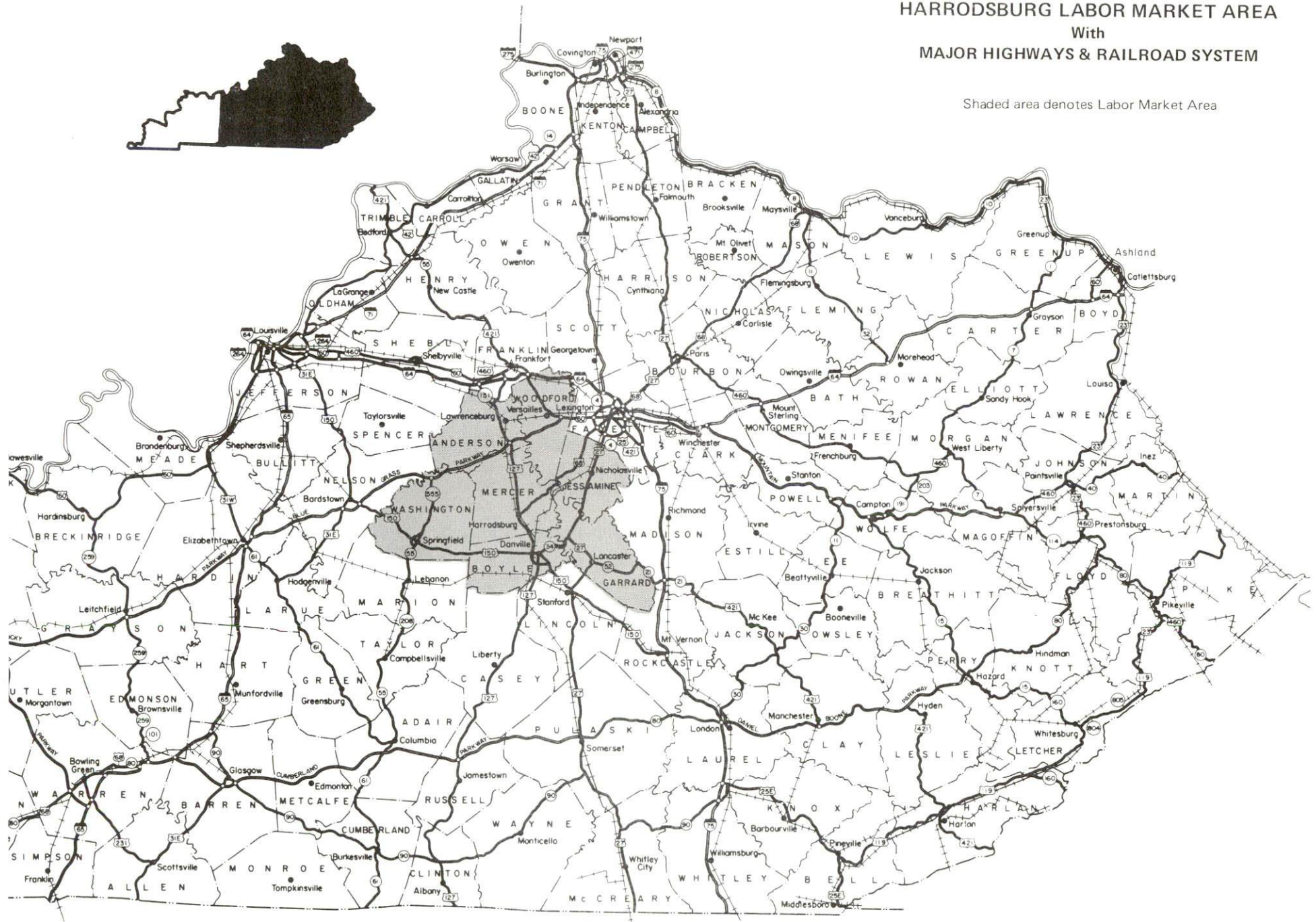


0 1 2 3 4 MILES



HARRODSBURG LABOR MARKET AREA With MAJOR HIGHWAYS & RAILROAD SYSTEM

Shaded area denotes Labor Market Area



HARRODSBURG, KENTUCKY - A RESOURCE PROFILE

Harrodsburg, the county seat of Mercer County, is the oldest permanent English settlement west of the Allegheny Mountains. The city is located 33 miles southwest of Lexington, Kentucky; 74 miles southeast of Louisville, Kentucky; and 111 miles south of Cincinnati, Ohio. In 1984, Harrodsburg had an estimated population of 8,021 persons.

Mercer County, with a land area of 250 square miles, is located in the Bluegrass Region of central Kentucky. The topography of the county is gently rolling to hilly. The 1984 estimated population of Mercer County was 19,330 persons.

The Economic Framework - The total number of Mercer County residents employed in 1985 averaged 8,220, with nonagricultural jobs accounting for 7,300 workers. Manufacturing firms in the county reported 1,505 employees; wholesale and retail trade provided 910 jobs; 750 people were employed in service occupations; state and local government accounted for 570 employees; and contract construction firms provided 175 jobs.

Labor Supply - There is a current estimated labor supply of 6,040 men and 6,910 women available for industrial jobs in the labor market area. In addition, from 1987 through 1991, 5,200 young men and 4,950 young women in the area will become 18 years of age and potentially available for industrial jobs.

Transportation - The Southern Railway System provides main line rail service to Harrodsburg. Highways serving the city are U.S. Highways 68 and 127, both AAA-rated trucking routes; and Kentucky Route 152, a AA-rated route. The Blue Grass Parkway is accessible 16 miles north of Harrodsburg via U.S. 127. Interstate 64 is accessible 29 miles north via the same route. Nineteen trucking companies provide interstate and/or intrastate service to Harrodsburg. The nearest scheduled commercial airline service is available at Lexington's Blue Grass Airport, 32 miles northeast of the city.

Power and Fuel - Electric power is provided to Harrodsburg and parts of Mercer County by the Kentucky Utilities Company. The remainder of Mercer County is served by the Fox Creek Rural Electric Cooperative Corporation and the Inter-County Rural Electric Cooperative Corporation. Natural gas service is provided by the Western Kentucky Gas Company. Five propane dealers and eight fuel oil dealers serve Harrodsburg.

Education - Primary and secondary education is provided to Mercer County by the Burgin Independent School System, the Harrodsburg Independent School System, and the Mercer County School System. The Harrodsburg Independent School System is accredited by the Southern Association of Colleges and Schools. Eleven colleges and universities are located within 50 miles of Harrodsburg. Vocational training is available locally at the Harrodsburg Area Vocational Education Center. The Central Kentucky State Vocational-Technical School in Lexington, 33 miles northeast, offers training in 36 course areas.

LABOR MARKET STATISTICS

The Harrodsburg Labor Market Area includes Mercer County and the adjoining Kentucky counties of Anderson, Boyle, Garrard, Jessamine, Washington and Woodford.

POPULATION				
Area	1984*	1980	1970	Percent Nonwhite 1980
Harrodsburg	8,021	7,265	6,741	9.6
Labor Market Area	126,100	122,104	99,228	N/A
Mercer County	19,330	19,011	15,960	4.6
Anderson County	13,334	12,567	9,358	3.9
Boyle County	25,104	25,066	21,861	9.5
Garrard County	11,292	10,853	9,457	5.5
Jessamine County	28,016	26,065	17,430	4.6
Washington County	10,390	10,764	10,728	10.3
Woodford County	18,634	17,778	14,434	8.0

* Population estimates.

Note: The 1980 city counts of population by race are provisional.

Sources: U.S. Department of Commerce, Bureau of the Census, 1980 Census of Population and Housing, March 1981; 1980 Census of Population, Number of Inhabitants. University of Louisville, Urban Studies Center, Population Unit, October 1985; Kentucky Population Research Notes, Issue Number One, May 1985.

POPULATION PROJECTIONS				
Area	1990	1995	2000	2010
Labor Market Area	135,230	142,573	148,374	156,952
Mercer County	20,567	21,549	22,290	23,377
Anderson County	14,495	15,438	16,166	17,250
Boyle County	26,345	27,301	27,973	28,632
Garrard County	11,849	12,252	12,543	12,899
Jessamine County	31,085	33,572	35,699	39,306
Washington County	10,408	10,440	10,452	10,407
Woodford County	20,481	22,021	23,251	25,081

Source: University of Louisville, Urban Studies Center, Population Research Unit, How Many Kentuckians: Population Forecasts, 1980-2020, the 1986 Edition, Spring 1986.

LABOR FORCE CHARACTERISTICS OF RESIDENTS, 1985

	<u>Mercer County</u>	<u>Labor Market Area</u>
Civilian Labor Force	8,989	63,813
Employment	8,223	58,712
Agricultural	924	5,551
Nonagricultural	7,299	53,161
Unemployment	766	5,101
Rate of Unemployment (%)	8.5	8.0

Source: Kentucky Cabinet for Human Resources, Kentucky Labor Force Estimates, Annual Averages, 1985.

SELECTED COMPONENTS OF NONAGRICULTURAL EMPLOYMENT,
BY PLACE OF WORK, 1985

	<u>Mercer County</u>	<u>Labor Market Area</u>
All Industries (total)	4,408	34,675
Manufacturing	1,505	11,823
Wholesale & Retail Trade	911	8,329
Services	751	4,626
State/Local Government	566	4,527
Contract Construction	175	1,601
Mining & Quarrying	0	28

Note: Excludes domestic workers, railway workers, certain nonprofit corporations, majority of federal government workers, and self-employed workers.

Source: Kentucky Cabinet for Human Resources, Average Monthly Workers Covered by Kentucky Unemployment Insurance Law, 1985.

PER CAPITA PERSONAL INCOME

<u>Area</u>	<u>1980</u>	<u>1984</u>	<u>Percent Change</u>
Mercer County	\$ 7,232	\$ 9,572	32.4
Labor Market Area Range	\$5,813 - 10,006	\$7,859 - 15,361	N/A
Kentucky	7,644	10,232	33.9
U. S.	9,494	12,772	34.5

Sources: U.S. Department of Commerce, Bureau of Economic Analysis. Kentucky Economic Information System, June 1986.

ESTIMATED MALE LABOR SUPPLY
HARRODSBURG LABOR MARKET AREA

Area	Current			Future	
	Total Male	Unemployed	Under-employed	Not in Labor Force	Becoming 18 years of age 1987 thru 1991
Labor Market					
Area*	6,039	2,966	2,806	267	5,203
Mercer	824	486	338	0	753
Anderson	557	351	206	0	564
Boyle	1,227	680	547	0	1,123
Garrard	905	353	285	267	426
Jessamine	1,433	549	884	0	1,117
Washington	587	353	234	0	431
Woodford	506	194	312	0	789

ESTIMATED FEMALE LABOR SUPPLY
HARRODSBURG LABOR MARKET AREA

Area	Current			Future	
	Total Female	Unemployed	Under-employed	Not in Labor Force	Becoming 18 years of age 1987 thru 1991
Labor Market					
Area*	6,908	2,135	3,302	1,471	4,951
Mercer	1,538	280	425	833	767
Anderson	652	307	345	0	543
Boyle	1,103	509	594	0	1,005
Garrard	1,009	223	196	590	375
Jessamine	1,351	330	1,021	0	1,068
Washington	599	303	248	48	423
Woodford	656	183	473	0	770

* Additional workers may be drawn from other nearby counties.

Note: Unemployed - persons unemployed and actively seeking work;
Underemployed - persons employed but working only 14 to 26 weeks per year;
Not in Labor Force - represents the number of persons who would enter the labor force if suitable employment were available (based on the assumption that persons in Kentucky would like to participate in the labor force in the same proportion that they do nationally).

Sources: Kentucky Cabinet for Human Resources, Kentucky Labor Supply Estimates by County, 1985. Kentucky Department of Economic Development, Future Labor Supply Becoming 18 Years of Age, 1987 thru 1991.

AVERAGE WEEKLY WAGES BY INDUSTRY,
BY PLACE OF WORK, 1985

	<u>Mercer County</u>	<u>Anderson County</u>	<u>Boyle County</u>	<u>Garrard County</u>
All Industries	\$279.89	\$286.88	\$304.94	\$205.20
Mining & Quarrying	0	*	516.45	*
Contract Construction	284.63	210.81	263.35	247.69
Manufacturing	374.22	376.69	391.16	204.82
Transportation, Communications & Public Utilities	413.33	418.87	417.23	328.36
Wholesale & Retail Trade	173.11	206.32	217.55	137.67
Finance, Insurance & Real Estate	293.98	290.20	300.88	275.51
Services	181.67	165.81	257.00	212.48
State/Local Government	285.53	253.24	302.69	220.87
Other	172.20	195.08	250.52	161.46
	<u>Jessamine County</u>	<u>Washington County</u>	<u>Woodford County</u>	
All Industries	\$262.49	\$227.21	\$312.02	
Mining & Quarrying	*	*	0	
Contract Construction	290.82	287.53	220.85	
Manufacturing	321.75	269.04	426.59	
Transportation, Communications & Public Utilities	320.03	176.10	398.89	
Wholesale & Retail Trade	219.60	169.99	162.07	
Finance, Insurance & Real Estate	248.61	283.99	270.35	
Services	208.05	151.24	221.22	
State/Local Government	232.48	242.26	280.92	
Other	257.10	162.54	272.43	

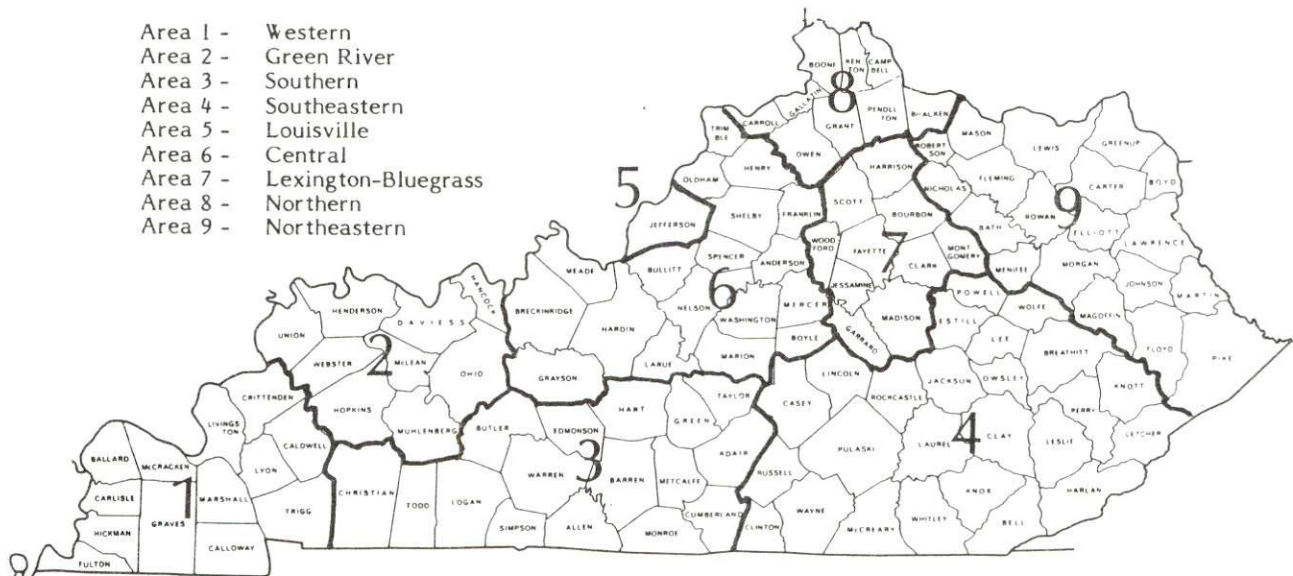
* Not disclosed.

Note: The average weekly wage for each category includes the salaries and wages of all persons working for that type business. For example, the manufacturing category includes both production workers and administrative personnel. Excludes domestic workers, railway workers, certain nonprofit corporations, majority of federal government workers, and self-employed workers.

Source: Kentucky Cabinet for Human Resources, Average Weekly Wages of Workers Covered by Kentucky Unemployment Insurance Law, 1985.

Occupational wage rates for specific industries are usually not available to most government agencies, and wage data furnished to state employment agencies by individual industrial employers are protected from disclosure by federal law. The most reliable up-to-date wage information can be obtained by direct contact with local employers.

Associated Industries of Kentucky, a voluntary organization of Kentucky businesses, regularly collects occupational wage rates and fringe benefits data from participating member firms. Data are compiled for over 127 clearly defined office, production, and service occupations. Tabulations are published for nine geographical areas of Kentucky, as shown on the map below. It should be noted that the data may be weighted by the preponderance of firms in the larger cities and may be somewhat higher than the rates paid in the smaller communities. Data from these tabulations are available, upon request, from the Kentucky Department of Economic Development, Frankfort, Kentucky 40601.



Associated Industries of Kentucky Area Wage Surveys

EXISTING INDUSTRY

MERCER COUNTY MANUFACTURING FIRMS, THEIR PRODUCTS AND EMPLOYMENT

<u>Firm</u> (Establishment date)	<u>Product</u>	<u>Employment</u>			<u>Labor Unions</u>
		<u>Total</u>	<u>Male</u>	<u>Female</u>	
Harrodsburg					
Corning Glass Works (1952)	Optical and ophthalmic glass, optical sunglass	350	210	140	Flint Glass Workers*
Createc Corporation (1986)	Styrofoam packing	25	--	--	
Cricketeer Manufacturing (1957)	Men's sport coats and suits	405	15	390	Clothing & Textile Workers*
Dairymen, Inc., Manufacturing Producer Division (1942)	Cheese, dried whey	60	52	8	Food & Commercial Workers*
Hall-Mack-Parker, Nutone Division Scovill, Inc. (1967)	Bathroom accessories, push buttons for door chimes, stainless steel handicap bars	132	87	45	Steelworkers*
Harrodsburg Herald (1884)	Newspaper, offset printing, letterpress printing	22	13	9	
Harrodsburg Ready Mix & Supply Company (1955)	Ready-mixed concrete	5	5	--	

(Continued)

<u>Firm (Establishment date)</u>	<u>Product</u>	<u>Employment</u>			<u>Labor Unions</u>
		<u>Total</u>	<u>Male</u>	<u>Female</u>	
Hitachi Automotive Products (USA), Inc. (1986)	Automotive electrical components	50	40	10	
Kentucky Souvenirs, Inc. (1947)	Textile screening, ceramics, wood souvenirs	11	8	3	
Mago Construction Company, Inc. (1966)	Bituminous concrete mixes	3	3	0	
National By-Products, Inc. (1956)	Dog food processing	27	25	2	
Sandusky Farm Service (1920)	Feed	10	9	1	
Signet Systems, Inc. (1969)	Auto and truck air conditioner systems	322	156	166	
Burgin					
DeTer Company, Inc. (1984)	Microfoam dust arresting equipment, microbond surfactants	10	6	4	
Keystone Brush & Contact, Inc. (1984)	Brushes for electric motors, electric sliding contacts	69	34	35	

*See Labor Organizations on next page.

Sources: Kentucky Department of Economic Development, 1986 Kentucky Directory of Manufacturers; Division of Research and Planning.

LABOR ORGANIZATIONS IN MANUFACTURING FIRMS

<u>Union</u>	<u>Representing workers at:</u>
Amalgamated Clothing and Textile Workers Union, AFL-CIO	Cricketeer Manufacturing
American Flint Glass Workers Union, AFL-CIO	Corning Glass Works
United Food and Commercial Workers International Union, AFL-CIO	Dairymen, Inc., Manufacturing Producer Division
United Steelworkers of America, AFL-CIO	Hall-Mack-Parker, Nutone Division Scovill, Inc.

SELECTED INDUSTRIAL SERVICES

<u>Types of Services</u>	<u>Location</u>	<u>Mileage from Harrodsburg</u>
Custom Plastics Producers	Danville	9
Electric Motor Repair	Lebanon	31
	Lexington	33
Grinding, Precision & Tool	Georgetown	48
	Winchester	53
Heat Treating Facilities	Frankfort	33
	Lexington	33
Industrial Equipment & Supplies	Springfield	25
	Frankfort	33
	Lexington	33
Industrial Gases	Lexington	33
Industrial Waste Removal	Frankfort	33
	Lexington	33
Machine Shops, Tool & Die	Danville	9
Metal Finishers	Lexington	33
Metal Service Centers	Lexington	33
Millwrights	Nicholasville	25
	Lexington	33
Public Warehouse Facilities	Danville	9

Sources: Kentucky Department of Economic Development, Kentucky Directory of Selected Industrial Services, 1985; Division of Research and Planning.

TRANSPORTATION

Rail

Line serving **Harrodsburg** - Southern Railway System

Services - Main line; three eastbound and three westbound freights stop daily; switching services; team track space for 3 cars; nearest piggyback facilities located at Danville, nine miles southeast

For details on routing, schedules, rates, and services, contact:

Industrial Development Department
Norfolk Southern Corporation
19th Floor, L & C Tower
Nashville, Tennessee 37219
(615) 254-3398

Highways

U.S. Highways 68 and 127 are "AAA"-rated (80,000-pound gross load limit) highways serving Harrodsburg. U.S. 127 has an excellent multilane segment extending from the Blue Grass Parkway, 16 miles north of Harrodsburg, to Danville, 9 miles southeast of Harrodsburg. Kentucky Route 152, a "AA"-rated (62,000-pound gross load limit) highway, also serves Harrodsburg.

Access to Interstate Highway 64 is available 29 miles north of Harrodsburg via U.S. 127, and 39 miles northeast near Lexington. Interstate 75 is also accessible near Lexington, as well as 47 miles southeast of Harrodsburg via U.S. 127 and U.S. 150, also a "AAA"-rated highway.

Truck Service

ANR Freight System, Inc.*
ARA/Smith's*
American Freight System, Inc.*
Bailey's Express, Inc.**
Bestway Express, Inc.*
Bowman Transportation, Inc.*
CW Transport, Inc.**
Carolina Freight Carriers
Corporation**
Central Transport, Inc.*
Duff Truck Line, Inc.**

Jones Truck Lines, Inc.
Lawrenceburg Transfer Company,
Inc.**
Manning Motor Express, Inc.**
Middlewest Freightways, Inc.**
O.K. Trucking Company**
Overnite Transportation
Company**
P-I-E Nationwide, Inc.*
Roadway Express, Inc.**
Suburban Motor Freight, Inc.**

* Interstate service only.

** Interstate and intrastate service.

Source: American Motor Carrier Directory, Fall 1986.

HIGHWAY MILES AND TRUCK TRANSIT TIME IN DAYS FROM
HARRODSBURG, KENTUCKY, TO SELECTED MARKET CENTERS

City	Highway Miles	Delivery Time TL	City	Highway Miles	Delivery Time TL
Atlanta, Ga.	355	1	Los Angeles, Ca.	2,182	5
Baltimore, Md.	574	2	Louisville, Ky.	74	1
Birmingham, Ala.	404	1	Nashville, Tenn.	208	1
Chicago, Ill.	366	2	New Orleans, La.	725	2
Cincinnati, Ohio	111	1	New York, N. Y.	736	-
Cleveland, Ohio	350	1	Pittsburgh, Pa.	376	1
Detroit, Mich.	370	1	St. Louis, Mo.	337	1
Knoxville, Tenn.	162	1			

Note: Mileage computations are via the best interstate or primary highways, not necessarily the most direct route of travel.

Sources: Rand McNally Road Atlas, 1979. Official Kentucky Mileage Map, 1980.
Delivery time - Overnite Transportation Company, 1020 Whipple Court,
Lexington, Kentucky 40574.

Air

Nearest Small Craft Airport

Location:	Goodall Field, Danville-Boyle County Airport 4 miles south of Danville; 13 miles southeast of Harrodsburg
Runways:	Two paved
Length:	4,800 feet and 1,800 feet
Traffic	
Control:	Wind sock, instrument approach, Unicom 122.8
Lighting:	Rotating beacon, sundown to sunrise; VASI, REILS
Services:	100 octane, jet-A; major and minor A & P repairs; charter; hangar; tie-down; flight instruction; aircraft rental
Air Freight	
Service:	Chartered air freight service must be arranged

(Continued)

Nearest Scheduled Commercial Airline Service

Location:	Bluegrass Airport 5 miles west of Lexington, Kentucky; 32 miles northeast of Harrodsburg
Runways:	2 paved
Length:	7,000 feet; 3,500 feet
Traffic	
Control:	Tower
Lighting:	Approach lighting system, beacon, runways and obstructions lighted, VASI
Services:	Delta, Piedmont, United, USAir, Allegheny Commuter, Piedmont Commuter, Eastern Metro, Comair, American Eagle; fuel - 100LL and jet-A; hangars, tie-downs; major A & P repairs; major Avionics repairs; APU, charter, flight instruction, oxygen, plane rentals, survival equipment; taxi, limousine, car rentals, courtesy car, weather information; restaurant, snack bar
Air Freight Service:	Air freight terminal

Air Express Service

Several major companies offer air express services in Kentucky. These companies provide a quick means of shipping small to medium-sized packages expeditiously.

Water

The nearest navigable waterway is the Kentucky River near Frankfort, 33 miles north of Harrodsburg, where a 6-foot navigation channel is maintained.

POWER AND FUEL

Electricity

Company serving **Harrodsburg and parts of Mercer County** - Kentucky Utilities Company

Source of power - Kentucky Utilities Company

For industrial rates contact:

Industrial Development Department
Kentucky Utilities Company
One Quality Street
Lexington, Kentucky 40507
(606) 255-1461

Companies serving **parts of Mercer County** - Fox Creek Rural Electric Cooperative Corporation; Inter-County Rural Electric Cooperative Corporation

Source of power - East Kentucky Power Cooperative

For industrial rates contact:

Industrial Development Division
East Kentucky Power Cooperative
P.O. Box 707
Winchester, Kentucky 40391
(606) 744-4812

and/or

Fox Creek Rural Electric Cooperative Corporation
P. O. Box 150
Lawrenceburg, Kentucky 40342
(502) 839-3442

and/or

Inter-County Rural Electric Cooperative Corporation
P. O. Box 87
Danville, Kentucky 40422
(606) 236-4561

Natural Gas

Company serving **Harrodsburg** - Western Kentucky Gas Company
Source of supply - Tennessee Gas Pipeline Company
Size of transmission mains - 26 to 36 inches (supplier); 6 inches (distributor)
Distribution mains - 2 to 6 inches
Distribution pressure - 35 psi
Btu content - 1,000 per cubic foot
Specific gravity - 0.60
For rates and supplies contact:

Western Kentucky Gas Company
311 West Seventh Street
Owensboro, Kentucky 42301
(502) 685-8067

Other Fuels (Within 25 miles)

Propane

Bright's Bottle Gas Company*
100 West Brook Street
Burgin, Kentucky 40310

Southern States Boyle Cooperative*
Route 4, Lebanon Road
Danville, Kentucky 40422

Doxol Propane
Buckeye Gas Products Company*
P.O. Box 280
Hustonsville, Kentucky 40437

Suburban Propane Gas Company*
121 North Fourth Street
Nicholasville, Kentucky 40356

Doxol Propane
Buckeye Gas Products*
P.O. Box 28
Lawrenceburg, Kentucky 40342

* Bulk plant.

Fuel oils

Distillate fuel oil -

Burton Oil Company*
419 West Factory Street
Harrodsburg, Kentucky 40330

Clarke & Keller Oil Company*
1060 Beaumont Avenue
Harrodsburg, Kentucky 40330

Ensslin Enterprises, Inc.*
David Road, P.O. Box 142
Danville, Kentucky 40422

E. N. Johnson Oil Company, Inc.
Union 76*
1211 Lebanon Road
Danville, Kentucky 40422

Little Oil Company, Inc.*
Highway 150 By-Pass
Danville, Kentucky 40422

Scheuer Oil Company*
Stanford Road, P.O. Box 687
Danville, Kentucky 40422

Southern States Boyle Cooperative*
Route 4, Lebanon Road
Danville, Kentucky 40422

Watts & Durr Oil Company, Inc.*
201 North College Street
Harrodsburg, Kentucky 40330

Residual fuel oil - Arrangements must be made with the refinery.

Low sulphur content coal - Available in Kentucky.

* Bulk plant.

WATER AND SEWERAGE

Public Water Supply

Company serving **Harrodsburg** - Harrodsburg Municipal Water Department
208 South Main Street
Harrodsburg, Kentucky 40330
(606) 734-2383

Source - Kentucky River

Treatment plant capacity - 4,000,000 gallons per day

Average daily consumption - 1,525,000 gallons

Peak daily consumption - 2,050,000 gallons

Type treatment - Coagulation, sedimentation, filtration, chlorination, fluoridation

Storage capacity - 1,090,000 gallons

Size lines - 4 to 20 inches

Average pressure - 42 to 60 psi

MONTHLY WATER RATES

First	250 cubic feet	\$5.00 (Minimum)
Next	750 cubic feet	1.90 per 100 cubic feet
Next	3,000 cubic feet	1.65 per 100 cubic feet
Next	6,000 cubic feet	1.40 per 100 cubic feet
Next	25,000 cubic feet	1.20 per 100 cubic feet
Next	25,000 cubic feet	1.00 per 100 cubic feet
Over	60,000 cubic feet	.80 per 100 cubic feet

Tap-on charge:

3/4-inch	\$ 300
1-inch	400
1 1/2-inch	500
2-inch	750
3-inch	1,000

Tap larger than 3 inches is negotiated.

An additional \$100 per tap is charged outside the city limits.

Sewerage

Company serving **Harrodsburg** - Harrodsburg Municipal Sewer Department
208 South Main Street
Harrodsburg, Kentucky 40330
(606) 734-2383

Design capacity - 2,680,000 gallons per day

Average daily flow - 1,000,000 gallons

Type of treatment - Primary and secondary

Treatment processes - Flow equalization, screening, grit removal, primary sedimentation, secondary sedimentation, post aeration, anaerobic digester, sludge drying beds, rotating biological contactors, chlorination, polishing lagoon

Treated effluent discharged into - Salt River

Size of sanitary mains - 18-inch main outfall; 6 to 10-inch branch lines

Size of storm mains - 12 to 36 inches. Storm drainage is not combined with sanitary sewers.

Monthly rates -

First	250 cubic feet	\$6.25 (Minimum)
Next	750 cubic feet	2.30 per 100 cubic feet
Next	3,000 cubic feet	2.10 per 100 cubic feet
Next	6,000 cubic feet	1.90 per 100 cubic feet
Next	25,000 cubic feet	1.75 per 100 cubic feet
Next	25,000 cubic feet	1.65 per 100 cubic feet
Over	60,000 cubic feet	1.40 per 100 cubic feet

Quality treatment surcharges for industrial wastes exceeding specific limits are as follows:

- 1.) BOD in concentrations greater than 250 mg/l - \$0.129 per pound
- 2.) SS in concentrations greater than 250 mg/l - \$0.155 per pound
- 3.) Ammonia nitrogen in concentrations greater than 25 mg/l - \$0.13 per pound

Tap-on charge:

4-inch	\$ 300
6-inch	500
8-inch	1,000
Larger than 8-inch:	Negotiated based on cost of labor and materials

CLIMATE

Mercer County

Temperature

Normal (30-year record)	54.90 degrees
Average annual 1985	54.60 degrees
Record highest, August 1983 (41-year record)	103.00 degrees
Record lowest, January 1963 (41-year record)	-21.00 degrees
Normal heating degree days (30-year record)	4,814
(Heating degree day totals are the sums of negative departures of average daily temperatures from 65 degrees F.)	

Precipitation

Normal (30-year record)	45.68 inches
Mean annual snowfall (30-year record)	16.50 inches
Total precipitation 1985	37.75 inches
Mean number days precipitation (.01 inch or more) (41-year record)	130.70
Mean number days thunderstorms (41-year record)	45.80

Prevailing Winds (through 1963)

South

Relative Humidity

1 a.m.	77 percent (21-year record)
7 a.m.	82 percent (22-year record)
1 p.m.	60 percent (22-year record)
7 p.m.	64 percent (22-year record)

Source: U.S. Department of Commerce, Environmental Science Services Administration, Climatological Data, 1985. Station of record: Lexington, Kentucky.

LOCAL GOVERNMENT

Structure

The city of Harrodsburg is served by a mayor and four council members. The mayor serves a four-year term and the council members serve two-year terms. Mercer County is served by a county judge/executive and six magistrates. The county judge/executive and magistrates are all elected to four-year terms.

Planning and Zoning

Joint agency - The Greater Mercer County-Harrodsburg Zoning Commission

Participating cities - Harrodsburg

Zoning enforced - All areas of Mercer County, except the city of Burgin

Subdivision regulations enforced - Within city limits of Harrodsburg and five miles beyond

Local codes enforced - None

Mandatory state codes enforced - Kentucky Plumbing Code, National Electric Code, Kentucky Boiler Regulations and Standards, Kentucky Building Code (modeled after BOCA code)

Local Fees and Licenses

The city of Harrodsburg levies a one percent occupational license tax on wages, salaries, and commissions of individuals and on net profits of businesses operating within the city. The city also levies a business license fee of \$25 per year on businesses operating within the city.

A 3 percent tax is levied on utilities receipts for schools in the Burgin Independent School District. Tax is paid by all consumers of utilities as an add-on to the utilities bills. Exempted are receipts from utilities services that are resold and the receipts from the sale of energy or energy producing fuels that exceed 3 percent of the cost of production in manufacturing, processing, mining or refining.

State and Local Property Taxes

All property in Kentucky, except items exempted by the state constitution, is taxed by the state. Property which also may be taxed by local jurisdictions includes land and buildings, finished goods inventories, automobiles, trucks, office furniture and office equipment. Local taxing jurisdictions in Kentucky include counties, cities, and school districts.

All property in Kentucky is assessed at 100 percent of fair cash value.

COMBINED STATE AND LOCAL RATES PER \$100 VALUATION, 1986

	<u>Harrodsburg and Harrodsburg Independent School District</u>	<u>Harrodsburg and Mercer County School District</u>	<u>Burgin and Burgin Independent School District</u>
Land and Buildings	\$ 1.0060	\$ 0.9480	\$ 0.8886
Manufacturing Machinery	0.1500	0.1500	0.1500
Pollution Control Equipment	0.1500	0.1500	0.1500
Inventories			
Raw materials	0.0010	0.0010	0.0010
Goods in Process	0.0010	0.0010	0.0010
Finished Goods	0.8180	0.7530	0.6950
Automobiles and Trucks	1.2737	1.2137	1.1315
Other Tangible Personal Property	1.2670	1.2020	1.1440
Intangibles (Accounts receivable, money in hand, stock, notes, bonds)	0.2500*	0.2500*	0.2500*
Goods Stored in Public Warehouses in Transit Status	0.0010	0.0010	0.0010
Private Leaseholds in Industrial Revenue Bond Financed Facilities	0.0150	0.0150	0.0150

(Continued)

* Accounts receivable are taxed at 85 percent of face value, for an effective rate of \$0.2125 per \$100 valuation.

	<u>Burgin and Mercer County School District</u>	<u>Unincorporated Mercer County</u>
Land and Buildings	\$ 0.9380	\$ 0.7380
Manufacturing Machinery	0.1500	0.1500
Pollution Control Equipment	0.1500	0.1500
Inventories		
Raw materials	0.0010	0.0010
Goods in Process	0.0010	0.0010
Finished Goods	0.7230	0.5230
Automobiles and Trucks	1.1865	0.9837
Other Tangible Personal Property	1.1720	0.9720
Intangibles (Accounts receivable, money in hand, stock, notes, bonds)	0.2500*	0.2500*
Goods Stored in Public Warehouses in Transit Status	0.0010	0.0010
Private Leaseholds in Industrial Revenue Bond Financed Facilities	0.0150	0.0150

Safety

Police	Harrodsburg	Mercer County
Total staff	12	5
Radio-patrol cars	4	3
Fire***		
Insurance Services Office, Public Protection Classification	5	****
Full-time staff	14	-
Volunteers	21	90

Rescue Service

The Harrodsburg Fire Department and the Mercer County Volunteer Fire Department provide rescue service to Harrodsburg and Mercer County.

* Accounts receivable are taxed at 85 percent of face value, for an effective rate of \$0.2125 per \$100 valuation.

*** Includes copyrighted material of ISO Commercial Risk Services, Inc., with its permission.

**** The city of Burgin has a fire classification rating of 7. Property in Mercer County fire districts 1, 2, 3, and 4 has a rating of class 9. All other property in unincorporated Mercer County has a rating of 10.

Refuse Collection and Disposal

Private contractors provide refuse collection to Harrodsburg and Mercer County. Disposal is in a county operated landfill.

EDUCATION

Public Schools

	Burgin Independent	Harrodsburg Independent*	Mercer County**
Total Enrollment (November 1986)	400	1,070	2,094
Kindergarten	27	82	145
Elementary	192	652	975
Junior High	66	-	325
High School	115	336	649
Accreditation		Southern Association of Colleges and Schools	
Pupil-Teacher Ratio (1985-86)	17-1	19-1	20-1
Percent High School Graduates to College (1985-86)	65.0	52.6	47.0
Expenditures Per Pupil (1985-86)	\$2,085.99	\$2,134.92	\$1,763.95

* The Harrodsburg Independent School System plans to construct a 4,800-square-foot addition to the high school. The addition will house a science lab, library, and a home economics facility. A 15,000-square-foot multi-purpose addition is also planned at one of the elementary schools. Construction is planned to begin in 1988.

** The Mercer County School System is currently constructing new classrooms at the high school. The new classrooms are scheduled to be completed in the spring of 1987. They will be used for art and computer training. Construction of a new 14,000-square-foot physical education complex and a nine-classroom addition at the elementary school was recently completed.

Area Colleges and Universities

<u>Name</u>	<u>Location (Miles distant)</u>	<u>Enrollment (Fall, 1986)</u>	<u>Highest Degree Conferred</u>
Centre College	Danville (9)	814	Baccalaureate
Asbury College	Wilmore (19)	939	Baccalaureate
Saint Catharine College	Springfield (25)	280	Associate
Kentucky State University	Frankfort (33)	2,205	Masters
Lexington Community College	Lexington (33)	2,587	Associate
Transylvania University	Lexington (33)	970	Baccalaureate*
University of Kentucky	Lexington (33)	20,788	Doctorate, M.D., D.M.D., J.D.
Midway College	Midway (39)	340	Associate
Berea College	Berea (43)	1,587	Baccalaureate
Eastern Kentucky University	Richmond (45)	12,737	Masters, Specialist**
Georgetown College	Georgetown (48)	1,362	Masters

* Courses in a masters degree program are taught on the Transylvania campus by faculty members of Xavier University of Cincinnati. The degree is issued by Xavier University.

** Joint doctoral degree programs are offered in cooperation with the University of Kentucky, Lexington. The degrees are issued by the University of Kentucky.

Vocational Training

The Bluegrass State Skills Corporation, an independent public corporation created and funded by the Kentucky General Assembly, provides programs of skills training to meet the needs of business and industry from entry level to advanced training, and from upgrading present employees to retraining experienced workers.

The Bluegrass State Skills Corporation is the primary source for skills training assistance for a new or existing company. The Corporation works in partnership with other employment and job training resources and programs, as well as Kentucky's economic development activities, to package a program customized to meet the specific needs of a company.

Vocational training is available at both the state vocational-technical schools and the area vocational education centers. The state vocational-technical schools are post-secondary institutions. The area vocational education centers are designed to supplement the curriculum of high school students. Both the state vocational-technical schools and the area vocational education centers offer evening courses to enable working adults to upgrade current job skills.

Arrangements can be made to provide training in the specific production skills required by an industrial plant. Instruction may be conducted either in the vocational school or in the industrial plant, depending upon the desired arrangement and the availability of special equipment.

(Continued)

Nearest State School

Central Kentucky State Vocational-Technical School
Lexington, 33 miles distant

Academic Related Subjects

Language

Math

Technical Related Math

Business & Office

Accounting

Clerical

Secretarial

Consumer & Home Economics

Commercial Foods

Distributive Education

Retail Training-Merchandising/

Food Marketing

Hotel/Motel-Waiter/Waitress-

Housekeeping Services

Health & Personal Services Occupations

Cosmetology

Dental Assistant

Nurse's Aide

Practical Nursing

Surgical Technician

Ward Clerk

Medications Aide

Home Health Care

Geriatric

Industrial Education

Air Conditioning

Auto Body Repair

Auto Mechanics

Carpentry

Drafting (with CAD/CAM)

Electronics

Graphic Arts

Industrial Electricity

Machine Shop

Welding

Learning Resource Center

GED

Public Service

E.M.T. Training

Fire Training

Cardiopulmonary Resuscitation

First Aid

Industrial Fire Brigade Training

Apprenticeship

Electrical

Tool & Die

Up-Grade Programs

Nearest Area Education Center

Harrodsburg Area Vocational Education Center
Harrodsburg

Business & Office

Clerical

Secretarial

Health & Personal Services Occupations

Health Services

Industrial Education

Auto Mechanics

Carpentry

Electricity

Welding

HEALTH

Local Medical Personnel

Physicians - 9
Dentists - 5

Hospitals

<u>General Hospital</u>	<u>Location</u>	<u>Beds</u>
James B. Haggin Memorial Hospital	Harrodsburg	80

Medical staff - 16 physicians, 31 registered nurses, and 31 licensed practical nurses

Other Medical Facilities

Southern Blue Grass Comprehensive Care Center
West Bluegrass District Health Department (a public health facility)

Ambulance Service

Name - Mercer County Ambulance Service
Staff - Eight emergency medical technicians

OTHER LOCAL FACILITIES

Communications

Telephone -	South Central Bell Telephone Company
Telegraph -	Western Union Toll-free number, 1-800-325-6000
Newspaper -	The Harrodsburg Herald
Weekly and circulation -	6,250
Radio -	WHBN - AM & FM
Television -	
Airwave reception from -	Lexington and Louisville, Kentucky; Cincinnati, Ohio
Cable service -	RV Cablevision, Inc.
Educational television -	The Kentucky Educational Television (K.E.T.) network is available statewide

Library Services

Public library - Mercer County Public Library
Size collection - 36,000 volumes
Circulation, 1985-86 - 127,000

Religious Institutions

Denominations -	AME Baptist Catholic Christian Church of Christ Church of God Episcopal	Guiding Light Tabernacle Interdenominational Jehovah's Witness Methodist Presbyterian Unity Business Mission
Nearest Synagogues -	Lexington, 33 miles northeast	
Congregations -	Adath Israel (reform) Ohavey Zion (traditional)	

Financial Institutions

<u>Banks</u>	<u>Assets</u>	<u>Deposits</u>	<u>Statement Date</u>
Citizens Bank & Trust Company (Burgin)	\$ 8,712,744.40	\$ 6,731,359.55	11/1/86
Mercer County National Bank	45,782,000.00	39,682,000.00	9/30/86
State Bank & Trust Company	39,435,671.84	35,035,717.86	6/30/86

<u>Savings and Loan Associations</u>	<u>Assets</u>	<u>Deposits</u>	<u>Statement Date</u>
The Cumberland* Harrodsburg First Federal Savings and Loan Association	\$873,431,000.00	\$723,538,000.00	12/31/85
	80,320,922.48	74,266,560.29	9/30/86

Hotels and Motels**

Total number - 12
Total rooms - 343

* Includes total assets and deposits for Louisville main office and branch offices in Bowling Green, Frankfort, Harrodsburg, Lexington, Louisville, Maysville, Scottsville, and Shelbyville.

** A new 50-room motel is being constructed in Harrodsburg. The motel will contain a restaurant and conference rooms. Construction is scheduled to be completed in the spring of 1987.

Clubs and Organizations

Agricultural Stabilization
and Conservation Service
American Legion
Art Club
Band Club
Beta Club
Beta Sigma Phi
Bluegrass Steam and Gas
Engine Association
Coed "Y" Club
Disabled American Veterans
Eastern Star
Fort Harrod Business and
Professional Women's Club
Fort Harrod Productions
French Club
Future Farmers of America
(FFA)
Future Homemakers of America
(FHA)
Go-Getters
Harrodsburg Guild of Creative
Arts
Harrodsburg Historical Society
Harrodsburg Lions Club
Harrodsburg-Mercer County
Landmark Association
Homemakers
Homemakers Garden Club
Jaycees
Junior Student Council
Kentucky Federation Women's
Club of Harrodsburg

Library Club
Masons
McAfee Puritan Club
Mercer-Boyle Y.M.C.A.
Mercer Chamber of Commerce
Mercer County Fair Board
Mercer County Farm Bureau
Mercer County Fish and Game
Club
Mercer County Foster Parents
Mercer County Homemakers
Advisory Council
Mercer County Humane Society
Mercer County Ministerial
Association
Mercer County Senior Citizens
Mercer Ministerial Association
National Honor Society
Old Harrodsburg CB Club
Optimist Club of Harrodsburg
Parent-Teachers Organization
Pep Club
Pioneer Saddle Club
Ragged Edge Theatre Club
Rotary Club
Salvisa Ruritan Club
Senior Student Council
Spanish Club
Veterans of Foreign Wars
(VFW)

RECREATION

Local

The citizens of Harrodsburg and Mercer County have access to a wide variety of recreational opportunities. The local YMCA manages the five city parks and the city swimming pool, in addition to its own facility, which houses a gymnasium, a coed weight room, and offices.

Facilities at Lions Park include the Harrodsburg Community Center, with conference and meeting room areas designed to accommodate over 300 people, and three lighted tennis courts.

Young's Park features a picnic area with tables and grills, a large shelter house that can be rented for group activities, and a playground. A new city park, Salt River Park, was recently developed. The park contains a shelter house and picnic areas.

Sportleigh Field offers baseball and football fields for use by Little League and Babe Ruth teams, and West Lane Park has a soccer field, a lighted softball field, and community meeting rooms. Other public recreational facilities in Harrodsburg include a municipal swimming pool, several tot lots, and two tennis courts and three baseball diamonds located at the public schools. Private recreational offerings include several swimming pools, a drive-in movie theater and a golf course.

The Beaumont Inn is one of Harrodsburg's most famous attractions. The antebellum structure serves as an historic country inn with antique furnishings, modern recreational facilities, a dining room specializing in southern delicacies, and a gift shop.

The Bright Leaf Resort, also a noted local attraction, features a modern 36-hole golf course and a health spa on the premises.

Old Fort Harrod State Park is a 28-acre park in Harrodsburg that features a full-scale reproduction of the original Fort Harrod. The park also contains the log cabin where Abraham Lincoln's parents were wed, the Mansion Museum which houses mementos associated with the great periods of Kentucky history, a pioneer cemetery, and a federal monument dedicated to pioneers. The "Legend of Daniel Boone" and "Lincoln" are two excellent outdoor dramas which are performed at the Old Fort Amphitheater during the summer months.

Herrington Lake, near Harrodsburg, was developed by the Kentucky Utilities Company in 1925. Dix River Dam near Pleasant Hill is located on the 3,600-acre lake. Fishing, boating, and swimming can all be enjoyed on the lake. Camping and fishing facilities are available near Harrodsburg.

Pleasant Hill, a restored Shaker Village located 7 miles northeast of Harrodsburg, is a National Historic Landmark. Over 20 buildings and grounds have been restored to display unique Shaker skills in furniture making, crafts, and architecture. Dining rooms, lodging, craft shops, and seasonal festivals and plays are offered. Pleasant Hill recently acquired an additional 6,000 acres which will be developed into a recreated Shaker farm.

Recreational events and activities in the Harrodsburg area offer something for all ages. Pioneer Days, Harrodsburg's tribute to the early settlers, is an event for young and old. Held annually, the 3-day celebration includes a parade, a horse and truck pull, open-air church services, a mini-marathon, an antique and classic car show, Kentucky arts and crafts, a flea market, Bluegrass and folk music, and a gospel sing.

The Mercer County Fair and Horse Show is one of the largest and oldest continually held county fairs in Kentucky. Featured activities include a horse show, equitation classes, exhibits, livestock judging, a parade, and beauty contests.

The Mercer Family YMCA coordinates a variety of athletic activities and programs. These include basketball leagues, volleyball leagues, soccer leagues, and Little League football and baseball. The YMCA also programs tennis instruction, swimming instruction, gymnastics instruction, aerobics and fitness classes, tennis tournaments, an annual golf tournament, and road races during the Pioneer Days festival.

Area (Within 60 miles)

Constitution Square State Shrine, 9 miles southeast of Harrodsburg in Danville, is a reproduction of Kentucky's first courthouse square, including the original 1792 post office which was the first in the west.

Perryville Battlefield State Shrine, 13 miles southwest of Harrodsburg near Perryville, is the site of the largest Civil War battle in Kentucky. A museum, a picnic area, and a playground are located on the grounds.

Isaac Shelby State Shrine, 14 miles south of Harrodsburg near Danville, is the burial site of Kentucky's first governor and one of the Commonwealth's foremost statesmen.

William Whitley House State Shrine, 28 miles southeast of Harrodsburg near Stanford, is the first brick house west of the Allegheny Mountains, built 1787-94. Whitley laid out Kentucky's first race track here and started U.S. counterclockwise racing. The facility provides picnic and playground areas in a ten-acre park.

Lincoln Homestead State Park, 30 miles west of Harrodsburg near Springfield, is a 153-acre park on land settled by Abraham Lincoln's family. The actual building in which Nancy Hanks, mother of President Lincoln, lived during her courtship with Thomas Lincoln is preserved here as well as a replica of the 1782 cabin where Thomas Lincoln lived as a boy. The park also has a museum, a gift shop, a picnic area, and an 18-hole golf course.

Waveland State Shrine, 32 miles northeast of Harrodsburg near Lexington, features an 1847 Greek Revival mansion depicting Kentucky lifestyles from the days of early settlers to the antebellum era of gentility and elegance as well as the Civil War and postwar periods. The shrine also includes the Kentucky Life Museum and a plantation village on ten acres with many shops and displays.

Frankfort, the capital of Kentucky, is 33 miles north of Harrodsburg. Points of interest in Frankfort include the Capitol Building, a 34-foot floral clock, the Daniel Boone Monument, several museums, and old homes with their original furnishings. Frankfort is also the home of Kentucky State University which offers many cultural activities and sporting events.

Lexington, 33 miles northeast of Harrodsburg, offers a variety of cultural, sporting, and recreational activities. Thoroughbred and harness racing is presented at Keeneland Race Course and the Red Mile Harness Track during several meets each year. The University of Kentucky and Transylvania University offer a number of sporting events. The University of Kentucky basketball games are held at Rupp Arena, the world's largest basketball arena. Other attractions include Lexington Philharmonic concerts, Lexington Children's Theatre, and plays performed by Broadway touring companies, all held in the recently renovated Opera House.

The Kentucky Horse Park, a park dedicated to horses and to man's love for horses, is located 41 miles northeast of Harrodsburg near Lexington. The park, which contains more than 1,000 acres of Kentucky Bluegrass, features the International Museum of the Horse; the Man O'War Memorial; an antique carriage display; horseback and pony rides; walking farm tours; horse-drawn tours; a restaurant; a gift shop; and a campground area, which offers swimming, tennis, and planned activities. Numerous special events are held year-round and include various horse shows, steeplechasing, dressage, polo games, and rodeos.

My Old Kentucky Home State Park, 42 miles west of Harrodsburg in Bardstown, portrays an image of the South's gentle and leisurely home life before the Civil War. The restored Georgian Colonial mansion is where composer Stephen Foster visited and where he was inspired to write "My Old Kentucky Home." One of the nation's most successful outdoor dramas, "The Stephen Foster Story", is presented in the park's amphitheatre during the summer months. The park also offers a 40-site campground, a gift shop, a 9-hole golf course and pro shop, a picnic area, and planned recreation.

White Hall State Shrine, 53 miles east of Harrodsburg near Richmond, one of the grand estate houses of post-Civil War Kentucky, is the Italianate mansion of Cassius Marcellus Clay, the early abolitionist and politician. Kentucky handcrafts are sold in the White Hall gift shop, only a short walk from the mansion.

Green River Lake State Park near Campbellsville, 54 miles southwest of Harrodsburg, is made up of 1,300 acres surrounding an 8,200-acre lake. The park is open all year-round and offers 96 campsites, a beach, boat docks, fishing, and a picnic area.

The spirit of Daniel Boone and his pioneers is reborn at **Fort Boonesborough State Park** in Boonesboro, 58 miles northeast of Harrodsburg. In the re-created fort, pioneer crafts of the eighteenth century are demonstrated by using functioning antiques from the frontier era. Cabins are furnished as they would have been in the days of Boone and documentary films are presented which depict the struggle of the first Kentuckians to make the Kentucky wilderness a home. A gift shop within the fort offers for sale all the handcrafted items made at the fort. Other recreational facilities and activities of the park include the finest sand beach on the Kentucky River with a modern bathhouse and a modern camping area with 187 sites.

COMMUNITY IMPROVEMENTS

Recent

Harrodsburg was chosen as a "Kentucky Certified City" in 1985 and 1986. The award is based on achievement in the following categories: economic development, transportation, public affairs, utilities, health, commercial development, housing, education, and recreation. The Certified Cities Program is sponsored by the Kentucky Chamber of Commerce.

Hitachi Automotive Products (USA), Inc., and Createc Corporation began operations in their new Harrodsburg facilities during 1986. Hitachi Automotive Products (USA), Inc., manufactures automotive electrical components and Createc Corporation manufactures styrofoam packing.

The State Bank and Trust Company recently completed construction of a drive-thru facility on U.S. 127 south. The facility is equipped with an automated bank machine.

Harrodsburg First Federal Savings and Loan recently completed renovation of its facility, which was constructed in the 1800's.

A new city park, Salt River Park, was recently developed. The park contains a shelter house and picnic areas.

Harrodsburg was recently accepted into the Main Street Program as a demonstration city. The program emphasizes restoration and preservation of historic districts.

The Mercer County School System recently completed construction of a new 14,000-square-foot physical education complex and a nine-classroom addition at the elementary school.

Under Way

The Mercer County School System is currently constructing new classrooms at the high school. The new classrooms are scheduled to be completed in the spring of 1987. They will be used for art and computer training.

A new 50-room motel is being constructed in Harrodsburg. The motel will contain a restaurant and conference rooms. Construction is scheduled to be completed in the spring of 1987.

The Mercer Fiscal Court is in the process of renovating a section of buildings on Main Street to be utilized as a courthouse annex. Construction is scheduled to be completed in the spring of 1987 at an estimated cost of \$250,000.

Planned

A new shopping center, which will include a 37,000-square-foot Kroger store, is planned for construction in Harrodsburg. The shopping center is scheduled to be completed in December, 1987.

The Harrodsburg Independent School System plans to construct a new 4,800-square-foot addition to the high school. The addition will house a science lab, library, and a home economics facility. A 15,000-square-foot multi-purpose addition is also planned at one of the elementary schools. Construction is planned to begin in 1988.