

1989

Industrial Resources: Shelby County - Shelbyville

Kentucky Library Research Collections
Western Kentucky University, spcol@wku.edu

Follow this and additional works at: https://digitalcommons.wku.edu/shelby_cty

 Part of the [Business Administration, Management, and Operations Commons](#), [Growth and Development Commons](#), and the [Infrastructure Commons](#)

Recommended Citation

Kentucky Library Research Collections, "Industrial Resources: Shelby County - Shelbyville" (1989). *Shelby County*. Paper 5.
https://digitalcommons.wku.edu/shelby_cty/5

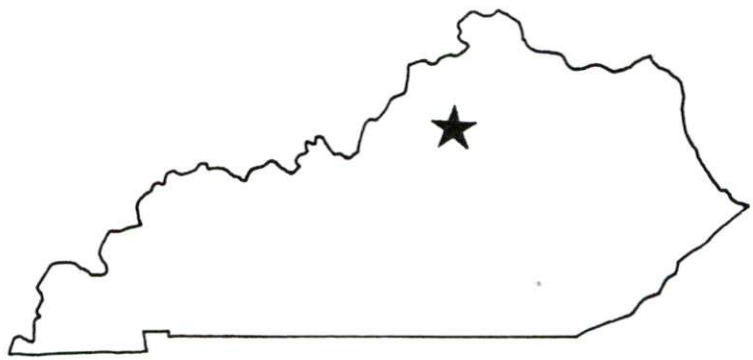
This Report is brought to you for free and open access by TopSCHOLAR®. It has been accepted for inclusion in Shelby County by an authorized administrator of TopSCHOLAR®. For more information, please contact topscholar@wku.edu.

J.R.
6/11

shelby

Resources for Economic Development

Shelbyville



KENTUCKY
Open for Business



RESOURCES FOR ECONOMIC DEVELOPMENT
SHELBYVILLE, KENTUCKY

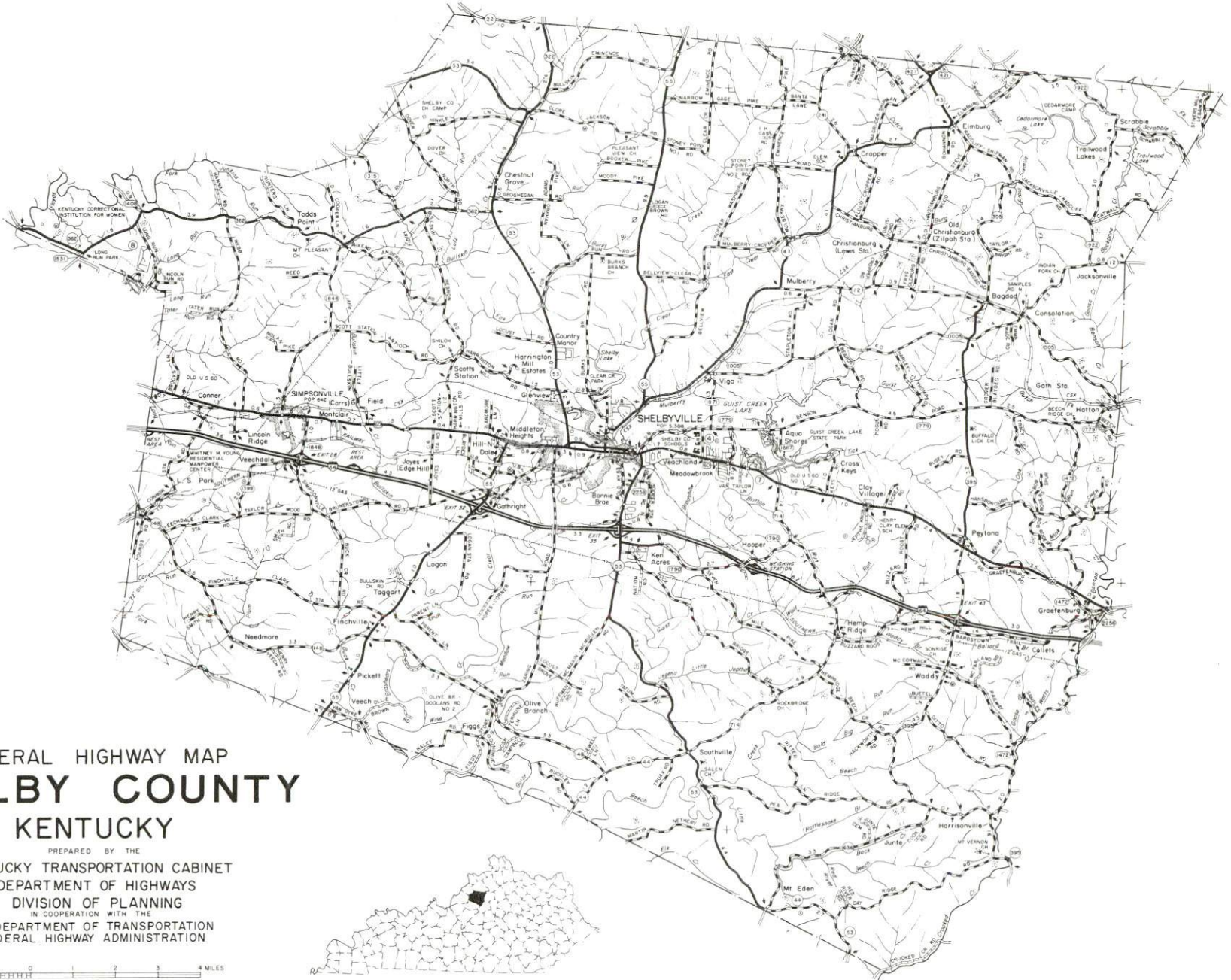
Prepared by
The Kentucky Cabinet for Economic Development
Division of Research and Planning
in cooperation with
The Shelby County Industrial Authority
and
The Shelby County Chamber of Commerce

1989

TABLE OF CONTENTS

| <u>Chapter</u> | <u>Page</u> |
|---|-------------|
| INDUSTRIAL SITES | i |
| SHELBYVILLE, KENTUCKY - A RESOURCE PROFILE | 1 |
| THE LABOR MARKET STATISTICS | 2 |
| Labor Market Area Map | 2 |
| Population | 3 |
| Population Projections | 3 |
| Estimated Labor Supply | 3 |
| Labor Force Characteristics of Residents, 1988 | 4 |
| Selected Components of Nonagricultural Employment, by Place of Work, 1988 | 5 |
| Per Capita Personal Income | 6 |
| Average Placement Wages | 7 |
| Average Weekly Wages of Workers Covered by Unemployment Insurance F.Y. 1986-87 - Bar Chart | 8 |
| Average Weekly Wages by Industry, by Place of Work, 1987 | 9 |
| EXISTING INDUSTRY | 10 |
| Shelby County Manufacturing Firms, Their Products and Employment | 10 |
| Labor Organizations in Manufacturing Firms | 12 |
| Selected Industrial Services | 12 |
| TRANSPORTATION | 13 |
| Highways | 13 |
| Truck Service | 13 |
| Selected Market Location Map | 14 |
| Rail | 15 |
| Air | 15 |
| Water | 16 |
| UTILITIES | 17 |
| Electricity | 17 |
| Natural Gas | 17 |
| Public Water Supply | 18 |
| Sewerage | 18 |
| CLIMATE | 20 |

| <u>Chapter</u> | <u>Page</u> |
|--|-------------|
| LOCAL GOVERNMENT | 21 |
| Structure | 21 |
| Planning and Zoning | 21 |
| Local Fees and Licenses | 21 |
| State and Local Property Taxes | 22 |
| Combined State and Local Rates Per \$100 Valuation, 1988 | 22 |
| EDUCATION | 23 |
| Public Schools | 23 |
| Area Colleges and Universities | 23 |
| Vocational Training | 24 |
| OTHER LOCAL FACILITIES | 25 |
| Local Medical Personnel | 25 |
| Hospitals | 25 |
| Other Medical Facilities and Services | 25 |
| Banks and Savings & Loan Associations | 25 |
| Newspapers | 25 |
| Telephone Service | 25 |
| RECREATION | 26 |
| COMMUNITY IMPROVEMENTS | 27 |



GENERAL HIGHWAY MAP
SHELBY COUNTY
 KENTUCKY

PREPARED BY THE
 KENTUCKY TRANSPORTATION CABINET
 DEPARTMENT OF HIGHWAYS
 DIVISION OF PLANNING
 IN COOPERATION WITH THE
 U.S. DEPARTMENT OF TRANSPORTATION
 FEDERAL HIGHWAY ADMINISTRATION



SHELBYVILLE, KENTUCKY - A RESOURCE PROFILE

Shelbyville, the county seat of Shelby County, is located in the Outer Bluegrass Region of north central Kentucky. Shelbyville, with a 1986 estimated population of 5,670, is located 31 miles east of Louisville, Kentucky; 50 miles west of Lexington, Kentucky; 95 miles southwest of Cincinnati, Ohio; and 202 miles northeast of Nashville, Tennessee.

Shelby County, with a rolling to hilly terrain, covers a total land area of 385 square miles. In 1987, Shelby County had an estimated population of 24,300.

The Economic Framework - The total number of Shelby County residents employed in 1988 averaged 11,665. Manufacturing firms in the county reported 2,863 employees; wholesale and retail trade provided 1,880 jobs; 1,226 people were employed in service occupations; state and local government accounted for 884 employees; and contract construction firms provided 237 jobs.

Labor Supply - There is a current estimated labor supply of 66,202 persons available for industrial jobs in the labor market area. In addition, from 1989 through 1993, 60,595 young persons in the area will become 18 years of age and potentially available for industrial jobs.

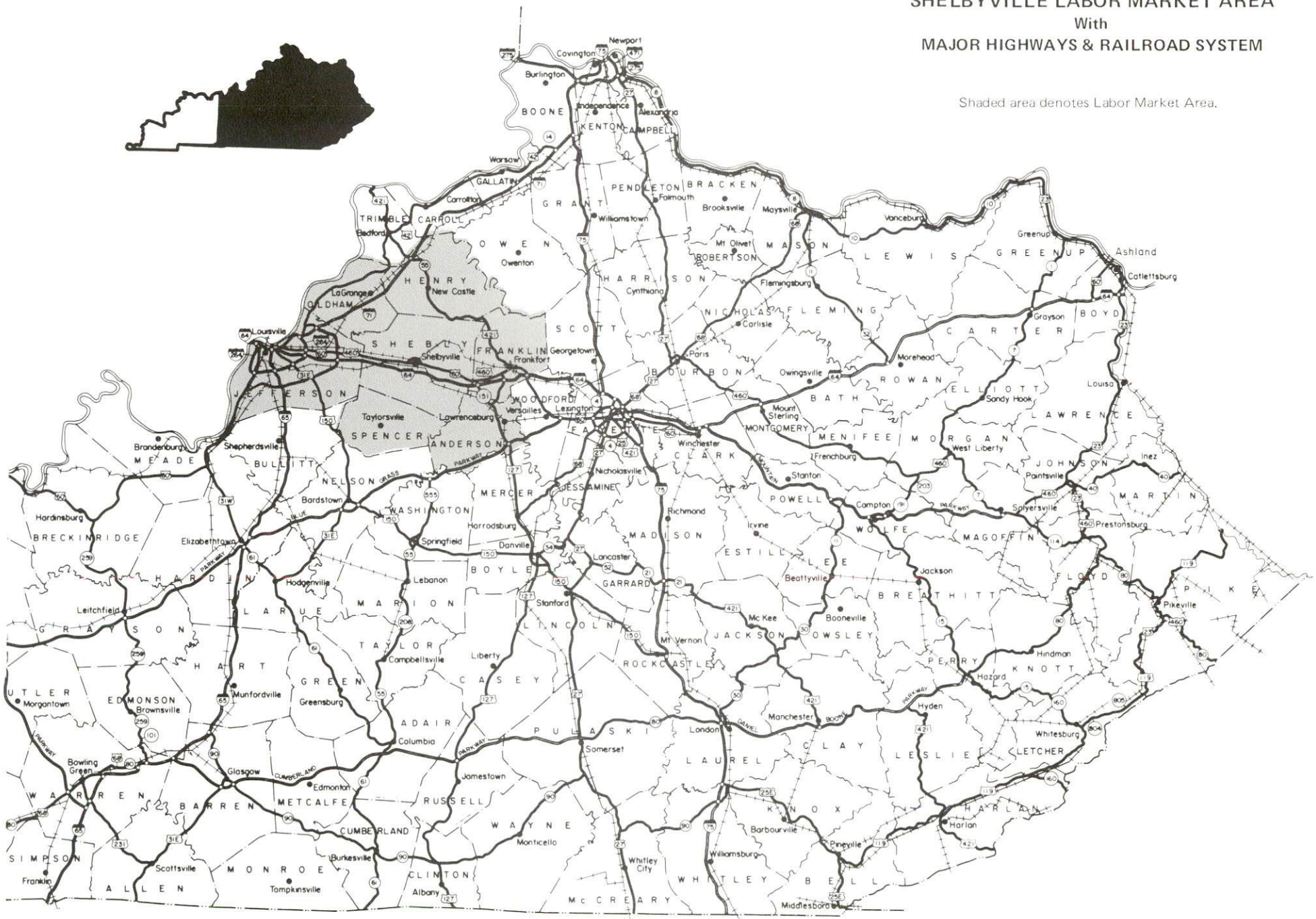
Transportation - Shelbyville is provided main line rail service by CSX Transportation and Southern Railway System. The nearest piggyback facility is available at Louisville, 31 miles west of Shelbyville. Major highways serving Shelbyville are Interstate 64, U.S. Highways 60 and 460, and Kentucky Routes 53 and 55. Twenty-five trucking companies provide interstate and/or intrastate service to the area. The Capital City Airport, 20 miles east of Shelbyville, and Bowman Field in Louisville, 26 miles west, provide facilities for small aircraft operation. The nearest scheduled commercial airline service is available at Standiford Field near Louisville, 35 miles west of Shelbyville.

Power and Fuel - Electric power is provided to Shelbyville and portions of Shelby County by Kentucky Utilities Company. The major portion of Shelby County is served by the Shelby Rural Electric Cooperative Corporation. Natural gas service is provided by Western Kentucky Gas Company.

Education - Primary and secondary education is provided by the Shelby County School System, which is accredited by the Southern Association of Colleges and Schools. Twelve colleges and universities are located within 50 miles of Shelbyville. Vocational training is available locally at the Shelby County Area Vocational Education Center. The Jefferson State Vocational-Technical School in Louisville, 31 miles west of Shelbyville, is the nearest state vocational training center.

SHELBYVILLE LABOR MARKET AREA With MAJOR HIGHWAYS & RAILROAD SYSTEM

Shaded area denotes Labor Market Area.



LABOR MARKET STATISTICS

The Shelbyville Labor Market Area includes Shelby County and the adjoining Kentucky counties of Anderson, Franklin, Henry, Jefferson, Oldham and Spencer.

| | POPULATION | | |
|-------------------|--------------|-------------|-------------|
| | <u>1987*</u> | <u>1980</u> | <u>1970</u> |
| Labor Market Area | 814,900 | 808,827 | 788,978 |
| Shelbyville | 5,670 | 5,329 | 4,182 |
| Shelby County | 24,300 | 23,328 | 18,999 |

* Population estimates. City estimates are for 1986.

Sources: U.S. Department of Commerce, Bureau of the Census, October 1988; University of Louisville, Urban Studies Center, Population Unit.

| | POPULATION PROJECTIONS | | | |
|-------------------|------------------------|-------------|-------------|-------------|
| | <u>1990</u> | <u>1995</u> | <u>2000</u> | <u>2010</u> |
| Labor Market Area | 820,506 | 826,397 | 830,164 | 827,133 |
| Shelby County | 25,032 | 25,948 | 26,677 | 27,654 |

Source: University of Louisville, Urban Studies Center, State Data Center.

| | ESTIMATED LABOR SUPPLY | | | | Future Becoming 18 years of age 1989 thru 1993 |
|-----------------------|------------------------|------------|-----------------------|--------------------------|---|
| | Current | | | Not in Labor Force | |
| | Total | Unemployed | Employed Part-Time | | |
| Labor Market Area* | 66,202 | 29,802 | 34,587 | 1,813 | 60,595 |
| Shelby Co. | 1,408 | 562 | 797 | 49 | 1,735 |

* Additional workers may be drawn from other nearby counties.

Note: Unemployed - persons unemployed and actively seeking work; Employed Part-Time - persons employed but working only 14 to 26 weeks per year; Not in Labor Force - represents the number of persons who would enter the labor force if suitable employment were available (based on the assumption that persons in Kentucky would like to participate in the labor force in the same proportion that they do nationally).

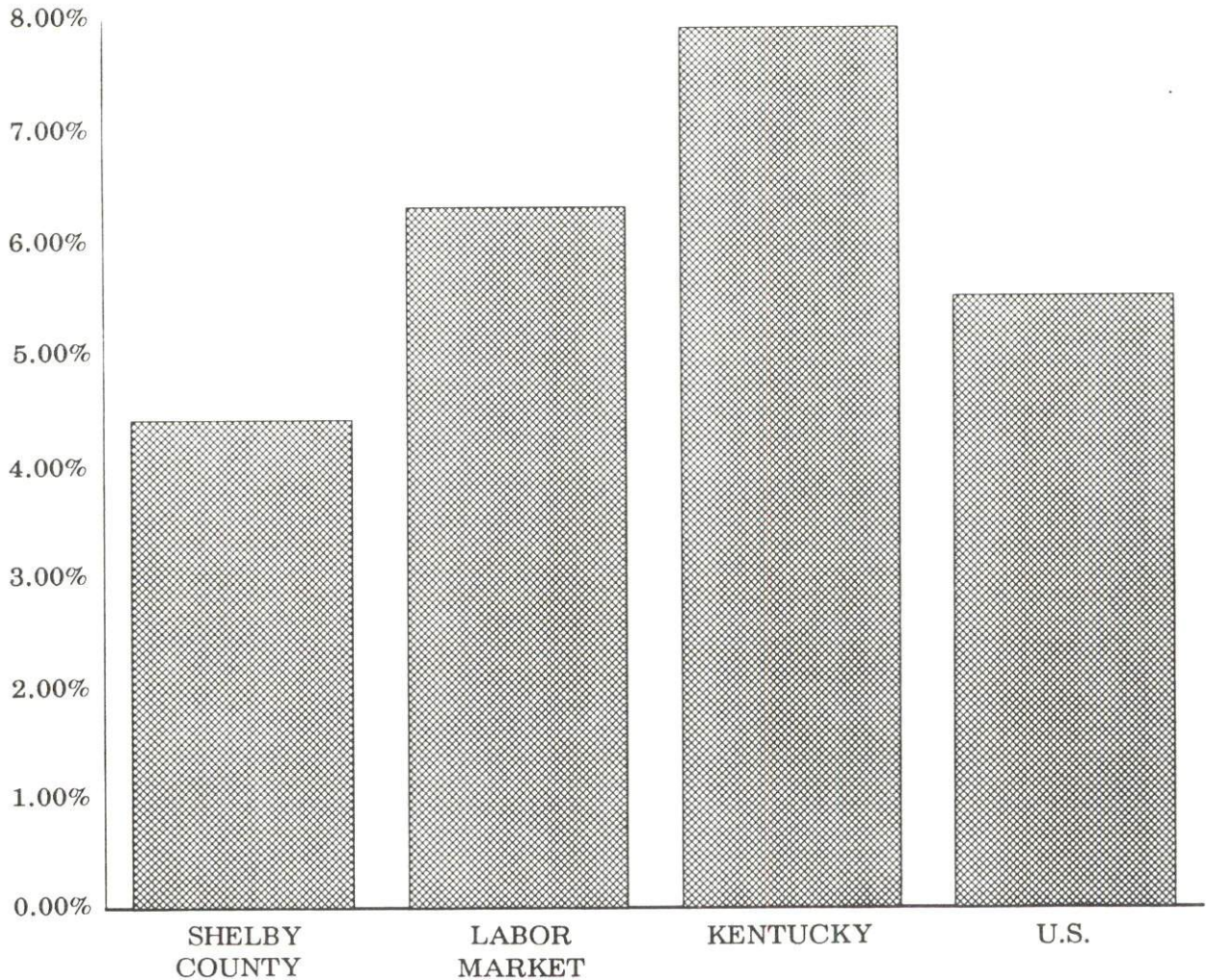
Sources: Kentucky Cabinet for Human Resources, Kentucky Labor Supply Estimates by County, 1987. Kentucky Cabinet for Economic Development, Future Labor Supply Becoming 18 Years of Age, 1989 thru 1993.

LABOR FORCE CHARACTERISTICS OF RESIDENTS, 1988

| | Shelby County | Labor Market Area |
|--------------------------|---------------|-------------------|
| Civilian Labor Force | 12,201 | 428,284 |
| Employment | 11,665 | 401,012 |
| Unemployment | 536 | 27,272 |
| Rate of Unemployment (%) | 4.4 | 6.3 |

Source: Kentucky Cabinet for Human Resources, Kentucky Labor Force Estimates, Annual Averages, 1988.

UNEMPLOYMENT RATES
1988

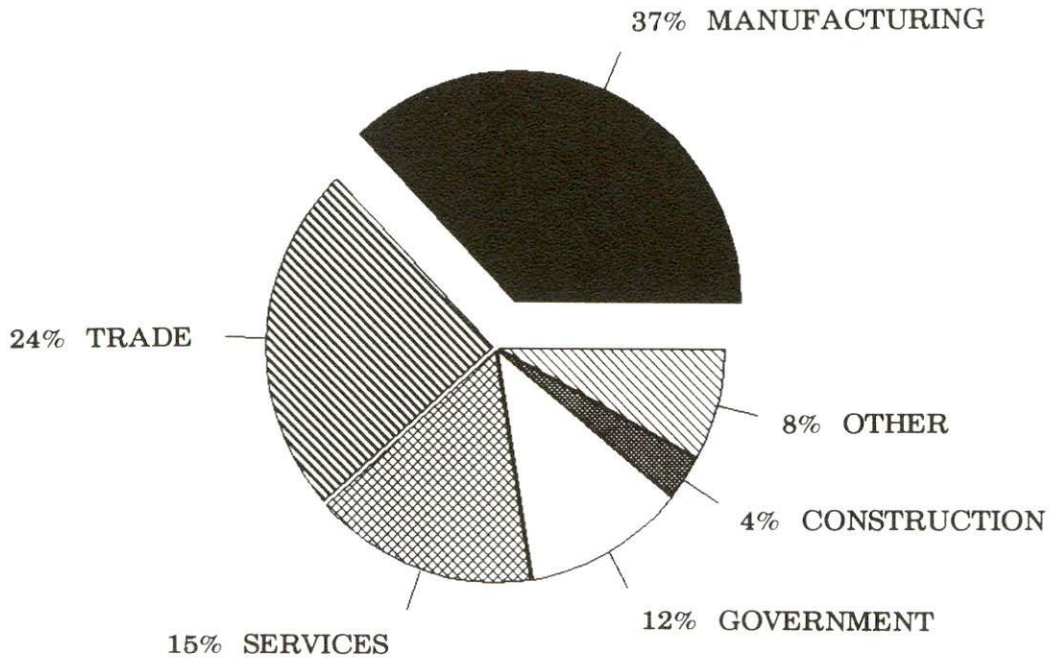


SELECTED COMPONENTS OF NONAGRICULTURAL EMPLOYMENT
BY PLACE OF WORK, 1988

| | Shelby County | Labor Market Area |
|--------------------------|---------------|-------------------|
| All Industries (total) | 7,692 | 392,213 |
| Manufacturing | 2,863 | 78,883 |
| Wholesale & Retail Trade | 1,880 | 99,410 |
| Services | 1,226 | 93,474 |
| State/Local Government | 884 | 49,413 |
| Contract Construction | 237 | 19,426 |

Note: Excludes domestic workers, railway workers, certain nonprofit corporations, majority of federal government workers, and self-employed workers.
Source: Kentucky Cabinet for Human Resources, Average Monthly Workers Covered by Kentucky Unemployment Insurance Law, 1988.

SHELBY COUNTY

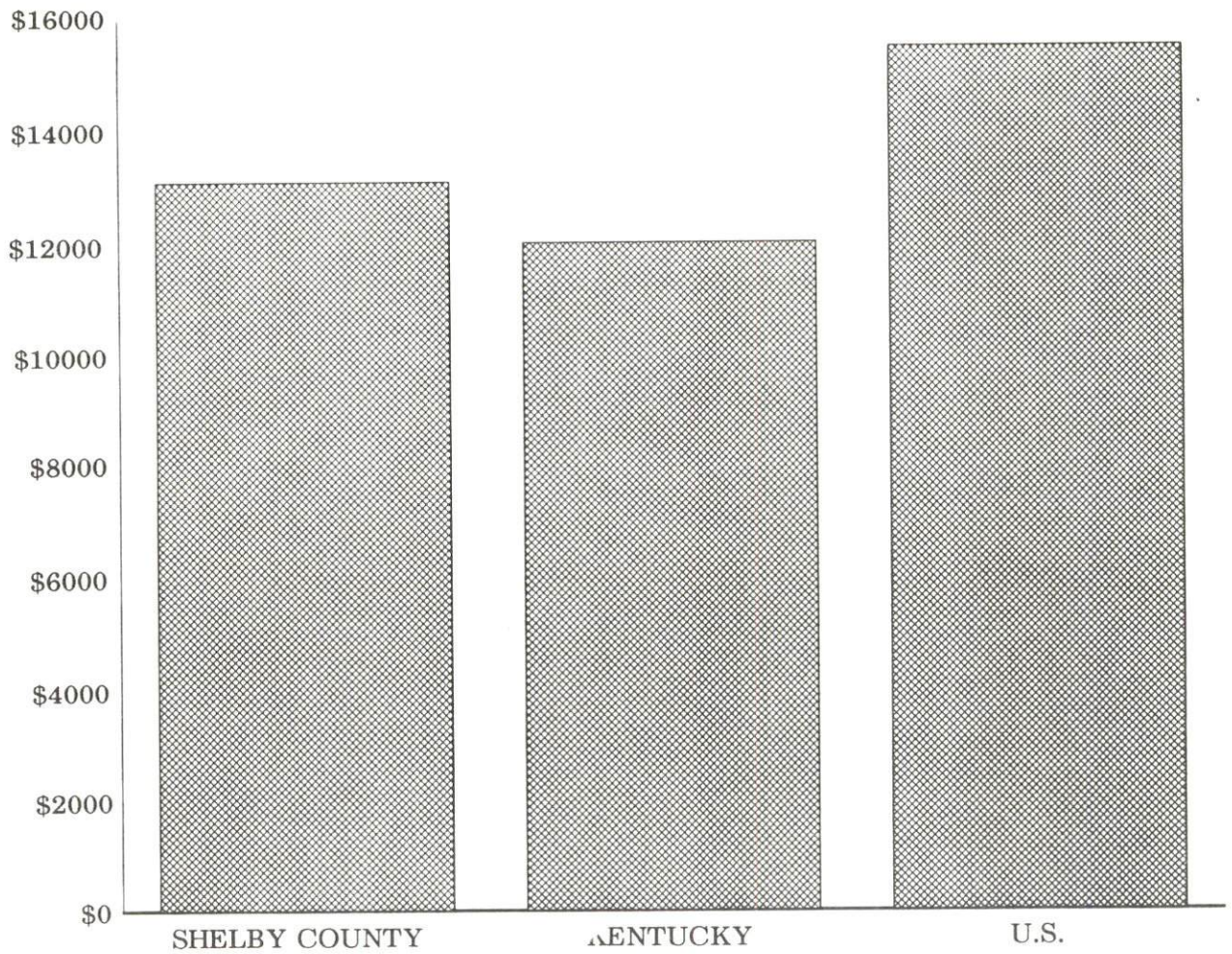


PER CAPITA PERSONAL INCOME

| Area | 1983 | 1987 | Percent Change |
|----------------------------|------------------|-------------------|----------------|
| Shelby County | \$9,847 | \$13,080 | 32.8 |
| Labor Market Area Range | \$8,124 - 12,183 | \$10,041 - 15,385 | - |
| Kentucky | \$9,513 | \$11,997 | 26.1 |
| U.S. | \$12,098 | \$15,484 | 28.0 |

Sources: U.S. Bureau of Economic Analysis, Kentucky Economic Information System, August 1988 and April 1989.

PER CAPITA PERSONAL INCOME
1987



AVERAGE PLACEMENT WAGES

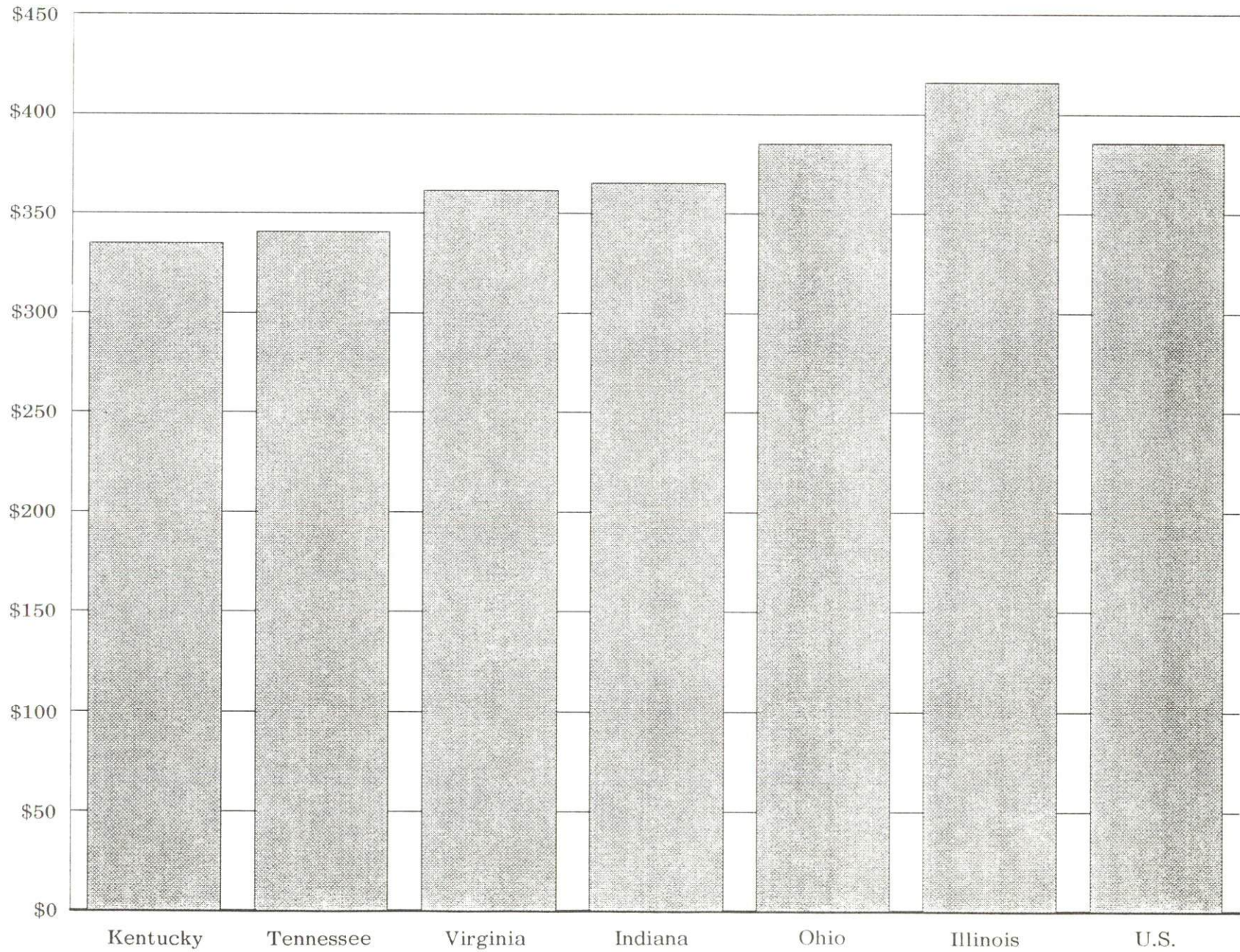
Shelby County is served by the Louisville local office of the Kentucky Department for Employment Services. The focus of the following data is on job placements made by the Louisville local office and may therefore be used as an indicator of the wages which employers in the area pay new employees. During the twelve months which ended on June 30, 1988, the local employment office filled 18,020 job openings in various occupational categories. The average hourly wage for selected occupational categories were:

| <u>OCCUPATIONAL CATEGORY</u> | <u>NUMBER OF PLACEMENTS</u> | <u>AVERAGE WAGE(\$)</u> |
|---------------------------------------|-----------------------------|-------------------------|
| All Occupations | 18,020 | 4.71 |
| Clerical | 1,488 | 4.14 |
| Sales | 1,109 | 3.83 |
| Services (excluding domestic) | 3,225 | 3.50 |
| Agricultural, Fishery, Forestry, etc. | 209 | 3.90 |
| Processing | 574 | 5.82 |
| Machine Trades | 476 | 5.50 |
| Bench Work | 877 | 4.33 |
| Structural | 1,174 | 5.46 |
| Motor Freight/ Transportation | 287 | 4.79 |
| Packaging and Materials Handling | 7,647 | 5.26 |
| Other | 303 | 3.47 |

The Louisville local office also serves Bullitt, Henry, Jefferson, Oldham, Spencer, and Trimble Counties. The above occupational categories are taken from the Dictionary of Occupational Titles published by the U.S. Department of Labor.

Source: Kentucky Cabinet for Human Resources, Department for Employment Services.

AVERAGE WEEKLY WAGES OF WORKERS COVERED BY
UNEMPLOYMENT INSURANCE F. Y. 1986-87



AVERAGE WEEKLY WAGES BY INDUSTRY
BY PLACE OF WORK, 1987*

| | <u>Shelby County</u> | <u>Kentucky (State- Wide)</u> | <u>Tennessee</u> | <u>Virginia</u> |
|---|--------------------------|---------------------------------------|------------------|-----------------|
| All Industries | \$304.23 | \$343.02 | \$350.00 | \$372.00 |
| Mining & Quarrying | 0 | 591.43 | 473.00 | 584.00 |
| Contract Construction | 289.57 | 366.14 | 375.00 | 392.00 |
| Manufacturing | 361.71 | 453.50 | 400.00 | 431.00 |
| Transportation, Communications & Public Utilities | 445.37 | 451.87 | 474.00 | 530.00 |
| Wholesale & Retail Trade | 215.28 | 232.55 | N/A | N/A |
| Finance, Insurance & Real Estate | 316.63 | 380.77 | 433.00 | 437.00 |
| Services | 259.83 | 286.94 | 331.00 | 369.00 |
| State/Local Government | 339.43 | 345.02 | N/A | N/A |
| | <u>Indiana</u> | <u>Ohio</u> | <u>Illinois</u> | <u>U. S.</u> |
| All Industries | \$379.00 | \$394.00 | \$427.00 | \$397.00 |
| Mining & Quarrying | 624.00 | 582.00 | 640.00 | 634.00 |
| Contract Construction | 434.00 | 444.00 | 555.00 | 445.00 |
| Manufacturing | 513.00 | 543.00 | 523.00 | 494.00 |
| Transportation, Communications & Public Utilities | 491.00 | N/A | 559.00 | 527.00 |
| Wholesale & Retail Trade | N/A | N/A | N/A | N/A |
| Finance, Insurance & Real Estate | 391.00 | 418.00 | 538.00 | 500.00 |
| Services | 304.00 | 332.00 | 379.00 | 364.00 |
| State/Local Government | N/A | N/A | N/A | N/A |

* Wages for U.S. and surrounding states rounded to nearest dollar.

N/A Not available.

Note: The average weekly wage for each category includes the salaries and wages of all persons working for that type business. For example, the manufacturing category includes both production workers and administrative personnel. Excludes domestic workers, railway workers, certain nonprofit corporations, majority of federal government workers, and self-employed workers.

Source: Kentucky Cabinet for Human Resources, Average Weekly Wages of Workers Covered by Kentucky Unemployment Insurance Law, 1987. U.S. Department of Labor, Employment and Wages, Annual Averages, 1987.

EXISTING INDUSTRY

MAJOR SHELBY COUNTY MANUFACTURING FIRMS,
THEIR PRODUCTS AND EMPLOYMENT*

| <u>Firm</u> <u>(Establishment date)</u> | <u>Product</u> | <u>1988</u> <u>Average Employment</u> |
|---|---|--|
| Bagdad | | |
| Bagdad Roller Mills, Inc. (1914) | Feed | 21 |
| Shelbyville | | |
| AAPER Alcohol & Chemical Company (1980) | Chafing dish fuel | 35 |
| Alusuisse Flexible Packaging, Inc. (1987) | Foil packaging, food & health care packages | 100 |
| American Emblem Tool Company (1977) | Steel & carbide circular saw blades | 140 |
| Atlantic Envelope Company (1972) | Envelopes | 88 |
| Bluegrass Forging Tool & Die, Inc. (1967) | Forging dies, tooling for forging dies, die inserts | 18 |
| The Budd Company (1988) | Auto stampings, sheet metal & assemblies | 120 |
| Coca-Cola Bottling Company (1920) | Soft drinks | 41 |
| Dotson Concrete, Inc. (1965) | Ready mixed concrete | 19 |
| Electro Wire (1985) | Wiring harness | 120 |
| Flexible Packaging Products, Inc. (1982) | Plastic bags/printing on plastic articles | 45 |
| Ichikoh Manufacturing, Inc. (1988) | Auto mirrors | 90 |
| Industrial Powder Coatings, Inc. (1987) | Powder coating | 122 |
| Irotas Manufacturing Company (1977) | Corrugated boxes, conveyor rolls, rotog & flexo cylinders | 53 |
| Katayama Kugyo Ltd. | Metal car window frames | 90 |
| Landmark Webb Press, Inc. (1968) | Newspapers, commercial printing | 44 |
| Ledco, Inc. (1979) | Wood doors, metal doors | 92 |

(Continued)

| <u>Firm</u> <u>(Establishment date)</u> | <u>Product</u> | <u>1988</u> <u>Average Employment</u> |
|---|---|--|
| Lee-McClain Company, Inc. (1933) | Men's suits, sport coats, men's slacks | 100 |
| Long Block & Supply Company (1938) | Concrete block, concrete septic tanks, & precast products | 21 |
| Ohio Valley Aluminum Company, Inc. (1960) | Aluminum extrusion billets fabrication, aluminum reclaimed scrap ingot, aluminum extrusions | 63 |
| Plastic Parts, Inc. (1969) | Molds for plastics/ structure foam, injec- tion molding | 47 |
| Revere Ware Containers, Inc. (1967) | Aluminum foil containers polystyrene dome covers | 44 |
| Roll Forming Corporation (1947) | Custom roll formed products, structural sheet metal work | 190 |
| The Sentinel News (1886) | Newspaper | 19 |
| Shelby Industries, Inc., Byrd Industries - Division of Shelby Industries, Inc. (1982) | Winches, couplers, trolling motors | 60 |
| Soltech, Inc., Thermo- coustics Division (1985) | Insulation for appliance, auto, heating & air | 155 |
| Southwestern Tobacco Company, Inc. (1925) | Hogsheads repairing | 40 |
| Union Camp Corporation (1980) | Hi-density polyethelene merchandise bags | 195 |
| Simpsonville | | |
| Leggett & Platt, Inc. (1959) | Swivel chair & sofa bed mechanisms, recliner chair mechanisms | 450 |
| F. B. Purnell Sausage Company, Inc. (1955) | Sausage products | 190 |

* Firms with 15 or more employees.

Sources: Kentucky Cabinet for Economic Development, 1989 Kentucky Directory of Manufacturers; Division of Research and Planning; Shelby County Industrial Authority.

LABOR ORGANIZATIONS IN MANUFACTURING FIRMS

| <u>Union</u> | <u>Representing workers at:</u> |
|--|---------------------------------|
| Aluminum, Brick and Glass Workers International Union, AFL-CIO | Revere Ware Containers, Inc. |
| International Association of Machinists and Aerospace Workers, AFL-CIO | Leggett & Platt, Inc. |

SELECTED INDUSTRIAL SERVICES

| <u>Types of Service</u> | <u>Location</u> | <u>Mileage from Shelbyville</u> |
|---------------------------------|-----------------|-------------------------------------|
| Custom Data Processing | Frankfort | 21 |
| Custom Plastics Producers | Shelbyville | - |
| Electric Motor Repair | Louisville | 31 |
| Grinding, Precision & Tool | Louisville | 31 |
| Heat Treating Facilities | Frankfort | 21 |
| | Louisville | 31 |
| Industrial Equipment & Supplies | Frankfort | 21 |
| | Louisville | 31 |
| Industrial Gases | Louisville | 31 |
| Industrial Waste Removal | Frankfort | 21 |
| | Buckner | 24 |
| | Louisville | 31 |
| Machine Shops, Tool & Die | Shelbyville | - |
| Metal Castings | Louisville | 31 |
| Metal Finishers | Jeffersontown | 19 |
| | Louisville | 31 |
| Metal Service Centers | Louisville | 31 |
| Millwrights | Louisville | 31 |
| Public Warehouse Facilities | Shelbyville | - |

Sources: Kentucky Cabinet for Economic Development, Kentucky Directory of Selected Industrial Services, 1987; Division of Research and Planning.

TRANSPORTATION

Highways

Major highways serving Shelbyville are Interstate 64, U.S. Highways 60 and 460, and Kentucky Routes 53 and 55. All are "AAA"-rated (80,000-pound gross load limit) trucking highways.

Interstate 64, a major east-west route, serves Shelbyville with two interchanges. An interchange of Interstate 64 is located three miles southeast of downtown Shelbyville via Kentucky Highway 53. Another interchange is located four miles southwest of the downtown area via Kentucky Highway 55.

Interstate 64 provides direct access to Louisville, 31 miles west, where it connects with Interstates 65 and 71. Interstate 64 also provides direct access to Lexington, 50 miles east of Shelbyville, where it connects with Interstate 75.

HIGHWAY MILES FROM SHELBYVILLE, KENTUCKY, TO SELECTED MARKET CENTERS

| City | Highway Miles | City | Highway Miles |
|----------------|------------------|-----------------|------------------|
| Atlanta, GA | 408 | Los Angeles, CA | 2,117 |
| Baltimore MD | 578 | Louisville, KY | 31 |
| Birmingham, AL | 391 | Nashville, TN | 173 |
| Chicago, IL | 318 | New Orleans, LA | 693 |
| Cincinnati, OH | 95 | New York, NY | 757 |
| Cleveland, OH | 362 | Pittsburgh, PA | 385 |
| Detroit, MI | 390 | St. Louis, MO | 289 |
| Knoxville, TN | 215 | | |

Note: Mileage computations are via the best interstate or primary highways, not necessarily the most direct route of travel.

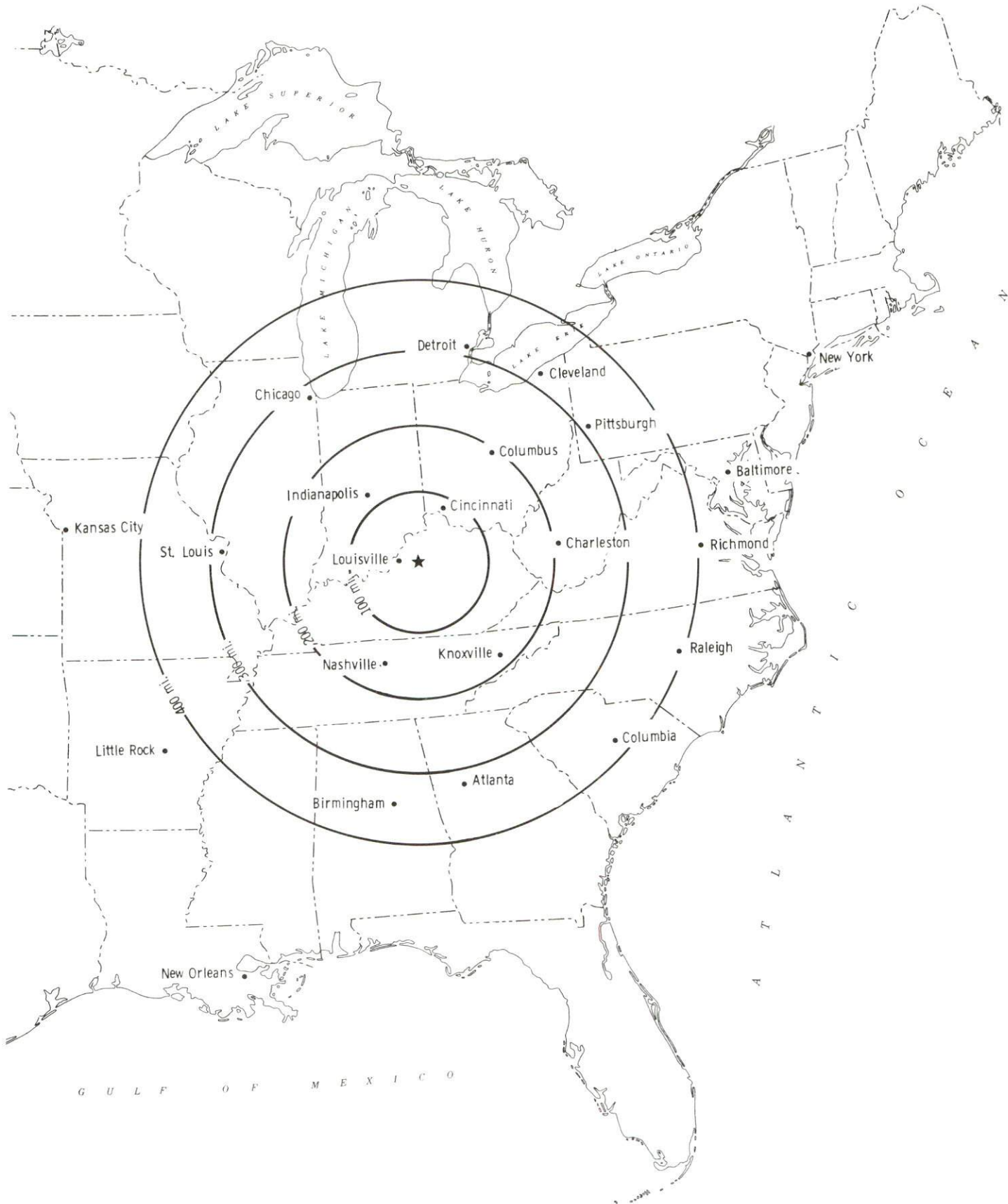
Sources: Rand McNally Deluxe Motor Carriers' Road Atlas, 1989. Official Kentucky Mileage Map, 1980.

Truck Service

Twenty-five trucking companies provide interstate and/or intrastate service to Shelbyville.

Source: American Motor Carrier Directory, Fall 1989.

Selected Market Centers



Rail

Shelbyville is provided main line rail service by CSX Transportation and Southern Railway System. Piggyback facilities are available in Louisville, thirty-one miles west of Shelbyville. The following railroad companies have piggyback facilities in Louisville: CSX Transportation, Southern Railway System, and Paducah and Louisville Railway.

For details on routing, schedules, rates, and services contact:

Manager
Industrial Development
CSX Transportation
908 West Broadway
P. O. Box 2157
Louisville, Kentucky 40201
(502) 587-7746

and/or

District Sales Manager
Norfolk Southern Corporation
1402 South 15th Street
Louisville, Kentucky 40210
(502) 636-6023

Air

Local

| | |
|-----------|---|
| Location: | Capital City Airport 1 mile west of Frankfort; 20 miles east of Shelbyville |
| Runways: | One paved |
| Length: | 5,000 feet |
| Traffic | |
| Control: | Wind tee |
| Lighting: | Beacon, runway lights sundown to sunrise, REILS, VASI |
| Services: | 100 octane, jet fuel, storage, taxi |

(Continued)

Location: Bowman Field
 4 miles southeast of center of Louisville;
 26 miles west of Shelbyville
 Runways: Three
 Length: 4,312 feet, 3,677 feet, 3,539 feet
 Traffic
 Control: Control tower
 Lighting: Runways, obstruction, beacon, and wind tee lighted;
 VASI
 Services: 100 octane and jet fuel, major A & P repairs, storage,
 radio service, FAA Flight Standards District Office,
 FAA Automated Flight Service Station, charter
 service (aircraft & helicopter), taxi, city bus,
 rental car service, restaurant, 3 fixed base
 operators

Nearest Scheduled Commercial Airline Service

Location: Standiford Field
 4 miles southeast of center of Louisville, Kentucky;
 35 miles west of Shelbyville
 Air Service: Air Toronto, Delta, Eastern, Northwest, American,
 TWA, United, USAir, Midstate, Nashville Eagle,
 ComAir, JetStream, Simmons Eagle
 Daily Arrivals
 & Departures: 192

Location: Bluegrass Airport
 4 miles west of Lexington, Kentucky;
 44 miles east of Shelbyville
 Air Service: Delta, USAir, TWA, United Express, JetStream, Air
 Kentucky, American Eagle, ComAir
 Daily Arrivals
 & Departures: 116

Water

Shelbyville is located 31 miles east of Louisville, where port facilities are available on the Ohio River. The Louisville and Jefferson County Riverport Authority has been designated as a Foreign Trade Zone and offers complete U.S. Customs services for exports and imports. The Port of Louisville is also available for public use.

UTILITIES

Electricity

Company serving Shelbyville and parts of Shelby County - Kentucky
Utilities Company
Source of power - Kentucky Utilities Company
For industrial rates contact:

Industrial Development Department
Kentucky Utilities Company
One Quality Street
Lexington, Kentucky 40507
(606) 255-1461

Company serving a major portion of Shelby County - Shelby Rural Electric
Cooperative Corporation
Source of power - East Kentucky Power Cooperative
For industrial rates contact:

Industrial Development Division
East Kentucky Power Cooperative
P. O. Box 707
Winchester, Kentucky 40391
(606) 744-4812

and/or

Shelby RECC
Old Finchville Road
Shelbyville, Kentucky 40065
(502) 633-4420

Natural Gas

Company serving Shelbyville - Western Kentucky Gas Company
Source of supply - Texas Gas Transmission Corporation
For rates and supplies contact:

Western Kentucky Gas Company
311 West 7th Street
Owensboro, Kentucky 42301
(502) 685-8067

Public Water Supply

Company serving Shelbyville - Shelbyville Municipal Water and Sewer Commission
P. O. Box 608
1040 West Main Street
Shelbyville, Kentucky 40066
(502) 633-2840

Source - Guist Creek Lake
Treatment plant capacity - 4,600,000 gallons per day
Average daily consumption - 2,427,000 gallons
Peak daily consumption - 3,644,000 gallons
Storage capacity - 2,540,000 gallons
Water pressure - 30 psi to 138 psi

Company serving portions of Shelby County -

West Shelby Water District
P. O. Box 26
Simpsonville, Kentucky 40067
(502) 722-8944

Source of treated water - Shelbyville Municipal Water and Louisville Water Company
Average daily consumption - 366,000 gallons
Peak daily consumption - 498,000 gallons
Storage capacity - 950,000 gallons
Water pressure - 70 psi to 100 psi

Sewerage

Company serving Shelbyville - Shelbyville Municipal Water and Sewer Commission
P. O. Box 608
1040 West Main Street
Shelbyville, Kentucky 40066
(502) 633-2840

Design capacity - 1,370,000 gallons per day
Average daily flow - 900,000 gallons
Type of treatment - Secondary
Treated effluent discharged into - Clear Creek

A \$400,000 sewer rehabilitation project is currently under way which will reduce inflow and infiltration to the treatment plant. Plans have been made to expand the wastewater treatment plant in the next three years.

Company serving the perimeter of Shelbyville -

Sanitation District #1 of Shelby County
P. O. Box 728
Shelbyville, Kentucky 40065
(502) 633-3521

The Sanitation District utilizes the treatment facilities of the Shelbyville Municipal Water and Sewer Commission. The district began providing sewerage service in April 1989.

CLIMATE

Shelby County

Temperature

| | |
|---|----------------|
| Normal (30-year record) | 54.90 degrees |
| Average annual 1987 | 56.80 degrees |
| Record highest, August 1983 (43-year record) | 103.00 degrees |
| Record lowest, January 1963 (43-year record) | -21.00 degrees |
| Normal heating degree days (30-year record) (Heating degree day totals are the sums of negative departures of average daily temperatures from 65 degrees F.) | 4,814 |

Precipitation

| | |
|---|--------------|
| Normal (30-year record) | 45.68 inches |
| Mean annual snowfall (43-year record) | 16.40 inches |
| Total precipitation 1987 | 36.68 inches |
| Mean number days precipitation (.01 inch or more) (43-year record) | 130.10 |
| Mean number days thunderstorms (43-year record) | 45.40 |

Prevailing winds (through 1963)

South

Relative Humidity (24-year record)

| | |
|--------|------------|
| 1 a.m. | 77 percent |
| 7 a.m. | 81 percent |
| 1 p.m. | 60 percent |
| 7 p.m. | 64 percent |

Source: U.S. Department of Commerce, Environmental Science Services Administration, Climatological Data, 1987. Station of record: Lexington, Kentucky.

LOCAL GOVERNMENT

Structure

The City of Shelbyville is served by a mayor and six council members. The mayor serves a four-year term and the council members serve two-year terms. Shelby County is served by a county judge/executive and seven magistrates. The judge/executive and magistrates are elected to serve four-year terms.

Planning and Zoning

Joint agency - Triple S Planning Commission
Participating cities - Shelbyville, Simpsonville
Zoning enforced - All areas, both county and cities
Subdivision regulations enforced - All areas, both county and cities
Local codes enforced - Building
Mandatory state codes enforced - Kentucky Plumbing code, National Electric Code, Kentucky Boiler Regulations and Standards, Kentucky Building Code (modeled after BOCA code)

Local Fees and Licenses

The City of Shelbyville levies an occupational tax of one percent on gross wages, salaries, and commissions of individuals. A net profits business tax of \$50 for the first year is also charged by the City. Thereafter, the net profits tax is one percent with a maximum of \$3,000 per year.

State and Local Property Taxes

All property in Kentucky, except items exempted by the state constitution, is taxed by the state. Property which also may be taxed by local jurisdictions includes land and buildings, finished goods inventories, automobiles, trucks, office furniture and office equipment. Local taxing jurisdictions in Kentucky include counties, cities, and school districts.

All property in Kentucky is assessed at 100 percent of fair cash value.

COMBINED STATE AND LOCAL RATES PER \$100 VALUATION, 1988

| | Shelbyville School District | Shelby County School District |
|---|--------------------------------|----------------------------------|
| Land and Buildings | \$1.059 | \$0.711 |
| Manufacturing | | |
| Machinery | 0.150 | 0.150 |
| Pollution Control | | |
| Equipment | 0.150 | 0.150 |
| Inventories | | |
| Raw Materials | 0.001 | 0.001 |
| Goods in Process | 0.001 | 0.001 |
| Finished Goods | 0.914 | 0.486 |
| Automobiles & Trucks | 1.397 | 0.959 |
| Other Tangible | | |
| Personal Property | 1.363 | 0.935 |
| Intangibles (Accounts receivable*, money in hand, stock, notes, bonds) | 0.250 | 0.250 |
| Goods Stored in Public Warehouses in Transit Status | 0.001 | 0.001 |
| Private Leaseholds in Industrial Revenue Bond Financed Facilities | 0.015 | 0.015 |

Five fire protection districts in Shelby County levy special property taxes on property located within their boundaries. The rates range from \$0.06 to \$0.10 per \$100 valuation.

* Accounts receivable are taxed at 85 percent of face value, for an effective rate of \$0.2125 per \$100 valuation.

EDUCATION

Public Schools

| | Shelby County |
|--|---|
| Total Enrollment (Fall, 1988) | 4,419 |
| Accreditation | Southern Association of Colleges and Schools |
| Pupil-Teacher Ratio (1987-88) | 20.2-1 |
| Percent High School Graduates to College (1987-88) | 49.7 |
| Expenditures Per Pupil (1987-88) | \$2,311.86 |

Area Colleges and Universities

| <u>Name</u> | <u>Location (Miles distant)</u> | <u>Enrollment (Fall, 1988)</u> |
|---|-------------------------------------|------------------------------------|
| Kentucky State University | Frankfort, Kentucky (21) | 2,222 |
| Bellarmino College | Louisville, Kentucky (31) | 3,345 |
| Jefferson Community College | Louisville, Kentucky (31) | 8,203 |
| Spalding University | Louisville, Kentucky (31) | 1,141 |
| University of Louisville | Louisville, Kentucky (31) | 21,901 |
| Midway College | Midway, Kentucky (34) | 396 |
| Indiana University, Southeast Campus | New Albany, Indiana (37) | 5,192 |
| Georgetown College | Georgetown, Kentucky (39) | 1,471 |
| Saint Catharine College | Springfield, Kentucky (49) | 266 |
| Lexington Community College | Lexington, Kentucky (50) | 3,401 |
| Transylvania University | Lexington, Kentucky (50) | 1,041 |
| University of Kentucky | Lexington, Kentucky (50) | 22,824 |

Vocational Training

Vocational training is available at both the state vocational-technical schools and the area vocational education centers. The state vocational-technical schools are post-secondary institutions. The area vocational education centers are designed to supplement the curriculum of high school students. Both the state vocational-technical schools and the area vocational education centers offer evening courses to enable working adults to upgrade current job skills.

Arrangements can be made to provide training in the specific production skills required by an industrial plant. Instruction may be conducted either in the vocational school or in the industrial plant, depending upon the desired arrangement and the availability of special equipment.

Bluegrass State Skills Corporation

The Bluegrass State Skills Corporation, an independent public corporation created and funded by the Kentucky General Assembly, provides programs of skills training to meet the needs of business and industry from entry level to advanced training, and from upgrading present employees to retraining experienced workers.

The Bluegrass State Skills Corporation is the primary source for skills training assistance for a new or existing company. The Corporation works in partnership with other employment and job training resources and programs, as well as Kentucky's economic development activities, to package a program customized to meet the specific needs of a company.

| <u>Vocational School</u> | <u>Location (Miles distant)</u> | <u>Enrollment Fall, 1987</u> |
|--|-------------------------------------|----------------------------------|
| Shelby County Area Vocational Education Center | Shelbyville | 390 |
| Jefferson State Vocational-Technical School and Manpower Skill Center | Louisville (31) | 1,303 |

OTHER LOCAL FACILITIES

Local Medical Personnel

Physicians - 20

Dentists - 10

Hospitals

| <u>General Hospital</u> | <u>Location</u> | <u>Beds</u> |
|-------------------------|-----------------|-------------|
| United Medical Center | Shelbyville | 76 |

Medical staff - 30 active physicians, 50 courtesy physicians, 69 registered nurses and 12 licensed practical nurses

A major expansion and renovation project has recently been completed at the United Medical Center. The critical care unit was expanded and completely replaced. The size of the surgical unit was doubled. Further renovation is under way which will upgrade the admission department and radiology.

Other Medical Facilities and Services

North Central District Health Department
Shelby County Emergency Medical Services
Shelbyville-Shelby County Rescue Squad

Banks and Savings & Loan Associations

Liberty National Bank of Shelbyville
Citizen Union Bank
Republic Bank
Shelby County Trust Bank
The Cumberland
Great Financial Federal

Newspapers

The Sentinel-News (twice weekly)

Telephone Service

South Central Bell Telephone Company

RECREATION

Local

Recreational facilities in Shelbyville include nine ball diamonds, one central park, three mini-parks, one swimming pool with a winter enclosure, nine tennis courts, a bowling alley and a golf course. The country club offers an 18-hole golf course, a swimming pool, a clubhouse and tennis courts.

The 132-acre Clear Creek Park is located adjacent to Lake Shelby, a 100-acre fishing lake. The park contains three softball fields, four baseball fields, six tennis courts, three soccer fields, boat rentals, a boat ramp and dock, three shelters, a playground, four horseshoe pits, an activities center, a miniature golf course, and a 9-hole golf course.

Guist Creek Lake, located four miles east of the city, is a 325-acre skiing and fishing lake with both primitive and recreational vehicle camping available.

Construction of Persimmon Ridge, a new recreation and residential development, was completed in 1989. The development includes an 18-hole golf course, swimming pool, and tennis courts.

A new public golf course is currently under construction at the intersection of Kentucky 53 and Interstate 64. The development will be called Undulata and will open in the spring of 1990.

A fine collection of English antiques, Georgian silver, limited edition porcelain and paintings are featured at Shelbyville's Wakefield-Scearce Galleries. Historic Science Hill Inn is located beside the Galleries. Shelbyville also has numerous other antique stores and specialty shops.

Area (Within 50 miles)

Taylorsville Lake State Park
E. P. "Tom" Sawyer State Park
Lincoln Homestead State Park
My Old Kentucky Home State Park
The Kentucky Horse Park
Old Fort Harrod State Park
Bernheim Forest Arboretum

COMMUNITY IMPROVEMENTS

Recent

Shelbyville was chosen as a "Kentucky Certified City" in 1988. The award is based on achievement in the following categories: economic development, transportation, public affairs, utilities, health, commercial development, housing, education and recreation. The Certified Cities Program is sponsored by the Kentucky Chamber of Commerce.

The fire insurance classification rating for the city of Shelbyville was recently upgraded from class 6 to class 4.

A new elementary school was opened in 1988 in Simpsonville. Three Shelby County schools, Cropper Elementary, Bagdad Elementary, and Henry Clay Elementary, will be closed this year and replaced by a new school to be built in the east end of the county on U.S. 60. The new school will be open for the 1990-91 school year.

A new golf course has been completed at Clear Creek Park and the construction of another public golf course is currently under way bringing the total number of golf courses in Shelbyville to four.

A winter enclosure for the municipal swimming pool was recently completed.

The Shelby Business Park has been expanded to include one hundred and three additional acres.

Planned

A new community center is being planned which will be located on the corner of Second and Washington Streets. The building will be used for town meetings, seminars, public meeting rooms, and emergency housing.

Under Way

The Shelby County Development Corporation has initiated Shelbyville 2000, a comprehensive planning process which will identify where the community wants to be in the year 2000. The project is soliciting ideas from both members of the community and owners of downtown businesses. The planning process is to be completed by March 1990 with implementation beginning by the end of 1990.

A \$400,000 sewer rehabilitation project is currently under way and is expected to be completed by fall of 1989. Approximately 8,000 feet of sewer lines are being replaced throughout the city. In addition, \$180,000 was spent recently on general maintenance of two elevated storage tanks.

Reynolds Aluminum, a slitting plant and warehouse company, and Beckaert, a wire company, have announced plants in Shelbyville. Reynolds' projected employment is fifty and Beckaert's projected employment is fifty-seven. Reynolds Aluminum Company is also moving its regional headquarters to the Shelbyville Reynolds plant in February of 1990.

The following plant expansions have been announced:

AAPER has a 24,000 square foot expansion under way which will add approximately 40 new jobs.

American Emblem Tool has plans for a major expansion in 1990.

Atlantic Envelop will double the size of its plant by 1990 creating 50 new jobs.

Soltech will expand 80,000 square feet adding 95 new jobs by 1990.

Another expansion which was completed in 1989 occurred at the United Medical Center. The expansion doubled the size of the medical facility.