

1973

Industrial Resources: Warren County - Bowling Green

Kentucky Library Research Collections
Western Kentucky University, spcol@wku.edu

Follow this and additional works at: https://digitalcommons.wku.edu/warren_cty



Part of the [Business Administration, Management, and Operations Commons](#), [Growth and Development Commons](#), and the [Infrastructure Commons](#)

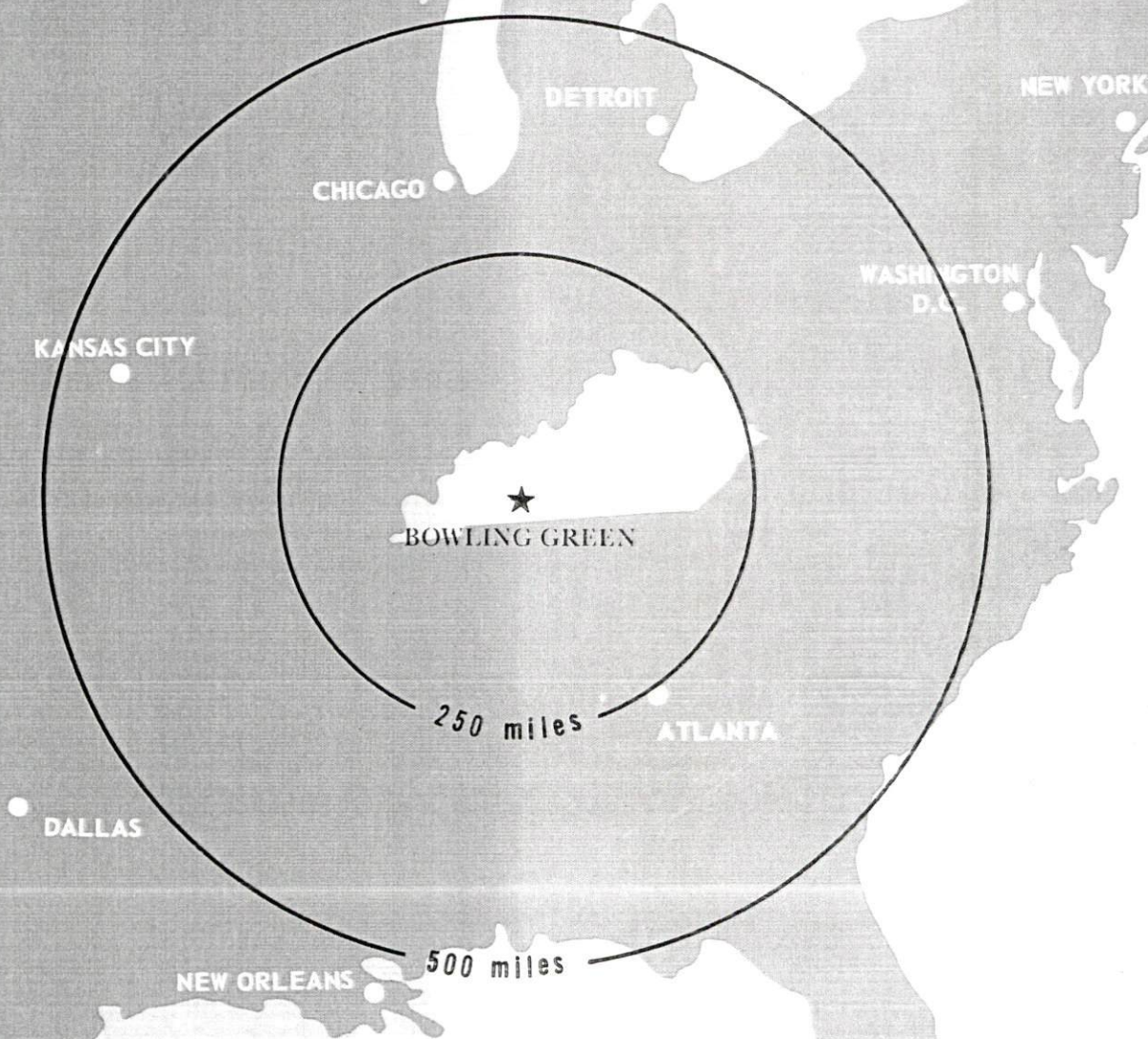
Recommended Citation

Kentucky Library Research Collections, "Industrial Resources: Warren County - Bowling Green" (1973). *Warren County*. Paper 11.
https://digitalcommons.wku.edu/warren_cty/11

This Report is brought to you for free and open access by TopSCHOLAR®. It has been accepted for inclusion in Warren County by an authorized administrator of TopSCHOLAR®. For more information, please contact topscholar@wku.edu.

INDUSTRIAL RESOURCES

BOWLING GREEN KENTUCKY



WARREN COUNTY, KENTUCKY

INDUSTRIAL RESOURCES
BOWLING GREEN, KENTUCKY

Prepared by
The Kentucky Department of Commerce
in cooperation with
The Bowling Green-Warren County Chamber of Commerce

1973

This copy has been prepared by the Kentucky Department of Commerce,
Division of Research and Planning, and the cost of printing paid from
state funds.

TABLE OF CONTENTS

<u>Chapter</u>	<u>Page</u>
INDUSTRIAL SITES	i
BOWLING GREEN, KENTUCKY - A RESOURCE PROFILE	1
THE LABOR MARKET.	9
Population Trends	9
General Employment Characteristics, 1971	9
Manufacturing Employment Trends by Industry.	10
Major Bowling Green Manufacturing Firms, Their Products and Employment	11
Wages.	15
Labor Organizations	16
Estimated Male Labor Supply	16
Estimated Female Labor Supply	17
Per Capita Personal Income.	17
TRANSPORTATION	18
Rail.	18
Truck Service	18
Air	19
Bus	20
Taxi	20
Rental Services.	20
POWER AND FUEL	21
Electricity.	21
Natural Gas	21
Other Fuels	22
WATER AND SEWERAGE	23
Water.	23
Sewerage	25
LOCAL GOVERNMENT	26
City.	26
County.	26
Assessed Value of Property, 1972	26
Property Taxes.	26

<u>Chapter</u>	<u>Page</u>
Local Property Tax Rates Per \$100 Assessed	
Valuation, 1972	27
Utilities Gross Receipts Tax for Schools	27
Planning and Zoning.	27
Safety	27
Police.	27
Fire	28
Rescue Service	28
Sanitation	28
EDUCATION	29
Public Schools	29
Nonpublic Schools.	29
Vocational Schools	31
Colleges and Universities	33
HEALTH	34
Hospitals	34
Nursing Homes	34
Public Health.	36
OTHER LOCAL FACILITIES	37
Communications	37
Library Services	37
Religious Institutions	38
Financial Institutions	38
Hotels and Motels.	38
Clubs and Organizations	41
RECREATION.	42
Local	42
Area.	42
AGRICULTURE - NATURAL RESOURCES - CLIMATE	45
Agriculture	45
Natural Resources	45
Climate	46
HISTORY	47

GENERAL HIGHWAY MAP WARREN COUNTY KENTUCKY

PREPARED BY THE
KENTUCKY DEPARTMENT OF HIGHWAYS
DIVISION OF PLANNING
IN COOPERATION WITH THE
U.S. DEPARTMENT OF TRANSPORTATION
FEDERAL HIGHWAY ADMINISTRATION



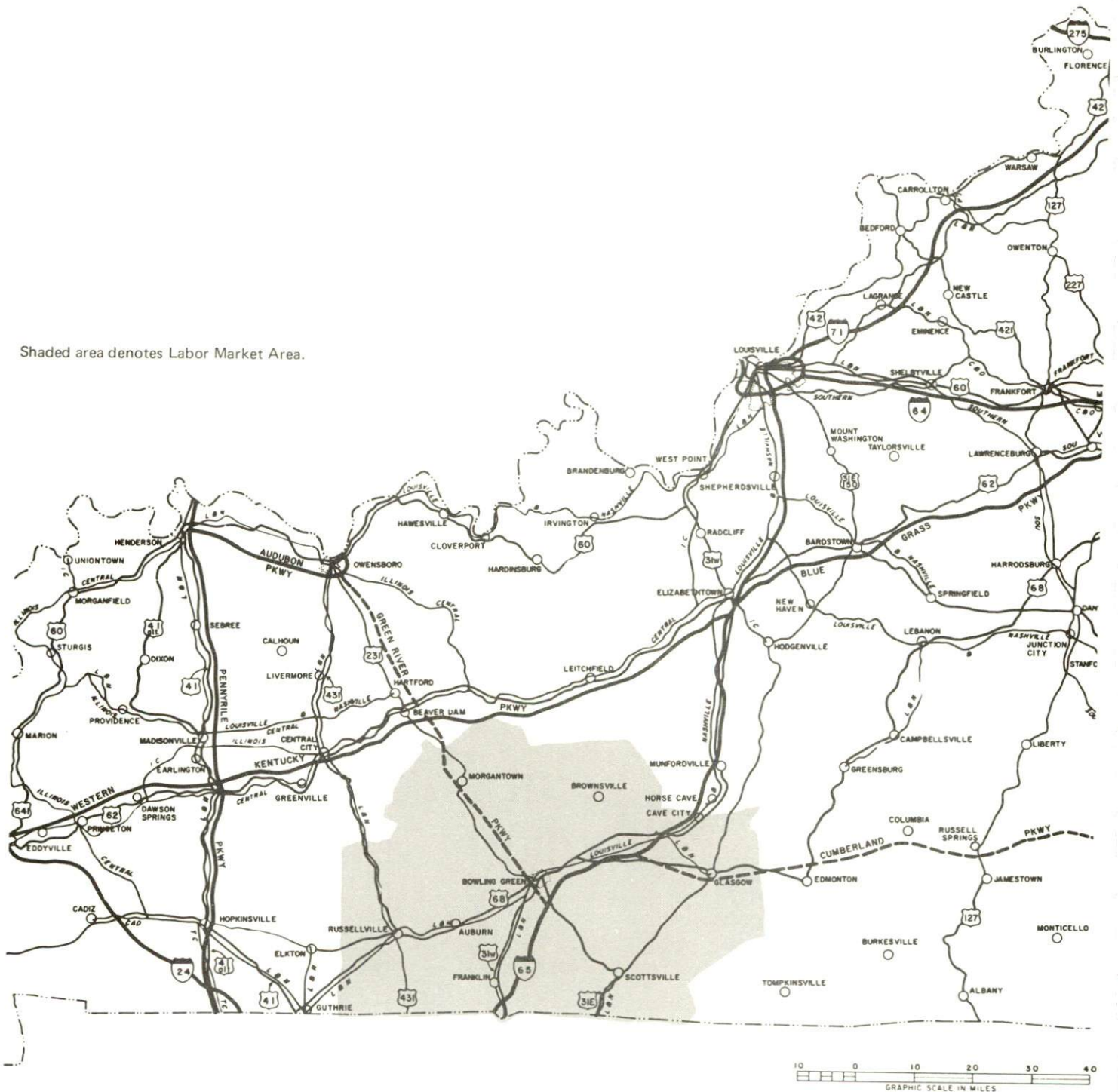
ORIGINAL DATA 1960			
ROUTE	TYPE	DATE	BY
1	1	1	1
2	2	2	2
3	3	3	3
4	4	4	4
5	5	5	5
6	6	6	6
7	7	7	7
8	8	8	8
9	9	9	9
10	10	10	10
11	11	11	11
12	12	12	12
13	13	13	13
14	14	14	14
15	15	15	15
16	16	16	16
17	17	17	17
18	18	18	18
19	19	19	19
20	20	20	20



BOWLING GREEN LABOR MARKET AREA



Shaded area denotes Labor Market Area.



BOWLING GREEN, KENTUCKY - A RESOURCE PROFILE

Bowling Green, county seat of Warren County and home of Western Kentucky University, is a progressive and fast-growing southern Kentucky city serving the area as an educational, industrial, and commercial center. Bowling Green is located in the southwestern corner of central Kentucky in the Pennyryle Region, 26 miles north of the Kentucky-Tennessee border; 113 miles southwest of Louisville, Kentucky, 136 miles southeast of Evansville, Indiana; and 61 miles northeast of Nashville, Tennessee.

Bowling Green, with a population of 36,253, was designated a Model City in 1968. The initiation of a vigorous model cities program is strong proof that the community is united in its efforts to create an environment of excellent livability for all its residents.

Warren County, with a population of 57,432 (according to the 1970 census), covers an area of 546 square miles. The county is bounded on the east by Barren County, on the south by Allen and Simpson Counties, on the west by Logan County, and on the north by Butler and Edmonson Counties. The Barren River flows through Warren County, and the Green River forms the County's northern boundary.

The Economic Framework

Total employment in Warren County averaged 25,480 in 1971, including 5,800 jobs in manufacturing, 6,840 in trade and services, and 4,540 in government. Manufacturing employment has increased by 3,790 jobs or 119 percent since 1962, with major industrial growth in the machinery and metal products, apparel and textiles industries.

Per capita income in the county in 1970 was \$2,817, an increase of 105 percent or \$1,442 since 1960.

Bowling Green is the hub of a labor market area that includes Warren and its six surrounding counties. Area employment in 1971 totaled 62,090. Manufacturing furnished 16,200 jobs. Area industrial employment has increased by approximately 9,860 jobs or 109 percent since 1962, with the sharpest gains in the machinery and metal products, apparel, and chemical and allied products industries.

Resources for Growth

1. There is an estimated current labor supply of 13,850 men and 11,240 women available for industrial jobs in the labor market area. In addition 7,410 young men and 7,100 young women will become 18 years of age by 1979 and will be potentially available for employment.

2. The local transportation capability is very good. The Louisville & Nashville Railroad provides freight and passenger service and a variety of other services including piggyback facilities. Interstate 65, a major highway artery into the industrial south, midwest and east, is routed through Warren County with interchanges located east and southeast of Bowling Green only minutes from the city's business district. The route of the new Green River Parkway-Cumberland Parkway System passes near the western and southern city limits. Charter air service is available locally and the Metropolitan Nashville Airport, 61 miles south by interstate, offers commercial passenger and scheduled air freight service.

3. Energy - Electric power is provided by the Bowling Green Electric Plant Board and the Warren Rural Electric Cooperative Corporation, with TVA serving as the source of supply. Natural gas service is provided by the Western Kentucky Gas Company. There are two bulk suppliers of propane and butane and ten bulk suppliers of distillate fuel oil in Bowling Green. Seven additional suppliers of propane and butane are located in the area. The local water supply from the Barren River is more than adequate for continued growth.

4. Bowling Green has ten industrial sites ranging from 14 to 380 acres. Six of the sites are rail served and two of the sites are within a few hundred feet of rail.

5. Educational opportunities offered in Bowling Green are excellent. Two school systems operate within the county. The Bowling Green Independent School System has recently completed a new occupational training center which offers training in 28 different courses. The Bowling Green State Vocational School offers career training in 23 different courses.

Western Kentucky University, located in Bowling Green, confers six undergraduate degrees: the Bachelor of Arts, the Bachelor of Fine Arts, the Bachelor of Science, the Bachelor of Music, the two-year Associate of Science, and the two-year Associate of Arts. The Graduate School offers the Master of Arts Degree, the Master of Science Degree, Master of Business Administration Degree, Master of Music Degree, and Master of Public Service Degree. A joint doctoral program with the University of Kentucky and George Peabody College is available to students who have completed their masters degree. The Western campus, located on a hill overlooking the City of Bowling Green, is acclaimed as one of the most beautiful in the nation. The University campus has 64 buildings and covers an area of approximately 200 acres. The University aspires to a balanced program of intercollegiate athletics and intramural and recreational activities, compatible with a strong physical education instructional program.

Community Programs for Improvement

In Bowling Green, community improvements have been the result of enthusiastic local teamwork and careful planning. Action has resulted in numerous successful programs and continual industrial and commercial development.

Industrial growth is evidenced by the expansion of several major plants since late 1971 - Bowling Green Manufacturing Company, Firestone Textile Company, Union Underwear Company, Inc., and Tri-State Bedding and Furniture Co. In addition to expansions, American Chain and Cable Company announced that it will make Bowling Green the headquarters for the Page Welding Wire Division and that production capacities would be doubled. Chrysler Airtemp has consolidated all marketing and manufacturing functions for the Applied Systems Group in the Bowling Green plant and is the headquarters for the vice president and general manager and other officials of this profit center.

The Bada Company of California, manufacturers of lead wheel weights and micro-precision wheel balancing equipment, has begun construction of a 122,000 square foot building. When in operation in spring, 1974, it will employ approximately 100. Schwan's Foodco, a distributor for Tennessee, Kentucky and Virginia, located in the Industrial Park in 1972.

City services have been expanded and improved. The Bowling Green Water, Sewer and Sanitation Commission laid 90,000 feet of new 12-inch through 18-inch transmission lines and has erected a new million gallon standpipe in the vicinity of two industrial sites. The utility is in the process of a \$2.5 million expansion to 100 percent secondary sewage treatment to be in operation by Fall, 1974. In addition, more than \$670,000 has been appropriated from Revenue Sharing Funds for new sanitary sewer lines and drainage improvements. The storm water drainage improvements are part of \$6.5 million comprehensive plan. In 1972 Westside Water District added 100 miles of lines and 550 customers. The Northside Water District expansion added 60 miles of line. The Warren RECC has added two new substations and over 60 miles of line. The Bowling Green Electric Plant Board installed a 69,000 volt transmission line to circle the city at a cost of \$600,000 and added two substations.

Bowling Green has completed a new fire station on Industrial Drive and has purchased a new truck. With Revenue Sharing Funds, land in the downtown area will be acquired for a new fire and police station and for two new police cars and fire and communication equipment. Since July, 1972, every police officer has received no less than forty hours certified training, making Bowling Green the only city in the state that has every officer certified by Kentucky Law Enforcement Council standard of training. In 1971, Bowling Green initiated an after school "Cops and Kids Program." Since then, vandalism of neighborhood schools has dropped by nearly 90 percent and there has been a 30 percent reduction in juvenile crime.

Communications services in the city are being expanded and improved. In February of 1971, Channel 13 opened its new facility located approximately 5 miles north of Bowling Green. The new facility includes a new transmitter, remote control facilities, emergency generator, and a transmitting tower which can deliver a signal over an area of approximately 10 miles. The station has changed its call letters from WLTV to WBKO. A second FM station has been added. In June, 1973, South Central Bell announced plans to construct a \$1 million addition. The post office has added 17,000 square feet of floor space and has increased the size of its parking lot. The Park City Daily News has undergone an improvement and expansion program which has resulted in the provision of facilities equal to those of any newspaper its size in the southeastern section of the nation.

Air transportation facilities of the area have been improved with the completion of a new building for the Federal Aviation Administration in 1970. Seven new T-hangars were built in 1972 and a 6,500-foot parallel taxiway was completed in the summer 1973. New lights and a VASI system were added.

A new addition to the Bowling Green-Warren County Hospital was opened in 1970. A new hospital, Greenview, an affiliate of Hospital Corporation of America was dedicated in August, 1972. In addition to 157-bed capacity it offers an 8-bed Coronary Care-Intensive Care Unit, a Nuclear Medicine Diagnostic Department and a Special Procedures Unit within the X-ray Department with highly specialized E. M. T. equipment, mammography and other diagnostic services. A new personal care facility with 68 beds was opened in December 1972, and a \$750,000 addition to the Graves-Gilbert Clinic was completed in 1972. Also in 1972, a pediatric clinic was opened by the Warren County Health Department.

New modern educational buildings have been constructed. The city's \$3.5 million high school opened in 1970. The Bowling Green Independent School System completed construction of a new occupational training center for the Bowling Green High School in the summer of 1971. The cost of the training center was approximately \$429,000. The center began operations in August, 1971. Training is provided in 28 different courses to all tenth grade students and to eleventh and twelfth grade students on a voluntary basis. The city school system has incorporated into its curriculum a "World of Work" program for students in kindergarten through grade twelve. The Bowling Green Independent System has also conducted an environmental seminar and a Negro in America Culture Seminar for teachers. A reading center with professional literature has been equipped. It has added to its curriculum the Science Curriculum Improvement Study (SCIS), "Stretchers and Shrinkers" math program and a Drug Abuse program. In 1972, Phonic-ear equipment was purchased for the classes which draw children with hearing impairment from southcentral Kentucky. Other specialty programs include classes for the retarded and for emotionally disturbed children. The Warren County School System has three new elementary schools and is constructing an additional school. Sixty thousand square feet, containing a new library,

cafeteria, music department, industrial arts department and an additional science lab, is being added to the Warren Central High School. Additions to two elementary schools will begin in the fall.

Bowling Green is one of the few cities to have two Girl's Clubs. The Girl's Clubs provide counseling and teach hygiene, sewing and other classes in order to provide a better social environment. The club constructed a new building at the northeast city limits in 1973. The structure is equipped with facilities to supplement the classes, and recreation equipment. Total cost was approximately \$50,000. Other youth services available include a youth walk-in center, opened in June 1971, and the Delafield Community Center opened recently. Plans are being formulated for a Half-Way House.

The city and county have excellent recreational programs and facilities. In the summer, the departments offer tennis tournaments and lessons, golf lessons and tournaments, a horseshoe tournament, arts and crafts lessons, swim lessons and softball summer leagues and invitational tournaments. Discovery Theatre for children, sponsored by the Bowling Green Parks and Recreation Department, was organized in 1972 and offers theatrical classes. A public swimming pool was constructed in 1972 and an additional pool in Lampkin Park will be in operation by summer 1974. Four new parks were dedicated in 1972. In the fall of 1973, the city park system will acquire land for an additional park which will have bicycle trails and with Revenue Sharing Funds the city will purchase land for a "passive" park near the University. The Hobson House, on the National Register of Historic Places, was restored in 1972.

Other new facilities include the opening of eight restaurants, and four new motels. The Red Carpet Inn which opened in June, 1973, is the largest modern convention facility ever built between Nashville and Louisville. Built at an expense of more than \$2 million, it has more than 16,000 square feet of commercial space and can accommodate a convention of 1,000 persons. It houses the main office and training and development school of Union Innkeepers. A 204-unit, 11-story Hilton, built at a cost of \$5 million, will open in 1974 and will offer complete convention facilities, an olympic-size swimming pool enclosed in a tropical garden, tennis courts, a suana, a whirlpool and 40,000 square feet of public area.

Two new apartment complexes for married Western Kentucky University students have been built and a \$480,000 expansion of an additional complex completed.

More than fifty-three new businesses became operational in Bowling Green in 1972.

Financial institutions are constructing several new facilities. The American National Bank and Trust Company has recently completed construction of a new \$150,000 branch bank. The bank is presently remodeling

its downtown facility and adding 21,000 square feet. Construction is expected to be complete in the fall of 1973. The expansion will provide additional drive-in facilities. The Bowling Green Bank and Trust has renovated the downtown facilities. In June, 1972, the Citizens National Bank of Bowling Green opened its new 40,000 square foot building and has subsequently added an additional branch.

Bowling Green has two projects in process which will completely renovate the downtown and surrounding area. Operation Townlift is a program sponsored by TVA. Its purpose will be to renovate the downtown business area. The Model Cities Program is primarily concerned with renovation of the area immediately surrounding the downtown area. The two projects together may be used to give the entire city of Bowling Green a new and modern appearance.

The underlying goals of the Townlift program are to continue the downtown area as a primary shopping area which will function as a modern shopping center, to expand business, working and entertainment opportunities in the downtown area and to relate the core central business district more directly with other nearby sections of town.

Phase I of Operation Townlift includes primary access, circulation and parking. This involves the realignment and continuation of some major streets, and the expansion of streets so the present by-pass can become a true belt-way road around the city. Parking areas will be redesigned to improve appearance and increase capacity. A street tree-planting program will be developed and Fountain Square Park will become primarily an area for pedestrians.

Phase II calls for the location of one or more large retail businesses in the downtown area. A new parking garage will be necessary. Also a new civic service complex will be located northwest of Fountain Square Park.

Phase III, the most long-range plan, suggests the possibility of connecting Pioneer Cemetery and Fountain Square Park with a pedestrian plaza, the construction of additional apartment buildings, the development of a convention center and downtown motel complex.

In 1968, Bowling Green was designated a Model City by the U. S. Department of Housing and Urban Development. The city has completed its first year of action. The model neighborhood encompasses 1,520 acres of land. Areas of major concern are: education, social services, housing and transportation.

The area of education is based upon employment and income. The Full Employment Commission provides training in many areas to make unskilled persons of the community employable.

The social services program is directed to find out what is wrong in the areas of health, crime, and delinquency, find the cause and then implement action to correct the situation.

Comprehensive housing services such as housing choice, relocation, physical environment and financial assistance is handled by the Housing Development Corporation.

In the area of transportation, studies are made to determine the feasibility and need for public transit, a new bridge across the Barren River and other traffic needs.

In conjunction with the Townlift Program, the Downtown Bowling Green Association has retained an architectural firm to design a pedestrian mall facing Fountain Square Park. A feasibility study is in progress to evaluate the type of parking structure needed to coincide with the mall and revenue-sharing money has been allotted. Restoration of the 90 year-old fountain in the square is being completed with local support. Plans for a Civic Government Complex, which will include a Civic Recreation Building, a government building, the new police and fire stations, a parking structure and parks and playgrounds, has been planned.

Recreation, Entertainment and Livability

Recreation facilities are abundant in and around Bowling Green.

One thousand acre Beech Bend Park has 6,500 fully equipped camping sites, a miniature golf course, an amusement area, a zoo, a skating rink, a swimming pool and nature trails. Canoes are available and a paddlewheeler tours the lake. The Duck, an amphibious vehicle, tours the park by land and then cruises on the Barren River. The Beech Bend International Raceway has several National Championships scheduled each year. In addition to this park, there are twelve other parks in Bowling Green and Warren County, ranging from parks offering bicycle paths, hiking trails, tennis facilities, golf courses, a miniature train to more pastoral areas within the downtown area. The Bowling Green and Warren County recreation departments provide a variety of supervised recreation. The city recreation department sponsors Discovery Theatre for children and organized theatrical classes in the summer.

Western Kentucky University offers an array of cultural and athletic activities, including a local community concert series, a campus lecture series and productions by Western Players. The Hardin Planetarium and the Kentucky Building, housing a collection of art and artifacts devoted to local and state history, are open to the public.

The Hobson House, recently restored, is on the National Register of Historic Places. The visitor will find oriental rugs, a magnificent fresco, and antiques in the Hobson House. The Maria Moore House, the oldest in

Bowling Green, was built in 1827. The name of the city originates from bowling on the lawn in front of this historic home.

Mammoth Cave National Park, 30 miles north of the city by Interstate, is world famous. Mammoth Cave consists of the largest cave network ever discovered. Park attractions include the Snowball Dining Room (267 feet below the surface), the Frozen Niagara, Crystal Lake and the Bottomless Pit. A scenic boat trip on the Green River, nature trails, an Amphitheater and a Visitor Center exhibit room with audiovisual programs hourly are additional features of the Park.

The Mammoth Onyx Cave, the Crystal Onyx Cave and the Diamond Caverns are located in the Bowling Green area.

Barren River Lake State Resort Park, approximately 25 miles from Bowling Green, is a 1,500-acre park with a 50-room lodge and 12 cottages. It provides supervised recreation, hiking trails, swimming, fishing and horseback riding facilities. Boat ramps, a marina, a 9-hole par-3 golf course, a gift shop and a coffee shop are also located on the park grounds.

THE LABOR MARKET

POPULATION TRENDS

Area	Population				Percent Change	
	1972*	1970	1960	1950	1960-70	1950-60
Bowling Green Labor Market Area	NA	36,253	28,338	18,347	+27.9	+54.5
Area	158,100	152,028	136,178	139,704	+11.6	- 2.5
Warren Co.	61,200	57,432	45,491	42,758	+26.2	+ 6.4
Allen Co.	12,800	12,598	12,269	13,787	+ 2.7	-11.0
Barren Co.	29,500	28,677	28,303	28,461	+ 1.3	- 0.6
Butler Co.	9,800	9,723	9,586	11,309	+ 1.4	-18.0
Edmonson Co.	9,600	8,751	8,085	9,376	+ 8.2	-13.8
Logan Co.	21,700	21,793	20,896	22,335	+ 4.3	- 6.4
Simpson Co.	13,500	13,054	11,548	11,678	+13.0	- 1.1

*Provisional estimates.

Source: U. S. Department of Commerce, Bureau of the Census, Census of Population, 1970, 1960, 1950. U. S. Bureau of the Census, Current Population Reports, Series P-26, June 1973.

GENERAL EMPLOYMENT CHARACTERISTICS, 1971

Major Employment Group	Employment	
	Warren County	Labor Market Area
TOTAL	25,480	62,090
Agricultural	1,940	9,870
Nonagricultural	23,540	52,220
Manufacturing	5,800	16,200
Government	4,540	8,580
Trade and Services	6,842	13,772
Other	6,358	13,668

Source: Kentucky Department of Economic Security, Division of Research and Statistics.

MANUFACTURING EMPLOYMENT TRENDS BY INDUSTRY
SEPTEMBER 1972 AND 1962

Industry	Warren County			Labor Market Area		
	1972	1962	%Change	1972	1962	%Change
TOTAL	6,974	3,184	+ 119.0	18,890	9,026	+ 109.3
Food & Kindred						
Products	534	692	- 22.8	1,041	1,123	- 7.3
Tobacco	105	115	- 8.7	113	126	- 10.3
Apparel, Textiles,						
Leather	1,762	783	+ 125.0	5,053	3,112	+ 62.4
Lumber, Furniture	417	215	+ 94.0	1,502	829	+ 81.2
Printing & Publishing,						
Paper	159	55	+ 189.1	617	128	+ 382.0
Chemicals, Petroleum						
& Coal, Rubber	20	8	+ 150.0	1,505	567	+ 165.4
Stone, Clay & Glass	28	13	+ 115.4	75	62	+ 21.0
Primary Metals	0	0	0	429	216	+ 98.6
Machinery, Metal						
Products, Equipment	3,917	1,301	+ 201.1	8,335	2,860	+ 191.4
Other	32	2	+1500.0	220	3	+7233.3

Source: Kentucky Department of Economic Security, Number of Workers in Manufacturing Industries Covered by Kentucky Unemployment Insurance Law Classified by Industry and County, September 1972, September, 1962.

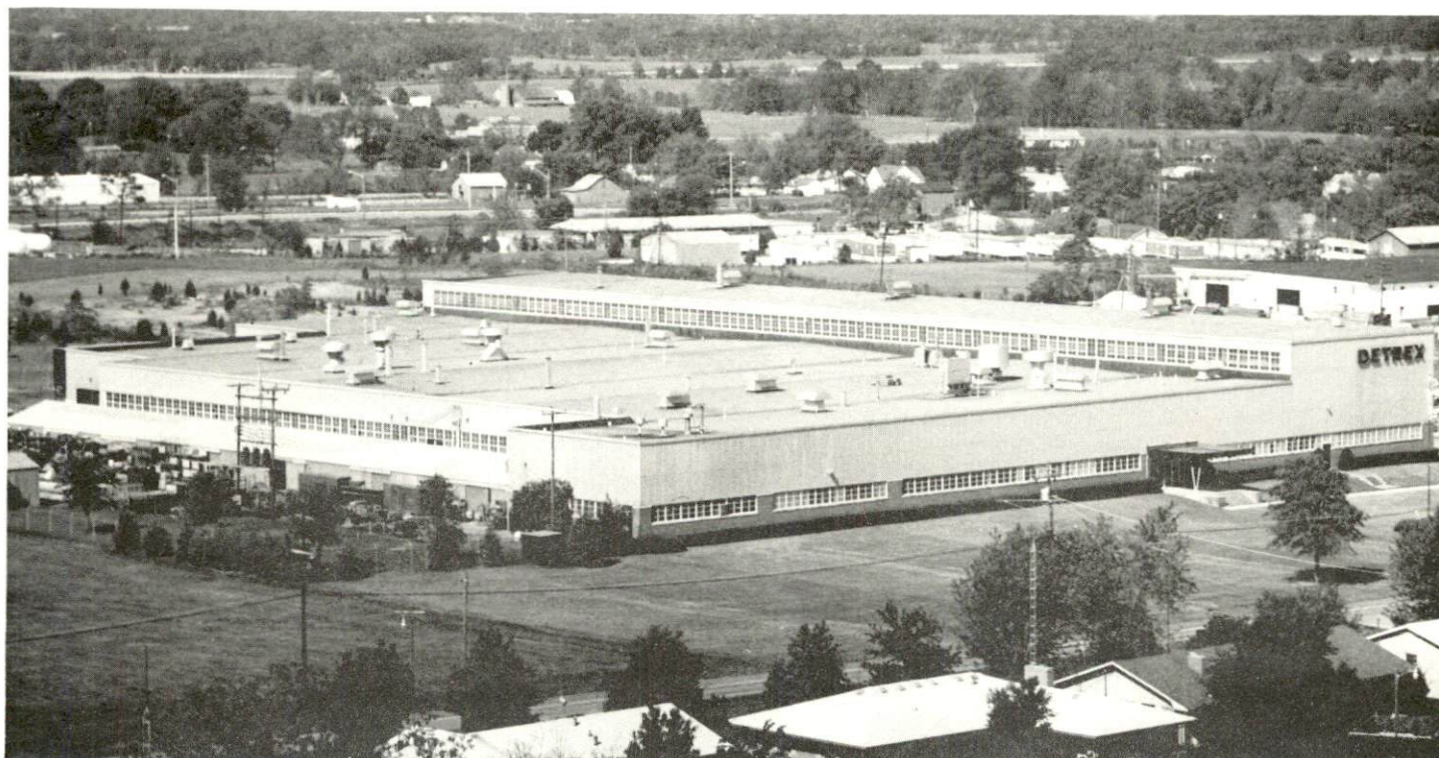
MAJOR BOWLING GREEN MANUFACTURING FIRMS,
THEIR PRODUCTS AND EMPLOYMENT

<u>Firm</u>	<u>Product</u>	<u>Employment</u>		
		<u>Total</u>	<u>Male</u>	<u>Female</u>
Applied Systems Group, Chrysler Airtemp Corp.	Air conditioning and re- frigeration equipment	1,000		
American Bread Company of Kentucky	Bread and rolls	125	122	3
American Chair & Cable Company	Welding electrodes	125	118	7
J. E. Bohannon Co.	Tobacco redrying	151	99	52
Bowling Green Plant, Holley Carburetor Div. of Colt Industries	Carburetors, distributors	1,995	1,201	794
Brown's Dairy Foods, Inc.	Milk and ice cream	50	45	5
Coca-Cola Bottling, Co., Inc.	Carbonated beverages	55	52	3
Corrugated Container Co., Division of Corco, Inc.	Shipping containers	81	74	7
Cutler-Hammer, Inc.	Electrical, electronic controls	900	600	300
Detrex Chemical Co.	Commercial dry cleaning equipment, industrial degreasing equipment	144	130	14
Dibrell Kentucky, Inc.	Tobacco redrying	550	350	200
Firestone Textiles Co.	Tire fabric	800	580	220
Master Division of Koehring Company	Oil fired portable space heaters	222	199	23
Nehi Royal Crown Bottling Co., Inc.	Soft drinks	79	75	4
News Publishing Co.	Newspaper	61	40	21
Pet, Inc.	Evaporated milk, tin cans	115	108	7
Scott Tobacco Co.	Twist, smoking tobacco	90	10	80
L. F. Strassheim Co.	Furniture parts, chairs, plastic handles, wood brush blocks and handles	170	130	40
Tri-State Bedding & Furniture Co.	Mattresses, box springs, felt	65	50	15
Union Underwear Co., Inc.	Men's and boys' underwear, infants' wear	1,015	125	890
Wren Products Corp.	Wood desk items, dish- washer tops	99	72	27

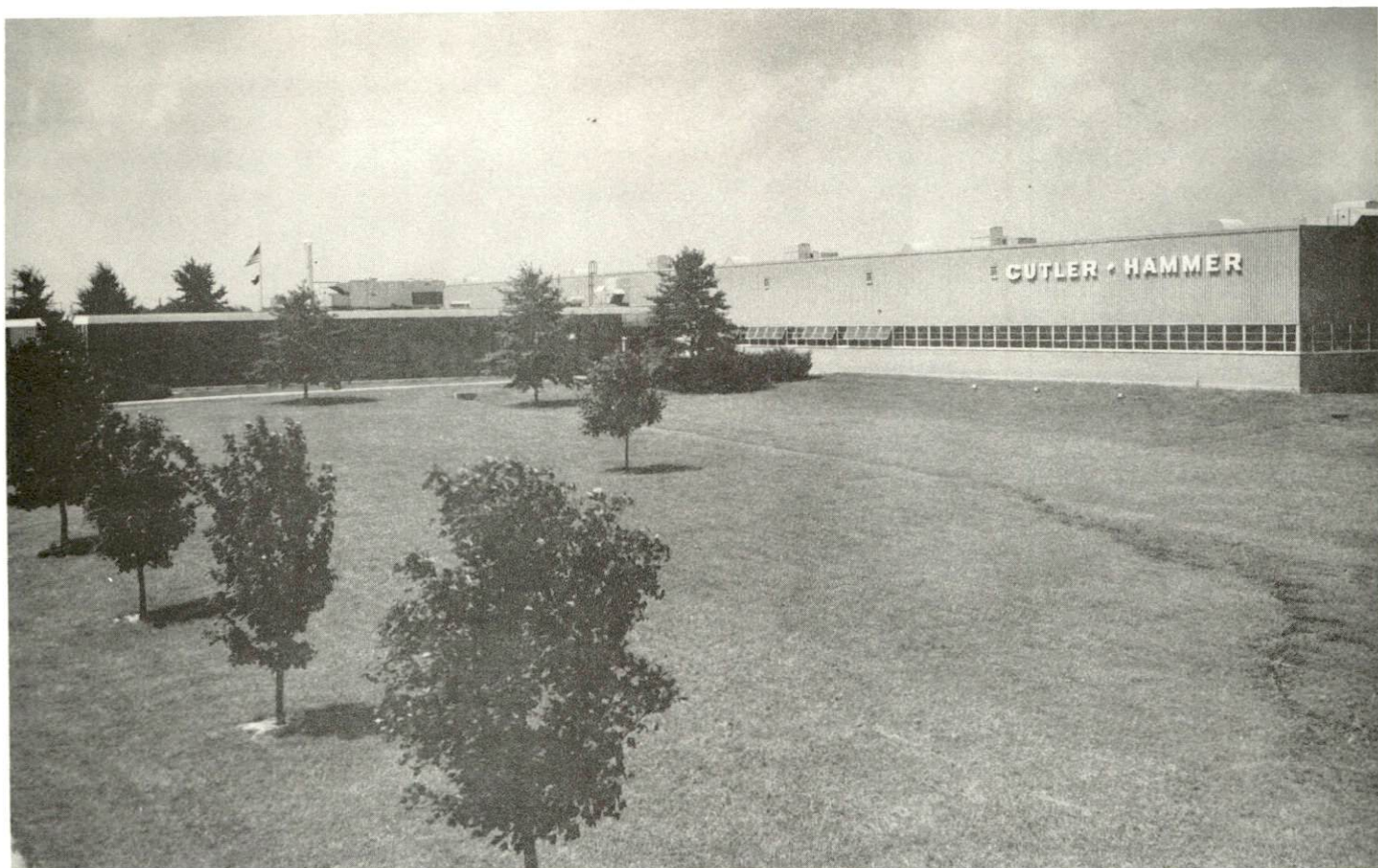
Source: Kentucky Department of Commerce, Division of Research and Planning.



BOWLING GREEN PLANT
HOLLEY CARBURETOR DIVISION OF COLT INDUSTRIES



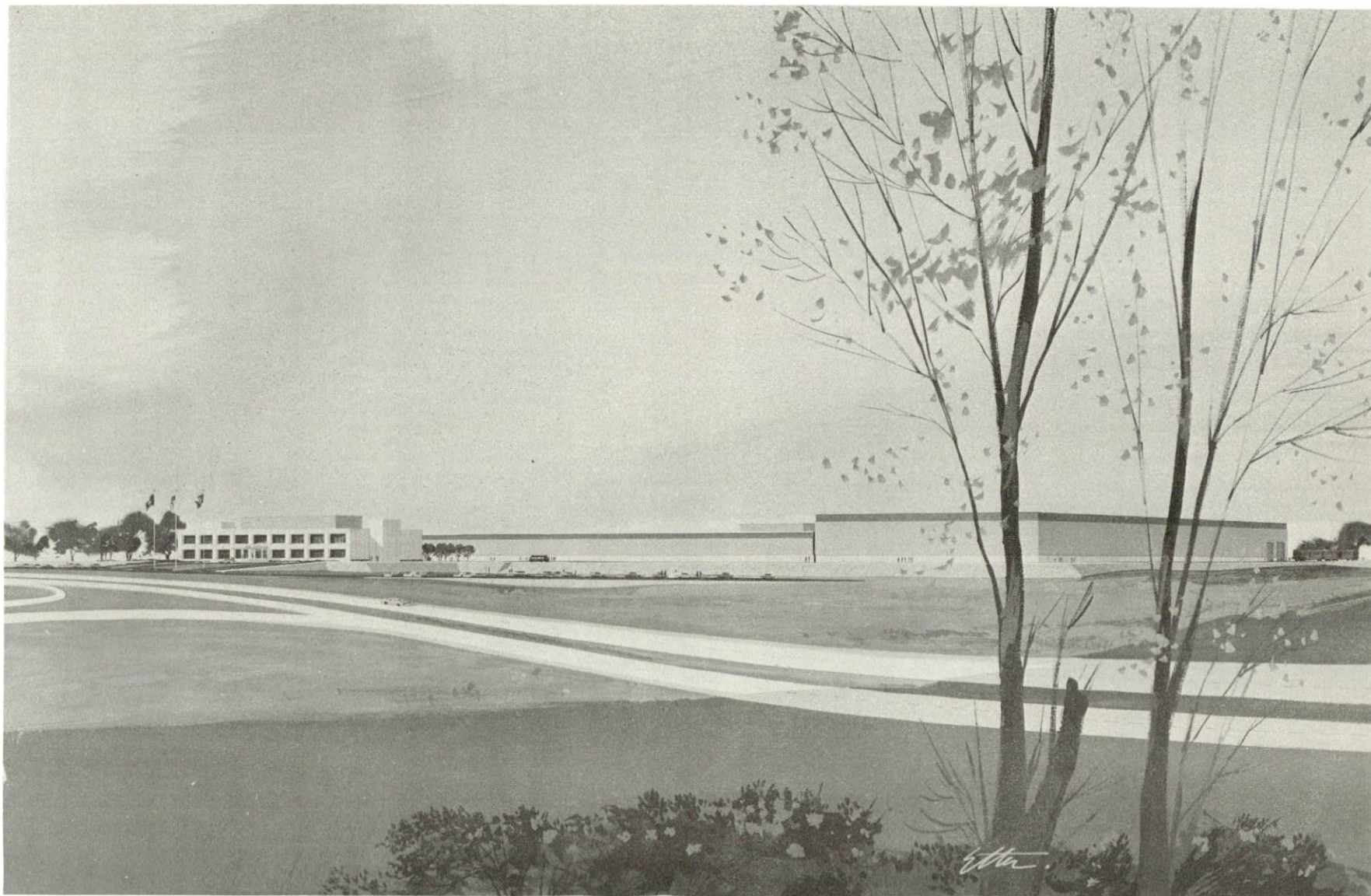
DETREX CHEMICAL COMPANY



CUTLER-HAMMER, INC.



FIRESTONE TEXTILES COMPANY

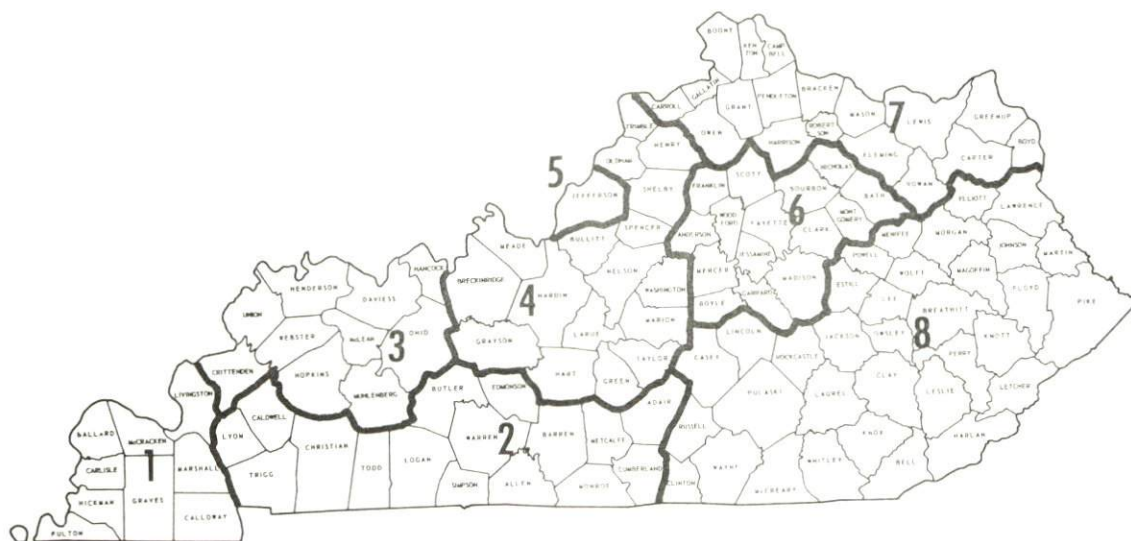


AIRTEMP DIVISION, CHRYSLER CORP.

WAGES

Occupational wage rates for specific industries are usually not available to most government agencies, and wage data furnished to state employment agencies by industrial employers is protected from disclosure by federal law. The most reliable up-to-date wage information can be obtained by direct contact with local employers.

Associated Industries of Kentucky, a voluntary organization of Kentucky businesses, regularly collects occupational wage rates and fringe benefits data from participating member firms. Data is compiled for over 130 clearly defined office, production, and service occupations. Tabulations are published for eight regions of Kentucky, as shown on the map below. It should be noted that the data may be weighted by the preponderance of firms in the larger cities and may be somewhat higher than the rates paid in the smaller communities. Data from these tabulations are available, upon request, from the Kentucky Department of Commerce, Frankfort, Kentucky 40601.



Associated Industries of Kentucky Area Wage Surveys

LABOR ORGANIZATIONS

<u>Union</u>	<u>Representing manufacturing workers at:</u>
International Construction & General Laborers, Local No. 871	Pet, Inc.
Sheet Metal Workers, Local 433	Detrex Chemical Company and Master Division of Koehring Co.
United Brotherhood of Carpenters and Joiners, Local No. 2561	True Temper Corporation
Bakers & Confectionery Workers and Teamsters	American Bread Company of Kentucky
International Association of Machinists and Aerospace Workers	Cutler-Hammer, Inc. and L.F. Strassheim Co., Wren Products Corp.
United Auto Workers	Chrysler Airtemp Corp., American Chain and Cable Co., Capitol Aluminum Manufacturing Co., Inc.
Teamsters	Corrugated Container Company, Division of Corco; Tri-State Bedding and Furniture Company

ESTIMATED MALE LABOR SUPPLY BOWLING GREEN LABOR MARKET AREA

<u>Area</u>	<u>Current</u>			<u>Future</u>	
	<u>Total</u>	<u>Not in Labor Force</u>	<u>Unemployed</u>	<u>Under-employed</u>	<u>Reaching 18 yrs. of age by 1979</u>
Labor Market Area	13,850	4,545	2,340	6,965	7,411
Warren	6,690	1,997	829	3,864	2,563
Allen	890	367	157	366	587
Barren	1,784	368	364	1,052	1,449
Butler	1,273	638	206	429	517
Edmonson	1,022	537	261	224	456
Logan	1,468	432	379	657	1,134
Simpson	723	206	144	373	615

Sources: Kentucky Department of Economic Security, Kentucky Labor Supply Estimates by County, 1972. Kentucky Department of Commerce, Future Labor Supply by 1979.

ESTIMATED FEMALE LABOR SUPPLY
BOWLING GREEN LABOR MARKET AREA

Area	Current				Future
	Total	Not in Labor Force	Unemployed	Under- employed	Reaching 18 yrs. of age by 1979
Labor Market					
Area	11,239	2,207	1,350	7,682	7,107
Warren	4,781	197	481	4,103	2,502
Allen	777	152	93	532	560
Barren	1,817	547	216	1,054	1,406
Butler	944	393	114	437	486
Edmonson	940	494	139	307	454
Logan	1,345	390	221	734	1,035
Simpson	635	34	86	515	664

Sources: Kentucky Department of Economic Security, Kentucky Labor Supply Estimates by County, 1972. Kentucky Department of Commerce, Future Labor Supply by 1979.

PER CAPITA PERSONAL INCOME

Area	1970	1960	% Change
Warren County	\$2,817*	\$1,375	+104.9
Labor Market Area			
Range	\$1,490 - 3,310*	\$636 - 1,425	N.A.
Kentucky	3,099	1,581	+ 96.0
U. S.	3,933	2,216	+ 77.5

*Unadjusted for commuting.

Sources: University of Kentucky, Office of Development Services and Business Research, Per Capita Income in Kentucky. U. S. Department of Commerce, Bureau of Economic Analysis, Survey of Current Business, August 1972.

TRANSPORTATION

Rail

Line serving Bowling Green - Louisville and Nashville Railroad Company
Services - Passenger, freight, switching facilities, siding space and
piggyback facilities

For details on routing, schedules, rates, and services, contact:

Manager of Industrial Development
Louisville and Nashville Railroad Company
908 West Broadway
Louisville, Kentucky 40203

Truck Service

Company

Home Office

*Associated Transport, Inc.	New York, New York
*Bowling Green Express, Inc.	Bowling Green, Kentucky
Cooper-Jarrett, Inc.	Orange, New Jersey
*Great Lakes Express, Inc.	Saginaw, Michigan
Manning Motor Express, Inc.	Glasgow, Kentucky
*McLean Trucking Company	Winston-Salem, North Carolina
Roadway Express, Inc.	Akron, Ohio
*Renner's Express, Inc.	Indianapolis, Indiana
*Southern Forwarding Co., Inc.	Memphis, Tennessee
Wilson Freight Company	Cincinnati, Ohio

Other Freight Services

Nearest Shipping Center

United Parcel Service
REA Express (pickup and
delivery service)

Bowling Green

Bowling Green

*Local terminal.

HIGHWAY MILES AND TRUCK TRANSIT TIME IN DAYS FROM
BOWLING GREEN, KENTUCKY, TO SELECTED MARKET CENTERS

City	Highway Miles	Delivery		City	Highway Miles	Delivery	
		Time TL				Time TL	
Atlanta, Ga.	318	2		Los Angeles, Calif.	2,127	-	
Birmingham, Ala.	256	-		Louisville, Ky.	113	1	
Chicago, Ill.	409	2		Nashville, Tenn.	61	1	
Cincinnati, Ohio	210	1		New Orleans, La.	599	-	
Cleveland, Ohio	462	1		New York, N. Y.	879	2	
Detroit, Mich.	523	1		Pittsburgh, Pa.	504	2	
Knoxville, Tenn.	254	1		St. Louis, Mo.	300	2	

Source: Delivery time only - Associated Transport, Inc., New York, N. Y.

Air

	<u>Local</u>	<u>Nearest Commercial</u>
	Bowling Green-Warren County Municipal	Metropolitan Nashville Airport
Location:	Bowling Green	Nashville, 61 miles south
Runways:	2 paved	3 paved
Length:	6,500 feet, 4,000 feet	8,500 feet, 7,700 feet, 4,025 feet
Traffic		
Control:	Wind tee; Airport Advisory Service	FAA control; Control tower, approach and ground control, departure control, guards
Lighting:	Runways, obstructions, beacons and wind tee until midnight	High intensity for instrument runway, medium intensity for other runways; obstructions, beacon and approach lights
Services:	80 and 100 octane jet A-50, storage, minor A & E repairs, FAA Flight Service Station, taxi and rental car service, restaurant	80, 91, 100 and 115 octane, jet fuel, major A & E repairs, storage, taxi and rental car service, city bus service, restaurant, hotel, FAA Flight Service Station; American, Ozark, Braniff, Eastern, Piedmont, Allegheny, Delta, TWA and Southern Airlines
Air Freight		
Service:	Chartered air freight service may be arranged	Air freight terminal

Bus - Greyhound Bus Lines
 Tennessee Trailblazers
 Bowling Green-Hopkinsville Bus Company

Taxi - 1 company, radio-dispatched service

Rental Services - Automobile, truck and trailer rentals

POWER AND FUEL

Electricity

Company serving Bowling Green - Bowling Green Electric Plant Board*
Source of power - Tennessee Valley Authority
Total generating capacity - 19,400,000 KW
For industrial rates contact:

Bowling Green Electric Plant Board
805 Center Street
Bowling Green, Kentucky 42101

Company serving Warren County - Warren RECC**
Source of power - Tennessee Valley Authority
Total generating capacity - 19,400,000 KW
For industrial rates contact:

Warren RECC
951 Fairview Avenue
Bowling Green, Kentucky 42101

Natural Gas

Company serving Bowling Green - Western Kentucky Gas Company
Source of supply - Texas Gas Transmission Corporation
Size of transmission mains - 6 and 12 inches (supplier); 8 inches (distributor)
Distribution mains - 1 1/4, 2, 3, 4, 6, 8 and 10 inches
Distribution pressure - 20 psi in the summer, 40 psi in the winter
Btu content - 1,000 per cubic foot; Specific gravity - 0.6
For rates and supplies contact:

Western Kentucky Gas Company
1020 College Street
Bowling Green, Kentucky 42101

*Improvements by the Bowling Green Electric Plant Board include a 69,000 volt transmission line which encircles the city and two additional substations.
**The Warren RECC has added two new substations and 60 miles of line.

Other Fuels

Propane and butane - There are two bulk stations in Bowling Green and seven others in the area.

Millers Bottle Gas and Southern State Petroleum Cooperative - Bowling Green
Pargas and Southern State Petroleum Cooperative - Franklin
Southern State Petroleum Cooperative - Russellville
Pargas and Doxol - Glasgow
Pargas - Scottsville
Blue Flame, a division of Ugite - Horse Cave

Fuel Oils -

Distillate fuel oil - There are ten bulk stations in Bowling Green; Arco, American, Gulf, Marathon, Phillips 66 distributed by Ramsey Oil; Shell, Southern States Petroleum Cooperative, Standard, Sun Oil, and Texaco distributed by R. C. McKinney
Residual fuel oil - Arrangements must be made with the refinery

Low sulphur content coal - Available in Kentucky

WATER AND SEWERAGE

Water

Company serving Bowling Green - Bowling Green Water, Sewer and Sanitation Commission*

Source - Barren River

Treatment plant capacity - 15,000,000 gpd

Average daily consumption - 7,000,000 gallons

Peak daily consumption - 7,800,000 gallons

Type treatment - Complete conventional treatment: Coagulation, sedimentation, flocculation, rapid sand filtration and disinfection

Storage capacity - 10,800,000 gallons

Size mains - 2, 4, 6, 8, 10, 12, 16, 18 and 24 inches

Average pressure - 60 psi

Average temperature - 68 degrees F.

MONTHLY WATER RATES FOR WHOLESALE AND INDUSTRIAL CONSUMERS

Inside City Rates

First	300 cu. ft. per month	\$2.80 (Minimum)
Next	200 cu. ft. per month	.82 per 100 cu. ft.
Next	1,000 cu. ft. per month	.75 per 100 cu. ft.
Next	1,500 cu. ft. per month	.65 per 100 cu. ft.
Next	3,000 cu. ft. per month	.50 per 100 cu. ft.
Next	4,000 cu. ft. per month	.40 per 100 cu. ft.
Next	10,000 cu. ft. per month	.30 per 100 cu. ft.
Next	25,000 cu. ft. per month	.23 per 100 cu. ft.
Next	25,000 cu. ft. per month	.20 per 100 cu. ft.
Next	25,000 cu. ft. per month	.19 per 100 cu. ft.
All over	100,000 cu. ft. per month	.18 per 100 cu. ft.

Name of water district - Northside Water District**

Area served - Portion of Bowling Green and Northeast Warren County

Date when water district began operating - 1964

Source of supply of treated water - Bowling Green Water, Sewer and Sanitation Commission

Source of raw water - Barren River

Capacity of treatment plant - 150 gpm

Type of treatment - gravity filters and chemical

*Improvements: Bowling Green Water, Sewer and Sanitation Commission has recently laid 90,000 feet of new transmission lines and built a new million gallon standpipe.

**Improvements: 60 miles of new line.

Average amount of water used in a 24-hour period - 700,000 gallons

Peak amount of water used in a 24-hour period - 900,000 gallons

Storage capacity - 960,000 gallons

Average pressure - 75 psi

Average temperature - 70 degrees F.

Size lines - 2, 3, 4, 6, 8, 10, and 16 inches

Rates - First	2,000 gallons	\$5.00 (Minimum)
Next	3,000 gallons	1.50 per M gallons
Next	3,000 gallons	1.00 per M gallons
Next	4,000 gallons	.85 per M gallons
Next	20,000 gallons	.75 per M gallons
Next	50,000 gallons	.60 per M gallons
Next	60,000 gallons	.50 per M gallons
Next	3,000,000 gallons	.38 per M gallons
All excess		.28 per M gallons

Name of water district - Westside Water District*

Area served - Southern Warren County

Date when water district began operating - 1965

Source of supply of treated water - Bowling Green Water, Sewer and Sanitation Commission

Average amount of water used in a 24-hour period - 533,000 gallons

Peak amount of water used in a 24-hour period - 650,000 gallons

Storage capacity - 529,000 gallons

Average pressure - 60 psi

Average temperature - 70 degrees F.

Size lines - 2, 3, 4, 6, and 8 inches

Rates - First	2,000 gallons	\$5.00 (Minimum)
Next	3,000 gallons	1.50 per M gallons
Next	3,000 gallons	1.00 per M gallons
Next	4,000 gallons	.85 per M gallons
Next	20,000 gallons	.75 per M gallons
Next	50,000 gallons	.60 per M gallons
All excess		.50 per M gallons

Surface water sources - Barren and Green Rivers

Average discharge - Barren River at Bowling Green, Kentucky, 2389 cfs (33-year record, unadjusted)

Expected ground water yield - 50 to 200 gpm along Barren River, 5 to 50 gpm in southwest and **northeast** portions, 5 gpm or less in northwestern part of county

*Improvements: Added 100 miles of new line.

Sewerage

Company serving Bowling Green and Warren County - Bowling Green
Water, Sewer and Sanitation Commission*

Design capacity - 5,180,000 gpd

Average daily flow - 3,500,000 gallons

Treatment - Primary and 30% secondary

Type treatment - Aeration, clarification, activated sludge and vacuum
filters

Treated effluent discharged into - Barren River

Size of sanitary mains - 6 to 42 inches

Size of storm mains - 15 and 60 inches

Monthly rates - First	300 cu. ft.	\$2.38 (Minimum)
Next	200 cu. ft.	.69 per 100 cu. ft.
Next	1,000 cu. ft.	.64 per 100 cu. ft.
Next	1,500 cu. ft.	.55 per 100 cu. ft.
Next	3,000 cu. ft.	.43 per 100 cu. ft.
Next	4,000 cu. ft.	.34 per 100 cu. ft.
Next	15,000 cu. ft.	.26 per 100 cu. ft.
Next	25,000 cu. ft.	.20 per 100 cu. ft.
Next	25,000 cu. ft.	.17 per 100 cu. ft.
Next	25,000 cu. ft.	.16 per 100 cu. ft.
All over	100,000 cu. ft.	.15 per 100 cu. ft.

Company serving Bowling Green and Warren County - Northside Water
District

Size of sanitary mains - 8-inch to 24-inch

Note - The district's sewerage mains empty into Bowling Green Water,
Sewer and Sanitation Commission sewage treatment plant. 1,500,000
gallons can be disposed of daily.

Monthly rates - First	2,000 gallons	\$4.00 (Minimum)
Next	3,000 gallons	1.50 per M gallons
Next	3,000 gallons	1.00 per M gallons
Next	4,000 gallons	.85 per M gallons
Next	20,000 gallons	.75 per M gallons
Next	50,000 gallons	.60 per M gallons
Next	60,000 gallons	.50 per M gallons
Next	3,000,000 gallons	.30 per M gallons
All over		.20 per M gallons

Metered sewage shall

be billed under a rate of - .315 per M gallons

*Improvements: The Bowling Green Water, Sewer and Sanitation Commis-
sion is in the process of a \$2.5 million expansion to 100 percent secondary
sewage treatment. New sanitary sewer lines and storm water drainage
improvements are planned.

LOCAL GOVERNMENT

City

Structure - Mayor - 4-year term; 4 Commissioners - 2-year terms;
City Manager

Budget 1972-73 - General Fund \$3,102,771

Water and Sewer Fund 1,203,650

Fees and licenses - Occupational license fee - 1 1/2 percent of wages
and earnings of individual; 1 1/2 percent of net profits of businesses,
(minimum \$30)

County

Structure - County Judge - 4-year term; 8 magistrates - 4-year terms

Budget 1972-73 - General Fund \$778,896.26; Road Fund \$292,273.00

Assessed Value of Property, 1972

<u>Classes of Property</u>	<u>Bowling Green</u>	<u>Warren County</u>
Real Estate	\$166,957,100	\$293,754,510
Tangibles	45,226,552	109,653,233
Public Service	NA	33,143,204 (1971)

Property Taxes

Land and buildings are taxed by the state and may be taxed by local jurisdictions. The state rate is \$0.015 per \$100 of assessed valuation.

Tangible personal property owned by manufacturers (automobiles, trucks, finished goods, office furniture, office equipment) is taxed by the state at \$0.15 per \$100 and may be taxed by local jurisdictions.

Manufacturing machinery, raw materials inventories, and goods in process inventories are not subject to local taxation. The state rate is \$0.15 per \$100.

Property stored in public warehouses is not subject to local taxation. The state rate is only \$0.015 per \$100.

All property is assessed at 100 percent of fair cash value.

Local Property Tax Rates Per \$100 of Assessed Valuation, 1972*

<u>Taxing Jurisdiction</u>	<u>Bowling Green</u>	<u>Warren County</u>
County	\$.163	\$.163
School	.833	.357
City	.315	

Utilities Gross Receipts Tax for Schools

Warren County levies a 3 percent tax on utilities receipts for schools. This tax is paid by all consumers of utilities. Exempted are receipts for utilities services that are resold and the receipts from the sale of energy or energy producing fuels that exceed 3 percent of the cost of production in manufacturing, processing, mining or refining.

Planning and Zoning

Joint agency - Bowling Green-Warren County Planning and Zoning Commission

Zoning enforced - All areas of the city and county

Subdivision regulations enforced - All areas of the city and county

Local codes enforced - Building and housing

Mandatory state codes enforced - Plumbing, National Fire Protection Association Code, National Building Code (for major buildings and residential construction containing more than 12 bedrooms per building)

Other programs - Urban Renewal, Public Housing, Model City, Neighborhood Development Program

Safety

<u>Police</u>	<u>Bowling Green</u>	<u>Warren County</u>
Total staff	89	12
Radio-patrol cars	20	8
Other equipment	2 radio-equipped motorcycles, 1 mobile crime lab, 19 portable radios, communication computer service - region headquarters	Standard

*Kentucky Department of Revenue, Kentucky Property Tax Rates, 1972.

FireBowling Green

American Insurance

Association Fire Rating

6

Full-time staff

89

Number of stations

4

Equipment:

1, 250 gpm pumper

1

1, 000 gpm pumpers

5

750 gpm pumper

1

650 gpm pumper

1

Aerial ladder truck, 100 ft.

1

Aerial ladder truck, 75 ft.

1

Other

5 station wagons

Rescue Service

Bowling Green-Warren County Rescue Squad:

Number of volunteers - 50

Equipment - Generator, lights, hand tools, station wagon, complete lighting and water tanker system, 6 x 6 army truck equipped van

Personnel training - First aid (standard, advanced, special) and

Civil Defense Training, special training

SanitationBowling Green

Type service

Municipal

Fee charged:

residential

\$2.10 per month

business & industrial

1.50 per yard

Collection frequency:

residential

Weekly

business & industrial

Variable (based on amount)

Trash pickup

Variable (based on amount)

Disposal method

Sanitary landfill

EDUCATION

Public Schools

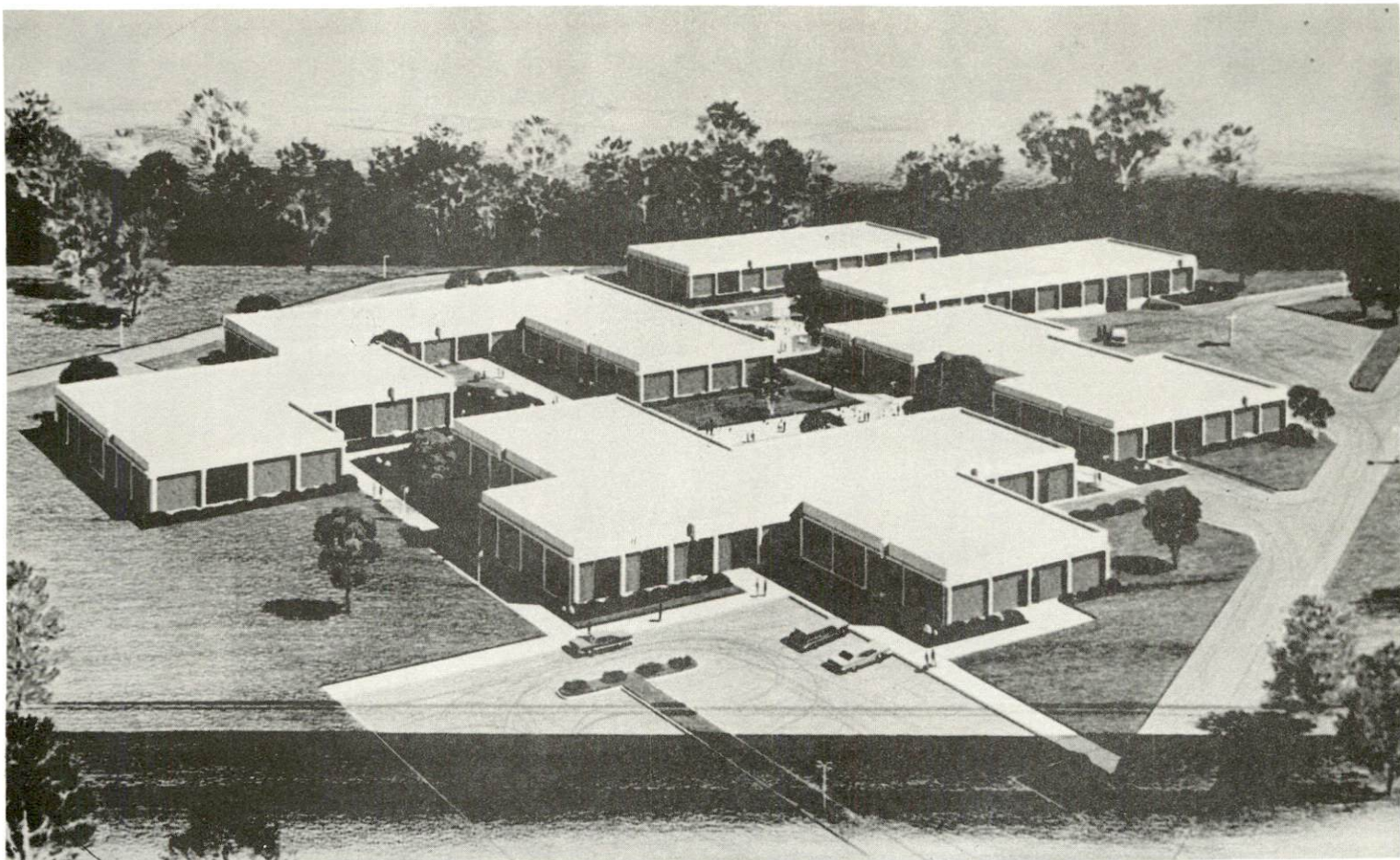
	<u>Bowling Green</u>	<u>Warren County</u>
Total Enrollment (1972)	5,457	6,586
Elementary	3,126	4,504
Junior High	994	
High School	1,337	2,082
Student-Teacher Ratio	24-1	25-1
Elementary	28-1	26-1
Junior High	19-1	
High School	21-1	23-1
Accreditation	Southern Association of Colleges and Schools	Southern Association of Colleges and Schools
Percent High School Graduates to College	59.3	30.1
Expenditures Per Pupil (1971-72)	\$579.92	\$457.50
Bonded Indebtedness, June 30, 1972	\$6,349,000	\$3,873,000

Nonpublic Schools

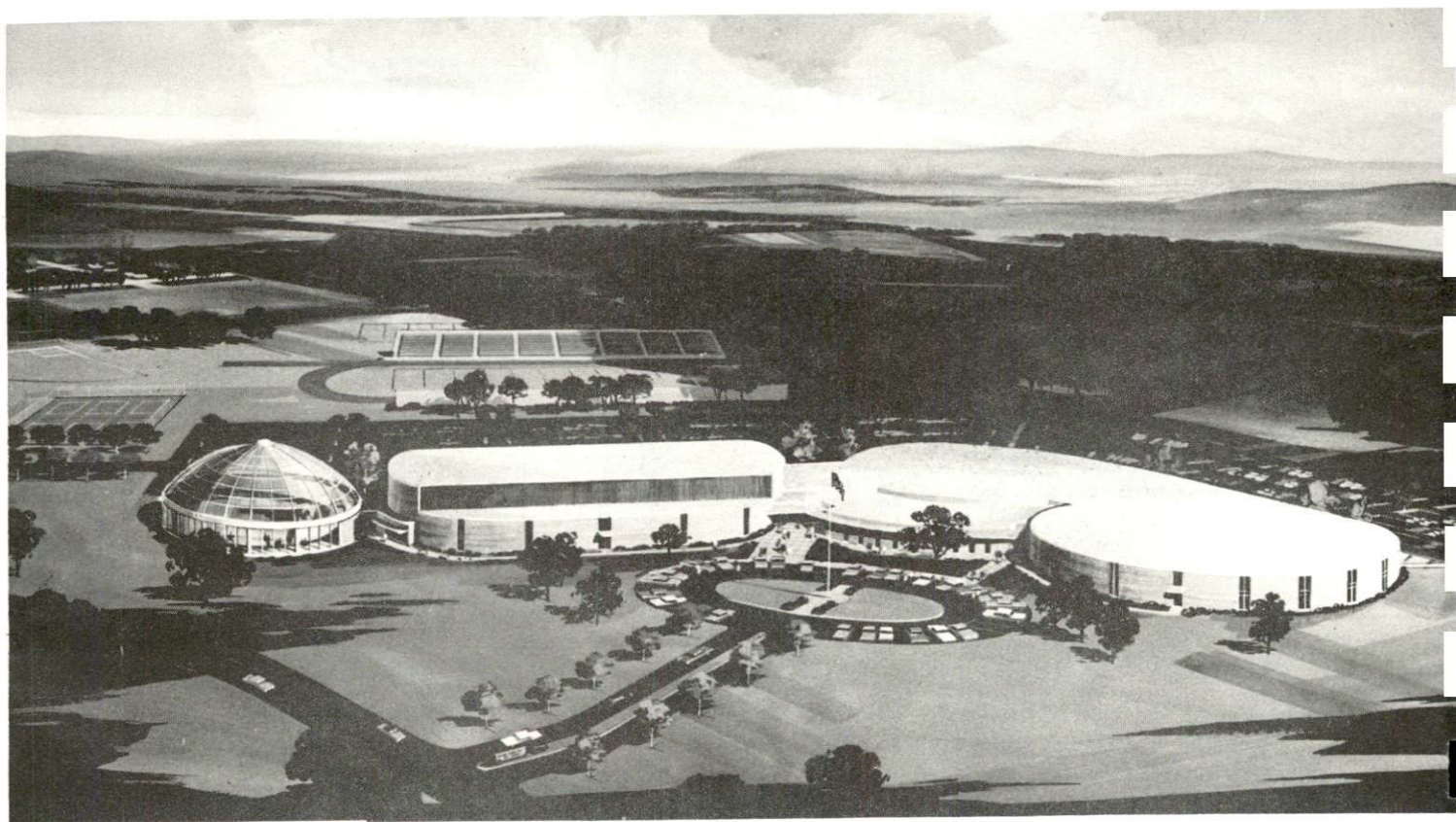
	<u>Jones-Jagger Lab.</u>	<u>Seventh Day Adventist</u>	<u>St. Joseph Elementary</u>
Total Enrollment	186	11	140
Grades	1-6	1-8	1-7
Student-Teacher Ratio	20-1	11-1	20-1

Potter Orphan Home and School

Total Enrollment	46
Grades	K to 8
Student-Teacher Ratio	9-1



BOWLING GREEN STATE VOCATIONAL-TECHNICAL SCHOOL

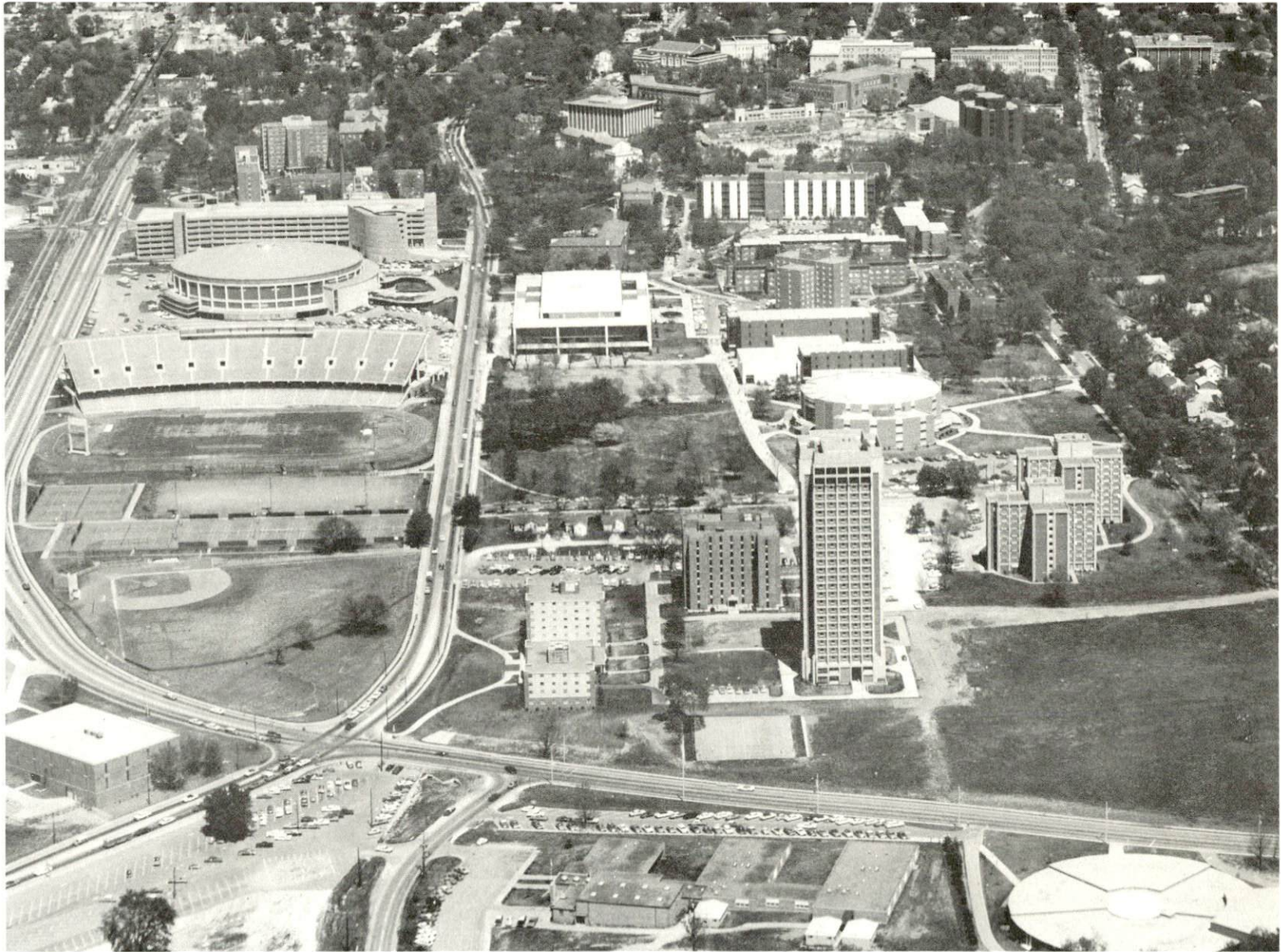


BOWLING GREEN HIGH SCHOOL

Vocational Schools

	<u>Nearest State School</u>
Location	Bowling Green State Vocational- Technical School
Curriculum	Bowling Green Distributive Education Dental Assistant Dental Technician Health Careers Nurses Aide Practical Nursing Surgical Technician Ward Clerk Electronics (Technology) Highway Technology Technical Drafting Air Conditioning and Refrigeration Auto Body Repair Auto Mechanics Carpentry Commercial Foods Drafting Electricity Machine Shop Printing Radio and TV Repair Tool and Die Making Welding

Arrangements can be made to provide training in the specific production skills required by an industrial plant. Instruction may be conducted either in the vocational school or in the industrial plant, depending upon the desired arrangement and the availability of special equipment.



AERIAL VIEW OF WESTERN KENTUCKY UNIVERSITY

Colleges and Universities

<u>Name</u>	<u>Location</u>	<u>Area - Within 65 miles</u>	
		<u>Enrollment</u> <u>(Fall, 1972)</u>	<u>Highest Degree</u> <u>Conferred</u>
Western Kentucky University	Bowling Green	11,488	Masters, Ph. D.*
Austin Peay State University	Clarksville, Tenn.	3,668	Masters
Fisk University	Nashville, Tenn.	1,558	Masters
Hopkinsville Community College	Hopkinsville	752	Associate
Meharry Medical College	Nashville, Tenn.	622	M. A., M. D. D. D. S.
Peabody College	Nashville, Tenn.	1,959	Ph. D.
Tennessee State University	Nashville, Tenn.	4,640	Masters
Vanderbilt University	Nashville, Tenn.	6,895	Ph. D.

*Cooperative program with the University of Kentucky, Lexington, for a Ph. D. in education only.

HEALTH

Hospitals

<u>General Hospital</u>	<u>Location</u>	<u>Beds</u>
Bowling Green-Warren County Hospital	Bowling Green	276 hospital beds, 23 extended care facility beds, 24 bassinets

General hospital facilities - 5 operating rooms, 5 emergency rooms, 4-bed coronary care unit, physical therapy department, electro-cardiograph, X-ray facilities, home health agency, coffee shop for visitors

Medical staff - 65 doctors, 97 registered nurses, 156 aides, 44 licensed practical nurses and 243 other employees

Greenview Hospital	Bowling Green	157 beds
--------------------	---------------	----------

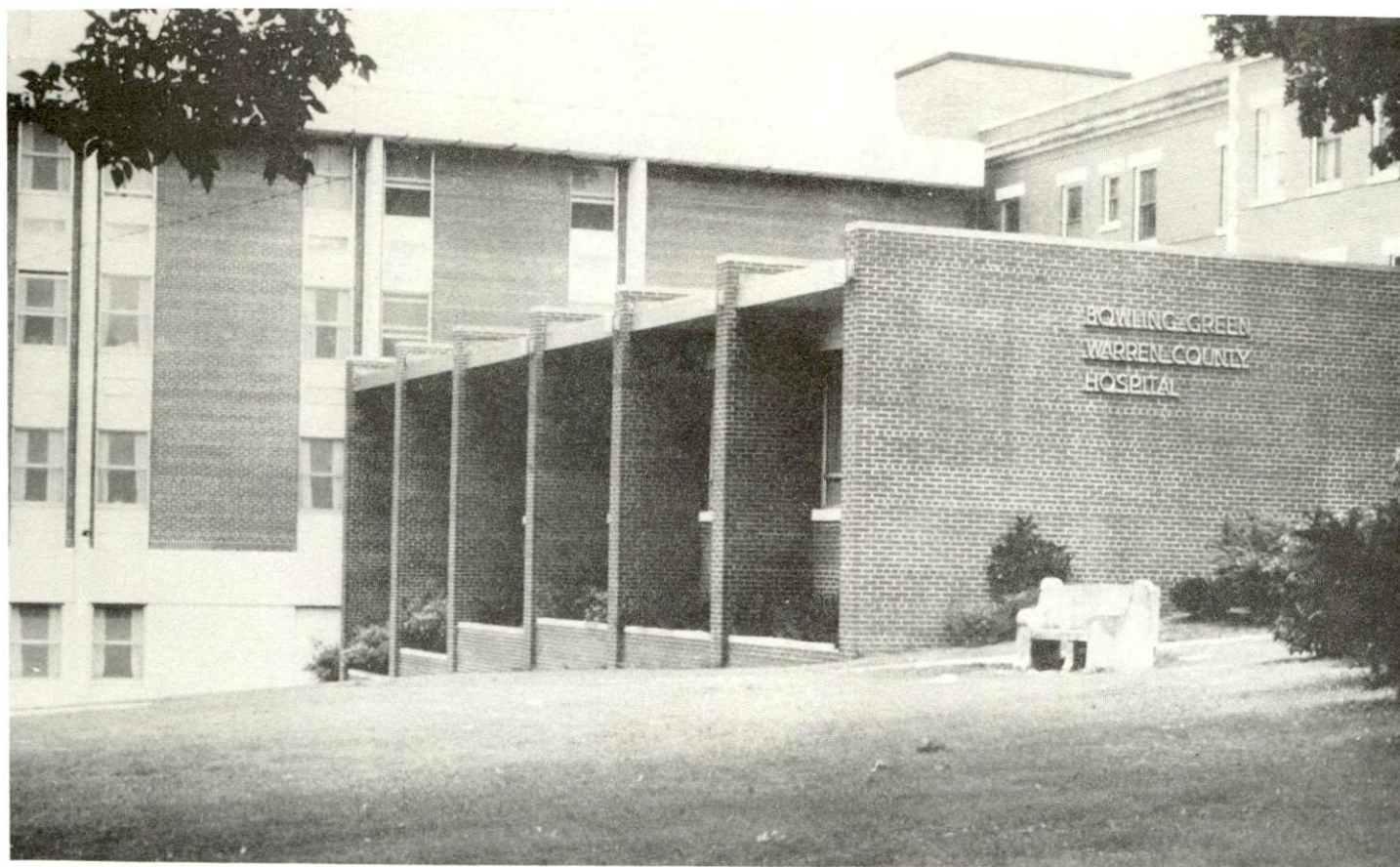
General hospital facilities - 4 operating rooms, emergency facilities, 8-bed coronary care-intensive care unit, physical therapy department, outpatient department, pathological laboratory, nuclear medicine diagnostic department, inhalation therapy, X-ray department, gift shop, coffee shop, pharmacy

Medical staff - 68 doctors, 38 registered nurses, 14 licensed practical nurses, 20 graduate nurses and 180 other employees

Other - Lion's Handicapped School; Mental Health-Mental Retardation - Southern Kentucky Comprehensive Care Center; Out-Patient Clinic - Speech Therapy and Physical Therapy - Commission for Handicapped Children

Nursing Homes

	<u>Number</u>	<u>Beds</u>
Extended care homes	4	207 (including 23 at the city-county hospital)
Personal care homes	5	191



BOWLING GREEN - WARREN COUNTY HOSPITAL



GREENVIEW HOSPITAL

Public Health

Facility - Warren County Health Department

Staff - One health officer, six public health nurses, one milk inspector (state), four sanitarians, four clerks, one clerk registrar, one nutritionist (part-time), two venereal disease inspectors available to the department, two lab technicians, one dentist (part-time), two pediatric clinicians (part-time)

Budget 1972-73 - \$175,376

OTHER LOCAL FACILITIES

Communications

Telephone - South Central Bell Telephone Company

Services - All standard services, mobile telephone service, teletype, touch-tone telephone

Telegraph - Western Union Telegraph Company

Services - Telephone or delivery service

Postal - U. S. Post Office

Class - First

Mail received - 32 times daily

Mail dispatched - 32 times daily

Newspapers - Park City Daily News (Daily except Saturday)

Daily and circulation - 17,000; Circulation (Sunday) 18,800

Other papers received from - Louisville, Kentucky, and Nashville, Tennessee

Radio - WBGD-AM; WKCT-AM; WLBJ-AM-FM; WDNS-FM

Television - WBKO

Reception from - Nashville, Tennessee; Louisville, Kentucky

Kentucky Educational Television - WKGB-KET - transmitter between Morgantown and Bowling Green

Library Services

Public library - Bowling Green Public Library

Size collection - 53,000 volumes

Circulation, 1971-72 - 105,158 - library; 55,527 - bookmobile

Services - 2 bookmobiles, reference, children's story hour, 120 periodicals, records, can secure films for loan, copying machine for public, audio-visual equipment and materials, inter-library loans

Private library - Six libraries and resource centers on Western Kentucky University campus

Size collection - Combined total - over 500,000 volumes

Special collections - Rare books, McGregor collection, Rice collection, David Morton collection, the collection of Kentucky statutes, and manuscripts, the Western Kentucky folklore collection, Courtney Ellis River collection, Kentucky art, Frank Chelf collection

Services - Recordings, documents, microforms, newspapers, magazines, clippings, scrap books, tapes, sheet music, paper collections such as: Lewis-Starling, Green, Calvert, Underwood, and Nahm families

Religious Institutions

Number of churches - There are over 65 churches representing 30 different denominations

Nearest Synagogues - Henderson - one reform (64 miles distant)

Nashville - one reform, one orthodox, and one conservative (69 miles distant)

Financial Institutions

<u>Banks</u>	<u>Statement as of December 31, 1972</u>	
	<u>Assets</u>	<u>Deposits</u>
American National Bank & Trust Company	\$62,189,632.53	\$56,385,878.12
Bowling Green Bank & Trust	31,115,861.61	21,112,837.14 (12/29/72)
Citizens National Bank of Bowling Green	50,093,375.07	45,197,051.90
<u>Savings and Loan Associations</u>	<u>Assets</u>	<u>Shared Accounts</u>
Fidelity Federal Savings and Loan Association	\$ 9,084,535.47	\$ 8,371,920.32
First Federal Savings and Loan Association	51,467,501.67	46,159,156.20

Hotels and Motels

Total number - 24

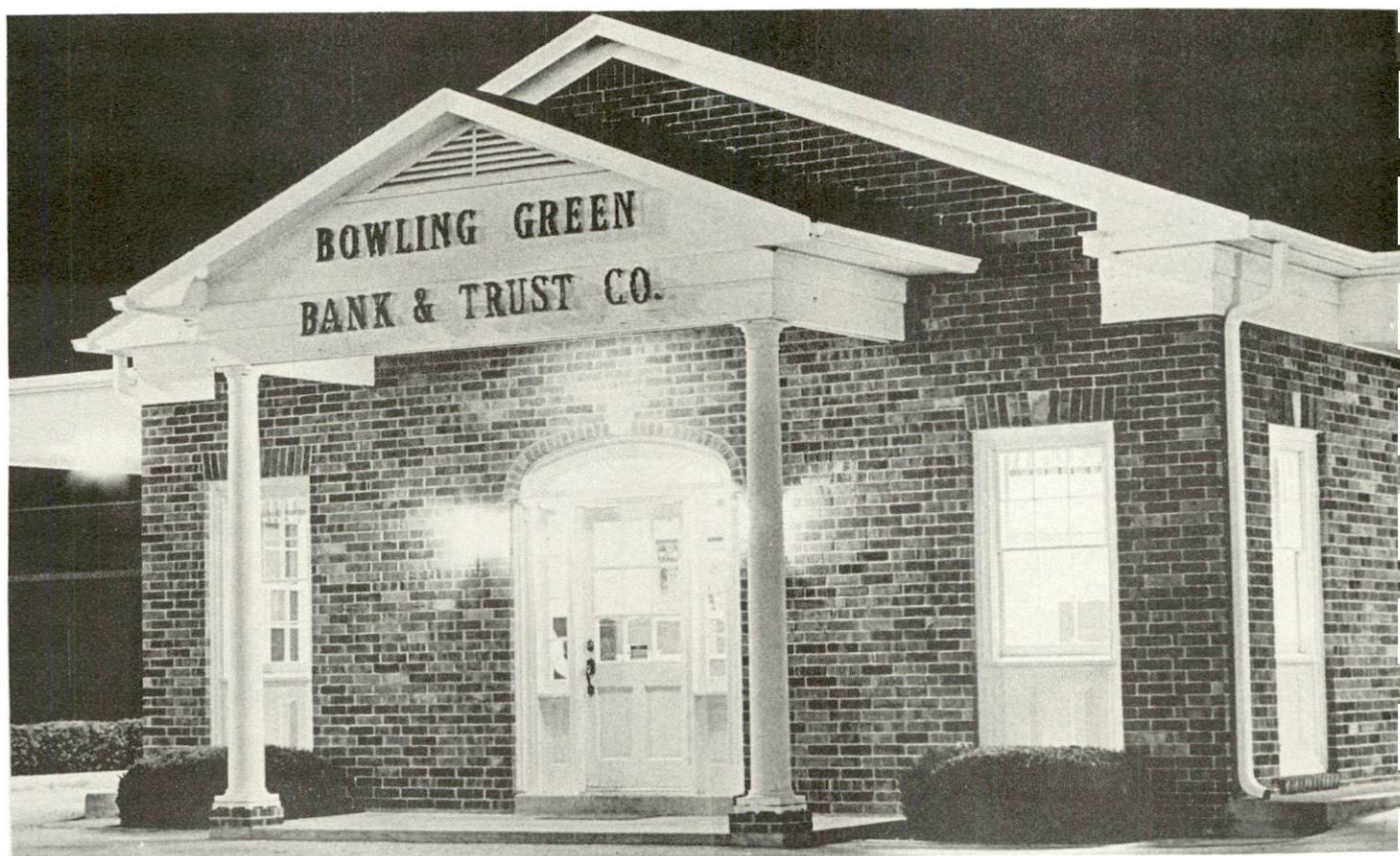
Units - 1,275



CITIZENS NATIONAL BANK



AMERICAN NATIONAL BANK & TRUST COMPANY



BRANCH BANKS - BOWLING GREEN BANK & TRUST COMPANY

Clubs and Organizations

Business and Civic - Bar Association, Dental Association, Bowling Green Realtors, Chamber of Commerce, Civitan, Community Greeters, Farm Bureau, Humane Society, Jaycees, Kiwanis, Lions, Professional Engineers, Optimist, Rotary, Association of Insurance Agents, Medical Society, National Secretaries Association, American Cancer Society, United Givers Fund

Fraternal - American Legion, Shrine, Elks, FOP, IOOF, Knights of Columbus, Masonic, Moose, VFW, Woodmen of the World, Sons of the American Revolution

Women's - Altrusa Club, American Association of University Women, American Business Women's Association, American Legion Auxiliary, Garden Clubs, Junior Women's Club, Business and Professional Women's Club, Civitan, Daughters of American Revolution, Jaycee-ettes, Opti-Mrs., Eastern Star, PEO Sisterhood, Rebekahs, Welcome Wagon, Lioness and Women's Club, Farm Bureau Women, National Secretaries Association (International)

Youth - Boy Scouts, Boy's Club, Girl Scouts, Girl's Clubs

Other - Bowling Green Rose Society, Current Events Club, Retired Civil Employees, Quarterback Club, Southern Kentucky Antique Club, Twentieth Century Club, Historical Society, Weight Watchers, Western Buckeroos Square Dance Club, Cumberland Trace Chapter

RECREATION

Local

	<u>Bowling Green</u>	<u>Warren County</u>
Public Recreation Facilities		
Supervised program -	Bowling Green Park and Recreation Department	Warren County Park and Recreation Department
Parks -	11	1
Playgrounds -	8(supervised in summer)	16
Swimming pools -	2 (1 indoor)	
Golf courses -	2	
Tennis courts -	12	5
Baseball diamonds	13	11
Football fields -	3	3
Other -	3 youth centers, Historic House Devel- opment, 2 Civil War Landmarks, Community center in progress	Picnic facilities and community center located at Richards- ville and Anna

Private Recreation Facilities

Country clubs -	2
Golf courses -	2 (18-hole)
Swimming pools -	5
Movie theaters -	2 indoor; 2 drive-in
Bowling facility	1
Skating Rink -	1

Tourist Attractions

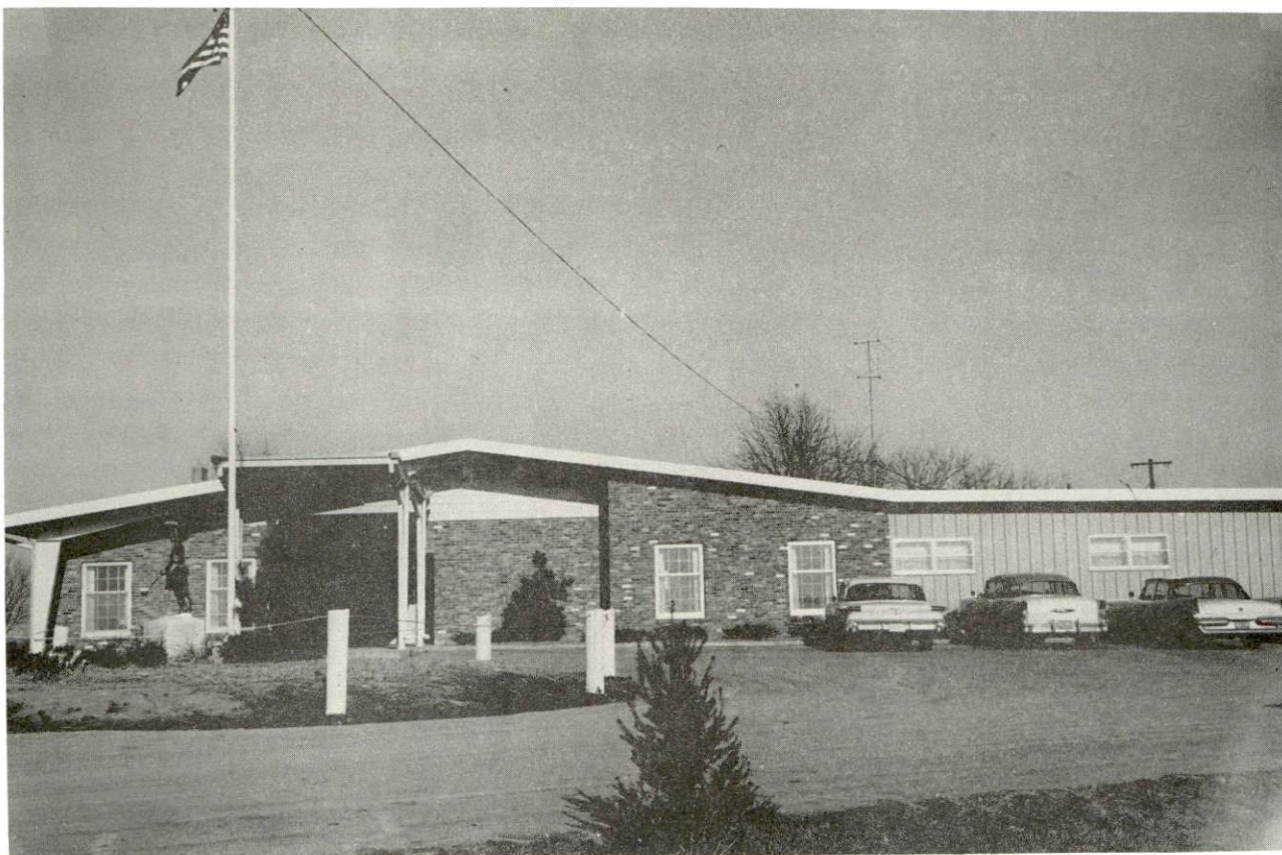
Beech Bend Park, Hobson House, The Kentucky Building Museum,
Western Kentucky University, Fort Webb, Civil War Site, Reservoir Hill,
Civil War bunkers

Cultural Events

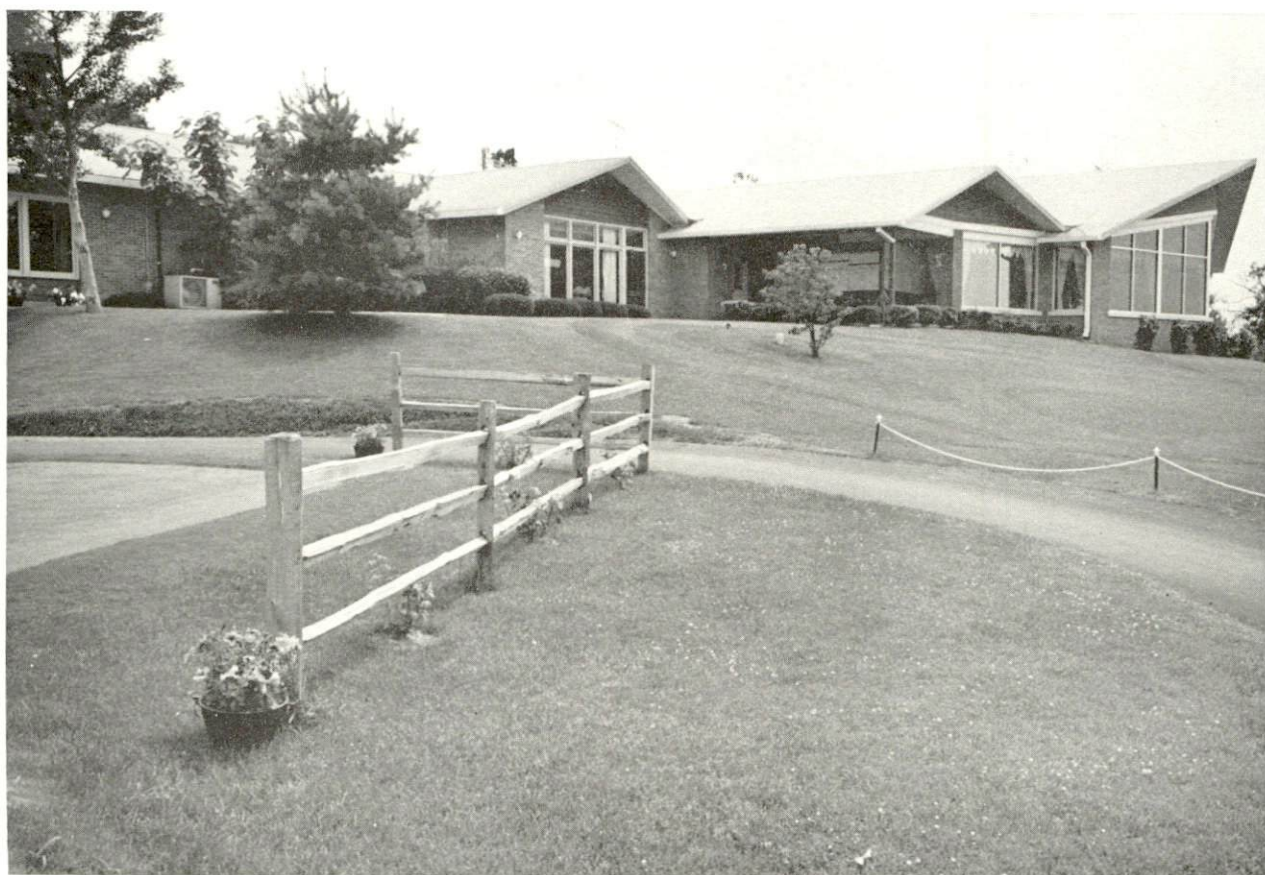
Community Concert series, traveling theatrical company productions,
major theatrical productions by the Western Players, Western Kentucky
Campus Lecture Series

Area (Within 35 miles)

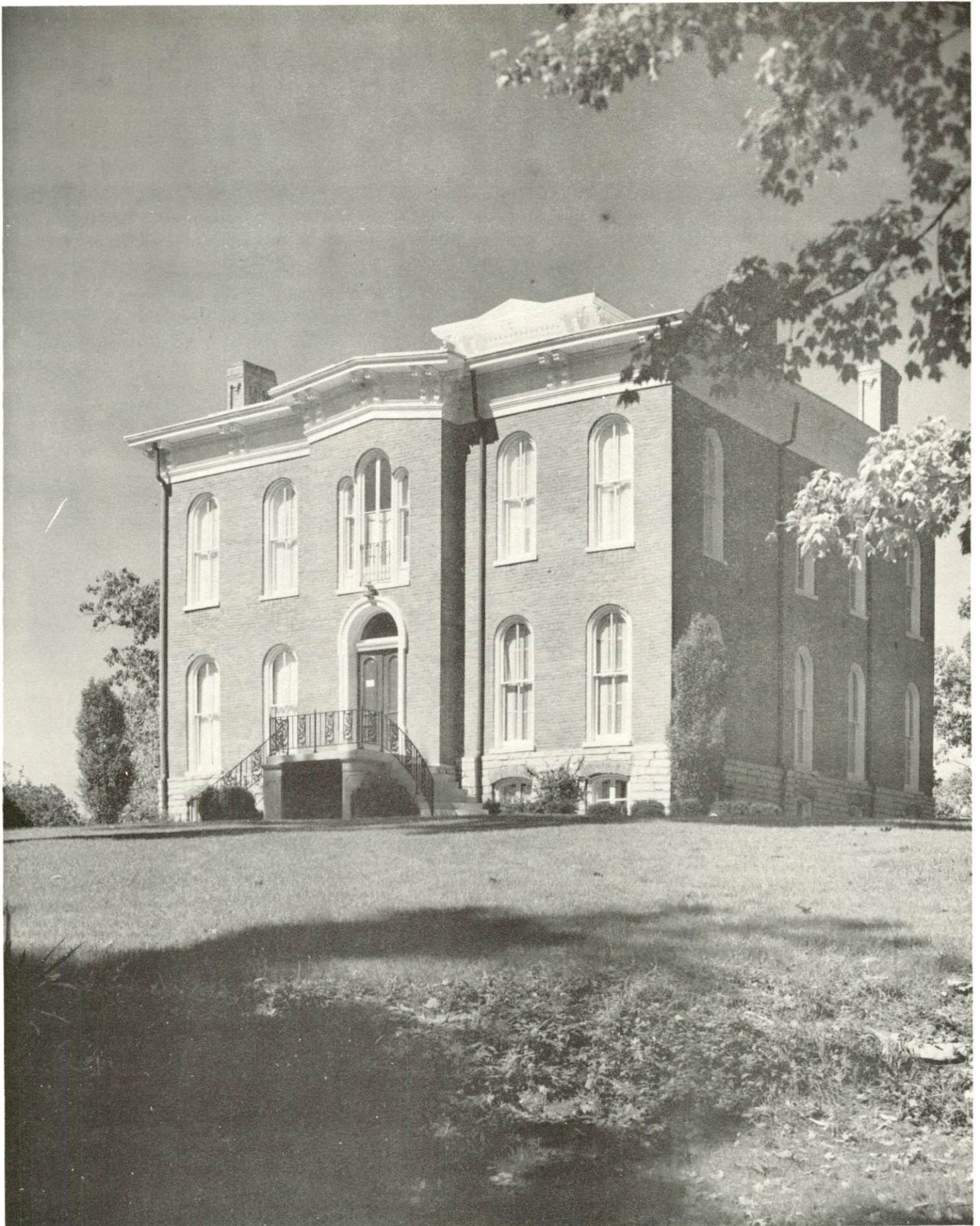
Mammoth Cave National Park, Crystal Onyx Cave, Diamond Caverns,
Barren River Lake State Resort Park



INDIAN HILLS COUNTRY CLUB



BOWLING GREEN COUNTRY CLUB



HOBSON HOUSE

AGRICULTURE - NATURAL RESOURCES - CLIMATE

Agriculture*

	<u>Warren County</u>	<u>Labor Market Area</u>
Total land area (acres)	546	2,908
Percent of area in farm land	83.0	78.6
Number of farms	2,502	12,156
Average size of farms (acres)	115.9	120.4
1969 value of all farm products	\$15,590,061	\$ 71,140,058
Value per farm	6,231	5,852
Total crop sales	4,340,357	26,357,073
Total livestock & livestock products	11,201,890	44,313,460
1970 agricultural production included:		
Burley tobacco (lbs.)	5,576,000	26,952,000
Corn (bu.)	1,269,000	6,062,000
Cattle and calves (number)	65,900	275,900
Hogs and pigs (number)	53,900	210,200
Milk production, 1969 (lbs.)	64,380,000	334,390,000

Natural Resources

Principal mineral resources	Limestone and petroleum
Acres of commercial forest land	90,200
Most abundant tree species	Red oak, white oak, hickory, yellow poplar, beech, hard maple and ash

*U. S. Department of Commerce, Bureau of the Census, Census of Agriculture, 1969. U. S. Department of Agriculture and Kentucky Department of Agriculture, Kentucky Agricultural Statistics, 1971.

Climate*

Warren County

Temperature

Annual mean (30-year record)	60.0 degrees
Average annual 1971	59.3 degrees
Record highest, July, 1966 (6-year record)	103.0 degrees
Record lowest, January, 1966 (6-year record)	- 6.0 degrees
Normal heating degree days (30-year record)	3,578
(Heating degree day totals are the sums of negative departures of average daily temperatures from 65 degrees F.)	

Precipitation

Mean annual total (30-year record)	45.14 inches
Mean annual snow and sleet (30-year record)	11.70 inches
Total precipitation 1971	40.65 inches
Mean number days precipitation (.01 inch or more) (30-year record)	118
Average number days thunderstorms (30-year record)	55
Prevailing winds (32-year record)	Northwest

*U. S. Department of Commerce, Environmental Science Services Administration, Climatological Data, 1971. Station of record: Nashville.

HISTORY

Warren County was the twenty-fourth county formed in Kentucky. Dating from 1796, it was taken from Logan County and later part of this land helped form Barren, Allen, Simpson, and Edmonson Counties. The county was named for General Joseph Warren, a hero of the Battle of Bunker Hill, who practiced medicine after graduating from Harvard, joined Sam Adams in opposition to British policies as incorporated in the Stamp Act of 1765, and dispatched Paul Revere and William Dawes on April 18, 1775, to warn the patriots that the British were marching toward Lexington and Concord.

The Barren River flows through Warren County in a northwesterly direction to its confluence with the Green River on the Butler County line. Covering 546 square miles, the county's surface is gently rolling, and its fertile soil is based on a red clay and limestone foundation. Of this area, 16.56 square miles are located in Bowling Green.

The Civil War touched Bowling Green and Warren County in a way that no other part of Kentucky experienced. In 1861, Confederates occupied Bowling Green. One month later, the State of Kentucky was admitted to the Southern Confederacy by an act of its Congress sitting in Richmond. In 1862, Bowling Green was designated the Confederate Capitol of Kentucky. Unfortunately for the Confederates, their forces were defeated at Perryville and the Confederate troops were forced to leave Kentucky. The Federal soldiers then moved into Bowling Green and completed the fortifications started by the Confederates.

Western Kentucky University was founded in Bowling Green by act of the 1906 Kentucky General Assembly. The school attained university status in 1966.

Historical events of note included:

1775 - First visitors came from the early settlement at Harrodsburg, Kentucky

1780 - The Bowling Green settlement was established by Robert and George Moore.

Names worthy of remembrance are:

General Braxton Bragg - Commander of Confederate forces in Kentucky

(contd.)

Joseph Underwood - County Judge, U. S. Representative, U. S. Senator

Warner Underwood - Served two years in Congress

John C. Underwood - Mayor, Lieutenant Governor

William H. Natcher - Member of U. S. Congress

Captain Thomas H. Hines - Credited with the formation of the plan by which General John Morgan escaped from the Ohio State Penitentiary during the Civil War

Henry Grider - Served in the Kentucky House of Representatives and in the United States Congress

Warren County's population has increased 26 percent from 45,491 in 1960 to 57,432 in 1970. Bowling Green had a 1970 population of 36,253, a 28 percent increase from the 1960 population of 28,338.

Manufacturing employment increased 119 percent from 3,184 in September, 1962, to 6,974 ten years later. Major products are refrigeration equipment, automotive parts, apparel, electronic controls and tire fabric. Major manufacturers are Airtemp Kentucky Plant, Chrysler Corp.; Bowling Green Manufacturing Co., Holley Carburetors Division of Colt Industries; Cutler-Hammer, Inc.; Dibrell Kentucky, Inc.; Firestone Textiles Co.; and the Union Underwear Co.