

1990

# Industrial Resources: Wayne County - Monticello

Kentucky Library Research Collections  
Western Kentucky University, [spcol@wku.edu](mailto:spcol@wku.edu)

Follow this and additional works at: [https://digitalcommons.wku.edu/wayne\\_cty](https://digitalcommons.wku.edu/wayne_cty)

 Part of the [Business Administration, Management, and Operations Commons](#), [Growth and Development Commons](#), and the [Infrastructure Commons](#)

---

## Recommended Citation

Kentucky Library Research Collections, "Industrial Resources: Wayne County - Monticello" (1990). *Wayne County*. Paper 1.  
[https://digitalcommons.wku.edu/wayne\\_cty/1](https://digitalcommons.wku.edu/wayne_cty/1)

This Report is brought to you for free and open access by TopSCHOLAR®. It has been accepted for inclusion in Wayne County by an authorized administrator of TopSCHOLAR®. For more information, please contact [topscholar@wku.edu](mailto:topscholar@wku.edu).

Wayne

# *Resources for Economic Development*

## Monticello



**KENTUCKY**  
*Open for Business*

---

RESOURCES FOR ECONOMIC DEVELOPMENT  
MONTICELLO, KENTUCKY

Prepared by  
The Kentucky Cabinet for Economic Development  
Division of Research and Planning  
in cooperation with  
Wayne County Industrial Foundation

1990

Division Director - Pamela K. Riley; program coordinator - Keith Roberts; research - Jane E. Sullivan; clerical - Wanda Sharp; graphics - Robert Owens, Pat Coleman; cartography - Edwin Scott, Dave Clark. Cost of printing paid from state funds.

## TABLE OF CONTENTS

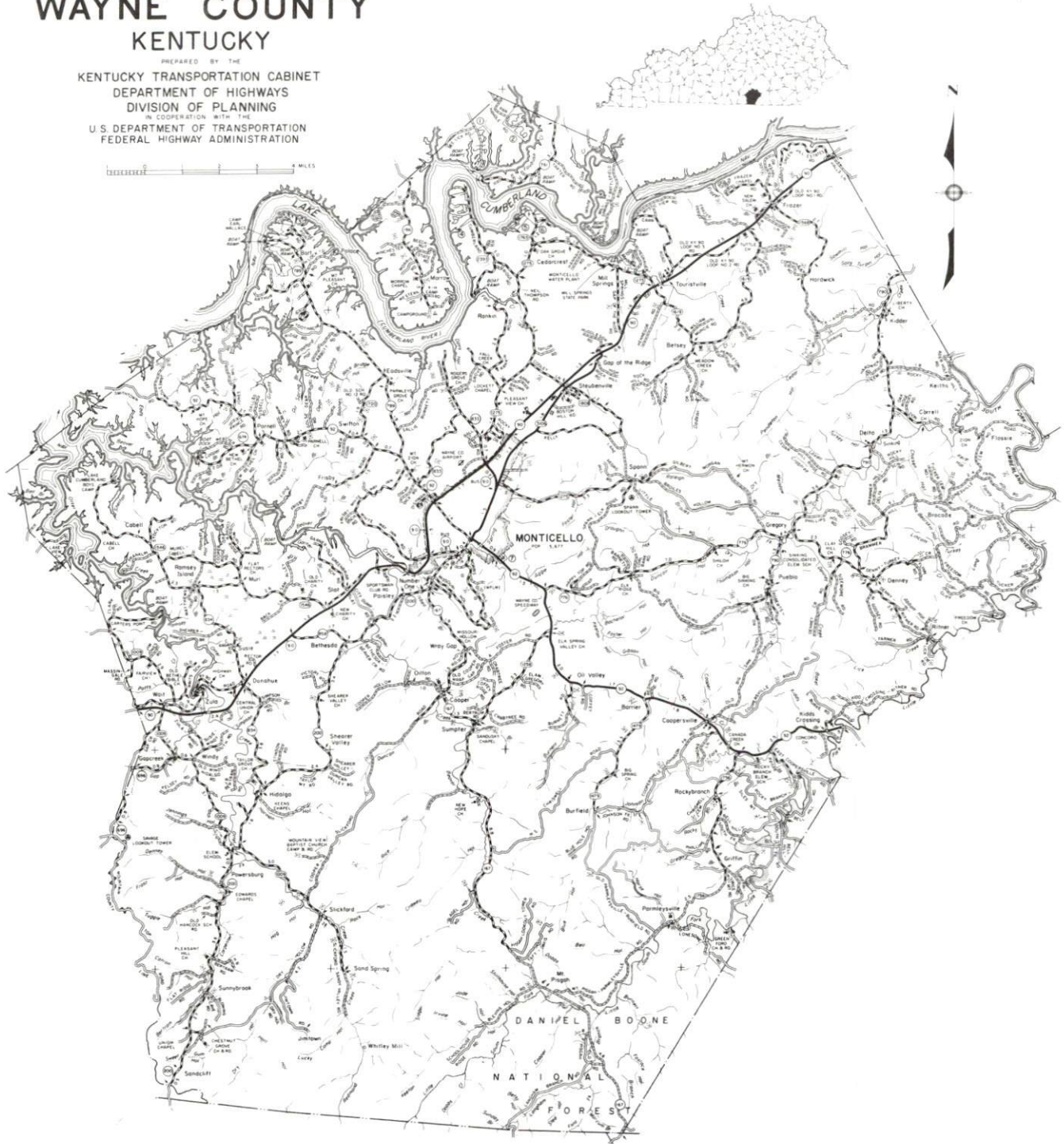
<u>Chapter</u>	<u>Page</u>
MONTICELLO, KENTUCKY - A RESOURCE PROFILE .....	1
THE LABOR MARKET STATISTICS .....	2
Labor Market Area Map .....	2
Population .....	3
Population Projections .....	3
Estimated Labor Supply .....	3
Labor Force Characteristics of Residents, 1989 .....	4
Selected Components of Nonagricultural Employment, by Place of Work, 1988 .....	5
Per Capita Personal Income .....	6
Average Placement Wages .....	7
Average Weekly Wages of Workers Covered by Unemployment Insurance F.Y. 1987-88 - Bar Chart .....	8
Average Weekly Wages by Industry, by Place of Work, 1988 .....	9
EXISTING INDUSTRY .....	10
Monticello Manufacturing Firms, Their Products and Employment .....	10
Labor Organizations in Manufacturing Firms .....	11
Selected Industrial Services .....	12
TRANSPORTATION .....	13
Highways .....	13
Truck Service .....	13
Selected Market Location Map .....	14
Rail .....	15
Air .....	15
UTILITIES .....	16
Electricity .....	16
Natural Gas .....	16
Public Water Supply .....	17
Sewerage .....	17
CLIMATE .....	18

<u>Chapter</u>	<u>Page</u>
LOCAL GOVERNMENT .....	19
Structure.....	19
Planning and Zoning .....	19
Local Fees and Licenses .....	19
State and Local Property Taxes .....	20
Combined State and Local Rates Per \$100 Valuation, 1989 .....	20
EDUCATION .....	21
Public Schools .....	21
Area Colleges and Universities .....	21
Vocational Training .....	22
OTHER LOCAL FACILITIES .....	23
Local Medical Personnel .....	23
Hospitals .....	23
Other Medical Facilities and Services .....	23
Banks and Savings & Loan Associations .....	23
Newspapers .....	23
Telephone Service .....	23
RECREATION .....	24
COMMUNITY IMPROVEMENTS .....	25



# GENERAL HIGHWAY MAP WAYNE COUNTY KENTUCKY

PREPARED BY THE  
KENTUCKY TRANSPORTATION CABINET  
DEPARTMENT OF HIGHWAYS  
DIVISION OF PLANNING  
IN COOPERATION WITH THE  
U.S. DEPARTMENT OF TRANSPORTATION  
FEDERAL HIGHWAY ADMINISTRATION



## MONTICELLO, KENTUCKY - A RESOURCE PROFILE

Monticello, the county seat of Wayne County, is located in south central Kentucky. The city of Monticello, with a 1988 estimated population of 5,860, is located 105 miles southwest of Lexington, Kentucky; 121 miles northwest of Knoxville, Tennessee; 160 miles southeast of Louisville, Kentucky; 157 miles northeast of Nashville, Tennessee; and 179 miles south of Cincinnati, Ohio.

Wayne County, with a total land area of 446 square miles, covers portions of both the Mississippi Plateaus and the Eastern Kentucky Coal Fields Regions of the state. Lake Cumberland runs along or near the northern boundary of Wayne County and the Tennessee state line forms the southern boundary. Wayne County had a 1988 population of 17,800.

**The Economic Framework** - The total number of Wayne County residents employed in 1989 averaged 6,903. In 1988, manufacturing firms in the county reported 1,759 employees; wholesale and retail trade provided 881 jobs; 642 people were employed in service occupations; state and local government accounted for 687 employees; contract construction firms provided 44 jobs; and 48 people were employed by mining and quarrying operations.

**Labor Supply** - There is a current estimated labor supply of 19,085 persons available for industrial jobs in the labor market area. In addition, from 1990 through 1994, 7,969 young persons in the area will become 18 years of age and potentially available for industrial jobs.

**Transportation** - Monticello is served directly by Kentucky Highway 90, a "AAA"-rated trucking highway, and by Kentucky Highway 92, a "AA"-rated trucking highway. In addition, the Cumberland Parkway, a multi-lane toll road, is located just 30 miles north of Monticello. Nine trucking companies provide interstate and/or intrastate service to Monticello. The Monticello-Wayne County Airport, a local airport located just north of Monticello, has a 4,000-foot paved runway. The nearest scheduled commercial airline service is available at Bluegrass Airport, 110 miles northeast of Monticello. The Norfolk Southern Corporation provides main line rail service at Burnside, 21 miles northeast of Monticello.

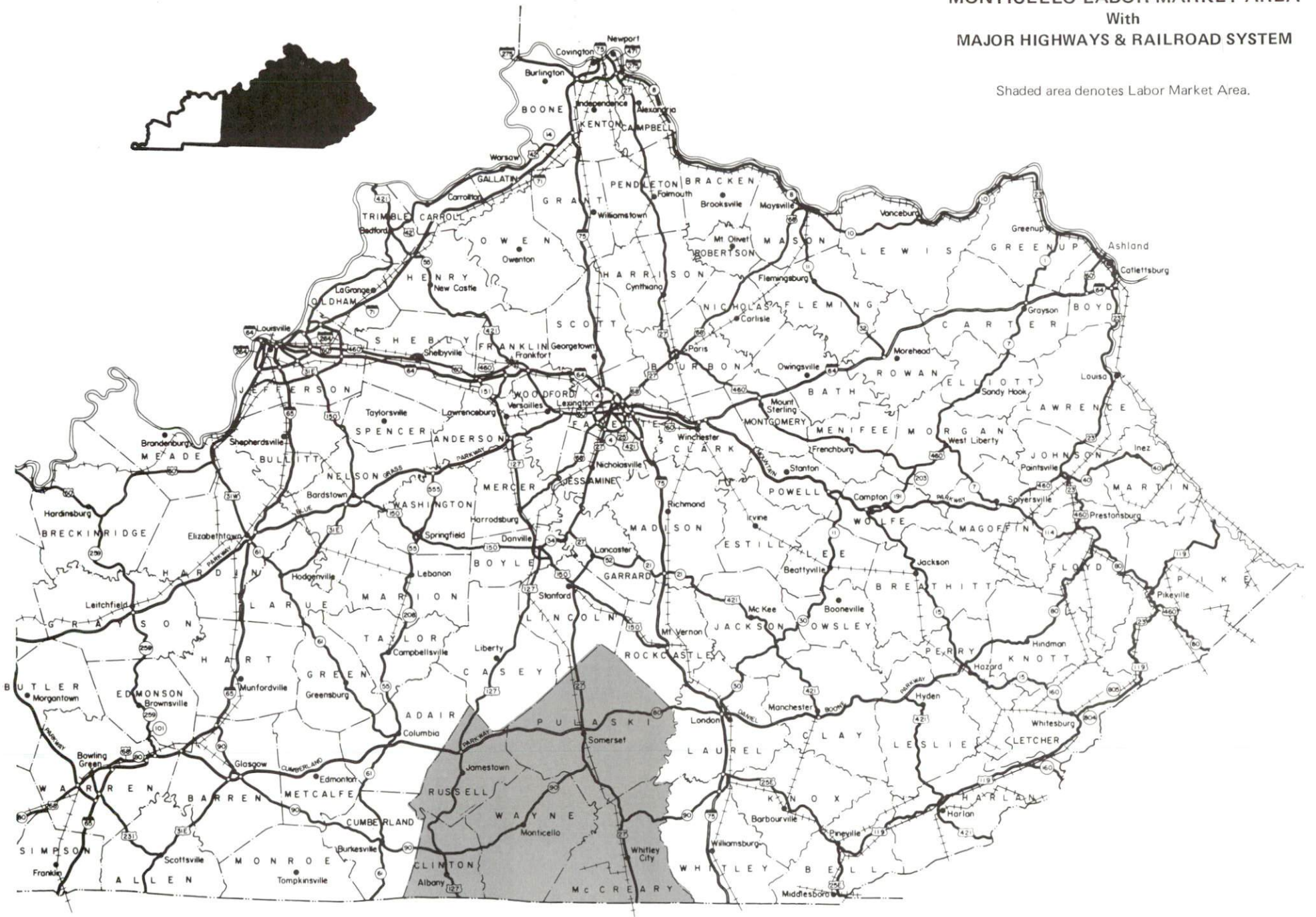
**Power and Fuel** - Electric power is provided to Monticello by the City of Monticello Electric Plant Board, which is supplied by the Tennessee Valley Authority. Wayne County is served by the South Kentucky Rural Electric Cooperative Corporation, which is supplied by the East Kentucky Power Cooperative. Natural gas service will be available to Monticello residents by January 1991.

**Education** - Primary and secondary education is provided to Monticello by the Monticello Independent School System and the Wayne County School System. One university, five senior colleges, two junior colleges, and one community college are within 85 miles of Monticello. Vocational training is available locally at the Wayne County Area Vocational Education Center in Monticello and at the Somerset State Vocational-Technical School in Somerset, 29 miles northeast of Monticello.



# MONTICELLO LABOR MARKET AREA With MAJOR HIGHWAYS & RAILROAD SYSTEM

Shaded area denotes Labor Market Area.



## LABOR MARKET STATISTICS

The Monticello Labor Market Area includes Wayne County and the adjoining Kentucky counties of Clinton, McCreary, Pulaski, and Russell.

### POPULATION

	<u>1988*</u>	<u>1980</u>	<u>1970</u>
Labor Market Area	106,500	101,488	80,766
Monticello	5,860	5,677	3,618
Wayne County	17,800	17,022	14,268

\* Population estimates.

Sources: U.S. Department of Commerce, Bureau of the Census, August 1989; November 1989.

### POPULATION PROJECTIONS

	<u>1995</u>	<u>2000</u>	<u>2010</u>	<u>2020</u>
Labor Market Area	118,192	122,140	127,372	130,299
Wayne County	19,312	20,088	21,284	22,138

Source: University of Louisville, Urban Studies Center, State Data Center.

### ESTIMATED LABOR SUPPLY

	<u>Current</u>			<u>Not in Labor Force</u>	<u>Future</u>
	<u>Total</u>	<u>Unemployed</u>	<u>Employed Part-Time</u>		<u>Becoming 18 years of age 1990 thru 1994</u>
Labor Market Area*	19,085	4,166	4,948	9,971	7,969
Wayne County	3,087	627	827	1,633	1,350

\* Additional workers may be drawn from other nearby counties.

Note: Unemployed - persons unemployed and actively seeking work; Employed Part-Time - persons employed but working only 14 to 26 weeks per year; Not in Labor Force - represents the number of persons who would enter the labor force if suitable employment were available (based on the assumption that persons in Kentucky would like to participate in the labor force in the same proportion that they do nationally).

Sources: Kentucky Cabinet for Human Resources, Kentucky Labor Supply Estimates by County, 1988. Kentucky Cabinet for Economic Development, Future Labor Supply Becoming 18 Years of Age, 1990 thru 1994.

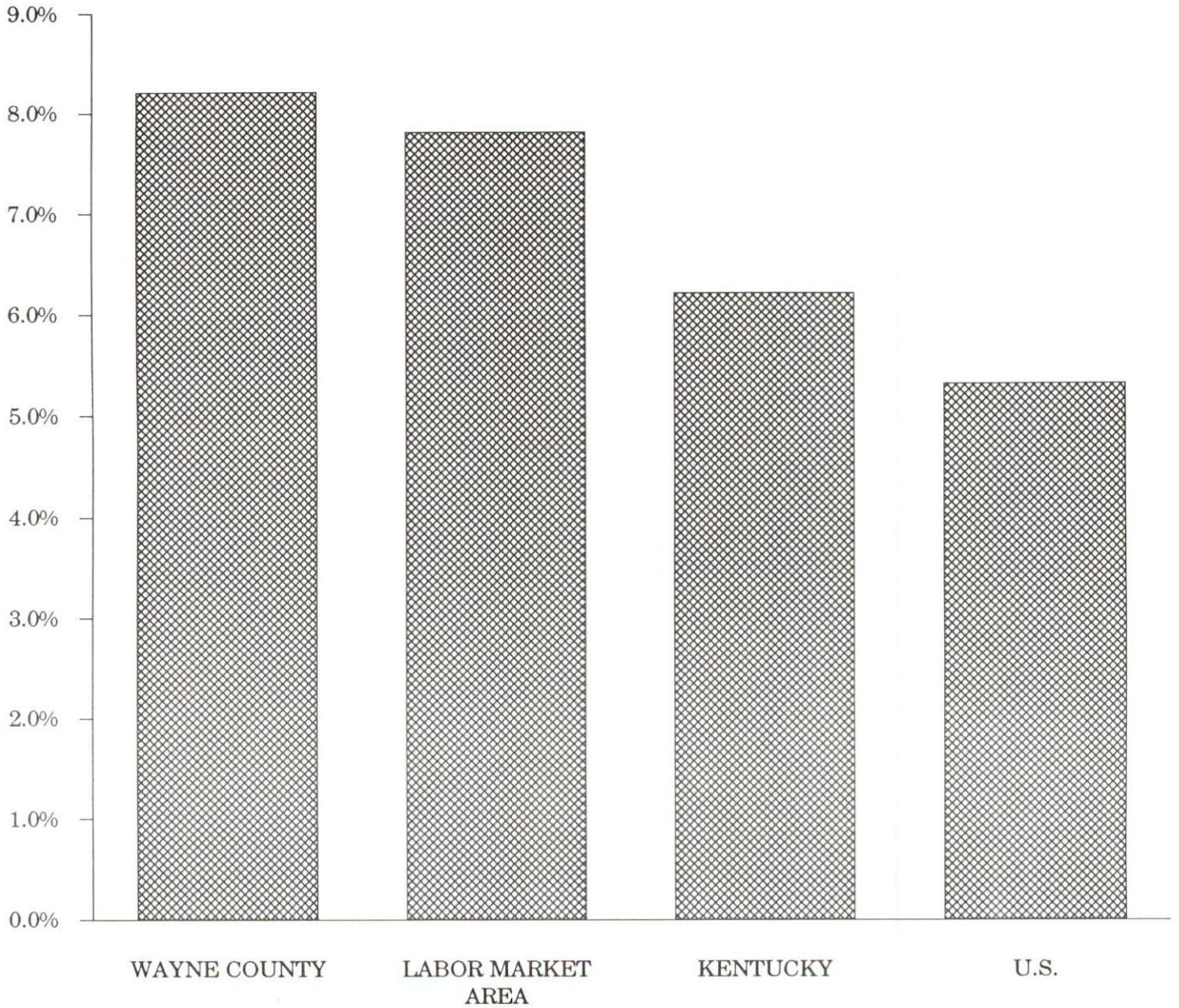


LABOR FORCE CHARACTERISTICS OF RESIDENTS, 1989

	Wayne County	Labor Market Area
Civilian Labor Force	7,516	48,859
Employment	6,903	45,057
Unemployment	613	3,802
Rate of Unemployment (%)	8.2	7.8

Source: Kentucky Cabinet for Human Resources, Kentucky Labor Force Estimates, Annual Averages, 1989.

UNEMPLOYMENT RATES  
1989



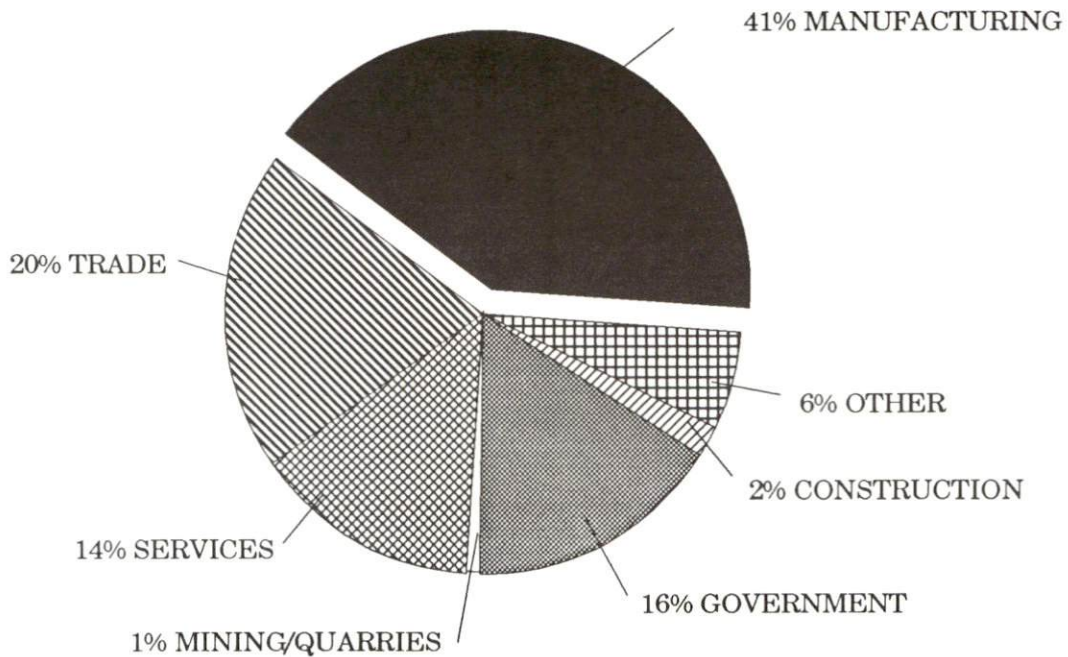
SELECTED COMPONENTS OF NONAGRICULTURAL EMPLOYMENT  
BY PLACE OF WORK, 1988

	Wayne County	Labor Market Area
All Industries (total)	4,281	30,614
Manufacturing	1,759	10,787
Wholesale & Retail Trade	881	6,924
Services	642	4,179
State/Local Government	687	5,045
Contract Construction	44	1,260
Mining & Quarrying	48	337

**Note:** Excludes domestic workers, railway workers, certain nonprofit corporations, majority of federal government workers, and self-employed workers.

**Source:** Kentucky Cabinet for Human Resources, Average Monthly Workers Covered by Kentucky Unemployment Insurance Law, 1988.

WAYNE COUNTY



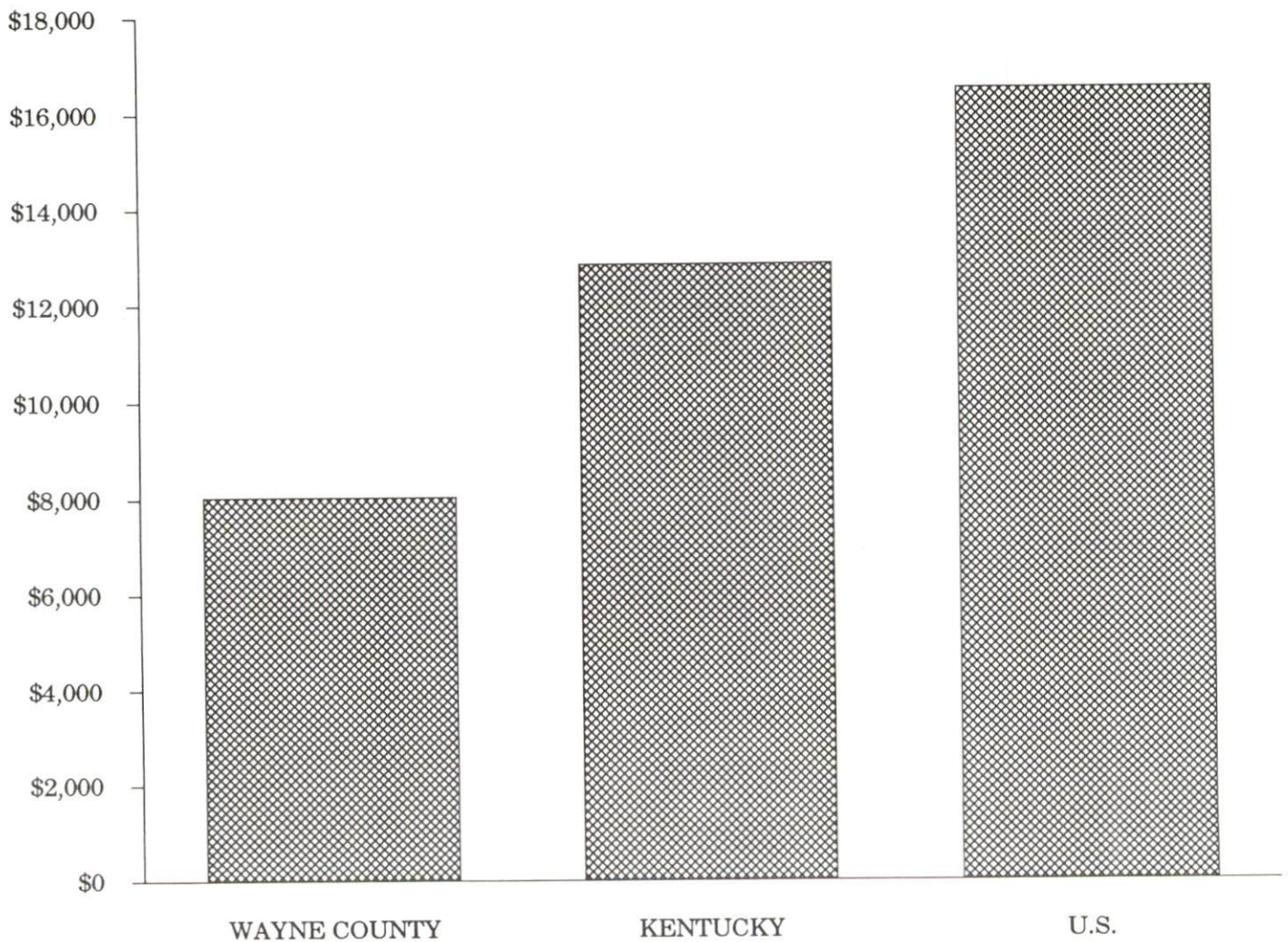


PER CAPITA PERSONAL INCOME

Area	1984	1988	Percent Change
Wayne County	\$6,476	\$8,026	23.9
Labor Market Area Range	\$5,064 - \$8,849	\$6,391 - \$11,409	-
Kentucky	\$10,411	\$12,830	23.2
U.S.	\$13,116	\$16,490	25.7

Sources: U.S. Bureau of Economic Analysis, Kentucky Economic Information System, April 1990.

PER CAPITA PERSONAL INCOME  
1988





## AVERAGE PLACEMENT WAGES

---

Wayne County is served by the Somerset local office of the Kentucky Department for Employment Services. The focus of the following data is on job placements made by the Somerset local office and may therefore be used as an indicator of the wages which employers in the area pay new employees. During the twelve months which ended on June 30, 1989, the local employment office filled 5,504 job openings in various occupational categories. The average hourly wage for selected occupational categories were:

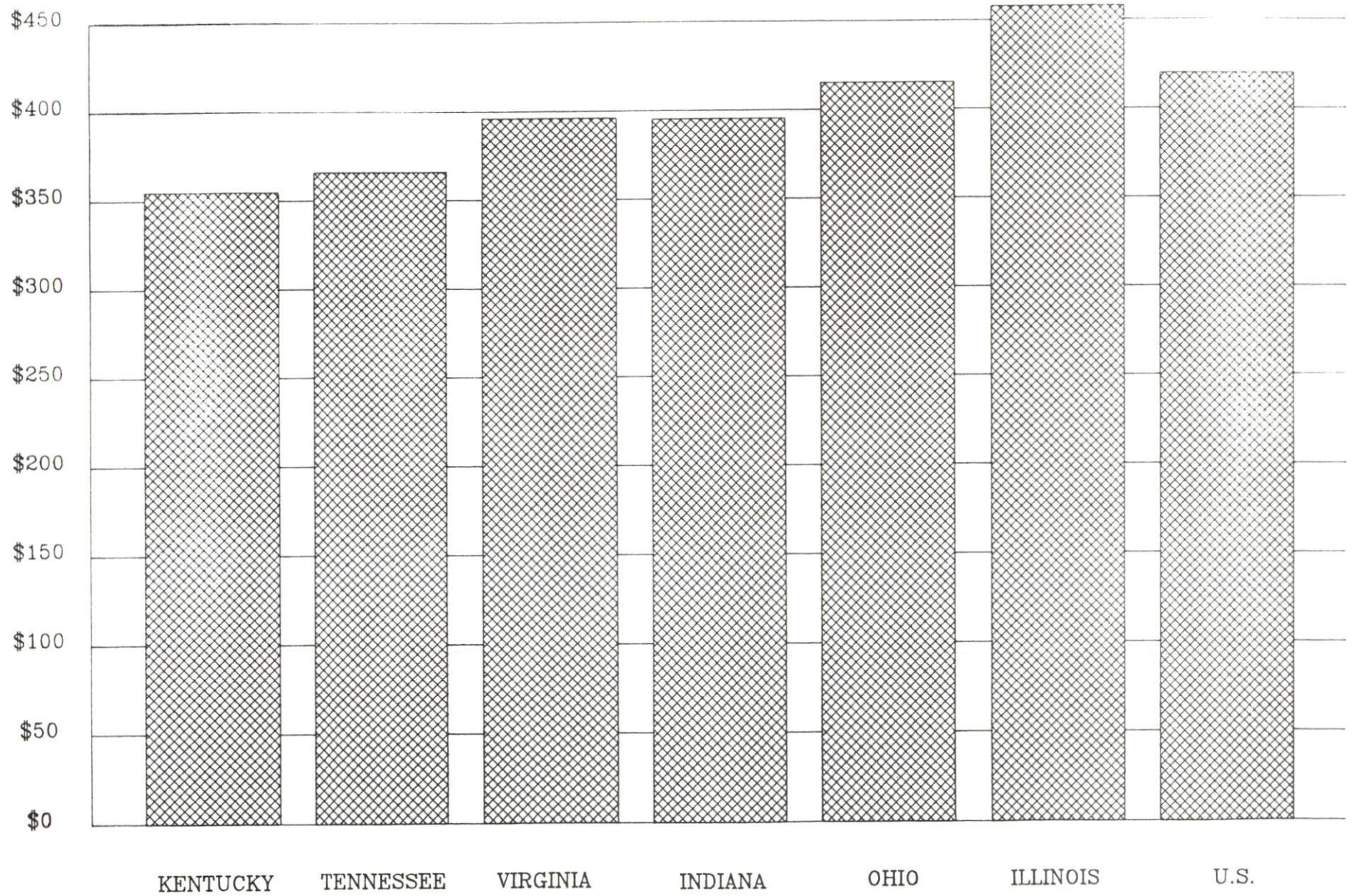
<u>OCCUPATIONAL CATEGORY</u>	<u>NUMBER OF PLACEMENTS</u>	<u>AVERAGE WAGE(\$)</u>
All Occupations	5,504	4.06
Clerical	1,339	3.61
Sales	109	3.68
Services (excluding domestic)	442	3.36
Agricultural, Fishery, Forestry, etc.	51	4.04
Processing	72	3.71
Machine Trades	238	4.04
Bench Work	2,347	4.03
Structural	489	5.31
Motor Freight/ Transportation	58	4.18
Packaging and Materials Handling	215	4.88
Other	85	3.62

The Somerset local office also serves Adair, Casey, Clinton, Cumberland, Green, McCreary, Pulaski, Russell, and Taylor Counties. The above occupational categories are taken from the Dictionary of Occupational Titles published by the U.S. Department of Labor.

---

Source: Kentucky Cabinet for Human Resources, Department for Employment Services.

AVERAGE WEEKLY WAGES OF WORKERS COVERED BY  
UNEMPLOYMENT INSURANCE F.Y. 1987-88





AVERAGE WEEKLY WAGES BY INDUSTRY  
BY PLACE OF WORK, 1988

	Wayne County	Kentucky (State- Wide)	Tennessee	Virginia
All Industries	\$218.75	\$352.31	\$363.12	\$392.56
Mining & Quarrying	418.16	603.27	495.85	596.88
Contract Construction	177.16	380.71	394.27	422.27
Manufacturing	230.62	464.92	416.73	452.60
Transportation, Communications & Public Utilities	256.88	468.17	485.13	554.17
Wholesale & Retail Trade	147.38	238.88	N/A	N/A
Finance, Insurance & Real Estate	311.83	401.17	269.27	466.23
Services	161.86	298.98	343.48	391.67
State/Local Government	300.89	377.81	403.21	457.00
	<u>Indiana</u>	<u>Ohio</u>	<u>Illinois</u>	<u>U. S.</u>
All Industries	\$392.63	\$411.08	\$454.10	\$416.33
Mining & Quarrying	635.77	579.73	674.62	660.40
Contract Construction	449.87	465.46	584.10	469.85
Manufacturing	532.06	569.98	555.83	517.62
Transportation, Communications & Public Utilities	502.69	519.17	584.83	542.33
Wholesale & Retail Trade	N/A	N/A	N/A	N/A
Finance, Insurance & Real Estate	406.58	444.33	579.88	532.52
Services	317.98	348.48	402.38	384.31
State/Local Government	395.31	428.10	453.12	442.71

N/A Not Available.

Note: The average weekly wage for each category includes the salaries and wages of all persons working for that type business. For example, the manufacturing category includes both production workers and administrative personnel. Excludes domestic workers, railway workers, certain nonprofit corporations, majority of federal government workers, and self-employed workers.

Source: Kentucky Cabinet for Human Resources, Average Weekly Wages of Workers Covered by Kentucky Unemployment Insurance Law, 1988. U.S. Department of Labor, Bureau of Labor Statistics, Average Annual Pay by State and Industry, August 29, 1989.

EXISTING INDUSTRY

MONTICELLO MANUFACTURING FIRMS,  
THEIR PRODUCTS AND EMPLOYMENT

<u>Firm</u> <u>(Establishment date)</u>	<u>Product</u>	<u>1989</u> <u>Average Employment</u>
American Lumber Company (1978)	Dimensional lumber	6
Bassett Products Company, Inc. (1928)	Agricultural lime, crushed limestone	24
Belden Corporation, Electronic Wire & Cable Plant (1973)	Electronic wire and cable	350
Frank Bell Lumber (1941)	Lumber	7
Cumberland Apparel Company, Kid Duds Division (1984)	Children's sleepwear	175
Farmers Supply & Produce Company (1957)	Feed	11
Gamble Brothers, Inc. (1969)	Millwork, farm stock, cabinet doors	207
Gregory Lumber Company (1983)	Lumber	21
Gregory Shirt Company (1973)	Women's blouses, men's shirts	132
Lendale Manufacturing Company (1987)	Children's pajamas	60
O.P. Link Handle Company, Inc. (1950)	Hickory barbecue wood, hickory handle blanks, sawdust	12
M & P Lumber Company, Inc. (1981)	Lumber	12
Mago Construction Company, Inc. (1961)	Bituminous concrete mixes	3
Monticello Cabinet & Woodworking Company (1985)	Custom wood cabinets	10
Monticello Flooring & Lumber Company (1971)	Wood paneling molding, wood flooring, dimension stock	57
Monticello Hardwoods, Inc. (1986)	Logs and lumber	12
Monticello Machine Shop (1948)	Fabrication shop, sawmill conveyors, machine shop	22
Monticello Manufacturing Company, Inc. (1955)	Ladies blouses and shirts	260
Monticello Tool & Die, Inc. (1978)	Tool & die work, machine shop	15
Don Richardson Lumber Company (1985)	Lumber	11

(Continued)

<u>Firm</u> <u>(Establishment date)</u>	<u>Product</u>	<u>1989</u> <u>Average Employment</u>
Ridgeway Wood Corporation (1985)	Wood erosion blankets	15
Stardust Cruisers, Inc. (1985)	Aluminum boats	85
Tenco Industries (1981)	Custom oak bookcases, carts, furniture	20
Valley Farm Center (1985)	Feed	6
WPM Company, Inc. (1977)	Children's sportswear, men and ladies jeans	185
W.W. Hardwoods (1986)	Wood dimensions, veneer style, machining	62
Wayne County Outlook, Inc. (1904)	Newspaper	9
Wayne Lumber Company (1966)	Rough lumber	70

Sources: Kentucky Cabinet for Economic Development, Division of Research and Planning.

#### Major Monticello Employer

Data Cumberland Services, located in Monticello, performs data conversion operations and employs approximately 185 persons.

### LABOR ORGANIZATIONS IN MANUFACTURING FIRMS

#### Union

Laborer's International Union of North America, AFL-CIO

#### Representing workers at:

Gamble Brothers, Inc.



SELECTED INDUSTRIAL SERVICES

<u>Types of Services</u>	<u>Location</u>	<u>Mileage from Monticello</u>
Custom Data Processing	Monticello, Kentucky	-
Custom Plastics Producers	Mount Vernon, Kentucky Bowling Green, Kentucky	55 100
Electric Motor Repair	Albany, Kentucky	25
Grinding, Precision & Tool	Glasgow, Kentucky	71
Heat Treating Facilities	Richmond, Kentucky	85
Industrial Equipment & Supplies	Richmond, Kentucky Bowling Green, Kentucky	85 100
Industrial Gases	Somerset, Kentucky	29
Industrial Waste Removal	Somerset, Kentucky	29
Machine Shops, Tool & Die	Monticello, Kentucky	-
Metal Castings	Horse Cave, Kentucky Pineville, Kentucky	86 91
Metal Finishers	Richmond, Kentucky	85
Metal Service Centers	Richmond, Kentucky	85
Millwrights	Bowling Green, Kentucky	100
Public Warehouse Facilities	Glasgow, Kentucky Danville, Kentucky	71 74

Sources: Kentucky Cabinet for Economic Development, Kentucky Directory of Selected Industrial Services, 1987; Division of Research and Planning.

## TRANSPORTATION

### Highways

Monticello is served by Kentucky Highway 90, a "AAA"-rated (80,000-pound gross load limit) trucking highway which connects with U.S. 27 just 21 miles northeast of Monticello; and Kentucky Highway 92, a "AA"-rated (62,000-pound gross load limit) trucking highway which connects with U.S. Highway 27, 32 miles southeast. U.S. 127 is 23 miles southwest of Monticello via Kentucky 90. The Cumberland Parkway, a multi-lane toll road, is located 30 miles north of Monticello via Kentucky 90 and U.S. 27. Interstate 75, a major north-south highway, lies 53 miles east of Monticello via Kentucky 92.

#### HIGHWAY MILES FROM MONTICELLO, KENTUCKY, TO SELECTED MARKET CENTERS

City	Highway Miles	City	Highway Miles
Atlanta, GA	285	Los Angeles, CA	2,162
Baltimore, MD	635	Louisville, KY	160
Birmingham, AL	310	Nashville, TN	157
Chicago, IL	447	New Orleans, LA	691
Cincinnati, OH	179	New York, NY	814
Cleveland, OH	419	Pittsburgh, PA	442
Detroit, MI	419	St. Louis, MO	382
Knoxville, TN	121		

Note: Mileage computations are via the best interstate or primary highways, not necessarily the most direct route of travel.

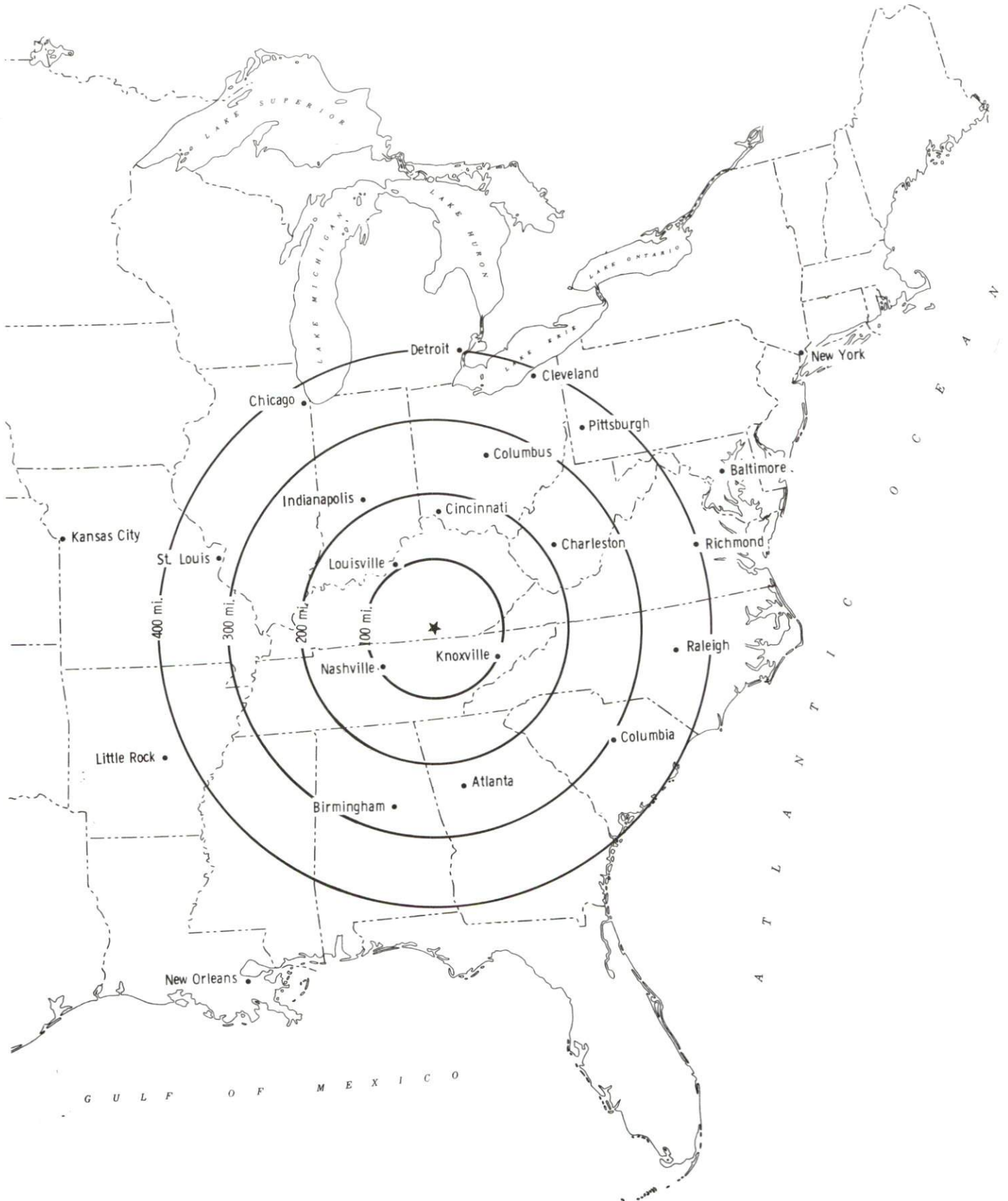
Sources: Rand McNally Deluxe Motor Carriers' Road Atlas, 1989. Official Kentucky Mileage Map, 1980.

### Truck Service

Interstate and/or Intrastate trucking service is provided to Monticello by nine companies

Source: American Motor Carrier Directory, Spring 1990.

# Selected Market Centers



## Rail

Monticello is not served directly by rail, however, service is provided by the Norfolk Southern Railroad at Burnside, 21 miles northeast of Monticello. The nearest piggyback facilities are in Knoxville, Tennessee, 121 miles southeast, on the Southern Railway System.

For details on routing, schedules, rates, and services contact:

District Sales Manager  
Norfolk Southern Corporation  
1402 South 15th Street  
Louisville, Kentucky 40210  
(502) 636-6023

## Air

### Local

Location:	Monticello-Wayne County Airport 1.5 miles north of Monticello
Runways:	1 paved
Length:	4,000 feet
Traffic	
Control:	Wind sock, UNICOM, and ADF approach
Lighting:	Wind sock and runway lights, VASI, REIL
Services:	100LL fuel, tie-downs and hangars, major A & P repairs, flight instruction, and transportation to motels and restaurants

The Monticello-Wayne County Airport plans to build additional tee hangars and extend the runway 500 feet within the next two years.

### Nearest Scheduled Commercial Airline Service

Location:	Bluegrass Airport 4 miles west of Lexington, Kentucky; 110 miles north of Monticello
Air Service:	Delta, USAir, TWA, United Express, JetStream, Air Kentucky, American Eagle, ComAir
Daily Arrivals & Departures:	116

## UTILITIES

### Electricity

Company serving Monticello - City of Monticello Electric Plant Board

Source of power - Tennessee Valley Authority  
For industrial rates contact:

South Kentucky Industrial Development  
Association, Inc.  
P.O. Box 726  
Hopkinsville, Kentucky 42240  
(502) 885-5392

and/or

City of Monticello Electric Plant Board  
615 Columbia Avenue  
P.O. Box 657  
Monticello, Kentucky 42633  
(606) 348-8102

Company serving Wayne County - South Kentucky Rural Electric  
Cooperative Corporation

Source of power - East Kentucky Power Cooperative  
For industrial rates contact:

Industrial Development Division  
East Kentucky Power Cooperative  
P.O. Box 707  
Winchester, Kentucky 40391  
(606) 744-4812

and/or

South Kentucky Rural Electric Cooperative  
Corporation  
925-929 North Main Street  
P.O. Box 910  
Somerset, Kentucky 42501  
(606) 678-4121

### Natural Gas

The City of Monticello has recently awarded a franchise to Ken-Gas of Kentucky, Inc. Natural gas service is expected to be available to Monticello residents by January 1991.



## Public Water Supply

Company serving Monticello - Monticello Utility Commission  
P.O. Box 518  
Monticello, Kentucky 42633  
(606) 348-8473

Source - Lake Cumberland  
Treatment plant capacity - 2,000,000 gallons per day  
Average daily consumption - 1,200,000 gallons  
Peak daily consumption - 1,400,000 gallons  
Storage capacity - 1,000,000 gallons  
Water pressure - 75 psi to 100 psi

The Monticello Utility Commission plans to construct a 600,000 gallon storage tank and to install 10.2 miles of 16-inch transmission lines within the next two years. The total expenditure for these projects is expected to be \$3 million.

## Sewerage

Company serving Monticello - Monticello Utility Commission  
P.O. Box 518  
Monticello, Kentucky 42633

Design capacity - 700,000 gallons per day  
Average daily flow - 300,000 gallons  
Type of treatment - Secondary  
Treated effluent discharged into - Elk Creek

The Monticello Utility Commission plans to spend approximately \$2 million to extend sewer service to portions of Monticello.

## CLIMATE

### Wayne County

#### Temperature

Normal (30-year record)	58.90 degrees
Average annual 1988	57.70 degrees
Record highest, September 1954 (47-year record)	103.00 degrees
Record lowest, January 1985 (47-year record)	-24.00 degrees
Normal heating degree days (30-year record) (Heating degree day totals are the sums of negative departures of average daily temperatures from 65 degrees F.)	3,658

#### Precipitation

Normal (30-year record)	47.29 inches
Mean annual snowfall (46-year record)	12.60 inches
Total precipitation 1988	34.66 inches
Mean number days precipitation (.01 inch or more) (46-year record)	126.00
Mean number days thunderstorms (46-year record)	47.00

#### Prevailing winds (through 1963)

Northeast

#### Relative Humidity (28-year record)

1 a.m.	80 percent
7 a.m.	85 percent
1 p.m.	59 percent
7 p.m.	63 percent

Source: U.S. Department of Commerce, Environmental Science Services Administration, Climatological Data, 1988. Station of record: Knoxville, Tennessee.

## LOCAL GOVERNMENT

### Structure

The city of Monticello is served by a mayor and six council members. The mayor is elected to a four-year term and the council members serve two-year terms. Wayne County is served by a county judge/executive and four magistrates, each of whom serves a four-year term.

### Planning and Zoning

The Monticello Planning Commission is currently inactive.

Mandatory state codes enforced - Kentucky Plumbing code, National Electric Code, Kentucky Boiler Regulations and Standards, Kentucky Building Code (modeled after BOCA code)

### Local Fees and Licenses

Wayne County levies occupational license fees ranging from \$6 to \$31 annually.

The city of Monticello levies a business license fee ranging from \$10 to \$1,025 per year, depending on the type of business. For manufacturers, the following fees apply: less than 50 employees - \$350 per year; more than 50 but less than 100 employees - \$562.50 per year; from 101 employees to 150 employees - \$675 per year; from 151 employees to 200 employees - \$780 per year; from 201 employees to 300 employees - \$900 per year; more than 301 employees - \$1,025 per year.

## State and Local Property Taxes

All property in Kentucky, except items exempted by the state constitution, is taxed by the state. Property which also may be taxed by local jurisdictions includes land and buildings, finished goods inventories, automobiles, trucks, office furniture and office equipment. Local taxing jurisdictions in Kentucky include counties, cities, and school districts.

All property in Kentucky is assessed at 100 percent of fair cash value.

### COMBINED STATE AND LOCAL RATES PER \$100 VALUATION, 1989

	City of Monticello/ Monticello Independent School District	City of Monticello/ Wayne County School District	Unincorporated Wayne County
Land and Buildings	\$1.0459	\$0.8899	\$0.6649
Manufacturing			
Machinery	0.1500	0.1500	0.1500
Pollution Control			
Equipment	0.1500	0.1500	0.1500
Inventories			
Raw Materials	0.0010	0.0010	0.0010
Goods in Process	0.0010	0.0010	0.0010
Finished Goods	0.8564	0.7004	0.4754
Automobiles & Trucks	1.3134	1.0514	0.7994
Other Tangible			
Personal Property	1.3054	1.1494	0.9244
Intangibles (Accounts receivable*, money in hand, stock, notes, bonds)	0.2500	0.2500	0.2500
Goods Stored in Public Warehouses in Transit Status	0.0010	0.0010	0.0010
Private Leaseholds in Industrial Revenue Bond Financed Facilities	0.0150	0.0150	0.0150

\* Accounts receivable are taxed at 85 percent of face value, for an effective rate of \$0.2125 per \$100 valuation.

## EDUCATION

### Public Schools

	<u>Monticello Independent</u>	<u>Wayne County</u>
Total Enrollment (Fall, 1989)	813	2,744
Pupil-Teacher Ratio (1988-89)	19.7-1	18.4-1
Percent High School Graduates to College (1988-89)	62.7	39.6
Expenditures Per Pupil (1988-89)	\$2,065.90	\$2,470.16

### Area Colleges and Universities

<u>Name</u>	<u>Location (Miles distant)</u>	<u>Enrollment (Fall, 1989)</u>
Somerset Community College	Somerset, Kentucky (29)	1,755
Cumberland College	Williamsburg, Kentucky (54)	1,880
Lindsey Wilson College	Columbia, Kentucky (62)	1,153
Sue Bennett College	London, Kentucky (63)	544
Berea College	Berea, Kentucky (72)	1,550
Centre College	Danville, Kentucky (74)	857
Campbellsville College	Campbellsville, Kentucky (81)	760
Union College	Barbourville, Kentucky (82)	1,047
Eastern Kentucky University	Richmond, Kentucky (85)	14,268



## Vocational Training

Vocational training is available at both the state vocational-technical schools and the area vocational education centers. The state vocational-technical schools are post-secondary institutions. The area vocational education centers are designed to supplement the curriculum of high school students. Both the state vocational-technical schools and the area vocational education centers offer evening courses to enable working adults to upgrade current job skills.

Arrangements can be made to provide training in the specific production skills required by an industrial plant. Instruction may be conducted either in the vocational school or in the industrial plant, depending upon the desired arrangement and the availability of special equipment.

### Bluegrass State Skills Corporation

The Bluegrass State Skills Corporation, an independent public corporation created and funded by the Kentucky General Assembly, provides programs of skills training to meet the needs of business and industry from entry level to advanced training, and from upgrading present employees to retraining experienced workers.

The Bluegrass State Skills Corporation is the primary source for skills training assistance for a new or existing company. The Corporation works in partnership with other employment and job training resources and programs, as well as Kentucky's economic development activities, to package a program customized to meet the specific needs of a company.

<u>Vocational School</u>	<u>Location (Miles distant)</u>	<u>Cumulative Enrollment 1988-1989</u>
Wayne County Area Vocational Education Center	Monticello	409
Somerset State Vocational-Technical School	Somerset (29)	909

## OTHER LOCAL FACILITIES

### Local Medical Personnel

Physicians - 10  
Dentists - 2

### Hospitals

<u>General Hospital</u>	<u>Location</u>	<u>Beds</u>
Wayne County Hospital	Monticello, Kentucky	30

Medical staff - 12 physicians, 17 registered nurses, and 5 licensed practical nurses

The Wayne County Hospital has recently expanded its scope of service by purchasing equipment in the surgery, radiology, and emergency departments. The hospital has also purchased a CT scanner.

### Other Medical Facilities and Services

Wayne County Health Center  
South Creek Medical Association

### Banks and Savings and Loan Associations

First State Bank of Wayne County  
Monticello Banking Company

### Newspapers

Wayne County Outlook

### Telephone Service

General Telephone Company

## RECREATION

### Local

The Monticello-Wayne County Park and Recreation Board sponsors many supervised recreation programs and oversees the Monticello-Wayne County Memorial Park. The 86-acre facility offers five shelters, with one shelter used for roller skating, two playgrounds, three basketball courts, three lighted tennis courts, volleyball, badminton, horseshoe pitching, croquet, two softball fields, one baseball field, and horseback riding trails. An additional softball field is currently under construction at the park.

An indoor swimming pool is located at the Monticello High School and is available to the community for recreation and instruction.

Private recreational facilities include a country club, a 9-hole golf course, two swimming pools, a movie theatre, and two tennis courts.

The Wayne County Sportsman's Club makes its clubhouse available for community activities. The clubhouse is located on 50 acres and provides kitchen and dining facilities.

### Area (Within 65 miles)

The Daniel Boone National Forest  
General Burnside State Park  
The Big South Fork National River and Recreation Area  
Lake Cumberland State Resort Park  
Dale Hollow Lake State Park  
Cumberland Falls State Resort Park  
William Whitley House State Shrine  
Levi Jackson Wilderson Road State Park

## COMMUNITY IMPROVEMENTS

### Recent

Hurd Lock and Manufacturing Company recently announced plans to locate in Monticello. Hurd, a subsidiary of Avis Industrial Corporation, will manufacture locks for the automobile industry, office equipment and other applications. Hurd may eventually employ up to 250 people, however, initial employment will be from 20 to 100 employees.

Expansions have occurred recently at Stardust Cruisers and WPM Company, Inc. Stardust Cruisers constructed a 7,000 square-foot building and added ten new employees. WPM Company recently constructed a 28,000 square-foot building.

The Monticello Independent School System completed the construction of a cafeteria and converted the former cafeteria into a science department in 1989. The total expenditure for the project was \$675,000. The Monticello Independent School System has also created an industrial education department and expanded its home economics and music departments.

The Wayne County School System completed a \$1.8 million addition to the middle school in July 1989. The expansion created fourteen classrooms and a cafeteria. A new central office building for the school system will be completed by July 1990.

A new shopping center opened in 1989 which features a Krogers and Walmart.

### Planned

The Monticello Utilities Commission will implement a \$3 million project this year to increase storage capacity by 600,000 gallons and extend water transmission mains 10.2 miles. The Commission also plans to expand its sewerage service area by laying additional collector lines. The sewer line expansion project will cost approximately \$2 million.