

1985

Industrial Resources: Webster County

Kentucky Library Research Collections
Western Kentucky University, spcol@wku.edu

Follow this and additional works at: https://digitalcommons.wku.edu/webster_cty



Part of the [Business Administration, Management, and Operations Commons](#), [Growth and Development Commons](#), and the [Infrastructure Commons](#)

Recommended Citation

Kentucky Library Research Collections, "Industrial Resources: Webster County" (1985). *Webster County*. Paper 2.
https://digitalcommons.wku.edu/webster_cty/2

This Report is brought to you for free and open access by TopSCHOLAR®. It has been accepted for inclusion in Webster County by an authorized administrator of TopSCHOLAR®. For more information, please contact topscholar@wku.edu.

IR Webster County
441

**RESOURCES
FOR
ECONOMIC
DEVELOPMENT**

WEBSTER COUNTY

KENTUCKY
The Business Environment is Right

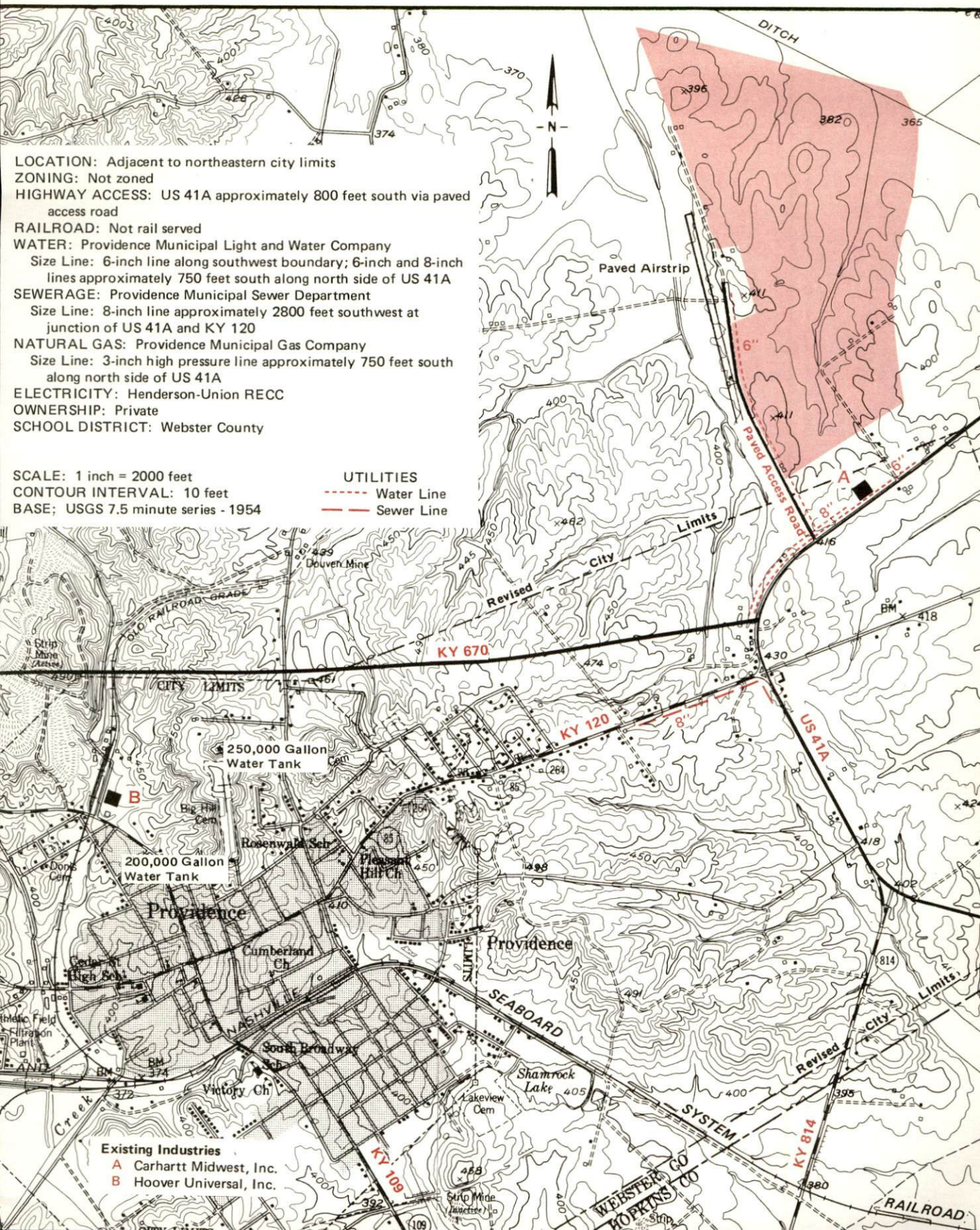
PROVIDENCE, KENTUCKY --- Site 185 --- 280 Acres

For more information contact the Kentucky Department of Economic Development, Industrial Development & Marketing Division, Capital Plaza Tower, Frankfort, Kentucky 40601 (502-564-7140).

LOCATION: Adjacent to northeastern city limits
ZONING: Not zoned
HIGHWAY ACCESS: US 41A approximately 800 feet south via paved access road
RAILROAD: Not rail served
WATER: Providence Municipal Light and Water Company
 Size Line: 6-inch line along southwest boundary; 6-inch and 8-inch lines approximately 750 feet south along north side of US 41A
SEWERAGE: Providence Municipal Sewer Department
 Size Line: 8-inch line approximately 2800 feet southwest at junction of US 41A and KY 120
NATURAL GAS: Providence Municipal Gas Company
 Size Line: 3-inch high pressure line approximately 750 feet south along north side of US 41A
ELECTRICITY: Henderson-Union RECC
OWNERSHIP: Private
SCHOOL DISTRICT: Webster County

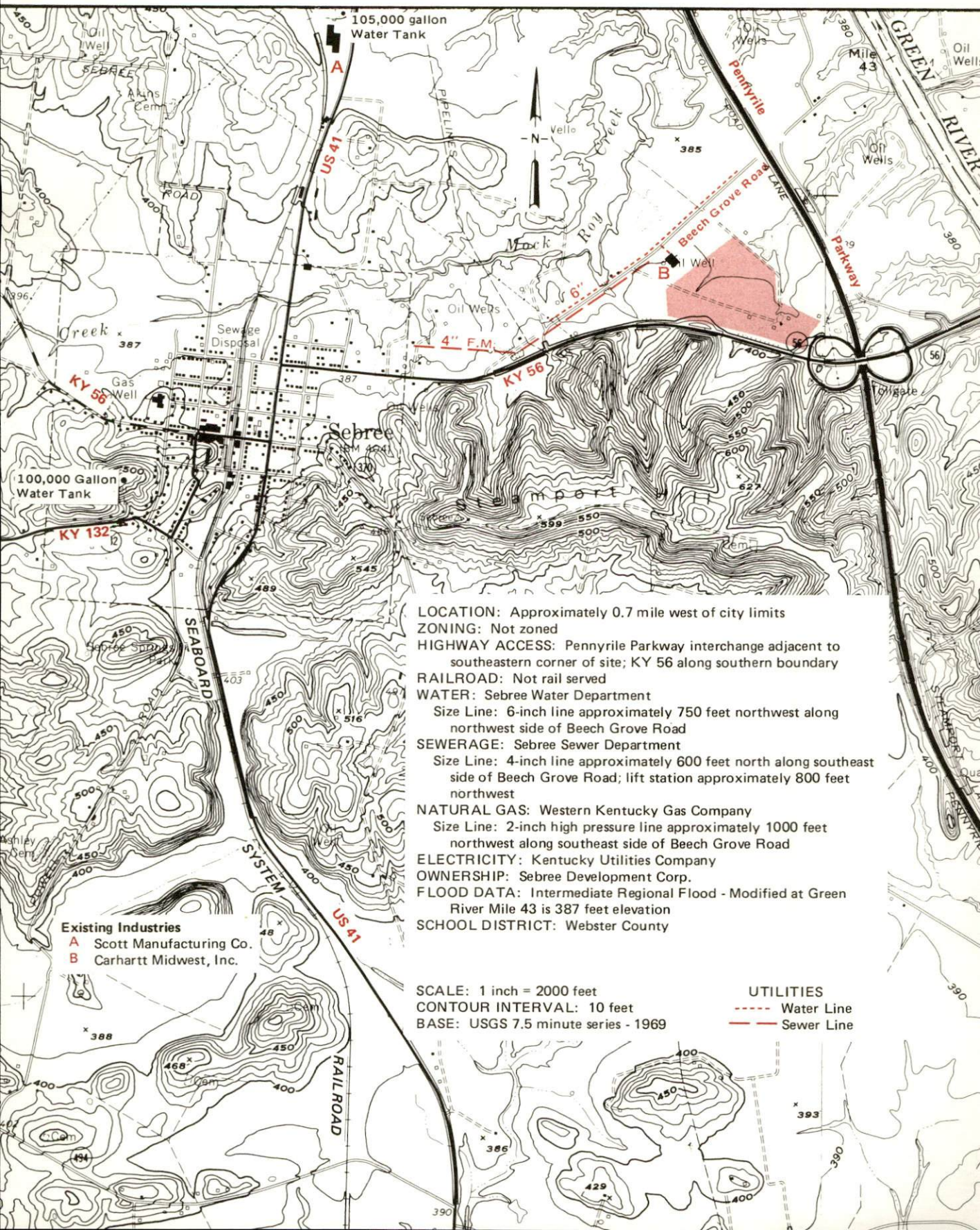
SCALE: 1 inch = 2000 feet
CONTOUR INTERVAL: 10 feet
BASE: USGS 7.5 minute series - 1954

UTILITIES
 - - - - - Water Line
 - - - - - Sewer Line



SEBREE, KENTUCKY --- Site 185 --- 48 Acres

For more information contact the Kentucky Department of Economic Development, Industrial Development & Marketing Division, Capital Plaza Tower, Frankfort, Kentucky 40601 (502-564-7140).



RESOURCES FOR ECONOMIC DEVELOPMENT
WEBSTER COUNTY, KENTUCKY

Prepared by
The Kentucky Department of Economic Development
Division of Research and Planning
in cooperation with
The Providence Business and Professionals Association
and
The City of Sebree
and
The City of Clay

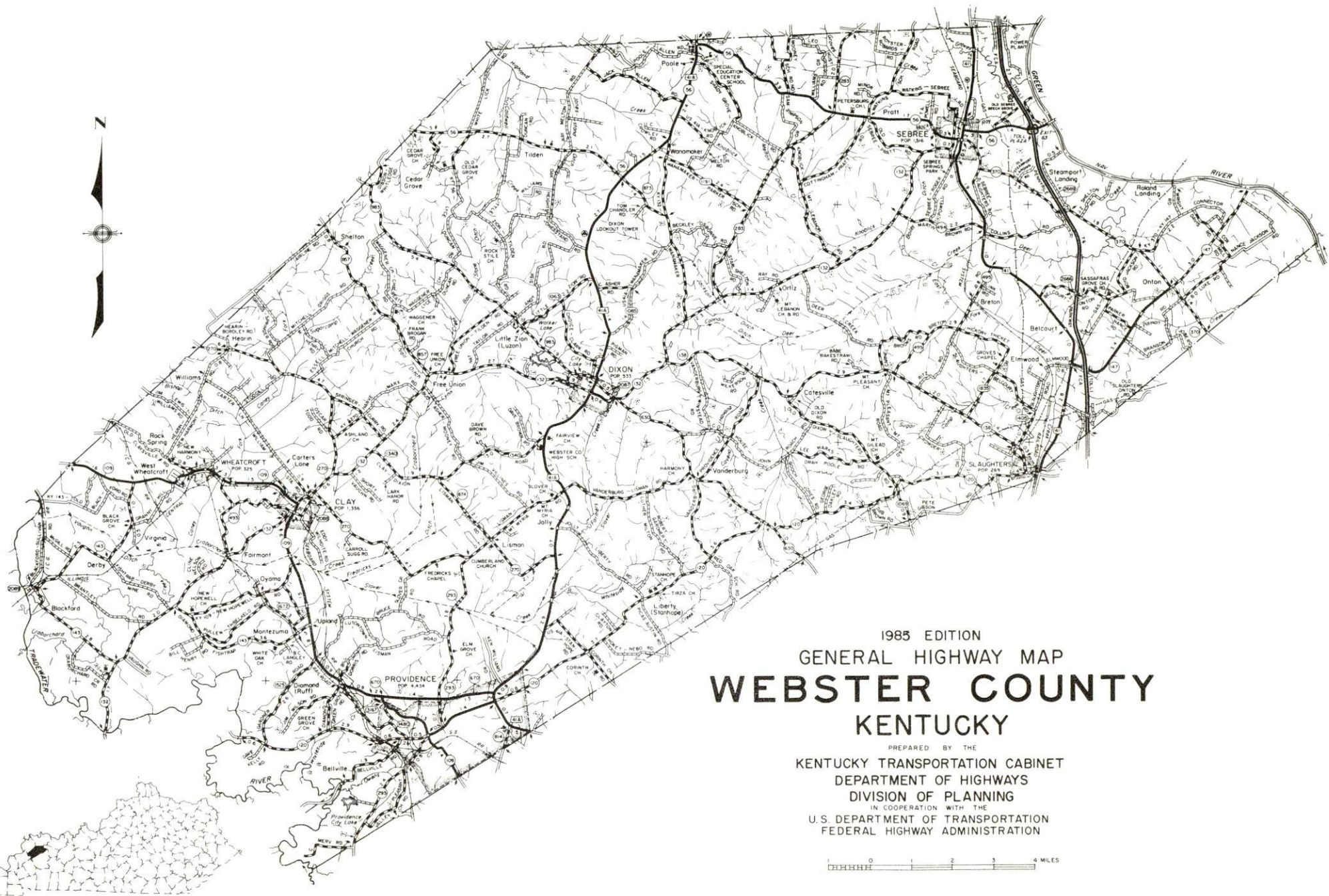
1985

Program manager - Andrew Dennis; research - James R. Thompson; clerical - Bobbi Graves; graphics - Frank Ferrante, Tony Cecconi, Robert Owens; cartography - Site Evaluation Branch, Division of Industrial Development and Marketing. Cost of printing paid from state funds.

TABLE OF CONTENTS

<u>Chapter</u>	<u>Page</u>
INDUSTRIAL SITES	i
WEBSTER COUNTY, KENTUCKY - A RESOURCE PROFILE	1
THE LABOR MARKET AREA	3
Population	3
Labor Force Characteristics of Residents, 1983	3
Selected Components of Nonagricultural Employment, by Place of Work, 1983	4
Webster County Manufacturing Firms, Their Products and Employment	5
Labor Organizations in Manufacturing Firms	6
Industrial Services	7
Estimated Male Labor Supply	8
Estimated Female Labor Supply	8
Average Weekly Wages By Industry, by Place of Work, 1983	9
Per Capita Personal Income	11
TRANSPORTATION	12
Rail	12
Highways	12
Truck Service	13
Air	14
Taxi	15
Rental Services	15
Water	15
POWER AND FUEL	16
Electricity	16
Natural Gas	17
Other Fuels	18
WATER AND SEWERAGE	19
Public Water Supply	19
Raw Water	23
Sewerage	23
CLIMATE	25

<u>Chapter</u>	<u>Page</u>
LOCAL GOVERNMENT	26
City	26
County	26
Assessed Value of Property, 1984	26
Property Taxes	27
Combined State and Local Rates Per \$100 Valuation, 1984	28
Utilities Gross Receipts Tax for Schools	29
Planning and Zoning	29
Safety	29
Police	29
Fire	30
Rescue Service	30
Refuse Collection and Disposal	30
EDUCATION	31
Public Schools	31
Area Colleges and Universities	32
Vocational Schools	33
HEALTH	35
Local Medical Personnel	35
Hospitals	35
Other Medical Facilities	36
Ambulance Service	36
OTHER LOCAL FACILITIES	37
Communications	37
Library Services	38
Religious Institutions	38
Financial Institutions	38
Hotels and Motels	38
Clubs and Organizations	39
RECREATION	40
COMMUNITY IMPROVEMENTS	42



1985 EDITION
GENERAL HIGHWAY MAP
WEBSTER COUNTY
KENTUCKY

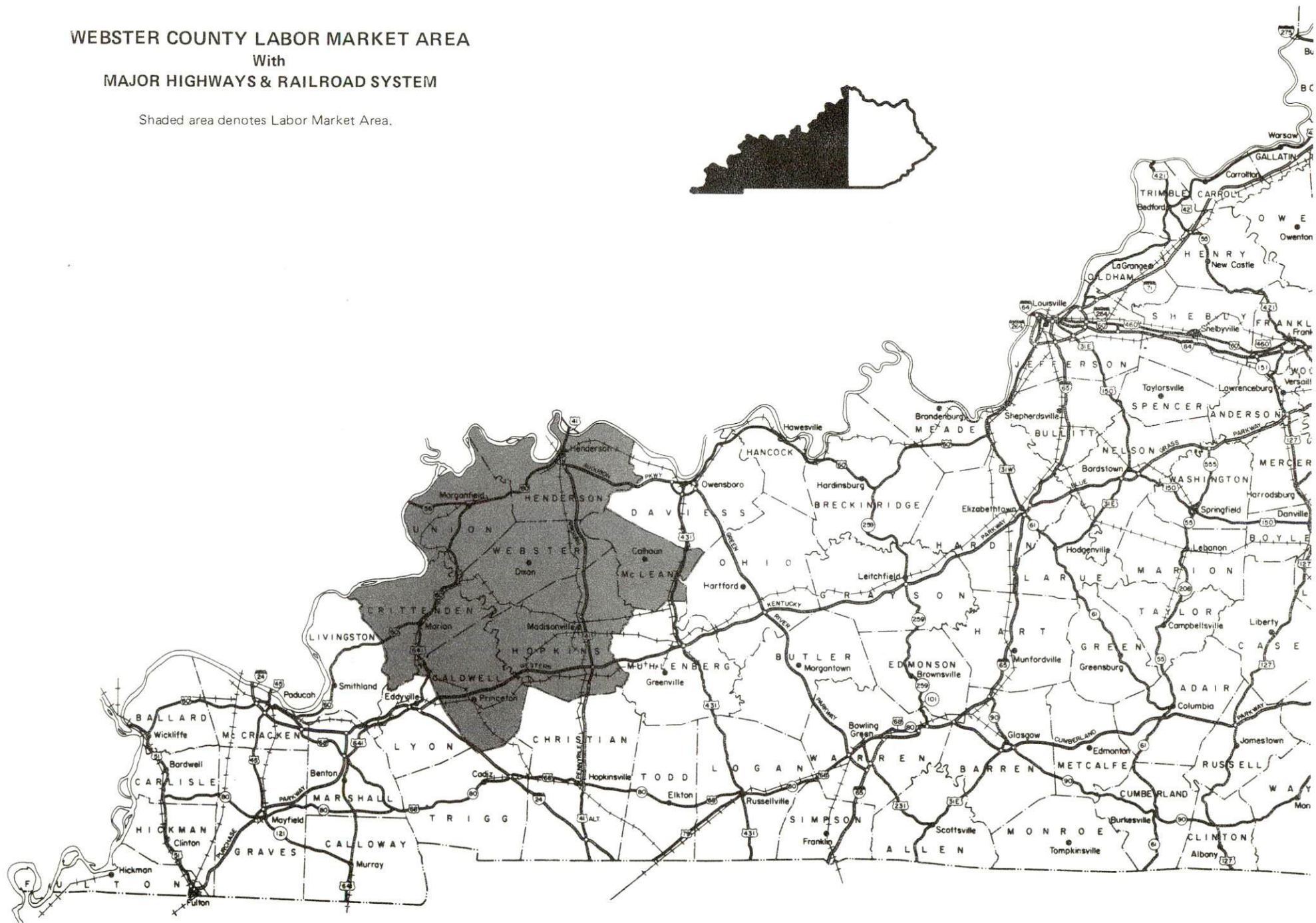
PREPARED BY THE
KENTUCKY TRANSPORTATION CABINET
DEPARTMENT OF HIGHWAYS
DIVISION OF PLANNING
IN COOPERATION WITH THE
U.S. DEPARTMENT OF TRANSPORTATION
FEDERAL HIGHWAY ADMINISTRATION

0 1 2 3 4 MILES

WEBSTER COUNTY LABOR MARKET AREA

With
MAJOR HIGHWAYS & RAILROAD SYSTEM

Shaded area denotes Labor Market Area.



WEBSTER COUNTY, KENTUCKY - A RESOURCE PROFILE

Webster County, with a land area of 336 square miles, is located within the Western Kentucky Coal Field region. The Green River forms the northeastern boundary of the county, while the Tradewater River forms the southwestern boundary of the county. In 1982, Webster County had an estimated population of 14,800.

Providence, the largest city in Webster County, is situated in the southwestern portion of the county. Providence is located 122 miles north of Nashville, Tennessee; 163 miles southwest of Louisville, Kentucky; and 215 miles southeast of St. Louis, Missouri. In 1982, Providence had an estimated population of 4,390.

Sebree, located in the northwestern portion of Webster County, is situated near the Green River. In 1982, Sebree had an estimated population of 1,480.

Clay, with a 1982 estimated population of 1,322, is located in the western portion of Webster County.

Dixon, the county seat, had a 1982 estimated population of 533.

The Economic Framework

The total number of Webster County residents employed in 1983 averaged 5,660, with nonagricultural jobs accounting for 5,270 workers. Manufacturing firms in the county reported 460 employees; wholesale and retail trade provided 500 jobs; 270 people were employed in service occupations; state and local government accounted for 490 employees; contract construction firms provided 80 jobs; and 540 people were employed by mining and quarrying operations. Manufacturing employment is greatest in apparel and related products and rubber and plastic products.

Per capita personal income in Webster County in 1983 was \$9,783, or \$387 above the Kentucky average. Between 1979 and 1983, per capita income increased by 18.5 percent.

The Webster County labor market area includes the adjoining counties of Caldwell, Crittenden, Henderson, Hopkins, McLean, and Union. The total number of residents employed in the labor market area in 1983 averaged 64,760, with nonagricultural jobs accounting for 61,620 workers. Manufacturing firms in the area reported 10,050 employees; wholesale and retail trade provided 9,040 jobs; 8,570 people were employed in service occupations; state and local government accounted for 5,660 employees; contract construction firms provided 1,140 jobs; and 5,700 people were employed by mining and quarrying operations.

Resources for Growth

1. Labor Supply - There is a current estimated labor supply of 7,760 men and 11,145 women available for industrial jobs in the labor market area. In addition, from 1985 through 1989, 6,445 young men and 5,980 young women in the area will become 18 years of age and potentially available for industrial jobs.

2. Transportation - Rail service is provided to Providence and Sebree by the Seaboard System Railroad. Providence is also served by the Tradewater Railway. Clay is currently not served by rail service. Major highways serving Webster County include the Pennyrite Parkway, U.S. 41, U.S. 41A, and Kentucky 109. Twenty trucking services have the authority to serve Webster County. The nearest scheduled commercial airline service is the Evansville Dress Regional Airport, 51 miles north of Providence. The Providence-Webster County Airport offers one paved runway 3,800 feet long to accommodate small aircraft. The Henderson County Riverport Authority offers port facilities at Henderson, 37 miles north of Providence.

3. Power and Fuel - Electric power is provided to Providence by Providence Municipal Light and Water Company, which is supplied by the Kentucky Utilities Company. Sebree, Clay, and parts of Webster County are served by Kentucky Utilities Company, an electric generation and transmission company. Webster County is also served by the Green River Electric Corporation and the Henderson-Union Rural Electric Cooperative Corporation, which are supplied by the Big River Electric Corporation. Natural gas service is provided to Providence by the Providence Municipal Gas Company, to Sebree by the Western Kentucky Gas Company, and to Clay by the Clay Natural Gas System, which are supplied by the Texas Gas Resources Corporation. Five distributors of propane and six distributors of distillate fuel oil serve Webster County.

4. Education - Primary and secondary education is provided to Providence by the Providence Independent School System. Sebree, Clay and Webster are served by the Webster County School System.

Two universities, two senior colleges, and three community colleges are located within 70 miles of Providence.

The Madisonville State Vocational-Technical School in Madisonville, 17 miles southeast of Providence, offers training in 20 courses. The Webster County Area Vocational Education Center, in Dixon, 11 miles north of Providence, offers training in six courses.

THE LABOR MARKET AREA

The Webster County Labor Market Area includes Webster County and the adjoining Kentucky counties of Caldwell, Crittenden, Henderson, Hopkins, McLean and Union.

POPULATION				
Area	1982*	1980	1970	Percent Nonwhite
				1980
Providence	4,390	4,434	4,270	17.8
Sebree	1,480	1,516	1,092	1.0
Clay	1,322	1,356	1,426	0.8
Dixon	533	533	572	3.2
Labor Market Area	152,900	152,446	134,096	N/A
Webster County	14,800	14,832	13,282	6.1
Caldwell County	13,500	13,473	13,179	6.4
Crittenden County	8,900	9,207	8,493	1.0
Henderson County	41,400	40,849	36,031	7.7
Hopkins County	46,700	46,174	38,167	7.2
McLean County	9,900	10,090	9,062	0.8
Union County	17,700	17,821	15,882	18.9

* Population estimates.

Note: The 1980 city counts of population by race are provisional.

Sources: U.S. Department of Commerce, Bureau of the Census, 1980 Census of Population and Housing, March 1981; 1980 Census of Population, Number of Inhabitants; Local Population Estimates, Series P-26, June 1984, September 1984.

LABOR FORCE CHARACTERISTICS OF RESIDENTS, 1983

	Webster County	Labor Market Area
Civilian Labor Force	6,542	74,124
Employment	5,659	64,757
Agricultural	385	3,138
Nonagricultural	5,274	61,619
Unemployment	883	9,367
Rate of Unemployment (%)	13.5	12.6

Source: Kentucky Cabinet for Human Resources, Kentucky Labor Force Estimates, Annual Averages, 1983.

SELECTED COMPONENTS OF NONAGRICULTURAL EMPLOYMENT,
BY PLACE OF WORK, 1983

	<u>Webster County</u>	<u>Labor Market Area</u>
All Industries (total)	2,909	44,259
Manufacturing	463	10,046
Wholesale & Retail Trade	503	9,036
Services	268	8,568
State/Local Government	486	5,664
Contract Construction	82	1,140
Mining & Quarrying	537	5,704

Note: Excludes domestic workers, railway workers, certain nonprofit corporations, majority of federal government workers, and self-employed workers.

Source: Kentucky Cabinet for Human Resources, Average Monthly Workers Covered by Kentucky Unemployment Insurance Law, 1983.

WEBSTER COUNTY MANUFACTURING FIRMS,
THEIR PRODUCTS AND EMPLOYMENT*

<u>Firm (Establishment date)</u>	<u>Product</u>	<u>Employment</u>			<u>Labor Unions</u>
		<u>Total</u>	<u>Male</u>	<u>Female</u>	
Providence					
Carhartt Midwest, Inc. (1973)	Work clothing	102	12	90	Garment Workers*
DA-CO Machine and Steel Fabrication, Inc. (1977)	Steel fabri- cation, mine equipment repair	11	10	1	
Hoover Universal, Inc., Plastic Products Division (1974)	Plastic plumbing parts	100	29	71	Steelworkers*
Hydra Tech, Inc. (1978)	Mine car parts	3	2	1	
The Journal-Enterprise, Inc. (1902)	Newspaper	10	4	6	
Northern Printing and Office Supply (1973)	Job printing	3	--	--	
Providence Machine, Inc. (1956)	Machine shop, metal fabri- cation, mining machinery parts	27	25	2	
West Kentucky Steel Construction (1958)	Steel fabri- cation	10	8	2	
Sebree					
Carhartt Midwest, Inc. (1973)	Men's work clothing	110	10	100	Garment Workers*
Hopkinsville Stone Company (1970)	Asphalt, crushed stone, agricultural lime	2	2	0	
(Cont'd)					

<u>Firm (Establishment date)</u>	<u>Product</u>	<u>Employment</u>			<u>Labor Unions</u>
		<u>Total</u>	<u>Male</u>	<u>Female</u>	
Scott Manufacturing Company (1973)	Fabricated fiberglass, metal building insulation, styrofoam	23	13	10	
The Sebree Banner (1892)	Newspaper, commercial printing	4	1	3	
Clay					
Clay Machine Works, Inc. (1967)	Welding, machine shop, cylinder parts, mining and farm machine parts	15	12	3	
Crop Production Services, Inc. (1964)	Fertilizer blending	4	3	1	
Dixon					
Pioneer Plastics (1981)	Molding, custom injection	40	20	20	

* See Labor Organizations below.

Sources: Kentucky Department of Economic Development, 1985 Kentucky Directory of Manufacturers; Division of Research and Planning.

LABOR ORGANIZATIONS IN MANUFACTURING FIRMS

<u>Union</u>	<u>Representing workers at:</u>
United Garment Workers of America, AFL-CIO	Carhartt Midwest, Inc. (Providence plant) Carhartt Midwest, Inc. (Sebree plant)
United Steelworkers of America, AFL-CIO	Hoover Universal, Inc.

INDUSTRIAL SERVICES

<u>Types of Services</u>	<u>Location</u>	<u>Mileage from Providence</u>
Custom Plastics Producers	Providence, Kentucky	-
	Dixon, Kentucky	11
Electric Motor Repair	Madisonville, Kentucky	17
	Henderson, Kentucky	37
Grinding, Precision & Tool	Evansville, Indiana	47
Heat Treating Facilities	Evansville, Indiana	47
Industrial Equipment & Supplies	Hopkinsville, Kentucky	51
	Owensboro, Kentucky	67
Industrial Gases	Henderson, Kentucky	37
	Evansville, Indiana	47
Industrial Waste Removal	Dawson Springs, Kentucky	18
	Henderson, Kentucky	37
	Evansville, Indiana	47
Machine Shops, Tool & Die	Clay, Kentucky	6
	Madisonville, Kentucky	17
Metal Finishers	Morganfield, Kentucky	31
Metal Service Centers	Greenville, Kentucky	55
	Owensboro, Kentucky	67
Millwrights	Evansville, Indiana	47
	Hopkinsville, Kentucky	51
Public Warehousing Facilities	Hopkinsville, Kentucky	51
	Owensboro, Kentucky	67

Sources: Kentucky Department of Economic Development, Kentucky Directory of Selected Industrial Services, 1985; Division of Research and Planning.

ESTIMATED MALE LABOR SUPPLY
WEBSTER COUNTY LABOR MARKET AREA

Area	Current			Not in Labor Force	Future Becoming 18 years of age 1985 thru 1989
	Total Male	Unemployed	Under- employed		
Labor Market					
Area*	7,763	5,301	2,158	304	6,445
Webster	680	395	238	47	617
Caldwell	969	545	188	236	556
Crittenden	556	389	146	21	372
Henderson	1,686	1,149	537	0	1,779
Hopkins	2,196	1,640	556	0	1,949
McLean	478	355	123	0	445
Union	1,198	828	370	0	727

ESTIMATED FEMALE LABOR SUPPLY
WEBSTER COUNTY LABOR MARKET AREA

Area	Current			Not in Labor Force	Future Becoming 18 years of age 1985 thru 1989
	Total Female	Unemployed	Under- employed		
Labor Market					
Area*	11,145	4,066	2,990	4,089	5,984
Webster	1,517	488	234	795	595
Caldwell	1,215	376	313	526	476
Crittenden	678	228	159	291	342
Henderson	2,274	1,110	875	289	1,684
Hopkins	3,756	1,035	793	1,928	1,850
McLean	664	250	154	260	415
Union	1,041	579	462	0	622

* Additional workers may be drawn from other nearby counties.

Note: Unemployed - persons unemployed and actively seeking work;
Underemployed - persons employed but working only 14 to 26 weeks per year;
Not in Labor Force - represents the number of persons who would enter the labor force if suitable employment were available (based on the assumption that persons in Kentucky would like to participate in the labor force in the same proportion that they do nationally).

Sources: Kentucky Cabinet for Human Resources, Kentucky Labor Supply Estimates by County, 1983. Kentucky Department of Economic Development, Future Labor Supply Becoming 18 Years of Age, 1985 thru 1989.

AVERAGE WEEKLY WAGES BY INDUSTRY,
BY PLACE OF WORK, 1983

	<u>Webster County</u>	<u>Caldwell County</u>	<u>Crittenden County</u>	<u>Henderson County</u>
All Industries	\$343.75	\$241.69	\$242.52	\$312.82
Mining & Quarrying	670.94	422.50	279.08	523.22
Contract Construction	316.53	192.89	235.16	341.20
Manufacturing	254.41	288.79	323.71	380.45
Transportation, Communications & Public Utilities	*	333.50	296.16	417.65
Wholesale & Retail Trade	197.16	171.16	149.41	203.85
Finance, Insurance & Real Estate	262.86	252.32	227.08	290.58
Services	132.67	199.86	170.30	267.27
State/Local Government	250.16	259.25	231.46	281.03
Other	145.66	208.28	170.32	259.75
	<u>Hopkins County</u>	<u>McLean County</u>	<u>Union County</u>	
All Industries	\$328.80	\$243.39	\$402.76	
Mining & Quarrying	639.57	467.40	655.09	
Contract Construction	347.42	298.70	351.13	
Manufacturing	381.50	300.95	266.80	
Transportation, Communications & Public Utilities	374.13	491.11	425.12	
Wholesale & Retail Trade	221.88	193.37	187.87	
Finance, Insurance & Real Estate	250.30	259.01	284.87	
Services	241.32	179.79	221.82	
State/Local Government	292.67	205.42	269.39	
Other	186.45	*	260.93	

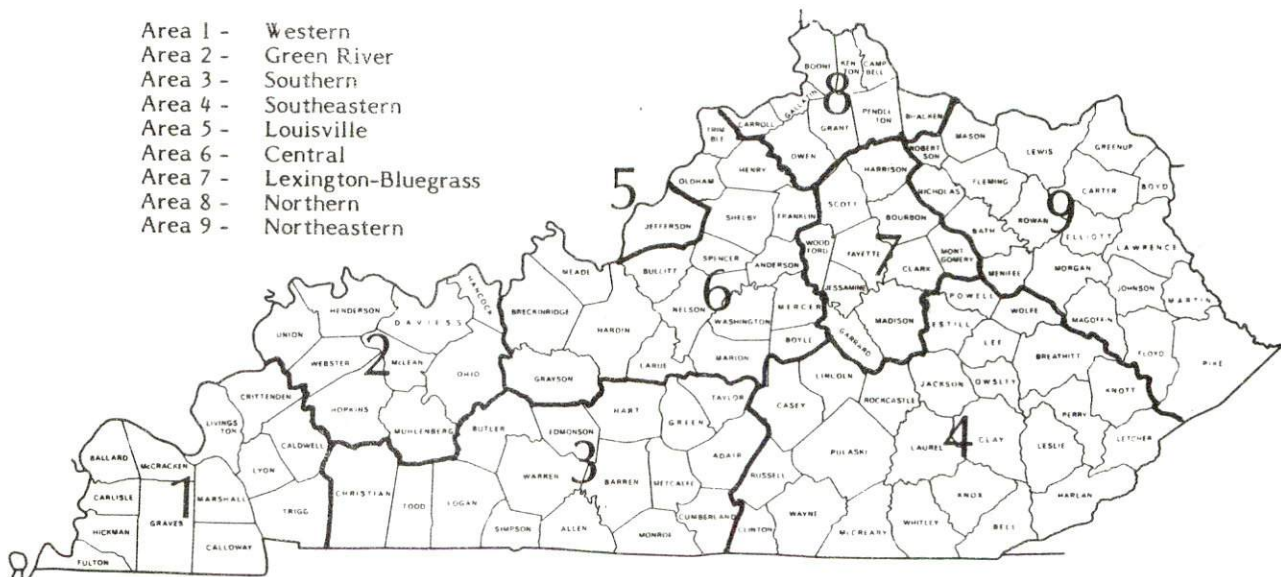
* Not disclosed.

Note: Excludes domestic workers, railway workers, certain nonprofit corporations, majority of federal government workers, and self-employed workers.

Source: Kentucky Cabinet for Human Resources, Average Weekly Wages of Workers Covered by Kentucky Unemployment Insurance Law, 1983.

Occupational wage rates for specific industries are usually not available to most government agencies, and wage data furnished to state employment agencies by individual industrial employers are protected from disclosure by federal law. The most reliable up-to-date wage information can be obtained by direct contact with local employers.

Associated Industries of Kentucky, a voluntary organization of Kentucky businesses, regularly collects occupational wage rates and fringe benefits data from participating member firms. Data are compiled for over 127 clearly defined office, production, and service occupations. Tabulations are published for nine geographical areas of Kentucky, as shown on the map below. It should be noted that the data may be weighted by the preponderance of firms in the larger cities and may be somewhat higher than the rates paid in the smaller communities. Data from these tabulations are available, upon request, from the Kentucky Department of Economic Development, Frankfort, Kentucky 40601.



PER CAPITA PERSONAL INCOME

<u>Area</u>	<u>1979</u>	<u>1983</u>	<u>Percent Change</u>
Webster County	\$ 8,254	\$ 9,783	18.5
Labor Market Area Range	\$6,915 - 8,798	\$8,269 - 10,855	N/A
Kentucky	7,124	9,396	31.9
U. S.	8,651	11,687	35.1

Sources: U.S. Department of Commerce, Bureau of Economic Analysis; Commerce News, August 28, 1984; May 7, 1985. Kentucky Economic Information System, June 1985.

TRANSPORTATION

Rail

Line serving **Providence** - Seaboard System Railroad

Services - Branch line; service is provided as needed to Providence; switching services; team track space for three cars; nearest piggyback facilities at Evansville, Indiana, 47 miles north of Providence

Line serving **Providence** - Tradewater Railway

Services - Main line; three northbound and three southbound freights stop weekly; switching services; siding space for 90 cars; nearest piggyback facilities at Evansville, Indiana, 47 miles north of Providence

Line serving **Sebree** - Seaboard System Railroad

Services - Main line; five northbound and five southbound through freights daily; local stops as needed; switching services; team track space for five cars; nearest piggyback facilities at Evansville, Indiana, 28 mile north of Sebree

For details on routing, schedules, rates, and services, contact:

Manager of Industrial Development
Seaboard System Railroad
P. O. Box 2157
Louisville, Kentucky 40201
(502) 587-5228

and/or

Tradewater Railway
P. O. Box 66
Sturgis, Kentucky 42459
(502) 333-4151

Highways

Major highways serving Webster County include the Pennyrile Parkway, U.S. 41, U.S. 41 Alternate, and Kentucky 109. Interchanges with the Pennyrile Parkway, a multi-lane toll road, are located 2 miles east of Sebree. The Pennyrile Parkway provides access to the Audubon Parkway to the north and the Western Kentucky Parkway to the south. Interchanges with the Western Kentucky Parkway are located 16 miles south of Providence via Kentucky 109.

Truck Service

<u>Company</u>	<u>Home Office</u>
A & H Truck Line, Inc.*	Evansville, Indiana 47711
ANR Freight System, Inc.*	P. O. Box 5070 Denver, Colorado 80217
Advance Transportation Company*	P. O. Box 2011 Milwaukee, Wisconsin 53201
American Freight System, Inc.**	9393 West 110th Street Overland Park, Kansas 66210
Bestway Express, Inc.*	Nashville, Tennessee 37210
Carolina Freight Carriers Corporation*	P. O. Box 697 Cherryville, North Carolina 28021
Duff Truck Line, Inc.**	P. O. Box 359 Lima, Ohio 45802
Holland Motor Express, Inc.*	Holland, Michigan 49423
Leoni Motor Express, Inc.*	Chicago Heights, Illinois 60411
Majors Transit, Inc.*	P. O. Box 9 Caneyville, Kentucky 42721
McLean Trucking Company**	P. O. Box 213 Winston-Salem, North Carolina 27154
Overnite Transportation Company*	P. O. Box 1216 Richmond, Virginia 23209
Preston Trucking Company, Inc.*	151 East Boulevard Preston, Maryland 21655
R-W Service System, Inc.*	20225 Goddard Road Taylor, Michigan 48180
Renner's Express, Inc.*	P. O. Box 882 Indianapolis, Indiana 46206
Ryder/P-I-E Nationwide, Inc.**	Jacksonville, Florida 32203
Smith's Transfer Corporation**	P. O. Box 1000 Staunton, Virginia 24401
Transcon Lines*	P. O. Box 92220 Los Angeles, California 90009
Yellow Freight System, Inc.*	P. O. Box 7270 Overland Park, Kansas 66207

* Interstate and intrastate service.

** Interstate service only.

Source: American Motor Carrier Directory, Spring 1985.

Other Freight ServicesNearest Office or Shipping Center

Airborne Express	Evansville, Indiana, 47 miles northeast of Providence
Emery	Evansville, Indiana, 47 miles northeast of Providence
Federal Express	Evansville, Indiana, 47 miles northeast of Providence
KATO Express, Inc.	Elizabethtown, Kentucky, 127 miles east of Providence
Purolator Courier	Evansville, Indiana, 47 miles northeast of Providence
United Parcel Service	Madisonville, Kentucky, 17 miles southeast of Providence

HIGHWAY MILES AND TRUCK TRANSIT TIME IN DAYS FROM
PROVIDENCE, KENTUCKY, TO SELECTED MARKET CENTERS

City	Highway Miles	Delivery Time TL	City	Highway Miles	Delivery Time TL
Atlanta, Ga.	364	2	Los Angeles, Ca.	2,060	5
Baltimore, Md.	746	3	Louisville, Ky.	163	1
Birmingham, Ala.	318	2	Nashville, Tenn.	122	1
Chicago, Ill.	339	2	New Orleans, La.	639	3
Cincinnati, Ohio	241	2	New York, N. Y.	908	3
Cleveland, Ohio	480	2	Pittsburgh, Pa.	548	3
Detroit, Mich.	523	2	St. Louis, Mo.	215	2
Knoxville, Tenn.	299	2			

Note: Mileage computations are via the best interstate or primary highways, not necessarily the most direct route of travel.

Sources: Rand McNally Road Atlas, 1979. Official Kentucky Mileage Map, 1982.
Delivery time - Majors Transit, Inc., P. O. Box 9, Caneyville, Kentucky 42721.

AirLocal

Location:	Providence-Webster County Airport
Runways:	2 miles northeast of Providence
Length:	1 paved
Traffic	3,800 feet
Control:	Wind sock
Lighting:	Radio activated lighting system
Services:	100 octane LL, car rental, tie down, hangar

(Cont'd)

Nearest Scheduled Commercial Airline Service

Location: Evansville Dress Regional Airport
4 miles north of Evansville, Indiana;
51 miles north of Providence, Kentucky

Runways: 3 paved

Length: 8,021 feet; 5,088 feet; 3,500 feet

Traffic Control: Tower

Lighting: Beacon, runway

Services: Eastern, USAir, Allegheny Commuter, Britt Airways,
Comair; fuel - 100LL, jet-A; hangars, tie-downs;
major A & P repairs, major Avionics repairs;
flight instruction, APU, charter, oxygen, plane
rental, survival equipment; taxi, car rentals,
courtesy car; weather information; restaurant

Air Freight Service: Air freight terminal

Taxi - Providence - one company, 24-hour service

Rental Services - Automobile rental services are available in Providence; truck and trailer rental services are available in Madisonville, 17 miles southeast of Providence and in Henderson, 18 miles north of Sebree.

Water

The nearest navigable river is the Green River at Sebree, where a 9-foot navigational channel is maintained to the Ohio River. The Henderson County Riverport Authority offers port facilities at Henderson, 37 miles north of Providence.

POWER AND FUEL

Electricity

Company serving **Providence** - Providence Municipal Light and Water Company
Source of power - Kentucky Utilities Company
Total generating capacity - 3,164,000 KW*
For industrial rates contact:

City of Providence
North Willow Street
Providence, Kentucky 42450
(502) 667-2511

Company serving **Dixon, Seebree, Clay and parts of Webster County** - Kentucky Utilities Company
Source of power - Kentucky Utilities Company
Total generating capacity - 3,164,000 KW*
For industrial rates contact:

Industrial Development Department
Kentucky Utilities Company
One Quality Street
Lexington, Kentucky 40507
(606) 255-1461

Companies serving **Webster County** - Green River Electric Corporation and Henderson-Union Rural Electric Cooperative Corporation
Source of power - Big Rivers Electric Corporation
Total generating capacity - 1,548,500 KW
For industrial rates contact:

Green River Electric Corporation
P. O. Box 1389
Owensboro, Kentucky 42302
(502) 926-4141

or

Henderson-Union RECC
P. O. Drawer 18
Henderson, Kentucky 42420
(502) 826-3991 or (800) 242-7069

* Kentucky Utilities Company's total generating capacity will be increased when a new 650,000 KW generation plant is completed in Hancock County in 1993.

Natural Gas

Company serving **Providence** - Providence Municipal Gas Company

Source of supply - Texas Gas Resources Corporation

Size of transmission mains - 26-inch (supplier); 4-inch (distributor)

Distribution mains - 1, 2, 3, and 4 inches

Distribution pressure - Up to 28 psi

Btu content - 1,008 to 1,016 per cubic foot

Specific gravity - 0.585

For rates and supplies contact:

Providence Municipal Gas Company

P. O. Box 128

Providence, Kentucky 42450

(502) 667-2511

Company serving **Sebree** - Western Kentucky Gas Company

Source of supply - Texas Gas Resources Corporation

Size of transmission mains - 10-inch (supplier); 2-inch (distributor)

Distribution mains - 2 to 4 inches

Distribution pressure - 35 psi

Btu content - 1,000 per cubic foot

Specific gravity - 0.600

For rates and supplies contact:

Western Kentucky Gas Company

311 West 7th Street

Owensboro, Kentucky 42301

(502) 685-8067

Company serving **Clay** - Clay Natural Gas System

Source of supply - Texas Gas Resources Corporation

Size of transmission mains - 26-inch (supplier); 6-inch (distributor)

Distribution mains - 1 to 4 inches

Distribution pressure - 10 to 25 psi

Btu content - 1,005 per cubic foot

Specific gravity - .585

For rates and supplies contact:

Clay Natural Gas System

West Railroad Street

Clay, Kentucky 42404

(502) 664-2444

Other Fuels

Propane

Lin-Gas, Inc.
Highway 41 South
Slaughters, Kentucky 42456

Texgas Corporation
1641 Madison Street
Henderson, Kentucky 42420

Pargas of Nebo
U.S. 41A
Nebo, Kentucky 42441

Union Propane Gas Company
Highway 60 West
Morganfield, Kentucky 42437

Southern States Coop
Clay Service
205 East Railroad Street
Clay, Kentucky 42404

Fuel oils

Distillate fuel oil -

Ashland Oil Company
North Broadway
Providence, Kentucky 42450

Marathon Oil Company
U.S. 41
Sebree, Kentucky 42455

Century Oils
West Main
Providence, Kentucky 42450

Charles M. Overby Oil Company
U.S. 41A
Dixon, Kentucky 42409

Hart Gas and Oil Company, Inc.
North Broadway
Providence, Kentucky 42450

Wiser Oil Company
Highway 283
Sebree, Kentucky 42455

Residual fuel oil - Arrangements must be made with the refinery.

Low sulphur content coal - Available in Kentucky.

WATER AND SEWERAGE

Public Water Supply

Company serving **Providence** - Providence Municipal Light and Water Company
Cedar Street
Providence, Kentucky 42450
(502) 667-7332

Source - Two lakes, Tradewater River
Treatment plant capacity - 1,500,000 gallons per day
Average daily consumption - 503,000 gallons
Peak daily consumption - 941,000 gallons
Treatment processes - Coagulation, sedimentation, chlorination, rapid mix, flocculation, filtration, fluoridation
Calcium content - 025.8 ppm
Iron content - 0.04 ppm
Hardness - 107.0 ppm as calcium carbonate
Storage capacity - 700,000 gallons (including clear well)
Size lines - 1, 1½, 2, 4, 6, 8, 10, and 12 inches
Water pressure - 72 to 80 psi

MONTHLY WATER RATES

Inside city limits

First	3,000 gallons	\$5.00 (Minimum)
Next	2,000 gallons	1.35 per M gallons
Next	10,000 gallons	1.20 per M gallons
Next	15,000 gallons	.90 per M gallons
Next	30,000 gallons	.75 per M gallons
All over	60,000 gallons	.55 per M gallons

Outside city limits

First	3,000 gallons	\$7.50 per M gallons
Next	2,000 gallons	1.50 per M gallons
Next	5,000 gallons	1.25 per M gallons
Next	5,000 gallons	1.00 per M gallons
Next	5,000 gallons	.90 per M gallons
Next	10,000 gallons	.80 per M gallons
Next	15,000 gallons	.70 per M gallons
All over	45,000 gallons	.50 per M gallons

Tap-on charge: \$175

Company serving **Sebree** - Sebree Water Treatment Plant
P. O. Box 245
Sebree, Kentucky 42455
(502) 835-7501

Source - 2 wells
Treatment plant capacity - 244,000 gallons per day*
Average daily consumption - 151,900 gallons
Peak daily consumption - 196,300 gallons
Treatment processes - Chlorination, filtration, fluoridation
Calcium content - 022.0 ppm
Iron content - 0.04 ppm
Hardness - 135.0 ppm as calcium carbonate
Storage capacity - 205,000 gallons
Size lines - 2 to 8 inches
Water pressure - 65 to 90 psi

MONTHLY WATER RATES

Inside city

5/8, 3/4 and 1-inch meter

First	2,000 gallons	\$5.00 (Minimum)
All over	2,000 gallons	1.00 per M gallons

1½ and 2-inch meter

First	2,000 gallons	\$5.50 (Minimum)
All over	2,000 gallons	1.00 per M gallons

All larger meters

First	2,000 gallons	\$6.00 (Minimum)
All over	2,000 gallons	1.00 per M gallons

Outside city

5/8, 3/4, and 1-inch meter

First	2,000 gallons	\$5.50 (Minimum)
All over	2,000 gallons	1.25 per M gallons

1½ and 2-inch meter

First	2,000 gallons	\$6.00 (Minimum)
All over	2,000 gallons	1.25 per M gallons

All larger meters

First	2,000 gallons	\$6.50 (Minimum)
All over	2,000 gallons	1.25 per M gallons

Tap-on charges: \$225

* Kentucky Natural Resources and Environmental Protection Cabinet.

Company serving Clay - Clay Water Works*
West Railroad Street
Clay, Kentucky 42404
(502) 664-2444

Source - Webster County Water District
Average daily consumption - 120,000 gallons
Peak daily consumption - 190,000 gallons
Calcium content - 025.5 ppm
Iron content - 00.11 ppm
Hardness - 216.0 ppm as calcium carbonate
Storage capacity - 500,000 gallons
Size lines - 1 to 8 inches
Water pressure - 25 to 60 psi

MONTHLY WATER RATES

First	2,000 gallons	\$8.50 (Minimum)
All over	2,000 gallons	3.50 per M gallons

Tap-on charge: \$200

Name of water district - Webster County Water District
Route 2, Box 111A, Davis Road
Sebree, Kentucky 42455
(502) 884-3395 or (502) 884-3879

Area served - Southeastern, central, and western parts of Webster County
Date when water district began operating - October 1980
Source of raw water - 2 wells
Capacity of treatment plant - 846,000 gallons per day
Treatment processes - Aeration, coagulation, chlorination, rapid mix, filtration
Average amount of water used in a 24-hour period - 350,000 gallons
Peak amount of water used in a 24-hour period - 500,000 gallons
Calcium content - 034.6 ppm
Iron content - 00.12 ppm
Hardness - 173.0 ppm as calcium carbonate
Storage capacity - 737,000 gallons
Size lines - 3 to 10 inches
Water pressure - 50 to 118 psi

(Cont'd)

* The City of Clay Water Department recently installed a new 500,000 gallon water storage tank. Also, additional water lines were added. Total cost of the project was \$540,000.

MONTHLY WATER RATES

5/8-inch meter

First	2,000 gallons	\$ 7.50 (Minimum)
Next	4,000 gallons	3.00 per M gallons
Next	4,000 gallons	2.50 per M gallons
Next	20,000 gallons	2.00 per M gallons
Next	20,000 gallons	1.70 per M gallons
Next	50,000 gallons	1.40 per M gallons
All over	100,000 gallons	1.00 per M gallons

1-inch meter

First	10,000 gallons	\$29.50 (Minimum)
Next	20,000 gallons	2.00 per M gallons
Next	20,000 gallons	1.70 per M gallons
Next	50,000 gallons	1.40 per M gallons
All over	100,000 gallons	1.00 per M gallons

1½-inch meter

First	15,000 gallons	\$39.50 (Minimum)
Next	15,000 gallons	2.00 per M gallons
Next	20,000 gallons	1.70 per M gallons
Next	50,000 gallons	1.40 per M gallons
All over	100,000 gallons	1.00 per M gallons

2-inch meter

First	20,000 gallons	\$49.50 (Minimum)
Next	10,000 gallons	2.00 per M gallons
Next	20,000 gallons	1.70 per M gallons
Next	50,000 gallons	1.40 per M gallons
All over	100,000 gallons	1.00 per M gallons

Tap-on charge:

5/8-inch meter -	\$300
3/4-inch meter -	325
1-inch meter -	400
1 1/2-inch meter -	500
2-inch meter -	600

Raw Water

Surface water sources - Tradewater River, Green River, and Highland Creek

Average discharge - Tradewater River at Olney, 334 cfs (43-year record, USGS); Green River at Calhoun, 11,220 (53-year record, USGS)

Expected ground water yield - 50 to 200 gpm along the Tradewater River in southwestern portion of the county and small areas in the northern portion of the county; 5 to 50 gpm in the western portion of the county; 5 gpm or less over the remainder of the county

Sewerage

Company serving **Providence** - Providence Municipal Light and Water Company
Cedar Street
Providence, Kentucky 42450
(502) 667-7332

Design capacity - 450,000 gallons per day

Average daily flow - 288,000 gallons

Type of treatment - Primary and secondary

Treatment processes - Grit removal, primary sedimentation, trickling filter, chlorination, sludge drying beds

Treated effluent discharged into - Owens Creek to Tradewater River

Size of sanitary mains - 8, 10, 12 and 15 inches

Size of storm mains - 12, 14, 24, 36, and 48 inches

Monthly rates - 75 percent of monthly water bill

Tap-on charge: \$200

Company serving **Sebree** - Sebree Sewage Treatment Plant
P. O. Box 245
Sebree, Kentucky 42455
(502) 835-7501

Design capacity - 160,000 gallons per day

Average daily flow - 122,000 gallons

Type of treatment - Primary

Treatment processes - Screening, grit removal, primary sedimentation, activated sludge, chlorination

Treated effluent discharged into - Mock Roy Creek

Size of sanitary mains - 6 and 8 inches

Size of storm mains - 36 inches

Monthly rates - 80% of monthly water bill

Tap-on charge: \$200

Company serving **Clay** - Clay Sewerage System

Railroad Street

Clay, Kentucky 42404

(502) 664-2444

Design capacity - 200,000 gallons per day*

Average daily flow - 100,000 gallons

Type of treatment - Primary

Treatment processes - Lagoon system, chlorination, post aeration, polishing lagoon

Treated effluent discharged into - Crab Orchard Creek

Size of sanitary mains - 8 inches

Size of storm mains - 12 and 15 inches

Monthly rates - 50 percent of monthly water bill

Tap-on charge: \$600

* Kentucky Natural Resources and Environmental Protection Cabinet.

CLIMATE

Webster County

Temperature

Normal (30-year record)	55.70 degrees
Average annual 1984	55.80 degrees
Record highest, July 1954 (44-year record)	105.00 degrees
Record lowest, February 1951 (44-year record)	-23.00 degrees
Normal heating degree days (30-year record)	4,729
(Heating degree day totals are the sums of negative departures of average daily temperatures from 65 degrees F.)	

Precipitation

Normal (30-year record)	41.55 inches
Mean annual snowfall (29-year record)	14.10 inches
Total precipitation 1984	49.75 inches
Mean number days precipitation (.01 inch or more) (44-year record)	115.80
Mean number days thunderstorms (44-year record)	45.20

Prevailing Winds (through 1963)

South-Southwest

Relative Humidity (23-year record)

Midnight	78 percent
6 a.m.	81 percent
Noon	59 percent
6 p.m.	62 percent

Source: U.S. Department of Commerce, Environmental Science Services Administration, Climatological Data, 1984. Station of record: Evansville, Indiana.

LOCAL GOVERNMENT

City

Providence

Structure - Mayor - 4-year term; 6 council members - 2-year terms

Budget 1984-85 - General Fund	\$ 808,410.00
Water and Sewer Fund	180,205.00
City Gas System	928,918.00
City Electric System	1,214,040.00

Fees and licenses - \$7.50 annual automobile license fee; \$10.50 annual loading fee for trucks under one ton and \$15.50 for trucks over one ton

Sebree

Structure - Mayor - 4-year term; 6 council members - 2-year terms

Budget 1984-85 - General Fund	\$164,931.60
Water and Sewer Fund	120,712.75

Fees and licenses - Occupational license tax ranges from \$31.25 to \$70.00 annually; fire card - \$25.00

Clay

Structure - Mayor - 4-year term; 6 council members - 2-year terms

Budget 1984-85 - General Fund	\$ 92,894.00
Water and Sewer Fund	164,040.00
City Gas System	401,264.00

Fees and licenses - Unloading fee ranges from \$10.50 to \$15.50; insurance license fee - 8 percent of premium collected; vending machine license - \$5.25

County

Structure - County Judge/Executive - 4-year term; 6 magistrates - 4-year terms

Budget 1984-85 - General Fund \$792,948; Road Fund \$332,722

Assessed Value of Property, 1984*

<u>Classes of Property</u>	<u>Providence</u>	<u>Sebree</u>
Real Estate	\$29,452,646	\$ 8,622,453
Tangibles	17,997,154	3,183,809
<u>Classes of Property</u>	<u>Clay</u>	<u>Webster County</u>
Real Estate	\$ 9,576,935	\$169,805,399
Tangibles	3,895,849	76,178,273

* Excludes Homestead Exemptions.

Property Taxes

All property in Kentucky is assessed at 100 percent of fair cash value.

Land and buildings are taxed by the state and may be taxed by local jurisdictions. The 1984 state rate is \$0.22 per \$100 of assessed valuation.

Manufacturing machinery, raw materials inventories, pollution control equipment, and goods in the process of manufacture are not subject to local taxation. The state rate is \$0.15 per \$100.

Other tangible personal property owned by manufacturers (automobiles, trucks, finished goods, office furniture, office equipment) is taxed by the state at \$0.45 per \$100 and may be taxed by local jurisdictions.

Intangible personal property located in Kentucky (money in hand, shares of stock, notes, bonds, accounts receivable, and other credits) is taxed by the state at \$0.25 per \$100, and is not subject to local taxation.

Property stored in public warehouses in a transit status is not subject to local taxation. The state rate is only \$0.015 per \$100.

Private leaseholds in industrial facilities owned by cities or counties and financed by industrial revenue bonds are subject to a state tax of \$0.015 per \$100 of value (essentially the lessee's equity, adjusted for appreciation or depreciation). Local taxation is not permitted.

Combined State and Local Rates Per \$100 Valuation, 1984*
(100% assessment)

Kentucky school districts levy property taxes on property located within individual school district boundaries. Two types of school districts are operated in Kentucky: 1) independent school districts which usually operate within a single city and often do not cover the entire city; and 2) common school districts which operate in portions of counties not covered by independent districts and cover the entire county when there is no independent district. School district boundaries are mutually exclusive and do not cross.

	Site Inside City of Providence and within the Providence <u>School District</u>	Site Inside City of Providence and within the Webster County <u>School District</u>
1. Land and buildings	\$1.1180	\$1.0350
2. Mfg. machinery, raw materials, goods in process, pollution control equipment	0.1500	0.1500
3. Automobiles and trucks	1.4578	1.3878
4. Finished goods, office equipment, other tangibles	1.4120	1.3270
5. Intangibles (accounts receivable, notes, bonds, etc.)	0.2500	0.2500
6. Property stored in public warehouses in a transit status	0.0150	0.0150
7. Leaseholds in industrial revenue bond financed plants	0.0150	0.0150
		(Cont'd)

* Kentucky Department of Economic Development.

	<u>Site Inside City of Sebree</u>	<u>Site Inside City of Clay</u>	<u>Site Inside Unincorporated Webster County</u>
1. Land and buildings	\$0.8650	\$0.7810	\$0.5350
2. Mfg. machinery, raw materials, goods in process, pollution control equipment	0.1500	0.1500	0.1500
3. Automobiles and trucks	1.2178	1.1338	0.8878
4. Finished goods, office equipment, other tangibles	1.1570	1.0730	0.8270
5. Intangibles (accounts receivable, notes, bonds, etc.)	0.2500	0.2500	0.2500
6. Property stored in public warehouses in a transit status	0.0150	0.0150	0.0150
7. Leaseholds in industrial revenue bond financed plants	0.0150	0.0150	0.0150

Utilities Gross Receipts Tax for Schools

A 3 percent tax is levied on utilities receipts for schools in Webster County. Tax is paid by all consumers of utilities as an add-on to the utilities bills. Exempted are receipts from utilities services that are resold and the receipts from the sale of energy or energy producing fuels that exceed 3 percent of the cost of production in manufacturing, processing, mining or refining.

Planning and Zoning

City agency - Providence Planning and Zoning Commission

Zoning enforced - Within city only

Subdivision regulations enforced - Within city only

Local codes enforced - Building and housing

Mandatory state codes enforced - Kentucky Plumbing Code, National Electric Code, Kentucky Boiler Regulations and Standards, Kentucky Building Code (modeled after BOCA code)

Safety

Police	Providence	Sebree
Total staff	8	2
Radio-patrol cars	2	1
	Clay	Webster County
Total staff	2 full-time	9
	1 part-time	
Radio-patrol cars	1	3

(Cont'd)

Fire	Providence	Sebree	Clay
------	------------	--------	------

Insurance Services Office,

Public Protection

Classification

6

7

8

Full-time staff

9

Volunteers

15

18

14

Rescue Service

Providence Fire Department and Rescue Squad:

Number of volunteers - 30

Equipment - Power saw, generator, first aid kits, Jaws-of-Life, resuscitator, rescue and brush fire 160-gpm truck fully equipped for rescue, access to all Civil Defense equipment, high pressure air bag system

Personnel training - 13 emergency medical technicians, basic fireman and refresher training

Sebree Fire and Rescue Squad:

Number of volunteers - 18

Equipment - Ambulance-rescue truck, two air packs, dragging equipment, respirator, standard first aid equipment, generator lights, Jaws-of-Life

Personnel training - Emergency medical technician training, advanced and standard first aid, basic fireman and refresher training

Webster County Rescue Squad:

Number of volunteers - 100

Equipment - 2 emergency vehicles, one boat, dragging equipment, Jaws-of-Life, county-wide warning system

Personnel training - 50 emergency medical technicians, basic first aid training

Refuse Collection and Disposal

	Providence	Sebree	Clay
Type service	Municipal	Municipal	Private
Fee charged:			
residential	\$5.00 per month	\$4.50 per month	\$5.00 per month
commercial	Negotiated	\$5.50 per month	Negotiated
industrial	Negotiated	\$175.00 per month	Negotiated
Collection frequency:			
residential	Weekly	Weekly	Weekly
commercial	As needed	Twice weekly	As needed
industrial	As needed	Twice weekly	As needed
Disposal method	Landfill	Landfill	Landfill

EDUCATION

Public Schools

	Providence Independent	Webster County
Total Enrollment (Spring 1985)	688	2,286
Kindergarten	52	179
Elementary	424	1,448
High School	212	659
Pupil-Teacher Ratio (1983-84)	21-1	22-1
Percent High School Graduates to College (1983-84)	40.4	21.2
Expenditures Per Pupil (1983-84)	\$1,730.36	\$ 1,612.16
Bonded Indebtedness (June 30, 1984)	\$ 70,000	\$1,890,000

Area Colleges and Universities

<u>Name</u>	<u>Location (Miles distant from Providence)</u>	<u>Enrollment (Fall, 1984)</u>	<u>Highest Degree Conferred</u>
Madisonville Community College	Madisonville, Kentucky (17)	1,417	Associate
Henderson Community College	Henderson, Kentucky (37)	1,434	Associate
Indiana State University, Evansville Campus	Evansville, Indiana (47)	3,848	Baccalaureate
University of Evansville	Evansville, Indiana (47)	5,824	Masters
Hopkinsville Community College	Hopkinsville, Kentucky (51)	1,113	Associate
Brescia College	Owensboro, Kentucky (67)	815	Baccalaureate*
Kentucky Wesleyan College	Owensboro, Kentucky (67)	836	Baccalaureate*

* Courses in masters degree programs are taught on campus by faculty members of Western Kentucky University or Murray State University. The degrees are issued by Western Kentucky University or Murray State University.

Vocational Schools

Both the state vocational-technical schools and the area vocational education centers are operated by the Kentucky Department of Education. The state vocational-technical schools enroll persons full time who are at least 16 years of age and not in school. These students attend classes for six hours each day. The area vocational education centers are designed to accommodate high school students who are at least 15 years of age. These students attend vocational school for three hours each day. The state vocational-technical schools and the area education centers offer evening courses to enable working adults to upgrade current job skills.

Nearest State School

Location	Madisonville State Vocational-Technical School
Miles Distant	Madisonville
Curriculum	17 miles southeast of Providence
	Health and Personal Services Occupations
	Biomedical Equipment Technician
	Licensed Practical Nursing
	Medical Laboratory Technician - C
	Medical Secretary/Medical Office Clerk
	Health Services
	Radiologic Technology
	Respiratory Therapy
	Surgical Techologist
	Industrial Education
	Auto Body Repair
	Auto Mechanics
	Carpentry
	Diesel Mechanics
	Drafting (with CAD/CAM)
	Electronics
	Industrial Electricity
	Machine Shop
	Mine Equipment Operator
	Mine Maintenance Technology
	Tool and Die
	Welding
	Learning Resource Center

Nearest Area Education Center

Location	Webster County Area Vocational Education Center
Miles Distant	Dixon
Curriculum	11 miles northeast of Providence
	Health and Personal Services Occupations
	Health Services
	Industrial Education
	Adult Agriculture
	Auto Mechanics
	Industrial Electricity
	Machine Shop
	Welding

Arrangements can be made to provide training in the specific production skills required by an industrial plant. Instruction may be conducted either in the vocational school or in the industrial plant, depending upon the desired arrangement and the availability of special equipment.

HEALTH

Local Medical Personnel

Webster County

Physicians - 8
Dentists - 6

Hospitals

<u>General Hospital</u>	<u>Location</u>	<u>Beds</u>
Regional Medical Center of Hopkins County	Madisonville, 17 miles southeast of Providence	401
Community Methodist Hospital	Henderson, 37 miles northeast of Providence	209

Regional Medical Center of Hopkins County

General hospital facilities - Emergency department (includes cardiac room and two trauma rooms); 12 operating rooms; intensive care and coronary care units; physical and respiratory therapy; pharmacy; laboratory; radiology department (includes nuclear medicine, ultra sound, and CAT-Scan); obstetrics; level II nursery; pediatric intensive care unit; electromyography; electrocardiography; electroencephalography; dietary department; cancer therapy

Medical staff - 94 physicians on active staff; 15 residents; 215 registered nurses; 116 licensed practical nurses

Community Methodist Hospital

General hospital facilities and services - 5 operating rooms; 18 bed ICU/CCU; 16 normal nursery bassinets and 4 level II neonatal care beds; 5 X-ray and diagnostic treatment rooms and nuclear medicine; ultrasound and CAT-Scan; emergency care department with 24-hour physician coverage; outpatient ambulatory surgical services with 2 operating and 2 treatment rooms; cardio-pulmonary services; chaplaincy services; laboratory facilities; pharmacy and physical therapy rehabilitation services

Medical staff - 50 doctors; 38 consultant doctors; 130 registered nurses; 70 graduate licensed practical nurses; 5 certified registered nurse anesthetists; 22 laboratory technicians; 4 pharmacists; 5 physical therapists; 2 physical therapist assistants; 2 respiratory therapists; 7 respiratory technicians and 15 X-ray technicians

Other Medical Facilities

Trover Clinic
Webster County Health Department

Ambulance Service

Name - Providence Fire Department

Staff - 8 full-time emergency medical technicians; 5 part-time emergency medical technicians

Service - 24-hour to Providence area; back-up service for Webster County

Equipment - 2 fully equipped ambulances

Name - Webster County Ambulance Service - Clay unit

Staff - 8 emergency medical technicians

Service - 24-hour service to the Clay area

Equipment - 1 fully equipped ambulance

Name - Sebree Emergency Medical Service

Staff - 9 emergency medical technicians

Service - 24-hour service to the Sebree and Slaughter area

Equipment - 1 fully equipped ambulance

OTHER LOCAL FACILITIES

Communications

Telephone -	South Central Bell
Telegraph -	Western Union
Services -	Toll-Free number, 1-800-325-6000
Postal -	U.S. Post Office*
Class -	Second
Mail received -	Once daily
Mail dispatched -	Once daily
Newspapers -	
Weekly and circulation -	Journal Enterprise - 4,350 (Providence); Sebree Banner - 4,100 (Sebree)
Other papers received from -	Henderson and Louisville, Kentucky; Evansville, Indiana
Radio -	WHRZ-FM
Major stations received from -	Louisville, Henderson, Madisonville, and Owensboro, Kentucky; Evansville, Indiana; Nashville, Tennessee
Television -	Webster County
Airwave reception from -	Paducah, Kentucky; Evansville Indiana; Nashville, Tennessee
Cable service	
Number of cable channels -	**
Kentucky Educational Television -	Madisonville, Kentucky transmitter, Channel 35

* U.S. Post Offices are located in Providence, Sebree and Clay with each having the same classification.

** The number of cable channels available in Webster County range from 12 to 30, depending on location.

Library Services

Public library - Webster County Public Library*

Size collection - 36,819

Circulation, 1983-84 - 74,598

Services - Bookmobile, records, magazines, paintings, audio-visual equipment

Religious Institutions

Denominations - Baptist
Catholic
Christian
Church of Christ
Jehovah's Witnesses
Methodist
Pentecostal
Presbyterian
Seventh Day Adventist

Financial Institutions

<u>Banks</u>	<u>Assets</u>	<u>Deposits</u>	<u>Statement Date</u>
Dixon Bank	\$18,016,121.87	\$15,912,388.38	12/31/84
Farmers Bank of Clay	47,334,734.49	38,643,660.03	12/31/84
Poole Deposit Bank	25,728,340.20	20,281,903.29	12/31/84
Providence State Bank	26,810,158.00	22,932,364.00	12/31/84
Sebree Deposit Bank	15,266,212.79	11,517,976.11	12/31/84

<u>Savings and Loan Associations</u>	<u>Assets</u>	<u>Savings Accounts</u>	<u>Statement Date</u>
First Federal Savings and Loan Association**	\$65,664,889.61	\$63,508,145.86	12/31/83

Hotels and Motels

Webster County

Total number - 3
Total rooms - 29

* The main library is located in Dixon. Branches are also located in Sebree and Providence.

** The main office is located in Madisonville with branch offices located in Providence, Dawson Springs, Marion, Morganfield and Eddyville.

Clubs and Organizations

Providence

American Legion
American Legion Auxiliary
Book Club
Boy Scouts
Brownies
Business and Professional
Women's Club
Cub Scouts
Demolay
Eagles
Eastern Star
4-H Club
FBLA
FFA
FHA
Garden Club
Girl Scouts
Jaycees
Little League
Masonic Lodge
Mother's Club
Ministerial Association
Pakendal Club
P.T.O.
Providence Business and
Professionals Association
Rainbow Girls
Rose Club
Rotatian
20th Century Club
VFW

Sebree

American Legion

Democratic Women's Club
Eastern Star
4-H Club
FBLA
FFA
FTA
Homemaker's Club
Little League
Masonic Lodge
P.T.O.
Pee Wee League
Pony League
Sebree Chamber of
Commerce
Women's Club
Women's Softball League
Woodmen of the World

Clay

American Legion
Civic Club
Eastern Star
4-H Club
FFA
FHA
Homemakers Club
Little League
Masonic Lodge
Ministerial Association
P.T.O.
Park Board
Pee Wee Football League

RECREATION

Local

Westerfield Memorial Park in Providence contains picnic shelters and grills, a concession stand, restrooms, a baseball diamond, two tennis courts, a basketball court, track and a playground. The new legion park contains a baseball diamond, Christian Youth Center, horse show rink and is the location of the annual Coal Festival.

The 30-acre Sebree Springs Park in Sebree contains a swimming pool, two tennis courts, volleyball courts, baseball diamond, basketball court, pavilion, picnic area, three shelter houses, horse show rink and playground equipment. Recreational facilities at the Sebree Elementary School include a football field and a baseball diamond.

The Clay Community Park in Clay is a 10-acre public park containing two baseball fields with lights and bleachers, playground equipment, two tennis courts, concession stands, barbecue pit, and community building.

Area (Within 60 miles)

Pennyrile Forest State Resort Park near Dawson Springs is located 22 miles southeast of Providence. The 24-room lodge and cottages nestled within the trees provide excellent accommodations. Other facilities and activities include a dining room, a gift shop, rental rowboats and pedal boats, a 9-hole golf course, hiking trails, horseback riding, picnicking, playgrounds, shuffleboard, swimming at the lodge pool and off a sand beach, and two tennis courts. Lake Beshear, only four miles from the lodge, sports good fishing.

Just north of Henderson, 39 miles north of Providence, is the **John James Audubon State Park**, a 692-acre park where the famed naturalist gathered material for his painting, "The Birds of America." Many paintings by Audubon and his sons, and 126 first-edition prints of his paintings are on display at the Audubon Memorial and Nature Museum which is the focal point of the park. Other park features include the Audubon woods, a bird sanctuary, and a 12-acre nature preserve lake. The park has cottages and camping sites. Recreational facilities include a 28-acre recreational lake, a beach and a bathhouse, rental rowboats and pedal boats, a dock, a 9-hole golf course, hiking trails, picnic shelters, and playgrounds. Organized recreation programs are offered during the summer.

The Land Between the Lakes, located on a 170,000-acre wooded peninsula, is an outdoor recreational and conservational education center. Camping, swimming, fishing, boating, hiking, a buffalo herd on a 250-acre range, an Environmental Education Center for school study groups, an educational farm and a central station with films and displays are among the attractions. Kentucky Lake and Lake Barkley are among the top fishing and water sport recreation areas in the southeastern United States. The Land Between the Lakes area is approximately 45 miles southwest of Providence.

Kentucky Dam Village State Resort Park, located 46 miles southwest of Providence near Gilbertsville, is one of the largest and most popular vacation resorts in Kentucky. A modern lodge with 72 rooms, six different cottage types, and a 225-site campground make up the accommodations. There is also a dining room overlooking Kentucky Lake, a coffee shop, a snack bar, two gift shops, a meeting room, an activities center, and a recreation room. Recreational activities to choose from include boating and fishing at the largest docking facility in the Kentucky parks system, golf at the 18-hole Village Green Course, fishing, hiking, horseback riding, picnicking, swimming at the lodge pool or off the sand beach, and tennis.

Lake Barkley State Resort Park, 49 miles southwest of Providence near Cadiz, is located on an embayment of Lake Barkley. The magnificent lodge includes 120 rooms, four suites, nine cottages, a dining room, a coffee shop, a gift shop, two meeting rooms, and a recreation room. An activities center with a capacity for 400 and an 80-site campground are located near the lodge. A lodge pool, a beach and a bathhouse, an 18-hole golf course, tennis courts, a riding stable, a trapshooting range, a basketball court, hiking trails, playgrounds, and a picnic area comprise the recreational facilities. The marina near the lodge has everything for the "boat lover": covered and open slips, launching ramp, and rentals for fishing boats, skiing boats, and pleasure ride pontoons.

Ben Hawes State Park, 57 miles northeast of Providence near Owensboro, is a 300-acre park which is open year-round. It contains tennis courts, hiking trails, a picnic area and shelters, plus an 18-hole and 9-hole golf course.

COMMUNITY IMPROVEMENTS

Recent

The City of Clay Water Department recently installed a new 500,000 gallon water storage tank. Also, additional water lines were added. Total cost of the project was \$540,000.

A \$127,000 renovation of Providence City Hall was recently completed.

The Providence Independent School System recently completed several projects which includes the addition of computer education and a gifted and talented program to the curriculum.

Several businesses have recently located in Providence. They include a Pizza Hut, a Twin Cinema Theater, a True-Value store, and a new furniture store. In addition, Sureway Grocery Store recently renovated and doubled its size.

The city of Providence recently purchased a pumper fire truck.

The City of Clay recently purchased a new 750-gallon per minute pumper fire truck.

A \$18,000 renovation of the Clay Fire Department building was recently completed.

Under Way

The Webster County School System has several projects currently under way which include: the \$300,000 renovation of Slaughter's Elementary School, renovation of central offices, and introduction of computer education to the curriculum.

A \$680,227 housing rehabilitation project in Providence is currently under way. The project, which is located on East Madison Street, will include extension of sewer service to the area and the rehabilitation of 36 houses.

Planned

The City of Providence has plans to build a community center. Also, there are plans for a new 8-unit shopping center.

The Webster County School System has plans for the construction of an elementary school at Sebree.

The construction of a 16-unit apartment complex in Providence is planned.