

1971

Industrial Resources: Whitley County - Corbin

Kentucky Library Research Collections
Western Kentucky University, spcol@wku.edu

Follow this and additional works at: https://digitalcommons.wku.edu/whitley_cty



Part of the [Business Administration, Management, and Operations Commons](#), [Growth and Development Commons](#), and the [Infrastructure Commons](#)

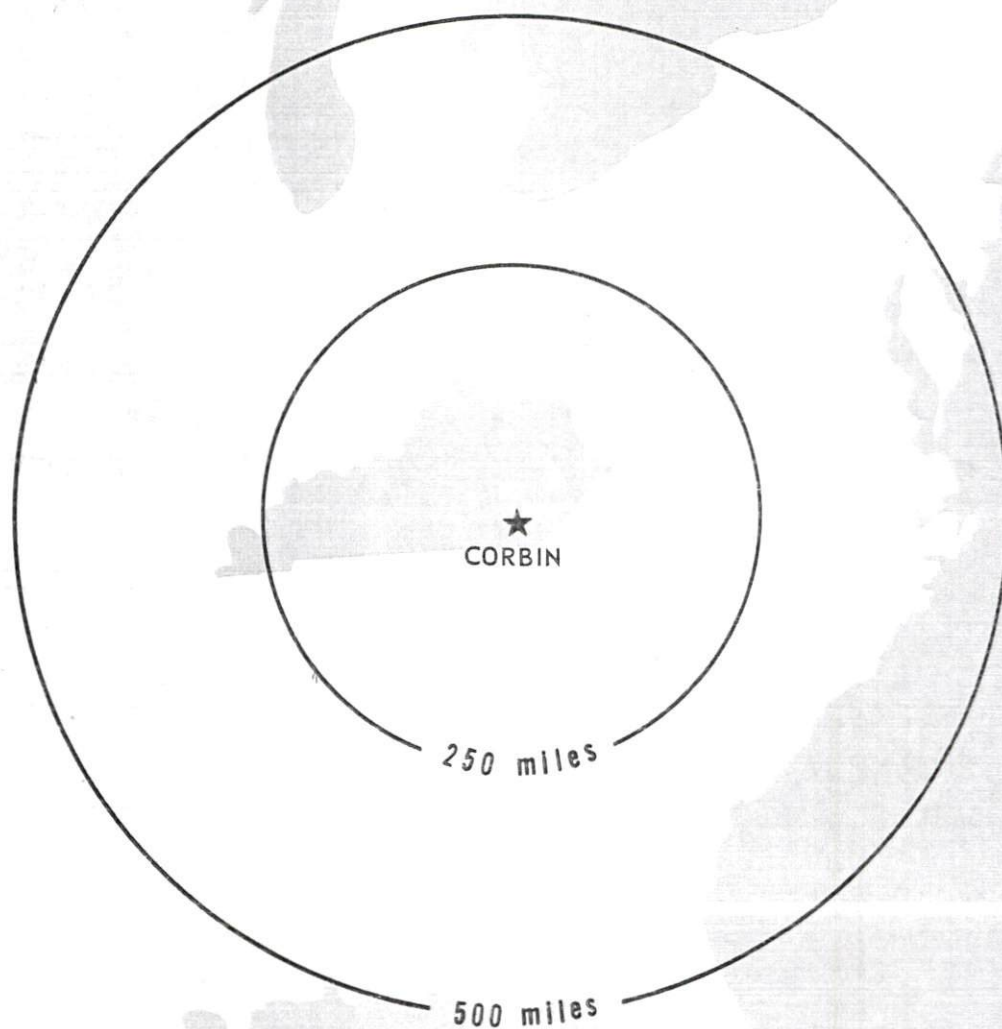
Recommended Citation

Kentucky Library Research Collections, "Industrial Resources: Whitley County - Corbin" (1971). *Whitley County*. Paper 12.
https://digitalcommons.wku.edu/whitley_cty/12

This Report is brought to you for free and open access by TopSCHOLAR®. It has been accepted for inclusion in Whitley County by an authorized administrator of TopSCHOLAR®. For more information, please contact topscholar@wku.edu.

INDUSTRIAL RESOURCES

CORBIN ***KENTUCKY***



CURRENT INDUSTRIAL RESOURCES

CURRENT INDUSTRIAL RESOURCES, CORBIN, KENTUCKY

This is a 1972 supplement to "Industrial Resources, Corbin, Kentucky" which was published in 1971.

Kentucky Library WKU

Population

	<u>1970</u>	<u>1960</u>
Corbin	7,317	7,119
Whitley County	24,145	25,815
Labor Market Area	118,890	123,773
(Includes Whitley, Bell, Knox, Laurel and McCreary Counties.)		

General Employment Characteristics

<u>Industry</u>	<u>Employment 1970</u>	
	<u>Whitley County</u>	<u>Labor Market Area</u>
TOTAL	8,100	29,400
Agricultural	500	2,300
Nonagricultural	7,600	27,100
Manufacturing	1,300	4,823
Government	1,000	5,300
Trade and Services	2,277	8,370
Other	3,023	8,607

Manufacturing Employment

<u>Type Industry</u>	<u>Whitley County</u>			<u>Labor Market Area</u>		
	<u>1971</u>	<u>1961</u>	<u>%Change</u>	<u>1971</u>	<u>1961</u>	<u>%Change</u>
TOTAL	1,391	297	+ 368.4	5,091	1,857	+ 174.2
Food & kindred products	143	116	+ 23.1	753	512	+ 47.1
Tobacco	1	0	-	4	1	+ 300.0
Apparel, textiles, leather	347	43	+ 707.0	1,833	328	+ 458.8
Lumber & furniture	149	33	+ 351.5	900	673	+ 33.7
Printing, publishing, paper	504	48	+ 950.0	575	99	+ 480.8
Chemicals, petroleum, coal, rubber	0	0	-	131	84	+ 55.9
Stone, clay & glass	36	48	- 25.0	99	91	+ 8.8
Machinery & metal products	211	4	+5,175.0	796	64	+1,143.8

There are presently 19 manufacturing firms in Corbin.
Major firms, employment, and year started operations:

<u>Firms</u>	<u>Employment</u>	<u>Year Started Operations</u>
American Greetings Corp.	550	1967
Corbin Brick Co.	28	1921
Corbin Textiles, Inc.	45	1959
Corbin Times-Tribune, Inc.	35	1892
Elicon Corbon, Inc.	280	1961
National-Standard Co., Woven Products Div.	200	1962
William H. Pennington	60	1957
Pepsi-Cola Bottling Co.	82	1938
Wood Products, Inc.	35	1966

Labor Supply

	<u>Whitley County</u>			<u>Labor Market Area</u>		
	<u>Total</u>	<u>Male</u>	<u>Female</u>	<u>Total</u>	<u>Male</u>	<u>Female</u>
Current	2,300	1,001	1,299	13,386	5,686	7,700
Potential additions next five years	2,583	1,413	1,170	13,103	6,741	6,362

Personal Income

Whitley County, 1970: Total - \$56,604,000; Per Capita - \$2,242
1960: Total - \$21,717,000; Per Capita - \$ 841

Education

The Whitley County School System includes 1 high school with standard rating, and 13 elementary schools.

The Corbin and Williamsburg Independent School Districts include 2 high schools with 1 standard and 1 basic rating, and 4 elementary schools.

Nearest Vocational School: Somerset Area Vocational School, Somerset, Kentucky

Courses offered: Data Processing, General Clerical, Secretarial-Steno, Distributive Education, Health Careers, Electronics (Technology), Aircraft Technician Maintenance, Appliance Repair, Auto Mechanics, Drafting, Machine Shop, Printing

Nearest Vocational Extension Center: Corbin Extension Center

Courses offered: Appliance Repair, Auto Mechanics, Drafting, Welding, Electricity

CORBIN INDUSTRIAL SITES

1972

CORBIN INDUSTRIAL SITES

1972

For additional information concerning the industrial sites, contact Mr. Roy G. Houser, Jr., Executive Director, Corbin Chamber of Commerce and Corbin Industrial Commission, Corbin, Kentucky 40701; or the Kentucky Department of Commerce, Capital Plaza Office Tower, Frankfort, Kentucky 40601.

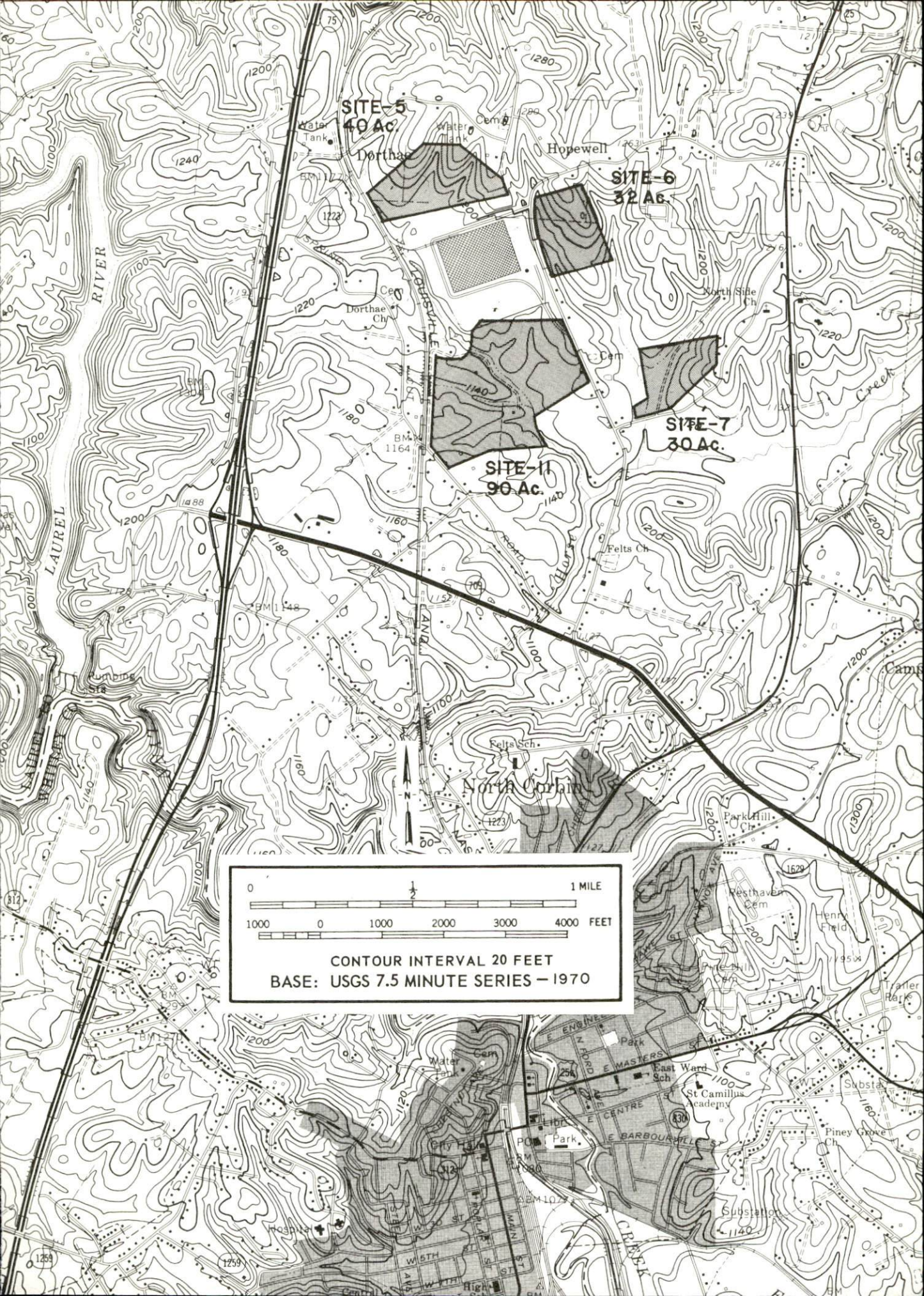
SITE #5: ACREAGE: 40 acres
 LOCATION: 4 miles north of Corbin
 ZONING: None
 HIGHWAY ACCESS: Paved road to U. S. 25-E
 RAILROADS: Louisville & Nashville
 Railroad along west boundary
 WATER: Corbin City Utilities Commission
 SIZE LINE: 12-inch line on site
 GAS: Peoples Gas Company
 SIZE MAIN: 4-inch main, 300 feet from site
 ELECTRICITY: Kentucky Utilities Company
 SEWERAGE: Corbin City Utilities Commission
 OWNERSHIP: First National Bank,
 Corbin, Kentucky

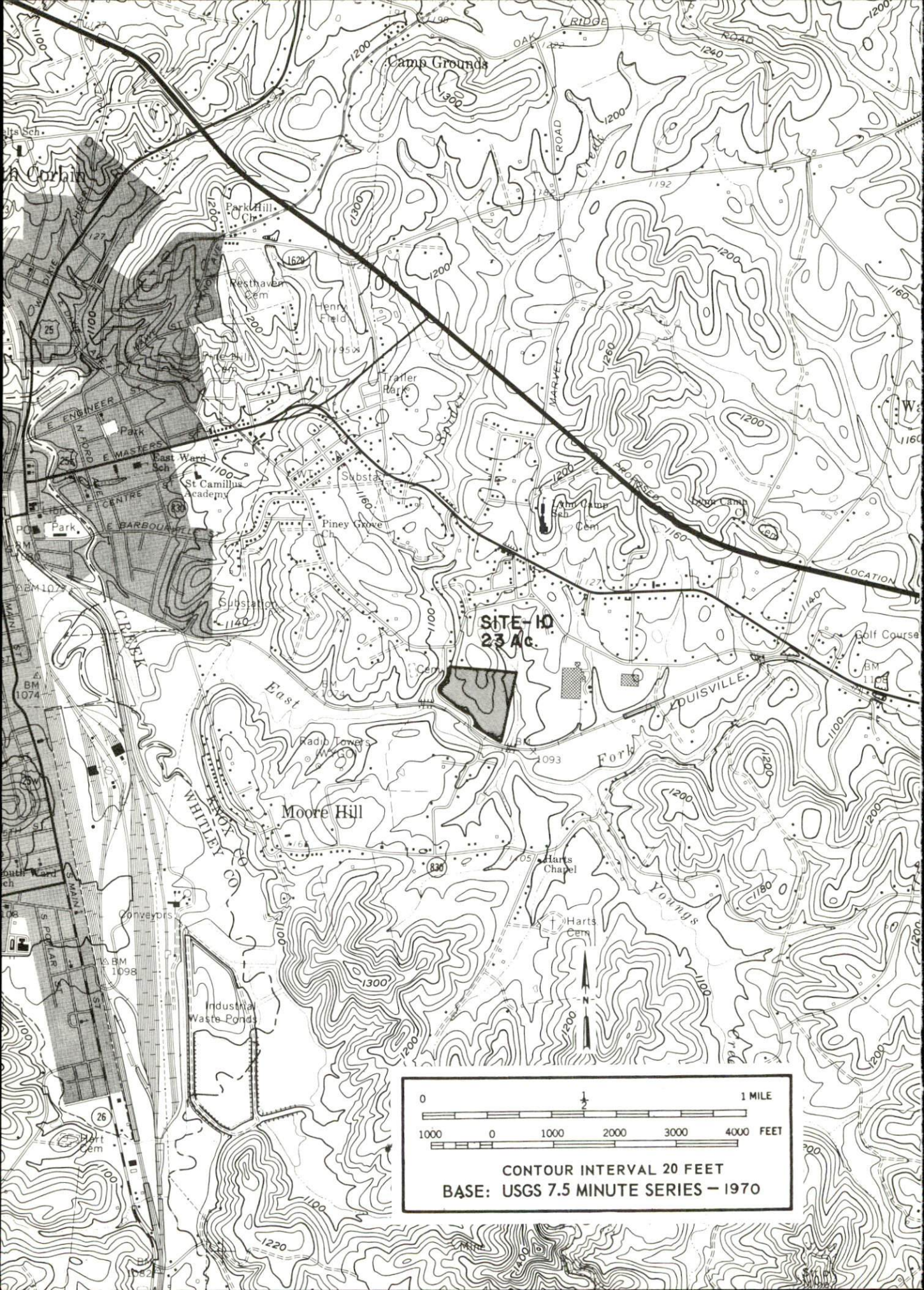
SITE #6: ACREAGE: 32 acres
 LOCATION: 3 1/2 miles north of Corbin
 ZONING: None
 HIGHWAY ACCESS: Paved road to
 U. S. 25-E
 RAILROADS: Not rail served
 WATER: Corbin City Utilities Commission
 SIZE LINE: 12-inch line, 1,000 feet
 from site
 GAS: Peoples Gas Company
 SIZE MAIN: 4-inch main, 1,000 feet
 from site
 ELECTRICITY: Kentucky Utilities Company
 SEWERAGE: Corbin City Utilities Commission
 OPTIONED BY: Corbin Industrial Commission

SITE #7: ACREAGE: 30 acres
 LOCATION: 3 miles north of Corbin
 ZONING: None
 HIGHWAY ACCESS: Paved access road
 to U. S. 25-E
 RAILROADS: Not rail served
 WATER: Corbin City Utilities Commission
 SIZE LINE: 12-inch line three-quarters
 of a mile
 GAS: Peoples Gas Company
 SIZE MAIN: 4-inch main
 ELECTRICITY: Kentucky Utilities Company
 SEWERAGE: Corbin City Utilities Commission
 OPTIONED BY: Corbin Industrial Commission

SITE #10: ACREAGE: 23 acres
 LOCATION: 1 1/2 miles east of Corbin
 ZONING: None
 HIGHWAY ACCESS: Access road to
 U. S. 25-E
 RAILROADS: Louisville & Nashville
 Railroad along south boundary
 WATER: Corbin City Utilities Commission
 SIZE LINE: 8-inch line, 500 feet from site
 GAS: Peoples Gas Company
 SIZE MAIN: 8-inch main, 500 feet
 from site
 ELECTRICITY: Kentucky Utilities Company
 SEWERAGE: None
 OPTIONED BY: Corbin Industrial Commission

SITE #11: ACREAGE: 90 acres
 LOCATION: 3 miles north of Corbin
 ZONING: None
 HIGHWAY ACCESS: U. S. 25-E three-quarter
 mile south; paved access road along east
 border; Kentucky 1223 along southwestern
 edge of site
 RAILROADS: Louisville & Nashville Railroad
 along west boundary
 WATER: Corbin City Utilities Commission
 SIZE LINE: 12-inch line
 GAS: Peoples Gas Company
 SIZE MAIN: 4-inch main
 ELECTRICITY: Kentucky Utilities Company
 SEWERAGE: Corbin City Utilities Commission
 OPTIONED BY: Corbin Industrial Commission





Power and Fuel

Electric Distributors

City Utilities Commission
Kentucky Utilities Company
Cumberland Valley RECC

Source of Supply

Kentucky Utilities Company
Kentucky Utilities Company
East Kentucky Power Cooperative

Natural Gas Distributor

Peoples Gas Company

Specific Gravity

700

Btu Per Cu. Ft.

1,150

Monthly Rate: Summer (6 months, May through October)

First	1,000 Cu. Ft.	\$600.00 (Minimum)
Next	1,000 Cu. Ft.	.58 Per M Cu. Ft.
All over	2,000 Cu. Ft.	.56 Per M Cu. Ft.

Winter (6 months, November through April)

First	1,000 Cu. Ft.	\$770.00 (Minimum)
Next	1,000 Cu. Ft.	.70 Per M Cu. Ft.
All over	2,000 Cu. Ft.	.69 Per M Cu. Ft.

Water and Sewerage

Water: Daily treatment capacity - 5,000,000 gallons; average daily use - 1,000,000 gallons; maximum daily use - 1,600,000 gallons; storage capacity - 2,850,000 gallons; size distribution lines - 4, 6, 8, 10, 12 inches

Sewerage: Type treatment - primary and secondary; primary settling, trickling filter, aeration, secondary settling, final contact, chamber drying beds; design capacity - 2,500,000 gallons per day; size of sewer mains - 6 to 24 inches.

Local Government

Business license fee based on annual volume with a minimum of \$25.

Property Tax Rates

Property tax rates per \$100 of assessed valuation, 1971

	<u>Corbin</u>	<u>Whitley County</u>
State	\$.015	\$.015
County	.308	.177
School	.512	.305
City	.308	
Total	\$1.143	\$.497

Police Protection: Number of law enforcement officers - 11 (city); 7 (county)

Fire Protection: Number of full-time firemen - 11; number of volunteer firemen - 10; American Insurance Association fire rating, City of Corbin, Class 7

Industrial Sites

There are five sites available for industrial use in Corbin.

CORBIN INDUSTRIAL SITES

1971

CORBIN INDUSTRIAL SITES

1971

For additional information concerning the industrial sites, contact Roy G. Houser, Jr., Executive Director, Corbin Chamber of Commerce and Corbin Industrial Commission, Corbin, Kentucky 40701; or the Kentucky Department of Commerce, Frankfort, Kentucky 40601.

SITE # 1: ACREAGE: 100 acres
LOCATION: North of Corbin; 4.5 miles from city limits
ZONING: None
HIGHWAY ACCESS: I-75 along east boundary. Gravel access road from interchange to site.
RAILROADS: Not rail served
WATER: Corbin City Utilities Commission
SIZE LINE: 12-inch line on site
GAS: Peoples Gas Company
SIZE MAIN: 4-inch main, 1,000 feet south of site
ELECTRICITY: Kentucky Utilities Company
SEWERAGE: Corbin City Utilities Commission
OWNERSHIP: Private

SITE # 2: ACREAGE: 50 acres
LOCATION: North of Corbin; 4.5 miles from city limits
ZONING: None
HIGHWAY ACCESS: I-75 along west boundary
RAILROADS: Not rail served
WATER: Corbin City Utilities Commission
SIZE LINE: 12-inch line, approximately 500 feet from site
GAS: Peoples Gas Company
SIZE MAIN: 4-inch main, 1,000 feet from site
ELECTRICITY: Kentucky Utilities Company
SEWERAGE: Corbin City Utilities Commission
OWNERSHIP: Private

SITE # 5: ACREAGE: 40 acres
LOCATION: 4 miles north of Corbin
ZONING: None
HIGHWAY ACCESS: Paved road to U.S. 25-E
RAILROADS: Louisville & Nashville Railroad along west boundary
WATER: Corbin City Utilities Commission
SIZE LINE: 12-inch line on site
GAS: Peoples Gas Company
SIZE MAIN: 4-inch main, 300 feet from site
ELECTRICITY: Kentucky Utilities Company
SEWERAGE: Corbin City Utilities Commission
OWNERSHIP: First National Bank, Corbin, Kentucky

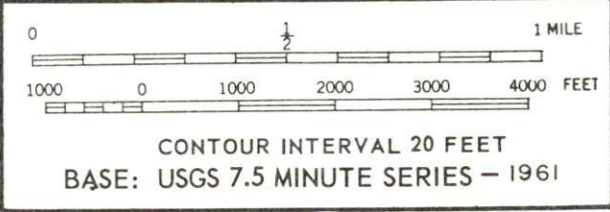
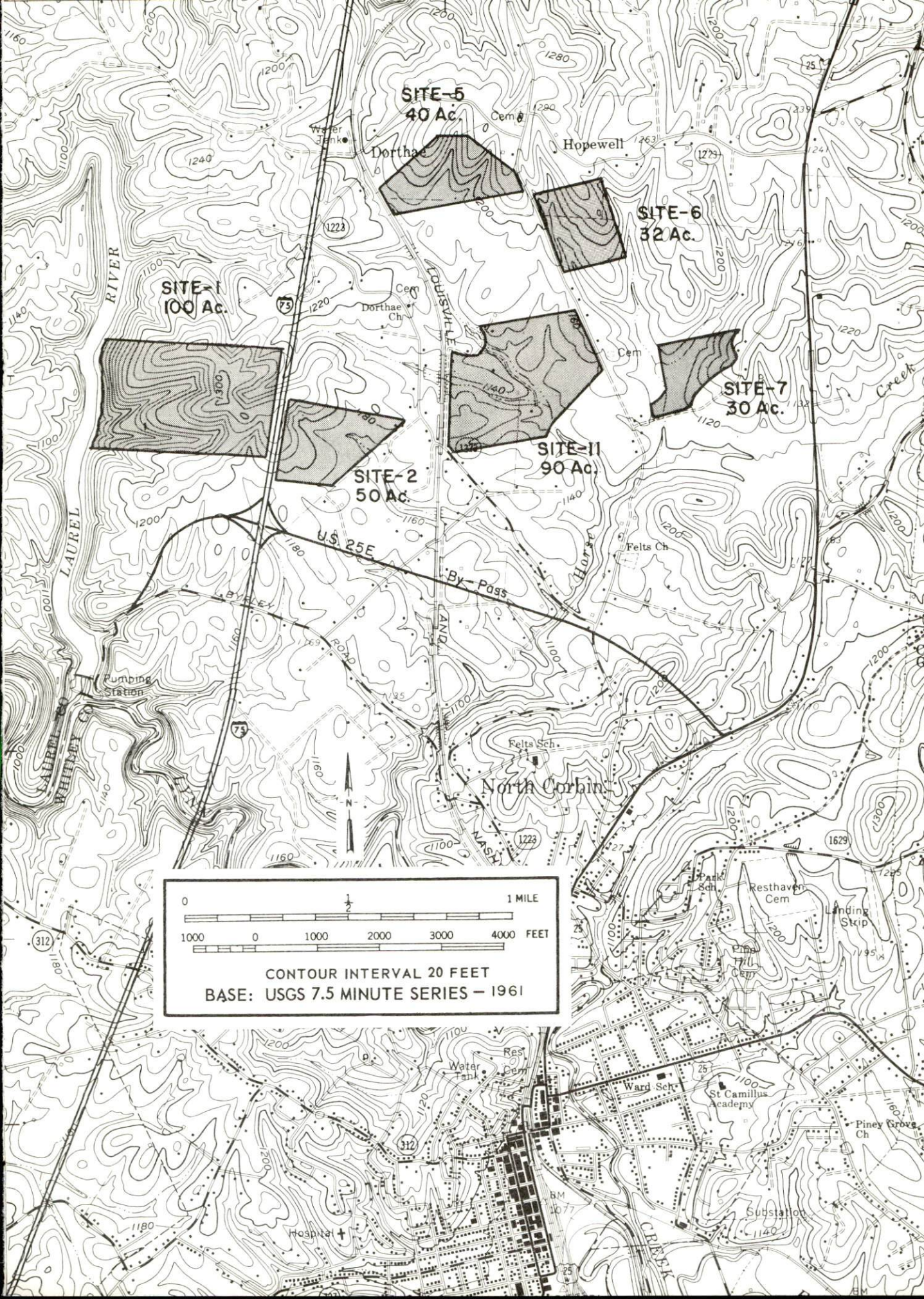
SITE # 6: ACREAGE: 32 acres
LOCATION: 3 1/2 miles north of Corbin
ZONING: None
HIGHWAY ACCESS: Paved road to U.S. 25-E
RAILROADS: Not rail served
WATER: Corbin City Utilities Commission
SIZE LINE: 12-inch line, 1,000 feet from site
GAS: Peoples Gas Company
SIZE MAIN: 4-inch main, 1,000 feet from site
ELECTRICITY: Kentucky Utilities Company
SEWERAGE: Corbin City Utilities Commission
OPTIONED BY: Corbin Industrial Commission

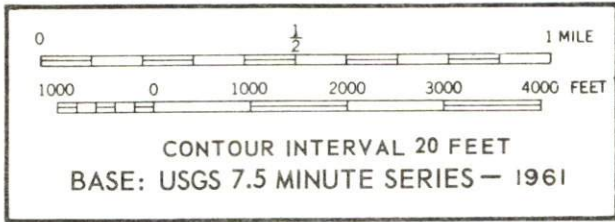
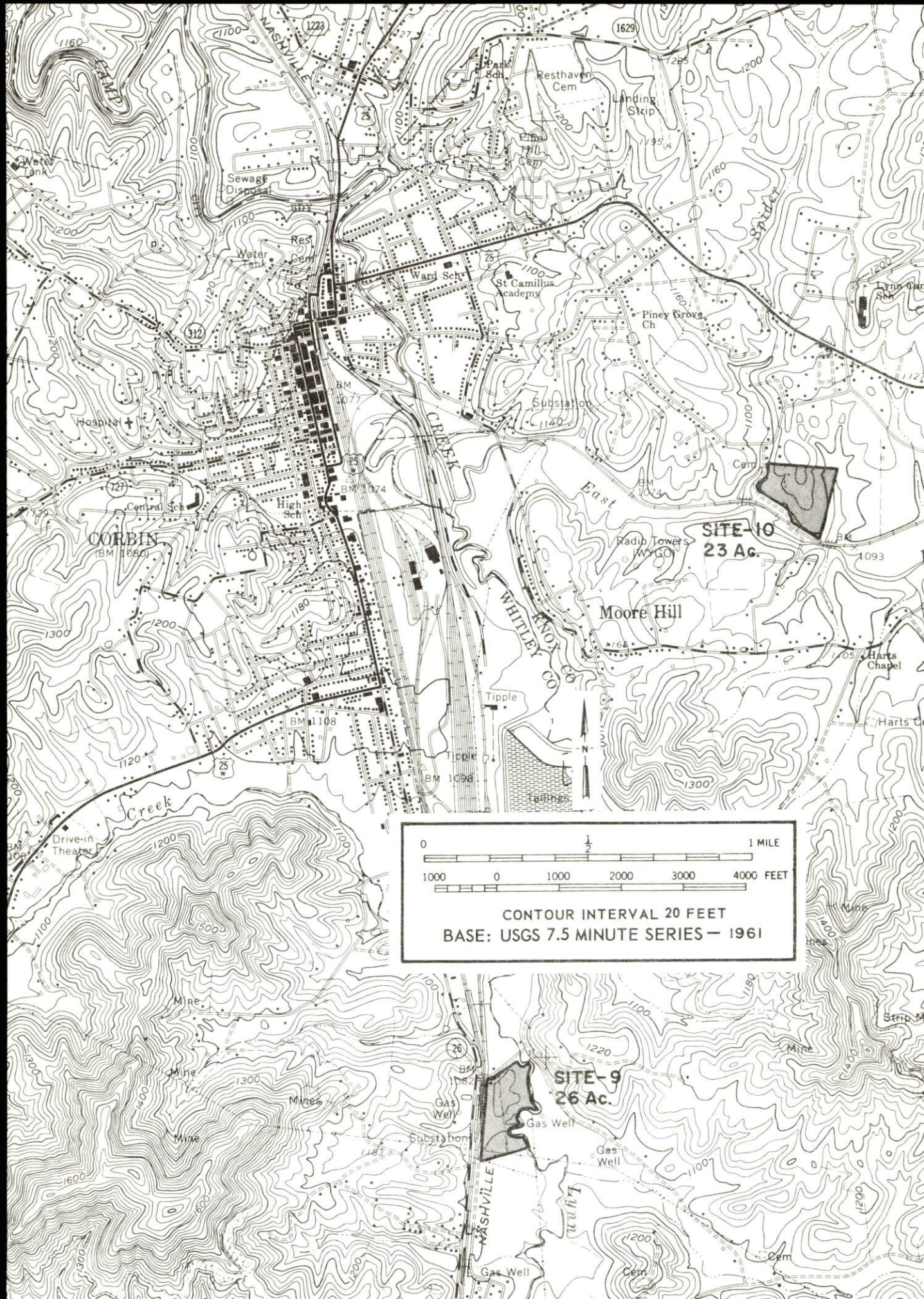
SITE # 7: ACREAGE: 30 acres
LOCATION: 3 miles north of Corbin
ZONING: None
HIGHWAY ACCESS: Paved access road to U.S. 25-E
RAILROADS: Not rail served
WATER: Corbin City Utilities Commission
SIZE LINE: 12-inch line three-quarters of a mile
GAS: Peoples Gas Company
SIZE MAIN: 4-inch main
ELECTRICITY: Kentucky Utilities Company
SEWERAGE: Corbin City Utilities Commission
OPTIONED BY: Corbin Industrial Commission

SITE # 9: ACREAGE: 26 acres
LOCATION: One-half mile south of Corbin
ZONING: None
HIGHWAY ACCESS: Paved access road to Kentucky 26
RAILROADS: Louisville & Nashville Railroad along west boundary
WATER: Whitley County Water District
SIZE LINE: 6-inch line across Louisville & Nashville tracks
GAS: Peoples Gas Company
SIZE MAIN: 4-inch main on site
ELECTRICITY: Kentucky Utilities Company
SEWERAGE: Corbin City Utilities Commission
OPTIONED BY: Corbin Industrial Commission

SITE # 10: ACREAGE: 23 acres
LOCATION: 1 1/2 miles east of Corbin
ZONING: None
HIGHWAY ACCESS: Access road to U.S. 25-E
RAILROADS: Louisville & Nashville Railroad along south boundary
WATER: Corbin City Utilities Commission
SIZE LINE: 8-inch, 500 feet from site
GAS: Peoples Gas Company
SIZE MAIN: 8-inch main, 500 feet from site
ELECTRICITY: Kentucky Utilities Company
SEWERAGE: None
OPTIONED BY: Corbin Industrial Commission

SITE # 11: ACREAGE: 90 acres
LOCATION: 3 miles north of Corbin
ZONING: None
HIGHWAY ACCESS: U.S. 25-E three-quarter mile south; paved access road along east border; Kentucky 1223 along southwestern edge of site.
RAILROADS: Louisville & Nashville Railroad along west boundary
WATER: Corbin City Utilities Commission
SIZE LINE: 12-inch main
GAS: Peoples Gas Company
SIZE MAIN: 4-inch main
ELECTRICITY: Kentucky Utilities Commission
SEWERAGE: Corbin City Utilities Commission
OPTIONED BY: Corbin Industrial Commission





INDUSTRIAL RESOURCES

CORBIN, KENTUCKY

Prepared by

The Kentucky Department of Commerce

in cooperation with

The Corbin Chamber of Commerce

1971

This copy has been prepared by the Kentucky Department of Commerce,
Division of Research and Planning, and the cost of printing paid from
state funds.

TABLE OF CONTENTS

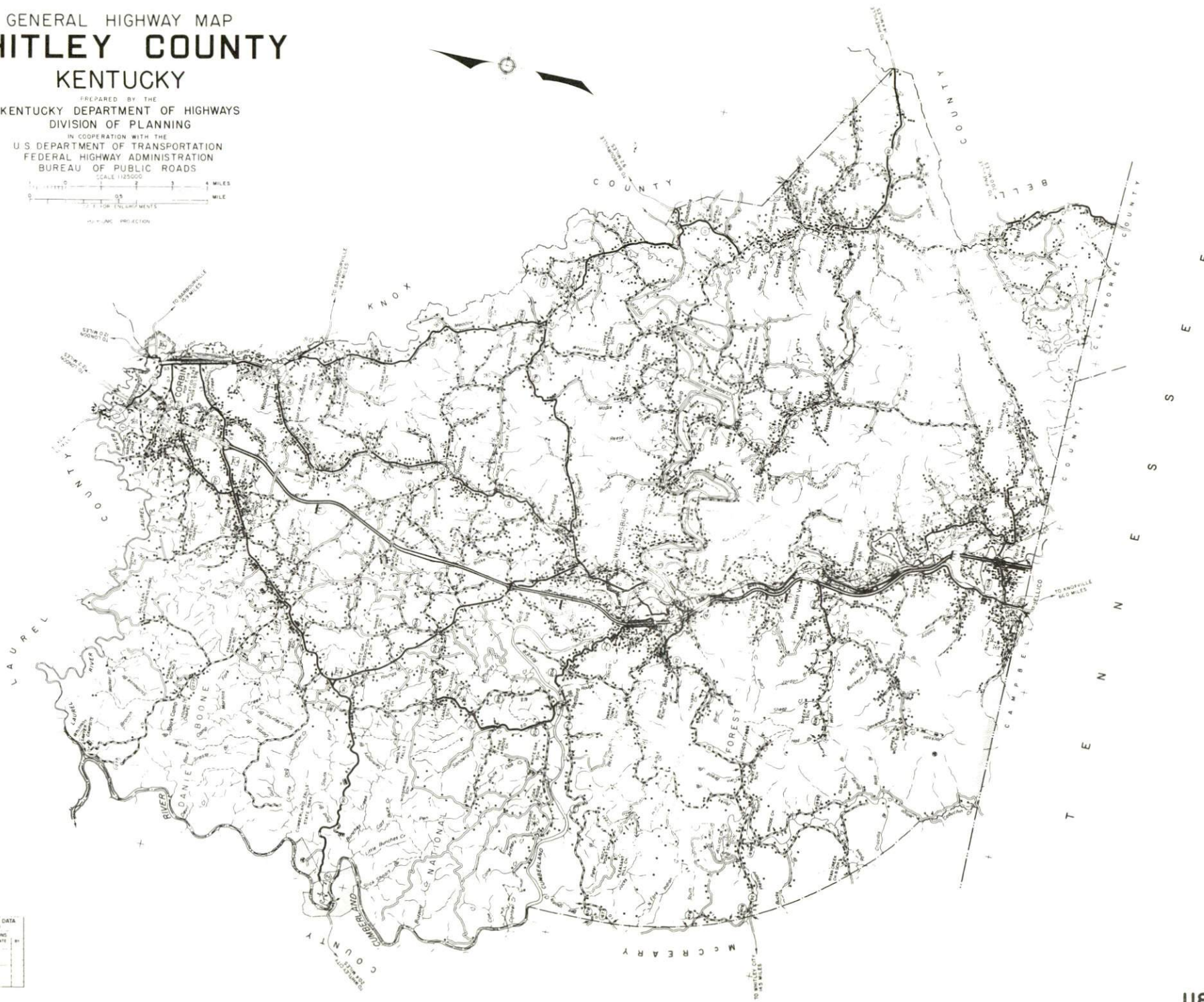
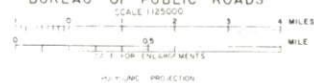
<u>Chapter</u>	<u>Page</u>
INDUSTRIAL SITES	i
CORBIN, KENTUCKY - A RESOURCE PROFILE	1
THE LABOR MARKET	4
Population Trends	4
General Employment Characteristics, 1969	4
Manufacturing Employment Trends by Industry	4
Major Corbin Manufacturing Firms, Their Products and Employment	5
Wage Rates for Selected Occupations	5
Labor Organizations	5
Current and Future Labor Supply	7
Total Personal Income	7
Per Capita Personal Income	7
EDUCATION	8
Public Schools	8
Parochial Schools	8
Vocational Schools	9
Colleges and Universities	9
TRANSPORTATION	10
Rail	10
Truck Service	10
Air	11
Bus	11
Taxi	11
Rental Services	11
POWER AND FUEL	12
Electricity	12
Natural Gas	12

<u>Chapter</u>	<u>Page</u>
WATER AND SEWERAGE	13
Water	13
Sewerage	14
LOCAL GOVERNMENT	17
City	17
County.	17
Assessed Value of Property, 1971	17
Local General Property Tax Rates Per \$100 of	
Assessed Valuation, 1971	17
Planning and Zoning	18
Safety	18
Police	18
Fire	18
Rescue Service	18
Sanitation	19
HEALTH	21
Hospitals	21
Public Health.	21
OTHER LOCAL FACILITIES	22
Communications	22
Library Services	22
Religious Institutions	23
Financial Institutions	23
Hotels and Motels	23
Clubs and Organizations.	23
RECREATION	25
Local	25
Area	25
AGRICULTURE - NATURAL RESOURCES - CLIMATE	26
Agriculture	26
Natural Resources	26
Climate	27
HISTORY.	28

GENERAL HIGHWAY MAP WHITLEY COUNTY KENTUCKY

PREPARED BY THE
KENTUCKY DEPARTMENT OF HIGHWAYS
DIVISION OF PLANNING

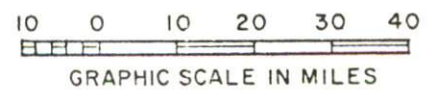
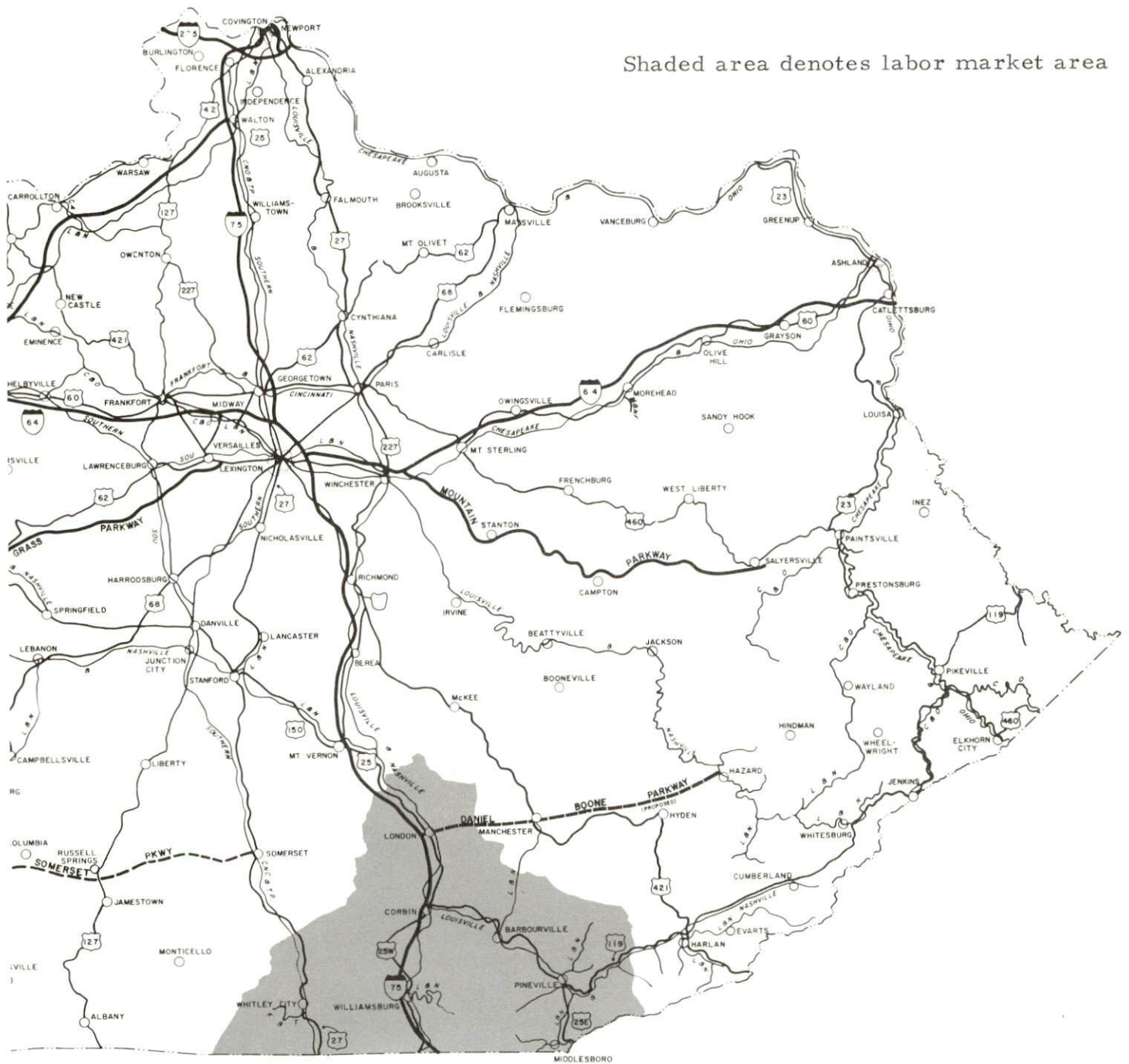
IN COOPERATION WITH THE
U.S. DEPARTMENT OF TRANSPORTATION
FEDERAL HIGHWAY ADMINISTRATION
BUREAU OF PUBLIC ROADS



ORIGINAL DATA 1959			
DATE	BY	DATE	BY
11-28	AP	1-10-60	AP

CORBIN LABOR MARKET AREA

Shaded area denotes labor market area



CORBIN, KENTUCKY - A RESOURCE PROFILE

Location

Corbin is located in southeastern Kentucky at the edge of the beautiful Daniel Boone National Forest. A small but progressive community, Corbin was designated an All Kentucky City in 1970. Corbin is located at the junction of the boundaries of three counties. Incorporated portions of the city lie in both Whitley and Knox Counties, and unincorporated areas are located in Laurel County. Corbin is 100 miles south of Lexington, Kentucky, 85 miles north of Knoxville, Tennessee, 165 miles northeast of Nashville, Tennessee, and 187 miles south of Cincinnati, Ohio.

The population of Corbin in 1970 was 7,317, while the population of Whitley County was 24,145.

The Economic Framework

Total employment in Whitley County averaged 7,800 in 1969 with manufacturing providing 900 of these jobs. Trade and services provided 2,280 jobs and government provided 1,000 jobs.* Industrial employment is heaviest in paper and allied products, apparel and electrical machinery industries.

Per capita personal income in the county in 1969 was \$2,180 or \$667 below the Kentucky average.

The Corbin labor market area includes Whitley, Bell, Knox, Laurel and McCreary Counties, and the two adjoining Tennessee Counties - Campbell and Claiborne. Employment in the Kentucky portion of the labor market area in 1969 averaged 26,400, with manufacturing providing 4,645 jobs, trade and services 7,820 jobs, and government 5,000 jobs. Since 1960, area industrial employment has increased by 149 percent with sharpest gains in the apparel, textiles, machinery and metal products, and paper and allied products industries.

Despite important industrial gains in recent years, the area still has a deficit of 6,467 manufacturing jobs when measured against the national industrial employment-population ratio. This indicates an area where the potential for additional manufacturing production is excellent.

*Employment figures reflect only that portion of Corbin's employment which is reported in Whitley County.

THE LABOR MARKET

POPULATION TRENDS ^{1/}

Area	Population			Percent Change	
	1970	1960	1950	1960-70	1950-60
Corbin	7,317	7,119	7,744	+ 2.8	- 8.1
Labor Market Area	118,855	123,773	152,400	- 4.0	- 18.8
Whitley County	24,145	25,815	31,940	- 6.5	- 19.2
Bell County	31,087	35,336	47,602	- 12.0	- 25.8
Knox County	23,689	25,258	30,409	- 6.2	- 16.9
Laurel County	27,386	24,901	25,797	+ 10.0	- 3.5
McCreary County	12,548	12,463	16,660	+ 0.7	- 25.2

GENERAL EMPLOYMENT CHARACTERISTICS, 1969 ^{2/}

Major Employment Group	Employment	
	Whitley County	Labor Market Area
TOTAL	7,800	26,400
Agricultural	600	2,500
Nonagricultural	7,200	23,900
Manufacturing	900	4,647
Trade and Services	2,280	7,823
Government	1,000	5,000
Other	3,020	6,430

MANUFACTURING EMPLOYMENT TRENDS BY INDUSTRY SEPTEMBER 1970 AND 1960 ^{3/}

Industry	Whitley County			Labor Market Area		
	1970	1960	%Change	1970	1960	%Change
TOTAL	1,310	267	+ 390.6	4,823	1,937	+ 149.0
Food & Kindred Products	148	116	+ 27.6	722	527	+ 37.0
Apparel, Textiles, Leather	354	34	+ 941.2	1,731	283	+ 511.7
Lumber & Furniture	75	38	+ 97.4	782	828	+ 5.6
Printing, Publishing, Paper	453	50	+ 806.0	521	96	+ 442.7
Chemicals, Petroleum						
Coal, Rubber	0	0		97	77	+ 26.0
Stone, Clay & Glass	27	20	+ 35.0	74	59	+ 25.4
Machinery & Metal Products	244	4	+ 6,000.0	885	60	+ 1375.0
Other	9	5	+ 80.0	12	7	+ 57.1

MAJOR CORBIN MANUFACTURING FIRMS,
THEIR PRODUCTS AND EMPLOYMENT^{4/}

<u>Firm</u>	<u>Product</u>	<u>Employment</u>		
		<u>Total</u>	<u>Male</u>	<u>Female</u>
American Greetings Corp.	Gift wrapping paper, napkins, ribbon	450	200	250
Corbin Textiles, Inc.	Ladies' blouses	45	1	44
Elicon Corbin, Inc.	Sockets, terminals, switches	280	70	210
National-Standard Co.	Industrial wire cloth	279	271	8
William H. Pennington	Ready mixed concrete	60	60	0
Pepsi-Cola Bottling Co.	Soft drinks	78	73	5

WAGE RATES FOR SELECTED OCCUPATIONS
CORBIN, KENTUCKY^{5/}

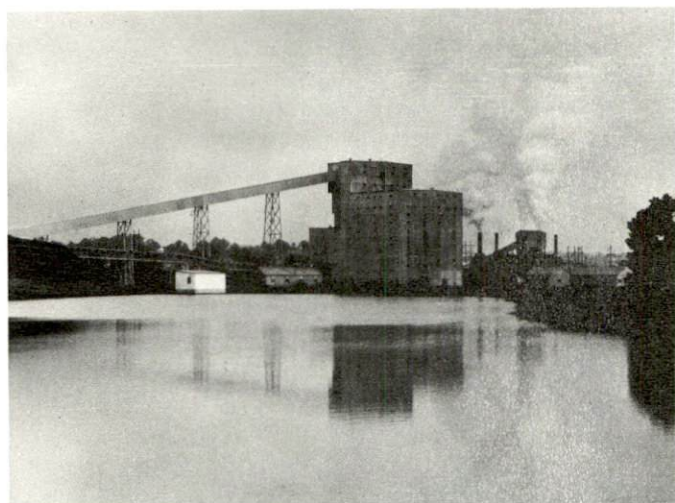
<u>Classification</u>	<u>Starting</u>	<u>Wages Per Hour</u>	
		<u>Maximum</u>	<u>Prevailing</u>
<u>Production Employees</u>			
Assembler	\$1.60	\$2.20	\$1.80
Inspector	1.60	2.20	1.80
Production Laborer	1.60	2.20	1.87
<u>Service Employees</u>			
Electrician (Class-A)	\$2.60	\$5.00	\$4.00
Machinist	2.10	4.00	3.00
Truck Driver, Industrial (Class-A)	1.60	3.72	2.15
<u>Office Employees</u>			
Bookkeeper	\$1.75	\$2.50	\$2.15
File Clerk	1.60	1.90	1.70
Receptionist	1.60	2.00	1.75
Secretary	1.60	2.60	2.15
Typist	1.60	2.00	1.70

LABOR ORGANIZATIONS

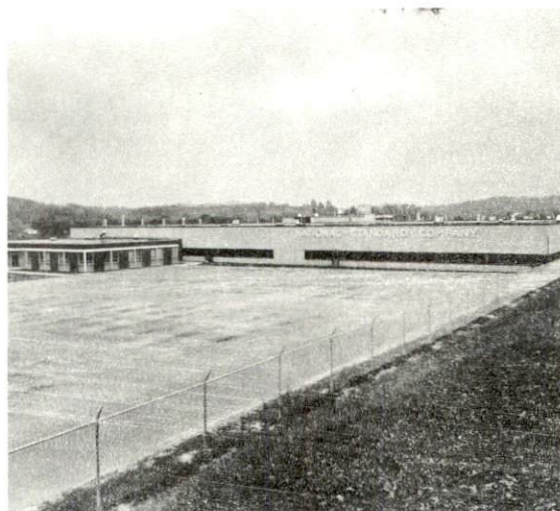
<u>Union</u>	<u>Representing workers at:</u>
United Mine Workers	Corbin Brick Company
United Steel Workers	National Standard Company
International Brotherhood of Electrical Workers and Inter- national Association of Machinists	Elicon Corbin, Inc.



Corbin Textiles



U. S. Steel Coal Washing Plant



National-Standard Company

CURRENT AND FUTURE LABOR SUPPLY -
CORBIN LABOR MARKET AREA

Area	Current Labor Supply, 1971 ^{6/}			Future Labor Supply by 1977 (Becoming 18 Years of Age) ^{7/}		
	Total	Male	Female	Total	Male	Female
Labor Market Area	13,386	5,686	7,700	15,655	8,107	7,548
Whitley County	2,300	1,001	1,299	3,085	1,684	1,401
Bell County	3,857	1,631	2,226	4,134	2,155	1,979
Knox County	2,600	1,111	1,489	3,021	1,455	1,566
Laurel County	2,898	1,201	1,697	3,523	1,784	1,739
McCreary County	1,731	742	989	1,892	1,029	863

TOTAL PERSONAL INCOME ^{8/}

Area	1969	1959	% Change
Whitley County	\$ 54,230,000	\$ 22,587,000	+140.1
Labor Market Area	198,530,000	92,597,000	+114.4
Kentucky	9,202,000,000	4,655,000,000	+ 97.6

PER CAPITA PERSONAL INCOME ^{9/}

Area	1969	1959	% Change
Whitley County	\$ 2,180	\$ 859	+153.8
Labor Market Area	\$984 to 2,180	\$563 to 868	N.A.
Kentucky	2,847	1,552	+ 83.4

EDUCATION

Public Schools

	<u>Corbin</u>	<u>Whitley County</u>
Total Enrollment	1,587	3,960
Elementary	1,026	2,937
High School	561	1,023
Student-Teacher Ratio	23-1	23-1
Elementary	25-1	23-1
High School	20-1	24-1
State Rating of High School	Standard	
Other Accreditations	Southern Association of Colleges and Schools	
Percent High School Graduates to College	61.9	33.3
Current Expenditures Per Pupil	\$410.99	\$421.19
Bonded Indebtedness, June 30, 1971	\$503,000	\$1,721,000

Parochial Schools

Total Enrollment	151
Elementary	78
High School	73
Student-Teacher Ratio	11-1
Elementary	11-1
High School	12-1

Vocational Schools

	<u>Nearest Area School</u>	<u>Nearest Extension Center</u>
Location	Somerset Area Vocational School	Corbin Extension Center
Miles Distant	Somerset	Corbin
Curriculum	45 Data Processing Secretarial-Steno General Clerical Distributive Education Health Careers Electronics (Technology) Aircraft Technician Maintenance Appliance Repair Auto Mechanics Drafting, Machine Shop Printing	Appliance Repair Auto Mechanics Drafting, Welding Electricity

Colleges and Universities

<u>Name</u>	<u>Area - Within 80 miles</u>		<u>Highest Degree Conferred</u>
	<u>Location</u>	<u>Enrollment</u>	
Berea College	Berea	1,448	Baccalaureate
Eastern Kentucky University	Richmond	10,163	Masters
Centre College	Danville	724	Baccalaureate
Cumberland College	Williamsburg	1,766	Baccalaureate
Somerset Community College	Somerset	681	Associate
Sue Bennett College	London	181	Associate
Union College	Barbourville	875	Masters

TRANSPORTATION

Rail

Line serving Corbin - Louisville & Nashville Railroad

Services - Siding, switching, freight, piggyback, REA Express

RAILWAY TRANSIT TIME FROM CORBIN, KENTUCKY, TO: 10/

City	No. of Days		City	No. of Days	
	CL			CL	
Atlanta, Ga.	1		Los Angeles, Calif.	5	
Birmingham, Ala.	2		Louisville, Ky.	1	
Chicago, Ill.	3		Nashville, Tenn.	2	
Cincinnati, Ohio	1		New Orleans, La.	3	
Cleveland, Ohio	3		New York, N. Y.	4	
Detroit, Mich.	4		Pittsburgh, Pa.	4	
Knoxville, Tenn.	1		St. Louis, Mo.	2	

Truck Service

Company

Home Office

Consolidated Freightways*
 Dixie Ohio Express, Inc.
 Mason & Dixon Lines, Inc.
 McDuffee Motor Freight,
 Inc. (United Trucking)*
 O. K. Trucking Co.
 Roadway Express, Inc.
 Smith's Transfer
 Corporation of Virginia
 Wilson Freight Co.

Lexington, Kentucky
 Cincinnati, Ohio
 Kingsport, Tennessee

 Detroit, Michigan
 Louisville, Kentucky
 Louisville, Kentucky

 Staunton, Virginia
 Cincinnati, Ohio

*Terminal in Corbin.

HIGHWAY MILES AND TRUCK TRANSIT TIME IN DAYS FROM
CORBIN, KENTUCKY, TO SELECTED MARKET CENTERS

City	Highway Miles	Delivery Time ^{11/}		City	Highway Miles	Delivery Time	
		LTL	TL			LTL	TL
Atlanta, Ga.	298	3	2	Los Angeles, Calif.	2,362	7	5
Birmingham, Ala.	343	3	2	Louisville, Ky.	160	3	2
Chicago, Ill.	506	3	2	Nashville, Tenn.	165	3	2
Cincinnati, Ohio	187	1	1	New Orleans, La.	873	4	3
Cleveland, Ohio	450	3	2	New York, N. Y.	838	5	4
Detroit, Mich.	449	3	2	Pittsburgh, Pa.	468	3	2
Knoxville, Tenn.	85	3	2	St. Louis, Mo.	470	3	2

Air

Nearest Commercial

Location:	London-Corbin War Memorial Airport
Runways:	9 miles north of Corbin
Length:	1 paved
Traffic Control:	6,000 feet
Lighting:	Wind sock
Services:	Beacon, runway and obstruction lights
	80 and 100 octane, JP-A-50, Piedmont
	Airlines, taxi; car rental; weather;
	flight training; charter; ambulance
	service; vending machines

Bus

Southern Greyhound Bus Line.
Black Brothers Bus Line
Southeastern Trailways

Taxi

24-hour service by three companies

Rental Services

Car rental

POWER AND FUEL

Electricity

Company serving Corbin - City Utilities Commission

Source of power - Kentucky Utilities Company

Total generating capacity - 1,215,000 KW

Industrial rates furnished by - City Utilities Commission,
Corbin, Kentucky

Company serving Whitley County - (1) Kentucky Utilities Company,
(2) Cumberland Valley RECC

Source of power - (1) Kentucky Utilities Company, (2) East Kentucky
Power Cooperative

Total generating capacity - (1) 1,215,000 KW, (2) 548,000 KW

Industrial rates furnished by - (1) Kentucky Utilities Company,
Lexington, Kentucky, (2) Cumberland Valley RECC, Gray, Kentucky

Natural Gas

Company serving - Peoples Gas Company

Source of supply - The Wiser Oil Company

Size of transmission lines - 4, 6, and 8 inches

Distribution lines - 2, 4, 6, and 8 inches

Btu content - 1,150

Specific gravity - .700

Distribution pressure - 250 psi

Interruptible Service Industrial Rates:

Monthly rate: Summer rate (six months, May through October)

First 1,000 per M cu. ft. or fraction thereof for - \$600 (Minimum)

Next 1,000 per M cu. ft. - .59 per M cu. ft.

All over 2,000 per M cu. ft. - .57 per M cu. ft.

Winter rate: (six months, November through April)

First 1,000 per M cu. ft. or fraction thereof for - \$800 (Minimum)

Next 1,000 per M cu. ft. - .75 per M cu. ft.

All over 2,000 per M cu. ft. - .73 per M cu. ft.

WATER AND SEWERAGE

Water

Company serving - City Utilities Commission
Source - Laurel River
Treatment plant capacity - 5,000,000 gpd
Average daily consumption - 1,000,000 gallons
Peak daily consumption - 1,600,000 gallons
Type treatment - High rate filtration
Storage capacity - 2,850,000 gallons
Size mains - 4, 6, 8, 10, and 12 inches
Average pressure - 65 psi
Average temperature - 70°

MONTHLY WATER RATES FOR WHOLESALE AND INDUSTRIAL CONSUMERS

Inside City

First	1,000 gallons	\$2.70
Next	1,000 gallons	1.05
Next	1,000 gallons	.85
Next	7,000 gallons	.70
Next	90,000 gallons	.60
Next	100,000 gallons	.50
Next	100,000 gallons	.42
Next	700,000 gallons	.36
All over	1,000,000 gallons	.30
Minimum charge per month		\$2.70
Yard hydrant		4.00

Outside City

First	1,000 gallons	\$3.75
Next	1,000 gallons	1.40
Next	1,000 gallons	1.13
Next	7,000 gallons	.93
Next	90,000 gallons	.80
Next	100,000 gallons	.67
Next	100,000 gallons	.56
Next	700,000 gallons	.48
All over	1,000,000 gallons	.30
Minimum charge per month		\$3.75
Yard hydrant		6.00

Surface water sources - Cumberland River, Laurel River, Laurel River Reservoir (under construction)
 Average discharge - Cumberland River at Williamsburg 2,583 cfs (19-years, USGS) Laurel River at Corbin, 325 cfs (29-years, USGS)
 Expected ground water yield - 50 to 200 gpm in eastern three-fourths of county; 5 to 50 gpm in western fourth of county.

Sewerage

Company serving - City Utilities Commission
 Design capacity - 2,500,000 gallons
 Average daily flow - 900,000 gallons
 Treatment - Primary and secondary
 Type treatment - Primary settling, trickling filter, aeration, secondary settling, final contact chamber, drying beds
 Treated effluent discharged into - Lynn Camp Creek
 Size of sanitary mains - 6 to 24 inches
 Rates:

Inside City (Schedule A)*

First	1,000 gallons	\$2.30
Next	1,000 gallons	.89
Next	1,000 gallons	.72
Next	7,000 gallons	.60
Next	90,000 gallons	.51
Next	100,000 gallons	.42
Next	100,000 gallons	.36
Next	700,000 gallons	.31
All over	1,000,000 gallons	.26
Minimum charge per month		\$2.30

Inside City (Schedule B)*

First	1,000 gallons	\$4.03
Next	1,000 gallons	1.56
Next	1,000 gallons	1.26
Next	7,000 gallons	1.05
Next	90,000 gallons	.89
Next	100,000 gallons	.73
Next	100,000 gallons	.63
Next	700,000 gallons	.54
All over	1,000,000 gallons	.45
Minimum charge per month		\$4.03

*Schedule A - Inside City rate schedule for customers serviceable by sewers existing as of November 1, 1970.

*Schedule B - Inside City rate schedule for customers serviceable by sewers constructed after November 1, 1970.

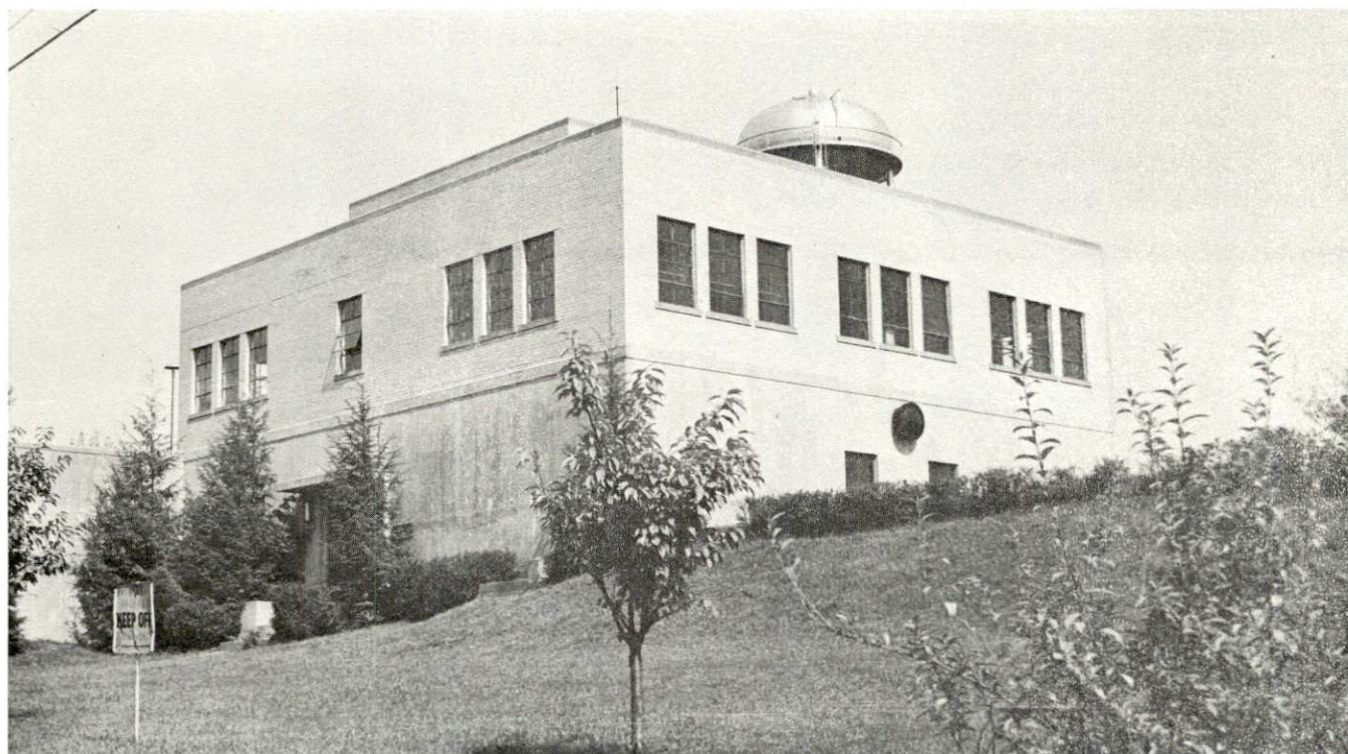
Outside City (Schedule C)*

First	1,000 gallons	\$4.60
Next	1,000 gallons	1.78
Next	1,000 gallons	1.44
Next	7,000 gallons	1.20
Next	90,000 gallons	1.02
Next	100,000 gallons	.84
Next	100,000 gallons	.72
Next	700,000 gallons	.62
All over	1,000,000 gallons	.52
Minimum charge per month		\$4.60

*Schedule C - Outside City rate schedule.



City Hall and Fire Station



Modern Water Plant

LOCAL GOVERNMENT

City

Structure - Mayor - 4-year term; 4 commissioners - 2-year terms

City manager - Yes

Budget 1971 - General Fund \$481,791; Water Fund \$246,683;

Sewer Fund \$118,063

Fees and licenses - Business license fees range from \$5 to \$750 annually. Auto stickers \$10 per year.

County

Structure - County Judge - 4-year term; 3 magistrates - 4-year terms

Budget 1970-71 - General Fund \$110,800; Road Fund \$35,000

Assessed Value of Property, 1971

<u>Classes of Property*</u>	<u>Corbin</u>	<u>Whitley County</u>
Real Estate	\$27,089,518	\$70,509,500
Tangibles	8,351,185	16,440,913
Public Service	N. A.	12,588,651 (1969)

Local General Property Tax Rates Per \$100 of Assessed Valuation, 1971^{12/}

<u>Taxing Unit**</u>	<u>Corbin</u>	<u>Whitley County</u>
State	\$.015	\$.015
County	.177	.177
School	.512	.305
City	.308	
Total	\$ 1.012	\$.497

*Property assessed at 100 percent of fair value.

**Manufacturing machinery, raw materials inventories and goods in process inventories are not subject to local tax. State rate is only \$0.15 per \$100.

Planning and Zoning

Agency - The Corbin Planning Commission
Plans completed - Comprehensive Plan, Subdivision Regulations,
Zoning Ordinance
Codes adopted - Building Code, Housing Code, Plumbing Code,
Electric Code, Fire Code, Gas Code.

Safety

<u>Police</u>	<u>Corbin</u>	<u>Whitley County</u>
Total staff	11	7
Radio-patrol cars	3	2
Other equipment	Motorcycle	

Fire

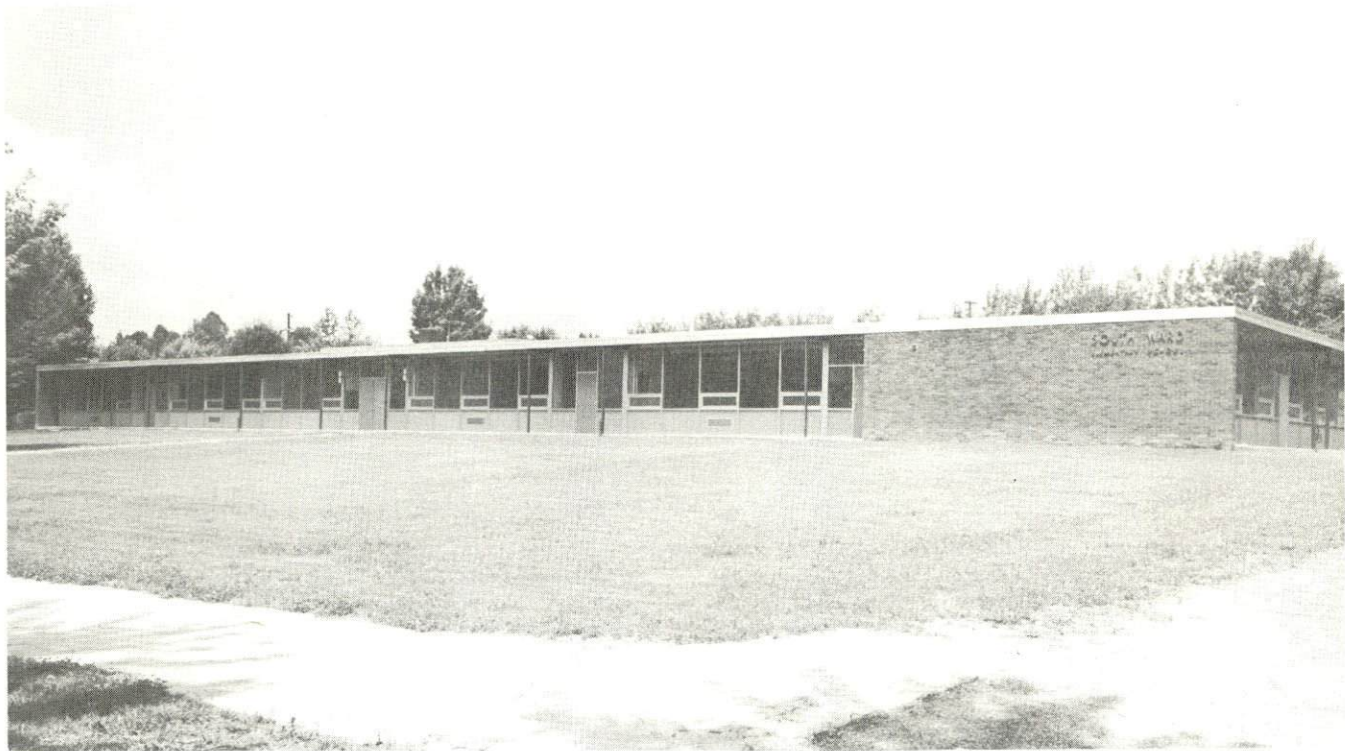
American Insurance Association Fire Rating	7
Full-time staff	11
Volunteers	10
Equipment:	
1,000-gpm pumper	1
750-gpm pumpers	2
500-gpm pumpers	2
Other	Portable generator, MSA masks, resuscitator

Rescue Service

Tri-County Rescue Squad:
Number of volunteers - 38
Equipment - 2 station wagons, 1 ambulance, 4 jeeps, 3/4 ton army truck, 1 trailer with portable light plant, 2 small portable light plants, 3 boats, 4 motors, complete kitchen bus, dragging equipment, 7 walkie-talkies
Personnel training - Require all members to be certified in advanced first aid. The Tri-County Rescue Squad is a member of the Kentucky Associate Rescue Squad; could have 500 to 600 men available in an emergency.

Sanitation

	<u>Corbin</u>	<u>Whitley County</u>
Type service	municipal	private
Cost		
residential	\$2.50 per month	contract
business	1 pickup per week \$6 per month	contract
	2 pickups per week \$12 per month	
	3 pickups per week \$18 per month	
	6 pickups per week \$36 per month	
residential	once weekly	when desired
business	when needed	when desired
trash pickup	twice a month	when desired
disposal method	land fill	land fill



South Ward Elementary School



Southeastern Kentucky Baptist Hospital

HEALTH

Hospitals

<u>General Hospital</u>	<u>Location</u>	<u>Beds</u>
Southeastern Kentucky Baptist Hospital	Corbin	80

General hospital facilities - 2 operating rooms, 2 delivery rooms, X-ray and emergency treatment facilities, laboratory, blood bank, OBGYN, surgical suite, EKG, recovery room, nursery, pediatrics ward

Medical staff - 16 doctors, 23 licensed practical nurses, 26 registered nurses, 5 medical technologists, 3 X-ray technicians, 5 surgical technicians, 1 radiologist, 2 anesthetists, and 1 pathologist

Public Health

Facility - The Whitley County Health Department

Staff - 5 registered nurses, licensed practical nurse, male aide, speech therapist, home help consultant

Budget 1971-72 - \$114,708

OTHER LOCAL FACILITIES

Communications

Telephone - South Central Bell Telephone Company
Services - Standard

Telegraph - Western Union
Services - Standard

Postal - U. S. Post Office
Class - 1
Mail received - five times daily
Mail dispatched - five times daily

Newspapers - Corbin Times Tribune
Daily and circulation - 6,200
Other papers received from - Lexington and Louisville, Kentucky;
Knoxville, Tennessee

Radio - WCTT-AM-FM - WYGO-AM-FM
Stations received from - London, Barbourville, Louisville and
Lexington, Kentucky; Knoxville, Tennessee

Television -
Cable Service
Reception from - Lexington, Kentucky; Knoxville, Tennessee;
Asheville, North Carolina
Kentucky Educational Television - Somerset transmitter, Channel 29

Library Services

Public Libraries - Corbin Public Library
Size collection - 21,000 volumes
Circulation, 1970-71 - 63,890
Services - Meeting rooms, record player, records, pictures,
paintings, movie projector, periodicals, copying machine, and
microfilm machine

Religious Institutions

Number of churches - 16

Denominations - Baptist, Catholic, Church of Christ, Christian,
Church of God, Episcopal, Methodist, Nazarene, Presbyterian,
Church of Latter Day Saints

Financial Institutions

<u>Banks</u>	<u>Statement as of June 30, 1971</u>	
	<u>Assets</u>	<u>Deposits</u>
First National Bank & Trust Co.	\$24,011,736.90	\$22,003,016.42
Corbin Deposit Bank & Trust Co.	14,480,276.98	13,187,153.14

Hotels and Motels

<u>Number</u>	<u>Units</u>
18	477

Clubs and Organizations

Business and Civic - Chamber of Commerce, Corbin Industrial
Development Commission, Rotary, Kiwanis, Lions, Optimist,
Junior Chamber of Commerce

Fraternal - Masons, Shriners, American Legion, VFW, FOP,
Knights of Pythias

Women's - Garden Club, Women's Club, Younger Women's Club,
Junior Women's Club, Eastern Star, Tri-County Business and
Professional Women's Club, Lady Golfers, Daughters of American
Council No. 124, Daughters of American Council No. 77, Pythian
System Temple 46, American Legion Auxiliary, Book Club,
Rainbow Girls, Ossoli Club, Forsythia Garden Club, Cumberland
Falls Garden Club, Corbin Business and Professional Women's Club

Youth - 4-H, FFA, Boy Scouts, Girl Scouts, Cub Scouts, Little
League, Brownies

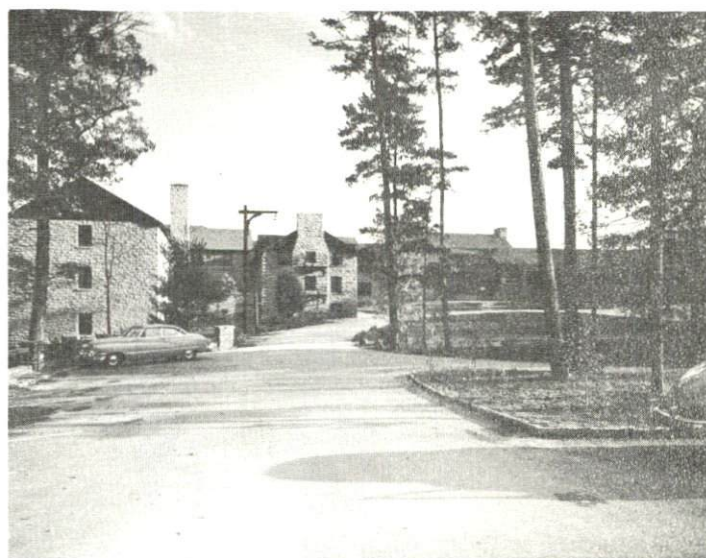
Other - Tri-County Saddle Club, Rod and Gun Club

Corbin Youth Center



Corbin
Municipal Swimming Pool

DuPont Lodge
Cumberland Falls
State Park



RECREATION

Local

Public Recreation Facilities

Supervised program - Year-round supervision

Park - 1

Playgrounds - 3

Swimming pool - 1

Golf course - 1

Baseball diamonds - 2

Football field - 1

Other - Golf driving range, youth center, skating rink

Private Recreation Facilities

Country club - 1

Golf course - 1

Swimming pool - 1

Movie theaters - 1 indoor, 1 drive-in

Bowling lanes - 1

Other - Tennis courts

Tourist Attractions

Nibroc Festival in August, 6 days, featuring square dancing, folk music, beauty contest, antique show, art exhibit, flea market, carnival, and Rotary Club, horse show

Area (Within 50 miles)

Cumberland Falls State Resort Park

Levi Jackson Wilderness Road State Park

Pine Mountain State Resort Park

AGRICULTURE - NATURAL RESOURCES - CLIMATE

Agriculture 13/

	<u>Whitley County</u>	<u>Labor Market Area</u>
Total land area (acres)	293,760	1,322,240
Percent of area in farm land	25.3	25.1
Number of farms	870	4,348
Average size of farms (acres)	85.5	76.5
1964 value of all farm products	\$1,023.31	\$1,755.33
Value per farm	890,284	7,632,193
Total crop sales	367,205	3,644,068
Total livestock & livestock products	517,524	3,981,863
1968 agricultural production included:		
Burley tobacco (lbs.)	497,000	5,649,000
Corn (bu.)	74,000	505,000
Cattle and calves (number)	6,600	35,100
Hogs and pigs (number)	1,700	9,000
Milk production (1967) (lbs.)	5,445,000	44,680,000

Natural Resources

Principal mineral resources	Coal, petroleum, miscellaneous clay
Other mineral resources	Natural gas, and gravel, high-calcium limestone along Pine Mountain
Acres of commercial forest land	228,200
Most abundant tree species	White oaks, red oaks, yellow pines, hickories, yellow poplar, beech and soft maple

Temperature

Annual mean (30-year record)	59.6 degrees
Average annual 1969	59.0 degrees
Record highest, August, 1968 (10-year record)	99.0 degrees
Record lowest, January 1966 (10-year record)	- 9.0 degrees
Seasonal heating degree-days (30-year record)	3,494

Precipitation

Mean annual total (30-year record)	45.85 inches
Mean annual snow and sleet (28-year record)	12.9 inches
Total precipitation 1969	43.43 inches
Mean number days precipitation (28-year record) (.01 inches or more)	126
Average number days thunderstorms (28-year record)	47
Prevailing winds (14-year record)	Northeast

HISTORY

Whitley County is located in the southeastern portion of Kentucky and covers 450 square miles. Its southern boundary is formed by the Tennessee state line. It is drained by the Cumberland River, which flows from east to west across the county and its tributaries. The county's northern boundary is formed by the Laurel River. The land surface is mountainous and broken, but there is much fertile soil in the valleys. A major portion of the area is included in Daniel Boone National Forest, and there are large deposits of coal.

An area noted for its unusual natural beauty, Whitley County is the site of beautiful Cumberland Falls. Here the waters of the Cumberland River fall sixty-two feet over a precipice of solid rock, just below a fifty-foot rapids. The falls has gained world renown for its remarkable moonbow, one of two in the world. The other is at Victoria Falls in Africa. Cumberland Falls State Park annually attracts thousands of visitors who enjoy complete overnight facilities.

The founders of Whitley County included John F. Sharp and Brinton Litton, both of whom served as representatives from the county in the State Assembly during its formative years. Whitley became the state's fifty-ninth county in 1818, named for Colonel William Whitley, an early Kentucky settler who led a body of troops to protect travelers along the Wilderness Road. One of the state's distinguished citizens, Whitely built the oldest brick house west of the Alleghenies in Lincoln County.

Williamsburg, the county seat, lies near the center of the county and had a population of 3,687 in 1970. It is the home of Cumberland College, a church-affiliated four-year liberal arts institution, which in 1970 had a total enrollment of 1,858. Corbin, the largest population center in the area, lies in the northeastern corner of the county. An important economic center, Corbin had a population of 7,317 in 1970.

In 1818, two years after its founding, Whitley County had a population of 2,340. This grew steadily until the 1840's when there was a rapid expansion due to the area's agricultural and timber resources. By 1950 the population had reached 31,940. Although there was a significant decline the next decade to 25,815 in 1960, industrial growth had cut the rate of decline by two-thirds by 1970, for a total of 24,145.

Agricultural employment accounted for 600 of the county's 7,800 employed in 1969, with burley tobacco, corn, hay, cattle, and hogs the principal products. Manufacturing employment was 900 in 1969. The heaviest concentration of production was in apparel, paper and printing, machinery and metal products. Largest of Williamsburg's firms are Lion Uniform Company, and Roper Corporation, which makes metal furniture. In Corbin, National-Standard Company, which produces industrial wire cloth, and American Greetings Corporation, making greeting cards, are the largest. Whitley County produces a significant amount of bituminous coal, and the Corbin railroad yards serve as a junction point for branch roads into the coal fields of eastern Kentucky.

An important transportation artery, Interstate 75, bisects the county from north to south.

One of the most famous residents of Whitley County was Julia Marcum, who aided the underground railroad prior to the Civil War and later fought for the Union. By a special act of Congress in 1884, she was made the only woman to be granted a soldiers pension by the federal government. Eugene Siler of Whitley County, was a recent United States Congressman.

SOURCES OF INFORMATION

- 1/ U. S. Department of Commerce, Bureau of the Census, Census of Population, 1950, 1960, 1970.
- 2/ Kentucky Department of Economic Security, Division of Research and Statistics.
- 3/ Kentucky Department of Economic Security, Number of Workers in Manufacturing Industries Covered by Kentucky Unemployment Insurance Law Classified by Industry and County, September 1960, 1970.
- 4/ Kentucky Department of Commerce, Division of Research and Planning.
- 5/ Kentucky Department of Economic Security, Division of Employment Services, Corbin Office.
- 6/ Kentucky Department of Economic Security, Kentucky Labor Supply Estimates by County, January 1971.
- 7/ Kentucky Department of Commerce, Future Labor Supply by 1977.
- 8/ University of Kentucky, Office of Development Services and Business Research, Total Personal Income for Kentucky.
- 9/ University of Kentucky, Office of Development Services and Business Research, Per Capita Income in Kentucky.
- 10/ Louisville & Nashville Railroad, Louisville, Kentucky.
- 11/ Wilson Freight Forwarding Company, Cincinnati, Ohio.
- 12/ Kentucky Department of Revenue.
- 13/ U. S. Department of Commerce, Bureau of the Census, Census of Agriculture, 1964. U. S. Department of Agriculture and Kentucky Department of Agriculture, Kentucky Agricultural Statistics, 1969.
- 14/ U. S. Department of Commerce, Environmental Science Services Administration, Climatological Data, 1970.

All other information was obtained from governmental offices, local businesses and organizations.